

Data Path : Z:\SVOASRV\HPCHEM1\BNA_F\DATA\BF101019\
 Data File : BF117362.D
 Acq On : 10 Oct 2019 16:15
 Operator : JU
 Sample : K5297-01
 Misc :
 ALS Vial : 4 Sample Multiplier: 1

Instrument :
 BNA_F
 ClientSampleId :
 HH-CONCRETE

Quant Time: Oct 11 05:26:05 2019
 Quant Method : Z:\SVOASRV\HPCHEM1\BNA_F\METHODS\8270-BF091319.M
 Quant Title : ASP BNA STANDARDS FOR 5 POINT CALIBRATION
 QLast Update : Wed Oct 09 01:26:00 2019
 Response via : Initial Calibration

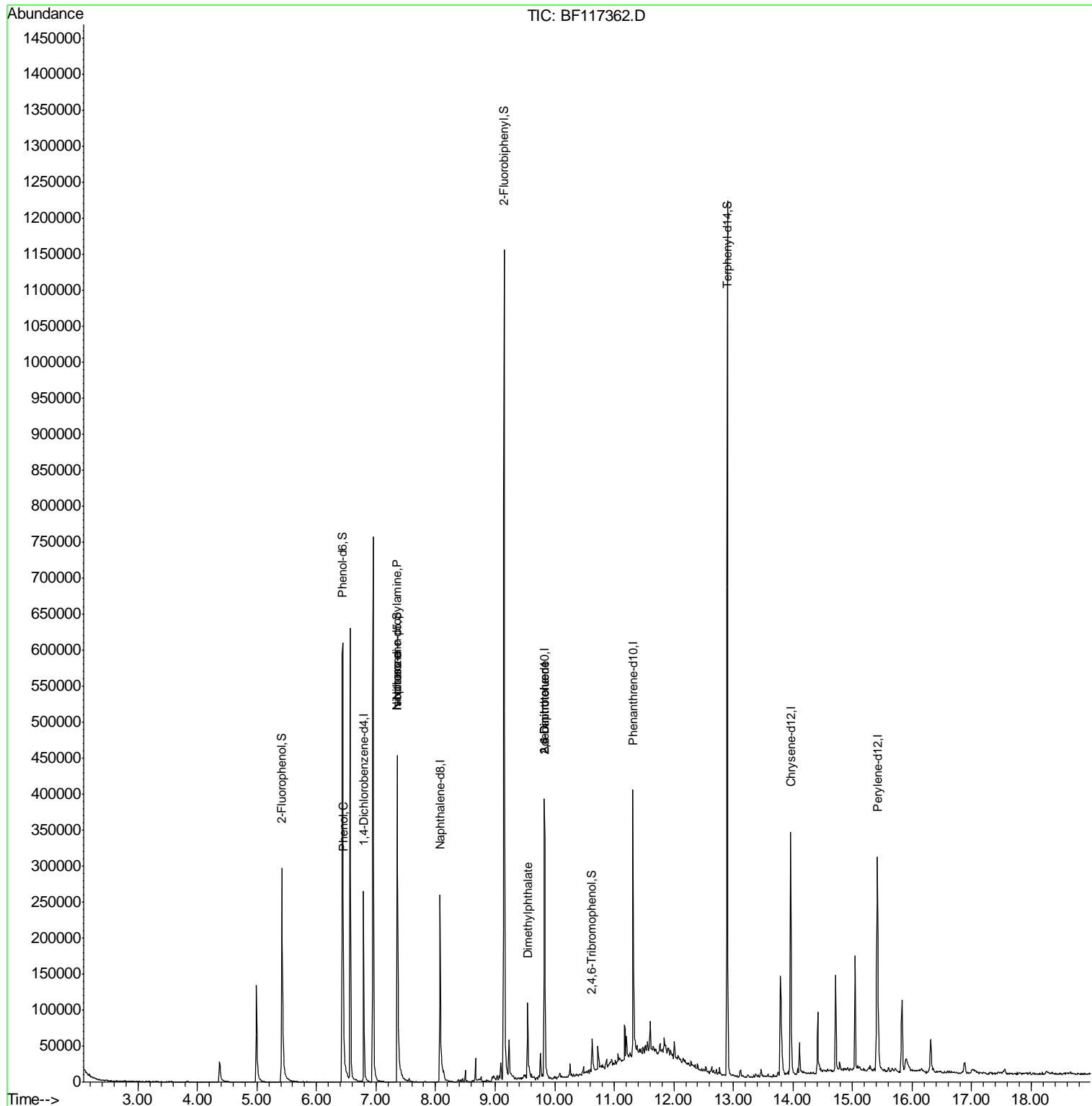
Internal Standards	R.T.	QIon	Response	Conc	Units	Dev(Min)
1) 1,4-Dichlorobenzene-d4	6.79	152	44217	20.00	ng	-0.01
21) Naphthalene-d8	8.07	136	174094	20.00	ng	-0.01
39) Acenaphthene-d10	9.83	164	93789	20.00	ng	-0.01
64) Phenanthrene-d10	11.32	188	154874	20.00	ng	-0.01
76) Chrysene-d12	13.96	240	125406	20.00	ng	-0.01
87) Perylene-d12	15.42	264	117016	20.00	ng	0.00
System Monitoring Compounds						
5) 2-Fluorophenol	5.42	112	121544	42.92	ng	0.00
7) Phenol-d6	6.44	99	292349	79.87	ng	-0.01
23) Nitrobenzene-d5	7.36	82	207436	62.61	ng	-0.01
42) 2,4,6-Tribromophenol	10.63	330	8384	10.70	ng	0.00
45) 2-Fluorobiphenyl	9.15	172	390159	65.04	ng	-0.01
79) Terphenyl-d14	12.90	244	408892	60.95	ng	-0.01
Target Compounds						
9) Benzaldehyde	6.43	77	126	Below Cal		Qvalue # 1
10) Phenol	6.45	94	11562	2.865	ng	93
19) n-Nitroso-di-n-propylamine	7.36	70	28057	12.589	ng	# 81
25) Isophorone	7.36	82	207434	35.358	ng	# 66
50) Dimethylphthalate	9.55	163	39221	5.906	ng	99
51) 2,6-Dinitrotoluene	9.83	165	11638	8.605	ng	# 24
57) 2,4-Dinitrotoluene	9.83	165	11638	6.629	ng	# 18

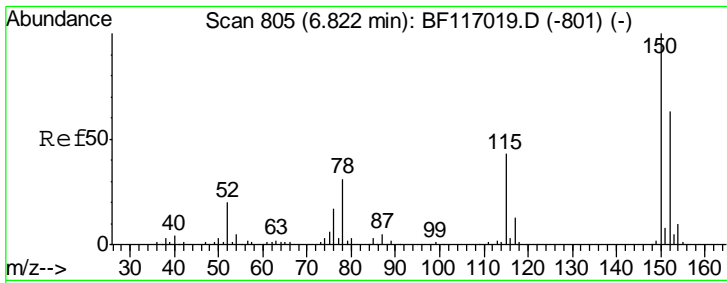
(#) = qualifier out of range (m) = manual integration (+) = signals summed

Data Path : Z:\SVOASRV\HPCHEM1\BNA_F\DATA\BF101019\
 Data File : BF117362.D
 Acq On : 10 Oct 2019 16:15
 Operator : JU
 Sample : K5297-01
 Misc :
 ALS Vial : 4 Sample Multiplier: 1

Instrument :
 BNA_F
 ClientSampleId :
 HH-CONCRETE

Quant Time: Oct 11 05:26:05 2019
 Quant Method : Z:\SVOASRV\HPCHEM1\BNA_F\METHODS\8270-BF091319.M
 Quant Title : ASP BNA STANDARDS FOR 5 POINT CALIBRATION
 QLast Update : Wed Oct 09 01:26:00 2019
 Response via : Initial Calibration

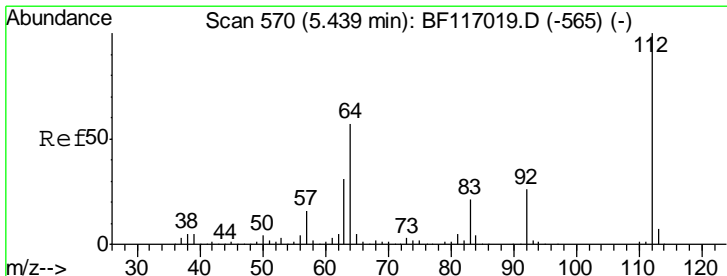
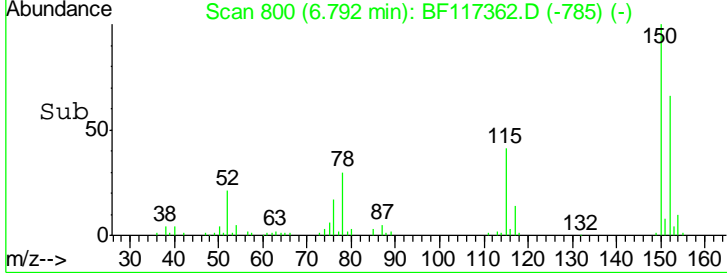
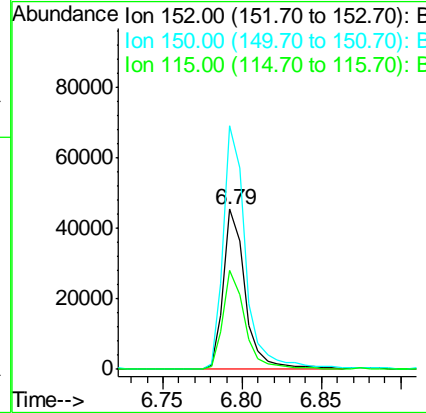
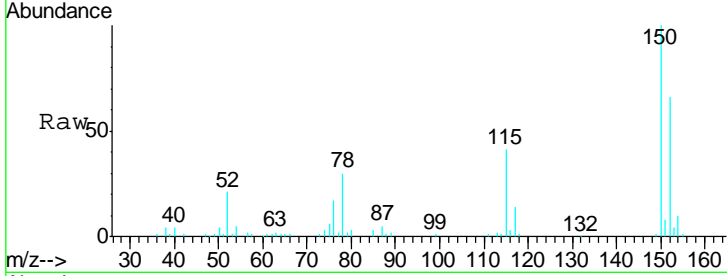




#1
 1,4-Dichlorobenzene-d4
 Concen: 20.000 ng
 RT: 6.79 min Scan# 800
 Delta R.T. -0.01 min
 Lab File: BF117362.D
 Acq: 10 Oct 2019 16:15

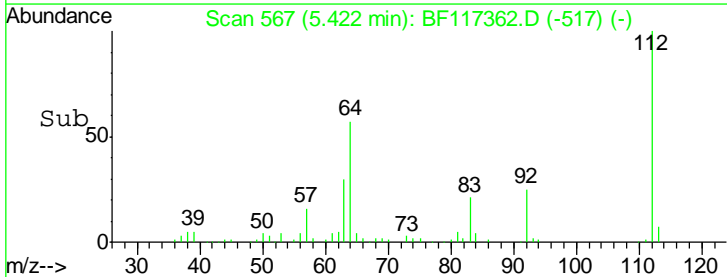
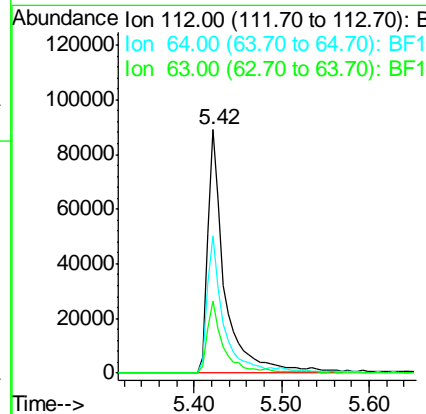
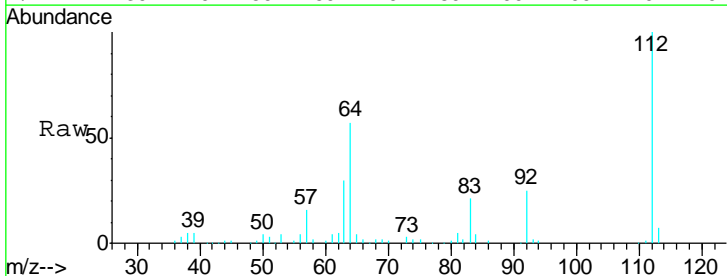
Instrument :
 BNA_F
ClientSampled :
 HH-CONCRETE

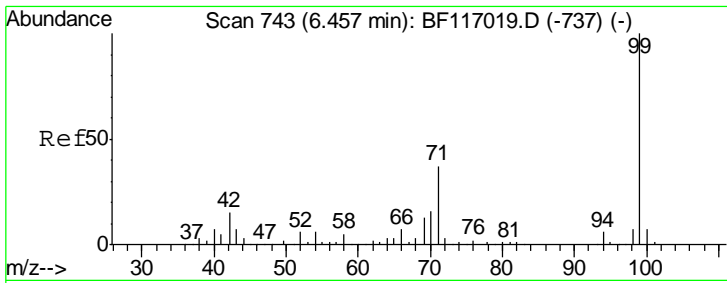
Tgt Ion	Resp	Lower	Upper
152	44217		
152	100		
150	152.0	127.5	191.3
115	61.7	55.0	82.4



#5
 2-Fluorophenol
 Concen: 42.916 ng
 RT: 5.42 min Scan# 567
 Delta R.T. -0.01 min
 Lab File: BF117362.D
 Acq: 10 Oct 2019 16:15

Tgt Ion	Resp	Lower	Upper
112	121544		
112	100		
64	56.7	45.7	68.5
63	29.5	24.9	37.3

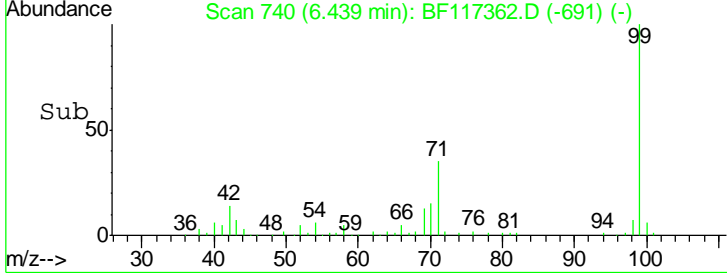
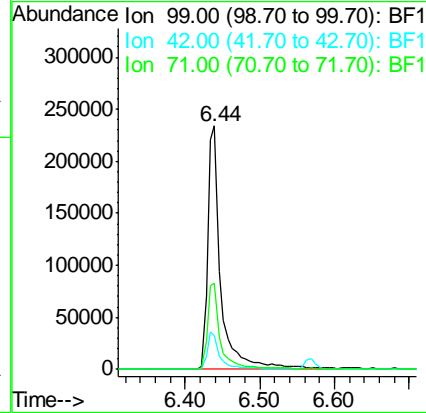
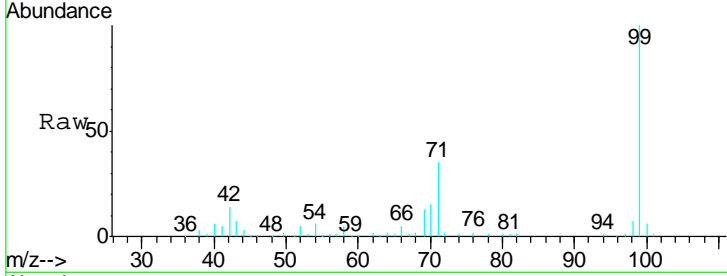




#7
 Phenol-d6
 Concen: 79.873 ng
 RT: 6.44 min Scan# 740
 Delta R.T. -0.01 min
 Lab File: BF117362.D
 Acq: 10 Oct 2019 16:15

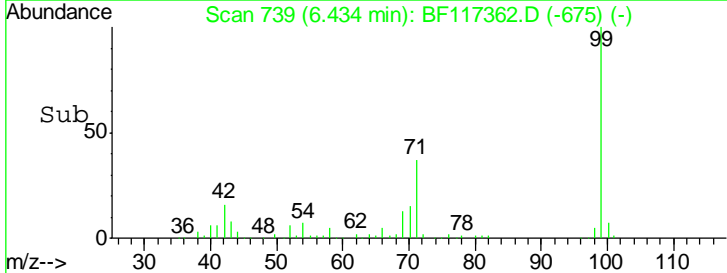
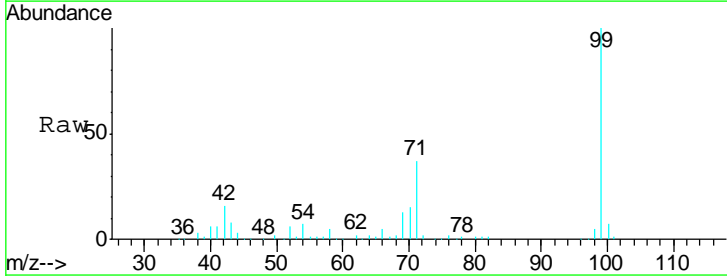
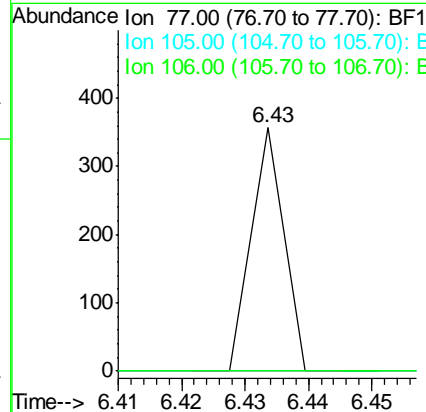
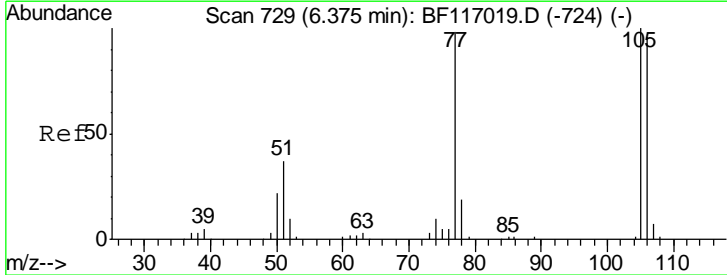
Instrument :
 BNA_F
ClientSampled :
 HH-CONCRETE

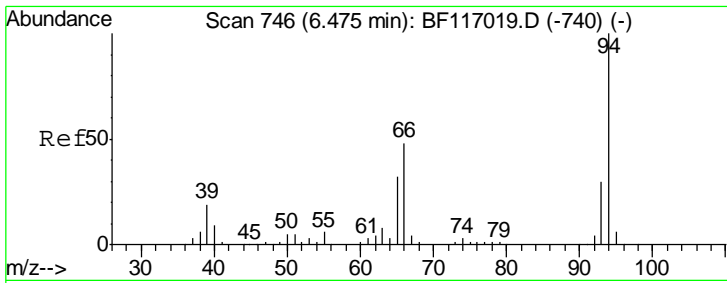
Tgt Ion	Resp	Lower	Upper
99	292349		
99	100		
42	13.7	12.2	18.2
71	35.2	29.8	44.8



#9
 Benzaldehyde
 Concen: Below Cal
 RT: 6.43 min Scan# 739
 Delta R.T. 0.08 min
 Lab File: BF117362.D
 Acq: 10 Oct 2019 16:15

Tgt Ion	Resp	Lower	Upper
77	126		
77	100		
105	0.0	81.8	121.8#
106	0.0	77.3	117.3#

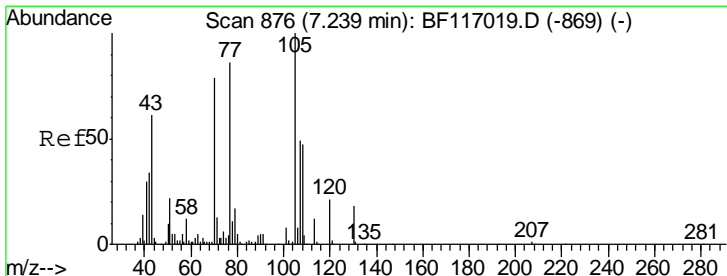
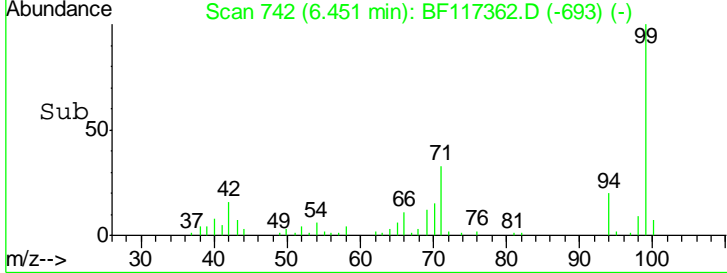
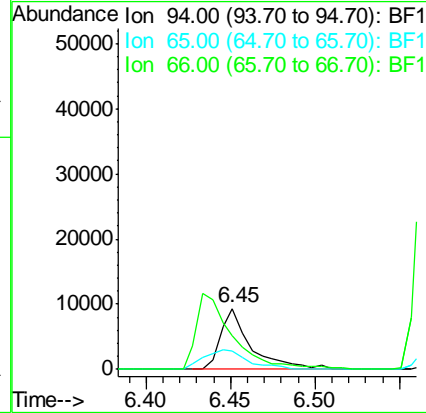
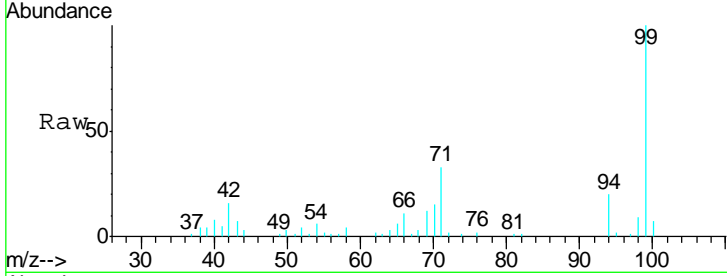




#10
 Phenol
 Concen: 2.865 ng
 RT: 6.45 min Scan# 742
 Delta R.T. -0.01 min
 Lab File: BF117362.D
 Acq: 10 Oct 2019 16:15

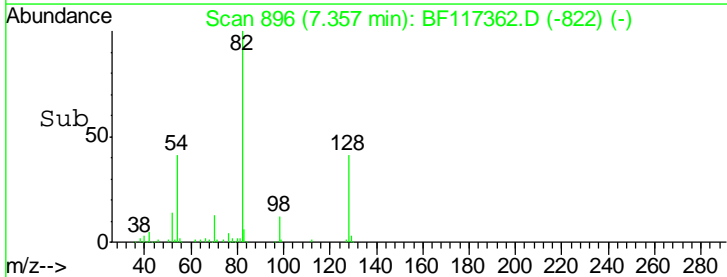
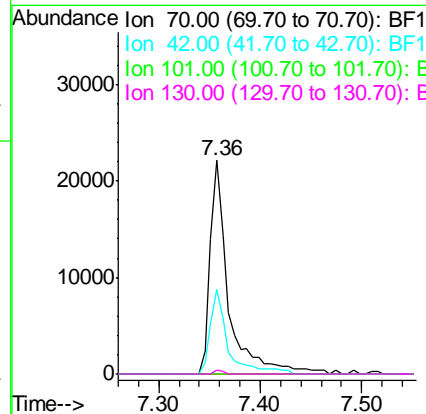
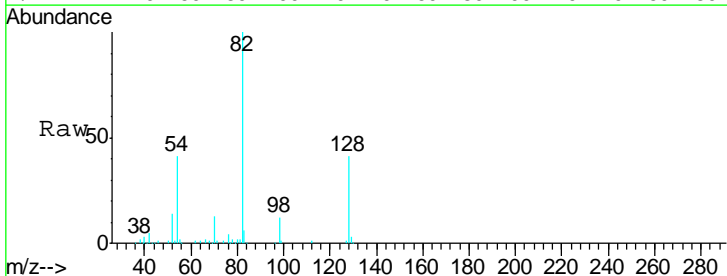
Instrument :
 BNA_F
 ClientSampleId :
 HH-CONCRETE

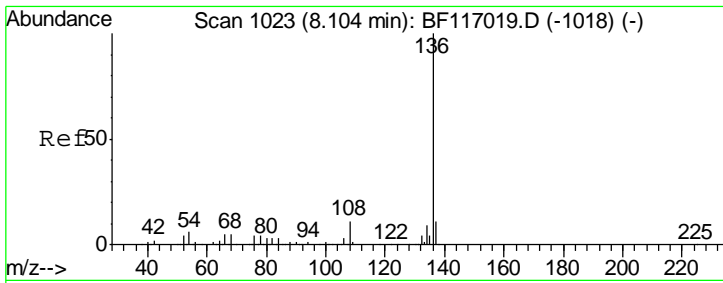
Tgt Ion	Resp	Lower	Upper
94	11562		
65	30.6	12.5	52.5
66	55.8	28.9	68.9



#19
 n-Nitroso-di-n-propylamine
 Concen: 12.589 ng
 RT: 7.36 min Scan# 896
 Delta R.T. 0.14 min
 Lab File: BF117362.D
 Acq: 10 Oct 2019 16:15

Tgt Ion	Resp	Lower	Upper
70	28057		
42	39.6	34.0	51.0
101	0.0	7.8	11.6#
130	1.8	17.8	26.8#



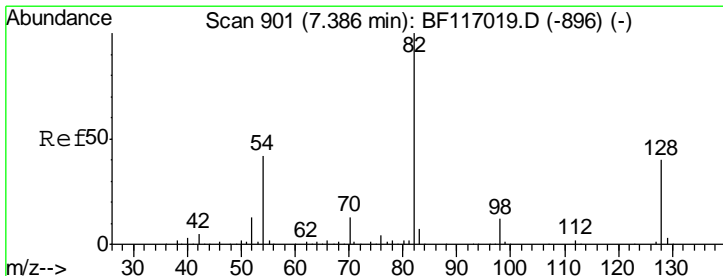
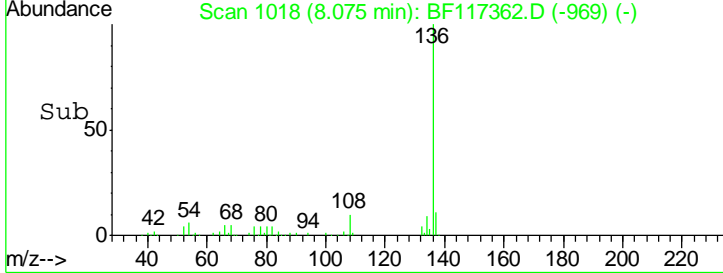
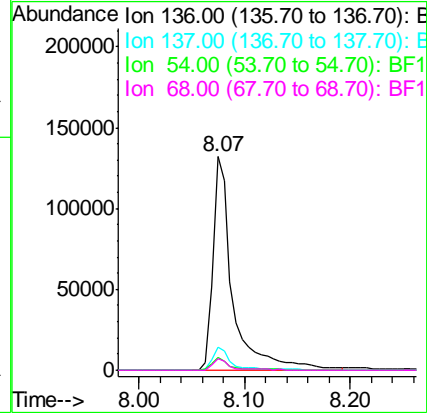
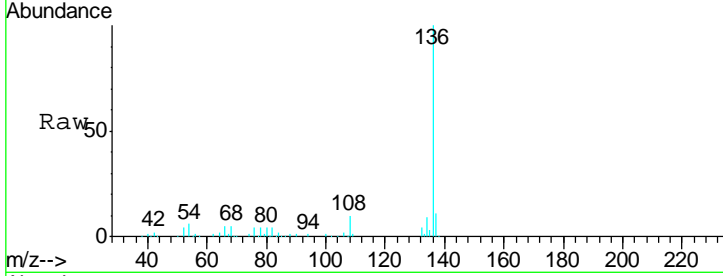


#21
 Naphthalene-d8
 Concen: 20.000 ng
 RT: 8.07 min Scan# 1018
 Delta R.T. -0.01 min
 Lab File: BF117362.D
 Acq: 10 Oct 2019 16:15

Instrument :
 BNA_F
ClientSampleId :
 HH-CONCRETE

Tgt Ion: 136 Resp: 174094

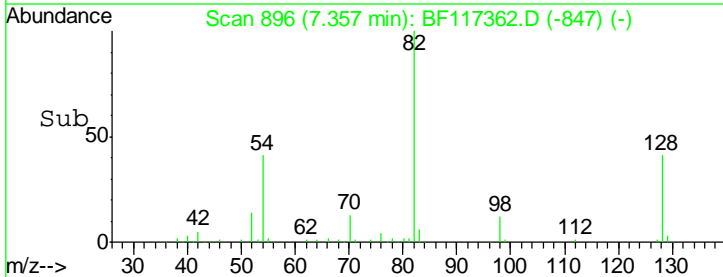
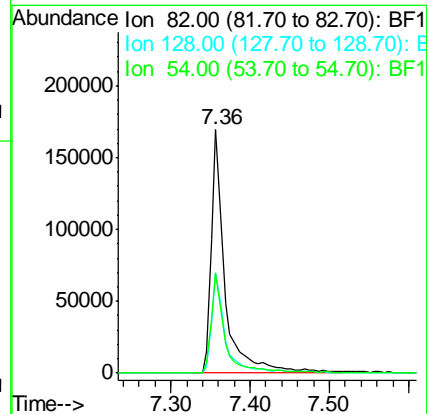
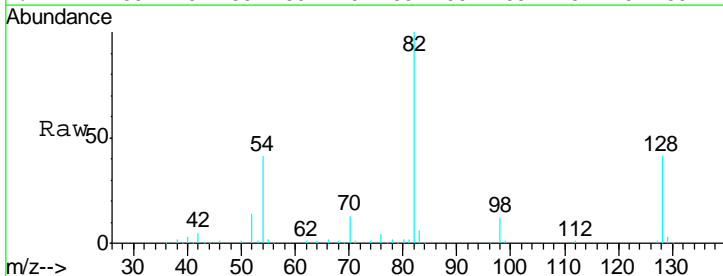
Ion	Ratio	Lower	Upper
136	100		
137	11.0	9.0	13.4
54	6.1	4.5	6.7
68	5.1	4.0	6.0

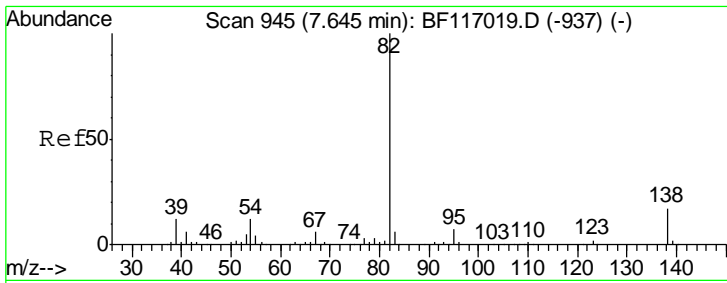


#23
 Nitrobenzene-d5
 Concen: 62.605 ng
 RT: 7.36 min Scan# 896
 Delta R.T. -0.01 min
 Lab File: BF117362.D
 Acq: 10 Oct 2019 16:15

Tgt Ion: 82 Resp: 207436

Ion	Ratio	Lower	Upper
82	100		
128	41.3	32.3	48.5
54	41.2	33.3	49.9

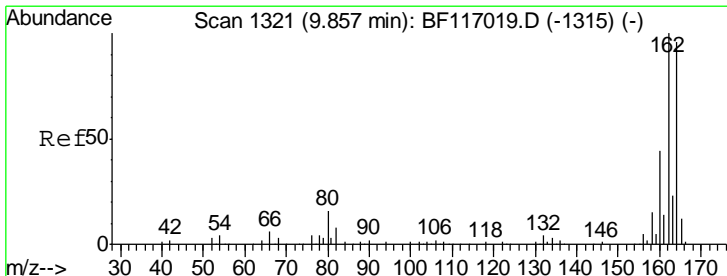
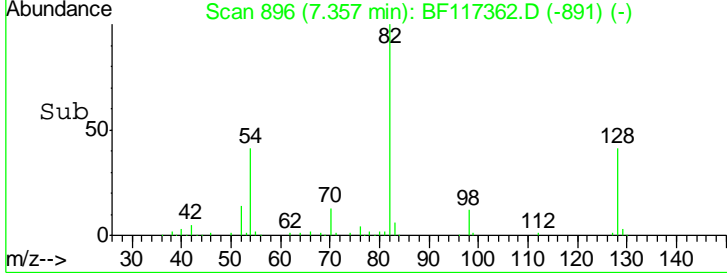
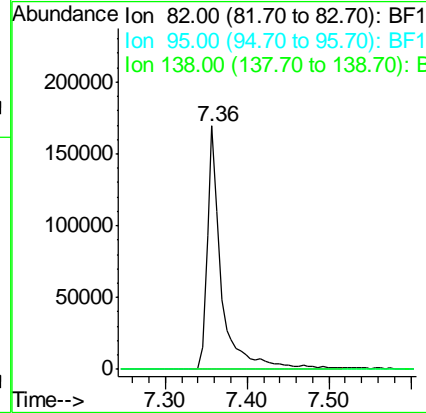
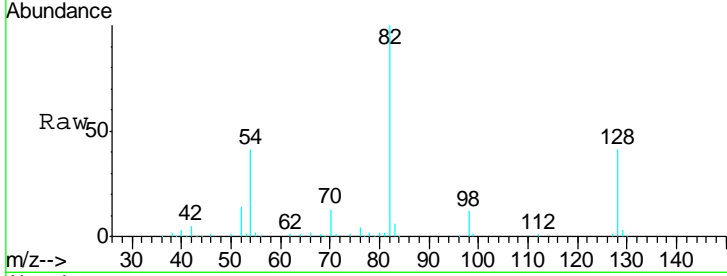




#25
 Isophorone
 Concen: 35.358 ng
 RT: 7.36 min Scan# 896
 Delta R.T. -0.27 min
 Lab File: BF117362.D
 Acq: 10 Oct 2019 16:15

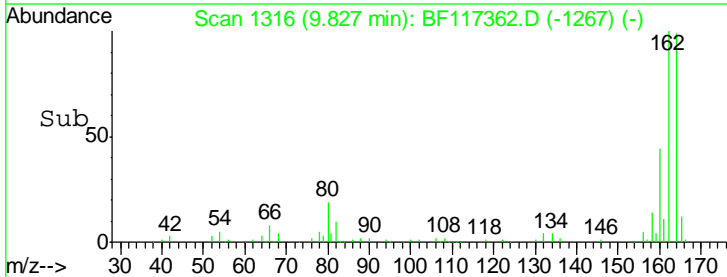
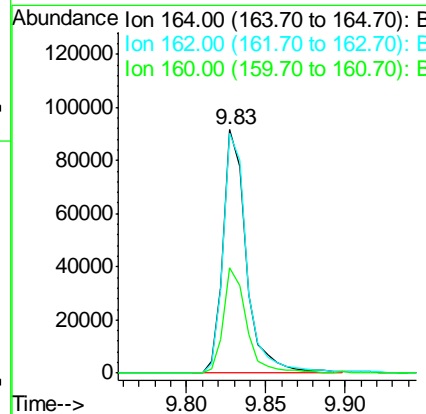
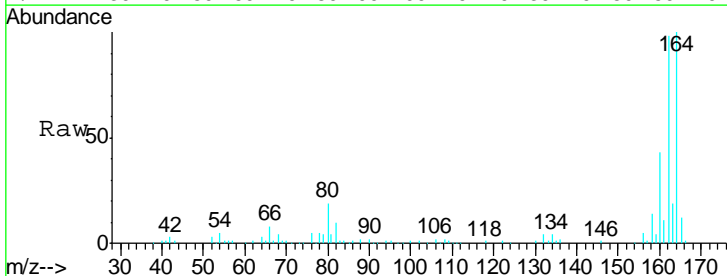
Instrument :
 BNA_F
 ClientSampled :
 HH-CONCRETE

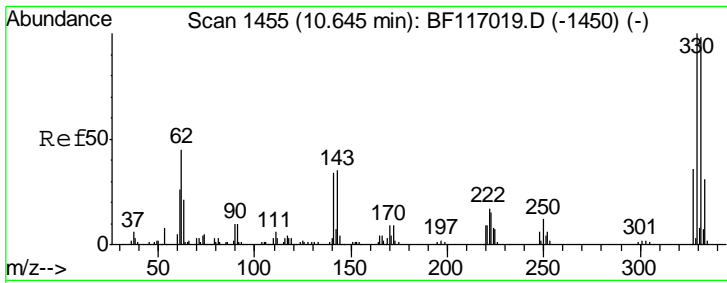
Tgt Ion	Resp	Lower	Upper
82	100		
95	0.0	5.8	8.6#
138	0.0	13.5	20.3#



#39
 Acenaphthene-d10
 Concen: 20.000 ng
 RT: 9.83 min Scan# 1316
 Delta R.T. -0.01 min
 Lab File: BF117362.D
 Acq: 10 Oct 2019 16:15

Tgt Ion	Resp	Lower	Upper
164	100		
162	98.5	83.4	125.2
160	43.2	36.4	54.6

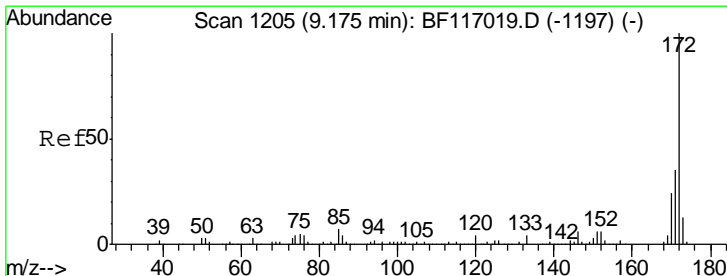
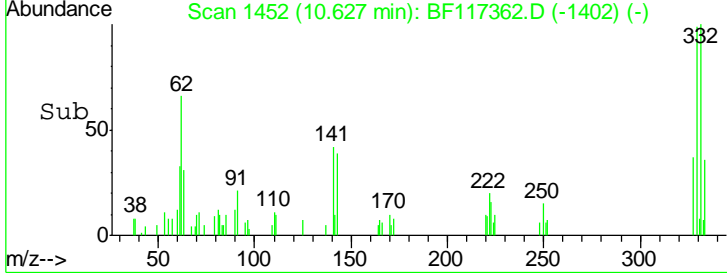
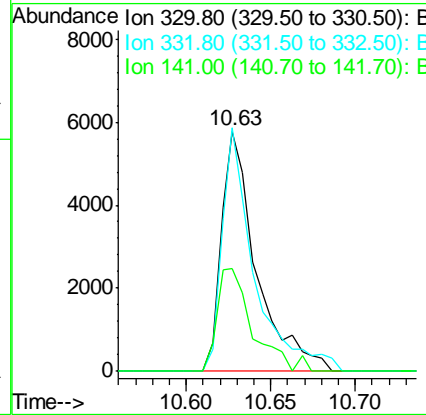
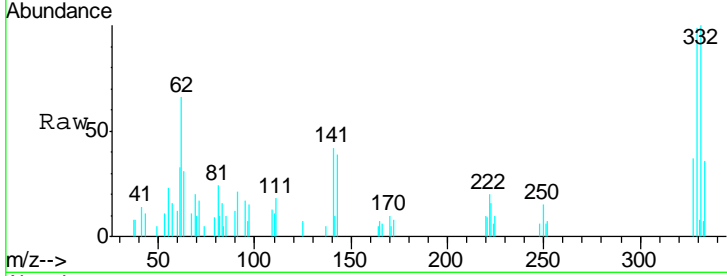




#42
 2,4,6-Tribromophenol
 Concen: 10.696 ng
 RT: 10.63 min Scan# 1452
 Delta R.T. -0.01 min
 Lab File: BF117362.D
 Acq: 10 Oct 2019 16:15

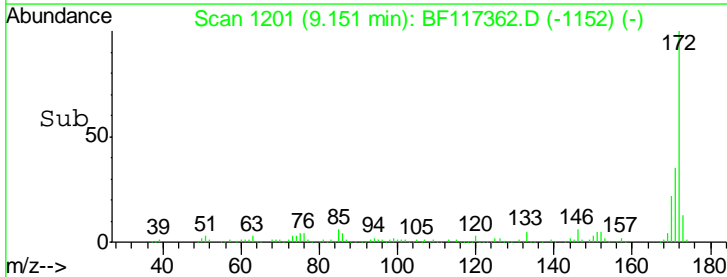
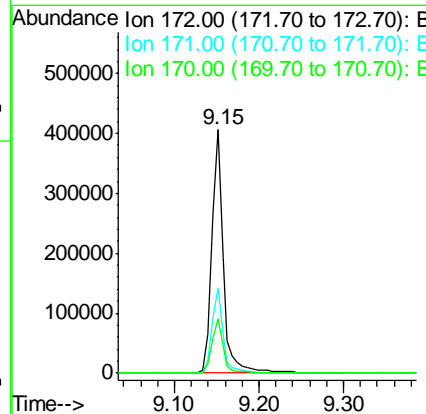
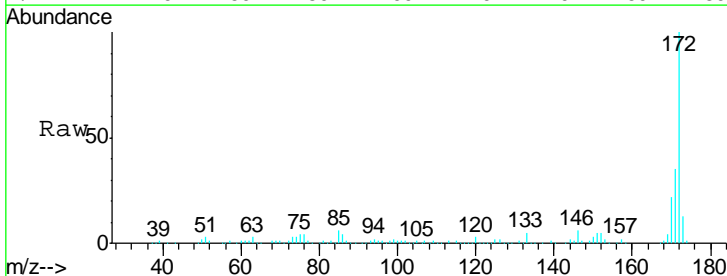
Instrument :
 BNA_F
 ClientSampleId :
 HH-CONCRETE

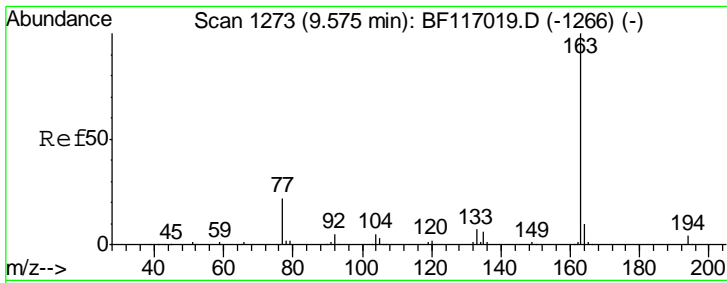
Tgt Ion	Resp	Lower	Upper
330	100		
332	93.4	78.0	117.0
141	43.6	35.8	53.6



#45
 2-Fluorobiphenyl
 Concen: 65.044 ng
 RT: 9.15 min Scan# 1201
 Delta R.T. -0.01 min
 Lab File: BF117362.D
 Acq: 10 Oct 2019 16:15

Tgt Ion	Resp	Lower	Upper
172	100		
171	34.9	28.2	42.2
170	22.3	18.9	28.3

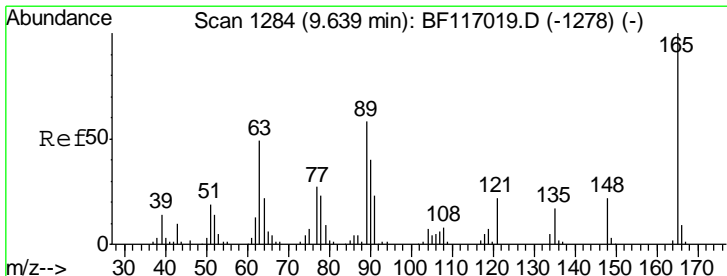
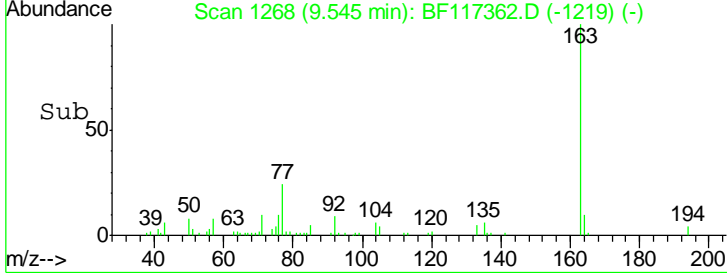
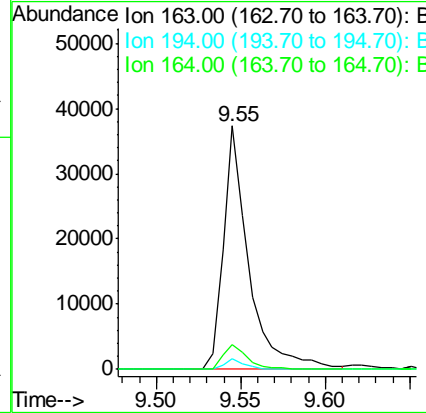
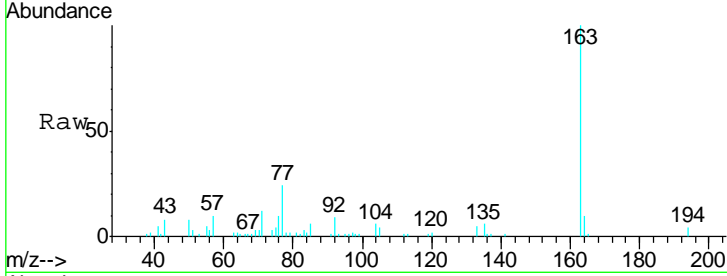




#50
 Dimethylphthalate
 Concen: 5.906 ng
 RT: 9.55 min Scan# 1268
 Delta R.T. -0.01 min
 Lab File: BF117362.D
 Acq: 10 Oct 2019 16:15

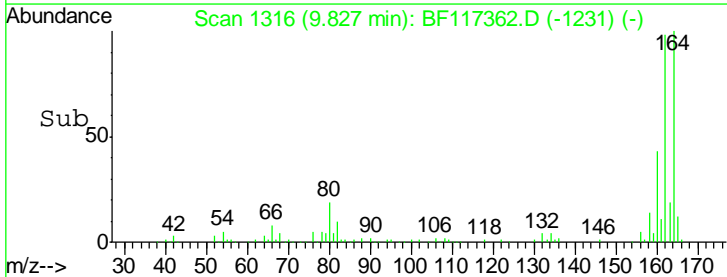
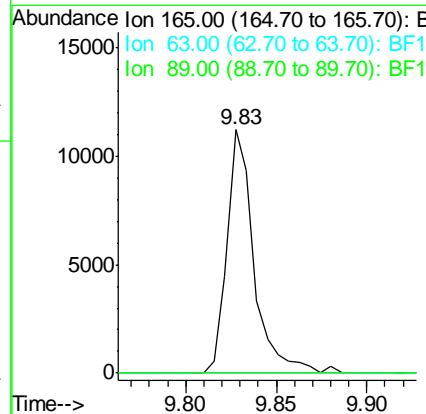
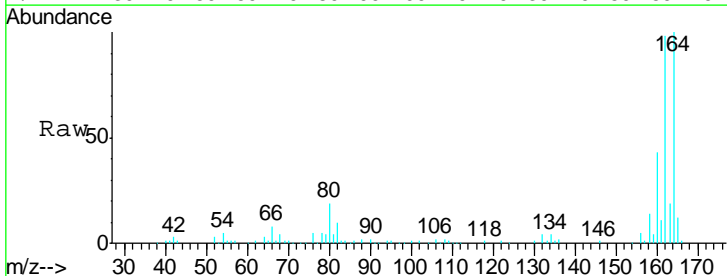
Instrument :
 BNA_F
 ClientSampleId :
 HH-CONCRETE

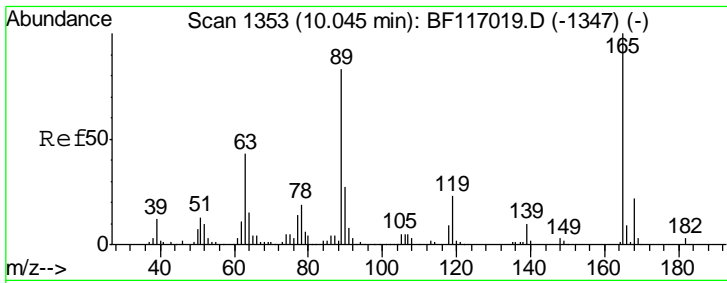
Tgt Ion	Resp	Lower	Upper
163	39221		
194	4.3	2.9	4.3
164	9.9	8.2	12.4



#51
 2,6-Dinitrotoluene
 Concen: 8.605 ng
 RT: 9.83 min Scan# 1316
 Delta R.T. 0.20 min
 Lab File: BF117362.D
 Acq: 10 Oct 2019 16:15

Tgt Ion	Resp	Lower	Upper
165	11638		
63	0.0	41.8	62.8#
89	0.0	46.5	69.7#

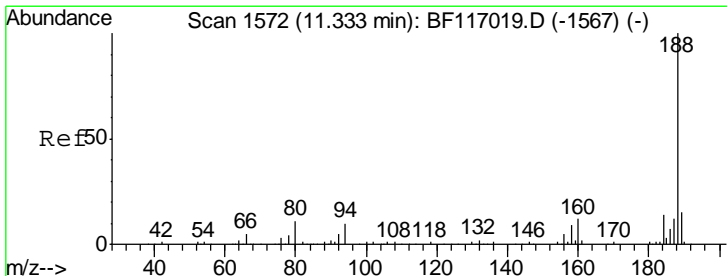
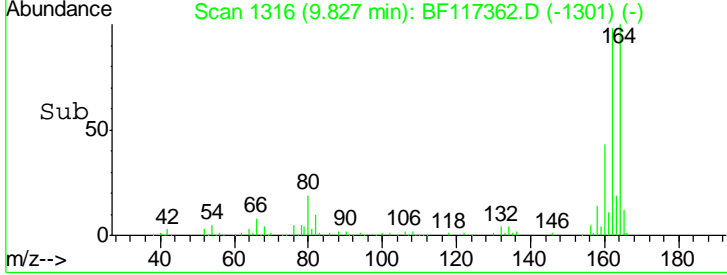
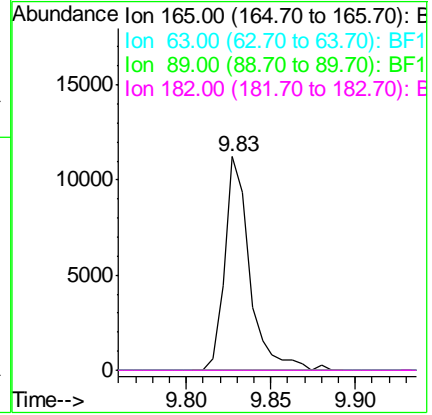
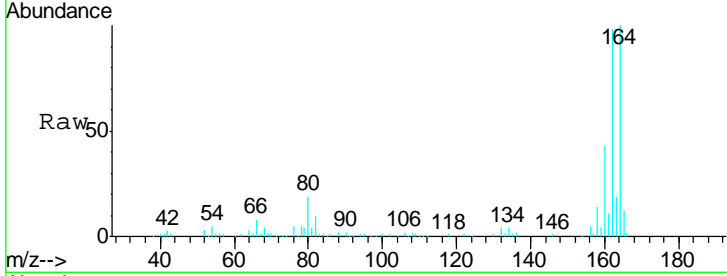




#57
 2,4-Dinitrotoluene
 Concen: 6.629 ng
 RT: 9.83 min Scan# 1316
 Delta R.T. -0.21 min
 Lab File: BF117362.D
 Acq: 10 Oct 2019 16:15

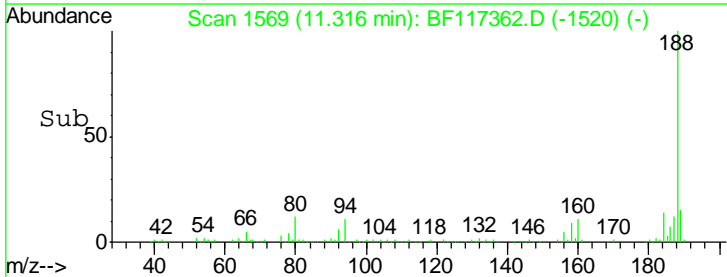
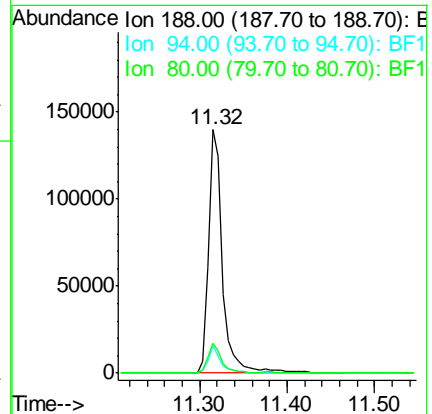
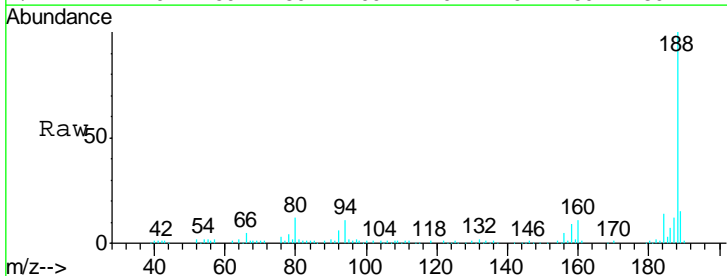
Instrument :
 BNA_F
 ClientSampleId :
 HH-CONCRETE

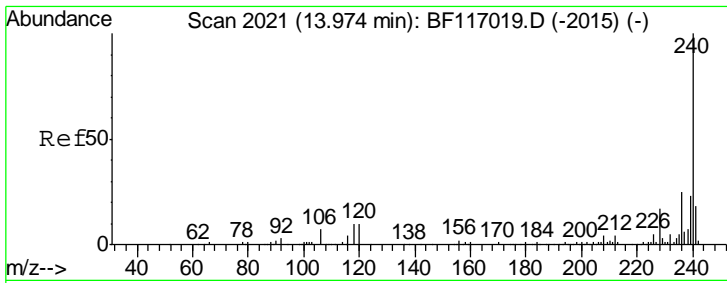
Tgt Ion	Resp	Lower	Upper
165	11638		
63	0.0	35.0	52.4#
89	0.0	66.1	99.1#
182	0.0	2.0	3.0#



#64
 Phenanthrene-d10
 Concen: 20.000 ng
 RT: 11.32 min Scan# 1569
 Delta R.T. -0.01 min
 Lab File: BF117362.D
 Acq: 10 Oct 2019 16:15

Tgt Ion	Resp	Lower	Upper
188	154874		
94	11.0	8.2	12.2
80	12.2	9.0	13.6

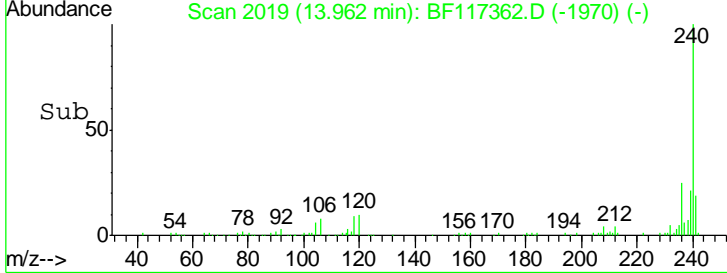
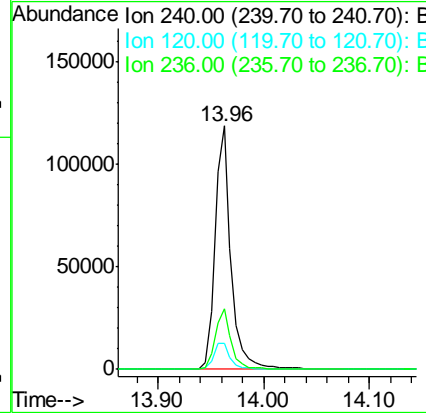
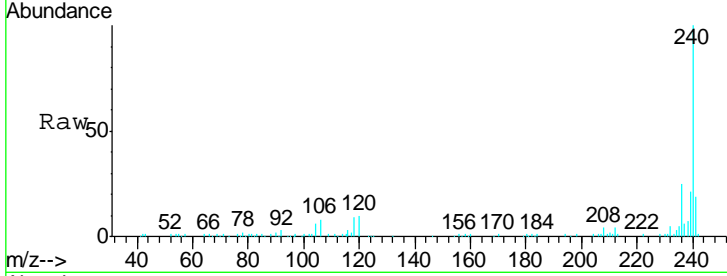




#76
 Chrysene-d12
 Concen: 20.000 ng
 RT: 13.96 min Scan# 2019
 Delta R.T. -0.01 min
 Lab File: BF117362.D
 Acq: 10 Oct 2019 16:15

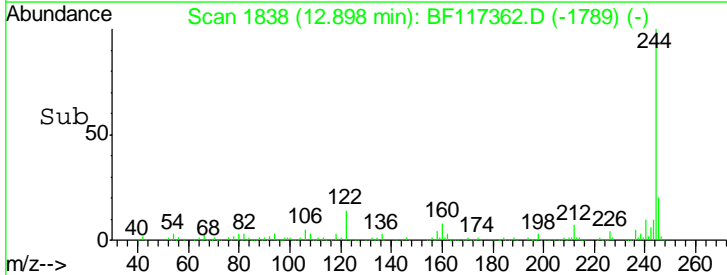
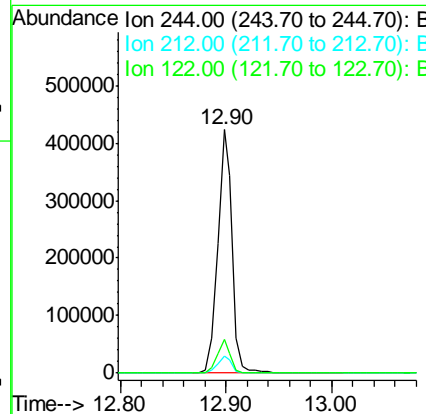
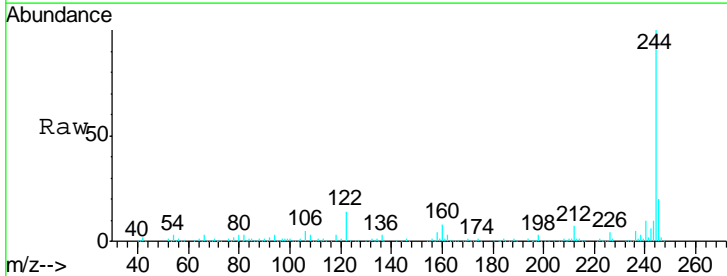
Instrument :
 BNA_F
 ClientSampleId :
 HH-CONCRETE

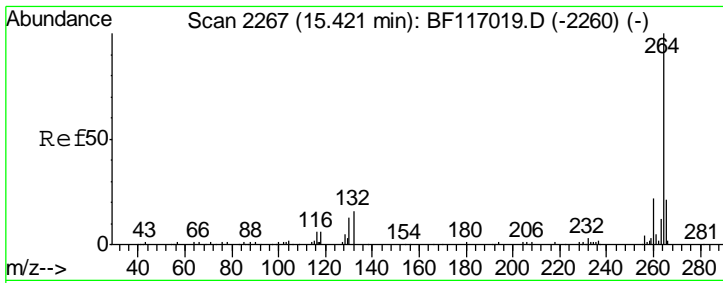
Tgt Ion	Resp	Lower	Upper
240	125406		
120	10.4	8.3	12.5
236	24.9	20.3	30.5



#79
 Terphenyl-d14
 Concen: 60.947 ng
 RT: 12.90 min Scan# 1838
 Delta R.T. -0.01 min
 Lab File: BF117362.D
 Acq: 10 Oct 2019 16:15

Tgt Ion	Resp	Lower	Upper
244	408892		
212	7.1	5.8	8.8
122	13.7	11.3	16.9





#87
 Perylene-d12
 Concen: 20.000 ng
 RT: 15.42 min Scan# 2267
 Delta R.T. -0.01 min
 Lab File: BF117362.D
 Acq: 10 Oct 2019 16:15

Instrument :
 BNA_F
ClientSampled :
 HH-CONCRETE

Tgt Ion: 264 Resp: 117016

Ion	Ratio	Lower	Upper
264	100		
260	21.9	17.6	26.4
265	22.1	16.6	24.8

