

Data Path : Z:\svoasrv\HPCHEM1\BNA\_F\Data\BF101025\  
 Data File : BF143927.D  
 Acq On : 10 Oct 2025 16:20  
 Operator : RC/JU  
 Sample : Q3310-01  
 Misc :  
 ALS Vial : 8 Sample Multiplier: 1

Instrument :  
 BNA\_F  
 ClientSampleId :  
 SS-01-0-1

Quant Time: Oct 10 17:16:44 2025  
 Quant Method : Z:\svoasrv\HPCHEM1\BNA\_F\Methods\8270-BF100625.M  
 Quant Title : ASP BNA STANDARDS FOR 5 POINT CALIBRATION  
 QLast Update : Mon Oct 06 15:29:47 2025  
 Response via : Initial Calibration

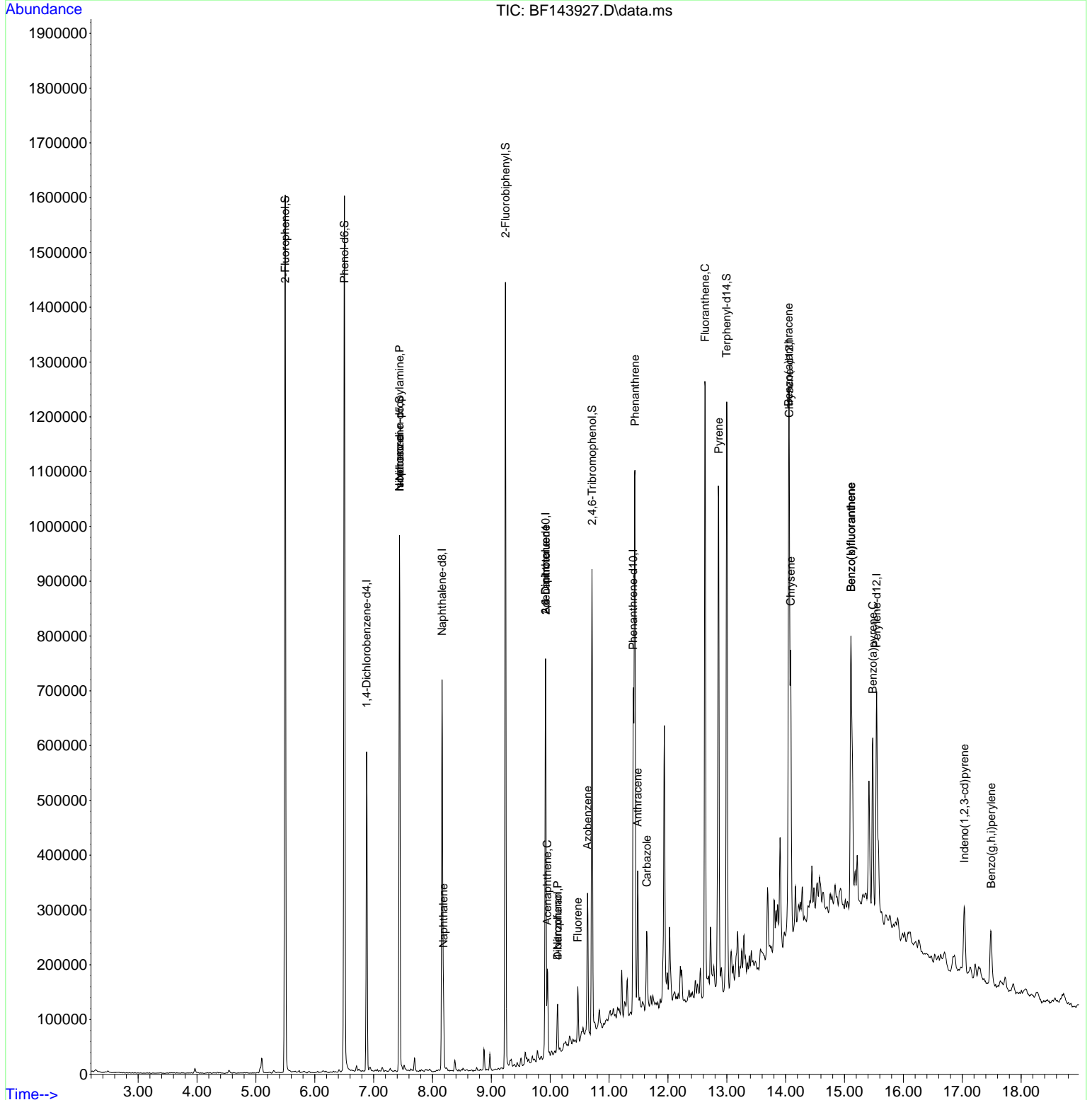
Compound	R.T.	QIon	Response	Conc	Units	Dev(Min)
Internal Standards						
1) 1,4-Dichlorobenzene-d4	6.881	152	118134	20.000	ng	0.00
21) Naphthalene-d8	8.163	136	439825	20.000	ng	0.00
39) Acenaphthene-d10	9.922	164	215736	20.000	ng	0.00
64) Phenanthrene-d10	11.410	188	320645	20.000	ng	0.00
76) Chrysene-d12	14.063	240	271231	20.000	ng	0.00
86) Perylene-d12	15.545	264	260591	20.000	ng	0.00
System Monitoring Compounds						
5) 2-Fluorophenol	5.498	112	608068	81.738	ng	0.00
7) Phenol-d6	6.504	99	707454	79.783	ng	-0.01
23) Nitrobenzene-d5	7.439	82	412861	57.030	ng	-0.02
42) 2,4,6-Tribromophenol	10.710	330	147734	68.753	ng	-0.01
45) 2-Fluorobiphenyl	9.239	172	665135	48.921	ng	-0.01
79) Terphenyl-d14	12.998	244	550490	34.687	ng	-0.01
Target Compounds						
19) n-Nitroso-di-n-propyla...	7.439	70	58600	9.655	ng	# 78
25) Isophorone	7.439	82	359555	23.555	ng	# 68
31) Naphthalene	8.187	128	72522	3.625	ng	99
51) 2,6-Dinitrotoluene	9.922	165	28162	11.086	ng	# 26
52) Acenaphthene	9.951	154	47610	4.340	ng	94
55) Dibenzofuran	10.128	168	46119	2.978	ng	99
56) 4-Nitrophenol	10.128	139	17945	7.619	ng	# 17
57) 2,4-Dinitrotoluene	9.922	165	28162	8.147	ng	# 27
58) Fluorene	10.469	166	37477	3.207	ng	95
63) Azobenzene	10.633	77	62420	4.693	ng	# 1
71) Phenanthrene	11.439	178	559645	36.002	ng	99
72) Anthracene	11.486	178	143621	9.145	ng	98
73) Carbazole	11.639	167	83654	6.015	ng	97
75) Fluoranthene	12.633	202	691596	43.072	ng	99
78) Pyrene	12.863	202	565939	25.028	ng	99
81) Benzo(a)anthracene	14.051	228	347624	19.585	ng	98
83) Chrysene	14.086	228	274054	16.683	ng	97
87) Indeno(1,2,3-cd)pyrene	17.033	276	95630	5.989	ng	98
88) Benzo(b)fluoranthene	15.110	252	440293	29.413	ng	97
89) Benzo(k)fluoranthene	15.110	252	440293	31.787	ng	# 97
90) Benzo(a)pyrene	15.480	252	203794	15.701	ng	# 98
92) Benzo(g,h,i)perylene	17.492	276	90167	7.021	ng	# 95

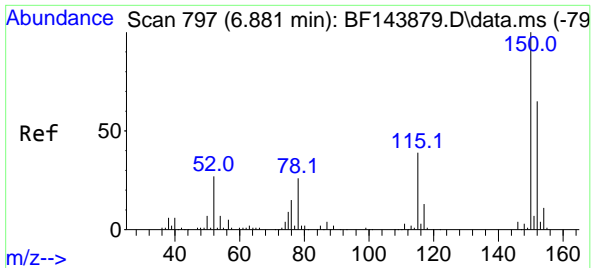
(#) = qualifier out of range (m) = manual integration (+) = signals summed

Data Path : Z:\svoasrv\HPCHEM1\BNA\_F\Data\BF101025\  
 Data File : BF143927.D  
 Acq On : 10 Oct 2025 16:20  
 Operator : RC/JU  
 Sample : Q3310-01  
 Misc :  
 ALS Vial : 8 Sample Multiplier: 1

Instrument :  
 BNA\_F  
 ClientSampleId :  
 SS-01-0-1

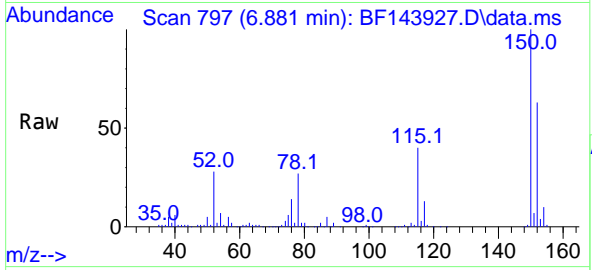
Quant Time: Oct 10 17:16:44 2025  
 Quant Method : Z:\svoasrv\HPCHEM1\BNA\_F\Methods\8270-BF100625.M  
 Quant Title : ASP BNA STANDARDS FOR 5 POINT CALIBRATION  
 QLast Update : Mon Oct 06 15:29:47 2025  
 Response via : Initial Calibration



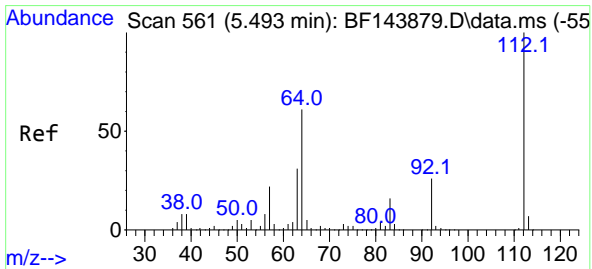
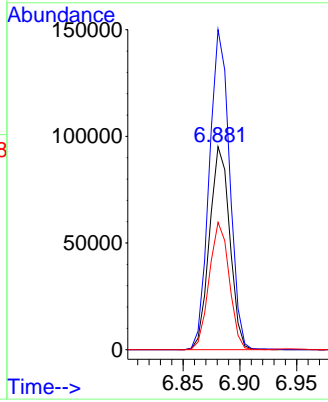
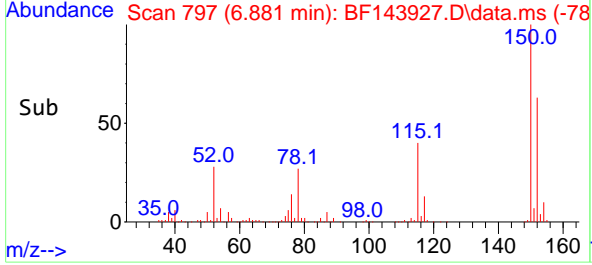


#1  
 1,4-Dichlorobenzene-d4  
 Concen: 20.000 ng  
 RT: 6.881 min Scan# 79  
 Delta R.T. -0.005 min  
 Lab File: BF143927.D  
 Acq: 10 Oct 2025 16:20

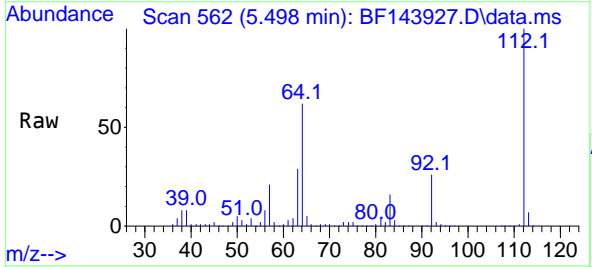
Instrument :  
 BNA\_F  
 ClientSampleId :  
 SS-01-0-1



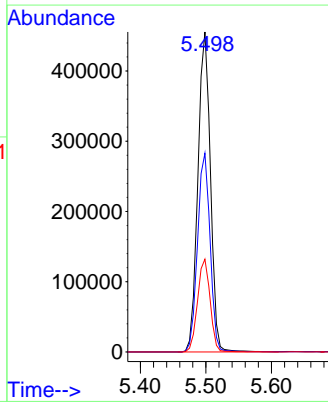
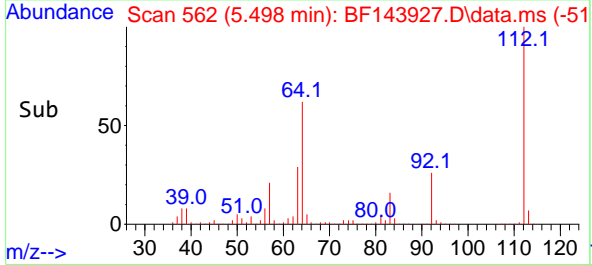
Tgt Ion:152 Resp: 118134  
 Ion Ratio Lower Upper  
 152 100  
 150 157.6 124.4 186.6  
 115 62.8 48.1 72.1

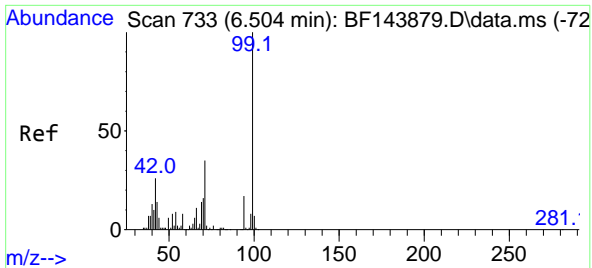


#5  
 2-Fluorophenol  
 Concen: 81.738 ng  
 RT: 5.498 min Scan# 562  
 Delta R.T. 0.000 min  
 Lab File: BF143927.D  
 Acq: 10 Oct 2025 16:20



Tgt Ion:112 Resp: 608068  
 Ion Ratio Lower Upper  
 112 100  
 64 62.1 49.1 73.7  
 63 29.0 24.5 36.7

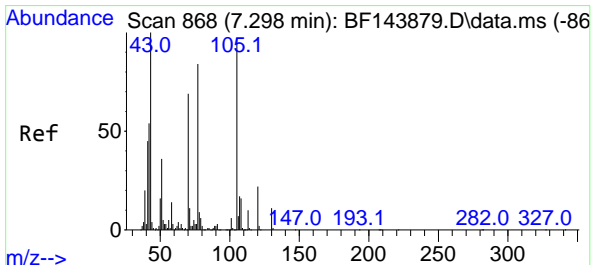
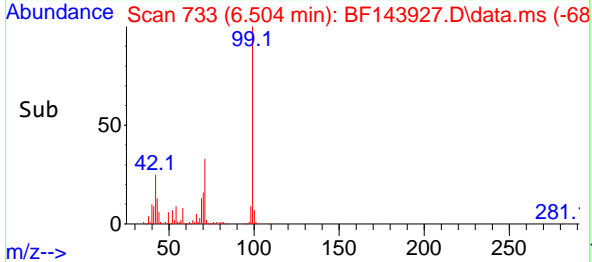
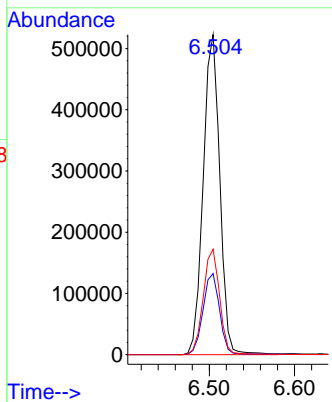
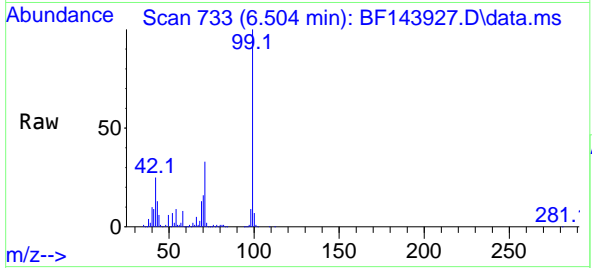




#7  
Phenol-d6  
Concen: 79.783 ng  
RT: 6.504 min Scan# 71  
Delta R.T. -0.012 min  
Lab File: BF143927.D  
Acq: 10 Oct 2025 16:20

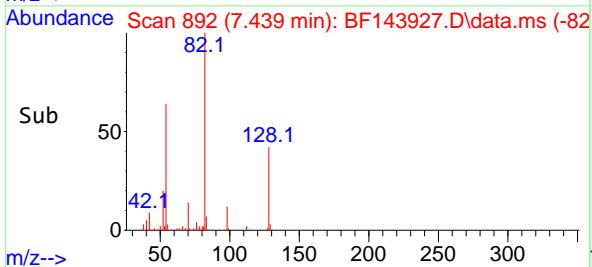
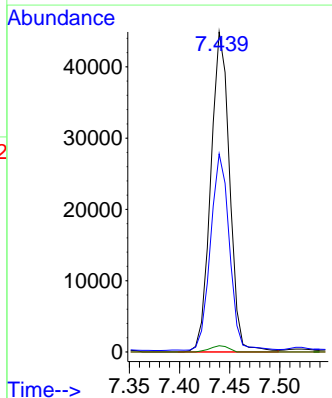
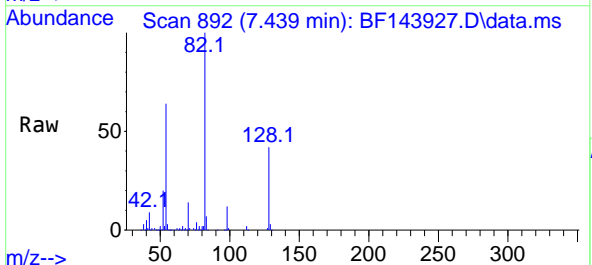
Instrument :  
BNA\_F  
ClientSampleId :  
SS-01-0-1

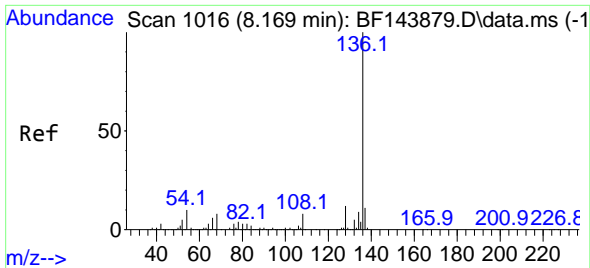
Tgt Ion: 99 Resp: 707454  
Ion Ratio Lower Upper  
99 100  
42 25.4 21.0 31.4  
71 32.9 27.8 41.8



#19  
n-Nitroso-di-n-propylamine  
Concen: 9.655 ng  
RT: 7.439 min Scan# 892  
Delta R.T. 0.124 min  
Lab File: BF143927.D  
Acq: 10 Oct 2025 16:20

Tgt Ion: 70 Resp: 58600  
Ion Ratio Lower Upper  
70 100  
42 61.9 62.8 94.2#  
101 0.0 6.7 10.1#  
130 2.0 13.0 19.4#



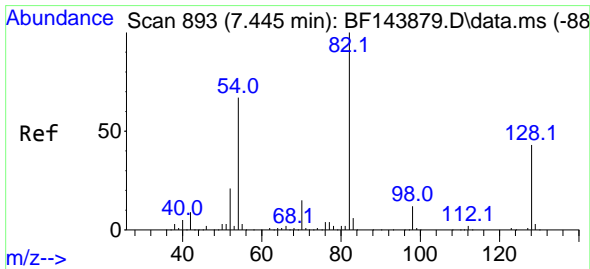
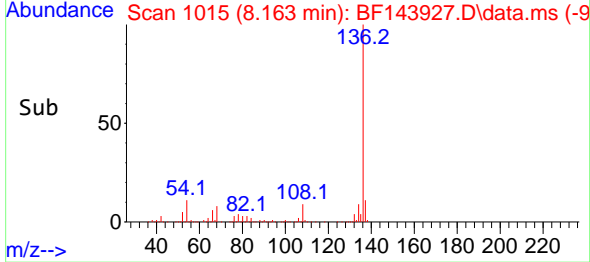
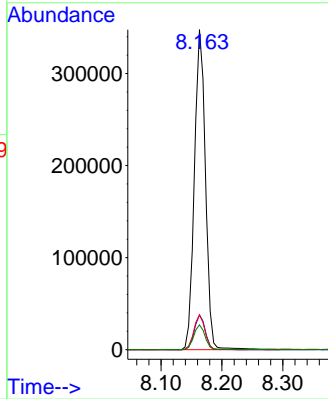
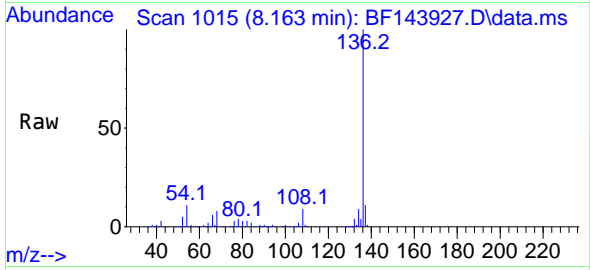


#21  
Naphthalene-d8  
Concen: 20.000 ng  
RT: 8.163 min Scan# 10  
Delta R.T. -0.006 min  
Lab File: BF143927.D  
Acq: 10 Oct 2025 16:20

Instrument :  
BNA\_F  
Client Sample Id :  
SS-01-0-1

Tgt Ion: 136 Resp: 439825

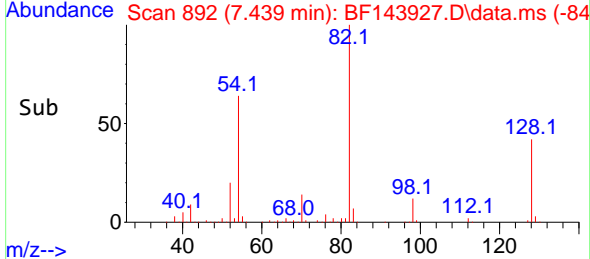
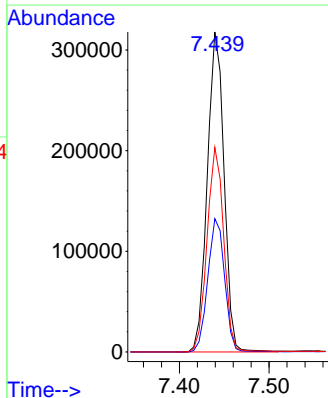
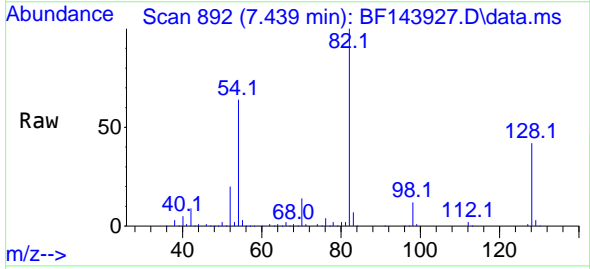
Ion	Ratio	Lower	Upper
136	100		
137	10.8	8.5	12.7
54	10.9	8.2	12.4
68	7.8	6.2	9.4

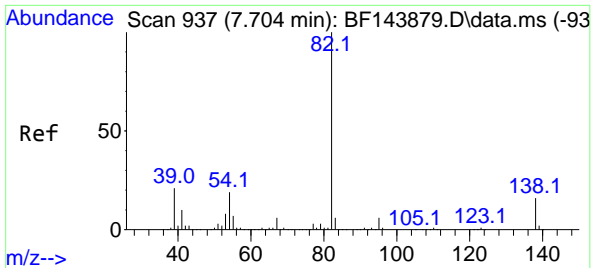


#23  
Nitrobenzene-d5  
Concen: 57.030 ng  
RT: 7.439 min Scan# 892  
Delta R.T. -0.018 min  
Lab File: BF143927.D  
Acq: 10 Oct 2025 16:20

Tgt Ion: 82 Resp: 412861

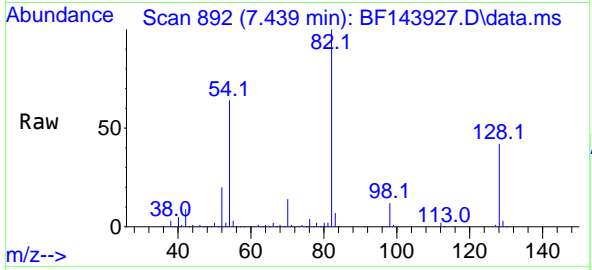
Ion	Ratio	Lower	Upper
82	100		
128	41.7	34.0	51.0
54	63.9	53.2	79.8



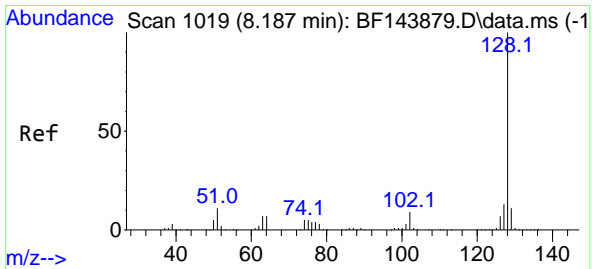
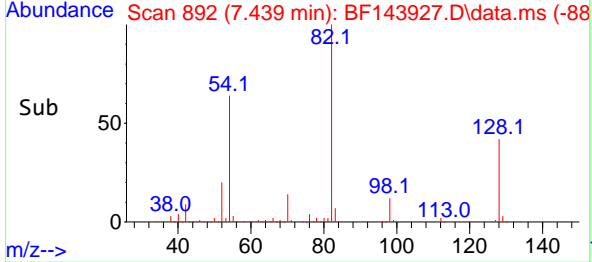
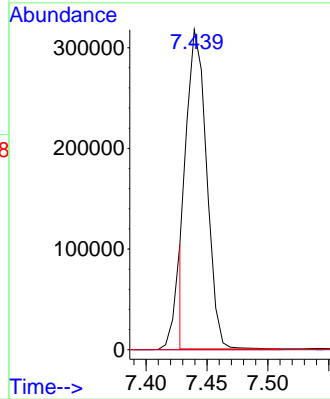


#25  
 Isophorone  
 Concen: 23.555 ng  
 RT: 7.439 min Scan# 892  
 Delta R.T. -0.282 min  
 Lab File: BF143927.D  
 Acq: 10 Oct 2025 16:20

Instrument : BNA\_F  
 ClientSampleId : SS-01-0-1

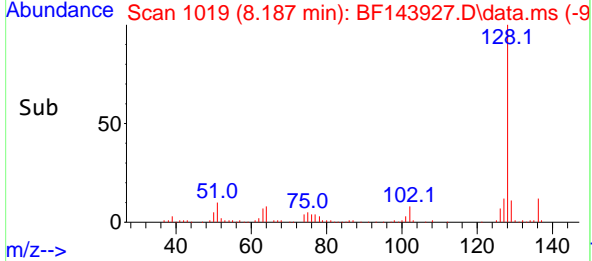
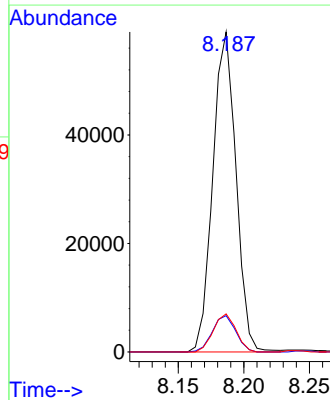
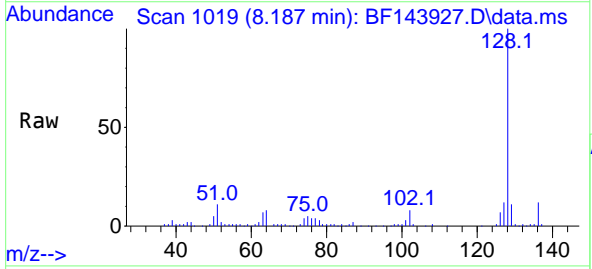


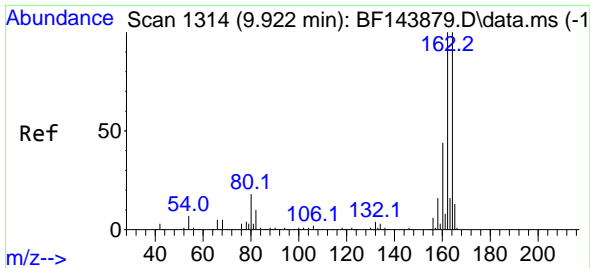
Tgt Ion: 82 Resp: 359555  
 Ion Ratio Lower Upper  
 82 100  
 95 0.0 5.1 7.7#  
 138 0.0 12.9 19.3#



#31  
 Naphthalene  
 Concen: 3.625 ng  
 RT: 8.187 min Scan# 1019  
 Delta R.T. -0.006 min  
 Lab File: BF143927.D  
 Acq: 10 Oct 2025 16:20

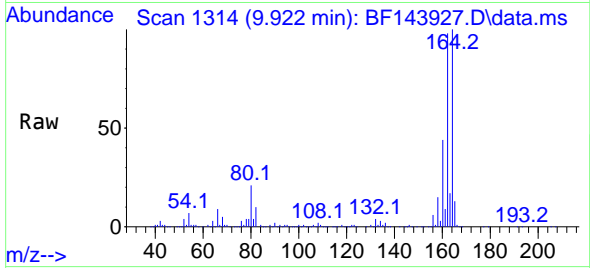
Tgt Ion: 128 Resp: 72522  
 Ion Ratio Lower Upper  
 128 100  
 129 11.3 8.7 13.1  
 127 11.9 10.0 15.0



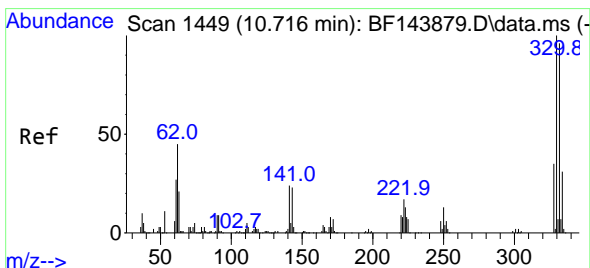
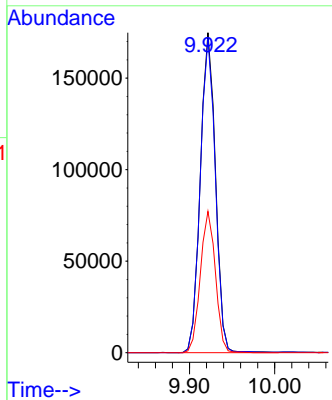
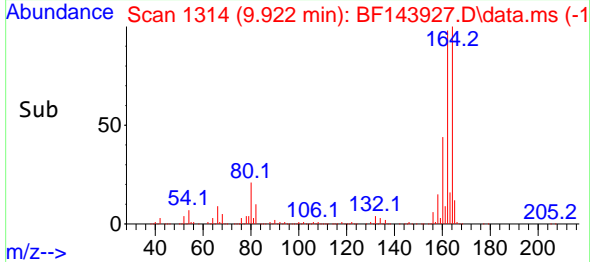


#39  
 Acenaphthene-d10  
 Concen: 20.000 ng  
 RT: 9.922 min Scan# 11  
 Delta R.T. -0.005 min  
 Lab File: BF143927.D  
 Acq: 10 Oct 2025 16:20

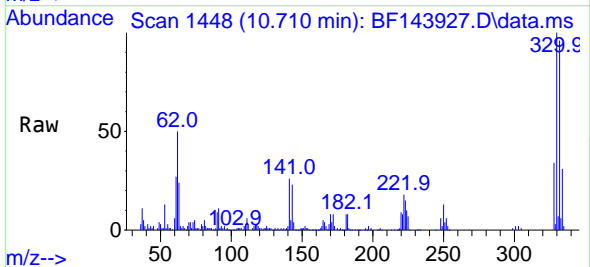
Instrument :  
 BNA\_F  
 ClientSampleId :  
 SS-01-0-1



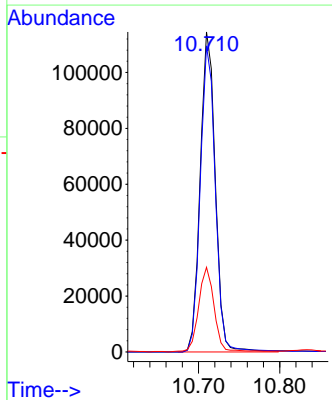
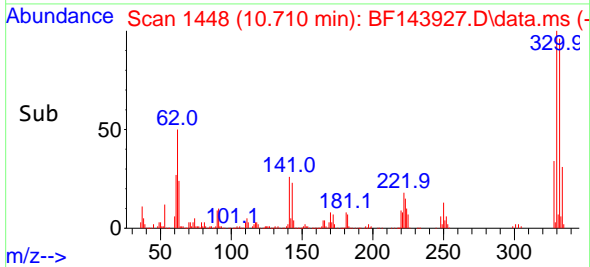
Tgt Ion:164 Resp: 215736  
 Ion Ratio Lower Upper  
 164 100  
 162 98.0 80.2 120.2  
 160 44.2 35.4 53.0

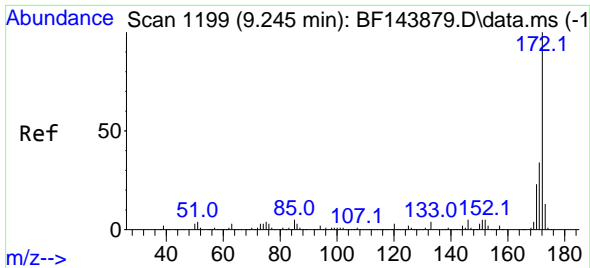


#42  
 2,4,6-Tribromophenol  
 Concen: 68.753 ng  
 RT: 10.710 min Scan# 1448  
 Delta R.T. -0.012 min  
 Lab File: BF143927.D  
 Acq: 10 Oct 2025 16:20



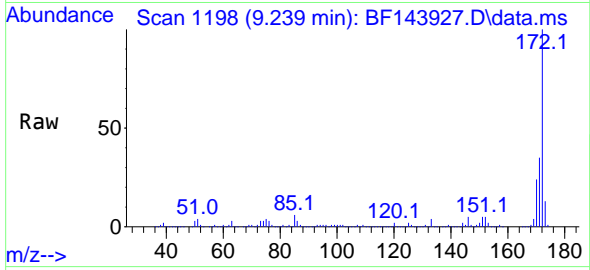
Tgt Ion:330 Resp: 147734  
 Ion Ratio Lower Upper  
 330 100  
 332 95.6 76.9 115.3  
 141 27.5 20.2 30.4





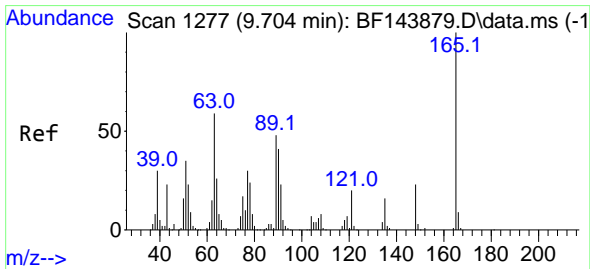
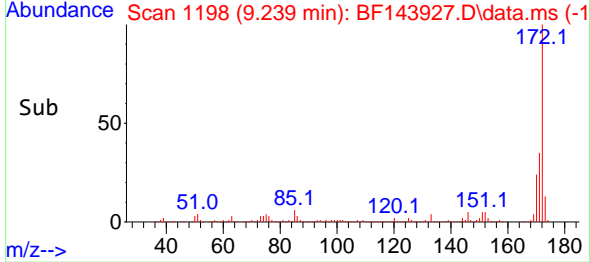
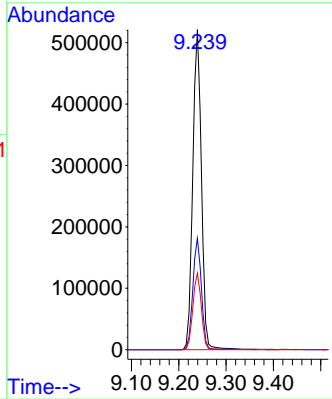
#45  
 2-Fluorobiphenyl  
 Concen: 48.921 ng  
 RT: 9.239 min Scan# 1199  
 Delta R.T. -0.012 min  
 Lab File: BF143927.D  
 Acq: 10 Oct 2025 16:20

Instrument : BNA\_F  
 Client Sample Id : SS-01-0-1



Tgt Ion: 172 Resp: 665135

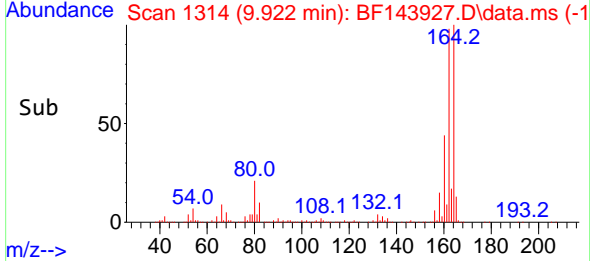
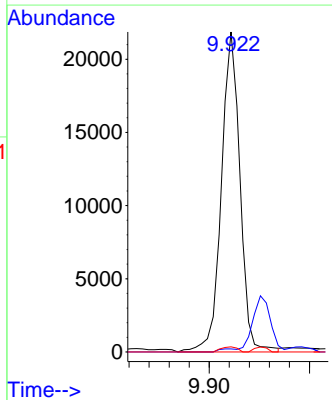
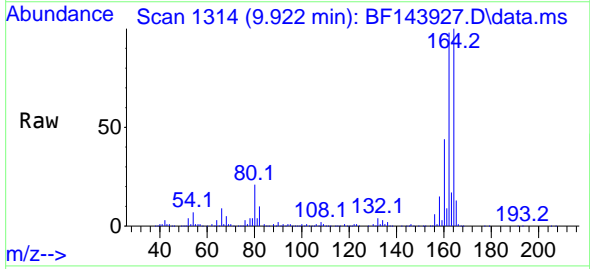
Ion	Ratio	Lower	Upper
172	100		
171	34.8	27.4	41.0
170	23.9	18.6	28.0



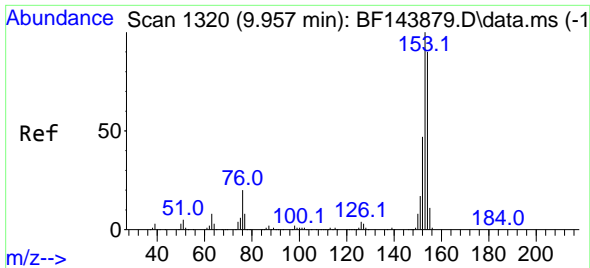
#51  
 2,6-Dinitrotoluene  
 Concen: 11.086 ng  
 RT: 9.922 min Scan# 1314  
 Delta R.T. 0.206 min  
 Lab File: BF143927.D  
 Acq: 10 Oct 2025 16:20

Tgt Ion: 165 Resp: 28162

Ion	Ratio	Lower	Upper
165	100		
63	0.9	47.3	70.9#
89	1.6	38.2	57.4#





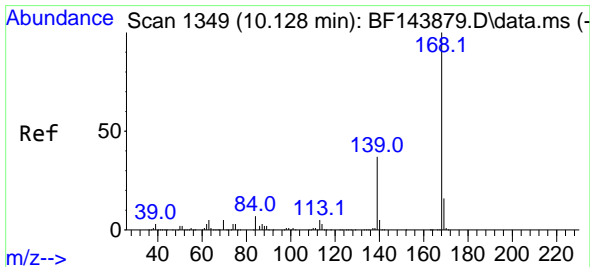
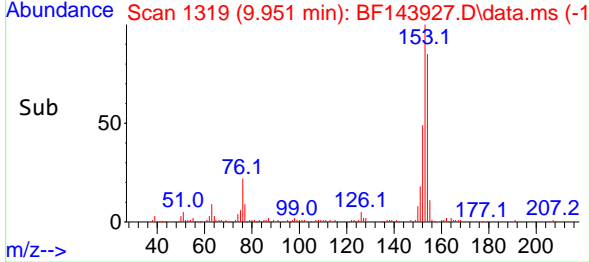
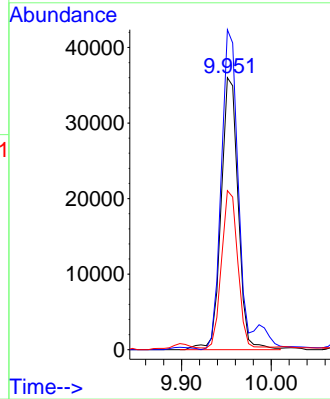
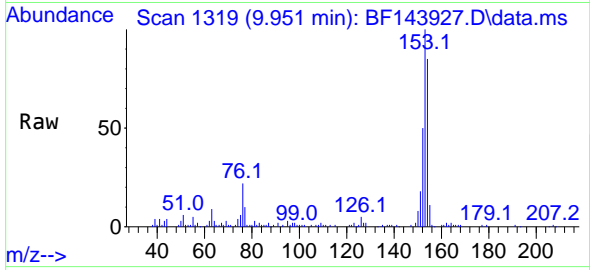


#52  
 Acenaphthene  
 Concen: 4.340 ng  
 RT: 9.951 min Scan# 1319  
 Delta R.T. -0.012 min  
 Lab File: BF143927.D  
 Acq: 10 Oct 2025 16:20

Instrument :  
 BNA\_F  
 ClientSampleId :  
 SS-01-0-1

Tgt Ion:154 Resp: 47610

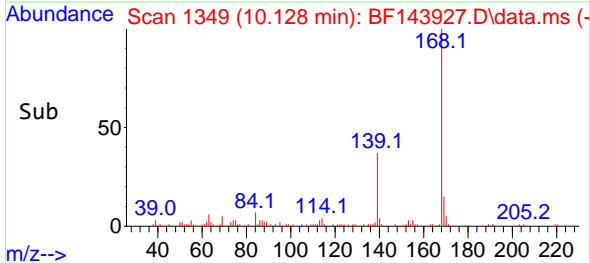
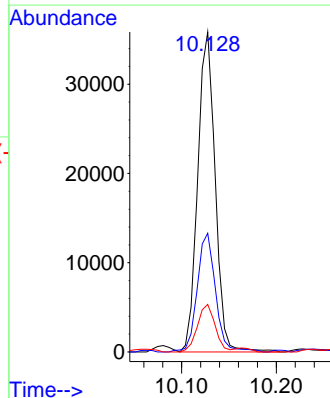
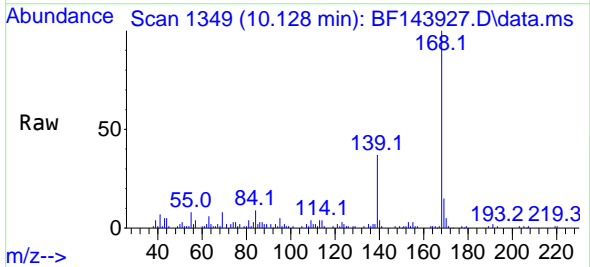
Ion	Ratio	Lower	Upper
154	100		
153	117.6	89.3	133.9
152	58.4	42.2	63.2

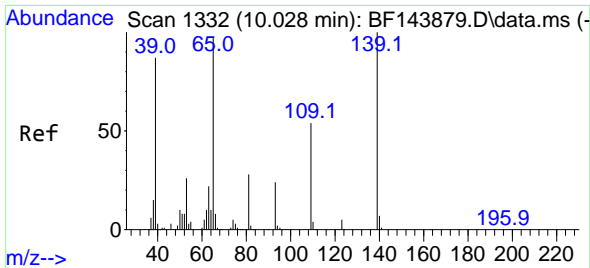


#55  
 Dibenzofuran  
 Concen: 2.978 ng  
 RT: 10.128 min Scan# 1349  
 Delta R.T. -0.006 min  
 Lab File: BF143927.D  
 Acq: 10 Oct 2025 16:20

Tgt Ion:168 Resp: 46119

Ion	Ratio	Lower	Upper
168	100		
139	37.1	29.8	44.8
169	14.8	12.8	19.2

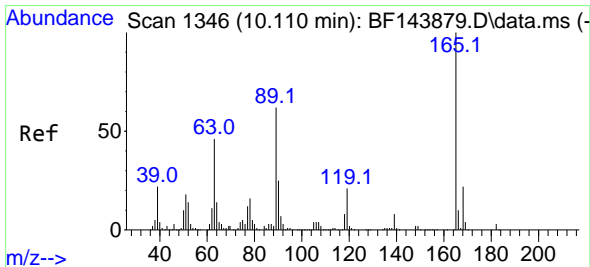
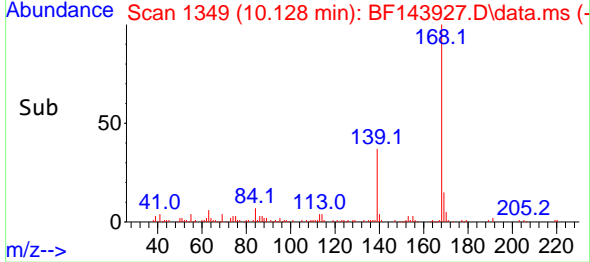
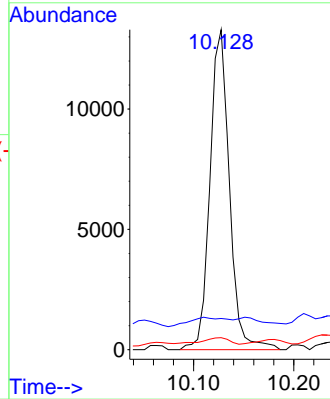
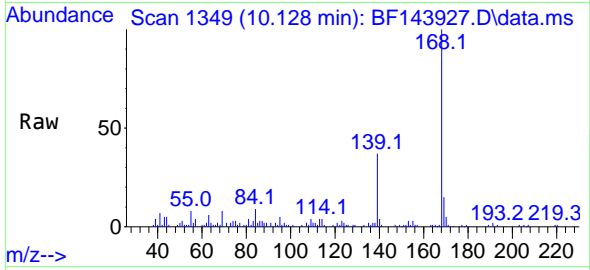




#56  
 4-Nitrophenol  
 Concen: 7.619 ng  
 RT: 10.128 min Scan# 11  
 Delta R.T. 0.089 min  
 Lab File: BF143927.D  
 Acq: 10 Oct 2025 16:20

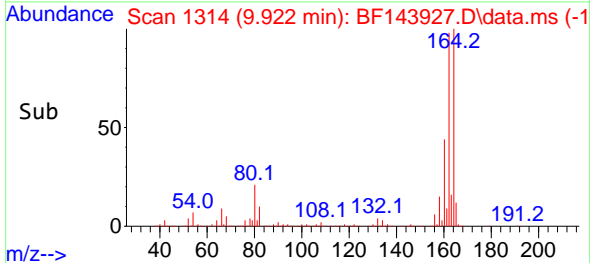
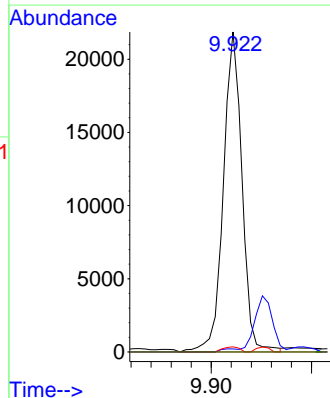
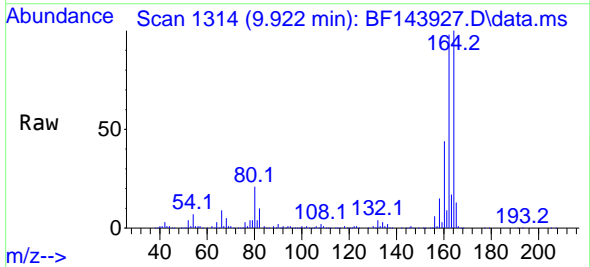
Instrument :  
 BNA\_F  
 ClientSampleId :  
 SS-01-0-1

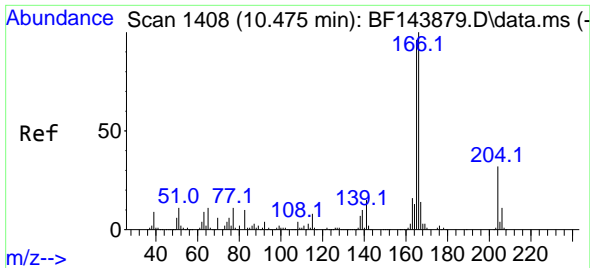
Tgt Ion:139 Resp: 17945  
 Ion Ratio Lower Upper  
 139 100  
 109 9.8 34.5 74.5#  
 65 3.8 77.6 117.6#



#57  
 2,4-Dinitrotoluene  
 Concen: 8.147 ng  
 RT: 9.922 min Scan# 1314  
 Delta R.T. -0.194 min  
 Lab File: BF143927.D  
 Acq: 10 Oct 2025 16:20

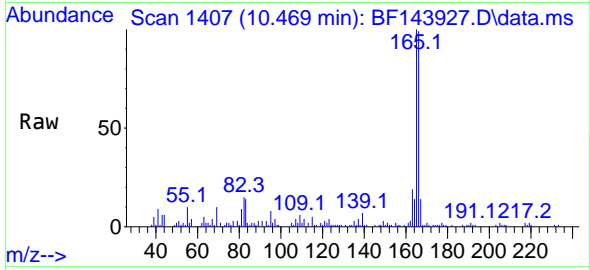
Tgt Ion:165 Resp: 28162  
 Ion Ratio Lower Upper  
 165 100  
 63 0.9 37.2 55.8#  
 89 1.6 49.4 74.2#  
 182 0.0 2.1 3.1#



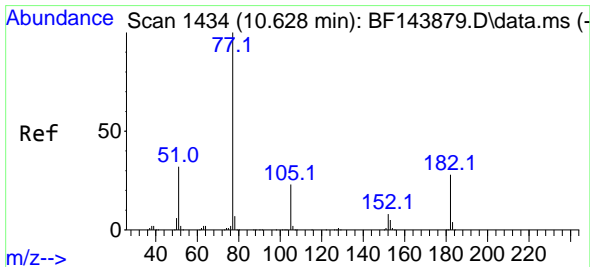
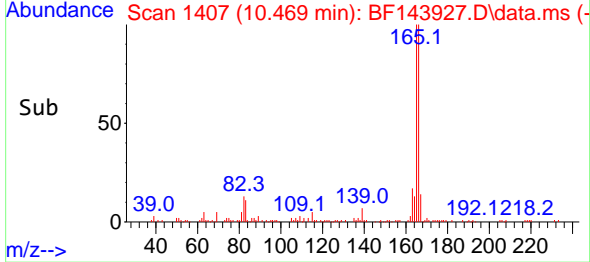
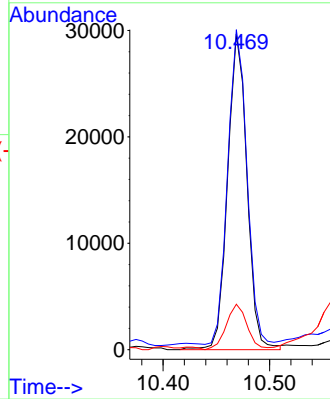


#58  
 Fluorene  
 Concen: 3.207 ng  
 RT: 10.469 min Scan# 1407  
 Delta R.T. -0.012 min  
 Lab File: BF143927.D  
 Acq: 10 Oct 2025 16:20

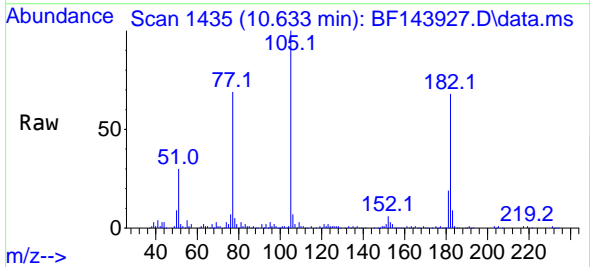
Instrument :  
 BNA\_F  
 ClientSampleId :  
 SS-01-0-1



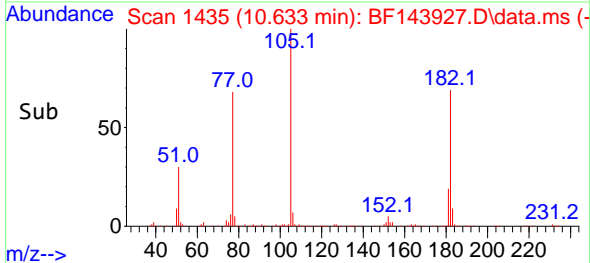
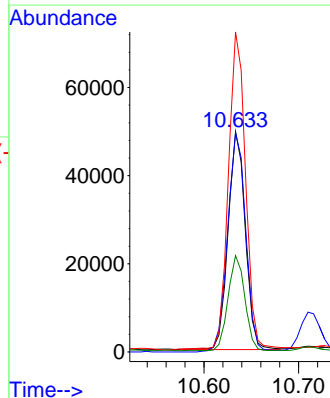
Tgt Ion:166 Resp: 37477  
 Ion Ratio Lower Upper  
 166 100  
 165 101.3 77.0 115.6  
 167 14.4 11.1 16.7

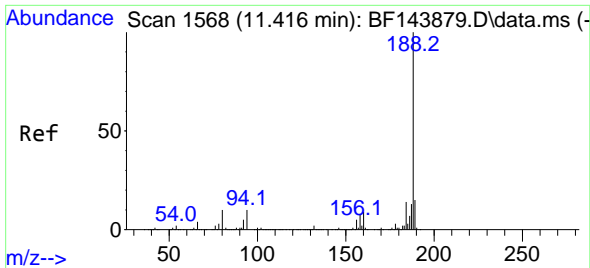


#63  
 Azobenzene  
 Concen: 4.693 ng  
 RT: 10.633 min Scan# 1435  
 Delta R.T. 0.000 min  
 Lab File: BF143927.D  
 Acq: 10 Oct 2025 16:20



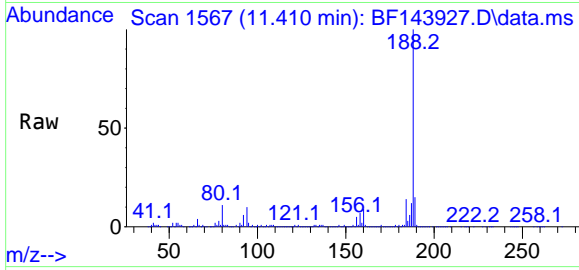
Tgt Ion: 77 Resp: 62420  
 Ion Ratio Lower Upper  
 77 100  
 182 99.4 7.3 47.3#  
 105 145.2 3.0 43.0#  
 51 43.7 13.5 53.5





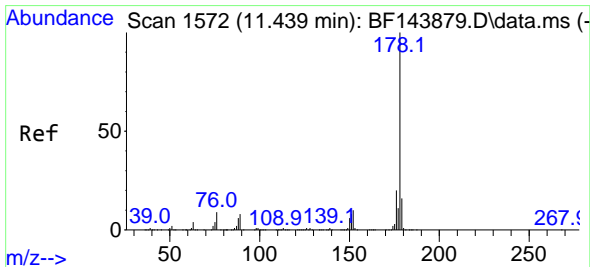
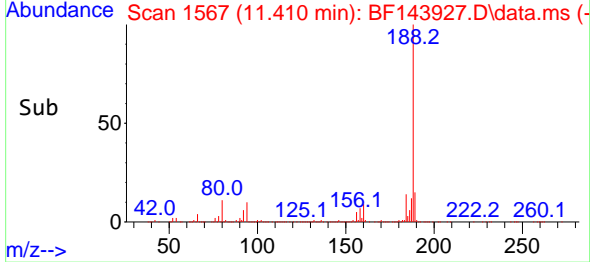
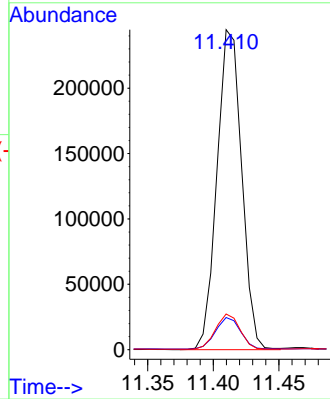
#64  
 Phenanthrene-d10  
 Concen: 20.000 ng  
 RT: 11.410 min Scan# 11  
 Delta R.T. -0.006 min  
 Lab File: BF143927.D  
 Acq: 10 Oct 2025 16:20

Instrument :  
 BNA\_F  
 ClientSampleId :  
 SS-01-0-1

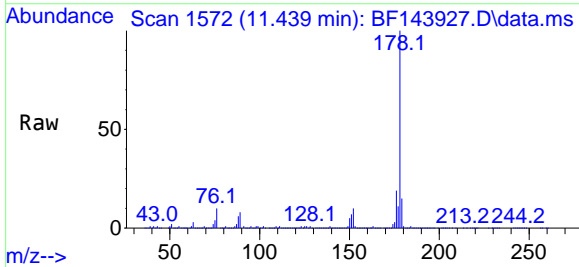


Tgt Ion:188 Resp: 320645

Ion	Ratio	Lower	Upper
188	100		
94	10.0	7.8	11.6
80	11.1	7.9	11.9

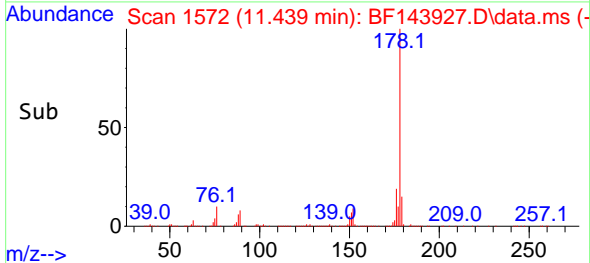
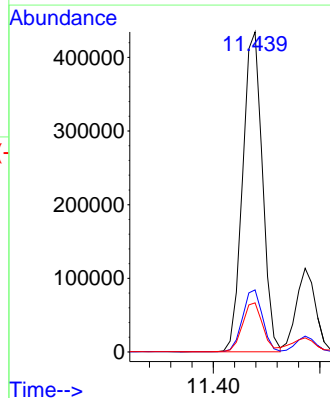


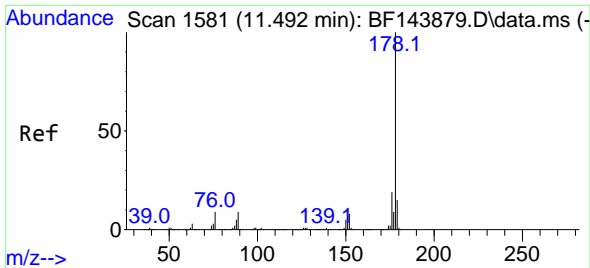
#71  
 Phenanthrene  
 Concen: 36.002 ng  
 RT: 11.439 min Scan# 1572  
 Delta R.T. -0.006 min  
 Lab File: BF143927.D  
 Acq: 10 Oct 2025 16:20



Tgt Ion:178 Resp: 559645

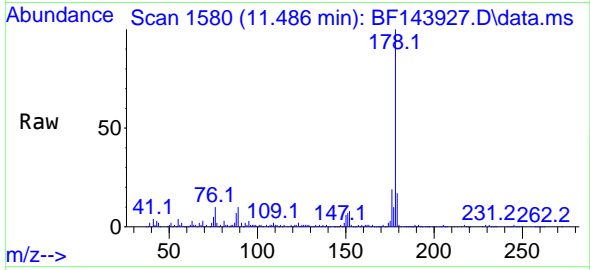
Ion	Ratio	Lower	Upper
178	100		
176	19.4	15.9	23.9
179	15.4	12.4	18.6



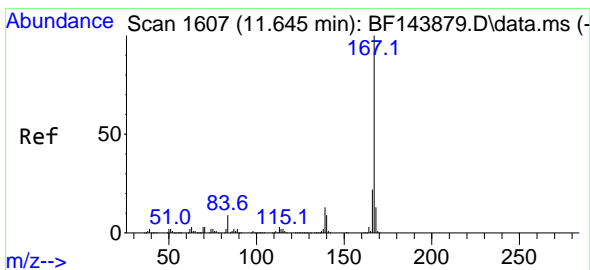
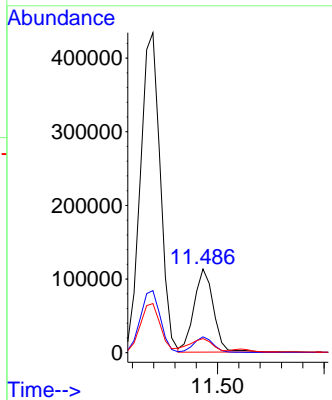
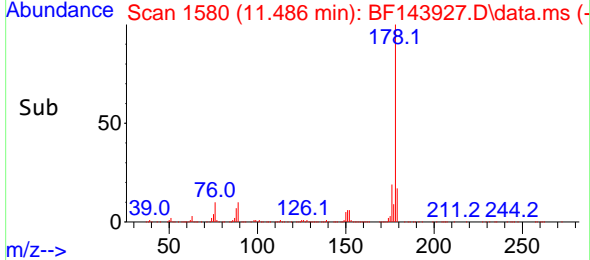


#72  
 Anthracene  
 Concen: 9.145 ng  
 RT: 11.486 min Scan# 11  
 Delta R.T. -0.012 min  
 Lab File: BF143927.D  
 Acq: 10 Oct 2025 16:20

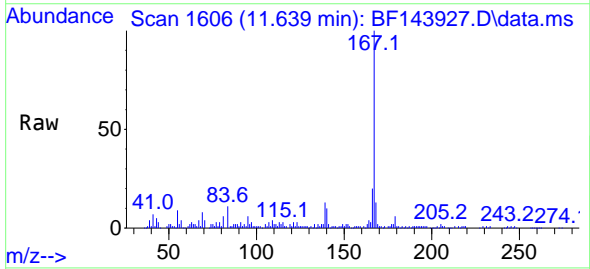
Instrument :  
 BNA\_F  
 ClientSampleId :  
 SS-01-0-1



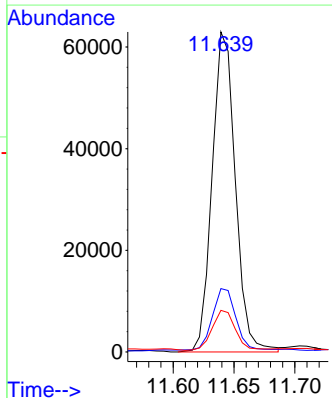
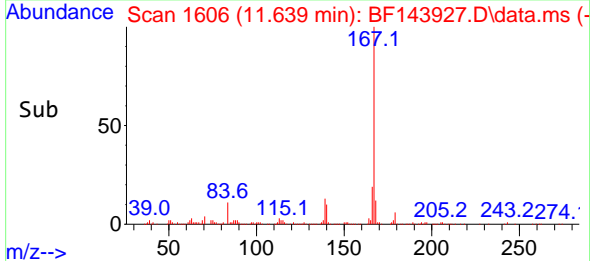
Tgt Ion:178 Resp: 143621  
 Ion Ratio Lower Upper  
 178 100  
 176 19.0 14.9 22.3  
 179 16.8 12.2 18.2

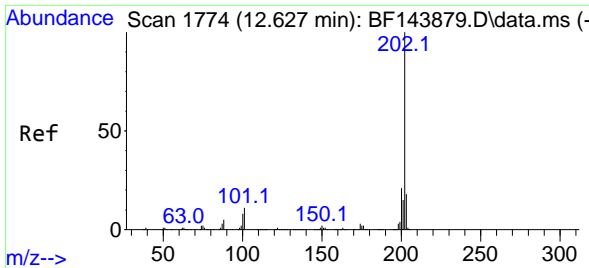


#73  
 Carbazole  
 Concen: 6.015 ng  
 RT: 11.639 min Scan# 1606  
 Delta R.T. -0.012 min  
 Lab File: BF143927.D  
 Acq: 10 Oct 2025 16:20



Tgt Ion:167 Resp: 83654  
 Ion Ratio Lower Upper  
 167 100  
 166 19.8 17.2 25.8  
 139 13.0 10.1 15.1

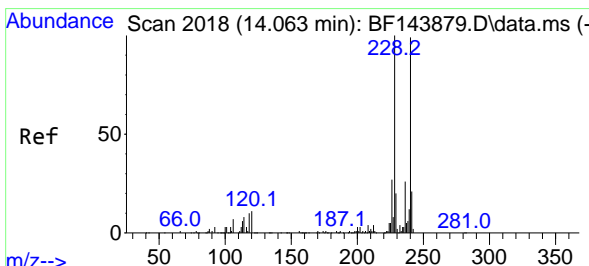
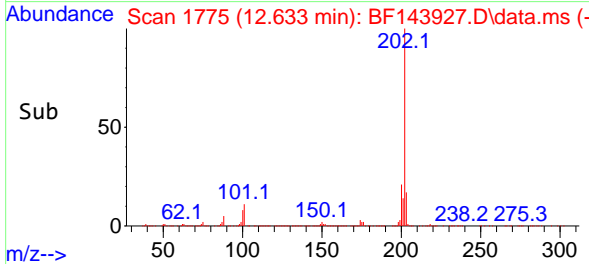
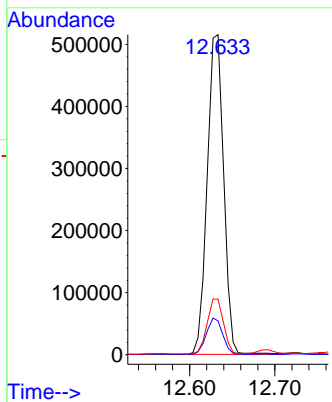
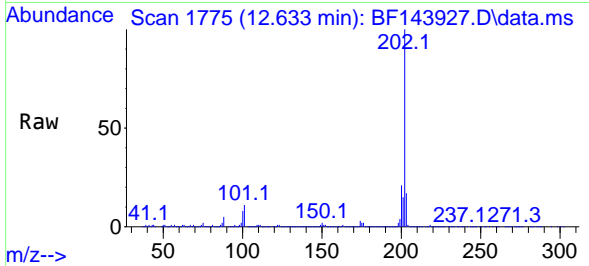




#75  
 Fluoranthene  
 Concen: 43.072 ng  
 RT: 12.633 min Scan# 11  
 Delta R.T. 0.000 min  
 Lab File: BF143927.D  
 Acq: 10 Oct 2025 16:20

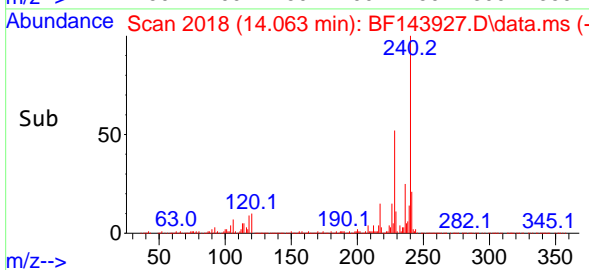
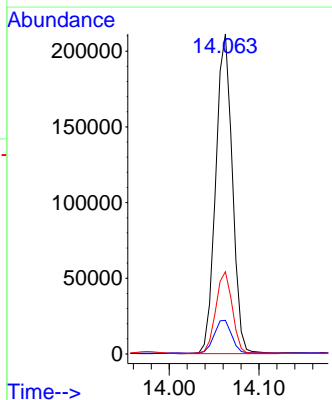
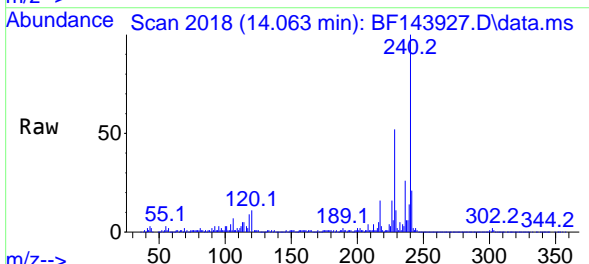
Instrument :  
 BNA\_F  
 ClientSampleId :  
 SS-01-0-1

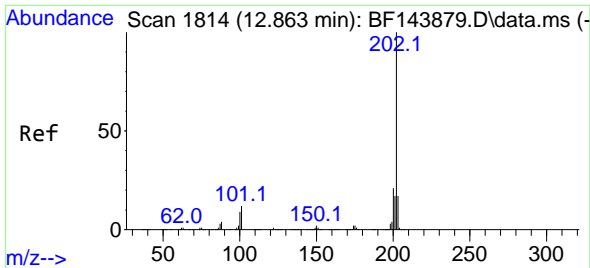
Tgt Ion:202 Resp: 691596  
 Ion Ratio Lower Upper  
 202 100  
 101 10.6 0.0 30.7  
 203 17.4 0.0 37.8



#76  
 Chrysene-d12  
 Concen: 20.000 ng  
 RT: 14.063 min Scan# 2018  
 Delta R.T. -0.005 min  
 Lab File: BF143927.D  
 Acq: 10 Oct 2025 16:20

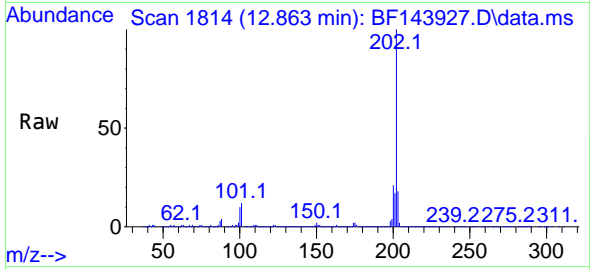
Tgt Ion:240 Resp: 271231  
 Ion Ratio Lower Upper  
 240 100  
 120 10.5 8.6 13.0  
 236 25.7 21.1 31.7





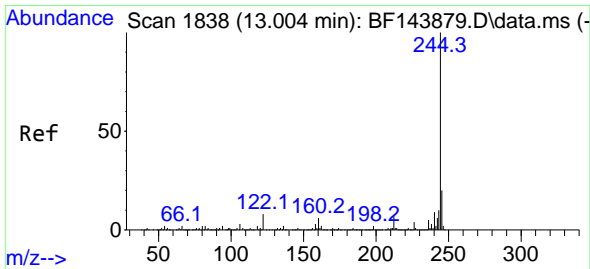
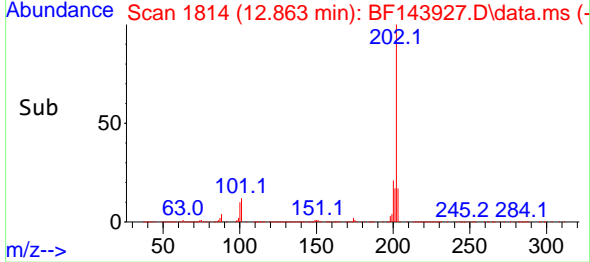
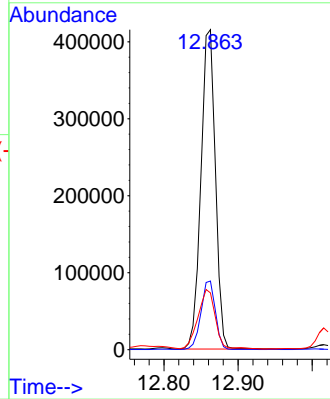
#78  
 Pyrene  
 Concen: 25.028 ng  
 RT: 12.863 min Scan# 1814  
 Delta R.T. 0.000 min  
 Lab File: BF143927.D  
 Acq: 10 Oct 2025 16:20

Instrument :  
 BNA\_F  
 ClientSampleId :  
 SS-01-0-1



Tgt Ion:202 Resp: 565939

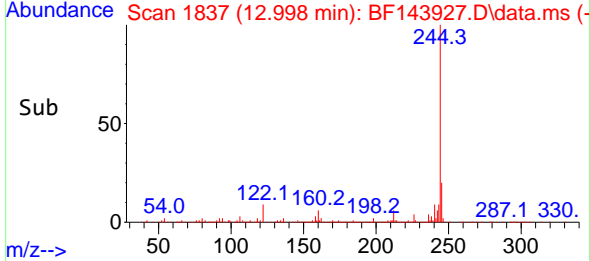
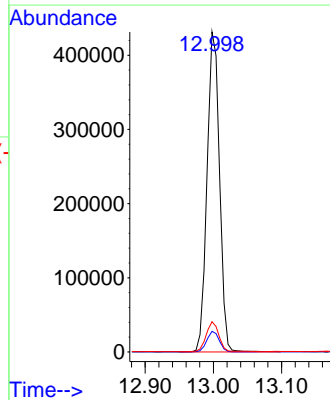
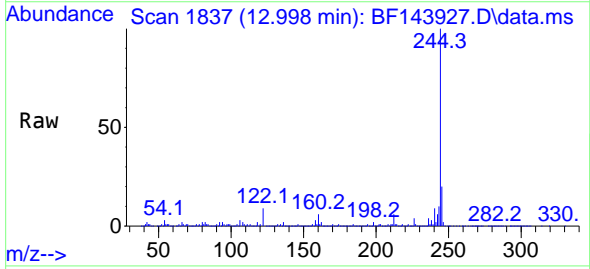
Ion	Ratio	Lower	Upper
202	100		
200	21.5	17.0	25.6
203	17.8	13.8	20.6

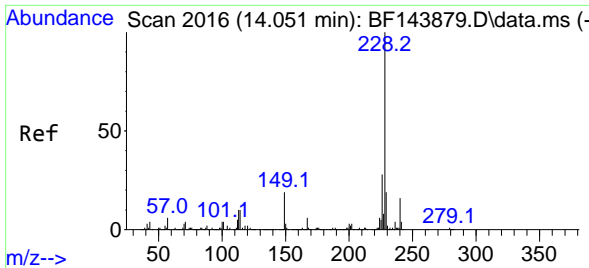


#79  
 Terphenyl-d14  
 Concen: 34.687 ng  
 RT: 12.998 min Scan# 1837  
 Delta R.T. -0.012 min  
 Lab File: BF143927.D  
 Acq: 10 Oct 2025 16:20

Tgt Ion:244 Resp: 550490

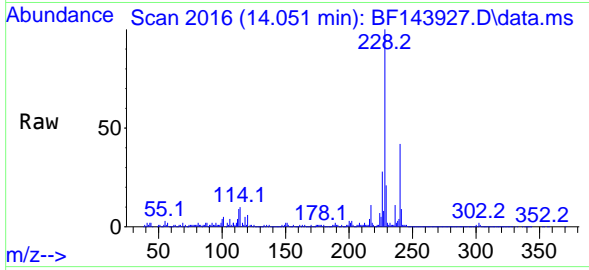
Ion	Ratio	Lower	Upper
244	100		
212	6.5	5.4	8.0
122	9.4	6.4	9.6



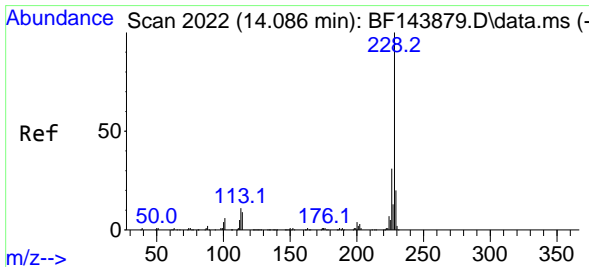
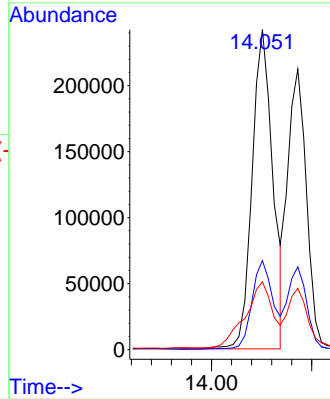
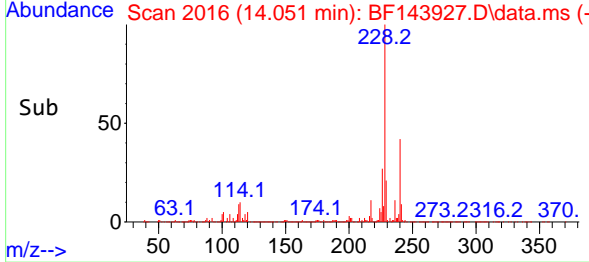


#81  
 Benzo(a)anthracene  
 Concen: 19.585 ng  
 RT: 14.051 min Scan# 2016  
 Delta R.T. -0.006 min  
 Lab File: BF143927.D  
 Acq: 10 Oct 2025 16:20

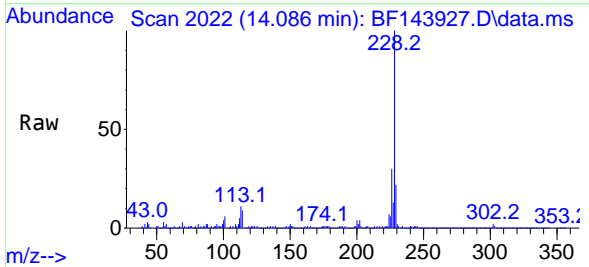
Instrument : BNA\_F  
 ClientSampleId : SS-01-0-1



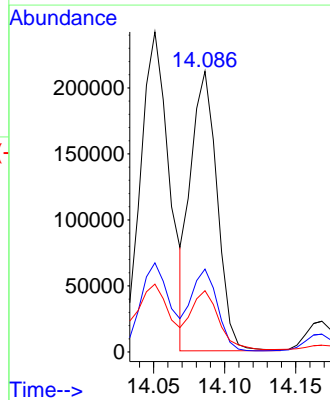
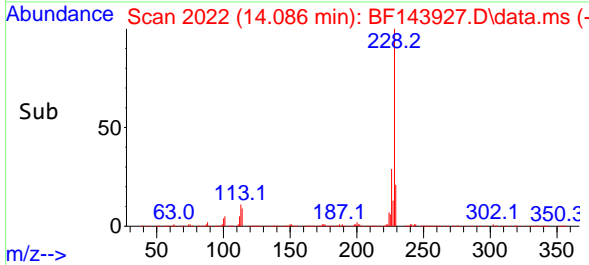
Tgt Ion:228 Resp: 347624  
 Ion Ratio Lower Upper  
 228 100  
 226 27.8 22.2 33.2  
 229 21.2 15.6 23.4



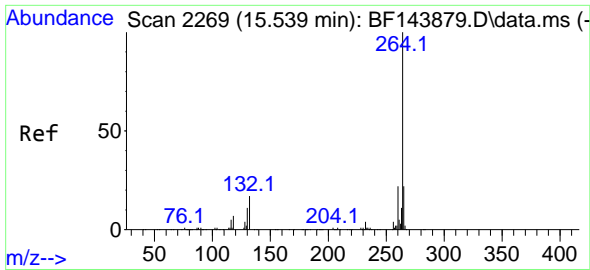
#83  
 Chrysene  
 Concen: 16.683 ng  
 RT: 14.086 min Scan# 2022  
 Delta R.T. -0.006 min  
 Lab File: BF143927.D  
 Acq: 10 Oct 2025 16:20



Tgt Ion:228 Resp: 274054  
 Ion Ratio Lower Upper  
 228 100  
 226 29.5 24.4 36.6  
 229 21.8 15.9 23.9

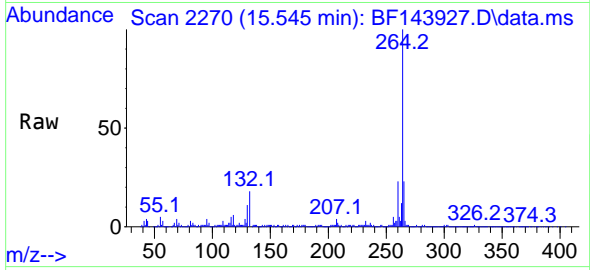




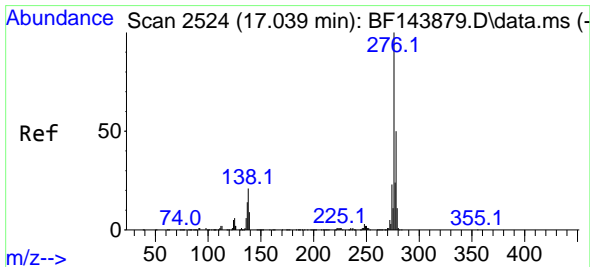
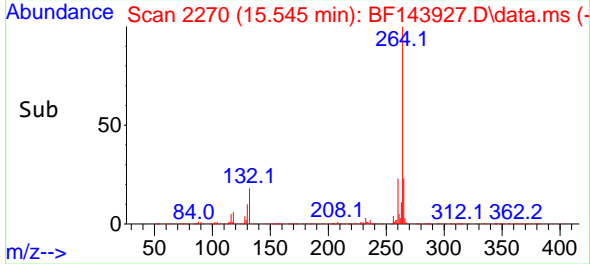
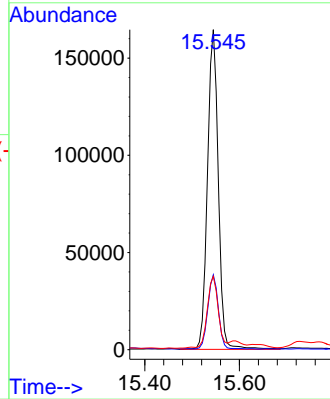


#86  
 Perylene-d12  
 Concen: 20.000 ng  
 RT: 15.545 min Scan# 21  
 Delta R.T. 0.000 min  
 Lab File: BF143927.D  
 Acq: 10 Oct 2025 16:20

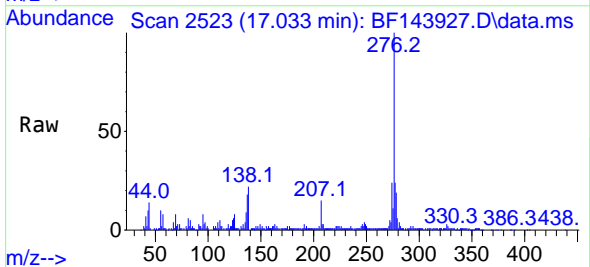
Instrument :  
 BNA\_F  
 ClientSampleId :  
 SS-01-0-1



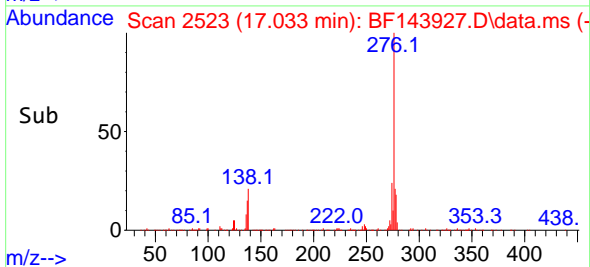
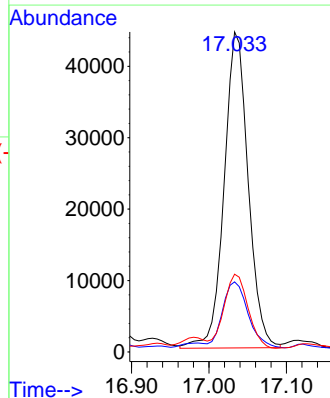
Tgt Ion:264 Resp: 260591  
 Ion Ratio Lower Upper  
 264 100  
 260 23.4 17.8 26.8  
 265 22.9 17.5 26.3

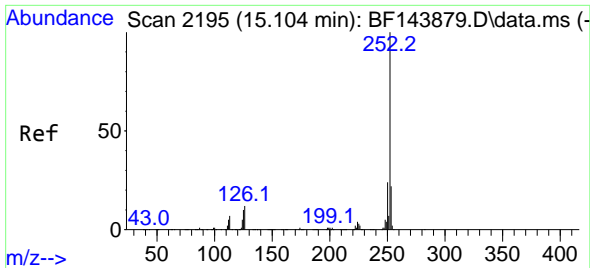


#87  
 Indeno(1,2,3-cd)pyrene  
 Concen: 5.989 ng  
 RT: 17.033 min Scan# 2523  
 Delta R.T. -0.023 min  
 Lab File: BF143927.D  
 Acq: 10 Oct 2025 16:20



Tgt Ion:276 Resp: 95630  
 Ion Ratio Lower Upper  
 276 100  
 138 22.0 18.2 27.2  
 277 23.5 19.8 29.6



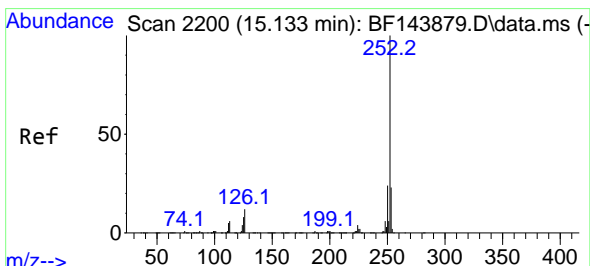
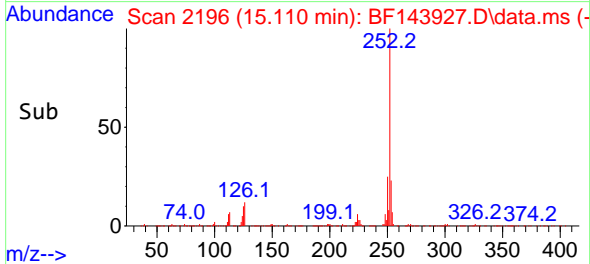
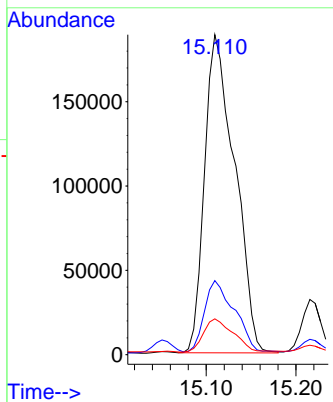
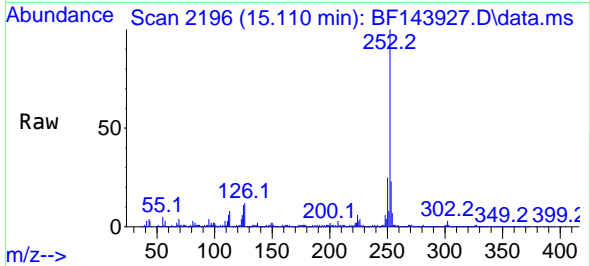


#88  
 Benzo(b)fluoranthene  
 Concen: 29.413 ng  
 RT: 15.110 min Scan# 2196  
 Delta R.T. -0.006 min  
 Lab File: BF143927.D  
 Acq: 10 Oct 2025 16:20

Instrument :  
 BNA\_F  
 Client Sample Id :  
 SS-01-0-1

Tgt Ion:252 Resp: 440293

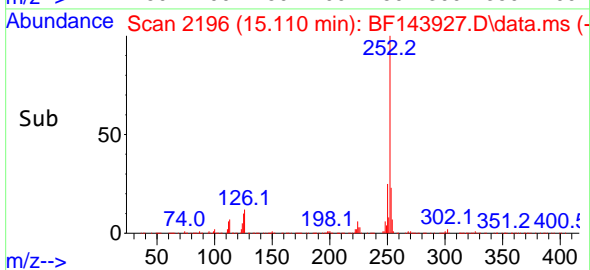
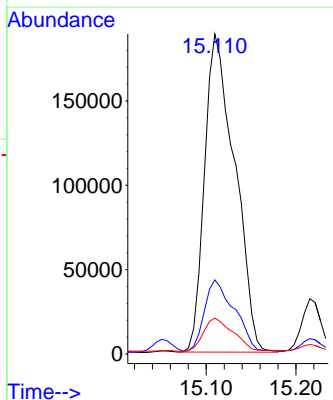
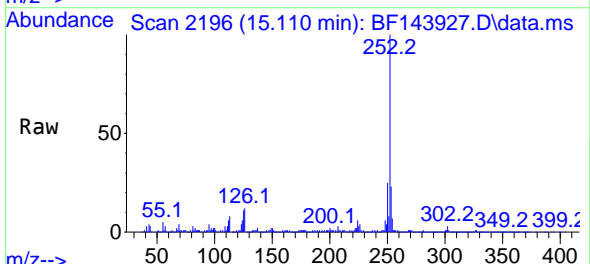
Ion	Ratio	Lower	Upper
252	100		
253	23.2	17.4	26.2
125	11.2	7.8	11.6

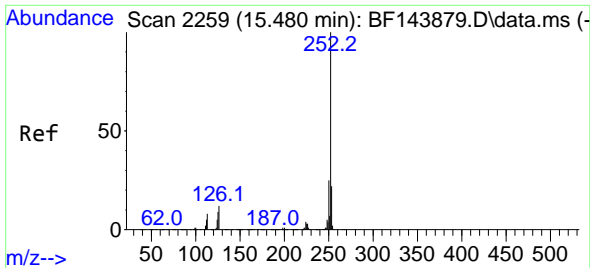


#89  
 Benzo(k)fluoranthene  
 Concen: 31.787 ng  
 RT: 15.110 min Scan# 2196  
 Delta R.T. -0.035 min  
 Lab File: BF143927.D  
 Acq: 10 Oct 2025 16:20

Tgt Ion:252 Resp: 440293

Ion	Ratio	Lower	Upper
252	100		
253	23.2	17.8	26.8
125	11.2	7.4	11.2



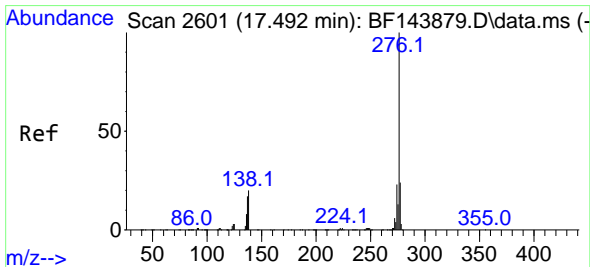
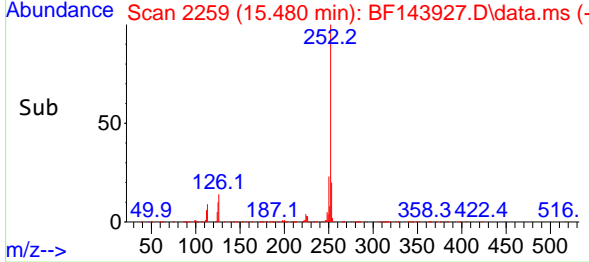
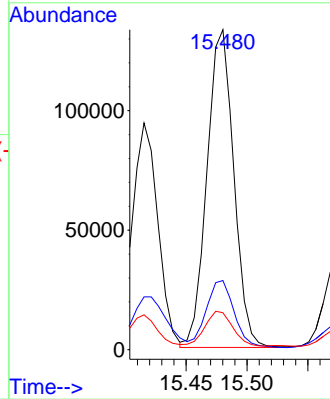
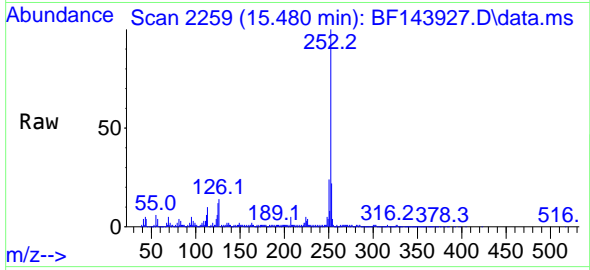


#90  
 Benzo(a)pyrene  
 Concen: 15.701 ng  
 RT: 15.480 min Scan# 2259  
 Delta R.T. -0.006 min  
 Lab File: BF143927.D  
 Acq: 10 Oct 2025 16:20

Instrument :  
 BNA\_F  
 ClientSampleId :  
 SS-01-0-1

Tgt Ion:252 Resp: 203794

Ion	Ratio	Lower	Upper
252	100		
253	21.6	17.3	25.9
125	11.6	7.0	10.4



#92  
 Benzo(g,h,i)perylene  
 Concen: 7.021 ng  
 RT: 17.492 min Scan# 2601  
 Delta R.T. -0.023 min  
 Lab File: BF143927.D  
 Acq: 10 Oct 2025 16:20

Tgt Ion:276 Resp: 90167

Ion	Ratio	Lower	Upper
276	100		
277	24.3	19.0	28.6
138	24.6	16.1	24.1

