

Data Path : Z:\svoasrv\HPCHEM1\BNA_F\Data\BF101425\
 Data File : BF143947.D
 Acq On : 14 Oct 2025 14:25
 Operator : RC/JU
 Sample : PB170067BL
 Misc :
 ALS Vial : 3 Sample Multiplier: 1

Instrument :
 BNA_F
 ClientSampleId :
 PB170067BL

Quant Time: Oct 14 14:53:58 2025
 Quant Method : Z:\svoasrv\HPCHEM1\BNA_F\Methods\8270-BF100625.M
 Quant Title : ASP BNA STANDARDS FOR 5 POINT CALIBRATION
 QLast Update : Mon Oct 06 15:29:47 2025
 Response via : Initial Calibration

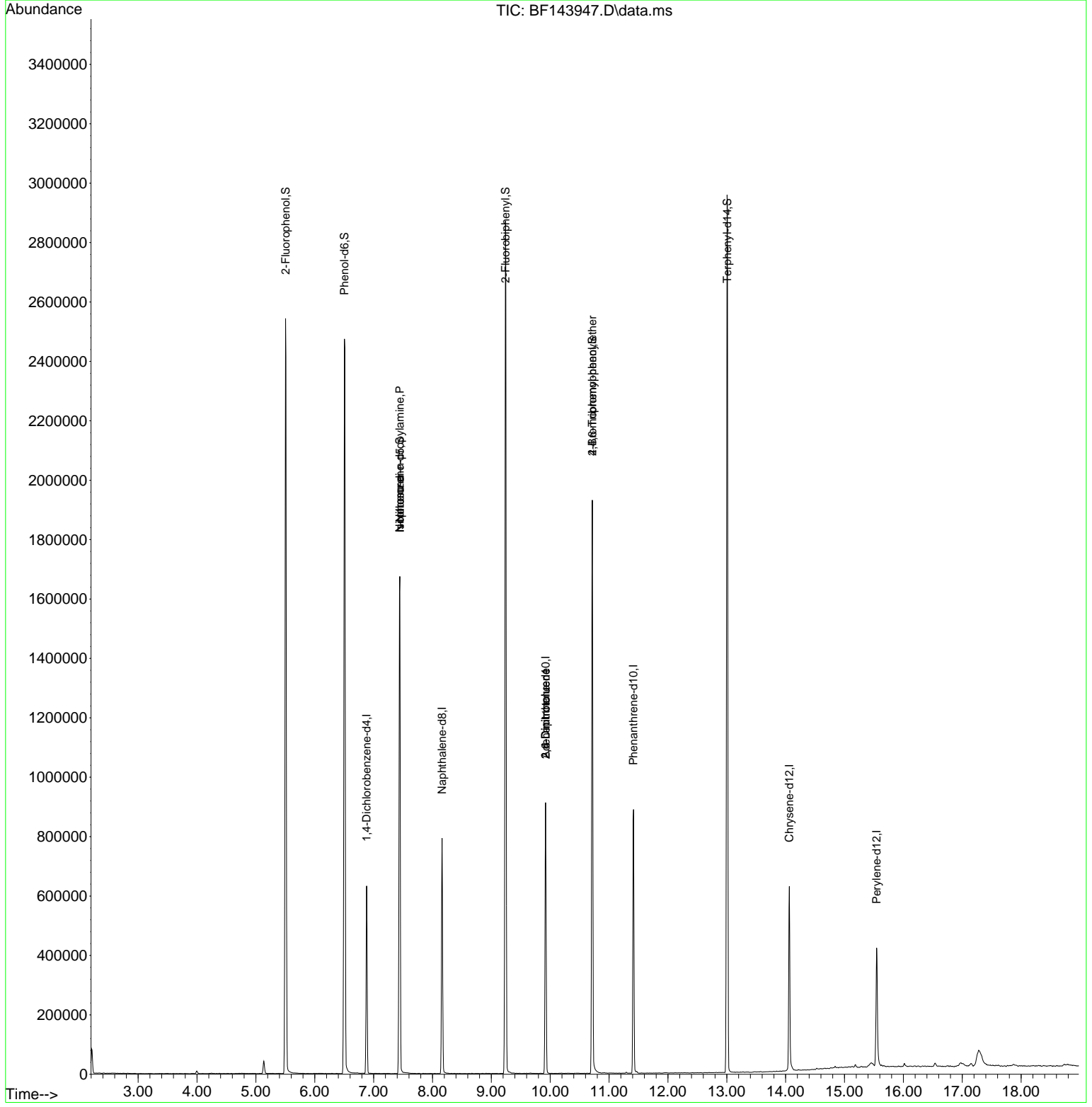
Compound	R.T.	QIon	Response	Conc	Units	Dev(Min)
Internal Standards						
1) 1,4-Dichlorobenzene-d4	6.881	152	124324	20.000	ng	0.00
21) Naphthalene-d8	8.163	136	501303	20.000	ng	0.00
39) Acenaphthene-d10	9.922	164	273867	20.000	ng	0.00
64) Phenanthrene-d10	11.416	188	483747	20.000	ng	0.00
76) Chrysene-d12	14.063	240	306236	20.000	ng	0.00
86) Perylene-d12	15.545	264	259328	20.000	ng	0.00
System Monitoring Compounds						
5) 2-Fluorophenol	5.504	112	1028430	131.361	ng	0.00
7) Phenol-d6	6.504	99	1240759	132.959	ng	-0.01
23) Nitrobenzene-d5	7.445	82	784659	95.096	ng	-0.01
42) 2,4,6-Tribromophenol	10.716	330	392621	143.935	ng	0.00
45) 2-Fluorobiphenyl	9.239	172	1473200	85.355	ng	-0.01
79) Terphenyl-d14	13.010	244	1716357	95.788	ng	0.00
Target Compounds						
19) n-Nitroso-di-n-propyla...	7.445	70	115921	18.148	ng	# 78
25) Isophorone	7.445	82	688881	39.595	ng	# 68
51) 2,6-Dinitrotoluene	9.922	165	34502	10.698	ng	# 26
57) 2,4-Dinitrotoluene	9.922	165	34502	7.863	ng	# 27
67) 4-Bromophenyl-phenylether	10.716	248	22366	4.184	ng	# 1

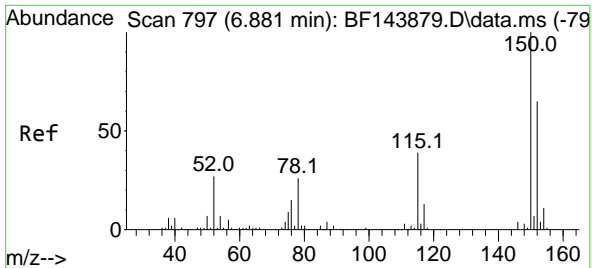
(#) = qualifier out of range (m) = manual integration (+) = signals summed

Data Path : Z:\svoasrv\HPCHEM1\BNA_F\Data\BF101425\
 Data File : BF143947.D
 Acq On : 14 Oct 2025 14:25
 Operator : RC/JU
 Sample : PB170067BL
 Misc :
 ALS Vial : 3 Sample Multiplier: 1

Instrument :
 BNA_F
 ClientSampleId :
 PB170067BL

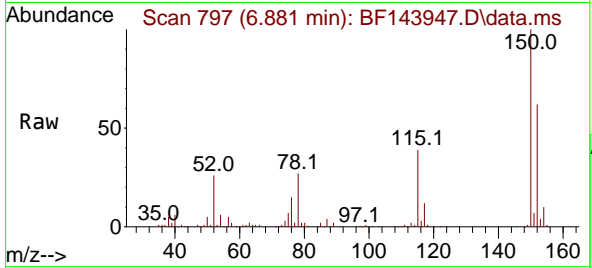
Quant Time: Oct 14 14:53:58 2025
 Quant Method : Z:\svoasrv\HPCHEM1\BNA_F\Methods\8270-BF100625.M
 Quant Title : ASP BNA STANDARDS FOR 5 POINT CALIBRATION
 QLast Update : Mon Oct 06 15:29:47 2025
 Response via : Initial Calibration



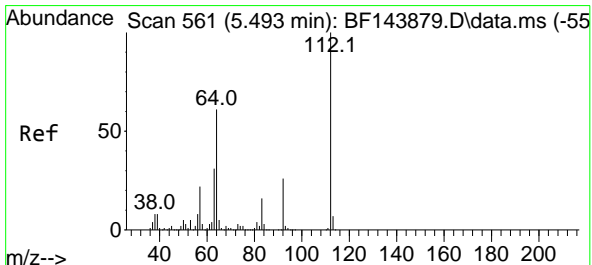
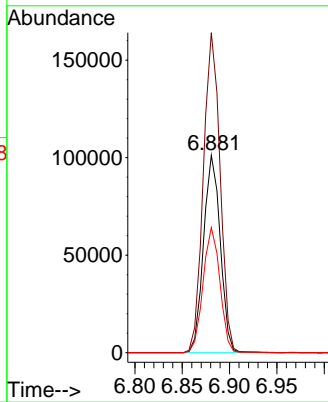
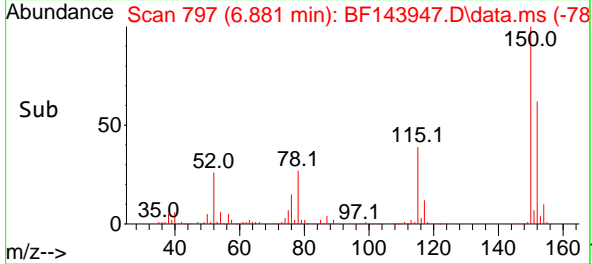


#1
 1,4-Dichlorobenzene-d4
 Concen: 20.000 ng
 RT: 6.881 min Scan# 79
 Delta R.T. -0.005 min
 Lab File: BF143947.D
 Acq: 14 Oct 2025 14:25

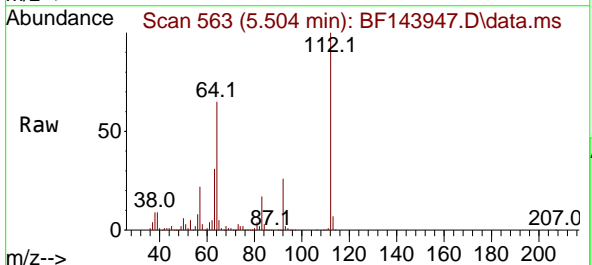
Instrument :
 BNA_F
 ClientSampleId :
 PB170067BL



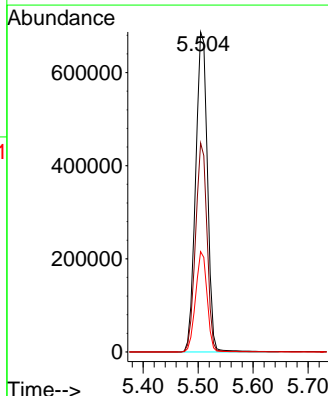
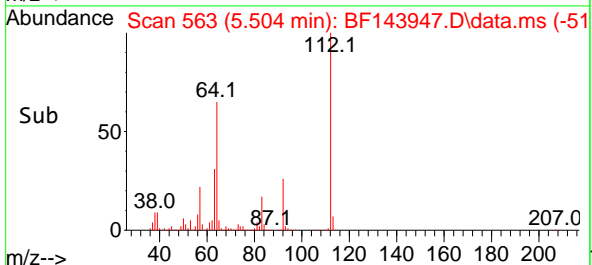
Tgt Ion:152 Resp: 124324
 Ion Ratio Lower Upper
 152 100
 150 162.0 124.4 186.6
 115 63.4 48.1 72.1

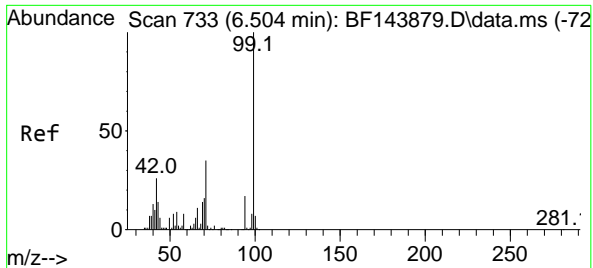


#5
 2-Fluorophenol
 Concen: 131.361 ng
 RT: 5.504 min Scan# 563
 Delta R.T. 0.006 min
 Lab File: BF143947.D
 Acq: 14 Oct 2025 14:25



Tgt Ion:112 Resp: 1028430
 Ion Ratio Lower Upper
 112 100
 64 65.3 49.1 73.7
 63 31.3 24.5 36.7



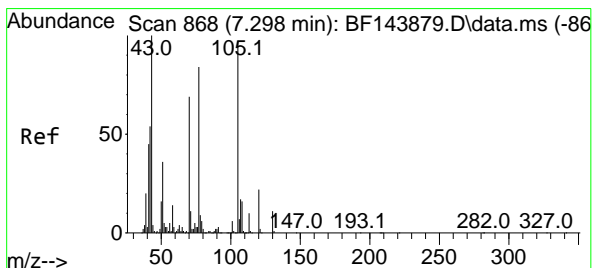
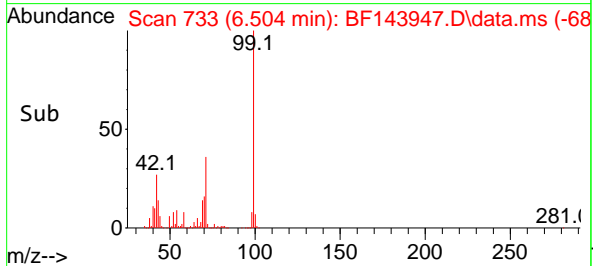
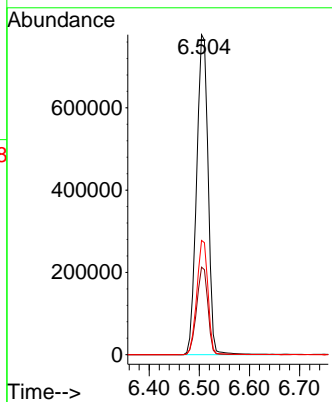
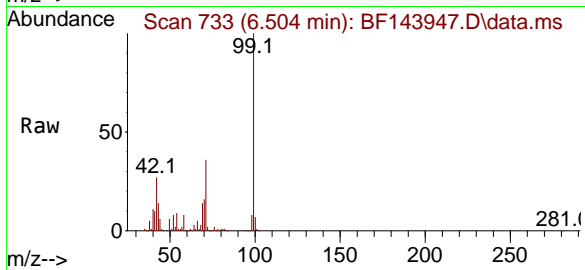


#7
 Phenol-d6
 Concen: 132.959 ng
 RT: 6.504 min Scan# 71
 Delta R.T. -0.012 min
 Lab File: BF143947.D
 Acq: 14 Oct 2025 14:25

Instrument :
 BNA_F
 ClientSampleId :
 PB170067BL

Tgt Ion: 99 Resp: 1240759

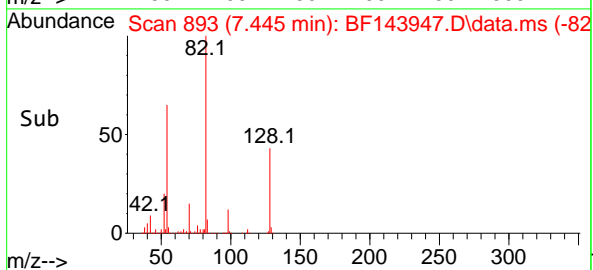
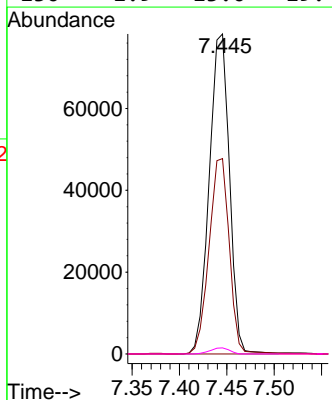
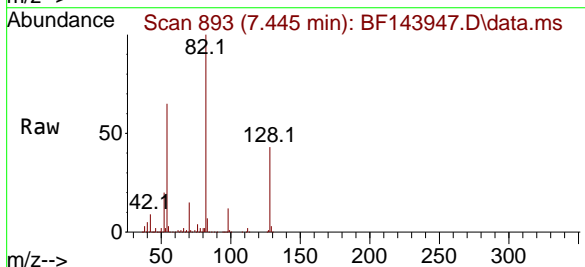
Ion	Ratio	Lower	Upper
99	100		
42	27.4	21.0	31.4
71	35.7	27.8	41.8

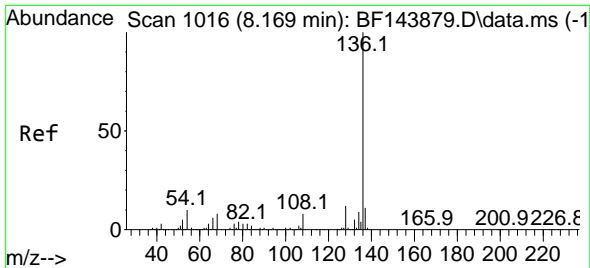


#19
 n-Nitroso-di-n-propylamine
 Concen: 18.148 ng
 RT: 7.445 min Scan# 893
 Delta R.T. 0.130 min
 Lab File: BF143947.D
 Acq: 14 Oct 2025 14:25

Tgt Ion: 70 Resp: 115921

Ion	Ratio	Lower	Upper
70	100		
42	61.1	62.8	94.2#
101	0.0	6.7	10.1#
130	1.9	13.0	19.4#





#21
 Naphthalene-d8
 Concen: 20.000 ng
 RT: 8.163 min Scan# 1016
 Delta R.T. -0.006 min
 Lab File: BF143947.D
 Acq: 14 Oct 2025 14:25

Instrument :

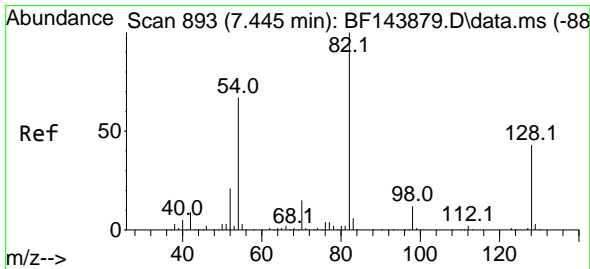
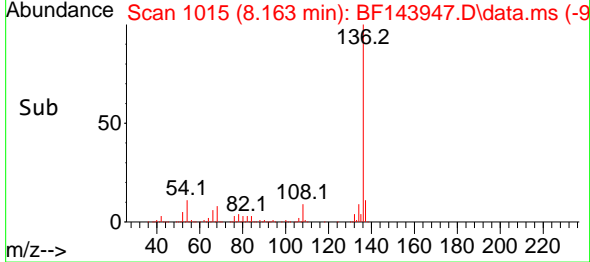
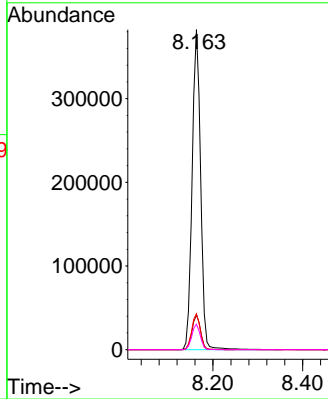
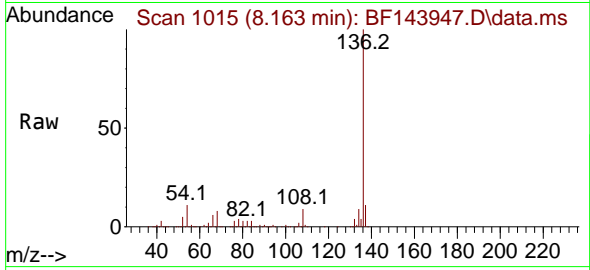
BNA_F

ClientSampleId :

PB170067BL

Tgt Ion:136 Resp: 501303

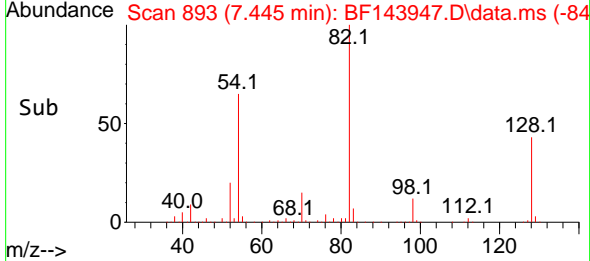
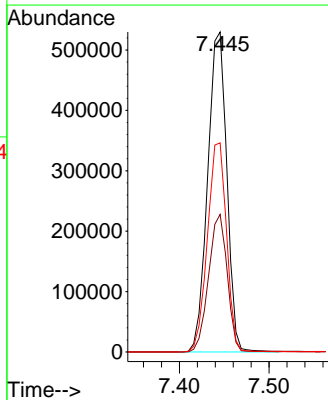
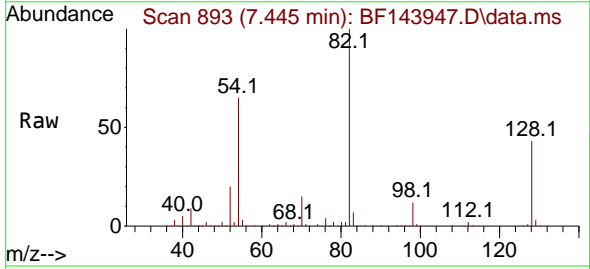
Ion	Ratio	Lower	Upper
136	100		
137	10.9	8.5	12.7
54	11.3	8.2	12.4
68	7.9	6.2	9.4

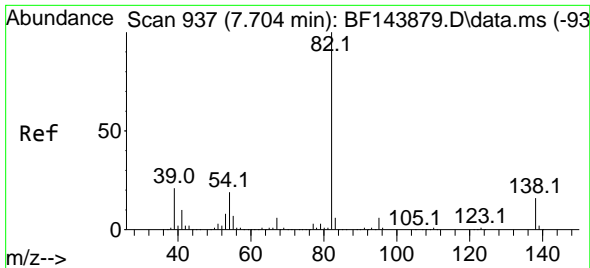


#23
 Nitrobenzene-d5
 Concen: 95.096 ng
 RT: 7.445 min Scan# 893
 Delta R.T. -0.012 min
 Lab File: BF143947.D
 Acq: 14 Oct 2025 14:25

Tgt Ion: 82 Resp: 784659

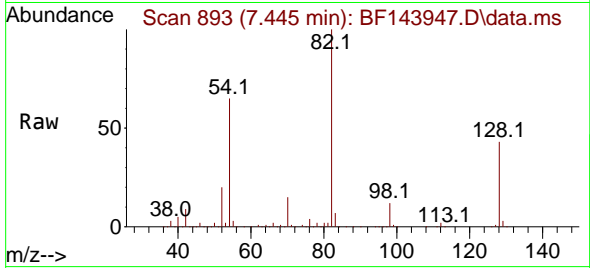
Ion	Ratio	Lower	Upper
82	100		
128	43.0	34.0	51.0
54	65.3	53.2	79.8



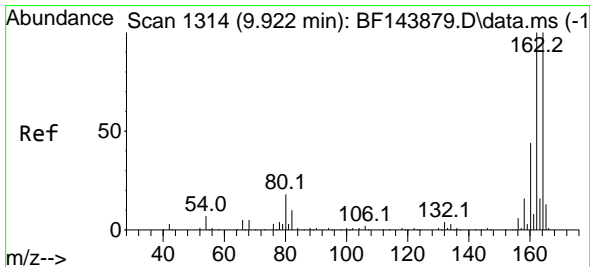
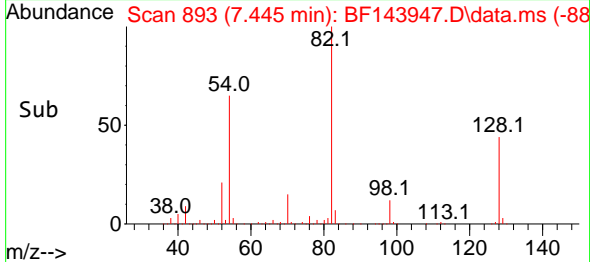
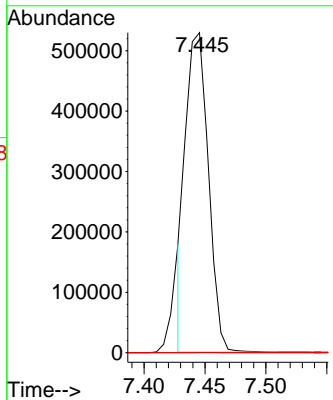


#25
 Isophorone
 Concen: 39.595 ng
 RT: 7.445 min Scan# 893
 Delta R.T. -0.276 min
 Lab File: BF143947.D
 Acq: 14 Oct 2025 14:25

Instrument : BNA_F
 ClientSampleId : PB170067BL

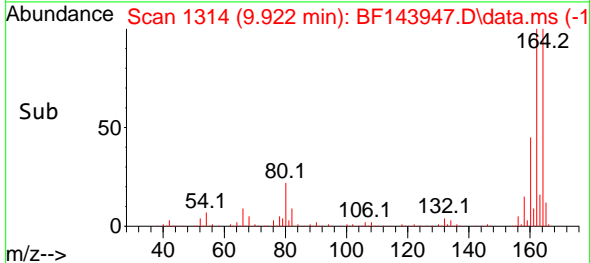
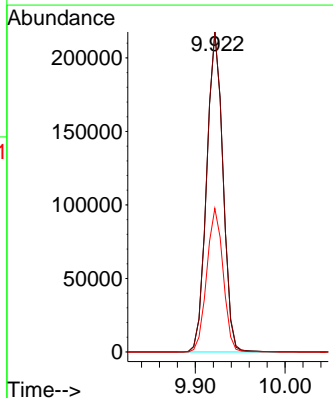
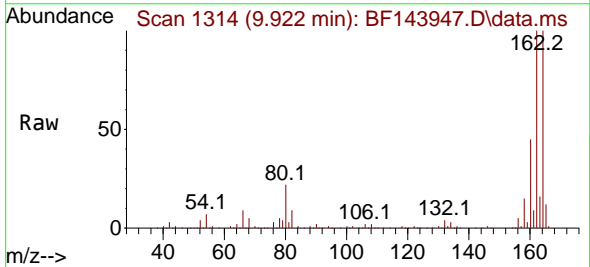


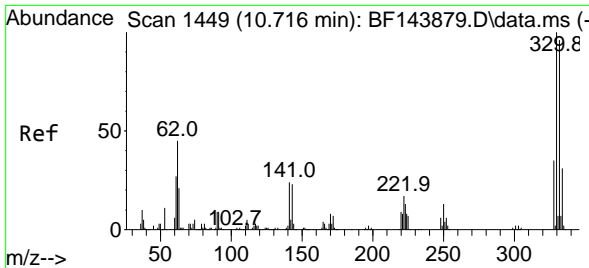
Tgt Ion: 82 Resp: 688881
 Ion Ratio Lower Upper
 82 100
 95 0.0 5.1 7.7#
 138 0.0 12.9 19.3#



#39
 Acenaphthene-d10
 Concen: 20.000 ng
 RT: 9.922 min Scan# 1314
 Delta R.T. -0.005 min
 Lab File: BF143947.D
 Acq: 14 Oct 2025 14:25

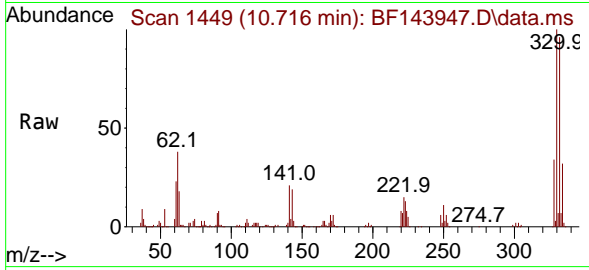
Tgt Ion: 164 Resp: 273867
 Ion Ratio Lower Upper
 164 100
 162 100.0 80.2 120.2
 160 44.9 35.4 53.0



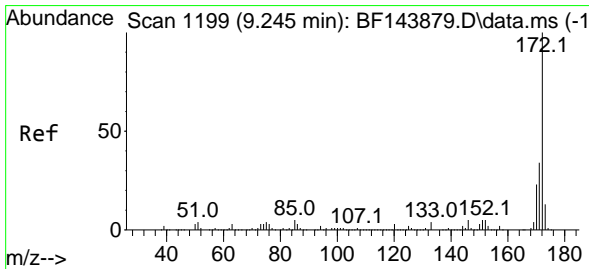
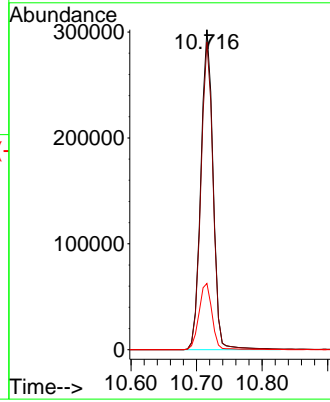
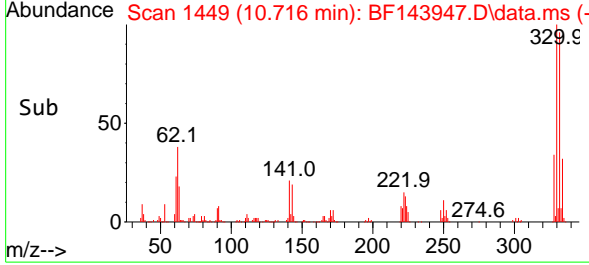


#42
 2,4,6-Tribromophenol
 Concen: 143.935 ng
 RT: 10.716 min Scan# 1449
 Delta R.T. -0.006 min
 Lab File: BF143947.D
 Acq: 14 Oct 2025 14:25

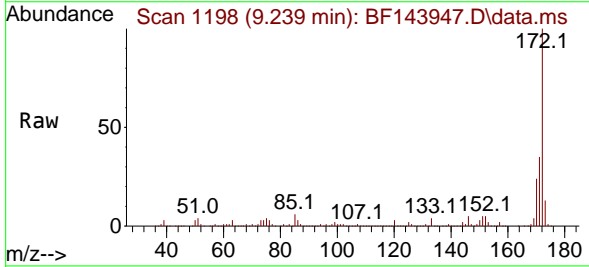
Instrument :
 BNA_F
 ClientSampleId :
 PB170067BL



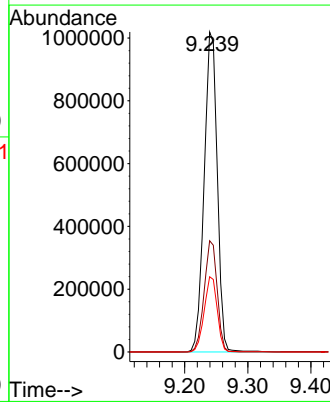
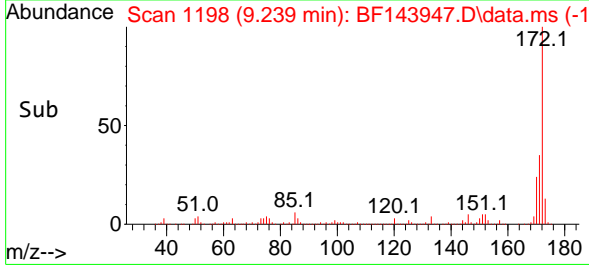
Tgt Ion:330 Resp: 392621
 Ion Ratio Lower Upper
 330 100
 332 96.7 76.9 115.3
 141 22.3 20.2 30.4

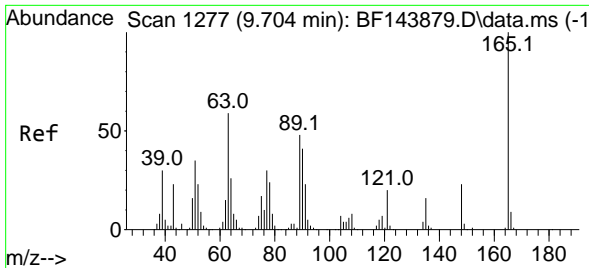


#45
 2-Fluorobiphenyl
 Concen: 85.355 ng
 RT: 9.239 min Scan# 1198
 Delta R.T. -0.012 min
 Lab File: BF143947.D
 Acq: 14 Oct 2025 14:25



Tgt Ion:172 Resp: 1473200
 Ion Ratio Lower Upper
 172 100
 171 34.8 27.4 41.0
 170 23.5 18.6 28.0

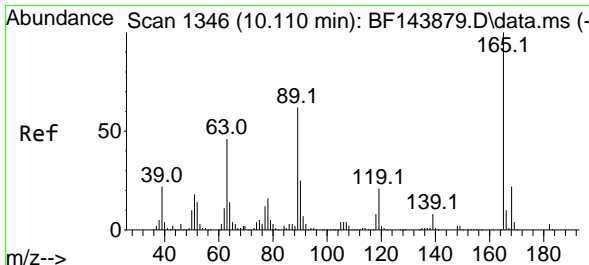
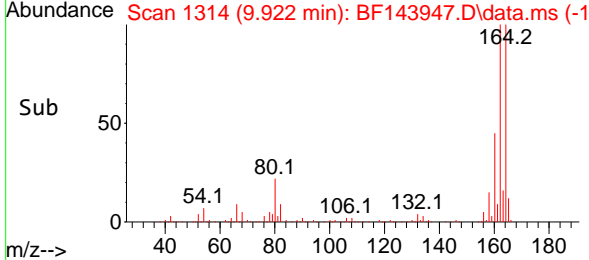
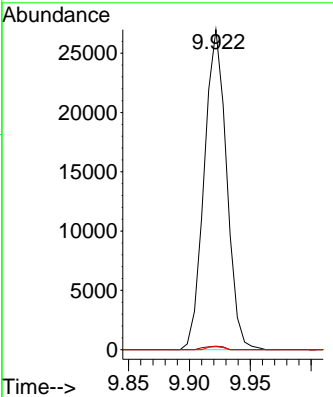
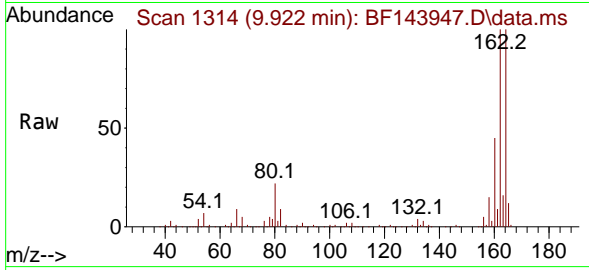




#51
 2,6-Dinitrotoluene
 Concen: 10.698 ng
 RT: 9.922 min Scan# 11
 Delta R.T. 0.206 min
 Lab File: BF143947.D
 Acq: 14 Oct 2025 14:25

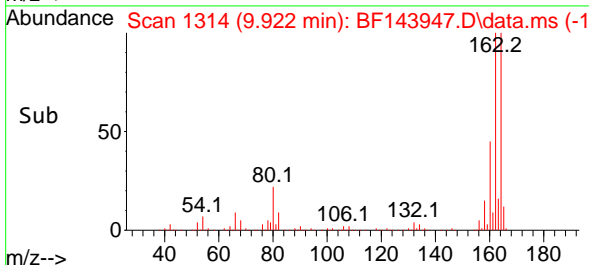
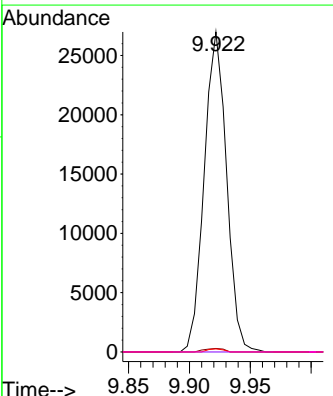
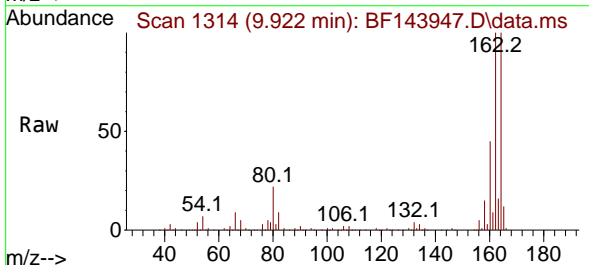
Instrument : BNA_F
 ClientSampleId : PB170067BL

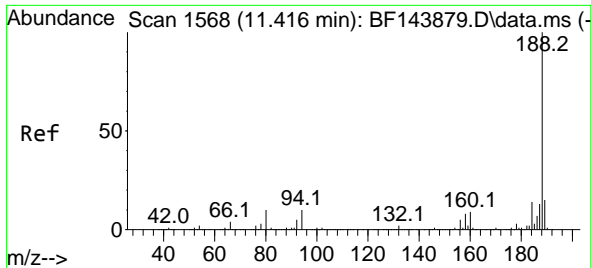
Tgt Ion	Resp	Lower	Upper
165	100		
63	1.1	47.3	70.9#
89	1.0	38.2	57.4#



#57
 2,4-Dinitrotoluene
 Concen: 7.863 ng
 RT: 9.922 min Scan# 1314
 Delta R.T. -0.194 min
 Lab File: BF143947.D
 Acq: 14 Oct 2025 14:25

Tgt Ion	Resp	Lower	Upper
165	100		
63	1.1	37.2	55.8#
89	1.0	49.4	74.2#
182	0.0	2.1	3.1#



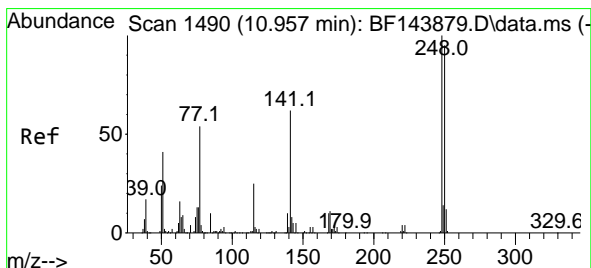
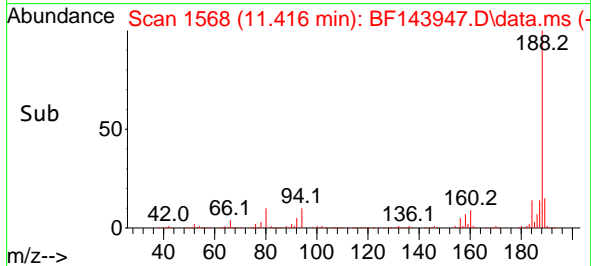
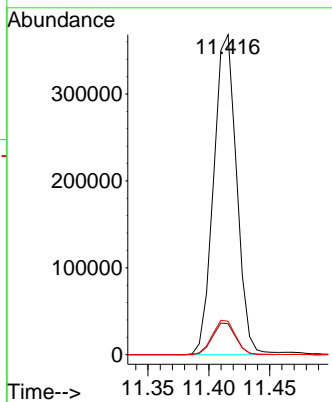
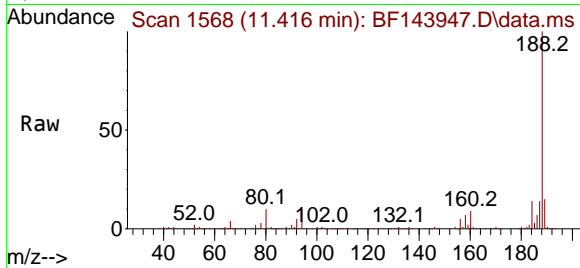


#64
 Phenanthrene-d10
 Concen: 20.000 ng
 RT: 11.416 min Scan# 11
 Delta R.T. 0.000 min
 Lab File: BF143947.D
 Acq: 14 Oct 2025 14:25

Instrument :
 BNA_F
 ClientSampleId :
 PB170067BL

Tgt Ion:188 Resp: 483747

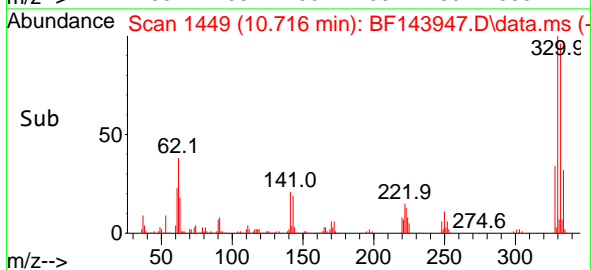
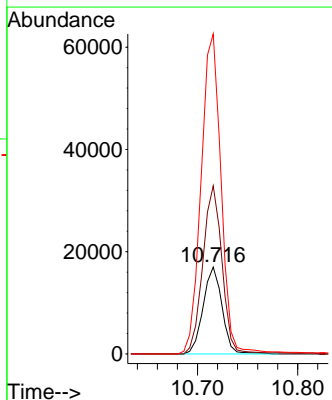
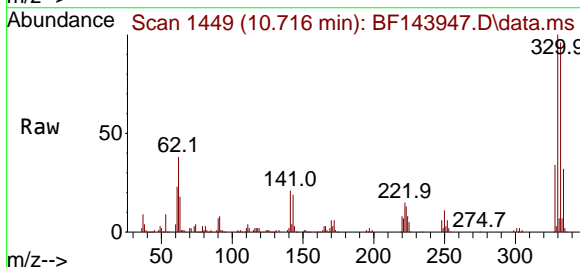
Ion	Ratio	Lower	Upper
188	100		
94	9.6	7.8	11.6
80	10.4	7.9	11.9

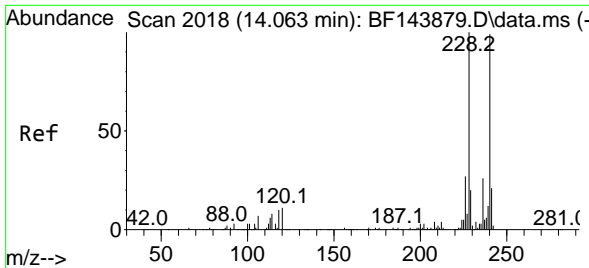


#67
 4-Bromophenyl-phenylether
 Concen: 4.184 ng
 RT: 10.716 min Scan# 1449
 Delta R.T. -0.247 min
 Lab File: BF143947.D
 Acq: 14 Oct 2025 14:25

Tgt Ion:248 Resp: 22366

Ion	Ratio	Lower	Upper
248	100		
250	193.6	76.3	114.5#
141	368.5	49.7	74.5#



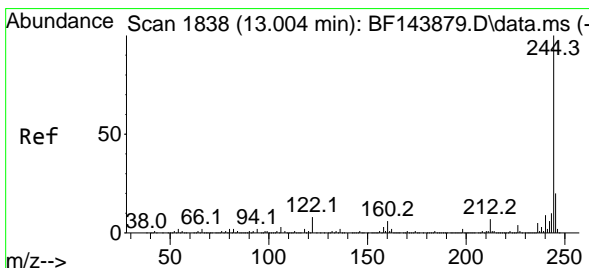
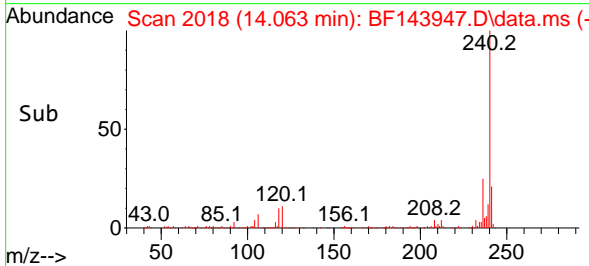
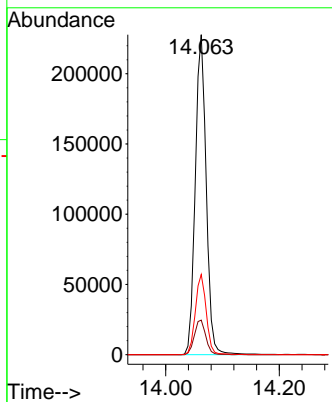
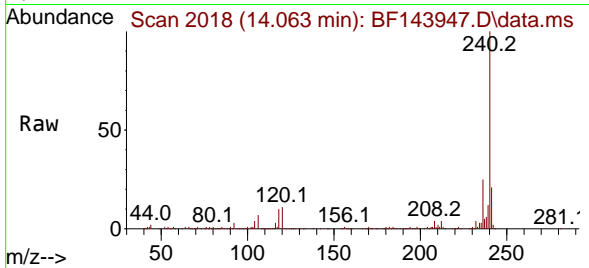


#76
 Chrysene-d12
 Concen: 20.000 ng
 RT: 14.063 min Scan# 20
 Delta R.T. -0.005 min
 Lab File: BF143947.D
 Acq: 14 Oct 2025 14:25

Instrument :
 BNA_F
 ClientSampleId :
 PB170067BL

Tgt Ion:240 Resp: 306236

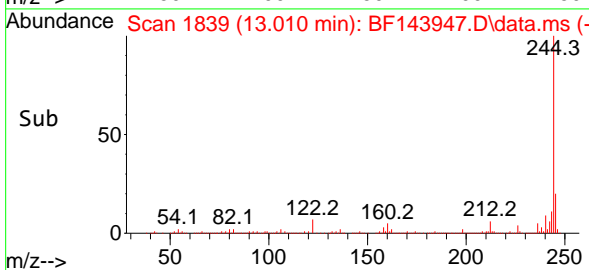
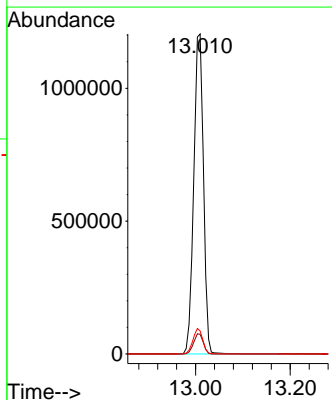
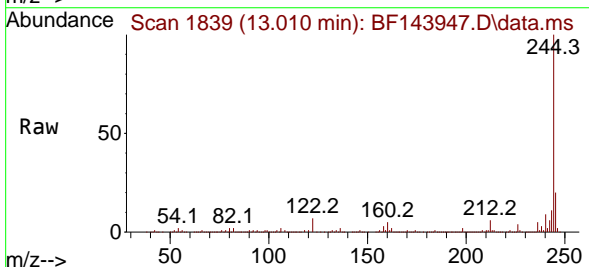
Ion	Ratio	Lower	Upper
240	100		
120	10.8	8.6	13.0
236	25.0	21.1	31.7

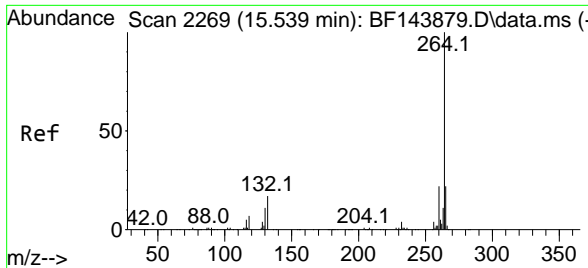


#79
 Terphenyl-d14
 Concen: 95.788 ng
 RT: 13.010 min Scan# 1839
 Delta R.T. 0.000 min
 Lab File: BF143947.D
 Acq: 14 Oct 2025 14:25

Tgt Ion:244 Resp: 1716357

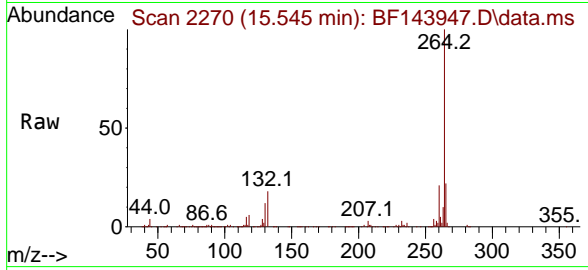
Ion	Ratio	Lower	Upper
244	100		
212	6.2	5.4	8.0
122	7.2	6.4	9.6





#86
 Perylene-d12
 Concen: 20.000 ng
 RT: 15.545 min Scan# 21
 Delta R.T. 0.000 min
 Lab File: BF143947.D
 Acq: 14 Oct 2025 14:25

Instrument :
 BNA_F
 ClientSampleId :
 PB170067BL



Tgt Ion:264 Resp: 259328

Ion	Ratio	Lower	Upper
264	100		
260	21.3	17.8	26.8
265	22.0	17.5	26.3

