

Data Path : Z:\svoasrv\HPCHEM1\BNA_F\Data\BF101525\
 Data File : BF143962.D
 Acq On : 15 Oct 2025 19:54
 Operator : RC/JU
 Sample : Q3340-03
 Misc :
 ALS Vial : 13 Sample Multiplier: 1

Instrument :
 BNA_F
 ClientSampleId :
 CONCRETE-3

Quant Time: Oct 16 11:10:59 2025
 Quant Method : Z:\svoasrv\HPCHEM1\BNA_F\Methods\8270-BF100625.M
 Quant Title : ASP BNA STANDARDS FOR 5 POINT CALIBRATION
 QLast Update : Mon Oct 06 15:29:47 2025
 Response via : Initial Calibration

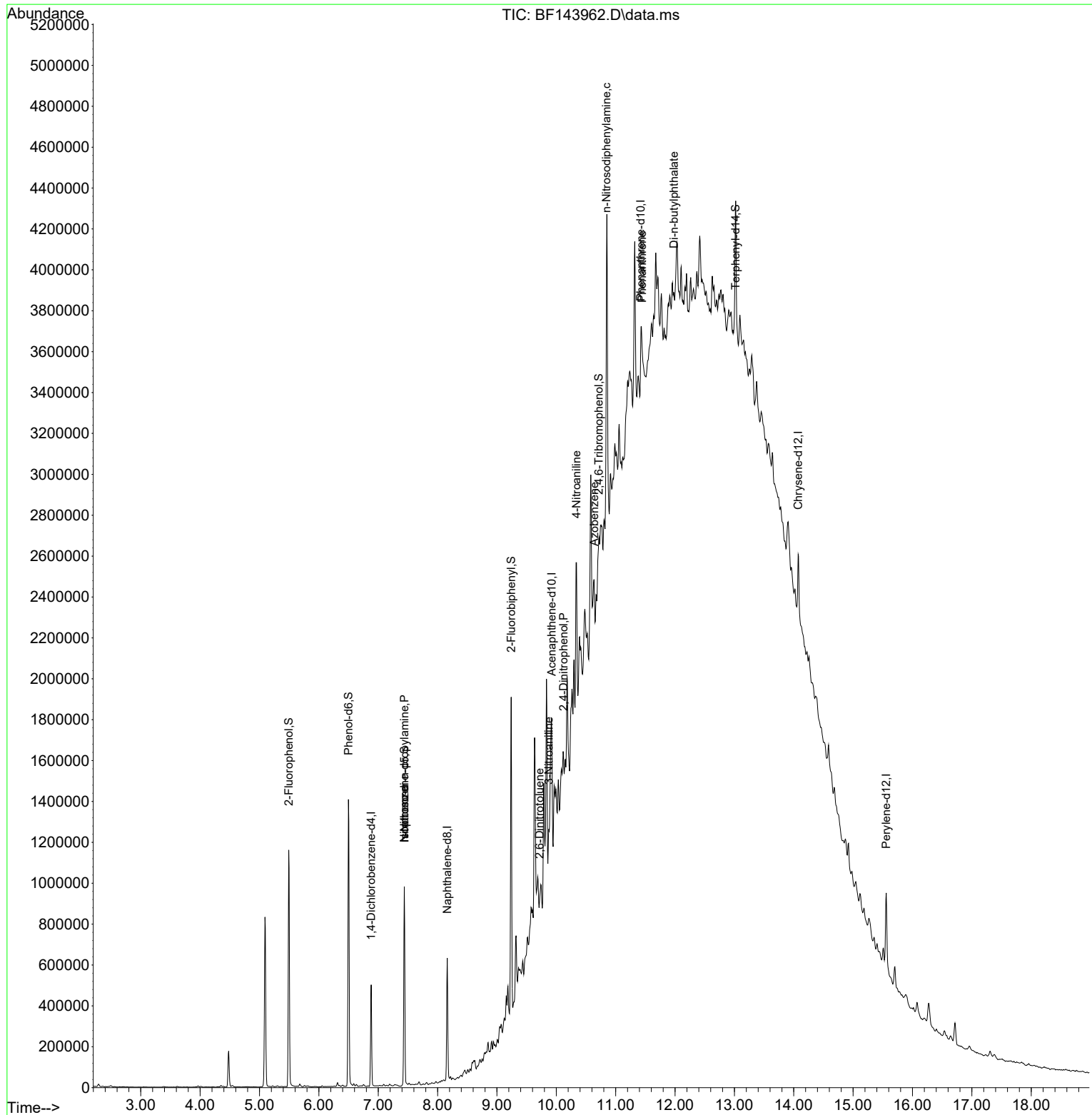
Compound	R.T.	QIon	Response	Conc	Units	Dev(Min)
Internal Standards						
1) 1,4-Dichlorobenzene-d4	6.881	152	103587	20.000	ng	0.00
21) Naphthalene-d8	8.163	136	367291	20.000	ng	0.00
39) Acenaphthene-d10	9.922	164	156751	20.000	ng	0.00
64) Phenanthrene-d10	11.422	188	162567	20.000	ng	# 0.00
76) Chrysene-d12	14.074	240	172072	20.000	ng	# 0.00
86) Perylene-d12	15.557	264	246956	20.000	ng	0.01
System Monitoring Compounds						
5) 2-Fluorophenol	5.493	112	449104	68.848	ng	0.00
7) Phenol-d6	6.498	99	618524	79.550	ng	-0.02
23) Nitrobenzene-d5	7.440	82	408925	67.642	ng	-0.02
42) 2,4,6-Tribromophenol	10.716	330	63405	40.611	ng	0.00
45) 2-Fluorobiphenyl	9.239	172	727343	73.627	ng	-0.01
79) Terphenyl-d14	13.022	244	489342	48.603	ng	0.01
Target Compounds						
19) n-Nitroso-di-n-propyla...	7.440	70	58459	10.984	ng	# 78
25) Isophorone	7.440	82	345532	27.107	ng	# 68
51) 2,6-Dinitrotoluene	9.716	165	4675	2.533	ng	# 37
53) 3-Nitroaniline	9.875	138	7648	3.384	ng	# 17
54) 2,4-Dinitrophenol	10.122	184	1159	7.871	ng	# 1
62) 4-Nitroaniline	10.339	138	8517	3.919	ng	# 89
63) Azobenzene	10.639	77	31251	3.233	ng	# 13
66) n-Nitrosodiphenylamine	10.845	169	30250	5.926	ng	# 96
71) Phenanthrene	11.445	178	27612	3.503	ng	# 22
74) Di-n-butylphthalate	11.980	149	20867	2.553	ng	# 31

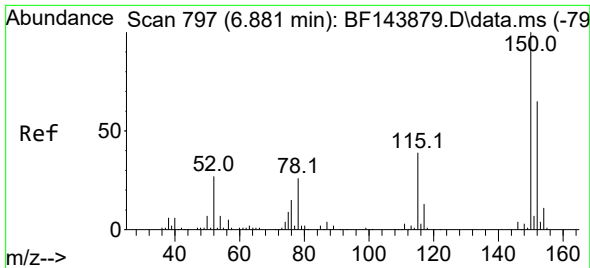
(#) = qualifier out of range (m) = manual integration (+) = signals summed

Data Path : Z:\svoasrv\HPCHEM1\BNA_F\Data\BF101525\
 Data File : BF143962.D
 Acq On : 15 Oct 2025 19:54
 Operator : RC/JU
 Sample : Q3340-03
 Misc :
 ALS Vial : 13 Sample Multiplier: 1

Instrument :
 BNA_F
 ClientSampleId :
 CONCRETE-3

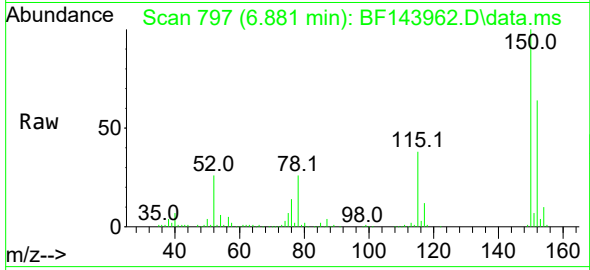
Quant Time: Oct 16 11:10:59 2025
 Quant Method : Z:\svoasrv\HPCHEM1\BNA_F\Methods\8270-BF100625.M
 Quant Title : ASP BNA STANDARDS FOR 5 POINT CALIBRATION
 QLast Update : Mon Oct 06 15:29:47 2025
 Response via : Initial Calibration



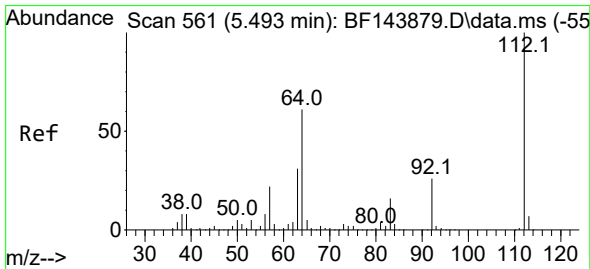
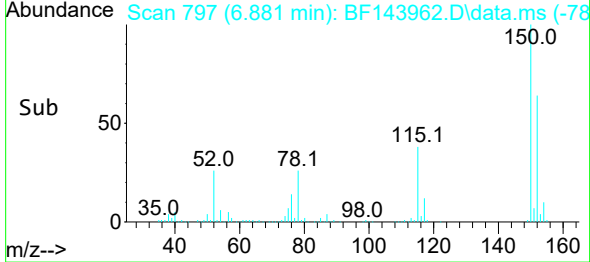
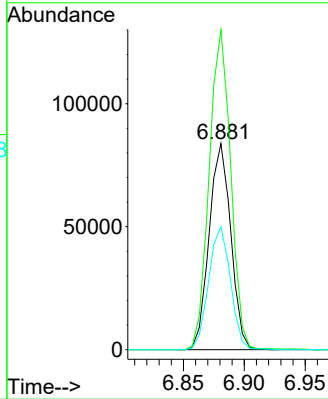


#1
 1,4-Dichlorobenzene-d4
 Concen: 20.000 ng
 RT: 6.881 min Scan# 797
 Delta R.T. -0.005 min
 Lab File: BF143962.D
 Acq: 15 Oct 2025 19:54

Instrument :
 BNA_F
 ClientSampleId :
 CONCRETE-3

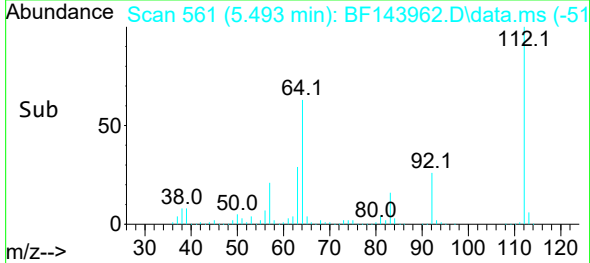
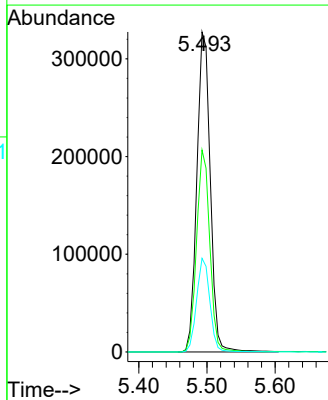
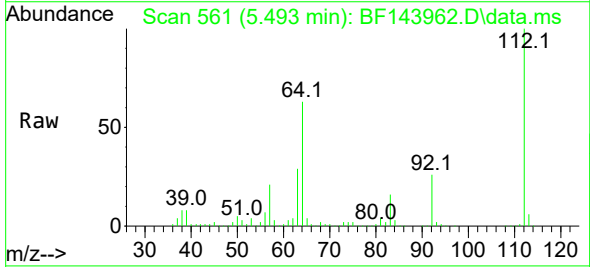


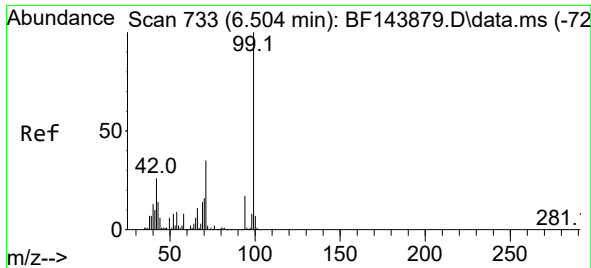
Tgt Ion:152 Resp: 103587
 Ion Ratio Lower Upper
 152 100
 150 155.3 124.4 186.6
 115 59.6 48.1 72.1



#5
 2-Fluorophenol
 Concen: 68.848 ng
 RT: 5.493 min Scan# 561
 Delta R.T. -0.006 min
 Lab File: BF143962.D
 Acq: 15 Oct 2025 19:54

Tgt Ion:112 Resp: 449104
 Ion Ratio Lower Upper
 112 100
 64 63.1 49.1 73.7
 63 29.3 24.5 36.7



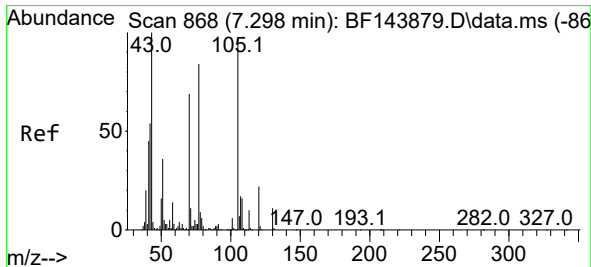
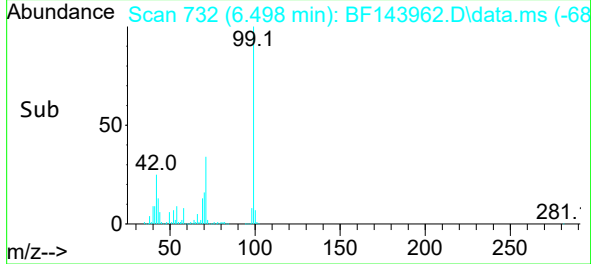
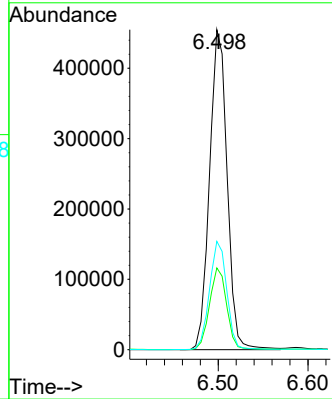
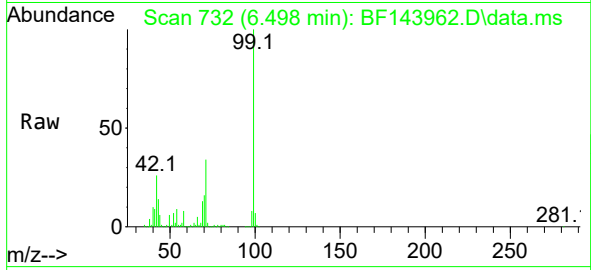


#7
 Phenol-d6
 Concen: 79.550 ng
 RT: 6.498 min Scan# 71
 Delta R.T. -0.017 min
 Lab File: BF143962.D
 Acq: 15 Oct 2025 19:54

Instrument :
 BNA_F
 ClientSampleId :
 CONCRETE-3

Tgt Ion: 99 Resp: 618524

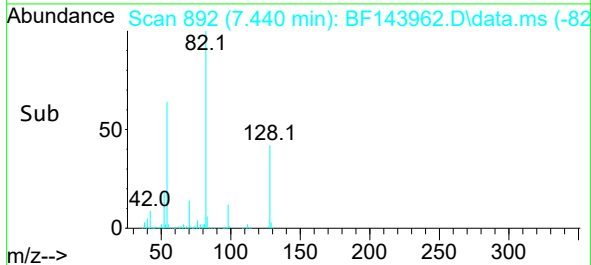
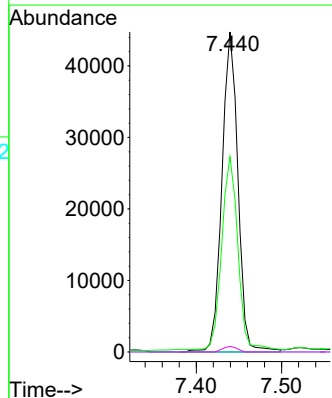
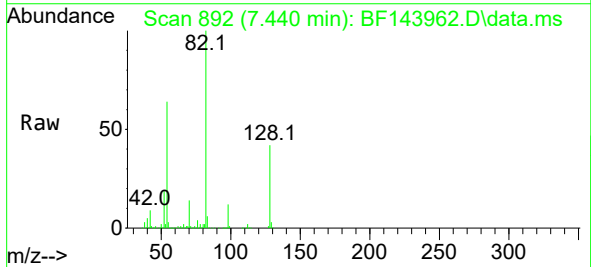
Ion	Ratio	Lower	Upper
99	100		
42	25.5	21.0	31.4
71	33.9	27.8	41.8

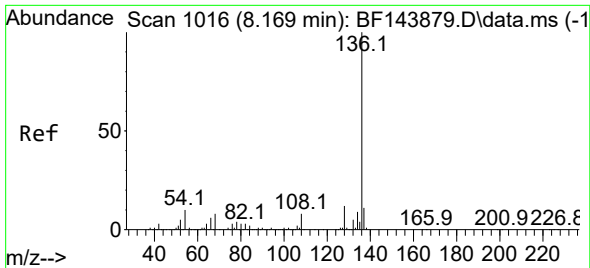


#19
 n-Nitroso-di-n-propylamine
 Concen: 10.984 ng
 RT: 7.440 min Scan# 892
 Delta R.T. 0.124 min
 Lab File: BF143962.D
 Acq: 15 Oct 2025 19:54

Tgt Ion: 70 Resp: 58459

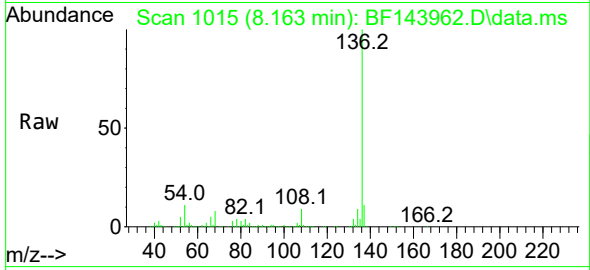
Ion	Ratio	Lower	Upper
70	100		
42	61.0	62.8	94.2#
101	0.0	6.7	10.1#
130	1.7	13.0	19.4#



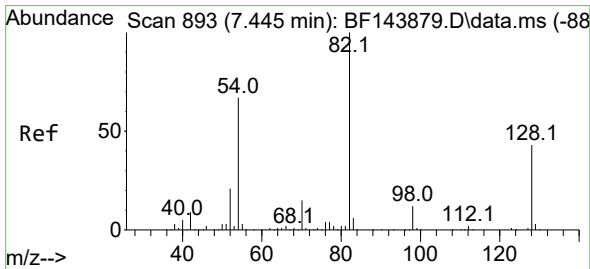
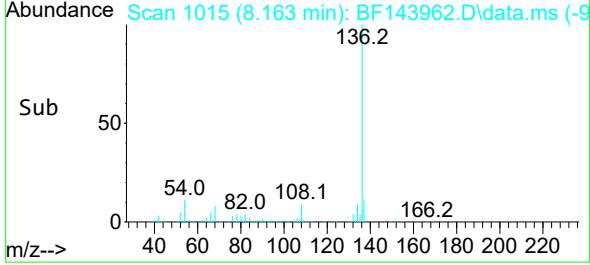
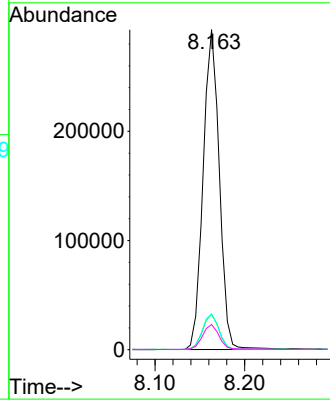


#21
 Naphthalene-d8
 Concen: 20.000 ng
 RT: 8.163 min Scan# 1016
 Delta R.T. -0.006 min
 Lab File: BF143962.D
 Acq: 15 Oct 2025 19:54

Instrument : BNA_F
 ClientSampleId : CONCRETE-3

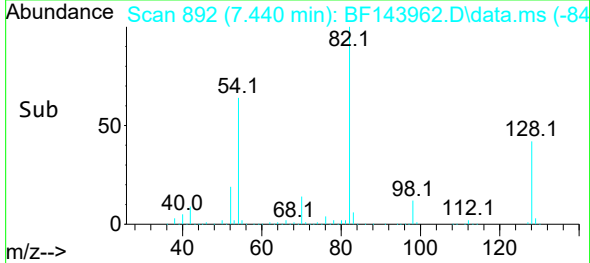
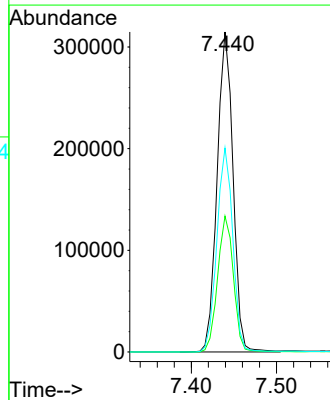
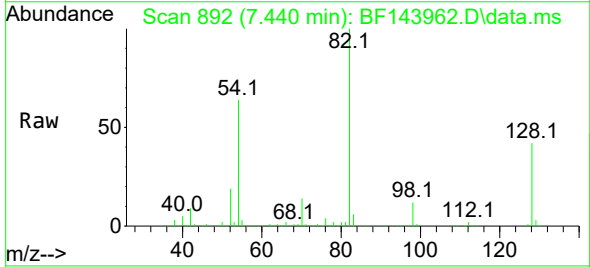


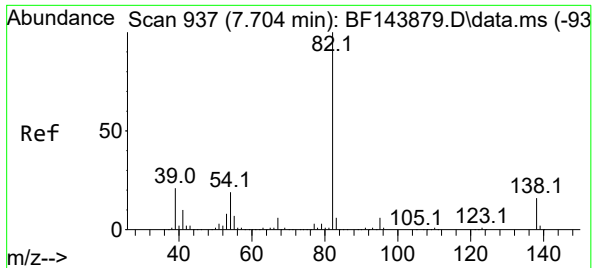
Tgt Ion:136 Resp: 367291
 Ion Ratio Lower Upper
 136 100
 137 11.0 8.5 12.7
 54 11.2 8.2 12.4
 68 7.8 6.2 9.4



#23
 Nitrobenzene-d5
 Concen: 67.642 ng
 RT: 7.440 min Scan# 892
 Delta R.T. -0.017 min
 Lab File: BF143962.D
 Acq: 15 Oct 2025 19:54

Tgt Ion: 82 Resp: 408925
 Ion Ratio Lower Upper
 82 100
 128 42.5 34.0 51.0
 54 63.8 53.2 79.8



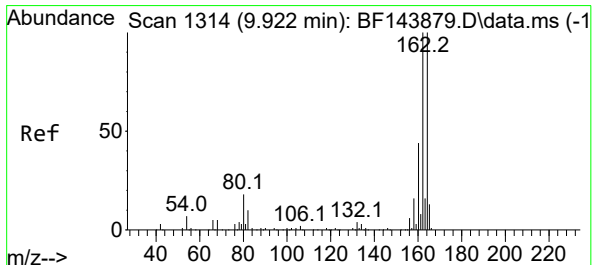
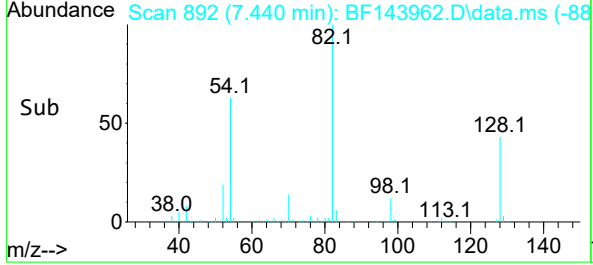
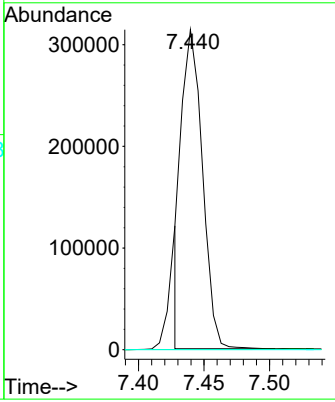
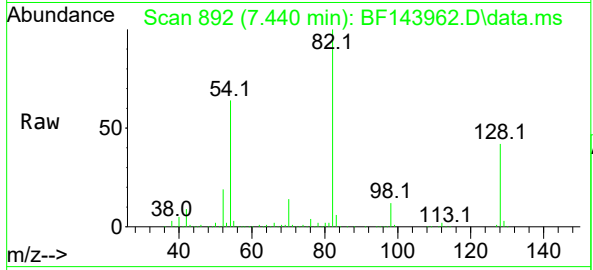


#25
 Isophorone
 Concen: 27.107 ng
 RT: 7.440 min Scan# 892
 Delta R.T. -0.282 min
 Lab File: BF143962.D
 Acq: 15 Oct 2025 19:54

Instrument : BNA_F
 ClientSampleId : CONCRETE-3

Tgt Ion: 82 Resp: 345532

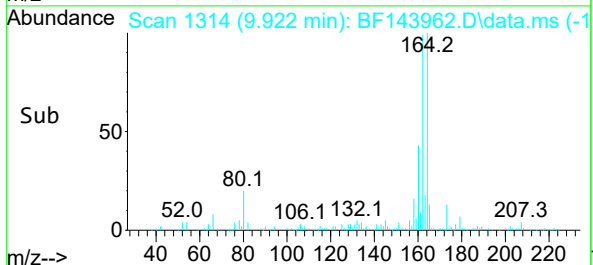
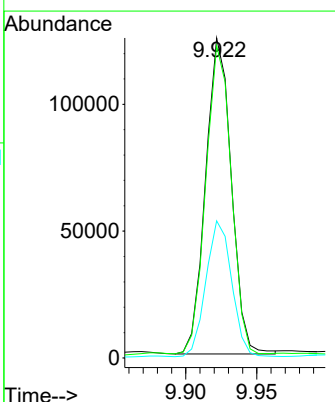
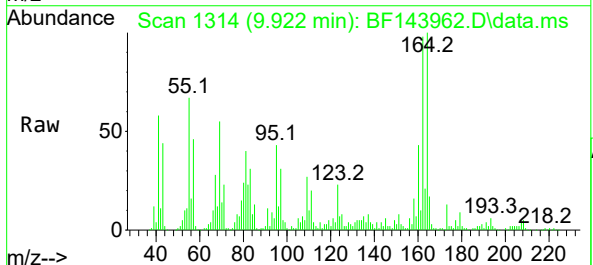
Ion	Ratio	Lower	Upper
82	100		
95	0.1	5.1	7.7#
138	0.0	12.9	19.3#

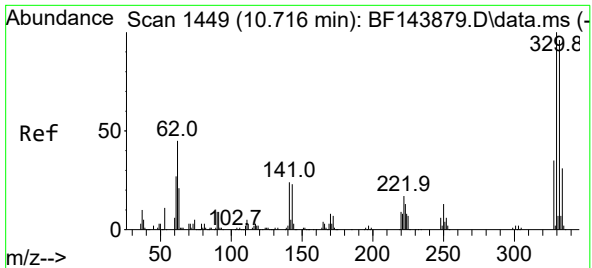


#39
 Acenaphthene-d10
 Concen: 20.000 ng
 RT: 9.922 min Scan# 1314
 Delta R.T. -0.005 min
 Lab File: BF143962.D
 Acq: 15 Oct 2025 19:54

Tgt Ion: 164 Resp: 156751

Ion	Ratio	Lower	Upper
164	100		
162	97.6	80.2	120.2
160	42.8	35.4	53.0



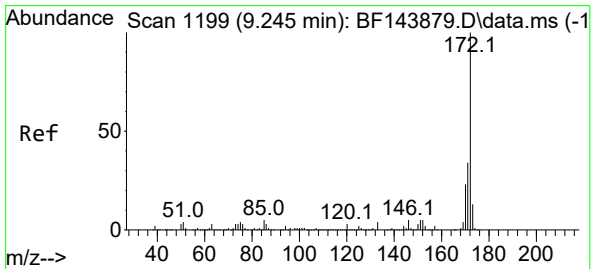
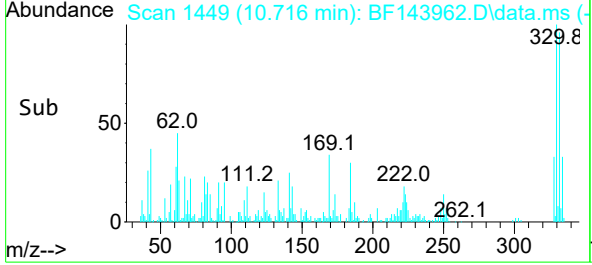
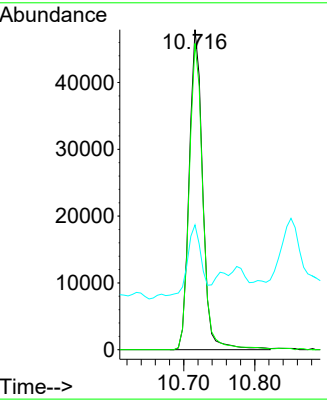
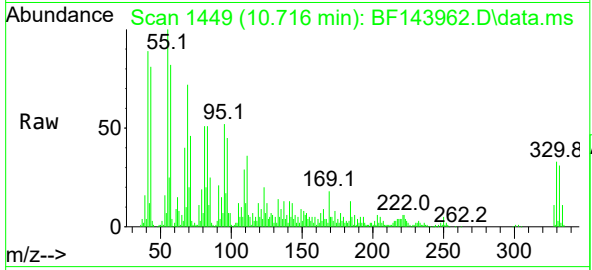


#42
 2,4,6-Tribromophenol
 Concen: 40.611 ng
 RT: 10.716 min Scan# 1449
 Delta R.T. -0.006 min
 Lab File: BF143962.D
 Acq: 15 Oct 2025 19:54

Instrument :
 BNA_F
 ClientSampleId :
 CONCRETE-3

Tgt Ion:330 Resp: 63405

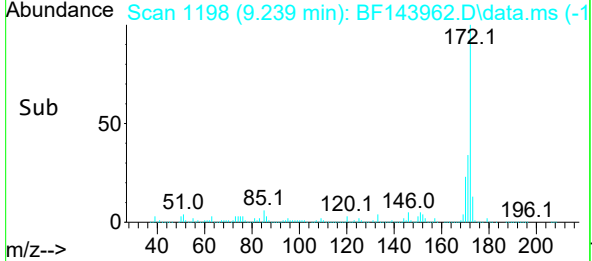
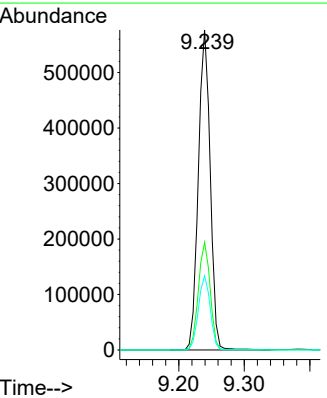
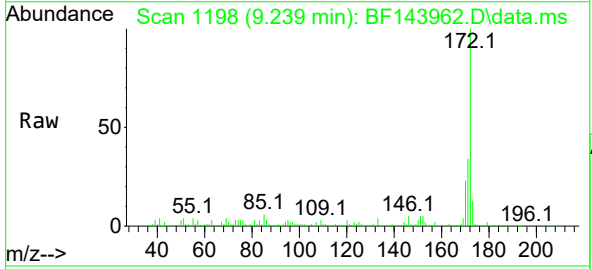
Ion	Ratio	Lower	Upper
330	100		
332	96.9	76.9	115.3
141	21.7	20.2	30.4

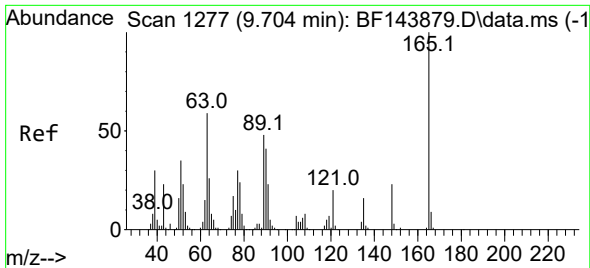


#45
 2-Fluorobiphenyl
 Concen: 73.627 ng
 RT: 9.239 min Scan# 1198
 Delta R.T. -0.012 min
 Lab File: BF143962.D
 Acq: 15 Oct 2025 19:54

Tgt Ion:172 Resp: 727343

Ion	Ratio	Lower	Upper
172	100		
171	33.7	27.4	41.0
170	23.2	18.6	28.0





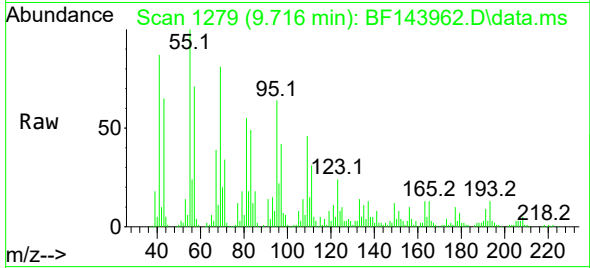
#51
 2,6-Dinitrotoluene
 Concen: 2.533 ng
 RT: 9.716 min Scan# 1111
 Delta R.T. -0.000 min
 Lab File: BF143962.D
 Acq: 15 Oct 2025 19:54

Instrument :

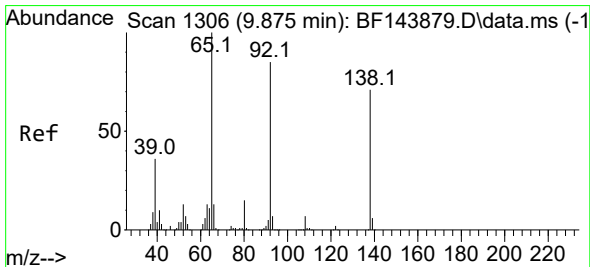
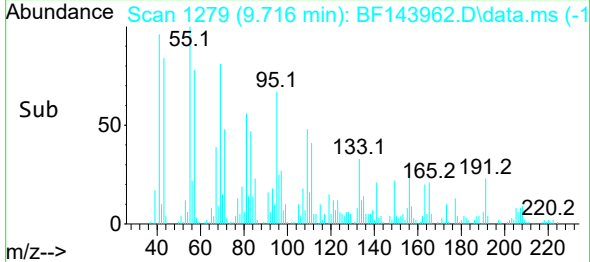
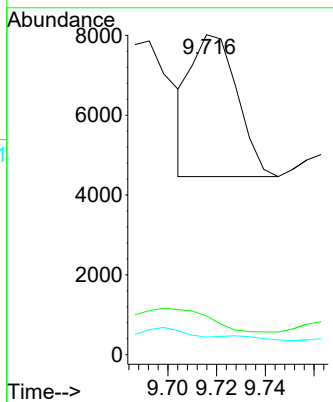
BNA_F

Client Sample Id :

CONCRETE-3

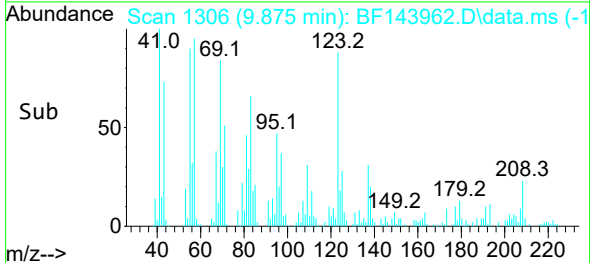
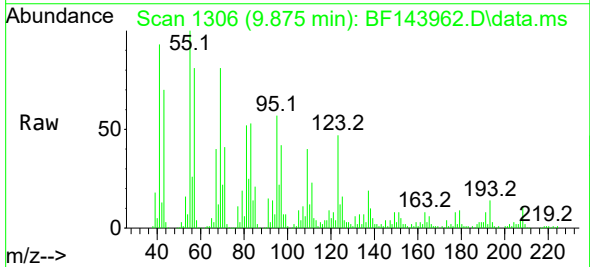
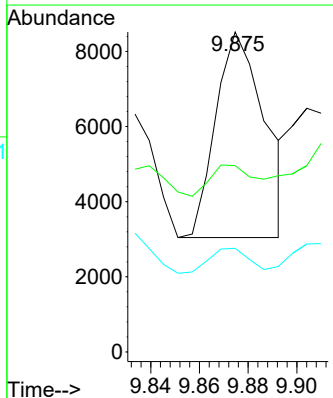


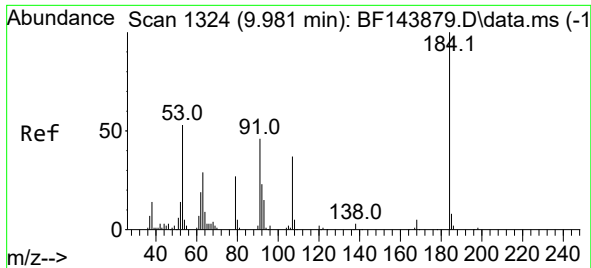
Tgt Ion:165 Resp: 4675
 Ion Ratio Lower Upper
 165 100
 63 12.1 47.3 70.9#
 89 5.5 38.2 57.4#



#53
 3-Nitroaniline
 Concen: 3.384 ng
 RT: 9.875 min Scan# 1306
 Delta R.T. -0.012 min
 Lab File: BF143962.D
 Acq: 15 Oct 2025 19:54

Tgt Ion:138 Resp: 7648
 Ion Ratio Lower Upper
 138 100
 108 58.2 8.3 12.5#
 92 32.4 96.2 144.2#

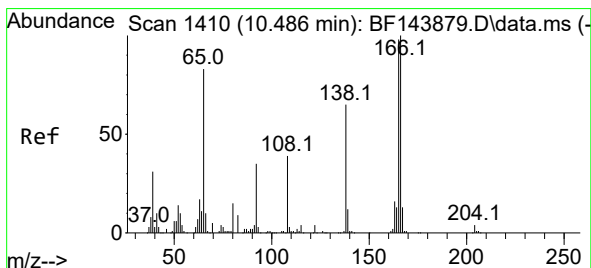
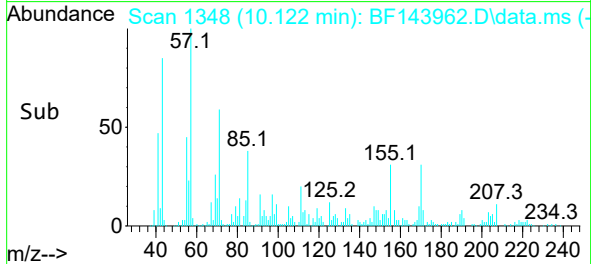
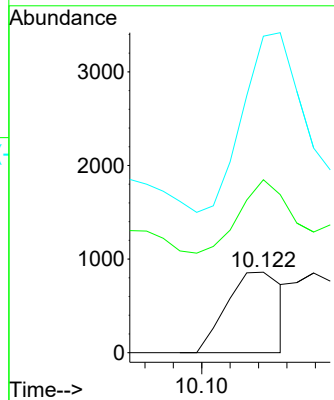
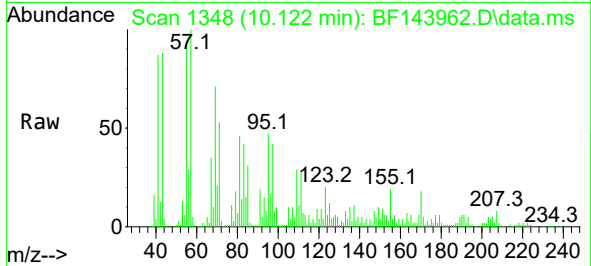




#54
 2,4-Dinitrophenol
 Concen: 7.871 ng
 RT: 10.122 min Scan# 111
 Delta R.T. 0.136 min
 Lab File: BF143962.D
 Acq: 15 Oct 2025 19:54

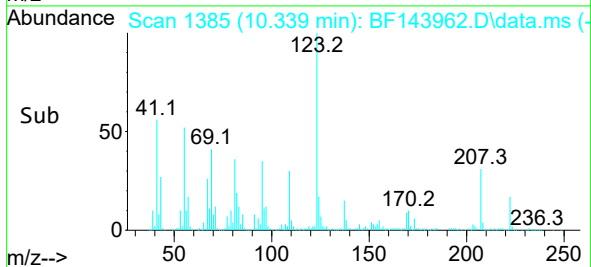
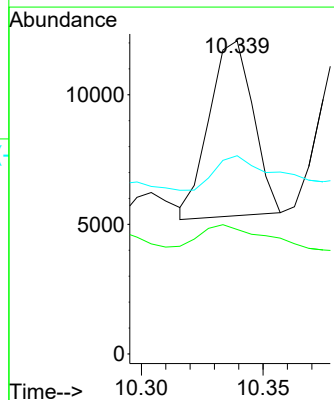
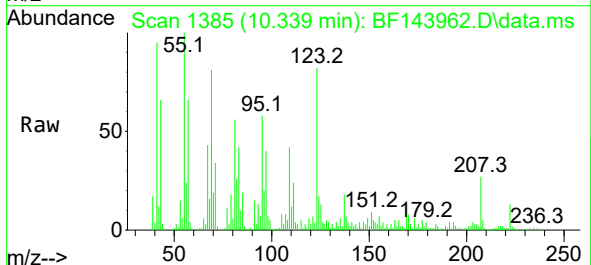
Instrument :
 BNA_F
 ClientSampleId :
 CONCRETE-3

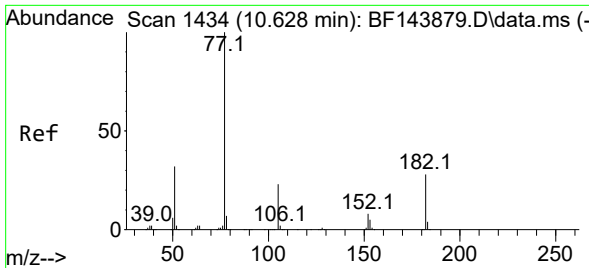
Tgt Ion:184 Resp: 1159
 Ion Ratio Lower Upper
 184 100
 63 215.0 48.2 72.4#
 154 393.5 49.2 73.8#



#62
 4-Nitroaniline
 Concen: 3.919 ng
 RT: 10.339 min Scan# 1385
 Delta R.T. -0.170 min
 Lab File: BF143962.D
 Acq: 15 Oct 2025 19:54

Tgt Ion:138 Resp: 8517
 Ion Ratio Lower Upper
 138 100
 92 39.8 33.9 73.9
 108 63.3 40.2 80.2



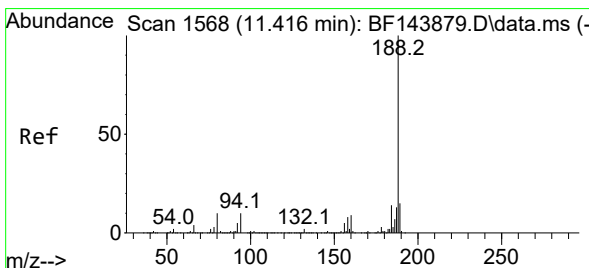
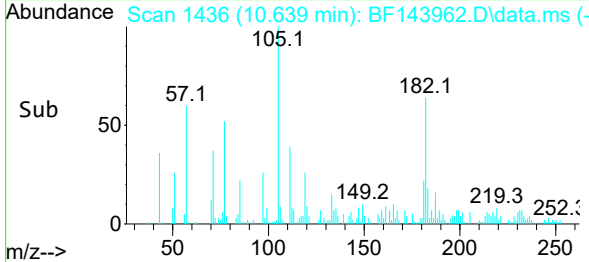
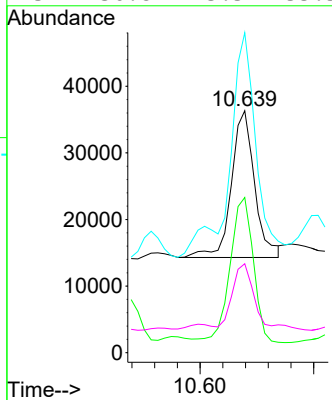
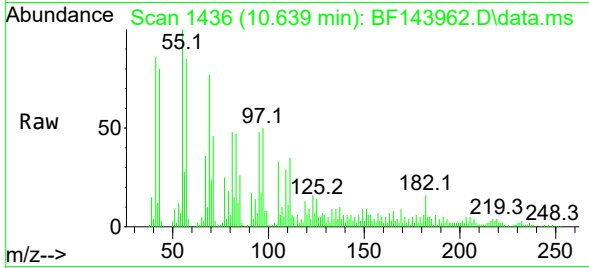


#63
 Azobenzene
 Concen: 3.233 ng
 RT: 10.639 min Scan# 14
 Delta R.T. 0.006 min
 Lab File: BF143962.D
 Acq: 15 Oct 2025 19:54

Instrument :
 BNA_F
 ClientSampleId :
 CONCRETE-3

Tgt Ion: 77 Resp: 31251

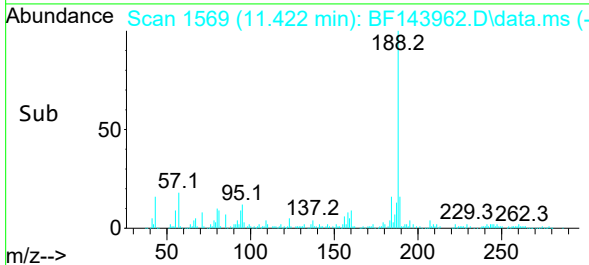
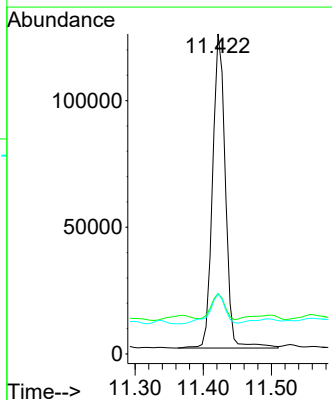
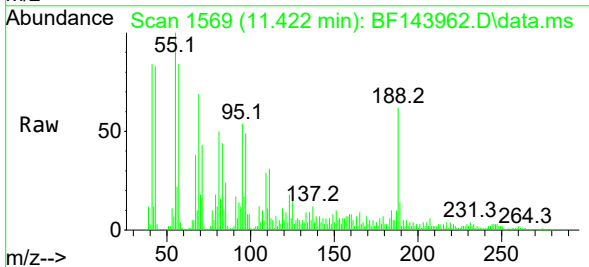
Ion	Ratio	Lower	Upper
77	100		
182	64.2	7.3	47.3#
105	132.3	3.0	43.0#
51	36.8	13.5	53.5

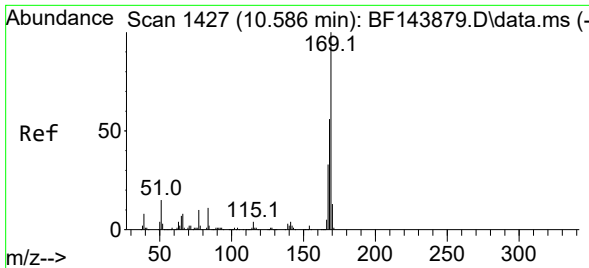


#64
 Phenanthrene-d10
 Concen: 20.000 ng
 RT: 11.422 min Scan# 1569
 Delta R.T. 0.006 min
 Lab File: BF143962.D
 Acq: 15 Oct 2025 19:54

Tgt Ion: 188 Resp: 162567

Ion	Ratio	Lower	Upper
188	100		
94	18.9	7.8	11.6#
80	18.7	7.9	11.9#



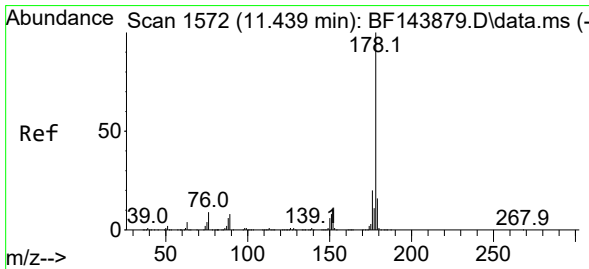
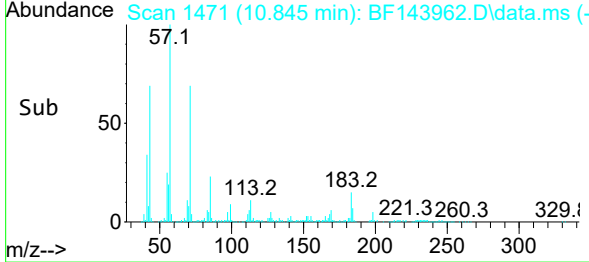
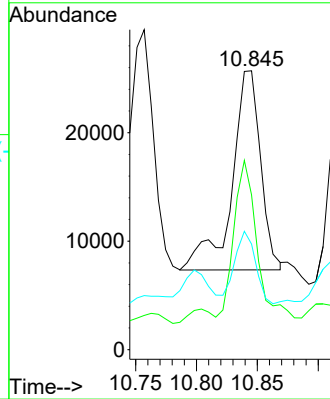
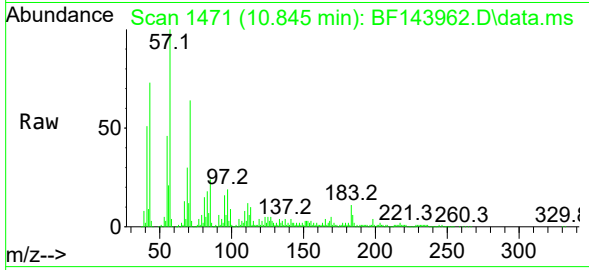


#66
 n-Nitrosodiphenylamine
 Concen: 5.926 ng
 RT: 10.845 min Scan# 14
 Delta R.T. 0.253 min
 Lab File: BF143962.D
 Acq: 15 Oct 2025 19:54

Instrument :
 BNA_F
 ClientSampleId :
 CONCRETE-3

Tgt Ion:169 Resp: 30250

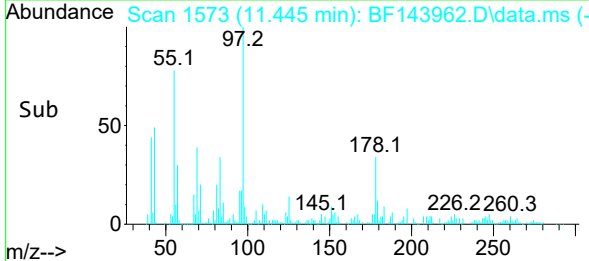
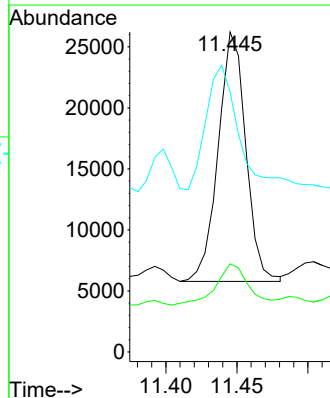
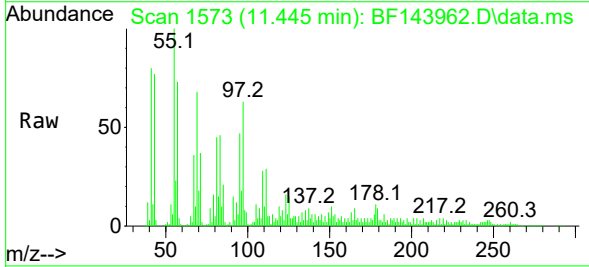
Ion	Ratio	Lower	Upper
169	100		
168	55.5	44.9	67.3
167	37.8	26.3	39.5

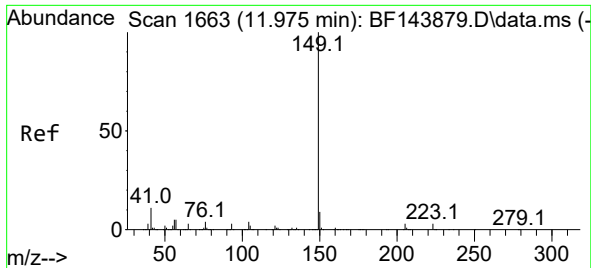


#71
 Phenanthrene
 Concen: 3.503 ng
 RT: 11.445 min Scan# 1573
 Delta R.T. 0.000 min
 Lab File: BF143962.D
 Acq: 15 Oct 2025 19:54

Tgt Ion:178 Resp: 27612

Ion	Ratio	Lower	Upper
178	100		
176	27.5	15.9	23.9#
179	81.2	12.4	18.6#



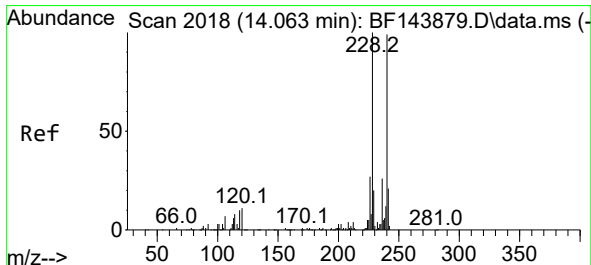
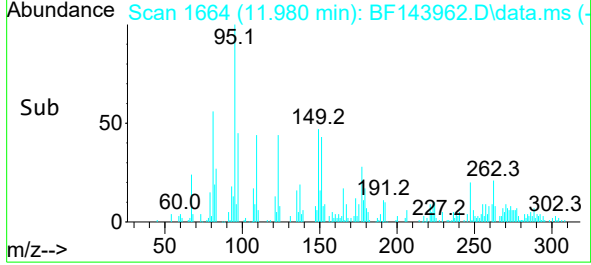
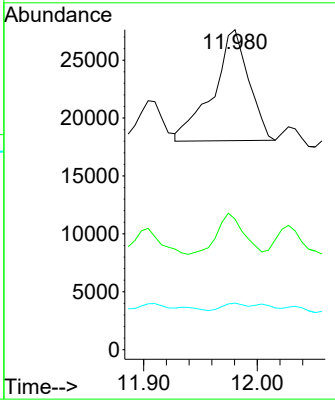
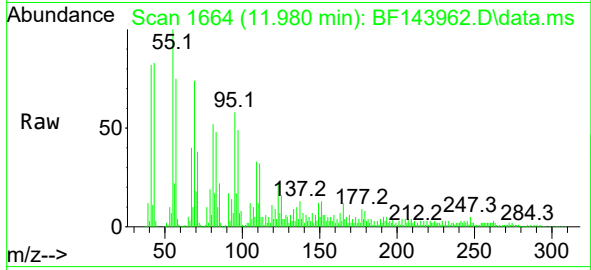


#74
 Di-n-butylphthalate
 Concen: 2.553 ng
 RT: 11.980 min Scan# 10
 Delta R.T. 0.000 min
 Lab File: BF143962.D
 Acq: 15 Oct 2025 19:54

Instrument : BNA_F
 Client Sample Id : CONCRETE-3

Tgt Ion:149 Resp: 20867

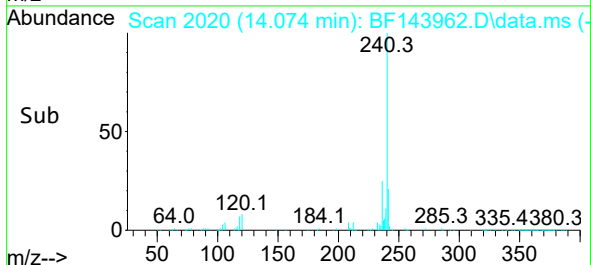
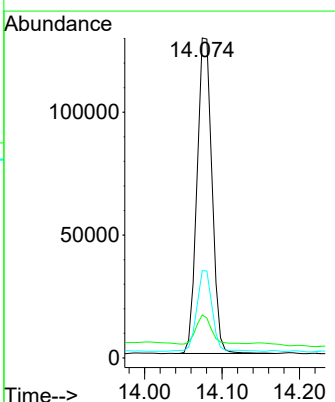
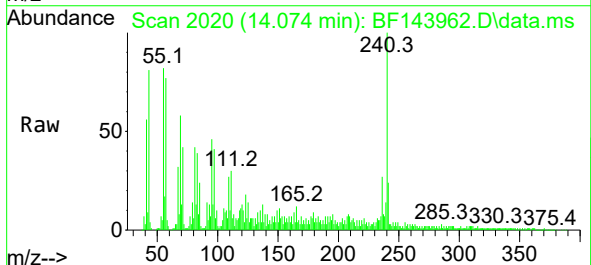
Ion	Ratio	Lower	Upper
149	100		
150	40.8	7.4	11.2#
104	14.5	3.4	5.2#

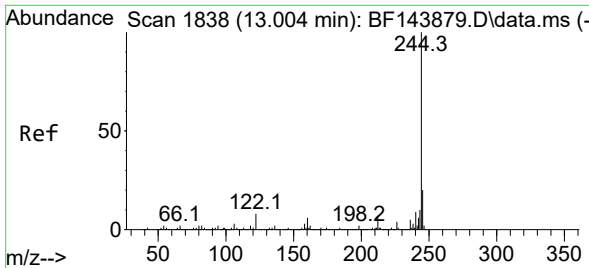


#76
 Chrysene-d12
 Concen: 20.000 ng
 RT: 14.074 min Scan# 2020
 Delta R.T. 0.006 min
 Lab File: BF143962.D
 Acq: 15 Oct 2025 19:54

Tgt Ion:240 Resp: 172072

Ion	Ratio	Lower	Upper
240	100		
120	13.5	8.6	13.0#
236	27.3	21.1	31.7





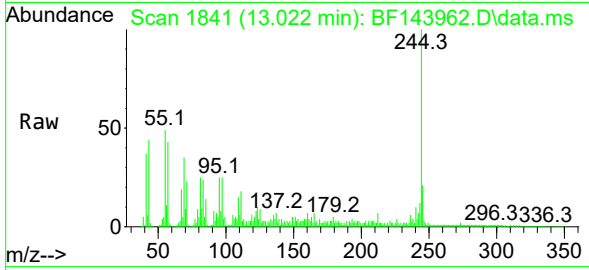
#79
 Terphenyl-d14
 Concen: 48.603 ng
 RT: 13.022 min Scan# 1838
 Delta R.T. 0.012 min
 Lab File: BF143962.D
 Acq: 15 Oct 2025 19:54

Instrument :

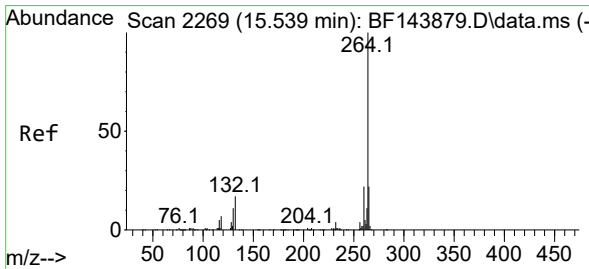
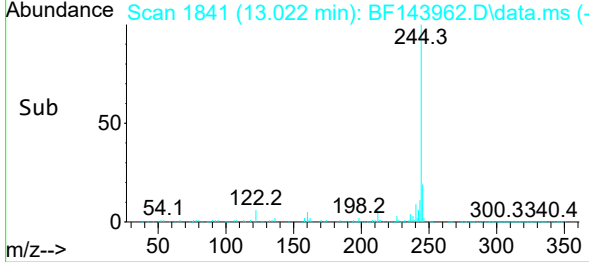
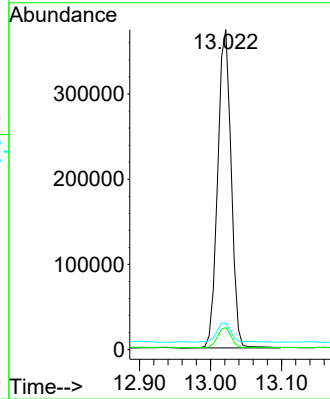
BNA_F

ClientSampleId :

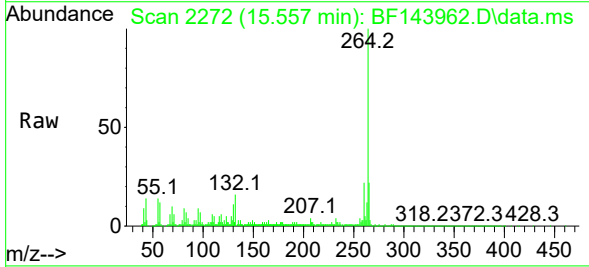
CONCRETE-3



Tgt Ion:244 Resp: 489342
 Ion Ratio Lower Upper
 244 100
 212 6.9 5.4 8.0
 122 8.3 6.4 9.6



#86
 Perylene-d12
 Concen: 20.000 ng
 RT: 15.557 min Scan# 2272
 Delta R.T. 0.012 min
 Lab File: BF143962.D
 Acq: 15 Oct 2025 19:54



Tgt Ion:264 Resp: 246956
 Ion Ratio Lower Upper
 264 100
 260 22.4 17.8 26.8
 265 21.8 17.5 26.3

