

Data Path : Z:\svoasrv\HPCHEM1\BNA_F\Data\BF101525\
 Data File : BF143970.D
 Acq On : 15 Oct 2025 23:47
 Operator : RC/JU
 Sample : Q3343-01 5X
 Misc :
 ALS Vial : 21 Sample Multiplier: 1

Instrument :
 BNA_F
 ClientSampleId :
 SOIL-ROLLOFF-WC-1

Quant Time: Oct 16 11:13:02 2025
 Quant Method : Z:\svoasrv\HPCHEM1\BNA_F\Methods\8270-BF100625.M
 Quant Title : ASP BNA STANDARDS FOR 5 POINT CALIBRATION
 QLast Update : Mon Oct 06 15:29:47 2025
 Response via : Initial Calibration

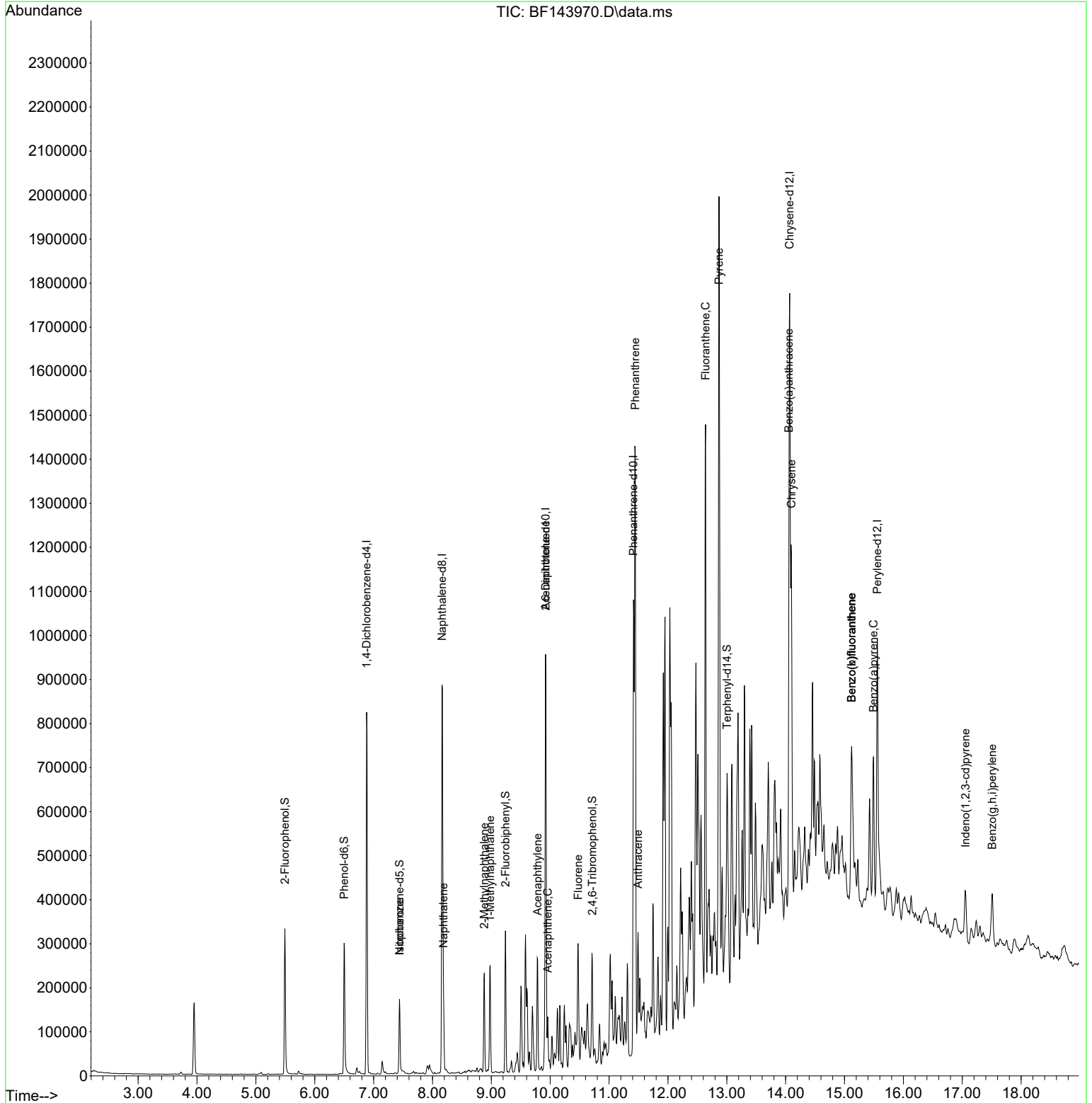
Compound	R.T.	QIon	Response	Conc	Units	Dev(Min)	
Internal Standards							
1) 1,4-Dichlorobenzene-d4	6.881	152	173198	20.000	ng	0.00	
21) Naphthalene-d8	8.163	136	576795	20.000	ng	0.00	
39) Acenaphthene-d10	9.922	164	285924	20.000	ng	0.00	
64) Phenanthrene-d10	11.416	188	568177	20.000	ng	0.00	
76) Chrysene-d12	14.068	240	467990	20.000	ng	0.00	
86) Perylene-d12	15.557	264	402069	20.000	ng	0.01	
System Monitoring Compounds							
5) 2-Fluorophenol	5.493	112	134387	12.321	ng	0.00	
7) Phenol-d6	6.498	99	147013	11.308	ng	-0.02	
23) Nitrobenzene-d5	7.439	82	74907	7.890	ng	-0.02	
42) 2,4,6-Tribromophenol	10.716	330	31413	11.030	ng	0.00	
45) 2-Fluorobiphenyl	9.239	172	142996	7.936	ng	-0.01	
79) Terphenyl-d14	13.004	244	199498	7.286	ng	0.00	
Target Compounds							
25) Isophorone	7.439	82	64898	3.242	ng		Qvalue # 68
31) Naphthalene	8.187	128	84265	3.212	ng		99
37) 2-Methylnaphthalene	8.881	142	88174	5.045	ng		98
38) 1-Methylnaphthalene	8.981	142	93685	5.526	ng		97
49) Acenaphthylene	9.786	152	119575	5.389	ng		96
51) 2,6-Dinitrotoluene	9.922	165	41249	12.251	ng		# 27
52) Acenaphthene	9.957	154	30583	2.103	ng		92
58) Fluorene	10.475	166	113372	7.320	ng		96
71) Phenanthrene	11.445	178	783366	28.439	ng		98
72) Anthracene	11.492	178	156875	5.637	ng		99
75) Fluoranthene	12.639	202	694299	24.402	ng		99
78) Pyrene	12.869	202	1078115	27.633	ng		98
81) Benzo(a)anthracene	14.057	228	409222	13.362	ng		# 89
83) Chrysene	14.098	228	450688	15.900	ng		95
87) Indeno(1,2,3-cd)pyrene	17.057	276	88603	3.596	ng		98
88) Benzo(b)fluoranthene	15.121	252	310068	13.425	ng		# 96
89) Benzo(k)fluoranthene	15.121	252	310068	14.509	ng		# 97
90) Benzo(a)pyrene	15.492	252	201732	10.073	ng		# 94
92) Benzo(g,h,i)perylene	17.509	276	100127	5.053	ng		# 94

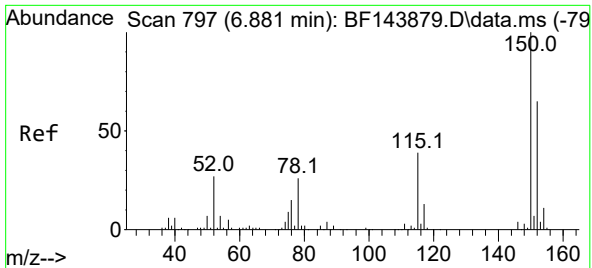
(#) = qualifier out of range (m) = manual integration (+) = signals summed

Data Path : Z:\svoasrv\HPCHEM1\BNA_F\Data\BF101525\
 Data File : BF143970.D
 Acq On : 15 Oct 2025 23:47
 Operator : RC/JU
 Sample : Q3343-01 5X
 Misc :
 ALS Vial : 21 Sample Multiplier: 1

Instrument :
 BNA_F
ClientSampleId :
 SOIL-ROLLOFF-WC-1

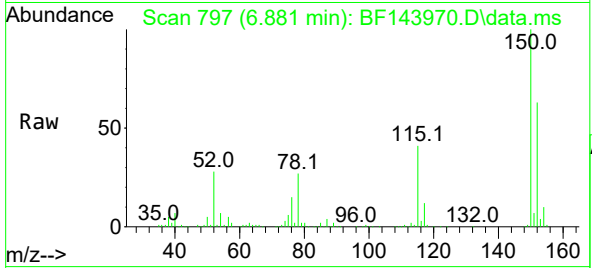
Quant Time: Oct 16 11:13:02 2025
 Quant Method : Z:\svoasrv\HPCHEM1\BNA_F\Methods\8270-BF100625.M
 Quant Title : ASP BNA STANDARDS FOR 5 POINT CALIBRATION
 QLast Update : Mon Oct 06 15:29:47 2025
 Response via : Initial Calibration



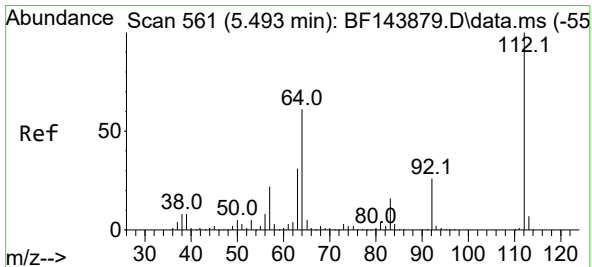
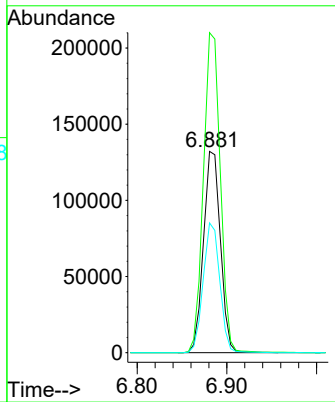
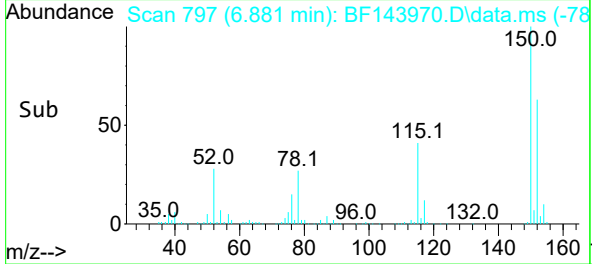


#1
 1,4-Dichlorobenzene-d4
 Concen: 20.000 ng
 RT: 6.881 min Scan# 79
 Delta R.T. -0.005 min
 Lab File: BF143970.D
 Acq: 15 Oct 2025 23:47

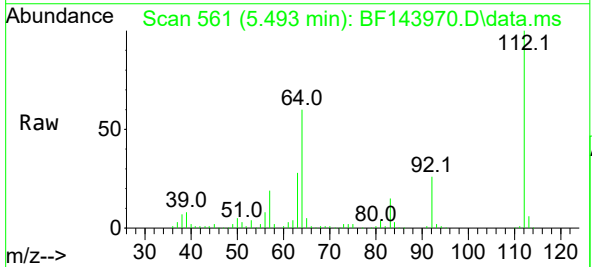
Instrument :
 BNA_F
 ClientSampleId :
 SOIL-ROLLOFF-WC-1



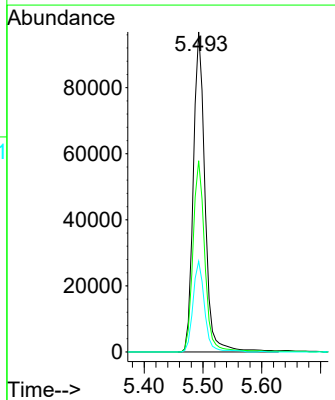
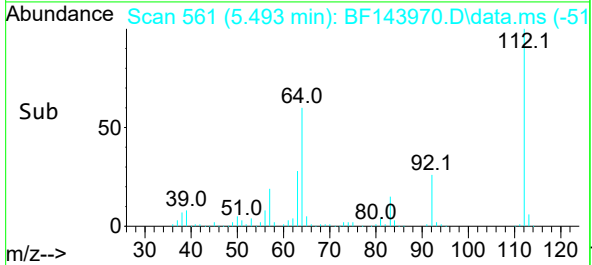
Tgt Ion:152 Resp: 173198
 Ion Ratio Lower Upper
 152 100
 150 159.0 124.4 186.6
 115 64.4 48.1 72.1

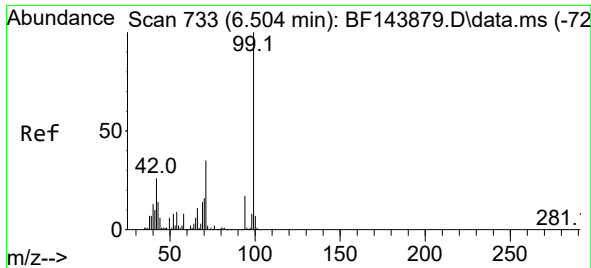


#5
 2-Fluorophenol
 Concen: 12.321 ng
 RT: 5.493 min Scan# 561
 Delta R.T. -0.006 min
 Lab File: BF143970.D
 Acq: 15 Oct 2025 23:47



Tgt Ion:112 Resp: 134387
 Ion Ratio Lower Upper
 112 100
 64 59.8 49.1 73.7
 63 28.4 24.5 36.7

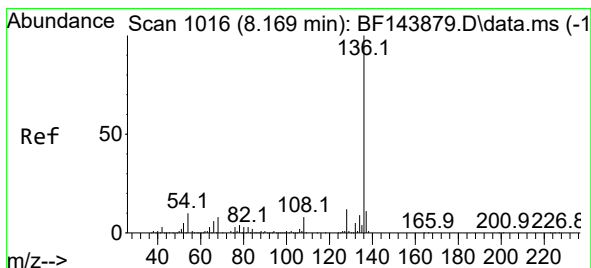
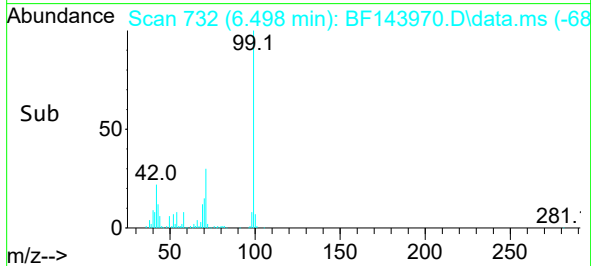
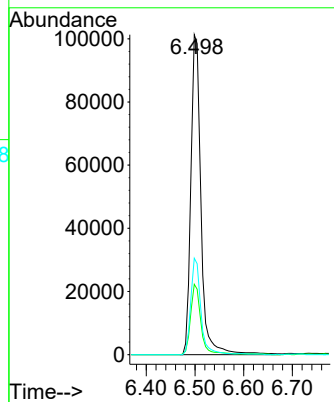
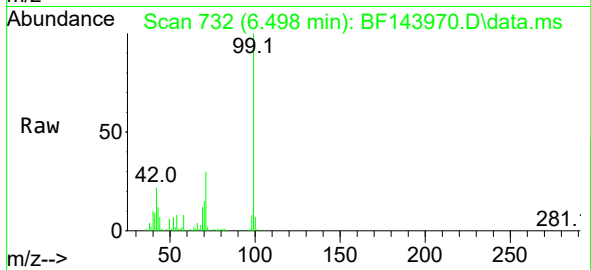




#7
 Phenol-d6
 Concen: 11.308 ng
 RT: 6.498 min Scan# 71
 Delta R.T. -0.018 min
 Lab File: BF143970.D
 Acq: 15 Oct 2025 23:47

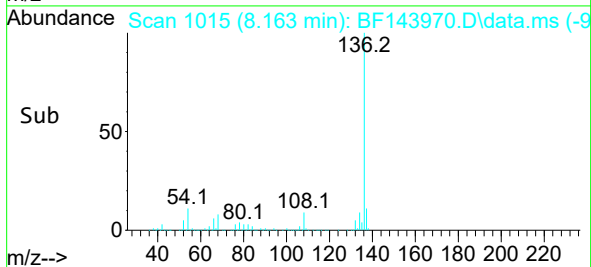
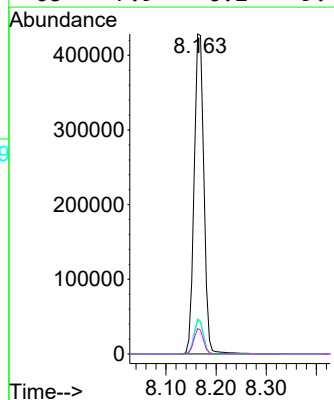
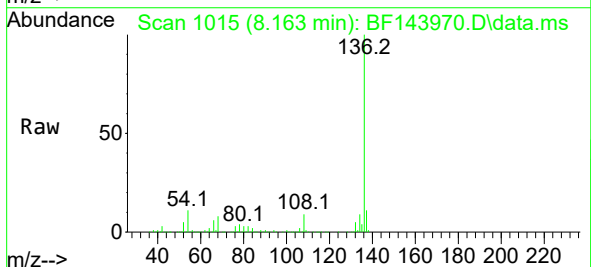
Instrument :
 BNA_F
 ClientSampleId :
 SOIL-ROLLOFF-WC-1

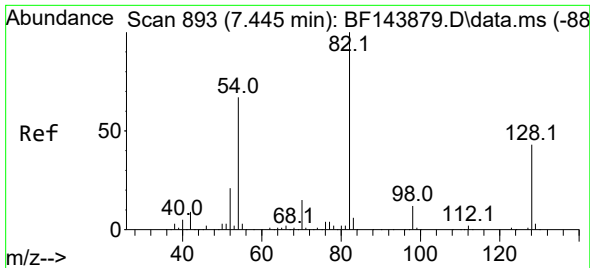
Tgt Ion: 99 Resp: 147013
 Ion Ratio Lower Upper
 99 100
 42 22.0 21.0 31.4
 71 30.1 27.8 41.8



#21
 Naphthalene-d8
 Concen: 20.000 ng
 RT: 8.163 min Scan# 1015
 Delta R.T. -0.006 min
 Lab File: BF143970.D
 Acq: 15 Oct 2025 23:47

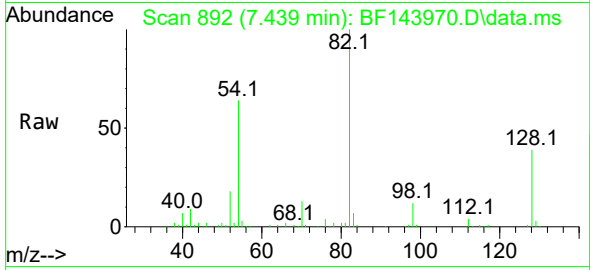
Tgt Ion: 136 Resp: 576795
 Ion Ratio Lower Upper
 136 100
 137 10.5 8.5 12.7
 54 11.0 8.2 12.4
 68 7.9 6.2 9.4



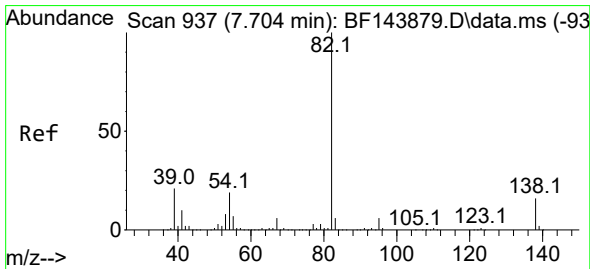
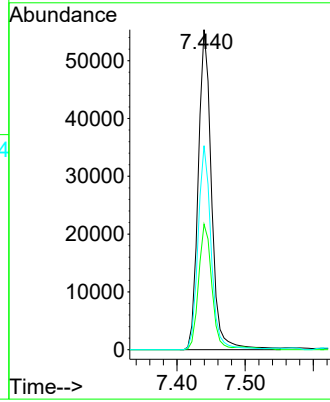
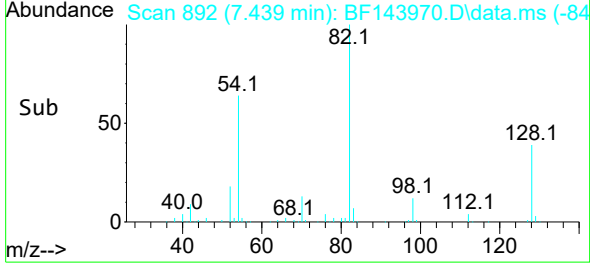


#23
 Nitrobenzene-d5
 Concen: 7.890 ng
 RT: 7.439 min Scan# 892
 Delta R.T. -0.018 min
 Lab File: BF143970.D
 Acq: 15 Oct 2025 23:47

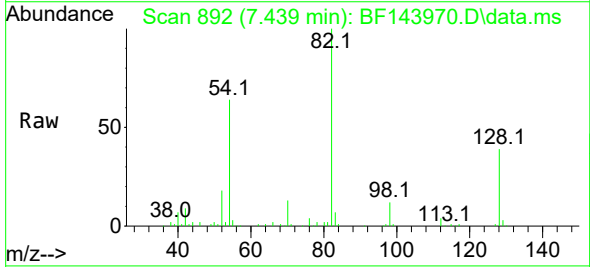
Instrument :
 BNA_F
 ClientSampleId :
 SOIL-ROLLOFF-WC-1



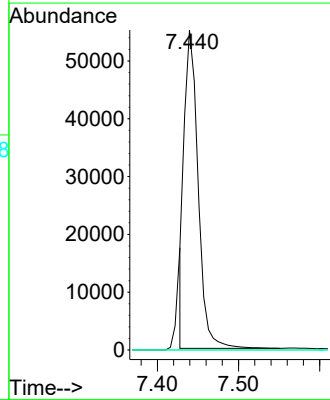
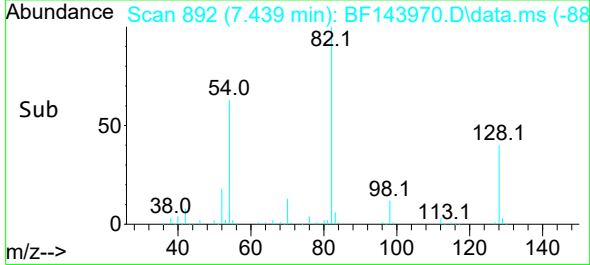
Tgt Ion: 82 Resp: 74907
 Ion Ratio Lower Upper
 82 100
 128 39.2 34.0 51.0
 54 63.7 53.2 79.8

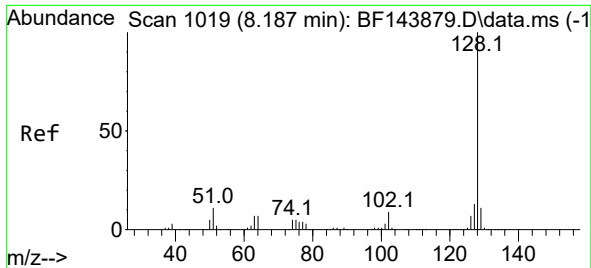


#25
 Isophorone
 Concen: 3.242 ng
 RT: 7.439 min Scan# 892
 Delta R.T. -0.282 min
 Lab File: BF143970.D
 Acq: 15 Oct 2025 23:47



Tgt Ion: 82 Resp: 64898
 Ion Ratio Lower Upper
 82 100
 95 0.0 5.1 7.7#
 138 0.0 12.9 19.3#



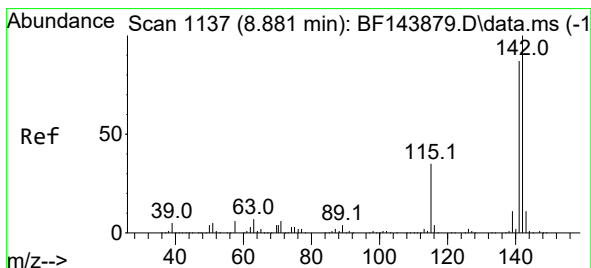
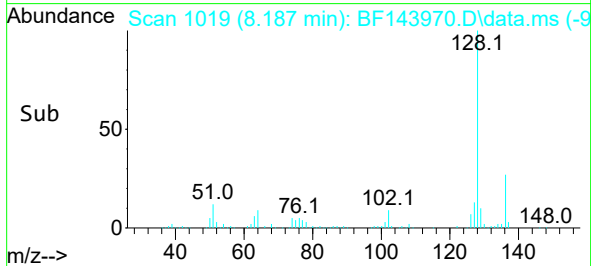
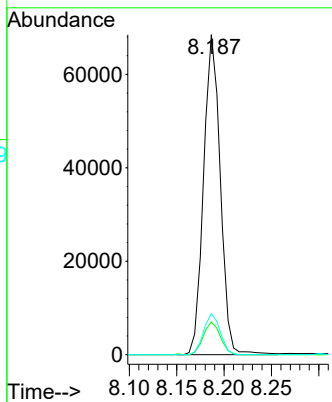
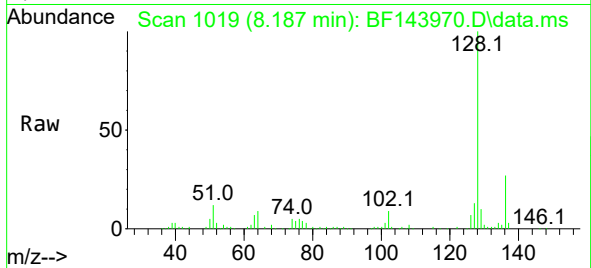


#31
 Naphthalene
 Concen: 3.212 ng
 RT: 8.187 min Scan# 1019
 Delta R.T. -0.006 min
 Lab File: BF143970.D
 Acq: 15 Oct 2025 23:47

Instrument : BNA_F
 ClientSampleId : SOIL-ROLLOFF-WC-1

Tgt Ion:128 Resp: 84265

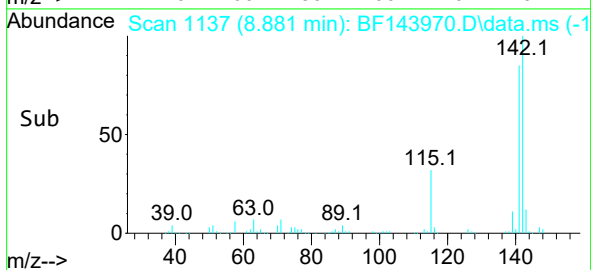
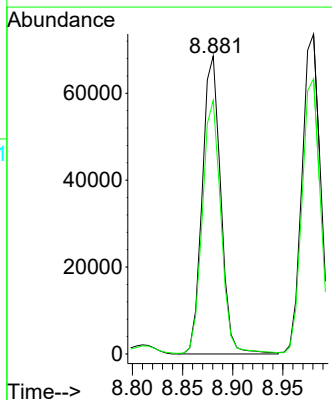
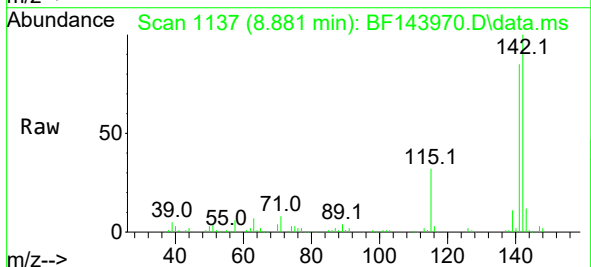
Ion	Ratio	Lower	Upper
128	100		
129	10.3	8.7	13.1
127	12.7	10.0	15.0

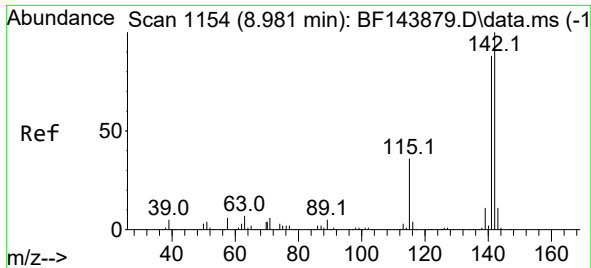


#37
 2-Methylnaphthalene
 Concen: 5.045 ng
 RT: 8.881 min Scan# 1137
 Delta R.T. -0.006 min
 Lab File: BF143970.D
 Acq: 15 Oct 2025 23:47

Tgt Ion:142 Resp: 88174

Ion	Ratio	Lower	Upper
142	100		
141	85.0	69.2	103.8

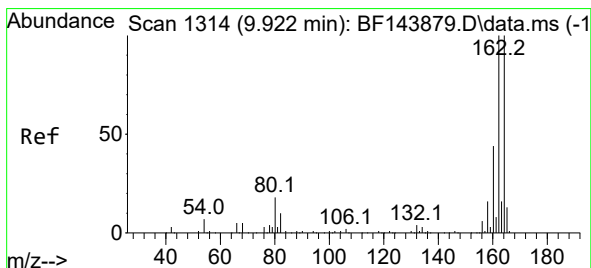
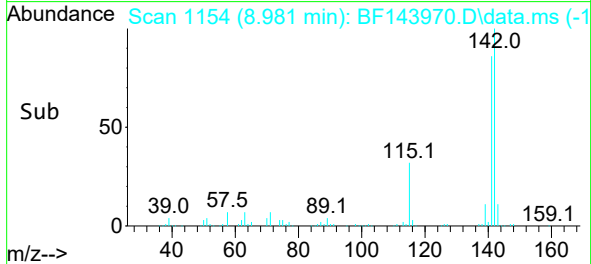
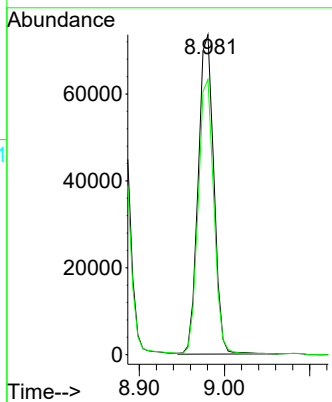
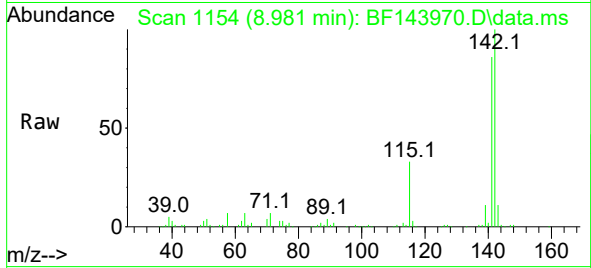




#38
 1-Methylnaphthalene
 Concen: 5.526 ng
 RT: 8.981 min Scan# 1154
 Delta R.T. -0.005 min
 Lab File: BF143970.D
 Acq: 15 Oct 2025 23:47

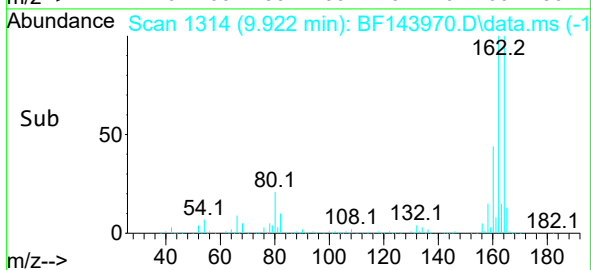
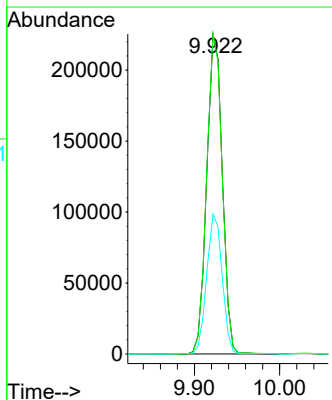
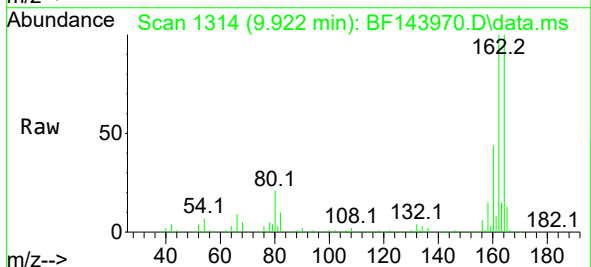
Instrument : BNA_F
 ClientSampleId : SOIL-ROLLOFF-WC-1

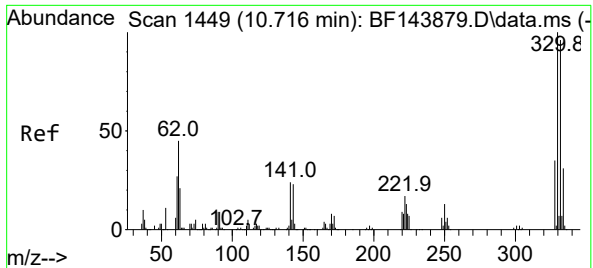
Tgt Ion:142 Resp: 93685
 Ion Ratio Lower Upper
 142 100
 141 86.0 70.8 106.2



#39
 Acenaphthene-d10
 Concen: 20.000 ng
 RT: 9.922 min Scan# 1314
 Delta R.T. -0.005 min
 Lab File: BF143970.D
 Acq: 15 Oct 2025 23:47

Tgt Ion:164 Resp: 285924
 Ion Ratio Lower Upper
 164 100
 162 100.1 80.2 120.2
 160 43.7 35.4 53.0



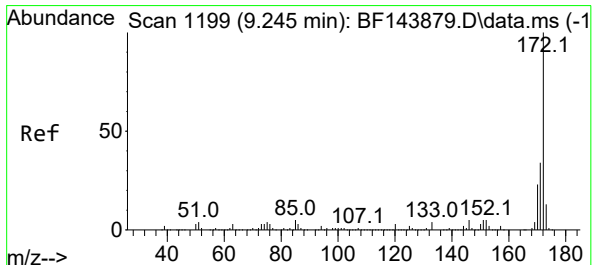
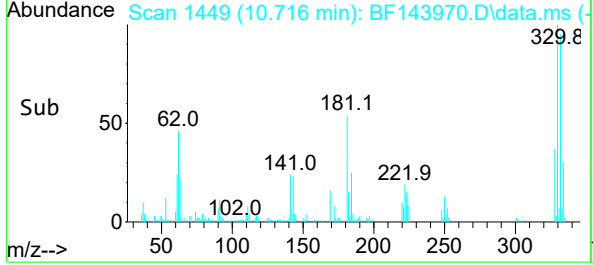
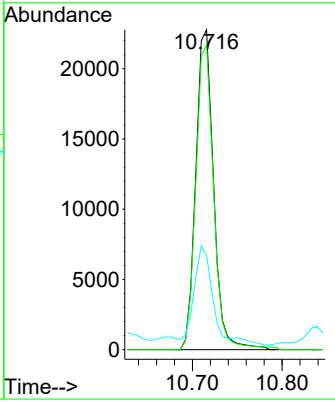
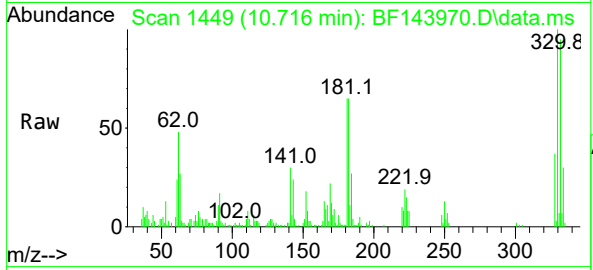


#42
 2,4,6-Tribromophenol
 Concen: 11.030 ng
 RT: 10.716 min Scan# 14
 Delta R.T. -0.006 min
 Lab File: BF143970.D
 Acq: 15 Oct 2025 23:47

Instrument :
 BNA_F
ClientSampleId :
 SOIL-ROLLOFF-WC-1

Tgt Ion: 330 Resp: 31413

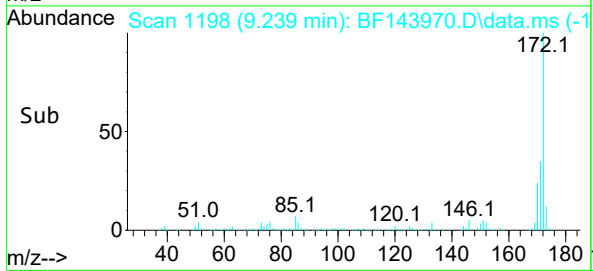
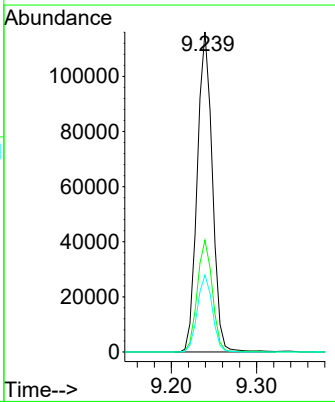
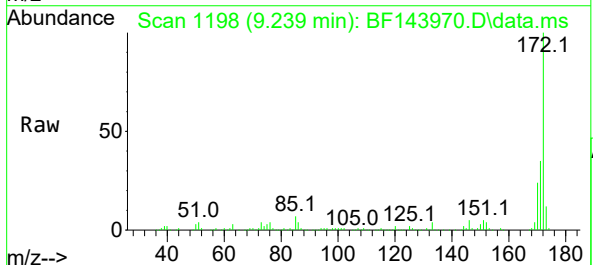
Ion	Ratio	Lower	Upper
330	100		
332	95.4	76.9	115.3
141	33.5	20.2	30.4#

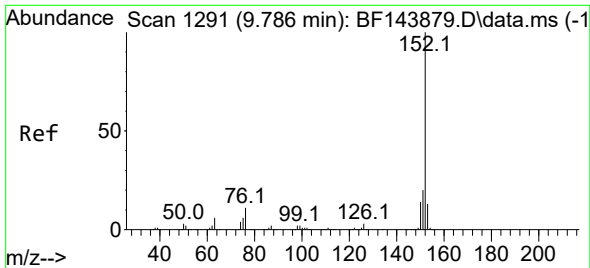


#45
 2-Fluorobiphenyl
 Concen: 7.936 ng
 RT: 9.239 min Scan# 1198
 Delta R.T. -0.012 min
 Lab File: BF143970.D
 Acq: 15 Oct 2025 23:47

Tgt Ion: 172 Resp: 142996

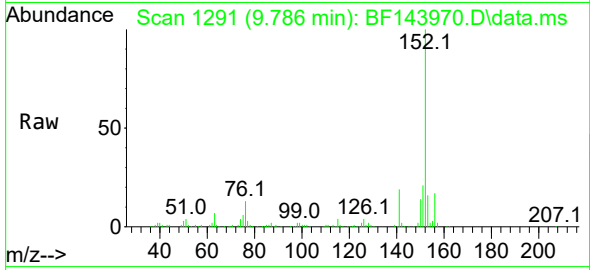
Ion	Ratio	Lower	Upper
172	100		
171	34.9	27.4	41.0
170	24.0	18.6	28.0



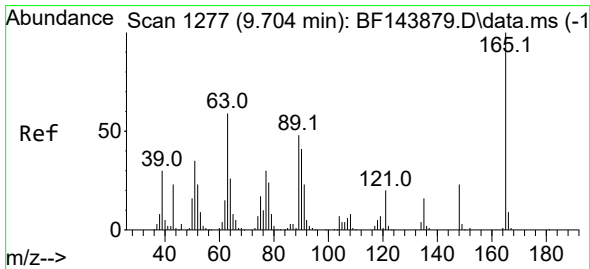
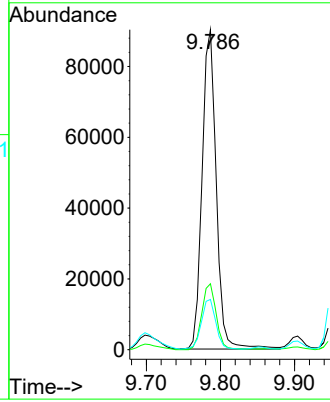
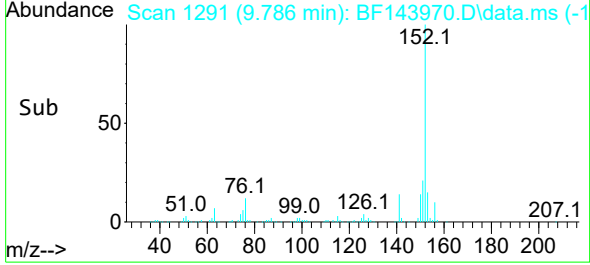


#49
 Acenaphthylene
 Concen: 5.389 ng
 RT: 9.786 min Scan# 1111
 Delta R.T. 0.000 min
 Lab File: BF143970.D
 Acq: 15 Oct 2025 23:47

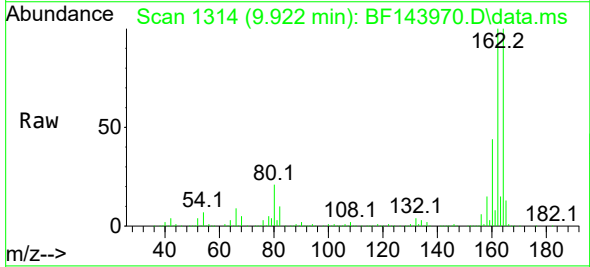
Instrument :
 BNA_F
 ClientSampleId :
 SOIL-ROLLOFF-WC-1



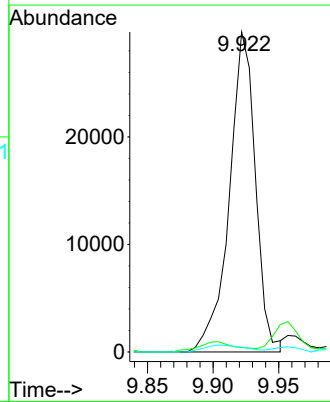
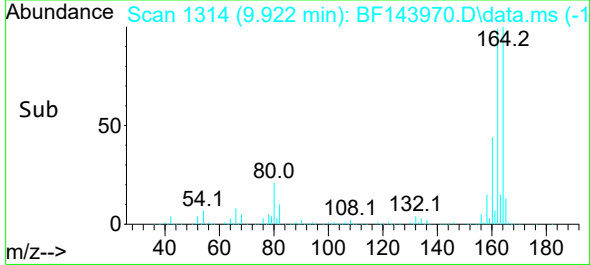
Tgt Ion:152 Resp: 119575
 Ion Ratio Lower Upper
 152 100
 151 20.6 15.8 23.6
 153 15.7 10.5 15.7

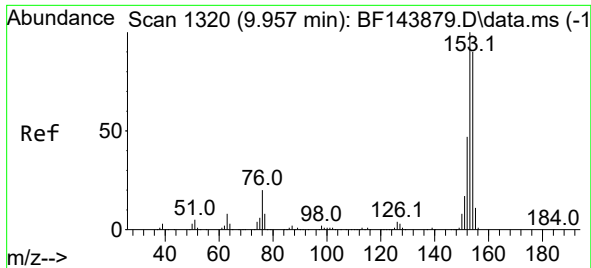


#51
 2,6-Dinitrotoluene
 Concen: 12.251 ng
 RT: 9.922 min Scan# 1314
 Delta R.T. 0.206 min
 Lab File: BF143970.D
 Acq: 15 Oct 2025 23:47



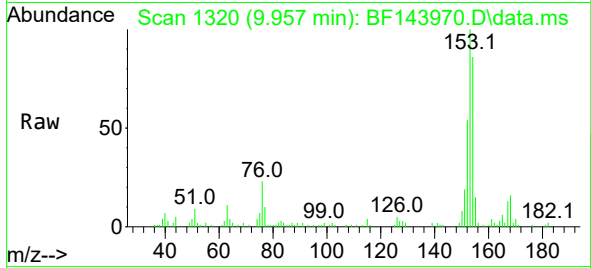
Tgt Ion:165 Resp: 41249
 Ion Ratio Lower Upper
 165 100
 63 1.4 47.3 70.9#
 89 1.5 38.2 57.4#



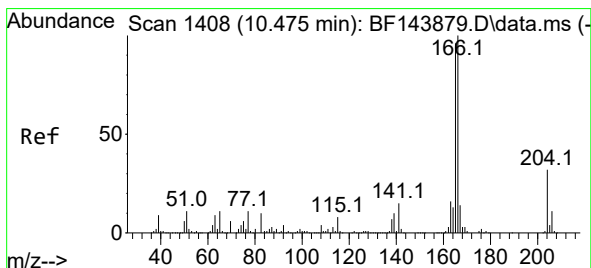
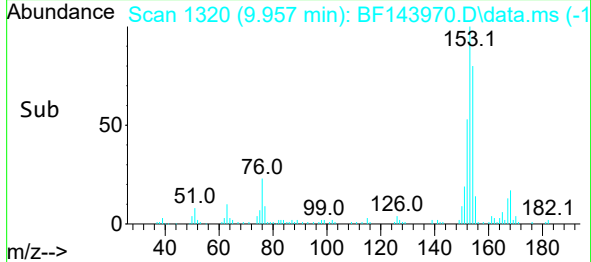
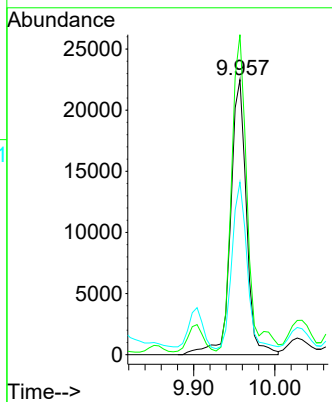


#52
 Acenaphthene
 Concen: 2.103 ng
 RT: 9.957 min Scan# 11
 Delta R.T. -0.006 min
 Lab File: BF143970.D
 Acq: 15 Oct 2025 23:47

Instrument :
 BNA_F
 ClientSampleId :
 SOIL-ROLLOFF-WC-1

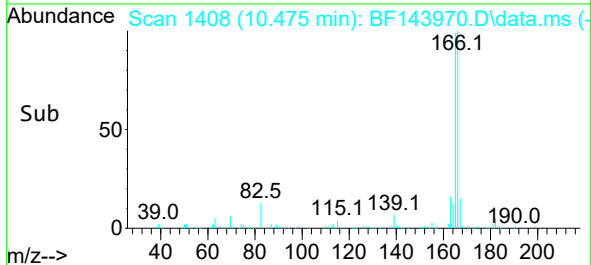
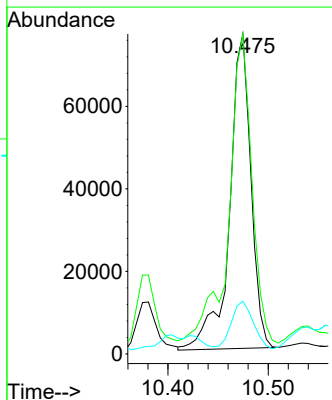
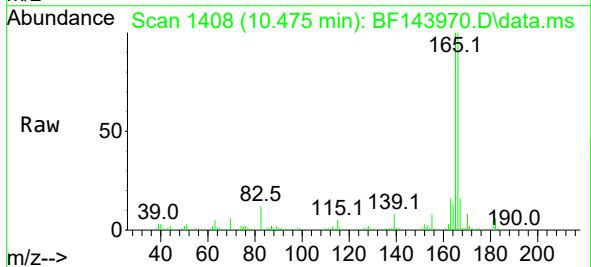


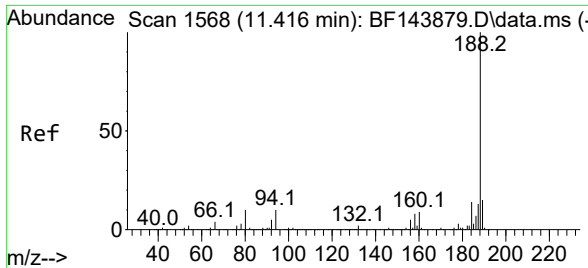
Tgt Ion:154 Resp: 30583
 Ion Ratio Lower Upper
 154 100
 153 116.4 89.3 133.9
 152 62.7 42.2 63.2



#58
 Fluorene
 Concen: 7.320 ng
 RT: 10.475 min Scan# 1408
 Delta R.T. -0.006 min
 Lab File: BF143970.D
 Acq: 15 Oct 2025 23:47

Tgt Ion:166 Resp: 113372
 Ion Ratio Lower Upper
 166 100
 165 99.9 77.0 115.6
 167 16.5 11.1 16.7



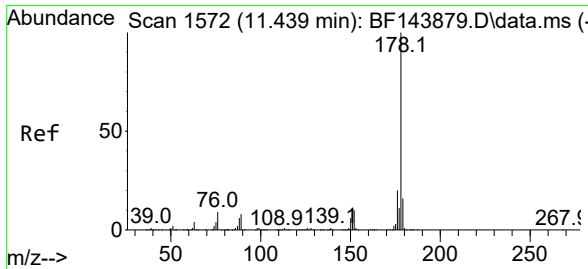
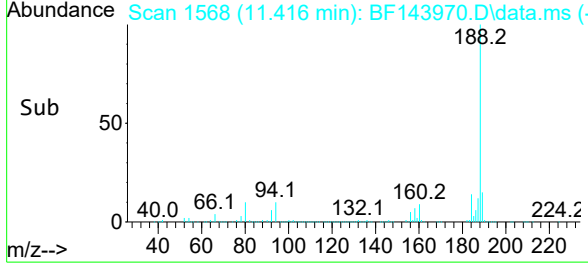
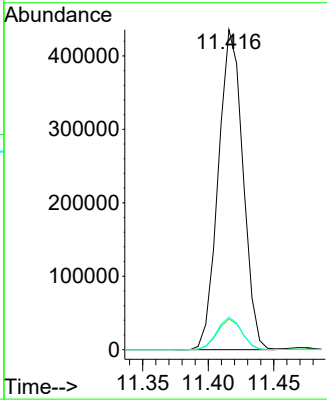
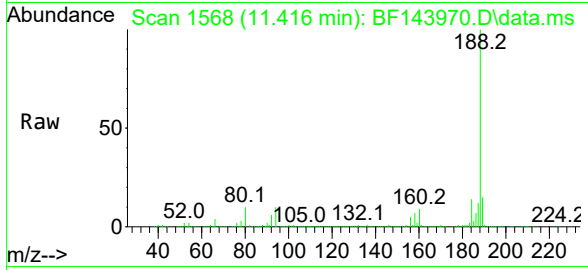


#64
 Phenanthrene-d10
 Concen: 20.000 ng
 RT: 11.416 min Scan# 11
 Delta R.T. 0.000 min
 Lab File: BF143970.D
 Acq: 15 Oct 2025 23:47

Instrument : BNA_F
 ClientSampleId : SOIL-ROLLOFF-WC-1

Tgt Ion:188 Resp: 568177

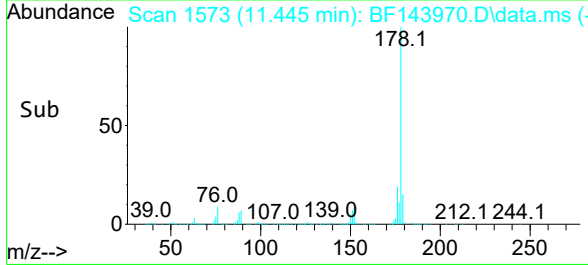
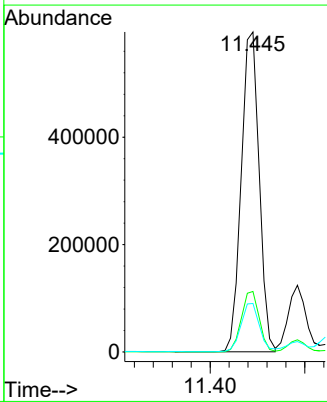
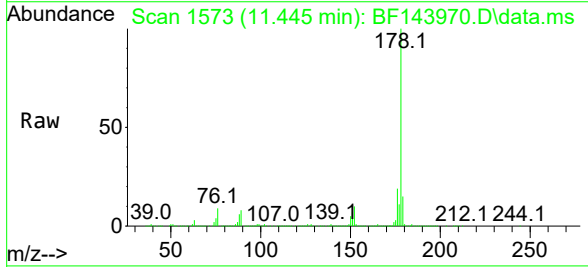
Ion	Ratio	Lower	Upper
188	100		
94	9.6	7.8	11.6
80	10.2	7.9	11.9

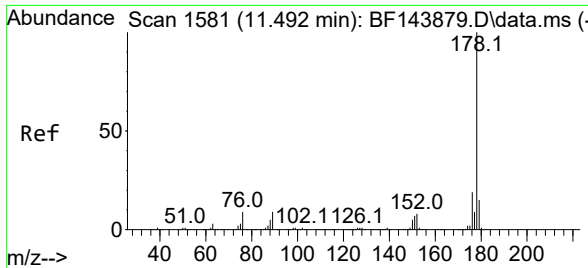


#71
 Phenanthrene
 Concen: 28.439 ng
 RT: 11.445 min Scan# 1573
 Delta R.T. 0.000 min
 Lab File: BF143970.D
 Acq: 15 Oct 2025 23:47

Tgt Ion:178 Resp: 783366

Ion	Ratio	Lower	Upper
178	100		
176	18.9	15.9	23.9
179	15.2	12.4	18.6



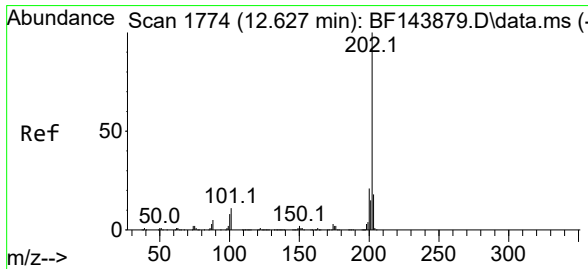
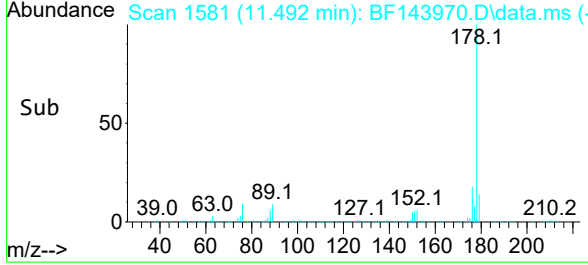
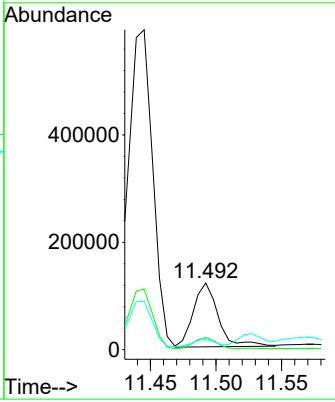
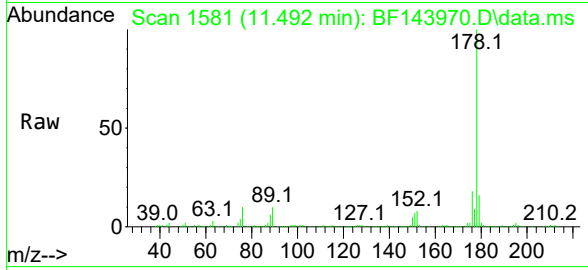


#72
 Anthracene
 Concen: 5.637 ng
 RT: 11.492 min Scan# 11
 Delta R.T. -0.006 min
 Lab File: BF143970.D
 Acq: 15 Oct 2025 23:47

Instrument : BNA_F
 ClientSampleId : SOIL-ROLLOFF-WC-1

Tgt Ion:178 Resp: 156875

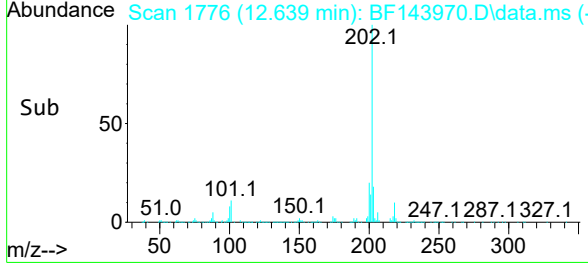
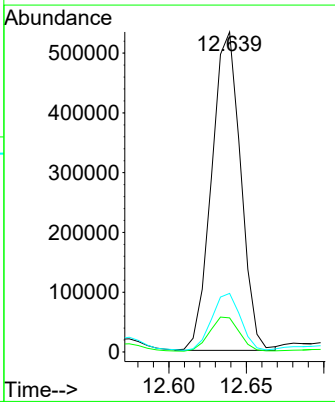
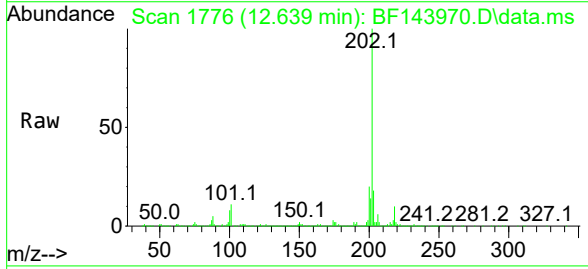
Ion	Ratio	Lower	Upper
178	100		
176	18.2	14.9	22.3
179	15.6	12.2	18.2

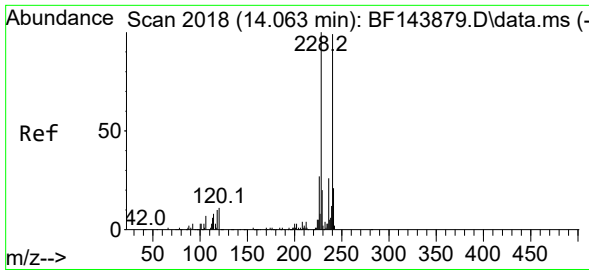


#75
 Fluoranthene
 Concen: 24.402 ng
 RT: 12.639 min Scan# 1776
 Delta R.T. 0.006 min
 Lab File: BF143970.D
 Acq: 15 Oct 2025 23:47

Tgt Ion:202 Resp: 694299

Ion	Ratio	Lower	Upper
202	100		
101	10.7	0.0	30.7
203	18.3	0.0	37.8

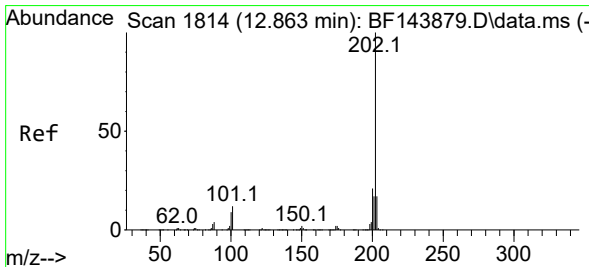
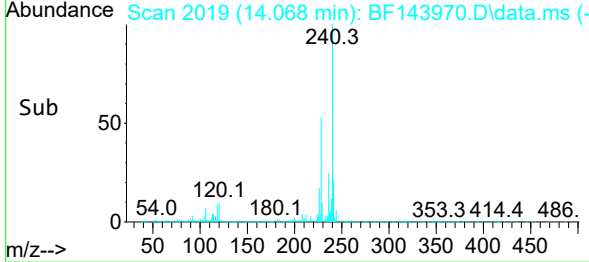
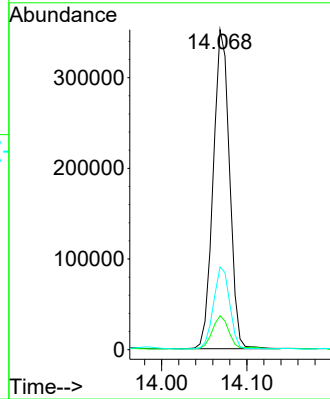
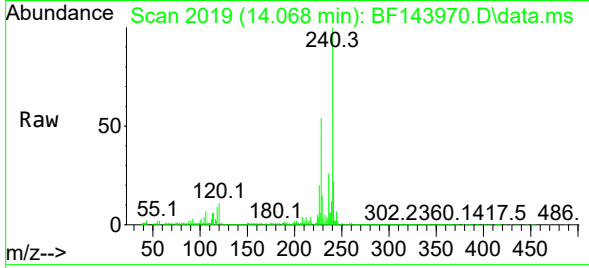




#76
 Chrysene-d12
 Concen: 20.000 ng
 RT: 14.068 min Scan# 20
 Delta R.T. 0.000 min
 Lab File: BF143970.D
 Acq: 15 Oct 2025 23:47

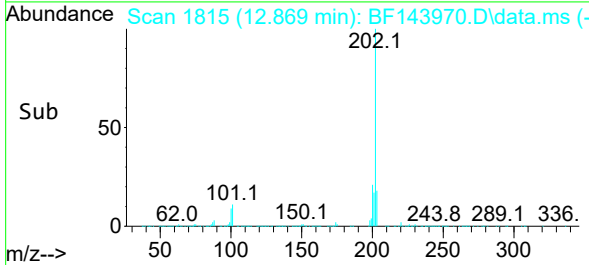
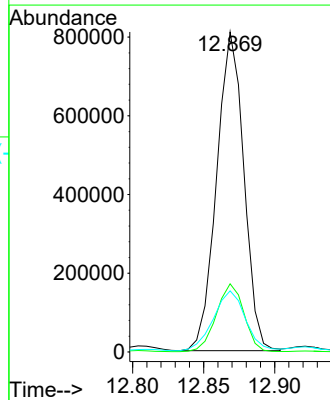
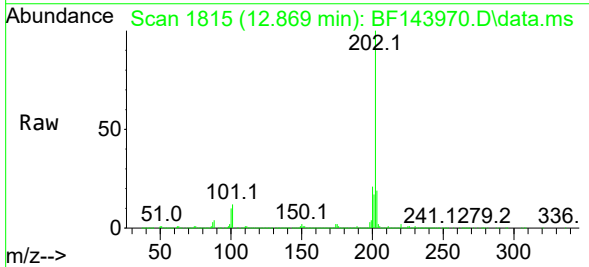
Instrument :
 BNA_F
 ClientSampleId :
 SOIL-ROLLOFF-WC-1

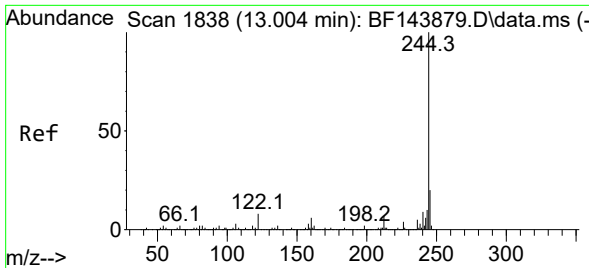
Tgt Ion:240 Resp: 467990
 Ion Ratio Lower Upper
 240 100
 120 10.6 8.6 13.0
 236 25.9 21.1 31.7



#78
 Pyrene
 Concen: 27.633 ng
 RT: 12.869 min Scan# 1815
 Delta R.T. 0.006 min
 Lab File: BF143970.D
 Acq: 15 Oct 2025 23:47

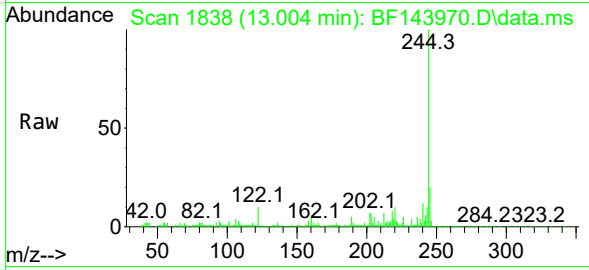
Tgt Ion:202 Resp: 1078115
 Ion Ratio Lower Upper
 202 100
 200 21.3 17.0 25.6
 203 19.1 13.8 20.6



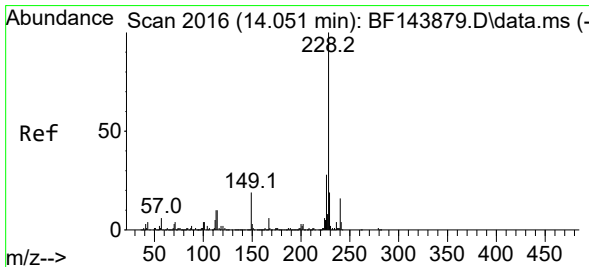
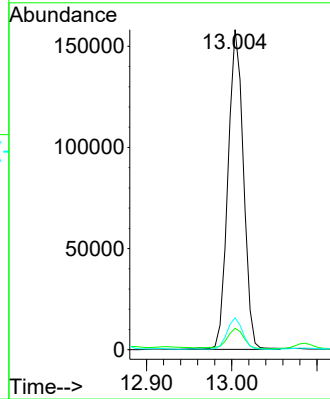
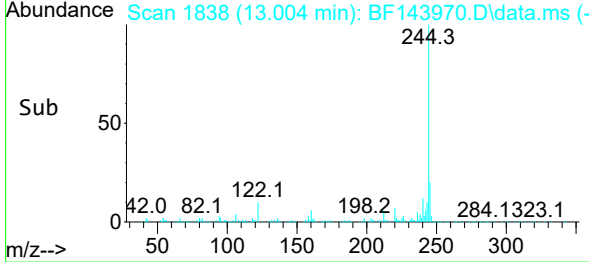


#79
 Terphenyl-d14
 Concen: 7.286 ng
 RT: 13.004 min Scan# 11
 Delta R.T. -0.006 min
 Lab File: BF143970.D
 Acq: 15 Oct 2025 23:47

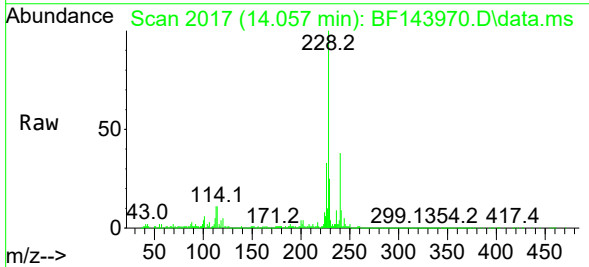
Instrument : BNA_F
 ClientSampleId : SOIL-ROLLOFF-WC-1



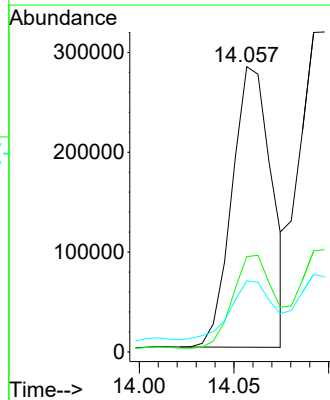
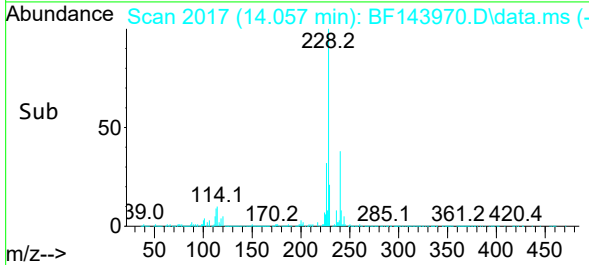
Tgt Ion:244 Resp: 199498
 Ion Ratio Lower Upper
 244 100
 212 6.7 5.4 8.0
 122 10.0 6.4 9.6#

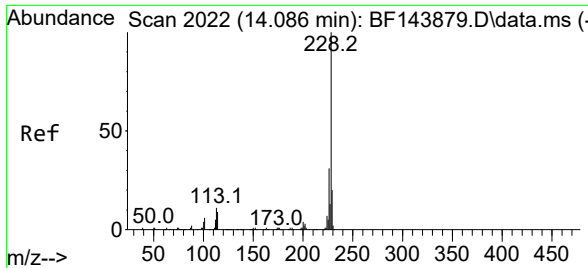


#81
 Benzo(a)anthracene
 Concen: 13.362 ng
 RT: 14.057 min Scan# 2017
 Delta R.T. 0.000 min
 Lab File: BF143970.D
 Acq: 15 Oct 2025 23:47



Tgt Ion:228 Resp: 409222
 Ion Ratio Lower Upper
 228 100
 226 33.4 22.2 33.2#
 229 24.9 15.6 23.4#



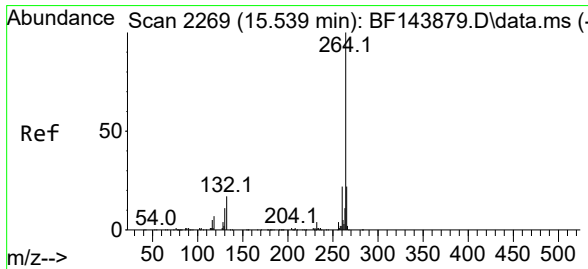
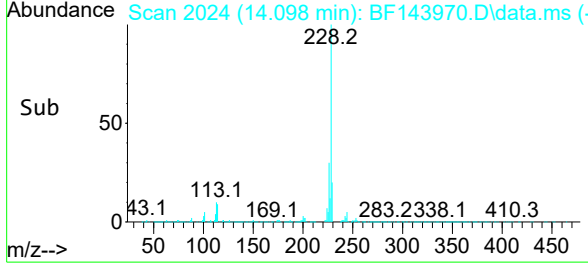
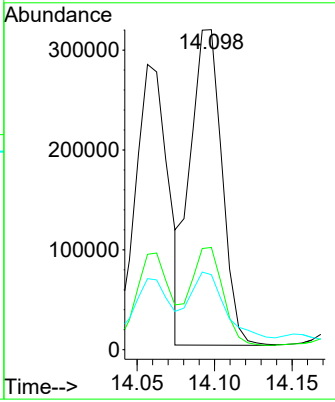
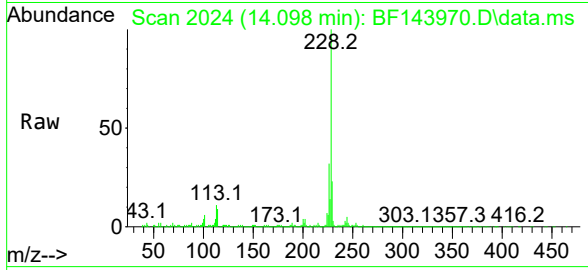


#83
 Chrysene
 Concen: 15.900 ng
 RT: 14.098 min Scan# 20
 Delta R.T. 0.006 min
 Lab File: BF143970.D
 Acq: 15 Oct 2025 23:47

Instrument : BNA_F
 ClientSampleId : SOIL-ROLLOFF-WC-1

Tgt Ion:228 Resp: 450688

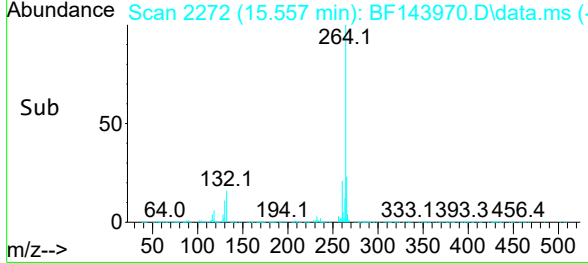
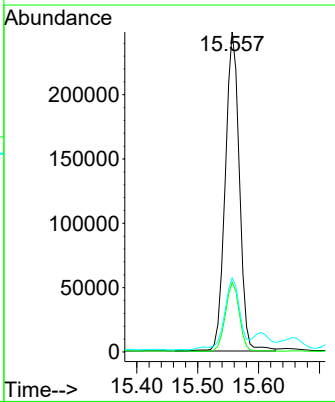
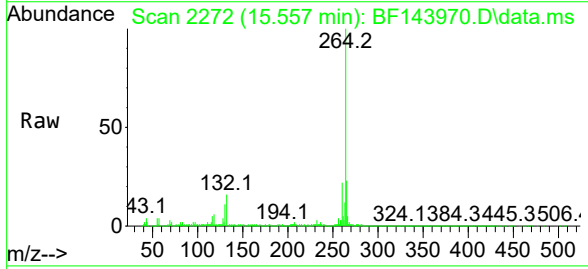
Ion	Ratio	Lower	Upper
228	100		
226	32.0	24.4	36.6
229	23.4	15.9	23.9

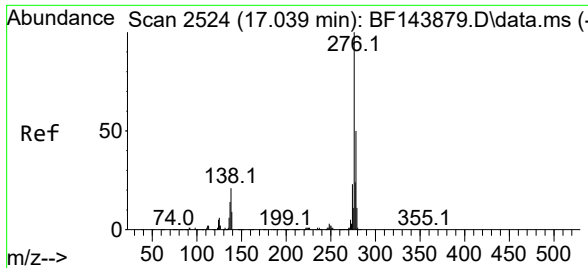


#86
 Perylene-d12
 Concen: 20.000 ng
 RT: 15.557 min Scan# 2272
 Delta R.T. 0.012 min
 Lab File: BF143970.D
 Acq: 15 Oct 2025 23:47

Tgt Ion:264 Resp: 402069

Ion	Ratio	Lower	Upper
264	100		
260	21.7	17.8	26.8
265	23.1	17.5	26.3

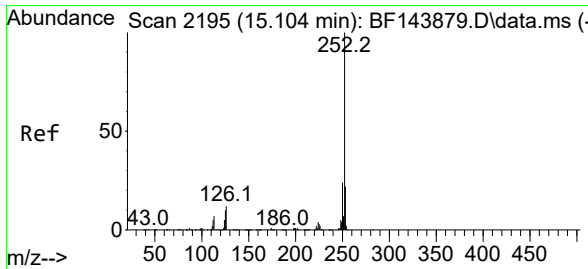
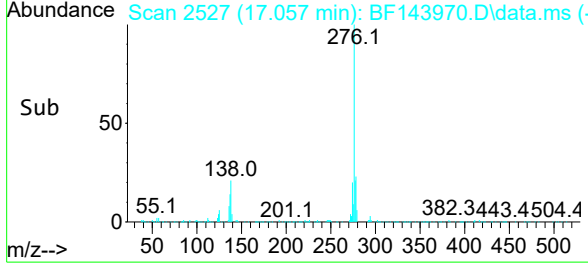
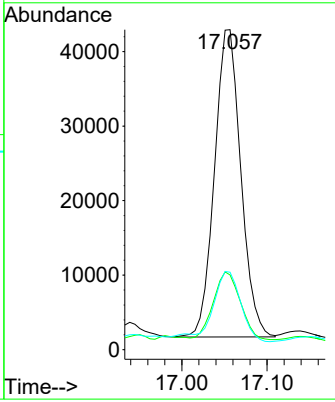
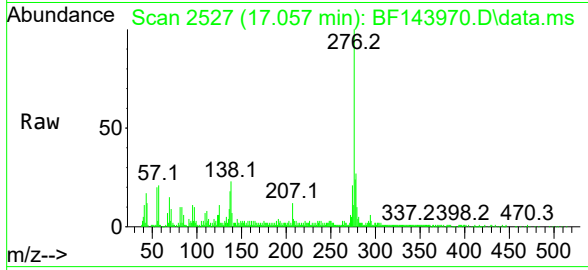




#87
 Indeno(1,2,3-cd)pyrene
 Concen: 3.596 ng
 RT: 17.057 min Scan# 2198
 Delta R.T. 0.000 min
 Lab File: BF143970.D
 Acq: 15 Oct 2025 23:47

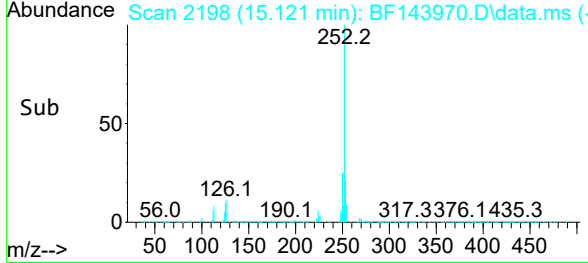
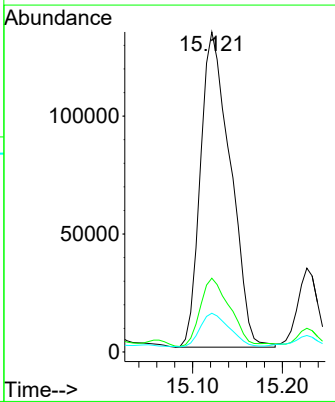
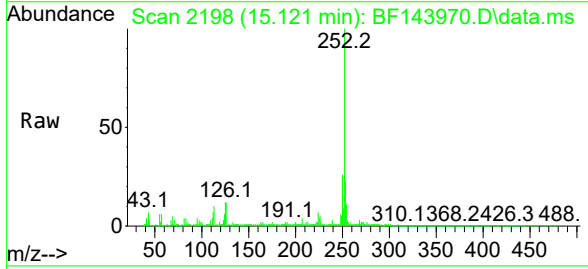
Instrument : BNA_F
 ClientSampleId : SOIL-ROLLOFF-WC-1

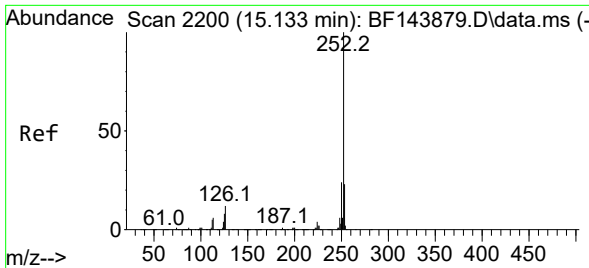
Tgt Ion	Resp	Lower	Upper
276	100		
138	22.7	18.2	27.2
277	23.1	19.8	29.6



#88
 Benzo(b)fluoranthene
 Concen: 13.425 ng
 RT: 15.121 min Scan# 2198
 Delta R.T. 0.006 min
 Lab File: BF143970.D
 Acq: 15 Oct 2025 23:47

Tgt Ion	Resp	Lower	Upper
252	100		
253	23.0	17.4	26.2
125	12.1	7.8	11.6



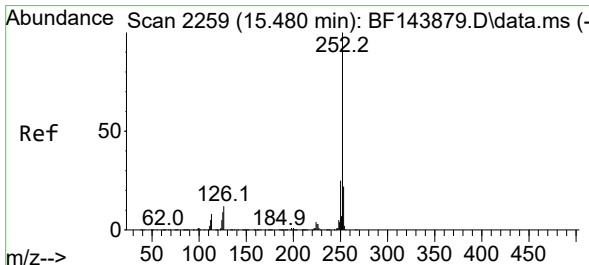
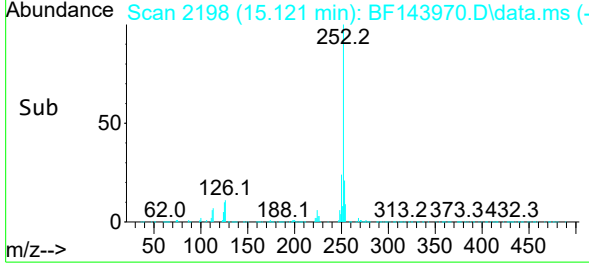
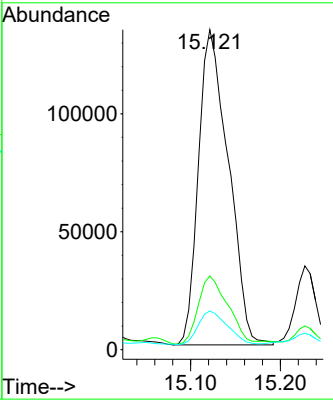
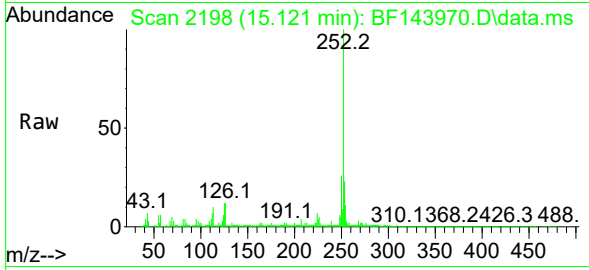


#89
 Benzo(k)fluoranthene
 Concen: 14.509 ng
 RT: 15.121 min Scan# 2198
 Delta R.T. -0.023 min
 Lab File: BF143970.D
 Acq: 15 Oct 2025 23:47

Instrument : BNA_F
 ClientSampleId : SOIL-ROLLOFF-WC-1

Tgt Ion:252 Resp: 310068

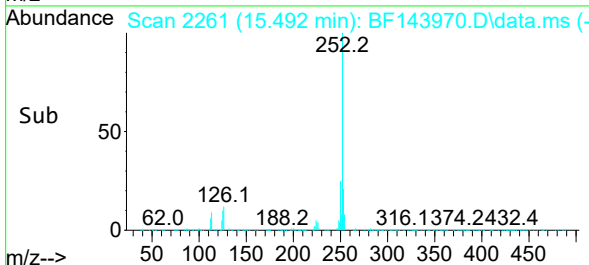
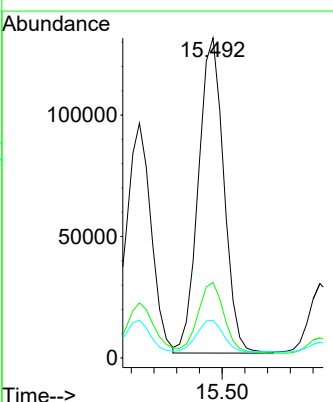
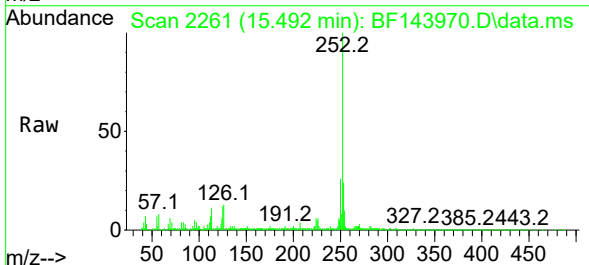
Ion	Ratio	Lower	Upper
252	100		
253	23.0	17.8	26.8
125	12.1	7.4	11.2

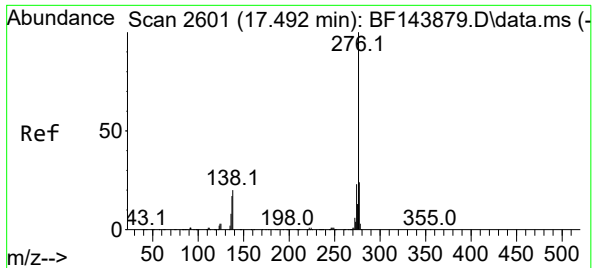


#90
 Benzo(a)pyrene
 Concen: 10.073 ng
 RT: 15.492 min Scan# 2261
 Delta R.T. 0.006 min
 Lab File: BF143970.D
 Acq: 15 Oct 2025 23:47

Tgt Ion:252 Resp: 201732

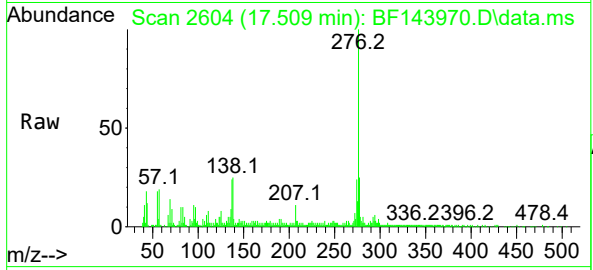
Ion	Ratio	Lower	Upper
252	100		
253	23.6	17.3	25.9
125	11.8	7.0	10.4





#92
 Benzo(g,h,i)perylene
 Concen: 5.053 ng
 RT: 17.509 min Scan# 20
 Delta R.T. -0.006 min
 Lab File: BF143970.D
 Acq: 15 Oct 2025 23:47

Instrument :
 BNA_F
 ClientSampleId :
 SOIL-ROLLOFF-WC-1



Tgt Ion: 276 Resp: 100127

Ion	Ratio	Lower	Upper
276	100		
277	24.9	19.0	28.6
138	25.1	16.1	24.1#

