

Data Path : Z:\SVOASRV\HPCHEM1\BNA_F\DATA\BF101918\
 Data File : BF110012.D
 Acq On : 19 Oct 2018 19:36
 Operator : JU/SJ
 Sample : J5593-05
 Misc :
 ALS Vial : 17 Sample Multiplier: 1

Instrument :
 BNA_F
 ClientSampleId :
 101718-SIDI-E-D-S

Quant Time: Oct 20 01:37:22 2018
 Quant Method : Z:\SVOASRV\HPCHEM1\BNA_F\METHODS\8270-BF101518.M
 Quant Title : ASP BNA STANDARDS FOR 5 POINT CALIBRATION
 QLast Update : Tue Oct 16 14:58:24 2018
 Response via : Initial Calibration

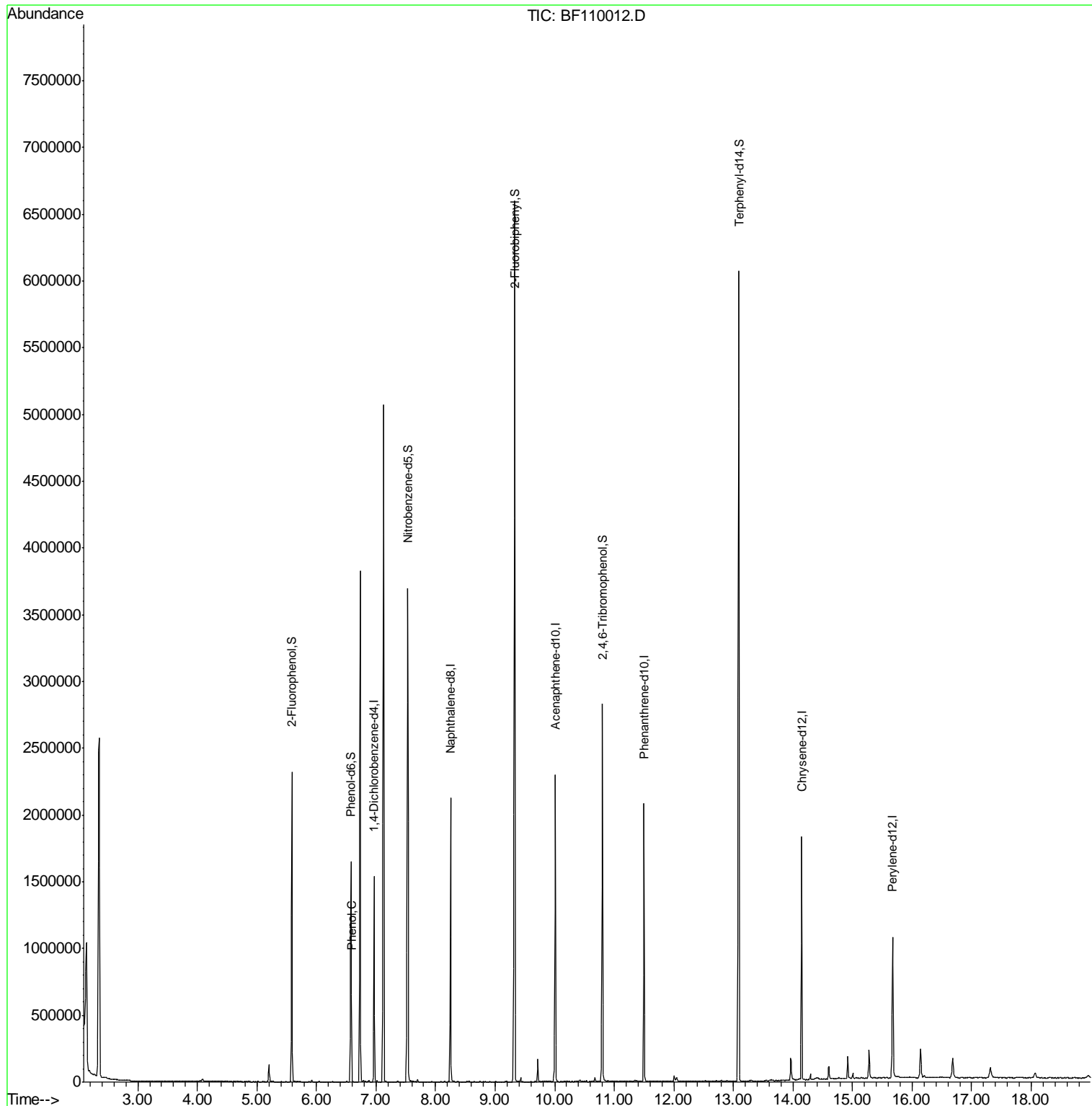
Internal Standards	R.T.	QIon	Response	Conc	Units	Dev(Min)
1) 1,4-Dichlorobenzene-d4	6.97	152	224275	20.00	ng	-0.01
21) Naphthalene-d8	8.25	136	933097	20.00	ng	-0.02
39) Acenaphthene-d10	10.01	164	438016	20.00	ng	-0.02
64) Phenanthrene-d10	11.50	188	789576	20.00	ng	-0.01
76) Chrysene-d12	14.14	240	564649	20.00	ng	-0.02
87) Perylene-d12	15.67	264	396019	20.00	ng	-0.02
System Monitoring Compounds						
5) 2-Fluorophenol	5.59	112	601811	42.53	ng	-0.01
7) Phenol-d6	6.58	99	466924	26.58	ng	-0.02
23) Nitrobenzene-d5	7.53	82	1400533	101.11	ng	-0.02
42) 2,4,6-Tribromophenol	10.80	330	357974	94.40	ng	-0.01
45) 2-Fluorobiphenyl	9.33	172	2380453	86.72	ng	-0.01
79) Terphenyl-d14	13.09	244	2177358	80.98	ng	-0.01
Target Compounds						
10) Phenol	6.59	94	51795	2.731	ng	Qvalue # 61

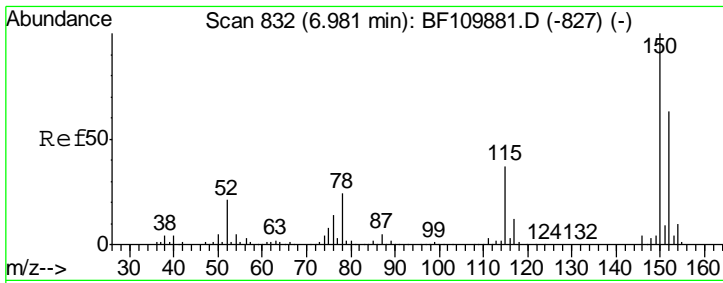
(#) = qualifier out of range (m) = manual integration (+) = signals summed

Data Path : Z:\SVOASRV\HPCHEM1\BNA_F\DATA\BF101918\
 Data File : BF110012.D
 Acq On : 19 Oct 2018 19:36
 Operator : JU/SJ
 Sample : J5593-05
 Misc :
 ALS Vial : 17 Sample Multiplier: 1

Instrument :
 BNA_F
 ClientSampled :
 101718-SIDI-E-D-S

Quant Time: Oct 20 01:37:22 2018
 Quant Method : Z:\SVOASRV\HPCHEM1\BNA_F\METHODS\8270-BF101518.M
 Quant Title : ASP BNA STANDARDS FOR 5 POINT CALIBRATION
 QLast Update : Tue Oct 16 14:58:24 2018
 Response via : Initial Calibration

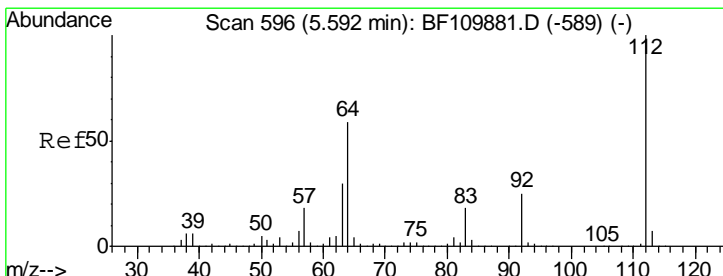
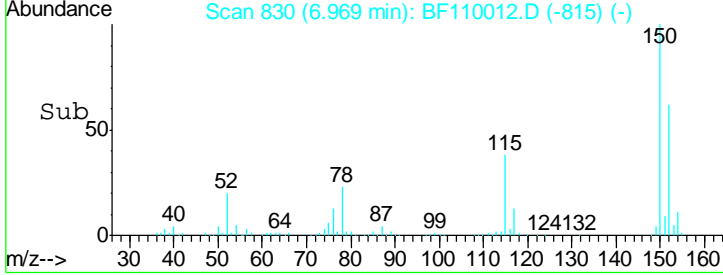
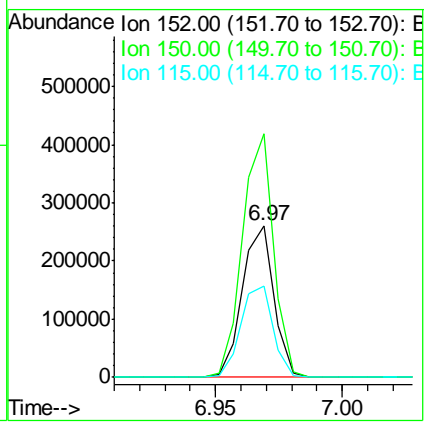
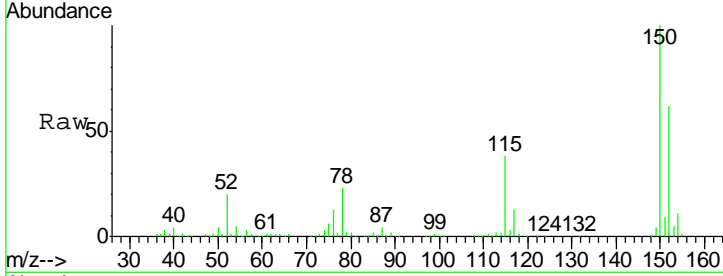




#1
 1,4-Dichlorobenzene-d4
 Concen: 20.000 ng
 RT: 6.97 min Scan# 830
 Delta R.T. -0.01 min
 Lab File: BF110012.D
 Acq: 19 Oct 2018 19:36

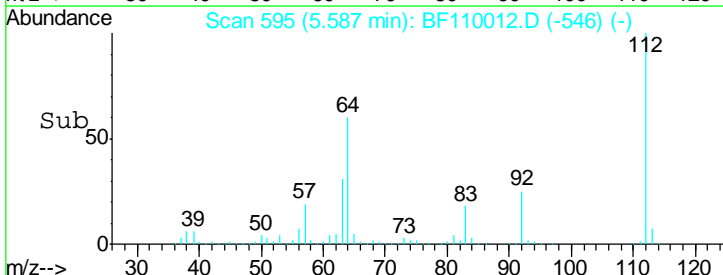
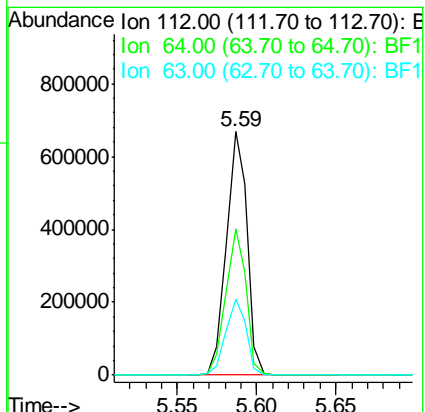
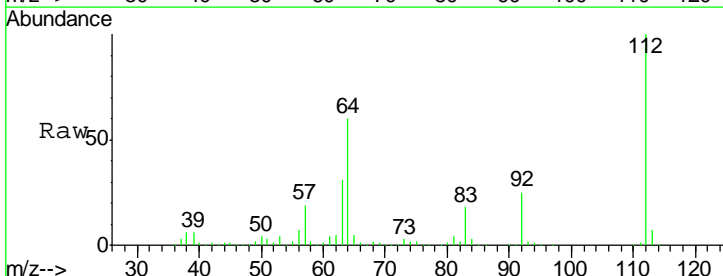
Instrument :
 BNA_F
ClientSampleId :
 101718-SIDI-E-D-S

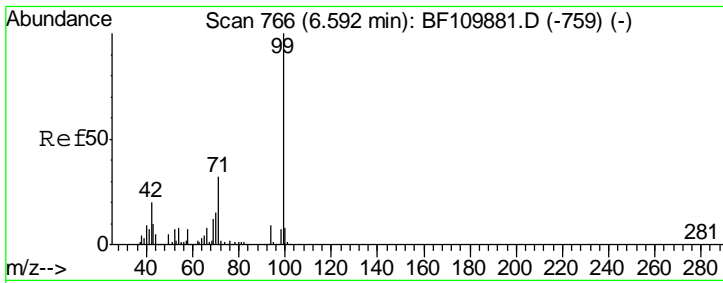
Tgt Ion	Resp	Lower	Upper
152	100		
150	160.4	122.7	184.1
115	60.4	49.1	73.7



#5
 2-Fluorophenol
 Concen: 42.535 ng
 RT: 5.59 min Scan# 595
 Delta R.T. -0.01 min
 Lab File: BF110012.D
 Acq: 19 Oct 2018 19:36

Tgt Ion	Resp	Lower	Upper
112	100		
64	60.1	44.1	66.1
63	31.3	23.7	35.5

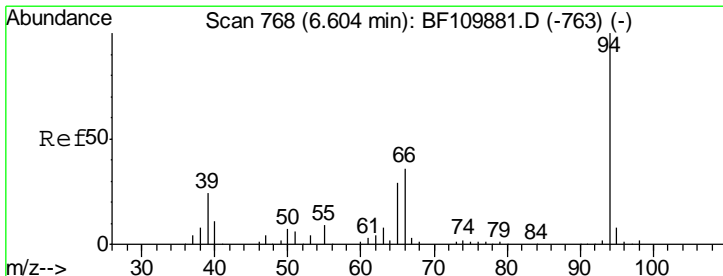
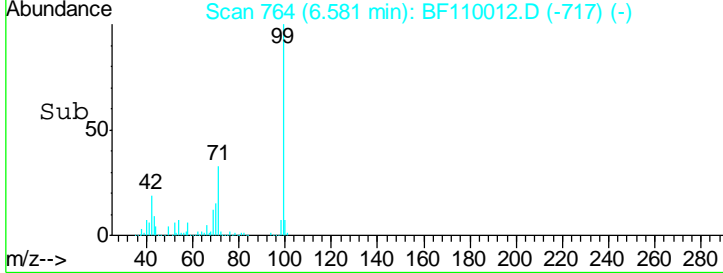
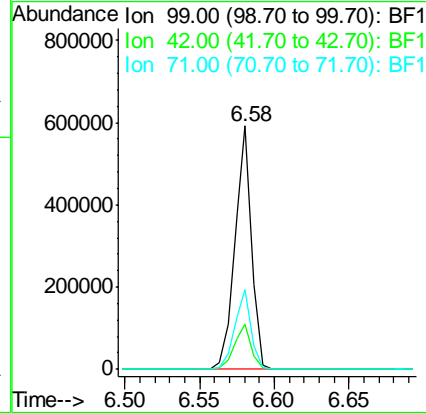
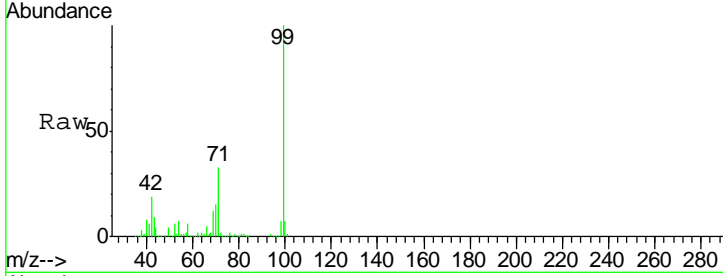




#7
 Phenol-d6
 Concen: 26.577 ng
 RT: 6.58 min Scan# 764
 Delta R.T. -0.02 min
 Lab File: BF110012.D
 Acq: 19 Oct 2018 19:36

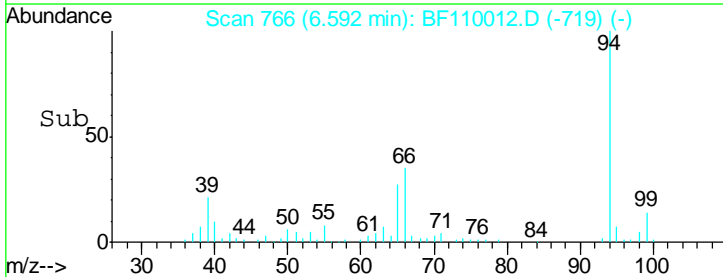
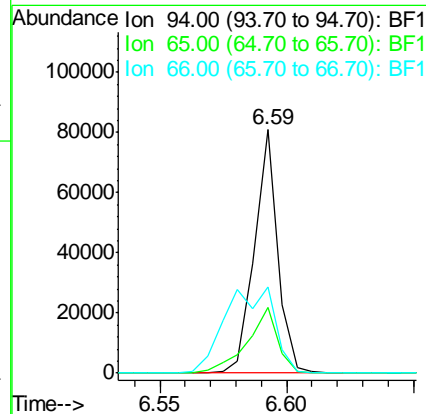
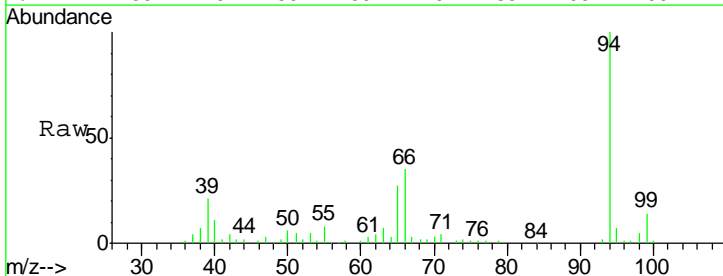
Instrument :
 BNA_F
 ClientSampleId :
 101718-SIDI-E-D-S

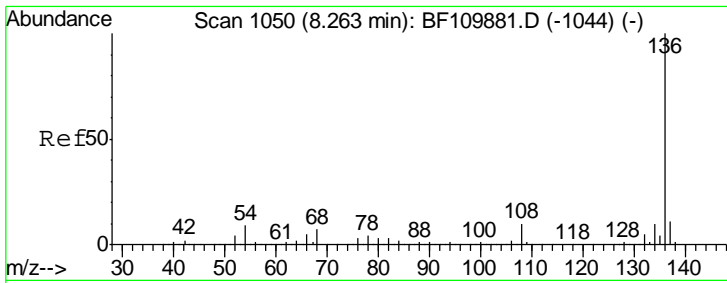
Tgt Ion	Resp	Lower	Upper
99	466924		
42	18.6	15.8	23.6
71	32.8	28.0	42.0



#10
 Phenol
 Concen: 2.731 ng
 RT: 6.59 min Scan# 766
 Delta R.T. -0.02 min
 Lab File: BF110012.D
 Acq: 19 Oct 2018 19:36

Tgt Ion	Resp	Lower	Upper
94	51795		
65	27.2	25.3	65.3
66	35.2	54.5	94.5#

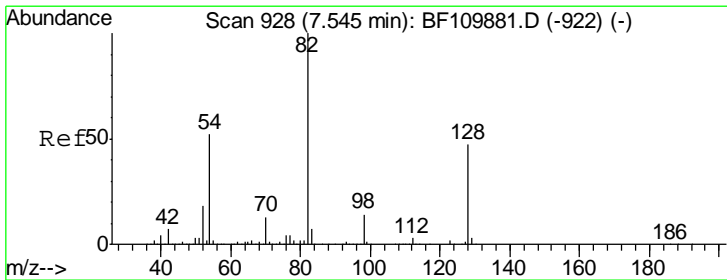
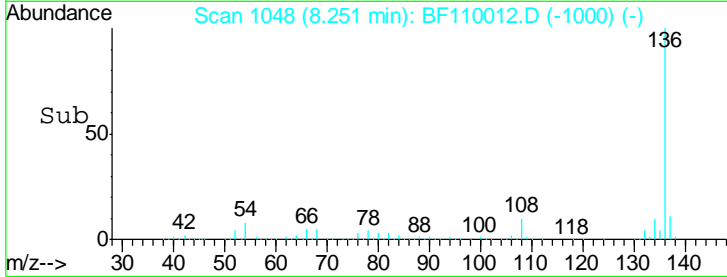
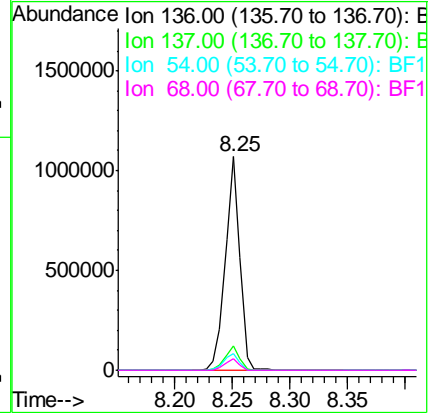
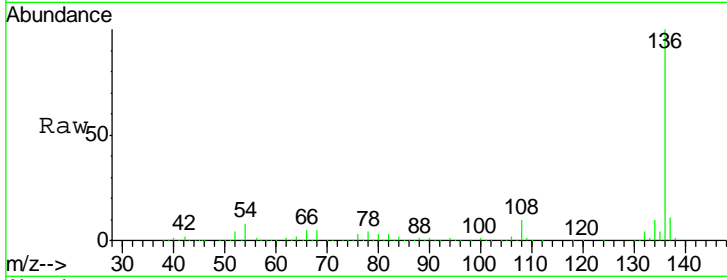




#21
 Naphthalene-d8
 Concen: 20.000 ng
 RT: 8.25 min Scan# 1048
 Delta R.T. -0.02 min
 Lab File: BF110012.D
 Acq: 19 Oct 2018 19:36

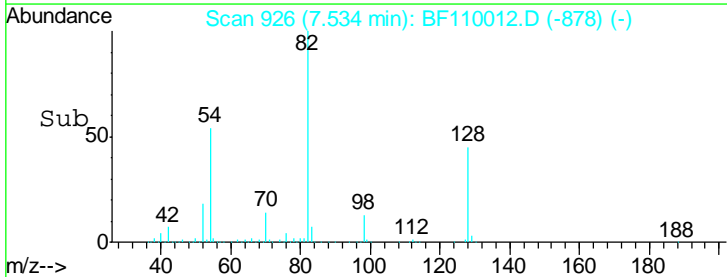
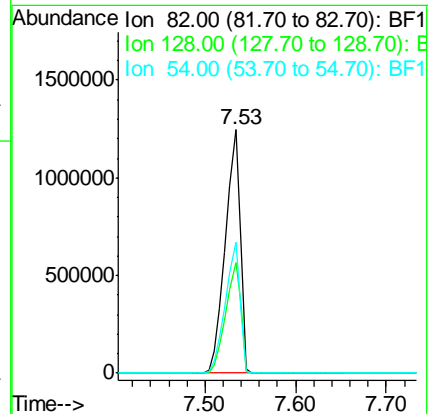
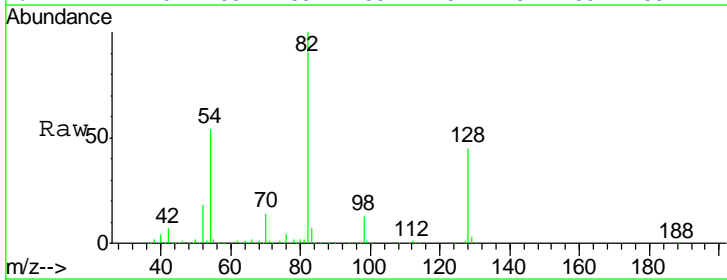
Instrument :
 BNA_F
 ClientSampleId :
 101718-SIDI-E-D-S

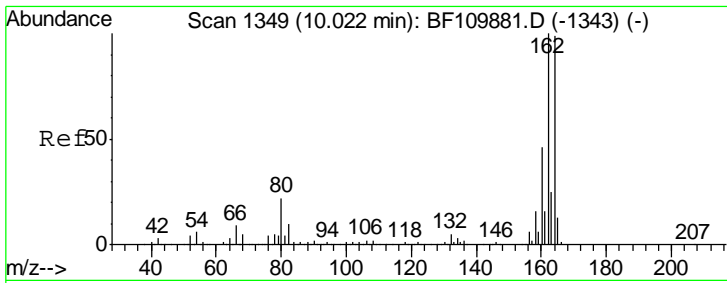
Tgt Ion	Resp	Lower	Upper
136	933097		
137	11.2	8.8	13.2
54	8.0	5.4	8.2
68	5.3	4.2	6.2



#23
 Nitrobenzene-d5
 Concen: 101.110 ng
 RT: 7.53 min Scan# 926
 Delta R.T. -0.02 min
 Lab File: BF110012.D
 Acq: 19 Oct 2018 19:36

Tgt Ion	Resp	Lower	Upper
82	1400533		
128	45.2	34.2	51.2
54	53.7	38.6	58.0

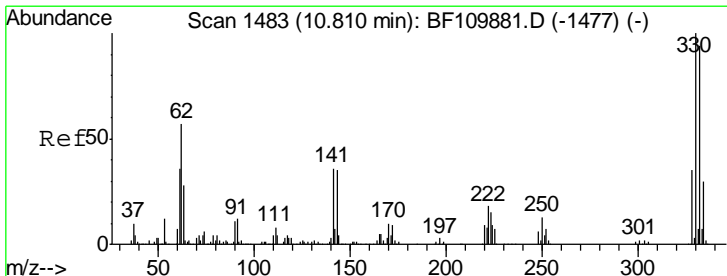
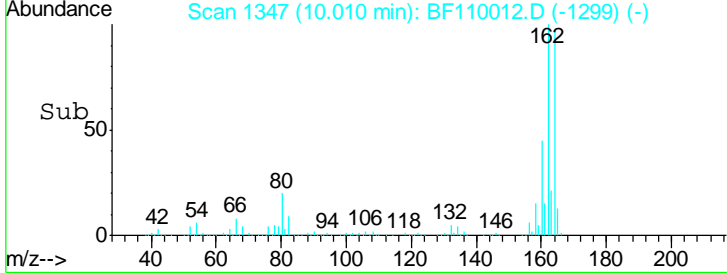
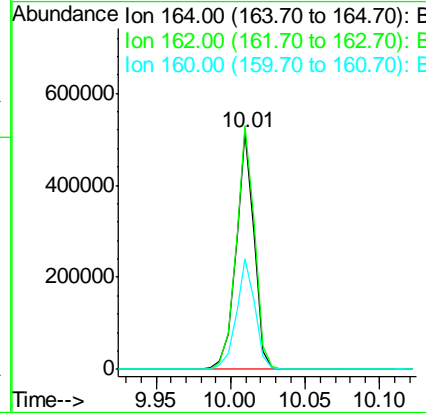
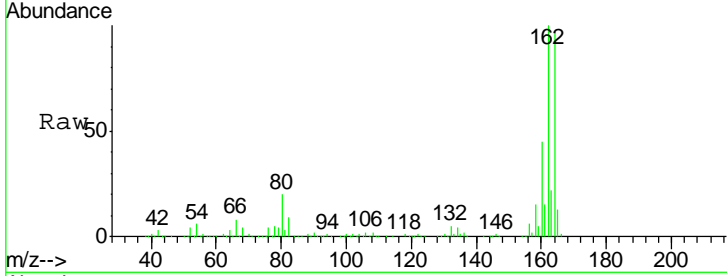




#39
 Acenaphthene-d10
 Concen: 20.000 ng
 RT: 10.01 min Scan# 1347
 Delta R.T. -0.02 min
 Lab File: BF110012.D
 Acq: 19 Oct 2018 19:36

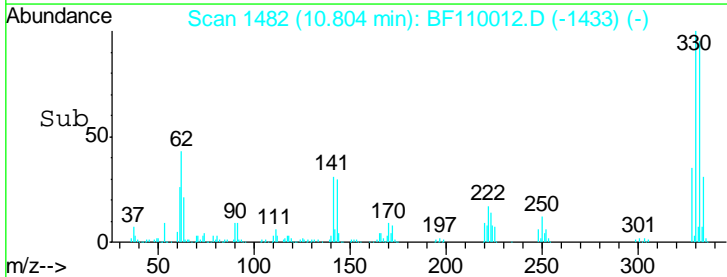
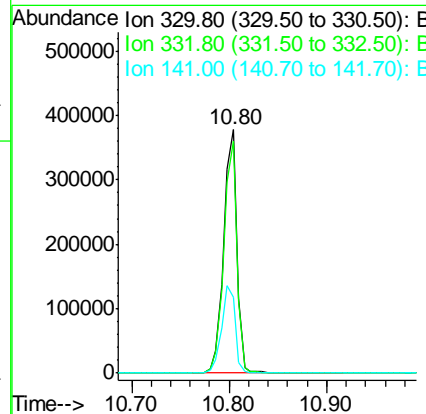
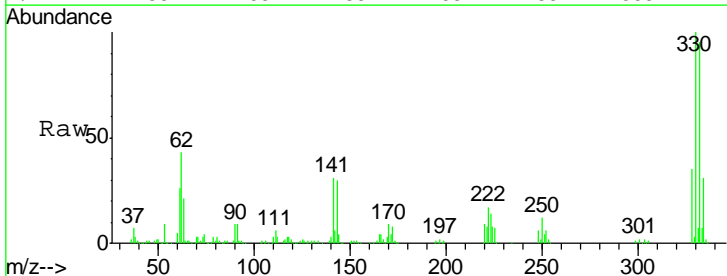
Instrument :
 BNA_F
 ClientSampled :
 101718-SIDI-E-D-S

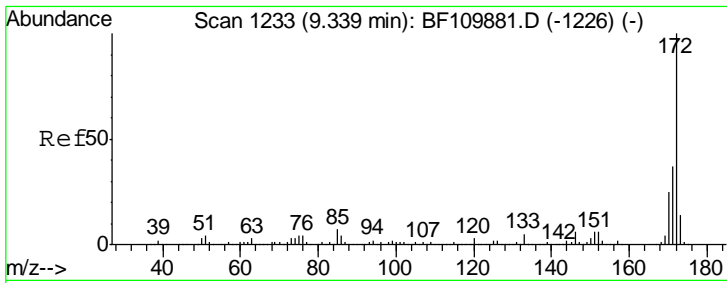
Tgt Ion	Resp	Lower	Upper
164	100		
162	102.8	83.0	124.6
160	46.6	37.0	55.6



#42
 2,4,6-Tribromophenol
 Concen: 94.397 ng
 RT: 10.80 min Scan# 1482
 Delta R.T. -0.01 min
 Lab File: BF110012.D
 Acq: 19 Oct 2018 19:36

Tgt Ion	Resp	Lower	Upper
330	100		
332	95.0	77.1	115.7
141	36.6	27.0	40.4



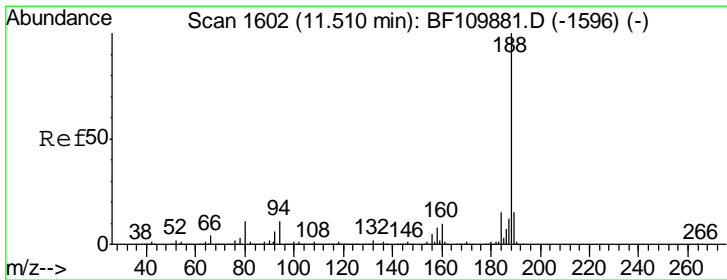
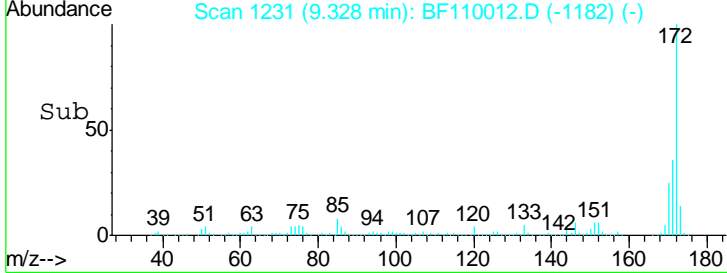
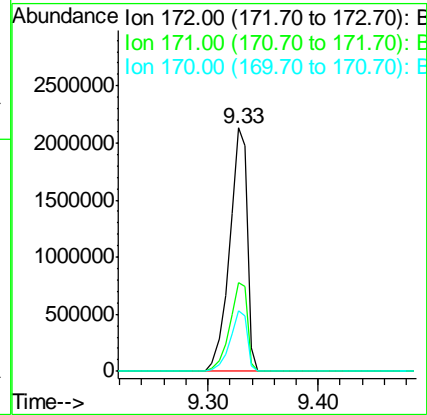
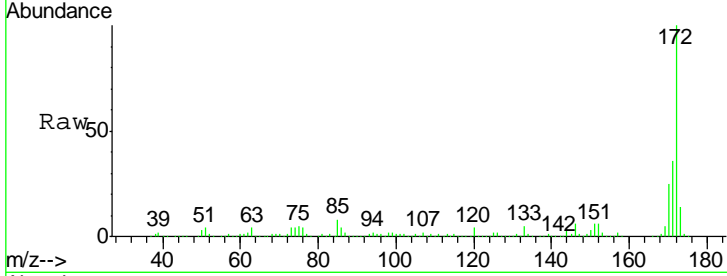


#45
 2-Fluorobiphenyl
 Concen: 86.718 ng
 RT: 9.33 min Scan# 1231
 Delta R.T. -0.01 min
 Lab File: BF110012.D
 Acq: 19 Oct 2018 19:36

Instrument :
 BNA_F
 ClientSampleId :
 101718-SIDI-E-D-S

Tgt Ion:172 Resp: 2380453

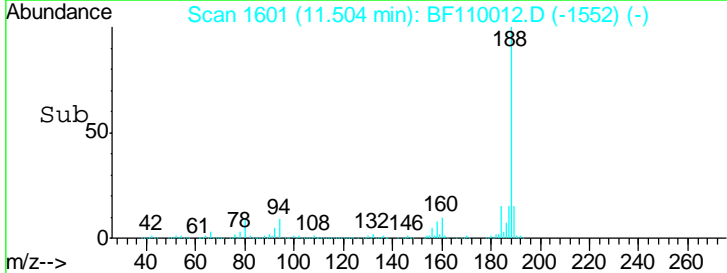
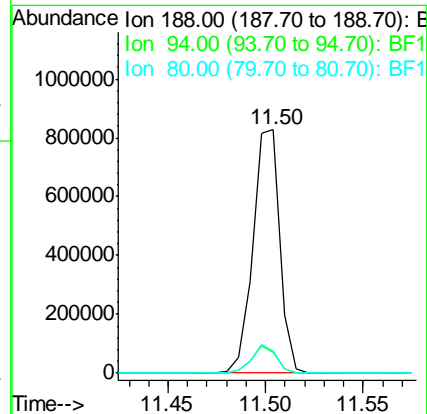
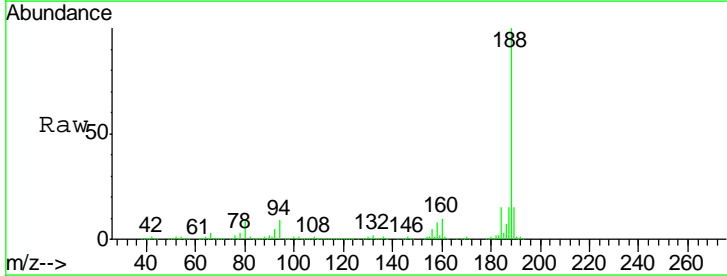
Ion	Ratio	Lower	Upper
172	100		
171	36.4	28.6	43.0
170	25.0	19.7	29.5

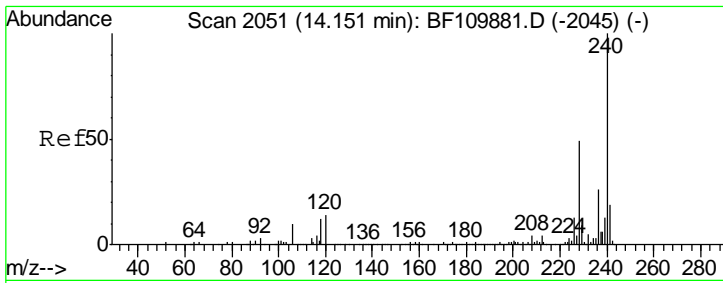


#64
 Phenanthrene-d10
 Concen: 20.000 ng
 RT: 11.50 min Scan# 1601
 Delta R.T. -0.01 min
 Lab File: BF110012.D
 Acq: 19 Oct 2018 19:36

Tgt Ion:188 Resp: 789576

Ion	Ratio	Lower	Upper
188	100		
94	8.5	7.2	10.8
80	8.9	7.9	11.9

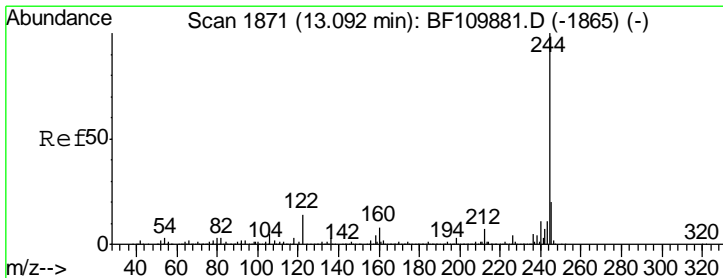
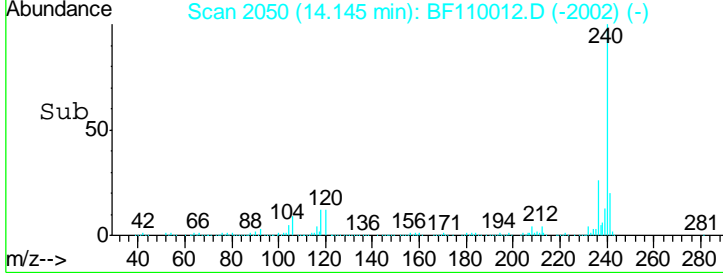
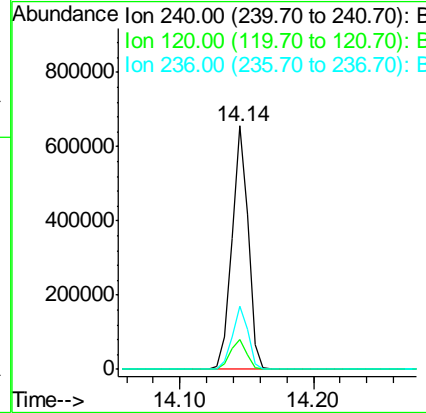
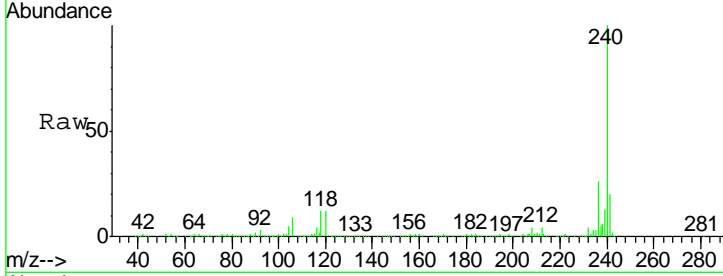




#76
 Chrysene-d12
 Concen: 20.000 ng
 RT: 14.14 min Scan# 2050
 Delta R.T. -0.02 min
 Lab File: BF110012.D
 Acq: 19 Oct 2018 19:36

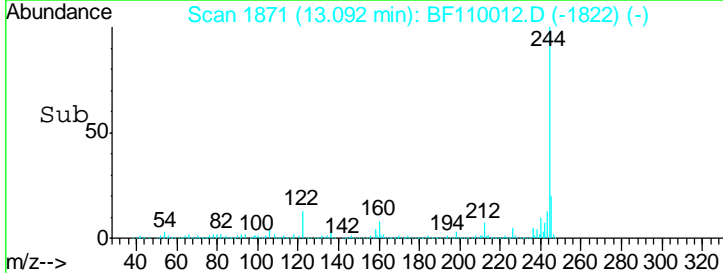
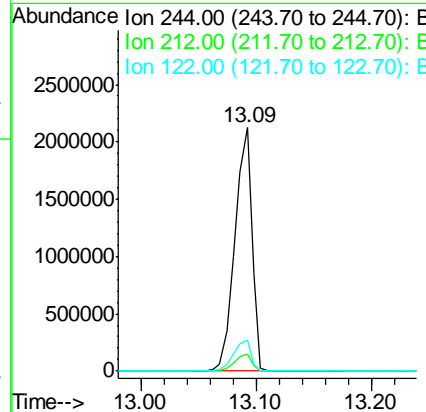
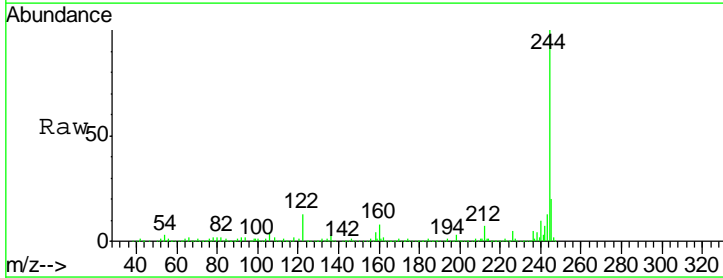
Instrument :
 BNA_F
 ClientSampleId :
 101718-SIDI-E-D-S

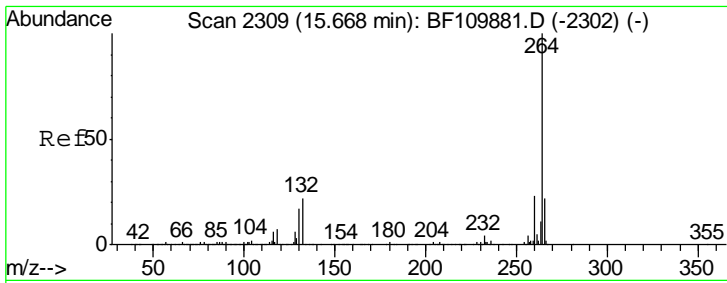
Tgt Ion	Resp	Lower	Upper
240	564649		
120	12.5	8.3	12.5
236	25.7	21.2	31.8



#79
 Terphenyl-d14
 Concen: 80.976 ng
 RT: 13.09 min Scan# 1871
 Delta R.T. -0.01 min
 Lab File: BF110012.D
 Acq: 19 Oct 2018 19:36

Tgt Ion	Resp	Lower	Upper
244	2177358		
212	7.0	5.8	8.8
122	12.6	8.7	13.1





#87
 Perylene-d12
 Concen: 20.000 ng
 RT: 15.67 min Scan# 2310
 Delta R.T. -0.02 min
 Lab File: BF110012.D
 Acq: 19 Oct 2018 19:36

Instrument :
 BNA_F
ClientSampleId :
 101718-SIDI-E-D-S

Tgt Ion	Resp	Lower	Upper
264	396019		
260	24.7	18.7	28.1
265	22.2	16.7	25.1

