

Data Path : Z:\svoasrv\HPCHEM1\BNA_F\Data\BF102025\
 Data File : BF144000.D
 Acq On : 20 Oct 2025 15:57
 Operator : RC/JU
 Sample : Q3381-03MS
 Misc :
 ALS Vial : 5 Sample Multiplier: 1

Instrument :
 BNA_F
 ClientSampleId :
 VNJ-245MS

Quant Time: Oct 20 16:33:56 2025
 Quant Method : Z:\svoasrv\HPCHEM1\BNA_F\Methods\8270-BF100625.M
 Quant Title : ASP BNA STANDARDS FOR 5 POINT CALIBRATION
 QLast Update : Mon Oct 06 15:29:47 2025
 Response via : Initial Calibration

Compound	R.T.	QIon	Response	Conc	Units	Dev(Min)
Internal Standards						
1) 1,4-Dichlorobenzene-d4	6.881	152	103333	20.00	ng	0.00
21) Naphthalene-d8	8.163	136	382013	20.00	ng	0.00
39) Acenaphthene-d10	9.922	164	200713	20.00	ng	0.00
64) Phenanthrene-d10	11.416	188	318387	20.00	ng	0.00
76) Chrysene-d12	14.063	240	223763	20.00	ng	0.00
86) Perylene-d12	15.545	264	294781	20.00	ng	0.00
System Monitoring Compounds						
5) 2-Fluorophenol	5.498	112	438595	67.40	ng	0.00
7) Phenol-d6	6.504	99	529928	68.32	ng	-0.01
23) Nitrobenzene-d5	7.440	82	289756	46.08	ng	-0.02
42) 2,4,6-Tribromophenol	10.716	330	118959	59.51	ng	0.00
45) 2-Fluorobiphenyl	9.239	172	409869	32.40	ng	-0.01
79) Terphenyl-d14	12.998	244	462900	35.36	ng	-0.01
Target Compounds						
2) 1,4-Dioxane	2.705	88	132798	44.10	ng	96
3) Pyridine	3.463	79	368348	42.02	ng	99
4) n-Nitrosodimethylamine	3.410	42	209201	45.37	ng	94
6) Aniline	6.545	93	368544	31.71	ng	99
8) 2-Chlorophenol	6.663	128	287133	45.14	ng	99
9) Benzaldehyde	6.434	77	158290	26.46	ng	99
10) Phenol	6.522	94	428684	46.23	ng	97
11) bis(2-Chloroethyl)ether	6.616	93	318744	44.50	ng	99
12) 1,3-Dichlorobenzene	6.822	146	343788	45.15	ng	99
13) 1,4-Dichlorobenzene	6.898	146	342288	45.57	ng	100
14) 1,2-Dichlorobenzene	7.051	146	334132	46.45	ng	99
15) Benzyl Alcohol	7.022	79	272640	46.91	ng	97
16) 2,2'-oxybis(1-Chloropr...	7.157	45	731362	44.86	ng	100
17) 2-Methylphenol	7.128	107	239106	45.49	ng	97
18) Hexachloroethane	7.392	117	110667	44.18	ng	99
19) n-Nitroso-di-n-propyla...	7.292	70	217753	41.01	ng	99
20) 3+4-Methylphenols	7.281	107	267179	43.85	ng	# 84
22) Acetophenone	7.287	105	403608	49.97	ng	96
24) Nitrobenzene	7.463	77	340069	48.70	ng	97
25) Isophorone	7.698	82	600118	45.26	ng	99
26) 2-Nitrophenol	7.781	139	159448	53.26	ng	96
27) 2,4-Dimethylphenol	7.810	122	272349	50.57	ng	99
28) bis(2-Chloroethoxy)met...	7.910	93	387810	46.31	ng	99
29) 2,4-Dichlorophenol	8.022	162	259499	46.26	ng	98
30) 1,2,4-Trichlorobenzene	8.104	180	269947	48.93	ng	98
31) Naphthalene	8.187	128	796848	45.86	ng	100
32) Benzoic acid	7.928	122	161816	43.42	ng	97
33) 4-Chloroaniline	8.234	127	142681	21.89	ng	99
34) Hexachlorobutadiene	8.304	225	170350	44.44	ng	96
35) Caprolactam	8.598	113	81445	45.66	ng	95
36) 4-Chloro-3-methylphenol	8.716	107	246157	45.68	ng	100
37) 2-Methylnaphthalene	8.875	142	489487	42.29	ng	98
38) 1-Methylnaphthalene	8.975	142	488367	43.50	ng	100
40) 1,2,4,5-Tetrachloroben...	9.045	216	284451	51.28	ng	98
41) Hexachlorocyclopentadiene	9.028	237	226930	98.61	ng	98
43) 2,4,6-Trichlorophenol	9.157	196	190058	46.89	ng	97

Data Path : Z:\svoasrv\HPCHEM1\BNA_F\Data\BF102025\
 Data File : BF144000.D
 Acq On : 20 Oct 2025 15:57
 Operator : RC/JU
 Sample : Q3381-03MS
 Misc :
 ALS Vial : 5 Sample Multiplier: 1

Instrument :
 BNA_F
 ClientSampleId :
 VNJ-245MS

Quant Time: Oct 20 16:33:56 2025
 Quant Method : Z:\svoasrv\HPCHEM1\BNA_F\Methods\8270-BF100625.M
 Quant Title : ASP BNA STANDARDS FOR 5 POINT CALIBRATION
 QLast Update : Mon Oct 06 15:29:47 2025
 Response via : Initial Calibration

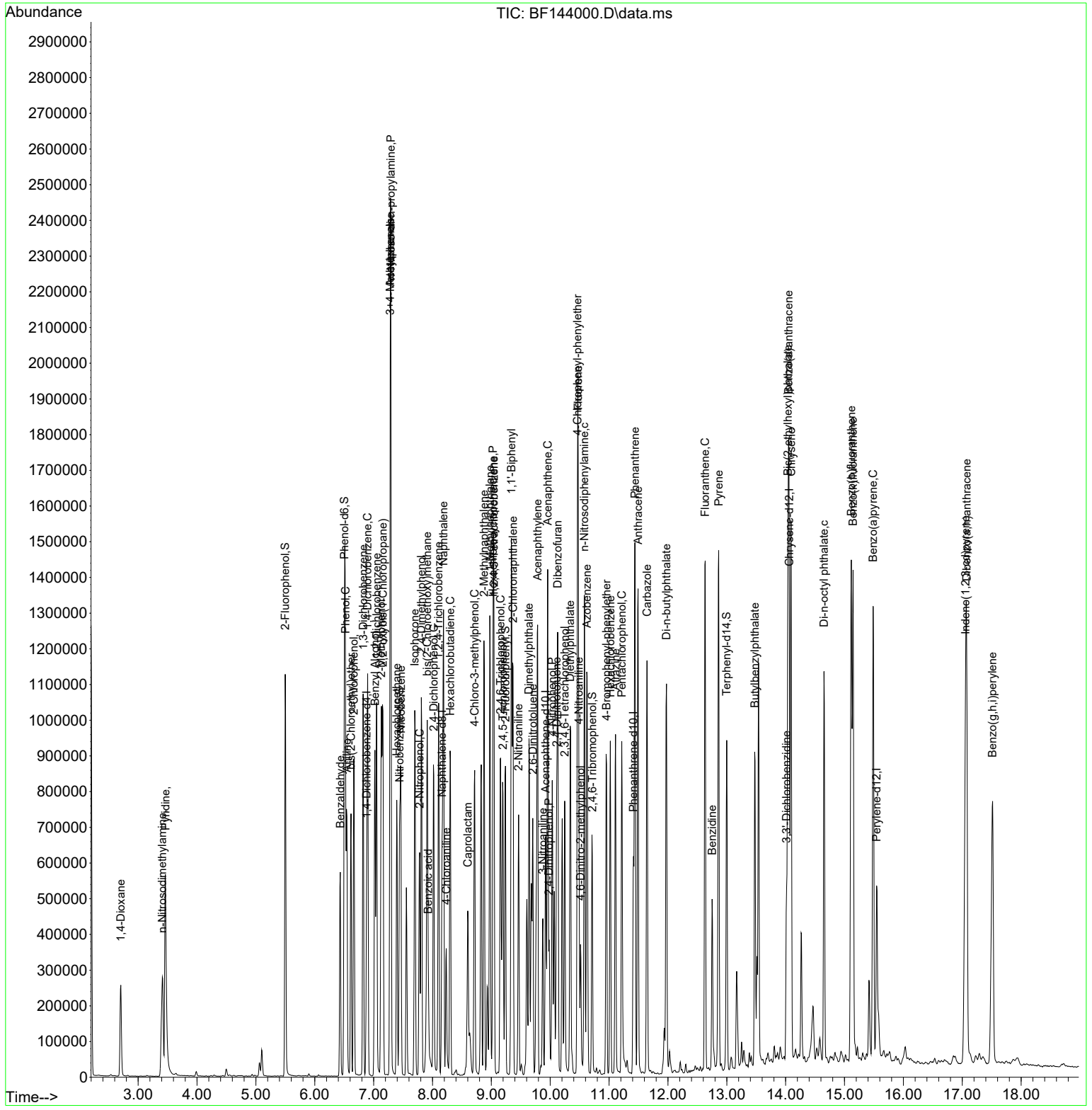
Compound	R.T.	QIon	Response	Conc	Units	Dev(Min)
44) 2,4,5-Trichlorophenol	9.198	196	200259	46.75	ng	99
46) 1,1'-Biphenyl	9.339	154	678896	51.09	ng	99
47) 2-Chloronaphthalene	9.369	162	512730	46.28	ng	97
48) 2-Nitroaniline	9.463	65	175824	50.19	ng	95
49) Acenaphthylene	9.786	152	809376	51.96	ng	100
50) Dimethylphthalate	9.639	163	597488	46.88	ng	100
51) 2,6-Dinitrotoluene	9.704	165	127854	54.09	ng	96
52) Acenaphthene	9.957	154	478527	46.88	ng	99
53) 3-Nitroaniline	9.875	138	92302	31.89	ng	99
54) 2,4-Dinitrophenol	9.981	184	81830	58.20	ng	92
55) Dibenzofuran	10.128	168	675911	46.91	ng	98
56) 4-Nitrophenol	10.033	139	186388	85.06	ng	97
57) 2,4-Dinitrotoluene	10.110	165	170165	52.91	ng	99
58) Fluorene	10.475	166	516441	47.50	ng	99
59) 2,3,4,6-Tetrachlorophenol	10.245	232	141238	46.58	ng	98
60) Diethylphthalate	10.339	149	543627	45.91	ng	100
61) 4-Chlorophenyl-phenyle...	10.463	204	257179	44.74	ng	97
62) 4-Nitroaniline	10.486	138	127786	45.92	ng	95
63) Azobenzene	10.622	77	606952	49.04	ng	99
65) 4,6-Dinitro-2-methylph...	10.516	198	73561	45.98	ng	99
66) n-Nitrosodiphenylamine	10.581	169	501852	50.20	ng	99
67) 4-Bromophenyl-phenylether	10.957	248	168517	47.89	ng	97
68) Hexachlorobenzene	11.022	284	195558	48.01	ng	99
69) Atrazine	11.110	200	152836	50.44	ng	98
70) Pentachlorophenol	11.216	266	184749	78.97	ng	98
71) Phenanthrene	11.439	178	818952	53.06	ng	99
72) Anthracene	11.492	178	795285	51.00	ng	99
73) Carbazole	11.645	167	673083	48.74	ng	99
74) Di-n-butylphthalate	11.975	149	786167	49.12	ng	99
75) Fluoranthene	12.633	202	892868	56.00	ng	98
77) Benzidine	12.751	184	292169	37.60	ng	99
78) Pyrene	12.863	202	897135	48.09	ng	99
80) Butylbenzylphthalate	13.474	149	297998	49.19	ng	99
81) Benzo(a)anthracene	14.051	228	876380	59.85	ng	99
82) 3,3'-Dichlorobenzidine	14.016	252	148913	33.37	ng	98
83) Chrysene	14.092	228	762919	56.29	ng	100
84) Bis(2-ethylhexyl)phtha...	14.039	149	388279	53.17	ng	100
85) Di-n-octyl phthalate	14.651	149	721877	60.18	ng	# 99
87) Indeno(1,2,3-cd)pyrene	17.057	276	942417	52.18	ng	99
88) Benzo(b)fluoranthene	15.116	252	963893	56.92	ng	99
89) Benzo(k)fluoranthene	15.145	252	694255	44.31	ng	99
90) Benzo(a)pyrene	15.486	252	854925	58.23	ng	99
91) Dibenzo(a,h)anthracene	17.074	278	729261	50.20	ng	98
92) Benzo(g,h,i)perylene	17.515	276	756650	52.09	ng	98

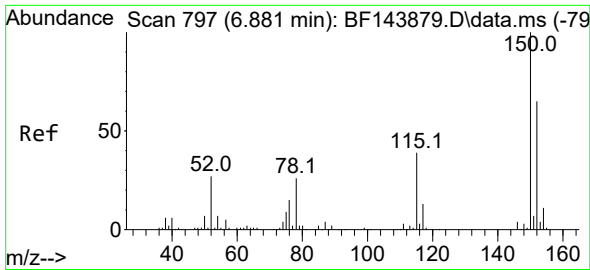
(#) = qualifier out of range (m) = manual integration (+) = signals summed

Data Path : Z:\svoasrv\HPCHEM1\BNA_F\Data\BF102025\
 Data File : BF144000.D
 Acq On : 20 Oct 2025 15:57
 Operator : RC/JU
 Sample : Q3381-03MS
 Misc :
 ALS Vial : 5 Sample Multiplier: 1

Instrument :
 BNA_F
 ClientSampleId :
 VNJ-245MS

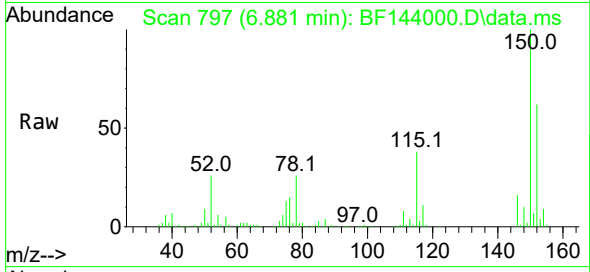
Quant Time: Oct 20 16:33:56 2025
 Quant Method : Z:\svoasrv\HPCHEM1\BNA_F\Methods\8270-BF100625.M
 Quant Title : ASP BNA STANDARDS FOR 5 POINT CALIBRATION
 QLast Update : Mon Oct 06 15:29:47 2025
 Response via : Initial Calibration



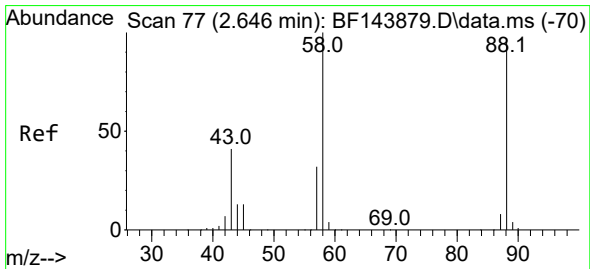
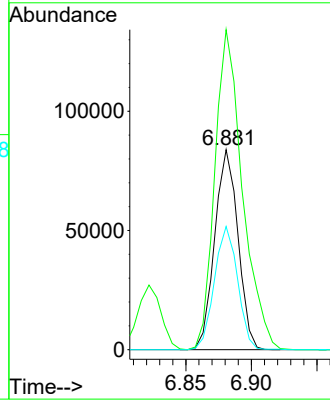
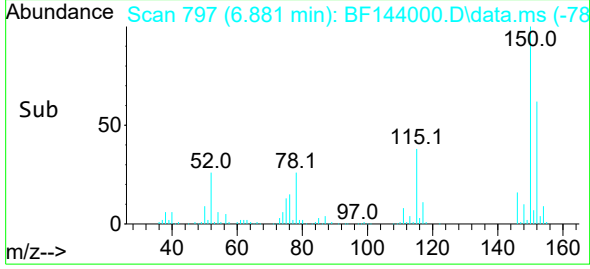


#1
 1,4-Dichlorobenzene-d4
 Concen: 20.00 ng
 RT: 6.881 min Scan# 79
 Delta R.T. -0.005 min
 Lab File: BF144000.D
 Acq: 20 Oct 2025 15:57

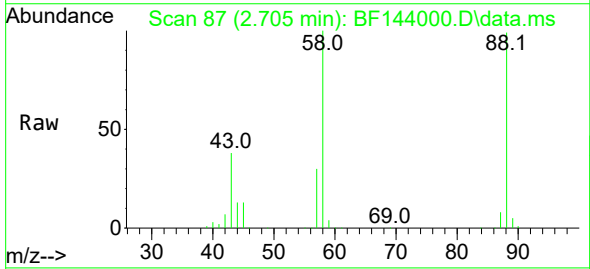
Instrument :
 BNA_F
 ClientSampleId :
 VNJ-245MS



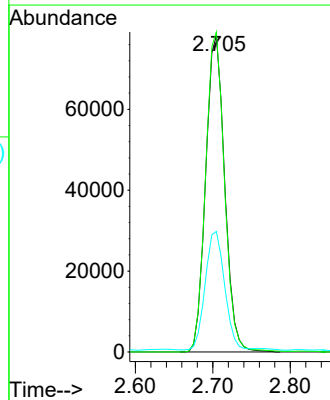
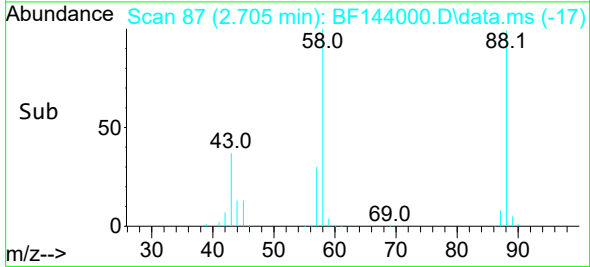
Tgt Ion:152 Resp: 103333
 Ion Ratio Lower Upper
 152 100
 150 160.0 124.4 186.6
 115 61.6 48.1 72.1

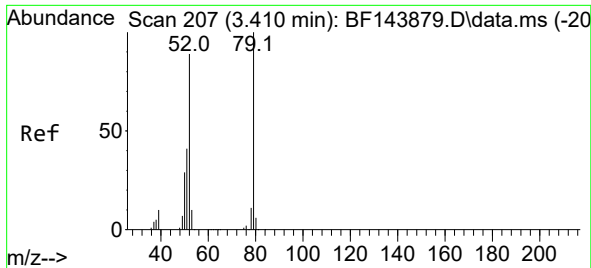


#2
 1,4-Dioxane
 Concen: 44.10 ng
 RT: 2.705 min Scan# 87
 Delta R.T. 0.059 min
 Lab File: BF144000.D
 Acq: 20 Oct 2025 15:57



Tgt Ion: 88 Resp: 132798
 Ion Ratio Lower Upper
 88 100
 58 100.7 83.0 124.6
 43 38.3 33.9 50.9



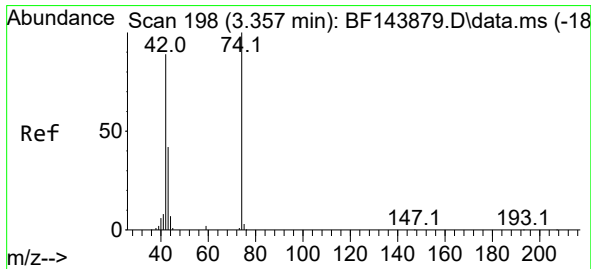
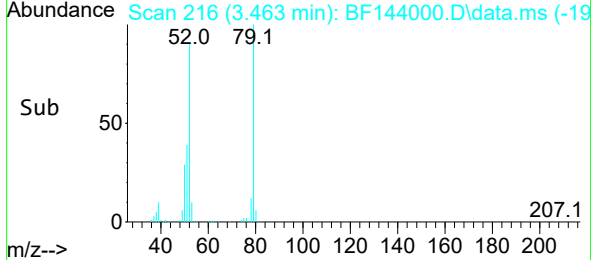
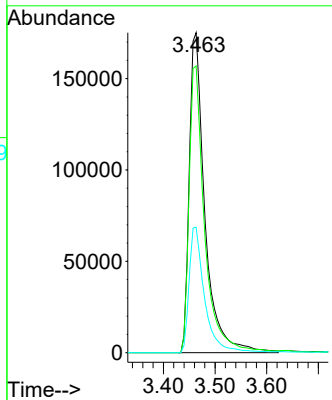
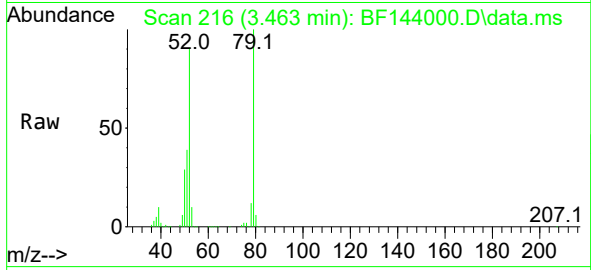


#3
 Pyridine
 Concen: 42.02 ng
 RT: 3.463 min Scan# 21
 Delta R.T. 0.047 min
 Lab File: BF144000.D
 Acq: 20 Oct 2025 15:57

Instrument :
 BNA_F
 ClientSampleId :
 VNJ-245MS

Tgt Ion: 79 Resp: 368348

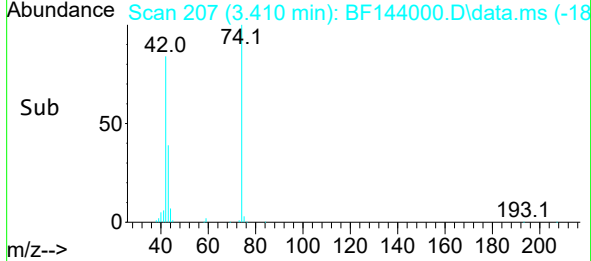
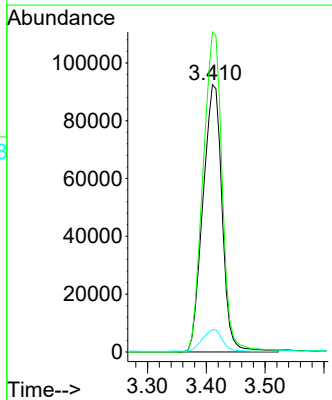
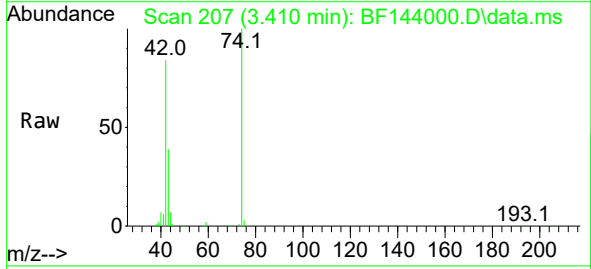
Ion	Ratio	Lower	Upper
79	100		
52	89.6	71.5	107.3
51	39.2	32.9	49.3

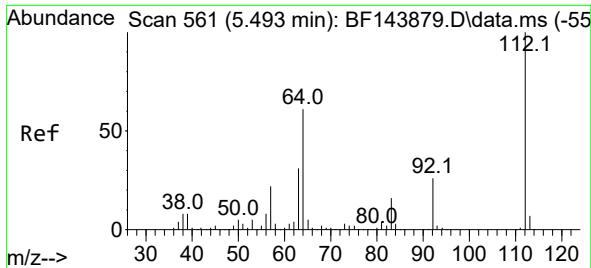


#4
 n-Nitrosodimethylamine
 Concen: 45.37 ng
 RT: 3.410 min Scan# 207
 Delta R.T. 0.024 min
 Lab File: BF144000.D
 Acq: 20 Oct 2025 15:57

Tgt Ion: 42 Resp: 209201

Ion	Ratio	Lower	Upper
42	100		
74	119.7	90.0	135.0
44	8.3	6.2	9.2



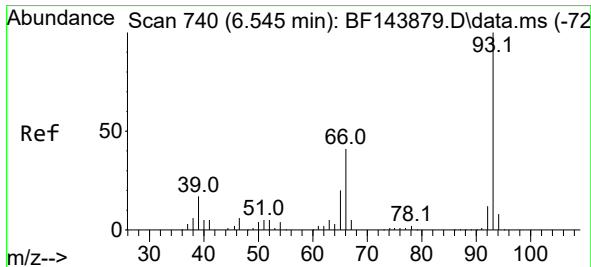
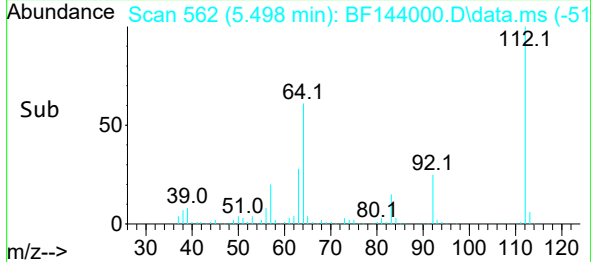
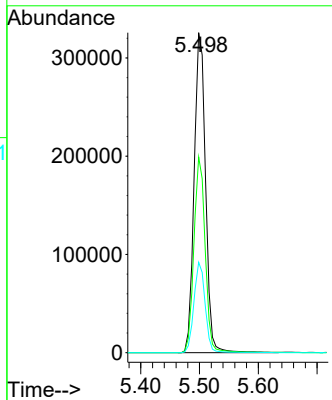
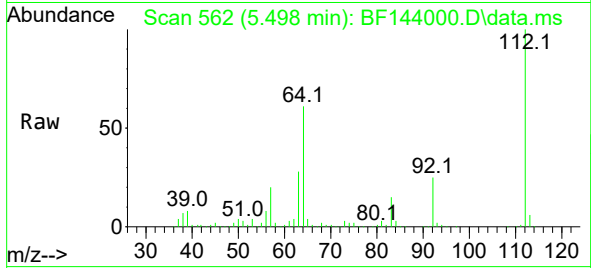


#5
 2-Fluorophenol
 Concen: 67.40 ng
 RT: 5.498 min Scan# 50
 Delta R.T. 0.000 min
 Lab File: BF144000.D
 Acq: 20 Oct 2025 15:57

Instrument : BNA_F
 ClientSampleId : VNJ-245MS

Tgt Ion: 112 Resp: 438595

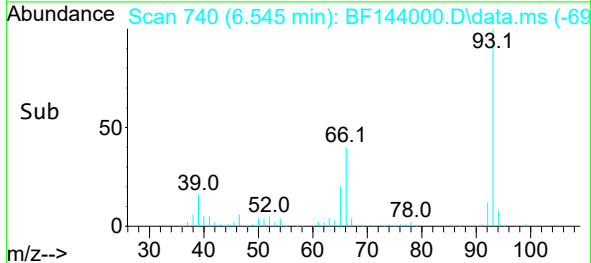
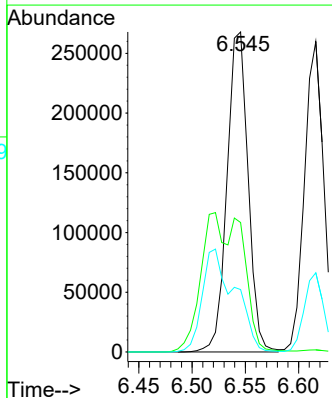
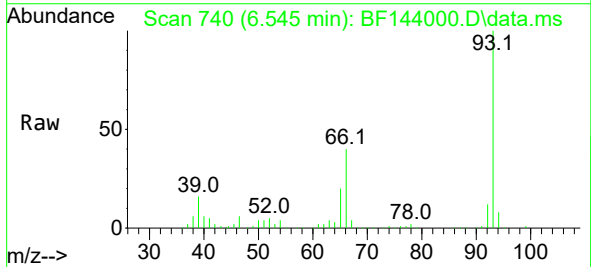
Ion	Ratio	Lower	Upper
112	100		
64	61.2	49.1	73.7
63	28.2	24.5	36.7

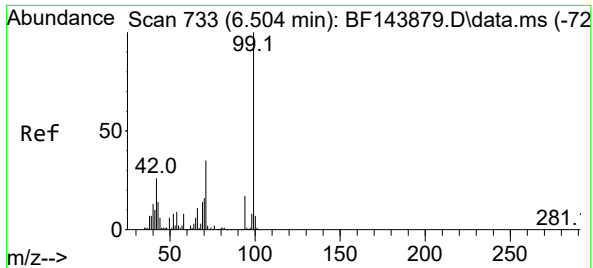


#6
 Aniline
 Concen: 31.71 ng
 RT: 6.545 min Scan# 740
 Delta R.T. -0.006 min
 Lab File: BF144000.D
 Acq: 20 Oct 2025 15:57

Tgt Ion: 93 Resp: 368544

Ion	Ratio	Lower	Upper
93	100		
66	40.5	33.0	49.6
65	19.5	15.8	23.8



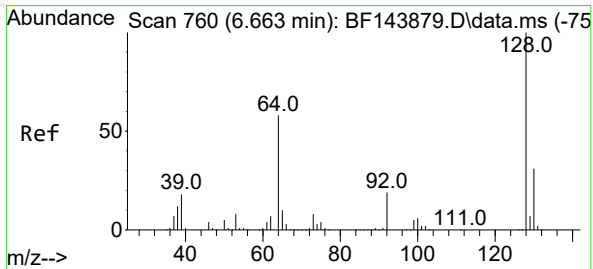
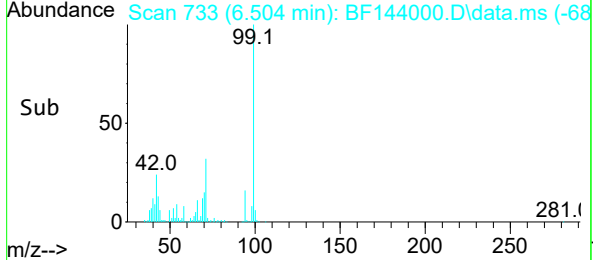
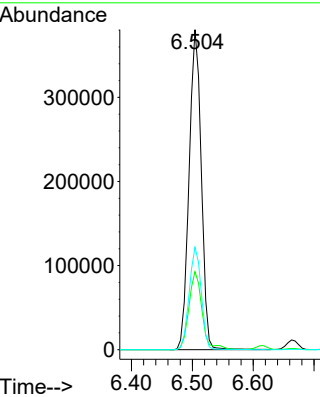
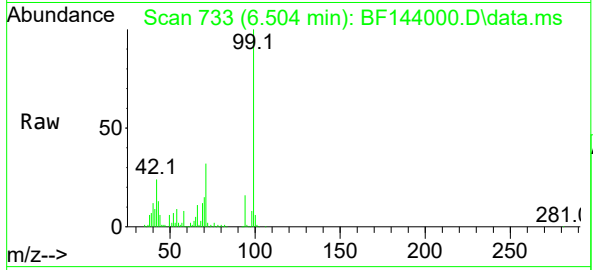


#7
 Phenol-d6
 Concen: 68.32 ng
 RT: 6.504 min Scan# 71
 Delta R.T. -0.012 min
 Lab File: BF144000.D
 Acq: 20 Oct 2025 15:57

Instrument :
 BNA_F
 ClientSampleId :
 VNJ-245MS

Tgt Ion: 99 Resp: 529928

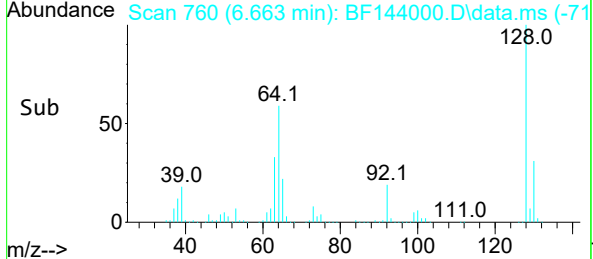
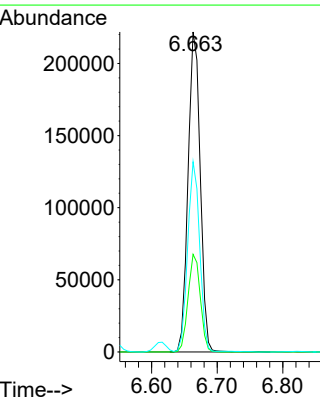
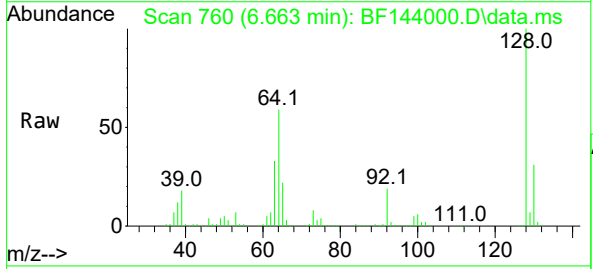
Ion	Ratio	Lower	Upper
99	100		
42	24.4	21.0	31.4
71	32.0	27.8	41.8

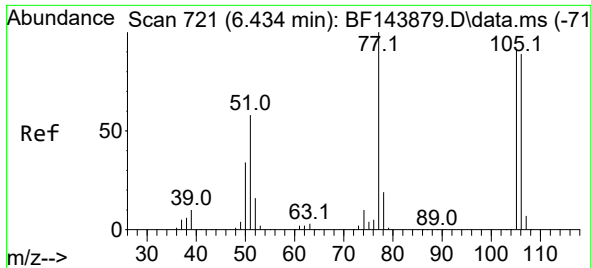


#8
 2-Chlorophenol
 Concen: 45.14 ng
 RT: 6.663 min Scan# 760
 Delta R.T. -0.006 min
 Lab File: BF144000.D
 Acq: 20 Oct 2025 15:57

Tgt Ion: 128 Resp: 287133

Ion	Ratio	Lower	Upper
128	100		
130	30.5	10.7	50.7
64	59.5	39.0	79.0

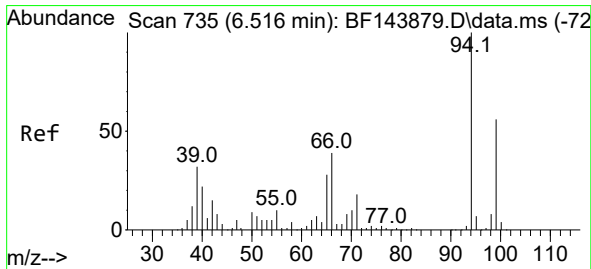
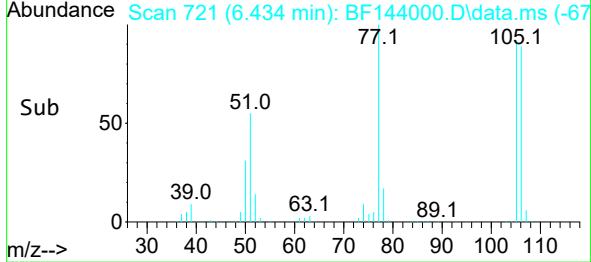
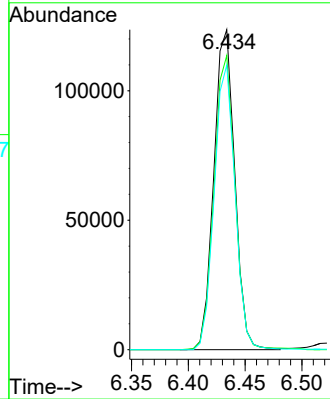
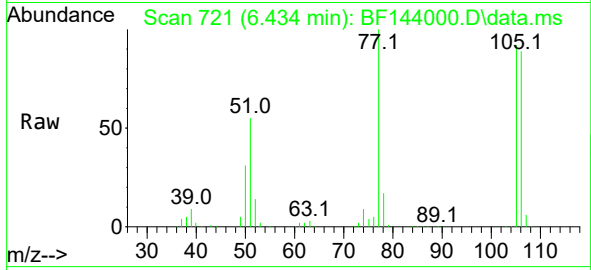




#9
Benzaldehyde
Concen: 26.46 ng
RT: 6.434 min Scan# 721
Delta R.T. -0.006 min
Lab File: BF144000.D
Acq: 20 Oct 2025 15:57

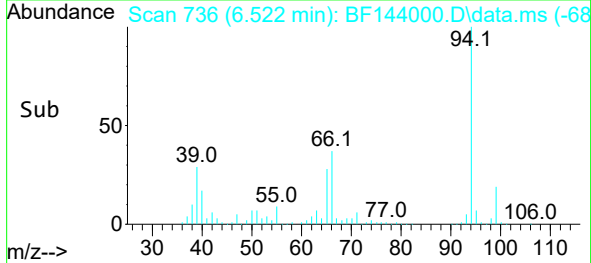
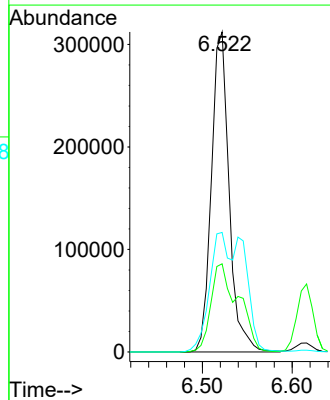
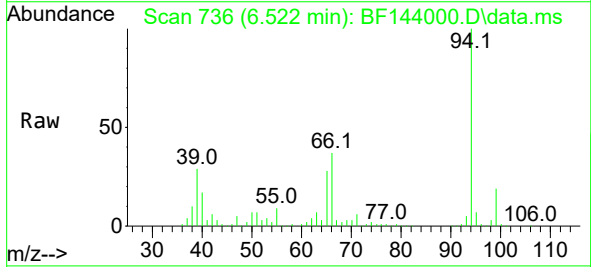
Instrument :
BNA_F
ClientSampleId :
VNJ-245MS

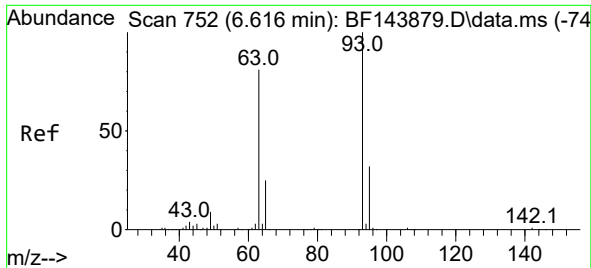
Tgt Ion: 77 Resp: 158290
Ion Ratio Lower Upper
77 100
105 91.9 70.9 110.9
106 89.0 68.9 108.9



#10
Phenol
Concen: 46.23 ng
RT: 6.522 min Scan# 736
Delta R.T. -0.012 min
Lab File: BF144000.D
Acq: 20 Oct 2025 15:57

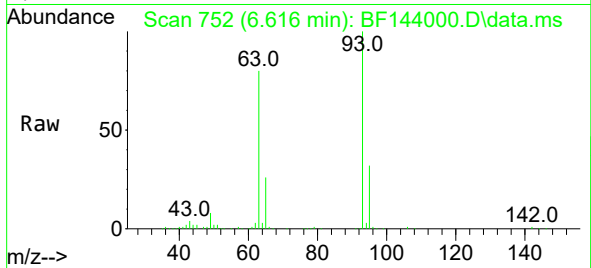
Tgt Ion: 94 Resp: 428684
Ion Ratio Lower Upper
94 100
65 27.6 8.5 48.5
66 37.4 19.9 59.9



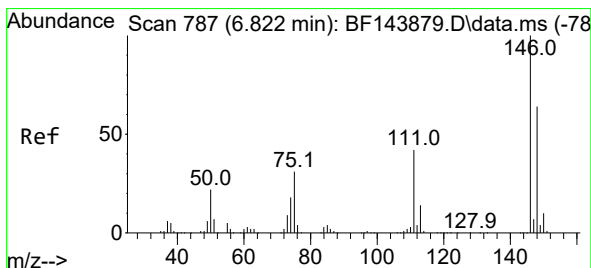
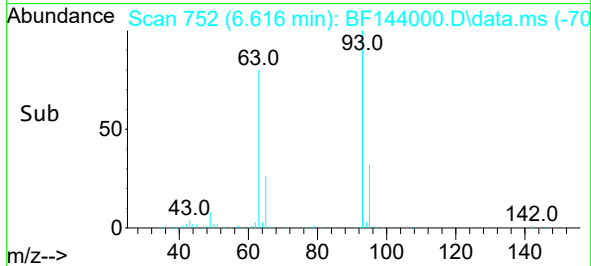
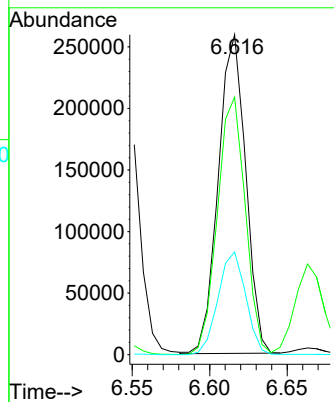


#11
 bis(2-Chloroethyl)ether
 Concen: 44.50 ng
 RT: 6.616 min Scan# 711
 Delta R.T. -0.012 min
 Lab File: BF144000.D
 Acq: 20 Oct 2025 15:57

Instrument :
 BNA_F
 ClientSampleId :
 VNJ-245MS

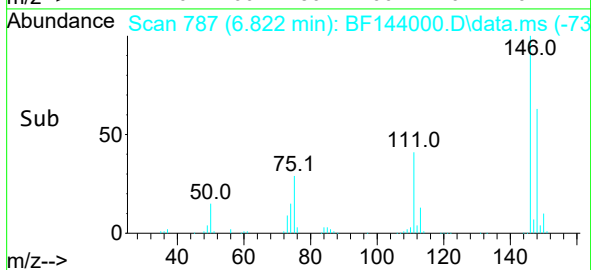
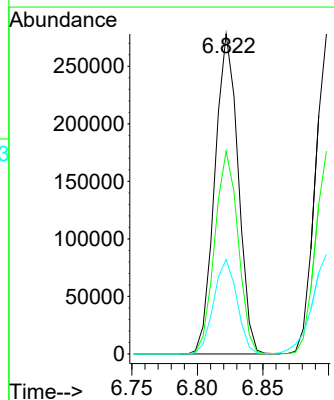
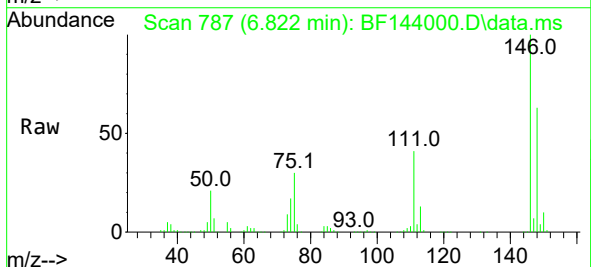


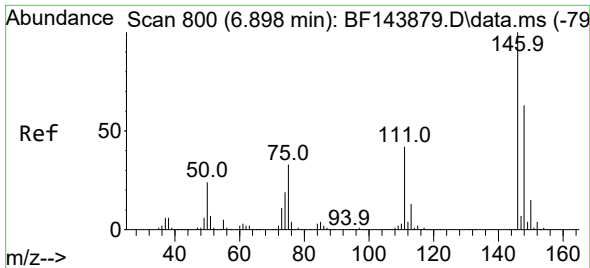
Tgt Ion: 93 Resp: 318744
 Ion Ratio Lower Upper
 93 100
 63 80.5 60.9 100.9
 95 32.1 11.5 51.5



#12
 1,3-Dichlorobenzene
 Concen: 45.15 ng
 RT: 6.822 min Scan# 787
 Delta R.T. -0.006 min
 Lab File: BF144000.D
 Acq: 20 Oct 2025 15:57

Tgt Ion:146 Resp: 343788
 Ion Ratio Lower Upper
 146 100
 148 63.4 51.0 76.4
 75 29.5 24.9 37.3

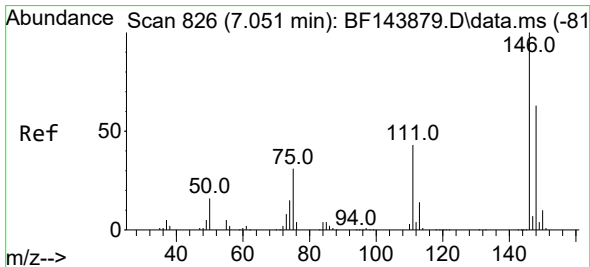
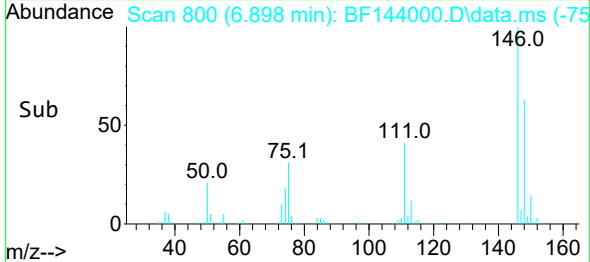
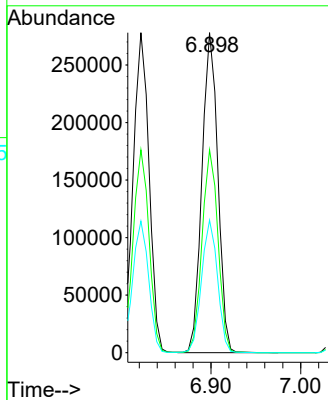
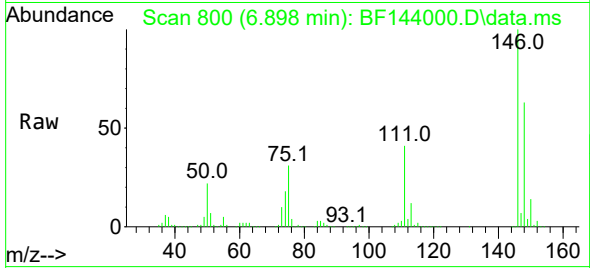




#13
 1,4-Dichlorobenzene
 Concen: 45.57 ng
 RT: 6.898 min Scan# 800
 Delta R.T. -0.006 min
 Lab File: BF144000.D
 Acq: 20 Oct 2025 15:57

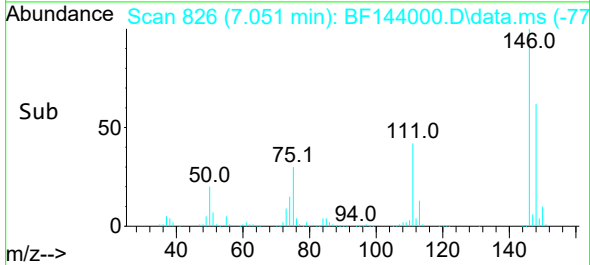
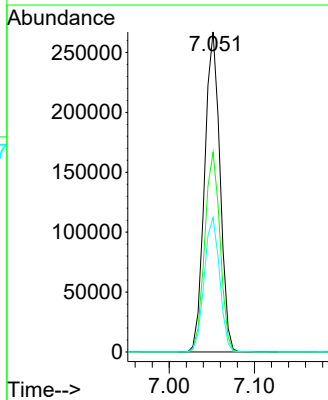
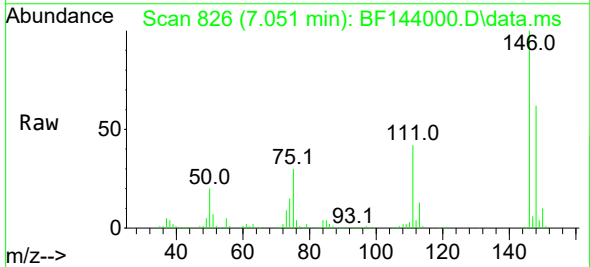
Instrument : BNA_F
 ClientSampleId : VNJ-245MS

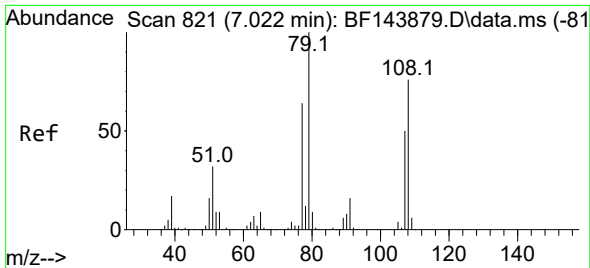
Tgt Ion:146 Resp: 342288
 Ion Ratio Lower Upper
 146 100
 148 63.4 50.5 75.7
 111 41.4 33.4 50.0



#14
 1,2-Dichlorobenzene
 Concen: 46.45 ng
 RT: 7.051 min Scan# 826
 Delta R.T. -0.006 min
 Lab File: BF144000.D
 Acq: 20 Oct 2025 15:57

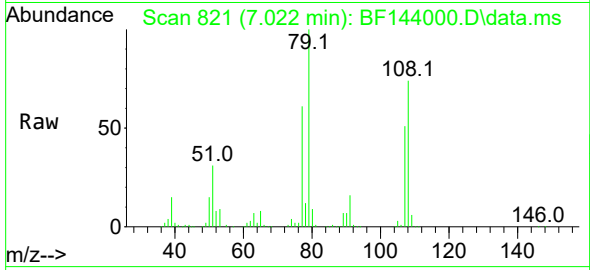
Tgt Ion:146 Resp: 334132
 Ion Ratio Lower Upper
 146 100
 148 62.5 50.6 75.8
 111 42.0 34.6 51.8



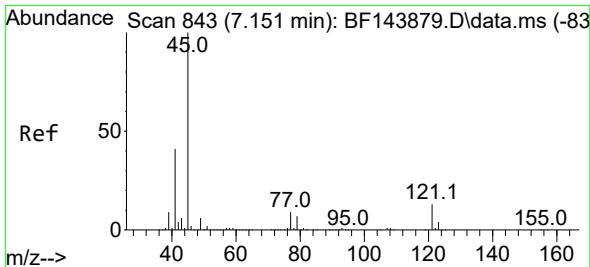
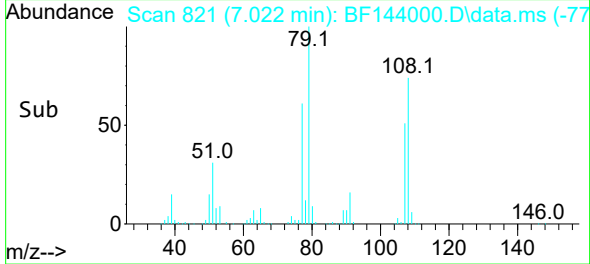
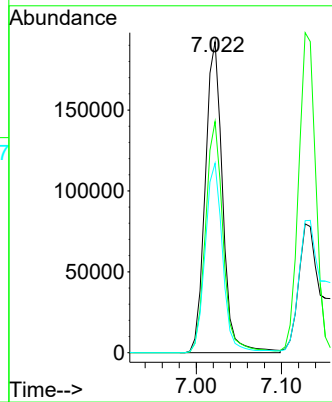


#15
 Benzyl Alcohol
 Concen: 46.91 ng
 RT: 7.022 min Scan# 81
 Delta R.T. -0.012 min
 Lab File: BF144000.D
 Acq: 20 Oct 2025 15:57

Instrument :
 BNA_F
 ClientSampleId :
 VNJ-245MS

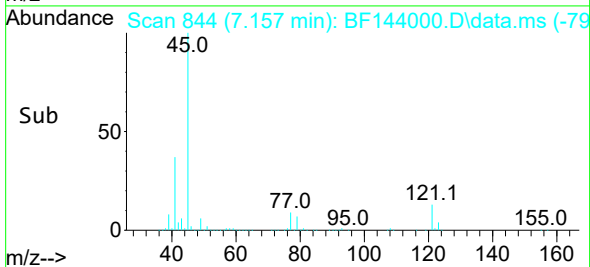
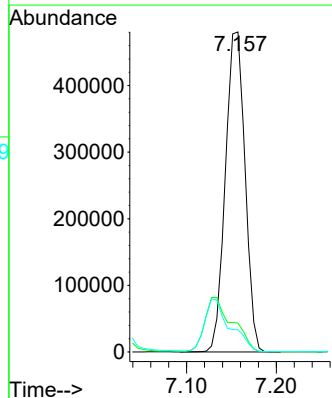
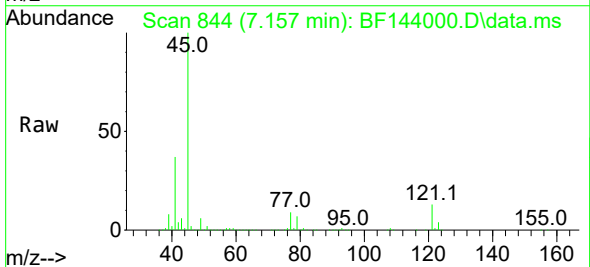


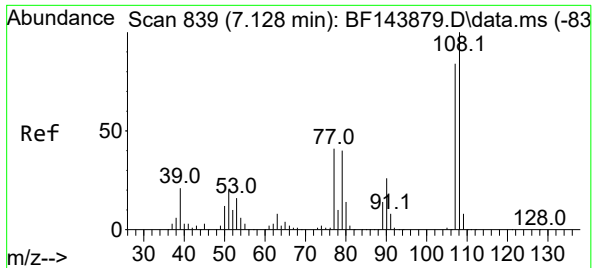
Tgt Ion: 79 Resp: 272640
 Ion Ratio Lower Upper
 79 100
 108 74.4 60.8 91.2
 77 60.9 51.0 76.6



#16
 2,2'-oxybis(1-Chloropropane)
 Concen: 44.86 ng
 RT: 7.157 min Scan# 844
 Delta R.T. 0.000 min
 Lab File: BF144000.D
 Acq: 20 Oct 2025 15:57

Tgt Ion: 45 Resp: 731362
 Ion Ratio Lower Upper
 45 100
 77 9.0 0.0 29.0
 79 7.0 0.0 26.8



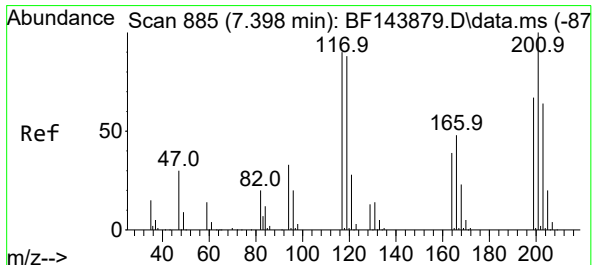
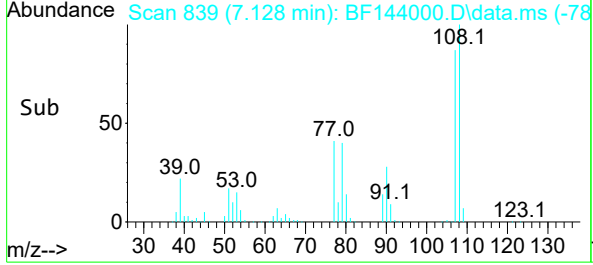
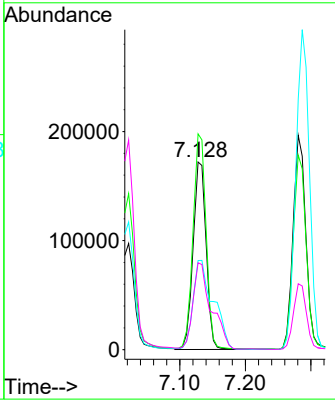
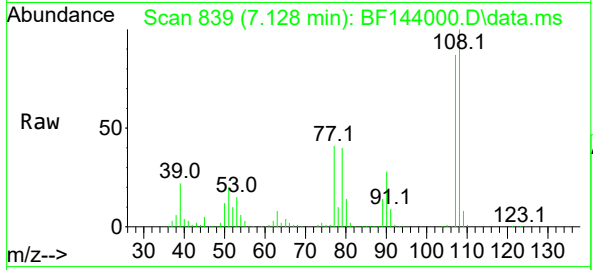


#17
 2-Methylphenol
 Concen: 45.49 ng
 RT: 7.128 min Scan# 811
 Delta R.T. -0.006 min
 Lab File: BF144000.D
 Acq: 20 Oct 2025 15:57

Instrument : BNA_F
 ClientSampleId : VNJ-245MS

Tgt Ion:107 Resp: 239106

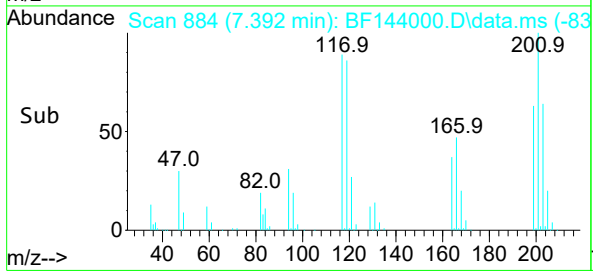
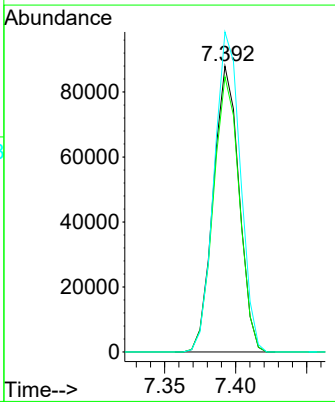
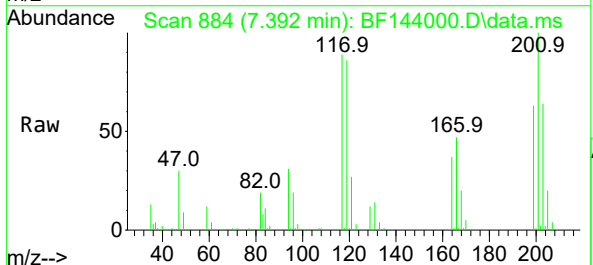
Ion	Ratio	Lower	Upper
107	100		
108	114.9	94.7	142.1
77	47.4	38.8	58.2
79	46.3	38.3	57.5

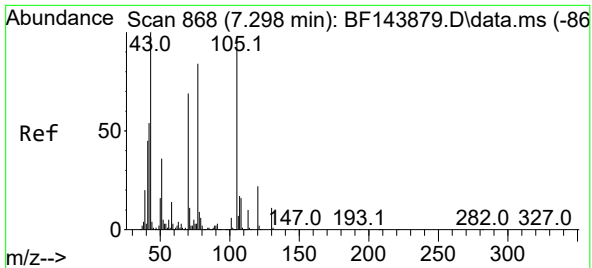


#18
 Hexachloroethane
 Concen: 44.18 ng
 RT: 7.392 min Scan# 884
 Delta R.T. -0.006 min
 Lab File: BF144000.D
 Acq: 20 Oct 2025 15:57

Tgt Ion:117 Resp: 110667

Ion	Ratio	Lower	Upper
117	100		
119	96.3	77.8	116.8
201	111.9	88.5	132.7



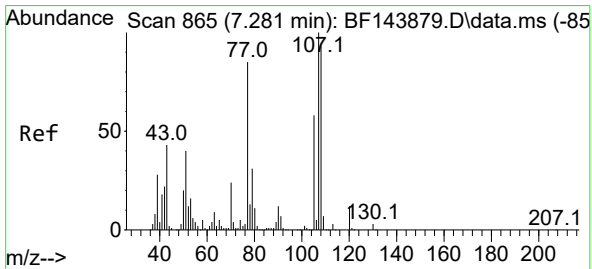
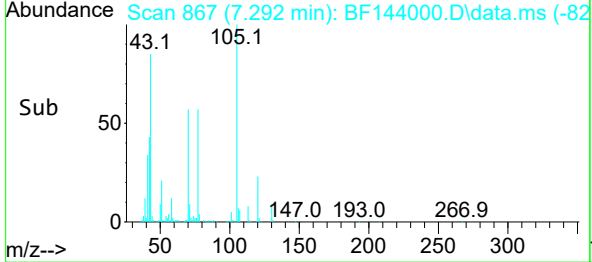
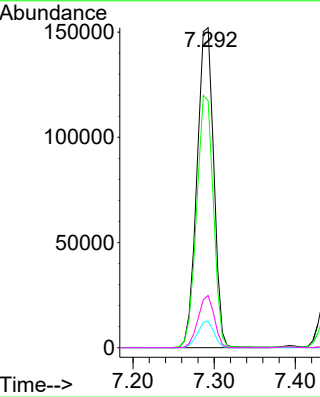
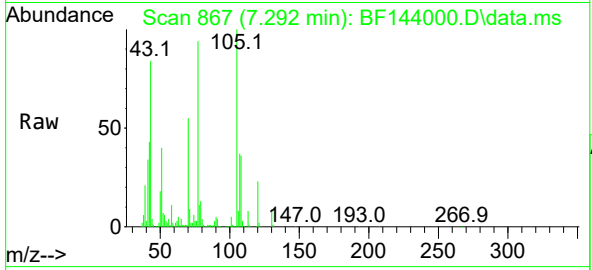


#19
 n-Nitroso-di-n-propylamine
 Concen: 41.01 ng
 RT: 7.292 min Scan# 80
 Delta R.T. -0.023 min
 Lab File: BF144000.D
 Acq: 20 Oct 2025 15:57

Instrument :
 BNA_F
 ClientSampleId :
 VNJ-245MS

Tgt Ion: 70 Resp: 217753

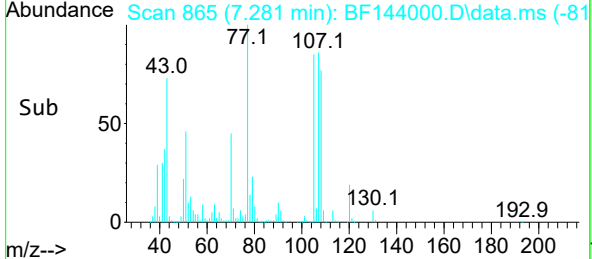
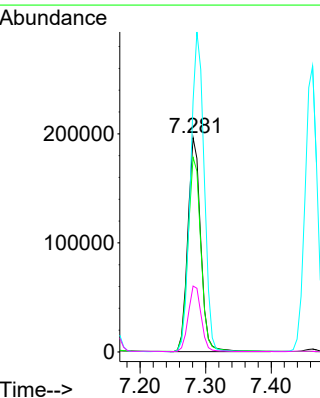
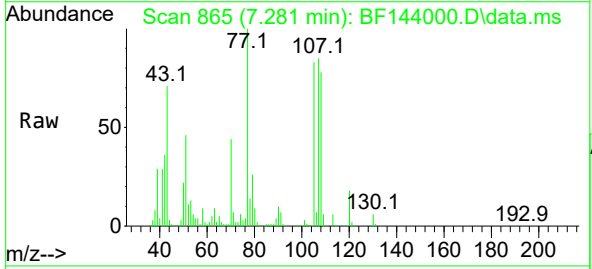
Ion	Ratio	Lower	Upper
70	100		
42	77.2	62.8	94.2
101	8.3	6.7	10.1
130	16.3	13.0	19.4

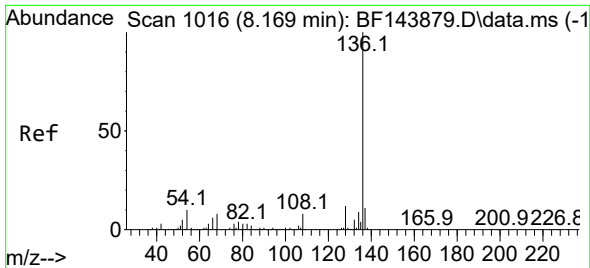


#20
 3+4-Methylphenols
 Concen: 43.85 ng
 RT: 7.281 min Scan# 865
 Delta R.T. -0.018 min
 Lab File: BF144000.D
 Acq: 20 Oct 2025 15:57

Tgt Ion: 107 Resp: 267179

Ion	Ratio	Lower	Upper
107	100		
108	90.9	73.0	113.0
77	117.1	64.6	104.6#
79	30.8	11.5	51.5



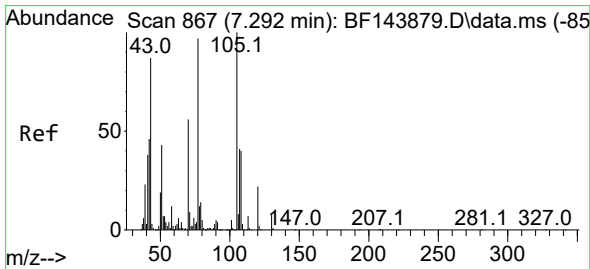
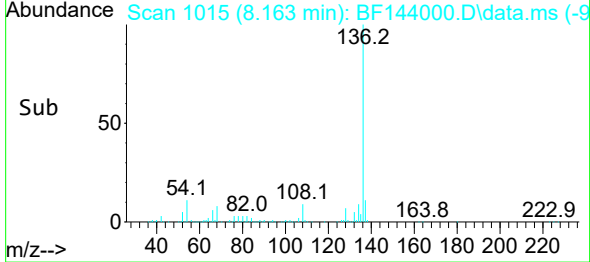
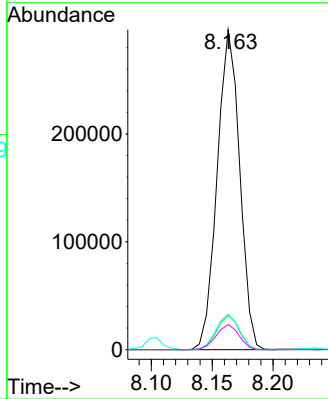
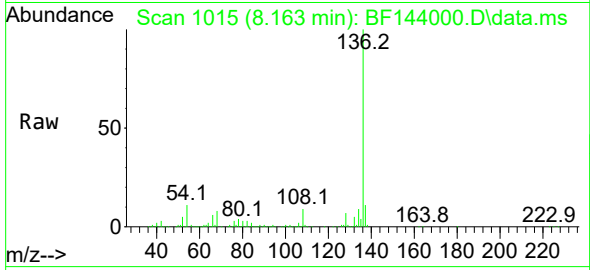


#21
 Naphthalene-d8
 Concen: 20.00 ng
 RT: 8.163 min Scan# 1016
 Delta R.T. -0.006 min
 Lab File: BF144000.D
 Acq: 20 Oct 2025 15:57

Instrument :
 BNA_F
 ClientSampleId :
 VNJ-245MS

Tgt Ion:136 Resp: 382013

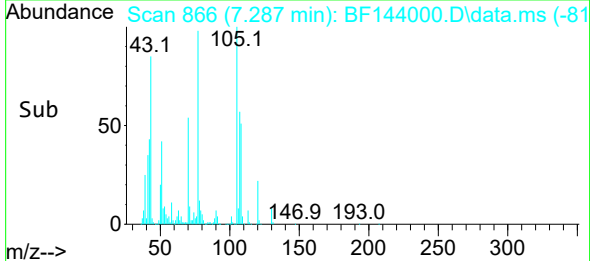
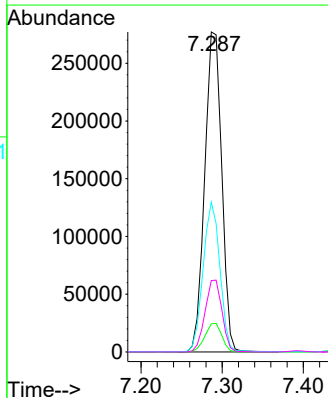
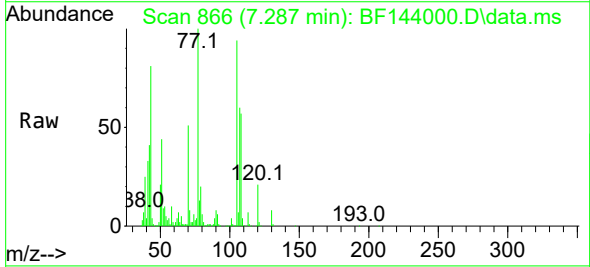
Ion	Ratio	Lower	Upper
136	100		
137	10.7	8.5	12.7
54	11.0	8.2	12.4
68	7.9	6.2	9.4

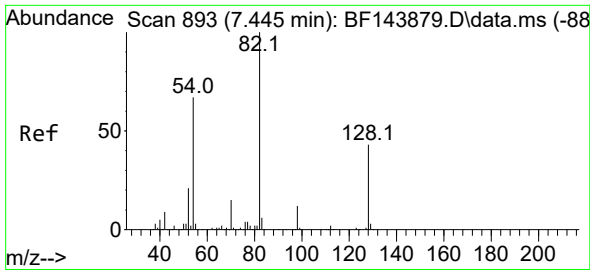


#22
 Acetophenone
 Concen: 49.97 ng
 RT: 7.287 min Scan# 866
 Delta R.T. -0.017 min
 Lab File: BF144000.D
 Acq: 20 Oct 2025 15:57

Tgt Ion:105 Resp: 403608

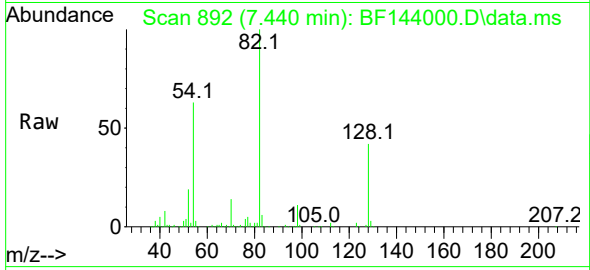
Ion	Ratio	Lower	Upper
105	100		
71	8.8	7.4	11.0
51	46.8	34.2	51.4
120	22.3	17.7	26.5



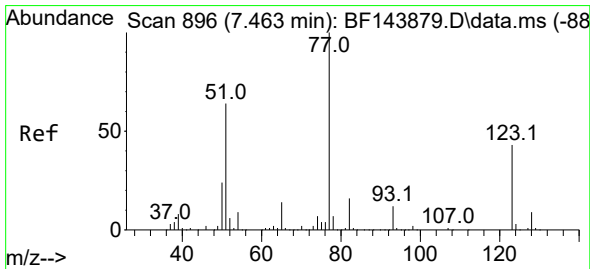
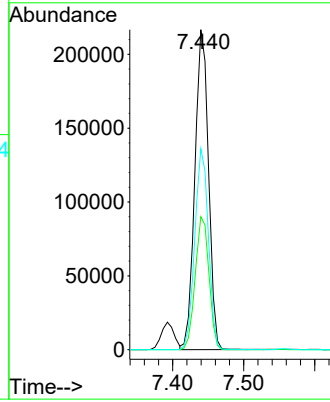
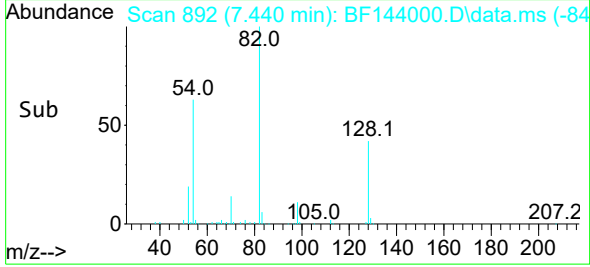


#23
 Nitrobenzene-d5
 Concen: 46.08 ng
 RT: 7.440 min Scan# 893
 Delta R.T. -0.017 min
 Lab File: BF144000.D
 Acq: 20 Oct 2025 15:57

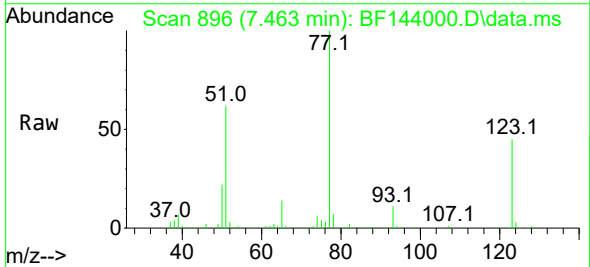
Instrument :
 BNA_F
 ClientSampleId :
 VNJ-245MS



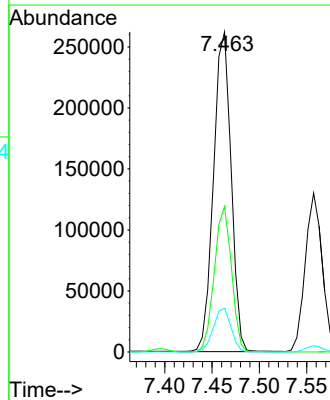
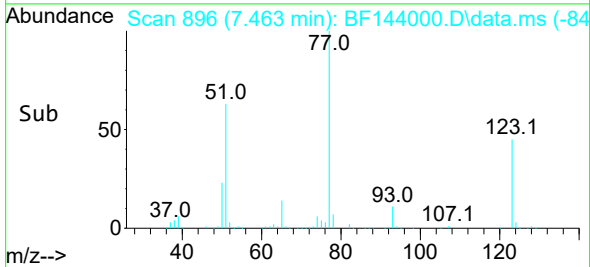
Tgt Ion: 82 Resp: 289756
 Ion Ratio Lower Upper
 82 100
 128 41.5 34.0 51.0
 54 62.8 53.2 79.8

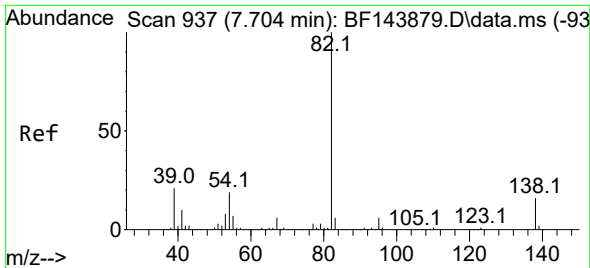


#24
 Nitrobenzene
 Concen: 48.70 ng
 RT: 7.463 min Scan# 896
 Delta R.T. -0.012 min
 Lab File: BF144000.D
 Acq: 20 Oct 2025 15:57



Tgt Ion: 77 Resp: 340069
 Ion Ratio Lower Upper
 77 100
 123 45.4 34.2 51.4
 65 13.6 11.0 16.6



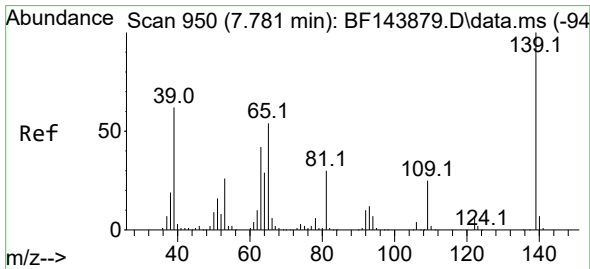
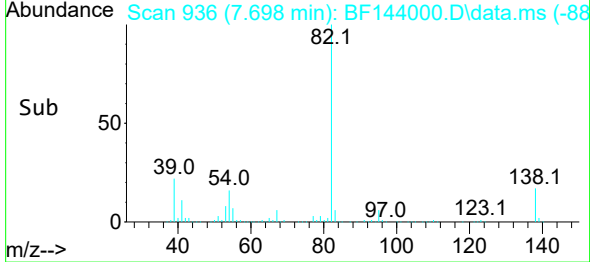
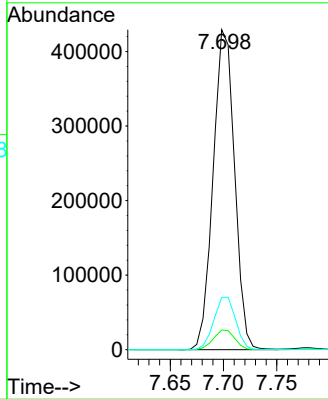
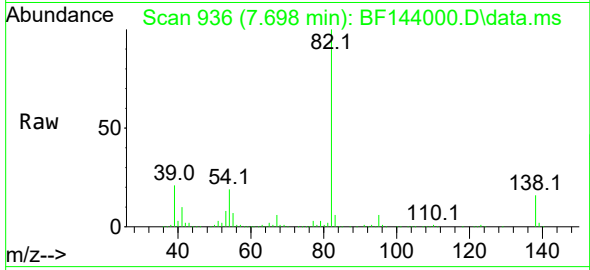


#25
 Isophorone
 Concen: 45.26 ng
 RT: 7.698 min Scan# 91
 Delta R.T. -0.023 min
 Lab File: BF144000.D
 Acq: 20 Oct 2025 15:57

Instrument :
 BNA_F
 ClientSampleId :
 VNJ-245MS

Tgt Ion: 82 Resp: 600118

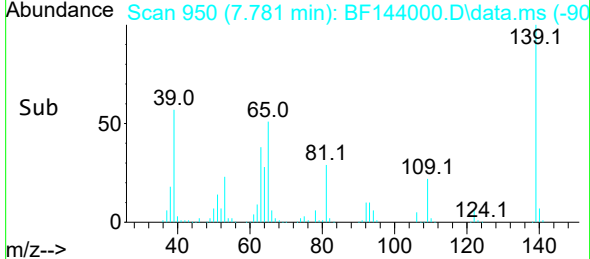
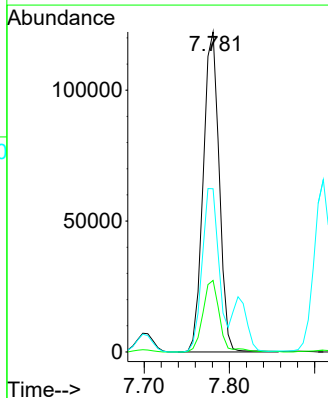
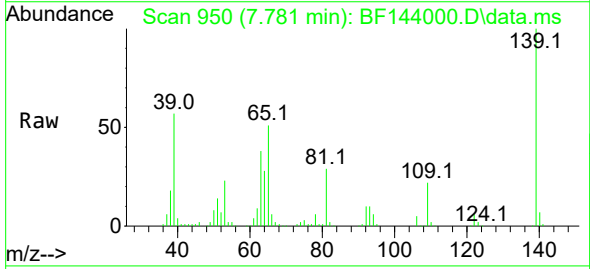
Ion	Ratio	Lower	Upper
82	100		
95	6.2	5.1	7.7
138	16.3	12.9	19.3

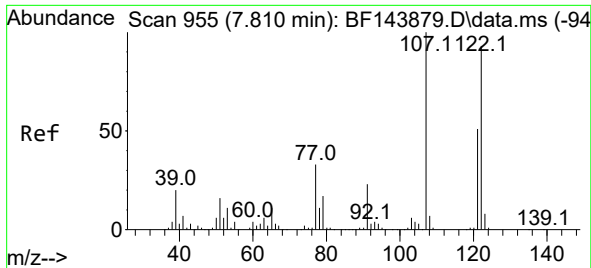


#26
 2-Nitrophenol
 Concen: 53.26 ng
 RT: 7.781 min Scan# 950
 Delta R.T. -0.006 min
 Lab File: BF144000.D
 Acq: 20 Oct 2025 15:57

Tgt Ion: 139 Resp: 159448

Ion	Ratio	Lower	Upper
139	100		
109	22.3	19.8	29.6
65	51.0	42.9	64.3



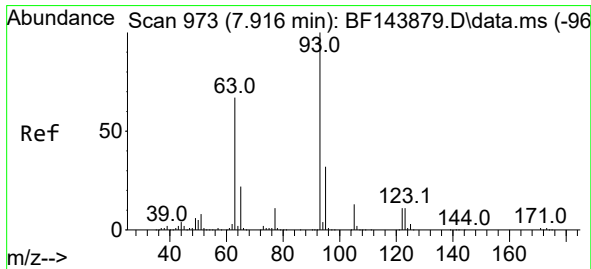
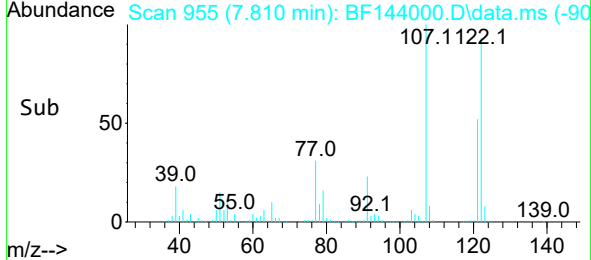
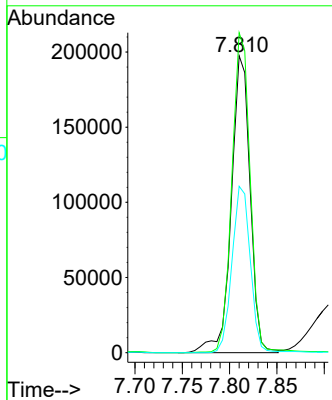
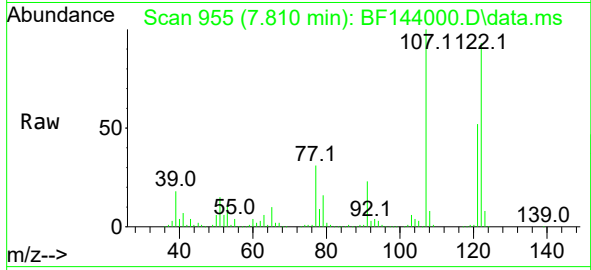


#27
 2,4-Dimethylphenol
 Concen: 50.57 ng
 RT: 7.810 min Scan# 911
 Delta R.T. -0.012 min
 Lab File: BF144000.D
 Acq: 20 Oct 2025 15:57

Instrument : BNA_F
 ClientSampleId : VNJ-245MS

Tgt Ion:122 Resp: 272349

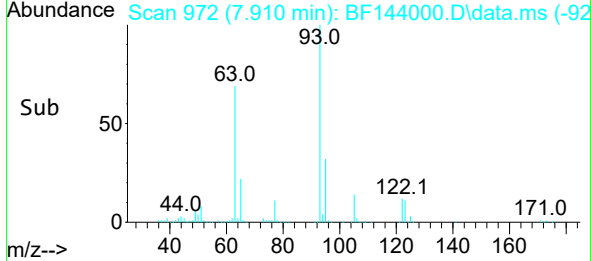
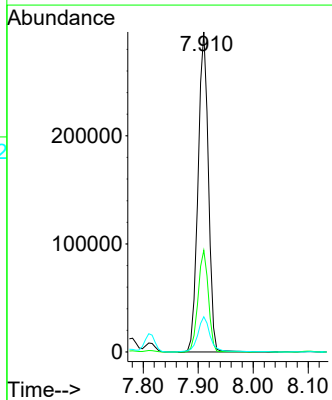
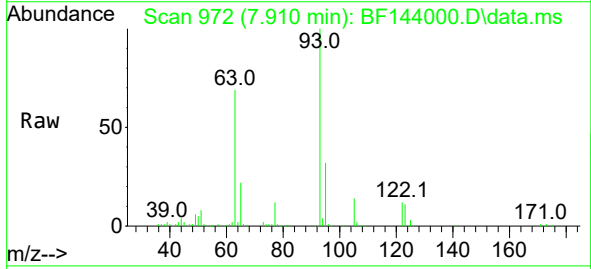
Ion	Ratio	Lower	Upper
122	100		
107	107.7	86.1	129.1
121	56.0	43.8	65.6

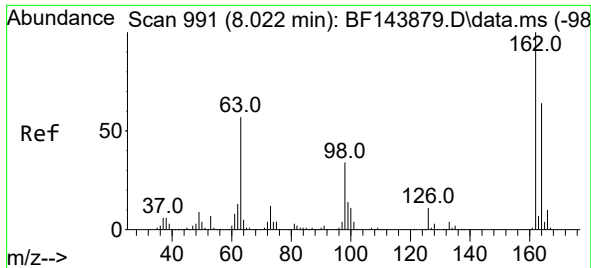


#28
 bis(2-Chloroethoxy)methane
 Concen: 46.31 ng
 RT: 7.910 min Scan# 972
 Delta R.T. -0.012 min
 Lab File: BF144000.D
 Acq: 20 Oct 2025 15:57

Tgt Ion: 93 Resp: 387810

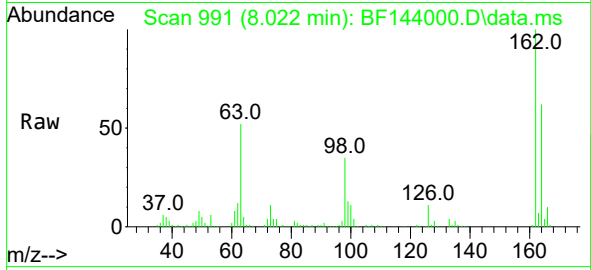
Ion	Ratio	Lower	Upper
93	100		
95	31.8	25.9	38.9
123	11.0	9.4	14.0



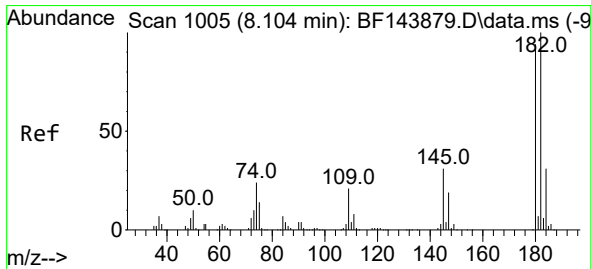
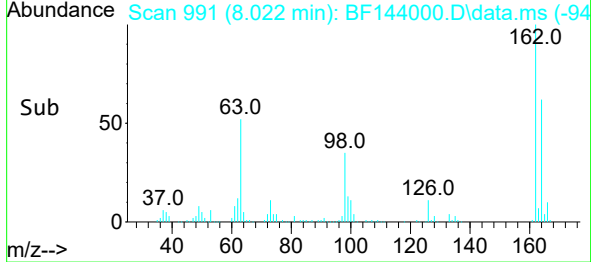
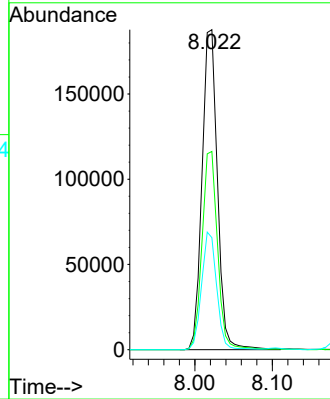


#29
 2,4-Dichlorophenol
 Concen: 46.26 ng
 RT: 8.022 min Scan# 991
 Delta R.T. -0.006 min
 Lab File: BF144000.D
 Acq: 20 Oct 2025 15:57

Instrument :
 BNA_F
 ClientSampleId :
 VNJ-245MS

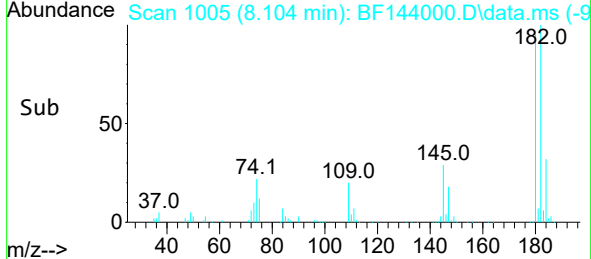
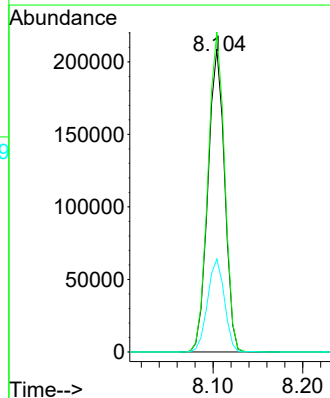
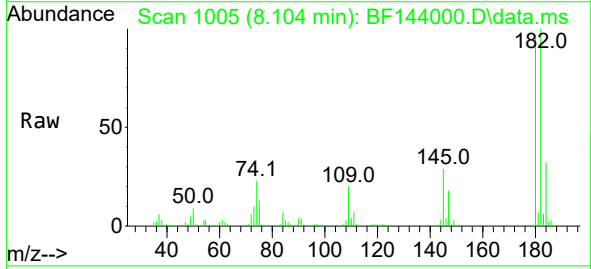


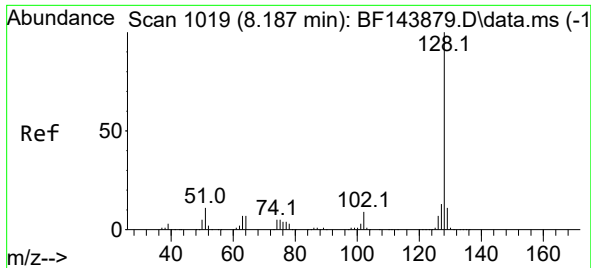
Tgt Ion:162 Resp: 259499
 Ion Ratio Lower Upper
 162 100
 164 61.9 43.9 83.9
 98 35.0 14.4 54.4



#30
 1,2,4-Trichlorobenzene
 Concen: 48.93 ng
 RT: 8.104 min Scan# 1005
 Delta R.T. -0.006 min
 Lab File: BF144000.D
 Acq: 20 Oct 2025 15:57

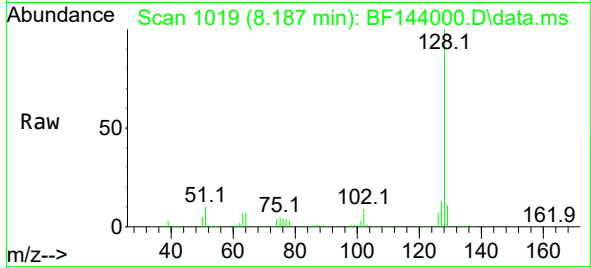
Tgt Ion:180 Resp: 269947
 Ion Ratio Lower Upper
 180 100
 182 105.7 85.4 128.0
 145 30.7 26.3 39.5



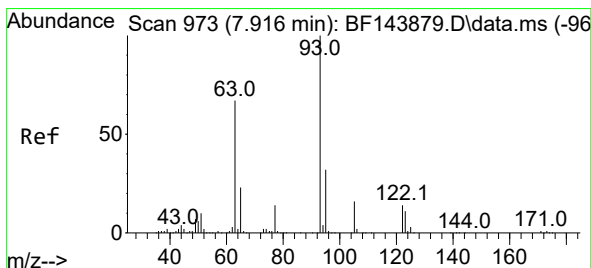
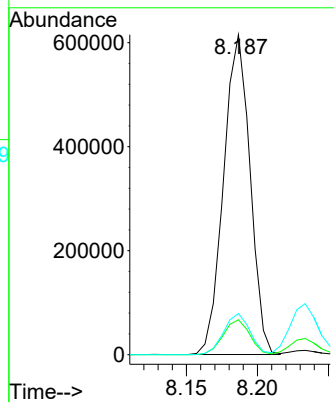
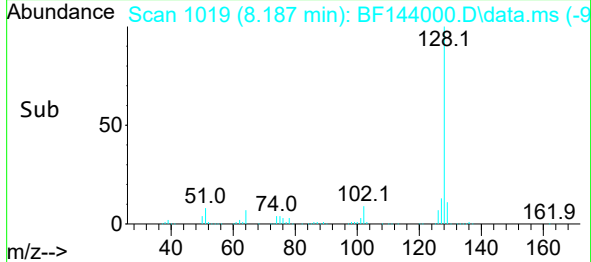


#31
 Naphthalene
 Concen: 45.86 ng
 RT: 8.187 min Scan# 1019
 Delta R.T. -0.006 min
 Lab File: BF144000.D
 Acq: 20 Oct 2025 15:57

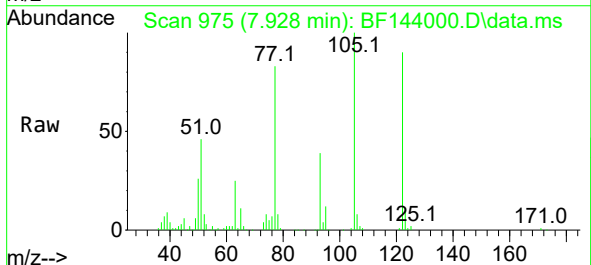
Instrument :
 BNA_F
 ClientSampleId :
 VNJ-245MS



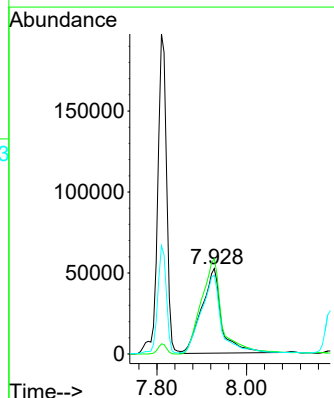
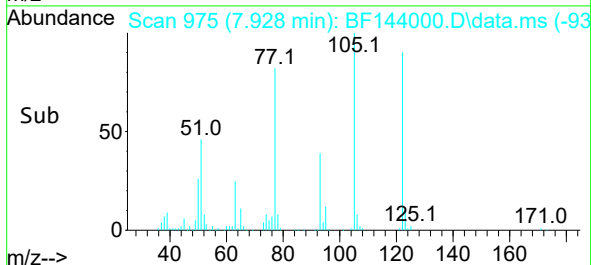
Tgt Ion:128 Resp: 796848
 Ion Ratio Lower Upper
 128 100
 129 10.9 8.7 13.1
 127 12.8 10.0 15.0

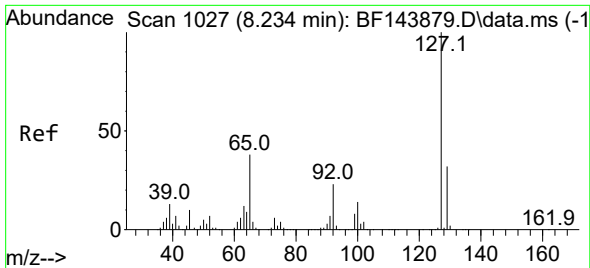


#32
 Benzoic acid
 Concen: 43.42 ng
 RT: 7.928 min Scan# 975
 Delta R.T. -0.035 min
 Lab File: BF144000.D
 Acq: 20 Oct 2025 15:57



Tgt Ion:122 Resp: 161816
 Ion Ratio Lower Upper
 122 100
 105 111.5 93.5 133.5
 77 92.4 76.3 116.3



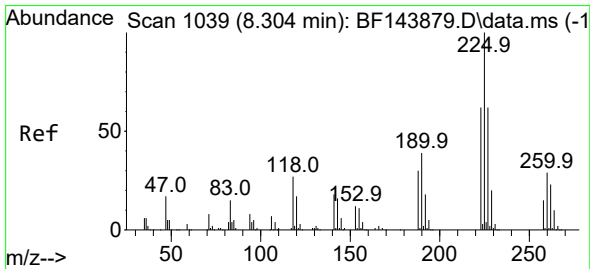
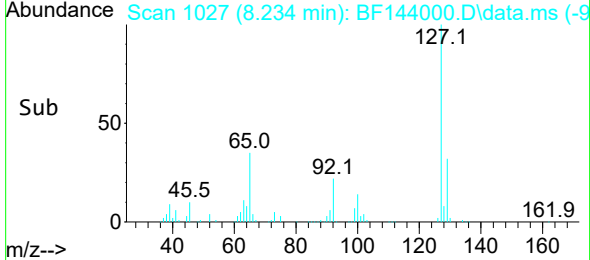
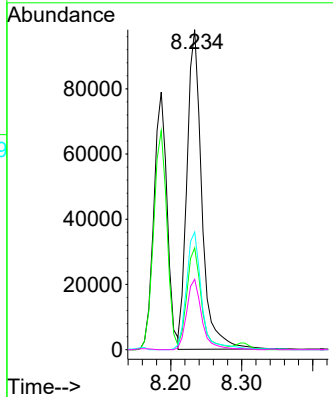
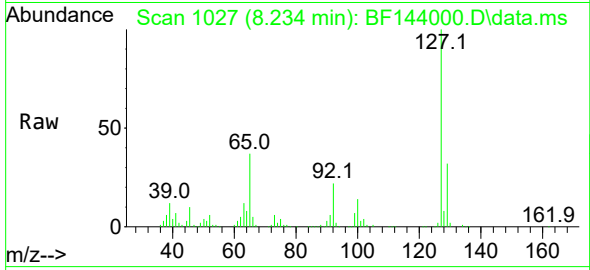


#33
 4-Chloroaniline
 Concen: 21.89 ng
 RT: 8.234 min Scan# 1027
 Delta R.T. -0.006 min
 Lab File: BF144000.D
 Acq: 20 Oct 2025 15:57

Instrument : BNA_F
 Client Sample Id : VNJ-245MS

Tgt Ion:127 Resp: 142681

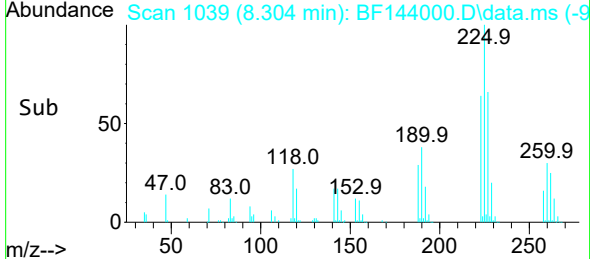
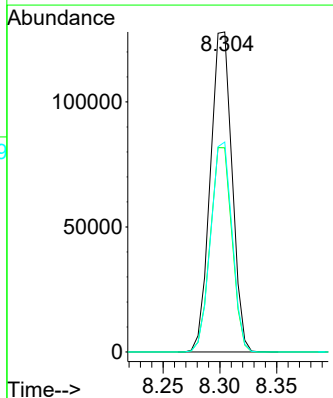
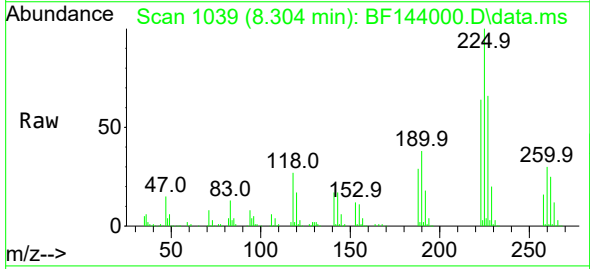
Ion	Ratio	Lower	Upper
127	100		
129	31.8	25.8	38.8
65	36.8	30.0	45.0
92	22.0	18.2	27.2

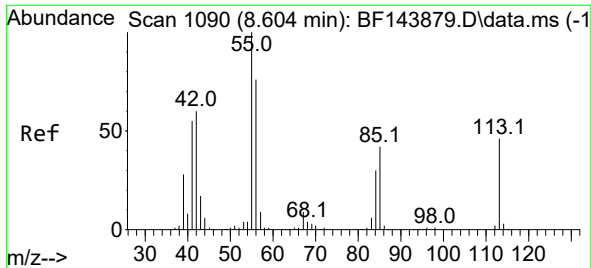


#34
 Hexachlorobutadiene
 Concen: 44.44 ng
 RT: 8.304 min Scan# 1039
 Delta R.T. -0.006 min
 Lab File: BF144000.D
 Acq: 20 Oct 2025 15:57

Tgt Ion:225 Resp: 170350

Ion	Ratio	Lower	Upper
225	100		
223	63.8	49.4	74.2
227	65.6	49.7	74.5

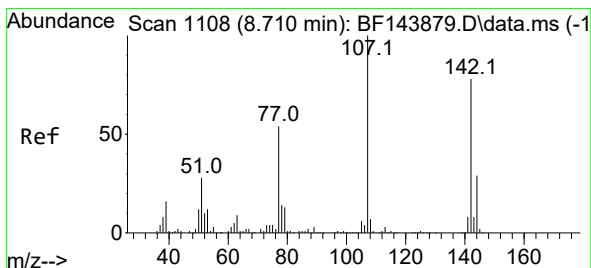
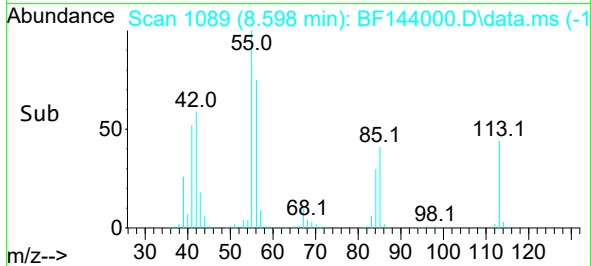
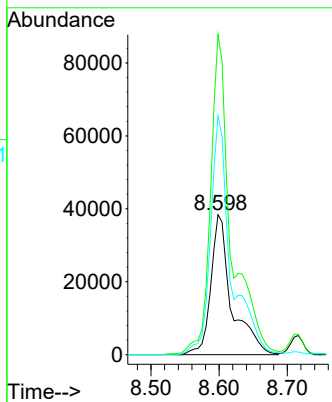
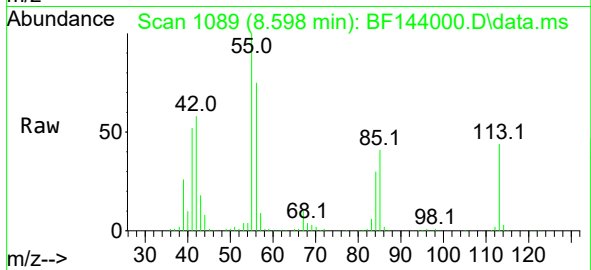




#35
 Caprolactam
 Concen: 45.66 ng
 RT: 8.598 min Scan# 1109
 Delta R.T. -0.047 min
 Lab File: BF144000.D
 Acq: 20 Oct 2025 15:57

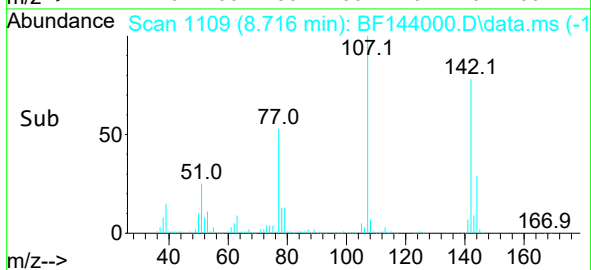
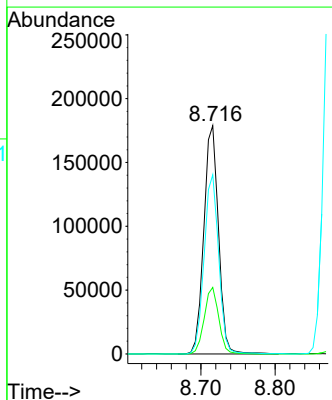
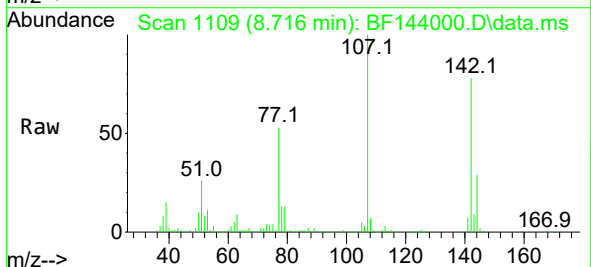
Instrument :
 BNA_F
 ClientSampleId :
 VNJ-245MS

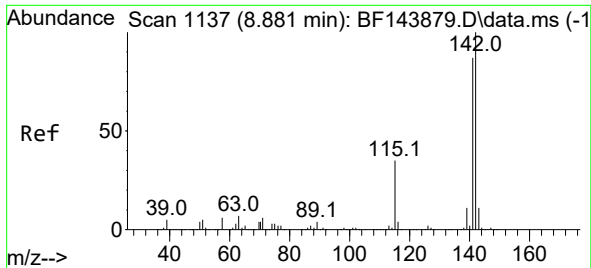
Tgt Ion:113 Resp: 81445
 Ion Ratio Lower Upper
 113 100
 55 228.5 199.6 239.6
 56 170.3 146.0 186.0



#36
 4-Chloro-3-methylphenol
 Concen: 45.68 ng
 RT: 8.716 min Scan# 1109
 Delta R.T. -0.006 min
 Lab File: BF144000.D
 Acq: 20 Oct 2025 15:57

Tgt Ion:107 Resp: 246157
 Ion Ratio Lower Upper
 107 100
 144 29.1 23.1 34.7
 142 78.5 62.6 94.0

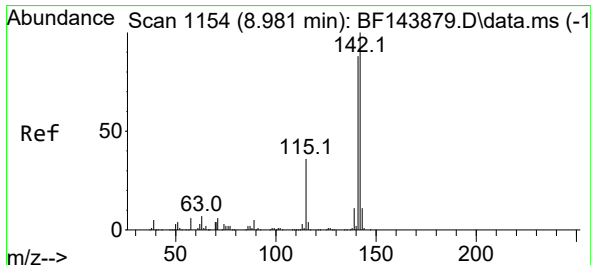
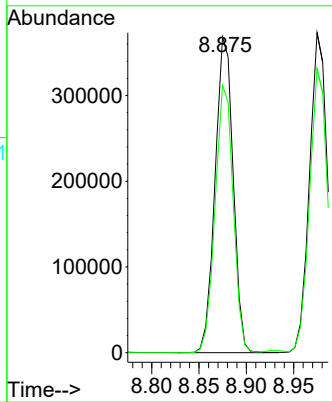
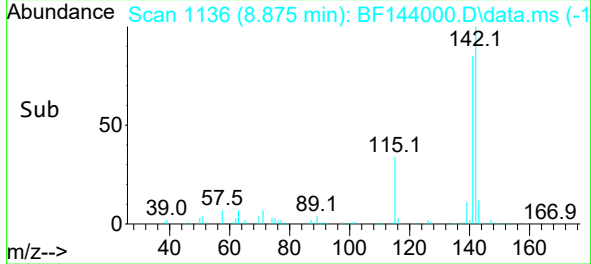
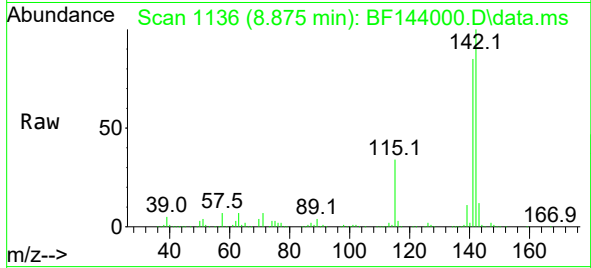




#37
 2-Methylnaphthalene
 Concen: 42.29 ng
 RT: 8.875 min Scan# 1113
 Delta R.T. -0.012 min
 Lab File: BF144000.D
 Acq: 20 Oct 2025 15:57

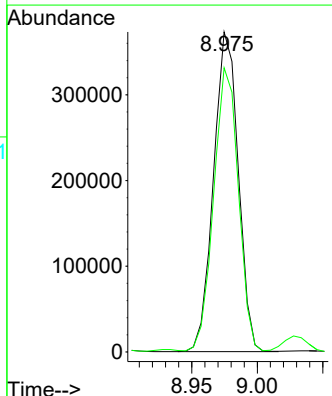
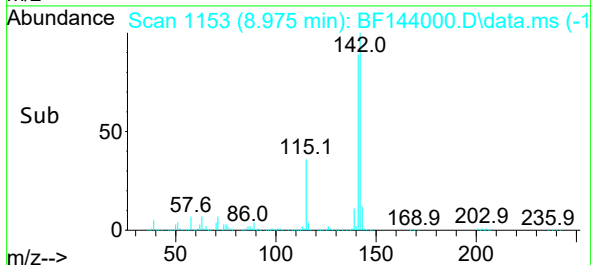
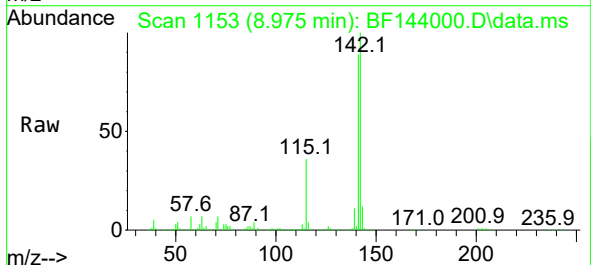
Instrument : BNA_F
 ClientSampleId : VNJ-245MS

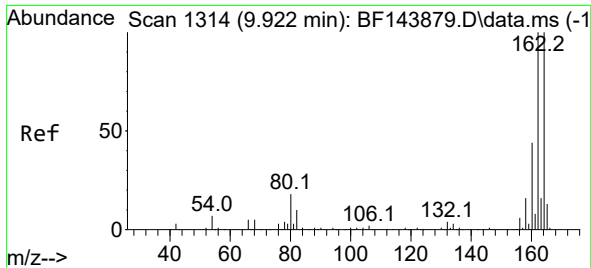
Tgt Ion:142 Resp: 489487
 Ion Ratio Lower Upper
 142 100
 141 84.7 69.2 103.8



#38
 1-Methylnaphthalene
 Concen: 43.50 ng
 RT: 8.975 min Scan# 1153
 Delta R.T. -0.011 min
 Lab File: BF144000.D
 Acq: 20 Oct 2025 15:57

Tgt Ion:142 Resp: 488367
 Ion Ratio Lower Upper
 142 100
 141 88.8 70.8 106.2



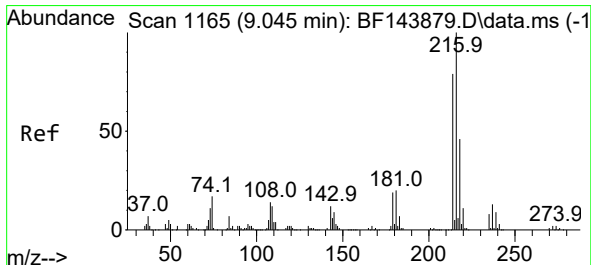
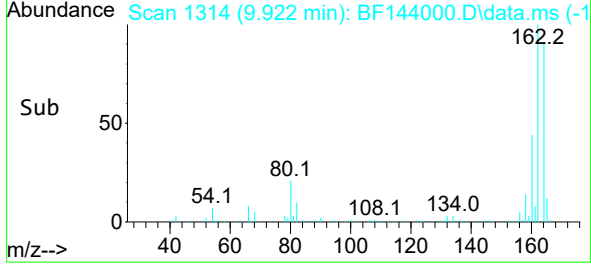
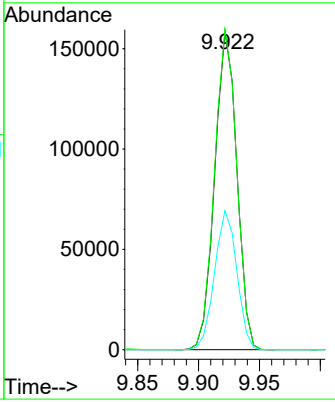
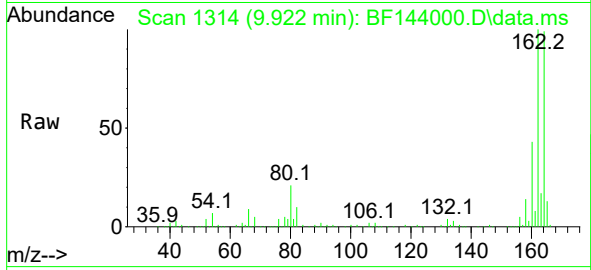


#39
 Acenaphthene-d10
 Concen: 20.00 ng
 RT: 9.922 min Scan# 111
 Delta R.T. -0.005 min
 Lab File: BF144000.D
 Acq: 20 Oct 2025 15:57

Instrument : BNA_F
 ClientSampleId : VNJ-245MS

Tgt Ion:164 Resp: 200713

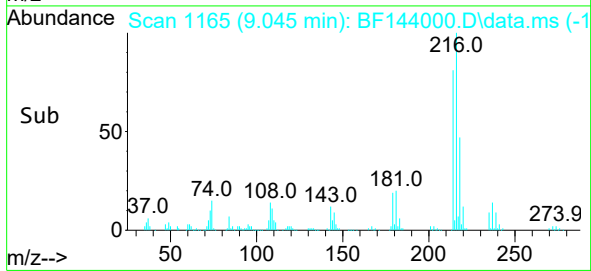
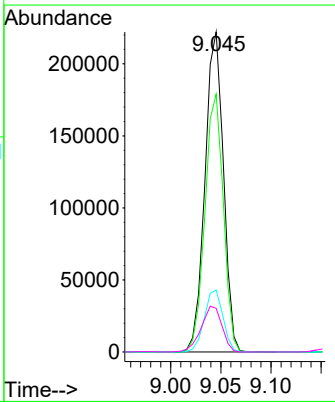
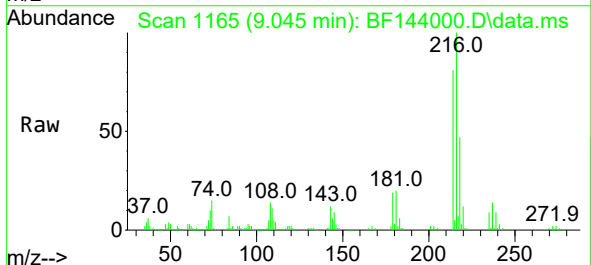
Ion	Ratio	Lower	Upper
164	100		
162	100.5	80.2	120.2
160	43.7	35.4	53.0

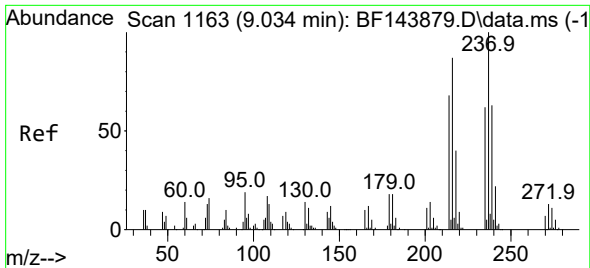


#40
 1,2,4,5-Tetrachlorobenzene
 Concen: 51.28 ng
 RT: 9.045 min Scan# 1165
 Delta R.T. -0.006 min
 Lab File: BF144000.D
 Acq: 20 Oct 2025 15:57

Tgt Ion:216 Resp: 284451

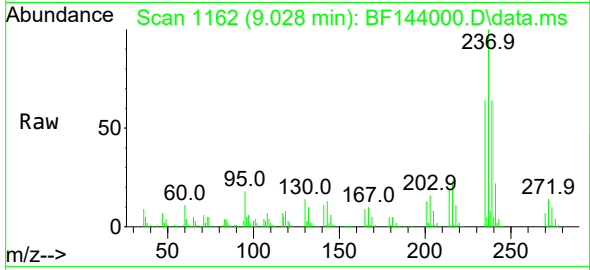
Ion	Ratio	Lower	Upper
216	100		
214	80.5	62.6	94.0
179	19.6	15.4	23.0
108	16.1	12.0	18.0



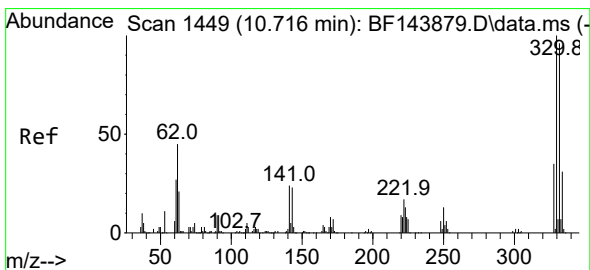
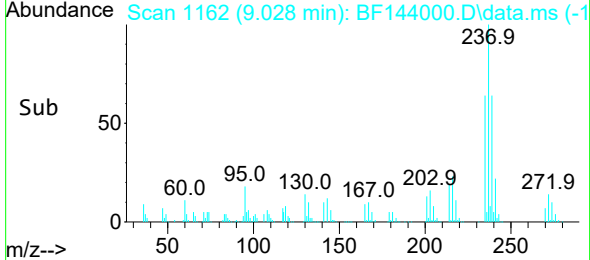
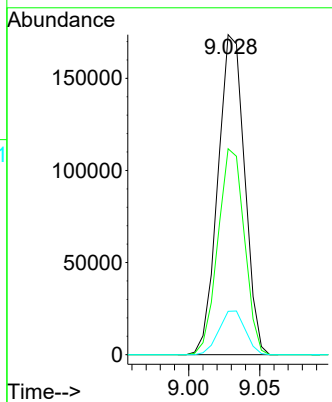


#41
 Hexachlorocyclopentadiene
 Concen: 98.61 ng
 RT: 9.028 min Scan# 1162
 Delta R.T. -0.006 min
 Lab File: BF144000.D
 Acq: 20 Oct 2025 15:57

Instrument :
 BNA_F
 ClientSampleId :
 VNJ-245MS

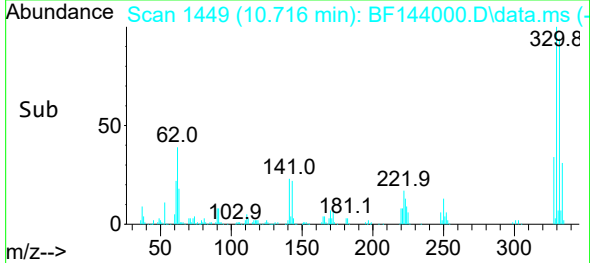
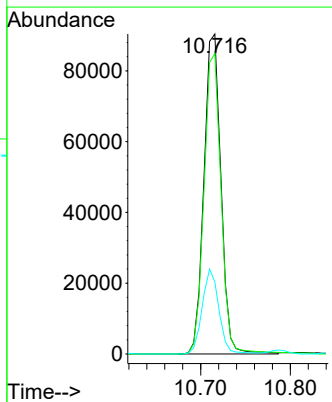
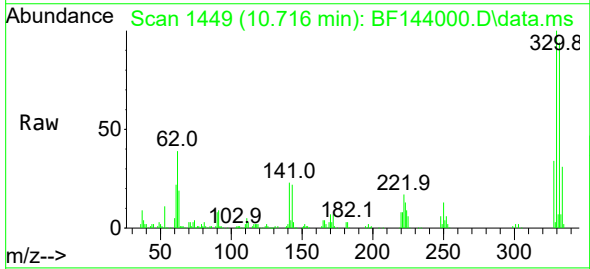


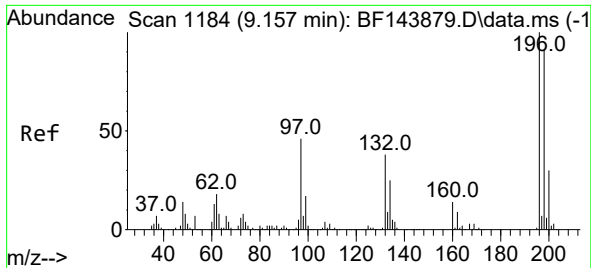
Tgt Ion:237 Resp: 226930
 Ion Ratio Lower Upper
 237 100
 235 64.4 42.3 82.3
 272 13.5 0.0 33.1



#42
 2,4,6-Tribromophenol
 Concen: 59.51 ng
 RT: 10.716 min Scan# 1449
 Delta R.T. -0.006 min
 Lab File: BF144000.D
 Acq: 20 Oct 2025 15:57

Tgt Ion:330 Resp: 118959
 Ion Ratio Lower Upper
 330 100
 332 94.8 76.9 115.3
 141 26.1 20.2 30.4



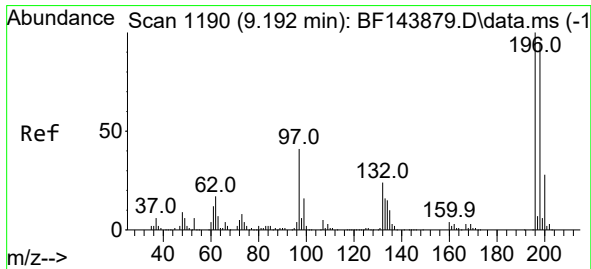
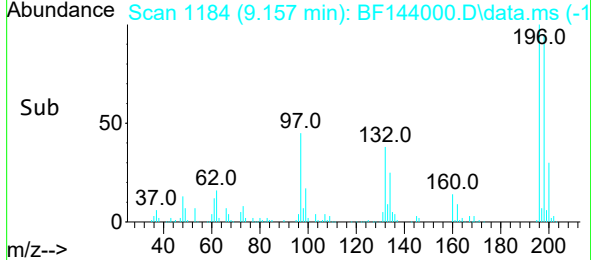
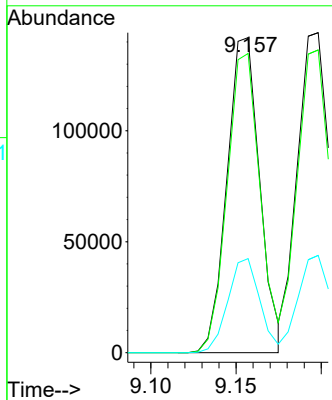
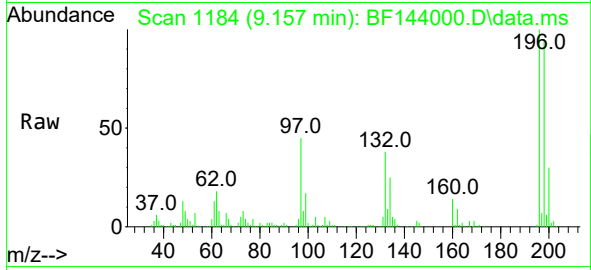


#43
 2,4,6-Trichlorophenol
 Concen: 46.89 ng
 RT: 9.157 min Scan# 1184
 Delta R.T. -0.006 min
 Lab File: BF144000.D
 Acq: 20 Oct 2025 15:57

Instrument : BNA_F
 ClientSampleId : VNJ-245MS

Tgt Ion:196 Resp: 190058

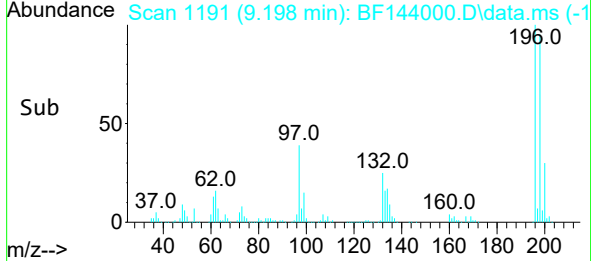
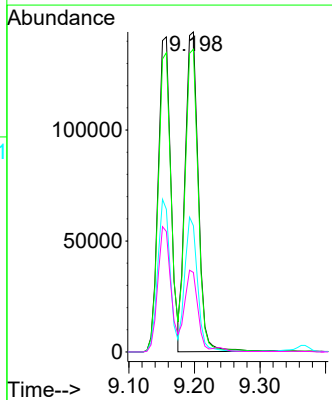
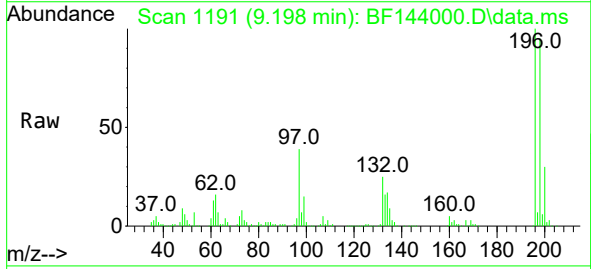
Ion	Ratio	Lower	Upper
196	100		
198	95.0	72.8	109.2
200	29.9	24.0	36.0

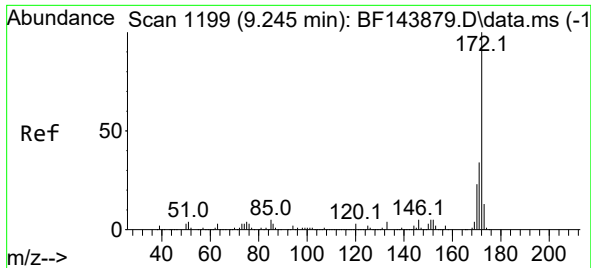


#44
 2,4,5-Trichlorophenol
 Concen: 46.75 ng
 RT: 9.198 min Scan# 1191
 Delta R.T. -0.006 min
 Lab File: BF144000.D
 Acq: 20 Oct 2025 15:57

Tgt Ion:196 Resp: 200259

Ion	Ratio	Lower	Upper
196	100		
198	94.6	75.5	113.3
97	39.5	33.9	50.9
132	24.8	20.0	30.0



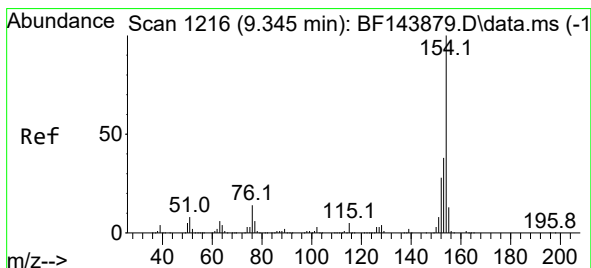
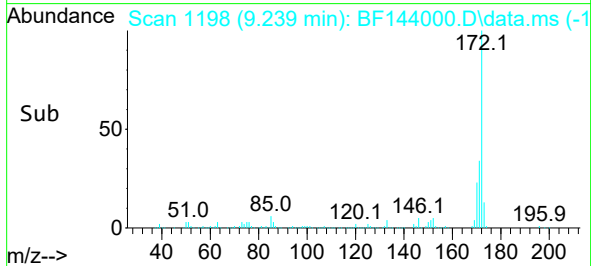
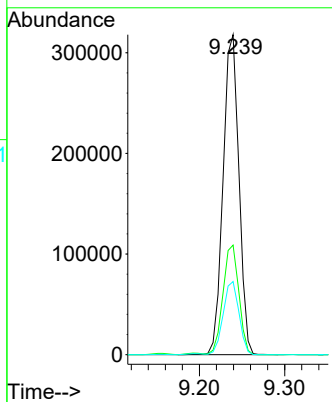
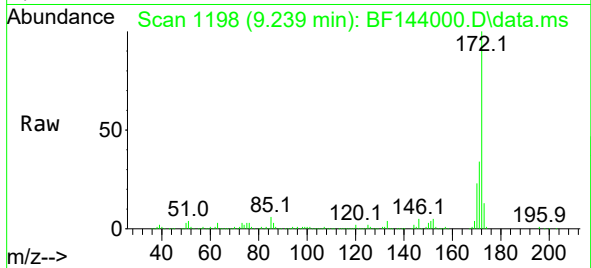


#45
 2-Fluorobiphenyl
 Concen: 32.40 ng
 RT: 9.239 min Scan# 1198
 Delta R.T. -0.012 min
 Lab File: BF144000.D
 Acq: 20 Oct 2025 15:57

Instrument :
 BNA_F
 ClientSampleId :
 VNJ-245MS

Tgt Ion:172 Resp: 409869

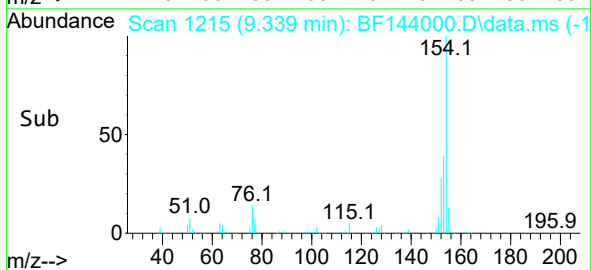
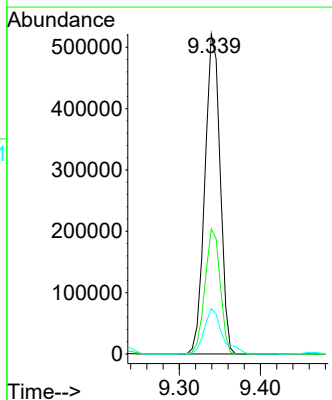
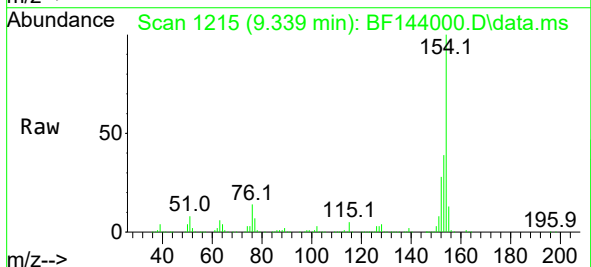
Ion	Ratio	Lower	Upper
172	100		
171	34.3	27.4	41.0
170	22.9	18.6	28.0

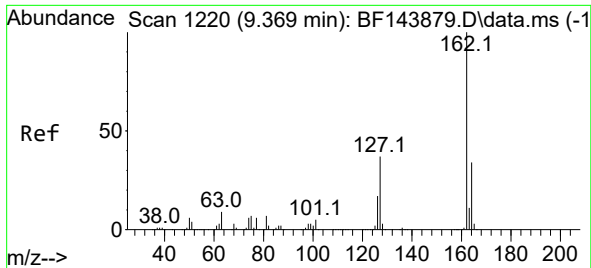


#46
 1,1'-Biphenyl
 Concen: 51.09 ng
 RT: 9.339 min Scan# 1215
 Delta R.T. -0.012 min
 Lab File: BF144000.D
 Acq: 20 Oct 2025 15:57

Tgt Ion:154 Resp: 678896

Ion	Ratio	Lower	Upper
154	100		
153	39.1	18.4	58.4
76	14.2	0.0	34.0



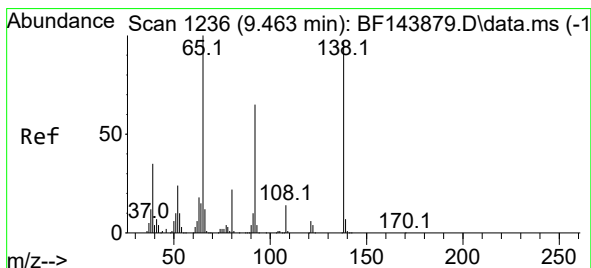
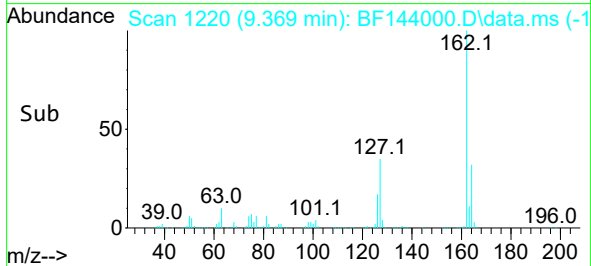
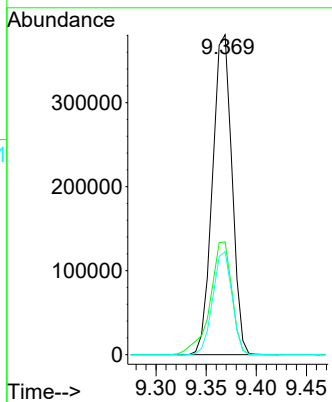
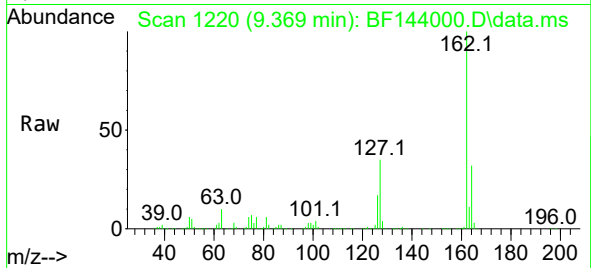


#47
 2-Chloronaphthalene
 Concen: 46.28 ng
 RT: 9.369 min Scan# 11
 Delta R.T. -0.006 min
 Lab File: BF144000.D
 Acq: 20 Oct 2025 15:57

Instrument :
 BNA_F
 ClientSampleId :
 VNJ-245MS

Tgt Ion: 162 Resp: 512730

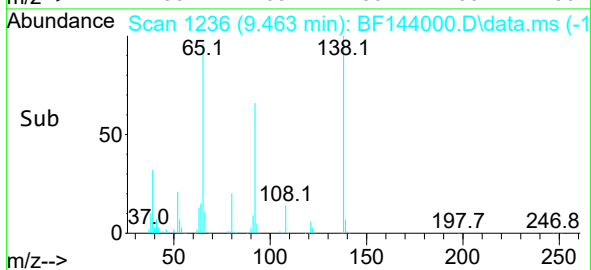
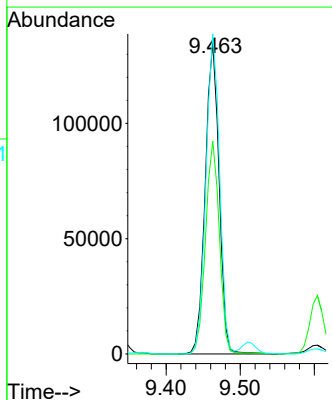
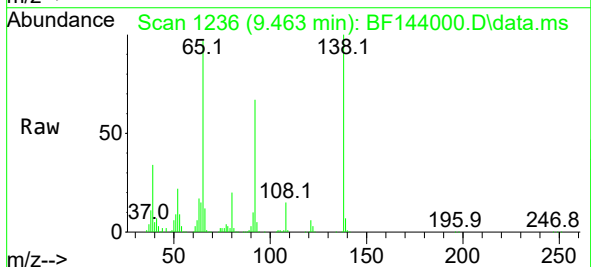
Ion	Ratio	Lower	Upper
162	100		
127	35.2	30.2	45.2
164	32.2	26.9	40.3

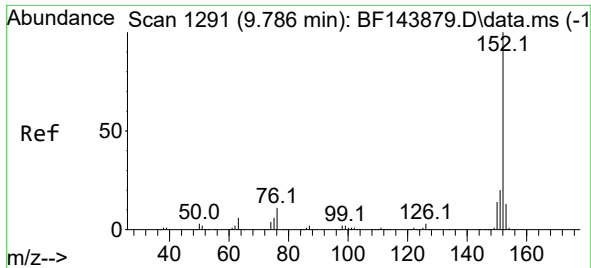


#48
 2-Nitroaniline
 Concen: 50.19 ng
 RT: 9.463 min Scan# 1236
 Delta R.T. -0.006 min
 Lab File: BF144000.D
 Acq: 20 Oct 2025 15:57

Tgt Ion: 65 Resp: 175824

Ion	Ratio	Lower	Upper
65	100		
92	68.4	52.1	78.1
138	102.7	77.4	116.2



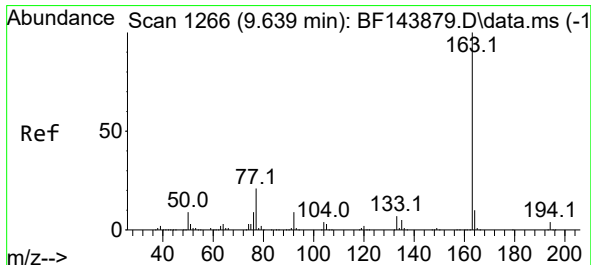
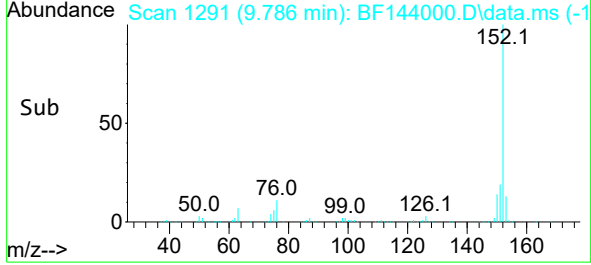
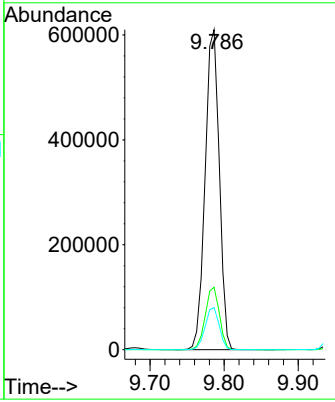
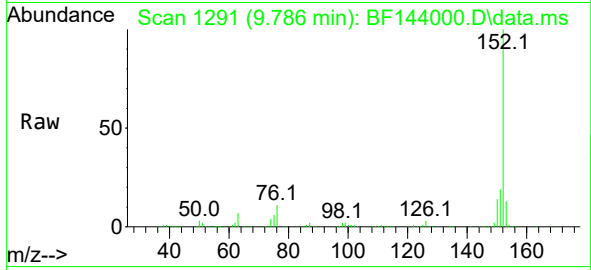


#49
 Acenaphthylene
 Concen: 51.96 ng
 RT: 9.786 min Scan# 1291
 Delta R.T. 0.000 min
 Lab File: BF144000.D
 Acq: 20 Oct 2025 15:57

Instrument : BNA_F
 Client Sample Id : VNJ-245MS

Tgt Ion:152 Resp: 809376

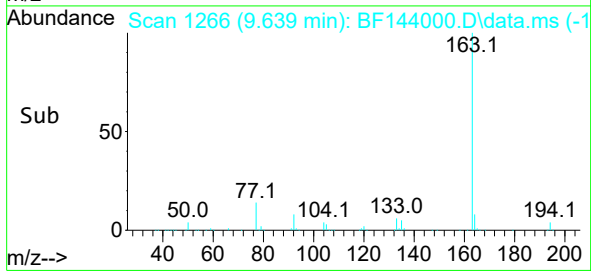
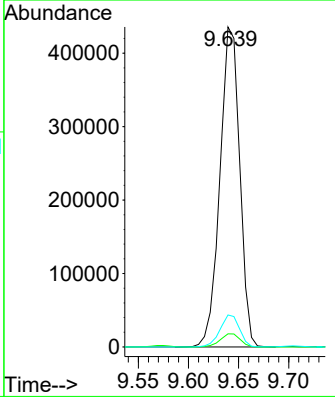
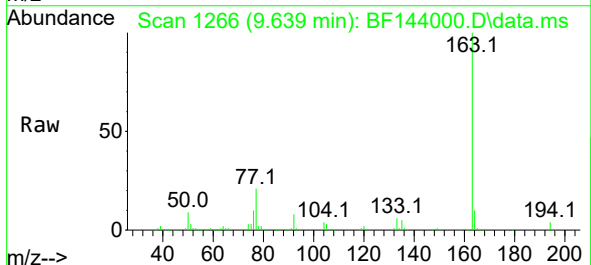
Ion	Ratio	Lower	Upper
152	100		
151	19.5	15.8	23.6
153	13.1	10.5	15.7

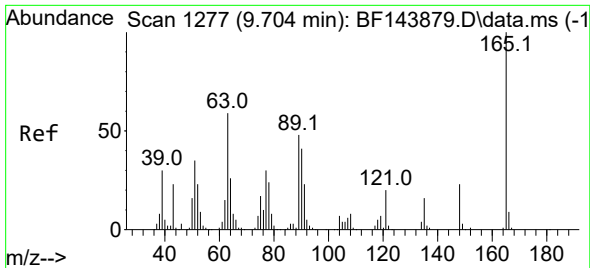


#50
 Dimethylphthalate
 Concen: 46.88 ng
 RT: 9.639 min Scan# 1266
 Delta R.T. -0.006 min
 Lab File: BF144000.D
 Acq: 20 Oct 2025 15:57

Tgt Ion:163 Resp: 597488

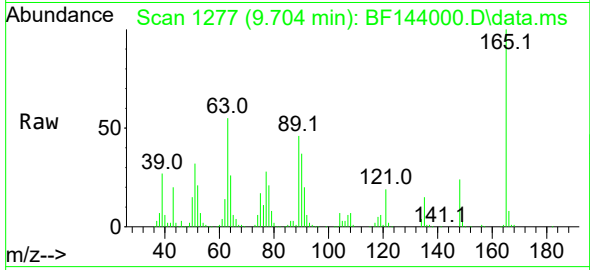
Ion	Ratio	Lower	Upper
163	100		
194	4.1	3.3	4.9
164	10.0	8.1	12.1





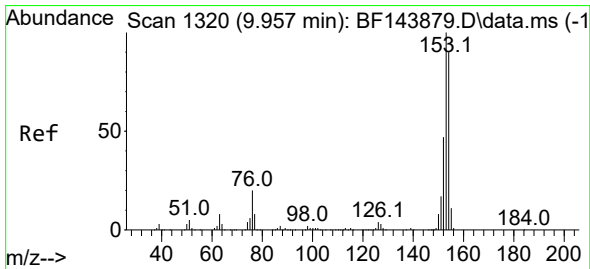
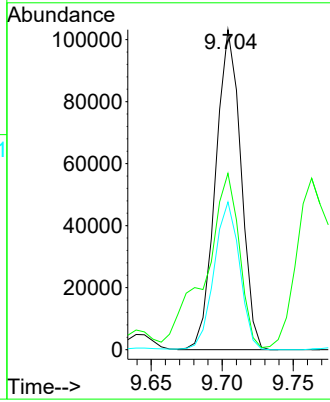
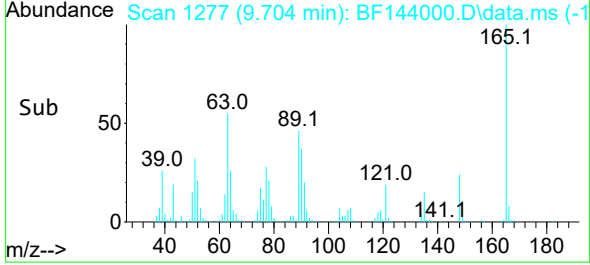
#51
 2,6-Dinitrotoluene
 Concen: 54.09 ng
 RT: 9.704 min Scan# 11
 Delta R.T. -0.012 min
 Lab File: BF144000.D
 Acq: 20 Oct 2025 15:57

Instrument : BNA_F
 ClientSampleId : VNJ-245MS

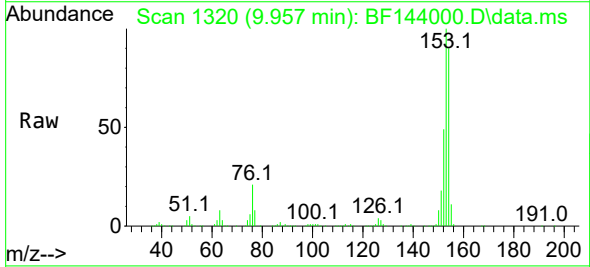


Tgt Ion:165 Resp: 127854

Ion	Ratio	Lower	Upper
165	100		
63	55.1	47.3	70.9
89	46.1	38.2	57.4

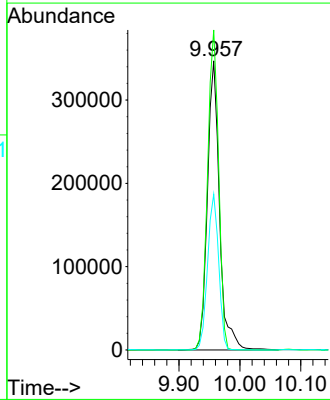
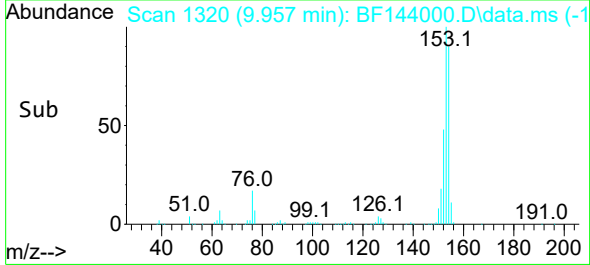


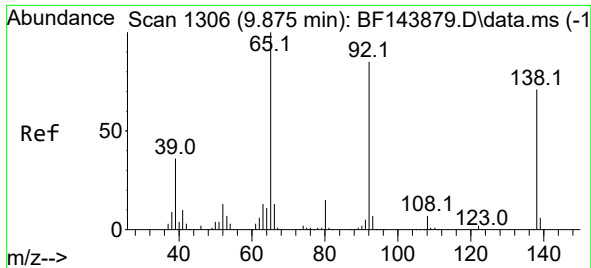
#52
 Acenaphthene
 Concen: 46.88 ng
 RT: 9.957 min Scan# 1320
 Delta R.T. -0.006 min
 Lab File: BF144000.D
 Acq: 20 Oct 2025 15:57



Tgt Ion:154 Resp: 478527

Ion	Ratio	Lower	Upper
154	100		
153	110.7	89.3	133.9
152	53.9	42.2	63.2



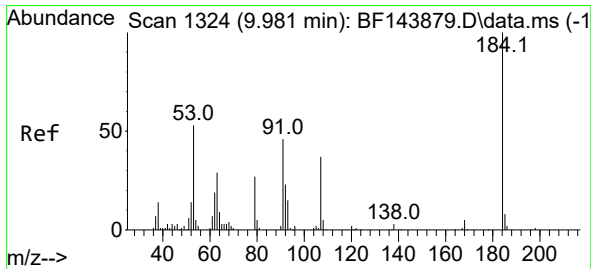
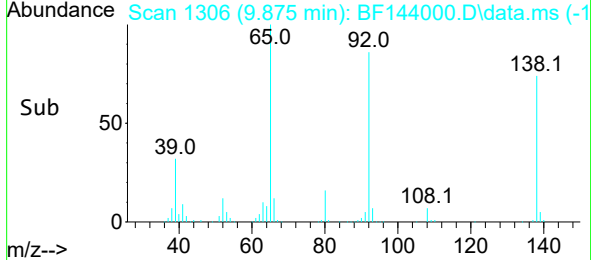
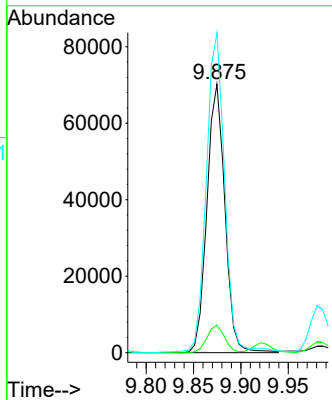
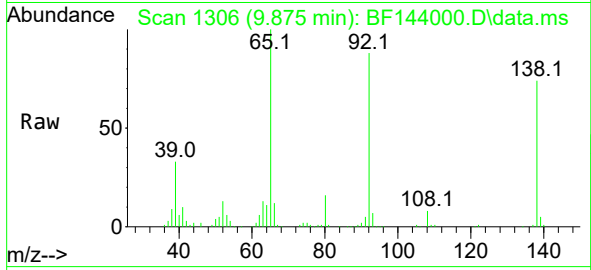


#53
 3-Nitroaniline
 Concen: 31.89 ng
 RT: 9.875 min Scan# 11
 Delta R.T. -0.012 min
 Lab File: BF144000.D
 Acq: 20 Oct 2025 15:57

Instrument : BNA_F
 ClientSampleId : VNJ-245MS

Tgt Ion:138 Resp: 92302

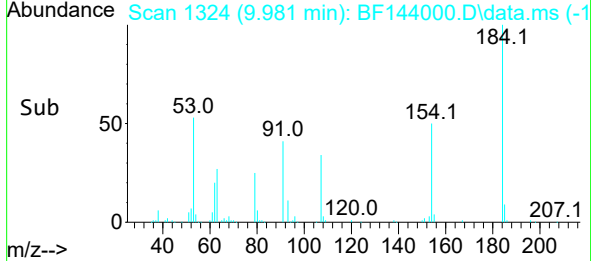
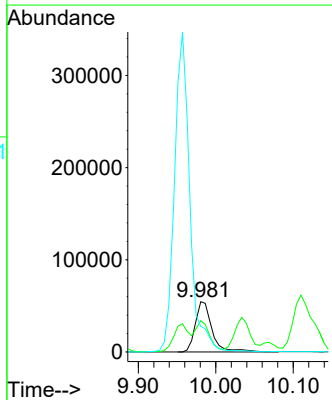
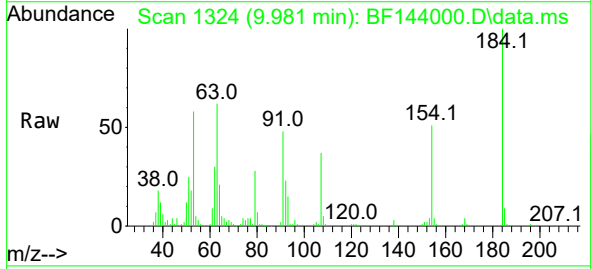
Ion	Ratio	Lower	Upper
138	100		
108	10.2	8.3	12.5
92	119.1	96.2	144.2

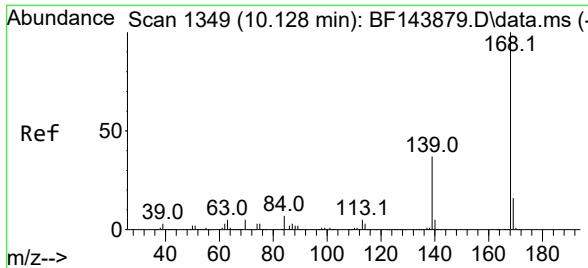


#54
 2,4-Dinitrophenol
 Concen: 58.20 ng
 RT: 9.981 min Scan# 1324
 Delta R.T. -0.005 min
 Lab File: BF144000.D
 Acq: 20 Oct 2025 15:57

Tgt Ion:184 Resp: 81830

Ion	Ratio	Lower	Upper
184	100		
63	62.3	48.2	72.4
154	50.8	49.2	73.8



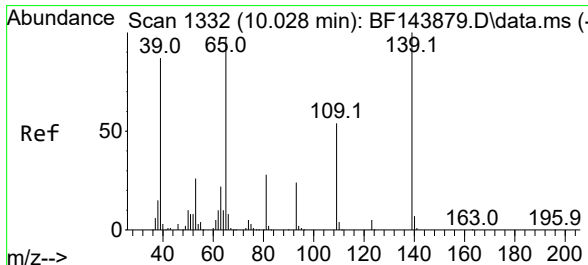
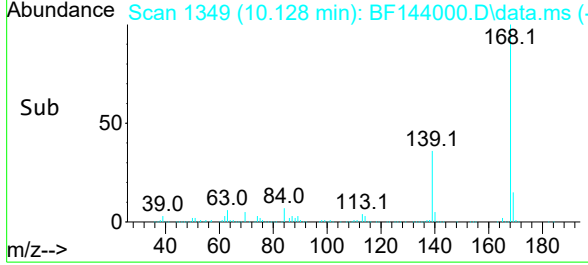
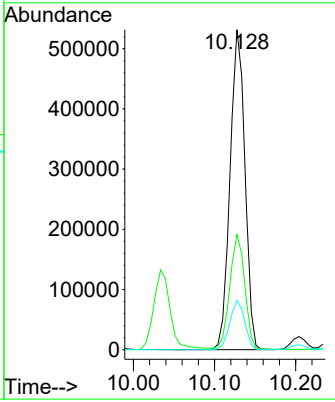
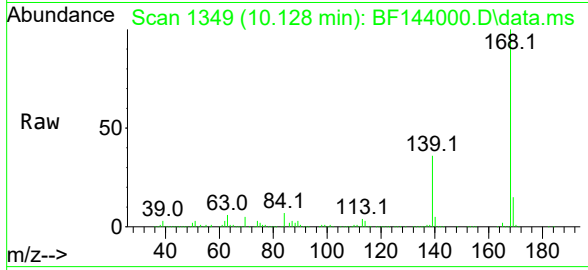


#55
 Dibenzofuran
 Concen: 46.91 ng
 RT: 10.128 min Scan# 11
 Delta R.T. -0.006 min
 Lab File: BF144000.D
 Acq: 20 Oct 2025 15:57

Instrument : BNA_F
 ClientSampleId : VNJ-245MS

Tgt Ion:168 Resp: 675911

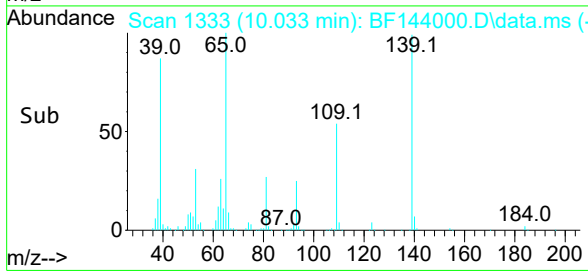
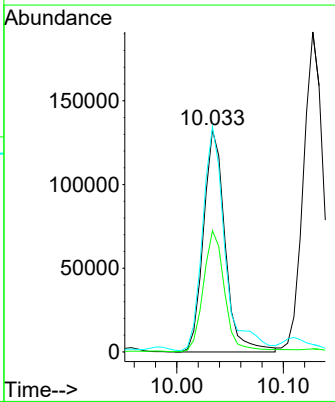
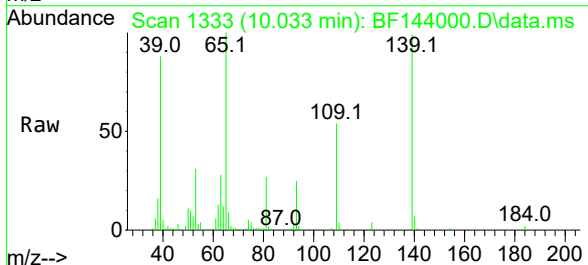
Ion	Ratio	Lower	Upper
168	100		
139	35.9	29.8	44.8
169	15.4	12.8	19.2

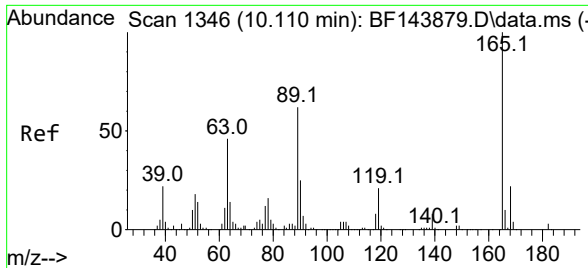


#56
 4-Nitrophenol
 Concen: 85.06 ng
 RT: 10.033 min Scan# 1333
 Delta R.T. -0.006 min
 Lab File: BF144000.D
 Acq: 20 Oct 2025 15:57

Tgt Ion:139 Resp: 186388

Ion	Ratio	Lower	Upper
139	100		
109	54.6	34.5	74.5
65	101.4	77.6	117.6

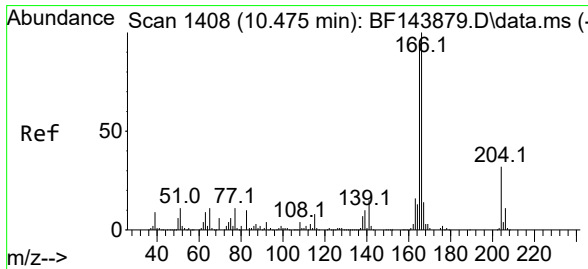
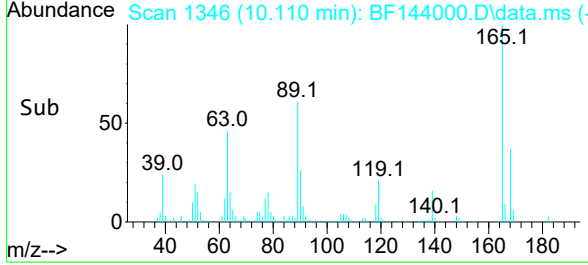
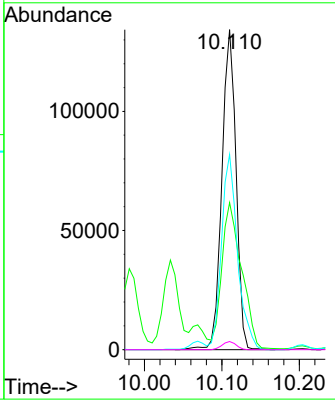
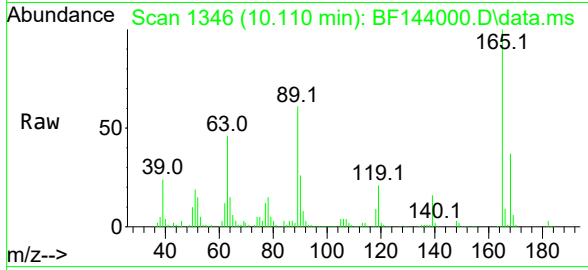




#57
 2,4-Dinitrotoluene
 Concen: 52.91 ng
 RT: 10.110 min Scan# 11
 Delta R.T. -0.006 min
 Lab File: BF144000.D
 Acq: 20 Oct 2025 15:57

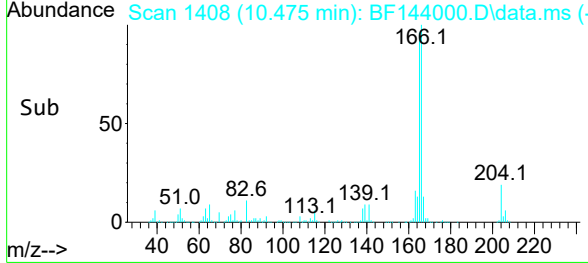
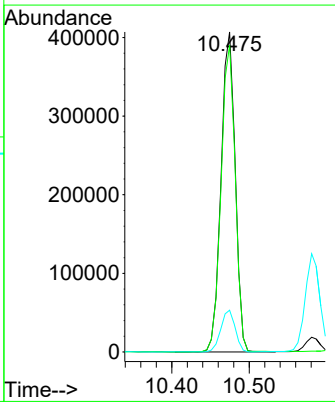
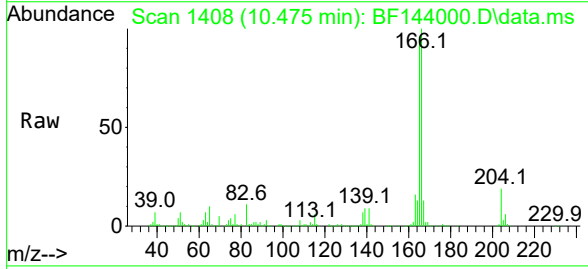
Instrument : BNA_F
 ClientSampleId : VNJ-245MS

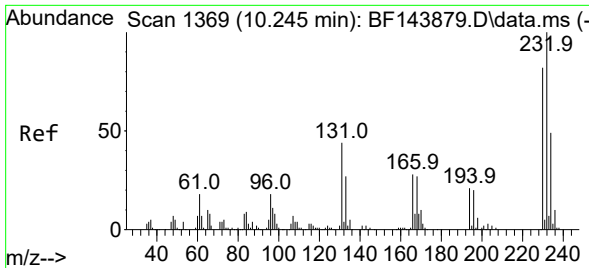
Tgt Ion	Resp	Lower	Upper
165	170165		
165	100		
63	45.9	37.2	55.8
89	61.0	49.4	74.2
182	2.6	2.1	3.1



#58
 Fluorene
 Concen: 47.50 ng
 RT: 10.475 min Scan# 1408
 Delta R.T. -0.006 min
 Lab File: BF144000.D
 Acq: 20 Oct 2025 15:57

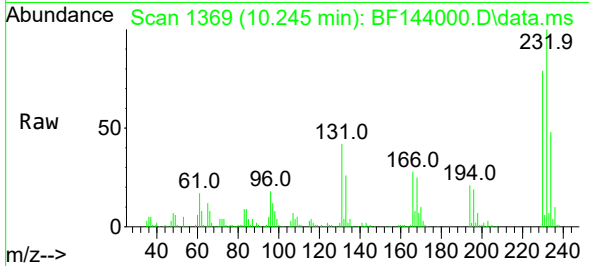
Tgt Ion	Resp	Lower	Upper
166	516441		
166	100		
165	95.9	77.0	115.6
167	13.0	11.1	16.7





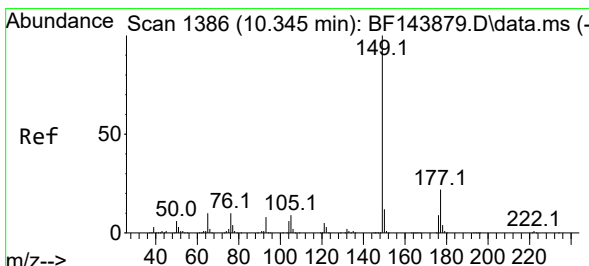
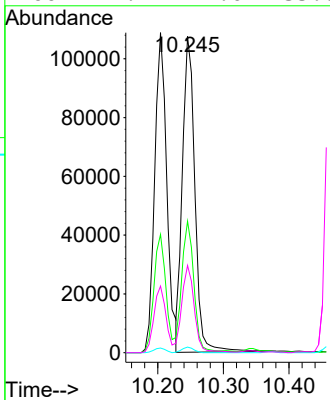
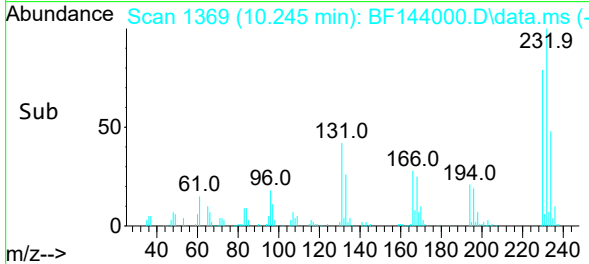
#59
 2,3,4,6-Tetrachlorophenol
 Concen: 46.58 ng
 RT: 10.245 min Scan# 11
 Delta R.T. -0.006 min
 Lab File: BF144000.D
 Acq: 20 Oct 2025 15:57

Instrument :
 BNA_F
 ClientSampleId :
 VNJ-245MS

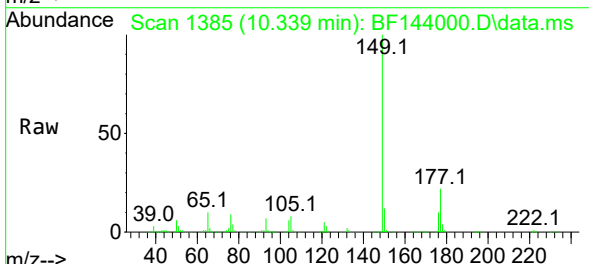


Tgt Ion: 232 Resp: 141238

Ion	Ratio	Lower	Upper
232	100		
131	41.4	34.9	52.3
130	1.7	1.6	2.4
166	27.4	22.0	33.0

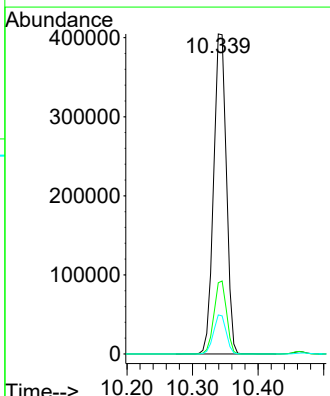
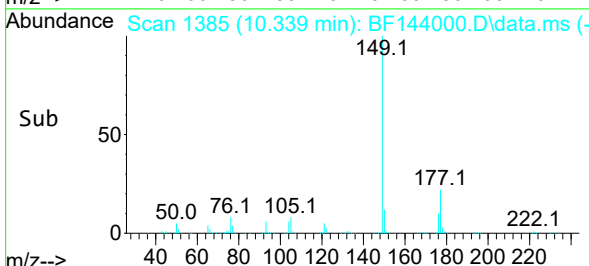


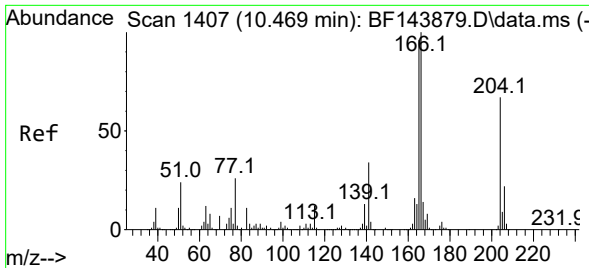
#60
 Diethylphthalate
 Concen: 45.91 ng
 RT: 10.339 min Scan# 1385
 Delta R.T. -0.012 min
 Lab File: BF144000.D
 Acq: 20 Oct 2025 15:57



Tgt Ion: 149 Resp: 543627

Ion	Ratio	Lower	Upper
149	100		
177	22.3	17.9	26.9
150	12.2	9.8	14.8

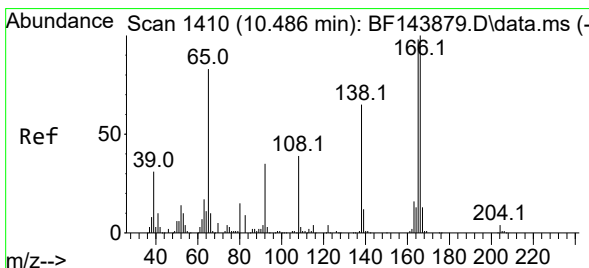
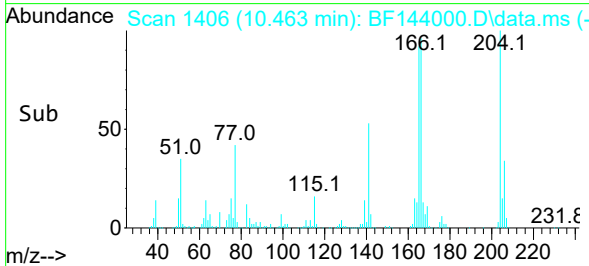
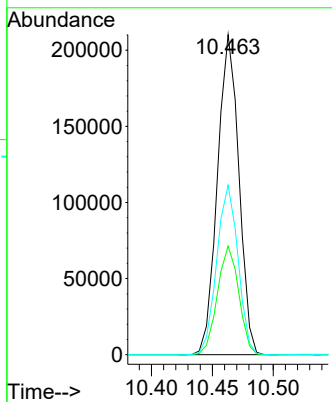
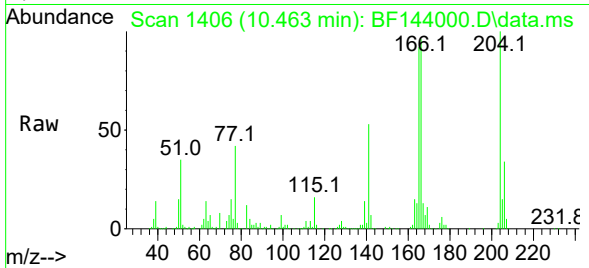




#61
 4-Chlorophenyl-phenylether
 Concen: 44.74 ng
 RT: 10.463 min Scan# 1406
 Delta R.T. -0.006 min
 Lab File: BF144000.D
 Acq: 20 Oct 2025 15:57

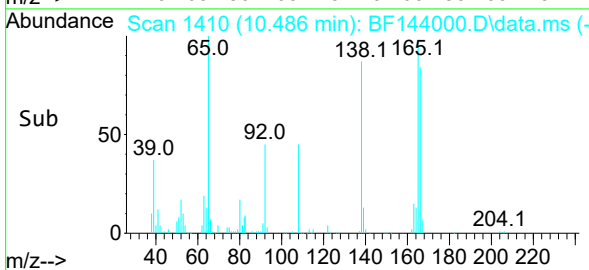
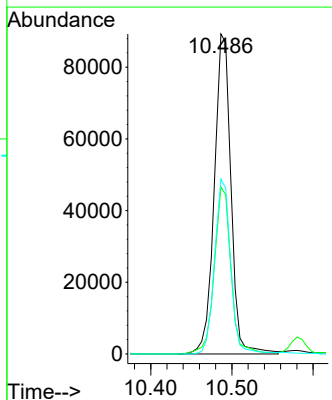
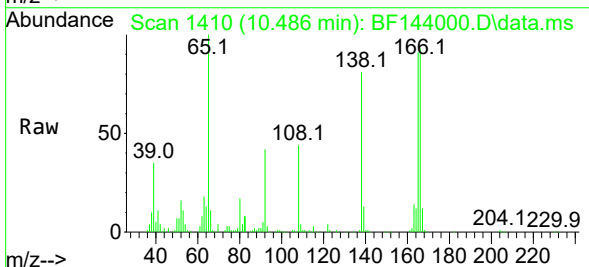
Instrument :
 BNA_F
 ClientSampleId :
 VNJ-245MS

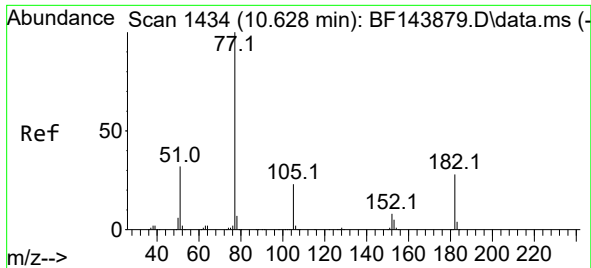
Tgt Ion	Resp	Lower	Upper
204	100		
206	34.0	26.6	40.0
141	52.9	40.4	60.6



#62
 4-Nitroaniline
 Concen: 45.92 ng
 RT: 10.486 min Scan# 1410
 Delta R.T. -0.023 min
 Lab File: BF144000.D
 Acq: 20 Oct 2025 15:57

Tgt Ion	Resp	Lower	Upper
138	100		
92	52.2	33.9	73.9
108	54.6	40.2	80.2



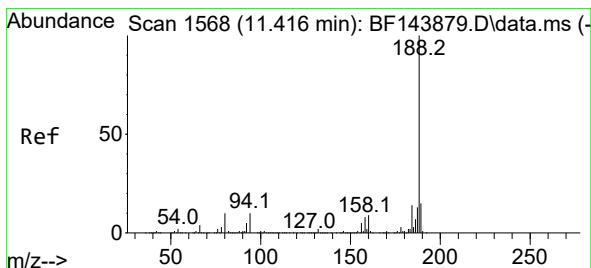
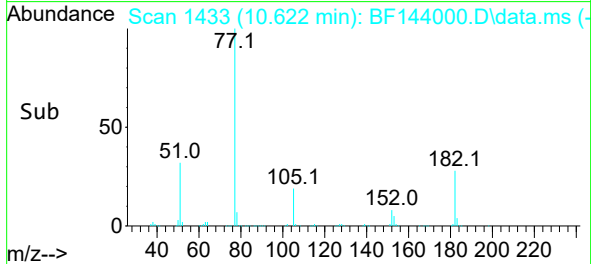
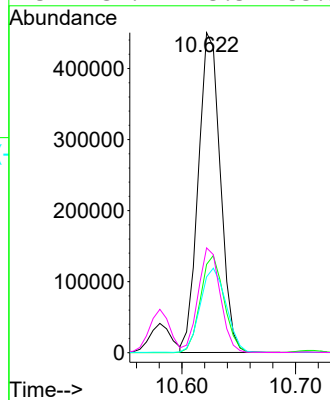
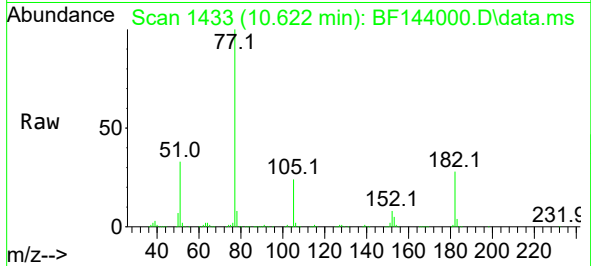


#63
 Azobenzene
 Concen: 49.04 ng
 RT: 10.622 min Scan# 14
 Delta R.T. -0.012 min
 Lab File: BF144000.D
 Acq: 20 Oct 2025 15:57

Instrument :
 BNA_F
 ClientSampleId :
 VNJ-245MS

Tgt Ion: 77 Resp: 606952

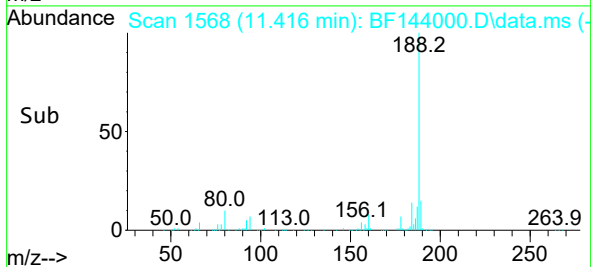
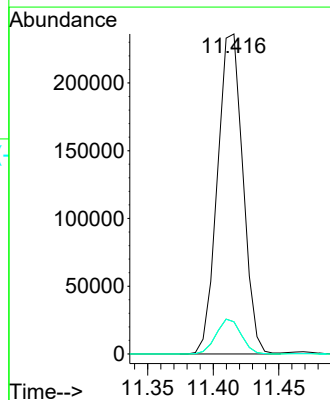
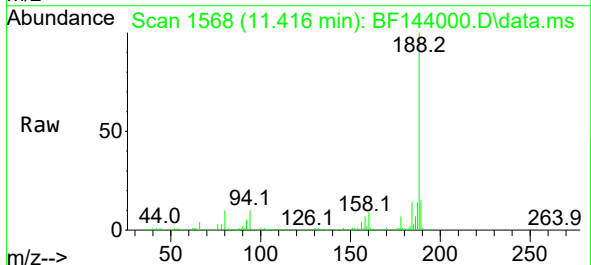
Ion	Ratio	Lower	Upper
77	100		
182	27.6	7.3	47.3
105	23.7	3.0	43.0
51	32.7	13.5	53.5

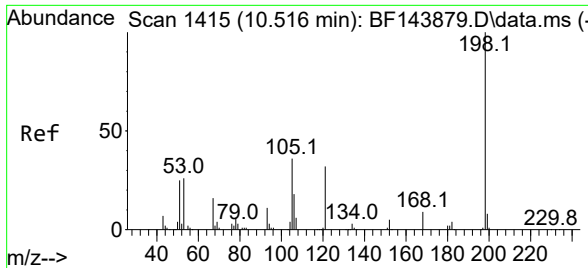


#64
 Phenanthrene-d10
 Concen: 20.00 ng
 RT: 11.416 min Scan# 1568
 Delta R.T. 0.000 min
 Lab File: BF144000.D
 Acq: 20 Oct 2025 15:57

Tgt Ion: 188 Resp: 318387

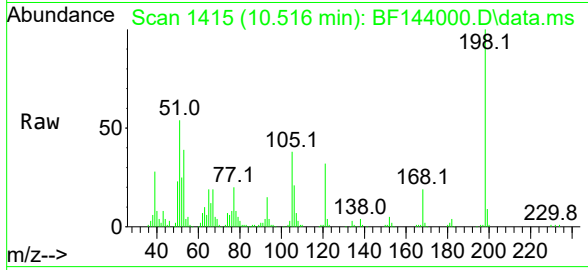
Ion	Ratio	Lower	Upper
188	100		
94	10.0	7.8	11.6
80	10.1	7.9	11.9





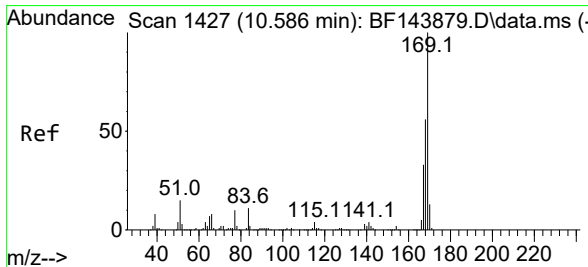
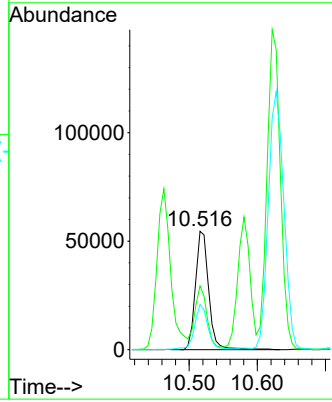
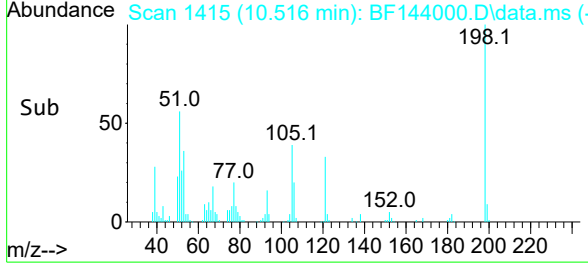
#65
 4,6-Dinitro-2-methylphenol
 Concen: 45.98 ng
 RT: 10.516 min Scan# 1415
 Delta R.T. -0.018 min
 Lab File: BF144000.D
 Acq: 20 Oct 2025 15:57

Instrument :
 BNA_F
 ClientSampleId :
 VNJ-245MS

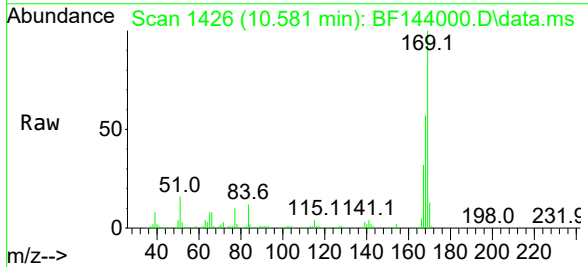


Tgt Ion:198 Resp: 73561

Ion	Ratio	Lower	Upper
198	100		
51	53.9	33.8	73.8
105	38.0	17.0	57.0

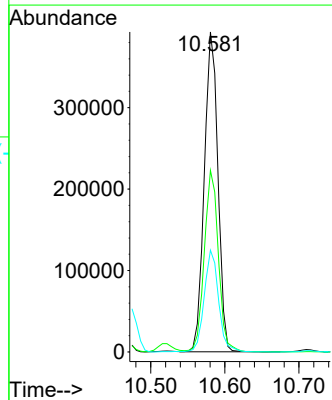
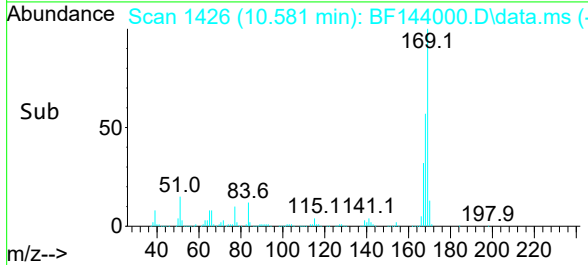


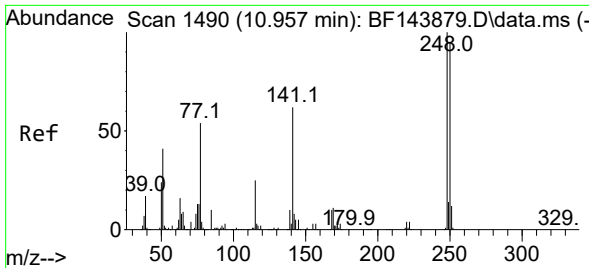
#66
 n-Nitrosodiphenylamine
 Concen: 50.20 ng
 RT: 10.581 min Scan# 1426
 Delta R.T. -0.012 min
 Lab File: BF144000.D
 Acq: 20 Oct 2025 15:57



Tgt Ion:169 Resp: 501852

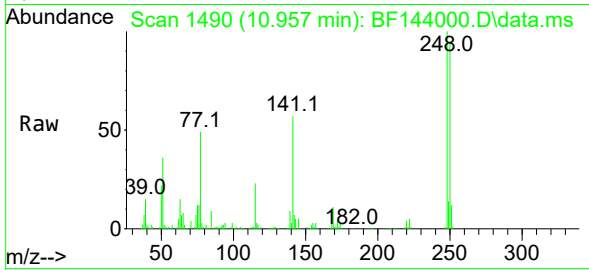
Ion	Ratio	Lower	Upper
169	100		
168	56.7	44.9	67.3
167	31.8	26.3	39.5



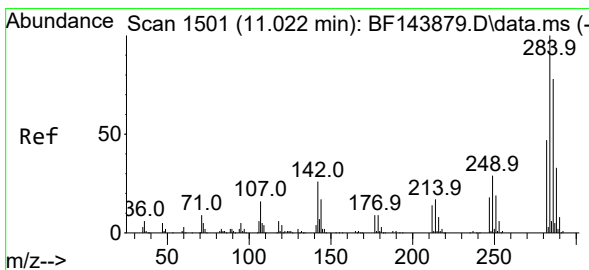
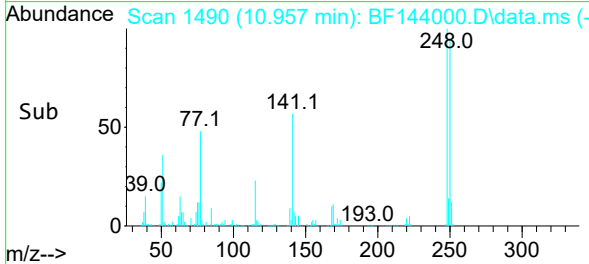
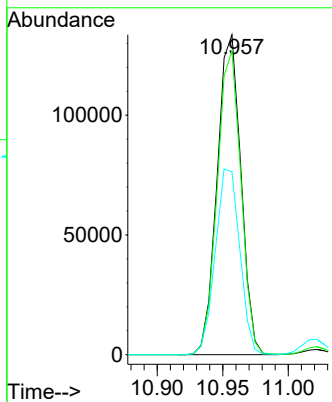


#67
 4-Bromophenyl-phenylether
 Concen: 47.89 ng
 RT: 10.957 min Scan# 1490
 Delta R.T. -0.006 min
 Lab File: BF144000.D
 Acq: 20 Oct 2025 15:57

Instrument :
 BNA_F
 ClientSampleId :
 VNJ-245MS

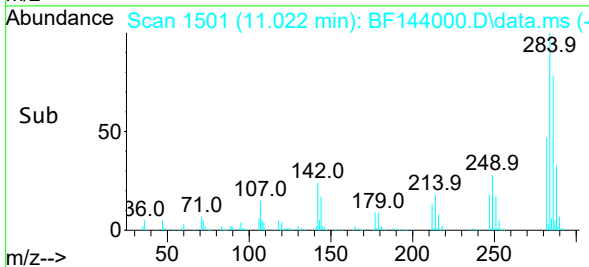
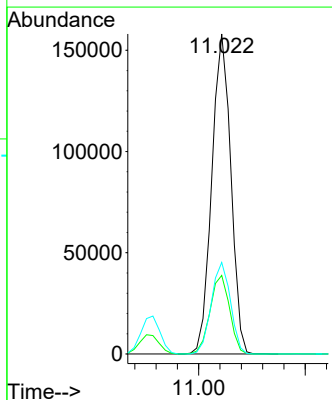
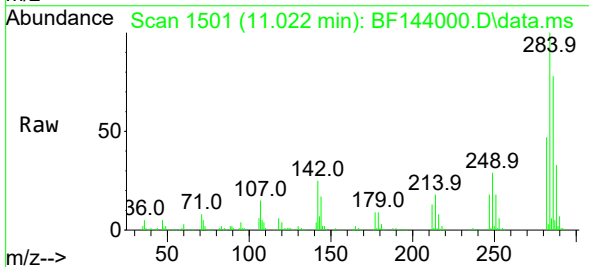


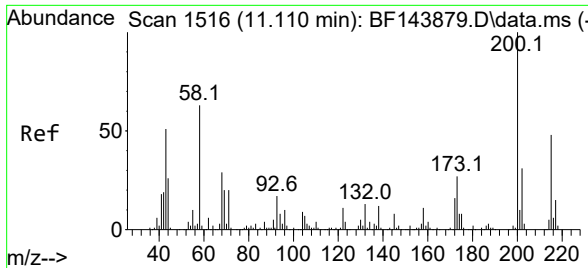
Tgt Ion:248 Resp: 168517
 Ion Ratio Lower Upper
 248 100
 250 94.8 76.3 114.5
 141 57.1 49.7 74.5



#68
 Hexachlorobenzene
 Concen: 48.01 ng
 RT: 11.022 min Scan# 1501
 Delta R.T. -0.006 min
 Lab File: BF144000.D
 Acq: 20 Oct 2025 15:57

Tgt Ion:284 Resp: 195558
 Ion Ratio Lower Upper
 284 100
 142 24.5 20.6 30.8
 249 28.6 23.2 34.8



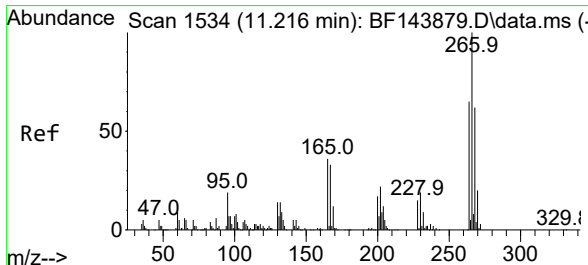
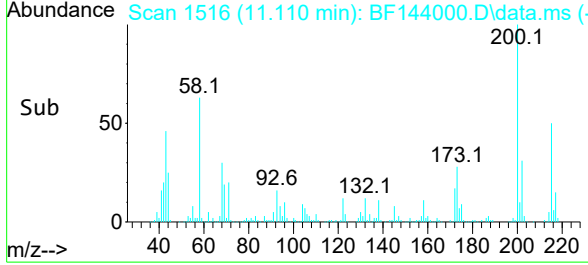
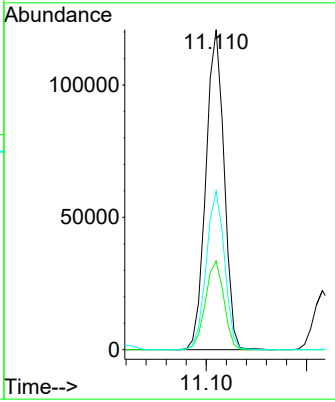
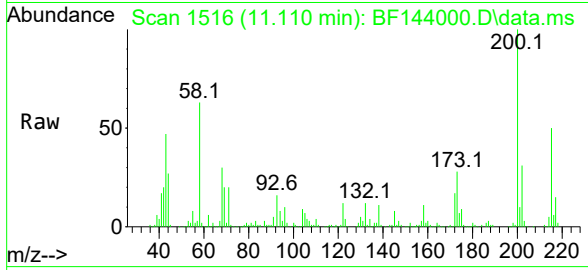


#69
 Atrazine
 Concen: 50.44 ng
 RT: 11.110 min Scan# 1516
 Delta R.T. -0.012 min
 Lab File: BF144000.D
 Acq: 20 Oct 2025 15:57

Instrument : BNA_F
 ClientSampleId : VNJ-245MS

Tgt Ion:200 Resp: 152836

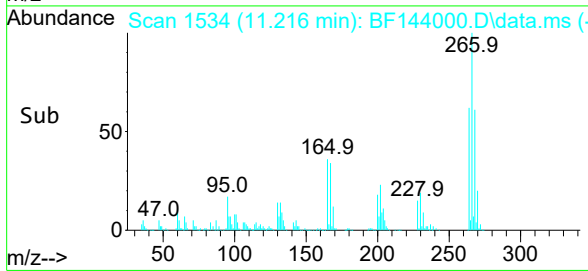
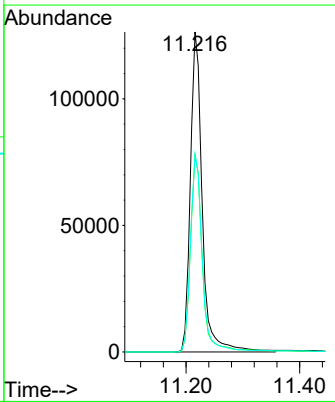
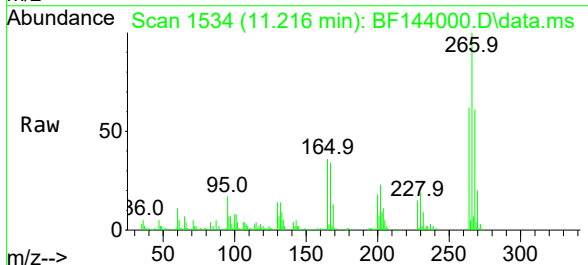
Ion	Ratio	Lower	Upper
200	100		
173	27.7	7.0	47.0
215	49.5	27.8	67.8

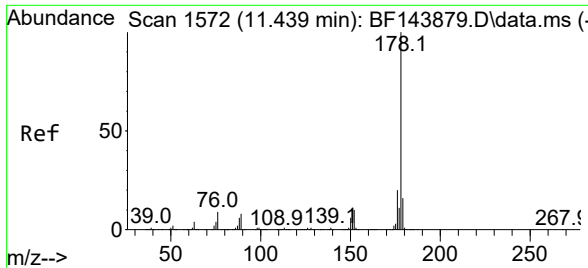


#70
 Pentachlorophenol
 Concen: 78.97 ng
 RT: 11.216 min Scan# 1534
 Delta R.T. -0.006 min
 Lab File: BF144000.D
 Acq: 20 Oct 2025 15:57

Tgt Ion:266 Resp: 184749

Ion	Ratio	Lower	Upper
266	100		
268	61.4	49.4	74.0
264	61.9	51.8	77.6



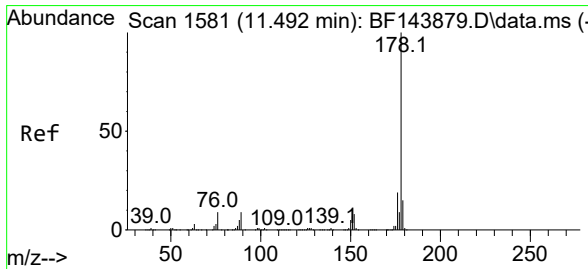
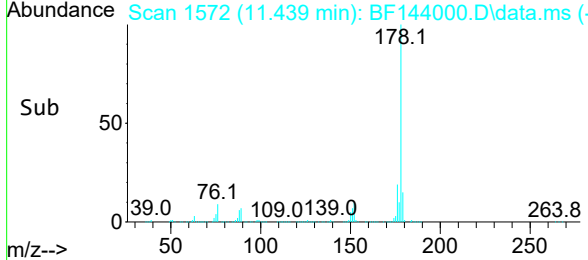
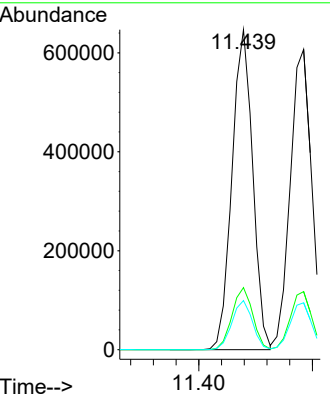
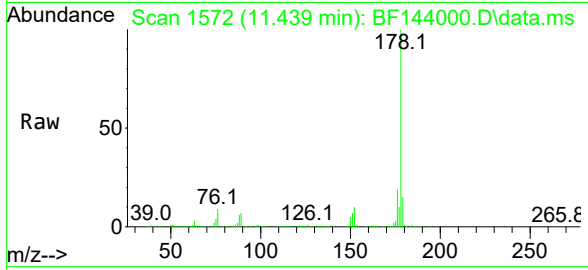


#71
 Phenanthrene
 Concen: 53.06 ng
 RT: 11.439 min Scan# 11
 Delta R.T. -0.006 min
 Lab File: BF144000.D
 Acq: 20 Oct 2025 15:57

Instrument : BNA_F
 ClientSampleId : VNJ-245MS

Tgt Ion:178 Resp: 818952

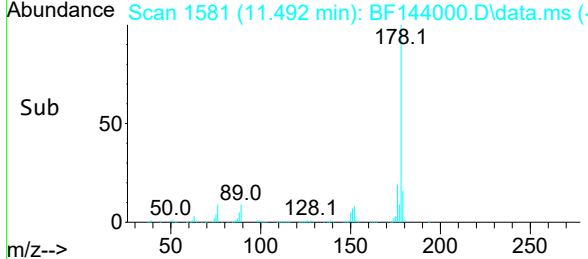
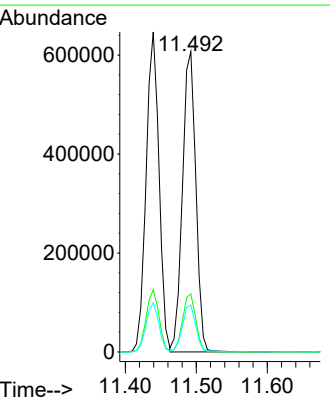
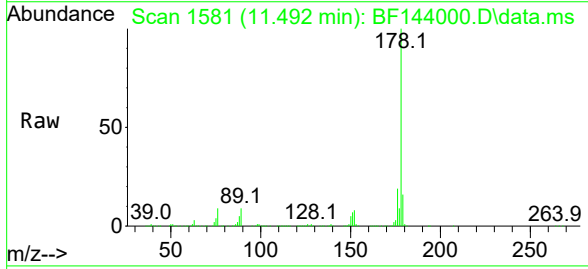
Ion	Ratio	Lower	Upper
178	100		
176	19.4	15.9	23.9
179	15.4	12.4	18.6

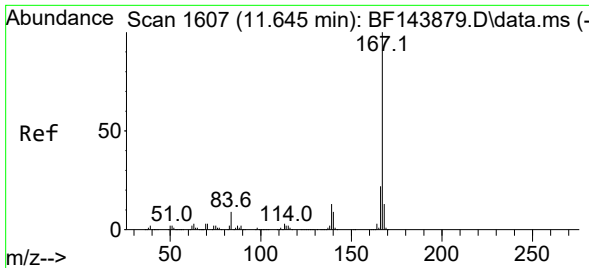


#72
 Anthracene
 Concen: 51.00 ng
 RT: 11.492 min Scan# 1581
 Delta R.T. -0.006 min
 Lab File: BF144000.D
 Acq: 20 Oct 2025 15:57

Tgt Ion:178 Resp: 795285

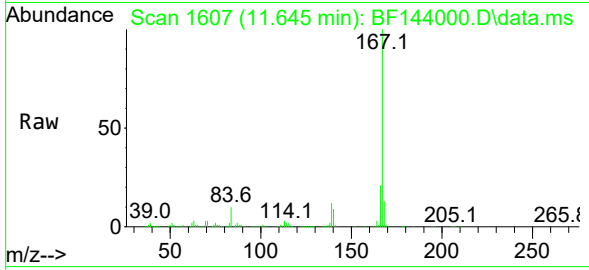
Ion	Ratio	Lower	Upper
178	100		
176	19.3	14.9	22.3
179	15.6	12.2	18.2



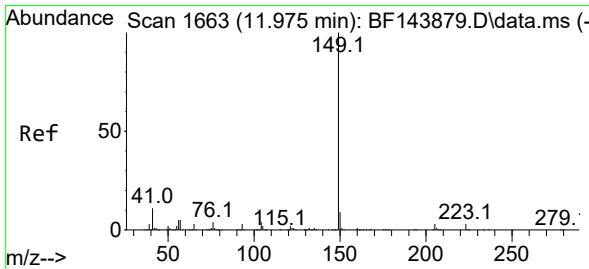
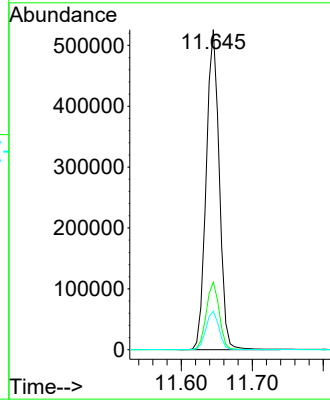
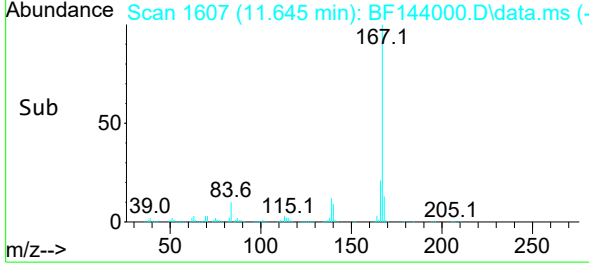


#73
 Carbazole
 Concen: 48.74 ng
 RT: 11.645 min Scan# 1607
 Delta R.T. -0.006 min
 Lab File: BF144000.D
 Acq: 20 Oct 2025 15:57

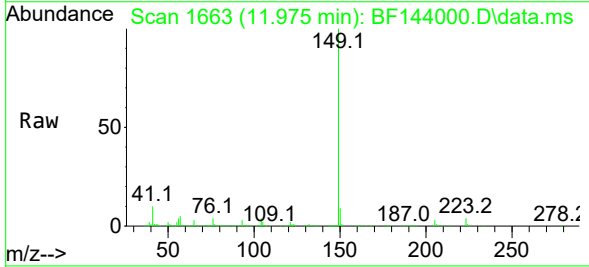
Instrument : BNA_F
 Client Sample Id : VNJ-245MS



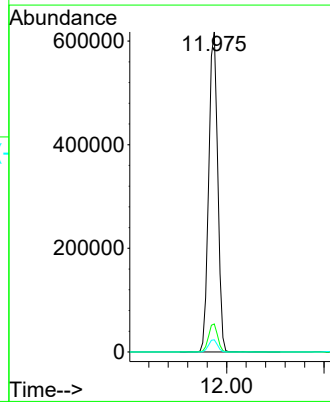
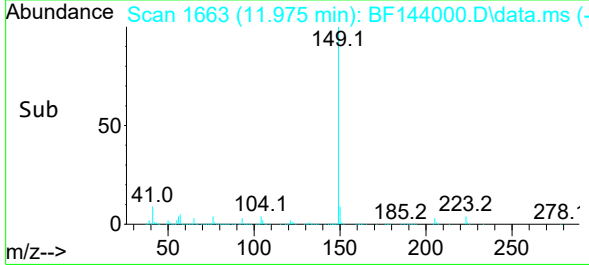
Tgt Ion:167 Resp: 673083
 Ion Ratio Lower Upper
 167 100
 166 21.1 17.2 25.8
 139 12.0 10.1 15.1

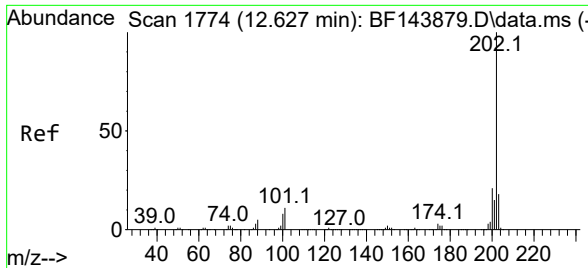


#74
 Di-n-butylphthalate
 Concen: 49.12 ng
 RT: 11.975 min Scan# 1663
 Delta R.T. -0.006 min
 Lab File: BF144000.D
 Acq: 20 Oct 2025 15:57



Tgt Ion:149 Resp: 786167
 Ion Ratio Lower Upper
 149 100
 150 8.8 7.4 11.2
 104 3.8 3.4 5.2

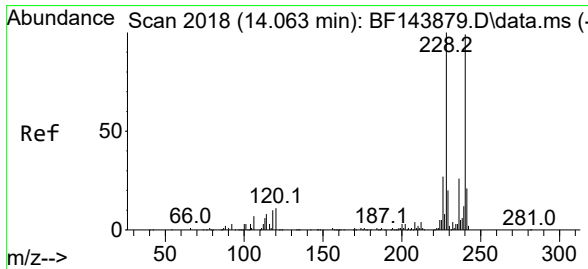
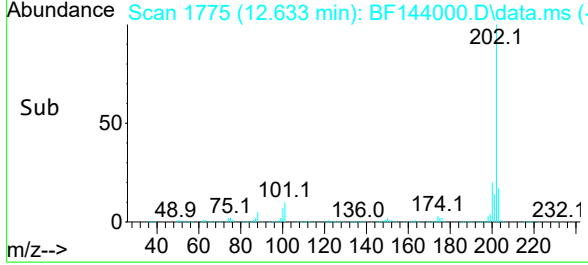
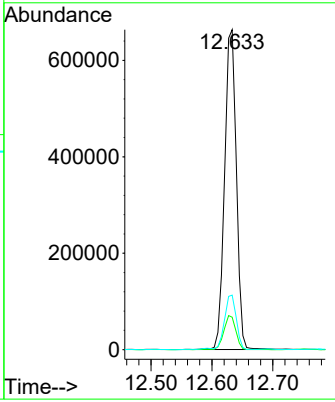
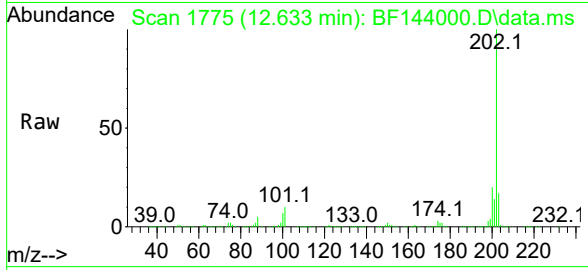




#75
 Fluoranthene
 Concen: 56.00 ng
 RT: 12.633 min Scan# 11
 Delta R.T. 0.000 min
 Lab File: BF144000.D
 Acq: 20 Oct 2025 15:57

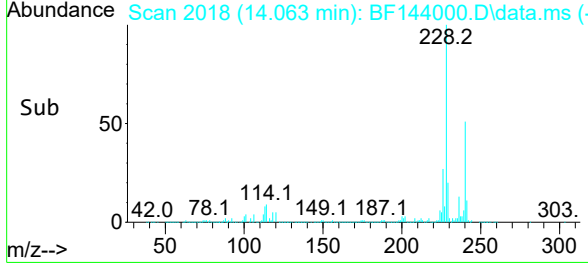
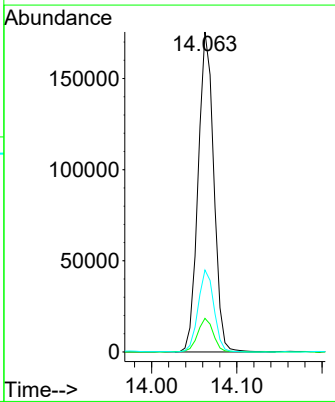
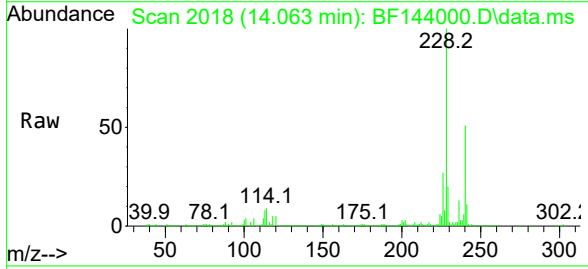
Instrument : BNA_F
 ClientSampleId : VNJ-245MS

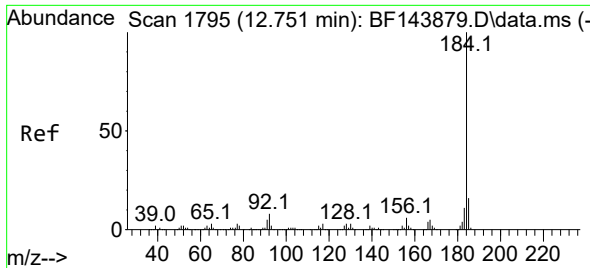
Tgt Ion	Resp	Lower	Upper
202	100		
101	10.1	0.0	30.7
203	17.0	0.0	37.8



#76
 Chrysene-d12
 Concen: 20.00 ng
 RT: 14.063 min Scan# 2018
 Delta R.T. -0.005 min
 Lab File: BF144000.D
 Acq: 20 Oct 2025 15:57

Tgt Ion	Resp	Lower	Upper
240	100		
120	10.5	8.6	13.0
236	25.6	21.1	31.7

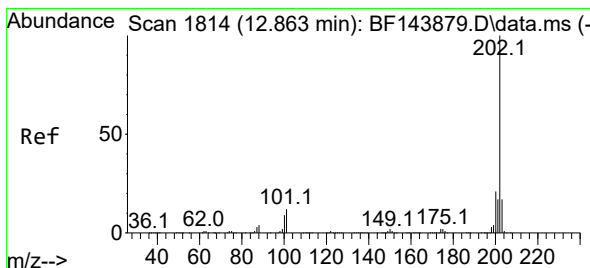
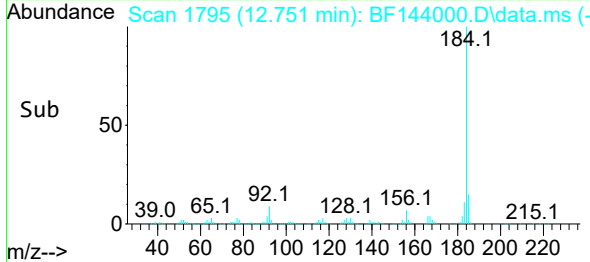
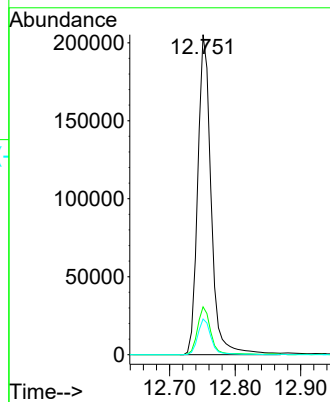
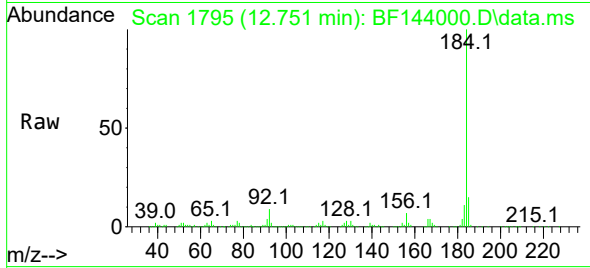




#77
Benzidine
Concen: 37.60 ng
RT: 12.751 min Scan# 1795
Delta R.T. -0.006 min
Lab File: BF144000.D
Acq: 20 Oct 2025 15:57

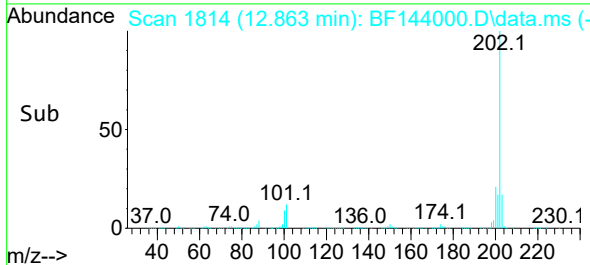
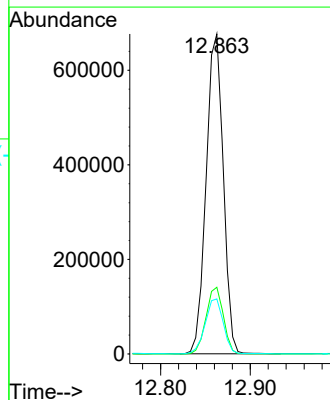
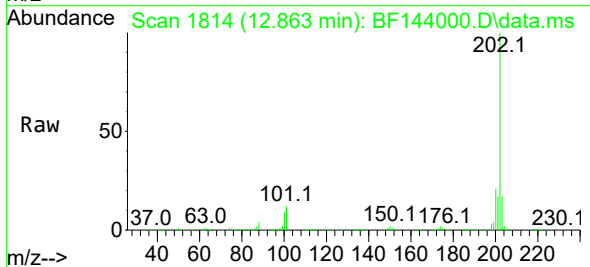
Instrument :
BNA_F
ClientSampleId :
VNJ-245MS

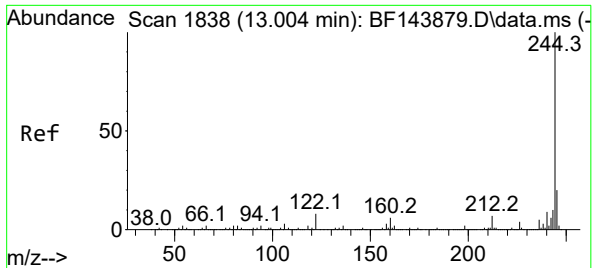
Tgt Ion:184 Resp: 292169
Ion Ratio Lower Upper
184 100
185 15.0 12.6 18.8
183 11.1 8.8 13.2



#78
Pyrene
Concen: 48.09 ng
RT: 12.863 min Scan# 1814
Delta R.T. 0.000 min
Lab File: BF144000.D
Acq: 20 Oct 2025 15:57

Tgt Ion:202 Resp: 897135
Ion Ratio Lower Upper
202 100
200 20.9 17.0 25.6
203 17.2 13.8 20.6



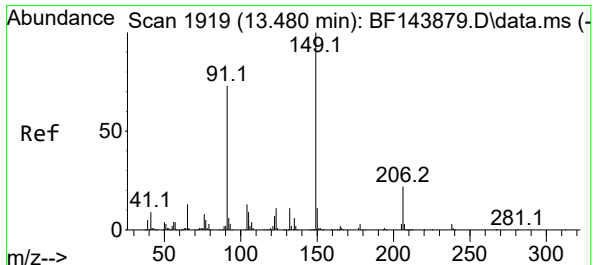
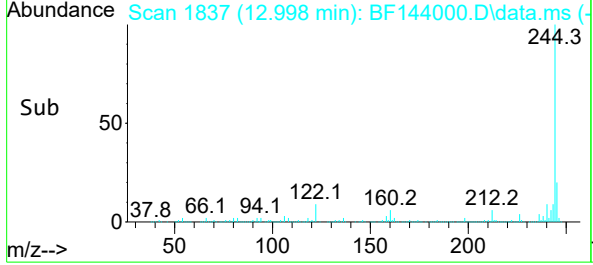
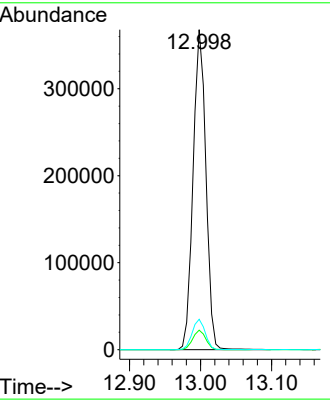
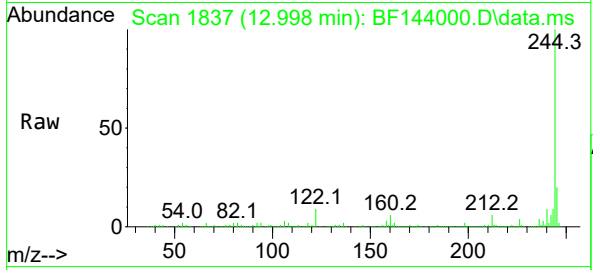


#79
 Terphenyl-d14
 Concen: 35.36 ng
 RT: 12.998 min Scan# 1837
 Delta R.T. -0.012 min
 Lab File: BF144000.D
 Acq: 20 Oct 2025 15:57

Instrument : BNA_F
 ClientSampleId : VNJ-245MS

Tgt Ion:244 Resp: 462900

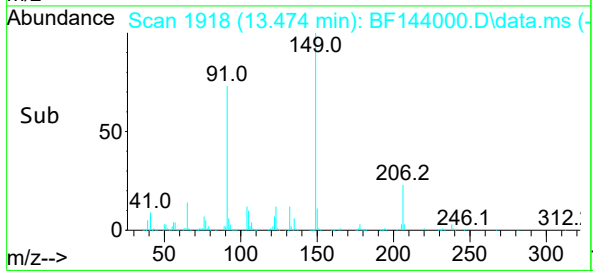
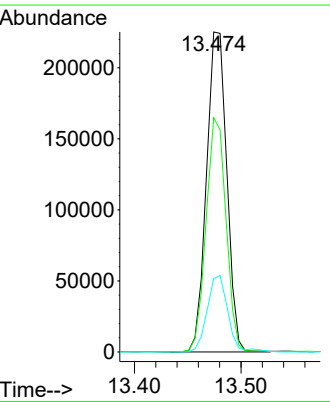
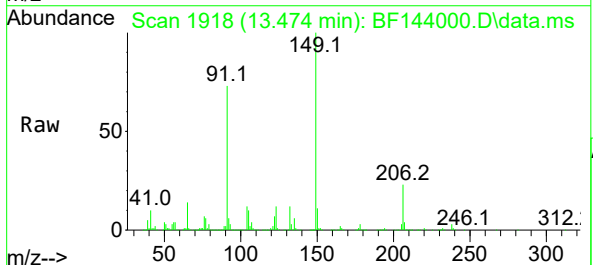
Ion	Ratio	Lower	Upper
244	100		
212	6.1	5.4	8.0
122	9.5	6.4	9.6

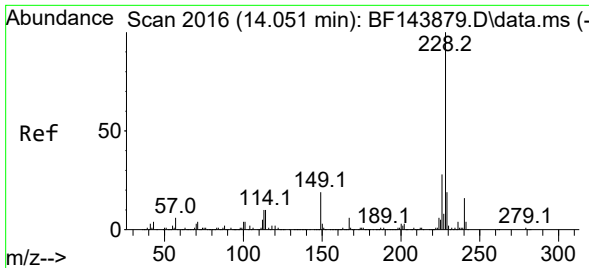


#80
 Butylbenzylphthalate
 Concen: 49.19 ng
 RT: 13.474 min Scan# 1918
 Delta R.T. -0.006 min
 Lab File: BF144000.D
 Acq: 20 Oct 2025 15:57

Tgt Ion:149 Resp: 297998

Ion	Ratio	Lower	Upper
149	100		
91	73.2	58.2	87.2
206	23.0	17.9	26.9



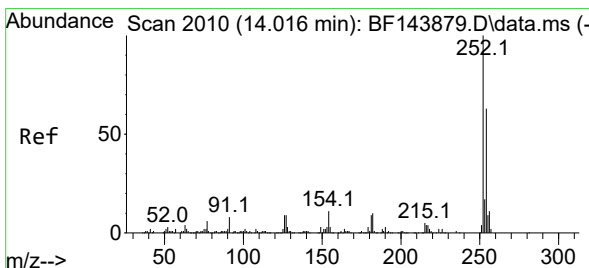
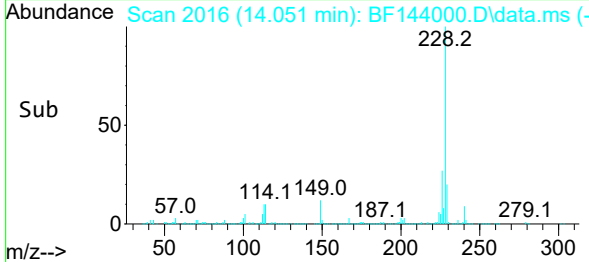
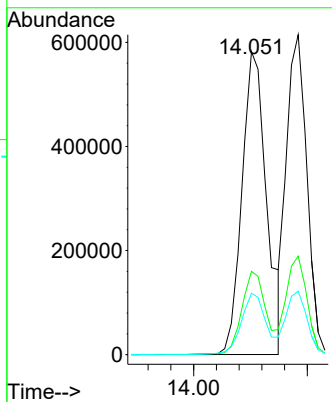
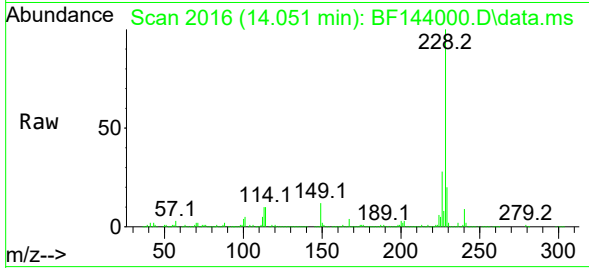


#81
 Benzo(a)anthracene
 Concen: 59.85 ng
 RT: 14.051 min Scan# 2016
 Delta R.T. -0.006 min
 Lab File: BF144000.D
 Acq: 20 Oct 2025 15:57

Instrument :
 BNA_F
 ClientSampleId :
 VNJ-245MS

Tgt Ion:228 Resp: 876380

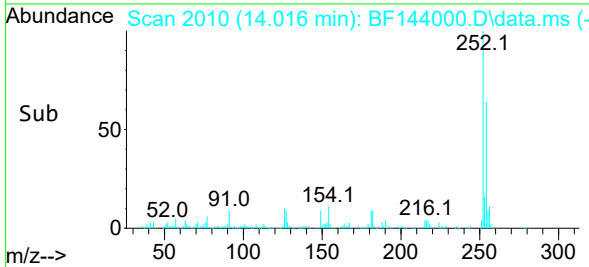
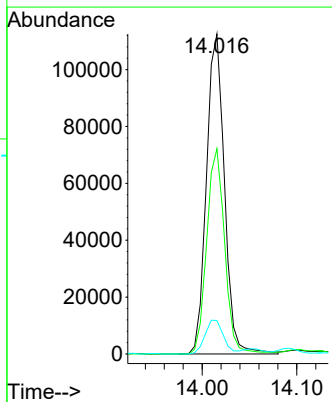
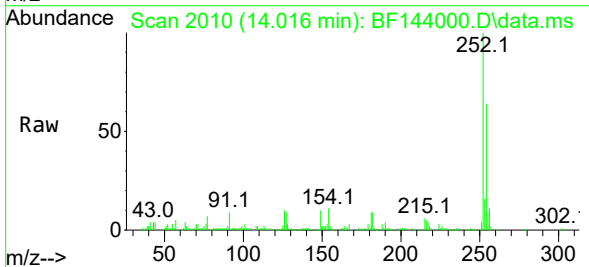
Ion	Ratio	Lower	Upper
228	100		
226	27.5	22.2	33.2
229	20.3	15.6	23.4

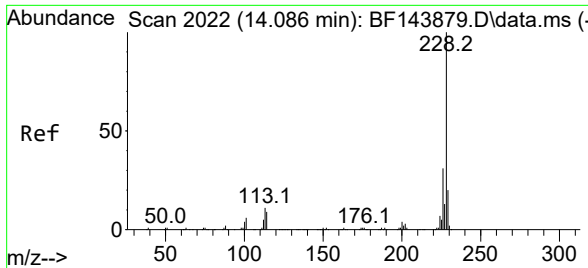


#82
 3,3'-Dichlorobenzidine
 Concen: 33.37 ng
 RT: 14.016 min Scan# 2010
 Delta R.T. 0.000 min
 Lab File: BF144000.D
 Acq: 20 Oct 2025 15:57

Tgt Ion:252 Resp: 148913

Ion	Ratio	Lower	Upper
252	100		
254	64.1	50.6	76.0
126	10.4	7.0	10.6



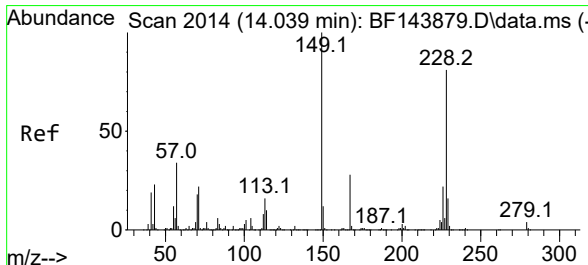
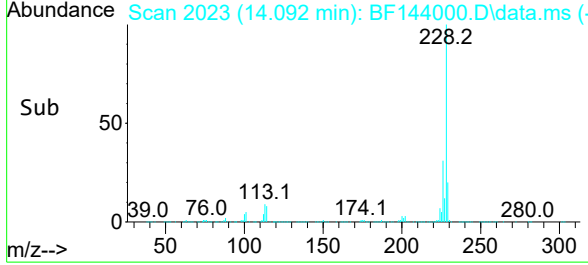
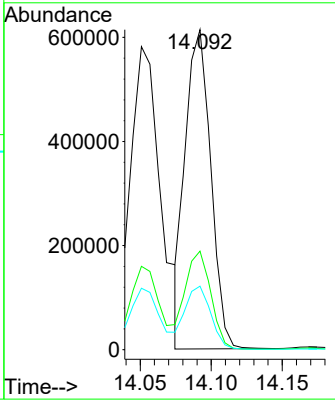
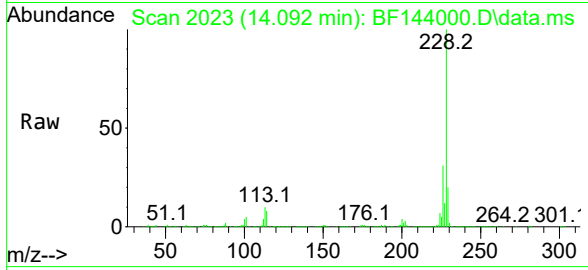


#83
 Chrysene
 Concen: 56.29 ng
 RT: 14.092 min Scan# 2023
 Delta R.T. 0.000 min
 Lab File: BF144000.D
 Acq: 20 Oct 2025 15:57

Instrument : BNA_F
 ClientSampleId : VNJ-245MS

Tgt Ion:228 Resp: 762919

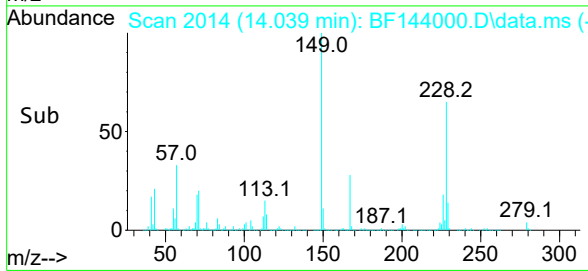
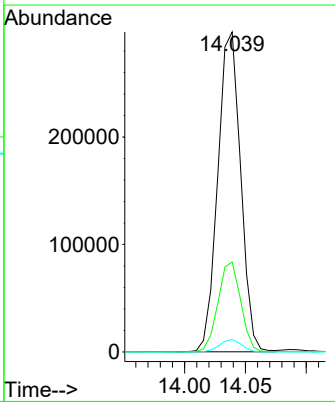
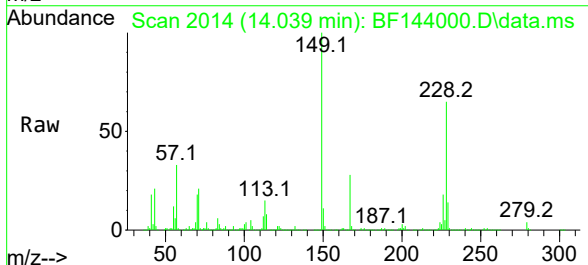
Ion	Ratio	Lower	Upper
228	100		
226	30.8	24.4	36.6
229	19.8	15.9	23.9

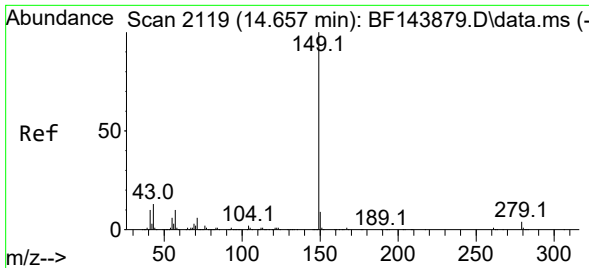


#84
 Bis(2-ethylhexyl)phthalate
 Concen: 53.17 ng
 RT: 14.039 min Scan# 2014
 Delta R.T. 0.000 min
 Lab File: BF144000.D
 Acq: 20 Oct 2025 15:57

Tgt Ion:149 Resp: 388279

Ion	Ratio	Lower	Upper
149	100		
167	28.1	22.2	33.4
279	3.9	3.1	4.7

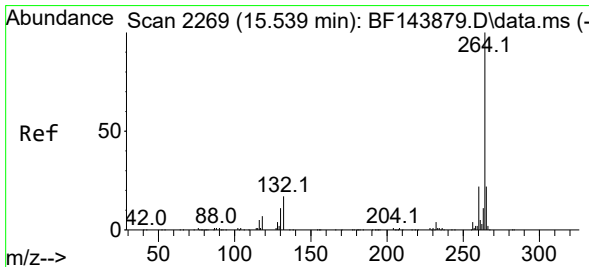
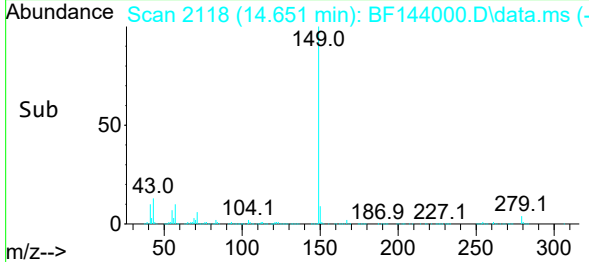
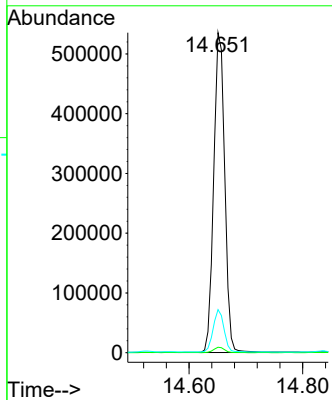
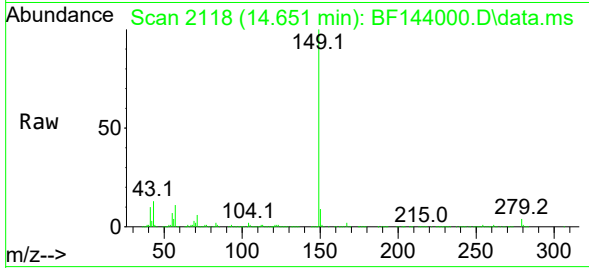




#85
 Di-n-octyl phthalate
 Concen: 60.18 ng
 RT: 14.651 min Scan# 2118
 Delta R.T. -0.006 min
 Lab File: BF144000.D
 Acq: 20 Oct 2025 15:57

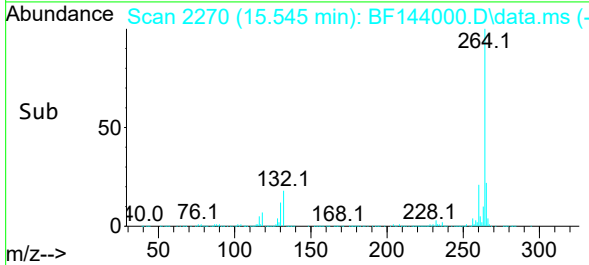
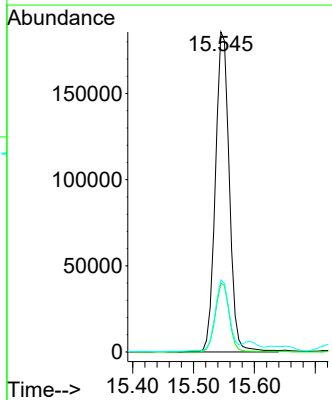
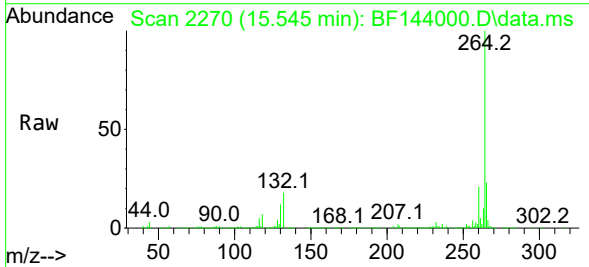
Instrument : BNA_F
 ClientSampleId : VNJ-245MS

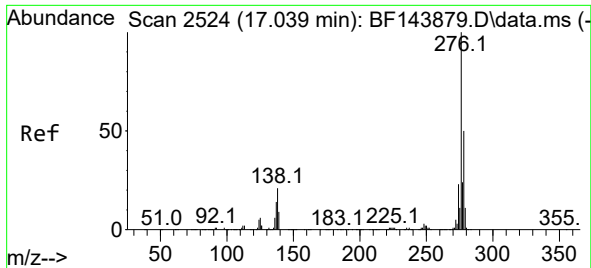
Tgt Ion	Resp	Lower	Upper
149	100		
167	1.8	1.1	1.7#
43	13.1	11.0	16.4



#86
 Perylene-d12
 Concen: 20.00 ng
 RT: 15.545 min Scan# 2270
 Delta R.T. 0.000 min
 Lab File: BF144000.D
 Acq: 20 Oct 2025 15:57

Tgt Ion	Resp	Lower	Upper
264	100		
260	21.4	17.8	26.8
265	22.5	17.5	26.3

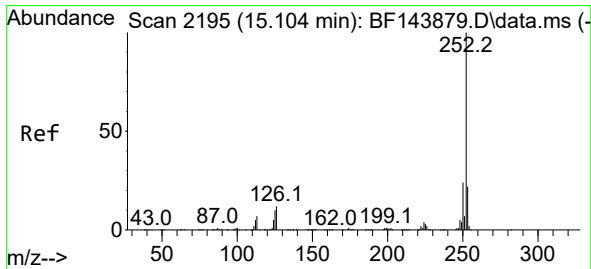
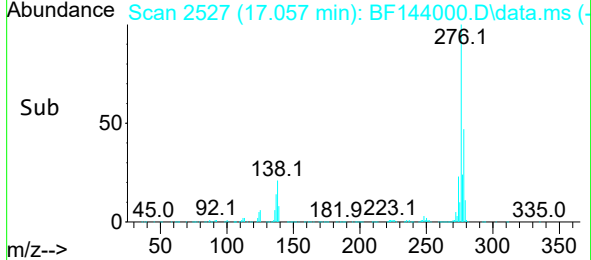
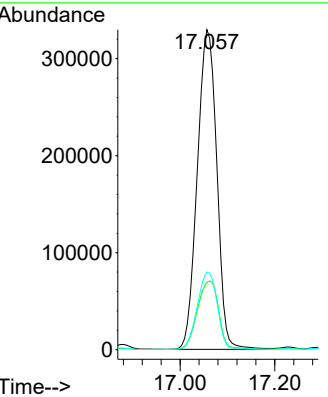
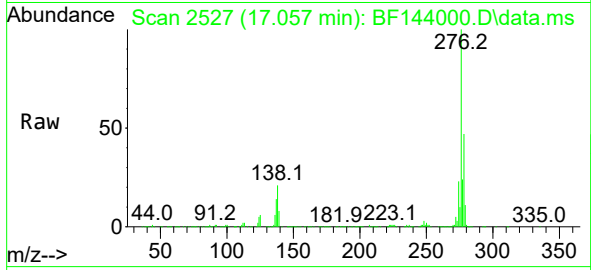




#87
 Indeno(1,2,3-cd)pyrene
 Concen: 52.18 ng
 RT: 17.057 min Scan# 211
 Delta R.T. 0.000 min
 Lab File: BF144000.D
 Acq: 20 Oct 2025 15:57

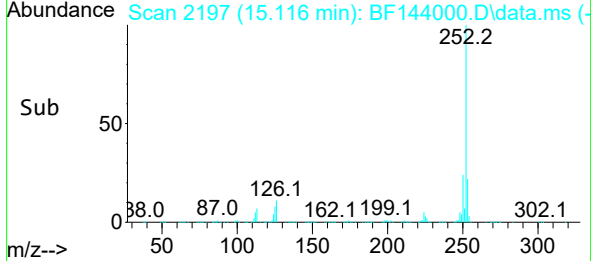
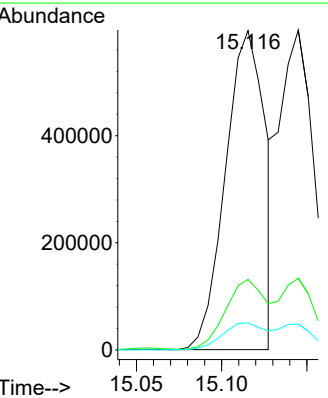
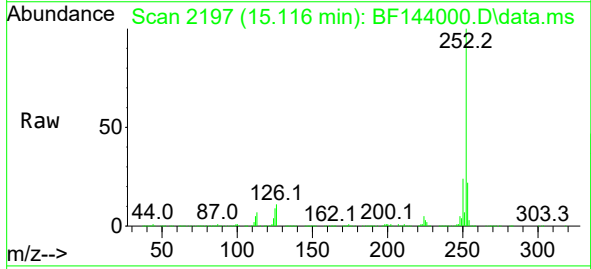
Instrument : BNA_F
 ClientSampleId : VNJ-245MS

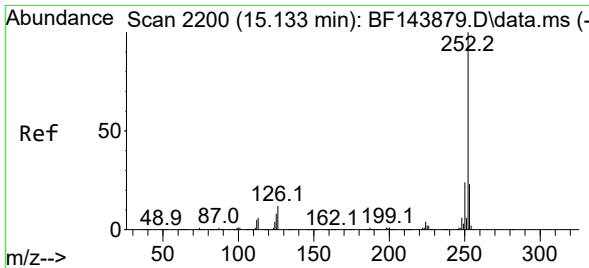
Tgt Ion	Resp	Lower	Upper
276	100		
138	23.4	18.2	27.2
277	24.9	19.8	29.6



#88
 Benzo(b)fluoranthene
 Concen: 56.92 ng
 RT: 15.116 min Scan# 2197
 Delta R.T. 0.000 min
 Lab File: BF144000.D
 Acq: 20 Oct 2025 15:57

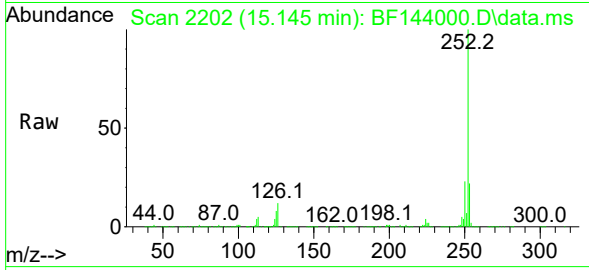
Tgt Ion	Resp	Lower	Upper
252	100		
253	22.1	17.4	26.2
125	8.5	7.8	11.6



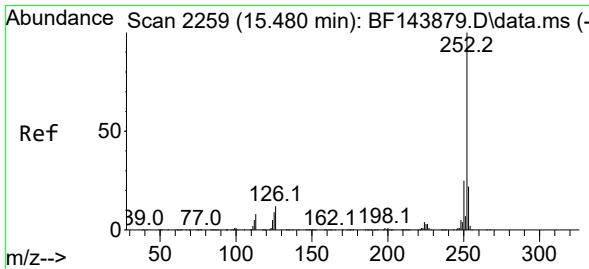
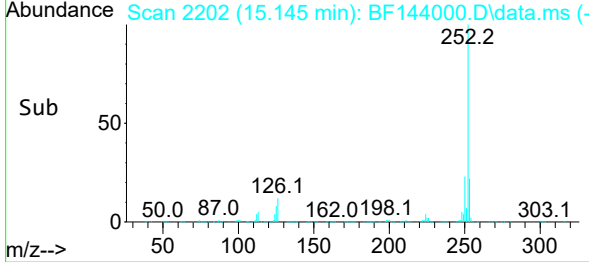
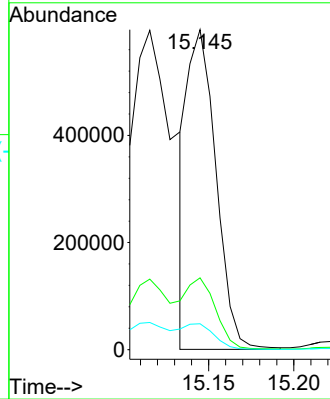


#89
 Benzo(k)fluoranthene
 Concen: 44.31 ng
 RT: 15.145 min Scan# 21
 Delta R.T. 0.000 min
 Lab File: BF144000.D
 Acq: 20 Oct 2025 15:57

Instrument :
 BNA_F
 ClientSampleId :
 VNJ-245MS

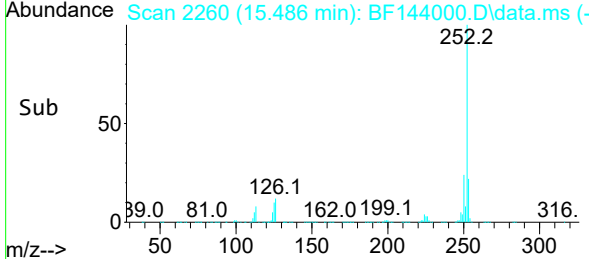
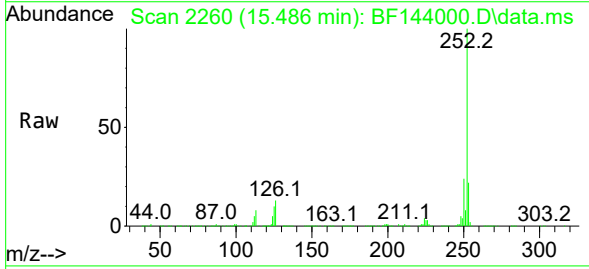
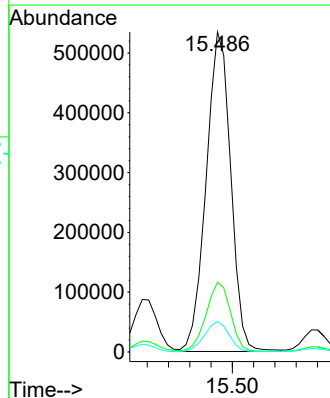


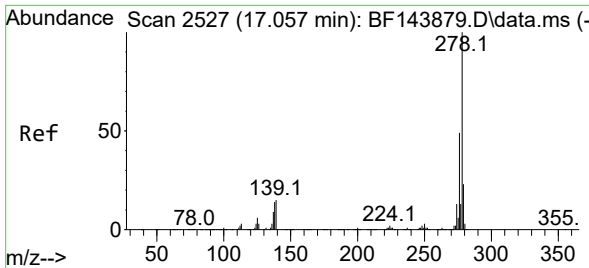
Tgt Ion:252 Resp: 694255
 Ion Ratio Lower Upper
 252 100
 253 22.4 17.8 26.8
 125 8.1 7.4 11.2



#90
 Benzo(a)pyrene
 Concen: 58.23 ng
 RT: 15.486 min Scan# 2260
 Delta R.T. 0.000 min
 Lab File: BF144000.D
 Acq: 20 Oct 2025 15:57

Tgt Ion:252 Resp: 854925
 Ion Ratio Lower Upper
 252 100
 253 21.8 17.3 25.9
 125 9.6 7.0 10.4



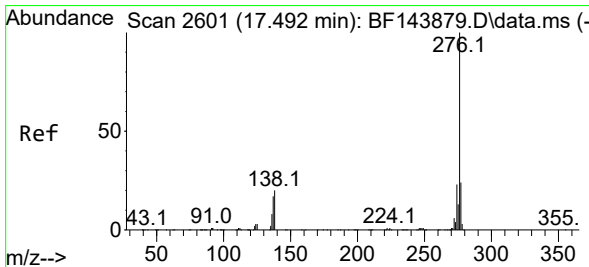
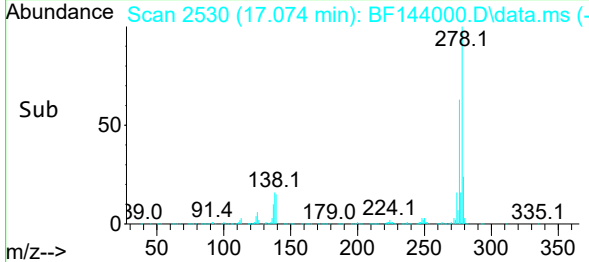
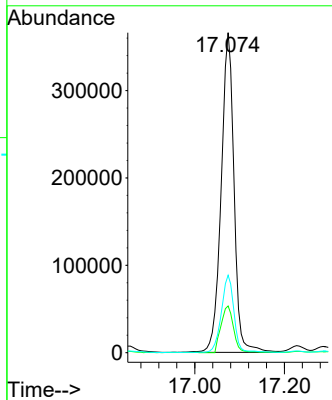
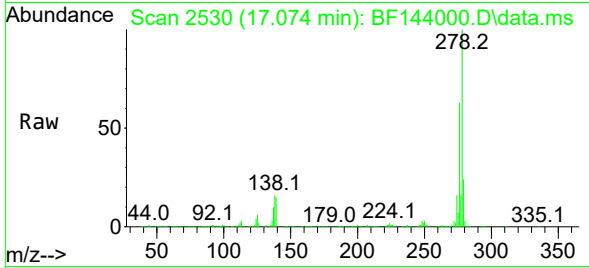


#91
 Dibenzo(a,h)anthracene
 Concen: 50.20 ng
 RT: 17.074 min Scan# 21
 Delta R.T. -0.006 min
 Lab File: BF144000.D
 Acq: 20 Oct 2025 15:57

Instrument :
 BNA_F
 ClientSampleId :
 VNJ-245MS

Tgt Ion:278 Resp: 729261

Ion	Ratio	Lower	Upper
278	100		
139	14.6	11.7	17.5
279	24.2	18.4	27.6



#92
 Benzo(g,h,i)perylene
 Concen: 52.09 ng
 RT: 17.515 min Scan# 2605
 Delta R.T. 0.000 min
 Lab File: BF144000.D
 Acq: 20 Oct 2025 15:57

Tgt Ion:276 Resp: 756650

Ion	Ratio	Lower	Upper
276	100		
277	23.3	19.0	28.6
138	21.2	16.1	24.1

