

Data Path : Z:\svoasrv\HPCHEM1\BNA_F\Data\BF102025\
 Data File : BF144006.D
 Acq On : 20 Oct 2025 18:53
 Operator : RC/JU
 Sample : Q3388-01
 Misc :
 ALS Vial : 11 Sample Multiplier: 1

Instrument :
 BNA_F
 ClientSampleId :

Quant Time: Oct 21 10:42:04 2025
 Quant Method : Z:\svoasrv\HPCHEM1\BNA_F\Methods\8270-BF100625.M
 Quant Title : ASP BNA STANDARDS FOR 5 POINT CALIBRATION
 QLast Update : Mon Oct 06 15:29:47 2025
 Response via : Initial Calibration

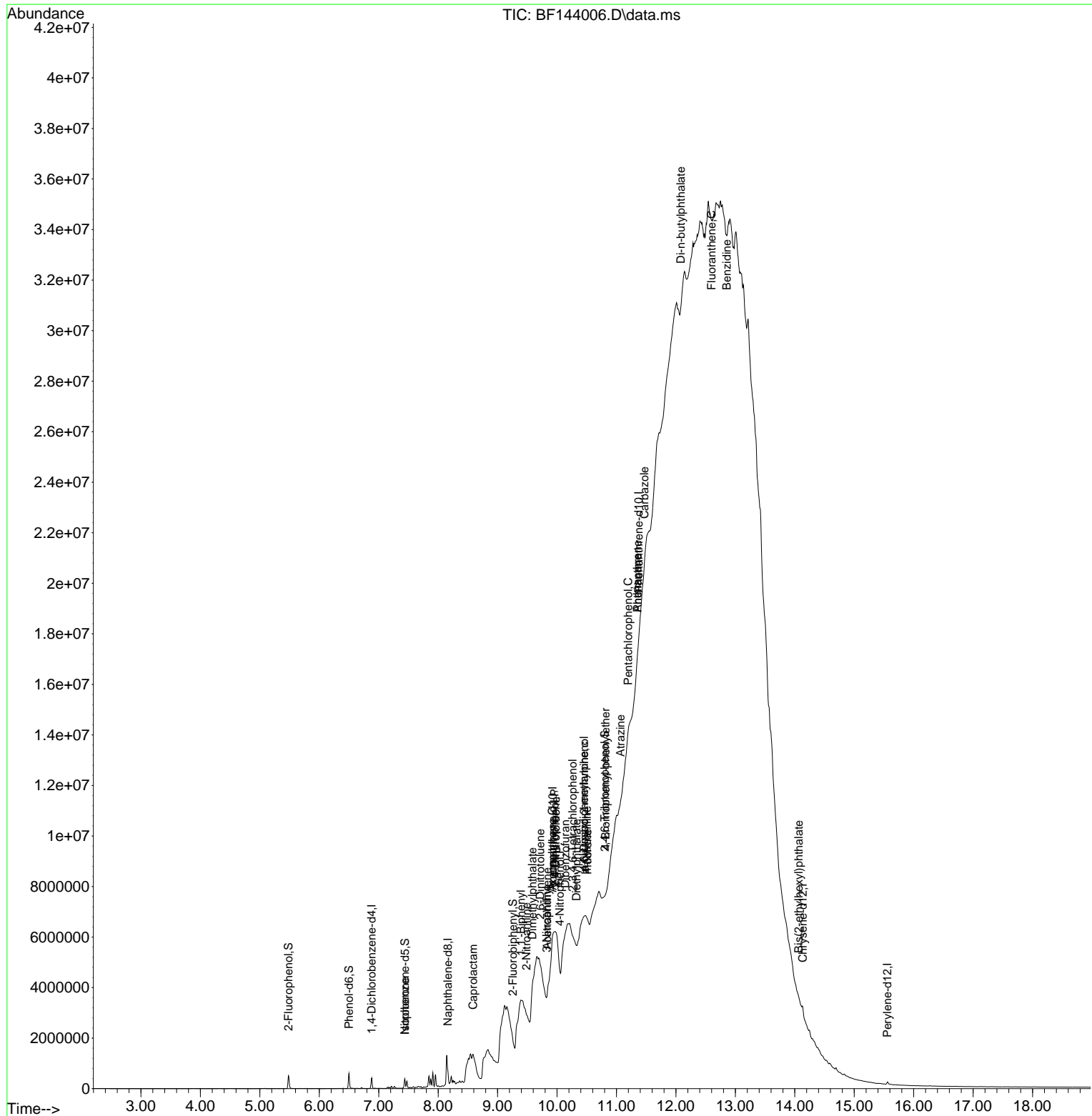
Compound	R.T.	QIon	Response	Conc	Units	Dev(Min)
Internal Standards						
1) 1,4-Dichlorobenzene-d4	6.881	152	88227	20.000	ng	0.00
21) Naphthalene-d8	8.163	136	309714	20.000	ng	0.00
39) Acenaphthene-d10	9.927	164	26359	20.000	ng	# 0.00
64) Phenanthrene-d10	11.374	188	2807	20.000	ng	#-0.04
76) Chrysene-d12	14.133	240	101656	20.000	ng	# 0.07
86) Perylene-d12	15.556	264	55150	20.000	ng	0.01
System Monitoring Compounds						
5) 2-Fluorophenol	5.481	112	229250	41.262	ng	-0.02
7) Phenol-d6	6.498	99	281765	42.547	ng	-0.02
23) Nitrobenzene-d5	7.439	82	156044	30.610	ng	-0.02
42) 2,4,6-Tribromophenol	10.804	330	51057	194.473	ng	0.08
45) 2-Fluorobiphenyl	9.257	172	299445	180.258	ng	0.00
79) Terphenyl-d14	13.045	244	10545	1.773	ng	0.04
Target Compounds						
25) Isophorone	7.439	82	126887	11.805	ng	# 68
35) Caprolactam	8.586	113	52323	36.184	ng	# 1
46) 1,1'-Biphenyl	9.392	154	58980	33.796	ng	95
48) 2-Nitroaniline	9.486	65	1489	3.237	ng	# 66
49) Acenaphthylene	9.833	152	12668	6.193	ng	# 1
50) Dimethylphthalate	9.586	163	24796	14.813	ng	# 38
51) 2,6-Dinitrotoluene	9.716	165	29919	96.390	ng	# 43
52) Acenaphthene	9.922	154	12117	9.040	ng	# 58
53) 3-Nitroaniline	9.827	138	1321	3.476	ng	# 59
54) 2,4-Dinitrophenol	9.957	184	1367	13.461	ng	# 1
55) Dibenzofuran	10.139	168	27801	14.693	ng	# 9
56) 4-Nitrophenol	10.045	139	10823	37.610	ng	# 1
57) 2,4-Dinitrotoluene	9.980	165	2279	5.396	ng	# 75
58) Fluorene	10.510	166	14655	10.264	ng	# 1
59) 2,3,4,6-Tetrachlorophenol	10.263	232	825	2.072	ng	# 1
60) Diethylphthalate	10.327	149	95197	61.217	ng	# 28
62) 4-Nitroaniline	10.504	138	1384	3.787	ng	# 38
65) 4,6-Dinitro-2-methylph...	10.457	198	946	67.064	ng	# 1
66) n-Nitrosodiphenylamine	10.457	169	3322	37.691	ng	# 65
67) 4-Bromophenyl-phenylether	10.816	248	3394	109.407	ng	# 1
69) Atrazine	11.069	200	3031	113.462	ng	# 1
70) Pentachlorophenol	11.198	266	2481	120.282	ng	# 52
71) Phenanthrene	11.351	178	13312	97.822	ng	# 1
72) Anthracene	11.351	178	13312	96.830	ng	# 1
73) Carbazole	11.469	167	48218	396.013	ng	# 1
74) Di-n-butylphthalate	12.080	149	126302	895.027	ng	# 31
75) Fluoranthene	12.598	202	5965	42.436	ng	# 1
77) Benzidine	12.857	184	35303	10.002	ng	# 1
84) Bis(2-ethylhexyl)phtha...	14.068	149	40743	12.280	ng	# 79

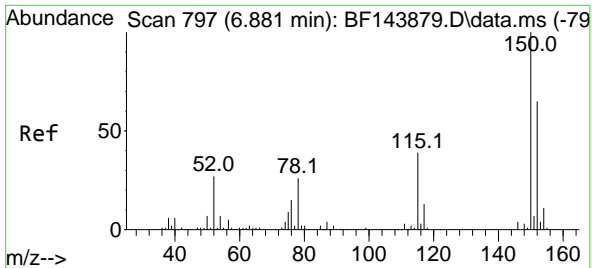
(#) = qualifier out of range (m) = manual integration (+) = signals summed

Data Path : Z:\svoasrv\HPCHEM1\BNA_F\Data\BF102025\
 Data File : BF144006.D
 Acq On : 20 Oct 2025 18:53
 Operator : RC/JU
 Sample : Q3388-01
 Misc :
 ALS Vial : 11 Sample Multiplier: 1

Instrument :
 BNA_F
 ClientSampleId :

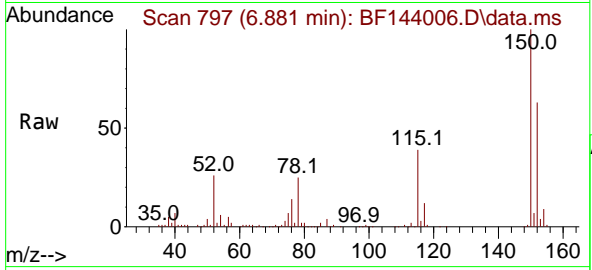
Quant Time: Oct 21 10:42:04 2025
 Quant Method : Z:\svoasrv\HPCHEM1\BNA_F\Methods\8270-BF100625.M
 Quant Title : ASP BNA STANDARDS FOR 5 POINT CALIBRATION
 QLast Update : Mon Oct 06 15:29:47 2025
 Response via : Initial Calibration



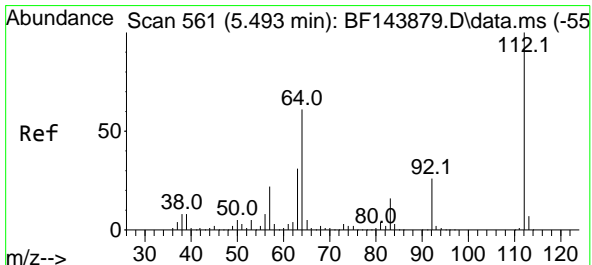
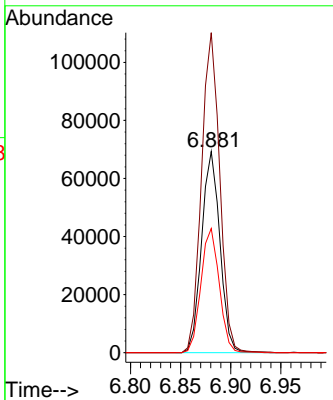
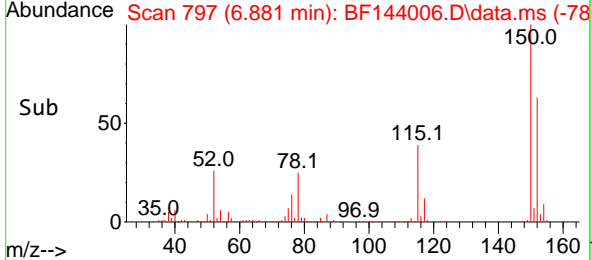


#1
 1,4-Dichlorobenzene-d4
 Concen: 20.000 ng
 RT: 6.881 min Scan# 79
 Delta R.T. -0.005 min
 Lab File: BF144006.D
 Acq: 20 Oct 2025 18:53

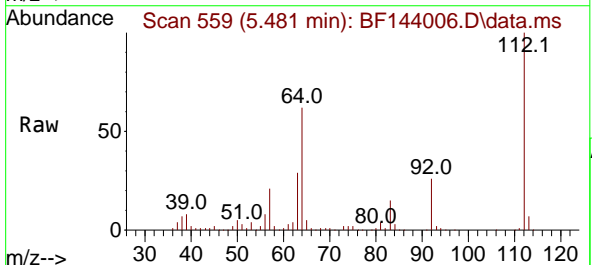
Instrument :
 BNA_F
 ClientSampleId :



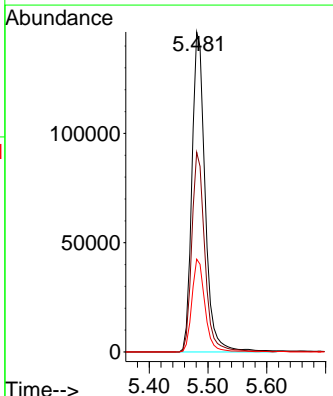
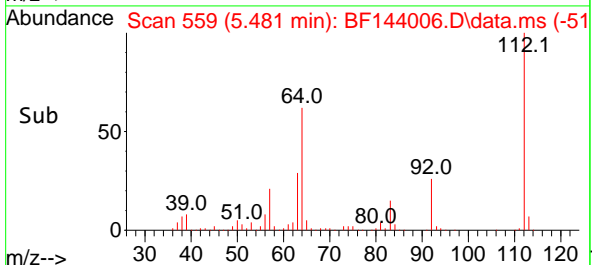
Tgt Ion:152 Resp: 88227
 Ion Ratio Lower Upper
 152 100
 150 159.1 124.4 186.6
 115 61.7 48.1 72.1

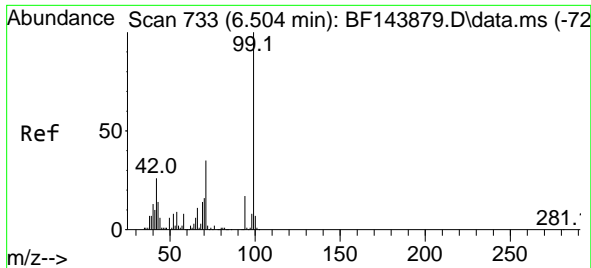


#5
 2-Fluorophenol
 Concen: 41.262 ng
 RT: 5.481 min Scan# 559
 Delta R.T. -0.018 min
 Lab File: BF144006.D
 Acq: 20 Oct 2025 18:53



Tgt Ion:112 Resp: 229250
 Ion Ratio Lower Upper
 112 100
 64 62.4 49.1 73.7
 63 29.0 24.5 36.7



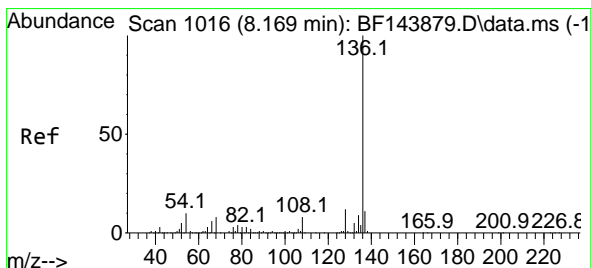
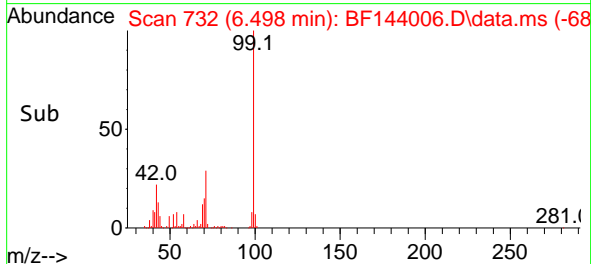
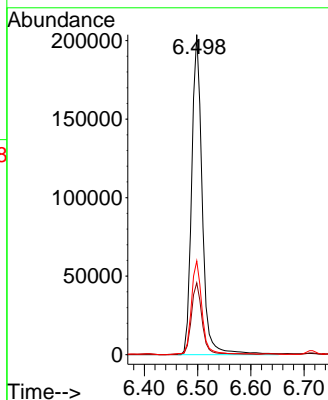
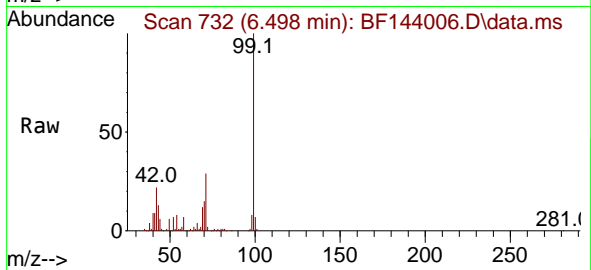


#7
 Phenol-d6
 Concen: 42.547 ng
 RT: 6.498 min Scan# 71
 Delta R.T. -0.018 min
 Lab File: BF144006.D
 Acq: 20 Oct 2025 18:53

Instrument :
 BNA_F
 ClientSampleId :

Tgt Ion: 99 Resp: 281765

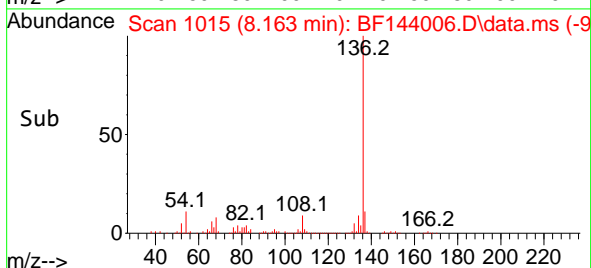
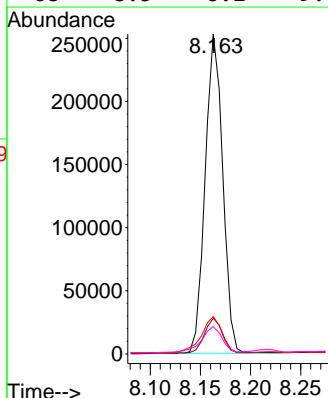
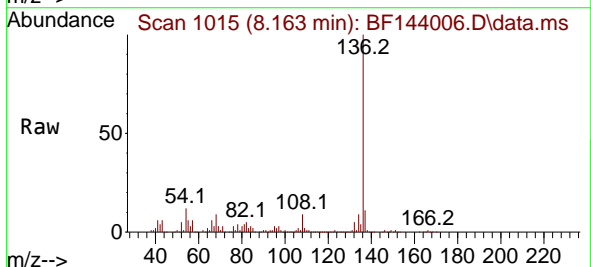
Ion	Ratio	Lower	Upper
99	100		
42	22.4	21.0	31.4
71	29.3	27.8	41.8

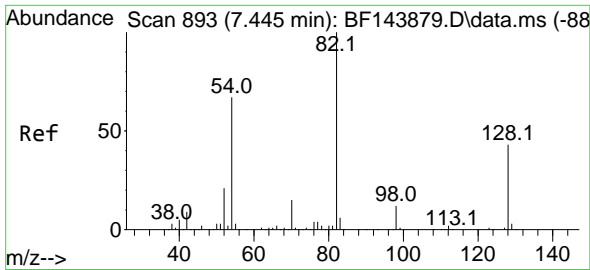


#21
 Naphthalene-d8
 Concen: 20.000 ng
 RT: 8.163 min Scan# 1015
 Delta R.T. -0.006 min
 Lab File: BF144006.D
 Acq: 20 Oct 2025 18:53

Tgt Ion: 136 Resp: 309714

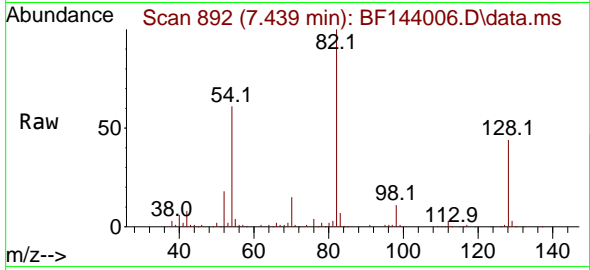
Ion	Ratio	Lower	Upper
136	100		
137	11.1	8.5	12.7
54	11.7	8.2	12.4
68	8.5	6.2	9.4



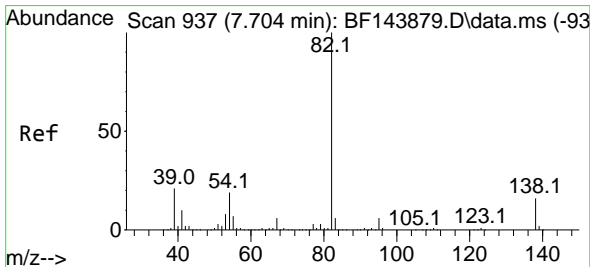
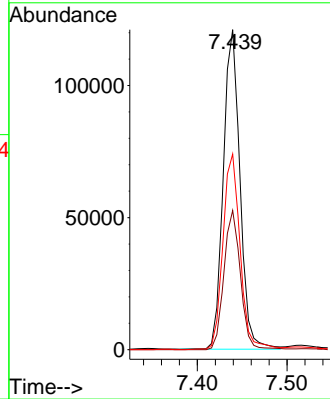
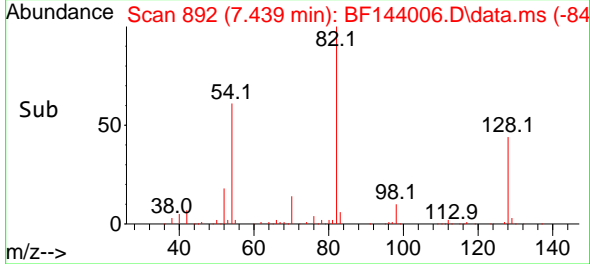


#23
 Nitrobenzene-d5
 Concen: 30.610 ng
 RT: 7.439 min Scan# 892
 Delta R.T. -0.018 min
 Lab File: BF144006.D
 Acq: 20 Oct 2025 18:53

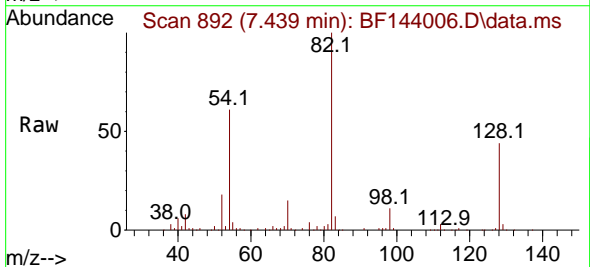
Instrument :
 BNA_F
 ClientSampleId :



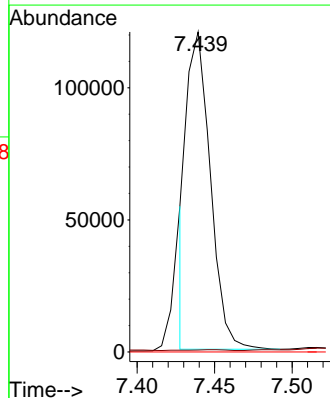
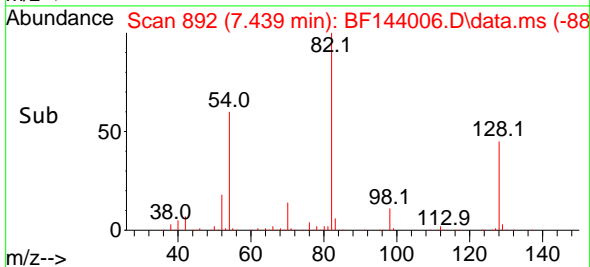
Tgt Ion: 82 Resp: 156044
 Ion Ratio Lower Upper
 82 100
 128 43.5 34.0 51.0
 54 61.1 53.2 79.8

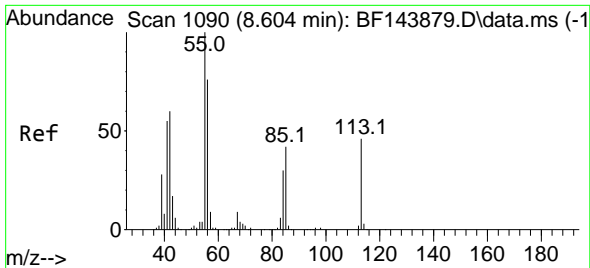


#25
 Isophorone
 Concen: 11.805 ng
 RT: 7.439 min Scan# 892
 Delta R.T. -0.282 min
 Lab File: BF144006.D
 Acq: 20 Oct 2025 18:53



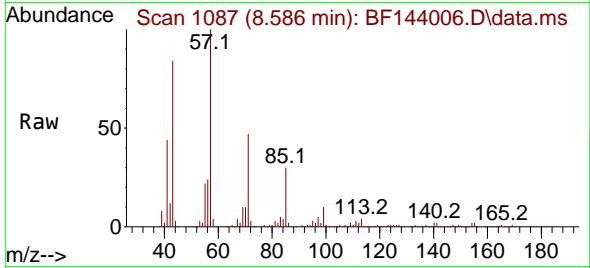
Tgt Ion: 82 Resp: 126887
 Ion Ratio Lower Upper
 82 100
 95 0.6 5.1 7.7#
 138 0.0 12.9 19.3#



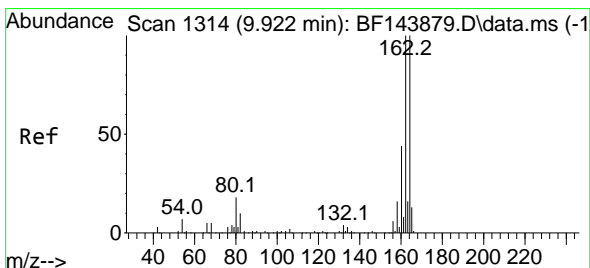
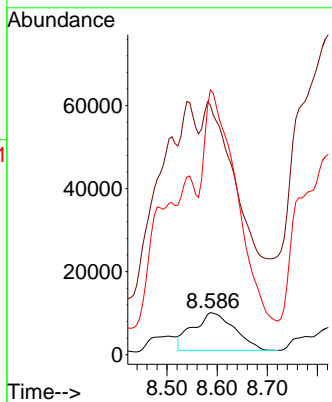
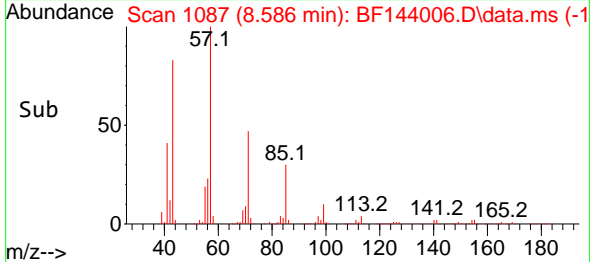


#35
 Caprolactam
 Concen: 36.184 ng
 RT: 8.586 min Scan# 1090
 Delta R.T. -0.059 min
 Lab File: BF144006.D
 Acq: 20 Oct 2025 18:53

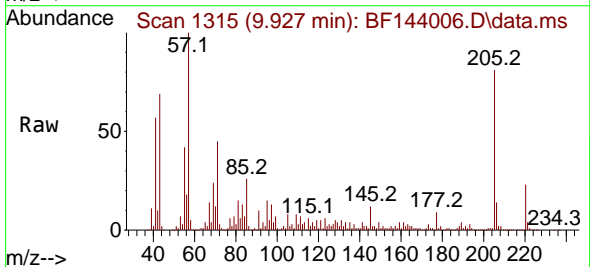
Instrument : BNA_F
 ClientSampleId :



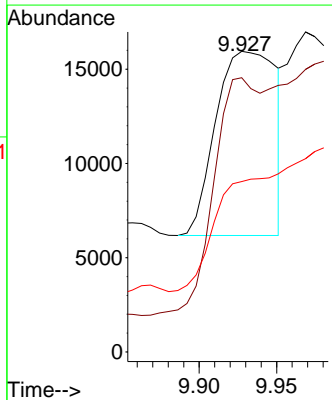
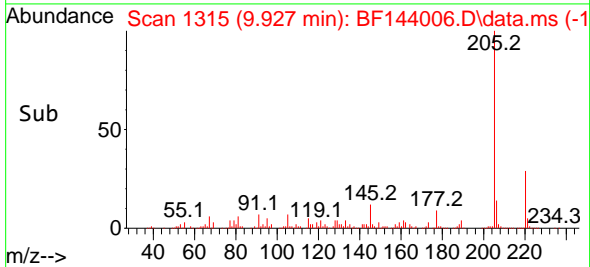
Tgt Ion:113 Resp: 52323
 Ion Ratio Lower Upper
 113 100
 55 593.4 199.6 239.6#
 56 629.5 146.0 186.0#

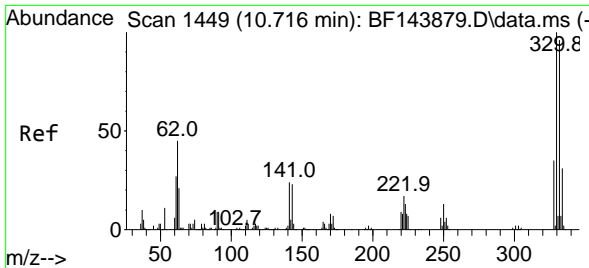


#39
 Acenaphthene-d10
 Concen: 20.000 ng
 RT: 9.927 min Scan# 1315
 Delta R.T. 0.000 min
 Lab File: BF144006.D
 Acq: 20 Oct 2025 18:53



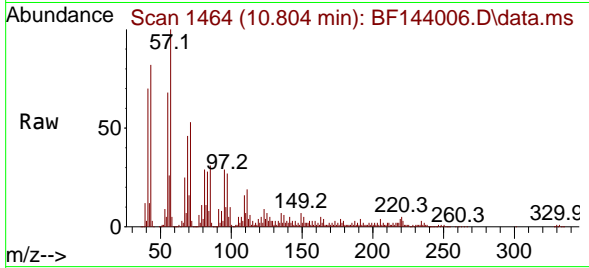
Tgt Ion:164 Resp: 26359
 Ion Ratio Lower Upper
 164 100
 162 91.2 80.2 120.2
 160 56.7 35.4 53.0#



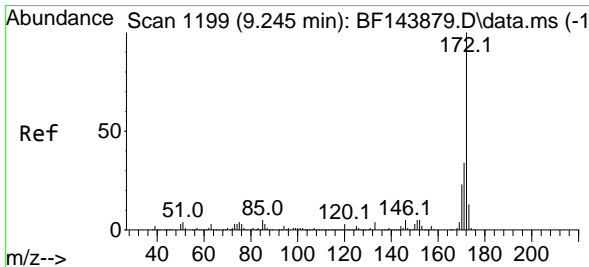
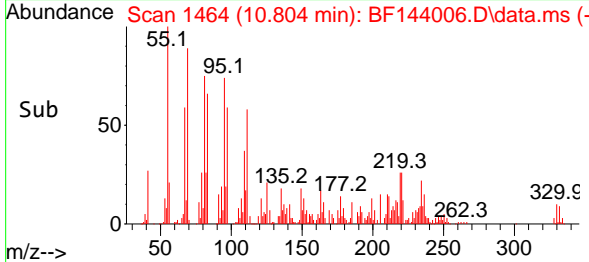
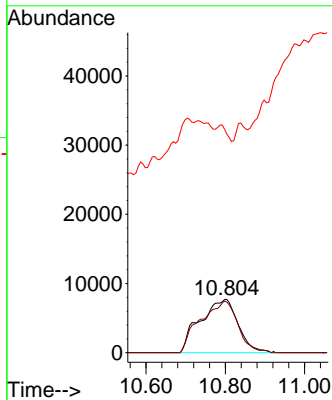


#42
 2,4,6-Tribromophenol
 Concen: 194.473 ng
 RT: 10.804 min Scan# 1449
 Delta R.T. 0.082 min
 Lab File: BF144006.D
 Acq: 20 Oct 2025 18:53

Instrument :
 BNA_F
 ClientSampleId :

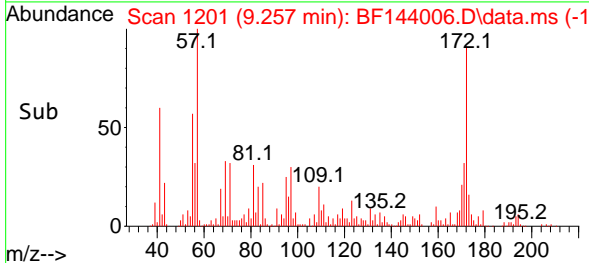
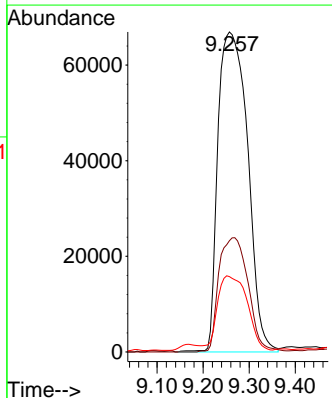
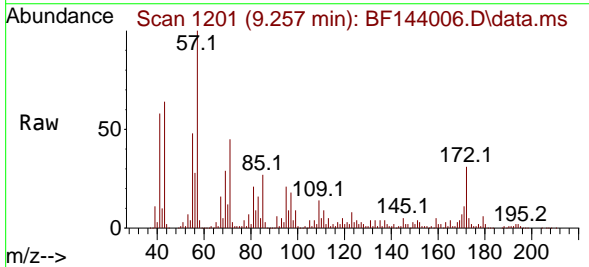


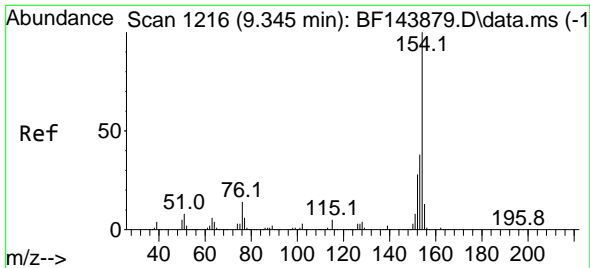
Tgt Ion:330 Resp: 51057
 Ion Ratio Lower Upper
 330 100
 332 96.0 76.9 115.3
 141 0.0 20.2 30.4#



#45
 2-Fluorobiphenyl
 Concen: 180.258 ng
 RT: 9.257 min Scan# 1201
 Delta R.T. 0.006 min
 Lab File: BF144006.D
 Acq: 20 Oct 2025 18:53

Tgt Ion:172 Resp: 299445
 Ion Ratio Lower Upper
 172 100
 171 34.7 27.4 41.0
 170 23.5 18.6 28.0



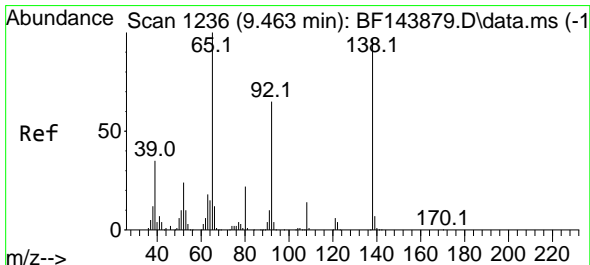
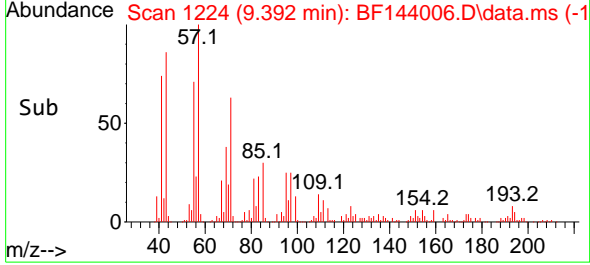
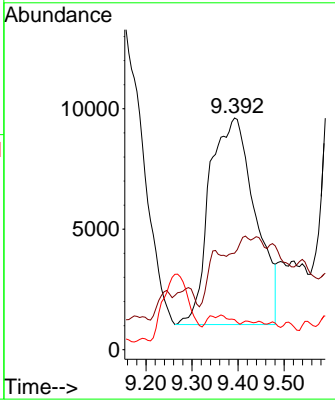
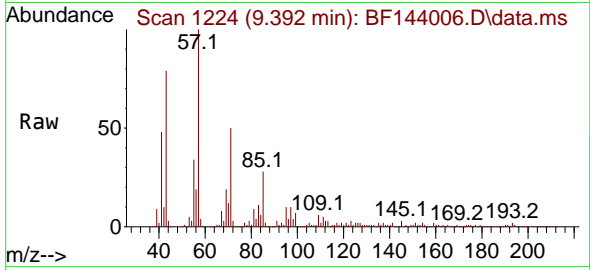


#46
 1,1'-Biphenyl
 Concen: 33.796 ng
 RT: 9.392 min Scan# 11
 Delta R.T. 0.041 min
 Lab File: BF144006.D
 Acq: 20 Oct 2025 18:53

Instrument : BNA_F
 ClientSampleId :

Tgt Ion:154 Resp: 58980

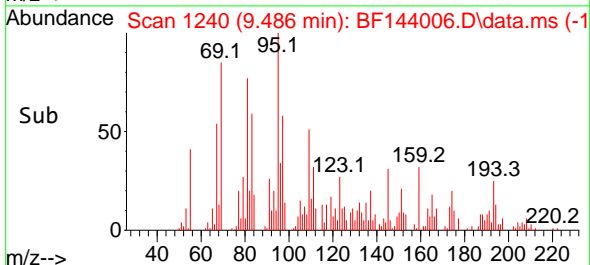
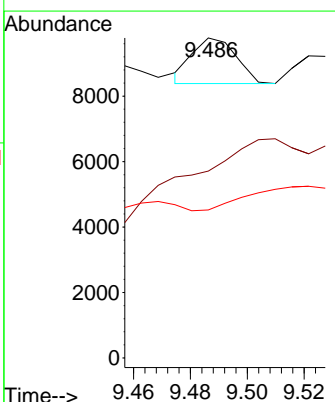
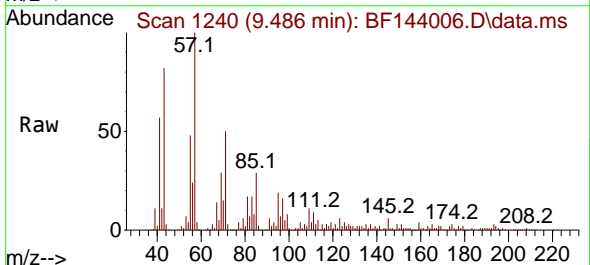
Ion	Ratio	Lower	Upper
154	100		
153	41.6	18.4	58.4
76	13.0	0.0	34.0

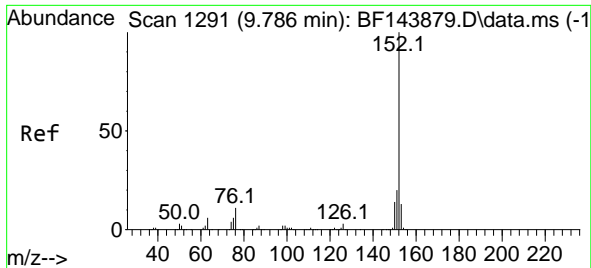


#48
 2-Nitroaniline
 Concen: 3.237 ng
 RT: 9.486 min Scan# 1240
 Delta R.T. 0.018 min
 Lab File: BF144006.D
 Acq: 20 Oct 2025 18:53

Tgt Ion: 65 Resp: 1489

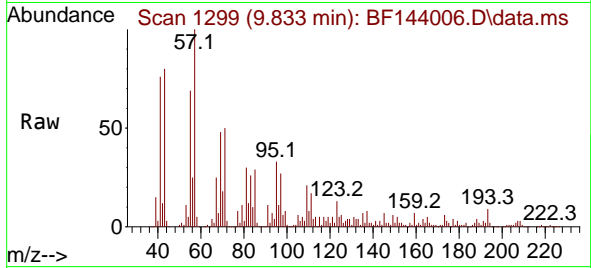
Ion	Ratio	Lower	Upper
65	100		
92	58.4	52.1	78.1
138	46.2	77.4	116.2



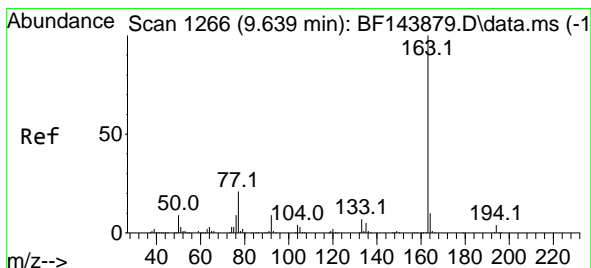
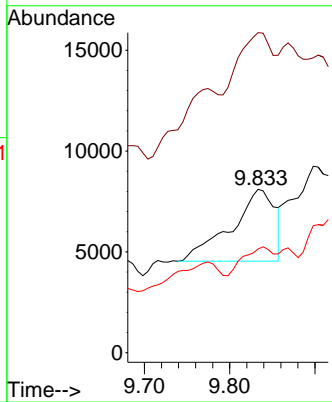
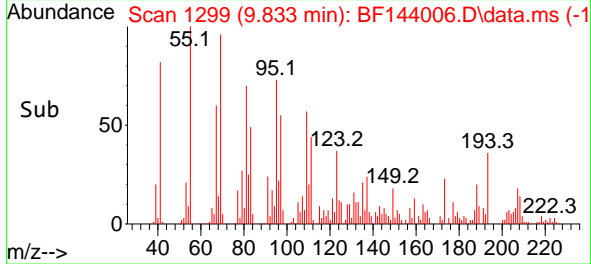


#49
 Acenaphthylene
 Concen: 6.193 ng
 RT: 9.833 min Scan# 1299
 Delta R.T. 0.047 min
 Lab File: BF144006.D
 Acq: 20 Oct 2025 18:53

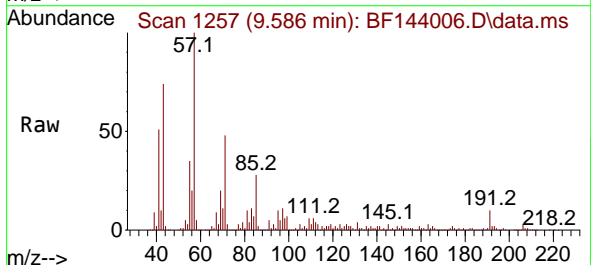
Instrument :
 BNA_F
 ClientSampleId :



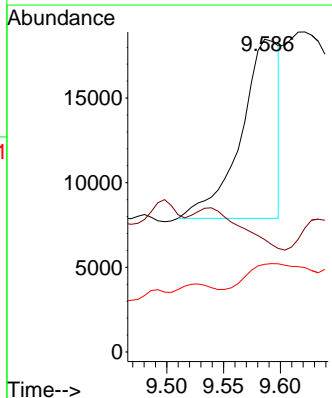
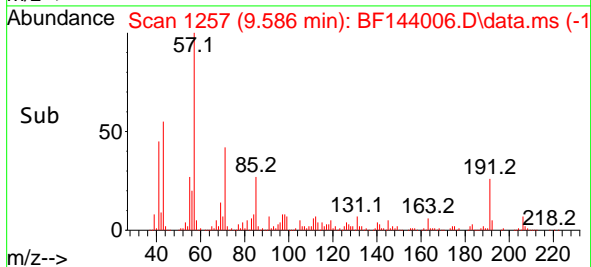
Tgt Ion:152 Resp: 12668
 Ion Ratio Lower Upper
 152 100
 151 195.9 15.8 23.6#
 153 63.5 10.5 15.7#

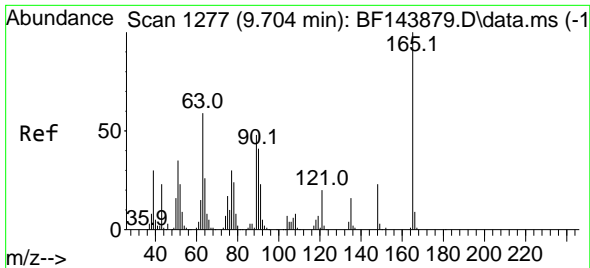


#50
 Dimethylphthalate
 Concen: 14.813 ng
 RT: 9.586 min Scan# 1257
 Delta R.T. -0.059 min
 Lab File: BF144006.D
 Acq: 20 Oct 2025 18:53



Tgt Ion:163 Resp: 24796
 Ion Ratio Lower Upper
 163 100
 194 35.9 3.3 4.9#
 164 28.0 8.1 12.1#



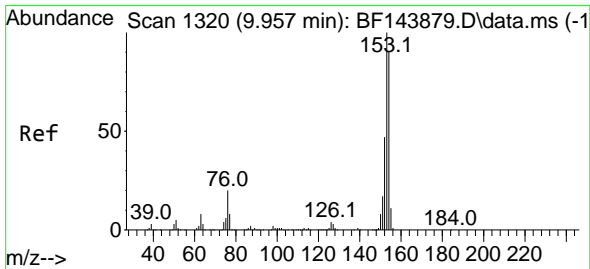
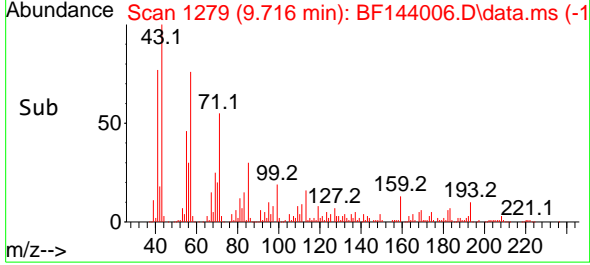
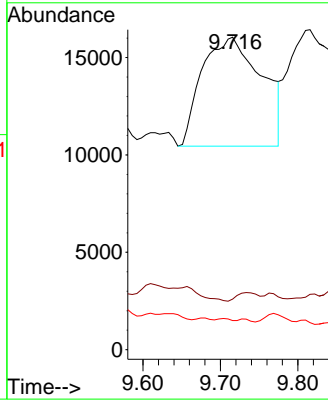
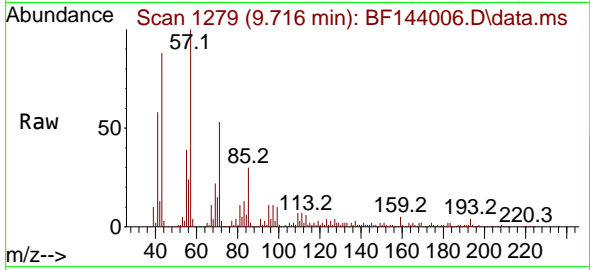


#51
 2,6-Dinitrotoluene
 Concen: 96.390 ng
 RT: 9.716 min Scan# 11
 Delta R.T. -0.000 min
 Lab File: BF144006.D
 Acq: 20 Oct 2025 18:53

Instrument :
 BNA_F
 ClientSampleId :

Tgt Ion:165 Resp: 29919

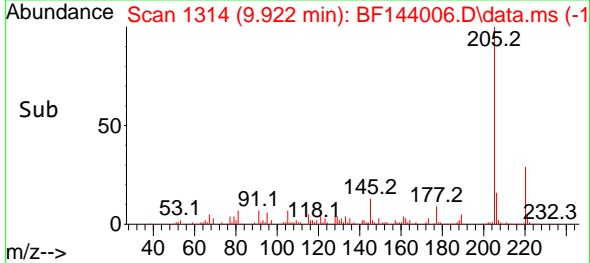
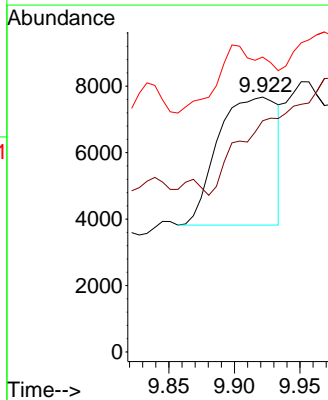
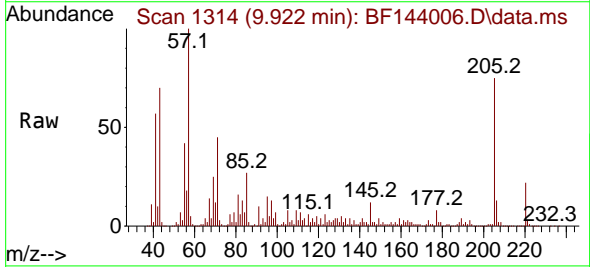
Ion	Ratio	Lower	Upper
165	100		
63	16.2	47.3	70.9#
89	9.3	38.2	57.4#

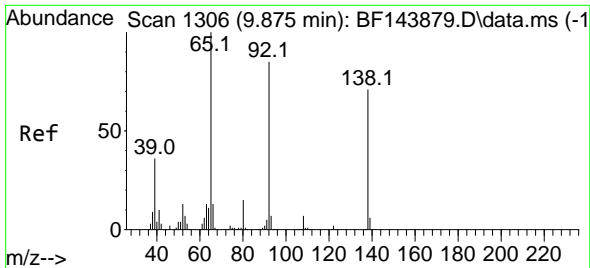


#52
 Acenaphthene
 Concen: 9.040 ng
 RT: 9.922 min Scan# 1314
 Delta R.T. -0.041 min
 Lab File: BF144006.D
 Acq: 20 Oct 2025 18:53

Tgt Ion:154 Resp: 12117

Ion	Ratio	Lower	Upper
154	100		
153	90.7	89.3	133.9
152	115.7	42.2	63.2#

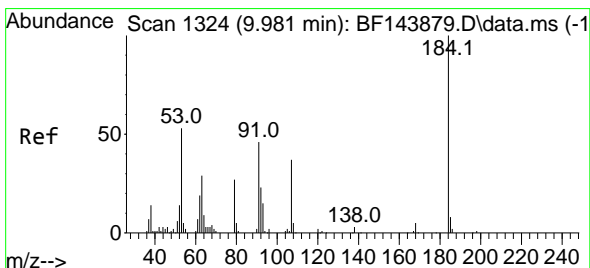
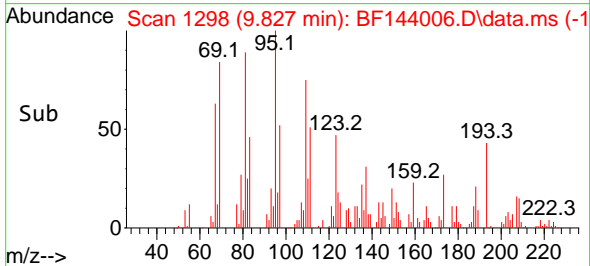
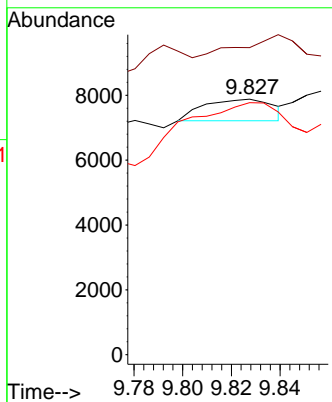
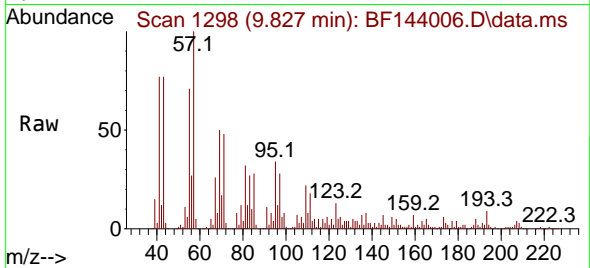




#53
 3-Nitroaniline
 Concen: 3.476 ng
 RT: 9.827 min Scan# 11
 Delta R.T. -0.059 min
 Lab File: BF144006.D
 Acq: 20 Oct 2025 18:53

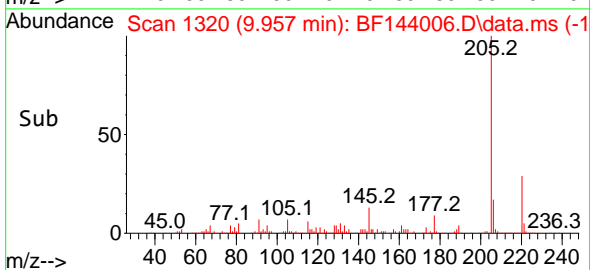
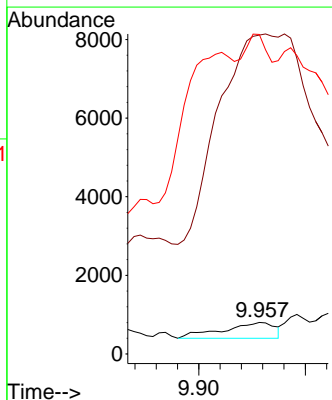
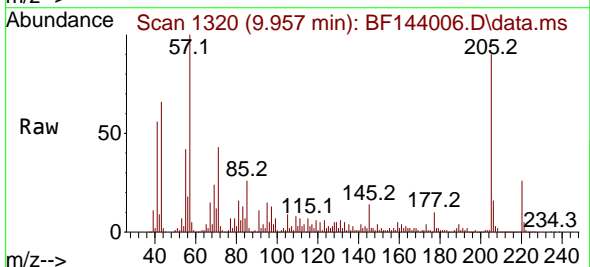
Instrument :
 BNA_F
 ClientSampleId :

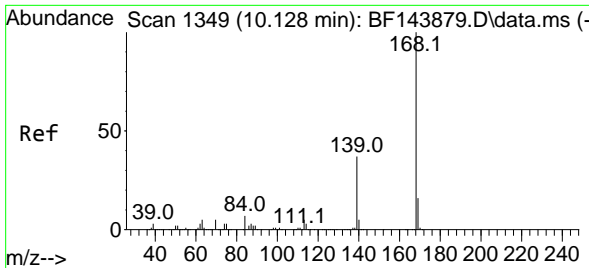
Tgt Ion:138 Resp: 1321
 Ion Ratio Lower Upper
 138 100
 108 120.2 8.3 12.5#
 92 98.6 96.2 144.2



#54
 2,4-Dinitrophenol
 Concen: 13.461 ng
 RT: 9.957 min Scan# 1320
 Delta R.T. -0.029 min
 Lab File: BF144006.D
 Acq: 20 Oct 2025 18:53

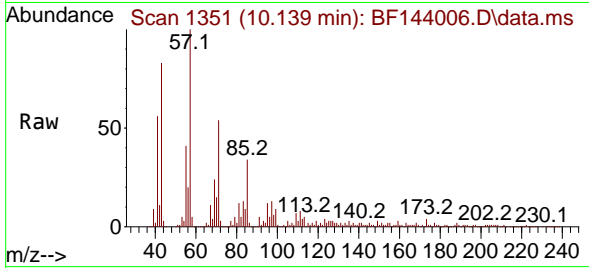
Tgt Ion:184 Resp: 1367
 Ion Ratio Lower Upper
 184 100
 63 1010.5 48.2 72.4#
 154 1012.3 49.2 73.8#



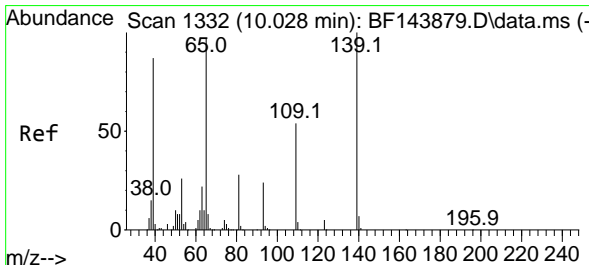
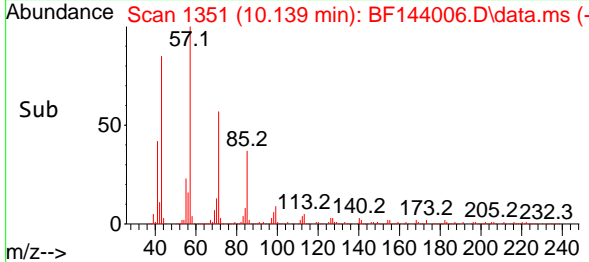
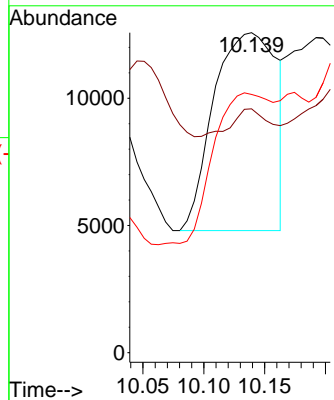


#55
 Dibenzofuran
 Concen: 14.693 ng
 RT: 10.139 min Scan# 11
 Delta R.T. 0.006 min
 Lab File: BF144006.D
 Acq: 20 Oct 2025 18:53

Instrument :
 BNA_F
 ClientSampleId :

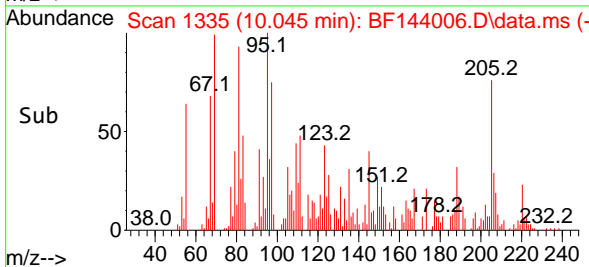
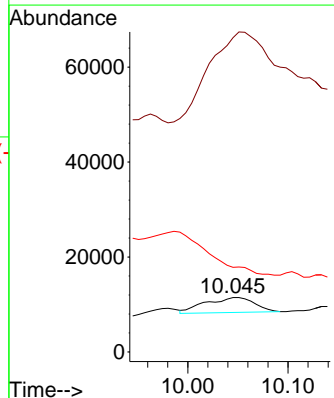
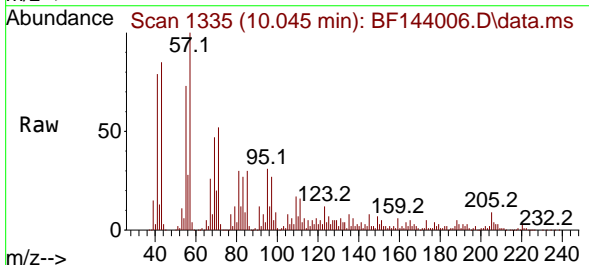


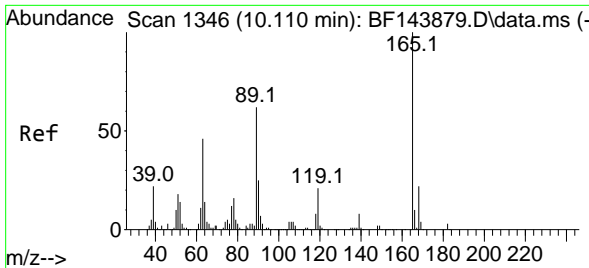
Tgt Ion:168 Resp: 27801
 Ion Ratio Lower Upper
 168 100
 139 76.2 29.8 44.8#
 169 80.7 12.8 19.2#



#56
 4-Nitrophenol
 Concen: 37.610 ng
 RT: 10.045 min Scan# 1335
 Delta R.T. 0.006 min
 Lab File: BF144006.D
 Acq: 20 Oct 2025 18:53

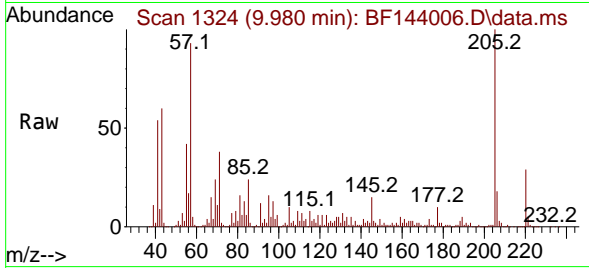
Tgt Ion:139 Resp: 10823
 Ion Ratio Lower Upper
 139 100
 109 577.4 34.5 74.5#
 65 155.4 77.6 117.6#





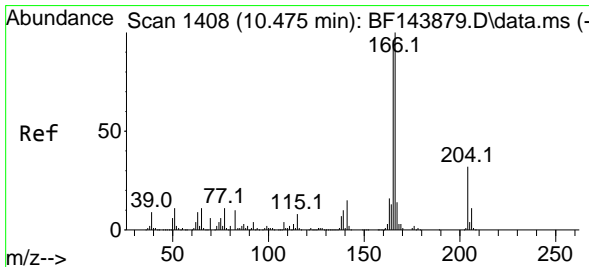
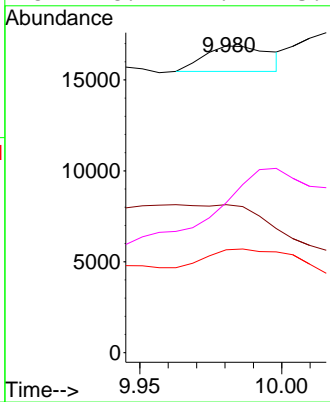
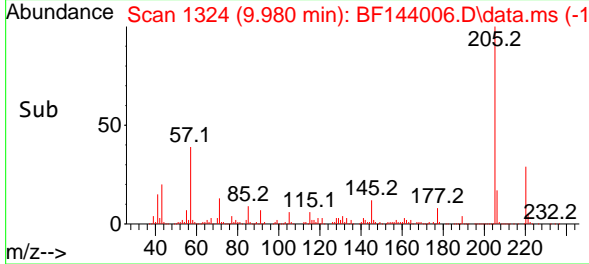
#57
 2,4-Dinitrotoluene
 Concen: 5.396 ng
 RT: 9.980 min Scan# 11
 Delta R.T. -0.135 min
 Lab File: BF144006.D
 Acq: 20 Oct 2025 18:53

Instrument :
 BNA_F
 ClientSampleId :

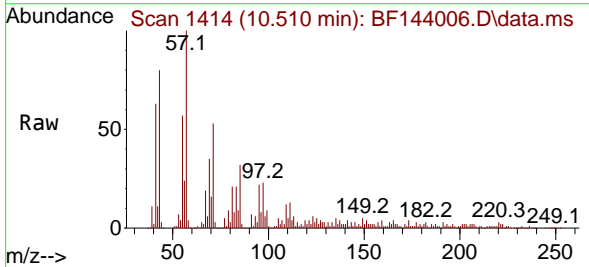


Tgt Ion:165 Resp: 2279

Ion	Ratio	Lower	Upper
165	100		
63	48.3	37.2	55.8
89	33.6	49.4	74.2#
182	48.9	2.1	3.1#

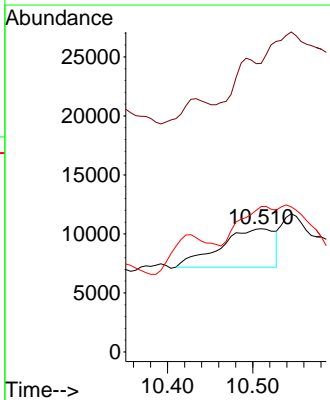
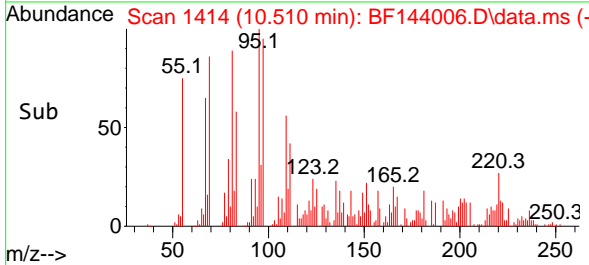


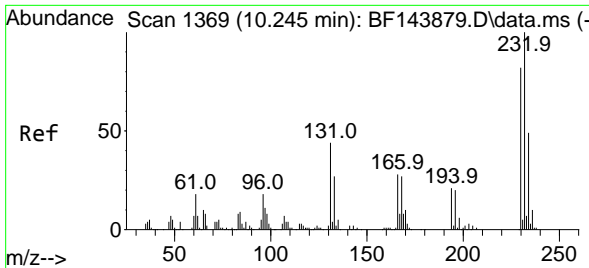
#58
 Fluorene
 Concen: 10.264 ng
 RT: 10.510 min Scan# 1414
 Delta R.T. 0.029 min
 Lab File: BF144006.D
 Acq: 20 Oct 2025 18:53



Tgt Ion:166 Resp: 14655

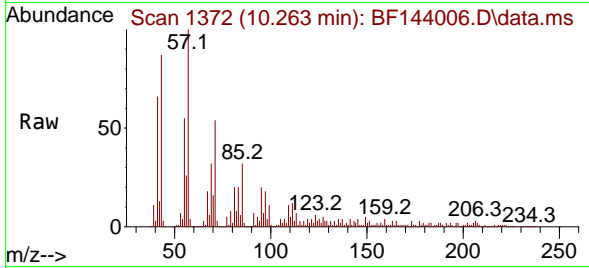
Ion	Ratio	Lower	Upper
166	100		
165	234.2	77.0	115.6#
167	118.0	11.1	16.7#



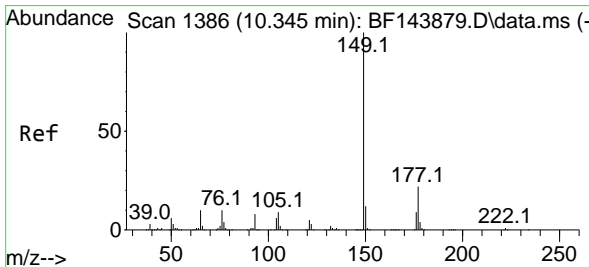
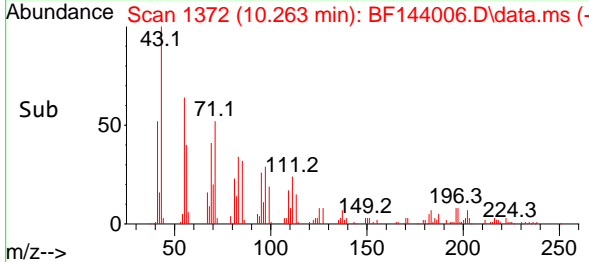
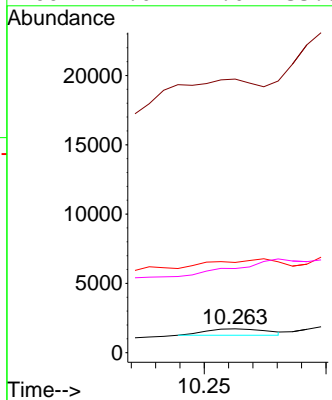


#59
 2,3,4,6-Tetrachlorophenol
 Concen: 2.072 ng
 RT: 10.263 min Scan# 11
 Delta R.T. 0.012 min
 Lab File: BF144006.D
 Acq: 20 Oct 2025 18:53

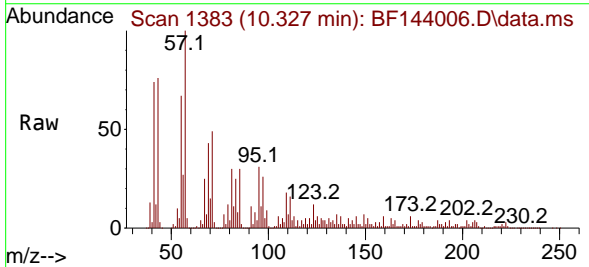
Instrument :
 BNA_F
 ClientSampleId :



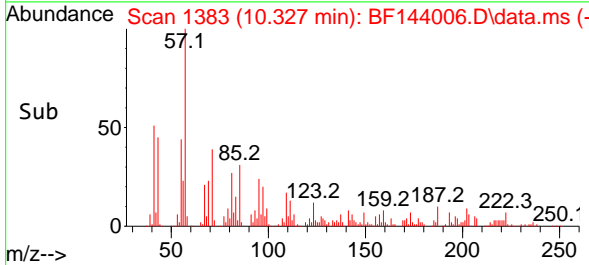
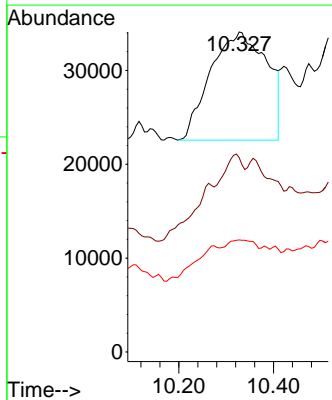
Tgt Ion:232 Resp: 825
 Ion Ratio Lower Upper
 232 100
 131 884.4 34.9 52.3#
 130 654.3 1.6 2.4#
 166 992.0 22.0 33.0#

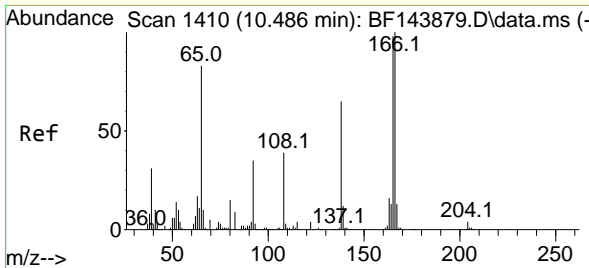


#60
 Diethylphthalate
 Concen: 61.217 ng
 RT: 10.327 min Scan# 1383
 Delta R.T. -0.024 min
 Lab File: BF144006.D
 Acq: 20 Oct 2025 18:53



Tgt Ion:149 Resp: 95197
 Ion Ratio Lower Upper
 149 100
 177 60.7 17.9 26.9#
 150 35.0 9.8 14.8#

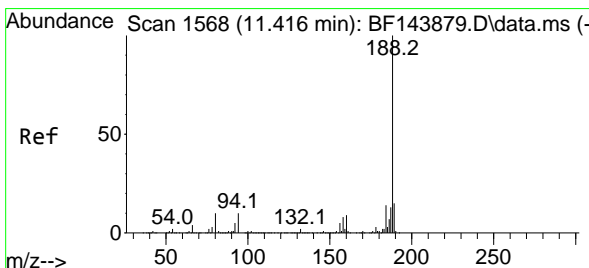
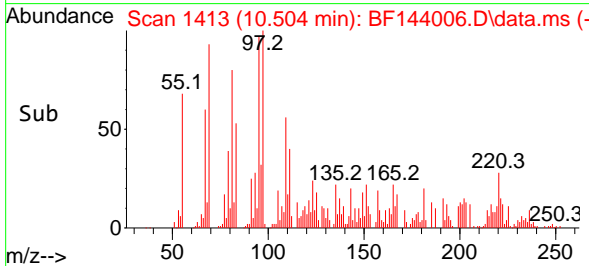
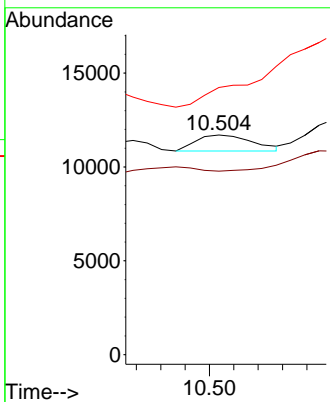
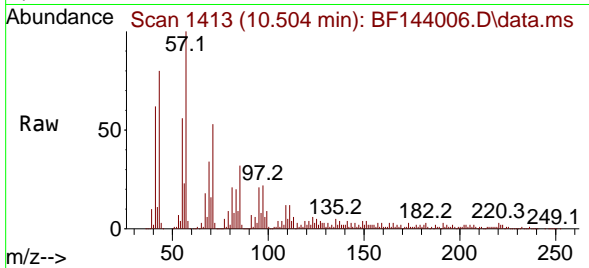




#62
 4-Nitroaniline
 Concen: 3.787 ng
 RT: 10.504 min Scan# 1410
 Delta R.T. -0.006 min
 Lab File: BF144006.D
 Acq: 20 Oct 2025 18:53

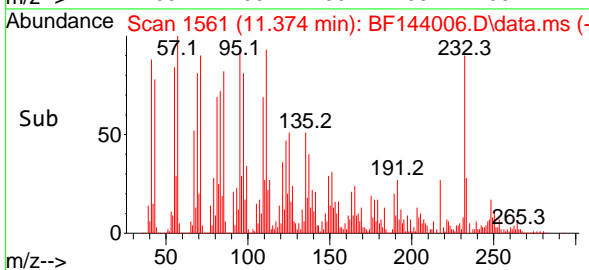
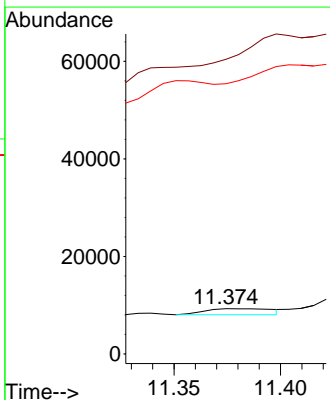
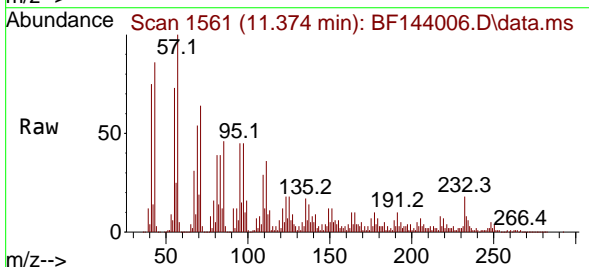
Instrument : BNA_F
 ClientSampleId :

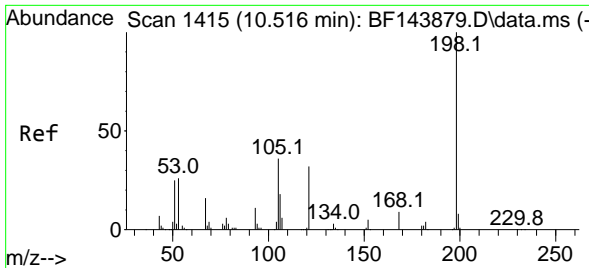
Tgt Ion	Resp	Lower	Upper
138	100		
92	83.5	33.9	73.9#
108	121.6	40.2	80.2#



#64
 Phenanthrene-d10
 Concen: 20.000 ng
 RT: 11.374 min Scan# 1561
 Delta R.T. -0.041 min
 Lab File: BF144006.D
 Acq: 20 Oct 2025 18:53

Tgt Ion	Resp	Lower	Upper
188	100		
94	651.1	7.8	11.6#
80	596.9	7.9	11.9#

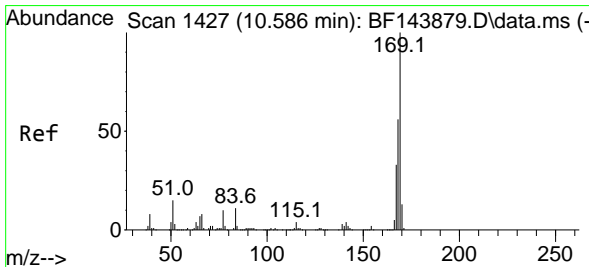
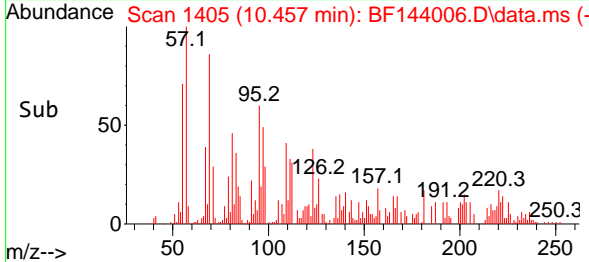
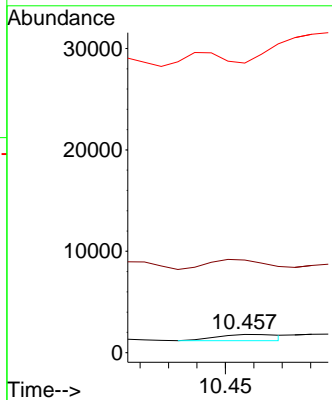
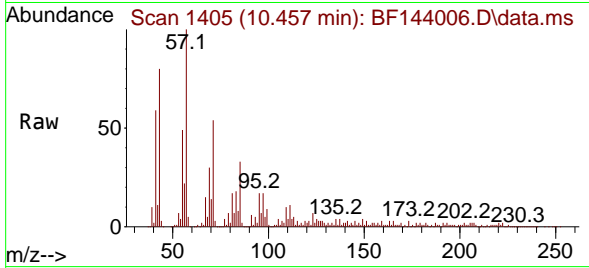




#65
 4,6-Dinitro-2-methylphenol
 Concen: 67.064 ng
 RT: 10.457 min Scan# 1405
 Delta R.T. -0.077 min
 Lab File: BF144006.D
 Acq: 20 Oct 2025 18:53

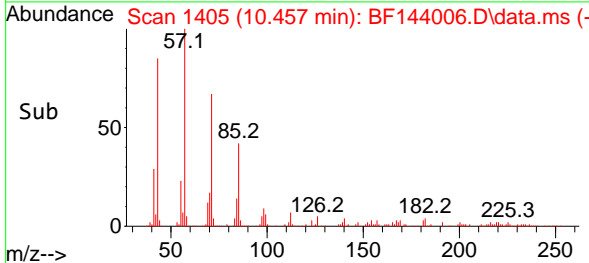
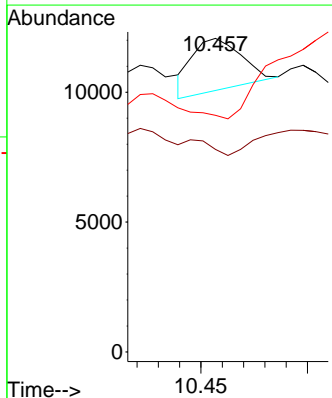
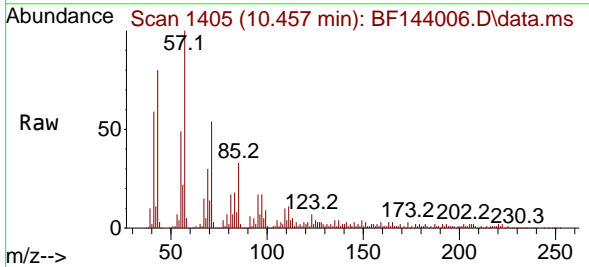
Instrument :
 BNA_F
 ClientSampleId :

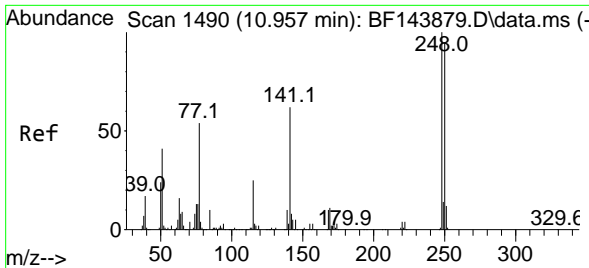
Tgt Ion:198 Resp: 946
 Ion Ratio Lower Upper
 198 100
 51 506.6 33.8 73.8#
 105 1584.5 17.0 57.0#



#66
 n-Nitrosodiphenylamine
 Concen: 37.691 ng
 RT: 10.457 min Scan# 1405
 Delta R.T. -0.135 min
 Lab File: BF144006.D
 Acq: 20 Oct 2025 18:53

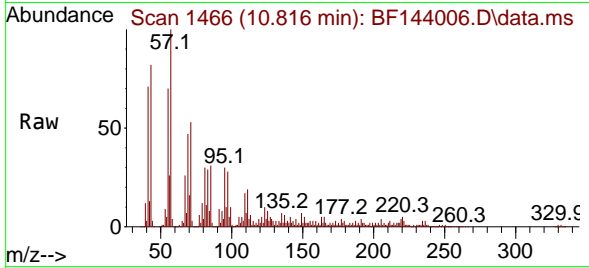
Tgt Ion:169 Resp: 3322
 Ion Ratio Lower Upper
 169 100
 168 64.6 44.9 67.3
 167 75.5 26.3 39.5#



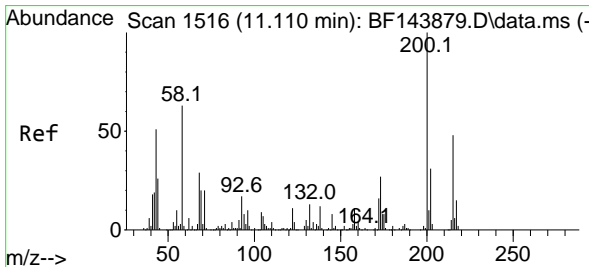
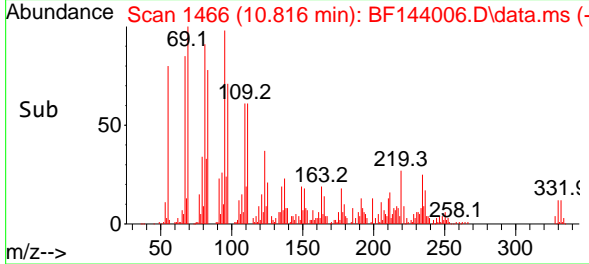
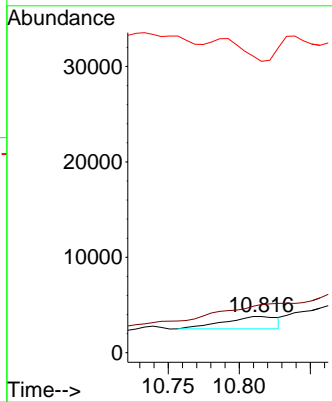


#67
 4-Bromophenyl-phenylether
 Concen: 109.407 ng
 RT: 10.816 min Scan# 14
 Delta R.T. -0.147 min
 Lab File: BF144006.D
 Acq: 20 Oct 2025 18:53

Instrument :
 BNA_F
 ClientSampleId :

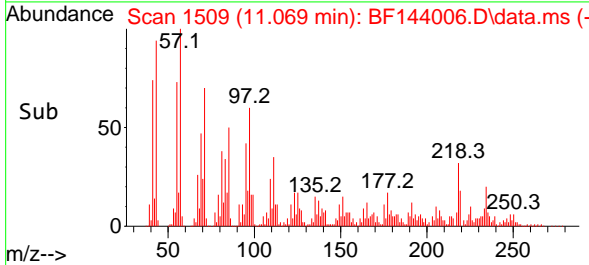
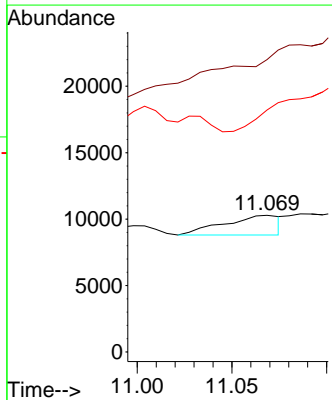
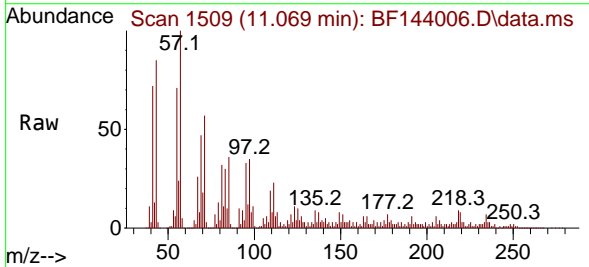


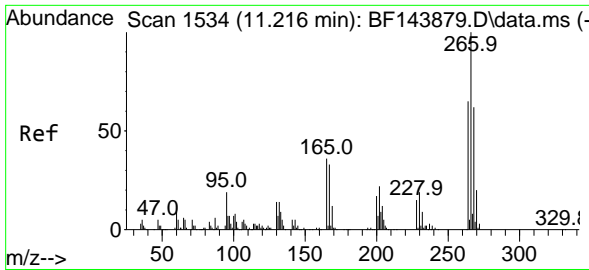
Tgt Ion:248 Resp: 3394
 Ion Ratio Lower Upper
 248 100
 250 133.0 76.3 114.5#
 141 804.0 49.7 74.5#



#69
 Atrazine
 Concen: 113.462 ng
 RT: 11.069 min Scan# 1509
 Delta R.T. -0.053 min
 Lab File: BF144006.D
 Acq: 20 Oct 2025 18:53

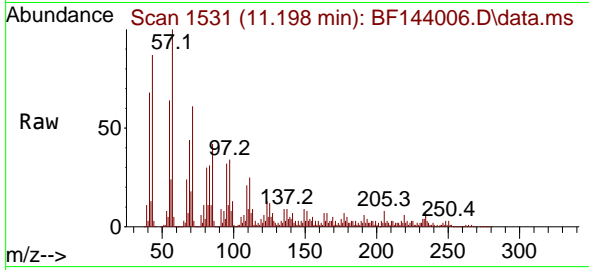
Tgt Ion:200 Resp: 3031
 Ion Ratio Lower Upper
 200 100
 173 213.8 7.0 47.0#
 215 177.0 27.8 67.8#



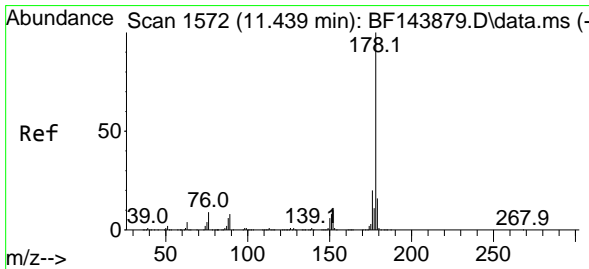
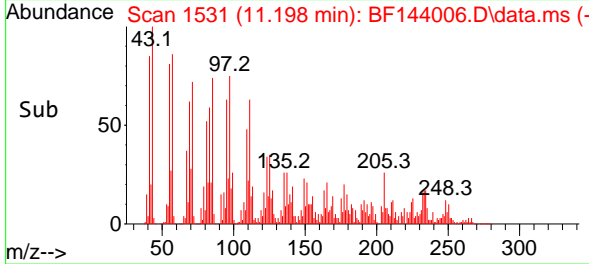
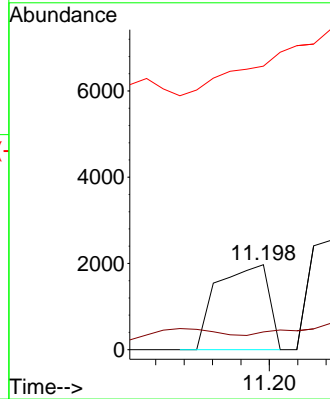


#70
 Pentachlorophenol
 Concen: 120.282 ng
 RT: 11.198 min Scan# 111
 Delta R.T. -0.024 min
 Lab File: BF144006.D
 Acq: 20 Oct 2025 18:53

Instrument :
 BNA_F
 ClientSampleId :

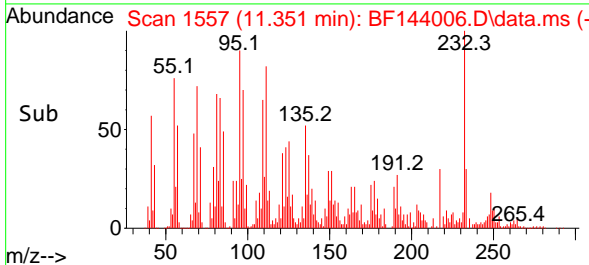
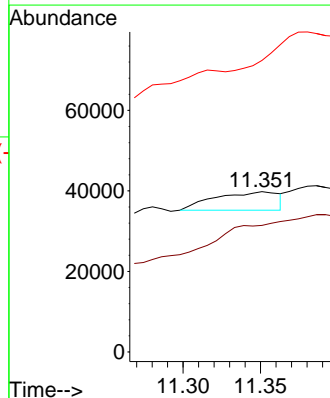
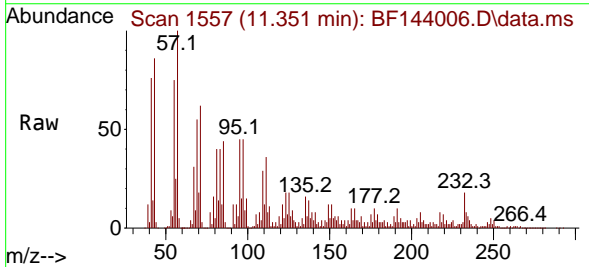


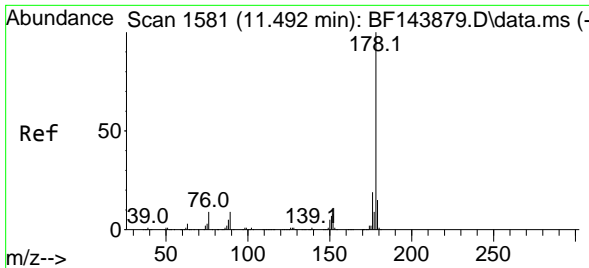
Tgt Ion:266 Resp: 2481
 Ion Ratio Lower Upper
 266 100
 268 5.2 49.4 74.0#
 264 83.6 51.8 77.6#



#71
 Phenanthrene
 Concen: 97.822 ng
 RT: 11.351 min Scan# 1557
 Delta R.T. -0.094 min
 Lab File: BF144006.D
 Acq: 20 Oct 2025 18:53

Tgt Ion:178 Resp: 13312
 Ion Ratio Lower Upper
 178 100
 176 78.9 15.9 23.9#
 179 181.8 12.4 18.6#

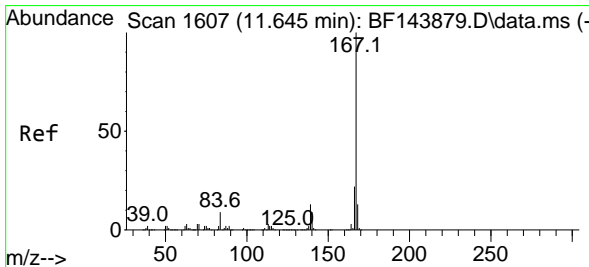
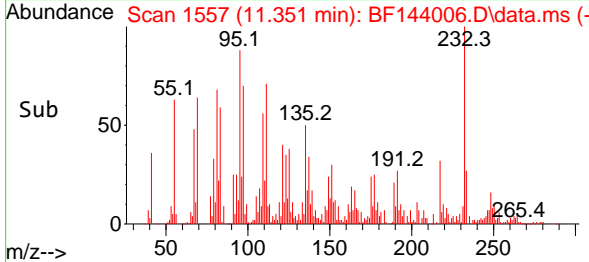
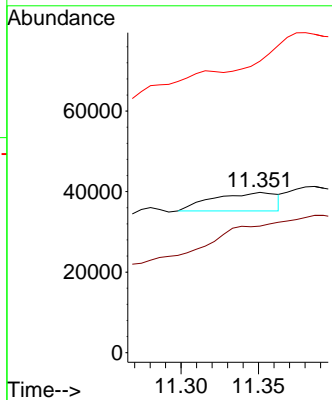
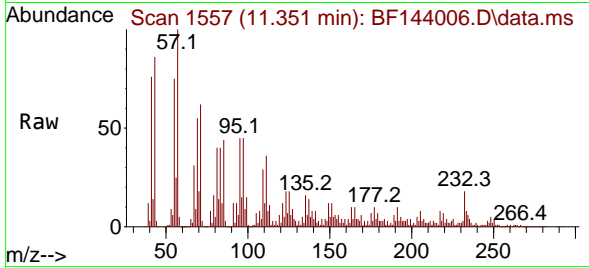




#72
 Anthracene
 Concen: 96.830 ng
 RT: 11.351 min Scan# 111
 Delta R.T. -0.147 min
 Lab File: BF144006.D
 Acq: 20 Oct 2025 18:53

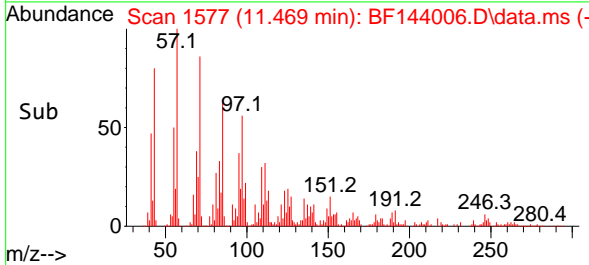
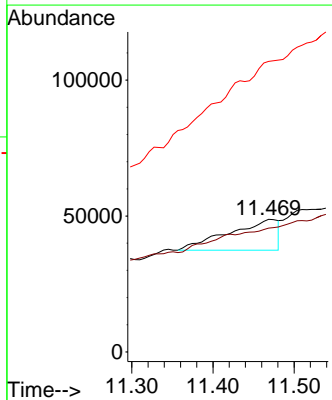
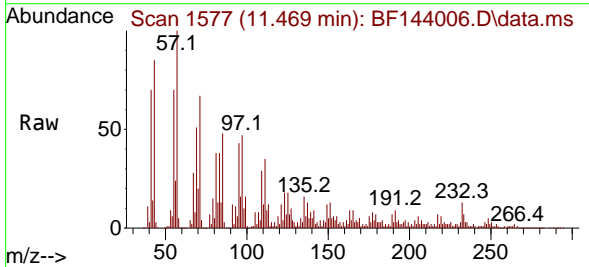
Instrument : BNA_F
 ClientSampleId :

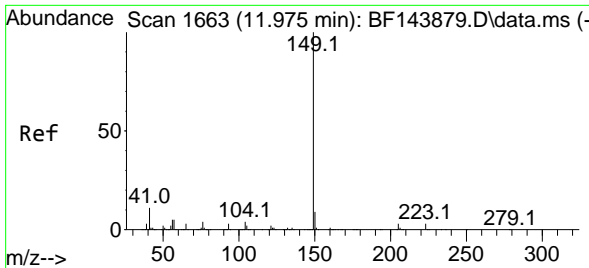
Tgt Ion	Resp	Lower	Upper
178	100		
176	78.9	14.9	22.3#
179	181.8	12.2	18.2#



#73
 Carbazole
 Concen: 396.013 ng
 RT: 11.469 min Scan# 1577
 Delta R.T. -0.182 min
 Lab File: BF144006.D
 Acq: 20 Oct 2025 18:53

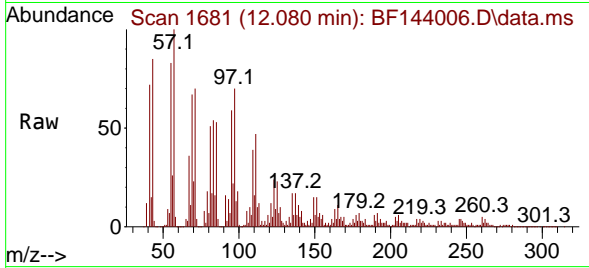
Tgt Ion	Resp	Lower	Upper
167	100		
166	93.4	17.2	25.8#
139	219.2	10.1	15.1#



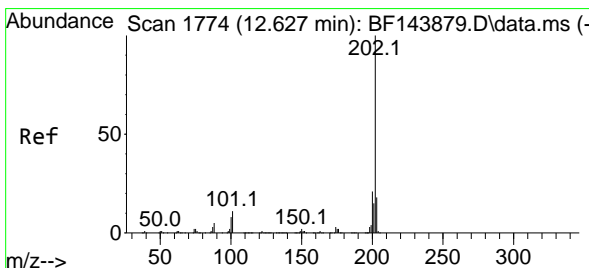
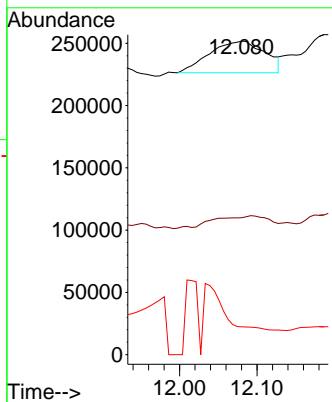
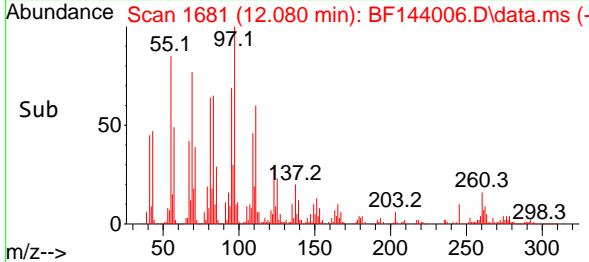


#74
 Di-n-butylphthalate
 Concen: 895.027 ng
 RT: 12.080 min Scan# 1769
 Delta R.T. 0.100 min
 Lab File: BF144006.D
 Acq: 20 Oct 2025 18:53

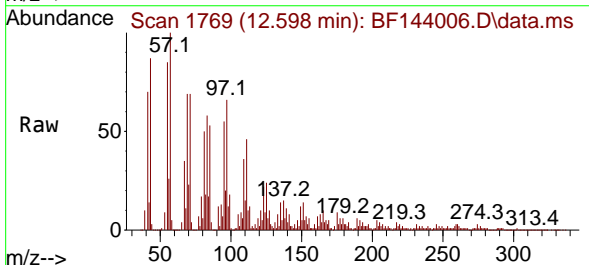
Instrument :
 BNA_F
 ClientSampleId :



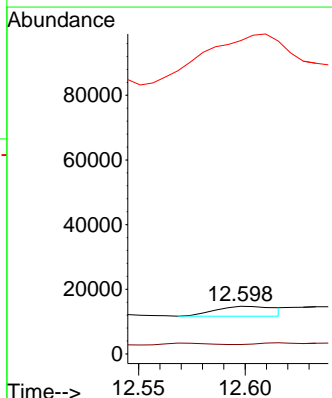
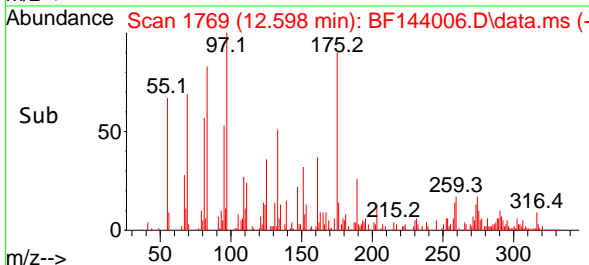
Tgt Ion:149 Resp: 126302
 Ion Ratio Lower Upper
 149 100
 150 43.7 7.4 11.2#
 104 8.9 3.4 5.2#

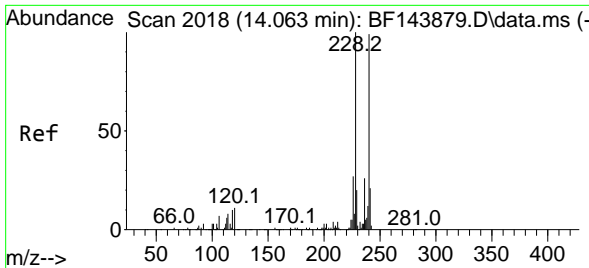


#75
 Fluoranthene
 Concen: 42.436 ng
 RT: 12.598 min Scan# 1769
 Delta R.T. -0.035 min
 Lab File: BF144006.D
 Acq: 20 Oct 2025 18:53



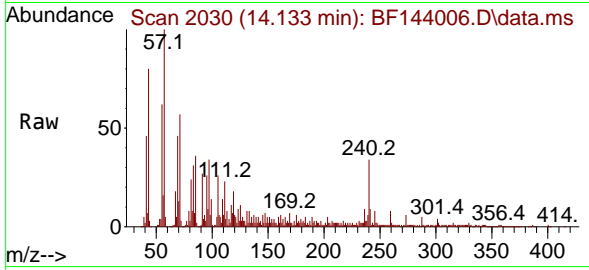
Tgt Ion:202 Resp: 5965
 Ion Ratio Lower Upper
 202 100
 101 19.7 0.0 30.7
 203 655.8 0.0 37.8#



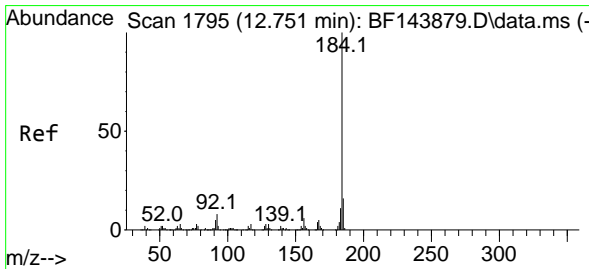
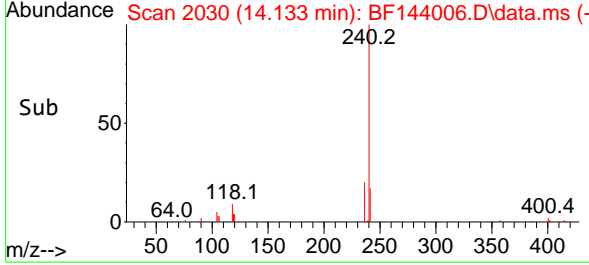
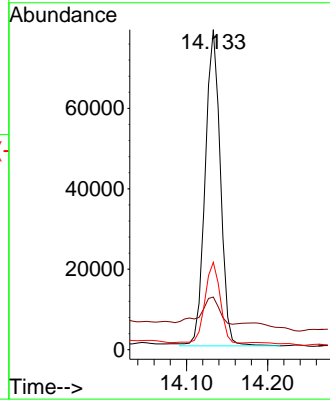


#76
 Chrysene-d12
 Concen: 20.000 ng
 RT: 14.133 min Scan# 20
 Delta R.T. 0.065 min
 Lab File: BF144006.D
 Acq: 20 Oct 2025 18:53

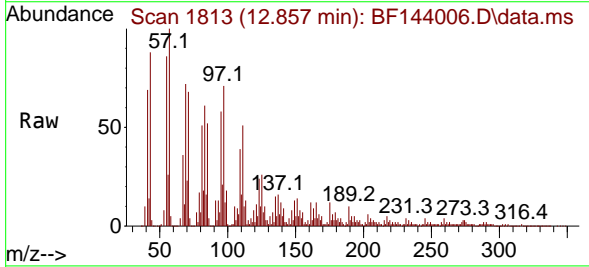
Instrument :
 BNA_F
 ClientSampleId :



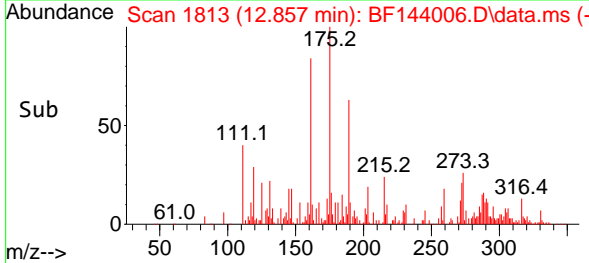
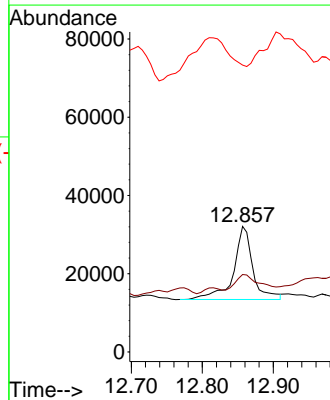
Tgt Ion:240 Resp: 101656
 Ion Ratio Lower Upper
 240 100
 120 16.4 8.6 13.0#
 236 27.3 21.1 31.7

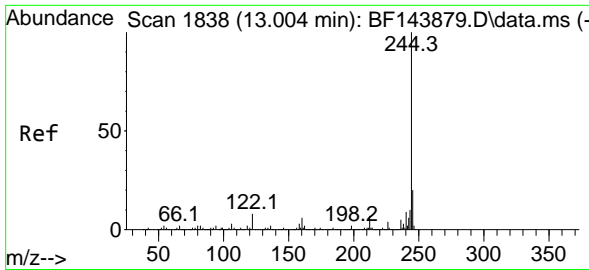


#77
 Benzidine
 Concen: 10.002 ng
 RT: 12.857 min Scan# 1813
 Delta R.T. 0.100 min
 Lab File: BF144006.D
 Acq: 20 Oct 2025 18:53



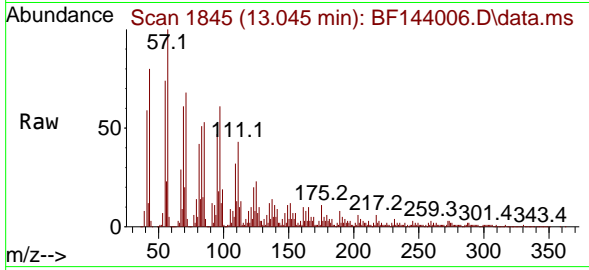
Tgt Ion:184 Resp: 35303
 Ion Ratio Lower Upper
 184 100
 185 61.7 12.6 18.8#
 183 228.5 8.8 13.2#



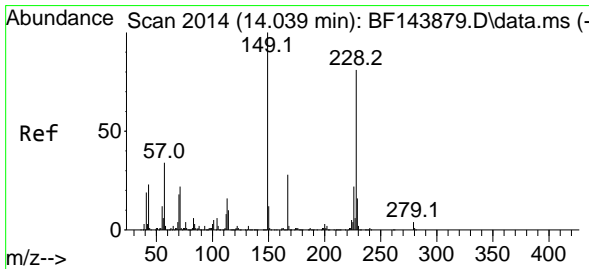
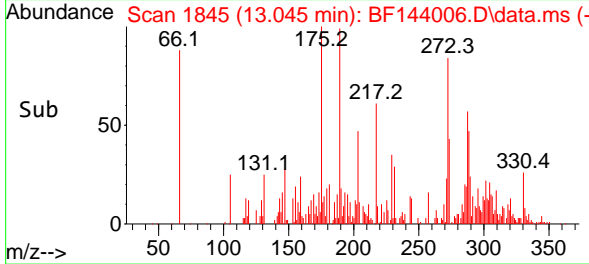
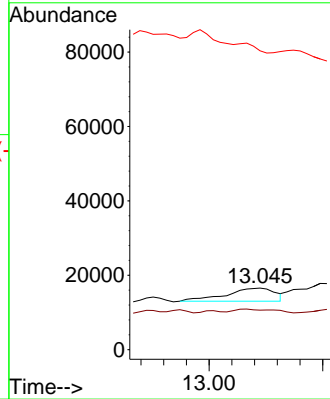


#79
 Terphenyl-d14
 Concen: 1.773 ng
 RT: 13.045 min Scan# 1838
 Delta R.T. 0.035 min
 Lab File: BF144006.D
 Acq: 20 Oct 2025 18:53

Instrument : BNA_F
 Client SampleId :

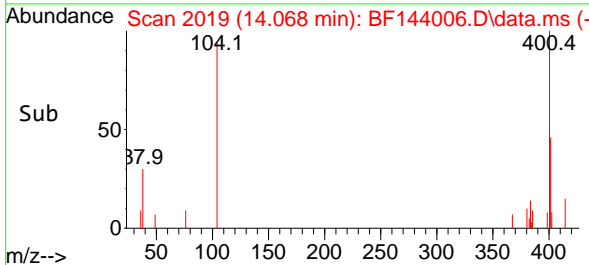
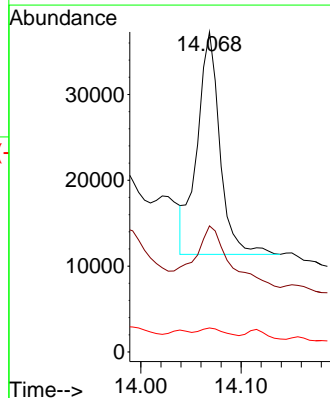
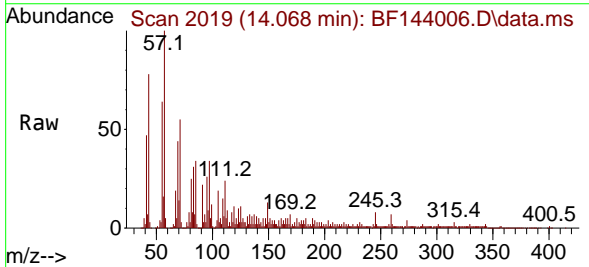


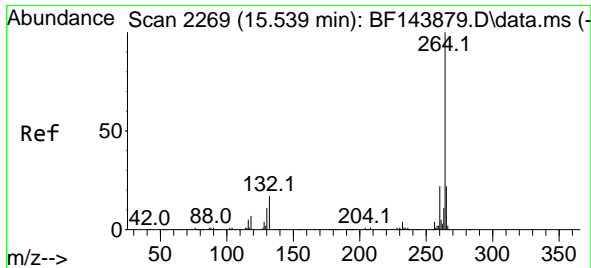
Tgt Ion:244 Resp: 10545
 Ion Ratio Lower Upper
 244 100
 212 64.2 5.4 8.0#
 122 484.9 6.4 9.6#



#84
 Bis(2-ethylhexyl)phthalate
 Concen: 12.280 ng
 RT: 14.068 min Scan# 2019
 Delta R.T. 0.029 min
 Lab File: BF144006.D
 Acq: 20 Oct 2025 18:53

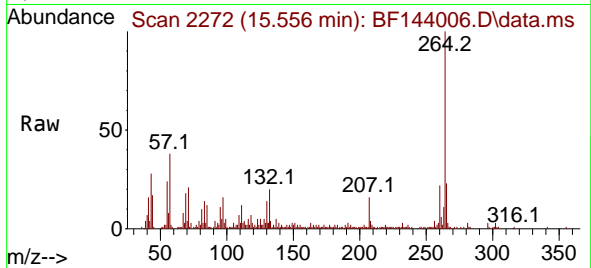
Tgt Ion:149 Resp: 40743
 Ion Ratio Lower Upper
 149 100
 167 39.4 22.2 33.4#
 279 7.5 3.1 4.7#





#86
 Perylene-d12
 Concen: 20.000 ng
 RT: 15.556 min Scan# 21
 Delta R.T. 0.012 min
 Lab File: BF144006.D
 Acq: 20 Oct 2025 18:53

Instrument :
 BNA_F
 ClientSampleId :



Tgt Ion:264 Resp: 55150

Ion	Ratio	Lower	Upper
264	100		
260	22.0	17.8	26.8
265	22.5	17.5	26.3

