

Data Path : Z:\svoasrv\HPCHEM1\BNA\_F\Data\BF102025\  
 Data File : BF144007.D  
 Acq On : 20 Oct 2025 19:22  
 Operator : RC/JU  
 Sample : Q3390-01  
 Misc :  
 ALS Vial : 12 Sample Multiplier: 1

Instrument :  
 BNA\_F  
 ClientSampleId :

Quant Time: Oct 21 10:42:39 2025  
 Quant Method : Z:\svoasrv\HPCHEM1\BNA\_F\Methods\8270-BF100625.M  
 Quant Title : ASP BNA STANDARDS FOR 5 POINT CALIBRATION  
 QLast Update : Mon Oct 06 15:29:47 2025  
 Response via : Initial Calibration

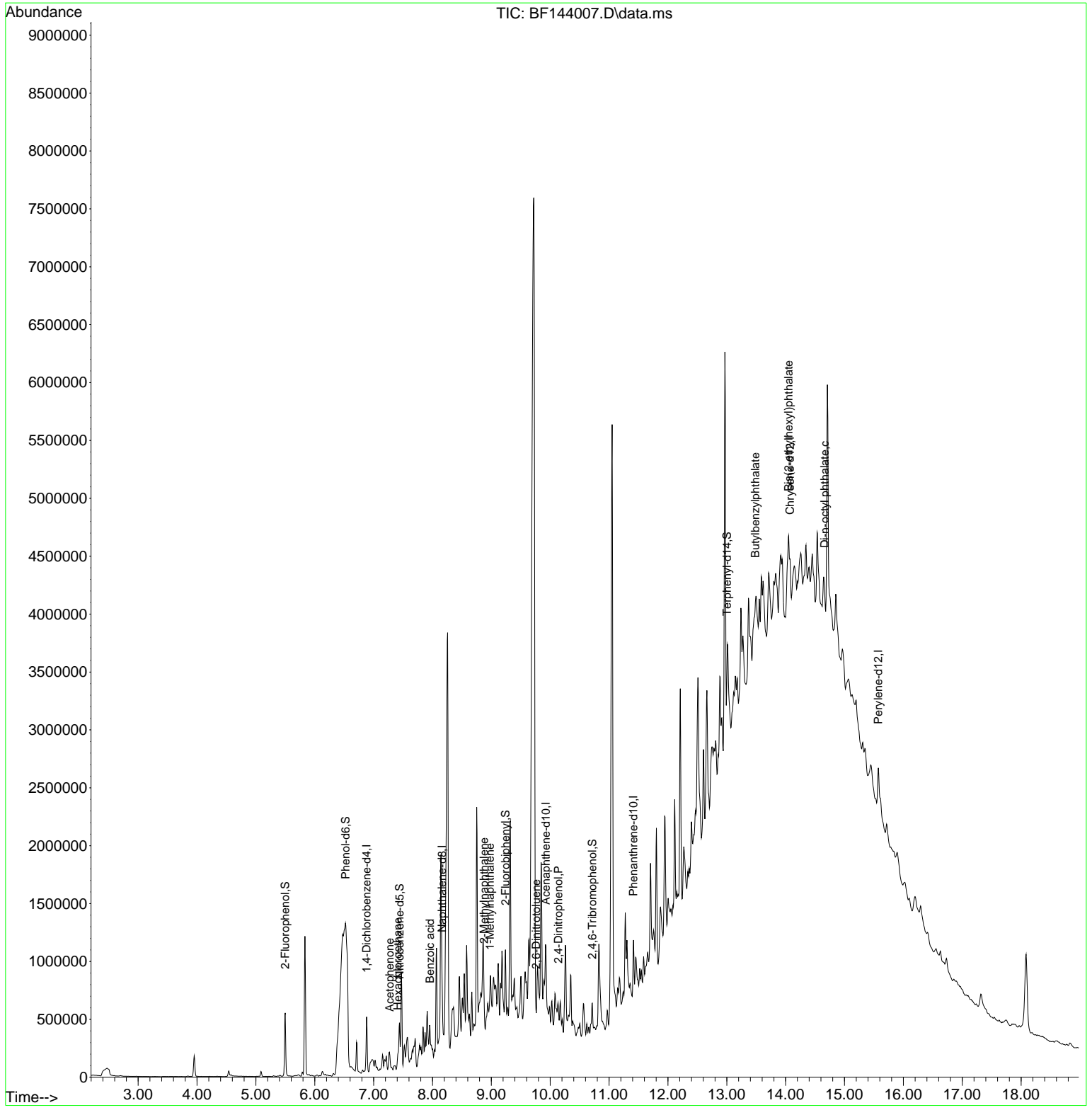
| Compound                      | R.T.   | QIon | Response | Conc   | Units | Dev(Min) |
|-------------------------------|--------|------|----------|--------|-------|----------|
| Internal Standards            |        |      |          |        |       |          |
| 1) 1,4-Dichlorobenzene-d4     | 6.881  | 152  | 91242    | 20.000 | ng    | 0.00     |
| 21) Naphthalene-d8            | 8.163  | 136  | 313006   | 20.000 | ng    | 0.00     |
| 39) Acenaphthene-d10          | 9.928  | 164  | 153320   | 20.000 | ng    | 0.00     |
| 64) Phenanthrene-d10          | 11.416 | 188  | 270484   | 20.000 | ng    | 0.00     |
| 76) Chrysene-d12              | 14.074 | 240  | 181480   | 20.000 | ng    | 0.00     |
| 86) Perylene-d12              | 15.574 | 264  | 263967   | 20.000 | ng    | 0.03     |
| System Monitoring Compounds   |        |      |          |        |       |          |
| 5) 2-Fluorophenol             | 5.498  | 112  | 234282   | 40.775 | ng    | 0.00     |
| 7) Phenol-d6                  | 6.522  | 99   | 246103   | 35.934 | ng    | 0.00     |
| 23) Nitrobenzene-d5           | 7.440  | 82   | 150532   | 29.218 | ng    | -0.02    |
| 42) 2,4,6-Tribromophenol      | 10.716 | 330  | 56461    | 36.973 | ng    | 0.00     |
| 45) 2-Fluorobiphenyl          | 9.239  | 172  | 277741   | 28.744 | ng    | -0.01    |
| 79) Terphenyl-d14             | 13.004 | 244  | 272060   | 25.621 | ng    | 0.00     |
| Target Compounds              |        |      |          |        |       |          |
| 18) Hexachloroethane          | 7.410  | 117  | 5773     | 2.610  | ng    | # 1      |
| 22) Acetophenone              | 7.275  | 105  | 13553    | 2.048  | ng    | # 38     |
| 32) Benzoic acid              | 7.957  | 122  | 25968    | 8.504  | ng    | 84       |
| 37) 2-Methylnaphthalene       | 8.875  | 142  | 41422    | 4.367  | ng    | 95       |
| 38) 1-Methylnaphthalene       | 8.975  | 142  | 26560    | 2.887  | ng    | 95       |
| 51) 2,6-Dinitrotoluene        | 9.763  | 165  | 5230     | 2.897  | ng    | # 71     |
| 54) 2,4-Dinitrophenol         | 10.139 | 184  | 121      | 7.040  | ng    | # 1      |
| 80) Butylbenzylphthalate      | 13.486 | 149  | 51839    | 10.550 | ng    | 86       |
| 84) Bis(2-ethylhexyl)phtha... | 14.051 | 149  | 221149   | 37.336 | ng    | # 95     |
| 85) Di-n-octyl phthalate      | 14.663 | 149  | 52077    | 5.353  | ng    | # 1      |

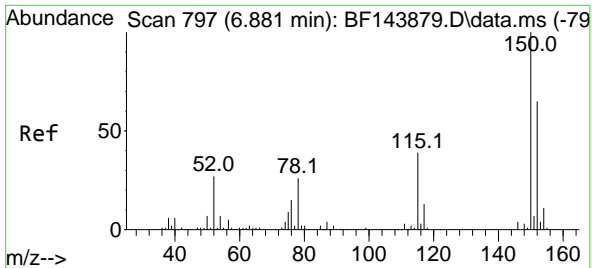
(#) = qualifier out of range (m) = manual integration (+) = signals summed

Data Path : Z:\svoasrv\HPCHEM1\BNA\_F\Data\BF102025\  
 Data File : BF144007.D  
 Acq On : 20 Oct 2025 19:22  
 Operator : RC/JU  
 Sample : Q3390-01  
 Misc :  
 ALS Vial : 12 Sample Multiplier: 1

Instrument :  
 BNA\_F  
 ClientSampleId :

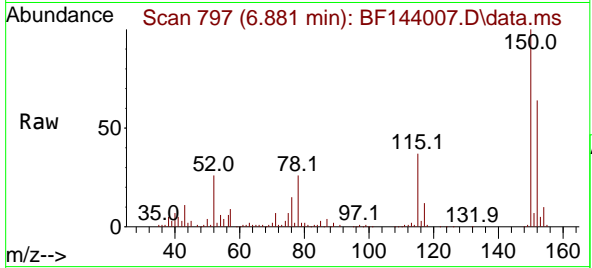
Quant Time: Oct 21 10:42:39 2025  
 Quant Method : Z:\svoasrv\HPCHEM1\BNA\_F\Methods\8270-BF100625.M  
 Quant Title : ASP BNA STANDARDS FOR 5 POINT CALIBRATION  
 QLast Update : Mon Oct 06 15:29:47 2025  
 Response via : Initial Calibration



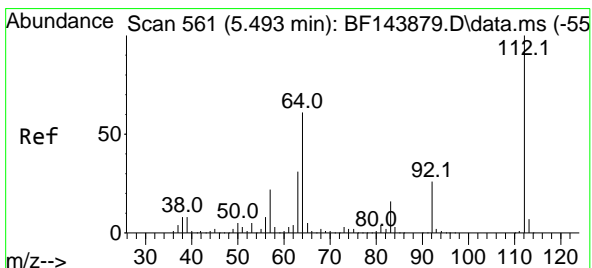
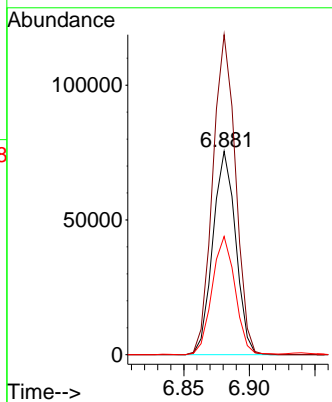
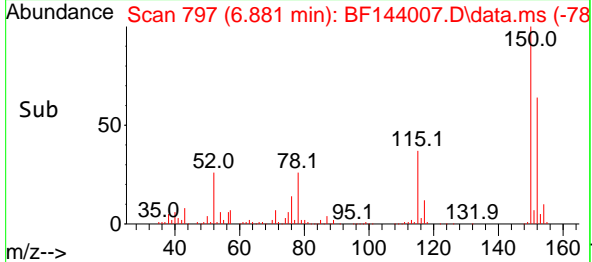


#1  
 1,4-Dichlorobenzene-d4  
 Concen: 20.000 ng  
 RT: 6.881 min Scan# 79  
 Delta R.T. -0.005 min  
 Lab File: BF144007.D  
 Acq: 20 Oct 2025 19:22

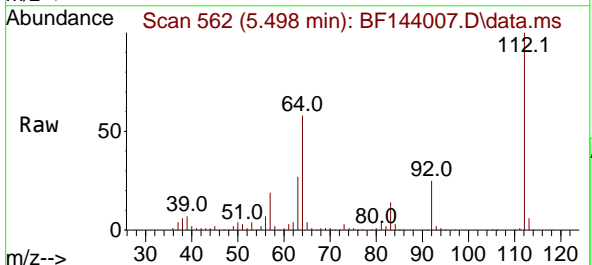
Instrument :  
 BNA\_F  
 ClientSampleId :



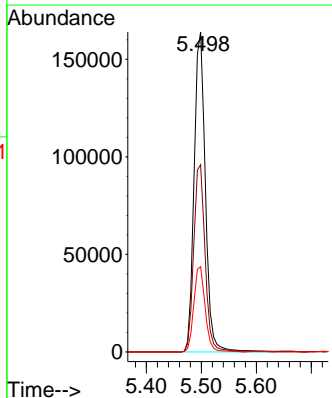
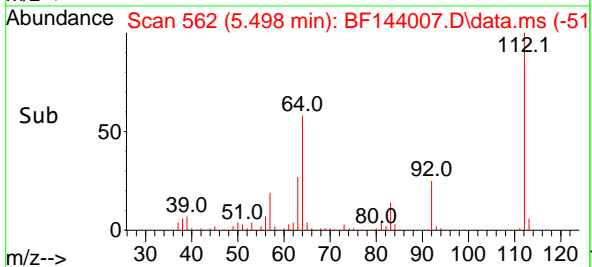
Tgt Ion:152 Resp: 91242  
 Ion Ratio Lower Upper  
 152 100  
 150 157.4 124.4 186.6  
 115 58.1 48.1 72.1

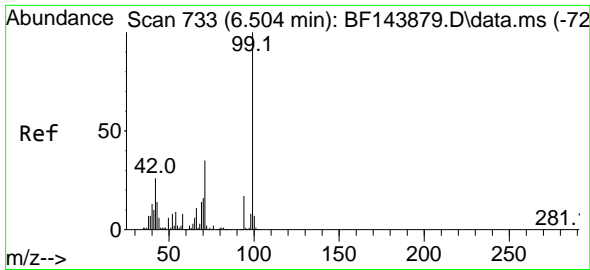


#5  
 2-Fluorophenol  
 Concen: 40.775 ng  
 RT: 5.498 min Scan# 562  
 Delta R.T. 0.000 min  
 Lab File: BF144007.D  
 Acq: 20 Oct 2025 19:22



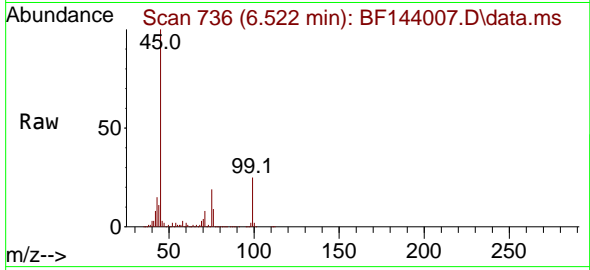
Tgt Ion:112 Resp: 234282  
 Ion Ratio Lower Upper  
 112 100  
 64 58.5 49.1 73.7  
 63 26.6 24.5 36.7



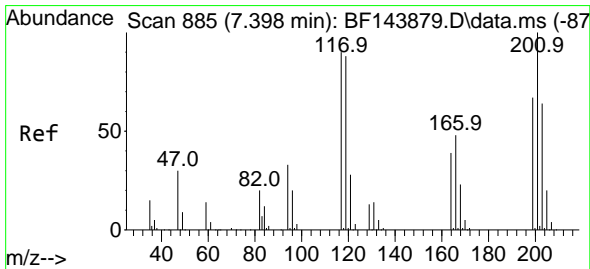
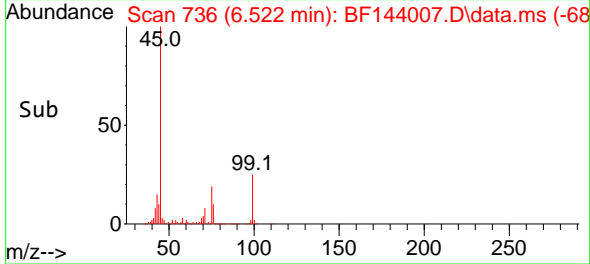
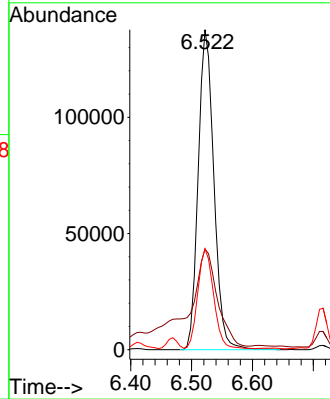


#7  
 Phenol-d6  
 Concen: 35.934 ng  
 RT: 6.522 min Scan# 71  
 Delta R.T. 0.006 min  
 Lab File: BF144007.D  
 Acq: 20 Oct 2025 19:22

Instrument :  
 BNA\_F  
 ClientSampleId :

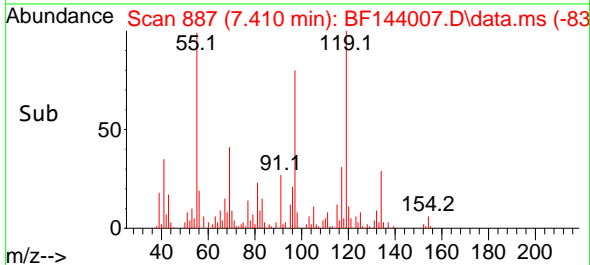
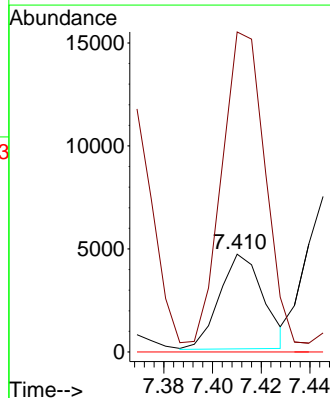
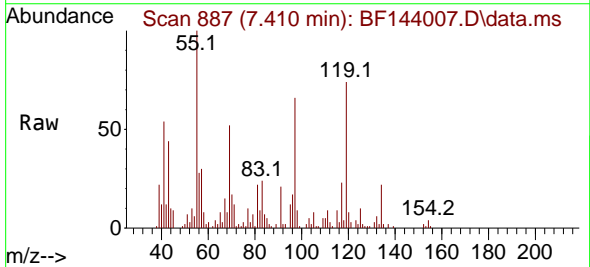


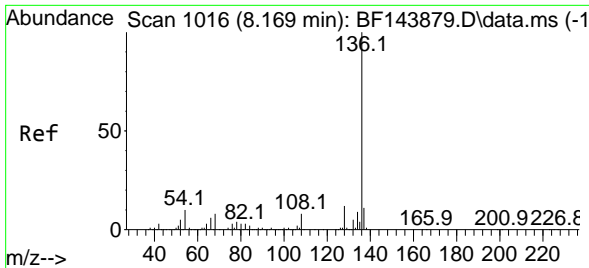
Tgt Ion: 99 Resp: 246103  
 Ion Ratio Lower Upper  
 99 100  
 42 31.5 21.0 31.4#  
 71 31.5 27.8 41.8



#18  
 Hexachloroethane  
 Concen: 2.610 ng  
 RT: 7.410 min Scan# 887  
 Delta R.T. 0.012 min  
 Lab File: BF144007.D  
 Acq: 20 Oct 2025 19:22

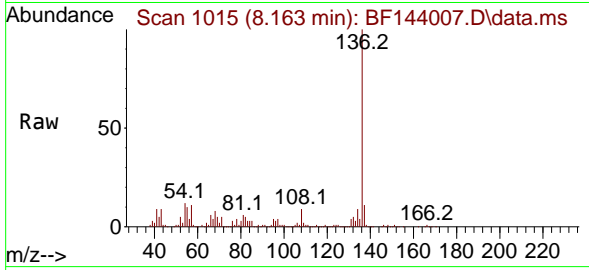
Tgt Ion: 117 Resp: 5773  
 Ion Ratio Lower Upper  
 117 100  
 119 327.1 77.8 116.8#  
 201 0.0 88.5 132.7#





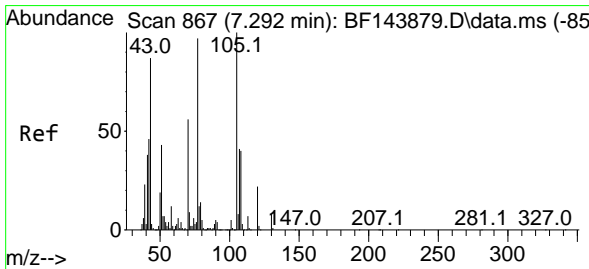
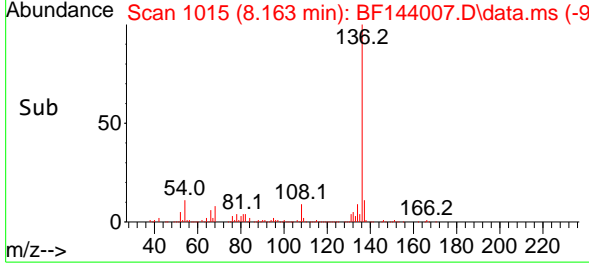
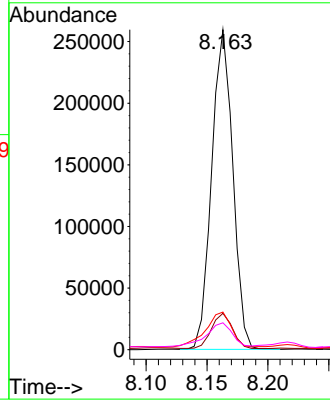
#21  
 Naphthalene-d8  
 Concen: 20.000 ng  
 RT: 8.163 min Scan# 1015  
 Delta R.T. -0.006 min  
 Lab File: BF144007.D  
 Acq: 20 Oct 2025 19:22

Instrument : BNA\_F  
 ClientSampleId :



Tgt Ion:136 Resp: 313006

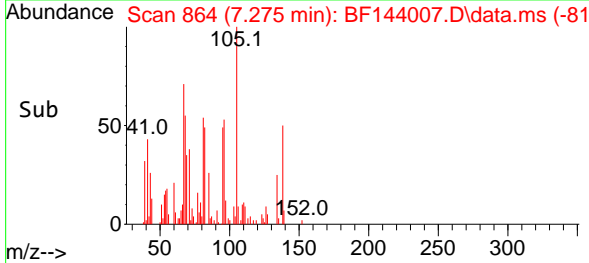
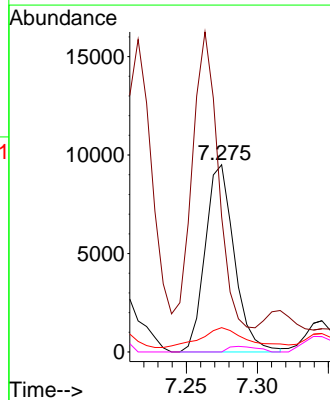
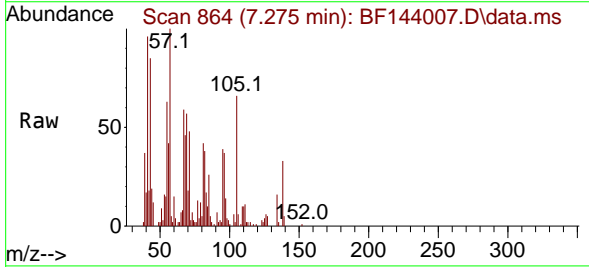
| Ion | Ratio | Lower | Upper |
|-----|-------|-------|-------|
| 136 | 100   |       |       |
| 137 | 11.4  | 8.5   | 12.7  |
| 54  | 11.8  | 8.2   | 12.4  |
| 68  | 8.4   | 6.2   | 9.4   |

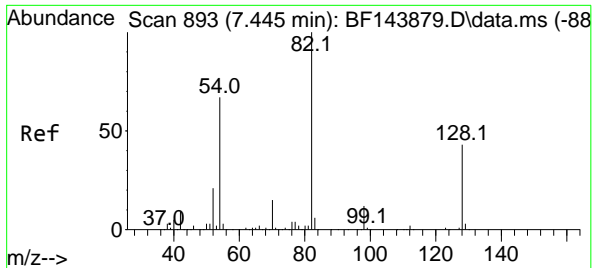


#22  
 Acetophenone  
 Concen: 2.048 ng  
 RT: 7.275 min Scan# 864  
 Delta R.T. -0.029 min  
 Lab File: BF144007.D  
 Acq: 20 Oct 2025 19:22

Tgt Ion:105 Resp: 13553

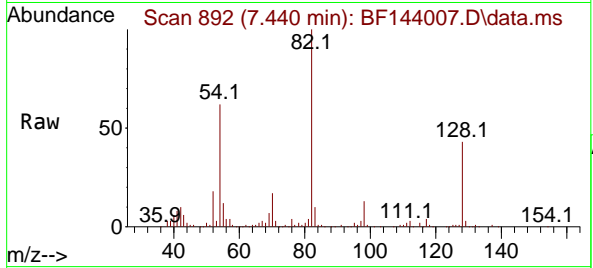
| Ion | Ratio | Lower | Upper |
|-----|-------|-------|-------|
| 105 | 100   |       |       |
| 71  | 72.2  | 7.4   | 11.0# |
| 51  | 13.0  | 34.2  | 51.4# |
| 120 | 0.0   | 17.7  | 26.5# |



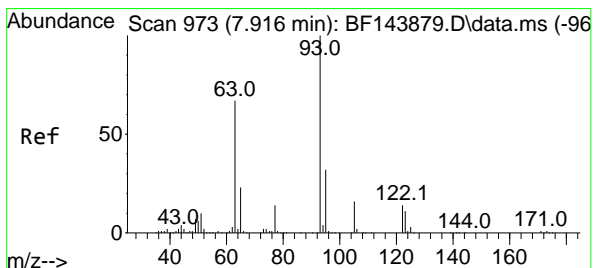
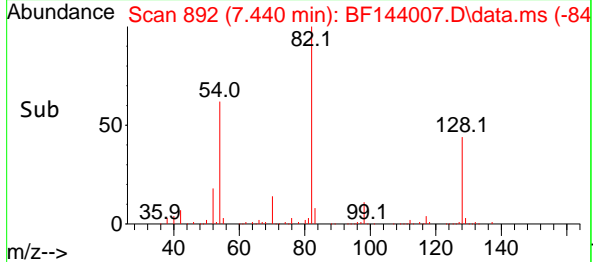
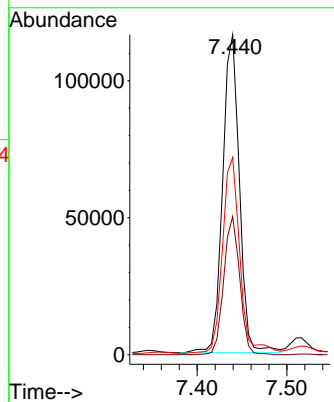


#23  
 Nitrobenzene-d5  
 Concen: 29.218 ng  
 RT: 7.440 min Scan# 89  
 Delta R.T. -0.017 min  
 Lab File: BF144007.D  
 Acq: 20 Oct 2025 19:22

Instrument :  
 BNA\_F  
 ClientSampleId :

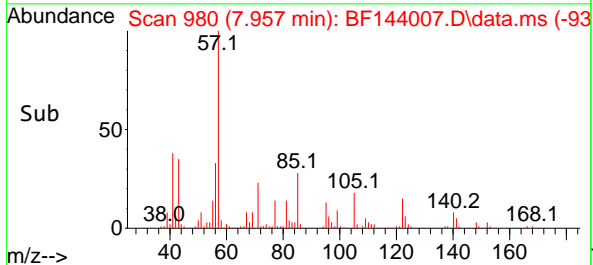
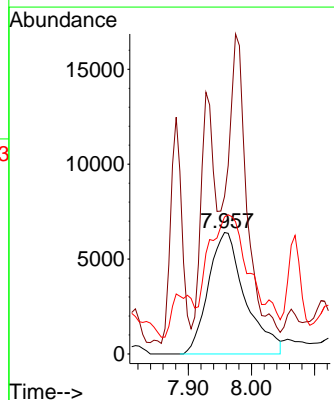
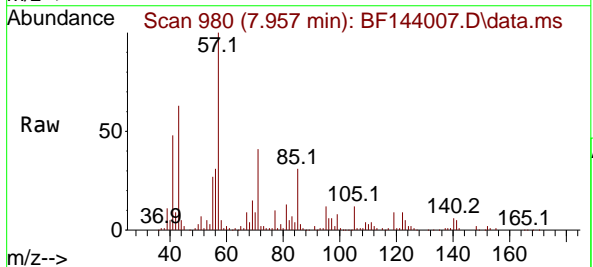


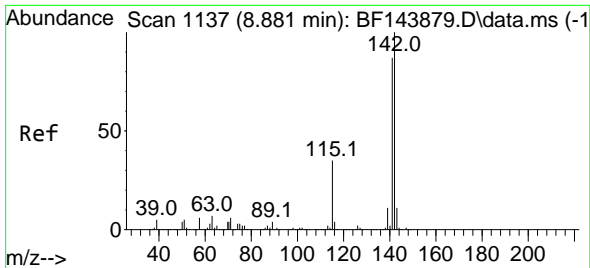
Tgt Ion: 82 Resp: 150532  
 Ion Ratio Lower Upper  
 82 100  
 128 43.2 34.0 51.0  
 54 61.6 53.2 79.8



#32  
 Benzoic acid  
 Concen: 8.504 ng  
 RT: 7.957 min Scan# 980  
 Delta R.T. -0.006 min  
 Lab File: BF144007.D  
 Acq: 20 Oct 2025 19:22

Tgt Ion:122 Resp: 25968  
 Ion Ratio Lower Upper  
 122 100  
 105 129.8 93.5 133.5  
 77 112.8 76.3 116.3

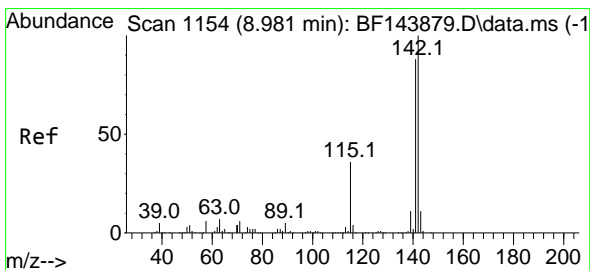
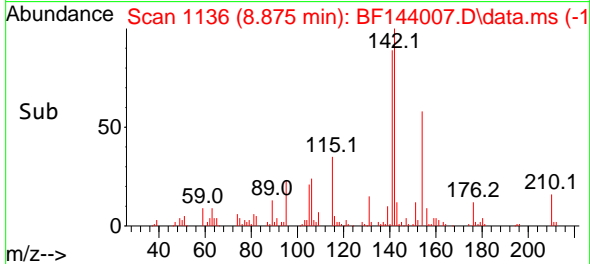
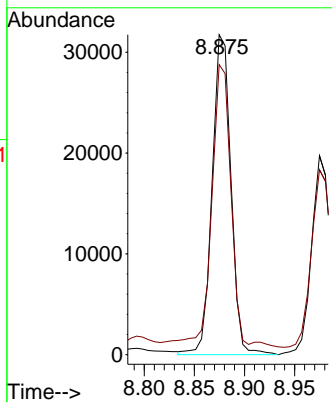
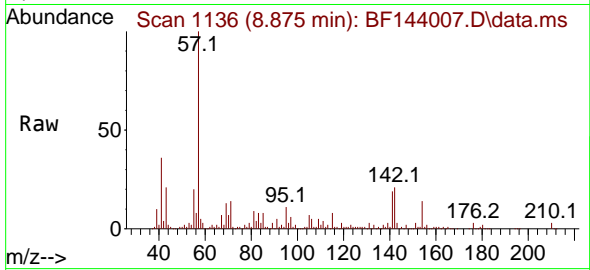




#37  
 2-Methylnaphthalene  
 Concen: 4.367 ng  
 RT: 8.875 min Scan# 1136  
 Delta R.T. -0.012 min  
 Lab File: BF144007.D  
 Acq: 20 Oct 2025 19:22

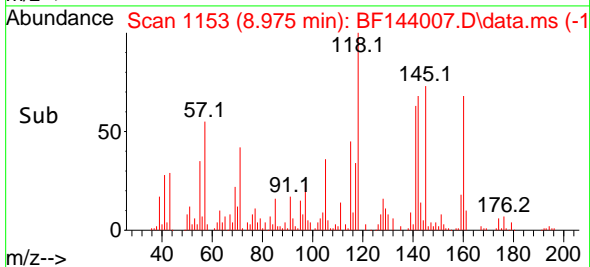
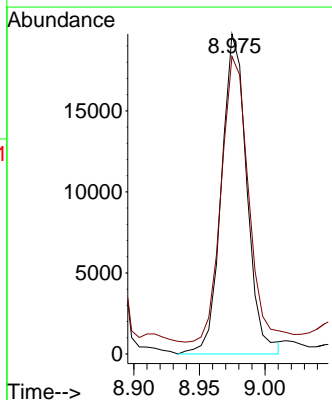
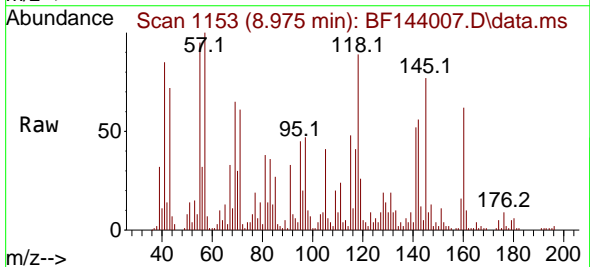
Instrument :  
 BNA\_F  
 ClientSampleId :

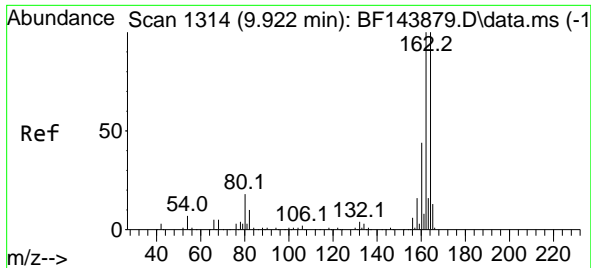
Tgt Ion:142 Resp: 41422  
 Ion Ratio Lower Upper  
 142 100  
 141 90.7 69.2 103.8



#38  
 1-Methylnaphthalene  
 Concen: 2.887 ng  
 RT: 8.975 min Scan# 1153  
 Delta R.T. -0.011 min  
 Lab File: BF144007.D  
 Acq: 20 Oct 2025 19:22

Tgt Ion:142 Resp: 26560  
 Ion Ratio Lower Upper  
 142 100  
 141 92.9 70.8 106.2

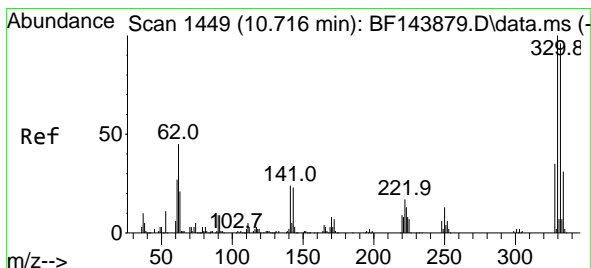
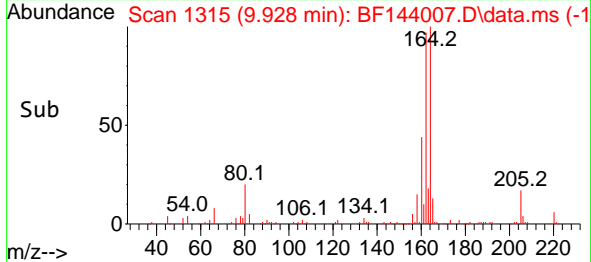
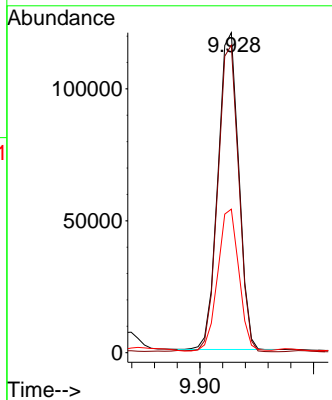
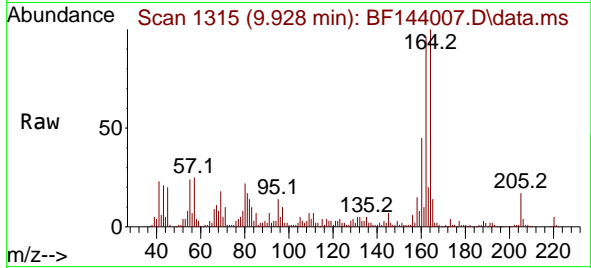




#39  
 Acenaphthene-d10  
 Concen: 20.000 ng  
 RT: 9.928 min Scan# 11  
 Delta R.T. 0.001 min  
 Lab File: BF144007.D  
 Acq: 20 Oct 2025 19:22

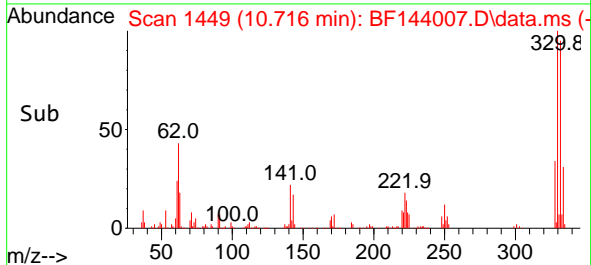
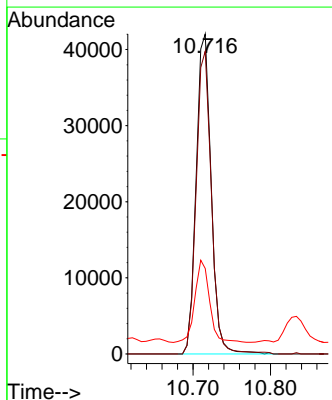
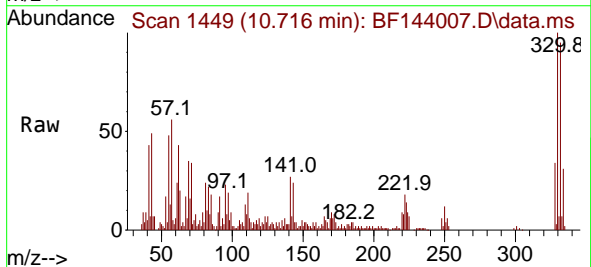
Instrument :  
 BNA\_F  
 ClientSampleId :

Tgt Ion:164 Resp: 153320  
 Ion Ratio Lower Upper  
 164 100  
 162 96.1 80.2 120.2  
 160 44.8 35.4 53.0

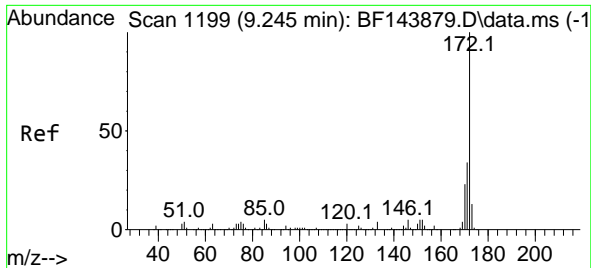


#42  
 2,4,6-Tribromophenol  
 Concen: 36.973 ng  
 RT: 10.716 min Scan# 1449  
 Delta R.T. -0.006 min  
 Lab File: BF144007.D  
 Acq: 20 Oct 2025 19:22

Tgt Ion:330 Resp: 56461  
 Ion Ratio Lower Upper  
 330 100  
 332 95.8 76.9 115.3  
 141 25.4 20.2 30.4

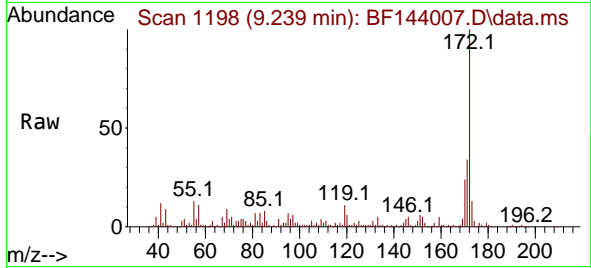




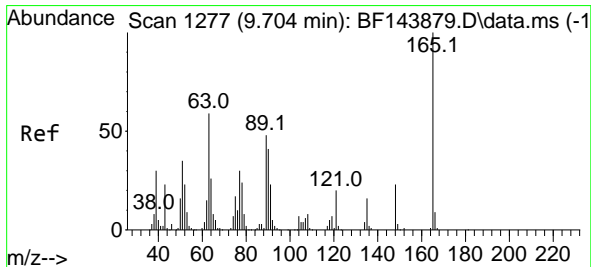
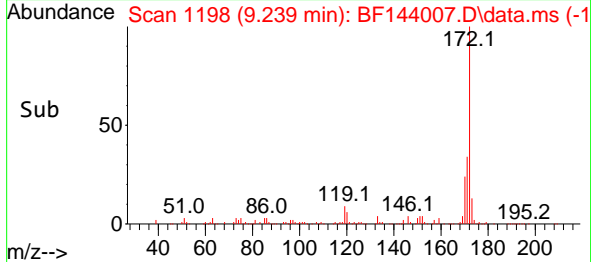
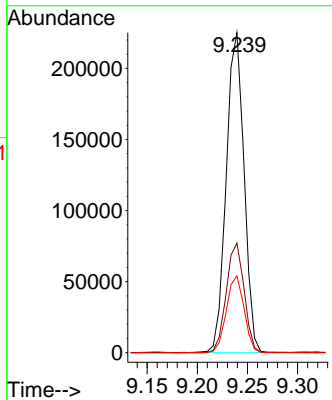


#45  
 2-Fluorobiphenyl  
 Concen: 28.744 ng  
 RT: 9.239 min Scan# 1198  
 Delta R.T. -0.012 min  
 Lab File: BF144007.D  
 Acq: 20 Oct 2025 19:22

Instrument :  
 BNA\_F  
 ClientSampleId :

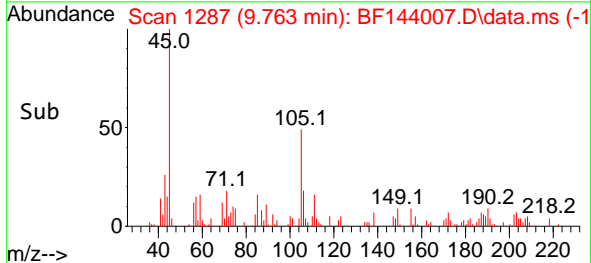
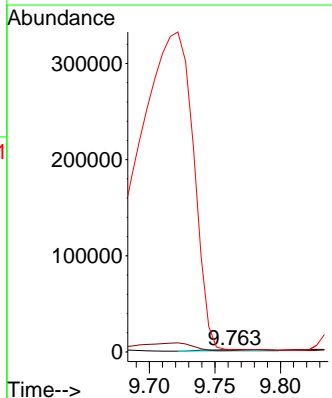
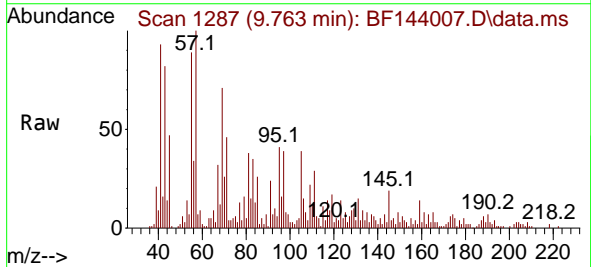


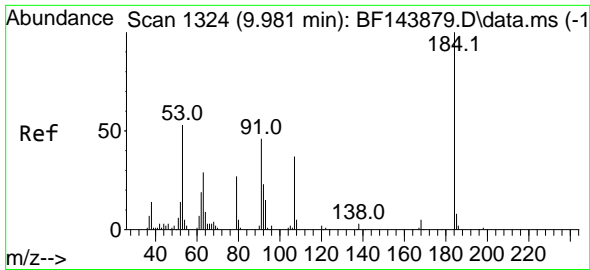
Tgt Ion:172 Resp: 277741  
 Ion Ratio Lower Upper  
 172 100  
 171 34.3 27.4 41.0  
 170 24.0 18.6 28.0



#51  
 2,6-Dinitrotoluene  
 Concen: 2.897 ng  
 RT: 9.763 min Scan# 1287  
 Delta R.T. 0.047 min  
 Lab File: BF144007.D  
 Acq: 20 Oct 2025 19:22

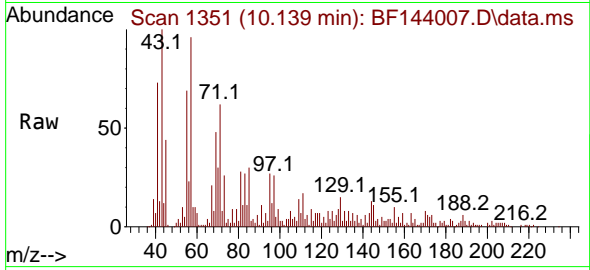
Tgt Ion:165 Resp: 5230  
 Ion Ratio Lower Upper  
 165 100  
 63 60.1 47.3 70.9  
 89 91.0 38.2 57.4#





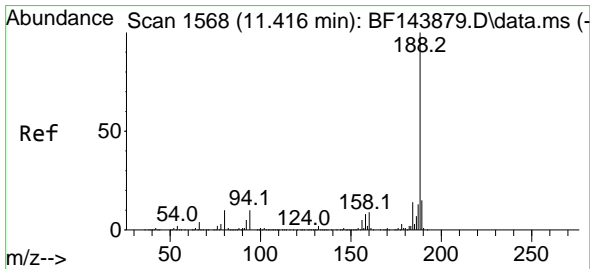
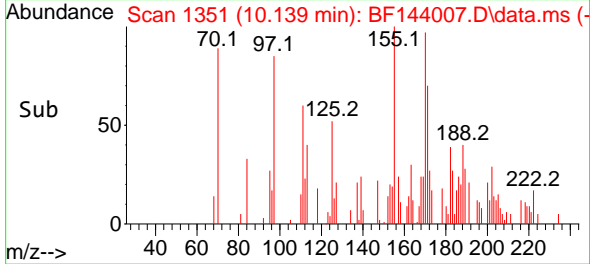
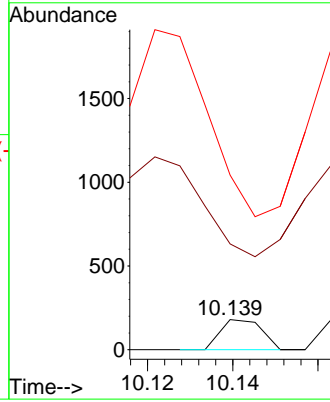
#54  
 2,4-Dinitrophenol  
 Concen: 7.040 ng  
 RT: 10.139 min Scan# 11  
 Delta R.T. 0.153 min  
 Lab File: BF144007.D  
 Acq: 20 Oct 2025 19:22

Instrument :  
 BNA\_F  
 ClientSampleId :



Tgt Ion:184 Resp: 121

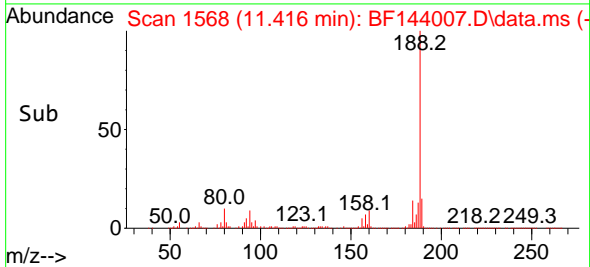
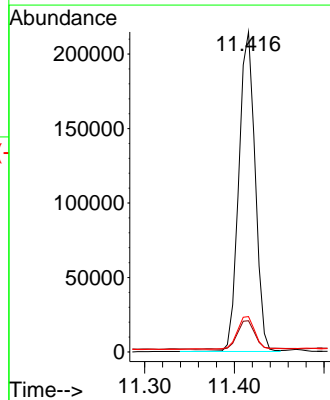
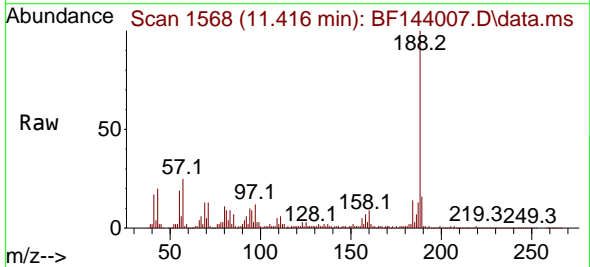
| Ion | Ratio | Lower | Upper |
|-----|-------|-------|-------|
| 184 | 100   |       |       |
| 63  | 351.1 | 48.2  | 72.4# |
| 154 | 579.4 | 49.2  | 73.8# |

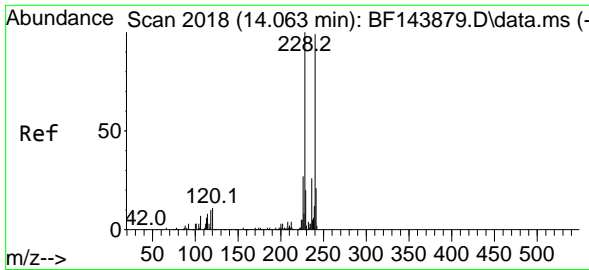


#64  
 Phenanthrene-d10  
 Concen: 20.000 ng  
 RT: 11.416 min Scan# 1568  
 Delta R.T. 0.000 min  
 Lab File: BF144007.D  
 Acq: 20 Oct 2025 19:22

Tgt Ion:188 Resp: 270484

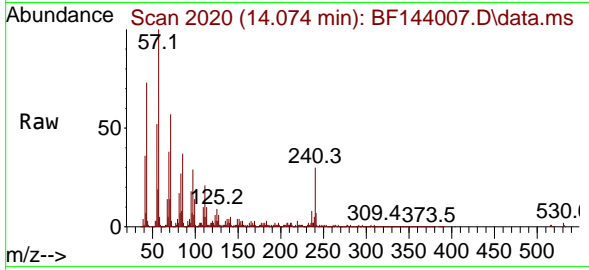
| Ion | Ratio | Lower | Upper |
|-----|-------|-------|-------|
| 188 | 100   |       |       |
| 94  | 9.7   | 7.8   | 11.6  |
| 80  | 11.1  | 7.9   | 11.9  |



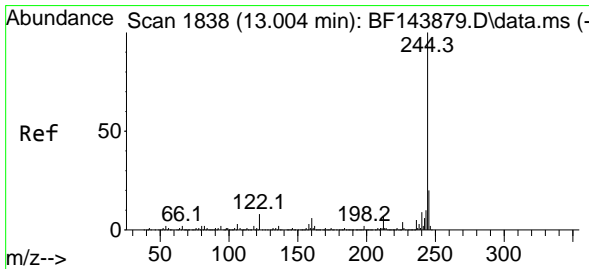
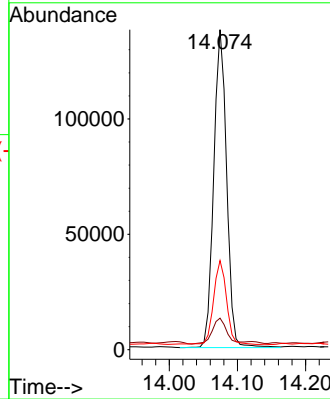
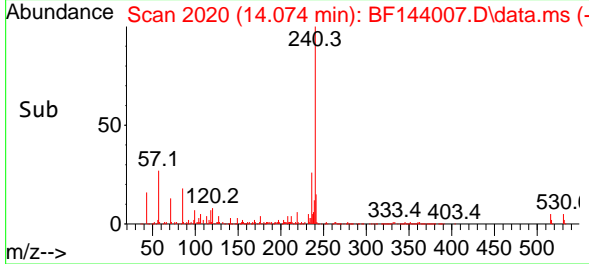


#76  
 Chrysene-d12  
 Concen: 20.000 ng  
 RT: 14.074 min Scan# 2018  
 Delta R.T. 0.006 min  
 Lab File: BF144007.D  
 Acq: 20 Oct 2025 19:22

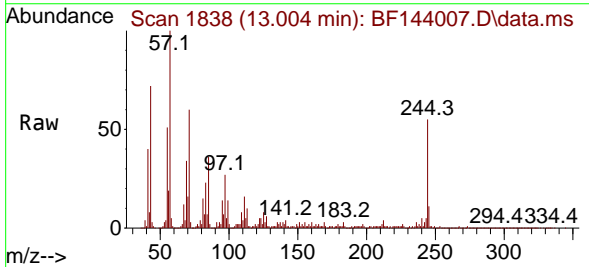
Instrument :  
 BNA\_F  
 ClientSampleId :



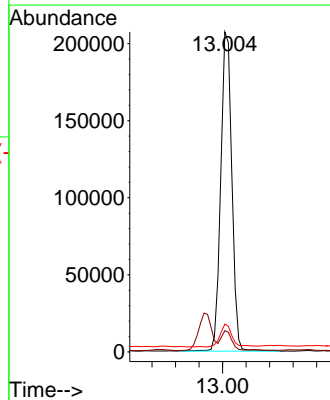
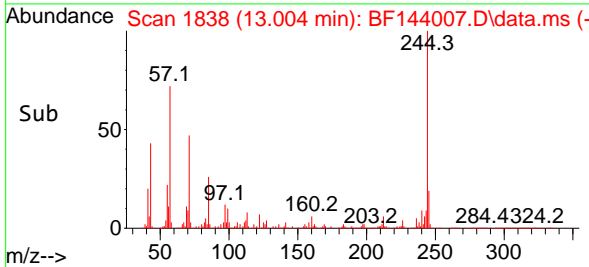
Tgt Ion:240 Resp: 181480  
 Ion Ratio Lower Upper  
 240 100  
 120 9.8 8.6 13.0  
 236 27.8 21.1 31.7

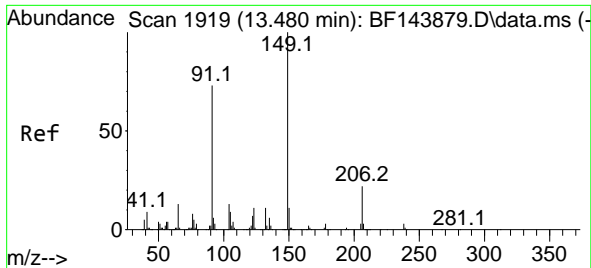


#79  
 Terphenyl-d14  
 Concen: 25.621 ng  
 RT: 13.004 min Scan# 1838  
 Delta R.T. -0.006 min  
 Lab File: BF144007.D  
 Acq: 20 Oct 2025 19:22



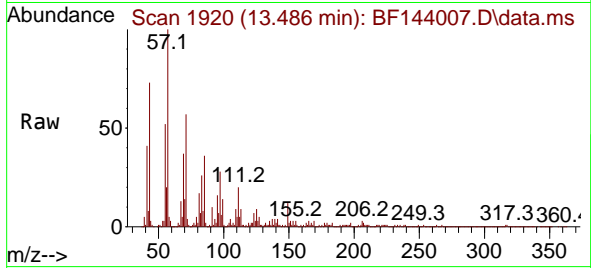
Tgt Ion:244 Resp: 272060  
 Ion Ratio Lower Upper  
 244 100  
 212 6.7 5.4 8.0  
 122 8.7 6.4 9.6



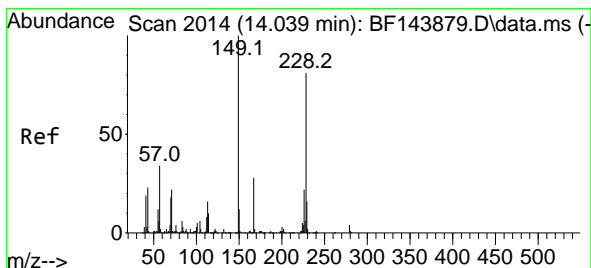
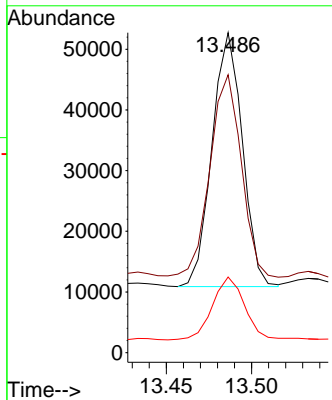
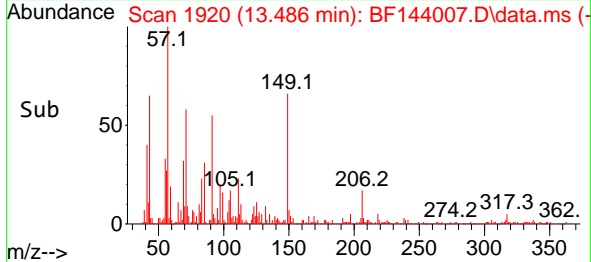


#80  
 Butylbenzylphthalate  
 Concen: 10.550 ng  
 RT: 13.486 min Scan# 1919  
 Delta R.T. 0.006 min  
 Lab File: BF144007.D  
 Acq: 20 Oct 2025 19:22

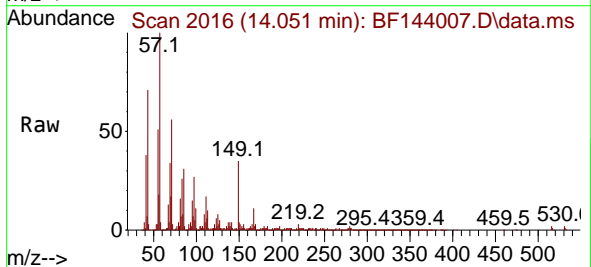
Instrument :  
 BNA\_F  
 ClientSampleId :



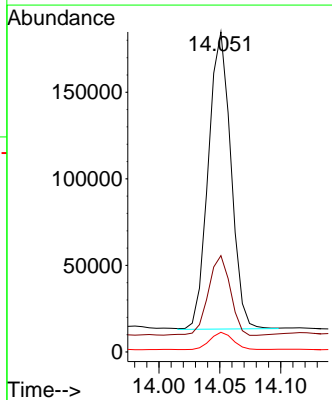
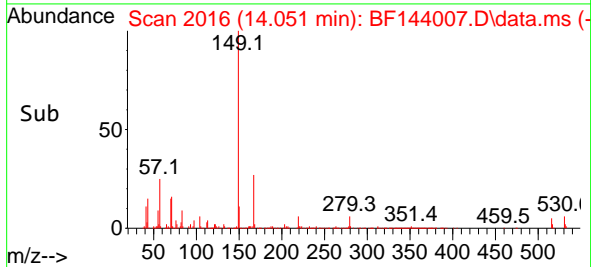
Tgt Ion:149 Resp: 51839  
 Ion Ratio Lower Upper  
 149 100  
 91 86.8 58.2 87.2  
 206 23.6 17.9 26.9

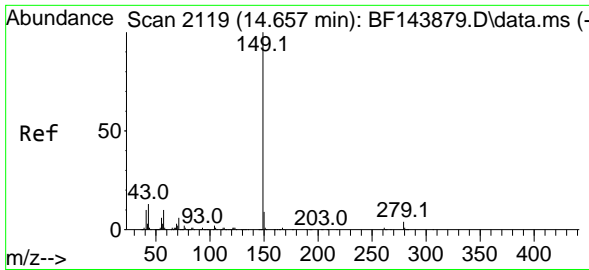


#84  
 Bis(2-ethylhexyl)phthalate  
 Concen: 37.336 ng  
 RT: 14.051 min Scan# 2016  
 Delta R.T. 0.012 min  
 Lab File: BF144007.D  
 Acq: 20 Oct 2025 19:22



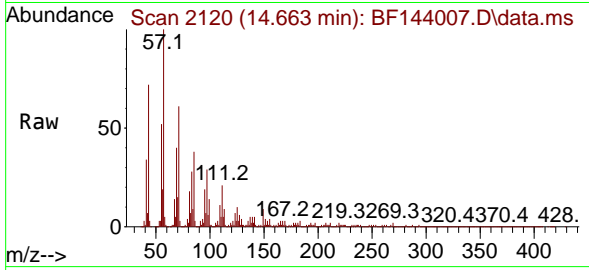
Tgt Ion:149 Resp: 221149  
 Ion Ratio Lower Upper  
 149 100  
 167 30.1 22.2 33.4  
 279 6.2 3.1 4.7#



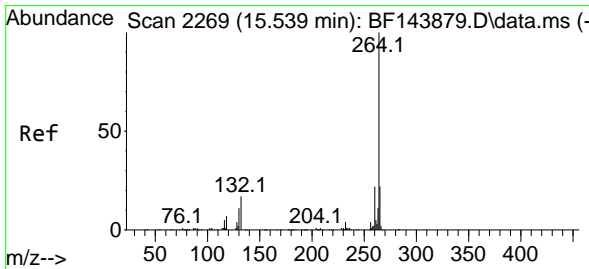
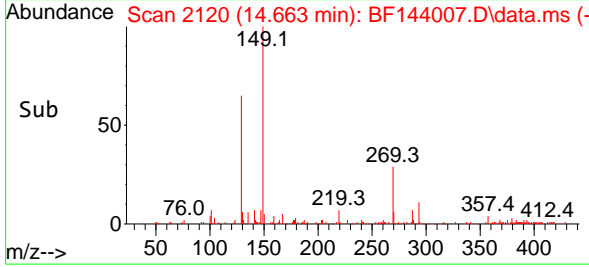
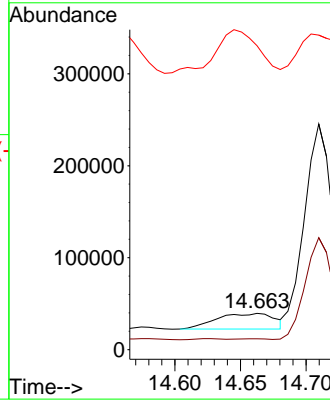


#85  
 Di-n-octyl phthalate  
 Concen: 5.353 ng  
 RT: 14.663 min Scan# 2119  
 Delta R.T. 0.006 min  
 Lab File: BF144007.D  
 Acq: 20 Oct 2025 19:22

Instrument :  
 BNA\_F  
 ClientSampleId :



Tgt Ion:149 Resp: 52077  
 Ion Ratio Lower Upper  
 149 100  
 167 0.0 1.1 1.7#  
 43 278.6 11.0 16.4#



#86  
 Perylene-d12  
 Concen: 20.000 ng  
 RT: 15.574 min Scan# 2275  
 Delta R.T. 0.030 min  
 Lab File: BF144007.D  
 Acq: 20 Oct 2025 19:22

Tgt Ion:264 Resp: 263967  
 Ion Ratio Lower Upper  
 264 100  
 260 22.0 17.8 26.8  
 265 21.7 17.5 26.3

