

Data Path : Z:\svoasrv\HPCHEM1\BNA_F\Data\BF102125\
 Data File : BF144010.D
 Acq On : 21 Oct 2025 13:58
 Operator : RC/JU
 Sample : PB170166BL
 Misc :
 ALS Vial : 3 Sample Multiplier: 1

Instrument :
 BNA_F
 ClientSampleId :
 PB170166BL

Quant Time: Oct 21 14:30:28 2025
 Quant Method : Z:\svoasrv\HPCHEM1\BNA_F\Methods\8270-BF100625.M
 Quant Title : ASP BNA STANDARDS FOR 5 POINT CALIBRATION
 QLast Update : Mon Oct 06 15:29:47 2025
 Response via : Initial Calibration

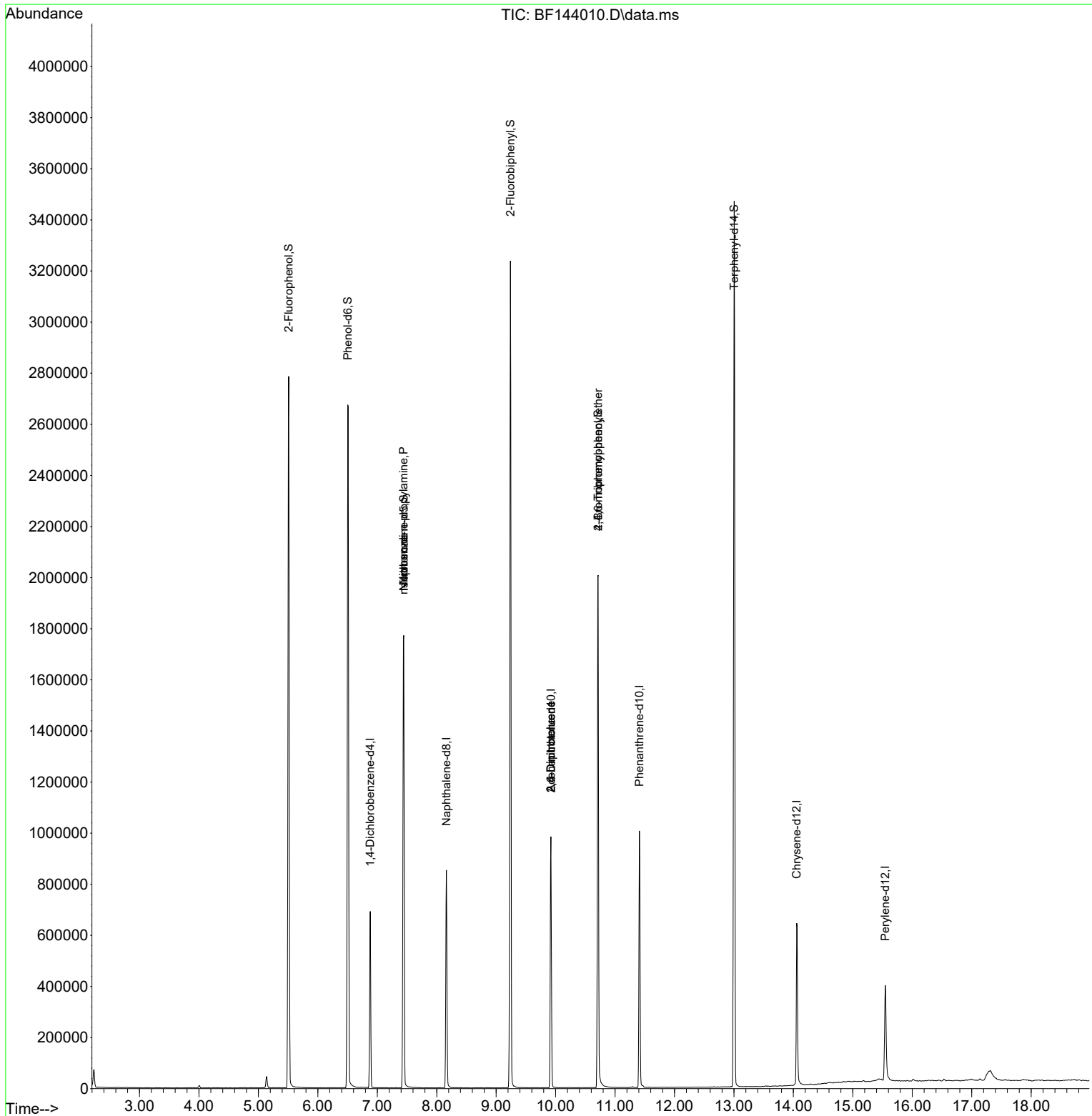
Compound	R.T.	QIon	Response	Conc	Units	Dev(Min)
Internal Standards						
1) 1,4-Dichlorobenzene-d4	6.881	152	139452	20.00	ng	0.00
21) Naphthalene-d8	8.163	136	558761	20.00	ng	0.00
39) Acenaphthene-d10	9.922	164	306361	20.00	ng	0.00
64) Phenanthrene-d10	11.410	188	551648	20.00	ng	0.00
76) Chrysene-d12	14.057	240	338314	20.00	ng	-0.01
86) Perylene-d12	15.545	264	285914	20.00	ng	0.00
System Monitoring Compounds						
5) 2-Fluorophenol	5.510	112	1125425	128.16	ng	0.01
7) Phenol-d6	6.504	99	1358347	129.77	ng	-0.01
23) Nitrobenzene-d5	7.445	82	853211	92.77	ng	-0.01
42) 2,4,6-Tribromophenol	10.716	330	433524	142.07	ng	0.00
45) 2-Fluorobiphenyl	9.239	172	1636263	84.75	ng	-0.01
79) Terphenyl-d14	13.004	244	1905074	96.24	ng	0.00
Target Compounds						
19) n-Nitroso-di-n-propyla...	7.439	70	123870	17.29	ng	# 79
25) Isophorone	7.445	82	739807	38.15	ng	# 68
51) 2,6-Dinitrotoluene	9.922	165	39095	10.84	ng	# 26
57) 2,4-Dinitrotoluene	9.922	165	39095	7.96	ng	# 27
67) 4-Bromophenyl-phenylether	10.716	248	26033	4.27	ng	# 1

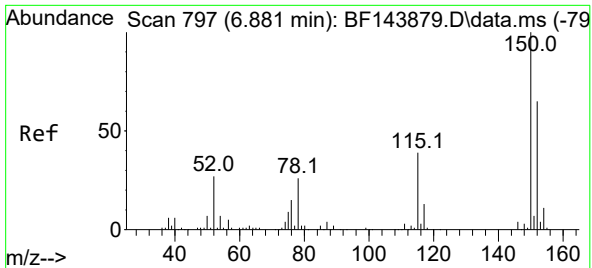
(#) = qualifier out of range (m) = manual integration (+) = signals summed

Data Path : Z:\svoasrv\HPCHEM1\BNA_F\Data\BF102125\
 Data File : BF144010.D
 Acq On : 21 Oct 2025 13:58
 Operator : RC/JU
 Sample : PB170166BL
 Misc :
 ALS Vial : 3 Sample Multiplier: 1

Instrument :
 BNA_F
 ClientSampleId :
 PB170166BL

Quant Time: Oct 21 14:30:28 2025
 Quant Method : Z:\svoasrv\HPCHEM1\BNA_F\Methods\8270-BF100625.M
 Quant Title : ASP BNA STANDARDS FOR 5 POINT CALIBRATION
 QLast Update : Mon Oct 06 15:29:47 2025
 Response via : Initial Calibration

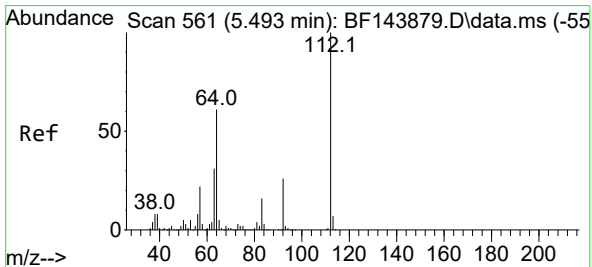
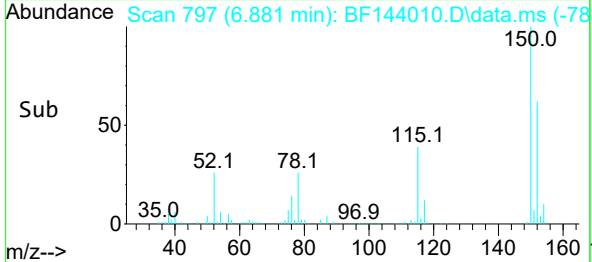
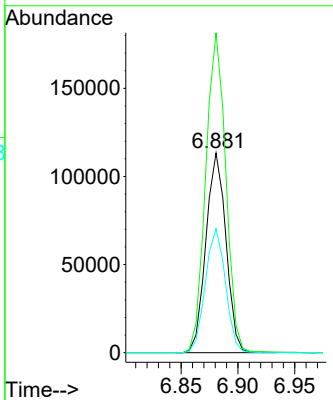
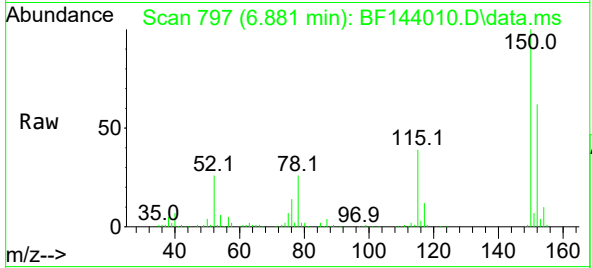




#1
 1,4-Dichlorobenzene-d4
 Concen: 20.00 ng
 RT: 6.881 min Scan# 79
 Delta R.T. -0.005 min
 Lab File: BF144010.D
 Acq: 21 Oct 2025 13:58

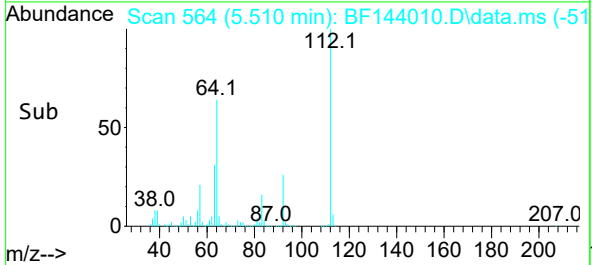
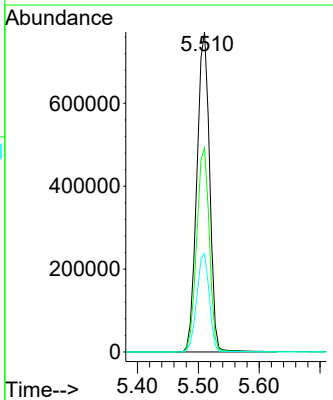
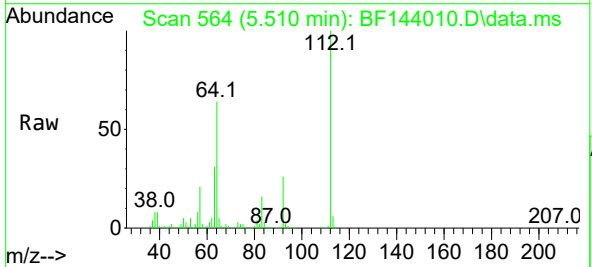
Instrument :
 BNA_F
 ClientSampleId :
 PB170166BL

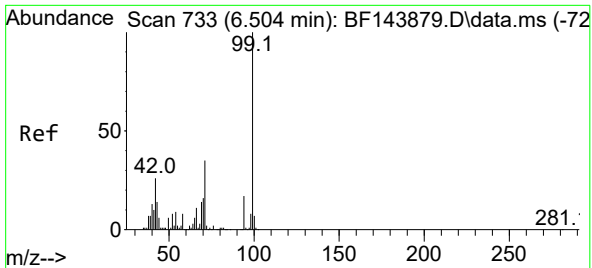
Tgt Ion:152 Resp: 139452
 Ion Ratio Lower Upper
 152 100
 150 160.2 124.4 186.6
 115 62.1 48.1 72.1



#5
 2-Fluorophenol
 Concen: 128.16 ng
 RT: 5.510 min Scan# 564
 Delta R.T. 0.012 min
 Lab File: BF144010.D
 Acq: 21 Oct 2025 13:58

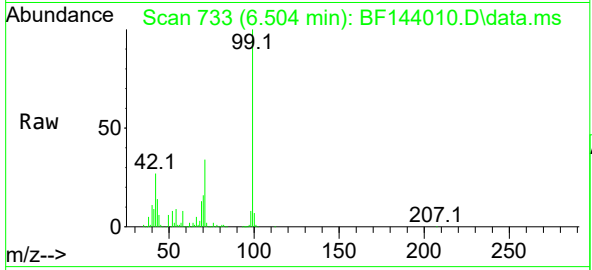
Tgt Ion:112 Resp: 1125425
 Ion Ratio Lower Upper
 112 100
 64 63.8 49.1 73.7
 63 30.8 24.5 36.7





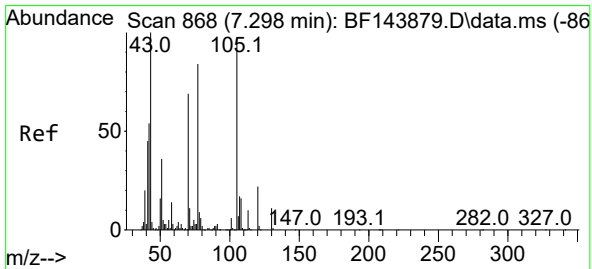
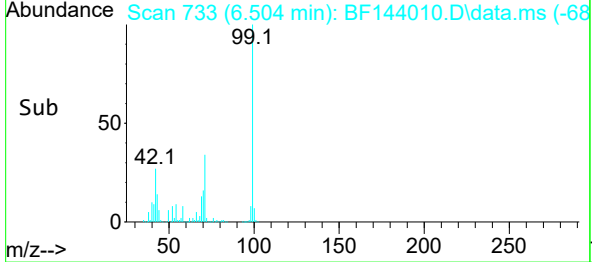
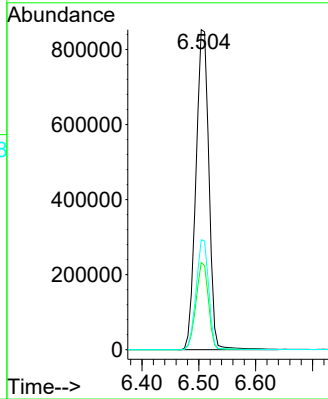
#7
 Phenol-d6
 Concen: 129.77 ng
 RT: 6.504 min Scan# 713
 Delta R.T. -0.012 min
 Lab File: BF144010.D
 Acq: 21 Oct 2025 13:58

Instrument :
 BNA_F
 ClientSampleId :
 PB170166BL

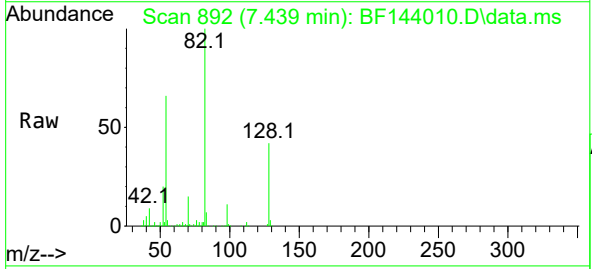


Tgt Ion: 99 Resp: 1358347

Ion	Ratio	Lower	Upper
99	100		
42	27.2	21.0	31.4
71	34.3	27.8	41.8

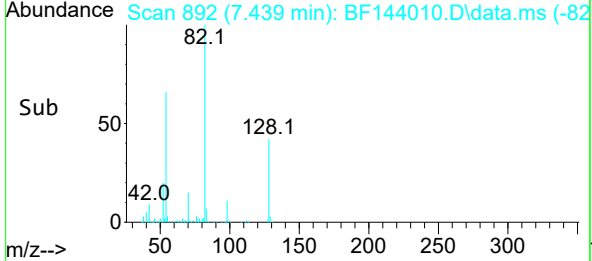
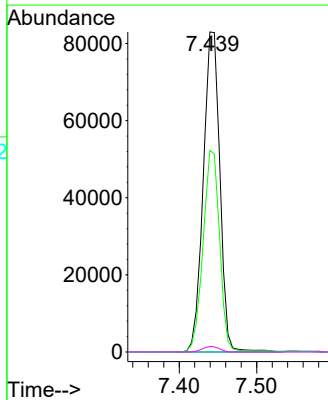


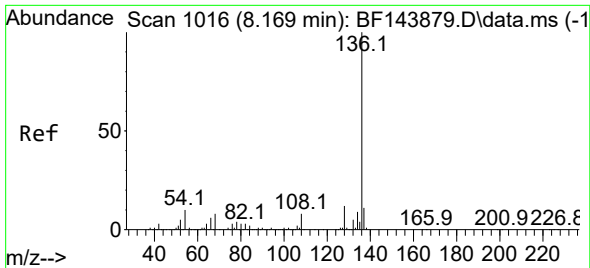
#19
 n-Nitroso-di-n-propylamine
 Concen: 17.29 ng
 RT: 7.439 min Scan# 892
 Delta R.T. 0.124 min
 Lab File: BF144010.D
 Acq: 21 Oct 2025 13:58



Tgt Ion: 70 Resp: 123870

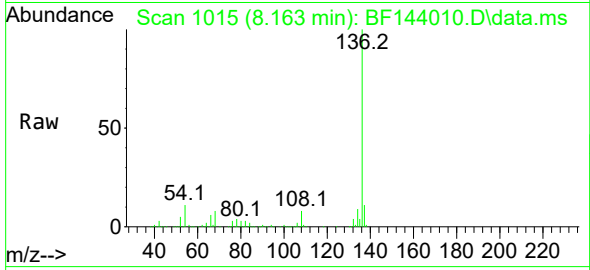
Ion	Ratio	Lower	Upper
70	100		
42	63.0	62.8	94.2
101	0.0	6.7	10.1#
130	1.7	13.0	19.4#





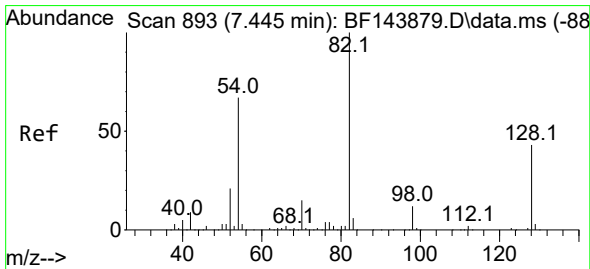
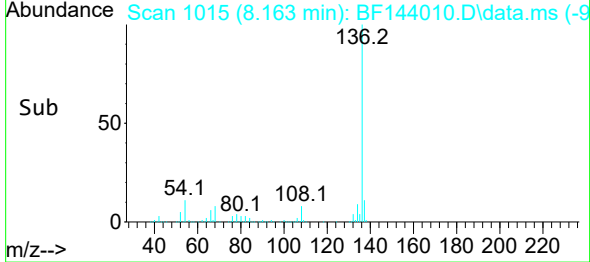
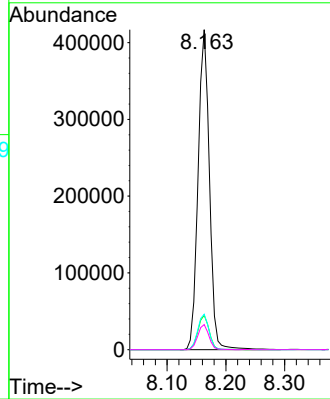
#21
 Naphthalene-d8
 Concen: 20.00 ng
 RT: 8.163 min Scan# 10
 Delta R.T. -0.006 min
 Lab File: BF144010.D
 Acq: 21 Oct 2025 13:58

Instrument :
 BNA_F
 ClientSampleId :
 PB170166BL



Tgt Ion:136 Resp: 558761

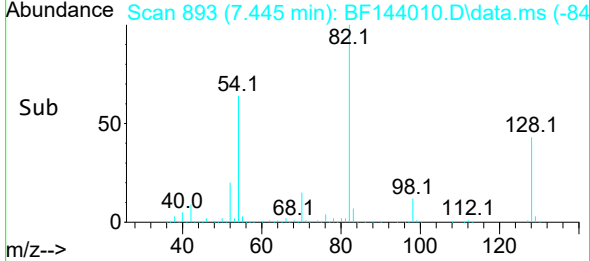
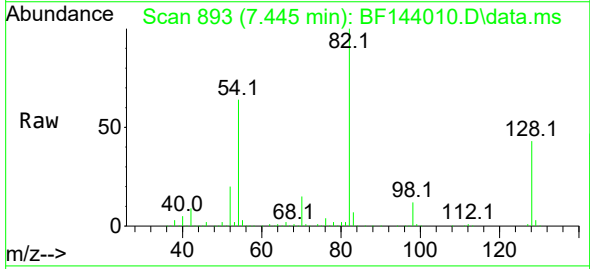
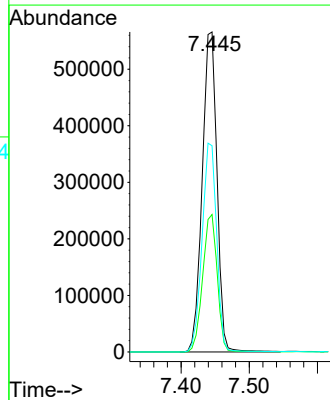
Ion	Ratio	Lower	Upper
136	100		
137	10.7	8.5	12.7
54	11.1	8.2	12.4
68	7.8	6.2	9.4

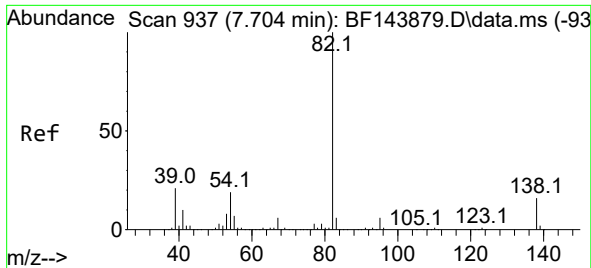


#23
 Nitrobenzene-d5
 Concen: 92.77 ng
 RT: 7.445 min Scan# 893
 Delta R.T. -0.012 min
 Lab File: BF144010.D
 Acq: 21 Oct 2025 13:58

Tgt Ion: 82 Resp: 853211

Ion	Ratio	Lower	Upper
82	100		
128	43.0	34.0	51.0
54	64.5	53.2	79.8

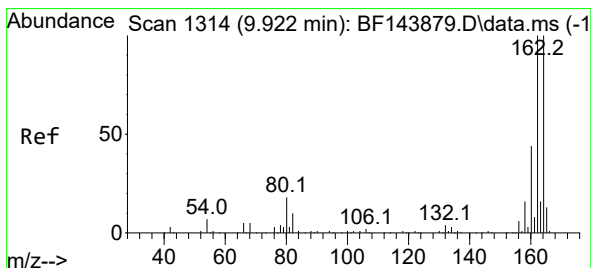
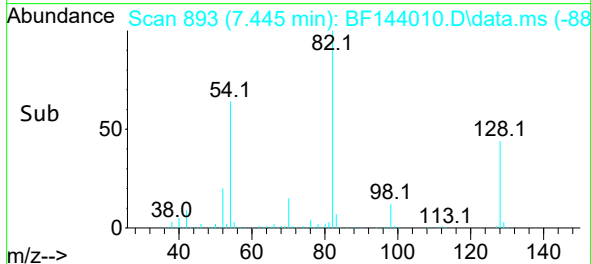
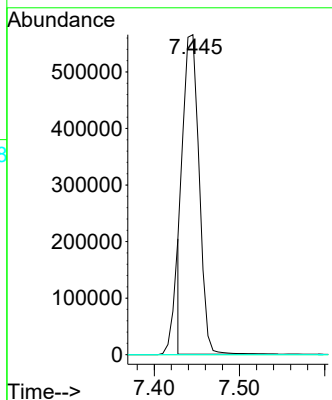
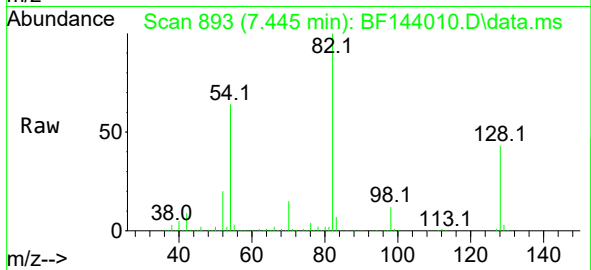




#25
 Isophorone
 Concen: 38.15 ng
 RT: 7.445 min Scan# 893
 Delta R.T. -0.276 min
 Lab File: BF144010.D
 Acq: 21 Oct 2025 13:58

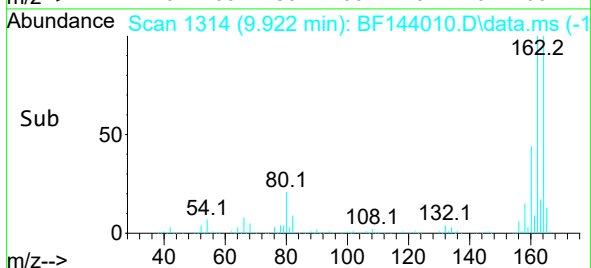
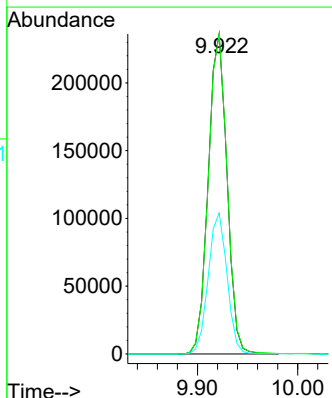
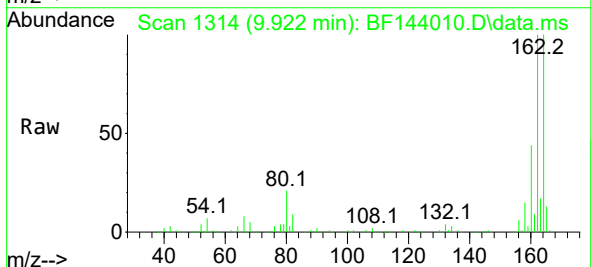
Instrument :
 BNA_F
 ClientSampleId :
 PB170166BL

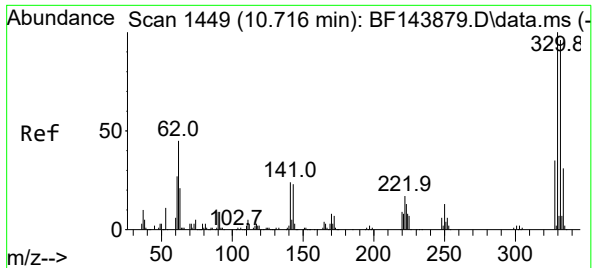
Tgt Ion: 82 Resp: 739807
 Ion Ratio Lower Upper
 82 100
 95 0.0 5.1 7.7#
 138 0.0 12.9 19.3#



#39
 Acenaphthene-d10
 Concen: 20.00 ng
 RT: 9.922 min Scan# 1314
 Delta R.T. -0.005 min
 Lab File: BF144010.D
 Acq: 21 Oct 2025 13:58

Tgt Ion: 164 Resp: 306361
 Ion Ratio Lower Upper
 164 100
 162 100.0 80.2 120.2
 160 44.0 35.4 53.0



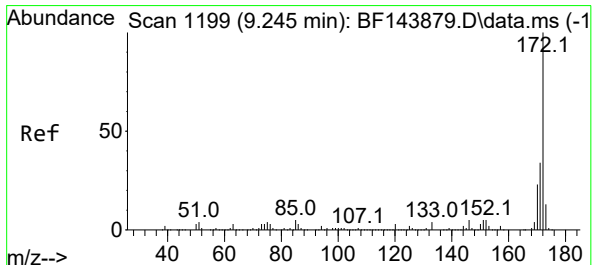
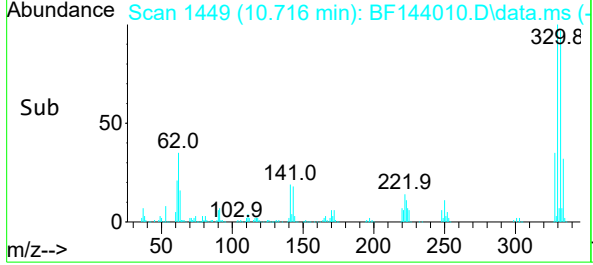
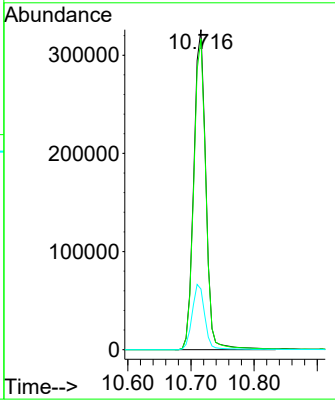
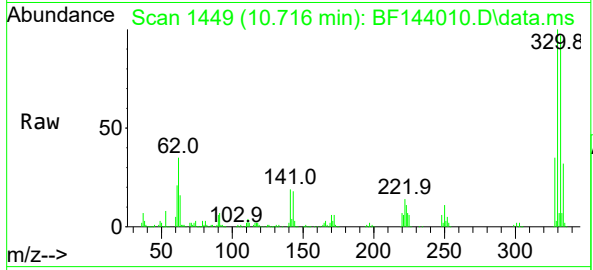


#42
 2,4,6-Tribromophenol
 Concen: 142.07 ng
 RT: 10.716 min Scan# 14
 Delta R.T. -0.006 min
 Lab File: BF144010.D
 Acq: 21 Oct 2025 13:58

Instrument : BNA_F
 ClientSampleId : PB170166BL

Tgt Ion: 330 Resp: 433524

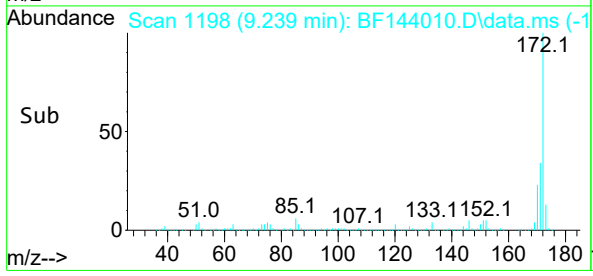
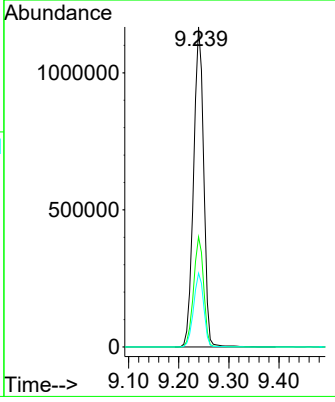
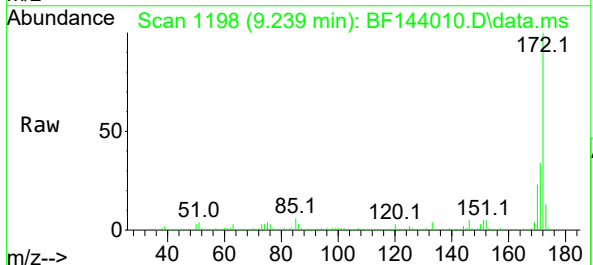
Ion	Ratio	Lower	Upper
330	100		
332	97.2	76.9	115.3
141	21.4	20.2	30.4

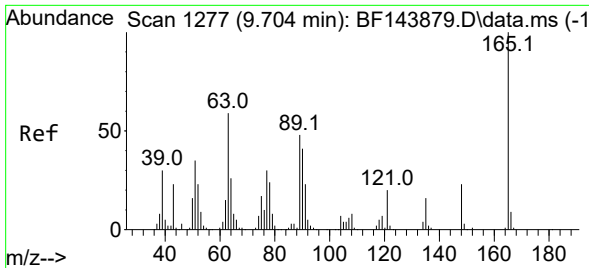


#45
 2-Fluorobiphenyl
 Concen: 84.75 ng
 RT: 9.239 min Scan# 1198
 Delta R.T. -0.012 min
 Lab File: BF144010.D
 Acq: 21 Oct 2025 13:58

Tgt Ion: 172 Resp: 1636263

Ion	Ratio	Lower	Upper
172	100		
171	34.4	27.4	41.0
170	23.0	18.6	28.0



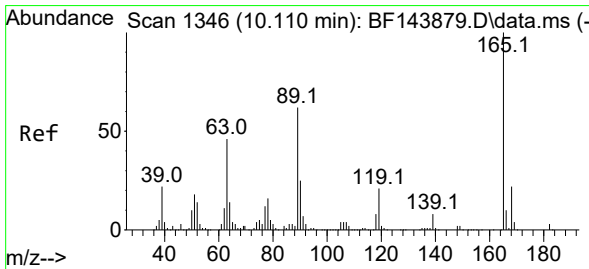
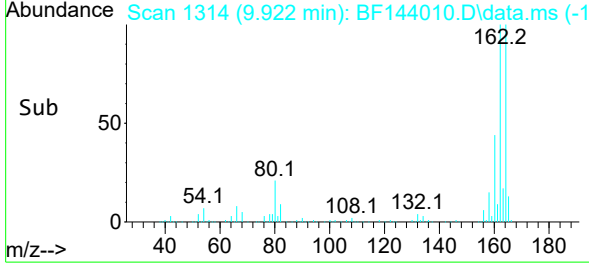
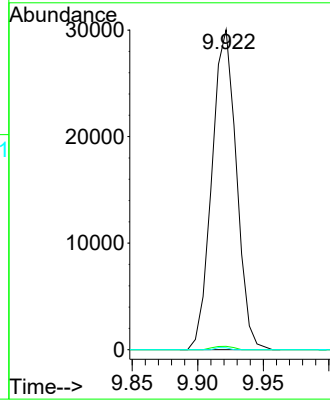
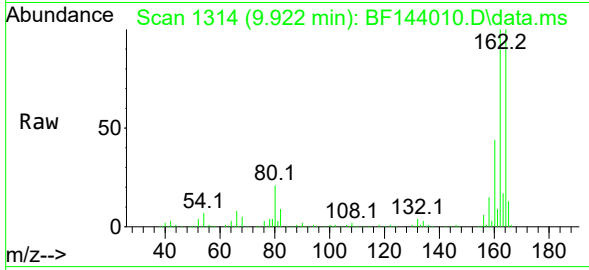


#51
 2,6-Dinitrotoluene
 Concen: 10.84 ng
 RT: 9.922 min Scan# 11
 Delta R.T. 0.206 min
 Lab File: BF144010.D
 Acq: 21 Oct 2025 13:58

Instrument :
 BNA_F
 ClientSampleId :
 PB170166BL

Tgt Ion:165 Resp: 39095

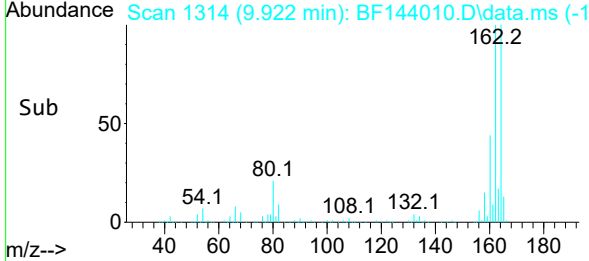
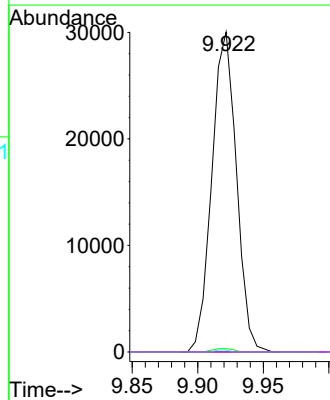
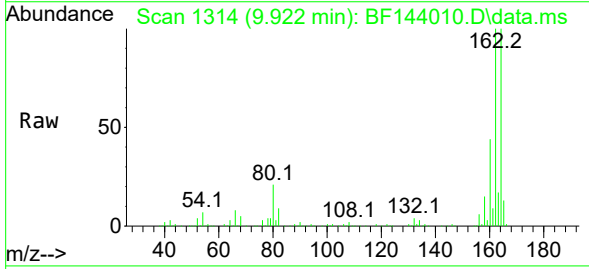
Ion	Ratio	Lower	Upper
165	100		
63	1.0	47.3	70.9#
89	0.6	38.2	57.4#

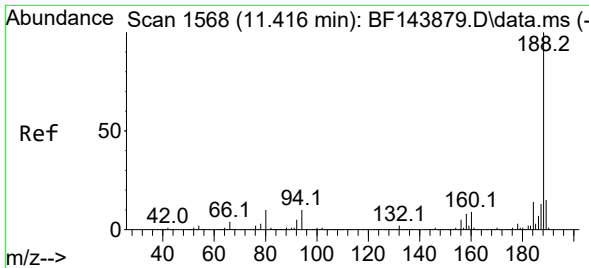


#57
 2,4-Dinitrotoluene
 Concen: 7.96 ng
 RT: 9.922 min Scan# 1314
 Delta R.T. -0.194 min
 Lab File: BF144010.D
 Acq: 21 Oct 2025 13:58

Tgt Ion:165 Resp: 39095

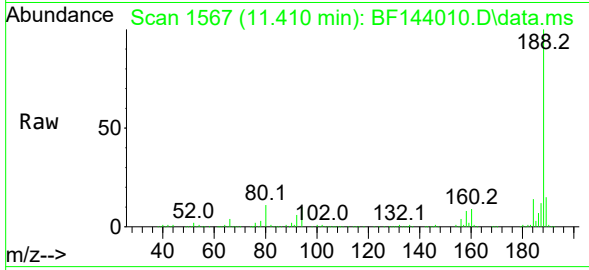
Ion	Ratio	Lower	Upper
165	100		
63	1.0	37.2	55.8#
89	0.6	49.4	74.2#
182	0.0	2.1	3.1#



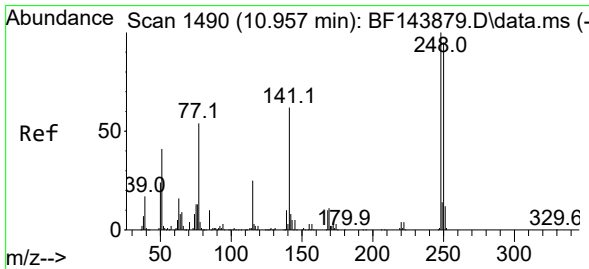
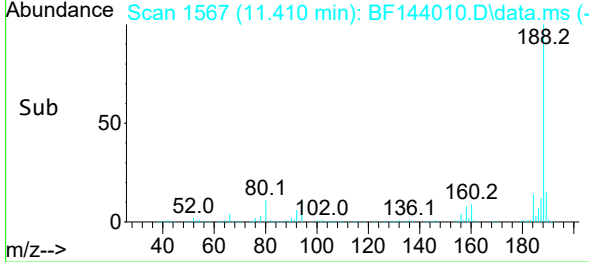
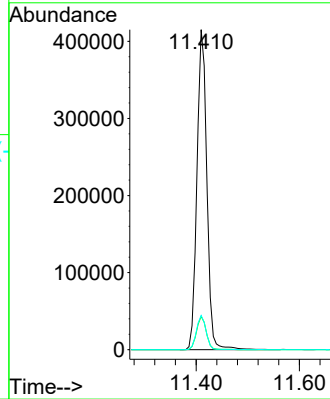


#64
 Phenanthrene-d10
 Concen: 20.00 ng
 RT: 11.410 min Scan# 11
 Delta R.T. -0.006 min
 Lab File: BF144010.D
 Acq: 21 Oct 2025 13:58

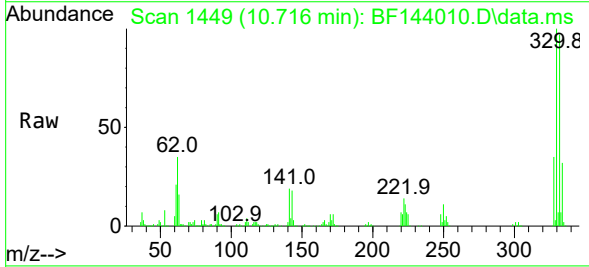
Instrument :
 BNA_F
 ClientSampleId :
 PB170166BL



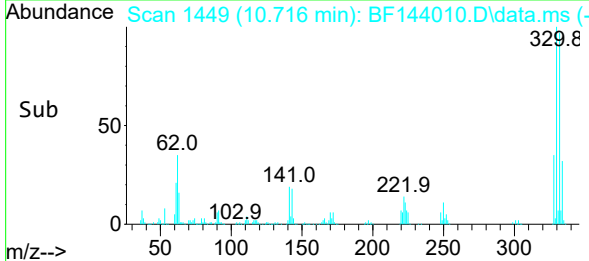
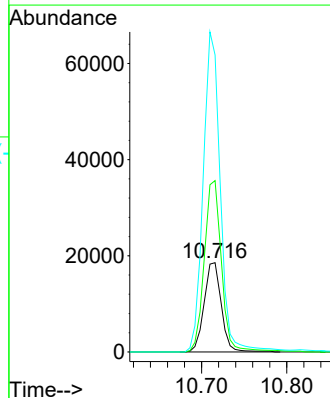
Tgt Ion:188 Resp: 551648
 Ion Ratio Lower Upper
 188 100
 94 10.4 7.8 11.6
 80 10.7 7.9 11.9

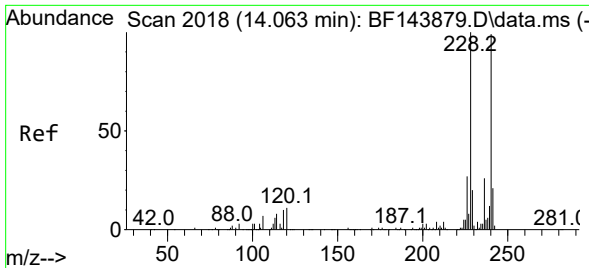


#67
 4-Bromophenyl-phenylether
 Concen: 4.27 ng
 RT: 10.716 min Scan# 1449
 Delta R.T. -0.247 min
 Lab File: BF144010.D
 Acq: 21 Oct 2025 13:58



Tgt Ion:248 Resp: 26033
 Ion Ratio Lower Upper
 248 100
 250 191.7 76.3 114.5#
 141 332.3 49.7 74.5#



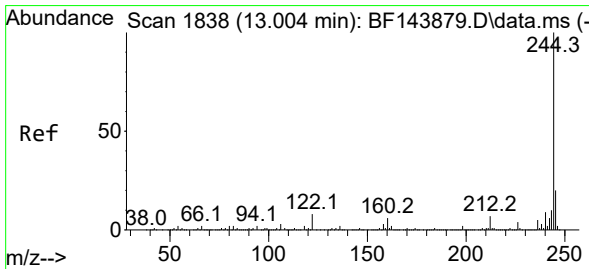
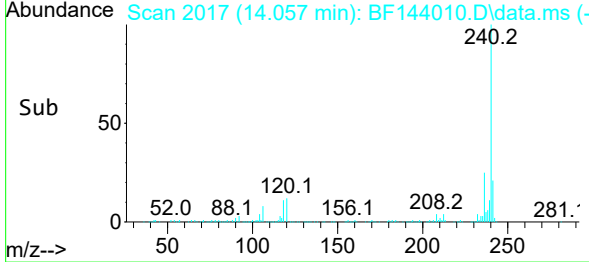
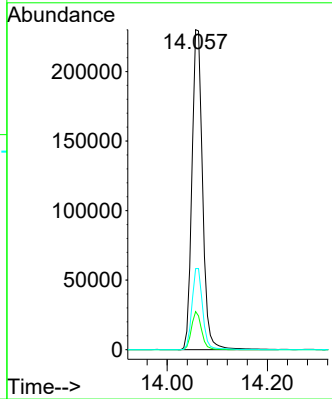
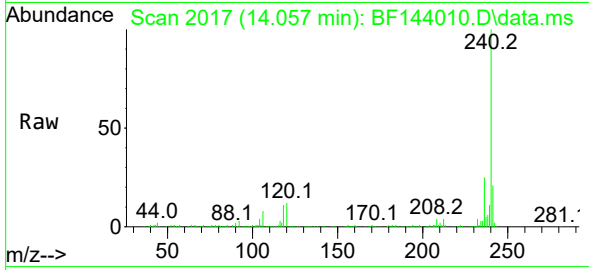


#76
 Chrysene-d12
 Concen: 20.00 ng
 RT: 14.057 min Scan# 2018
 Delta R.T. -0.011 min
 Lab File: BF144010.D
 Acq: 21 Oct 2025 13:58

Instrument : BNA_F
 ClientSampleId : PB170166BL

Tgt Ion:240 Resp: 338314

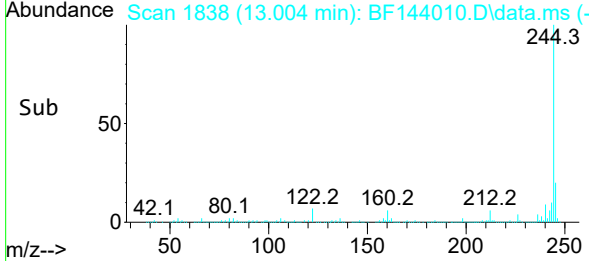
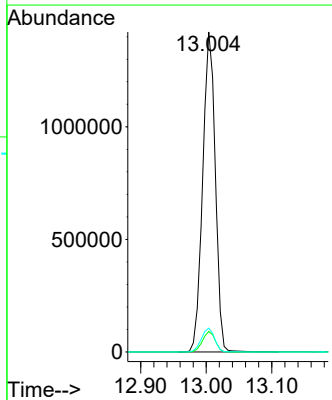
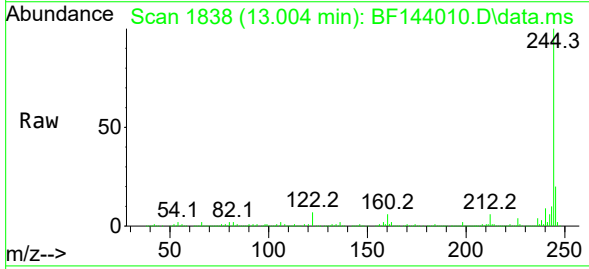
Ion	Ratio	Lower	Upper
240	100		
120	11.9	8.6	13.0
236	25.4	21.1	31.7

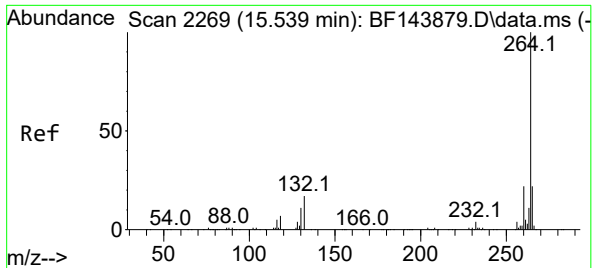


#79
 Terphenyl-d14
 Concen: 96.24 ng
 RT: 13.004 min Scan# 1838
 Delta R.T. -0.006 min
 Lab File: BF144010.D
 Acq: 21 Oct 2025 13:58

Tgt Ion:244 Resp: 1905074

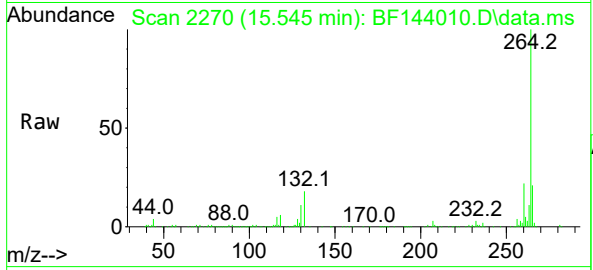
Ion	Ratio	Lower	Upper
244	100		
212	6.4	5.4	8.0
122	7.5	6.4	9.6





#86
 Perylene-d12
 Concen: 20.00 ng
 RT: 15.545 min Scan# 21
 Delta R.T. 0.000 min
 Lab File: BF144010.D
 Acq: 21 Oct 2025 13:58

Instrument :
 BNA_F
 ClientSampleId :
 PB170166BL



Tgt Ion:264 Resp: 285914

Ion	Ratio	Lower	Upper
264	100		
260	22.0	17.8	26.8
265	21.4	17.5	26.3

