

Data Path : Z:\svoasrv\HPCHEM1\BNA_F\Data\BF102125\
 Data File : BF144018.D
 Acq On : 21 Oct 2025 18:01
 Operator : RC/JU
 Sample : Q3375-04
 Misc :
 ALS Vial : 11 Sample Multiplier: 1

Instrument :
 BNA_F
 ClientSampleId :
 PR132-S02-010074-20251016

Quant Time: Oct 21 18:24:22 2025
 Quant Method : Z:\svoasrv\HPCHEM1\BNA_F\Methods\8270-BF100625.M
 Quant Title : ASP BNA STANDARDS FOR 5 POINT CALIBRATION
 QLast Update : Mon Oct 06 15:29:47 2025
 Response via : Initial Calibration

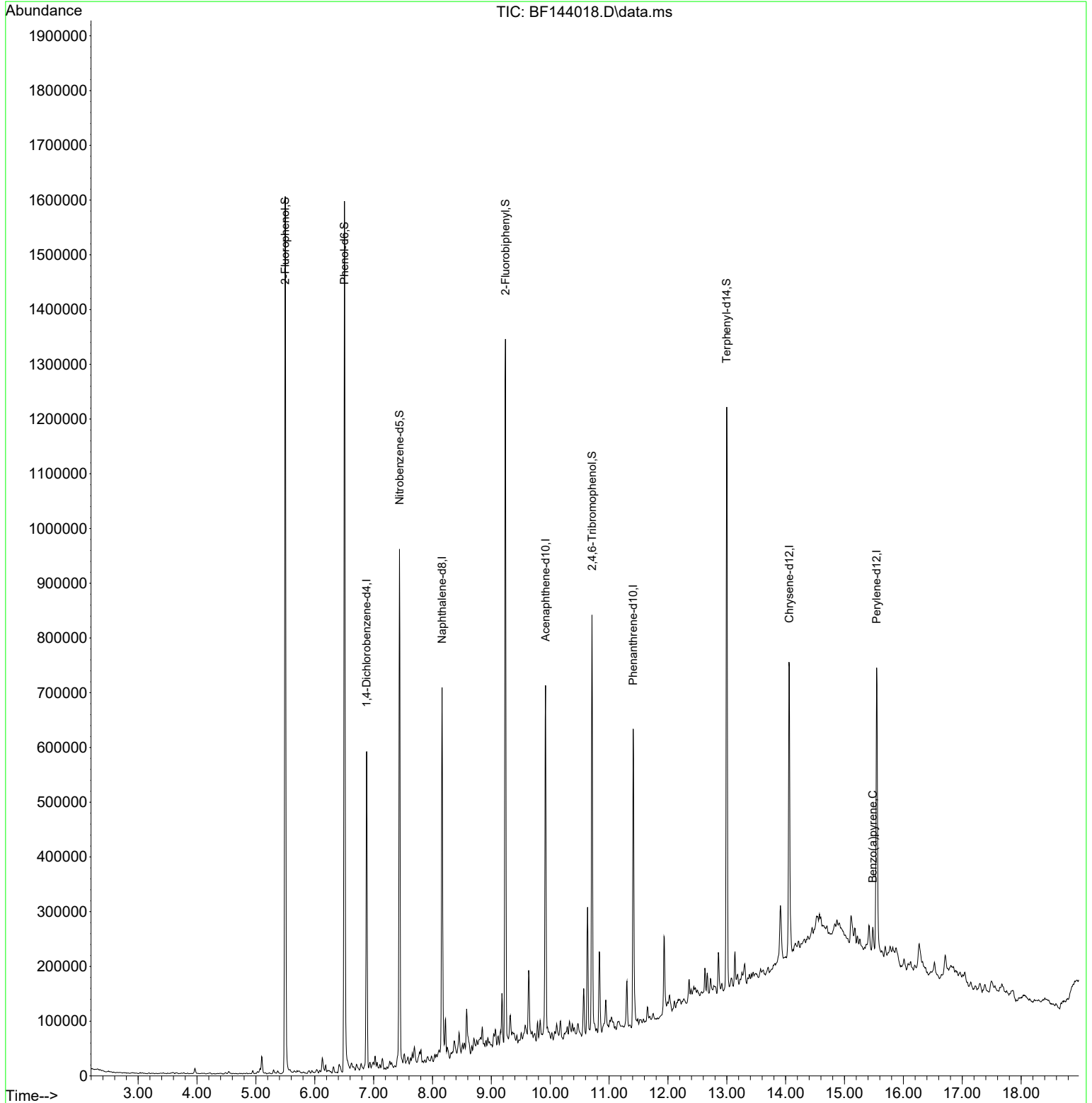
Compound	R.T.	QIon	Response	Conc	Units	Dev(Min)
Internal Standards						
1) 1,4-Dichlorobenzene-d4	6.881	152	114769	20.00	ng	0.00
21) Naphthalene-d8	8.163	136	412633	20.00	ng	0.00
39) Acenaphthene-d10	9.922	164	190672	20.00	ng	0.00
64) Phenanthrene-d10	11.410	188	289518	20.00	ng	0.00
76) Chrysene-d12	14.063	240	267469	20.00	ng	0.00
86) Perylene-d12	15.545	264	332355	20.00	ng	0.00
System Monitoring Compounds						
5) 2-Fluorophenol	5.498	112	611499	84.61	ng	0.00
7) Phenol-d6	6.504	99	708851	82.28	ng	-0.01
23) Nitrobenzene-d5	7.440	82	390907	57.56	ng	-0.02
42) 2,4,6-Tribromophenol	10.710	330	137810	72.56	ng	-0.01
45) 2-Fluorobiphenyl	9.239	172	609475	50.72	ng	-0.01
79) Terphenyl-d14	12.998	244	553454	35.36	ng	-0.01
Target Compounds						Qvalue
90) Benzo(a)pyrene	15.480	252	34714	2.10	ng	# 85

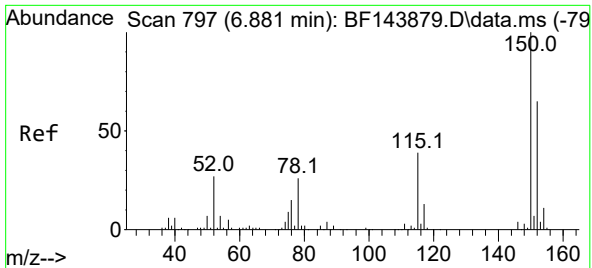
(#) = qualifier out of range (m) = manual integration (+) = signals summed

Data Path : Z:\svoasrv\HPCHEM1\BNA_F\Data\BF102125\
 Data File : BF144018.D
 Acq On : 21 Oct 2025 18:01
 Operator : RC/JU
 Sample : Q3375-04
 Misc :
 ALS Vial : 11 Sample Multiplier: 1

Instrument :
 BNA_F
 ClientSampleId :
 PR132-S02-010074-20251016

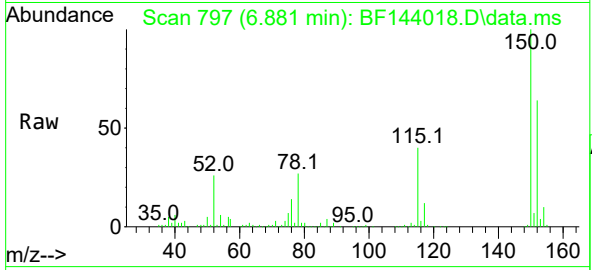
Quant Time: Oct 21 18:24:22 2025
 Quant Method : Z:\svoasrv\HPCHEM1\BNA_F\Methods\8270-BF100625.M
 Quant Title : ASP BNA STANDARDS FOR 5 POINT CALIBRATION
 QLast Update : Mon Oct 06 15:29:47 2025
 Response via : Initial Calibration



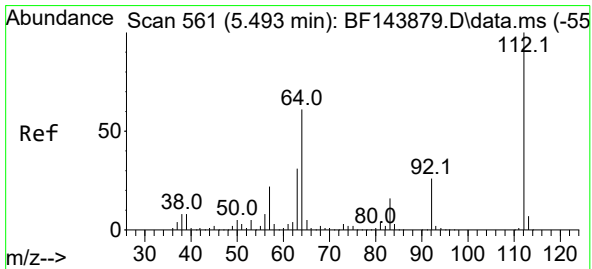
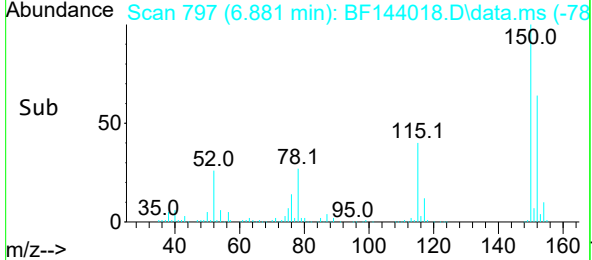
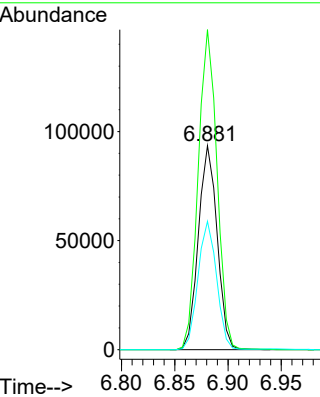


#1
 1,4-Dichlorobenzene-d4
 Concen: 20.00 ng
 RT: 6.881 min Scan# 79
 Delta R.T. -0.005 min
 Lab File: BF144018.D
 Acq: 21 Oct 2025 18:01

Instrument : BNA_F
 ClientSampleId : PR132-S02-010074-20251016

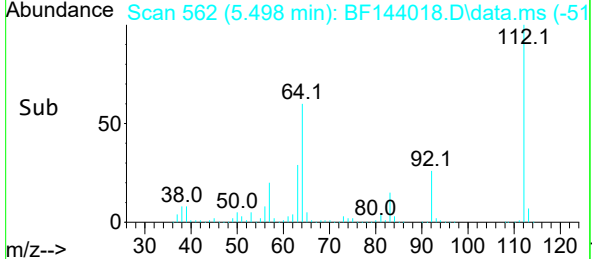
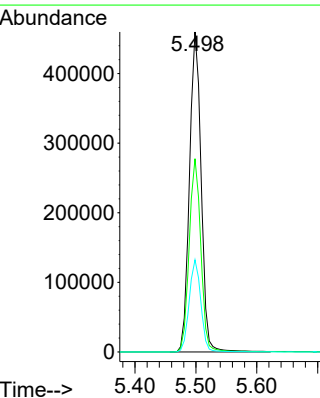
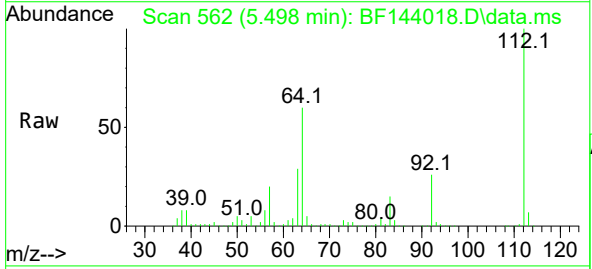


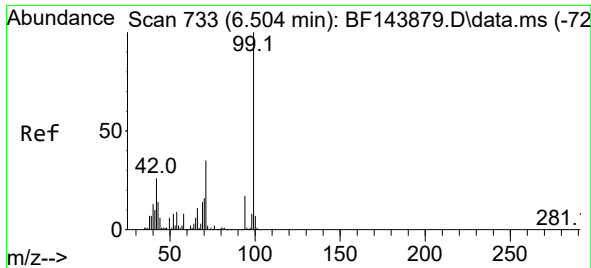
Tgt Ion:152 Resp: 114769
 Ion Ratio Lower Upper
 152 100
 150 156.9 124.4 186.6
 115 62.9 48.1 72.1



#5
 2-Fluorophenol
 Concen: 84.61 ng
 RT: 5.498 min Scan# 562
 Delta R.T. 0.000 min
 Lab File: BF144018.D
 Acq: 21 Oct 2025 18:01

Tgt Ion:112 Resp: 611499
 Ion Ratio Lower Upper
 112 100
 64 60.4 49.1 73.7
 63 28.8 24.5 36.7

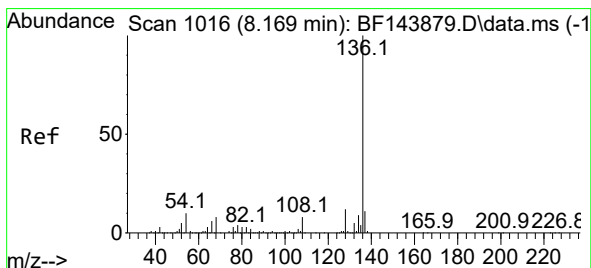
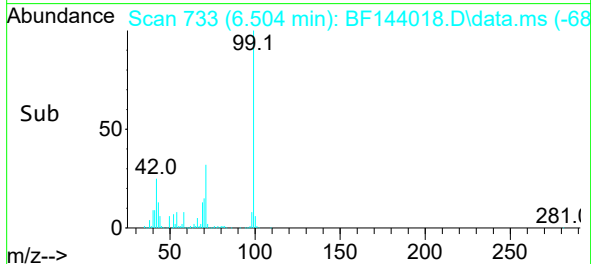
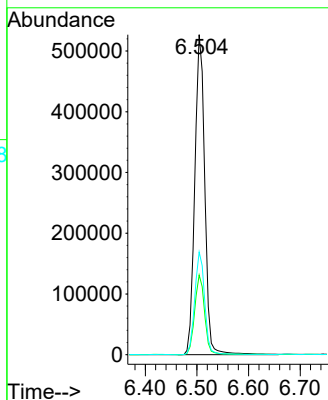
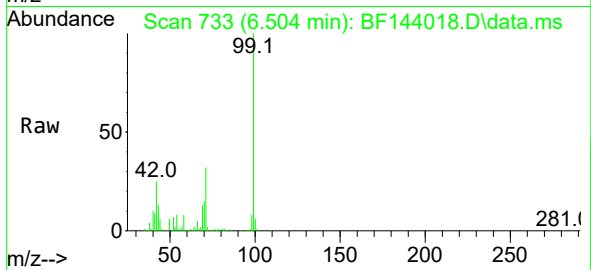




#7
 Phenol-d6
 Concen: 82.28 ng
 RT: 6.504 min Scan# 71
 Delta R.T. -0.012 min
 Lab File: BF144018.D
 Acq: 21 Oct 2025 18:01

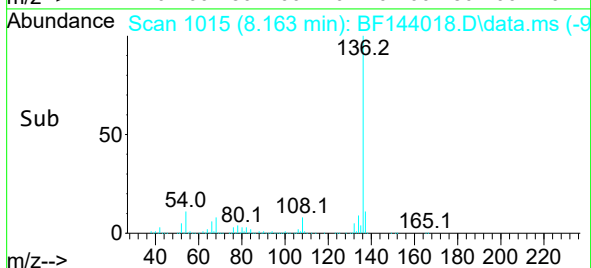
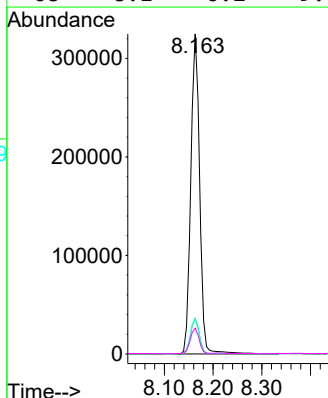
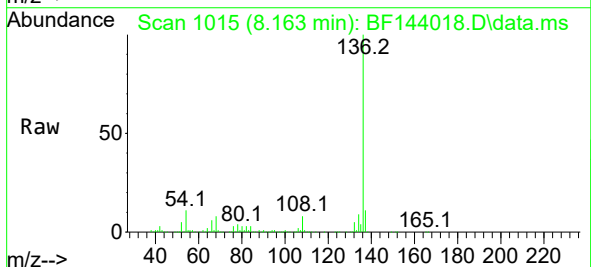
Instrument :
 BNA_F
 ClientSampleId :
 PR132-S02-010074-20251016

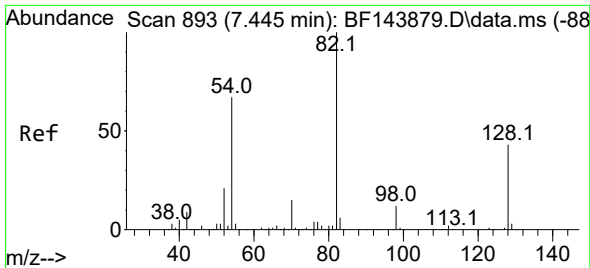
Tgt Ion: 99 Resp: 708851
 Ion Ratio Lower Upper
 99 100
 42 24.9 21.0 31.4
 71 32.1 27.8 41.8



#21
 Naphthalene-d8
 Concen: 20.00 ng
 RT: 8.163 min Scan# 1015
 Delta R.T. -0.006 min
 Lab File: BF144018.D
 Acq: 21 Oct 2025 18:01

Tgt Ion: 136 Resp: 412633
 Ion Ratio Lower Upper
 136 100
 137 11.1 8.5 12.7
 54 11.0 8.2 12.4
 68 8.1 6.2 9.4



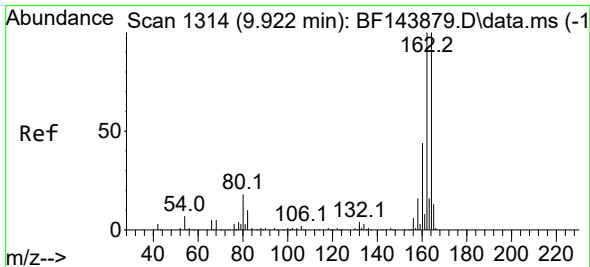
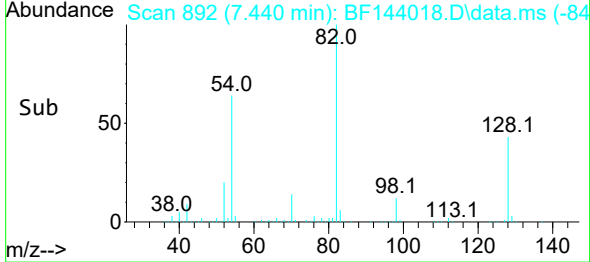
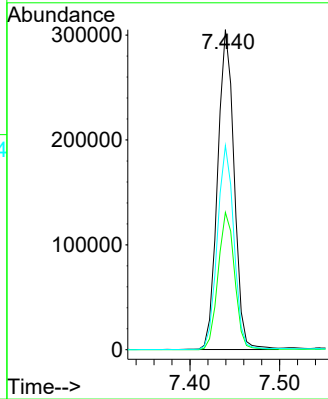
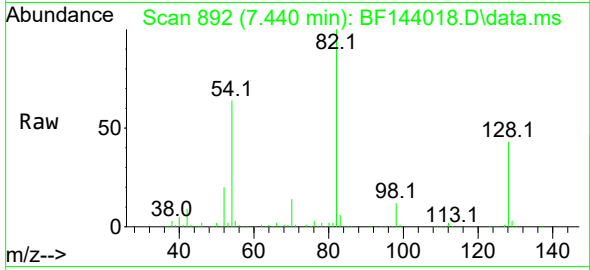


#23
 Nitrobenzene-d5
 Concen: 57.56 ng
 RT: 7.440 min Scan# 893
 Delta R.T. -0.018 min
 Lab File: BF144018.D
 Acq: 21 Oct 2025 18:01

Instrument : BNA_F
 ClientSampleId : PR132-S02-010074-20251016

Tgt Ion: 82 Resp: 390907

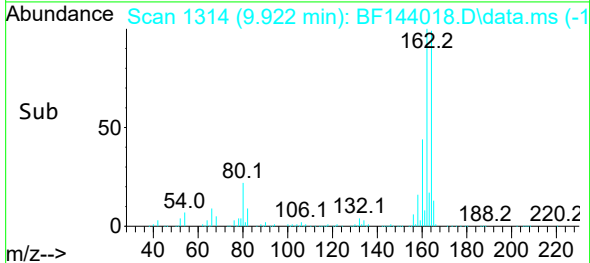
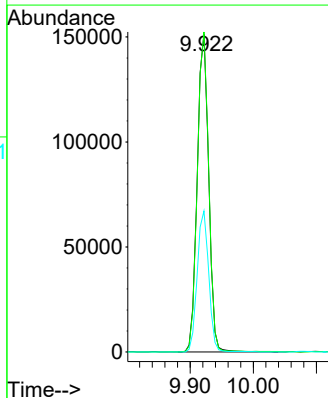
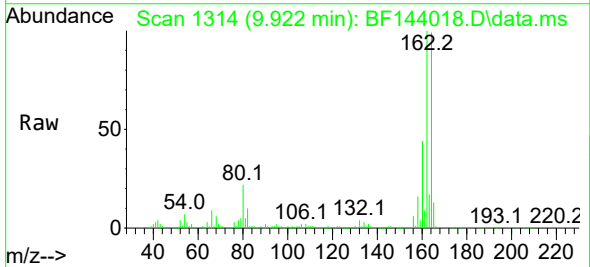
Ion	Ratio	Lower	Upper
82	100		
128	42.9	34.0	51.0
54	63.8	53.2	79.8

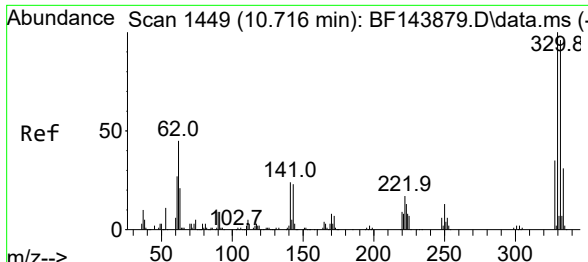


#39
 Acenaphthene-d10
 Concen: 20.00 ng
 RT: 9.922 min Scan# 1314
 Delta R.T. -0.005 min
 Lab File: BF144018.D
 Acq: 21 Oct 2025 18:01

Tgt Ion: 164 Resp: 190672

Ion	Ratio	Lower	Upper
164	100		
162	100.7	80.2	120.2
160	44.4	35.4	53.0



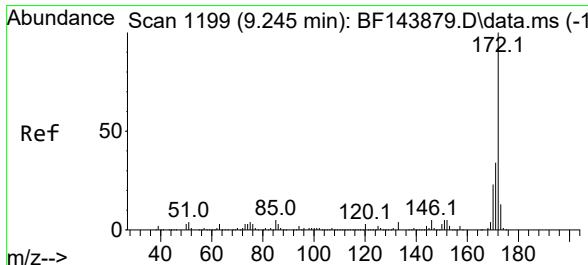
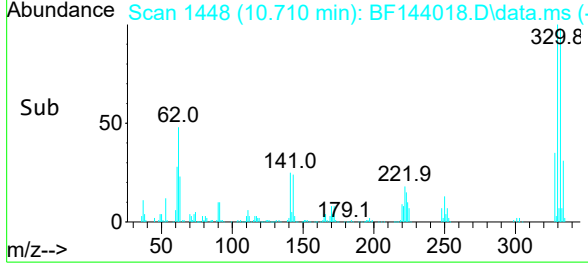
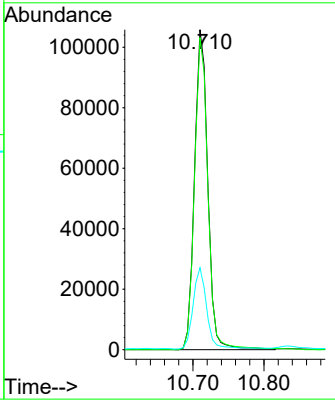
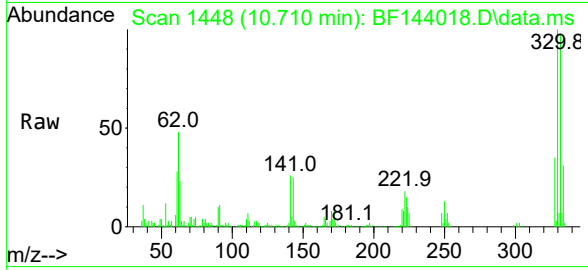


#42
 2,4,6-Tribromophenol
 Concen: 72.56 ng
 RT: 10.710 min Scan# 1448
 Delta R.T. -0.012 min
 Lab File: BF144018.D
 Acq: 21 Oct 2025 18:01

Instrument : BNA_F
 ClientSampleId : PR132-S02-010074-20251016

Tgt Ion:330 Resp: 137810

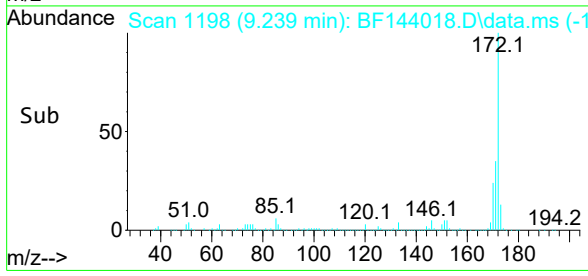
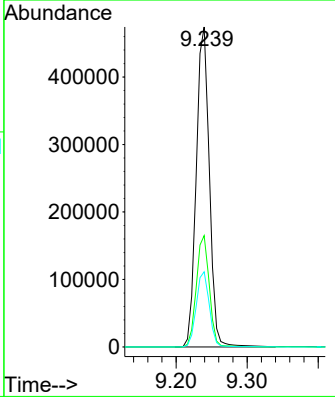
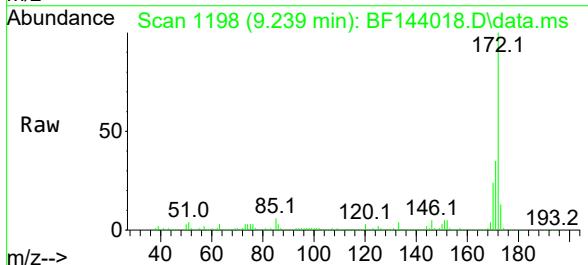
Ion	Ratio	Lower	Upper
330	100		
332	98.4	76.9	115.3
141	26.3	20.2	30.4

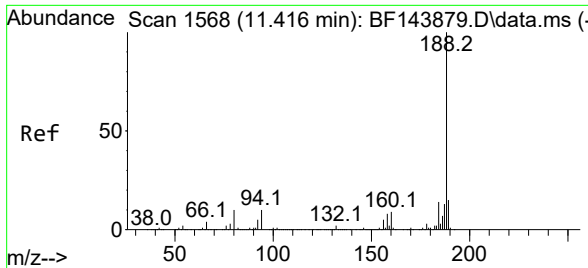


#45
 2-Fluorobiphenyl
 Concen: 50.72 ng
 RT: 9.239 min Scan# 1198
 Delta R.T. -0.012 min
 Lab File: BF144018.D
 Acq: 21 Oct 2025 18:01

Tgt Ion:172 Resp: 609475

Ion	Ratio	Lower	Upper
172	100		
171	34.8	27.4	41.0
170	23.5	18.6	28.0



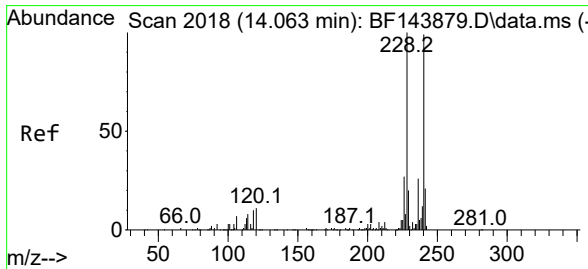
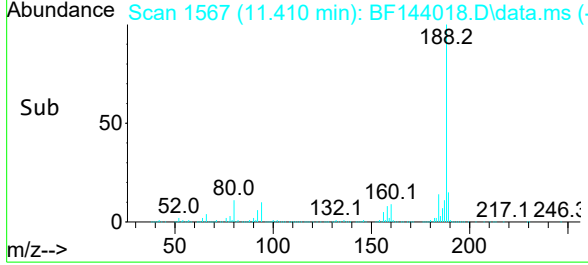
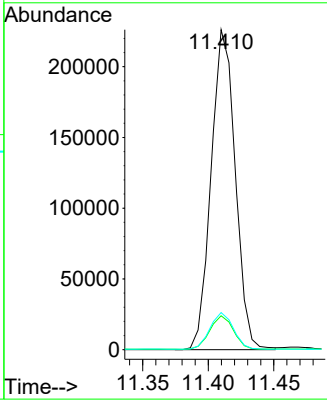
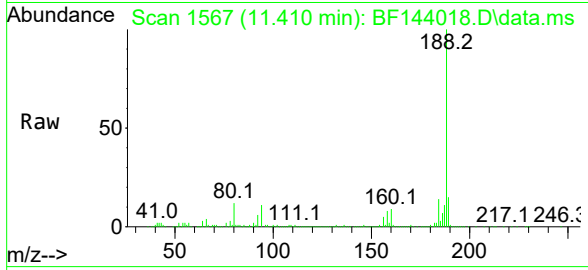


#64
 Phenanthrene-d10
 Concen: 20.00 ng
 RT: 11.410 min Scan# 11
 Delta R.T. -0.006 min
 Lab File: BF144018.D
 Acq: 21 Oct 2025 18:01

Instrument : BNA_F
 ClientSampleId : PR132-S02-010074-20251016

Tgt Ion:188 Resp: 289518

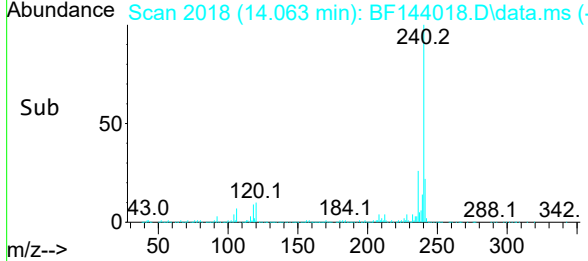
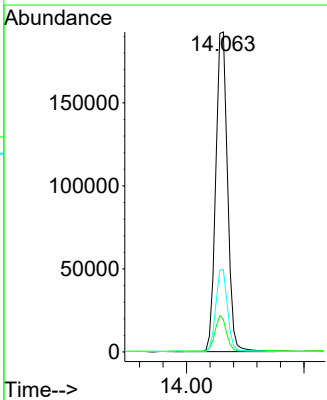
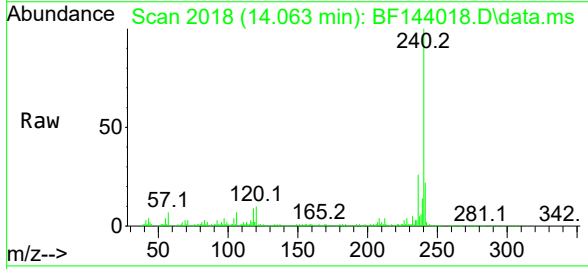
Ion	Ratio	Lower	Upper
188	100		
94	10.6	7.8	11.6
80	11.6	7.9	11.9

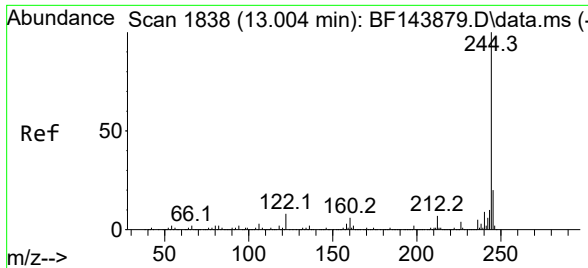


#76
 Chrysene-d12
 Concen: 20.00 ng
 RT: 14.063 min Scan# 2018
 Delta R.T. -0.005 min
 Lab File: BF144018.D
 Acq: 21 Oct 2025 18:01

Tgt Ion:240 Resp: 267469

Ion	Ratio	Lower	Upper
240	100		
120	10.2	8.6	13.0
236	25.7	21.1	31.7



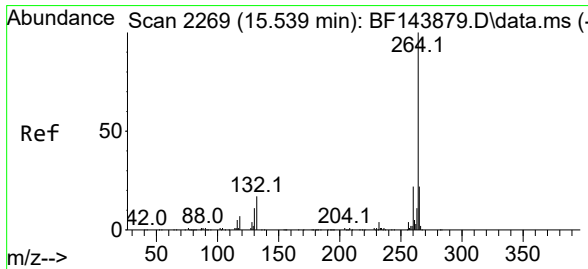
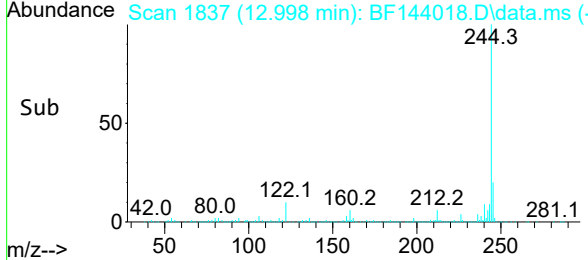
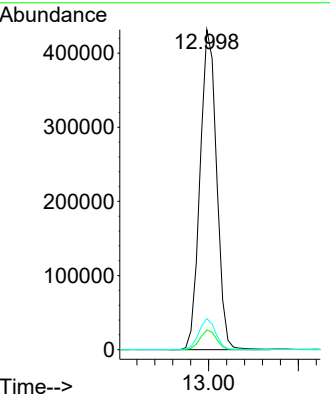
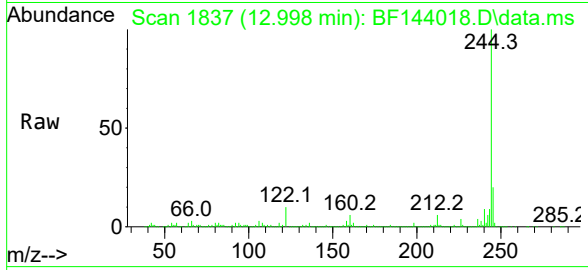


#79
 Terphenyl-d14
 Concen: 35.36 ng
 RT: 12.998 min Scan# 11
 Delta R.T. -0.012 min
 Lab File: BF144018.D
 Acq: 21 Oct 2025 18:01

Instrument : BNA_F
 ClientSampleId : PR132-S02-010074-20251016

Tgt Ion:244 Resp: 553454

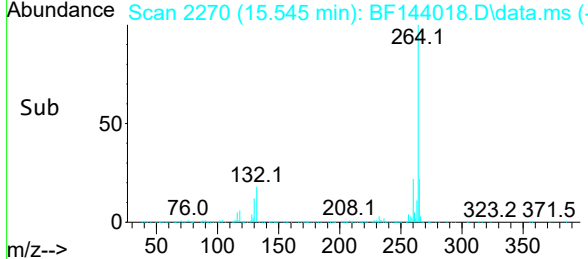
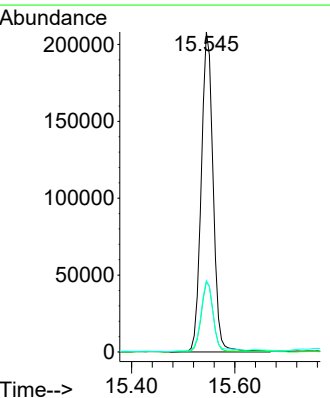
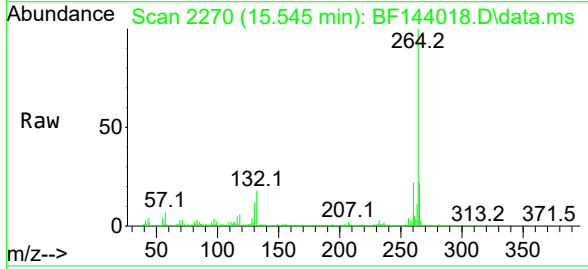
Ion	Ratio	Lower	Upper
244	100		
212	6.1	5.4	8.0
122	9.7	6.4	9.6#

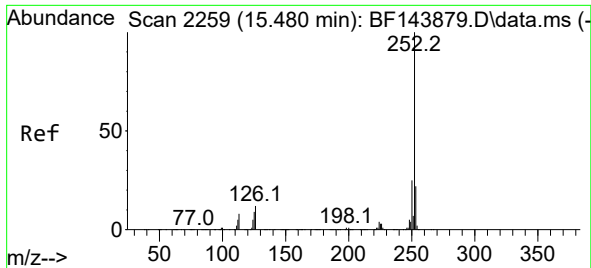


#86
 Perylene-d12
 Concen: 20.00 ng
 RT: 15.545 min Scan# 2270
 Delta R.T. 0.000 min
 Lab File: BF144018.D
 Acq: 21 Oct 2025 18:01

Tgt Ion:264 Resp: 332355

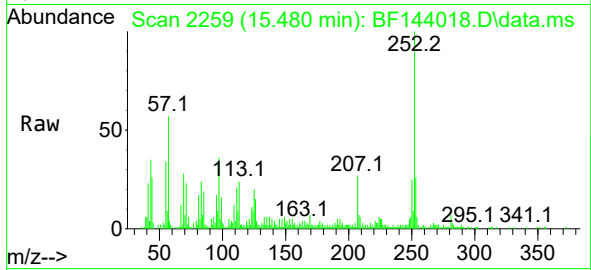
Ion	Ratio	Lower	Upper
264	100		
260	21.9	17.8	26.8
265	22.2	17.5	26.3





#90
 Benzo(a)pyrene
 Concen: 2.10 ng
 RT: 15.480 min Scan# 21
 Delta R.T. -0.006 min
 Lab File: BF144018.D
 Acq: 21 Oct 2025 18:01

Instrument :
 BNA_F
 ClientSampleId :
 PR132-S02-010074-20251016



Tgt Ion:252 Resp: 34714

Ion	Ratio	Lower	Upper
252	100		
253	25.6	17.3	25.9
125	20.1	7.0	10.4#

