

Data Path : Z:\svoasrv\HPCHEM1\BNA_F\Data\BF102125\
 Data File : BF144029.D
 Acq On : 21 Oct 2025 23:22
 Operator : RC/JU
 Sample : Q3376-02
 Misc :
 ALS Vial : 22 Sample Multiplier: 1

Instrument :
 BNA_F
 ClientSampleId :

Quant Time: Oct 22 11:13:59 2025
 Quant Method : Z:\svoasrv\HPCHEM1\BNA_F\Methods\8270-BF100625.M
 Quant Title : ASP BNA STANDARDS FOR 5 POINT CALIBRATION
 QLast Update : Mon Oct 06 15:29:47 2025
 Response via : Initial Calibration

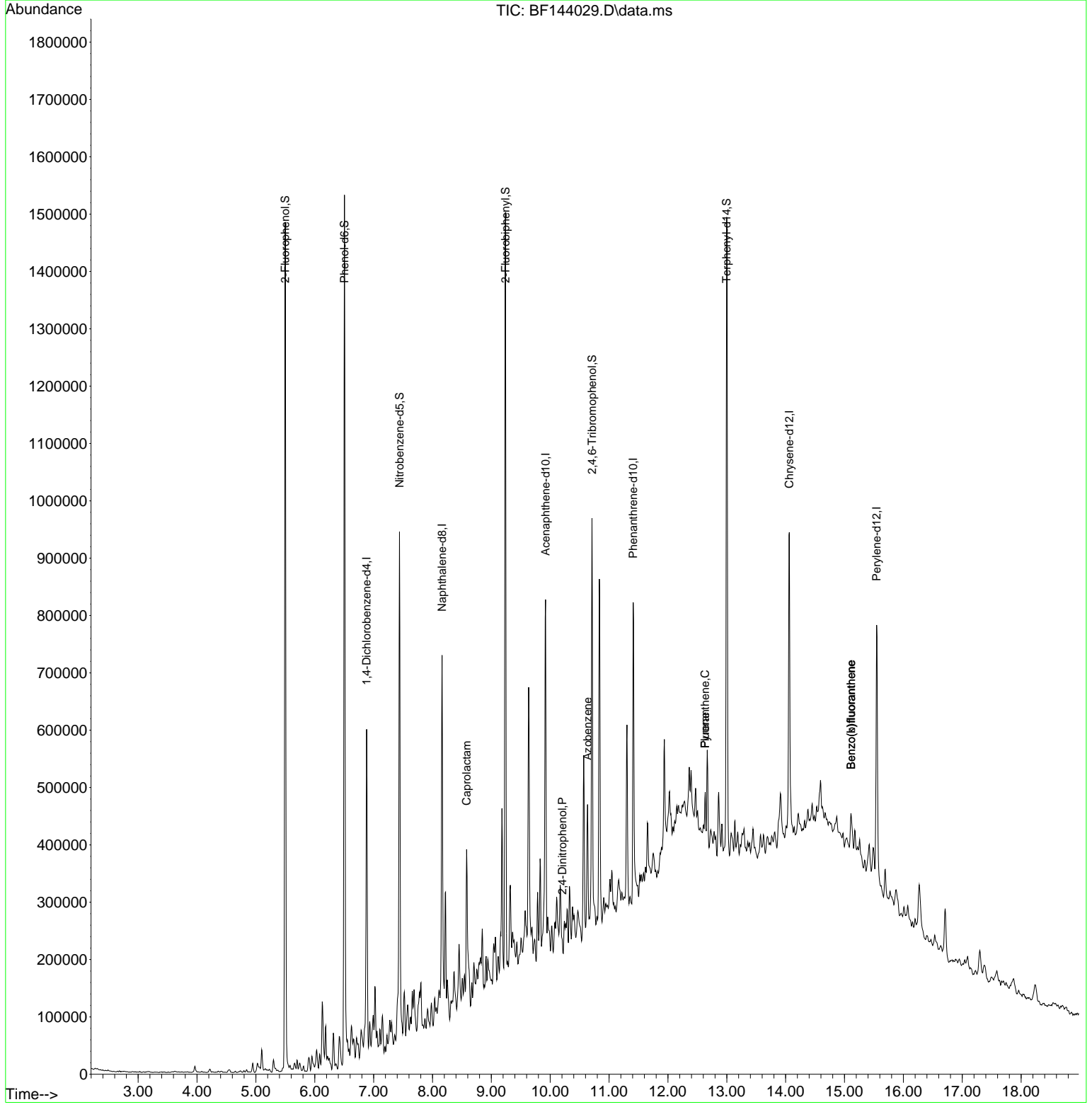
Compound	R.T.	QIon	Response	Conc	Units	Dev(Min)
Internal Standards						
1) 1,4-Dichlorobenzene-d4	6.881	152	102606	20.000	ng	0.00
21) Naphthalene-d8	8.163	136	370185	20.000	ng	0.00
39) Acenaphthene-d10	9.922	164	182853	20.000	ng	0.00
64) Phenanthrene-d10	11.410	188	276992	20.000	ng	0.00
76) Chrysenes-d12	14.063	240	261924	20.000	ng	0.00
86) Perylene-d12	15.545	264	301622	20.000	ng	0.00
System Monitoring Compounds						
5) 2-Fluorophenol	5.498	112	575295	89.036	ng	0.00
7) Phenol-d6	6.504	99	664885	86.330	ng	-0.01
23) Nitrobenzene-d5	7.440	82	368882	60.541	ng	-0.02
42) 2,4,6-Tribromophenol	10.710	330	134570	73.889	ng	-0.01
45) 2-Fluorobiphenyl	9.239	172	636031	55.193	ng	-0.01
79) Terphenyl-d14	12.998	244	591870	38.620	ng	-0.01
Target Compounds						
35) Caprolactam	8.581	113	7964	4.608	ng	# 1
54) 2,4-Dinitrophenol	10.204	184	1049	7.662	ng	90
63) Azobenzene	10.633	77	54501	4.834	ng	# 1
75) Fluoranthene	12.633	202	47766	3.444	ng	96
78) Pyrene	12.633	202	47766	2.187	ng	98
88) Benzo(b)fluoranthene	15.110	252	47603	2.747	ng	# 78
89) Benzo(k)fluoranthene	15.110	252	47603	2.969	ng	# 79

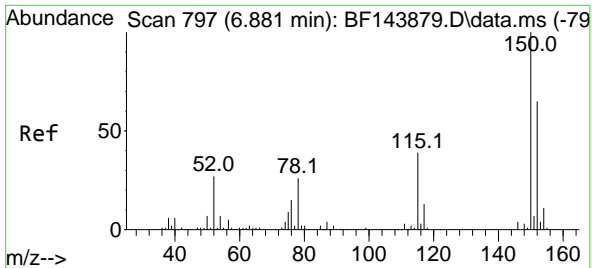
(#) = qualifier out of range (m) = manual integration (+) = signals summed

Data Path : Z:\svoasrv\HPCHEM1\BNA_F\Data\BF102125\
 Data File : BF144029.D
 Acq On : 21 Oct 2025 23:22
 Operator : RC/JU
 Sample : Q3376-02
 Misc :
 ALS Vial : 22 Sample Multiplier: 1

Instrument :
 BNA_F
 ClientSampleId :

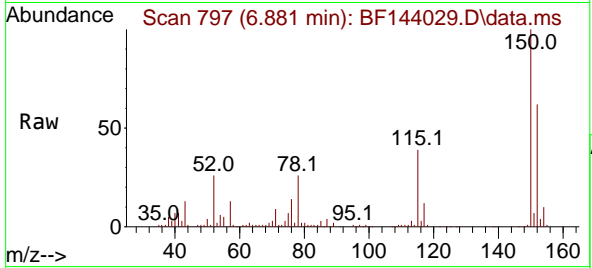
Quant Time: Oct 22 11:13:59 2025
 Quant Method : Z:\svoasrv\HPCHEM1\BNA_F\Methods\8270-BF100625.M
 Quant Title : ASP BNA STANDARDS FOR 5 POINT CALIBRATION
 QLast Update : Mon Oct 06 15:29:47 2025
 Response via : Initial Calibration



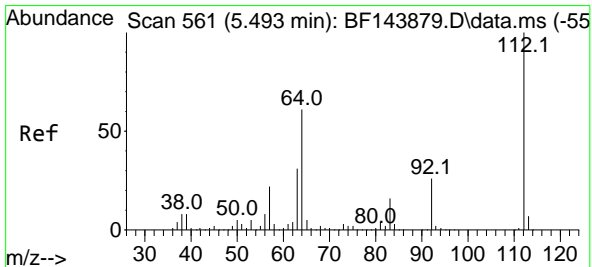
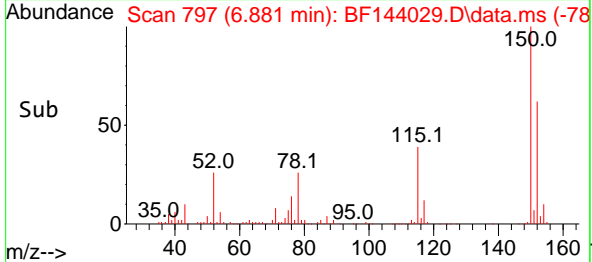
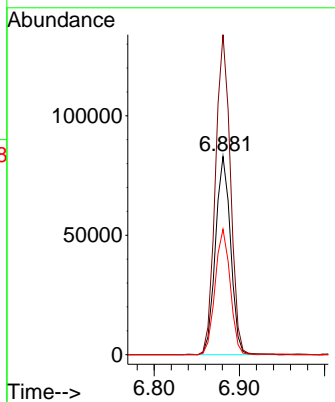


#1
 1,4-Dichlorobenzene-d4
 Concen: 20.000 ng
 RT: 6.881 min Scan# 79
 Delta R.T. -0.005 min
 Lab File: BF144029.D
 Acq: 21 Oct 2025 23:22

Instrument :
 BNA_F
 ClientSampleId :

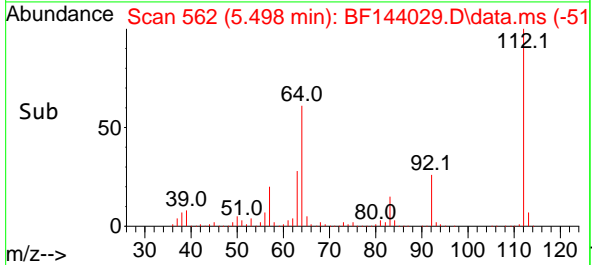
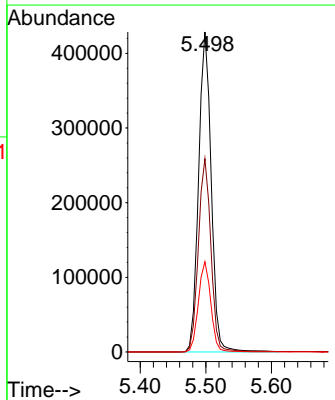
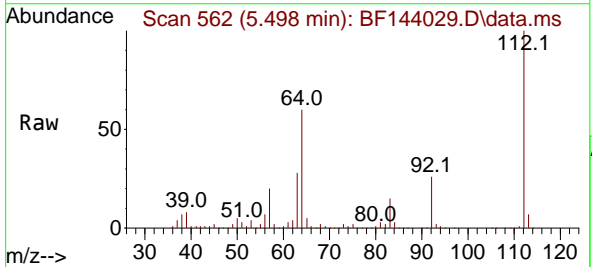


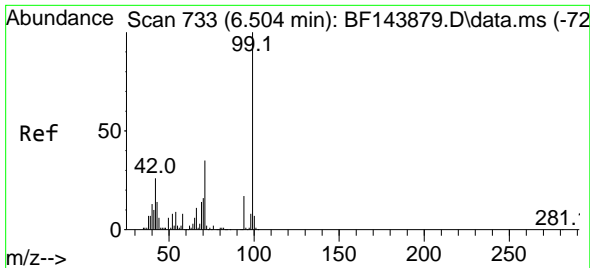
Tgt Ion:152 Resp: 102606
 Ion Ratio Lower Upper
 152 100
 150 161.4 124.4 186.6
 115 63.3 48.1 72.1



#5
 2-Fluorophenol
 Concen: 89.036 ng
 RT: 5.498 min Scan# 562
 Delta R.T. 0.000 min
 Lab File: BF144029.D
 Acq: 21 Oct 2025 23:22

Tgt Ion:112 Resp: 575295
 Ion Ratio Lower Upper
 112 100
 64 60.4 49.1 73.7
 63 28.2 24.5 36.7

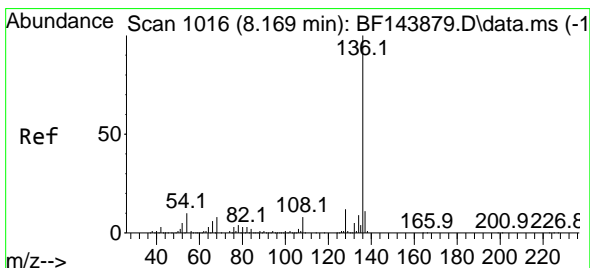
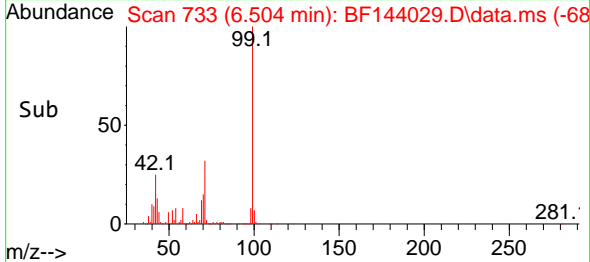
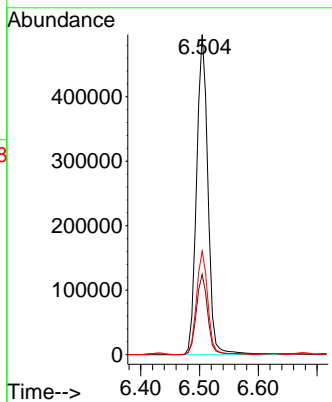
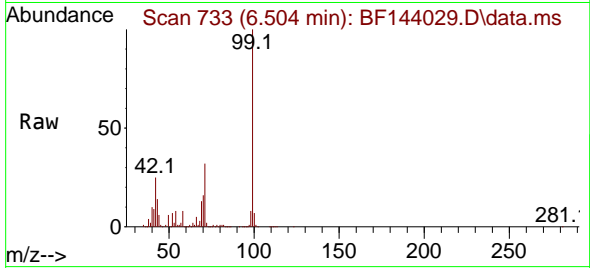




#7
 Phenol-d6
 Concen: 86.330 ng
 RT: 6.504 min Scan# 71
 Delta R.T. -0.012 min
 Lab File: BF144029.D
 Acq: 21 Oct 2025 23:22

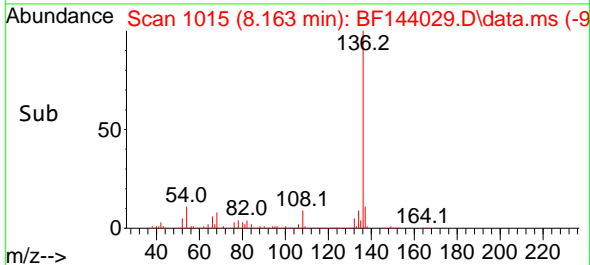
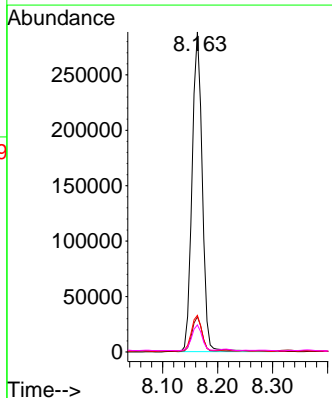
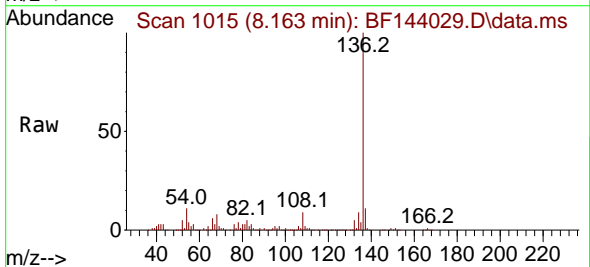
Instrument :
 BNA_F
 ClientSampleId :

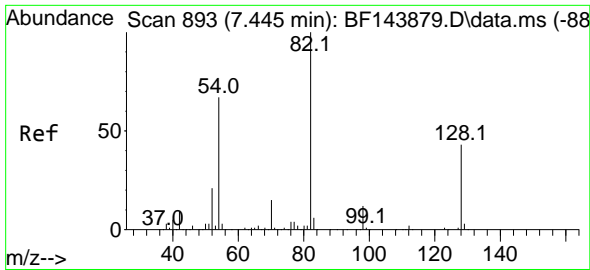
Tgt Ion	Resp	Lower	Upper
99	664885		
42	25.0	21.0	31.4
71	32.3	27.8	41.8



#21
 Naphthalene-d8
 Concen: 20.000 ng
 RT: 8.163 min Scan# 1015
 Delta R.T. -0.006 min
 Lab File: BF144029.D
 Acq: 21 Oct 2025 23:22

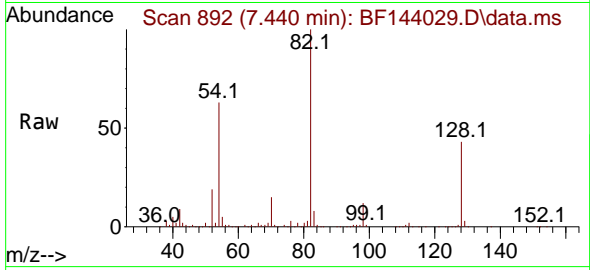
Tgt Ion	Resp	Lower	Upper
136	370185		
137	11.0	8.5	12.7
54	11.4	8.2	12.4
68	8.5	6.2	9.4



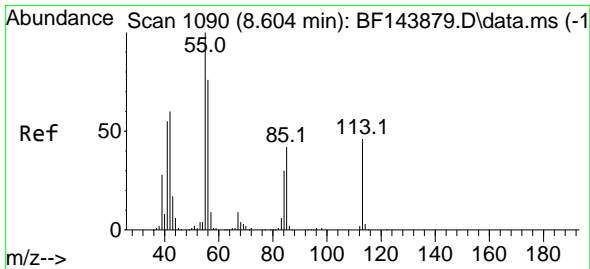
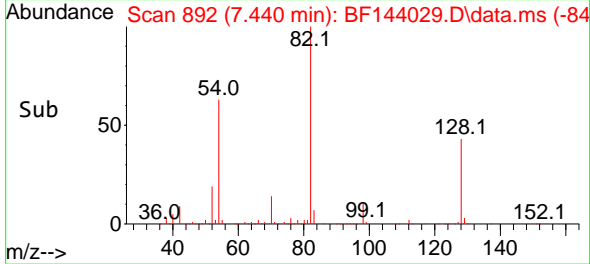
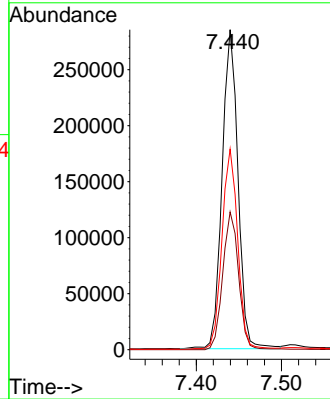


#23
 Nitrobenzene-d5
 Concen: 60.541 ng
 RT: 7.440 min Scan# 89
 Delta R.T. -0.017 min
 Lab File: BF144029.D
 Acq: 21 Oct 2025 23:22

Instrument :
 BNA_F
 ClientSampleId :

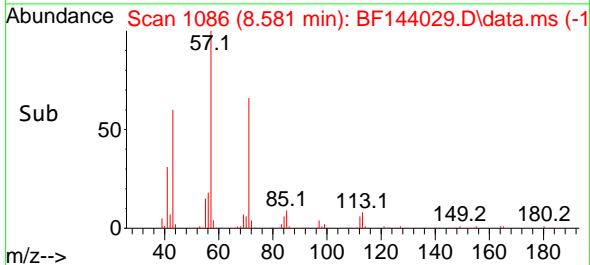
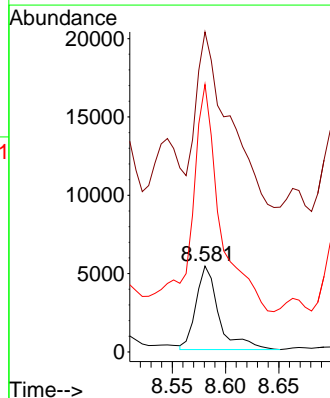
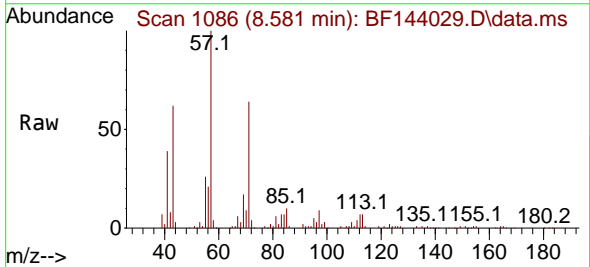


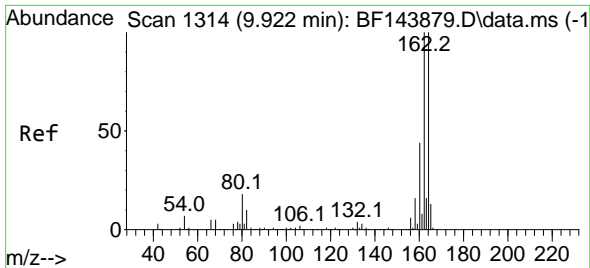
Tgt Ion: 82 Resp: 368882
 Ion Ratio Lower Upper
 82 100
 128 43.0 34.0 51.0
 54 62.7 53.2 79.8



#35
 Caprolactam
 Concen: 4.608 ng
 RT: 8.581 min Scan# 1086
 Delta R.T. -0.065 min
 Lab File: BF144029.D
 Acq: 21 Oct 2025 23:22

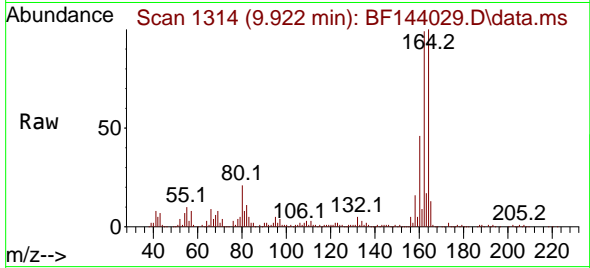
Tgt Ion: 113 Resp: 7964
 Ion Ratio Lower Upper
 113 100
 55 372.6 199.6 239.6#
 56 311.5 146.0 186.0#



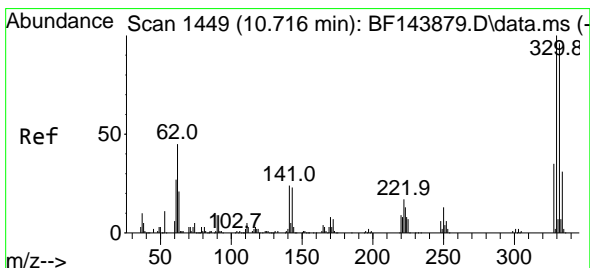
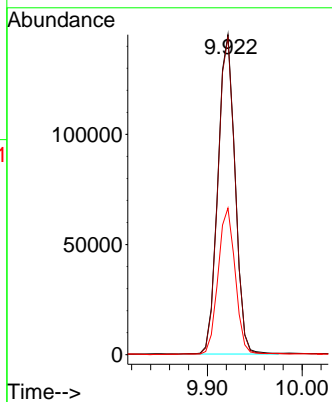
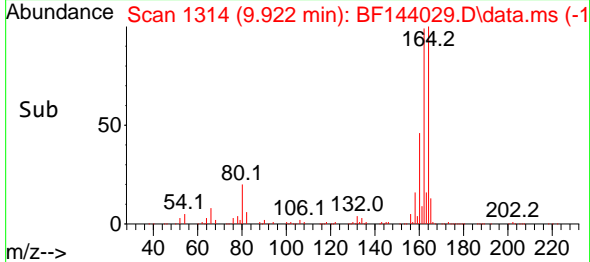


#39
 Acenaphthene-d10
 Concen: 20.000 ng
 RT: 9.922 min Scan# 11
 Delta R.T. -0.005 min
 Lab File: BF144029.D
 Acq: 21 Oct 2025 23:22

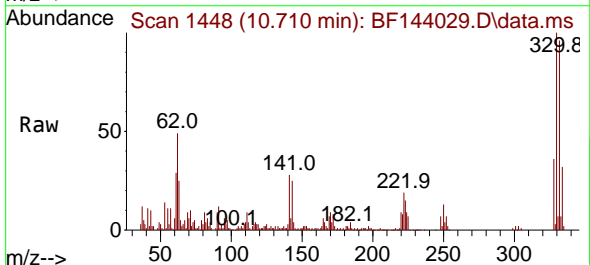
Instrument :
 BNA_F
 ClientSampleId :



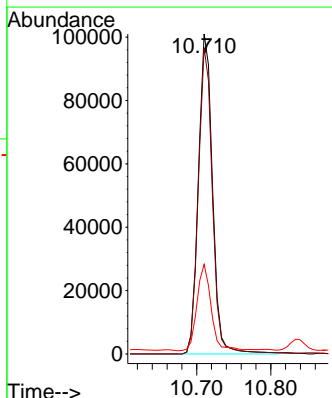
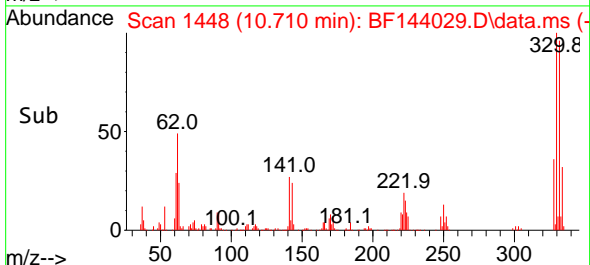
Tgt Ion:164 Resp: 182853
 Ion Ratio Lower Upper
 164 100
 162 99.2 80.2 120.2
 160 45.8 35.4 53.0

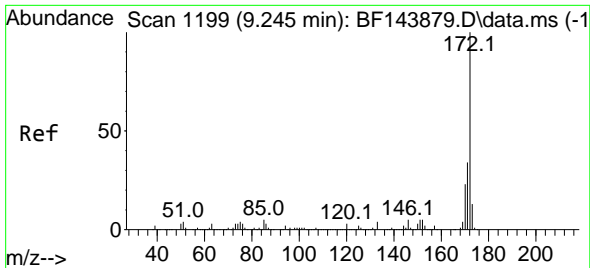


#42
 2,4,6-Tribromophenol
 Concen: 73.889 ng
 RT: 10.710 min Scan# 1448
 Delta R.T. -0.012 min
 Lab File: BF144029.D
 Acq: 21 Oct 2025 23:22



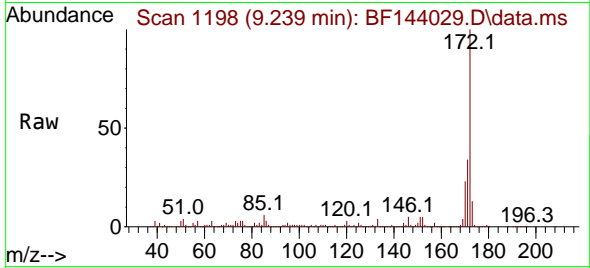
Tgt Ion:330 Resp: 134570
 Ion Ratio Lower Upper
 330 100
 332 95.1 76.9 115.3
 141 27.0 20.2 30.4





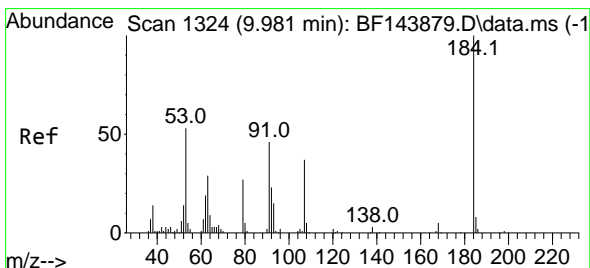
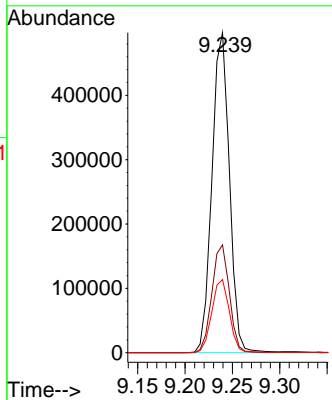
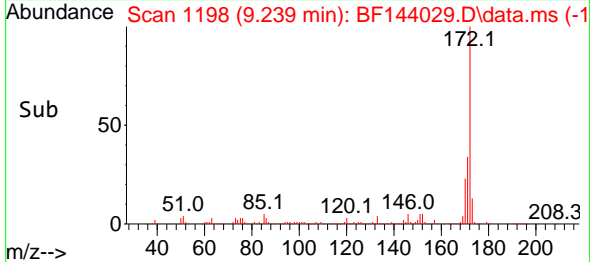
#45
 2-Fluorobiphenyl
 Concen: 55.193 ng
 RT: 9.239 min Scan# 1198
 Delta R.T. -0.012 min
 Lab File: BF144029.D
 Acq: 21 Oct 2025 23:22

Instrument :
 BNA_F
 ClientSampleId :

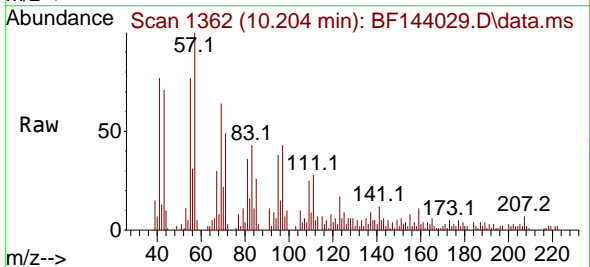


Tgt Ion:172 Resp: 636031

Ion	Ratio	Lower	Upper
172	100		
171	33.7	27.4	41.0
170	22.9	18.6	28.0

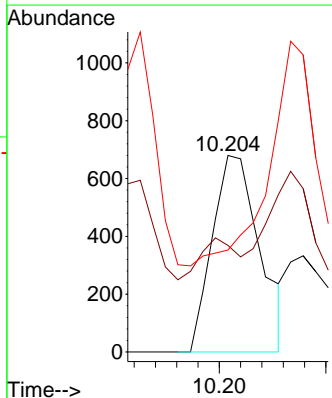
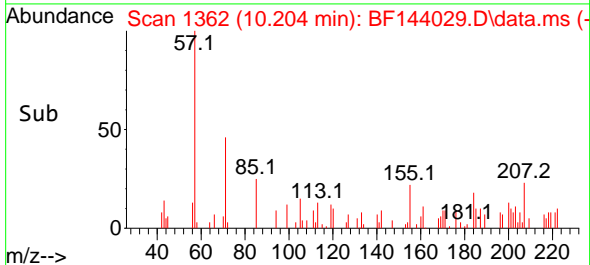


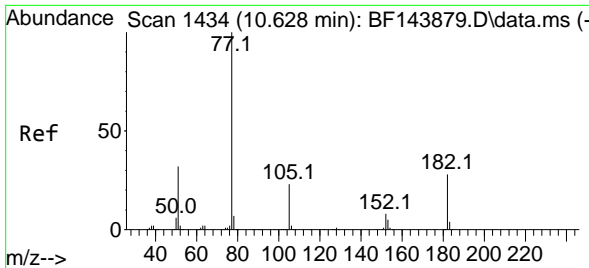
#54
 2,4-Dinitrophenol
 Concen: 7.662 ng
 RT: 10.204 min Scan# 1362
 Delta R.T. 0.218 min
 Lab File: BF144029.D
 Acq: 21 Oct 2025 23:22



Tgt Ion:184 Resp: 1049

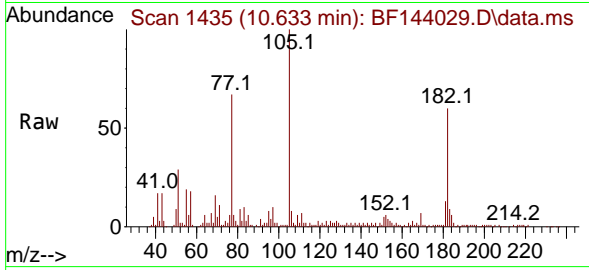
Ion	Ratio	Lower	Upper
184	100		
63	54.3	48.2	72.4
154	51.9	49.2	73.8



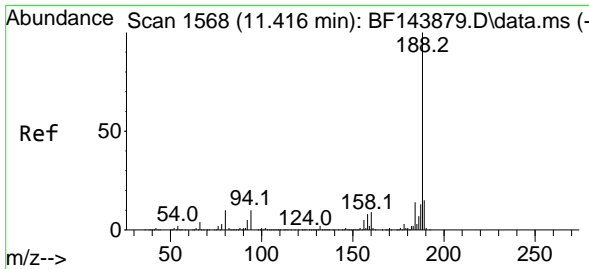
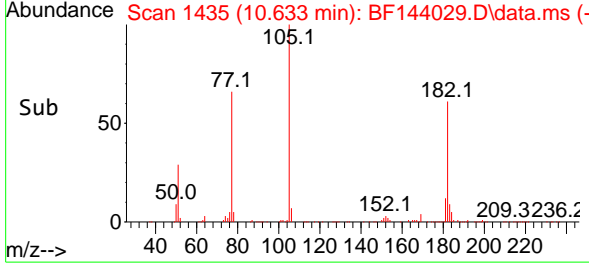
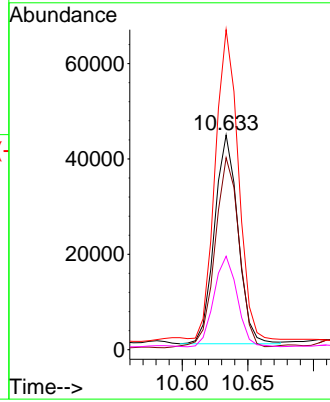


#63
 Azobenzene
 Concen: 4.834 ng
 RT: 10.633 min Scan# 14
 Delta R.T. 0.000 min
 Lab File: BF144029.D
 Acq: 21 Oct 2025 23:22

Instrument :
 BNA_F
 ClientSampleId :

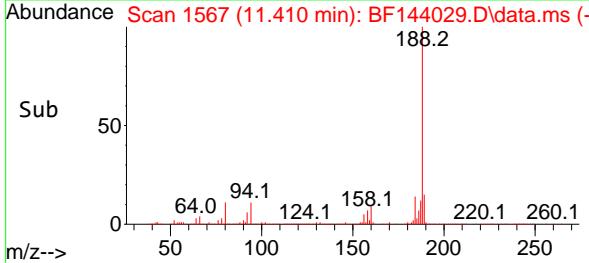
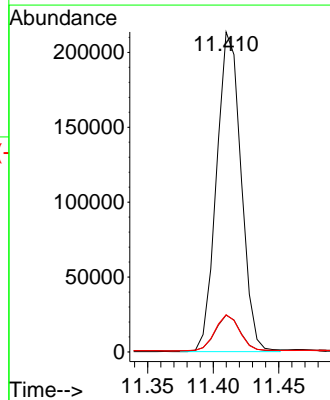
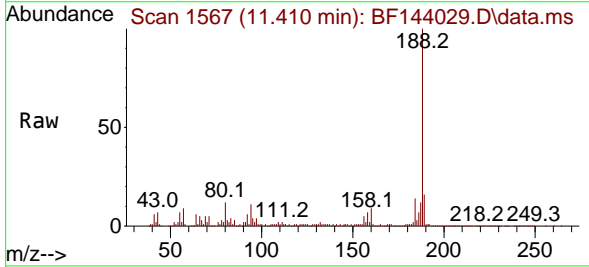


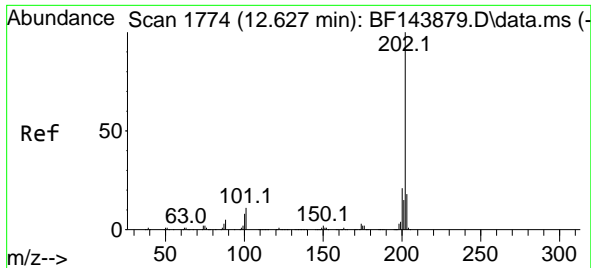
Tgt Ion: 77 Resp: 54501
 Ion Ratio Lower Upper
 77 100
 182 89.4 7.3 47.3#
 105 149.0 3.0 43.0#
 51 43.5 13.5 53.5



#64
 Phenanthrene-d10
 Concen: 20.000 ng
 RT: 11.410 min Scan# 1567
 Delta R.T. -0.006 min
 Lab File: BF144029.D
 Acq: 21 Oct 2025 23:22

Tgt Ion:188 Resp: 276992
 Ion Ratio Lower Upper
 188 100
 94 11.5 7.8 11.6
 80 11.6 7.9 11.9

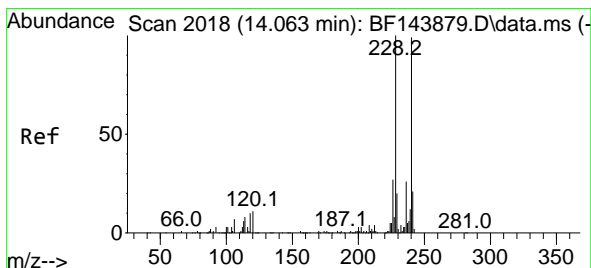
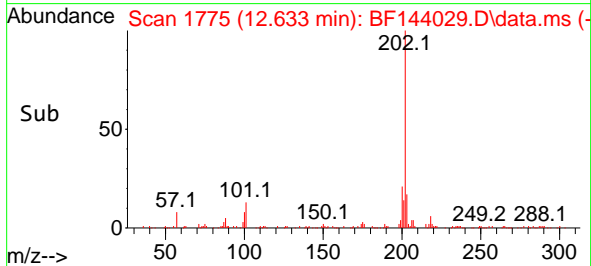
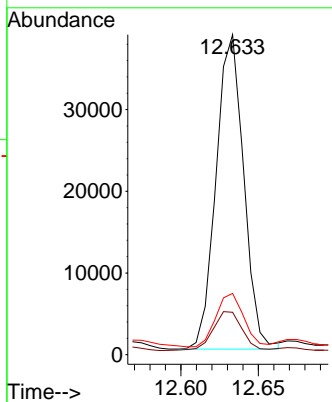
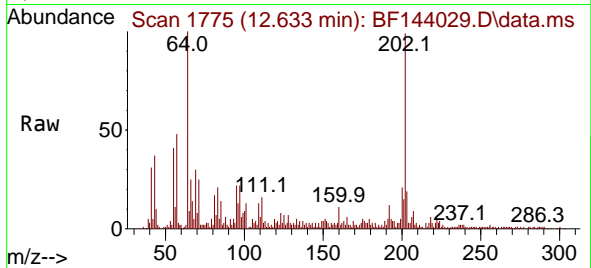




#75
 Fluoranthene
 Concen: 3.444 ng
 RT: 12.633 min Scan# 11
 Delta R.T. 0.000 min
 Lab File: BF144029.D
 Acq: 21 Oct 2025 23:22

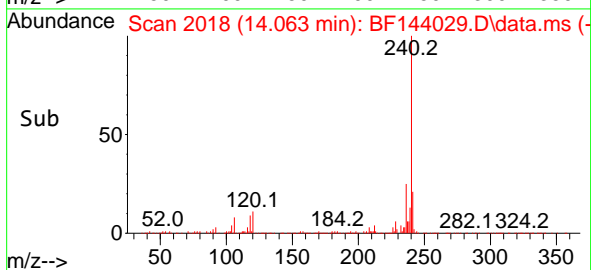
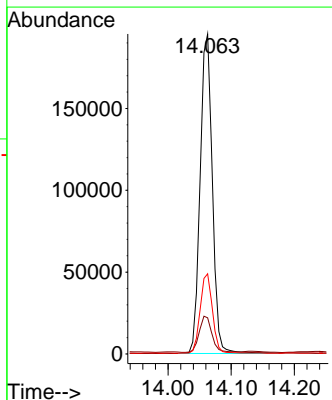
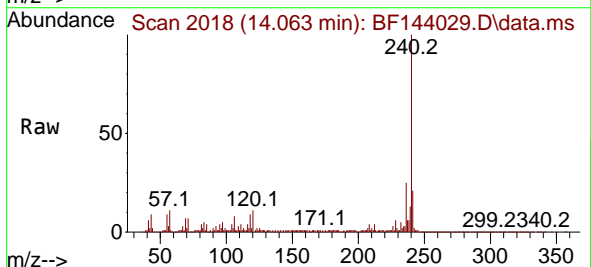
Instrument :
 BNA_F
 ClientSampleId :

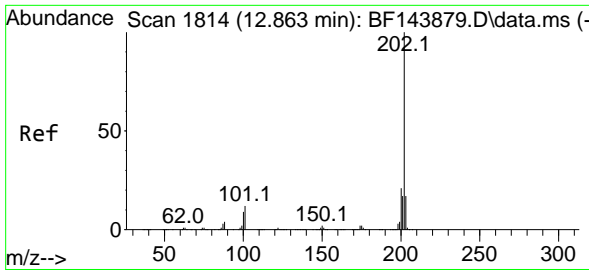
Tgt Ion	Resp	Lower	Upper
202	47766	100	100
101	13.3	0.0	30.7
203	19.2	0.0	37.8



#76
 Chrysene-d12
 Concen: 20.000 ng
 RT: 14.063 min Scan# 2018
 Delta R.T. -0.005 min
 Lab File: BF144029.D
 Acq: 21 Oct 2025 23:22

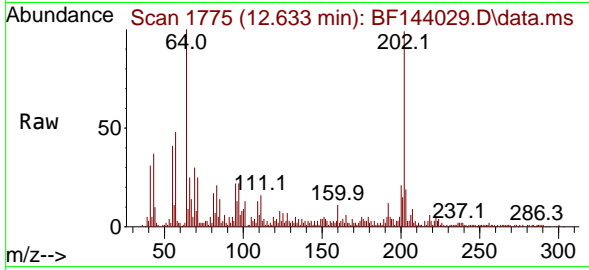
Tgt Ion	Resp	Lower	Upper
240	261924	100	100
120	11.3	8.6	13.0
236	25.1	21.1	31.7



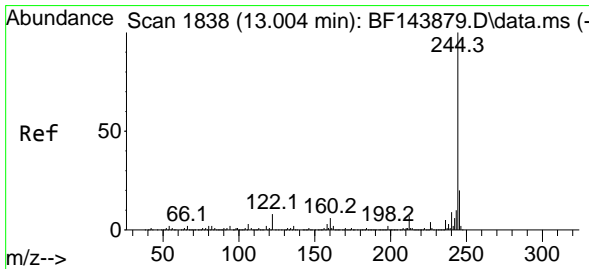
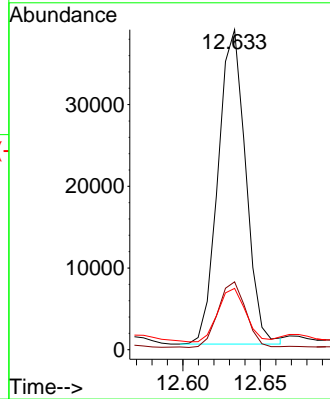
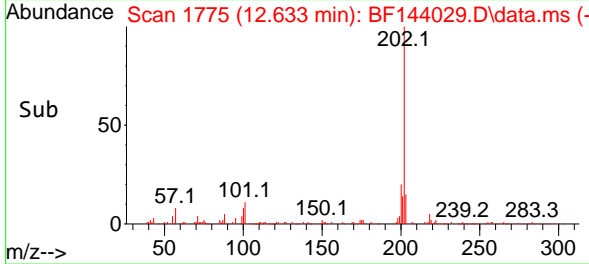


#78
 Pyrene
 Concen: 2.187 ng
 RT: 12.633 min Scan# 11
 Delta R.T. -0.229 min
 Lab File: BF144029.D
 Acq: 21 Oct 2025 23:22

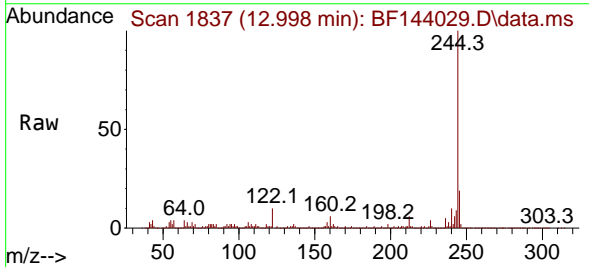
Instrument :
 BNA_F
 ClientSampleId :



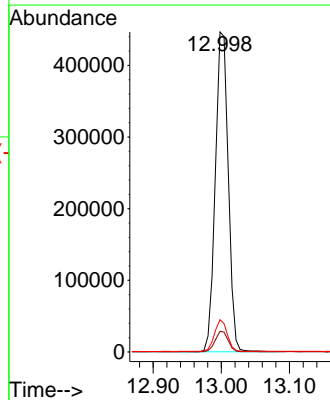
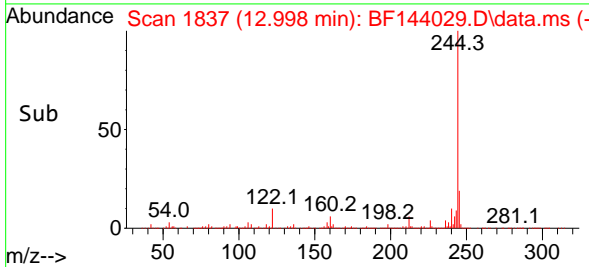
Tgt Ion:202 Resp: 47766
 Ion Ratio Lower Upper
 202 100
 200 21.2 17.0 25.6
 203 19.2 13.8 20.6

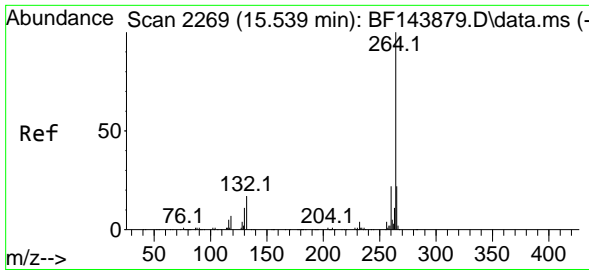


#79
 Terphenyl-d14
 Concen: 38.620 ng
 RT: 12.998 min Scan# 1837
 Delta R.T. -0.012 min
 Lab File: BF144029.D
 Acq: 21 Oct 2025 23:22



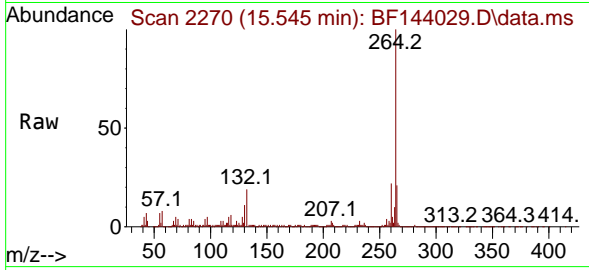
Tgt Ion:244 Resp: 591870
 Ion Ratio Lower Upper
 244 100
 212 6.4 5.4 8.0
 122 10.1 6.4 9.6#



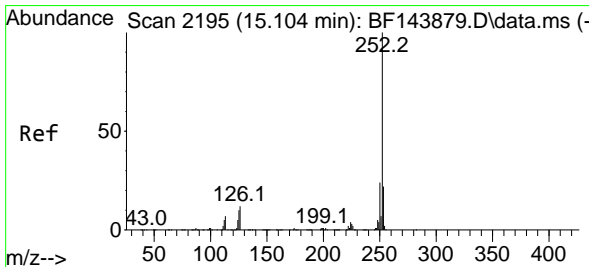
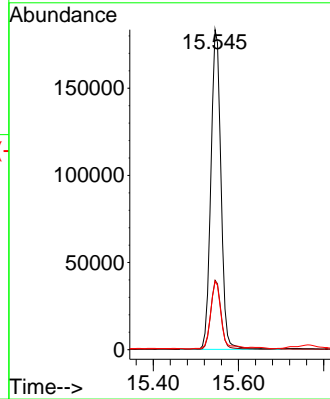
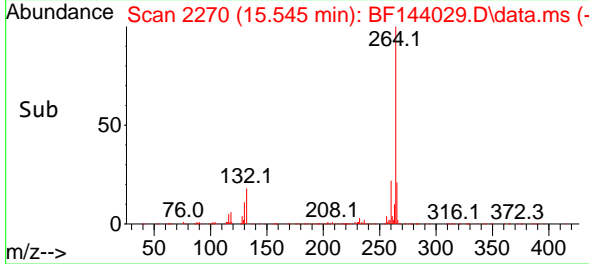


#86
 Perylene-d12
 Concen: 20.000 ng
 RT: 15.545 min Scan# 2196
 Delta R.T. 0.000 min
 Lab File: BF144029.D
 Acq: 21 Oct 2025 23:22

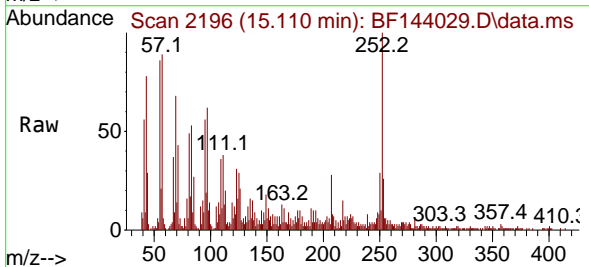
Instrument :
 BNA_F
 ClientSampleId :



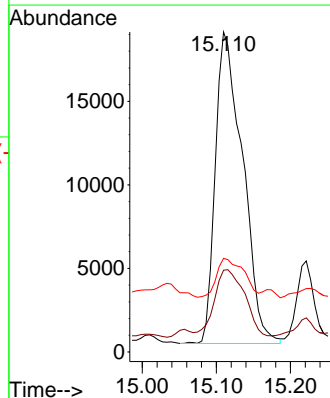
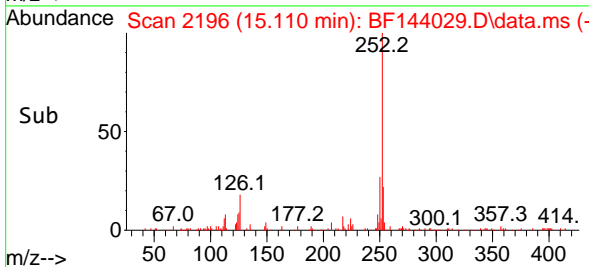
Tgt Ion:264 Resp: 301622
 Ion Ratio Lower Upper
 264 100
 260 21.7 17.8 26.8
 265 21.3 17.5 26.3

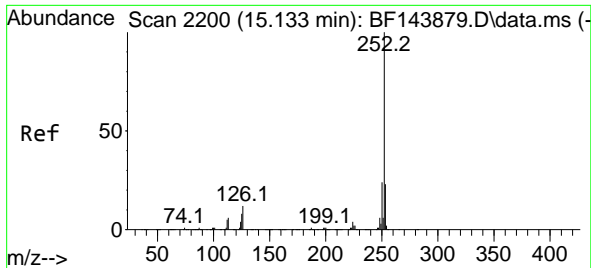


#88
 Benzo(b)fluoranthene
 Concen: 2.747 ng
 RT: 15.110 min Scan# 2196
 Delta R.T. -0.006 min
 Lab File: BF144029.D
 Acq: 21 Oct 2025 23:22



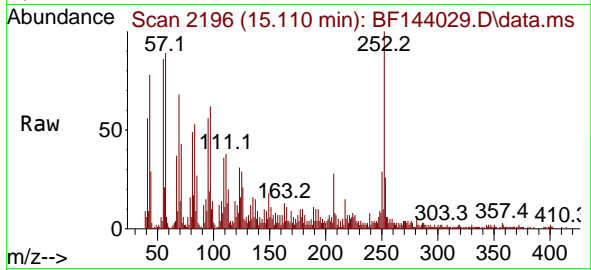
Tgt Ion:252 Resp: 47603
 Ion Ratio Lower Upper
 252 100
 253 25.5 17.4 26.2
 125 29.3 7.8 11.6#





#89
 Benzo(k)fluoranthene
 Concen: 2.969 ng
 RT: 15.110 min Scan# 2196
 Delta R.T. -0.035 min
 Lab File: BF144029.D
 Acq: 21 Oct 2025 23:22

Instrument :
 BNA_F
 ClientSampleId :



Tgt Ion: 252 Resp: 47603

Ion	Ratio	Lower	Upper
252	100		
253	25.5	17.8	26.8
125	29.3	7.4	11.2#

