

Data Path : Z:\svoasrv\HPCHEM1\BNA_F\Data\BF102125\
 Data File : BF144030.D
 Acq On : 21 Oct 2025 23:51
 Operator : RC/JU
 Sample : Q3393-02
 Misc :
 ALS Vial : 23 Sample Multiplier: 1

Instrument :
 BNA_F
 ClientSampleId :

Quant Time: Oct 22 11:14:23 2025
 Quant Method : Z:\svoasrv\HPCHEM1\BNA_F\Methods\8270-BF100625.M
 Quant Title : ASP BNA STANDARDS FOR 5 POINT CALIBRATION
 QLast Update : Mon Oct 06 15:29:47 2025
 Response via : Initial Calibration

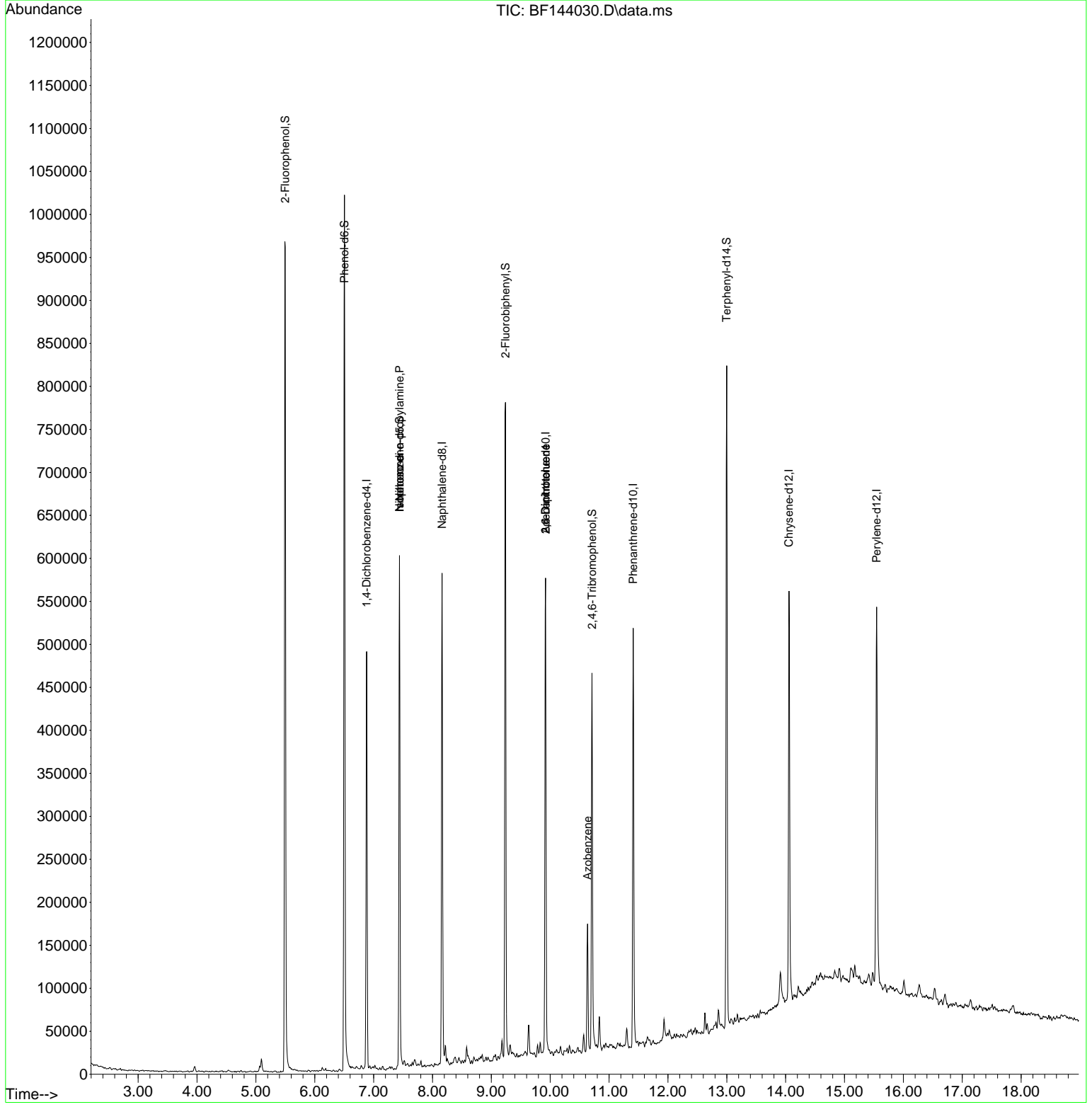
Compound	R.T.	QIon	Response	Conc	Units	Dev(Min)
Internal Standards						
1) 1,4-Dichlorobenzene-d4	6.881	152	96300	20.000	ng	0.00
21) Naphthalene-d8	8.163	136	359740	20.000	ng	0.00
39) Acenaphthene-d10	9.922	164	172359	20.000	ng	0.00
64) Phenanthrene-d10	11.410	188	260149	20.000	ng	0.00
76) Chrysene-d12	14.057	240	239581	20.000	ng	-0.01
86) Perylene-d12	15.545	264	287667	20.000	ng	0.00
System Monitoring Compounds						
5) 2-Fluorophenol	5.498	112	398838	65.768	ng	0.00
7) Phenol-d6	6.504	99	457122	63.240	ng	-0.01
23) Nitrobenzene-d5	7.439	82	253163	42.756	ng	-0.02
42) 2,4,6-Tribromophenol	10.710	330	76692	44.673	ng	-0.01
45) 2-Fluorobiphenyl	9.239	172	373648	34.398	ng	-0.01
79) Terphenyl-d14	12.998	244	388651	27.725	ng	-0.01
Target Compounds						
19) n-Nitroso-di-n-propyla...	7.439	70	36005	7.277	ng	# 78
25) Isophorone	7.439	82	211412	16.933	ng	# 68
51) 2,6-Dinitrotoluene	9.922	165	21538	10.612	ng	# 26
57) 2,4-Dinitrotoluene	9.922	165	21538	7.799	ng	# 27
63) Azobenzene	10.633	77	38653	3.637	ng	# 1

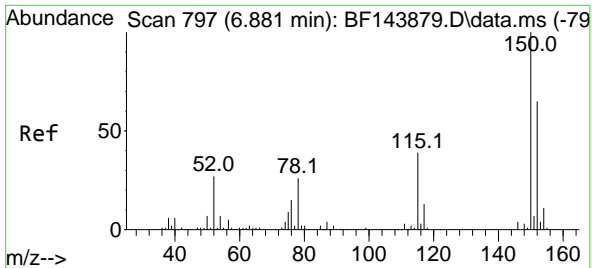
(#) = qualifier out of range (m) = manual integration (+) = signals summed

Data Path : Z:\svoasrv\HPCHEM1\BNA_F\Data\BF102125\
 Data File : BF144030.D
 Acq On : 21 Oct 2025 23:51
 Operator : RC/JU
 Sample : Q3393-02
 Misc :
 ALS Vial : 23 Sample Multiplier: 1

Instrument :
 BNA_F
 ClientSampleId :

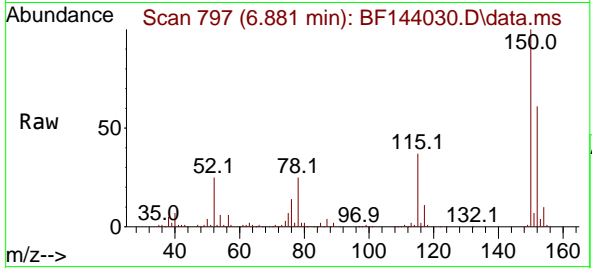
Quant Time: Oct 22 11:14:23 2025
 Quant Method : Z:\svoasrv\HPCHEM1\BNA_F\Methods\8270-BF100625.M
 Quant Title : ASP BNA STANDARDS FOR 5 POINT CALIBRATION
 QLast Update : Mon Oct 06 15:29:47 2025
 Response via : Initial Calibration



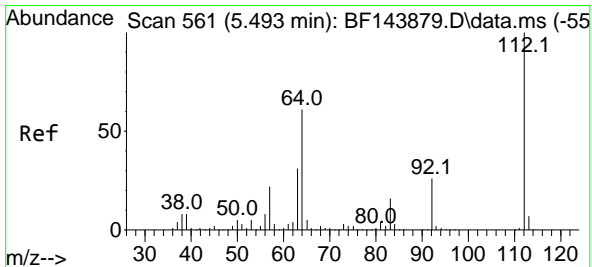
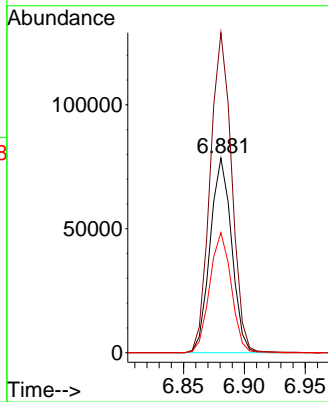
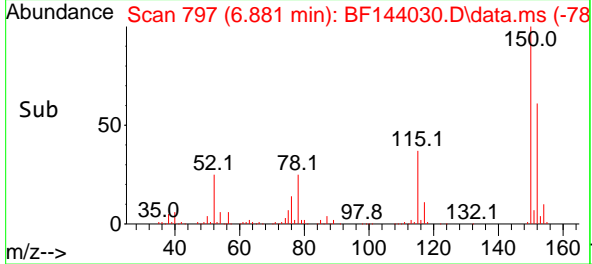


#1
 1,4-Dichlorobenzene-d4
 Concen: 20.000 ng
 RT: 6.881 min Scan# 797
 Delta R.T. -0.005 min
 Lab File: BF144030.D
 Acq: 21 Oct 2025 23:51

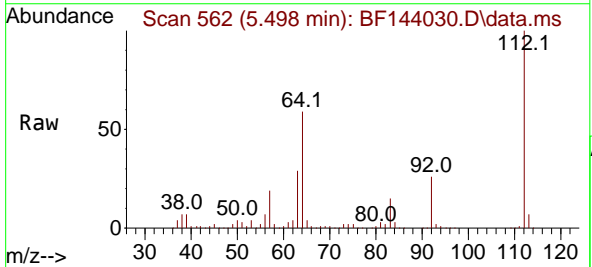
Instrument :
 BNA_F
 ClientSampleId :



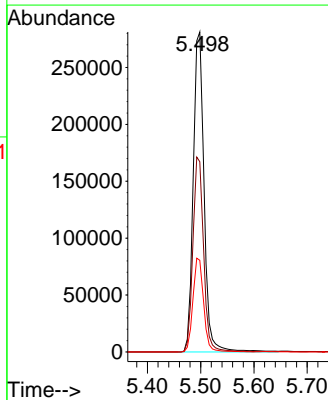
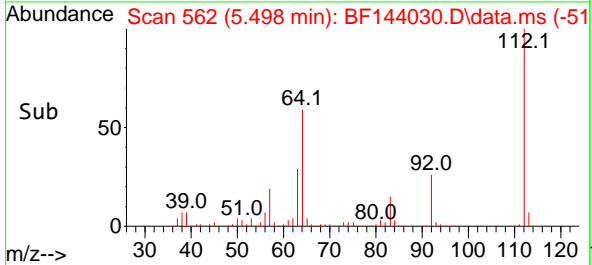
Tgt Ion:152 Resp: 96300
 Ion Ratio Lower Upper
 152 100
 150 164.5 124.4 186.6
 115 61.7 48.1 72.1

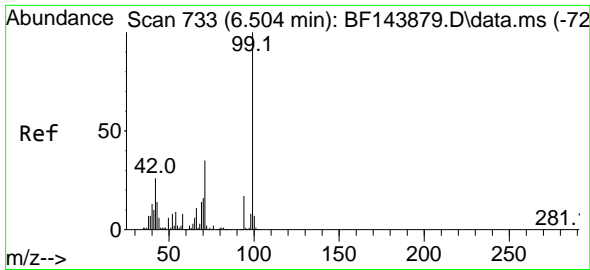


#5
 2-Fluorophenol
 Concen: 65.768 ng
 RT: 5.498 min Scan# 562
 Delta R.T. 0.000 min
 Lab File: BF144030.D
 Acq: 21 Oct 2025 23:51



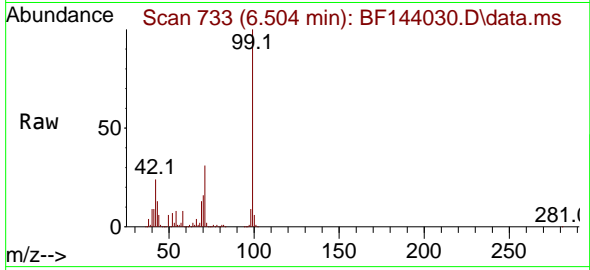
Tgt Ion:112 Resp: 398838
 Ion Ratio Lower Upper
 112 100
 64 59.5 49.1 73.7
 63 28.7 24.5 36.7



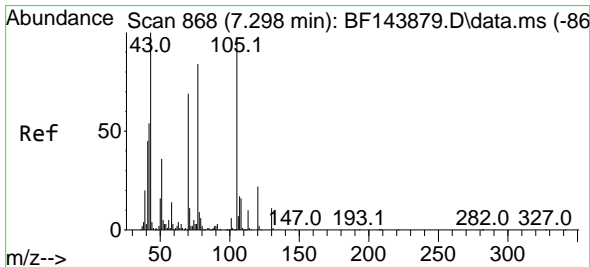
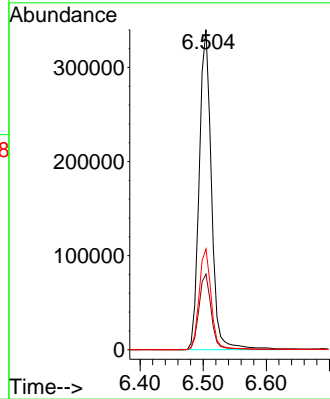
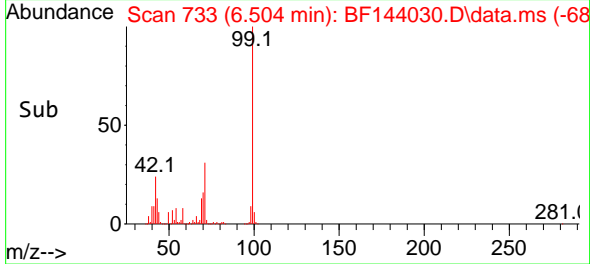


#7
 Phenol-d6
 Concen: 63.240 ng
 RT: 6.504 min Scan# 71
 Delta R.T. -0.012 min
 Lab File: BF144030.D
 Acq: 21 Oct 2025 23:51

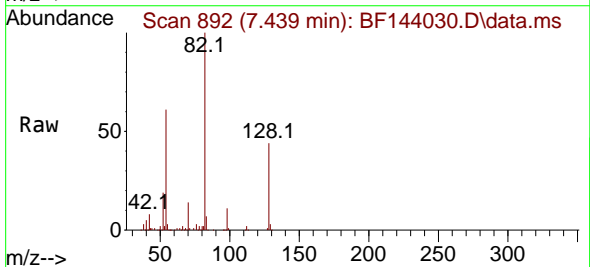
Instrument :
 BNA_F
 ClientSampleId :



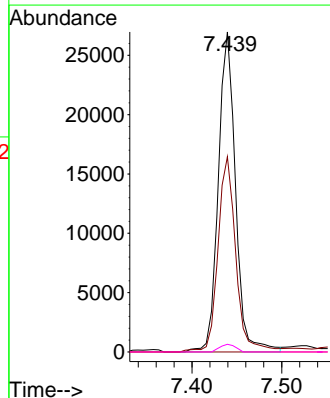
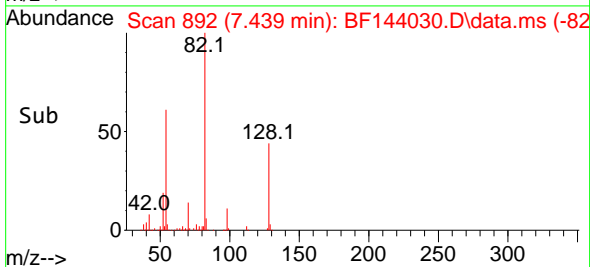
Tgt Ion: 99 Resp: 457122
 Ion Ratio Lower Upper
 99 100
 42 23.6 21.0 31.4
 71 31.5 27.8 41.8

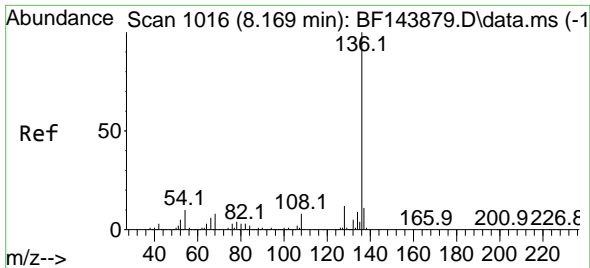


#19
 n-Nitroso-di-n-propylamine
 Concen: 7.277 ng
 RT: 7.439 min Scan# 892
 Delta R.T. 0.124 min
 Lab File: BF144030.D
 Acq: 21 Oct 2025 23:51



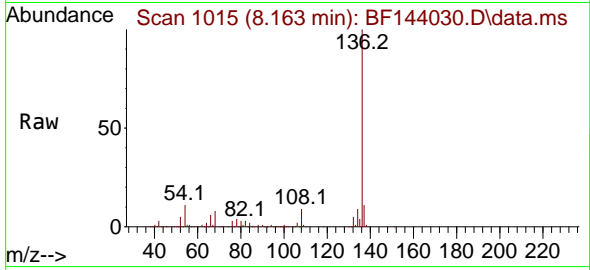
Tgt Ion: 70 Resp: 36005
 Ion Ratio Lower Upper
 70 100
 42 61.0 62.8 94.2#
 101 0.0 6.7 10.1#
 130 2.4 13.0 19.4#



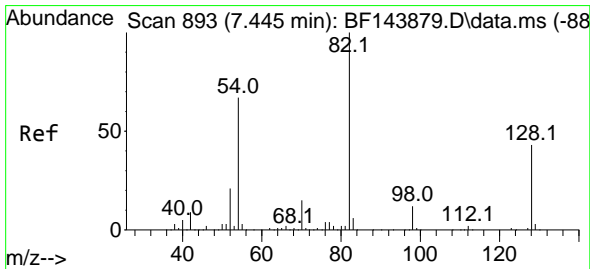
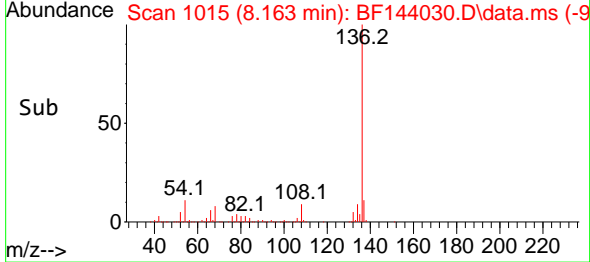
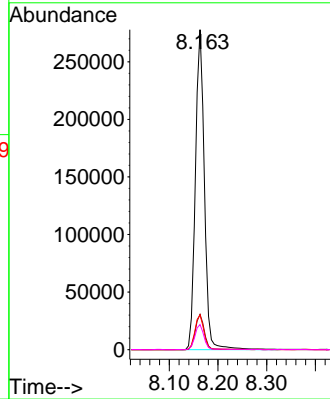


#21
 Naphthalene-d8
 Concen: 20.000 ng
 RT: 8.163 min Scan# 1015
 Delta R.T. -0.006 min
 Lab File: BF144030.D
 Acq: 21 Oct 2025 23:51

Instrument : BNA_F
 ClientSampleId :

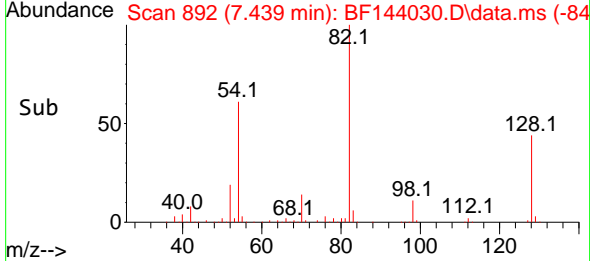
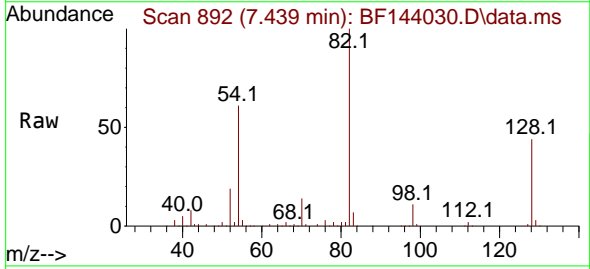
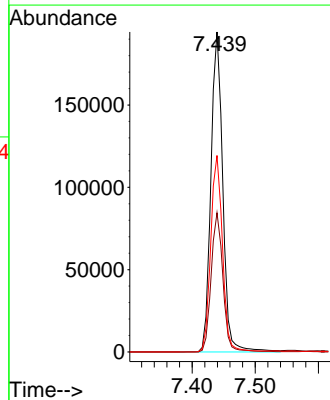


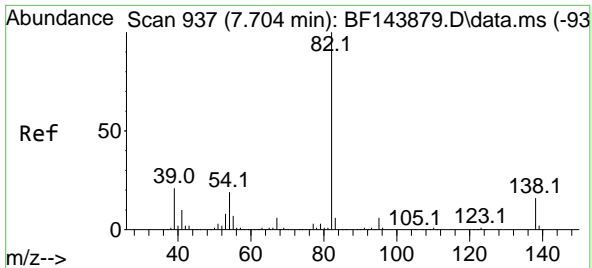
Tgt Ion:136 Resp: 359740
 Ion Ratio Lower Upper
 136 100
 137 11.0 8.5 12.7
 54 10.9 8.2 12.4
 68 7.9 6.2 9.4



#23
 Nitrobenzene-d5
 Concen: 42.756 ng
 RT: 7.439 min Scan# 892
 Delta R.T. -0.018 min
 Lab File: BF144030.D
 Acq: 21 Oct 2025 23:51

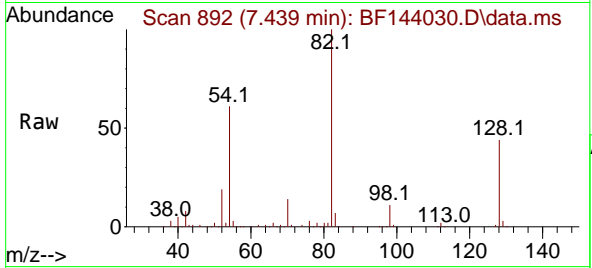
Tgt Ion: 82 Resp: 253163
 Ion Ratio Lower Upper
 82 100
 128 43.5 34.0 51.0
 54 61.4 53.2 79.8



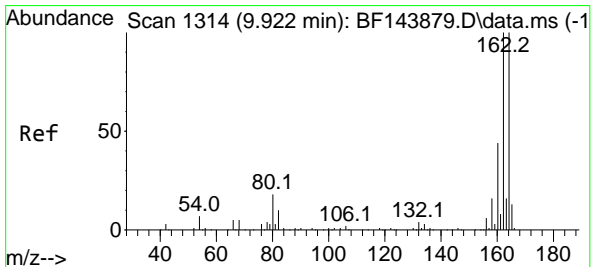
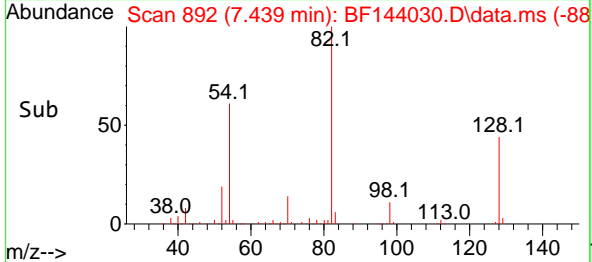
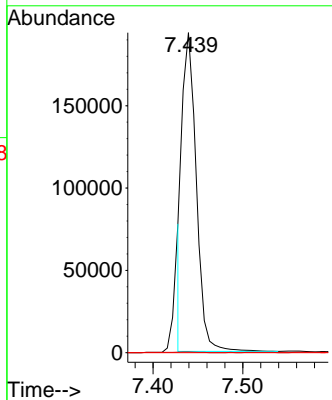


#25
 Isophorone
 Concen: 16.933 ng
 RT: 7.439 min Scan# 892
 Delta R.T. -0.282 min
 Lab File: BF144030.D
 Acq: 21 Oct 2025 23:51

Instrument : BNA_F
 ClientSampleId :

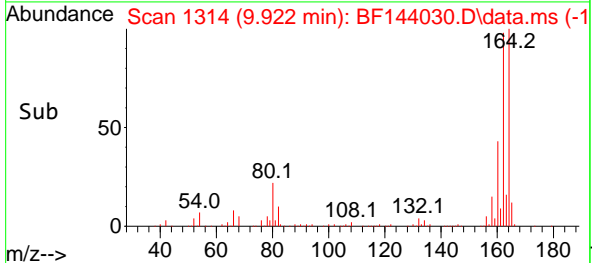
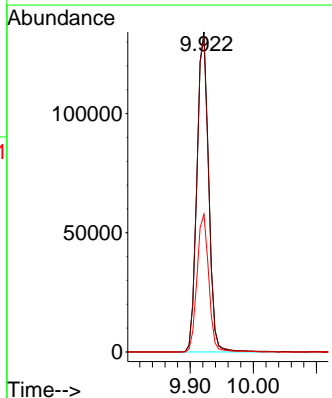
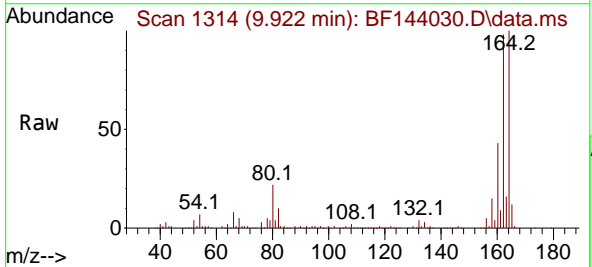


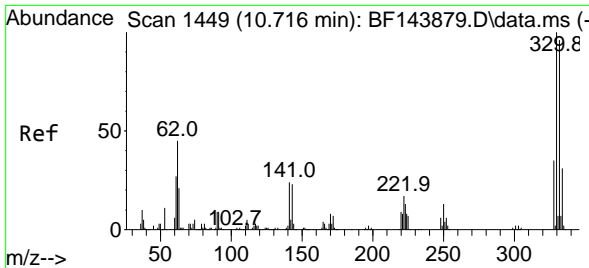
Tgt Ion: 82 Resp: 211412
 Ion Ratio Lower Upper
 82 100
 95 0.2 5.1 7.7#
 138 0.0 12.9 19.3#



#39
 Acenaphthene-d10
 Concen: 20.000 ng
 RT: 9.922 min Scan# 1314
 Delta R.T. -0.005 min
 Lab File: BF144030.D
 Acq: 21 Oct 2025 23:51

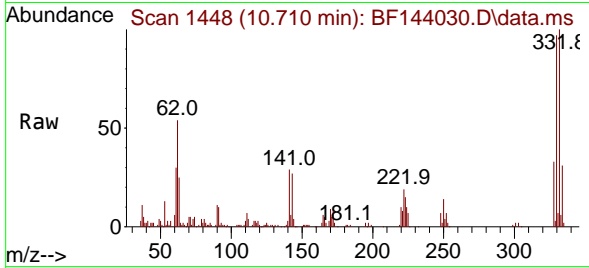
Tgt Ion: 164 Resp: 172359
 Ion Ratio Lower Upper
 164 100
 162 98.4 80.2 120.2
 160 43.0 35.4 53.0



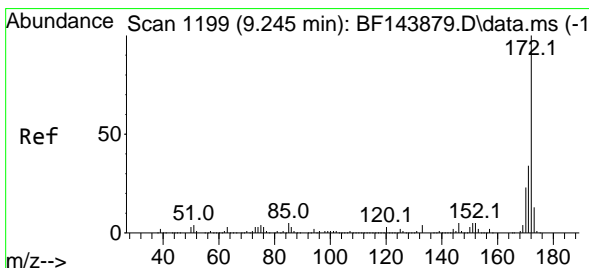
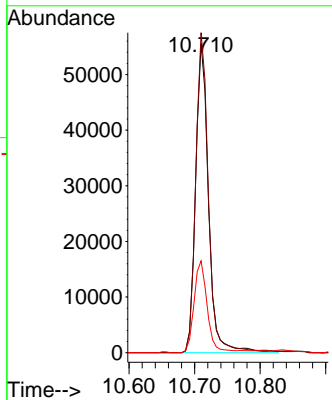
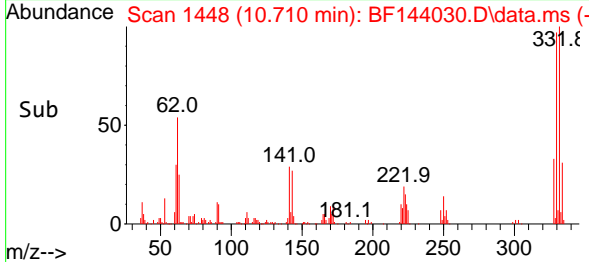


#42
 2,4,6-Tribromophenol
 Concen: 44.673 ng
 RT: 10.710 min Scan# 1448
 Delta R.T. -0.012 min
 Lab File: BF144030.D
 Acq: 21 Oct 2025 23:51

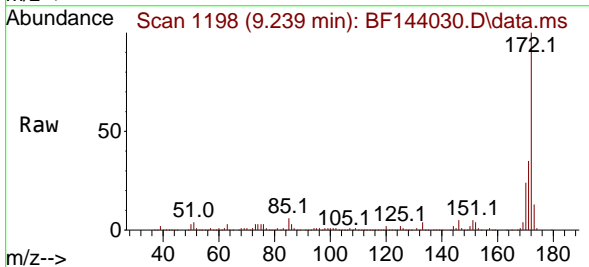
Instrument : BNA_F
 ClientSampleId :



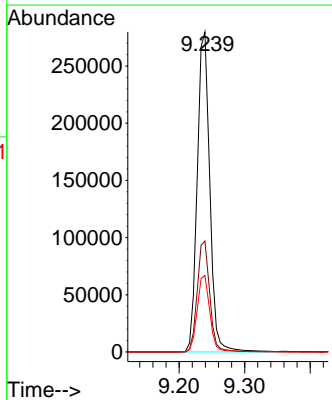
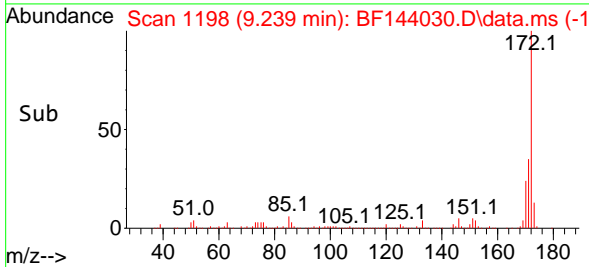
Tgt Ion:330 Resp: 76692
 Ion Ratio Lower Upper
 330 100
 332 101.2 76.9 115.3
 141 30.8 20.2 30.4#

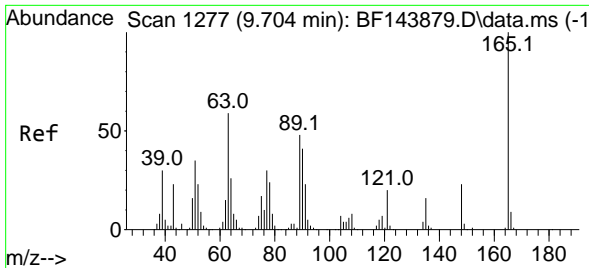


#45
 2-Fluorobiphenyl
 Concen: 34.398 ng
 RT: 9.239 min Scan# 1198
 Delta R.T. -0.012 min
 Lab File: BF144030.D
 Acq: 21 Oct 2025 23:51



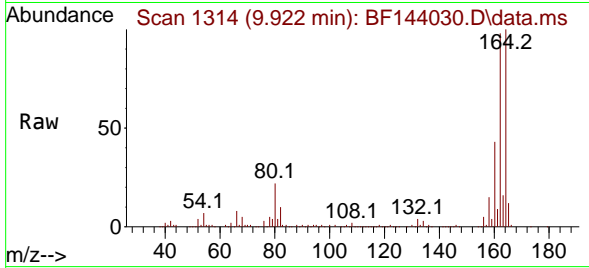
Tgt Ion:172 Resp: 373648
 Ion Ratio Lower Upper
 172 100
 171 34.6 27.4 41.0
 170 23.9 18.6 28.0





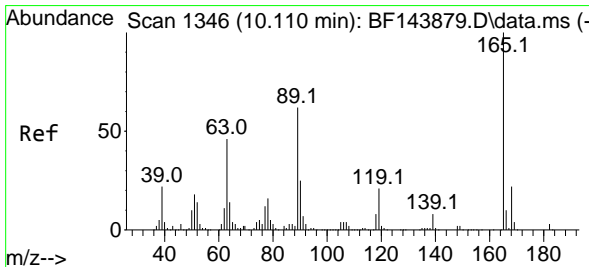
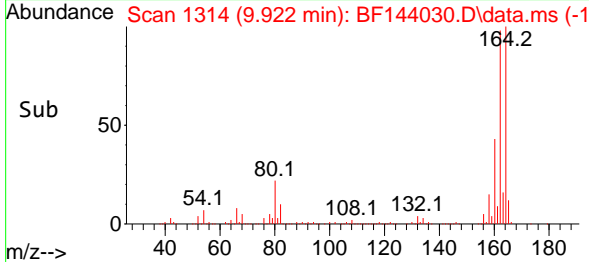
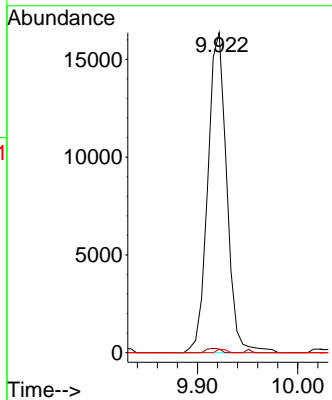
#51
 2,6-Dinitrotoluene
 Concen: 10.612 ng
 RT: 9.922 min Scan# 11
 Delta R.T. 0.206 min
 Lab File: BF144030.D
 Acq: 21 Oct 2025 23:51

Instrument :
 BNA_F
 ClientSampleId :



Tgt Ion:165 Resp: 21538

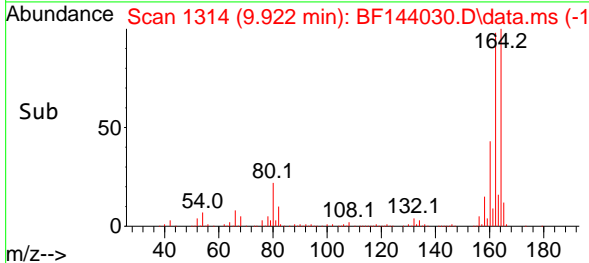
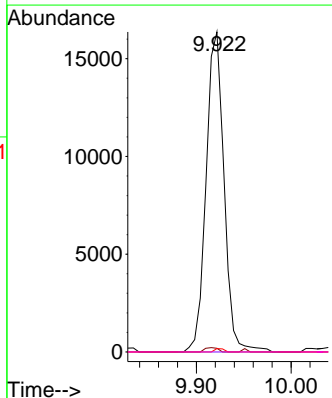
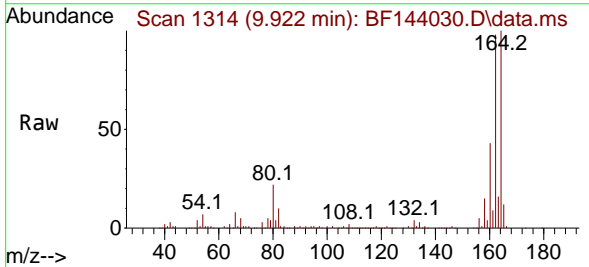
Ion	Ratio	Lower	Upper
165	100		
63	1.1	47.3	70.9#
89	1.0	38.2	57.4#

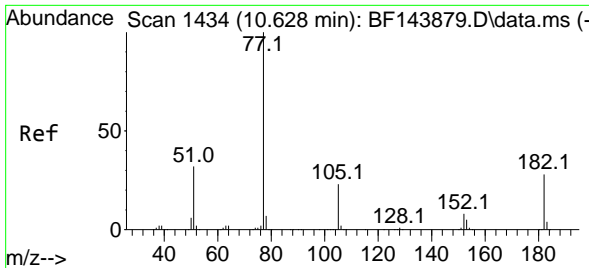


#57
 2,4-Dinitrotoluene
 Concen: 7.799 ng
 RT: 9.922 min Scan# 1314
 Delta R.T. -0.194 min
 Lab File: BF144030.D
 Acq: 21 Oct 2025 23:51

Tgt Ion:165 Resp: 21538

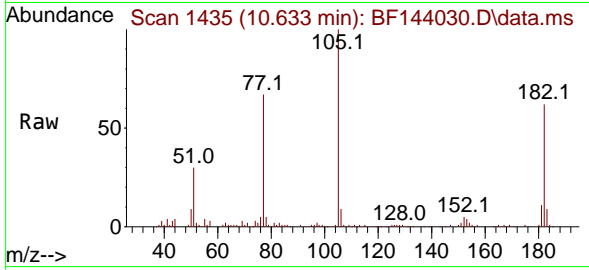
Ion	Ratio	Lower	Upper
165	100		
63	1.1	37.2	55.8#
89	1.0	49.4	74.2#
182	0.0	2.1	3.1#



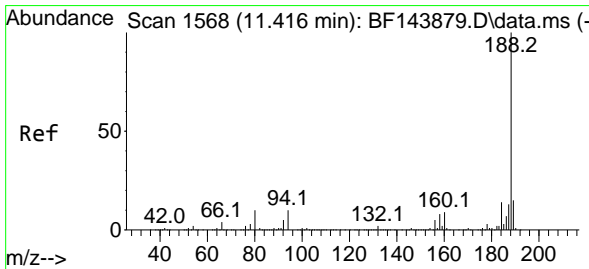
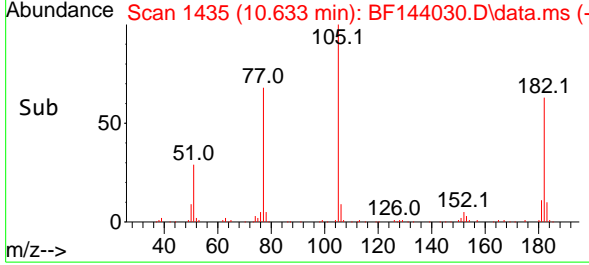
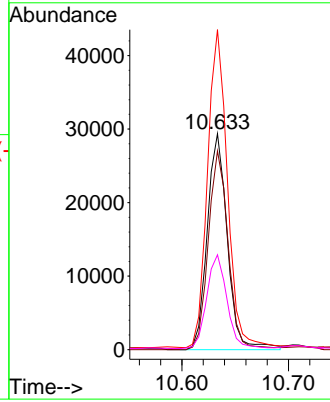


#63
 Azobenzene
 Concen: 3.637 ng
 RT: 10.633 min Scan# 14
 Delta R.T. 0.000 min
 Lab File: BF144030.D
 Acq: 21 Oct 2025 23:51

Instrument :
 BNA_F
 ClientSampleId :

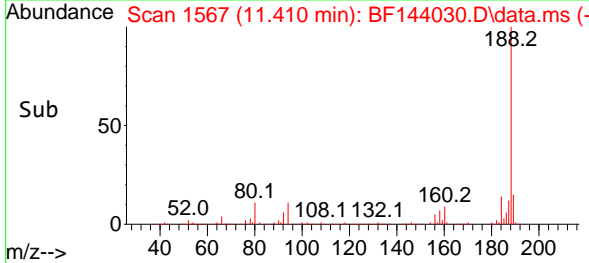
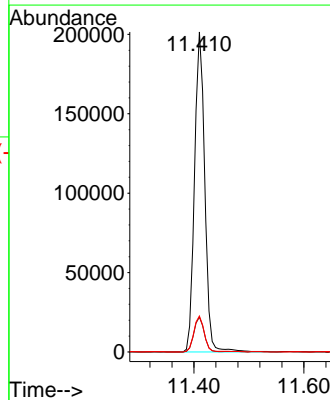
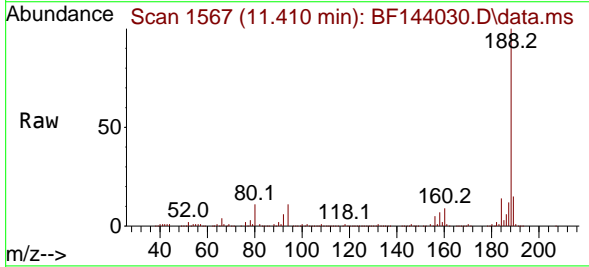


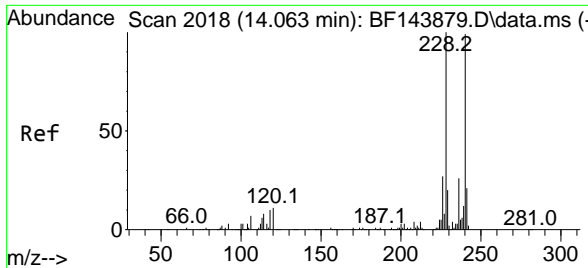
Tgt Ion: 77 Resp: 38653
 Ion Ratio Lower Upper
 77 100
 182 92.0 7.3 47.3#
 105 148.2 3.0 43.0#
 51 43.9 13.5 53.5



#64
 Phenanthrene-d10
 Concen: 20.000 ng
 RT: 11.410 min Scan# 1567
 Delta R.T. -0.006 min
 Lab File: BF144030.D
 Acq: 21 Oct 2025 23:51

Tgt Ion: 188 Resp: 260149
 Ion Ratio Lower Upper
 188 100
 94 10.9 7.8 11.6
 80 11.3 7.9 11.9



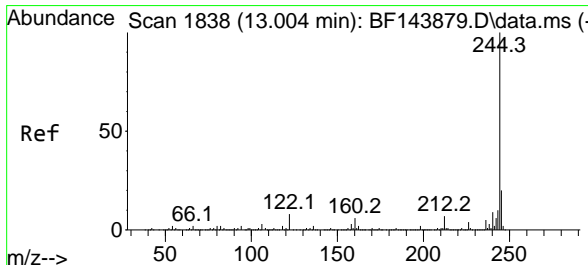
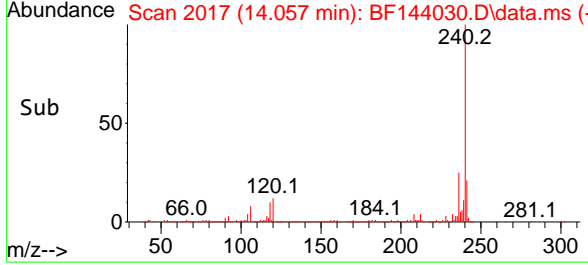
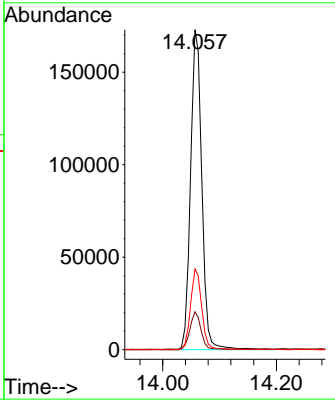
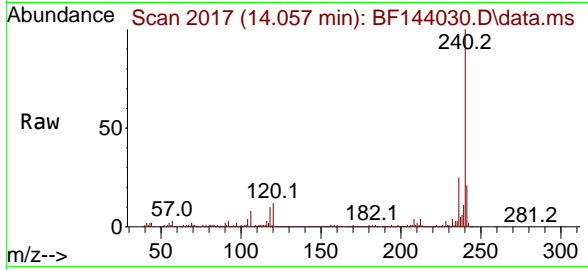


#76
 Chrysene-d12
 Concen: 20.000 ng
 RT: 14.057 min Scan# 20
 Delta R.T. -0.011 min
 Lab File: BF144030.D
 Acq: 21 Oct 2025 23:51

Instrument :
 BNA_F
 ClientSampleId :

Tgt Ion:240 Resp: 239581

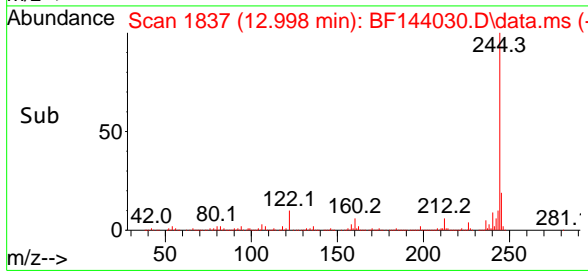
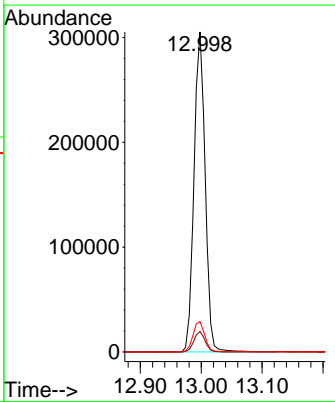
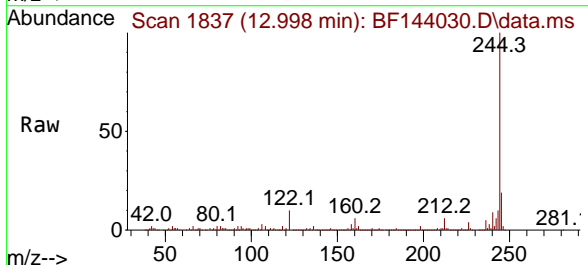
Ion	Ratio	Lower	Upper
240	100		
120	11.8	8.6	13.0
236	25.2	21.1	31.7

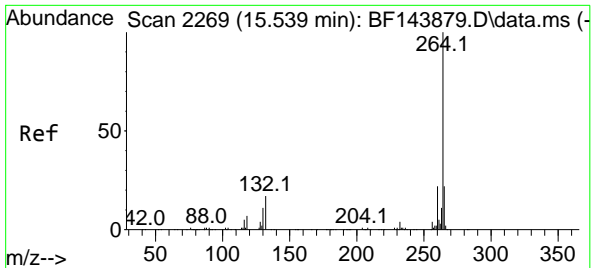


#79
 Terphenyl-d14
 Concen: 27.725 ng
 RT: 12.998 min Scan# 1837
 Delta R.T. -0.012 min
 Lab File: BF144030.D
 Acq: 21 Oct 2025 23:51

Tgt Ion:244 Resp: 388651

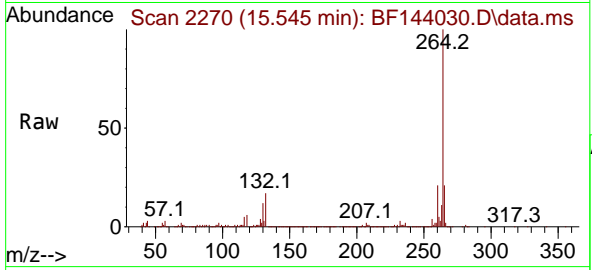
Ion	Ratio	Lower	Upper
244	100		
212	6.4	5.4	8.0
122	9.5	6.4	9.6





#86
 Perylene-d12
 Concen: 20.000 ng
 RT: 15.545 min Scan# 21
 Delta R.T. 0.000 min
 Lab File: BF144030.D
 Acq: 21 Oct 2025 23:51

Instrument :
 BNA_F
 ClientSampleId :



Tgt Ion:264 Resp: 287667

Ion	Ratio	Lower	Upper
264	100		
260	20.8	17.8	26.8
265	21.1	17.5	26.3

