

Data Path : Z:\SVOASRV\HPCHEM1\BNA F\DATA\BF102218\
 Data File : BF110052.D
 Acq On : 22 Oct 2018 16:44
 Operator : JU/SJ
 Sample : J5601-02
 Misc :
 ALS Vial : 14 Sample Multiplier: 1

Instrument :
 BNA_F
 ClientSampleId :

Quant Time: Oct 23 02:09:40 2018
 Quant Method : Z:\SVOASRV\HPCHEM1\BNA F\METHODS\8270-BF101518.M
 Quant Title : ASP BNA STANDARDS FOR 5 POINT CALIBRATION
 QLast Update : Tue Oct 16 14:58:24 2018
 Response via : Initial Calibration

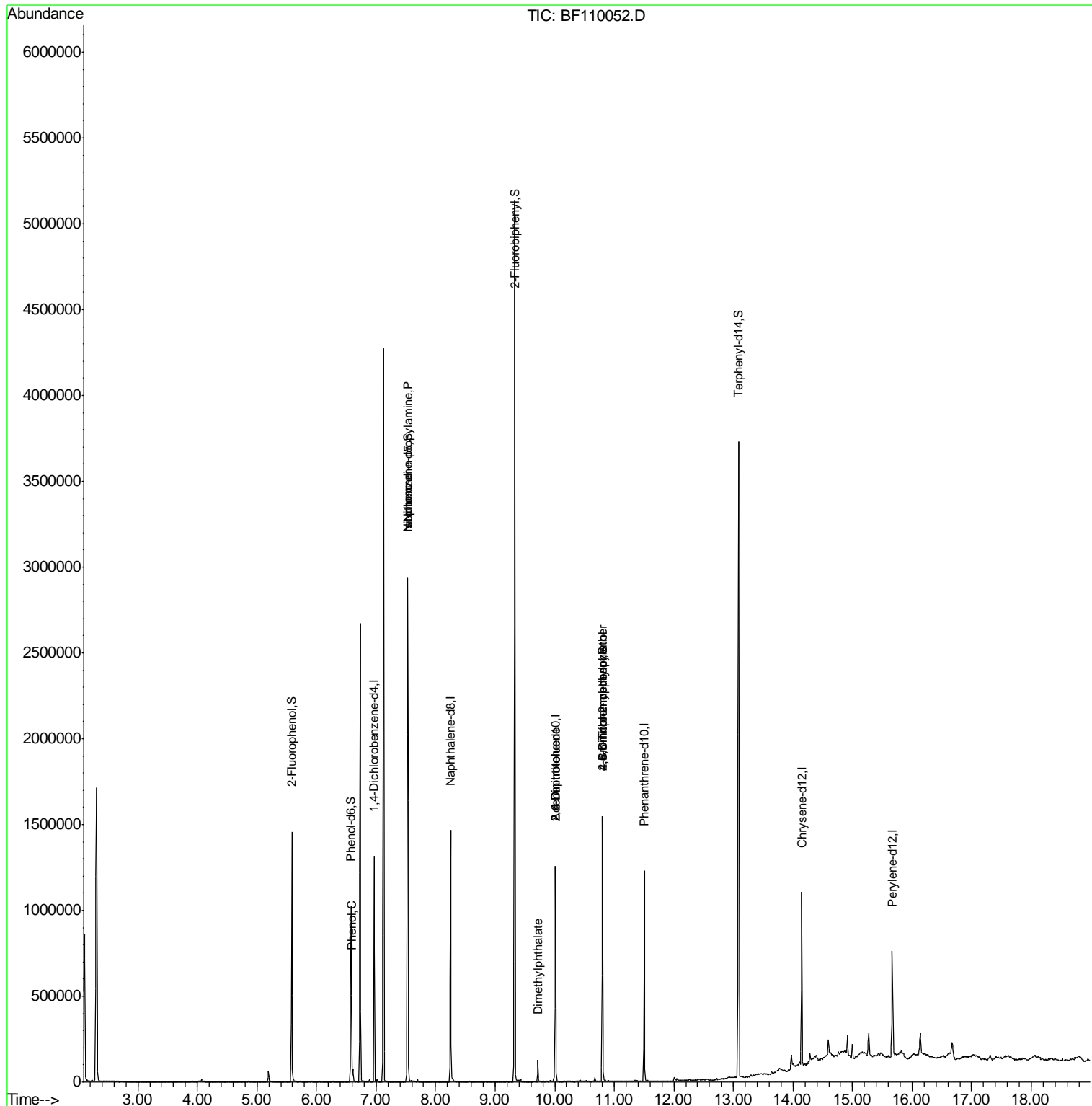
Internal Standards	R.T.	QIon	Response	Conc	Units	Dev(Min)
1) 1,4-Dichlorobenzene-d4	6.97	152	174995	20.00	ng	-0.01
21) Naphthalene-d8	8.25	136	639588	20.00	ng	-0.02
39) Acenaphthene-d10	10.01	164	256384	20.00	ng	-0.02
64) Phenanthrene-d10	11.50	188	417030	20.00	ng	-0.01
76) Chrysene-d12	14.14	240	313975	20.00	ng	-0.02
87) Perylene-d12	15.67	264	231650	20.00	ng	-0.02
System Monitoring Compounds						
5) 2-Fluorophenol	5.59	112	372569	33.75	ng	-0.01
7) Phenol-d6	6.58	99	281315	20.52	ng	-0.02
23) Nitrobenzene-d5	7.53	82	965025	101.64	ng	-0.02
42) 2,4,6-Tribromophenol	10.80	330	172473	77.70	ng	-0.01
45) 2-Fluorobiphenyl	9.33	172	1620810	100.87	ng	-0.01
79) Terphenyl-d14	13.09	244	1240973	83.00	ng	-0.02
Target Compounds						
10) Phenol	6.59	94	30209	2.041	ng	# 64
19) n-Nitroso-di-n-propylamine	7.53	70	127790	14.518	ng	# 80
25) Isophorone	7.53	82	965015	51.727	ng	# 67
50) Dimethylphthalate	9.72	163	48605	2.677	ng	100
51) 2,6-Dinitrotoluene	10.01	165	32457	9.413	ng	# 23
57) 2,4-Dinitrotoluene	10.01	165	32457	11.323	ng	# 19
65) 4,6-Dinitro-2-methylphenol	10.80	198	258	8.047	ng	# 1
67) 4-Bromophenyl-phenylether	10.80	248	11248	2.489	ng	# 1

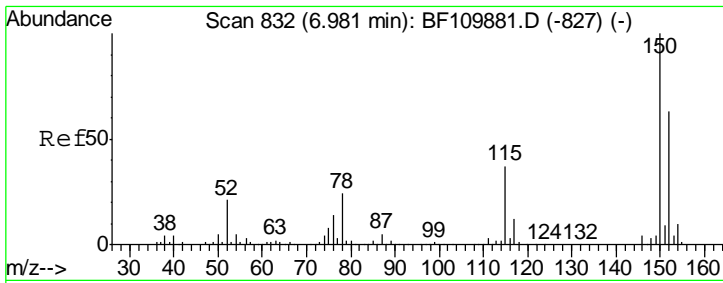
(#) = qualifier out of range (m) = manual integration (+) = signals summed

Data Path : Z:\SVOASRV\HPCHEM1\BNA F\DATA\BF102218\
 Data File : BF110052.D
 Acq On : 22 Oct 2018 16:44
 Operator : JU/SJ
 Sample : J5601-02
 Misc :
 ALS Vial : 14 Sample Multiplier: 1

Instrument :
 BNA_F
 ClientSampled :

Quant Time: Oct 23 02:09:40 2018
 Quant Method : Z:\SVOASRV\HPCHEM1\BNA F\METHODS\8270-BF101518.M
 Quant Title : ASP BNA STANDARDS FOR 5 POINT CALIBRATION
 QLast Update : Tue Oct 16 14:58:24 2018
 Response via : Initial Calibration

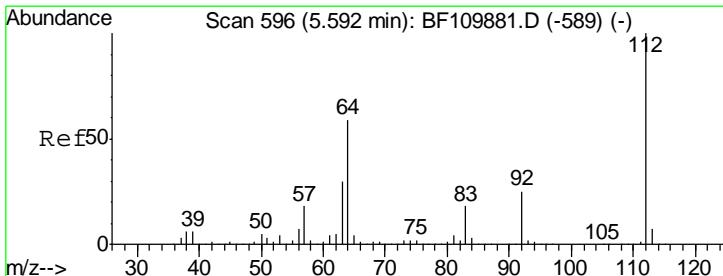
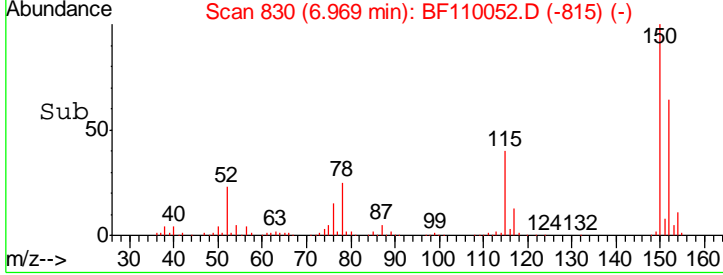
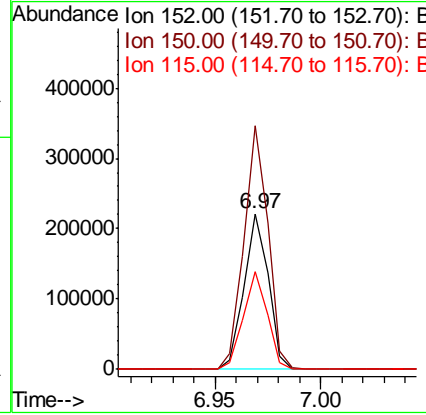
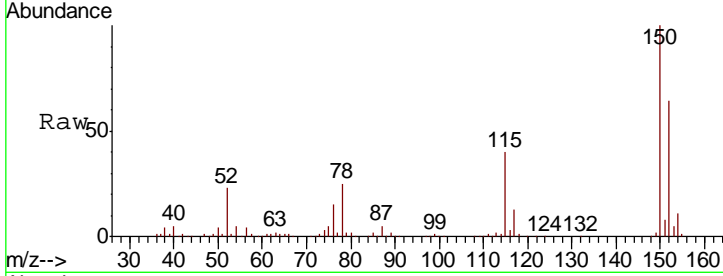




#1
 1,4-Dichlorobenzene-d4
 Concen: 20.000 ng
 RT: 6.97 min Scan# 830
 Delta R.T. -0.01 min
 Lab File: BF110052.D
 Acq: 22 Oct 2018 16:44

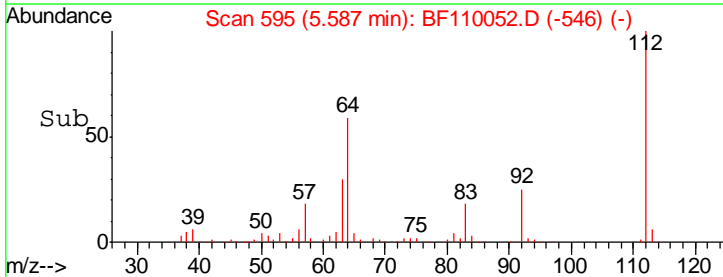
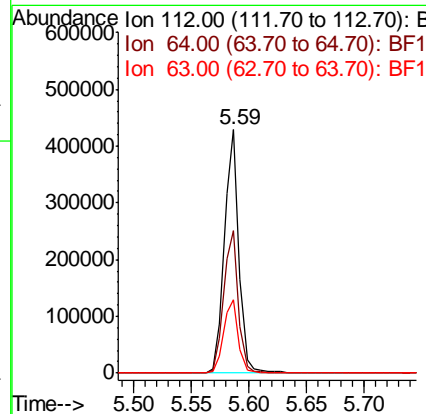
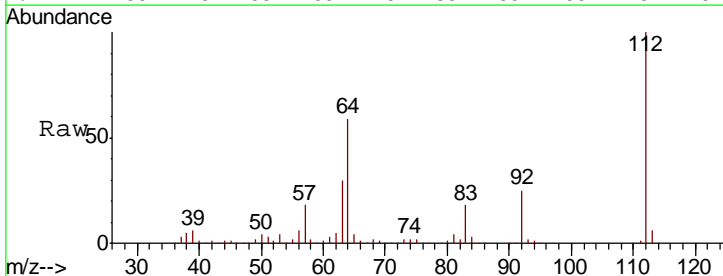
Instrument :
 BNA_F
 ClientSampled :

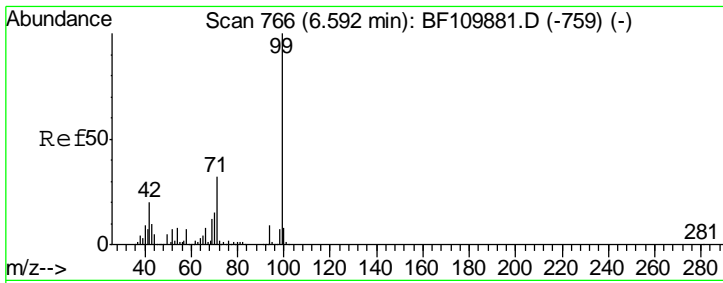
Tgt Ion	Resp	Lower	Upper
152	174995		
150	156.6	122.7	184.1
115	62.8	49.1	73.7



#5
 2-Fluorophenol
 Concen: 33.748 ng
 RT: 5.59 min Scan# 595
 Delta R.T. -0.01 min
 Lab File: BF110052.D
 Acq: 22 Oct 2018 16:44

Tgt Ion	Resp	Lower	Upper
112	372569		
64	58.6	44.1	66.1
63	30.1	23.7	35.5

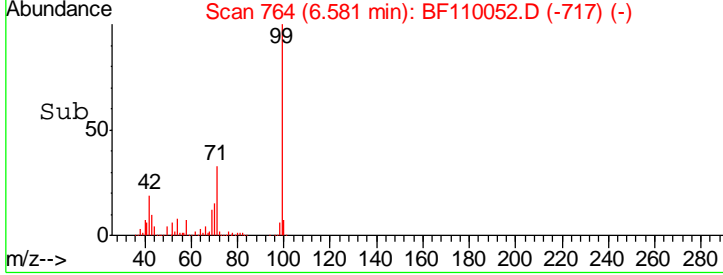
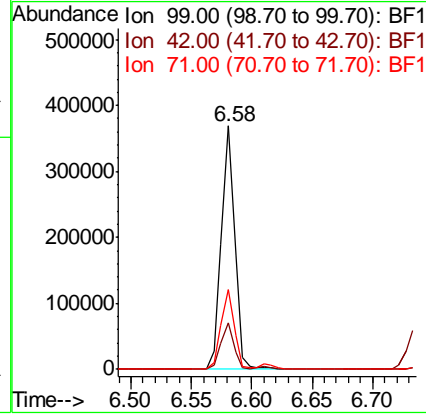
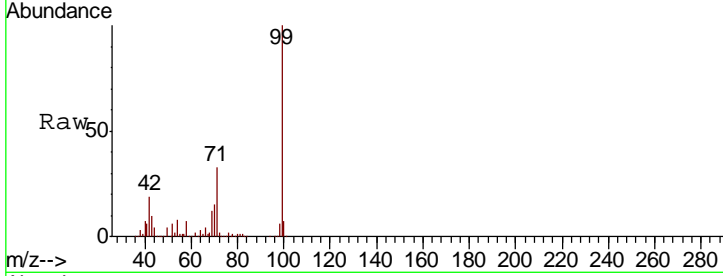




#7
 Phenol-d6
 Concen: 20.521 ng
 RT: 6.58 min Scan# 764
 Delta R.T. -0.02 min
 Lab File: BF110052.D
 Acq: 22 Oct 2018 16:44

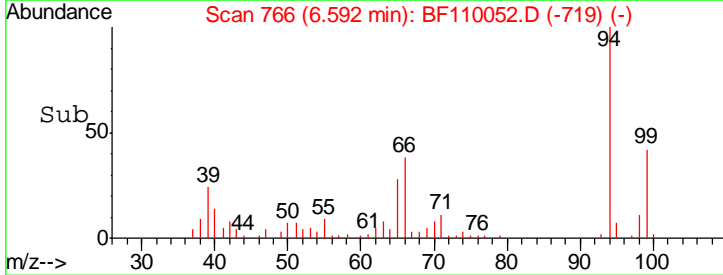
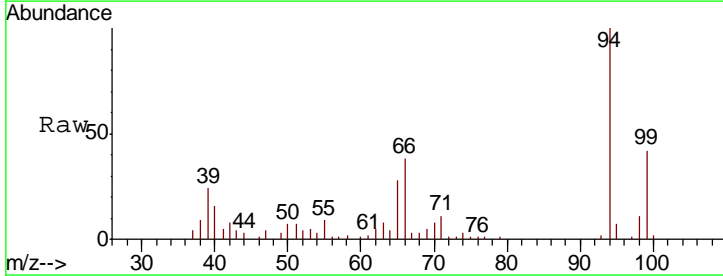
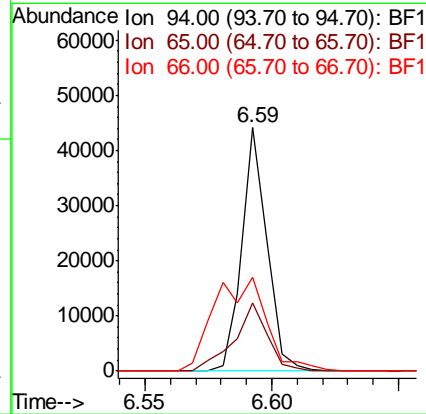
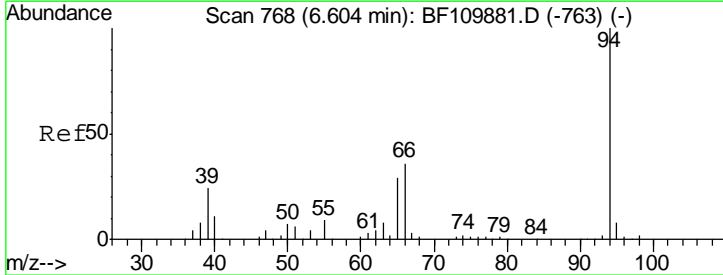
Instrument :
 BNA_F
 ClientSampled :

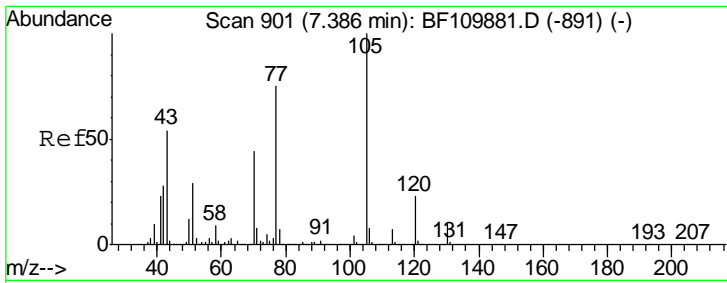
Tgt Ion	Resp	Lower	Upper
99	281315		
42	18.9	15.8	23.6
71	32.9	28.0	42.0



#10
 Phenol
 Concen: 2.041 ng
 RT: 6.59 min Scan# 766
 Delta R.T. -0.02 min
 Lab File: BF110052.D
 Acq: 22 Oct 2018 16:44

Tgt Ion	Resp	Lower	Upper
94	30209		
65	28.2	25.3	65.3
66	38.5	54.5	94.5#

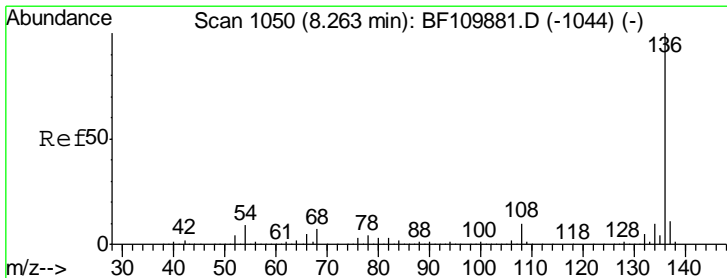
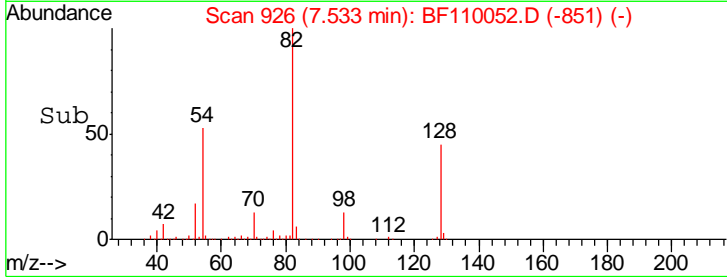
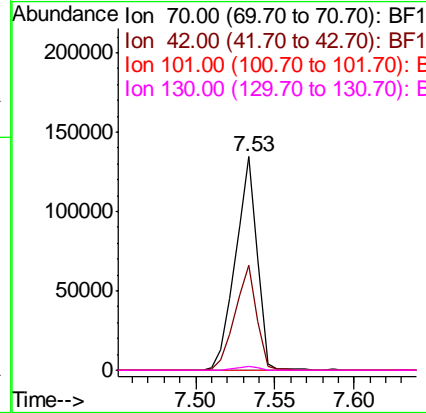
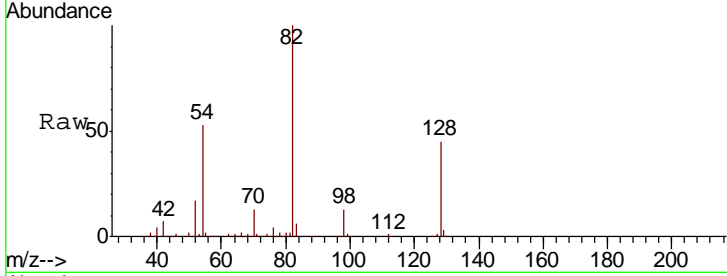




#19
 n-Nitroso-di-n-propylamine
 Concen: 14.518 ng
 RT: 7.53 min Scan# 926
 Delta R.T. 0.14 min
 Lab File: BF110052.D
 Acq: 22 Oct 2018 16:44

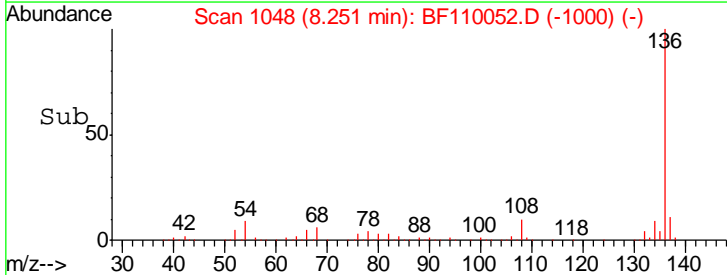
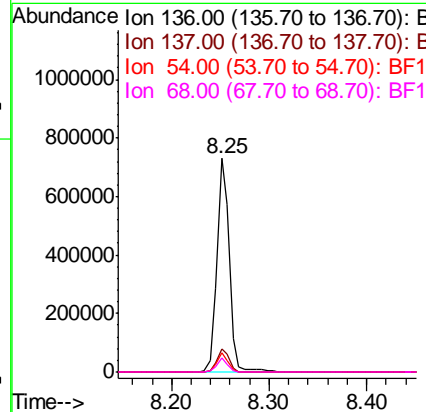
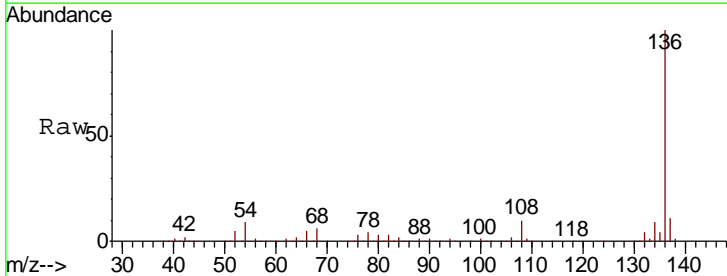
Instrument :
 BNA_F
 ClientSampled :

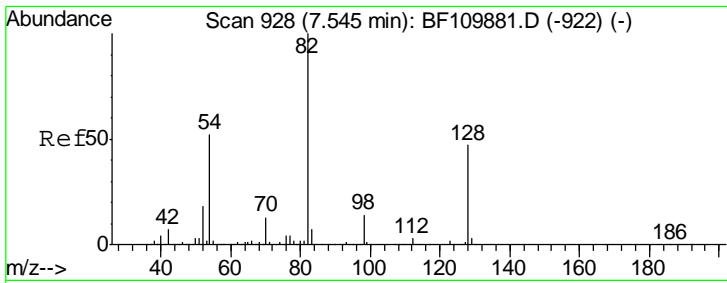
Tgt Ion	Resp	Lower	Upper
70	100		
42	49.4	47.4	71.2
101	0.0	7.3	10.9#
130	2.1	16.2	24.2#



#21
 Naphthalene-d8
 Concen: 20.000 ng
 RT: 8.25 min Scan# 1048
 Delta R.T. -0.02 min
 Lab File: BF110052.D
 Acq: 22 Oct 2018 16:44

Tgt Ion	Resp	Lower	Upper
136	100		
137	11.0	8.8	13.2
54	8.9	5.4	8.2#
68	6.4	4.2	6.2#

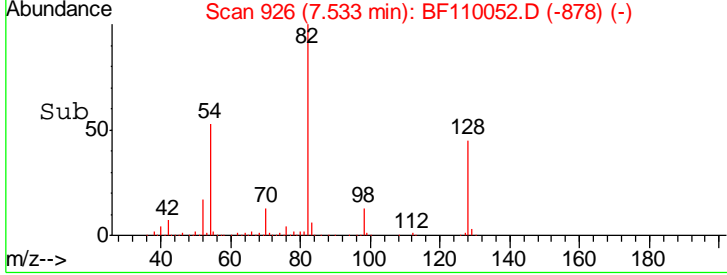
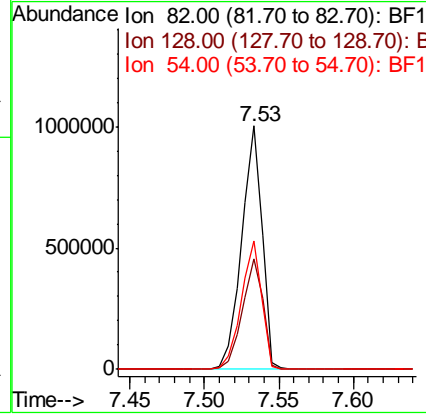
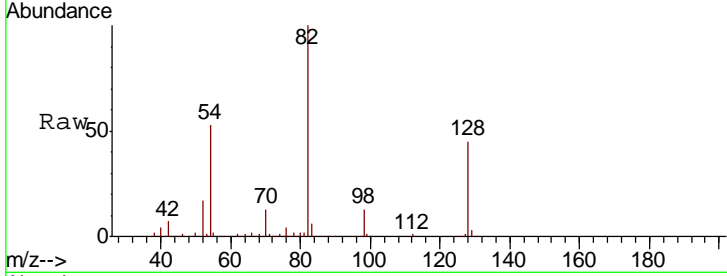




#23
 Nitrobenzene-d5
 Concen: 101.640 ng
 RT: 7.53 min Scan# 926
 Delta R.T. -0.02 min
 Lab File: BF110052.D
 Acq: 22 Oct 2018 16:44

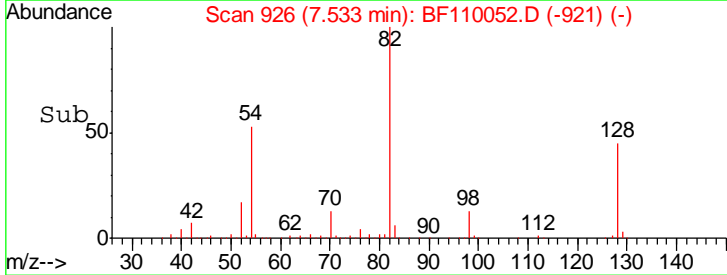
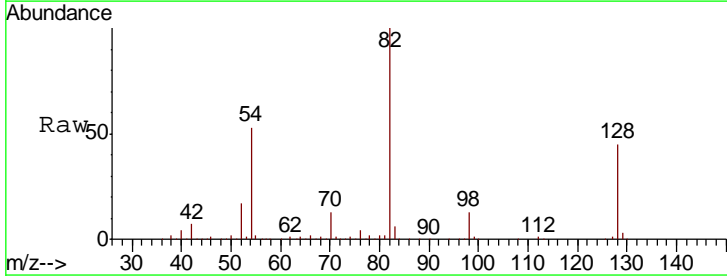
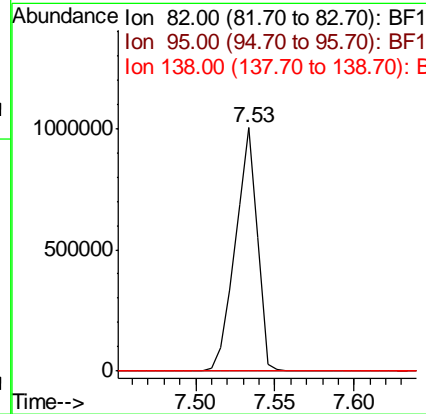
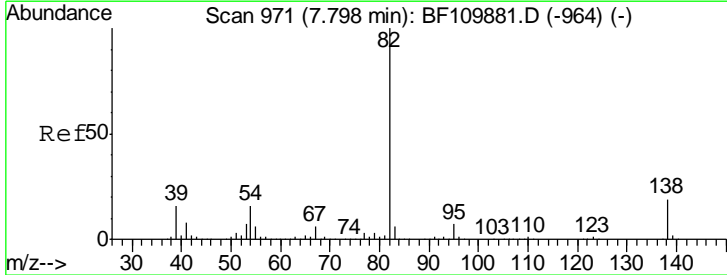
Instrument :
 BNA_F
 ClientSampleID :

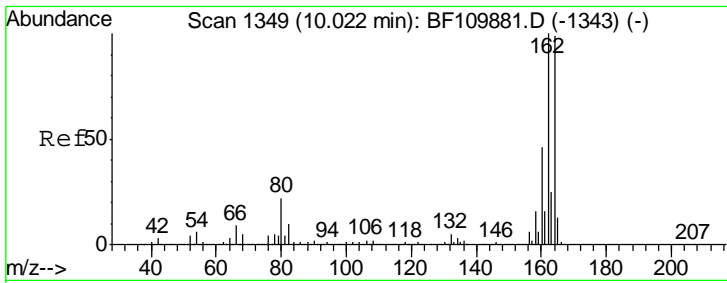
Tgt Ion	Resp	Lower	Upper
82	100		
128	45.1	34.2	51.2
54	52.7	38.6	58.0



#25
 Isophorone
 Concen: 51.727 ng
 RT: 7.53 min Scan# 926
 Delta R.T. -0.27 min
 Lab File: BF110052.D
 Acq: 22 Oct 2018 16:44

Tgt Ion	Resp	Lower	Upper
82	100		
95	0.0	5.7	8.5#
138	0.0	13.2	19.8#

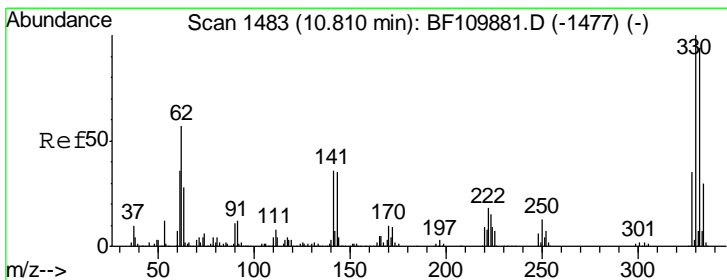
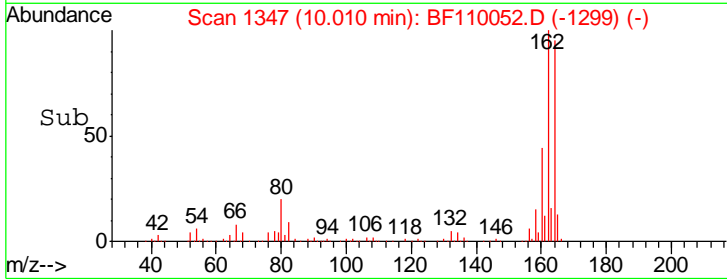
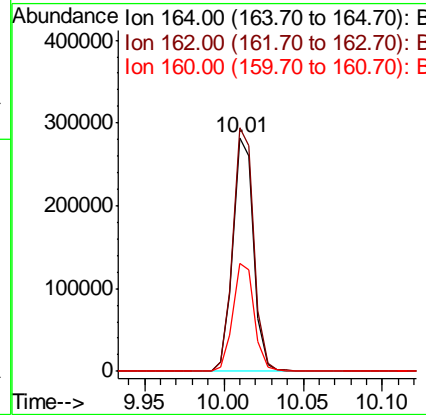
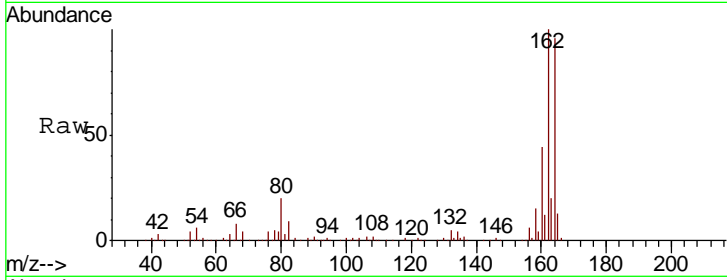




#39
 Acenaphthene-d10
 Concen: 20.000 ng
 RT: 10.01 min Scan# 1347
 Delta R.T. -0.02 min
 Lab File: BF110052.D
 Acq: 22 Oct 2018 16:44

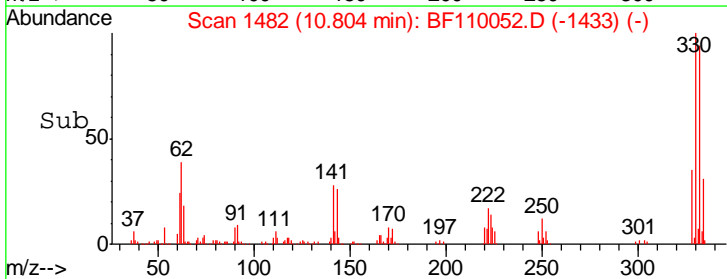
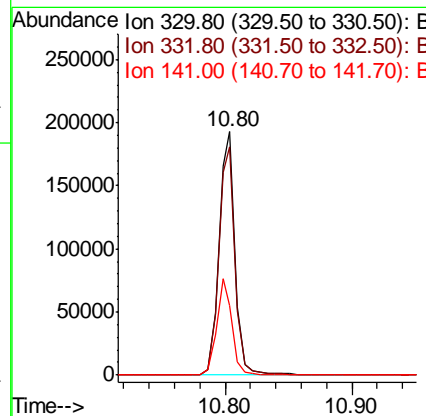
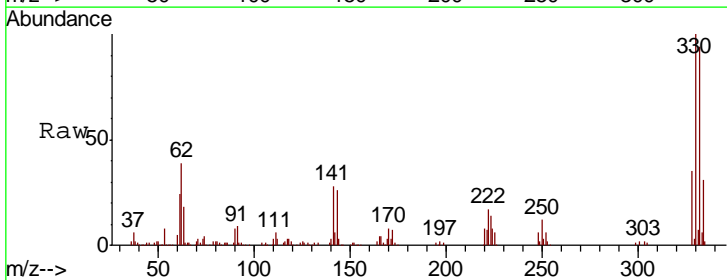
Instrument :
 BNA_F
 ClientSampled :

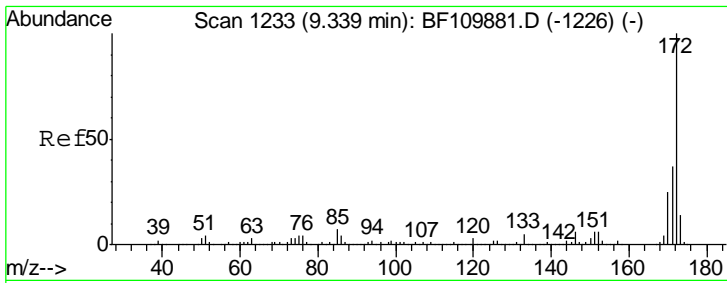
Tgt Ion	Resp	Lower	Upper
164	100		
162	104.3	83.0	124.6
160	46.2	37.0	55.6



#42
 2,4,6-Tribromophenol
 Concen: 77.701 ng
 RT: 10.80 min Scan# 1482
 Delta R.T. -0.01 min
 Lab File: BF110052.D
 Acq: 22 Oct 2018 16:44

Tgt Ion	Resp	Lower	Upper
330	100		
332	95.2	77.1	115.7
141	37.6	27.0	40.4



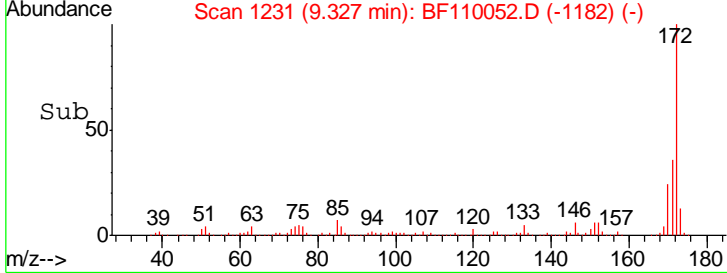
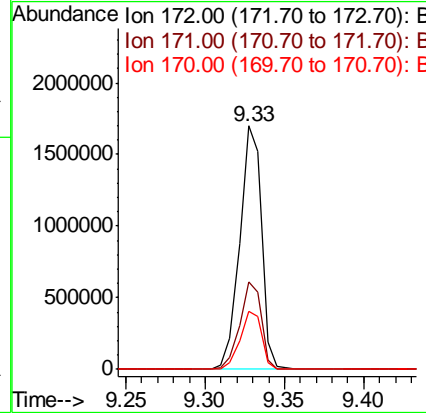
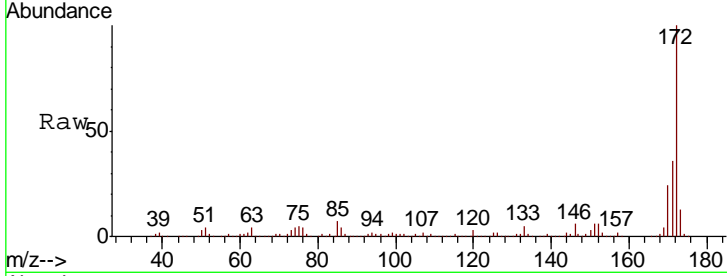


#45
 2-Fluorobiphenyl
 Concen: 100.874 ng
 RT: 9.33 min Scan# 1231
 Delta R.T. -0.01 min
 Lab File: BF110052.D
 Acq: 22 Oct 2018 16:44

Instrument :
 BNA_F
 ClientSampled :

Tot Ion:172 Resp: 1620810

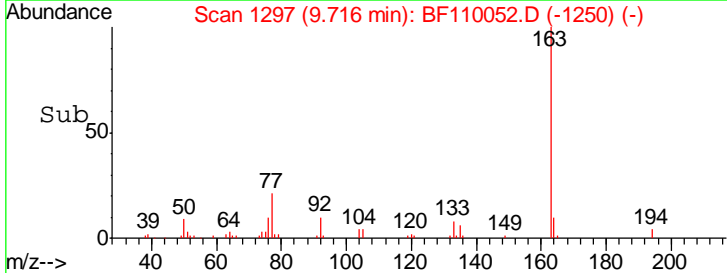
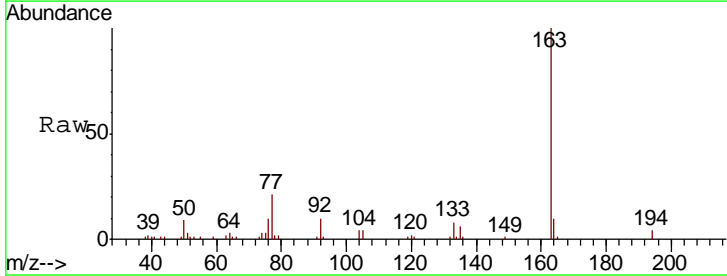
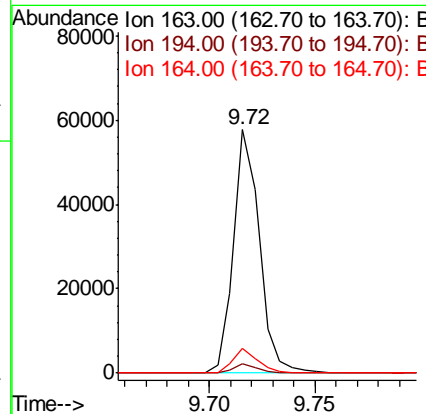
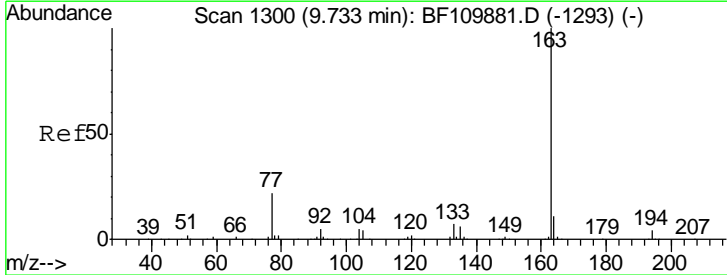
Ion	Ratio	Lower	Upper
172	100		
171	36.0	28.6	43.0
170	24.0	19.7	29.5

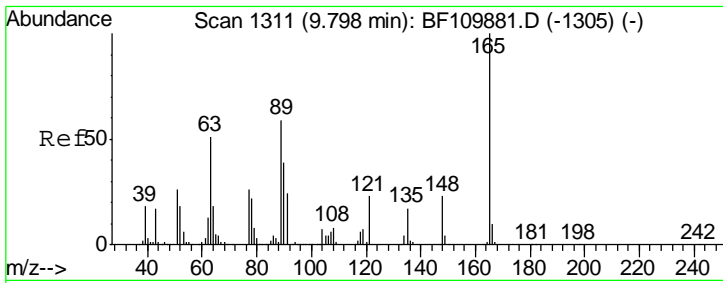


#50
 Dimethylphthalate
 Concen: 2.677 ng
 RT: 9.72 min Scan# 1297
 Delta R.T. -0.02 min
 Lab File: BF110052.D
 Acq: 22 Oct 2018 16:44

Tgt Ion:163 Resp: 48605

Ion	Ratio	Lower	Upper
163	100		
194	3.7	3.2	4.8
164	10.1	8.1	12.1

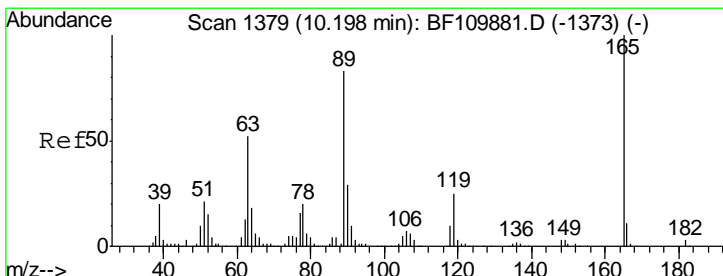
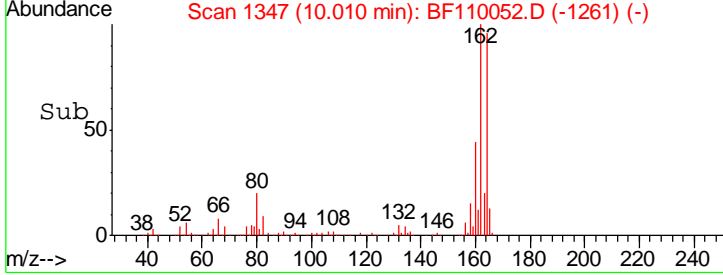
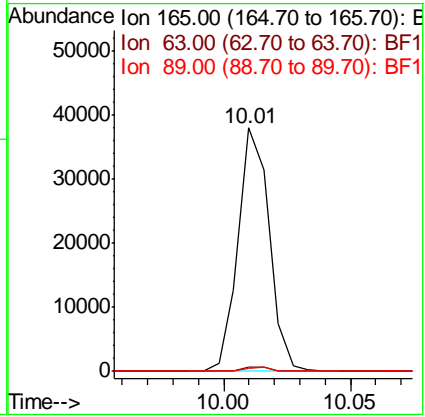
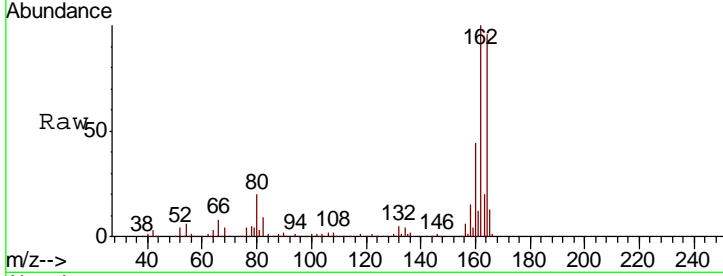




#51
 2,6-Dinitrotoluene
 Concen: 9.413 ng
 RT: 10.01 min Scan# 1347
 Delta R.T. 0.21 min
 Lab File: BF110052.D
 Acq: 22 Oct 2018 16:44

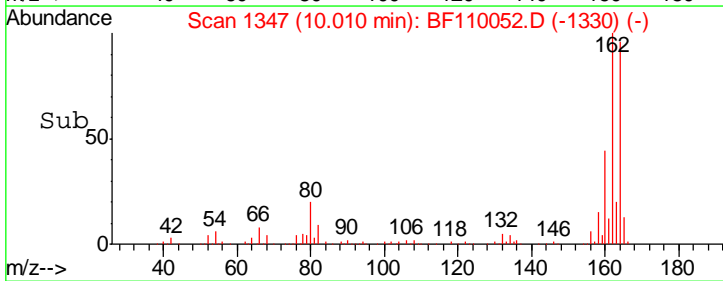
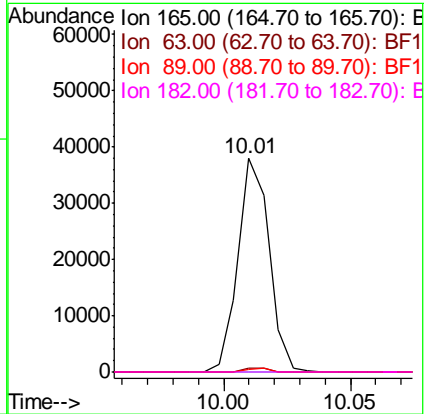
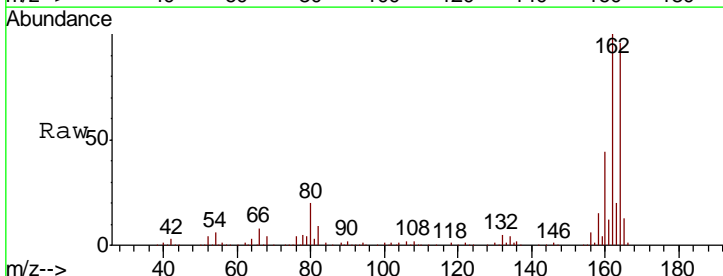
Instrument :
 BNA_F
 ClientSampled :

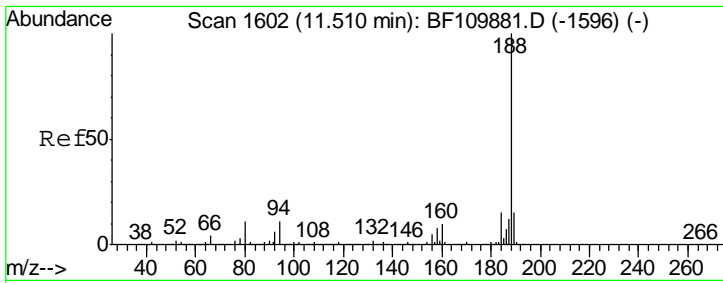
Tgt Ion	Resp	Lower	Upper
165	100		
63	1.6	48.9	73.3#
89	1.1	46.6	69.8#



#57
 2,4-Dinitrotoluene
 Concen: 11.323 ng
 RT: 10.01 min Scan# 1347
 Delta R.T. -0.20 min
 Lab File: BF110052.D
 Acq: 22 Oct 2018 16:44

Tgt Ion	Resp	Lower	Upper
165	100		
63	1.6	44.8	67.2#
89	1.1	62.2	93.4#
182	0.0	2.1	3.1#

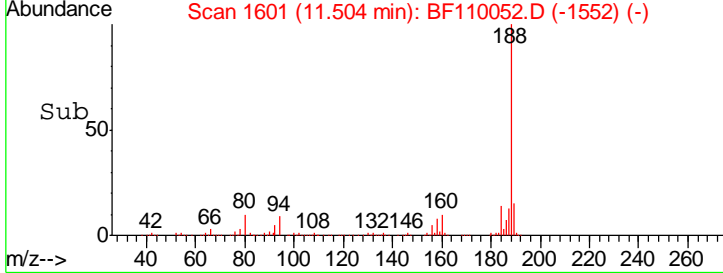
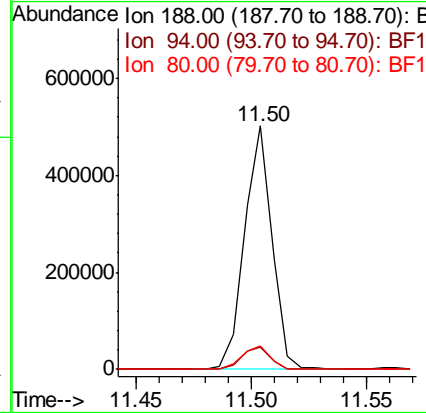
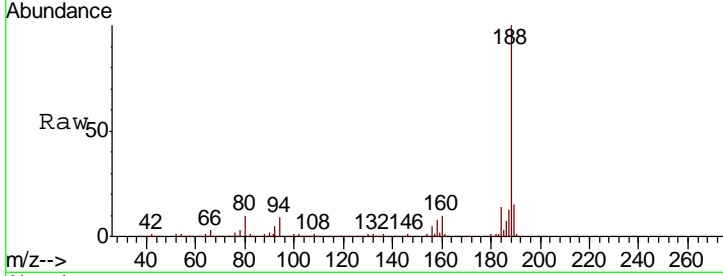




#64
 Phenanthrene-d10
 Concen: 20.000 ng
 RT: 11.50 min Scan# 1601
 Delta R.T. -0.01 min
 Lab File: BF110052.D
 Acq: 22 Oct 2018 16:44

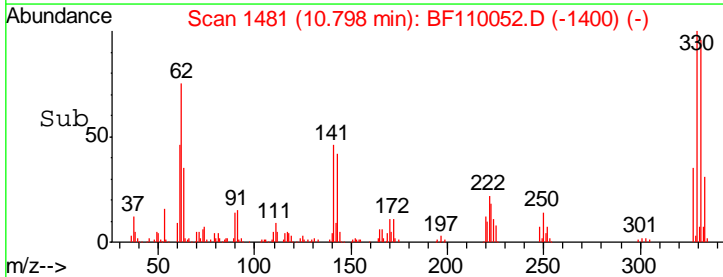
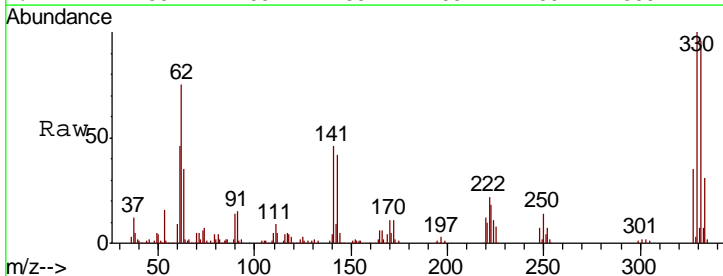
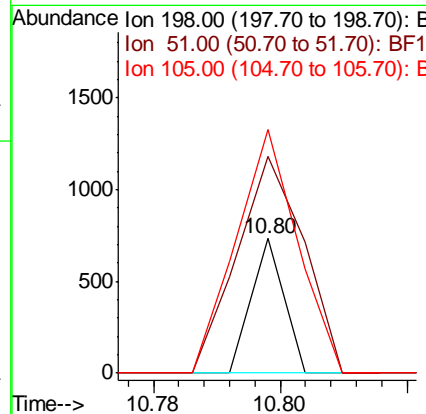
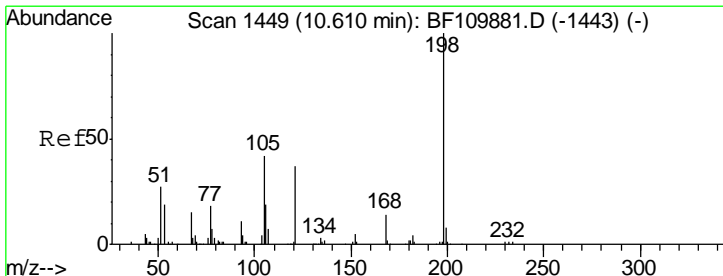
Instrument :
 BNA_F
 ClientSampleId :

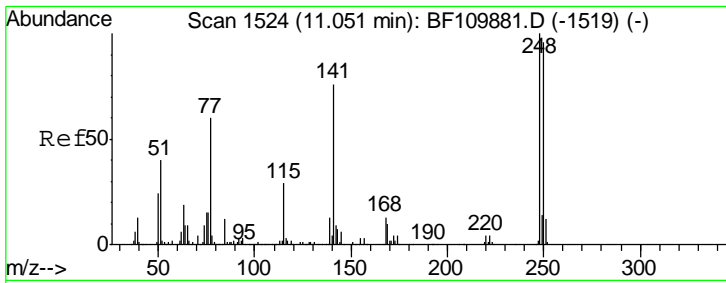
Tgt Ion	Resp	Lower	Upper
188	417030		
94	100	7.2	10.8
80	100	7.9	11.9



#65
 4,6-Dinitro-2-methylphenol
 Concen: 8.047 ng
 RT: 10.80 min Scan# 1481
 Delta R.T. 0.18 min
 Lab File: BF110052.D
 Acq: 22 Oct 2018 16:44

Tgt Ion	Resp	Lower	Upper
198	258		
51	100	22.8	62.8#
105	100	23.6	63.6#

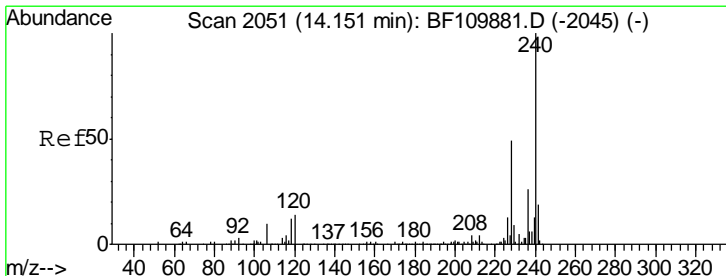
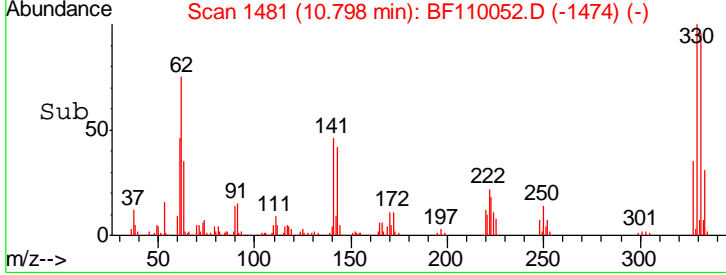
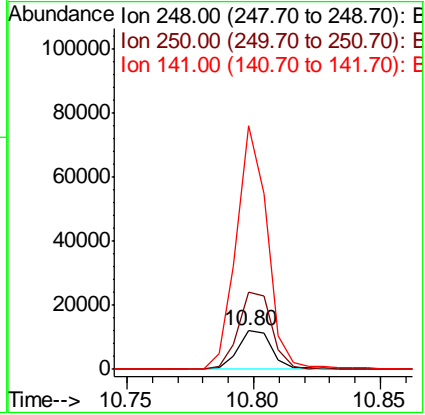
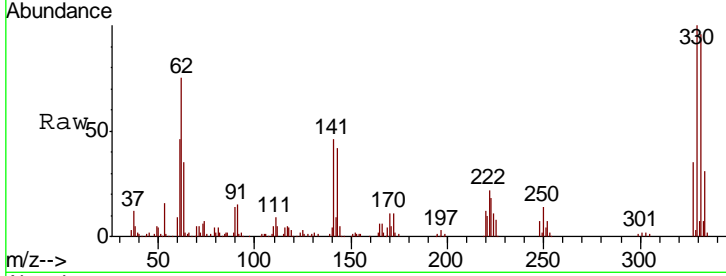




#67
 4-Bromophenyl-phenylether
 Concen: 2.489 ng
 RT: 10.80 min Scan# 1481
 Delta R.T. -0.26 min
 Lab File: BF110052.D
 Acq: 22 Oct 2018 16:44

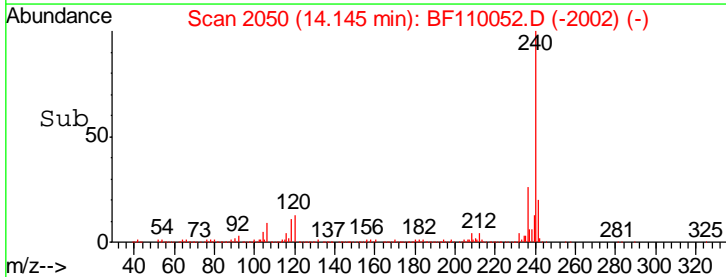
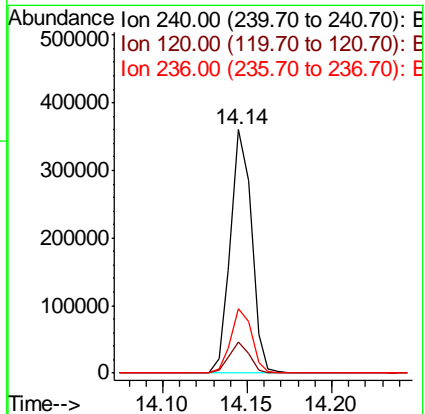
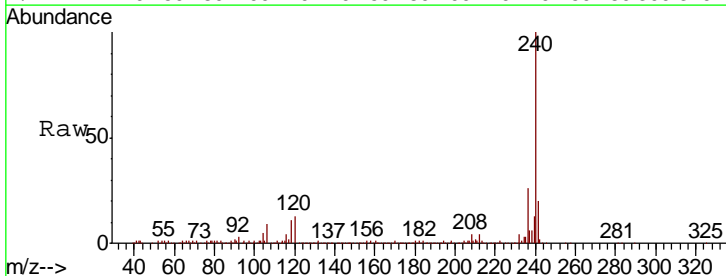
Instrument :
 BNA_F
 ClientSampled :

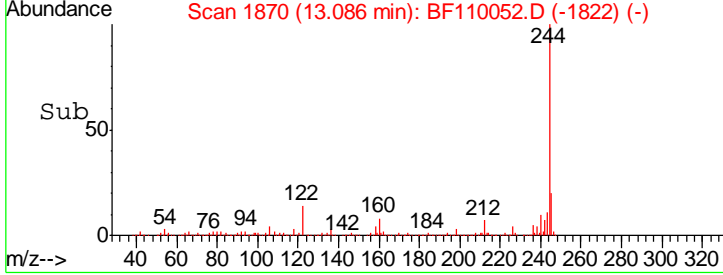
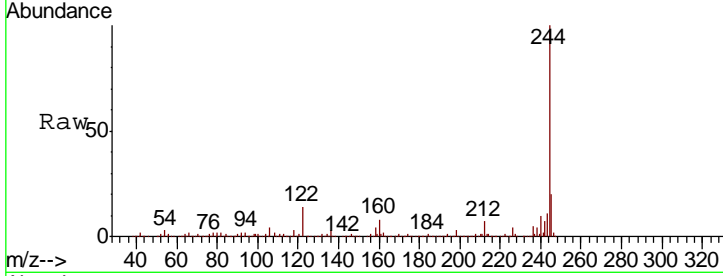
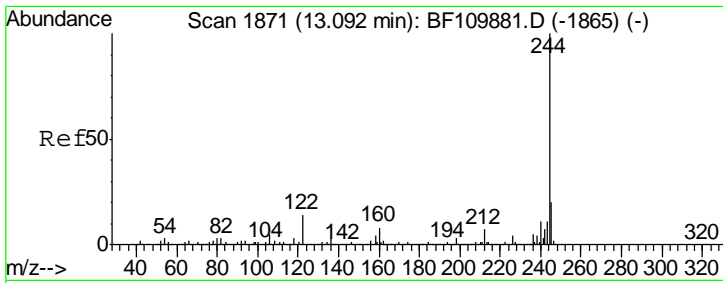
Tgt Ion	Resp	Lower	Upper
248	11248		
250	200.5	79.4	119.2#
141	637.0	55.9	83.9#



#76
 Chrysene-d12
 Concen: 20.000 ng
 RT: 14.14 min Scan# 2050
 Delta R.T. -0.02 min
 Lab File: BF110052.D
 Acq: 22 Oct 2018 16:44

Tgt Ion	Resp	Lower	Upper
240	313975		
120	13.0	8.3	12.5#
236	26.2	21.2	31.8

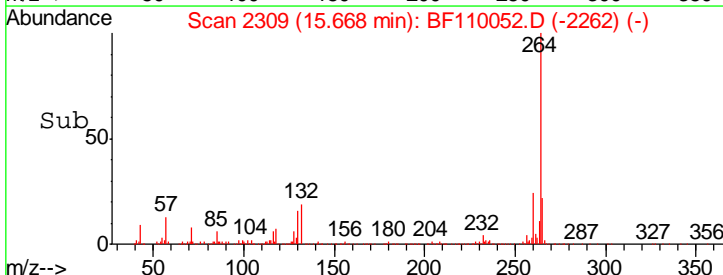
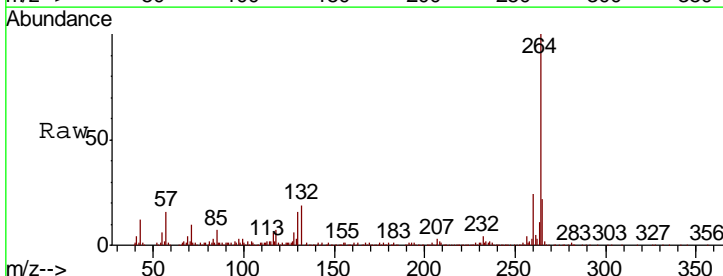
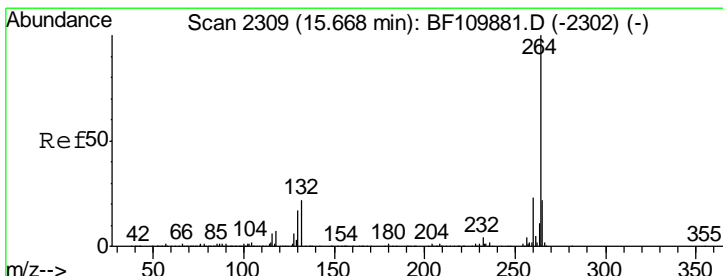
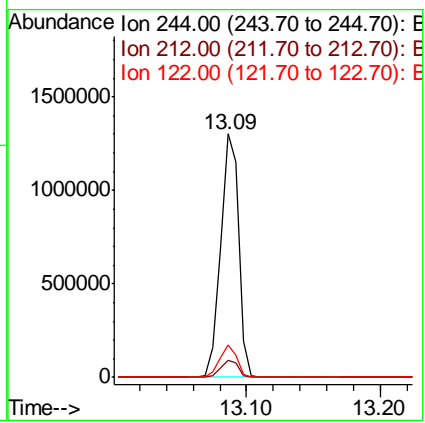




#79
 Terphenyl-d14
 Concen: 82.999 ng
 RT: 13.09 min Scan# 1870
 Delta R.T. -0.02 min
 Lab File: BF110052.D
 Acq: 22 Oct 2018 16:44

Instrument :
 BNA_F
 ClientSampled :

Tgt Ion	Resp	Lower	Upper
244	1240973		
212	6.8	5.8	8.8
122	13.5	8.7	13.1#



#87
 Perylene-d12
 Concen: 20.000 ng
 RT: 15.67 min Scan# 2309
 Delta R.T. -0.02 min
 Lab File: BF110052.D
 Acq: 22 Oct 2018 16:44

Tgt Ion	Resp	Lower	Upper
264	231650		
260	23.9	18.7	28.1
265	22.1	16.7	25.1

