

Data Path : Z:\svoasrv\HPCHEM1\BNA_F\Data\BF110525\
 Data File : BF144175.D
 Acq On : 05 Nov 2025 16:19
 Operator : RC/JU
 Sample : SSTDICC060
 Misc :
 ALS Vial : 9 Sample Multiplier: 1

Instrument :
 BNA_F
 ClientSampleId :
 SSTDICC060

Quant Time: Nov 05 17:24:17 2025
 Quant Method : Z:\svoasrv\HPCHEM1\BNA_F\Methods\8270-BF110525.M
 Quant Title : ASP BNA STANDARDS FOR 5 POINT CALIBRATION
 QLast Update : Wed Nov 05 17:20:41 2025
 Response via : Initial Calibration

Compound	R.T.	QIon	Response	Conc	Units	Dev(Min)	
Internal Standards							
1) 1,4-Dichlorobenzene-d4	6.875	152	63801	20.000	ng	0.00	
21) Naphthalene-d8	8.157	136	239743	20.000	ng	0.00	
39) Acenaphthene-d10	9.916	164	126385	20.000	ng	0.00	
64) Phenanthrene-d10	11.410	188	213136	20.000	ng	0.00	
76) Chrysene-d12	14.057	240	145867	20.000	ng	0.00	
86) Perylene-d12	15.539	264	205758	20.000	ng	0.00	
System Monitoring Compounds							
5) 2-Fluorophenol	5.492	112	509184	124.890	ng	0.00	
7) Phenol-d6	6.510	99	559443	121.101	ng	0.00	
23) Nitrobenzene-d5	7.439	82	519687	125.195	ng	0.00	
42) 2,4,6-Tribromophenol	10.710	330	198226	124.986	ng	0.00	
45) 2-Fluorobiphenyl	9.233	172	1047440	122.404	ng	0.00	
79) Terphenyl-d14	12.998	244	1057426	115.147	ng	0.00	
Target Compounds							
2) 1,4-Dioxane	2.604	88	109742	65.106	ng		Qvalue
3) Pyridine	3.375	79	307664	65.424	ng		97
4) n-Nitrosodimethylamine	3.334	42	166098	67.619	ng		97
6) Aniline	6.539	93	409356	62.194	ng		99
8) 2-Chlorophenol	6.663	128	247503	61.902	ng		99
9) Benzaldehyde	6.428	77	150534	57.706	ng		98
10) Phenol	6.522	94	342646	60.707	ng		90
11) bis(2-Chloroethyl)ether	6.610	93	256657	62.405	ng		96
12) 1,3-Dichlorobenzene	6.816	146	303642	61.543	ng		98
13) 1,4-Dichlorobenzene	6.892	146	306973	62.104	ng		99
14) 1,2-Dichlorobenzene	7.045	146	293432	61.936	ng		99
15) Benzyl Alcohol	7.016	79	229107	62.632	ng		97
16) 2,2'-oxybis(1-Chloropr...	7.145	45	467387	61.712	ng		96
17) 2-Methylphenol	7.128	107	191705	60.269	ng		96
18) Hexachloroethane	7.386	117	103964	63.308	ng		99
19) n-Nitroso-di-n-propyla...	7.292	70	179314	58.963	ng		96
20) 3+4-Methylphenols	7.281	107	224891	59.977	ng		91
22) Acetophenone	7.286	105	302907	58.897	ng		94
24) Nitrobenzene	7.463	77	285924	63.439	ng		98
25) Isophorone	7.698	82	485836	61.876	ng		99
26) 2-Nitrophenol	7.775	139	144140	64.606	ng		96
27) 2,4-Dimethylphenol	7.810	122	212249	63.471	ng		95
28) bis(2-Chloroethoxy)met...	7.904	93	304411	62.085	ng		99
29) 2,4-Dichlorophenol	8.016	162	234718	60.899	ng		99
30) 1,2,4-Trichlorobenzene	8.098	180	240858	60.858	ng		98
31) Naphthalene	8.181	128	684579	60.028	ng		100
32) Benzoic acid	7.933	122	136682	55.761	ng		96
33) 4-Chloroaniline	8.228	127	255554	61.441	ng		98
34) Hexachlorobutadiene	8.298	225	182626	61.229	ng		98
35) Caprolactam	8.610	113	62840	59.512	ng		95
36) 4-Chloro-3-methylphenol	8.710	107	208910	60.481	ng		99
37) 2-Methylnaphthalene	8.875	142	447909	58.743	ng		98
38) 1-Methylnaphthalene	8.975	142	431529	58.654	ng		100
40) 1,2,4,5-Tetrachloroben...	9.039	216	271508	65.549	ng		99
41) Hexachlorocyclopentadiene	9.022	237	95909	64.419	ng		96
43) 2,4,6-Trichlorophenol	9.151	196	185412	65.769	ng		98

Data Path : Z:\svoasrv\HPCHEM1\BNA_F\Data\BF110525\
 Data File : BF144175.D
 Acq On : 05 Nov 2025 16:19
 Operator : RC/JU
 Sample : SSTDICC060
 Misc :
 ALS Vial : 9 Sample Multiplier: 1

Instrument :
 BNA_F
 ClientSampleId :
 SSTDICC060

Quant Time: Nov 05 17:24:17 2025
 Quant Method : Z:\svoasrv\HPCHEM1\BNA_F\Methods\8270-BF110525.M
 Quant Title : ASP BNA STANDARDS FOR 5 POINT CALIBRATION
 QLast Update : Wed Nov 05 17:20:41 2025
 Response via : Initial Calibration

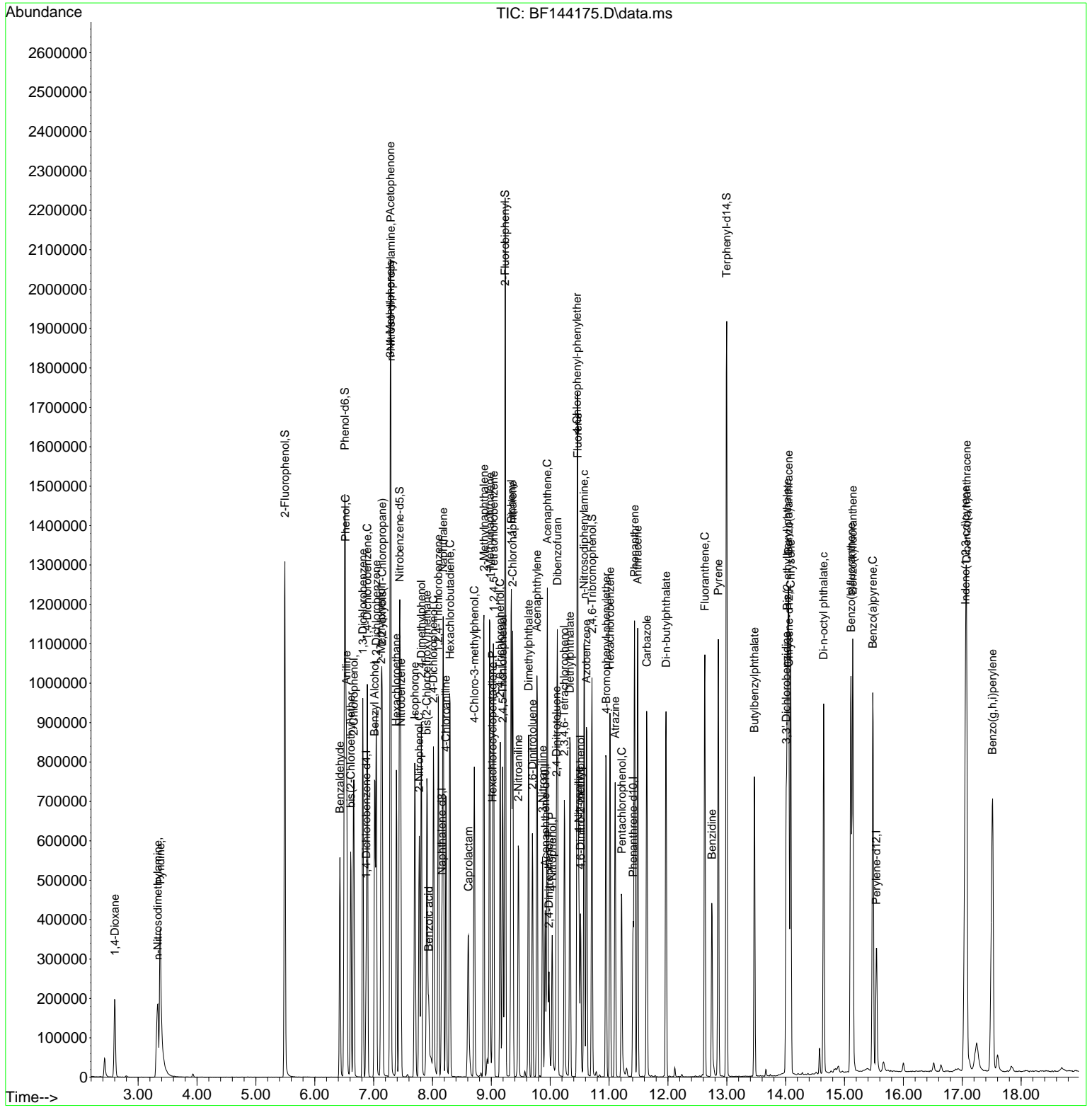
Compound	R.T.	QIon	Response	Conc	Units	Dev(Min)
44) 2,4,5-Trichlorophenol	9.192	196	190324	62.639	ng	99
46) 1,1'-Biphenyl	9.339	154	549700	62.310	ng	99
47) 2-Chloronaphthalene	9.363	162	474514	63.056	ng	99
48) 2-Nitroaniline	9.457	65	141938	65.370	ng	98
49) Acenaphthylene	9.775	152	636324	62.050	ng	100
50) Dimethylphthalate	9.633	163	521205	62.250	ng	99
51) 2,6-Dinitrotoluene	9.698	165	110140	64.983	ng	99
52) Acenaphthene	9.951	154	423653	61.778	ng	99
53) 3-Nitroaniline	9.869	138	119967	64.749	ng	100
54) 2,4-Dinitrophenol	9.980	184	63597	62.138	ng	98
55) Dibenzofuran	10.122	168	592400	61.680	ng	98
56) 4-Nitrophenol	10.033	139	80163	59.812	ng	97
57) 2,4-Dinitrotoluene	10.104	165	142910	62.984	ng	97
58) Fluorene	10.469	166	435687	59.664	ng	99
59) 2,3,4,6-Tetrachlorophenol	10.239	232	140953	65.569	ng	97
60) Diethylphthalate	10.333	149	468931	60.755	ng	98
61) 4-Chlorophenyl-phenylether	10.457	204	249857	60.068	ng	97
62) 4-Nitroaniline	10.486	138	109153	61.862	ng	97
63) Azobenzene	10.616	77	453890	63.187	ng	99
65) 4,6-Dinitro-2-methylphthalate	10.516	198	90823	62.727	ng	97
66) n-Nitrosodiphenylamine	10.574	169	421720	61.520	ng	99
67) 4-Bromophenyl-phenylether	10.951	248	170395	62.634	ng	99
68) Hexachlorobenzene	11.016	284	204258	63.744	ng	96
69) Atrazine	11.104	200	134002	61.467	ng	100
70) Pentachlorophenol	11.216	266	103466	64.842	ng	99
71) Phenanthrene	11.433	178	641461	60.448	ng	99
72) Anthracene	11.486	178	656819	60.871	ng	100
73) Carbazole	11.639	167	546322	59.542	ng	100
74) Di-n-butylphthalate	11.969	149	677444	61.075	ng	99
75) Fluoranthene	12.627	202	667021	60.849	ng	99
77) Benzidine	12.745	184	277725	64.368	ng	100
78) Pyrene	12.857	202	686663	58.384	ng	100
80) Butylbenzylphthalate	13.468	149	249274	61.152	ng	100
81) Benzo(a)anthracene	14.051	228	653341	64.625	ng	100
82) 3,3'-Dichlorobenzidine	14.010	252	232807	67.182	ng	96
83) Chrysene	14.086	228	580449	62.196	ng	98
84) Bis(2-ethylhexyl)phthalate	14.027	149	351501	62.991	ng	98
85) Di-n-octyl phthalate	14.645	149	631065	65.547	ng	100
87) Indeno(1,2,3-cd)pyrene	17.056	276	938738	63.557	ng	100
88) Benzo(b)fluoranthene	15.109	252	700099	59.849	ng	99
89) Benzo(k)fluoranthene	15.139	252	699851	63.919	ng	98
90) Benzo(a)pyrene	15.480	252	680720	63.078	ng	99
91) Dibenzo(a,h)anthracene	17.074	278	746544	62.936	ng	98
92) Benzo(g,h,i)perylene	17.515	276	757880	64.699	ng	98

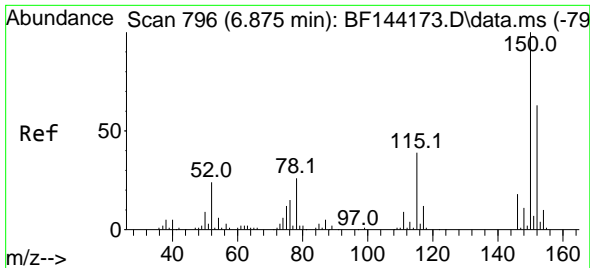
(#) = qualifier out of range (m) = manual integration (+) = signals summed

Data Path : Z:\svoasrv\HPCHEM1\BNA_F\Data\BF110525\
 Data File : BF144175.D
 Acq On : 05 Nov 2025 16:19
 Operator : RC/JU
 Sample : SSTDICC060
 Misc :
 ALS Vial : 9 Sample Multiplier: 1

Instrument :
 BNA_F
ClientSampleId :
 SSTDICC060

Quant Time: Nov 05 17:24:17 2025
 Quant Method : Z:\svoasrv\HPCHEM1\BNA_F\Methods\8270-BF110525.M
 Quant Title : ASP BNA STANDARDS FOR 5 POINT CALIBRATION
 QLast Update : Wed Nov 05 17:20:41 2025
 Response via : Initial Calibration

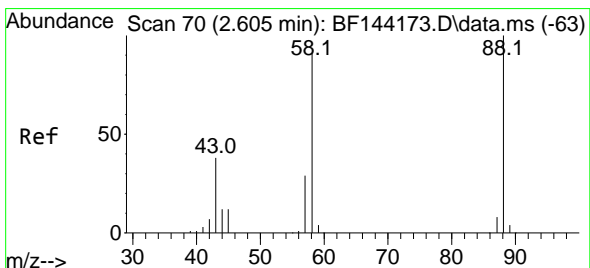
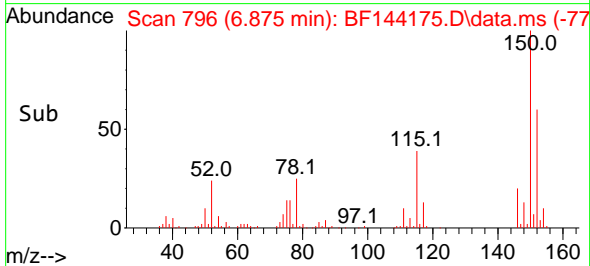
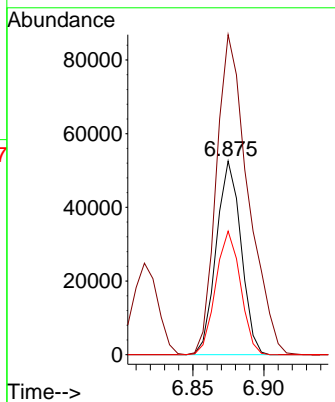
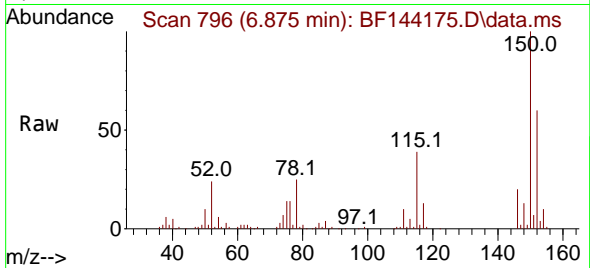




#1
 1,4-Dichlorobenzene-d4
 Concen: 20.000 ng
 RT: 6.875 min Scan# 79
 Delta R.T. -0.000 min
 Lab File: BF144175.D
 Acq: 05 Nov 2025 16:19

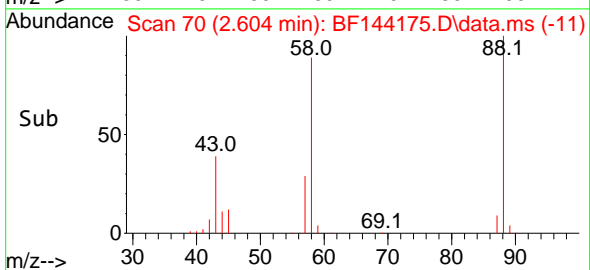
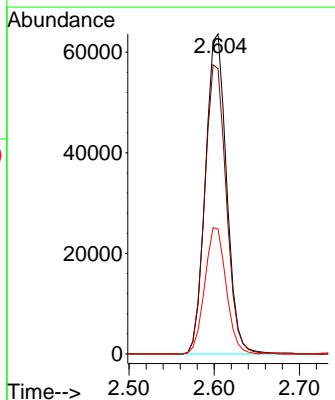
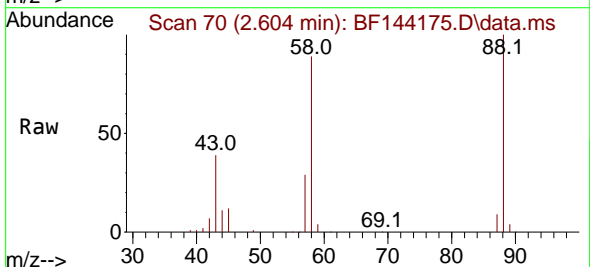
Instrument :
 BNA_F
 ClientSampleId :
 SSTDICC060

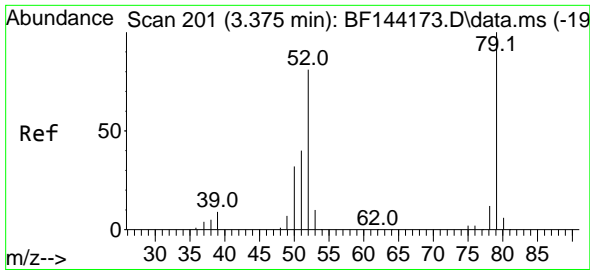
Tgt Ion:152 Resp: 63801
 Ion Ratio Lower Upper
 152 100
 150 165.3 127.4 191.0
 115 63.8 49.5 74.3



#2
 1,4-Dioxane
 Concen: 65.106 ng
 RT: 2.604 min Scan# 70
 Delta R.T. -0.000 min
 Lab File: BF144175.D
 Acq: 05 Nov 2025 16:19

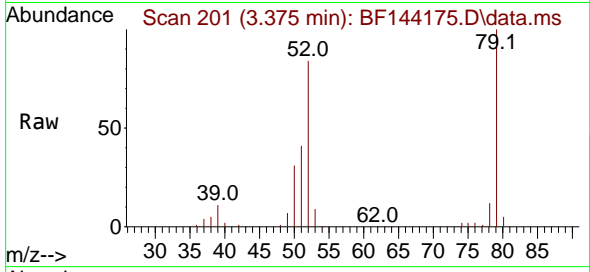
Tgt Ion: 88 Resp: 109742
 Ion Ratio Lower Upper
 88 100
 58 92.2 73.1 109.7
 43 39.9 31.0 46.6



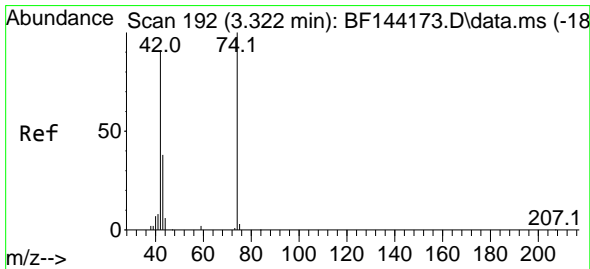
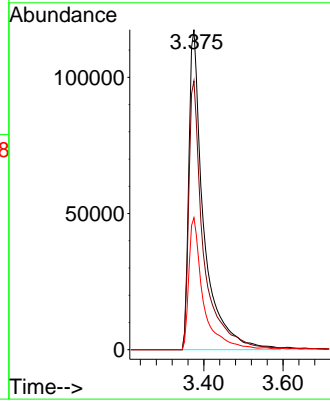
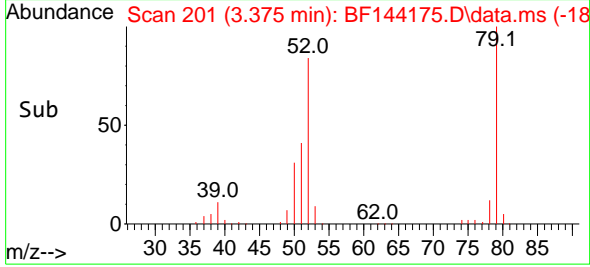


#3
 Pyridine
 Concen: 65.424 ng
 RT: 3.375 min Scan# 201
 Delta R.T. -0.000 min
 Lab File: BF144175.D
 Acq: 05 Nov 2025 16:19

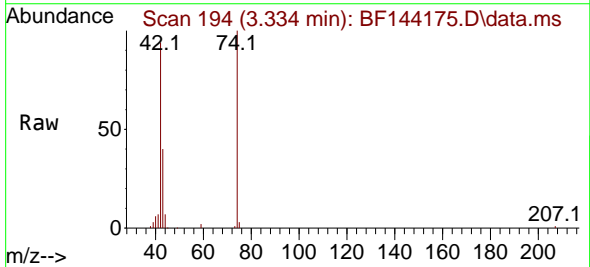
Instrument :
 BNA_F
 ClientSampleId :
 SSTDICC060



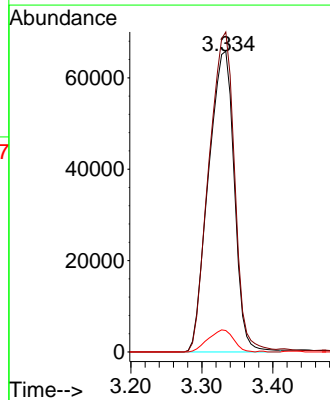
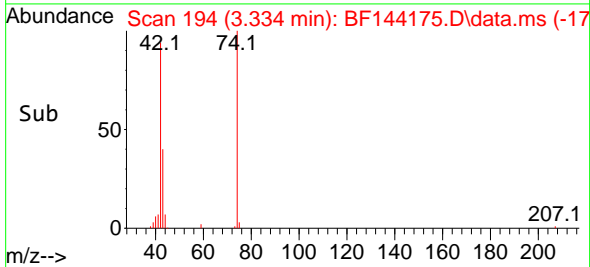
Tgt Ion: 79 Resp: 307664
 Ion Ratio Lower Upper
 79 100
 52 84.0 64.5 96.7
 51 41.2 31.7 47.5

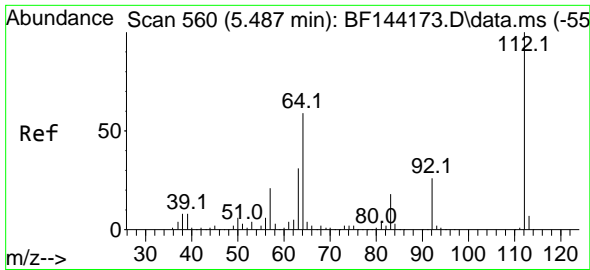


#4
 n-Nitrosodimethylamine
 Concen: 67.619 ng
 RT: 3.334 min Scan# 194
 Delta R.T. -0.012 min
 Lab File: BF144175.D
 Acq: 05 Nov 2025 16:19



Tgt Ion: 42 Resp: 166098
 Ion Ratio Lower Upper
 42 100
 74 106.4 88.2 132.4
 44 7.1 5.7 8.5

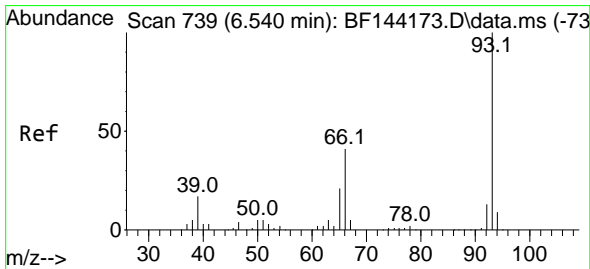
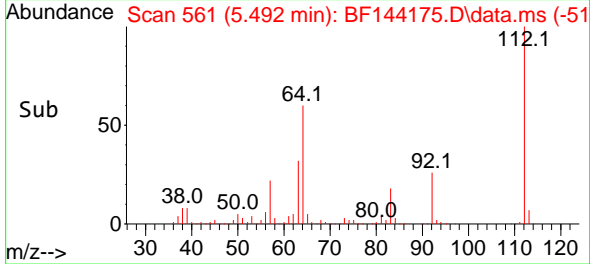
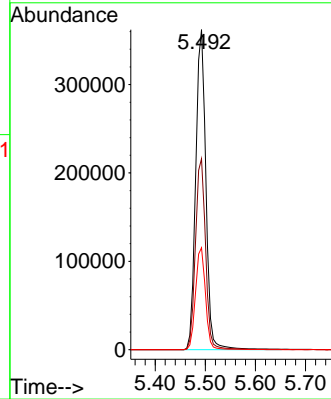
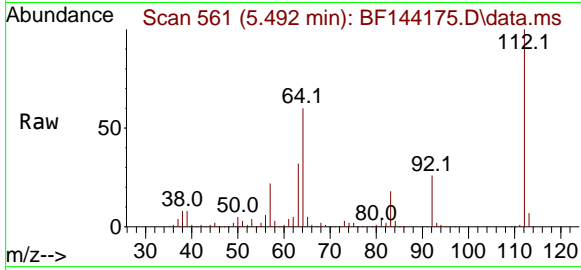




#5
 2-Fluorophenol
 Concen: 124.890 ng
 RT: 5.492 min Scan# 509
 Delta R.T. -0.000 min
 Lab File: BF144175.D
 Acq: 05 Nov 2025 16:19

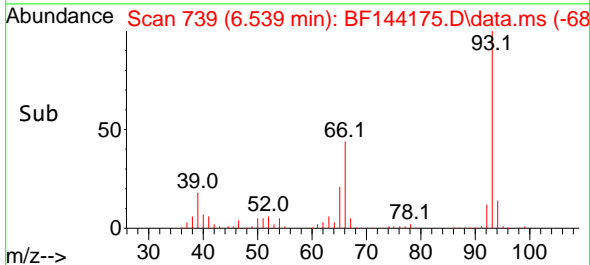
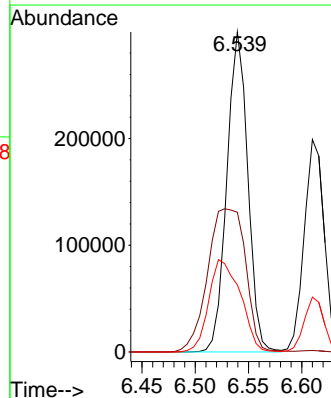
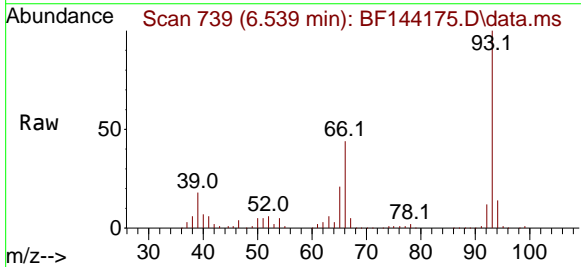
Instrument :
 BNA_F
 ClientSampleId :
 SSTDICC060

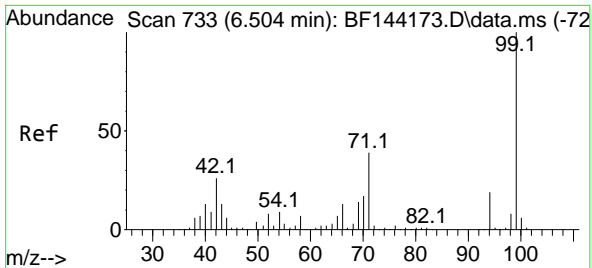
Tgt Ion:112 Resp: 509184
 Ion Ratio Lower Upper
 112 100
 64 59.7 47.2 70.8
 63 31.9 24.4 36.6



#6
 Aniline
 Concen: 62.194 ng
 RT: 6.539 min Scan# 739
 Delta R.T. -0.006 min
 Lab File: BF144175.D
 Acq: 05 Nov 2025 16:19

Tgt Ion: 93 Resp: 409356
 Ion Ratio Lower Upper
 93 100
 66 43.6 34.3 51.5
 65 21.0 16.9 25.3

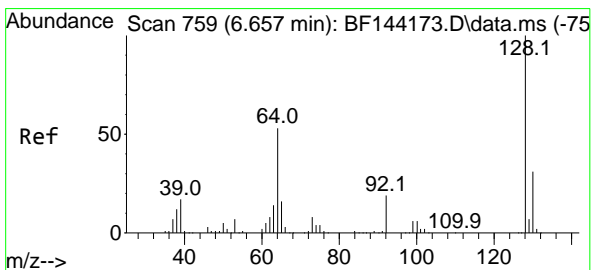
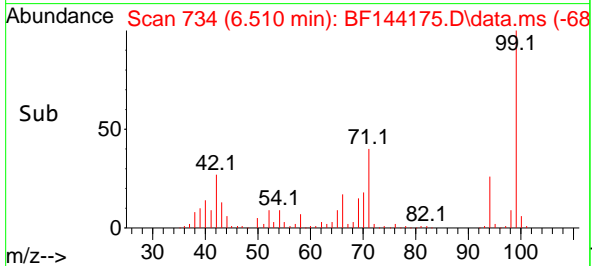
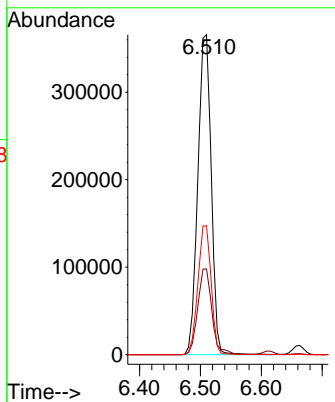
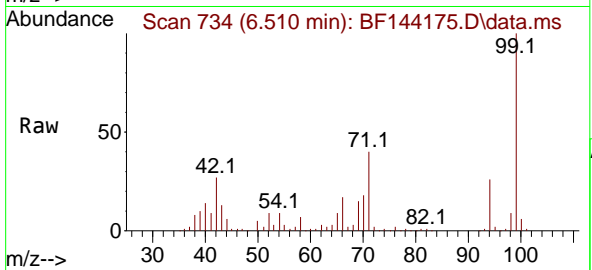




#7
Phenol-d6
Concen: 121.101 ng
RT: 6.510 min Scan# 710
Delta R.T. -0.000 min
Lab File: BF144175.D
Acq: 05 Nov 2025 16:19

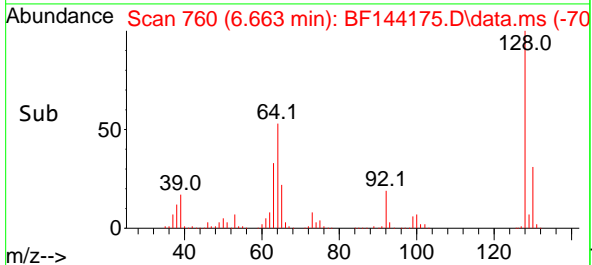
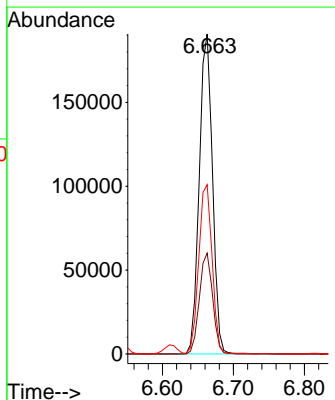
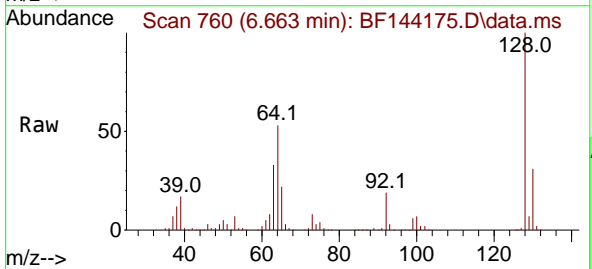
Instrument : BNA_F
ClientSampleId : SSTDICC060

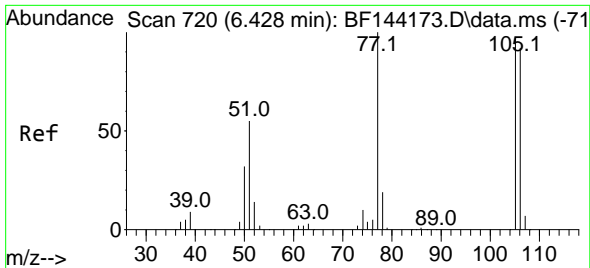
Tgt Ion: 99 Resp: 559443
Ion Ratio Lower Upper
99 100
42 26.8 20.9 31.3
71 40.3 31.4 47.2



#8
2-Chlorophenol
Concen: 61.902 ng
RT: 6.663 min Scan# 760
Delta R.T. -0.000 min
Lab File: BF144175.D
Acq: 05 Nov 2025 16:19

Tgt Ion:128 Resp: 247503
Ion Ratio Lower Upper
128 100
130 31.5 10.5 50.5
64 52.9 33.2 73.2



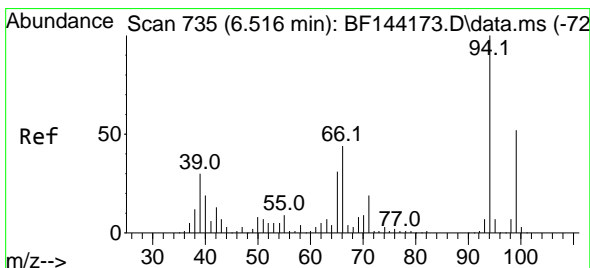
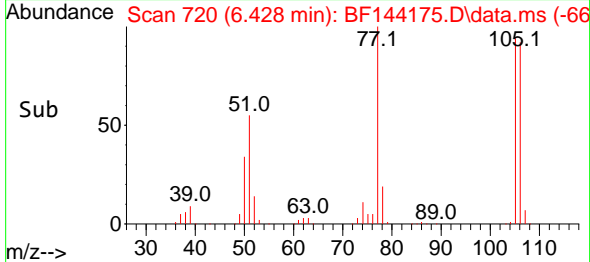
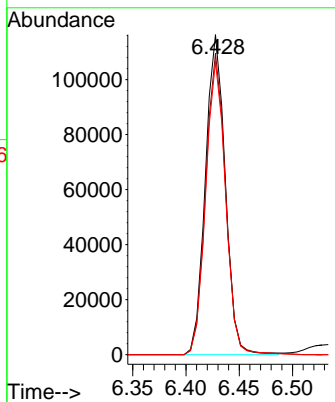
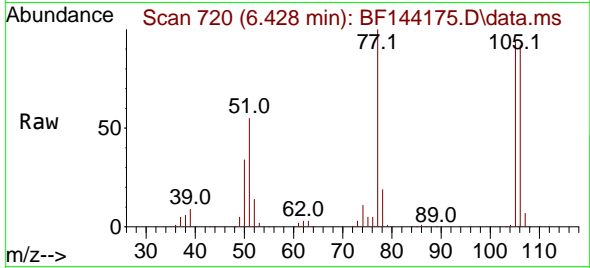


#9
 Benzaldehyde
 Concen: 57.706 ng
 RT: 6.428 min Scan# 71
 Delta R.T. -0.000 min
 Lab File: BF144175.D
 Acq: 05 Nov 2025 16:19

Instrument : BNA_F
 ClientSampleId : SSTDICC060

Tgt Ion: 77 Resp: 150534

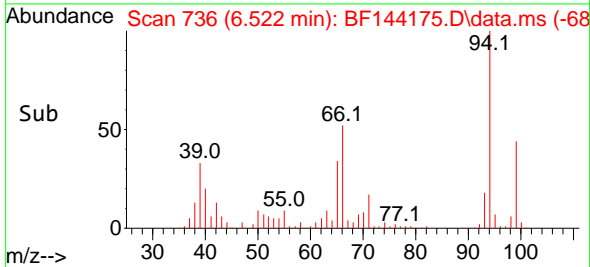
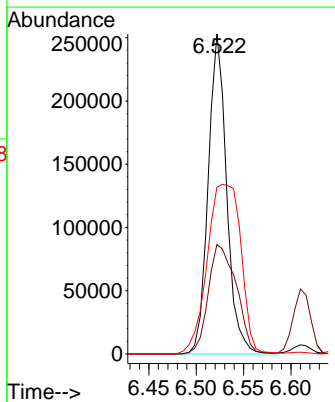
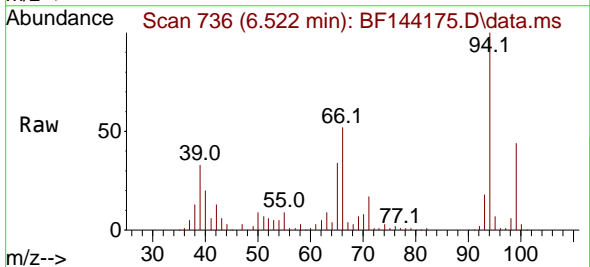
Ion	Ratio	Lower	Upper
77	100		
105	94.2	77.2	117.2
106	91.6	72.2	112.2

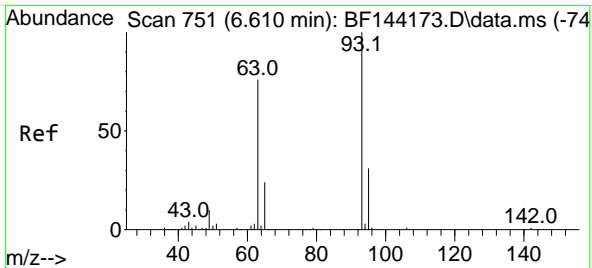


#10
 Phenol
 Concen: 60.707 ng
 RT: 6.522 min Scan# 736
 Delta R.T. -0.006 min
 Lab File: BF144175.D
 Acq: 05 Nov 2025 16:19

Tgt Ion: 94 Resp: 342646

Ion	Ratio	Lower	Upper
94	100		
65	34.2	10.8	50.8
66	52.1	24.3	64.3





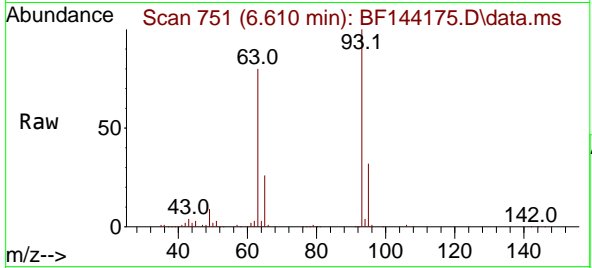
#11
 bis(2-Chloroethyl)ether
 Concen: 62.405 ng
 RT: 6.610 min Scan# 751
 Delta R.T. -0.006 min
 Lab File: BF144175.D
 Acq: 05 Nov 2025 16:19

Instrument :

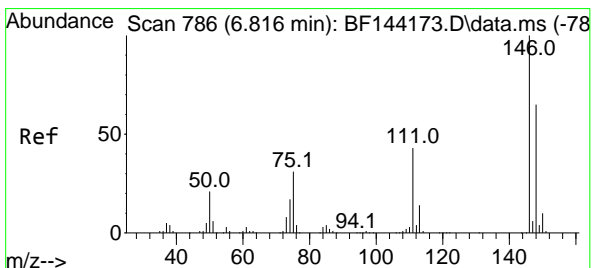
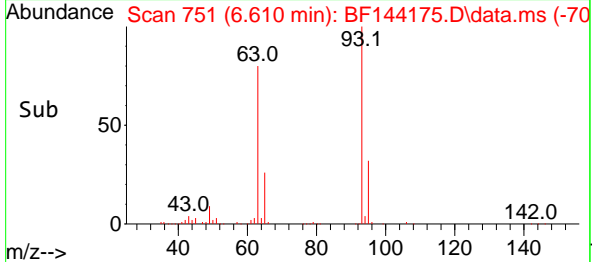
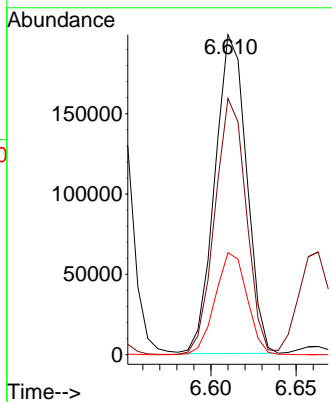
BNA_F

ClientSampleId :

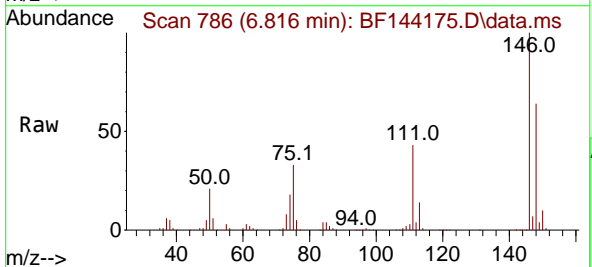
SSTDICC060



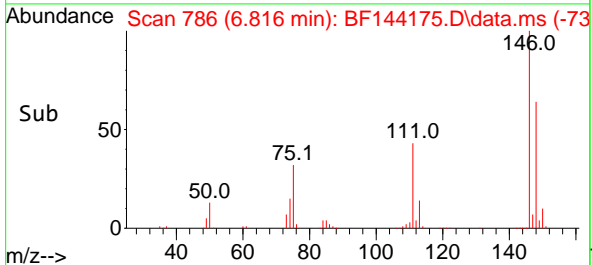
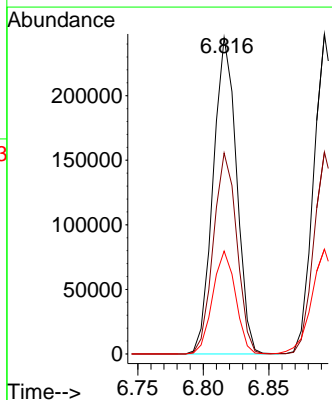
Tgt Ion: 93 Resp: 256657
 Ion Ratio Lower Upper
 93 100
 63 80.1 55.2 95.2
 95 31.9 11.2 51.2

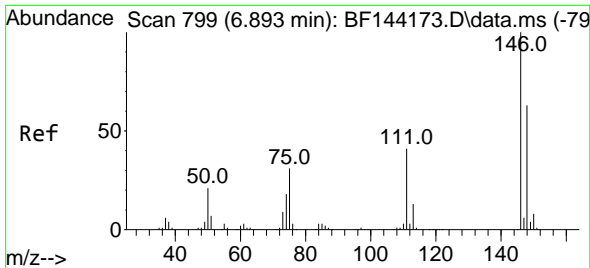


#12
 1,3-Dichlorobenzene
 Concen: 61.543 ng
 RT: 6.816 min Scan# 786
 Delta R.T. -0.000 min
 Lab File: BF144175.D
 Acq: 05 Nov 2025 16:19



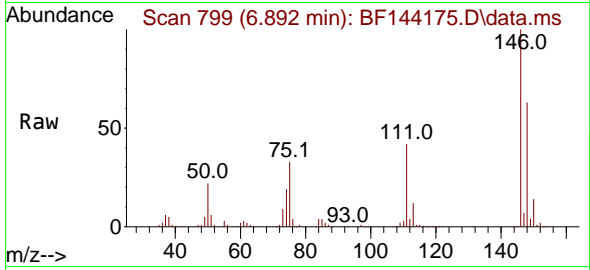
Tgt Ion: 146 Resp: 303642
 Ion Ratio Lower Upper
 146 100
 148 63.5 51.8 77.8
 75 32.6 25.0 37.4



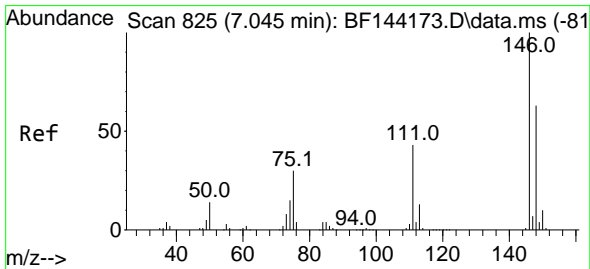
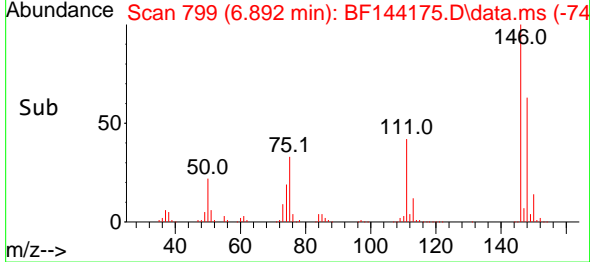
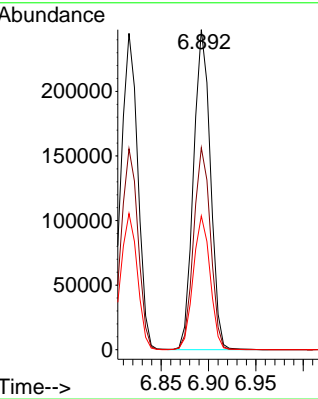


#13
 1,4-Dichlorobenzene
 Concen: 62.104 ng
 RT: 6.892 min Scan# 799
 Delta R.T. -0.000 min
 Lab File: BF144175.D
 Acq: 05 Nov 2025 16:19

Instrument :
 BNA_F
 ClientSampleId :
 SSTDICC060

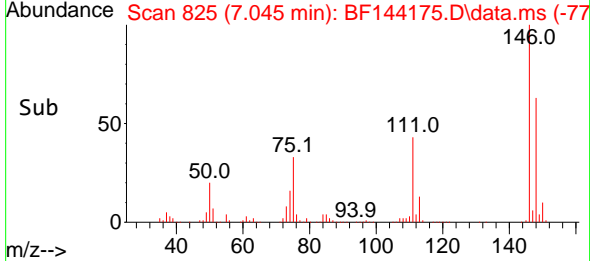
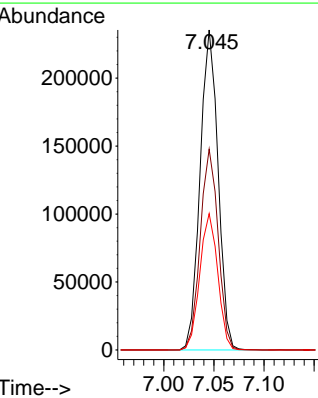
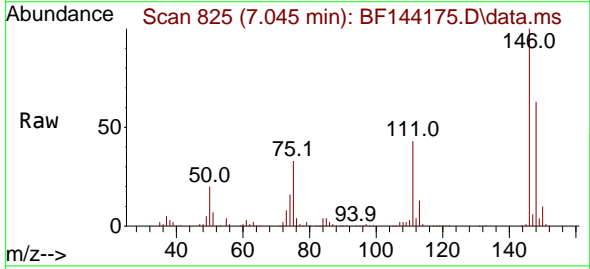


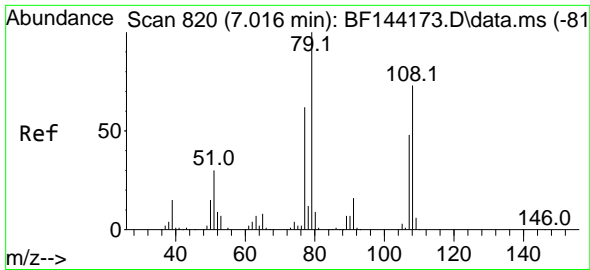
Tgt Ion:146 Resp: 306973
 Ion Ratio Lower Upper
 146 100
 148 63.1 50.2 75.2
 111 41.8 32.6 48.8



#14
 1,2-Dichlorobenzene
 Concen: 61.936 ng
 RT: 7.045 min Scan# 825
 Delta R.T. -0.000 min
 Lab File: BF144175.D
 Acq: 05 Nov 2025 16:19

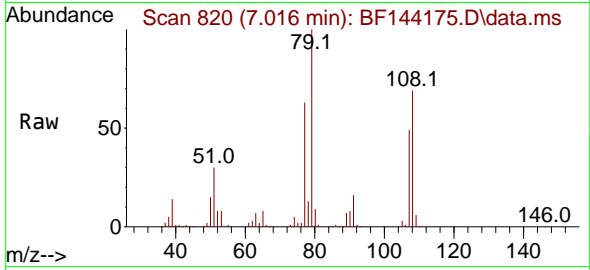
Tgt Ion:146 Resp: 293432
 Ion Ratio Lower Upper
 146 100
 148 62.8 50.7 76.1
 111 42.6 34.2 51.4



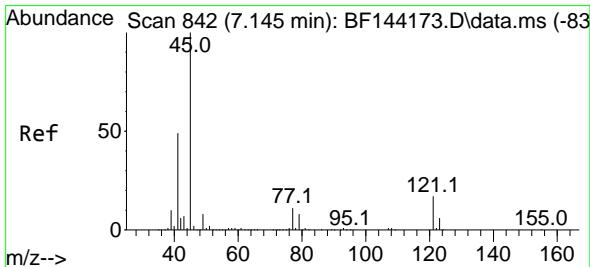
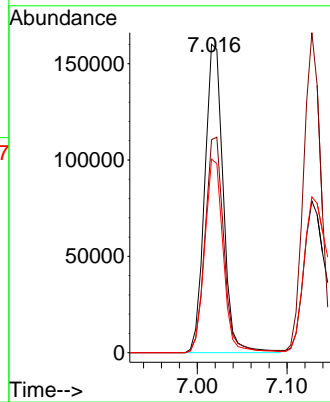
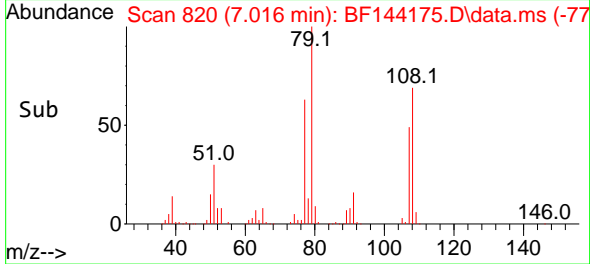


#15
 Benzyl Alcohol
 Concen: 62.632 ng
 RT: 7.016 min Scan# 81
 Delta R.T. -0.006 min
 Lab File: BF144175.D
 Acq: 05 Nov 2025 16:19

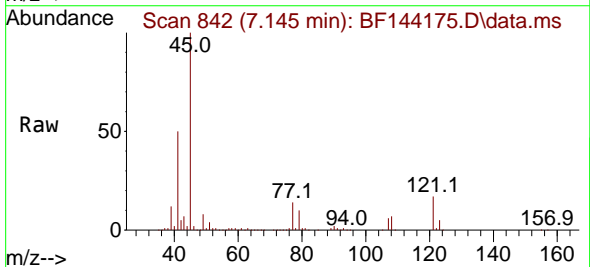
Instrument :
 BNA_F
 ClientSampleId :
 SSTDICC060



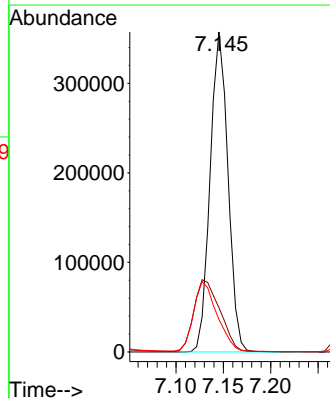
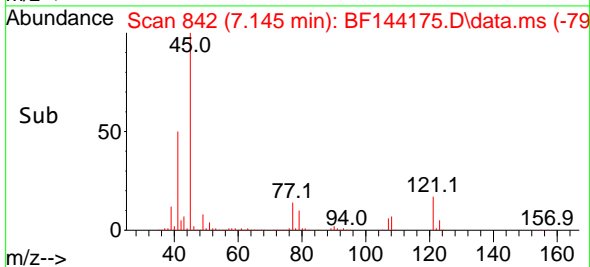
Tgt Ion: 79 Resp: 229107
 Ion Ratio Lower Upper
 79 100
 108 69.0 58.2 87.4
 77 62.8 49.9 74.9

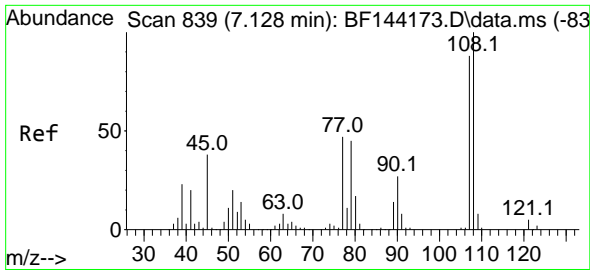


#16
 2,2'-oxybis(1-Chloropropane)
 Concen: 61.712 ng
 RT: 7.145 min Scan# 842
 Delta R.T. -0.000 min
 Lab File: BF144175.D
 Acq: 05 Nov 2025 16:19



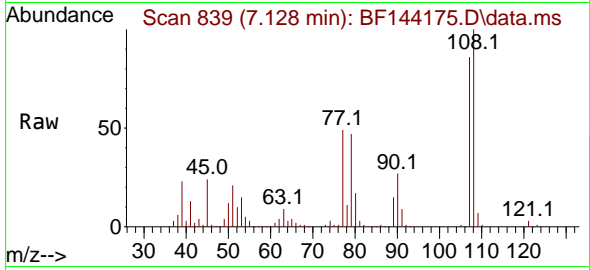
Tgt Ion: 45 Resp: 467387
 Ion Ratio Lower Upper
 45 100
 77 13.9 0.0 31.8
 79 10.2 0.0 29.1





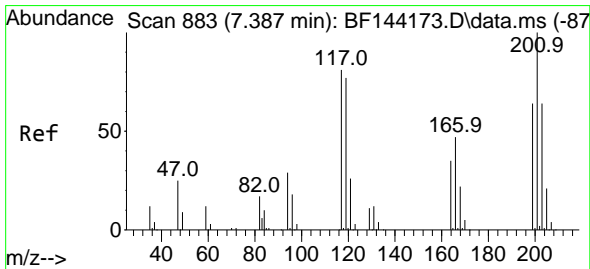
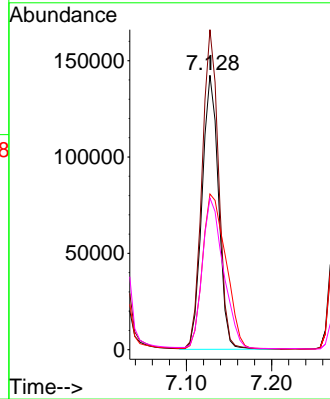
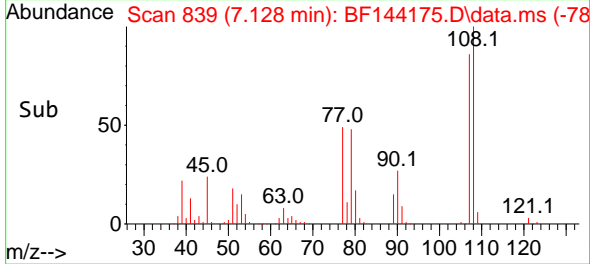
#17
 2-Methylphenol
 Concen: 60.269 ng
 RT: 7.128 min Scan# 811
 Delta R.T. -0.000 min
 Lab File: BF144175.D
 Acq: 05 Nov 2025 16:19

Instrument :
 BNA_F
 ClientSampleId :
 SSTDICC060

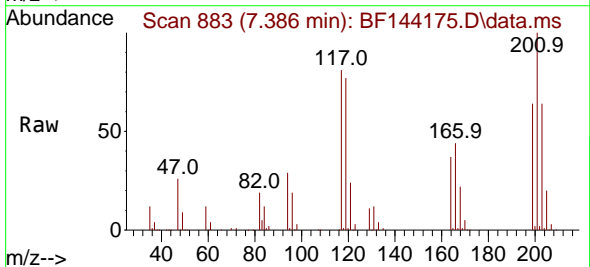


Tgt Ion:107 Resp: 191705

Ion	Ratio	Lower	Upper
107	100		
108	116.6	91.0	136.4
77	56.7	42.7	64.1
79	55.3	41.4	62.2

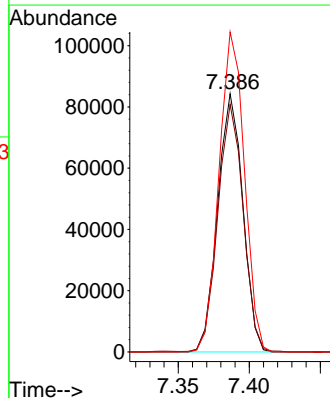
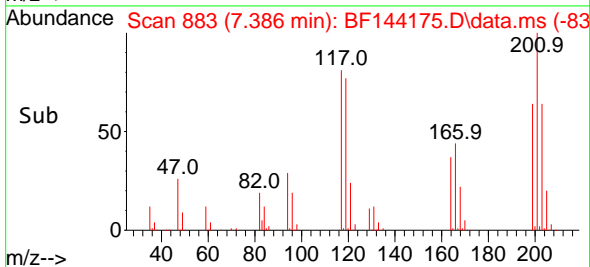


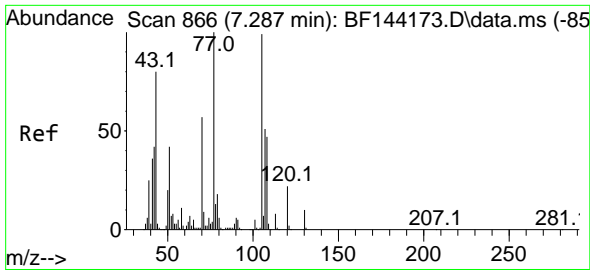
#18
 Hexachloroethane
 Concen: 63.308 ng
 RT: 7.386 min Scan# 883
 Delta R.T. -0.000 min
 Lab File: BF144175.D
 Acq: 05 Nov 2025 16:19



Tgt Ion:117 Resp: 103964

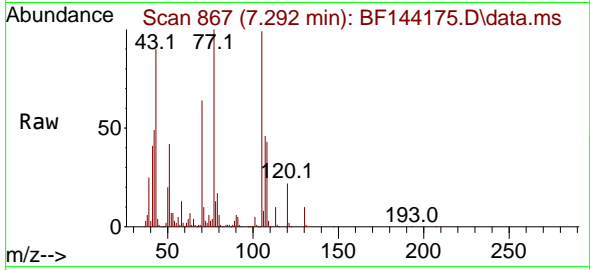
Ion	Ratio	Lower	Upper
117	100		
119	95.9	75.8	113.8
201	123.9	98.9	148.3



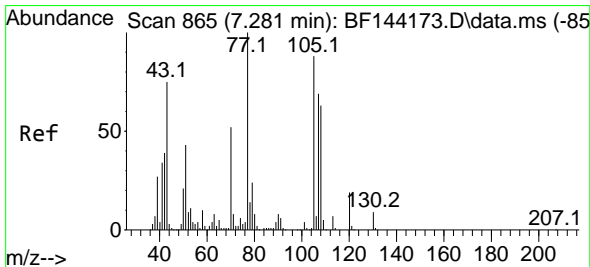
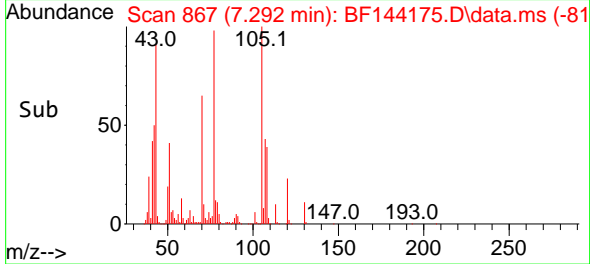
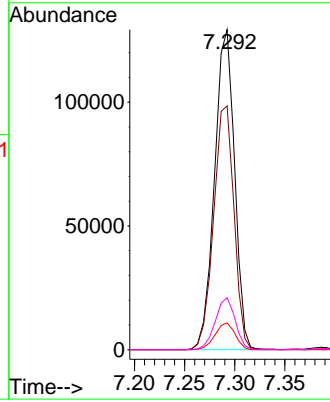


#19
 n-Nitroso-di-n-propylamine
 Concen: 58.963 ng
 RT: 7.292 min Scan# 80
 Delta R.T. -0.006 min
 Lab File: BF144175.D
 Acq: 05 Nov 2025 16:19

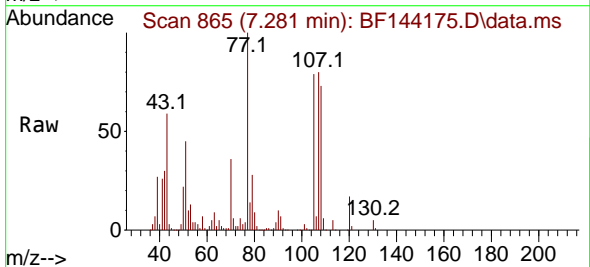
Instrument :
 BNA_F
 ClientSampleId :
 SSTDICC060



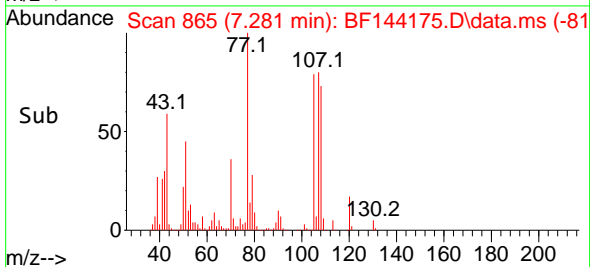
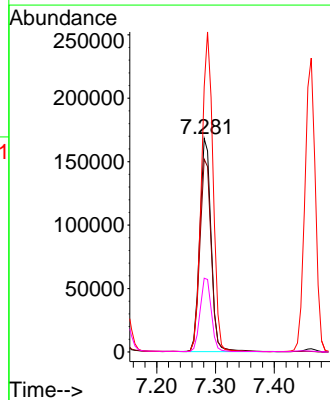
Tgt Ion: 70 Resp: 179314
 Ion Ratio Lower Upper
 70 100
 42 76.2 58.3 87.5
 101 8.4 7.0 10.6
 130 16.3 14.4 21.6

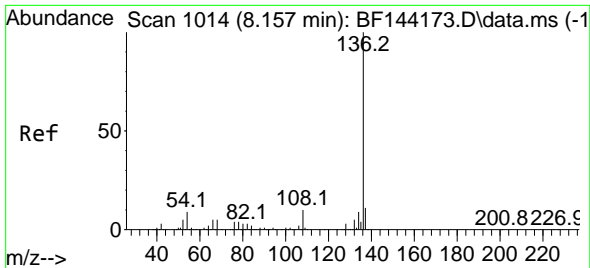


#20
 3+4-Methylphenols
 Concen: 59.977 ng
 RT: 7.281 min Scan# 865
 Delta R.T. -0.006 min
 Lab File: BF144175.D
 Acq: 05 Nov 2025 16:19



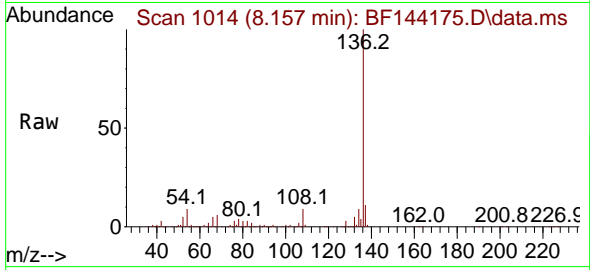
Tgt Ion: 107 Resp: 224891
 Ion Ratio Lower Upper
 107 100
 108 90.4 70.2 110.2
 77 124.2 123.9 163.9
 79 34.6 14.2 54.2





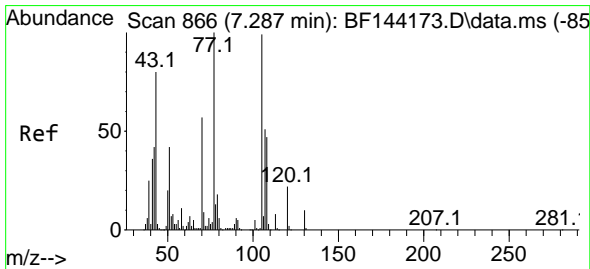
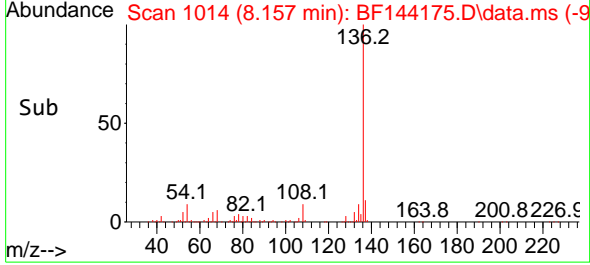
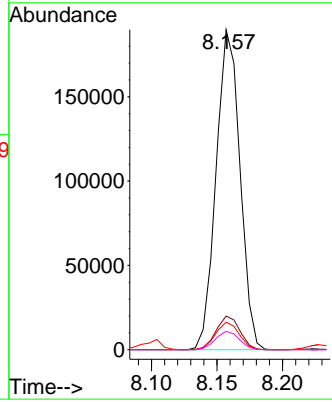
#21
 Naphthalene-d8
 Concen: 20.000 ng
 RT: 8.157 min Scan# 1014
 Delta R.T. -0.006 min
 Lab File: BF144175.D
 Acq: 05 Nov 2025 16:19

Instrument : BNA_F
 ClientSampleId : SSTDICC060

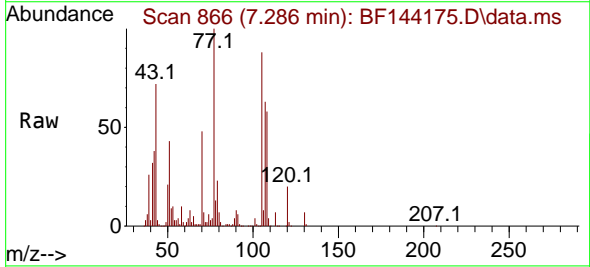


Tgt Ion:136 Resp: 239743

Ion	Ratio	Lower	Upper
136	100		
137	10.5	8.6	13.0
54	8.6	7.0	10.6
68	5.8	4.3	6.5

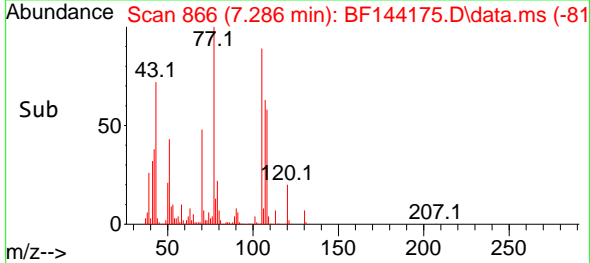
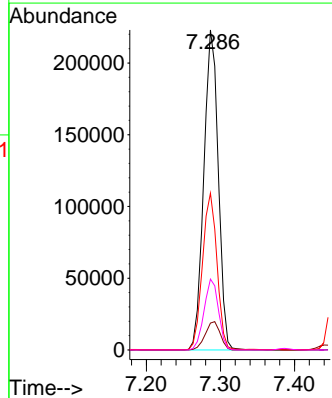


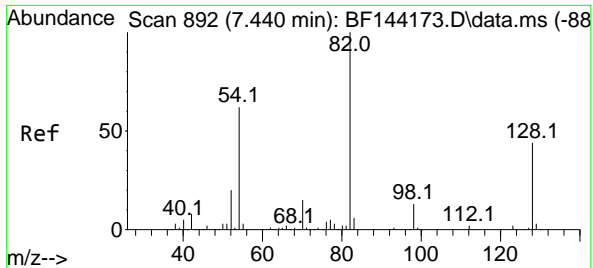
#22
 Acetophenone
 Concen: 58.897 ng
 RT: 7.286 min Scan# 866
 Delta R.T. -0.006 min
 Lab File: BF144175.D
 Acq: 05 Nov 2025 16:19



Tgt Ion:105 Resp: 302907

Ion	Ratio	Lower	Upper
105	100		
71	8.4	7.2	10.8
51	49.0	34.0	51.0
120	22.2	17.8	26.6

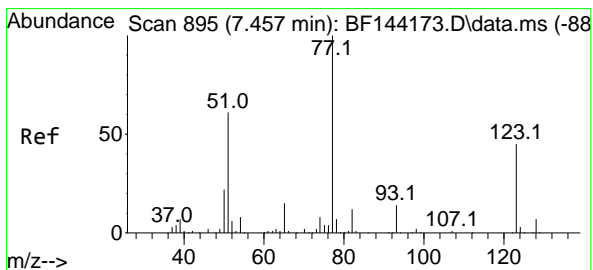
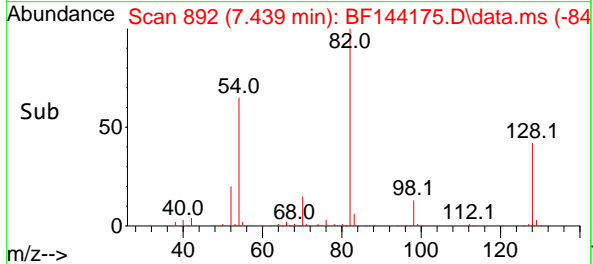
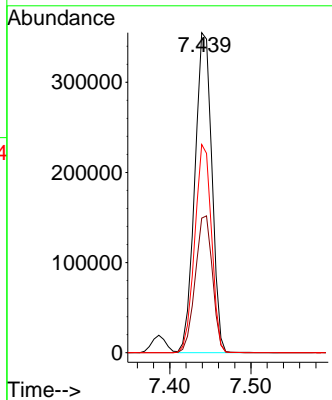
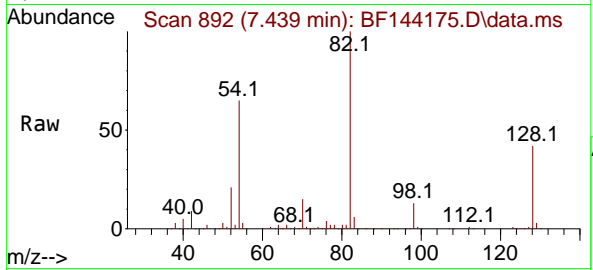




#23
 Nitrobenzene-d5
 Concen: 125.195 ng
 RT: 7.439 min Scan# 891
 Delta R.T. -0.006 min
 Lab File: BF144175.D
 Acq: 05 Nov 2025 16:19

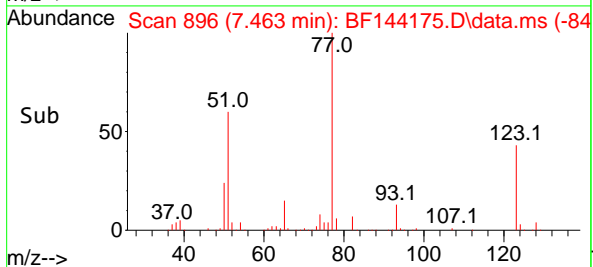
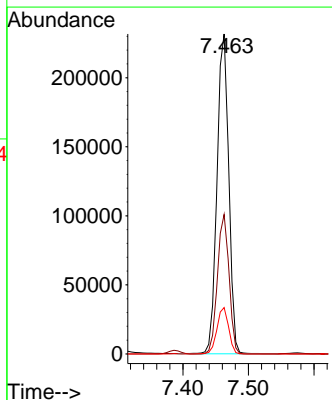
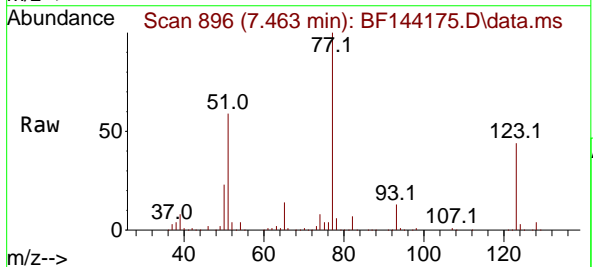
Instrument :
 BNA_F
 ClientSampleId :
 SSTDICC060

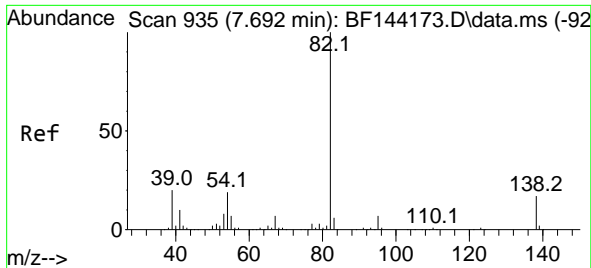
Tgt Ion: 82 Resp: 519687
 Ion Ratio Lower Upper
 82 100
 128 42.0 34.7 52.1
 54 65.1 49.5 74.3



#24
 Nitrobenzene
 Concen: 63.439 ng
 RT: 7.463 min Scan# 896
 Delta R.T. -0.000 min
 Lab File: BF144175.D
 Acq: 05 Nov 2025 16:19

Tgt Ion: 77 Resp: 285924
 Ion Ratio Lower Upper
 77 100
 123 43.6 35.8 53.8
 65 14.5 12.2 18.2



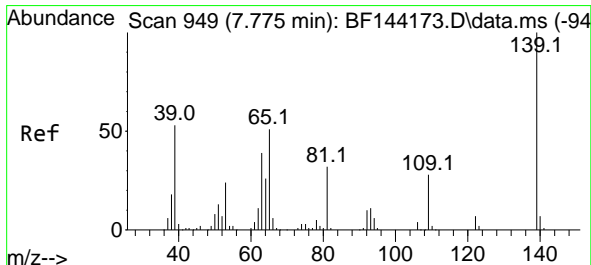
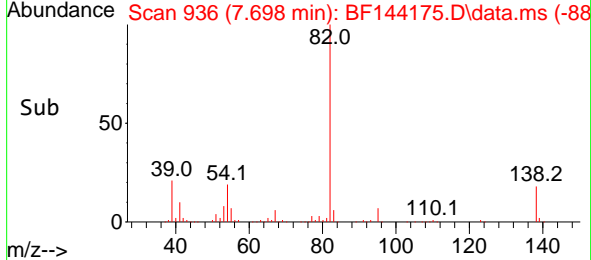
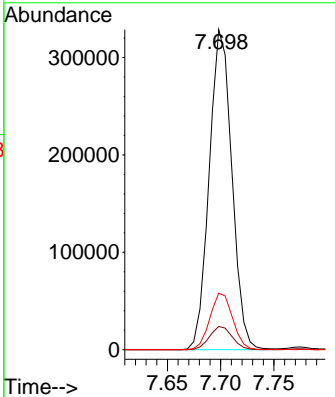
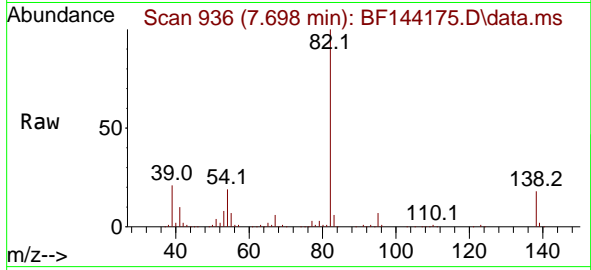


#25
 Isophorone
 Concen: 61.876 ng
 RT: 7.698 min Scan# 913
 Delta R.T. -0.006 min
 Lab File: BF144175.D
 Acq: 05 Nov 2025 16:19

Instrument : BNA_F
 ClientSampleId : SSTDICC060

Tgt Ion: 82 Resp: 485836

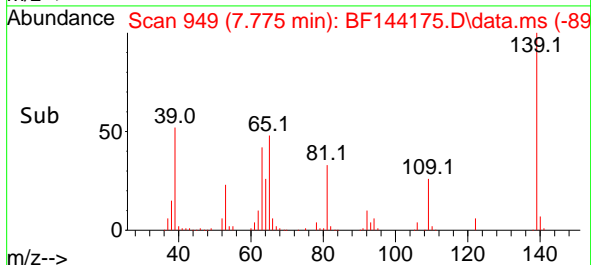
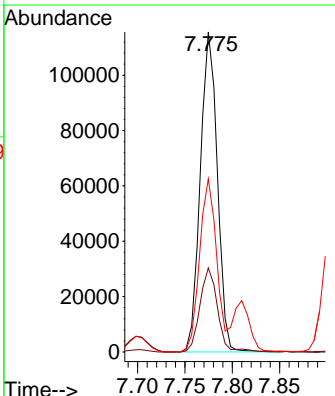
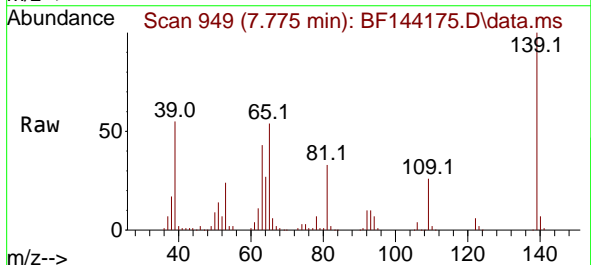
Ion	Ratio	Lower	Upper
82	100		
95	7.3	5.5	8.3
138	17.7	13.7	20.5

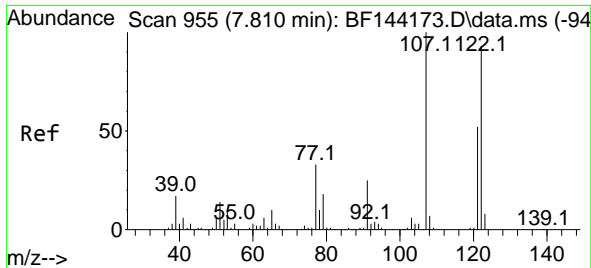


#26
 2-Nitrophenol
 Concen: 64.606 ng
 RT: 7.775 min Scan# 949
 Delta R.T. -0.000 min
 Lab File: BF144175.D
 Acq: 05 Nov 2025 16:19

Tgt Ion: 139 Resp: 144140

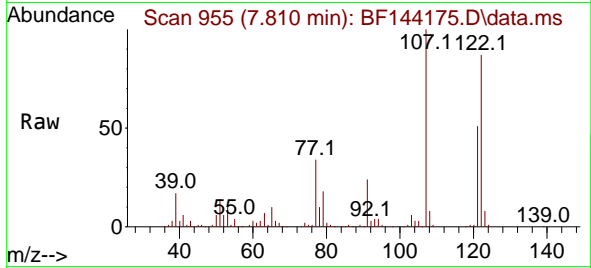
Ion	Ratio	Lower	Upper
139	100		
109	26.2	22.2	33.2
65	54.1	40.7	61.1



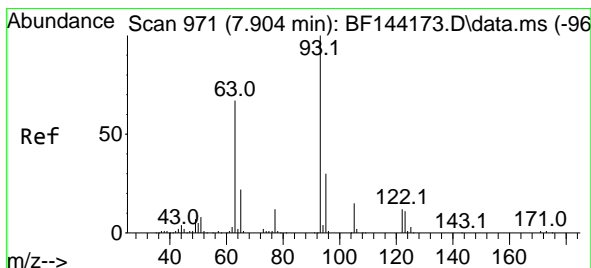
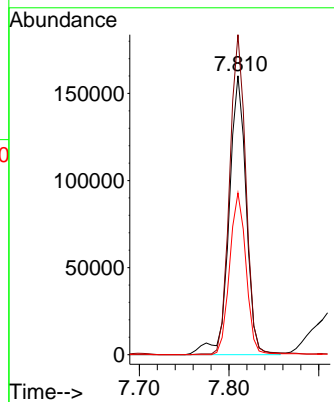
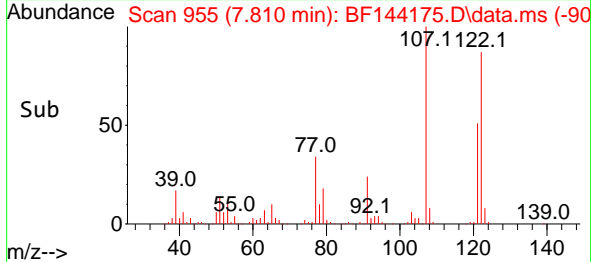


#27
 2,4-Dimethylphenol
 Concen: 63.471 ng
 RT: 7.810 min Scan# 911
 Delta R.T. -0.006 min
 Lab File: BF144175.D
 Acq: 05 Nov 2025 16:19

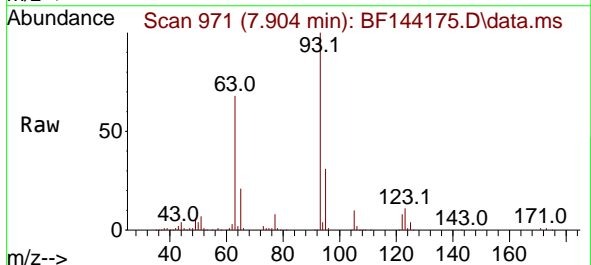
Instrument : BNA_F
 ClientSampleId : SSTDICC060



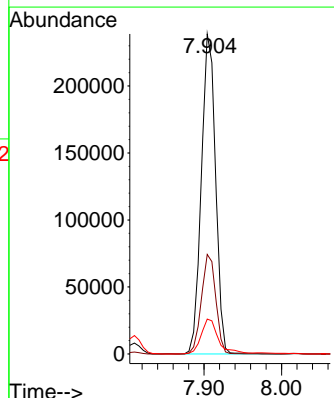
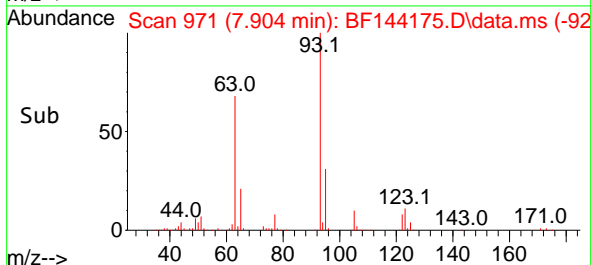
Tgt Ion:122 Resp: 212249
 Ion Ratio Lower Upper
 122 100
 107 114.7 86.2 129.4
 121 58.0 44.6 66.8

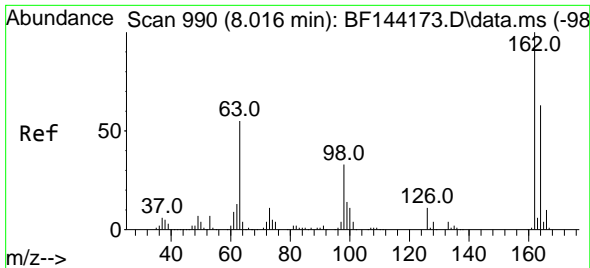


#28
 bis(2-Chloroethoxy)methane
 Concen: 62.085 ng
 RT: 7.904 min Scan# 971
 Delta R.T. -0.006 min
 Lab File: BF144175.D
 Acq: 05 Nov 2025 16:19



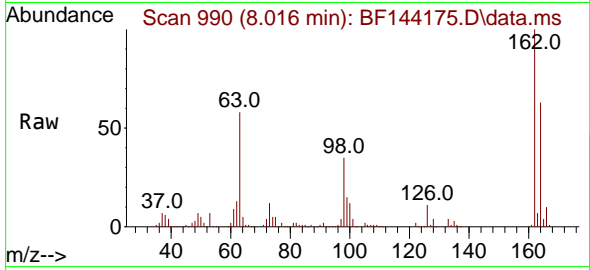
Tgt Ion: 93 Resp: 304411
 Ion Ratio Lower Upper
 93 100
 95 31.1 24.2 36.4
 123 10.9 9.0 13.4



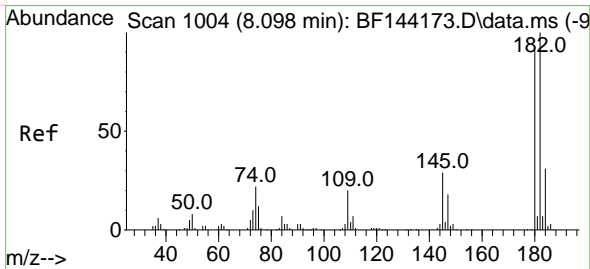
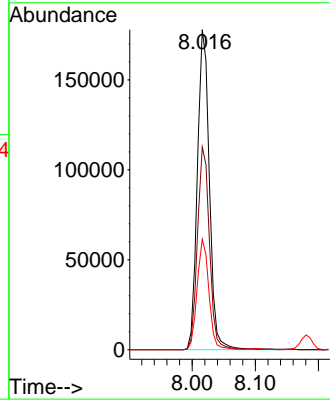
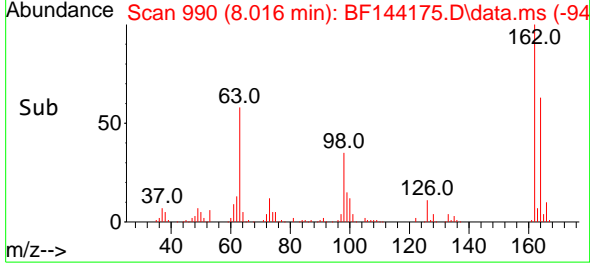


#29
 2,4-Dichlorophenol
 Concen: 60.899 ng
 RT: 8.016 min Scan# 990
 Delta R.T. -0.006 min
 Lab File: BF144175.D
 Acq: 05 Nov 2025 16:19

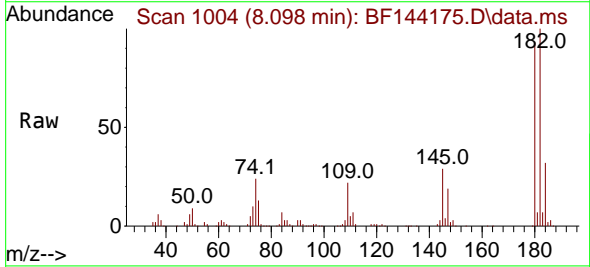
Instrument :
 BNA_F
 ClientSampleId :
 SSTDICC060



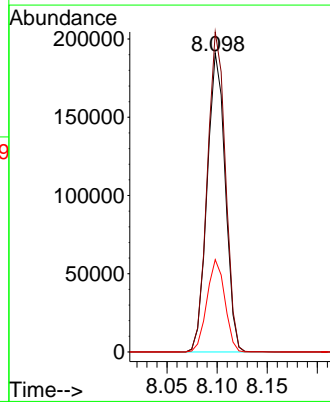
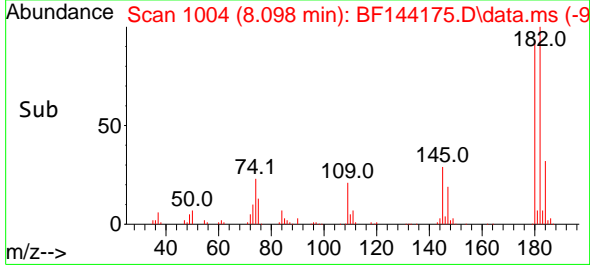
Tgt Ion:162 Resp: 234718
 Ion Ratio Lower Upper
 162 100
 164 63.3 42.9 82.9
 98 34.5 13.3 53.3

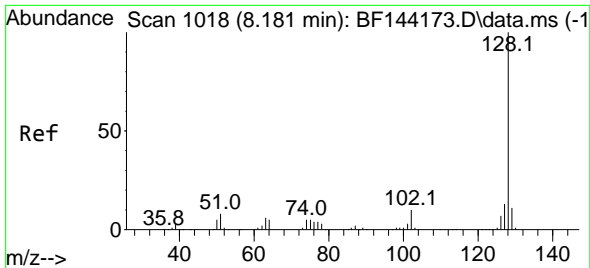


#30
 1,2,4-Trichlorobenzene
 Concen: 60.858 ng
 RT: 8.098 min Scan# 1004
 Delta R.T. -0.000 min
 Lab File: BF144175.D
 Acq: 05 Nov 2025 16:19



Tgt Ion:180 Resp: 240858
 Ion Ratio Lower Upper
 180 100
 182 107.0 87.7 131.5
 145 30.9 25.4 38.0

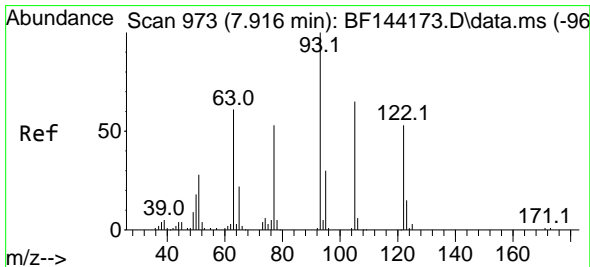
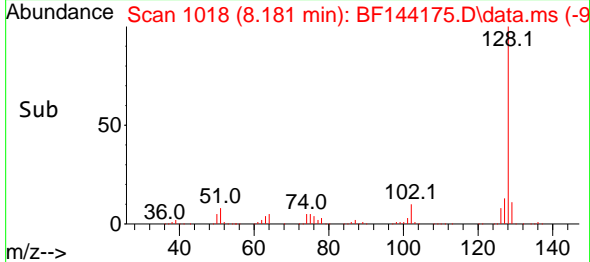
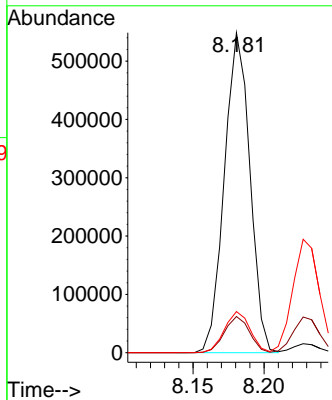
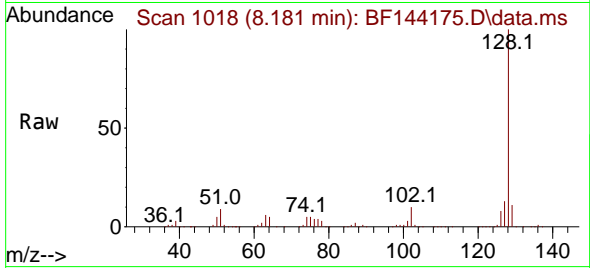




#31
 Naphthalene
 Concen: 60.028 ng
 RT: 8.181 min Scan# 1018
 Delta R.T. -0.006 min
 Lab File: BF144175.D
 Acq: 05 Nov 2025 16:19

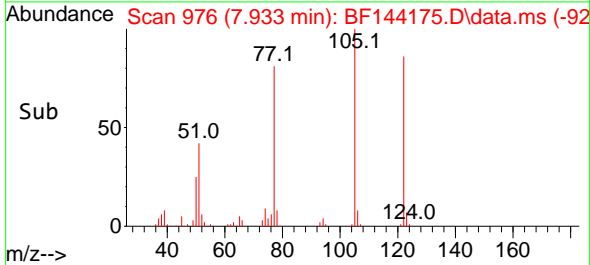
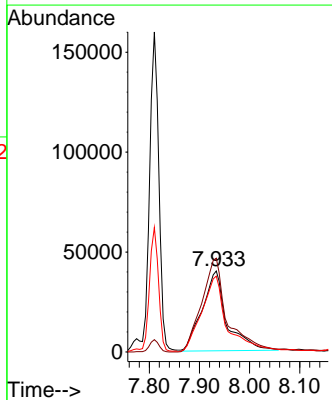
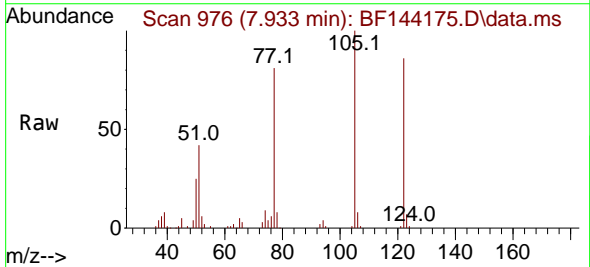
Instrument : BNA_F
 ClientSampleId : SSTDICC060

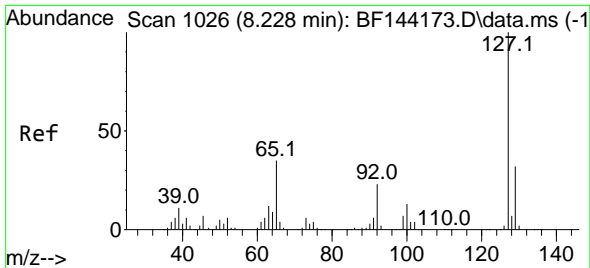
Tgt Ion:128 Resp: 684579
 Ion Ratio Lower Upper
 128 100
 129 11.3 8.9 13.3
 127 12.9 10.3 15.5



#32
 Benzoic acid
 Concen: 55.761 ng
 RT: 7.933 min Scan# 976
 Delta R.T. -0.018 min
 Lab File: BF144175.D
 Acq: 05 Nov 2025 16:19

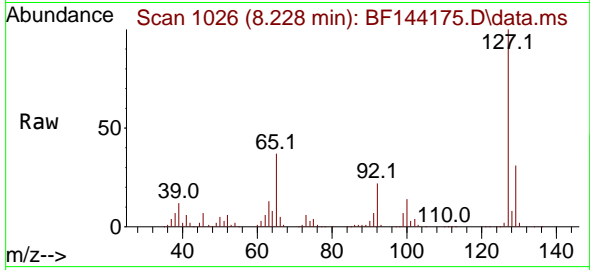
Tgt Ion:122 Resp: 136682
 Ion Ratio Lower Upper
 122 100
 105 115.8 99.9 139.9
 77 93.8 77.5 117.5





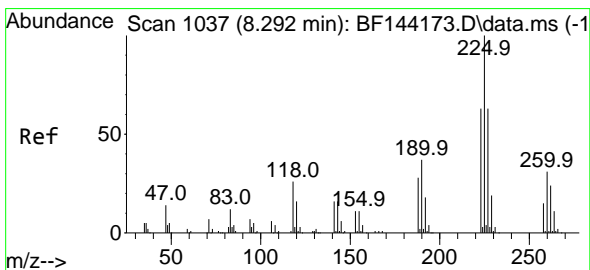
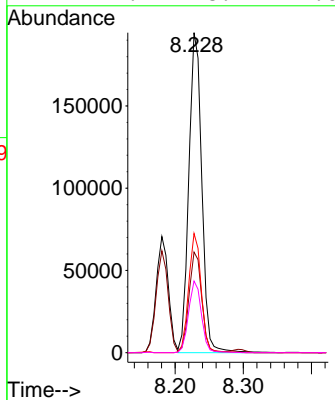
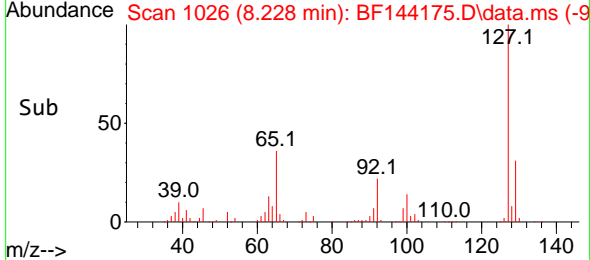
#33
 4-Chloroaniline
 Concen: 61.441 ng
 RT: 8.228 min Scan# 1026
 Delta R.T. -0.006 min
 Lab File: BF144175.D
 Acq: 05 Nov 2025 16:19

Instrument : BNA_F
 ClientSampleId : SSTDICC060

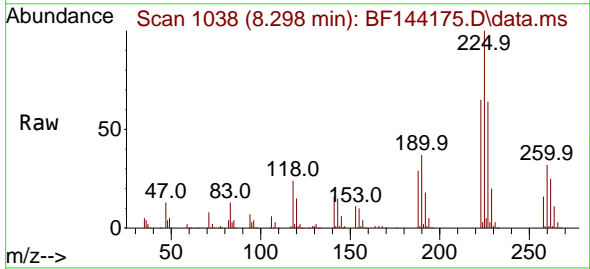


Tgt Ion:127 Resp: 255554

Ion	Ratio	Lower	Upper
127	100		
129	31.5	25.3	37.9
65	37.2	27.6	41.4
92	22.4	18.4	27.6

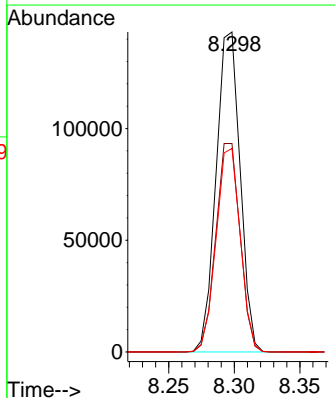
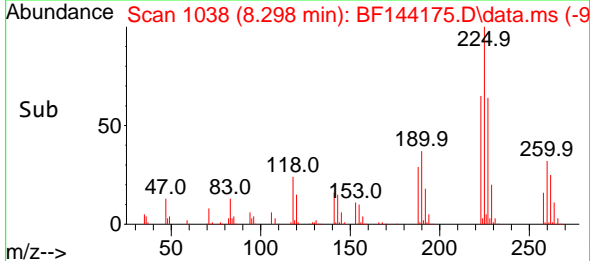


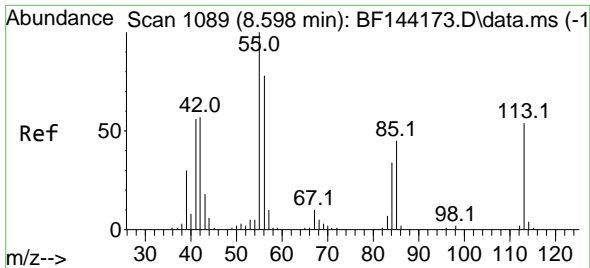
#34
 Hexachlorobutadiene
 Concen: 61.229 ng
 RT: 8.298 min Scan# 1038
 Delta R.T. -0.000 min
 Lab File: BF144175.D
 Acq: 05 Nov 2025 16:19



Tgt Ion:225 Resp: 182626

Ion	Ratio	Lower	Upper
225	100		
223	65.2	50.2	75.4
227	63.6	50.1	75.1



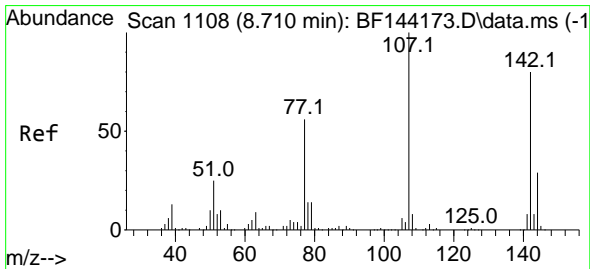
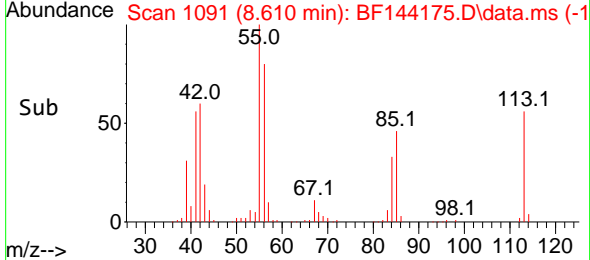
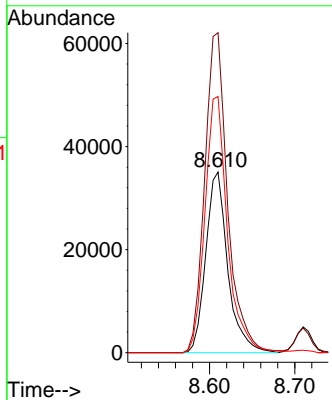
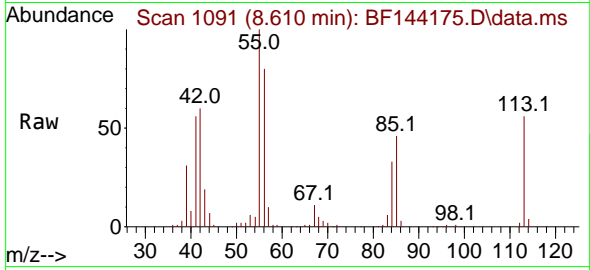


#35
 Caprolactam
 Concen: 59.512 ng
 RT: 8.610 min Scan# 1091
 Delta R.T. -0.012 min
 Lab File: BF144175.D
 Acq: 05 Nov 2025 16:19

Instrument : BNA_F
 ClientSampleId : SSTDICC060

Tgt Ion:113 Resp: 62840

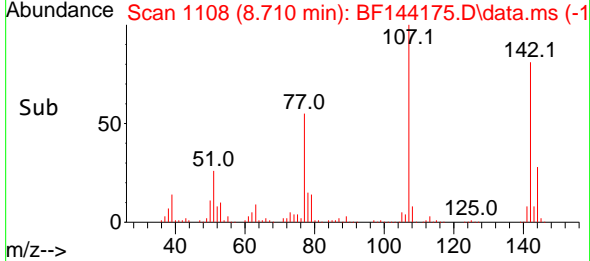
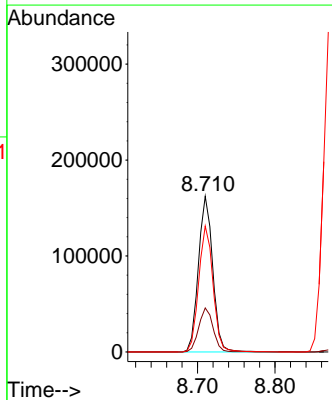
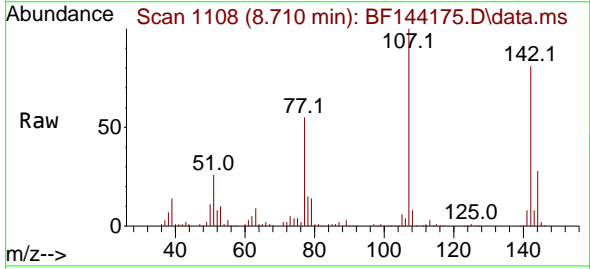
Ion	Ratio	Lower	Upper
113	100		
55	177.2	166.8	206.8
56	141.8	125.9	165.9

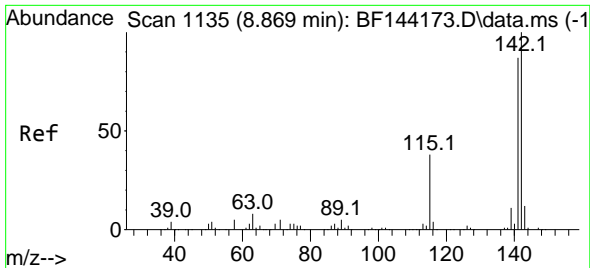


#36
 4-Chloro-3-methylphenol
 Concen: 60.481 ng
 RT: 8.710 min Scan# 1108
 Delta R.T. -0.006 min
 Lab File: BF144175.D
 Acq: 05 Nov 2025 16:19

Tgt Ion:107 Resp: 208910

Ion	Ratio	Lower	Upper
107	100		
144	28.2	23.3	34.9
142	80.8	63.8	95.6

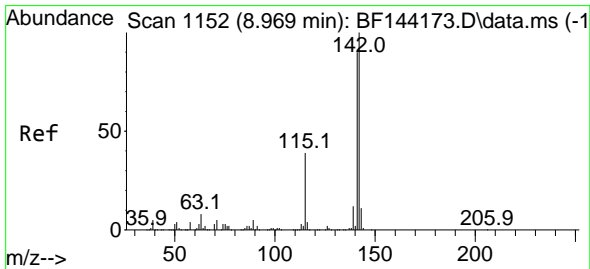
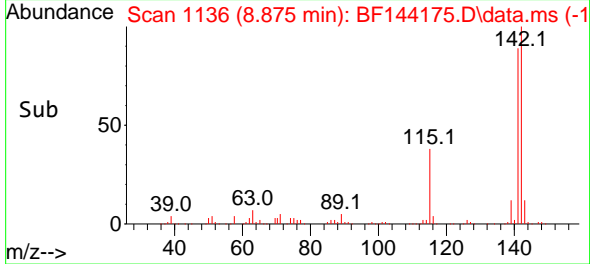
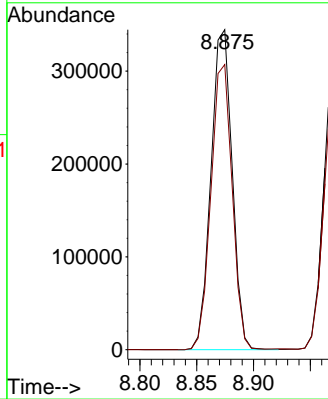
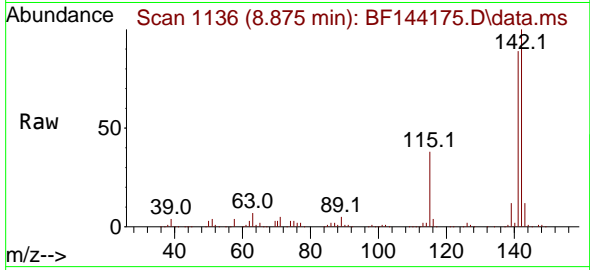




#37
 2-Methylnaphthalene
 Concen: 58.743 ng
 RT: 8.875 min Scan# 1136
 Delta R.T. -0.000 min
 Lab File: BF144175.D
 Acq: 05 Nov 2025 16:19

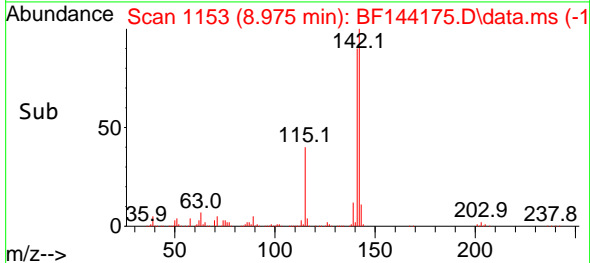
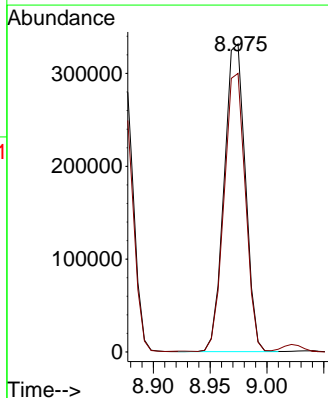
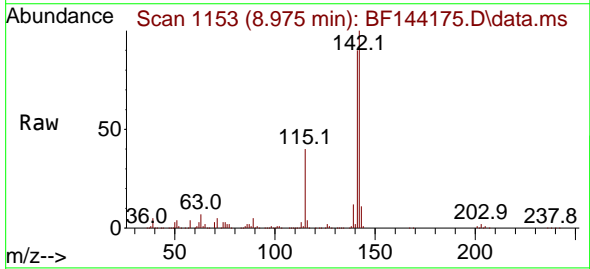
Instrument : BNA_F
 ClientSampleId : SSTDICC060

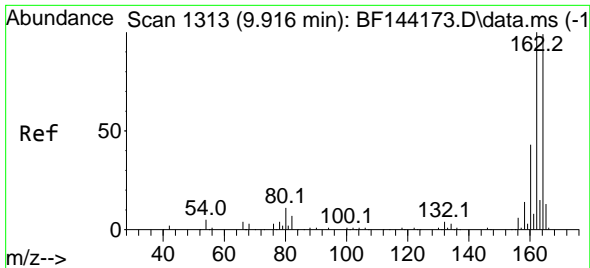
Tgt Ion:142 Resp: 447909
 Ion Ratio Lower Upper
 142 100
 141 89.1 69.9 104.9



#38
 1-Methylnaphthalene
 Concen: 58.654 ng
 RT: 8.975 min Scan# 1153
 Delta R.T. -0.000 min
 Lab File: BF144175.D
 Acq: 05 Nov 2025 16:19

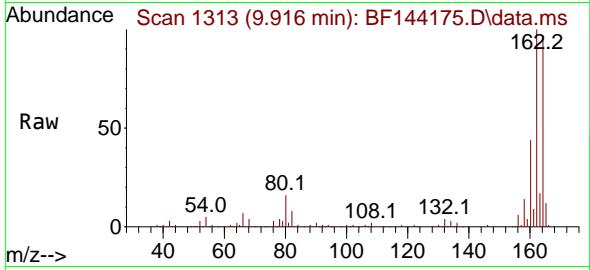
Tgt Ion:142 Resp: 431529
 Ion Ratio Lower Upper
 142 100
 141 90.4 72.1 108.1





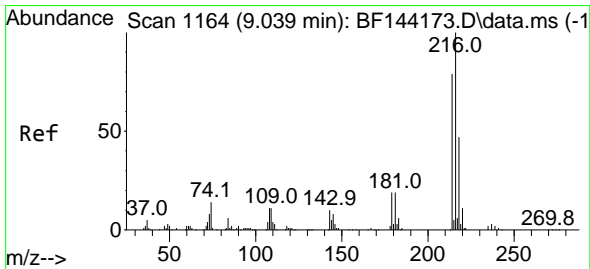
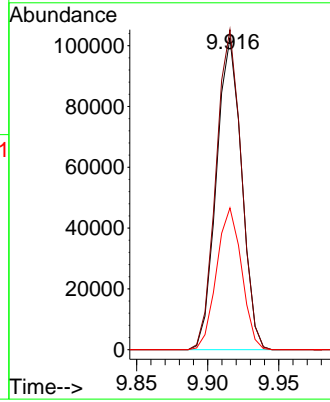
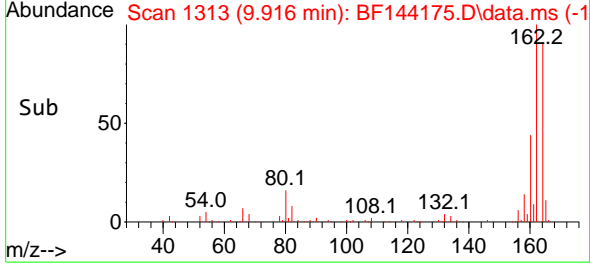
#39
 Acenaphthene-d10
 Concen: 20.000 ng
 RT: 9.916 min Scan# 1113
 Delta R.T. -0.000 min
 Lab File: BF144175.D
 Acq: 05 Nov 2025 16:19

Instrument : BNA_F
 Client Sample Id : BF144175.D
 SSTDICC060

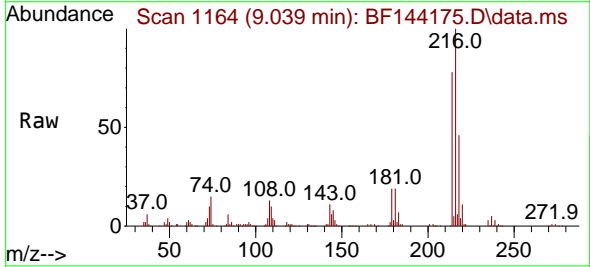


Tgt Ion:164 Resp: 126385

Ion	Ratio	Lower	Upper
164	100		
162	102.6	81.1	121.7
160	45.5	34.5	51.7

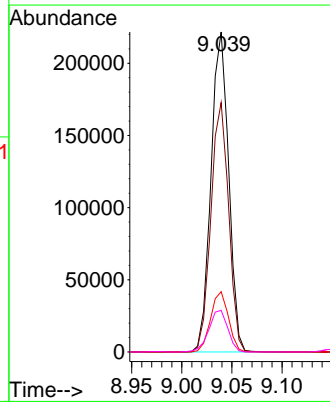
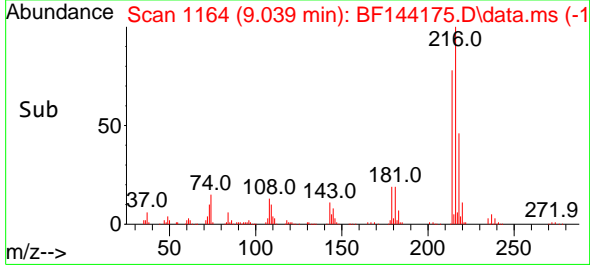


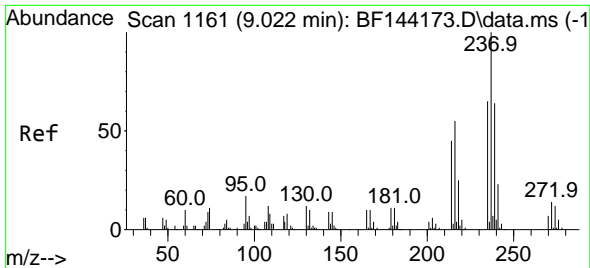
#40
 1,2,4,5-Tetrachlorobenzene
 Concen: 65.549 ng
 RT: 9.039 min Scan# 1164
 Delta R.T. -0.000 min
 Lab File: BF144175.D
 Acq: 05 Nov 2025 16:19



Tgt Ion:216 Resp: 271508

Ion	Ratio	Lower	Upper
216	100		
214	78.2	63.4	95.2
179	19.0	15.0	22.4
108	14.0	10.5	15.7





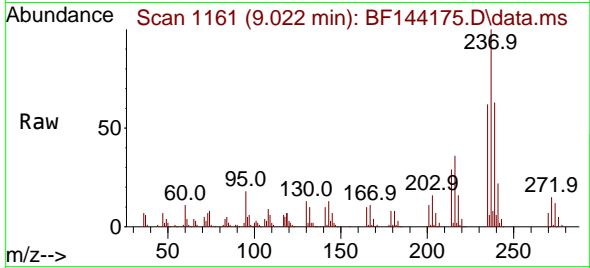
#41
 Hexachlorocyclopentadiene
 Concen: 64.419 ng
 RT: 9.022 min Scan# 11161
 Delta R.T. -0.006 min
 Lab File: BF144175.D
 Acq: 05 Nov 2025 16:19

Instrument :

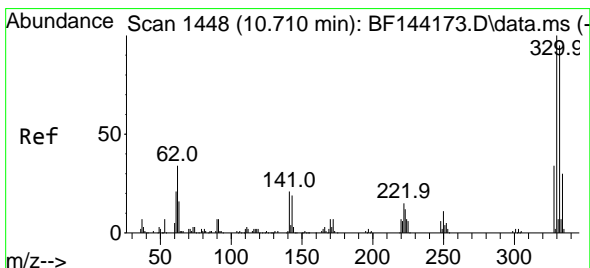
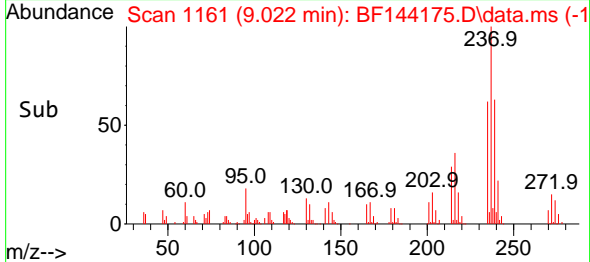
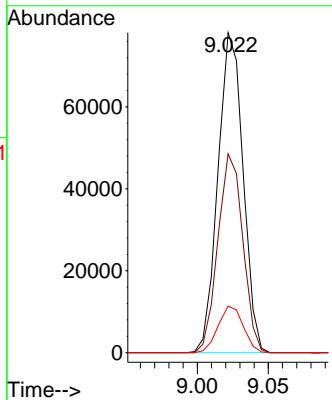
BNA_F

ClientSampleId :

SSTDIC060

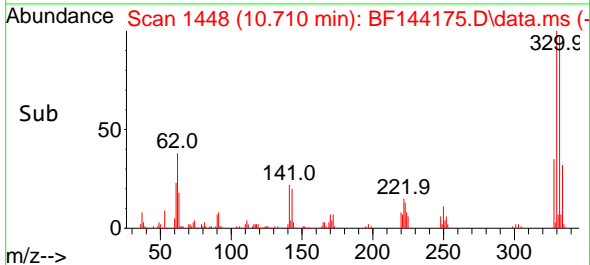
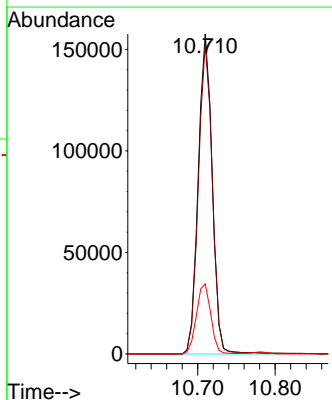
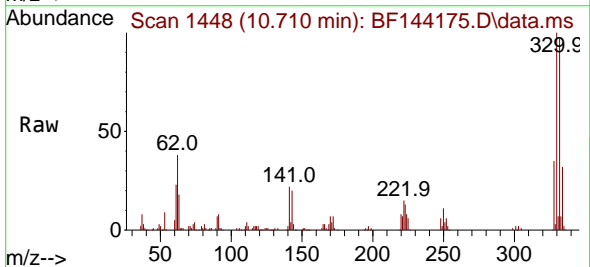


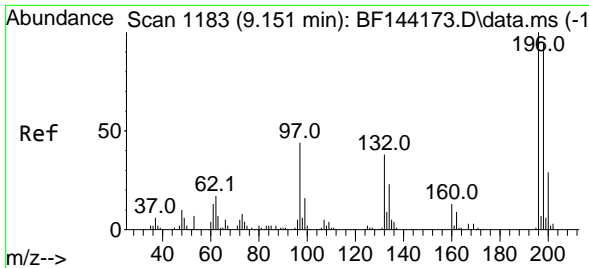
Tgt Ion:237 Resp: 95909
 Ion Ratio Lower Upper
 237 100
 235 62.2 45.5 85.5
 272 14.5 0.0 33.5



#42
 2,4,6-Tribromophenol
 Concen: 124.986 ng
 RT: 10.710 min Scan# 1448
 Delta R.T. -0.006 min
 Lab File: BF144175.D
 Acq: 05 Nov 2025 16:19

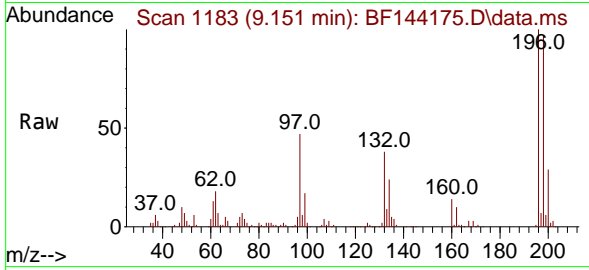
Tgt Ion:330 Resp: 198226
 Ion Ratio Lower Upper
 330 100
 332 96.6 76.7 115.1
 141 22.5 17.8 26.8



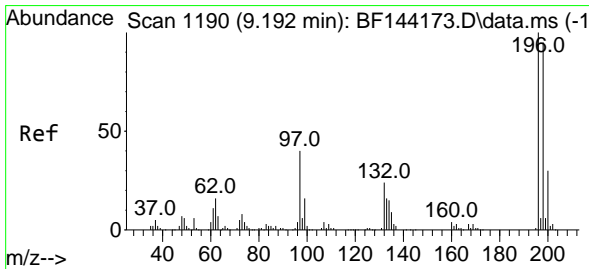
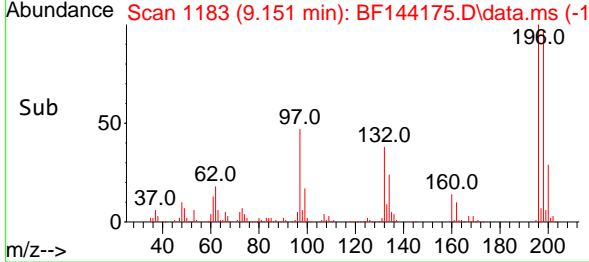
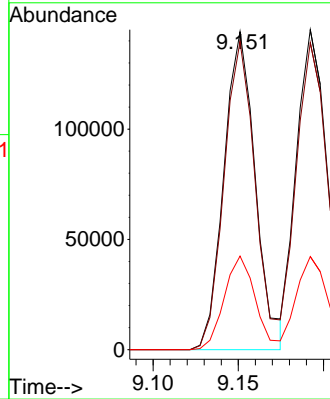


#43
 2,4,6-Trichlorophenol
 Concen: 65.769 ng
 RT: 9.151 min Scan# 1183
 Delta R.T. -0.000 min
 Lab File: BF144175.D
 Acq: 05 Nov 2025 16:19

Instrument : BNA_F
 ClientSampleId : SSTDICC060

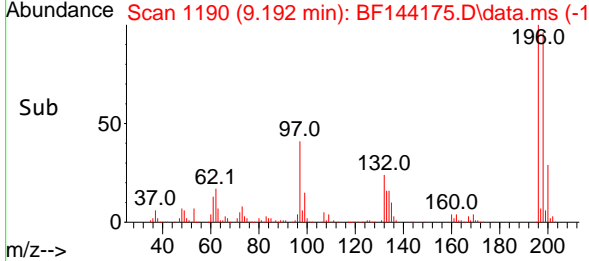
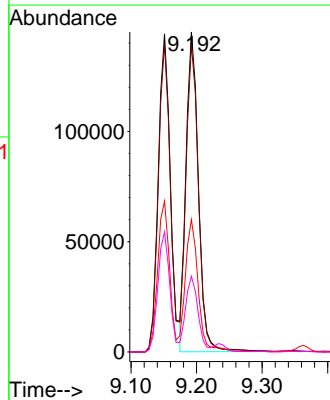
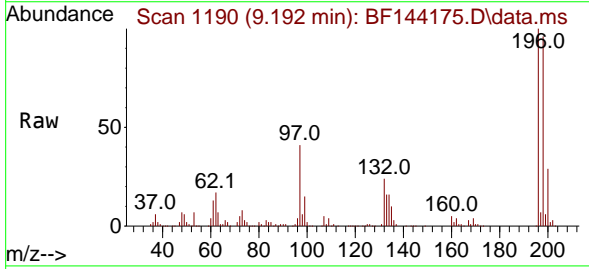


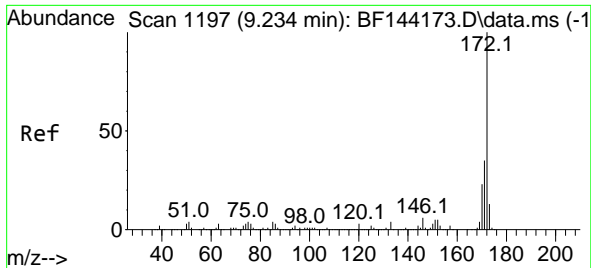
Tgt Ion:196 Resp: 185412
 Ion Ratio Lower Upper
 196 100
 198 96.9 75.3 112.9
 200 29.4 23.4 35.2



#44
 2,4,5-Trichlorophenol
 Concen: 62.639 ng
 RT: 9.192 min Scan# 1190
 Delta R.T. -0.006 min
 Lab File: BF144175.D
 Acq: 05 Nov 2025 16:19

Tgt Ion:196 Resp: 190324
 Ion Ratio Lower Upper
 196 100
 198 95.9 76.1 114.1
 97 41.4 31.9 47.9
 132 23.7 19.4 29.2



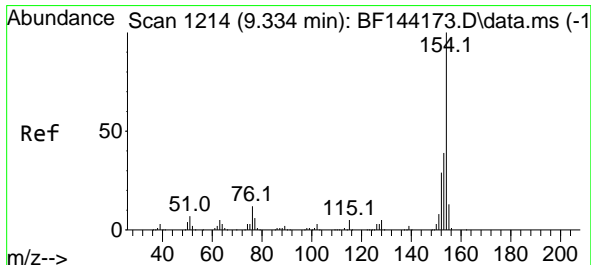
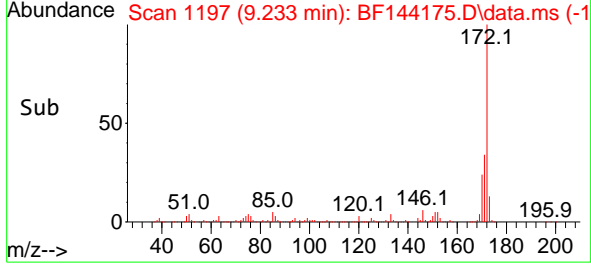
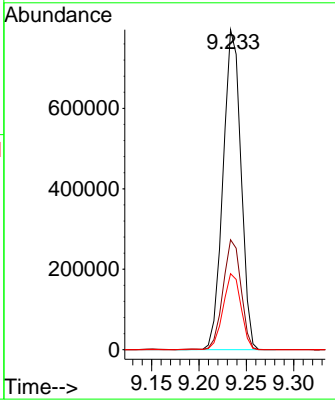
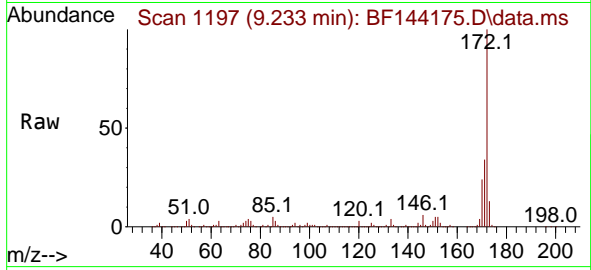


#45
 2-Fluorobiphenyl
 Concen: 122.404 ng
 RT: 9.233 min Scan# 1197
 Delta R.T. -0.006 min
 Lab File: BF144175.D
 Acq: 05 Nov 2025 16:19

Instrument : BNA_F
 ClientSampleId : SSTDICC060

Tgt Ion:172 Resp: 1047440

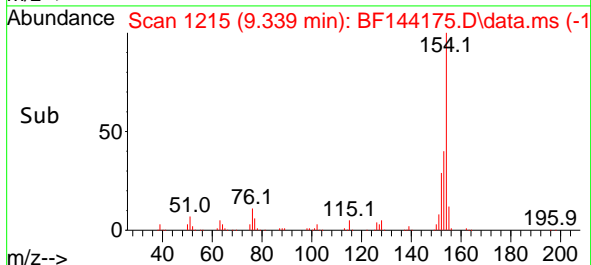
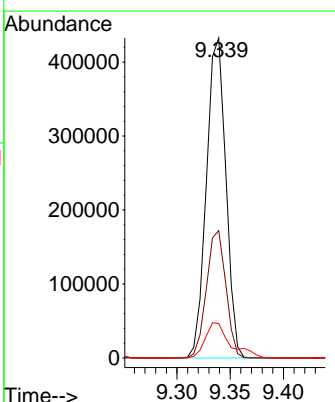
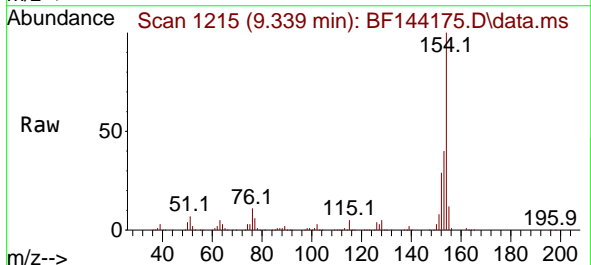
Ion	Ratio	Lower	Upper
172	100		
171	34.4	28.1	42.1
170	23.7	18.6	28.0

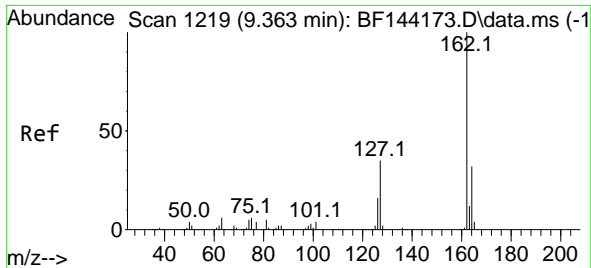


#46
 1,1'-Biphenyl
 Concen: 62.310 ng
 RT: 9.339 min Scan# 1215
 Delta R.T. -0.000 min
 Lab File: BF144175.D
 Acq: 05 Nov 2025 16:19

Tgt Ion:154 Resp: 549700

Ion	Ratio	Lower	Upper
154	100		
153	39.8	19.2	59.2
76	10.8	0.0	31.8





#47
 2-Chloronaphthalene
 Concen: 63.056 ng
 RT: 9.363 min Scan# 1219
 Delta R.T. -0.006 min
 Lab File: BF144175.D
 Acq: 05 Nov 2025 16:19

Instrument :

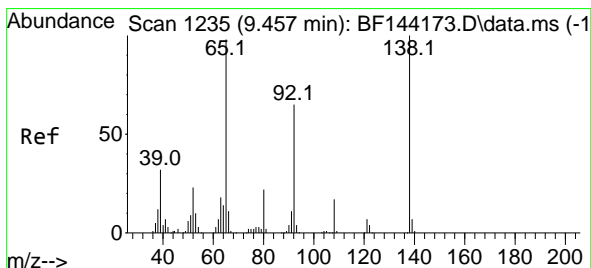
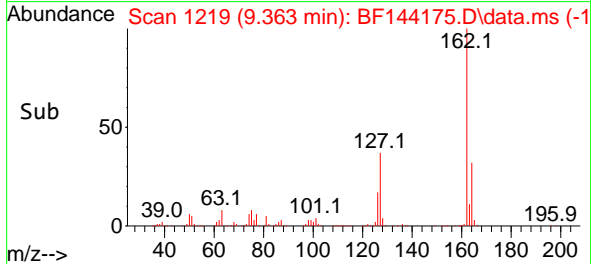
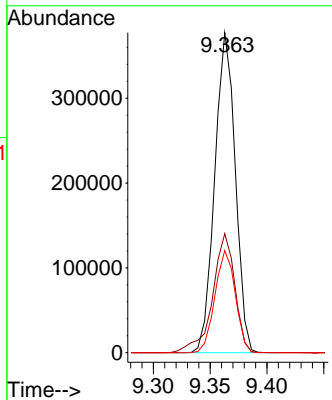
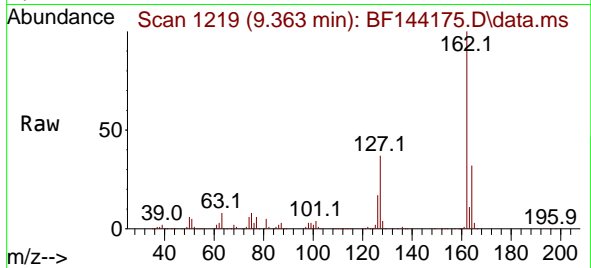
BNA_F

ClientSampleId :

SSTDICC060

Tgt Ion:162 Resp: 474514

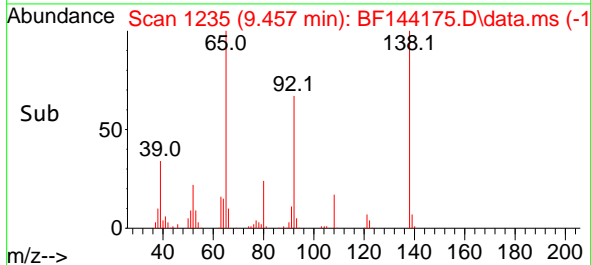
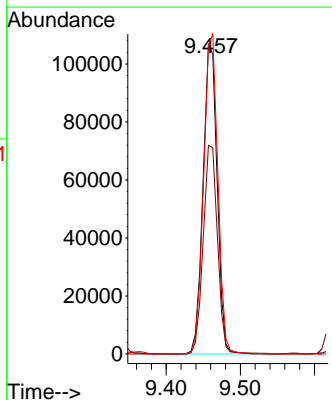
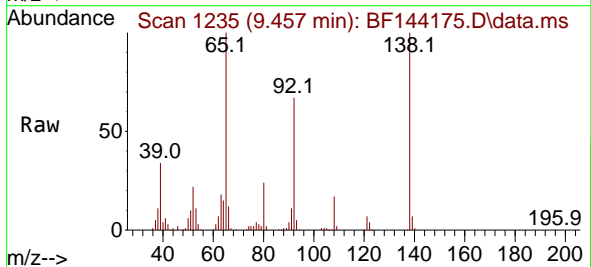
Ion	Ratio	Lower	Upper
162	100		
127	37.2	28.8	43.2
164	31.9	25.8	38.8

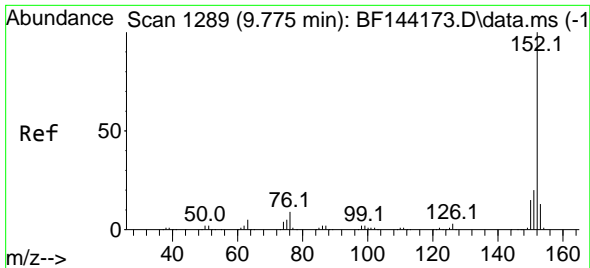


#48
 2-Nitroaniline
 Concen: 65.370 ng
 RT: 9.457 min Scan# 1235
 Delta R.T. -0.006 min
 Lab File: BF144175.D
 Acq: 05 Nov 2025 16:19

Tgt Ion: 65 Resp: 141938

Ion	Ratio	Lower	Upper
65	100		
92	67.5	53.0	79.6
138	100.0	81.6	122.4



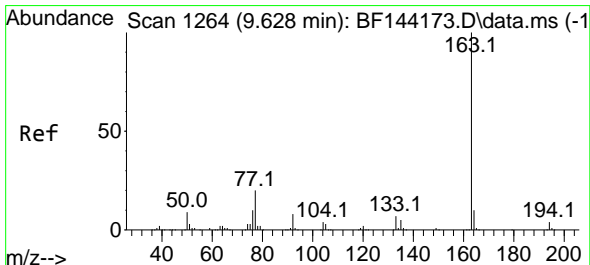
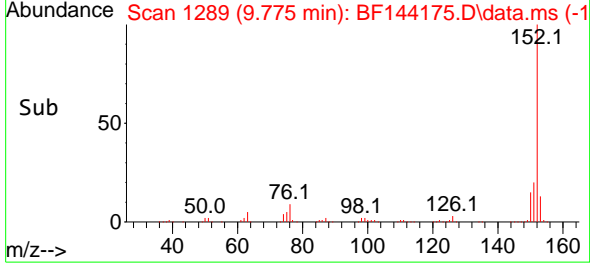
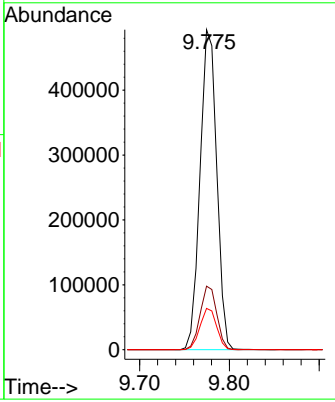
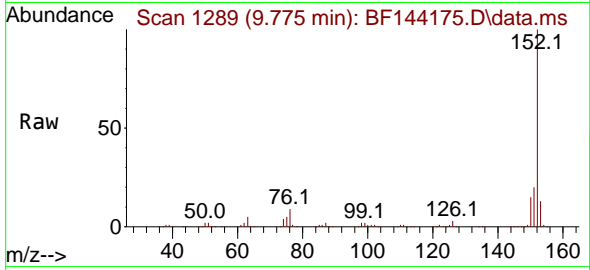


#49
 Acenaphthylene
 Concen: 62.050 ng
 RT: 9.775 min Scan# 11
 Delta R.T. -0.006 min
 Lab File: BF144175.D
 Acq: 05 Nov 2025 16:19

Instrument : BNA_F
 ClientSampleId : SSTDICC060

Tgt Ion:152 Resp: 636324

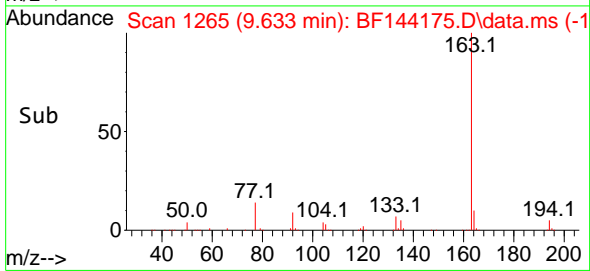
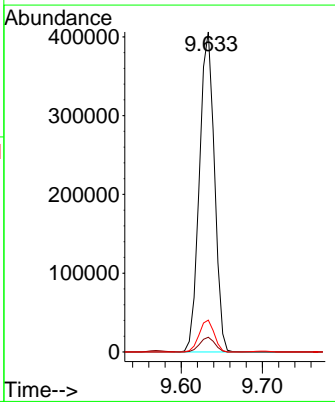
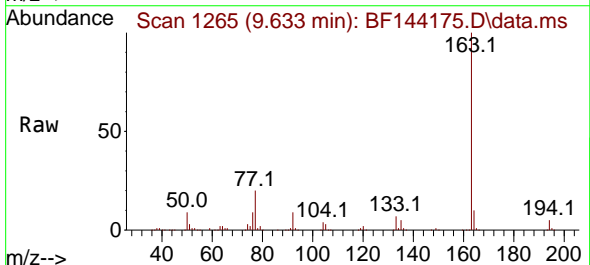
Ion	Ratio	Lower	Upper
152	100		
151	19.9	15.9	23.9
153	12.9	10.5	15.7

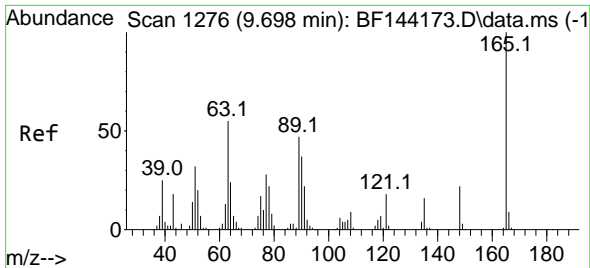


#50
 Dimethylphthalate
 Concen: 62.250 ng
 RT: 9.633 min Scan# 1265
 Delta R.T. -0.000 min
 Lab File: BF144175.D
 Acq: 05 Nov 2025 16:19

Tgt Ion:163 Resp: 521205

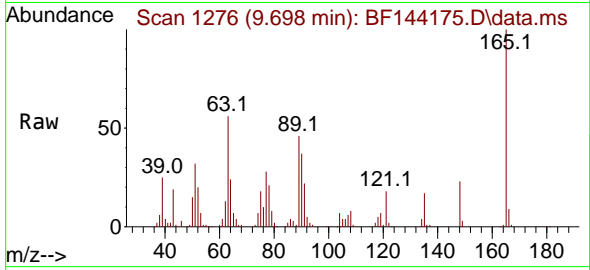
Ion	Ratio	Lower	Upper
163	100		
194	4.6	3.3	4.9
164	10.0	8.1	12.1





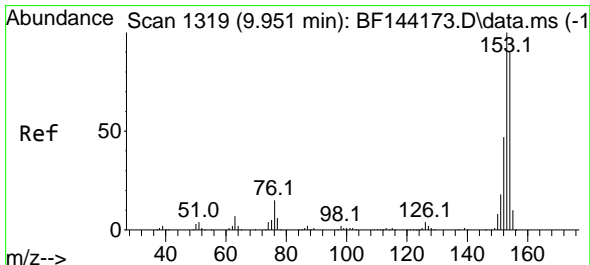
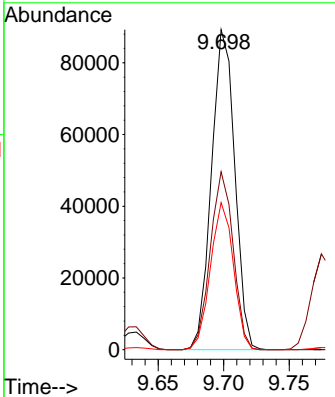
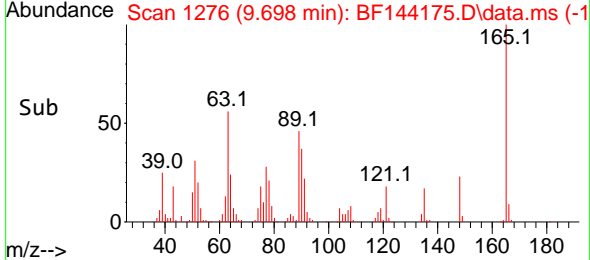
#51
 2,6-Dinitrotoluene
 Concen: 64.983 ng
 RT: 9.698 min Scan# 1111
 Delta R.T. -0.006 min
 Lab File: BF144175.D
 Acq: 05 Nov 2025 16:19

Instrument : BNA_F
 ClientSampleId : SSTDICC060

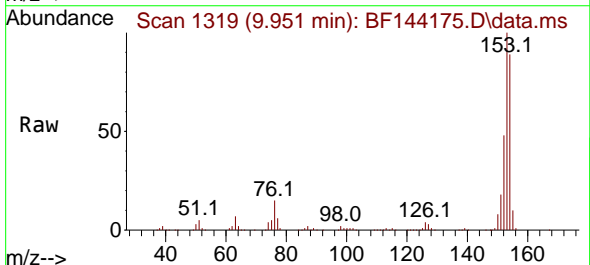


Tgt Ion:165 Resp: 110140

Ion	Ratio	Lower	Upper
165	100		
63	55.6	43.8	65.8
89	45.9	37.5	56.3

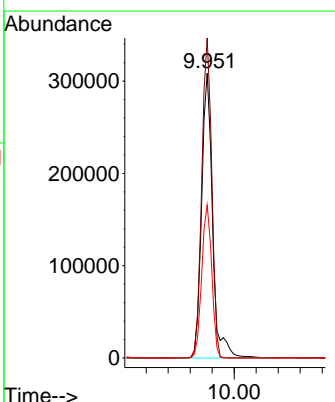
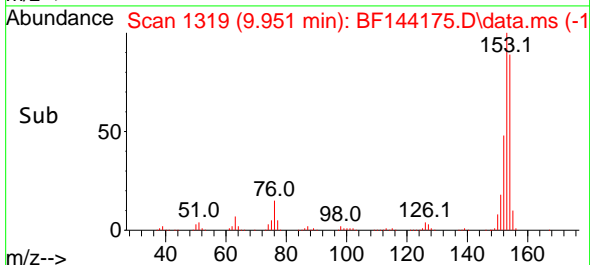


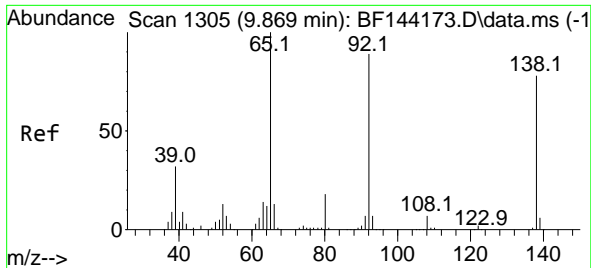
#52
 Acenaphthene
 Concen: 61.778 ng
 RT: 9.951 min Scan# 1319
 Delta R.T. -0.000 min
 Lab File: BF144175.D
 Acq: 05 Nov 2025 16:19



Tgt Ion:154 Resp: 423653

Ion	Ratio	Lower	Upper
154	100		
153	112.4	89.0	133.4
152	53.7	42.2	63.4





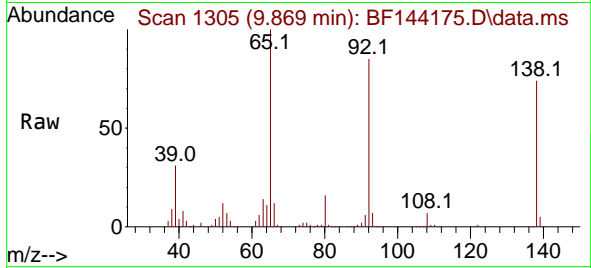
#53
 3-Nitroaniline
 Concen: 64.749 ng
 RT: 9.869 min Scan# 11
 Delta R.T. -0.006 min
 Lab File: BF144175.D
 Acq: 05 Nov 2025 16:19

Instrument :

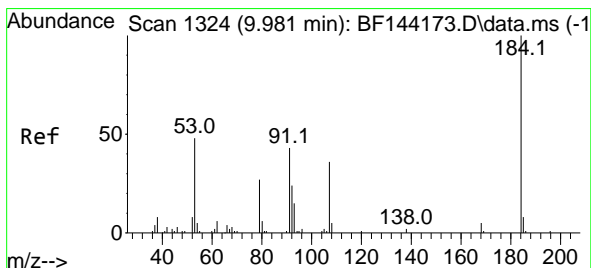
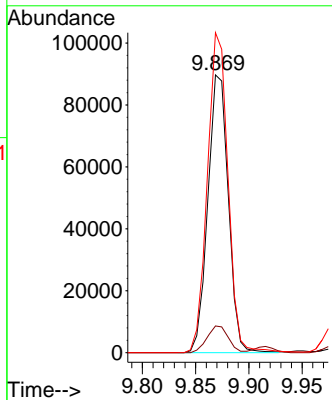
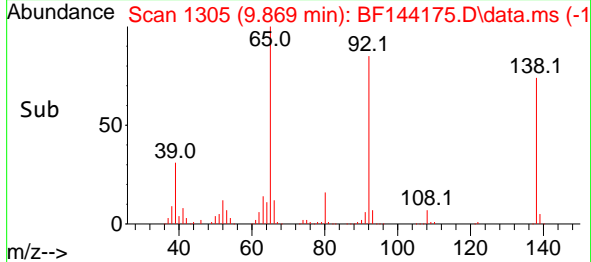
BNA_F

ClientSampleId :

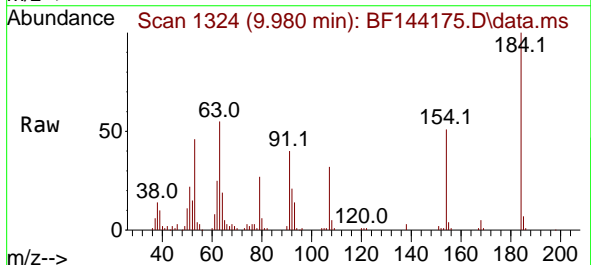
SSTDICC060



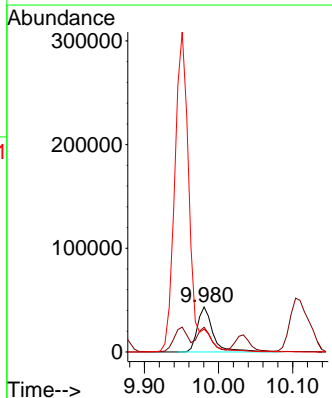
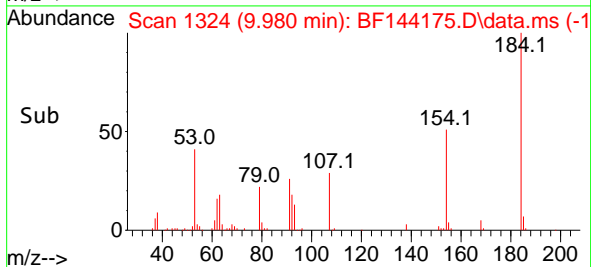
Tgt Ion:138 Resp: 119967
 Ion Ratio Lower Upper
 138 100
 108 9.6 7.5 11.3
 92 115.2 91.8 137.6

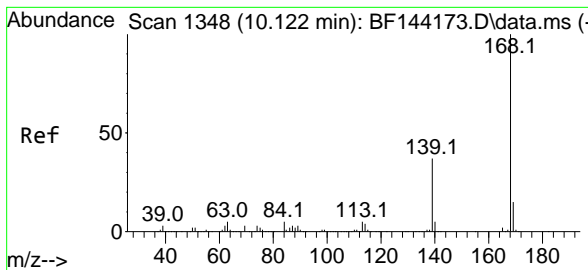


#54
 2,4-Dinitrophenol
 Concen: 62.138 ng
 RT: 9.980 min Scan# 1324
 Delta R.T. -0.006 min
 Lab File: BF144175.D
 Acq: 05 Nov 2025 16:19



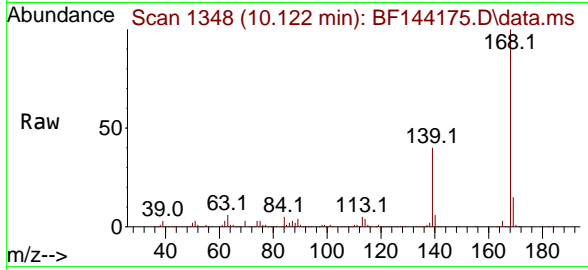
Tgt Ion:184 Resp: 63597
 Ion Ratio Lower Upper
 184 100
 63 54.7 44.0 66.0
 154 50.8 42.4 63.6



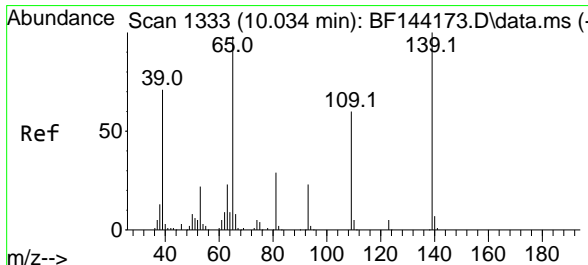
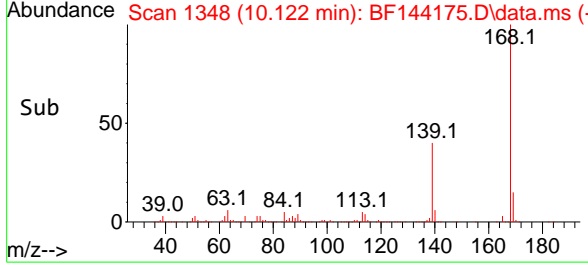
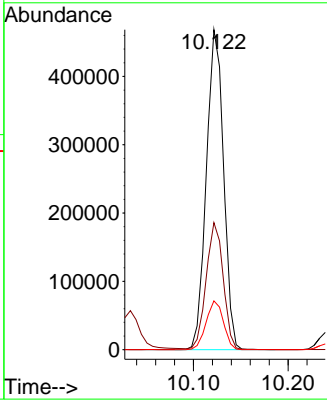


#55
 Dibenzofuran
 Concen: 61.680 ng
 RT: 10.122 min Scan# 11
 Delta R.T. -0.006 min
 Lab File: BF144175.D
 Acq: 05 Nov 2025 16:19

Instrument : BNA_F
 ClientSampleId : SSTDICC060

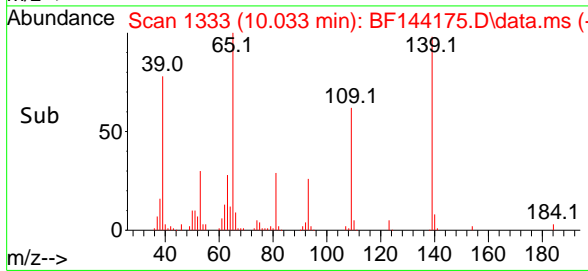
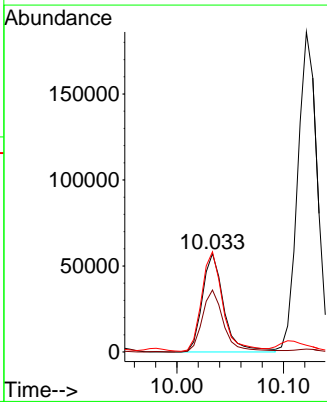
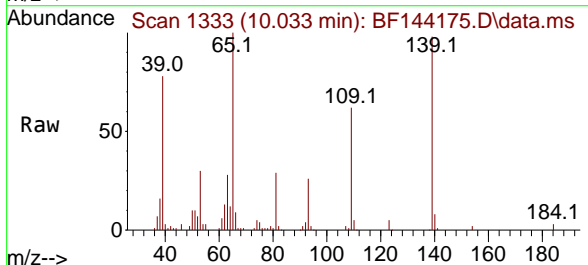


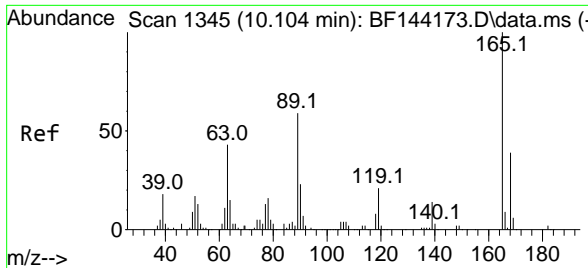
Tgt Ion:168 Resp: 592400
 Ion Ratio Lower Upper
 168 100
 139 39.7 30.2 45.2
 169 15.3 12.2 18.4



#56
 4-Nitrophenol
 Concen: 59.812 ng
 RT: 10.033 min Scan# 1333
 Delta R.T. -0.006 min
 Lab File: BF144175.D
 Acq: 05 Nov 2025 16:19

Tgt Ion:139 Resp: 80163
 Ion Ratio Lower Upper
 139 100
 109 63.0 39.9 79.9
 65 101.8 79.5 119.5



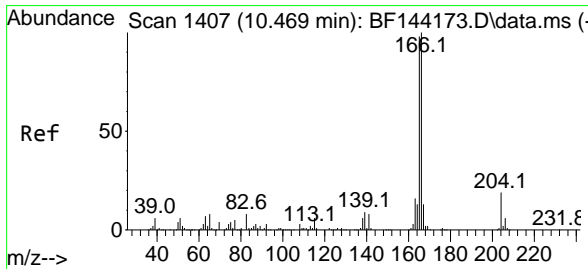
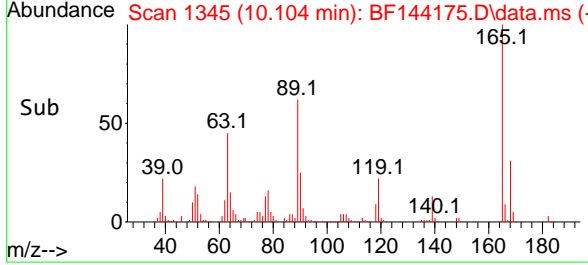
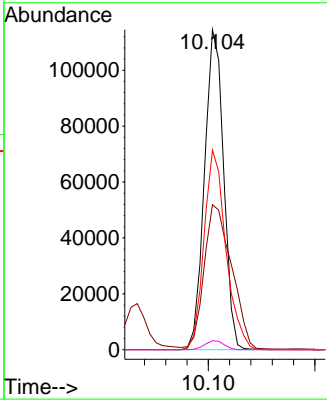
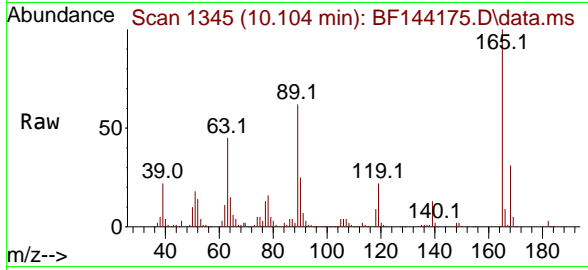


#57
 2,4-Dinitrotoluene
 Concen: 62.984 ng
 RT: 10.104 min Scan# 11
 Delta R.T. -0.006 min
 Lab File: BF144175.D
 Acq: 05 Nov 2025 16:19

Instrument : BNA_F
 ClientSampleId : SSTDICC060

Tgt Ion:165 Resp: 142910

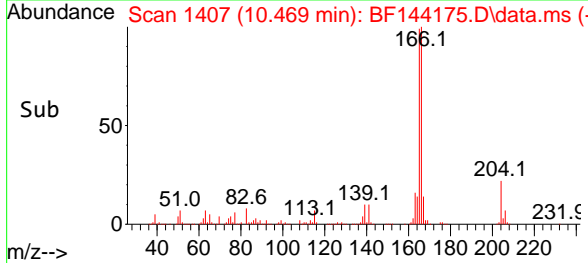
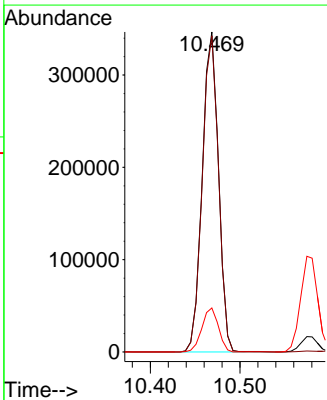
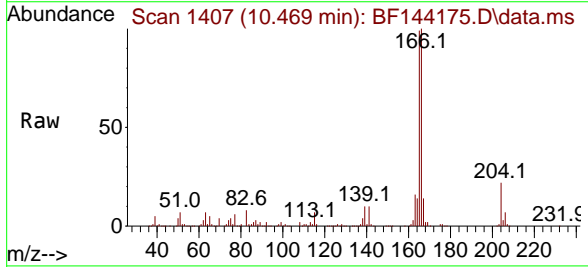
Ion	Ratio	Lower	Upper
165	100		
63	45.3	35.5	53.3
89	62.4	47.4	71.2
182	2.8	1.9	2.9

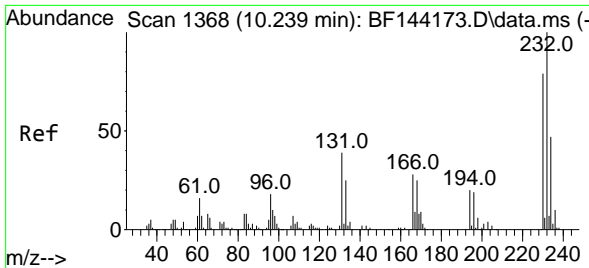


#58
 Fluorene
 Concen: 59.664 ng
 RT: 10.469 min Scan# 1407
 Delta R.T. -0.000 min
 Lab File: BF144175.D
 Acq: 05 Nov 2025 16:19

Tgt Ion:166 Resp: 435687

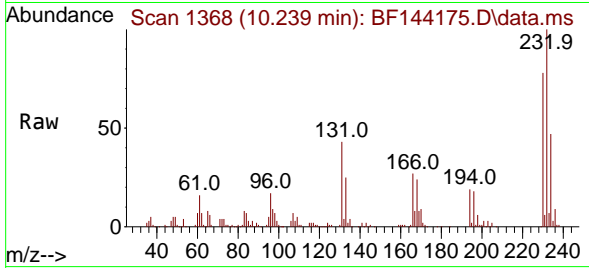
Ion	Ratio	Lower	Upper
166	100		
165	98.8	78.6	118.0
167	13.8	10.4	15.6



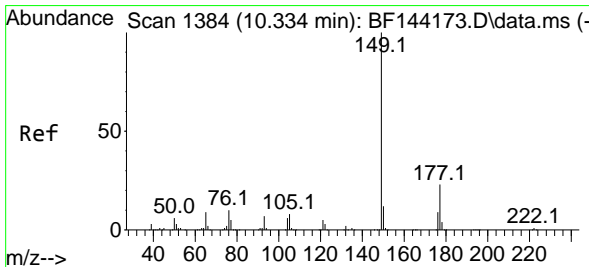
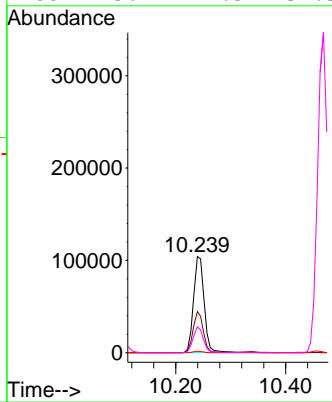
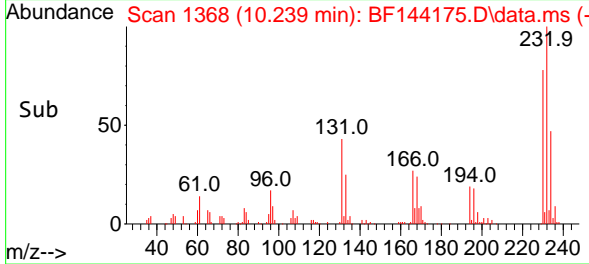


#59
 2,3,4,6-Tetrachlorophenol
 Concen: 65.569 ng
 RT: 10.239 min Scan# 1368
 Delta R.T. -0.006 min
 Lab File: BF144175.D
 Acq: 05 Nov 2025 16:19

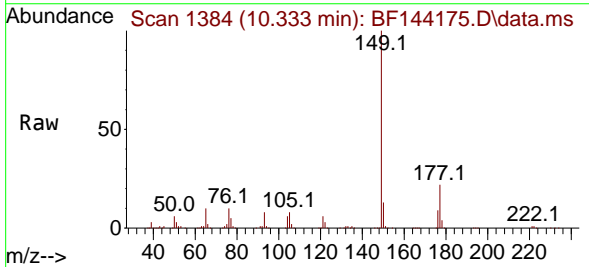
Instrument : BNA_F
 ClientSampleId : SSTDICC060



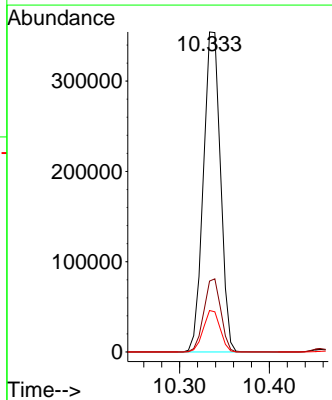
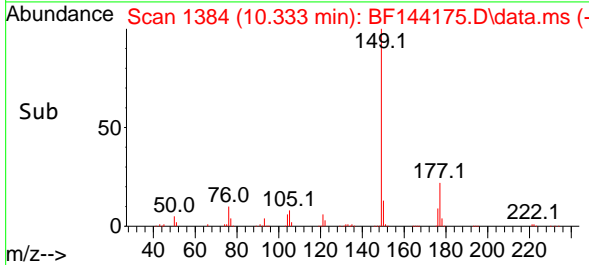
Tgt Ion: 232 Resp: 140953
 Ion Ratio Lower Upper
 232 100
 131 40.7 30.3 45.5
 130 1.3 1.2 1.8
 166 25.9 21.5 32.3

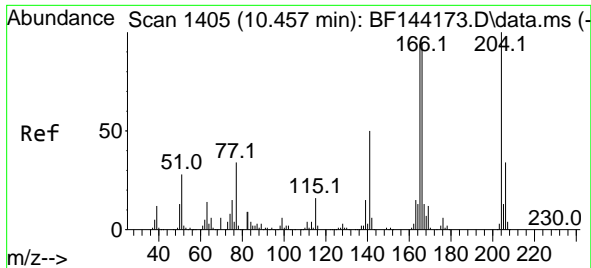


#60
 Diethylphthalate
 Concen: 60.755 ng
 RT: 10.333 min Scan# 1384
 Delta R.T. -0.006 min
 Lab File: BF144175.D
 Acq: 05 Nov 2025 16:19



Tgt Ion: 149 Resp: 468931
 Ion Ratio Lower Upper
 149 100
 177 22.2 18.3 27.5
 150 12.9 9.8 14.6



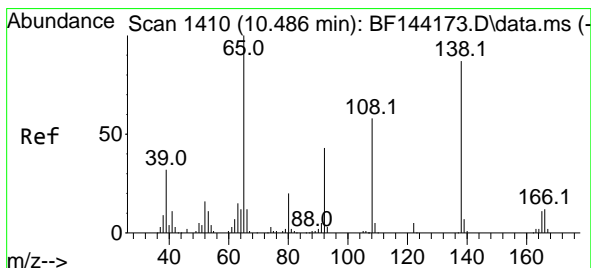
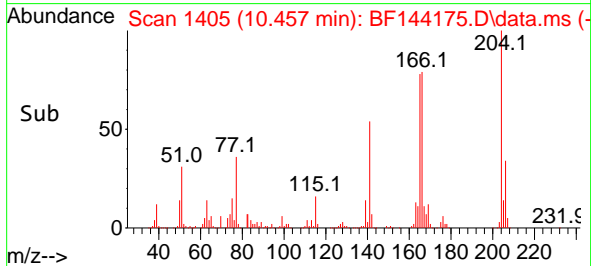
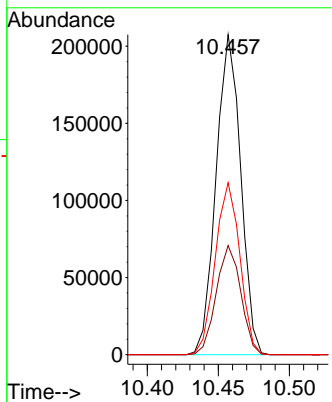
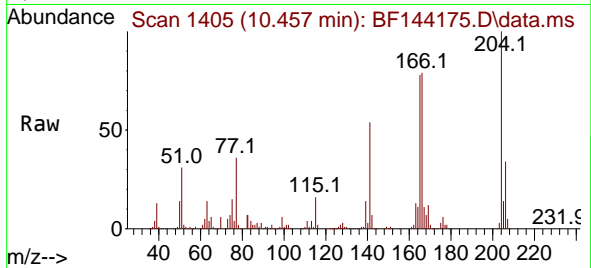


#61
 4-Chlorophenyl-phenylether
 Concen: 60.068 ng
 RT: 10.457 min Scan# 1405
 Delta R.T. -0.000 min
 Lab File: BF144175.D
 Acq: 05 Nov 2025 16:19

Instrument :
 BNA_F
 ClientSampleId :
 SSTDICC060

Tgt Ion: 204 Resp: 249857

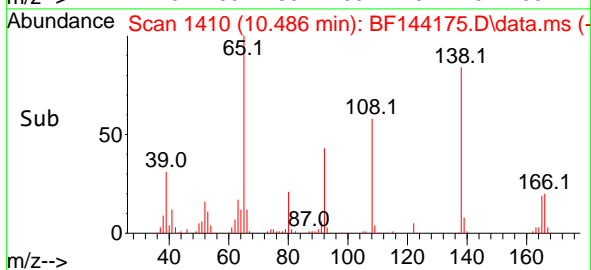
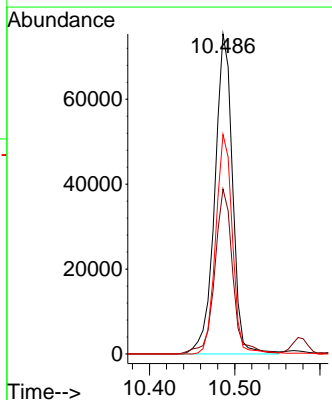
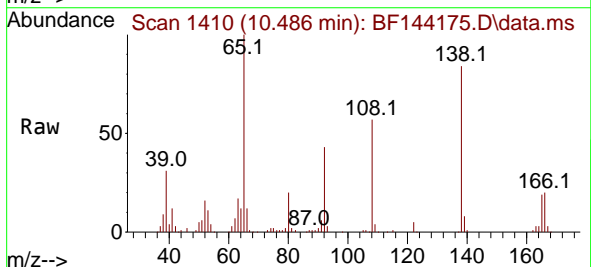
Ion	Ratio	Lower	Upper
204	100		
206	34.1	27.4	41.2
141	53.8	40.0	60.0

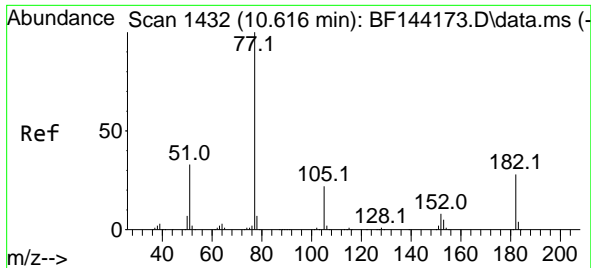


#62
 4-Nitroaniline
 Concen: 61.862 ng
 RT: 10.486 min Scan# 1410
 Delta R.T. -0.012 min
 Lab File: BF144175.D
 Acq: 05 Nov 2025 16:19

Tgt Ion: 138 Resp: 109153

Ion	Ratio	Lower	Upper
138	100		
92	51.6	29.4	69.4
108	68.6	46.4	86.4

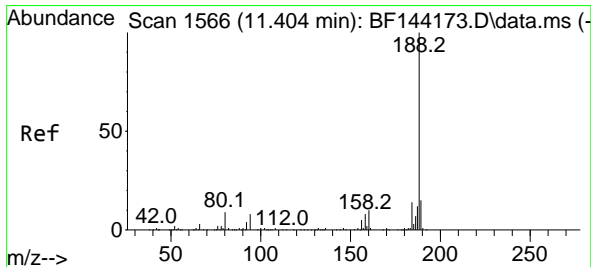
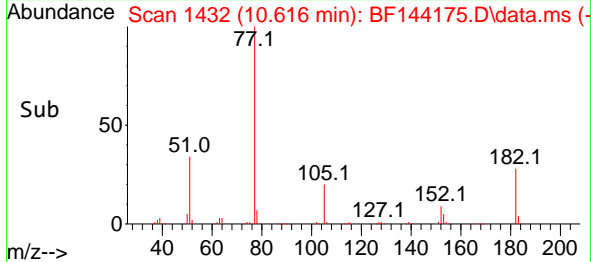
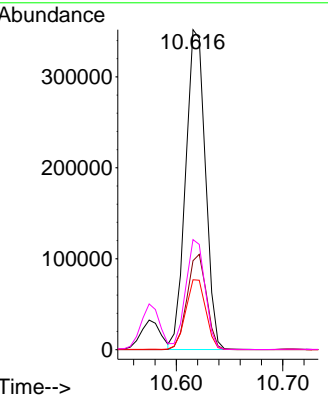
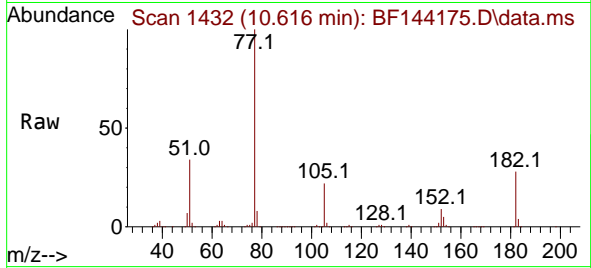




#63
 Azobenzene
 Concen: 63.187 ng
 RT: 10.616 min Scan# 14
 Delta R.T. -0.006 min
 Lab File: BF144175.D
 Acq: 05 Nov 2025 16:19

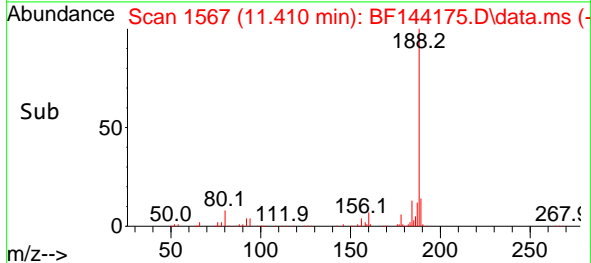
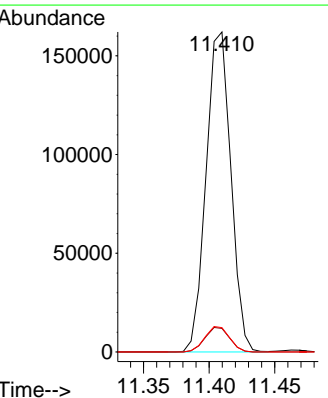
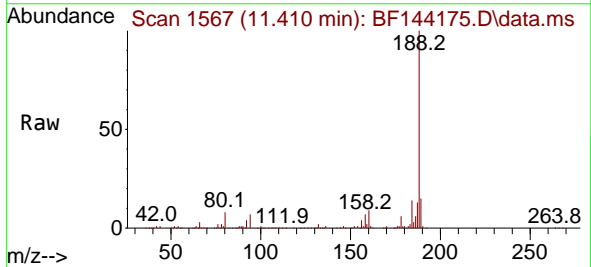
Instrument : BNA_F
 Client Sample Id : SSTDICC060

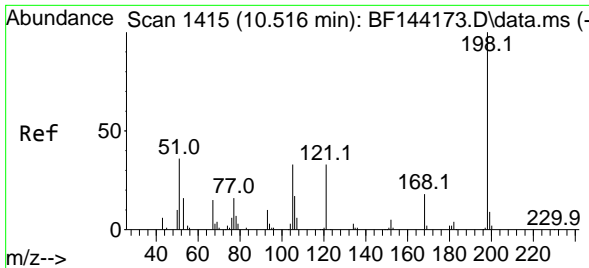
Tgt Ion	Resp	Lower	Upper
77	100		
182	27.8	8.1	48.1
105	21.9	2.0	42.0
51	34.4	13.9	53.9



#64
 Phenanthrene-d10
 Concen: 20.000 ng
 RT: 11.410 min Scan# 1567
 Delta R.T. -0.000 min
 Lab File: BF144175.D
 Acq: 05 Nov 2025 16:19

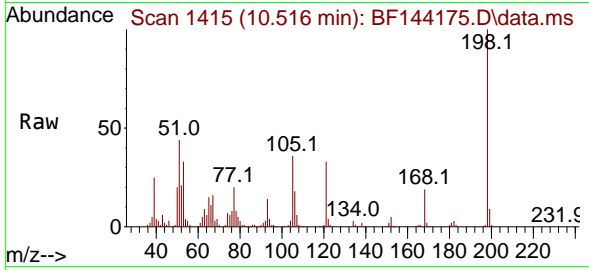
Tgt Ion	Resp	Lower	Upper
188	100		
94	7.4	6.2	9.2
80	7.6	6.9	10.3



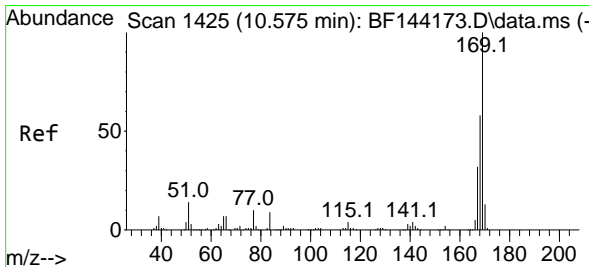
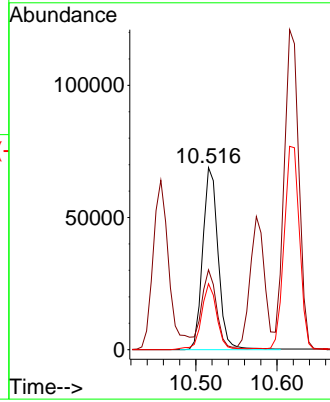
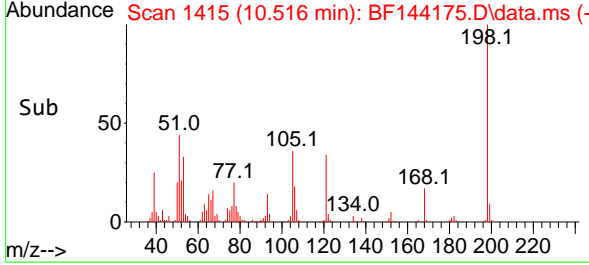


#65
 4,6-Dinitro-2-methylphenol
 Concen: 62.727 ng
 RT: 10.516 min Scan# 1415
 Delta R.T. -0.006 min
 Lab File: BF144175.D
 Acq: 05 Nov 2025 16:19

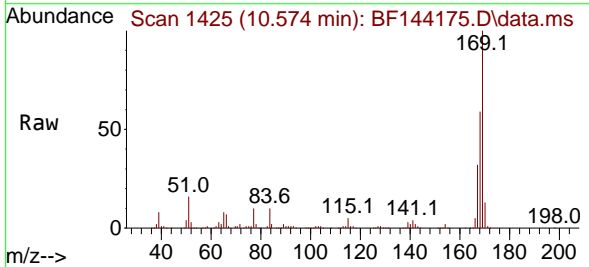
Instrument : BNA_F
 ClientSampleId : SSTDICC060



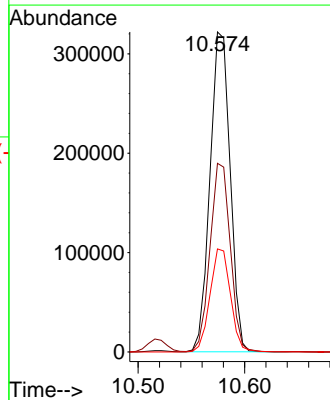
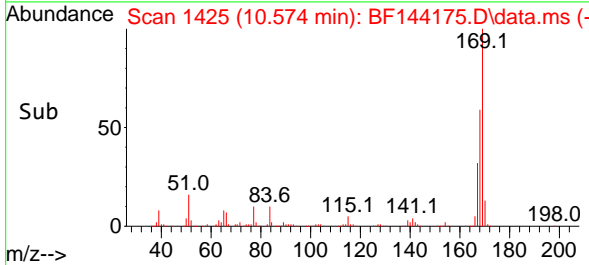
Tgt Ion:198 Resp: 90823
 Ion Ratio Lower Upper
 198 100
 51 43.8 25.6 65.6
 105 36.2 14.6 54.6

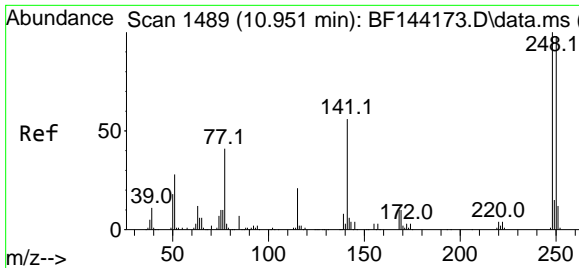


#66
 n-Nitrosodiphenylamine
 Concen: 61.520 ng
 RT: 10.574 min Scan# 1425
 Delta R.T. -0.006 min
 Lab File: BF144175.D
 Acq: 05 Nov 2025 16:19



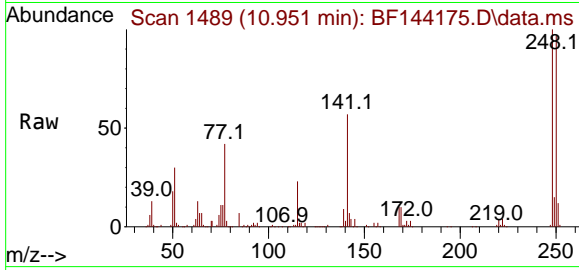
Tgt Ion:169 Resp: 421720
 Ion Ratio Lower Upper
 169 100
 168 58.9 46.2 69.2
 167 32.2 25.7 38.5



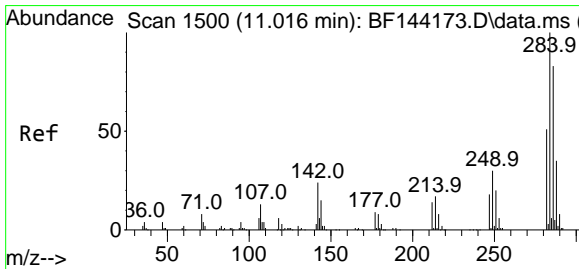
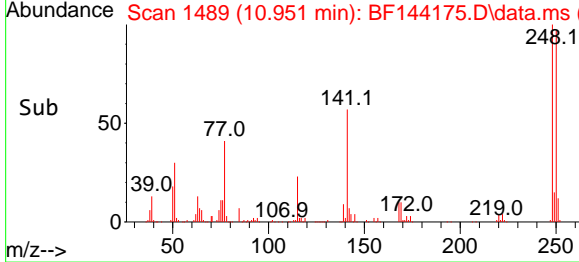
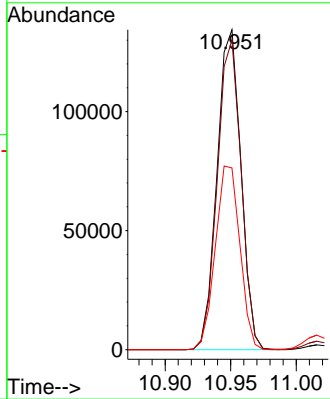


#67
 4-Bromophenyl-phenylether
 Concen: 62.634 ng
 RT: 10.951 min Scan# 14
 Delta R.T. -0.000 min
 Lab File: BF144175.D
 Acq: 05 Nov 2025 16:19

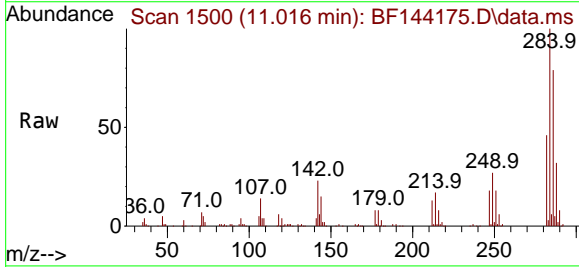
Instrument :
 BNA_F
 ClientSampleId :
 SSTDICC060



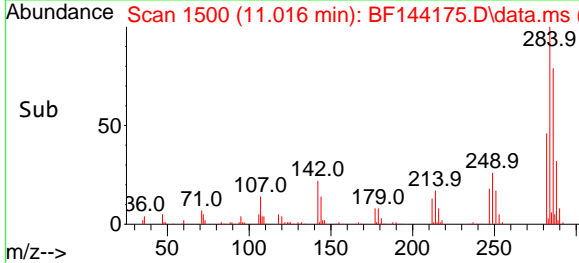
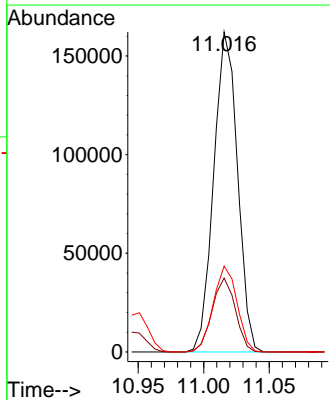
Tgt Ion:248 Resp: 170395
 Ion Ratio Lower Upper
 248 100
 250 96.8 78.4 117.6
 141 56.8 45.1 67.7

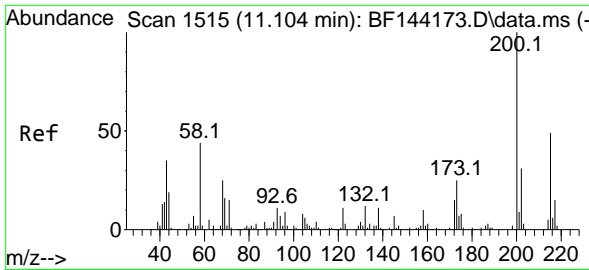


#68
 Hexachlorobenzene
 Concen: 63.744 ng
 RT: 11.016 min Scan# 1500
 Delta R.T. -0.006 min
 Lab File: BF144175.D
 Acq: 05 Nov 2025 16:19



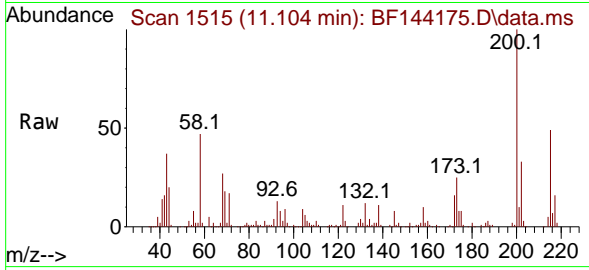
Tgt Ion:284 Resp: 204258
 Ion Ratio Lower Upper
 284 100
 142 23.1 19.2 28.8
 249 26.8 23.8 35.8



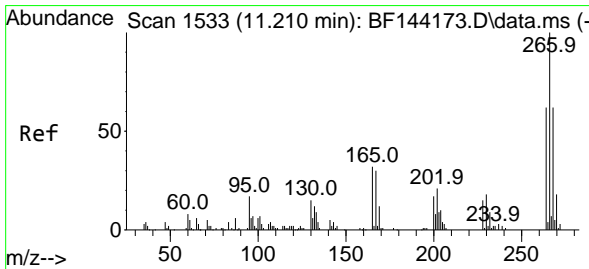
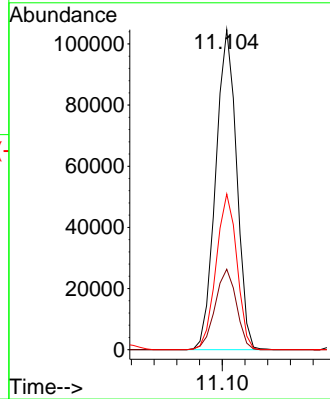
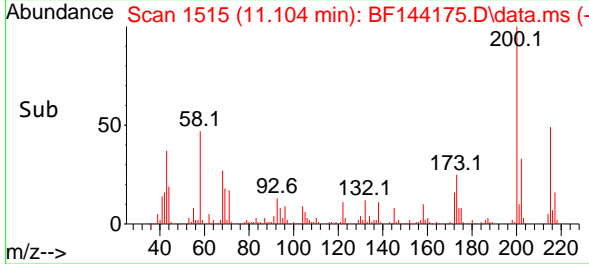


#69
 Atrazine
 Concen: 61.467 ng
 RT: 11.104 min Scan# 11
 Delta R.T. -0.006 min
 Lab File: BF144175.D
 Acq: 05 Nov 2025 16:19

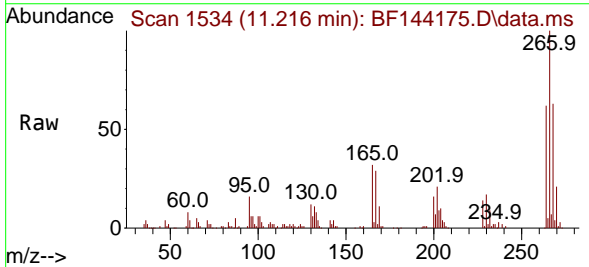
Instrument :
 BNA_F
 ClientSampleId :
 SSTDICC060



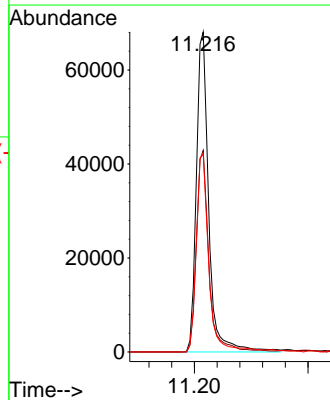
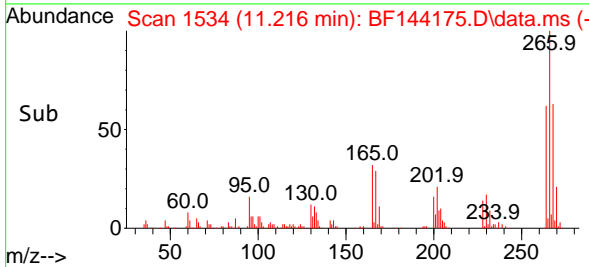
Tgt Ion:200 Resp: 134002
 Ion Ratio Lower Upper
 200 100
 173 25.1 5.0 45.0
 215 48.7 28.7 68.7

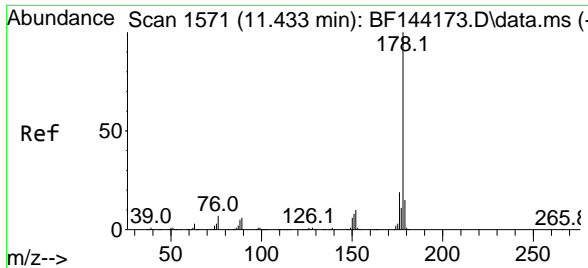


#70
 Pentachlorophenol
 Concen: 64.842 ng
 RT: 11.216 min Scan# 1534
 Delta R.T. -0.000 min
 Lab File: BF144175.D
 Acq: 05 Nov 2025 16:19



Tgt Ion:266 Resp: 103466
 Ion Ratio Lower Upper
 266 100
 268 63.0 49.5 74.3
 264 61.8 49.4 74.2



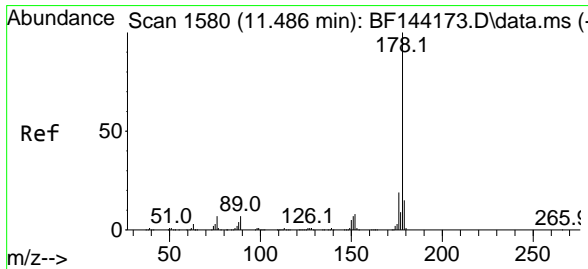
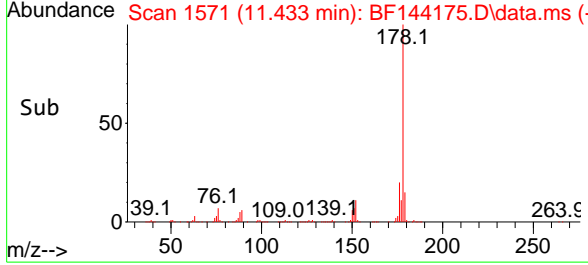
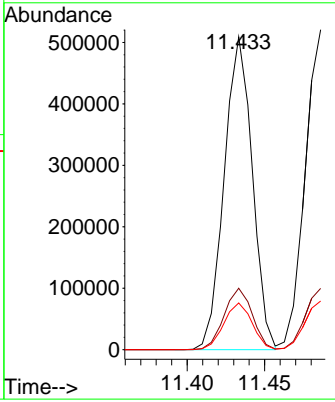
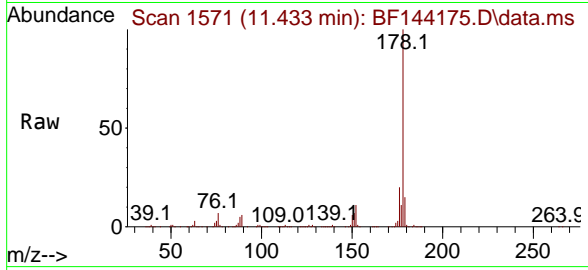


#71
 Phenanthrene
 Concen: 60.448 ng
 RT: 11.433 min Scan# 1571
 Delta R.T. -0.000 min
 Lab File: BF144175.D
 Acq: 05 Nov 2025 16:19

Instrument : BNA_F
 Client Sample Id : SSTDICC060

Tgt Ion:178 Resp: 641461

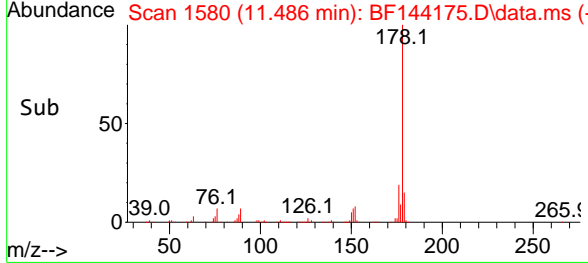
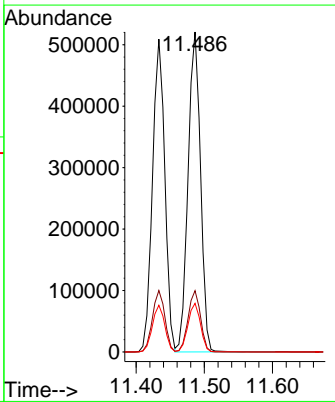
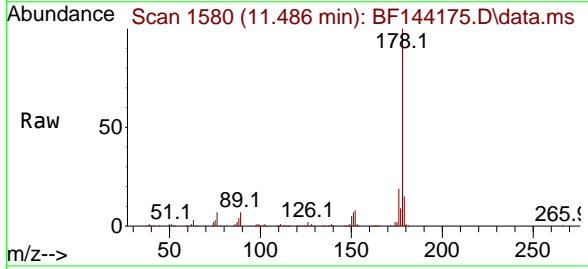
Ion	Ratio	Lower	Upper
178	100		
176	19.6	15.5	23.3
179	14.9	12.2	18.4

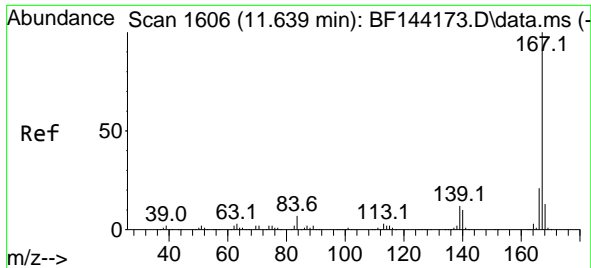


#72
 Anthracene
 Concen: 60.871 ng
 RT: 11.486 min Scan# 1580
 Delta R.T. -0.000 min
 Lab File: BF144175.D
 Acq: 05 Nov 2025 16:19

Tgt Ion:178 Resp: 656819

Ion	Ratio	Lower	Upper
178	100		
176	19.2	15.3	22.9
179	15.2	12.0	18.0





#73
 Carbazole
 Concen: 59.542 ng
 RT: 11.639 min Scan# 1606
 Delta R.T. -0.006 min
 Lab File: BF144175.D
 Acq: 05 Nov 2025 16:19

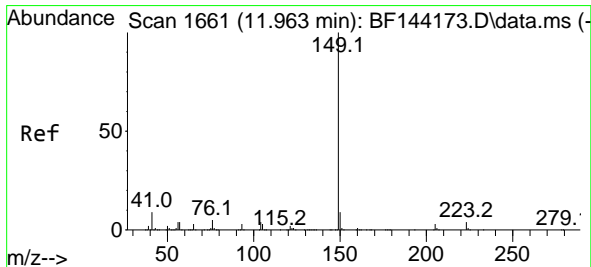
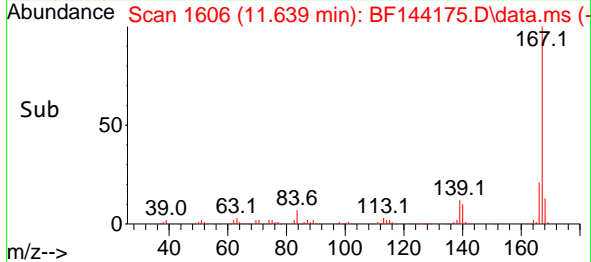
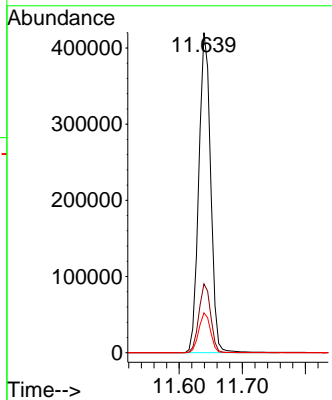
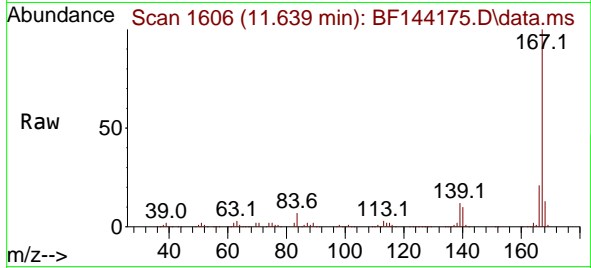
Instrument :

BNA_F

ClientSampleId :

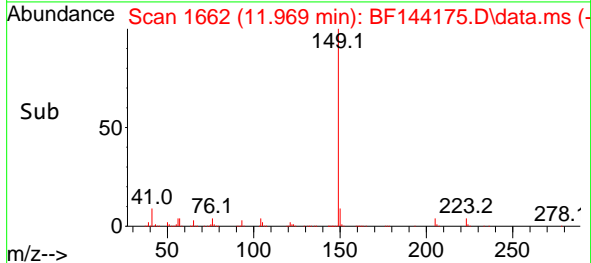
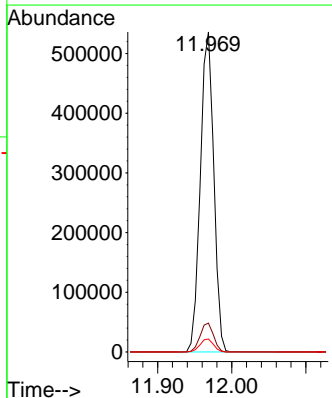
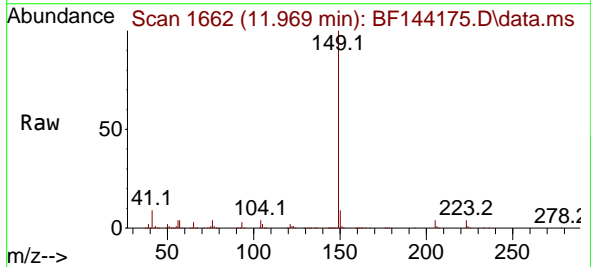
SSTDICC060

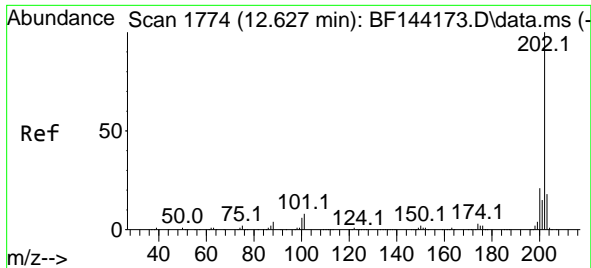
Tgt Ion:167 Resp: 546322
 Ion Ratio Lower Upper
 167 100
 166 21.5 17.2 25.8
 139 12.4 9.9 14.9



#74
 Di-n-butylphthalate
 Concen: 61.075 ng
 RT: 11.969 min Scan# 1662
 Delta R.T. -0.000 min
 Lab File: BF144175.D
 Acq: 05 Nov 2025 16:19

Tgt Ion:149 Resp: 677444
 Ion Ratio Lower Upper
 149 100
 150 9.0 7.4 11.0
 104 4.1 3.4 5.2





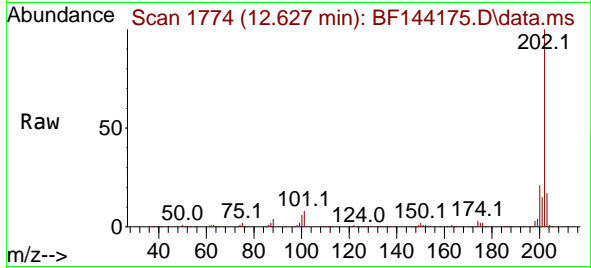
#75
 Fluoranthene
 Concen: 60.849 ng
 RT: 12.627 min Scan# 11
 Delta R.T. -0.000 min
 Lab File: BF144175.D
 Acq: 05 Nov 2025 16:19

Instrument :

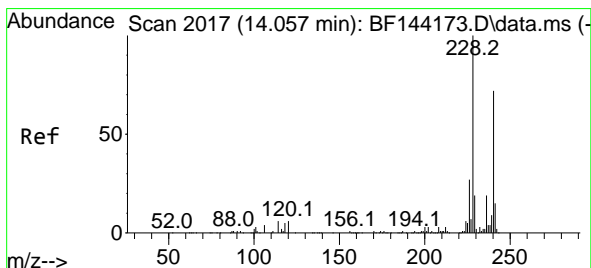
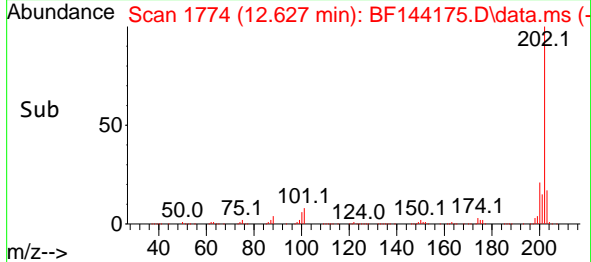
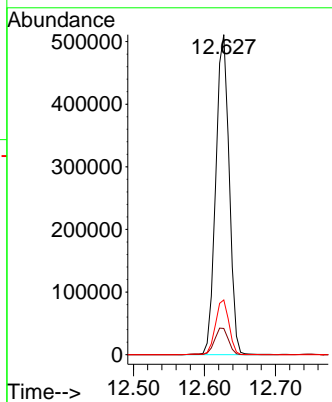
BNA_F

Client Sample Id :

SSTDICC060

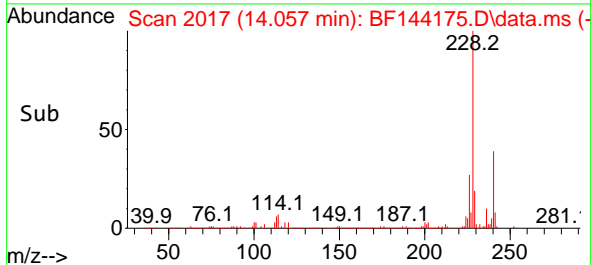
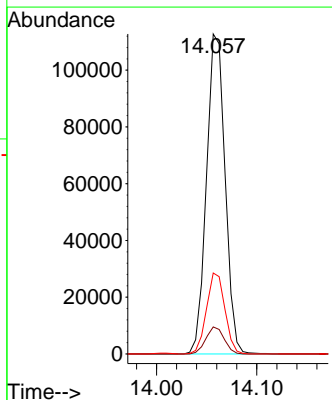
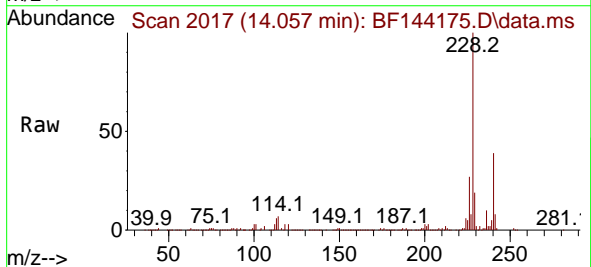


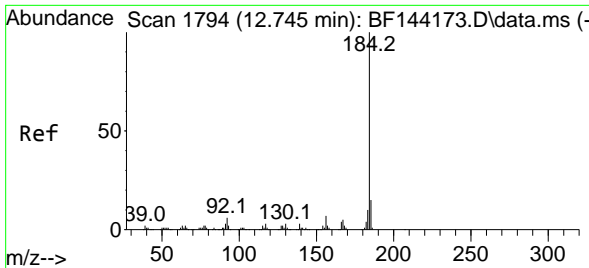
Tgt Ion: 202 Resp: 667021
 Ion Ratio Lower Upper
 202 100
 101 8.2 0.0 27.9
 203 17.1 0.0 37.5



#76
 Chrysene-d12
 Concen: 20.000 ng
 RT: 14.057 min Scan# 2017
 Delta R.T. -0.006 min
 Lab File: BF144175.D
 Acq: 05 Nov 2025 16:19

Tgt Ion: 240 Resp: 145867
 Ion Ratio Lower Upper
 240 100
 120 8.5 6.6 10.0
 236 25.3 21.4 32.2



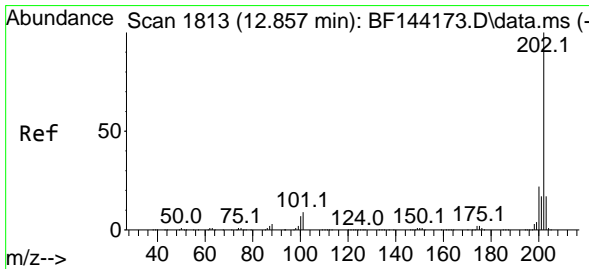
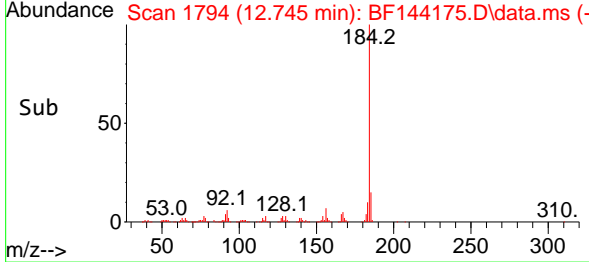
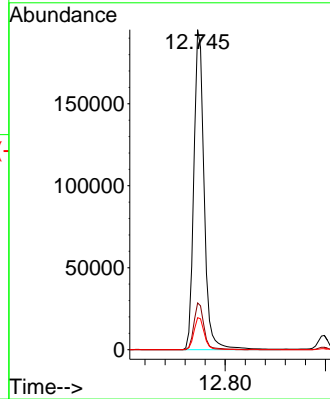
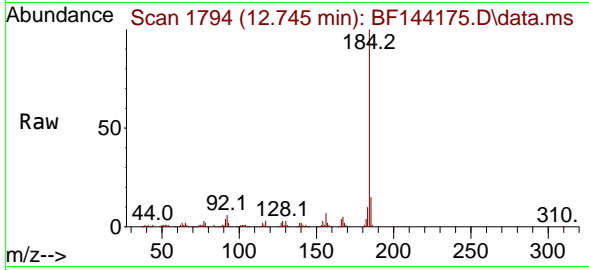


#77
 Benzidine
 Concen: 64.368 ng
 RT: 12.745 min Scan# 11
 Delta R.T. -0.006 min
 Lab File: BF144175.D
 Acq: 05 Nov 2025 16:19

Instrument :
 BNA_F
 ClientSampleId :
 SSTDICC060

Tgt Ion:184 Resp: 277725

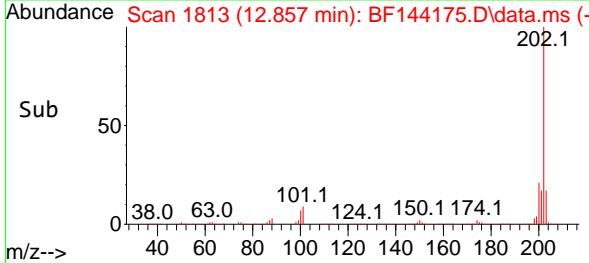
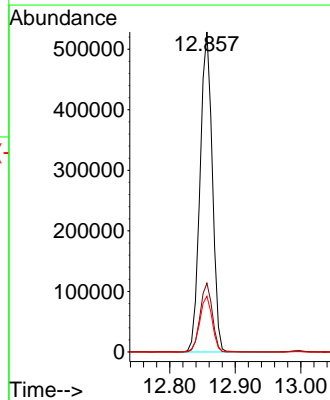
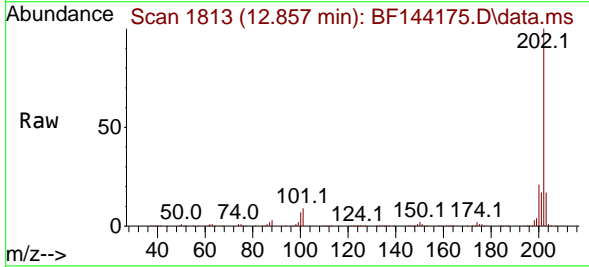
Ion	Ratio	Lower	Upper
184	100		
185	14.6	11.7	17.5
183	10.0	8.3	12.5

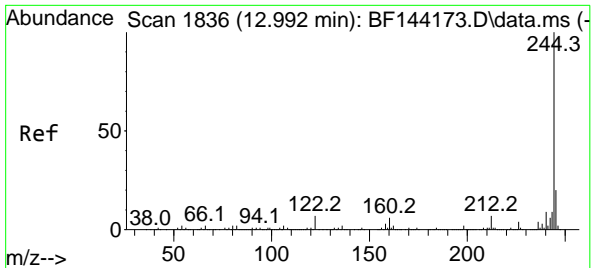


#78
 Pyrene
 Concen: 58.384 ng
 RT: 12.857 min Scan# 1813
 Delta R.T. -0.000 min
 Lab File: BF144175.D
 Acq: 05 Nov 2025 16:19

Tgt Ion:202 Resp: 686663

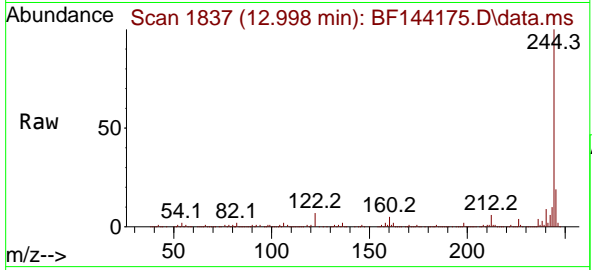
Ion	Ratio	Lower	Upper
202	100		
200	21.5	17.2	25.8
203	17.5	13.7	20.5



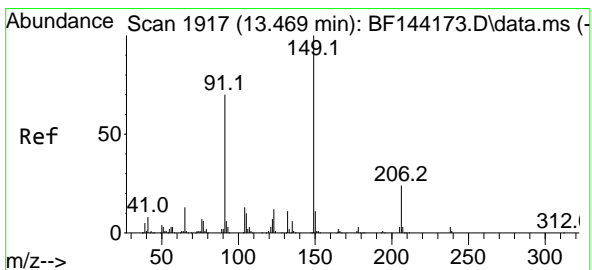
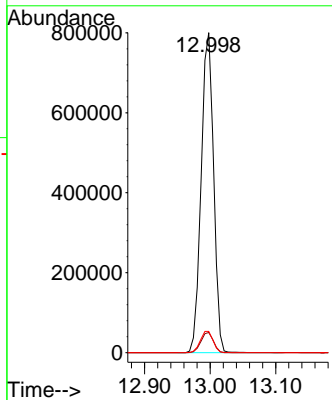
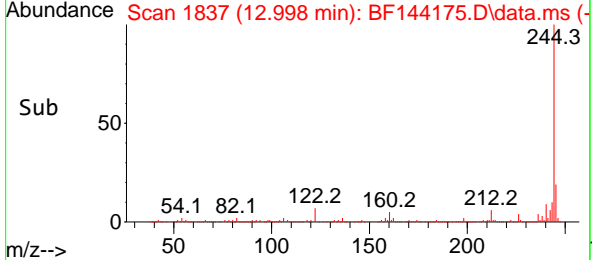


#79
 Terphenyl-d14
 Concen: 115.147 ng
 RT: 12.998 min Scan# 1837
 Delta R.T. -0.000 min
 Lab File: BF144175.D
 Acq: 05 Nov 2025 16:19

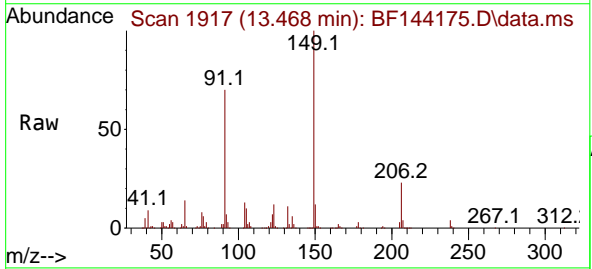
Instrument : BNA_F
 ClientSampleId : SSTDICC060



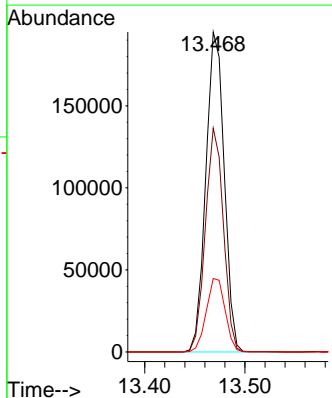
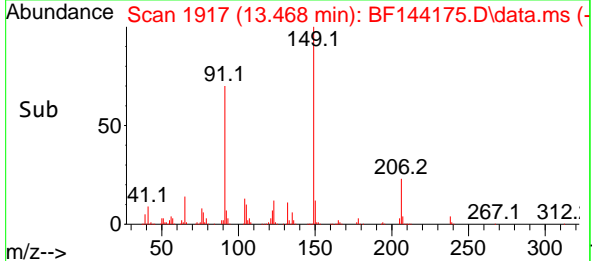
Tgt Ion:244 Resp: 1057426
 Ion Ratio Lower Upper
 244 100
 212 6.3 5.3 7.9
 122 6.6 5.6 8.4

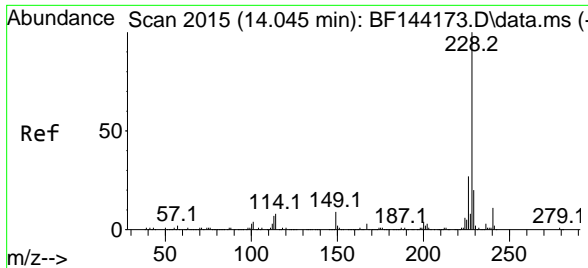


#80
 Butylbenzylphthalate
 Concen: 61.152 ng
 RT: 13.468 min Scan# 1917
 Delta R.T. -0.006 min
 Lab File: BF144175.D
 Acq: 05 Nov 2025 16:19



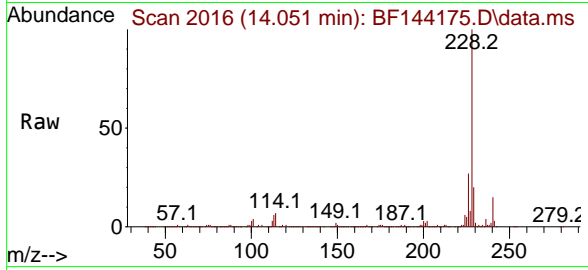
Tgt Ion:149 Resp: 249274
 Ion Ratio Lower Upper
 149 100
 91 69.9 56.1 84.1
 206 23.0 18.8 28.2





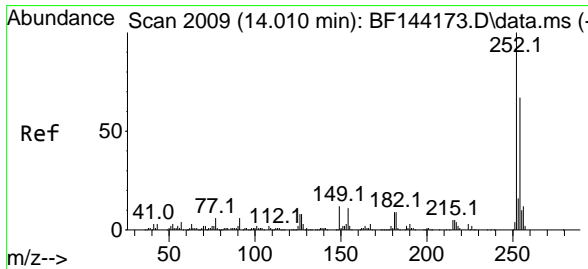
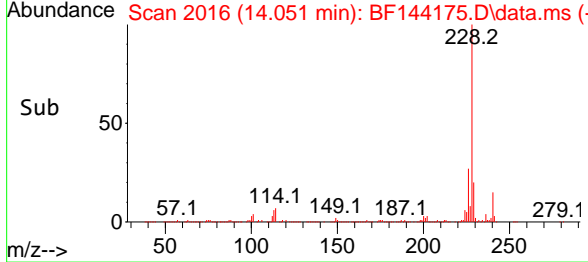
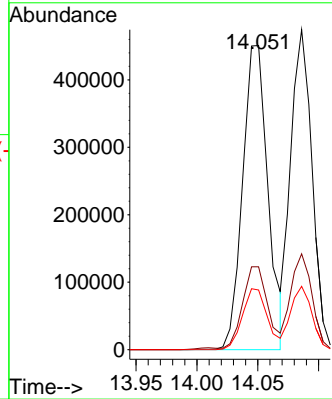
#81
 Benzo(a)anthracene
 Concen: 64.625 ng
 RT: 14.051 min Scan# 2016
 Delta R.T. -0.000 min
 Lab File: BF144175.D
 Acq: 05 Nov 2025 16:19

Instrument : BNA_F
 ClientSampleId : SSTDICC060



Tgt Ion:228 Resp: 653341

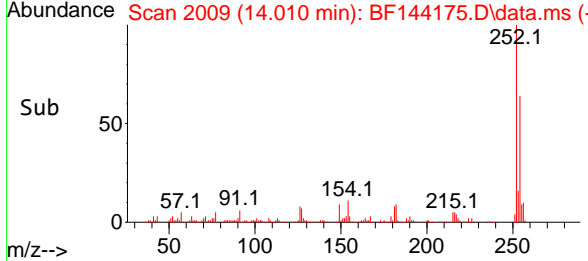
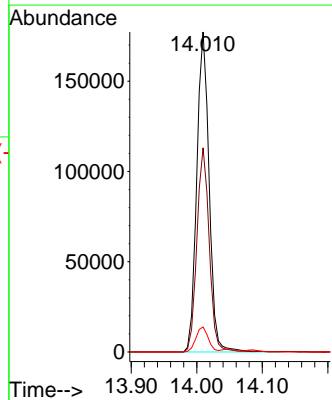
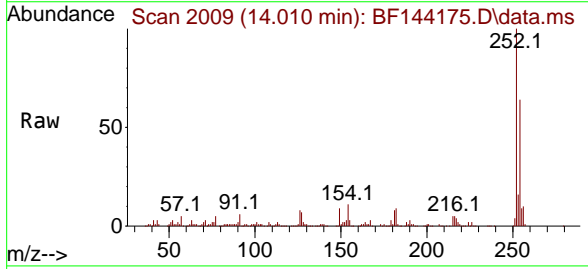
Ion	Ratio	Lower	Upper
228	100		
226	27.2	21.8	32.8
229	19.6	15.8	23.6

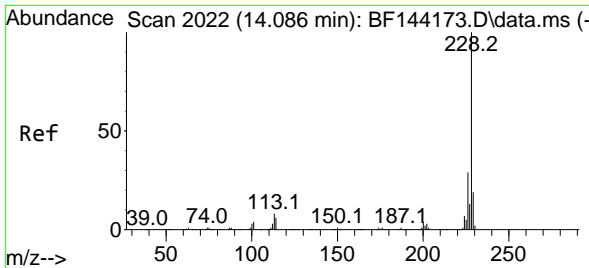


#82
 3,3'-Dichlorobenzidine
 Concen: 67.182 ng
 RT: 14.010 min Scan# 2009
 Delta R.T. -0.000 min
 Lab File: BF144175.D
 Acq: 05 Nov 2025 16:19

Tgt Ion:252 Resp: 232807

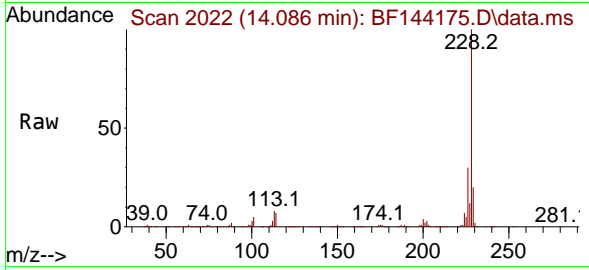
Ion	Ratio	Lower	Upper
252	100		
254	63.8	53.5	80.3
126	7.8	6.4	9.6





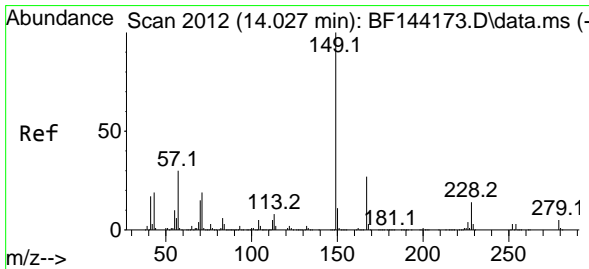
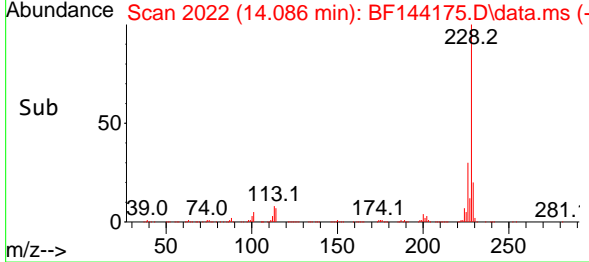
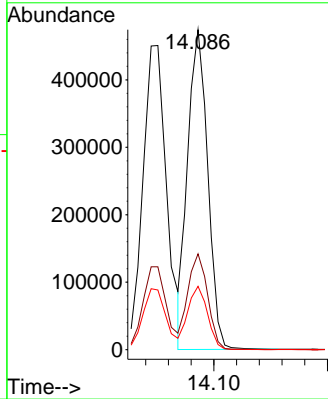
#83
 Chrysene
 Concen: 62.196 ng
 RT: 14.086 min Scan# 2012
 Delta R.T. -0.000 min
 Lab File: BF144175.D
 Acq: 05 Nov 2025 16:19

Instrument : BNA_F
 ClientSampleId : SSTDICC060



Tgt Ion: 228 Resp: 580449

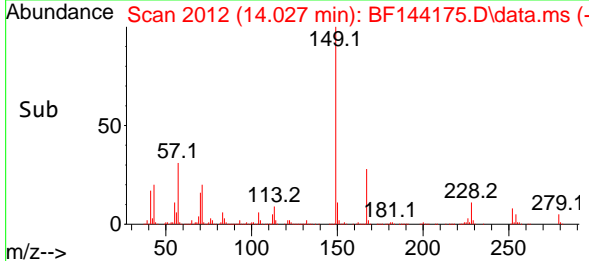
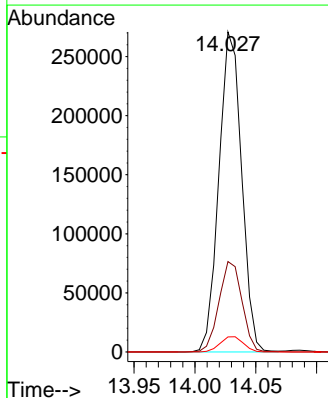
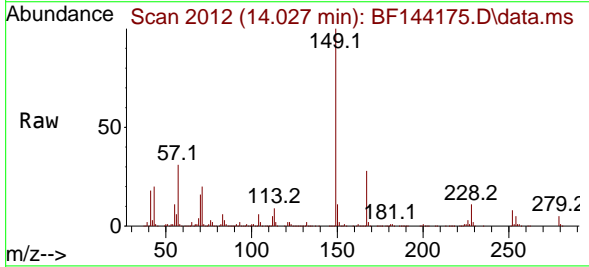
Ion	Ratio	Lower	Upper
228	100		
226	30.0	22.9	34.3
229	19.8	15.0	22.6

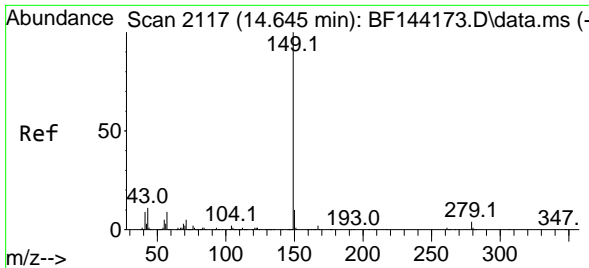


#84
 Bis(2-ethylhexyl)phthalate
 Concen: 62.991 ng
 RT: 14.027 min Scan# 2012
 Delta R.T. -0.006 min
 Lab File: BF144175.D
 Acq: 05 Nov 2025 16:19

Tgt Ion: 149 Resp: 351501

Ion	Ratio	Lower	Upper
149	100		
167	28.2	21.8	32.8
279	4.7	3.7	5.5

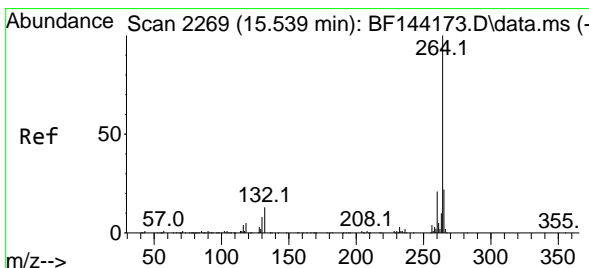
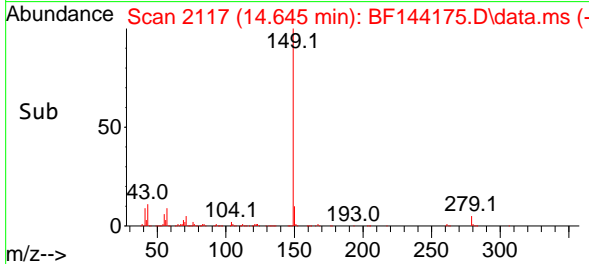
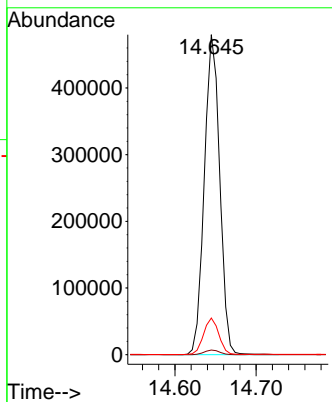
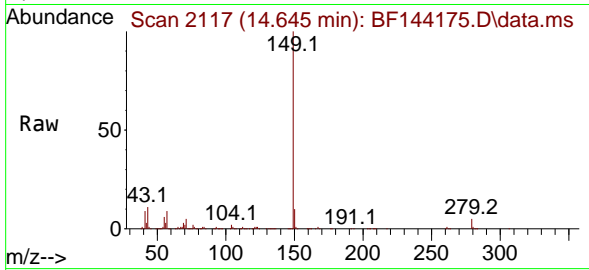




#85
 Di-n-octyl phthalate
 Concen: 65.547 ng
 RT: 14.645 min Scan# 2117
 Delta R.T. -0.000 min
 Lab File: BF144175.D
 Acq: 05 Nov 2025 16:19

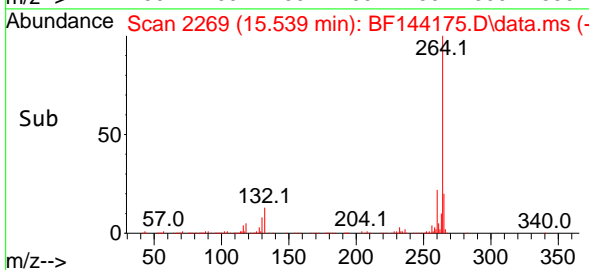
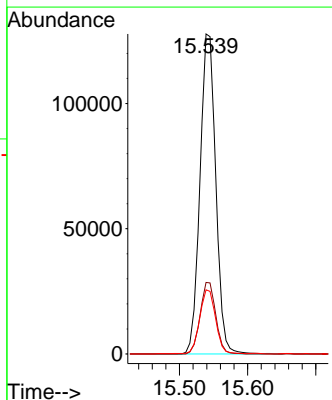
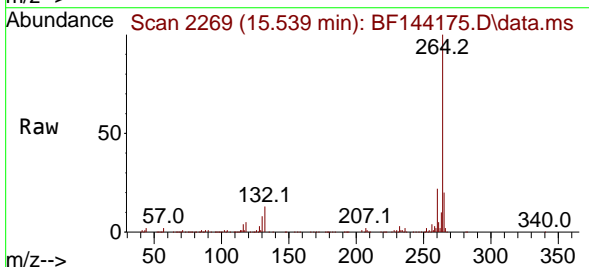
Instrument :
 BNA_F
 ClientSampleId :
 SSTDICC060

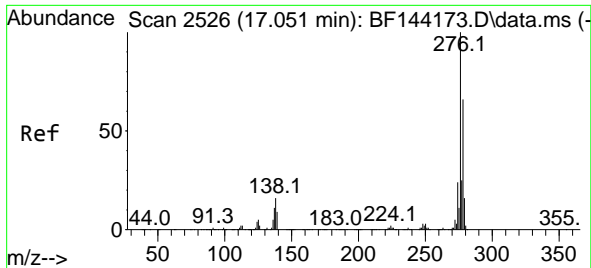
Tgt Ion	Resp	Lower	Upper
149	100		
167	1.4	1.2	1.8
43	11.3	9.0	13.4



#86
 Perylene-d12
 Concen: 20.000 ng
 RT: 15.539 min Scan# 2269
 Delta R.T. -0.006 min
 Lab File: BF144175.D
 Acq: 05 Nov 2025 16:19

Tgt Ion	Resp	Lower	Upper
264	100		
260	22.4	17.1	25.7
265	20.1	17.4	26.0





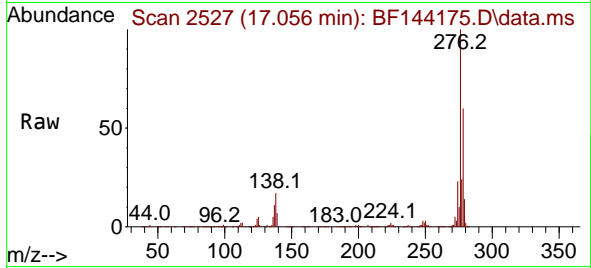
#87
 Indeno(1,2,3-cd)pyrene
 Concen: 63.557 ng
 RT: 17.056 min Scan# 21
 Delta R.T. -0.006 min
 Lab File: BF144175.D
 Acq: 05 Nov 2025 16:19

Instrument :

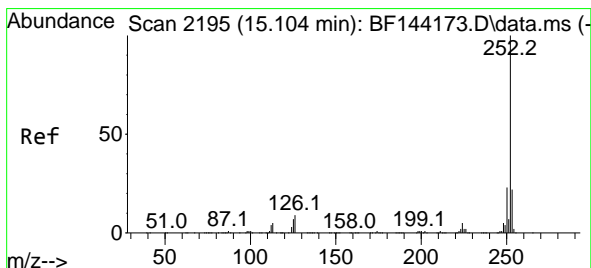
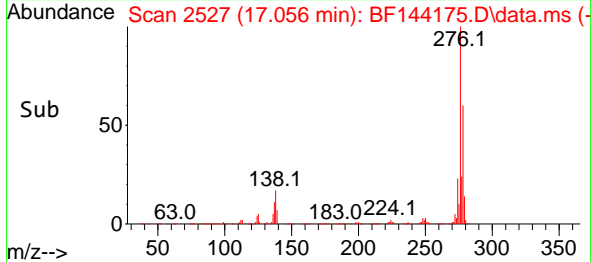
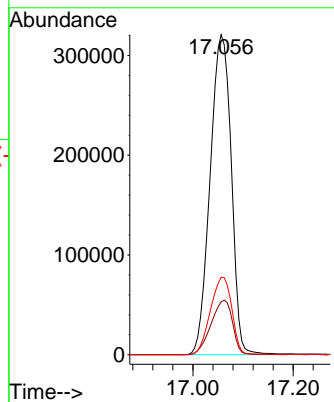
BNA_F

Client Sample Id :

SSTDICC060

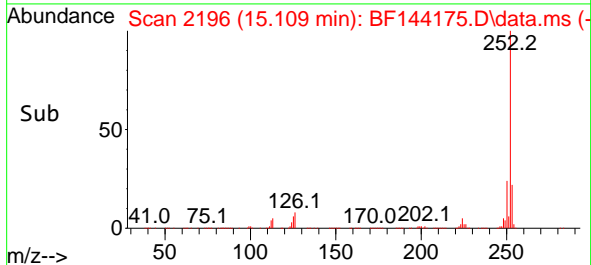
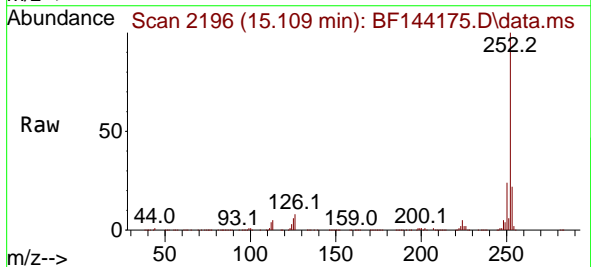
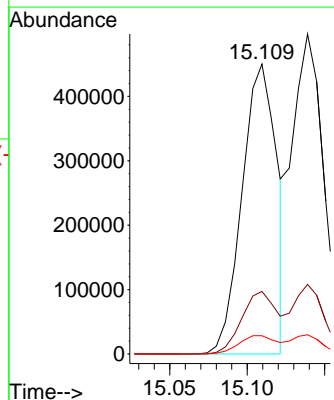


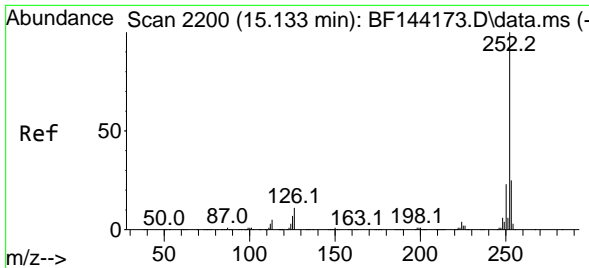
Tgt Ion: 276 Resp: 938738
 Ion Ratio Lower Upper
 276 100
 138 17.4 13.9 20.9
 277 24.6 19.8 29.6



#88
 Benzo(b)fluoranthene
 Concen: 59.849 ng
 RT: 15.109 min Scan# 2196
 Delta R.T. -0.000 min
 Lab File: BF144175.D
 Acq: 05 Nov 2025 16:19

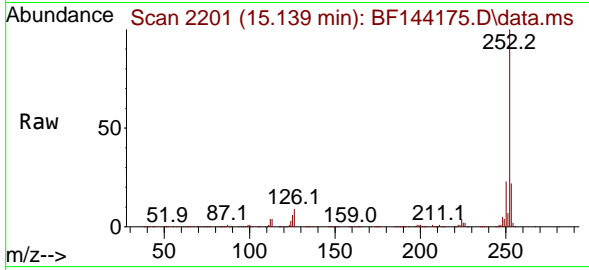
Tgt Ion: 252 Resp: 700099
 Ion Ratio Lower Upper
 252 100
 253 21.6 17.4 26.2
 125 6.3 5.3 7.9



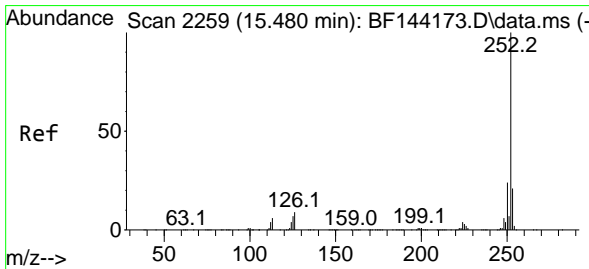
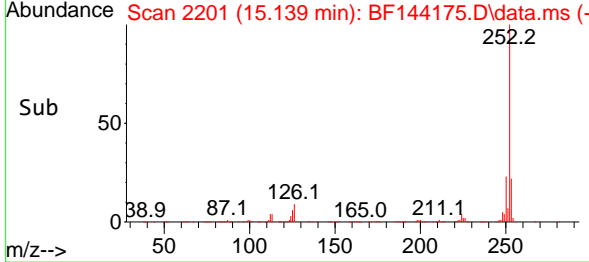
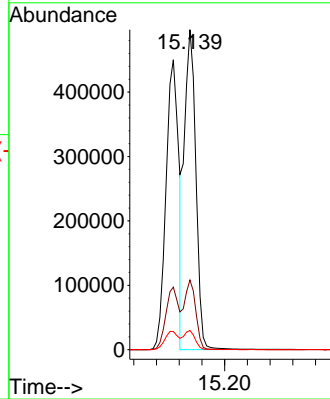


#89
 Benzo(k)fluoranthene
 Concen: 63.919 ng
 RT: 15.139 min Scan# 21
 Delta R.T. -0.006 min
 Lab File: BF144175.D
 Acq: 05 Nov 2025 16:19

Instrument :
 BNA_F
 ClientSampleId :
 SSTDICC060

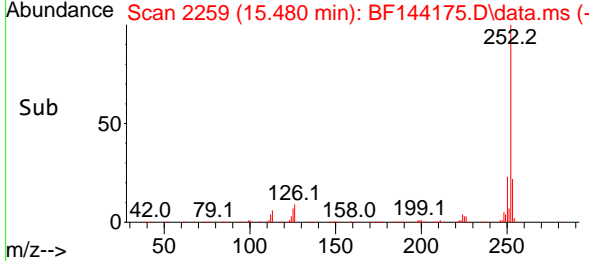
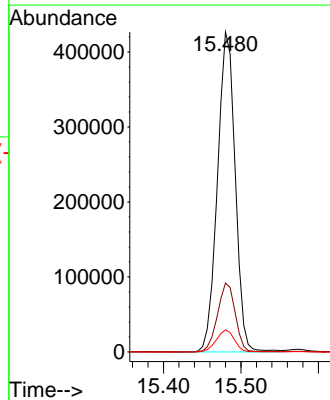
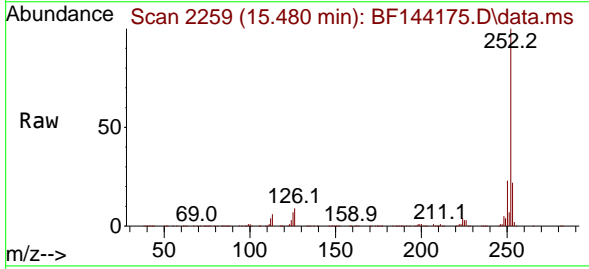


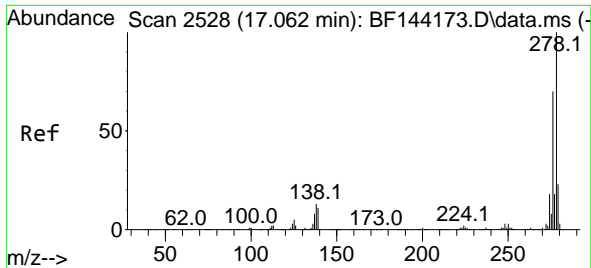
Tgt Ion:252 Resp: 699851
 Ion Ratio Lower Upper
 252 100
 253 21.8 18.0 27.0
 125 6.0 5.4 8.2



#90
 Benzo(a)pyrene
 Concen: 63.078 ng
 RT: 15.480 min Scan# 2259
 Delta R.T. -0.006 min
 Lab File: BF144175.D
 Acq: 05 Nov 2025 16:19

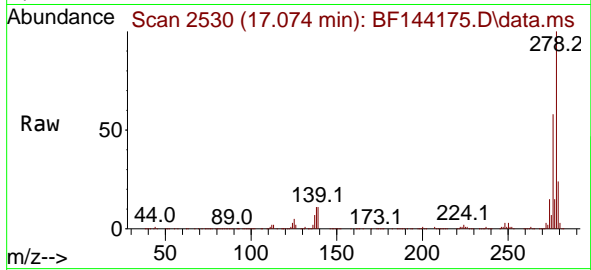
Tgt Ion:252 Resp: 680720
 Ion Ratio Lower Upper
 252 100
 253 21.5 16.7 25.1
 125 6.9 5.7 8.5



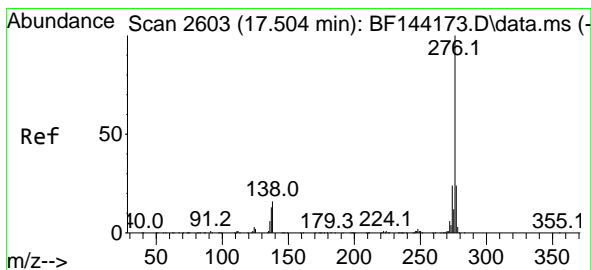
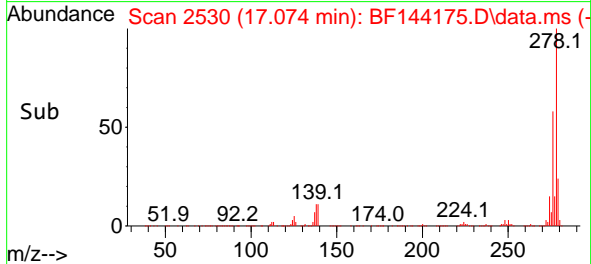
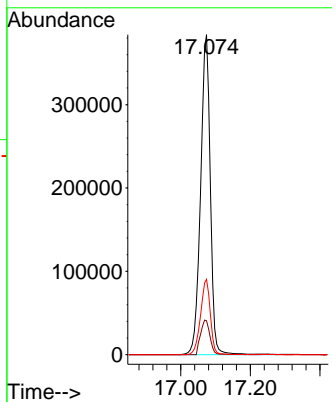


#91
 Dibenzo(a,h)anthracene
 Concen: 62.936 ng
 RT: 17.074 min Scan# 21
 Delta R.T. -0.006 min
 Lab File: BF144175.D
 Acq: 05 Nov 2025 16:19

Instrument :
 BNA_F
 ClientSampleId :
 SSTDICC060



Tgt Ion:278 Resp: 746544
 Ion Ratio Lower Upper
 278 100
 139 10.6 9.1 13.7
 279 23.5 18.2 27.4



#92
 Benzo(g,h,i)perylene
 Concen: 64.699 ng
 RT: 17.515 min Scan# 2605
 Delta R.T. -0.006 min
 Lab File: BF144175.D
 Acq: 05 Nov 2025 16:19

Tgt Ion:276 Resp: 757880
 Ion Ratio Lower Upper
 276 100
 277 24.2 19.0 28.4
 138 15.0 12.9 19.3

