

Data Path : Z:\svoasrv\HPCHEM1\BNA\_F\Data\BF111125\  
 Data File : BF144203.D  
 Acq On : 11 Nov 2025 15:09  
 Operator : RC/JU  
 Sample : Q3584-02  
 Misc :  
 ALS Vial : 7 Sample Multiplier: 1

Instrument :  
 BNA\_F  
 ClientSampleId :  
 SW-2

Quant Time: Nov 11 15:39:15 2025  
 Quant Method : Z:\svoasrv\HPCHEM1\BNA\_F\Methods\8270-BF110525.M  
 Quant Title : ASP BNA STANDARDS FOR 5 POINT CALIBRATION  
 QLast Update : Wed Nov 05 18:37:33 2025  
 Response via : Initial Calibration

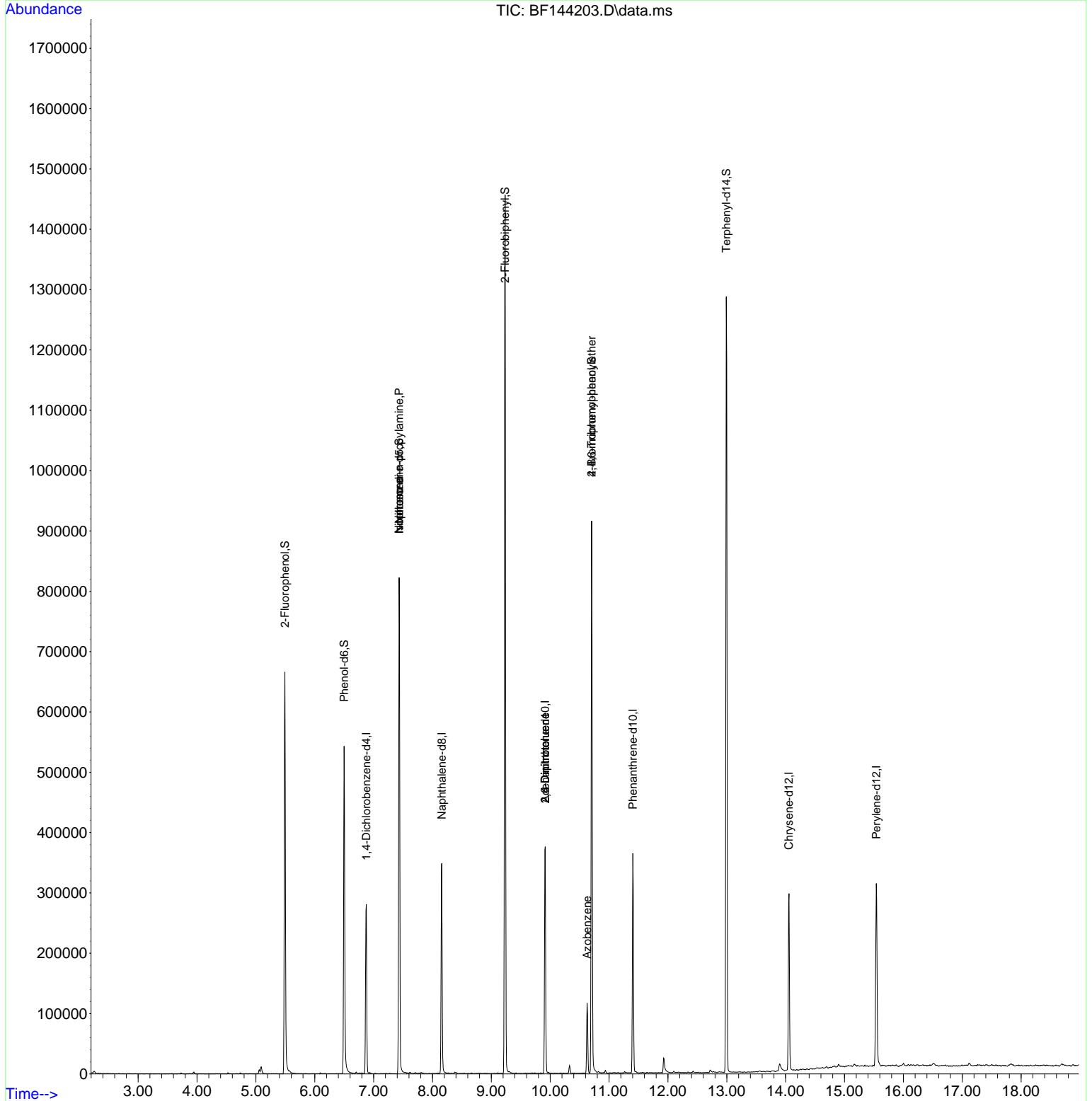
Compound	R.T.	QIon	Response	Conc	Units	Dev(Min)
Internal Standards						
1) 1,4-Dichlorobenzene-d4	6.875	152	59255	20.000	ng	0.00
21) Naphthalene-d8	8.157	136	231451	20.000	ng	0.00
39) Acenaphthene-d10	9.916	164	119771	20.000	ng	0.00
64) Phenanthrene-d10	11.404	188	200120	20.000	ng	0.00
76) Chrysene-d12	14.057	240	163164	20.000	ng	0.00
86) Perylene-d12	15.539	264	207285	20.000	ng	0.00
System Monitoring Compounds						
5) 2-Fluorophenol	5.492	112	262551	69.337	ng	0.00
7) Phenol-d6	6.498	99	236120	55.033	ng	0.00
23) Nitrobenzene-d5	7.434	82	347465	86.704	ng	0.00
42) 2,4,6-Tribromophenol	10.704	330	179630	119.515	ng	0.00
45) 2-Fluorobiphenyl	9.233	172	686010	84.594	ng	0.00
79) Terphenyl-d14	12.992	244	686303	66.812	ng	0.00
Target Compounds						
19) n-Nitroso-di-n-propyla...	7.434	70	51050	18.074	ng	# 80
25) Isophorone	7.434	82	347463	45.838	ng	# 66
51) 2,6-Dinitrotoluene	9.916	165	15309	9.531	ng	# 27
57) 2,4-Dinitrotoluene	9.916	165	15309	7.120	ng	# 27
63) Azobenzene	10.627	77	27268	4.006	ng	# 1
67) 4-Bromophenyl-phenylether	10.704	248	10572	4.139	ng	# 1

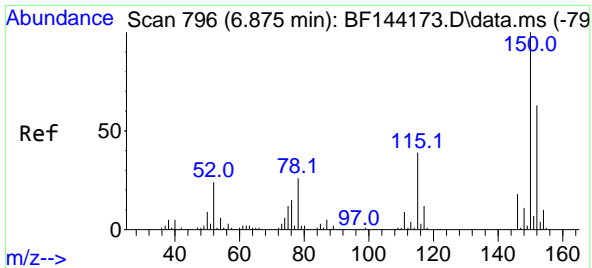
(#) = qualifier out of range (m) = manual integration (+) = signals summed

Data Path : Z:\svoasrv\HPCHEM1\BNA\_F\Data\BF111125\  
 Data File : BF144203.D  
 Acq On : 11 Nov 2025 15:09  
 Operator : RC/JU  
 Sample : Q3584-02  
 Misc :  
 ALS Vial : 7 Sample Multiplier: 1

Instrument :  
 BNA\_F  
 ClientSampleId :  
 SW-2

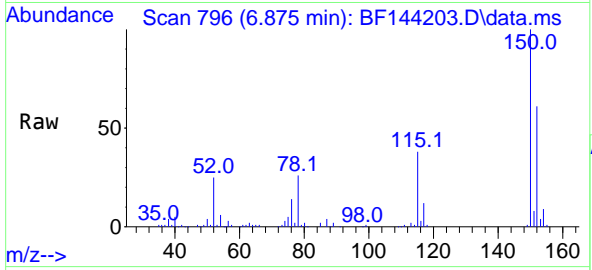
Quant Time: Nov 11 15:39:15 2025  
 Quant Method : Z:\svoasrv\HPCHEM1\BNA\_F\Methods\8270-BF110525.M  
 Quant Title : ASP BNA STANDARDS FOR 5 POINT CALIBRATION  
 QLast Update : Wed Nov 05 18:37:33 2025  
 Response via : Initial Calibration



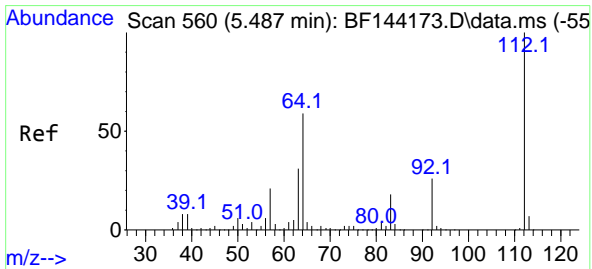
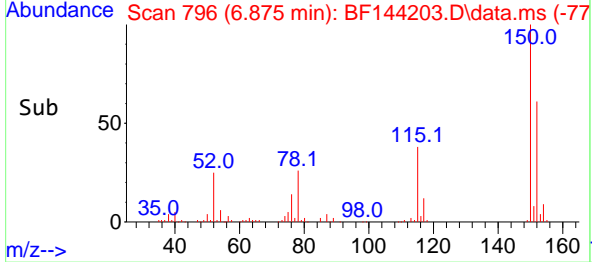
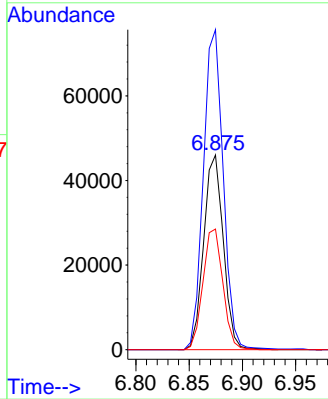


#1  
 1,4-Dichlorobenzene-d4  
 Concen: 20.000 ng  
 RT: 6.875 min Scan# 796  
 Delta R.T. -0.000 min  
 Lab File: BF144203.D  
 Acq: 11 Nov 2025 15:09

Instrument :  
 BNA\_F  
 ClientSampleId :  
 SW-2

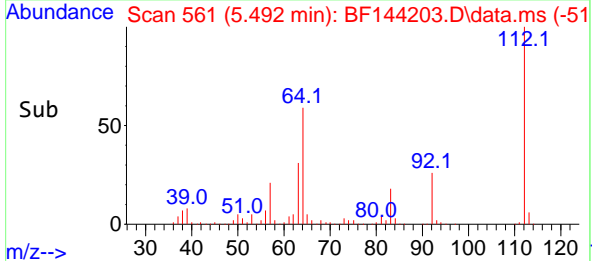
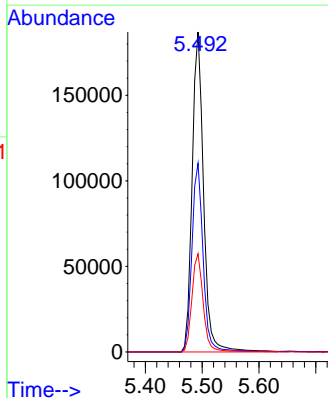
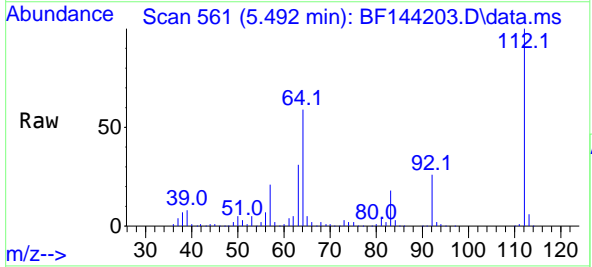


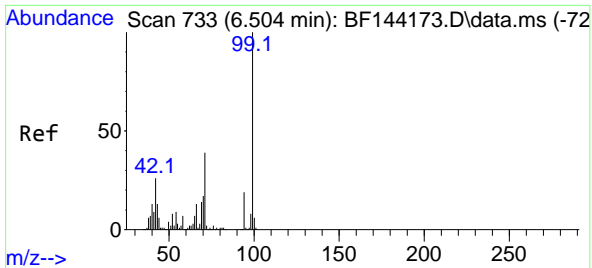
Tgt Ion:152 Resp: 59255  
 Ion Ratio Lower Upper  
 152 100  
 150 164.3 127.4 191.0  
 115 62.0 49.5 74.3



#5  
 2-Fluorophenol  
 Concen: 69.337 ng  
 RT: 5.492 min Scan# 561  
 Delta R.T. -0.000 min  
 Lab File: BF144203.D  
 Acq: 11 Nov 2025 15:09

Tgt Ion:112 Resp: 262551  
 Ion Ratio Lower Upper  
 112 100  
 64 58.9 47.2 70.8  
 63 30.7 24.4 36.6



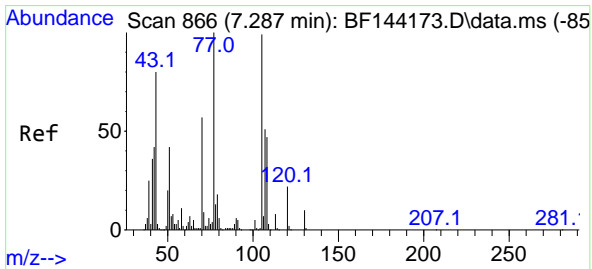
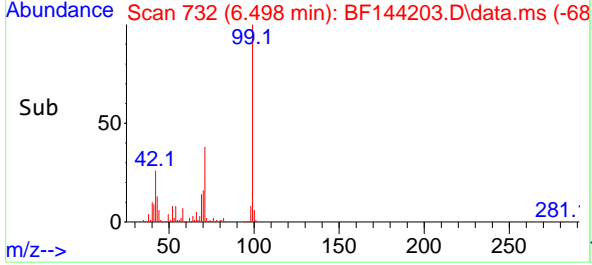
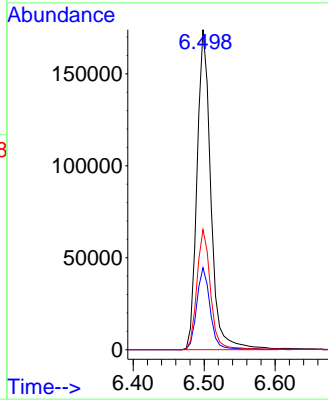
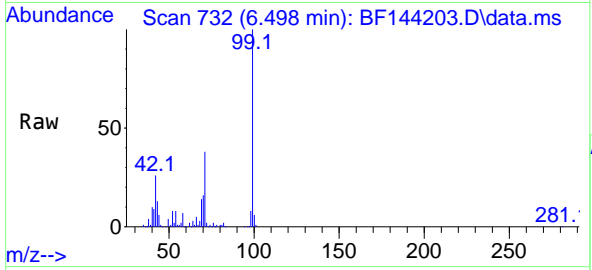


#7  
 Phenol-d6  
 Concen: 55.033 ng  
 RT: 6.498 min Scan# 71  
 Delta R.T. -0.000 min  
 Lab File: BF144203.D  
 Acq: 11 Nov 2025 15:09

Instrument :  
 BNA\_F  
 ClientSampleId :  
 SW-2

Tgt Ion: 99 Resp: 236120

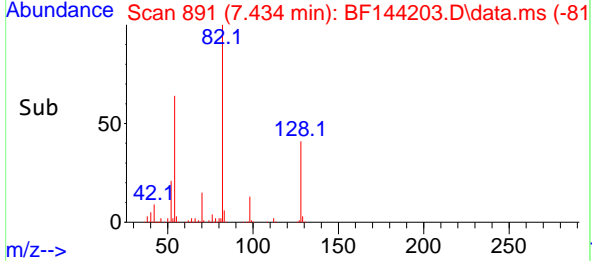
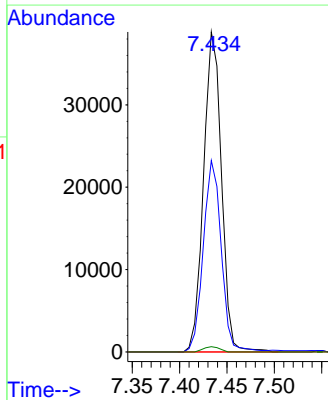
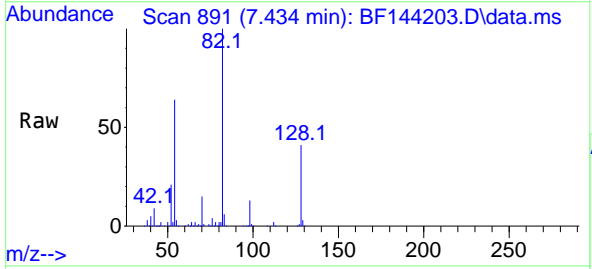
Ion	Ratio	Lower	Upper
99	100		
42	25.6	20.9	31.3
71	37.6	31.4	47.2

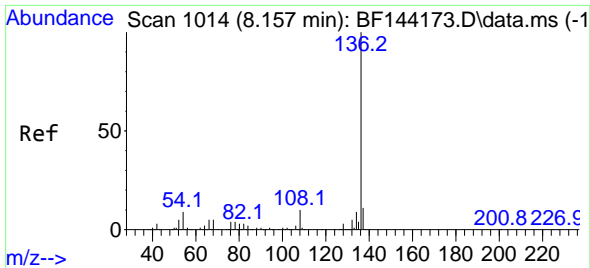


#19  
 n-Nitroso-di-n-propylamine  
 Concen: 18.074 ng  
 RT: 7.434 min Scan# 891  
 Delta R.T. 0.159 min  
 Lab File: BF144203.D  
 Acq: 11 Nov 2025 15:09

Tgt Ion: 70 Resp: 51050

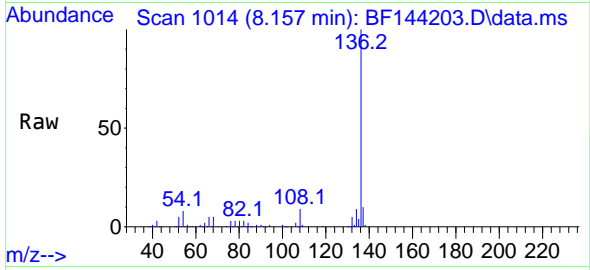
Ion	Ratio	Lower	Upper
70	100		
42	59.8	58.3	87.5
101	0.0	7.0	10.6#
130	1.7	14.4	21.6#





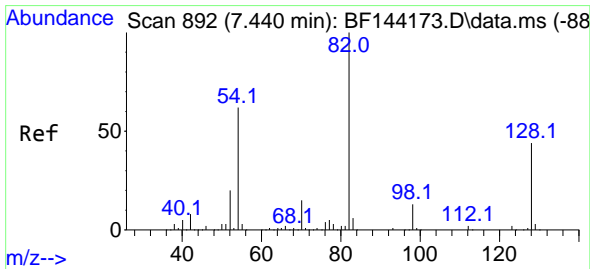
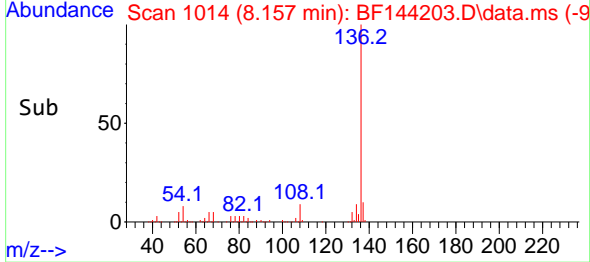
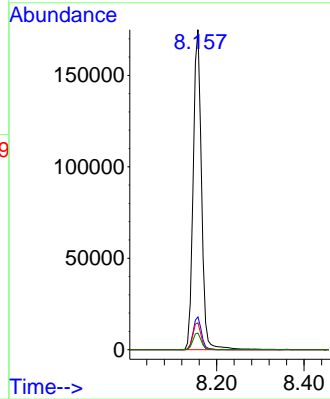
#21  
 Naphthalene-d8  
 Concen: 20.000 ng  
 RT: 8.157 min Scan# 1014  
 Delta R.T. -0.000 min  
 Lab File: BF144203.D  
 Acq: 11 Nov 2025 15:09

Instrument : BNA\_F  
 ClientSampleId : SW-2



Tgt Ion: 136 Resp: 231451

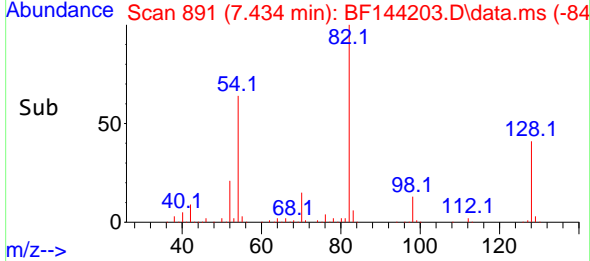
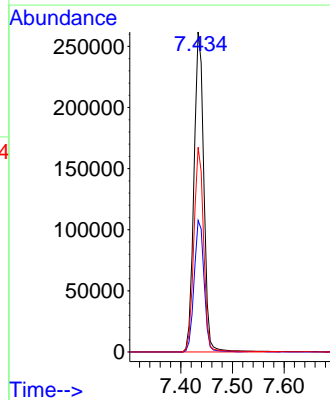
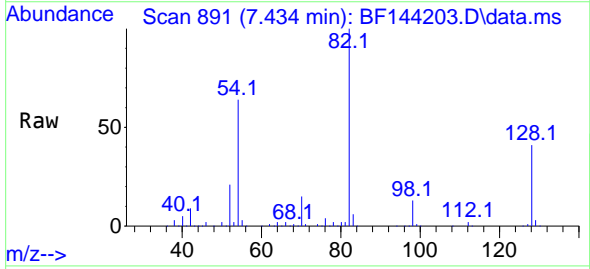
Ion	Ratio	Lower	Upper
136	100		
137	10.3	8.6	13.0
54	8.4	7.0	10.6
68	5.2	4.3	6.5

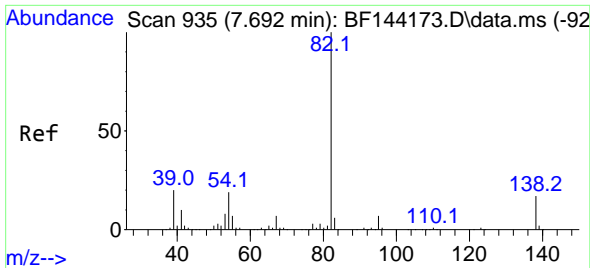


#23  
 Nitrobenzene-d5  
 Concen: 86.704 ng  
 RT: 7.434 min Scan# 891  
 Delta R.T. -0.000 min  
 Lab File: BF144203.D  
 Acq: 11 Nov 2025 15:09

Tgt Ion: 82 Resp: 347465

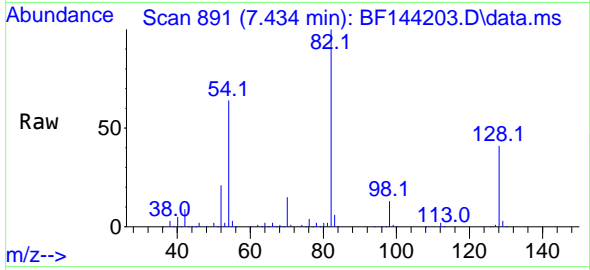
Ion	Ratio	Lower	Upper
82	100		
128	41.1	34.7	52.1
54	63.9	49.5	74.3



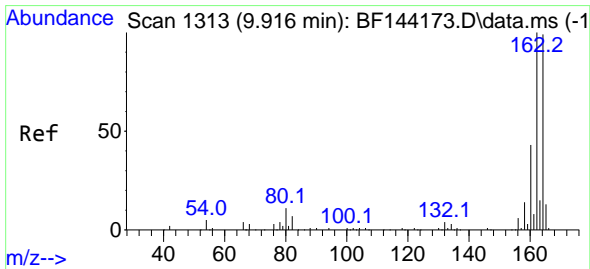
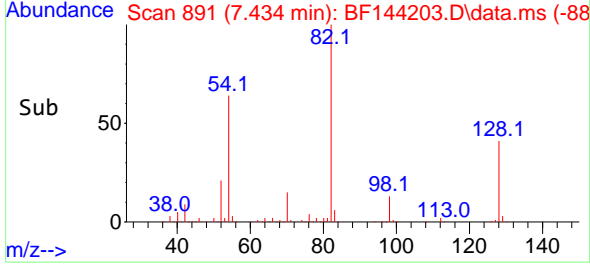
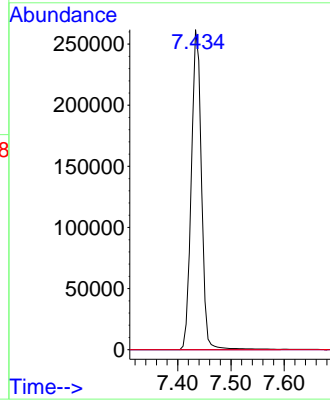


#25  
 Isophorone  
 Concen: 45.838 ng  
 RT: 7.434 min Scan# 891  
 Delta R.T. -0.253 min  
 Lab File: BF144203.D  
 Acq: 11 Nov 2025 15:09

Instrument :  
 BNA\_F  
 ClientSampleId :  
 SW-2

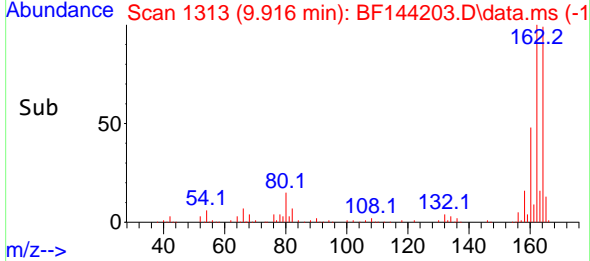
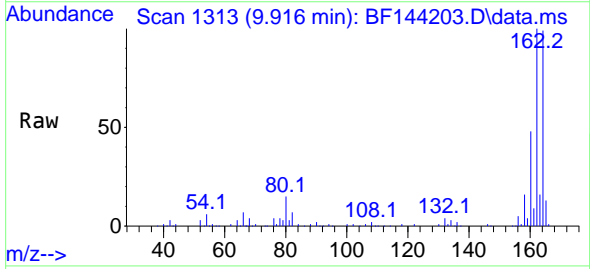
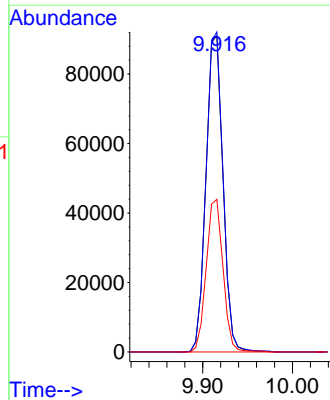


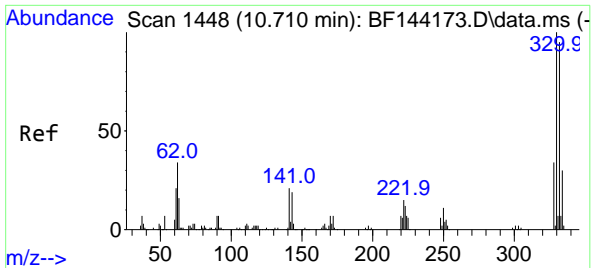
Tgt Ion: 82 Resp: 347463  
 Ion Ratio Lower Upper  
 82 100  
 95 0.0 5.5 8.3#  
 138 0.0 13.7 20.5#



#39  
 Acenaphthene-d10  
 Concen: 20.000 ng  
 RT: 9.916 min Scan# 1313  
 Delta R.T. -0.000 min  
 Lab File: BF144203.D  
 Acq: 11 Nov 2025 15:09

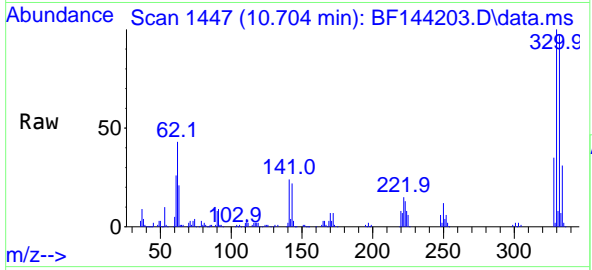
Tgt Ion: 164 Resp: 119771  
 Ion Ratio Lower Upper  
 164 100  
 162 101.2 81.1 121.7  
 160 48.3 34.5 51.7



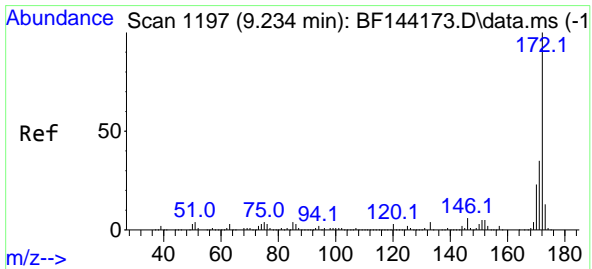
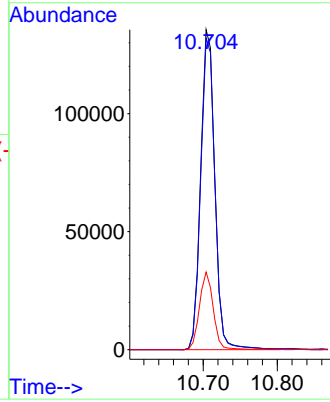
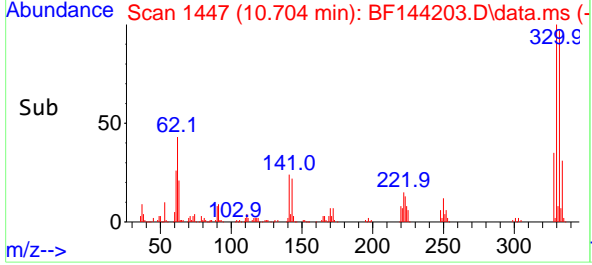


#42  
 2,4,6-Tribromophenol  
 Concen: 119.515 ng  
 RT: 10.704 min Scan# 1447  
 Delta R.T. -0.000 min  
 Lab File: BF144203.D  
 Acq: 11 Nov 2025 15:09

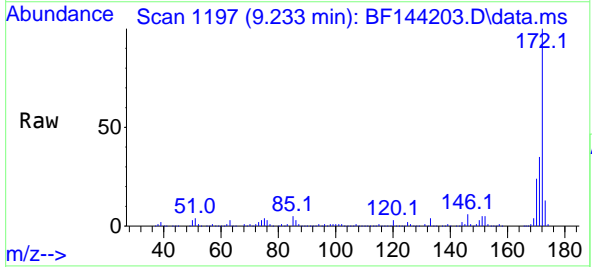
Instrument :  
 BNA\_F  
 ClientSampleId :  
 SW-2



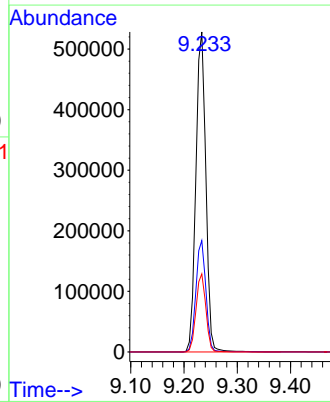
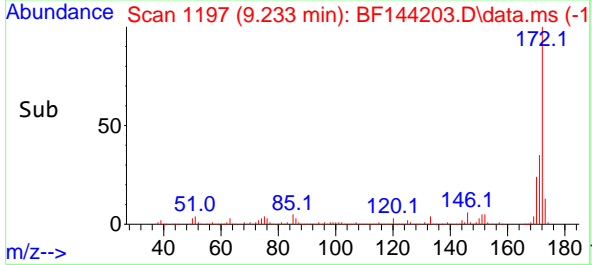
Tgt Ion:330 Resp: 179630  
 Ion Ratio Lower Upper  
 330 100  
 332 97.5 76.7 115.1  
 141 23.5 17.8 26.8

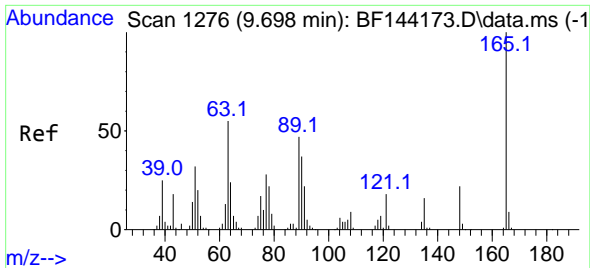


#45  
 2-Fluorobiphenyl  
 Concen: 84.594 ng  
 RT: 9.233 min Scan# 1197  
 Delta R.T. 0.006 min  
 Lab File: BF144203.D  
 Acq: 11 Nov 2025 15:09



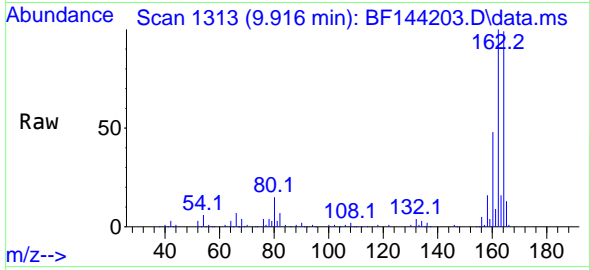
Tgt Ion:172 Resp: 686010  
 Ion Ratio Lower Upper  
 172 100  
 171 34.8 28.1 42.1  
 170 24.4 18.6 28.0



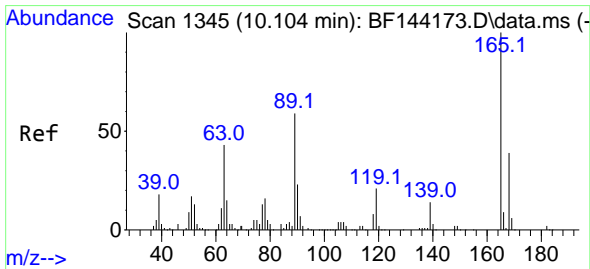
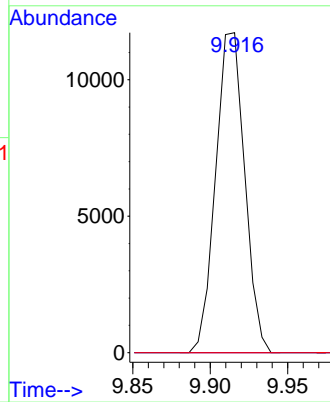
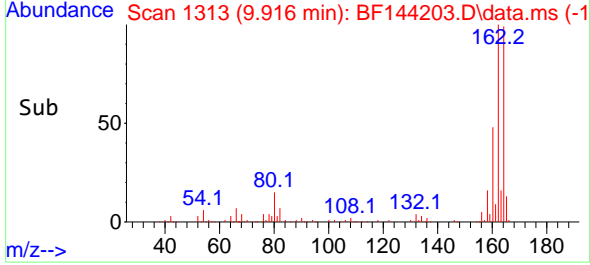


#51  
 2,6-Dinitrotoluene  
 Concen: 9.531 ng  
 RT: 9.916 min Scan# 1111  
 Delta R.T. 0.223 min  
 Lab File: BF144203.D  
 Acq: 11 Nov 2025 15:09

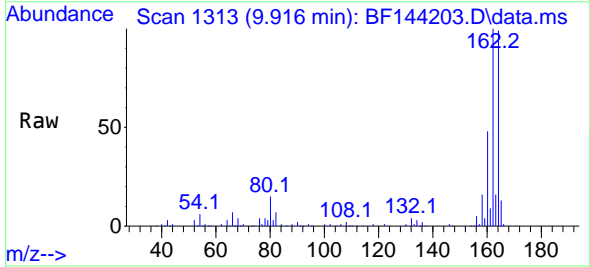
Instrument :  
 BNA\_F  
 ClientSampleId :  
 SW-2



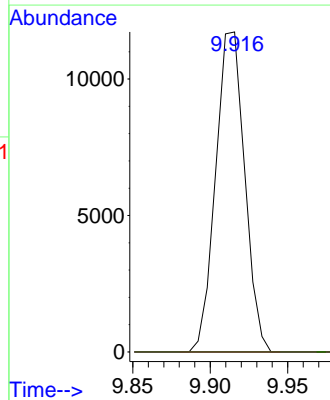
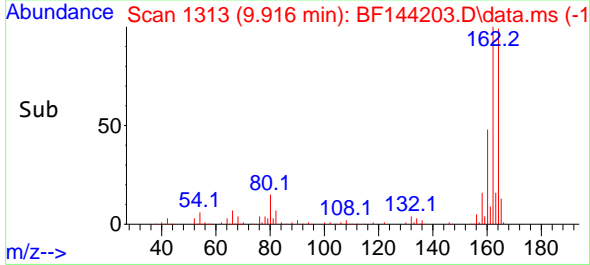
Tgt Ion:165 Resp: 15309  
 Ion Ratio Lower Upper  
 165 100  
 63 0.0 43.8 65.8#  
 89 0.0 37.5 56.3#



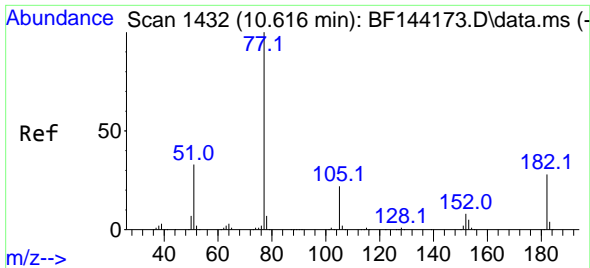
#57  
 2,4-Dinitrotoluene  
 Concen: 7.120 ng  
 RT: 9.916 min Scan# 1313  
 Delta R.T. -0.183 min  
 Lab File: BF144203.D  
 Acq: 11 Nov 2025 15:09



Tgt Ion:165 Resp: 15309  
 Ion Ratio Lower Upper  
 165 100  
 63 0.0 35.5 53.3#  
 89 0.0 47.4 71.2#  
 182 0.0 1.9 2.9#

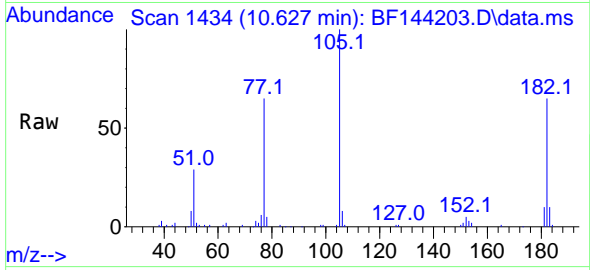




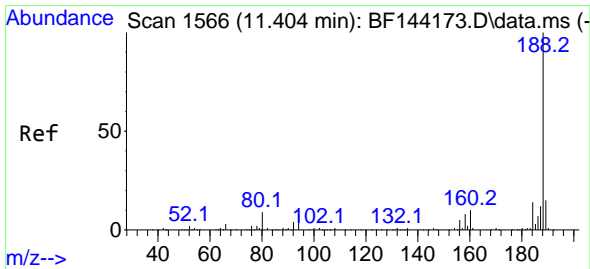
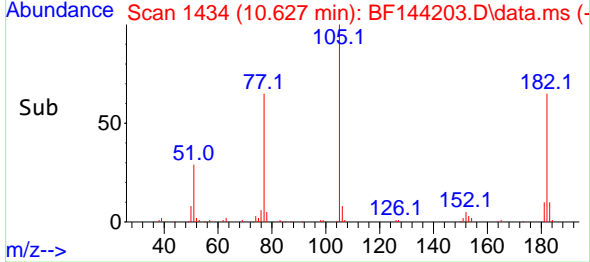
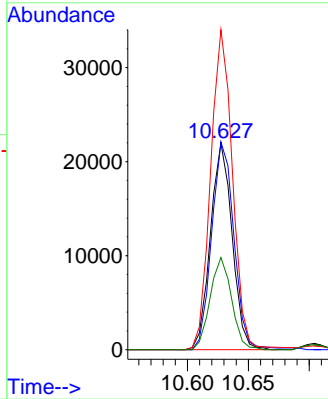


#63  
 Azobenzene  
 Concen: 4.006 ng  
 RT: 10.627 min Scan# 14  
 Delta R.T. 0.012 min  
 Lab File: BF144203.D  
 Acq: 11 Nov 2025 15:09

Instrument :  
 BNA\_F  
 ClientSampleId :  
 SW-2

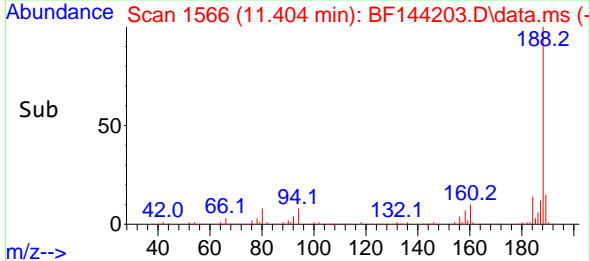
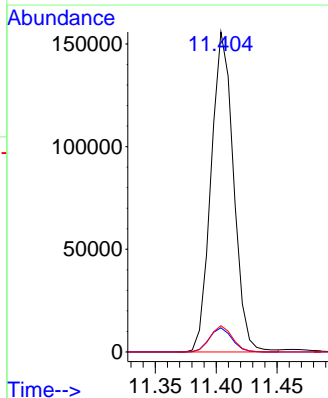
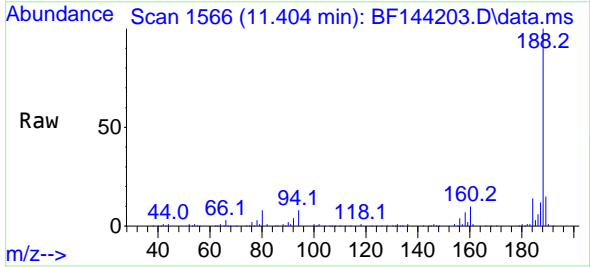


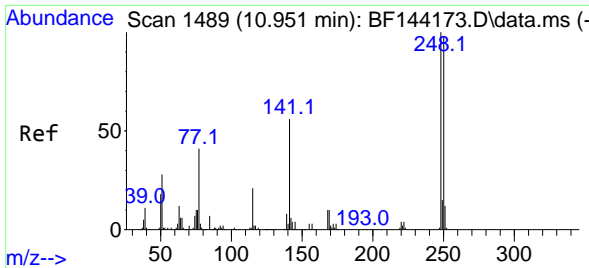
Tgt Ion: 77 Resp: 27268  
 Ion Ratio Lower Upper  
 77 100  
 182 100.5 8.1 48.1#  
 105 155.0 2.0 42.0#  
 51 44.7 13.9 53.9



#64  
 Phenanthrene-d10  
 Concen: 20.000 ng  
 RT: 11.404 min Scan# 1566  
 Delta R.T. -0.000 min  
 Lab File: BF144203.D  
 Acq: 11 Nov 2025 15:09

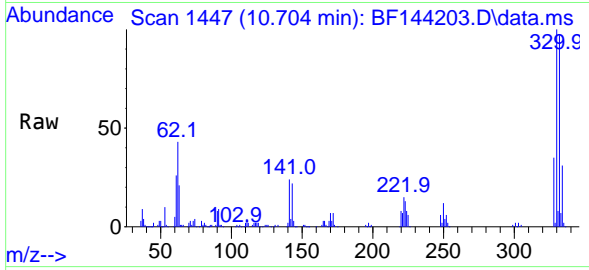
Tgt Ion: 188 Resp: 200120  
 Ion Ratio Lower Upper  
 188 100  
 94 7.6 6.2 9.2  
 80 8.2 6.9 10.3



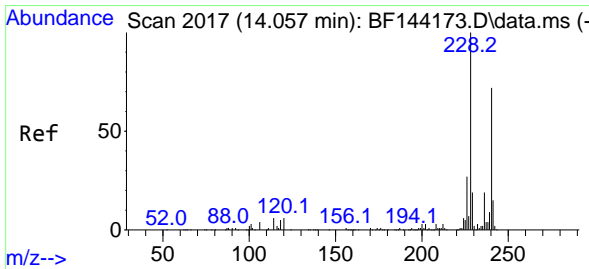
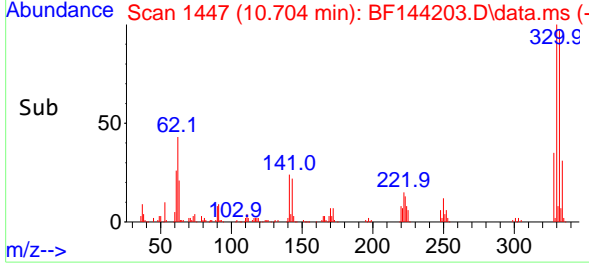
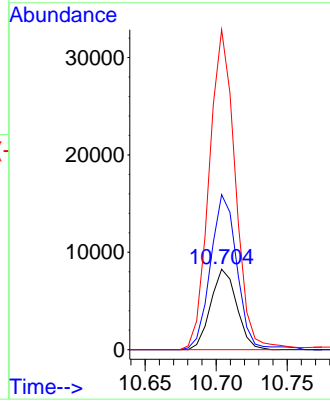


#67  
 4-Bromophenyl-phenylether  
 Concen: 4.139 ng  
 RT: 10.704 min Scan# 14  
 Delta R.T. -0.241 min  
 Lab File: BF144203.D  
 Acq: 11 Nov 2025 15:09

Instrument :  
 BNA\_F  
 ClientSampleId :  
 SW-2

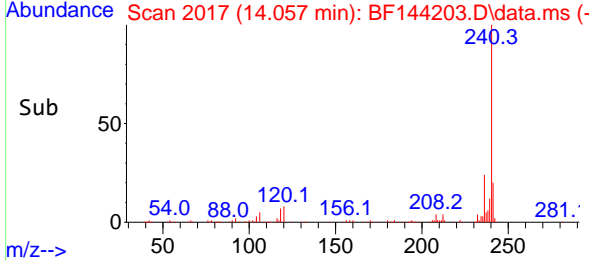
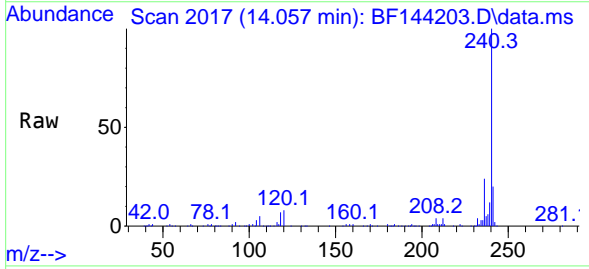
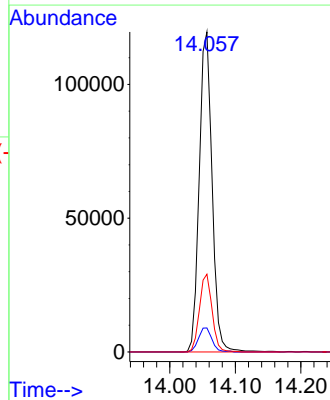


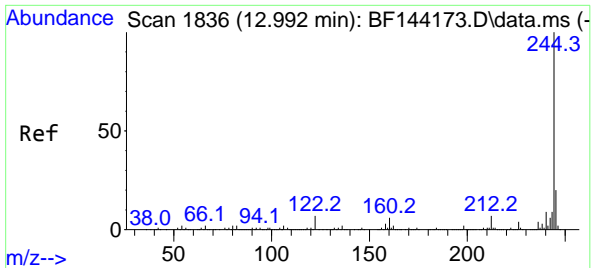
Tgt Ion:248 Resp: 10572  
 Ion Ratio Lower Upper  
 248 100  
 250 192.8 78.4 117.6#  
 141 398.0 45.1 67.7#



#76  
 Chrysene-d12  
 Concen: 20.000 ng  
 RT: 14.057 min Scan# 2017  
 Delta R.T. 0.006 min  
 Lab File: BF144203.D  
 Acq: 11 Nov 2025 15:09

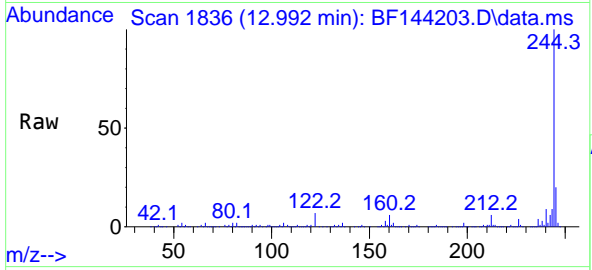
Tgt Ion:240 Resp: 163164  
 Ion Ratio Lower Upper  
 240 100  
 120 7.5 6.6 10.0  
 236 24.3 21.4 32.2





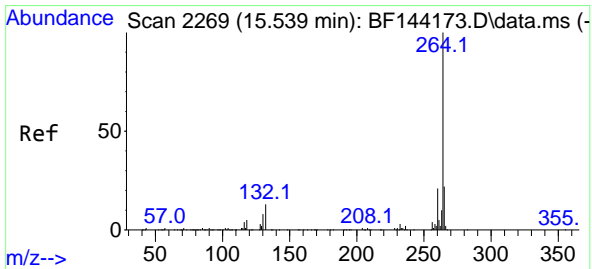
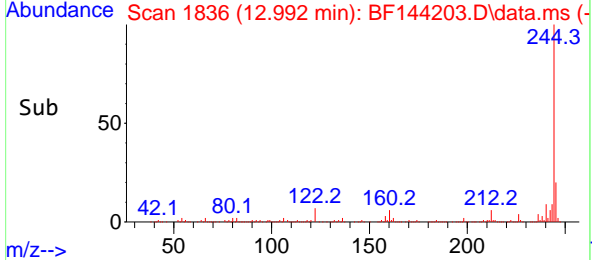
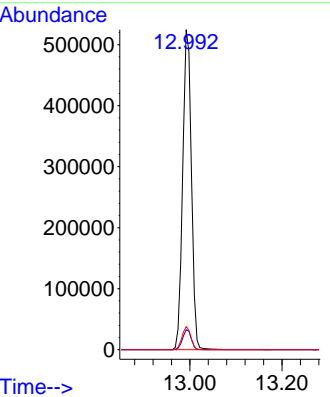
#79  
 Terphenyl-d14  
 Concen: 66.812 ng  
 RT: 12.992 min Scan# 1836  
 Delta R.T. -0.000 min  
 Lab File: BF144203.D  
 Acq: 11 Nov 2025 15:09

Instrument : BNA\_F  
 Client Sample Id : SW-2

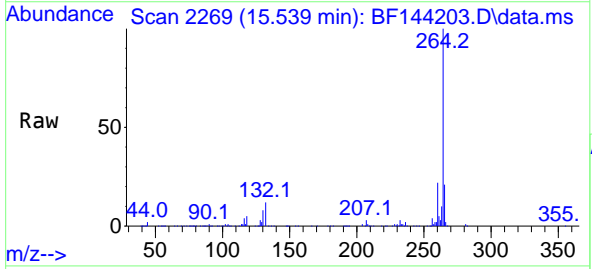


Tgt Ion: 244 Resp: 686303

Ion	Ratio	Lower	Upper
244	100		
212	6.3	5.3	7.9
122	7.2	5.6	8.4



#86  
 Perylene-d12  
 Concen: 20.000 ng  
 RT: 15.539 min Scan# 2269  
 Delta R.T. -0.000 min  
 Lab File: BF144203.D  
 Acq: 11 Nov 2025 15:09



Tgt Ion: 264 Resp: 207285

Ion	Ratio	Lower	Upper
264	100		
260	22.1	17.1	25.7
265	20.6	17.4	26.0

