

Data Path : Z:\svoasrv\HPCHEM1\BNA\_F\Data\BF111125\  
 Data File : BF144205.D  
 Acq On : 11 Nov 2025 16:07  
 Operator : RC/JU  
 Sample : Q3584-04  
 Misc :  
 ALS Vial : 9 Sample Multiplier: 1

Instrument :  
 BNA\_F  
 ClientSampleId :  
 EB-2

Quant Time: Nov 11 16:27:29 2025  
 Quant Method : Z:\svoasrv\HPCHEM1\BNA\_F\Methods\8270-BF110525.M  
 Quant Title : ASP BNA STANDARDS FOR 5 POINT CALIBRATION  
 QLast Update : Wed Nov 05 18:37:33 2025  
 Response via : Initial Calibration

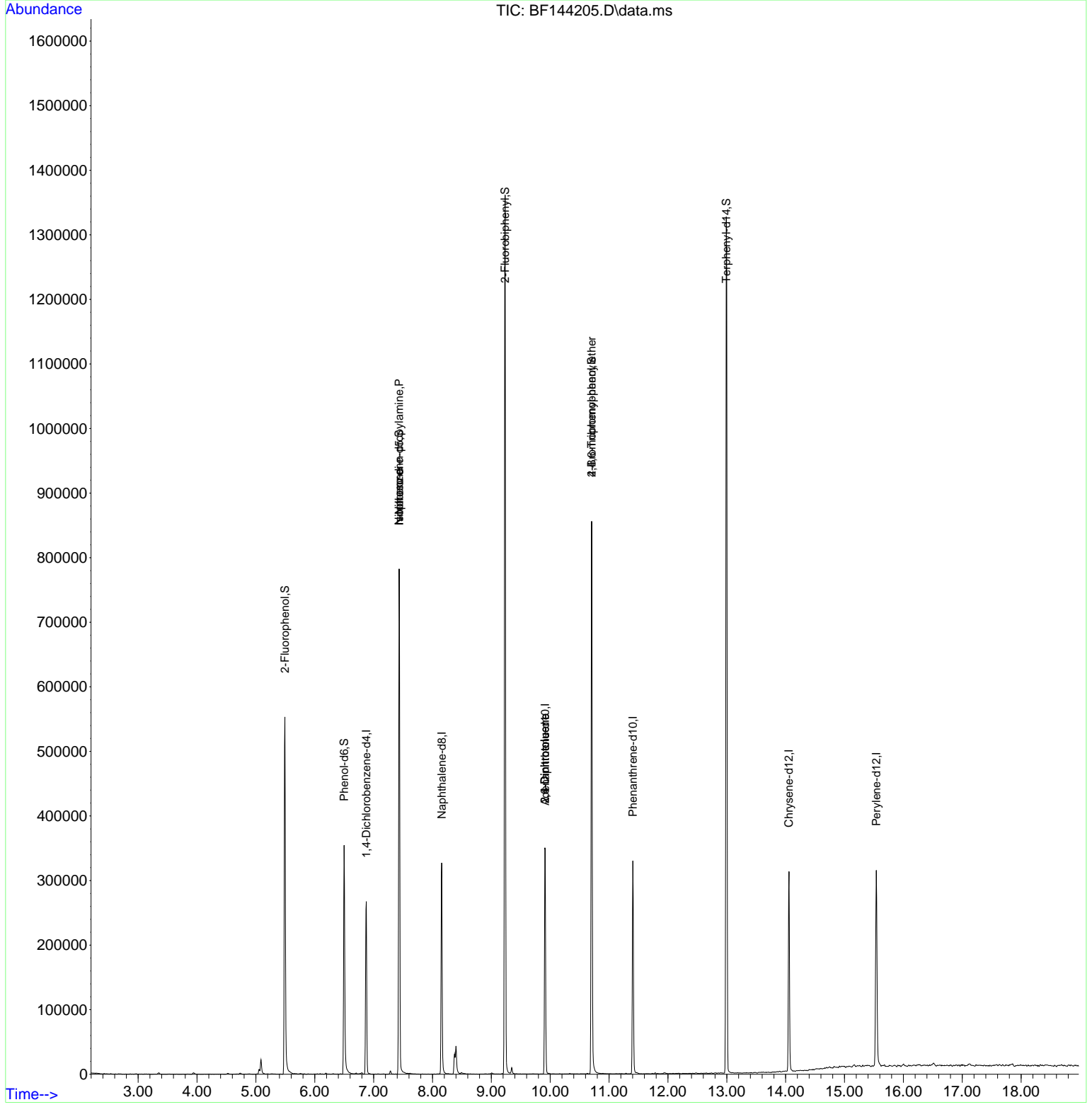
Compound	R.T.	QIon	Response	Conc	Units	Dev(Min)
Internal Standards						
1) 1,4-Dichlorobenzene-d4	6.875	152	58254	20.000	ng	0.00
21) Naphthalene-d8	8.157	136	216777	20.000	ng	0.00
39) Acenaphthene-d10	9.916	164	114918	20.000	ng	0.00
64) Phenanthrene-d10	11.404	188	186847	20.000	ng	0.00
76) Chrysene-d12	14.057	240	165680	20.000	ng	0.00
86) Perylene-d12	15.539	264	209451	20.000	ng	0.00
System Monitoring Compounds						
5) 2-Fluorophenol	5.493	112	229143	61.555	ng	0.00
7) Phenol-d6	6.498	99	162660	38.563	ng	0.00
23) Nitrobenzene-d5	7.434	82	325762	86.791	ng	0.00
42) 2,4,6-Tribromophenol	10.704	330	169687	117.668	ng	0.00
45) 2-Fluorobiphenyl	9.234	172	647178	83.176	ng	0.00
79) Terphenyl-d14	12.992	244	710957	68.161	ng	0.00
Target Compounds						
19) n-Nitroso-di-n-propyla...	7.434	70	47396	17.069	ng	# 80
25) Isophorone	7.434	82	325759	45.884	ng	# 66
51) 2,6-Dinitrotoluene	9.910	165	14041	9.111	ng	# 27
57) 2,4-Dinitrotoluene	9.910	165	14041	6.806	ng	# 27
67) 4-Bromophenyl-phenylether	10.704	248	9578	4.016	ng	# 1

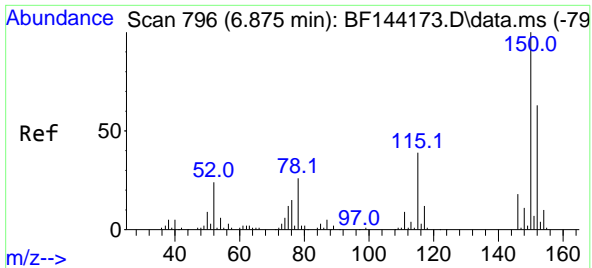
(#) = qualifier out of range (m) = manual integration (+) = signals summed

Data Path : Z:\svoasrv\HPCHEM1\BNA\_F\Data\BF111125\  
 Data File : BF144205.D  
 Acq On : 11 Nov 2025 16:07  
 Operator : RC/JU  
 Sample : Q3584-04  
 Misc :  
 ALS Vial : 9 Sample Multiplier: 1

Instrument :  
 BNA\_F  
 ClientSampleId :  
 EB-2

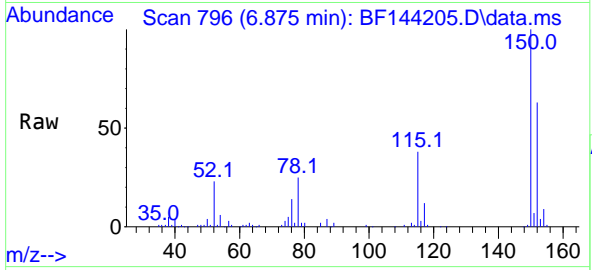
Quant Time: Nov 11 16:27:29 2025  
 Quant Method : Z:\svoasrv\HPCHEM1\BNA\_F\Methods\8270-BF110525.M  
 Quant Title : ASP BNA STANDARDS FOR 5 POINT CALIBRATION  
 QLast Update : Wed Nov 05 18:37:33 2025  
 Response via : Initial Calibration



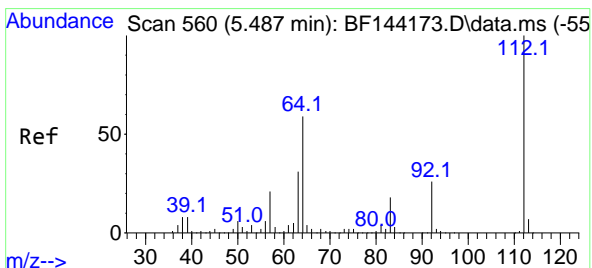
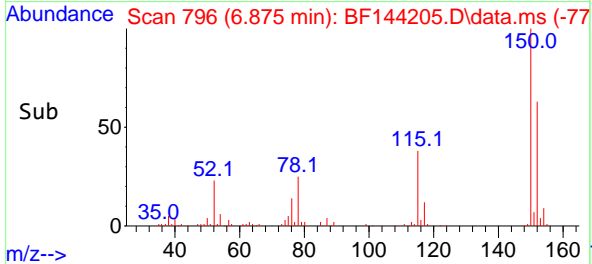
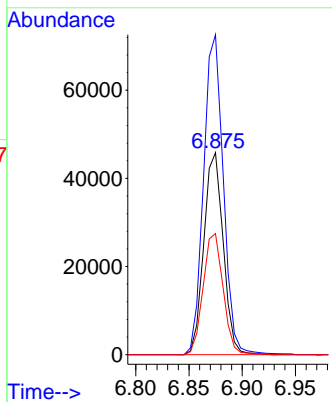


#1  
 1,4-Dichlorobenzene-d4  
 Concen: 20.000 ng  
 RT: 6.875 min Scan# 796  
 Delta R.T. -0.000 min  
 Lab File: BF144205.D  
 Acq: 11 Nov 2025 16:07

Instrument :  
 BNA\_F  
 ClientSampleId :  
 EB-2

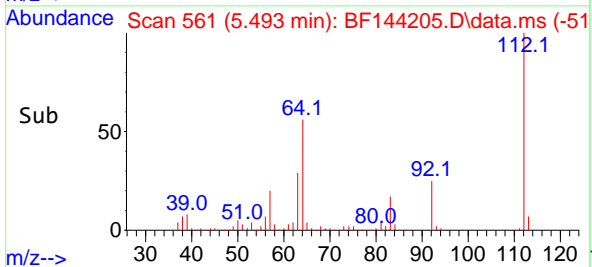
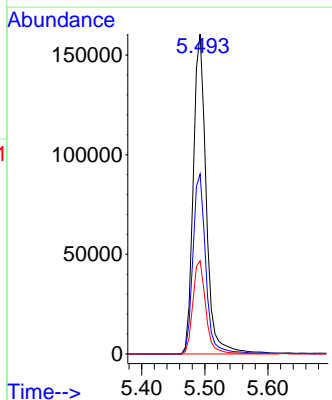
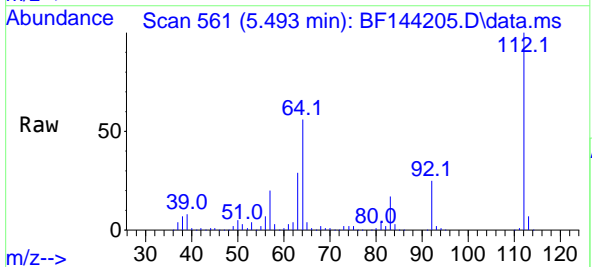


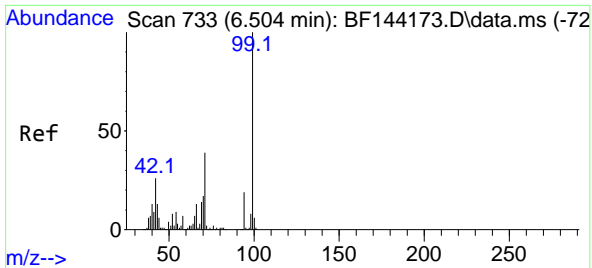
Tgt Ion:152 Resp: 58254  
 Ion Ratio Lower Upper  
 152 100  
 150 158.3 127.4 191.0  
 115 59.9 49.5 74.3



#5  
 2-Fluorophenol  
 Concen: 61.555 ng  
 RT: 5.493 min Scan# 561  
 Delta R.T. -0.000 min  
 Lab File: BF144205.D  
 Acq: 11 Nov 2025 16:07

Tgt Ion:112 Resp: 229143  
 Ion Ratio Lower Upper  
 112 100  
 64 56.3 47.2 70.8  
 63 29.1 24.4 36.6



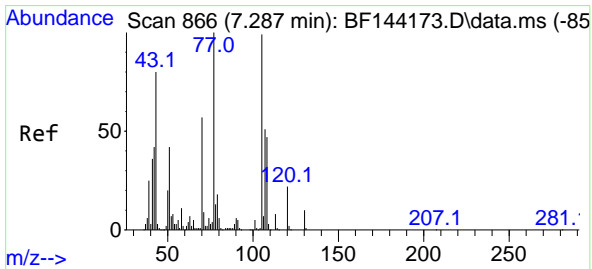
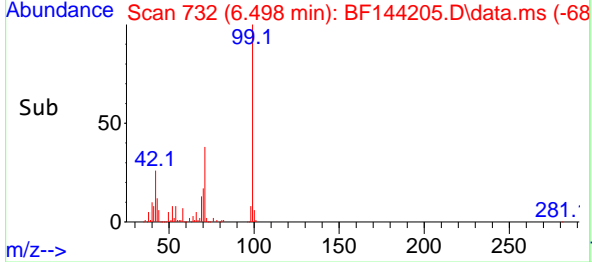
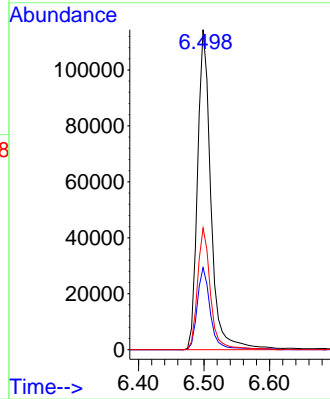
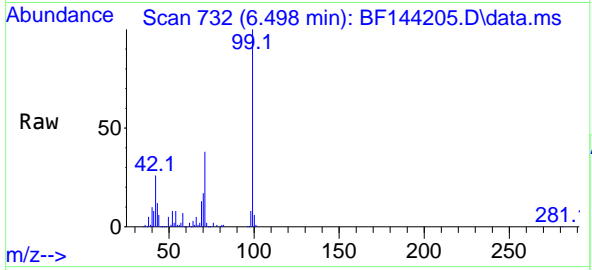


#7  
Pheno1-d6  
Concen: 38.563 ng  
RT: 6.498 min Scan# 71  
Delta R.T. -0.000 min  
Lab File: BF144205.D  
Acq: 11 Nov 2025 16:07

Instrument :  
BNA\_F  
ClientSampleId :  
EB-2

Tgt Ion: 99 Resp: 162660

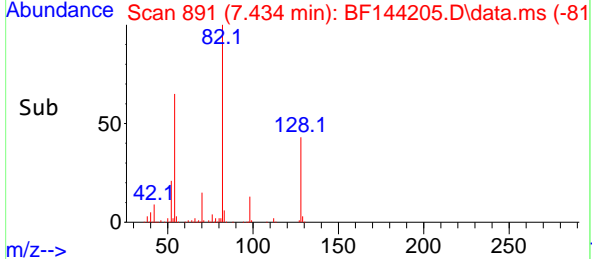
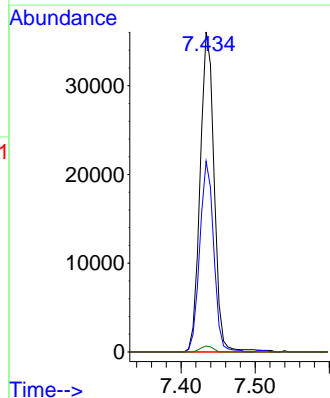
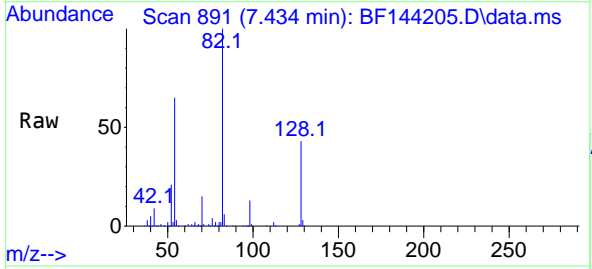
Ion	Ratio	Lower	Upper
99	100		
42	25.6	20.9	31.3
71	38.0	31.4	47.2

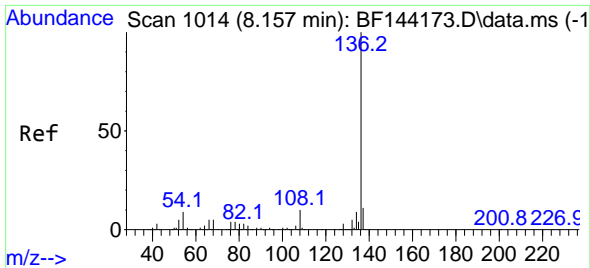


#19  
n-Nitroso-di-n-propylamine  
Concen: 17.069 ng  
RT: 7.434 min Scan# 891  
Delta R.T. 0.159 min  
Lab File: BF144205.D  
Acq: 11 Nov 2025 16:07

Tgt Ion: 70 Resp: 47396

Ion	Ratio	Lower	Upper
70	100		
42	59.6	58.3	87.5
101	0.0	7.0	10.6#
130	1.9	14.4	21.6#



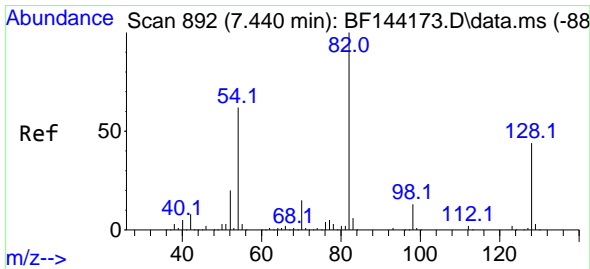
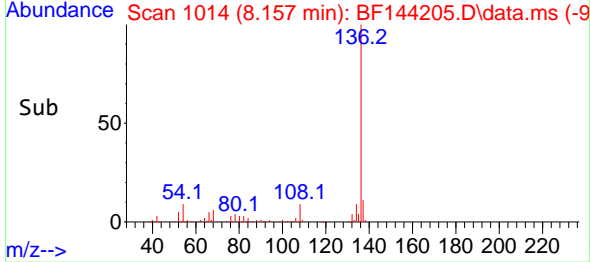
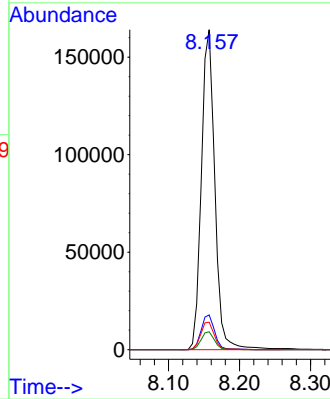
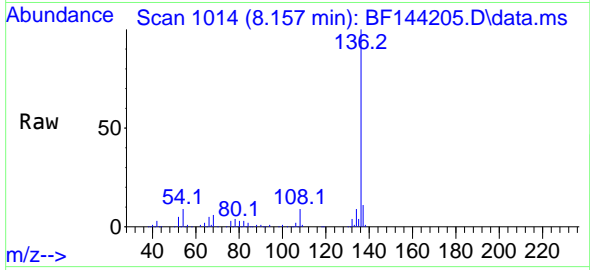


#21  
 Naphthalene-d8  
 Concen: 20.000 ng  
 RT: 8.157 min Scan# 1014  
 Delta R.T. -0.000 min  
 Lab File: BF144205.D  
 Acq: 11 Nov 2025 16:07

Instrument :  
 BNA\_F  
 ClientSampleId :  
 EB-2

Tgt Ion: 136 Resp: 216777

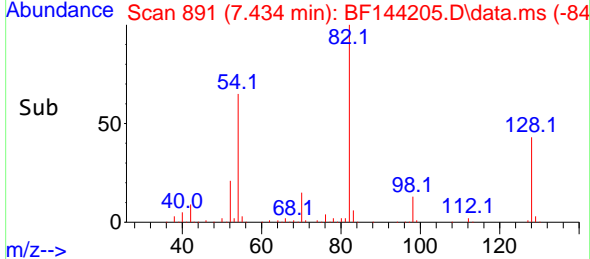
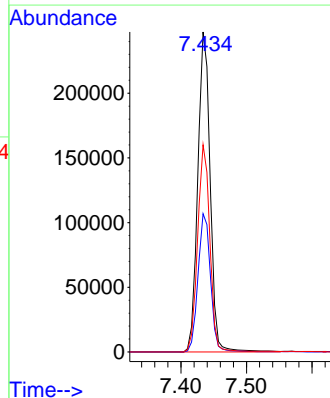
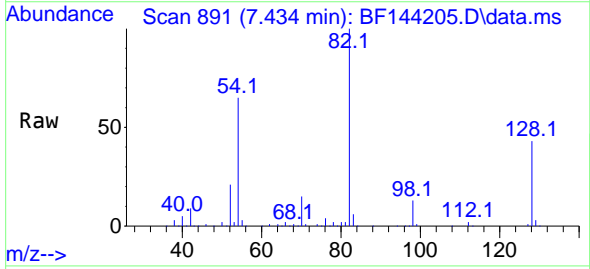
Ion	Ratio	Lower	Upper
136	100		
137	10.9	8.6	13.0
54	8.6	7.0	10.6
68	5.6	4.3	6.5

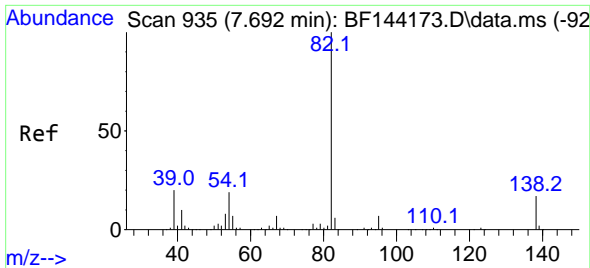


#23  
 Nitrobenzene-d5  
 Concen: 86.791 ng  
 RT: 7.434 min Scan# 891  
 Delta R.T. -0.000 min  
 Lab File: BF144205.D  
 Acq: 11 Nov 2025 16:07

Tgt Ion: 82 Resp: 325762

Ion	Ratio	Lower	Upper
82	100		
128	43.2	34.7	52.1
54	64.8	49.5	74.3

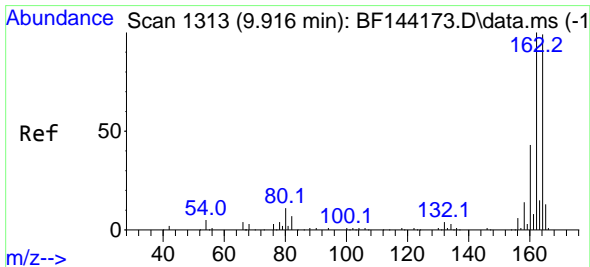
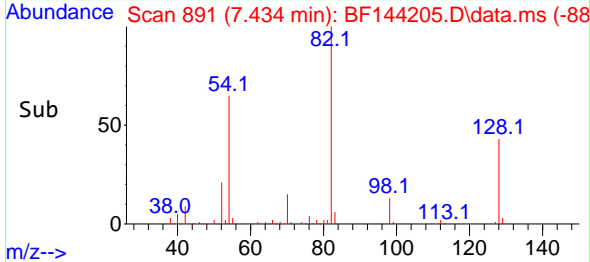
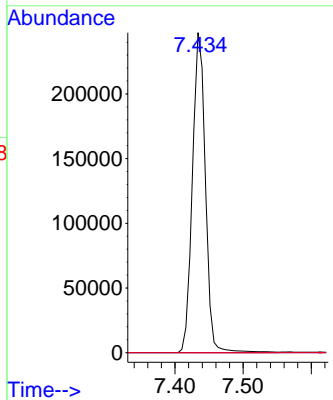
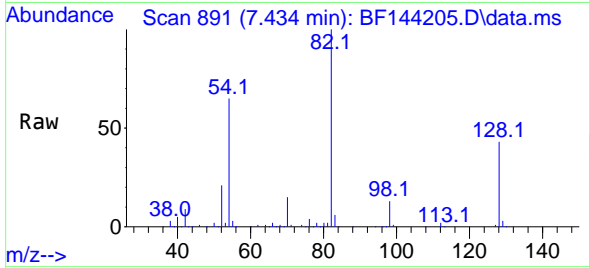




#25  
 Isophorone  
 Concen: 45.884 ng  
 RT: 7.434 min Scan# 891  
 Delta R.T. -0.253 min  
 Lab File: BF144205.D  
 Acq: 11 Nov 2025 16:07

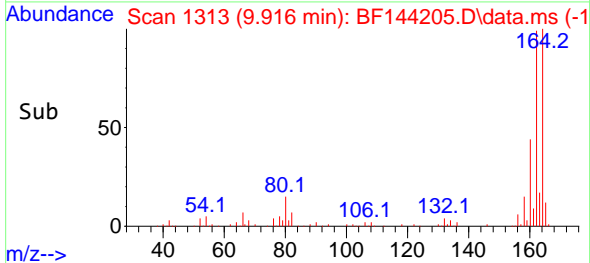
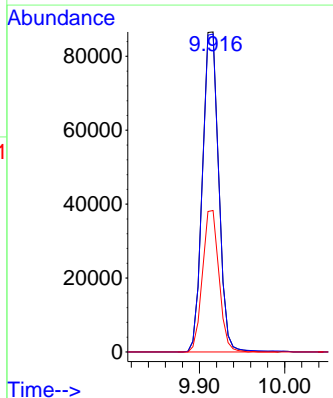
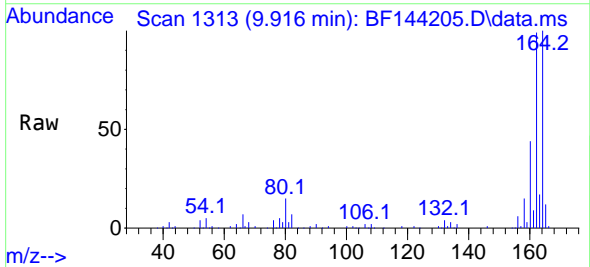
Instrument :  
 BNA\_F  
 ClientSampleId :  
 EB-2

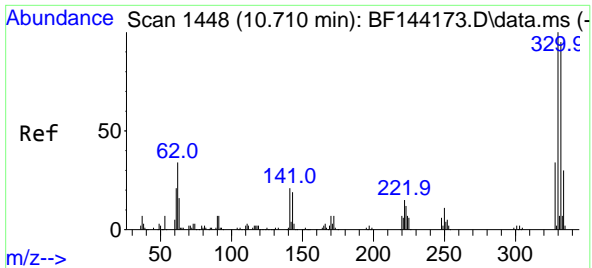
Tgt Ion: 82 Resp: 325759  
 Ion Ratio Lower Upper  
 82 100  
 95 0.0 5.5 8.3#  
 138 0.0 13.7 20.5#



#39  
 Acenaphthene-d10  
 Concen: 20.000 ng  
 RT: 9.916 min Scan# 1313  
 Delta R.T. -0.000 min  
 Lab File: BF144205.D  
 Acq: 11 Nov 2025 16:07

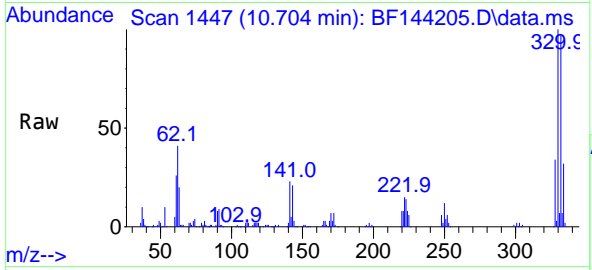
Tgt Ion: 164 Resp: 114918  
 Ion Ratio Lower Upper  
 164 100  
 162 99.3 81.1 121.7  
 160 44.2 34.5 51.7



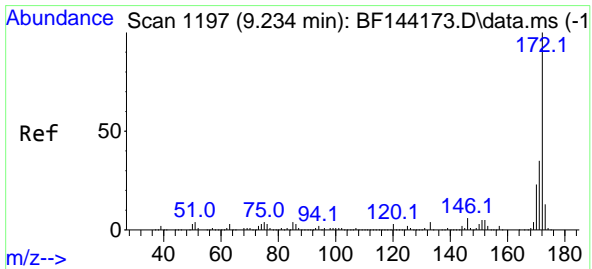
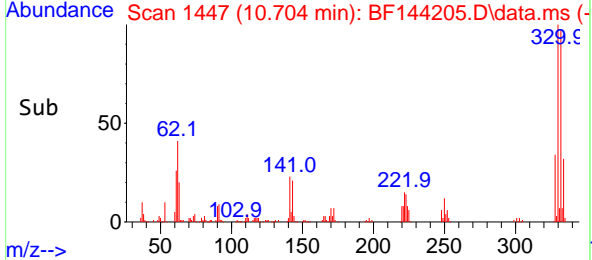
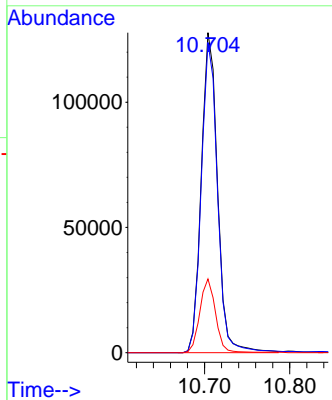


#42  
 2,4,6-Tribromophenol  
 Concen: 117.668 ng  
 RT: 10.704 min Scan# 1448  
 Delta R.T. -0.000 min  
 Lab File: BF144205.D  
 Acq: 11 Nov 2025 16:07

Instrument : BNA\_F  
 ClientSampleId : EB-2

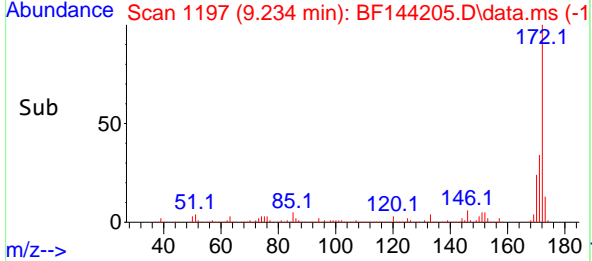
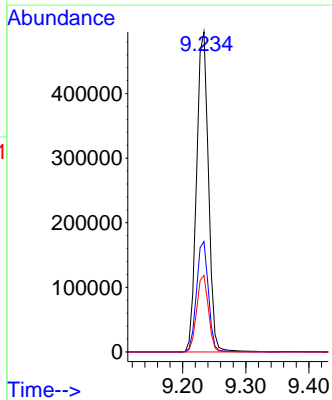
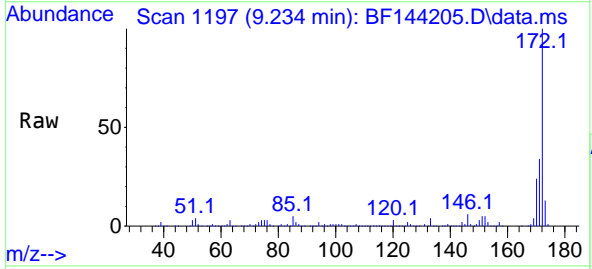


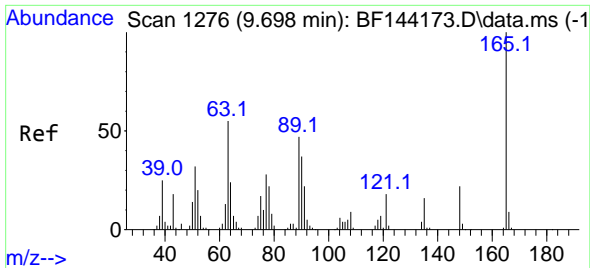
Tgt Ion:330 Resp: 169687  
 Ion Ratio Lower Upper  
 330 100  
 332 96.9 76.7 115.1  
 141 22.3 17.8 26.8



#45  
 2-Fluorobiphenyl  
 Concen: 83.176 ng  
 RT: 9.234 min Scan# 1197  
 Delta R.T. 0.006 min  
 Lab File: BF144205.D  
 Acq: 11 Nov 2025 16:07

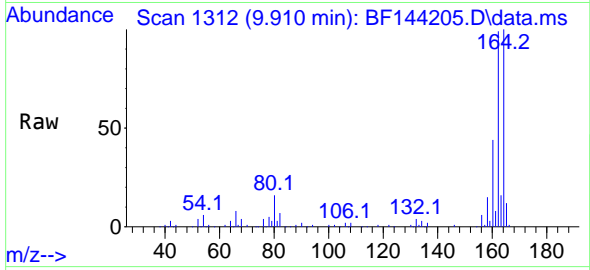
Tgt Ion:172 Resp: 647178  
 Ion Ratio Lower Upper  
 172 100  
 171 34.5 28.1 42.1  
 170 23.9 18.6 28.0



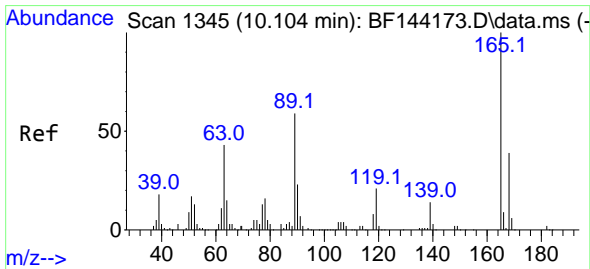
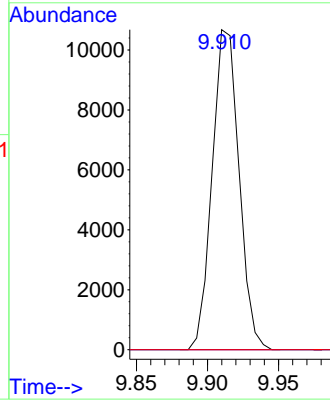
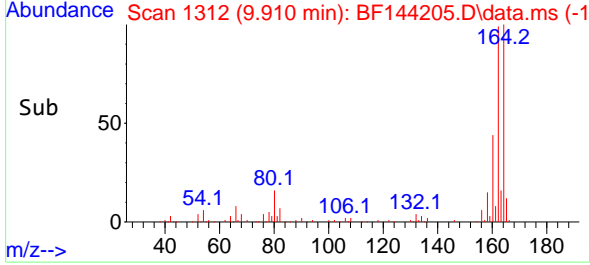


#51  
 2,6-Dinitrotoluene  
 Concen: 9.111 ng  
 RT: 9.910 min Scan# 11  
 Delta R.T. 0.218 min  
 Lab File: BF144205.D  
 Acq: 11 Nov 2025 16:07

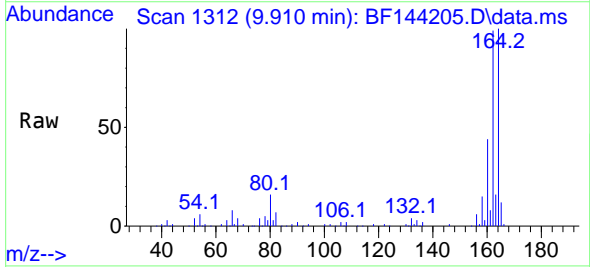
Instrument :  
 BNA\_F  
 ClientSampleId :  
 EB-2



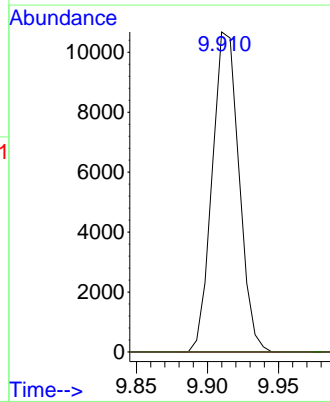
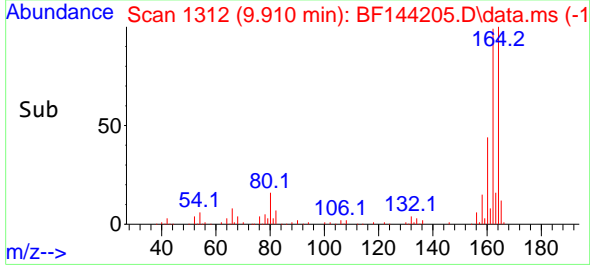
Tgt Ion:165 Resp: 14041  
 Ion Ratio Lower Upper  
 165 100  
 63 0.0 43.8 65.8#  
 89 0.0 37.5 56.3#



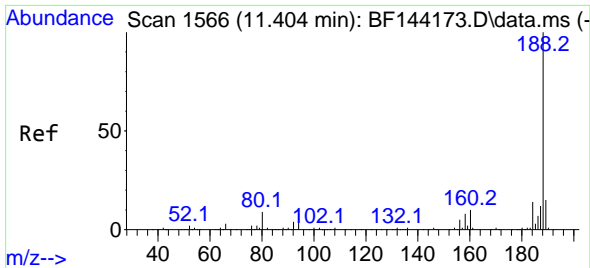
#57  
 2,4-Dinitrotoluene  
 Concen: 6.806 ng  
 RT: 9.910 min Scan# 1312  
 Delta R.T. -0.188 min  
 Lab File: BF144205.D  
 Acq: 11 Nov 2025 16:07



Tgt Ion:165 Resp: 14041  
 Ion Ratio Lower Upper  
 165 100  
 63 0.0 35.5 53.3#  
 89 0.0 47.4 71.2#  
 182 0.0 1.9 2.9#

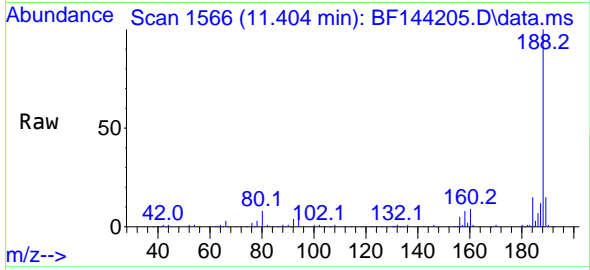




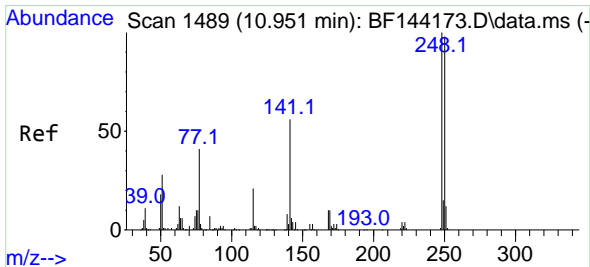
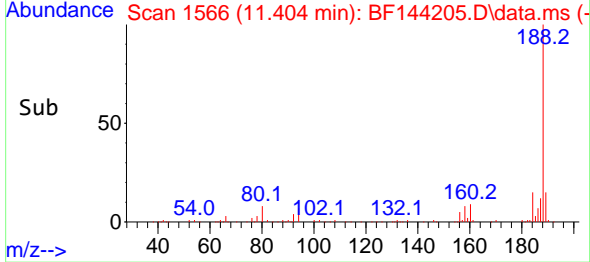
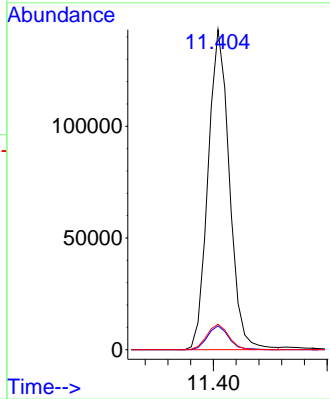


#64  
 Phenanthrene-d10  
 Concen: 20.000 ng  
 RT: 11.404 min Scan# 11  
 Delta R.T. -0.000 min  
 Lab File: BF144205.D  
 Acq: 11 Nov 2025 16:07

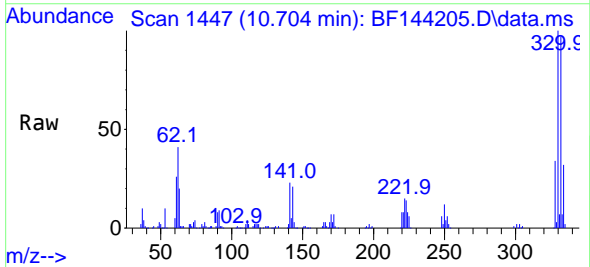
Instrument :  
 BNA\_F  
 ClientSampleId :  
 EB-2



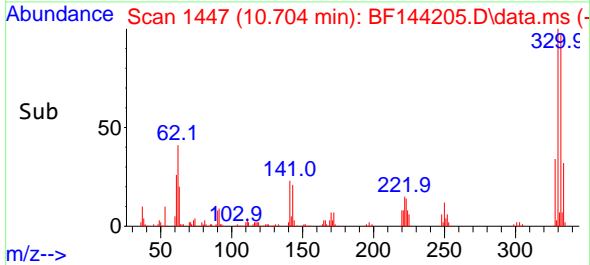
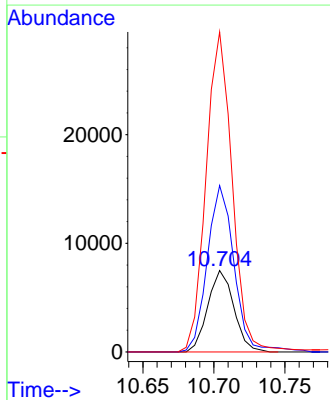
Tgt Ion:188 Resp: 186847  
 Ion Ratio Lower Upper  
 188 100  
 94 7.4 6.2 9.2  
 80 8.0 6.9 10.3

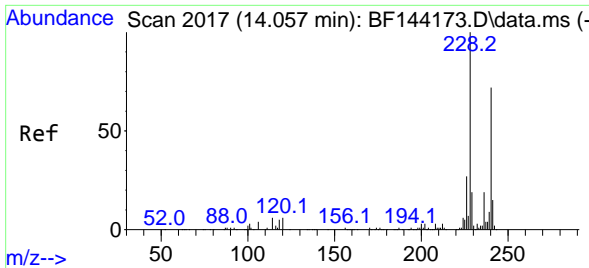


#67  
 4-Bromophenyl-phenylether  
 Concen: 4.016 ng  
 RT: 10.704 min Scan# 1447  
 Delta R.T. -0.241 min  
 Lab File: BF144205.D  
 Acq: 11 Nov 2025 16:07



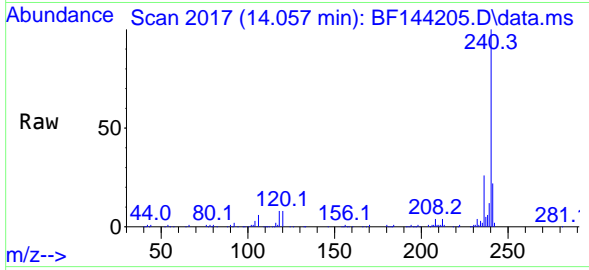
Tgt Ion:248 Resp: 9578  
 Ion Ratio Lower Upper  
 248 100  
 250 204.1 78.4 117.6#  
 141 392.6 45.1 67.7#



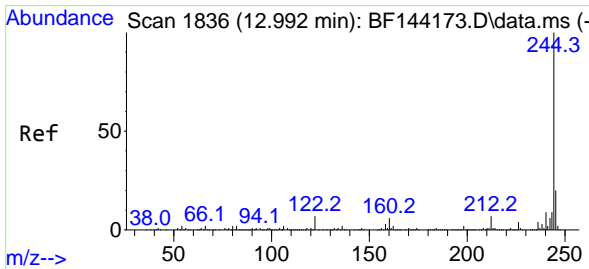
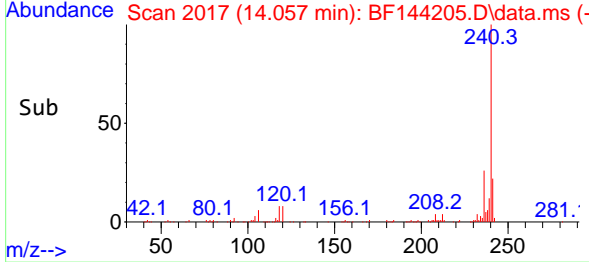
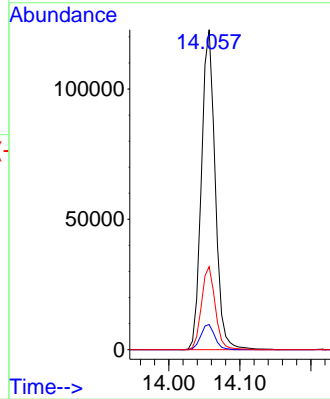


#76  
 Chrysene-d12  
 Concen: 20.000 ng  
 RT: 14.057 min Scan# 20  
 Delta R.T. 0.006 min  
 Lab File: BF144205.D  
 Acq: 11 Nov 2025 16:07

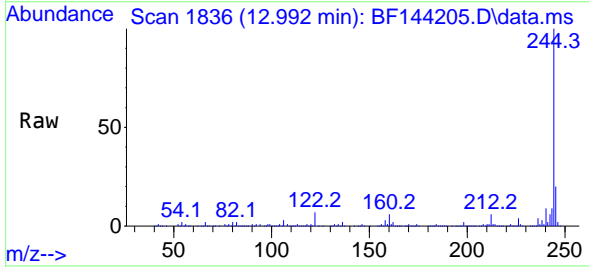
Instrument :  
 BNA\_F  
 ClientSampleId :  
 EB-2



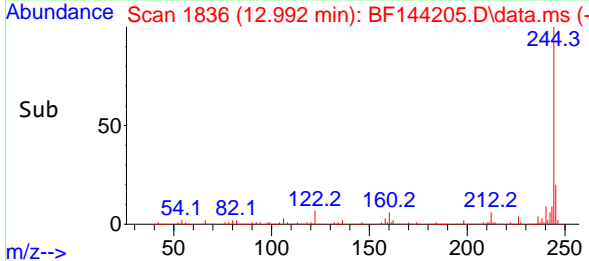
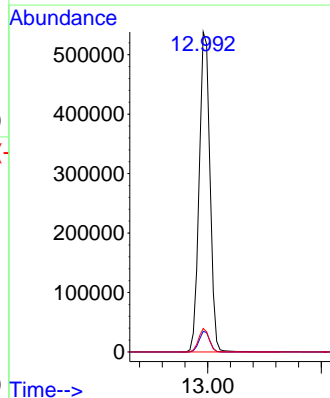
Tgt Ion:240 Resp: 165680  
 Ion Ratio Lower Upper  
 240 100  
 120 7.8 6.6 10.0  
 236 25.9 21.4 32.2

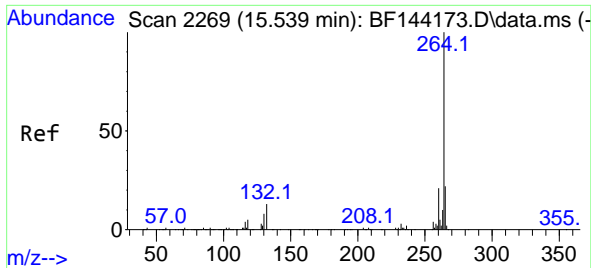


#79  
 Terphenyl-d14  
 Concen: 68.161 ng  
 RT: 12.992 min Scan# 1836  
 Delta R.T. -0.000 min  
 Lab File: BF144205.D  
 Acq: 11 Nov 2025 16:07



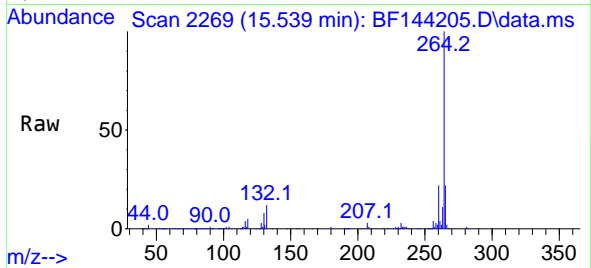
Tgt Ion:244 Resp: 710957  
 Ion Ratio Lower Upper  
 244 100  
 212 6.5 5.3 7.9  
 122 7.4 5.6 8.4





#86  
 Perylene-d12  
 Concen: 20.000 ng  
 RT: 15.539 min Scan# 21  
 Delta R.T. -0.000 min  
 Lab File: BF144205.D  
 Acq: 11 Nov 2025 16:07

Instrument :  
 BNA\_F  
 ClientSampleId :  
 EB-2



Tgt Ion:264 Resp: 209451

Ion	Ratio	Lower	Upper
264	100		
260	21.9	17.1	25.7
265	21.6	17.4	26.0

