

Data Path : Z:\svoasrv\HPCHEM1\BNA_F\Data\BF111125\
 Data File : BF144208.D
 Acq On : 11 Nov 2025 18:02
 Operator : RC/JU
 Sample : PB170462TB
 Misc :
 ALS Vial : 3 Sample Multiplier: 1

Instrument :
 BNA_F
 ClientSampleId :
 PB170462TB

Quant Time: Nov 12 03:43:39 2025
 Quant Method : Z:\svoasrv\HPCHEM1\BNA_F\Methods\8270-BF110525.M
 Quant Title : ASP BNA STANDARDS FOR 5 POINT CALIBRATION
 QLast Update : Wed Nov 05 18:37:33 2025
 Response via : Initial Calibration

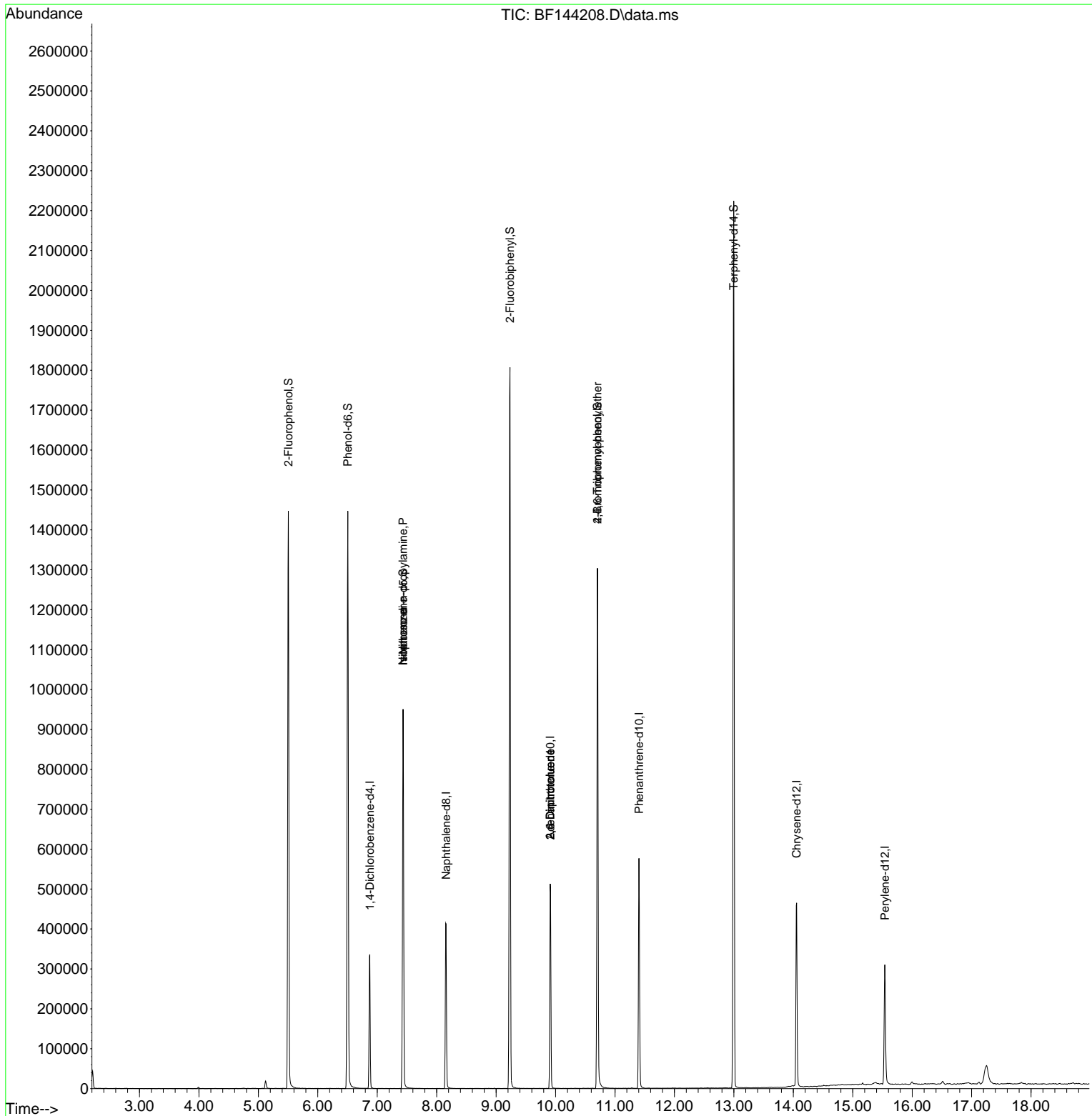
Compound	R.T.	QIon	Response	Conc Units	Dev(Min)
Internal Standards					
1) 1,4-Dichlorobenzene-d4	6.875	152	73788	20.000 ng	0.00
21) Naphthalene-d8	8.157	136	290573	20.000 ng	0.00
39) Acenaphthene-d10	9.910	164	167180	20.000 ng	0.00
64) Phenanthrene-d10	11.404	188	320455	20.000 ng	0.00
76) Chrysene-d12	14.057	240	257139	20.000 ng	0.00
86) Perylene-d12	15.539	264	208948	20.000 ng	0.00
System Monitoring Compounds					
5) 2-Fluorophenol	5.504	112	547772	116.170 ng	0.01
7) Phenol-d6	6.504	99	623574	116.714 ng	0.00
23) Nitrobenzene-d5	7.434	82	409400	81.373 ng	0.00
42) 2,4,6-Tribromophenol	10.704	330	272327	129.808 ng	0.00
45) 2-Fluorobiphenyl	9.234	172	894101	78.988 ng	0.00
79) Terphenyl-d14	12.998	244	1241480	76.689 ng	0.00
Target Compounds					
19) n-Nitroso-di-n-propyla...	7.434	70	60786	17.283 ng	# 81
25) Isophorone	7.434	82	409396	43.020 ng	# 66
51) 2,6-Dinitrotoluene	9.910	165	20680	9.224 ng	# 28
57) 2,4-Dinitrotoluene	9.910	165	20680	6.890 ng	# 28
67) 4-Bromophenyl-phenylether	10.704	248	14803	3.619 ng	# 1

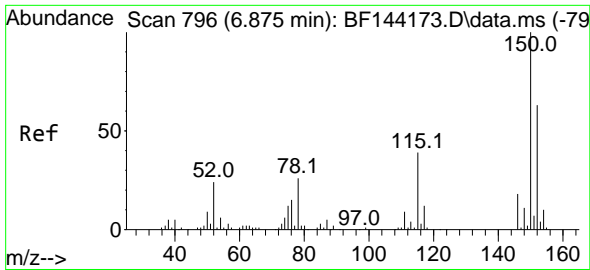
(#) = qualifier out of range (m) = manual integration (+) = signals summed

Data Path : Z:\svoasrv\HPCHEM1\BNA_F\Data\BF111125\
 Data File : BF144208.D
 Acq On : 11 Nov 2025 18:02
 Operator : RC/JU
 Sample : PB170462TB
 Misc :
 ALS Vial : 3 Sample Multiplier: 1

Instrument :
 BNA_F
 ClientSampleId :
 PB170462TB

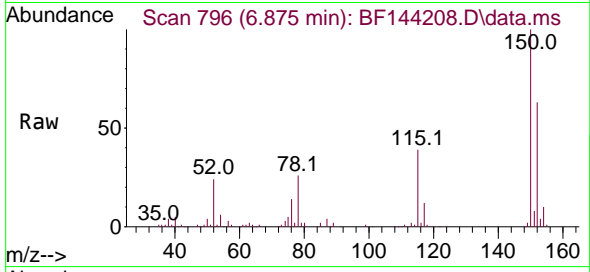
Quant Time: Nov 12 03:43:39 2025
 Quant Method : Z:\svoasrv\HPCHEM1\BNA_F\Methods\8270-BF110525.M
 Quant Title : ASP BNA STANDARDS FOR 5 POINT CALIBRATION
 QLast Update : Wed Nov 05 18:37:33 2025
 Response via : Initial Calibration



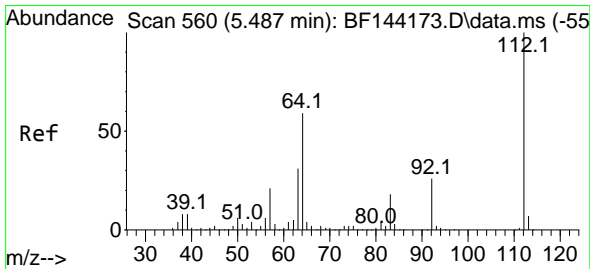
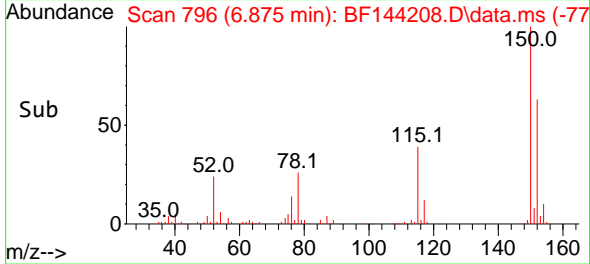
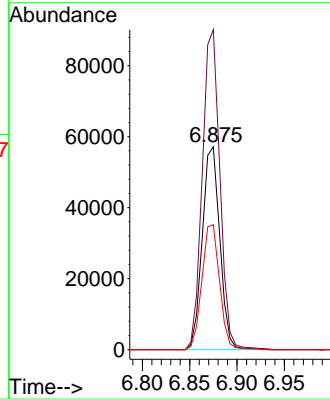


#1
 1,4-Dichlorobenzene-d4
 Concen: 20.000 ng
 RT: 6.875 min Scan# 79
 Delta R.T. -0.000 min
 Lab File: BF144208.D
 Acq: 11 Nov 2025 18:02

Instrument :
 BNA_F
 ClientSampleId :
 PB170462TB

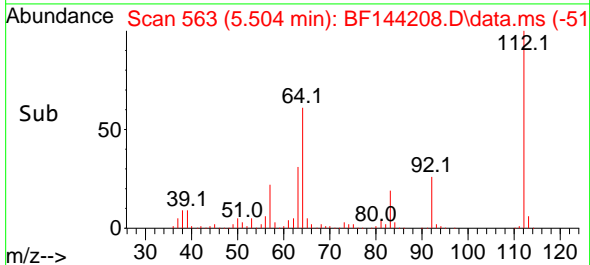
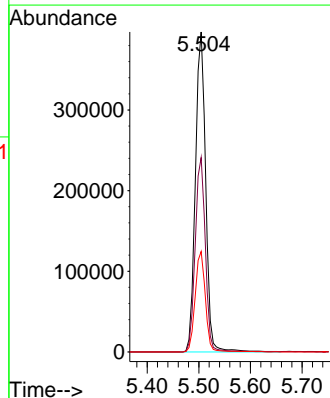
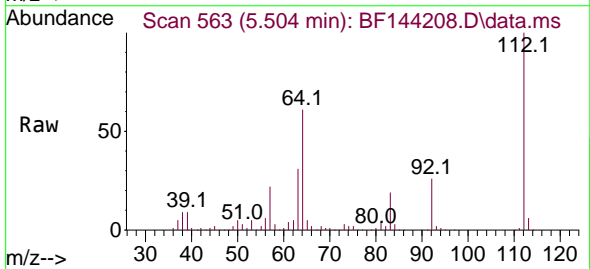


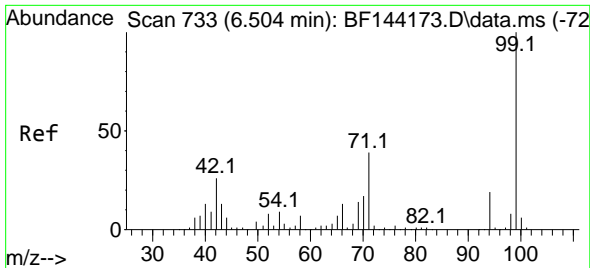
Tgt Ion:152 Resp: 73788
 Ion Ratio Lower Upper
 152 100
 150 157.8 127.4 191.0
 115 61.6 49.5 74.3



#5
 2-Fluorophenol
 Concen: 116.170 ng
 RT: 5.504 min Scan# 563
 Delta R.T. 0.012 min
 Lab File: BF144208.D
 Acq: 11 Nov 2025 18:02

Tgt Ion:112 Resp: 547772
 Ion Ratio Lower Upper
 112 100
 64 60.7 47.2 70.8
 63 31.4 24.4 36.6

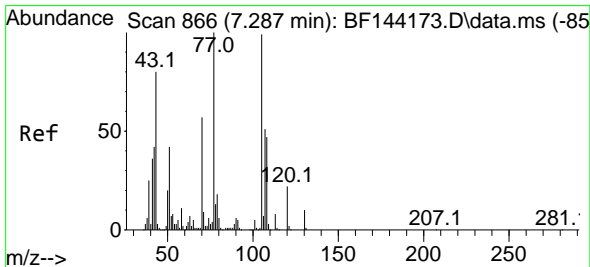
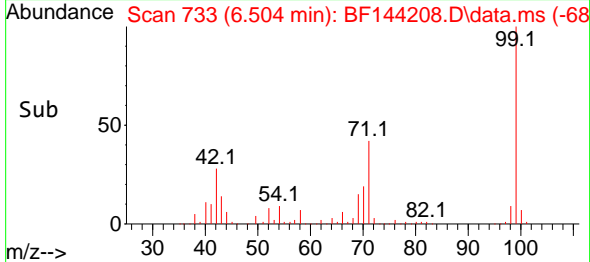
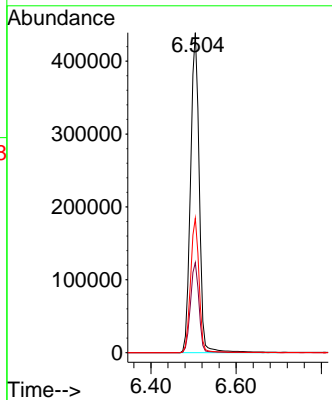
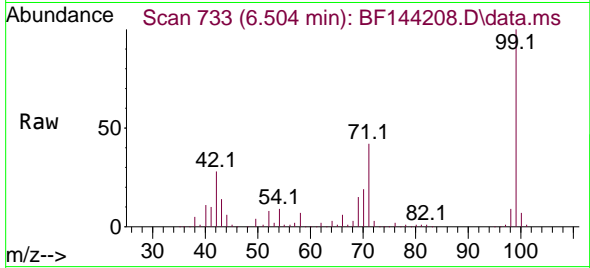




#7
 Phenol-d6
 Concen: 116.714 ng
 RT: 6.504 min Scan# 711
 Delta R.T. 0.006 min
 Lab File: BF144208.D
 Acq: 11 Nov 2025 18:02

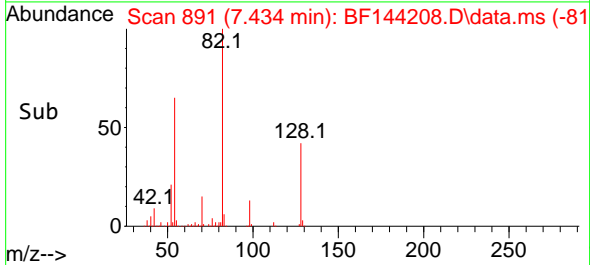
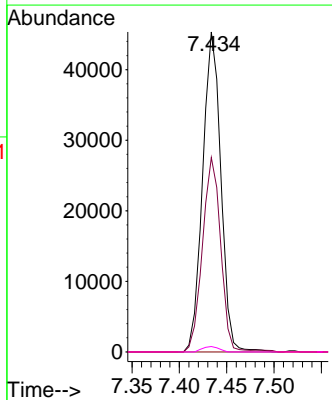
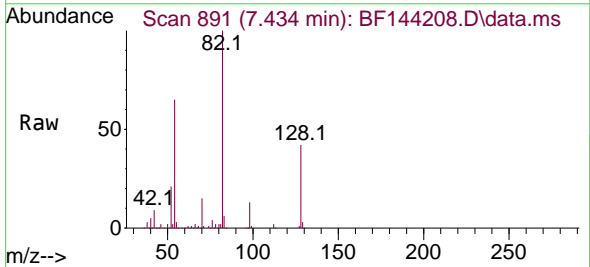
Instrument : BNA_F
 ClientSampleId : PB170462TB

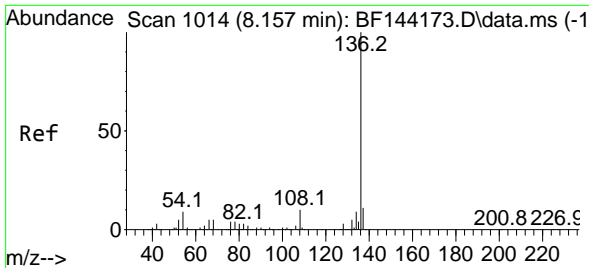
Tgt Ion	Resp	Lower	Upper
99	100		
42	28.1	20.9	31.3
71	42.0	31.4	47.2



#19
 n-Nitroso-di-n-propylamine
 Concen: 17.283 ng
 RT: 7.434 min Scan# 891
 Delta R.T. 0.159 min
 Lab File: BF144208.D
 Acq: 11 Nov 2025 18:02

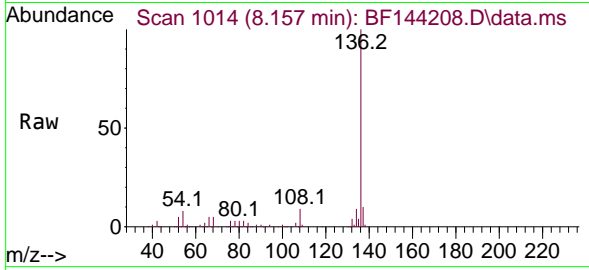
Tgt Ion	Resp	Lower	Upper
70	100		
42	60.7	58.3	87.5
101	0.0	7.0	10.6#
130	1.7	14.4	21.6#



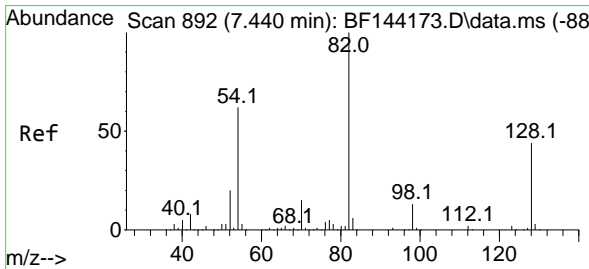
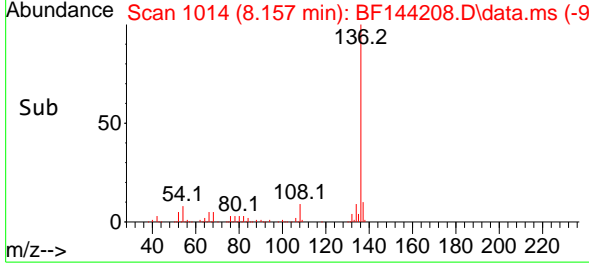
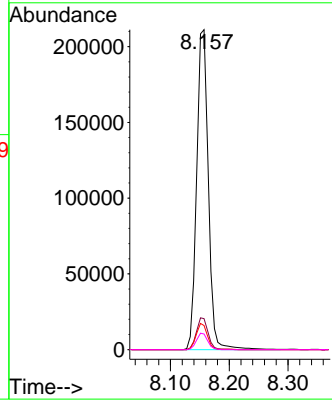


#21
 Naphthalene-d8
 Concen: 20.000 ng
 RT: 8.157 min Scan# 10
 Delta R.T. -0.000 min
 Lab File: BF144208.D
 Acq: 11 Nov 2025 18:02

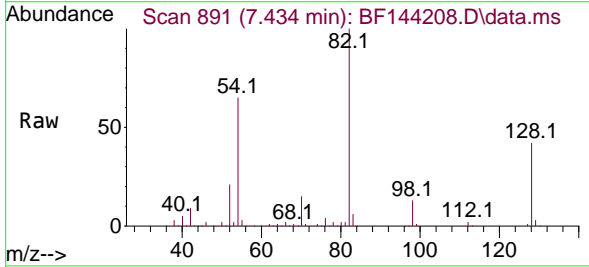
Instrument :
 BNA_F
 ClientSampleId :
 PB170462TB



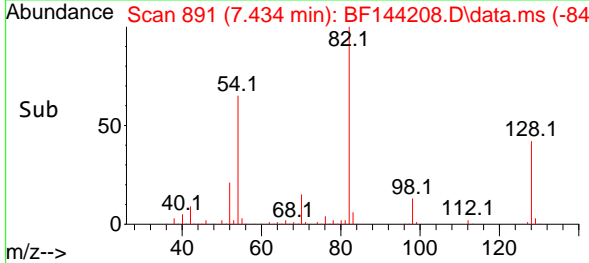
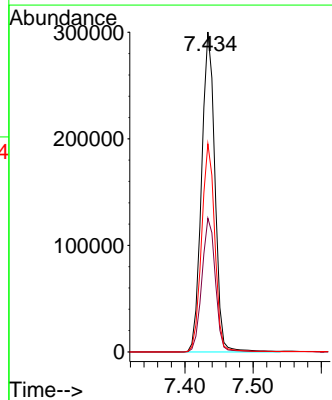
Tgt Ion:136 Resp: 290573
 Ion Ratio Lower Upper
 136 100
 137 9.7 8.6 13.0
 54 7.5 7.0 10.6
 68 4.9 4.3 6.5

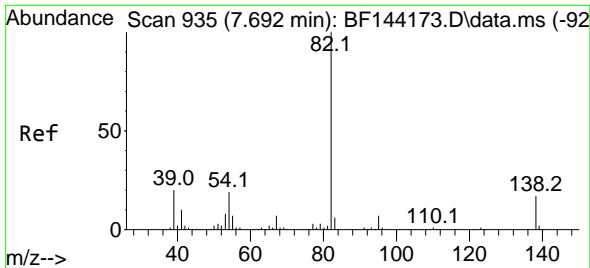


#23
 Nitrobenzene-d5
 Concen: 81.373 ng
 RT: 7.434 min Scan# 891
 Delta R.T. -0.000 min
 Lab File: BF144208.D
 Acq: 11 Nov 2025 18:02



Tgt Ion: 82 Resp: 409400
 Ion Ratio Lower Upper
 82 100
 128 41.8 34.7 52.1
 54 65.0 49.5 74.3

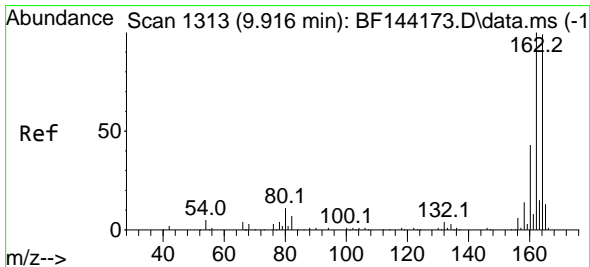
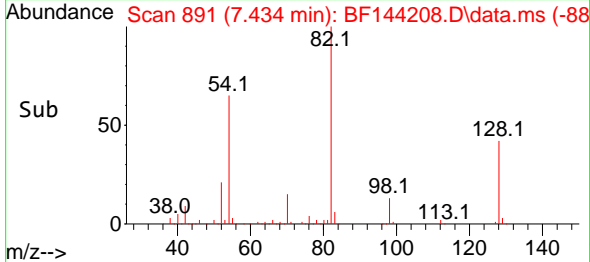
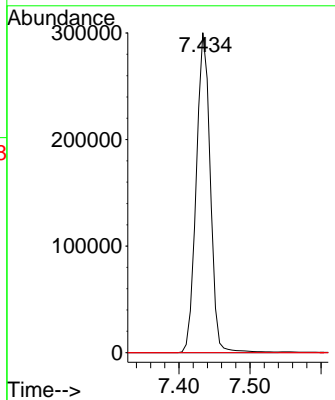
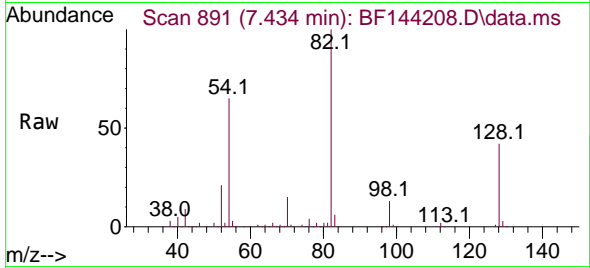




#25
 Isophorone
 Concen: 43.020 ng
 RT: 7.434 min Scan# 89
 Delta R.T. -0.253 min
 Lab File: BF144208.D
 Acq: 11 Nov 2025 18:02

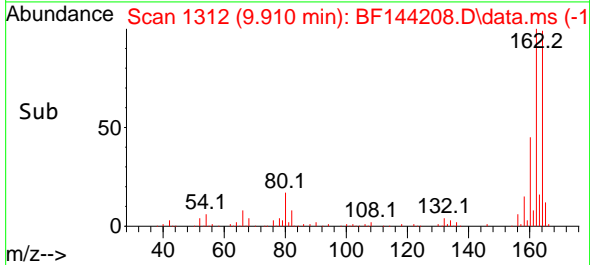
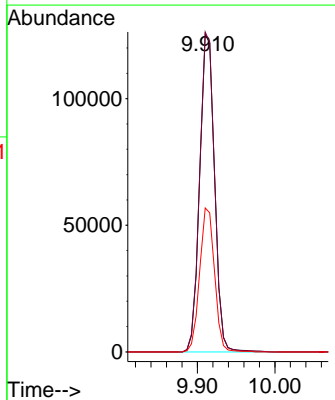
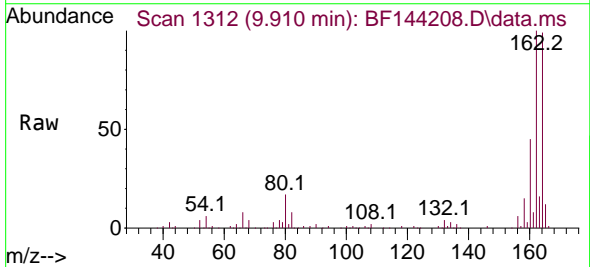
Instrument : BNA_F
 Client Sample Id : PB170462TB

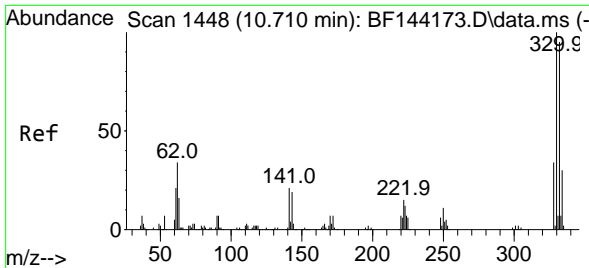
Tgt Ion	Resp	Lower	Upper
82	409396		
95	0.0	5.5	8.3#
138	0.0	13.7	20.5#



#39
 Acenaphthene-d10
 Concen: 20.000 ng
 RT: 9.910 min Scan# 1312
 Delta R.T. -0.006 min
 Lab File: BF144208.D
 Acq: 11 Nov 2025 18:02

Tgt Ion	Resp	Lower	Upper
164	167180		
162	100.6	81.1	121.7
160	45.2	34.5	51.7

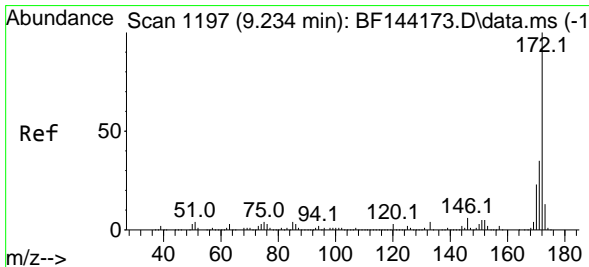
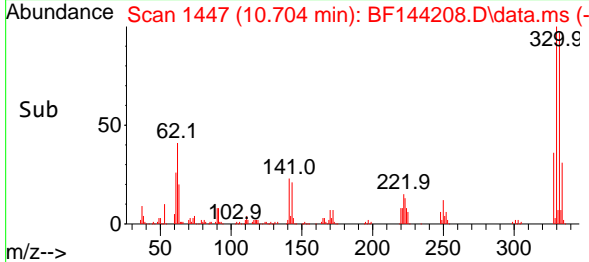
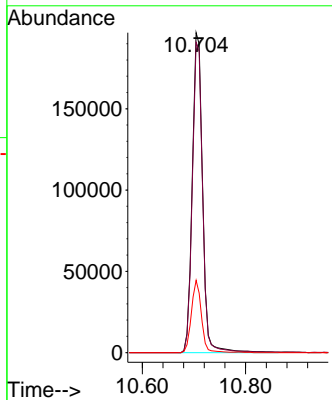
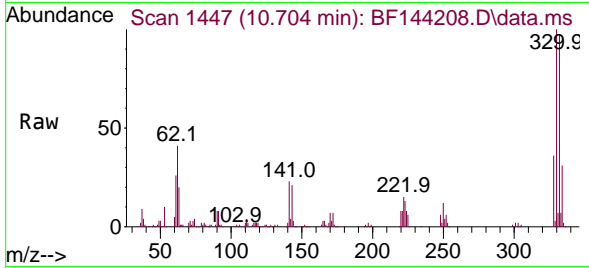




#42
 2,4,6-Tribromophenol
 Concen: 129.808 ng
 RT: 10.704 min Scan# 1448
 Delta R.T. -0.000 min
 Lab File: BF144208.D
 Acq: 11 Nov 2025 18:02

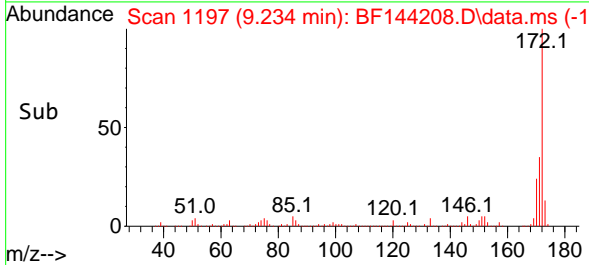
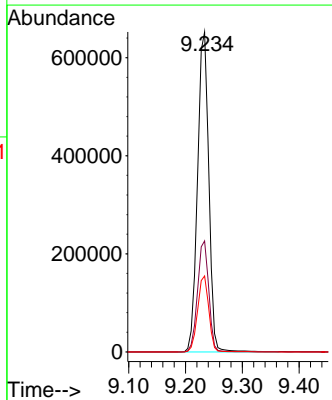
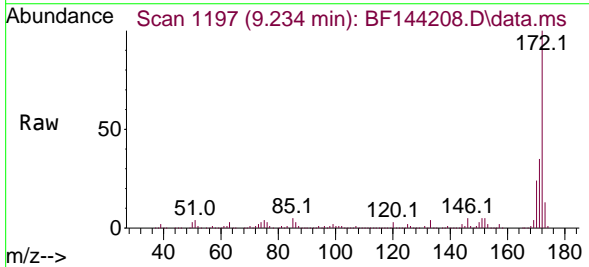
Instrument : BNA_F
 ClientSampleId : PB170462TB

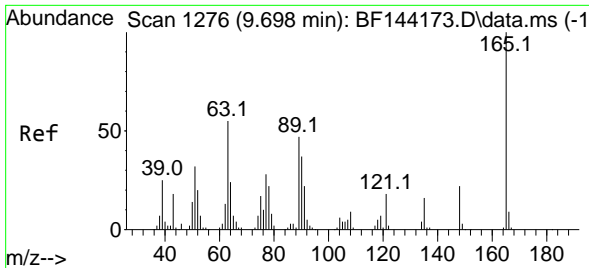
Tgt Ion	Resp	Lower	Upper
330	100		
332	96.6	76.7	115.1
141	21.8	17.8	26.8



#45
 2-Fluorobiphenyl
 Concen: 78.988 ng
 RT: 9.234 min Scan# 1197
 Delta R.T. 0.006 min
 Lab File: BF144208.D
 Acq: 11 Nov 2025 18:02

Tgt Ion	Resp	Lower	Upper
172	100		
171	34.7	28.1	42.1
170	23.7	18.6	28.0



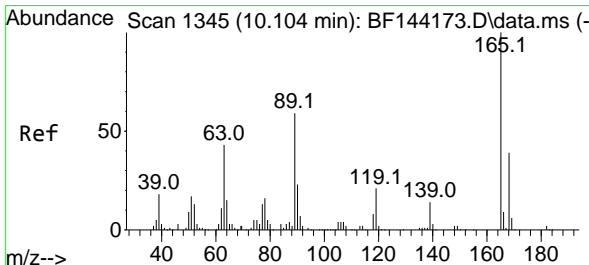
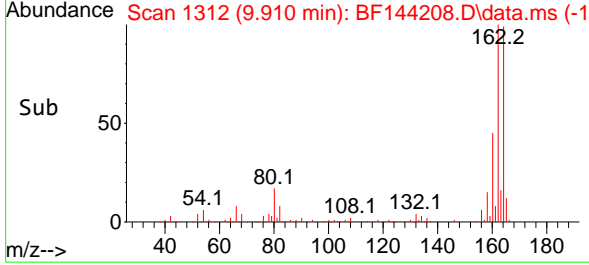
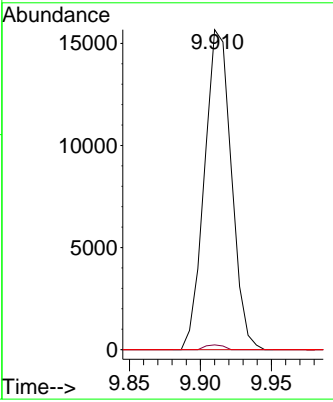
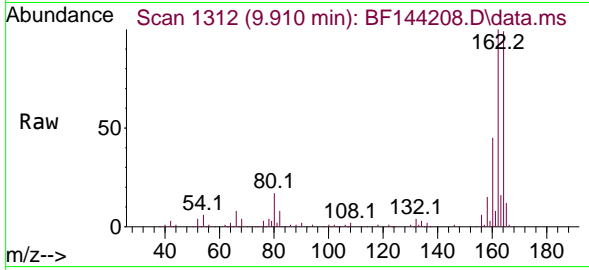


#51
 2,6-Dinitrotoluene
 Concen: 9.224 ng
 RT: 9.910 min Scan# 1312
 Delta R.T. 0.218 min
 Lab File: BF144208.D
 Acq: 11 Nov 2025 18:02

Instrument : BNA_F
 ClientSampleId : PB170462TB

Tgt Ion:165 Resp: 20680

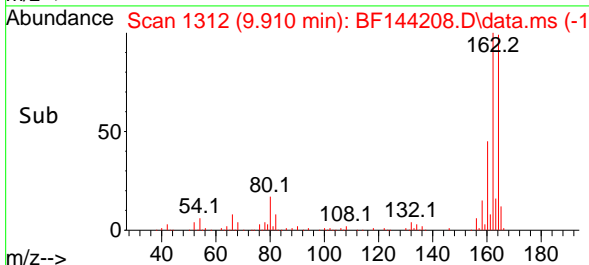
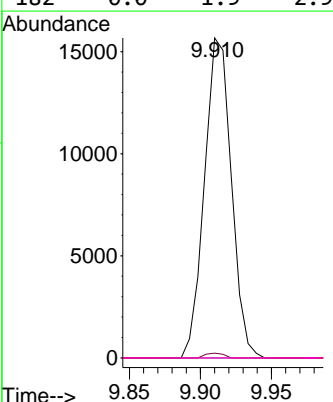
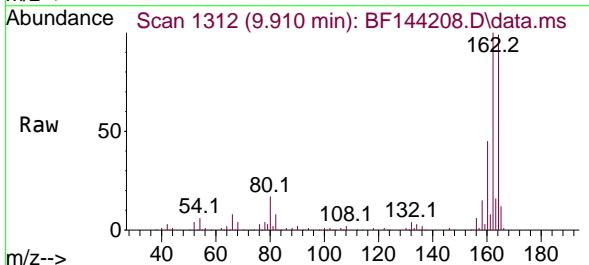
Ion	Ratio	Lower	Upper
165	100		
63	1.5	43.8	65.8#
89	0.0	37.5	56.3#

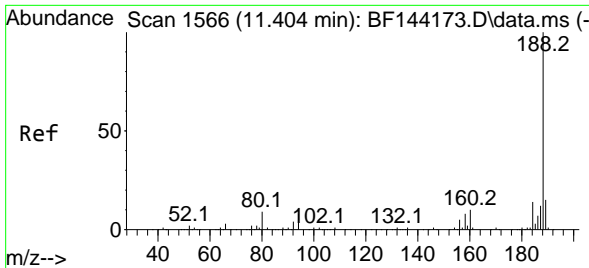


#57
 2,4-Dinitrotoluene
 Concen: 6.890 ng
 RT: 9.910 min Scan# 1312
 Delta R.T. -0.188 min
 Lab File: BF144208.D
 Acq: 11 Nov 2025 18:02

Tgt Ion:165 Resp: 20680

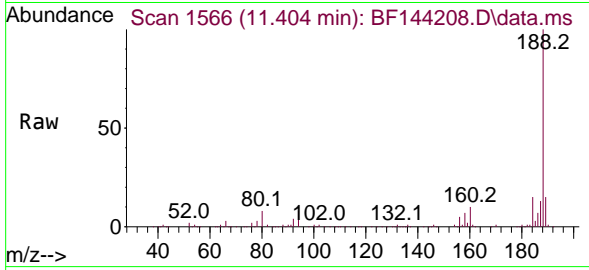
Ion	Ratio	Lower	Upper
165	100		
63	1.5	35.5	53.3#
89	0.0	47.4	71.2#
182	0.0	1.9	2.9#



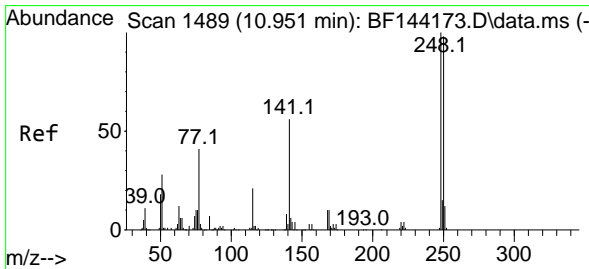
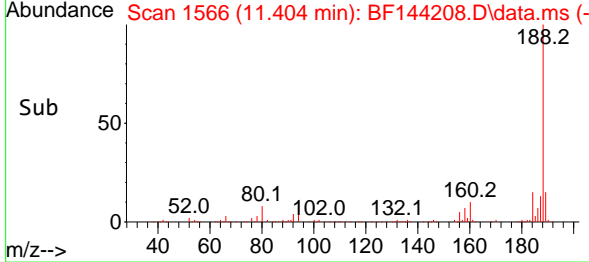
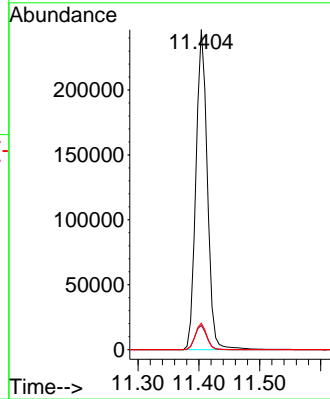


#64
 Phenanthrene-d10
 Concen: 20.000 ng
 RT: 11.404 min Scan# 11
 Delta R.T. -0.000 min
 Lab File: BF144208.D
 Acq: 11 Nov 2025 18:02

Instrument :
 BNA_F
 ClientSampleId :
 PB170462TB

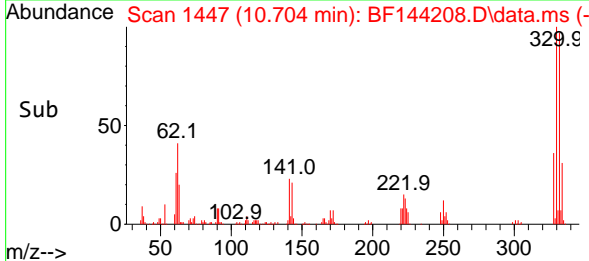
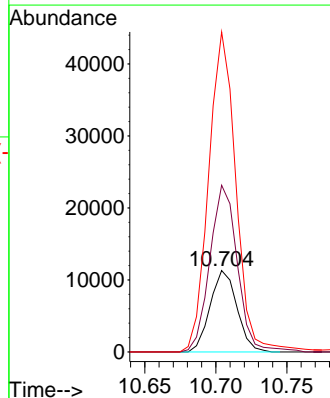
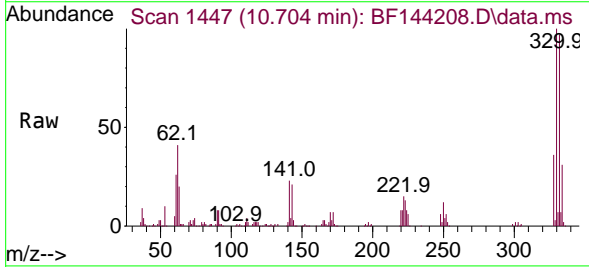


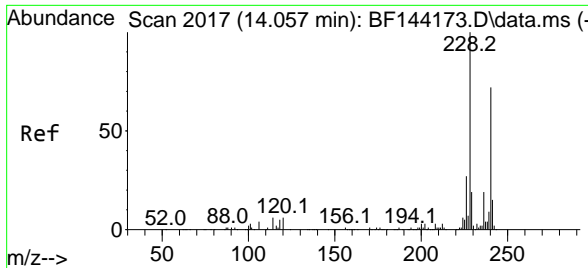
Tgt Ion:188 Resp: 320455
 Ion Ratio Lower Upper
 188 100
 94 7.6 6.2 9.2
 80 8.3 6.9 10.3



#67
 4-Bromophenyl-phenylether
 Concen: 3.619 ng
 RT: 10.704 min Scan# 1447
 Delta R.T. -0.241 min
 Lab File: BF144208.D
 Acq: 11 Nov 2025 18:02

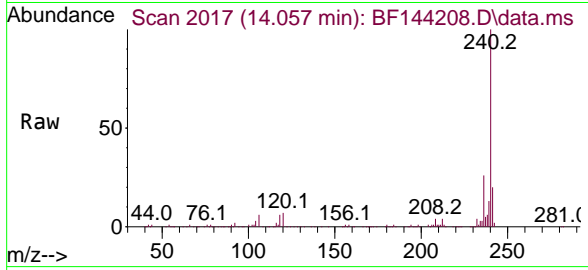
Tgt Ion:248 Resp: 14803
 Ion Ratio Lower Upper
 248 100
 250 204.7 78.4 117.6#
 141 393.2 45.1 67.7#



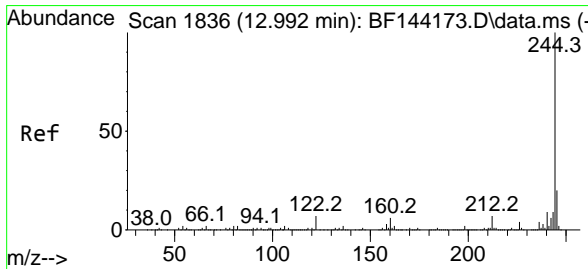
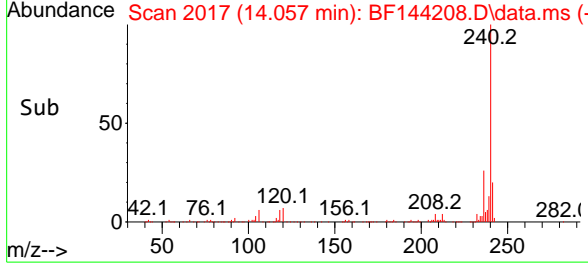
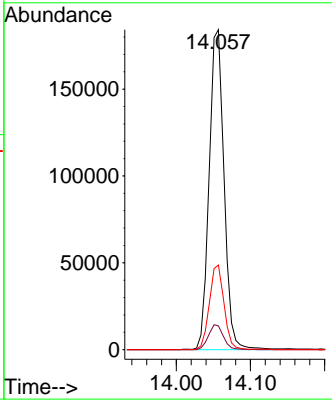


#76
 Chrysene-d12
 Concen: 20.000 ng
 RT: 14.057 min Scan# 20
 Delta R.T. 0.006 min
 Lab File: BF144208.D
 Acq: 11 Nov 2025 18:02

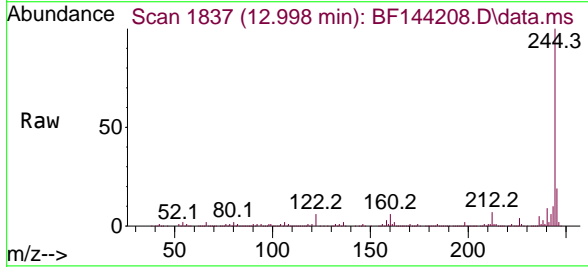
Instrument : BNA_F
 ClientSampleId : PB170462TB



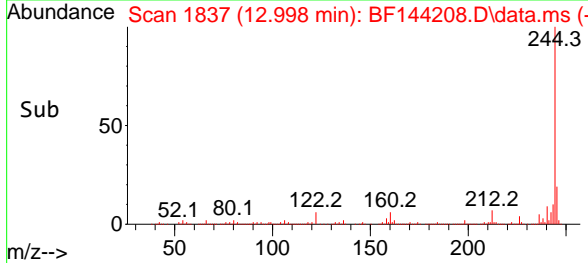
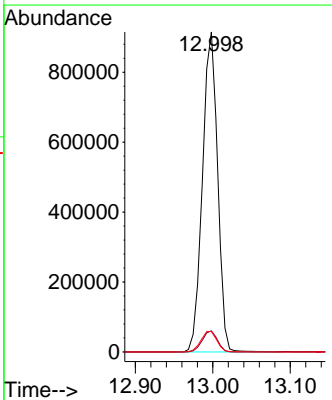
Tgt Ion:240 Resp: 257139
 Ion Ratio Lower Upper
 240 100
 120 7.4 6.6 10.0
 236 26.4 21.4 32.2

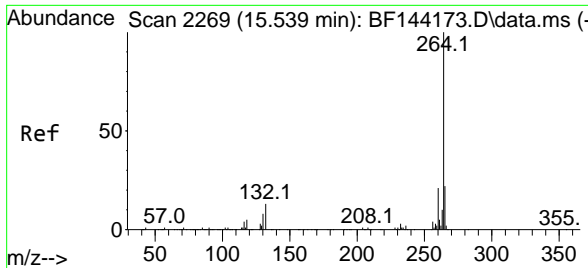


#79
 Terphenyl-d14
 Concen: 76.689 ng
 RT: 12.998 min Scan# 1837
 Delta R.T. 0.006 min
 Lab File: BF144208.D
 Acq: 11 Nov 2025 18:02



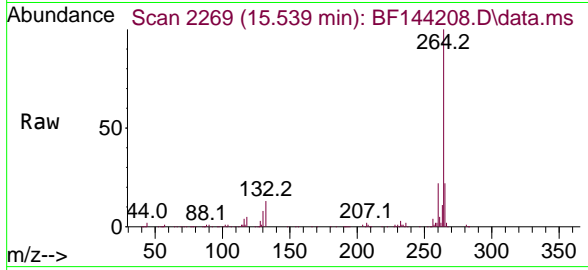
Tgt Ion:244 Resp: 1241480
 Ion Ratio Lower Upper
 244 100
 212 6.6 5.3 7.9
 122 6.4 5.6 8.4





#86
 Perylene-d12
 Concen: 20.000 ng
 RT: 15.539 min Scan# 21
 Delta R.T. -0.000 min
 Lab File: BF144208.D
 Acq: 11 Nov 2025 18:02

Instrument :
 BNA_F
 ClientSampleId :
 PB170462TB



Tgt Ion:264 Resp: 208948

Ion	Ratio	Lower	Upper
264	100		
260	21.7	17.1	25.7
265	22.2	17.4	26.0

