

Data Path : Z:\svoasrv\HPCHEM1\BNA_F\Data\BF111125\
 Data File : BF144227.D
 Acq On : 12 Nov 2025 03:22
 Operator : RC/JU
 Sample : Q3593-04 5X
 Misc :
 ALS Vial : 22 Sample Multiplier: 1

Instrument :
 BNA_F
 ClientSampleId :
 A-LAW-25-0167-0175-COMP

Quant Time: Nov 12 03:51:19 2025
 Quant Method : Z:\svoasrv\HPCHEM1\BNA_F\Methods\8270-BF110525.M
 Quant Title : ASP BNA STANDARDS FOR 5 POINT CALIBRATION
 QLast Update : Wed Nov 05 18:37:33 2025
 Response via : Initial Calibration

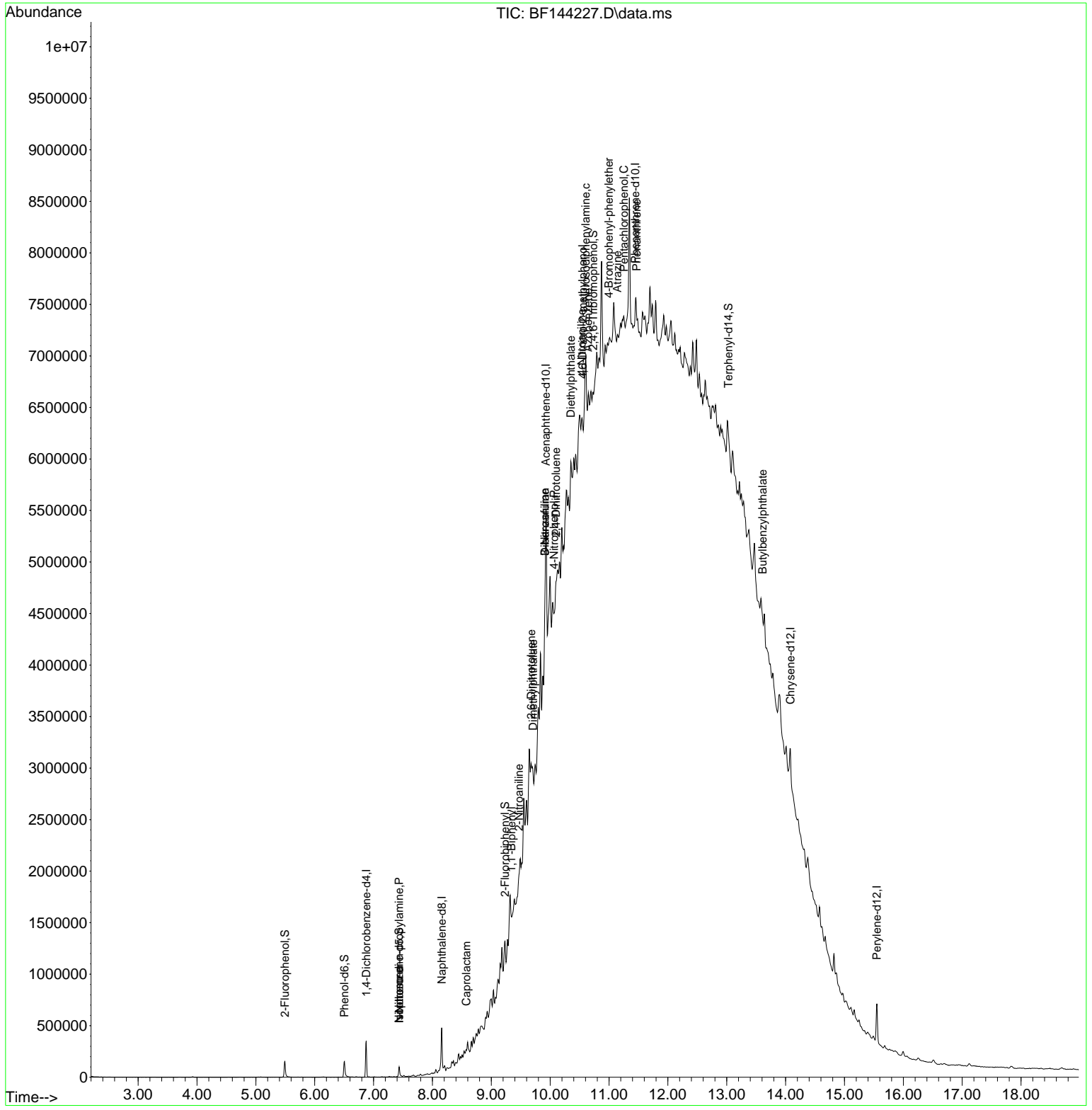
Compound	R.T.	QIon	Response	Conc	Units	Dev(Min)
Internal Standards						
1) 1,4-Dichlorobenzene-d4	6.875	152	76890	20.000	ng	0.00
21) Naphthalene-d8	8.157	136	257068	20.000	ng	0.00
39) Acenaphthene-d10	9.928	164	74415	20.000	ng	0.01
64) Phenanthrene-d10	11.445	188	114710	20.000	ng	# 0.04
76) Chrysene-d12	14.080	240	193282	20.000	ng	# 0.03
86) Perylene-d12	15.551	264	217571	20.000	ng	0.01
System Monitoring Compounds						
5) 2-Fluorophenol	5.493	112	74151	15.091	ng	0.00
7) Phenol-d6	6.504	99	83928	15.075	ng	0.00
23) Nitrobenzene-d5	7.434	82	43932	9.870	ng	0.00
42) 2,4,6-Tribromophenol	10.733	330	16102	17.243	ng	0.03
45) 2-Fluorobiphenyl	9.234	172	79914	15.861	ng	0.00
79) Terphenyl-d14	13.027	244	84057	6.908	ng	0.04
Target Compounds						
19) n-Nitroso-di-n-propyla...	7.434	70	7524	2.053	ng	# 76
25) Isophorone	7.434	82	43025	5.110	ng	# 67
35) Caprolactam	8.575	113	2504	2.212	ng	# 1
46) 1,1'-Biphenyl	9.339	154	33766	6.500	ng	90
48) 2-Nitroaniline	9.469	65	8823	6.901	ng	# 28
50) Dimethylphthalate	9.710	163	27374	5.553	ng	# 19
51) 2,6-Dinitrotoluene	9.675	165	25809	25.862	ng	# 43
53) 3-Nitroaniline	9.910	138	13354	12.241	ng	# 42
55) Dibenzofuran	9.910	168	48551	8.585	ng	98
56) 4-Nitrophenol	10.069	139	8610	10.911	ng	# 1
57) 2,4-Dinitrotoluene	10.098	165	9851	7.374	ng	# 47
60) Diethylphthalate	10.351	149	27193	5.984	ng	# 33
62) 4-Nitroaniline	10.533	138	7432	7.154	ng	# 28
63) Azobenzene	10.645	77	25748	6.088	ng	# 46
65) 4,6-Dinitro-2-methylph...	10.551	198	1726	2.215	ng	# 1
66) n-Nitrosodiphenylamine	10.604	169	19981	5.416	ng	# 73
67) 4-Bromophenyl-phenylether	10.998	248	7371	5.034	ng	# 1
69) Atrazine	11.139	200	3984	3.396	ng	# 1
70) Pentachlorophenol	11.251	266	8247	9.603	ng	# 8
71) Phenanthrene	11.469	178	13092	2.292	ng	# 1
80) Butylbenzylphthalate	13.610	149	12112	2.242	ng	# 50

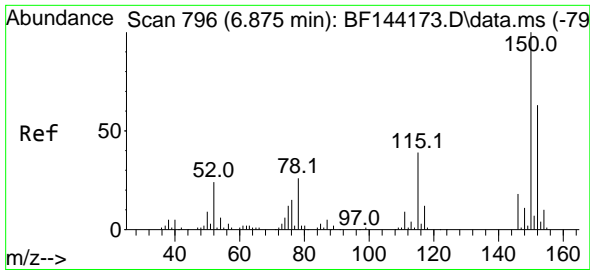
(#) = qualifier out of range (m) = manual integration (+) = signals summed

Data Path : Z:\svoasrv\HPCHEM1\BNA_F\Data\BF111125\
 Data File : BF144227.D
 Acq On : 12 Nov 2025 03:22
 Operator : RC/JU
 Sample : Q3593-04 5X
 Misc :
 ALS Vial : 22 Sample Multiplier: 1

Instrument :
 BNA_F
ClientSampleId :
 A-LAW-25-0167-0175-COMP

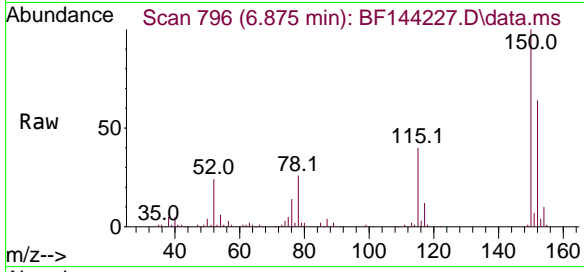
Quant Time: Nov 12 03:51:19 2025
 Quant Method : Z:\svoasrv\HPCHEM1\BNA_F\Methods\8270-BF110525.M
 Quant Title : ASP BNA STANDARDS FOR 5 POINT CALIBRATION
 QLast Update : Wed Nov 05 18:37:33 2025
 Response via : Initial Calibration



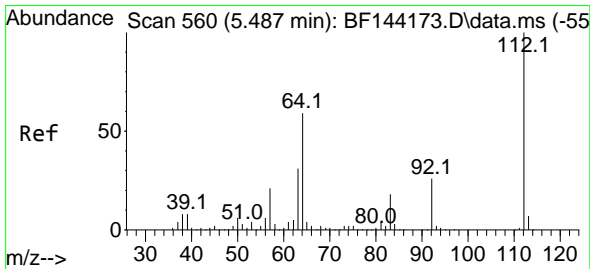
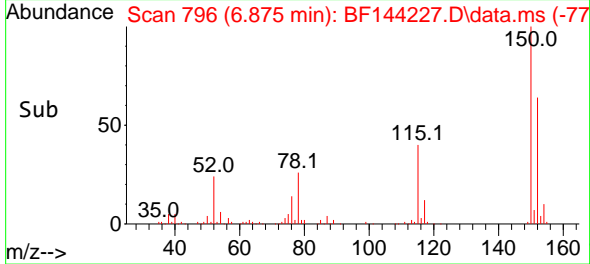
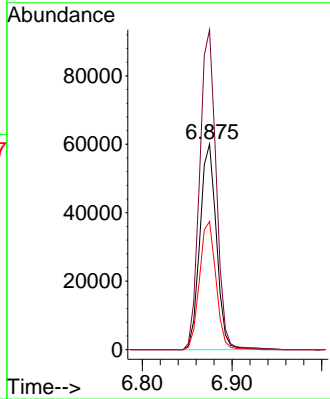


#1
 1,4-Dichlorobenzene-d4
 Concen: 20.000 ng
 RT: 6.875 min Scan# 79
 Delta R.T. -0.000 min
 Lab File: BF144227.D
 Acq: 12 Nov 2025 03:22

Instrument :
 BNA_F
 ClientSampleId :
 A-LAW-25-0167-0175-COMP

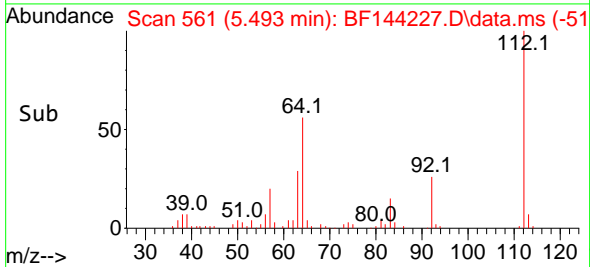
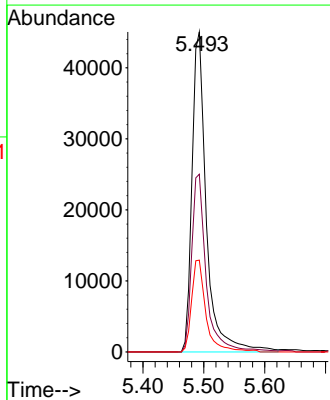
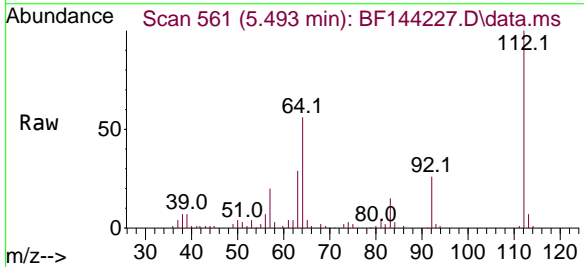


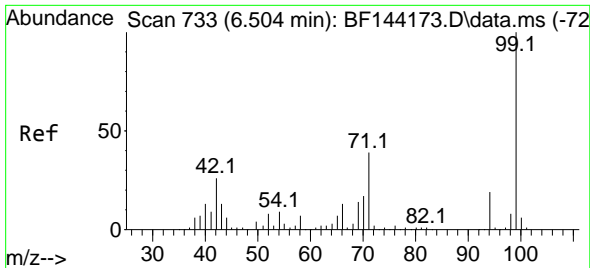
Tgt Ion:152 Resp: 76890
 Ion Ratio Lower Upper
 152 100
 150 155.7 127.4 191.0
 115 62.3 49.5 74.3



#5
 2-Fluorophenol
 Concen: 15.091 ng
 RT: 5.493 min Scan# 561
 Delta R.T. -0.000 min
 Lab File: BF144227.D
 Acq: 12 Nov 2025 03:22

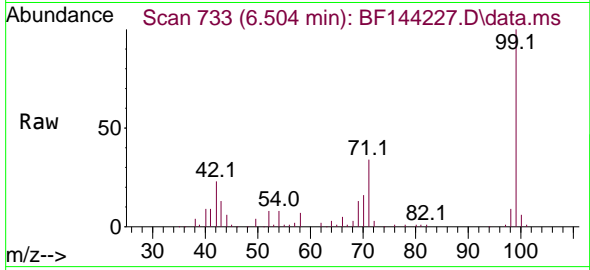
Tgt Ion:112 Resp: 74151
 Ion Ratio Lower Upper
 112 100
 64 55.5 47.2 70.8
 63 28.7 24.4 36.6





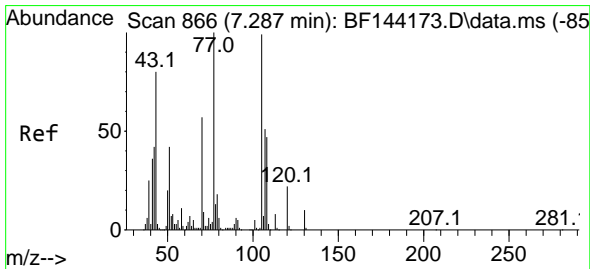
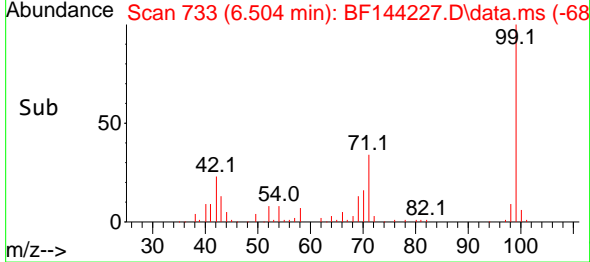
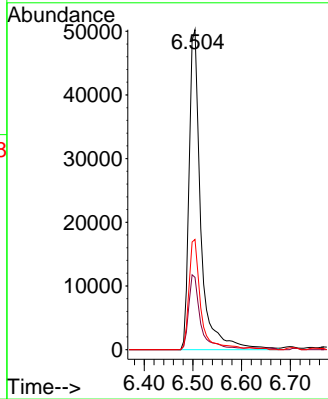
#7
 Phenol-d6
 Concen: 15.075 ng
 RT: 6.504 min Scan# 71
 Delta R.T. 0.006 min
 Lab File: BF144227.D
 Acq: 12 Nov 2025 03:22

Instrument : BNA_F
 ClientSampleId : A-LAW-25-0167-0175-COMP

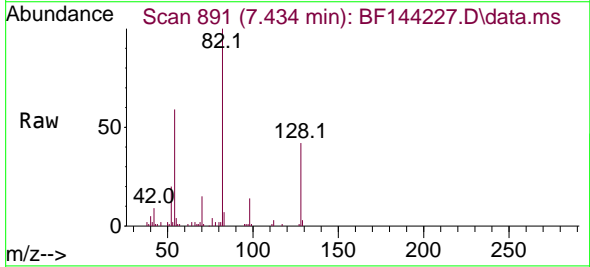


Tgt Ion: 99 Resp: 83928

Ion	Ratio	Lower	Upper
99	100		
42	22.6	20.9	31.3
71	34.4	31.4	47.2

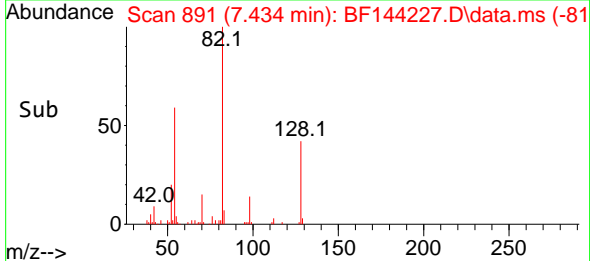
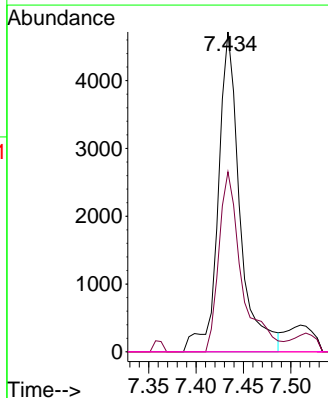


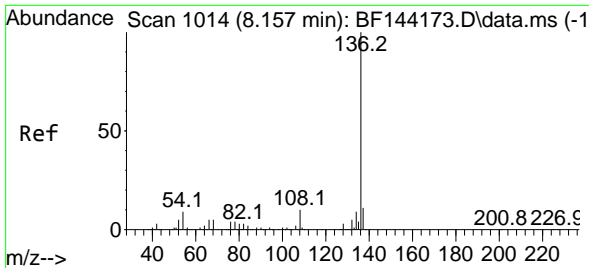
#19
 n-Nitroso-di-n-propylamine
 Concen: 2.053 ng
 RT: 7.434 min Scan# 891
 Delta R.T. 0.159 min
 Lab File: BF144227.D
 Acq: 12 Nov 2025 03:22



Tgt Ion: 70 Resp: 7524

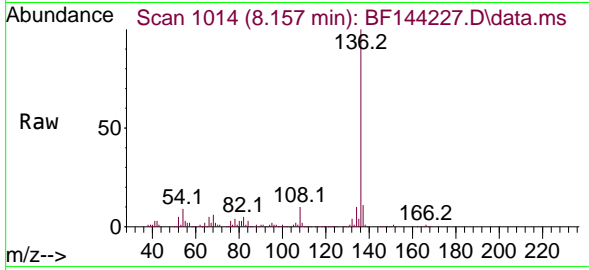
Ion	Ratio	Lower	Upper
70	100		
42	56.3	58.3	87.5#
101	0.0	7.0	10.6#
130	0.0	14.4	21.6#



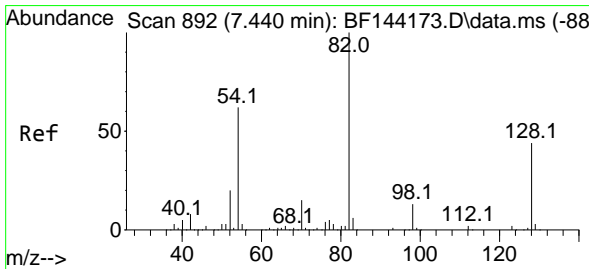
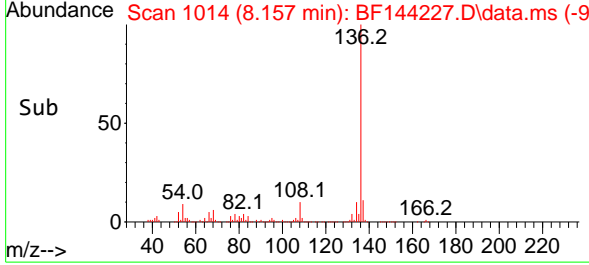
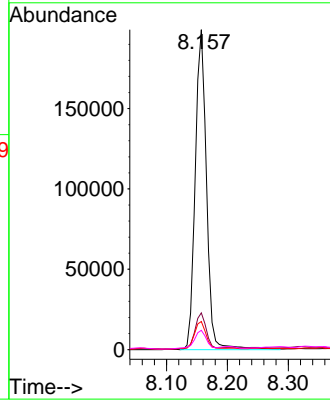


#21
 Naphthalene-d8
 Concen: 20.000 ng
 RT: 8.157 min Scan# 1014
 Delta R.T. -0.000 min
 Lab File: BF144227.D
 Acq: 12 Nov 2025 03:22

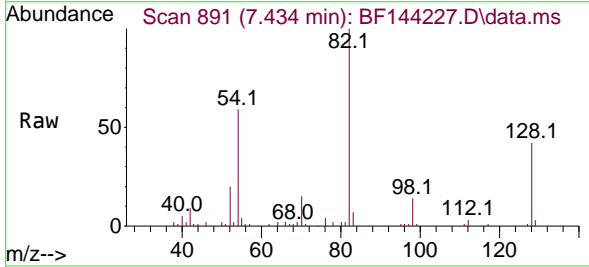
Instrument : BNA_F
 ClientSampleId : A-LAW-25-0167-0175-COMP



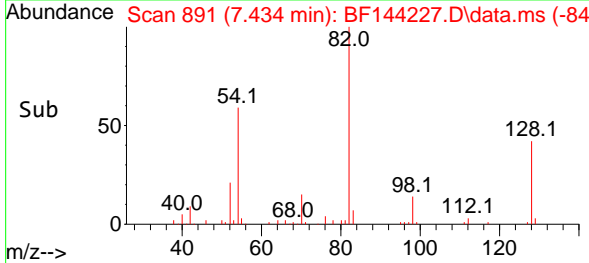
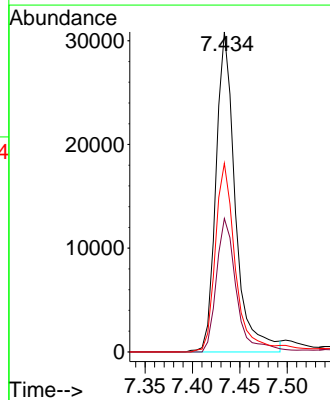
Tgt Ion:136 Resp: 257068
 Ion Ratio Lower Upper
 136 100
 137 11.5 8.6 13.0
 54 8.8 7.0 10.6
 68 6.0 4.3 6.5

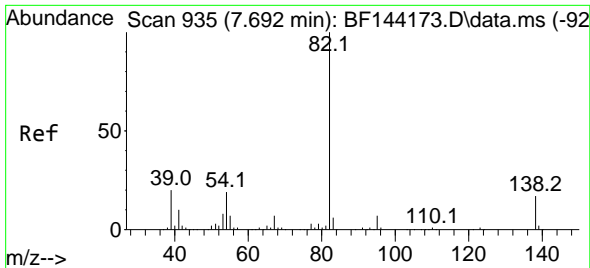


#23
 Nitrobenzene-d5
 Concen: 9.870 ng
 RT: 7.434 min Scan# 891
 Delta R.T. -0.000 min
 Lab File: BF144227.D
 Acq: 12 Nov 2025 03:22



Tgt Ion: 82 Resp: 43932
 Ion Ratio Lower Upper
 82 100
 128 41.7 34.7 52.1
 54 58.9 49.5 74.3

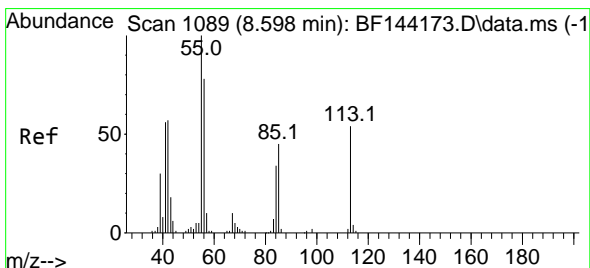
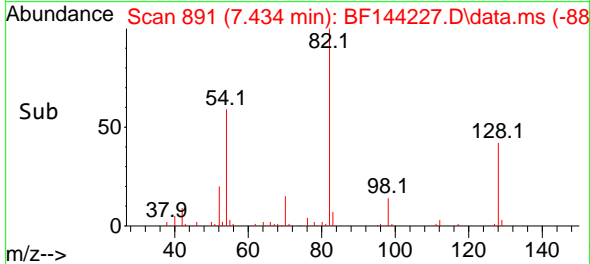
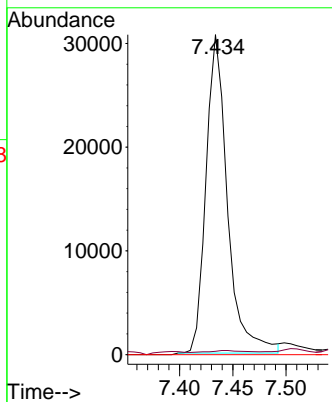
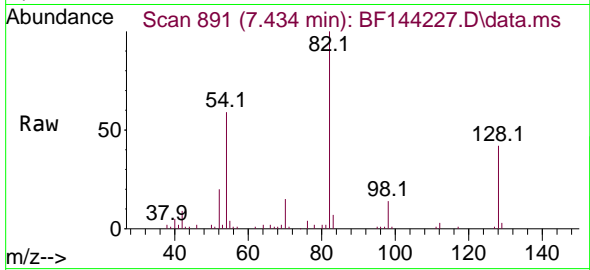




#25
 Isophorone
 Concen: 5.110 ng
 RT: 7.434 min Scan# 891
 Delta R.T. -0.253 min
 Lab File: BF144227.D
 Acq: 12 Nov 2025 03:22

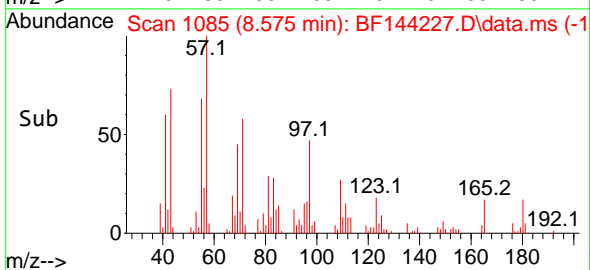
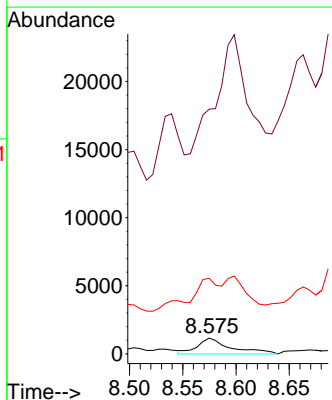
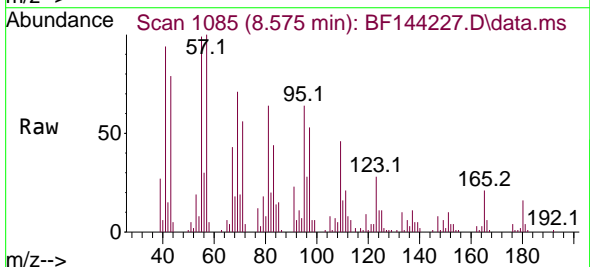
Instrument : BNA_F
 ClientSampleId : A-LAW-25-0167-0175-COMP

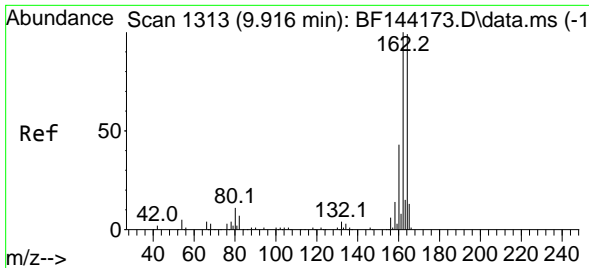
Tgt Ion: 82 Resp: 43025
 Ion Ratio Lower Upper
 82 100
 95 1.0 5.5 8.3#
 138 0.0 13.7 20.5#



#35
 Caprolactam
 Concen: 2.212 ng
 RT: 8.575 min Scan# 1085
 Delta R.T. -0.047 min
 Lab File: BF144227.D
 Acq: 12 Nov 2025 03:22

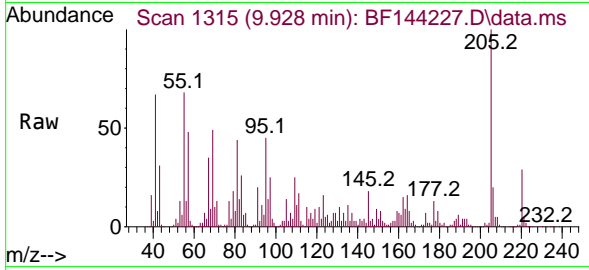
Tgt Ion: 113 Resp: 2504
 Ion Ratio Lower Upper
 113 100
 55 1546.3 166.8 206.8#
 56 477.5 125.9 165.9#



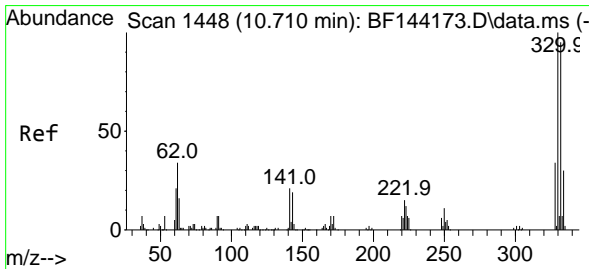
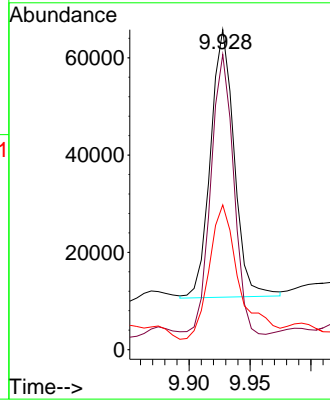
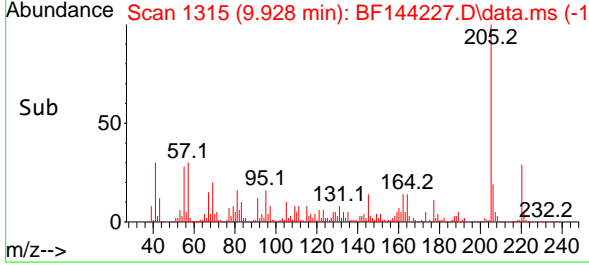


#39
 Acenaphthene-d10
 Concen: 20.000 ng
 RT: 9.928 min Scan# 1313
 Delta R.T. 0.012 min
 Lab File: BF144227.D
 Acq: 12 Nov 2025 03:22

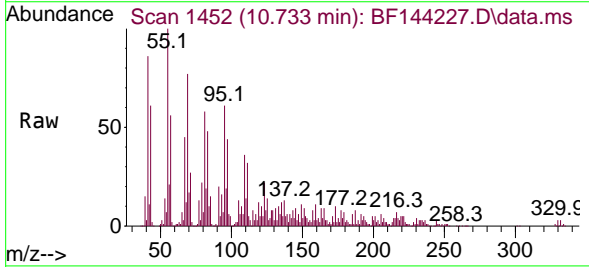
Instrument : BNA_F
 ClientSampleId : A-LAW-25-0167-0175-COMP



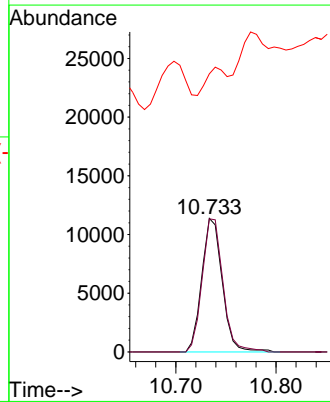
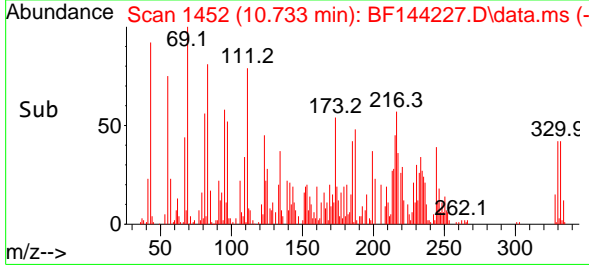
Tgt Ion:164 Resp: 74415
 Ion Ratio Lower Upper
 164 100
 162 92.2 81.1 121.7
 160 45.2 34.5 51.7

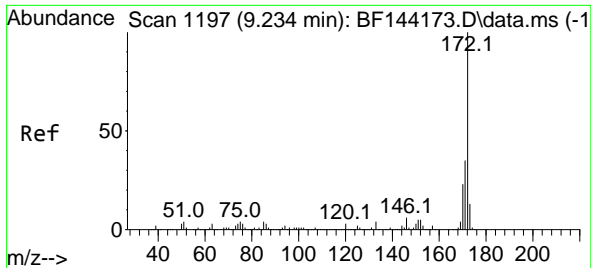


#42
 2,4,6-Tribromophenol
 Concen: 17.243 ng
 RT: 10.733 min Scan# 1452
 Delta R.T. 0.029 min
 Lab File: BF144227.D
 Acq: 12 Nov 2025 03:22



Tgt Ion:330 Resp: 16102
 Ion Ratio Lower Upper
 330 100
 332 100.9 76.7 115.1
 141 19.4 17.8 26.8

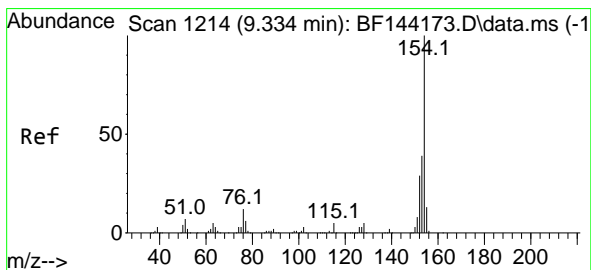
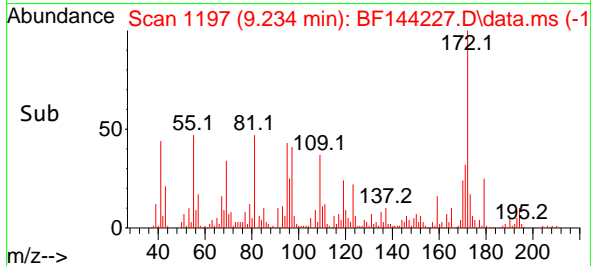
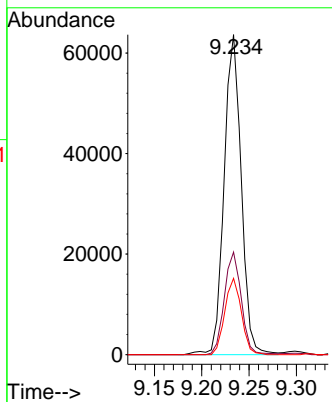
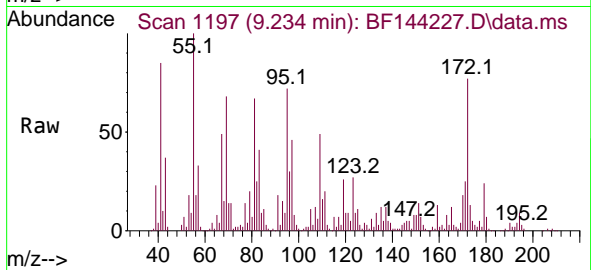




#45
 2-Fluorobiphenyl
 Concen: 15.861 ng
 RT: 9.234 min Scan# 1197
 Delta R.T. 0.006 min
 Lab File: BF144227.D
 Acq: 12 Nov 2025 03:22

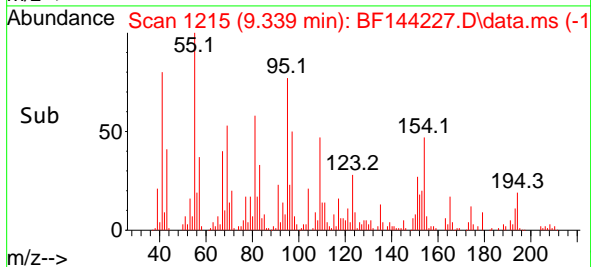
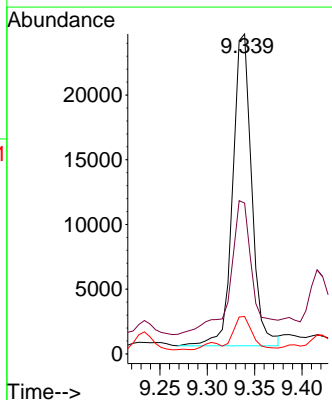
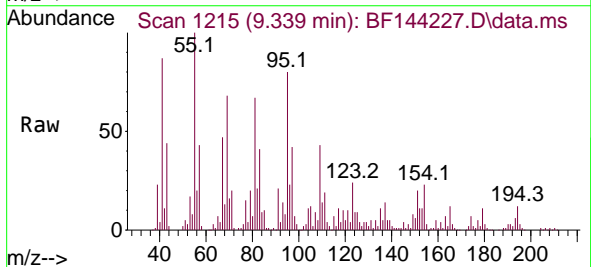
Instrument : BNA_F
 ClientSampleId : A-LAW-25-0167-0175-COMP

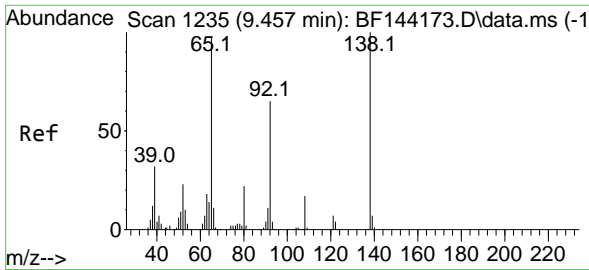
Tgt Ion	Resp	Lower	Upper
172	79914		
171	32.0	28.1	42.1
170	23.8	18.6	28.0



#46
 1,1'-Biphenyl
 Concen: 6.500 ng
 RT: 9.339 min Scan# 1215
 Delta R.T. 0.006 min
 Lab File: BF144227.D
 Acq: 12 Nov 2025 03:22

Tgt Ion	Resp	Lower	Upper
154	33766		
153	47.1	19.2	59.2
76	11.7	0.0	31.8

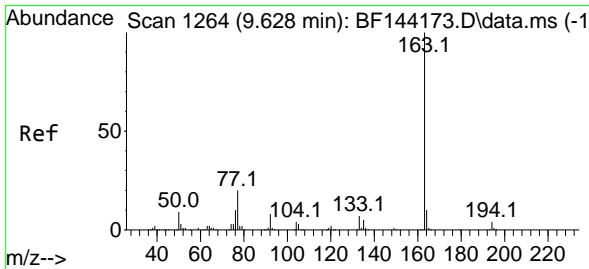
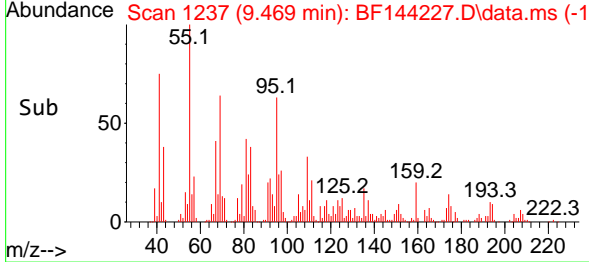
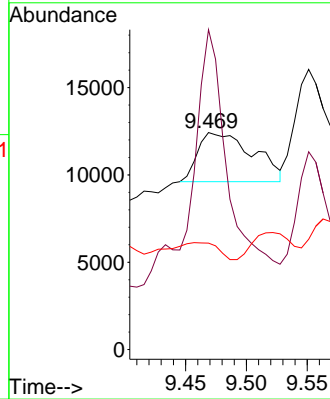
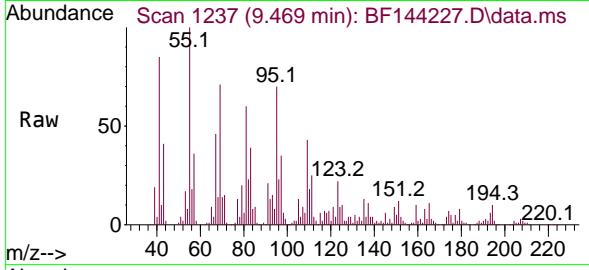




#48
 2-Nitroaniline
 Concen: 6.901 ng
 RT: 9.469 min Scan# 11
 Delta R.T. 0.012 min
 Lab File: BF144227.D
 Acq: 12 Nov 2025 03:22

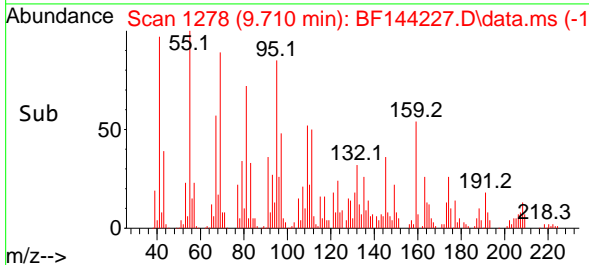
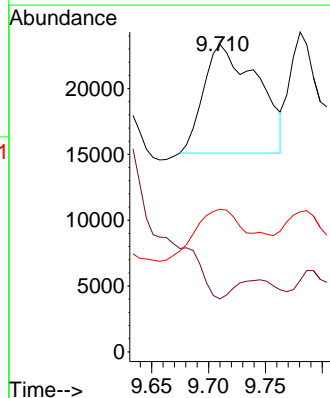
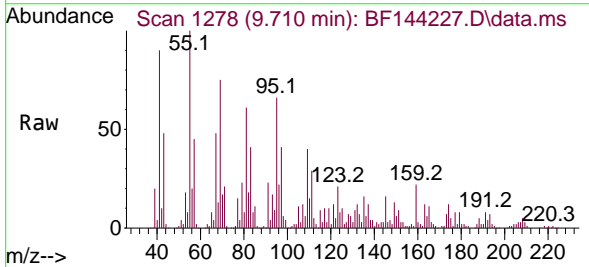
Instrument :
 BNA_F
 ClientSampleId :
 A-LAW-25-0167-0175-COMP

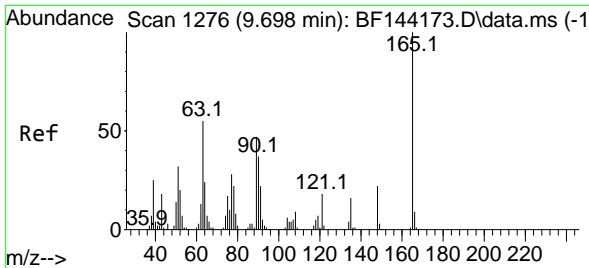
Tgt Ion: 65 Resp: 8823
 Ion Ratio Lower Upper
 65 100
 92 147.4 53.0 79.6#
 138 49.1 81.6 122.4#



#50
 Dimethylphthalate
 Concen: 5.553 ng
 RT: 9.710 min Scan# 1278
 Delta R.T. 0.082 min
 Lab File: BF144227.D
 Acq: 12 Nov 2025 03:22

Tgt Ion:163 Resp: 27374
 Ion Ratio Lower Upper
 163 100
 194 17.2 3.3 4.9#
 164 46.4 8.1 12.1#



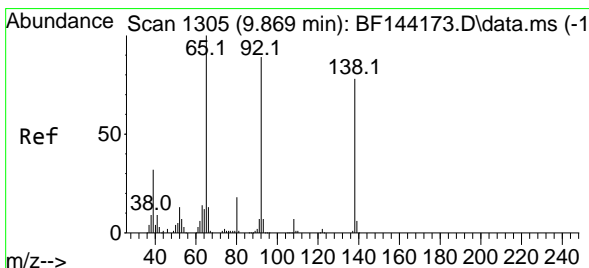
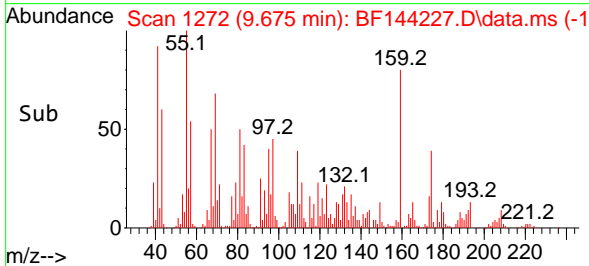
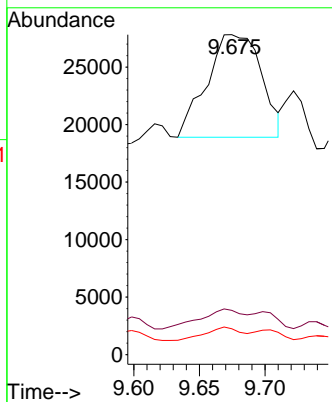
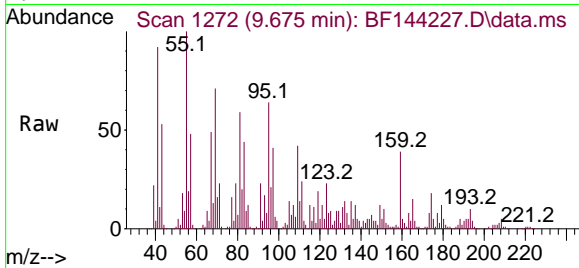


#51
 2,6-Dinitrotoluene
 Concen: 25.862 ng
 RT: 9.675 min Scan# 111
 Delta R.T. -0.018 min
 Lab File: BF144227.D
 Acq: 12 Nov 2025 03:22

Instrument :
 BNA_F
 ClientSampleId :
 A-LAW-25-0167-0175-COMP

Tgt Ion:165 Resp: 25809

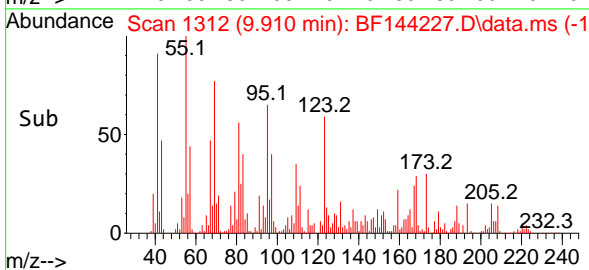
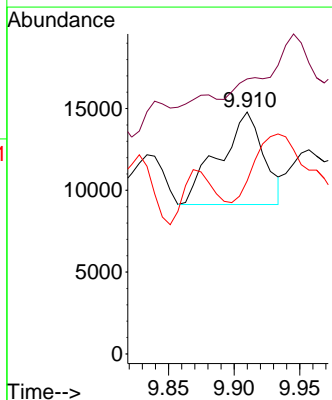
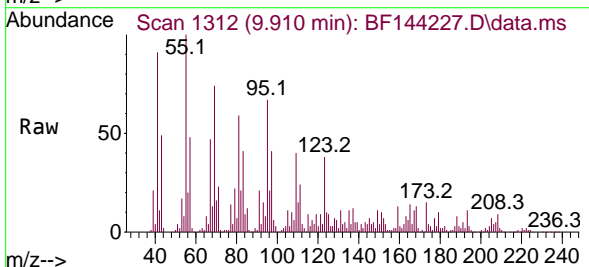
Ion	Ratio	Lower	Upper
165	100		
63	13.8	43.8	65.8#
89	8.1	37.5	56.3#

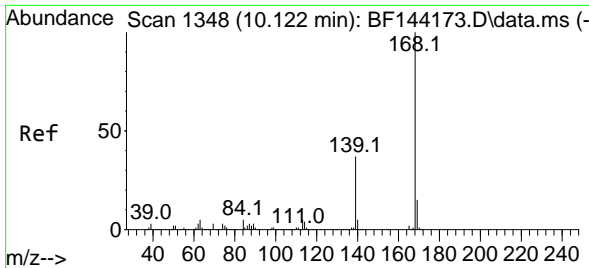


#53
 3-Nitroaniline
 Concen: 12.241 ng
 RT: 9.910 min Scan# 1312
 Delta R.T. 0.041 min
 Lab File: BF144227.D
 Acq: 12 Nov 2025 03:22

Tgt Ion:138 Resp: 13354

Ion	Ratio	Lower	Upper
138	100		
108	113.7	7.5	11.3#
92	71.6	91.8	137.6#

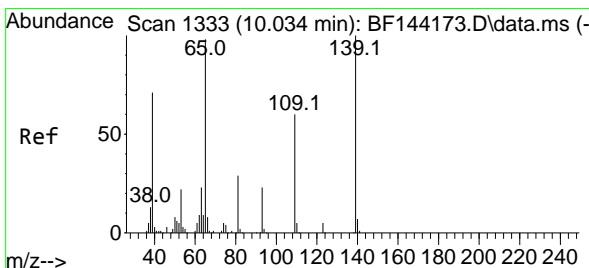
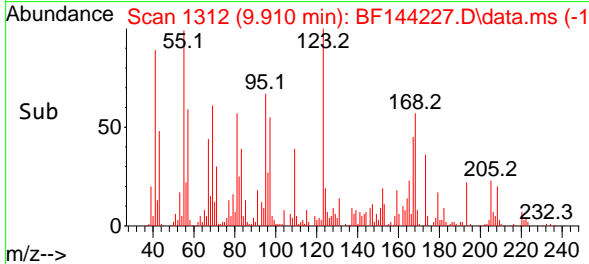
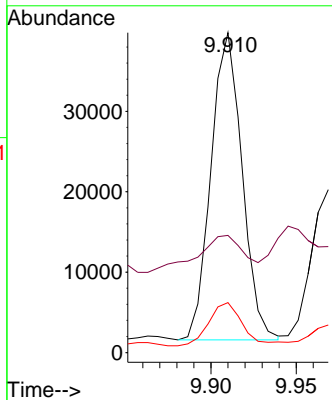
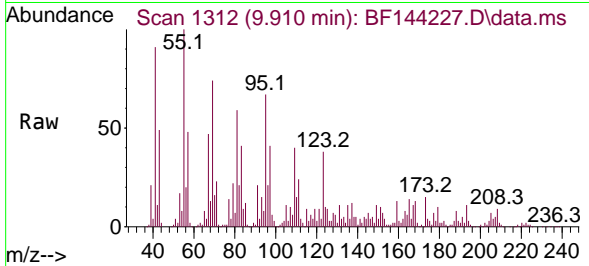




#55
 Dibenzofuran
 Concen: 8.585 ng
 RT: 9.910 min Scan# 1312
 Delta R.T. -0.206 min
 Lab File: BF144227.D
 Acq: 12 Nov 2025 03:22

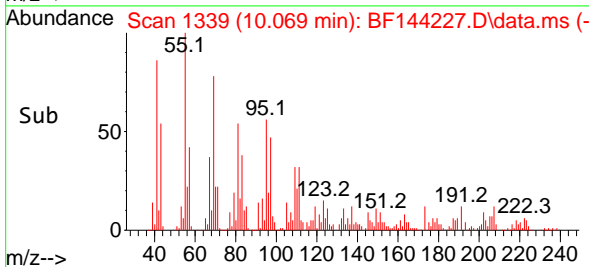
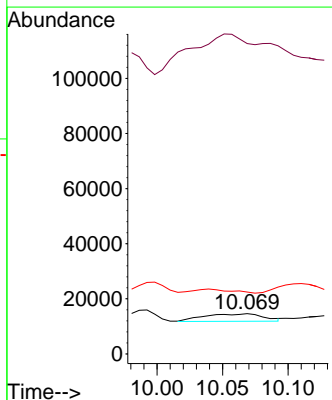
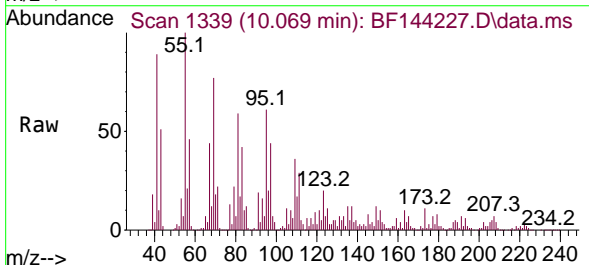
Instrument : BNA_F
 ClientSampleId : A-LAW-25-0167-0175-COMP

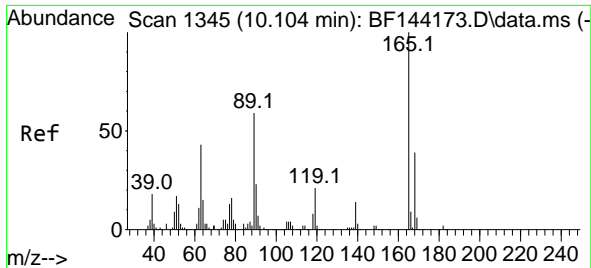
Tgt Ion	Resp	Lower	Upper
168	48551		
139	36.6	30.2	45.2
169	15.6	12.2	18.4



#56
 4-Nitrophenol
 Concen: 10.911 ng
 RT: 10.069 min Scan# 1339
 Delta R.T. 0.030 min
 Lab File: BF144227.D
 Acq: 12 Nov 2025 03:22

Tgt Ion	Resp	Lower	Upper
139	8610		
139	100		
109	771.3	39.9	79.9#
65	153.8	79.5	119.5#



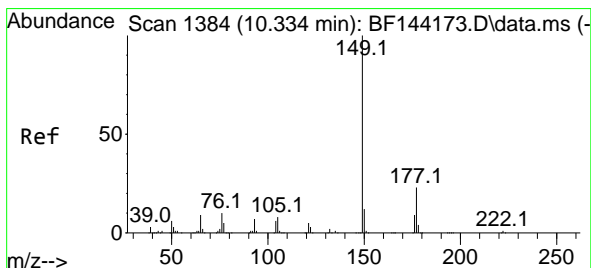
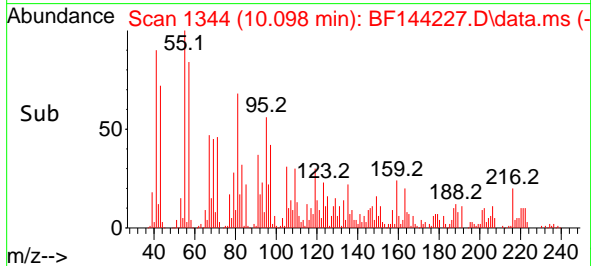
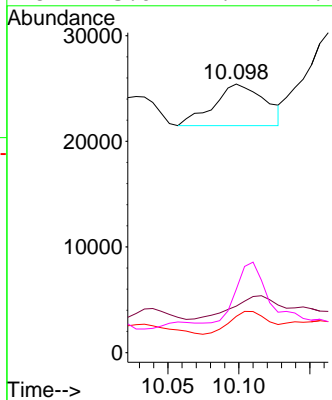
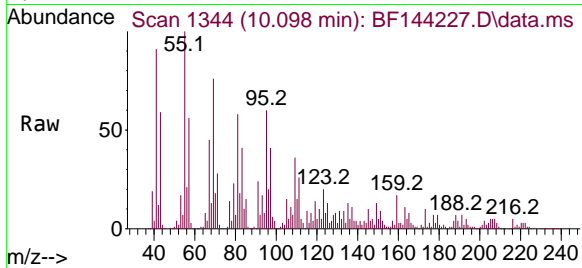


#57
 2,4-Dinitrotoluene
 Concen: 7.374 ng
 RT: 10.098 min Scan# 1344
 Delta R.T. -0.000 min
 Lab File: BF144227.D
 Acq: 12 Nov 2025 03:22

Instrument : BNA_F
 ClientSampleId : A-LAW-25-0167-0175-COMP

Tgt Ion:165 Resp: 9851

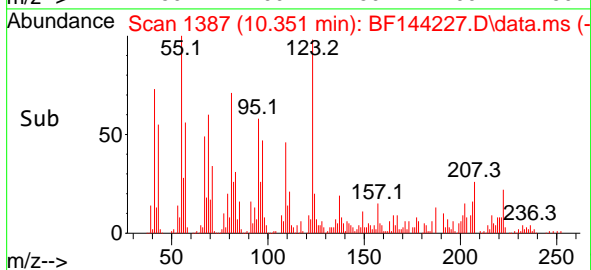
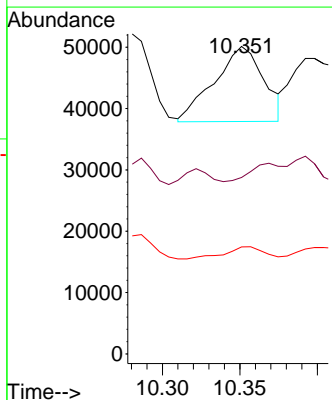
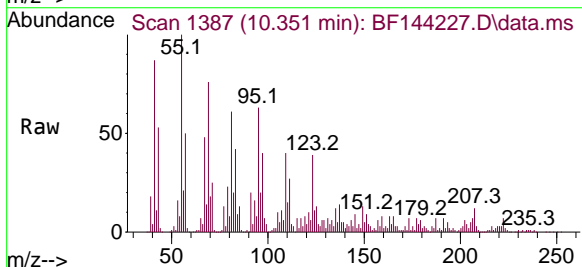
Ion	Ratio	Lower	Upper
165	100		
63	17.3	35.5	53.3#
89	13.5	47.4	71.2#
182	23.6	1.9	2.9#

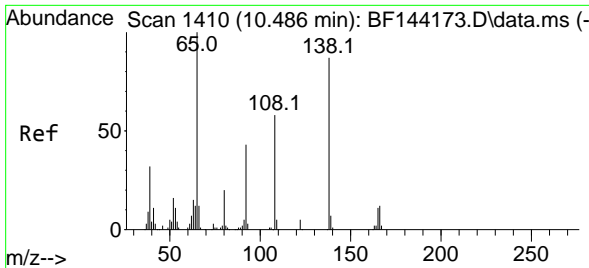


#60
 Diethylphthalate
 Concen: 5.984 ng
 RT: 10.351 min Scan# 1387
 Delta R.T. 0.023 min
 Lab File: BF144227.D
 Acq: 12 Nov 2025 03:22

Tgt Ion:149 Resp: 27193

Ion	Ratio	Lower	Upper
149	100		
177	57.4	18.3	27.5#
150	34.8	9.8	14.6#

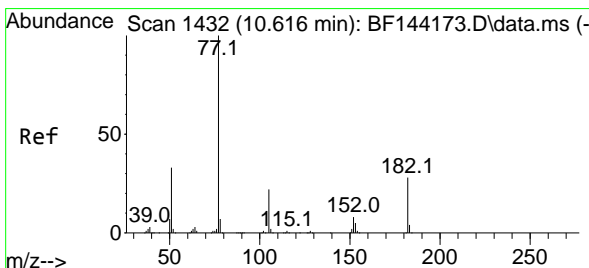
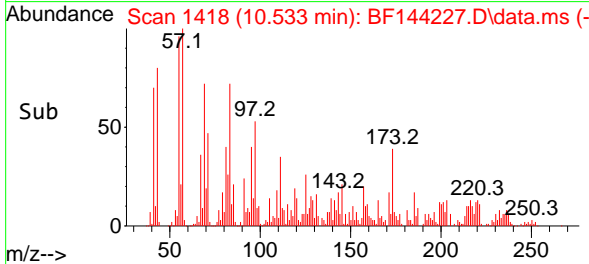
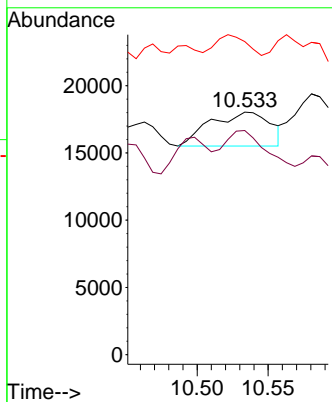
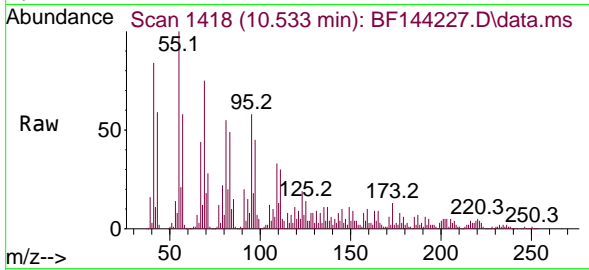




#62
 4-Nitroaniline
 Concen: 7.154 ng
 RT: 10.533 min Scan# 1410
 Delta R.T. 0.059 min
 Lab File: BF144227.D
 Acq: 12 Nov 2025 03:22

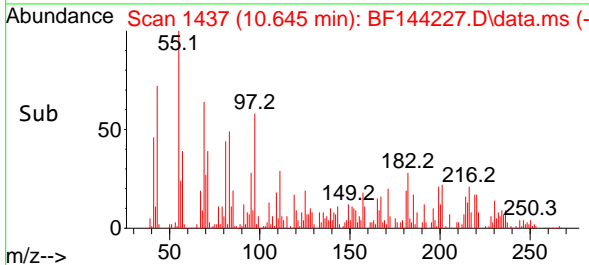
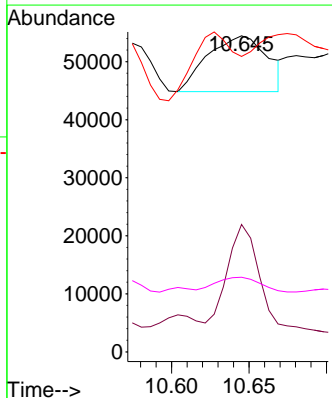
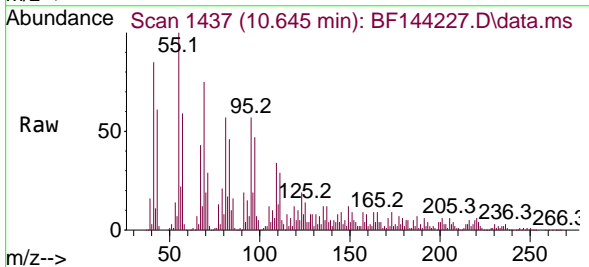
Instrument : BNA_F
 ClientSampleId : A-LAW-25-0167-0175-COMP

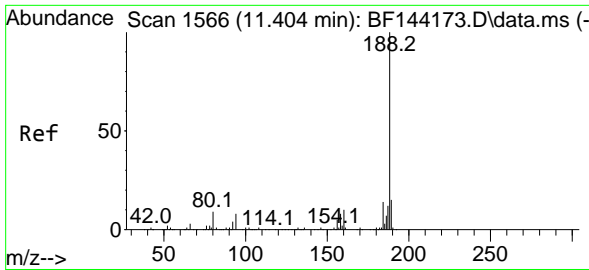
Tgt Ion:138 Resp: 7432
 Ion Ratio Lower Upper
 138 100
 92 92.4 29.4 69.4#
 108 129.1 46.4 86.4#



#63
 Azobenzene
 Concen: 6.088 ng
 RT: 10.645 min Scan# 1437
 Delta R.T. 0.029 min
 Lab File: BF144227.D
 Acq: 12 Nov 2025 03:22

Tgt Ion: 77 Resp: 25748
 Ion Ratio Lower Upper
 77 100
 182 40.3 8.1 48.1
 105 93.5 2.0 42.0#
 51 23.6 13.9 53.9



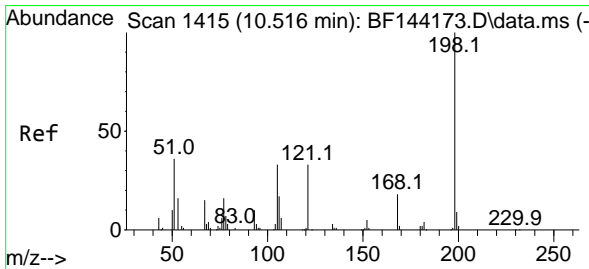
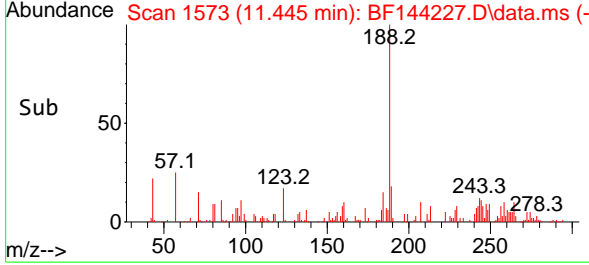
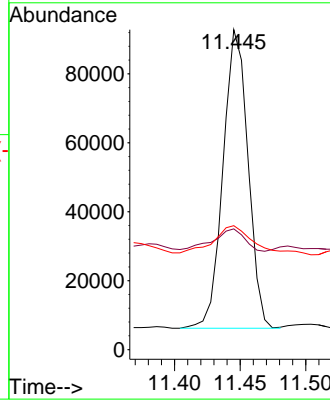
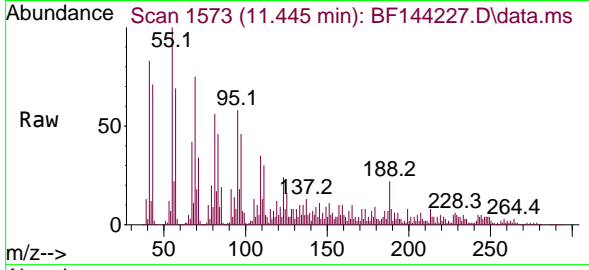


#64
 Phenanthrene-d10
 Concen: 20.000 ng
 RT: 11.445 min Scan# 114710
 Delta R.T. 0.041 min
 Lab File: BF144227.D
 Acq: 12 Nov 2025 03:22

Instrument : BNA_F
 ClientSampleId : A-LAW-25-0167-0175-COMP

Tgt Ion:188 Resp: 114710

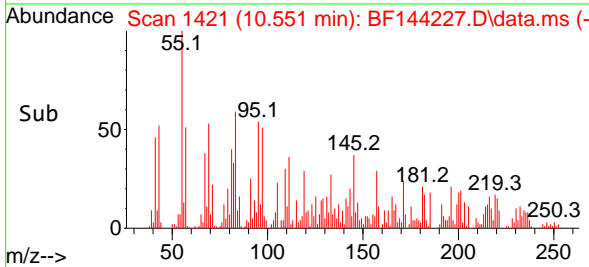
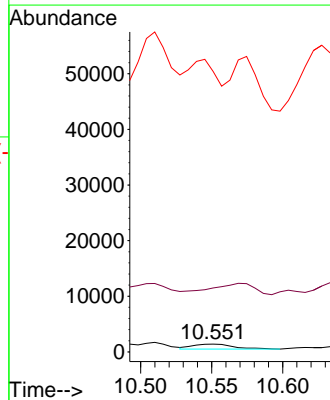
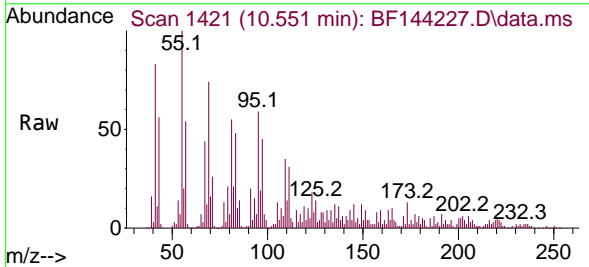
Ion	Ratio	Lower	Upper
188	100		
94	37.7	6.2	9.2#
80	38.7	6.9	10.3#

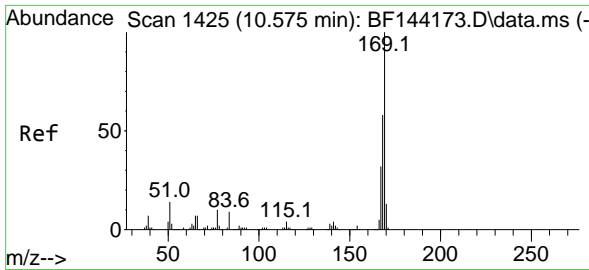


#65
 4,6-Dinitro-2-methylphenol
 Concen: 2.215 ng
 RT: 10.551 min Scan# 1421
 Delta R.T. 0.029 min
 Lab File: BF144227.D
 Acq: 12 Nov 2025 03:22

Tgt Ion:198 Resp: 1726

Ion	Ratio	Lower	Upper
198	100		
51	820.3	25.6	65.6#
105	3601.7	14.6	54.6#



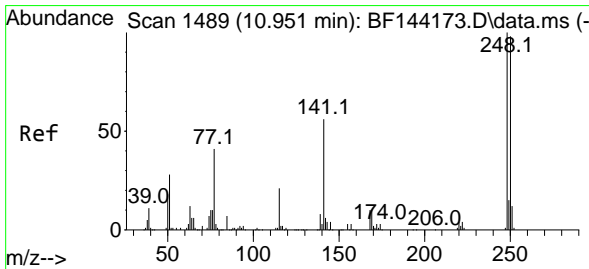
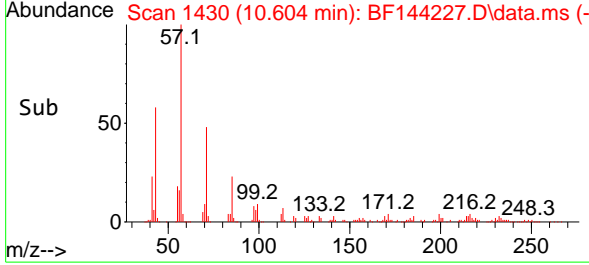
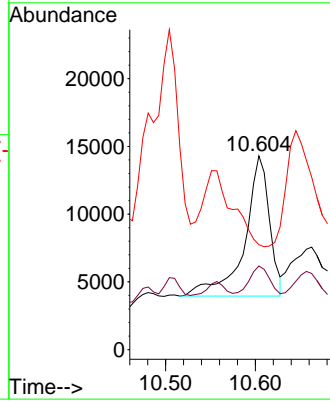
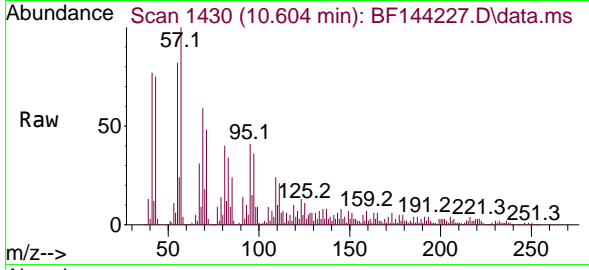


#66
 n-Nitrosodiphenylamine
 Concen: 5.416 ng
 RT: 10.604 min Scan# 1425
 Delta R.T. 0.035 min
 Lab File: BF144227.D
 Acq: 12 Nov 2025 03:22

Instrument : BNA_F
 ClientSampleId : A-LAW-25-0167-0175-COMP

Tgt Ion:169 Resp: 19981

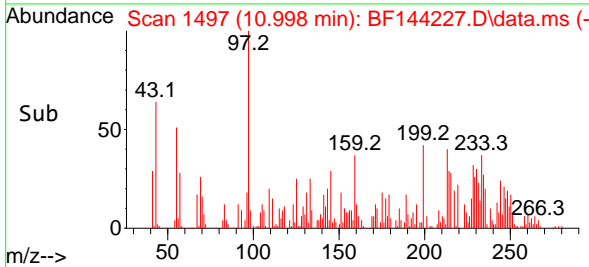
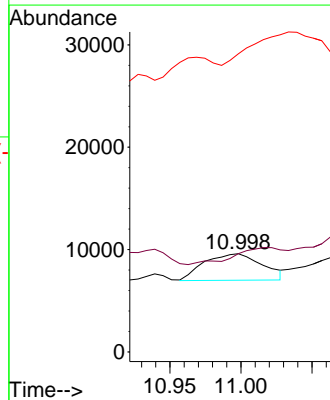
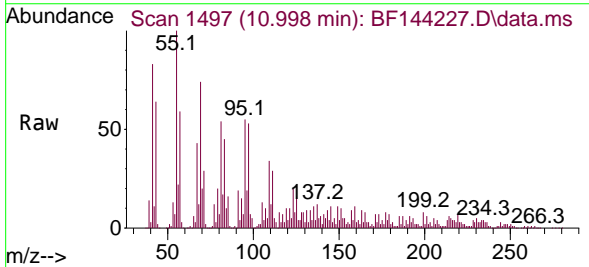
Ion	Ratio	Lower	Upper
169	100		
168	43.2	46.2	69.2#
167	54.2	25.7	38.5#

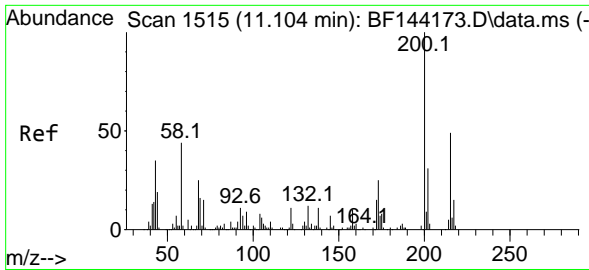


#67
 4-Bromophenyl-phenylether
 Concen: 5.034 ng
 RT: 10.998 min Scan# 1497
 Delta R.T. 0.053 min
 Lab File: BF144227.D
 Acq: 12 Nov 2025 03:22

Tgt Ion:248 Resp: 7371

Ion	Ratio	Lower	Upper
248	100		
250	99.9	78.4	117.6
141	303.4	45.1	67.7#

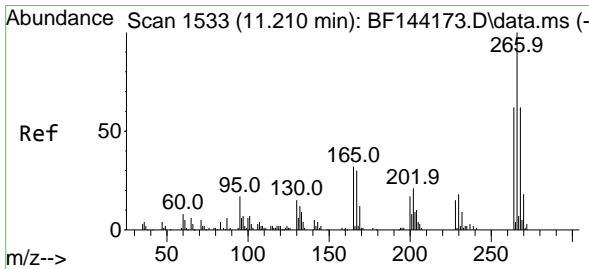
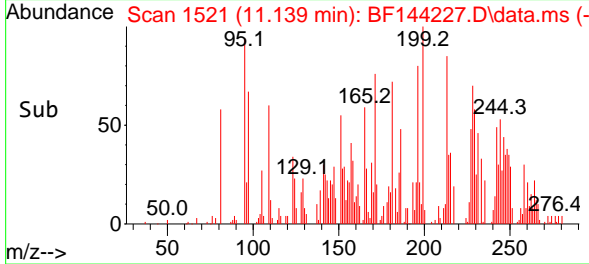
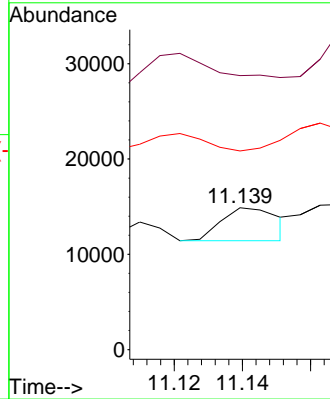
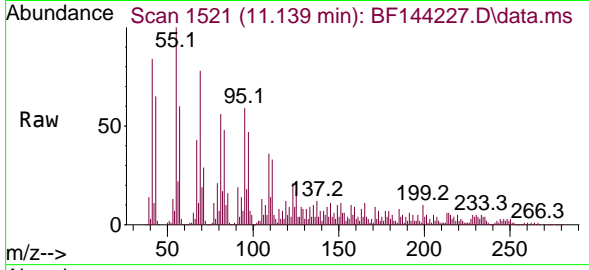




#69
 Atrazine
 Concen: 3.396 ng
 RT: 11.139 min Scan# 111
 Delta R.T. 0.041 min
 Lab File: BF144227.D
 Acq: 12 Nov 2025 03:22

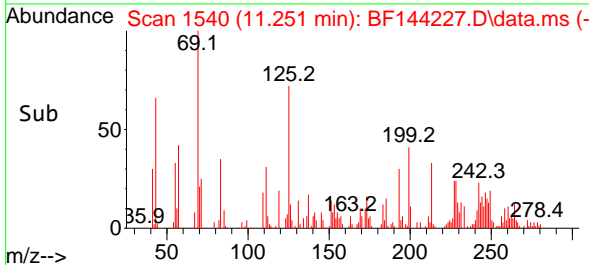
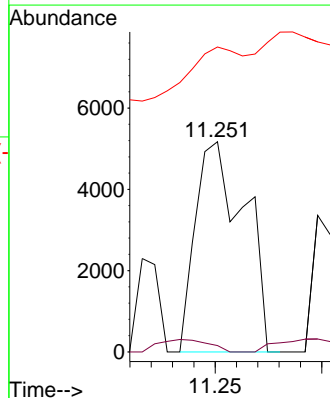
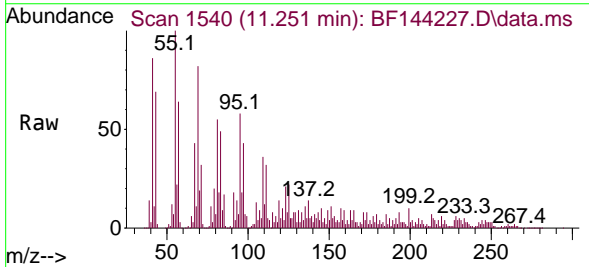
Instrument :
 BNA_F
 ClientSampleId :
 A-LAW-25-0167-0175-COMP

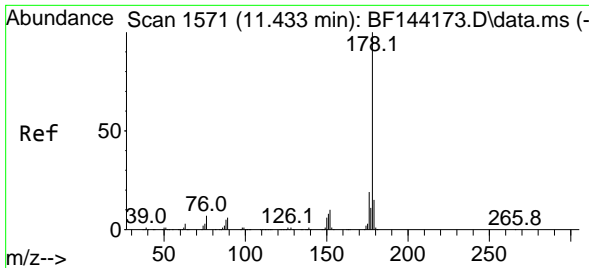
Tgt Ion:200 Resp: 3984
 Ion Ratio Lower Upper
 200 100
 173 193.2 5.0 45.0#
 215 140.1 28.7 68.7#



#70
 Pentachlorophenol
 Concen: 9.603 ng
 RT: 11.251 min Scan# 1540
 Delta R.T. 0.035 min
 Lab File: BF144227.D
 Acq: 12 Nov 2025 03:22

Tgt Ion:266 Resp: 8247
 Ion Ratio Lower Upper
 266 100
 268 3.0 49.5 74.3#
 264 145.0 49.4 74.2#

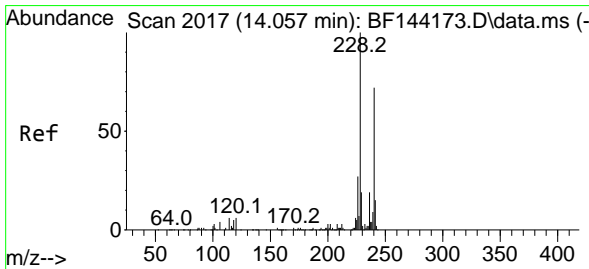
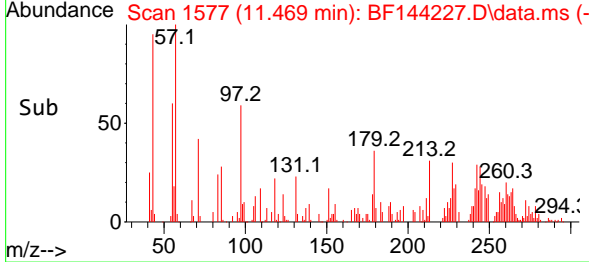
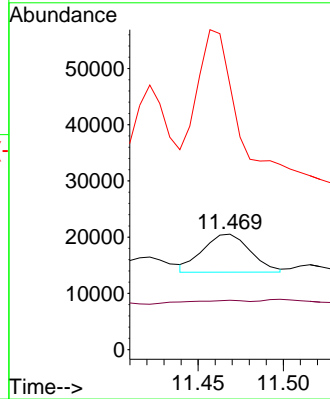
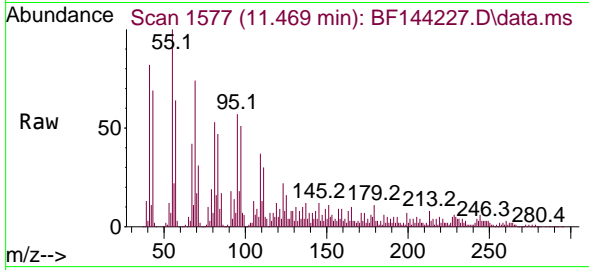




#71
 Phenanthrene
 Concen: 2.292 ng
 RT: 11.469 min Scan# 111
 Delta R.T. 0.041 min
 Lab File: BF144227.D
 Acq: 12 Nov 2025 03:22

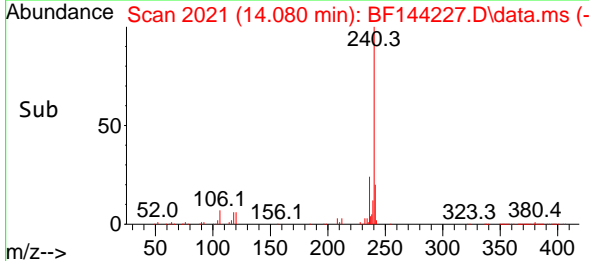
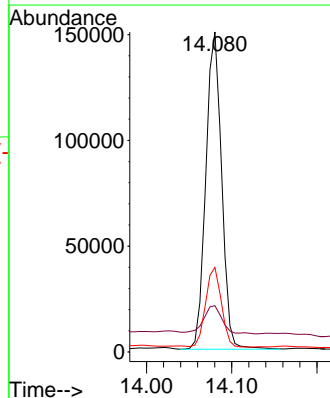
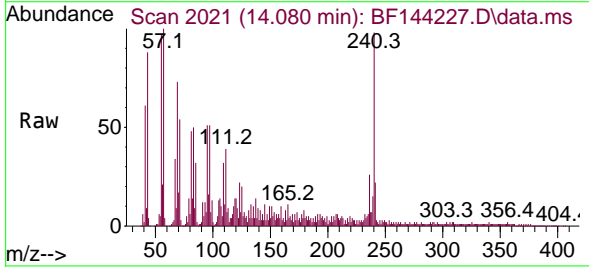
Instrument : BNA_F
 ClientSampleId : A-LAW-25-0167-0175-COMP

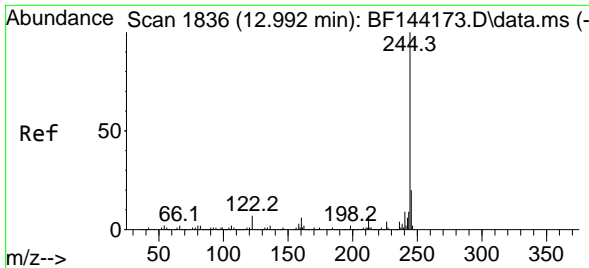
Tgt Ion	Resp	Lower	Upper
178	13092		
176	42.8	15.5	23.3#
179	229.0	12.2	18.4#



#76
 Chrysene-d12
 Concen: 20.000 ng
 RT: 14.080 min Scan# 2021
 Delta R.T. 0.029 min
 Lab File: BF144227.D
 Acq: 12 Nov 2025 03:22

Tgt Ion	Resp	Lower	Upper
240	193282		
120	14.4	6.6	10.0#
236	26.4	21.4	32.2



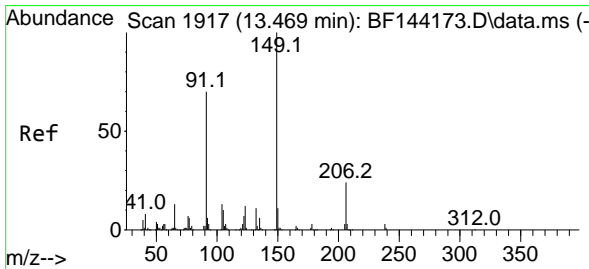
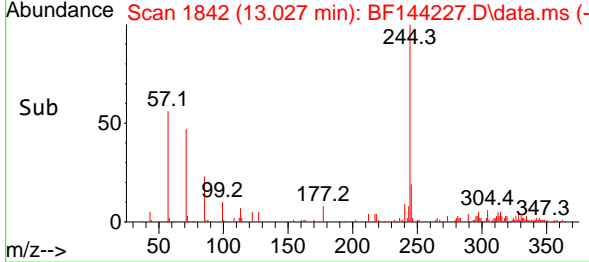
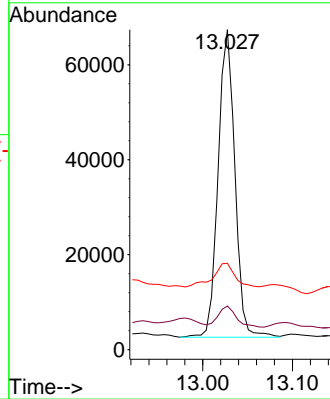
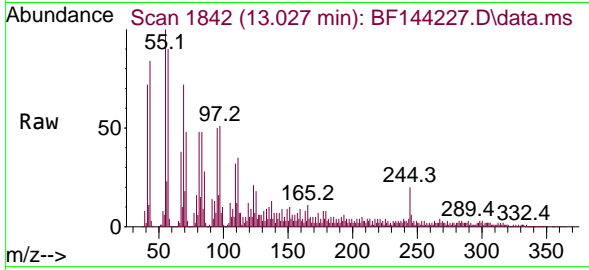


#79
 Terphenyl-d14
 Concen: 6.908 ng
 RT: 13.027 min Scan# 1836
 Delta R.T. 0.035 min
 Lab File: BF144227.D
 Acq: 12 Nov 2025 03:22

Instrument : BNA_F
 ClientSampleId : A-LAW-25-0167-0175-COMP

Tgt Ion:244 Resp: 84057

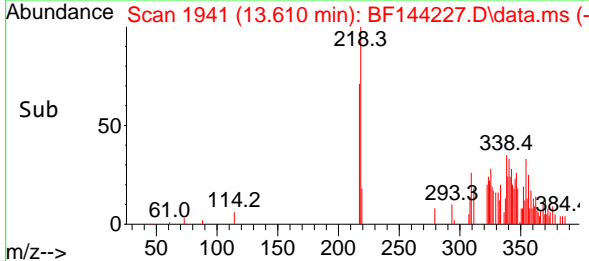
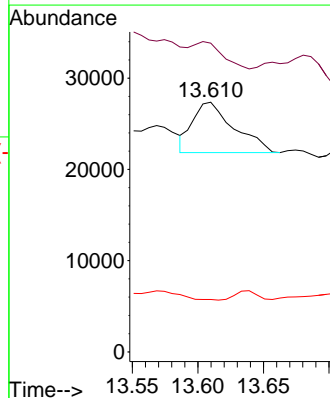
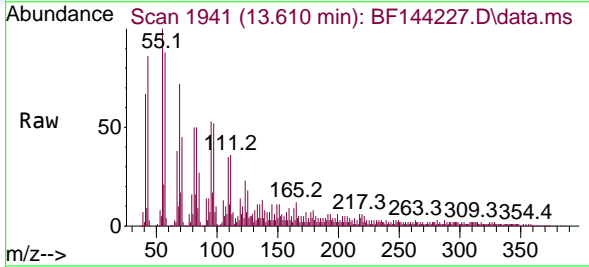
Ion	Ratio	Lower	Upper
244	100		
212	13.6	5.3	7.9#
122	27.0	5.6	8.4#

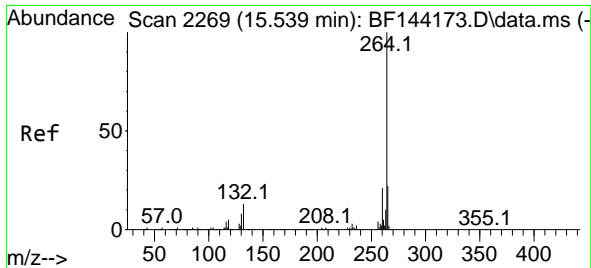


#80
 Butylbenzylphthalate
 Concen: 2.242 ng
 RT: 13.610 min Scan# 1941
 Delta R.T. 0.141 min
 Lab File: BF144227.D
 Acq: 12 Nov 2025 03:22

Tgt Ion:149 Resp: 12112

Ion	Ratio	Lower	Upper
149	100		
91	123.6	56.1	84.1#
206	21.0	18.8	28.2





#86
 Perylene-d12
 Concen: 20.000 ng
 RT: 15.551 min Scan# 21
 Delta R.T. 0.012 min
 Lab File: BF144227.D
 Acq: 12 Nov 2025 03:22

Instrument :
 BNA_F
 ClientSampleId :
 A-LAW-25-0167-0175-COMP

Tgt Ion:264 Resp: 217571

Ion	Ratio	Lower	Upper
264	100		
260	21.6	17.1	25.7
265	22.2	17.4	26.0

