

Data Path : Z:\svoasrv\HPCHEM1\BNA_F\Data\BF111225\
 Data File : BF144235.D
 Acq On : 12 Nov 2025 18:20
 Operator : RC/JU
 Sample : PB170515BL
 Misc :
 ALS Vial : 7 Sample Multiplier: 1

Instrument :
 BNA_F
 ClientSampleId :
 PB170515BL

Quant Time: Nov 13 10:41:21 2025
 Quant Method : Z:\svoasrv\HPCHEM1\BNA_F\Methods\8270-BF110525.M
 Quant Title : ASP BNA STANDARDS FOR 5 POINT CALIBRATION
 QLast Update : Wed Nov 05 18:37:33 2025
 Response via : Initial Calibration

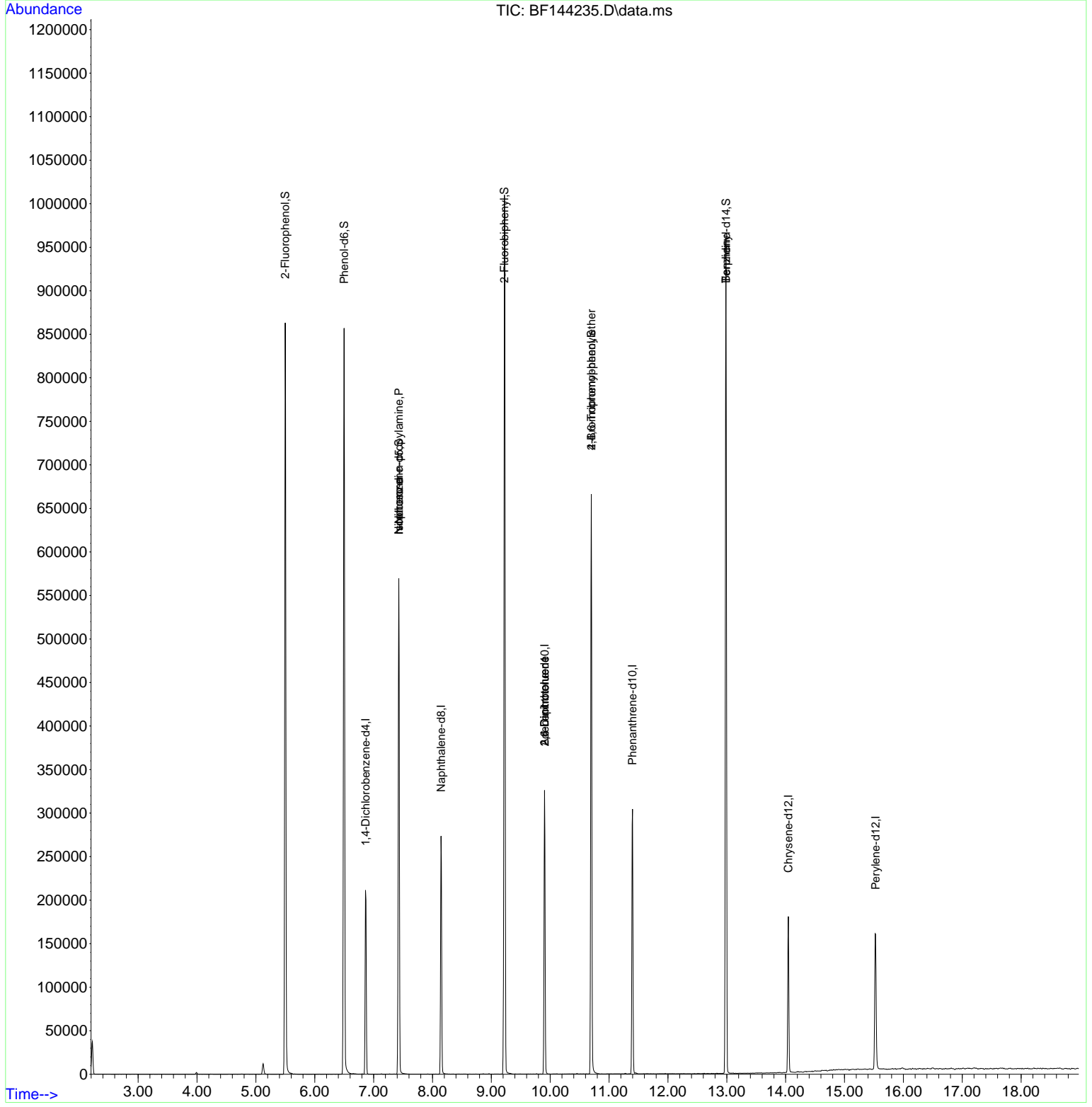
Compound	R.T.	QIon	Response	Conc	Units	Dev(Min)
Internal Standards						
1) 1,4-Dichlorobenzene-d4	6.863	152	46055	20.000	ng	-0.01
21) Naphthalene-d8	8.145	136	180129	20.000	ng	#-0.01
39) Acenaphthene-d10	9.904	164	102582	20.000	ng	-0.01
64) Phenanthrene-d10	11.398	188	172359	20.000	ng	0.00
76) Chrysene-d12	14.045	240	92202	20.000	ng	# 0.00
86) Perylene-d12	15.527	264	107660	20.000	ng	-0.01
System Monitoring Compounds						
5) 2-Fluorophenol	5.498	112	334802	113.760	ng	0.00
7) Phenol-d6	6.498	99	387037	116.063	ng	0.00
23) Nitrobenzene-d5	7.428	82	253617	81.318	ng	0.00
42) 2,4,6-Tribromophenol	10.698	330	139591	108.438	ng	0.00
45) 2-Fluorobiphenyl	9.222	172	507747	73.103	ng	0.00
79) Terphenyl-d14	12.986	244	515330	88.778	ng	0.00
Target Compounds						
19) n-Nitroso-di-n-propyla...	7.428	70	37036	16.871	ng	# 79
25) Isophorone	7.428	82	253616	42.991	ng	# 66
51) 2,6-Dinitrotoluene	9.904	165	12715	9.243	ng	# 27
57) 2,4-Dinitrotoluene	9.904	165	12715	6.904	ng	# 27
67) 4-Bromophenyl-phenylether	10.698	248	7917	3.599	ng	# 1
77) Benzidine	12.986	184	5813	2.131	ng	# 95

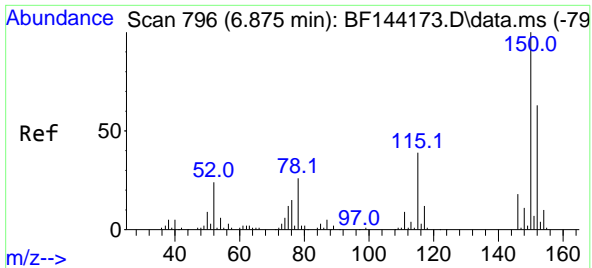
(#) = qualifier out of range (m) = manual integration (+) = signals summed

Data Path : Z:\svoasrv\HPCHEM1\BNA_F\Data\BF111225\
 Data File : BF144235.D
 Acq On : 12 Nov 2025 18:20
 Operator : RC/JU
 Sample : PB170515BL
 Misc :
 ALS Vial : 7 Sample Multiplier: 1

Instrument :
 BNA_F
 ClientSampleId :
 PB170515BL

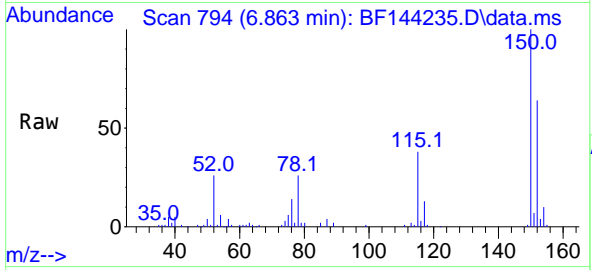
Quant Time: Nov 13 10:41:21 2025
 Quant Method : Z:\svoasrv\HPCHEM1\BNA_F\Methods\8270-BF110525.M
 Quant Title : ASP BNA STANDARDS FOR 5 POINT CALIBRATION
 QLast Update : Wed Nov 05 18:37:33 2025
 Response via : Initial Calibration



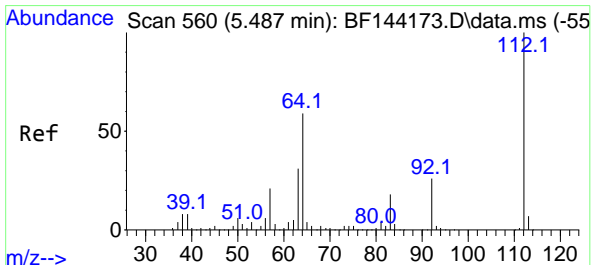
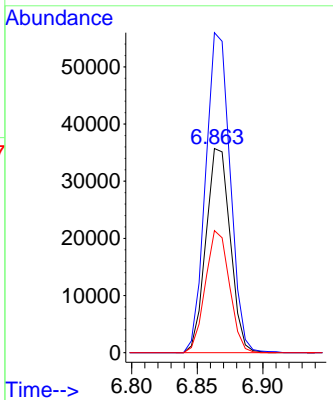
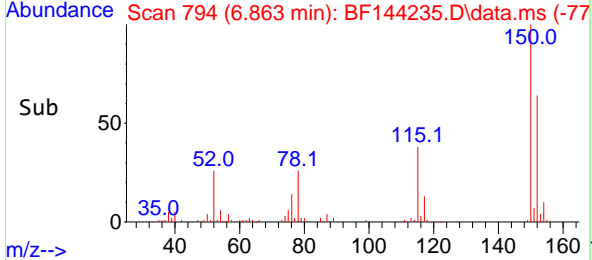


#1
 1,4-Dichlorobenzene-d4
 Concen: 20.000 ng
 RT: 6.863 min Scan# 794
 Delta R.T. -0.012 min
 Lab File: BF144235.D
 Acq: 12 Nov 2025 18:20

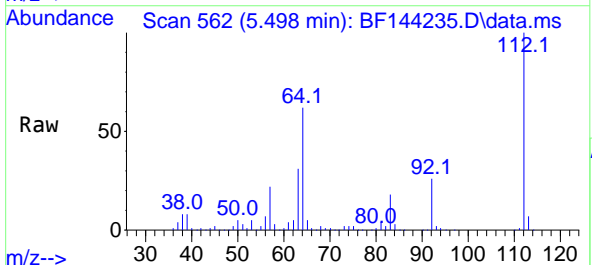
Instrument :
 BNA_F
 ClientSampleId :
 PB170515BL



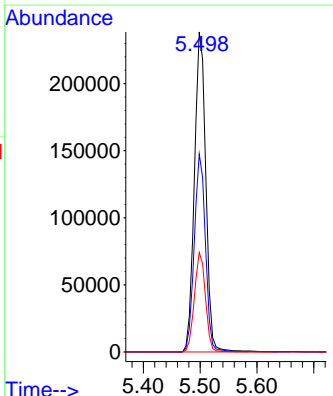
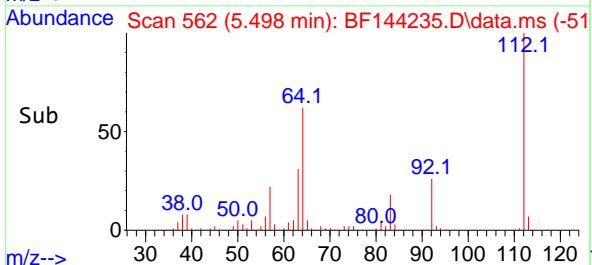
Tgt Ion:152 Resp: 46055
 Ion Ratio Lower Upper
 152 100
 150 156.8 127.4 191.0
 115 59.8 49.5 74.3

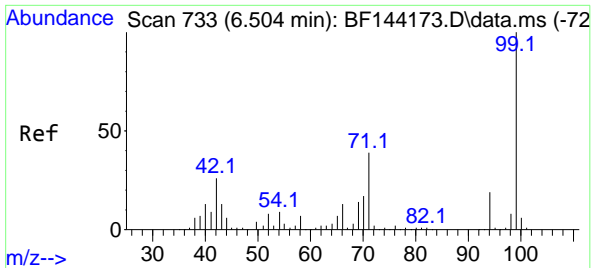


#5
 2-Fluorophenol
 Concen: 113.760 ng
 RT: 5.498 min Scan# 562
 Delta R.T. 0.006 min
 Lab File: BF144235.D
 Acq: 12 Nov 2025 18:20



Tgt Ion:112 Resp: 334802
 Ion Ratio Lower Upper
 112 100
 64 61.9 47.2 70.8
 63 31.1 24.4 36.6

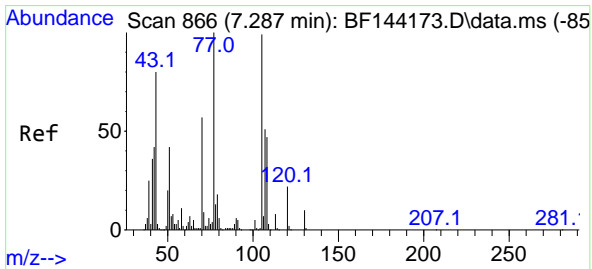
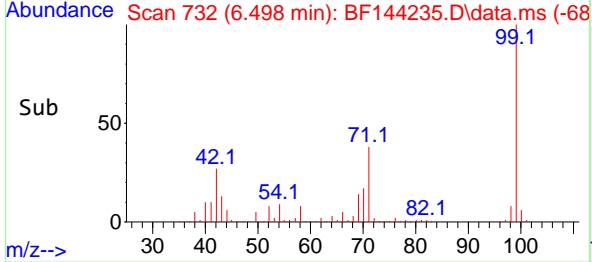
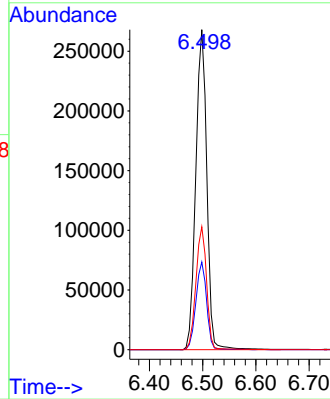
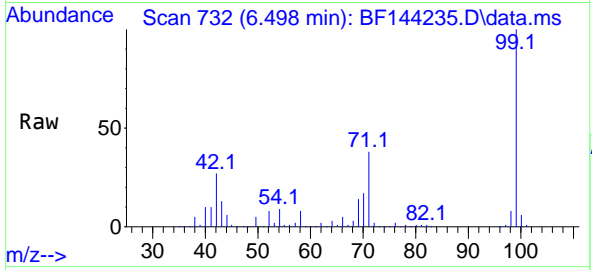




#7
Phenol-d6
Concen: 116.063 ng
RT: 6.498 min Scan# 71
Delta R.T. -0.000 min
Lab File: BF144235.D
Acq: 12 Nov 2025 18:20

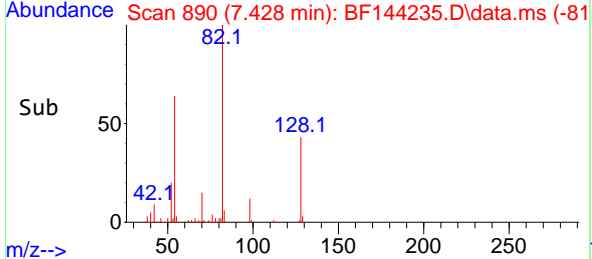
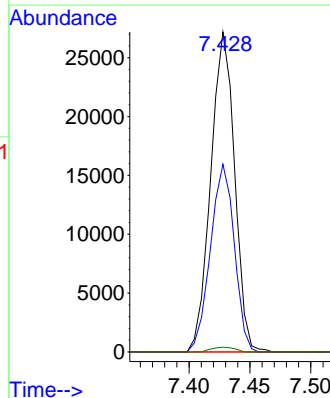
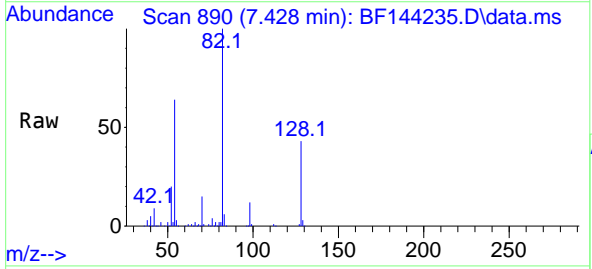
Instrument :
BNA_F
ClientSampleId :
PB170515BL

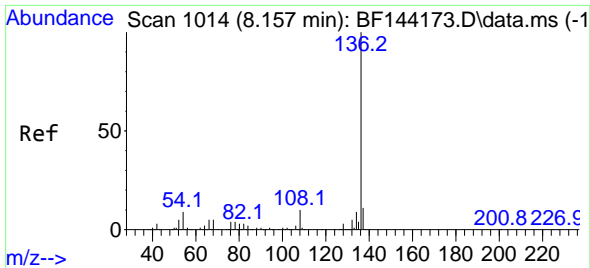
Tgt Ion: 99 Resp: 387037
Ion Ratio Lower Upper
99 100
42 27.4 20.9 31.3
71 38.4 31.4 47.2



#19
n-Nitroso-di-n-propylamine
Concen: 16.871 ng
RT: 7.428 min Scan# 890
Delta R.T. 0.153 min
Lab File: BF144235.D
Acq: 12 Nov 2025 18:20

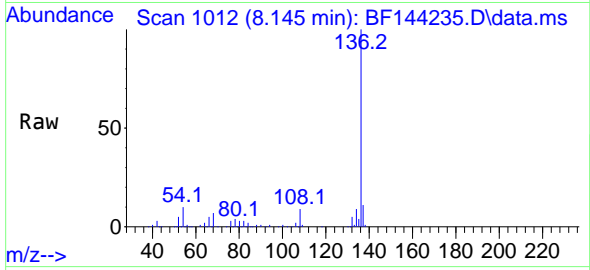
Tgt Ion: 70 Resp: 37036
Ion Ratio Lower Upper
70 100
42 58.7 58.3 87.5
101 0.0 7.0 10.6#
130 1.5 14.4 21.6#



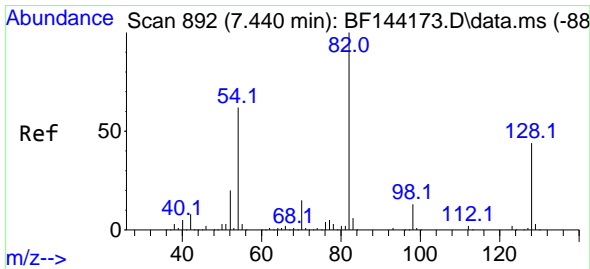
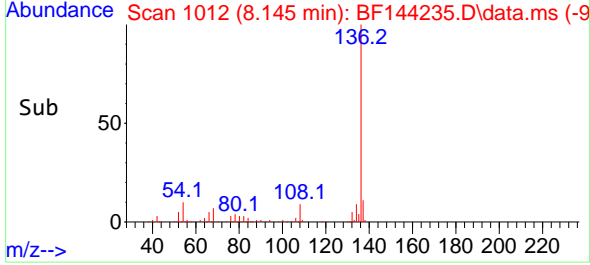
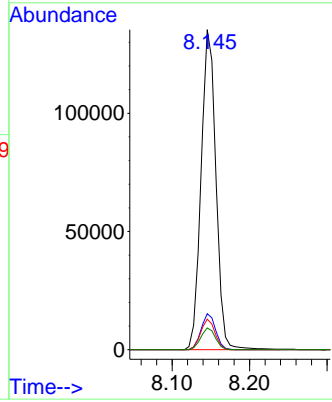


#21
 Naphthalene-d8
 Concen: 20.000 ng
 RT: 8.145 min Scan# 10
 Delta R.T. -0.012 min
 Lab File: BF144235.D
 Acq: 12 Nov 2025 18:20

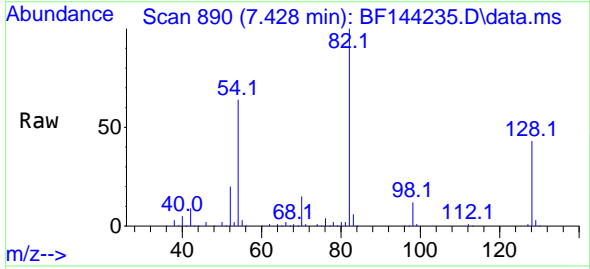
Instrument :
 BNA_F
 ClientSampleId :
 PB170515BL



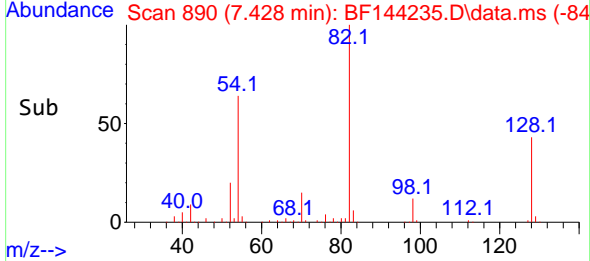
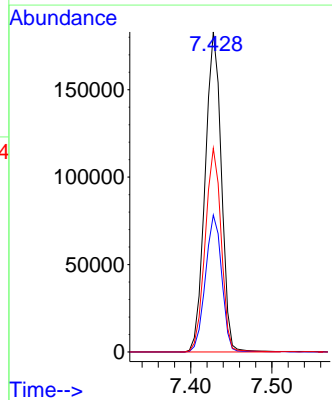
Tgt Ion:136 Resp: 180129
 Ion Ratio Lower Upper
 136 100
 137 11.2 8.6 13.0
 54 9.5 7.0 10.6
 68 6.8 4.3 6.5#

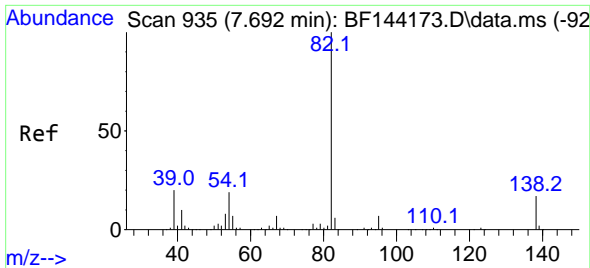


#23
 Nitrobenzene-d5
 Concen: 81.318 ng
 RT: 7.428 min Scan# 890
 Delta R.T. -0.006 min
 Lab File: BF144235.D
 Acq: 12 Nov 2025 18:20



Tgt Ion: 82 Resp: 253617
 Ion Ratio Lower Upper
 82 100
 128 42.8 34.7 52.1
 54 63.6 49.5 74.3

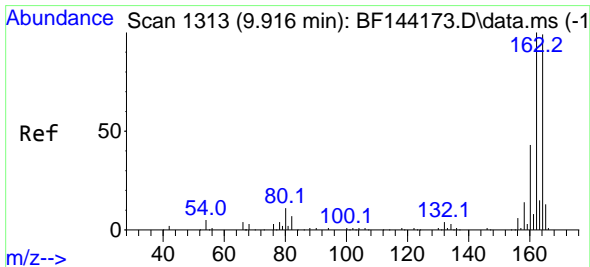
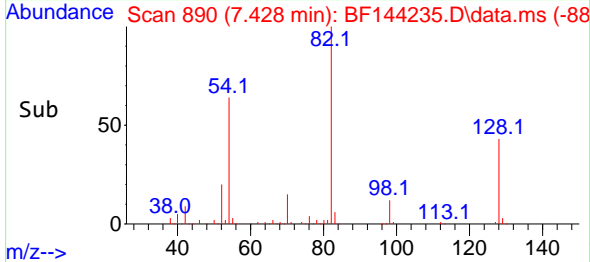
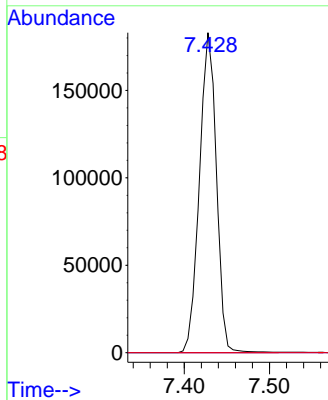
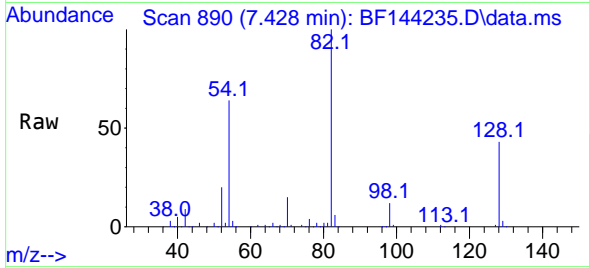




#25
 Isophorone
 Concen: 42.991 ng
 RT: 7.428 min Scan# 89
 Delta R.T. -0.259 min
 Lab File: BF144235.D
 Acq: 12 Nov 2025 18:20

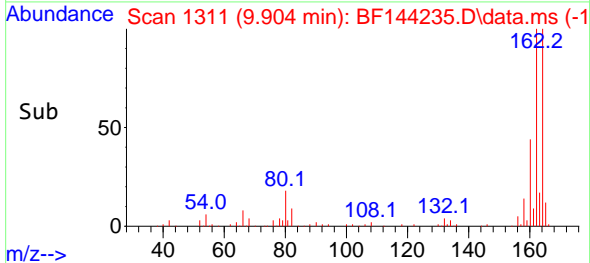
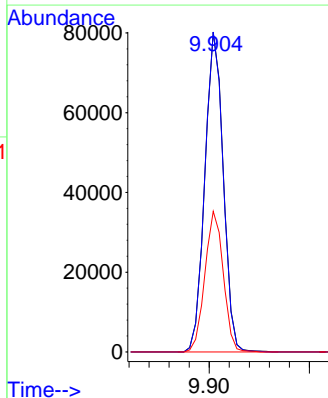
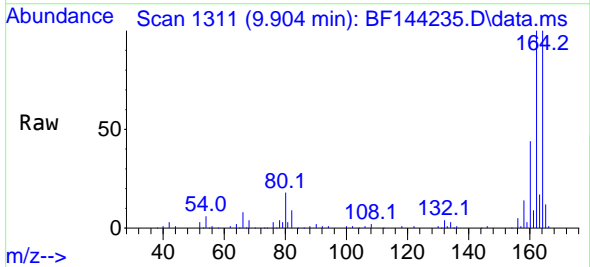
Instrument : BNA_F
 Client SampleId : PB170515BL

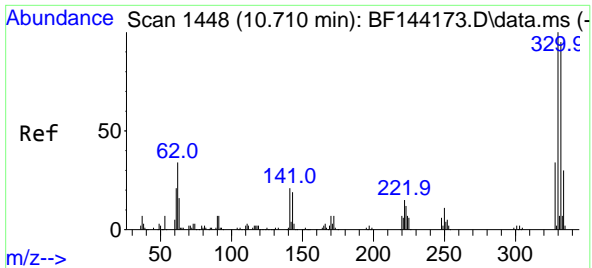
Tgt Ion: 82 Resp: 253616
 Ion Ratio Lower Upper
 82 100
 95 0.0 5.5 8.3#
 138 0.0 13.7 20.5#



#39
 Acenaphthene-d10
 Concen: 20.000 ng
 RT: 9.904 min Scan# 1311
 Delta R.T. -0.012 min
 Lab File: BF144235.D
 Acq: 12 Nov 2025 18:20

Tgt Ion: 164 Resp: 102582
 Ion Ratio Lower Upper
 164 100
 162 100.1 81.1 121.7
 160 44.0 34.5 51.7



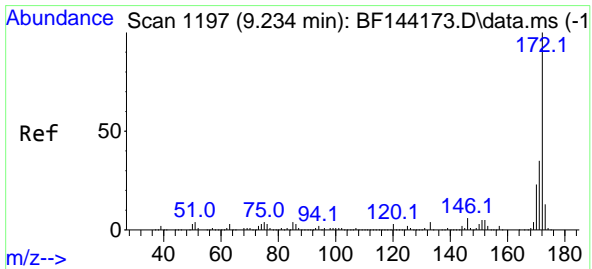
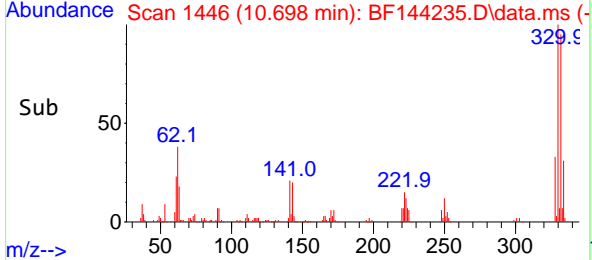
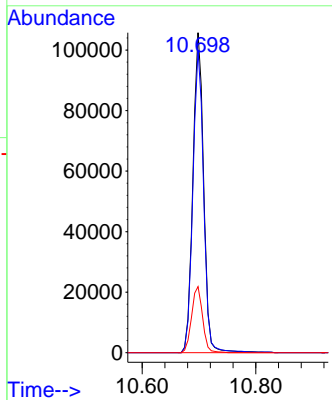
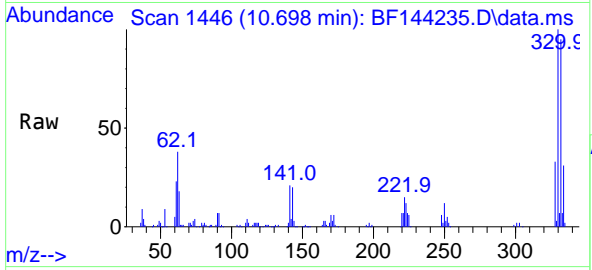


#42
 2,4,6-Tribromophenol
 Concen: 108.438 ng
 RT: 10.698 min Scan# 1446
 Delta R.T. -0.006 min
 Lab File: BF144235.D
 Acq: 12 Nov 2025 18:20

Instrument : BNA_F
 Client Sample Id : PB170515BL

Tgt Ion: 330 Resp: 139591

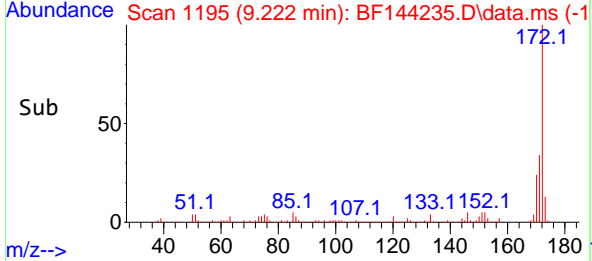
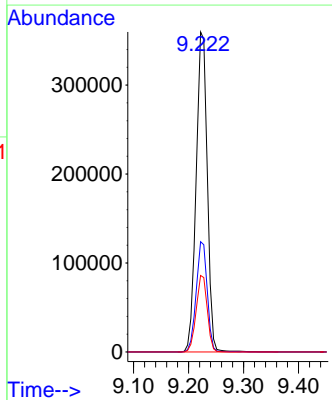
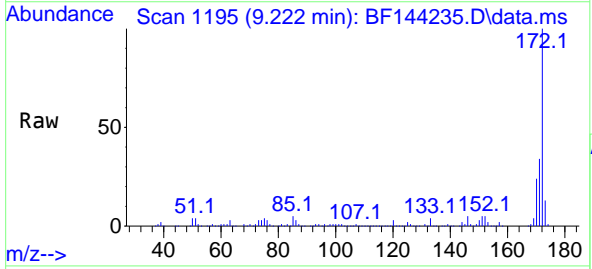
Ion	Ratio	Lower	Upper
330	100		
332	94.4	76.7	115.1
141	21.1	17.8	26.8

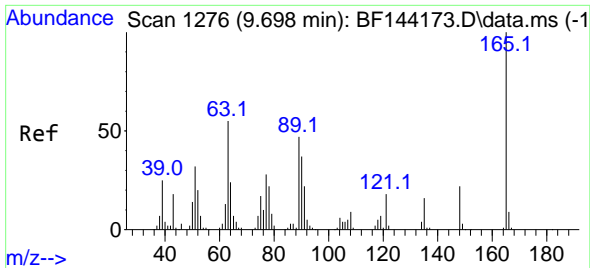


#45
 2-Fluorobiphenyl
 Concen: 73.103 ng
 RT: 9.222 min Scan# 1195
 Delta R.T. -0.006 min
 Lab File: BF144235.D
 Acq: 12 Nov 2025 18:20

Tgt Ion: 172 Resp: 507747

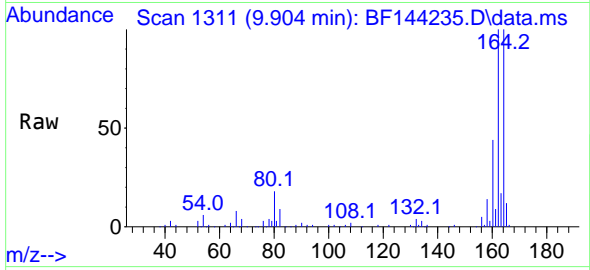
Ion	Ratio	Lower	Upper
172	100		
171	34.5	28.1	42.1
170	23.9	18.6	28.0





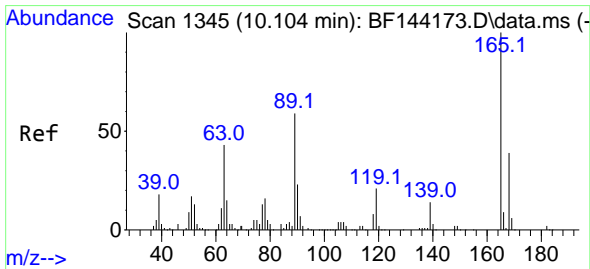
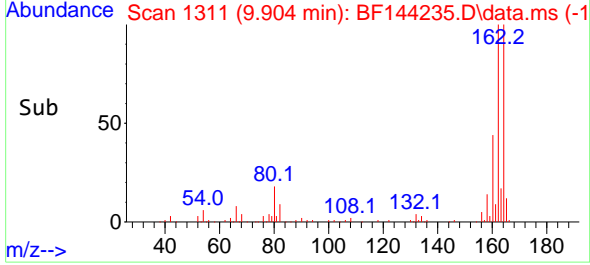
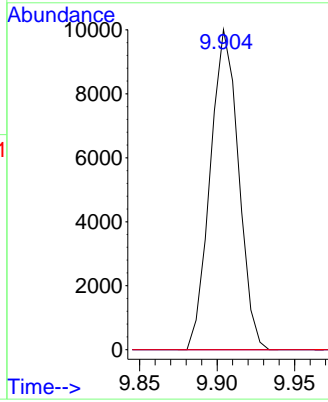
#51
 2,6-Dinitrotoluene
 Concen: 9.243 ng
 RT: 9.904 min Scan# 1111
 Delta R.T. 0.212 min
 Lab File: BF144235.D
 Acq: 12 Nov 2025 18:20

Instrument :
 BNA_F
 ClientSampleId :
 PB170515BL



Tgt Ion:165 Resp: 12715

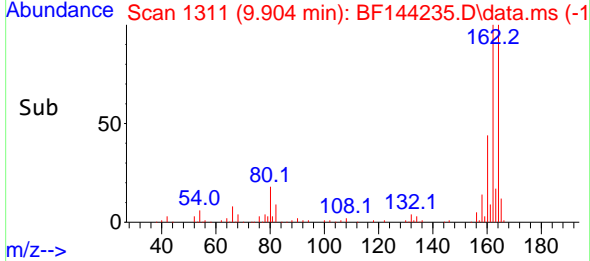
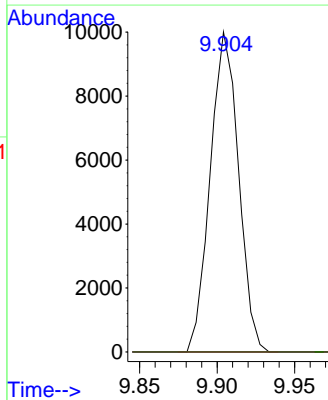
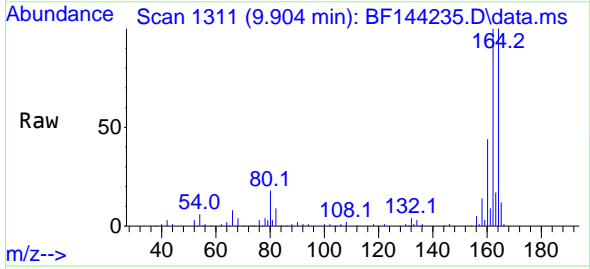
Ion	Ratio	Lower	Upper
165	100		
63	0.0	43.8	65.8#
89	0.0	37.5	56.3#

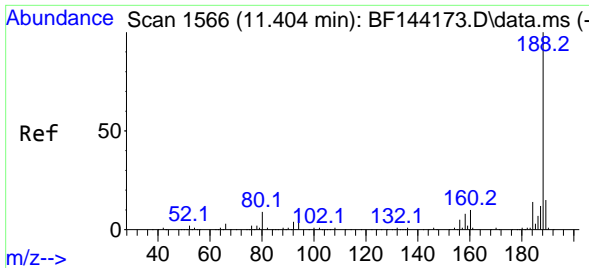


#57
 2,4-Dinitrotoluene
 Concen: 6.904 ng
 RT: 9.904 min Scan# 1311
 Delta R.T. -0.194 min
 Lab File: BF144235.D
 Acq: 12 Nov 2025 18:20

Tgt Ion:165 Resp: 12715

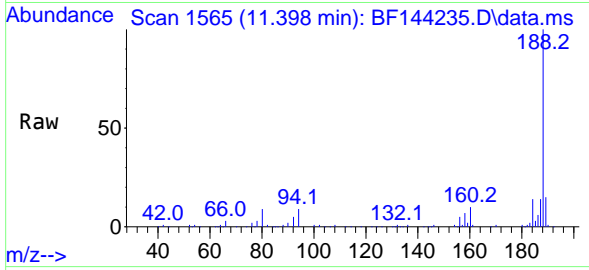
Ion	Ratio	Lower	Upper
165	100		
63	0.0	35.5	53.3#
89	0.0	47.4	71.2#
182	0.0	1.9	2.9#



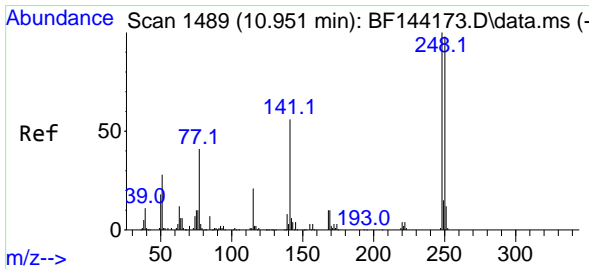
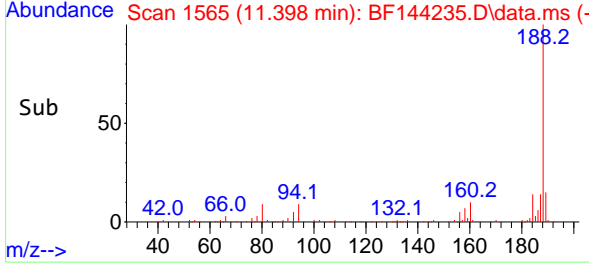
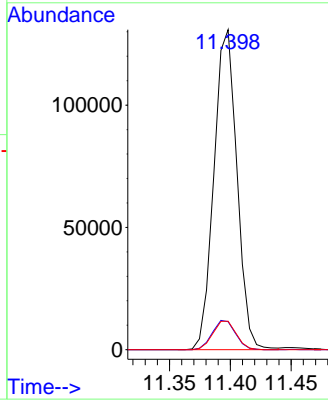


#64
 Phenanthrene-d10
 Concen: 20.000 ng
 RT: 11.398 min Scan# 11
 Delta R.T. -0.006 min
 Lab File: BF144235.D
 Acq: 12 Nov 2025 18:20

Instrument :
 BNA_F
 Client Sample Id :
 PB170515BL

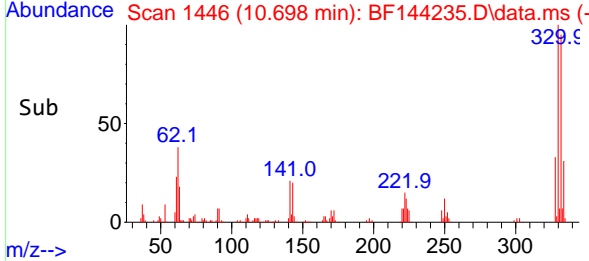
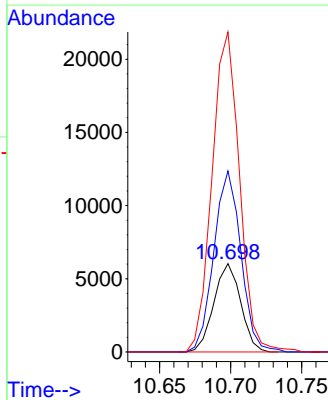
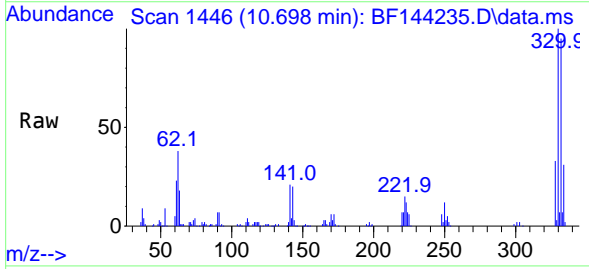


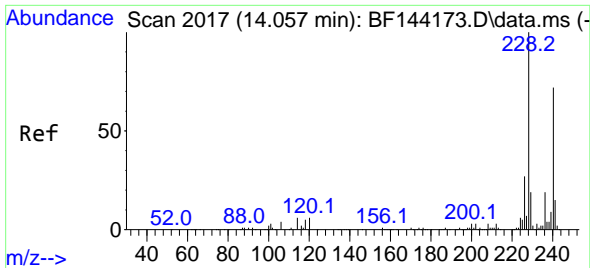
Tgt Ion:188 Resp: 172359
 Ion Ratio Lower Upper
 188 100
 94 8.8 6.2 9.2
 80 8.9 6.9 10.3



#67
 4-Bromophenyl-phenylether
 Concen: 3.599 ng
 RT: 10.698 min Scan# 1446
 Delta R.T. -0.247 min
 Lab File: BF144235.D
 Acq: 12 Nov 2025 18:20

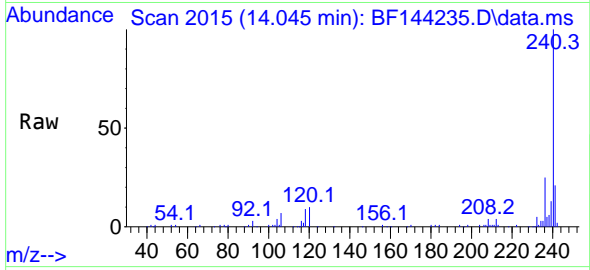
Tgt Ion:248 Resp: 7917
 Ion Ratio Lower Upper
 248 100
 250 204.8 78.4 117.6#
 141 362.0 45.1 67.7#



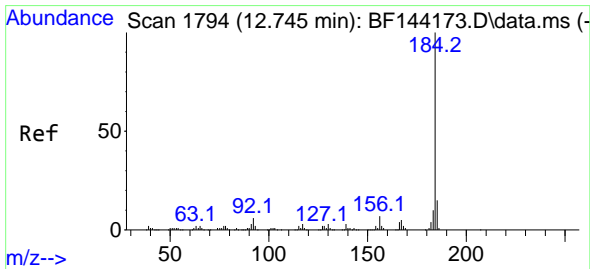
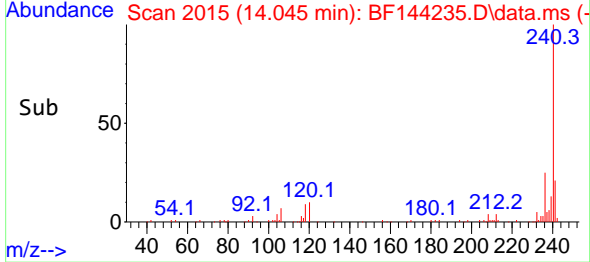
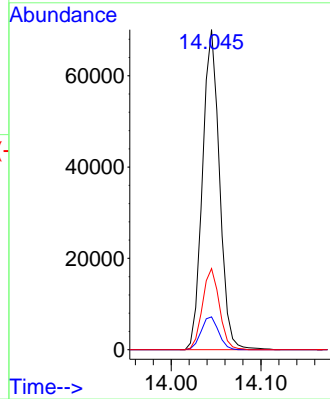


#76
 Chrysene-d12
 Concen: 20.000 ng
 RT: 14.045 min Scan# 20
 Delta R.T. -0.006 min
 Lab File: BF144235.D
 Acq: 12 Nov 2025 18:20

Instrument :
 BNA_F
 ClientSampleId :
 PB170515BL

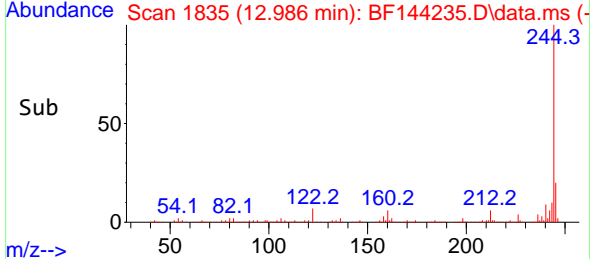
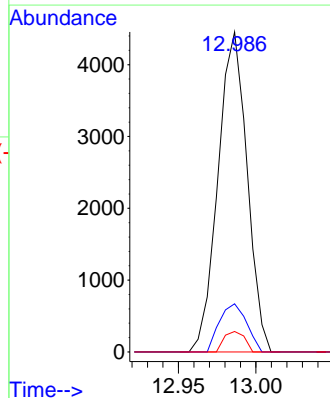
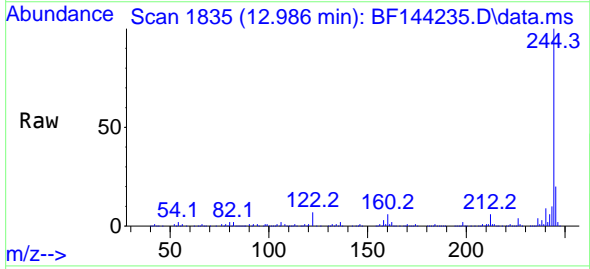


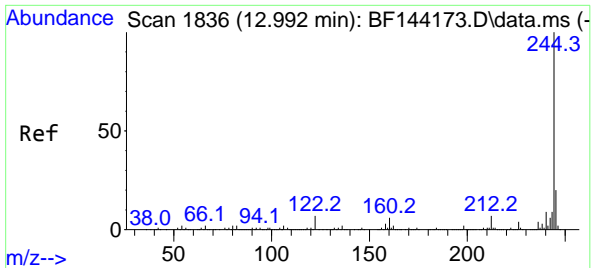
Tgt Ion:240 Resp: 92202
 Ion Ratio Lower Upper
 240 100
 120 10.3 6.6 10.0#
 236 25.4 21.4 32.2



#77
 Benzdine
 Concen: 2.131 ng
 RT: 12.986 min Scan# 1835
 Delta R.T. 0.235 min
 Lab File: BF144235.D
 Acq: 12 Nov 2025 18:20

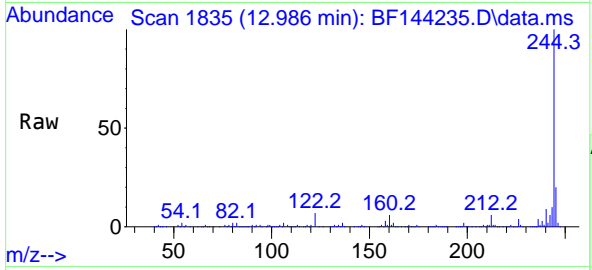
Tgt Ion:184 Resp: 5813
 Ion Ratio Lower Upper
 184 100
 185 15.0 11.7 17.5
 183 6.4 8.3 12.5#





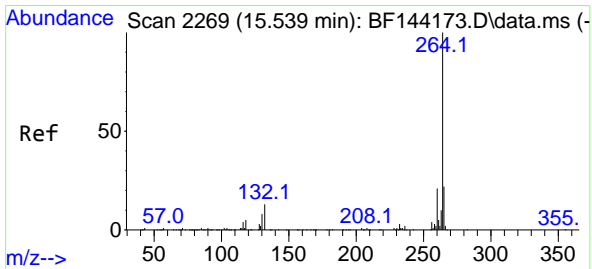
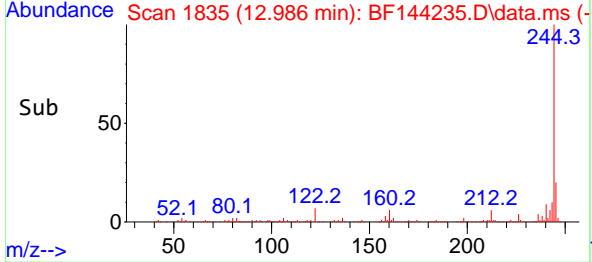
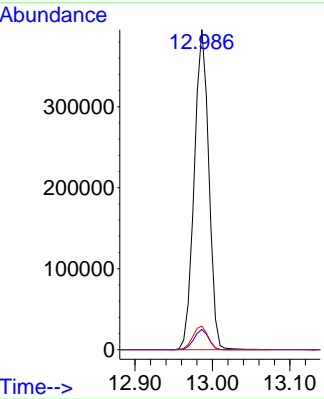
#79
 Terphenyl-d14
 Concen: 88.778 ng
 RT: 12.986 min Scan# 11
 Delta R.T. -0.006 min
 Lab File: BF144235.D
 Acq: 12 Nov 2025 18:20

Instrument : BNA_F
 Client Sample Id : PB170515BL

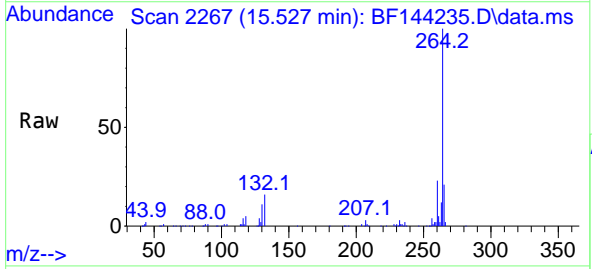


Tgt Ion: 244 Resp: 515330

Ion	Ratio	Lower	Upper
244	100		
212	6.3	5.3	7.9
122	7.3	5.6	8.4



#86
 Perylene-d12
 Concen: 20.000 ng
 RT: 15.527 min Scan# 2267
 Delta R.T. -0.012 min
 Lab File: BF144235.D
 Acq: 12 Nov 2025 18:20



Tgt Ion: 264 Resp: 107660

Ion	Ratio	Lower	Upper
264	100		
260	22.5	17.1	25.7
265	20.9	17.4	26.0

