

Data Path : Z:\svoasrv\HPCHEM1\BNA\_F\Data\BF111225\  
 Data File : BF144237.D  
 Acq On : 12 Nov 2025 19:20  
 Operator : RC/JU  
 Sample : PB170493TB  
 Misc :  
 ALS Vial : 9 Sample Multiplier: 1

Instrument :  
 BNA\_F  
 ClientSampleId :  
 PB170493TB

Quant Time: Nov 13 10:42:14 2025  
 Quant Method : Z:\svoasrv\HPCHEM1\BNA\_F\Methods\8270-BF110525.M  
 Quant Title : ASP BNA STANDARDS FOR 5 POINT CALIBRATION  
 QLast Update : Wed Nov 05 18:37:33 2025  
 Response via : Initial Calibration

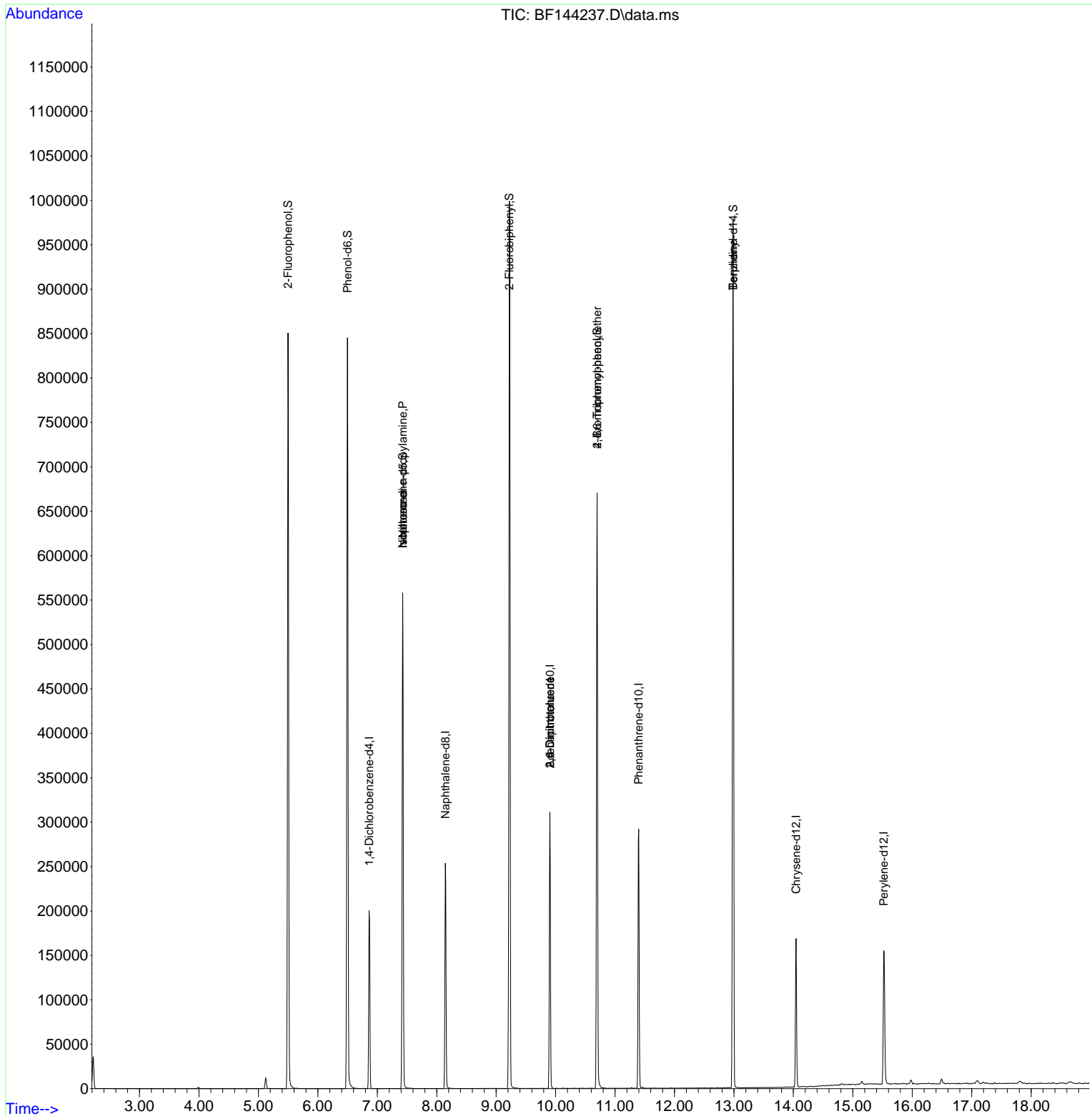
Compound	R.T.	QIon	Response	Conc	Units	Dev(Min)
-----						
Internal Standards						
1) 1,4-Dichlorobenzene-d4	6.863	152	43190	20.000	ng	-0.01
21) Naphthalene-d8	8.145	136	169062	20.000	ng	#-0.01
39) Acenaphthene-d10	9.904	164	97723	20.000	ng	-0.01
64) Phenanthrene-d10	11.398	188	165628	20.000	ng	0.00
76) Chrysene-d12	14.045	240	88153	20.000	ng	0.00
86) Perylene-d12	15.521	264	103140	20.000	ng	-0.02
System Monitoring Compounds						
5) 2-Fluorophenol	5.499	112	328705	119.097	ng	0.00
7) Phenol-d6	6.498	99	383354	122.585	ng	0.00
23) Nitrobenzene-d5	7.428	82	246763	84.299	ng	0.00
42) 2,4,6-Tribromophenol	10.698	330	139344	113.629	ng	0.00
45) 2-Fluorobiphenyl	9.222	172	503760	76.136	ng	0.00
79) Terphenyl-d14	12.986	244	530802	95.644	ng	0.00
Target Compounds						
						Qvalue
19) n-Nitroso-di-n-propyla...	7.428	70	36200	17.584	ng	# 78
25) Isophorone	7.428	82	246780	44.570	ng	# 66
51) 2,6-Dinitrotoluene	9.904	165	12863	9.815	ng	# 27
57) 2,4-Dinitrotoluene	9.904	165	12863	7.332	ng	# 27
67) 4-Bromophenyl-phenylether	10.698	248	8017	3.792	ng	# 1
77) Benzidine	12.986	184	5999	2.301	ng	# 94
-----						

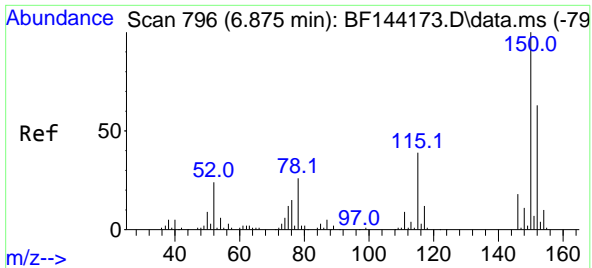
(#) = qualifier out of range (m) = manual integration (+) = signals summed

Data Path : Z:\svoasrv\HPCHEM1\BNA\_F\Data\BF111225\  
 Data File : BF144237.D  
 Acq On : 12 Nov 2025 19:20  
 Operator : RC/JU  
 Sample : PB170493TB  
 Misc :  
 ALS Vial : 9 Sample Multiplier: 1

Instrument :  
 BNA\_F  
 ClientSampleId :  
 PB170493TB

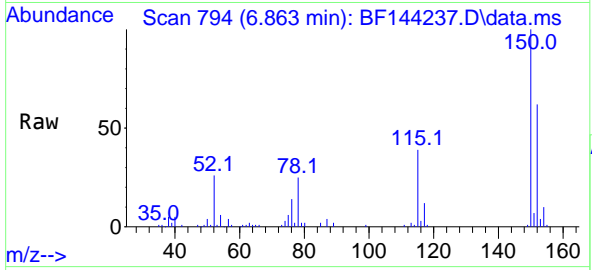
Quant Time: Nov 13 10:42:14 2025  
 Quant Method : Z:\svoasrv\HPCHEM1\BNA\_F\Methods\8270-BF110525.M  
 Quant Title : ASP BNA STANDARDS FOR 5 POINT CALIBRATION  
 QLast Update : Wed Nov 05 18:37:33 2025  
 Response via : Initial Calibration



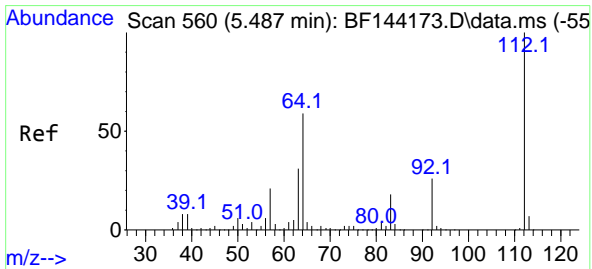
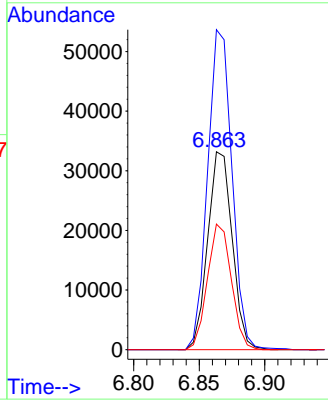
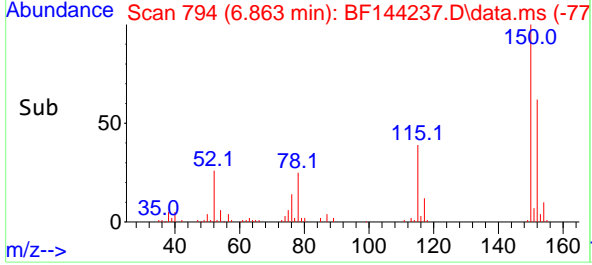


#1  
 1,4-Dichlorobenzene-d4  
 Concen: 20.000 ng  
 RT: 6.863 min Scan# 794  
 Delta R.T. -0.012 min  
 Lab File: BF144237.D  
 Acq: 12 Nov 2025 19:20

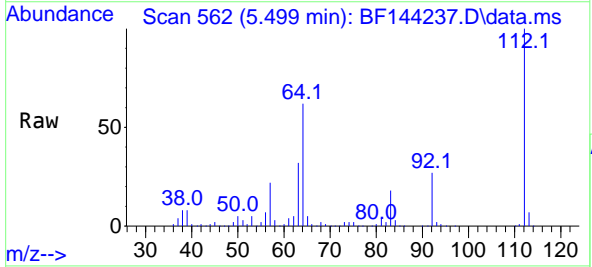
Instrument :  
 BNA\_F  
 Client Sample Id :  
 PB170493TB



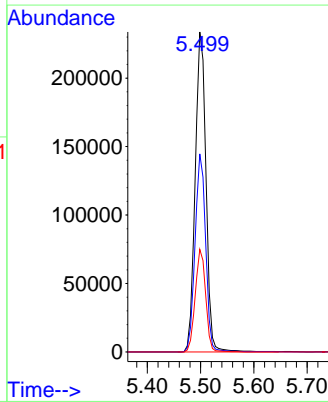
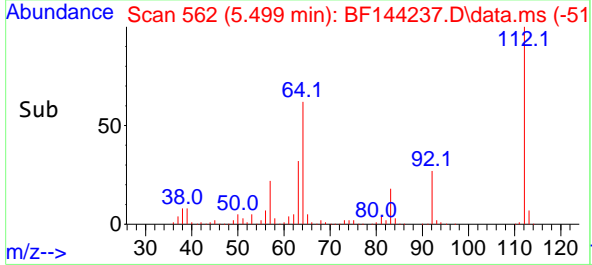
Tgt Ion:152 Resp: 43190  
 Ion Ratio Lower Upper  
 152 100  
 150 161.7 127.4 191.0  
 115 63.5 49.5 74.3

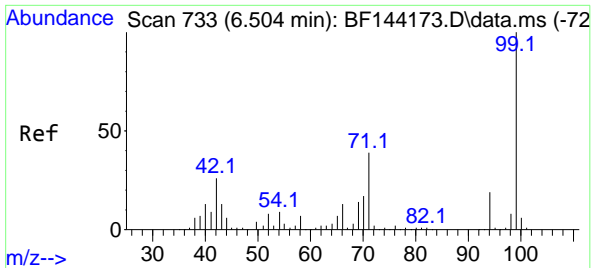


#5  
 2-Fluorophenol  
 Concen: 119.097 ng  
 RT: 5.499 min Scan# 562  
 Delta R.T. 0.006 min  
 Lab File: BF144237.D  
 Acq: 12 Nov 2025 19:20



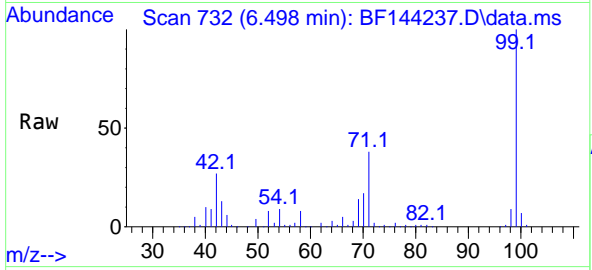
Tgt Ion:112 Resp: 328705  
 Ion Ratio Lower Upper  
 112 100  
 64 61.9 47.2 70.8  
 63 32.0 24.4 36.6



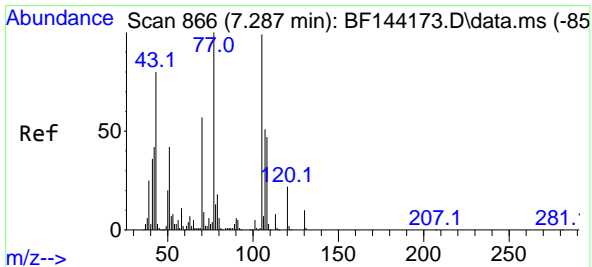
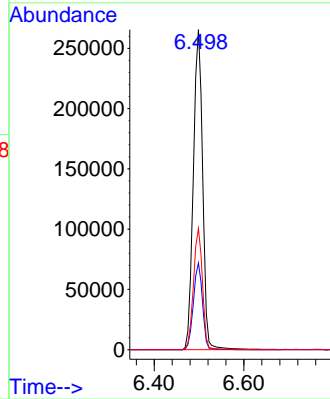
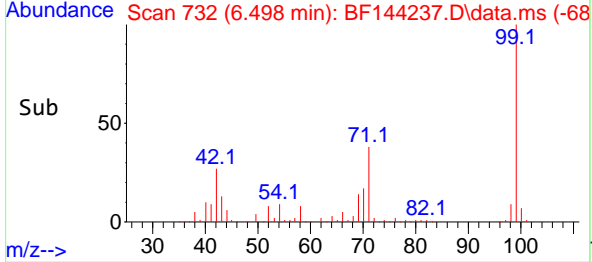


#7  
Phenol-d6  
Concen: 122.585 ng  
RT: 6.498 min Scan# 71  
Delta R.T. -0.000 min  
Lab File: BF144237.D  
Acq: 12 Nov 2025 19:20

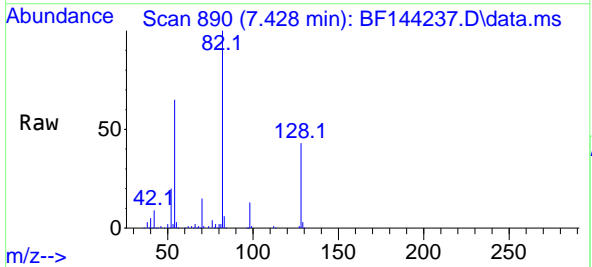
Instrument :  
BNA\_F  
ClientSampleId :  
PB170493TB



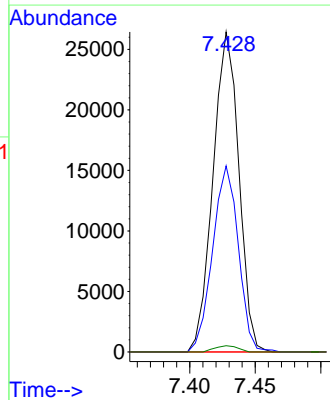
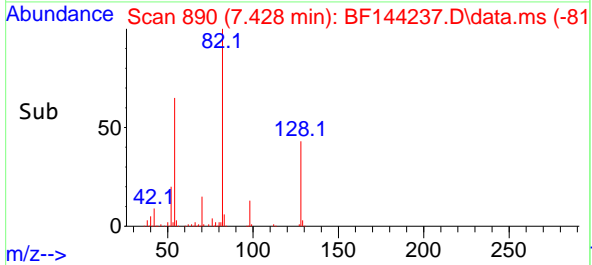
Tgt Ion: 99 Resp: 383354  
Ion Ratio Lower Upper  
99 100  
42 27.1 20.9 31.3  
71 37.9 31.4 47.2

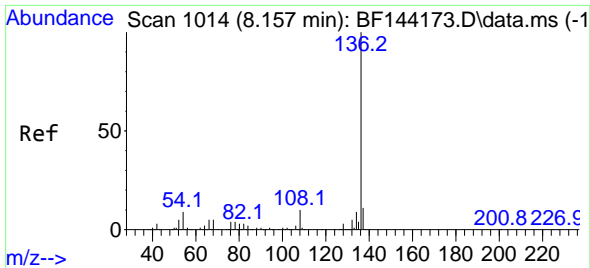


#19  
n-Nitroso-di-n-propylamine  
Concen: 17.584 ng  
RT: 7.428 min Scan# 890  
Delta R.T. 0.153 min  
Lab File: BF144237.D  
Acq: 12 Nov 2025 19:20



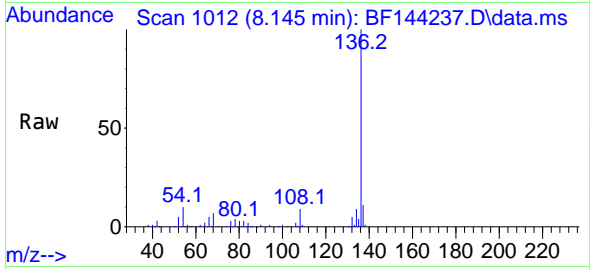
Tgt Ion: 70 Resp: 36200  
Ion Ratio Lower Upper  
70 100  
42 58.1 58.3 87.5#  
101 0.0 7.0 10.6#  
130 1.9 14.4 21.6#



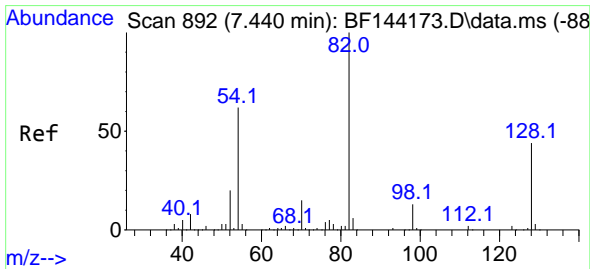
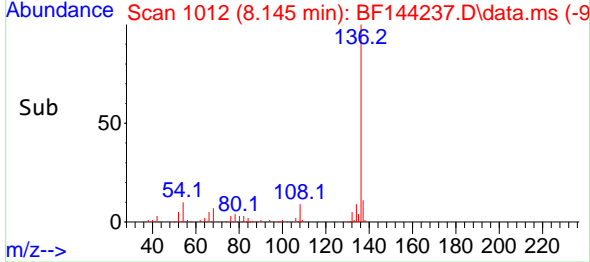
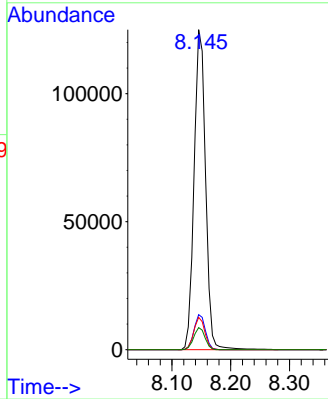


#21  
 Naphthalene-d8  
 Concen: 20.000 ng  
 RT: 8.145 min Scan# 1014  
 Delta R.T. -0.012 min  
 Lab File: BF144237.D  
 Acq: 12 Nov 2025 19:20

Instrument : BNA\_F  
 Client Sample Id : PB170493TB

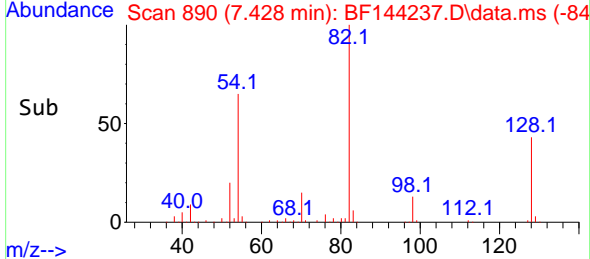
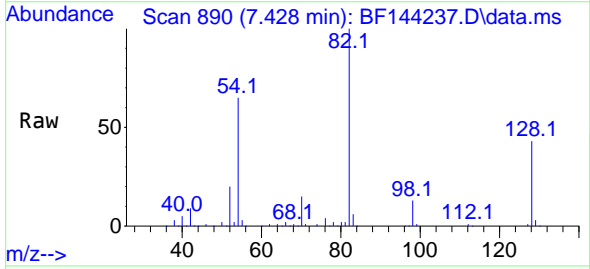
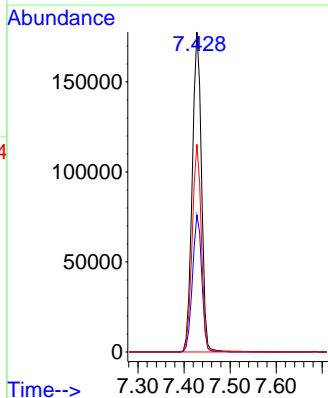


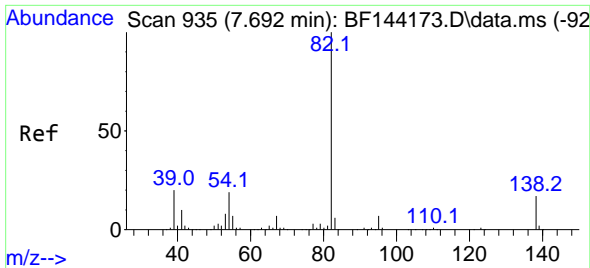
Tgt Ion: 136 Resp: 169062  
 Ion Ratio Lower Upper  
 136 100  
 137 11.0 8.6 13.0  
 54 10.1 7.0 10.6  
 68 6.9 4.3 6.5



#23  
 Nitrobenzene-d5  
 Concen: 84.299 ng  
 RT: 7.428 min Scan# 890  
 Delta R.T. -0.006 min  
 Lab File: BF144237.D  
 Acq: 12 Nov 2025 19:20

Tgt Ion: 82 Resp: 246763  
 Ion Ratio Lower Upper  
 82 100  
 128 42.8 34.7 52.1  
 54 64.9 49.5 74.3

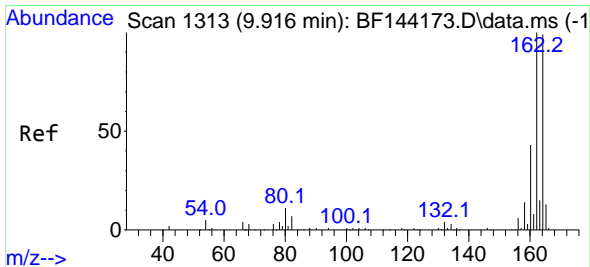
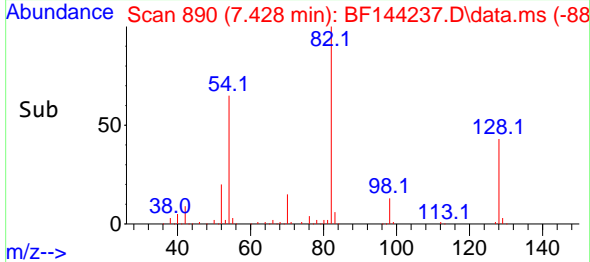
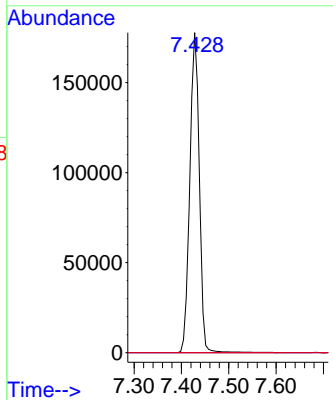
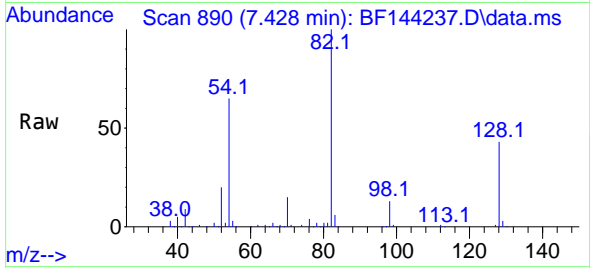




#25  
 Isophorone  
 Concen: 44.570 ng  
 RT: 7.428 min Scan# 89  
 Delta R.T. -0.259 min  
 Lab File: BF144237.D  
 Acq: 12 Nov 2025 19:20

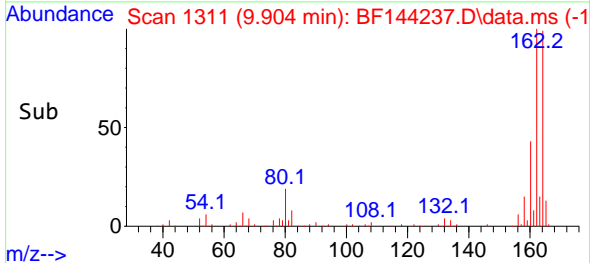
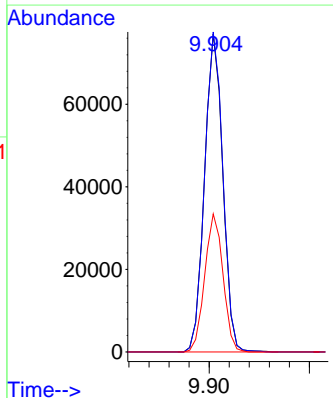
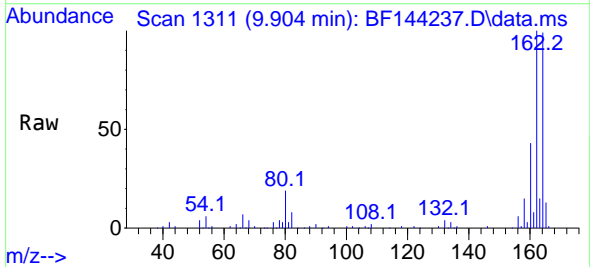
Instrument : BNA\_F  
 ClientSampleId : PB170493TB

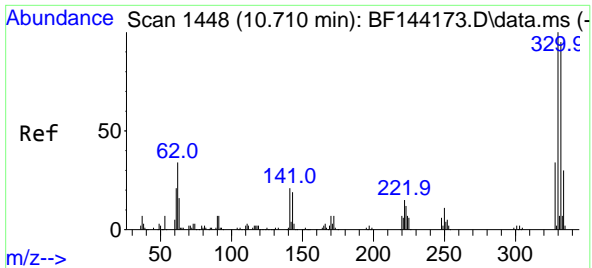
Tgt Ion: 82 Resp: 246780  
 Ion Ratio Lower Upper  
 82 100  
 95 0.0 5.5 8.3#  
 138 0.0 13.7 20.5#



#39  
 Acenaphthene-d10  
 Concen: 20.000 ng  
 RT: 9.904 min Scan# 1311  
 Delta R.T. -0.012 min  
 Lab File: BF144237.D  
 Acq: 12 Nov 2025 19:20

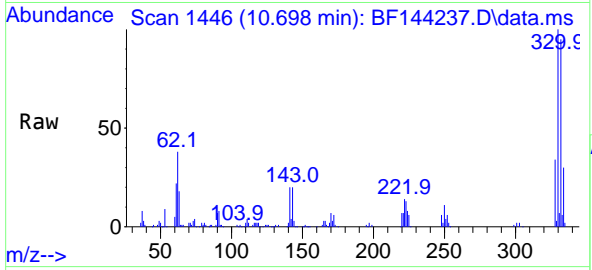
Tgt Ion: 164 Resp: 97723  
 Ion Ratio Lower Upper  
 164 100  
 162 100.6 81.1 121.7  
 160 43.4 34.5 51.7





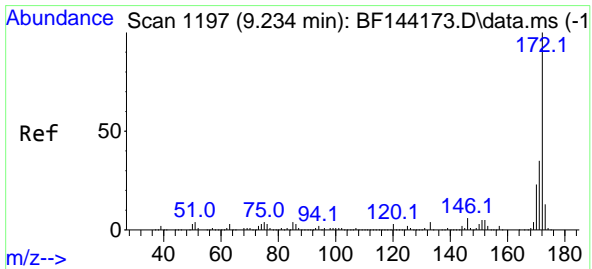
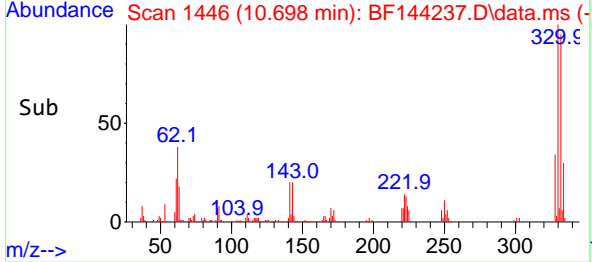
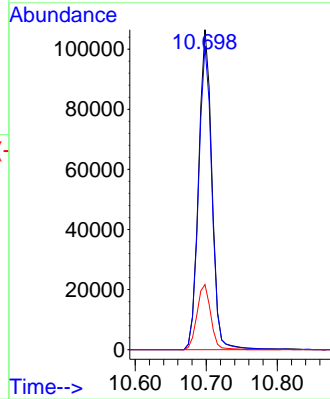
#42  
 2,4,6-Tribromophenol  
 Concen: 113.629 ng  
 RT: 10.698 min Scan# 1446  
 Delta R.T. -0.006 min  
 Lab File: BF144237.D  
 Acq: 12 Nov 2025 19:20

Instrument : BNA\_F  
 ClientSampleId : PB170493TB



Tgt Ion: 330 Resp: 139344

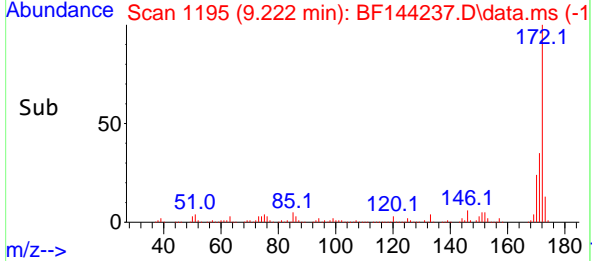
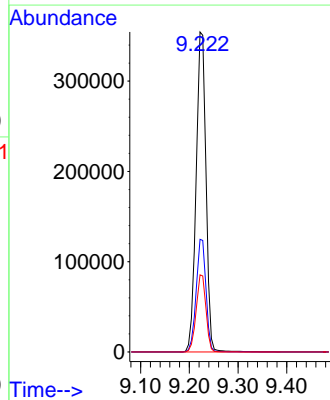
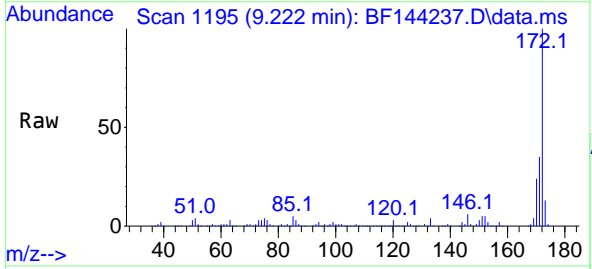
Ion	Ratio	Lower	Upper
330	100		
332	94.9	76.7	115.1
141	21.0	17.8	26.8

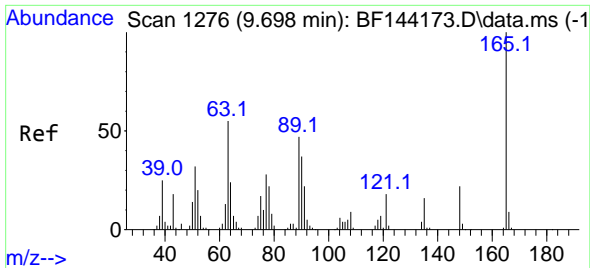


#45  
 2-Fluorobiphenyl  
 Concen: 76.136 ng  
 RT: 9.222 min Scan# 1195  
 Delta R.T. -0.006 min  
 Lab File: BF144237.D  
 Acq: 12 Nov 2025 19:20

Tgt Ion: 172 Resp: 503760

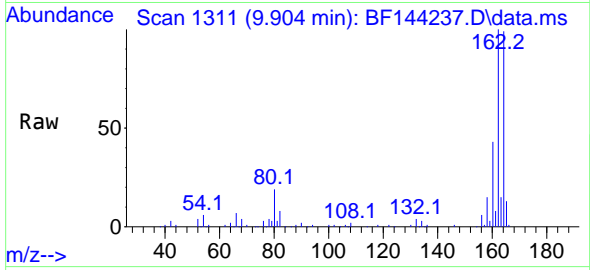
Ion	Ratio	Lower	Upper
172	100		
171	35.2	28.1	42.1
170	24.1	18.6	28.0



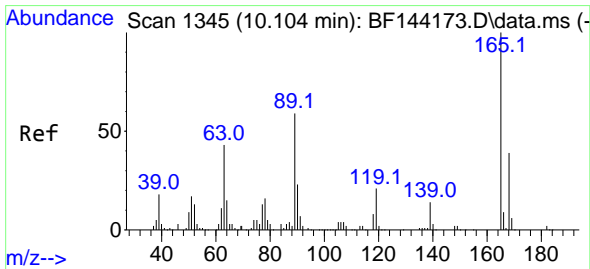
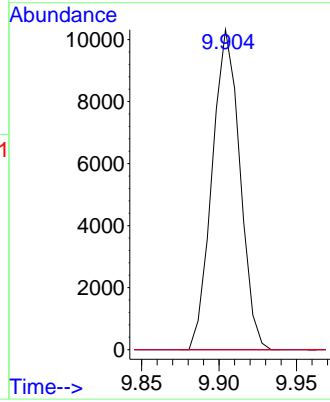
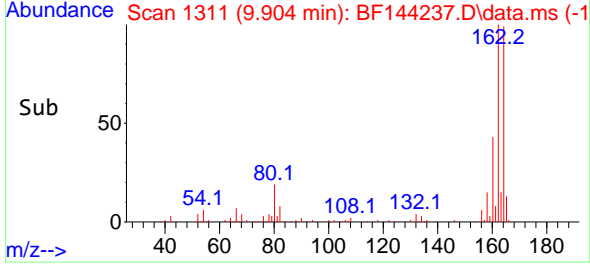


#51  
 2,6-Dinitrotoluene  
 Concen: 9.815 ng  
 RT: 9.904 min Scan# 1111  
 Delta R.T. 0.212 min  
 Lab File: BF144237.D  
 Acq: 12 Nov 2025 19:20

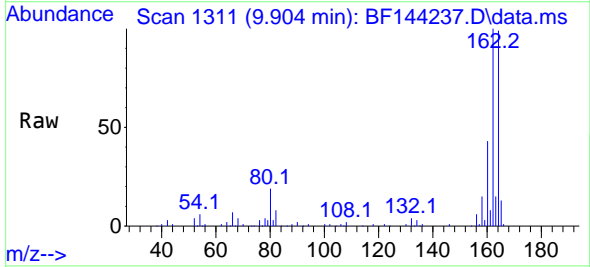
Instrument :  
 BNA\_F  
 ClientSampleId :  
 PB170493TB



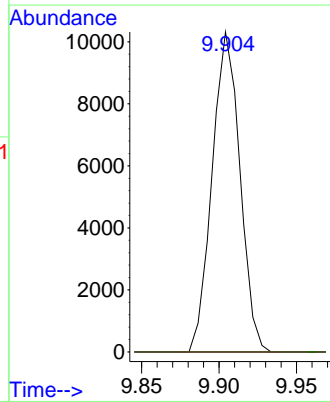
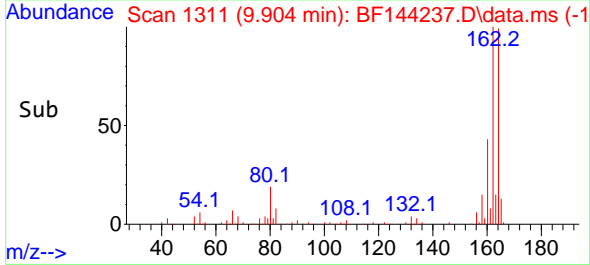
Tgt Ion:165 Resp: 12863  
 Ion Ratio Lower Upper  
 165 100  
 63 0.0 43.8 65.8#  
 89 0.0 37.5 56.3#



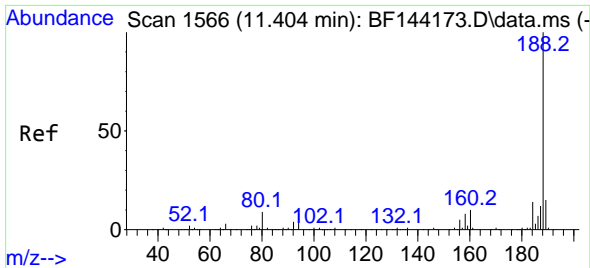
#57  
 2,4-Dinitrotoluene  
 Concen: 7.332 ng  
 RT: 9.904 min Scan# 1311  
 Delta R.T. -0.194 min  
 Lab File: BF144237.D  
 Acq: 12 Nov 2025 19:20



Tgt Ion:165 Resp: 12863  
 Ion Ratio Lower Upper  
 165 100  
 63 0.0 35.5 53.3#  
 89 0.0 47.4 71.2#  
 182 0.0 1.9 2.9#

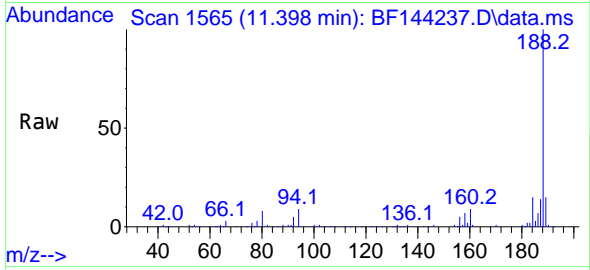




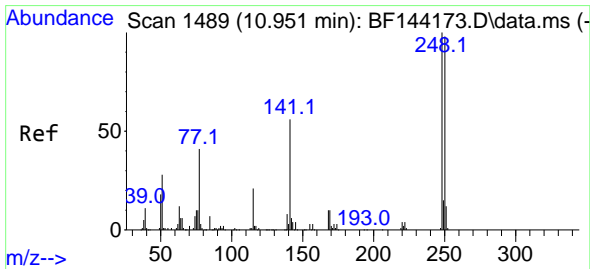
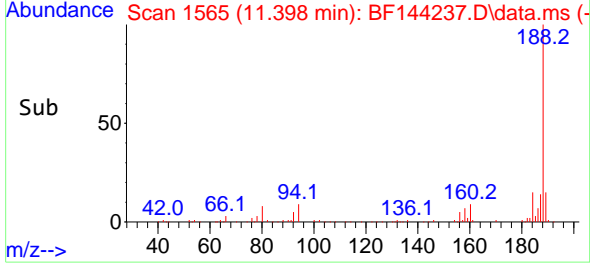
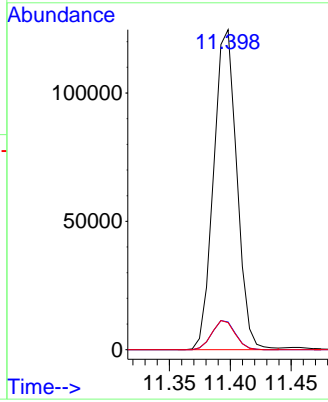


#64  
 Phenanthrene-d10  
 Concen: 20.000 ng  
 RT: 11.398 min Scan# 11  
 Delta R.T. -0.006 min  
 Lab File: BF144237.D  
 Acq: 12 Nov 2025 19:20

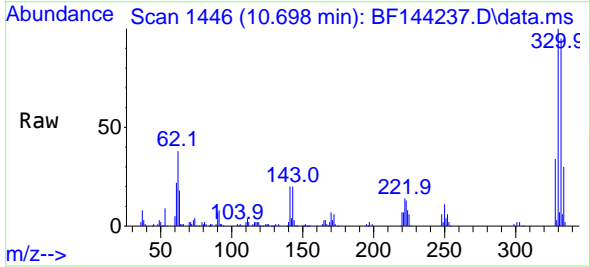
Instrument :  
 BNA\_F  
 ClientSampleId :  
 PB170493TB



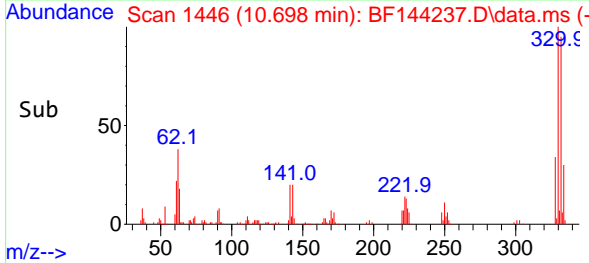
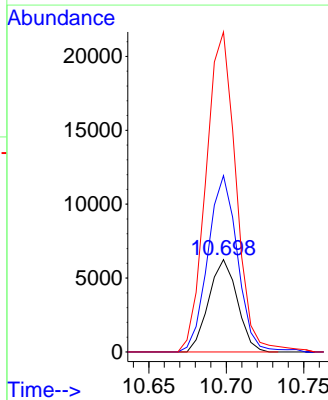
Tgt Ion:188 Resp: 165628  
 Ion Ratio Lower Upper  
 188 100  
 94 8.6 6.2 9.2  
 80 8.5 6.9 10.3

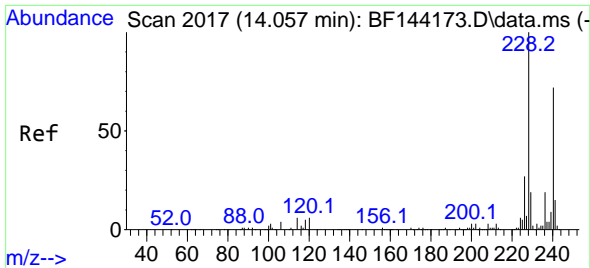


#67  
 4-Bromophenyl-phenylether  
 Concen: 3.792 ng  
 RT: 10.698 min Scan# 1446  
 Delta R.T. -0.247 min  
 Lab File: BF144237.D  
 Acq: 12 Nov 2025 19:20



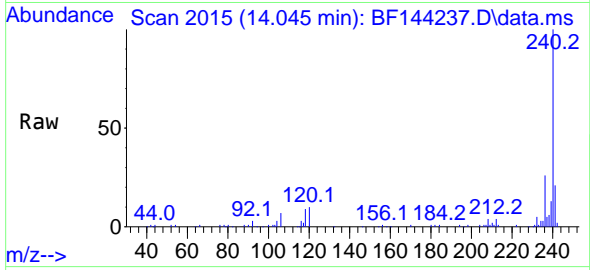
Tgt Ion:248 Resp: 8017  
 Ion Ratio Lower Upper  
 248 100  
 250 191.1 78.4 117.6#  
 141 346.7 45.1 67.7#



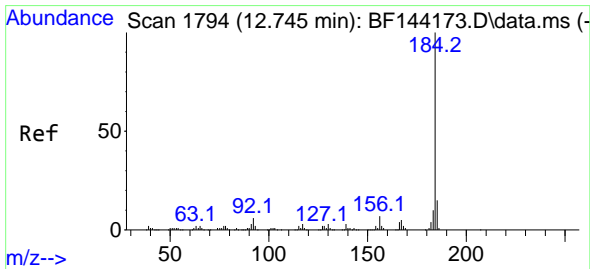
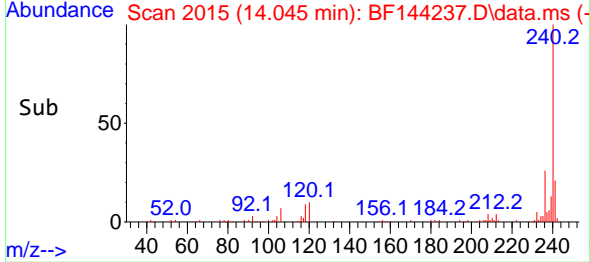
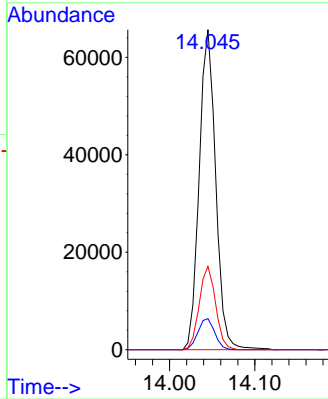


#76  
 Chrysene-d12  
 Concen: 20.000 ng  
 RT: 14.045 min Scan# 2017  
 Delta R.T. -0.006 min  
 Lab File: BF144237.D  
 Acq: 12 Nov 2025 19:20

Instrument : BNA\_F  
 ClientSampleId : PB170493TB

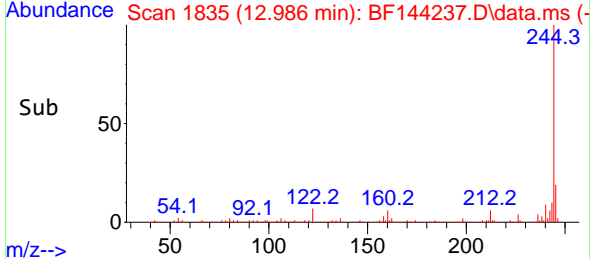
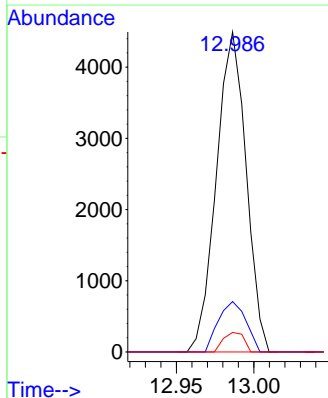
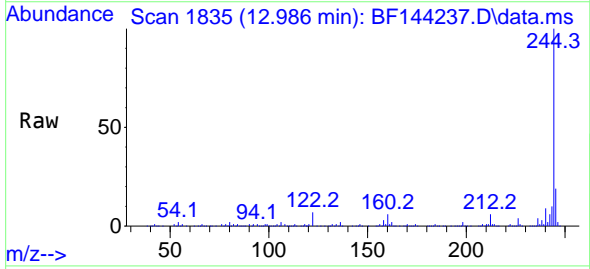


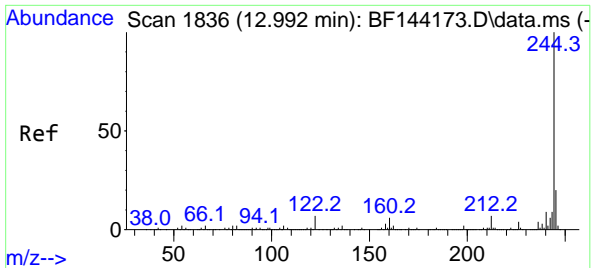
Tgt Ion:240 Resp: 88153  
 Ion Ratio Lower Upper  
 240 100  
 120 9.7 6.6 10.0  
 236 26.0 21.4 32.2



#77  
 Benzdine  
 Concen: 2.301 ng  
 RT: 12.986 min Scan# 1835  
 Delta R.T. 0.235 min  
 Lab File: BF144237.D  
 Acq: 12 Nov 2025 19:20

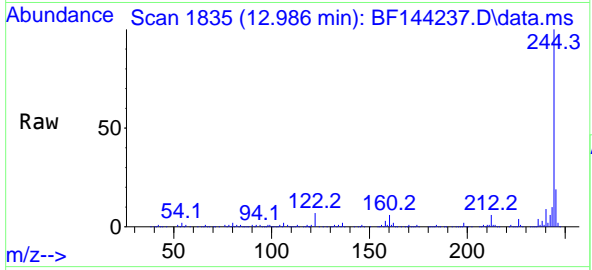
Tgt Ion:184 Resp: 5999  
 Ion Ratio Lower Upper  
 184 100  
 185 15.8 11.7 17.5  
 183 6.1 8.3 12.5#





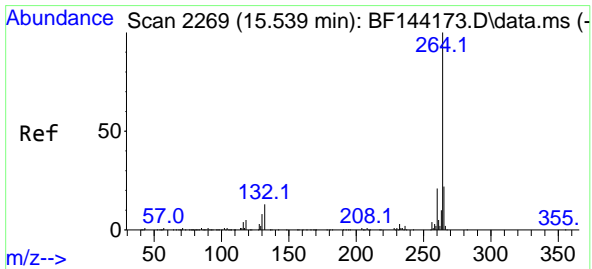
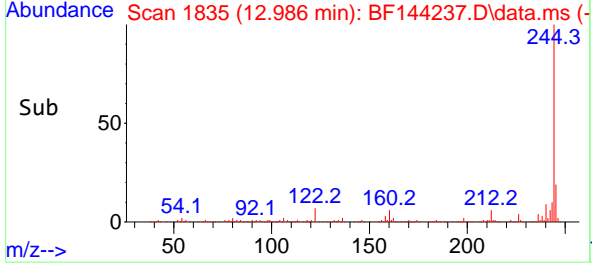
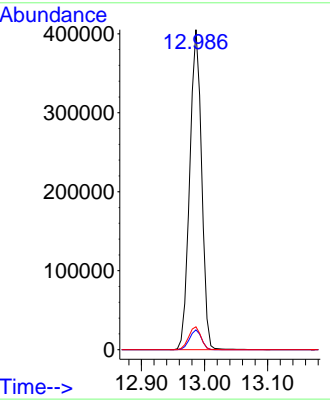
#79  
 Terphenyl-d14  
 Concen: 95.644 ng  
 RT: 12.986 min Scan# 1835  
 Delta R.T. -0.006 min  
 Lab File: BF144237.D  
 Acq: 12 Nov 2025 19:20

Instrument : BNA\_F  
 Client Sample Id : PB170493TB

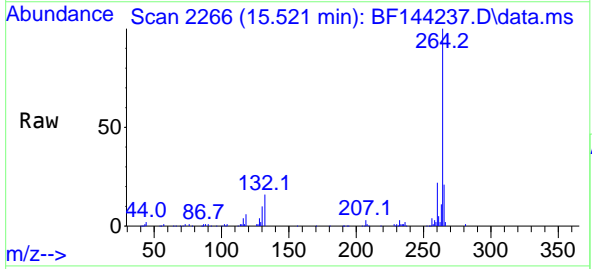


Tgt Ion: 244 Resp: 530802

Ion	Ratio	Lower	Upper
244	100		
212	6.2	5.3	7.9
122	7.1	5.6	8.4



#86  
 Perylene-d12  
 Concen: 20.000 ng  
 RT: 15.521 min Scan# 2266  
 Delta R.T. -0.018 min  
 Lab File: BF144237.D  
 Acq: 12 Nov 2025 19:20



Tgt Ion: 264 Resp: 103140

Ion	Ratio	Lower	Upper
264	100		
260	22.1	17.1	25.7
265	21.0	17.4	26.0

