

Data Path : Z:\svoasrv\HPCHEM1\BNA_F\Data\BF111225\
 Data File : BF144240.D
 Acq On : 12 Nov 2025 20:49
 Operator : RC/JU
 Sample : Q3604-01MSD
 Misc :
 ALS Vial : 12 Sample Multiplier: 1

Instrument :
 BNA_F
 ClientSampleId :
 S-1MSD

Quant Time: Nov 13 10:43:24 2025
 Quant Method : Z:\svoasrv\HPCHEM1\BNA_F\Methods\8270-BF110525.M
 Quant Title : ASP BNA STANDARDS FOR 5 POINT CALIBRATION
 QLast Update : Wed Nov 05 18:37:33 2025
 Response via : Initial Calibration

Compound	R.T.	QIon	Response	Conc	Units	Dev(Min)
Internal Standards						
1) 1,4-Dichlorobenzene-d4	6.869	152	39225	20.000	ng	0.00
21) Naphthalene-d8	8.151	136	152960	20.000	ng	0.00
39) Acenaphthene-d10	9.910	164	88266	20.000	ng	0.00
64) Phenanthrene-d10	11.398	188	148585	20.000	ng	0.00
76) Chrysene-d12	14.045	240	75670	20.000	ng	0.00
86) Perylene-d12	15.527	264	90928	20.000	ng	-0.01
System Monitoring Compounds						
5) 2-Fluorophenol	5.510	112	298289	119.002	ng	0.02
7) Phenol-d6	6.504	99	331524	116.727	ng	0.00
23) Nitrobenzene-d5	7.434	82	239393	90.391	ng	0.00
42) 2,4,6-Tribromophenol	10.704	330	143410	129.474	ng	0.00
45) 2-Fluorobiphenyl	9.228	172	486866	81.466	ng	0.00
79) Terphenyl-d14	12.986	244	469575	98.569	ng	0.00
Target Compounds						
2) 1,4-Dioxane	2.822	88	44733	43.166	ng	# 78
3) Pyridine	3.534	79	98807	34.176	ng	98
4) n-Nitrosodimethylamine	3.475	42	76555	50.693	ng	96
6) Aniline	6.540	93	29891	7.387	ng	# 77
8) 2-Chlorophenol	6.657	128	117958	47.986	ng	99
9) Benzaldehyde	6.422	77	51565	32.152	ng	98
10) Phenol	6.522	94	138958	40.045	ng	98
11) bis(2-Chloroethyl)ether	6.604	93	124118	49.087	ng	96
12) 1,3-Dichlorobenzene	6.810	146	136946	45.147	ng	98
13) 1,4-Dichlorobenzene	6.887	146	138722	45.649	ng	100
14) 1,2-Dichlorobenzene	7.039	146	132363	45.443	ng	100
15) Benzyl Alcohol	7.016	79	107782	47.926	ng	98
16) 2,2'-oxybis(1-Chloropr...	7.139	45	238394	51.198	ng	90
17) 2-Methylphenol	7.122	107	94735	48.444	ng	99
18) Hexachloroethane	7.381	117	45373	44.941	ng	98
19) n-Nitroso-di-n-propyla...	7.281	70	90551	48.431	ng	94
20) 3+4-Methylphenols	7.281	107	107360	46.572	ng	# 85
22) Acetophenone	7.281	105	153531	46.789	ng	96
24) Nitrobenzene	7.451	77	138165	48.048	ng	99
25) Isophorone	7.692	82	250287	49.962	ng	100
26) 2-Nitrophenol	7.769	139	70160	49.288	ng	97
27) 2,4-Dimethylphenol	7.804	122	113828	53.352	ng	98
28) bis(2-Chloroethoxy)met...	7.898	93	154372	49.347	ng	98
29) 2,4-Dichlorophenol	8.010	162	112429	45.721	ng	99
30) 1,2,4-Trichlorobenzene	8.092	180	116972	46.324	ng	98
31) Naphthalene	8.175	128	325916	44.792	ng	100
32) Benzoic acid	7.939	122	77462	49.531	ng	94
33) 4-Chloroaniline	8.228	127	14102	5.314	ng	98
34) Hexachlorobutadiene	8.286	225	82411	43.306	ng	99
35) Caprolactam	8.598	113	21332	31.664	ng	97
36) 4-Chloro-3-methylphenol	8.710	107	107414	48.740	ng	99
37) 2-Methylnaphthalene	8.863	142	211225	43.419	ng	99
38) 1-Methylnaphthalene	8.963	142	212697	45.313	ng	99
40) 1,2,4,5-Tetrachloroben...	9.033	216	124668	43.097	ng	# 99
41) Hexachlorocyclopentadiene	9.016	237	120878	98.183	ng	97
43) 2,4,6-Trichlorophenol	9.145	196	91425	46.435	ng	99

Data Path : Z:\svoasrv\HPCHEM1\BNA_F\Data\BF111225\
 Data File : BF144240.D
 Acq On : 12 Nov 2025 20:49
 Operator : RC/JU
 Sample : Q3604-01MSD
 Misc :
 ALS Vial : 12 Sample Multiplier: 1

Instrument :
 BNA_F
 ClientSampleId :
 S-1MSD

Quant Time: Nov 13 10:43:24 2025
 Quant Method : Z:\svoasrv\HPCHEM1\BNA_F\Methods\8270-BF110525.M
 Quant Title : ASP BNA STANDARDS FOR 5 POINT CALIBRATION
 QLast Update : Wed Nov 05 18:37:33 2025
 Response via : Initial Calibration

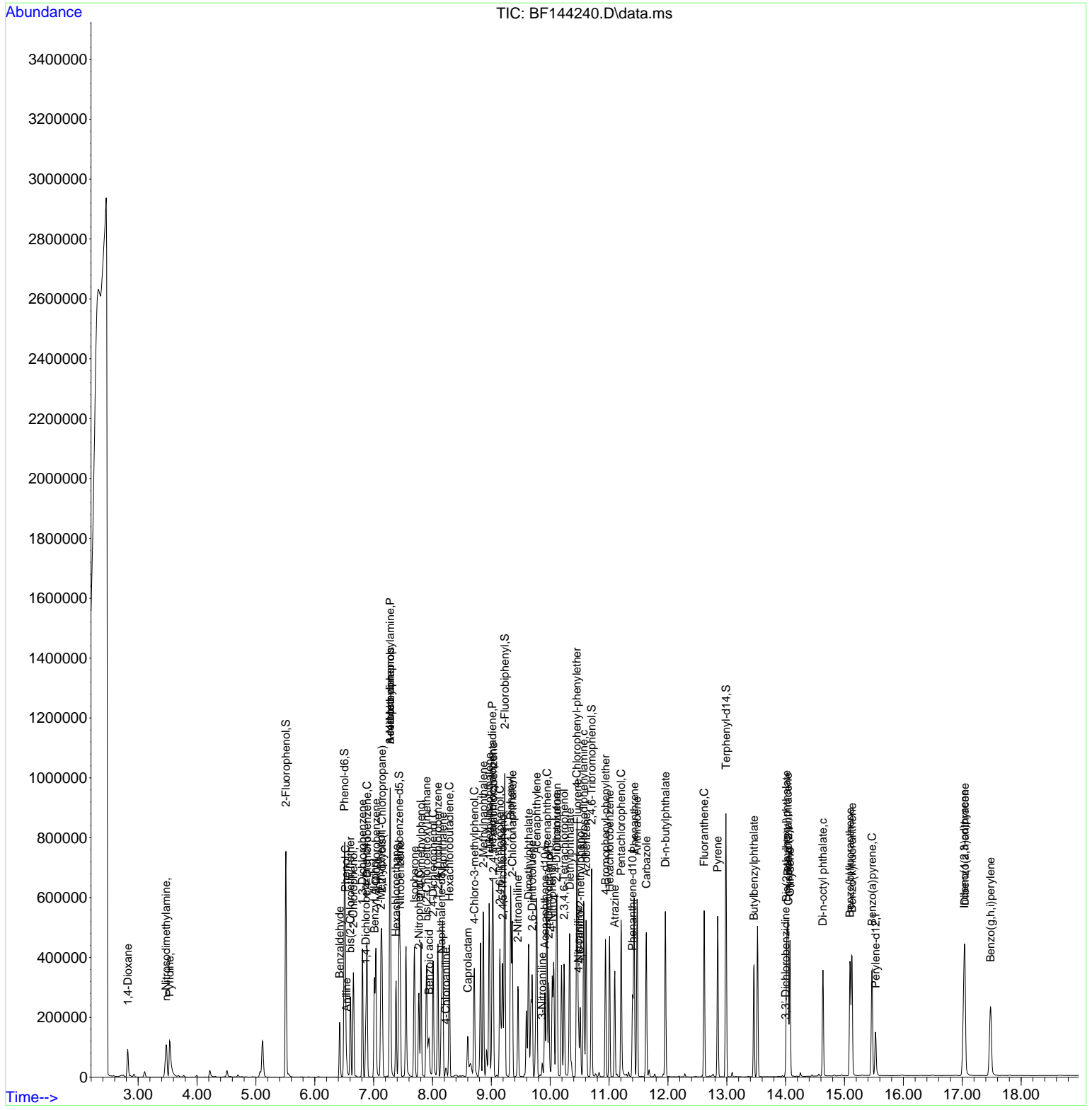
Compound	R.T.	QIon	Response	Conc	Units	Dev(Min)
44) 2,4,5-Trichlorophenol	9.192	196	95396	44.956	ng	100
46) 1,1'-Biphenyl	9.328	154	285308	46.307	ng	100
47) 2-Chloronaphthalene	9.357	162	234474	44.614	ng	100
48) 2-Nitroaniline	9.451	65	74562	49.170	ng	98
49) Acenaphthylene	9.769	152	367687	51.339	ng	99
50) Dimethylphthalate	9.633	163	292649	50.047	ng	99
51) 2,6-Dinitrotoluene	9.692	165	61109	51.625	ng	98
52) Acenaphthene	9.945	154	204139	42.624	ng	98
53) 3-Nitroaniline	9.863	138	10133	7.831	ng #	98
54) 2,4-Dinitrophenol	9.975	184	70440	98.546	ng	95
55) Dibenzofuran	10.116	168	298065	44.437	ng	98
56) 4-Nitrophenol	10.033	139	73736	78.776	ng	95
57) 2,4-Dinitrotoluene	10.104	165	78857	49.764	ng	92
58) Fluorene	10.463	166	233867	45.858	ng	98
59) 2,3,4,6-Tetrachlorophenol	10.233	232	73718	49.102	ng	96
60) Diethylphthalate	10.333	149	271081	50.289	ng	100
61) 4-Chlorophenyl-phenyle...	10.451	204	130121	44.792	ng	98
62) 4-Nitroaniline	10.480	138	45864	37.219	ng	96
63) Azobenzene	10.610	77	257157	51.260	ng	100
65) 4,6-Dinitro-2-methylph...	10.510	198	50060	49.594	ng	98
66) n-Nitrosodiphenylamine	10.569	169	224095	46.893	ng	99
67) 4-Bromophenyl-phenylether	10.939	248	88117	46.462	ng	97
68) Hexachlorobenzene	11.010	284	104447	46.756	ng	97
69) Atrazine	11.098	200	62022	40.809	ng	99
70) Pentachlorophenol	11.204	266	107096	96.276	ng	98
71) Phenanthrene	11.427	178	347083	46.917	ng	100
72) Anthracene	11.474	178	357314	47.500	ng	99
73) Carbazole	11.633	167	287835	44.999	ng	99
74) Di-n-butylphthalate	11.957	149	393967	50.949	ng	99
75) Fluoranthene	12.616	202	338186	44.254	ng	99
78) Pyrene	12.845	202	329016	53.926	ng	100
80) Butylbenzylphthalate	13.463	149	126138	59.651	ng	99
81) Benzo(a)anthracene	14.039	228	262690	50.089	ng	99
82) 3,3'-Dichlorobenzidine	13.998	252	9064	5.042	ng #	96
83) Chrysene	14.074	228	234037	48.341	ng	99
84) Bis(2-ethylhexyl)phtha...	14.015	149	161561	55.811	ng	98
85) Di-n-octyl phthalate	14.633	149	238121	47.677	ng	100
87) Indeno(1,2,3-cd)pyrene	17.033	276	308388	47.247	ng	98
88) Benzo(b)fluoranthene	15.092	252	275332	53.261	ng	99
89) Benzo(k)fluoranthene	15.127	252	246476	50.940	ng	98
90) Benzo(a)pyrene	15.468	252	250944	52.620	ng	99
91) Dibenzo(a,h)anthracene	17.045	278	256609	48.952	ng	99
92) Benzo(g,h,i)perylene	17.480	276	247582	47.827	ng	96

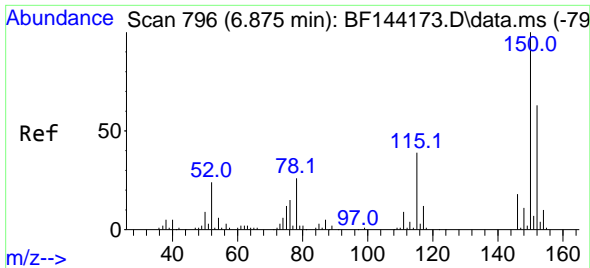
(#) = qualifier out of range (m) = manual integration (+) = signals summed

Data Path : Z:\svoasrv\HPCHEM1\BNA_F\Data\BF111225\
 Data File : BF144240.D
 Acq On : 12 Nov 2025 20:49
 Operator : RC/JU
 Sample : Q3604-01MSD
 Misc :
 ALS Vial : 12 Sample Multiplier: 1

Instrument :
 BNA_F
 ClientSampleId :
 S-1MSD

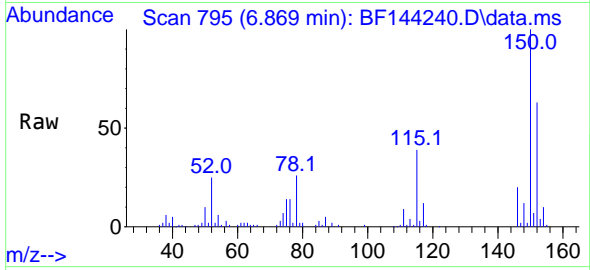
Quant Time: Nov 13 10:43:24 2025
 Quant Method : Z:\svoasrv\HPCHEM1\BNA_F\Methods\8270-BF110525.M
 Quant Title : ASP BNA STANDARDS FOR 5 POINT CALIBRATION
 QLast Update : Wed Nov 05 18:37:33 2025
 Response via : Initial Calibration



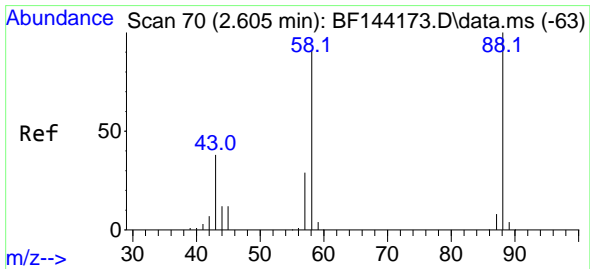
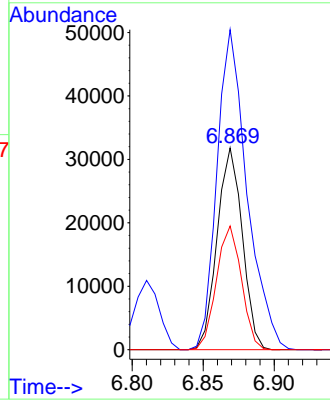
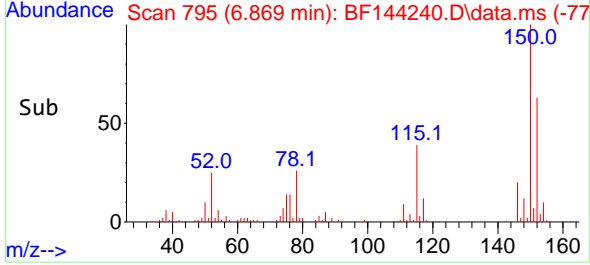


#1
 1,4-Dichlorobenzene-d4
 Concen: 20.000 ng
 RT: 6.869 min Scan# 796
 Delta R.T. -0.006 min
 Lab File: BF144240.D
 Acq: 12 Nov 2025 20:49

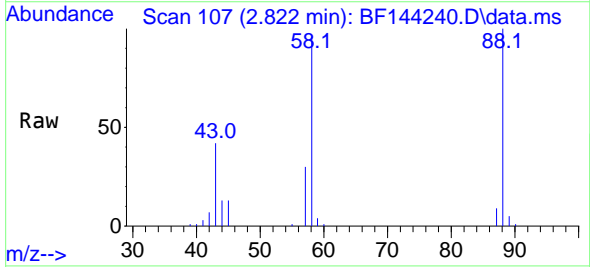
Instrument :
 BNA_F
 ClientSampleId :
 S-1MSD



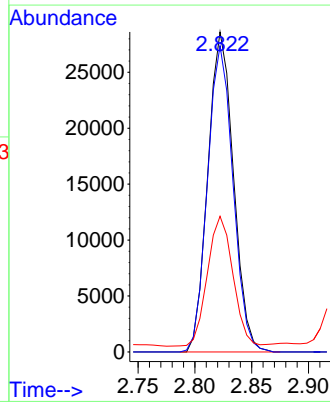
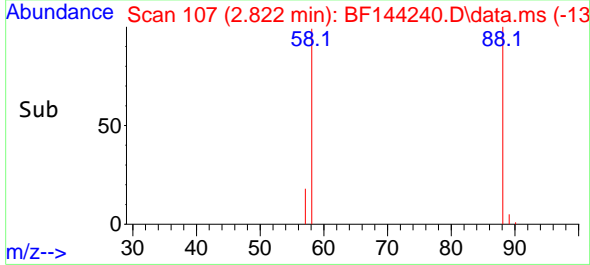
Tgt Ion:152 Resp: 39225
 Ion Ratio Lower Upper
 152 100
 150 158.6 127.4 191.0
 115 61.3 49.5 74.3

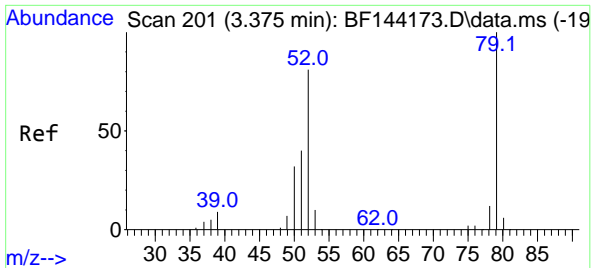


#2
 1,4-Dioxane
 Concen: 43.166 ng
 RT: 2.822 min Scan# 107
 Delta R.T. 0.206 min
 Lab File: BF144240.D
 Acq: 12 Nov 2025 20:49



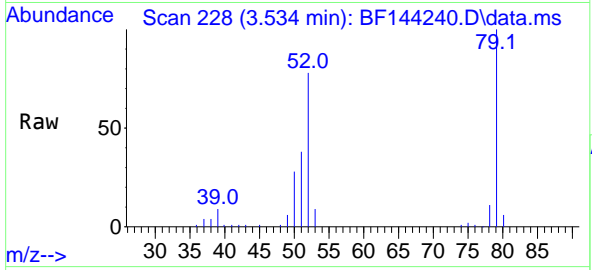
Tgt Ion: 88 Resp: 44733
 Ion Ratio Lower Upper
 88 100
 58 95.4 73.1 109.7
 43 0.0 31.0 46.6#





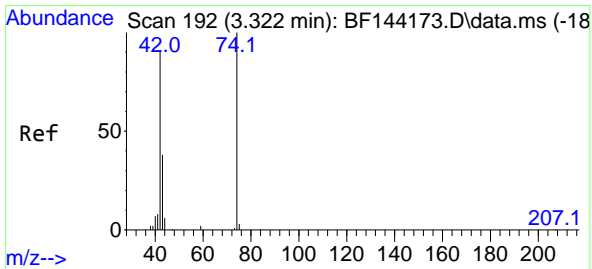
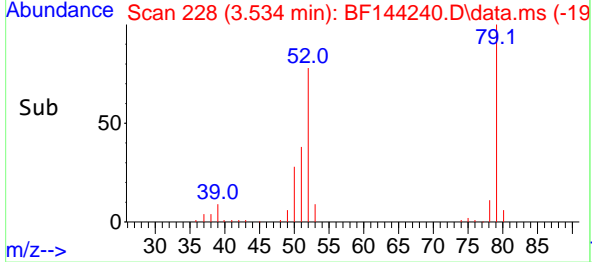
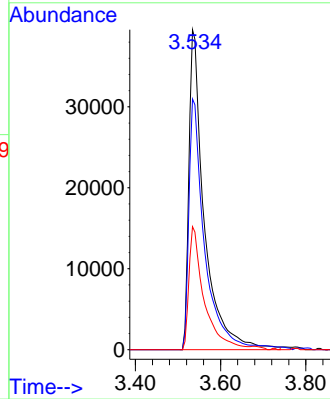
#3
 Pyridine
 Concen: 34.176 ng
 RT: 3.534 min Scan# 218
 Delta R.T. 0.123 min
 Lab File: BF144240.D
 Acq: 12 Nov 2025 20:49

Instrument : BNA_F
 ClientSampleId : S-1MSD

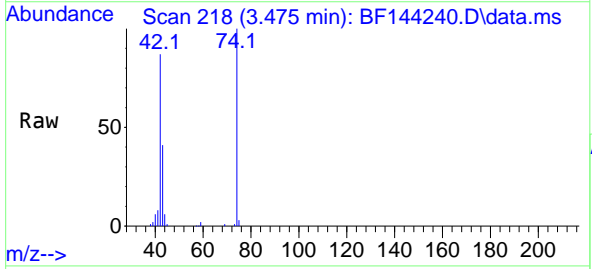


Tgt Ion: 79 Resp: 98807

Ion	Ratio	Lower	Upper
79	100		
52	78.3	64.5	96.7
51	38.5	31.7	47.5

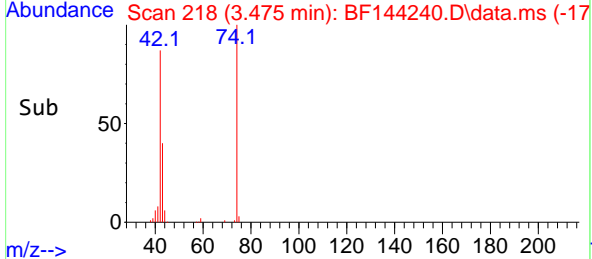
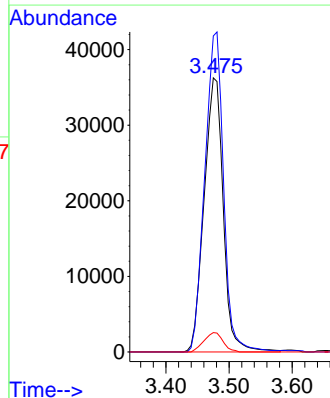


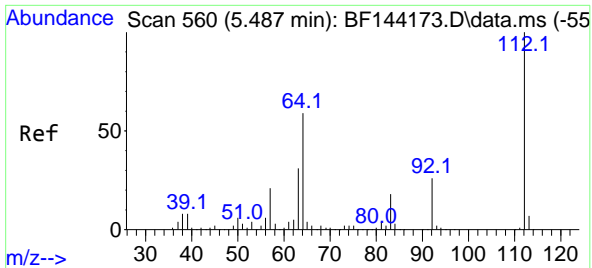
#4
 n-Nitrosodimethylamine
 Concen: 50.693 ng
 RT: 3.475 min Scan# 218
 Delta R.T. 0.129 min
 Lab File: BF144240.D
 Acq: 12 Nov 2025 20:49



Tgt Ion: 42 Resp: 76555

Ion	Ratio	Lower	Upper
42	100		
74	115.3	88.2	132.4
44	7.1	5.7	8.5



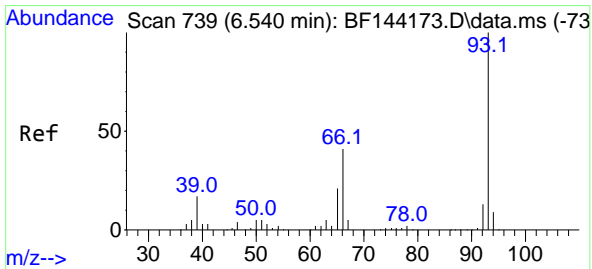
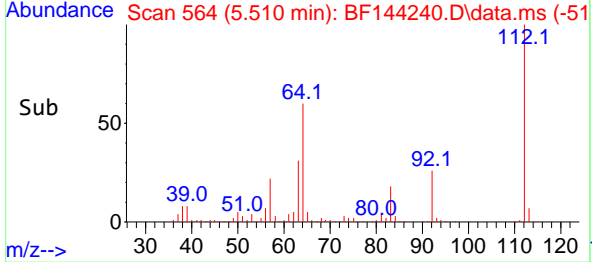
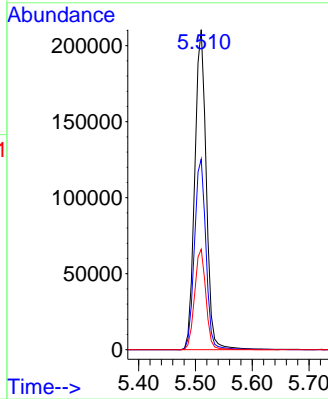
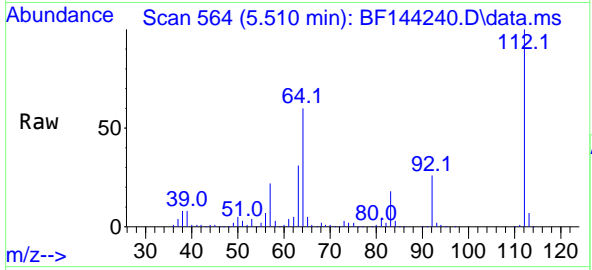


#5
 2-Fluorophenol
 Concen: 119.002 ng
 RT: 5.510 min Scan# 50
 Delta R.T. 0.018 min
 Lab File: BF144240.D
 Acq: 12 Nov 2025 20:49

Instrument :
 BNA_F
 ClientSampleId :
 S-1MSD

Tgt Ion:112 Resp: 298289

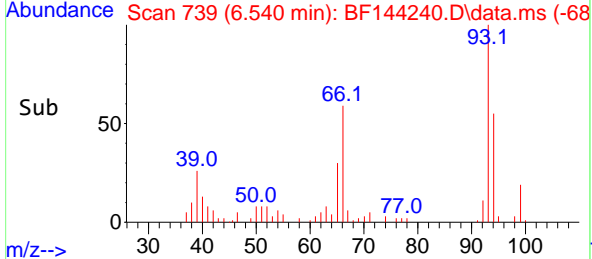
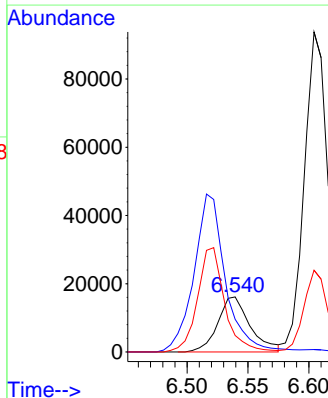
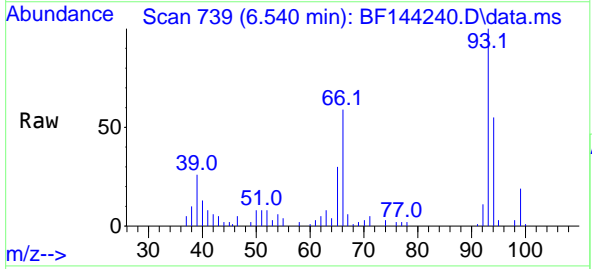
Ion	Ratio	Lower	Upper
112	100		
64	59.6	47.2	70.8
63	31.4	24.4	36.6

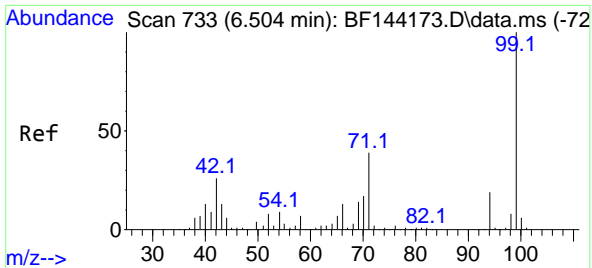


#6
 Aniline
 Concen: 7.387 ng
 RT: 6.540 min Scan# 739
 Delta R.T. 0.006 min
 Lab File: BF144240.D
 Acq: 12 Nov 2025 20:49

Tgt Ion: 93 Resp: 29891

Ion	Ratio	Lower	Upper
93	100		
66	59.2	34.3	51.5#
65	30.0	16.9	25.3#



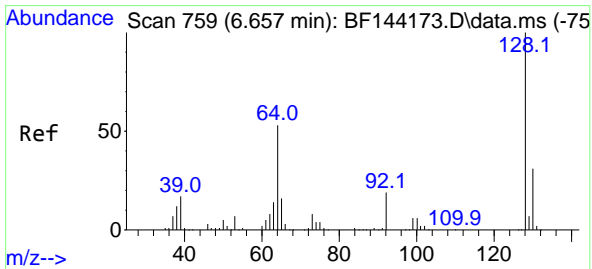
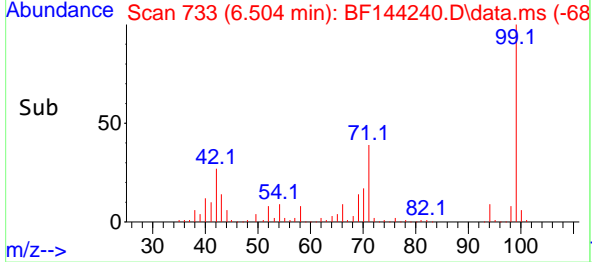
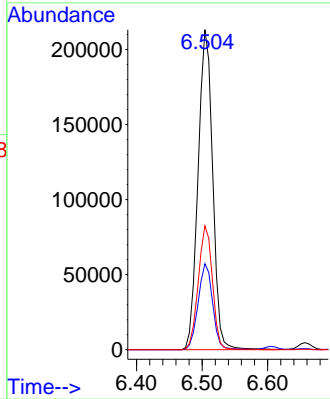
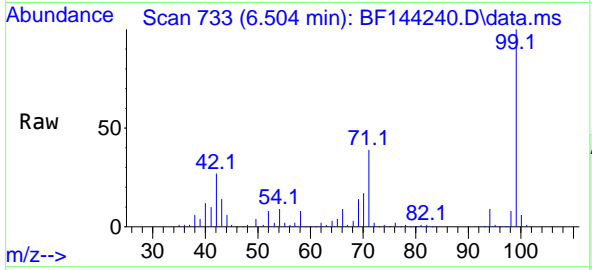


#7
Phenol-d6
Concen: 116.727 ng
RT: 6.504 min Scan# 711
Delta R.T. 0.006 min
Lab File: BF144240.D
Acq: 12 Nov 2025 20:49

Instrument : BNA_F
ClientSampleId : S-1MSD

Tgt Ion: 99 Resp: 331524

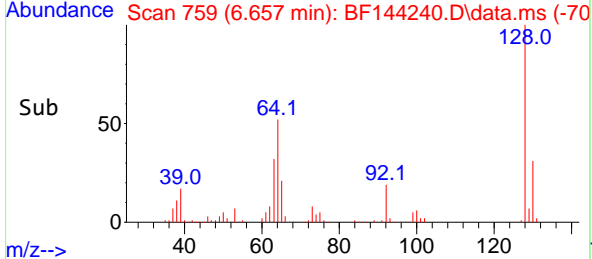
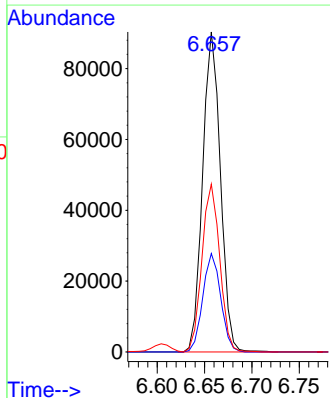
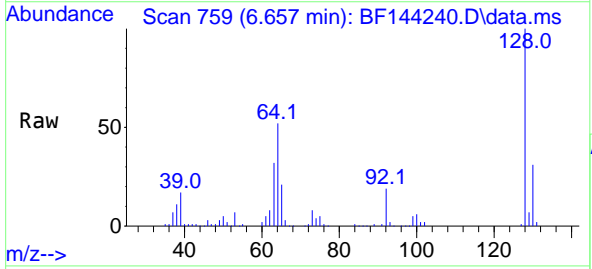
Ion	Ratio	Lower	Upper
99	100		
42	26.9	20.9	31.3
71	38.7	31.4	47.2

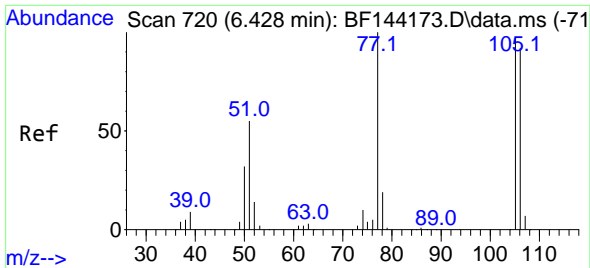


#8
2-Chlorophenol
Concen: 47.986 ng
RT: 6.657 min Scan# 759
Delta R.T. -0.000 min
Lab File: BF144240.D
Acq: 12 Nov 2025 20:49

Tgt Ion:128 Resp: 117958

Ion	Ratio	Lower	Upper
128	100		
130	30.8	10.5	50.5
64	52.4	33.2	73.2



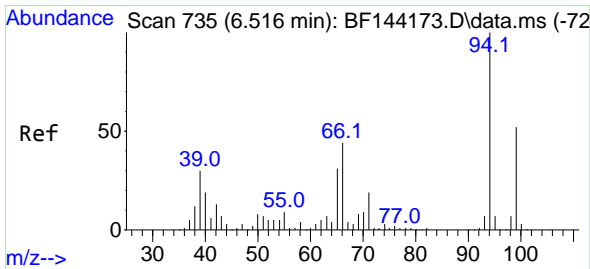
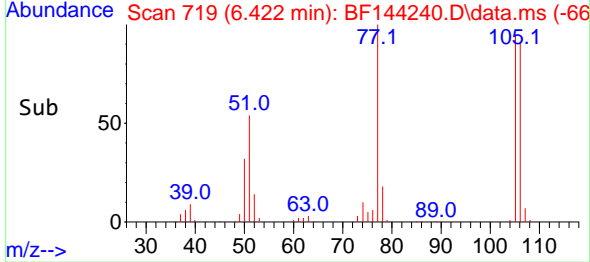
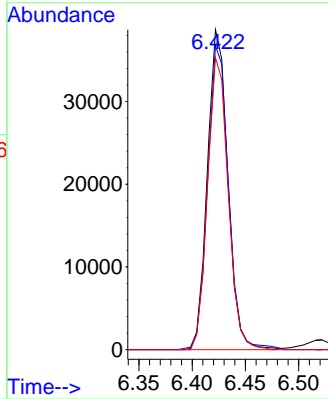
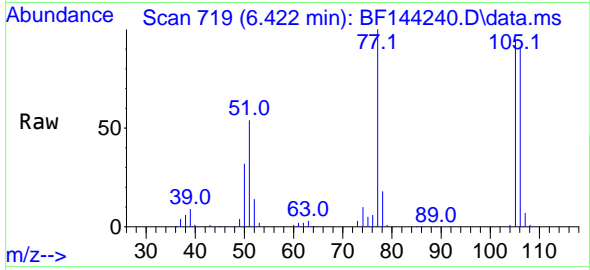


#9
 Benzaldehyde
 Concen: 32.152 ng
 RT: 6.422 min Scan# 719
 Delta R.T. -0.006 min
 Lab File: BF144240.D
 Acq: 12 Nov 2025 20:49

Instrument :
 BNA_F
 ClientSampleId :
 S-1MSD

Tgt Ion: 77 Resp: 51565

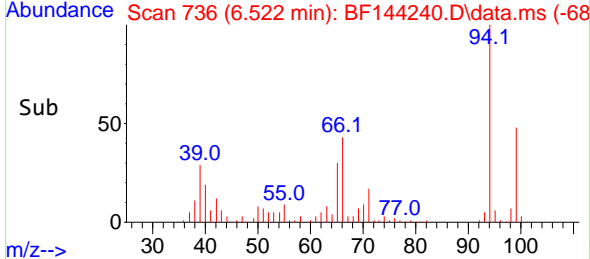
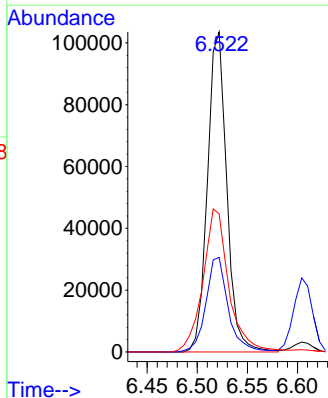
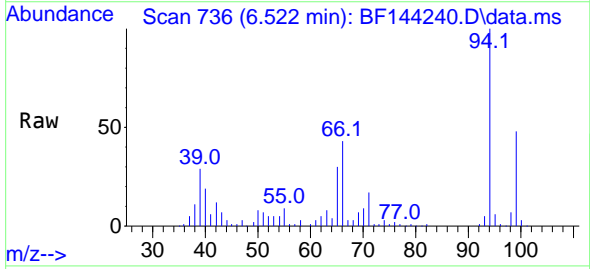
Ion	Ratio	Lower	Upper
77	100		
105	94.9	77.2	117.2
106	91.3	72.2	112.2

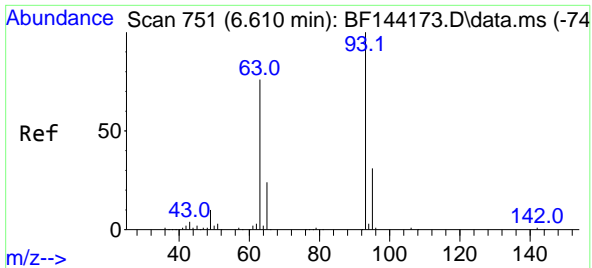


#10
 Phenol
 Concen: 40.045 ng
 RT: 6.522 min Scan# 736
 Delta R.T. 0.012 min
 Lab File: BF144240.D
 Acq: 12 Nov 2025 20:49

Tgt Ion: 94 Resp: 138958

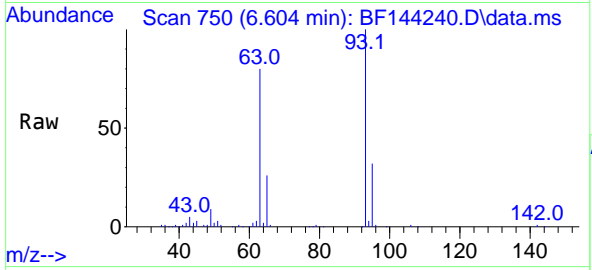
Ion	Ratio	Lower	Upper
94	100		
65	29.5	10.8	50.8
66	43.2	24.3	64.3





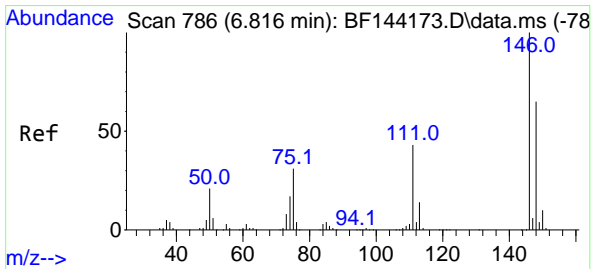
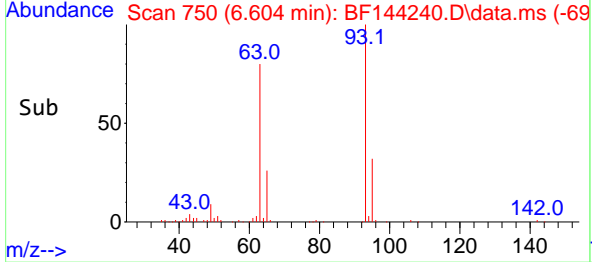
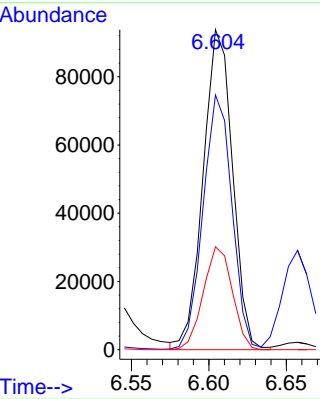
#11
 bis(2-Chloroethyl)ether
 Concen: 49.087 ng
 RT: 6.604 min Scan# 711
 Delta R.T. -0.000 min
 Lab File: BF144240.D
 Acq: 12 Nov 2025 20:49

Instrument :
 BNA_F
 ClientSampleId :
 S-1MSD

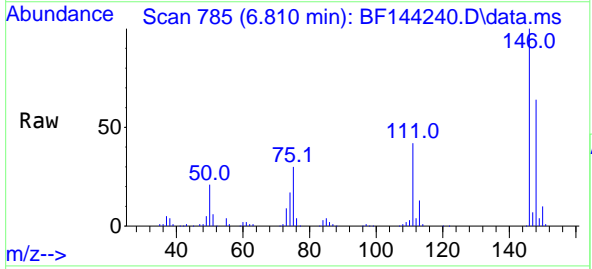


Tgt Ion: 93 Resp: 124118

Ion	Ratio	Lower	Upper
93	100		
63	79.6	55.2	95.2
95	32.1	11.2	51.2

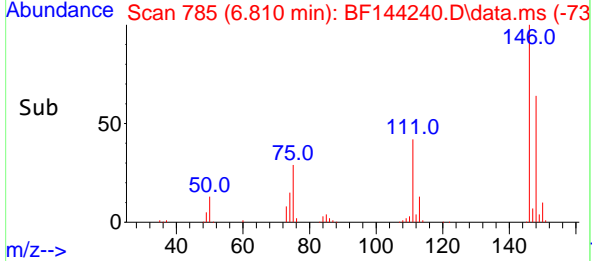
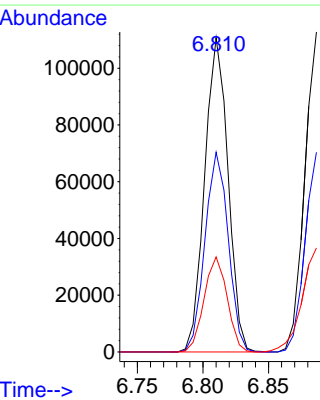


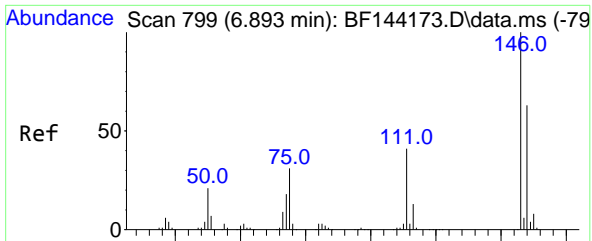
#12
 1,3-Dichlorobenzene
 Concen: 45.147 ng
 RT: 6.810 min Scan# 785
 Delta R.T. -0.006 min
 Lab File: BF144240.D
 Acq: 12 Nov 2025 20:49



Tgt Ion: 146 Resp: 136946

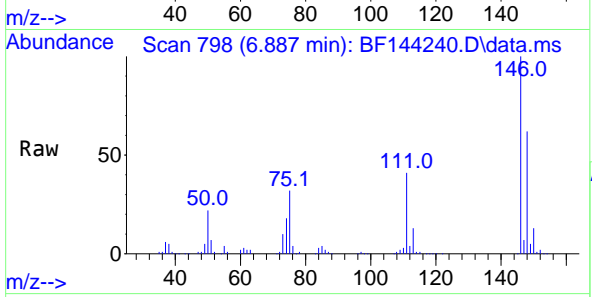
Ion	Ratio	Lower	Upper
146	100		
148	63.6	51.8	77.8
75	30.2	25.0	37.4



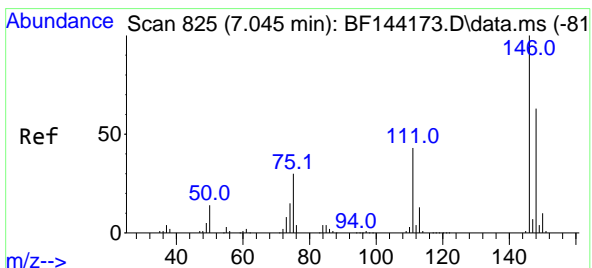
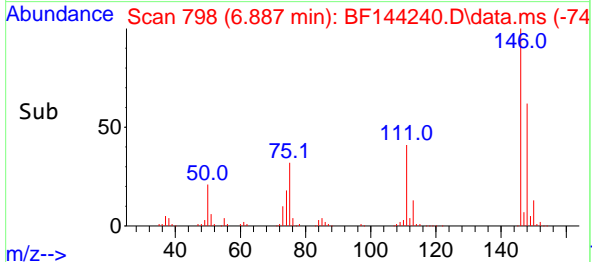
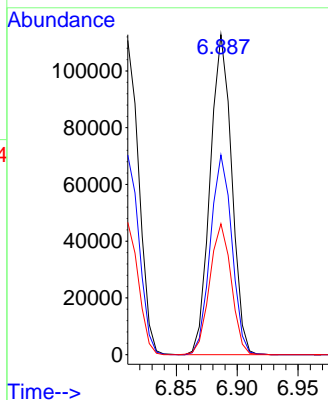


#13
 1,4-Dichlorobenzene
 Concen: 45.649 ng
 RT: 6.887 min Scan# 74
 Delta R.T. -0.006 min
 Lab File: BF144240.D
 Acq: 12 Nov 2025 20:49

Instrument :
 BNA_F
 ClientSampleId :
 S-1MSD

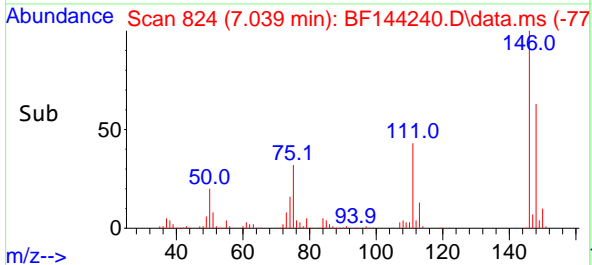
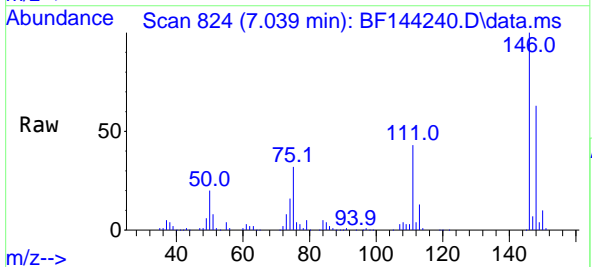
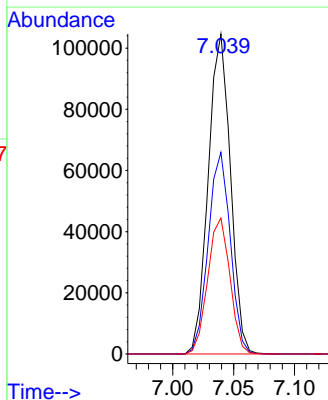


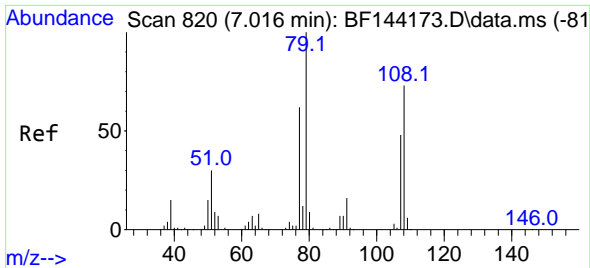
Tgt Ion:146 Resp: 138722
 Ion Ratio Lower Upper
 146 100
 148 62.4 50.2 75.2
 111 40.9 32.6 48.8



#14
 1,2-Dichlorobenzene
 Concen: 45.443 ng
 RT: 7.039 min Scan# 824
 Delta R.T. -0.006 min
 Lab File: BF144240.D
 Acq: 12 Nov 2025 20:49

Tgt Ion:146 Resp: 132363
 Ion Ratio Lower Upper
 146 100
 148 63.0 50.7 76.1
 111 42.5 34.2 51.4



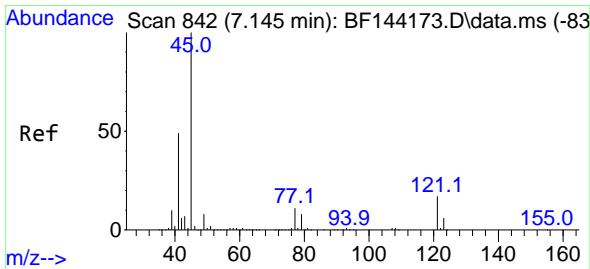
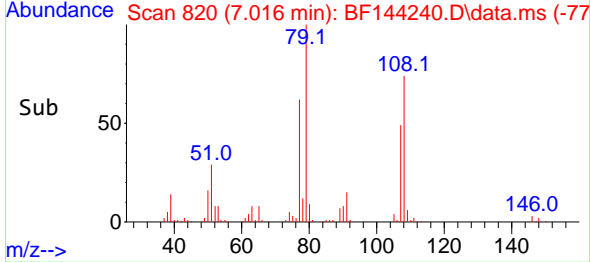
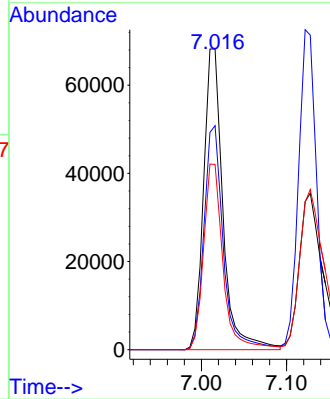
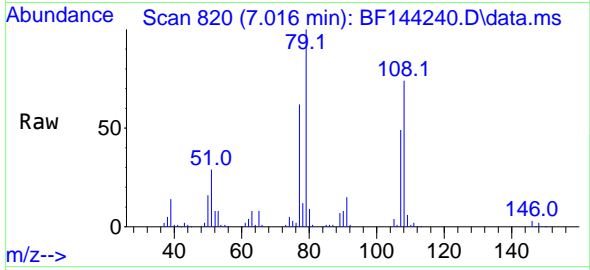


#15
 Benzyl Alcohol
 Concen: 47.926 ng
 RT: 7.016 min Scan# 81
 Delta R.T. -0.006 min
 Lab File: BF144240.D
 Acq: 12 Nov 2025 20:49

Instrument :
 BNA_F
 ClientSampleId :
 S-1MSD

Tgt Ion: 79 Resp: 107782

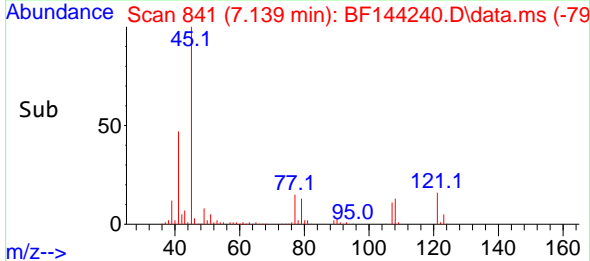
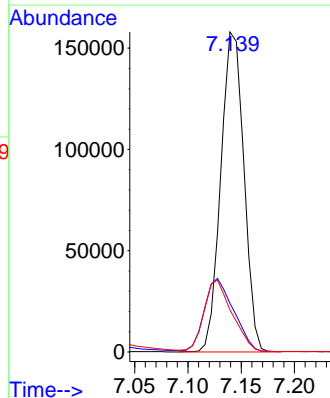
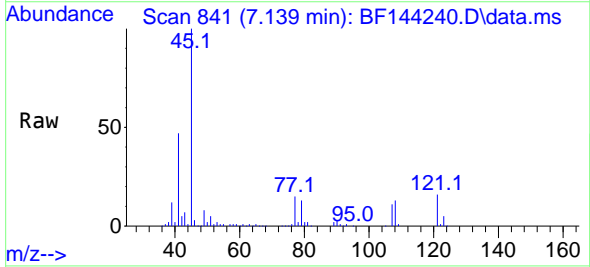
Ion	Ratio	Lower	Upper
79	100		
108	74.5	58.2	87.4
77	61.6	49.9	74.9

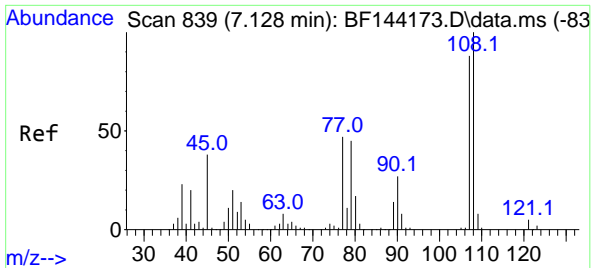


#16
 2,2'-oxybis(1-Chloropropane)
 Concen: 51.198 ng
 RT: 7.139 min Scan# 841
 Delta R.T. -0.000 min
 Lab File: BF144240.D
 Acq: 12 Nov 2025 20:49

Tgt Ion: 45 Resp: 238394

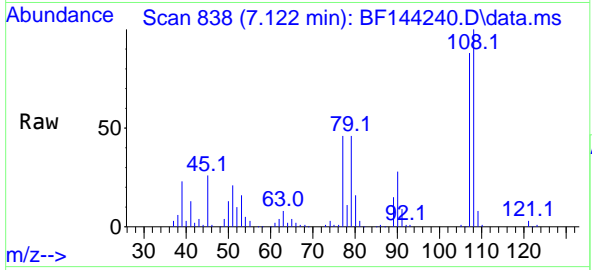
Ion	Ratio	Lower	Upper
45	100		
77	15.2	0.0	31.8
79	13.1	0.0	29.1





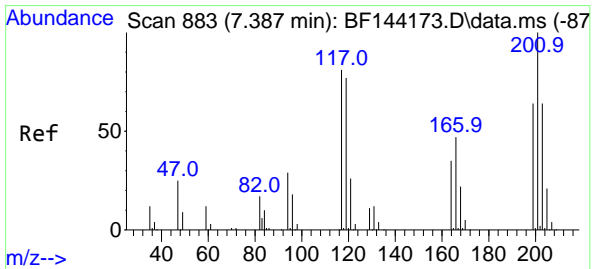
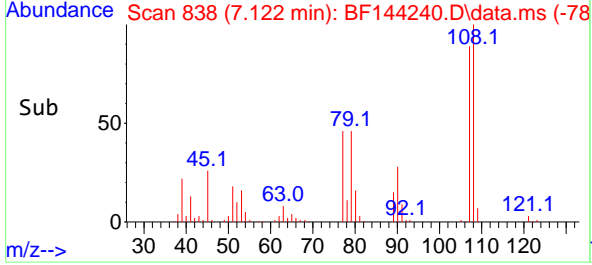
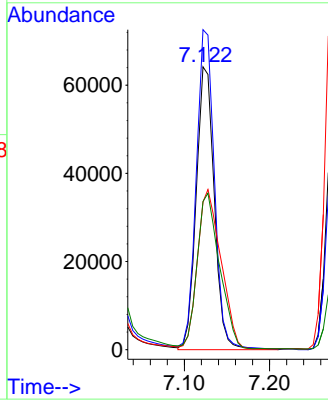
#17
 2-Methylphenol
 Concen: 48.444 ng
 RT: 7.122 min Scan# 811
 Delta R.T. -0.000 min
 Lab File: BF144240.D
 Acq: 12 Nov 2025 20:49

Instrument :
 BNA_F
 ClientSampleId :
 S-1MSD

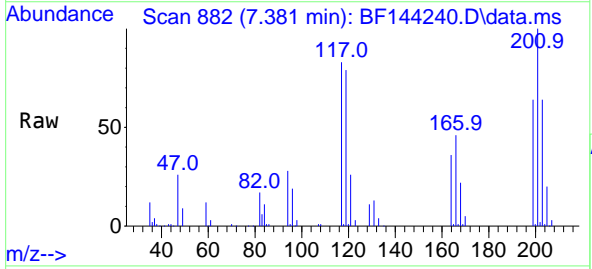


Tgt Ion:107 Resp: 94735

Ion	Ratio	Lower	Upper
107	100		
108	113.1	91.0	136.4
77	52.2	42.7	64.1
79	52.4	41.4	62.2

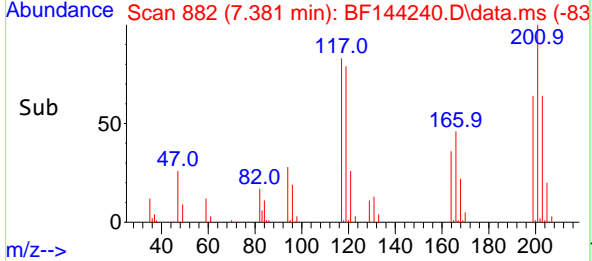
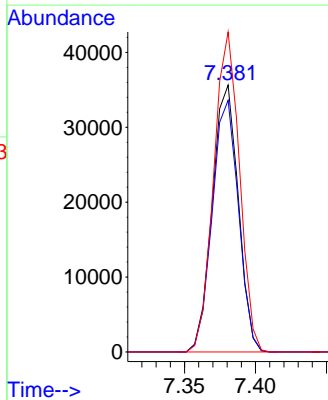


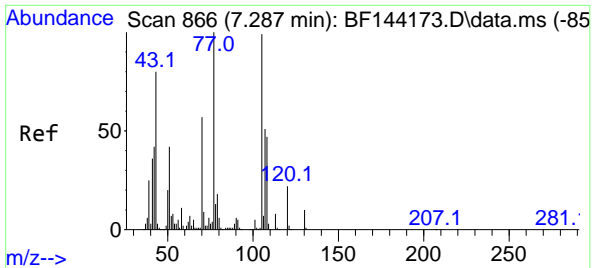
#18
 Hexachloroethane
 Concen: 44.941 ng
 RT: 7.381 min Scan# 882
 Delta R.T. -0.006 min
 Lab File: BF144240.D
 Acq: 12 Nov 2025 20:49



Tgt Ion:117 Resp: 45373

Ion	Ratio	Lower	Upper
117	100		
119	94.3	75.8	113.8
201	119.9	98.9	148.3



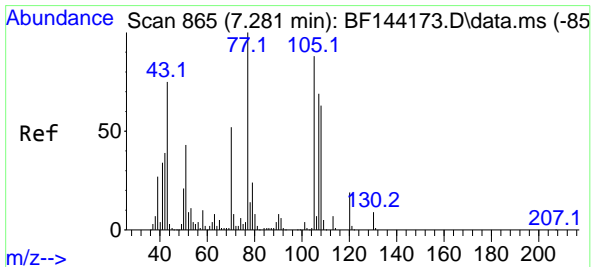
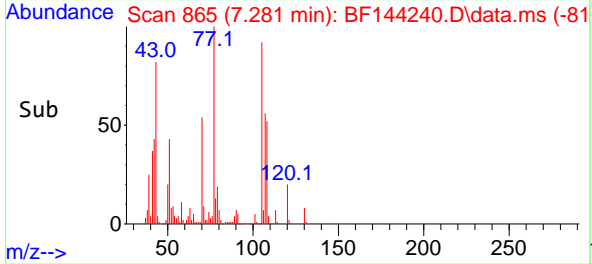
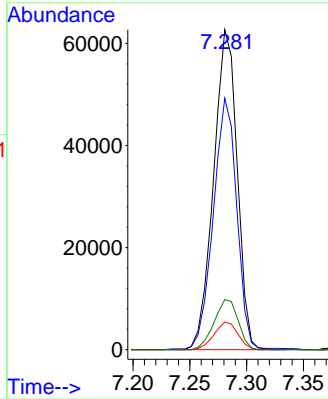
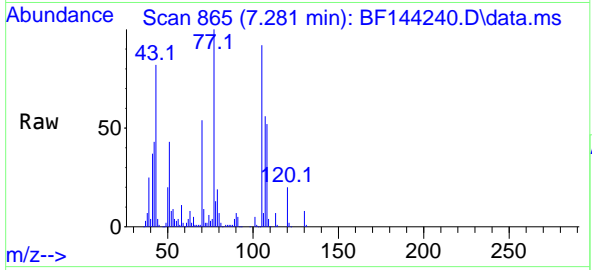


#19
 n-Nitroso-di-n-propylamine
 Concen: 48.431 ng
 RT: 7.281 min Scan# 80
 Delta R.T. 0.006 min
 Lab File: BF144240.D
 Acq: 12 Nov 2025 20:49

Instrument :
 BNA_F
 ClientSampleId :
 S-1MSD

Tgt Ion: 70 Resp: 90551

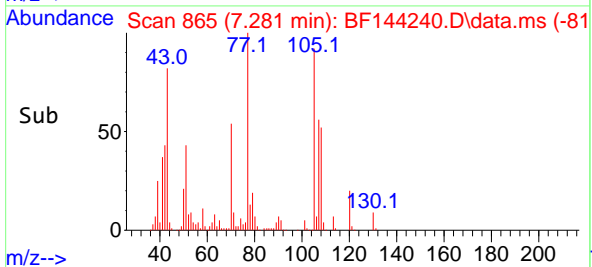
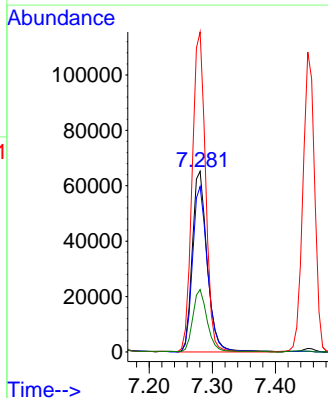
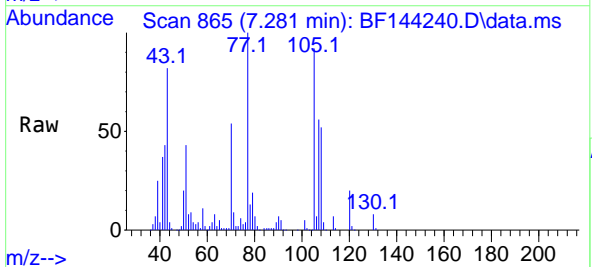
Ion	Ratio	Lower	Upper
70	100		
42	78.6	58.3	87.5
101	8.6	7.0	10.6
130	15.6	14.4	21.6

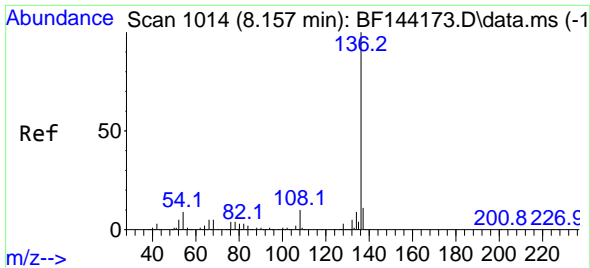


#20
 3+4-Methylphenols
 Concen: 46.572 ng
 RT: 7.281 min Scan# 865
 Delta R.T. -0.006 min
 Lab File: BF144240.D
 Acq: 12 Nov 2025 20:49

Tgt Ion: 107 Resp: 107360

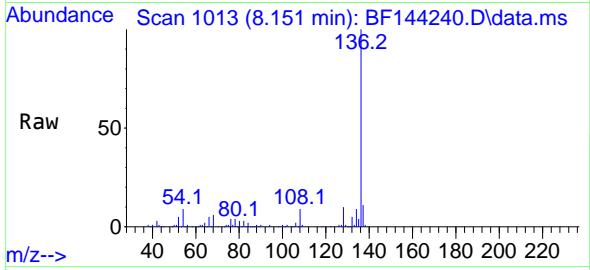
Ion	Ratio	Lower	Upper
107	100		
108	91.6	70.2	110.2
77	177.2	123.9	163.9#
79	34.5	14.2	54.2





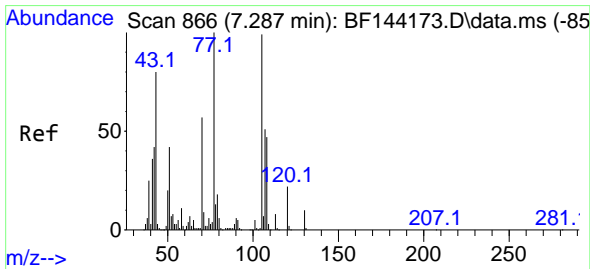
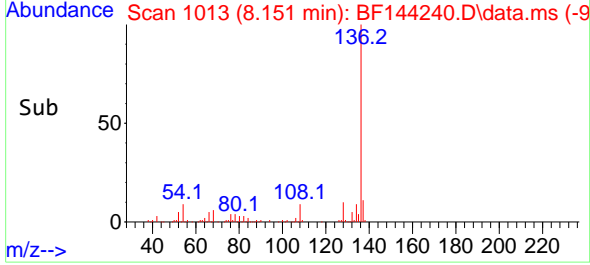
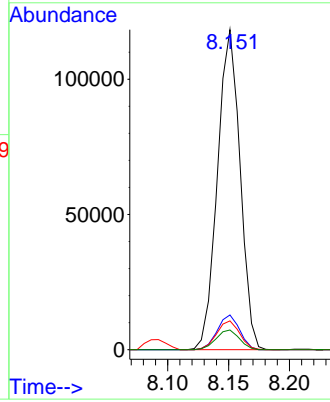
#21
 Naphthalene-d8
 Concen: 20.000 ng
 RT: 8.151 min Scan# 1014
 Delta R.T. -0.006 min
 Lab File: BF144240.D
 Acq: 12 Nov 2025 20:49

Instrument : BNA_F
 ClientSampleId : S-1MSD

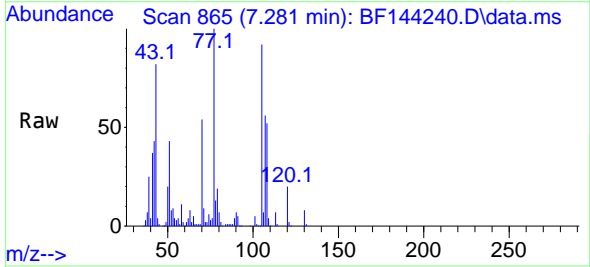


Tgt Ion:136 Resp: 152960

Ion	Ratio	Lower	Upper
136	100		
137	10.8	8.6	13.0
54	9.0	7.0	10.6
68	6.2	4.3	6.5

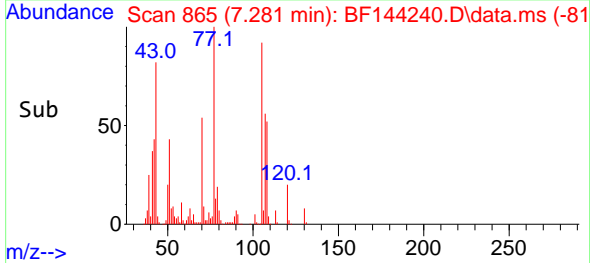
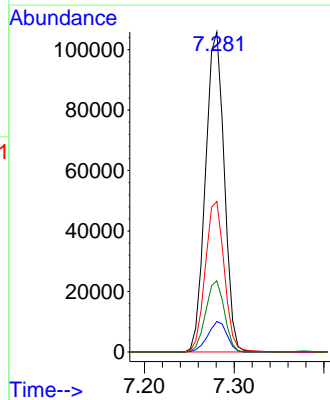


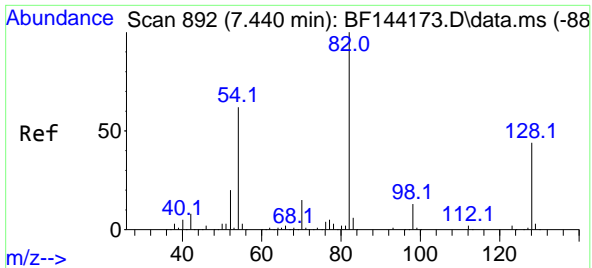
#22
 Acetophenone
 Concen: 46.789 ng
 RT: 7.281 min Scan# 865
 Delta R.T. -0.000 min
 Lab File: BF144240.D
 Acq: 12 Nov 2025 20:49



Tgt Ion:105 Resp: 153531

Ion	Ratio	Lower	Upper
105	100		
71	9.5	7.2	10.8
51	47.1	34.0	51.0
120	22.3	17.8	26.6



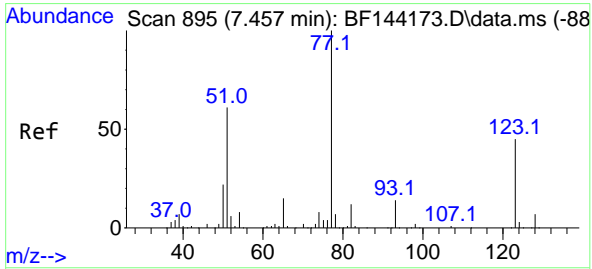
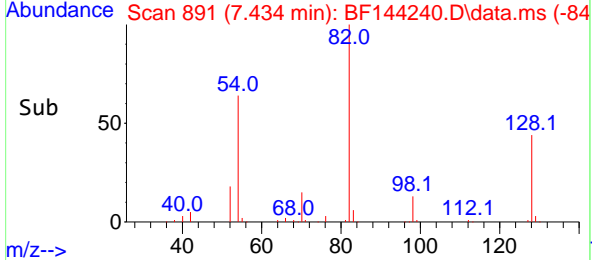
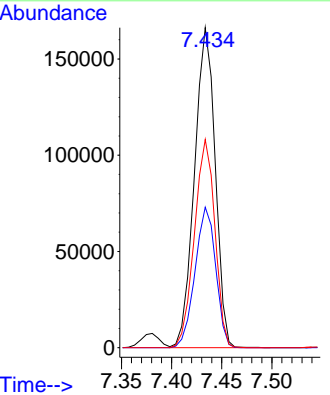
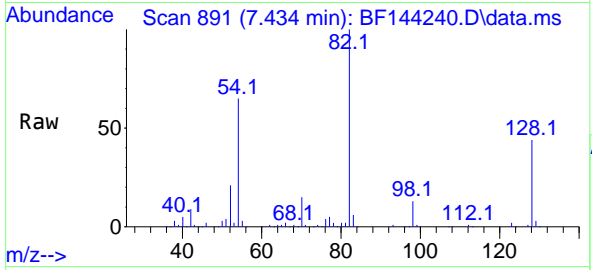


#23
 Nitrobenzene-d5
 Concen: 90.391 ng
 RT: 7.434 min Scan# 891
 Delta R.T. -0.000 min
 Lab File: BF144240.D
 Acq: 12 Nov 2025 20:49

Instrument : BNA_F
 ClientSampleId : S-1MSD

Tgt Ion: 82 Resp: 239393

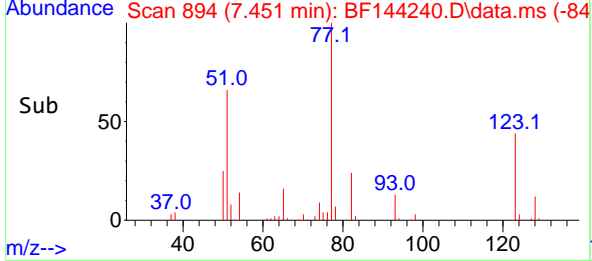
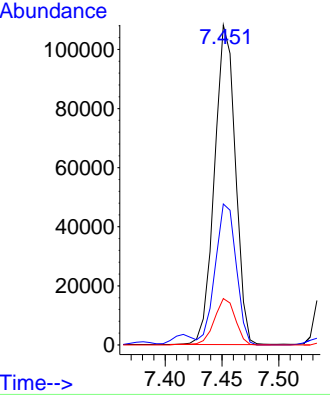
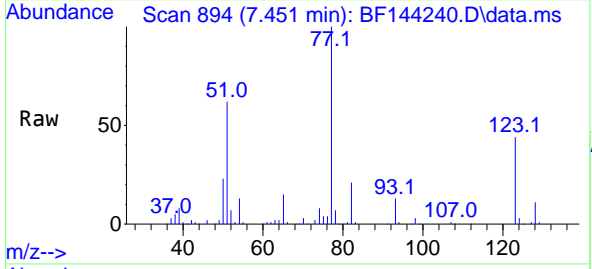
Ion	Ratio	Lower	Upper
82	100		
128	43.9	34.7	52.1
54	65.1	49.5	74.3

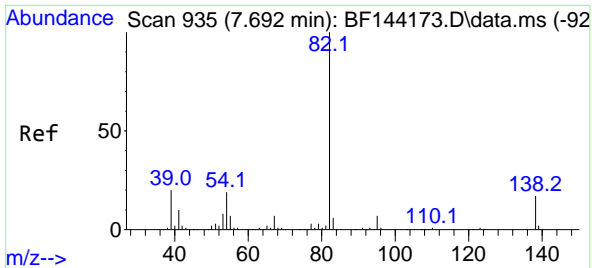


#24
 Nitrobenzene
 Concen: 48.048 ng
 RT: 7.451 min Scan# 894
 Delta R.T. -0.000 min
 Lab File: BF144240.D
 Acq: 12 Nov 2025 20:49

Tgt Ion: 77 Resp: 138165

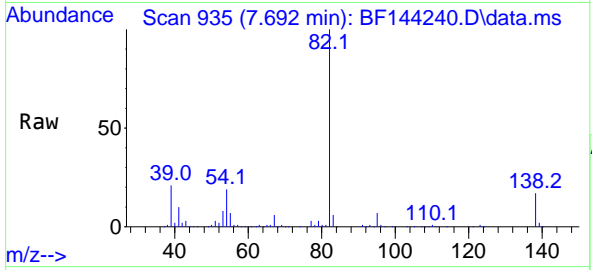
Ion	Ratio	Lower	Upper
77	100		
123	44.0	35.8	53.8
65	14.5	12.2	18.2



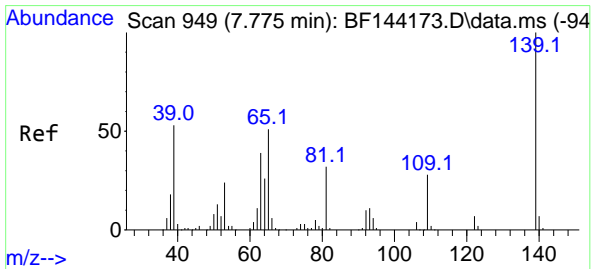
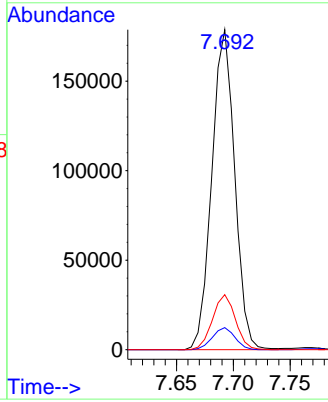
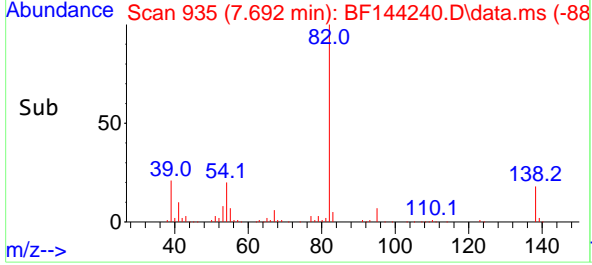


#25
 Isophorone
 Concen: 49.962 ng
 RT: 7.692 min Scan# 91
 Delta R.T. 0.006 min
 Lab File: BF144240.D
 Acq: 12 Nov 2025 20:49

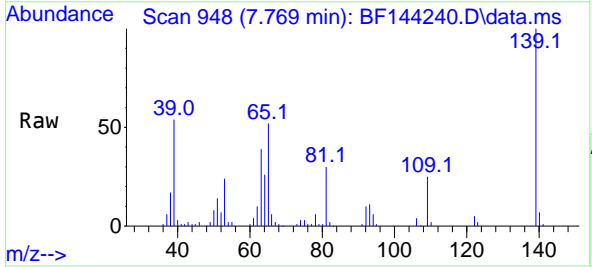
Instrument :
 BNA_F
 ClientSampleId :
 S-1MSD



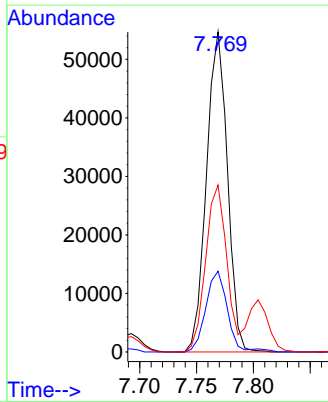
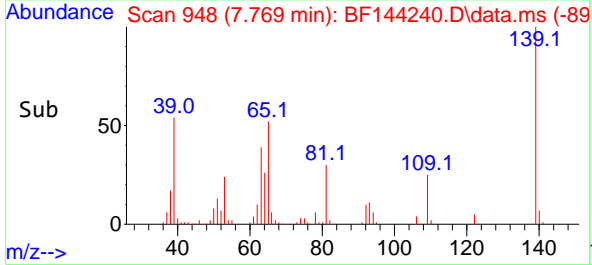
Tgt Ion: 82 Resp: 250287
 Ion Ratio Lower Upper
 82 100
 95 6.9 5.5 8.3
 138 17.2 13.7 20.5

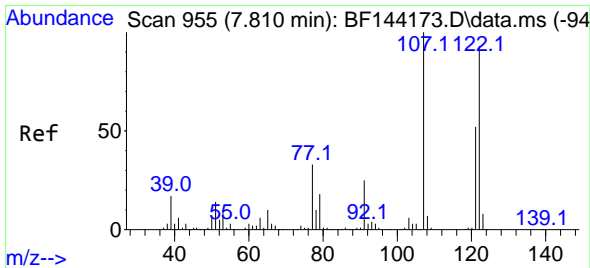


#26
 2-Nitrophenol
 Concen: 49.288 ng
 RT: 7.769 min Scan# 948
 Delta R.T. -0.006 min
 Lab File: BF144240.D
 Acq: 12 Nov 2025 20:49



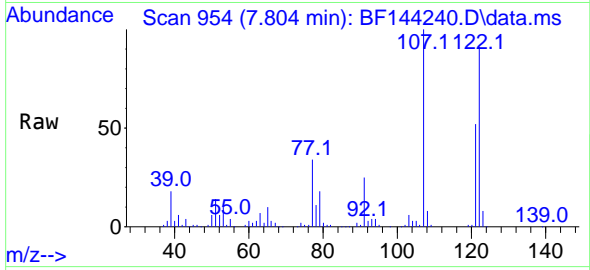
Tgt Ion: 139 Resp: 70160
 Ion Ratio Lower Upper
 139 100
 109 25.3 22.2 33.2
 65 52.2 40.7 61.1



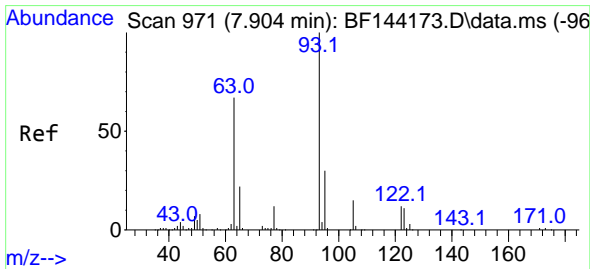
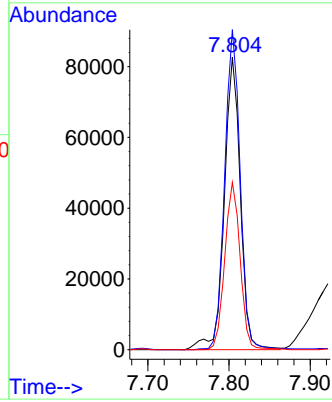
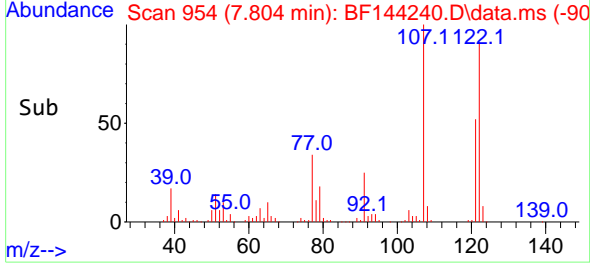


#27
 2,4-Dimethylphenol
 Concen: 53.352 ng
 RT: 7.804 min Scan# 91
 Delta R.T. -0.000 min
 Lab File: BF144240.D
 Acq: 12 Nov 2025 20:49

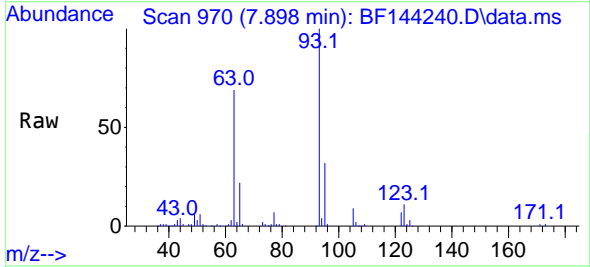
Instrument :
 BNA_F
 ClientSampleId :
 S-1MSD



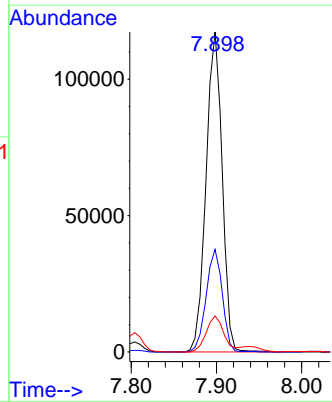
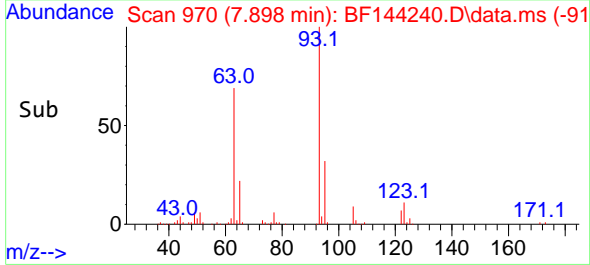
Tgt Ion:122 Resp: 113828
 Ion Ratio Lower Upper
 122 100
 107 109.4 86.2 129.4
 121 57.2 44.6 66.8

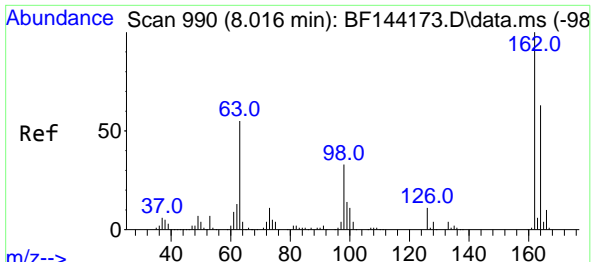


#28
 bis(2-Chloroethoxy)methane
 Concen: 49.347 ng
 RT: 7.898 min Scan# 970
 Delta R.T. -0.000 min
 Lab File: BF144240.D
 Acq: 12 Nov 2025 20:49



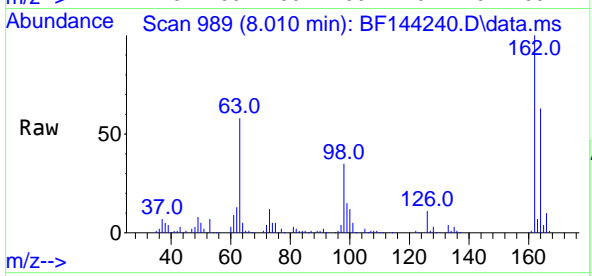
Tgt Ion: 93 Resp: 154372
 Ion Ratio Lower Upper
 93 100
 95 32.0 24.2 36.4
 123 11.2 9.0 13.4



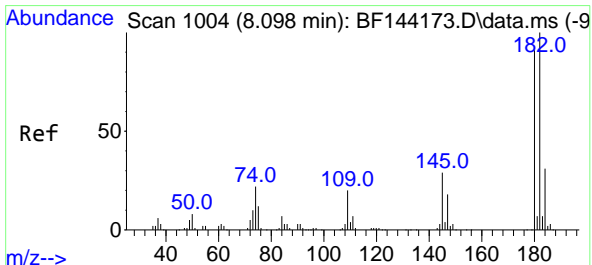
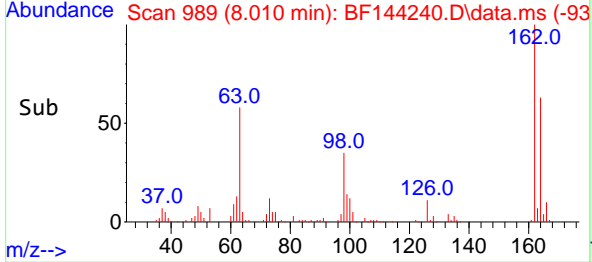
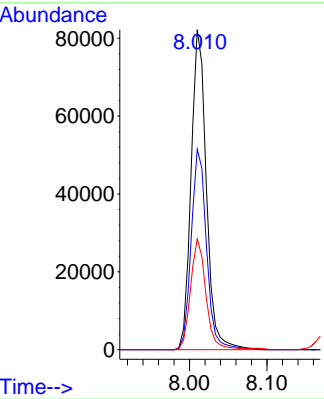


#29
 2,4-Dichlorophenol
 Concen: 45.721 ng
 RT: 8.010 min Scan# 91
 Delta R.T. -0.006 min
 Lab File: BF144240.D
 Acq: 12 Nov 2025 20:49

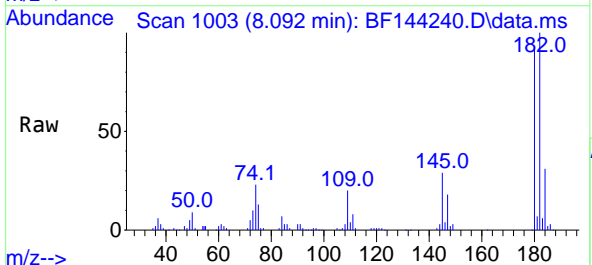
Instrument :
 BNA_F
 ClientSampleId :
 S-1MSD



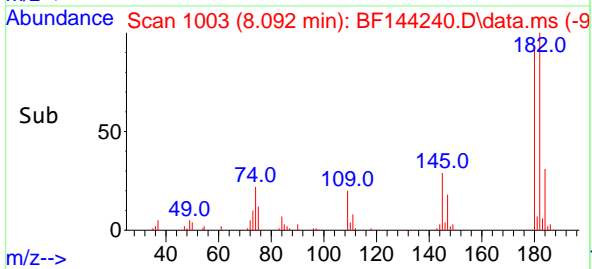
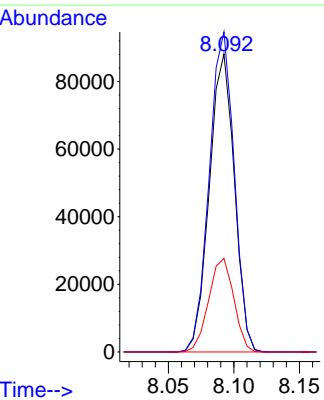
Tgt Ion:162 Resp: 112429
 Ion Ratio Lower Upper
 162 100
 164 62.6 42.9 82.9
 98 34.6 13.3 53.3

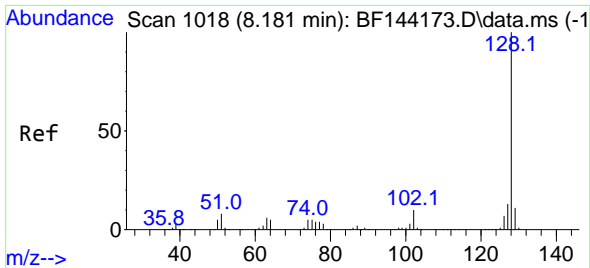


#30
 1,2,4-Trichlorobenzene
 Concen: 46.324 ng
 RT: 8.092 min Scan# 1003
 Delta R.T. -0.006 min
 Lab File: BF144240.D
 Acq: 12 Nov 2025 20:49



Tgt Ion:180 Resp: 116972
 Ion Ratio Lower Upper
 180 100
 182 107.3 87.7 131.5
 145 31.4 25.4 38.0



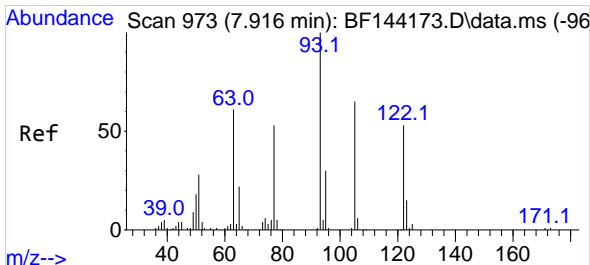
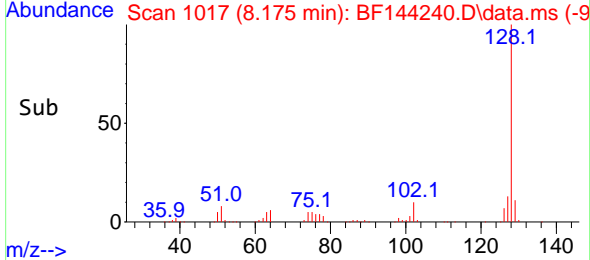
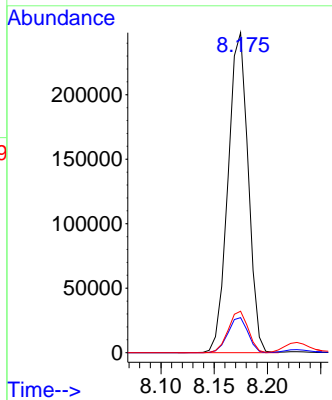
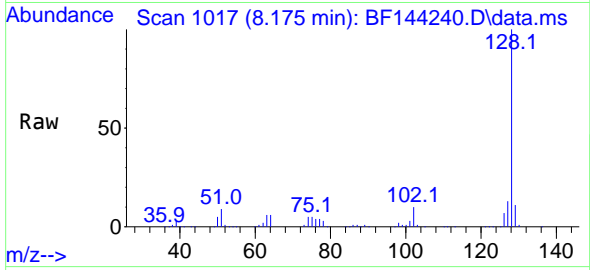


#31
 Naphthalene
 Concen: 44.792 ng
 RT: 8.175 min Scan# 1017
 Delta R.T. -0.000 min
 Lab File: BF144240.D
 Acq: 12 Nov 2025 20:49

Instrument : BNA_F
 ClientSampleId : S-1MSD

Tgt Ion:128 Resp: 325916

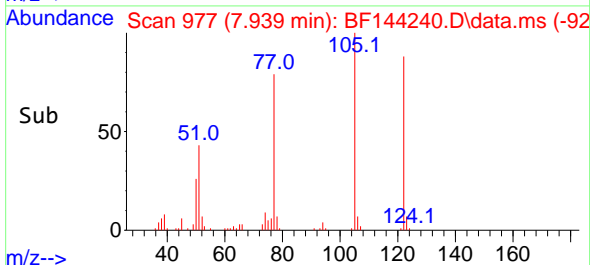
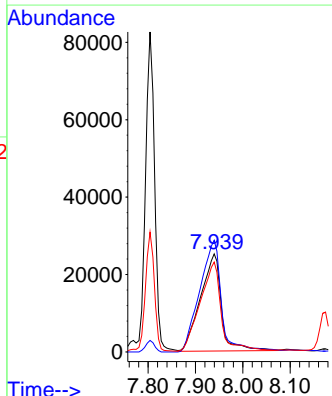
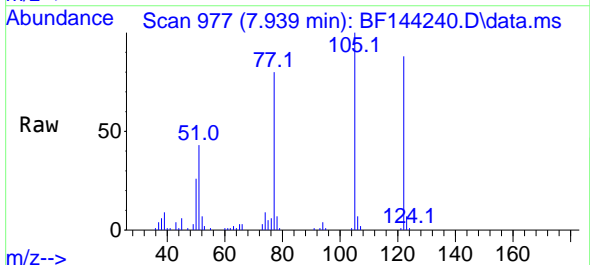
Ion	Ratio	Lower	Upper
128	100		
129	10.9	8.9	13.3
127	13.0	10.3	15.5

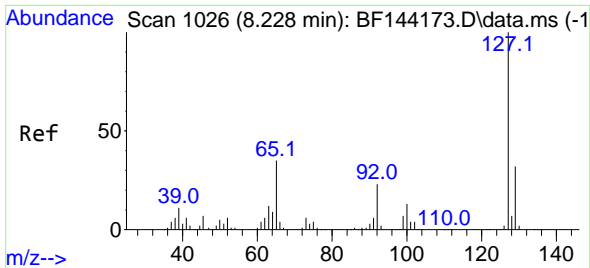


#32
 Benzoic acid
 Concen: 49.531 ng
 RT: 7.939 min Scan# 977
 Delta R.T. -0.012 min
 Lab File: BF144240.D
 Acq: 12 Nov 2025 20:49

Tgt Ion:122 Resp: 77462

Ion	Ratio	Lower	Upper
122	100		
105	113.8	99.9	139.9
77	91.6	77.5	117.5



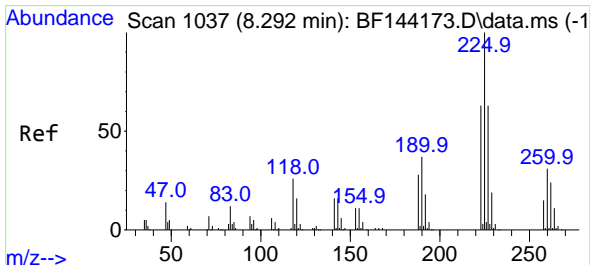
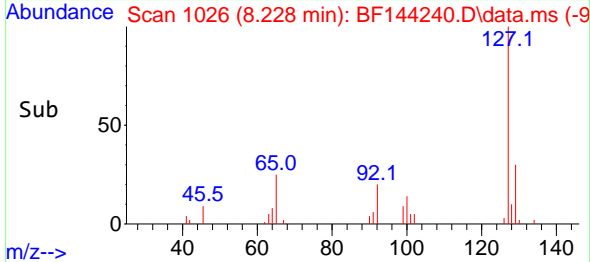
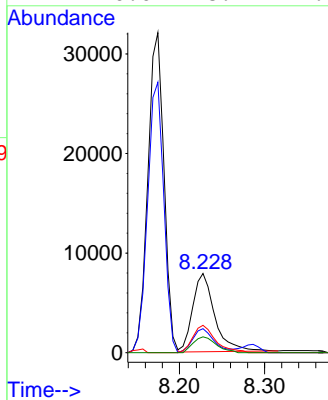
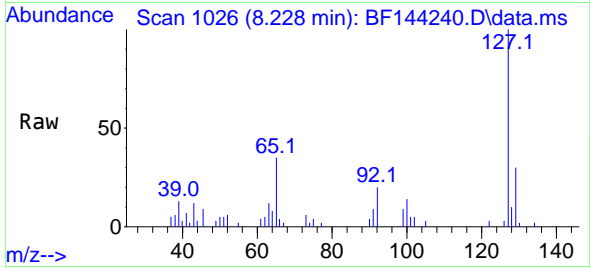


#33
 4-Chloroaniline
 Concen: 5.314 ng
 RT: 8.228 min Scan# 1026
 Delta R.T. -0.000 min
 Lab File: BF144240.D
 Acq: 12 Nov 2025 20:49

Instrument : BNA_F
 Client Sample Id : S-1MSD

Tgt Ion:127 Resp: 14102

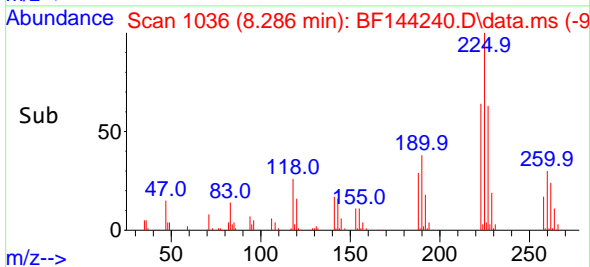
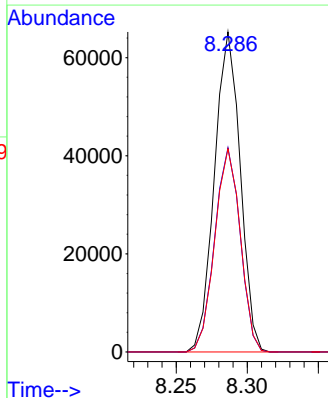
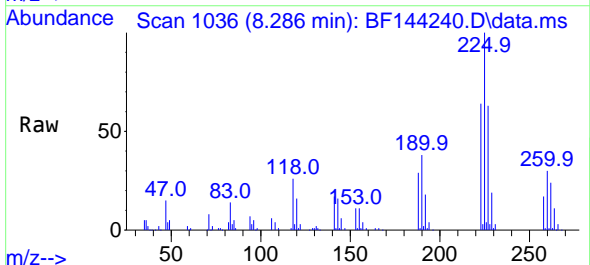
Ion	Ratio	Lower	Upper
127	100		
129	30.3	25.3	37.9
65	34.6	27.6	41.4
92	20.0	18.4	27.6

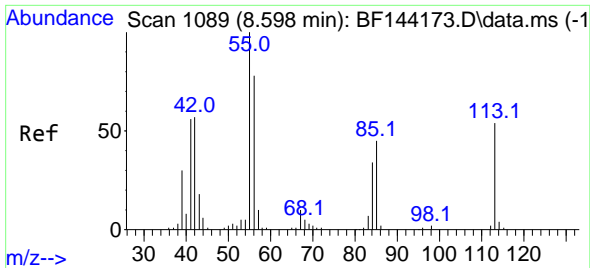


#34
 Hexachlorobutadiene
 Concen: 43.306 ng
 RT: 8.286 min Scan# 1036
 Delta R.T. -0.006 min
 Lab File: BF144240.D
 Acq: 12 Nov 2025 20:49

Tgt Ion:225 Resp: 82411

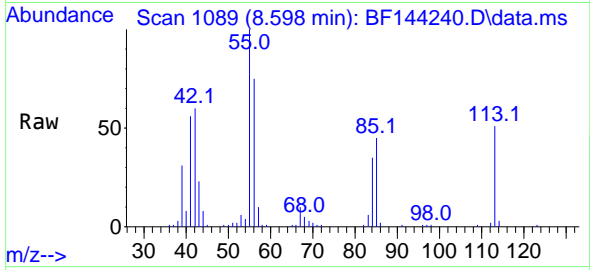
Ion	Ratio	Lower	Upper
225	100		
223	63.8	50.2	75.4
227	63.5	50.1	75.1



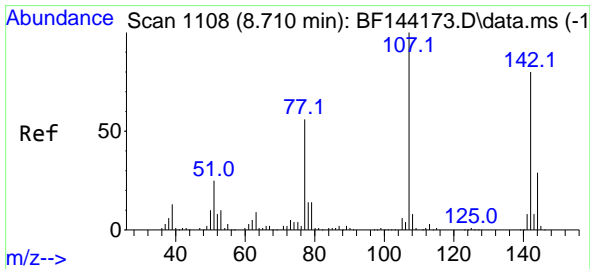
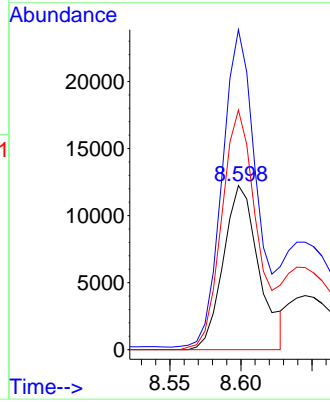
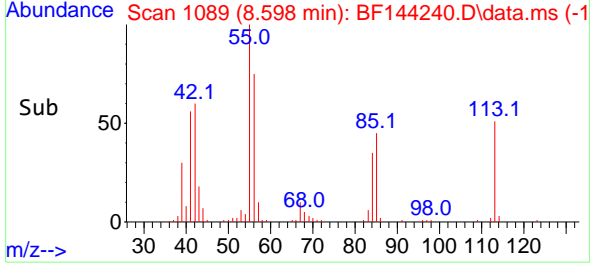


#35
 Caprolactam
 Concen: 31.664 ng
 RT: 8.598 min Scan# 1089
 Delta R.T. -0.024 min
 Lab File: BF144240.D
 Acq: 12 Nov 2025 20:49

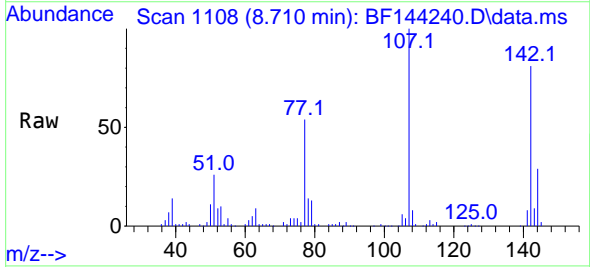
Instrument :
 BNA_F
 ClientSampleId :
 S-1MSD



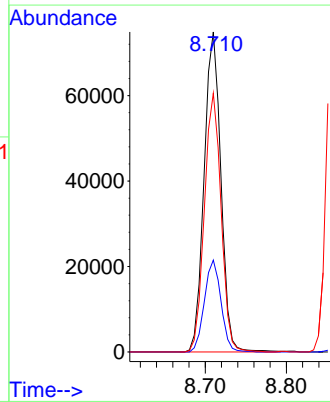
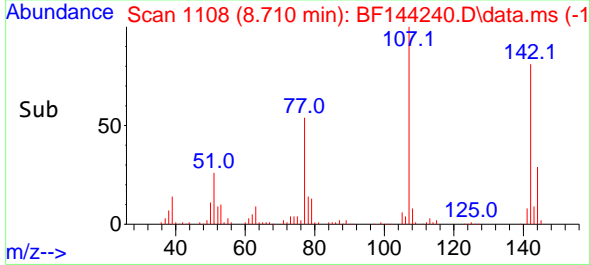
Tgt Ion:113 Resp: 21332
 Ion Ratio Lower Upper
 113 100
 55 194.9 166.8 206.8
 56 146.0 125.9 165.9

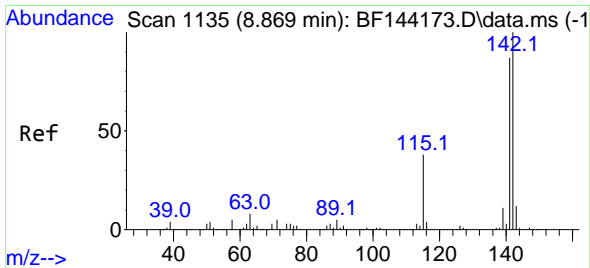


#36
 4-Chloro-3-methylphenol
 Concen: 48.740 ng
 RT: 8.710 min Scan# 1108
 Delta R.T. 0.006 min
 Lab File: BF144240.D
 Acq: 12 Nov 2025 20:49



Tgt Ion:107 Resp: 107414
 Ion Ratio Lower Upper
 107 100
 144 28.7 23.3 34.9
 142 80.9 63.8 95.6

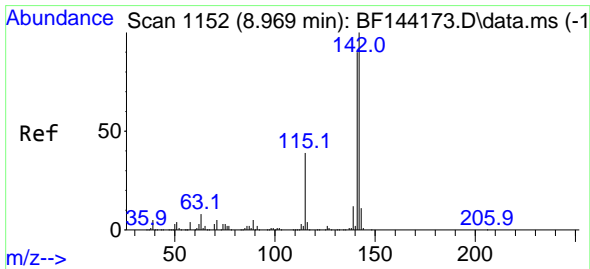
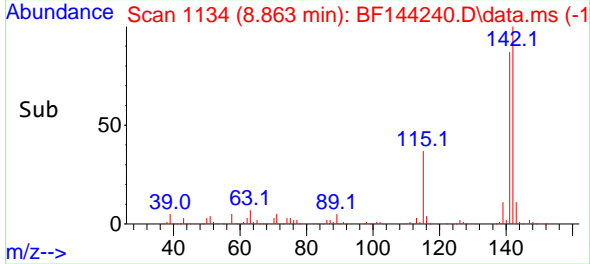
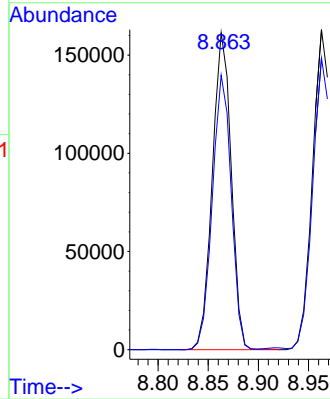
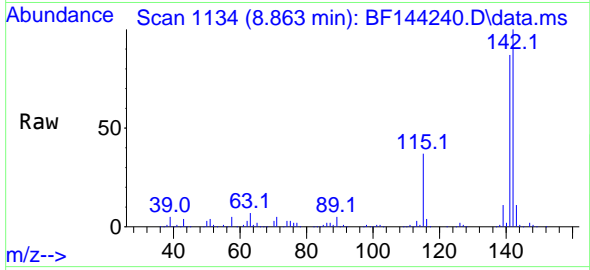




#37
 2-Methylnaphthalene
 Concen: 43.419 ng
 RT: 8.863 min Scan# 1114
 Delta R.T. -0.006 min
 Lab File: BF144240.D
 Acq: 12 Nov 2025 20:49

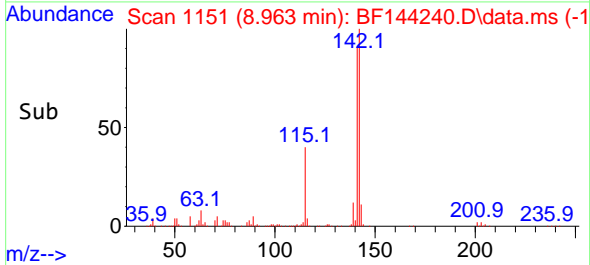
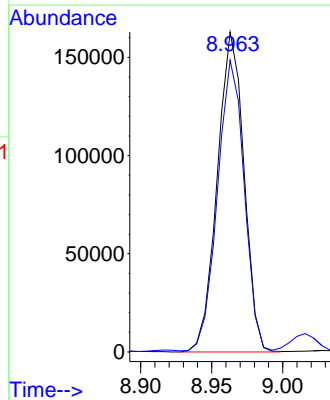
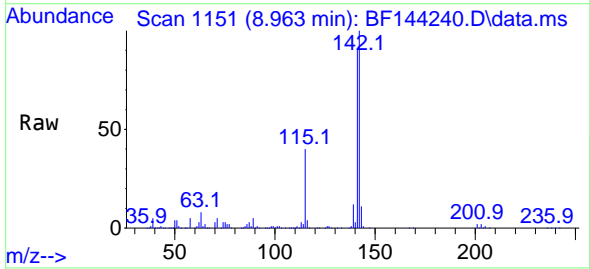
Instrument :
 BNA_F
 ClientSampleId :
 S-1MSD

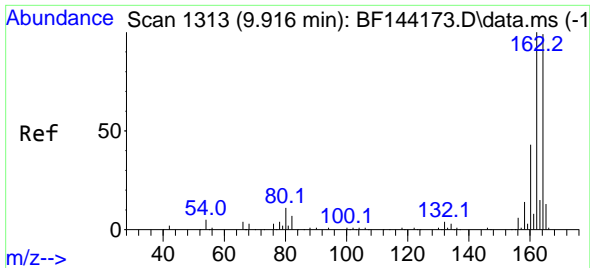
Tgt Ion:142 Resp: 211225
 Ion Ratio Lower Upper
 142 100
 141 86.6 69.9 104.9



#38
 1-Methylnaphthalene
 Concen: 45.313 ng
 RT: 8.963 min Scan# 1151
 Delta R.T. -0.006 min
 Lab File: BF144240.D
 Acq: 12 Nov 2025 20:49

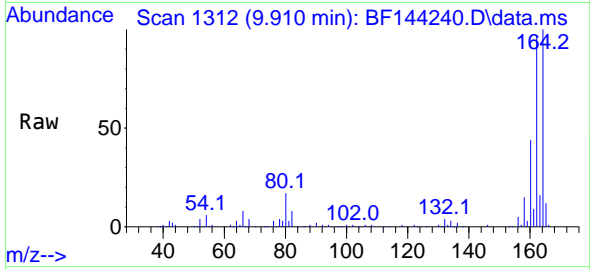
Tgt Ion:142 Resp: 212697
 Ion Ratio Lower Upper
 142 100
 141 91.2 72.1 108.1



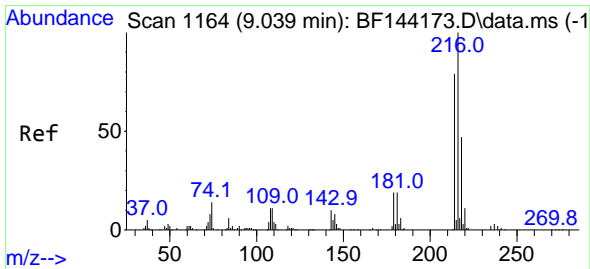
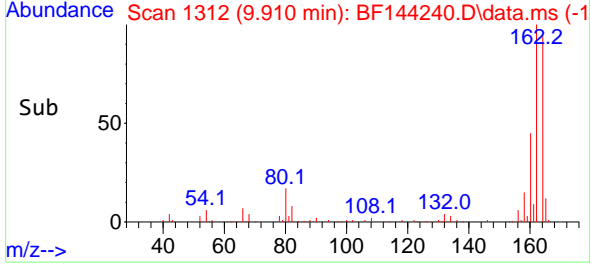
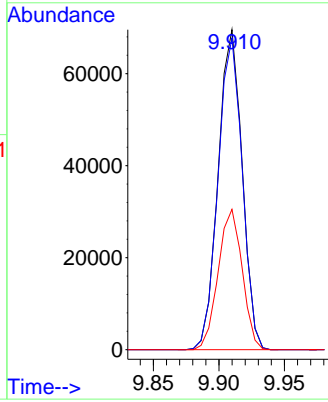


#39
 Acenaphthene-d10
 Concen: 20.000 ng
 RT: 9.910 min Scan# 1163
 Delta R.T. -0.006 min
 Lab File: BF144240.D
 Acq: 12 Nov 2025 20:49

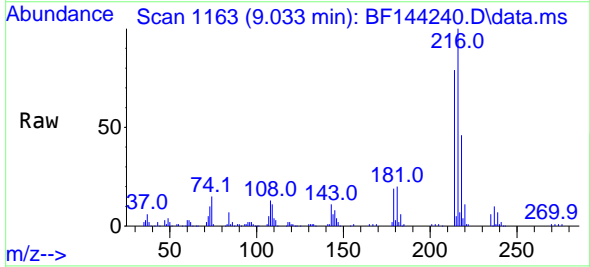
Instrument :
 BNA_F
 ClientSampleId :
 S-1MSD



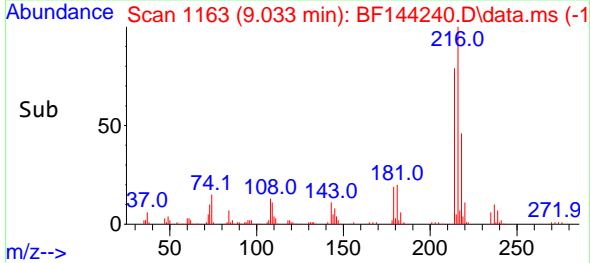
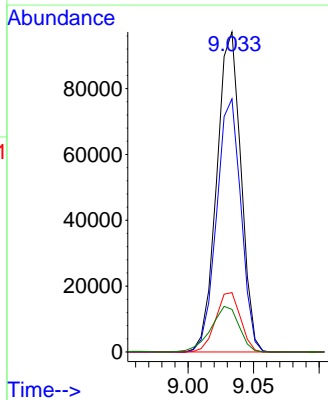
Tgt Ion:164 Resp: 88266
 Ion Ratio Lower Upper
 164 100
 162 97.4 81.1 121.7
 160 43.9 34.5 51.7

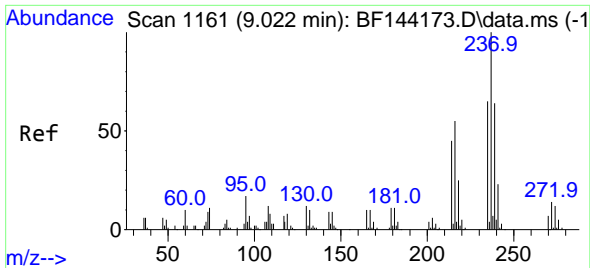


#40
 1,2,4,5-Tetrachlorobenzene
 Concen: 43.097 ng
 RT: 9.033 min Scan# 1163
 Delta R.T. -0.000 min
 Lab File: BF144240.D
 Acq: 12 Nov 2025 20:49



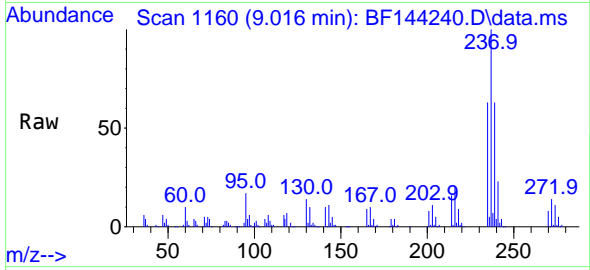
Tgt Ion:216 Resp: 124668
 Ion Ratio Lower Upper
 216 100
 214 79.5 63.4 95.2
 179 19.0 15.0 22.4
 108 16.5 10.5 15.7#



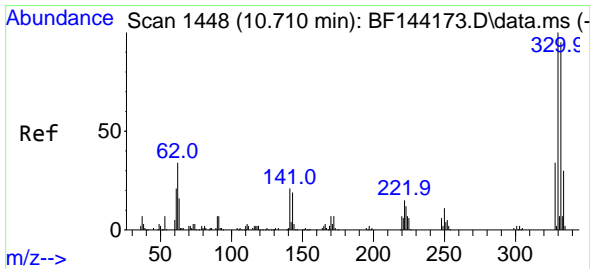
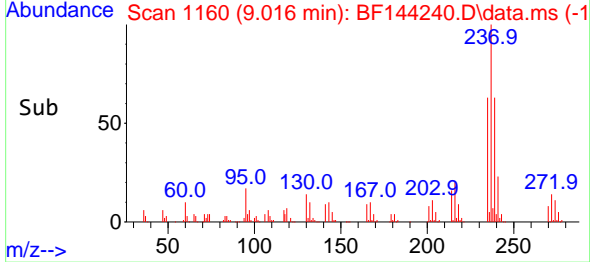
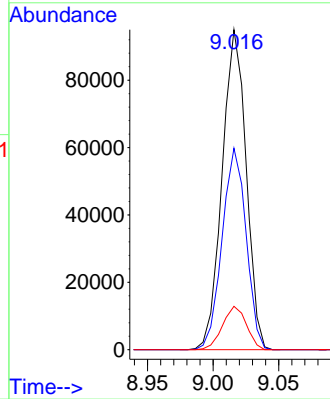


#41
 Hexachlorocyclopentadiene
 Concen: 98.183 ng
 RT: 9.016 min Scan# 1161
 Delta R.T. -0.012 min
 Lab File: BF144240.D
 Acq: 12 Nov 2025 20:49

Instrument :
 BNA_F
 ClientSampleId :
 S-1MSD

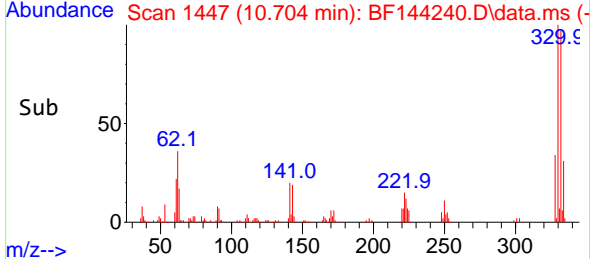
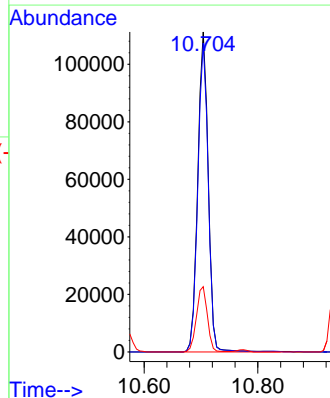
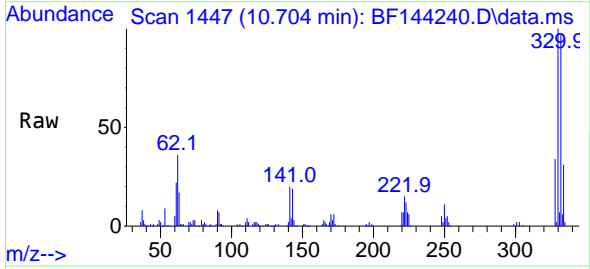


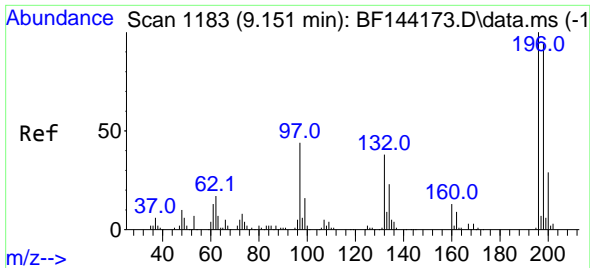
Tgt Ion:237 Resp: 120878
 Ion Ratio Lower Upper
 237 100
 235 63.0 45.5 85.5
 272 13.6 0.0 33.5



#42
 2,4,6-Tribromophenol
 Concen: 129.474 ng
 RT: 10.704 min Scan# 1447
 Delta R.T. -0.000 min
 Lab File: BF144240.D
 Acq: 12 Nov 2025 20:49

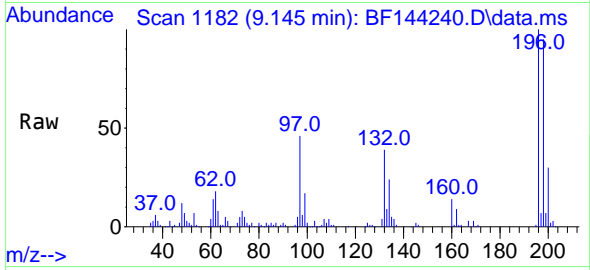
Tgt Ion:330 Resp: 143410
 Ion Ratio Lower Upper
 330 100
 332 95.8 76.7 115.1
 141 21.3 17.8 26.8



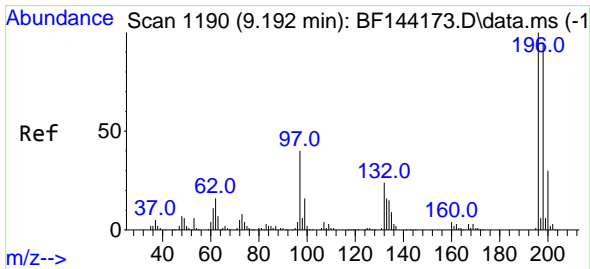
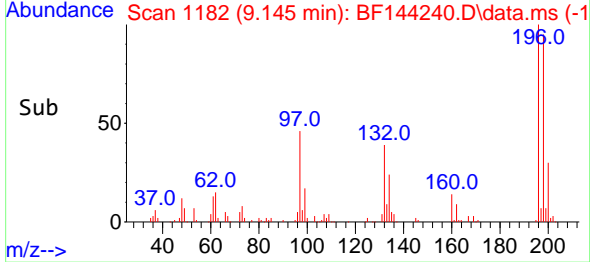
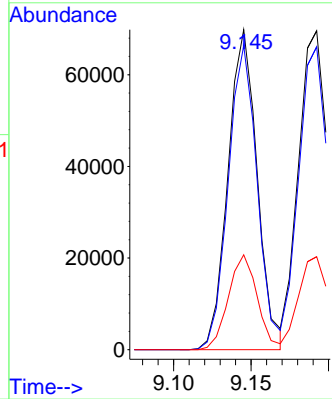


#43
 2,4,6-Trichlorophenol
 Concen: 46.435 ng
 RT: 9.145 min Scan# 1182
 Delta R.T. -0.006 min
 Lab File: BF144240.D
 Acq: 12 Nov 2025 20:49

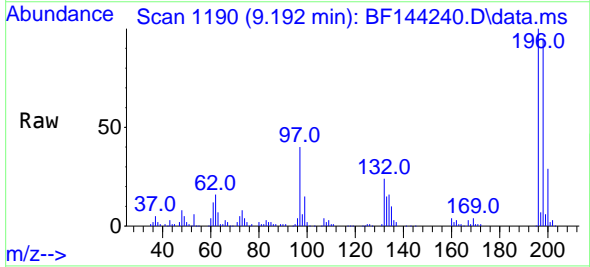
Instrument :
 BNA_F
 ClientSampleId :
 S-1MSD



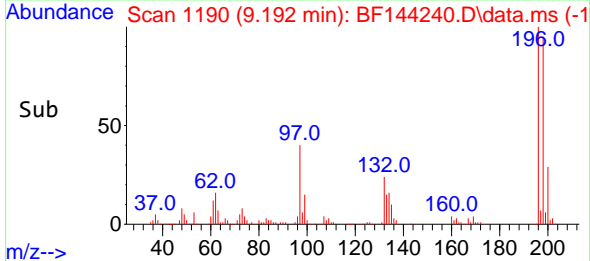
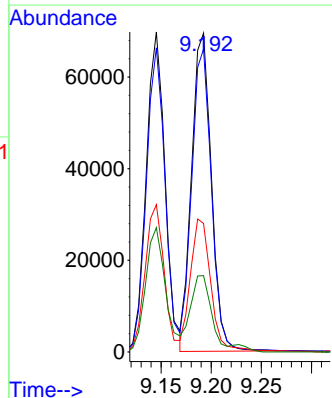
Tgt Ion:196 Resp: 91425
 Ion Ratio Lower Upper
 196 100
 198 95.1 75.3 112.9
 200 29.7 23.4 35.2

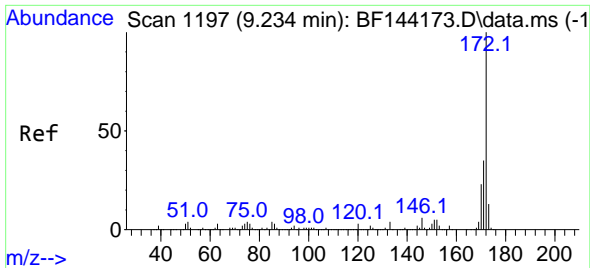


#44
 2,4,5-Trichlorophenol
 Concen: 44.956 ng
 RT: 9.192 min Scan# 1190
 Delta R.T. -0.000 min
 Lab File: BF144240.D
 Acq: 12 Nov 2025 20:49



Tgt Ion:196 Resp: 95396
 Ion Ratio Lower Upper
 196 100
 198 95.0 76.1 114.1
 97 40.3 31.9 47.9
 132 24.0 19.4 29.2



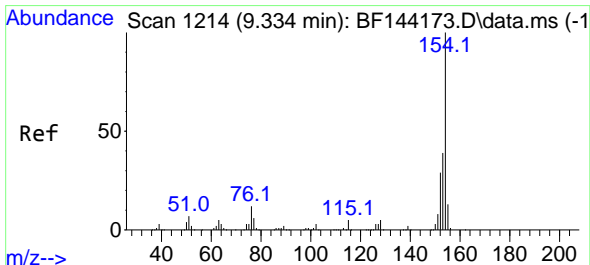
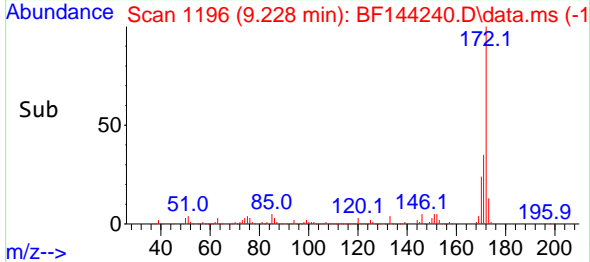
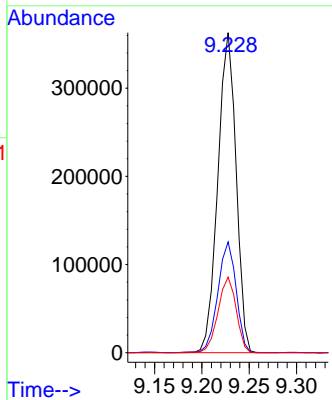
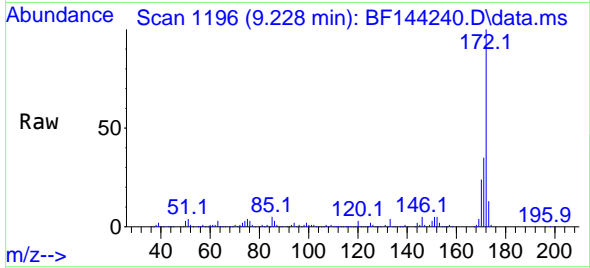


#45
 2-Fluorobiphenyl
 Concen: 81.466 ng
 RT: 9.228 min Scan# 1197
 Delta R.T. -0.000 min
 Lab File: BF144240.D
 Acq: 12 Nov 2025 20:49

Instrument :
 BNA_F
 ClientSampleId :
 S-1MSD

Tgt Ion:172 Resp: 486866

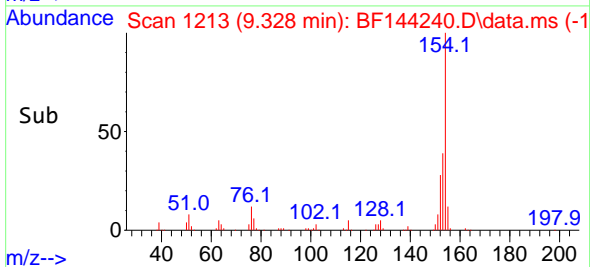
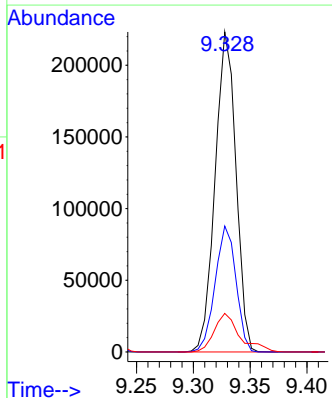
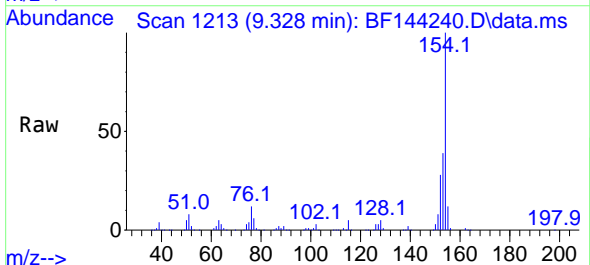
Ion	Ratio	Lower	Upper
172	100		
171	34.6	28.1	42.1
170	23.6	18.6	28.0

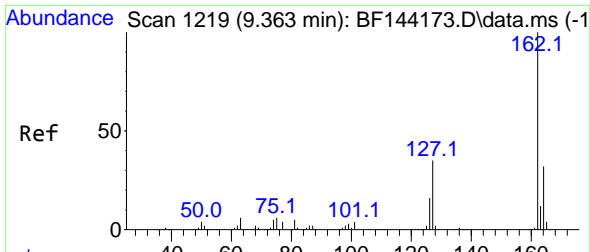


#46
 1,1'-Biphenyl
 Concen: 46.307 ng
 RT: 9.328 min Scan# 1213
 Delta R.T. -0.006 min
 Lab File: BF144240.D
 Acq: 12 Nov 2025 20:49

Tgt Ion:154 Resp: 285308

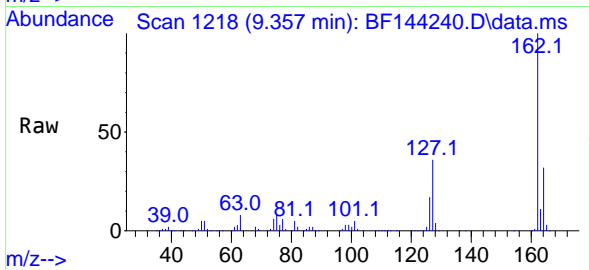
Ion	Ratio	Lower	Upper
154	100		
153	39.4	19.2	59.2
76	12.1	0.0	31.8



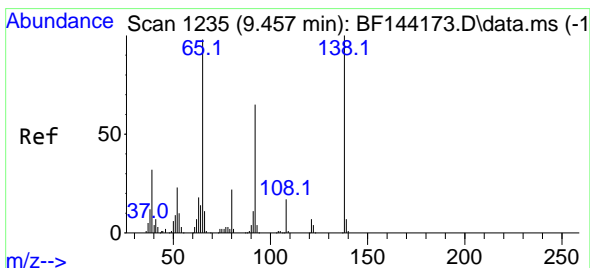
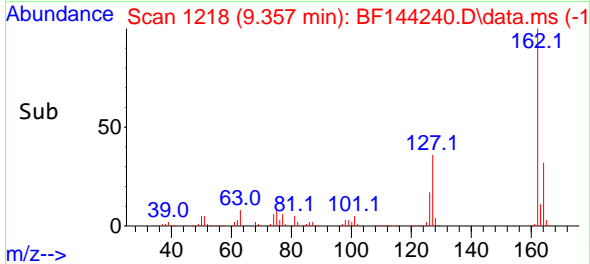
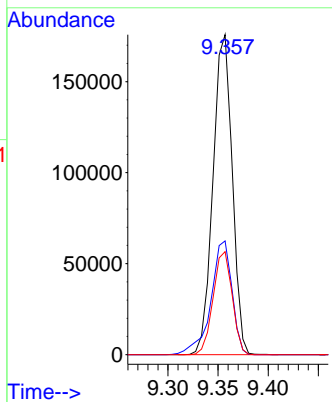


#47
 2-Chloronaphthalene
 Concen: 44.614 ng
 RT: 9.357 min Scan# 11
 Delta R.T. -0.000 min
 Lab File: BF144240.D
 Acq: 12 Nov 2025 20:49

Instrument :
 BNA_F
 ClientSampleId :
 S-1MSD

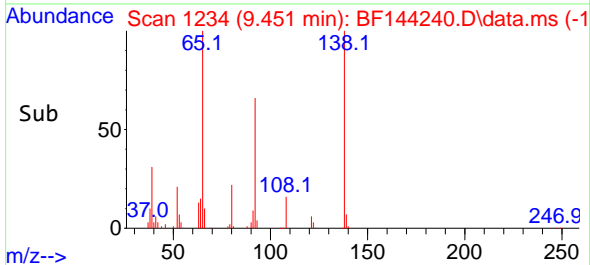
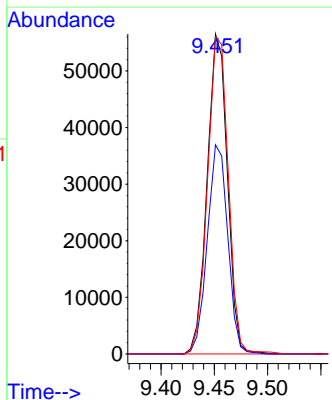
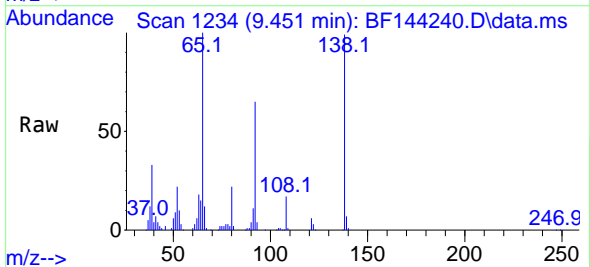


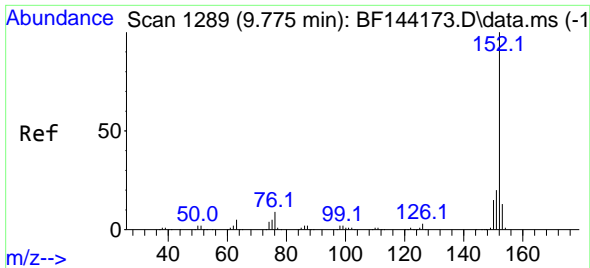
Tgt Ion:162 Resp: 234474
 Ion Ratio Lower Upper
 162 100
 127 35.5 28.8 43.2
 164 32.2 25.8 38.8



#48
 2-Nitroaniline
 Concen: 49.170 ng
 RT: 9.451 min Scan# 1234
 Delta R.T. -0.006 min
 Lab File: BF144240.D
 Acq: 12 Nov 2025 20:49

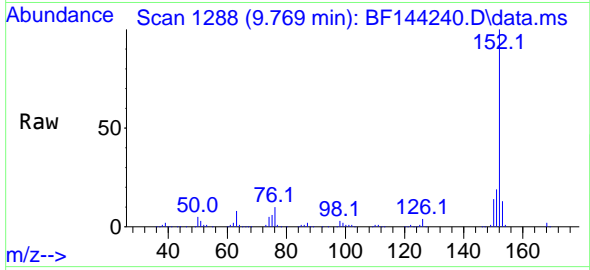
Tgt Ion: 65 Resp: 74562
 Ion Ratio Lower Upper
 65 100
 92 65.4 53.0 79.6
 138 99.1 81.6 122.4



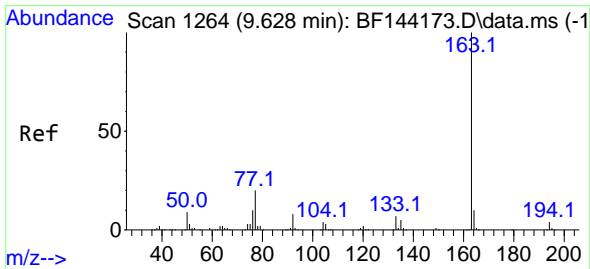
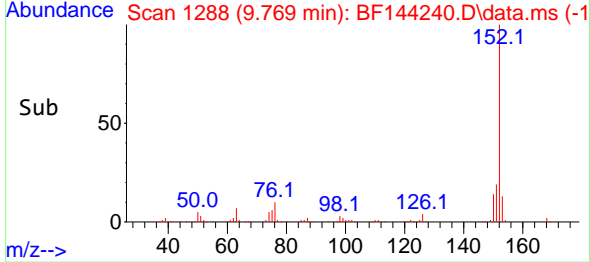
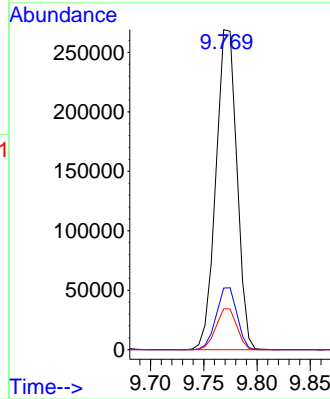


#49
 Acenaphthylene
 Concen: 51.339 ng
 RT: 9.769 min Scan# 11
 Delta R.T. -0.006 min
 Lab File: BF144240.D
 Acq: 12 Nov 2025 20:49

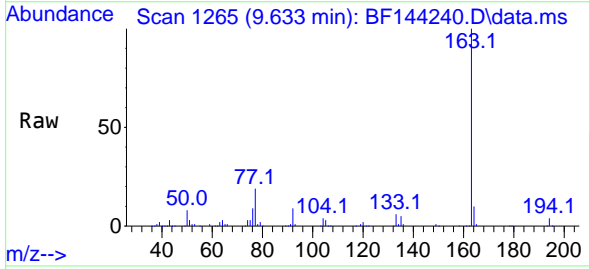
Instrument :
 BNA_F
 ClientSampleId :
 S-1MSD



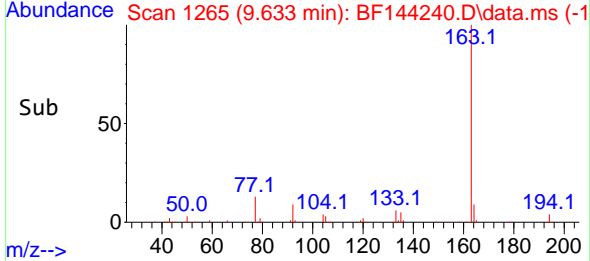
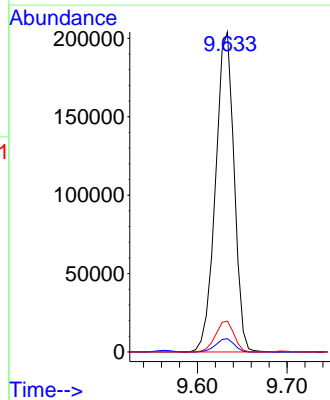
Tgt Ion:152 Resp: 367687
 Ion Ratio Lower Upper
 152 100
 151 19.2 15.9 23.9
 153 12.8 10.5 15.7

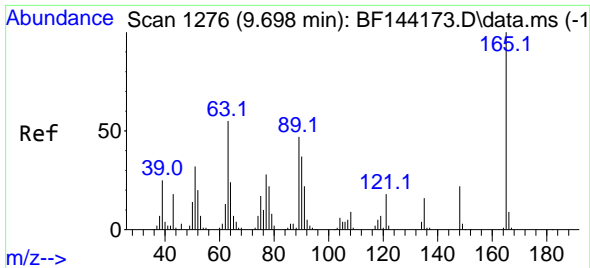


#50
 Dimethylphthalate
 Concen: 50.047 ng
 RT: 9.633 min Scan# 1265
 Delta R.T. 0.006 min
 Lab File: BF144240.D
 Acq: 12 Nov 2025 20:49



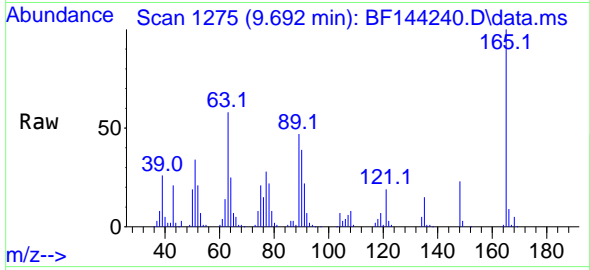
Tgt Ion:163 Resp: 292649
 Ion Ratio Lower Upper
 163 100
 194 4.2 3.3 4.9
 164 9.6 8.1 12.1



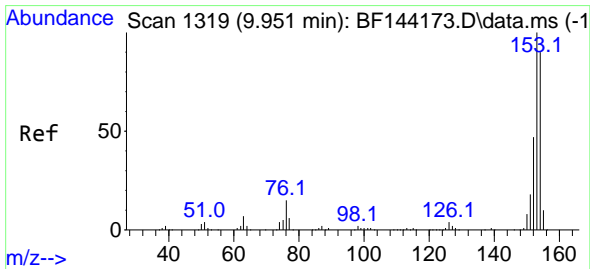
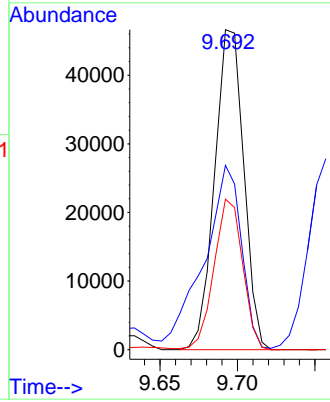
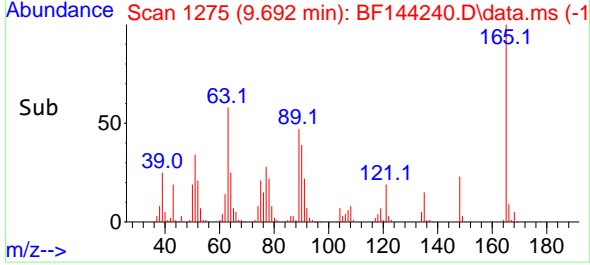


#51
 2,6-Dinitrotoluene
 Concen: 51.625 ng
 RT: 9.692 min Scan# 11
 Delta R.T. -0.000 min
 Lab File: BF144240.D
 Acq: 12 Nov 2025 20:49

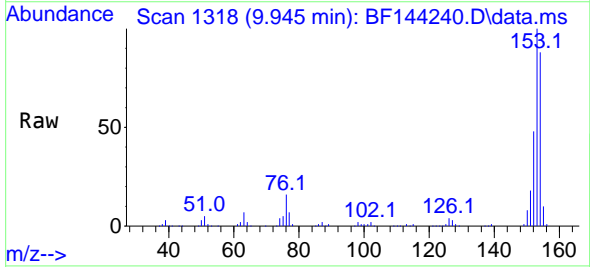
Instrument :
 BNA_F
 ClientSampleId :
 S-1MSD



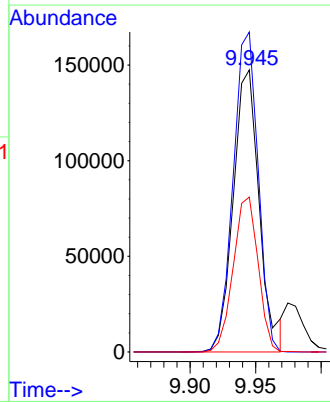
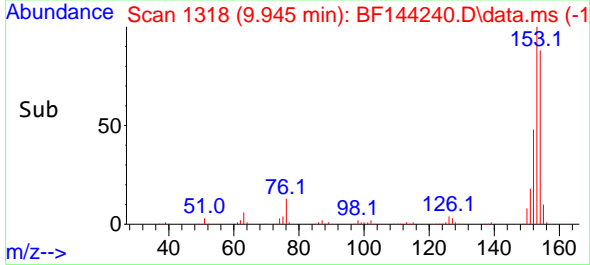
Tgt Ion:165 Resp: 61109
 Ion Ratio Lower Upper
 165 100
 63 57.6 43.8 65.8
 89 47.0 37.5 56.3

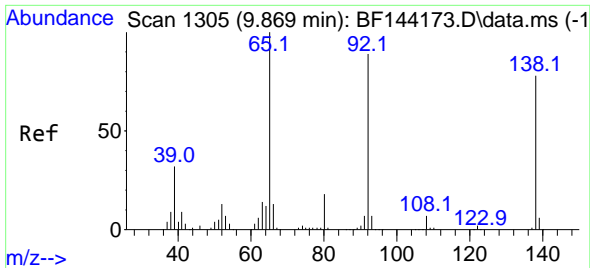


#52
 Acenaphthene
 Concen: 42.624 ng
 RT: 9.945 min Scan# 1318
 Delta R.T. -0.000 min
 Lab File: BF144240.D
 Acq: 12 Nov 2025 20:49



Tgt Ion:154 Resp: 204139
 Ion Ratio Lower Upper
 154 100
 153 113.5 89.0 133.4
 152 54.9 42.2 63.4



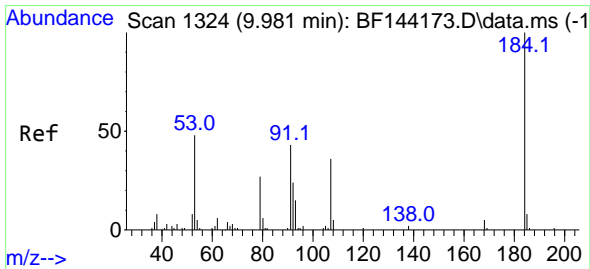
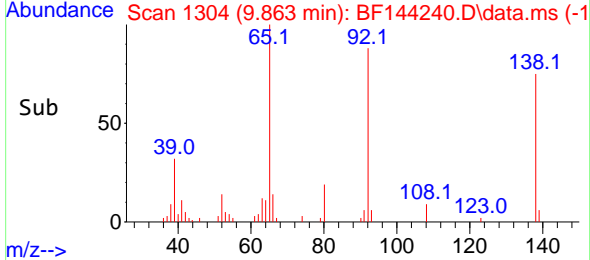
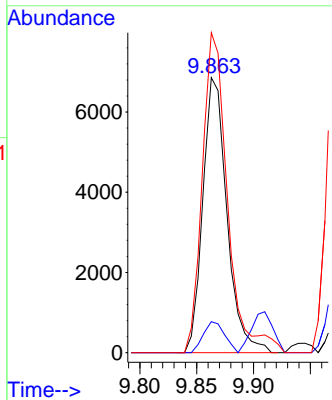
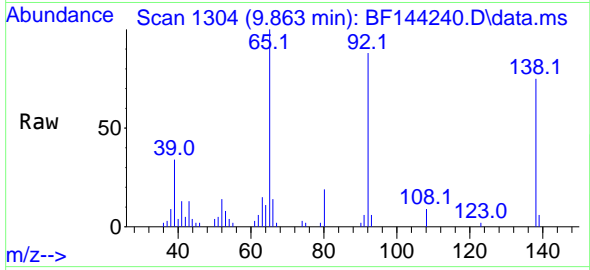


#53
 3-Nitroaniline
 Concen: 7.831 ng
 RT: 9.863 min Scan# 11
 Delta R.T. -0.006 min
 Lab File: BF144240.D
 Acq: 12 Nov 2025 20:49

Instrument : BNA_F
 ClientSampleId : S-1MSD

Tgt Ion:138 Resp: 10133

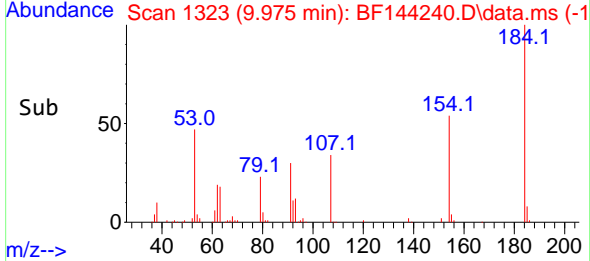
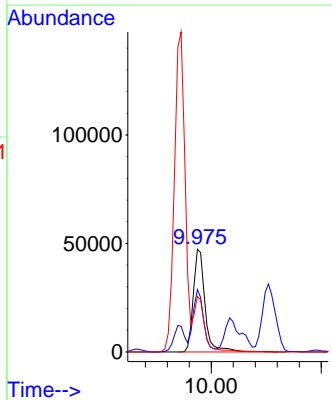
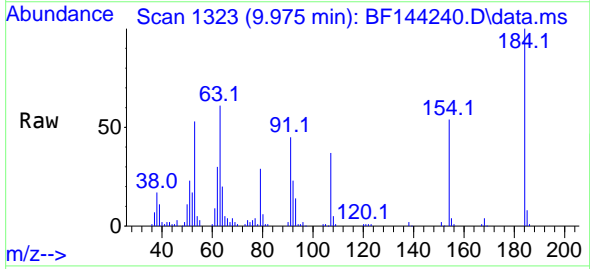
Ion	Ratio	Lower	Upper
138	100		
108	11.3	7.5	11.3#
92	116.3	91.8	137.6

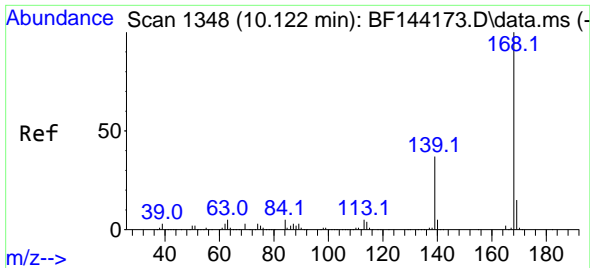


#54
 2,4-Dinitrophenol
 Concen: 98.546 ng
 RT: 9.975 min Scan# 1323
 Delta R.T. -0.012 min
 Lab File: BF144240.D
 Acq: 12 Nov 2025 20:49

Tgt Ion:184 Resp: 70440

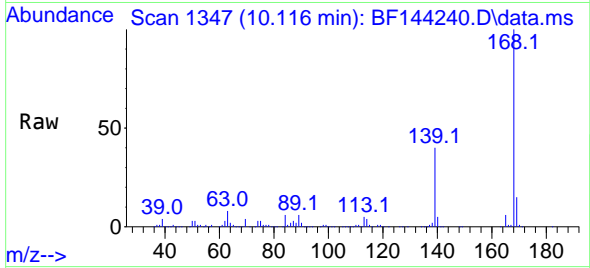
Ion	Ratio	Lower	Upper
184	100		
63	60.6	44.0	66.0
154	54.0	42.4	63.6



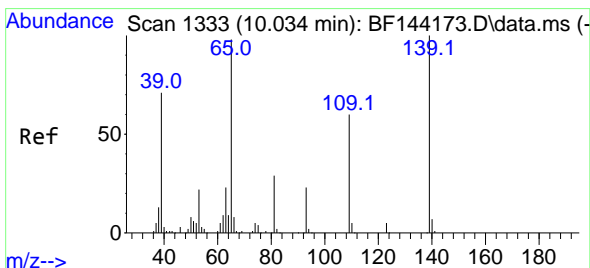
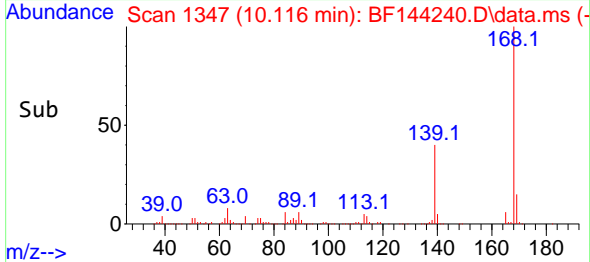
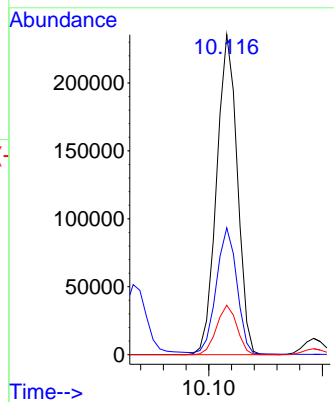


#55
 Dibenzofuran
 Concen: 44.437 ng
 RT: 10.116 min Scan# 11
 Delta R.T. -0.000 min
 Lab File: BF144240.D
 Acq: 12 Nov 2025 20:49

Instrument :
 BNA_F
 ClientSampleId :
 S-1MSD

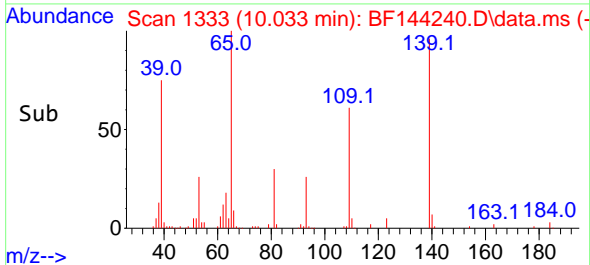
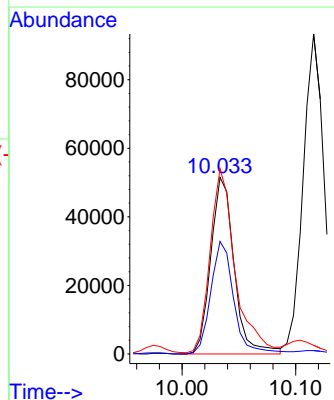
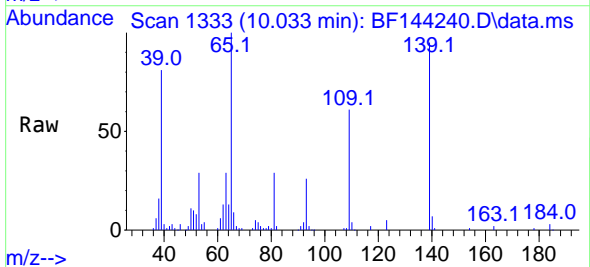


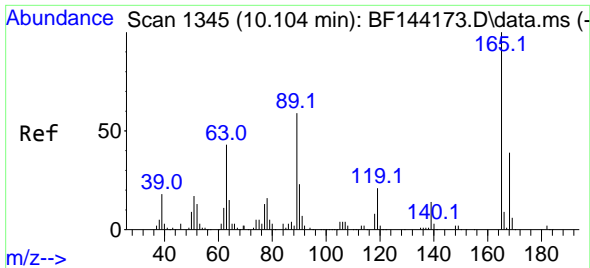
Tgt Ion:168 Resp: 298065
 Ion Ratio Lower Upper
 168 100
 139 39.6 30.2 45.2
 169 15.4 12.2 18.4



#56
 4-Nitrophenol
 Concen: 78.776 ng
 RT: 10.033 min Scan# 1333
 Delta R.T. -0.006 min
 Lab File: BF144240.D
 Acq: 12 Nov 2025 20:49

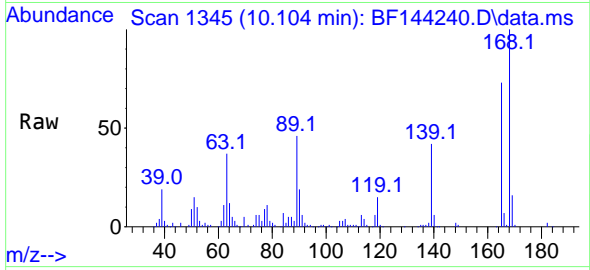
Tgt Ion:139 Resp: 73736
 Ion Ratio Lower Upper
 139 100
 109 63.7 39.9 79.9
 65 104.9 79.5 119.5



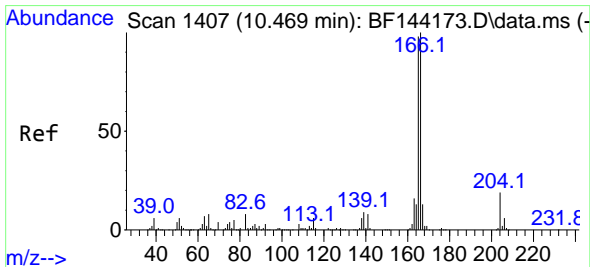
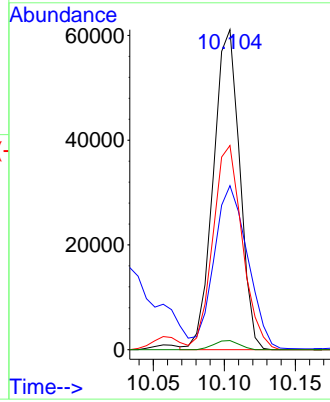
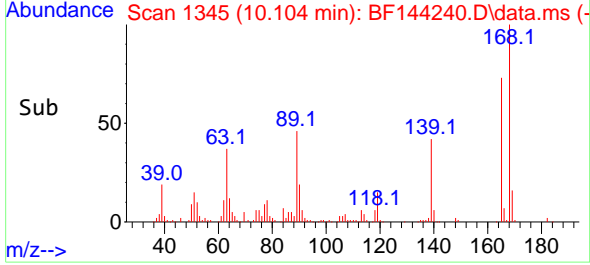


#57
 2,4-Dinitrotoluene
 Concen: 49.764 ng
 RT: 10.104 min Scan# 11
 Delta R.T. 0.006 min
 Lab File: BF144240.D
 Acq: 12 Nov 2025 20:49

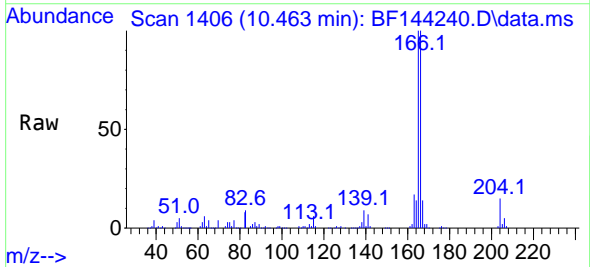
Instrument :
 BNA_F
 ClientSampleId :
 S-1MSD



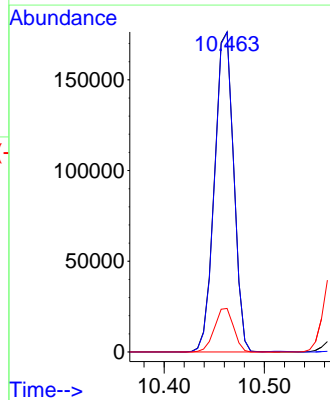
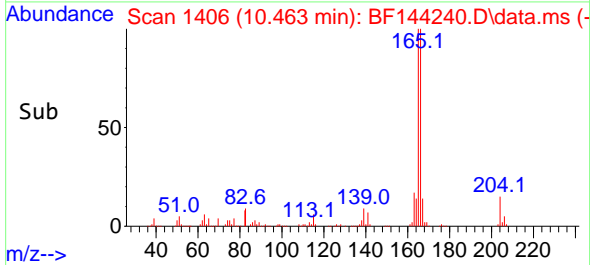
Tgt Ion:165 Resp: 78857
 Ion Ratio Lower Upper
 165 100
 63 51.3 35.5 53.3
 89 63.8 47.4 71.2
 182 2.8 1.9 2.9

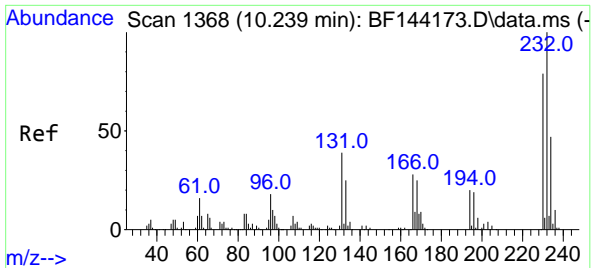


#58
 Fluorene
 Concen: 45.858 ng
 RT: 10.463 min Scan# 1406
 Delta R.T. -0.000 min
 Lab File: BF144240.D
 Acq: 12 Nov 2025 20:49



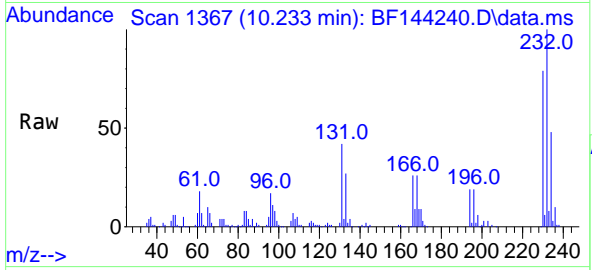
Tgt Ion:166 Resp: 233867
 Ion Ratio Lower Upper
 166 100
 165 99.9 78.6 118.0
 167 13.6 10.4 15.6



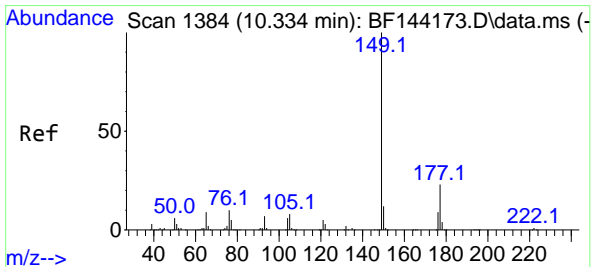
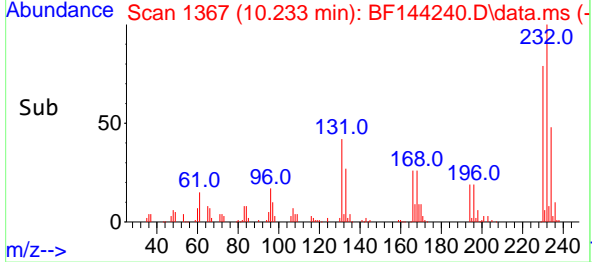
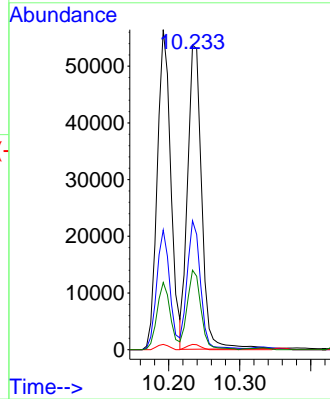


#59
 2,3,4,6-Tetrachlorophenol
 Concen: 49.102 ng
 RT: 10.233 min Scan# 11
 Delta R.T. -0.006 min
 Lab File: BF144240.D
 Acq: 12 Nov 2025 20:49

Instrument :
 BNA_F
 ClientSampleId :
 S-1MSD

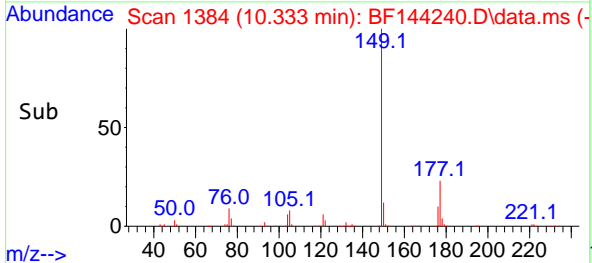
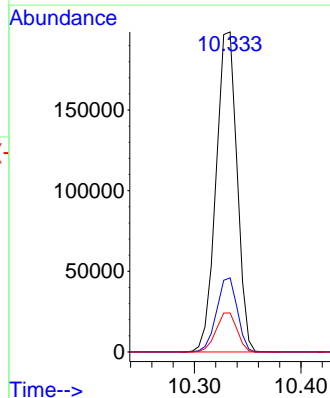
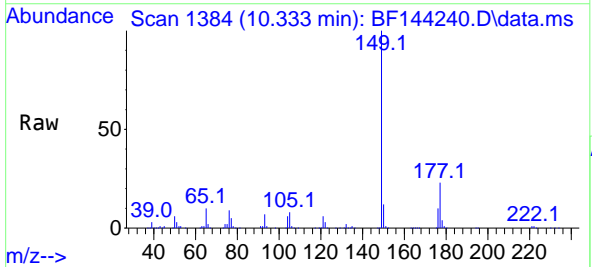


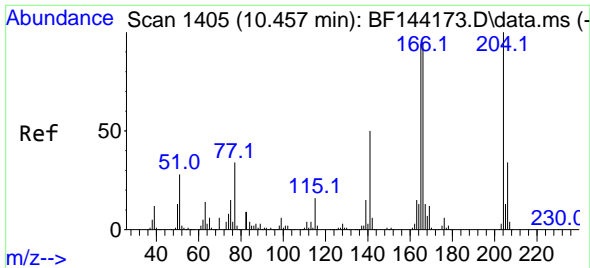
Tgt Ion:232 Resp: 73718
 Ion Ratio Lower Upper
 232 100
 131 40.4 30.3 45.5
 130 1.7 1.2 1.8
 166 25.4 21.5 32.3



#60
 Diethylphthalate
 Concen: 50.289 ng
 RT: 10.333 min Scan# 1384
 Delta R.T. 0.006 min
 Lab File: BF144240.D
 Acq: 12 Nov 2025 20:49

Tgt Ion:149 Resp: 271081
 Ion Ratio Lower Upper
 149 100
 177 23.1 18.3 27.5
 150 12.2 9.8 14.6

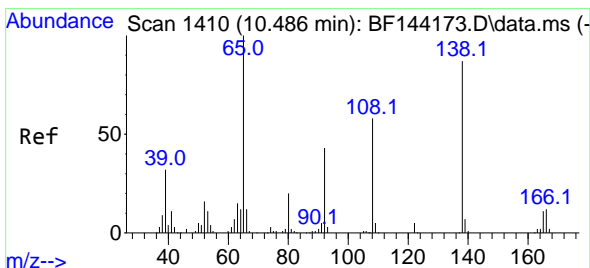
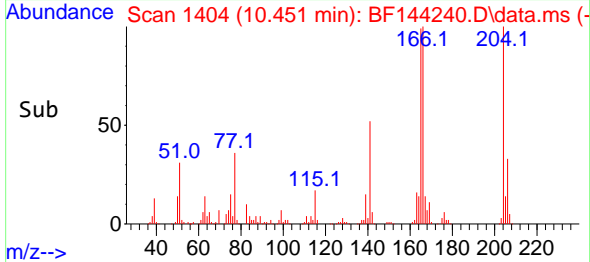
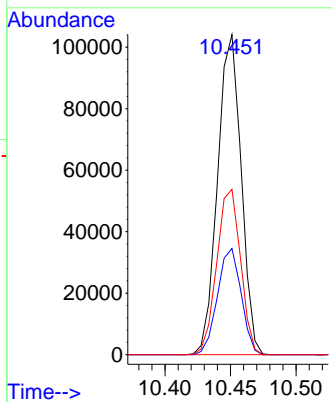
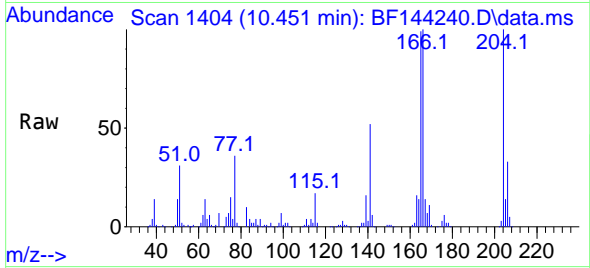




#61
 4-Chlorophenyl-phenylether
 Concen: 44.792 ng
 RT: 10.451 min Scan# 1404
 Delta R.T. -0.006 min
 Lab File: BF144240.D
 Acq: 12 Nov 2025 20:49

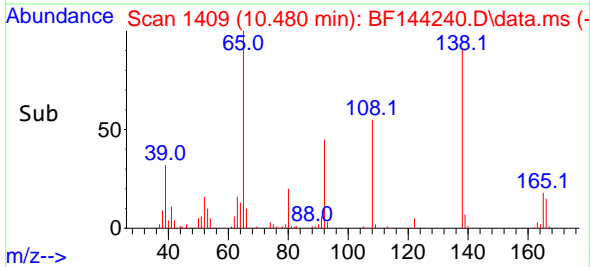
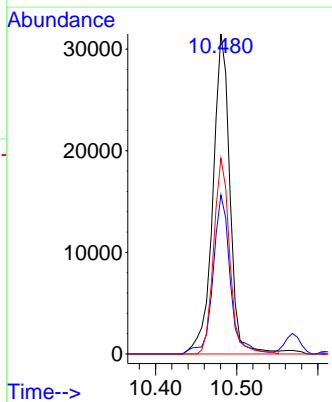
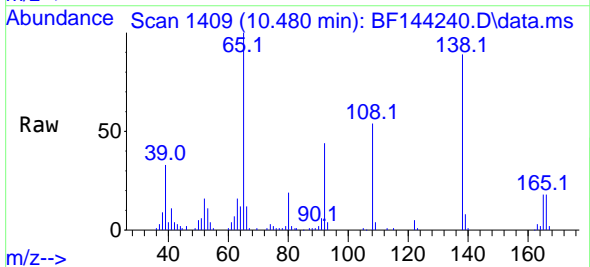
Instrument :
 BNA_F
 ClientSampleId :
 S-1MSD

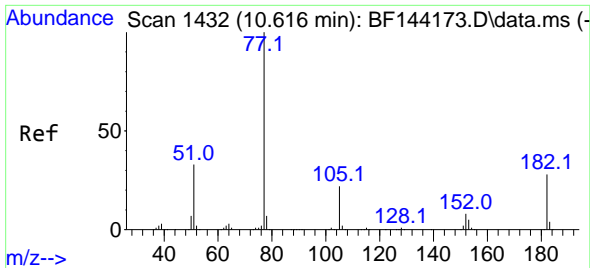
Tgt Ion:204 Resp: 130121
 Ion Ratio Lower Upper
 204 100
 206 33.2 27.4 41.2
 141 51.7 40.0 60.0



#62
 4-Nitroaniline
 Concen: 37.219 ng
 RT: 10.480 min Scan# 1409
 Delta R.T. 0.006 min
 Lab File: BF144240.D
 Acq: 12 Nov 2025 20:49

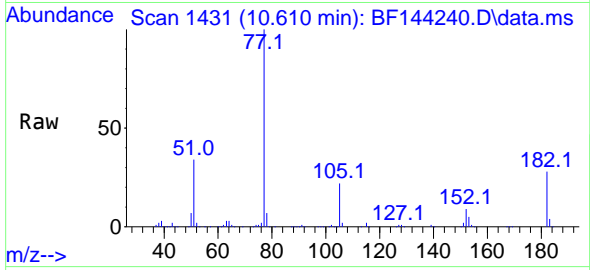
Tgt Ion:138 Resp: 45864
 Ion Ratio Lower Upper
 138 100
 92 49.7 29.4 69.4
 108 61.2 46.4 86.4





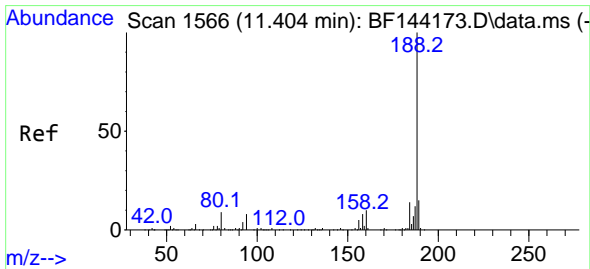
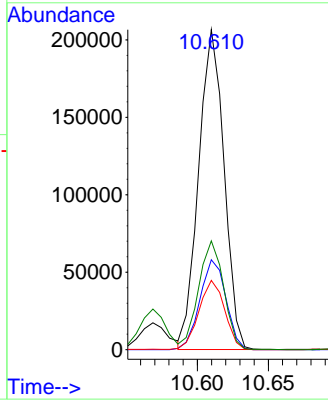
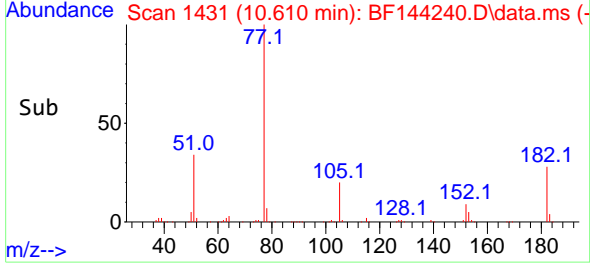
#63
 Azobenzene
 Concen: 51.260 ng
 RT: 10.610 min Scan# 14
 Delta R.T. -0.006 min
 Lab File: BF144240.D
 Acq: 12 Nov 2025 20:49

Instrument :
 BNA_F
 ClientSampleId :
 S-1MSD

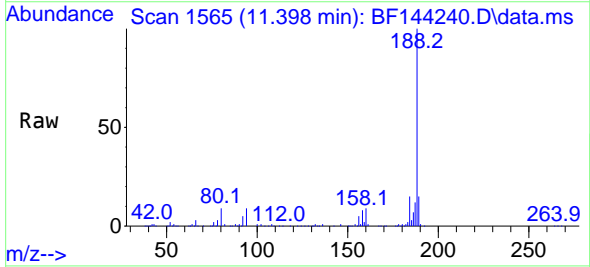


Tgt Ion: 77 Resp: 257157

Ion	Ratio	Lower	Upper
77	100		
182	28.1	8.1	48.1
105	21.6	2.0	42.0
51	34.0	13.9	53.9

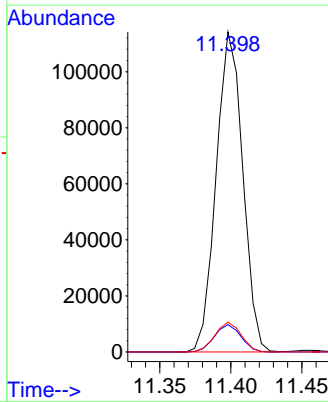
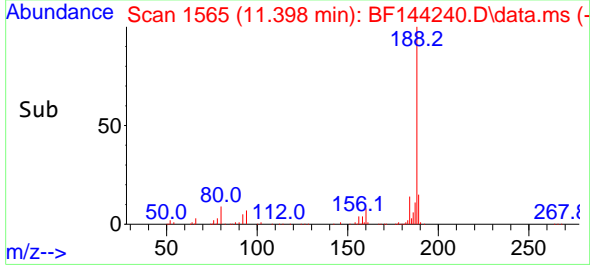


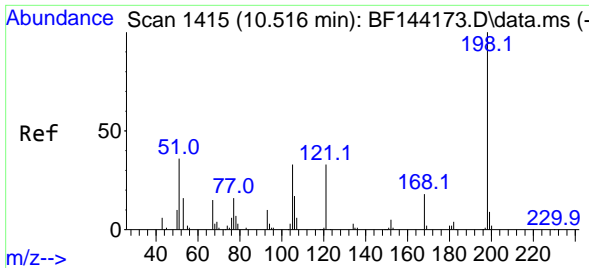
#64
 Phenanthrene-d10
 Concen: 20.000 ng
 RT: 11.398 min Scan# 1565
 Delta R.T. -0.006 min
 Lab File: BF144240.D
 Acq: 12 Nov 2025 20:49



Tgt Ion: 188 Resp: 148585

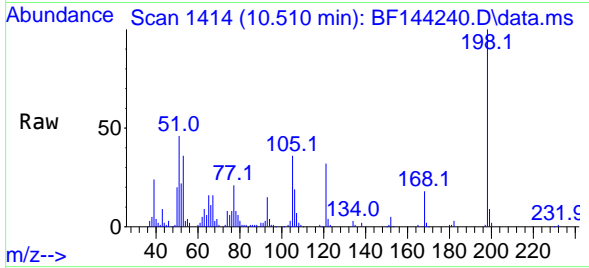
Ion	Ratio	Lower	Upper
188	100		
94	8.6	6.2	9.2
80	9.3	6.9	10.3



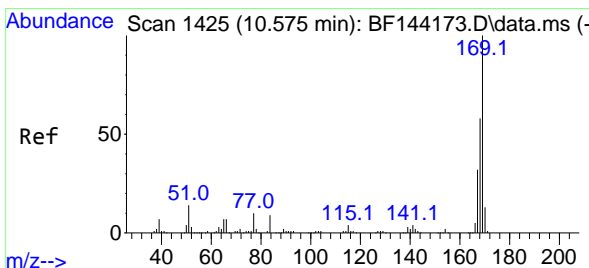
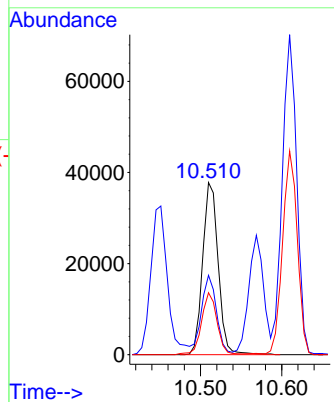
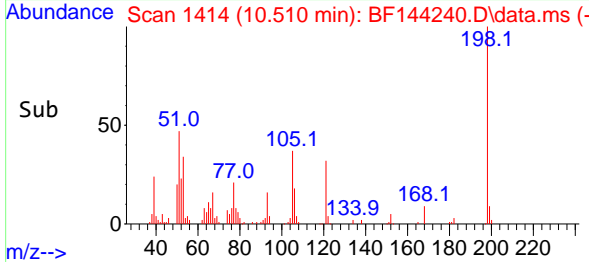


#65
 4,6-Dinitro-2-methylphenol
 Concen: 49.594 ng
 RT: 10.510 min Scan# 1415
 Delta R.T. -0.012 min
 Lab File: BF144240.D
 Acq: 12 Nov 2025 20:49

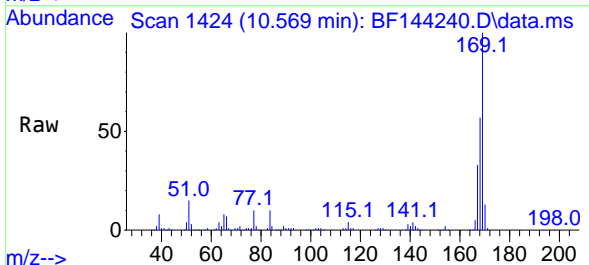
Instrument :
 BNA_F
 ClientSampleId :
 S-1MSD



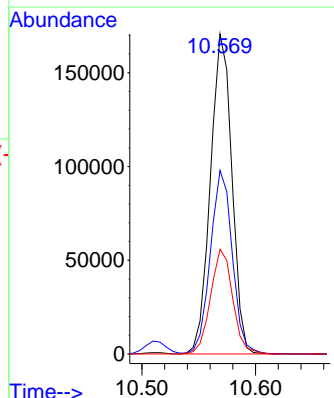
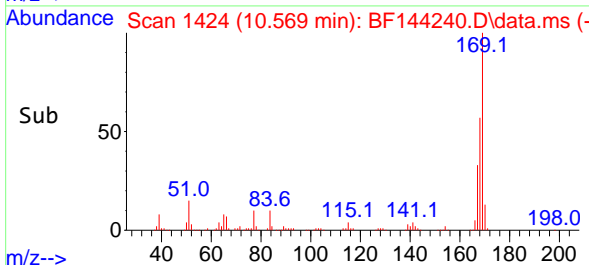
Tgt Ion:198 Resp: 50060
 Ion Ratio Lower Upper
 198 100
 51 46.2 25.6 65.6
 105 36.0 14.6 54.6

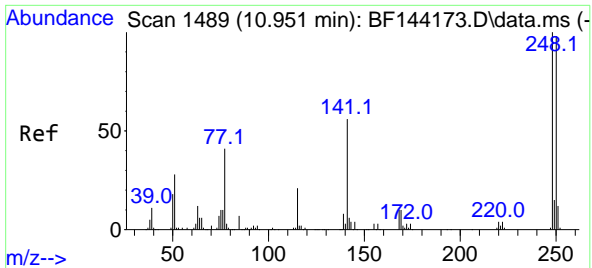


#66
 n-Nitrosodiphenylamine
 Concen: 46.893 ng
 RT: 10.569 min Scan# 1424
 Delta R.T. -0.000 min
 Lab File: BF144240.D
 Acq: 12 Nov 2025 20:49



Tgt Ion:169 Resp: 224095
 Ion Ratio Lower Upper
 169 100
 168 57.4 46.2 69.2
 167 32.7 25.7 38.5



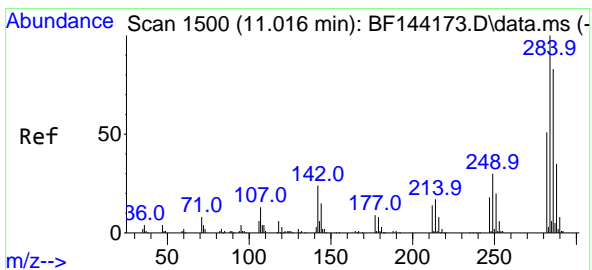
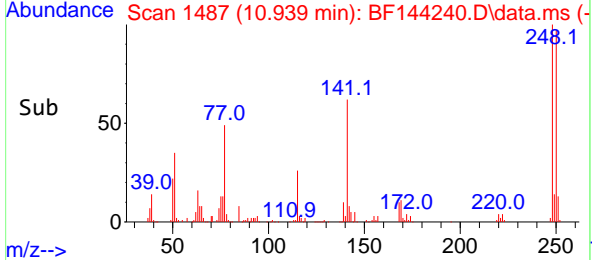
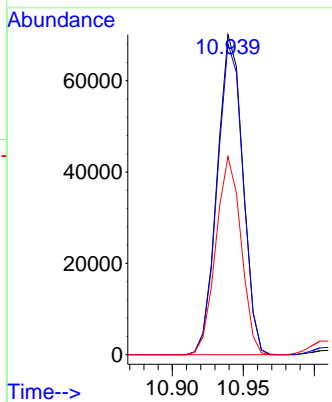
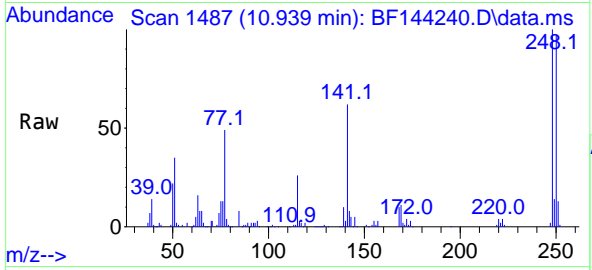


#67
 4-Bromophenyl-phenylether
 Concen: 46.462 ng
 RT: 10.939 min Scan# 1499
 Delta R.T. -0.006 min
 Lab File: BF144240.D
 Acq: 12 Nov 2025 20:49

Instrument :
 BNA_F
 ClientSampleId :
 S-1MSD

Tgt Ion: 248 Resp: 88117

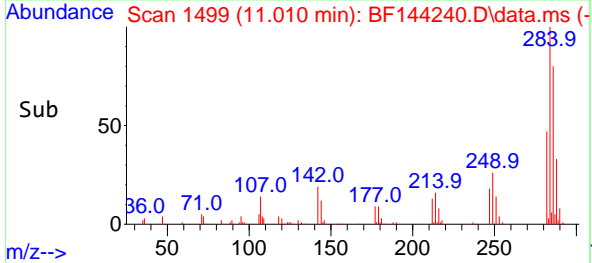
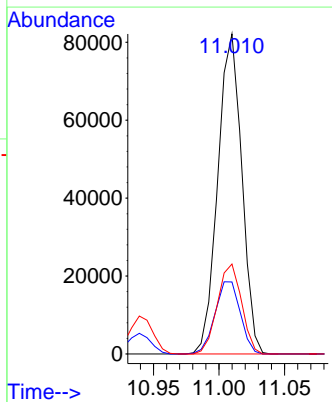
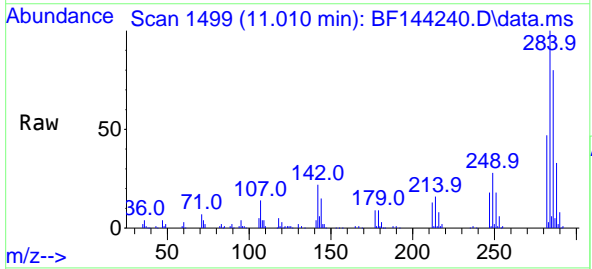
Ion	Ratio	Lower	Upper
248	100		
250	97.2	78.4	117.6
141	61.9	45.1	67.7

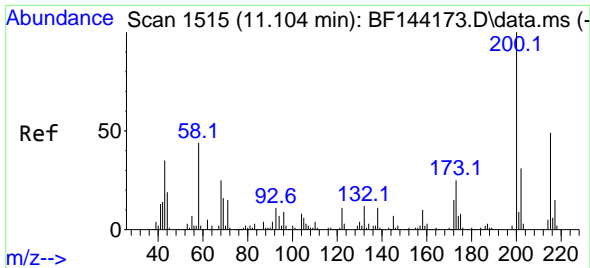


#68
 Hexachlorobenzene
 Concen: 46.756 ng
 RT: 11.010 min Scan# 1499
 Delta R.T. -0.000 min
 Lab File: BF144240.D
 Acq: 12 Nov 2025 20:49

Tgt Ion: 284 Resp: 104447

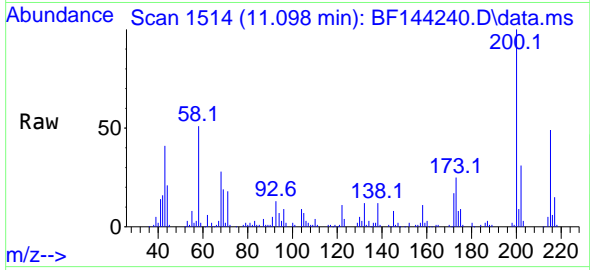
Ion	Ratio	Lower	Upper
284	100		
142	22.5	19.2	28.8
249	28.1	23.8	35.8



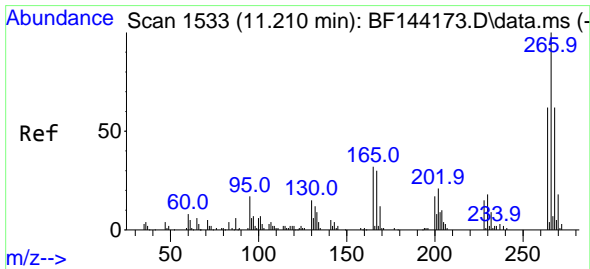
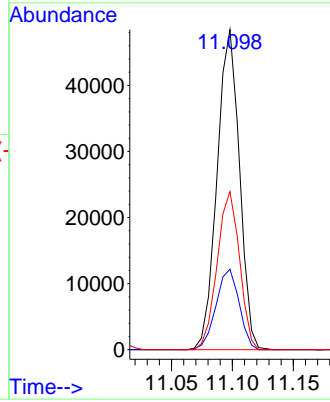
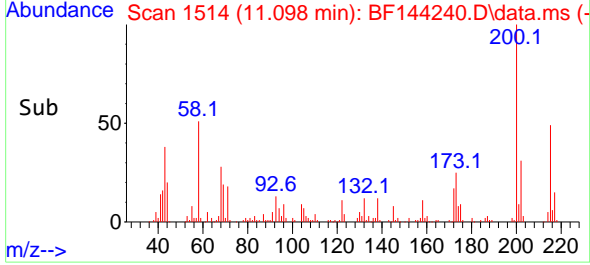


#69
 Atrazine
 Concen: 40.809 ng
 RT: 11.098 min Scan# 11
 Delta R.T. -0.000 min
 Lab File: BF144240.D
 Acq: 12 Nov 2025 20:49

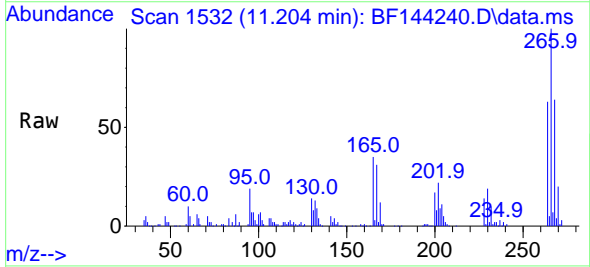
Instrument :
 BNA_F
 ClientSampleId :
 S-1MSD



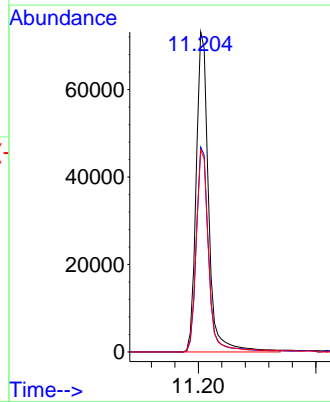
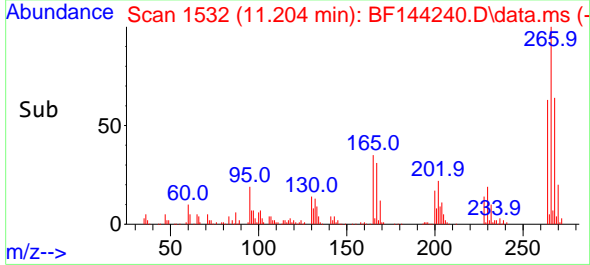
Tgt Ion:200 Resp: 62022
 Ion Ratio Lower Upper
 200 100
 173 25.2 5.0 45.0
 215 49.4 28.7 68.7

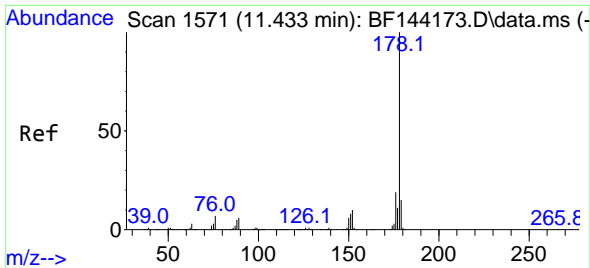


#70
 Pentachlorophenol
 Concen: 96.276 ng
 RT: 11.204 min Scan# 1532
 Delta R.T. -0.012 min
 Lab File: BF144240.D
 Acq: 12 Nov 2025 20:49



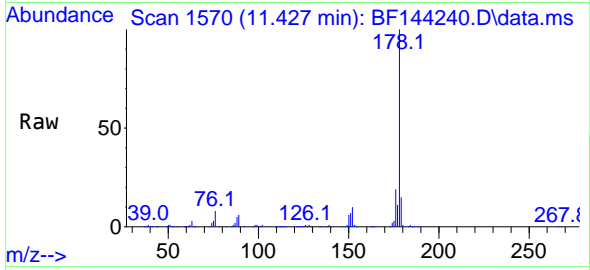
Tgt Ion:266 Resp: 107096
 Ion Ratio Lower Upper
 266 100
 268 64.0 49.5 74.3
 264 63.1 49.4 74.2





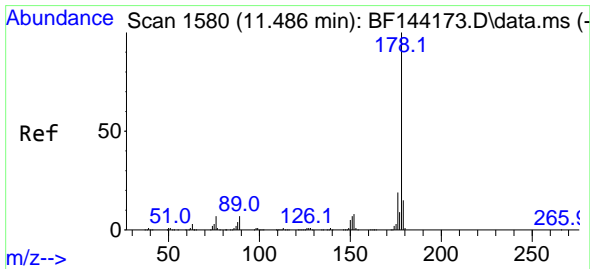
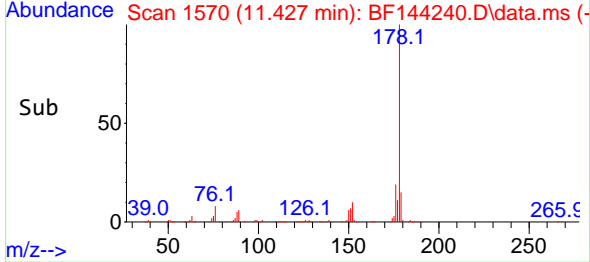
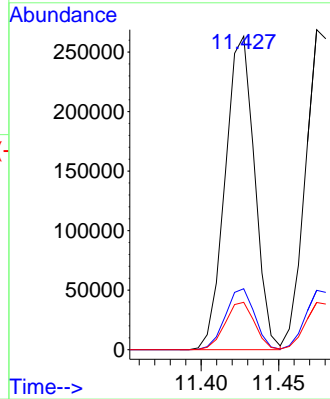
#71
 Phenanthrene
 Concen: 46.917 ng
 RT: 11.427 min Scan# 11
 Delta R.T. -0.000 min
 Lab File: BF144240.D
 Acq: 12 Nov 2025 20:49

Instrument :
 BNA_F
 ClientSampleId :
 S-1MSD



Tgt Ion:178 Resp: 347083

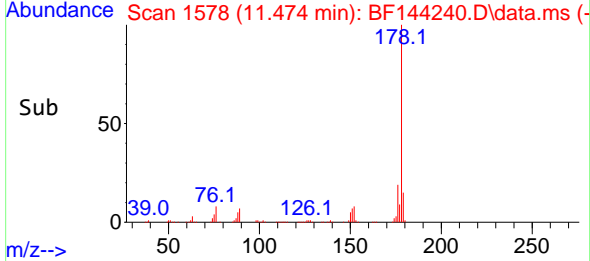
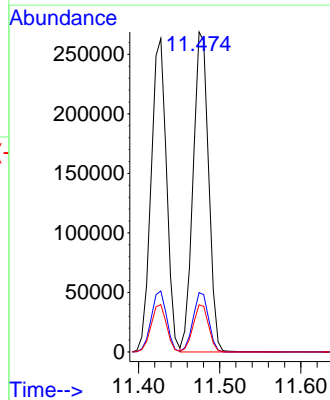
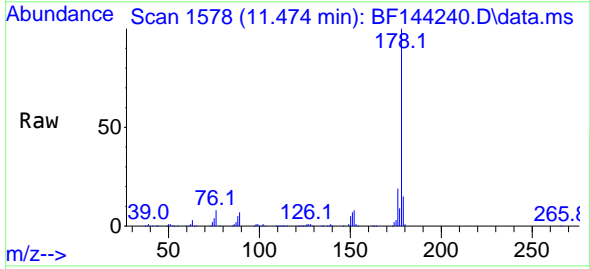
Ion	Ratio	Lower	Upper
178	100		
176	19.5	15.5	23.3
179	15.1	12.2	18.4

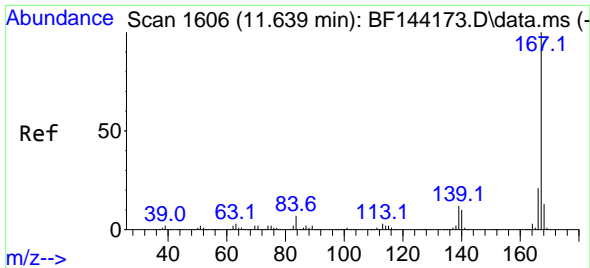


#72
 Anthracene
 Concen: 47.500 ng
 RT: 11.474 min Scan# 1578
 Delta R.T. -0.006 min
 Lab File: BF144240.D
 Acq: 12 Nov 2025 20:49

Tgt Ion:178 Resp: 357314

Ion	Ratio	Lower	Upper
178	100		
176	18.6	15.3	22.9
179	14.8	12.0	18.0

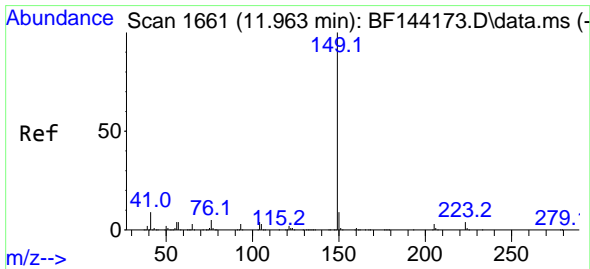
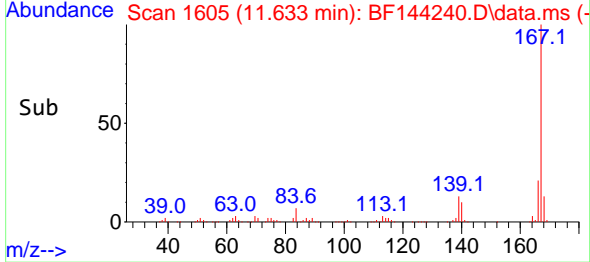
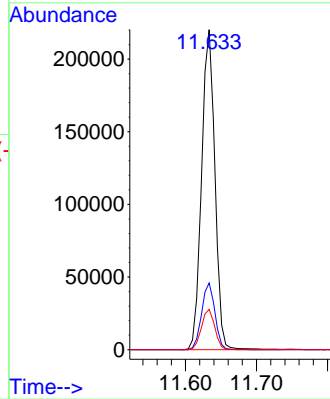
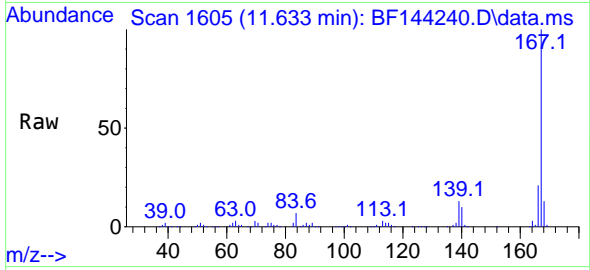




#73
 Carbazole
 Concen: 44.999 ng
 RT: 11.633 min Scan# 1605
 Delta R.T. -0.006 min
 Lab File: BF144240.D
 Acq: 12 Nov 2025 20:49

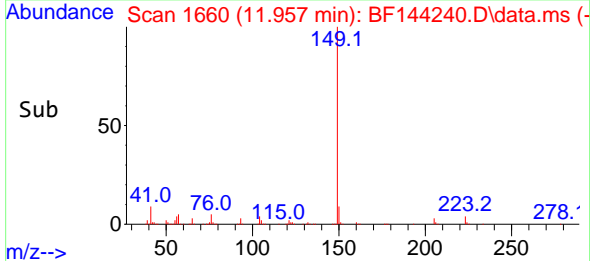
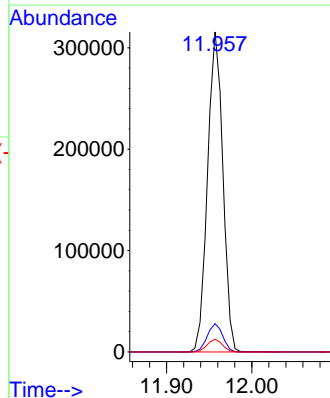
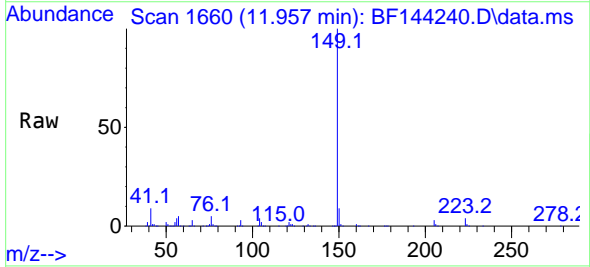
Instrument :
 BNA_F
 ClientSampleId :
 S-1MSD

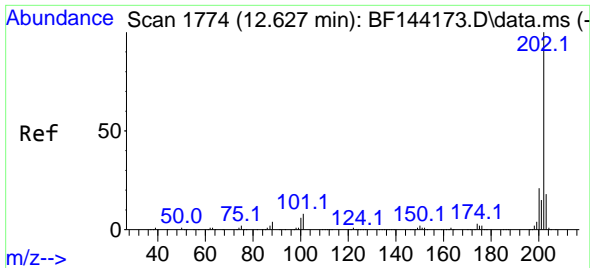
Tgt Ion:167 Resp: 287835
 Ion Ratio Lower Upper
 167 100
 166 20.9 17.2 25.8
 139 12.6 9.9 14.9



#74
 Di-n-butylphthalate
 Concen: 50.949 ng
 RT: 11.957 min Scan# 1660
 Delta R.T. -0.006 min
 Lab File: BF144240.D
 Acq: 12 Nov 2025 20:49

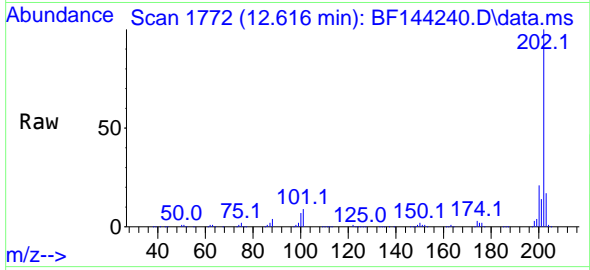
Tgt Ion:149 Resp: 393967
 Ion Ratio Lower Upper
 149 100
 150 8.9 7.4 11.0
 104 3.9 3.4 5.2



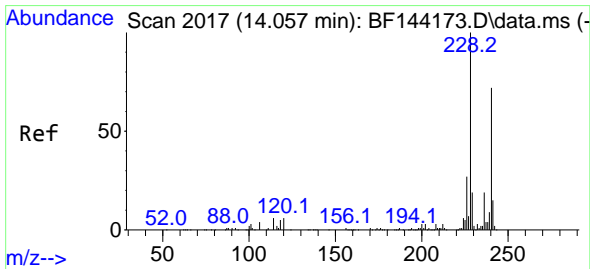
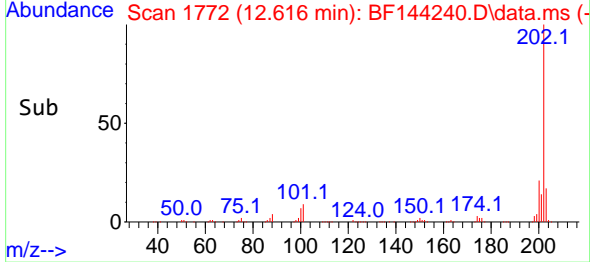
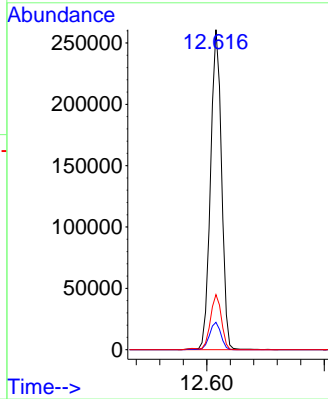


#75
 Fluoranthene
 Concen: 44.254 ng
 RT: 12.616 min Scan# 11
 Delta R.T. -0.006 min
 Lab File: BF144240.D
 Acq: 12 Nov 2025 20:49

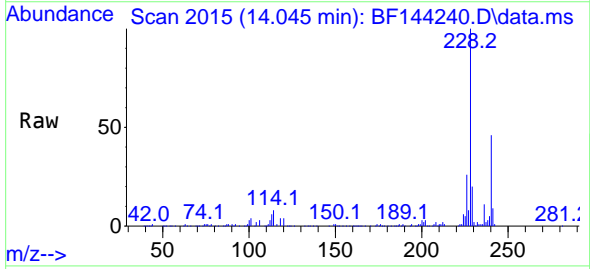
Instrument :
 BNA_F
 ClientSampleId :
 S-1MSD



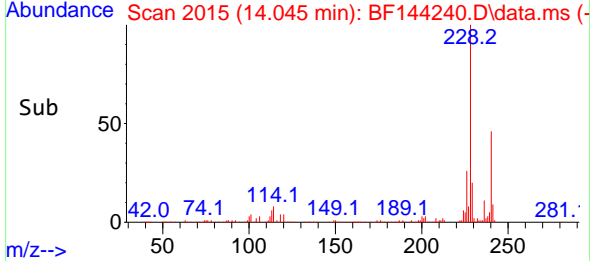
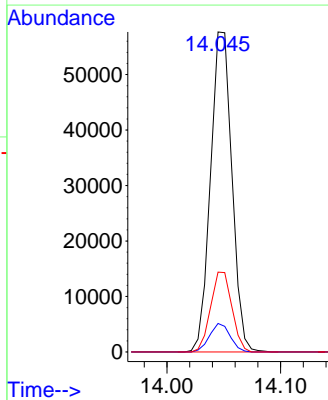
Tgt Ion:202 Resp: 338186
 Ion Ratio Lower Upper
 202 100
 101 8.6 0.0 27.9
 203 17.2 0.0 37.5

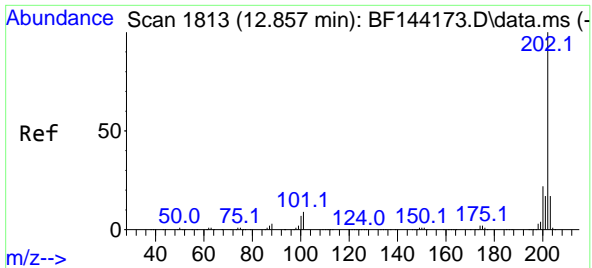


#76
 Chrysene-d12
 Concen: 20.000 ng
 RT: 14.045 min Scan# 2015
 Delta R.T. -0.006 min
 Lab File: BF144240.D
 Acq: 12 Nov 2025 20:49



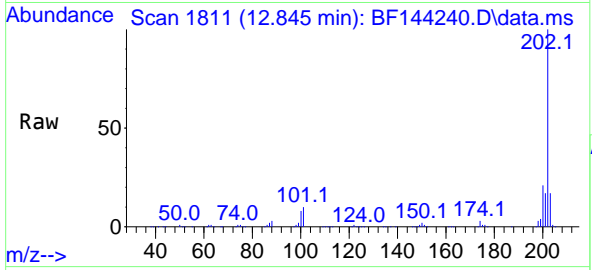
Tgt Ion:240 Resp: 75670
 Ion Ratio Lower Upper
 240 100
 120 8.9 6.6 10.0
 236 25.0 21.4 32.2





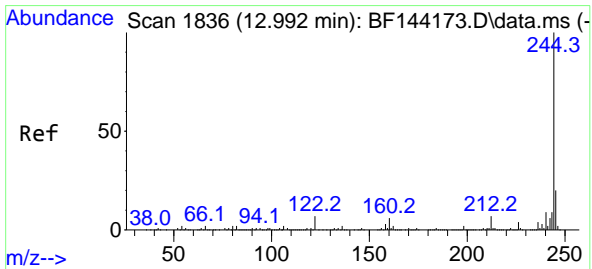
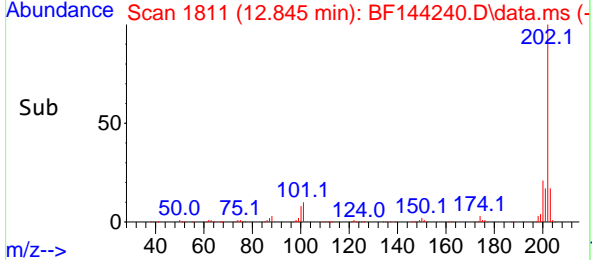
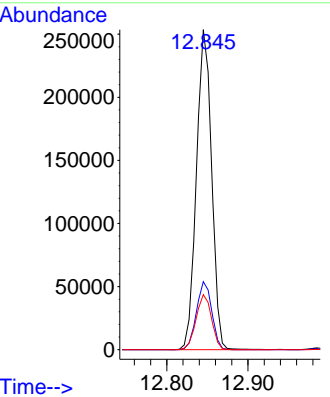
#78
 Pyrene
 Concen: 53.926 ng
 RT: 12.845 min Scan# 1811
 Delta R.T. -0.006 min
 Lab File: BF144240.D
 Acq: 12 Nov 2025 20:49

Instrument : BNA_F
 Client Sample Id : S-1MSD



Tgt Ion: 202 Resp: 329016

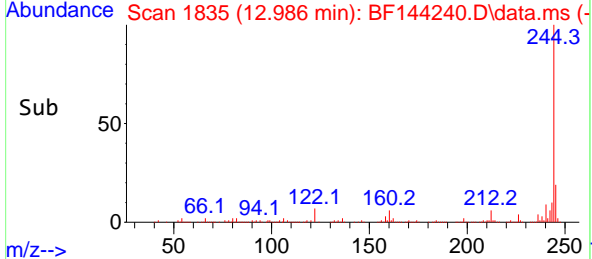
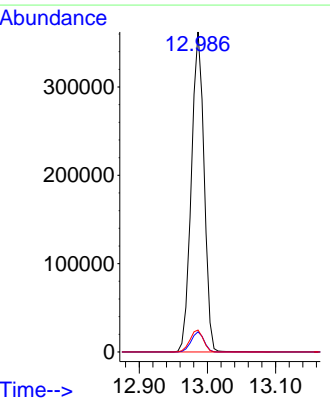
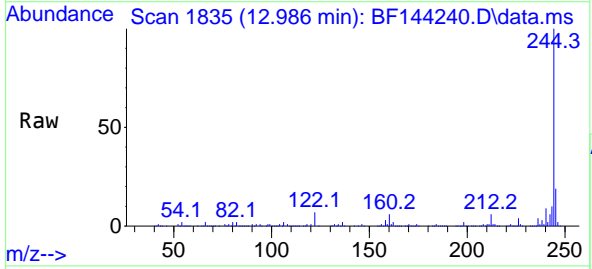
Ion	Ratio	Lower	Upper
202	100		
200	21.2	17.2	25.8
203	17.2	13.7	20.5

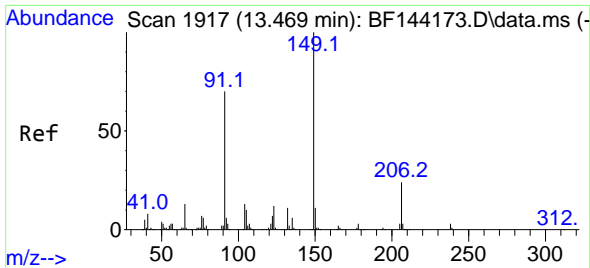


#79
 Terphenyl-d14
 Concen: 98.569 ng
 RT: 12.986 min Scan# 1835
 Delta R.T. -0.006 min
 Lab File: BF144240.D
 Acq: 12 Nov 2025 20:49

Tgt Ion: 244 Resp: 469575

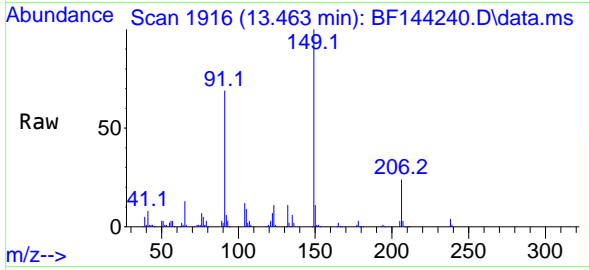
Ion	Ratio	Lower	Upper
244	100		
212	6.3	5.3	7.9
122	6.8	5.6	8.4





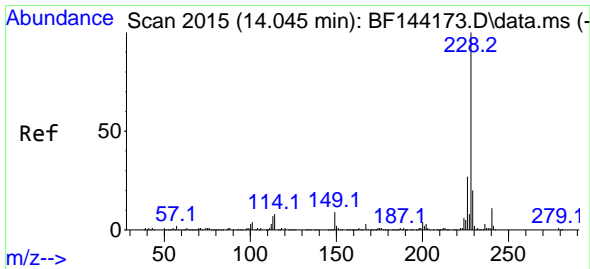
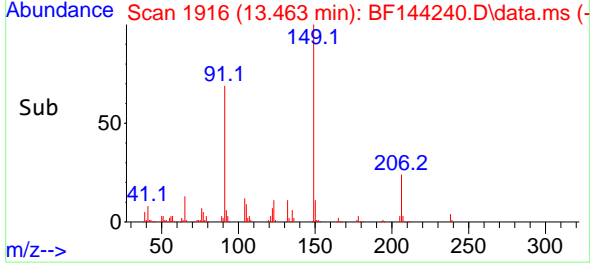
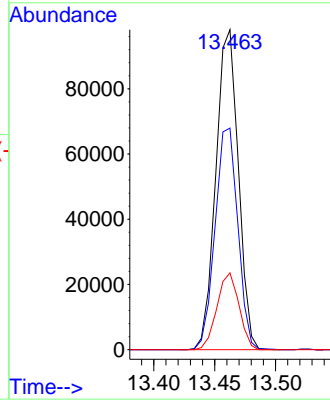
#80
 Butylbenzylphthalate
 Concen: 59.651 ng
 RT: 13.463 min Scan# 1346
 Delta R.T. -0.006 min
 Lab File: BF144240.D
 Acq: 12 Nov 2025 20:49

Instrument :
 BNA_F
 ClientSampleId :
 S-1MSD



Tgt Ion:149 Resp: 126138

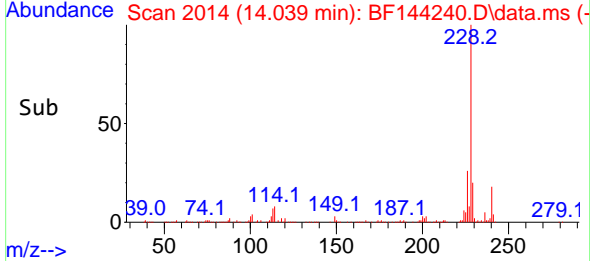
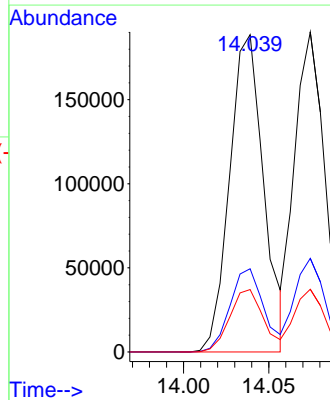
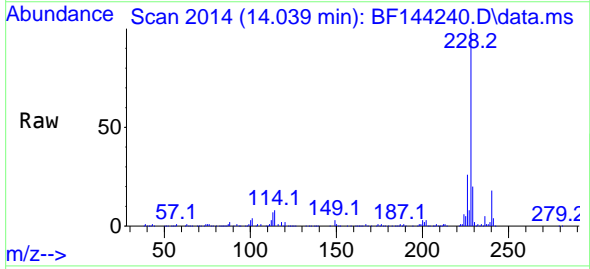
Ion	Ratio	Lower	Upper
149	100		
91	69.2	56.1	84.1
206	24.0	18.8	28.2

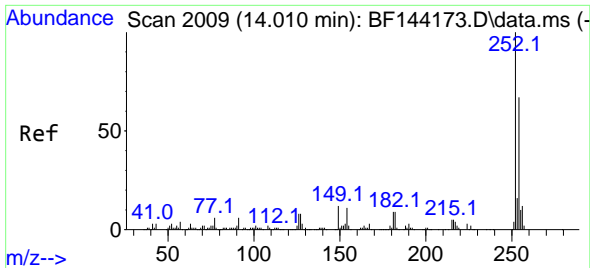


#81
 Benzo(a)anthracene
 Concen: 50.089 ng
 RT: 14.039 min Scan# 2014
 Delta R.T. -0.006 min
 Lab File: BF144240.D
 Acq: 12 Nov 2025 20:49

Tgt Ion:228 Resp: 262690

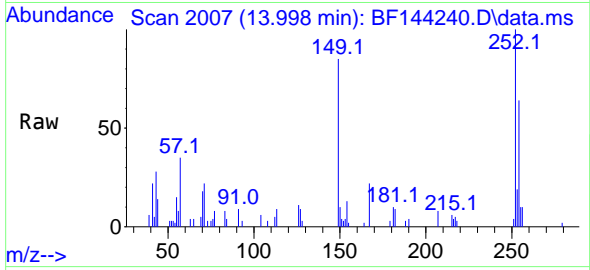
Ion	Ratio	Lower	Upper
228	100		
226	26.2	21.8	32.8
229	19.7	15.8	23.6



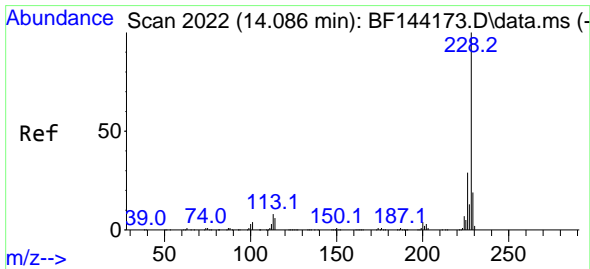
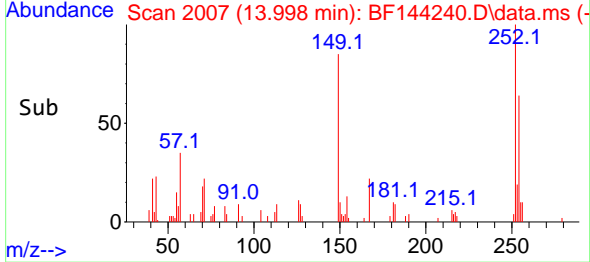
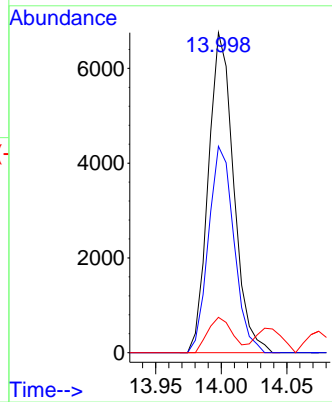


#82
 3,3'-Dichlorobenzidine
 Concen: 5.042 ng
 RT: 13.998 min Scan# 2007
 Delta R.T. -0.012 min
 Lab File: BF144240.D
 Acq: 12 Nov 2025 20:49

Instrument :
 BNA_F
 ClientSampleId :
 S-1MSD

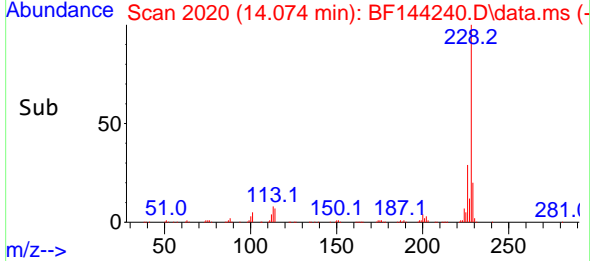
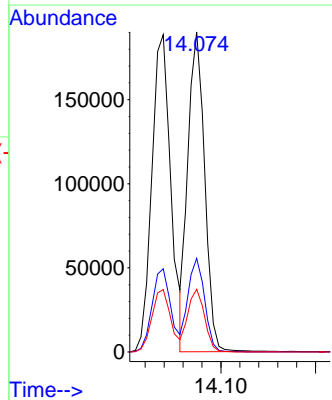
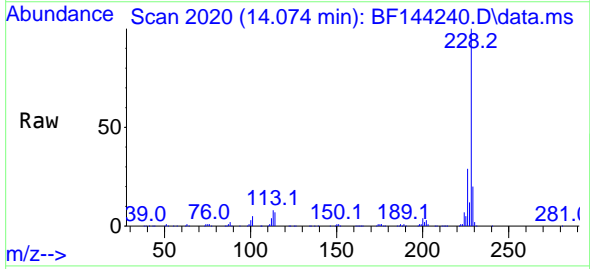


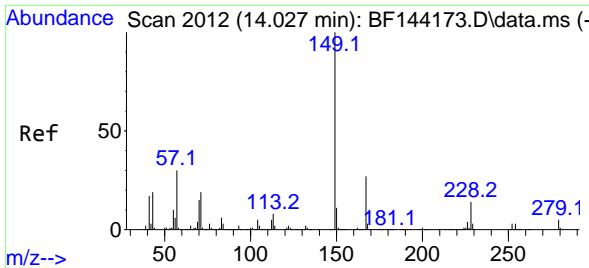
Tgt Ion:252 Resp: 9064
 Ion Ratio Lower Upper
 252 100
 254 64.5 53.5 80.3
 126 11.0 6.4 9.6#



#83
 Chrysene
 Concen: 48.341 ng
 RT: 14.074 min Scan# 2020
 Delta R.T. -0.006 min
 Lab File: BF144240.D
 Acq: 12 Nov 2025 20:49

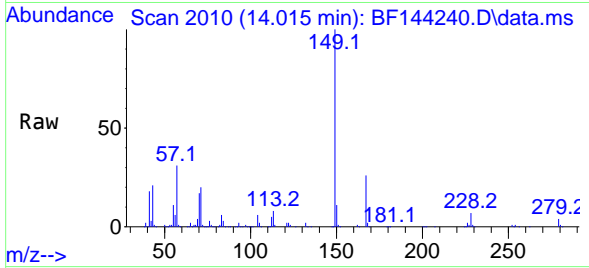
Tgt Ion:228 Resp: 234037
 Ion Ratio Lower Upper
 228 100
 226 29.2 22.9 34.3
 229 19.6 15.0 22.6





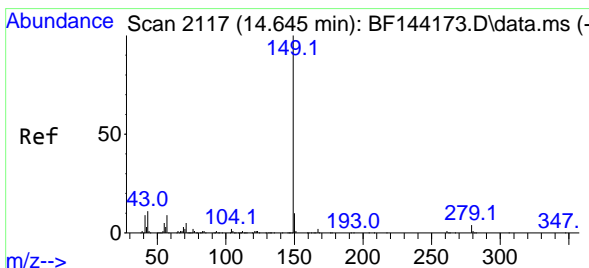
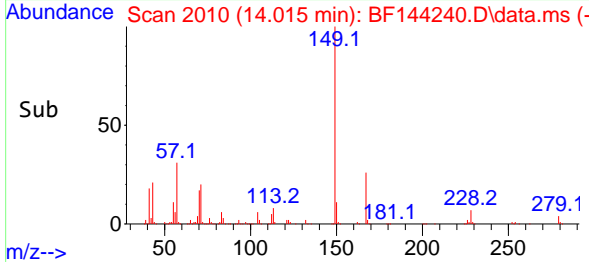
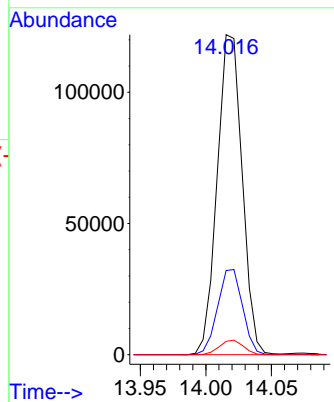
#84
 Bis(2-ethylhexyl)phthalate
 Concen: 55.811 ng
 RT: 14.015 min Scan# 2010
 Delta R.T. -0.012 min
 Lab File: BF144240.D
 Acq: 12 Nov 2025 20:49

Instrument :
 BNA_F
 ClientSampleId :
 S-1MSD



Tgt Ion:149 Resp: 161561

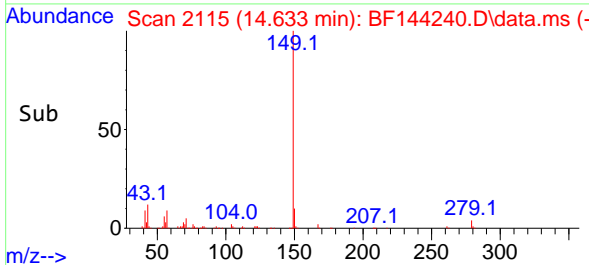
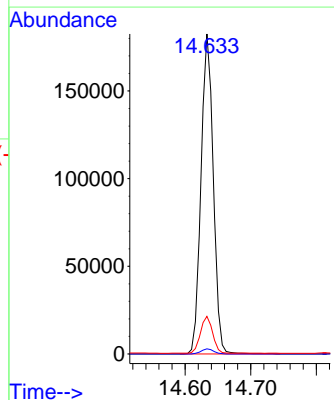
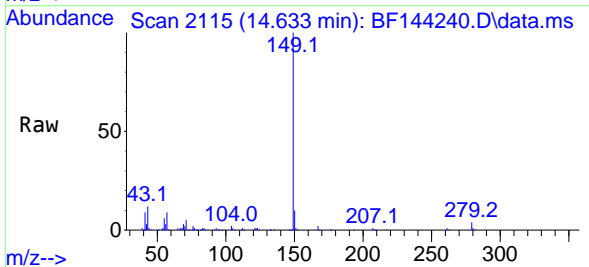
Ion	Ratio	Lower	Upper
149	100		
167	26.3	21.8	32.8
279	4.1	3.7	5.5

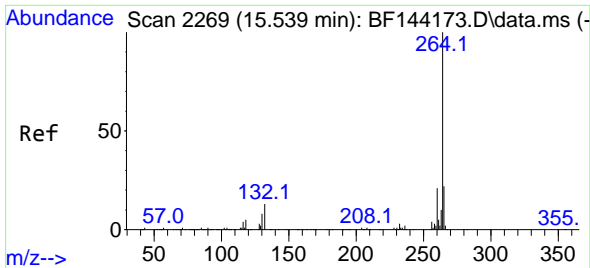


#85
 Di-n-octyl phthalate
 Concen: 47.677 ng
 RT: 14.633 min Scan# 2115
 Delta R.T. -0.012 min
 Lab File: BF144240.D
 Acq: 12 Nov 2025 20:49

Tgt Ion:149 Resp: 238121

Ion	Ratio	Lower	Upper
149	100		
167	1.6	1.2	1.8
43	11.3	9.0	13.4



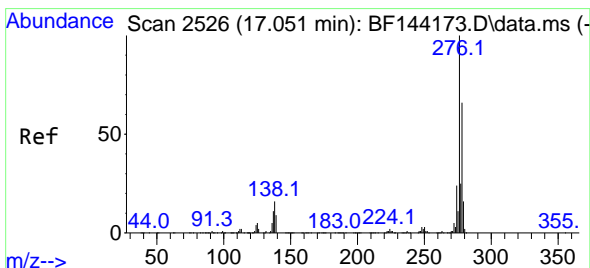
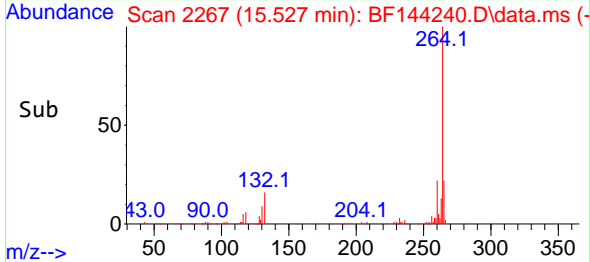
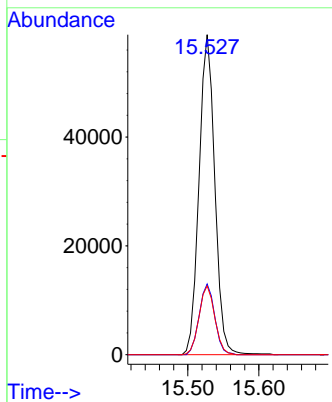
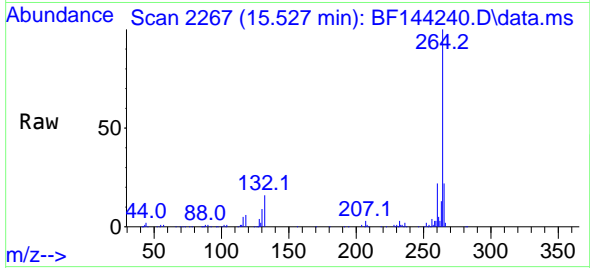


#86
 Perylene-d12
 Concen: 20.000 ng
 RT: 15.527 min Scan# 21
 Delta R.T. -0.012 min
 Lab File: BF144240.D
 Acq: 12 Nov 2025 20:49

Instrument :
 BNA_F
 ClientSampleId :
 S-1MSD

Tgt Ion:264 Resp: 90928

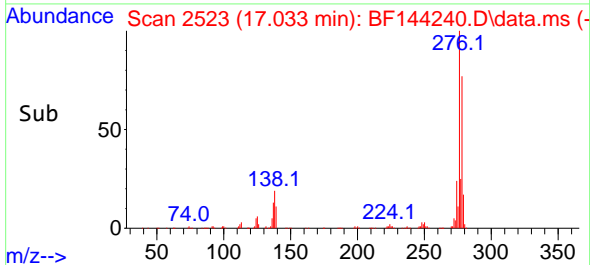
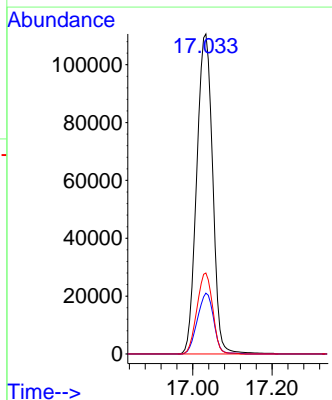
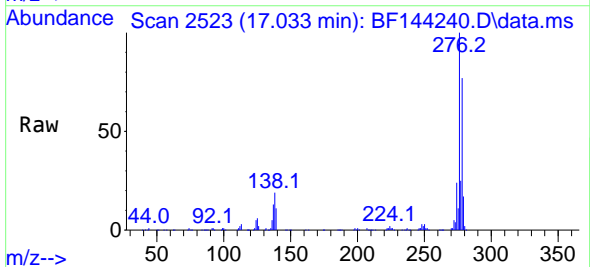
Ion	Ratio	Lower	Upper
264	100		
260	22.1	17.1	25.7
265	21.5	17.4	26.0

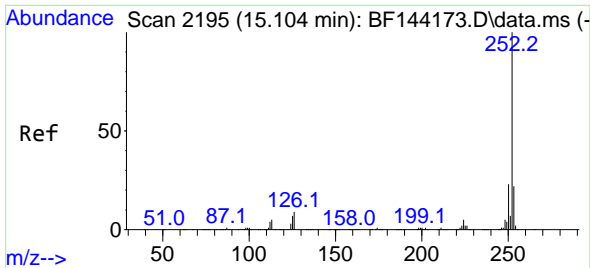


#87
 Indeno(1,2,3-cd)pyrene
 Concen: 47.247 ng
 RT: 17.033 min Scan# 2523
 Delta R.T. -0.000 min
 Lab File: BF144240.D
 Acq: 12 Nov 2025 20:49

Tgt Ion:276 Resp: 308388

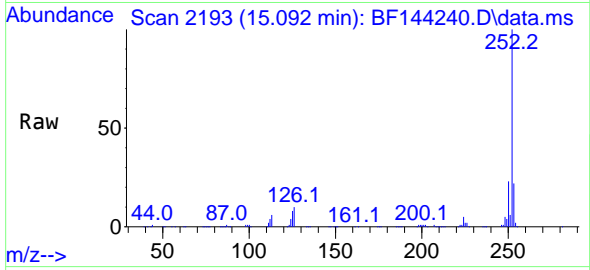
Ion	Ratio	Lower	Upper
276	100		
138	19.4	13.9	20.9
277	24.9	19.8	29.6



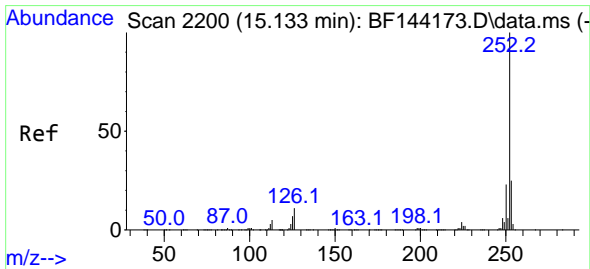
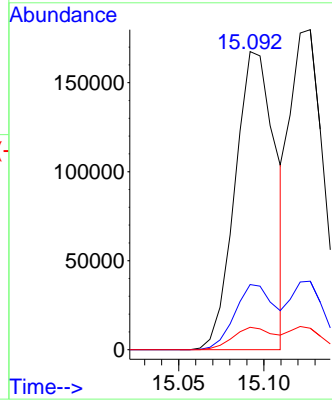
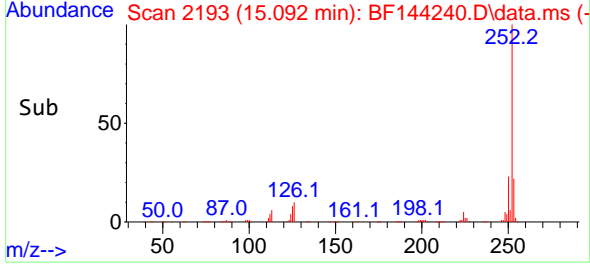


#88
 Benzo(b)fluoranthene
 Concen: 53.261 ng
 RT: 15.092 min Scan# 2192
 Delta R.T. -0.006 min
 Lab File: BF144240.D
 Acq: 12 Nov 2025 20:49

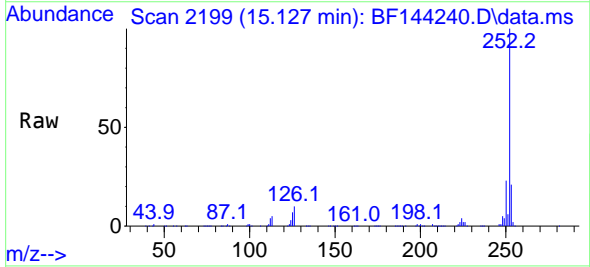
Instrument :
 BNA_F
 ClientSampleId :
 S-1MSD



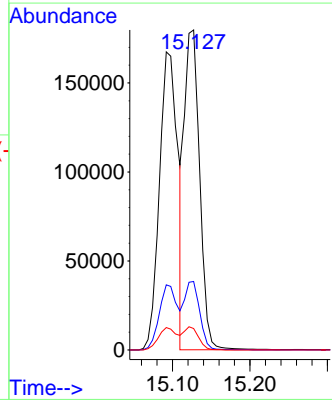
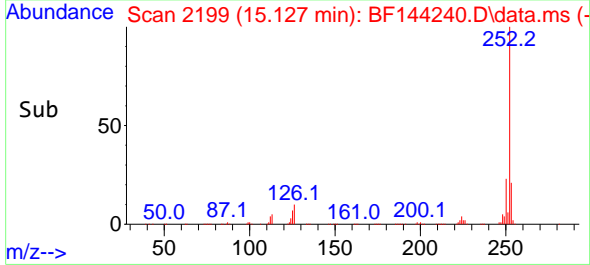
Tgt Ion:252 Resp: 275332
 Ion Ratio Lower Upper
 252 100
 253 21.8 17.4 26.2
 125 7.5 5.3 7.9

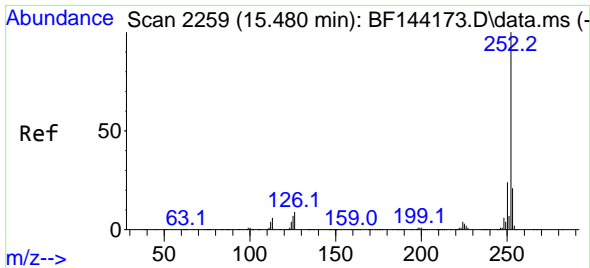


#89
 Benzo(k)fluoranthene
 Concen: 50.940 ng
 RT: 15.127 min Scan# 2199
 Delta R.T. -0.000 min
 Lab File: BF144240.D
 Acq: 12 Nov 2025 20:49



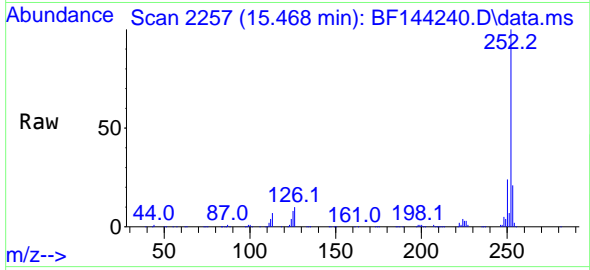
Tgt Ion:252 Resp: 246476
 Ion Ratio Lower Upper
 252 100
 253 21.4 18.0 27.0
 125 6.7 5.4 8.2



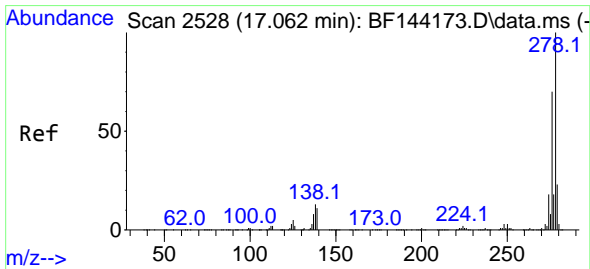
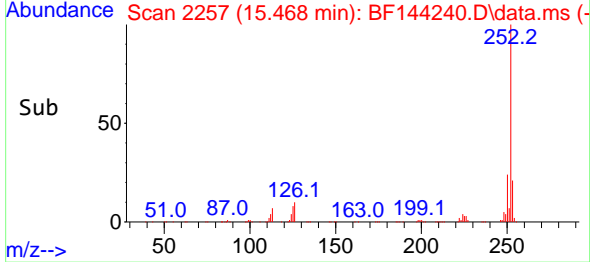
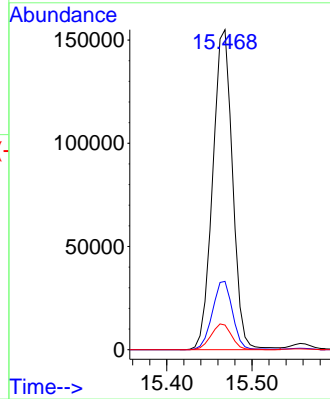


#90
 Benzo(a)pyrene
 Concen: 52.620 ng
 RT: 15.468 min Scan# 21
 Delta R.T. -0.006 min
 Lab File: BF144240.D
 Acq: 12 Nov 2025 20:49

Instrument :
 BNA_F
 ClientSampleId :
 S-1MSD

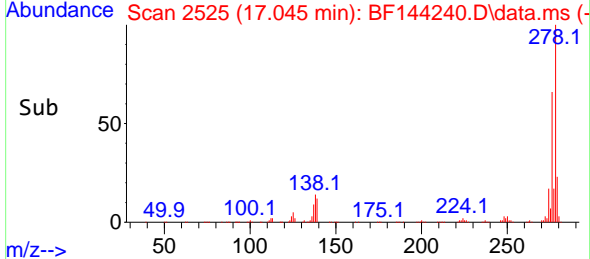
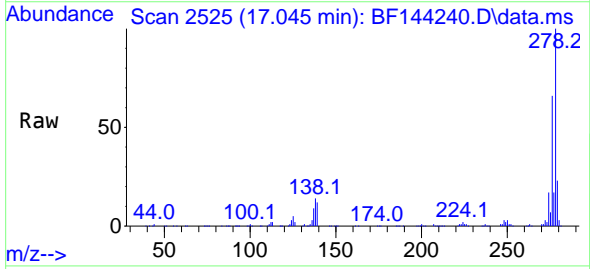
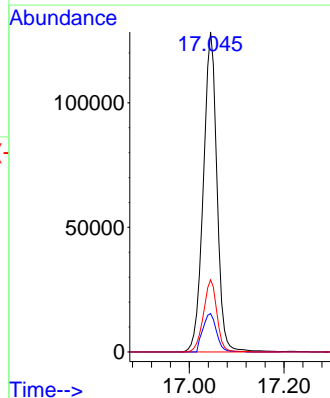


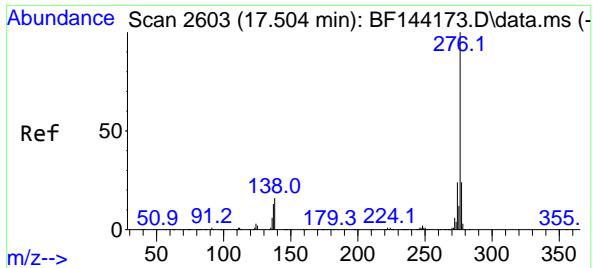
Tgt Ion:252 Resp: 250944
 Ion Ratio Lower Upper
 252 100
 253 21.4 16.7 25.1
 125 7.7 5.7 8.5



#91
 Dibenzo(a,h)anthracene
 Concen: 48.952 ng
 RT: 17.045 min Scan# 2525
 Delta R.T. -0.006 min
 Lab File: BF144240.D
 Acq: 12 Nov 2025 20:49

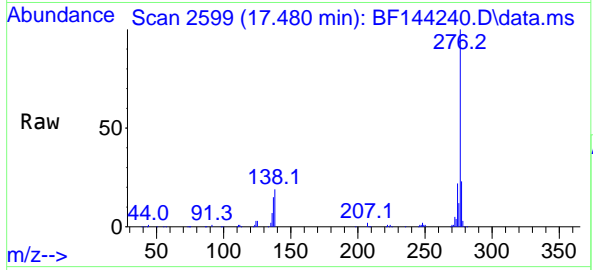
Tgt Ion:278 Resp: 256609
 Ion Ratio Lower Upper
 278 100
 139 12.0 9.1 13.7
 279 22.6 18.2 27.4





#92
 Benzo(g,h,i)perylene
 Concen: 47.827 ng
 RT: 17.480 min Scan# 21
 Delta R.T. -0.012 min
 Lab File: BF144240.D
 Acq: 12 Nov 2025 20:49

Instrument :
 BNA_F
 ClientSampleId :
 S-1MSD



Tgt Ion: 276 Resp: 247582

Ion	Ratio	Lower	Upper
276	100		
277	22.6	19.0	28.4
138	18.8	12.9	19.3

