

Data Path : Z:\svoasrv\HPCHEM1\BNA\_F\Data\BF111225\  
 Data File : BF144241.D  
 Acq On : 12 Nov 2025 21:19  
 Operator : RC/JU  
 Sample : Q3604-02  
 Misc :  
 ALS Vial : 13 Sample Multiplier: 1

Instrument :  
 BNA\_F  
 ClientSampleId :  
 S-2

Quant Time: Nov 13 10:44:02 2025  
 Quant Method : Z:\svoasrv\HPCHEM1\BNA\_F\Methods\8270-BF110525.M  
 Quant Title : ASP BNA STANDARDS FOR 5 POINT CALIBRATION  
 QLast Update : Wed Nov 05 18:37:33 2025  
 Response via : Initial Calibration

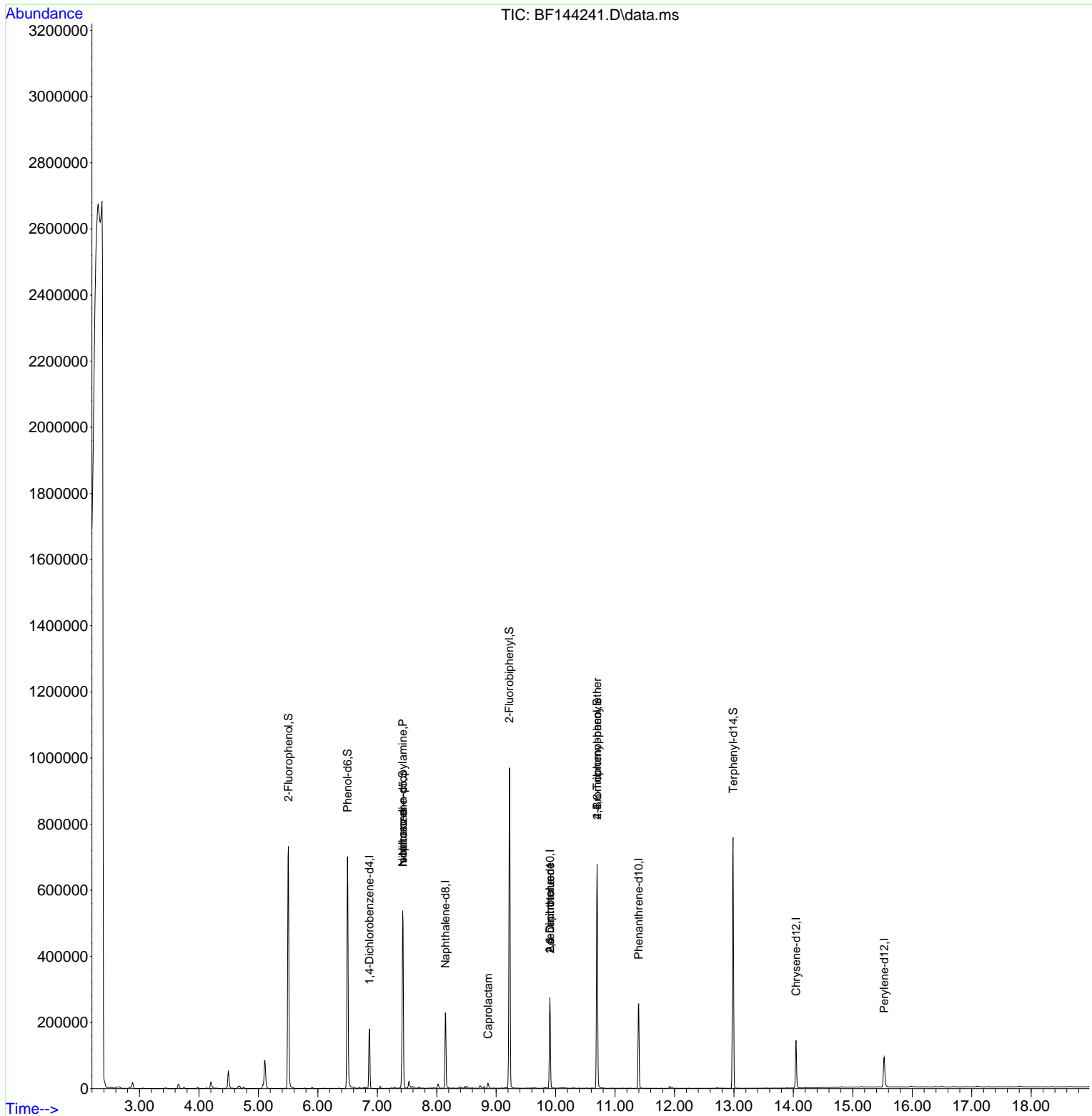
Compound	R.T.	QIon	Response	Conc	Units	Dev(Min)
Internal Standards						
1) 1,4-Dichlorobenzene-d4	6.869	152	38006	20.000	ng	0.00
21) Naphthalene-d8	8.145	136	150573	20.000	ng	-0.01
39) Acenaphthene-d10	9.904	164	83623	20.000	ng	-0.01
64) Phenanthrene-d10	11.398	188	146516	20.000	ng	0.00
76) Chrysene-d12	14.045	240	78541	20.000	ng	0.00
86) Perylene-d12	15.527	264	60402	20.000	ng	-0.01
System Monitoring Compounds						
5) 2-Fluorophenol	5.504	112	289159	119.059	ng	0.01
7) Phenol-d6	6.498	99	314233	114.187	ng	0.00
23) Nitrobenzene-d5	7.428	82	237011	90.910	ng	0.00
42) 2,4,6-Tribromophenol	10.698	330	140738	134.116	ng	0.00
45) 2-Fluorobiphenyl	9.222	172	479421	84.674	ng	0.00
79) Terphenyl-d14	12.986	244	408379	82.590	ng	0.00
Target Compounds						
19) n-Nitroso-di-n-propyla...	7.428	70	34448	19.015	ng	# 80
25) Isophorone	7.428	82	237009	48.062	ng	# 67
35) Caprolactam	8.863	113	1535	2.315	ng	# 14
51) 2,6-Dinitrotoluene	9.904	165	10248	9.138	ng	# 27
57) 2,4-Dinitrotoluene	9.904	165	10248	6.826	ng	# 27
67) 4-Bromophenyl-phenylether	10.698	248	7524	4.023	ng	# 1

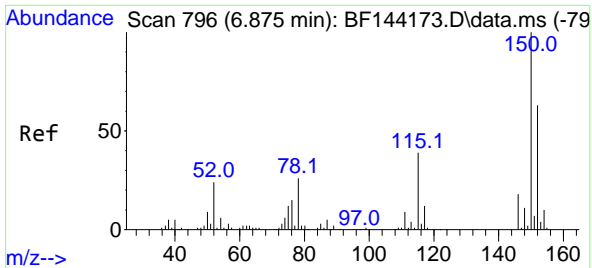
(#) = qualifier out of range (m) = manual integration (+) = signals summed

Data Path : Z:\svoasrv\HPCHEM1\BNA\_F\Data\BF111225\  
 Data File : BF144241.D  
 Acq On : 12 Nov 2025 21:19  
 Operator : RC/JU  
 Sample : Q3604-02  
 Misc :  
 ALS Vial : 13 Sample Multiplier: 1

Instrument :  
 BNA\_F  
 ClientSampleId :  
 S-2

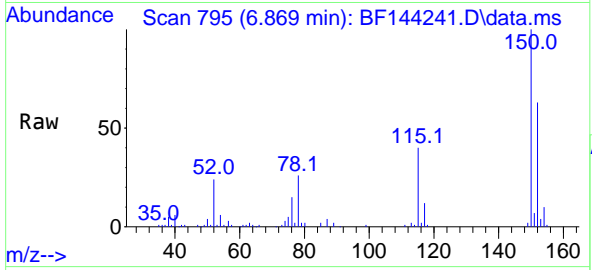
Quant Time: Nov 13 10:44:02 2025  
 Quant Method : Z:\svoasrv\HPCHEM1\BNA\_F\Methods\8270-BF110525.M  
 Quant Title : ASP BNA STANDARDS FOR 5 POINT CALIBRATION  
 QLast Update : Wed Nov 05 18:37:33 2025  
 Response via : Initial Calibration



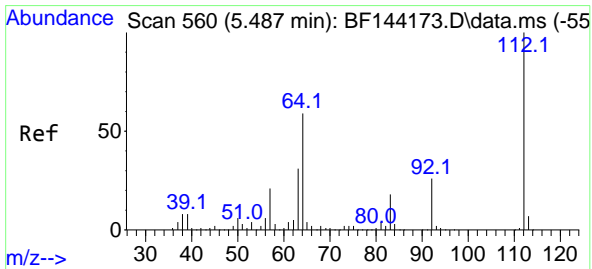
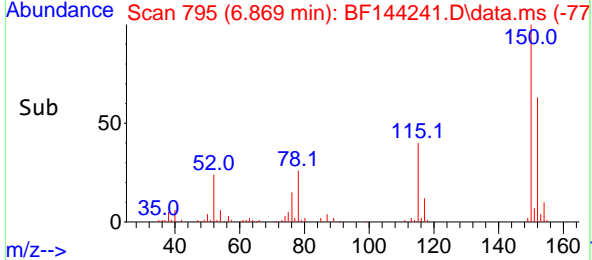
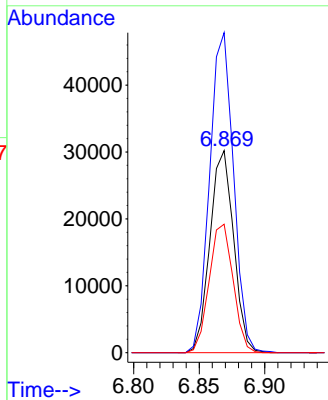


#1  
 1,4-Dichlorobenzene-d4  
 Concen: 20.000 ng  
 RT: 6.869 min Scan# 795  
 Delta R.T. -0.006 min  
 Lab File: BF144241.D  
 Acq: 12 Nov 2025 21:19

Instrument :  
 BNA\_F  
 ClientSampleId :  
 S-2

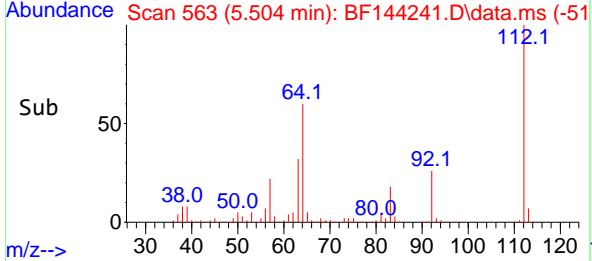
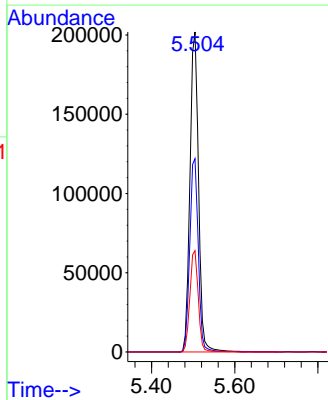
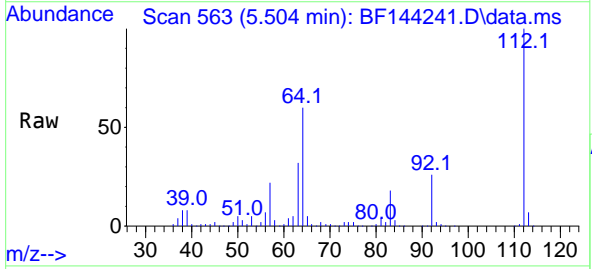


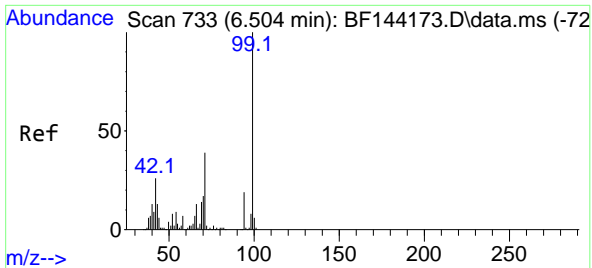
Tgt Ion:152 Resp: 38006  
 Ion Ratio Lower Upper  
 152 100  
 150 158.4 127.4 191.0  
 115 63.6 49.5 74.3



#5  
 2-Fluorophenol  
 Concen: 119.059 ng  
 RT: 5.504 min Scan# 563  
 Delta R.T. 0.012 min  
 Lab File: BF144241.D  
 Acq: 12 Nov 2025 21:19

Tgt Ion:112 Resp: 289159  
 Ion Ratio Lower Upper  
 112 100  
 64 60.4 47.2 70.8  
 63 31.6 24.4 36.6



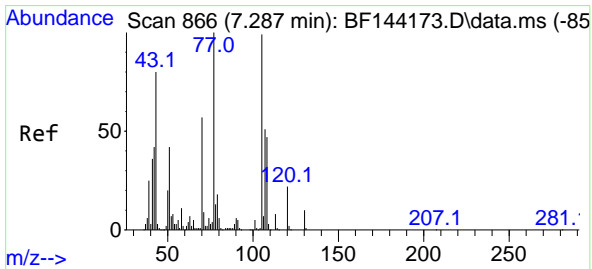
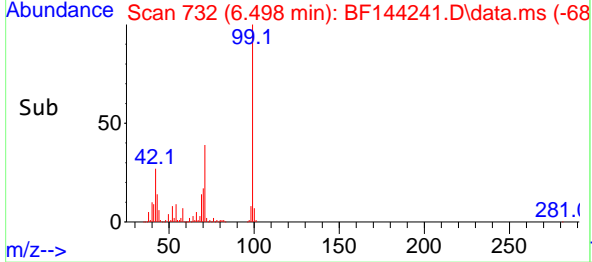
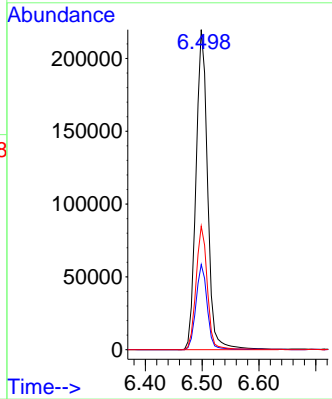
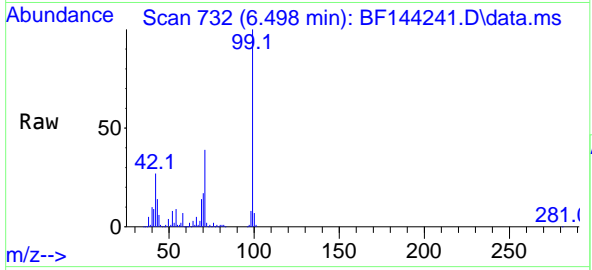


#7  
 Phenol-d6  
 Concen: 114.187 ng  
 RT: 6.498 min Scan# 71  
 Delta R.T. -0.000 min  
 Lab File: BF144241.D  
 Acq: 12 Nov 2025 21:19

Instrument : BNA\_F  
 ClientSampleId : S-2

Tgt Ion: 99 Resp: 314233

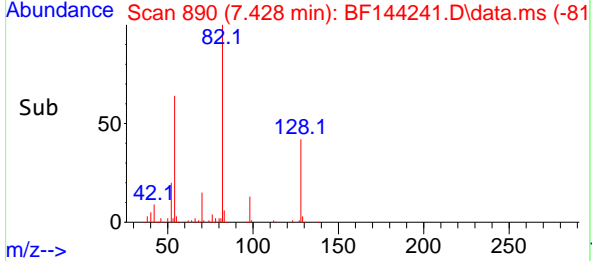
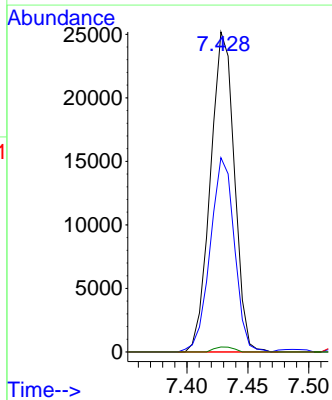
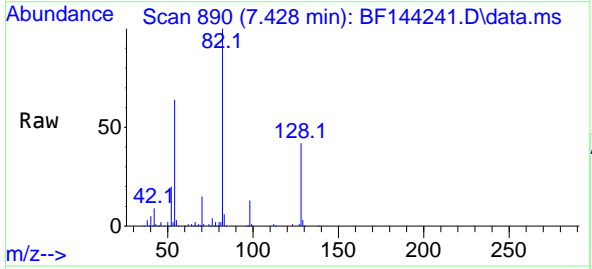
Ion	Ratio	Lower	Upper
99	100		
42	26.6	20.9	31.3
71	38.6	31.4	47.2

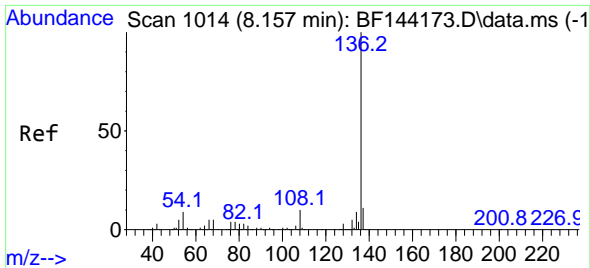


#19  
 n-Nitroso-di-n-propylamine  
 Concen: 19.015 ng  
 RT: 7.428 min Scan# 890  
 Delta R.T. 0.153 min  
 Lab File: BF144241.D  
 Acq: 12 Nov 2025 21:19

Tgt Ion: 70 Resp: 34448

Ion	Ratio	Lower	Upper
70	100		
42	60.7	58.3	87.5
101	0.0	7.0	10.6#
130	1.5	14.4	21.6#



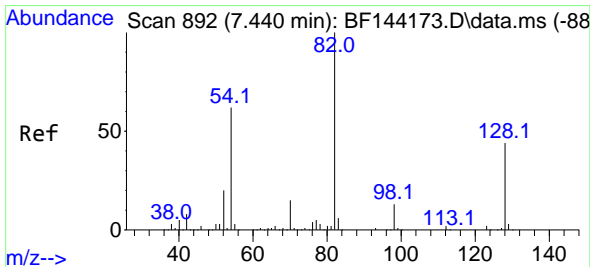
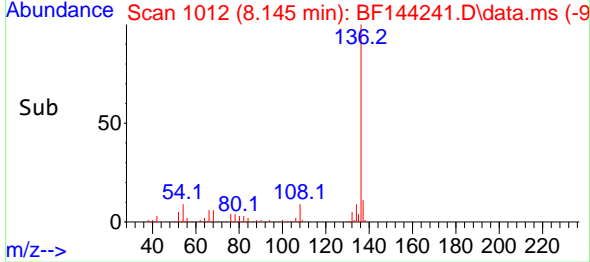
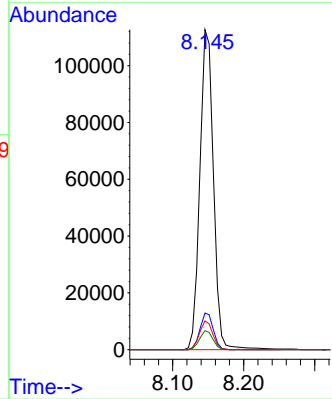
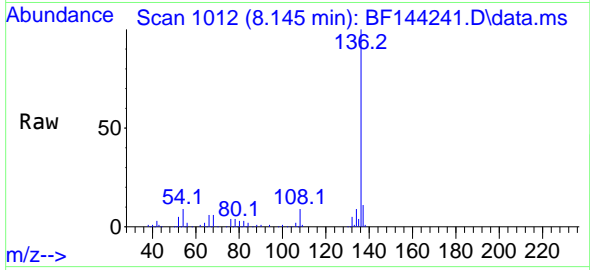


#21  
 Naphthalene-d8  
 Concen: 20.000 ng  
 RT: 8.145 min Scan# 1014  
 Delta R.T. -0.012 min  
 Lab File: BF144241.D  
 Acq: 12 Nov 2025 21:19

Instrument :  
 BNA\_F  
 ClientSampleId :  
 S-2

Tgt Ion:136 Resp: 150573

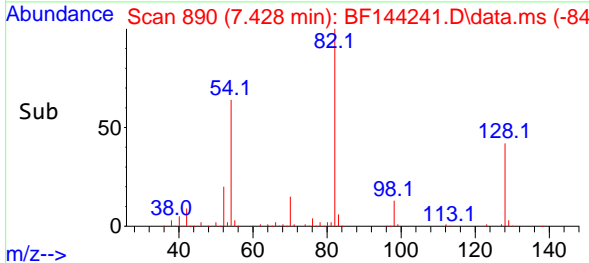
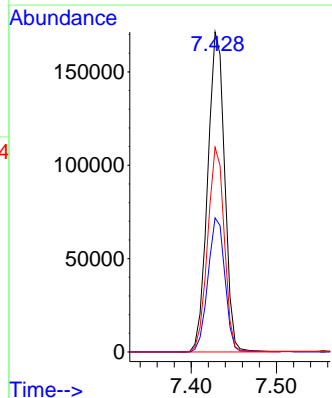
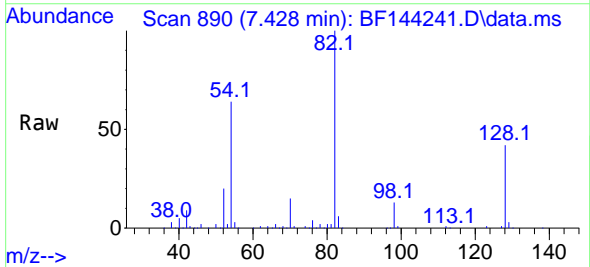
Ion	Ratio	Lower	Upper
136	100		
137	11.5	8.6	13.0
54	9.0	7.0	10.6
68	6.0	4.3	6.5

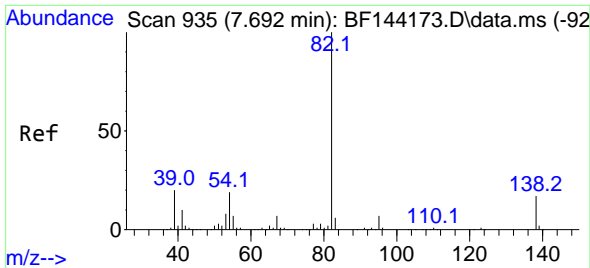


#23  
 Nitrobenzene-d5  
 Concen: 90.910 ng  
 RT: 7.428 min Scan# 890  
 Delta R.T. -0.006 min  
 Lab File: BF144241.D  
 Acq: 12 Nov 2025 21:19

Tgt Ion: 82 Resp: 237011

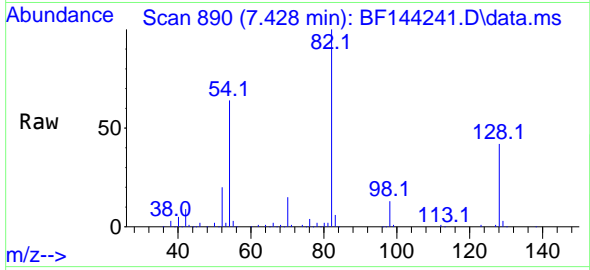
Ion	Ratio	Lower	Upper
82	100		
128	41.9	34.7	52.1
54	63.9	49.5	74.3



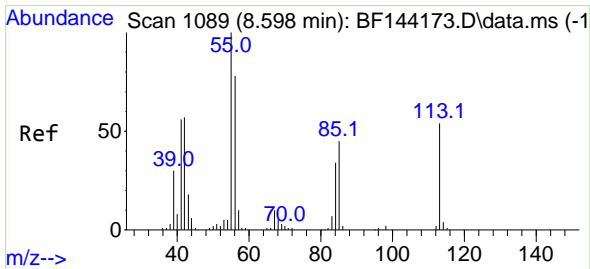
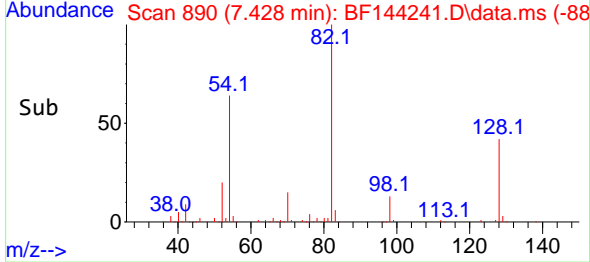
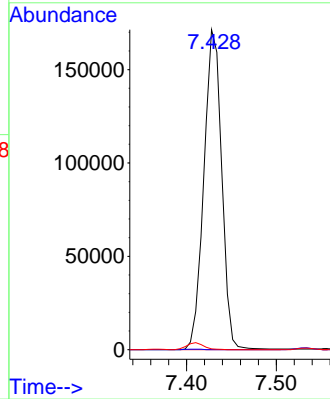


#25  
 Isophorone  
 Concen: 48.062 ng  
 RT: 7.428 min Scan# 890  
 Delta R.T. -0.259 min  
 Lab File: BF144241.D  
 Acq: 12 Nov 2025 21:19

Instrument : BNA\_F  
 Client SampleId : S-2

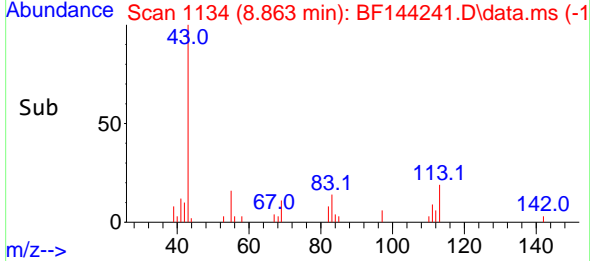
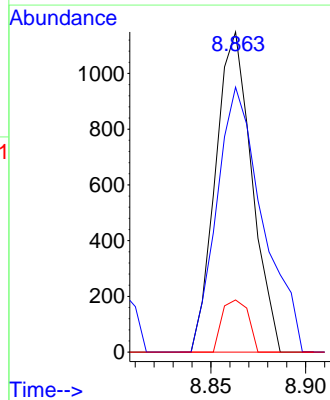
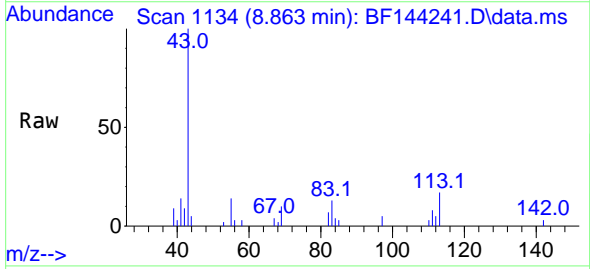


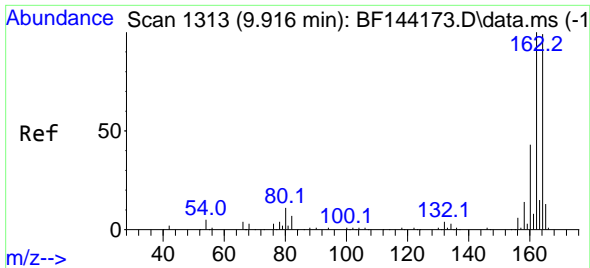
Tgt Ion: 82 Resp: 237009  
 Ion Ratio Lower Upper  
 82 100  
 95 0.0 5.5 8.3#  
 138 0.3 13.7 20.5#



#35  
 Caprolactam  
 Concen: 2.315 ng  
 RT: 8.863 min Scan# 1134  
 Delta R.T. 0.241 min  
 Lab File: BF144241.D  
 Acq: 12 Nov 2025 21:19

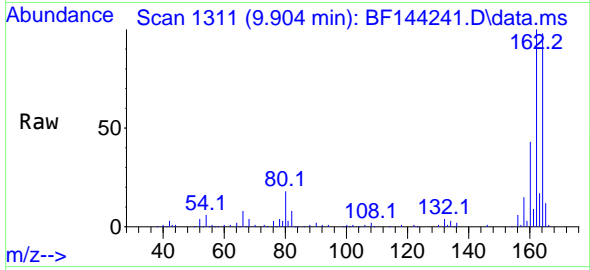
Tgt Ion: 113 Resp: 1535  
 Ion Ratio Lower Upper  
 113 100  
 55 82.8 166.8 206.8#  
 56 16.3 125.9 165.9#



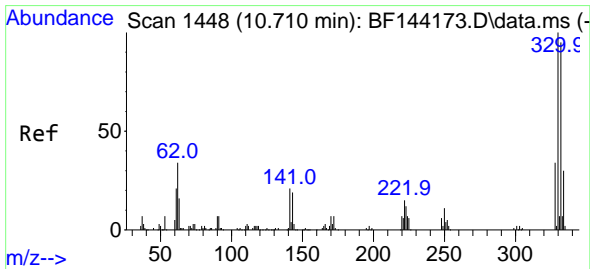
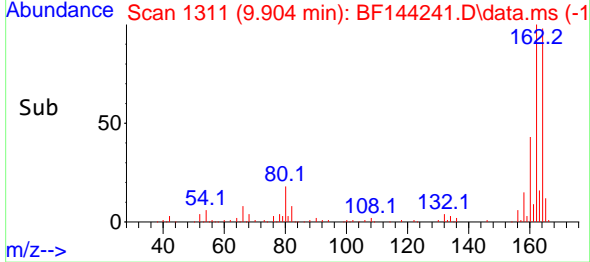
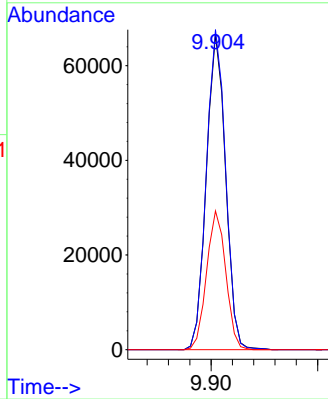


#39  
 Acenaphthene-d10  
 Concen: 20.000 ng  
 RT: 9.904 min Scan# 111  
 Delta R.T. -0.012 min  
 Lab File: BF144241.D  
 Acq: 12 Nov 2025 21:19

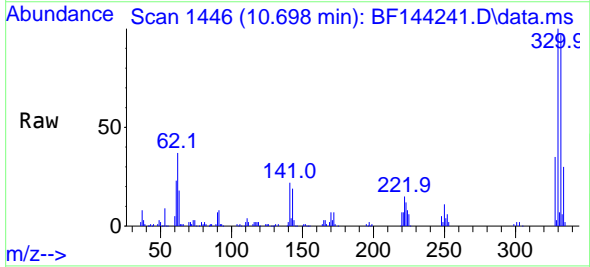
Instrument :  
 BNA\_F  
 ClientSampleId :  
 S-2



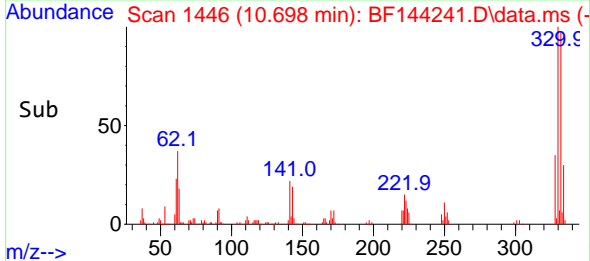
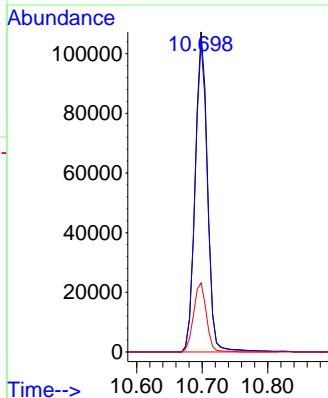
Tgt Ion:164 Resp: 83623  
 Ion Ratio Lower Upper  
 164 100  
 162 101.6 81.1 121.7  
 160 44.0 34.5 51.7

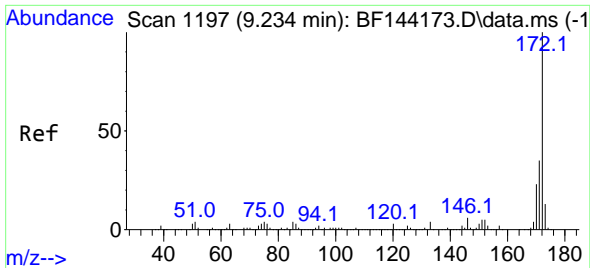


#42  
 2,4,6-Tribromophenol  
 Concen: 134.116 ng  
 RT: 10.698 min Scan# 1446  
 Delta R.T. -0.006 min  
 Lab File: BF144241.D  
 Acq: 12 Nov 2025 21:19



Tgt Ion:330 Resp: 140738  
 Ion Ratio Lower Upper  
 330 100  
 332 96.9 76.7 115.1  
 141 22.4 17.8 26.8



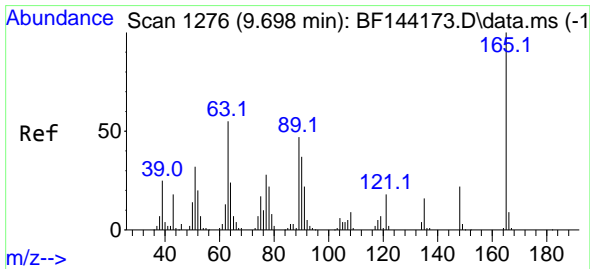
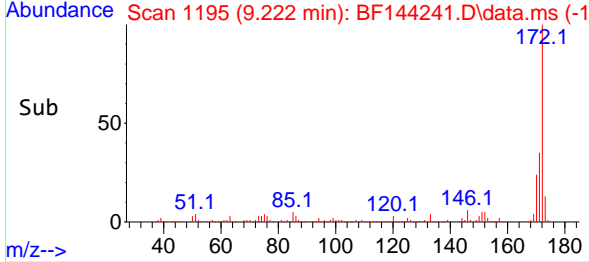
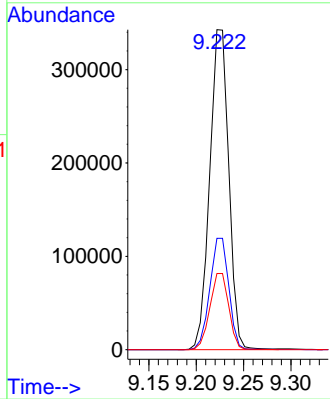
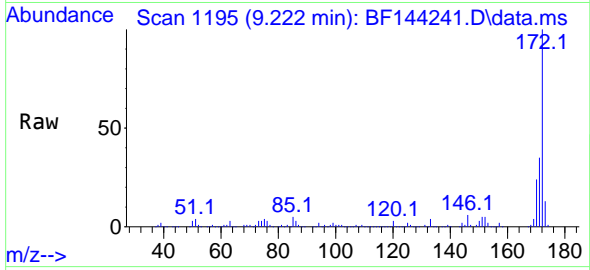


#45  
 2-Fluorobiphenyl  
 Concen: 84.674 ng  
 RT: 9.222 min Scan# 1119  
 Delta R.T. -0.006 min  
 Lab File: BF144241.D  
 Acq: 12 Nov 2025 21:19

Instrument : BNA\_F  
 ClientSampleId : S-2

Tgt Ion:172 Resp: 479421

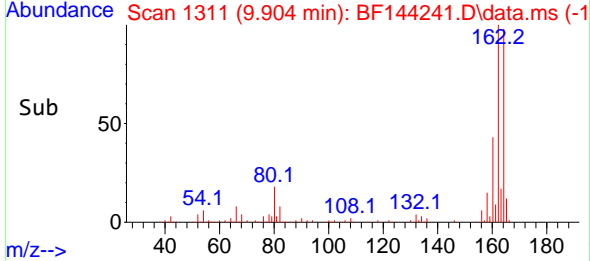
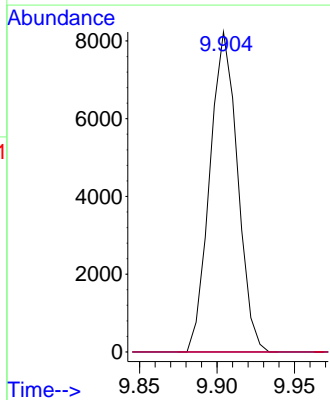
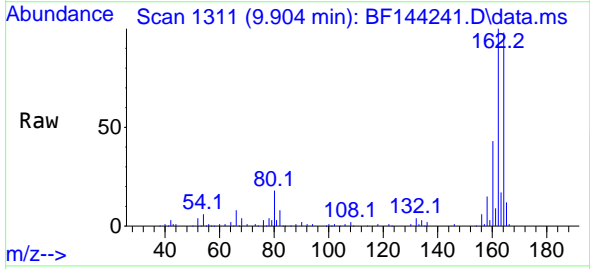
Ion	Ratio	Lower	Upper
172	100		
171	34.8	28.1	42.1
170	23.8	18.6	28.0



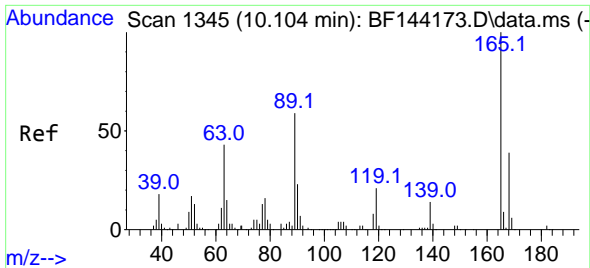
#51  
 2,6-Dinitrotoluene  
 Concen: 9.138 ng  
 RT: 9.904 min Scan# 1311  
 Delta R.T. 0.212 min  
 Lab File: BF144241.D  
 Acq: 12 Nov 2025 21:19

Tgt Ion:165 Resp: 10248

Ion	Ratio	Lower	Upper
165	100		
63	0.0	43.8	65.8#
89	0.0	37.5	56.3#

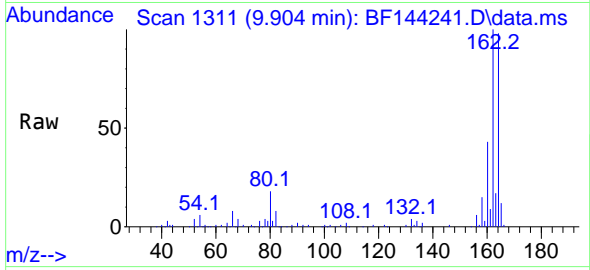




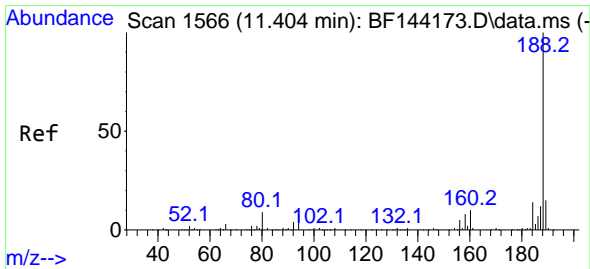
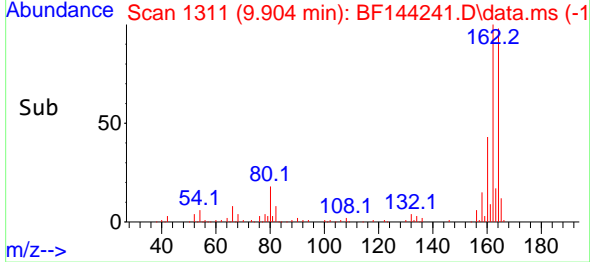
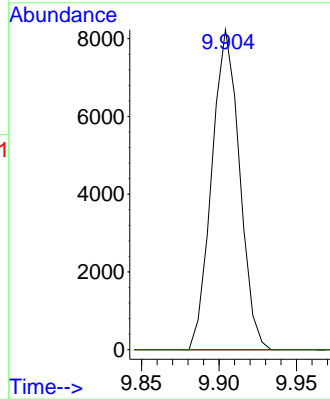


#57  
 2,4-Dinitrotoluene  
 Concen: 6.826 ng  
 RT: 9.904 min Scan# 11  
 Delta R.T. -0.194 min  
 Lab File: BF144241.D  
 Acq: 12 Nov 2025 21:19

Instrument :  
 BNA\_F  
 ClientSampleId :  
 S-2

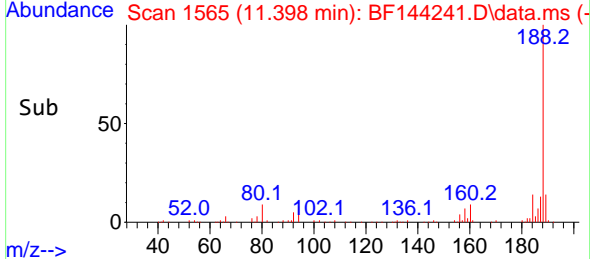
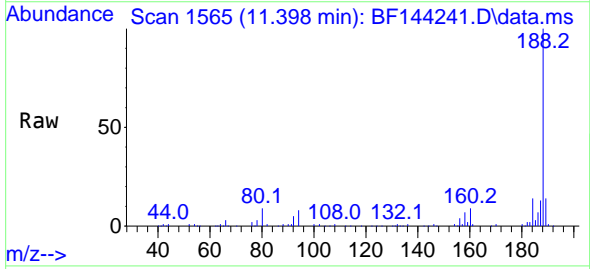
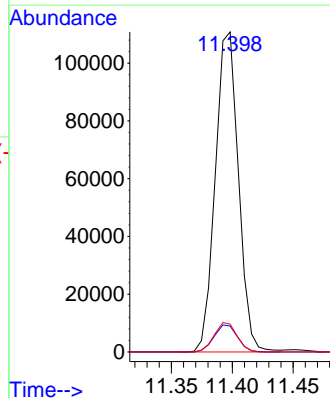


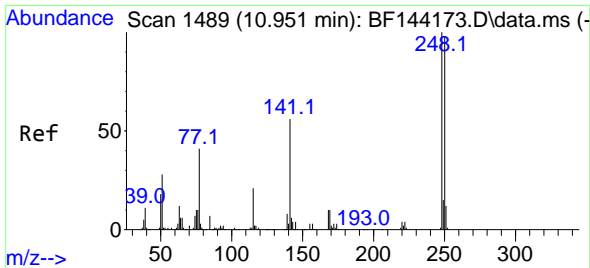
Tgt Ion:165 Resp: 10248  
 Ion Ratio Lower Upper  
 165 100  
 63 0.0 35.5 53.3#  
 89 0.0 47.4 71.2#  
 182 0.0 1.9 2.9#



#64  
 Phenanthrene-d10  
 Concen: 20.000 ng  
 RT: 11.398 min Scan# 1565  
 Delta R.T. -0.006 min  
 Lab File: BF144241.D  
 Acq: 12 Nov 2025 21:19

Tgt Ion:188 Resp: 146516  
 Ion Ratio Lower Upper  
 188 100  
 94 8.1 6.2 9.2  
 80 8.7 6.9 10.3



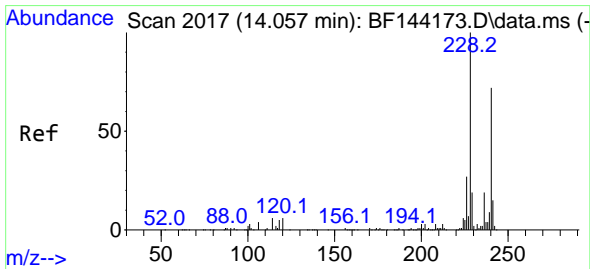
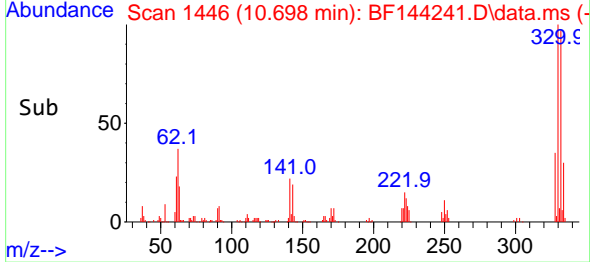
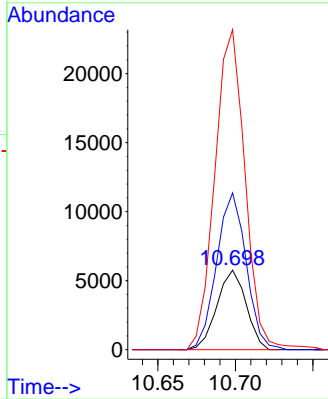
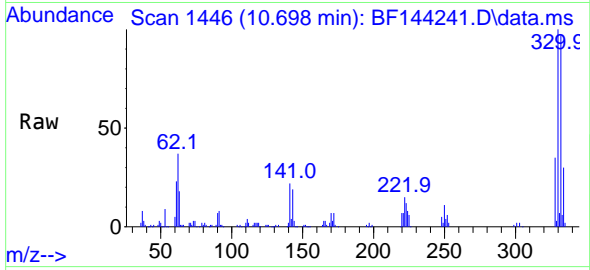


#67  
 4-Bromophenyl-phenylether  
 Concen: 4.023 ng  
 RT: 10.698 min Scan# 14  
 Delta R.T. -0.247 min  
 Lab File: BF144241.D  
 Acq: 12 Nov 2025 21:19

Instrument :  
 BNA\_F  
 ClientSampleId :  
 S-2

Tgt Ion:248 Resp: 7524

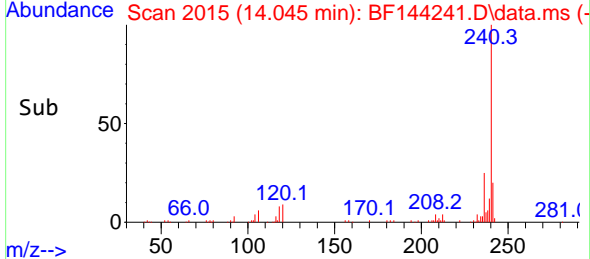
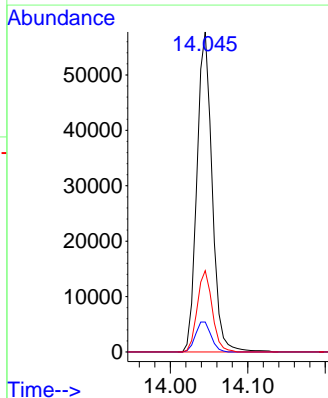
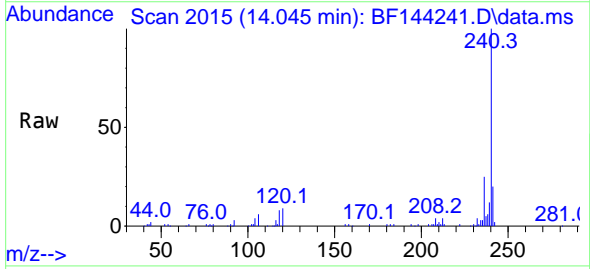
Ion	Ratio	Lower	Upper
248	100		
250	197.0	78.4	117.6#
141	402.1	45.1	67.7#

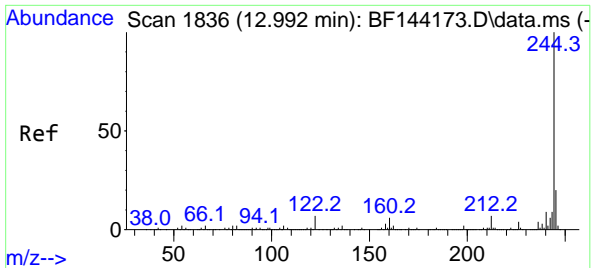


#76  
 Chrysene-d12  
 Concen: 20.000 ng  
 RT: 14.045 min Scan# 2015  
 Delta R.T. -0.006 min  
 Lab File: BF144241.D  
 Acq: 12 Nov 2025 21:19

Tgt Ion:240 Resp: 78541

Ion	Ratio	Lower	Upper
240	100		
120	9.3	6.6	10.0
236	25.4	21.4	32.2



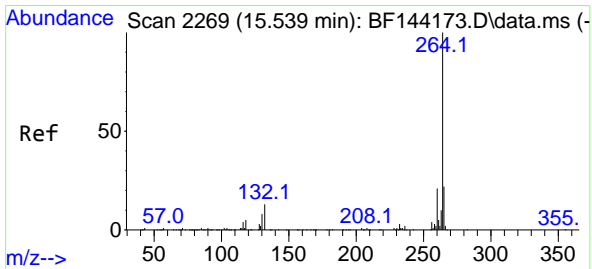
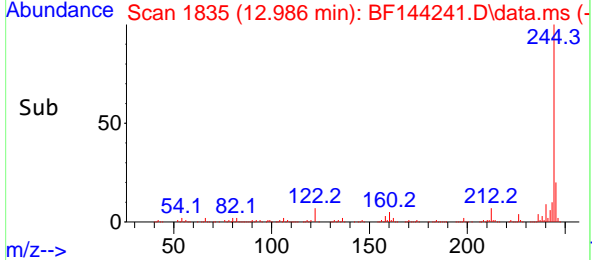
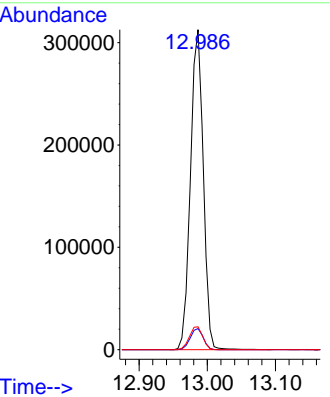
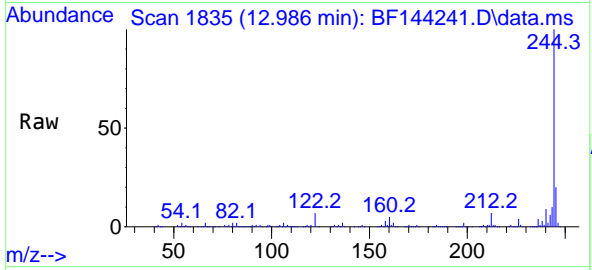


#79  
 Terphenyl-d14  
 Concen: 82.590 ng  
 RT: 12.986 min Scan# 11  
 Delta R.T. -0.006 min  
 Lab File: BF144241.D  
 Acq: 12 Nov 2025 21:19

Instrument : BNA\_F  
 ClientSampleId : S-2

Tgt Ion:244 Resp: 408379

Ion	Ratio	Lower	Upper
244	100		
212	6.6	5.3	7.9
122	7.2	5.6	8.4



#86  
 Perylene-d12  
 Concen: 20.000 ng  
 RT: 15.527 min Scan# 2267  
 Delta R.T. -0.012 min  
 Lab File: BF144241.D  
 Acq: 12 Nov 2025 21:19

Tgt Ion:264 Resp: 60402

Ion	Ratio	Lower	Upper
264	100		
260	23.3	17.1	25.7
265	21.1	17.4	26.0

