

Data Path : Z:\svoasrv\HPCHEM1\BNA_F\Data\BF111425\
 Data File : BF144254.D
 Acq On : 14 Nov 2025 10:47
 Operator : RC/JU
 Sample : PB170538BL
 Misc :
 ALS Vial : 3 Sample Multiplier: 1

Instrument :
 BNA_F
 ClientSampleId :
 PB170538BL

Quant Time: Nov 14 11:07:13 2025
 Quant Method : Z:\svoasrv\HPCHEM1\BNA_F\Methods\8270-BF110525.M
 Quant Title : ASP BNA STANDARDS FOR 5 POINT CALIBRATION
 QLast Update : Wed Nov 05 18:37:33 2025
 Response via : Initial Calibration

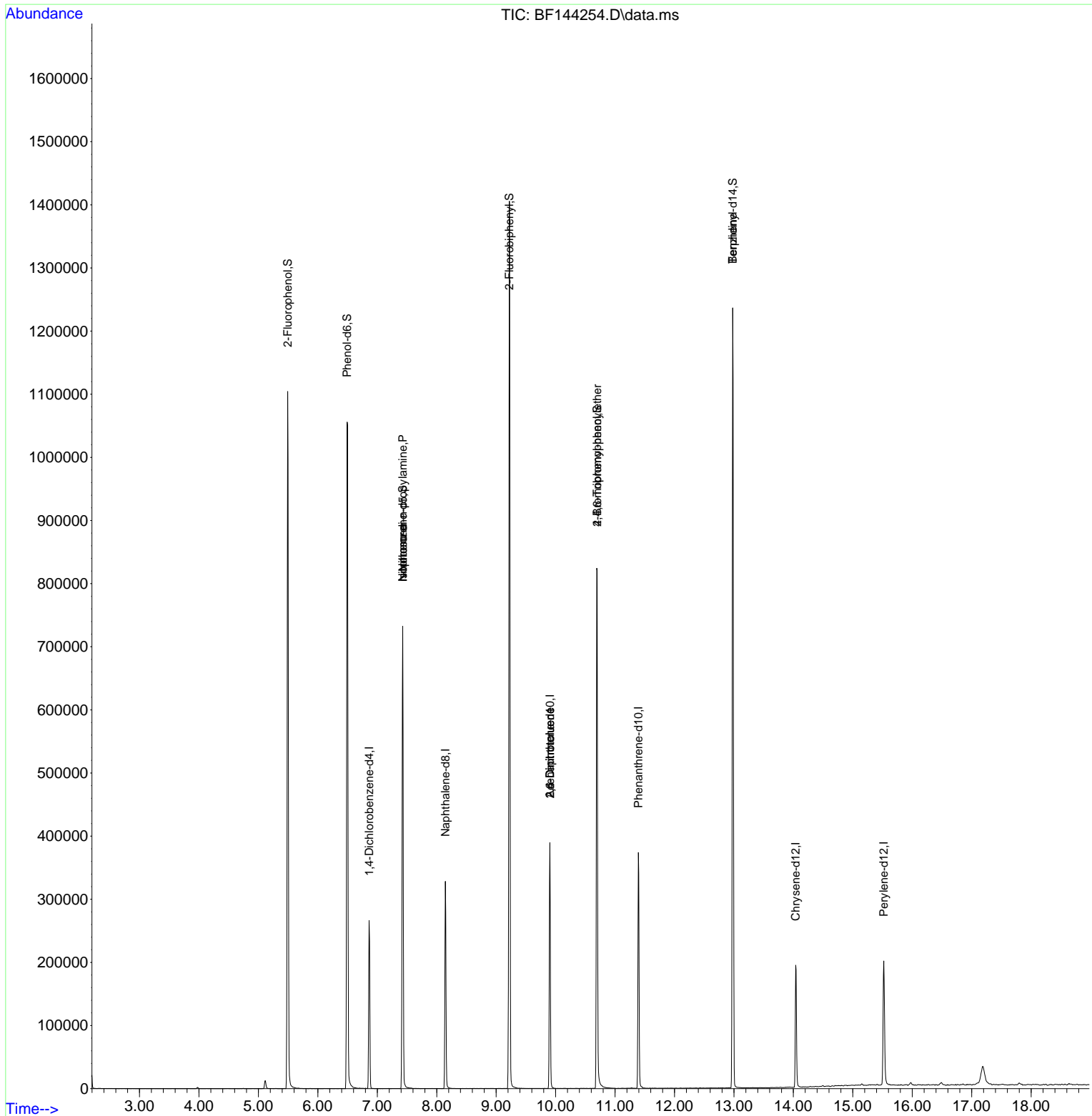
Compound	R.T.	QIon	Response	Conc	Units	Dev(Min)
Internal Standards						
1) 1,4-Dichlorobenzene-d4	6.863	152	56586	20.000	ng	-0.01
21) Naphthalene-d8	8.145	136	217939	20.000	ng	-0.01
39) Acenaphthene-d10	9.904	164	121994	20.000	ng	-0.01
64) Phenanthrene-d10	11.392	188	217183	20.000	ng	-0.01
76) Chrysene-d12	14.039	240	113626	20.000	ng	-0.01
86) Perylene-d12	15.521	264	145312	20.000	ng	-0.02
System Monitoring Compounds						
5) 2-Fluorophenol	5.492	112	415468	114.897	ng	0.00
7) Phenol-d6	6.492	99	463880	113.218	ng	0.00
23) Nitrobenzene-d5	7.428	82	313034	82.956	ng	0.00
42) 2,4,6-Tribromophenol	10.698	330	179922	117.528	ng	0.00
45) 2-Fluorobiphenyl	9.222	172	671816	81.334	ng	0.00
79) Terphenyl-d14	12.980	244	676905	94.626	ng	-0.01
Target Compounds						
19) n-Nitroso-di-n-propyla...	7.428	70	46896	17.387	ng	# 79
25) Isophorone	7.428	82	313031	43.856	ng	# 66
51) 2,6-Dinitrotoluene	9.904	165	15242	9.316	ng	# 27
57) 2,4-Dinitrotoluene	9.904	165	15242	6.959	ng	# 27
67) 4-Bromophenyl-phenylether	10.698	248	9740	3.514	ng	# 1
77) Benzidine	12.980	184	7688	2.287	ng	# 95

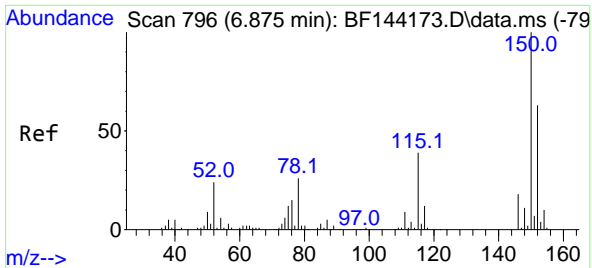
(#) = qualifier out of range (m) = manual integration (+) = signals summed

Data Path : Z:\svoasrv\HPCHEM1\BNA_F\Data\BF111425\
 Data File : BF144254.D
 Acq On : 14 Nov 2025 10:47
 Operator : RC/JU
 Sample : PB170538BL
 Misc :
 ALS Vial : 3 Sample Multiplier: 1

Instrument :
 BNA_F
 ClientSampleId :
 PB170538BL

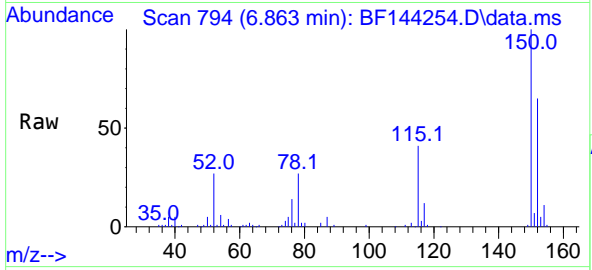
Quant Time: Nov 14 11:07:13 2025
 Quant Method : Z:\svoasrv\HPCHEM1\BNA_F\Methods\8270-BF110525.M
 Quant Title : ASP BNA STANDARDS FOR 5 POINT CALIBRATION
 QLast Update : Wed Nov 05 18:37:33 2025
 Response via : Initial Calibration



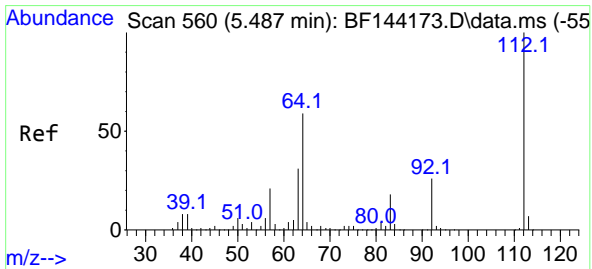
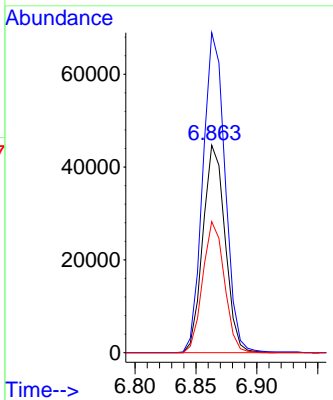
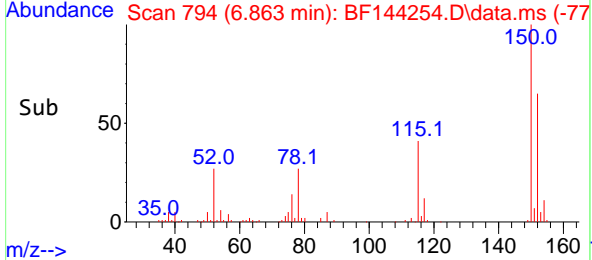


#1
 1,4-Dichlorobenzene-d4
 Concen: 20.000 ng
 RT: 6.863 min Scan# 794
 Delta R.T. -0.012 min
 Lab File: BF144254.D
 Acq: 14 Nov 2025 10:47

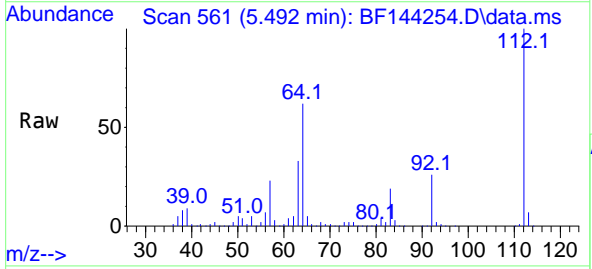
Instrument :
 BNA_F
 ClientSampleId :
 PB170538BL



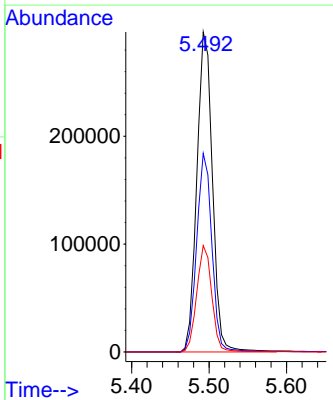
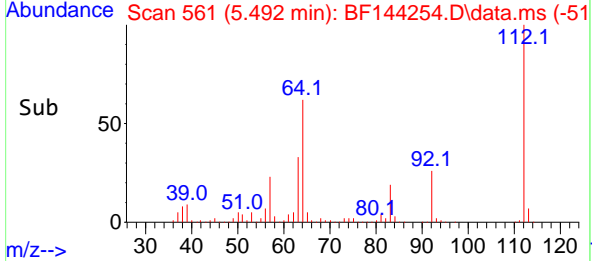
Tgt Ion:152 Resp: 56586
 Ion Ratio Lower Upper
 152 100
 150 154.2 127.4 191.0
 115 63.2 49.5 74.3

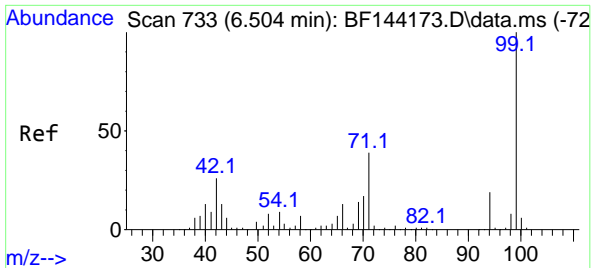


#5
 2-Fluorophenol
 Concen: 114.897 ng
 RT: 5.492 min Scan# 561
 Delta R.T. -0.000 min
 Lab File: BF144254.D
 Acq: 14 Nov 2025 10:47



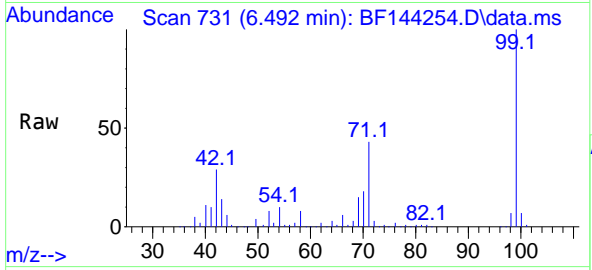
Tgt Ion:112 Resp: 415468
 Ion Ratio Lower Upper
 112 100
 64 62.0 47.2 70.8
 63 33.3 24.4 36.6



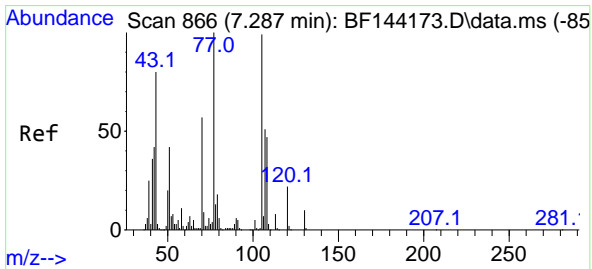
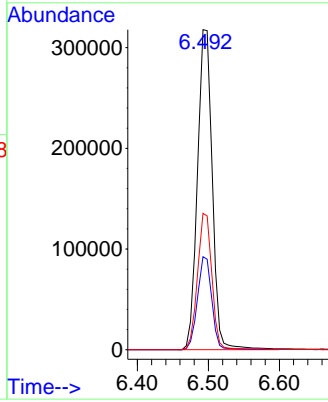
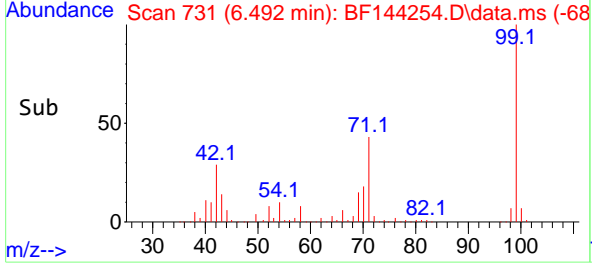


#7
Phenol-d6
Concen: 113.218 ng
RT: 6.492 min Scan# 71
Delta R.T. -0.006 min
Lab File: BF144254.D
Acq: 14 Nov 2025 10:47

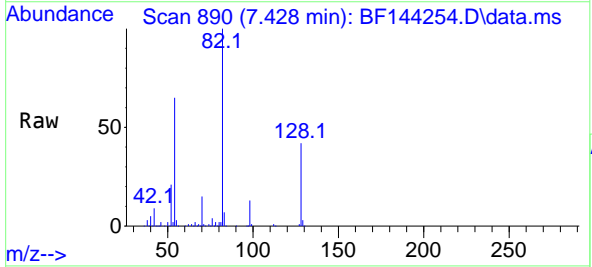
Instrument :
BNA_F
ClientSampleId :
PB170538BL



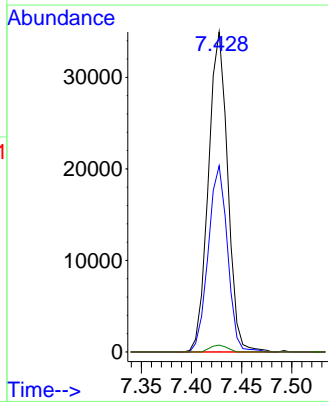
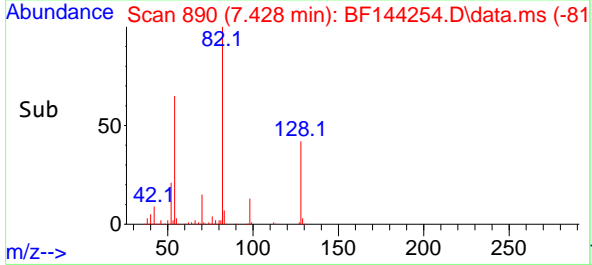
Tgt Ion: 99 Resp: 463880
Ion Ratio Lower Upper
99 100
42 29.0 20.9 31.3
71 42.6 31.4 47.2

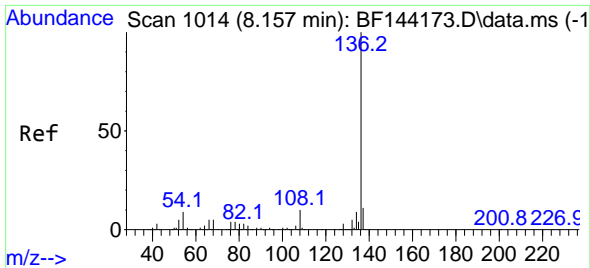


#19
n-Nitroso-di-n-propylamine
Concen: 17.387 ng
RT: 7.428 min Scan# 890
Delta R.T. 0.153 min
Lab File: BF144254.D
Acq: 14 Nov 2025 10:47



Tgt Ion: 70 Resp: 46896
Ion Ratio Lower Upper
70 100
42 58.2 58.3 87.5#
101 0.0 7.0 10.6#
130 2.2 14.4 21.6#



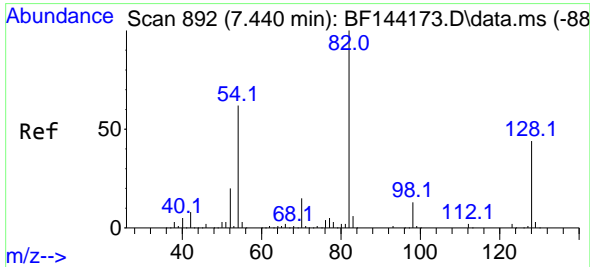
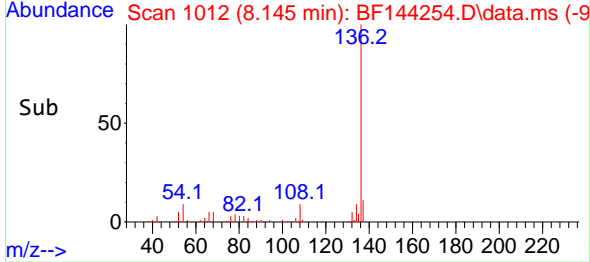
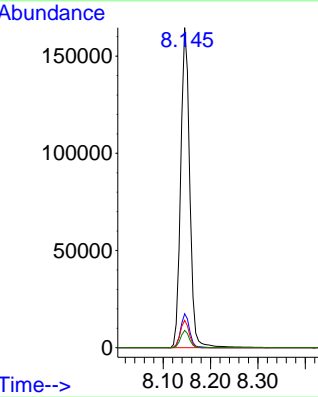
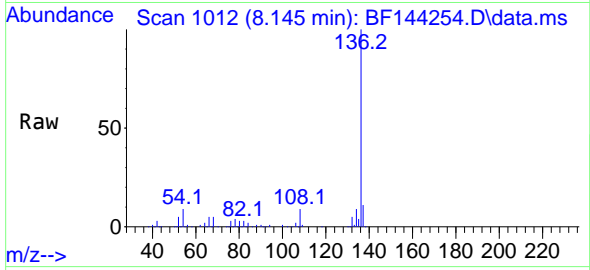


#21
 Naphthalene-d8
 Concen: 20.000 ng
 RT: 8.145 min Scan# 10
 Delta R.T. -0.012 min
 Lab File: BF144254.D
 Acq: 14 Nov 2025 10:47

Instrument :
 BNA_F
 Client Sample Id :
 PB170538BL

Tgt Ion: 136 Resp: 217939

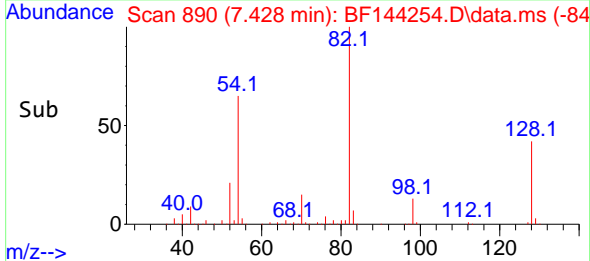
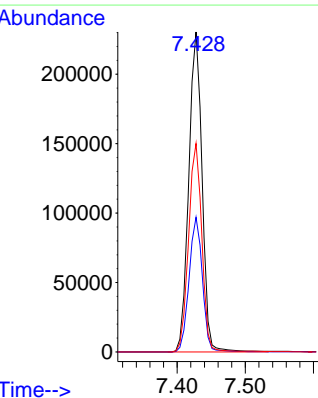
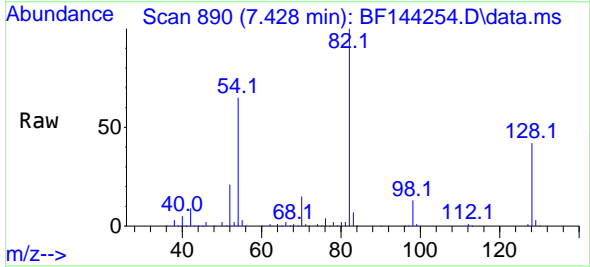
Ion	Ratio	Lower	Upper
136	100		
137	10.6	8.6	13.0
54	8.5	7.0	10.6
68	5.4	4.3	6.5

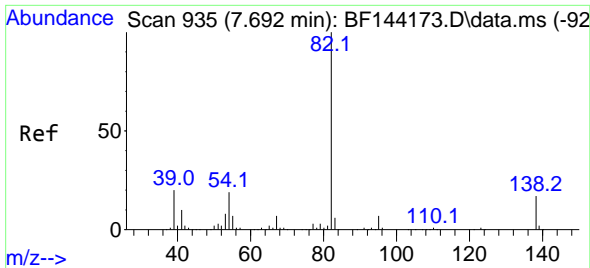


#23
 Nitrobenzene-d5
 Concen: 82.956 ng
 RT: 7.428 min Scan# 890
 Delta R.T. -0.006 min
 Lab File: BF144254.D
 Acq: 14 Nov 2025 10:47

Tgt Ion: 82 Resp: 313034

Ion	Ratio	Lower	Upper
82	100		
128	42.1	34.7	52.1
54	65.2	49.5	74.3

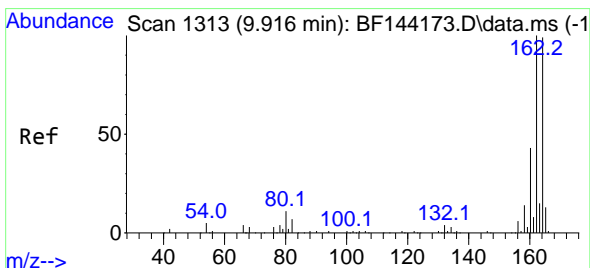
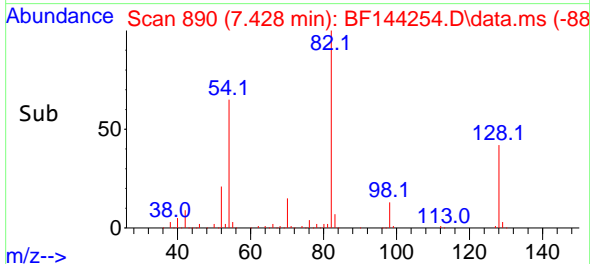
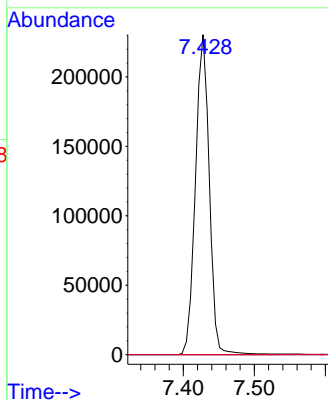
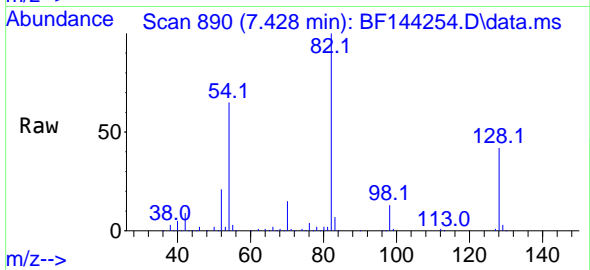




#25
 Isophorone
 Concen: 43.856 ng
 RT: 7.428 min Scan# 890
 Delta R.T. -0.259 min
 Lab File: BF144254.D
 Acq: 14 Nov 2025 10:47

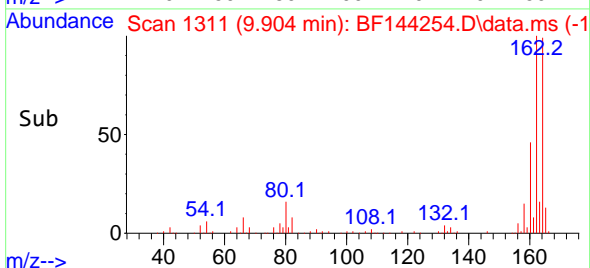
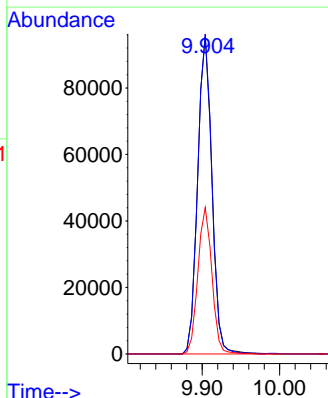
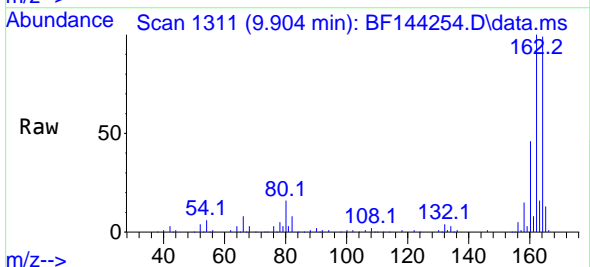
Instrument : BNA_F
 Client Sample Id : PB170538BL

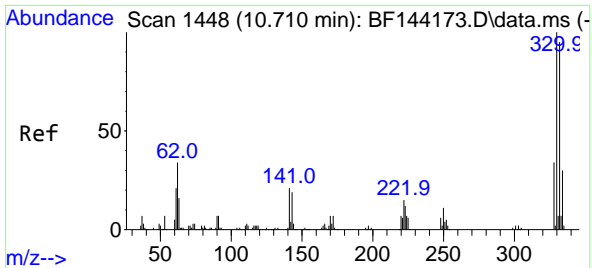
Tgt Ion: 82 Resp: 313031
 Ion Ratio Lower Upper
 82 100
 95 0.0 5.5 8.3#
 138 0.0 13.7 20.5#



#39
 Acenaphthene-d10
 Concen: 20.000 ng
 RT: 9.904 min Scan# 1311
 Delta R.T. -0.012 min
 Lab File: BF144254.D
 Acq: 14 Nov 2025 10:47

Tgt Ion: 164 Resp: 121994
 Ion Ratio Lower Upper
 164 100
 162 100.9 81.1 121.7
 160 46.2 34.5 51.7



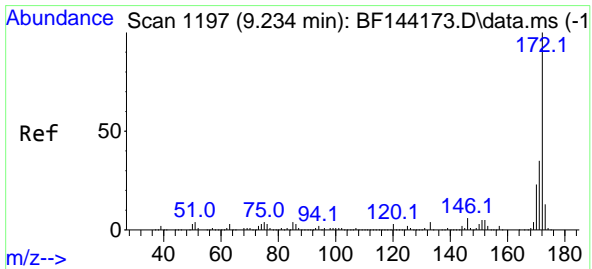
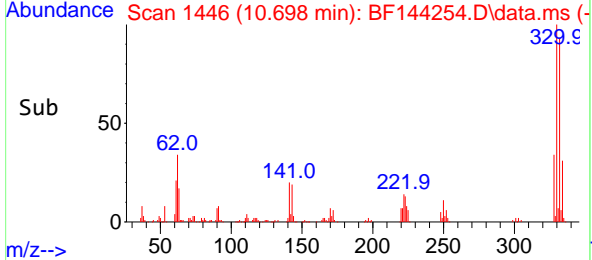
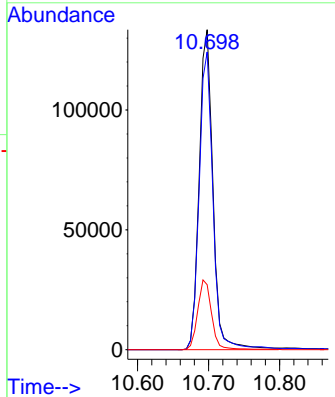
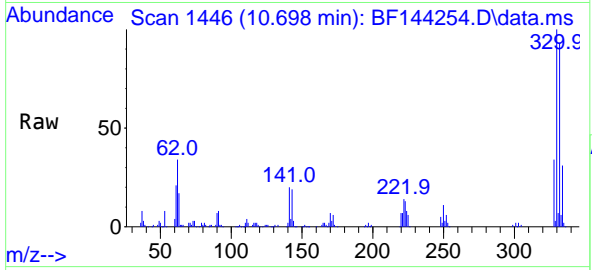


#42
 2,4,6-Tribromophenol
 Concen: 117.528 ng
 RT: 10.698 min Scan# 1446
 Delta R.T. -0.006 min
 Lab File: BF144254.D
 Acq: 14 Nov 2025 10:47

Instrument : BNA_F
 Client Sample Id : PB170538BL

Tgt Ion: 330 Resp: 179922

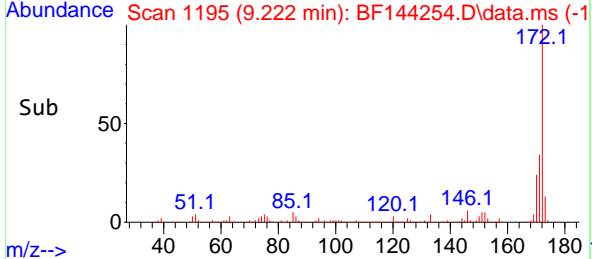
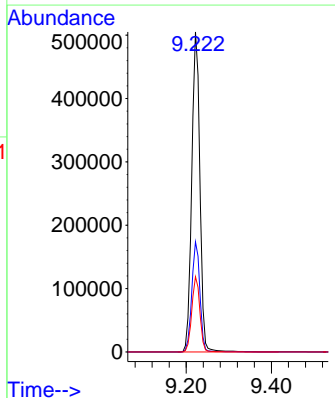
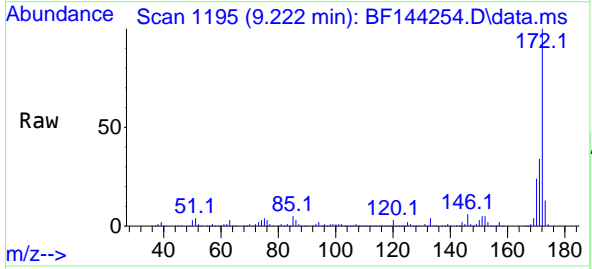
Ion	Ratio	Lower	Upper
330	100		
332	93.8	76.7	115.1
141	22.3	17.8	26.8

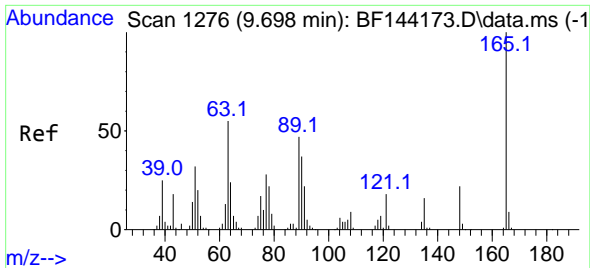


#45
 2-Fluorobiphenyl
 Concen: 81.334 ng
 RT: 9.222 min Scan# 1195
 Delta R.T. -0.006 min
 Lab File: BF144254.D
 Acq: 14 Nov 2025 10:47

Tgt Ion: 172 Resp: 671816

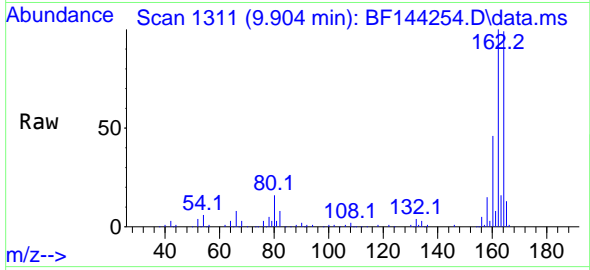
Ion	Ratio	Lower	Upper
172	100		
171	34.4	28.1	42.1
170	23.5	18.6	28.0



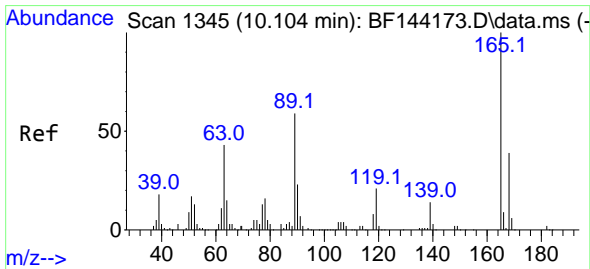
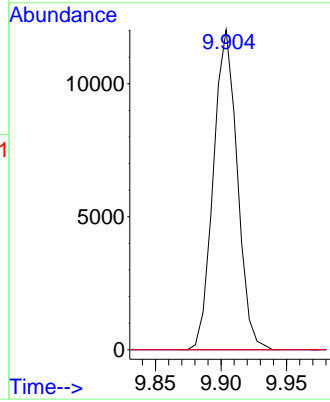
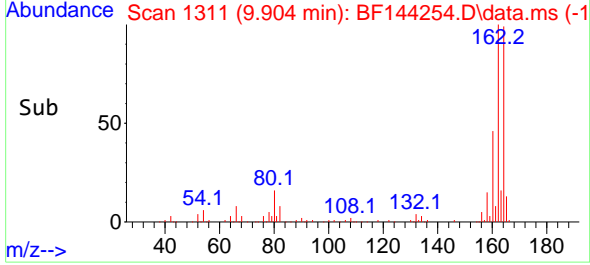


#51
 2,6-Dinitrotoluene
 Concen: 9.316 ng
 RT: 9.904 min Scan# 1311
 Delta R.T. 0.212 min
 Lab File: BF144254.D
 Acq: 14 Nov 2025 10:47

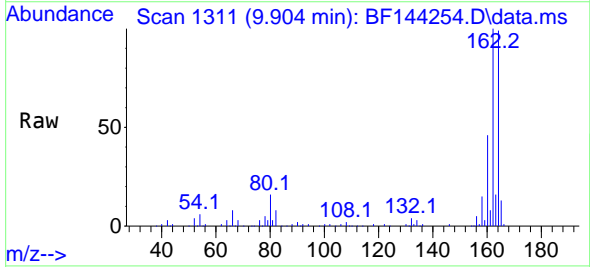
Instrument : BNA_F
 ClientSampleId : PB170538BL



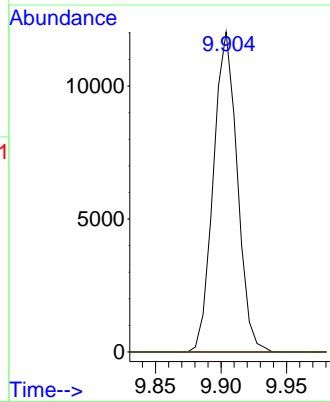
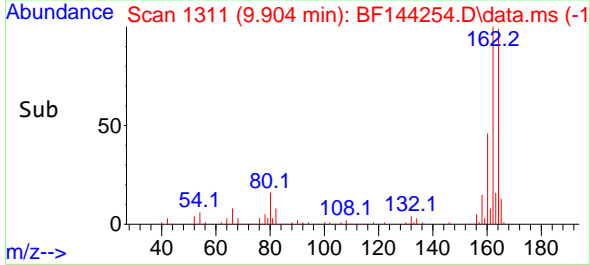
Tgt Ion:165 Resp: 15242
 Ion Ratio Lower Upper
 165 100
 63 0.0 43.8 65.8#
 89 0.0 37.5 56.3#

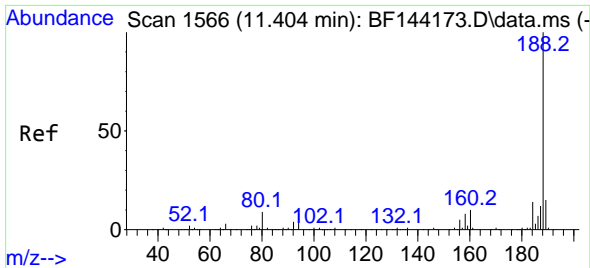


#57
 2,4-Dinitrotoluene
 Concen: 6.959 ng
 RT: 9.904 min Scan# 1311
 Delta R.T. -0.194 min
 Lab File: BF144254.D
 Acq: 14 Nov 2025 10:47



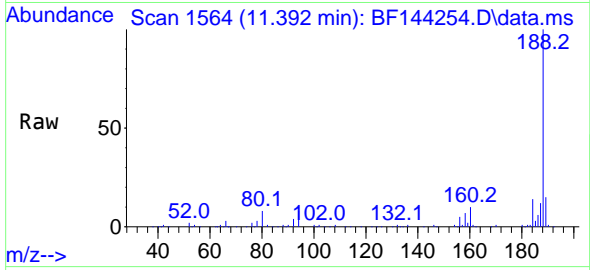
Tgt Ion:165 Resp: 15242
 Ion Ratio Lower Upper
 165 100
 63 0.0 35.5 53.3#
 89 0.0 47.4 71.2#
 182 0.0 1.9 2.9#



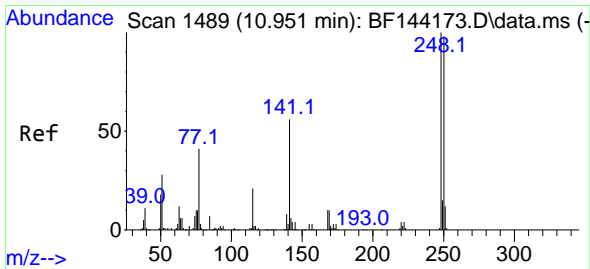
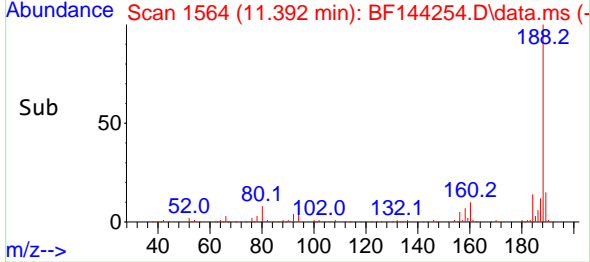
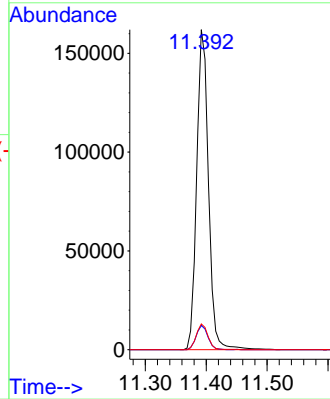


#64
 Phenanthrene-d10
 Concen: 20.000 ng
 RT: 11.392 min Scan# 11
 Delta R.T. -0.012 min
 Lab File: BF144254.D
 Acq: 14 Nov 2025 10:47

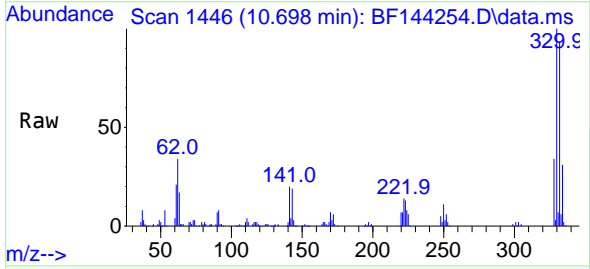
Instrument :
 BNA_F
 ClientSampleId :
 PB170538BL



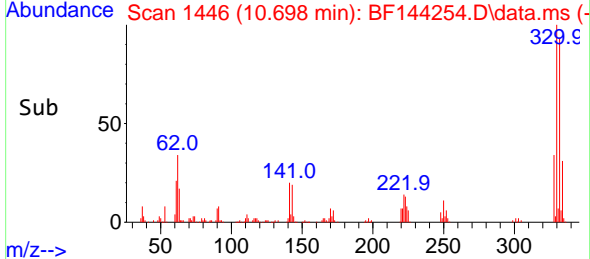
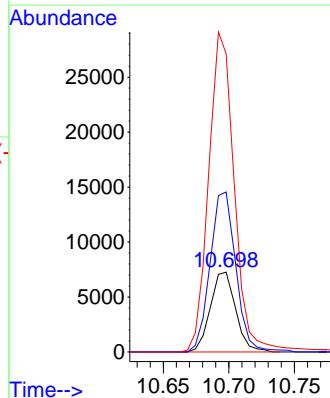
Tgt Ion:188 Resp: 217183
 Ion Ratio Lower Upper
 188 100
 94 7.6 6.2 9.2
 80 8.1 6.9 10.3

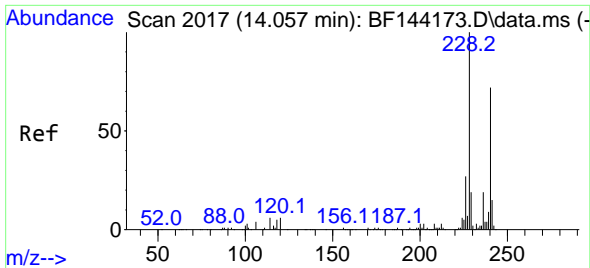


#67
 4-Bromophenyl-phenylether
 Concen: 3.514 ng
 RT: 10.698 min Scan# 1446
 Delta R.T. -0.247 min
 Lab File: BF144254.D
 Acq: 14 Nov 2025 10:47



Tgt Ion:248 Resp: 9740
 Ion Ratio Lower Upper
 248 100
 250 200.6 78.4 117.6#
 141 373.9 45.1 67.7#

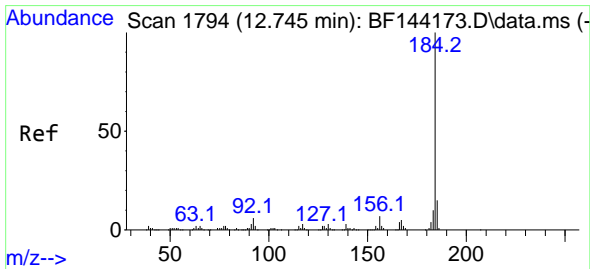
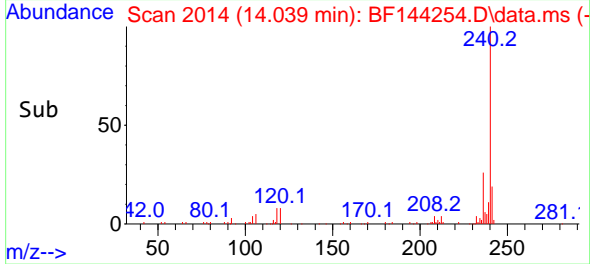
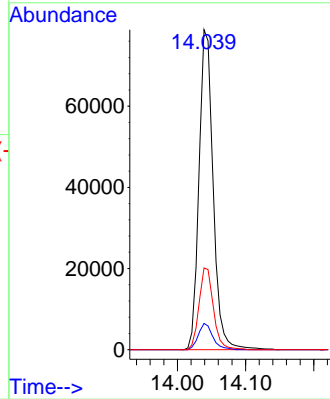
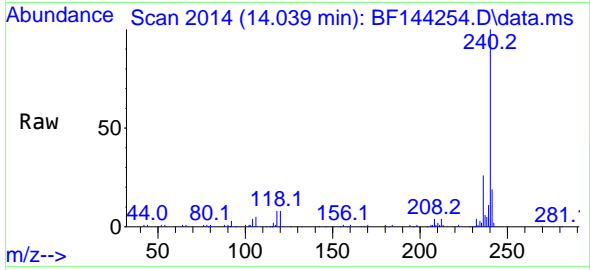




#76
 Chrysene-d12
 Concen: 20.000 ng
 RT: 14.039 min Scan# 20
 Delta R.T. -0.012 min
 Lab File: BF144254.D
 Acq: 14 Nov 2025 10:47

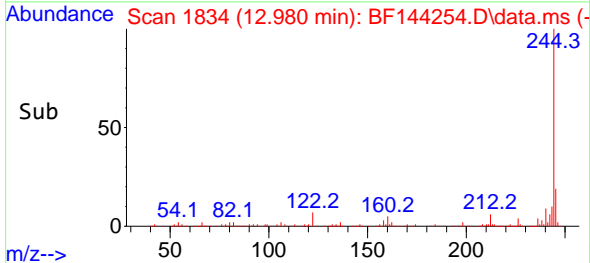
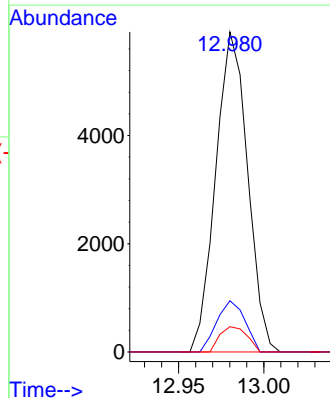
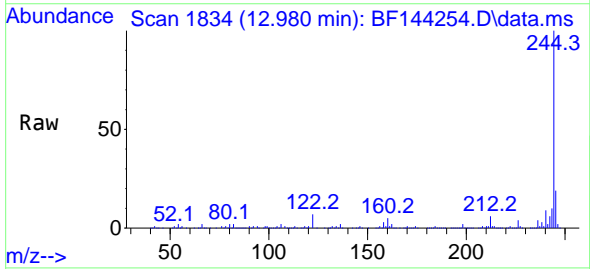
Instrument :
 BNA_F
 ClientSampleId :
 PB170538BL

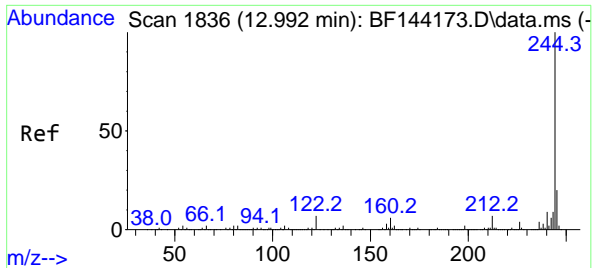
Tgt Ion:240 Resp: 113626
 Ion Ratio Lower Upper
 240 100
 120 8.2 6.6 10.0
 236 25.5 21.4 32.2



#77
 Benzdine
 Concen: 2.287 ng
 RT: 12.980 min Scan# 1834
 Delta R.T. 0.229 min
 Lab File: BF144254.D
 Acq: 14 Nov 2025 10:47

Tgt Ion:184 Resp: 7688
 Ion Ratio Lower Upper
 184 100
 185 16.0 11.7 17.5
 183 7.9 8.3 12.5#



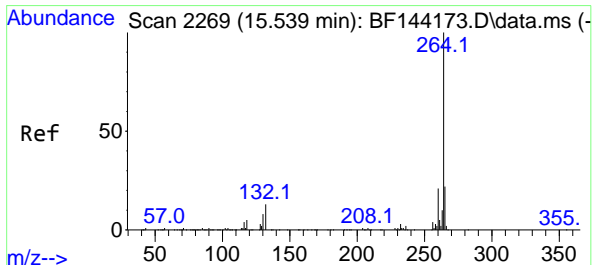
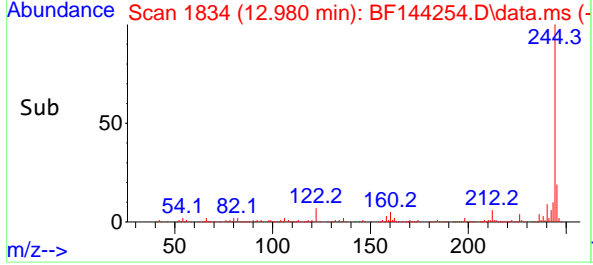
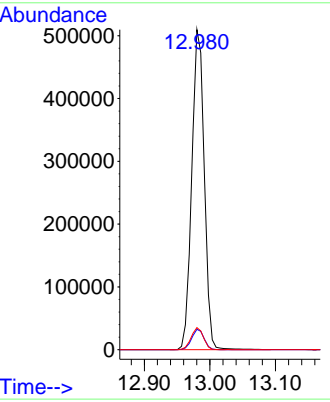
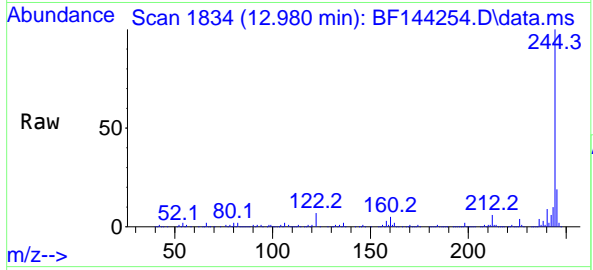


#79
 Terphenyl-d14
 Concen: 94.626 ng
 RT: 12.980 min Scan# 1834
 Delta R.T. -0.012 min
 Lab File: BF144254.D
 Acq: 14 Nov 2025 10:47

Instrument : BNA_F
 Client Sample Id : PB170538BL

Tgt Ion:244 Resp: 676905

Ion	Ratio	Lower	Upper
244	100		
212	6.4	5.3	7.9
122	6.9	5.6	8.4



#86
 Perylene-d12
 Concen: 20.000 ng
 RT: 15.521 min Scan# 2266
 Delta R.T. -0.018 min
 Lab File: BF144254.D
 Acq: 14 Nov 2025 10:47

Tgt Ion:264 Resp: 145312

Ion	Ratio	Lower	Upper
264	100		
260	21.8	17.1	25.7
265	20.2	17.4	26.0

