

Data Path : Z:\svoasrv\HPCHEM1\BNA\_F\Data\BF111425\  
 Data File : BF144257.D  
 Acq On : 14 Nov 2025 12:16  
 Operator : RC/JU  
 Sample : Q3601-05 2X  
 Misc :  
 ALS Vial : 6 Sample Multiplier: 1

Instrument :  
 BNA\_F  
 ClientSampleId :  
 TP-2

Quant Time: Nov 14 12:36:11 2025  
 Quant Method : Z:\svoasrv\HPCHEM1\BNA\_F\Methods\8270-BF110525.M  
 Quant Title : ASP BNA STANDARDS FOR 5 POINT CALIBRATION  
 QLast Update : Wed Nov 05 18:37:33 2025  
 Response via : Initial Calibration

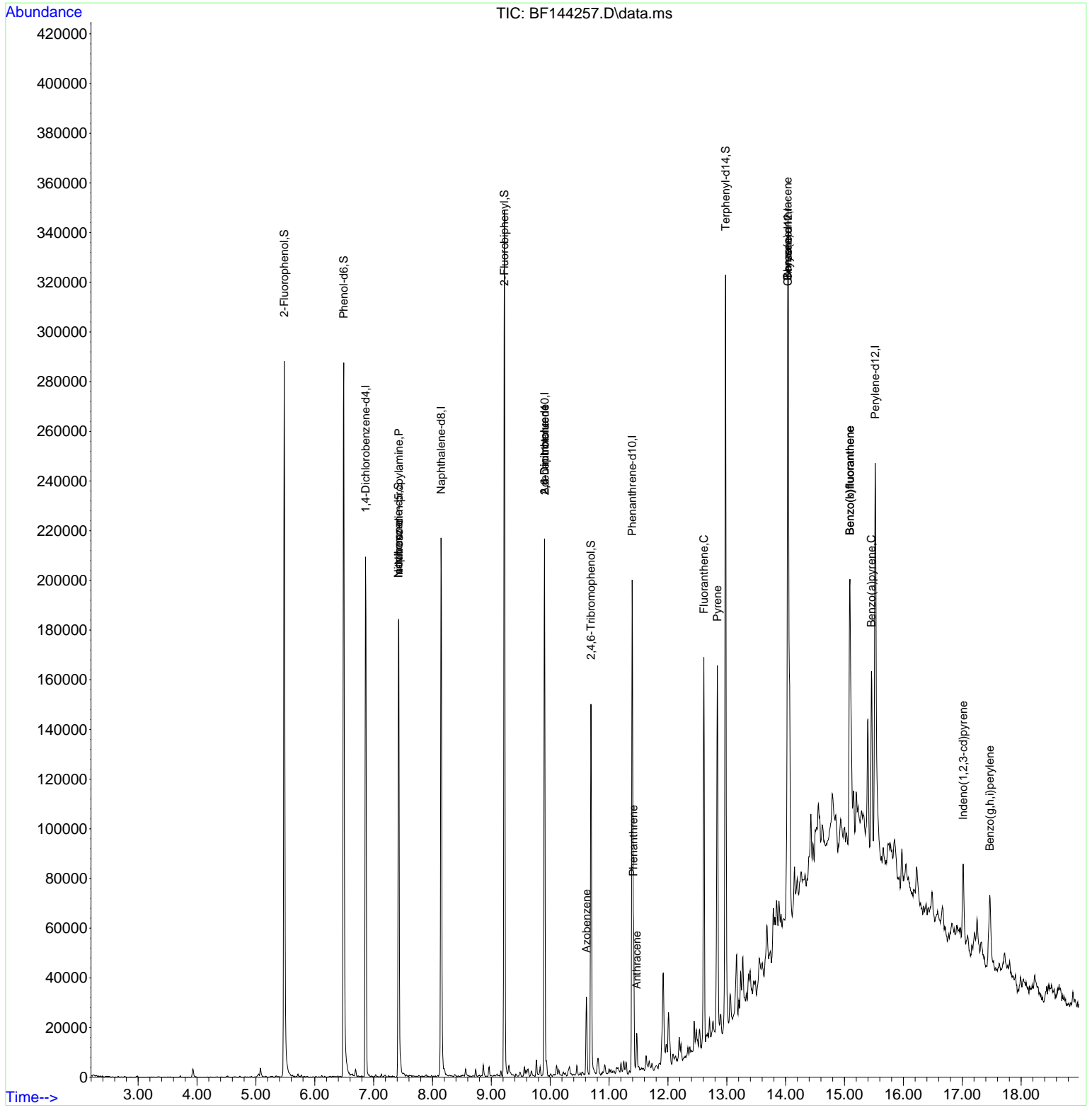
Compound	R.T.	QIon	Response	Conc	Units	Dev(Min)
Internal Standards						
1) 1,4-Dichlorobenzene-d4	6.863	152	45420	20.000	ng	-0.01
21) Naphthalene-d8	8.145	136	142918	20.000	ng	-0.01
39) Acenaphthene-d10	9.904	164	66638	20.000	ng	-0.01
64) Phenanthrene-d10	11.392	188	104372	20.000	ng	-0.01
76) Chrysene-d12	14.039	240	111101	20.000	ng	-0.01
86) Perylene-d12	15.521	264	98257	20.000	ng	-0.02
System Monitoring Compounds						
5) 2-Fluorophenol	5.481	112	119876	41.301	ng	-0.01
7) Phenol-d6	6.492	99	135333	41.151	ng	0.00
23) Nitrobenzene-d5	7.422	82	84519	34.155	ng	-0.01
42) 2,4,6-Tribromophenol	10.692	330	30064	35.952	ng	-0.01
45) 2-Fluorobiphenyl	9.222	172	162174	35.943	ng	0.00
79) Terphenyl-d14	12.980	244	157787	22.559	ng	-0.01
Target Compounds						
19) n-Nitroso-di-n-propyla...	7.428	70	11904	5.498	ng	# 77
25) Isophorone	7.422	82	84519	18.057	ng	# 66
51) 2,6-Dinitrotoluene	9.904	165	8416	9.417	ng	# 27
57) 2,4-Dinitrotoluene	9.904	165	8416	7.035	ng	# 27
63) Azobenzene	10.616	77	8029	2.120	ng	# 1
71) Phenanthrene	11.416	178	31826	6.124	ng	99
72) Anthracene	11.469	178	11346	2.147	ng	95
75) Fluoranthene	12.610	202	91347	17.017	ng	100
78) Pyrene	12.839	202	88552	9.885	ng	99
81) Benzo(a)anthracene	14.033	228	64012	8.313	ng	93
83) Chrysene	14.033	228	64012	9.005	ng	94
87) Indeno(1,2,3-cd)pyrene	17.015	276	23963	3.397	ng	94
88) Benzo(b)fluoranthene	15.092	252	98097	17.561	ng	# 95
89) Benzo(k)fluoranthene	15.092	252	98097	18.762	ng	# 96
90) Benzo(a)pyrene	15.457	252	46741	9.070	ng	97
92) Benzo(g,h,i)perylene	17.468	276	25987	4.646	ng	100

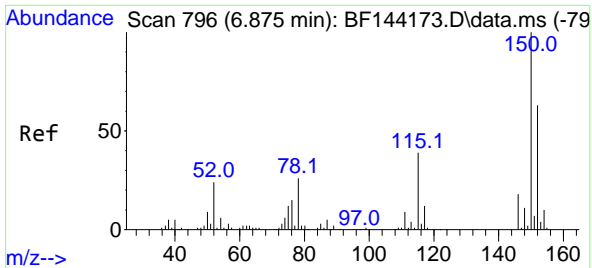
(#) = qualifier out of range (m) = manual integration (+) = signals summed

Data Path : Z:\svoasrv\HPCHEM1\BNA\_F\Data\BF111425\  
 Data File : BF144257.D  
 Acq On : 14 Nov 2025 12:16  
 Operator : RC/JU  
 Sample : Q3601-05 2X  
 Misc :  
 ALS Vial : 6 Sample Multiplier: 1

Instrument :  
 BNA\_F  
 ClientSampleId :  
 TP-2

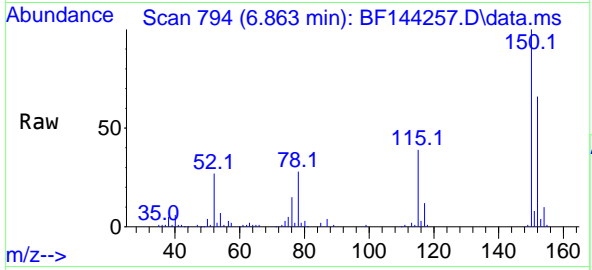
Quant Time: Nov 14 12:36:11 2025  
 Quant Method : Z:\svoasrv\HPCHEM1\BNA\_F\Methods\8270-BF110525.M  
 Quant Title : ASP BNA STANDARDS FOR 5 POINT CALIBRATION  
 QLast Update : Wed Nov 05 18:37:33 2025  
 Response via : Initial Calibration



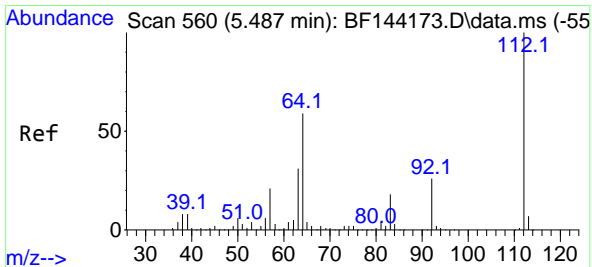
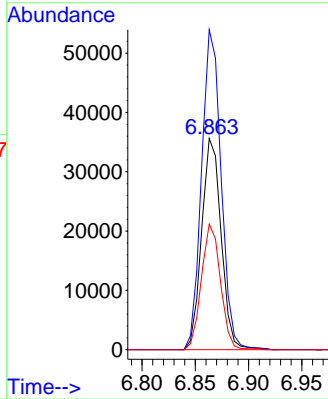
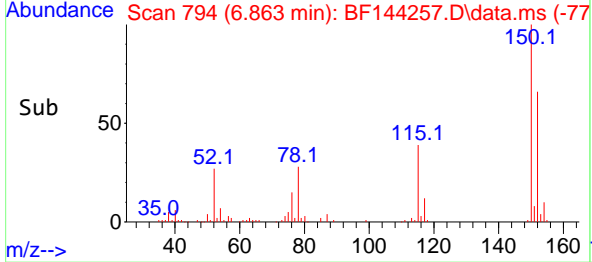


#1  
 1,4-Dichlorobenzene-d4  
 Concen: 20.000 ng  
 RT: 6.863 min Scan# 794  
 Delta R.T. -0.012 min  
 Lab File: BF144257.D  
 Acq: 14 Nov 2025 12:16

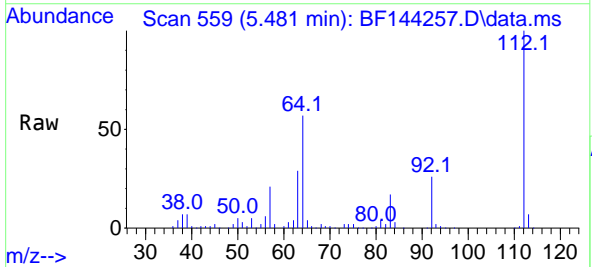
Instrument :  
 BNA\_F  
 ClientSampleId :  
 TP-2



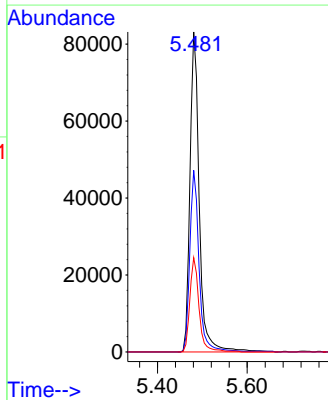
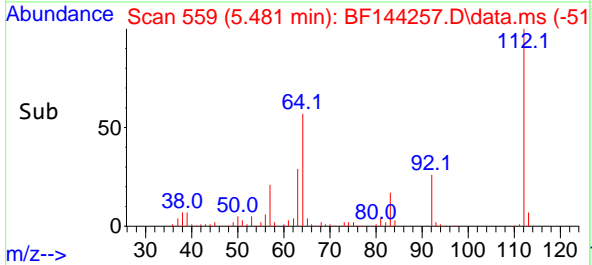
Tgt Ion:152 Resp: 45420  
 Ion Ratio Lower Upper  
 152 100  
 150 151.5 127.4 191.0  
 115 59.5 49.5 74.3

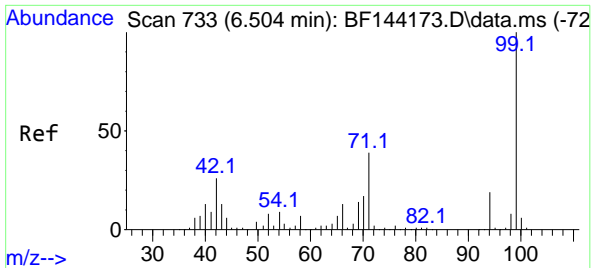


#5  
 2-Fluorophenol  
 Concen: 41.301 ng  
 RT: 5.481 min Scan# 559  
 Delta R.T. -0.012 min  
 Lab File: BF144257.D  
 Acq: 14 Nov 2025 12:16



Tgt Ion:112 Resp: 119876  
 Ion Ratio Lower Upper  
 112 100  
 64 56.7 47.2 70.8  
 63 29.5 24.4 36.6

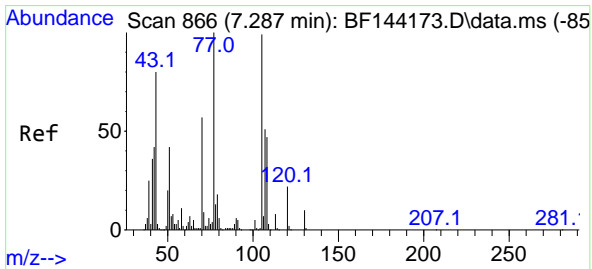
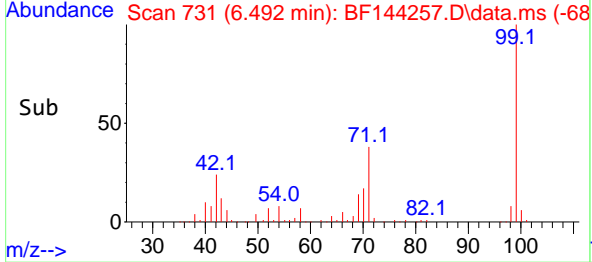
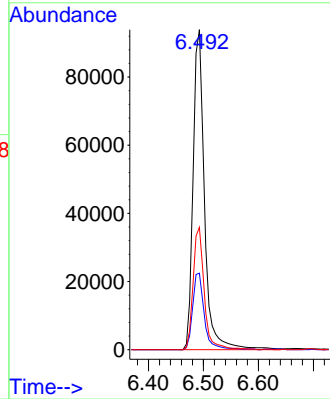
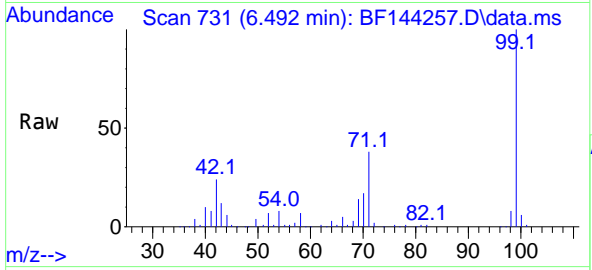




#7  
Phenol-d6  
Concen: 41.151 ng  
RT: 6.492 min Scan# 71  
Delta R.T. -0.006 min  
Lab File: BF144257.D  
Acq: 14 Nov 2025 12:16

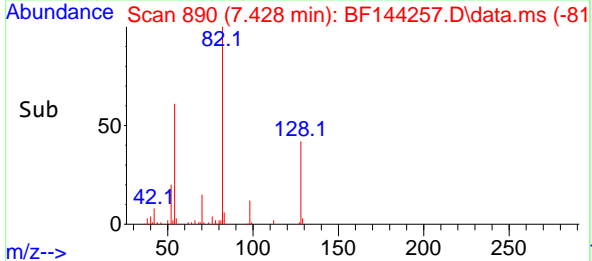
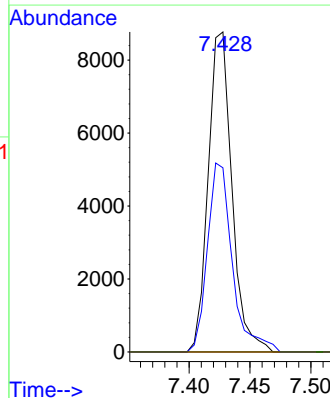
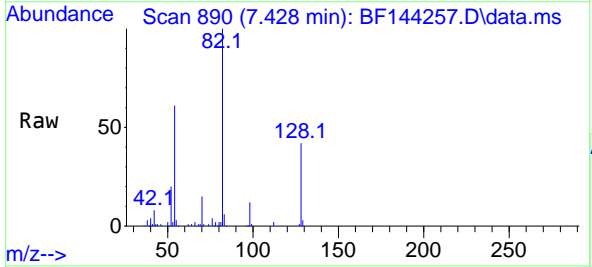
Instrument :  
BNA\_F  
ClientSampleId :  
TP-2

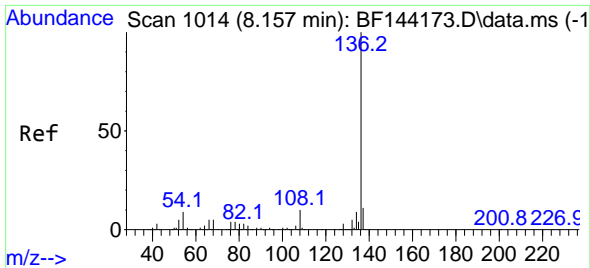
Tgt Ion: 99 Resp: 135333  
Ion Ratio Lower Upper  
99 100  
42 23.9 20.9 31.3  
71 38.2 31.4 47.2



#19  
n-Nitroso-di-n-propylamine  
Concen: 5.498 ng  
RT: 7.428 min Scan# 890  
Delta R.T. 0.153 min  
Lab File: BF144257.D  
Acq: 14 Nov 2025 12:16

Tgt Ion: 70 Resp: 11904  
Ion Ratio Lower Upper  
70 100  
42 57.6 58.3 87.5#  
101 0.0 7.0 10.6#  
130 0.0 14.4 21.6#



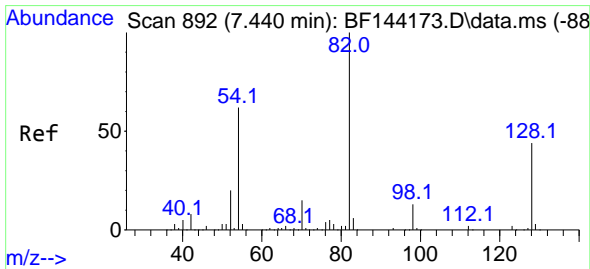
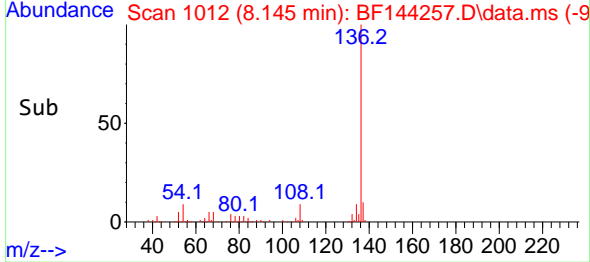
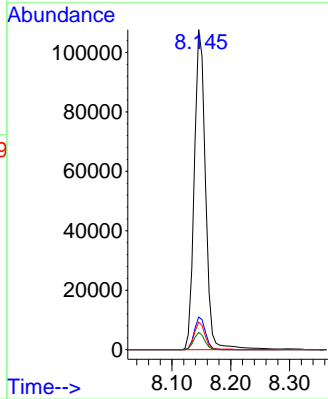
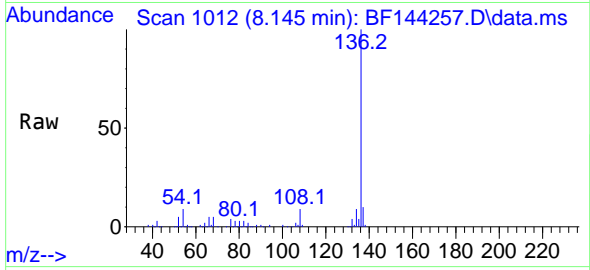


#21  
 Naphthalene-d8  
 Concen: 20.000 ng  
 RT: 8.145 min Scan# 10  
 Delta R.T. -0.012 min  
 Lab File: BF144257.D  
 Acq: 14 Nov 2025 12:16

Instrument :  
 BNA\_F  
 ClientSampleId :  
 TP-2

Tgt Ion:136 Resp: 142918

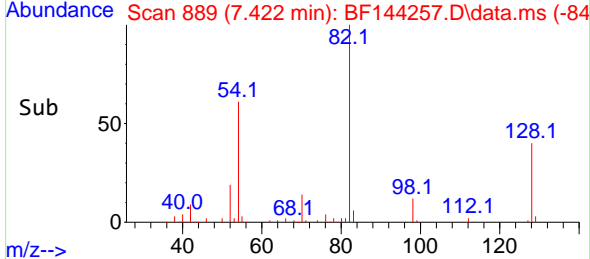
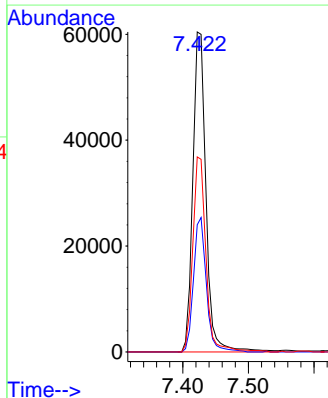
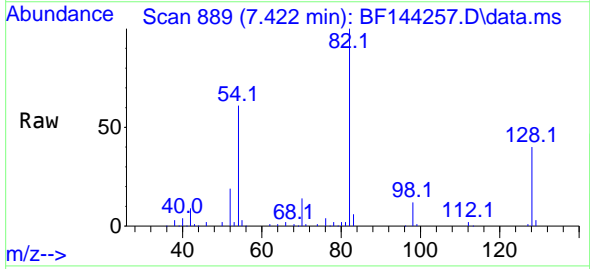
Ion	Ratio	Lower	Upper
136	100		
137	10.2	8.6	13.0
54	8.6	7.0	10.6
68	5.4	4.3	6.5

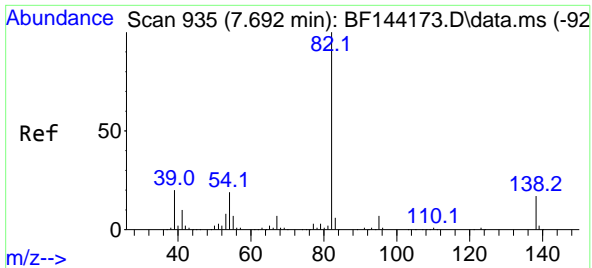


#23  
 Nitrobenzene-d5  
 Concen: 34.155 ng  
 RT: 7.422 min Scan# 889  
 Delta R.T. -0.012 min  
 Lab File: BF144257.D  
 Acq: 14 Nov 2025 12:16

Tgt Ion: 82 Resp: 84519

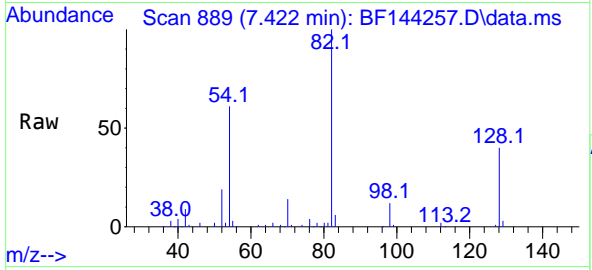
Ion	Ratio	Lower	Upper
82	100		
128	39.7	34.7	52.1
54	61.0	49.5	74.3



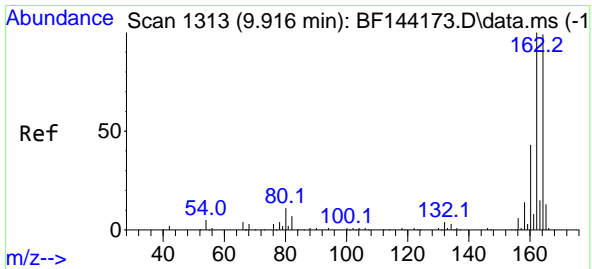
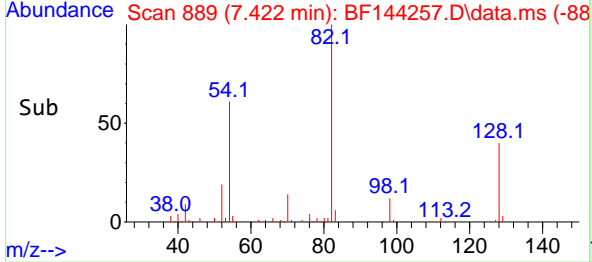
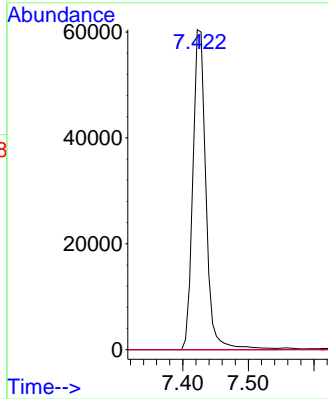


#25  
 Isophorone  
 Concen: 18.057 ng  
 RT: 7.422 min Scan# 84  
 Delta R.T. -0.265 min  
 Lab File: BF144257.D  
 Acq: 14 Nov 2025 12:16

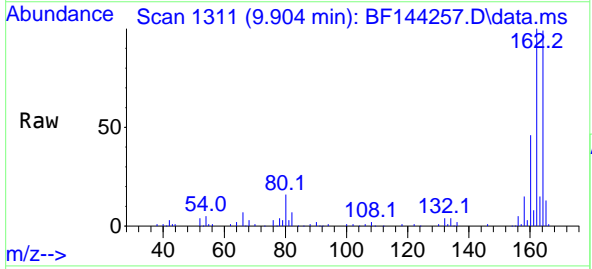
Instrument :  
 BNA\_F  
 ClientSampleId :  
 TP-2



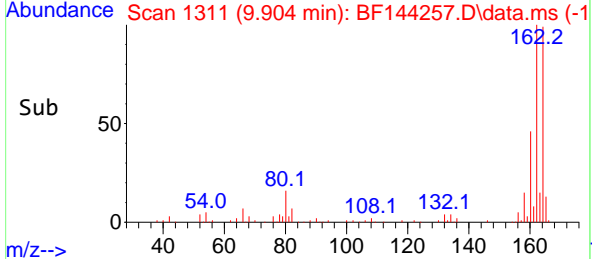
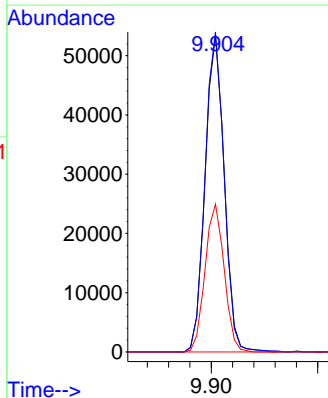
Tgt Ion: 82 Resp: 84519  
 Ion Ratio Lower Upper  
 82 100  
 95 0.0 5.5 8.3#  
 138 0.0 13.7 20.5#

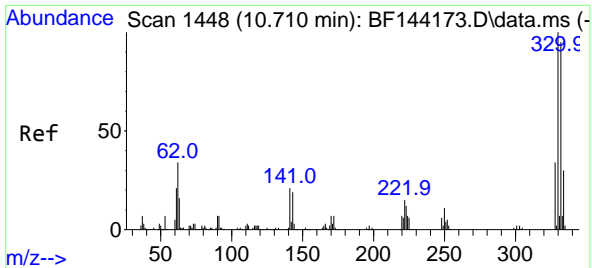


#39  
 Acenaphthene-d10  
 Concen: 20.000 ng  
 RT: 9.904 min Scan# 1311  
 Delta R.T. -0.012 min  
 Lab File: BF144257.D  
 Acq: 14 Nov 2025 12:16



Tgt Ion: 164 Resp: 66638  
 Ion Ratio Lower Upper  
 164 100  
 162 101.3 81.1 121.7  
 160 46.8 34.5 51.7



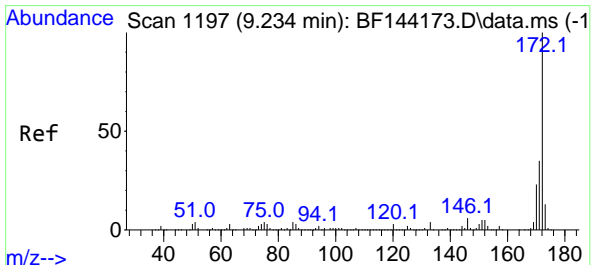
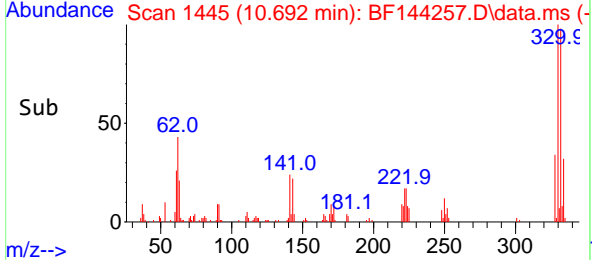
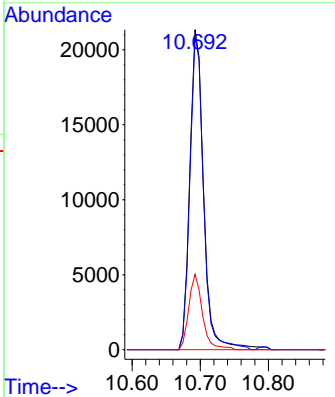
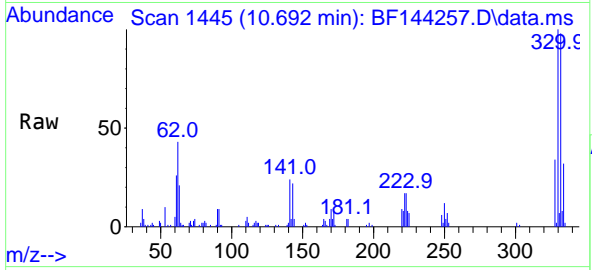


#42  
 2,4,6-Tribromophenol  
 Concen: 35.952 ng  
 RT: 10.692 min Scan# 1445  
 Delta R.T. -0.012 min  
 Lab File: BF144257.D  
 Acq: 14 Nov 2025 12:16

Instrument : BNA\_F  
 ClientSampleId : TP-2

Tgt Ion: 330 Resp: 30064

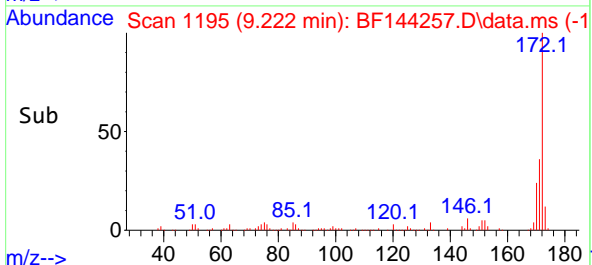
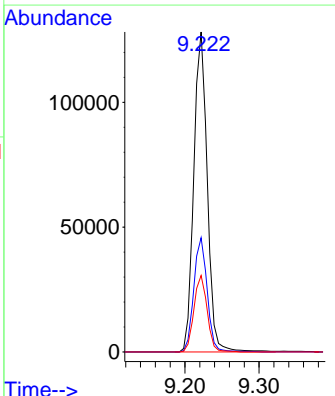
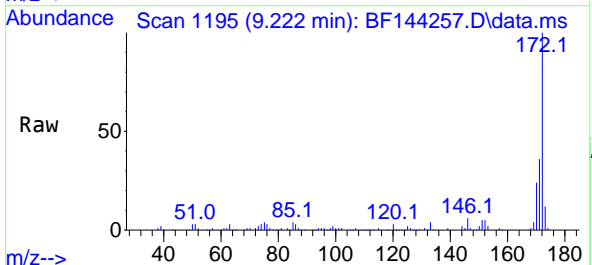
Ion	Ratio	Lower	Upper
330	100		
332	96.1	76.7	115.1
141	23.3	17.8	26.8

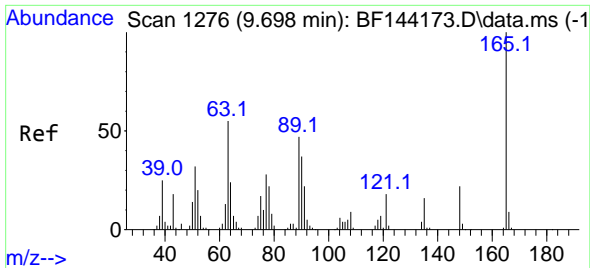


#45  
 2-Fluorobiphenyl  
 Concen: 35.943 ng  
 RT: 9.222 min Scan# 1195  
 Delta R.T. -0.006 min  
 Lab File: BF144257.D  
 Acq: 14 Nov 2025 12:16

Tgt Ion: 172 Resp: 162174

Ion	Ratio	Lower	Upper
172	100		
171	35.7	28.1	42.1
170	23.9	18.6	28.0



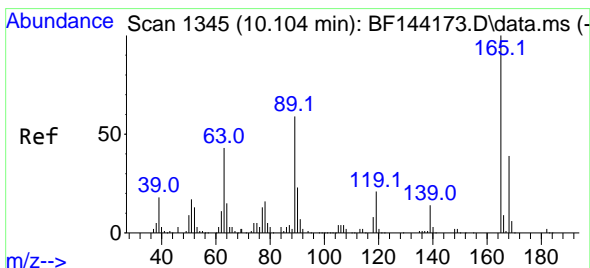
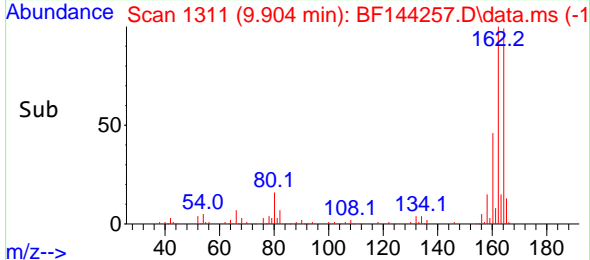
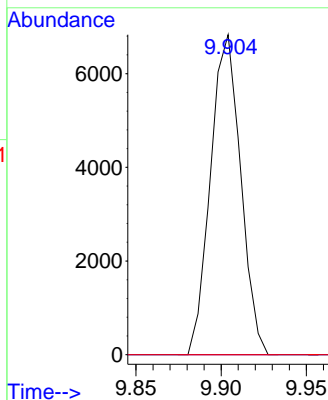
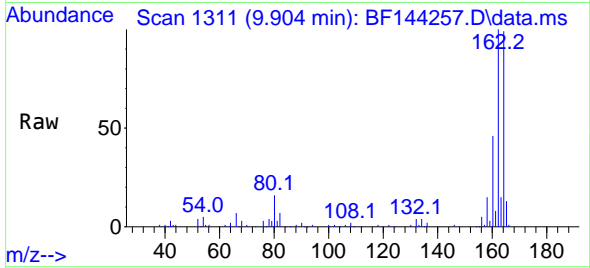


#51  
 2,6-Dinitrotoluene  
 Concen: 9.417 ng  
 RT: 9.904 min Scan# 1111  
 Delta R.T. 0.212 min  
 Lab File: BF144257.D  
 Acq: 14 Nov 2025 12:16

Instrument :  
 BNA\_F  
 ClientSampleId :  
 TP-2

Tgt Ion:165 Resp: 8416

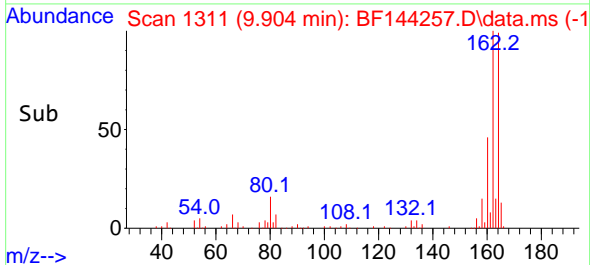
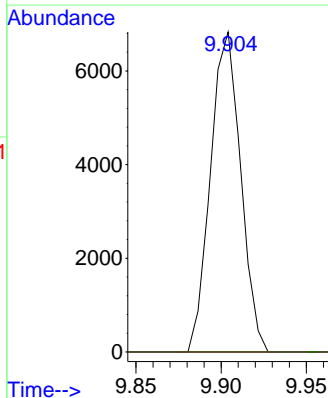
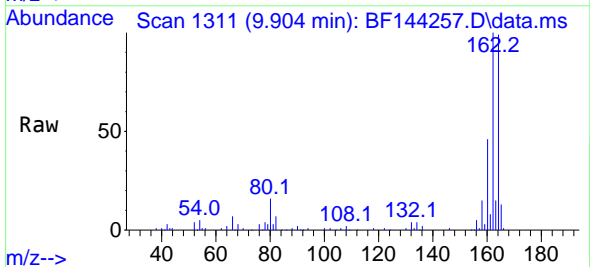
Ion	Ratio	Lower	Upper
165	100		
63	0.0	43.8	65.8#
89	0.0	37.5	56.3#



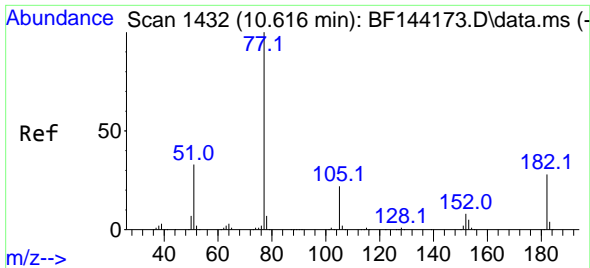
#57  
 2,4-Dinitrotoluene  
 Concen: 7.035 ng  
 RT: 9.904 min Scan# 1311  
 Delta R.T. -0.194 min  
 Lab File: BF144257.D  
 Acq: 14 Nov 2025 12:16

Tgt Ion:165 Resp: 8416

Ion	Ratio	Lower	Upper
165	100		
63	0.0	35.5	53.3#
89	0.0	47.4	71.2#
182	0.0	1.9	2.9#

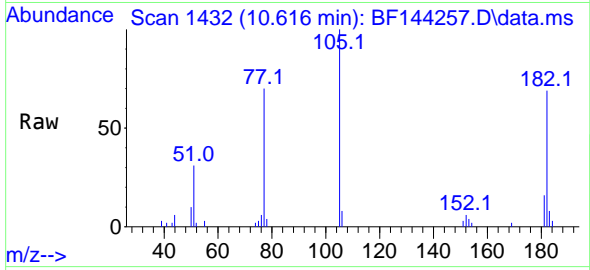






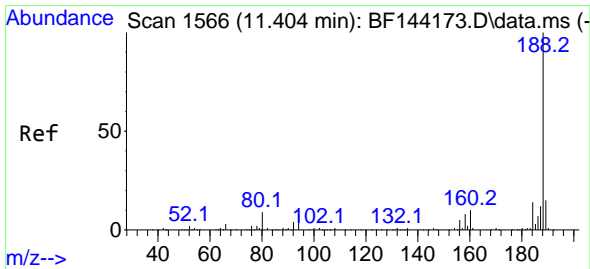
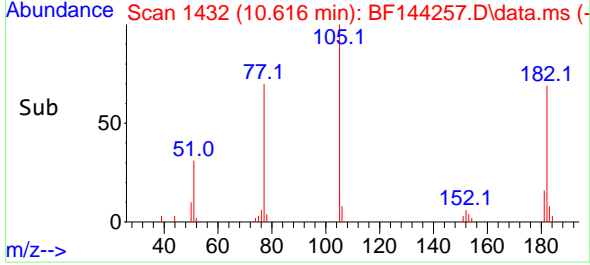
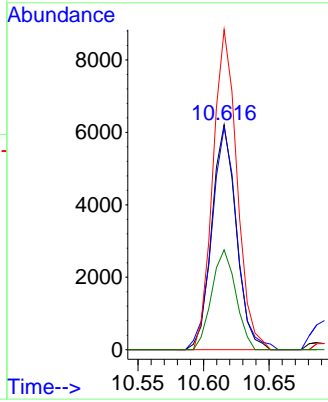
#63  
 Azobenzene  
 Concen: 2.120 ng  
 RT: 10.616 min Scan# 14  
 Delta R.T. -0.000 min  
 Lab File: BF144257.D  
 Acq: 14 Nov 2025 12:16

Instrument :  
 BNA\_F  
 ClientSampleId :  
 TP-2



Tgt Ion: 77 Resp: 8029

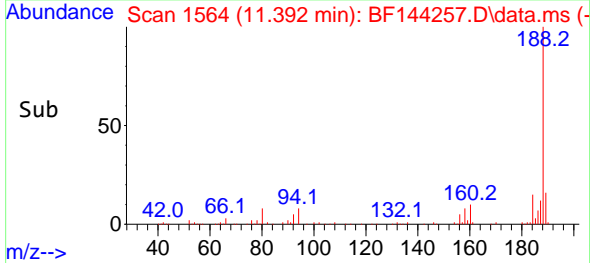
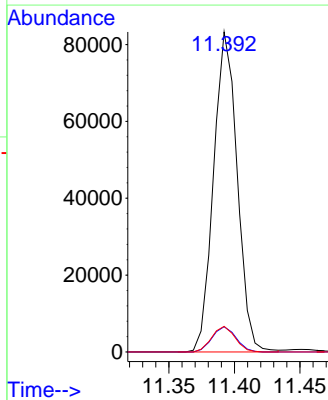
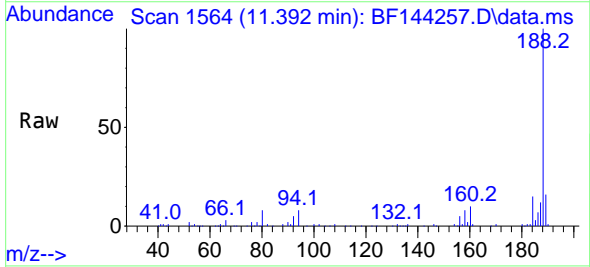
Ion	Ratio	Lower	Upper
77	100		
182	98.8	8.1	48.1#
105	142.2	2.0	42.0#
51	44.4	13.9	53.9

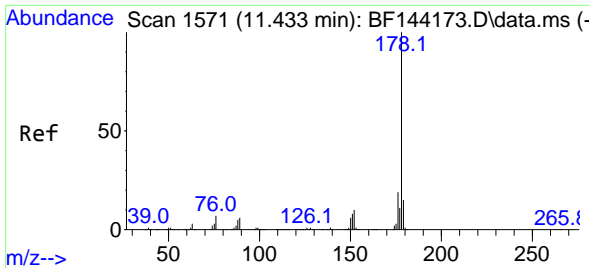


#64  
 Phenanthrene-d10  
 Concen: 20.000 ng  
 RT: 11.392 min Scan# 1564  
 Delta R.T. -0.012 min  
 Lab File: BF144257.D  
 Acq: 14 Nov 2025 12:16

Tgt Ion: 188 Resp: 104372

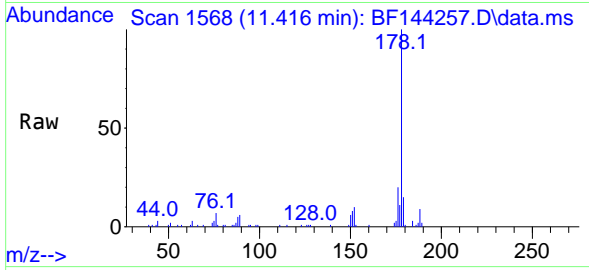
Ion	Ratio	Lower	Upper
188	100		
94	7.9	6.2	9.2
80	8.0	6.9	10.3



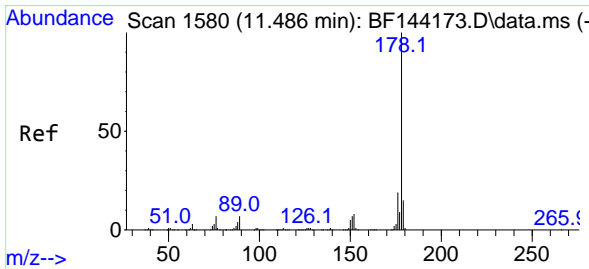
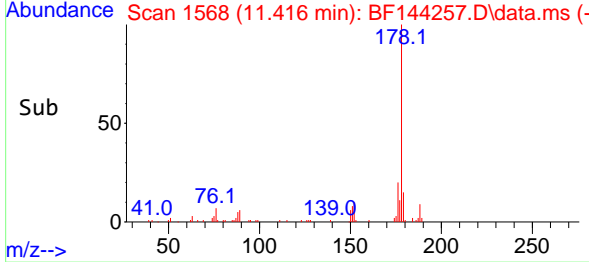
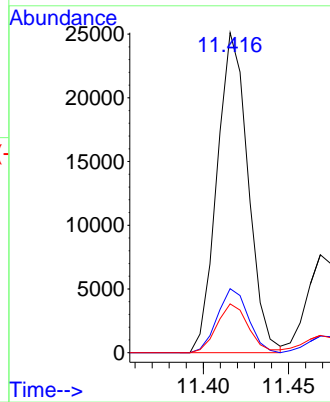


#71  
 Phenanthrene  
 Concen: 6.124 ng  
 RT: 11.416 min Scan# 11  
 Delta R.T. -0.012 min  
 Lab File: BF144257.D  
 Acq: 14 Nov 2025 12:16

Instrument :  
 BNA\_F  
 ClientSampleId :  
 TP-2

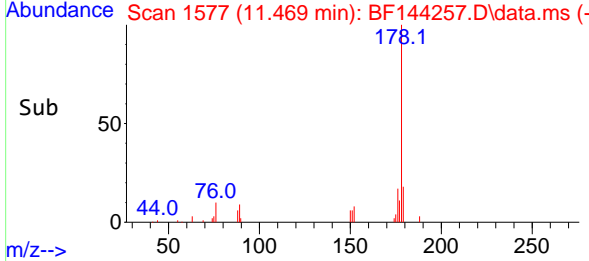
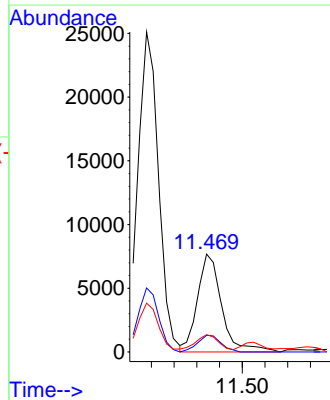
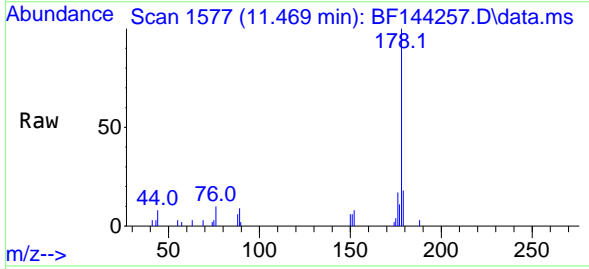


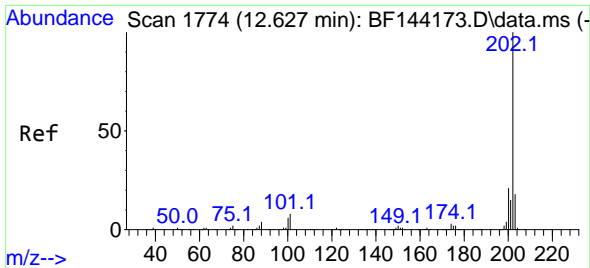
Tgt Ion:178 Resp: 31826  
 Ion Ratio Lower Upper  
 178 100  
 176 20.0 15.5 23.3  
 179 15.3 12.2 18.4



#72  
 Anthracene  
 Concen: 2.147 ng  
 RT: 11.469 min Scan# 1577  
 Delta R.T. -0.012 min  
 Lab File: BF144257.D  
 Acq: 14 Nov 2025 12:16

Tgt Ion:178 Resp: 11346  
 Ion Ratio Lower Upper  
 178 100  
 176 17.0 15.3 22.9  
 179 17.7 12.0 18.0



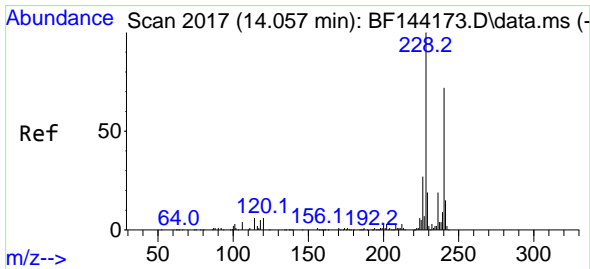
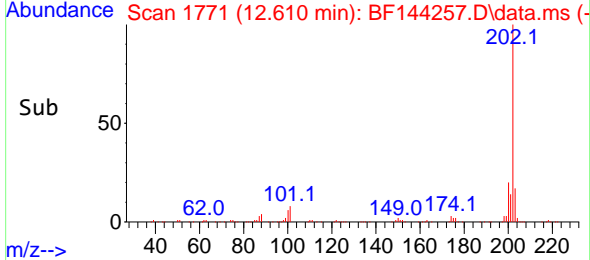
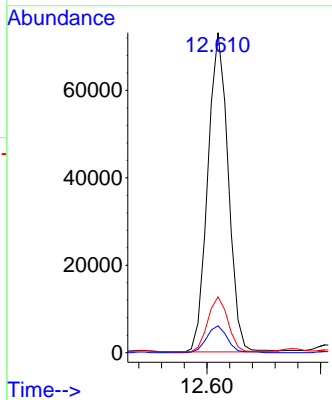
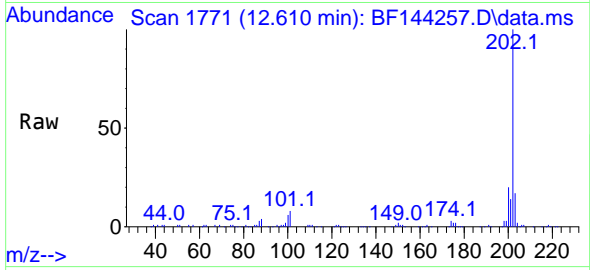


#75  
 Fluoranthene  
 Concen: 17.017 ng  
 RT: 12.610 min Scan# 11  
 Delta R.T. -0.012 min  
 Lab File: BF144257.D  
 Acq: 14 Nov 2025 12:16

Instrument : BNA\_F  
 ClientSampleId : TP-2

Tgt Ion: 202 Resp: 91347

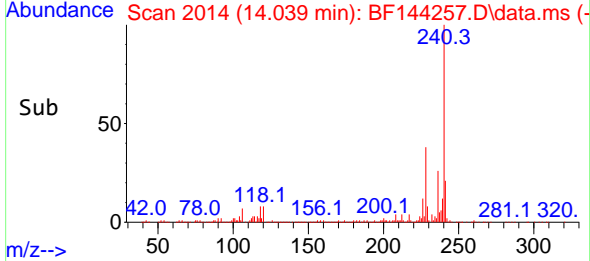
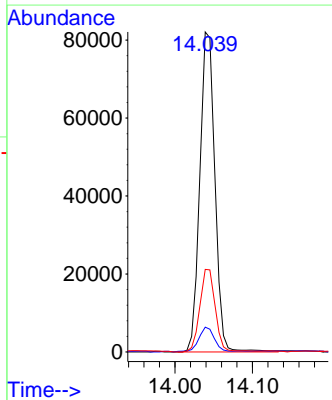
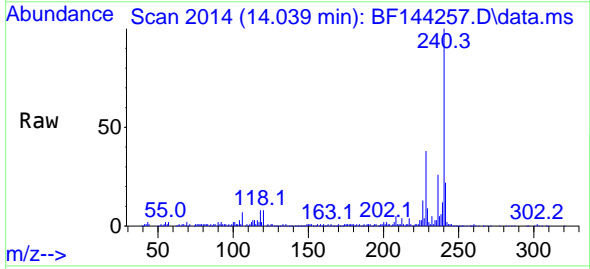
Ion	Ratio	Lower	Upper
202	100		
101	8.4	0.0	27.9
203	17.5	0.0	37.5

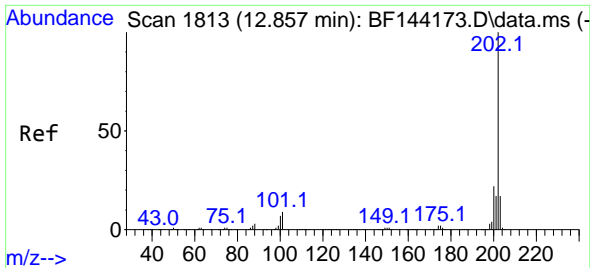


#76  
 Chrysene-d12  
 Concen: 20.000 ng  
 RT: 14.039 min Scan# 2014  
 Delta R.T. -0.012 min  
 Lab File: BF144257.D  
 Acq: 14 Nov 2025 12:16

Tgt Ion: 240 Resp: 111101

Ion	Ratio	Lower	Upper
240	100		
120	7.8	6.6	10.0
236	25.8	21.4	32.2

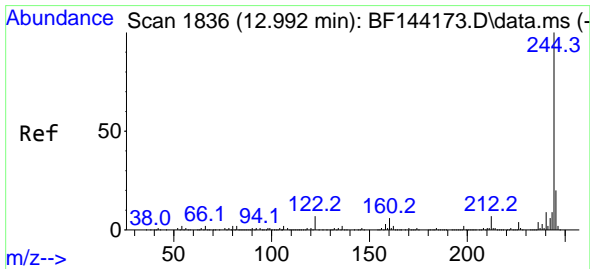
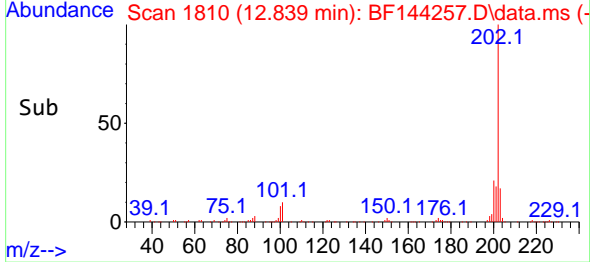
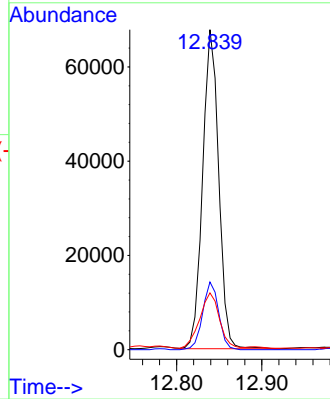
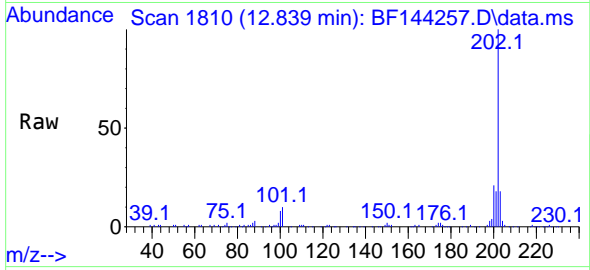




#78  
 Pyrene  
 Concen: 9.885 ng  
 RT: 12.839 min Scan# 1810  
 Delta R.T. -0.012 min  
 Lab File: BF144257.D  
 Acq: 14 Nov 2025 12:16

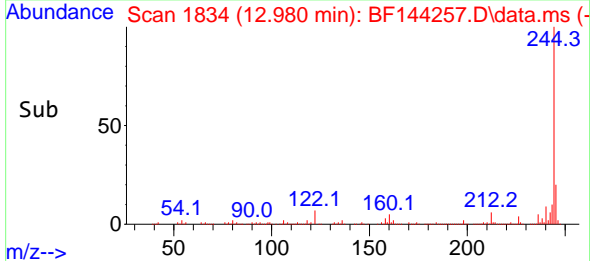
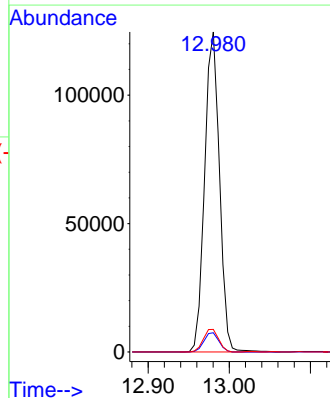
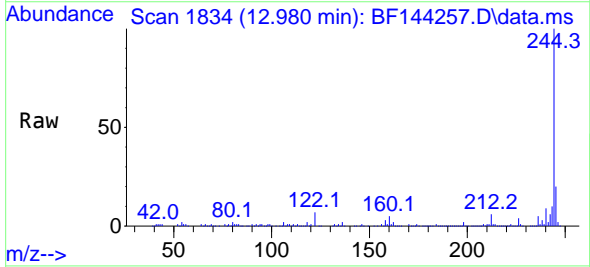
Instrument :  
 BNA\_F  
 ClientSampleId :  
 TP-2

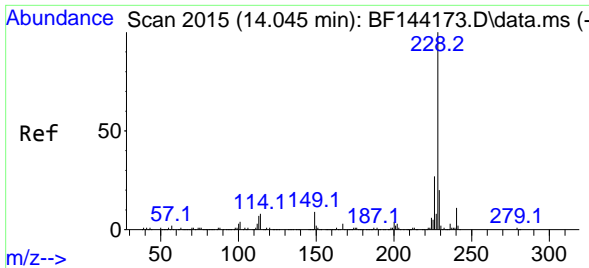
Tgt Ion:202 Resp: 88552  
 Ion Ratio Lower Upper  
 202 100  
 200 21.2 17.2 25.8  
 203 17.8 13.7 20.5



#79  
 Terphenyl-d14  
 Concen: 22.559 ng  
 RT: 12.980 min Scan# 1834  
 Delta R.T. -0.012 min  
 Lab File: BF144257.D  
 Acq: 14 Nov 2025 12:16

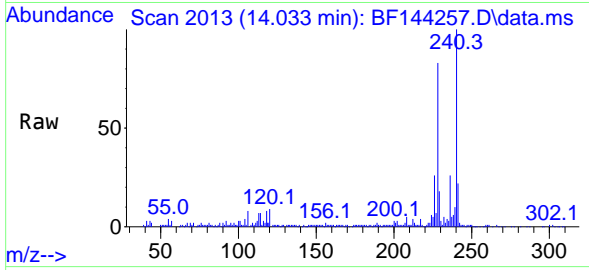
Tgt Ion:244 Resp: 157787  
 Ion Ratio Lower Upper  
 244 100  
 212 6.0 5.3 7.9  
 122 7.1 5.6 8.4





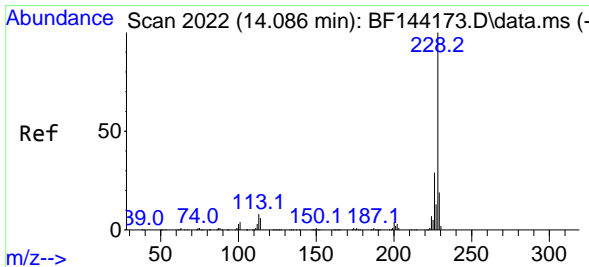
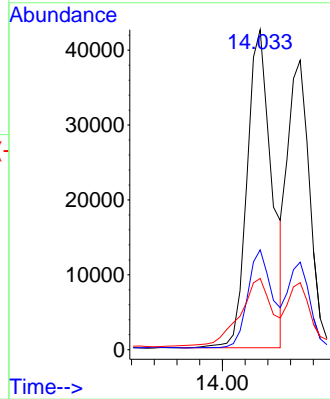
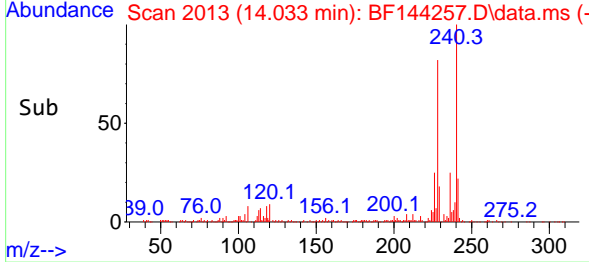
#81  
 Benzo(a)anthracene  
 Concen: 8.313 ng  
 RT: 14.033 min Scan# 2013  
 Delta R.T. -0.012 min  
 Lab File: BF144257.D  
 Acq: 14 Nov 2025 12:16

Instrument : BNA\_F  
 ClientSampleId : TP-2

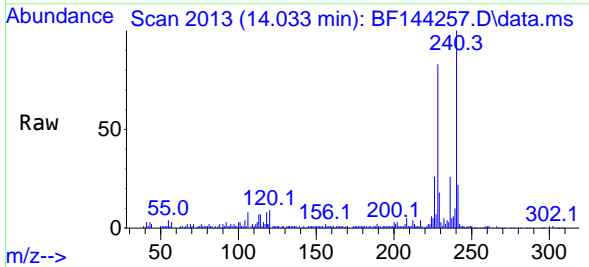


Tgt Ion:228 Resp: 64012

Ion	Ratio	Lower	Upper
228	100		
226	31.2	21.8	32.8
229	22.3	15.8	23.6

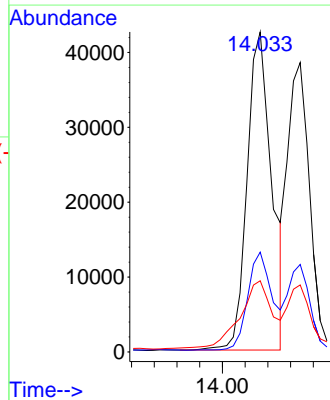
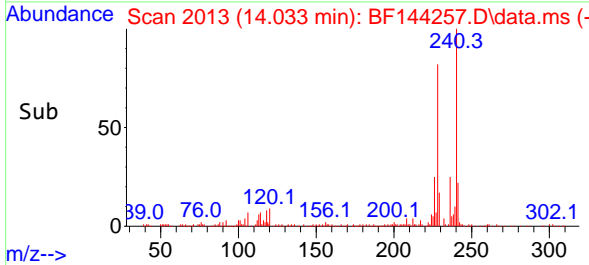


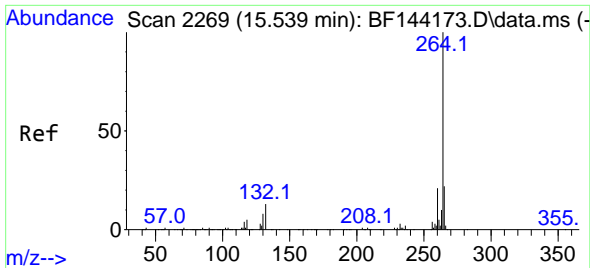
#83  
 Chrysene  
 Concen: 9.005 ng  
 RT: 14.033 min Scan# 2013  
 Delta R.T. -0.047 min  
 Lab File: BF144257.D  
 Acq: 14 Nov 2025 12:16



Tgt Ion:228 Resp: 64012

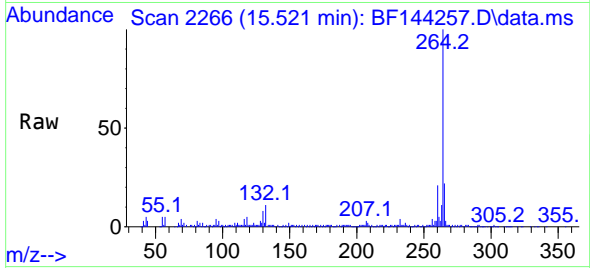
Ion	Ratio	Lower	Upper
228	100		
226	31.2	22.9	34.3
229	22.3	15.0	22.6



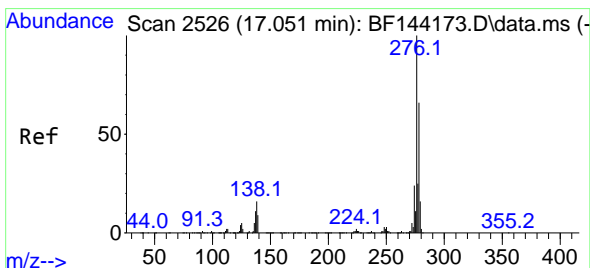
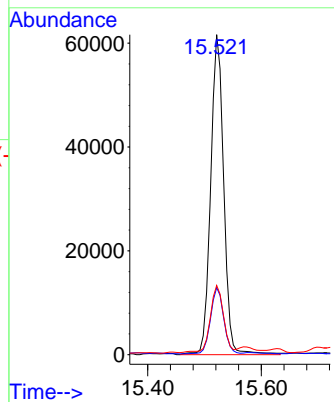
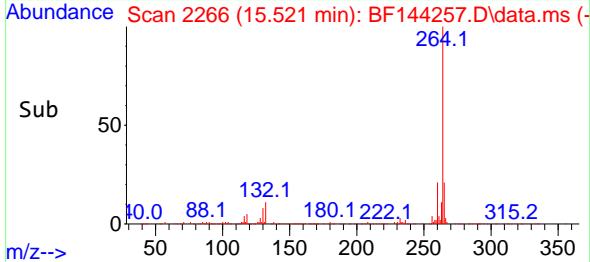


#86  
 Perylene-d12  
 Concen: 20.000 ng  
 RT: 15.521 min Scan# 21  
 Delta R.T. -0.018 min  
 Lab File: BF144257.D  
 Acq: 14 Nov 2025 12:16

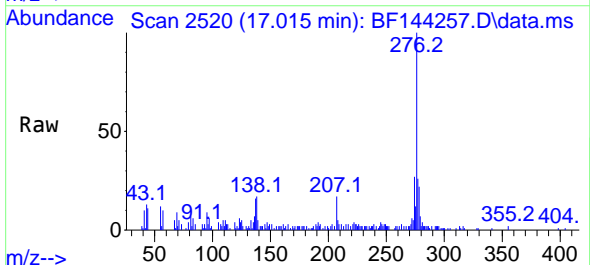
Instrument :  
 BNA\_F  
 ClientSampleId :  
 TP-2



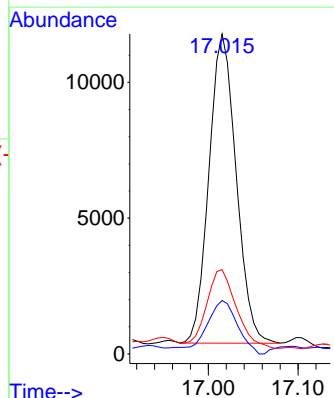
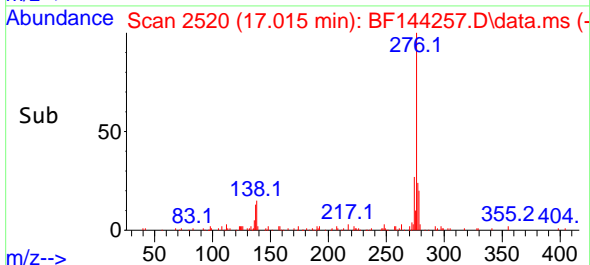
Tgt Ion:264 Resp: 98257  
 Ion Ratio Lower Upper  
 264 100  
 260 20.9 17.1 25.7  
 265 21.6 17.4 26.0

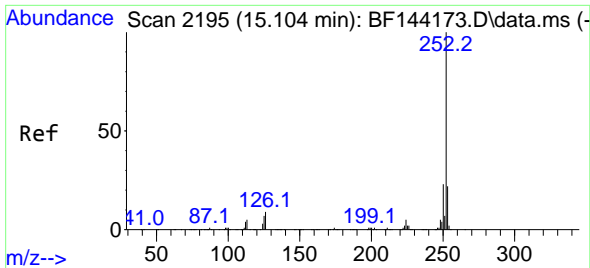


#87  
 Indeno(1,2,3-cd)pyrene  
 Concen: 3.397 ng  
 RT: 17.015 min Scan# 2520  
 Delta R.T. -0.018 min  
 Lab File: BF144257.D  
 Acq: 14 Nov 2025 12:16



Tgt Ion:276 Resp: 23963  
 Ion Ratio Lower Upper  
 276 100  
 138 19.2 13.9 20.9  
 277 28.2 19.8 29.6



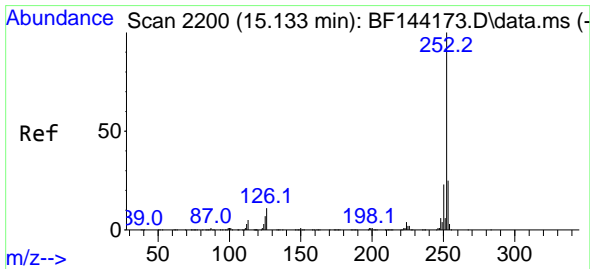
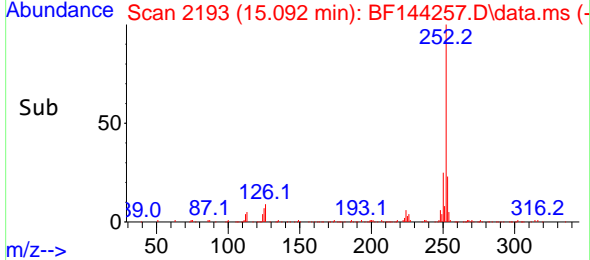
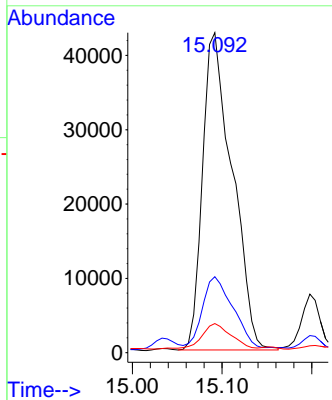
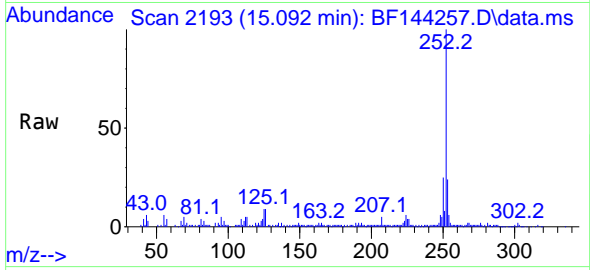


#88  
 Benzo(b)fluoranthene  
 Concen: 17.561 ng  
 RT: 15.092 min Scan# 2193  
 Delta R.T. -0.006 min  
 Lab File: BF144257.D  
 Acq: 14 Nov 2025 12:16

Instrument :  
 BNA\_F  
 ClientSampleId :  
 TP-2

Tgt Ion:252 Resp: 98097

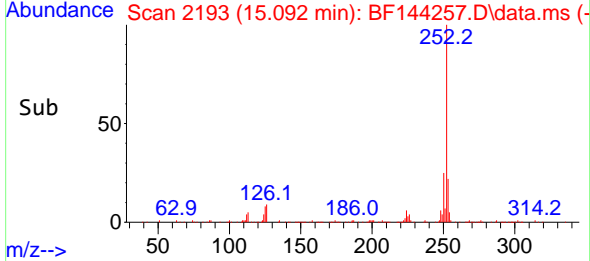
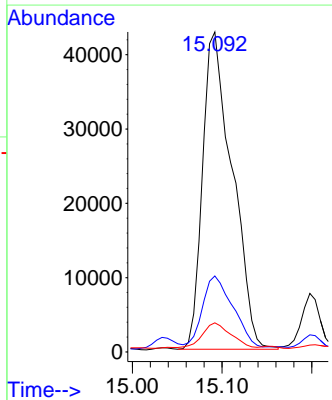
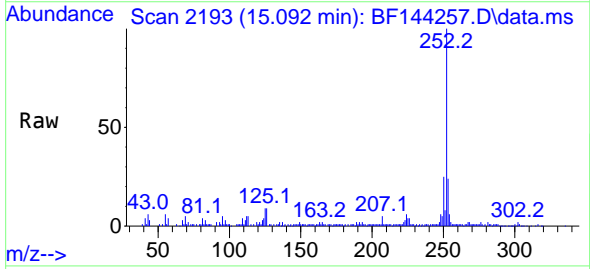
Ion	Ratio	Lower	Upper
252	100		
253	23.8	17.4	26.2
125	9.1	5.3	7.9#

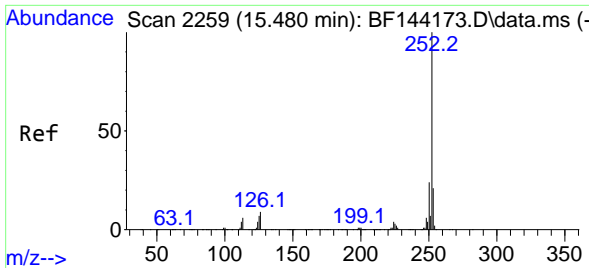


#89  
 Benzo(k)fluoranthene  
 Concen: 18.762 ng  
 RT: 15.092 min Scan# 2193  
 Delta R.T. -0.035 min  
 Lab File: BF144257.D  
 Acq: 14 Nov 2025 12:16

Tgt Ion:252 Resp: 98097

Ion	Ratio	Lower	Upper
252	100		
253	23.8	18.0	27.0
125	9.1	5.4	8.2#



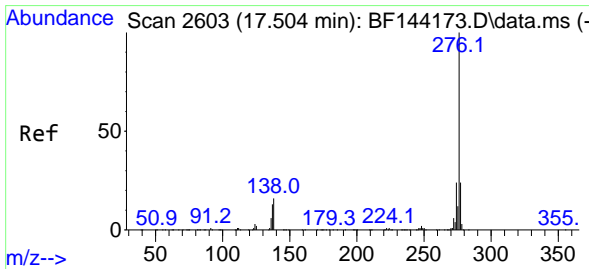
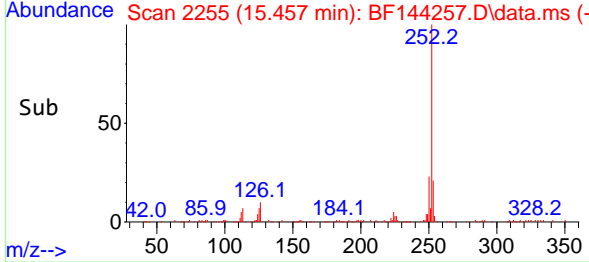
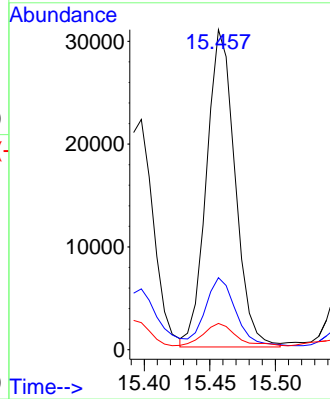
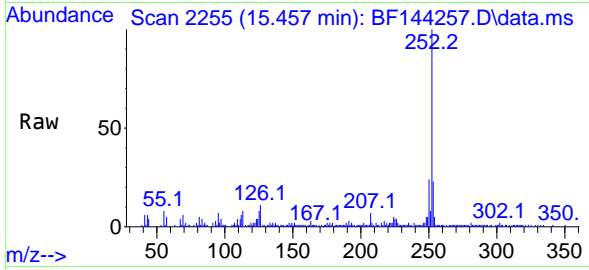


#90  
 Benzo(a)pyrene  
 Concen: 9.070 ng  
 RT: 15.457 min Scan# 21  
 Delta R.T. -0.018 min  
 Lab File: BF144257.D  
 Acq: 14 Nov 2025 12:16

Instrument :  
 BNA\_F  
 ClientSampleId :  
 TP-2

Tgt Ion:252 Resp: 46741

Ion	Ratio	Lower	Upper
252	100		
253	22.5	16.7	25.1
125	8.2	5.7	8.5



#92  
 Benzo(g,h,i)perylene  
 Concen: 4.646 ng  
 RT: 17.468 min Scan# 2597  
 Delta R.T. -0.024 min  
 Lab File: BF144257.D  
 Acq: 14 Nov 2025 12:16

Tgt Ion:276 Resp: 25987

Ion	Ratio	Lower	Upper
276	100		
277	24.0	19.0	28.4
138	16.0	12.9	19.3

