

Data Path : Z:\svoasrv\HPCHEM1\BNA_F\Data\BF111425\
 Data File : BF144261.D
 Acq On : 14 Nov 2025 14:15
 Operator : RC/JU
 Sample : Q3633-01 2X
 Misc :
 ALS Vial : 10 Sample Multiplier: 1

Instrument :
 BNA_F
 ClientSampleId :
 ETGI-369

Quant Time: Nov 14 14:34:33 2025
 Quant Method : Z:\svoasrv\HPCHEM1\BNA_F\Methods\8270-BF110525.M
 Quant Title : ASP BNA STANDARDS FOR 5 POINT CALIBRATION
 QLast Update : Wed Nov 05 18:37:33 2025
 Response via : Initial Calibration

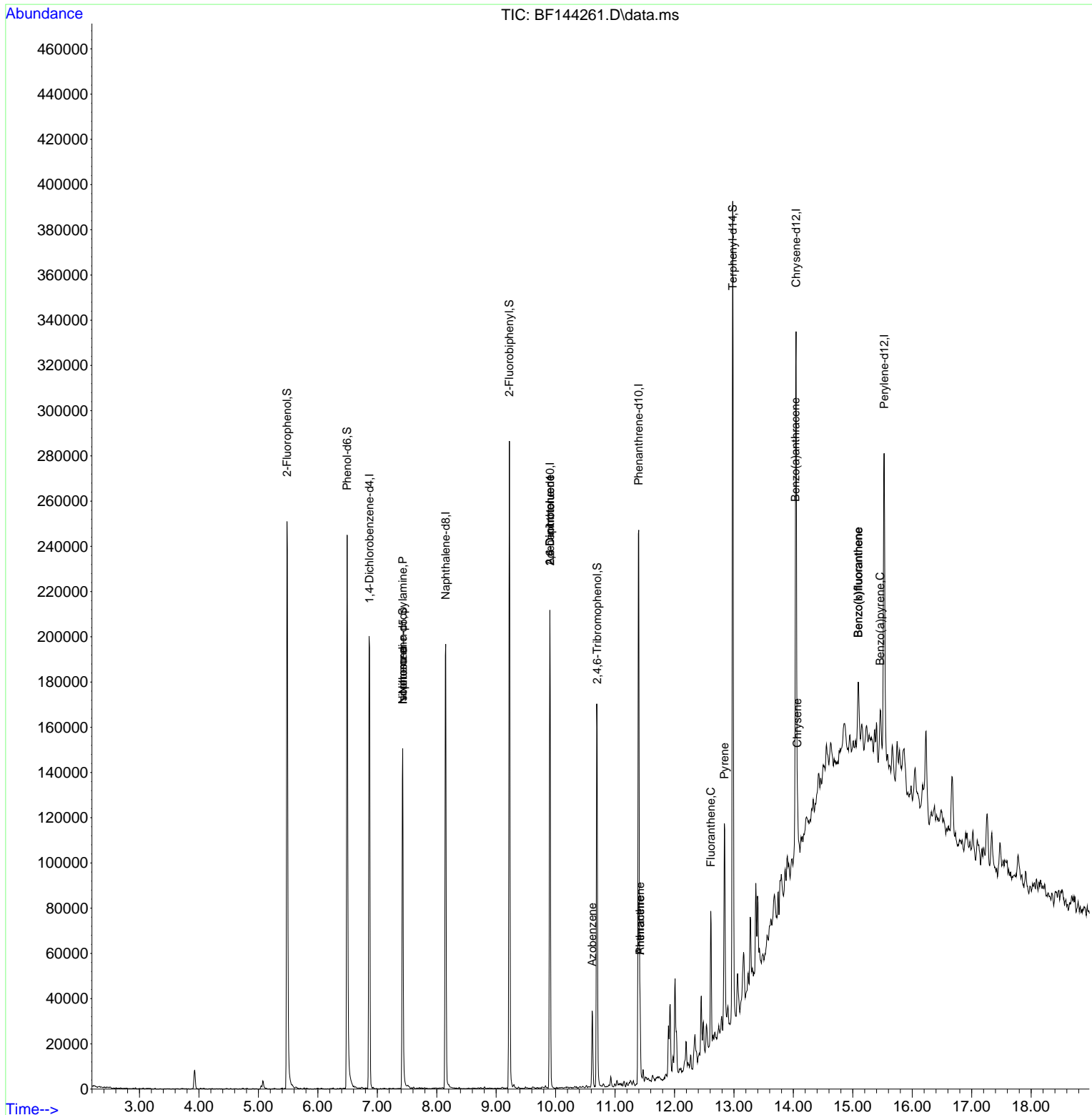
Compound	R.T.	QIon	Response	Conc	Units	Dev(Min)
Internal Standards						
1) 1,4-Dichlorobenzene-d4	6.869	152	44182	20.000	ng	0.00
21) Naphthalene-d8	8.151	136	132691	20.000	ng	0.00
39) Acenaphthene-d10	9.904	164	65707	20.000	ng	-0.01
64) Phenanthrene-d10	11.398	188	141568	20.000	ng	# 0.00
76) Chrysene-d12	14.045	240	109889	20.000	ng	0.00
86) Perylene-d12	15.527	264	87022	20.000	ng	-0.01
System Monitoring Compounds						
5) 2-Fluorophenol	5.481	112	110032	38.972	ng	-0.01
7) Phenol-d6	6.492	99	115784	36.193	ng	0.00
23) Nitrobenzene-d5	7.428	82	65628	28.565	ng	0.00
42) 2,4,6-Tribromophenol	10.698	330	33947	41.170	ng	0.00
45) 2-Fluorobiphenyl	9.222	172	132910	29.875	ng	0.00
79) Terphenyl-d14	12.980	244	185434	26.804	ng	-0.01
Target Compounds						
19) n-Nitroso-di-n-propyla...	7.428	70	9324	4.427	ng	# 77
25) Isophorone	7.428	82	65627	15.102	ng	# 66
51) 2,6-Dinitrotoluene	9.904	165	8672	9.841	ng	# 27
57) 2,4-Dinitrotoluene	9.904	165	8672	7.351	ng	# 27
63) Azobenzene	10.616	77	8584	2.299	ng	# 1
71) Phenanthrene	11.421	178	20508	2.910	ng	97
72) Anthracene	11.421	178	20508	2.861	ng	96
75) Fluoranthene	12.610	202	33160	4.554	ng	99
78) Pyrene	12.839	202	54591	6.161	ng	97
81) Benzo(a)anthracene	14.033	228	19531	2.564	ng	# 85
83) Chrysene	14.068	228	16877	2.400	ng	# 84
88) Benzo(b)fluoranthene	15.092	252	19738	3.990	ng	# 74
89) Benzo(k)fluoranthene	15.092	252	19738	4.262	ng	# 76
90) Benzo(a)pyrene	15.462	252	9836	2.155	ng	# 76

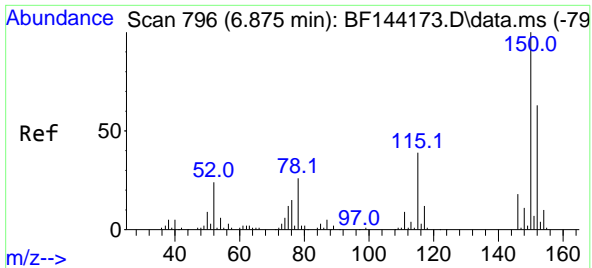
(#) = qualifier out of range (m) = manual integration (+) = signals summed

Data Path : Z:\svoasrv\HPCHEM1\BNA_F\Data\BF111425\
 Data File : BF144261.D
 Acq On : 14 Nov 2025 14:15
 Operator : RC/JU
 Sample : Q3633-01 2X
 Misc :
 ALS Vial : 10 Sample Multiplier: 1

Instrument :
 BNA_F
 ClientSampleId :
 ETGI-369

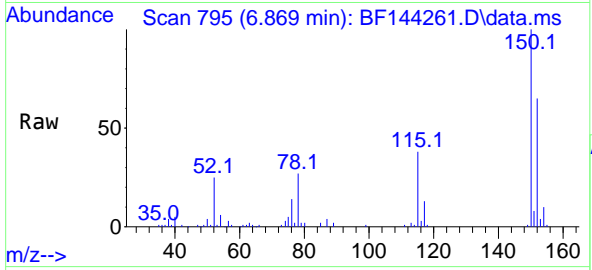
Quant Time: Nov 14 14:34:33 2025
 Quant Method : Z:\svoasrv\HPCHEM1\BNA_F\Methods\8270-BF110525.M
 Quant Title : ASP BNA STANDARDS FOR 5 POINT CALIBRATION
 QLast Update : Wed Nov 05 18:37:33 2025
 Response via : Initial Calibration



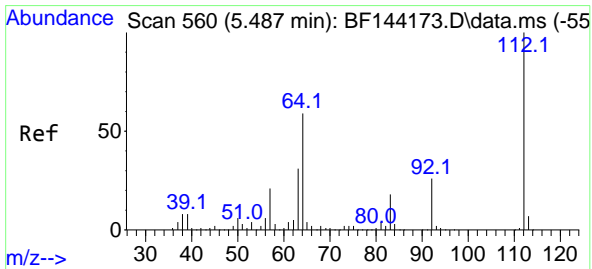
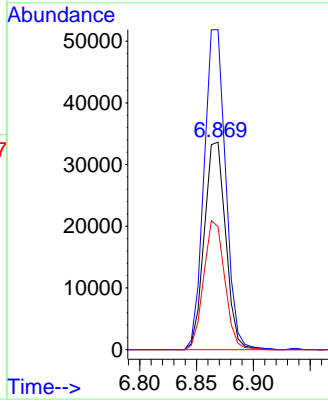
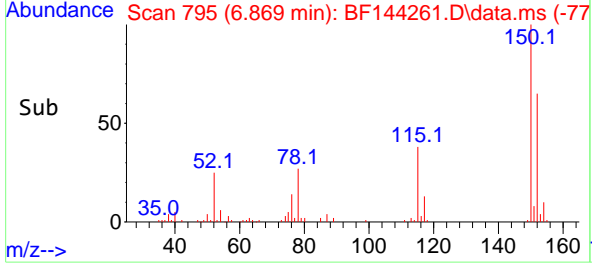


#1
 1,4-Dichlorobenzene-d4
 Concen: 20.000 ng
 RT: 6.869 min Scan# 796
 Delta R.T. -0.006 min
 Lab File: BF144261.D
 Acq: 14 Nov 2025 14:15

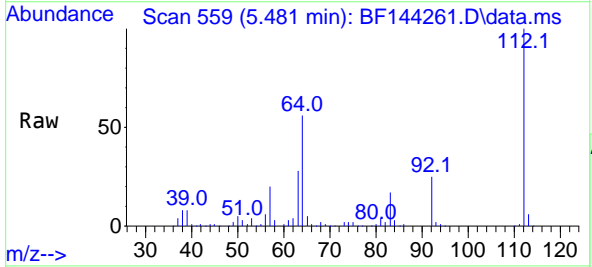
Instrument :
 BNA_F
 ClientSampleId :
 ETGI-369



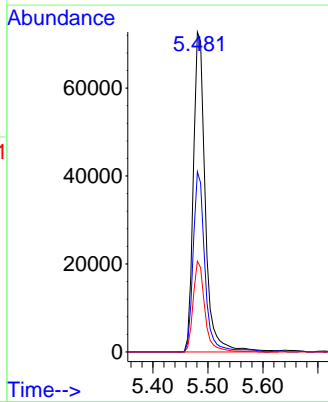
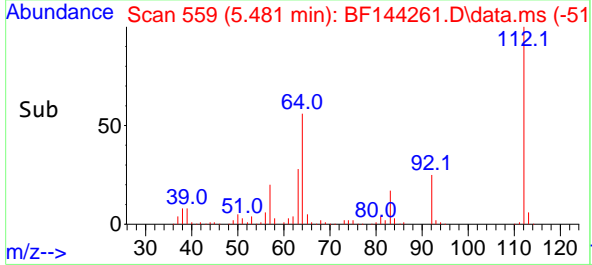
Tgt Ion:152 Resp: 44182
 Ion Ratio Lower Upper
 152 100
 150 154.2 127.4 191.0
 115 59.3 49.5 74.3

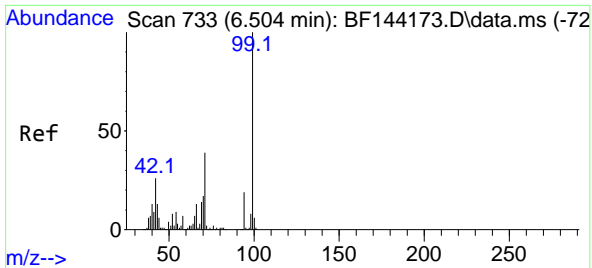


#5
 2-Fluorophenol
 Concen: 38.972 ng
 RT: 5.481 min Scan# 559
 Delta R.T. -0.012 min
 Lab File: BF144261.D
 Acq: 14 Nov 2025 14:15



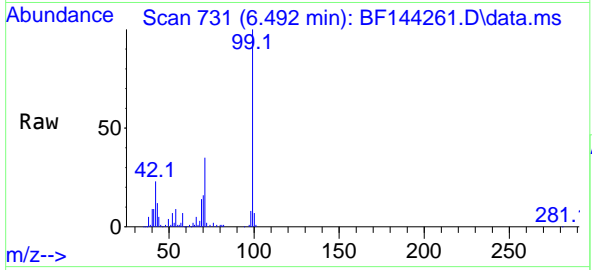
Tgt Ion:112 Resp: 110032
 Ion Ratio Lower Upper
 112 100
 64 56.3 47.2 70.8
 63 28.4 24.4 36.6





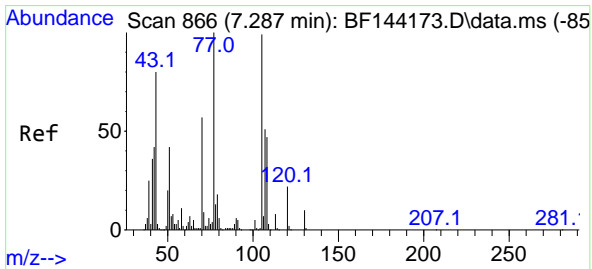
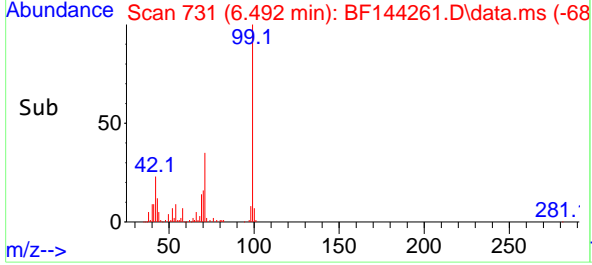
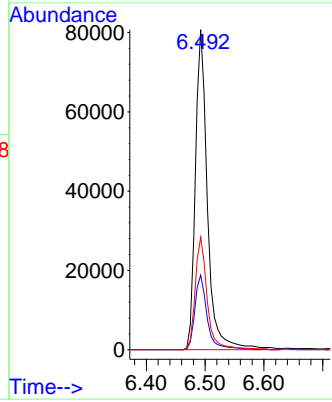
#7
Pheno1-d6
Concen: 36.193 ng
RT: 6.492 min Scan# 71
Delta R.T. -0.006 min
Lab File: BF144261.D
Acq: 14 Nov 2025 14:15

Instrument :
BNA_F
ClientSampleId :
ETGI-369

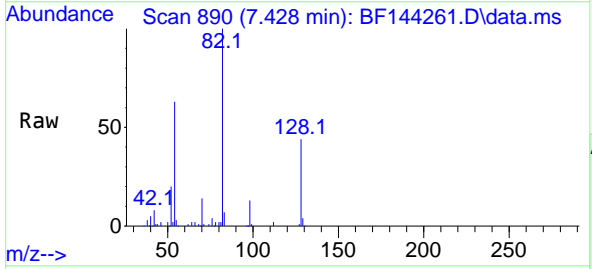


Tgt Ion: 99 Resp: 115784

Ion	Ratio	Lower	Upper
99	100		
42	23.3	20.9	31.3
71	35.2	31.4	47.2

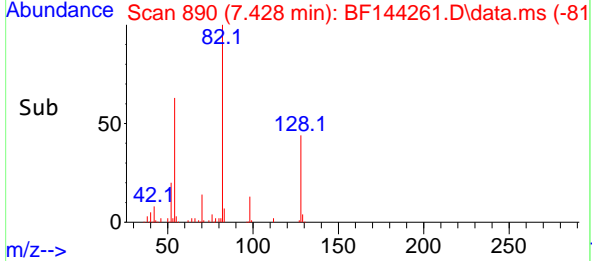
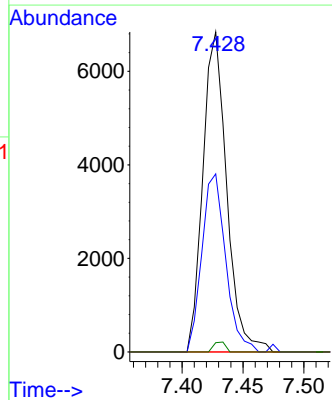


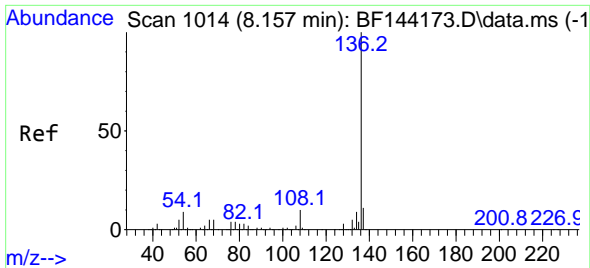
#19
n-Nitroso-di-n-propylamine
Concen: 4.427 ng
RT: 7.428 min Scan# 890
Delta R.T. 0.153 min
Lab File: BF144261.D
Acq: 14 Nov 2025 14:15



Tgt Ion: 70 Resp: 9324

Ion	Ratio	Lower	Upper
70	100		
42	55.7	58.3	87.5#
101	0.0	7.0	10.6#
130	2.9	14.4	21.6#



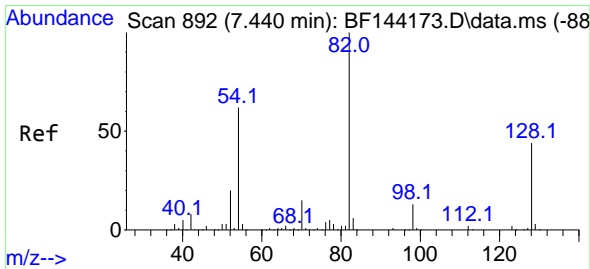
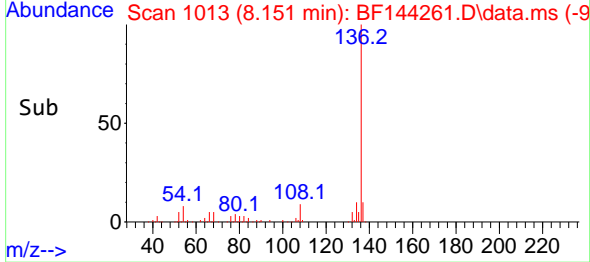
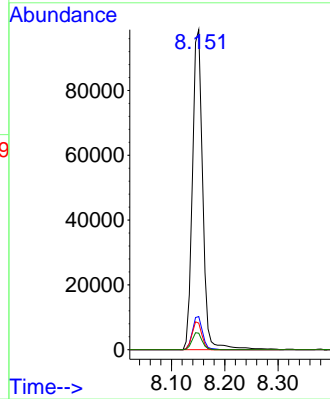
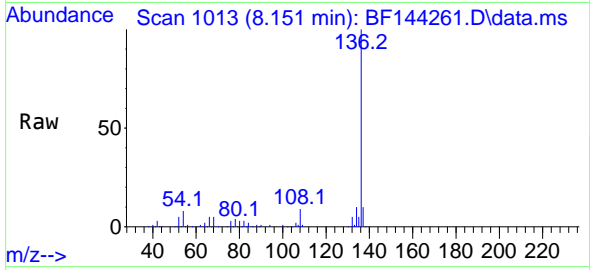


#21
 Naphthalene-d8
 Concen: 20.000 ng
 RT: 8.151 min Scan# 1014
 Delta R.T. -0.006 min
 Lab File: BF144261.D
 Acq: 14 Nov 2025 14:15

Instrument : BNA_F
 Client SampleId : ETGI-369

Tgt Ion: 136 Resp: 132691

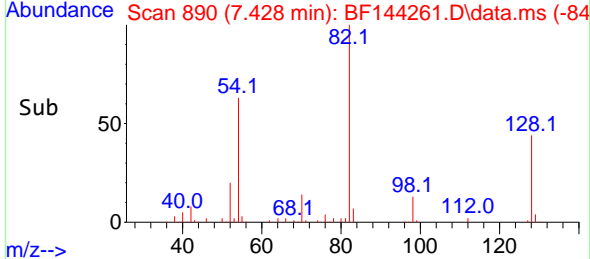
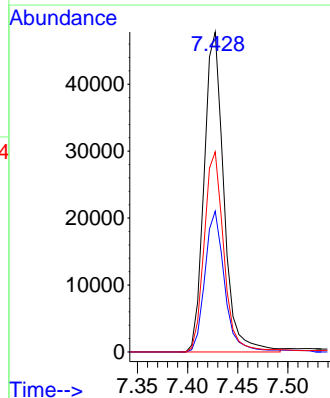
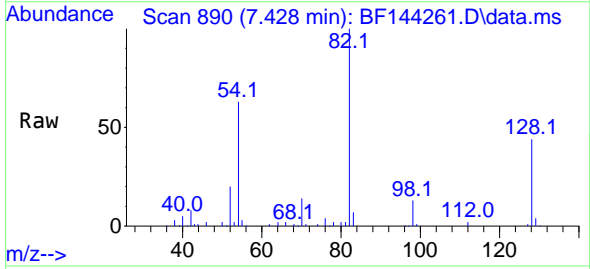
Ion	Ratio	Lower	Upper
136	100		
137	10.3	8.6	13.0
54	8.3	7.0	10.6
68	5.1	4.3	6.5

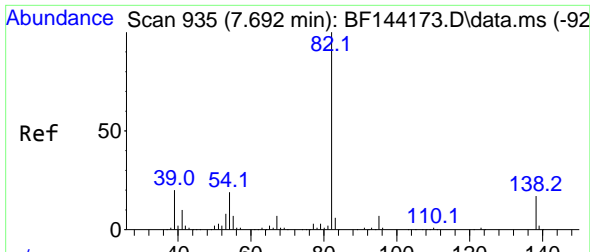


#23
 Nitrobenzene-d5
 Concen: 28.565 ng
 RT: 7.428 min Scan# 890
 Delta R.T. -0.006 min
 Lab File: BF144261.D
 Acq: 14 Nov 2025 14:15

Tgt Ion: 82 Resp: 65628

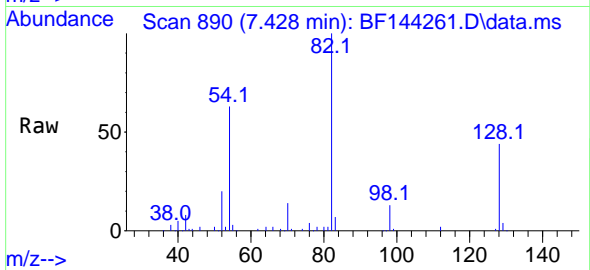
Ion	Ratio	Lower	Upper
82	100		
128	44.0	34.7	52.1
54	62.6	49.5	74.3



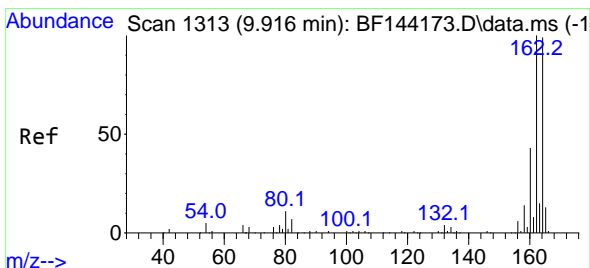
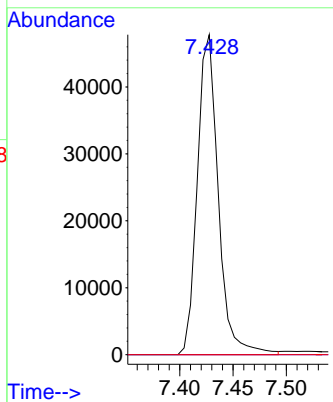
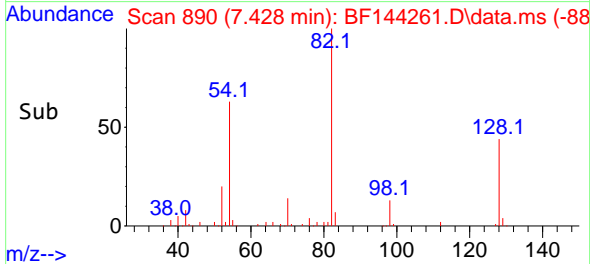


#25
 Isophorone
 Concen: 15.102 ng
 RT: 7.428 min Scan# 890
 Delta R.T. -0.259 min
 Lab File: BF144261.D
 Acq: 14 Nov 2025 14:15

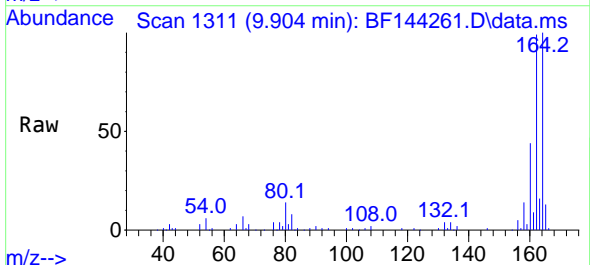
Instrument : BNA_F
 Client Sample Id : ETGI-369



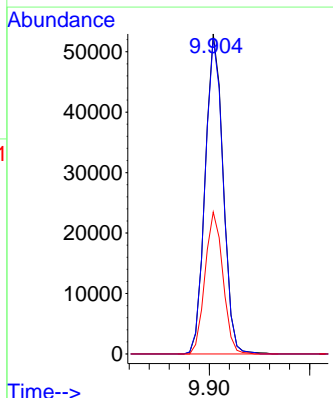
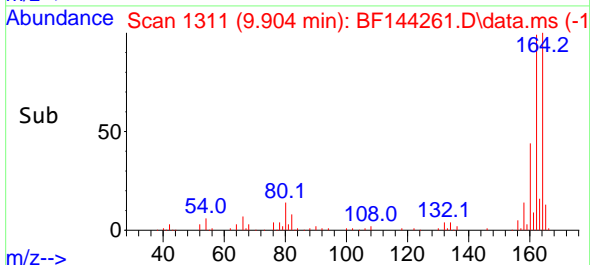
Tgt Ion: 82 Resp: 65627
 Ion Ratio Lower Upper
 82 100
 95 0.0 5.5 8.3#
 138 0.0 13.7 20.5#

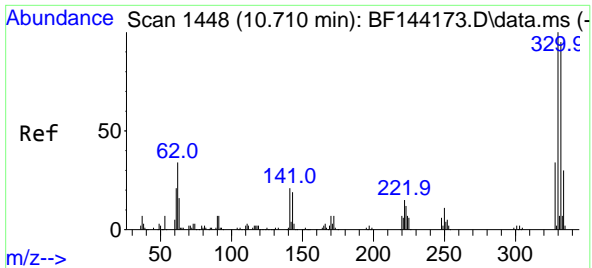


#39
 Acenaphthene-d10
 Concen: 20.000 ng
 RT: 9.904 min Scan# 1311
 Delta R.T. -0.012 min
 Lab File: BF144261.D
 Acq: 14 Nov 2025 14:15



Tgt Ion: 164 Resp: 65707
 Ion Ratio Lower Upper
 164 100
 162 98.7 81.1 121.7
 160 44.3 34.5 51.7



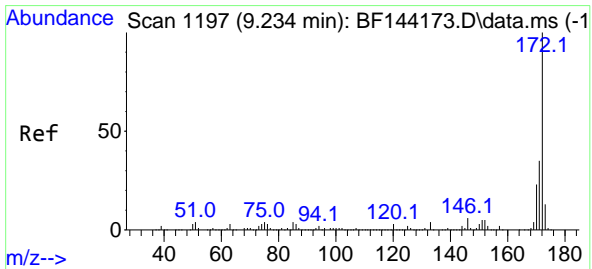
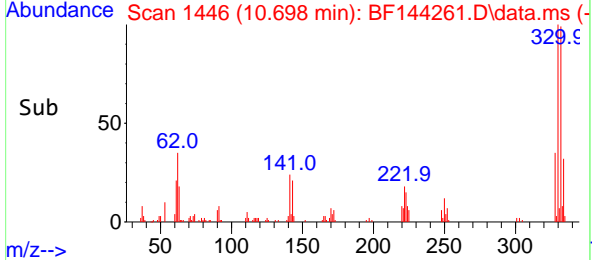
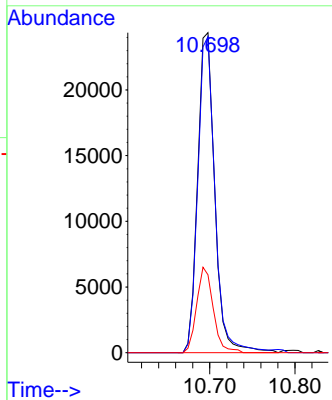
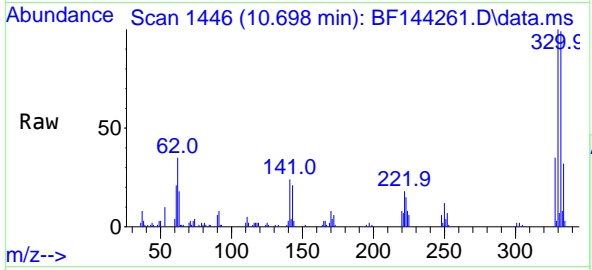


#42
 2,4,6-Tribromophenol
 Concen: 41.170 ng
 RT: 10.698 min Scan# 1446
 Delta R.T. -0.006 min
 Lab File: BF144261.D
 Acq: 14 Nov 2025 14:15

Instrument : BNA_F
 ClientSampleId : ETGI-369

Tgt Ion:330 Resp: 33947

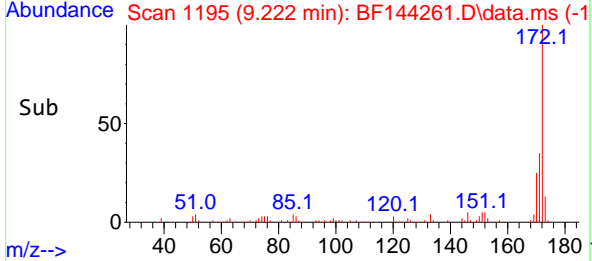
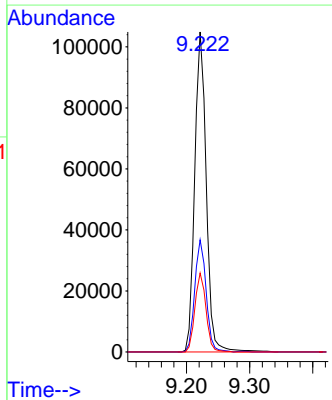
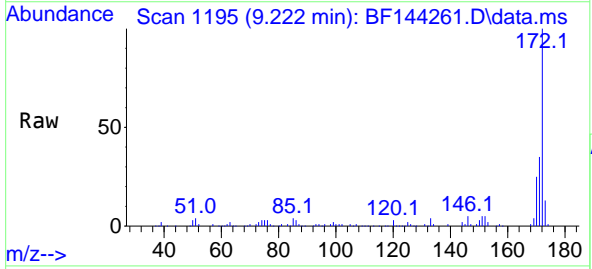
Ion	Ratio	Lower	Upper
330	100		
332	98.9	76.7	115.1
141	25.9	17.8	26.8

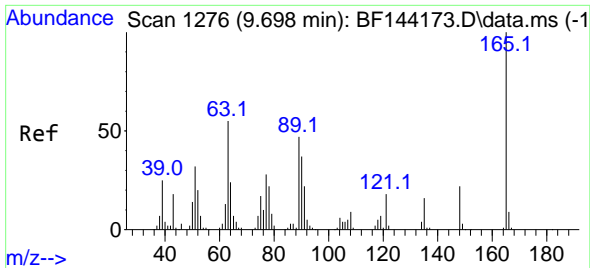


#45
 2-Fluorobiphenyl
 Concen: 29.875 ng
 RT: 9.222 min Scan# 1195
 Delta R.T. -0.006 min
 Lab File: BF144261.D
 Acq: 14 Nov 2025 14:15

Tgt Ion:172 Resp: 132910

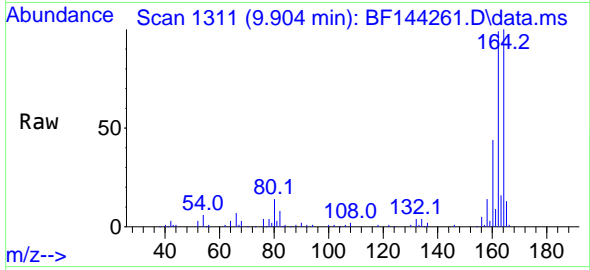
Ion	Ratio	Lower	Upper
172	100		
171	35.1	28.1	42.1
170	24.6	18.6	28.0



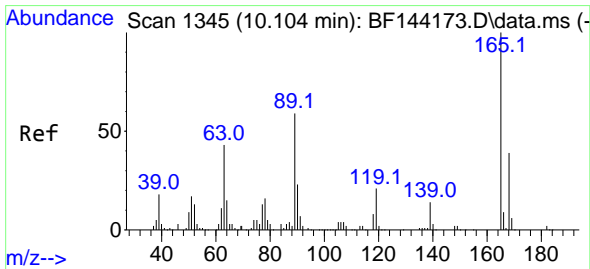
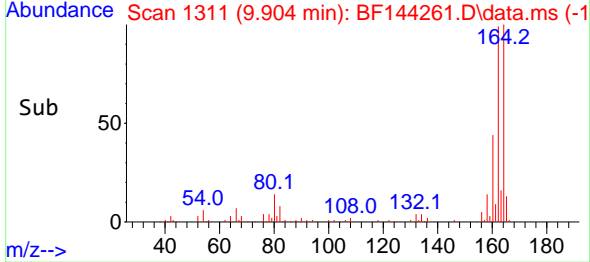
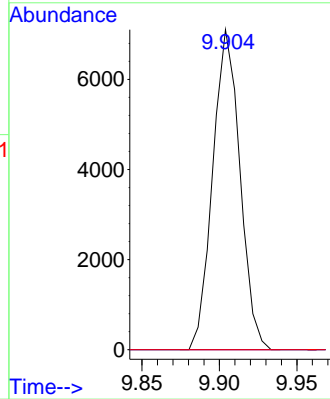


#51
 2,6-Dinitrotoluene
 Concen: 9.841 ng
 RT: 9.904 min Scan# 1111
 Delta R.T. 0.211 min
 Lab File: BF144261.D
 Acq: 14 Nov 2025 14:15

Instrument :
 BNA_F
 Client Sample Id :
 ETGI-369

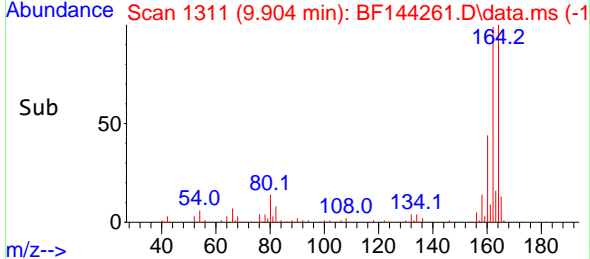
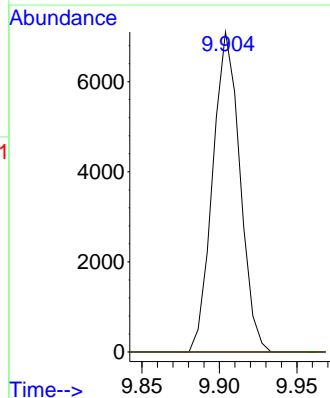
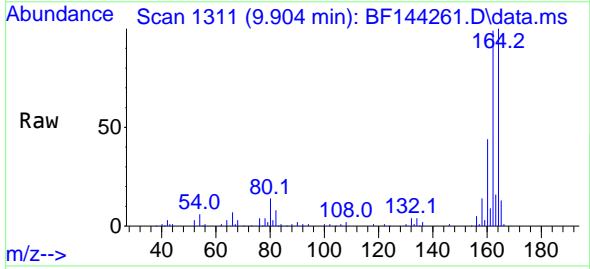


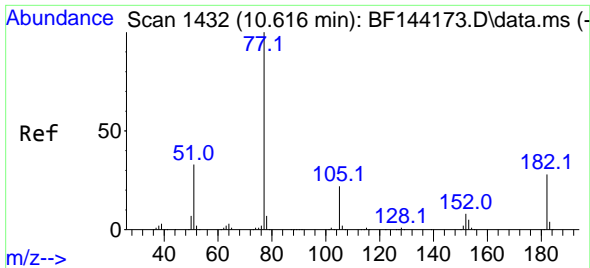
Tgt Ion:165 Resp: 8672
 Ion Ratio Lower Upper
 165 100
 63 0.0 43.8 65.8#
 89 0.0 37.5 56.3#



#57
 2,4-Dinitrotoluene
 Concen: 7.351 ng
 RT: 9.904 min Scan# 1311
 Delta R.T. -0.194 min
 Lab File: BF144261.D
 Acq: 14 Nov 2025 14:15

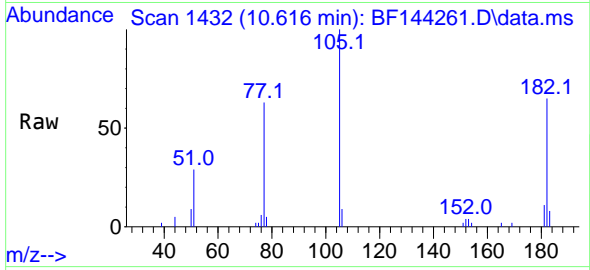
Tgt Ion:165 Resp: 8672
 Ion Ratio Lower Upper
 165 100
 63 0.0 35.5 53.3#
 89 0.0 47.4 71.2#
 182 0.0 1.9 2.9#





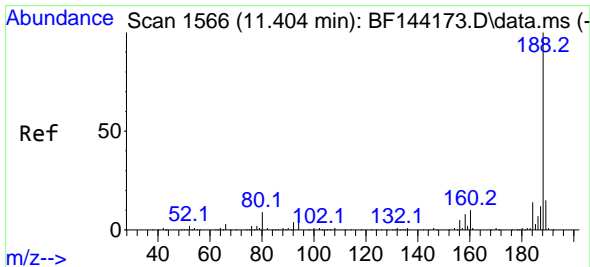
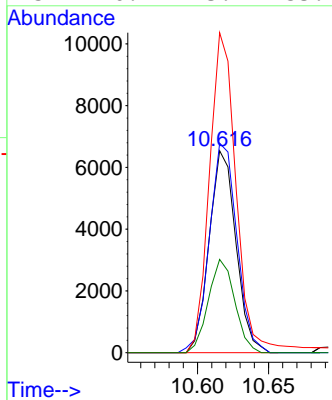
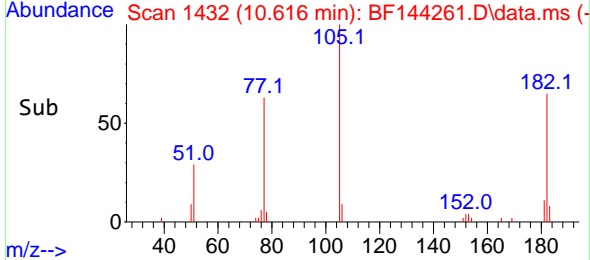
#63
 Azobenzene
 Concen: 2.299 ng
 RT: 10.616 min Scan# 14
 Delta R.T. -0.000 min
 Lab File: BF144261.D
 Acq: 14 Nov 2025 14:15

Instrument :
 BNA_F
 ClientSampleId :
 ETGI-369

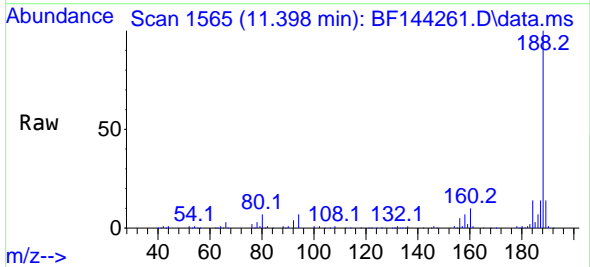


Tgt Ion: 77 Resp: 8584

Ion	Ratio	Lower	Upper
77	100		
182	103.7	8.1	48.1#
105	158.4	2.0	42.0#
51	46.2	13.9	53.9

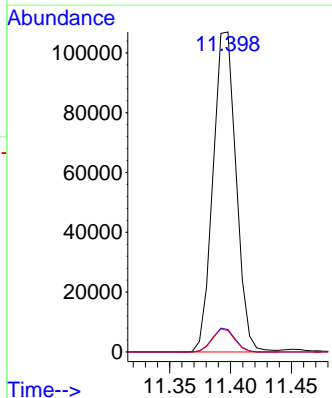
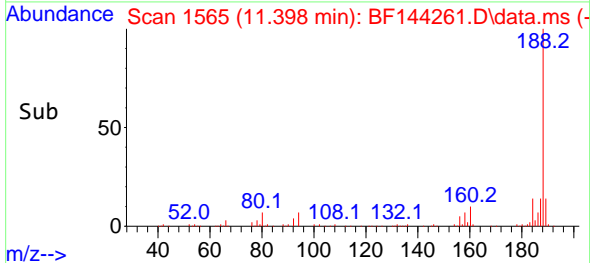


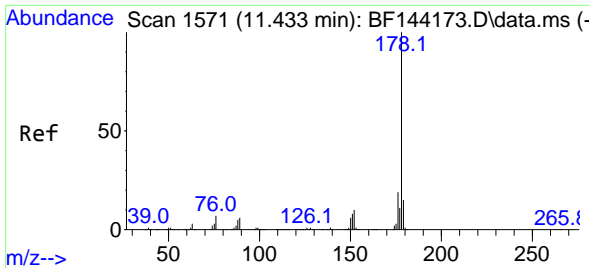
#64
 Phenanthrene-d10
 Concen: 20.000 ng
 RT: 11.398 min Scan# 1565
 Delta R.T. -0.006 min
 Lab File: BF144261.D
 Acq: 14 Nov 2025 14:15



Tgt Ion: 188 Resp: 141568

Ion	Ratio	Lower	Upper
188	100		
94	7.0	6.2	9.2
80	6.7	6.9	10.3#



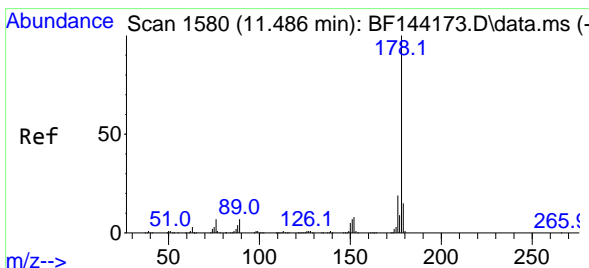
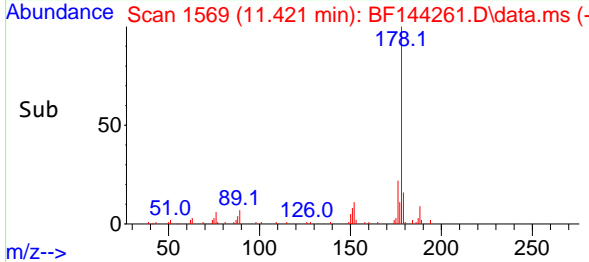
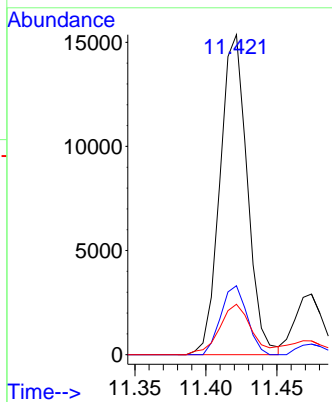
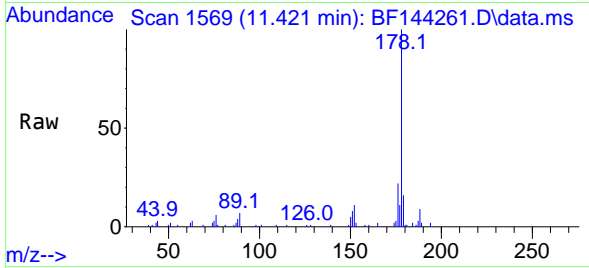


#71
 Phenanthrene
 Concen: 2.910 ng
 RT: 11.421 min Scan# 1569
 Delta R.T. -0.006 min
 Lab File: BF144261.D
 Acq: 14 Nov 2025 14:15

Instrument : BNA_F
 Client Sample Id : ETGI-369

Tgt Ion:178 Resp: 20508

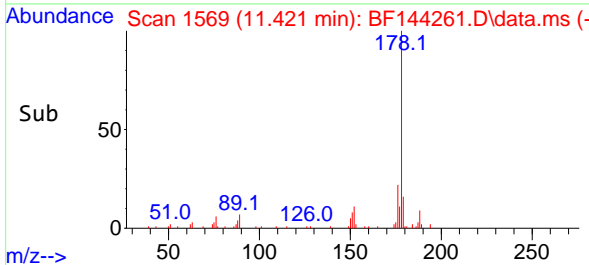
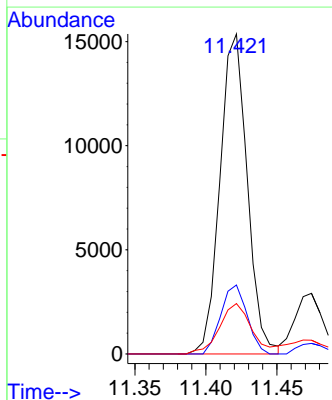
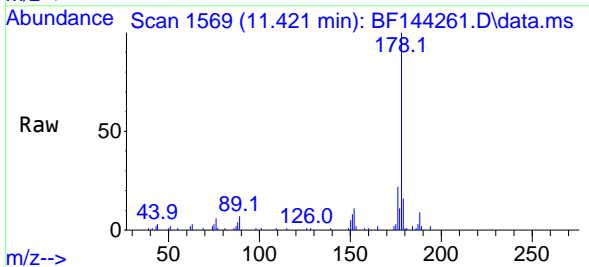
Ion	Ratio	Lower	Upper
178	100		
176	21.5	15.5	23.3
179	15.8	12.2	18.4

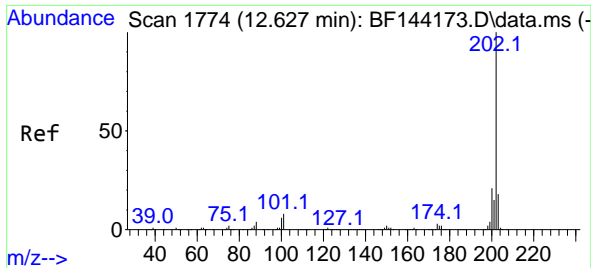


#72
 Anthracene
 Concen: 2.861 ng
 RT: 11.421 min Scan# 1569
 Delta R.T. -0.059 min
 Lab File: BF144261.D
 Acq: 14 Nov 2025 14:15

Tgt Ion:178 Resp: 20508

Ion	Ratio	Lower	Upper
178	100		
176	21.5	15.3	22.9
179	15.8	12.0	18.0



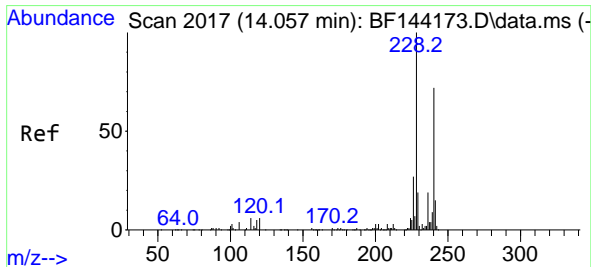
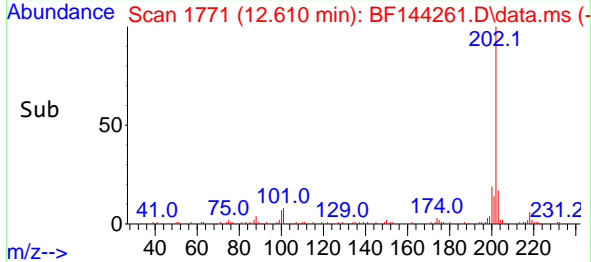
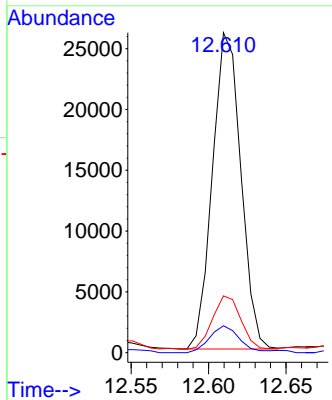
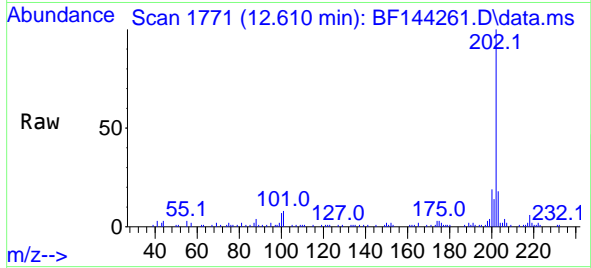


#75
 Fluoranthene
 Concen: 4.554 ng
 RT: 12.610 min Scan# 11
 Delta R.T. -0.012 min
 Lab File: BF144261.D
 Acq: 14 Nov 2025 14:15

Instrument :
 BNA_F
 ClientSampleId :
 ETGI-369

Tgt Ion:202 Resp: 33160

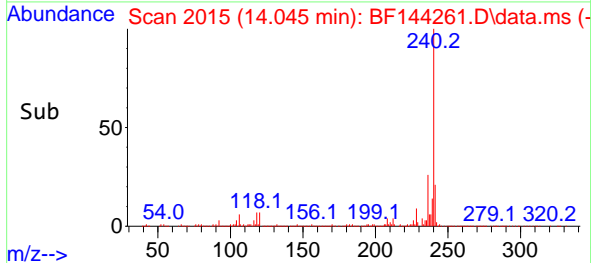
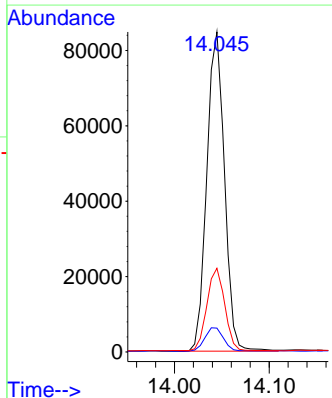
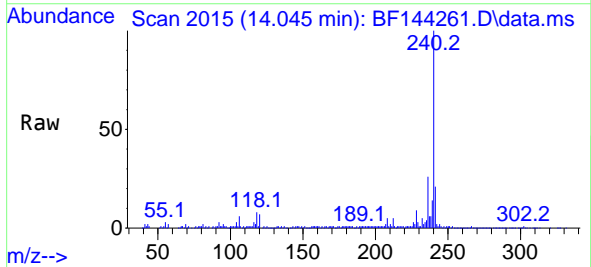
Ion	Ratio	Lower	Upper
202	100		
101	8.4	0.0	27.9
203	17.8	0.0	37.5

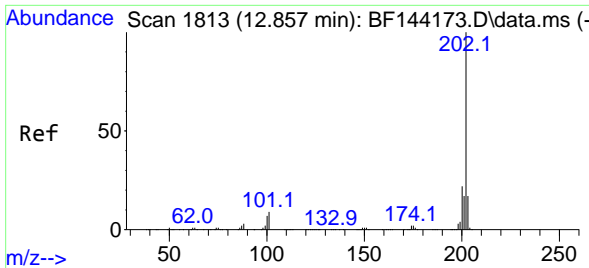


#76
 Chrysene-d12
 Concen: 20.000 ng
 RT: 14.045 min Scan# 2015
 Delta R.T. -0.006 min
 Lab File: BF144261.D
 Acq: 14 Nov 2025 14:15

Tgt Ion:240 Resp: 109889

Ion	Ratio	Lower	Upper
240	100		
120	7.5	6.6	10.0
236	26.2	21.4	32.2



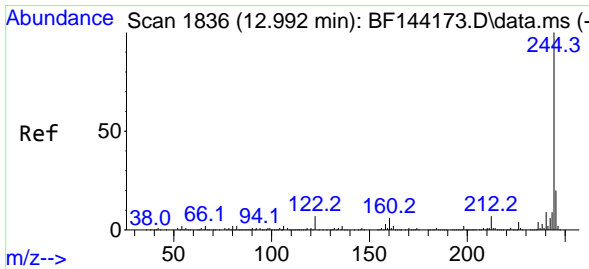
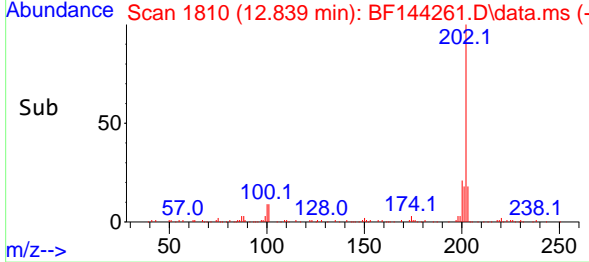
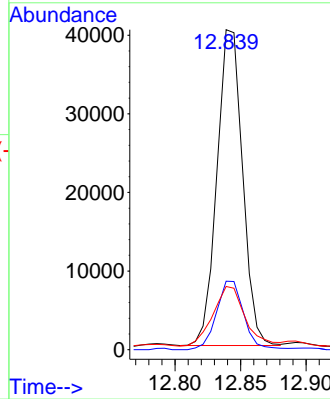
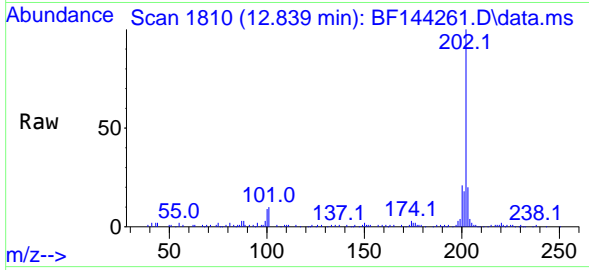


#78
 Pyrene
 Concen: 6.161 ng
 RT: 12.839 min Scan# 1810
 Delta R.T. -0.012 min
 Lab File: BF144261.D
 Acq: 14 Nov 2025 14:15

Instrument :
 BNA_F
 ClientSampleId :
 ETGI-369

Tgt Ion:202 Resp: 54591

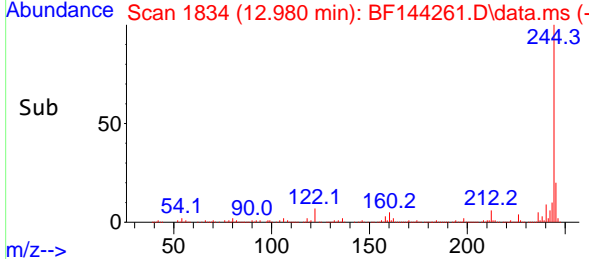
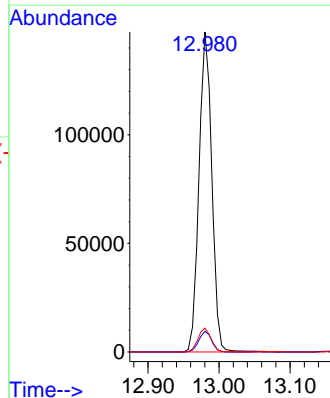
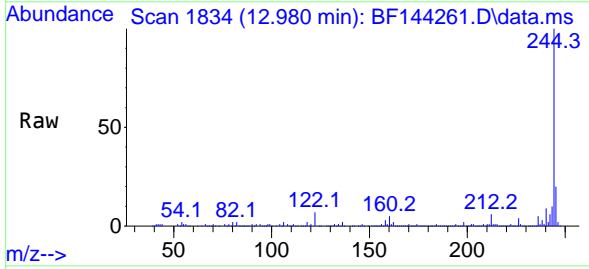
Ion	Ratio	Lower	Upper
202	100		
200	21.4	17.2	25.8
203	19.8	13.7	20.5

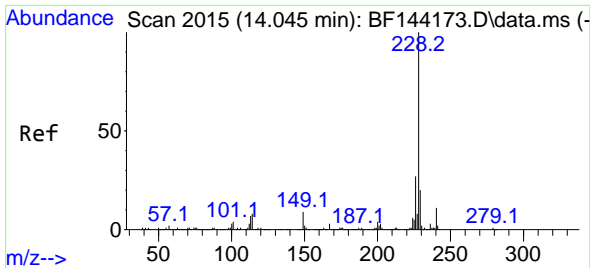


#79
 Terphenyl-d14
 Concen: 26.804 ng
 RT: 12.980 min Scan# 1834
 Delta R.T. -0.012 min
 Lab File: BF144261.D
 Acq: 14 Nov 2025 14:15

Tgt Ion:244 Resp: 185434

Ion	Ratio	Lower	Upper
244	100		
212	6.4	5.3	7.9
122	7.5	5.6	8.4



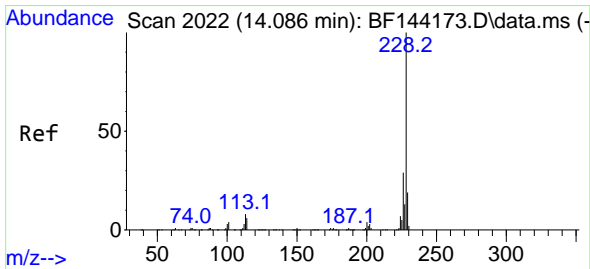
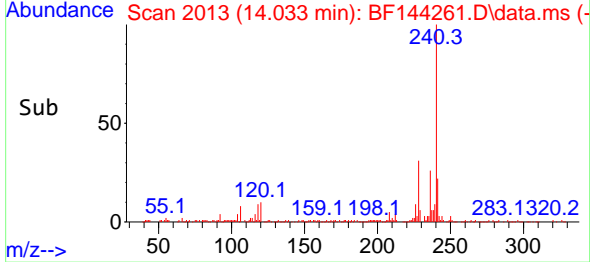
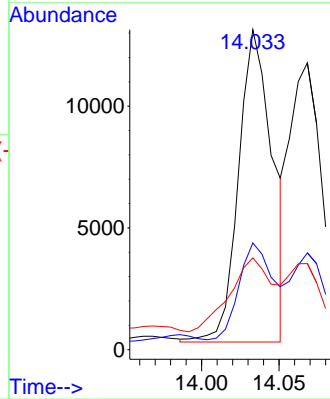
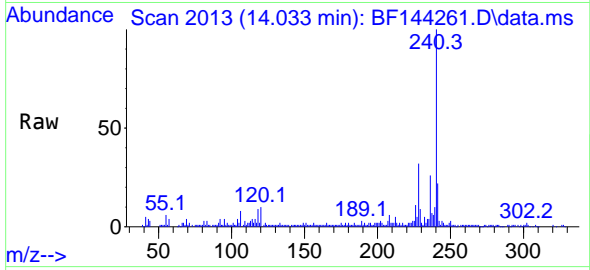


#81
 Benzo(a)anthracene
 Concen: 2.564 ng
 RT: 14.033 min Scan# 2019
 Delta R.T. -0.012 min
 Lab File: BF144261.D
 Acq: 14 Nov 2025 14:15

Instrument :
 BNA_F
 ClientSampleId :
 ETGI-369

Tgt Ion:228 Resp: 19531

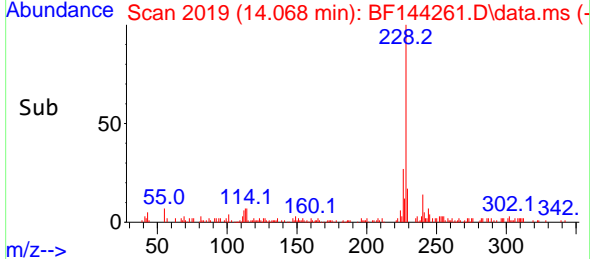
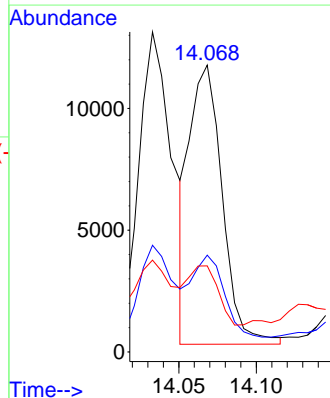
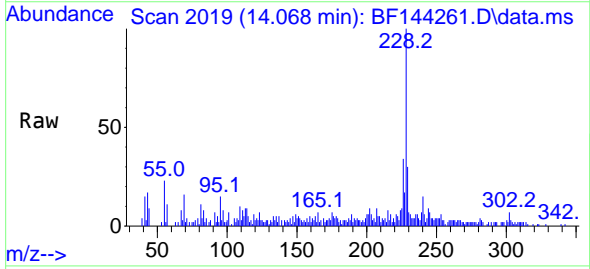
Ion	Ratio	Lower	Upper
228	100		
226	33.4	21.8	32.8#
229	28.7	15.8	23.6#

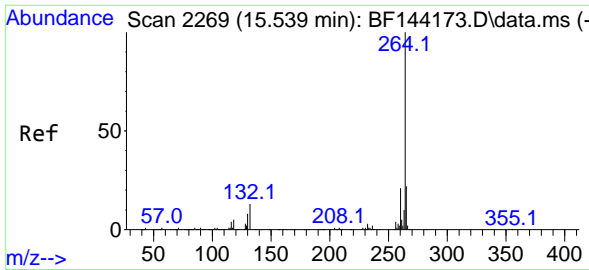


#83
 Chrysene
 Concen: 2.400 ng
 RT: 14.068 min Scan# 2019
 Delta R.T. -0.012 min
 Lab File: BF144261.D
 Acq: 14 Nov 2025 14:15

Tgt Ion:228 Resp: 16877

Ion	Ratio	Lower	Upper
228	100		
226	33.7	22.9	34.3
229	30.0	15.0	22.6#

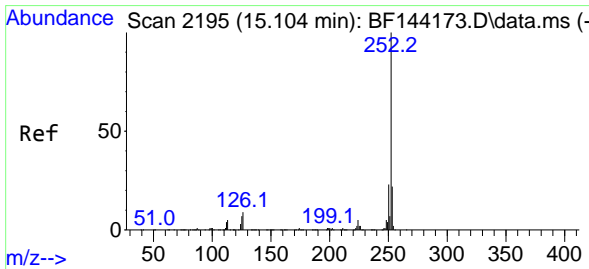
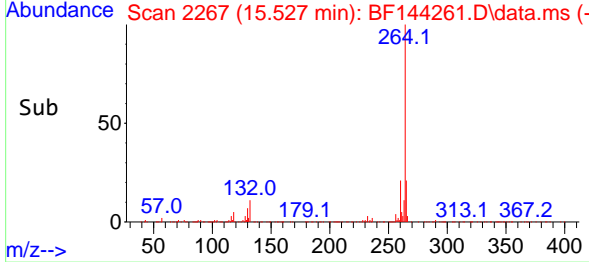
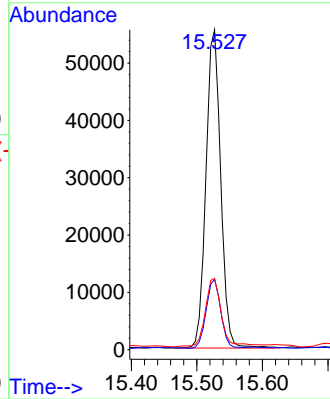
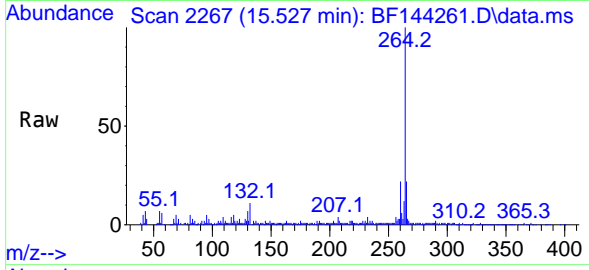




#86
 Perylene-d12
 Concen: 20.000 ng
 RT: 15.527 min Scan# 2193
 Delta R.T. -0.012 min
 Lab File: BF144261.D
 Acq: 14 Nov 2025 14:15

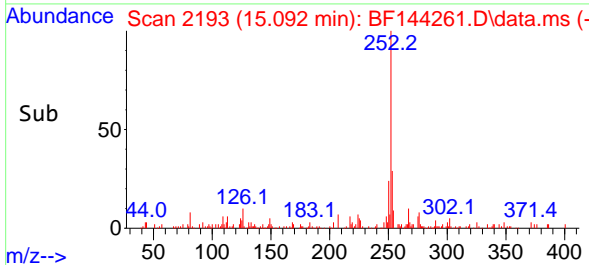
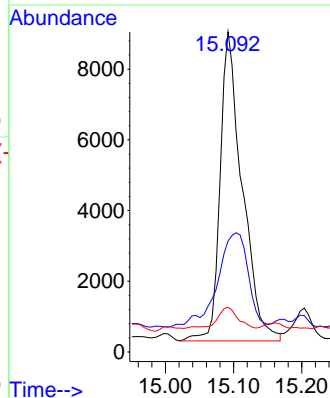
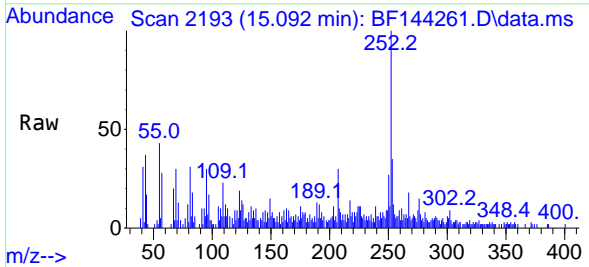
Instrument : BNA_F
 ClientSampleId : ETGI-369

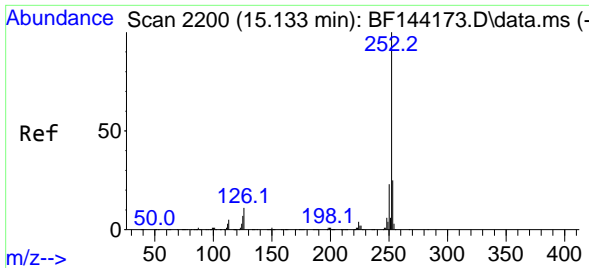
Tgt Ion:264 Resp: 87022
 Ion Ratio Lower Upper
 264 100
 260 22.0 17.1 25.7
 265 22.3 17.4 26.0



#88
 Benzo(b)fluoranthene
 Concen: 3.990 ng
 RT: 15.092 min Scan# 2193
 Delta R.T. -0.006 min
 Lab File: BF144261.D
 Acq: 14 Nov 2025 14:15

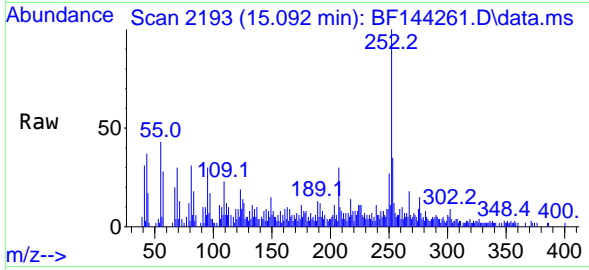
Tgt Ion:252 Resp: 19738
 Ion Ratio Lower Upper
 252 100
 253 34.7 17.4 26.2#
 125 14.0 5.3 7.9#



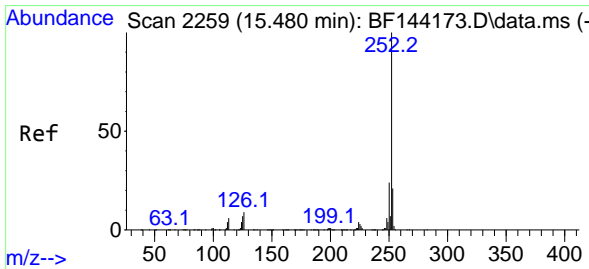
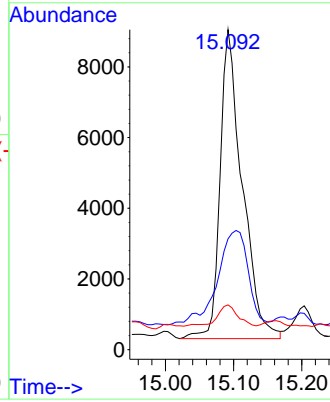
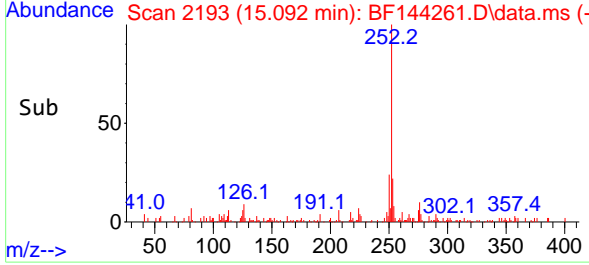


#89
 Benzo(k)fluoranthene
 Concen: 4.262 ng
 RT: 15.092 min Scan# 2193
 Delta R.T. -0.036 min
 Lab File: BF144261.D
 Acq: 14 Nov 2025 14:15

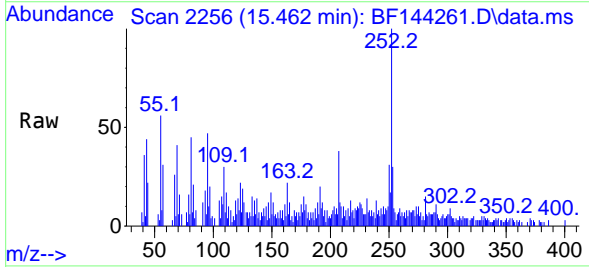
Instrument :
 BNA_F
 ClientSampleId :
 ETGI-369



Tgt Ion:252 Resp: 19738
 Ion Ratio Lower Upper
 252 100
 253 34.7 18.0 27.0#
 125 14.0 5.4 8.2#



#90
 Benzo(a)pyrene
 Concen: 2.155 ng
 RT: 15.462 min Scan# 2256
 Delta R.T. -0.012 min
 Lab File: BF144261.D
 Acq: 14 Nov 2025 14:15



Tgt Ion:252 Resp: 9836
 Ion Ratio Lower Upper
 252 100
 253 30.4 16.7 25.1#
 125 19.3 5.7 8.5#

