

Data Path : Z:\svoasrv\HPCHEM1\BNA_F\Data\BF111725\
 Data File : BF144265.D
 Acq On : 17 Nov 2025 13:52
 Operator : RC/JU
 Sample : PB170576BS
 Misc :
 ALS Vial : 4 Sample Multiplier: 1

Instrument :
 BNA_F
 ClientSampleId :

Quant Time: Nov 17 14:13:06 2025
 Quant Method : Z:\svoasrv\HPCHEM1\BNA_F\Methods\8270-BF110525.M
 Quant Title : ASP BNA STANDARDS FOR 5 POINT CALIBRATION
 QLast Update : Wed Nov 05 18:37:33 2025
 Response via : Initial Calibration

Compound	R.T.	QIon	Response	Conc Units	Dev(Min)	
Internal Standards						
1) 1,4-Dichlorobenzene-d4	6.869	152	57508	20.000 ng	0.00	
21) Naphthalene-d8	8.151	136	224965	20.000 ng	0.00	
39) Acenaphthene-d10	9.910	164	126893	20.000 ng	0.00	
64) Phenanthrene-d10	11.398	188	214778	20.000 ng	0.00	
76) Chrysene-d12	14.045	240	127678	20.000 ng	0.00	
86) Perylene-d12	15.527	264	154286	20.000 ng	-0.01	
System Monitoring Compounds						
5) 2-Fluorophenol	5.498	112	421874	114.798 ng	0.00	
7) Phenol-d6	6.504	99	478765	114.978 ng	0.00	
23) Nitrobenzene-d5	7.434	82	311496	79.970 ng	0.00	
42) 2,4,6-Tribromophenol	10.704	330	188405	118.318 ng	0.00	
45) 2-Fluorobiphenyl	9.227	172	680168	79.166 ng	0.00	
79) Terphenyl-d14	12.986	244	663126	82.498 ng	0.00	
Target Compounds						
2) 1,4-Dioxane	2.693	88	56543	37.216 ng		Qvalue 98
3) Pyridine	3.463	79	148748	35.092 ng		99
4) n-Nitrosodimethylamine	3.404	42	99331	44.863 ng		97
6) Aniline	6.534	93	186036	31.358 ng		98
8) 2-Chlorophenol	6.651	128	154455	42.857 ng		100
9) Benzaldehyde	6.422	77	63023	26.803 ng		99
10) Phenol	6.516	94	207073	40.702 ng		90
11) bis(2-Chloroethyl)ether	6.604	93	159489	43.023 ng		99
12) 1,3-Dichlorobenzene	6.810	146	187707	42.208 ng		98
13) 1,4-Dichlorobenzene	6.886	146	190820	42.829 ng		98
14) 1,2-Dichlorobenzene	7.034	146	183824	43.046 ng		99
15) Benzyl Alcohol	7.010	79	148710	45.102 ng		98
16) 2,2'-oxybis(1-Chloropr...	7.139	45	286313	41.940 ng		95
17) 2-Methylphenol	7.122	107	119855	41.804 ng		95
18) Hexachloroethane	7.375	117	61002	41.212 ng		98
19) n-Nitroso-di-n-propyla...	7.281	70	115627	42.182 ng		94
20) 3+4-Methylphenols	7.275	107	146258	43.275 ng		92
22) Acetophenone	7.275	105	224963	46.615 ng		95
24) Nitrobenzene	7.451	77	175647	41.532 ng		99
25) Isophorone	7.686	82	316082	42.901 ng		100
26) 2-Nitrophenol	7.769	139	88948	42.487 ng		98
27) 2,4-Dimethylphenol	7.804	122	146563	46.708 ng		97
28) bis(2-Chloroethoxy)met...	7.898	93	195648	42.524 ng		98
29) 2,4-Dichlorophenol	8.010	162	151071	41.771 ng		99
30) 1,2,4-Trichlorobenzene	8.092	180	164074	44.180 ng		96
31) Naphthalene	8.169	128	447289	41.797 ng		100
32) Benzoic acid	7.933	122	101372	44.073 ng		94
33) 4-Chloroaniline	8.222	127	96938	24.837 ng		99
34) Hexachlorobutadiene	8.286	225	114468	40.898 ng		99
35) Caprolactam	8.592	113	30026	30.304 ng		96
36) 4-Chloro-3-methylphenol	8.704	107	138818	42.829 ng		99
37) 2-Methylnaphthalene	8.863	142	278575	38.935 ng		99
38) 1-Methylnaphthalene	8.963	142	278003	40.269 ng		99
40) 1,2,4,5-Tetrachloroben...	9.028	216	190679	45.851 ng		98
41) Hexachlorocyclopentadiene	9.016	237	137806	83.412 ng		99
43) 2,4,6-Trichlorophenol	9.145	196	117312	41.446 ng		97

Data Path : Z:\svoasrv\HPCHEM1\BNA_F\Data\BF111725\
 Data File : BF144265.D
 Acq On : 17 Nov 2025 13:52
 Operator : RC/JU
 Sample : PB170576BS
 Misc :
 ALS Vial : 4 Sample Multiplier: 1

Instrument :
 BNA_F
 ClientSampleId :

Quant Time: Nov 17 14:13:06 2025
 Quant Method : Z:\svoasrv\HPCHEM1\BNA_F\Methods\8270-BF110525.M
 Quant Title : ASP BNA STANDARDS FOR 5 POINT CALIBRATION
 QLast Update : Wed Nov 05 18:37:33 2025
 Response via : Initial Calibration

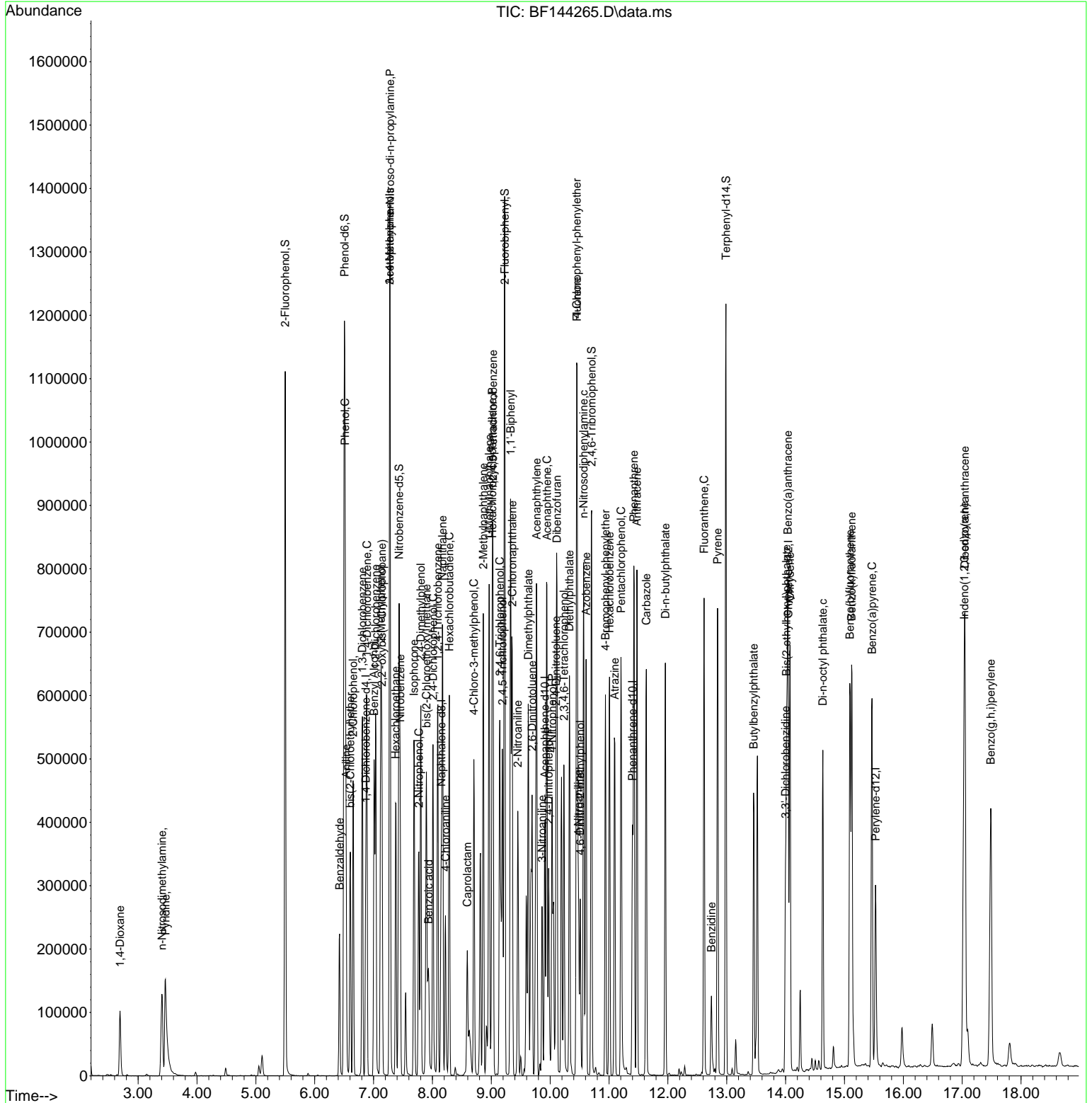
Compound	R.T.	QIon	Response	Conc	Units	Dev(Min)
44) 2,4,5-Trichlorophenol	9.186	196	124969	40.965	ng	98
46) 1,1'-Biphenyl	9.328	154	402584	45.451	ng	99
47) 2-Chloronaphthalene	9.357	162	315213	41.719	ng	99
48) 2-Nitroaniline	9.451	65	98024	44.964	ng	99
49) Acenaphthylene	9.769	152	479794	46.599	ng	99
50) Dimethylphthalate	9.627	163	375975	44.725	ng	99
51) 2,6-Dinitrotoluene	9.692	165	79835	46.914	ng	99
52) Acenaphthene	9.945	154	270060	39.223	ng	100
53) 3-Nitroaniline	9.863	138	56681	30.470	ng	99
54) 2,4-Dinitrophenol	9.975	184	78637	76.525	ng	98
55) Dibenzofuran	10.116	168	400494	41.532	ng	99
56) 4-Nitrophenol	10.033	139	94446	70.187	ng	93
57) 2,4-Dinitrotoluene	10.098	165	104644	45.935	ng	97
58) Fluorene	10.457	166	315358	43.013	ng	99
59) 2,3,4,6-Tetrachlorophenol	10.233	232	95261	44.136	ng	# 96
60) Diethylphthalate	10.327	149	336684	43.446	ng	100
61) 4-Chlorophenyl-phenyle...	10.451	204	172430	41.288	ng	99
62) 4-Nitroaniline	10.480	138	71517	40.370	ng	98
63) Azobenzene	10.610	77	320032	44.374	ng	99
65) 4,6-Dinitro-2-methylph...	10.510	198	61765	42.332	ng	98
66) n-Nitrosodiphenylamine	10.569	169	309243	44.767	ng	99
67) 4-Bromophenyl-phenylether	10.939	248	117484	42.855	ng	97
68) Hexachlorobenzene	11.010	284	143061	44.304	ng	95
69) Atrazine	11.098	200	97665	44.457	ng	99
70) Pentachlorophenol	11.204	266	136188	84.697	ng	97
71) Phenanthrene	11.421	178	466162	43.593	ng	100
72) Anthracene	11.474	178	461640	42.456	ng	99
73) Carbazole	11.633	167	387879	41.951	ng	99
74) Di-n-butylphthalate	11.957	149	461045	41.248	ng	99
75) Fluoranthene	12.616	202	461433	41.772	ng	99
77) Benzidine	12.739	184	84424	22.354	ng	99
78) Pyrene	12.845	202	448811	43.597	ng	99
80) Butylbenzylphthalate	13.457	149	150266	42.115	ng	99
81) Benzo(a)anthracene	14.039	228	391354	44.226	ng	99
82) 3,3'-Dichlorobenzidine	13.998	252	102068	33.650	ng	96
83) Chrysene	14.074	228	349396	42.772	ng	98
84) Bis(2-ethylhexyl)phtha...	14.015	149	190183	38.937	ng	98
85) Di-n-octyl phthalate	14.633	149	341741	40.553	ng	100
87) Indeno(1,2,3-cd)pyrene	17.033	276	503139	45.429	ng	99
88) Benzo(b)fluoranthene	15.092	252	436245	49.735	ng	99
89) Benzo(k)fluoranthene	15.121	252	384664	46.853	ng	99
90) Benzo(a)pyrene	15.468	252	401625	49.632	ng	98
91) Dibenzo(a,h)anthracene	17.045	278	409253	46.011	ng	99
92) Benzo(g,h,i)perylene	17.486	276	418232	47.615	ng	99

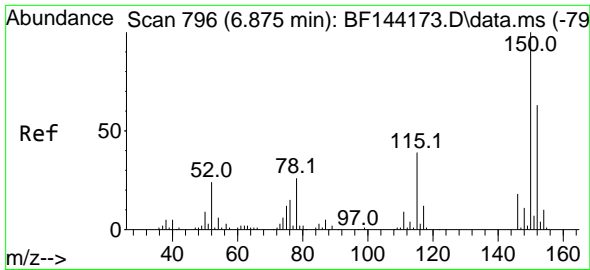
(#) = qualifier out of range (m) = manual integration (+) = signals summed

Data Path : Z:\svoasrv\HPCHEM1\BNA_F\Data\BF111725\
 Data File : BF144265.D
 Acq On : 17 Nov 2025 13:52
 Operator : RC/JU
 Sample : PB170576BS
 Misc :
 ALS Vial : 4 Sample Multiplier: 1

Instrument :
 BNA_F
 ClientSampleId :

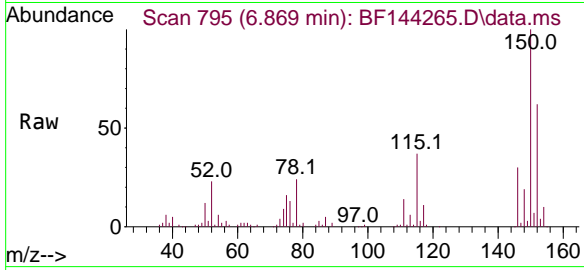
Quant Time: Nov 17 14:13:06 2025
 Quant Method : Z:\svoasrv\HPCHEM1\BNA_F\Methods\8270-BF110525.M
 Quant Title : ASP BNA STANDARDS FOR 5 POINT CALIBRATION
 QLast Update : Wed Nov 05 18:37:33 2025
 Response via : Initial Calibration



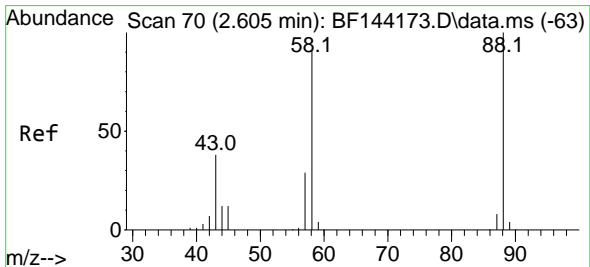
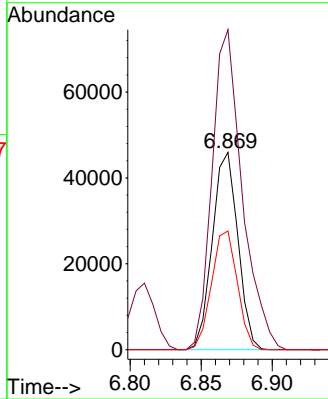
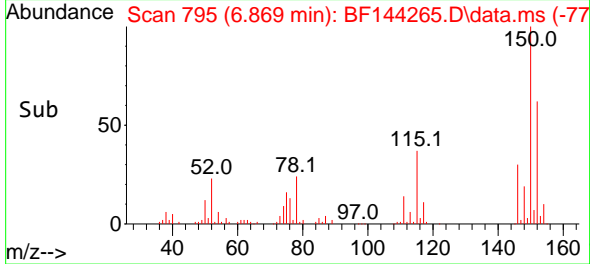


#1
 1,4-Dichlorobenzene-d4
 Concen: 20.000 ng
 RT: 6.869 min Scan# 79
 Delta R.T. -0.006 min
 Lab File: BF144265.D
 Acq: 17 Nov 2025 13:52

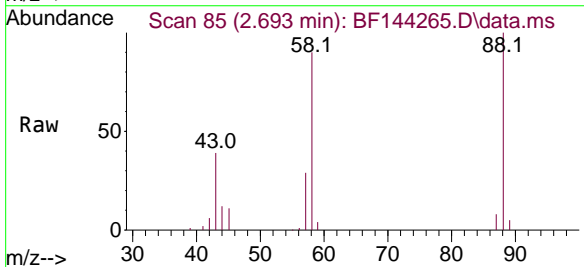
Instrument :
 BNA_F
 ClientSampleId :



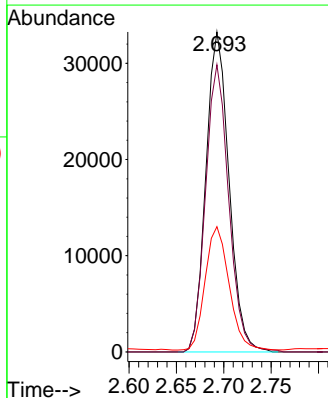
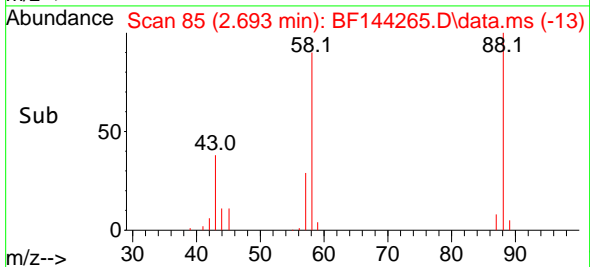
Tgt Ion:152 Resp: 57508
 Ion Ratio Lower Upper
 152 100
 150 162.3 127.4 191.0
 115 60.2 49.5 74.3

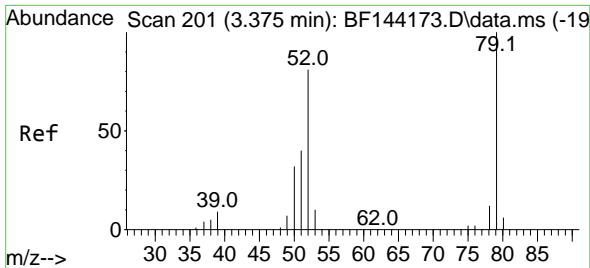


#2
 1,4-Dioxane
 Concen: 37.216 ng
 RT: 2.693 min Scan# 85
 Delta R.T. 0.076 min
 Lab File: BF144265.D
 Acq: 17 Nov 2025 13:52



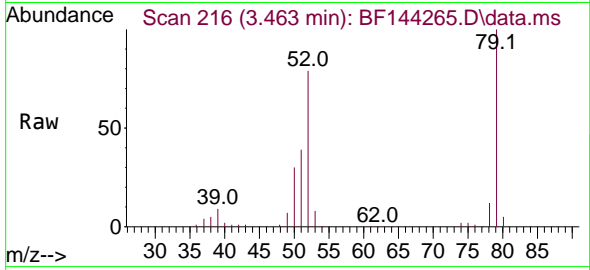
Tgt Ion: 88 Resp: 56543
 Ion Ratio Lower Upper
 88 100
 58 90.0 73.1 109.7
 43 39.8 31.0 46.6



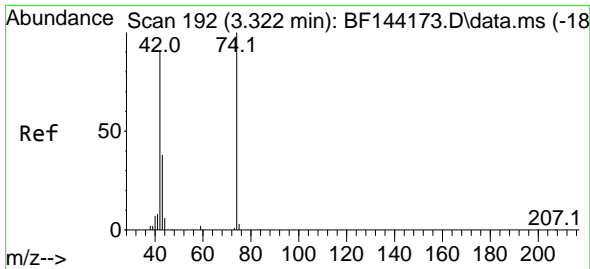
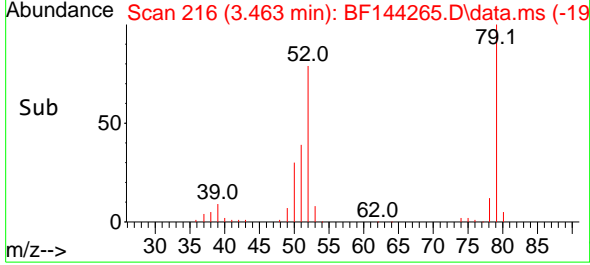
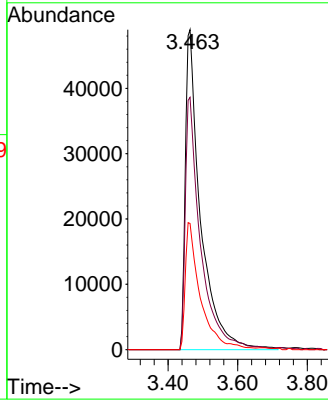


#3
 Pyridine
 Concen: 35.092 ng
 RT: 3.463 min Scan# 21
 Delta R.T. 0.053 min
 Lab File: BF144265.D
 Acq: 17 Nov 2025 13:52

Instrument :
 BNA_F
 ClientSampleId :

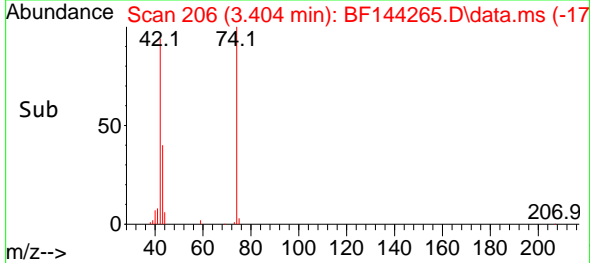
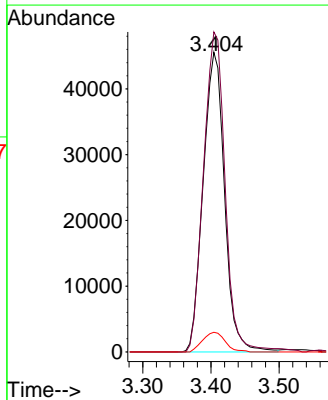
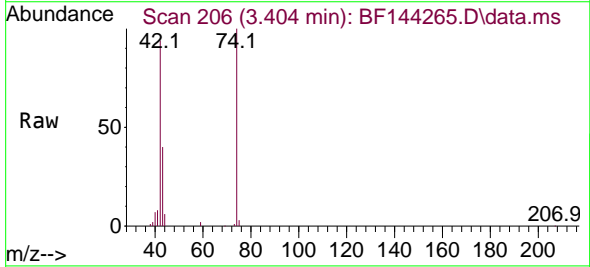


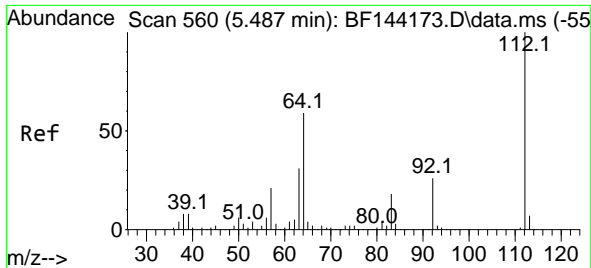
Tgt Ion: 79 Resp: 148748
 Ion Ratio Lower Upper
 79 100
 52 78.8 64.5 96.7
 51 39.4 31.7 47.5



#4
 n-Nitrosodimethylamine
 Concen: 44.863 ng
 RT: 3.404 min Scan# 206
 Delta R.T. 0.059 min
 Lab File: BF144265.D
 Acq: 17 Nov 2025 13:52

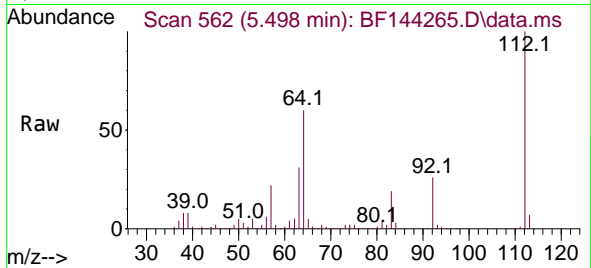
Tgt Ion: 42 Resp: 99331
 Ion Ratio Lower Upper
 42 100
 74 106.8 88.2 132.4
 44 6.6 5.7 8.5



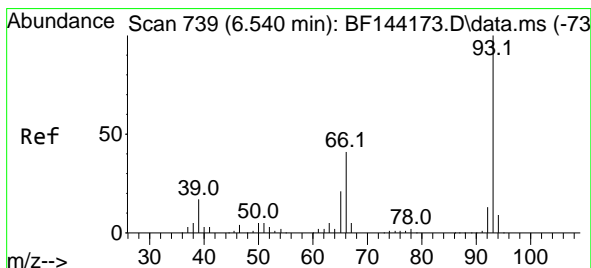
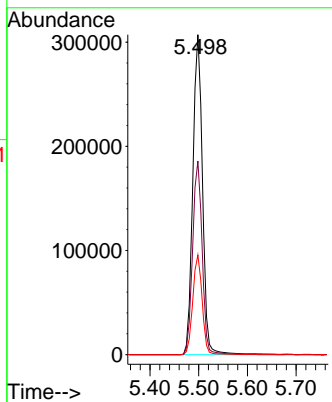
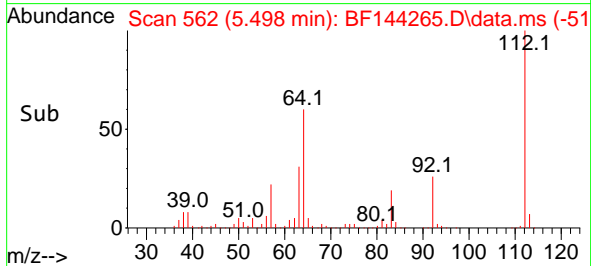


#5
 2-Fluorophenol
 Concen: 114.798 ng
 RT: 5.498 min Scan# 50
 Delta R.T. 0.006 min
 Lab File: BF144265.D
 Acq: 17 Nov 2025 13:52

Instrument :
 BNA_F
 ClientSampleId :

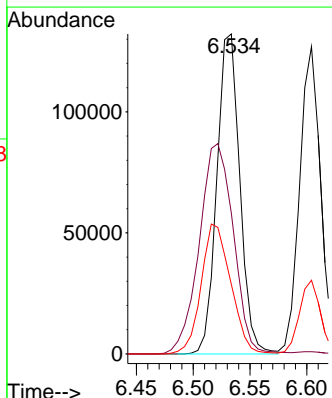
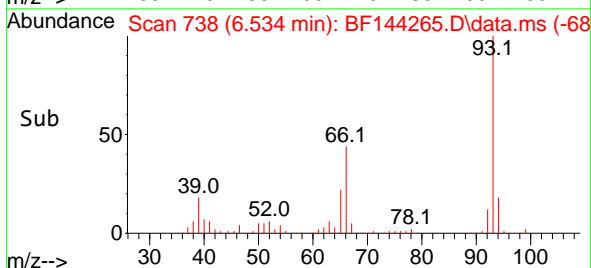
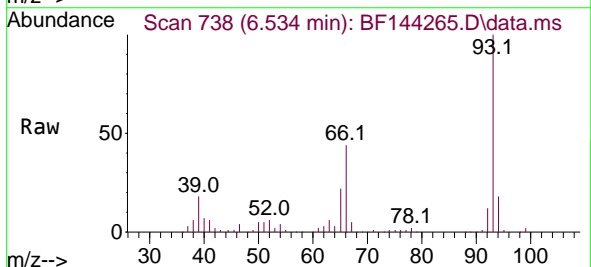


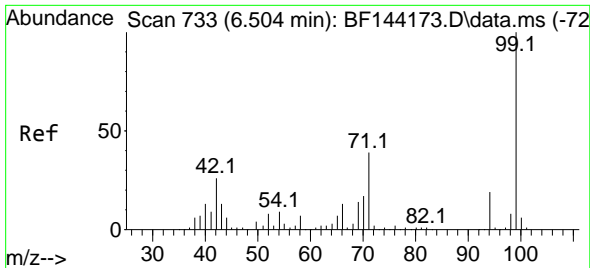
Tgt Ion:112 Resp: 421874
 Ion Ratio Lower Upper
 112 100
 64 60.5 47.2 70.8
 63 31.1 24.4 36.6



#6
 Aniline
 Concen: 31.358 ng
 RT: 6.534 min Scan# 738
 Delta R.T. -0.000 min
 Lab File: BF144265.D
 Acq: 17 Nov 2025 13:52

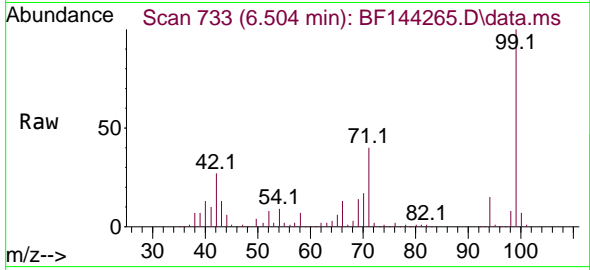
Tgt Ion: 93 Resp: 186036
 Ion Ratio Lower Upper
 93 100
 66 44.0 34.3 51.5
 65 21.8 16.9 25.3





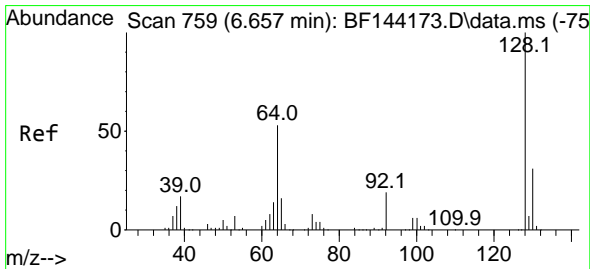
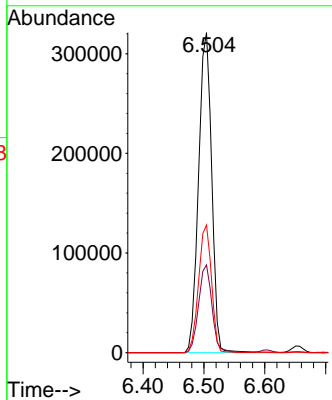
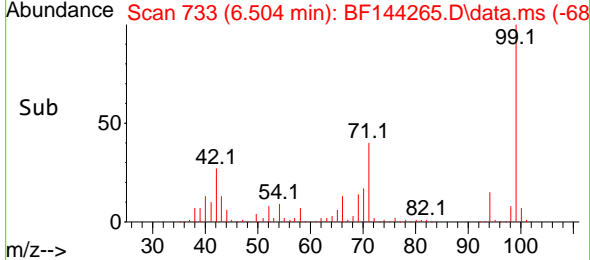
#7
 Phenol-d6
 Concen: 114.978 ng
 RT: 6.504 min Scan# 731
 Delta R.T. 0.006 min
 Lab File: BF144265.D
 Acq: 17 Nov 2025 13:52

Instrument :
 BNA_F
 ClientSampleId :

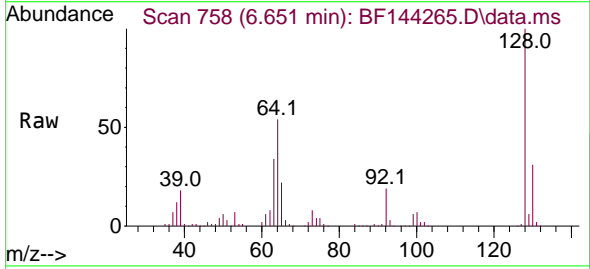


Tgt Ion: 99 Resp: 478765

Ion	Ratio	Lower	Upper
99	100		
42	27.4	20.9	31.3
71	39.9	31.4	47.2

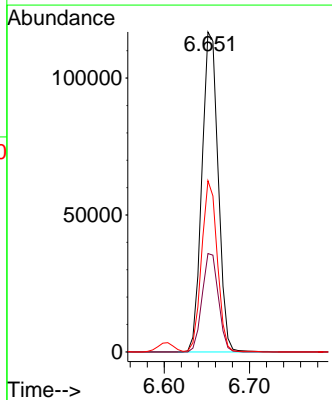
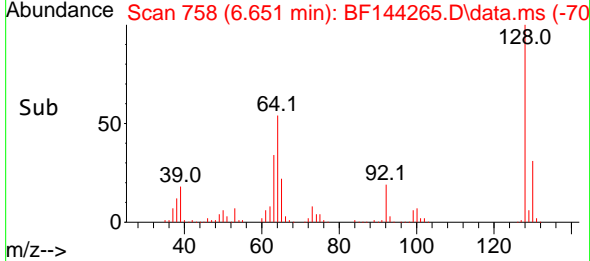


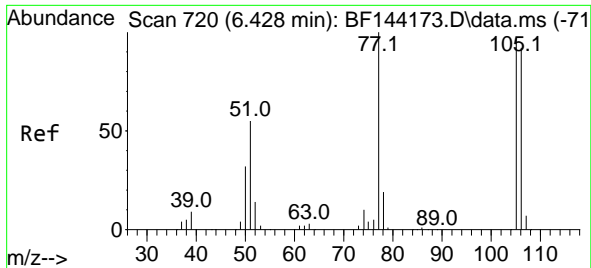
#8
 2-Chlorophenol
 Concen: 42.857 ng
 RT: 6.651 min Scan# 758
 Delta R.T. -0.006 min
 Lab File: BF144265.D
 Acq: 17 Nov 2025 13:52



Tgt Ion: 128 Resp: 154455

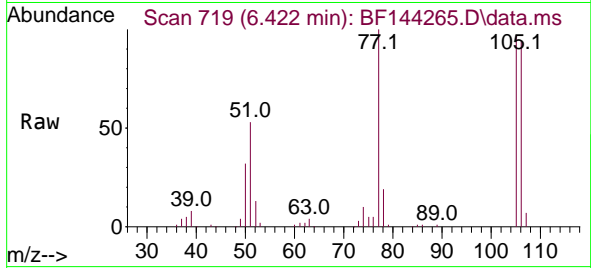
Ion	Ratio	Lower	Upper
128	100		
130	30.7	10.5	50.5
64	53.5	33.2	73.2





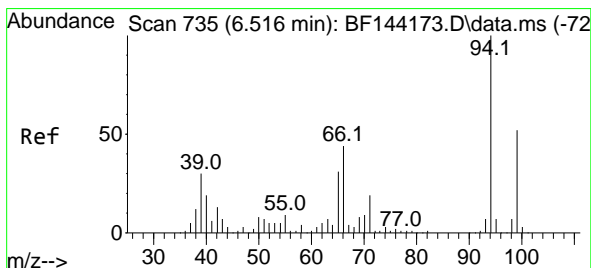
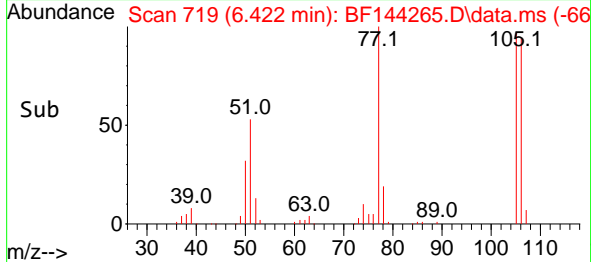
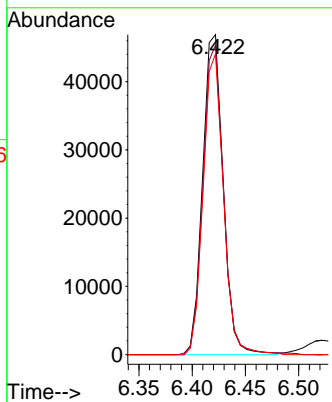
#9
 Benzaldehyde
 Concen: 26.803 ng
 RT: 6.422 min Scan# 719
 Delta R.T. -0.006 min
 Lab File: BF144265.D
 Acq: 17 Nov 2025 13:52

Instrument :
 BNA_F
 ClientSampleId :



Tgt Ion: 77 Resp: 63023

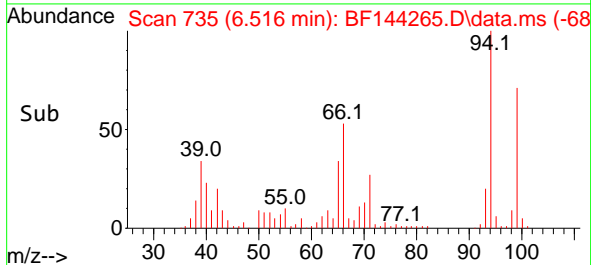
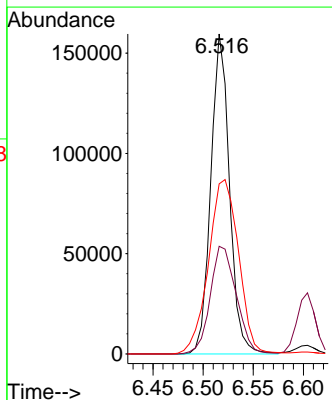
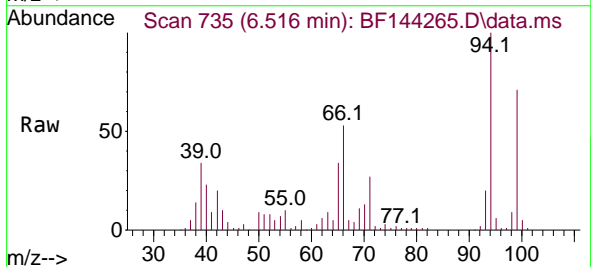
Ion	Ratio	Lower	Upper
77	100		
105	96.7	77.2	117.2
106	94.0	72.2	112.2

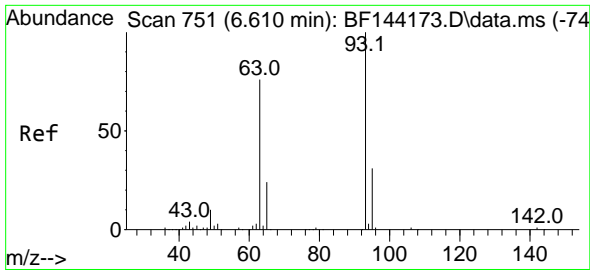


#10
 Phenol
 Concen: 40.702 ng
 RT: 6.516 min Scan# 735
 Delta R.T. 0.006 min
 Lab File: BF144265.D
 Acq: 17 Nov 2025 13:52

Tgt Ion: 94 Resp: 207073

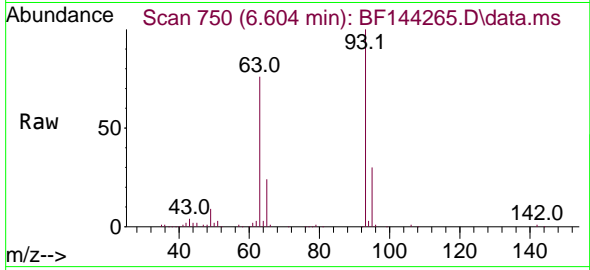
Ion	Ratio	Lower	Upper
94	100		
65	33.6	10.8	50.8
66	53.2	24.3	64.3





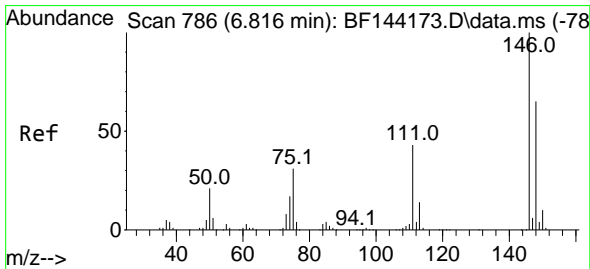
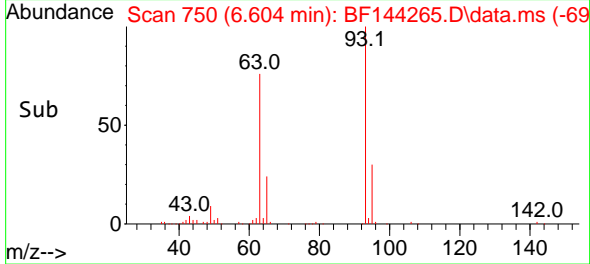
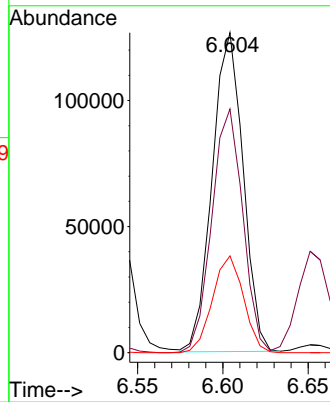
#11
 bis(2-Chloroethyl)ether
 Concen: 43.023 ng
 RT: 6.604 min Scan# 751
 Delta R.T. -0.000 min
 Lab File: BF144265.D
 Acq: 17 Nov 2025 13:52

Instrument :
 BNA_F
 ClientSampleId :



Tgt Ion: 93 Resp: 159489

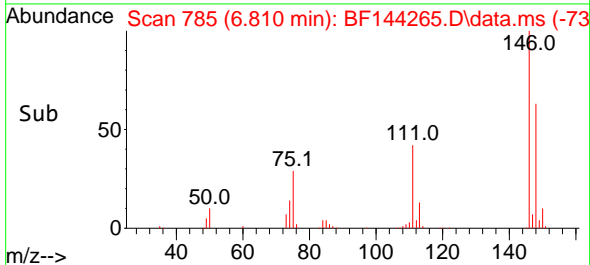
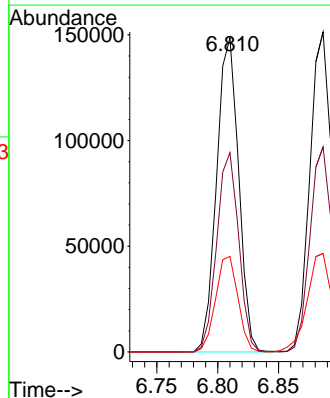
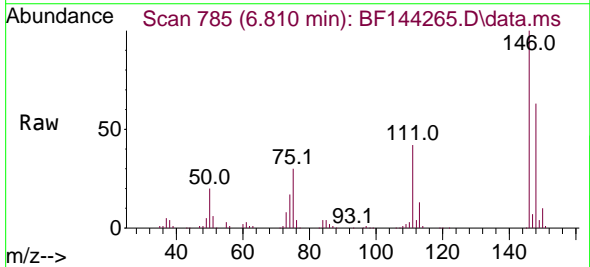
Ion	Ratio	Lower	Upper
93	100		
63	76.1	55.2	95.2
95	30.2	11.2	51.2

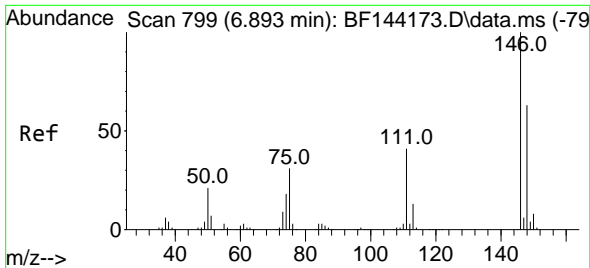


#12
 1,3-Dichlorobenzene
 Concen: 42.208 ng
 RT: 6.810 min Scan# 785
 Delta R.T. -0.006 min
 Lab File: BF144265.D
 Acq: 17 Nov 2025 13:52

Tgt Ion: 146 Resp: 187707

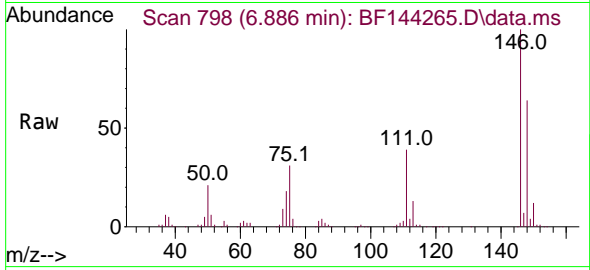
Ion	Ratio	Lower	Upper
146	100		
148	63.5	51.8	77.8
75	30.4	25.0	37.4



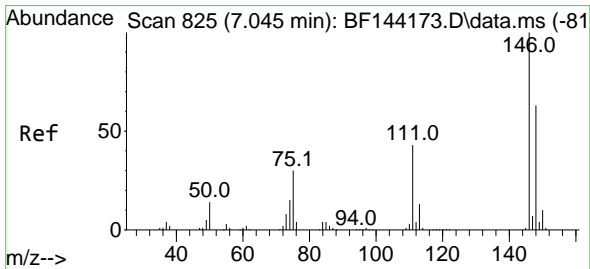
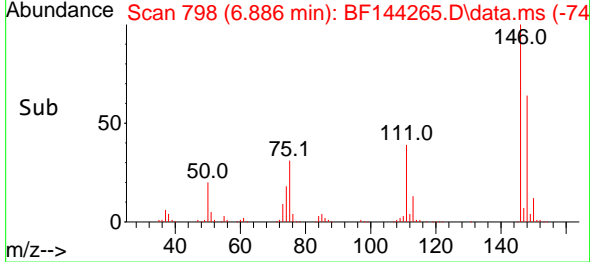
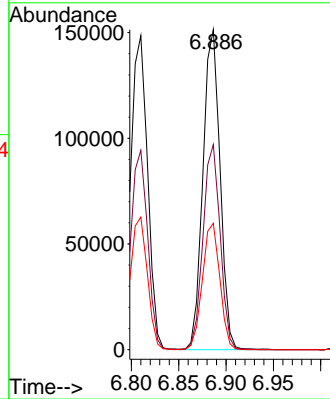


#13
 1,4-Dichlorobenzene
 Concen: 42.829 ng
 RT: 6.886 min Scan# 79
 Delta R.T. -0.006 min
 Lab File: BF144265.D
 Acq: 17 Nov 2025 13:52

Instrument :
 BNA_F
 ClientSampleId :

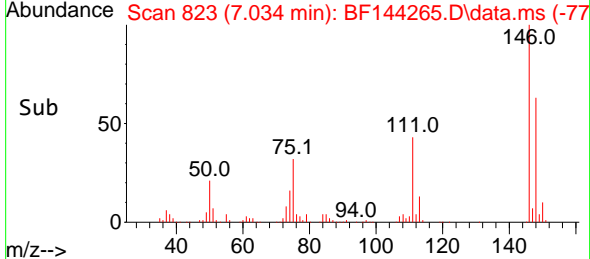
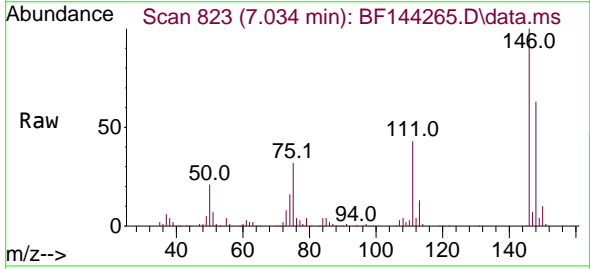
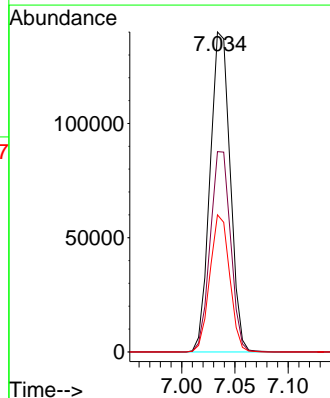


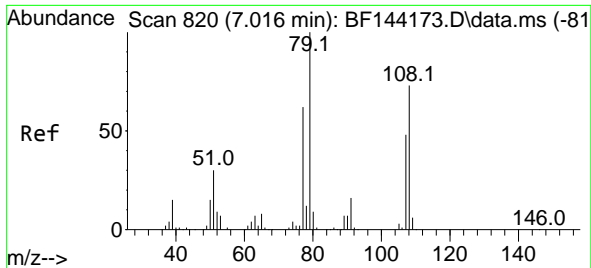
Tgt Ion:146 Resp: 190820
 Ion Ratio Lower Upper
 146 100
 148 64.1 50.2 75.2
 111 39.5 32.6 48.8



#14
 1,2-Dichlorobenzene
 Concen: 43.046 ng
 RT: 7.034 min Scan# 823
 Delta R.T. -0.012 min
 Lab File: BF144265.D
 Acq: 17 Nov 2025 13:52

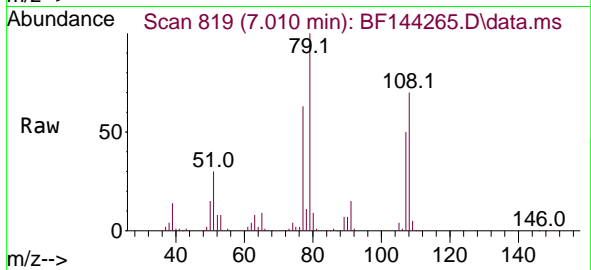
Tgt Ion:146 Resp: 183824
 Ion Ratio Lower Upper
 146 100
 148 62.6 50.7 76.1
 111 42.8 34.2 51.4



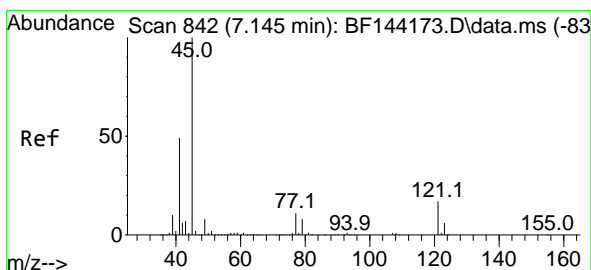
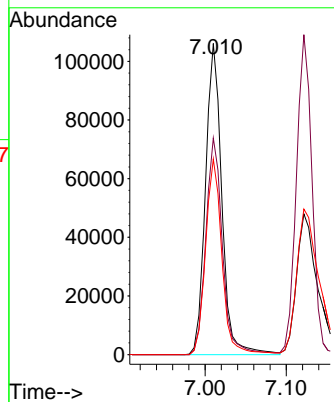
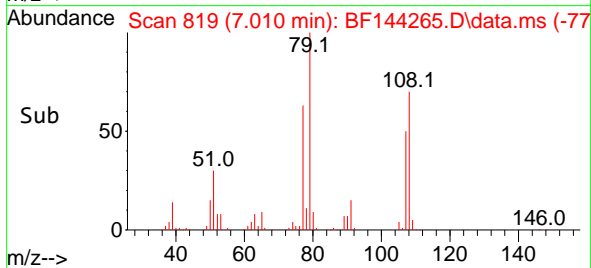


#15
 Benzyl Alcohol
 Concen: 45.102 ng
 RT: 7.010 min Scan# 819
 Delta R.T. -0.012 min
 Lab File: BF144265.D
 Acq: 17 Nov 2025 13:52

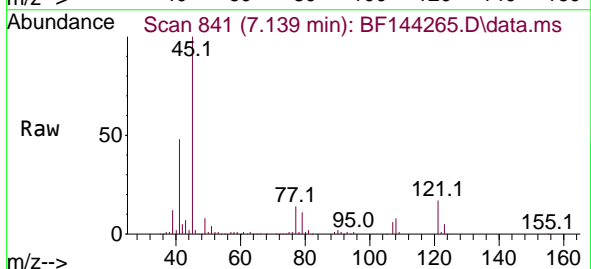
Instrument :
 BNA_F
 ClientSampleId :



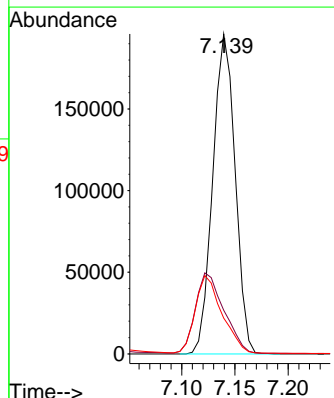
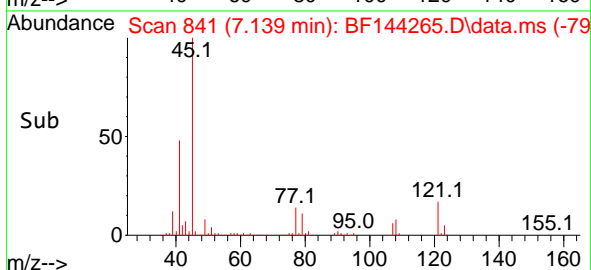
Tgt Ion: 79 Resp: 148710
 Ion Ratio Lower Upper
 79 100
 108 69.6 58.2 87.4
 77 62.8 49.9 74.9

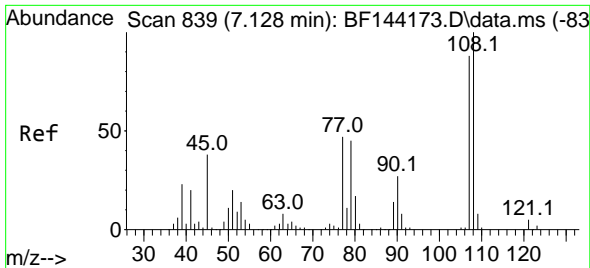


#16
 2,2'-oxybis(1-Chloropropane)
 Concen: 41.940 ng
 RT: 7.139 min Scan# 841
 Delta R.T. -0.000 min
 Lab File: BF144265.D
 Acq: 17 Nov 2025 13:52



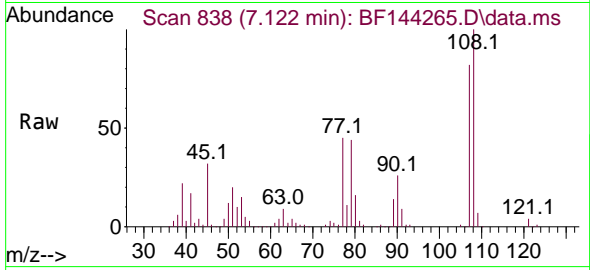
Tgt Ion: 45 Resp: 286313
 Ion Ratio Lower Upper
 45 100
 77 13.6 0.0 31.8
 79 11.2 0.0 29.1





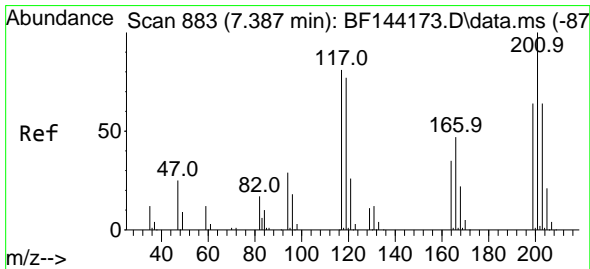
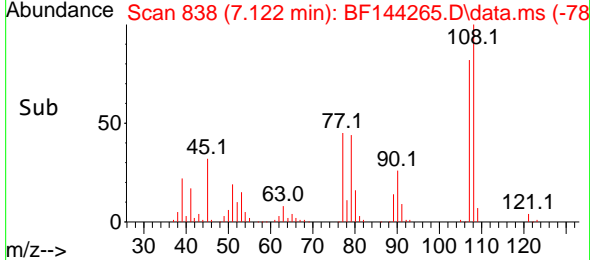
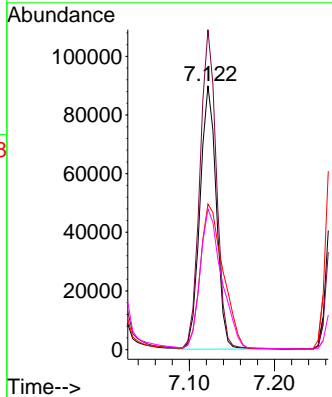
#17
 2-Methylphenol
 Concen: 41.804 ng
 RT: 7.122 min Scan# 81
 Delta R.T. -0.000 min
 Lab File: BF144265.D
 Acq: 17 Nov 2025 13:52

Instrument :
 BNA_F
 ClientSampleId :



Tgt Ion:107 Resp: 119855

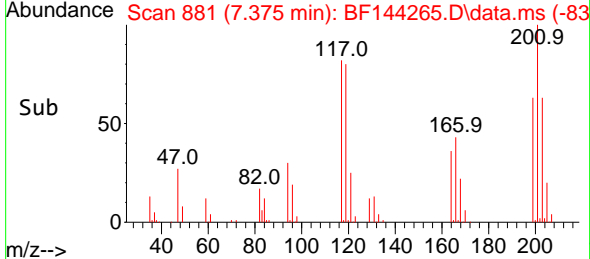
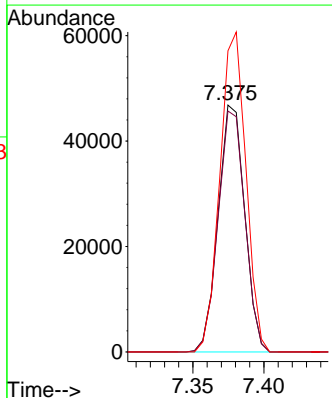
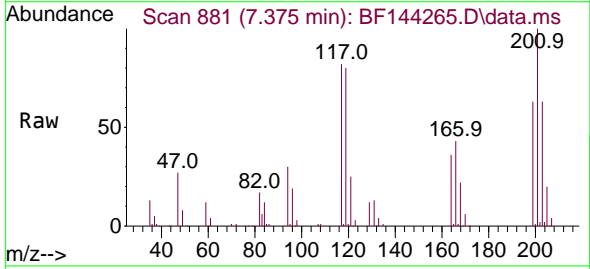
Ion	Ratio	Lower	Upper
107	100		
108	121.4	91.0	136.4
77	55.2	42.7	64.1
79	53.3	41.4	62.2

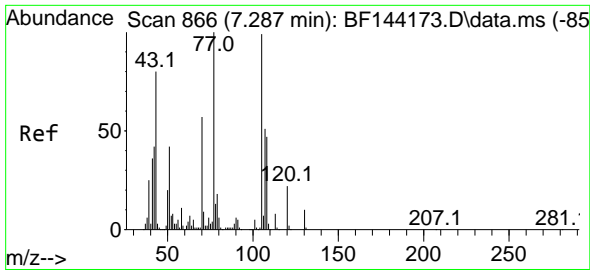


#18
 Hexachloroethane
 Concen: 41.212 ng
 RT: 7.375 min Scan# 881
 Delta R.T. -0.012 min
 Lab File: BF144265.D
 Acq: 17 Nov 2025 13:52

Tgt Ion:117 Resp: 61002

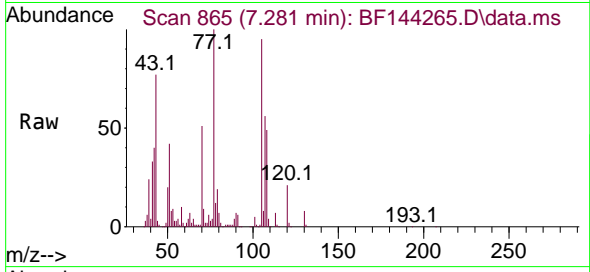
Ion	Ratio	Lower	Upper
117	100		
119	97.6	75.8	113.8
201	122.0	98.9	148.3



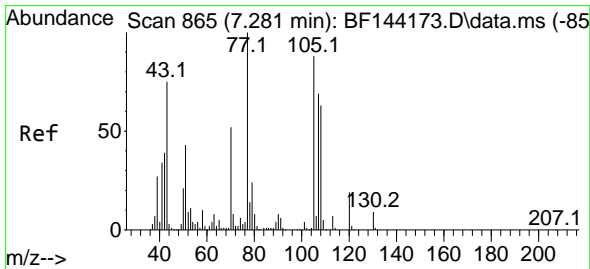
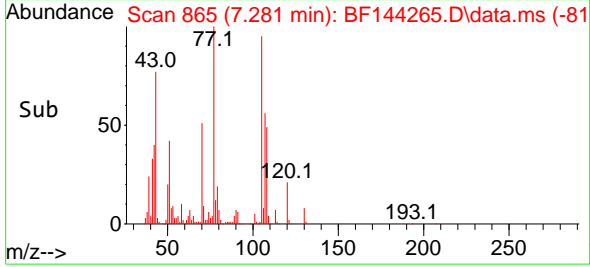
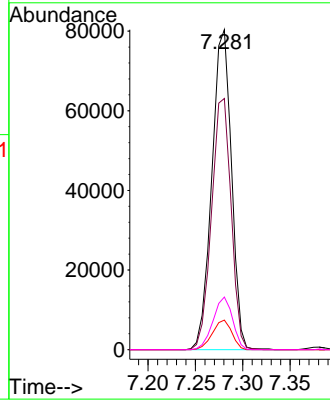


#19
 n-Nitroso-di-n-propylamine
 Concen: 42.182 ng
 RT: 7.281 min Scan# 80
 Delta R.T. 0.006 min
 Lab File: BF144265.D
 Acq: 17 Nov 2025 13:52

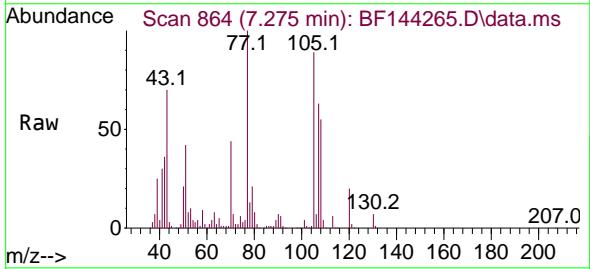
Instrument :
 BNA_F
 ClientSampleId :



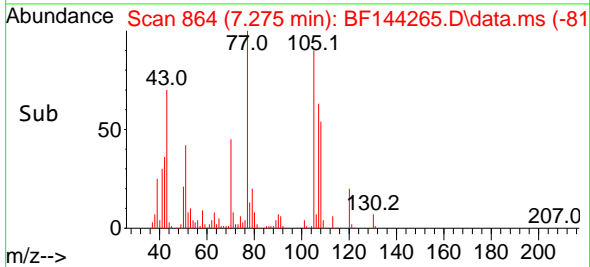
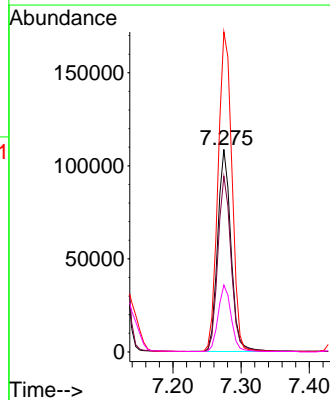
Tgt Ion: 70 Resp: 115627
 Ion Ratio Lower Upper
 70 100
 42 78.5 58.3 87.5
 101 9.2 7.0 10.6
 130 16.4 14.4 21.6

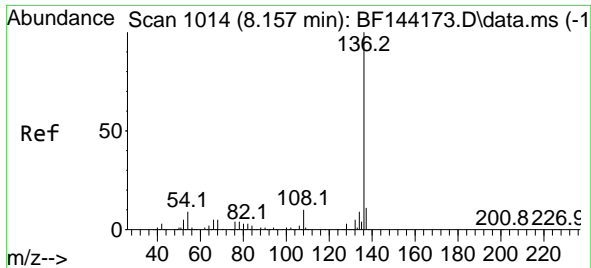


#20
 3+4-Methylphenols
 Concen: 43.275 ng
 RT: 7.275 min Scan# 864
 Delta R.T. -0.012 min
 Lab File: BF144265.D
 Acq: 17 Nov 2025 13:52



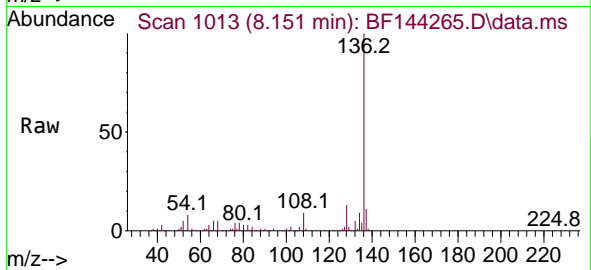
Tgt Ion: 107 Resp: 146258
 Ion Ratio Lower Upper
 107 100
 108 86.7 70.2 110.2
 77 158.0 123.9 163.9
 79 33.0 14.2 54.2





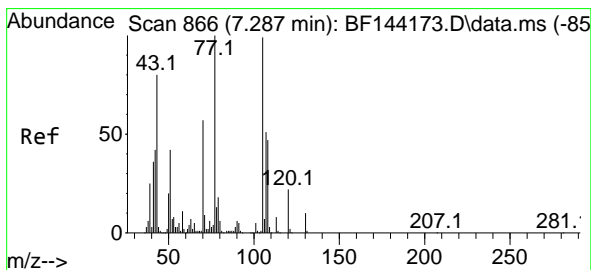
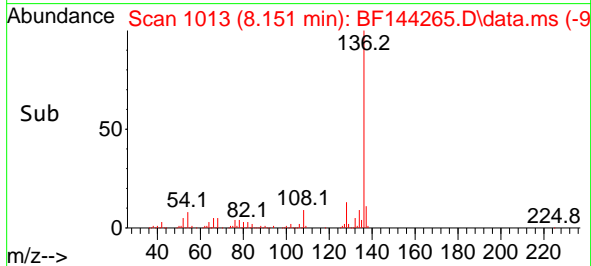
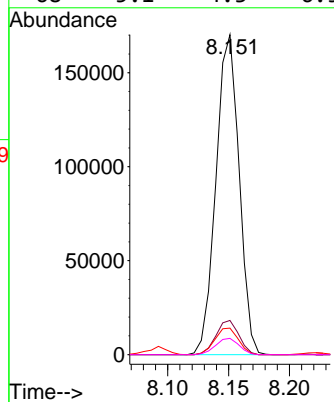
#21
 Naphthalene-d8
 Concen: 20.000 ng
 RT: 8.151 min Scan# 10
 Delta R.T. -0.006 min
 Lab File: BF144265.D
 Acq: 17 Nov 2025 13:52

Instrument :
 BNA_F
 ClientSampleId :



Tgt Ion:136 Resp: 224965

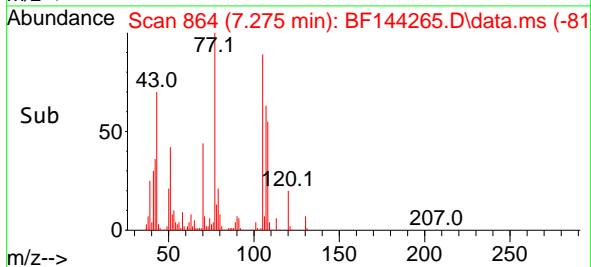
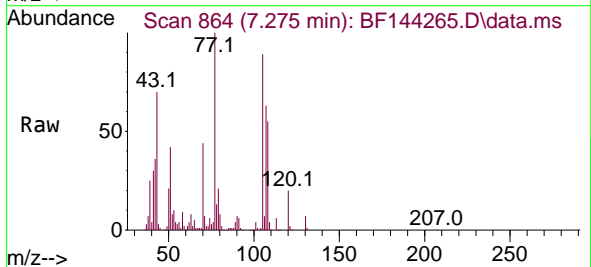
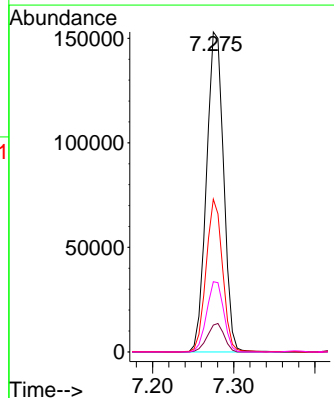
Ion	Ratio	Lower	Upper
136	100		
137	10.7	8.6	13.0
54	8.3	7.0	10.6
68	5.1	4.3	6.5

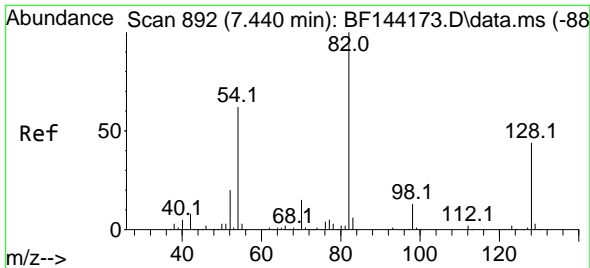


#22
 Acetophenone
 Concen: 46.615 ng
 RT: 7.275 min Scan# 864
 Delta R.T. -0.006 min
 Lab File: BF144265.D
 Acq: 17 Nov 2025 13:52

Tgt Ion:105 Resp: 224963

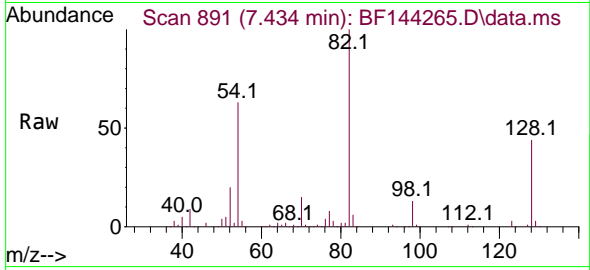
Ion	Ratio	Lower	Upper
105	100		
71	8.4	7.2	10.8
51	47.7	34.0	51.0
120	21.9	17.8	26.6



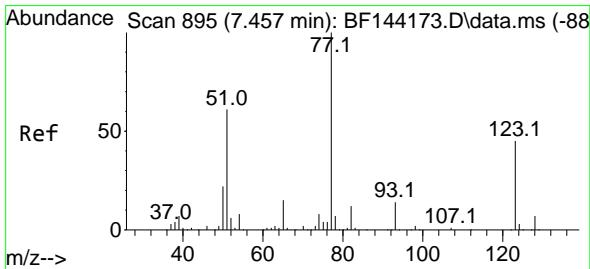
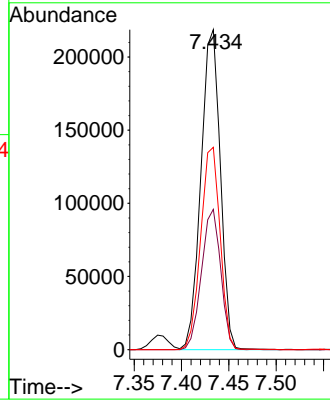
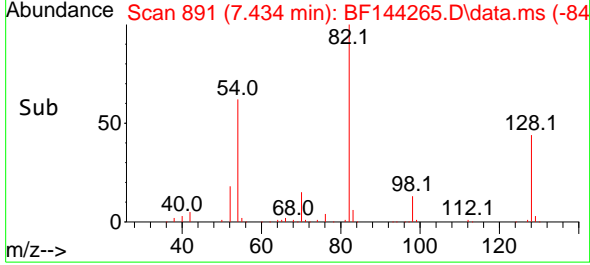


#23
 Nitrobenzene-d5
 Concen: 79.970 ng
 RT: 7.434 min Scan# 891
 Delta R.T. -0.000 min
 Lab File: BF144265.D
 Acq: 17 Nov 2025 13:52

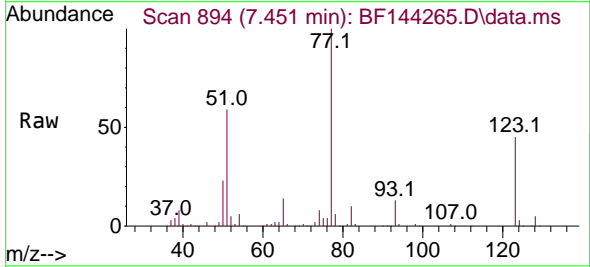
Instrument :
 BNA_F
 ClientSampleId :



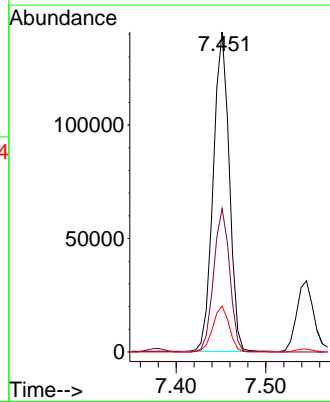
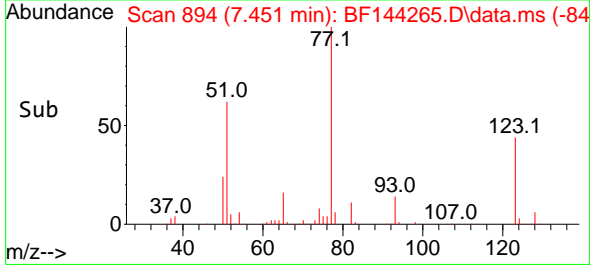
Tgt Ion: 82 Resp: 311496
 Ion Ratio Lower Upper
 82 100
 128 43.8 34.7 52.1
 54 63.2 49.5 74.3

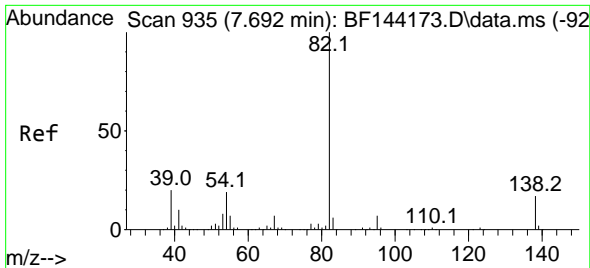


#24
 Nitrobenzene
 Concen: 41.532 ng
 RT: 7.451 min Scan# 894
 Delta R.T. -0.000 min
 Lab File: BF144265.D
 Acq: 17 Nov 2025 13:52



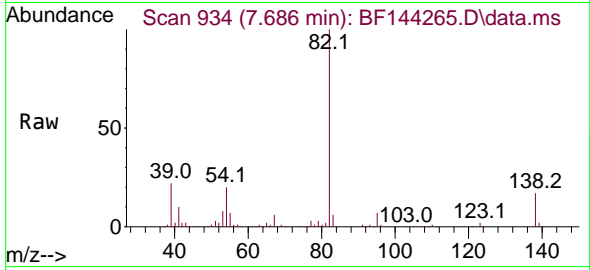
Tgt Ion: 77 Resp: 175647
 Ion Ratio Lower Upper
 77 100
 123 44.8 35.8 53.8
 65 14.3 12.2 18.2



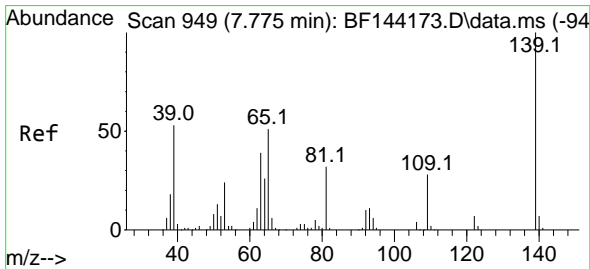
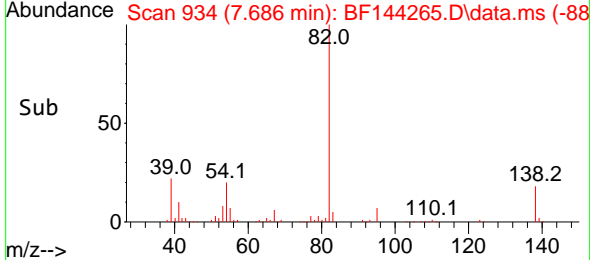
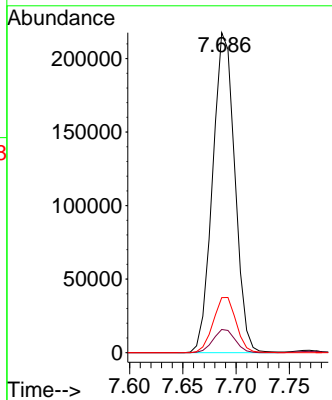


#25
 Isophorone
 Concen: 42.901 ng
 RT: 7.686 min Scan# 91
 Delta R.T. -0.000 min
 Lab File: BF144265.D
 Acq: 17 Nov 2025 13:52

Instrument :
 BNA_F
 ClientSampleId :

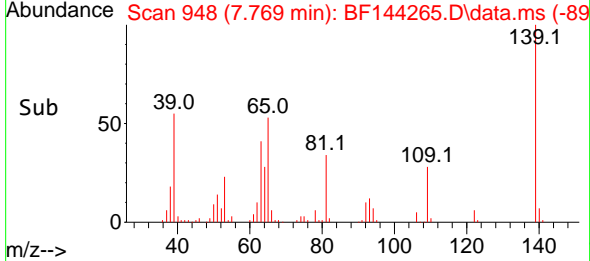
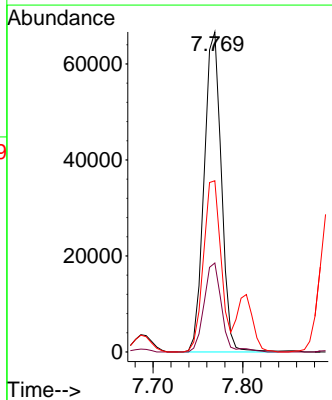
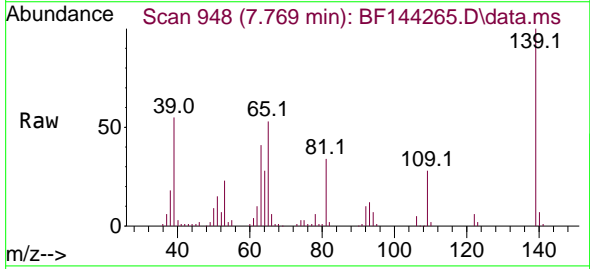


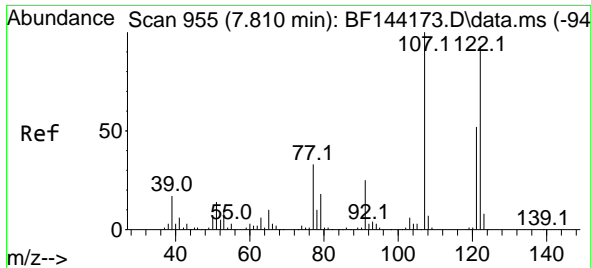
Tgt Ion: 82 Resp: 316082
 Ion Ratio Lower Upper
 82 100
 95 7.2 5.5 8.3
 138 17.2 13.7 20.5



#26
 2-Nitrophenol
 Concen: 42.487 ng
 RT: 7.769 min Scan# 948
 Delta R.T. -0.006 min
 Lab File: BF144265.D
 Acq: 17 Nov 2025 13:52

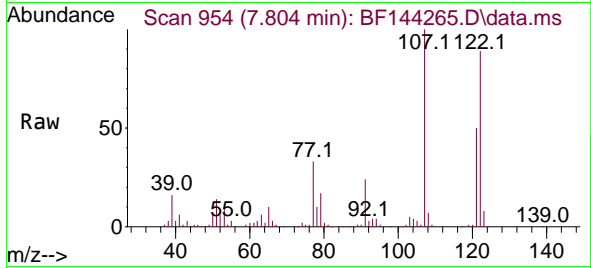
Tgt Ion:139 Resp: 88948
 Ion Ratio Lower Upper
 139 100
 109 27.8 22.2 33.2
 65 53.5 40.7 61.1



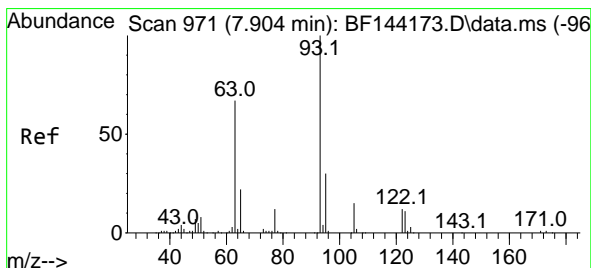
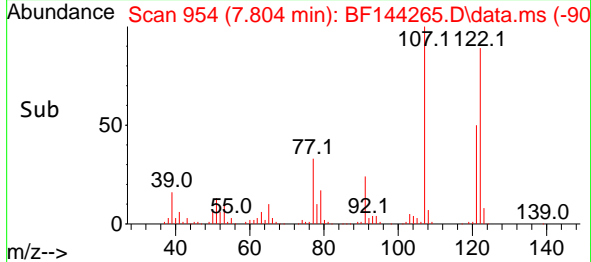
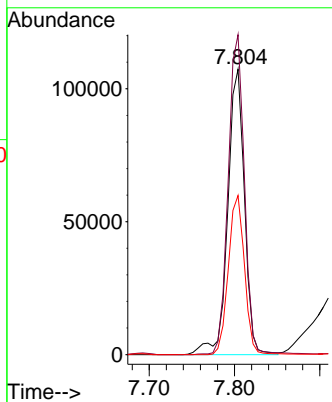


#27
 2,4-Dimethylphenol
 Concen: 46.708 ng
 RT: 7.804 min Scan# 91
 Delta R.T. -0.000 min
 Lab File: BF144265.D
 Acq: 17 Nov 2025 13:52

Instrument :
 BNA_F
 ClientSampleId :

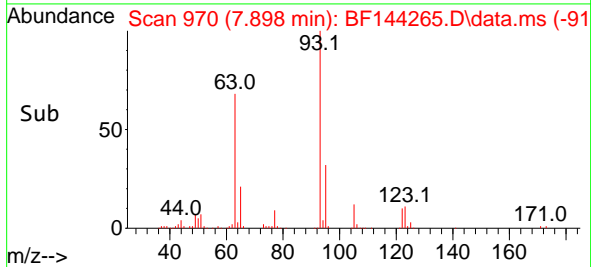
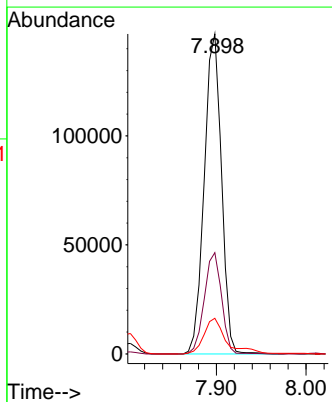
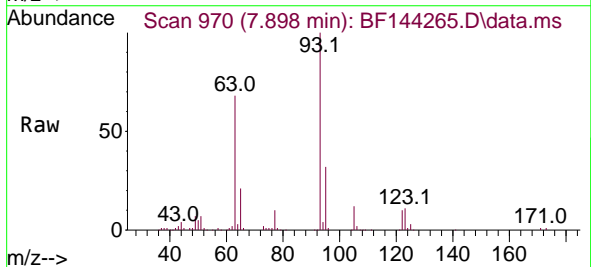


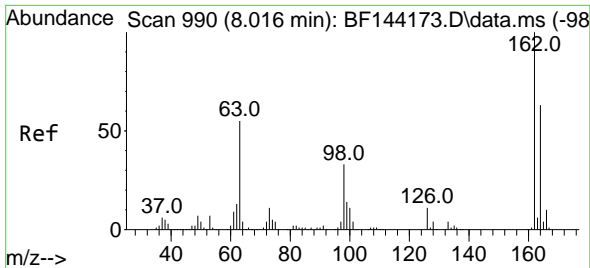
Tgt Ion:122 Resp: 146563
 Ion Ratio Lower Upper
 122 100
 107 112.1 86.2 129.4
 121 55.7 44.6 66.8



#28
 bis(2-Chloroethoxy)methane
 Concen: 42.524 ng
 RT: 7.898 min Scan# 970
 Delta R.T. -0.000 min
 Lab File: BF144265.D
 Acq: 17 Nov 2025 13:52

Tgt Ion: 93 Resp: 195648
 Ion Ratio Lower Upper
 93 100
 95 31.6 24.2 36.4
 123 11.1 9.0 13.4



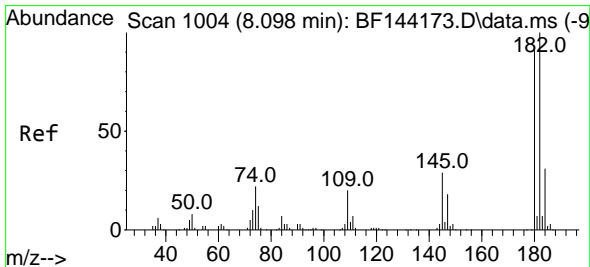
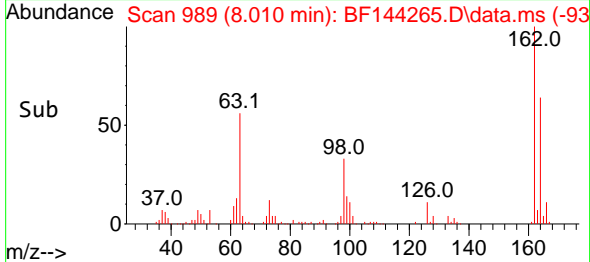
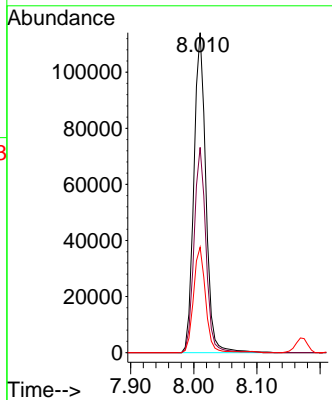
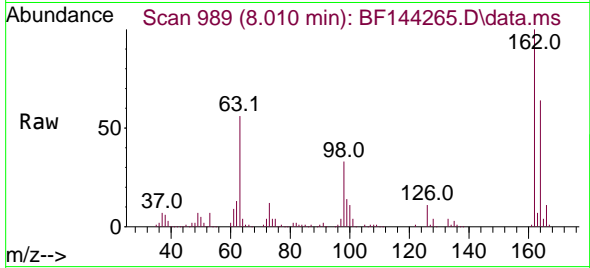


#29
 2,4-Dichlorophenol
 Concen: 41.771 ng
 RT: 8.010 min Scan# 98
 Delta R.T. -0.006 min
 Lab File: BF144265.D
 Acq: 17 Nov 2025 13:52

Instrument :
 BNA_F
 ClientSampleId :

Tgt Ion:162 Resp: 151071

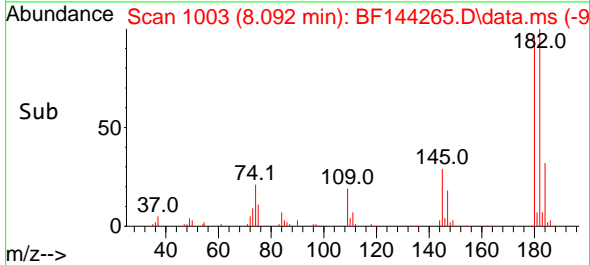
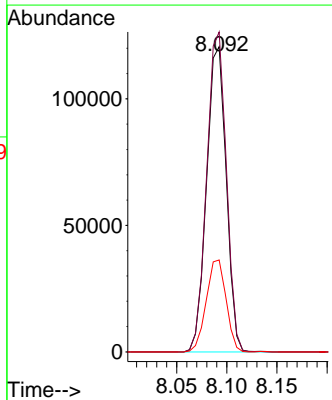
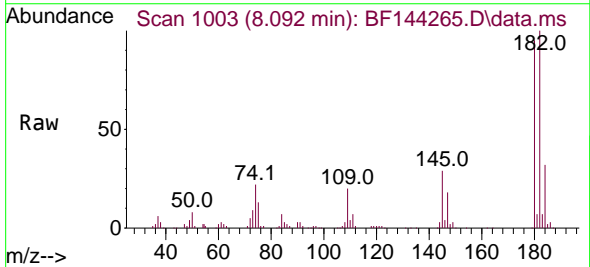
Ion	Ratio	Lower	Upper
162	100		
164	64.1	42.9	82.9
98	32.9	13.3	53.3

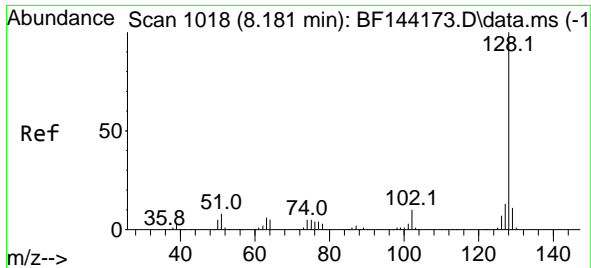


#30
 1,2,4-Trichlorobenzene
 Concen: 44.180 ng
 RT: 8.092 min Scan# 1003
 Delta R.T. -0.006 min
 Lab File: BF144265.D
 Acq: 17 Nov 2025 13:52

Tgt Ion:180 Resp: 164074

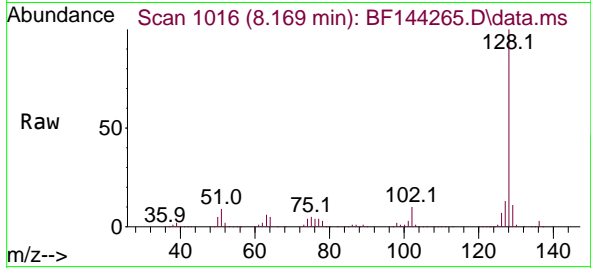
Ion	Ratio	Lower	Upper
180	100		
182	104.9	87.7	131.5
145	30.1	25.4	38.0



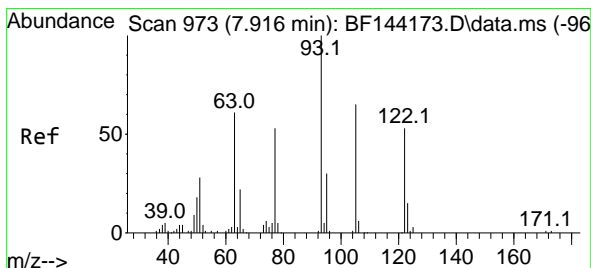
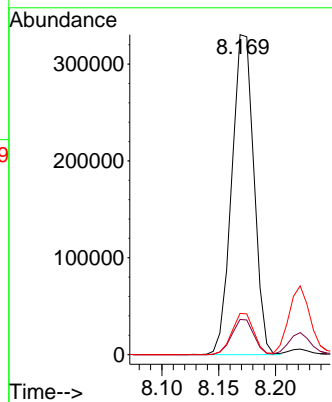
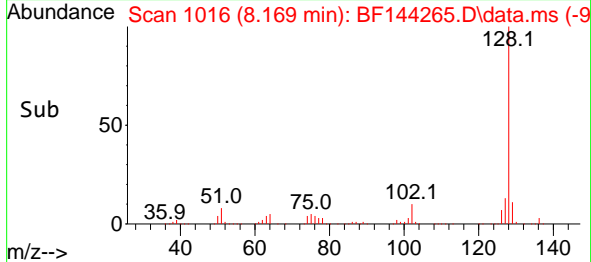


#31
 Naphthalene
 Concen: 41.797 ng
 RT: 8.169 min Scan# 1016
 Delta R.T. -0.006 min
 Lab File: BF144265.D
 Acq: 17 Nov 2025 13:52

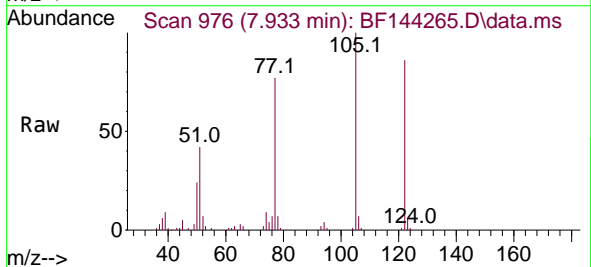
Instrument :
 BNA_F
 ClientSampleId :



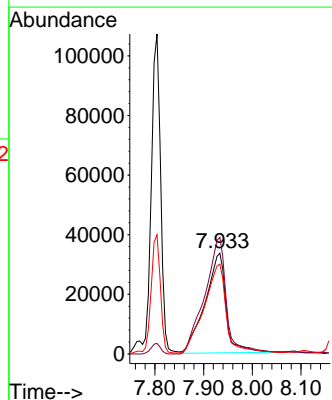
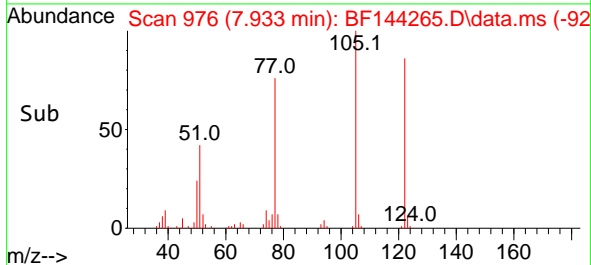
Tgt Ion:128 Resp: 447289
 Ion Ratio Lower Upper
 128 100
 129 11.0 8.9 13.3
 127 12.9 10.3 15.5

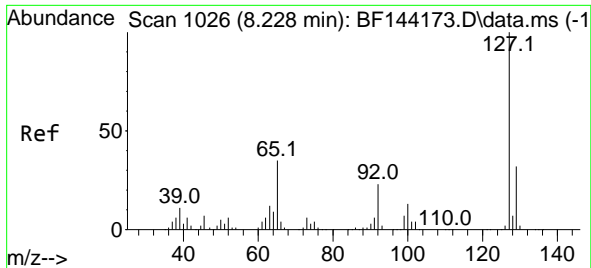


#32
 Benzoic acid
 Concen: 44.073 ng
 RT: 7.933 min Scan# 976
 Delta R.T. -0.018 min
 Lab File: BF144265.D
 Acq: 17 Nov 2025 13:52



Tgt Ion:122 Resp: 101372
 Ion Ratio Lower Upper
 122 100
 105 115.7 99.9 139.9
 77 88.9 77.5 117.5



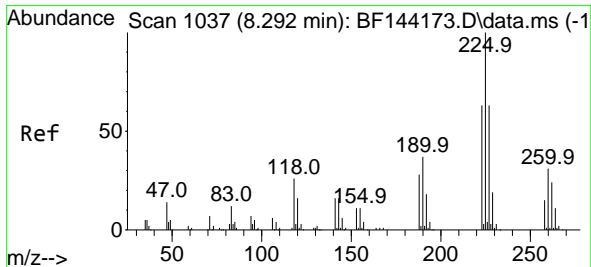
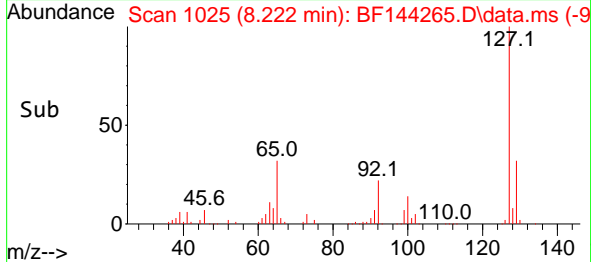
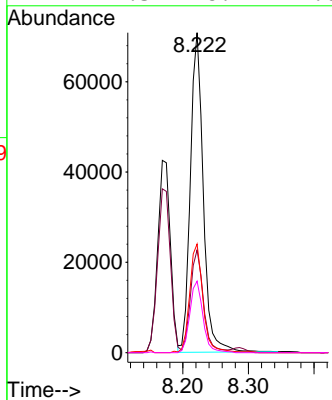
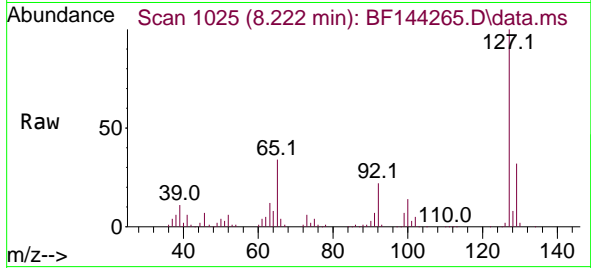


#33
 4-Chloroaniline
 Concen: 24.837 ng
 RT: 8.222 min Scan# 10
 Delta R.T. -0.006 min
 Lab File: BF144265.D
 Acq: 17 Nov 2025 13:52

Instrument :
 BNA_F
 ClientSampleId :

Tgt Ion:127 Resp: 96938

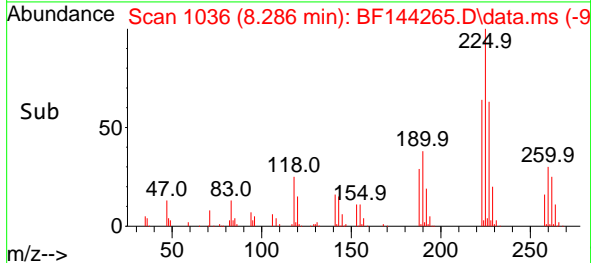
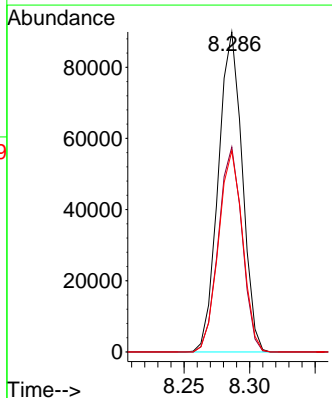
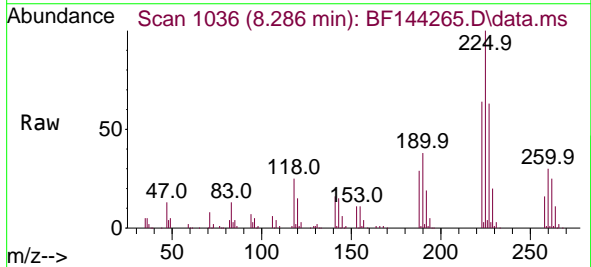
Ion	Ratio	Lower	Upper
127	100		
129	32.1	25.3	37.9
65	33.9	27.6	41.4
92	22.3	18.4	27.6

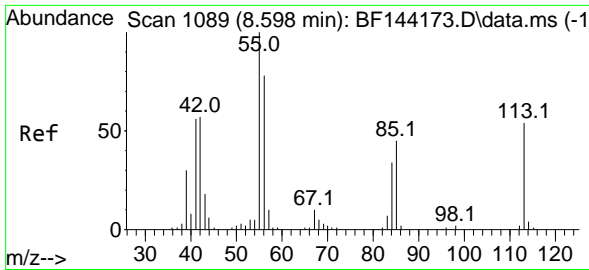


#34
 Hexachlorobutadiene
 Concen: 40.898 ng
 RT: 8.286 min Scan# 1036
 Delta R.T. -0.006 min
 Lab File: BF144265.D
 Acq: 17 Nov 2025 13:52

Tgt Ion:225 Resp: 114468

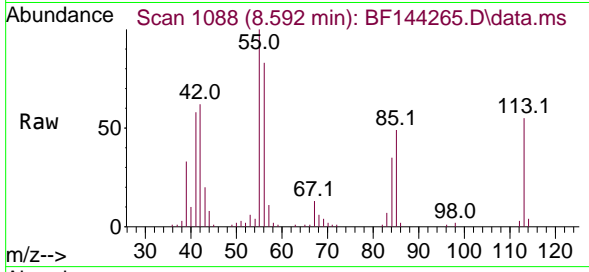
Ion	Ratio	Lower	Upper
225	100		
223	64.0	50.2	75.4
227	62.8	50.1	75.1



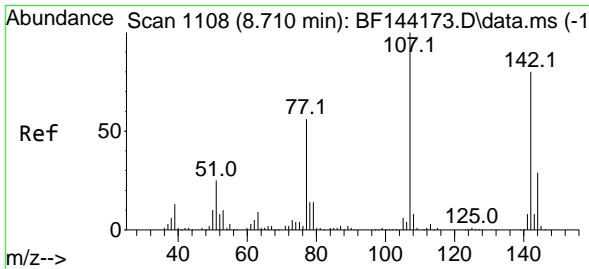
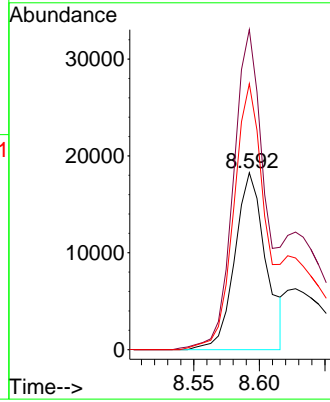
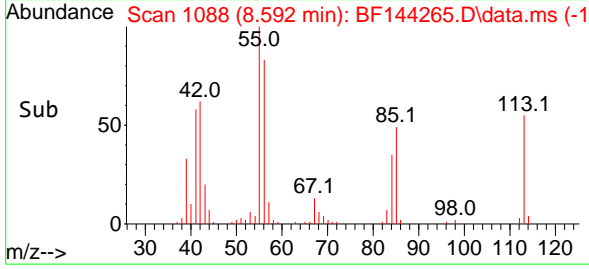


#35
 Caprolactam
 Concen: 30.304 ng
 RT: 8.592 min Scan# 1088
 Delta R.T. -0.029 min
 Lab File: BF144265.D
 Acq: 17 Nov 2025 13:52

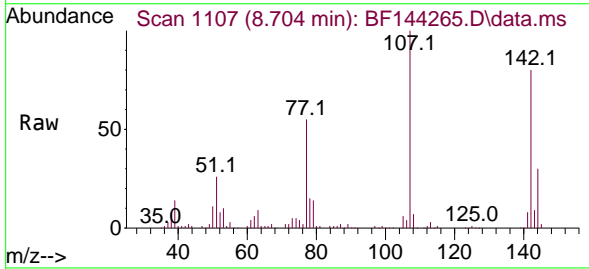
Instrument :
 BNA_F
 ClientSampleId :



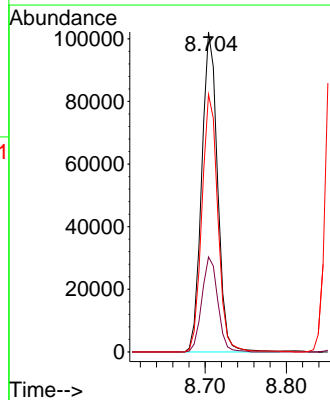
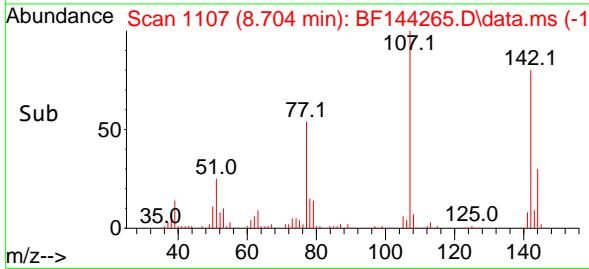
Tgt Ion:113 Resp: 30026
 Ion Ratio Lower Upper
 113 100
 55 180.9 166.8 206.8
 56 150.3 125.9 165.9

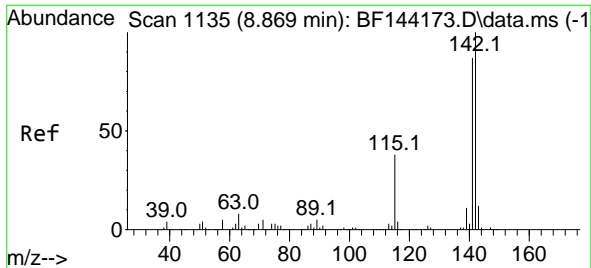


#36
 4-Chloro-3-methylphenol
 Concen: 42.829 ng
 RT: 8.704 min Scan# 1107
 Delta R.T. -0.000 min
 Lab File: BF144265.D
 Acq: 17 Nov 2025 13:52



Tgt Ion:107 Resp: 138818
 Ion Ratio Lower Upper
 107 100
 144 29.7 23.3 34.9
 142 80.5 63.8 95.6

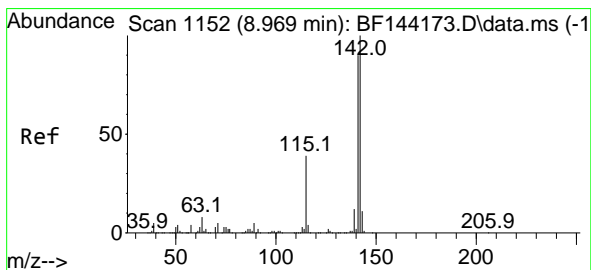
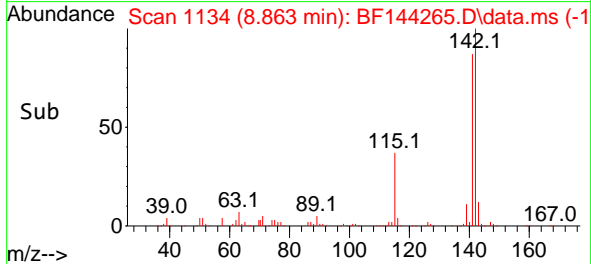
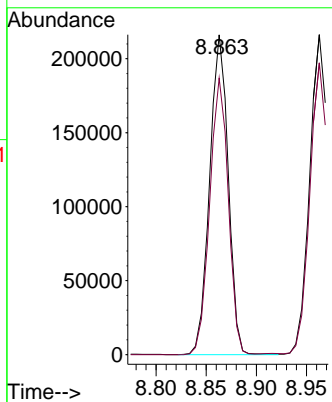
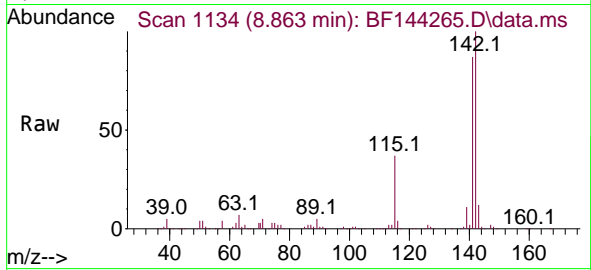




#37
 2-Methylnaphthalene
 Concen: 38.935 ng
 RT: 8.863 min Scan# 1114
 Delta R.T. -0.006 min
 Lab File: BF144265.D
 Acq: 17 Nov 2025 13:52

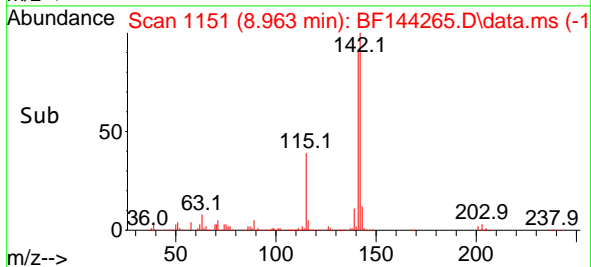
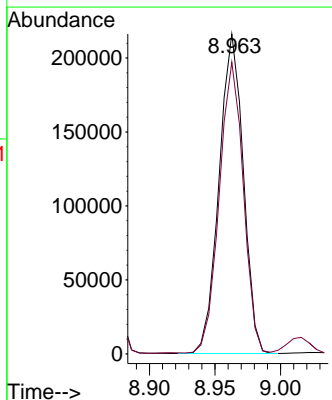
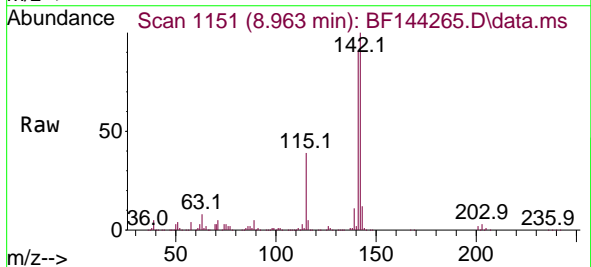
Instrument :
 BNA_F
 ClientSampleId :

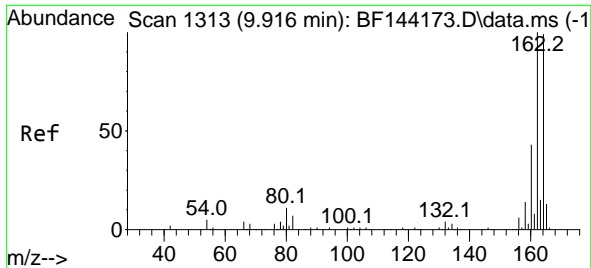
Tgt Ion:142 Resp: 278575
 Ion Ratio Lower Upper
 142 100
 141 86.5 69.9 104.9



#38
 1-Methylnaphthalene
 Concen: 40.269 ng
 RT: 8.963 min Scan# 1151
 Delta R.T. -0.006 min
 Lab File: BF144265.D
 Acq: 17 Nov 2025 13:52

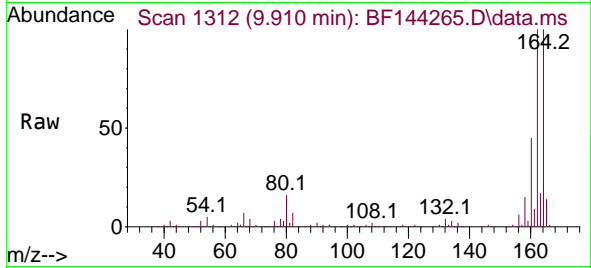
Tgt Ion:142 Resp: 278003
 Ion Ratio Lower Upper
 142 100
 141 91.2 72.1 108.1



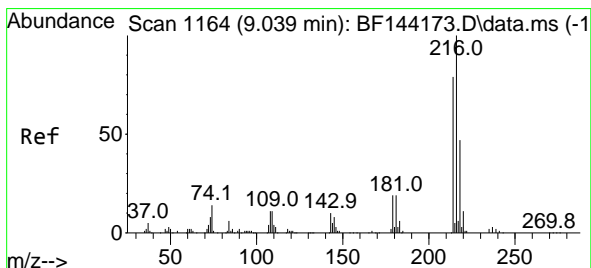
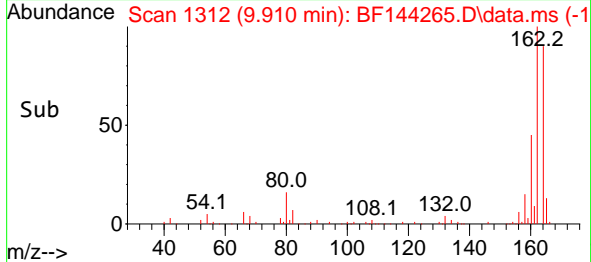
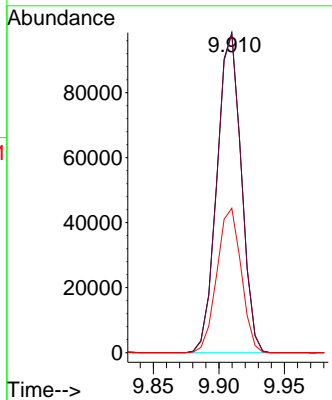


#39
 Acenaphthene-d10
 Concen: 20.000 ng
 RT: 9.910 min Scan# 1313
 Delta R.T. -0.006 min
 Lab File: BF144265.D
 Acq: 17 Nov 2025 13:52

Instrument : BNA_F
 ClientSampleId :

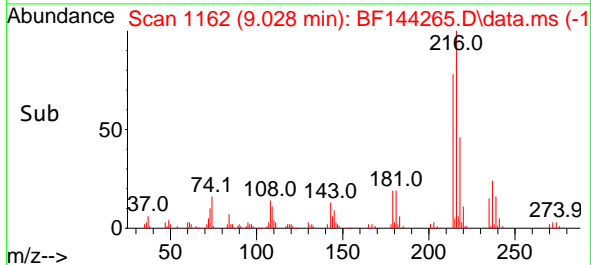
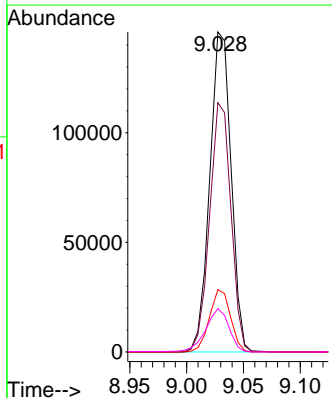
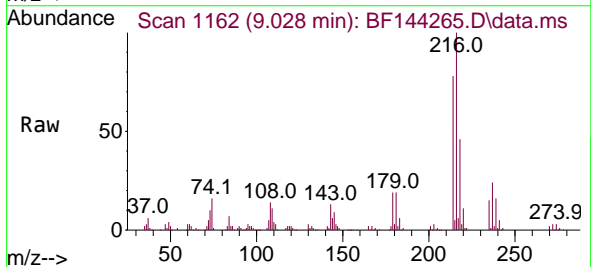


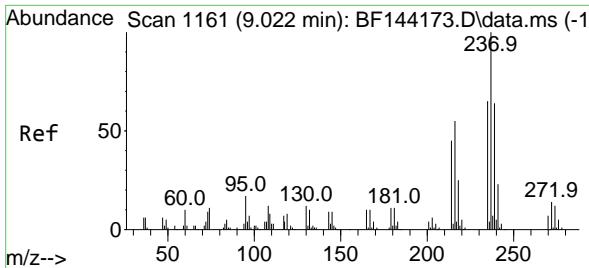
Tgt Ion:164 Resp: 126893
 Ion Ratio Lower Upper
 164 100
 162 99.6 81.1 121.7
 160 45.1 34.5 51.7



#40
 1,2,4,5-Tetrachlorobenzene
 Concen: 45.851 ng
 RT: 9.028 min Scan# 1162
 Delta R.T. -0.006 min
 Lab File: BF144265.D
 Acq: 17 Nov 2025 13:52

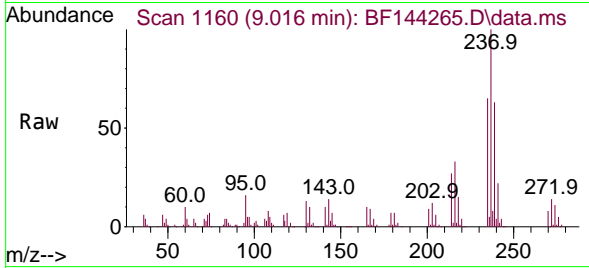
Tgt Ion:216 Resp: 190679
 Ion Ratio Lower Upper
 216 100
 214 77.9 63.4 95.2
 179 19.1 15.0 22.4
 108 14.8 10.5 15.7



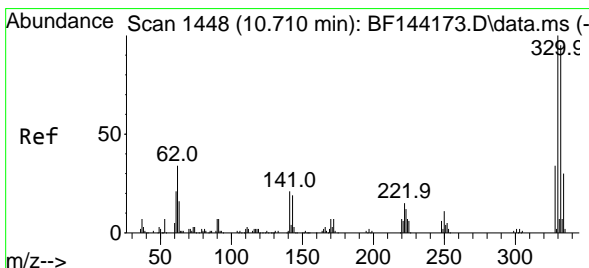
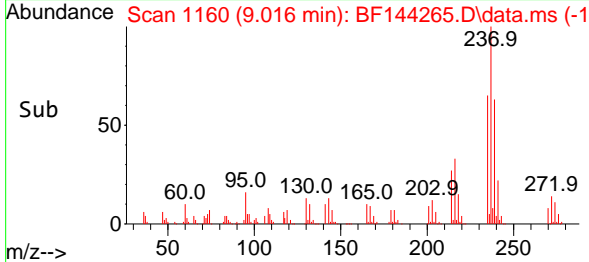
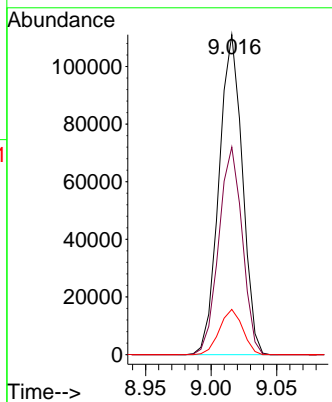


#41
 Hexachlorocyclopentadiene
 Concen: 83.412 ng
 RT: 9.016 min Scan# 1160
 Delta R.T. -0.012 min
 Lab File: BF144265.D
 Acq: 17 Nov 2025 13:52

Instrument :
 BNA_F
 ClientSampleId :

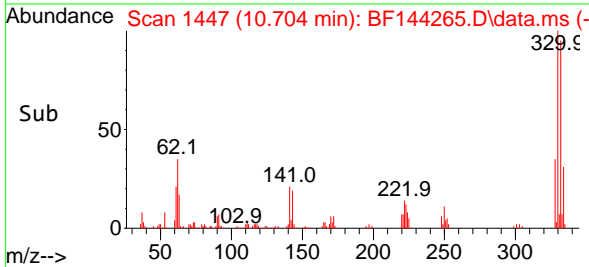
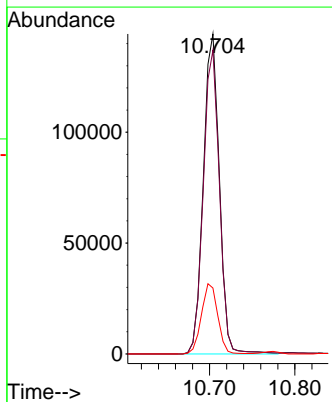
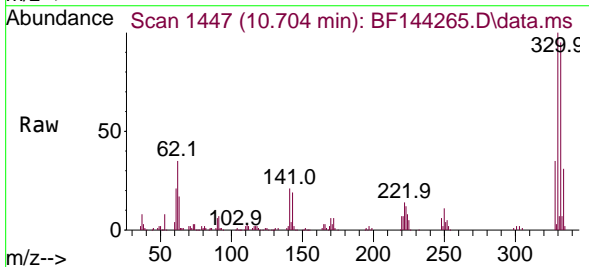


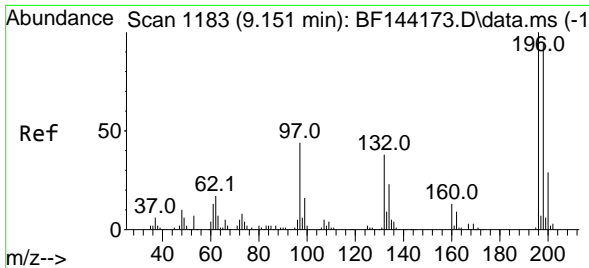
Tgt Ion:237 Resp: 137806
 Ion Ratio Lower Upper
 237 100
 235 64.9 45.5 85.5
 272 14.1 0.0 33.5



#42
 2,4,6-Tribromophenol
 Concen: 118.318 ng
 RT: 10.704 min Scan# 1447
 Delta R.T. -0.000 min
 Lab File: BF144265.D
 Acq: 17 Nov 2025 13:52

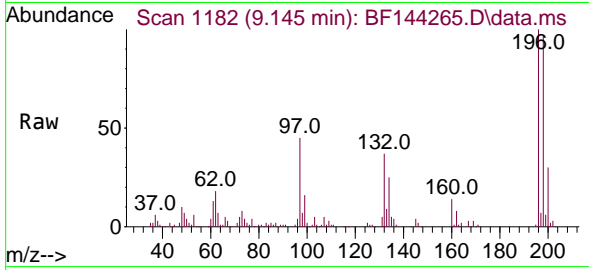
Tgt Ion:330 Resp: 188405
 Ion Ratio Lower Upper
 330 100
 332 95.7 76.7 115.1
 141 22.3 17.8 26.8



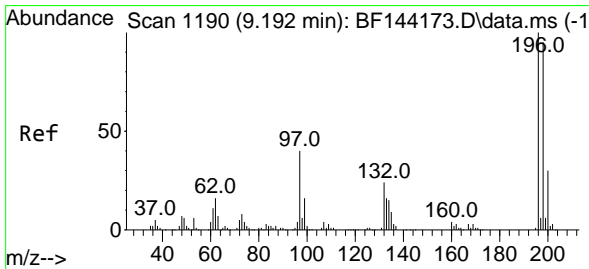
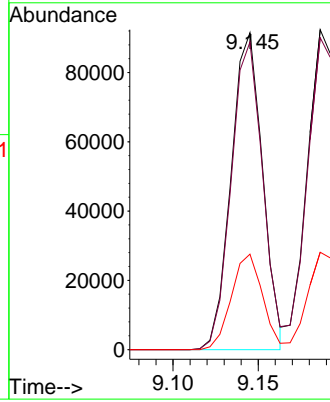
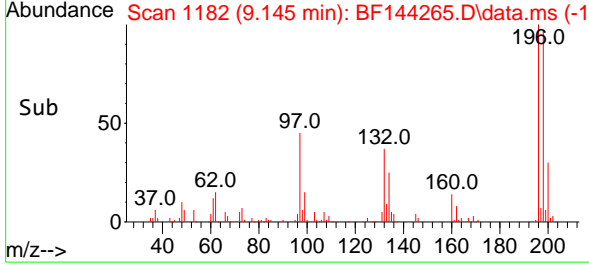


#43
 2,4,6-Trichlorophenol
 Concen: 41.446 ng
 RT: 9.145 min Scan# 1182
 Delta R.T. -0.006 min
 Lab File: BF144265.D
 Acq: 17 Nov 2025 13:52

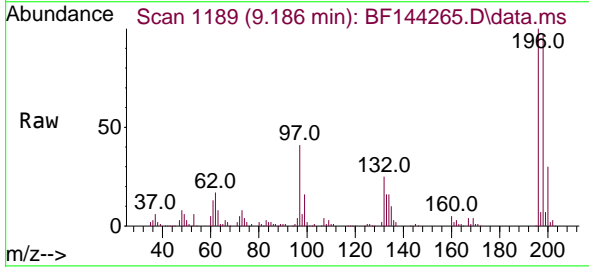
Instrument :
 BNA_F
 ClientSampleId :



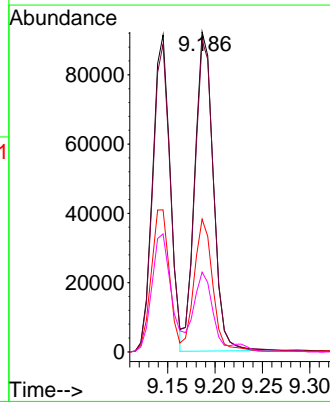
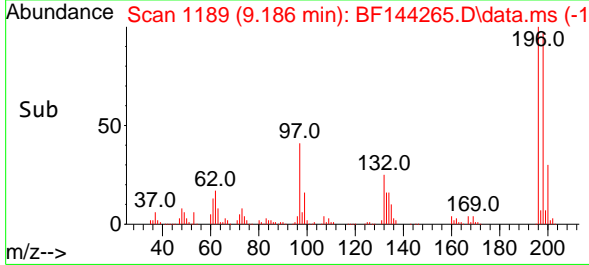
Tgt Ion:196 Resp: 117312
 Ion Ratio Lower Upper
 196 100
 198 97.1 75.3 112.9
 200 30.1 23.4 35.2

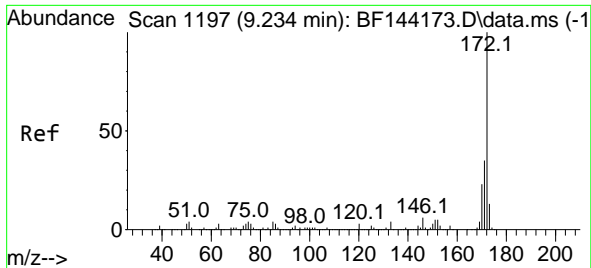


#44
 2,4,5-Trichlorophenol
 Concen: 40.965 ng
 RT: 9.186 min Scan# 1189
 Delta R.T. -0.006 min
 Lab File: BF144265.D
 Acq: 17 Nov 2025 13:52



Tgt Ion:196 Resp: 124969
 Ion Ratio Lower Upper
 196 100
 198 97.5 76.1 114.1
 97 41.5 31.9 47.9
 132 24.9 19.4 29.2

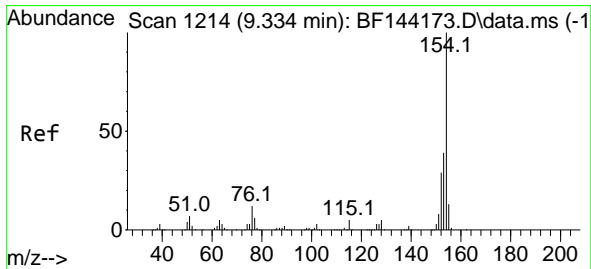
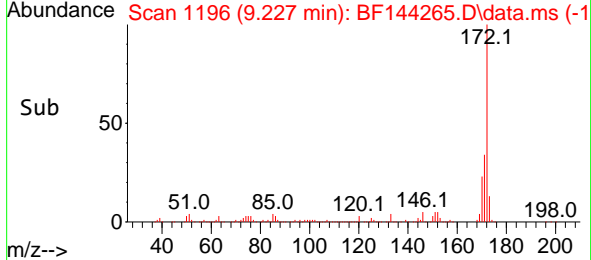
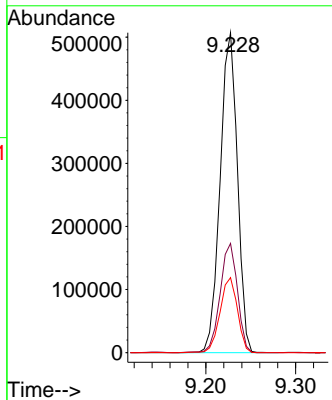
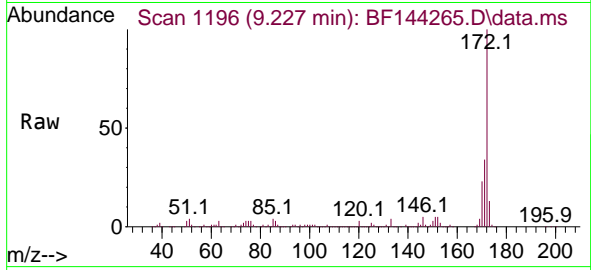




#45
 2-Fluorobiphenyl
 Concen: 79.166 ng
 RT: 9.227 min Scan# 1196
 Delta R.T. -0.000 min
 Lab File: BF144265.D
 Acq: 17 Nov 2025 13:52

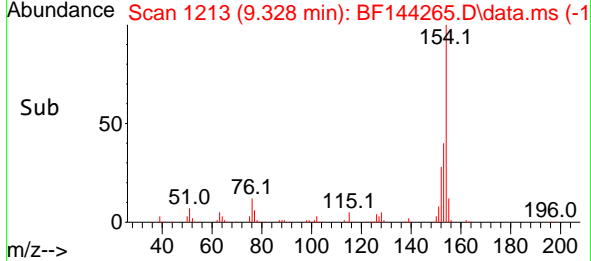
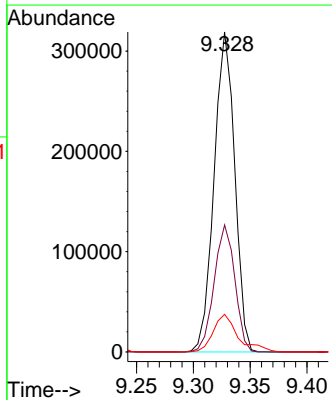
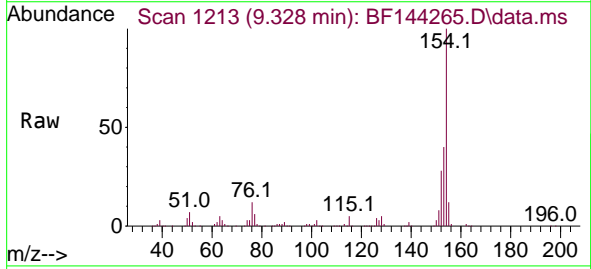
Instrument : BNA_F
 ClientSampleId :

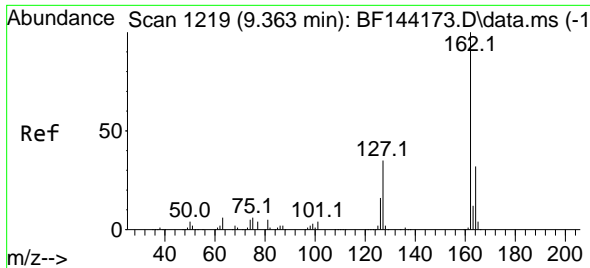
Tgt Ion	Resp	Lower	Upper
172	680168		
171	34.1	28.1	42.1
170	23.4	18.6	28.0



#46
 1,1'-Biphenyl
 Concen: 45.451 ng
 RT: 9.328 min Scan# 1213
 Delta R.T. -0.006 min
 Lab File: BF144265.D
 Acq: 17 Nov 2025 13:52

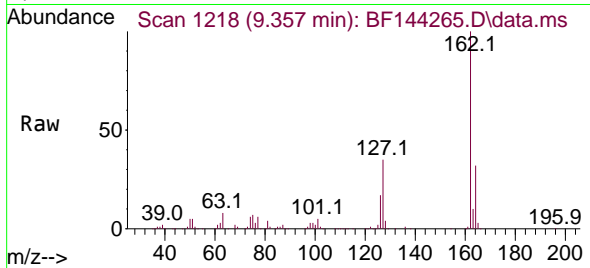
Tgt Ion	Resp	Lower	Upper
154	402584		
153	39.7	19.2	59.2
76	11.7	0.0	31.8



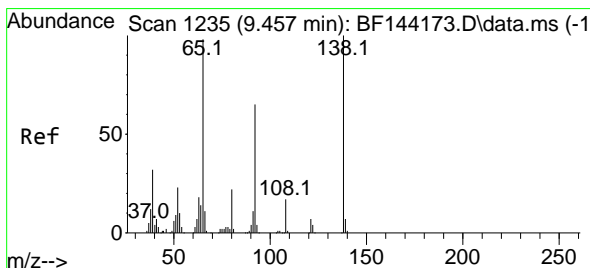
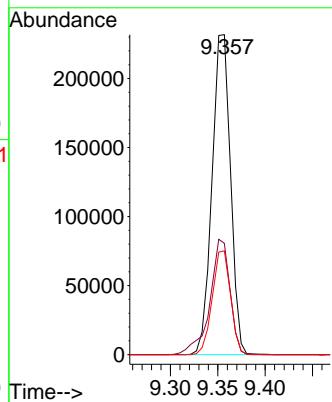
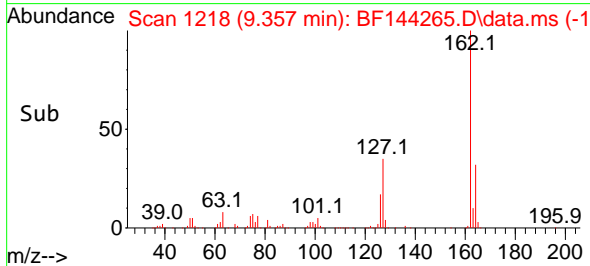


#47
 2-Chloronaphthalene
 Concen: 41.719 ng
 RT: 9.357 min Scan# 11
 Delta R.T. -0.000 min
 Lab File: BF144265.D
 Acq: 17 Nov 2025 13:52

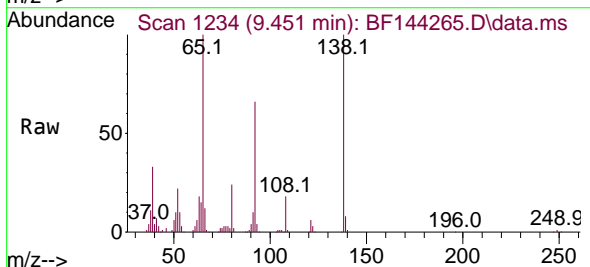
Instrument :
 BNA_F
 ClientSampleId :



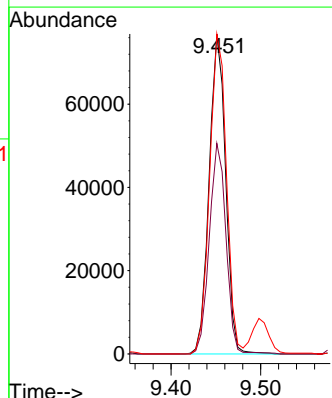
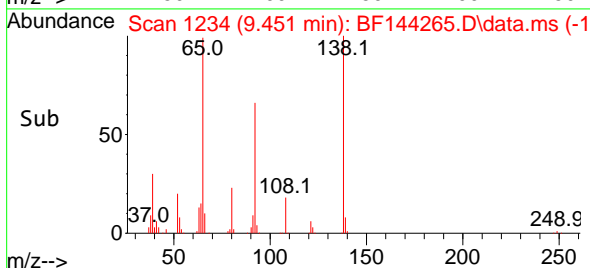
Tgt Ion:162 Resp: 315213
 Ion Ratio Lower Upper
 162 100
 127 34.8 28.8 43.2
 164 32.4 25.8 38.8

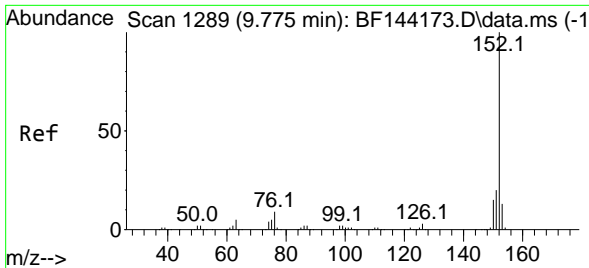


#48
 2-Nitroaniline
 Concen: 44.964 ng
 RT: 9.451 min Scan# 1234
 Delta R.T. -0.006 min
 Lab File: BF144265.D
 Acq: 17 Nov 2025 13:52



Tgt Ion: 65 Resp: 98024
 Ion Ratio Lower Upper
 65 100
 92 65.8 53.0 79.6
 138 100.1 81.6 122.4



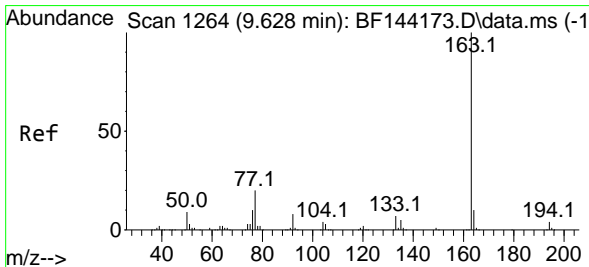
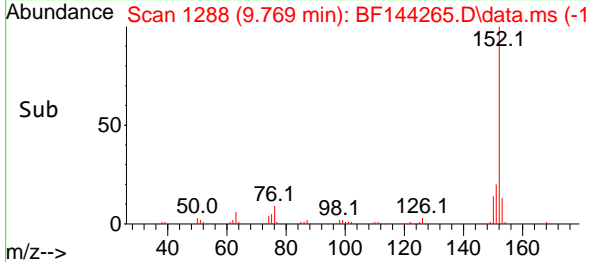
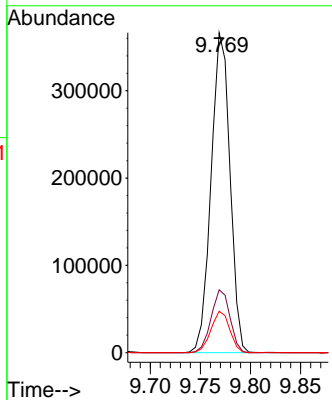
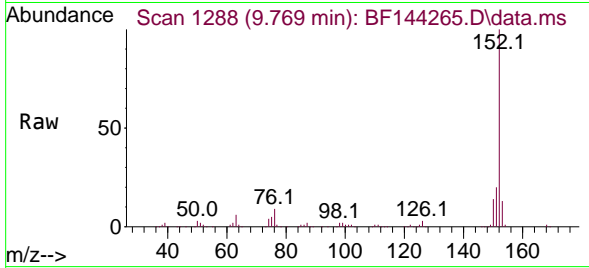


#49
 Acenaphthylene
 Concen: 46.599 ng
 RT: 9.769 min Scan# 11
 Delta R.T. -0.006 min
 Lab File: BF144265.D
 Acq: 17 Nov 2025 13:52

Instrument :
 BNA_F
 ClientSampleId :

Tgt Ion:152 Resp: 479794

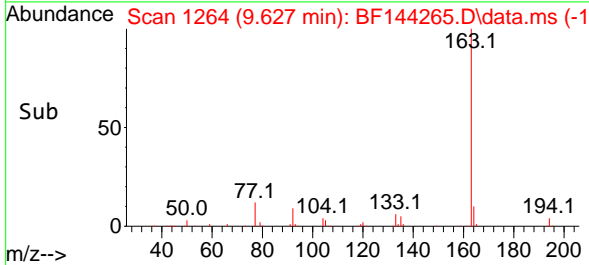
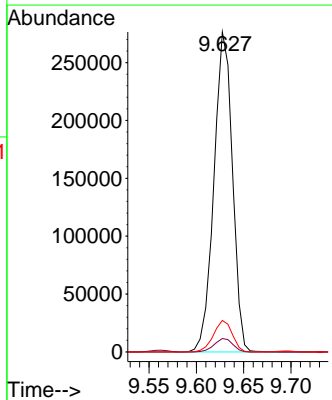
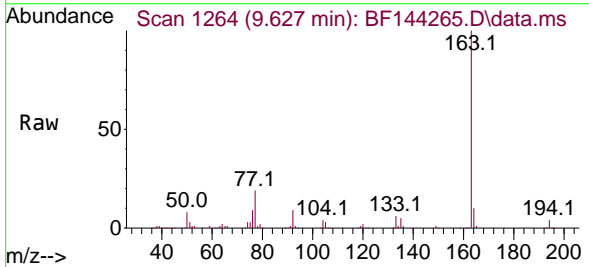
Ion	Ratio	Lower	Upper
152	100		
151	19.6	15.9	23.9
153	12.9	10.5	15.7

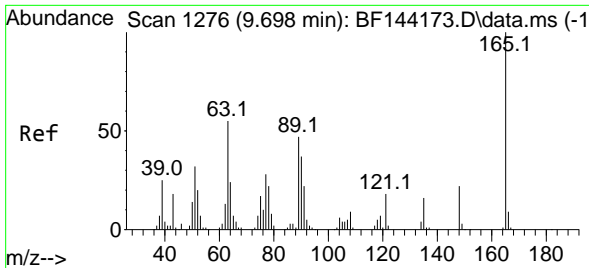


#50
 Dimethylphthalate
 Concen: 44.725 ng
 RT: 9.627 min Scan# 1264
 Delta R.T. -0.000 min
 Lab File: BF144265.D
 Acq: 17 Nov 2025 13:52

Tgt Ion:163 Resp: 375975

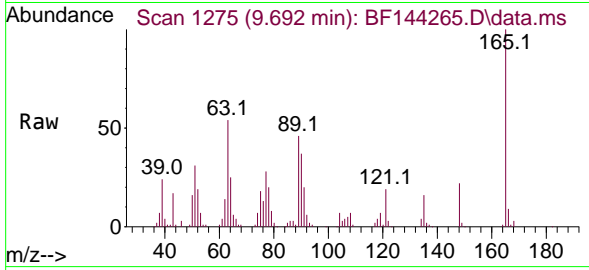
Ion	Ratio	Lower	Upper
163	100		
194	4.2	3.3	4.9
164	9.9	8.1	12.1





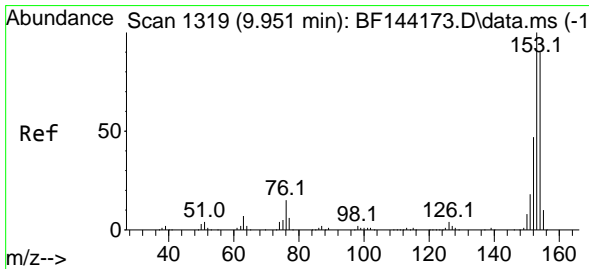
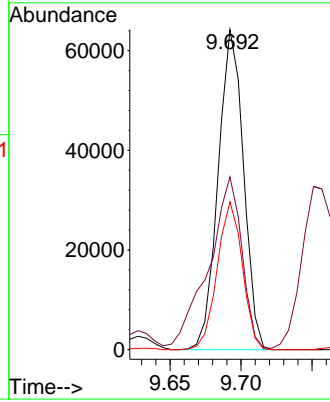
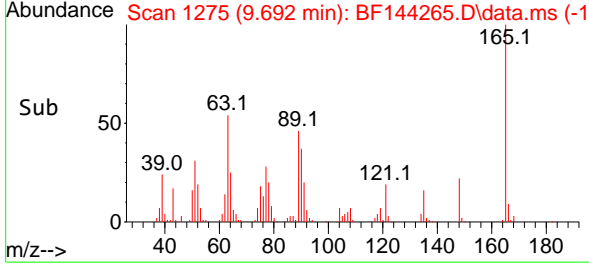
#51
 2,6-Dinitrotoluene
 Concen: 46.914 ng
 RT: 9.692 min Scan# 11
 Delta R.T. -0.000 min
 Lab File: BF144265.D
 Acq: 17 Nov 2025 13:52

Instrument :
 BNA_F
 ClientSampleId :

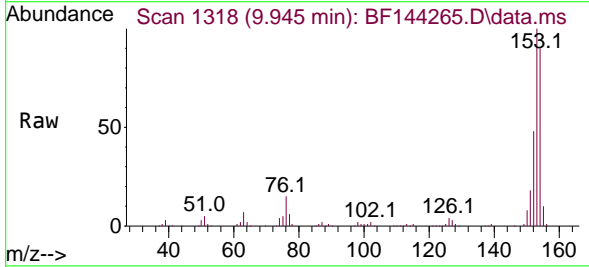


Tgt Ion:165 Resp: 79835

Ion	Ratio	Lower	Upper
165	100		
63	54.0	43.8	65.8
89	46.2	37.5	56.3

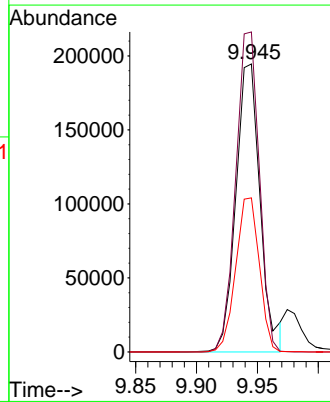
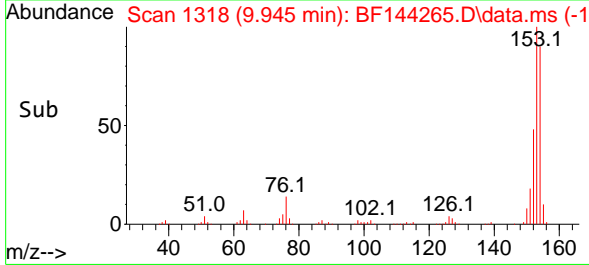


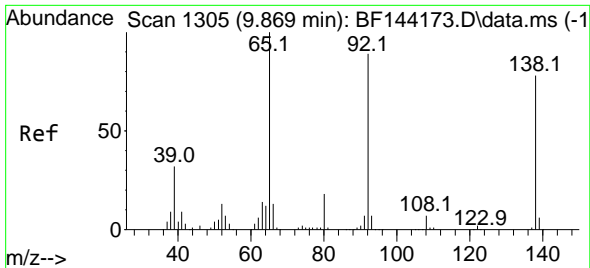
#52
 Acenaphthene
 Concen: 39.223 ng
 RT: 9.945 min Scan# 1318
 Delta R.T. -0.000 min
 Lab File: BF144265.D
 Acq: 17 Nov 2025 13:52



Tgt Ion:154 Resp: 270060

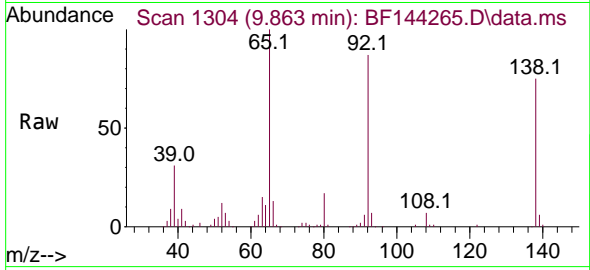
Ion	Ratio	Lower	Upper
154	100		
153	111.2	89.0	133.4
152	53.5	42.2	63.4





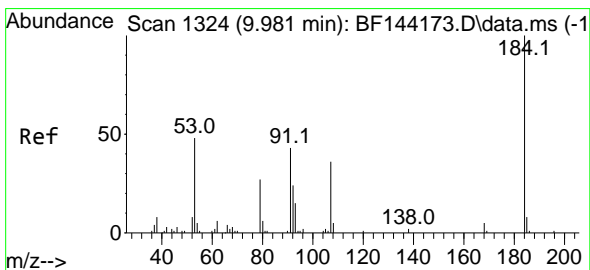
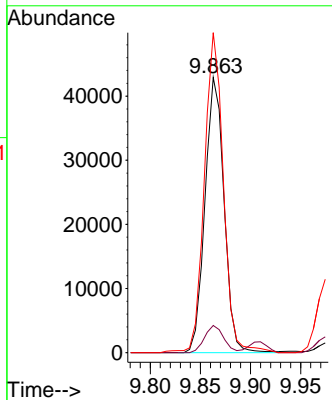
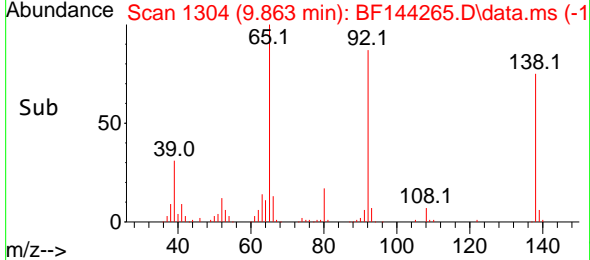
#53
 3-Nitroaniline
 Concen: 30.470 ng
 RT: 9.863 min Scan# 1304
 Delta R.T. -0.006 min
 Lab File: BF144265.D
 Acq: 17 Nov 2025 13:52

Instrument : BNA_F
 ClientSampleId :

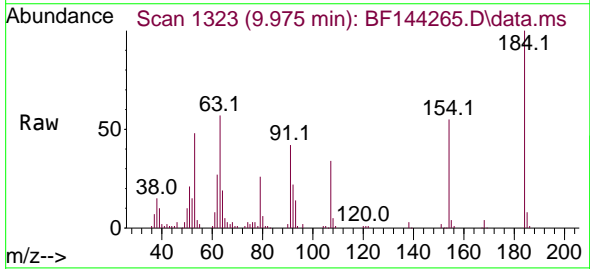


Tgt Ion:138 Resp: 56681

Ion	Ratio	Lower	Upper
138	100		
108	9.9	7.5	11.3
92	116.3	91.8	137.6

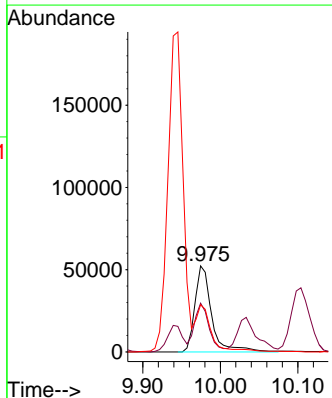
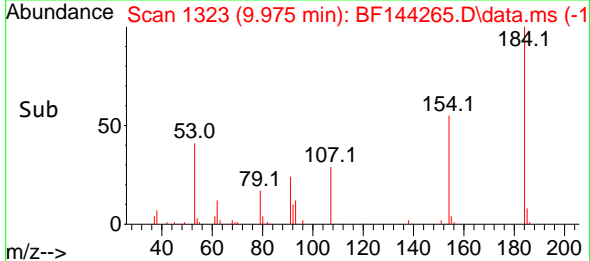


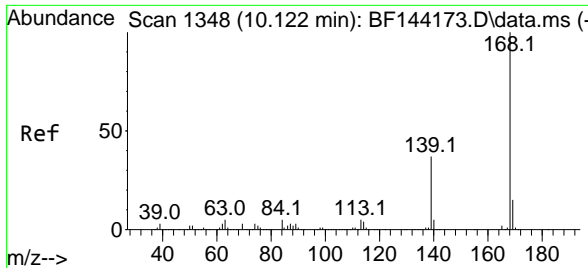
#54
 2,4-Dinitrophenol
 Concen: 76.525 ng
 RT: 9.975 min Scan# 1323
 Delta R.T. -0.012 min
 Lab File: BF144265.D
 Acq: 17 Nov 2025 13:52



Tgt Ion:184 Resp: 78637

Ion	Ratio	Lower	Upper
184	100		
63	56.7	44.0	66.0
154	54.8	42.4	63.6



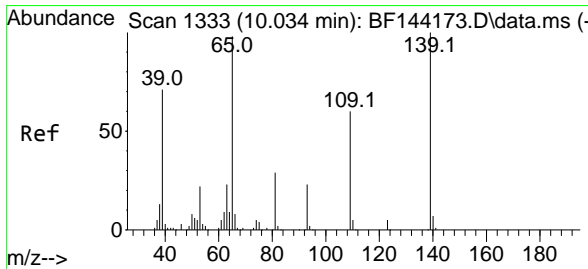
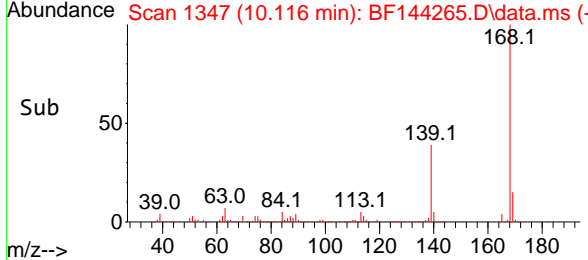
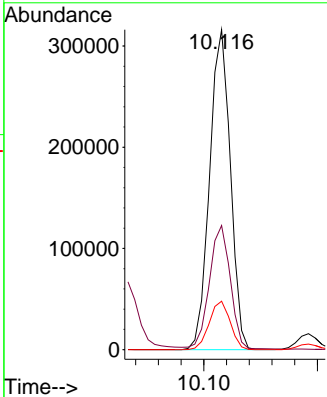
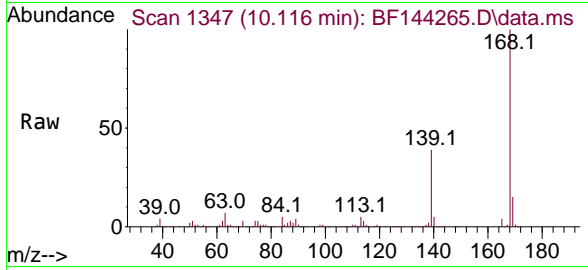


#55
 Dibenzofuran
 Concen: 41.532 ng
 RT: 10.116 min Scan# 1347
 Delta R.T. -0.000 min
 Lab File: BF144265.D
 Acq: 17 Nov 2025 13:52

Instrument : BNA_F
 ClientSampleId :

Tgt Ion:168 Resp: 400494

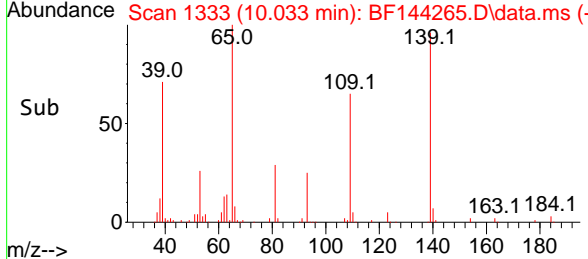
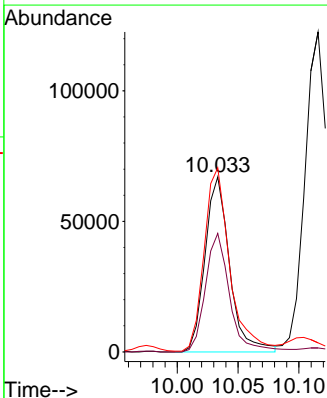
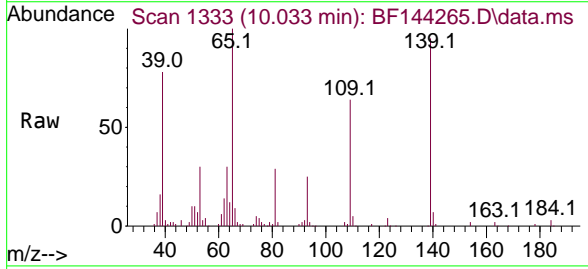
Ion	Ratio	Lower	Upper
168	100		
139	38.8	30.2	45.2
169	15.1	12.2	18.4

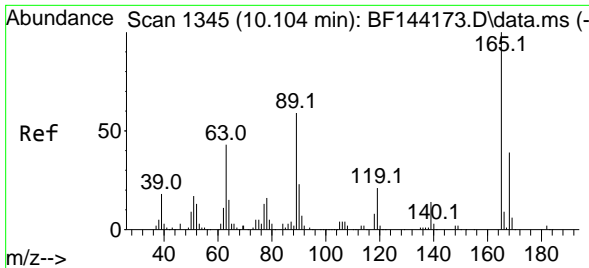


#56
 4-Nitrophenol
 Concen: 70.187 ng
 RT: 10.033 min Scan# 1333
 Delta R.T. -0.006 min
 Lab File: BF144265.D
 Acq: 17 Nov 2025 13:52

Tgt Ion:139 Resp: 94446

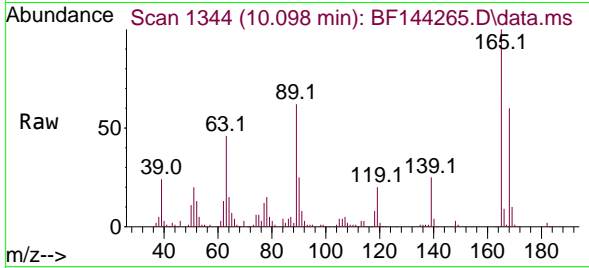
Ion	Ratio	Lower	Upper
139	100		
109	67.7	39.9	79.9
65	105.3	79.5	119.5





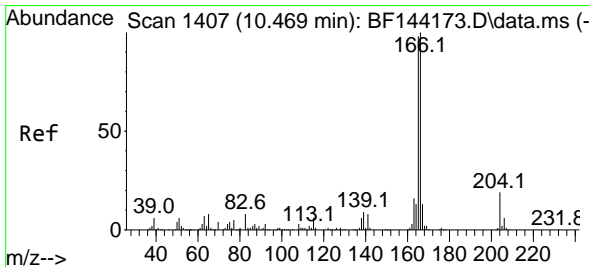
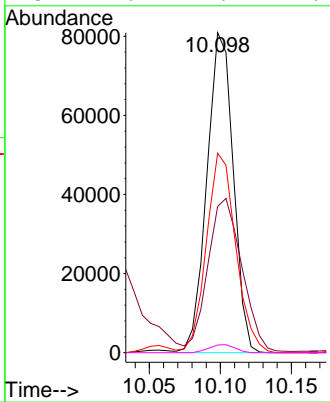
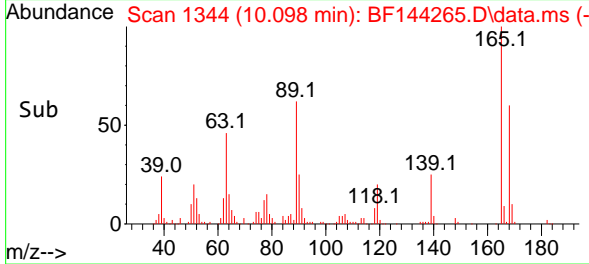
#57
 2,4-Dinitrotoluene
 Concen: 45.935 ng
 RT: 10.098 min Scan# 11
 Delta R.T. -0.000 min
 Lab File: BF144265.D
 Acq: 17 Nov 2025 13:52

Instrument :
 BNA_F
 ClientSampleId :

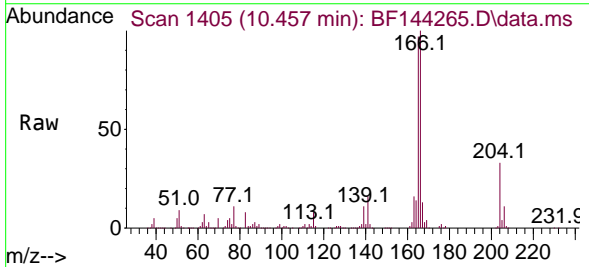


Tgt Ion:165 Resp: 104644

Ion	Ratio	Lower	Upper
165	100		
63	45.7	35.5	53.3
89	62.3	47.4	71.2
182	2.4	1.9	2.9

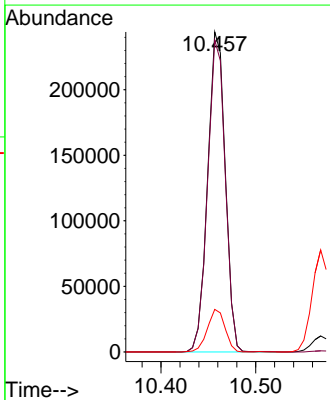
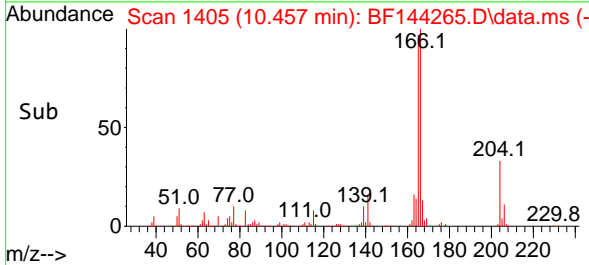


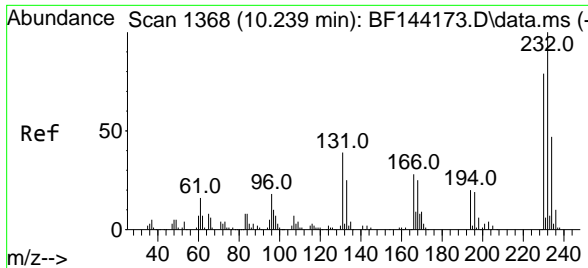
#58
 Fluorene
 Concen: 43.013 ng
 RT: 10.457 min Scan# 1405
 Delta R.T. -0.006 min
 Lab File: BF144265.D
 Acq: 17 Nov 2025 13:52



Tgt Ion:166 Resp: 315358

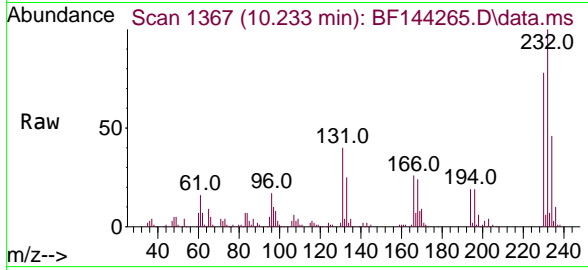
Ion	Ratio	Lower	Upper
166	100		
165	97.4	78.6	118.0
167	13.3	10.4	15.6



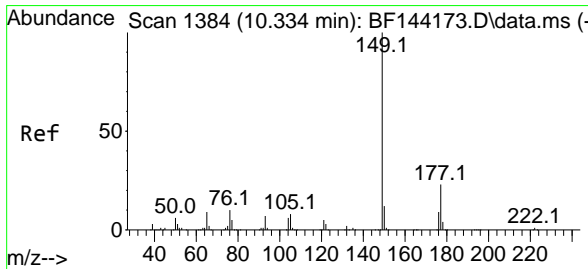
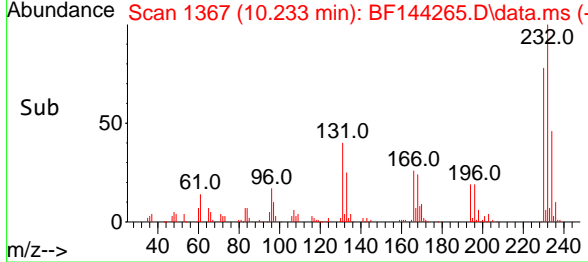
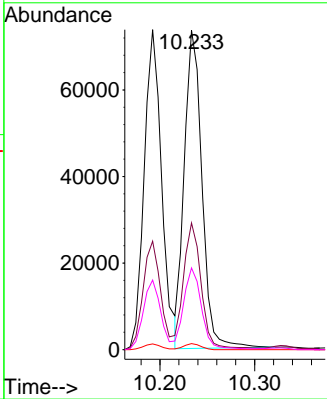


#59
 2,3,4,6-Tetrachlorophenol
 Concen: 44.136 ng
 RT: 10.233 min Scan# 1367
 Delta R.T. -0.006 min
 Lab File: BF144265.D
 Acq: 17 Nov 2025 13:52

Instrument :
 BNA_F
 ClientSampleId :

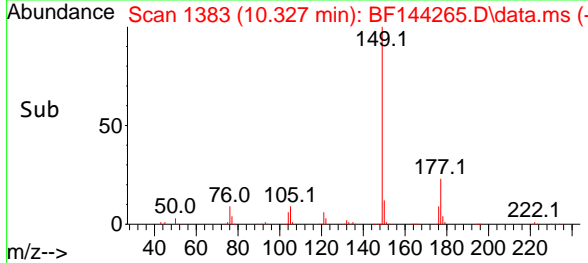
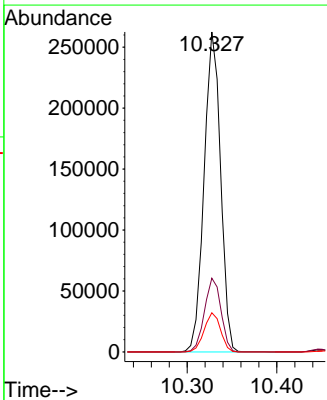
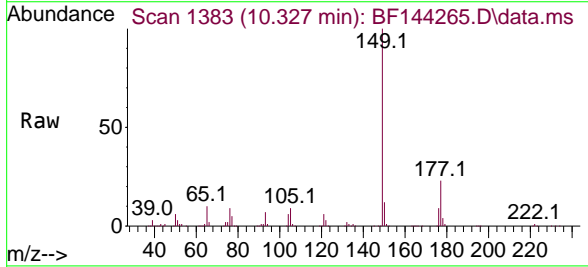


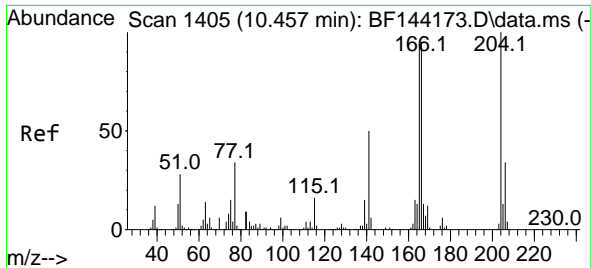
Tgt Ion:232 Resp: 95261
 Ion Ratio Lower Upper
 232 100
 131 40.9 30.3 45.5
 130 1.8 1.2 1.8#
 166 25.6 21.5 32.3



#60
 Diethylphthalate
 Concen: 43.446 ng
 RT: 10.327 min Scan# 1383
 Delta R.T. -0.000 min
 Lab File: BF144265.D
 Acq: 17 Nov 2025 13:52

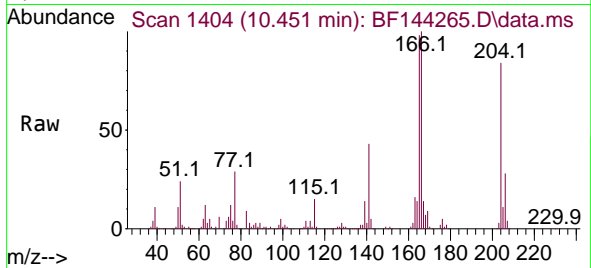
Tgt Ion:149 Resp: 336684
 Ion Ratio Lower Upper
 149 100
 177 23.1 18.3 27.5
 150 12.2 9.8 14.6



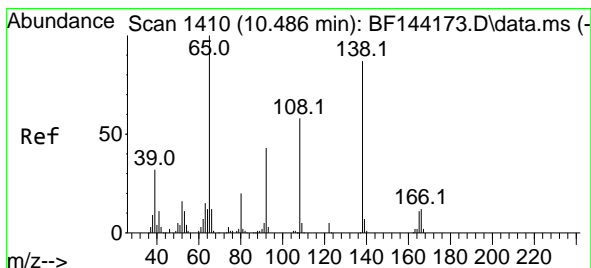
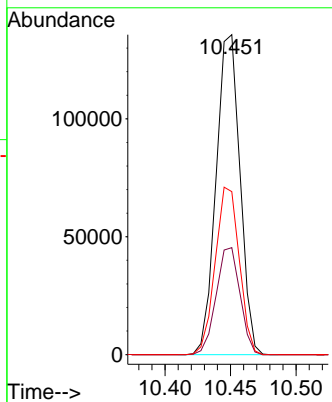
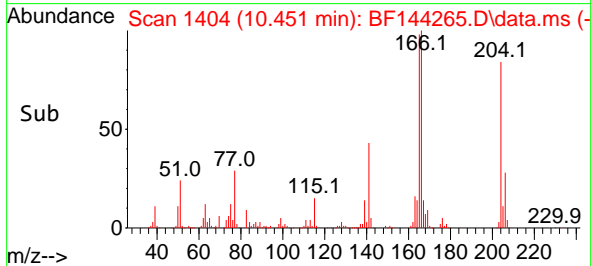


#61
 4-Chlorophenyl-phenylether
 Concen: 41.288 ng
 RT: 10.451 min Scan# 1405
 Delta R.T. -0.006 min
 Lab File: BF144265.D
 Acq: 17 Nov 2025 13:52

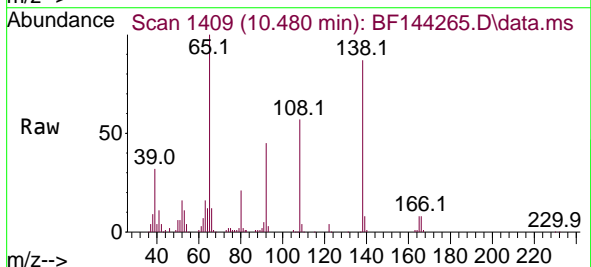
Instrument :
 BNA_F
 ClientSampleId :



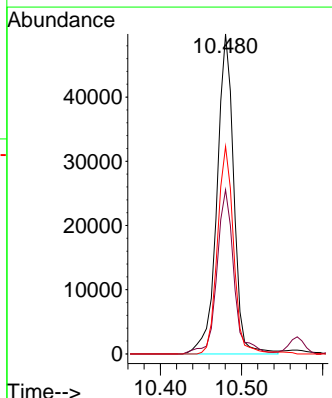
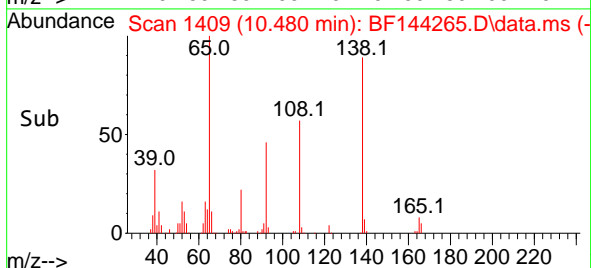
Tgt Ion:204 Resp: 172430
 Ion Ratio Lower Upper
 204 100
 206 33.5 27.4 41.2
 141 50.9 40.0 60.0

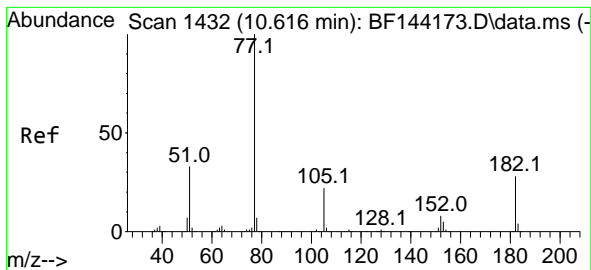


#62
 4-Nitroaniline
 Concen: 40.370 ng
 RT: 10.480 min Scan# 1409
 Delta R.T. 0.006 min
 Lab File: BF144265.D
 Acq: 17 Nov 2025 13:52



Tgt Ion:138 Resp: 71517
 Ion Ratio Lower Upper
 138 100
 92 51.3 29.4 69.4
 108 64.8 46.4 86.4



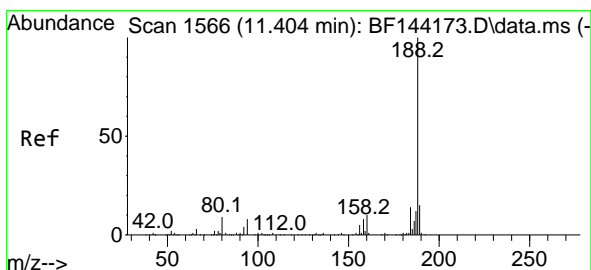
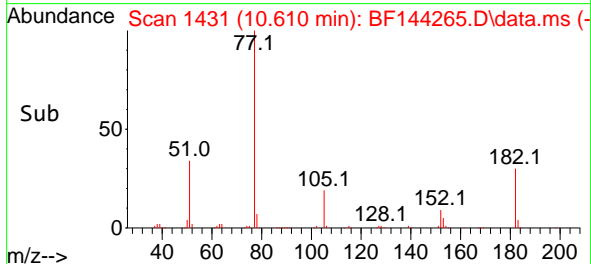
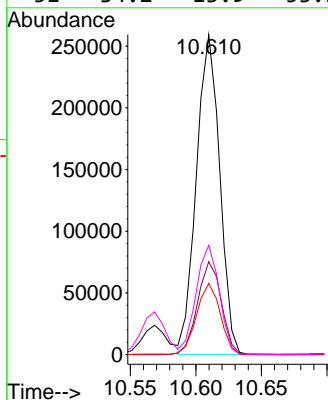
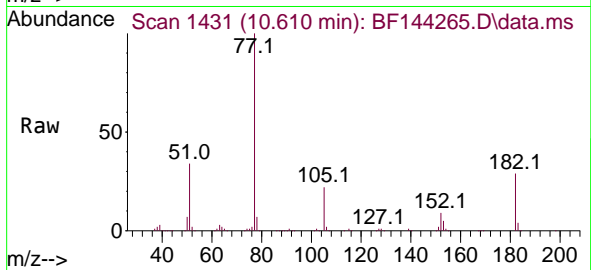


#63
 Azobenzene
 Concen: 44.374 ng
 RT: 10.610 min Scan# 14
 Delta R.T. -0.006 min
 Lab File: BF144265.D
 Acq: 17 Nov 2025 13:52

Instrument :
 BNA_F
 ClientSampleId :

Tgt Ion: 77 Resp: 320032

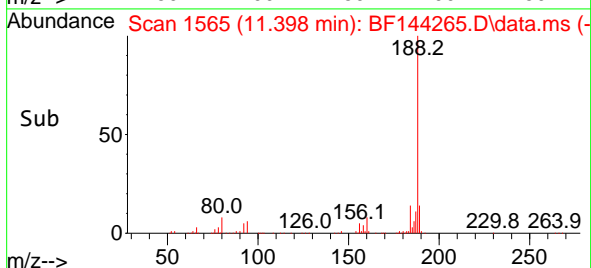
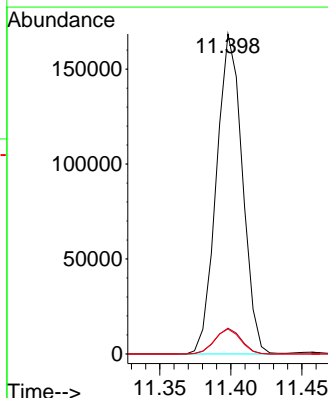
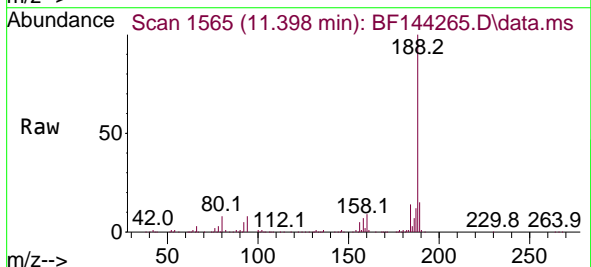
Ion	Ratio	Lower	Upper
77	100		
182	29.0	8.1	48.1
105	22.2	2.0	42.0
51	34.2	13.9	53.9

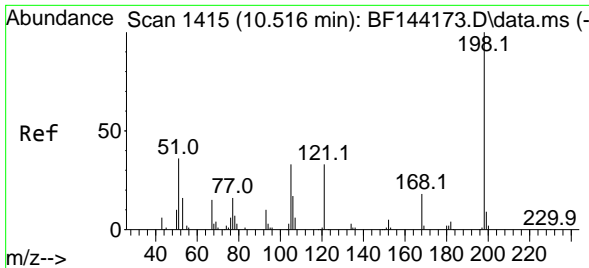


#64
 Phenanthrene-d10
 Concen: 20.000 ng
 RT: 11.398 min Scan# 1565
 Delta R.T. -0.006 min
 Lab File: BF144265.D
 Acq: 17 Nov 2025 13:52

Tgt Ion: 188 Resp: 214778

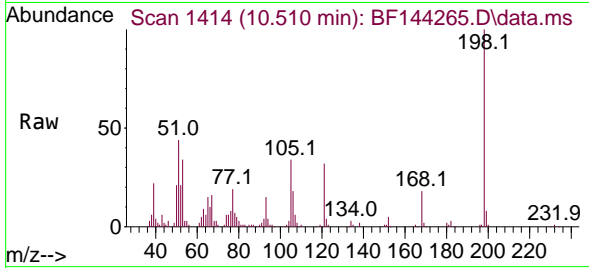
Ion	Ratio	Lower	Upper
188	100		
94	8.0	6.2	9.2
80	7.8	6.9	10.3



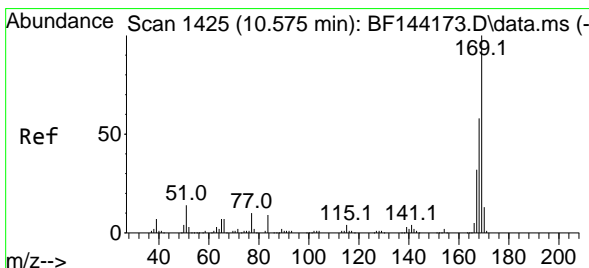
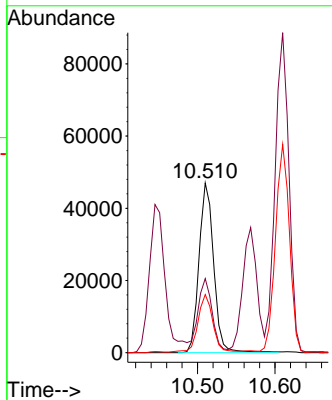
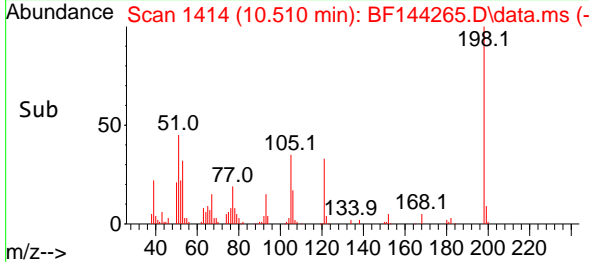


#65
 4,6-Dinitro-2-methylphenol
 Concen: 42.332 ng
 RT: 10.510 min Scan# 1414
 Delta R.T. -0.012 min
 Lab File: BF144265.D
 Acq: 17 Nov 2025 13:52

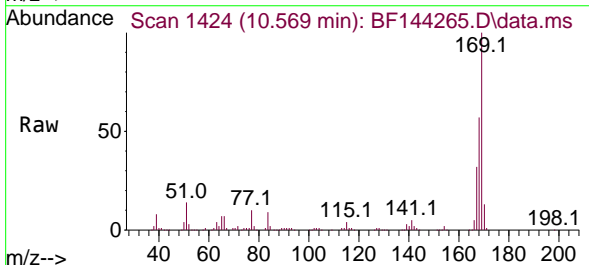
Instrument :
 BNA_F
 ClientSampleId :



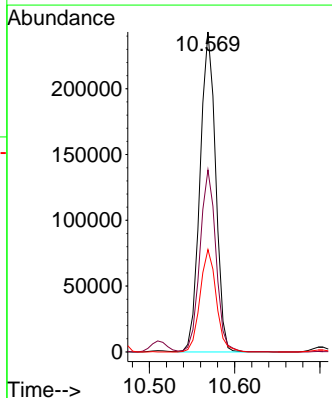
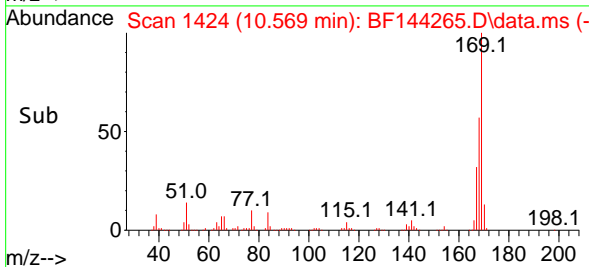
Tgt Ion:198 Resp: 61765
 Ion Ratio Lower Upper
 198 100
 51 43.6 25.6 65.6
 105 34.2 14.6 54.6

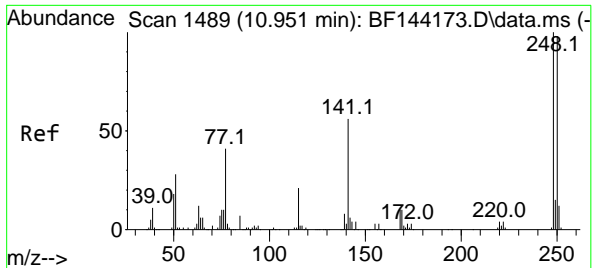


#66
 n-Nitrosodiphenylamine
 Concen: 44.767 ng
 RT: 10.569 min Scan# 1424
 Delta R.T. -0.000 min
 Lab File: BF144265.D
 Acq: 17 Nov 2025 13:52



Tgt Ion:169 Resp: 309243
 Ion Ratio Lower Upper
 169 100
 168 56.9 46.2 69.2
 167 32.0 25.7 38.5

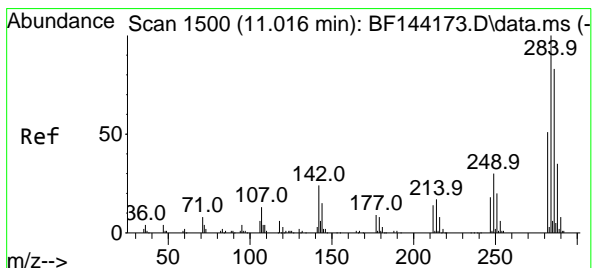
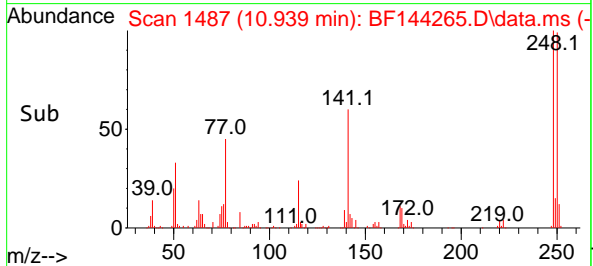
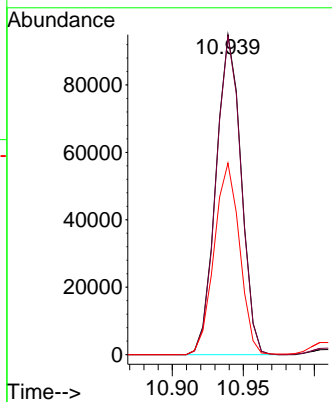
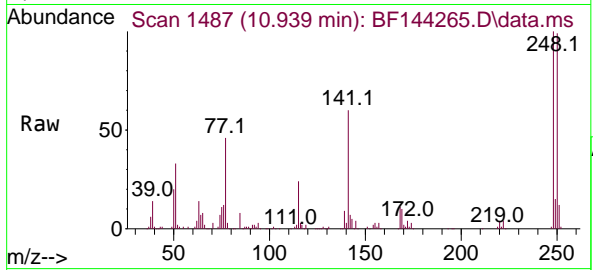




#67
 4-Bromophenyl-phenylether
 Concen: 42.855 ng
 RT: 10.939 min Scan# 1487
 Delta R.T. -0.006 min
 Lab File: BF144265.D
 Acq: 17 Nov 2025 13:52

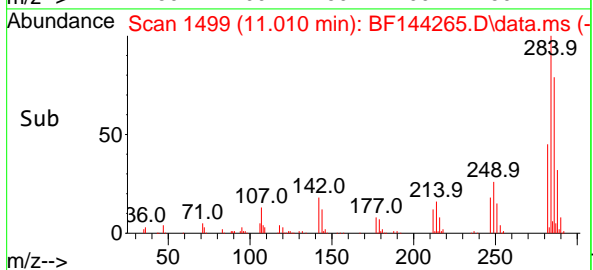
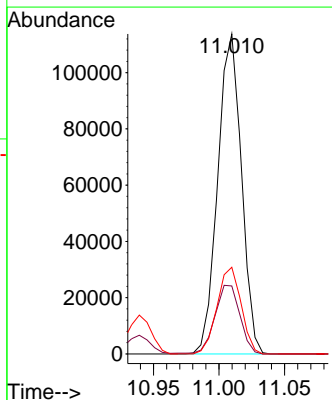
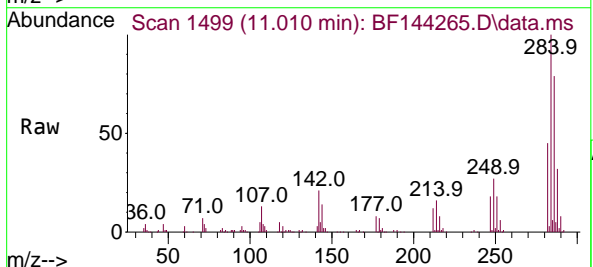
Instrument :
 BNA_F
 ClientSampleId :

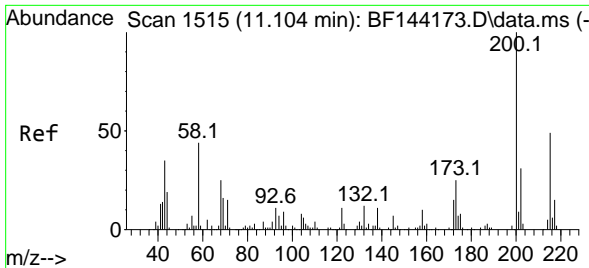
Tgt Ion	Resp	Lower	Upper
248	117484		
250	99.5	78.4	117.6
141	59.8	45.1	67.7



#68
 Hexachlorobenzene
 Concen: 44.304 ng
 RT: 11.010 min Scan# 1499
 Delta R.T. -0.000 min
 Lab File: BF144265.D
 Acq: 17 Nov 2025 13:52

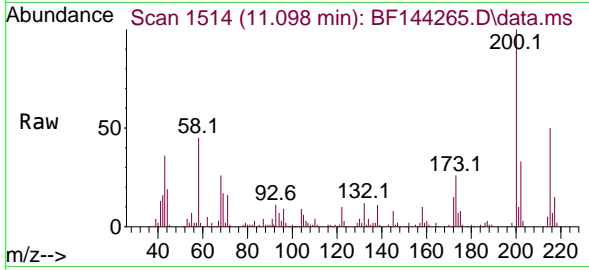
Tgt Ion	Resp	Lower	Upper
284	143061		
284	100		
142	21.2	19.2	28.8
249	27.1	23.8	35.8



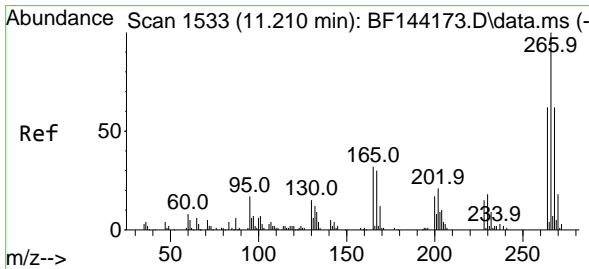
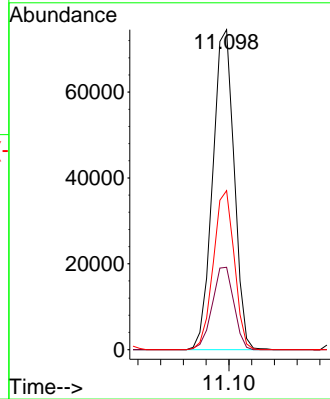
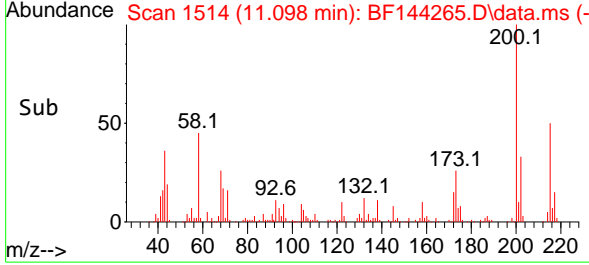


#69
Atrazine
 Concen: 44.457 ng
 RT: 11.098 min Scan# 1514
 Delta R.T. -0.000 min
 Lab File: BF144265.D
 Acq: 17 Nov 2025 13:52

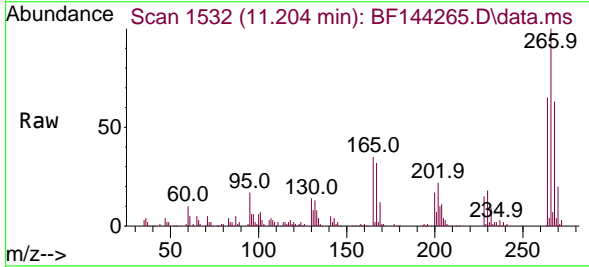
Instrument :
 BNA_F
 ClientSampleId :



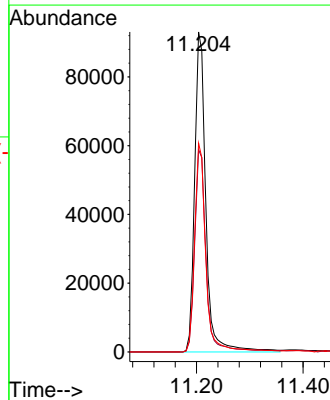
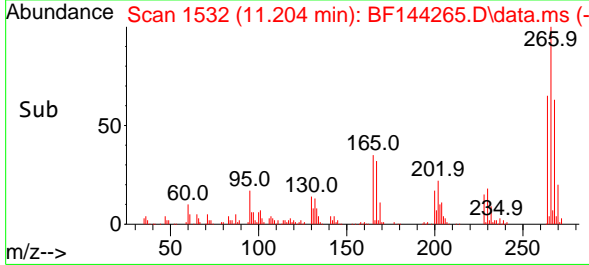
Tgt Ion:200 Resp: 97665
 Ion Ratio Lower Upper
 200 100
 173 25.7 5.0 45.0
 215 49.7 28.7 68.7

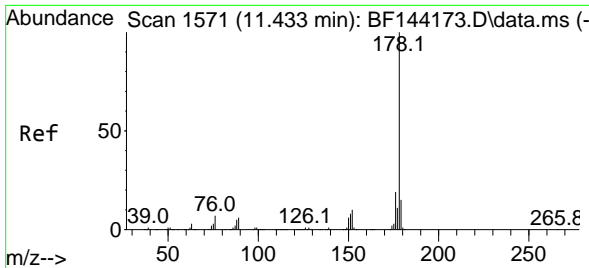


#70
Pentachlorophenol
 Concen: 84.697 ng
 RT: 11.204 min Scan# 1532
 Delta R.T. -0.012 min
 Lab File: BF144265.D
 Acq: 17 Nov 2025 13:52



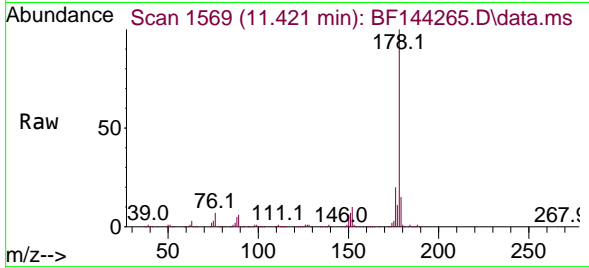
Tgt Ion:266 Resp: 136188
 Ion Ratio Lower Upper
 266 100
 268 63.2 49.5 74.3
 264 65.2 49.4 74.2





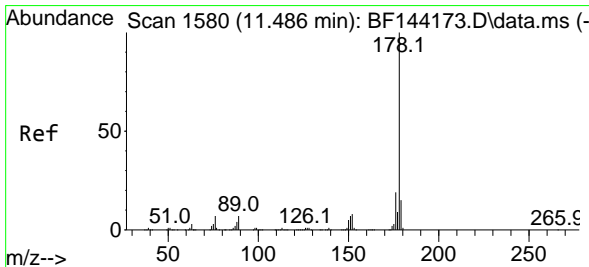
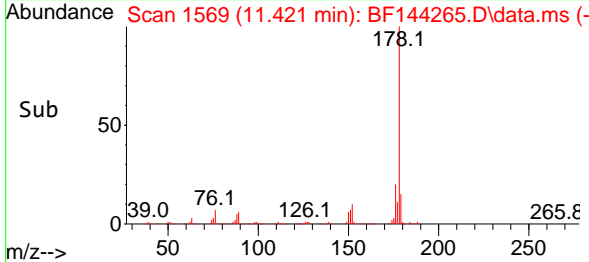
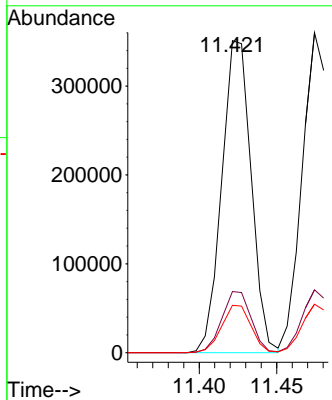
#71
 Phenanthrene
 Concen: 43.593 ng
 RT: 11.421 min Scan# 1569
 Delta R.T. -0.006 min
 Lab File: BF144265.D
 Acq: 17 Nov 2025 13:52

Instrument : BNA_F
 ClientSampleId :



Tgt Ion:178 Resp: 466162

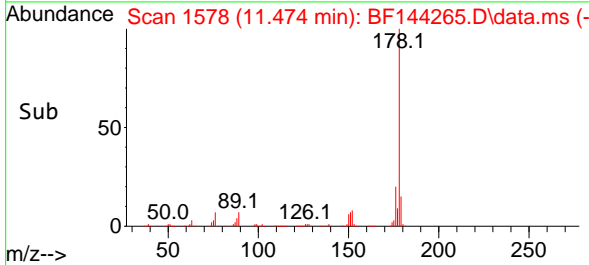
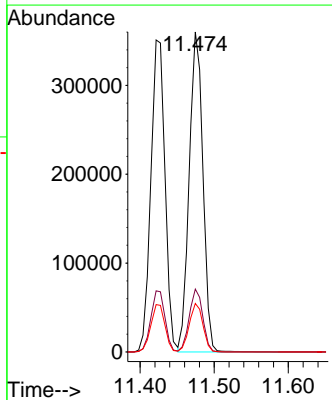
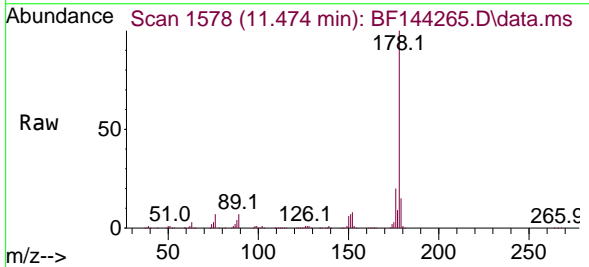
Ion	Ratio	Lower	Upper
178	100		
176	19.6	15.5	23.3
179	15.1	12.2	18.4

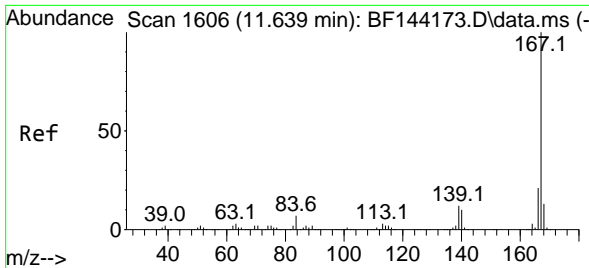


#72
 Anthracene
 Concen: 42.456 ng
 RT: 11.474 min Scan# 1578
 Delta R.T. -0.006 min
 Lab File: BF144265.D
 Acq: 17 Nov 2025 13:52

Tgt Ion:178 Resp: 461640

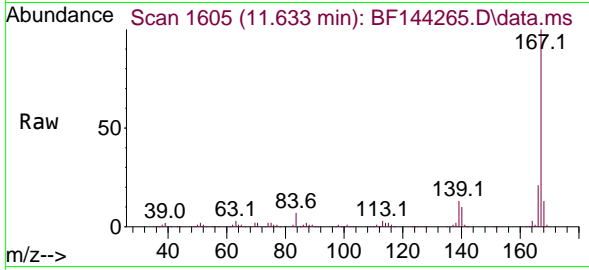
Ion	Ratio	Lower	Upper
178	100		
176	19.6	15.3	22.9
179	15.1	12.0	18.0



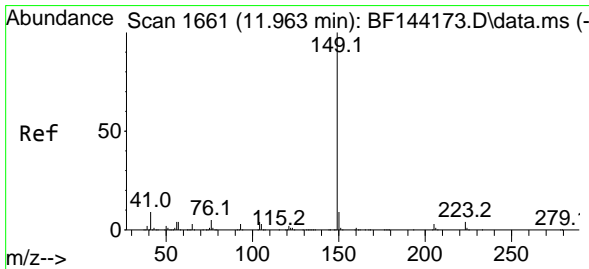
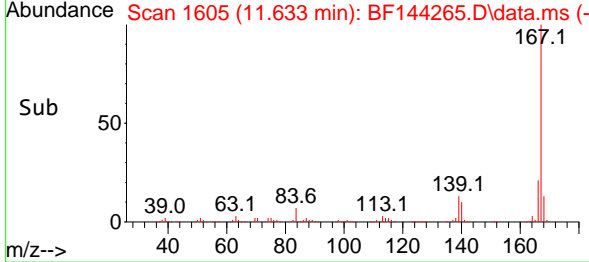
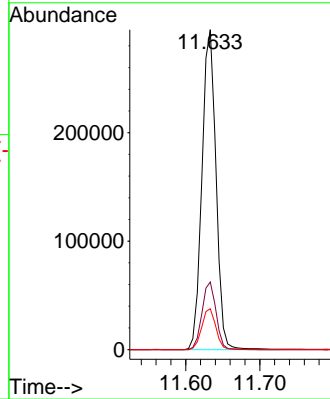


#73
 Carbazole
 Concen: 41.951 ng
 RT: 11.633 min Scan# 1605
 Delta R.T. -0.006 min
 Lab File: BF144265.D
 Acq: 17 Nov 2025 13:52

Instrument : BNA_F
 ClientSampleId :

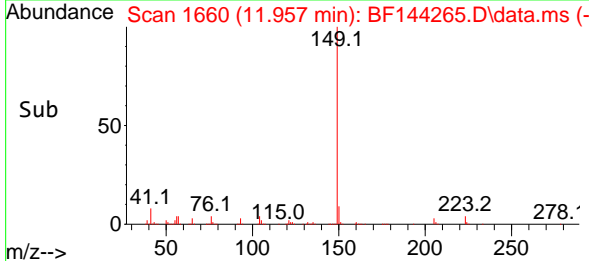
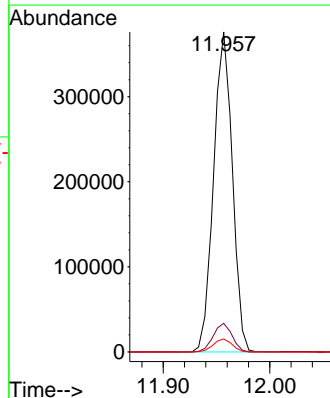
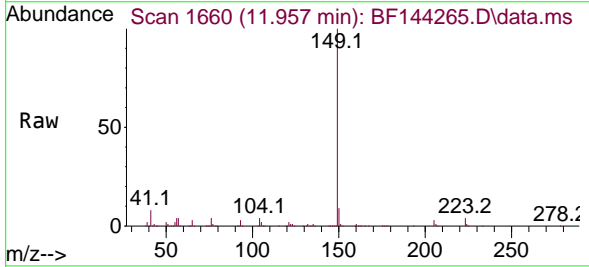


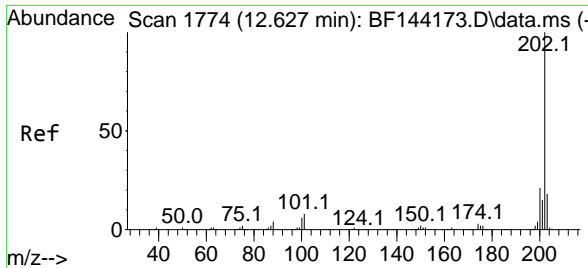
Tgt Ion:167 Resp: 387879
 Ion Ratio Lower Upper
 167 100
 166 21.2 17.2 25.8
 139 12.8 9.9 14.9



#74
 Di-n-butylphthalate
 Concen: 41.248 ng
 RT: 11.957 min Scan# 1660
 Delta R.T. -0.006 min
 Lab File: BF144265.D
 Acq: 17 Nov 2025 13:52

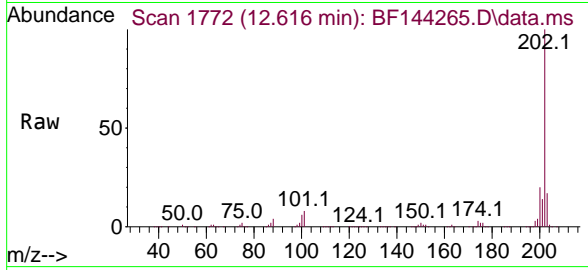
Tgt Ion:149 Resp: 461045
 Ion Ratio Lower Upper
 149 100
 150 8.9 7.4 11.0
 104 4.1 3.4 5.2





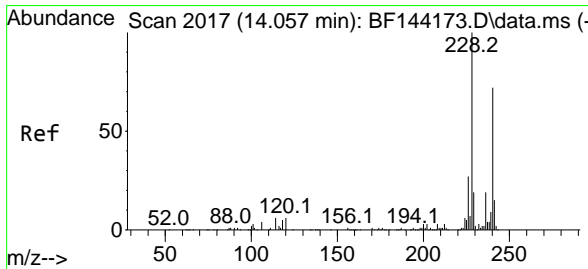
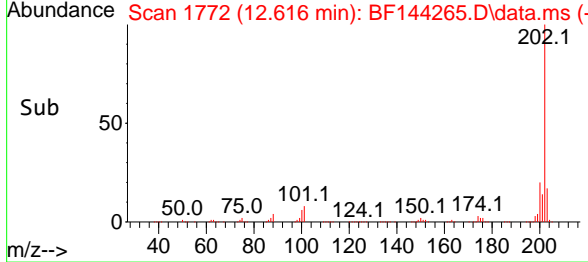
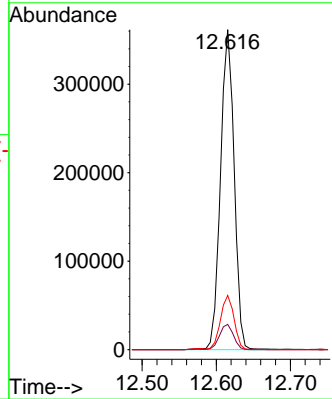
#75
 Fluoranthene
 Concen: 41.772 ng
 RT: 12.616 min Scan# 1772
 Delta R.T. -0.006 min
 Lab File: BF144265.D
 Acq: 17 Nov 2025 13:52

Instrument : BNA_F
 ClientSampleId :



Tgt Ion: 202 Resp: 461433

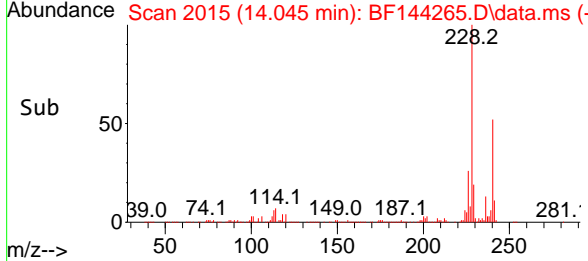
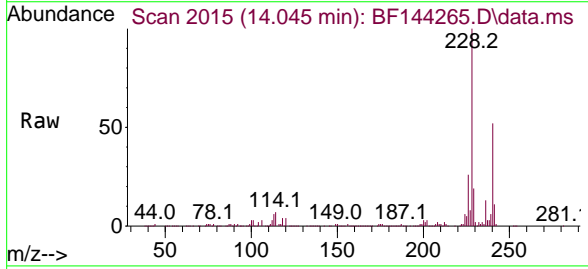
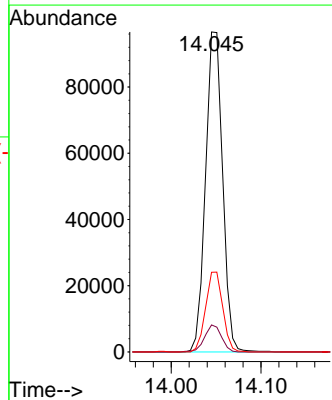
Ion	Ratio	Lower	Upper
202	100		
101	7.9	0.0	27.9
203	16.9	0.0	37.5

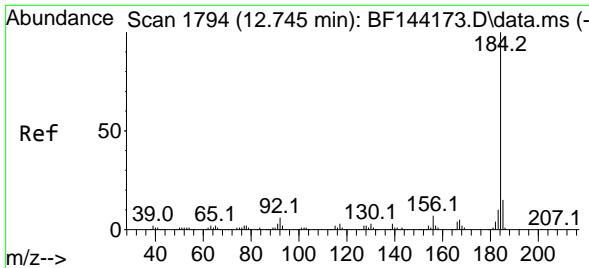


#76
 Chrysene-d12
 Concen: 20.000 ng
 RT: 14.045 min Scan# 2015
 Delta R.T. -0.006 min
 Lab File: BF144265.D
 Acq: 17 Nov 2025 13:52

Tgt Ion: 240 Resp: 127678

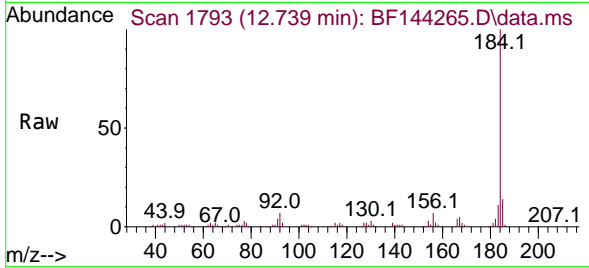
Ion	Ratio	Lower	Upper
240	100		
120	8.4	6.6	10.0
236	24.9	21.4	32.2



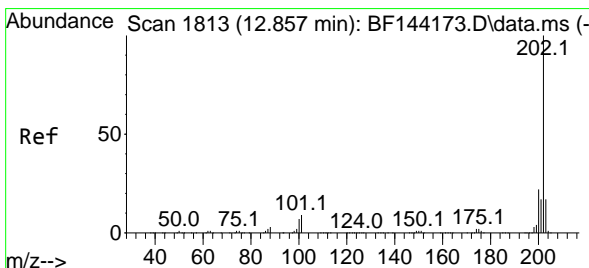
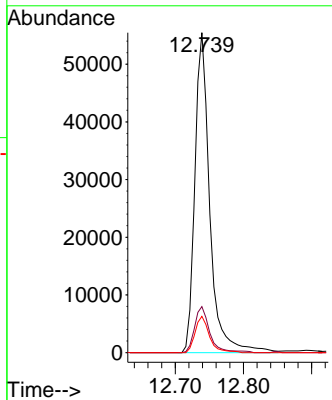
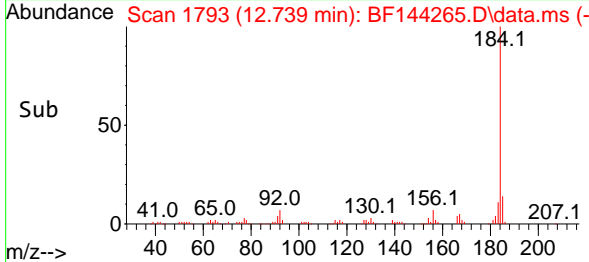


#77
 Benzidine
 Concen: 22.354 ng
 RT: 12.739 min Scan# 1111
 Delta R.T. -0.012 min
 Lab File: BF144265.D
 Acq: 17 Nov 2025 13:52

Instrument :
 BNA_F
 ClientSampleId :

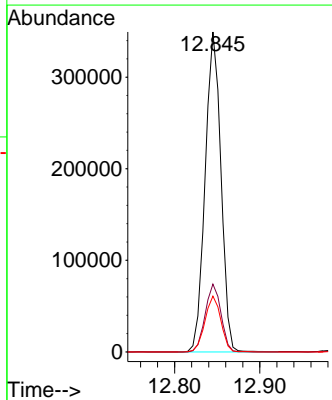
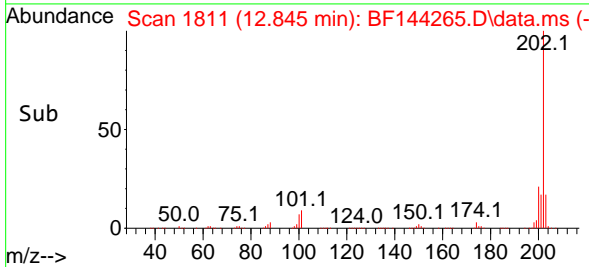
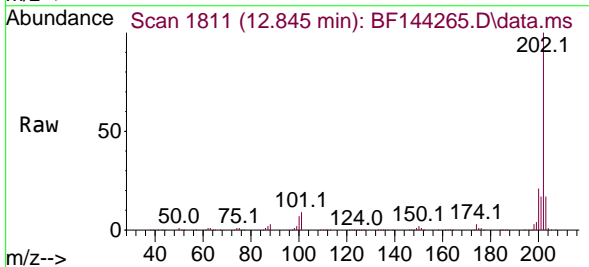


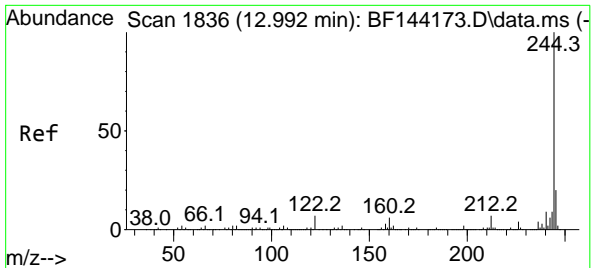
Tgt Ion:184 Resp: 84424
 Ion Ratio Lower Upper
 184 100
 185 14.4 11.7 17.5
 183 11.3 8.3 12.5



#78
 Pyrene
 Concen: 43.597 ng
 RT: 12.845 min Scan# 1811
 Delta R.T. -0.006 min
 Lab File: BF144265.D
 Acq: 17 Nov 2025 13:52

Tgt Ion:202 Resp: 448811
 Ion Ratio Lower Upper
 202 100
 200 21.2 17.2 25.8
 203 17.4 13.7 20.5



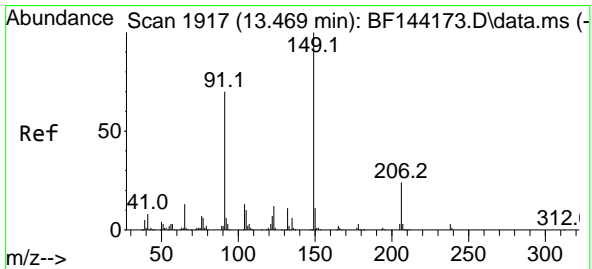
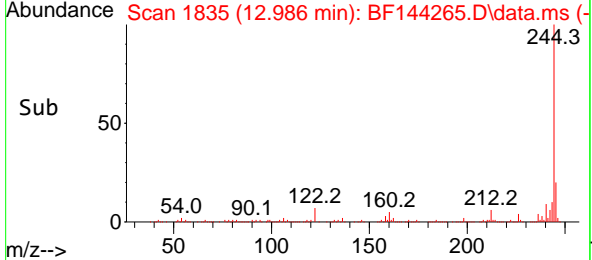
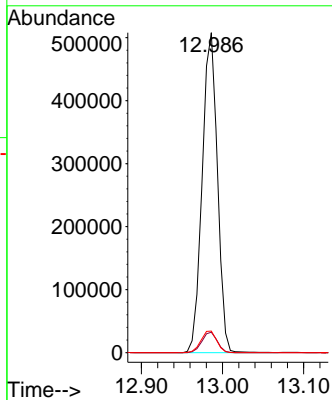
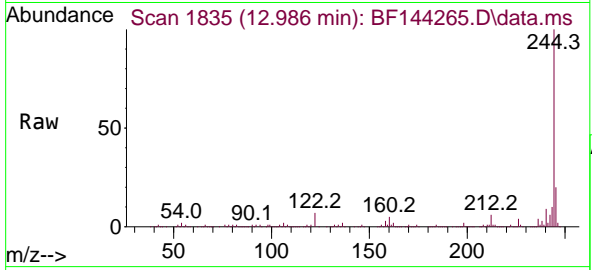


#79
 Terphenyl-d14
 Concen: 82.498 ng
 RT: 12.986 min Scan# 1835
 Delta R.T. -0.006 min
 Lab File: BF144265.D
 Acq: 17 Nov 2025 13:52

Instrument : BNA_F
 ClientSampleId :

Tgt Ion:244 Resp: 663126

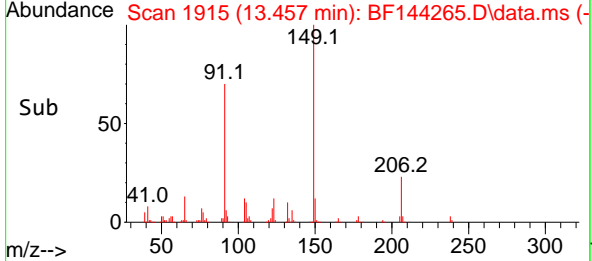
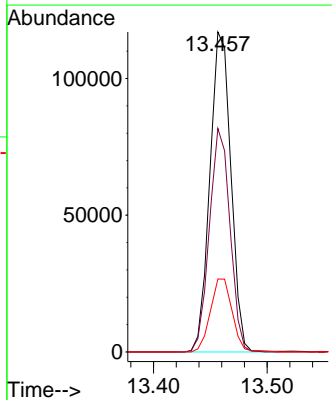
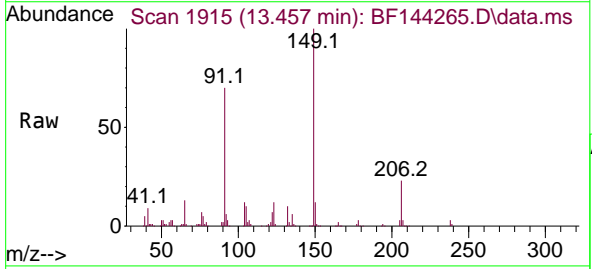
Ion	Ratio	Lower	Upper
244	100		
212	6.4	5.3	7.9
122	6.7	5.6	8.4

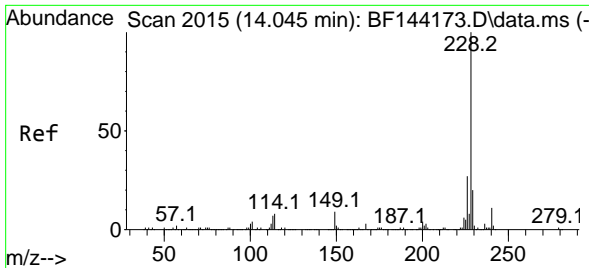


#80
 Butylbenzylphthalate
 Concen: 42.115 ng
 RT: 13.457 min Scan# 1915
 Delta R.T. -0.012 min
 Lab File: BF144265.D
 Acq: 17 Nov 2025 13:52

Tgt Ion:149 Resp: 150266

Ion	Ratio	Lower	Upper
149	100		
91	69.8	56.1	84.1
206	22.8	18.8	28.2



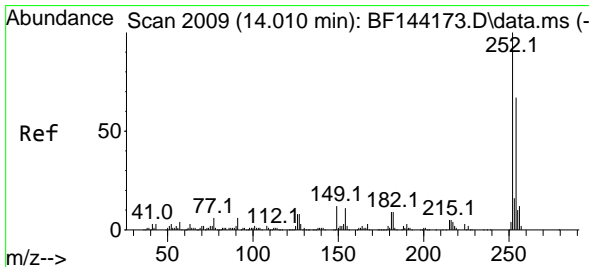
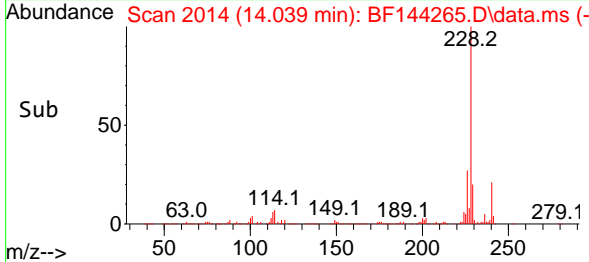
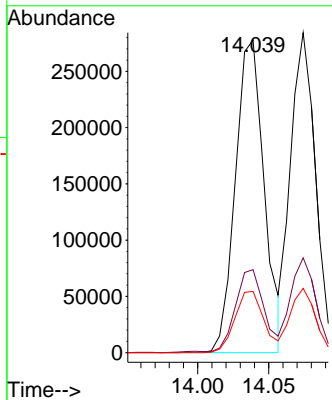
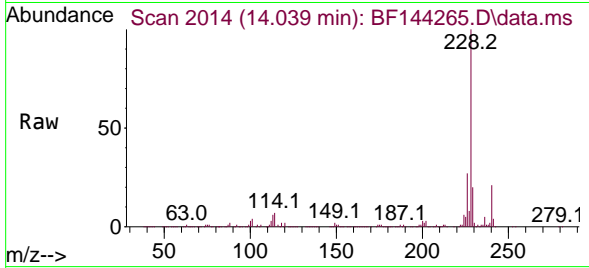


#81
 Benzo(a)anthracene
 Concen: 44.226 ng
 RT: 14.039 min Scan# 2014
 Delta R.T. -0.006 min
 Lab File: BF144265.D
 Acq: 17 Nov 2025 13:52

Instrument : BNA_F
 ClientSampleId :

Tgt Ion:228 Resp: 391354

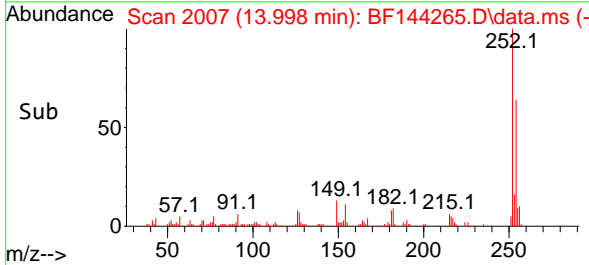
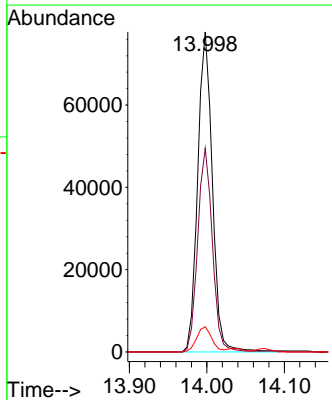
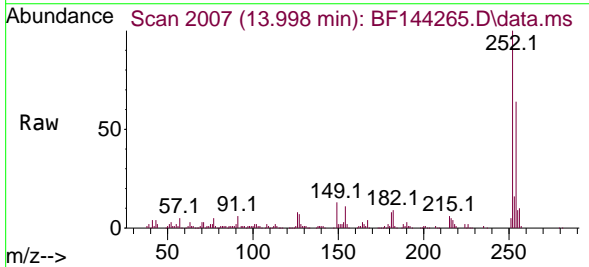
Ion	Ratio	Lower	Upper
228	100		
226	26.5	21.8	32.8
229	19.6	15.8	23.6

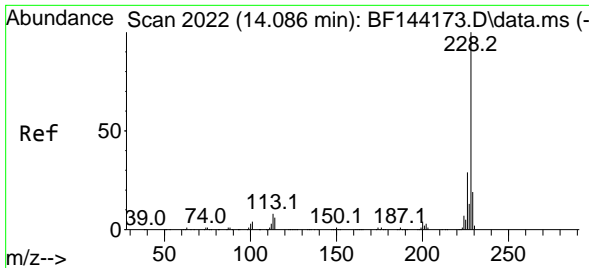


#82
 3,3'-Dichlorobenzidine
 Concen: 33.650 ng
 RT: 13.998 min Scan# 2007
 Delta R.T. -0.012 min
 Lab File: BF144265.D
 Acq: 17 Nov 2025 13:52

Tgt Ion:252 Resp: 102068

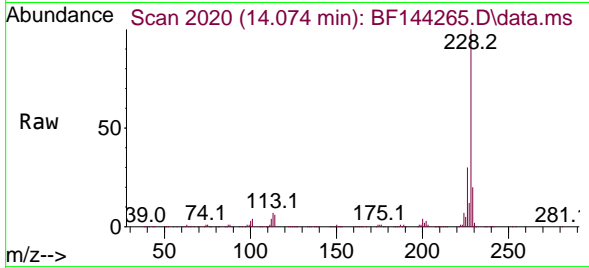
Ion	Ratio	Lower	Upper
252	100		
254	63.6	53.5	80.3
126	7.9	6.4	9.6



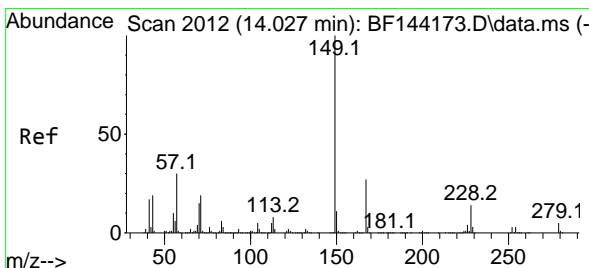
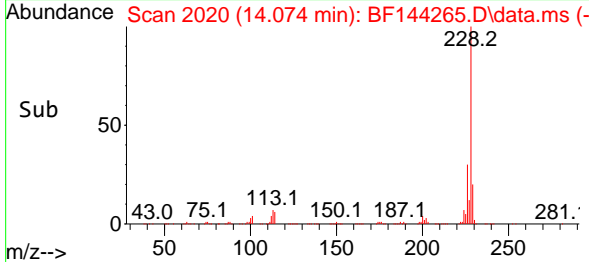
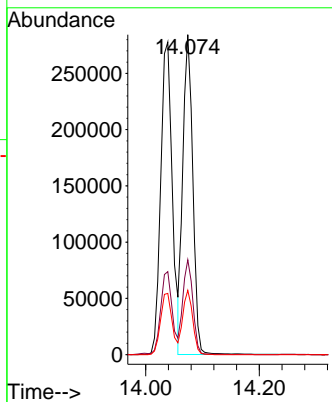


#83
 Chrysene
 Concen: 42.772 ng
 RT: 14.074 min Scan# 2010
 Delta R.T. -0.006 min
 Lab File: BF144265.D
 Acq: 17 Nov 2025 13:52

Instrument : BNA_F
 Client Sample Id :

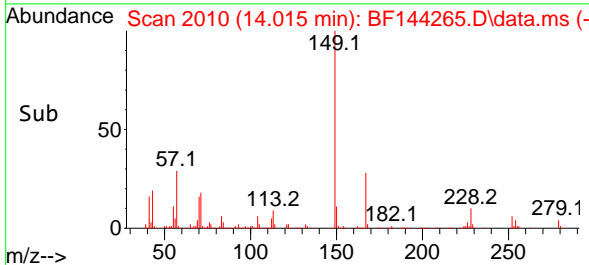
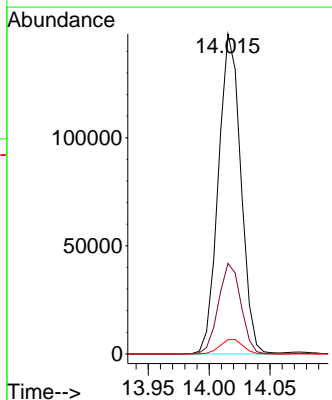
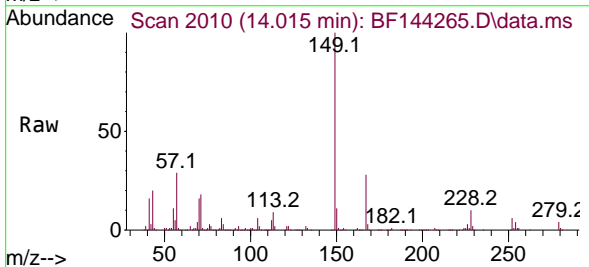


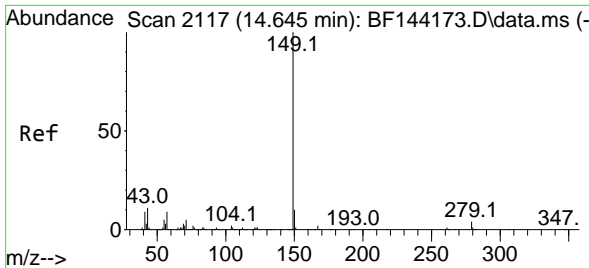
Tgt Ion: 228 Resp: 349396
 Ion Ratio Lower Upper
 228 100
 226 29.6 22.9 34.3
 229 20.1 15.0 22.6



#84
 Bis(2-ethylhexyl)phthalate
 Concen: 38.937 ng
 RT: 14.015 min Scan# 2010
 Delta R.T. -0.012 min
 Lab File: BF144265.D
 Acq: 17 Nov 2025 13:52

Tgt Ion: 149 Resp: 190183
 Ion Ratio Lower Upper
 149 100
 167 28.3 21.8 32.8
 279 4.4 3.7 5.5

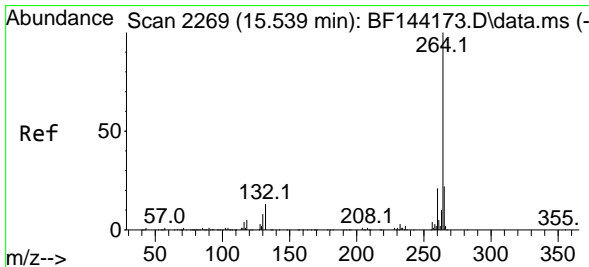
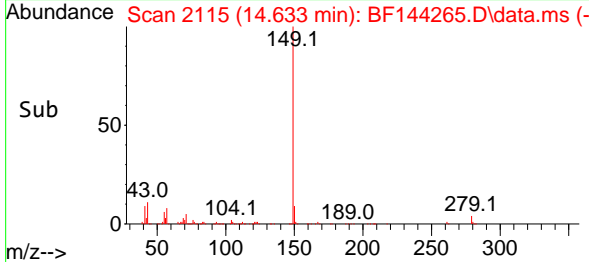
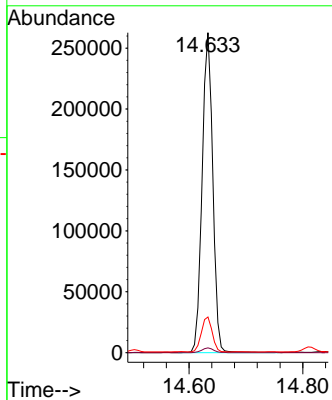
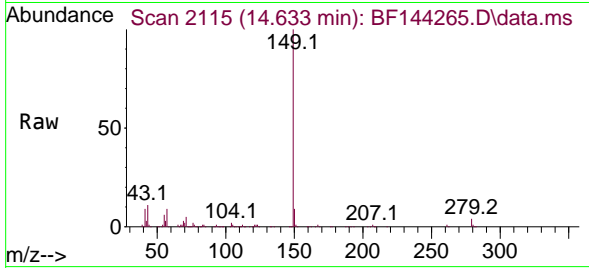




#85
 Di-n-octyl phthalate
 Concen: 40.553 ng
 RT: 14.633 min Scan# 2115
 Delta R.T. -0.012 min
 Lab File: BF144265.D
 Acq: 17 Nov 2025 13:52

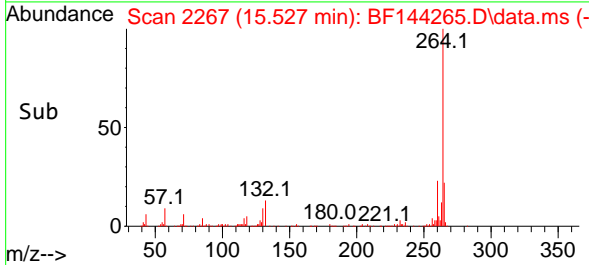
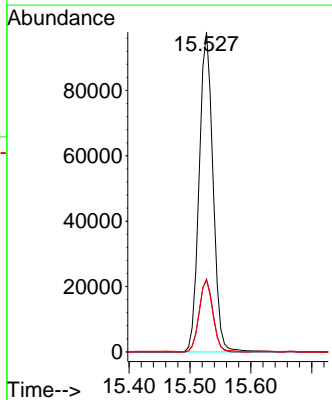
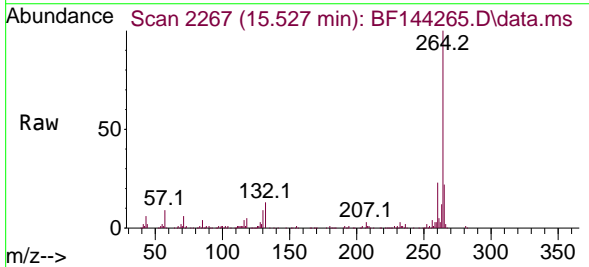
Instrument : BNA_F
 ClientSampleId :

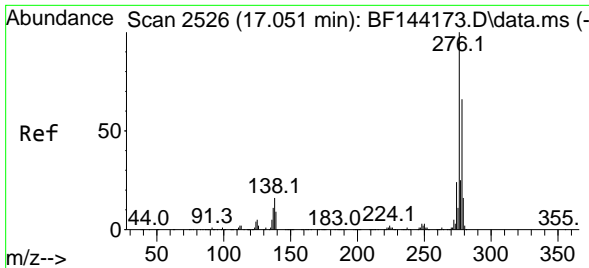
Tgt Ion	Resp	Lower	Upper
149	100		
167	1.6	1.2	1.8
43	11.0	9.0	13.4



#86
 Perylene-d12
 Concen: 20.000 ng
 RT: 15.527 min Scan# 2267
 Delta R.T. -0.012 min
 Lab File: BF144265.D
 Acq: 17 Nov 2025 13:52

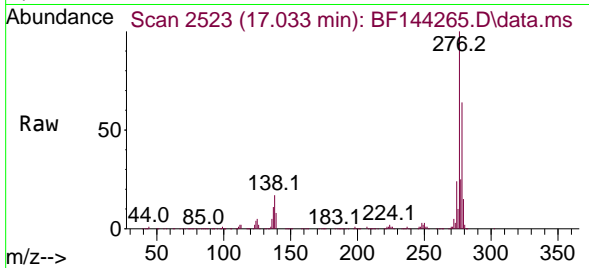
Tgt Ion	Resp	Lower	Upper
264	100		
260	22.7	17.1	25.7
265	22.4	17.4	26.0



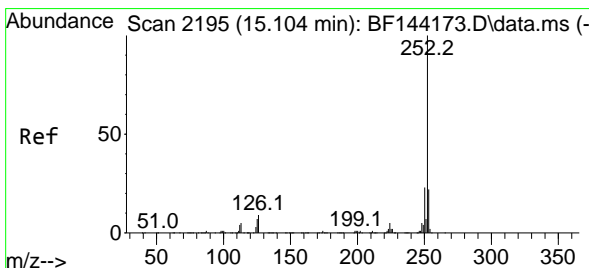
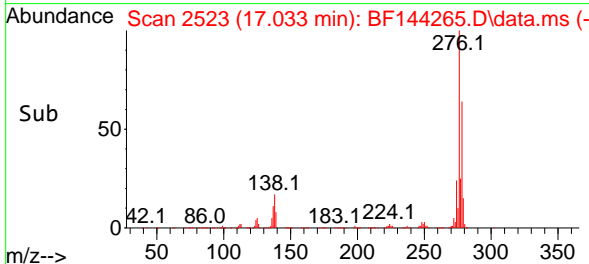
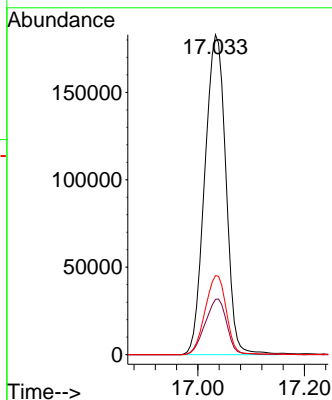


#87
 Indeno(1,2,3-cd)pyrene
 Concen: 45.429 ng
 RT: 17.033 min Scan# 2193
 Delta R.T. -0.000 min
 Lab File: BF144265.D
 Acq: 17 Nov 2025 13:52

Instrument :
 BNA_F
 ClientSampleId :

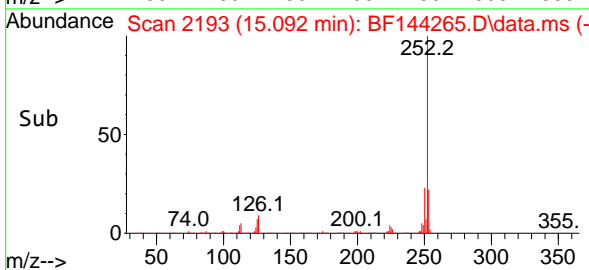
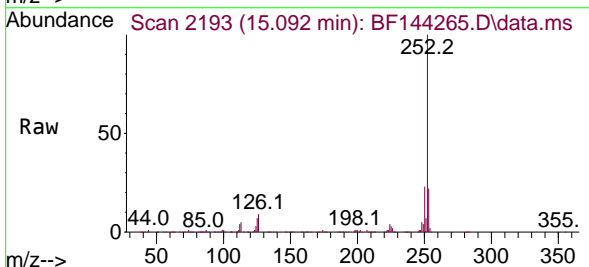
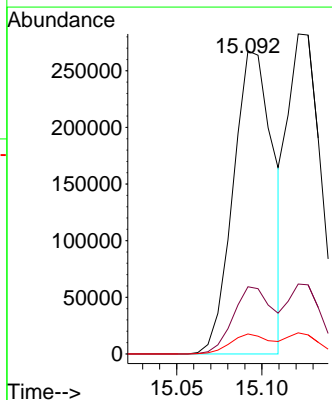


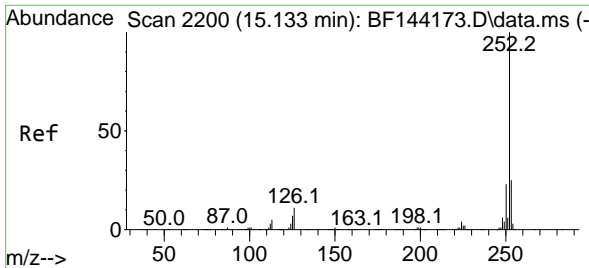
Tgt Ion: 276 Resp: 503139
 Ion Ratio Lower Upper
 276 100
 138 17.9 13.9 20.9
 277 24.9 19.8 29.6



#88
 Benzo(b)fluoranthene
 Concen: 49.735 ng
 RT: 15.092 min Scan# 2193
 Delta R.T. -0.006 min
 Lab File: BF144265.D
 Acq: 17 Nov 2025 13:52

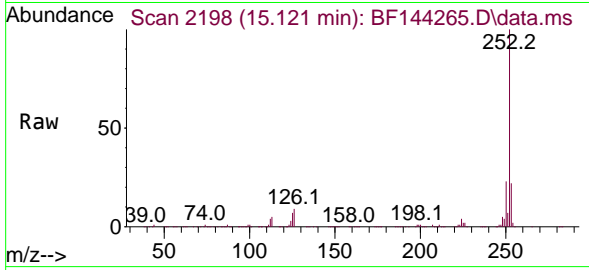
Tgt Ion: 252 Resp: 436245
 Ion Ratio Lower Upper
 252 100
 253 22.2 17.4 26.2
 125 6.6 5.3 7.9



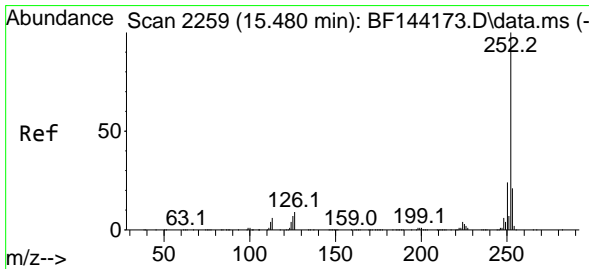
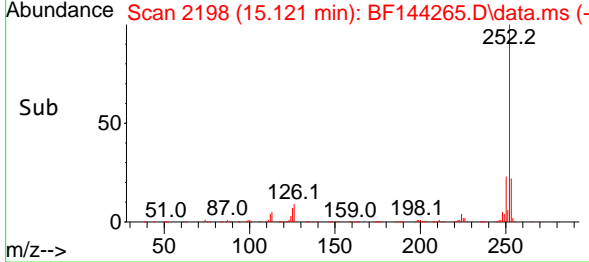
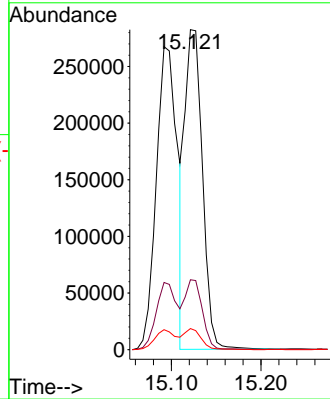


#89
 Benzo(k)fluoranthene
 Concen: 46.853 ng
 RT: 15.121 min Scan# 21
 Delta R.T. -0.006 min
 Lab File: BF144265.D
 Acq: 17 Nov 2025 13:52

Instrument :
 BNA_F
 ClientSampleId :

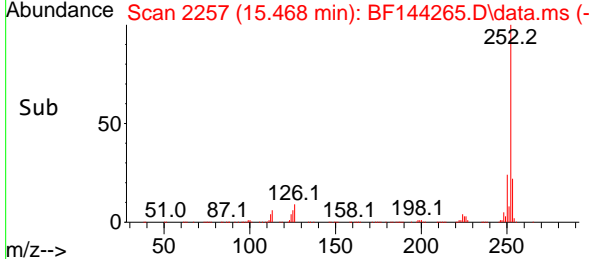
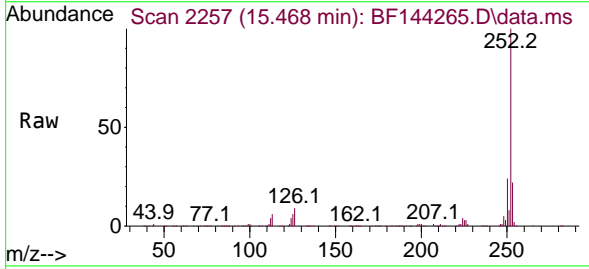
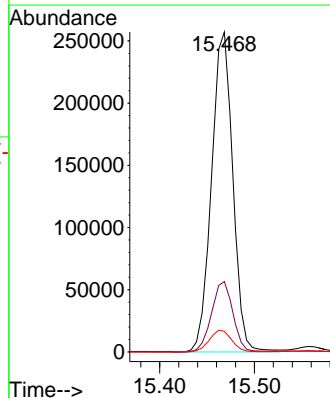


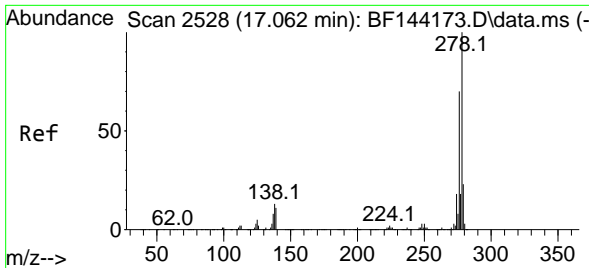
Tgt Ion:252 Resp: 384664
 Ion Ratio Lower Upper
 252 100
 253 21.8 18.0 27.0
 125 6.6 5.4 8.2



#90
 Benzo(a)pyrene
 Concen: 49.632 ng
 RT: 15.468 min Scan# 2257
 Delta R.T. -0.006 min
 Lab File: BF144265.D
 Acq: 17 Nov 2025 13:52

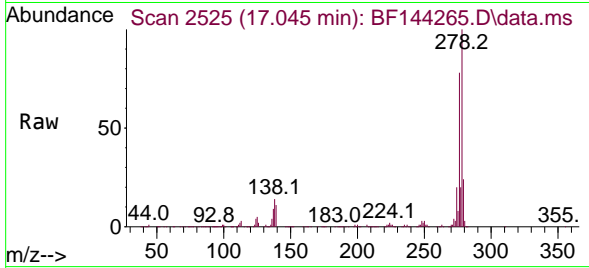
Tgt Ion:252 Resp: 401625
 Ion Ratio Lower Upper
 252 100
 253 22.0 16.7 25.1
 125 6.4 5.7 8.5



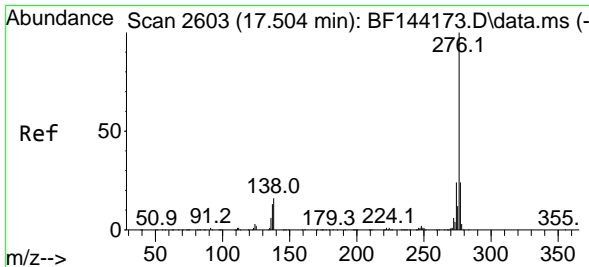
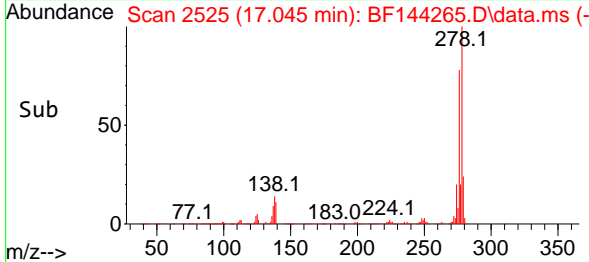
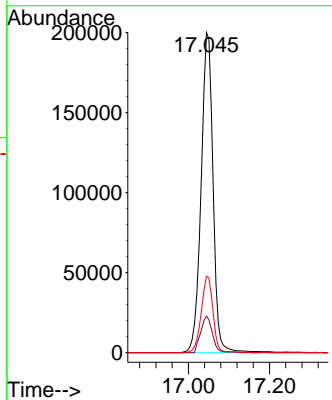


#91
 Dibenzo(a,h)anthracene
 Concen: 46.011 ng
 RT: 17.045 min Scan# 21
 Delta R.T. -0.006 min
 Lab File: BF144265.D
 Acq: 17 Nov 2025 13:52

Instrument :
 BNA_F
 ClientSampleId :



Tgt Ion:278 Resp: 409253
 Ion Ratio Lower Upper
 278 100
 139 11.4 9.1 13.7
 279 23.9 18.2 27.4



#92
 Benzo(g,h,i)perylene
 Concen: 47.615 ng
 RT: 17.486 min Scan# 2600
 Delta R.T. -0.006 min
 Lab File: BF144265.D
 Acq: 17 Nov 2025 13:52

Tgt Ion:276 Resp: 418232
 Ion Ratio Lower Upper
 276 100
 277 24.1 19.0 28.4
 138 16.0 12.9 19.3

