

Data Path : Z:\svoasrv\HPCHEM1\BNA_F\Data\BF112125\
 Data File : BF144307.D
 Acq On : 21 Nov 2025 14:33
 Operator : RC/JU
 Sample : PB170680BL
 Misc :
 ALS Vial : 3 Sample Multiplier: 1

Instrument :
 BNA_F
 ClientSampleId :
 PB170680BL

Quant Time: Nov 21 14:52:45 2025
 Quant Method : Z:\svoasrv\HPCHEM1\BNA_F\Methods\8270-BF110525.M
 Quant Title : ASP BNA STANDARDS FOR 5 POINT CALIBRATION
 QLast Update : Wed Nov 05 18:37:33 2025
 Response via : Initial Calibration

Compound	R.T.	QIon	Response	Conc	Units	Dev(Min)

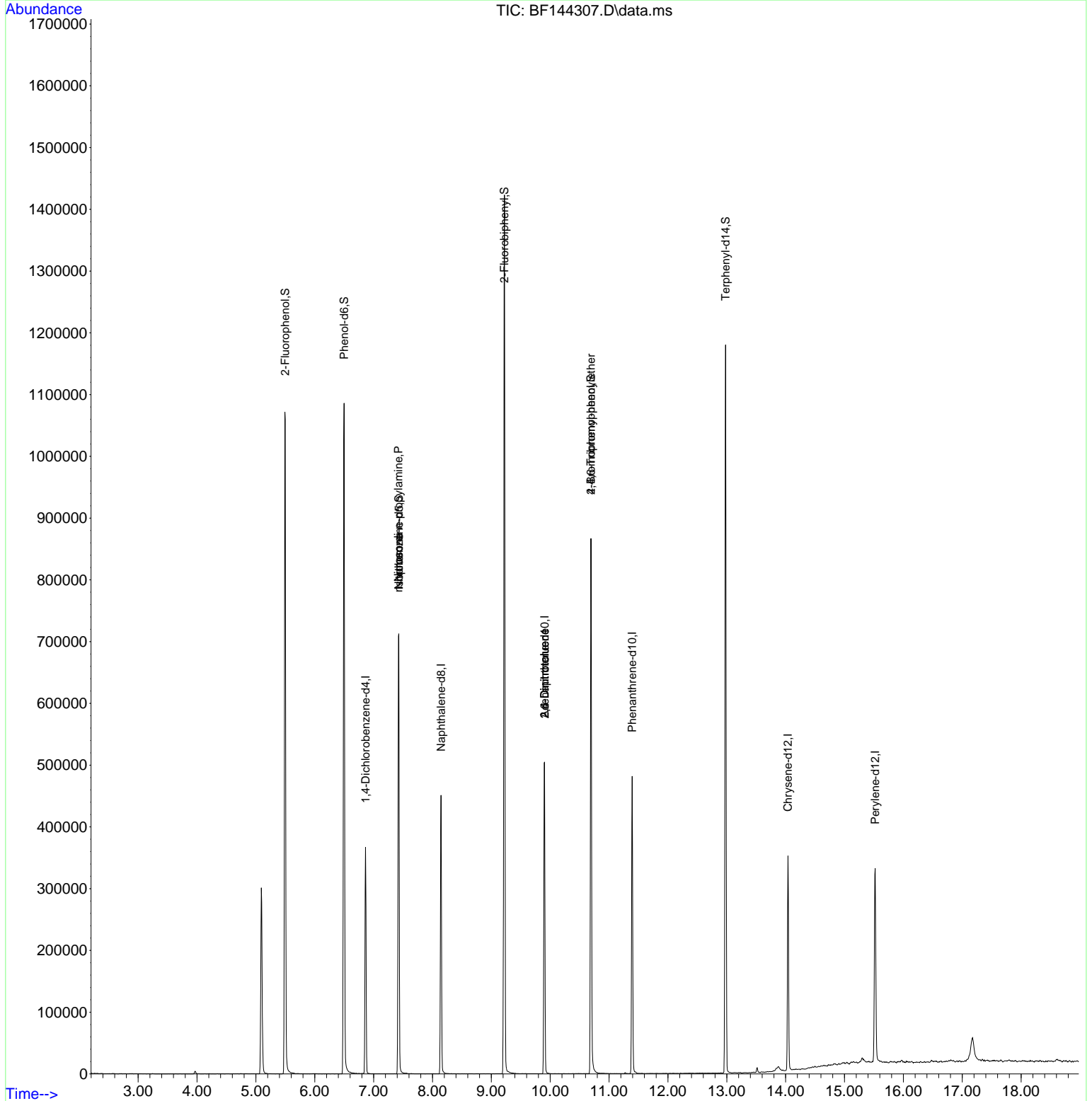
Internal Standards						
1) 1,4-Dichlorobenzene-d4	6.863	152	77298	20.000	ng	-0.01
21) Naphthalene-d8	8.145	136	299715	20.000	ng	-0.01
39) Acenaphthene-d10	9.904	164	173062	20.000	ng	-0.01
64) Phenanthrene-d10	11.392	188	277704	20.000	ng	-0.01
76) Chrysene-d12	14.039	240	182728	20.000	ng	-0.01
86) Perylene-d12	15.521	264	222979	20.000	ng	-0.02
System Monitoring Compounds						
5) 2-Fluorophenol	5.498	112	439004	88.875	ng	0.00
7) Phenol-d6	6.498	99	498461	89.060	ng	0.00
23) Nitrobenzene-d5	7.428	82	319220	61.514	ng	0.00
42) 2,4,6-Tribromophenol	10.692	330	183774	84.621	ng	-0.01
45) 2-Fluorobiphenyl	9.222	172	700453	59.778	ng	0.00
79) Terphenyl-d14	12.980	244	645147	56.081	ng	-0.01
Target Compounds						
						Qvalue
19) n-Nitroso-di-n-propyla...	7.422	70	47254	12.825	ng	# 77
25) Isophorone	7.428	82	319217	32.521	ng	# 66
51) 2,6-Dinitrotoluene	9.904	165	21006	9.051	ng	# 28
57) 2,4-Dinitrotoluene	9.904	165	21006	6.761	ng	# 28
67) 4-Bromophenyl-phenylether	10.692	248	10539	2.973	ng	# 1

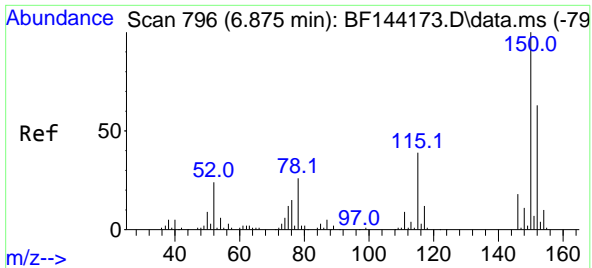
(#) = qualifier out of range (m) = manual integration (+) = signals summed

Data Path : Z:\svoasrv\HPCHEM1\BNA_F\Data\BF112125\
 Data File : BF144307.D
 Acq On : 21 Nov 2025 14:33
 Operator : RC/JU
 Sample : PB170680BL
 Misc :
 ALS Vial : 3 Sample Multiplier: 1

Instrument :
 BNA_F
 ClientSampleId :
 PB170680BL

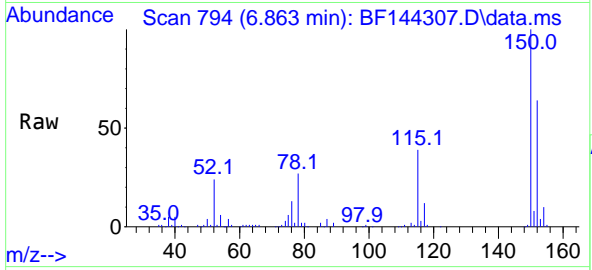
Quant Time: Nov 21 14:52:45 2025
 Quant Method : Z:\svoasrv\HPCHEM1\BNA_F\Methods\8270-BF110525.M
 Quant Title : ASP BNA STANDARDS FOR 5 POINT CALIBRATION
 QLast Update : Wed Nov 05 18:37:33 2025
 Response via : Initial Calibration



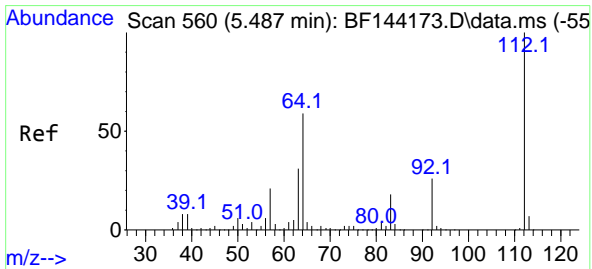
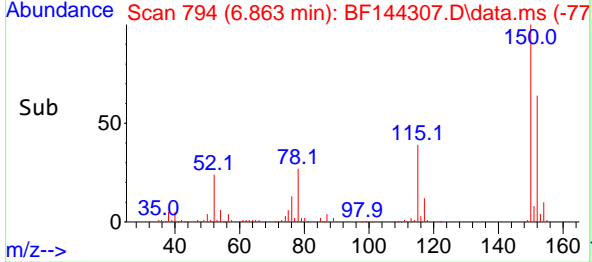
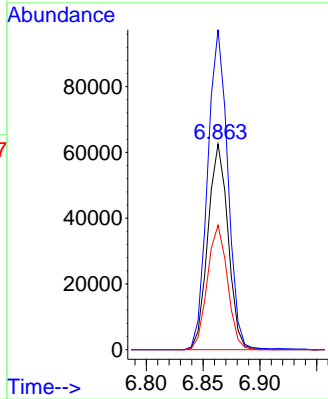


#1
 1,4-Dichlorobenzene-d4
 Concen: 20.000 ng
 RT: 6.863 min Scan# 794
 Delta R.T. -0.012 min
 Lab File: BF144307.D
 Acq: 21 Nov 2025 14:33

Instrument : BNA_F
 ClientSampleId : PB170680BL

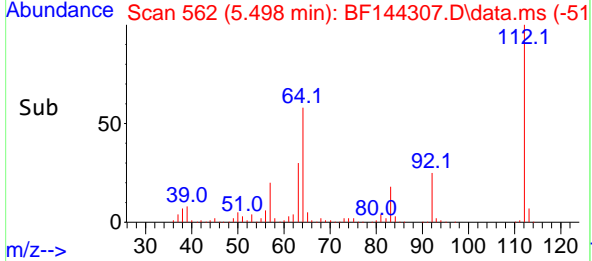
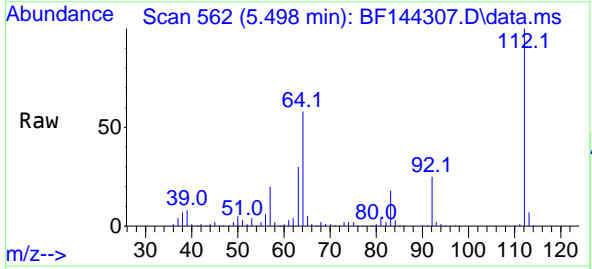
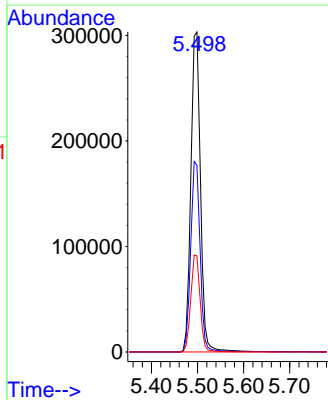


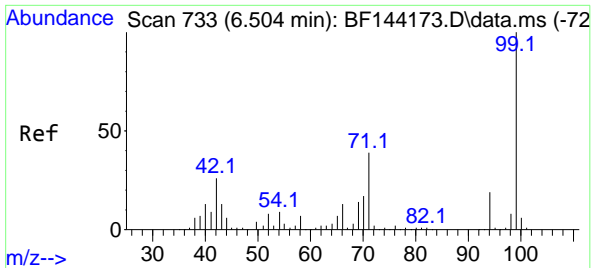
Tgt Ion:152 Resp: 77298
 Ion Ratio Lower Upper
 152 100
 150 155.6 127.4 191.0
 115 60.6 49.5 74.3



#5
 2-Fluorophenol
 Concen: 88.875 ng
 RT: 5.498 min Scan# 562
 Delta R.T. 0.006 min
 Lab File: BF144307.D
 Acq: 21 Nov 2025 14:33

Tgt Ion:112 Resp: 439004
 Ion Ratio Lower Upper
 112 100
 64 58.3 47.2 70.8
 63 30.0 24.4 36.6

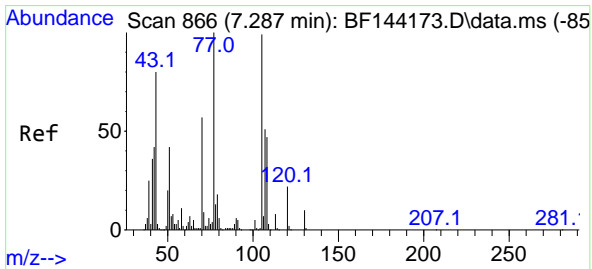
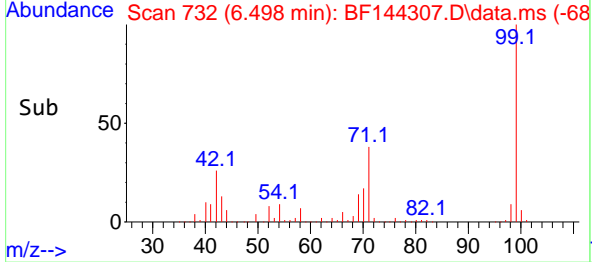
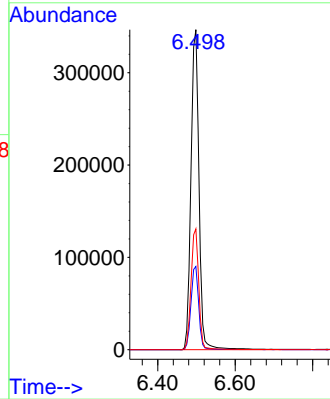
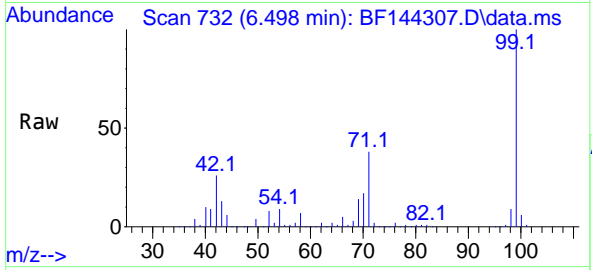




#7
Phenol-d6
Concen: 89.060 ng
RT: 6.498 min Scan# 71
Delta R.T. -0.000 min
Lab File: BF144307.D
Acq: 21 Nov 2025 14:33

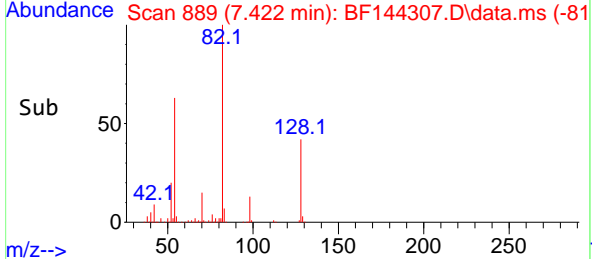
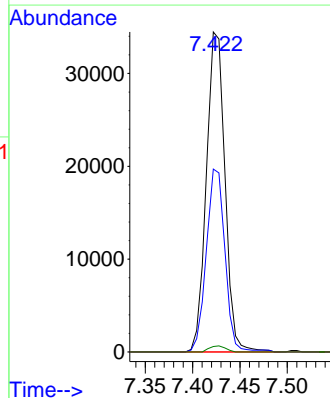
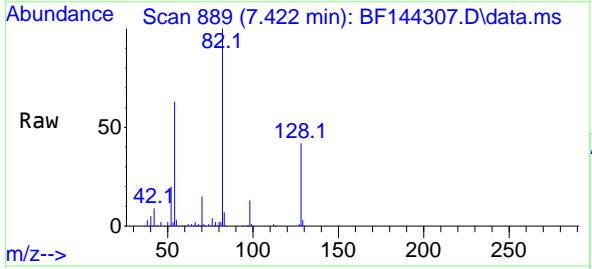
Instrument :
BNA_F
ClientSampleId :
PB170680BL

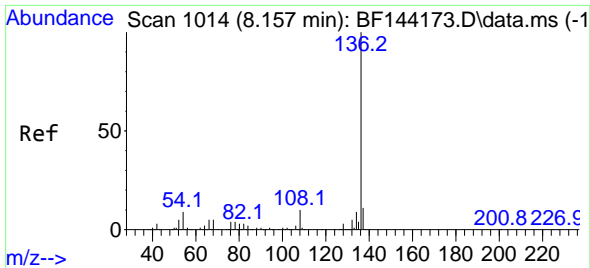
Tgt Ion: 99 Resp: 498461
Ion Ratio Lower Upper
99 100
42 26.0 20.9 31.3
71 37.8 31.4 47.2



#19
n-Nitroso-di-n-propylamine
Concen: 12.825 ng
RT: 7.422 min Scan# 889
Delta R.T. 0.147 min
Lab File: BF144307.D
Acq: 21 Nov 2025 14:33

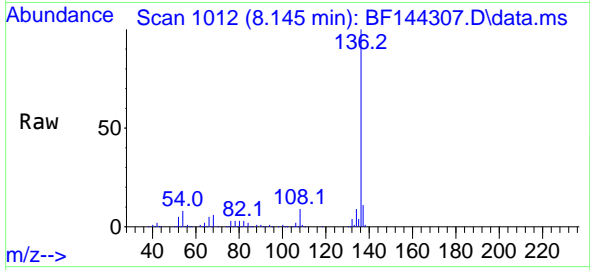
Tgt Ion: 70 Resp: 47254
Ion Ratio Lower Upper
70 100
42 57.1 58.3 87.5#
101 0.0 7.0 10.6#
130 1.7 14.4 21.6#





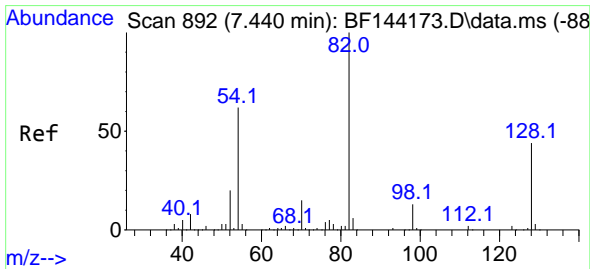
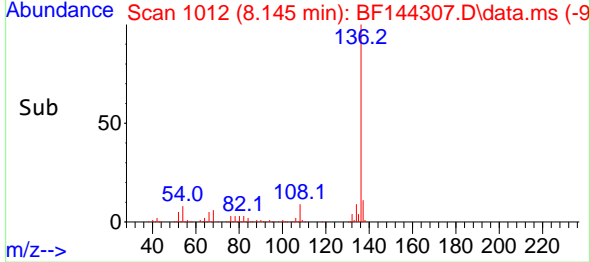
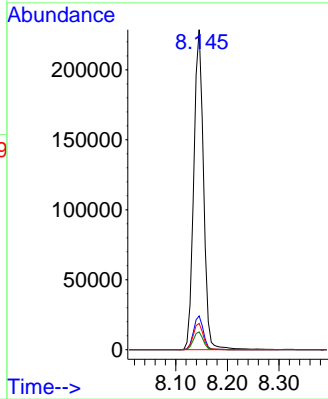
#21
 Naphthalene-d8
 Concen: 20.000 ng
 RT: 8.145 min Scan# 10
 Delta R.T. -0.012 min
 Lab File: BF144307.D
 Acq: 21 Nov 2025 14:33

Instrument :
 BNA_F
 ClientSampleId :
 PB170680BL



Tgt Ion:136 Resp: 299715

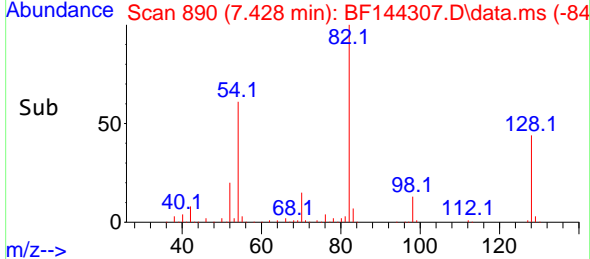
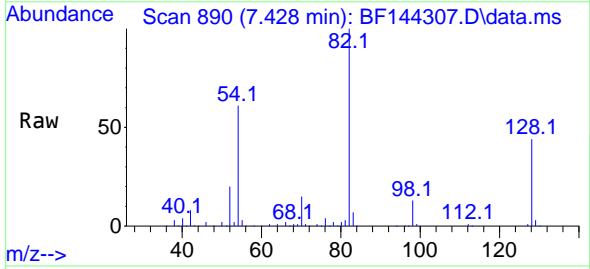
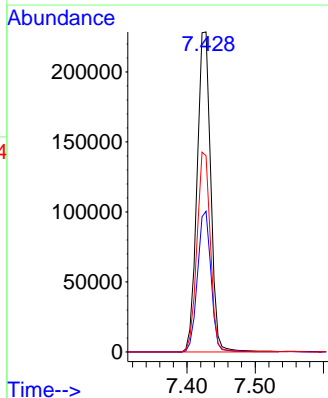
Ion	Ratio	Lower	Upper
136	100		
137	10.6	8.6	13.0
54	8.2	7.0	10.6
68	5.5	4.3	6.5

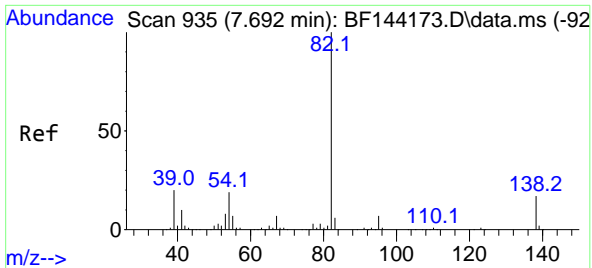


#23
 Nitrobenzene-d5
 Concen: 61.514 ng
 RT: 7.428 min Scan# 890
 Delta R.T. -0.006 min
 Lab File: BF144307.D
 Acq: 21 Nov 2025 14:33

Tgt Ion: 82 Resp: 319220

Ion	Ratio	Lower	Upper
82	100		
128	43.9	34.7	52.1
54	61.3	49.5	74.3



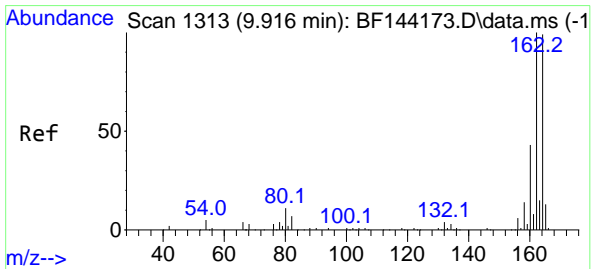
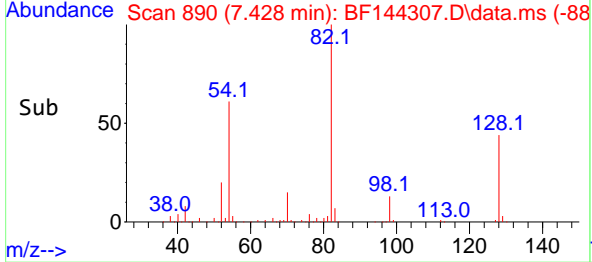
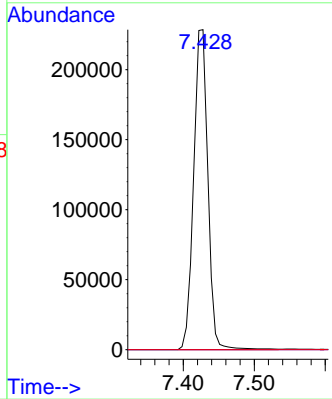
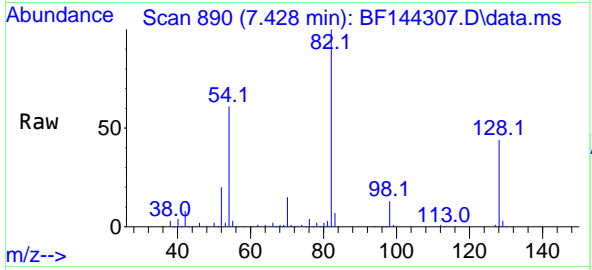


#25
 Isophorone
 Concen: 32.521 ng
 RT: 7.428 min Scan# 89
 Delta R.T. -0.259 min
 Lab File: BF144307.D
 Acq: 21 Nov 2025 14:33

Instrument : BNA_F
 Client Sample Id : PB170680BL

Tgt Ion: 82 Resp: 319217

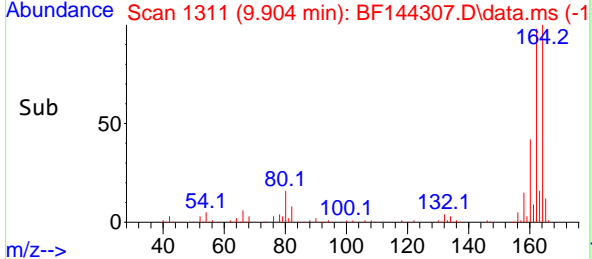
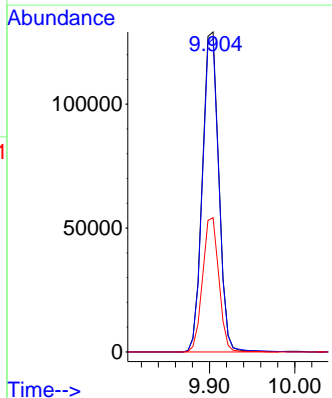
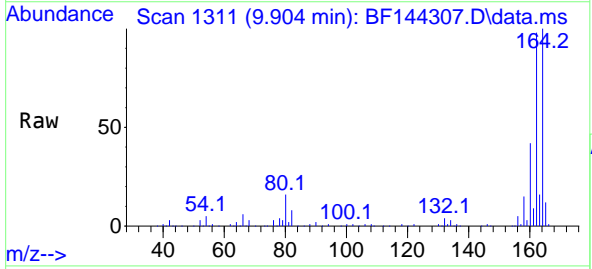
Ion	Ratio	Lower	Upper
82	100		
95	0.0	5.5	8.3#
138	0.0	13.7	20.5#

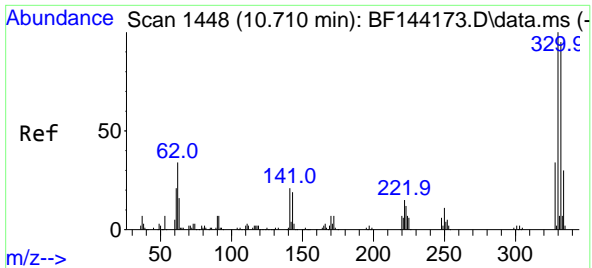


#39
 Acenaphthene-d10
 Concen: 20.000 ng
 RT: 9.904 min Scan# 1311
 Delta R.T. -0.012 min
 Lab File: BF144307.D
 Acq: 21 Nov 2025 14:33

Tgt Ion: 164 Resp: 173062

Ion	Ratio	Lower	Upper
164	100		
162	97.9	81.1	121.7
160	42.0	34.5	51.7



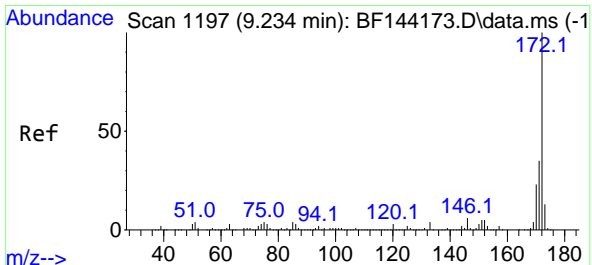
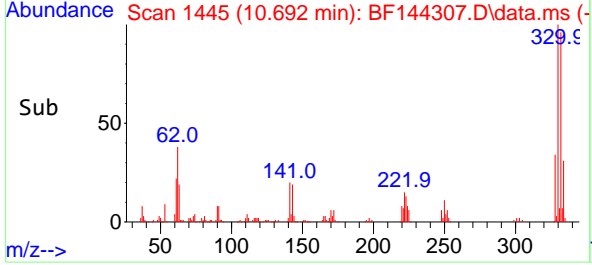
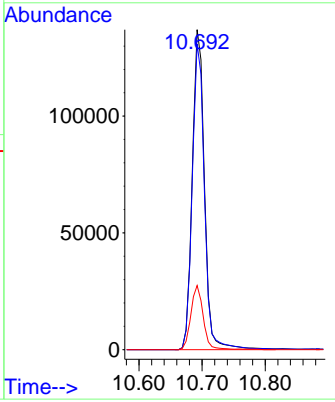
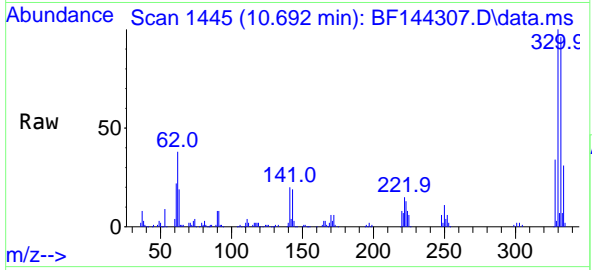


#42
 2,4,6-Tribromophenol
 Concen: 84.621 ng
 RT: 10.692 min Scan# 14
 Delta R.T. -0.012 min
 Lab File: BF144307.D
 Acq: 21 Nov 2025 14:33

Instrument : BNA_F
 Client Sample Id : PB170680BL

Tgt Ion: 330 Resp: 183774

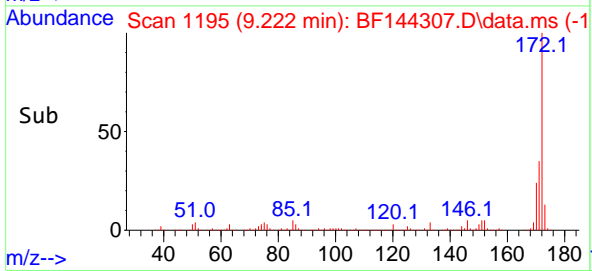
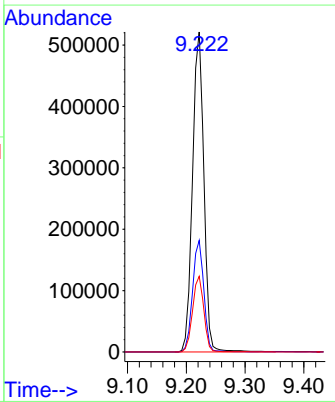
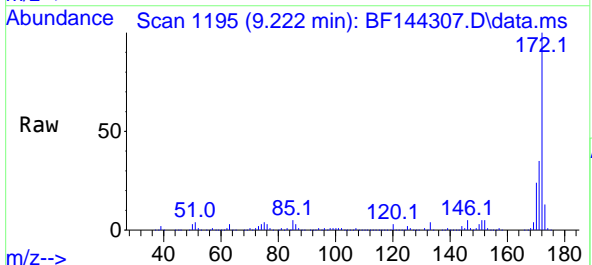
Ion	Ratio	Lower	Upper
330	100		
332	96.0	76.7	115.1
141	20.5	17.8	26.8

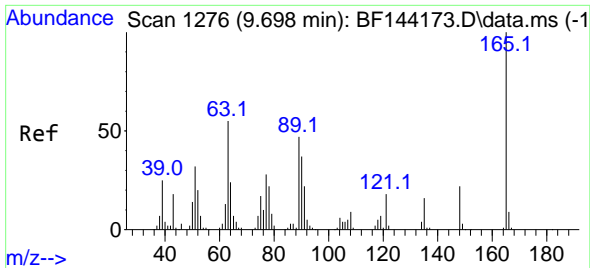


#45
 2-Fluorobiphenyl
 Concen: 59.778 ng
 RT: 9.222 min Scan# 1195
 Delta R.T. -0.006 min
 Lab File: BF144307.D
 Acq: 21 Nov 2025 14:33

Tgt Ion: 172 Resp: 700453

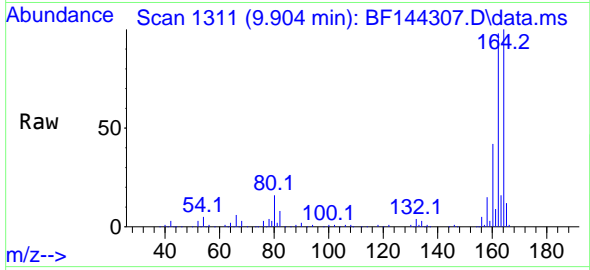
Ion	Ratio	Lower	Upper
172	100		
171	34.8	28.1	42.1
170	23.7	18.6	28.0



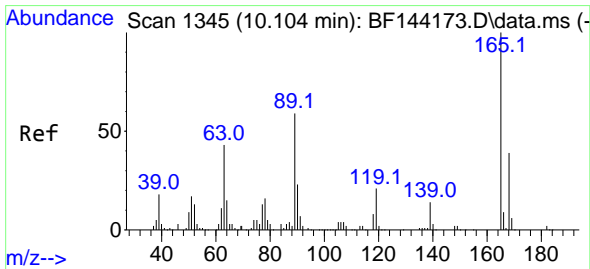
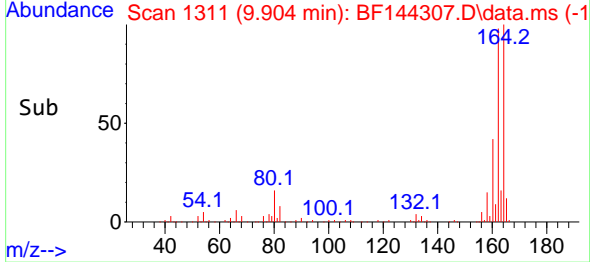
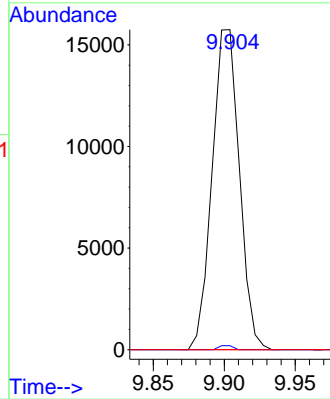


#51
 2,6-Dinitrotoluene
 Concen: 9.051 ng
 RT: 9.904 min Scan# 1311
 Delta R.T. 0.212 min
 Lab File: BF144307.D
 Acq: 21 Nov 2025 14:33

Instrument :
 BNA_F
 ClientSampleId :
 PB170680BL

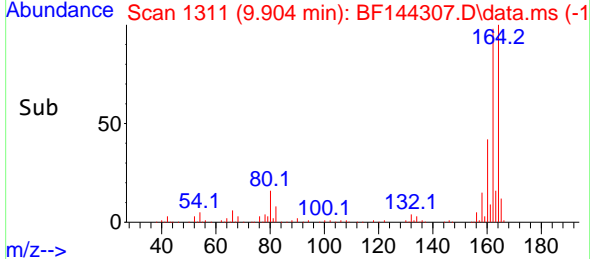
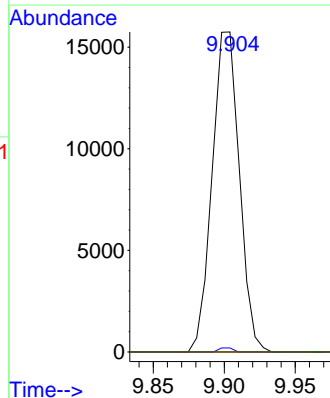
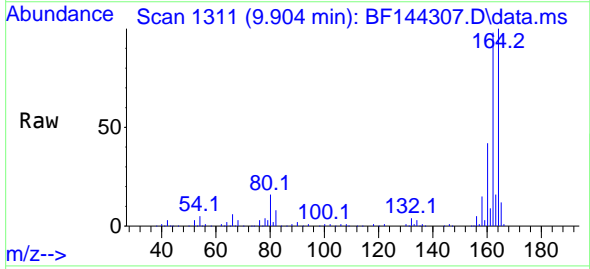


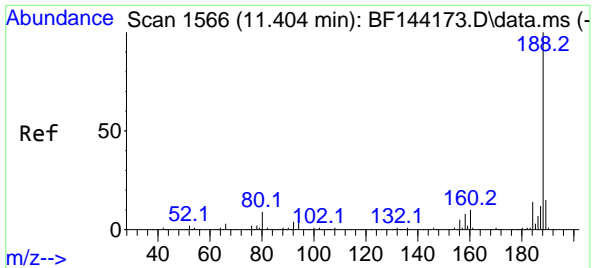
Tgt Ion:165 Resp: 21006
 Ion Ratio Lower Upper
 165 100
 63 1.2 43.8 65.8#
 89 0.0 37.5 56.3#



#57
 2,4-Dinitrotoluene
 Concen: 6.761 ng
 RT: 9.904 min Scan# 1311
 Delta R.T. -0.194 min
 Lab File: BF144307.D
 Acq: 21 Nov 2025 14:33

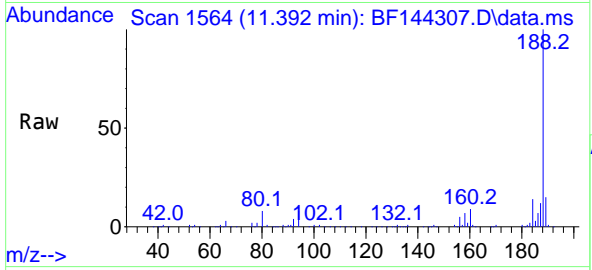
Tgt Ion:165 Resp: 21006
 Ion Ratio Lower Upper
 165 100
 63 1.2 35.5 53.3#
 89 0.0 47.4 71.2#
 182 0.0 1.9 2.9#



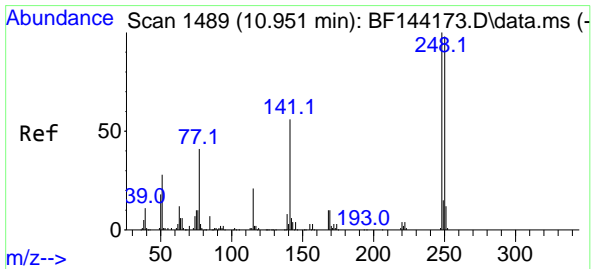
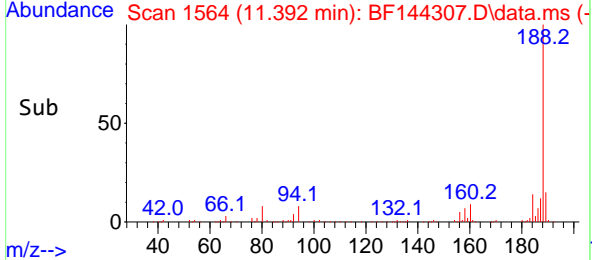
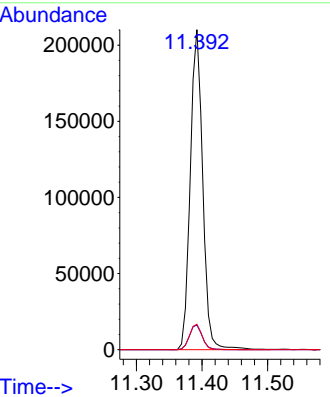


#64
 Phenanthrene-d10
 Concen: 20.000 ng
 RT: 11.392 min Scan# 11
 Delta R.T. -0.012 min
 Lab File: BF144307.D
 Acq: 21 Nov 2025 14:33

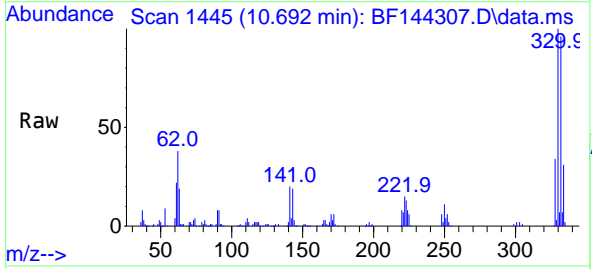
Instrument : BNA_F
 Client Sample Id : PB170680BL



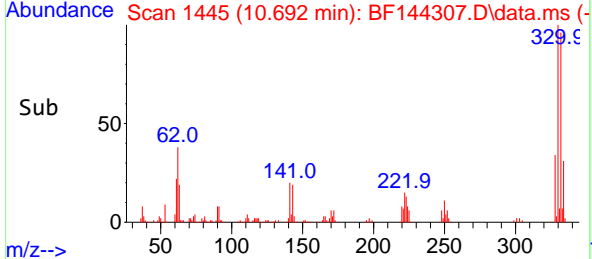
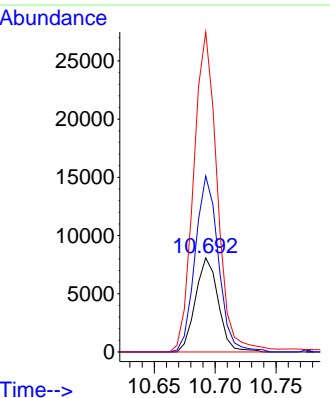
Tgt Ion:188 Resp: 277704
 Ion Ratio Lower Upper
 188 100
 94 7.7 6.2 9.2
 80 7.9 6.9 10.3

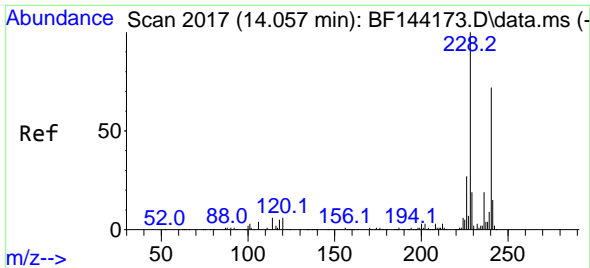


#67
 4-Bromophenyl-phenylether
 Concen: 2.973 ng
 RT: 10.692 min Scan# 1445
 Delta R.T. -0.253 min
 Lab File: BF144307.D
 Acq: 21 Nov 2025 14:33



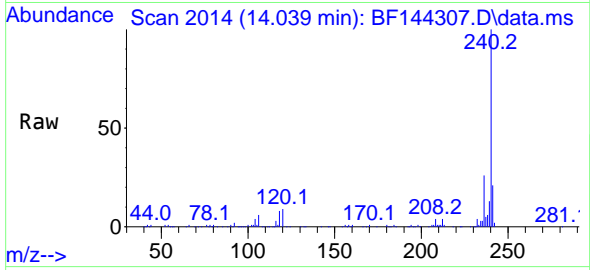
Tgt Ion:248 Resp: 10539
 Ion Ratio Lower Upper
 248 100
 250 187.1 78.4 117.6#
 141 340.1 45.1 67.7#



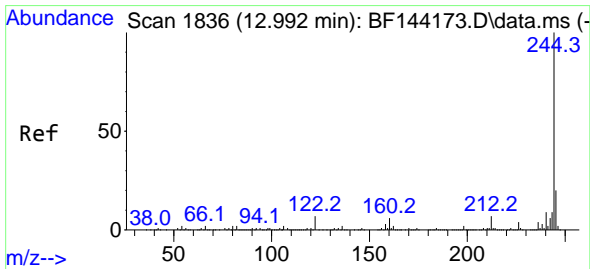
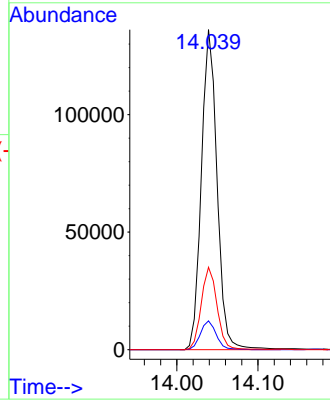
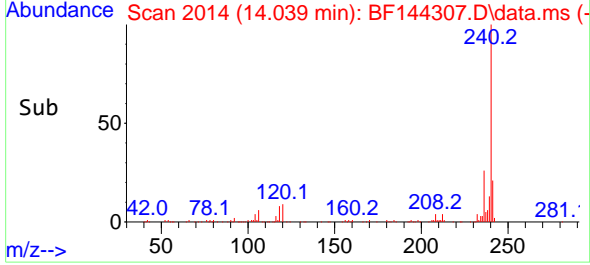


#76
 Chrysene-d12
 Concen: 20.000 ng
 RT: 14.039 min Scan# 20
 Delta R.T. -0.012 min
 Lab File: BF144307.D
 Acq: 21 Nov 2025 14:33

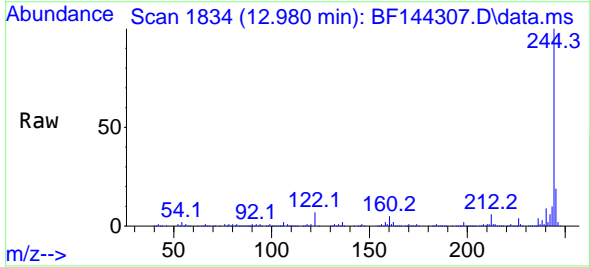
Instrument :
 BNA_F
 ClientSampleId :
 PB170680BL



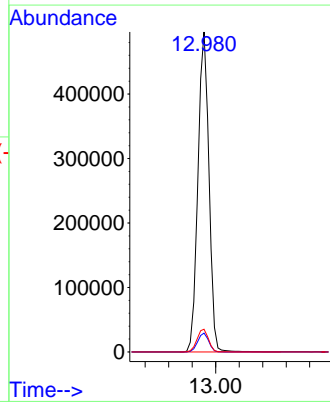
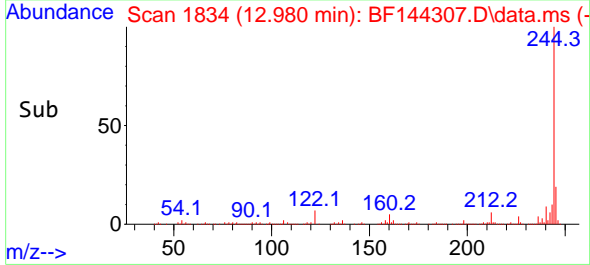
Tgt Ion:240 Resp: 182728
 Ion Ratio Lower Upper
 240 100
 120 9.0 6.6 10.0
 236 25.8 21.4 32.2

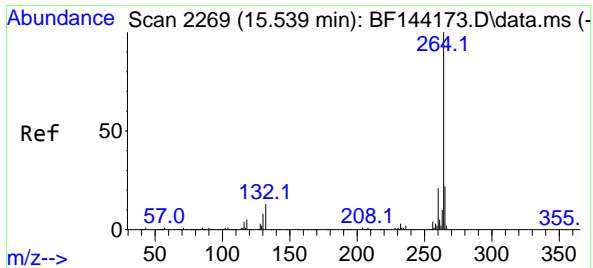


#79
 Terphenyl-d14
 Concen: 56.081 ng
 RT: 12.980 min Scan# 1834
 Delta R.T. -0.012 min
 Lab File: BF144307.D
 Acq: 21 Nov 2025 14:33



Tgt Ion:244 Resp: 645147
 Ion Ratio Lower Upper
 244 100
 212 5.9 5.3 7.9
 122 7.1 5.6 8.4





#86
 Perylene-d12
 Concen: 20.000 ng
 RT: 15.521 min Scan# 21
 Delta R.T. -0.018 min
 Lab File: BF144307.D
 Acq: 21 Nov 2025 14:33

Instrument :
 BNA_F
 ClientSampleId :
 PB170680BL

Tgt Ion:264 Resp: 222979

Ion	Ratio	Lower	Upper
264	100		
260	22.5	17.1	25.7
265	21.5	17.4	26.0

