

Data Path : Z:\svoasrv\HPCHEM1\BNA\_F\Data\BF112125\  
 Data File : BF144309.D  
 Acq On : 21 Nov 2025 15:50  
 Operator : RC/JU  
 Sample : Q3669-01 5X  
 Misc :  
 ALS Vial : 5 Sample Multiplier: 1

Instrument :  
 BNA\_F  
 ClientSampleId :  
 TR-04-112025

Quant Time: Nov 21 16:09:11 2025  
 Quant Method : Z:\svoasrv\HPCHEM1\BNA\_F\Methods\8270-BF110525.M  
 Quant Title : ASP BNA STANDARDS FOR 5 POINT CALIBRATION  
 QLast Update : Wed Nov 05 18:37:33 2025  
 Response via : Initial Calibration

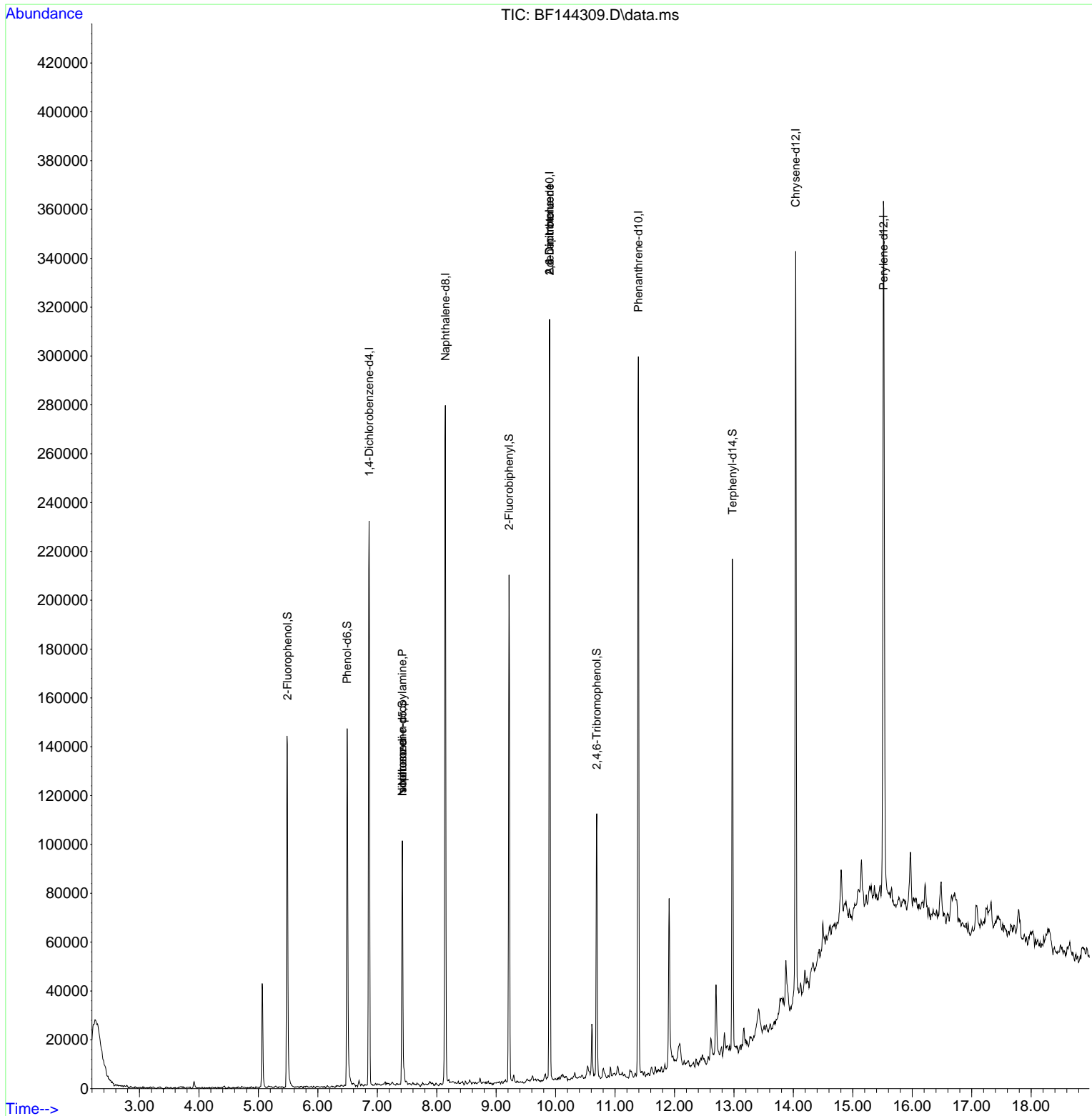
Compound	R.T.	QIon	Response	Conc	Units	Dev(Min)
Internal Standards						
1) 1,4-Dichlorobenzene-d4	6.863	152	50367	20.000	ng	-0.01
21) Naphthalene-d8	8.145	136	182660	20.000	ng	-0.01
39) Acenaphthene-d10	9.898	164	97508	20.000	ng	-0.02
64) Phenanthrene-d10	11.392	188	162575	20.000	ng	-0.01
76) Chrysene-d12	14.039	240	153057	20.000	ng	-0.01
86) Perylene-d12	15.515	264	176389	20.000	ng	-0.02
System Monitoring Compounds						
5) 2-Fluorophenol	5.487	112	64745	20.116	ng	0.00
7) Phenol-d6	6.493	99	74233	20.355	ng	0.00
23) Nitrobenzene-d5	7.422	82	39920	12.622	ng	-0.01
42) 2,4,6-Tribromophenol	10.692	330	21566	17.625	ng	-0.01
45) 2-Fluorobiphenyl	9.216	172	95252	14.428	ng	-0.01
79) Terphenyl-d14	12.974	244	102846	10.673	ng	-0.02
Target Compounds						
19) n-Nitroso-di-n-propyla...	7.422	70	6425	2.676	ng	# 81
25) Isophorone	7.422	82	39919	6.673	ng	# 66
51) 2,6-Dinitrotoluene	9.898	165	12571	9.613	ng	# 28
57) 2,4-Dinitrotoluene	9.898	165	12571	7.181	ng	# 28

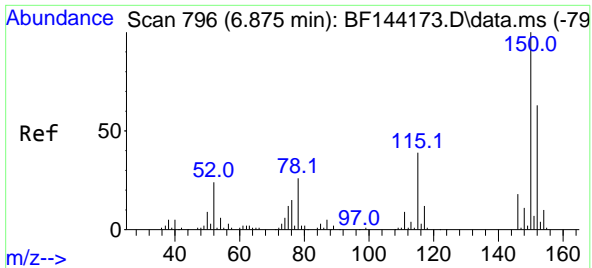
(#) = qualifier out of range (m) = manual integration (+) = signals summed

Data Path : Z:\svoasrv\HPCHEM1\BNA\_F\Data\BF112125\  
 Data File : BF144309.D  
 Acq On : 21 Nov 2025 15:50  
 Operator : RC/JU  
 Sample : Q3669-01 5X  
 Misc :  
 ALS Vial : 5 Sample Multiplier: 1

Instrument :  
 BNA\_F  
 ClientSampleId :  
 TR-04-112025

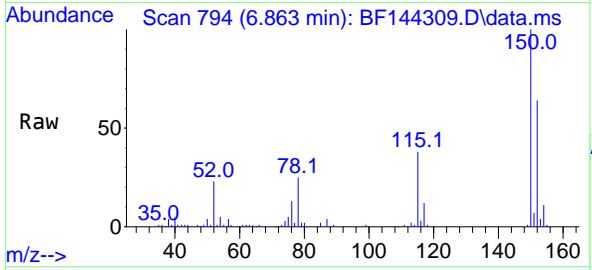
Quant Time: Nov 21 16:09:11 2025  
 Quant Method : Z:\svoasrv\HPCHEM1\BNA\_F\Methods\8270-BF110525.M  
 Quant Title : ASP BNA STANDARDS FOR 5 POINT CALIBRATION  
 QLast Update : Wed Nov 05 18:37:33 2025  
 Response via : Initial Calibration



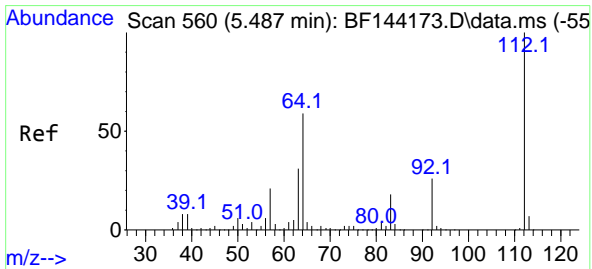
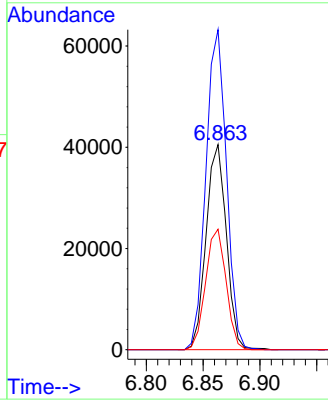
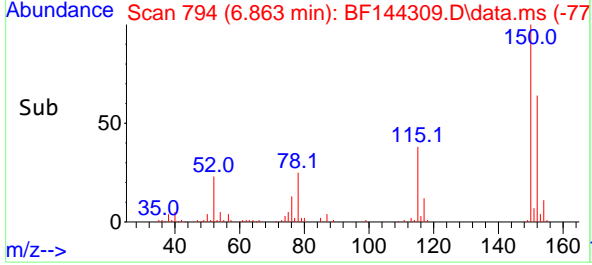


#1  
 1,4-Dichlorobenzene-d4  
 Concen: 20.000 ng  
 RT: 6.863 min Scan# 794  
 Delta R.T. -0.012 min  
 Lab File: BF144309.D  
 Acq: 21 Nov 2025 15:50

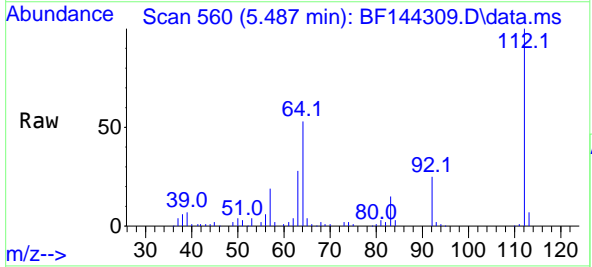
Instrument :  
 BNA\_F  
 ClientSampleId :  
 TR-04-112025



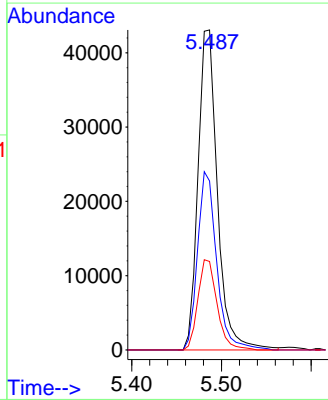
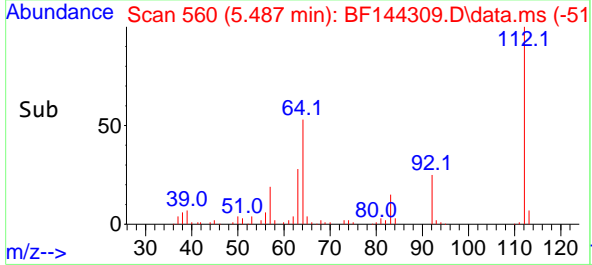
Tgt Ion:152 Resp: 50367  
 Ion Ratio Lower Upper  
 152 100  
 150 156.0 127.4 191.0  
 115 58.8 49.5 74.3

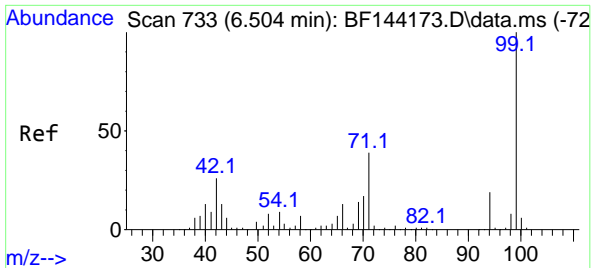


#5  
 2-Fluorophenol  
 Concen: 20.116 ng  
 RT: 5.487 min Scan# 560  
 Delta R.T. -0.006 min  
 Lab File: BF144309.D  
 Acq: 21 Nov 2025 15:50



Tgt Ion:112 Resp: 64745  
 Ion Ratio Lower Upper  
 112 100  
 64 52.8 47.2 70.8  
 63 27.6 24.4 36.6

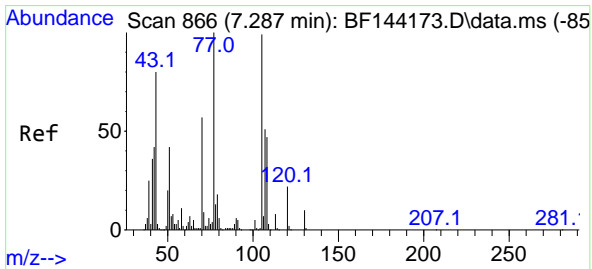
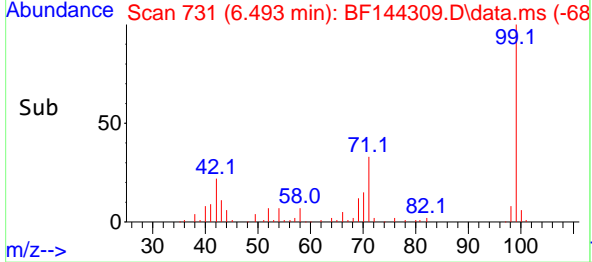
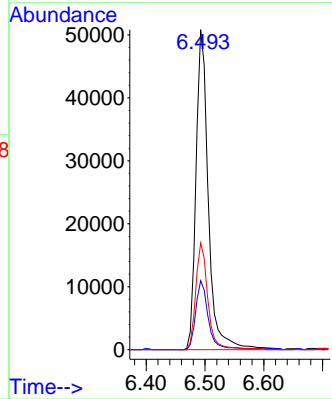
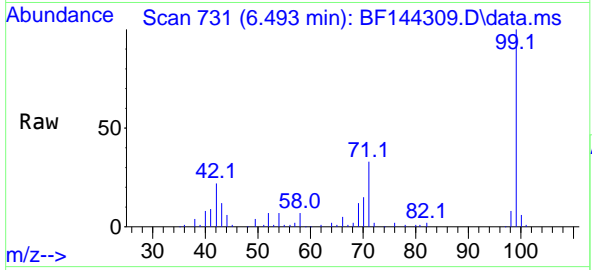




#7  
Phenol-d6  
Concen: 20.355 ng  
RT: 6.493 min Scan# 71  
Delta R.T. -0.006 min  
Lab File: BF144309.D  
Acq: 21 Nov 2025 15:50

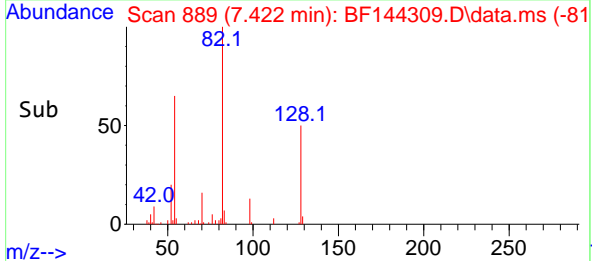
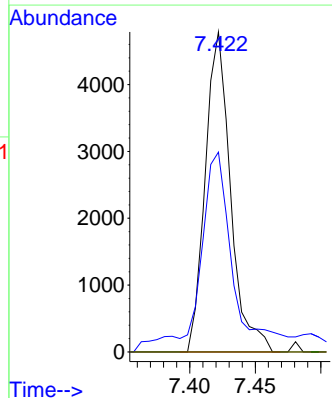
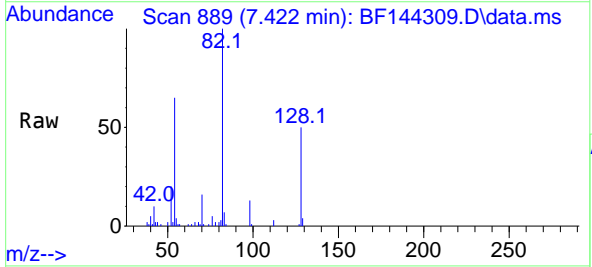
Instrument :  
BNA\_F  
ClientSampleId :  
TR-04-112025

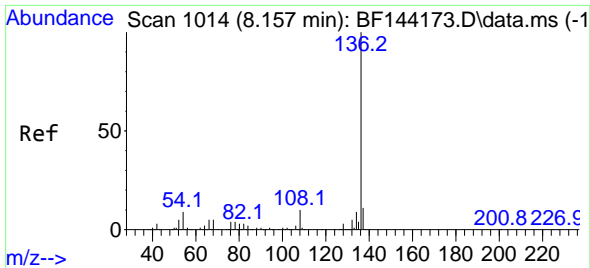
Tgt Ion: 99 Resp: 74233  
Ion Ratio Lower Upper  
99 100  
42 21.6 20.9 31.3  
71 33.3 31.4 47.2



#19  
n-Nitroso-di-n-propylamine  
Concen: 2.676 ng  
RT: 7.422 min Scan# 889  
Delta R.T. 0.147 min  
Lab File: BF144309.D  
Acq: 21 Nov 2025 15:50

Tgt Ion: 70 Resp: 6425  
Ion Ratio Lower Upper  
70 100  
42 62.4 58.3 87.5  
101 0.0 7.0 10.6#  
130 0.0 14.4 21.6#



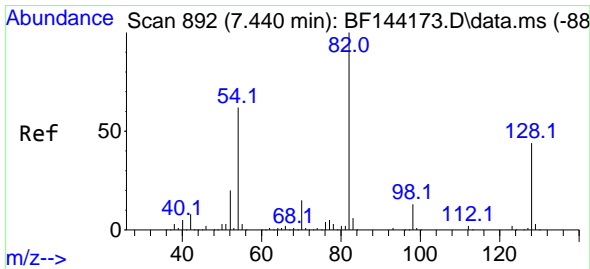
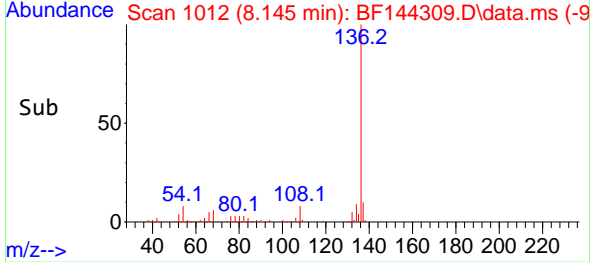
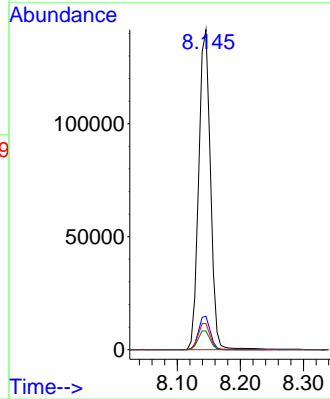
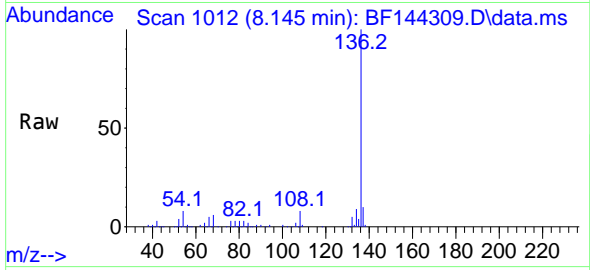


#21  
 Naphthalene-d8  
 Concen: 20.000 ng  
 RT: 8.145 min Scan# 1014  
 Delta R.T. -0.012 min  
 Lab File: BF144309.D  
 Acq: 21 Nov 2025 15:50

Instrument :  
 BNA\_F  
 ClientSampleId :  
 TR-04-112025

Tgt Ion:136 Resp: 182660

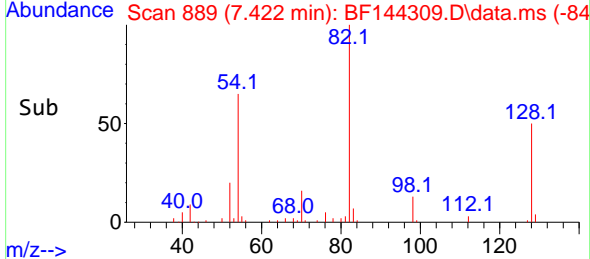
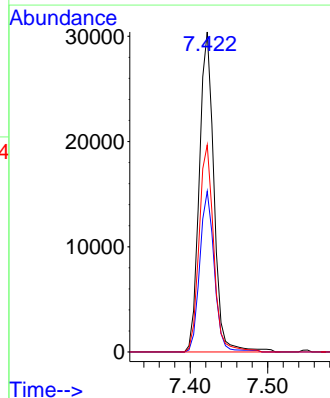
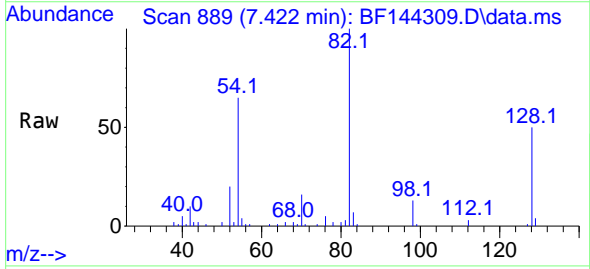
Ion	Ratio	Lower	Upper
136	100		
137	10.5	8.6	13.0
54	8.2	7.0	10.6
68	5.9	4.3	6.5

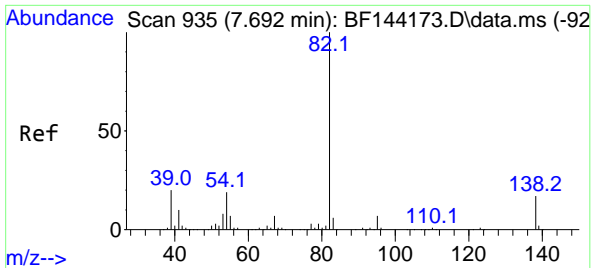


#23  
 Nitrobenzene-d5  
 Concen: 12.622 ng  
 RT: 7.422 min Scan# 889  
 Delta R.T. -0.012 min  
 Lab File: BF144309.D  
 Acq: 21 Nov 2025 15:50

Tgt Ion: 82 Resp: 39920

Ion	Ratio	Lower	Upper
82	100		
128	50.2	34.7	52.1
54	64.7	49.5	74.3



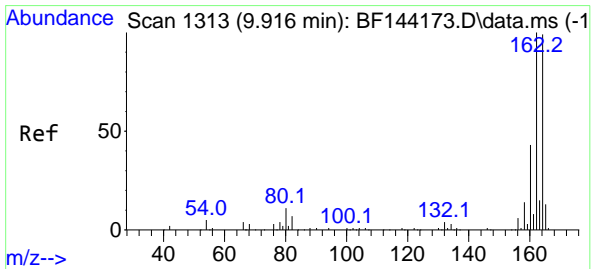
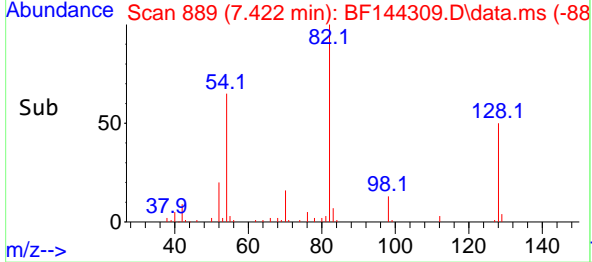
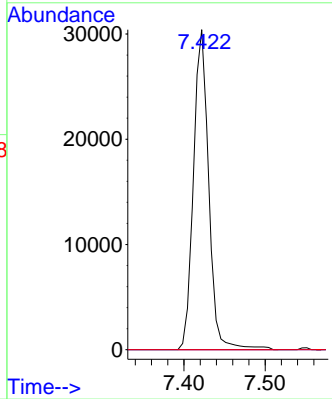
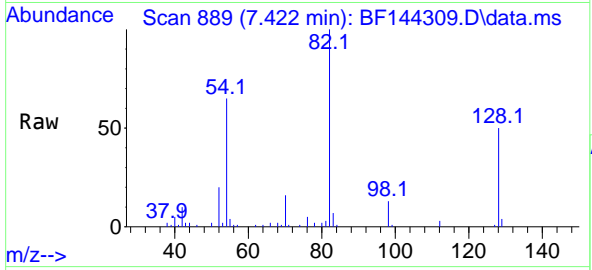


#25  
 Isophorone  
 Concen: 6.673 ng  
 RT: 7.422 min Scan# 889  
 Delta R.T. -0.265 min  
 Lab File: BF144309.D  
 Acq: 21 Nov 2025 15:50

Instrument : BNA\_F  
 ClientSampleId : TR-04-112025

Tgt Ion: 82 Resp: 39919

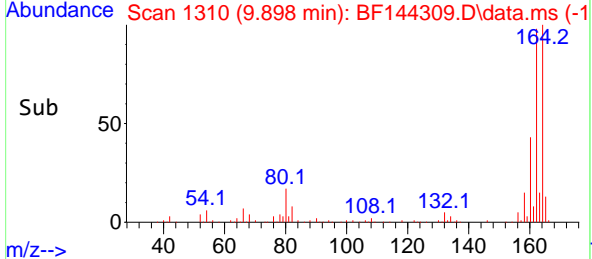
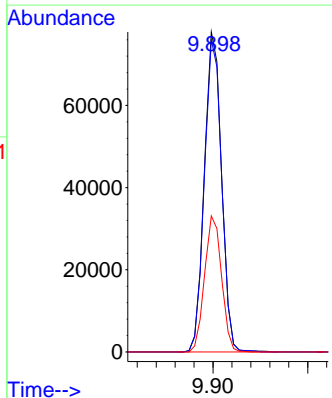
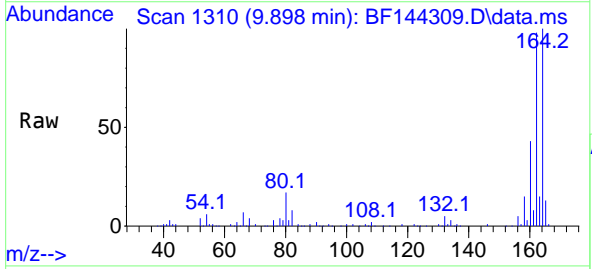
Ion	Ratio	Lower	Upper
82	100		
95	0.0	5.5	8.3#
138	0.0	13.7	20.5#

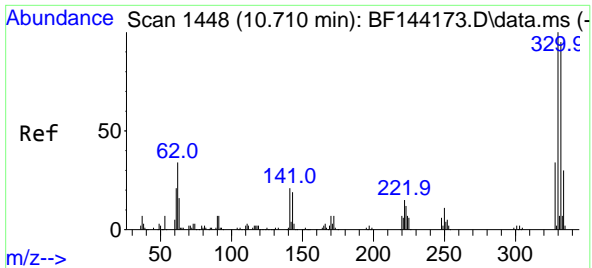


#39  
 Acenaphthene-d10  
 Concen: 20.000 ng  
 RT: 9.898 min Scan# 1310  
 Delta R.T. -0.018 min  
 Lab File: BF144309.D  
 Acq: 21 Nov 2025 15:50

Tgt Ion: 164 Resp: 97508

Ion	Ratio	Lower	Upper
164	100		
162	97.6	81.1	121.7
160	42.5	34.5	51.7



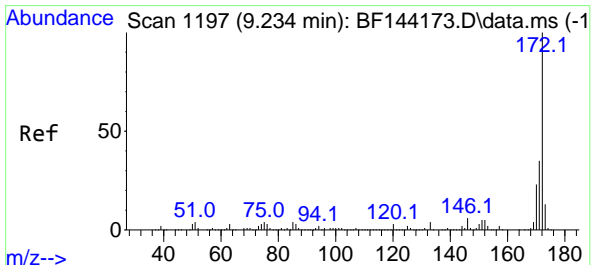
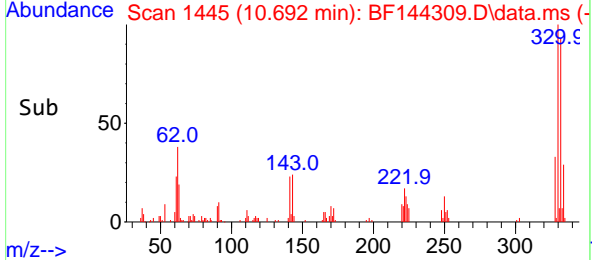
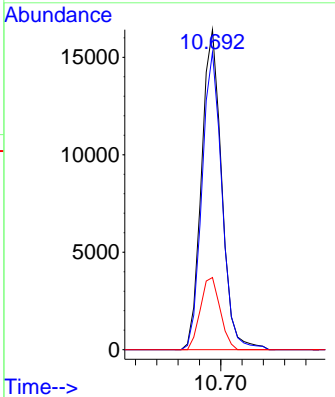
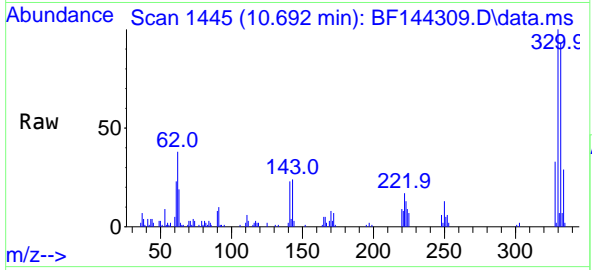


#42  
 2,4,6-Tribromophenol  
 Concen: 17.625 ng  
 RT: 10.692 min Scan# 1445  
 Delta R.T. -0.012 min  
 Lab File: BF144309.D  
 Acq: 21 Nov 2025 15:50

Instrument : BNA\_F  
 ClientSampleId : TR-04-112025

Tgt Ion:330 Resp: 21566

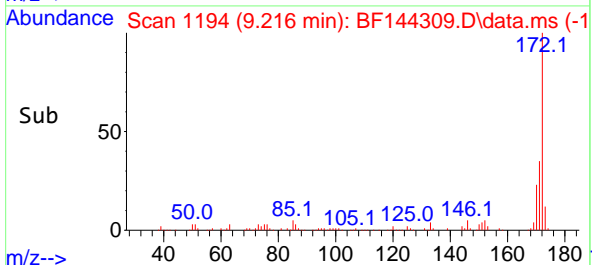
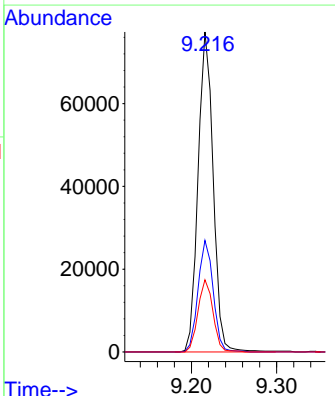
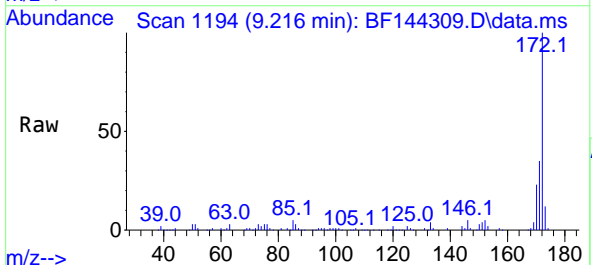
Ion	Ratio	Lower	Upper
330	100		
332	92.0	76.7	115.1
141	22.1	17.8	26.8

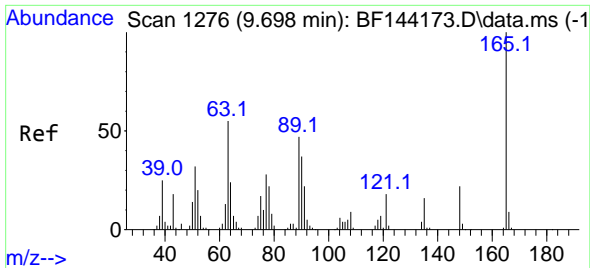


#45  
 2-Fluorobiphenyl  
 Concen: 14.428 ng  
 RT: 9.216 min Scan# 1194  
 Delta R.T. -0.012 min  
 Lab File: BF144309.D  
 Acq: 21 Nov 2025 15:50

Tgt Ion:172 Resp: 95252

Ion	Ratio	Lower	Upper
172	100		
171	34.9	28.1	42.1
170	22.6	18.6	28.0



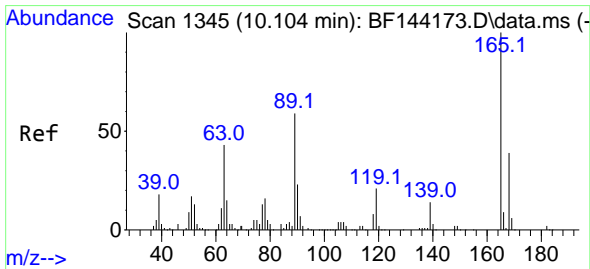
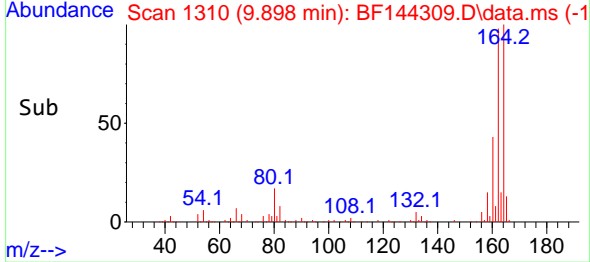
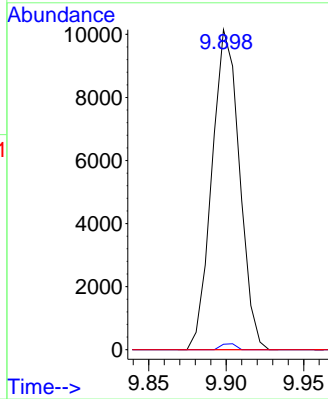
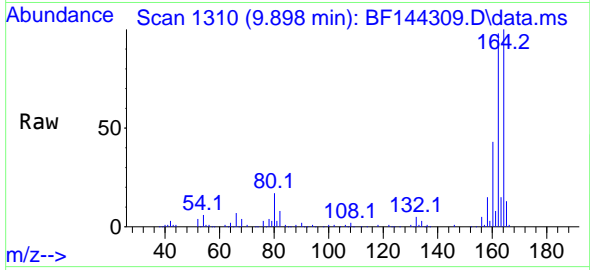


#51  
 2,6-Dinitrotoluene  
 Concen: 9.613 ng  
 RT: 9.898 min Scan# 1111  
 Delta R.T. 0.206 min  
 Lab File: BF144309.D  
 Acq: 21 Nov 2025 15:50

Instrument : BNA\_F  
 ClientSampleId : TR-04-112025

Tgt Ion:165 Resp: 12571

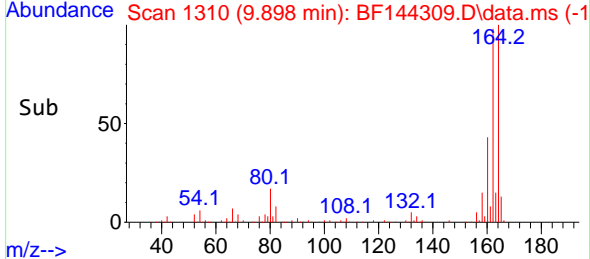
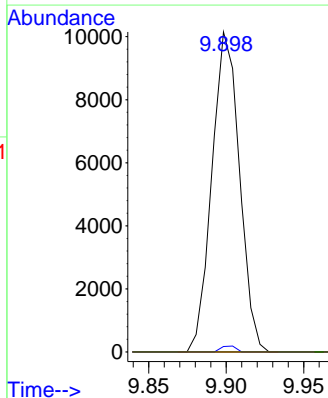
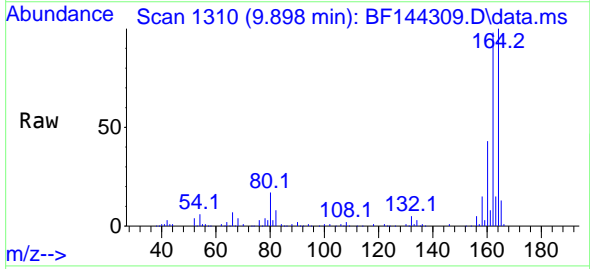
Ion	Ratio	Lower	Upper
165	100		
63	1.7	43.8	65.8#
89	0.0	37.5	56.3#



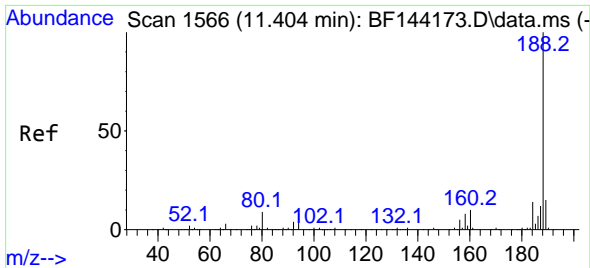
#57  
 2,4-Dinitrotoluene  
 Concen: 7.181 ng  
 RT: 9.898 min Scan# 1310  
 Delta R.T. -0.200 min  
 Lab File: BF144309.D  
 Acq: 21 Nov 2025 15:50

Tgt Ion:165 Resp: 12571

Ion	Ratio	Lower	Upper
165	100		
63	1.7	35.5	53.3#
89	0.0	47.4	71.2#
182	0.0	1.9	2.9#

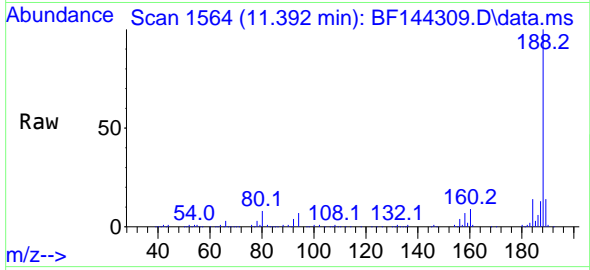




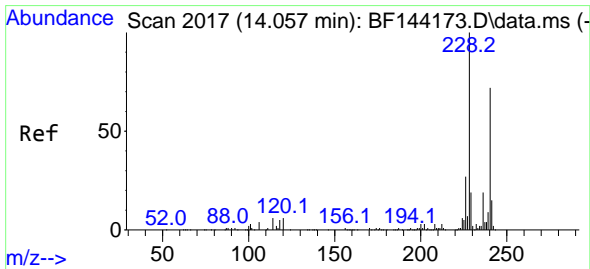
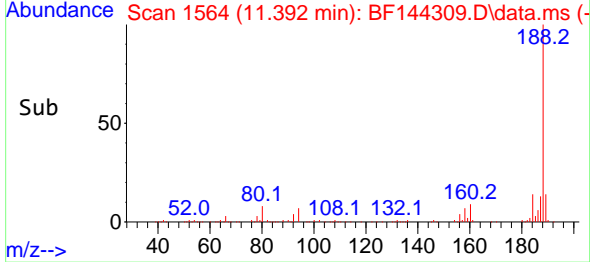
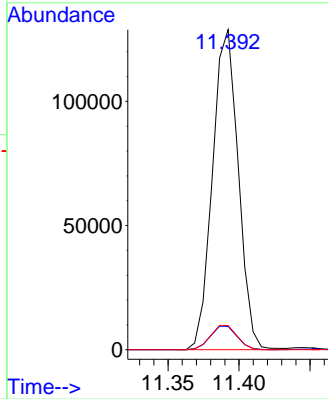


#64  
 Phenanthrene-d10  
 Concen: 20.000 ng  
 RT: 11.392 min Scan# 111  
 Delta R.T. -0.012 min  
 Lab File: BF144309.D  
 Acq: 21 Nov 2025 15:50

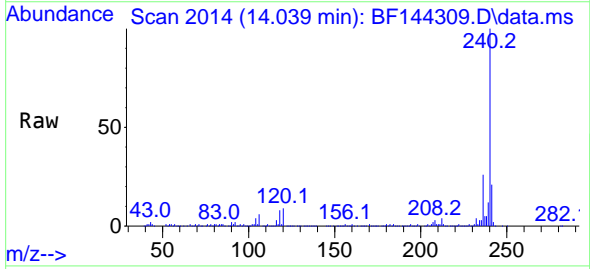
Instrument :  
 BNA\_F  
 ClientSampleId :  
 TR-04-112025



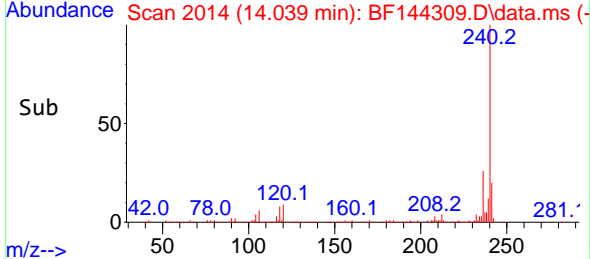
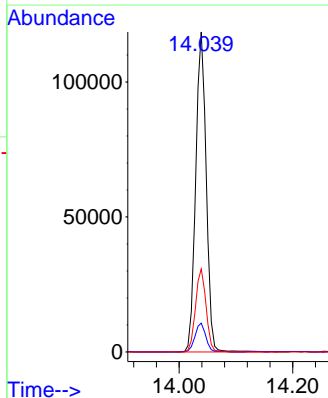
Tgt Ion:188 Resp: 162575  
 Ion Ratio Lower Upper  
 188 100  
 94 7.3 6.2 9.2  
 80 7.6 6.9 10.3

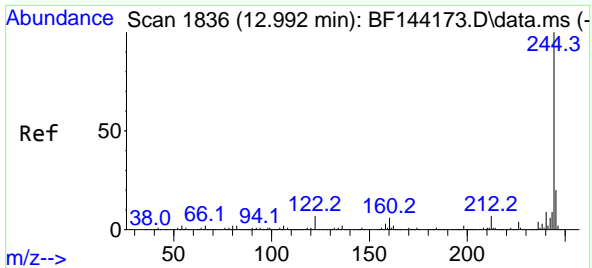


#76  
 Chrysene-d12  
 Concen: 20.000 ng  
 RT: 14.039 min Scan# 2014  
 Delta R.T. -0.012 min  
 Lab File: BF144309.D  
 Acq: 21 Nov 2025 15:50



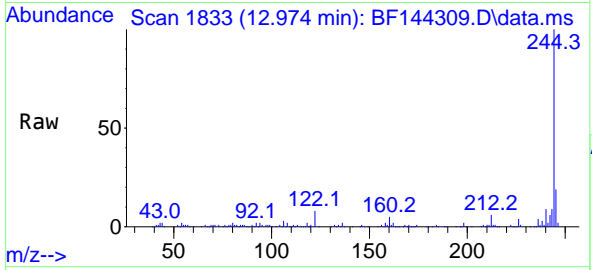
Tgt Ion:240 Resp: 153057  
 Ion Ratio Lower Upper  
 240 100  
 120 9.0 6.6 10.0  
 236 26.0 21.4 32.2





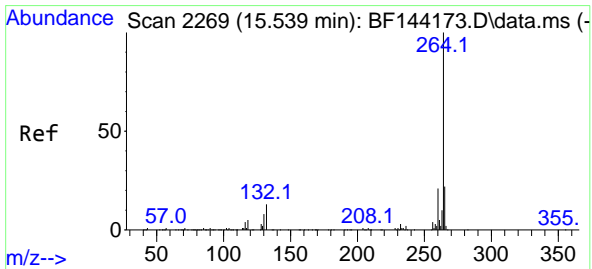
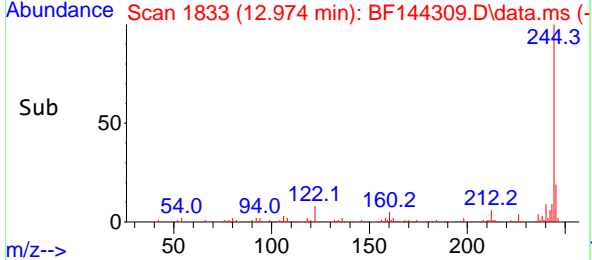
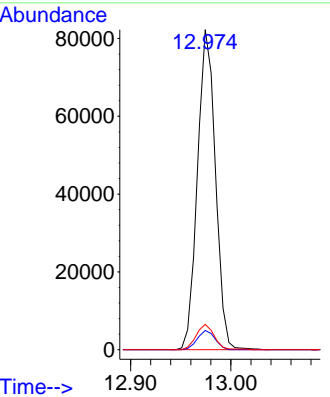
#79  
 Terphenyl-d14  
 Concen: 10.673 ng  
 RT: 12.974 min Scan# 1833  
 Delta R.T. -0.018 min  
 Lab File: BF144309.D  
 Acq: 21 Nov 2025 15:50

Instrument : BNA\_F  
 ClientSampleId : TR-04-112025



Tgt Ion: 244 Resp: 102846

Ion	Ratio	Lower	Upper
244	100		
212	6.0	5.3	7.9
122	7.9	5.6	8.4



#86  
 Perylene-d12  
 Concen: 20.000 ng  
 RT: 15.515 min Scan# 2265  
 Delta R.T. -0.024 min  
 Lab File: BF144309.D  
 Acq: 21 Nov 2025 15:50

Tgt Ion: 264 Resp: 176389

Ion	Ratio	Lower	Upper
264	100		
260	23.1	17.1	25.7
265	22.6	17.4	26.0

