

Data Path : Z:\svoasrv\HPCHEM1\BNA_F\Data\BF112320\
 Data File : BF122463.D
 Acq On : 23 Nov 2020 23:34
 Operator : JU/CG
 Sample : L4848-01
 Misc :
 ALS Vial : 21 Sample Multiplier: 1

Instrument :
 BNA_F
 ClientSampleId :
 TR5-(1-4)-COMP

Quant Time: Nov 24 00:29:05 2020
 Quant Method : Z:\SVOASRV\HPCHEM1\BNA_F\METHODS\8270-BF110920.M
 Quant Title : ASP BNA STANDARDS FOR 5 POINT CALIBRATION
 QLast Update : Fri Nov 20 13:27:02 2020
 Response via : Initial Calibration

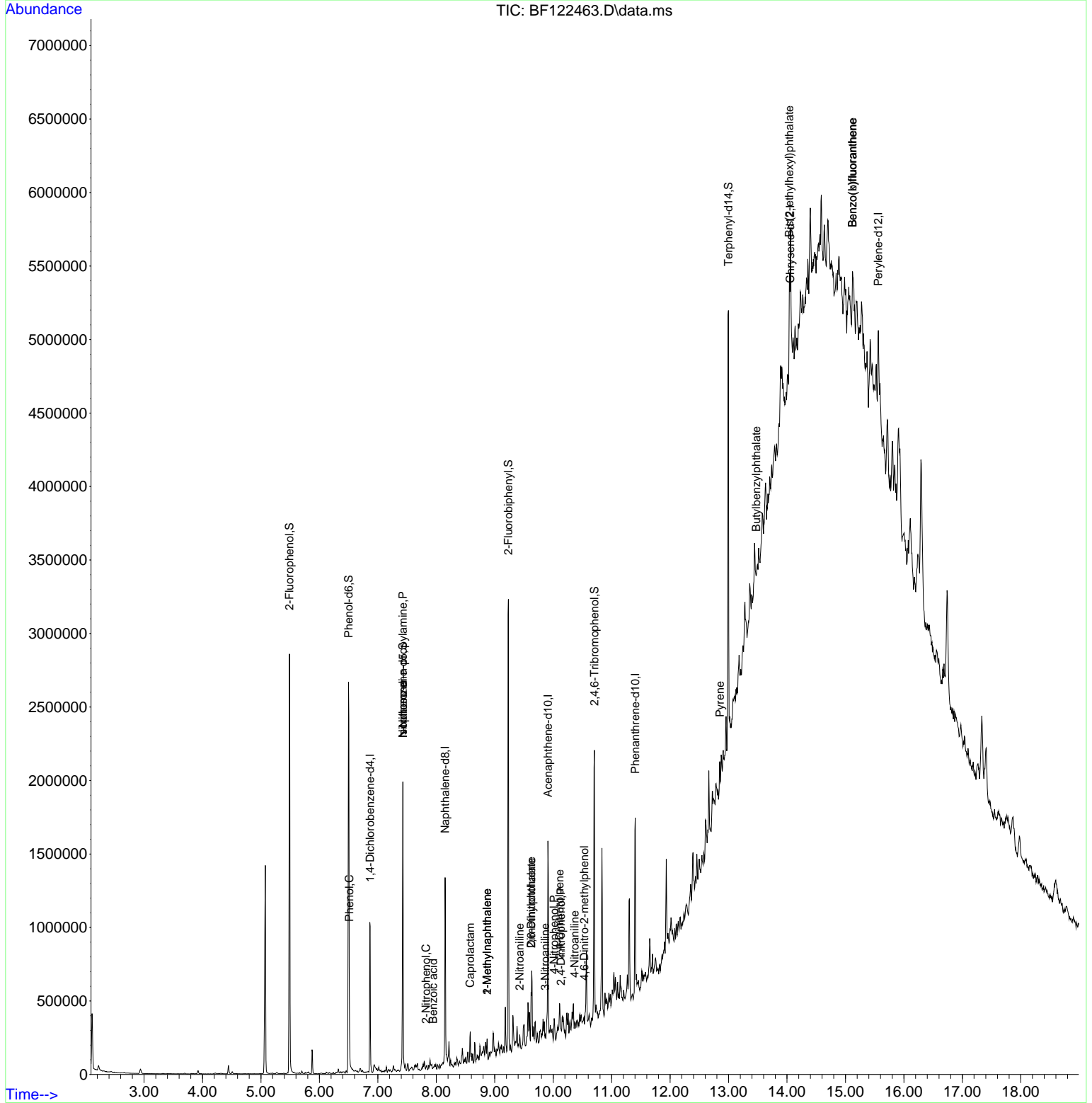
Compound	R.T.	QIon	Response	Conc	Units	Dev(Min)
Internal Standards						
1) 1,4-Dichlorobenzene-d4	6.869	152	153390	20.00	ng	0.00
21) Naphthalene-d8	8.151	136	526654	20.00	ng	0.00
39) Acenaphthene-d10	9.910	164	255874	20.00	ng	0.00
64) Phenanthrene-d10	11.404	188	457505	20.00	ng	# 0.00
76) Chrysene-d12	14.057	240	386575	20.00	ng	0.00
86) Perylene-d12	15.562	264	336024	20.00	ng	0.03
System Monitoring Compounds						
5) 2-Fluorophenol	5.486	112	824756	82.56	ng	0.00
7) Phenol-d6	6.498	99	995520	76.18	ng	-0.01
23) Nitrobenzene-d5	7.428	82	585057	68.01	ng	0.00
42) 2,4,6-Tribromophenol	10.704	330	248113	90.35	ng	0.00
45) 2-Fluorobiphenyl	9.233	172	991497	60.54	ng	0.00
79) Terphenyl-d14	12.998	244	982567	53.85	ng	0.00
Target Compounds						
9) Benzaldehyde	6.410	77	2565	Below Cal		93
10) Phenol	6.510	94	82543	6.41	ng	85
19) n-Nitroso-di-n-propyla...	7.428	70	81311	10.41	ng	# 74
25) Isophorone	7.428	82	580811	30.28	ng	# 67
26) 2-Nitrophenol	7.822	139	108	6.84	ng	# 1
32) Benzoic acid	7.945	122	913	8.11	ng	# 64
35) Caprolactam	8.580	113	5673	2.23	ng	# 73
37) 2-Methylnaphthalene	8.869	142	38901	2.10	ng	97
38) 1-Methylnaphthalene	8.869	142	38901	2.25	ng	93
48) 2-Nitroaniline	9.427	65	381	5.24	ng	# 66
50) Dimethylphthalate	9.622	163	51482	2.83	ng	# 93
51) 2,6-Dinitrotoluene	9.622	165	1693	4.20	ng	# 68
53) 3-Nitroaniline	9.863	138	740	3.71	ng	# 37
54) 2,4-Dinitrophenol	10.133	184	130	6.46	ng	# 1
56) 4-Nitrophenol	10.016	139	2846	6.08	ng	# 28
57) 2,4-Dinitrotoluene	10.110	165	1532	4.99	ng	# 54
62) 4-Nitroaniline	10.369	138	1506	3.69	ng	99
65) 4,6-Dinitro-2-methylph...	10.533	198	252	6.30	ng	# 1
78) Pyrene	12.851	202	86669	3.19	ng	96
80) Butylbenzylphthalate	13.474	149	4716	3.69	ng	# 73
84) Bis(2-ethylhexyl)phtha...	14.039	149	247380	18.89	ng	97
88) Benzo(b)fluoranthene	15.121	252	48044	2.21	ng	# 1
89) Benzo(k)fluoranthene	15.121	252	48044	2.26	ng	# 1

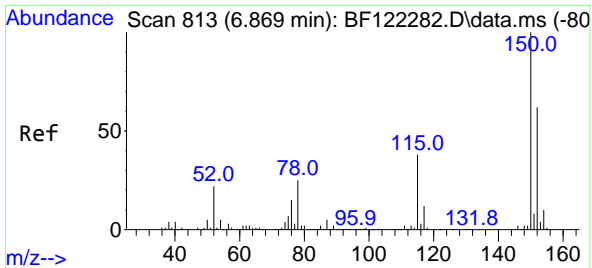
(#) = qualifier out of range (m) = manual integration (+) = signals summed

Data Path : Z:\svoasrv\HPCHEM1\BNA_F\Data\BF112320\
 Data File : BF122463.D
 Acq On : 23 Nov 2020 23:34
 Operator : JU/CG
 Sample : L4848-01
 Misc :
 ALS Vial : 21 Sample Multiplier: 1

Instrument :
 BNA_F
 ClientSampled :
 TR5-(1-4)-COMP

Quant Time: Nov 24 00:29:05 2020
 Quant Method : Z:\SVOASRV\HPCHEM1\BNA_F\METHODS\8270-BF110920.M
 Quant Title : ASP BNA STANDARDS FOR 5 POINT CALIBRATION
 QLast Update : Fri Nov 20 13:27:02 2020
 Response via : Initial Calibration

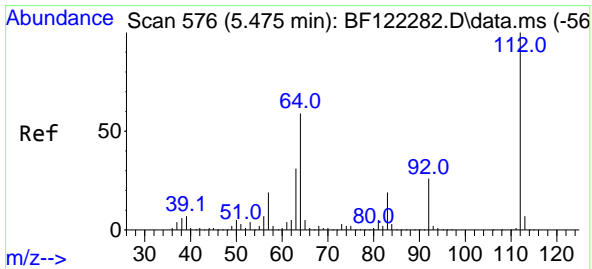
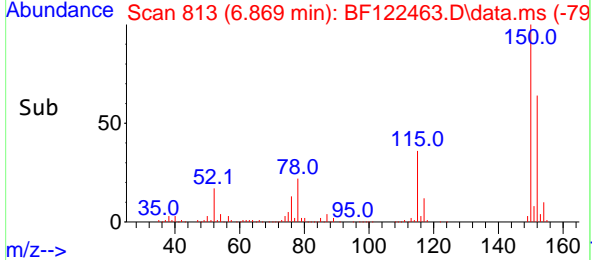
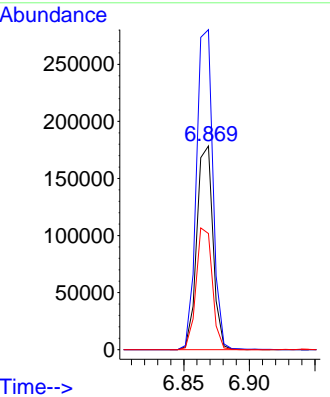
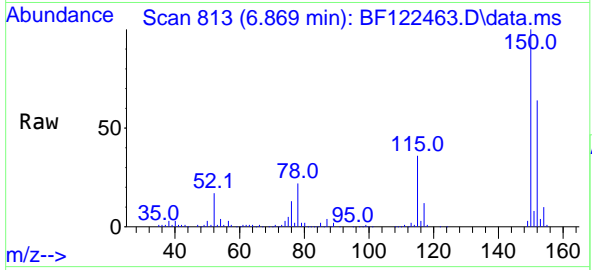




#1
 1,4-Dichlorobenzene-d4
 Concen: 20.00 ng
 RT: 6.869 min Scan# 813
 Delta R.T. -0.000 min
 Lab File: BF122463.D
 Acq: 23 Nov 2020 23:34

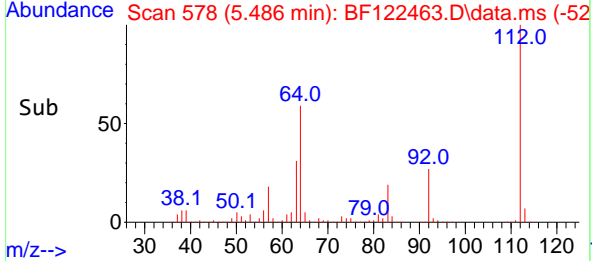
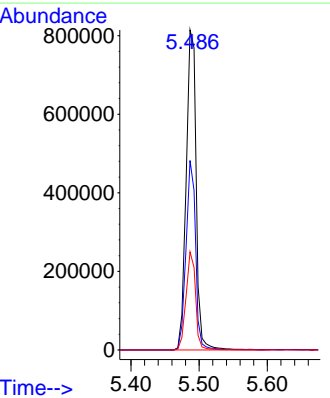
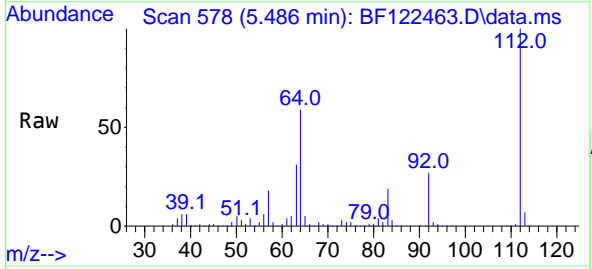
Instrument :
 BNA_F
ClientSampleId :
 TR5-(1-4)-COMP

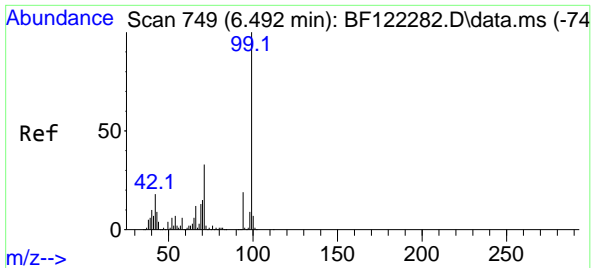
Tgt Ion:152 Resp: 153390
 Ion Ratio Lower Upper
 152 100
 150 157.1 125.3 187.9
 115 57.1 51.9 77.9



#5
 2-Fluorophenol
 Concen: 82.56 ng
 RT: 5.486 min Scan# 578
 Delta R.T. -0.006 min
 Lab File: BF122463.D
 Acq: 23 Nov 2020 23:34

Tgt Ion:112 Resp: 824756
 Ion Ratio Lower Upper
 112 100
 64 59.2 50.4 75.6
 63 30.7 25.8 38.6



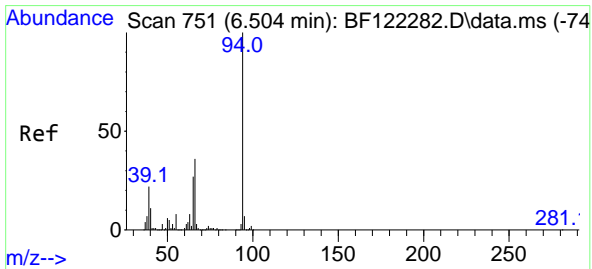
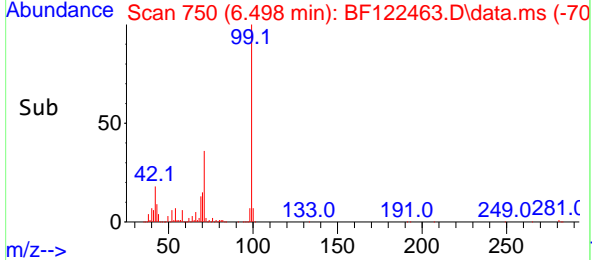
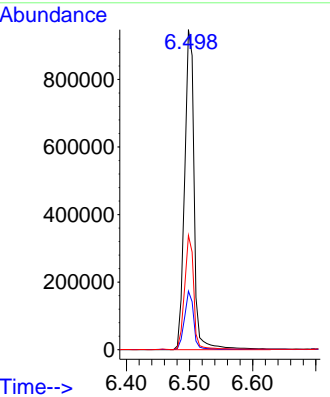
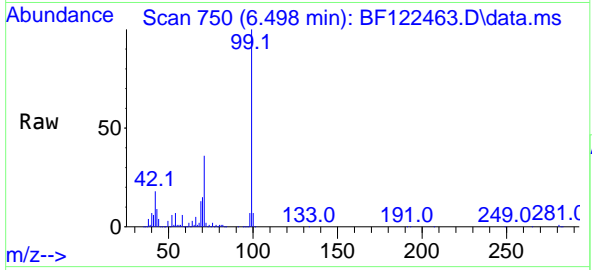


#7
 Phenol-d6
 Concen: 76.18 ng
 RT: 6.498 min Scan# 750
 Delta R.T. -0.012 min
 Lab File: BF122463.D
 Acq: 23 Nov 2020 23:34

Instrument :
 BNA_F
 ClientSampleId :
 TR5-(1-4)-COMP

Tgt Ion: 99 Resp: 995520

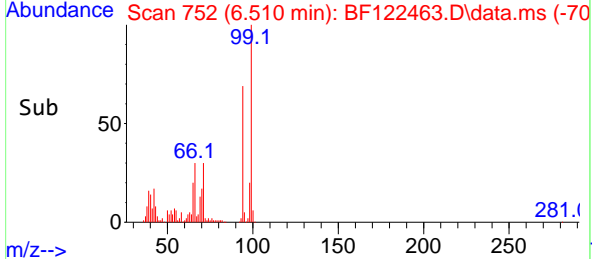
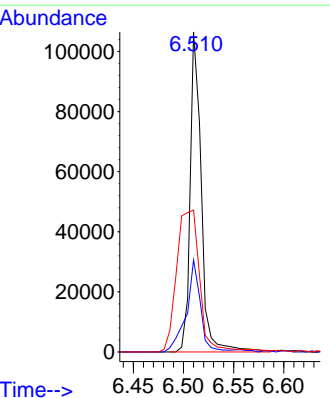
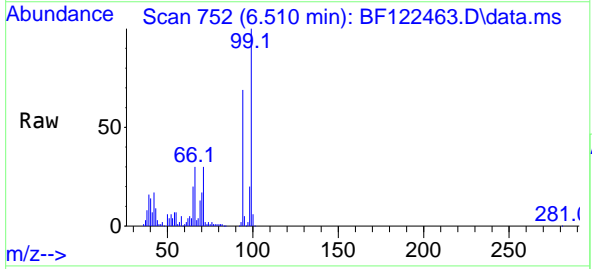
Ion	Ratio	Lower	Upper
99	100		
42	18.3	15.9	23.9
71	35.7	27.1	40.7

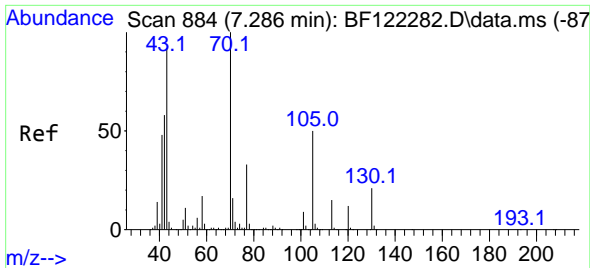


#10
 Phenol
 Concen: 6.41 ng
 RT: 6.510 min Scan# 752
 Delta R.T. -0.012 min
 Lab File: BF122463.D
 Acq: 23 Nov 2020 23:34

Tgt Ion: 94 Resp: 82543

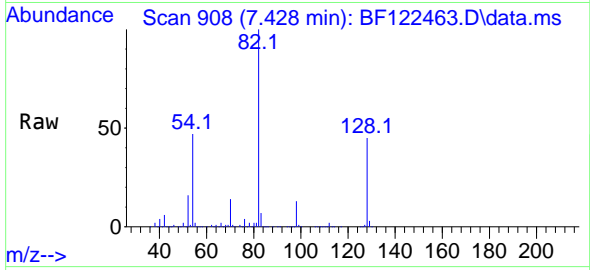
Ion	Ratio	Lower	Upper
94	100		
65	28.8	17.1	57.1
66	44.4	36.0	76.0



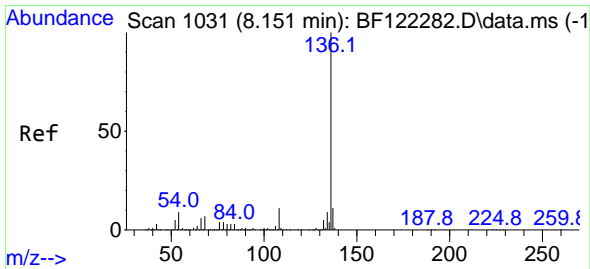
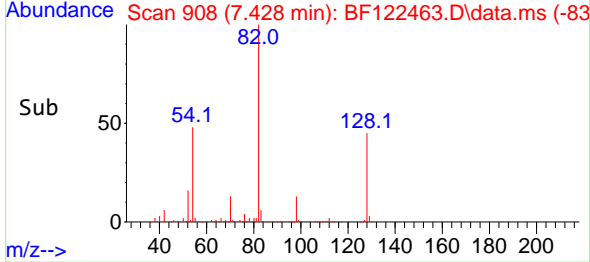
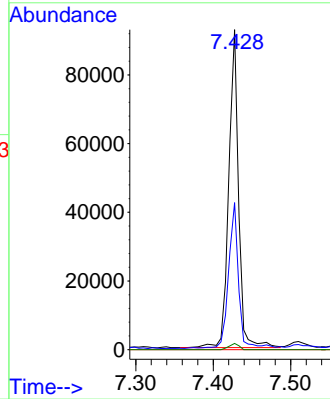


#19
 n-Nitroso-di-n-propylamine
 Concen: 10.41 ng
 RT: 7.428 min Scan# 908
 Delta R.T. 0.141 min
 Lab File: BF122463.D
 Acq: 23 Nov 2020 23:34

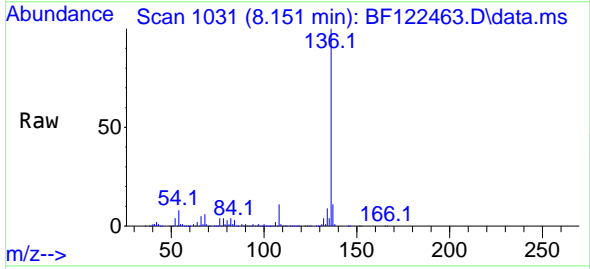
Instrument :
 BNA_F
 ClientSampleId :
 TR5-(1-4)-COMP



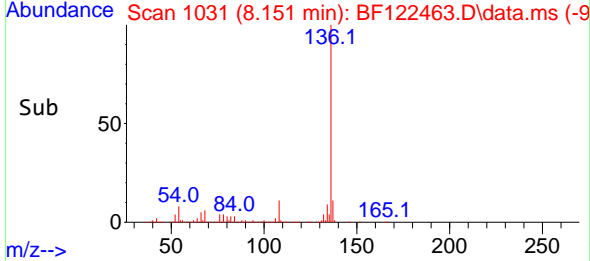
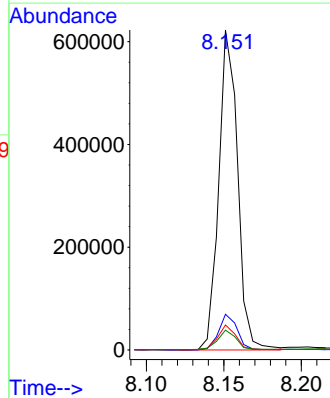
Tgt Ion: 70 Resp: 81311
 Ion Ratio Lower Upper
 70 100
 42 46.0 50.2 75.4#
 101 0.0 7.5 11.3#
 130 2.0 15.5 23.3#

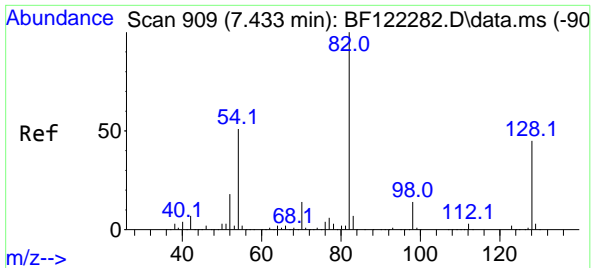


#21
 Naphthalene-d8
 Concen: 20.00 ng
 RT: 8.151 min Scan# 1031
 Delta R.T. -0.006 min
 Lab File: BF122463.D
 Acq: 23 Nov 2020 23:34



Tgt Ion: 136 Resp: 526654
 Ion Ratio Lower Upper
 136 100
 137 11.2 8.6 13.0
 54 7.8 7.1 10.7
 68 6.2 5.0 7.4



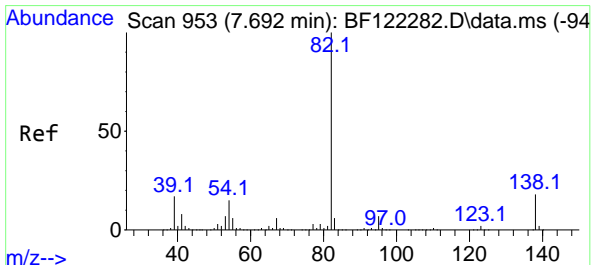
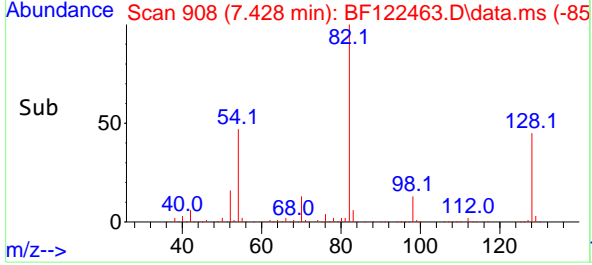
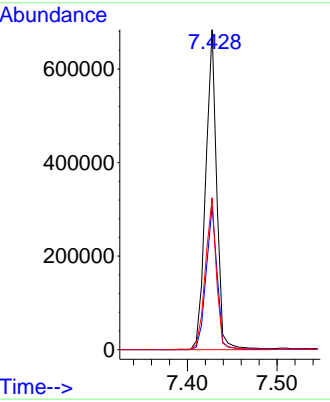
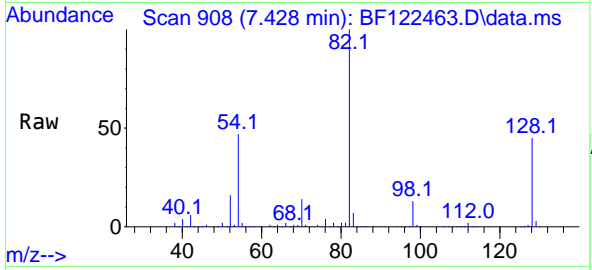


#23
 Nitrobenzene-d5
 Concen: 68.01 ng
 RT: 7.428 min Scan# 908
 Delta R.T. -0.006 min
 Lab File: BF122463.D
 Acq: 23 Nov 2020 23:34

Instrument :
 BNA_F
ClientSampled :
 TR5-(1-4)-COMP

Tgt Ion: 82 Resp: 585057

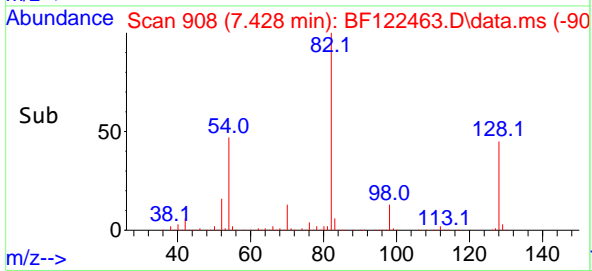
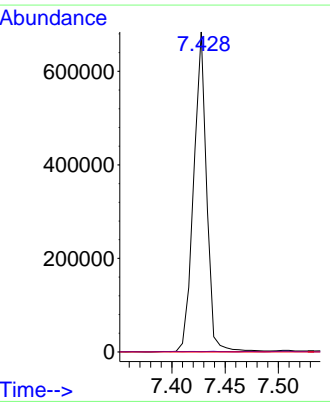
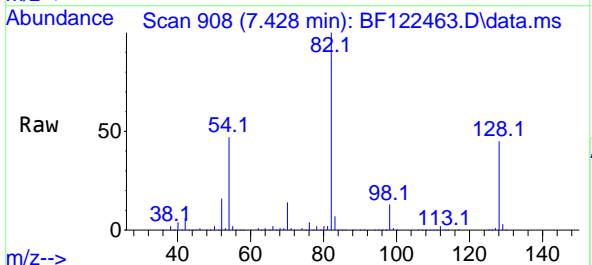
Ion	Ratio	Lower	Upper
82	100		
128	44.8	35.0	52.4
54	47.5	43.9	65.9

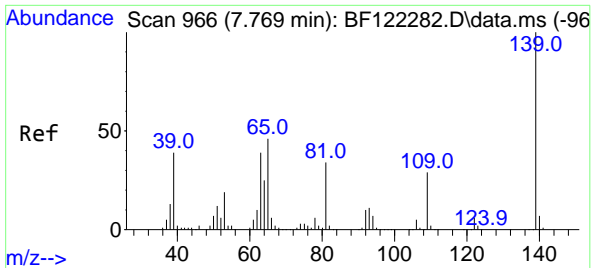


#25
 Isophorone
 Concen: 30.28 ng
 RT: 7.428 min Scan# 908
 Delta R.T. -0.265 min
 Lab File: BF122463.D
 Acq: 23 Nov 2020 23:34

Tgt Ion: 82 Resp: 580811

Ion	Ratio	Lower	Upper
82	100		
95	0.1	5.4	8.0#
138	0.0	13.4	20.0#



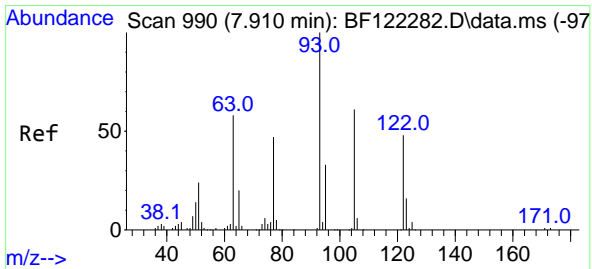
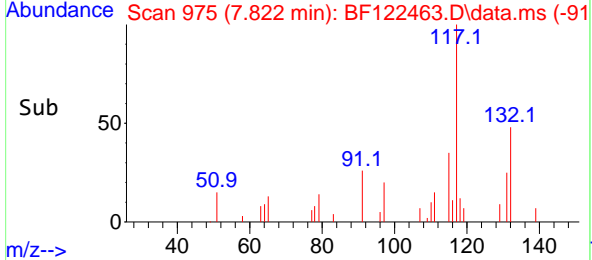
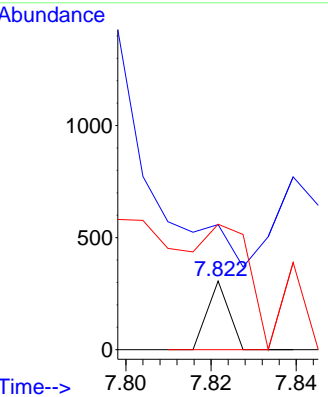
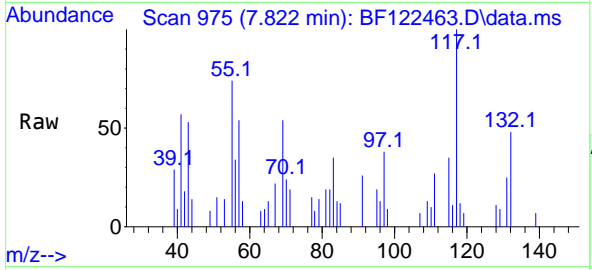


#26
 2-Nitrophenol
 Concen: 6.84 ng
 RT: 7.822 min Scan# 975
 Delta R.T. 0.053 min
 Lab File: BF122463.D
 Acq: 23 Nov 2020 23:34

Instrument :
 BNA_F
 ClientSampled :
 TR5-(1-4)-COMP

Tgt Ion:139 Resp: 108

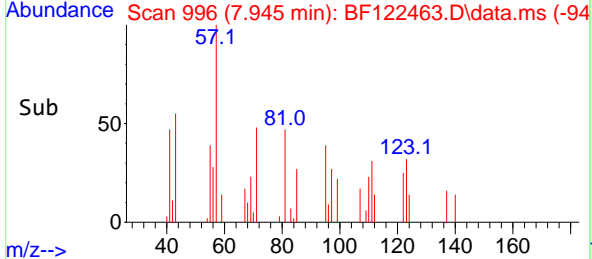
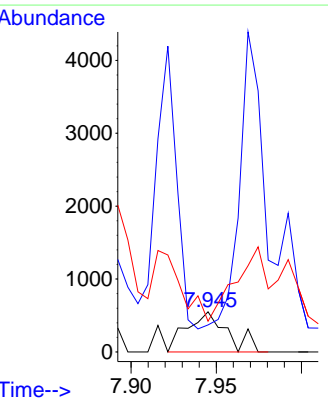
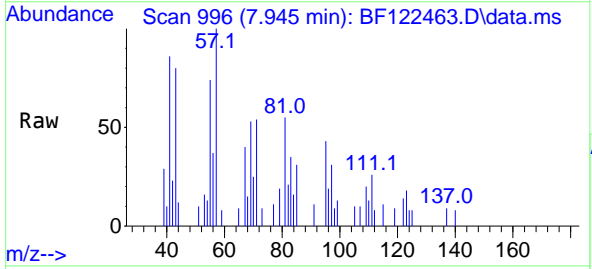
Ion	Ratio	Lower	Upper
139	100		
109	182.4	23.0	34.4#
65	183.0	39.9	59.9#

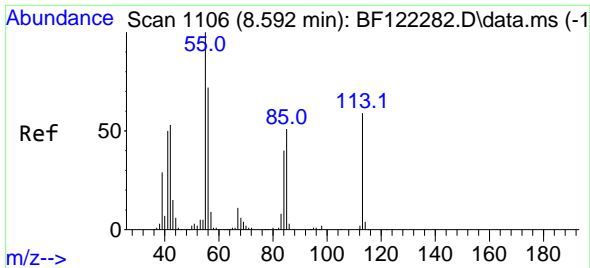


#32
 Benzoic acid
 Concen: 8.11 ng
 RT: 7.945 min Scan# 996
 Delta R.T. 0.006 min
 Lab File: BF122463.D
 Acq: 23 Nov 2020 23:34

Tgt Ion:122 Resp: 913

Ion	Ratio	Lower	Upper
122	100		
105	67.5	103.3	143.3#
77	76.7	73.9	113.9

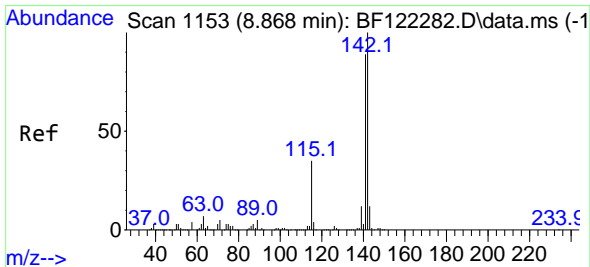
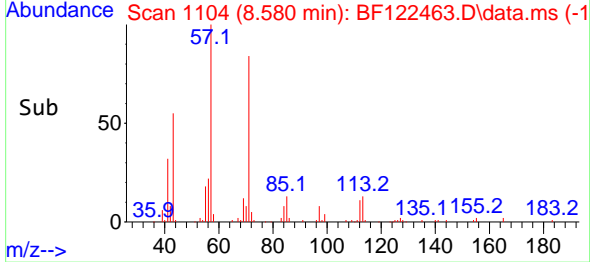
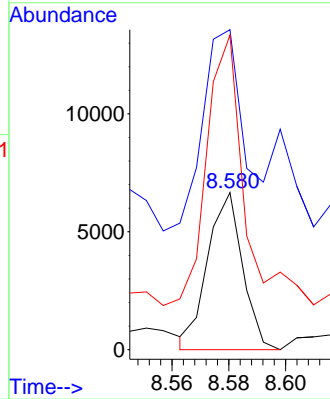
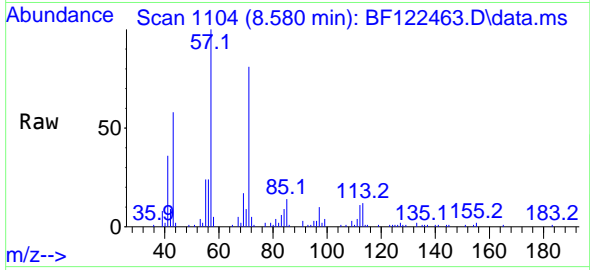




#35
 Caprolactam
 Concen: 2.23 ng
 RT: 8.580 min Scan# 1104
 Delta R.T. -0.024 min
 Lab File: BF122463.D
 Acq: 23 Nov 2020 23:34

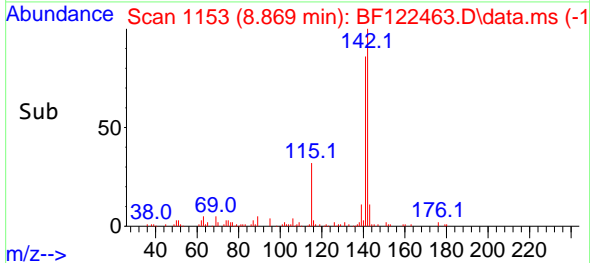
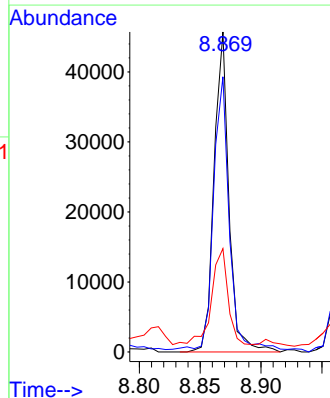
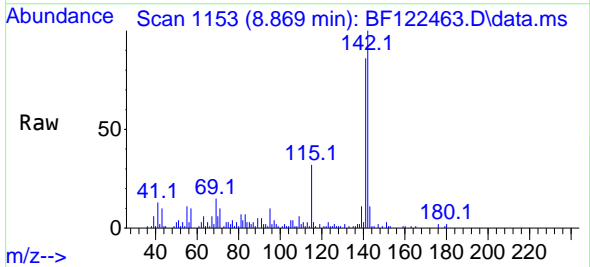
Instrument :
 BNA_F
 ClientSampleId :
 TR5-(1-4)-COMP

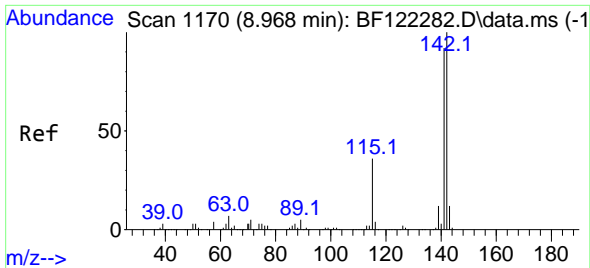
Tgt Ion:113 Resp: 5673
 Ion Ratio Lower Upper
 113 100
 55 203.6 167.5 207.5
 56 200.2 121.2 161.2#



#37
 2-Methylnaphthalene
 Concen: 2.10 ng
 RT: 8.869 min Scan# 1153
 Delta R.T. -0.000 min
 Lab File: BF122463.D
 Acq: 23 Nov 2020 23:34

Tgt Ion:142 Resp: 38901
 Ion Ratio Lower Upper
 142 100
 141 86.0 70.2 105.4
 115 32.3 28.6 43.0

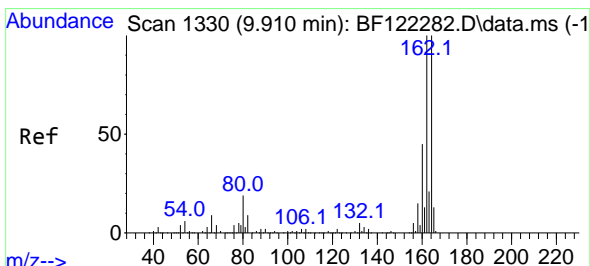
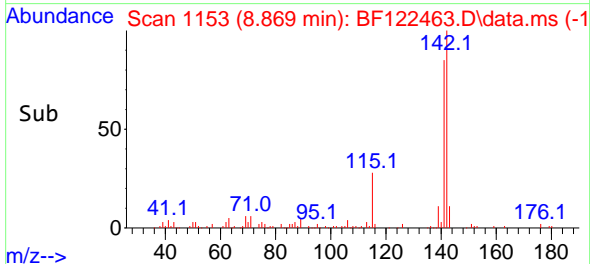
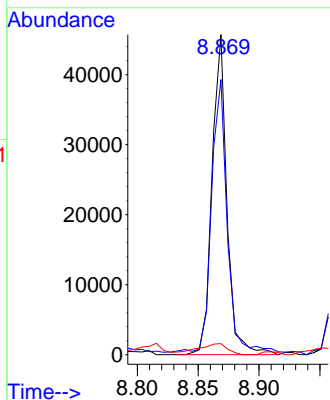
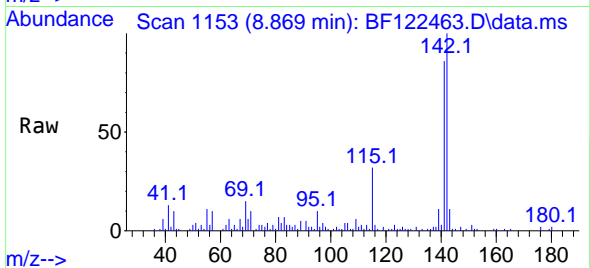




#38
 1-Methylnaphthalene
 Concen: 2.25 ng
 RT: 8.869 min Scan# 1153
 Delta R.T. -0.100 min
 Lab File: BF122463.D
 Acq: 23 Nov 2020 23:34

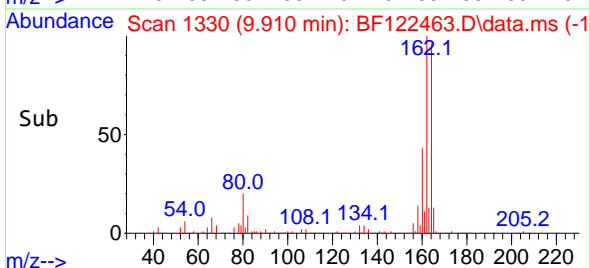
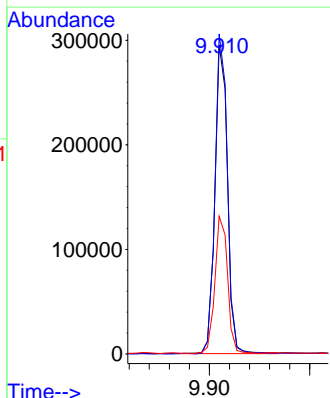
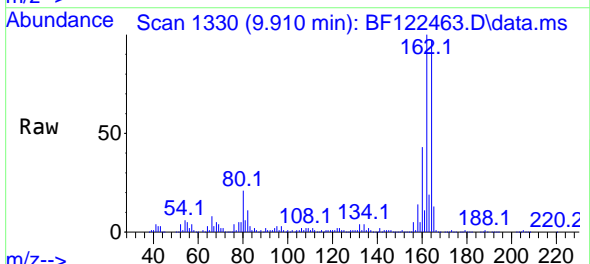
Instrument :
 BNA_F
 ClientSampleId :
 TR5-(1-4)-COMP

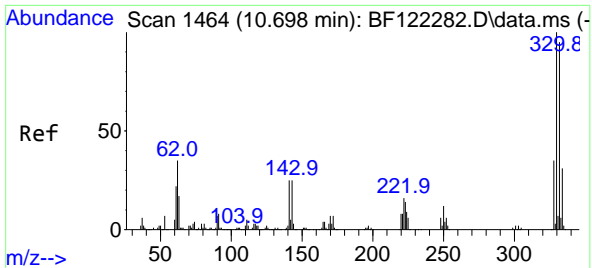
Tgt Ion:142 Resp: 38901
 Ion Ratio Lower Upper
 142 100
 141 86.0 74.5 111.7
 116 3.5 3.2 4.8



#39
 Acenaphthene-d10
 Concen: 20.00 ng
 RT: 9.910 min Scan# 1330
 Delta R.T. -0.006 min
 Lab File: BF122463.D
 Acq: 23 Nov 2020 23:34

Tgt Ion:164 Resp: 255874
 Ion Ratio Lower Upper
 164 100
 162 103.6 83.2 124.8
 160 44.6 37.5 56.3

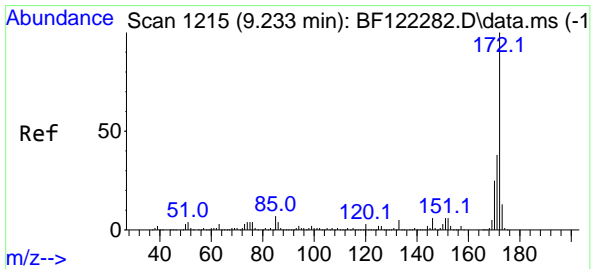
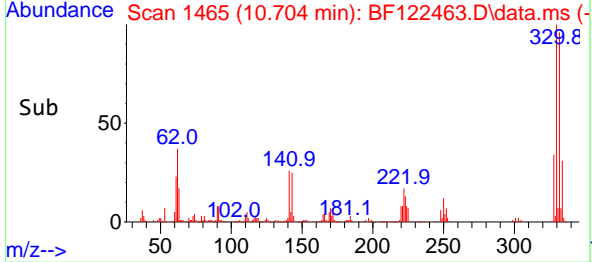
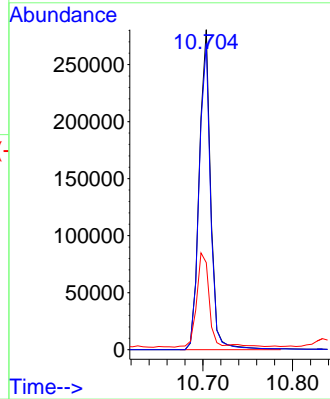
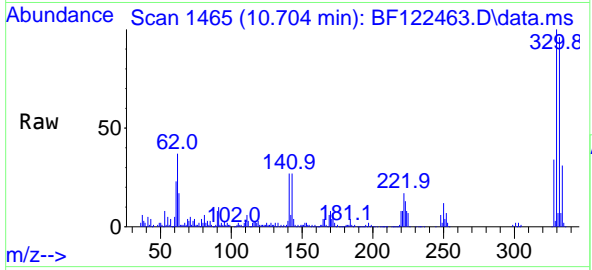




#42
 2,4,6-Tribromophenol
 Concen: 90.35 ng
 RT: 10.704 min Scan# 1465
 Delta R.T. -0.000 min
 Lab File: BF122463.D
 Acq: 23 Nov 2020 23:34

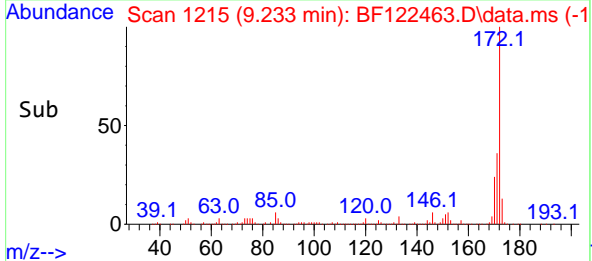
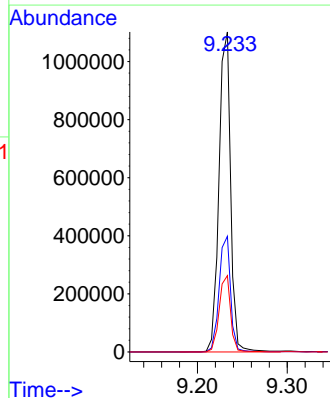
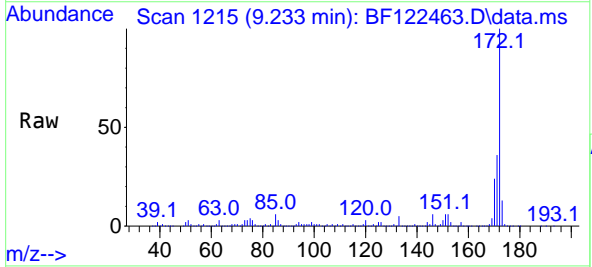
Instrument :
 BNA_F
 ClientSampleId :
 TR5-(1-4)-COMP

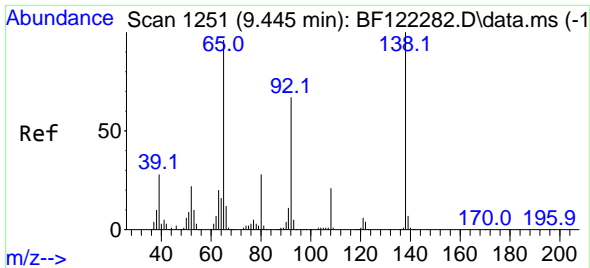
Tgt Ion:330 Resp: 248113
 Ion Ratio Lower Upper
 330 100
 332 97.0 77.3 115.9
 141 31.4 22.3 33.5



#45
 2-Fluorobiphenyl
 Concen: 60.54 ng
 RT: 9.233 min Scan# 1215
 Delta R.T. -0.000 min
 Lab File: BF122463.D
 Acq: 23 Nov 2020 23:34

Tgt Ion:172 Resp: 991497
 Ion Ratio Lower Upper
 172 100
 171 36.1 29.1 43.7
 170 23.8 19.8 29.6



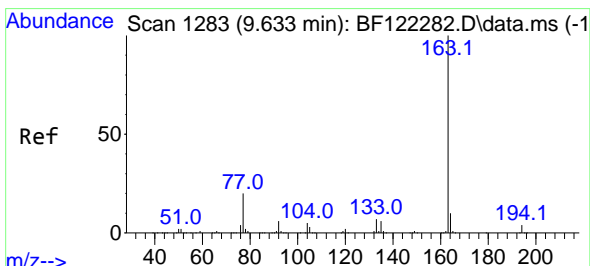
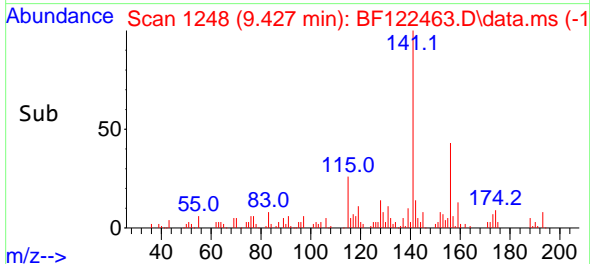
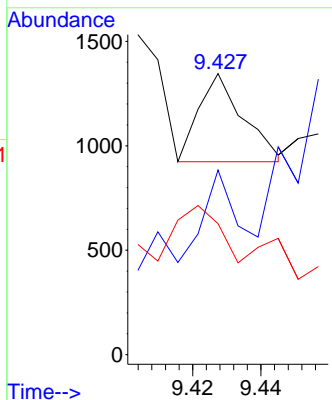
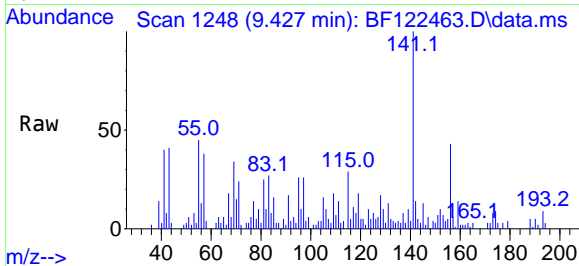


#48
 2-Nitroaniline
 Concen: 5.24 ng
 RT: 9.427 min Scan# 1248
 Delta R.T. -0.030 min
 Lab File: BF122463.D
 Acq: 23 Nov 2020 23:34

Instrument :
 BNA_F
 ClientSampled :
 TR5-(1-4)-COMP

Tgt Ion: 65 Resp: 381

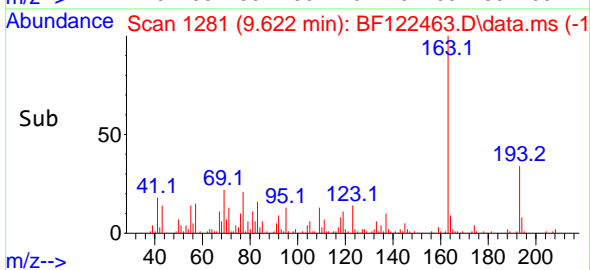
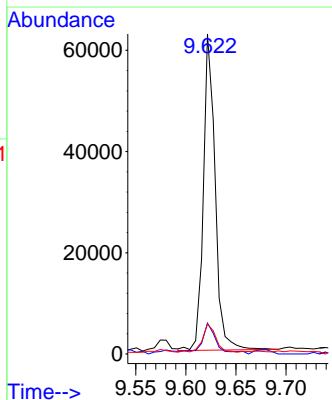
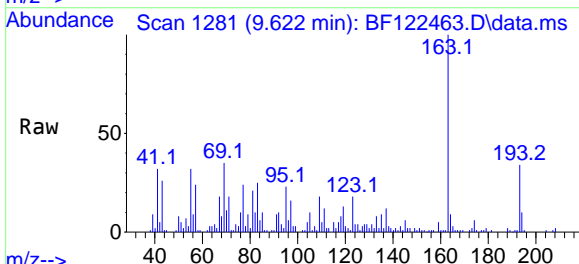
Ion	Ratio	Lower	Upper
65	100		
92	65.7	55.1	82.7
138	46.6	80.5	120.7#

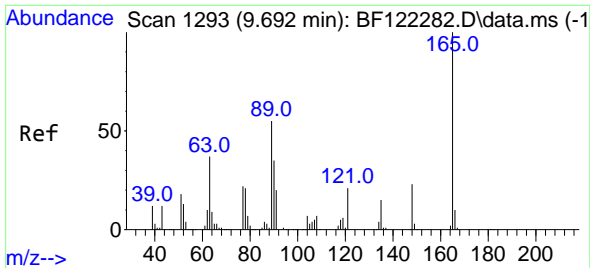


#50
 Dimethylphthalate
 Concen: 2.83 ng
 RT: 9.622 min Scan# 1281
 Delta R.T. -0.018 min
 Lab File: BF122463.D
 Acq: 23 Nov 2020 23:34

Tgt Ion: 163 Resp: 51482

Ion	Ratio	Lower	Upper
163	100		
194	9.7	3.3	4.9#
164	9.4	8.2	12.4



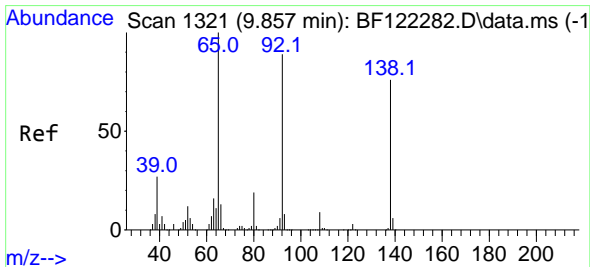
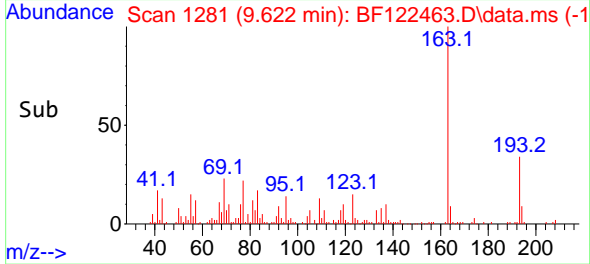
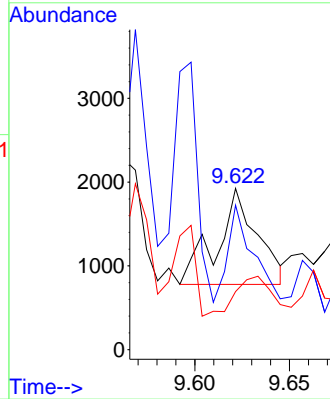
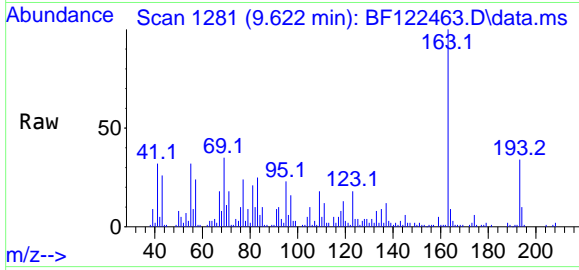


#51
 2,6-Dinitrotoluene
 Concen: 4.20 ng
 RT: 9.622 min Scan# 1281
 Delta R.T. -0.077 min
 Lab File: BF122463.D
 Acq: 23 Nov 2020 23:34

Instrument :
 BNA_F
 ClientSampled :
 TR5-(1-4)-COMP

Tgt Ion:165 Resp: 1693

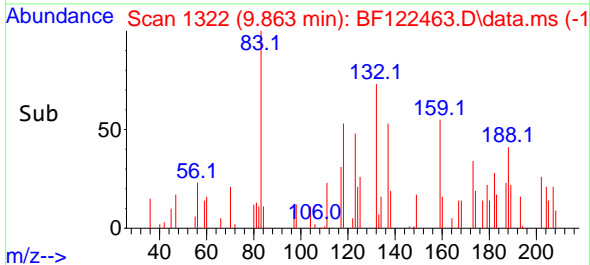
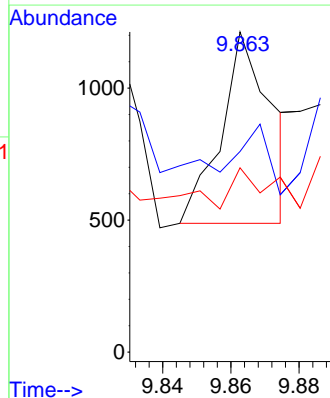
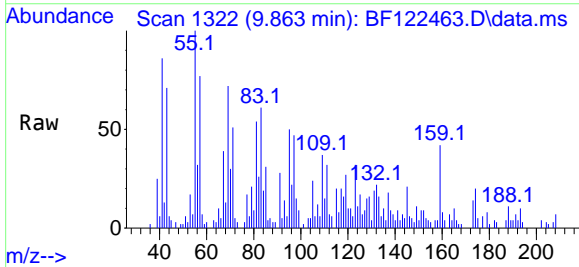
Ion	Ratio	Lower	Upper
165	100		
63	89.5	51.8	77.6#
89	36.0	49.0	73.6#

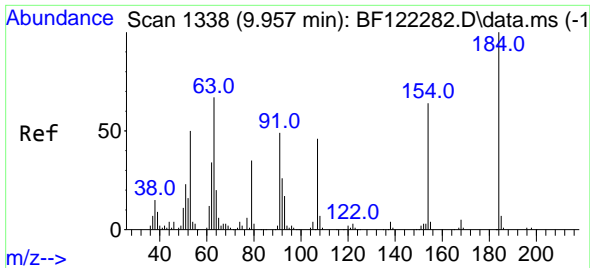


#53
 3-Nitroaniline
 Concen: 3.71 ng
 RT: 9.863 min Scan# 1322
 Delta R.T. -0.006 min
 Lab File: BF122463.D
 Acq: 23 Nov 2020 23:34

Tgt Ion:138 Resp: 740

Ion	Ratio	Lower	Upper
138	100		
108	62.7	8.6	13.0#
92	57.5	96.6	144.8#



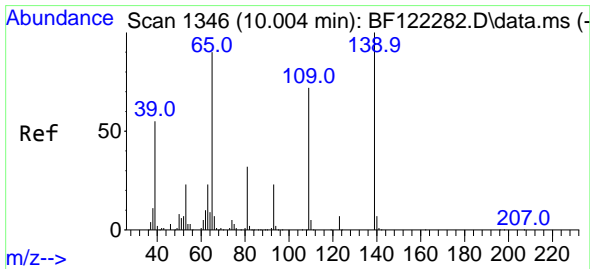
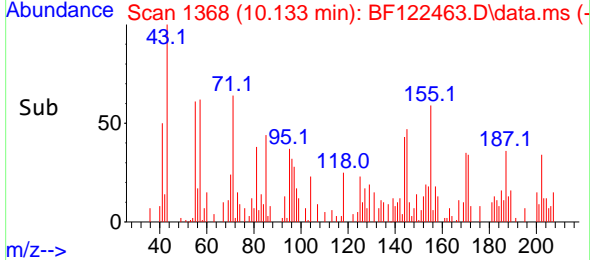
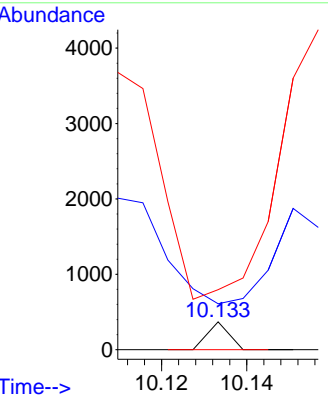
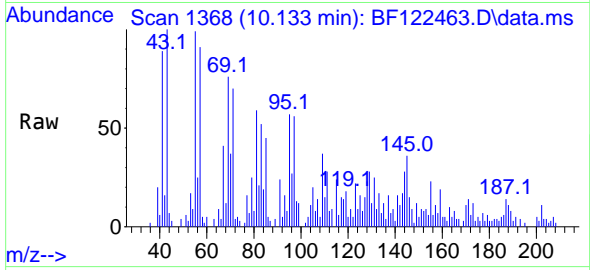


#54
 2,4-Dinitrophenol
 Concen: 6.46 ng
 RT: 10.133 min Scan# 1368
 Delta R.T. 0.164 min
 Lab File: BF122463.D
 Acq: 23 Nov 2020 23:34

Instrument :
 BNA_F
 ClientSampled :
 TR5-(1-4)-COMP

Tgt Ion:184 Resp: 130

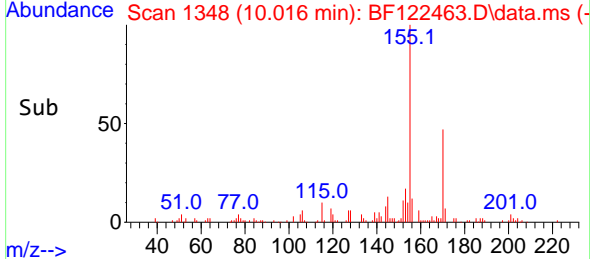
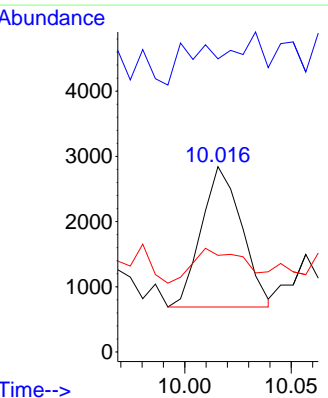
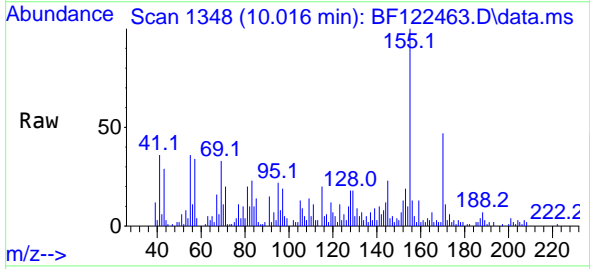
Ion	Ratio	Lower	Upper
184	100		
63	165.0	45.9	68.9#
154	215.7	45.8	68.6#

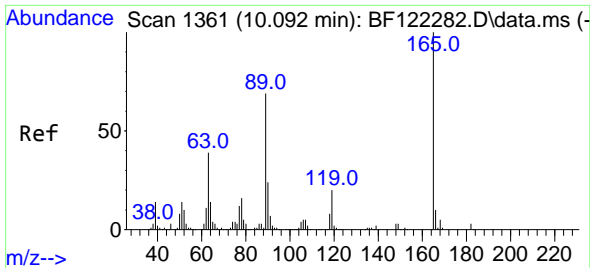


#56
 4-Nitrophenol
 Concen: 6.08 ng
 RT: 10.016 min Scan# 1348
 Delta R.T. -0.012 min
 Lab File: BF122463.D
 Acq: 23 Nov 2020 23:34

Tgt Ion:139 Resp: 2846

Ion	Ratio	Lower	Upper
139	100		
109	158.3	45.4	85.4#
65	52.2	68.4	108.4#



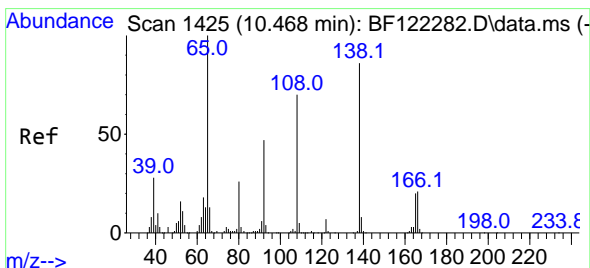
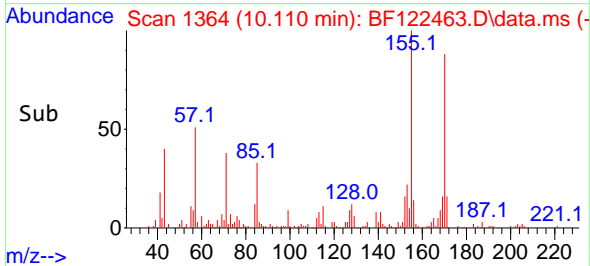
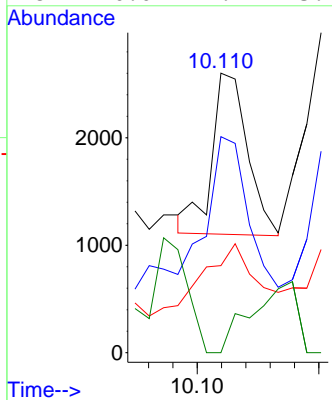
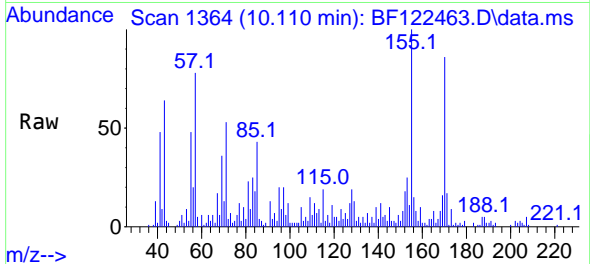


#57
 2,4-Dinitrotoluene
 Concen: 4.99 ng
 RT: 10.110 min Scan# 1364
 Delta R.T. 0.012 min
 Lab File: BF122463.D
 Acq: 23 Nov 2020 23:34

Instrument :
 BNA_F
 ClientSampleId :
 TR5-(1-4)-COMP

Tgt Ion:165 Resp: 1532

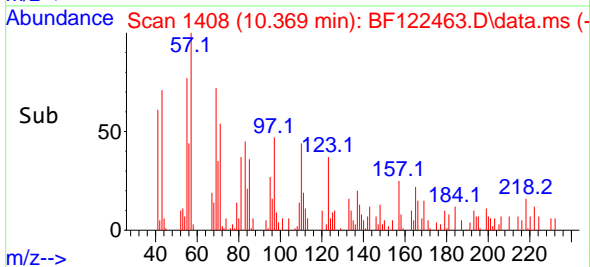
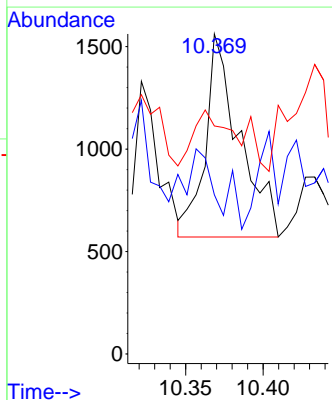
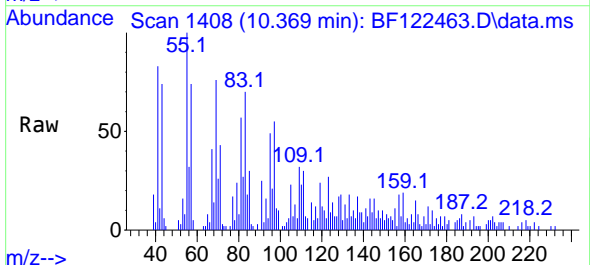
Ion	Ratio	Lower	Upper
165	100		
63	77.2	41.3	61.9#
89	31.2	61.8	92.8#
182	0.0	2.1	3.1#

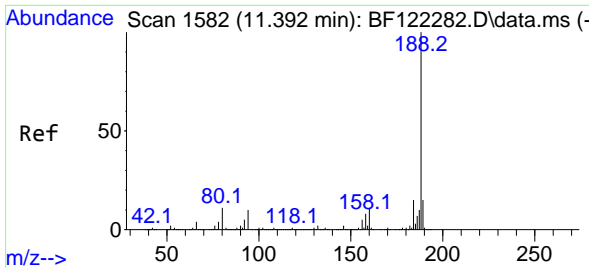


#62
 4-Nitroaniline
 Concen: 3.69 ng
 RT: 10.369 min Scan# 1408
 Delta R.T. -0.118 min
 Lab File: BF122463.D
 Acq: 23 Nov 2020 23:34

Tgt Ion:138 Resp: 1506

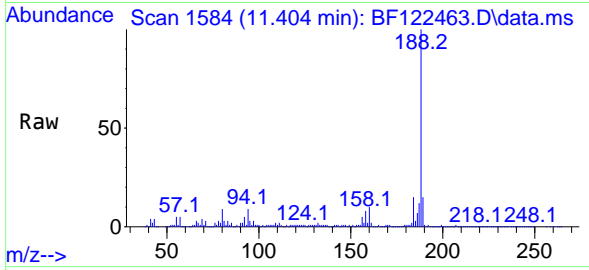
Ion	Ratio	Lower	Upper
138	100		
92	49.7	31.0	71.0
108	71.3	51.5	91.5





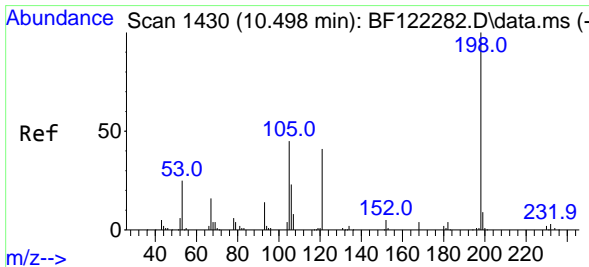
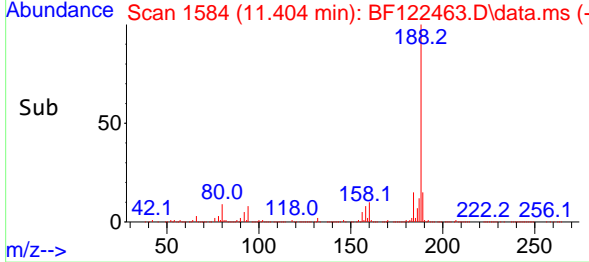
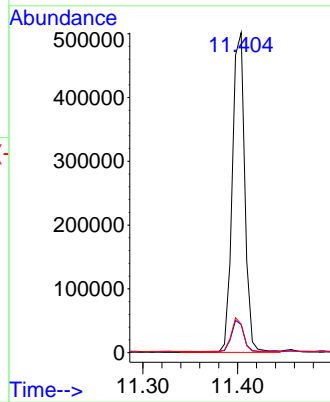
#64
 Phenanthrene-d10
 Concen: 20.00 ng
 RT: 11.404 min Scan# 1584
 Delta R.T. -0.000 min
 Lab File: BF122463.D
 Acq: 23 Nov 2020 23:34

Instrument :
 BNA_F
 ClientSampleId :
 TR5-(1-4)-COMP



Tgt Ion:188 Resp: 457505

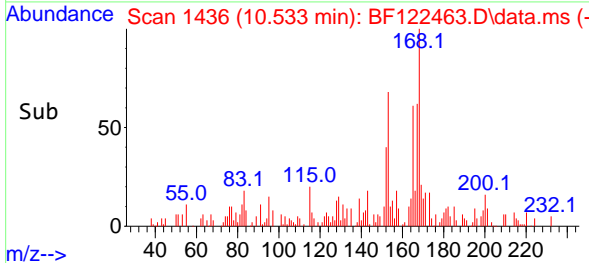
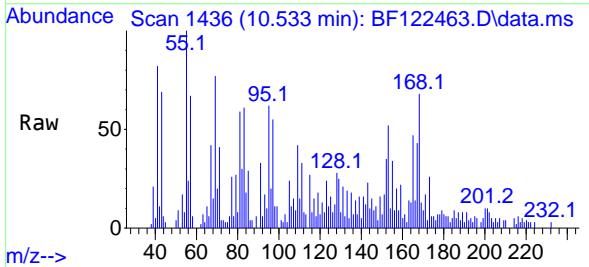
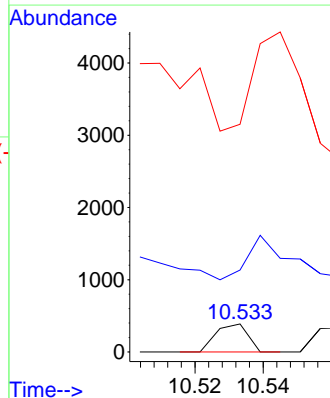
Ion	Ratio	Lower	Upper
188	100		
94	8.8	8.3	12.5
80	8.9	9.1	13.7#

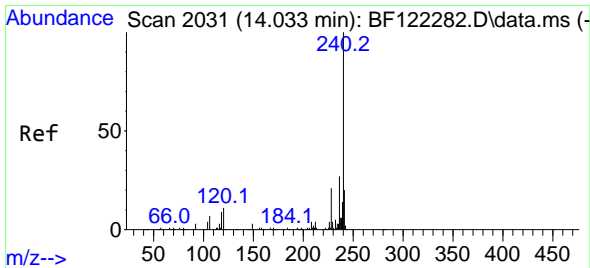


#65
 4,6-Dinitro-2-methylphenol
 Concen: 6.30 ng
 RT: 10.533 min Scan# 1436
 Delta R.T. 0.023 min
 Lab File: BF122463.D
 Acq: 23 Nov 2020 23:34

Tgt Ion:198 Resp: 252

Ion	Ratio	Lower	Upper
198	100		
51	292.5	29.6	69.6#
105	812.4	24.4	64.4#



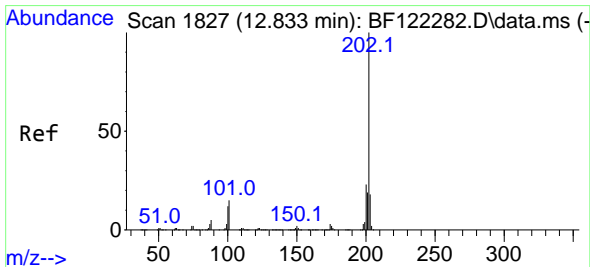
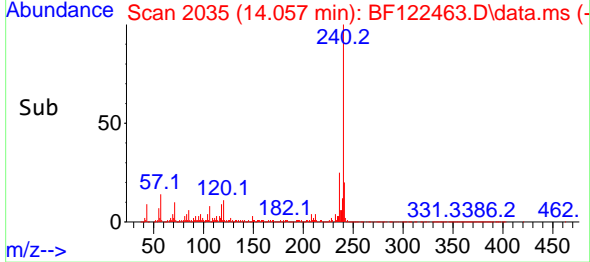
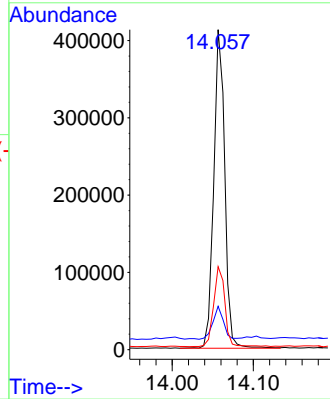
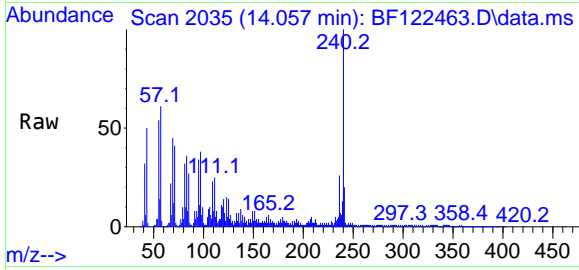


#76
 Chrysene-d12
 Concen: 20.00 ng
 RT: 14.057 min Scan# 2035
 Delta R.T. 0.006 min
 Lab File: BF122463.D
 Acq: 23 Nov 2020 23:34

Instrument :
 BNA_F
 ClientSampleId :
 TR5-(1-4)-COMP

Tgt Ion:240 Resp: 386575

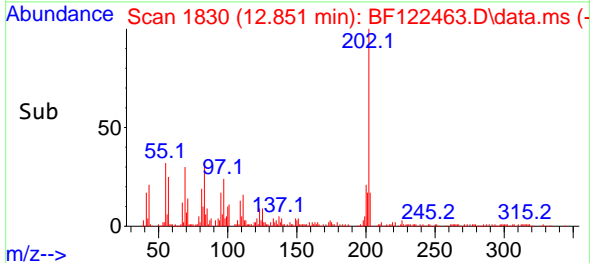
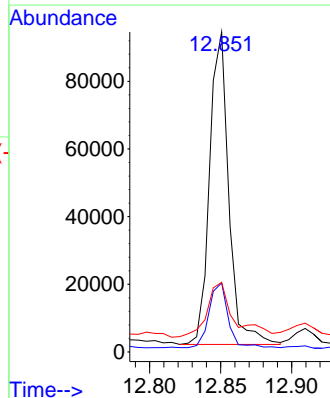
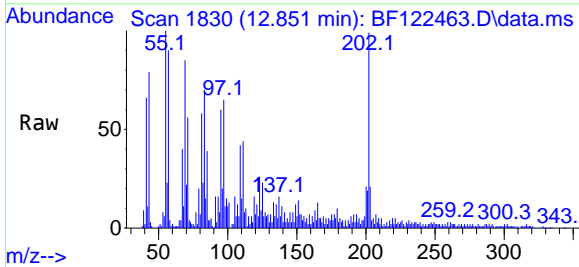
Ion	Ratio	Lower	Upper
240	100		
120	13.5	9.2	13.8
236	26.0	20.9	31.3

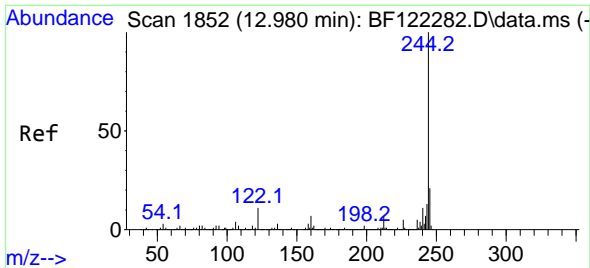


#78
 Pyrene
 Concen: 3.19 ng
 RT: 12.851 min Scan# 1830
 Delta R.T. -0.000 min
 Lab File: BF122463.D
 Acq: 23 Nov 2020 23:34

Tgt Ion:202 Resp: 86669

Ion	Ratio	Lower	Upper
202	100		
200	21.6	17.4	26.2
203	21.8	14.6	21.8



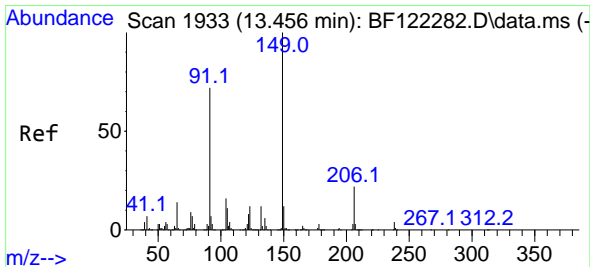
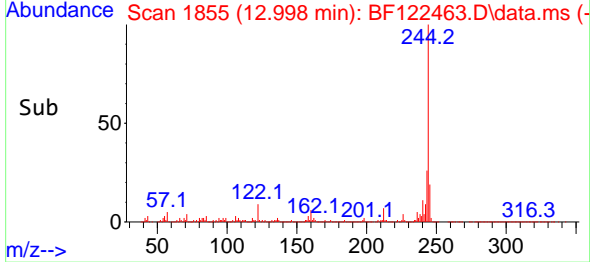
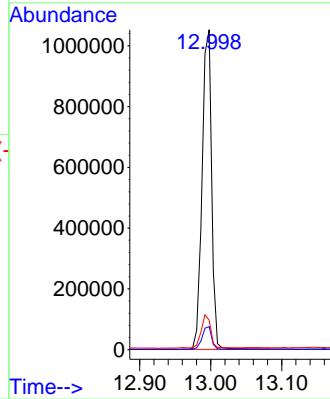
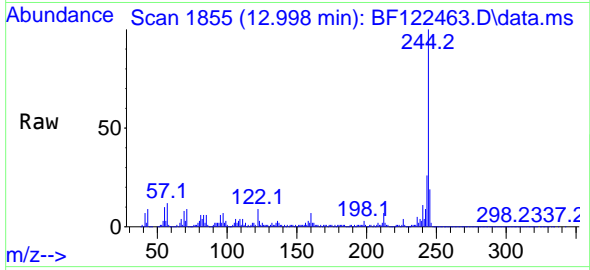


#79
 Terphenyl-d14
 Concen: 53.85 ng
 RT: 12.998 min Scan# 1855
 Delta R.T. 0.006 min
 Lab File: BF122463.D
 Acq: 23 Nov 2020 23:34

Instrument :
 BNA_F
ClientSampled :
 TR5-(1-4)-COMP

Tgt Ion:244 Resp: 982567

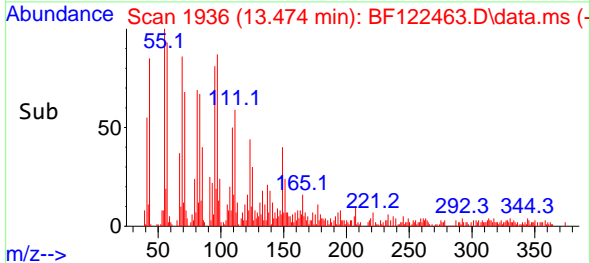
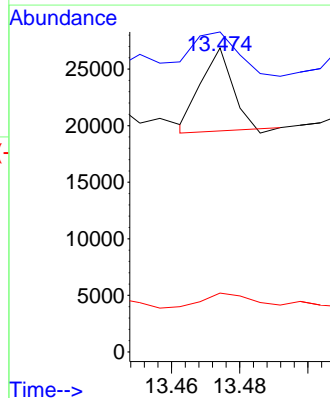
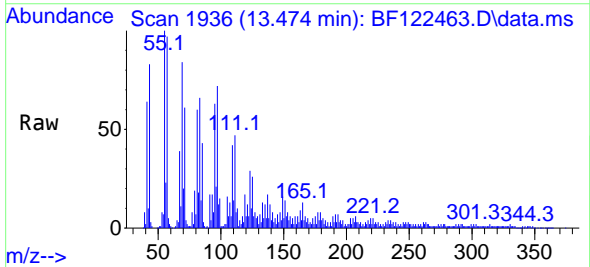
Ion	Ratio	Lower	Upper
244	100		
212	7.2	5.4	8.2
122	9.2	8.1	12.1

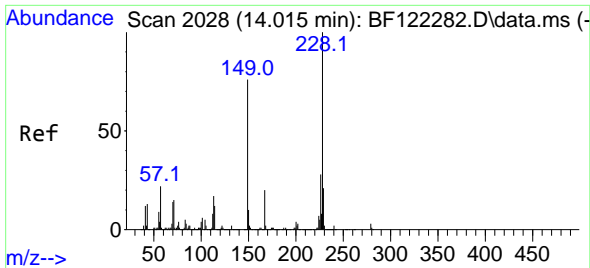


#80
 Butylbenzylphthalate
 Concen: 3.69 ng
 RT: 13.474 min Scan# 1936
 Delta R.T. 0.006 min
 Lab File: BF122463.D
 Acq: 23 Nov 2020 23:34

Tgt Ion:149 Resp: 4716

Ion	Ratio	Lower	Upper
149	100		
91	105.2	61.0	91.4#
206	19.4	16.7	25.1



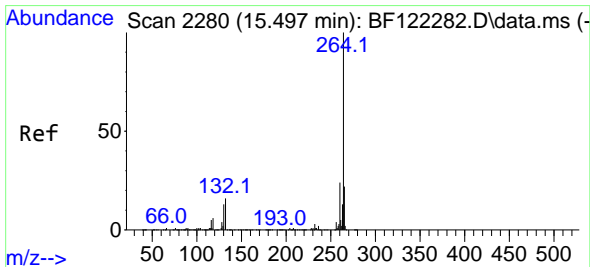
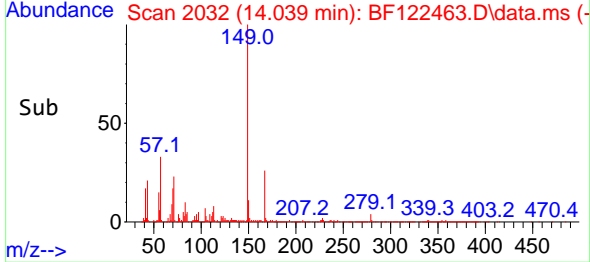
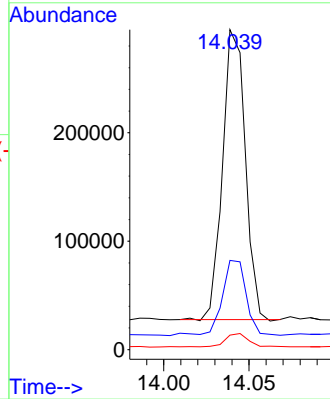
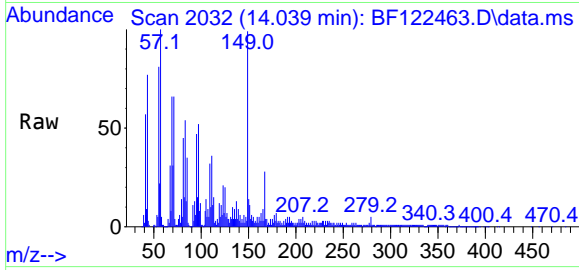


#84
 Bis(2-ethylhexyl)phthalate
 Concen: 18.89 ng
 RT: 14.039 min Scan# 2032
 Delta R.T. 0.006 min
 Lab File: BF122463.D
 Acq: 23 Nov 2020 23:34

Instrument :
 BNA_F
 ClientSampleId :
 TR5-(1-4)-COMP

Tgt Ion:149 Resp: 247380

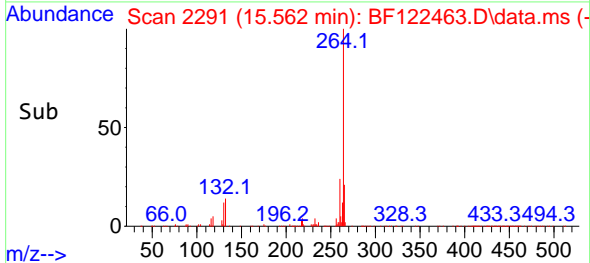
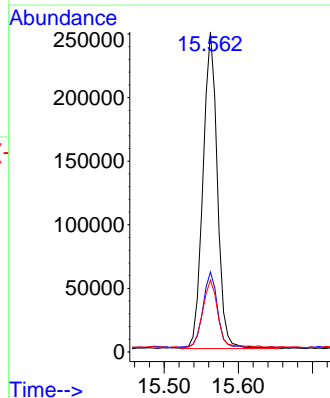
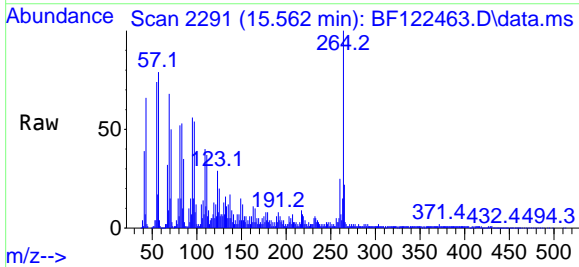
Ion	Ratio	Lower	Upper
149	100		
167	27.9	20.9	31.3
279	4.5	3.2	4.8

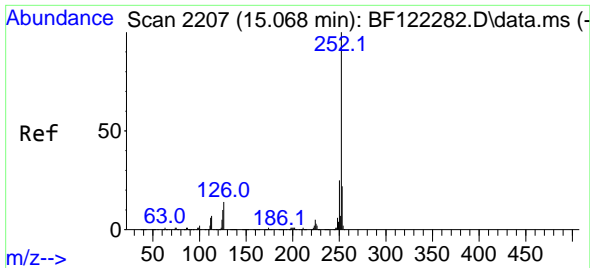


#86
 Perylene-d12
 Concen: 20.00 ng
 RT: 15.562 min Scan# 2291
 Delta R.T. 0.029 min
 Lab File: BF122463.D
 Acq: 23 Nov 2020 23:34

Tgt Ion:264 Resp: 336024

Ion	Ratio	Lower	Upper
264	100		
260	25.0	18.7	28.1
265	22.5	17.3	25.9



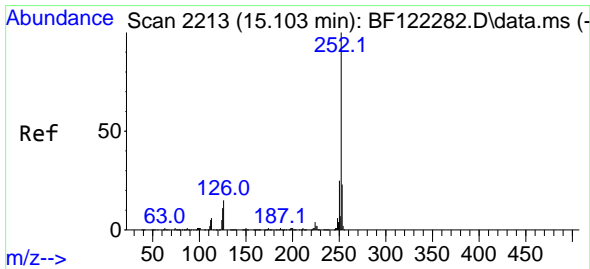
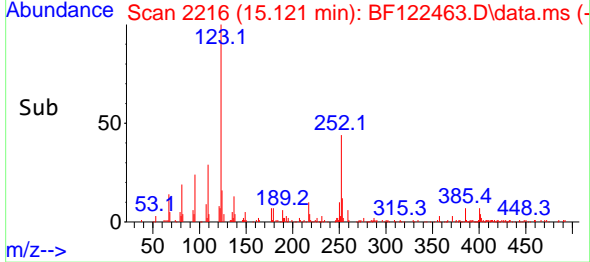
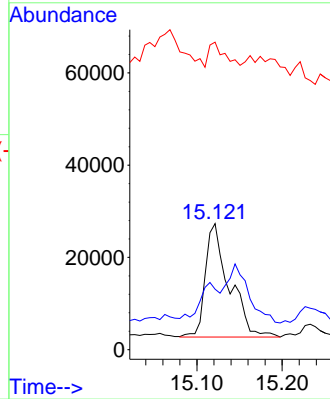
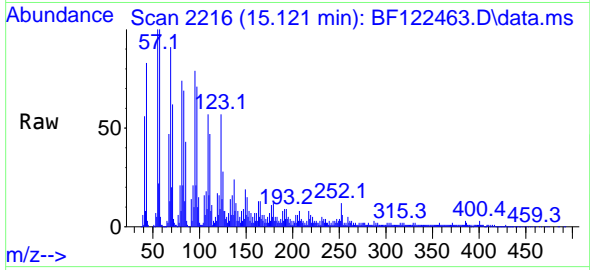


#88
 Benzo(b)fluoranthene
 Concen: 2.21 ng
 RT: 15.121 min Scan# 2216
 Delta R.T. 0.023 min
 Lab File: BF122463.D
 Acq: 23 Nov 2020 23:34

Instrument :
 BNA_F
 ClientSampled :
 TR5-(1-4)-COMP

Tgt Ion:252 Resp: 48044

Ion	Ratio	Lower	Upper
252	100		
253	47.9	18.2	27.2#
125	243.9	8.0	12.0#



#89
 Benzo(k)fluoranthene
 Concen: 2.26 ng
 RT: 15.121 min Scan# 2216
 Delta R.T. -0.012 min
 Lab File: BF122463.D
 Acq: 23 Nov 2020 23:34

Tgt Ion:252 Resp: 48044

Ion	Ratio	Lower	Upper
252	100		
253	47.9	17.8	26.6#
125	243.9	7.7	11.5#

