

Data Path : Z:\svoasrv\HPCHEM1\BNA_F\Data\BF112425\
 Data File : BF144325.D
 Acq On : 24 Nov 2025 15:50
 Operator : RC/JU
 Sample : Q3707-01MS
 Misc :
 ALS Vial : 6 Sample Multiplier: 1

Instrument :
 BNA_F
 ClientSampleId :
 V933MS

Quant Time: Nov 25 00:23:43 2025
 Quant Method : Z:\svoasrv\HPCHEM1\BNA_F\Methods\8270-BF110525.M
 Quant Title : ASP BNA STANDARDS FOR 5 POINT CALIBRATION
 QLast Update : Wed Nov 05 18:37:33 2025
 Response via : Initial Calibration

Compound	R.T.	QIon	Response	Conc Units	Dev(Min)	
Internal Standards						
1) 1,4-Dichlorobenzene-d4	6.863	152	58197	20.000 ng	-0.01	
21) Naphthalene-d8	8.145	136	219530	20.000 ng	-0.01	
39) Acenaphthene-d10	9.904	164	123038	20.000 ng	-0.01	
64) Phenanthrene-d10	11.392	188	202567	20.000 ng	-0.01	
76) Chrysene-d12	14.045	240	120422	20.000 ng	0.00	
86) Perylene-d12	15.527	264	160562	20.000 ng	-0.01	
System Monitoring Compounds						
5) 2-Fluorophenol	5.492	112	182523	49.079 ng	0.00	
7) Phenol-d6	6.498	99	283419	67.259 ng	0.00	
23) Nitrobenzene-d5	7.428	82	216151	56.866 ng	0.00	
42) 2,4,6-Tribromophenol	10.698	330	61192	39.633 ng	0.00	
45) 2-Fluorobiphenyl	9.222	172	439428	52.748 ng	0.00	
79) Terphenyl-d14	12.980	244	418804	55.242 ng	-0.01	
Target Compounds						Qvalue
2) 1,4-Dioxane	2.675	88	71547	46.534 ng		98
3) Pyridine	3.440	79	198438	46.261 ng		96
4) n-Nitrosodimethylamine	3.393	42	107362	47.916 ng		89
6) Aniline	6.528	93	199475	33.225 ng		97
8) 2-Chlorophenol	6.651	128	173617	47.604 ng		97
9) Benzaldehyde	6.416	77	87903	36.942 ng		96
10) Phenol	6.510	94	235833	45.806 ng		98
11) bis(2-Chloroethyl)ether	6.598	93	176760	47.117 ng		98
12) 1,3-Dichlorobenzene	6.804	146	206934	45.981 ng		98
13) 1,4-Dichlorobenzene	6.881	146	211472	46.903 ng		99
14) 1,2-Dichlorobenzene	7.034	146	200933	46.495 ng		99
15) Benzyl Alcohol	7.004	79	162709	48.764 ng		99
16) 2,2'-oxybis(1-Chloropr...	7.134	45	335006	48.492 ng		91
17) 2-Methylphenol	7.122	107	135684	46.764 ng		97
18) Hexachloroethane	7.375	117	68389	45.655 ng		99
19) n-Nitroso-di-n-propyla...	7.275	70	126447	45.583 ng		98
20) 3+4-Methylphenols	7.275	107	157059	45.920 ng		96
22) Acetophenone	7.275	105	219391	46.586 ng		97
24) Nitrobenzene	7.445	77	193196	46.812 ng		98
25) Isophorone	7.686	82	349181	48.566 ng		97
26) 2-Nitrophenol	7.763	139	101679	49.770 ng		96
27) 2,4-Dimethylphenol	7.798	122	163158	53.284 ng		98
28) bis(2-Chloroethoxy)met...	7.892	93	219539	48.898 ng		98
29) 2,4-Dichlorophenol	8.004	162	163191	46.240 ng		99
30) 1,2,4-Trichlorobenzene	8.086	180	178517	49.259 ng		95
31) Naphthalene	8.169	128	489719	46.895 ng		98
32) Benzoic acid	7.922	122	101725	45.321 ng		96
33) 4-Chloroaniline	8.216	127	67023	17.598 ng		98
34) Hexachlorobutadiene	8.281	225	121870	44.621 ng		98
35) Caprolactam	8.592	113	38004	39.305 ng		99
36) 4-Chloro-3-methylphenol	8.704	107	147677	46.690 ng		98
37) 2-Methylnaphthalene	8.857	142	301350	43.161 ng		98
38) 1-Methylnaphthalene	8.957	142	307268	45.610 ng		99
40) 1,2,4,5-Tetrachloroben...	9.028	216	179042	44.401 ng		98
41) Hexachlorocyclopentadiene	9.010	237	170392	98.949 ng		98
43) 2,4,6-Trichlorophenol	9.139	196	124699	45.436 ng		98

Data Path : Z:\svoasrv\HPCHEM1\BNA_F\Data\BF112425\
 Data File : BF144325.D
 Acq On : 24 Nov 2025 15:50
 Operator : RC/JU
 Sample : Q3707-01MS
 Misc :
 ALS Vial : 6 Sample Multiplier: 1

Instrument :
 BNA_F
 ClientSampleId :
 V933MS

Quant Time: Nov 25 00:23:43 2025
 Quant Method : Z:\svoasrv\HPCHEM1\BNA_F\Methods\8270-BF110525.M
 Quant Title : ASP BNA STANDARDS FOR 5 POINT CALIBRATION
 QLast Update : Wed Nov 05 18:37:33 2025
 Response via : Initial Calibration

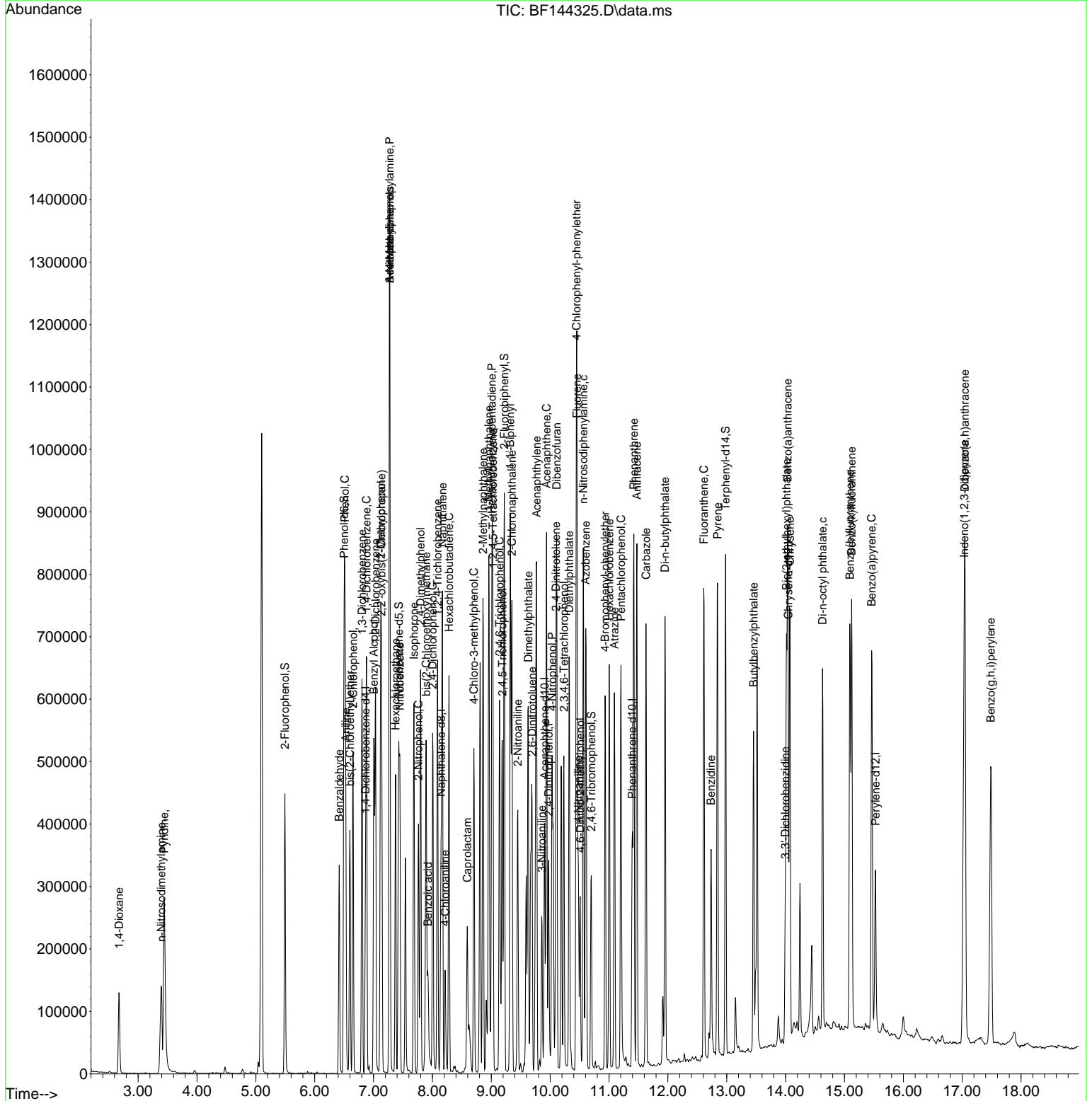
Compound	R.T.	QIon	Response	Conc	Units	Dev(Min)
44) 2,4,5-Trichlorophenol	9.186	196	135064	45.662	ng	98
46) 1,1'-Biphenyl	9.322	154	406119	47.287	ng	100
47) 2-Chloronaphthalene	9.351	162	330247	45.079	ng	99
48) 2-Nitroaniline	9.451	65	99783	47.205	ng	92
49) Acenaphthylene	9.769	152	521558	52.243	ng	99
50) Dimethylphthalate	9.627	163	387256	47.510	ng	99
51) 2,6-Dinitrotoluene	9.692	165	85250	51.666	ng	95
52) Acenaphthene	9.939	154	280861	42.070	ng	99
53) 3-Nitroaniline	9.857	138	55043	30.516	ng	98
54) 2,4-Dinitrophenol	9.975	184	82162	82.461	ng	98
55) Dibenzofuran	10.110	168	424481	45.399	ng	99
56) 4-Nitrophenol	10.033	139	110298	84.535	ng	97
57) 2,4-Dinitrotoluene	10.098	165	107043	48.460	ng	95
58) Fluorene	10.457	166	331229	46.593	ng	100
59) 2,3,4,6-Tetrachlorophenol	10.233	232	100122	47.842	ng	97
60) Diethylphthalate	10.322	149	363158	48.331	ng	99
61) 4-Chlorophenyl-phenylether	10.445	204	177561	43.849	ng	98
62) 4-Nitroaniline	10.480	138	84081	48.949	ng	90
63) Azobenzene	10.604	77	369585	52.850	ng	96
65) 4,6-Dinitro-2-methylphthalate	10.510	198	63362	46.044	ng	93
66) n-Nitrosodiphenylamine	10.563	169	320696	49.224	ng	99
67) 4-Bromophenyl-phenylether	10.933	248	118360	45.777	ng	96
68) Hexachlorobenzene	11.004	284	140834	46.244	ng	97
69) Atrazine	11.092	200	107076	51.679	ng	98
70) Pentachlorophenol	11.204	266	134384	88.613	ng	98
71) Phenanthrene	11.422	178	475567	47.153	ng	99
72) Anthracene	11.474	178	495154	48.283	ng	100
73) Carbazole	11.627	167	419258	48.078	ng	99
74) Di-n-butylphthalate	11.951	149	515400	48.890	ng	99
75) Fluoranthene	12.610	202	471869	45.292	ng	99
77) Benzidine	12.733	184	195112	54.776	ng	99
78) Pyrene	12.845	202	487678	50.227	ng	99
80) Butylbenzylphthalate	13.457	149	172312	51.204	ng	99
81) Benzo(a)anthracene	14.033	228	424419	50.852	ng	98
82) 3,3'-Dichlorobenzidine	13.992	252	68191	23.836	ng	96
83) Chrysene	14.074	228	393020	51.011	ng	98
84) Bis(2-ethylhexyl)phthalate	14.015	149	230847	50.111	ng	98
85) Di-n-octyl phthalate	14.627	149	406265	51.114	ng	100
87) Indeno(1,2,3-cd)pyrene	17.033	276	550485	47.761	ng	98
88) Benzo(b)fluoranthene	15.092	252	469917	51.479	ng	98
89) Benzo(k)fluoranthene	15.121	252	381343	44.633	ng	99
90) Benzo(a)pyrene	15.462	252	426159	50.605	ng	97
91) Dibenzo(a,h)anthracene	17.045	278	445052	48.080	ng	98
92) Benzo(g,h,i)perylene	17.486	276	459132	50.229	ng	97

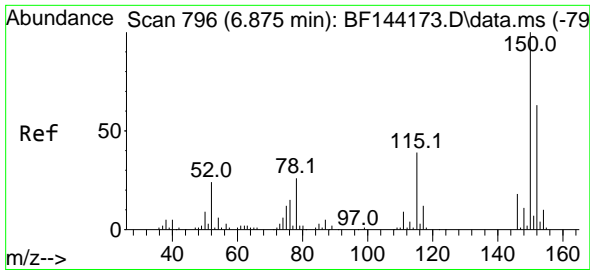
(#) = qualifier out of range (m) = manual integration (+) = signals summed

Data Path : Z:\svoasrv\HPCHEM1\BNA_F\Data\BF112425\
 Data File : BF144325.D
 Acq On : 24 Nov 2025 15:50
 Operator : RC/JU
 Sample : Q3707-01MS
 Misc :
 ALS Vial : 6 Sample Multiplier: 1

Instrument :
 BNA_F
 ClientSampleId :
 V933MS

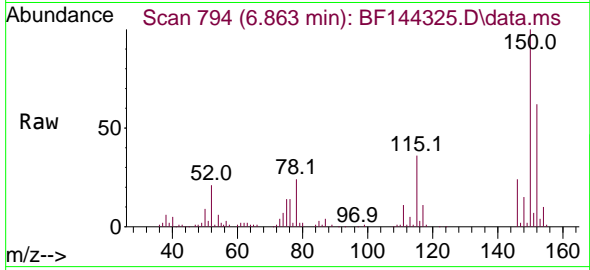
Quant Time: Nov 25 00:23:43 2025
 Quant Method : Z:\svoasrv\HPCHEM1\BNA_F\Methods\8270-BF110525.M
 Quant Title : ASP BNA STANDARDS FOR 5 POINT CALIBRATION
 QLast Update : Wed Nov 05 18:37:33 2025
 Response via : Initial Calibration



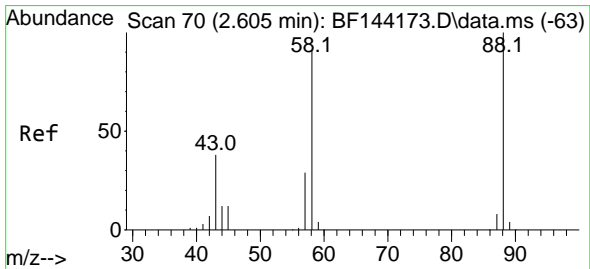
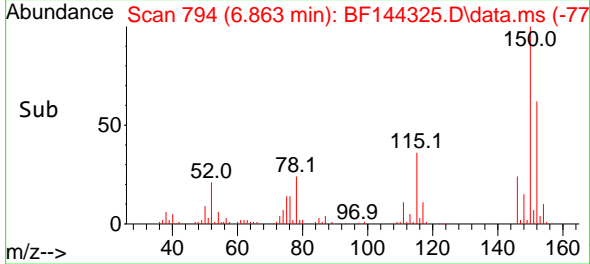
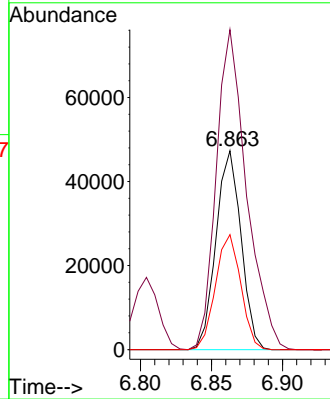


#1
 1,4-Dichlorobenzene-d4
 Concen: 20.000 ng
 RT: 6.863 min Scan# 79
 Delta R.T. -0.012 min
 Lab File: BF144325.D
 Acq: 24 Nov 2025 15:50

Instrument :
 BNA_F
 ClientSampleId :
 V933MS

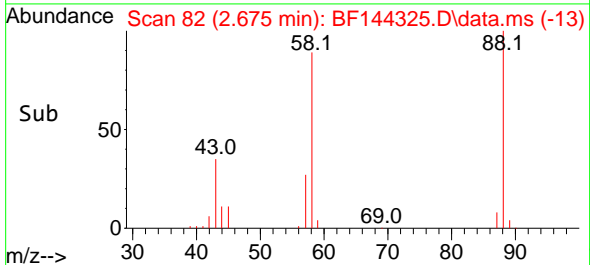
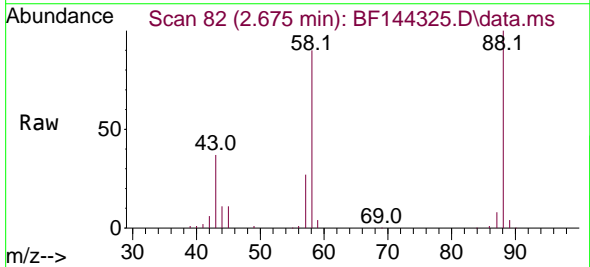
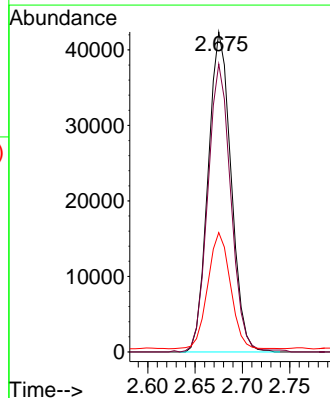


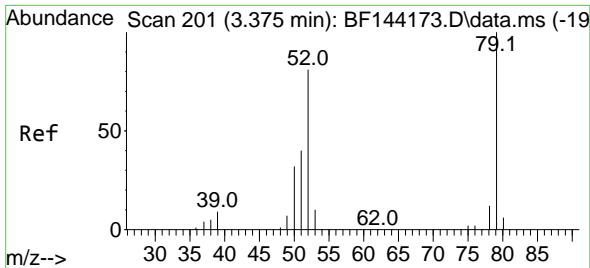
Tgt Ion:152 Resp: 58197
 Ion Ratio Lower Upper
 152 100
 150 161.0 127.4 191.0
 115 57.8 49.5 74.3



#2
 1,4-Dioxane
 Concen: 46.534 ng
 RT: 2.675 min Scan# 82
 Delta R.T. 0.059 min
 Lab File: BF144325.D
 Acq: 24 Nov 2025 15:50

Tgt Ion: 88 Resp: 71547
 Ion Ratio Lower Upper
 88 100
 58 90.4 73.1 109.7
 43 35.7 31.0 46.6



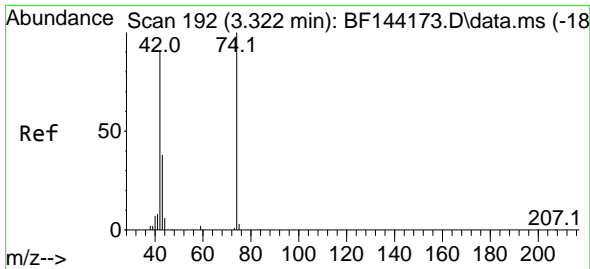
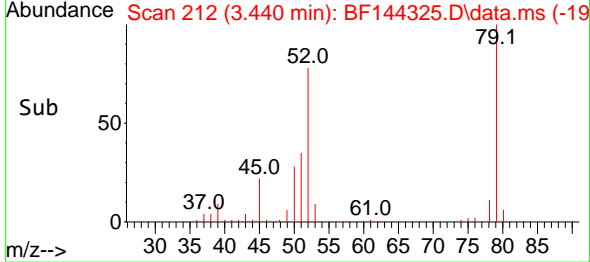
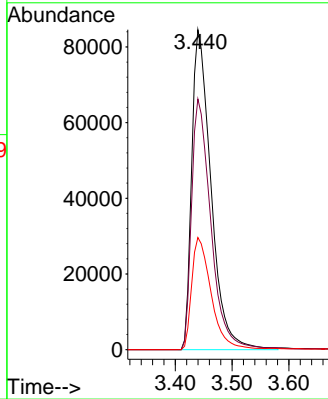
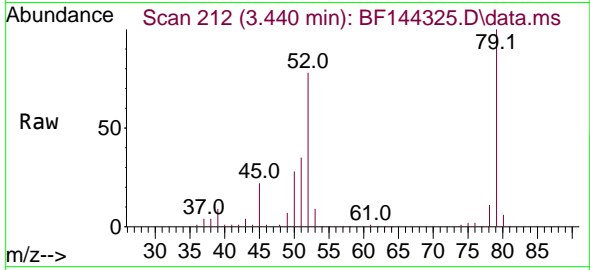


#3
 Pyridine
 Concen: 46.261 ng
 RT: 3.440 min Scan# 21
 Delta R.T. 0.029 min
 Lab File: BF144325.D
 Acq: 24 Nov 2025 15:50

Instrument :
 BNA_F
 ClientSampleId :
 V933MS

Tgt Ion: 79 Resp: 198438

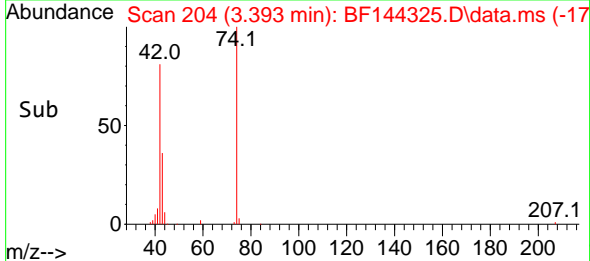
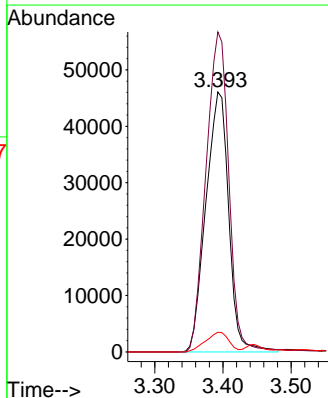
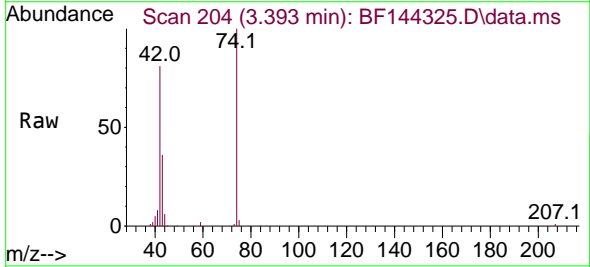
Ion	Ratio	Lower	Upper
79	100		
52	78.4	64.5	96.7
51	35.0	31.7	47.5

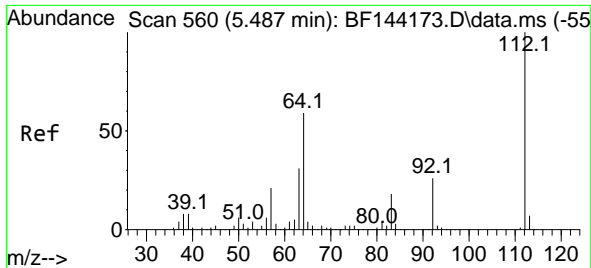


#4
 n-Nitrosodimethylamine
 Concen: 47.916 ng
 RT: 3.393 min Scan# 204
 Delta R.T. 0.047 min
 Lab File: BF144325.D
 Acq: 24 Nov 2025 15:50

Tgt Ion: 42 Resp: 107362

Ion	Ratio	Lower	Upper
42	100		
74	123.1	88.2	132.4
44	7.6	5.7	8.5

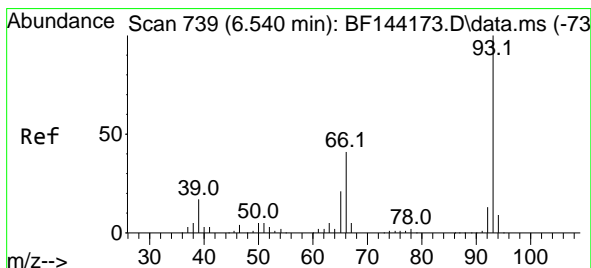
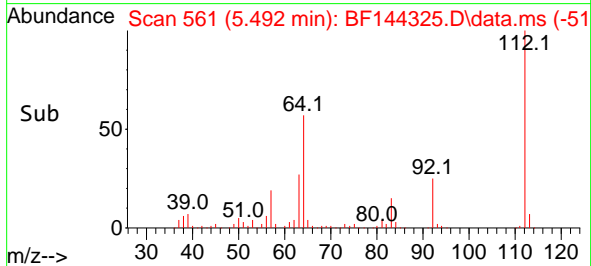
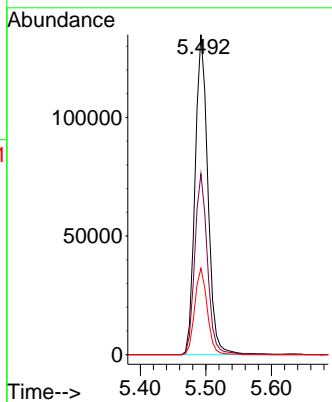
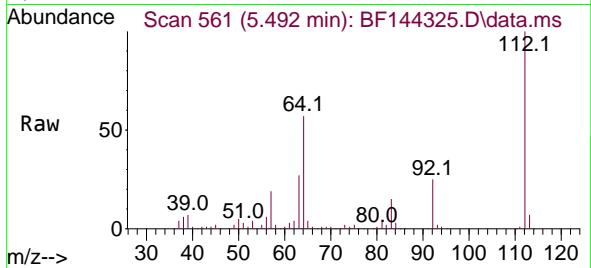




#5
 2-Fluorophenol
 Concen: 49.079 ng
 RT: 5.492 min Scan# 50
 Delta R.T. -0.000 min
 Lab File: BF144325.D
 Acq: 24 Nov 2025 15:50

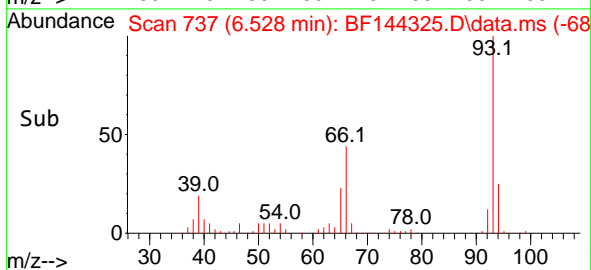
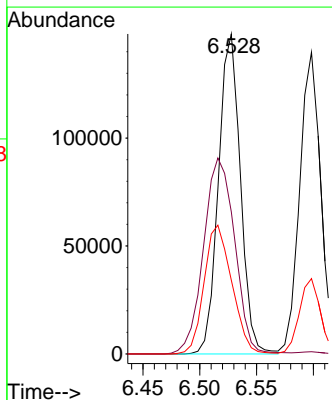
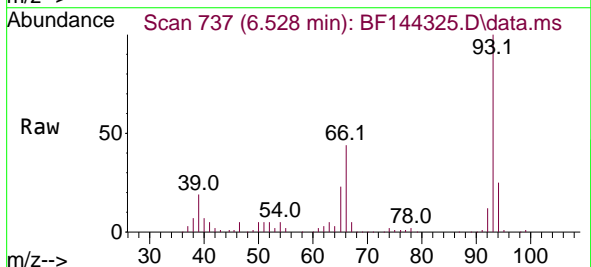
Instrument :
 BNA_F
 ClientSampleId :
 V933MS

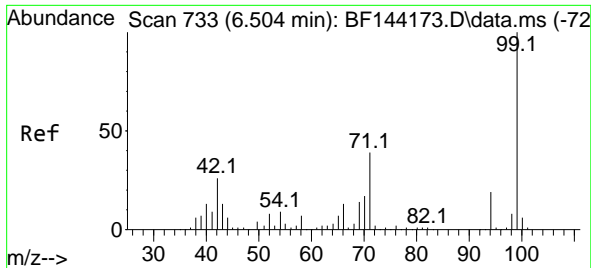
Tgt Ion	Resp	Lower	Upper
112	182523		
112	100		
64	56.5	47.2	70.8
63	27.0	24.4	36.6



#6
 Aniline
 Concen: 33.225 ng
 RT: 6.528 min Scan# 737
 Delta R.T. -0.006 min
 Lab File: BF144325.D
 Acq: 24 Nov 2025 15:50

Tgt Ion	Resp	Lower	Upper
93	199475		
93	100		
66	44.4	34.3	51.5
65	23.0	16.9	25.3

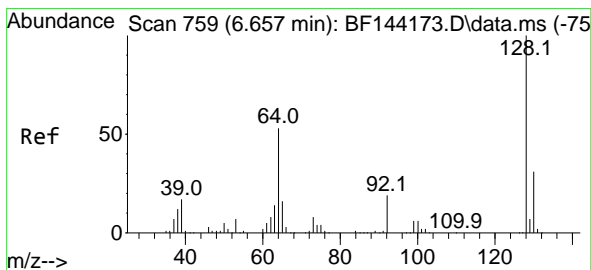
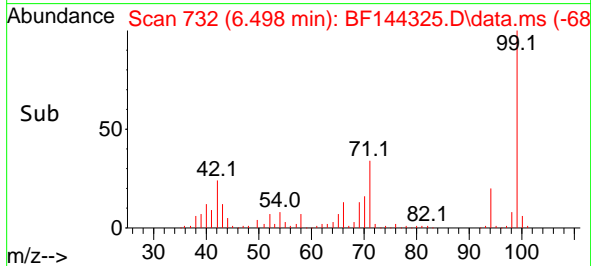
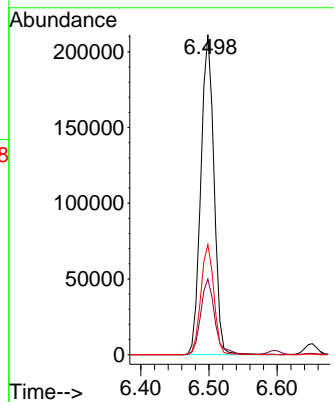
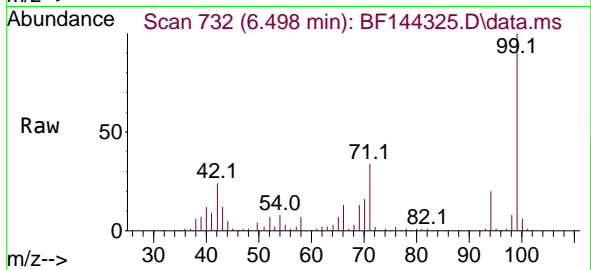




#7
 Phenol-d6
 Concen: 67.259 ng
 RT: 6.498 min Scan# 731
 Delta R.T. -0.000 min
 Lab File: BF144325.D
 Acq: 24 Nov 2025 15:50

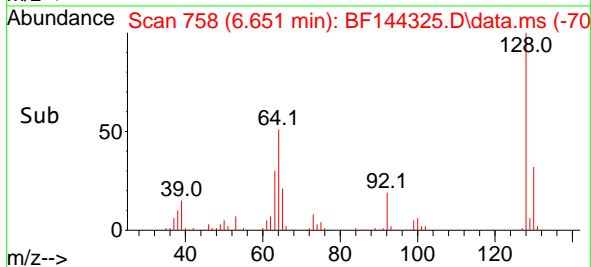
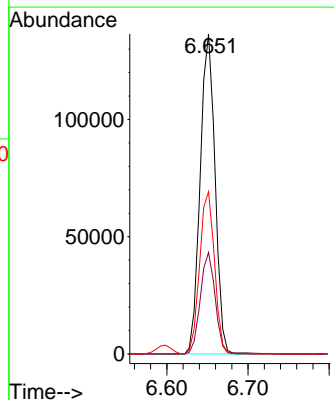
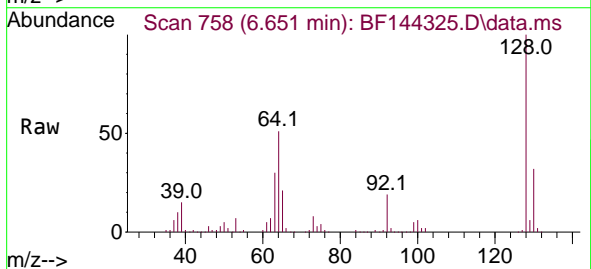
Instrument :
 BNA_F
 ClientSampleId :
 V933MS

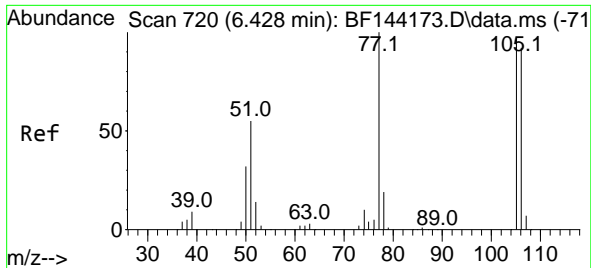
Tgt Ion: 99 Resp: 283419
 Ion Ratio Lower Upper
 99 100
 42 23.6 20.9 31.3
 71 34.4 31.4 47.2



#8
 2-Chlorophenol
 Concen: 47.604 ng
 RT: 6.651 min Scan# 758
 Delta R.T. -0.006 min
 Lab File: BF144325.D
 Acq: 24 Nov 2025 15:50

Tgt Ion: 128 Resp: 173617
 Ion Ratio Lower Upper
 128 100
 130 31.7 10.5 50.5
 64 50.7 33.2 73.2

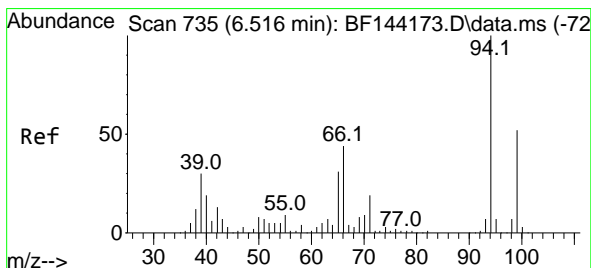
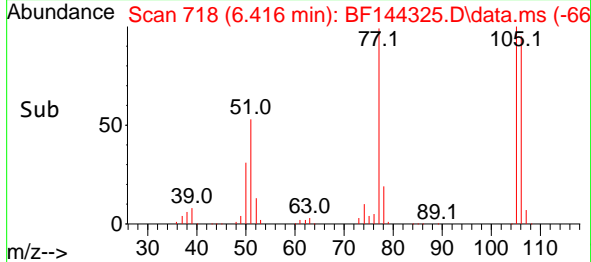
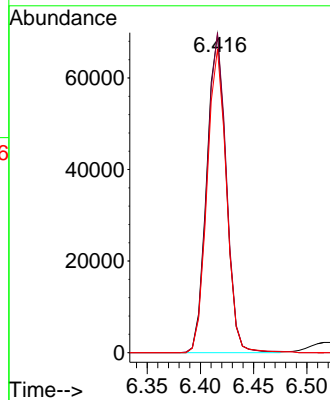
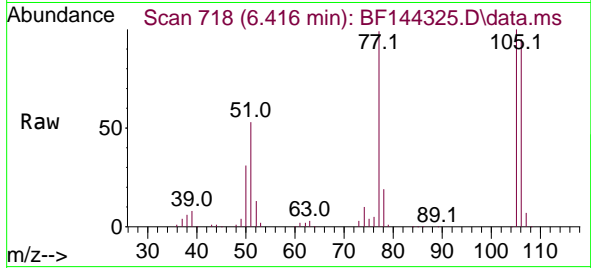




#9
Benzaldehyde
Concen: 36.942 ng
RT: 6.416 min Scan# 718
Delta R.T. -0.012 min
Lab File: BF144325.D
Acq: 24 Nov 2025 15:50

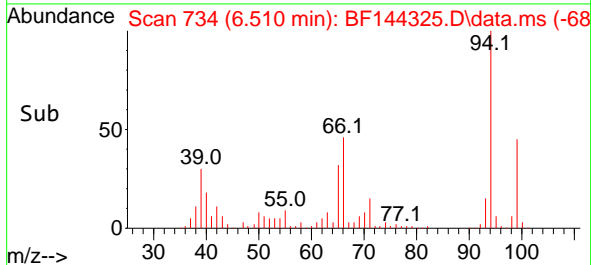
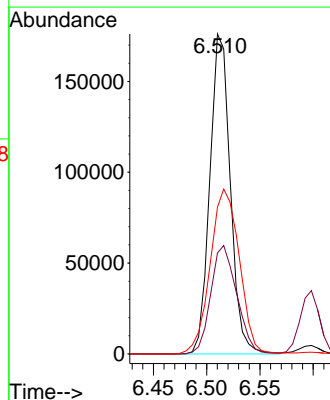
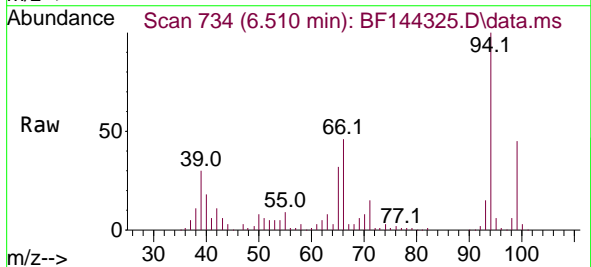
Instrument : BNA_F
ClientSampleId : V933MS

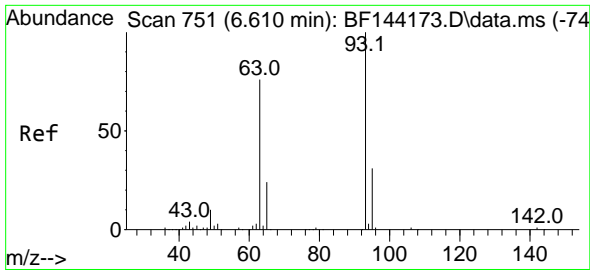
Tgt Ion: 77 Resp: 87903
Ion Ratio Lower Upper
77 100
105 100.7 77.2 117.2
106 95.6 72.2 112.2



#10
Phenol
Concen: 45.806 ng
RT: 6.510 min Scan# 734
Delta R.T. -0.000 min
Lab File: BF144325.D
Acq: 24 Nov 2025 15:50

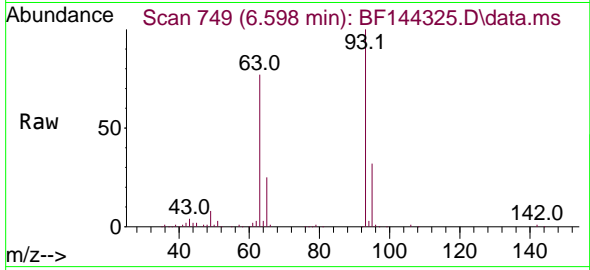
Tgt Ion: 94 Resp: 235833
Ion Ratio Lower Upper
94 100
65 31.5 10.8 50.8
66 45.8 24.3 64.3





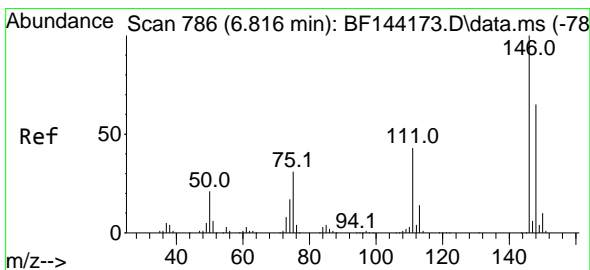
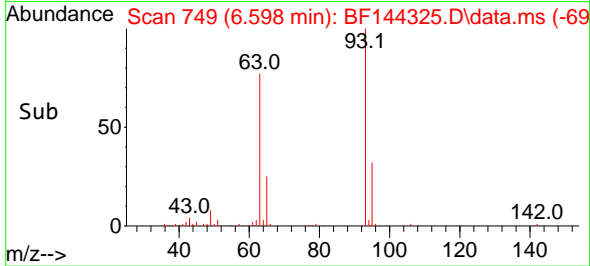
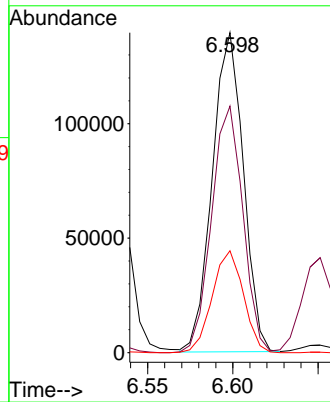
#11
 bis(2-Chloroethyl)ether
 Concen: 47.117 ng
 RT: 6.598 min Scan# 749
 Delta R.T. -0.006 min
 Lab File: BF144325.D
 Acq: 24 Nov 2025 15:50

Instrument : BNA_F
 ClientSampleId : V933MS



Tgt Ion: 93 Resp: 176760

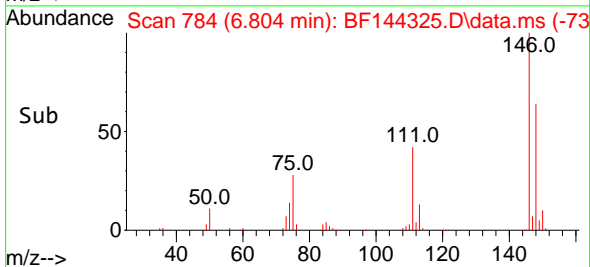
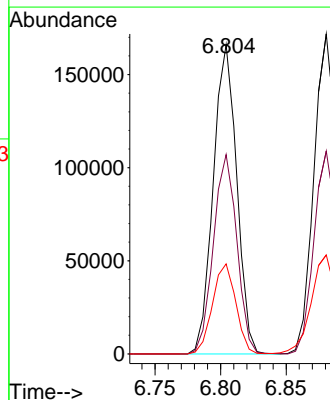
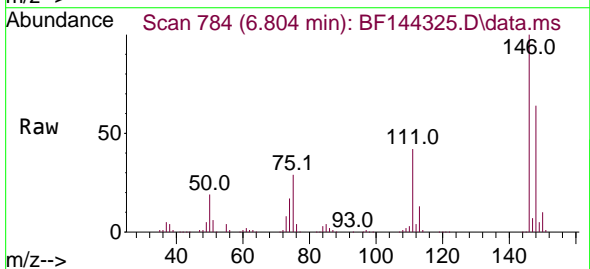
Ion	Ratio	Lower	Upper
93	100		
63	77.0	55.2	95.2
95	31.8	11.2	51.2

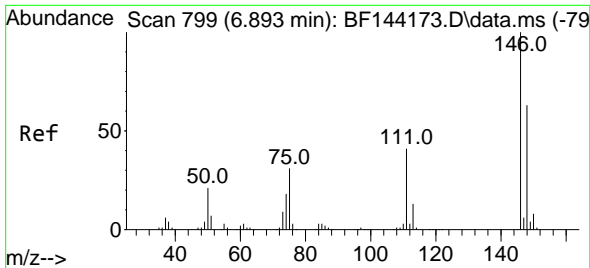


#12
 1,3-Dichlorobenzene
 Concen: 45.981 ng
 RT: 6.804 min Scan# 784
 Delta R.T. -0.012 min
 Lab File: BF144325.D
 Acq: 24 Nov 2025 15:50

Tgt Ion: 146 Resp: 206934

Ion	Ratio	Lower	Upper
146	100		
148	64.5	51.8	77.8
75	29.1	25.0	37.4



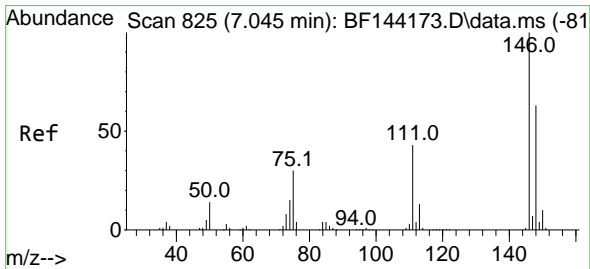
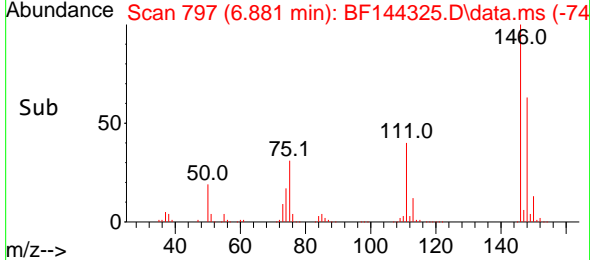
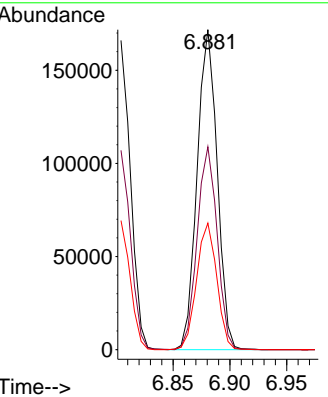
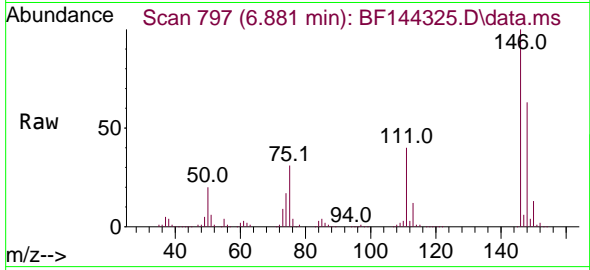


#13
 1,4-Dichlorobenzene
 Concen: 46.903 ng
 RT: 6.881 min Scan# 79
 Delta R.T. -0.012 min
 Lab File: BF144325.D
 Acq: 24 Nov 2025 15:50

Instrument :
 BNA_F
 ClientSampleId :
 V933MS

Tgt Ion:146 Resp: 211472

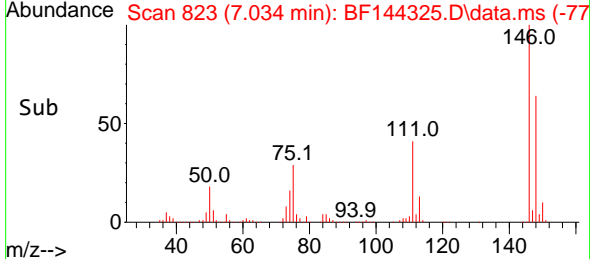
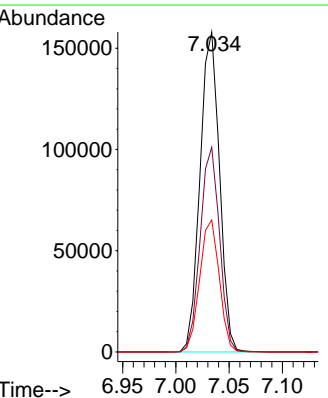
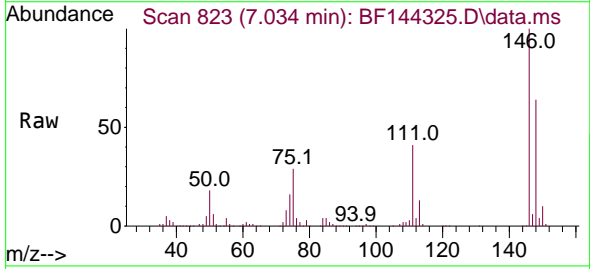
Ion	Ratio	Lower	Upper
146	100		
148	63.4	50.2	75.2
111	39.5	32.6	48.8

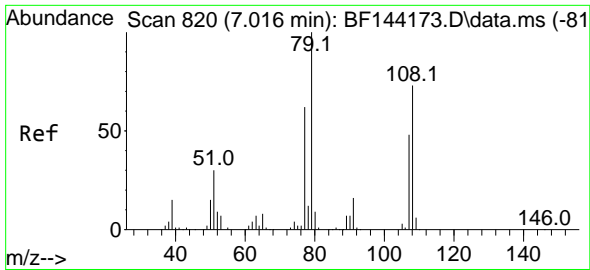


#14
 1,2-Dichlorobenzene
 Concen: 46.495 ng
 RT: 7.034 min Scan# 823
 Delta R.T. -0.012 min
 Lab File: BF144325.D
 Acq: 24 Nov 2025 15:50

Tgt Ion:146 Resp: 200933

Ion	Ratio	Lower	Upper
146	100		
148	63.9	50.7	76.1
111	41.2	34.2	51.4



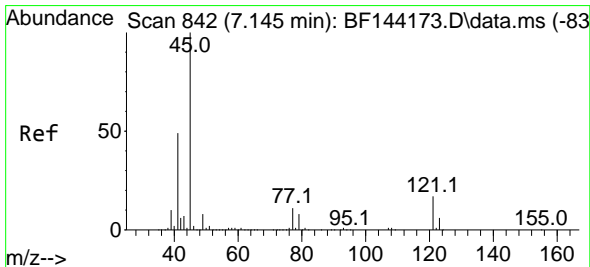
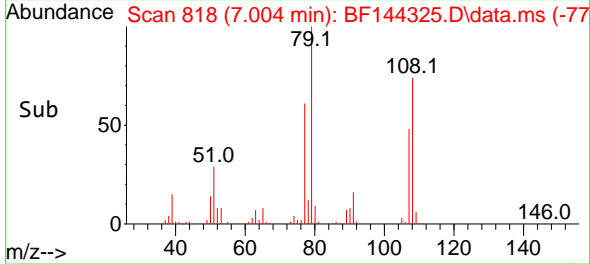
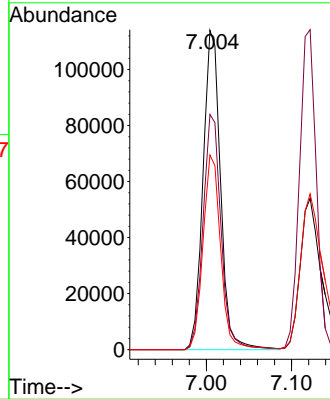
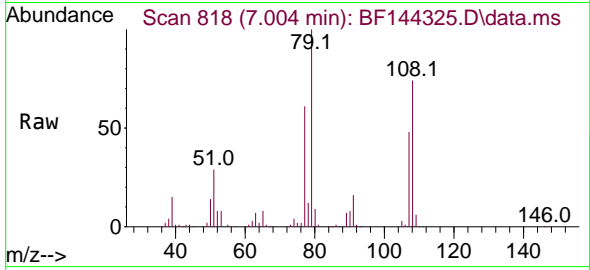


#15
 Benzyl Alcohol
 Concen: 48.764 ng
 RT: 7.004 min Scan# 81
 Delta R.T. -0.018 min
 Lab File: BF144325.D
 Acq: 24 Nov 2025 15:50

Instrument :
 BNA_F
 ClientSampleId :
 V933MS

Tgt Ion: 79 Resp: 162709

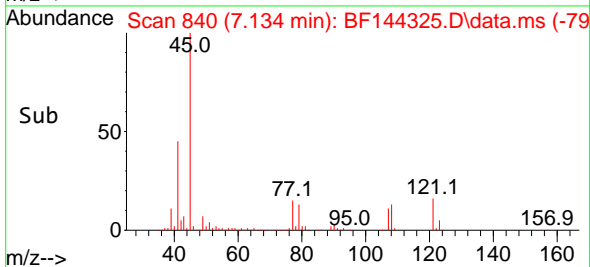
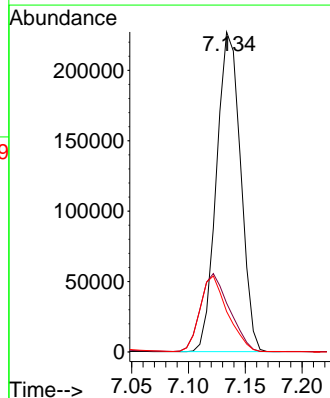
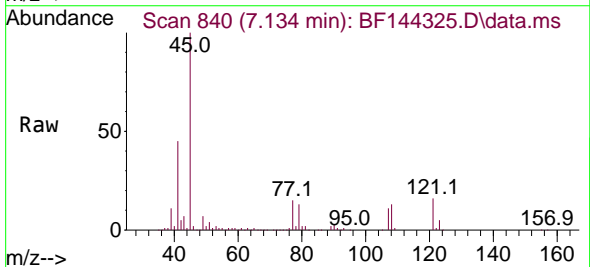
Ion	Ratio	Lower	Upper
79	100		
108	73.6	58.2	87.4
77	60.9	49.9	74.9

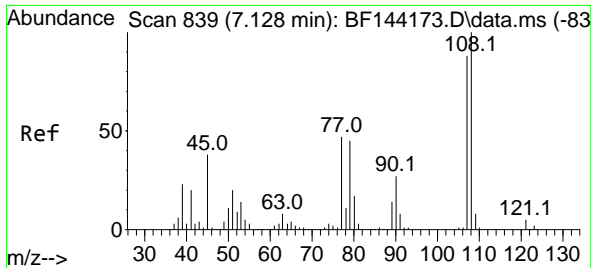


#16
 2,2'-oxybis(1-Chloropropane)
 Concen: 48.492 ng
 RT: 7.134 min Scan# 840
 Delta R.T. -0.006 min
 Lab File: BF144325.D
 Acq: 24 Nov 2025 15:50

Tgt Ion: 45 Resp: 335006

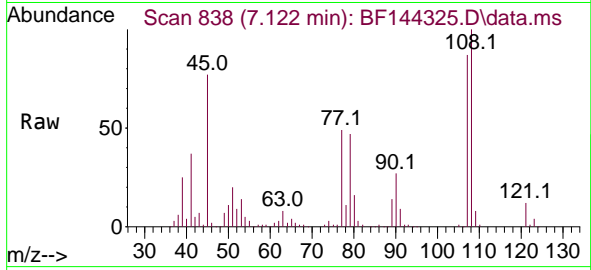
Ion	Ratio	Lower	Upper
45	100		
77	15.2	0.0	31.8
79	12.6	0.0	29.1





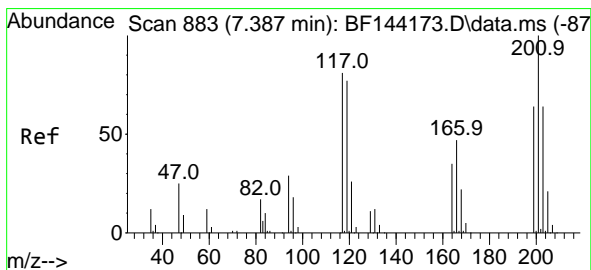
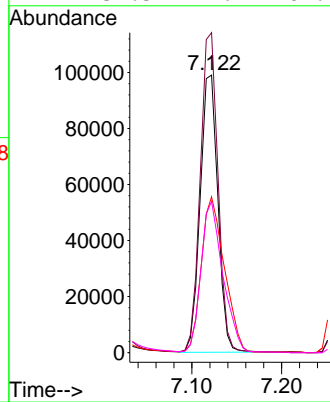
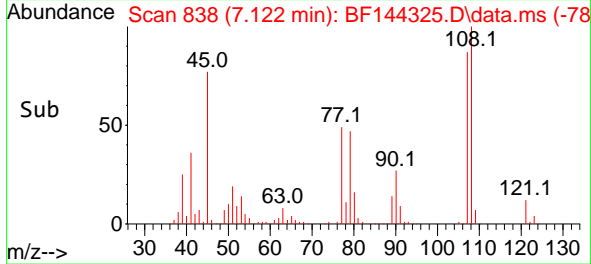
#17
 2-Methylphenol
 Concen: 46.764 ng
 RT: 7.122 min Scan# 81
 Delta R.T. -0.000 min
 Lab File: BF144325.D
 Acq: 24 Nov 2025 15:50

Instrument :
 BNA_F
 ClientSampleId :
 V933MS

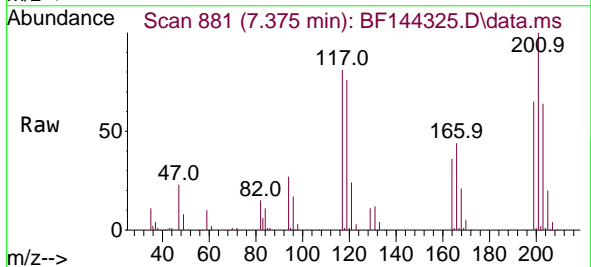


Tgt Ion:107 Resp: 135684

Ion	Ratio	Lower	Upper
107	100		
108	115.3	91.0	136.4
77	56.1	42.7	64.1
79	54.5	41.4	62.2

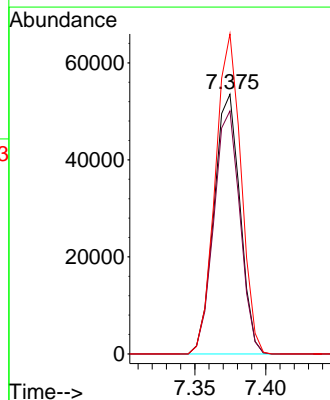
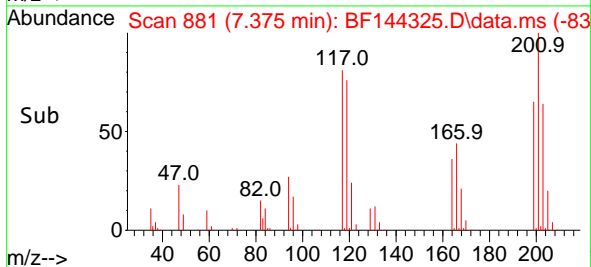


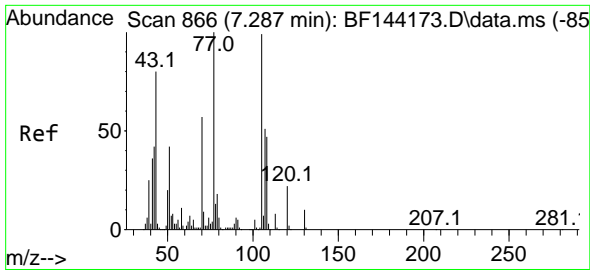
#18
 Hexachloroethane
 Concen: 45.655 ng
 RT: 7.375 min Scan# 881
 Delta R.T. -0.012 min
 Lab File: BF144325.D
 Acq: 24 Nov 2025 15:50



Tgt Ion:117 Resp: 68389

Ion	Ratio	Lower	Upper
117	100		
119	93.6	75.8	113.8
201	123.3	98.9	148.3



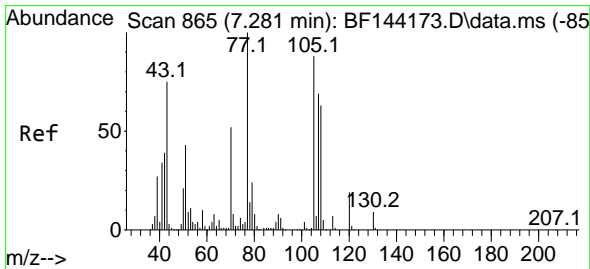
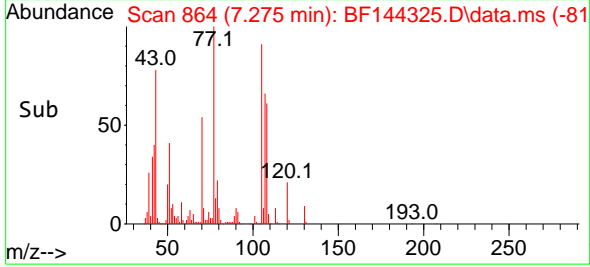
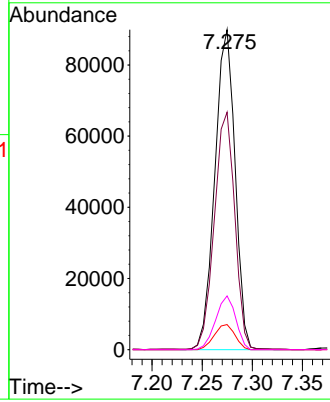
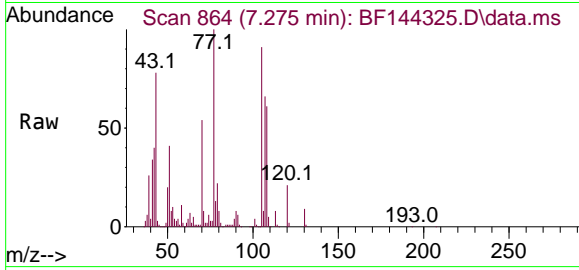


#19
 n-Nitroso-di-n-propylamine
 Concen: 45.583 ng
 RT: 7.275 min Scan# 864
 Delta R.T. -0.000 min
 Lab File: BF144325.D
 Acq: 24 Nov 2025 15:50

Instrument :
 BNA_F
 ClientSampleId :
 V933MS

Tgt Ion: 70 Resp: 126447

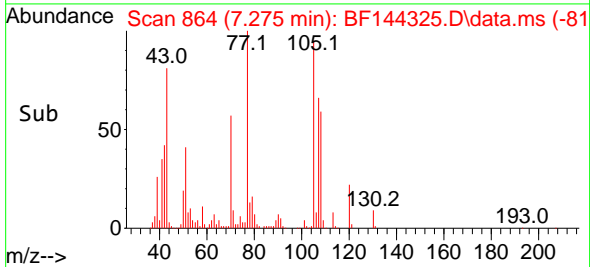
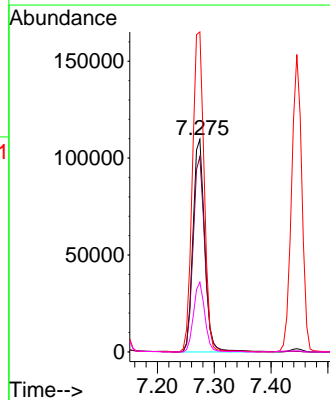
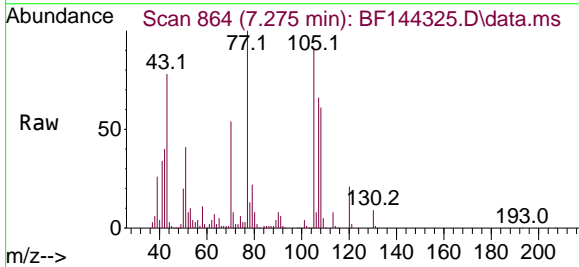
Ion	Ratio	Lower	Upper
70	100		
42	74.2	58.3	87.5
101	7.8	7.0	10.6
130	16.8	14.4	21.6

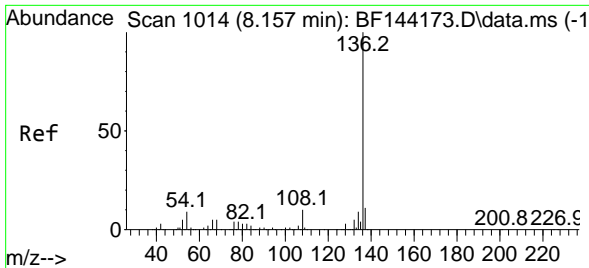


#20
 3+4-Methylphenols
 Concen: 45.920 ng
 RT: 7.275 min Scan# 864
 Delta R.T. -0.012 min
 Lab File: BF144325.D
 Acq: 24 Nov 2025 15:50

Tgt Ion: 107 Resp: 157059

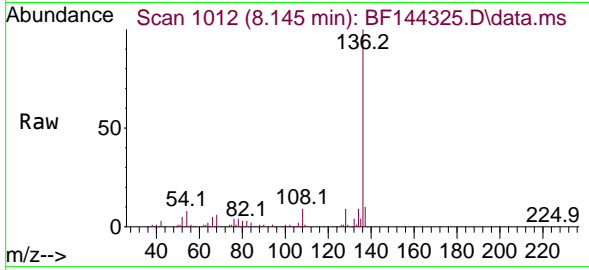
Ion	Ratio	Lower	Upper
107	100		
108	91.9	70.2	110.2
77	150.6	123.9	163.9
79	32.8	14.2	54.2





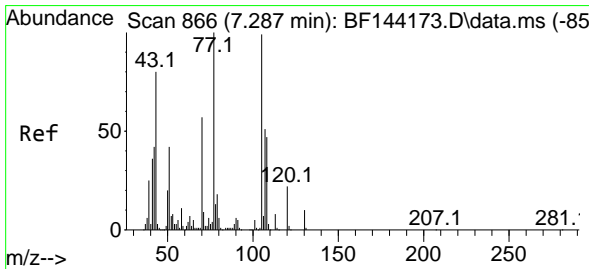
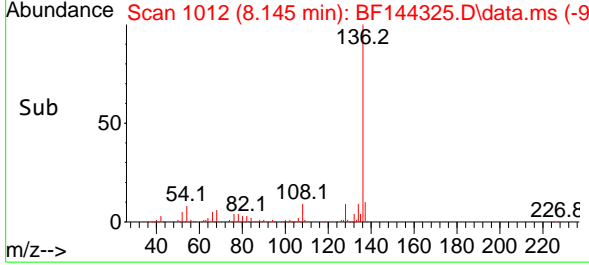
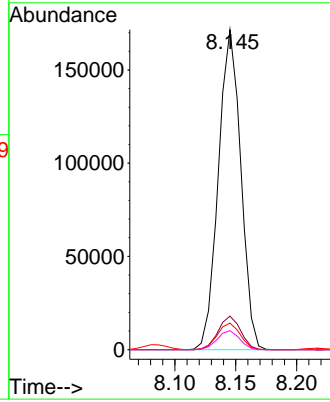
#21
 Naphthalene-d8
 Concen: 20.000 ng
 RT: 8.145 min Scan# 1014
 Delta R.T. -0.012 min
 Lab File: BF144325.D
 Acq: 24 Nov 2025 15:50

Instrument :
 BNA_F
 ClientSampleId :
 V933MS



Tgt Ion:136 Resp: 219530

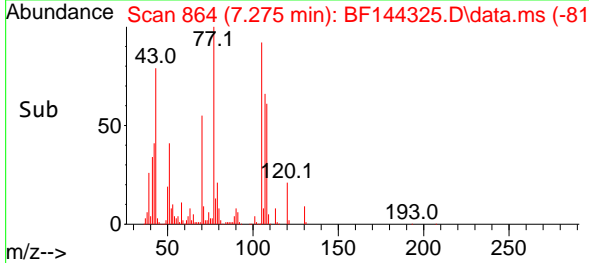
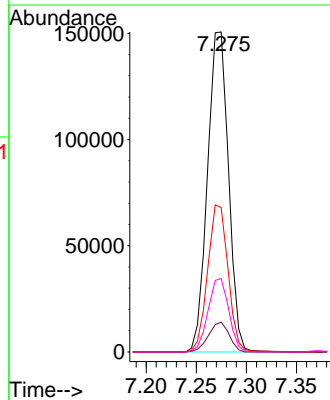
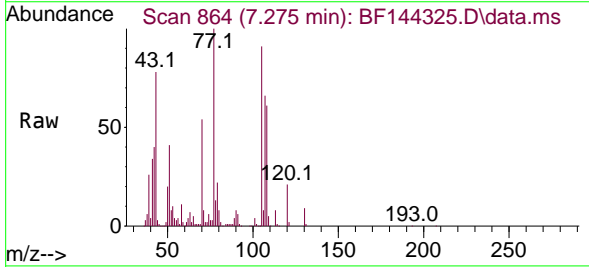
Ion	Ratio	Lower	Upper
136	100		
137	10.5	8.6	13.0
54	8.3	7.0	10.6
68	5.9	4.3	6.5

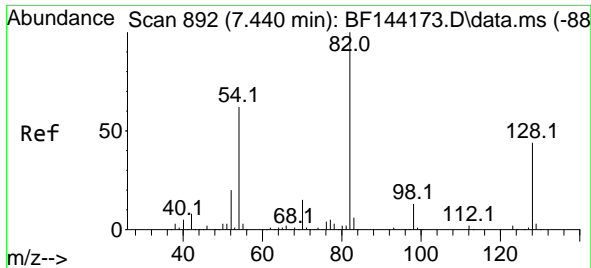


#22
 Acetophenone
 Concen: 46.586 ng
 RT: 7.275 min Scan# 864
 Delta R.T. -0.006 min
 Lab File: BF144325.D
 Acq: 24 Nov 2025 15:50

Tgt Ion:105 Resp: 219391

Ion	Ratio	Lower	Upper
105	100		
71	9.3	7.2	10.8
51	45.1	34.0	51.0
120	22.9	17.8	26.6

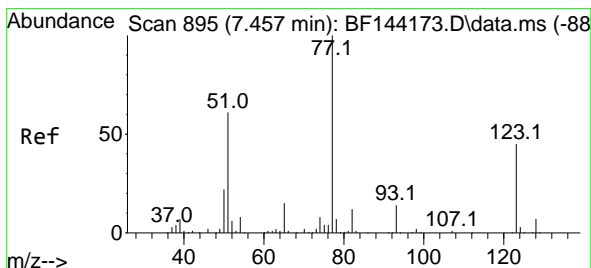
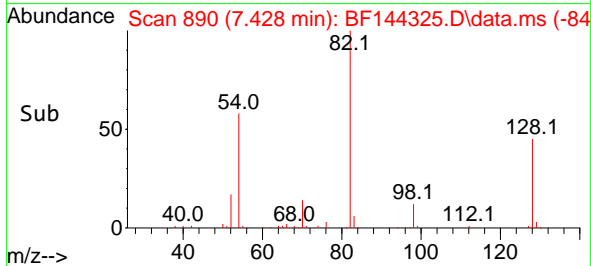
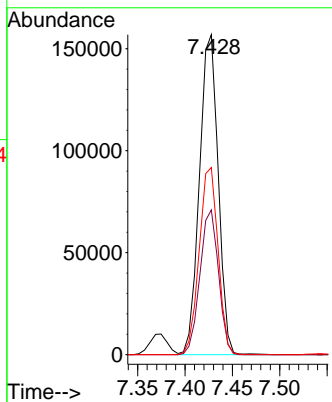
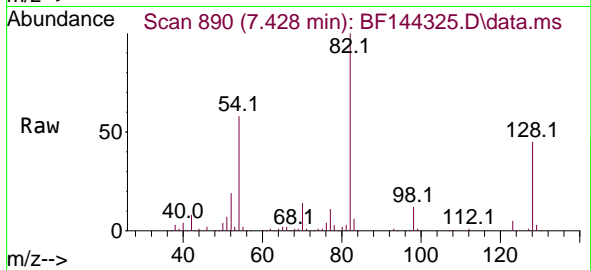




#23
 Nitrobenzene-d5
 Concen: 56.866 ng
 RT: 7.428 min Scan# 892
 Delta R.T. -0.006 min
 Lab File: BF144325.D
 Acq: 24 Nov 2025 15:50

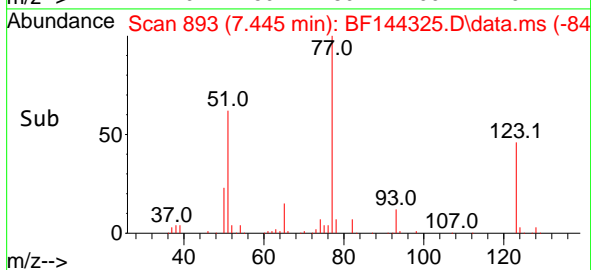
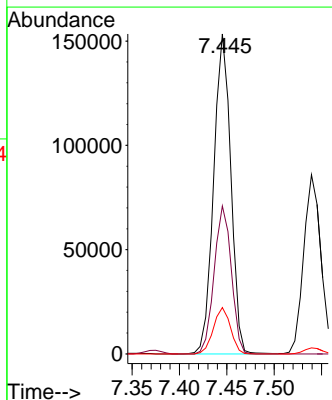
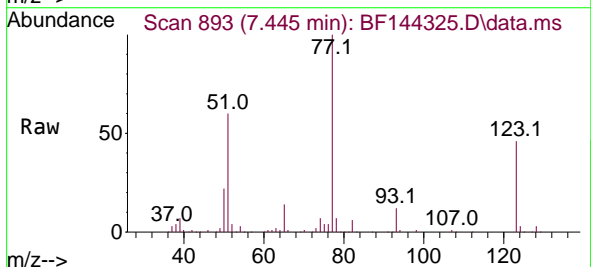
Instrument :
 BNA_F
 ClientSampleId :
 V933MS

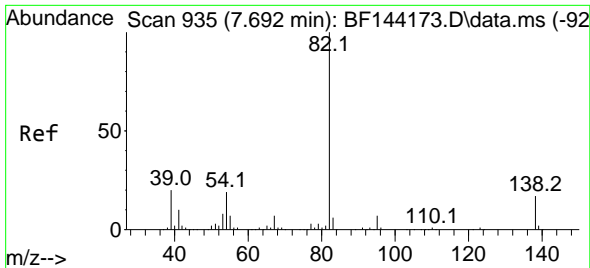
Tgt Ion: 82 Resp: 216151
 Ion Ratio Lower Upper
 82 100
 128 45.2 34.7 52.1
 54 58.5 49.5 74.3



#24
 Nitrobenzene
 Concen: 46.812 ng
 RT: 7.445 min Scan# 893
 Delta R.T. -0.006 min
 Lab File: BF144325.D
 Acq: 24 Nov 2025 15:50

Tgt Ion: 77 Resp: 193196
 Ion Ratio Lower Upper
 77 100
 123 46.2 35.8 53.8
 65 14.5 12.2 18.2

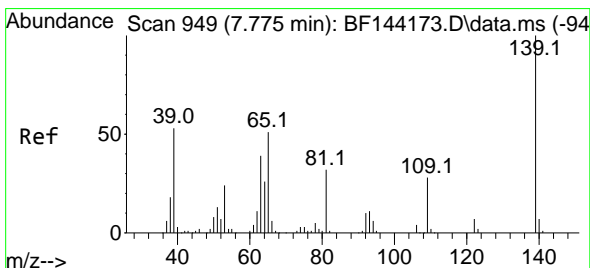
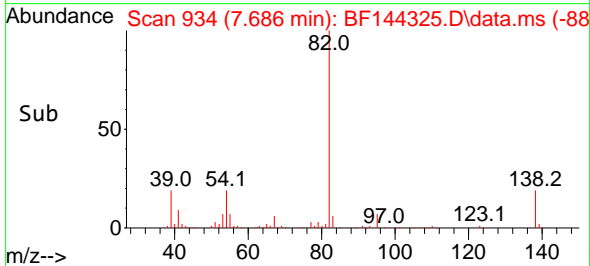
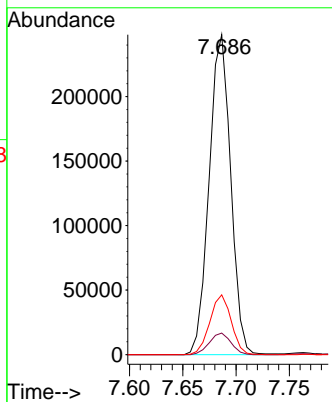
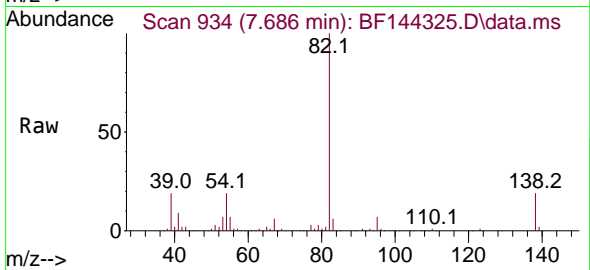




#25
 Isophorone
 Concen: 48.566 ng
 RT: 7.686 min Scan# 91
 Delta R.T. -0.000 min
 Lab File: BF144325.D
 Acq: 24 Nov 2025 15:50

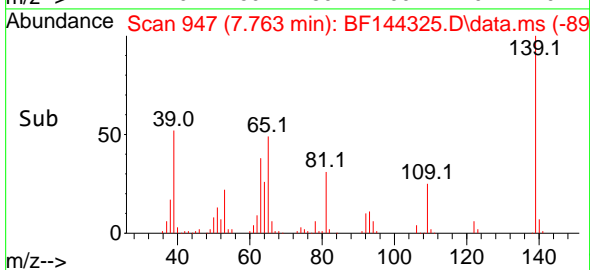
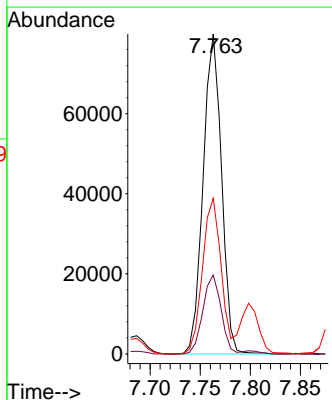
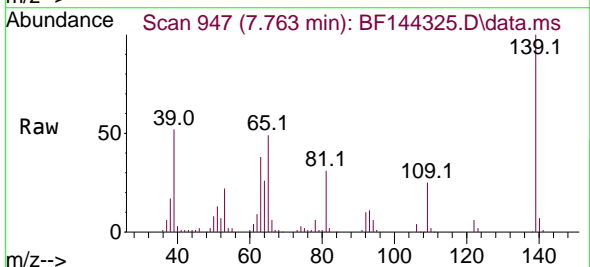
Instrument :
 BNA_F
 ClientSampleId :
 V933MS

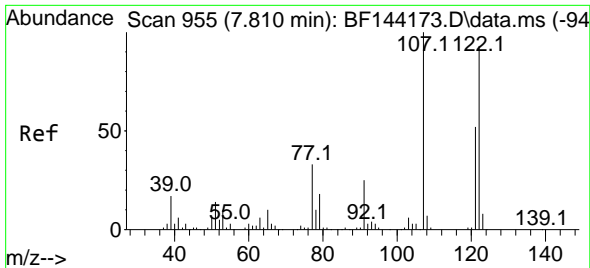
Tgt Ion: 82 Resp: 349181
 Ion Ratio Lower Upper
 82 100
 95 6.7 5.5 8.3
 138 18.7 13.7 20.5



#26
 2-Nitrophenol
 Concen: 49.770 ng
 RT: 7.763 min Scan# 947
 Delta R.T. -0.012 min
 Lab File: BF144325.D
 Acq: 24 Nov 2025 15:50

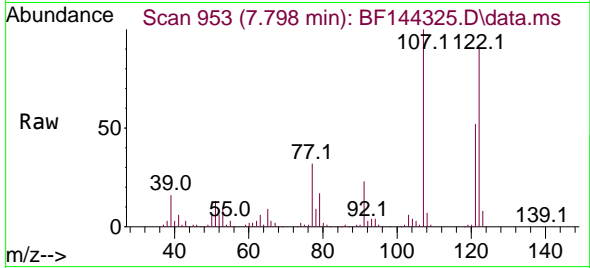
Tgt Ion: 139 Resp: 101679
 Ion Ratio Lower Upper
 139 100
 109 24.7 22.2 33.2
 65 48.6 40.7 61.1



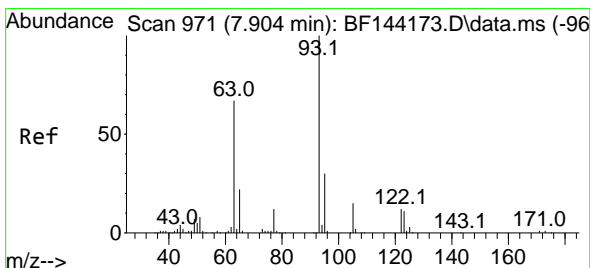
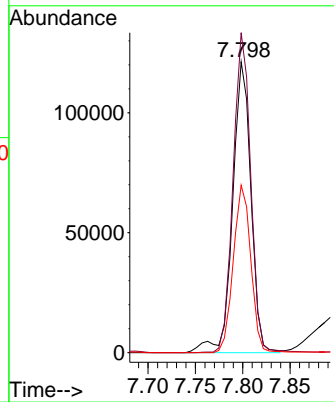
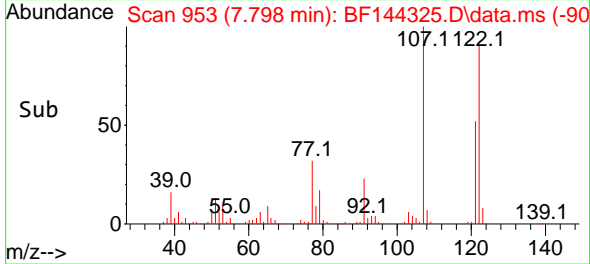


#27
 2,4-Dimethylphenol
 Concen: 53.284 ng
 RT: 7.798 min Scan# 911
 Delta R.T. -0.006 min
 Lab File: BF144325.D
 Acq: 24 Nov 2025 15:50

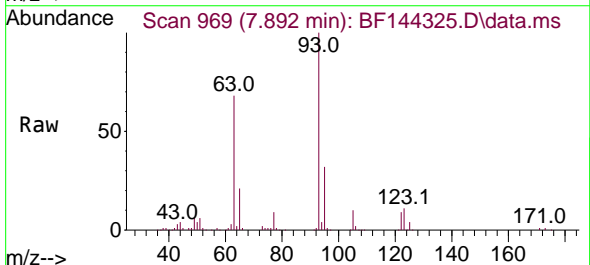
Instrument :
 BNA_F
 ClientSampleId :
 V933MS



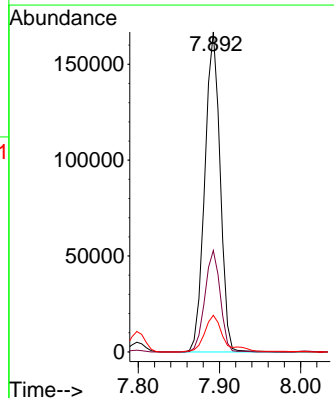
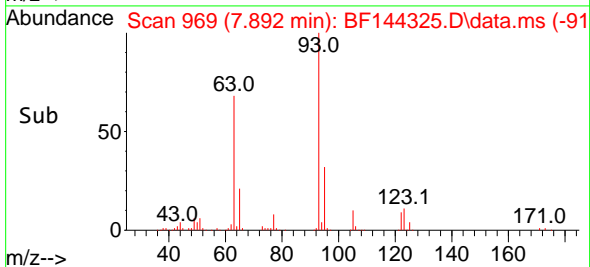
Tgt Ion:122 Resp: 163158
 Ion Ratio Lower Upper
 122 100
 107 110.0 86.2 129.4
 121 57.6 44.6 66.8

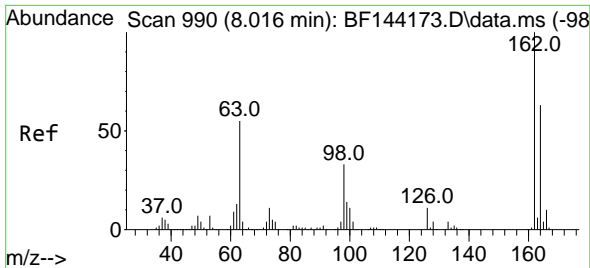


#28
 bis(2-Chloroethoxy)methane
 Concen: 48.898 ng
 RT: 7.892 min Scan# 969
 Delta R.T. -0.006 min
 Lab File: BF144325.D
 Acq: 24 Nov 2025 15:50



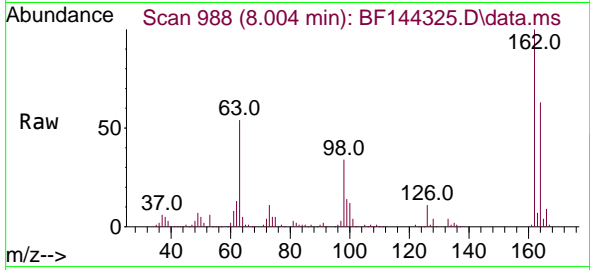
Tgt Ion: 93 Resp: 219539
 Ion Ratio Lower Upper
 93 100
 95 31.7 24.2 36.4
 123 11.4 9.0 13.4



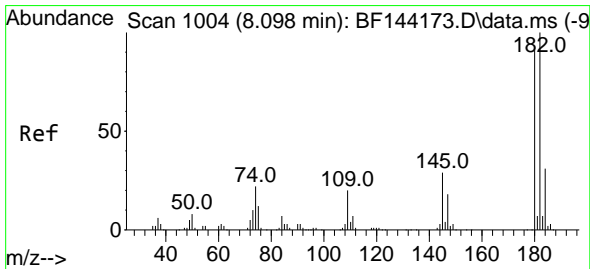
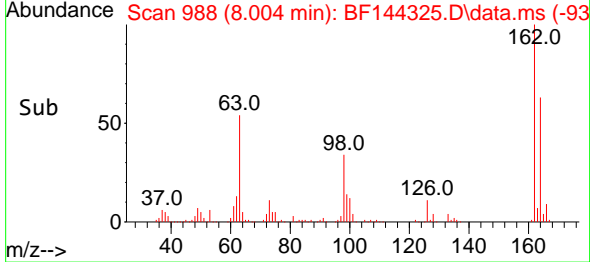
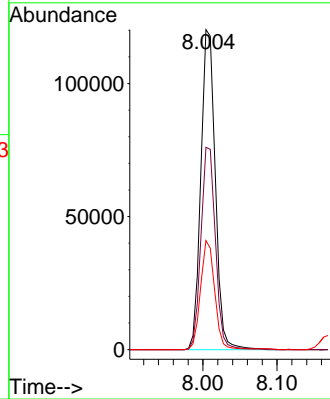


#29
 2,4-Dichlorophenol
 Concen: 46.240 ng
 RT: 8.004 min Scan# 98
 Delta R.T. -0.012 min
 Lab File: BF144325.D
 Acq: 24 Nov 2025 15:50

Instrument :
 BNA_F
 ClientSampleId :
 V933MS

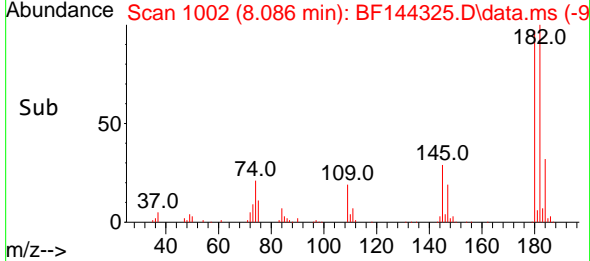
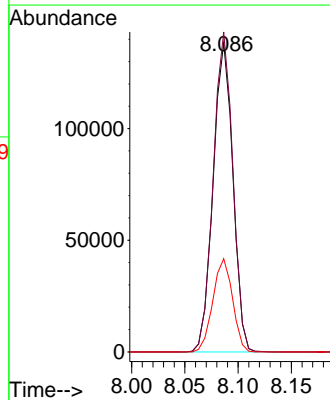
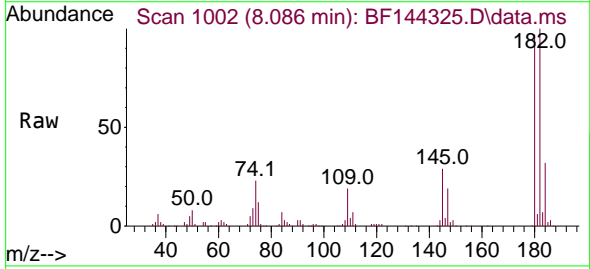


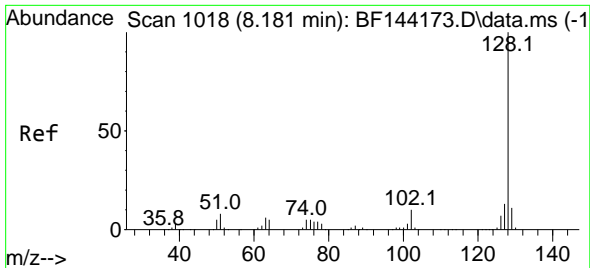
Tgt Ion:162 Resp: 163191
 Ion Ratio Lower Upper
 162 100
 164 63.2 42.9 82.9
 98 34.1 13.3 53.3



#30
 1,2,4-Trichlorobenzene
 Concen: 49.259 ng
 RT: 8.086 min Scan# 1002
 Delta R.T. -0.012 min
 Lab File: BF144325.D
 Acq: 24 Nov 2025 15:50

Tgt Ion:180 Resp: 178517
 Ion Ratio Lower Upper
 180 100
 182 103.6 87.7 131.5
 145 30.2 25.4 38.0

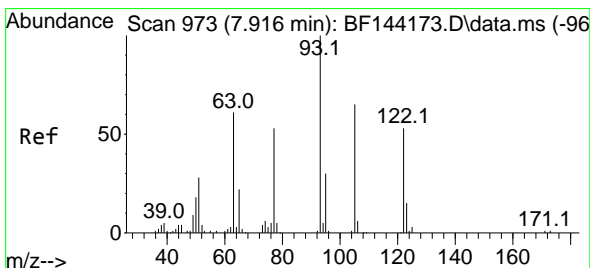
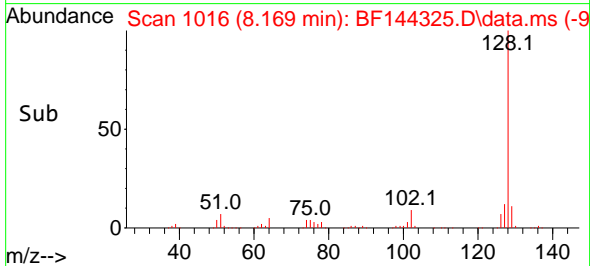
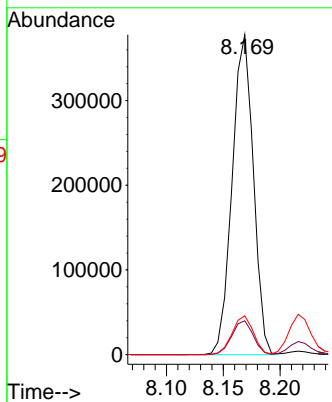
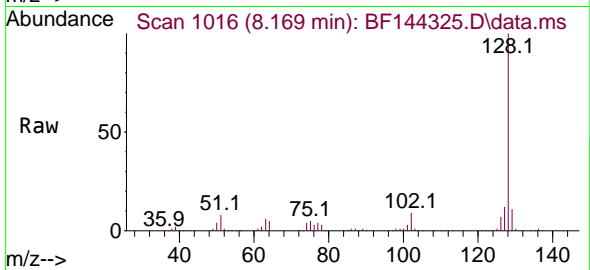




#31
 Naphthalene
 Concen: 46.895 ng
 RT: 8.169 min Scan# 1016
 Delta R.T. -0.006 min
 Lab File: BF144325.D
 Acq: 24 Nov 2025 15:50

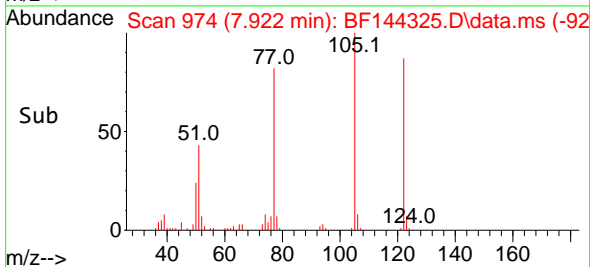
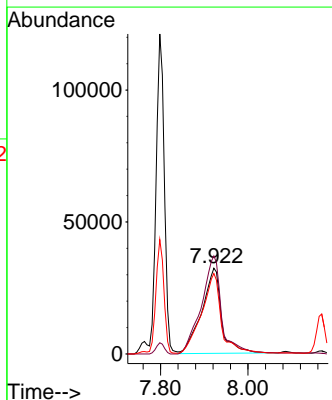
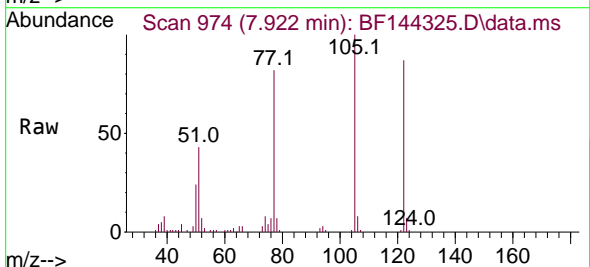
Instrument :
 BNA_F
 ClientSampleId :
 V933MS

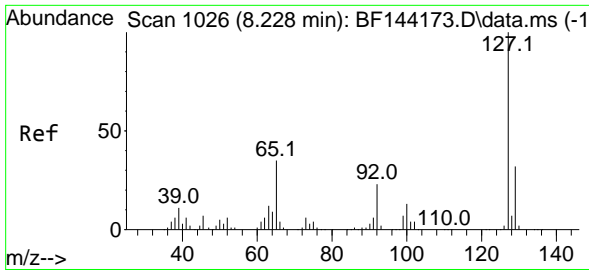
Tgt Ion:128 Resp: 489719
 Ion Ratio Lower Upper
 128 100
 129 10.6 8.9 13.3
 127 12.1 10.3 15.5



#32
 Benzoic acid
 Concen: 45.321 ng
 RT: 7.922 min Scan# 974
 Delta R.T. -0.029 min
 Lab File: BF144325.D
 Acq: 24 Nov 2025 15:50

Tgt Ion:122 Resp: 101725
 Ion Ratio Lower Upper
 122 100
 105 114.4 99.9 139.9
 77 93.8 77.5 117.5

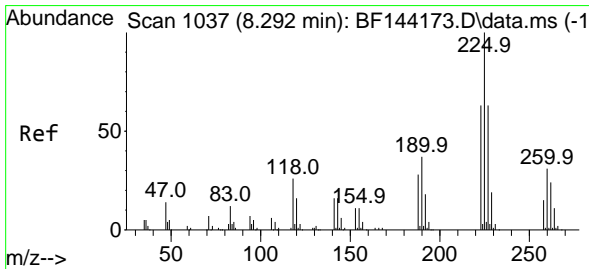
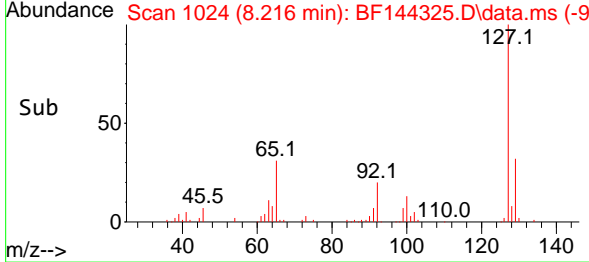
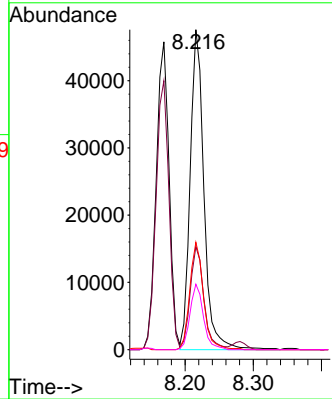
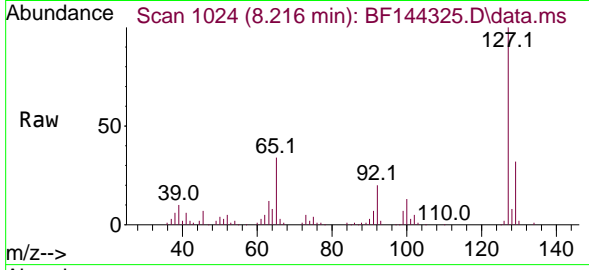




#33
 4-Chloroaniline
 Concen: 17.598 ng
 RT: 8.216 min Scan# 1024
 Delta R.T. -0.012 min
 Lab File: BF144325.D
 Acq: 24 Nov 2025 15:50

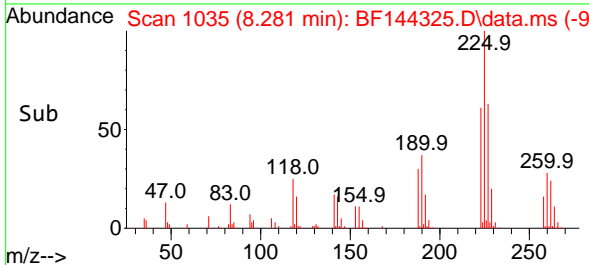
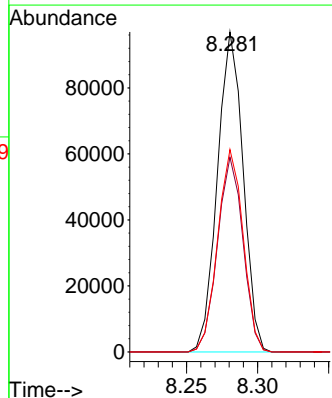
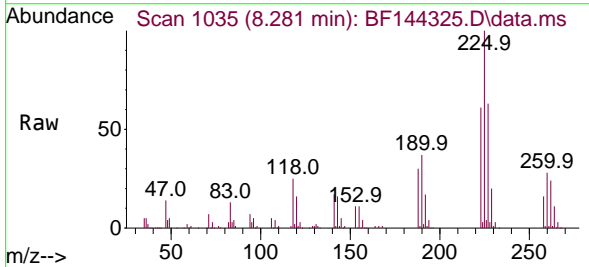
Instrument : BNA_F
 Client Sample Id : V933MS

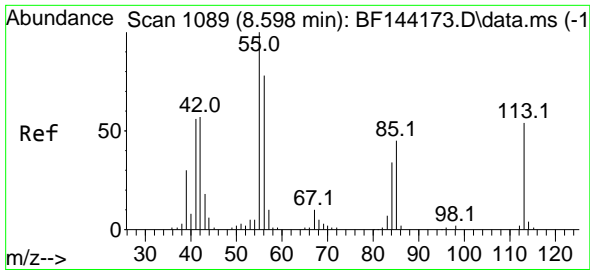
Tgt Ion	Resp	Lower	Upper
127	67023		
129	32.2	25.3	37.9
65	33.5	27.6	41.4
92	20.4	18.4	27.6



#34
 Hexachlorobutadiene
 Concen: 44.621 ng
 RT: 8.281 min Scan# 1035
 Delta R.T. -0.012 min
 Lab File: BF144325.D
 Acq: 24 Nov 2025 15:50

Tgt Ion	Resp	Lower	Upper
225	121870		
223	60.8	50.2	75.4
227	63.2	50.1	75.1



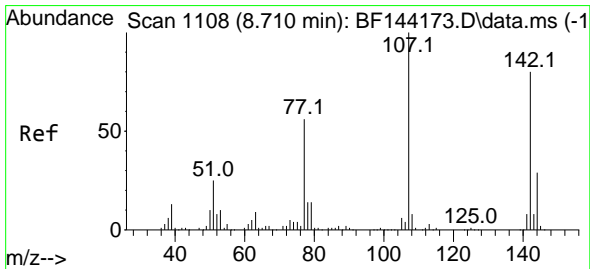
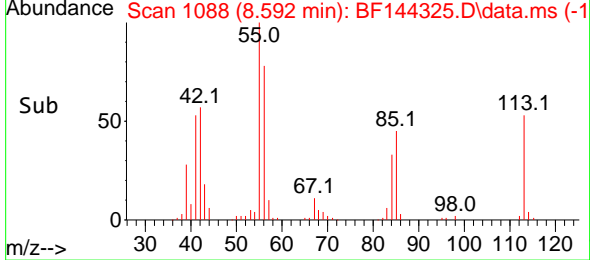
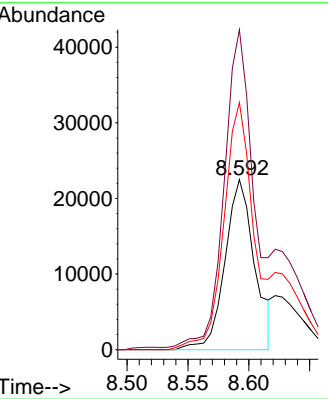
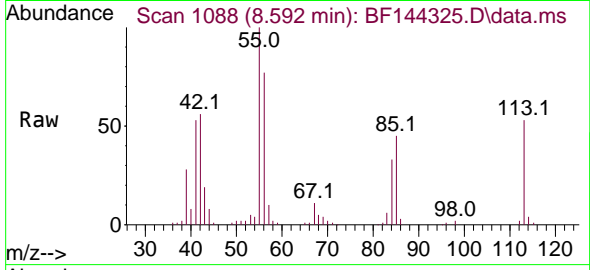


#35
 Caprolactam
 Concen: 39.305 ng
 RT: 8.592 min Scan# 1088
 Delta R.T. -0.029 min
 Lab File: BF144325.D
 Acq: 24 Nov 2025 15:50

Instrument :
 BNA_F
 ClientSampleId :
 V933MS

Tgt Ion:113 Resp: 38004

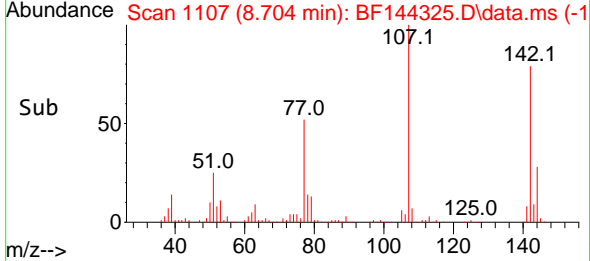
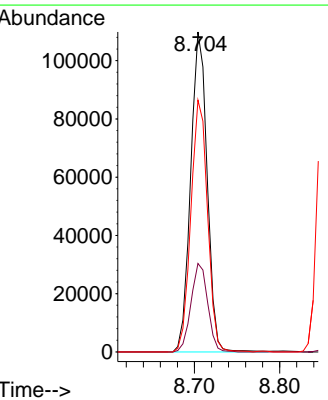
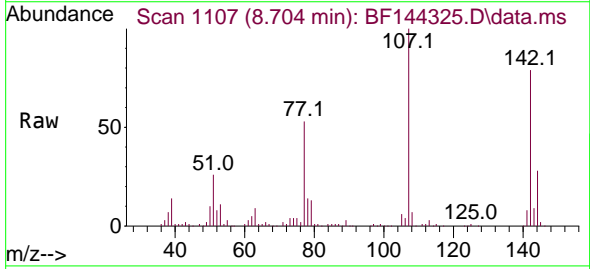
Ion	Ratio	Lower	Upper
113	100		
55	188.3	166.8	206.8
56	145.4	125.9	165.9

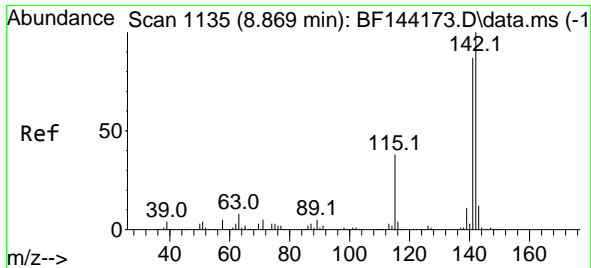


#36
 4-Chloro-3-methylphenol
 Concen: 46.690 ng
 RT: 8.704 min Scan# 1107
 Delta R.T. -0.000 min
 Lab File: BF144325.D
 Acq: 24 Nov 2025 15:50

Tgt Ion:107 Resp: 147677

Ion	Ratio	Lower	Upper
107	100		
144	27.6	23.3	34.9
142	78.7	63.8	95.6

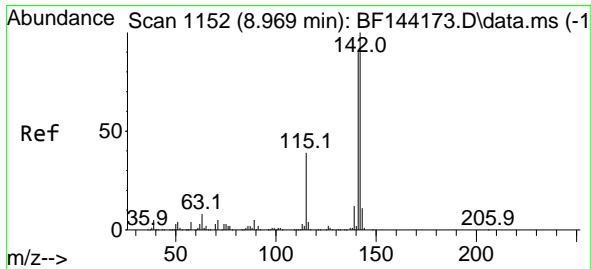
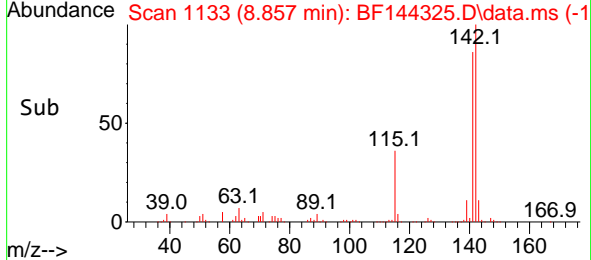
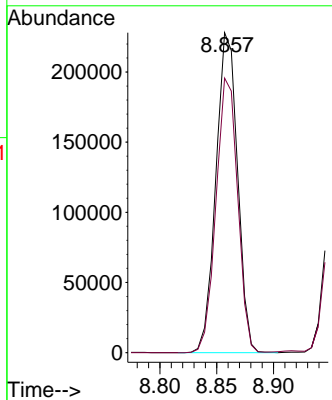
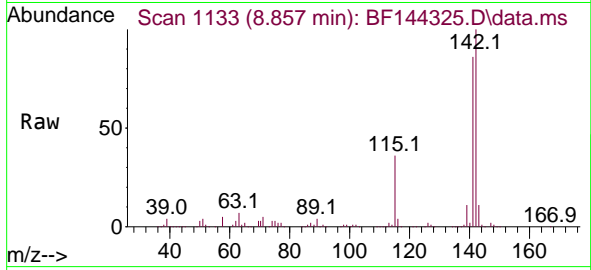




#37
 2-Methylnaphthalene
 Concen: 43.161 ng
 RT: 8.857 min Scan# 1110
 Delta R.T. -0.012 min
 Lab File: BF144325.D
 Acq: 24 Nov 2025 15:50

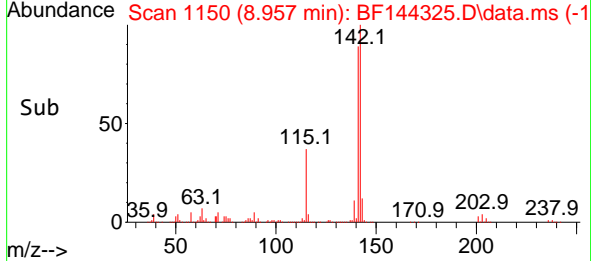
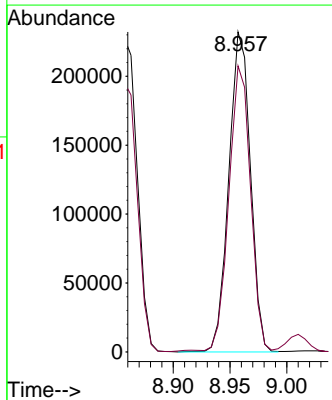
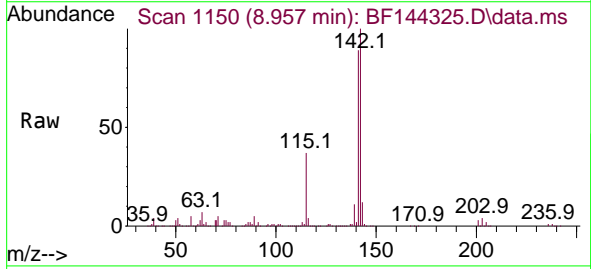
Instrument : BNA_F
 ClientSampleId : V933MS

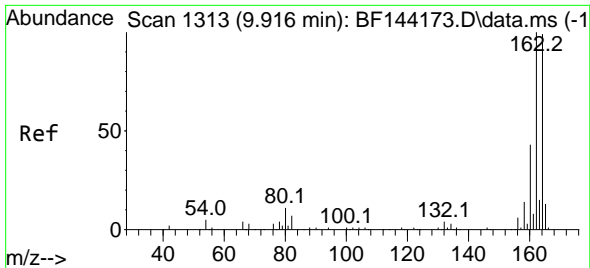
Tgt Ion:142 Resp: 301350
 Ion Ratio Lower Upper
 142 100
 141 85.8 69.9 104.9



#38
 1-Methylnaphthalene
 Concen: 45.610 ng
 RT: 8.957 min Scan# 1150
 Delta R.T. -0.012 min
 Lab File: BF144325.D
 Acq: 24 Nov 2025 15:50

Tgt Ion:142 Resp: 307268
 Ion Ratio Lower Upper
 142 100
 141 89.4 72.1 108.1



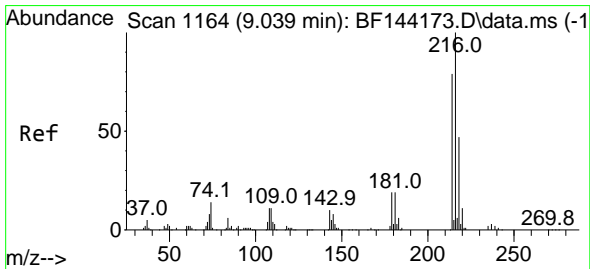
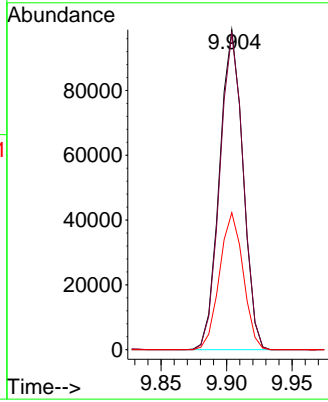
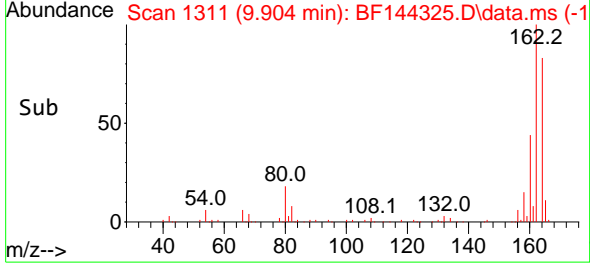
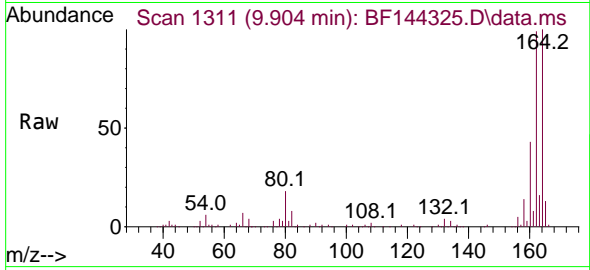


#39
 Acenaphthene-d10
 Concen: 20.000 ng
 RT: 9.904 min Scan# 1313
 Delta R.T. -0.012 min
 Lab File: BF144325.D
 Acq: 24 Nov 2025 15:50

Instrument :
 BNA_F
 Client Sample Id :
 V933MS

Tgt Ion:164 Resp: 123038

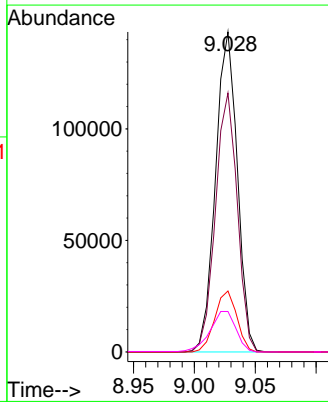
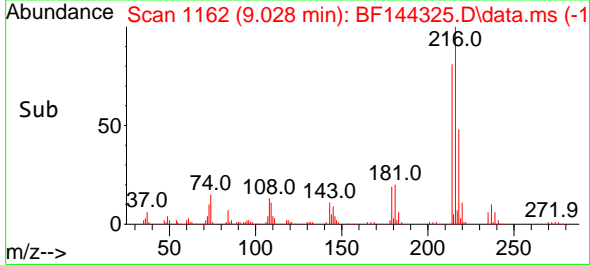
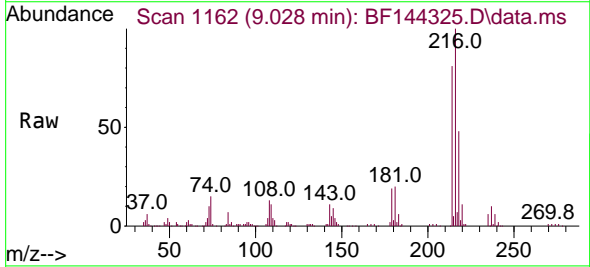
Ion	Ratio	Lower	Upper
164	100		
162	98.7	81.1	121.7
160	42.8	34.5	51.7

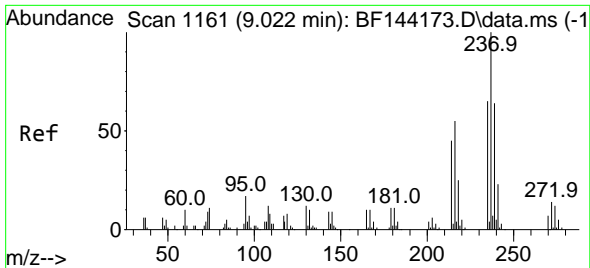


#40
 1,2,4,5-Tetrachlorobenzene
 Concen: 44.401 ng
 RT: 9.028 min Scan# 1162
 Delta R.T. -0.006 min
 Lab File: BF144325.D
 Acq: 24 Nov 2025 15:50

Tgt Ion:216 Resp: 179042

Ion	Ratio	Lower	Upper
216	100		
214	80.9	63.4	95.2
179	19.2	15.0	22.4
108	15.1	10.5	15.7



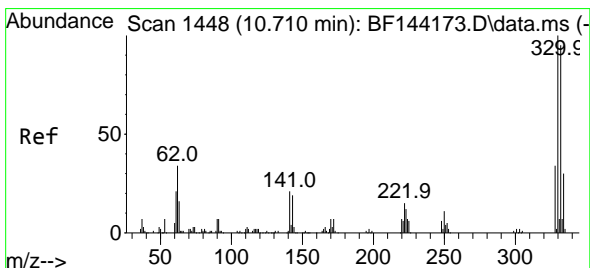
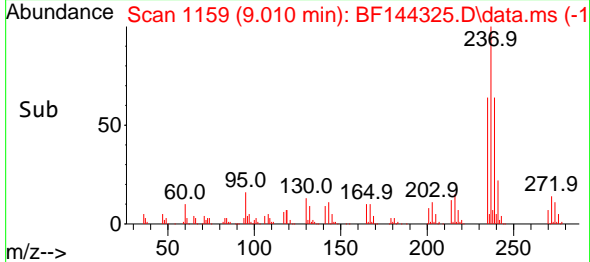
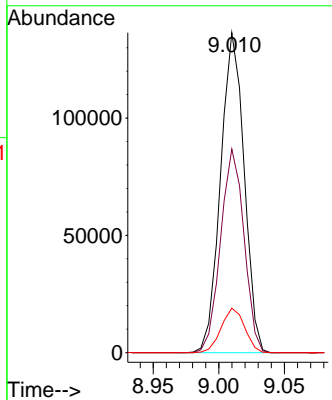
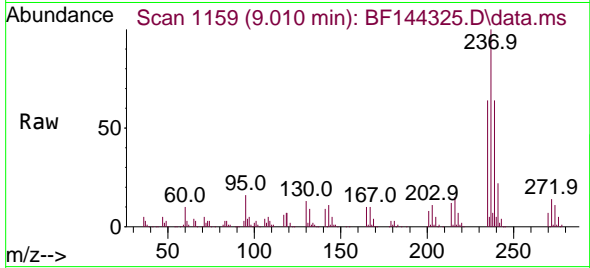


#41
 Hexachlorocyclopentadiene
 Concen: 98.949 ng
 RT: 9.010 min Scan# 1161
 Delta R.T. -0.018 min
 Lab File: BF144325.D
 Acq: 24 Nov 2025 15:50

Instrument :
 BNA_F
 ClientSampleId :
 V933MS

Tgt Ion: 237 Resp: 170392

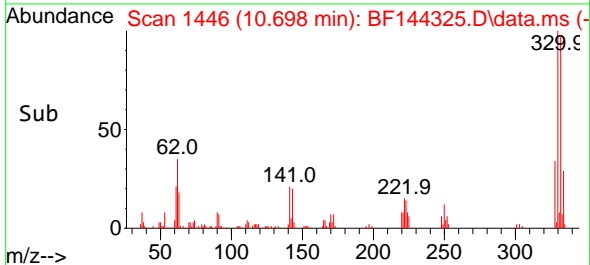
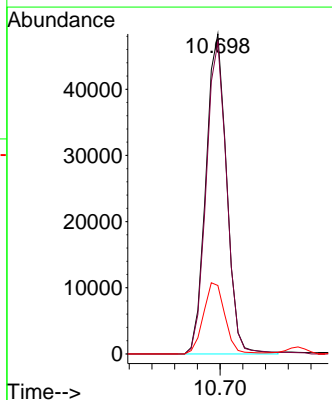
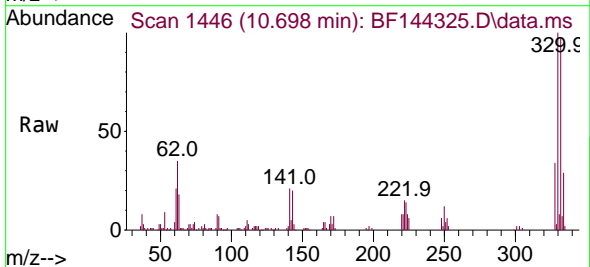
Ion	Ratio	Lower	Upper
237	100		
235	63.6	45.5	85.5
272	13.9	0.0	33.5

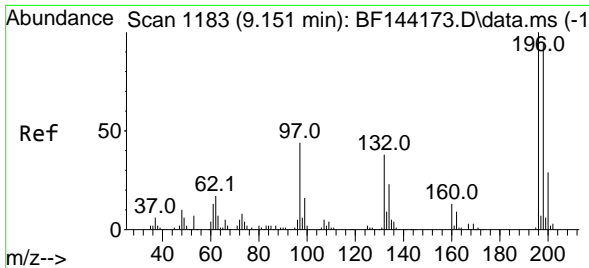


#42
 2,4,6-Tribromophenol
 Concen: 39.633 ng
 RT: 10.698 min Scan# 1446
 Delta R.T. -0.006 min
 Lab File: BF144325.D
 Acq: 24 Nov 2025 15:50

Tgt Ion: 330 Resp: 61192

Ion	Ratio	Lower	Upper
330	100		
332	97.1	76.7	115.1
141	23.1	17.8	26.8



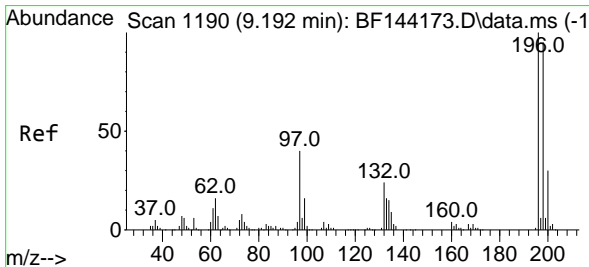
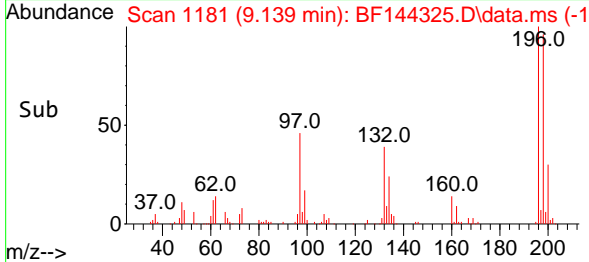
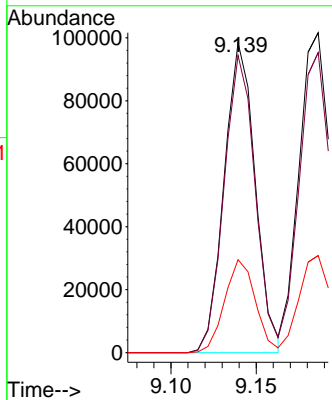
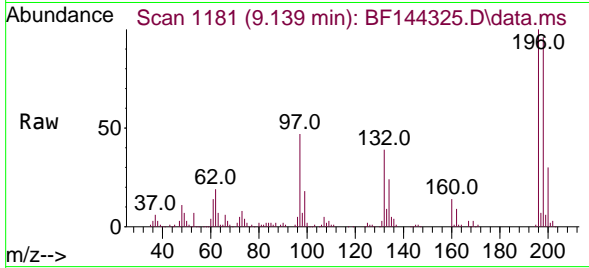


#43
 2,4,6-Trichlorophenol
 Concen: 45.436 ng
 RT: 9.139 min Scan# 1181
 Delta R.T. -0.012 min
 Lab File: BF144325.D
 Acq: 24 Nov 2025 15:50

Instrument : BNA_F
 Client SampleId : V933MS

Tgt Ion:196 Resp: 124699

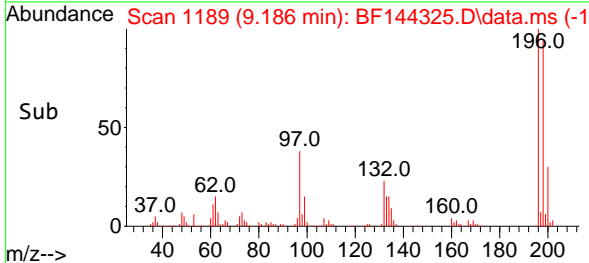
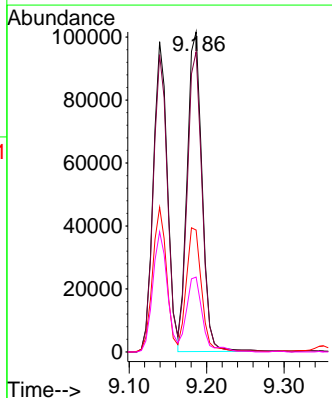
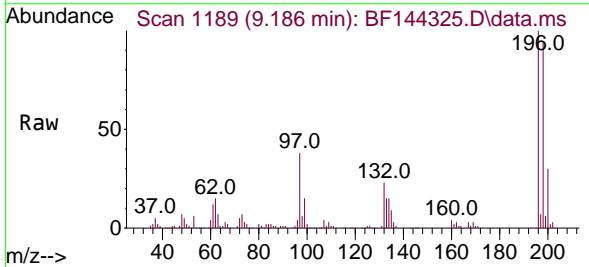
Ion	Ratio	Lower	Upper
196	100		
198	95.8	75.3	112.9
200	30.0	23.4	35.2

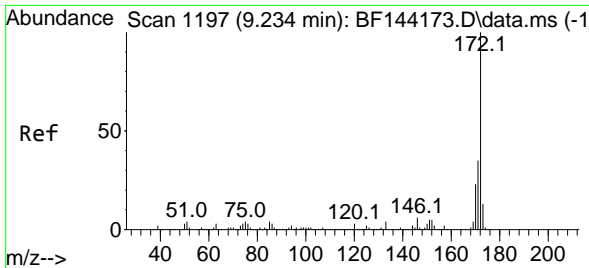


#44
 2,4,5-Trichlorophenol
 Concen: 45.662 ng
 RT: 9.186 min Scan# 1189
 Delta R.T. -0.006 min
 Lab File: BF144325.D
 Acq: 24 Nov 2025 15:50

Tgt Ion:196 Resp: 135064

Ion	Ratio	Lower	Upper
196	100		
198	93.8	76.1	114.1
97	38.1	31.9	47.9
132	23.4	19.4	29.2

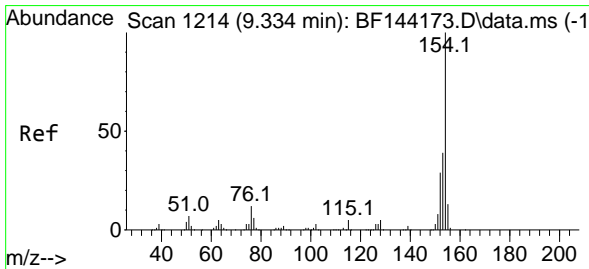
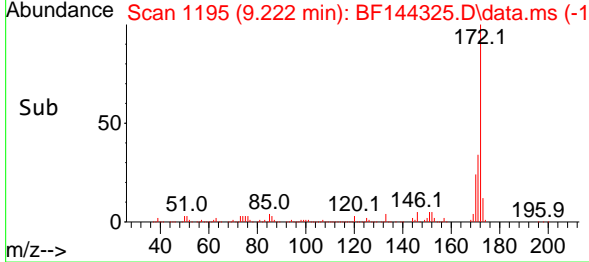
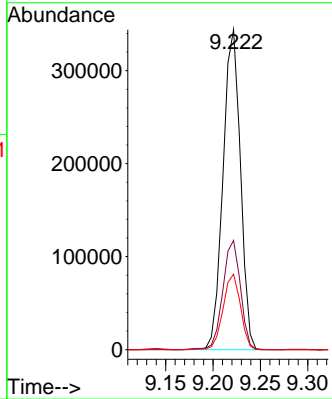
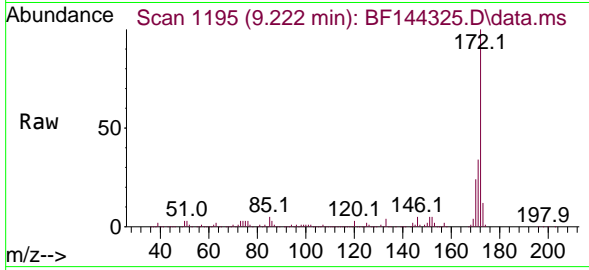




#45
 2-Fluorobiphenyl
 Concen: 52.748 ng
 RT: 9.222 min Scan# 1195
 Delta R.T. -0.006 min
 Lab File: BF144325.D
 Acq: 24 Nov 2025 15:50

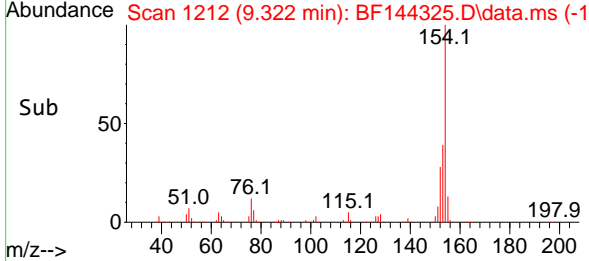
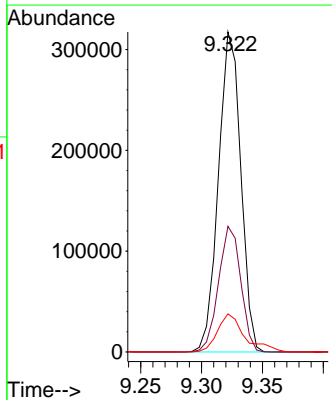
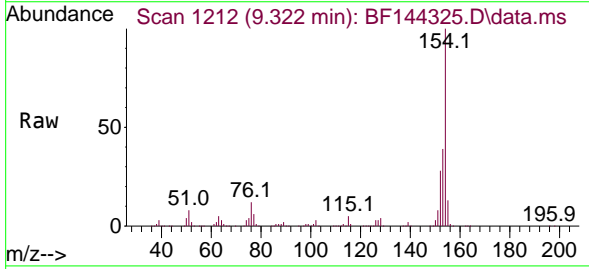
Instrument : BNA_F
 ClientSampleId : V933MS

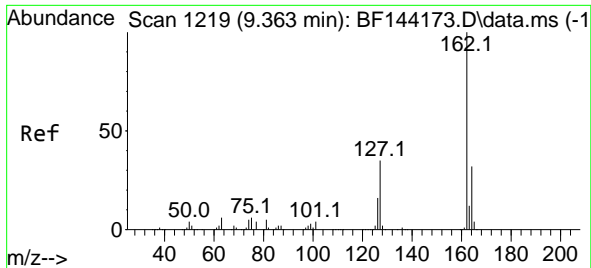
Tgt Ion	Resp	Lower	Upper
172	100		
171	34.1	28.1	42.1
170	23.6	18.6	28.0



#46
 1,1'-Biphenyl
 Concen: 47.287 ng
 RT: 9.322 min Scan# 1212
 Delta R.T. -0.012 min
 Lab File: BF144325.D
 Acq: 24 Nov 2025 15:50

Tgt Ion	Resp	Lower	Upper
154	100		
153	39.2	19.2	59.2
76	11.9	0.0	31.8



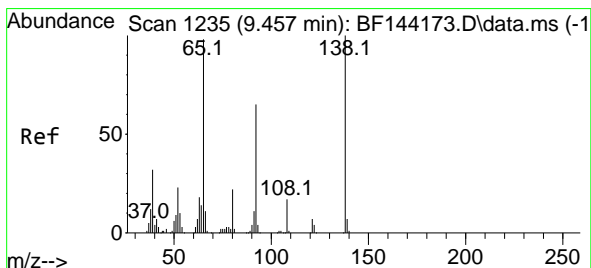
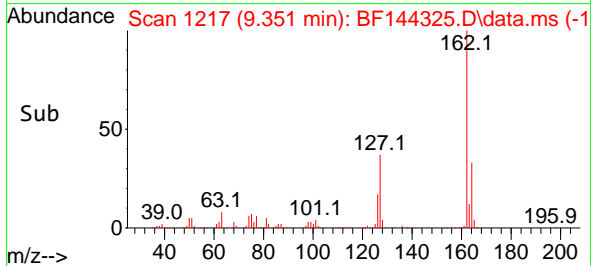
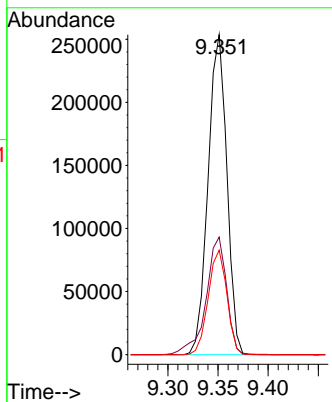
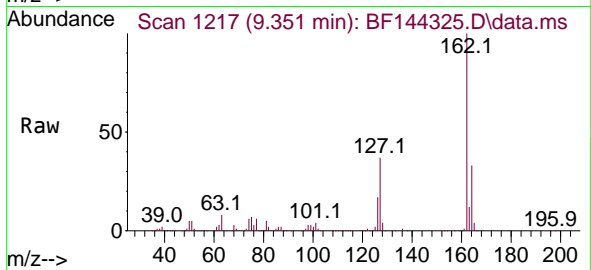


#47
 2-Chloronaphthalene
 Concen: 45.079 ng
 RT: 9.351 min Scan# 11
 Delta R.T. -0.006 min
 Lab File: BF144325.D
 Acq: 24 Nov 2025 15:50

Instrument :
 BNA_F
 ClientSampleId :
 V933MS

Tgt Ion:162 Resp: 330247

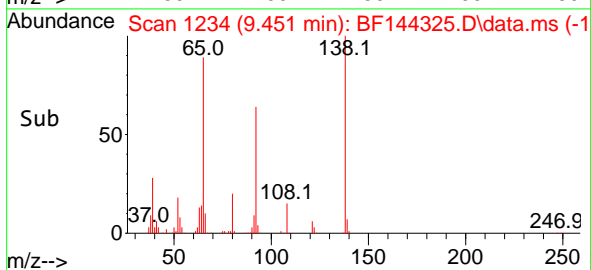
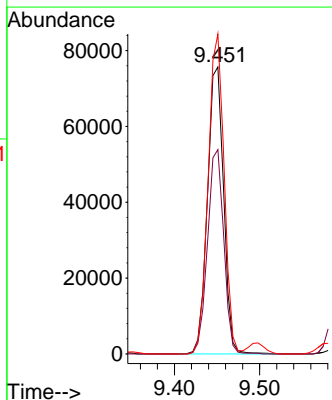
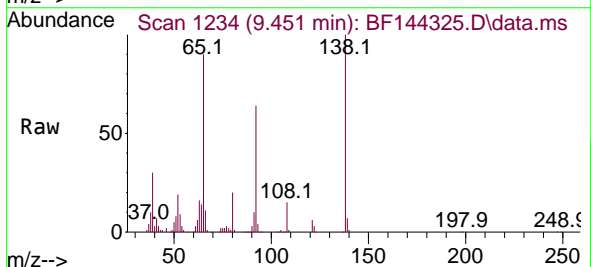
Ion	Ratio	Lower	Upper
162	100		
127	36.7	28.8	43.2
164	32.6	25.8	38.8

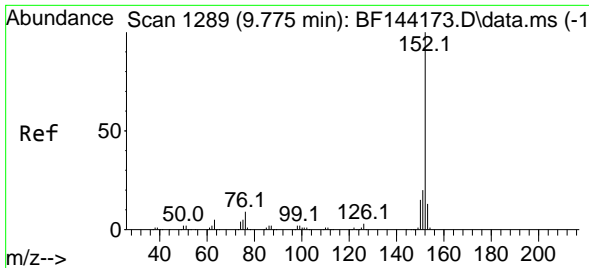


#48
 2-Nitroaniline
 Concen: 47.205 ng
 RT: 9.451 min Scan# 1234
 Delta R.T. -0.006 min
 Lab File: BF144325.D
 Acq: 24 Nov 2025 15:50

Tgt Ion: 65 Resp: 99783

Ion	Ratio	Lower	Upper
65	100		
92	71.2	53.0	79.6
138	111.5	81.6	122.4



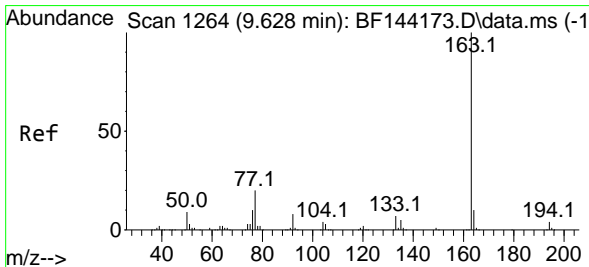
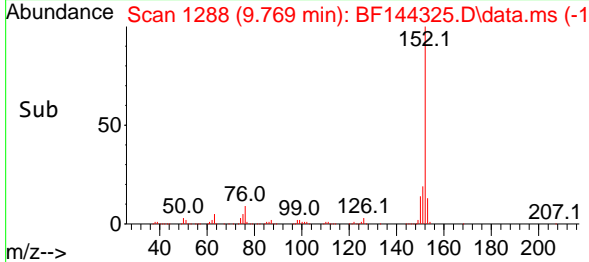
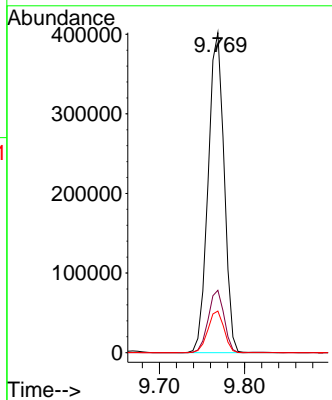
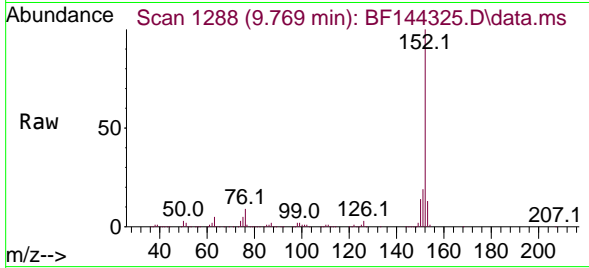


#49
 Acenaphthylene
 Concen: 52.243 ng
 RT: 9.769 min Scan# 11
 Delta R.T. -0.006 min
 Lab File: BF144325.D
 Acq: 24 Nov 2025 15:50

Instrument :
 BNA_F
 ClientSampleId :
 V933MS

Tgt Ion:152 Resp: 521558

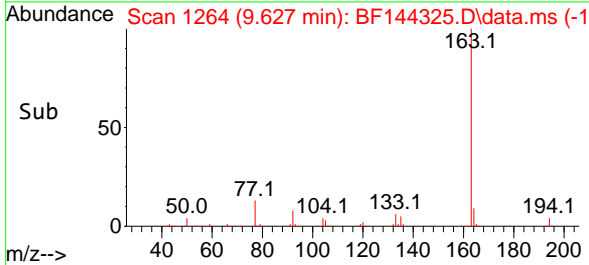
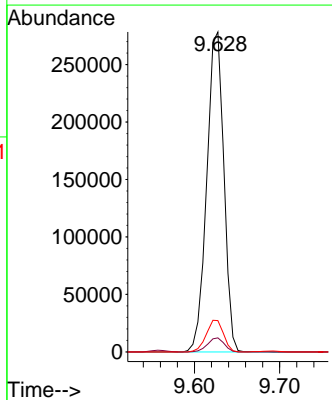
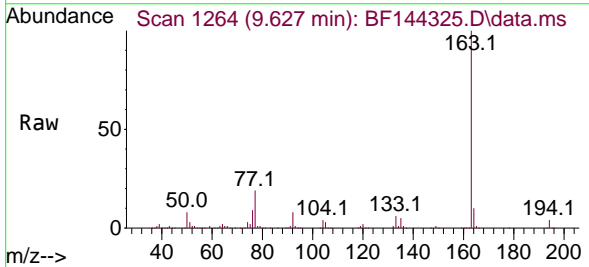
Ion	Ratio	Lower	Upper
152	100		
151	19.5	15.9	23.9
153	13.0	10.5	15.7

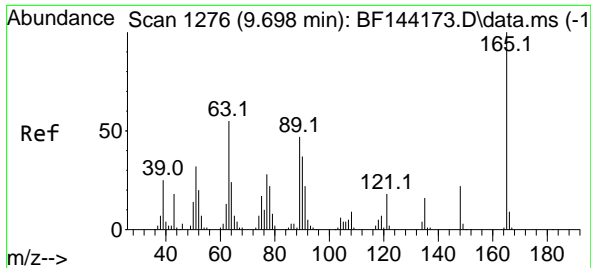


#50
 Dimethylphthalate
 Concen: 47.510 ng
 RT: 9.627 min Scan# 1264
 Delta R.T. -0.000 min
 Lab File: BF144325.D
 Acq: 24 Nov 2025 15:50

Tgt Ion:163 Resp: 387256

Ion	Ratio	Lower	Upper
163	100		
194	4.4	3.3	4.9
164	9.8	8.1	12.1



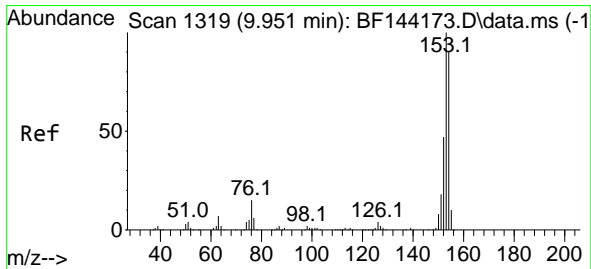
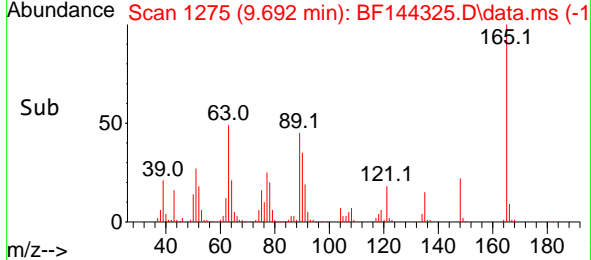
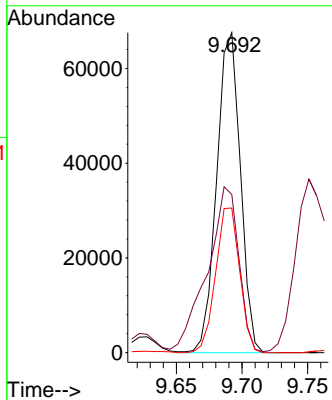
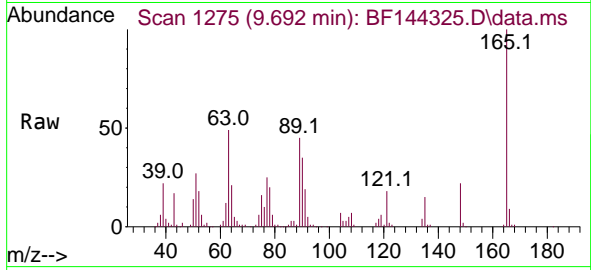


#51
 2,6-Dinitrotoluene
 Concen: 51.666 ng
 RT: 9.692 min Scan# 11
 Delta R.T. -0.000 min
 Lab File: BF144325.D
 Acq: 24 Nov 2025 15:50

Instrument : BNA_F
 ClientSampleId : V933MS

Tgt Ion:165 Resp: 85250

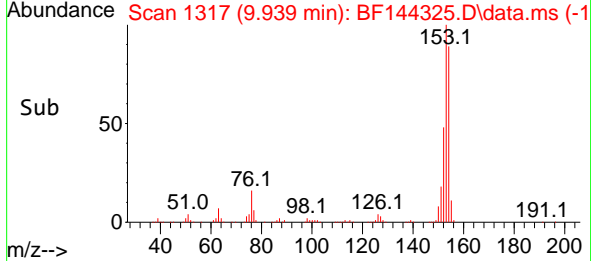
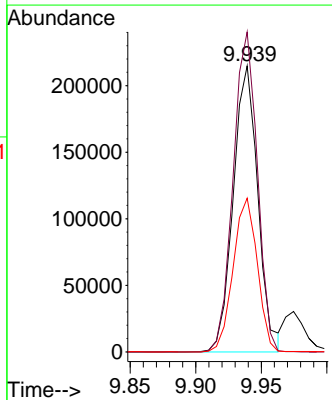
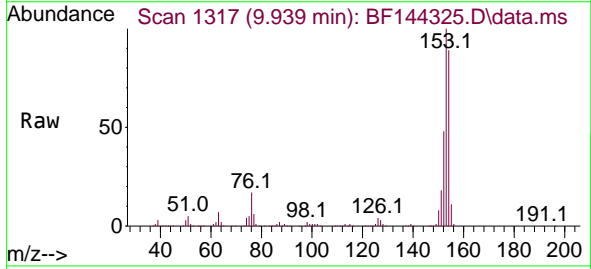
Ion	Ratio	Lower	Upper
165	100		
63	49.4	43.8	65.8
89	45.2	37.5	56.3

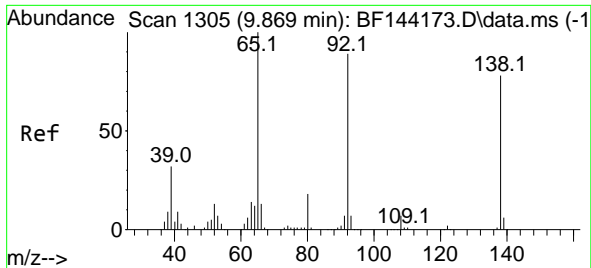


#52
 Acenaphthene
 Concen: 42.070 ng
 RT: 9.939 min Scan# 1317
 Delta R.T. -0.006 min
 Lab File: BF144325.D
 Acq: 24 Nov 2025 15:50

Tgt Ion:154 Resp: 280861

Ion	Ratio	Lower	Upper
154	100		
153	111.9	89.0	133.4
152	53.7	42.2	63.4

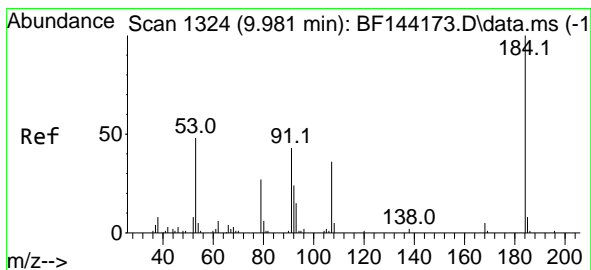
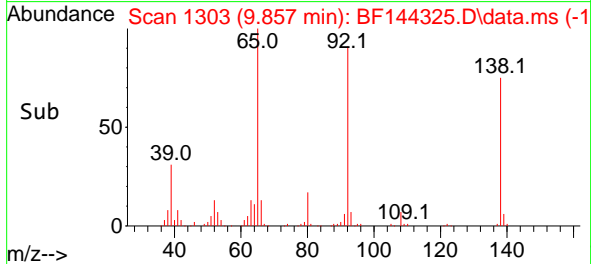
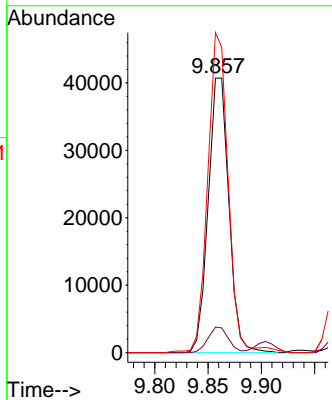
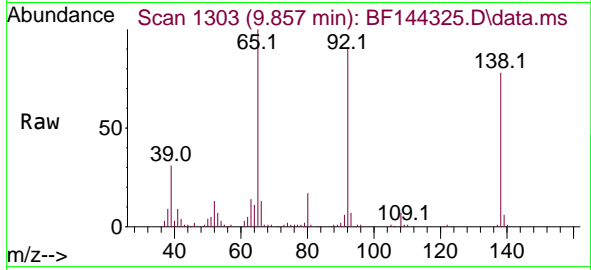




#53
 3-Nitroaniline
 Concen: 30.516 ng
 RT: 9.857 min Scan# 1303
 Delta R.T. -0.012 min
 Lab File: BF144325.D
 Acq: 24 Nov 2025 15:50

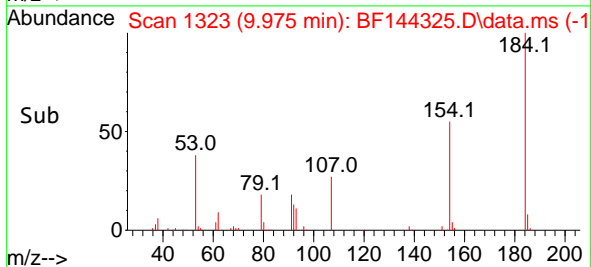
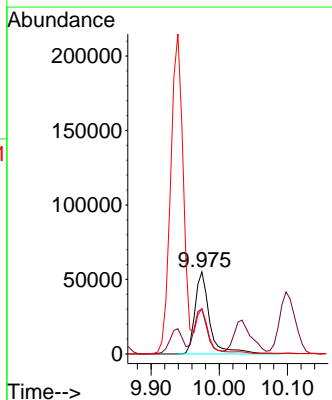
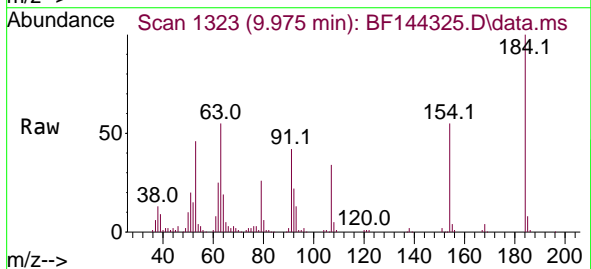
Instrument : BNA_F
 ClientSampleId : V933MS

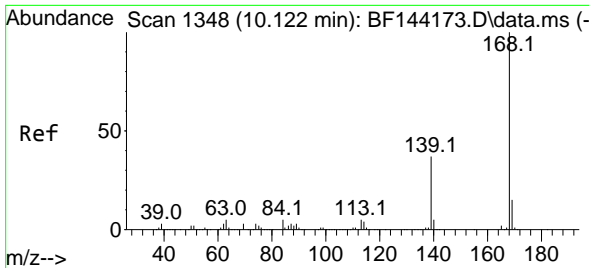
Tgt Ion	Resp	Lower	Upper
138	100		
108	9.3	7.5	11.3
92	116.6	91.8	137.6



#54
 2,4-Dinitrophenol
 Concen: 82.461 ng
 RT: 9.975 min Scan# 1323
 Delta R.T. -0.012 min
 Lab File: BF144325.D
 Acq: 24 Nov 2025 15:50

Tgt Ion	Resp	Lower	Upper
184	100		
63	54.8	44.0	66.0
154	55.1	42.4	63.6



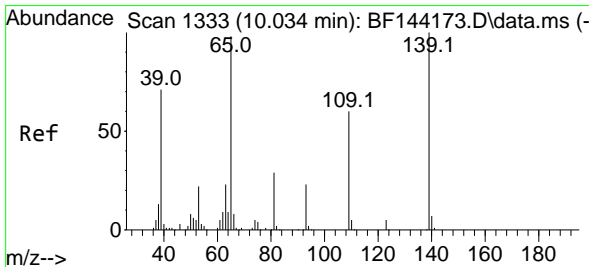
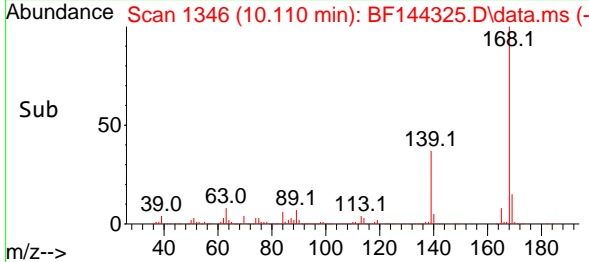
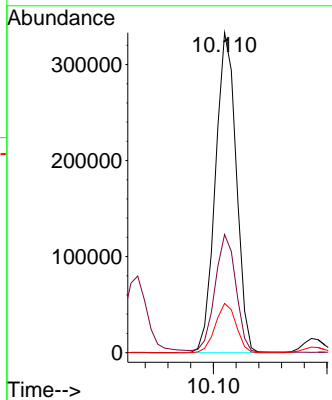
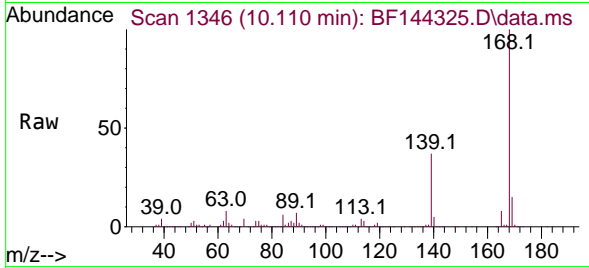


#55
 Dibenzofuran
 Concen: 45.399 ng
 RT: 10.110 min Scan# 1346
 Delta R.T. -0.006 min
 Lab File: BF144325.D
 Acq: 24 Nov 2025 15:50

Instrument : BNA_F
 ClientSampleId : V933MS

Tgt Ion:168 Resp: 424481

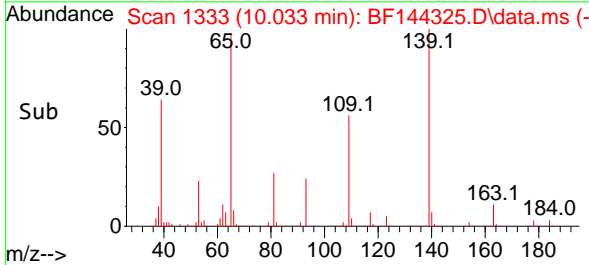
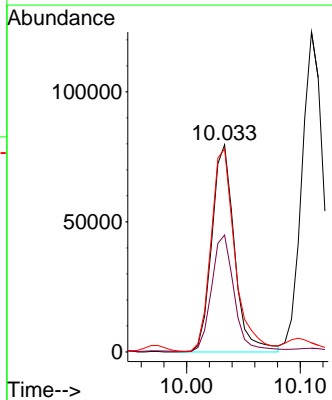
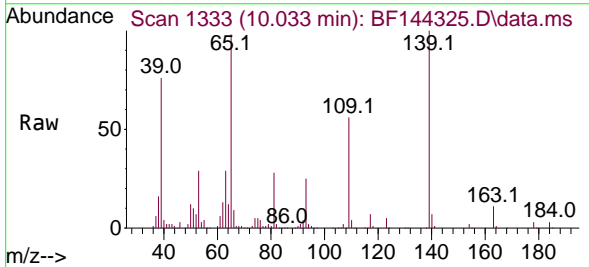
Ion	Ratio	Lower	Upper
168	100		
139	36.9	30.2	45.2
169	15.4	12.2	18.4

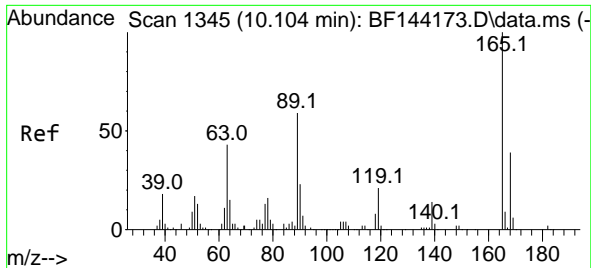


#56
 4-Nitrophenol
 Concen: 84.535 ng
 RT: 10.033 min Scan# 1333
 Delta R.T. -0.006 min
 Lab File: BF144325.D
 Acq: 24 Nov 2025 15:50

Tgt Ion:139 Resp: 110298

Ion	Ratio	Lower	Upper
139	100		
109	56.5	39.9	79.9
65	98.0	79.5	119.5

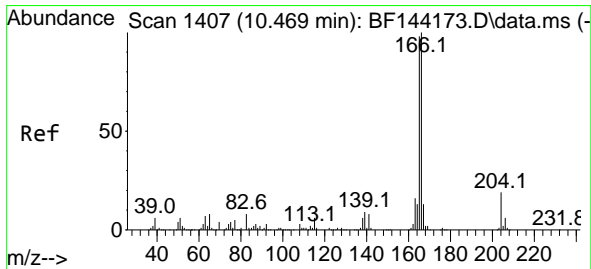
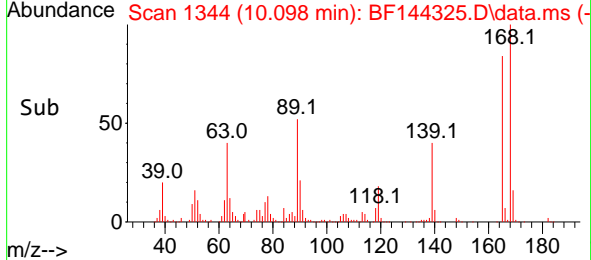
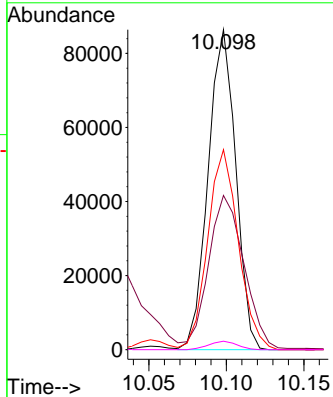
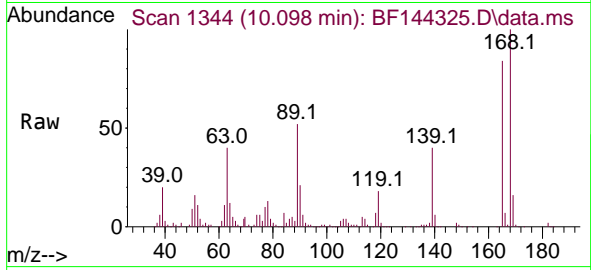




#57
 2,4-Dinitrotoluene
 Concen: 48.460 ng
 RT: 10.098 min Scan# 11
 Delta R.T. -0.000 min
 Lab File: BF144325.D
 Acq: 24 Nov 2025 15:50

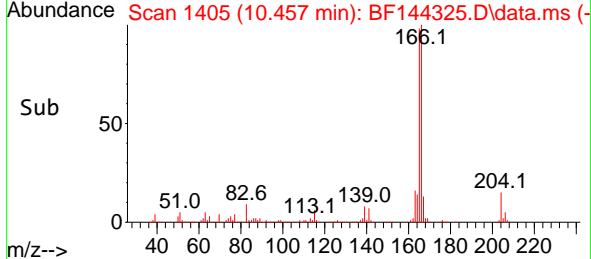
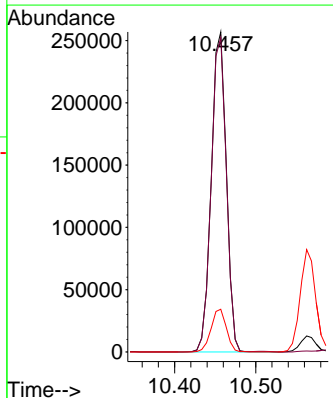
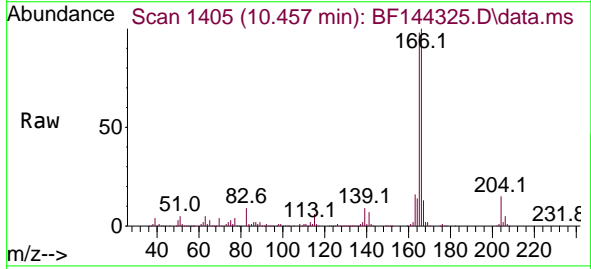
Instrument : BNA_F
 Client SampleId : V933MS

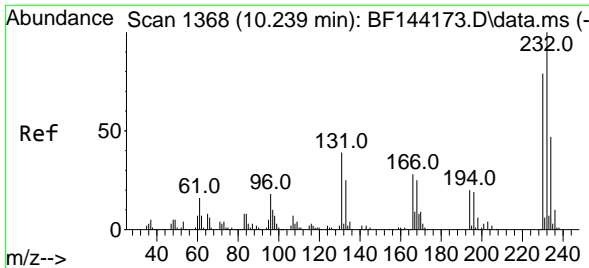
Tgt Ion	Resp	Lower	Upper
165	107043		
63	48.2	35.5	53.3
89	62.5	47.4	71.2
182	2.6	1.9	2.9



#58
 Fluorene
 Concen: 46.593 ng
 RT: 10.457 min Scan# 1405
 Delta R.T. -0.006 min
 Lab File: BF144325.D
 Acq: 24 Nov 2025 15:50

Tgt Ion	Resp	Lower	Upper
166	331229		
166	100		
165	98.2	78.6	118.0
167	13.3	10.4	15.6



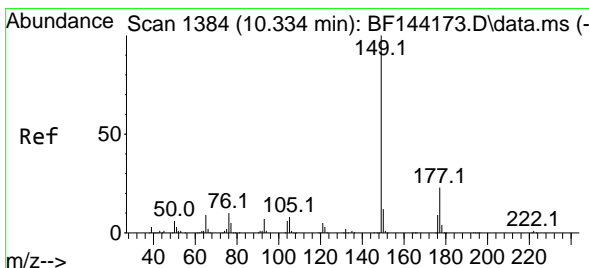
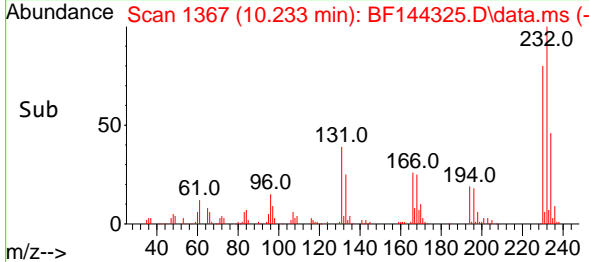
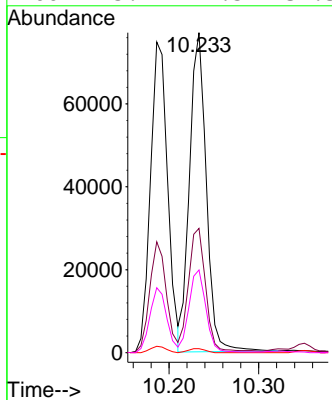
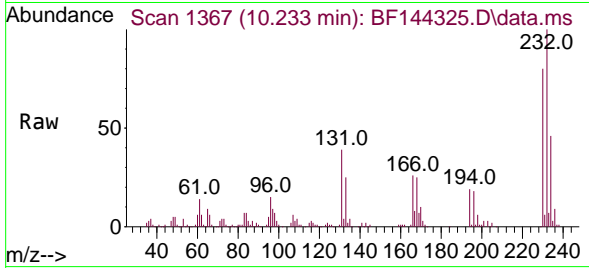


#59
 2,3,4,6-Tetrachlorophenol
 Concen: 47.842 ng
 RT: 10.233 min Scan# 1367
 Delta R.T. -0.006 min
 Lab File: BF144325.D
 Acq: 24 Nov 2025 15:50

Instrument : BNA_F
 ClientSampleId : V933MS

Tgt Ion:232 Resp: 100122

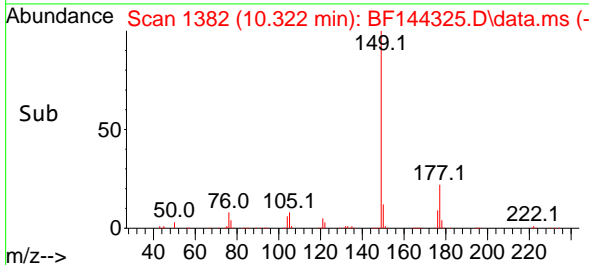
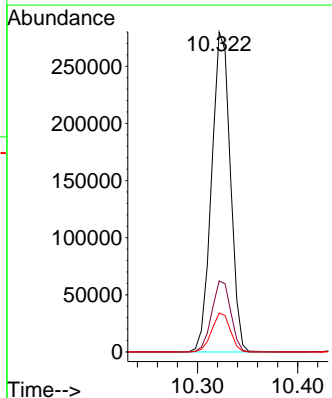
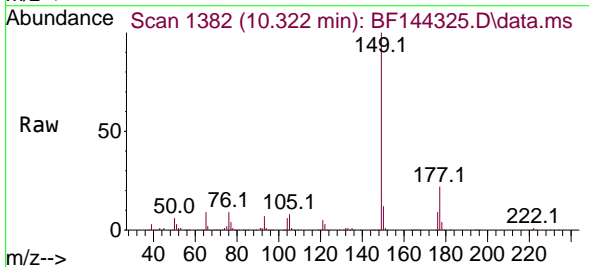
Ion	Ratio	Lower	Upper
232	100		
131	40.3	30.3	45.5
130	1.3	1.2	1.8
166	25.7	21.5	32.3

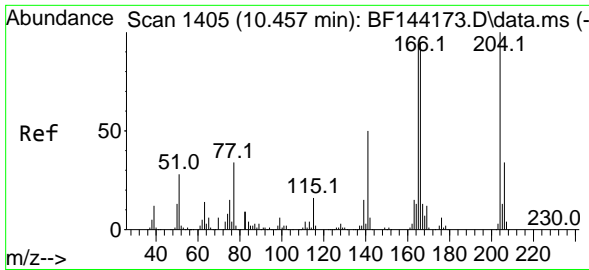


#60
 Diethylphthalate
 Concen: 48.331 ng
 RT: 10.322 min Scan# 1382
 Delta R.T. -0.006 min
 Lab File: BF144325.D
 Acq: 24 Nov 2025 15:50

Tgt Ion:149 Resp: 363158

Ion	Ratio	Lower	Upper
149	100		
177	22.2	18.3	27.5
150	12.1	9.8	14.6



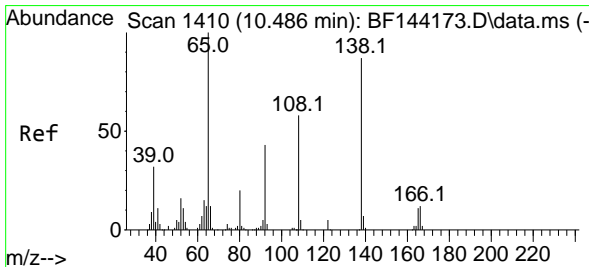
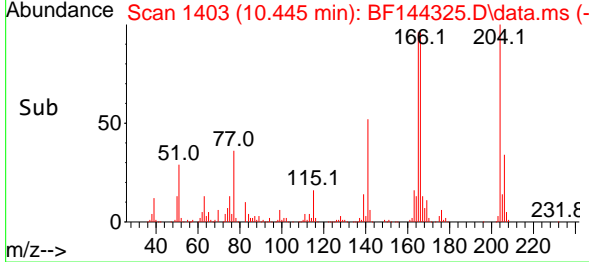
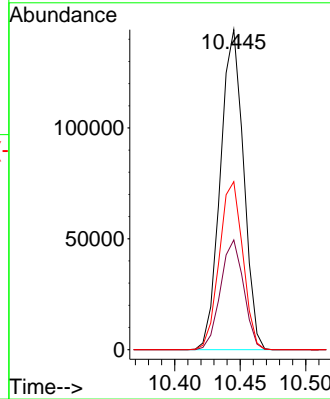
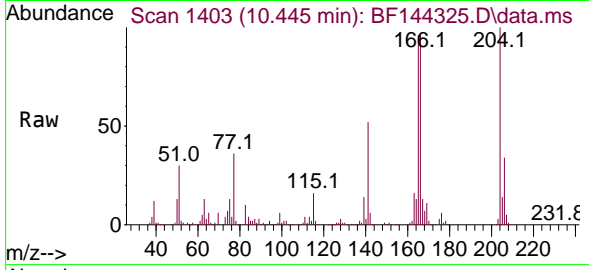


#61
 4-Chlorophenyl-phenylether
 Concen: 43.849 ng
 RT: 10.445 min Scan# 1403
 Delta R.T. -0.012 min
 Lab File: BF144325.D
 Acq: 24 Nov 2025 15:50

Instrument :
 BNA_F
 ClientSampleId :
 V933MS

Tgt Ion:204 Resp: 177561

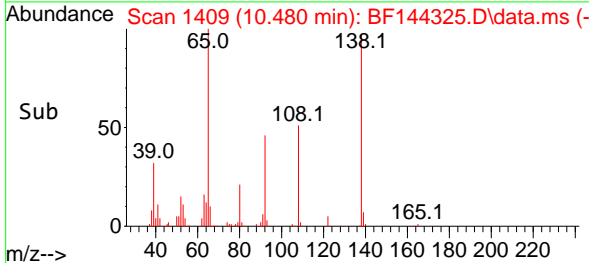
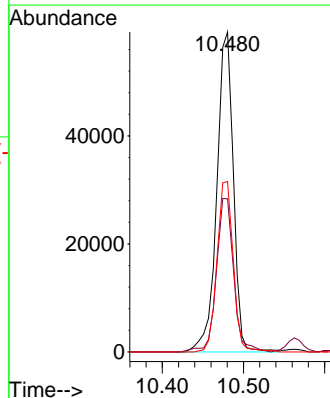
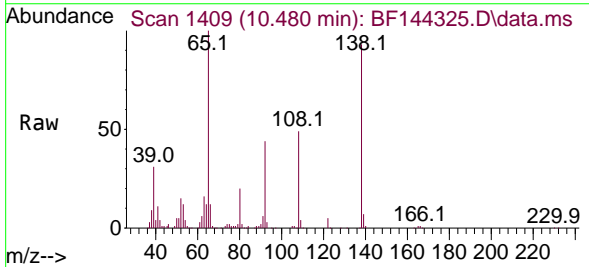
Ion	Ratio	Lower	Upper
204	100		
206	34.3	27.4	41.2
141	52.5	40.0	60.0

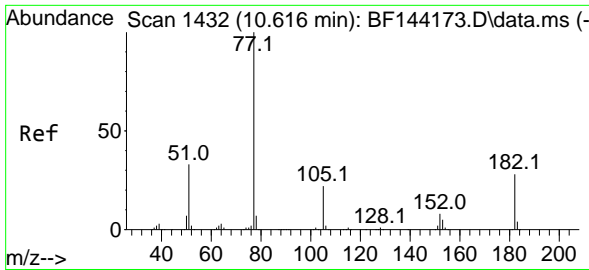


#62
 4-Nitroaniline
 Concen: 48.949 ng
 RT: 10.480 min Scan# 1409
 Delta R.T. 0.006 min
 Lab File: BF144325.D
 Acq: 24 Nov 2025 15:50

Tgt Ion:138 Resp: 84081

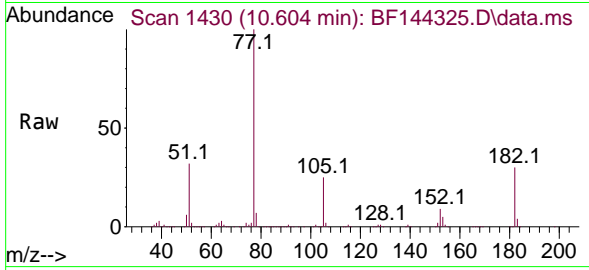
Ion	Ratio	Lower	Upper
138	100		
92	47.8	29.4	69.4
108	53.2	46.4	86.4





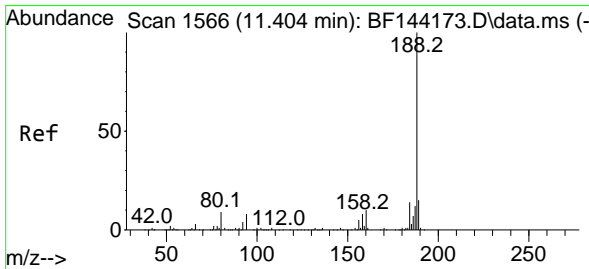
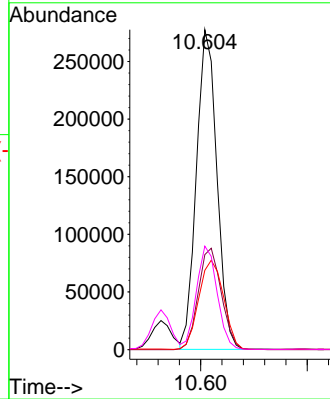
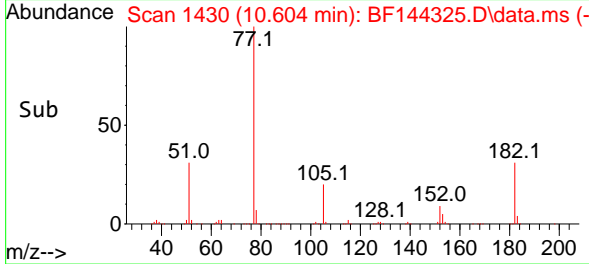
#63
 Azobenzene
 Concen: 52.850 ng
 RT: 10.604 min Scan# 14
 Delta R.T. -0.012 min
 Lab File: BF144325.D
 Acq: 24 Nov 2025 15:50

Instrument :
 BNA_F
 ClientSampleId :
 V933MS

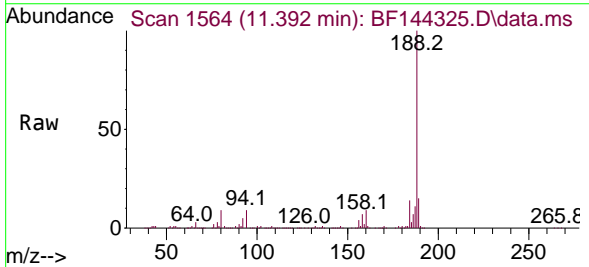


Tgt Ion: 77 Resp: 369585

Ion	Ratio	Lower	Upper
77	100		
182	29.7	8.1	48.1
105	24.8	2.0	42.0
51	32.4	13.9	53.9

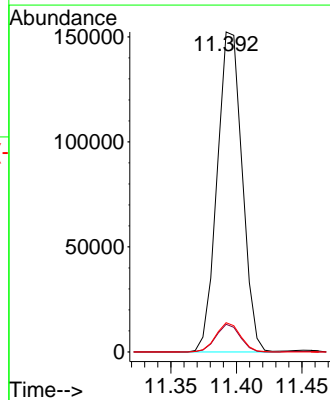
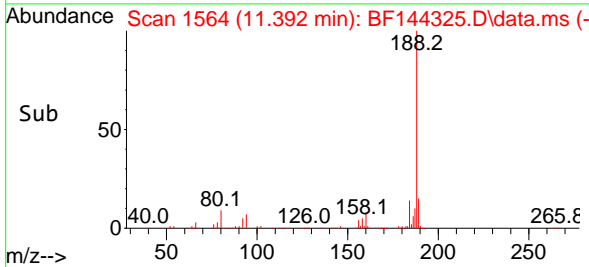


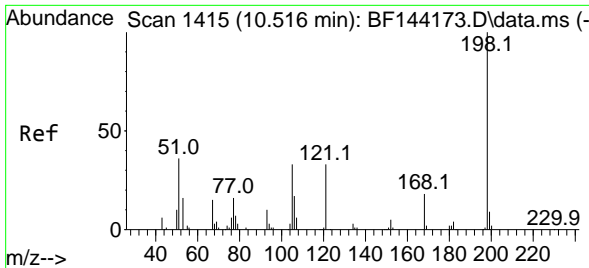
#64
 Phenanthrene-d10
 Concen: 20.000 ng
 RT: 11.392 min Scan# 1564
 Delta R.T. -0.012 min
 Lab File: BF144325.D
 Acq: 24 Nov 2025 15:50



Tgt Ion: 188 Resp: 202567

Ion	Ratio	Lower	Upper
188	100		
94	8.6	6.2	9.2
80	9.1	6.9	10.3

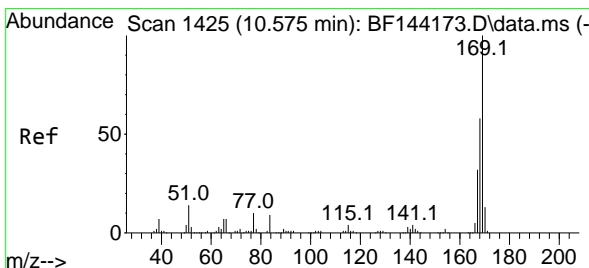
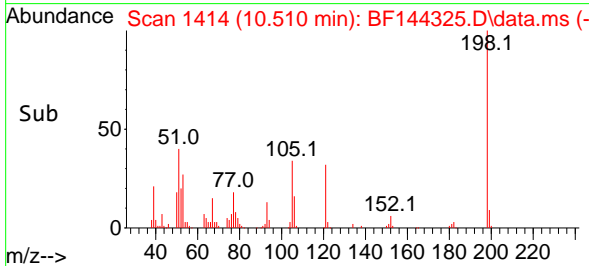
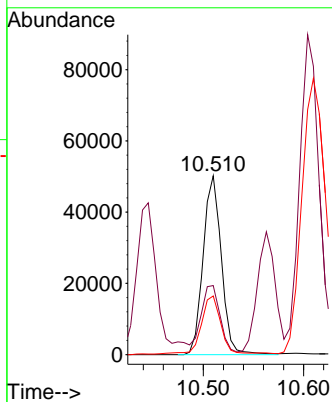
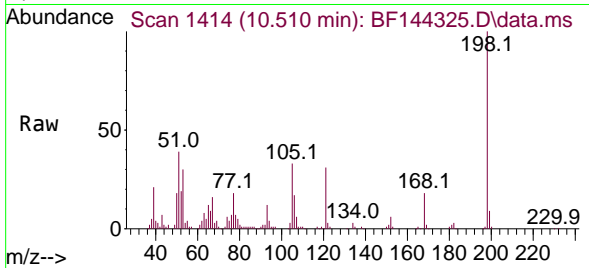




#65
 4,6-Dinitro-2-methylphenol
 Concen: 46.044 ng
 RT: 10.510 min Scan# 1414
 Delta R.T. -0.012 min
 Lab File: BF144325.D
 Acq: 24 Nov 2025 15:50

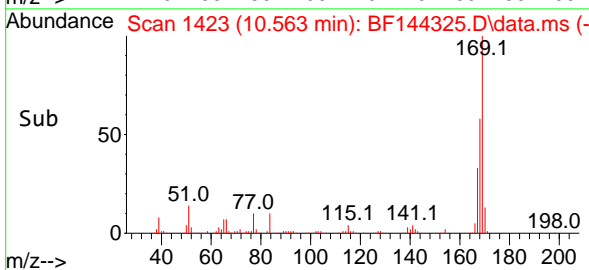
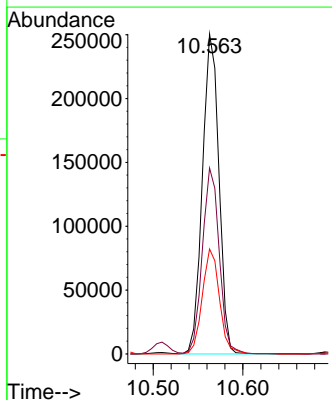
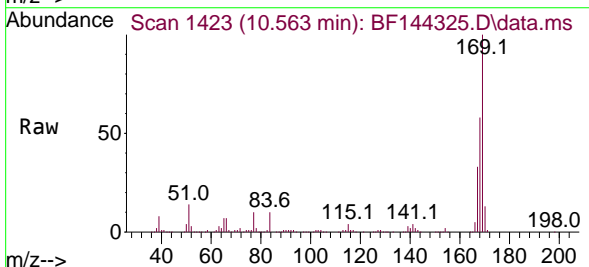
Instrument :
 BNA_F
 ClientSampleId :
 V933MS

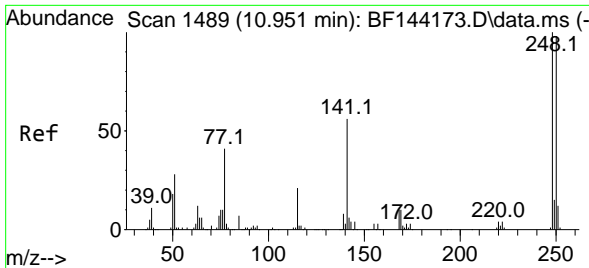
Tgt Ion	Resp	Lower	Upper
198	100		
51	38.6	25.6	65.6
105	32.8	14.6	54.6



#66
 n-Nitrosodiphenylamine
 Concen: 49.224 ng
 RT: 10.563 min Scan# 1423
 Delta R.T. -0.006 min
 Lab File: BF144325.D
 Acq: 24 Nov 2025 15:50

Tgt Ion	Resp	Lower	Upper
169	100		
168	58.1	46.2	69.2
167	32.8	25.7	38.5

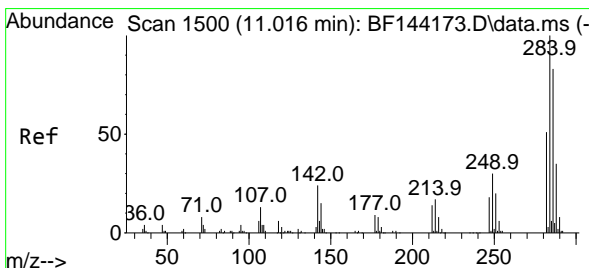
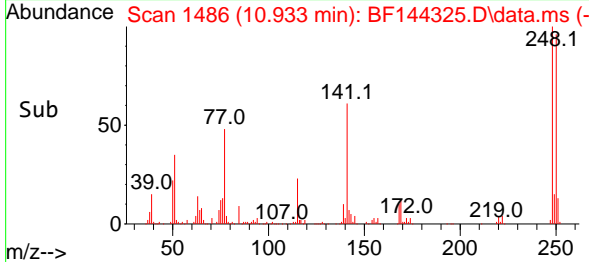
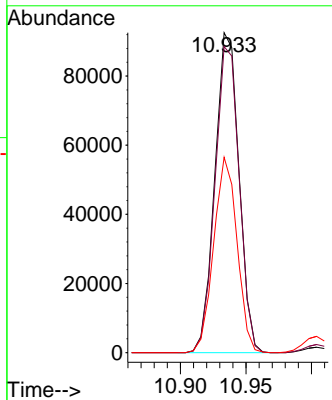
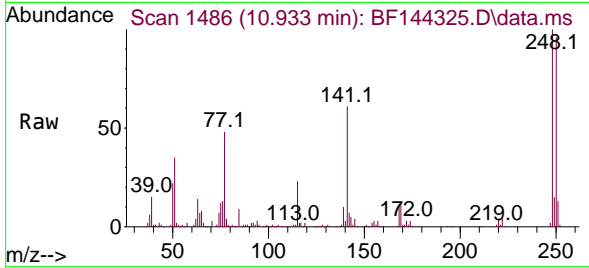




#67
 4-Bromophenyl-phenylether
 Concen: 45.777 ng
 RT: 10.933 min Scan# 14
 Delta R.T. -0.012 min
 Lab File: BF144325.D
 Acq: 24 Nov 2025 15:50

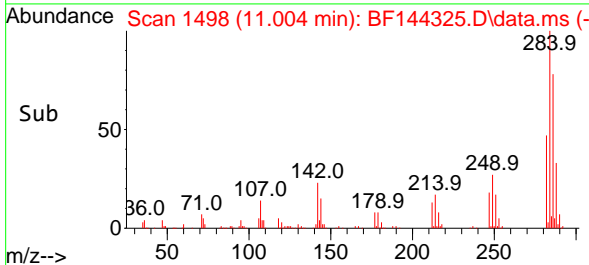
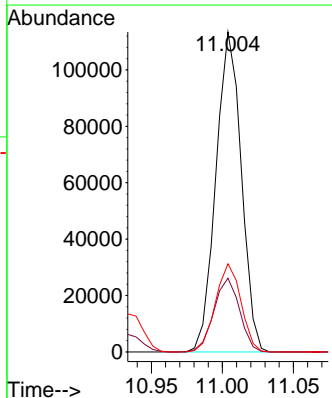
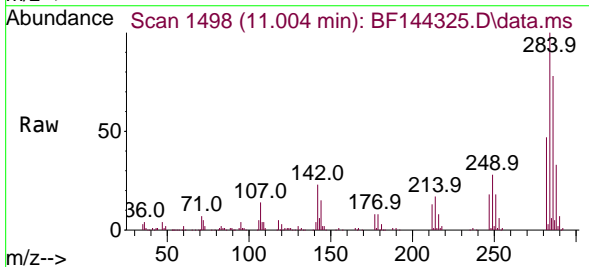
Instrument :
 BNA_F
 ClientSampleId :
 V933MS

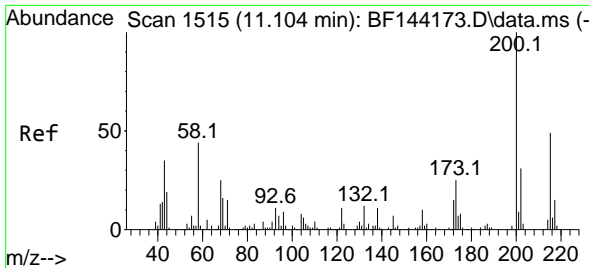
Tgt Ion	Resp	Lower	Upper
248	118360		
250	95.6	78.4	117.6
141	61.0	45.1	67.7



#68
 Hexachlorobenzene
 Concen: 46.244 ng
 RT: 11.004 min Scan# 1498
 Delta R.T. -0.006 min
 Lab File: BF144325.D
 Acq: 24 Nov 2025 15:50

Tgt Ion	Resp	Lower	Upper
284	140834		
284	100		
142	23.0	19.2	28.8
249	27.5	23.8	35.8



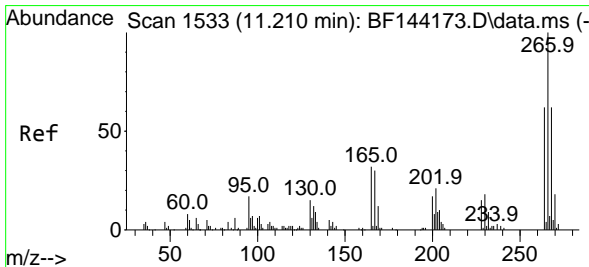
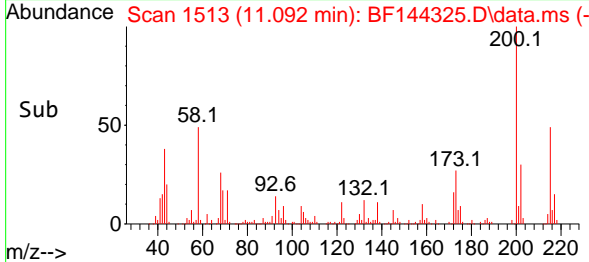
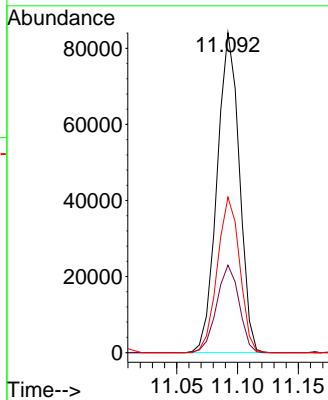
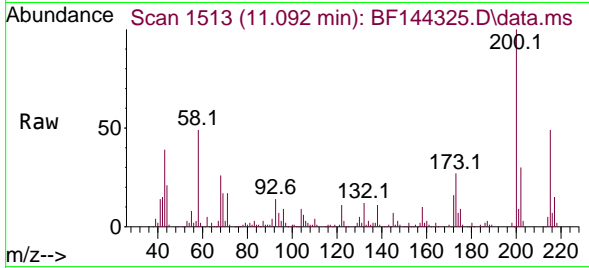


#69
 Atrazine
 Concen: 51.679 ng
 RT: 11.092 min Scan# 1513
 Delta R.T. -0.006 min
 Lab File: BF144325.D
 Acq: 24 Nov 2025 15:50

Instrument :
 BNA_F
 ClientSampleId :
 V933MS

Tgt Ion:200 Resp: 107076

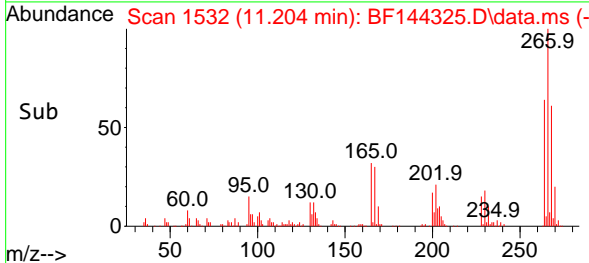
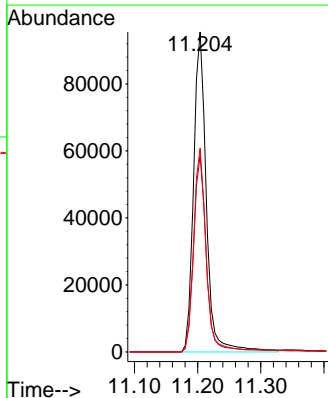
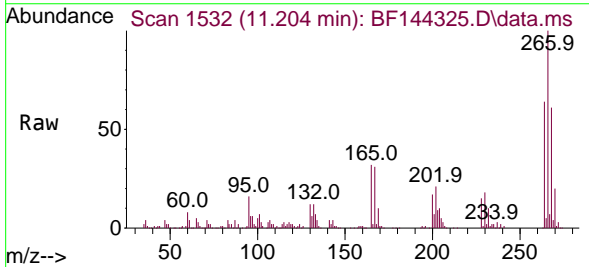
Ion	Ratio	Lower	Upper
200	100		
173	27.3	5.0	45.0
215	48.6	28.7	68.7

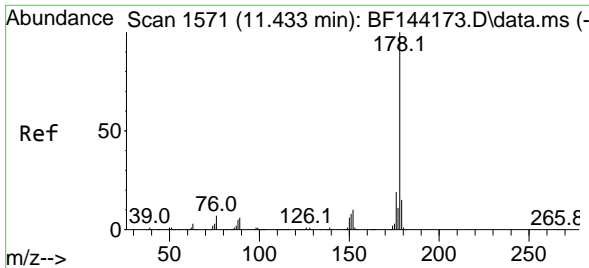


#70
 Pentachlorophenol
 Concen: 88.613 ng
 RT: 11.204 min Scan# 1532
 Delta R.T. -0.012 min
 Lab File: BF144325.D
 Acq: 24 Nov 2025 15:50

Tgt Ion:266 Resp: 134384

Ion	Ratio	Lower	Upper
266	100		
268	61.4	49.5	74.3
264	63.6	49.4	74.2



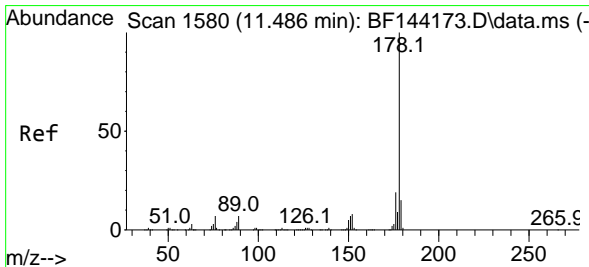
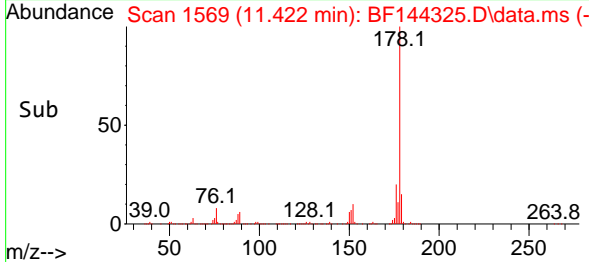
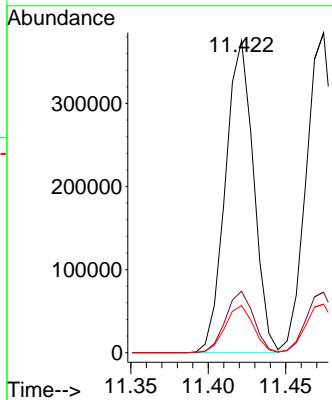
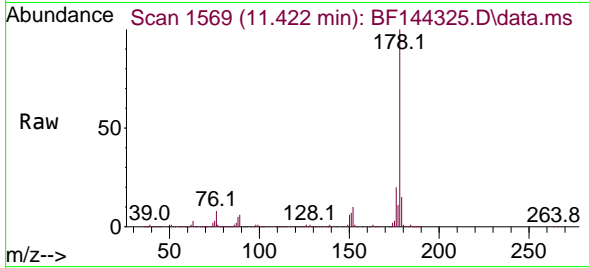


#71
 Phenanthrene
 Concen: 47.153 ng
 RT: 11.422 min Scan# 1569
 Delta R.T. -0.006 min
 Lab File: BF144325.D
 Acq: 24 Nov 2025 15:50

Instrument : BNA_F
 ClientSampleId : V933MS

Tgt Ion:178 Resp: 475567

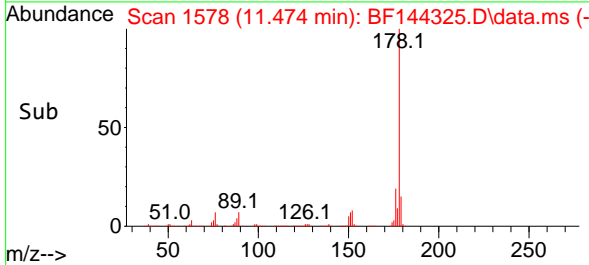
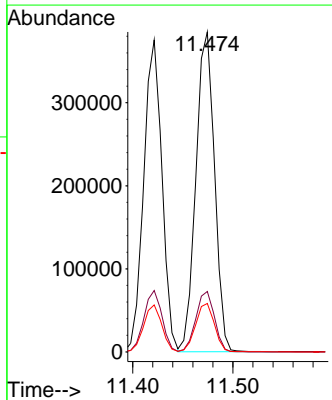
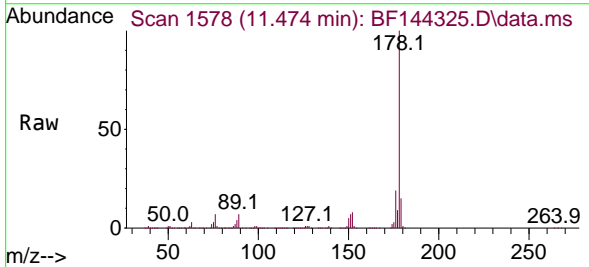
Ion	Ratio	Lower	Upper
178	100		
176	19.7	15.5	23.3
179	15.1	12.2	18.4

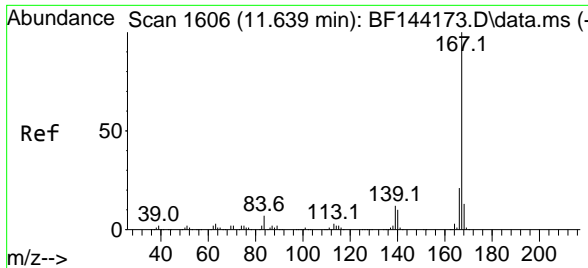


#72
 Anthracene
 Concen: 48.283 ng
 RT: 11.474 min Scan# 1578
 Delta R.T. -0.006 min
 Lab File: BF144325.D
 Acq: 24 Nov 2025 15:50

Tgt Ion:178 Resp: 495154

Ion	Ratio	Lower	Upper
178	100		
176	18.9	15.3	22.9
179	15.2	12.0	18.0



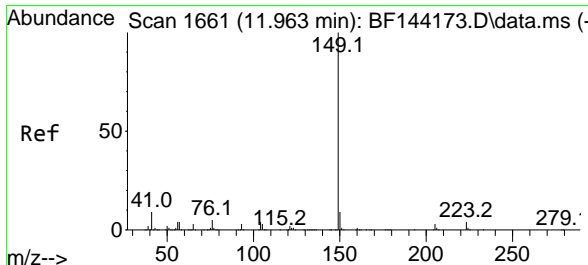
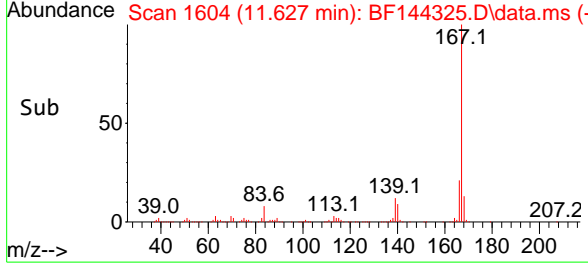
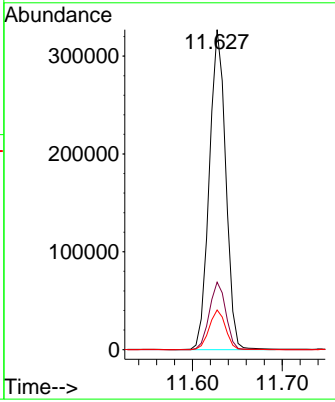
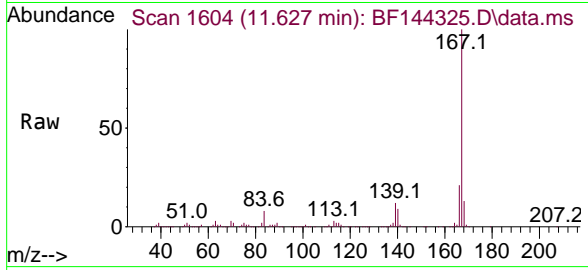


#73
 Carbazole
 Concen: 48.078 ng
 RT: 11.627 min Scan# 1604
 Delta R.T. -0.012 min
 Lab File: BF144325.D
 Acq: 24 Nov 2025 15:50

Instrument : BNA_F
 ClientSampleId : V933MS

Tgt Ion:167 Resp: 419258

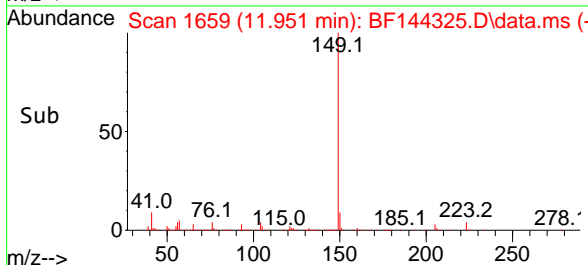
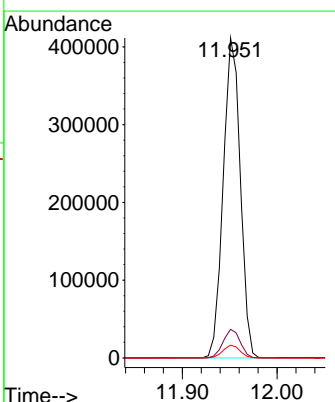
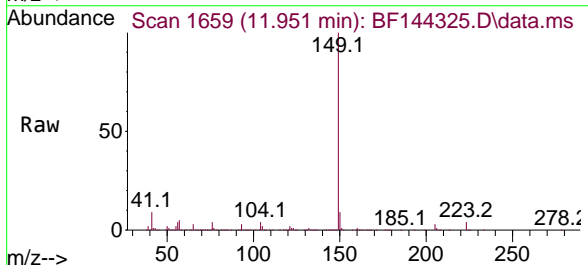
Ion	Ratio	Lower	Upper
167	100		
166	21.1	17.2	25.8
139	12.4	9.9	14.9

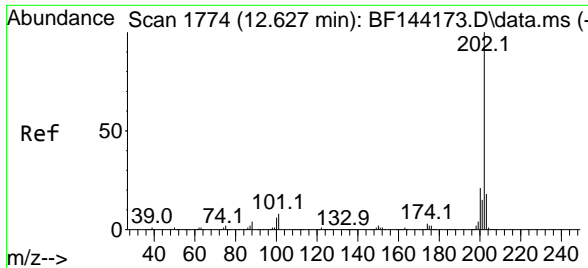


#74
 Di-n-butylphthalate
 Concen: 48.890 ng
 RT: 11.951 min Scan# 1659
 Delta R.T. -0.012 min
 Lab File: BF144325.D
 Acq: 24 Nov 2025 15:50

Tgt Ion:149 Resp: 515400

Ion	Ratio	Lower	Upper
149	100		
150	8.9	7.4	11.0
104	4.0	3.4	5.2



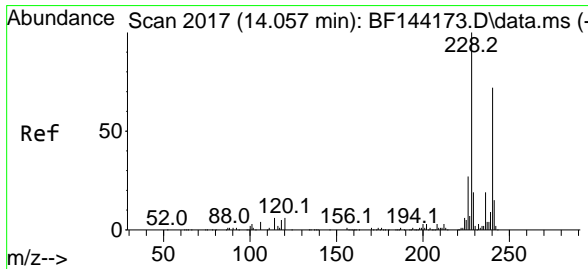
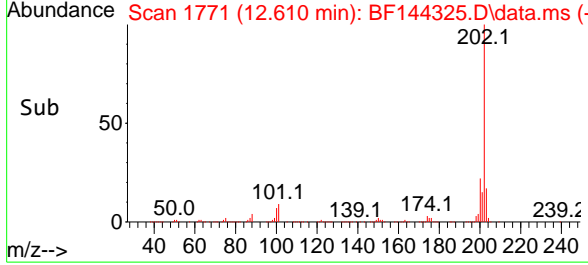
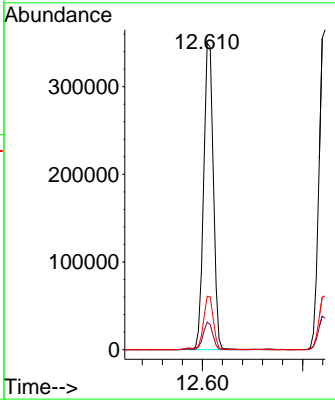
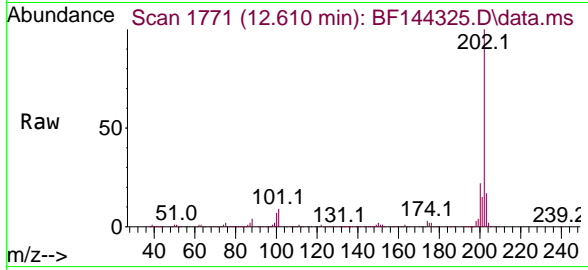


#75
 Fluoranthene
 Concen: 45.292 ng
 RT: 12.610 min Scan# 11
 Delta R.T. -0.012 min
 Lab File: BF144325.D
 Acq: 24 Nov 2025 15:50

Instrument : BNA_F
 ClientSampleId : V933MS

Tgt Ion:202 Resp: 471869

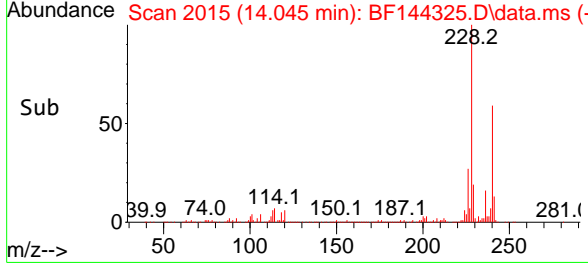
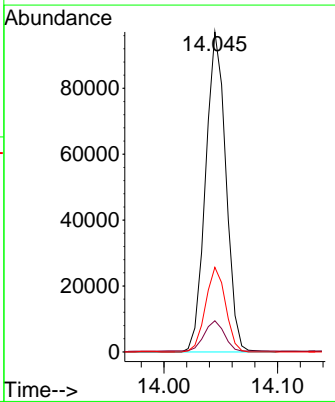
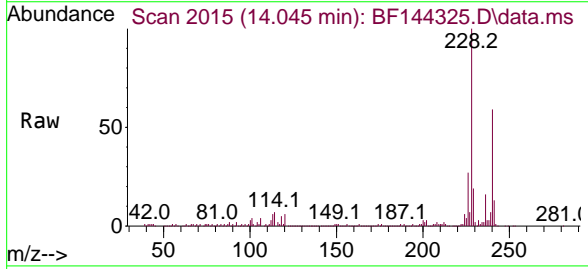
Ion	Ratio	Lower	Upper
202	100		
101	9.0	0.0	27.9
203	17.4	0.0	37.5

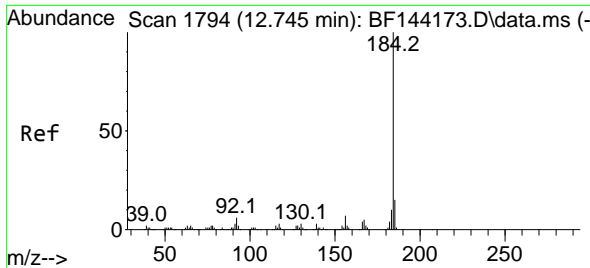


#76
 Chrysene-d12
 Concen: 20.000 ng
 RT: 14.045 min Scan# 2015
 Delta R.T. -0.006 min
 Lab File: BF144325.D
 Acq: 24 Nov 2025 15:50

Tgt Ion:240 Resp: 120422

Ion	Ratio	Lower	Upper
240	100		
120	9.7	6.6	10.0
236	26.4	21.4	32.2

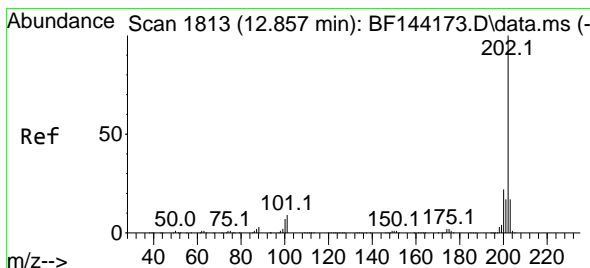
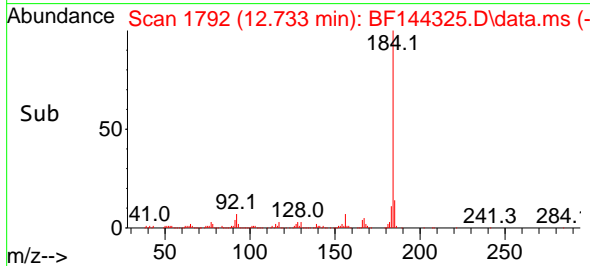
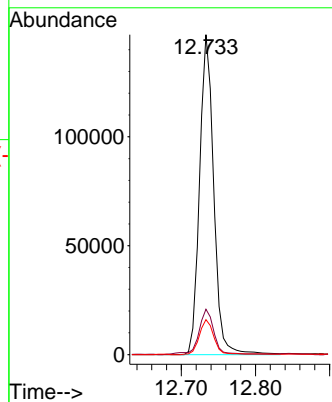
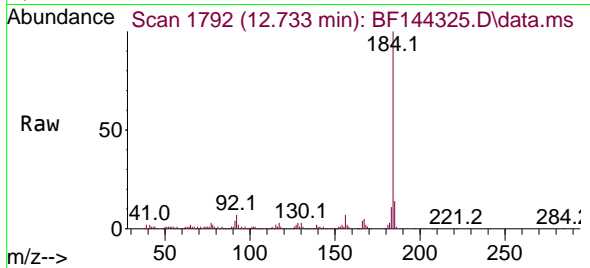




#77
Benzidine
Concen: 54.776 ng
RT: 12.733 min Scan# 1111
Delta R.T. -0.018 min
Lab File: BF144325.D
Acq: 24 Nov 2025 15:50

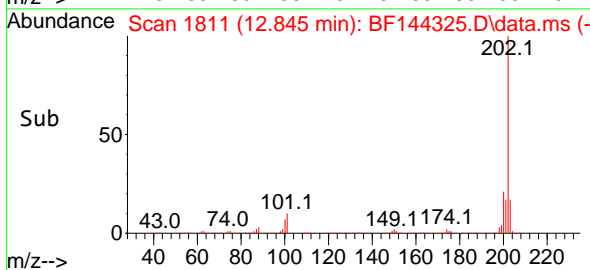
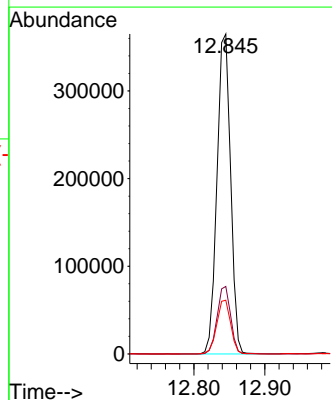
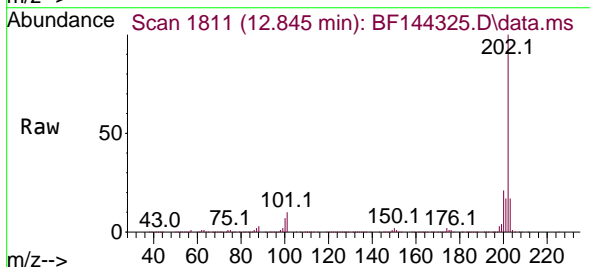
Instrument :
BNA_F
ClientSampleId :
V933MS

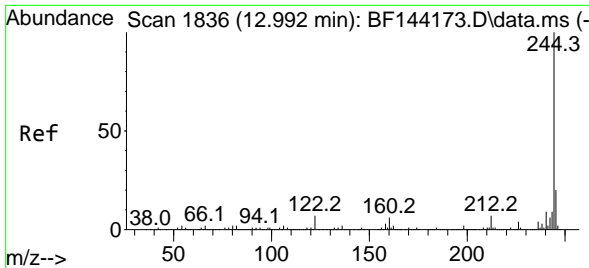
Tgt Ion:184 Resp: 195112
Ion Ratio Lower Upper
184 100
185 14.2 11.7 17.5
183 10.9 8.3 12.5



#78
Pyrene
Concen: 50.227 ng
RT: 12.845 min Scan# 1811
Delta R.T. -0.006 min
Lab File: BF144325.D
Acq: 24 Nov 2025 15:50

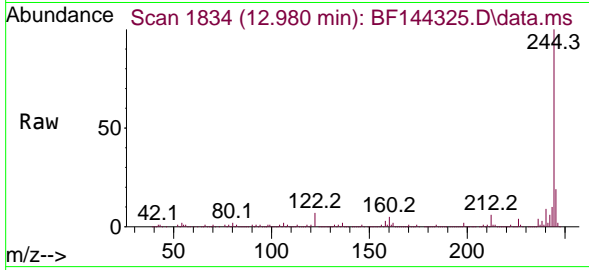
Tgt Ion:202 Resp: 487678
Ion Ratio Lower Upper
202 100
200 21.1 17.2 25.8
203 16.8 13.7 20.5



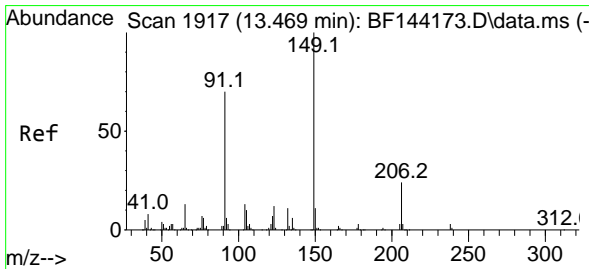
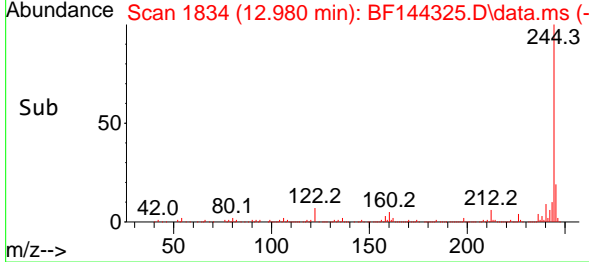
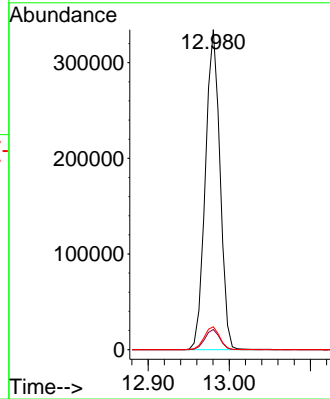


#79
 Terphenyl-d14
 Concen: 55.242 ng
 RT: 12.980 min Scan# 1834
 Delta R.T. -0.012 min
 Lab File: BF144325.D
 Acq: 24 Nov 2025 15:50

Instrument : BNA_F
 ClientSampleId : V933MS

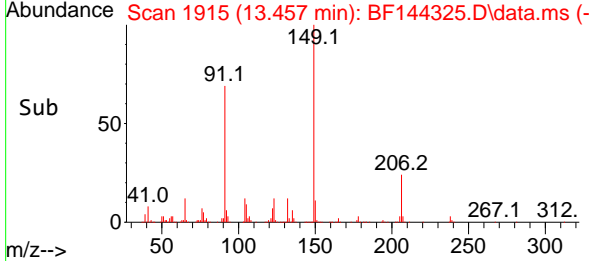
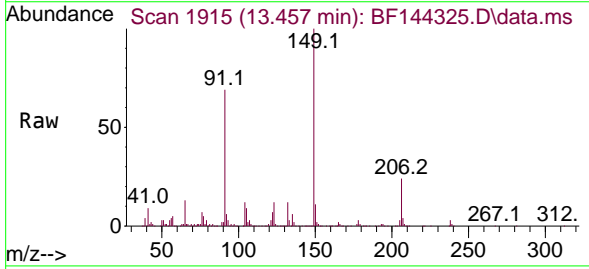
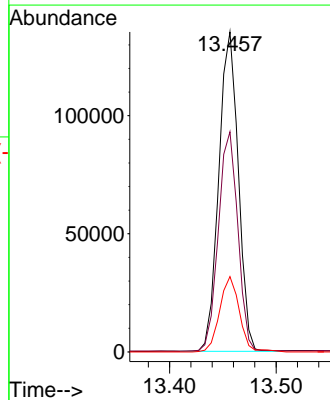


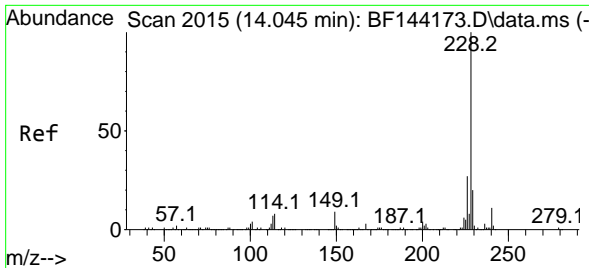
Tgt Ion:244 Resp: 418804
 Ion Ratio Lower Upper
 244 100
 212 6.3 5.3 7.9
 122 7.1 5.6 8.4



#80
 Butylbenzylphthalate
 Concen: 51.204 ng
 RT: 13.457 min Scan# 1915
 Delta R.T. -0.012 min
 Lab File: BF144325.D
 Acq: 24 Nov 2025 15:50

Tgt Ion:149 Resp: 172312
 Ion Ratio Lower Upper
 149 100
 91 68.8 56.1 84.1
 206 23.5 18.8 28.2



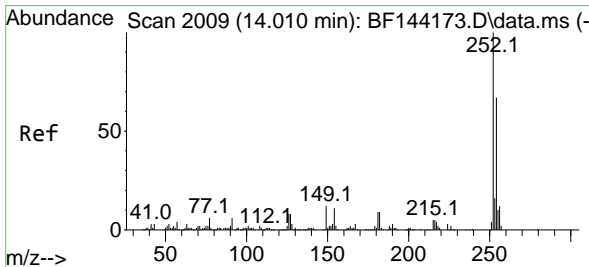
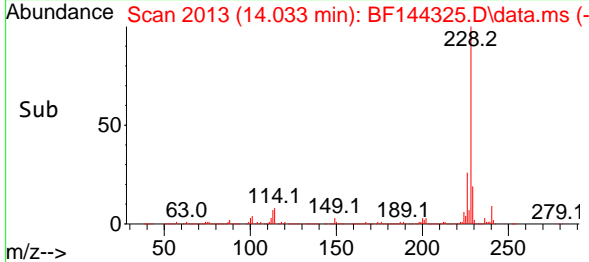
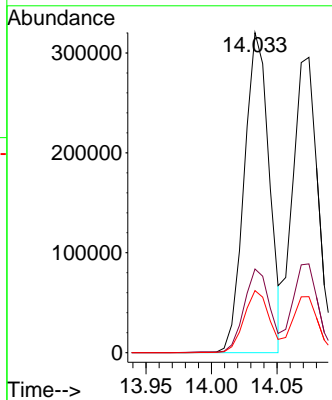
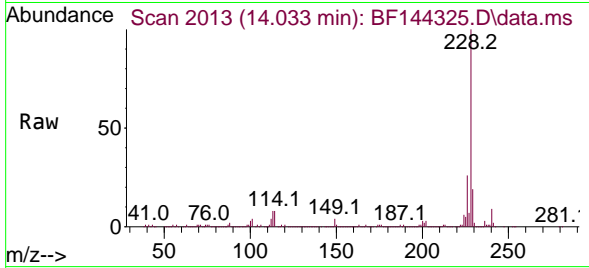


#81
 Benzo(a)anthracene
 Concen: 50.852 ng
 RT: 14.033 min Scan# 2006
 Delta R.T. -0.012 min
 Lab File: BF144325.D
 Acq: 24 Nov 2025 15:50

Instrument : BNA_F
 ClientSampleId : V933MS

Tgt Ion:228 Resp: 424419

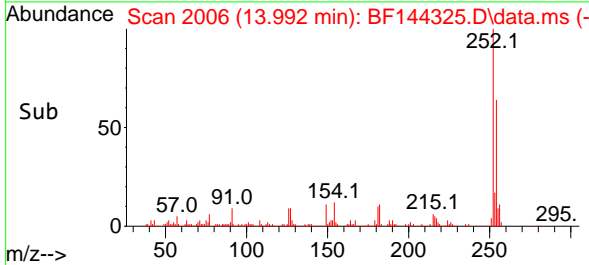
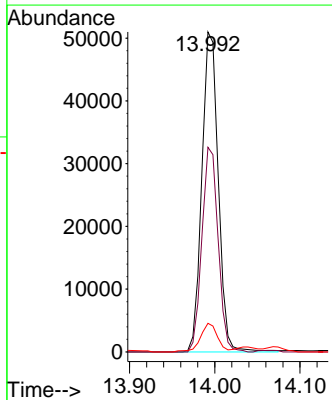
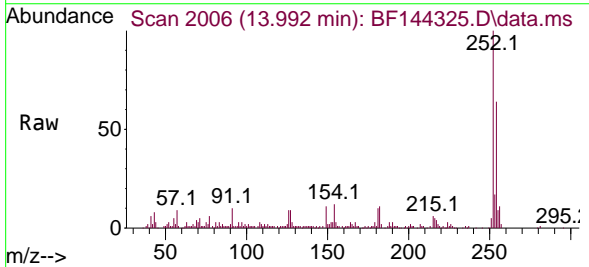
Ion	Ratio	Lower	Upper
228	100		
226	26.2	21.8	32.8
229	19.4	15.8	23.6

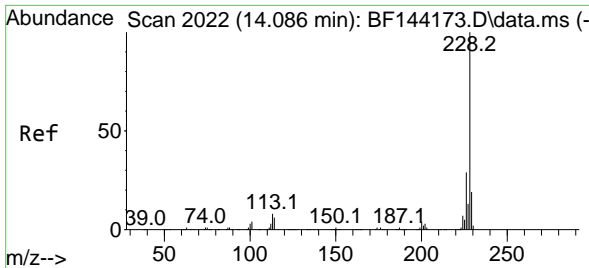


#82
 3,3'-Dichlorobenzidine
 Concen: 23.836 ng
 RT: 13.992 min Scan# 2006
 Delta R.T. -0.018 min
 Lab File: BF144325.D
 Acq: 24 Nov 2025 15:50

Tgt Ion:252 Resp: 68191

Ion	Ratio	Lower	Upper
252	100		
254	63.9	53.5	80.3
126	8.9	6.4	9.6



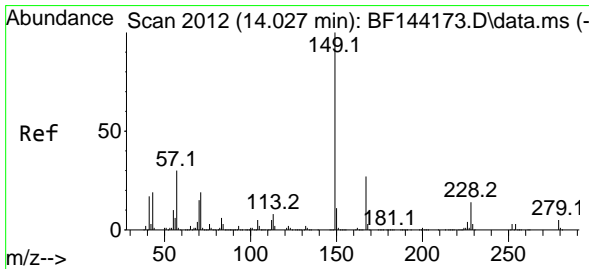
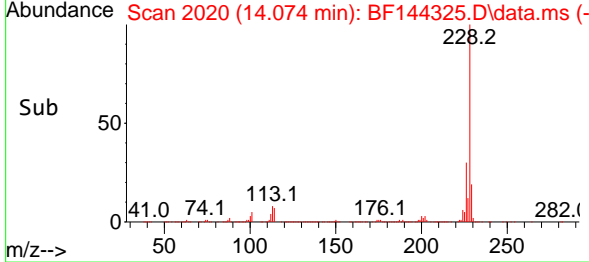
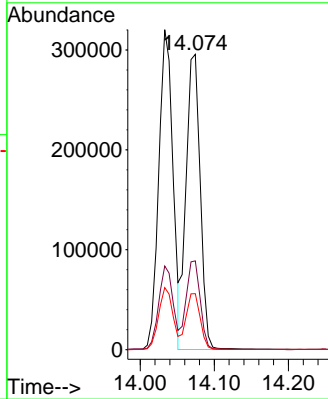
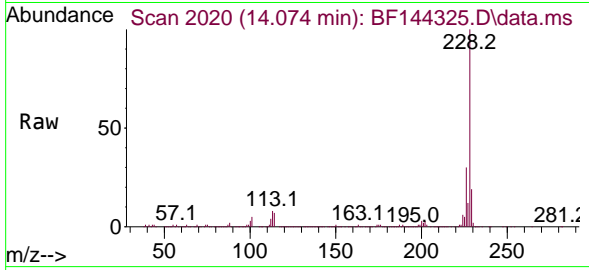


#83
 Chrysene
 Concen: 51.011 ng
 RT: 14.074 min Scan# 2010
 Delta R.T. -0.006 min
 Lab File: BF144325.D
 Acq: 24 Nov 2025 15:50

Instrument :
 BNA_F
 ClientSampleId :
 V933MS

Tgt Ion:228 Resp: 393020

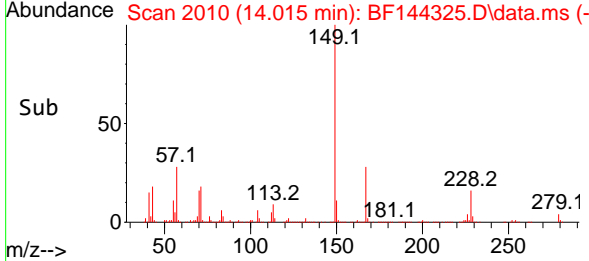
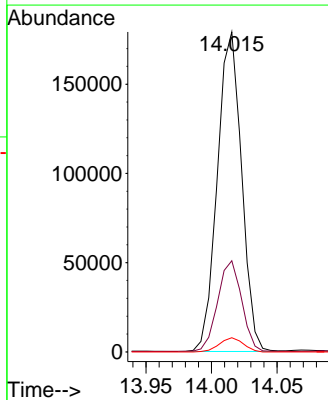
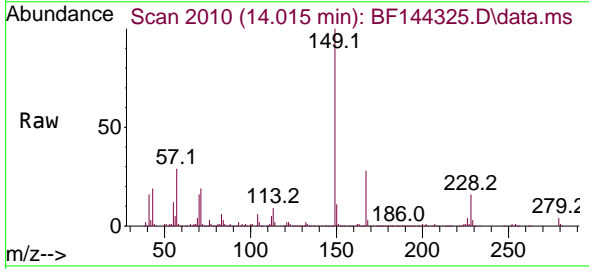
Ion	Ratio	Lower	Upper
228	100		
226	30.0	22.9	34.3
229	19.0	15.0	22.6

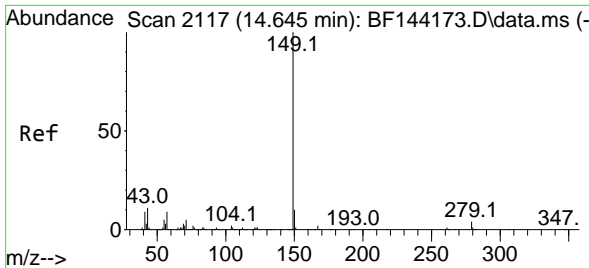


#84
 Bis(2-ethylhexyl)phthalate
 Concen: 50.111 ng
 RT: 14.015 min Scan# 2010
 Delta R.T. -0.012 min
 Lab File: BF144325.D
 Acq: 24 Nov 2025 15:50

Tgt Ion:149 Resp: 230847

Ion	Ratio	Lower	Upper
149	100		
167	28.5	21.8	32.8
279	4.4	3.7	5.5

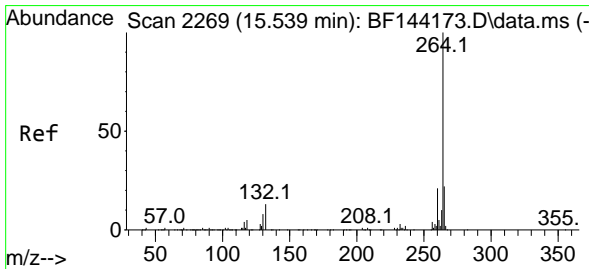
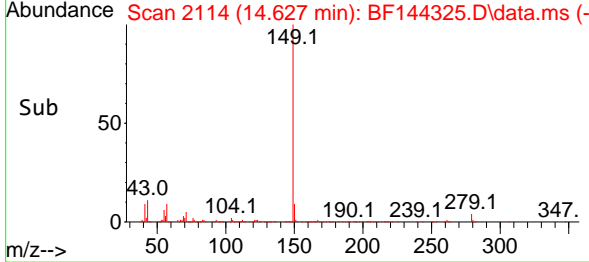
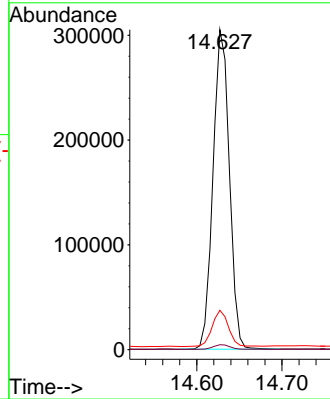
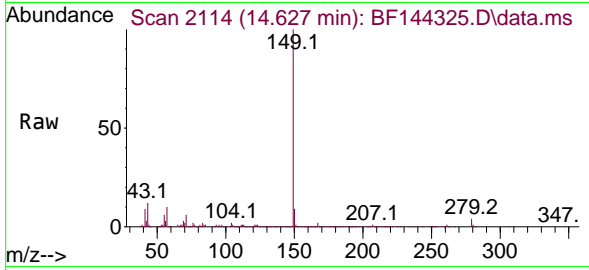




#85
 Di-n-octyl phthalate
 Concen: 51.114 ng
 RT: 14.627 min Scan# 2114
 Delta R.T. -0.018 min
 Lab File: BF144325.D
 Acq: 24 Nov 2025 15:50

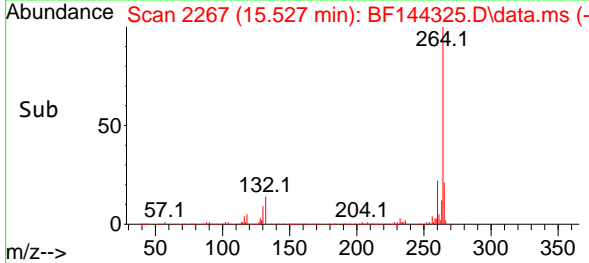
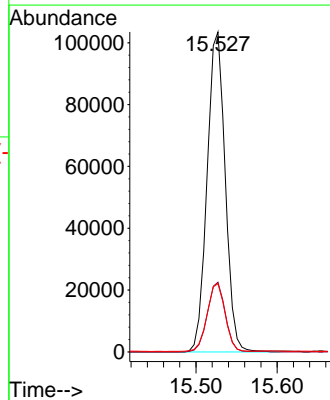
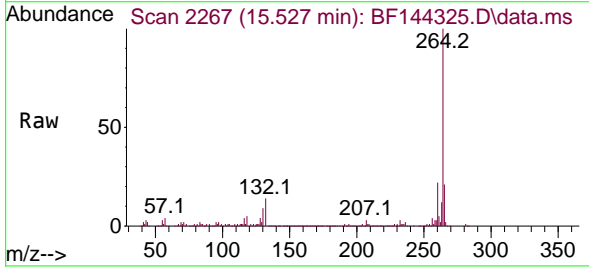
Instrument :
 BNA_F
 ClientSampleId :
 V933MS

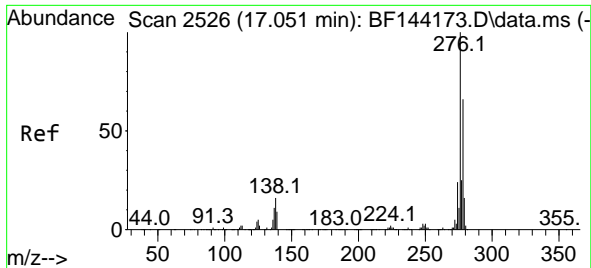
Tgt Ion	Resp	Lower	Upper
149	100		
167	1.6	1.2	1.8
43	11.2	9.0	13.4



#86
 Perylene-d12
 Concen: 20.000 ng
 RT: 15.527 min Scan# 2267
 Delta R.T. -0.012 min
 Lab File: BF144325.D
 Acq: 24 Nov 2025 15:50

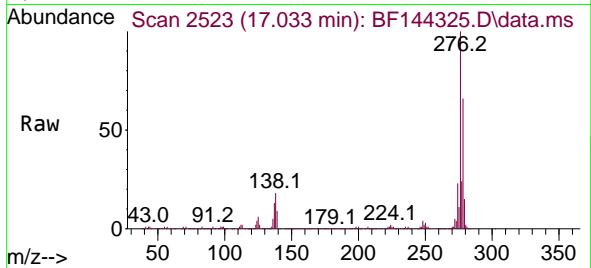
Tgt Ion	Resp	Lower	Upper
264	100		
260	21.8	17.1	25.7
265	21.3	17.4	26.0



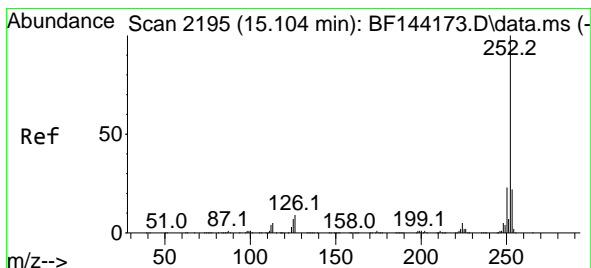
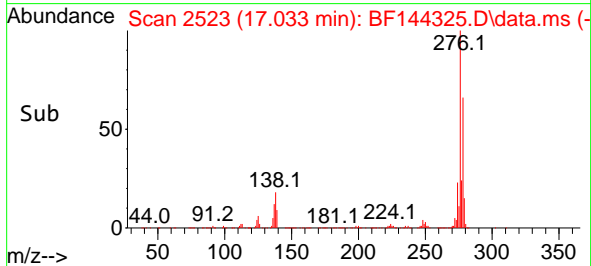
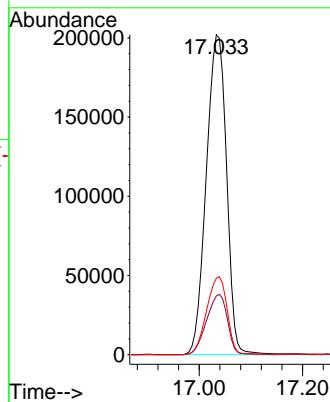


#87
 Indeno(1,2,3-cd)pyrene
 Concen: 47.761 ng
 RT: 17.033 min Scan# 2193
 Delta R.T. -0.000 min
 Lab File: BF144325.D
 Acq: 24 Nov 2025 15:50

Instrument :
 BNA_F
 ClientSampleId :
 V933MS

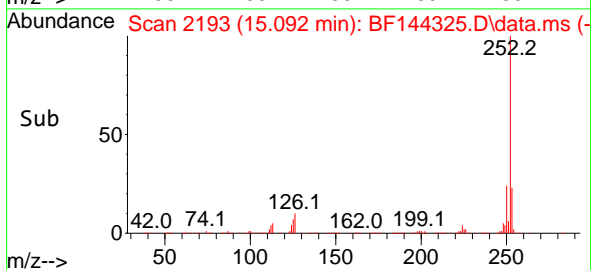
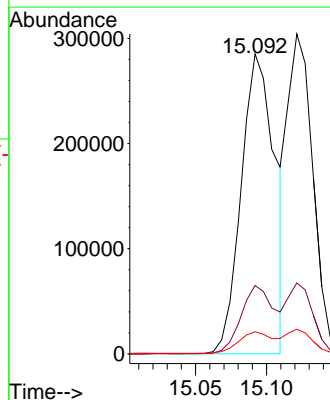
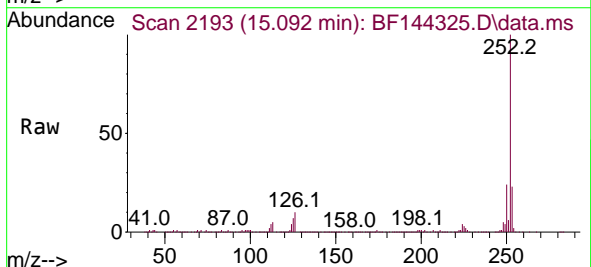


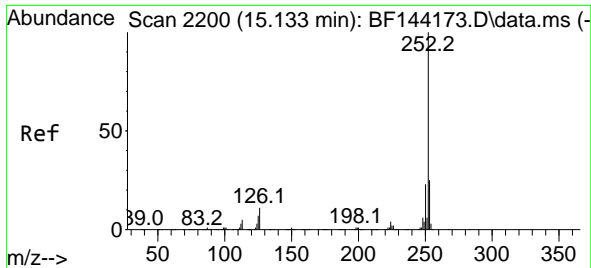
Tgt Ion: 276 Resp: 550485
 Ion Ratio Lower Upper
 276 100
 138 19.4 13.9 20.9
 277 24.6 19.8 29.6



#88
 Benzo(b)fluoranthene
 Concen: 51.479 ng
 RT: 15.092 min Scan# 2193
 Delta R.T. -0.006 min
 Lab File: BF144325.D
 Acq: 24 Nov 2025 15:50

Tgt Ion: 252 Resp: 469917
 Ion Ratio Lower Upper
 252 100
 253 22.8 17.4 26.2
 125 7.4 5.3 7.9



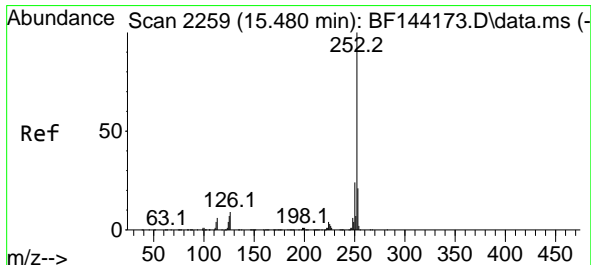
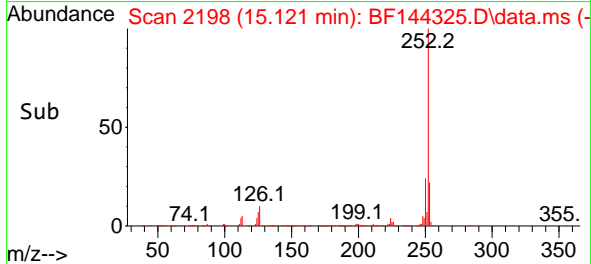
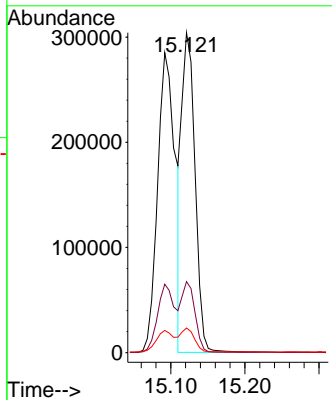
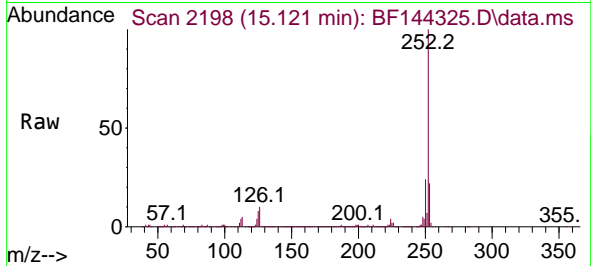


#89
 Benzo(k)fluoranthene
 Concen: 44.633 ng
 RT: 15.121 min Scan# 2119
 Delta R.T. -0.006 min
 Lab File: BF144325.D
 Acq: 24 Nov 2025 15:50

Instrument : BNA_F
 ClientSampleId : V933MS

Tgt Ion:252 Resp: 381343

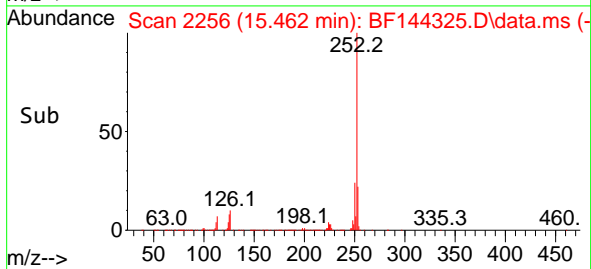
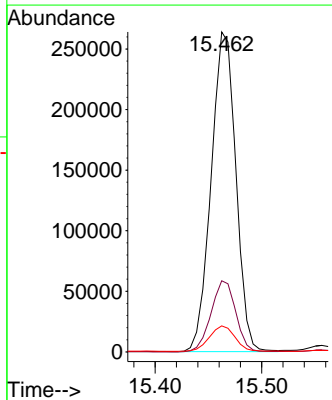
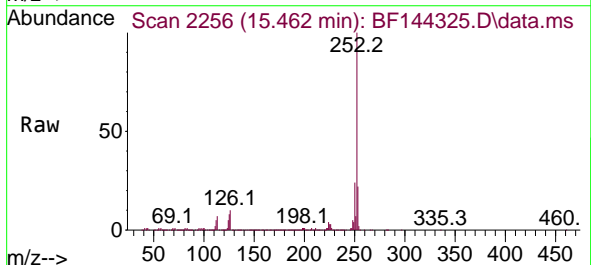
Ion	Ratio	Lower	Upper
252	100		
253	22.2	18.0	27.0
125	7.7	5.4	8.2

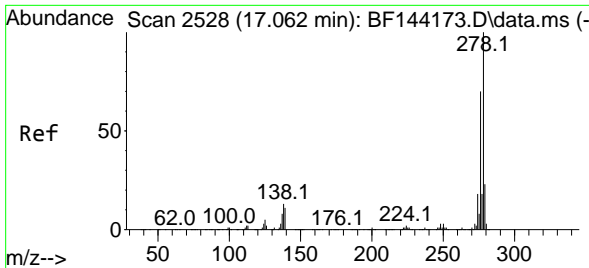


#90
 Benzo(a)pyrene
 Concen: 50.605 ng
 RT: 15.462 min Scan# 2256
 Delta R.T. -0.012 min
 Lab File: BF144325.D
 Acq: 24 Nov 2025 15:50

Tgt Ion:252 Resp: 426159

Ion	Ratio	Lower	Upper
252	100		
253	22.2	16.7	25.1
125	8.1	5.7	8.5

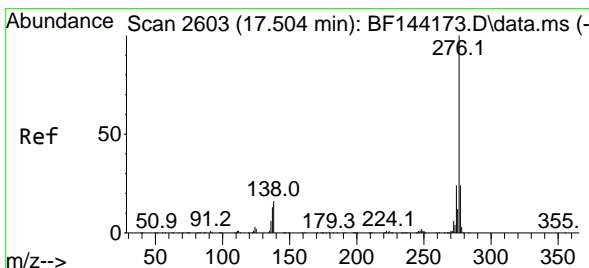
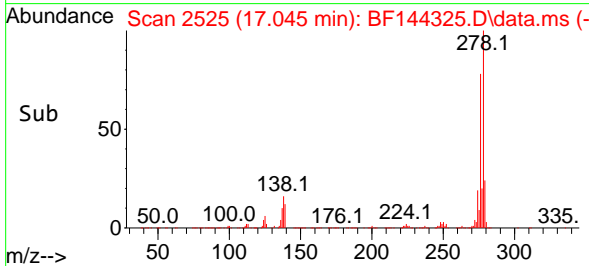
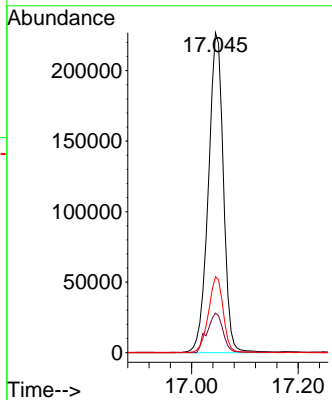
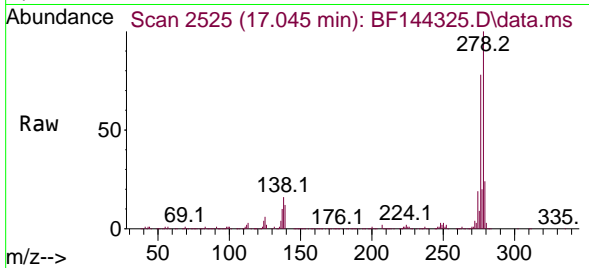




#91
 Dibenzo(a,h)anthracene
 Concen: 48.080 ng
 RT: 17.045 min Scan# 21
 Delta R.T. -0.006 min
 Lab File: BF144325.D
 Acq: 24 Nov 2025 15:50

Instrument :
 BNA_F
 ClientSampleId :
 V933MS

Tgt Ion	Resp	Lower	Upper
278	100		
139	12.3	9.1	13.7
279	23.7	18.2	27.4



#92
 Benzo(g,h,i)perylene
 Concen: 50.229 ng
 RT: 17.486 min Scan# 2600
 Delta R.T. -0.006 min
 Lab File: BF144325.D
 Acq: 24 Nov 2025 15:50

Tgt Ion	Resp	Lower	Upper
276	100		
277	24.1	19.0	28.4
138	18.6	12.9	19.3

