

Data Path : Z:\svoasrv\HPCHEM1\BNA_F\Data\BF112425\
 Data File : BF144326.D
 Acq On : 24 Nov 2025 16:20
 Operator : RC/JU
 Sample : Q3707-01MSD
 Misc :
 ALS Vial : 7 Sample Multiplier: 1

Instrument :
 BNA_F
 ClientSampleId :
 V933MSD

Quant Time: Nov 25 00:24:30 2025
 Quant Method : Z:\svoasrv\HPCHEM1\BNA_F\Methods\8270-BF110525.M
 Quant Title : ASP BNA STANDARDS FOR 5 POINT CALIBRATION
 QLast Update : Wed Nov 05 18:37:33 2025
 Response via : Initial Calibration

Compound	R.T.	QIon	Response	Conc Units	Dev(Min)	
Internal Standards						
1) 1,4-Dichlorobenzene-d4	6.863	152	54624	20.000 ng	-0.01	
21) Naphthalene-d8	8.145	136	215864	20.000 ng	-0.01	
39) Acenaphthene-d10	9.904	164	121102	20.000 ng	-0.01	
64) Phenanthrene-d10	11.392	188	208077	20.000 ng	-0.01	
76) Chrysene-d12	14.045	240	137029	20.000 ng	0.00	
86) Perylene-d12	15.527	264	164174	20.000 ng	-0.01	
System Monitoring Compounds						
5) 2-Fluorophenol	5.493	112	168183	48.181 ng	0.00	
7) Phenol-d6	6.499	99	263644	66.658 ng	0.00	
23) Nitrobenzene-d5	7.428	82	197868	52.940 ng	0.00	
42) 2,4,6-Tribromophenol	10.698	330	58449	38.461 ng	0.00	
45) 2-Fluorobiphenyl	9.222	172	404991	49.392 ng	0.00	
79) Terphenyl-d14	12.980	244	426736	49.466 ng	-0.01	
Target Compounds						Qvalue
2) 1,4-Dioxane	2.669	88	66143	45.833 ng		98
3) Pyridine	3.434	79	180336	44.791 ng		97
4) n-Nitrosodimethylamine	3.387	42	99694	47.404 ng		90
6) Aniline	6.528	93	188120	33.383 ng		98
8) 2-Chlorophenol	6.651	128	156619	45.752 ng		99
9) Benzaldehyde	6.416	77	84091	37.652 ng		98
10) Phenol	6.510	94	222089	45.959 ng		98
11) bis(2-Chloroethyl)ether	6.598	93	164978	46.853 ng		99
12) 1,3-Dichlorobenzene	6.804	146	194430	46.028 ng		96
13) 1,4-Dichlorobenzene	6.881	146	195544	46.207 ng		100
14) 1,2-Dichlorobenzene	7.034	146	189364	46.685 ng		98
15) Benzyl Alcohol	7.004	79	146526	46.786 ng		97
16) 2,2'-oxybis(1-Chloropr...	7.134	45	309649	47.754 ng		92
17) 2-Methylphenol	7.116	107	128764	47.282 ng		97
18) Hexachloroethane	7.375	117	63315	45.033 ng		98
19) n-Nitroso-di-n-propyla...	7.275	70	117230	45.024 ng		99
20) 3+4-Methylphenols	7.275	107	144498	45.011 ng		94
22) Acetophenone	7.275	105	204726	44.210 ng		98
24) Nitrobenzene	7.446	77	179427	44.214 ng		97
25) Isophorone	7.687	82	320967	45.400 ng		98
26) 2-Nitrophenol	7.763	139	94686	47.134 ng		97
27) 2,4-Dimethylphenol	7.798	122	155426	51.620 ng		99
28) bis(2-Chloroethoxy)met...	7.893	93	206577	46.792 ng		98
29) 2,4-Dichlorophenol	8.004	162	151014	43.516 ng		99
30) 1,2,4-Trichlorobenzene	8.087	180	159713	44.819 ng		97
31) Naphthalene	8.169	128	453440	44.159 ng		99
32) Benzoic acid	7.922	122	93081	42.174 ng		92
33) 4-Chloroaniline	8.216	127	69186	18.474 ng		97
34) Hexachlorobutadiene	8.281	225	112534	41.903 ng		100
35) Caprolactam	8.592	113	48352	50.856 ng		99
36) 4-Chloro-3-methylphenol	8.704	107	139076	44.717 ng		99
37) 2-Methylnaphthalene	8.857	142	280935	40.920 ng		99
38) 1-Methylnaphthalene	8.957	142	285640	43.120 ng		99
40) 1,2,4,5-Tetrachloroben...	9.028	216	170933	43.068 ng		98
41) Hexachlorocyclopentadiene	9.010	237	150265	91.642 ng		96
43) 2,4,6-Trichlorophenol	9.140	196	121470	44.967 ng		97

Data Path : Z:\svoasrv\HPCHEM1\BNA_F\Data\BF112425\
 Data File : BF144326.D
 Acq On : 24 Nov 2025 16:20
 Operator : RC/JU
 Sample : Q3707-01MSD
 Misc :
 ALS Vial : 7 Sample Multiplier: 1

Instrument :
 BNA_F
 ClientSampleId :
 V933MSD

Quant Time: Nov 25 00:24:30 2025
 Quant Method : Z:\svoasrv\HPCHEM1\BNA_F\Methods\8270-BF110525.M
 Quant Title : ASP BNA STANDARDS FOR 5 POINT CALIBRATION
 QLast Update : Wed Nov 05 18:37:33 2025
 Response via : Initial Calibration

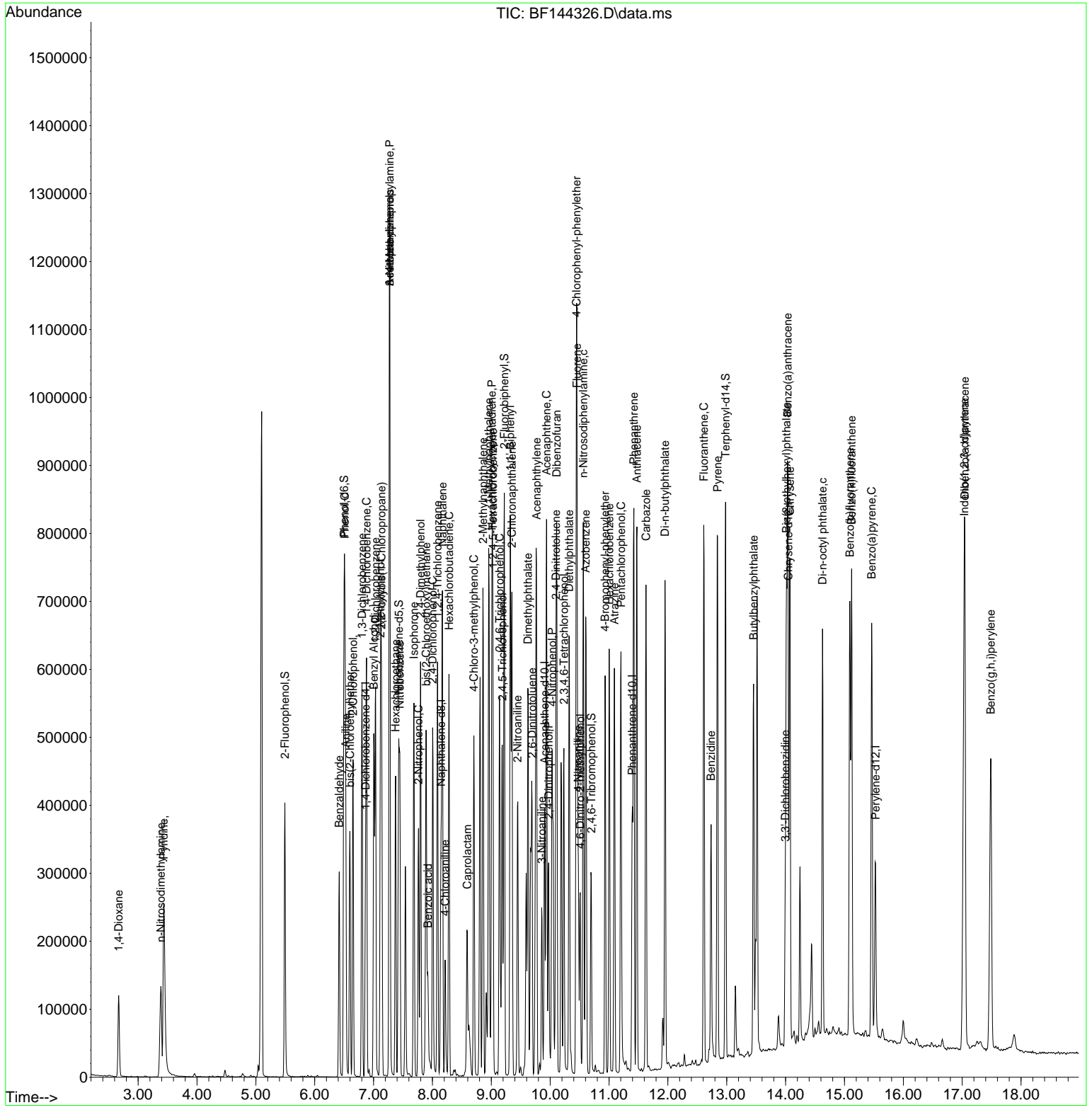
Compound	R.T.	QIon	Response	Conc	Units	Dev(Min)
44) 2,4,5-Trichlorophenol	9.187	196	127127	43.665	ng	98
46) 1,1'-Biphenyl	9.322	154	377862	44.700	ng	100
47) 2-Chloronaphthalene	9.351	162	317454	44.025	ng	98
48) 2-Nitroaniline	9.445	65	99746	47.942	ng	99
49) Acenaphthylene	9.769	152	492588	50.130	ng	99
50) Dimethylphthalate	9.622	163	372317	46.408	ng	99
51) 2,6-Dinitrotoluene	9.692	165	81646	50.273	ng	91
52) Acenaphthene	9.939	154	268034	40.790	ng	100
53) 3-Nitroaniline	9.857	138	54542	30.722	ng	99
54) 2,4-Dinitrophenol	9.975	184	79178	80.736	ng	95
55) Dibenzofuran	10.110	168	399023	43.358	ng	99
56) 4-Nitrophenol	10.034	139	108599	84.564	ng	95
57) 2,4-Dinitrotoluene	10.098	165	106086	48.795	ng #	97
58) Fluorene	10.457	166	320519	45.808	ng	99
59) 2,3,4,6-Tetrachlorophenol	10.234	232	96323	46.762	ng	98
60) Diethylphthalate	10.322	149	341279	46.145	ng	99
61) 4-Chlorophenyl-phenyle...	10.445	204	173666	43.572	ng	98
62) 4-Nitroaniline	10.475	138	84756	50.130	ng	92
63) Azobenzene	10.604	77	351341	51.044	ng	96
65) 4,6-Dinitro-2-methylph...	10.510	198	61956	43.830	ng	94
66) n-Nitrosodiphenylamine	10.563	169	311690	46.574	ng	100
67) 4-Bromophenyl-phenylether	10.934	248	112150	42.227	ng	96
68) Hexachlorobenzene	11.004	284	137753	44.034	ng	98
69) Atrazine	11.092	200	106829	50.194	ng	98
70) Pentachlorophenol	11.204	266	133840	85.917	ng	99
71) Phenanthrene	11.422	178	468568	45.229	ng	100
72) Anthracene	11.475	178	479971	45.563	ng	100
73) Carbazole	11.628	167	423160	47.240	ng	99
74) Di-n-butylphthalate	11.951	149	519771	47.999	ng	100
75) Fluoranthene	12.610	202	491252	45.904	ng	99
77) Benzidine	12.733	184	207618	51.223	ng	99
78) Pyrene	12.845	202	490645	44.408	ng	100
80) Butylbenzylphthalate	13.457	149	187190	48.884	ng	97
81) Benzo(a)anthracene	14.033	228	434525	45.753	ng	100
82) 3,3'-Dichlorobenzidine	13.992	252	69515	21.354	ng	99
83) Chrysene	14.074	228	404897	46.184	ng	99
84) Bis(2-ethylhexyl)phtha...	14.016	149	242744	46.307	ng	98
85) Di-n-octyl phthalate	14.627	149	413956	45.770	ng	100
87) Indeno(1,2,3-cd)pyrene	17.033	276	521774	44.274	ng	97
88) Benzo(b)fluoranthene	15.092	252	415342	44.500	ng	99
89) Benzo(k)fluoranthene	15.121	252	434837	49.774	ng	99
90) Benzo(a)pyrene	15.463	252	417211	48.453	ng #	99
91) Dibenzo(a,h)anthracene	17.045	278	418978	44.268	ng	99
92) Benzo(g,h,i)perylene	17.486	276	435956	46.644	ng	98

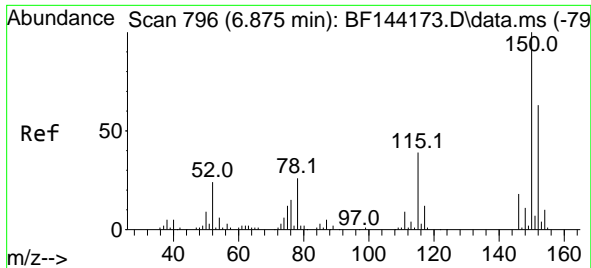
(#) = qualifier out of range (m) = manual integration (+) = signals summed

Data Path : Z:\svoasrv\HPCHEM1\BNA_F\Data\BF112425\
 Data File : BF144326.D
 Acq On : 24 Nov 2025 16:20
 Operator : RC/JU
 Sample : Q3707-01MSD
 Misc :
 ALS Vial : 7 Sample Multiplier: 1

Instrument :
 BNA_F
 ClientSampleId :
 V933MSD

Quant Time: Nov 25 00:24:30 2025
 Quant Method : Z:\svoasrv\HPCHEM1\BNA_F\Methods\8270-BF110525.M
 Quant Title : ASP BNA STANDARDS FOR 5 POINT CALIBRATION
 QLast Update : Wed Nov 05 18:37:33 2025
 Response via : Initial Calibration

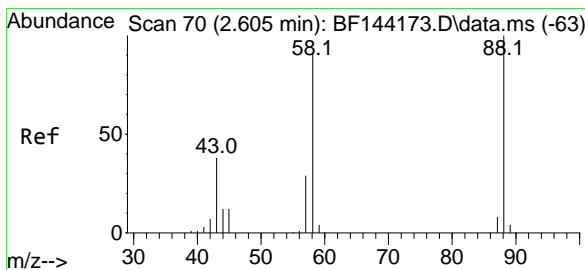
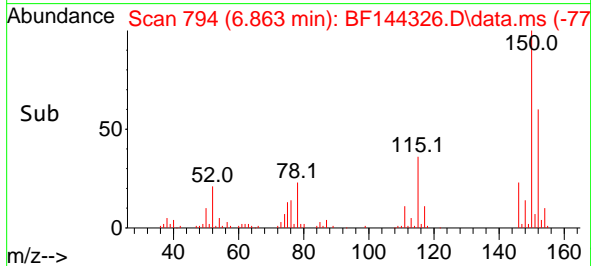
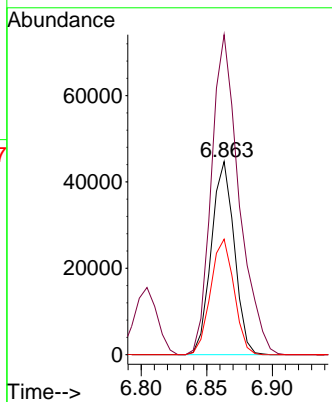
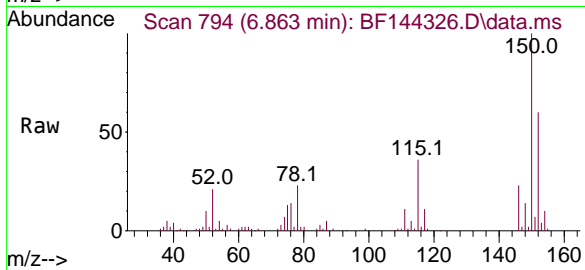




#1
 1,4-Dichlorobenzene-d4
 Concen: 20.000 ng
 RT: 6.863 min Scan# 79
 Delta R.T. -0.012 min
 Lab File: BF144326.D
 Acq: 24 Nov 2025 16:20

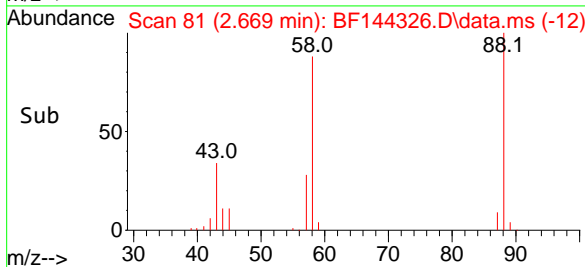
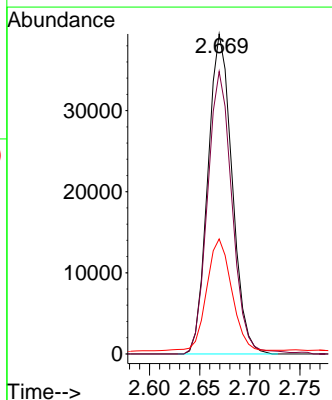
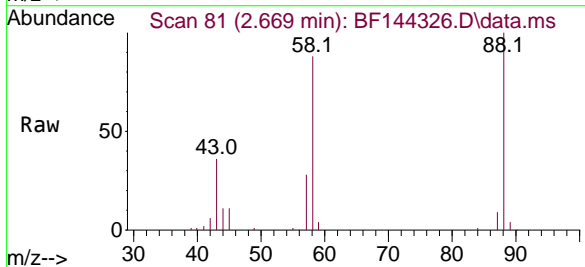
Instrument :
 BNA_F
 ClientSampleId :
 V933MSD

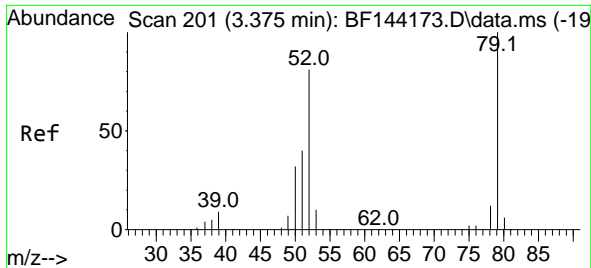
Tgt Ion:152 Resp: 54624
 Ion Ratio Lower Upper
 152 100
 150 165.8 127.4 191.0
 115 59.8 49.5 74.3



#2
 1,4-Dioxane
 Concen: 45.833 ng
 RT: 2.669 min Scan# 81
 Delta R.T. 0.053 min
 Lab File: BF144326.D
 Acq: 24 Nov 2025 16:20

Tgt Ion: 88 Resp: 66143
 Ion Ratio Lower Upper
 88 100
 58 89.6 73.1 109.7
 43 36.7 31.0 46.6

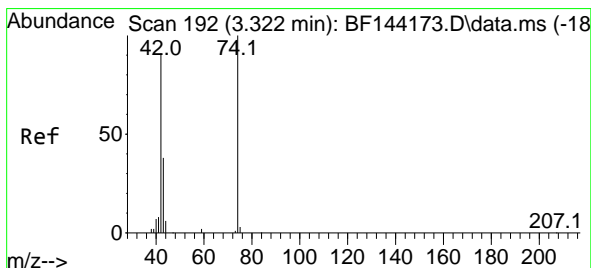
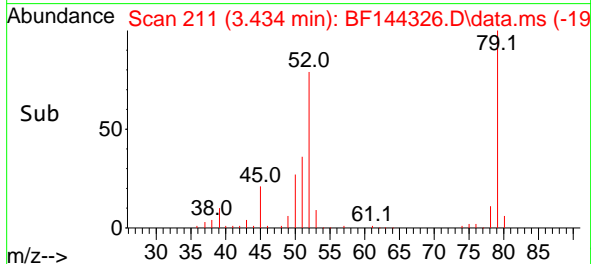
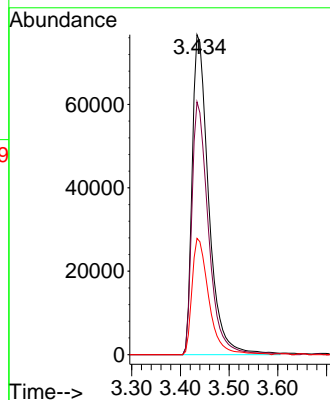
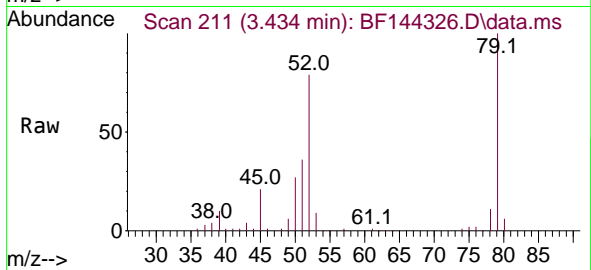




#3
 Pyridine
 Concen: 44.791 ng
 RT: 3.434 min Scan# 211
 Delta R.T. 0.024 min
 Lab File: BF144326.D
 Acq: 24 Nov 2025 16:20

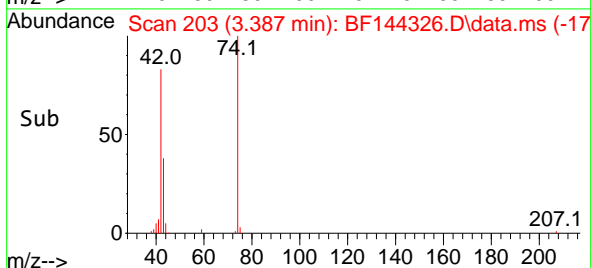
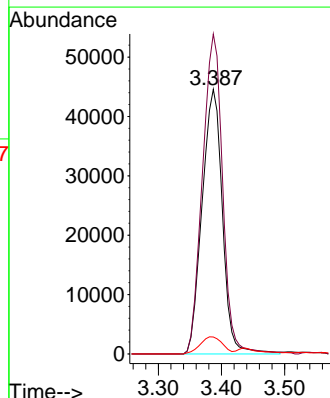
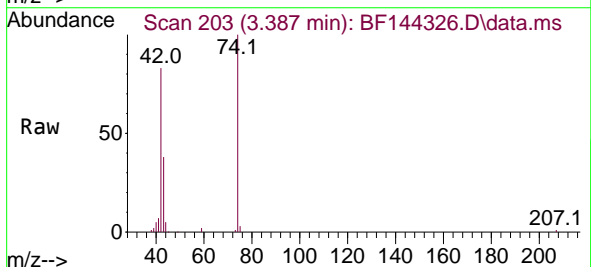
Instrument :
 BNA_F
 ClientSampleId :
 V933MSD

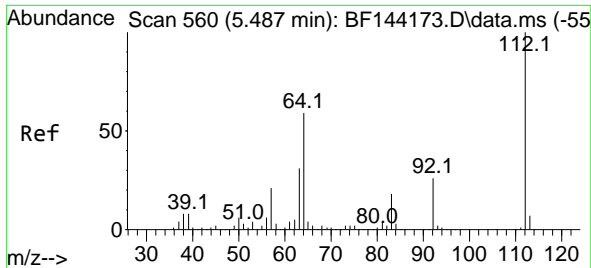
Tgt Ion: 79 Resp: 180336
 Ion Ratio Lower Upper
 79 100
 52 79.0 64.5 96.7
 51 36.3 31.7 47.5



#4
 n-Nitrosodimethylamine
 Concen: 47.404 ng
 RT: 3.387 min Scan# 203
 Delta R.T. 0.041 min
 Lab File: BF144326.D
 Acq: 24 Nov 2025 16:20

Tgt Ion: 42 Resp: 99694
 Ion Ratio Lower Upper
 42 100
 74 121.0 88.2 132.4
 44 6.4 5.7 8.5



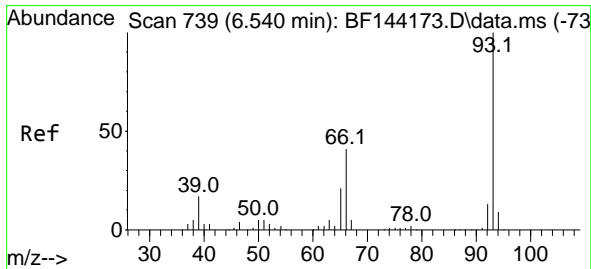
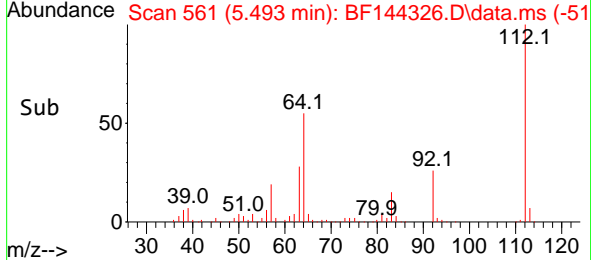
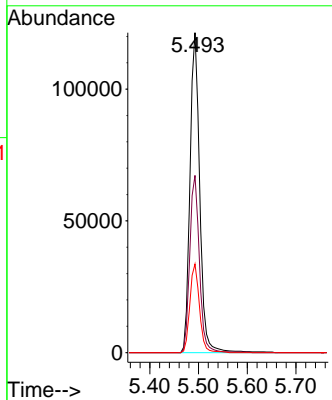
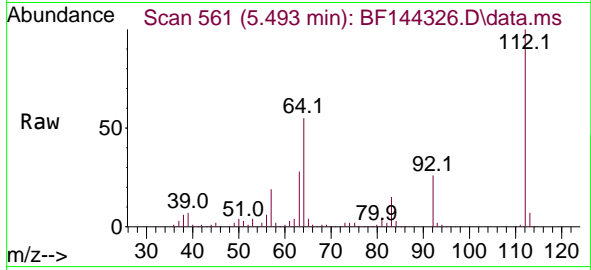


#5
 2-Fluorophenol
 Concen: 48.181 ng
 RT: 5.493 min Scan# 50
 Delta R.T. 0.000 min
 Lab File: BF144326.D
 Acq: 24 Nov 2025 16:20

Instrument : BNA_F
 ClientSampleId : V933MSD

Tgt Ion:112 Resp: 168183

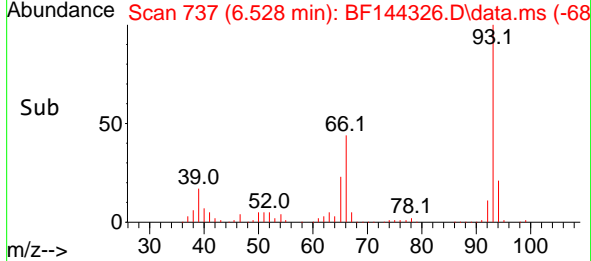
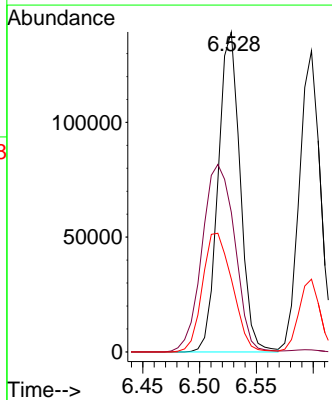
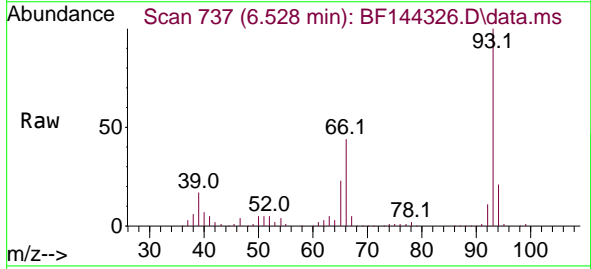
Ion	Ratio	Lower	Upper
112	100		
64	55.4	47.2	70.8
63	27.7	24.4	36.6

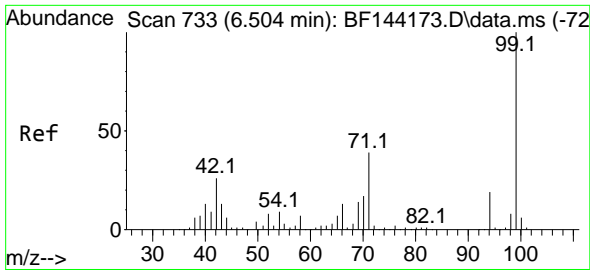


#6
 Aniline
 Concen: 33.383 ng
 RT: 6.528 min Scan# 737
 Delta R.T. -0.006 min
 Lab File: BF144326.D
 Acq: 24 Nov 2025 16:20

Tgt Ion: 93 Resp: 188120

Ion	Ratio	Lower	Upper
93	100		
66	43.6	34.3	51.5
65	22.8	16.9	25.3



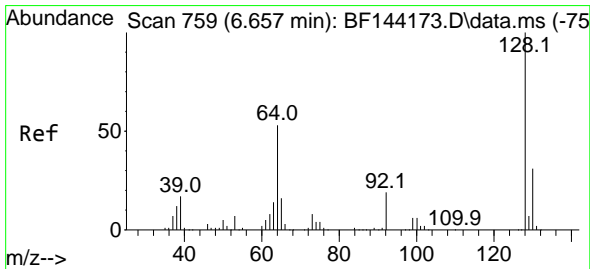
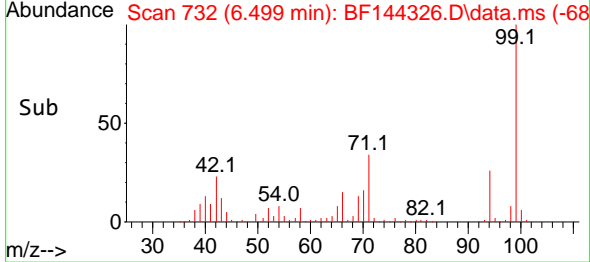
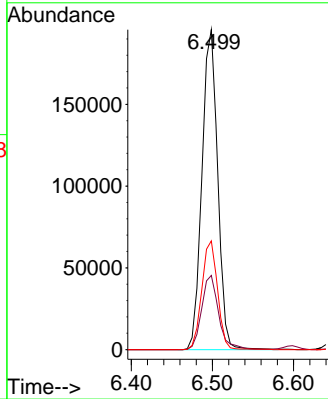
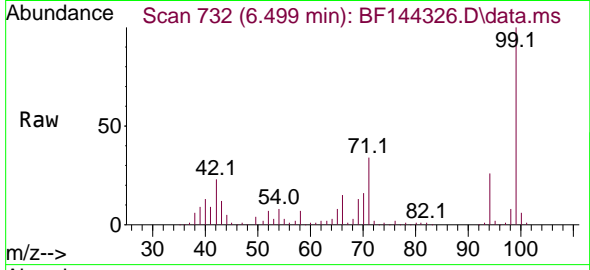


#7
 Phenol-d6
 Concen: 66.658 ng
 RT: 6.499 min Scan# 731
 Delta R.T. 0.000 min
 Lab File: BF144326.D
 Acq: 24 Nov 2025 16:20

Instrument :
 BNA_F
 ClientSampleId :
 V933MSD

Tgt Ion: 99 Resp: 263644

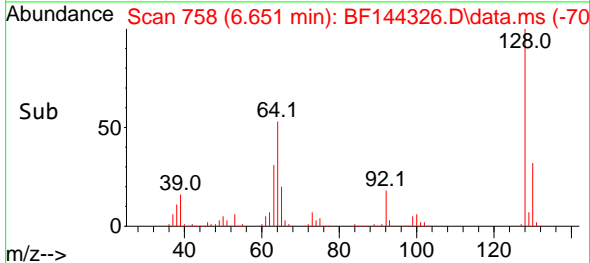
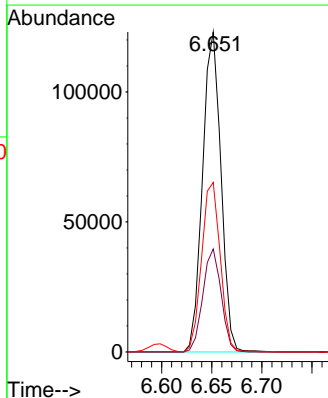
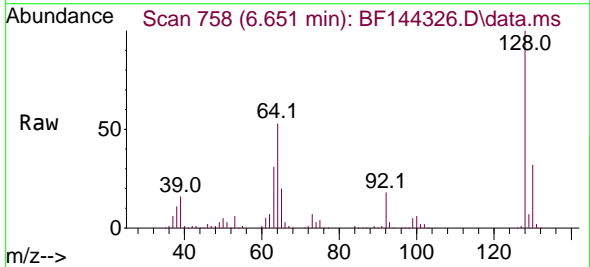
Ion	Ratio	Lower	Upper
99	100		
42	23.2	20.9	31.3
71	34.0	31.4	47.2

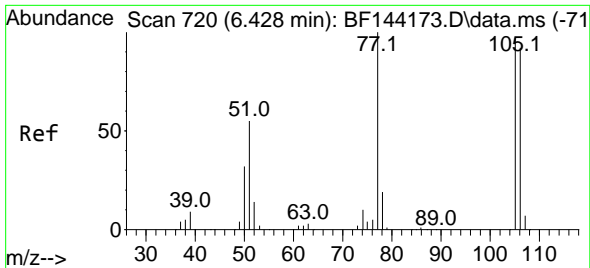


#8
 2-Chlorophenol
 Concen: 45.752 ng
 RT: 6.651 min Scan# 758
 Delta R.T. -0.006 min
 Lab File: BF144326.D
 Acq: 24 Nov 2025 16:20

Tgt Ion: 128 Resp: 156619

Ion	Ratio	Lower	Upper
128	100		
130	32.2	10.5	50.5
64	53.0	33.2	73.2

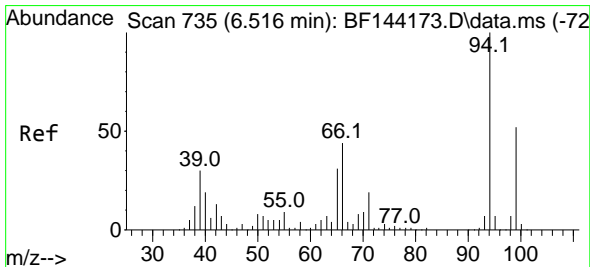
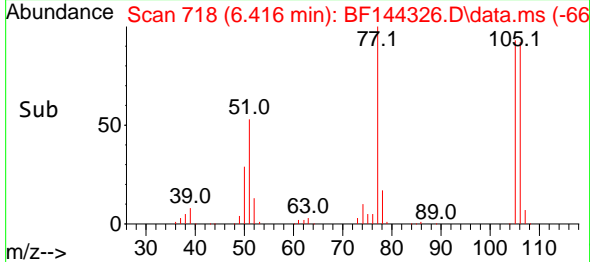
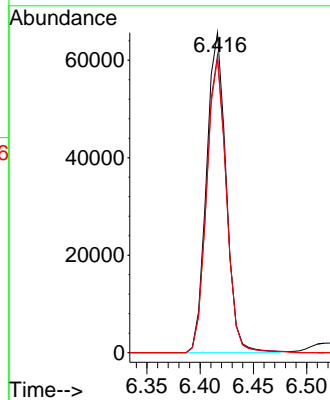
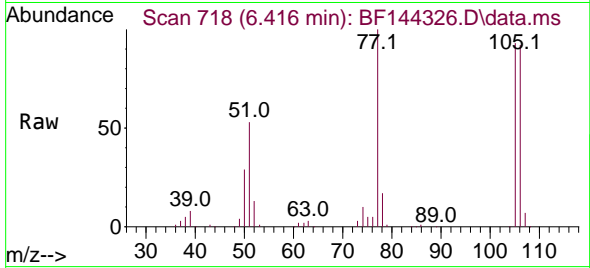




#9
 Benzaldehyde
 Concen: 37.652 ng
 RT: 6.416 min Scan# 718
 Delta R.T. -0.012 min
 Lab File: BF144326.D
 Acq: 24 Nov 2025 16:20

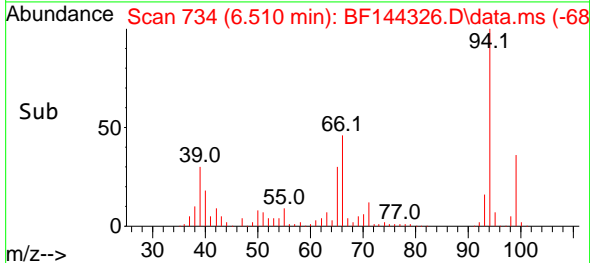
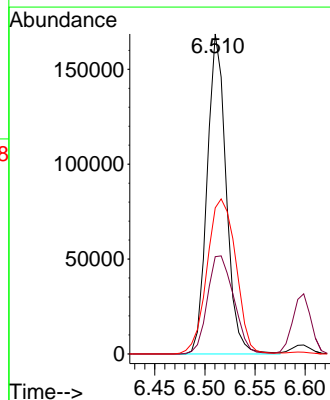
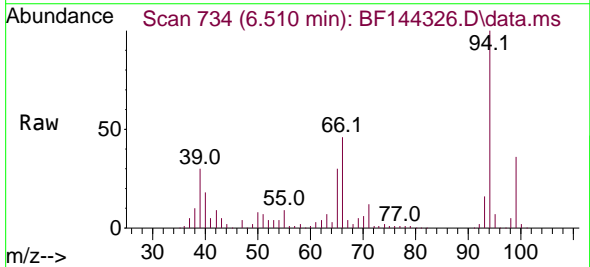
Instrument :
 BNA_F
 ClientSampleId :
 V933MSD

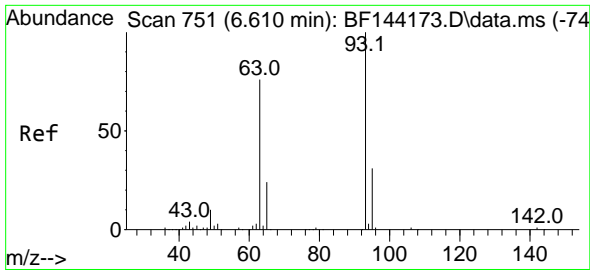
Tgt Ion: 77 Resp: 84091
 Ion Ratio Lower Upper
 77 100
 105 92.9 77.2 117.2
 106 91.8 72.2 112.2



#10
 Phenol
 Concen: 45.959 ng
 RT: 6.510 min Scan# 734
 Delta R.T. 0.000 min
 Lab File: BF144326.D
 Acq: 24 Nov 2025 16:20

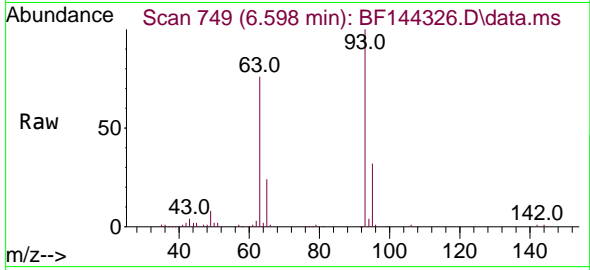
Tgt Ion: 94 Resp: 222089
 Ion Ratio Lower Upper
 94 100
 65 30.4 10.8 50.8
 66 45.6 24.3 64.3





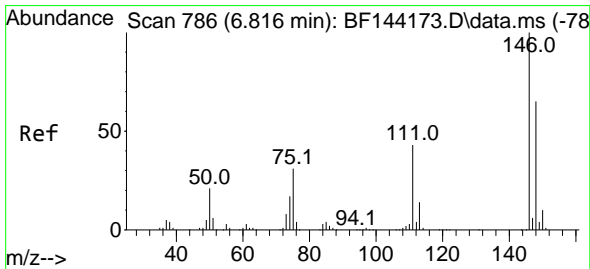
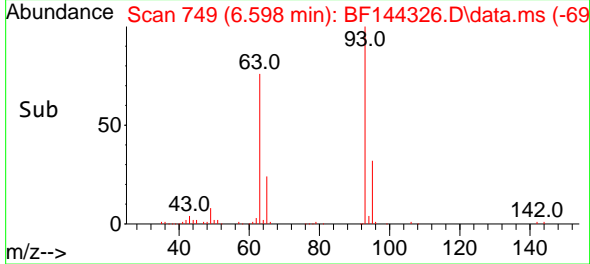
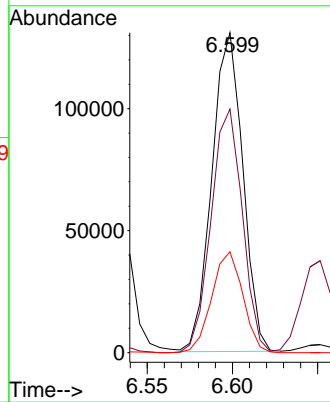
#11
 bis(2-Chloroethyl)ether
 Concen: 46.853 ng
 RT: 6.598 min Scan# 749
 Delta R.T. -0.006 min
 Lab File: BF144326.D
 Acq: 24 Nov 2025 16:20

Instrument :
 BNA_F
 ClientSampleId :
 V933MSD



Tgt Ion: 93 Resp: 164978

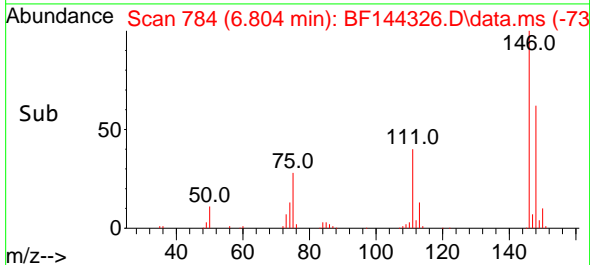
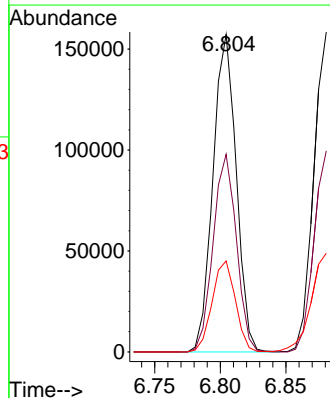
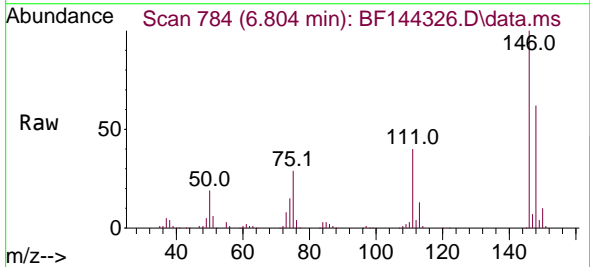
Ion	Ratio	Lower	Upper
93	100		
63	76.1	55.2	95.2
95	31.5	11.2	51.2

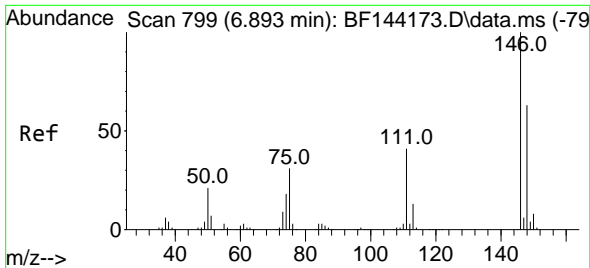


#12
 1,3-Dichlorobenzene
 Concen: 46.028 ng
 RT: 6.804 min Scan# 784
 Delta R.T. -0.012 min
 Lab File: BF144326.D
 Acq: 24 Nov 2025 16:20

Tgt Ion: 146 Resp: 194430

Ion	Ratio	Lower	Upper
146	100		
148	62.3	51.8	77.8
75	28.7	25.0	37.4



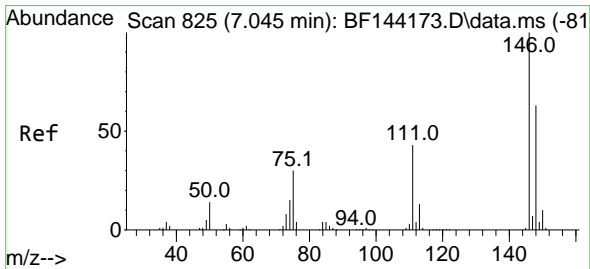
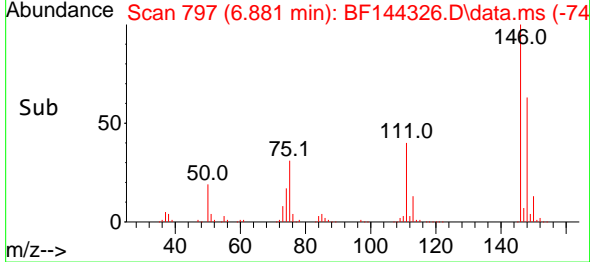
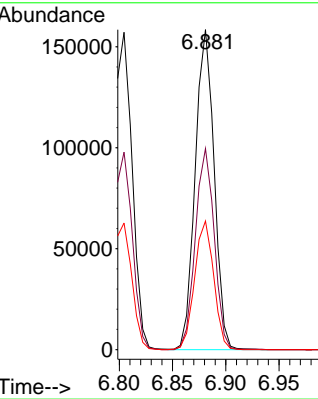
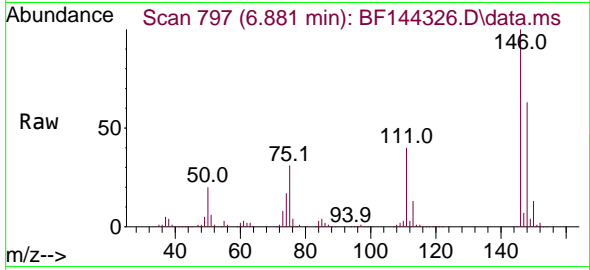


#13
 1,4-Dichlorobenzene
 Concen: 46.207 ng
 RT: 6.881 min Scan# 79
 Delta R.T. -0.012 min
 Lab File: BF144326.D
 Acq: 24 Nov 2025 16:20

Instrument :
 BNA_F
 ClientSampleId :
 V933MSD

Tgt Ion:146 Resp: 195544

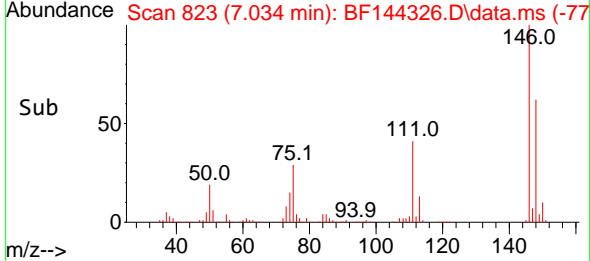
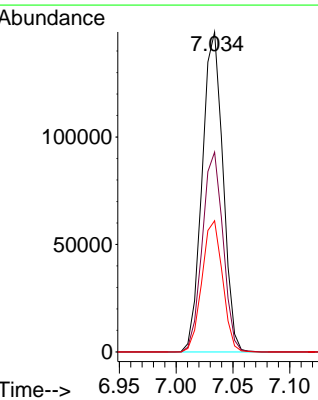
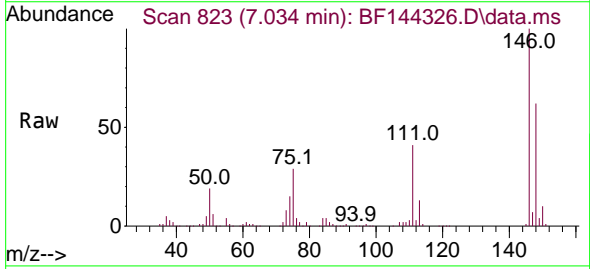
Ion	Ratio	Lower	Upper
146	100		
148	62.8	50.2	75.2
111	40.2	32.6	48.8

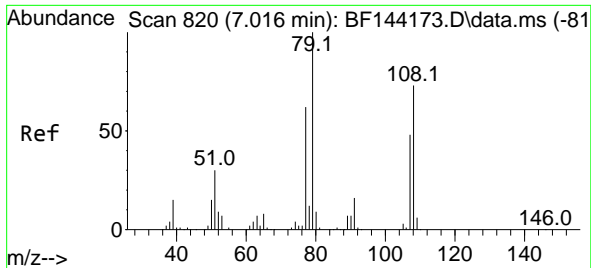


#14
 1,2-Dichlorobenzene
 Concen: 46.685 ng
 RT: 7.034 min Scan# 823
 Delta R.T. -0.012 min
 Lab File: BF144326.D
 Acq: 24 Nov 2025 16:20

Tgt Ion:146 Resp: 189364

Ion	Ratio	Lower	Upper
146	100		
148	62.4	50.7	76.1
111	41.0	34.2	51.4

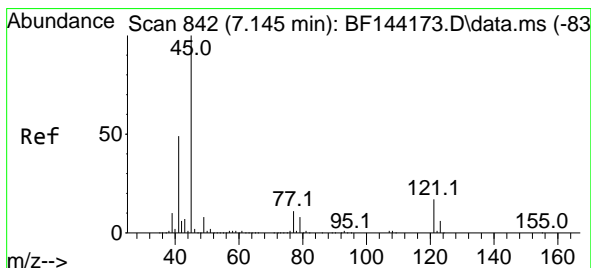
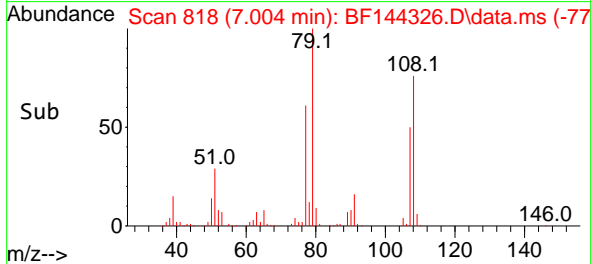
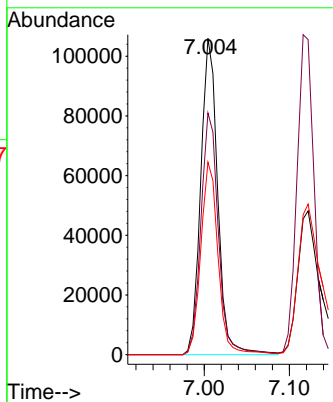
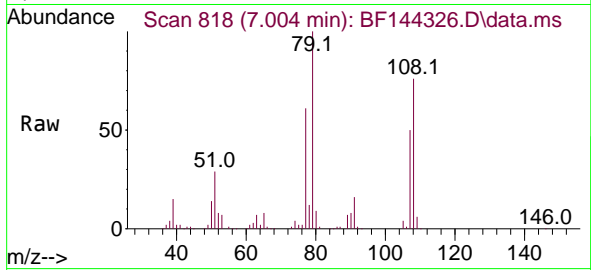




#15
 Benzyl Alcohol
 Concen: 46.786 ng
 RT: 7.004 min Scan# 81
 Delta R.T. -0.017 min
 Lab File: BF144326.D
 Acq: 24 Nov 2025 16:20

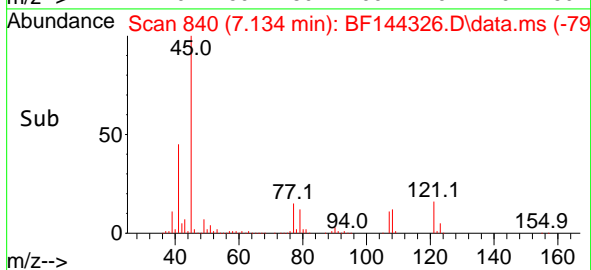
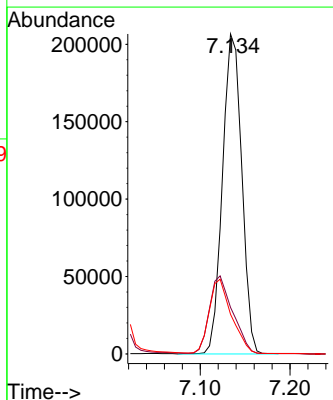
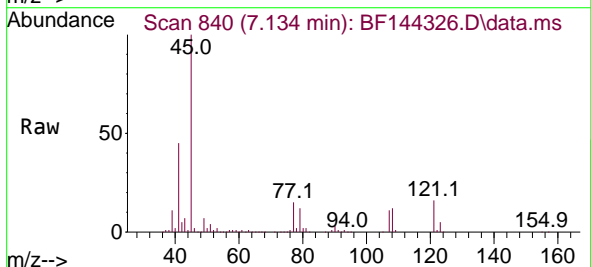
Instrument :
 BNA_F
 ClientSampleId :
 V933MSD

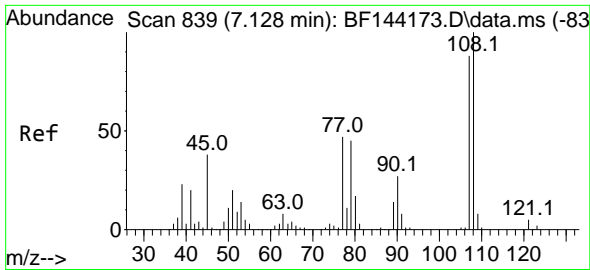
Tgt Ion: 79 Resp: 146526
 Ion Ratio Lower Upper
 79 100
 108 76.4 58.2 87.4
 77 60.8 49.9 74.9



#16
 2,2'-oxybis(1-Chloropropane)
 Concen: 47.754 ng
 RT: 7.134 min Scan# 840
 Delta R.T. -0.006 min
 Lab File: BF144326.D
 Acq: 24 Nov 2025 16:20

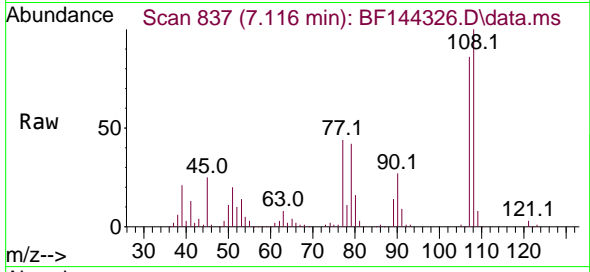
Tgt Ion: 45 Resp: 309649
 Ion Ratio Lower Upper
 45 100
 77 14.5 0.0 31.8
 79 12.4 0.0 29.1



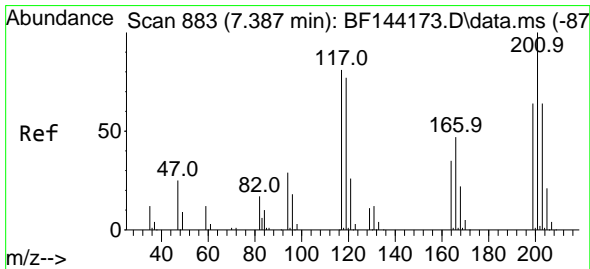
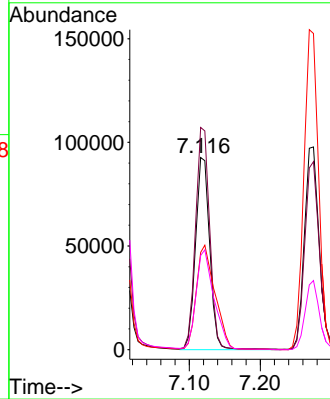
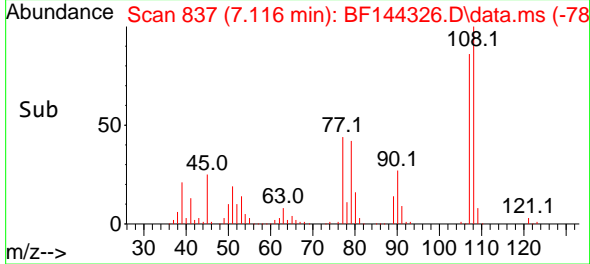


#17
 2-Methylphenol
 Concen: 47.282 ng
 RT: 7.116 min Scan# 811
 Delta R.T. -0.006 min
 Lab File: BF144326.D
 Acq: 24 Nov 2025 16:20

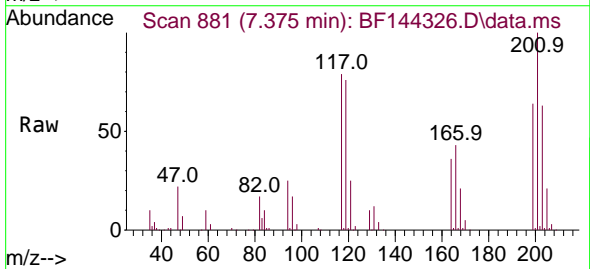
Instrument :
 BNA_F
 ClientSampleId :
 V933MSD



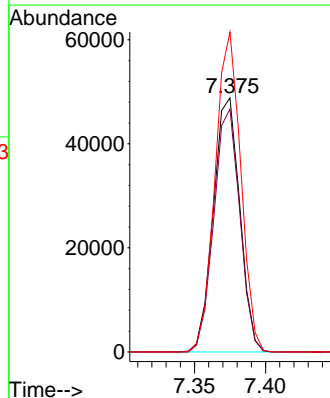
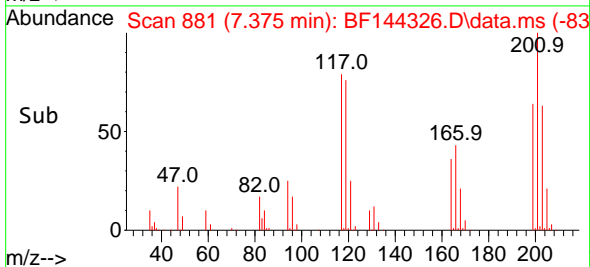
Tgt Ion:107 Resp: 128764
 Ion Ratio Lower Upper
 107 100
 108 115.6 91.0 136.4
 77 50.6 42.7 64.1
 79 49.0 41.4 62.2

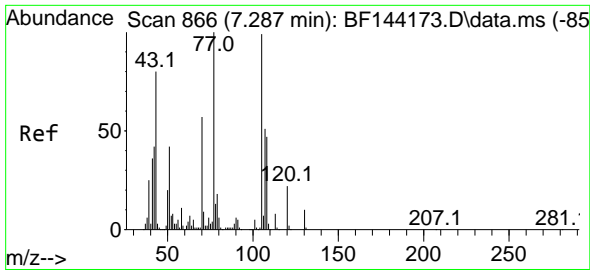


#18
 Hexachloroethane
 Concen: 45.033 ng
 RT: 7.375 min Scan# 881
 Delta R.T. -0.012 min
 Lab File: BF144326.D
 Acq: 24 Nov 2025 16:20



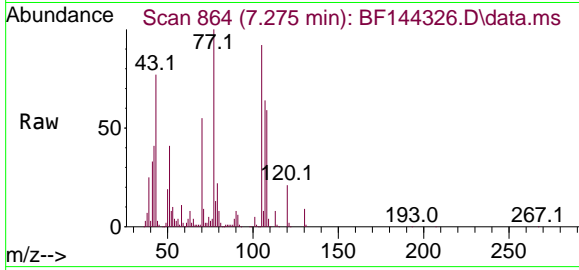
Tgt Ion:117 Resp: 63315
 Ion Ratio Lower Upper
 117 100
 119 95.6 75.8 113.8
 201 126.0 98.9 148.3



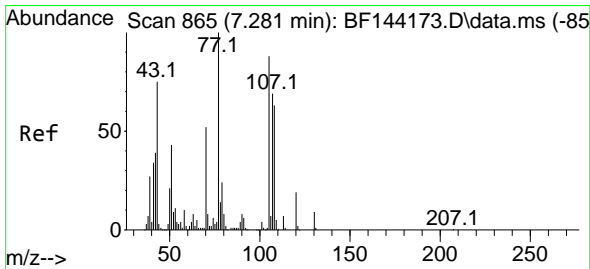
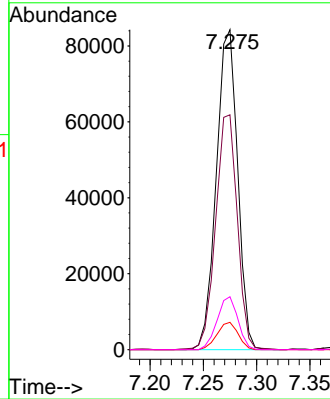
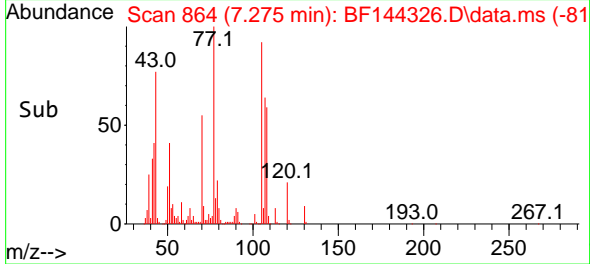


#19
 n-Nitroso-di-n-propylamine
 Concen: 45.024 ng
 RT: 7.275 min Scan# 864
 Delta R.T. 0.000 min
 Lab File: BF144326.D
 Acq: 24 Nov 2025 16:20

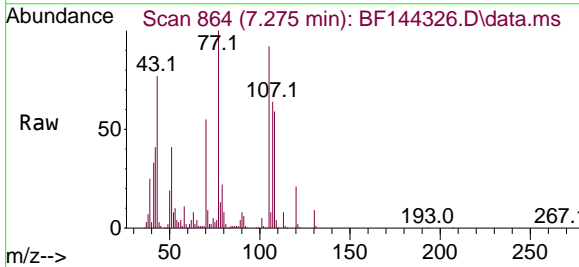
Instrument :
 BNA_F
 ClientSampleId :
 V933MSD



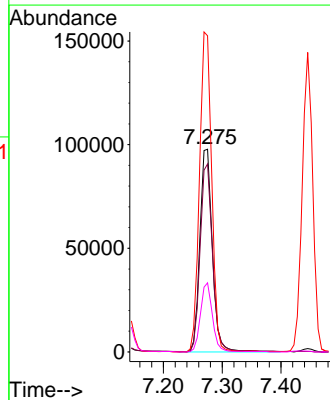
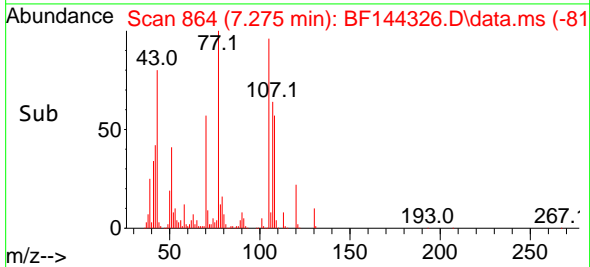
Tgt Ion: 70 Resp: 117230
 Ion Ratio Lower Upper
 70 100
 42 73.4 58.3 87.5
 101 8.5 7.0 10.6
 130 16.5 14.4 21.6

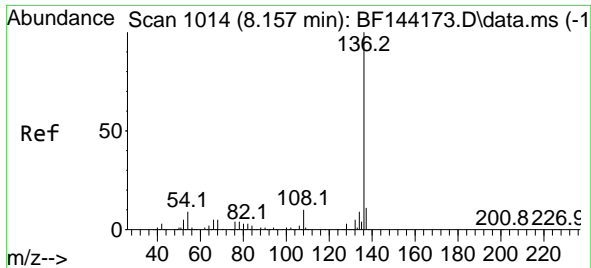


#20
 3+4-Methylphenols
 Concen: 45.011 ng
 RT: 7.275 min Scan# 864
 Delta R.T. -0.012 min
 Lab File: BF144326.D
 Acq: 24 Nov 2025 16:20



Tgt Ion: 107 Resp: 144498
 Ion Ratio Lower Upper
 107 100
 108 92.7 70.2 110.2
 77 155.9 123.9 163.9
 79 34.1 14.2 54.2



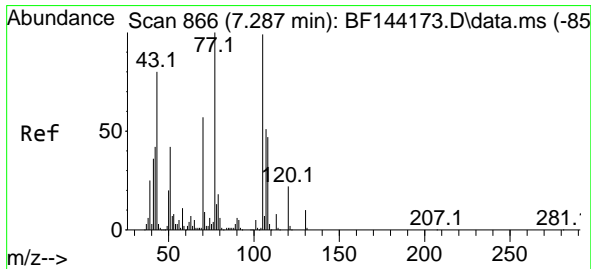
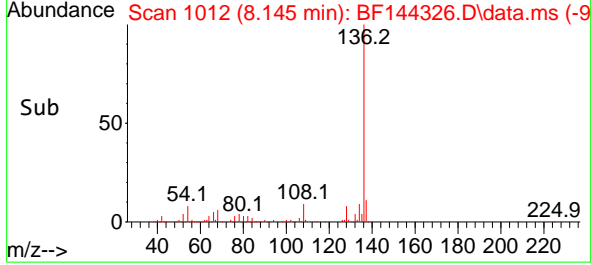
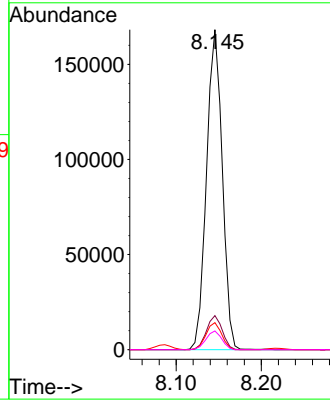
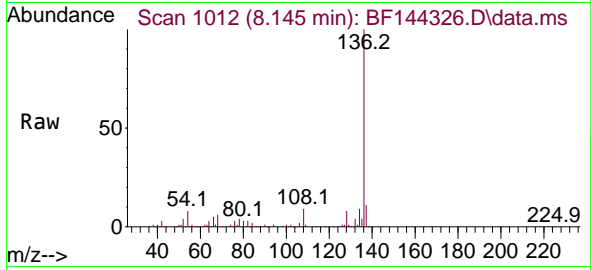


#21
 Naphthalene-d8
 Concen: 20.000 ng
 RT: 8.145 min Scan# 10
 Delta R.T. -0.012 min
 Lab File: BF144326.D
 Acq: 24 Nov 2025 16:20

Instrument :
 BNA_F
 ClientSampleId :
 V933MSD

Tgt Ion:136 Resp: 215864

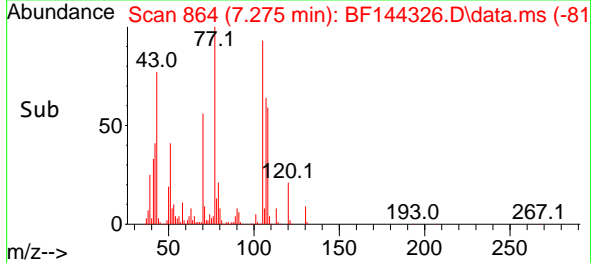
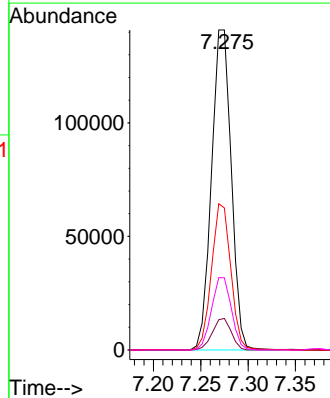
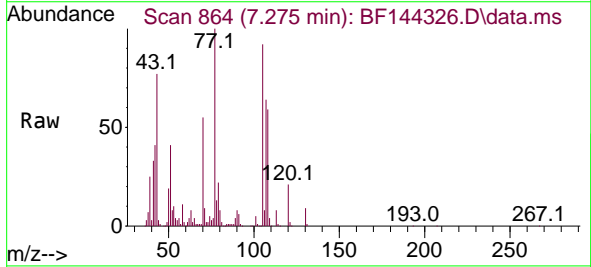
Ion	Ratio	Lower	Upper
136	100		
137	10.6	8.6	13.0
54	8.4	7.0	10.6
68	5.8	4.3	6.5

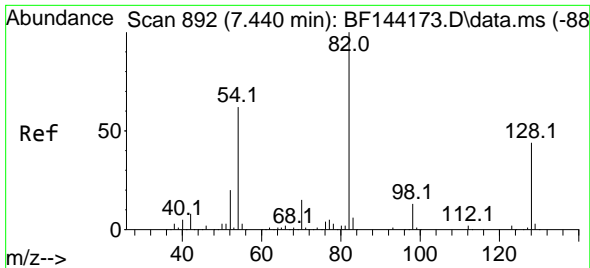


#22
 Acetophenone
 Concen: 44.210 ng
 RT: 7.275 min Scan# 864
 Delta R.T. -0.006 min
 Lab File: BF144326.D
 Acq: 24 Nov 2025 16:20

Tgt Ion:105 Resp: 204726

Ion	Ratio	Lower	Upper
105	100		
71	9.8	7.2	10.8
51	44.4	34.0	51.0
120	22.5	17.8	26.6



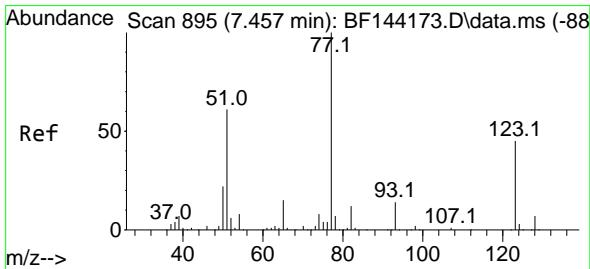
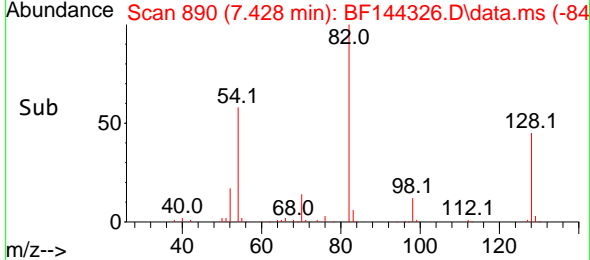
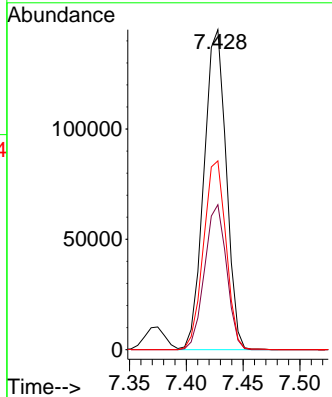
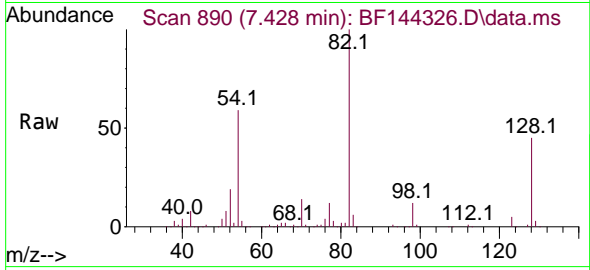


#23
 Nitrobenzene-d5
 Concen: 52.940 ng
 RT: 7.428 min Scan# 893
 Delta R.T. -0.006 min
 Lab File: BF144326.D
 Acq: 24 Nov 2025 16:20

Instrument : BNA_F
 ClientSampleId : V933MSD

Tgt Ion: 82 Resp: 197868

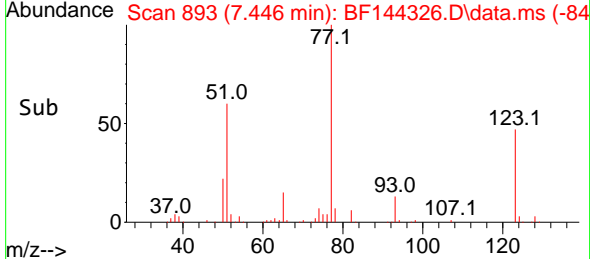
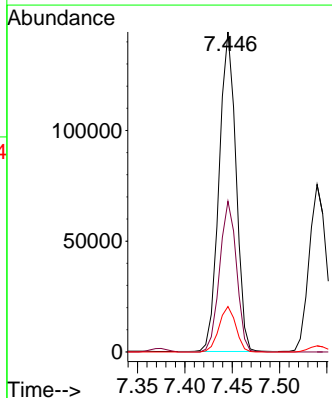
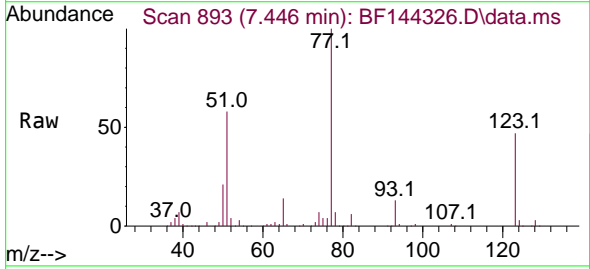
Ion	Ratio	Lower	Upper
82	100		
128	45.3	34.7	52.1
54	59.0	49.5	74.3

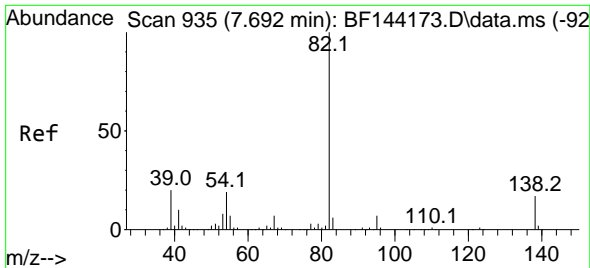


#24
 Nitrobenzene
 Concen: 44.214 ng
 RT: 7.446 min Scan# 893
 Delta R.T. -0.006 min
 Lab File: BF144326.D
 Acq: 24 Nov 2025 16:20

Tgt Ion: 77 Resp: 179427

Ion	Ratio	Lower	Upper
77	100		
123	47.1	35.8	53.8
65	14.2	12.2	18.2

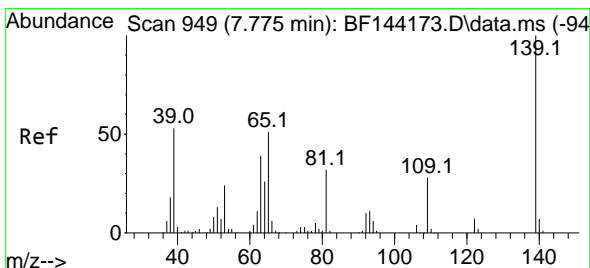
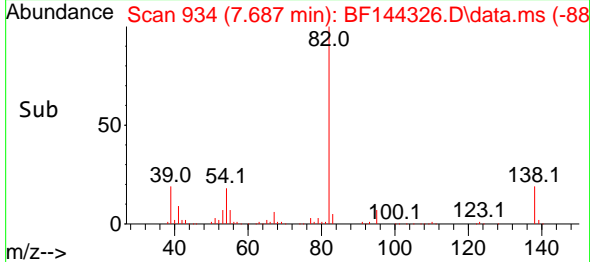
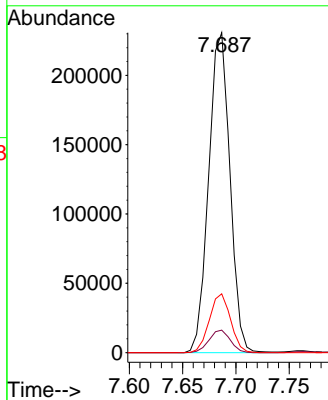
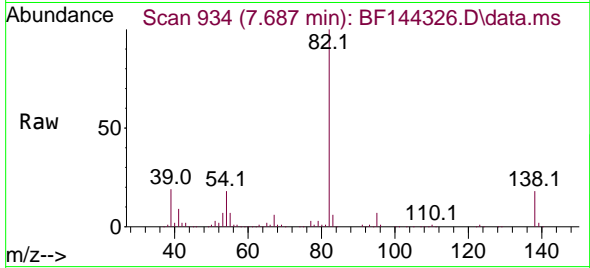




#25
 Isophorone
 Concen: 45.400 ng
 RT: 7.687 min Scan# 91
 Delta R.T. 0.000 min
 Lab File: BF144326.D
 Acq: 24 Nov 2025 16:20

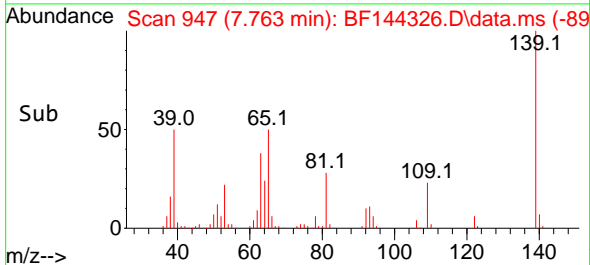
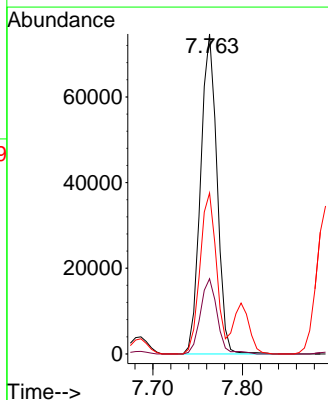
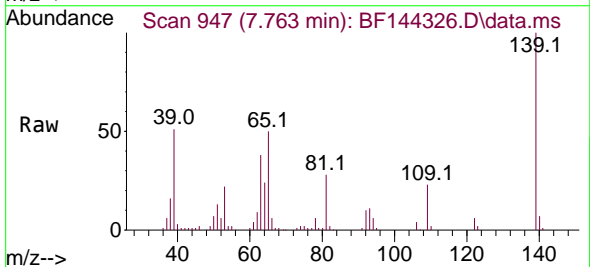
Instrument :
 BNA_F
 ClientSampleId :
 V933MSD

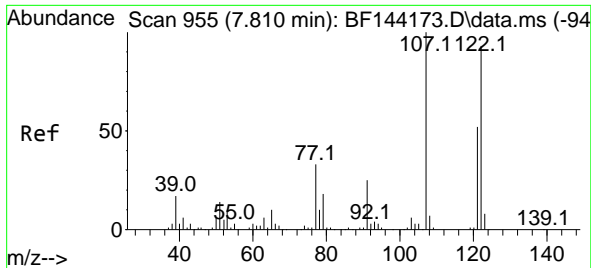
Tgt Ion: 82 Resp: 320967
 Ion Ratio Lower Upper
 82 100
 95 7.0 5.5 8.3
 138 18.4 13.7 20.5



#26
 2-Nitrophenol
 Concen: 47.134 ng
 RT: 7.763 min Scan# 947
 Delta R.T. -0.012 min
 Lab File: BF144326.D
 Acq: 24 Nov 2025 16:20

Tgt Ion: 139 Resp: 94686
 Ion Ratio Lower Upper
 139 100
 109 23.5 22.2 33.2
 65 50.3 40.7 61.1

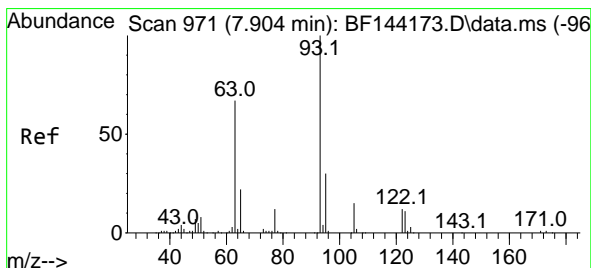
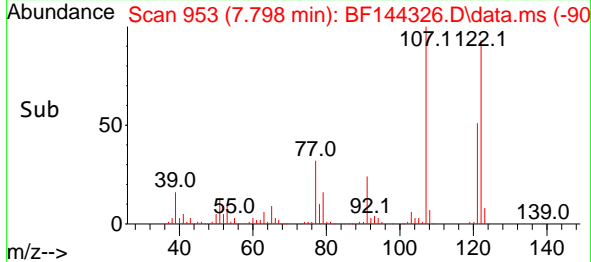
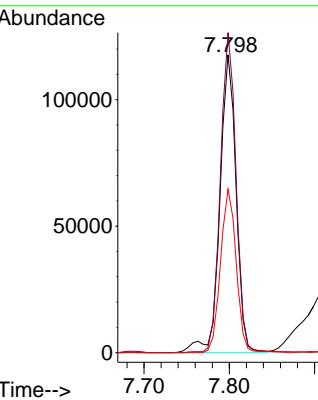
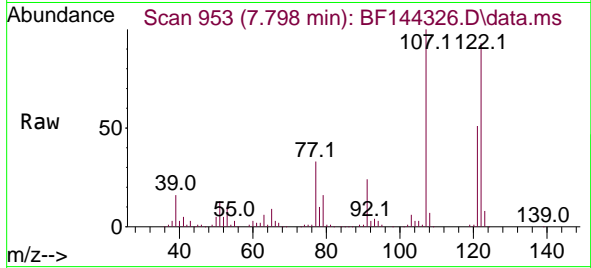




#27
 2,4-Dimethylphenol
 Concen: 51.620 ng
 RT: 7.798 min Scan# 911
 Delta R.T. -0.006 min
 Lab File: BF144326.D
 Acq: 24 Nov 2025 16:20

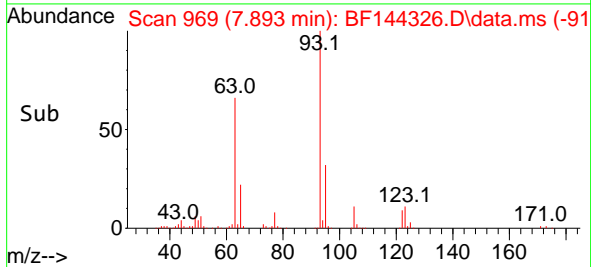
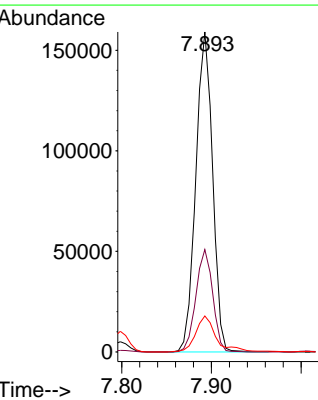
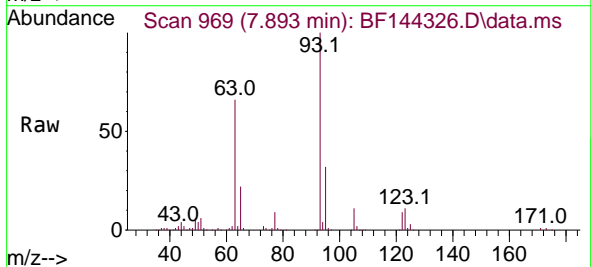
Instrument :
 BNA_F
 ClientSampleId :
 V933MSD

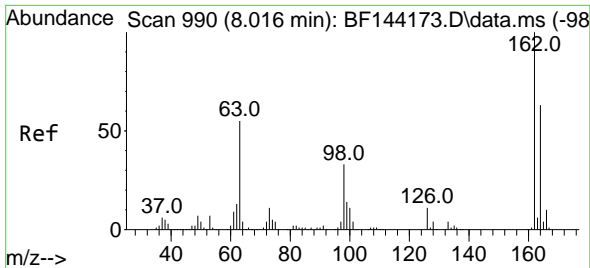
Tgt Ion	Resp	Lower	Upper
122	155426		
107	107.4	86.2	129.4
121	54.8	44.6	66.8



#28
 bis(2-Chloroethoxy)methane
 Concen: 46.792 ng
 RT: 7.893 min Scan# 969
 Delta R.T. -0.006 min
 Lab File: BF144326.D
 Acq: 24 Nov 2025 16:20

Tgt Ion	Resp	Lower	Upper
93	206577		
95	32.0	24.2	36.4
123	11.2	9.0	13.4



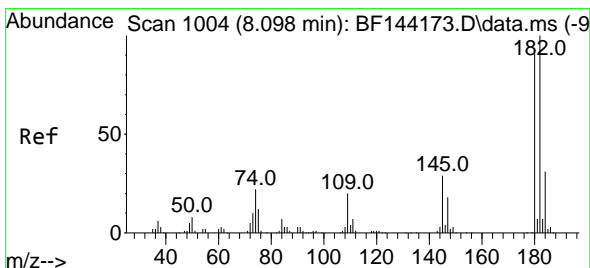
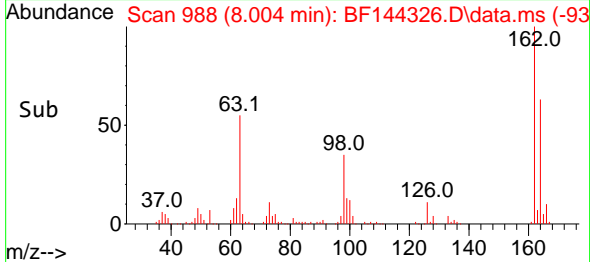
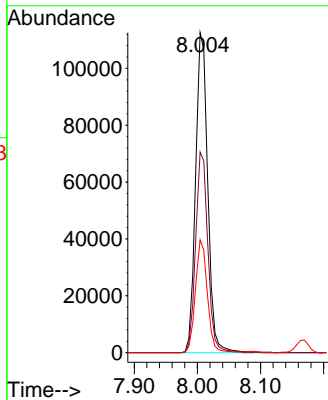
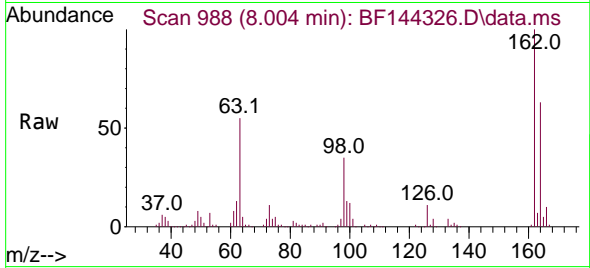


#29
 2,4-Dichlorophenol
 Concen: 43.516 ng
 RT: 8.004 min Scan# 98
 Delta R.T. -0.012 min
 Lab File: BF144326.D
 Acq: 24 Nov 2025 16:20

Instrument :
 BNA_F
 ClientSampleId :
 V933MSD

Tgt Ion:162 Resp: 151014

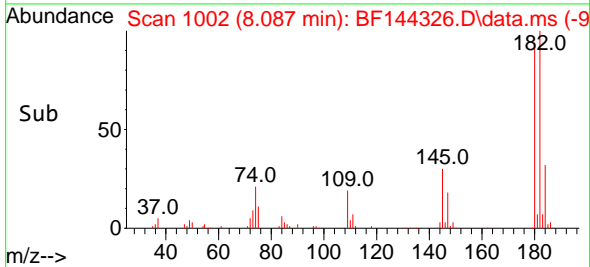
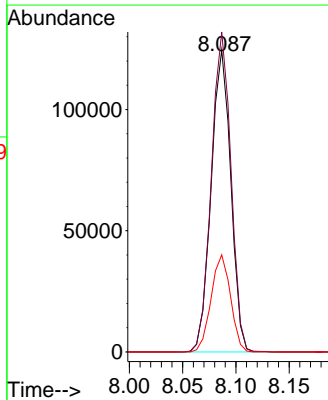
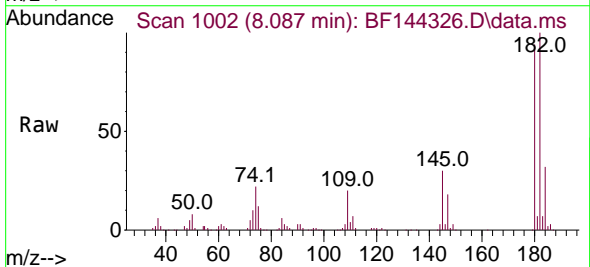
Ion	Ratio	Lower	Upper
162	100		
164	62.7	42.9	82.9
98	35.2	13.3	53.3

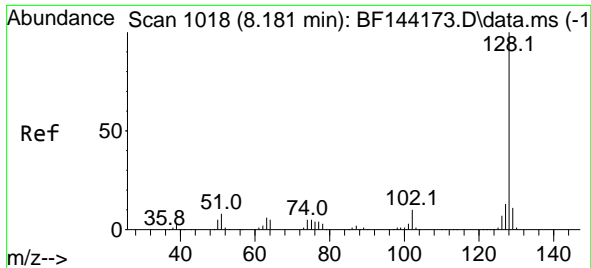


#30
 1,2,4-Trichlorobenzene
 Concen: 44.819 ng
 RT: 8.087 min Scan# 1002
 Delta R.T. -0.012 min
 Lab File: BF144326.D
 Acq: 24 Nov 2025 16:20

Tgt Ion:180 Resp: 159713

Ion	Ratio	Lower	Upper
180	100		
182	106.0	87.7	131.5
145	32.1	25.4	38.0

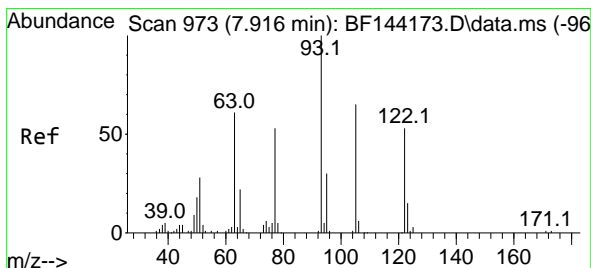
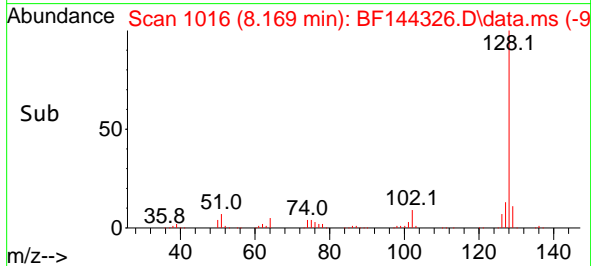
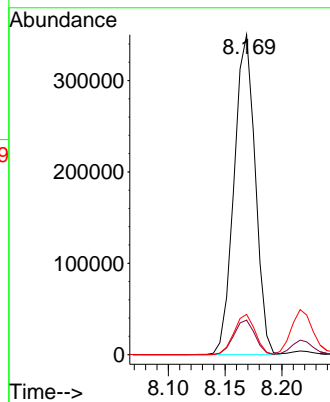
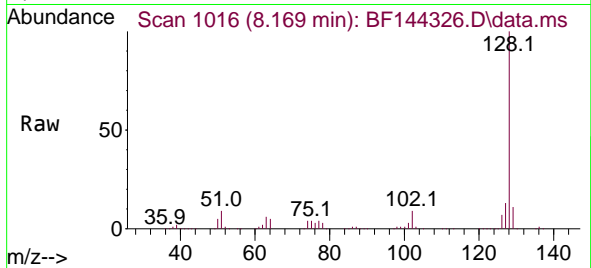




#31
 Naphthalene
 Concen: 44.159 ng
 RT: 8.169 min Scan# 1016
 Delta R.T. -0.006 min
 Lab File: BF144326.D
 Acq: 24 Nov 2025 16:20

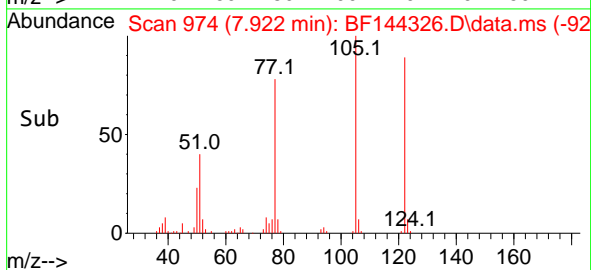
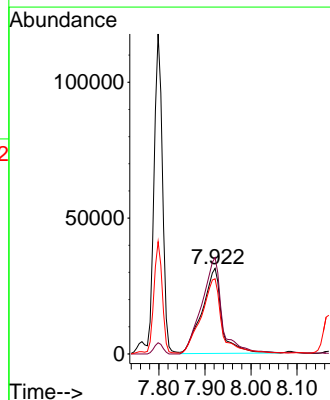
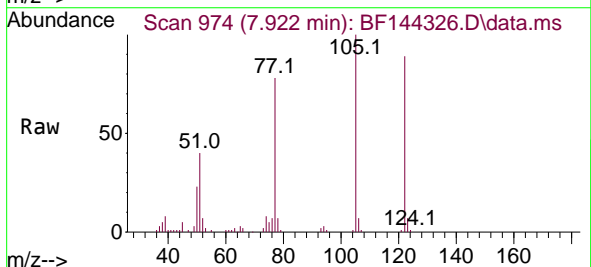
Instrument :
 BNA_F
 ClientSampleId :
 V933MSD

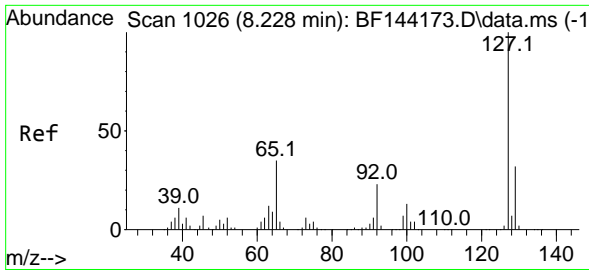
Tgt Ion:128 Resp: 453440
 Ion Ratio Lower Upper
 128 100
 129 10.8 8.9 13.3
 127 12.6 10.3 15.5



#32
 Benzoic acid
 Concen: 42.174 ng
 RT: 7.922 min Scan# 974
 Delta R.T. -0.029 min
 Lab File: BF144326.D
 Acq: 24 Nov 2025 16:20

Tgt Ion:122 Resp: 93081
 Ion Ratio Lower Upper
 122 100
 105 112.7 99.9 139.9
 77 87.8 77.5 117.5

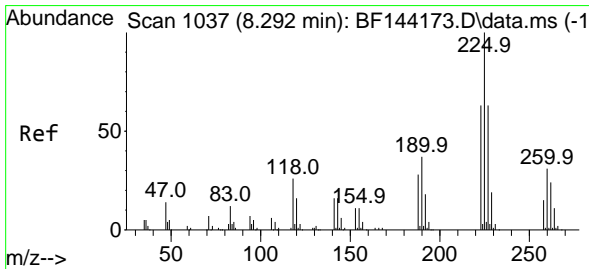
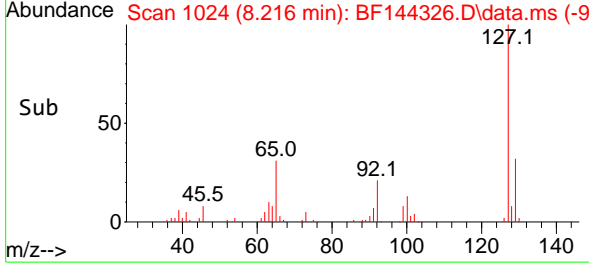
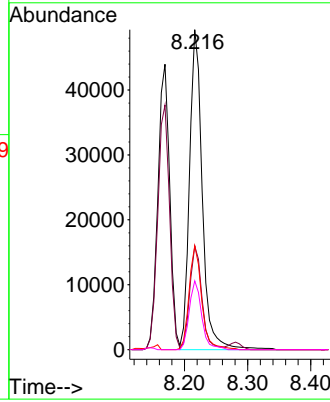
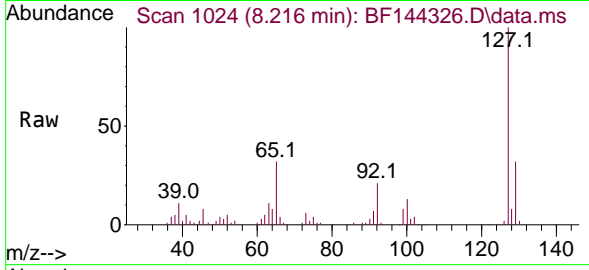




#33
 4-Chloroaniline
 Concen: 18.474 ng
 RT: 8.216 min Scan# 1024
 Delta R.T. -0.012 min
 Lab File: BF144326.D
 Acq: 24 Nov 2025 16:20

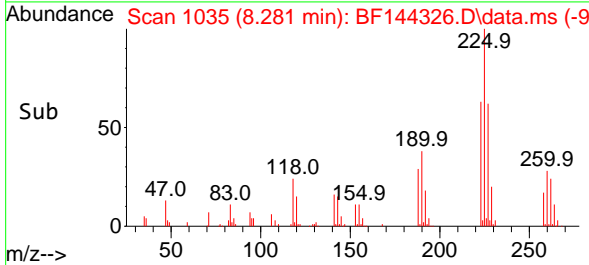
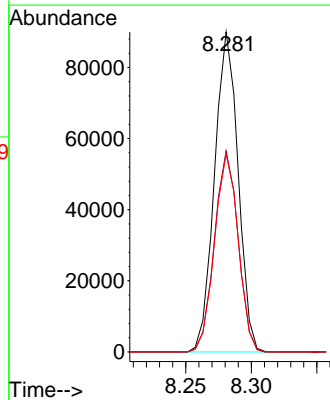
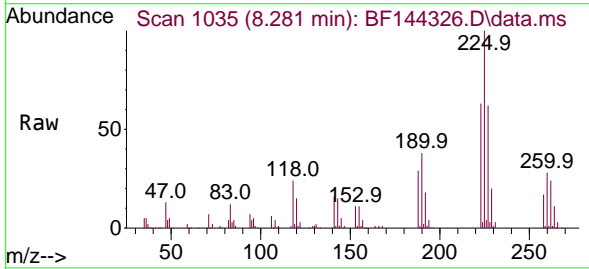
Instrument :
 BNA_F
 ClientSampleId :
 V933MSD

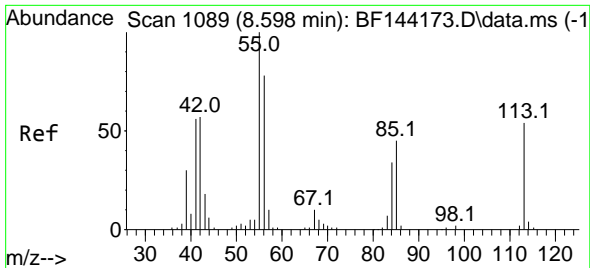
Tgt Ion	Resp	Lower	Upper
127	100		
129	32.3	25.3	37.9
65	32.5	27.6	41.4
92	21.5	18.4	27.6



#34
 Hexachlorobutadiene
 Concen: 41.903 ng
 RT: 8.281 min Scan# 1035
 Delta R.T. -0.012 min
 Lab File: BF144326.D
 Acq: 24 Nov 2025 16:20

Tgt Ion	Resp	Lower	Upper
225	100		
223	62.8	50.2	75.4
227	61.8	50.1	75.1

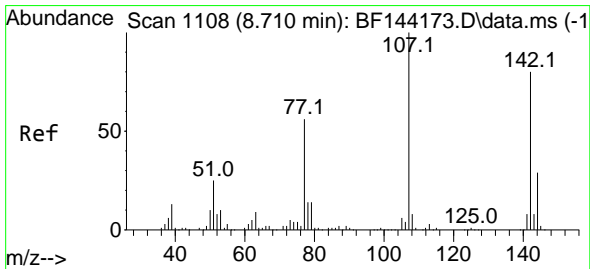
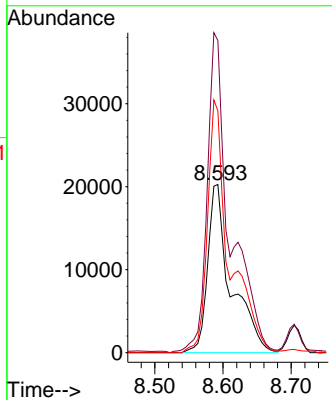
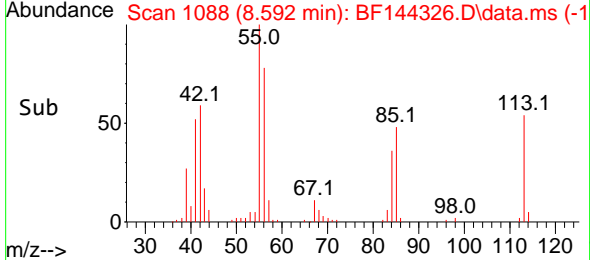
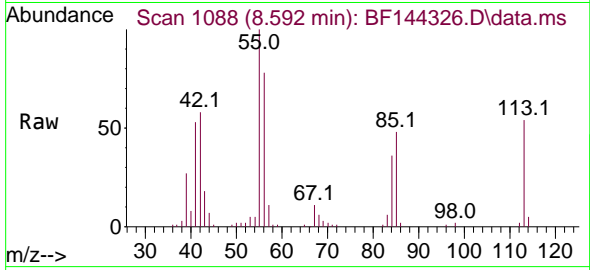




#35
 Caprolactam
 Concen: 50.856 ng
 RT: 8.592 min Scan# 1088
 Delta R.T. -0.029 min
 Lab File: BF144326.D
 Acq: 24 Nov 2025 16:20

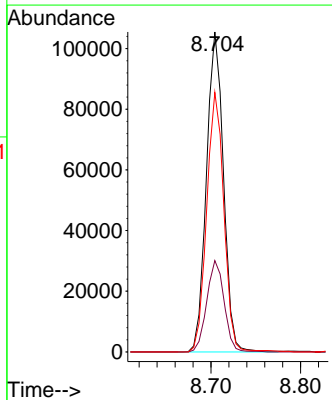
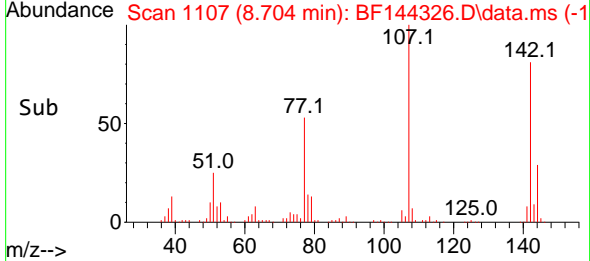
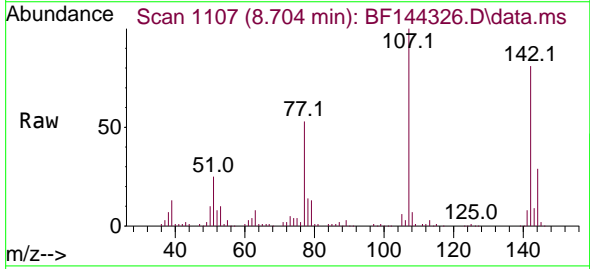
Instrument : BNA_F
 ClientSampleId : V933MSD

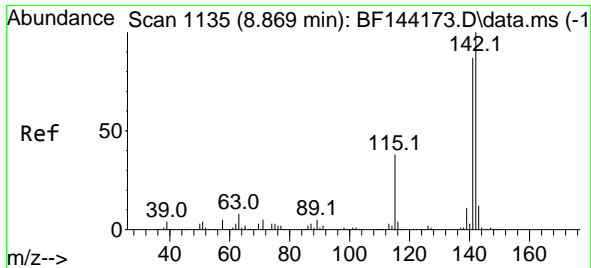
Tgt Ion:113 Resp: 48352
 Ion Ratio Lower Upper
 113 100
 55 185.6 166.8 206.8
 56 143.9 125.9 165.9



#36
 4-Chloro-3-methylphenol
 Concen: 44.717 ng
 RT: 8.704 min Scan# 1107
 Delta R.T. 0.000 min
 Lab File: BF144326.D
 Acq: 24 Nov 2025 16:20

Tgt Ion:107 Resp: 139076
 Ion Ratio Lower Upper
 107 100
 144 28.5 23.3 34.9
 142 81.1 63.8 95.6

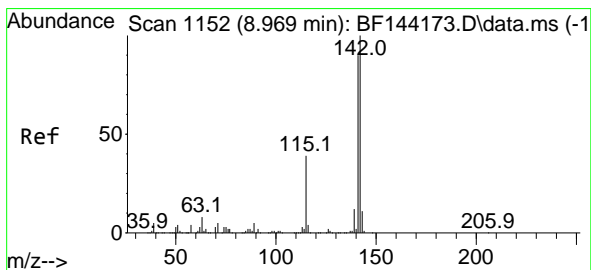
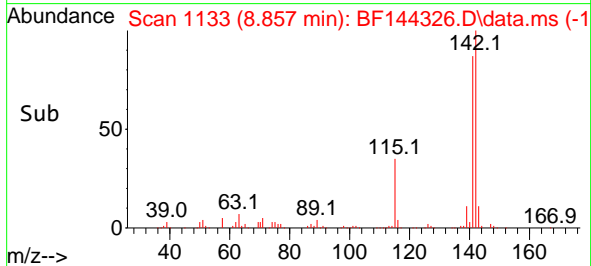
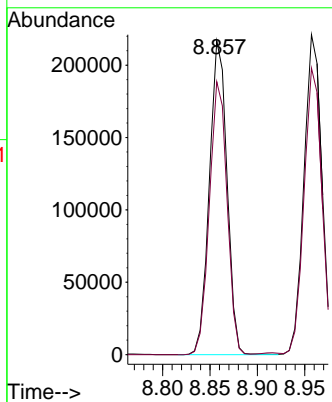
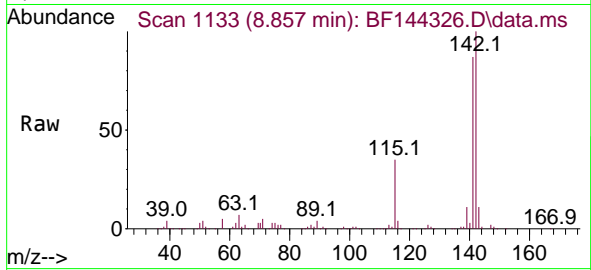




#37
 2-Methylnaphthalene
 Concen: 40.920 ng
 RT: 8.857 min Scan# 1113
 Delta R.T. -0.012 min
 Lab File: BF144326.D
 Acq: 24 Nov 2025 16:20

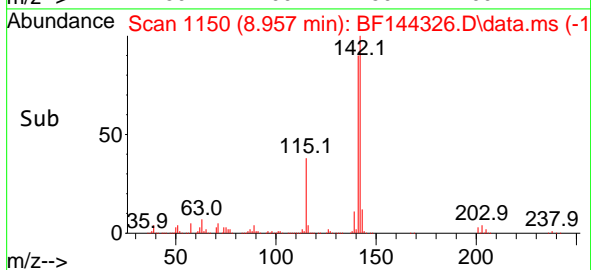
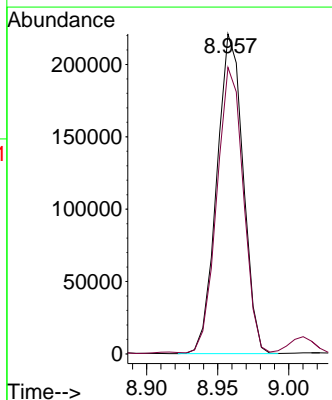
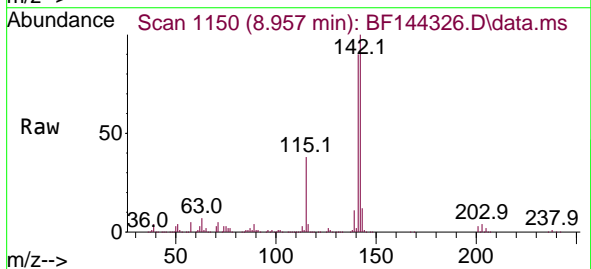
Instrument :
 BNA_F
 ClientSampleId :
 V933MSD

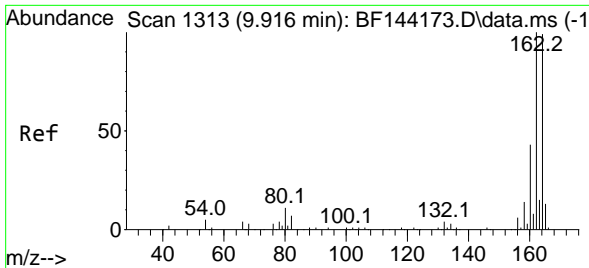
Tgt Ion:142 Resp: 280935
 Ion Ratio Lower Upper
 142 100
 141 86.9 69.9 104.9



#38
 1-Methylnaphthalene
 Concen: 43.120 ng
 RT: 8.957 min Scan# 1150
 Delta R.T. -0.012 min
 Lab File: BF144326.D
 Acq: 24 Nov 2025 16:20

Tgt Ion:142 Resp: 285640
 Ion Ratio Lower Upper
 142 100
 141 89.6 72.1 108.1



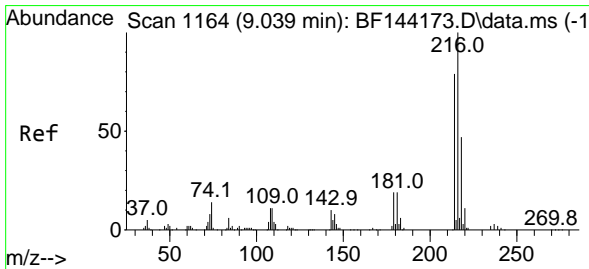
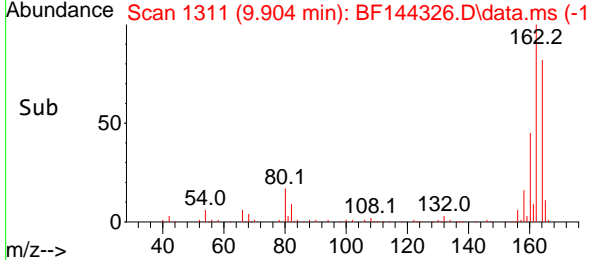
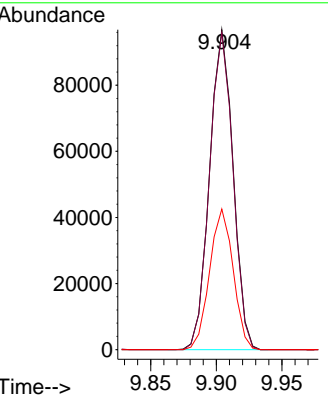
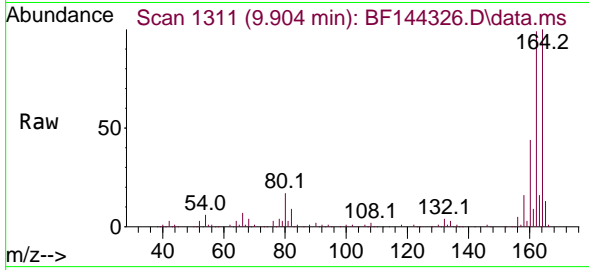


#39
 Acenaphthene-d10
 Concen: 20.000 ng
 RT: 9.904 min Scan# 1311
 Delta R.T. -0.012 min
 Lab File: BF144326.D
 Acq: 24 Nov 2025 16:20

Instrument :
 BNA_F
 ClientSampleId :
 V933MSD

Tgt Ion:164 Resp: 121102

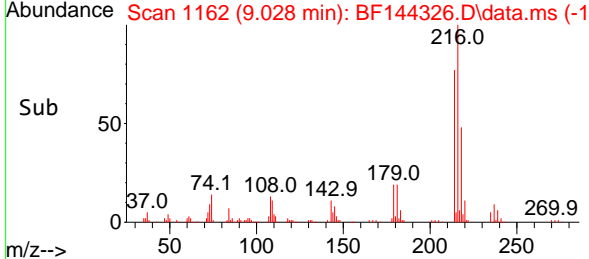
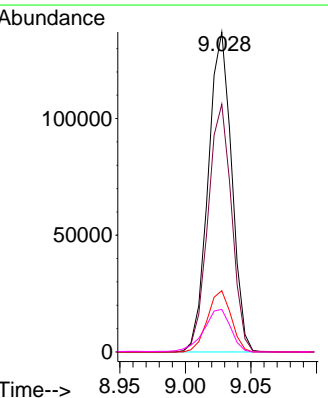
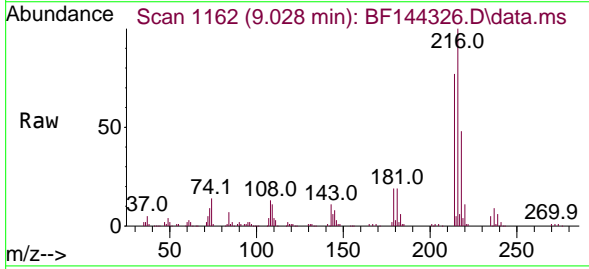
Ion	Ratio	Lower	Upper
164	100		
162	99.0	81.1	121.7
160	43.9	34.5	51.7

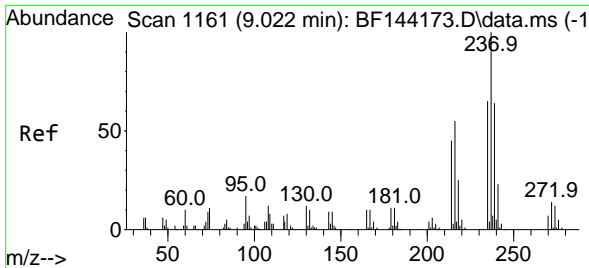


#40
 1,2,4,5-Tetrachlorobenzene
 Concen: 43.068 ng
 RT: 9.028 min Scan# 1162
 Delta R.T. -0.006 min
 Lab File: BF144326.D
 Acq: 24 Nov 2025 16:20

Tgt Ion:216 Resp: 170933

Ion	Ratio	Lower	Upper
216	100		
214	77.9	63.4	95.2
179	19.2	15.0	22.4
108	15.3	10.5	15.7



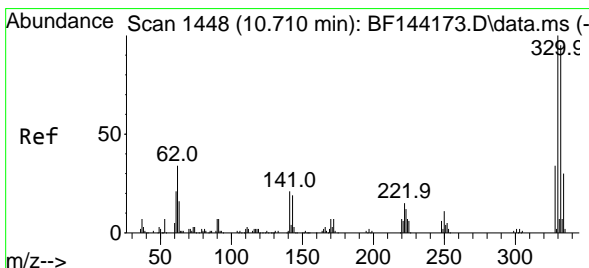
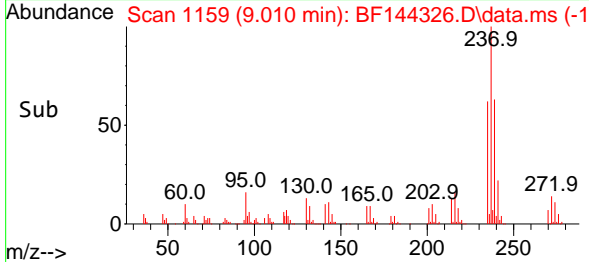
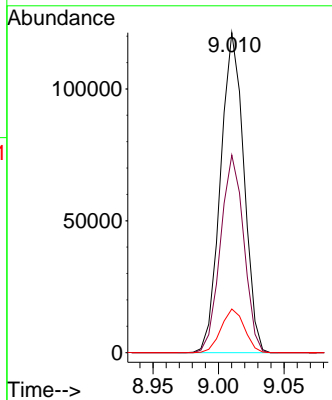
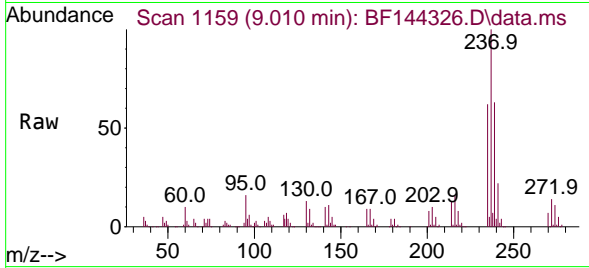


#41
 Hexachlorocyclopentadiene
 Concen: 91.642 ng
 RT: 9.010 min Scan# 1161
 Delta R.T. -0.018 min
 Lab File: BF144326.D
 Acq: 24 Nov 2025 16:20

Instrument :
 BNA_F
 ClientSampleId :
 V933MSD

Tgt Ion:237 Resp: 150265

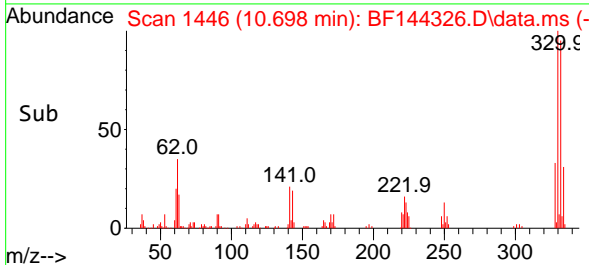
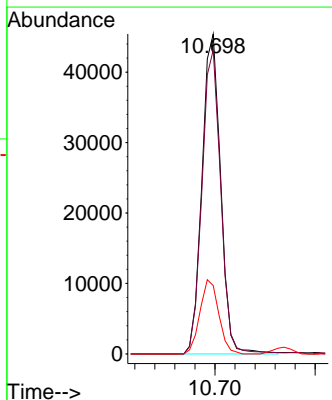
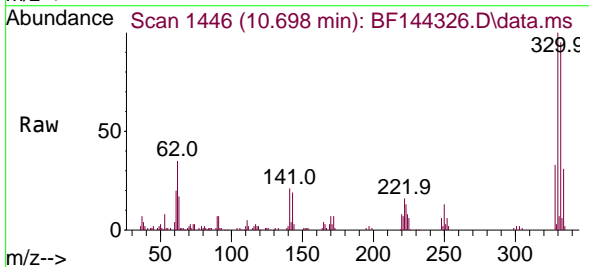
Ion	Ratio	Lower	Upper
237	100		
235	61.7	45.5	85.5
272	13.6	0.0	33.5

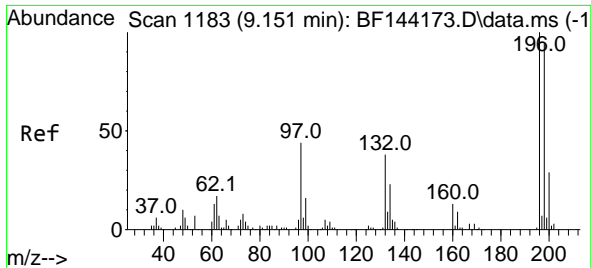


#42
 2,4,6-Tribromophenol
 Concen: 38.461 ng
 RT: 10.698 min Scan# 1446
 Delta R.T. -0.006 min
 Lab File: BF144326.D
 Acq: 24 Nov 2025 16:20

Tgt Ion:330 Resp: 58449

Ion	Ratio	Lower	Upper
330	100		
332	95.4	76.7	115.1
141	23.3	17.8	26.8

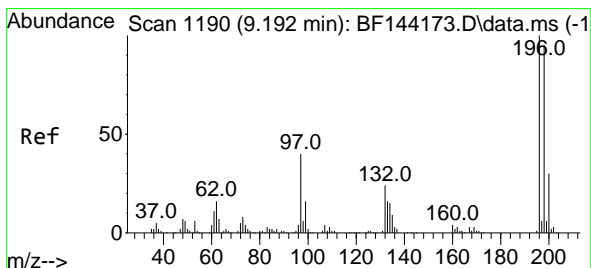
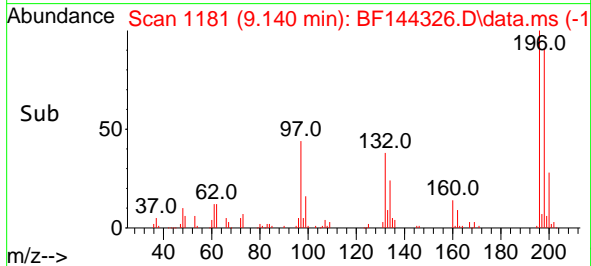
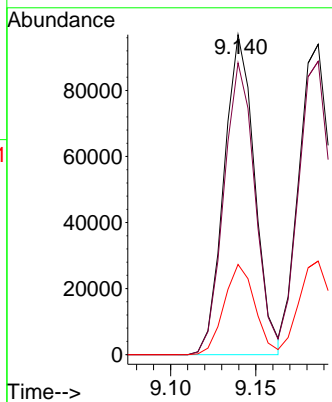
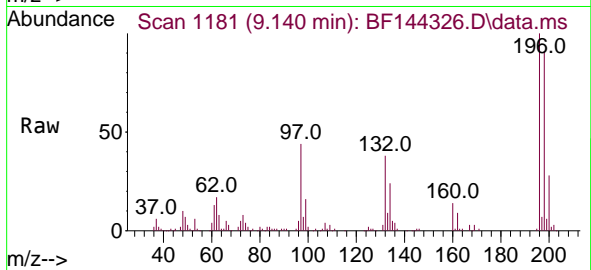




#43
 2,4,6-Trichlorophenol
 Concen: 44.967 ng
 RT: 9.140 min Scan# 1181
 Delta R.T. -0.012 min
 Lab File: BF144326.D
 Acq: 24 Nov 2025 16:20

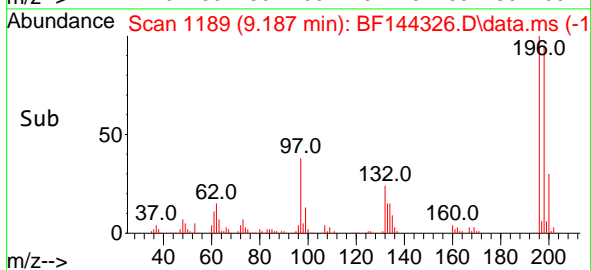
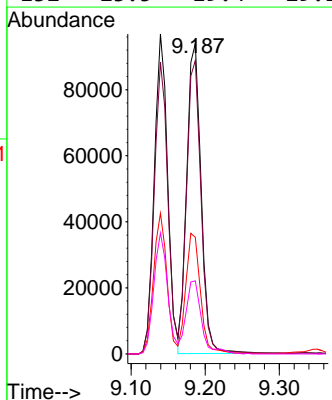
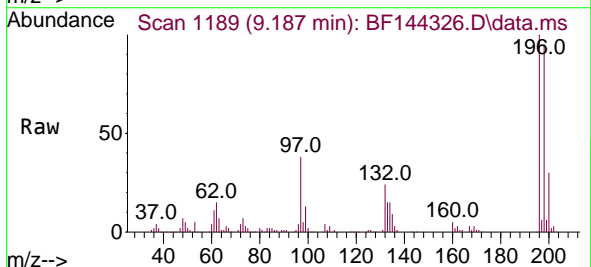
Instrument :
 BNA_F
 ClientSampleId :
 V933MSD

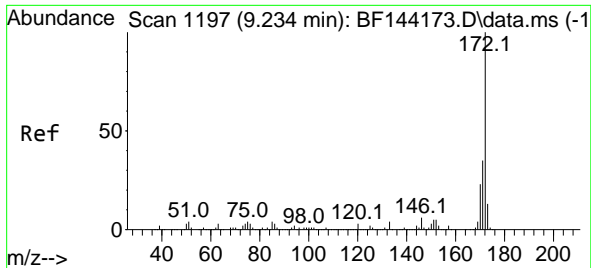
Tgt Ion:196 Resp: 121470
 Ion Ratio Lower Upper
 196 100
 198 91.2 75.3 112.9
 200 28.2 23.4 35.2



#44
 2,4,5-Trichlorophenol
 Concen: 43.665 ng
 RT: 9.187 min Scan# 1189
 Delta R.T. -0.006 min
 Lab File: BF144326.D
 Acq: 24 Nov 2025 16:20

Tgt Ion:196 Resp: 127127
 Ion Ratio Lower Upper
 196 100
 198 94.5 76.1 114.1
 97 37.5 31.9 47.9
 132 23.5 19.4 29.2



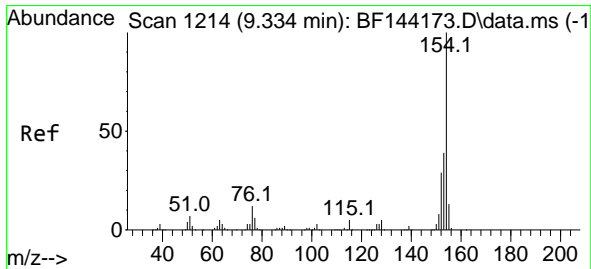
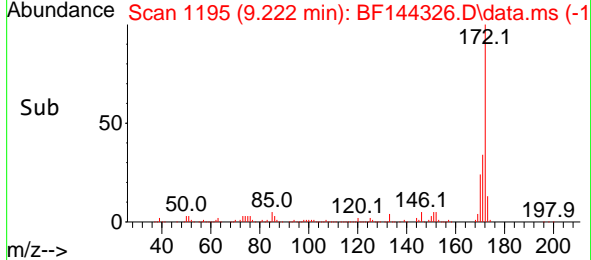
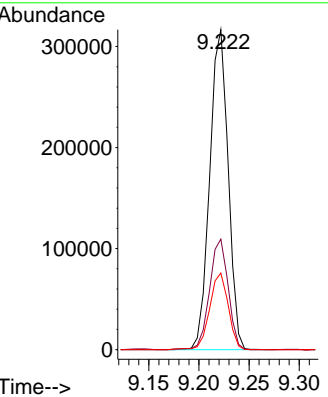
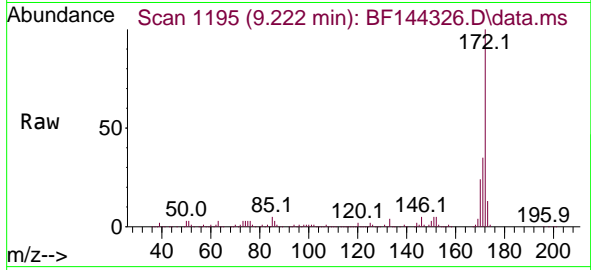


#45
 2-Fluorobiphenyl
 Concen: 49.392 ng
 RT: 9.222 min Scan# 1197
 Delta R.T. -0.006 min
 Lab File: BF144326.D
 Acq: 24 Nov 2025 16:20

Instrument :
 BNA_F
 ClientSampleId :
 V933MSD

Tgt Ion:172 Resp: 404991

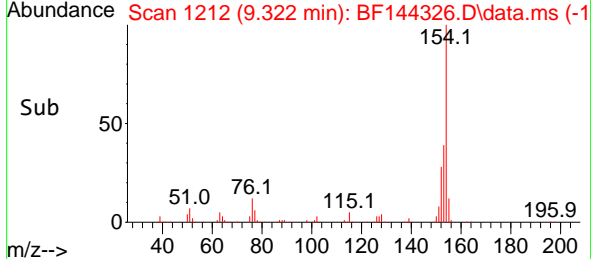
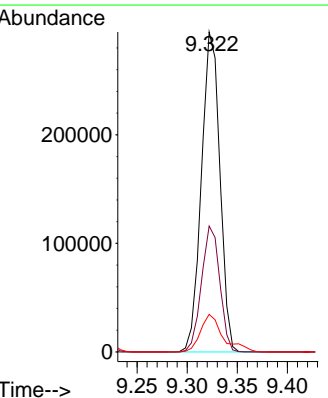
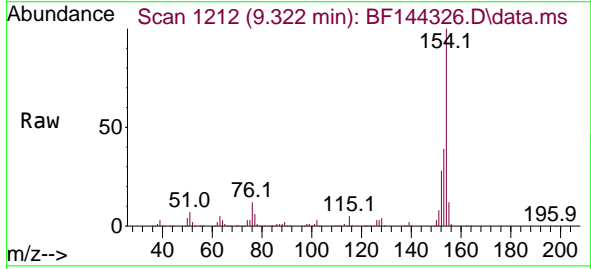
Ion	Ratio	Lower	Upper
172	100		
171	34.5	28.1	42.1
170	23.9	18.6	28.0

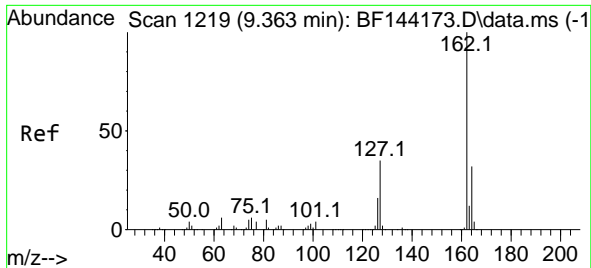


#46
 1,1'-Biphenyl
 Concen: 44.700 ng
 RT: 9.322 min Scan# 1212
 Delta R.T. -0.012 min
 Lab File: BF144326.D
 Acq: 24 Nov 2025 16:20

Tgt Ion:154 Resp: 377862

Ion	Ratio	Lower	Upper
154	100		
153	39.3	19.2	59.2
76	11.7	0.0	31.8



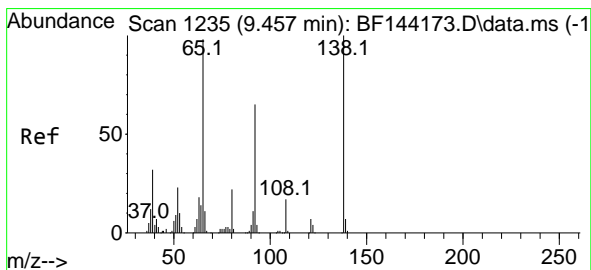
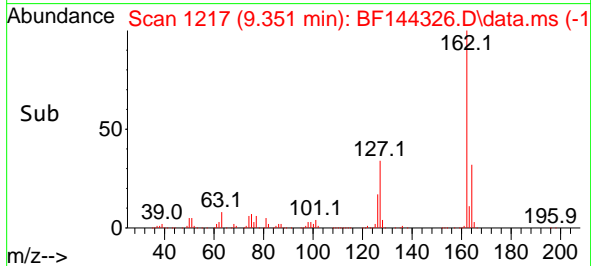
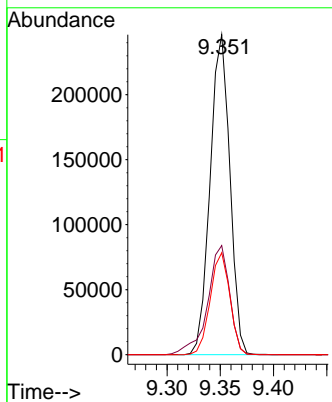
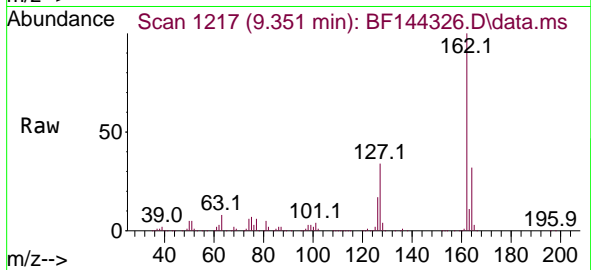


#47
 2-Chloronaphthalene
 Concen: 44.025 ng
 RT: 9.351 min Scan# 11
 Delta R.T. -0.006 min
 Lab File: BF144326.D
 Acq: 24 Nov 2025 16:20

Instrument :
 BNA_F
 ClientSampleId :
 V933MSD

Tgt Ion:162 Resp: 317454

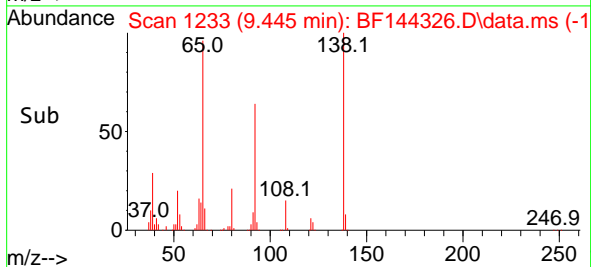
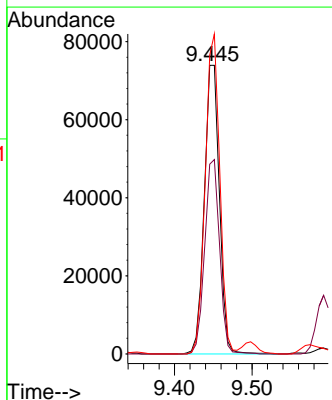
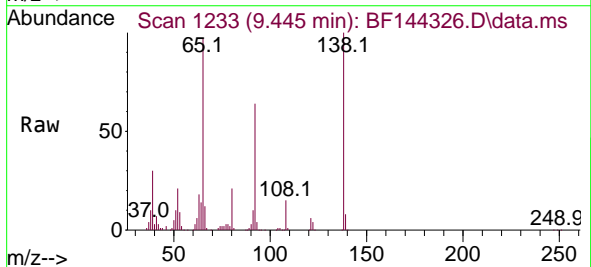
Ion	Ratio	Lower	Upper
162	100		
127	34.1	28.8	43.2
164	31.8	25.8	38.8

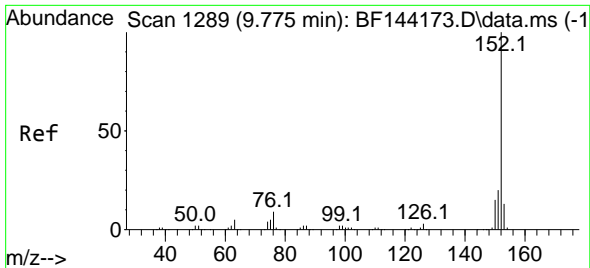


#48
 2-Nitroaniline
 Concen: 47.942 ng
 RT: 9.445 min Scan# 1233
 Delta R.T. -0.012 min
 Lab File: BF144326.D
 Acq: 24 Nov 2025 16:20

Tgt Ion: 65 Resp: 99746

Ion	Ratio	Lower	Upper
65	100		
92	65.7	53.0	79.6
138	103.5	81.6	122.4



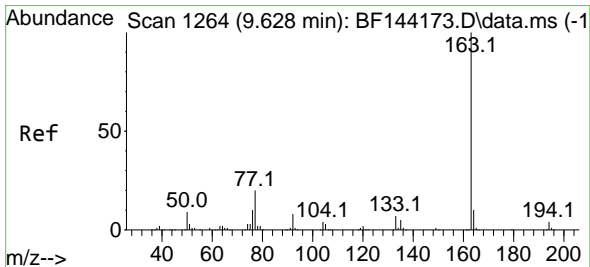
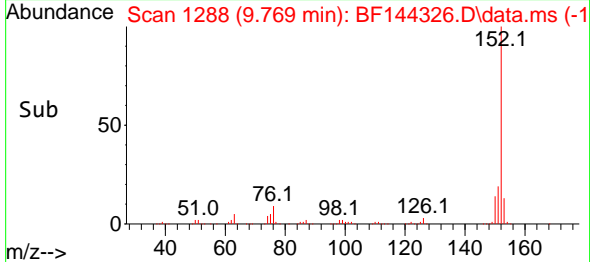
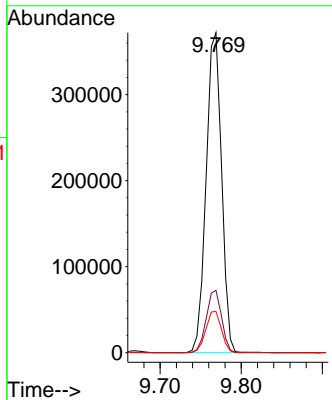
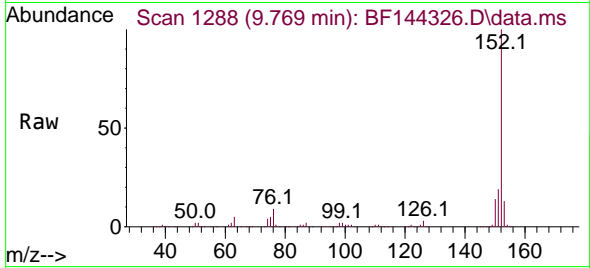


#49
 Acenaphthylene
 Concen: 50.130 ng
 RT: 9.769 min Scan# 11
 Delta R.T. -0.006 min
 Lab File: BF144326.D
 Acq: 24 Nov 2025 16:20

Instrument :
 BNA_F
 ClientSampleId :
 V933MSD

Tgt Ion:152 Resp: 492588

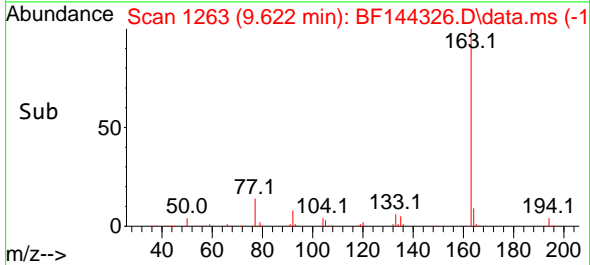
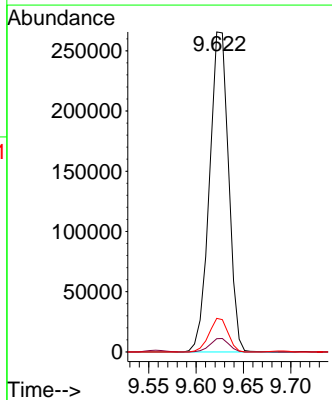
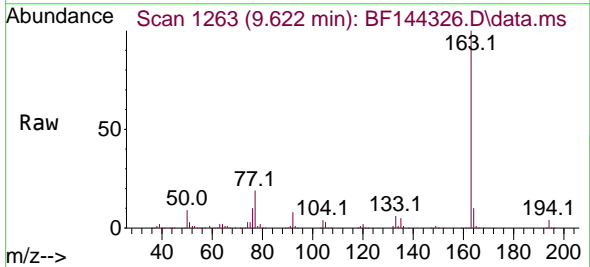
Ion	Ratio	Lower	Upper
152	100		
151	19.5	15.9	23.9
153	12.9	10.5	15.7

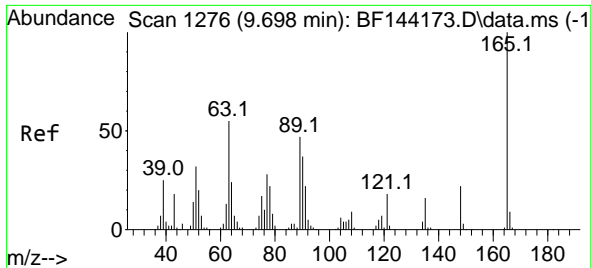


#50
 Dimethylphthalate
 Concen: 46.408 ng
 RT: 9.622 min Scan# 1263
 Delta R.T. -0.006 min
 Lab File: BF144326.D
 Acq: 24 Nov 2025 16:20

Tgt Ion:163 Resp: 372317

Ion	Ratio	Lower	Upper
163	100		
194	4.1	3.3	4.9
164	10.5	8.1	12.1

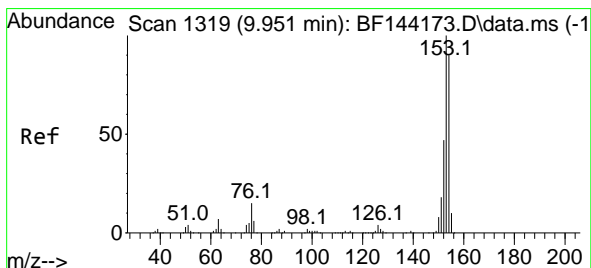
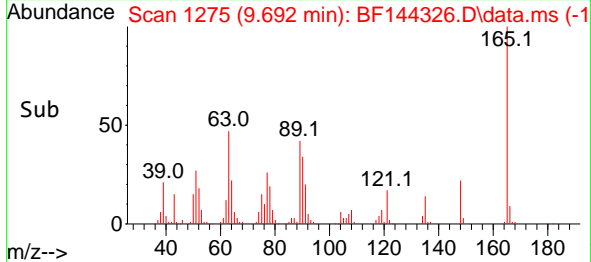
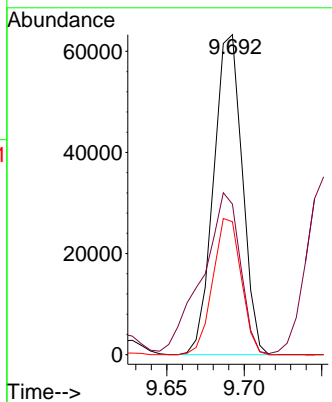
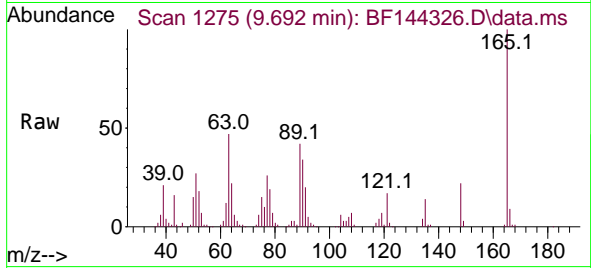




#51
 2,6-Dinitrotoluene
 Concen: 50.273 ng
 RT: 9.692 min Scan# 11
 Delta R.T. 0.000 min
 Lab File: BF144326.D
 Acq: 24 Nov 2025 16:20

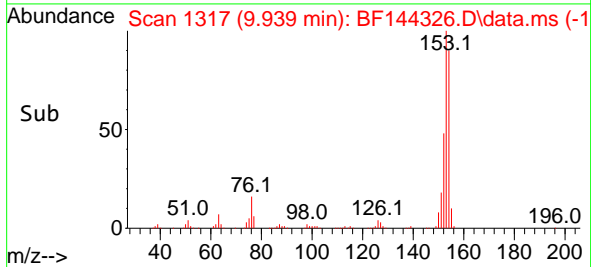
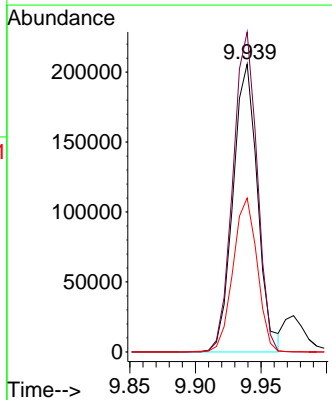
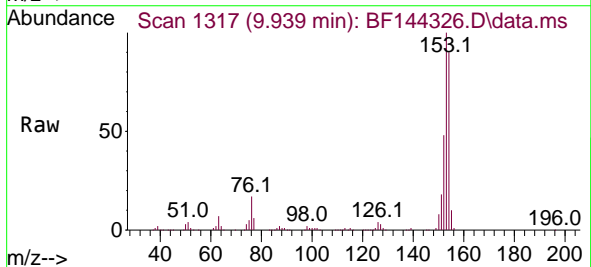
Instrument : BNA_F
 Client Sample Id : V933MSD

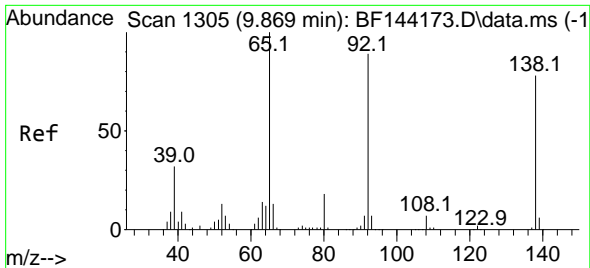
Tgt Ion	Resp	Lower	Upper
165	100		
63	47.0	43.8	65.8
89	41.5	37.5	56.3



#52
 Acenaphthene
 Concen: 40.790 ng
 RT: 9.939 min Scan# 1317
 Delta R.T. -0.006 min
 Lab File: BF144326.D
 Acq: 24 Nov 2025 16:20

Tgt Ion	Resp	Lower	Upper
154	100		
153	111.2	89.0	133.4
152	53.5	42.2	63.4



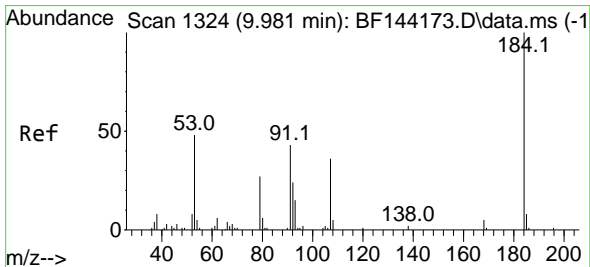
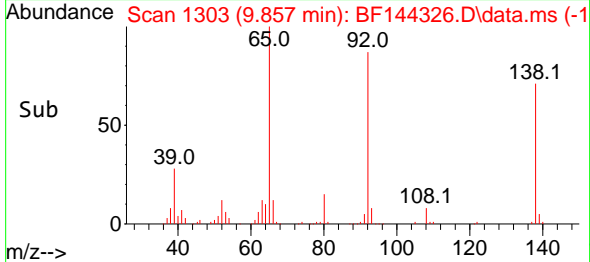
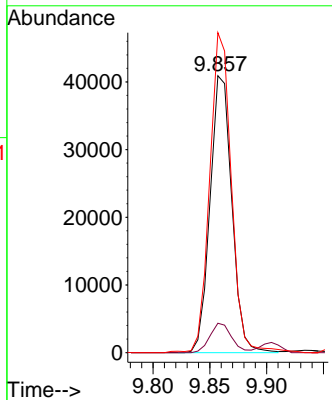
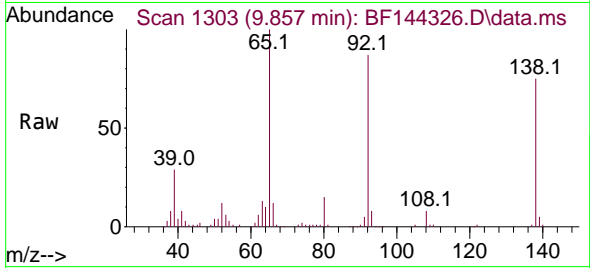


#53
 3-Nitroaniline
 Concen: 30.722 ng
 RT: 9.857 min Scan# 1303
 Delta R.T. -0.012 min
 Lab File: BF144326.D
 Acq: 24 Nov 2025 16:20

Instrument : BNA_F
 ClientSampleId : V933MSD

Tgt Ion:138 Resp: 54542

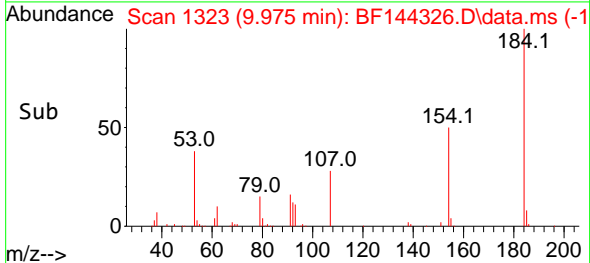
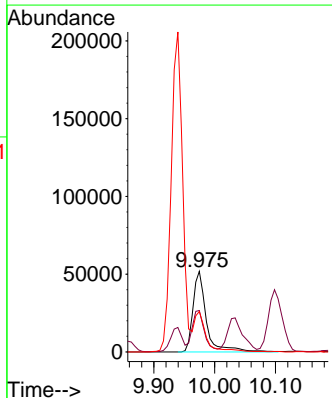
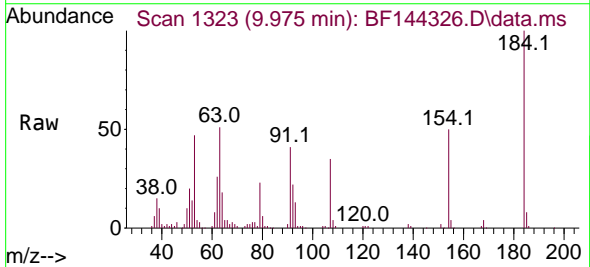
Ion	Ratio	Lower	Upper
138	100		
108	10.6	7.5	11.3
92	115.6	91.8	137.6

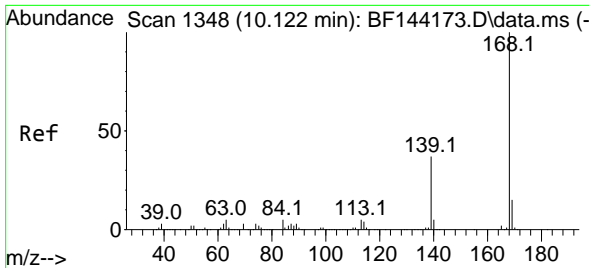


#54
 2,4-Dinitrophenol
 Concen: 80.736 ng
 RT: 9.975 min Scan# 1323
 Delta R.T. -0.012 min
 Lab File: BF144326.D
 Acq: 24 Nov 2025 16:20

Tgt Ion:184 Resp: 79178

Ion	Ratio	Lower	Upper
184	100		
63	51.3	44.0	66.0
154	50.0	42.4	63.6



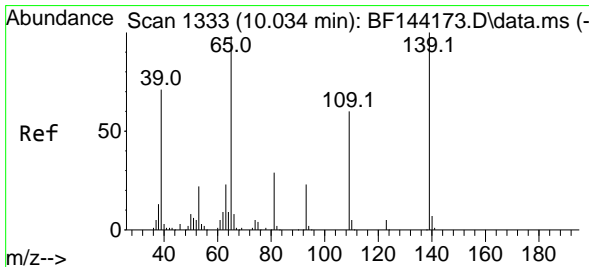
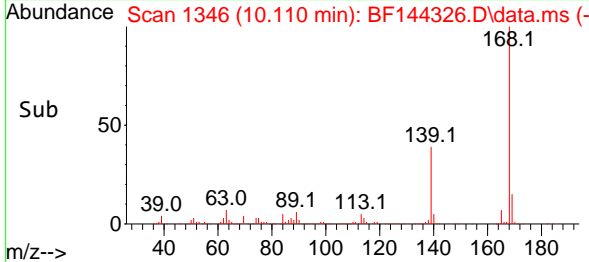
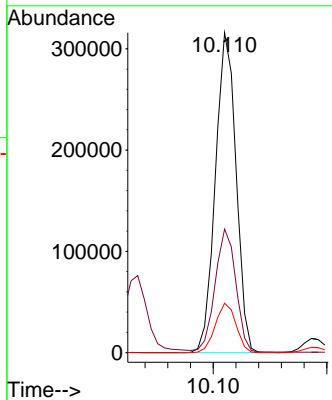
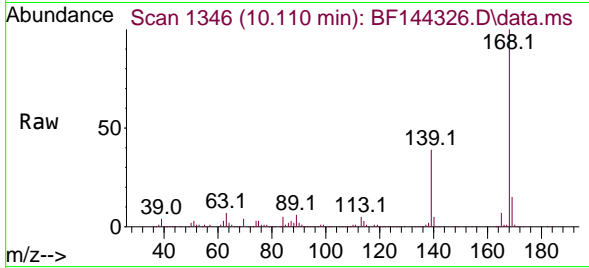


#55
 Dibenzofuran
 Concen: 43.358 ng
 RT: 10.110 min Scan# 1346
 Delta R.T. -0.006 min
 Lab File: BF144326.D
 Acq: 24 Nov 2025 16:20

Instrument : BNA_F
 ClientSampleId : V933MSD

Tgt Ion:168 Resp: 399023

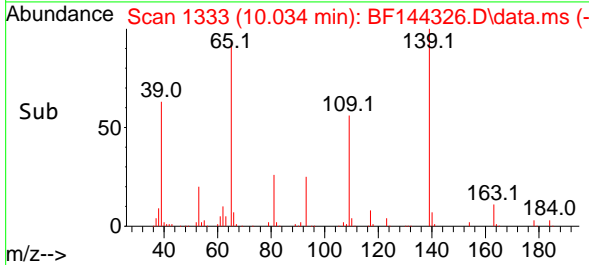
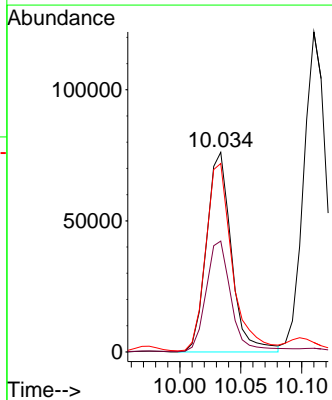
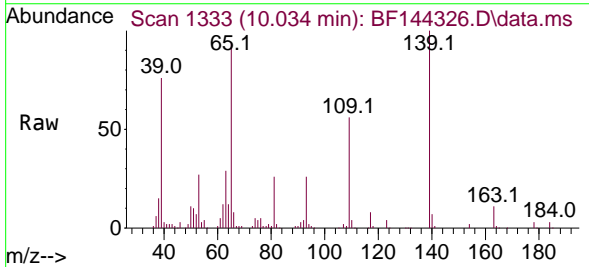
Ion	Ratio	Lower	Upper
168	100		
139	38.6	30.2	45.2
169	15.4	12.2	18.4

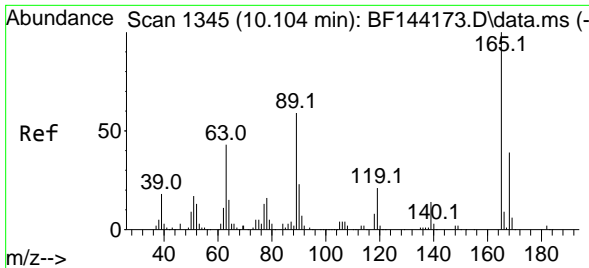


#56
 4-Nitrophenol
 Concen: 84.564 ng
 RT: 10.034 min Scan# 1333
 Delta R.T. -0.006 min
 Lab File: BF144326.D
 Acq: 24 Nov 2025 16:20

Tgt Ion:139 Resp: 108599

Ion	Ratio	Lower	Upper
139	100		
109	55.5	39.9	79.9
65	94.4	79.5	119.5



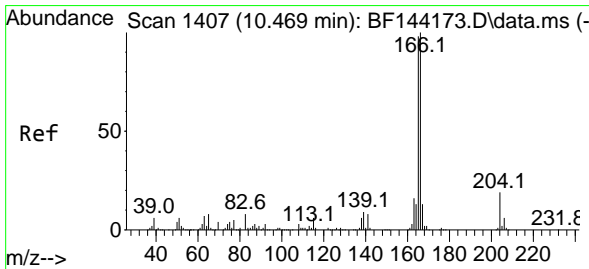
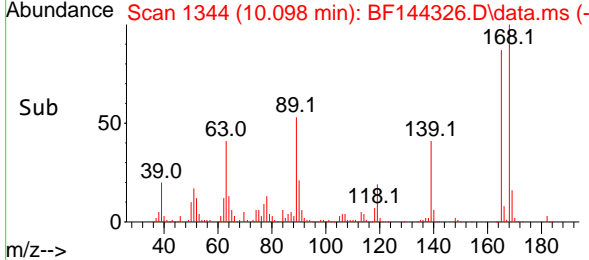
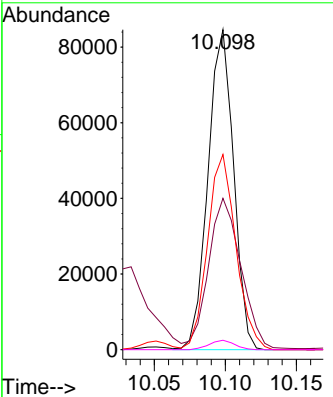
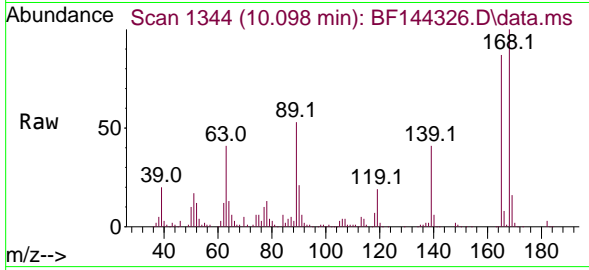


#57
 2,4-Dinitrotoluene
 Concen: 48.795 ng
 RT: 10.098 min Scan# 1344
 Delta R.T. 0.000 min
 Lab File: BF144326.D
 Acq: 24 Nov 2025 16:20

Instrument : BNA_F
 ClientSampleId : V933MSD

Tgt Ion:165 Resp: 106086

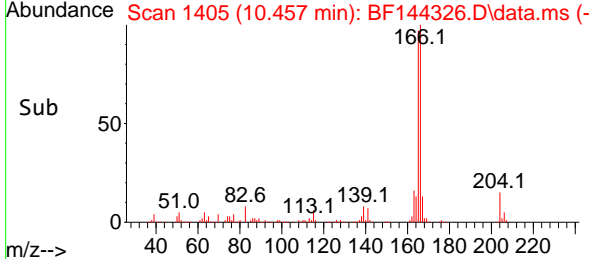
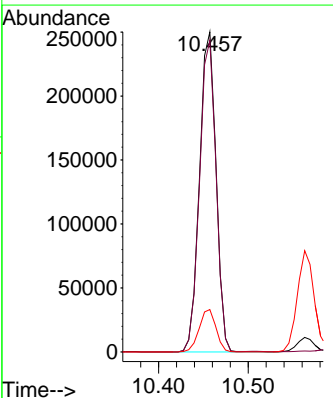
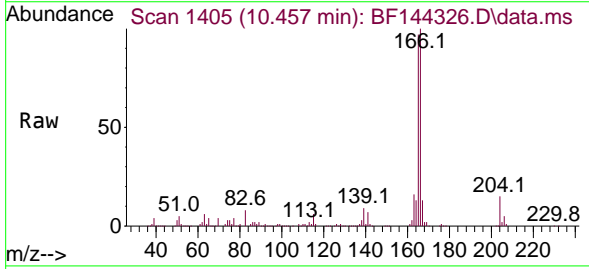
Ion	Ratio	Lower	Upper
165	100		
63	47.3	35.5	53.3
89	61.0	47.4	71.2
182	2.9	1.9	2.9

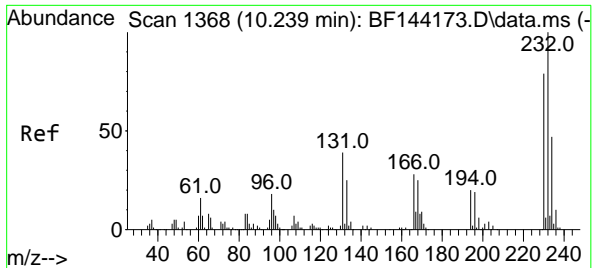


#58
 Fluorene
 Concen: 45.808 ng
 RT: 10.457 min Scan# 1405
 Delta R.T. -0.006 min
 Lab File: BF144326.D
 Acq: 24 Nov 2025 16:20

Tgt Ion:166 Resp: 320519

Ion	Ratio	Lower	Upper
166	100		
165	97.3	78.6	118.0
167	13.2	10.4	15.6



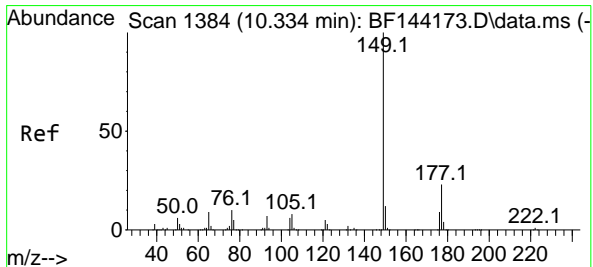
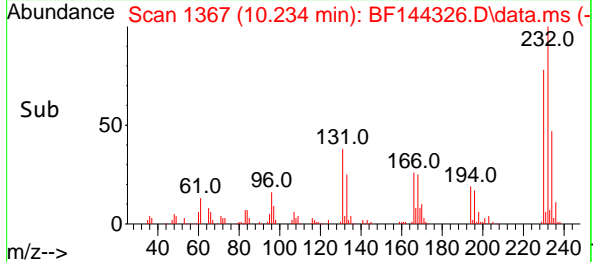
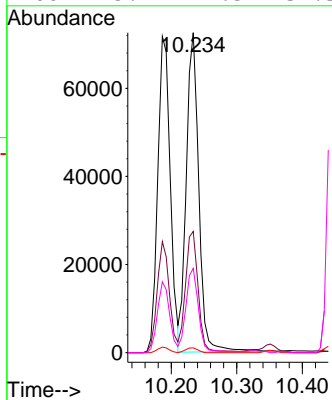
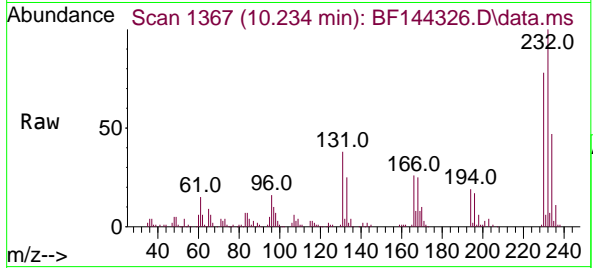


#59
 2,3,4,6-Tetrachlorophenol
 Concen: 46.762 ng
 RT: 10.234 min Scan# 1367
 Delta R.T. -0.006 min
 Lab File: BF144326.D
 Acq: 24 Nov 2025 16:20

Instrument : BNA_F
 Client Sample Id : V933MSD

Tgt Ion: 232 Resp: 96323

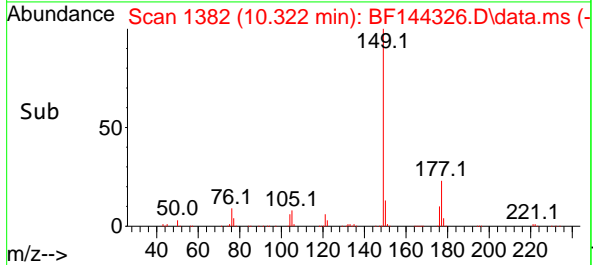
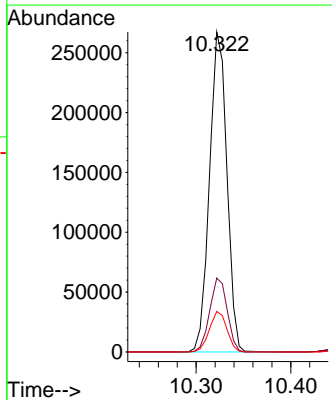
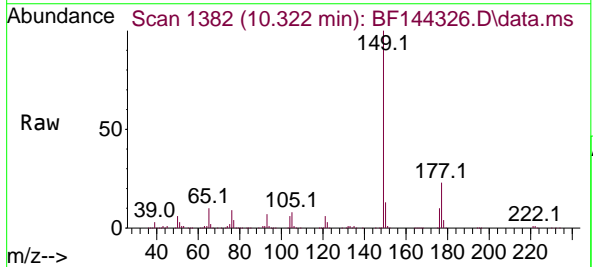
Ion	Ratio	Lower	Upper
232	100		
131	38.7	30.3	45.5
130	1.5	1.2	1.8
166	25.7	21.5	32.3

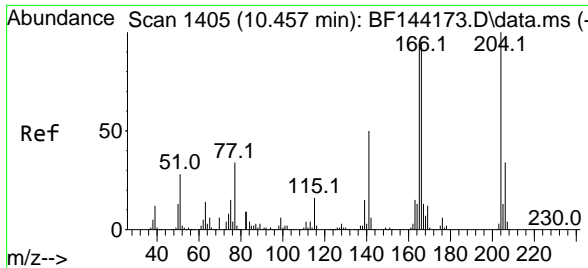


#60
 Diethylphthalate
 Concen: 46.145 ng
 RT: 10.322 min Scan# 1382
 Delta R.T. -0.006 min
 Lab File: BF144326.D
 Acq: 24 Nov 2025 16:20

Tgt Ion: 149 Resp: 341279

Ion	Ratio	Lower	Upper
149	100		
177	23.1	18.3	27.5
150	12.6	9.8	14.6



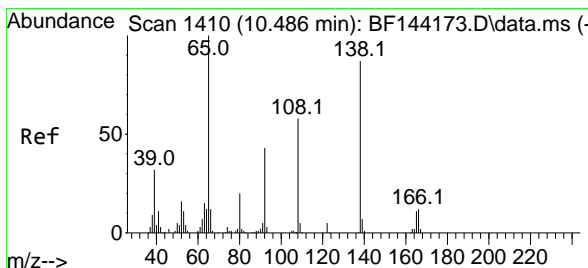
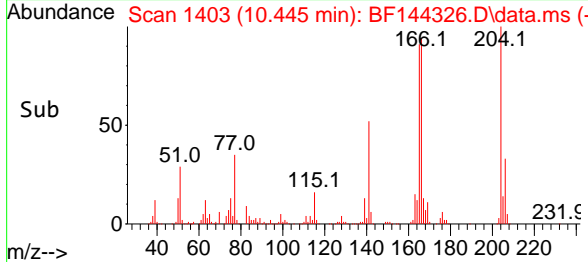
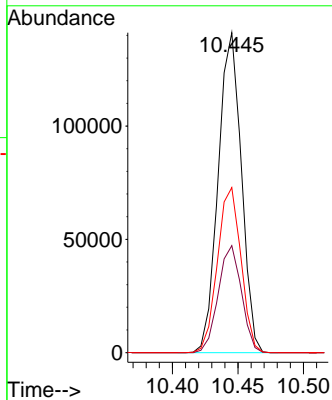
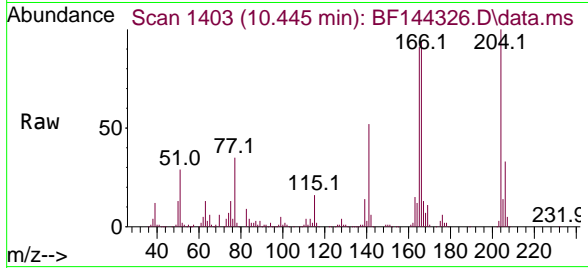


#61
 4-Chlorophenyl-phenylether
 Concen: 43.572 ng
 RT: 10.445 min Scan# 1403
 Delta R.T. -0.012 min
 Lab File: BF144326.D
 Acq: 24 Nov 2025 16:20

Instrument :
 BNA_F
 ClientSampleId :
 V933MSD

Tgt Ion:204 Resp: 173666

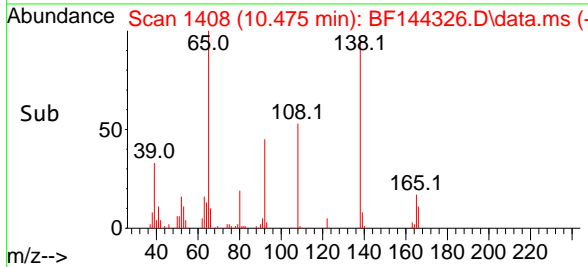
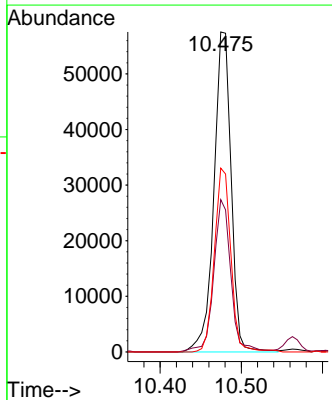
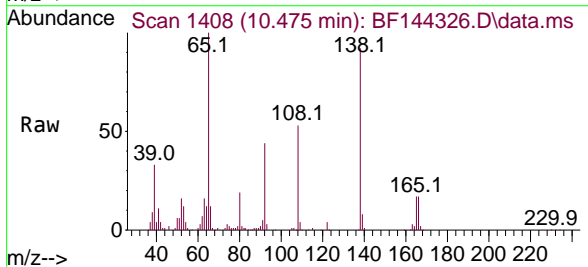
Ion	Ratio	Lower	Upper
204	100		
206	33.4	27.4	41.2
141	51.6	40.0	60.0

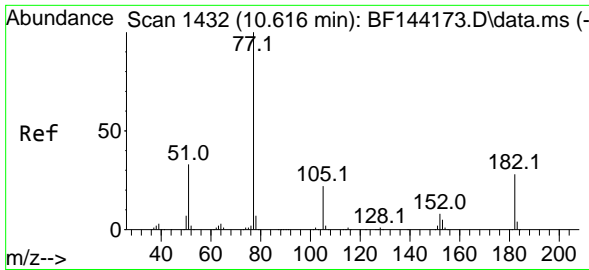


#62
 4-Nitroaniline
 Concen: 50.130 ng
 RT: 10.475 min Scan# 1408
 Delta R.T. 0.000 min
 Lab File: BF144326.D
 Acq: 24 Nov 2025 16:20

Tgt Ion:138 Resp: 84756

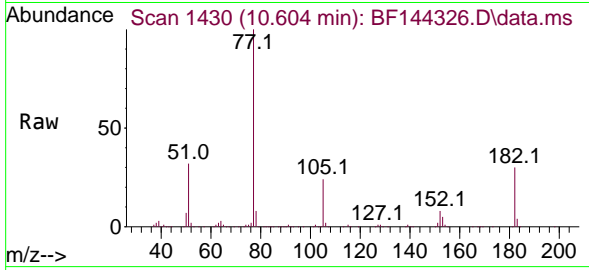
Ion	Ratio	Lower	Upper
138	100		
92	47.6	29.4	69.4
108	57.4	46.4	86.4





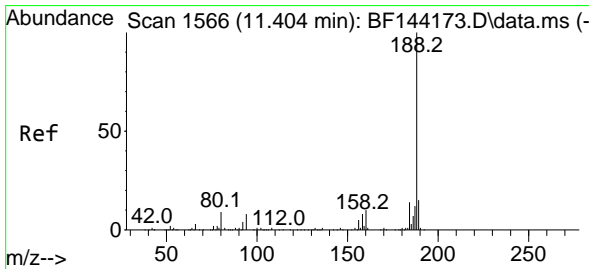
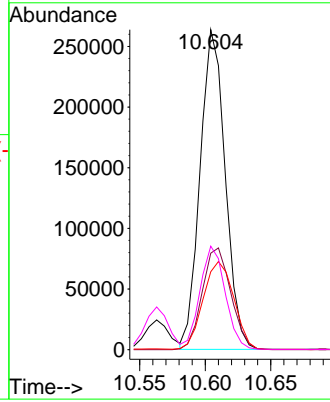
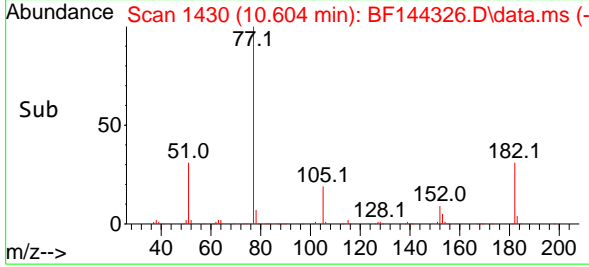
#63
 Azobenzene
 Concen: 51.044 ng
 RT: 10.604 min Scan# 14
 Delta R.T. -0.012 min
 Lab File: BF144326.D
 Acq: 24 Nov 2025 16:20

Instrument :
 BNA_F
 ClientSampleId :
 V933MSD

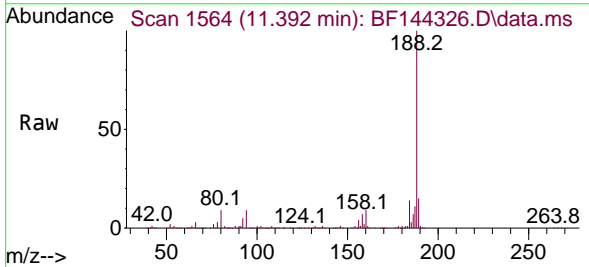


Tgt Ion: 77 Resp: 351341

Ion	Ratio	Lower	Upper
77	100		
182	30.1	8.1	48.1
105	24.4	2.0	42.0
51	32.3	13.9	53.9

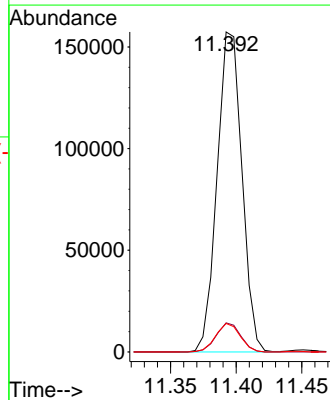
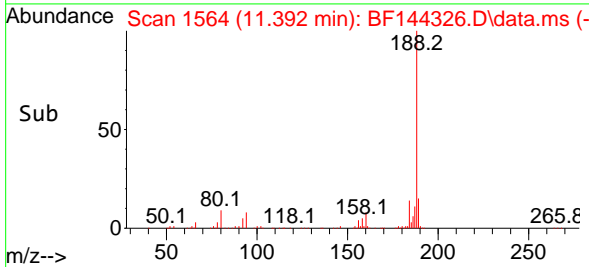


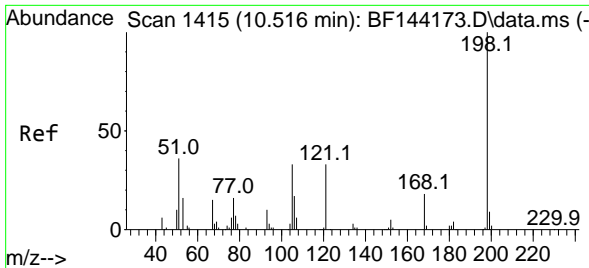
#64
 Phenanthrene-d10
 Concen: 20.000 ng
 RT: 11.392 min Scan# 1564
 Delta R.T. -0.012 min
 Lab File: BF144326.D
 Acq: 24 Nov 2025 16:20



Tgt Ion: 188 Resp: 208077

Ion	Ratio	Lower	Upper
188	100		
94	9.1	6.2	9.2
80	8.9	6.9	10.3

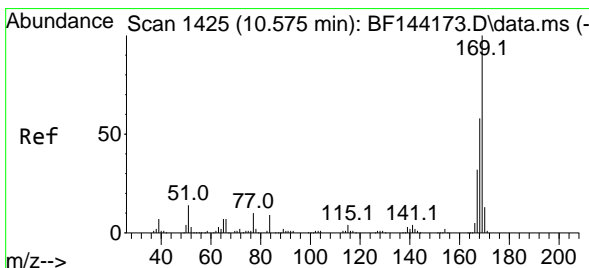
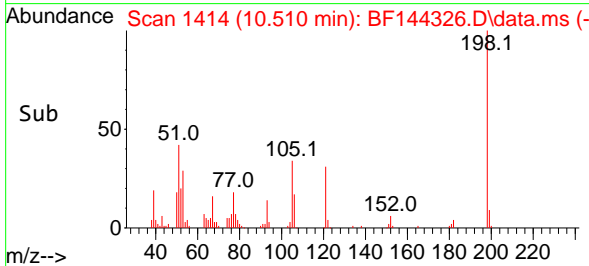
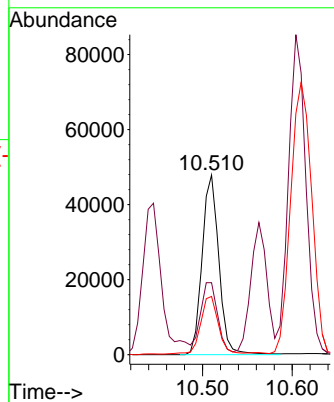
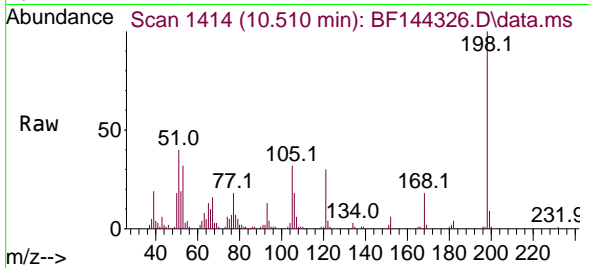




#65
 4,6-Dinitro-2-methylphenol
 Concen: 43.830 ng
 RT: 10.510 min Scan# 1415
 Delta R.T. -0.012 min
 Lab File: BF144326.D
 Acq: 24 Nov 2025 16:20

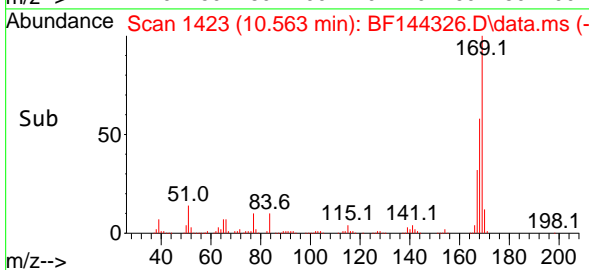
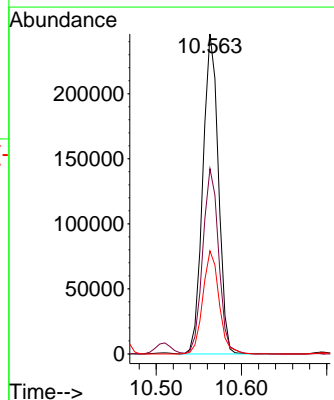
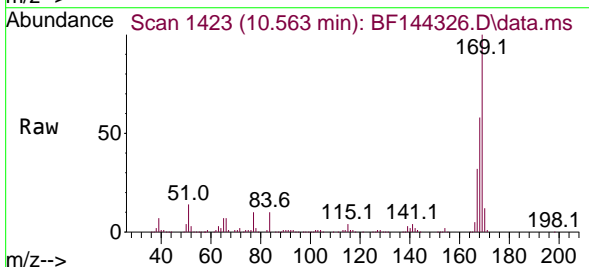
Instrument :
 BNA_F
 ClientSampleId :
 V933MSD

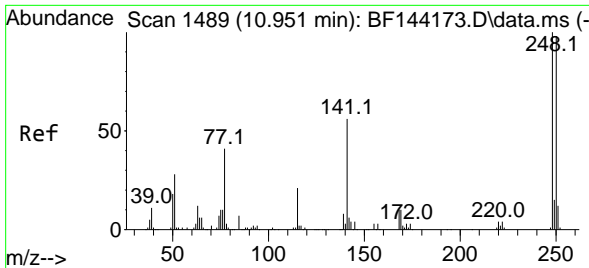
Tgt Ion	Resp	Lower	Upper
198	100		
51	40.0	25.6	65.6
105	32.4	14.6	54.6



#66
 n-Nitrosodiphenylamine
 Concen: 46.574 ng
 RT: 10.563 min Scan# 1423
 Delta R.T. -0.006 min
 Lab File: BF144326.D
 Acq: 24 Nov 2025 16:20

Tgt Ion	Resp	Lower	Upper
169	100		
168	57.9	46.2	69.2
167	32.2	25.7	38.5



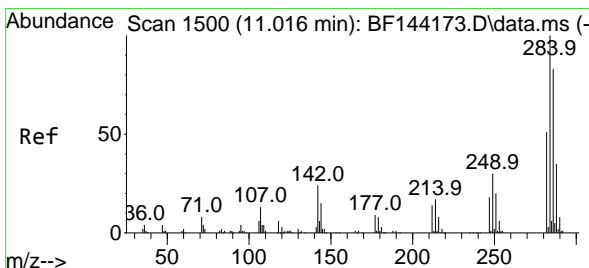
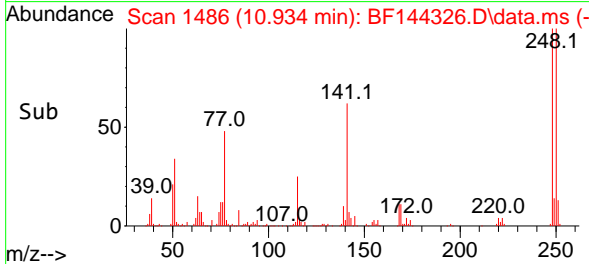
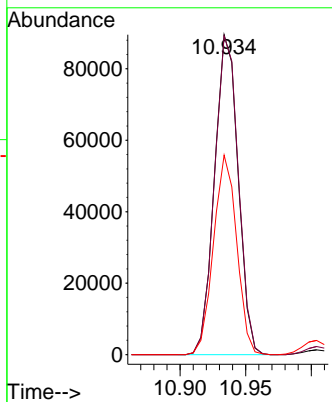
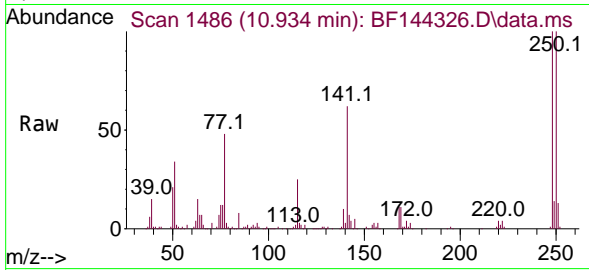


#67
 4-Bromophenyl-phenylether
 Concen: 42.227 ng
 RT: 10.934 min Scan# 1486
 Delta R.T. -0.012 min
 Lab File: BF144326.D
 Acq: 24 Nov 2025 16:20

Instrument :
 BNA_F
 ClientSampleId :
 V933MSD

Tgt Ion:248 Resp: 112150

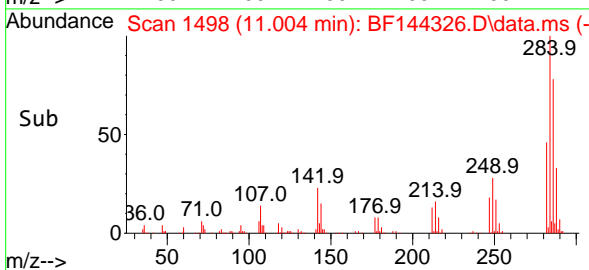
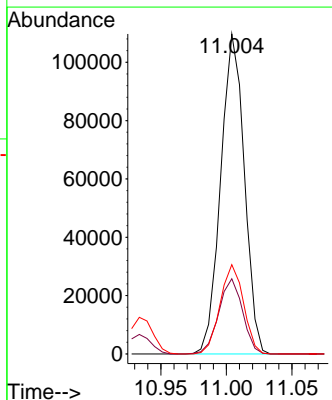
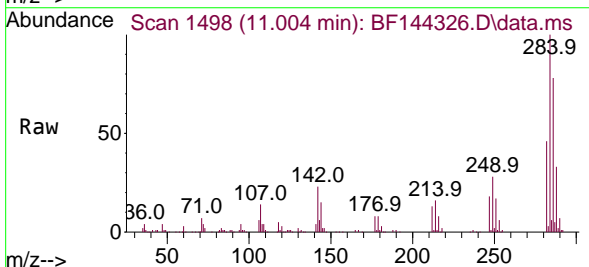
Ion	Ratio	Lower	Upper
248	100		
250	99.6	78.4	117.6
141	62.3	45.1	67.7

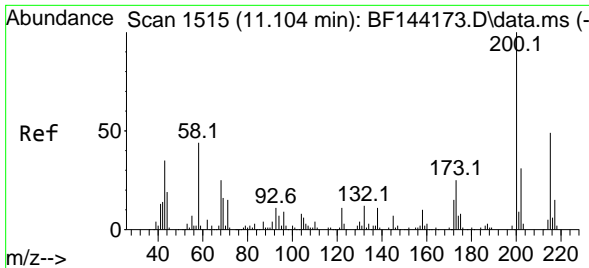


#68
 Hexachlorobenzene
 Concen: 44.034 ng
 RT: 11.004 min Scan# 1498
 Delta R.T. -0.006 min
 Lab File: BF144326.D
 Acq: 24 Nov 2025 16:20

Tgt Ion:284 Resp: 137753

Ion	Ratio	Lower	Upper
284	100		
142	23.5	19.2	28.8
249	27.9	23.8	35.8



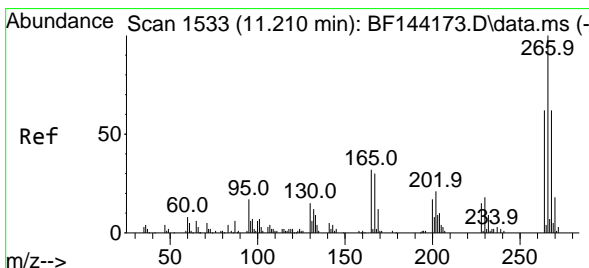
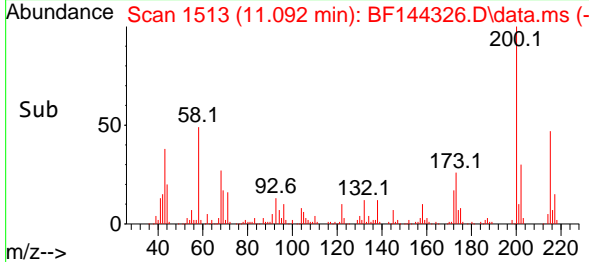
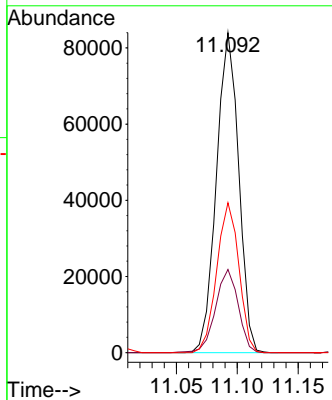
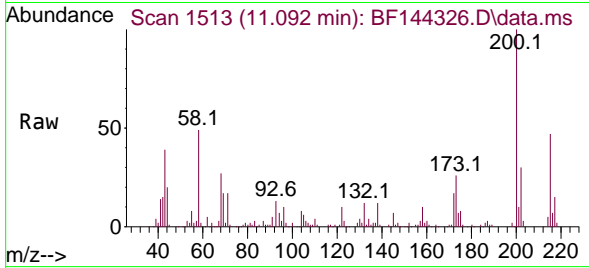


#69
 Atrazine
 Concen: 50.194 ng
 RT: 11.092 min Scan# 11
 Delta R.T. -0.006 min
 Lab File: BF144326.D
 Acq: 24 Nov 2025 16:20

Instrument :
 BNA_F
 ClientSampleId :
 V933MSD

Tgt Ion:200 Resp: 106829

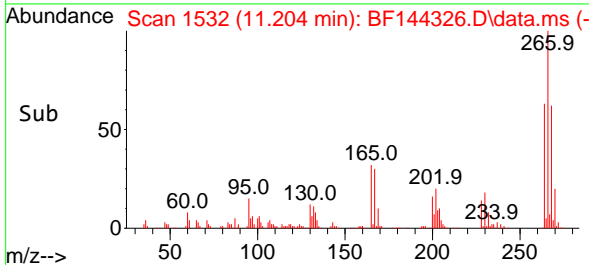
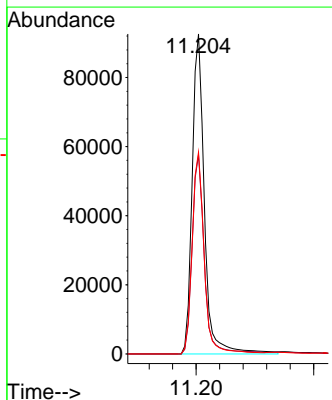
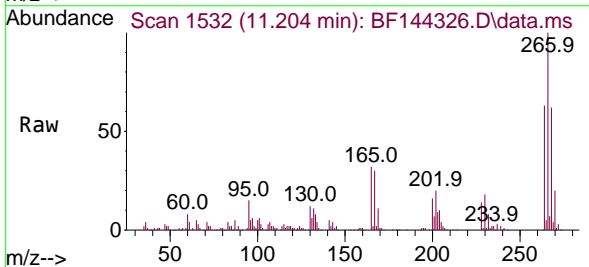
Ion	Ratio	Lower	Upper
200	100		
173	26.0	5.0	45.0
215	46.8	28.7	68.7

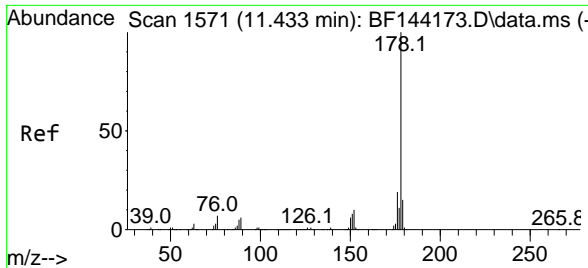


#70
 Pentachlorophenol
 Concen: 85.917 ng
 RT: 11.204 min Scan# 1532
 Delta R.T. -0.012 min
 Lab File: BF144326.D
 Acq: 24 Nov 2025 16:20

Tgt Ion:266 Resp: 133840

Ion	Ratio	Lower	Upper
266	100		
268	62.2	49.5	74.3
264	63.1	49.4	74.2



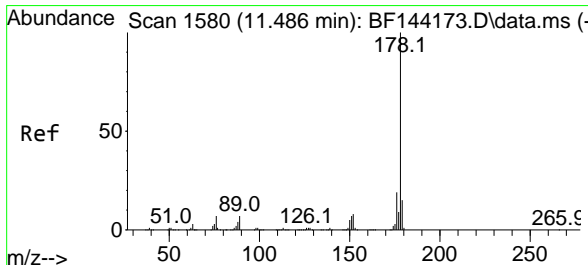
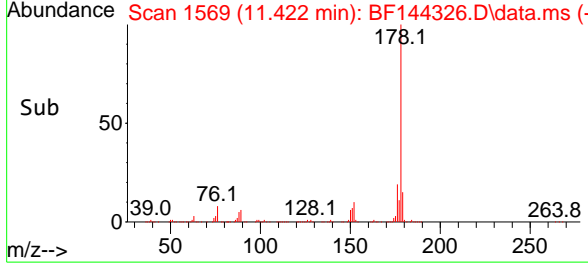
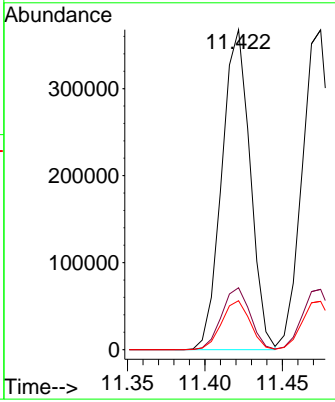
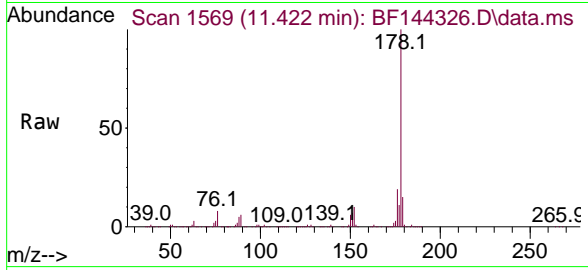


#71
 Phenanthrene
 Concen: 45.229 ng
 RT: 11.422 min Scan# 1569
 Delta R.T. -0.006 min
 Lab File: BF144326.D
 Acq: 24 Nov 2025 16:20

Instrument : BNA_F
 Client Sample Id : V933MSD

Tgt Ion:178 Resp: 468568

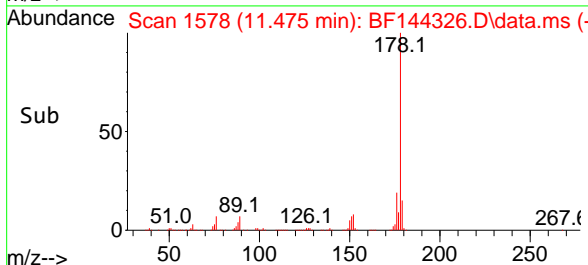
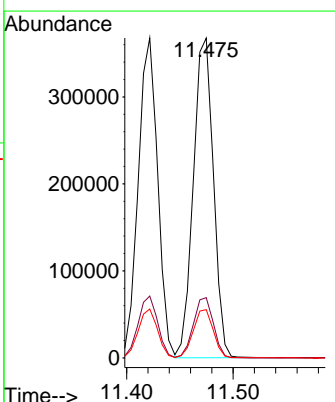
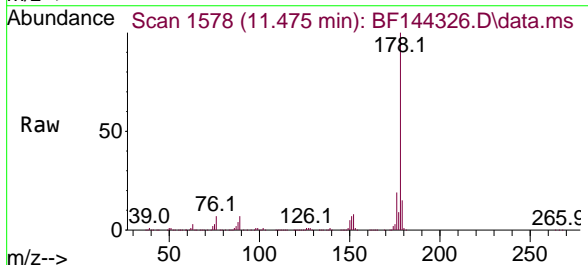
Ion	Ratio	Lower	Upper
178	100		
176	19.3	15.5	23.3
179	15.3	12.2	18.4

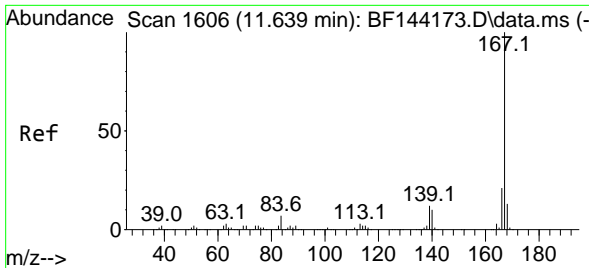


#72
 Anthracene
 Concen: 45.563 ng
 RT: 11.475 min Scan# 1578
 Delta R.T. -0.006 min
 Lab File: BF144326.D
 Acq: 24 Nov 2025 16:20

Tgt Ion:178 Resp: 479971

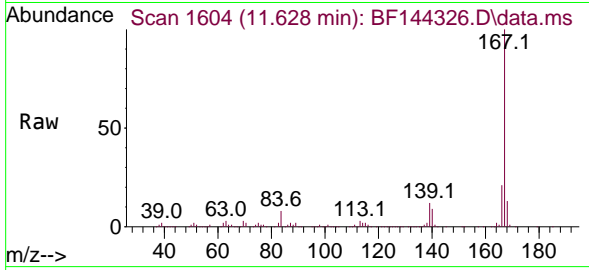
Ion	Ratio	Lower	Upper
178	100		
176	18.9	15.3	22.9
179	15.1	12.0	18.0



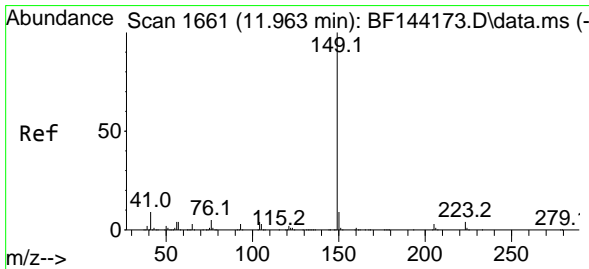
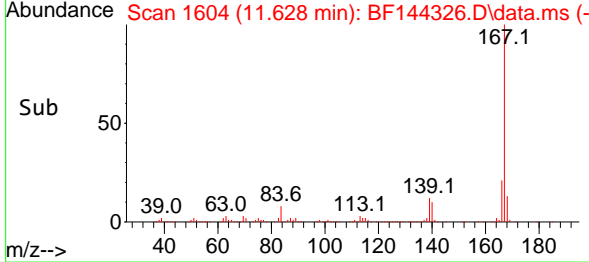
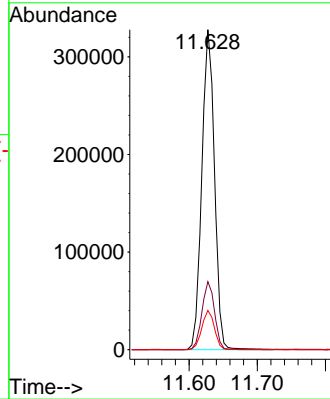


#73
 Carbazole
 Concen: 47.240 ng
 RT: 11.628 min Scan# 1604
 Delta R.T. -0.012 min
 Lab File: BF144326.D
 Acq: 24 Nov 2025 16:20

Instrument :
 BNA_F
 ClientSampleId :
 V933MSD

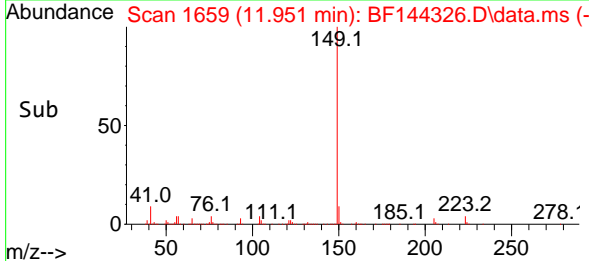
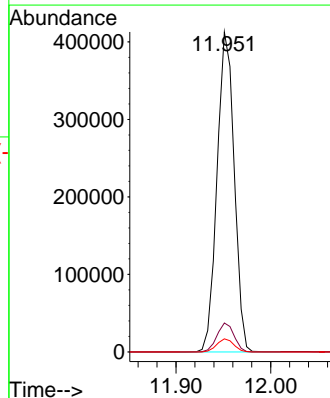
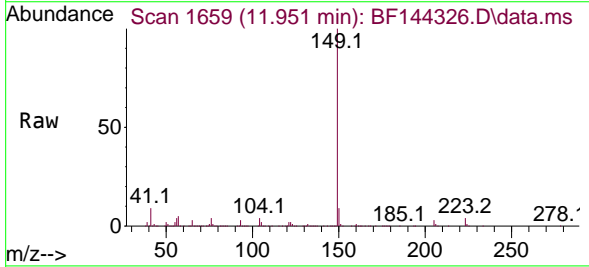


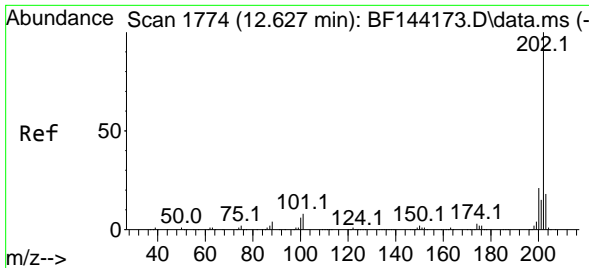
Tgt Ion:167 Resp: 423160
 Ion Ratio Lower Upper
 167 100
 166 21.2 17.2 25.8
 139 12.2 9.9 14.9



#74
 Di-n-butylphthalate
 Concen: 47.999 ng
 RT: 11.951 min Scan# 1659
 Delta R.T. -0.012 min
 Lab File: BF144326.D
 Acq: 24 Nov 2025 16:20

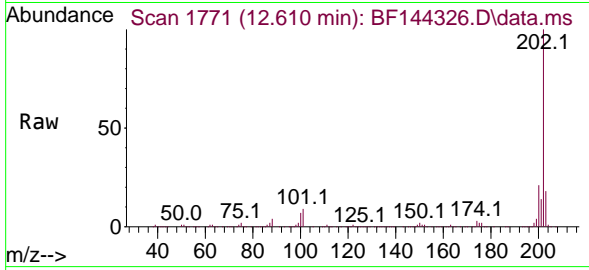
Tgt Ion:149 Resp: 519771
 Ion Ratio Lower Upper
 149 100
 150 9.0 7.4 11.0
 104 4.1 3.4 5.2





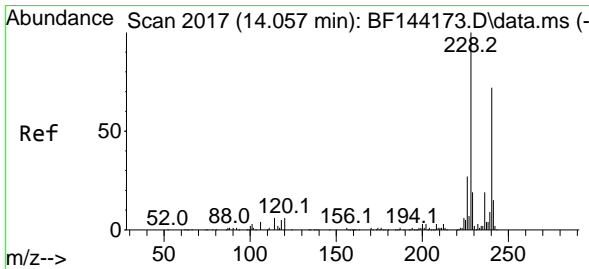
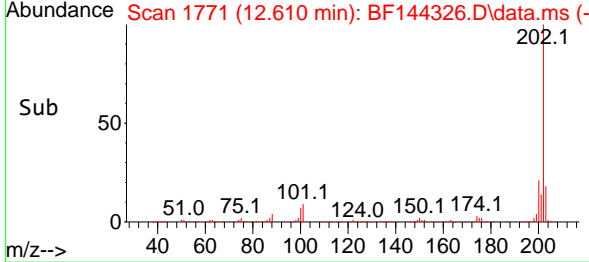
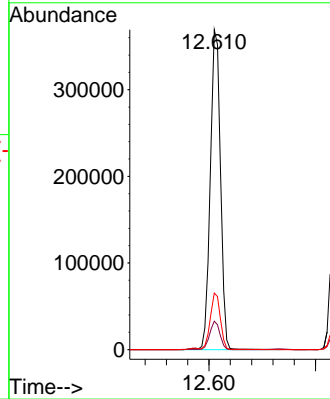
#75
 Fluoranthene
 Concen: 45.904 ng
 RT: 12.610 min Scan# 11
 Delta R.T. -0.012 min
 Lab File: BF144326.D
 Acq: 24 Nov 2025 16:20

Instrument :
 BNA_F
 ClientSampleId :
 V933MSD



Tgt Ion: 202 Resp: 491252

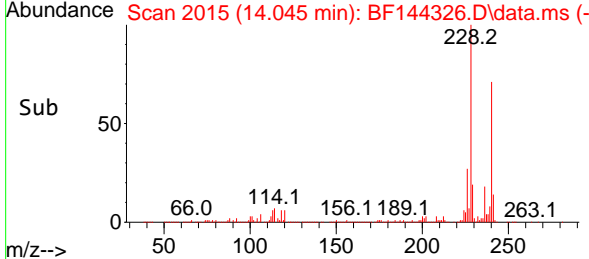
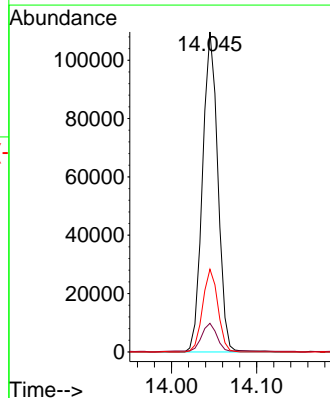
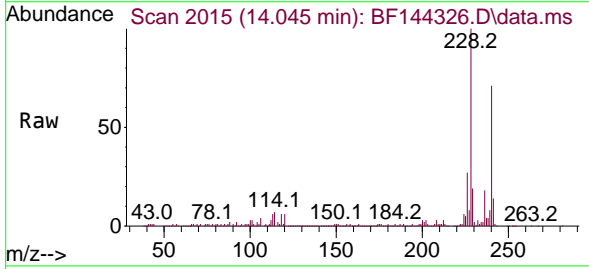
Ion	Ratio	Lower	Upper
202	100		
101	8.9	0.0	27.9
203	17.7	0.0	37.5

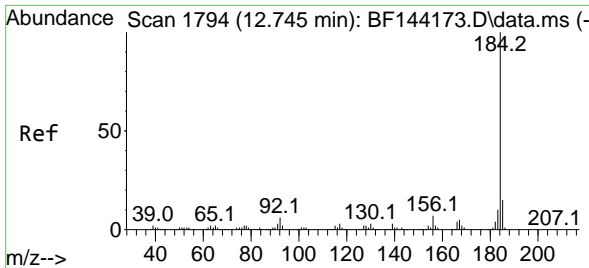


#76
 Chrysene-d12
 Concen: 20.000 ng
 RT: 14.045 min Scan# 2015
 Delta R.T. -0.006 min
 Lab File: BF144326.D
 Acq: 24 Nov 2025 16:20

Tgt Ion: 240 Resp: 137029

Ion	Ratio	Lower	Upper
240	100		
120	8.9	6.6	10.0
236	25.8	21.4	32.2



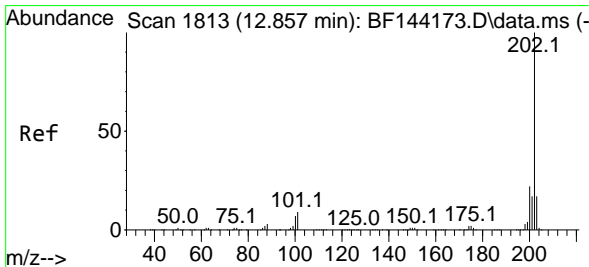
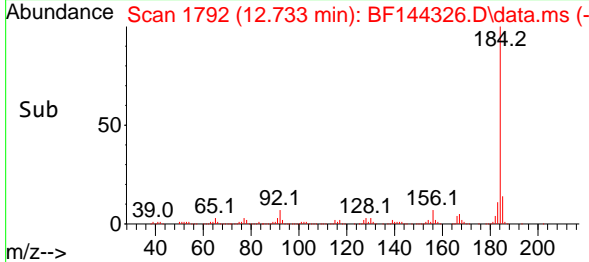
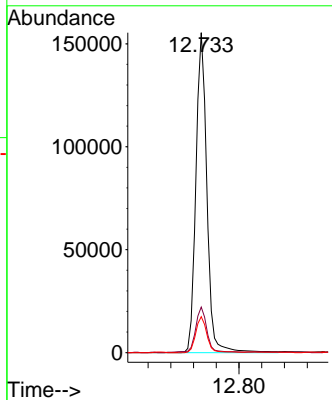
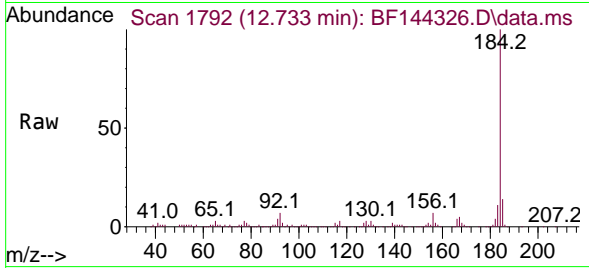


#77
 Benzidine
 Concen: 51.223 ng
 RT: 12.733 min Scan# 11
 Delta R.T. -0.017 min
 Lab File: BF144326.D
 Acq: 24 Nov 2025 16:20

Instrument : BNA_F
 ClientSampleId : V933MSD

Tgt Ion:184 Resp: 207618

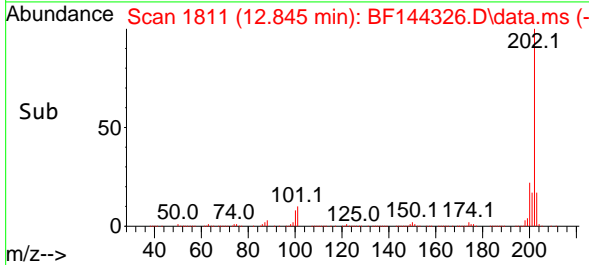
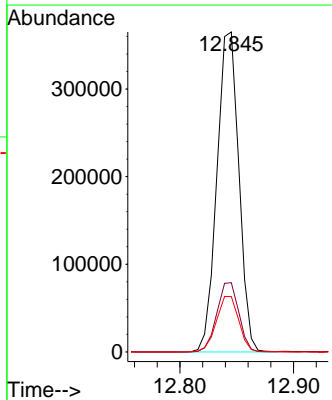
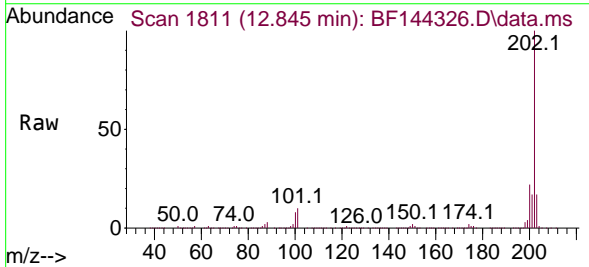
Ion	Ratio	Lower	Upper
184	100		
185	14.2	11.7	17.5
183	11.2	8.3	12.5

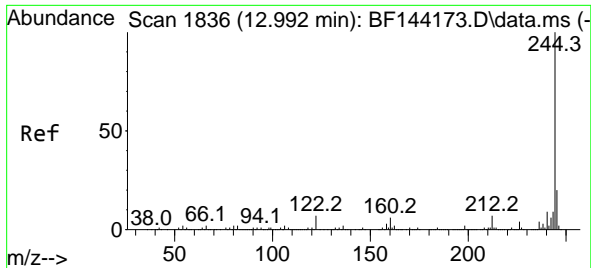


#78
 Pyrene
 Concen: 44.408 ng
 RT: 12.845 min Scan# 1811
 Delta R.T. -0.006 min
 Lab File: BF144326.D
 Acq: 24 Nov 2025 16:20

Tgt Ion:202 Resp: 490645

Ion	Ratio	Lower	Upper
202	100		
200	21.6	17.2	25.8
203	17.3	13.7	20.5



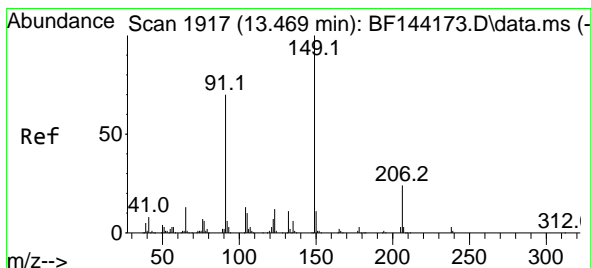
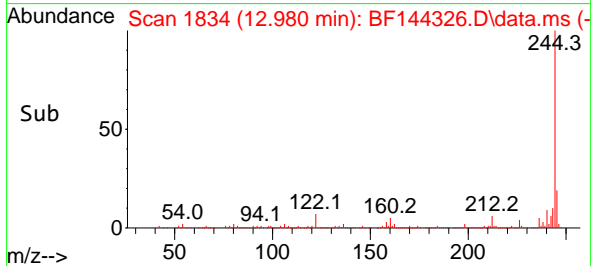
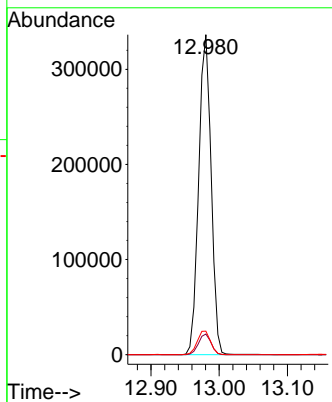
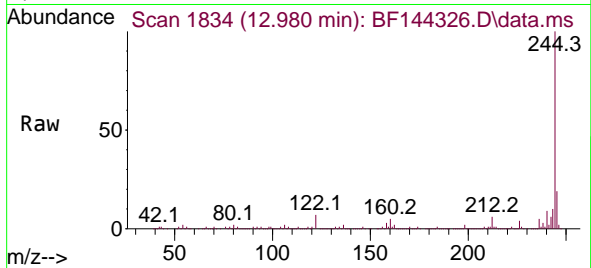


#79
 Terphenyl-d14
 Concen: 49.466 ng
 RT: 12.980 min Scan# 1834
 Delta R.T. -0.012 min
 Lab File: BF144326.D
 Acq: 24 Nov 2025 16:20

Instrument :
 BNA_F
 ClientSampleId :
 V933MSD

Tgt Ion:244 Resp: 426736

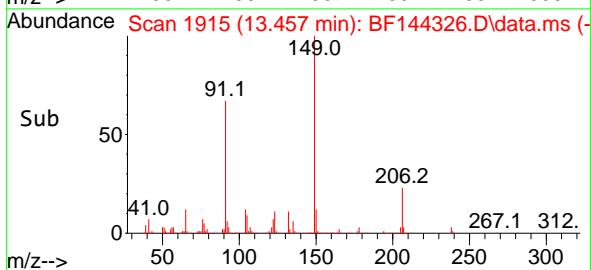
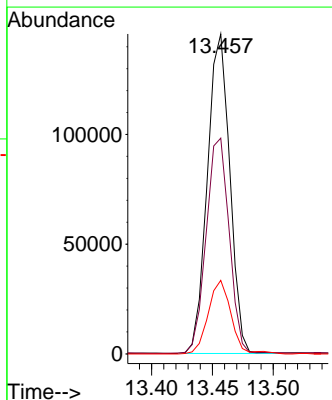
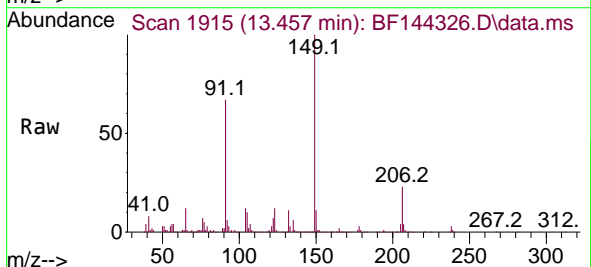
Ion	Ratio	Lower	Upper
244	100		
212	6.4	5.3	7.9
122	7.3	5.6	8.4

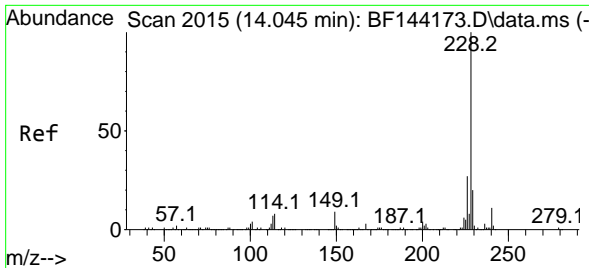


#80
 Butylbenzylphthalate
 Concen: 48.884 ng
 RT: 13.457 min Scan# 1915
 Delta R.T. -0.012 min
 Lab File: BF144326.D
 Acq: 24 Nov 2025 16:20

Tgt Ion:149 Resp: 187190

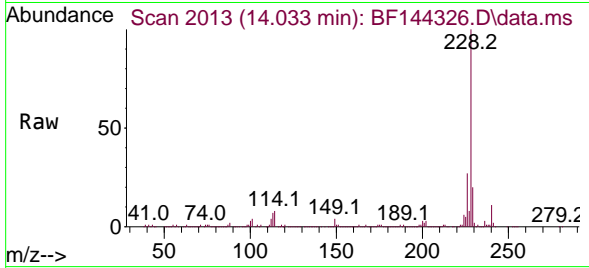
Ion	Ratio	Lower	Upper
149	100		
91	67.4	56.1	84.1
206	23.0	18.8	28.2



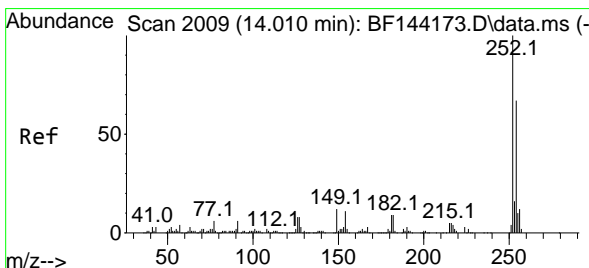
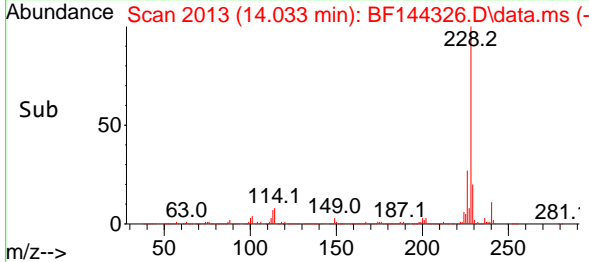
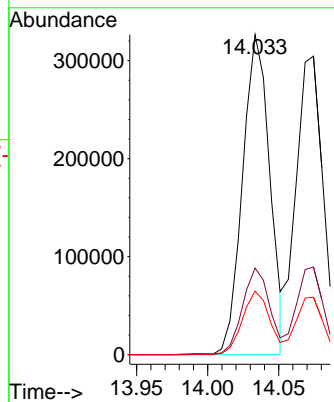


#81
 Benzo(a)anthracene
 Concen: 45.753 ng
 RT: 14.033 min Scan# 2006
 Delta R.T. -0.012 min
 Lab File: BF144326.D
 Acq: 24 Nov 2025 16:20

Instrument :
 BNA_F
 ClientSampleId :
 V933MSD

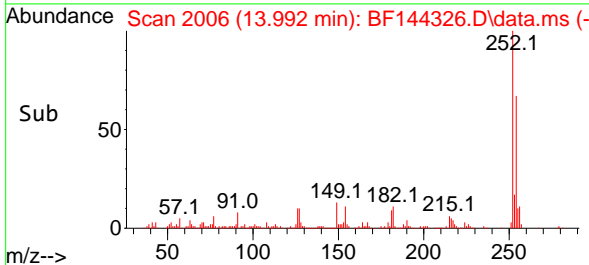
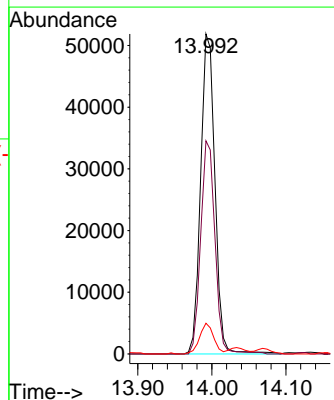
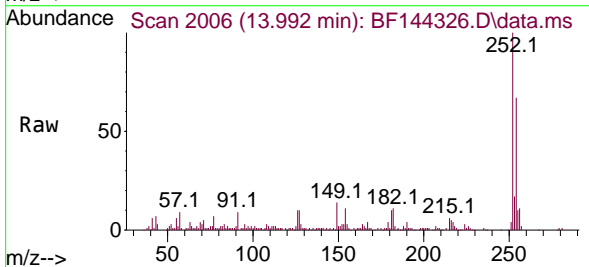


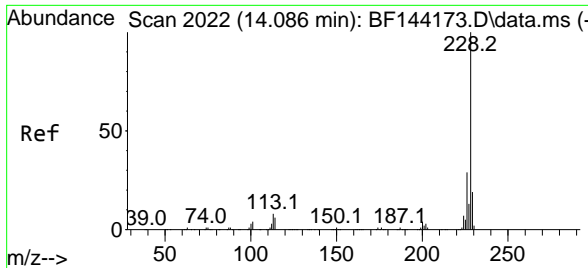
Tgt Ion:228 Resp: 434525
 Ion Ratio Lower Upper
 228 100
 226 27.0 21.8 32.8
 229 19.8 15.8 23.6



#82
 3,3'-Dichlorobenzidine
 Concen: 21.354 ng
 RT: 13.992 min Scan# 2006
 Delta R.T. -0.017 min
 Lab File: BF144326.D
 Acq: 24 Nov 2025 16:20

Tgt Ion:252 Resp: 69515
 Ion Ratio Lower Upper
 252 100
 254 66.6 53.5 80.3
 126 9.6 6.4 9.6



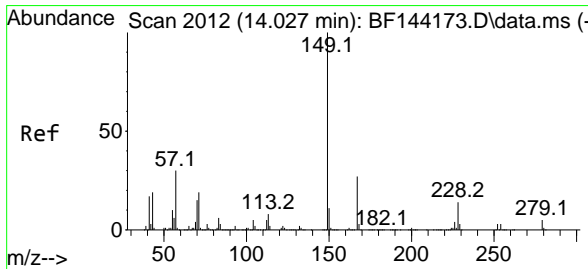
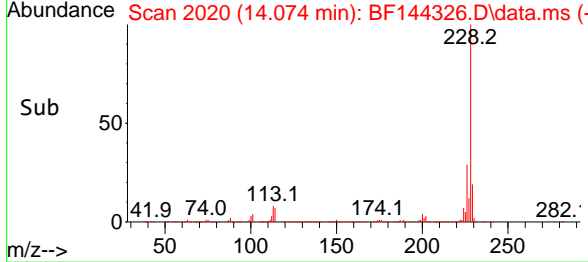
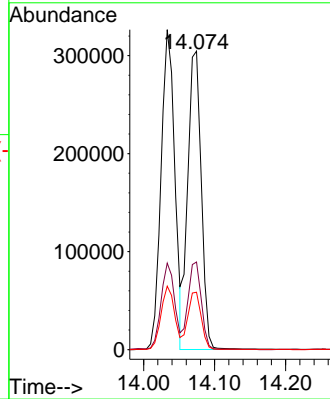
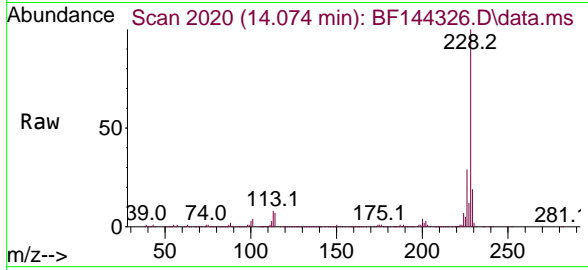


#83
 Chrysene
 Concen: 46.184 ng
 RT: 14.074 min Scan# 2010
 Delta R.T. -0.006 min
 Lab File: BF144326.D
 Acq: 24 Nov 2025 16:20

Instrument :
 BNA_F
 ClientSampleId :
 V933MSD

Tgt Ion:228 Resp: 404897

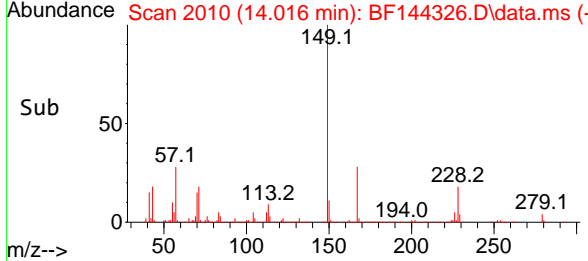
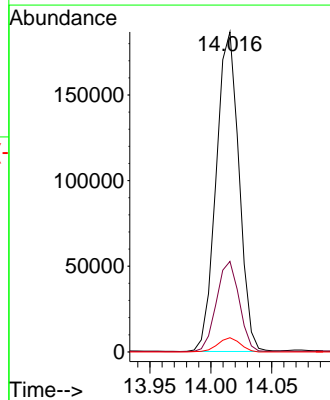
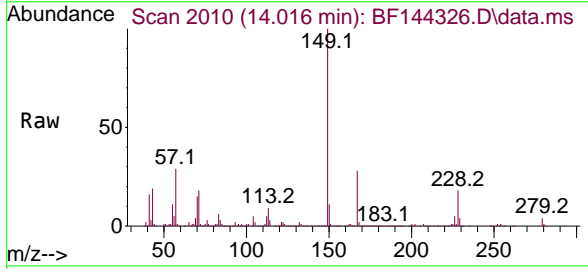
Ion	Ratio	Lower	Upper
228	100		
226	29.3	22.9	34.3
229	19.2	15.0	22.6

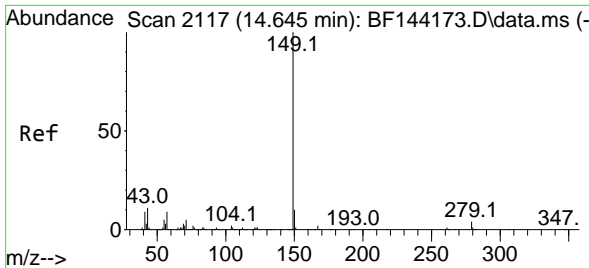


#84
 Bis(2-ethylhexyl)phthalate
 Concen: 46.307 ng
 RT: 14.016 min Scan# 2010
 Delta R.T. -0.012 min
 Lab File: BF144326.D
 Acq: 24 Nov 2025 16:20

Tgt Ion:149 Resp: 242744

Ion	Ratio	Lower	Upper
149	100		
167	28.3	21.8	32.8
279	4.4	3.7	5.5

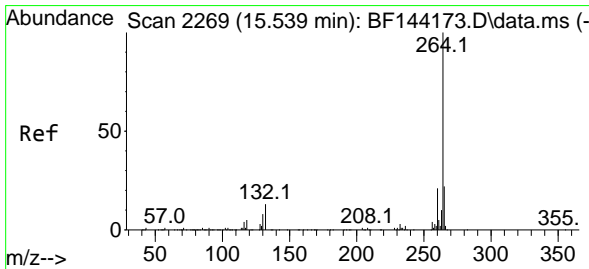
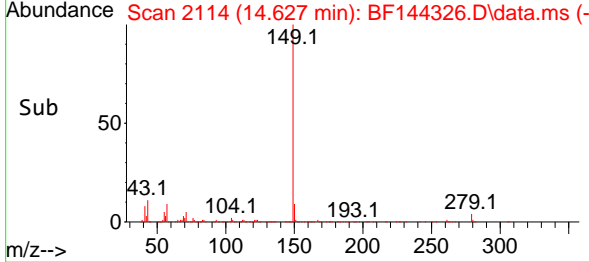
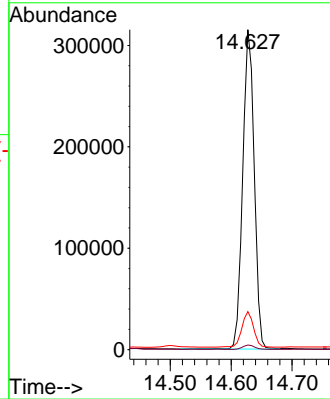
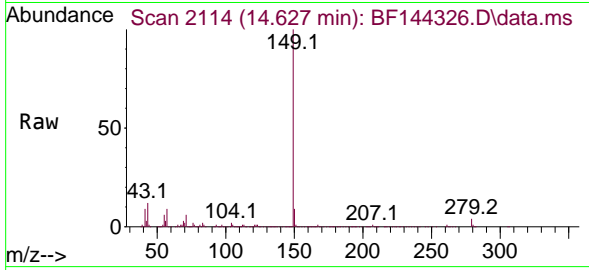




#85
 Di-n-octyl phthalate
 Concen: 45.770 ng
 RT: 14.627 min Scan# 2117
 Delta R.T. -0.017 min
 Lab File: BF144326.D
 Acq: 24 Nov 2025 16:20

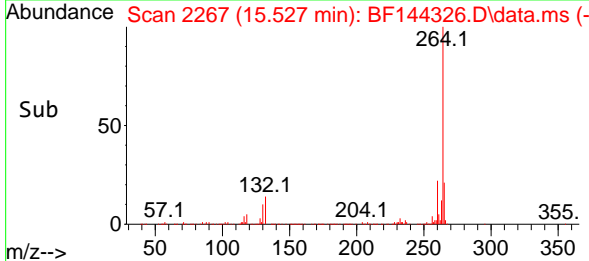
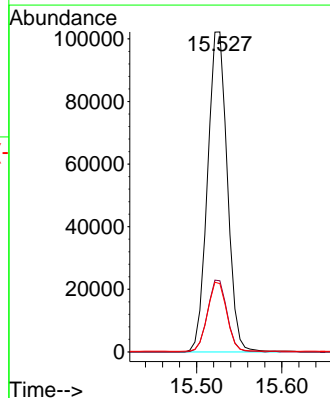
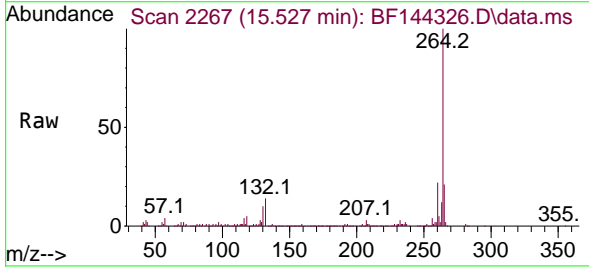
Instrument : BNA_F
 ClientSampleId : V933MSD

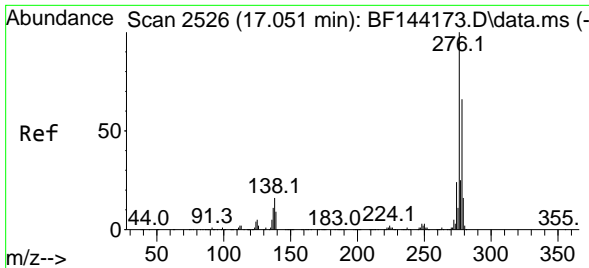
Tgt Ion	Resp	Lower	Upper
149	100		
167	1.4	1.2	1.8
43	11.3	9.0	13.4



#86
 Perylene-d12
 Concen: 20.000 ng
 RT: 15.527 min Scan# 2267
 Delta R.T. -0.012 min
 Lab File: BF144326.D
 Acq: 24 Nov 2025 16:20

Tgt Ion	Resp	Lower	Upper
264	100		
260	22.2	17.1	25.7
265	21.4	17.4	26.0



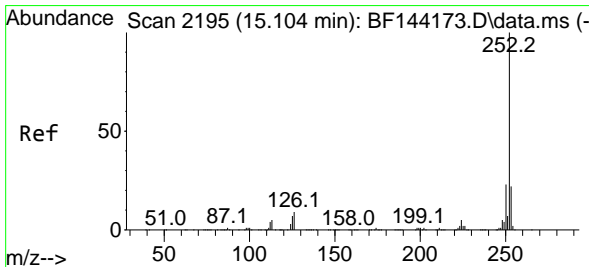
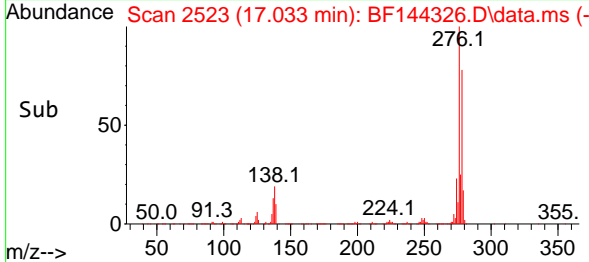
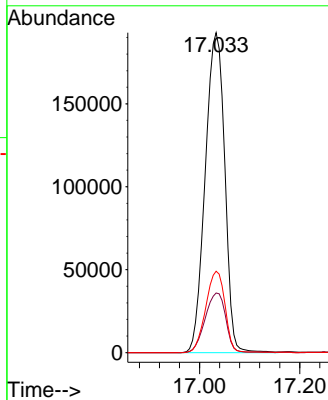
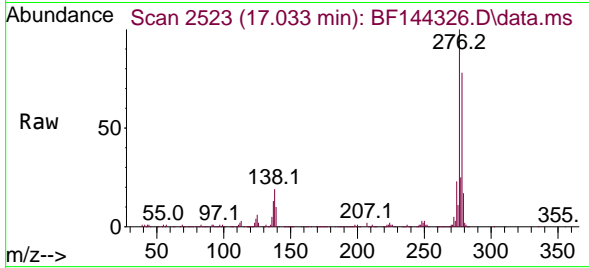


#87
 Indeno(1,2,3-cd)pyrene
 Concen: 44.274 ng
 RT: 17.033 min Scan# 2193
 Delta R.T. 0.000 min
 Lab File: BF144326.D
 Acq: 24 Nov 2025 16:20

Instrument :
 BNA_F
 ClientSampleId :
 V933MSD

Tgt Ion:276 Resp: 521774

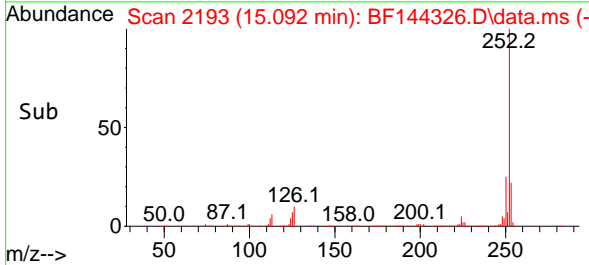
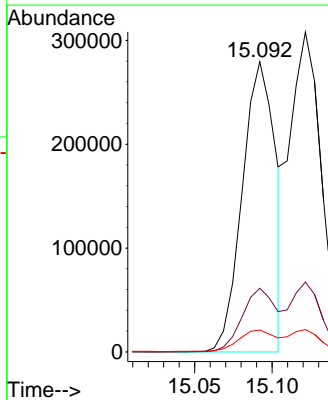
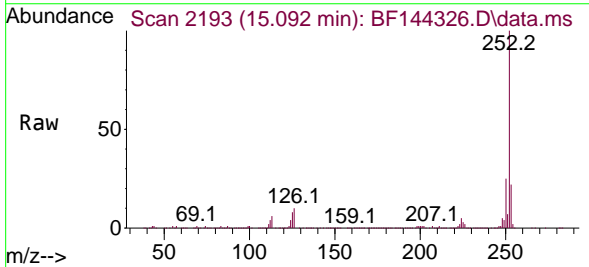
Ion	Ratio	Lower	Upper
276	100		
138	19.7	13.9	20.9
277	25.2	19.8	29.6

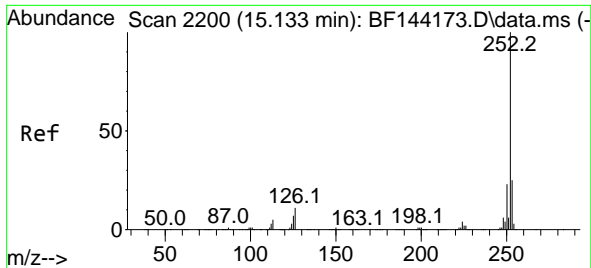


#88
 Benzo(b)fluoranthene
 Concen: 44.500 ng
 RT: 15.092 min Scan# 2193
 Delta R.T. -0.006 min
 Lab File: BF144326.D
 Acq: 24 Nov 2025 16:20

Tgt Ion:252 Resp: 415342

Ion	Ratio	Lower	Upper
252	100		
253	21.9	17.4	26.2
125	7.5	5.3	7.9

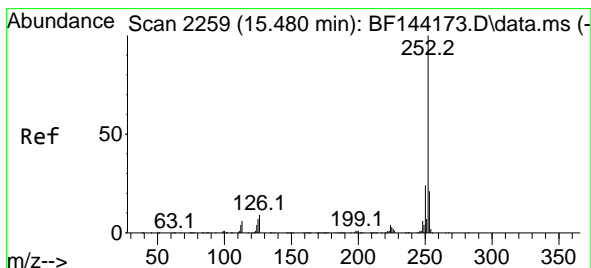
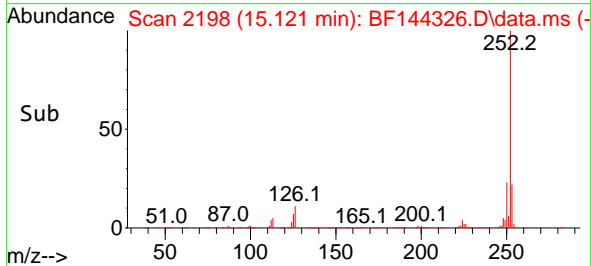
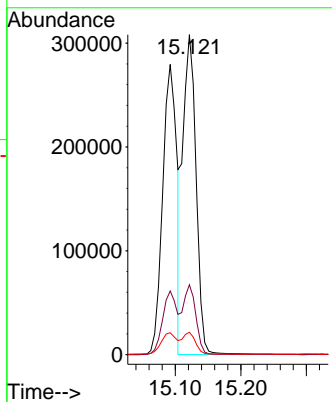
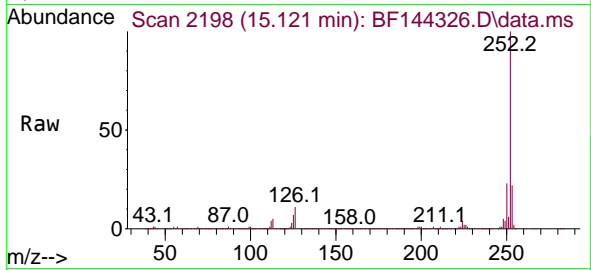




#89
 Benzo(k)fluoranthene
 Concen: 49.774 ng
 RT: 15.121 min Scan# 21
 Delta R.T. -0.006 min
 Lab File: BF144326.D
 Acq: 24 Nov 2025 16:20

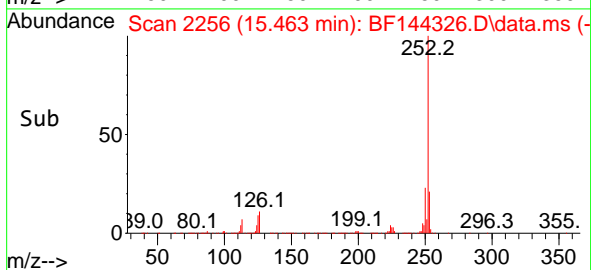
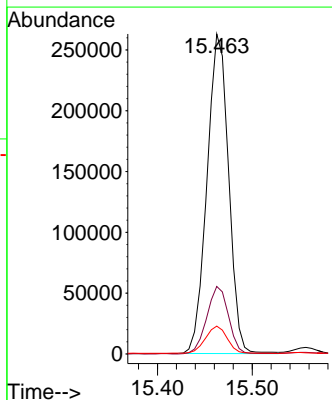
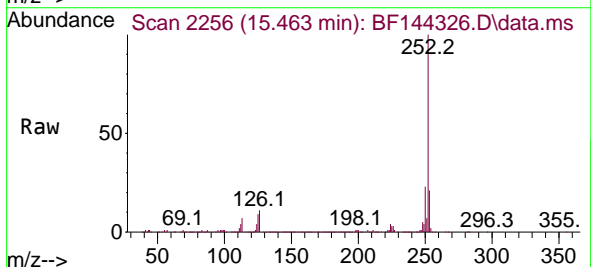
Instrument :
 BNA_F
 ClientSampleId :
 V933MSD

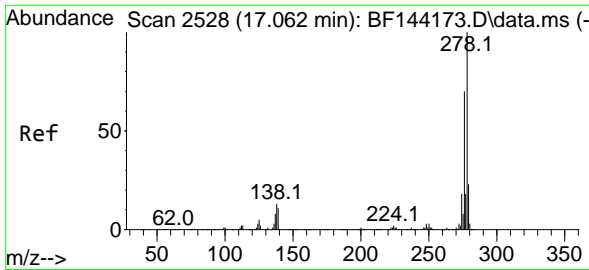
Tgt Ion:252 Resp: 434837
 Ion Ratio Lower Upper
 252 100
 253 21.8 18.0 27.0
 125 7.0 5.4 8.2



#90
 Benzo(a)pyrene
 Concen: 48.453 ng
 RT: 15.463 min Scan# 2256
 Delta R.T. -0.012 min
 Lab File: BF144326.D
 Acq: 24 Nov 2025 16:20

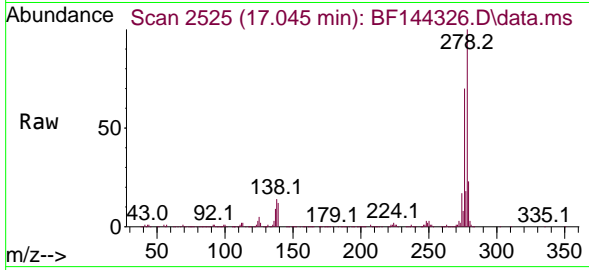
Tgt Ion:252 Resp: 417211
 Ion Ratio Lower Upper
 252 100
 253 21.1 16.7 25.1
 125 8.7 5.7 8.5#



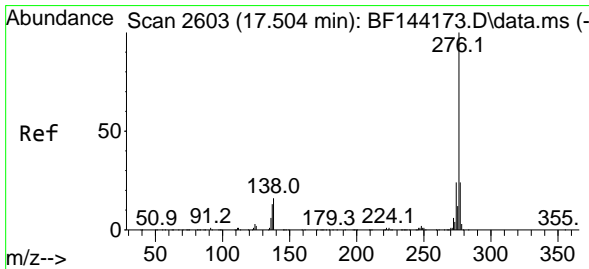
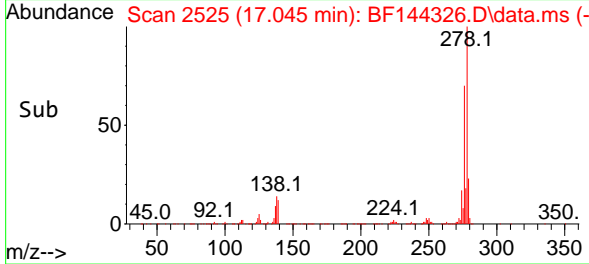
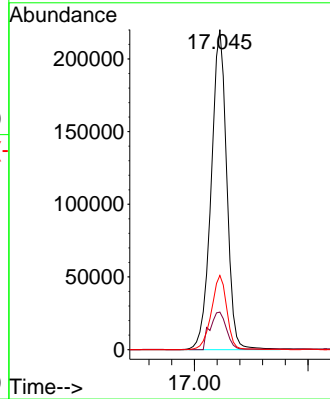


#91
 Dibenzo(a,h)anthracene
 Concen: 44.268 ng
 RT: 17.045 min Scan# 21
 Delta R.T. -0.006 min
 Lab File: BF144326.D
 Acq: 24 Nov 2025 16:20

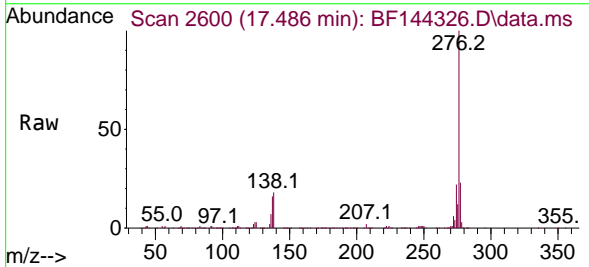
Instrument :
 BNA_F
 ClientSampleId :
 V933MSD



Tgt Ion:278 Resp: 418978
 Ion Ratio Lower Upper
 278 100
 139 11.7 9.1 13.7
 279 23.2 18.2 27.4



#92
 Benzo(g,h,i)perylene
 Concen: 46.644 ng
 RT: 17.486 min Scan# 2600
 Delta R.T. -0.006 min
 Lab File: BF144326.D
 Acq: 24 Nov 2025 16:20



Tgt Ion:276 Resp: 435956
 Ion Ratio Lower Upper
 276 100
 277 23.2 19.0 28.4
 138 17.9 12.9 19.3

