

Data Path : Z:\svoasrv\HPCHEM1\BNA_F\Data\BF112425\
 Data File : BF144330.D
 Acq On : 24 Nov 2025 18:18
 Operator : RC/JU
 Sample : Q3707-03MSD
 Misc :
 ALS Vial : 11 Sample Multiplier: 1

Instrument :
 BNA_F
 ClientSampleId :
 V933MSD

Quant Time: Nov 25 00:27:16 2025
 Quant Method : Z:\svoasrv\HPCHEM1\BNA_F\Methods\8270-BF110525.M
 Quant Title : ASP BNA STANDARDS FOR 5 POINT CALIBRATION
 QLast Update : Wed Nov 05 18:37:33 2025
 Response via : Initial Calibration

Compound	R.T.	QIon	Response	Conc	Units	Dev(Min)	
Internal Standards							
1) 1,4-Dichlorobenzene-d4	6.863	152	52039	20.000	ng	-0.01	
21) Naphthalene-d8	8.145	136	202390	20.000	ng	-0.01	
39) Acenaphthene-d10	9.904	164	108226	20.000	ng	-0.01	
64) Phenanthrene-d10	11.392	188	171619	20.000	ng	-0.01	
76) Chrysene-d12	14.045	240	114576	20.000	ng	0.00	
86) Perylene-d12	15.521	264	160719	20.000	ng	-0.02	
System Monitoring Compounds							
5) 2-Fluorophenol	5.498	112	425371	127.914	ng	0.00	
7) Phenol-d6	6.504	99	453790	120.433	ng	0.00	
23) Nitrobenzene-d5	7.428	82	322021	91.893	ng	0.00	
42) 2,4,6-Tribromophenol	10.698	330	167173	123.092	ng	0.00	
45) 2-Fluorobiphenyl	9.222	172	671747	91.672	ng	0.00	
79) Terphenyl-d14	12.980	244	649135	89.992	ng	-0.01	
Target Compounds							
2) 1,4-Dioxane	2.757	88	64807	47.138	ng	#	81
3) Pyridine	3.493	79	163027	42.503	ng		97
4) n-Nitrosodimethylamine	3.428	42	99465	49.645	ng		89
6) Aniline	6.528	93	148943	27.744	ng	#	75
8) 2-Chlorophenol	6.651	128	162684	49.884	ng		99
9) Benzaldehyde	6.416	77	55572	26.118	ng		95
10) Phenol	6.516	94	201463	43.761	ng		96
11) bis(2-Chloroethyl)ether	6.598	93	176319	52.561	ng		100
12) 1,3-Dichlorobenzene	6.804	146	198322	49.282	ng		97
13) 1,4-Dichlorobenzene	6.881	146	198450	49.223	ng		99
14) 1,2-Dichlorobenzene	7.034	146	189467	49.030	ng		99
15) Benzyl Alcohol	7.010	79	151176	50.669	ng		98
16) 2,2'-oxybis(1-Chloropr...	7.134	45	319472	51.716	ng		87
17) 2-Methylphenol	7.122	107	126178	48.634	ng		95
18) Hexachloroethane	7.375	117	62452	46.625	ng		96
19) n-Nitroso-di-n-propyla...	7.275	70	121785	49.097	ng		99
20) 3+4-Methylphenols	7.275	107	145747	47.655	ng		91
22) Acetophenone	7.275	105	213073	49.076	ng		99
24) Nitrobenzene	7.445	77	185466	48.745	ng		98
25) Isophorone	7.687	82	323244	48.766	ng		98
26) 2-Nitrophenol	7.763	139	95946	50.941	ng		96
27) 2,4-Dimethylphenol	7.798	122	155767	55.178	ng		100
28) bis(2-Chloroethoxy)met...	7.892	93	211304	51.050	ng		97
29) 2,4-Dichlorophenol	8.010	162	157975	48.553	ng		99
30) 1,2,4-Trichlorobenzene	8.087	180	165162	49.434	ng		96
31) Naphthalene	8.169	128	461276	47.912	ng		99
32) Benzoic acid	7.928	122	92418	44.662	ng		98
33) 4-Chloroaniline	8.216	127	55944	15.933	ng		98
34) Hexachlorobutadiene	8.281	225	114173	45.343	ng		99
35) Caprolactam	8.586	113	24969	28.011	ng		95
36) 4-Chloro-3-methylphenol	8.704	107	138637	47.544	ng		98
37) 2-Methylnaphthalene	8.857	142	284169	44.147	ng		99
38) 1-Methylnaphthalene	8.957	142	288234	46.408	ng		99
40) 1,2,4,5-Tetrachloroben...	9.028	216	172580	48.656	ng		99
41) Hexachlorocyclopentadiene	9.010	237	131391	90.249	ng		97
43) 2,4,6-Trichlorophenol	9.139	196	116605	48.302	ng		99

Data Path : Z:\svoasrv\HPCHEM1\BNA_F\Data\BF112425\
 Data File : BF144330.D
 Acq On : 24 Nov 2025 18:18
 Operator : RC/JU
 Sample : Q3707-03MSD
 Misc :
 ALS Vial : 11 Sample Multiplier: 1

Instrument :
 BNA_F
 ClientSampleId :
 V933MSD

Quant Time: Nov 25 00:27:16 2025
 Quant Method : Z:\svoasrv\HPCHEM1\BNA_F\Methods\8270-BF110525.M
 Quant Title : ASP BNA STANDARDS FOR 5 POINT CALIBRATION
 QLast Update : Wed Nov 05 18:37:33 2025
 Response via : Initial Calibration

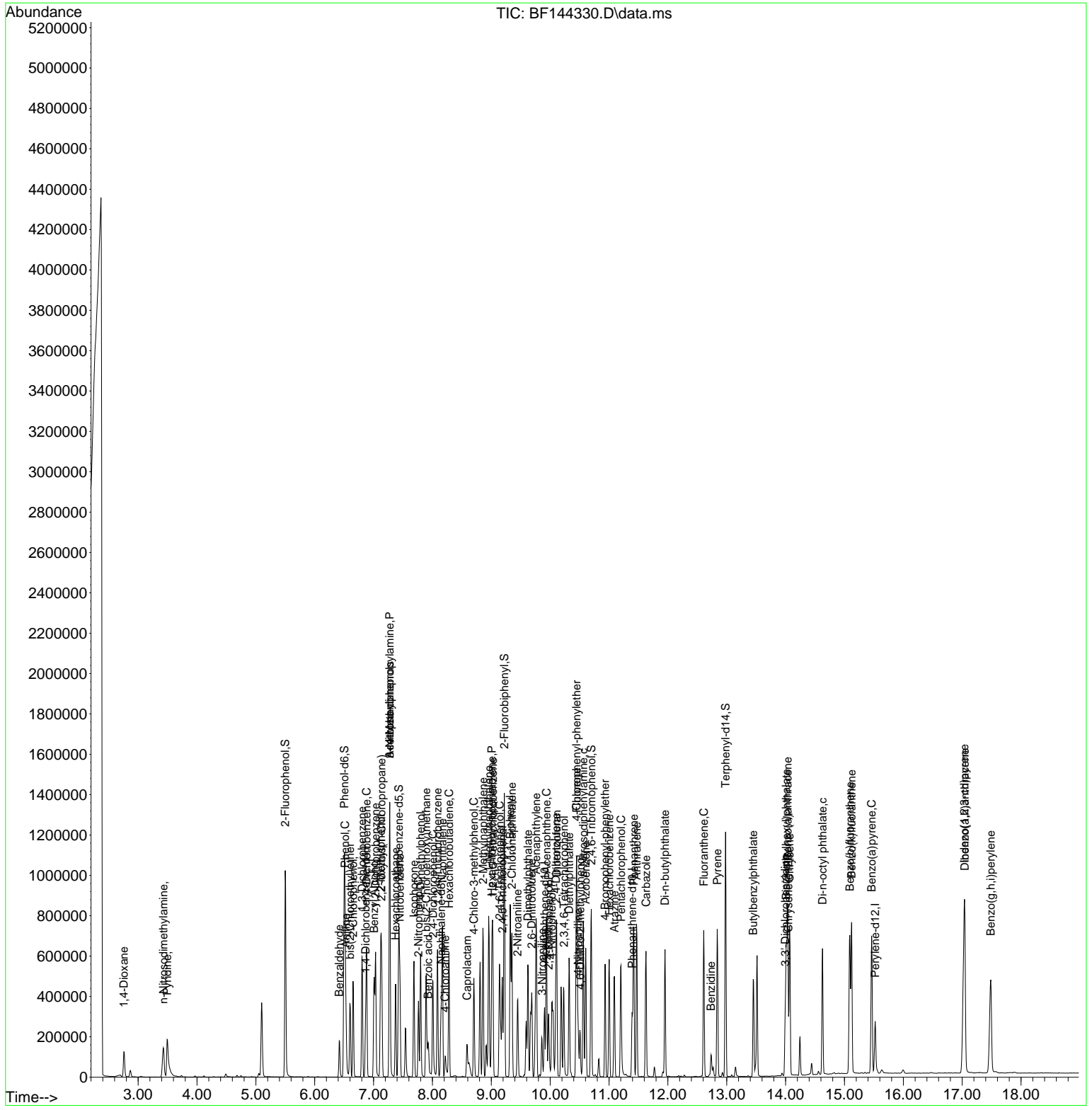
Compound	R.T.	QIon	Response	Conc	Units	Dev(Min)
44) 2,4,5-Trichlorophenol	9.186	196	125939	48.404	ng	99
46) 1,1'-Biphenyl	9.322	154	385263	50.998	ng	99
47) 2-Chloronaphthalene	9.351	162	317400	49.255	ng	99
48) 2-Nitroaniline	9.445	65	93618	50.350	ng	97
49) Acenaphthylene	9.763	152	487623	55.528	ng	100
50) Dimethylphthalate	9.622	163	351298	48.997	ng	100
51) 2,6-Dinitrotoluene	9.686	165	76020	52.377	ng	97
52) Acenaphthene	9.939	154	266576	45.395	ng	100
53) 3-Nitroaniline	9.863	138	47055	29.658	ng	98
54) 2,4-Dinitrophenol	9.975	184	82188	93.776	ng	97
55) Dibenzofuran	10.110	168	395890	48.136	ng	99
56) 4-Nitrophenol	10.028	139	91223	79.484	ng	97
57) 2,4-Dinitrotoluene	10.098	165	97261	50.058	ng #	96
58) Fluorene	10.451	166	307030	49.100	ng	99
59) 2,3,4,6-Tetrachlorophenol	10.233	232	89825	48.796	ng	98
60) Diethylphthalate	10.322	149	313576	47.444	ng	100
61) 4-Chlorophenyl-phenyle...	10.445	204	164852	46.282	ng	99
62) 4-Nitroaniline	10.475	138	68956	45.638	ng	92
63) Azobenzene	10.604	77	313024	50.888	ng	97
65) 4,6-Dinitro-2-methylph...	10.510	198	54861	47.056	ng	92
66) n-Nitrosodiphenylamine	10.563	169	289982	52.536	ng	100
67) 4-Bromophenyl-phenylether	10.933	248	108214	49.400	ng	99
68) Hexachlorobenzene	11.004	284	127803	49.533	ng	97
69) Atrazine	11.092	200	90646	51.638	ng	97
70) Pentachlorophenol	11.204	266	124036	96.539	ng	99
71) Phenanthrene	11.422	178	438107	51.273	ng	100
72) Anthracene	11.469	178	440820	50.736	ng	99
73) Carbazole	11.627	167	374267	50.658	ng	99
74) Di-n-butylphthalate	11.951	149	454700	50.910	ng	99
75) Fluoranthene	12.610	202	432844	49.038	ng	99
77) Benzidine	12.733	184	76022	22.431	ng	98
78) Pyrene	12.839	202	444156	48.078	ng	99
80) Butylbenzylphthalate	13.451	149	167908	52.441	ng	99
81) Benzo(a)anthracene	14.033	228	425225	53.548	ng	99
82) 3,3'-Dichlorobenzidine	13.992	252	95541	35.100	ng	97
83) Chrysene	14.068	228	398390	54.346	ng	99
84) Bis(2-ethylhexyl)phtha...	14.010	149	230126	52.503	ng	98
85) Di-n-octyl phthalate	14.627	149	428567	56.671	ng	99
87) Indeno(1,2,3-cd)pyrene	17.033	276	578952	50.182	ng	97
88) Benzo(b)fluoranthene	15.092	252	480078	52.541	ng	100
89) Benzo(k)fluoranthene	15.121	252	457004	53.436	ng	99
90) Benzo(a)pyrene	15.463	252	465036	55.168	ng	98
91) Dibenzo(a,h)anthracene	17.045	278	469297	50.650	ng	99
92) Benzo(g,h,i)perylene	17.486	276	483782	52.874	ng	98

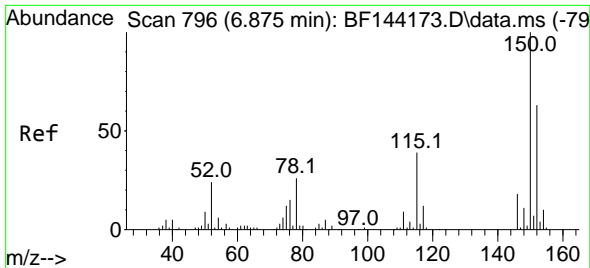
(#) = qualifier out of range (m) = manual integration (+) = signals summed

Data Path : Z:\svoasrv\HPCHEM1\BNA_F\Data\BF112425\
 Data File : BF144330.D
 Acq On : 24 Nov 2025 18:18
 Operator : RC/JU
 Sample : Q3707-03MSD
 Misc :
 ALS Vial : 11 Sample Multiplier: 1

Instrument :
 BNA_F
 ClientSampleId :
 V933MSD

Quant Time: Nov 25 00:27:16 2025
 Quant Method : Z:\svoasrv\HPCHEM1\BNA_F\Methods\8270-BF110525.M
 Quant Title : ASP BNA STANDARDS FOR 5 POINT CALIBRATION
 QLast Update : Wed Nov 05 18:37:33 2025
 Response via : Initial Calibration



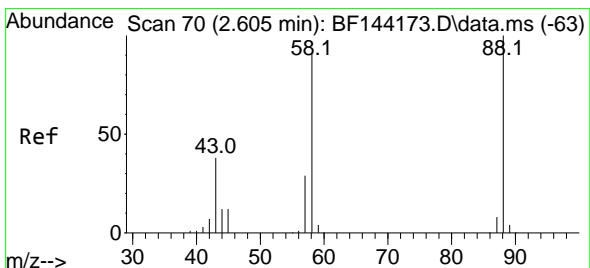
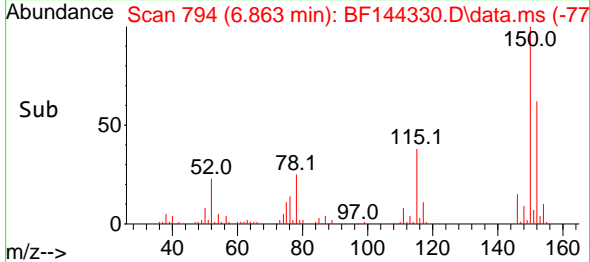
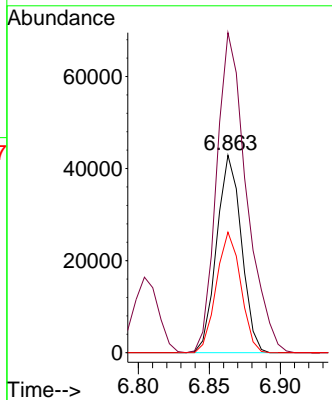
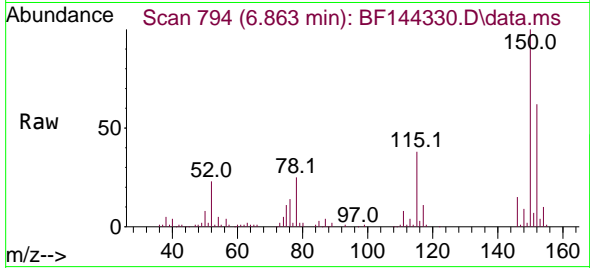


#1
 1,4-Dichlorobenzene-d4
 Concen: 20.000 ng
 RT: 6.863 min Scan# 79
 Delta R.T. -0.012 min
 Lab File: BF144330.D
 Acq: 24 Nov 2025 18:18

Instrument : BNA_F
 ClientSampleId : V933MSD

Tgt Ion:152 Resp: 52039

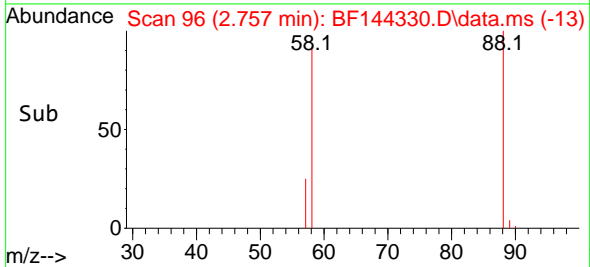
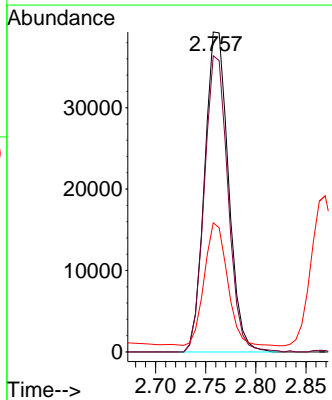
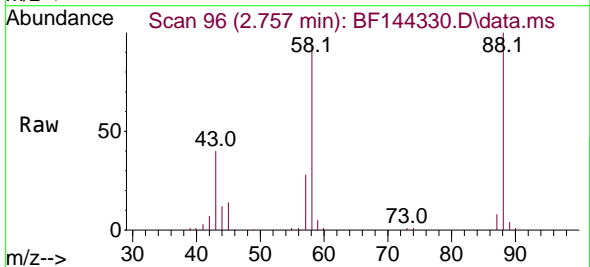
Ion	Ratio	Lower	Upper
152	100		
150	162.1	127.4	191.0
115	61.0	49.5	74.3

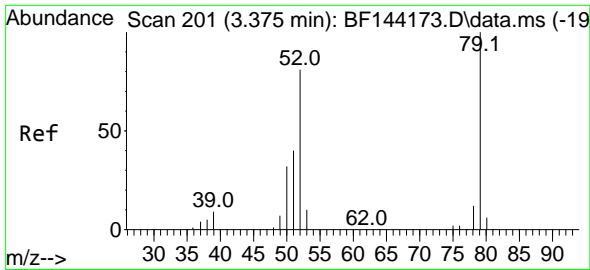


#2
 1,4-Dioxane
 Concen: 47.138 ng
 RT: 2.757 min Scan# 96
 Delta R.T. 0.141 min
 Lab File: BF144330.D
 Acq: 24 Nov 2025 18:18

Tgt Ion: 88 Resp: 64807

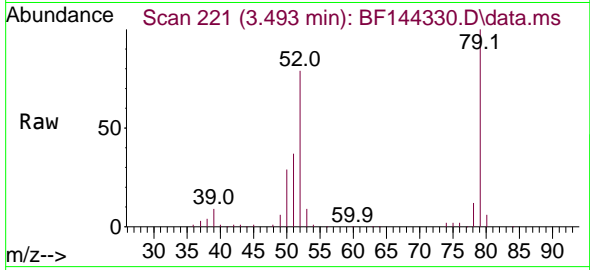
Ion	Ratio	Lower	Upper
88	100		
58	92.0	73.1	109.7
43	0.0	31.0	46.6



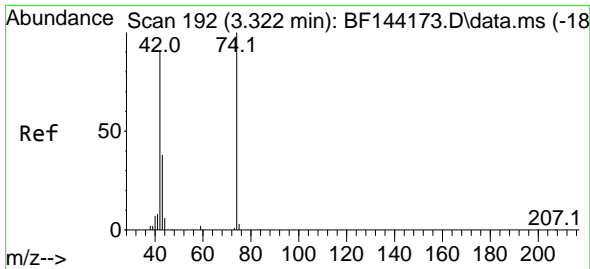
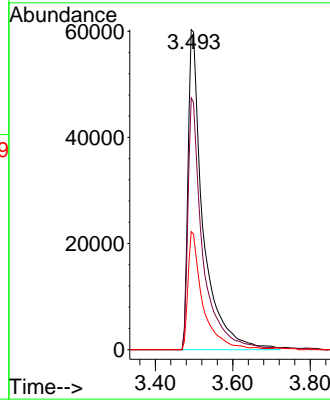
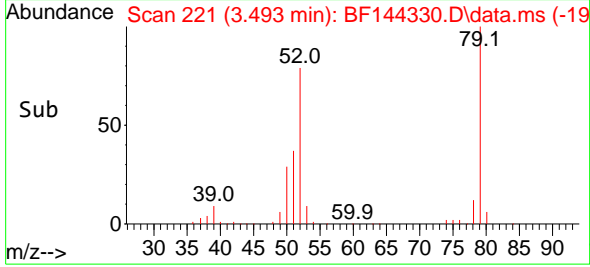


#3
 Pyridine
 Concen: 42.503 ng
 RT: 3.493 min Scan# 210
 Delta R.T. 0.082 min
 Lab File: BF144330.D
 Acq: 24 Nov 2025 18:18

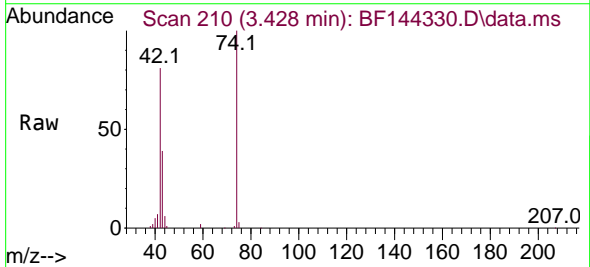
Instrument :
 BNA_F
 ClientSampleId :
 V933MSD



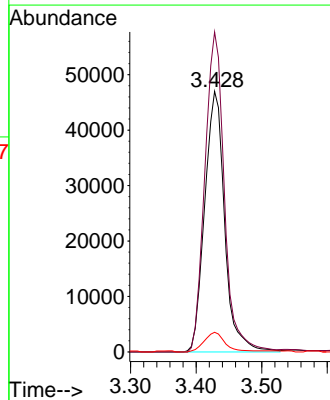
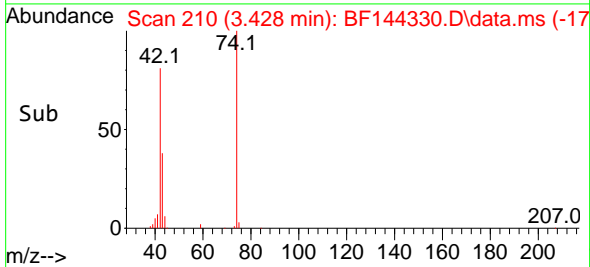
Tgt Ion: 79 Resp: 163027
 Ion Ratio Lower Upper
 79 100
 52 78.7 64.5 96.7
 51 36.9 31.7 47.5

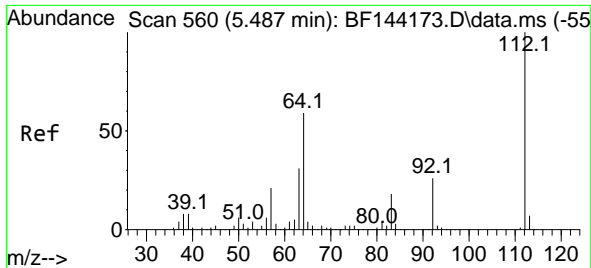


#4
 n-Nitrosodimethylamine
 Concen: 49.645 ng
 RT: 3.428 min Scan# 210
 Delta R.T. 0.082 min
 Lab File: BF144330.D
 Acq: 24 Nov 2025 18:18



Tgt Ion: 42 Resp: 99465
 Ion Ratio Lower Upper
 42 100
 74 122.8 88.2 132.4
 44 7.5 5.7 8.5



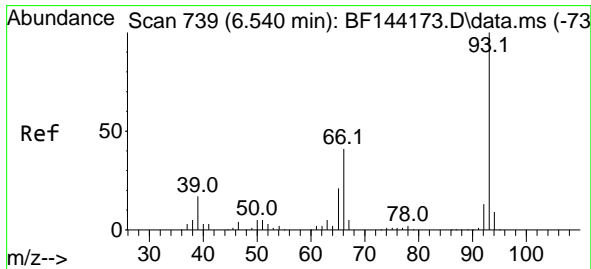
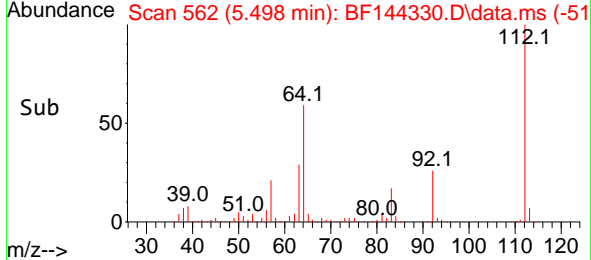
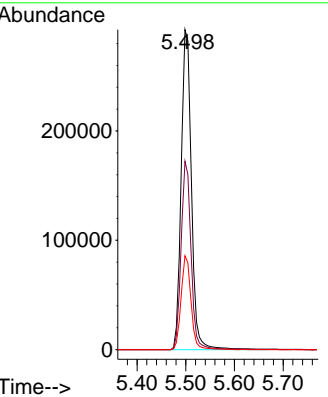
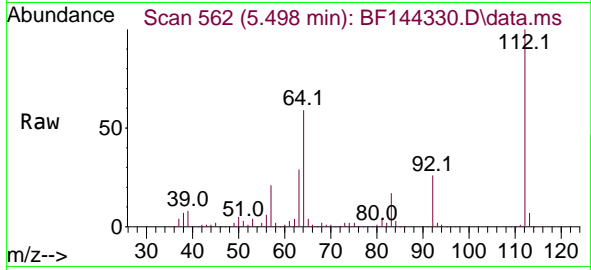


#5
 2-Fluorophenol
 Concen: 127.914 ng
 RT: 5.498 min Scan# 50
 Delta R.T. 0.006 min
 Lab File: BF144330.D
 Acq: 24 Nov 2025 18:18

Instrument :
 BNA_F
 ClientSampleId :
 V933MSD

Tgt Ion:112 Resp: 425371

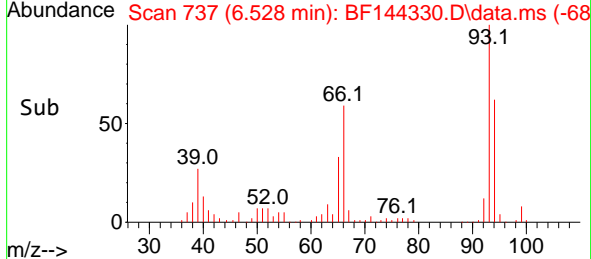
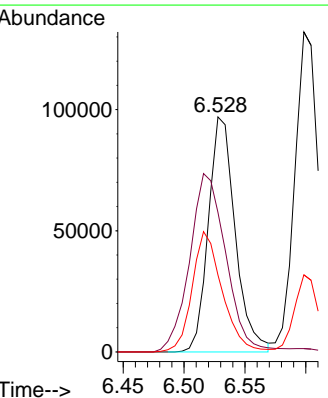
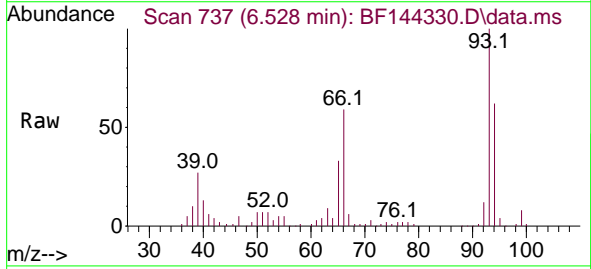
Ion	Ratio	Lower	Upper
112	100		
64	58.8	47.2	70.8
63	29.3	24.4	36.6

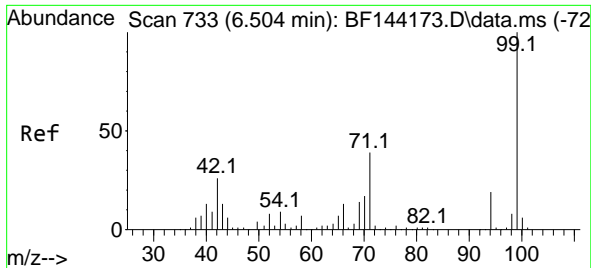


#6
 Aniline
 Concen: 27.744 ng
 RT: 6.528 min Scan# 737
 Delta R.T. -0.006 min
 Lab File: BF144330.D
 Acq: 24 Nov 2025 18:18

Tgt Ion: 93 Resp: 148943

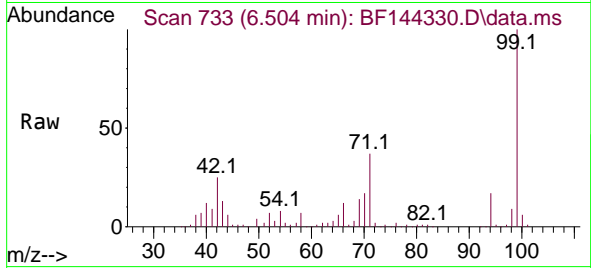
Ion	Ratio	Lower	Upper
93	100		
66	59.4	34.3	51.5#
65	32.8	16.9	25.3#





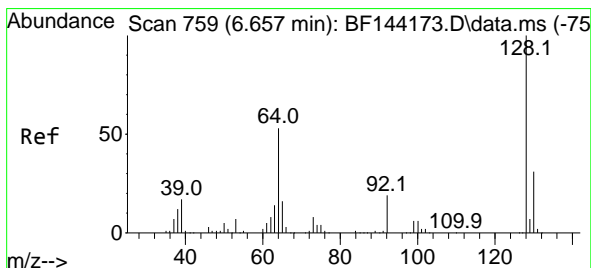
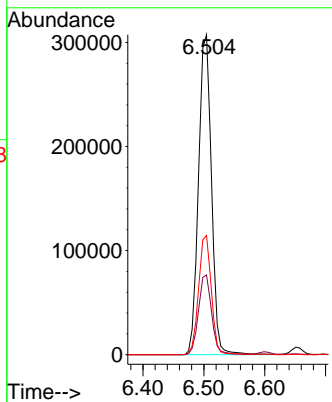
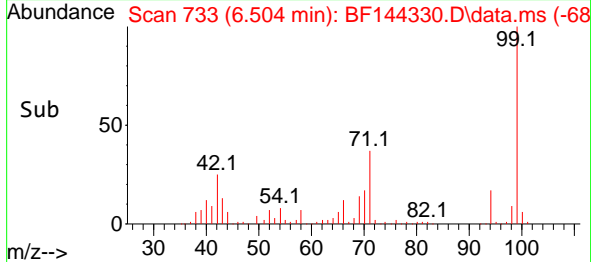
#7
 Phenol-d6
 Concen: 120.433 ng
 RT: 6.504 min Scan# 731
 Delta R.T. 0.006 min
 Lab File: BF144330.D
 Acq: 24 Nov 2025 18:18

Instrument :
 BNA_F
 ClientSampleId :
 V933MSD

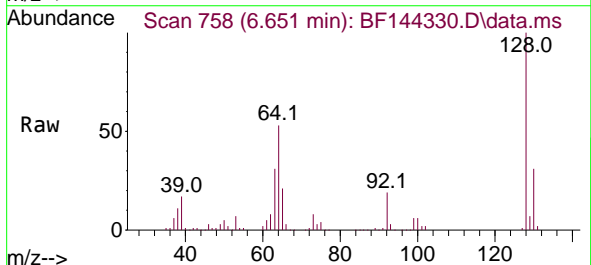


Tgt Ion: 99 Resp: 453790

Ion	Ratio	Lower	Upper
99	100		
42	24.9	20.9	31.3
71	37.2	31.4	47.2

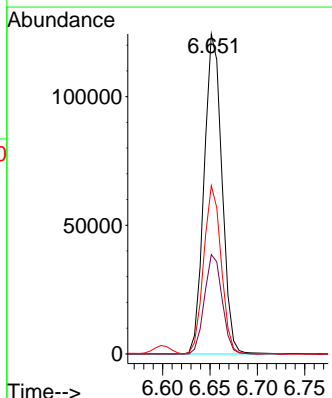
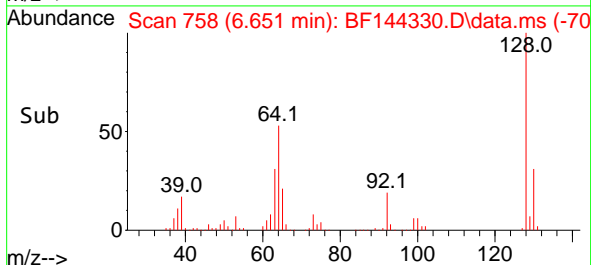


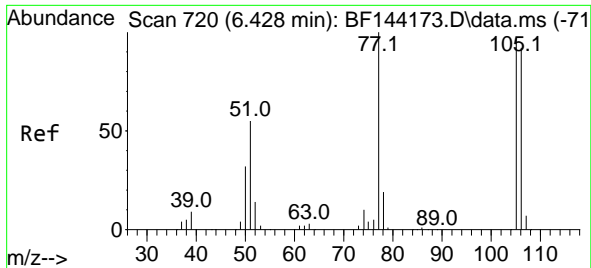
#8
 2-Chlorophenol
 Concen: 49.884 ng
 RT: 6.651 min Scan# 758
 Delta R.T. -0.006 min
 Lab File: BF144330.D
 Acq: 24 Nov 2025 18:18



Tgt Ion: 128 Resp: 162684

Ion	Ratio	Lower	Upper
128	100		
130	31.0	10.5	50.5
64	52.6	33.2	73.2

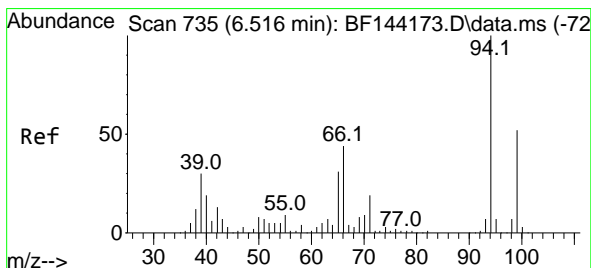
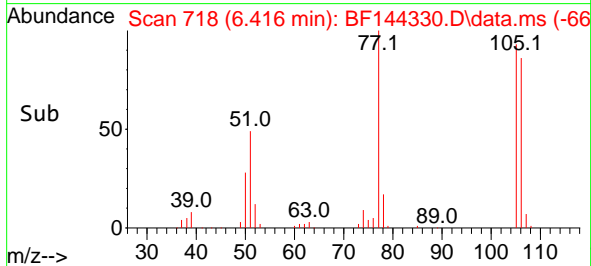
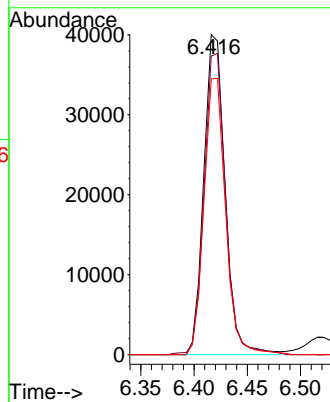
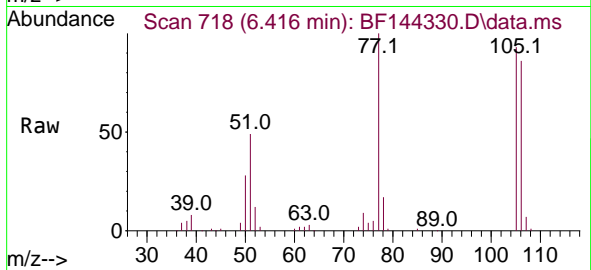




#9
 Benzaldehyde
 Concen: 26.118 ng
 RT: 6.416 min Scan# 718
 Delta R.T. -0.012 min
 Lab File: BF144330.D
 Acq: 24 Nov 2025 18:18

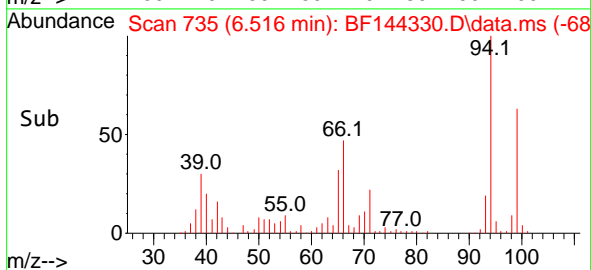
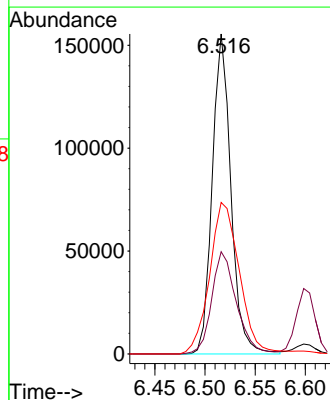
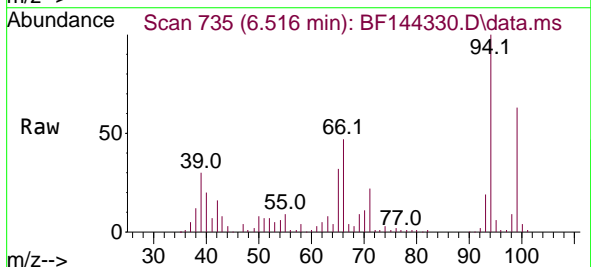
Instrument :
 BNA_F
 ClientSampleId :
 V933MSD

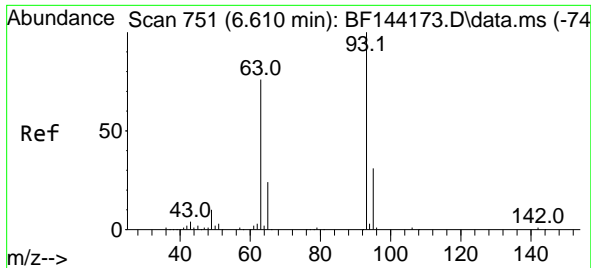
Tgt Ion: 77 Resp: 55572
 Ion Ratio Lower Upper
 77 100
 105 93.3 77.2 117.2
 106 86.2 72.2 112.2



#10
 Phenol
 Concen: 43.761 ng
 RT: 6.516 min Scan# 735
 Delta R.T. 0.006 min
 Lab File: BF144330.D
 Acq: 24 Nov 2025 18:18

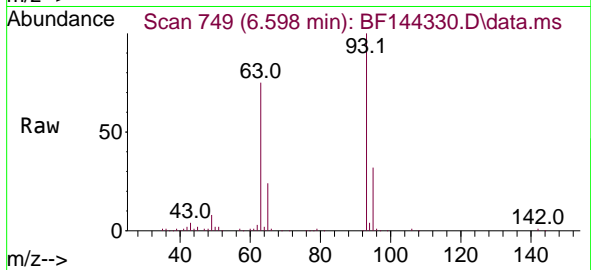
Tgt Ion: 94 Resp: 201463
 Ion Ratio Lower Upper
 94 100
 65 31.9 10.8 50.8
 66 47.4 24.3 64.3





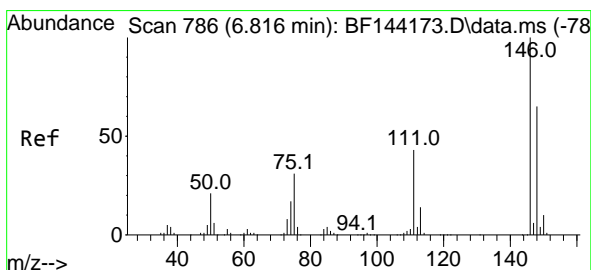
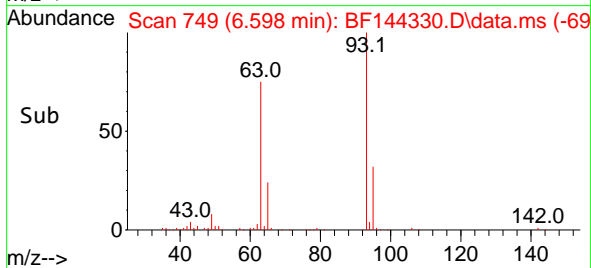
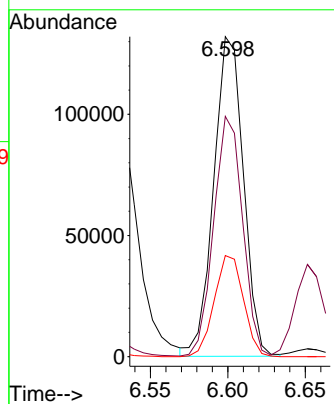
#11
 bis(2-Chloroethyl)ether
 Concen: 52.561 ng
 RT: 6.598 min Scan# 749
 Delta R.T. -0.006 min
 Lab File: BF144330.D
 Acq: 24 Nov 2025 18:18

Instrument :
 BNA_F
 ClientSampleId :
 V933MSD



Tgt Ion: 93 Resp: 176319

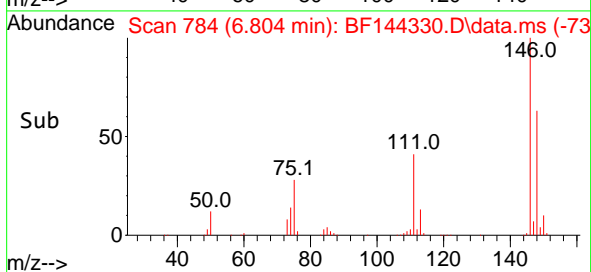
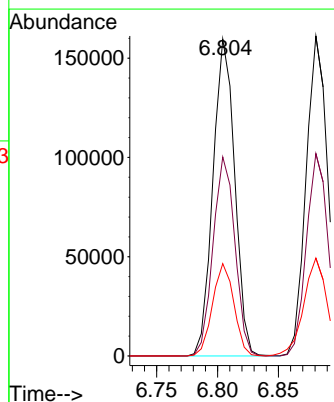
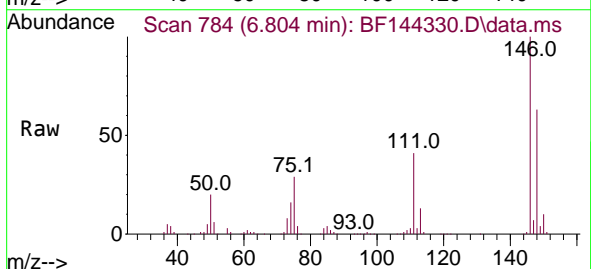
Ion	Ratio	Lower	Upper
93	100		
63	75.1	55.2	95.2
95	31.6	11.2	51.2

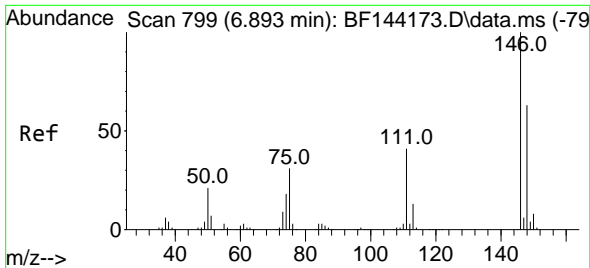


#12
 1,3-Dichlorobenzene
 Concen: 49.282 ng
 RT: 6.804 min Scan# 784
 Delta R.T. -0.012 min
 Lab File: BF144330.D
 Acq: 24 Nov 2025 18:18

Tgt Ion: 146 Resp: 198322

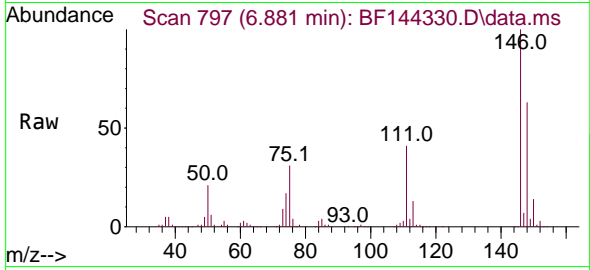
Ion	Ratio	Lower	Upper
146	100		
148	62.8	51.8	77.8
75	29.1	25.0	37.4



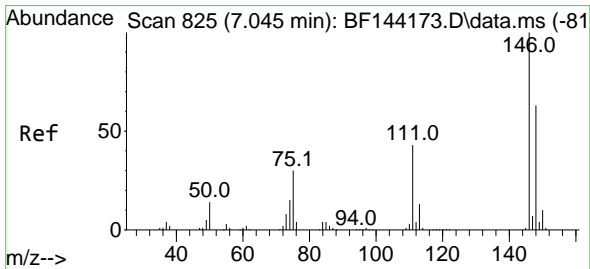
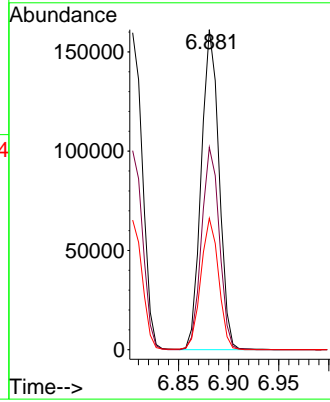
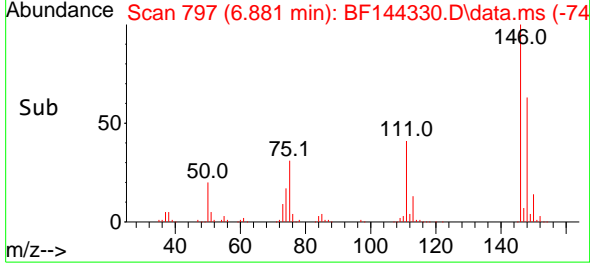


#13
 1,4-Dichlorobenzene
 Concen: 49.223 ng
 RT: 6.881 min Scan# 799
 Delta R.T. -0.012 min
 Lab File: BF144330.D
 Acq: 24 Nov 2025 18:18

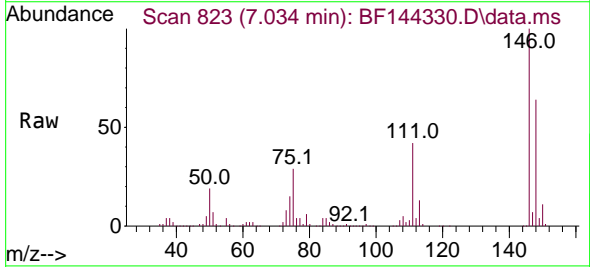
Instrument :
 BNA_F
 ClientSampleId :
 V933MSD



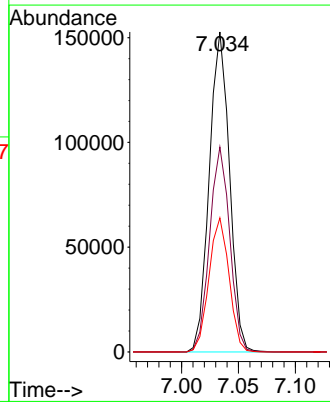
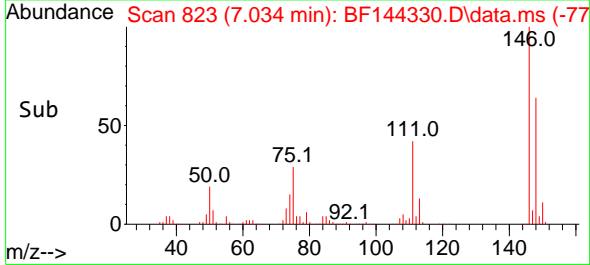
Tgt Ion:146 Resp: 198450
 Ion Ratio Lower Upper
 146 100
 148 63.2 50.2 75.2
 111 41.0 32.6 48.8

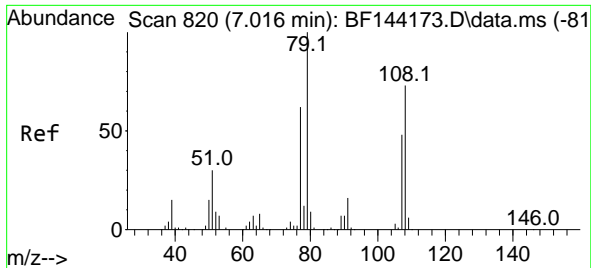


#14
 1,2-Dichlorobenzene
 Concen: 49.030 ng
 RT: 7.034 min Scan# 823
 Delta R.T. -0.012 min
 Lab File: BF144330.D
 Acq: 24 Nov 2025 18:18



Tgt Ion:146 Resp: 189467
 Ion Ratio Lower Upper
 146 100
 148 64.0 50.7 76.1
 111 41.9 34.2 51.4

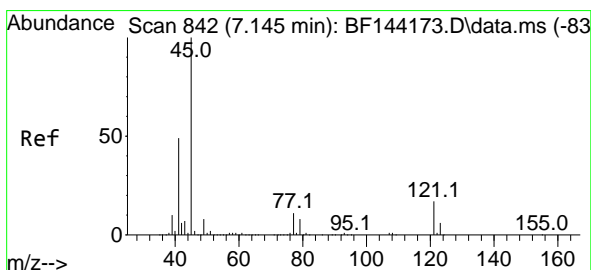
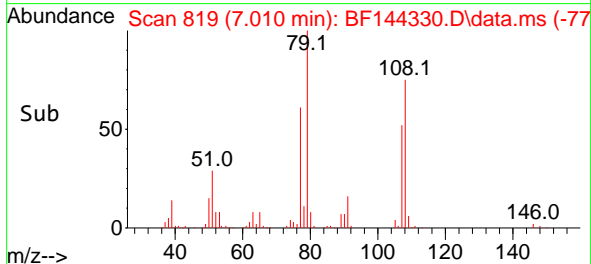
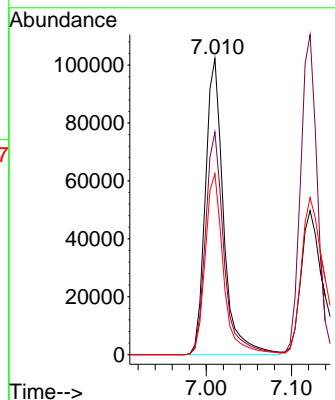
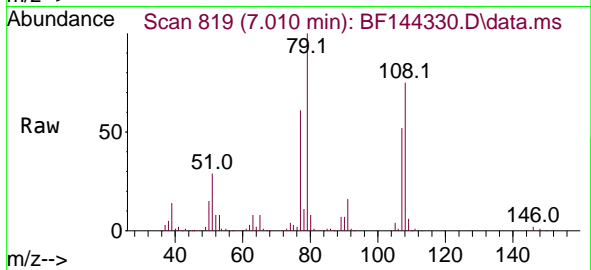




#15
Benzyl Alcohol
Concen: 50.669 ng
RT: 7.010 min Scan# 819
Delta R.T. -0.012 min
Lab File: BF144330.D
Acq: 24 Nov 2025 18:18

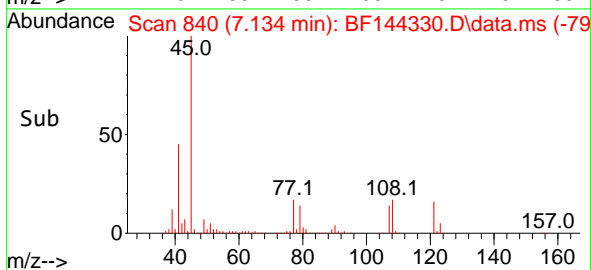
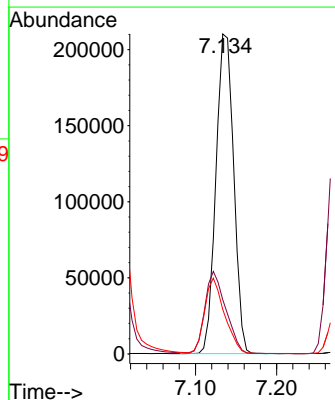
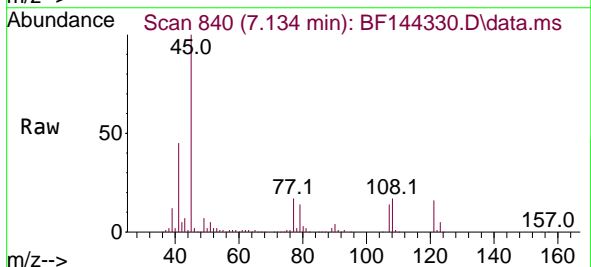
Instrument :
BNA_F
ClientSampleId :
V933MSD

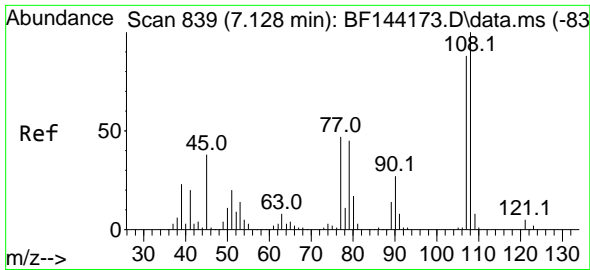
Tgt Ion: 79 Resp: 151176
Ion Ratio Lower Upper
79 100
108 75.2 58.2 87.4
77 61.1 49.9 74.9



#16
2,2'-oxybis(1-Chloropropane)
Concen: 51.716 ng
RT: 7.134 min Scan# 840
Delta R.T. -0.006 min
Lab File: BF144330.D
Acq: 24 Nov 2025 18:18

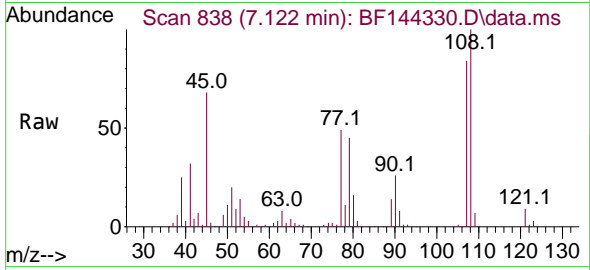
Tgt Ion: 45 Resp: 319472
Ion Ratio Lower Upper
45 100
77 17.0 0.0 31.8
79 13.9 0.0 29.1





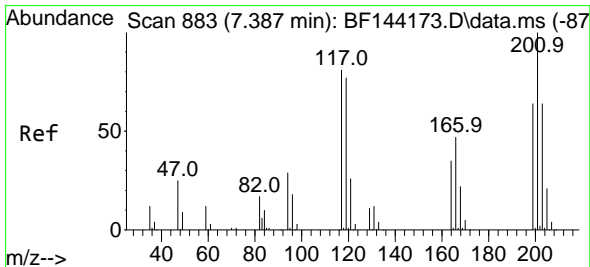
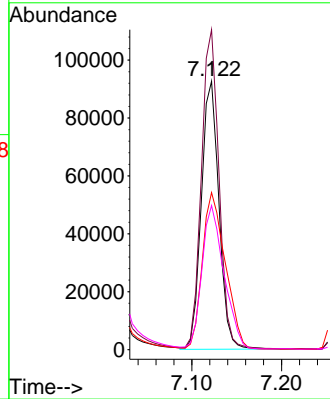
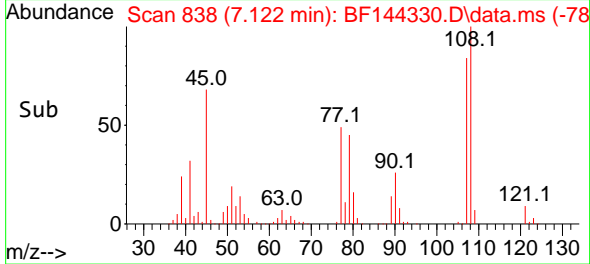
#17
 2-Methylphenol
 Concen: 48.634 ng
 RT: 7.122 min Scan# 81
 Delta R.T. -0.000 min
 Lab File: BF144330.D
 Acq: 24 Nov 2025 18:18

Instrument :
 BNA_F
 ClientSampleId :
 V933MSD

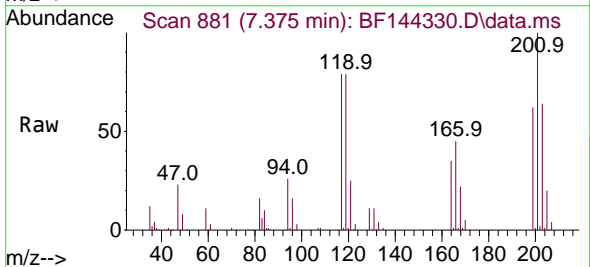


Tgt Ion:107 Resp: 126178

Ion	Ratio	Lower	Upper
107	100		
108	119.2	91.0	136.4
77	58.5	42.7	64.1
79	53.7	41.4	62.2

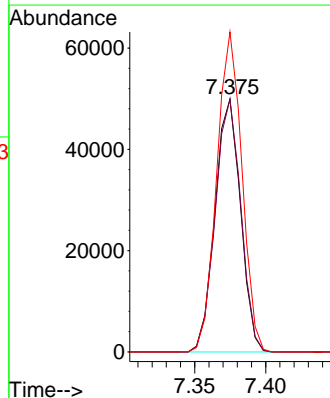
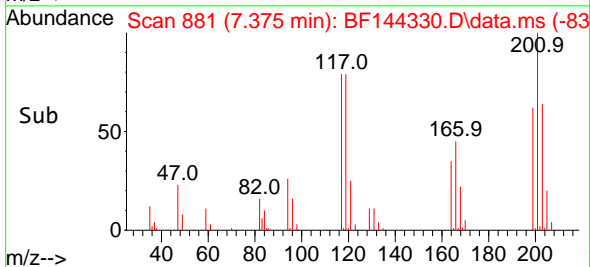


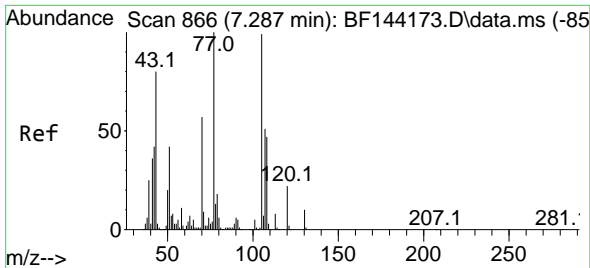
#18
 Hexachloroethane
 Concen: 46.625 ng
 RT: 7.375 min Scan# 881
 Delta R.T. -0.012 min
 Lab File: BF144330.D
 Acq: 24 Nov 2025 18:18



Tgt Ion:117 Resp: 62452

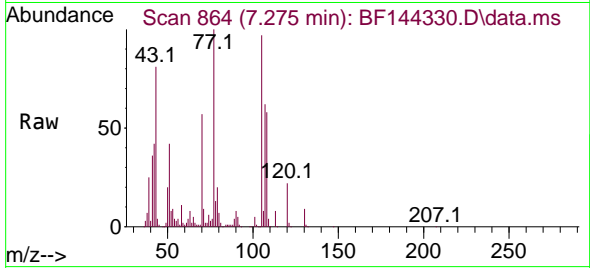
Ion	Ratio	Lower	Upper
117	100		
119	100.0	75.8	113.8
201	126.6	98.9	148.3





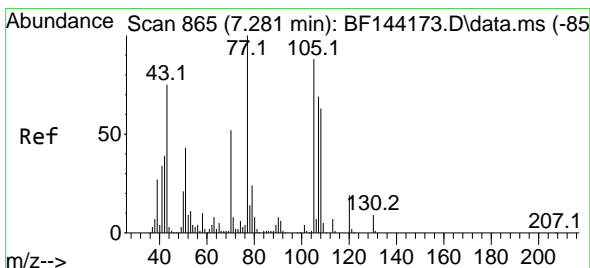
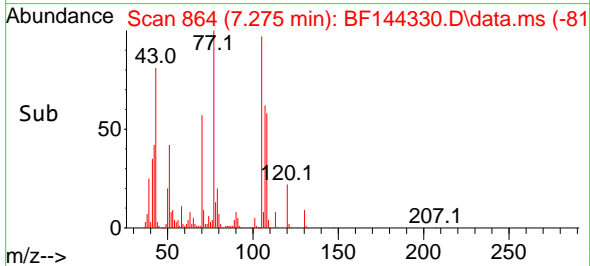
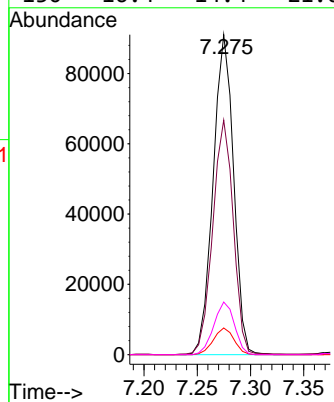
#19
 n-Nitroso-di-n-propylamine
 Concen: 49.097 ng
 RT: 7.275 min Scan# 864
 Delta R.T. -0.000 min
 Lab File: BF144330.D
 Acq: 24 Nov 2025 18:18

Instrument :
 BNA_F
 ClientSampleId :
 V933MSD



Tgt Ion: 70 Resp: 121785

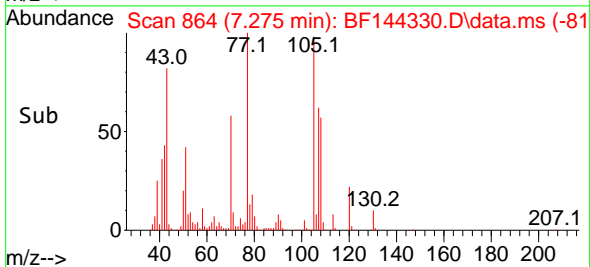
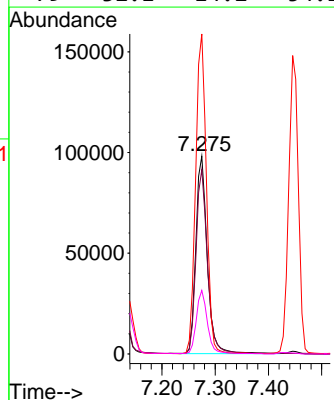
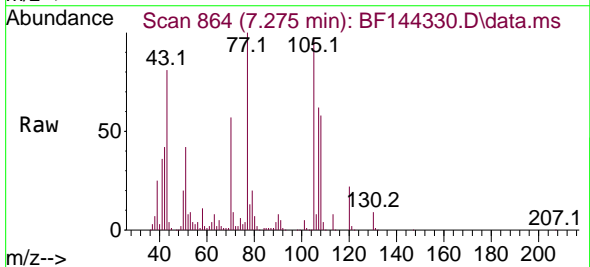
Ion	Ratio	Lower	Upper
70	100		
42	73.3	58.3	87.5
101	8.3	7.0	10.6
130	16.4	14.4	21.6

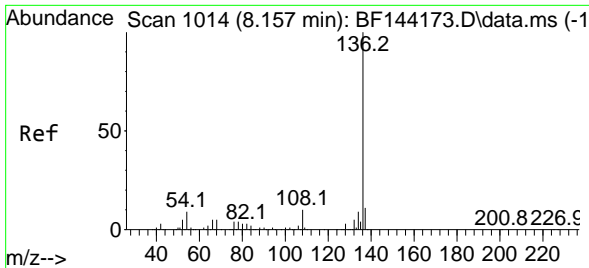


#20
 3+4-Methylphenols
 Concen: 47.655 ng
 RT: 7.275 min Scan# 864
 Delta R.T. -0.012 min
 Lab File: BF144330.D
 Acq: 24 Nov 2025 18:18

Tgt Ion: 107 Resp: 145747

Ion	Ratio	Lower	Upper
107	100		
108	93.2	70.2	110.2
77	161.8	123.9	163.9
79	32.1	14.2	54.2



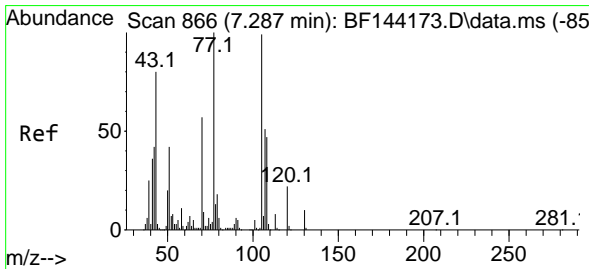
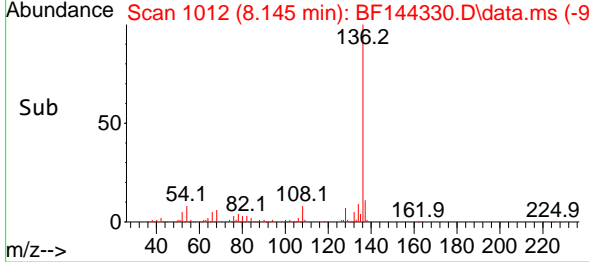
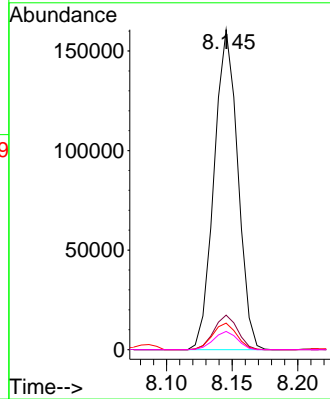
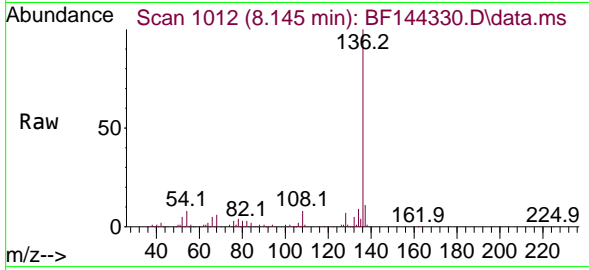


#21
 Naphthalene-d8
 Concen: 20.000 ng
 RT: 8.145 min Scan# 10
 Delta R.T. -0.012 min
 Lab File: BF144330.D
 Acq: 24 Nov 2025 18:18

Instrument :
 BNA_F
 ClientSampleId :
 V933MSD

Tgt Ion:136 Resp: 202390

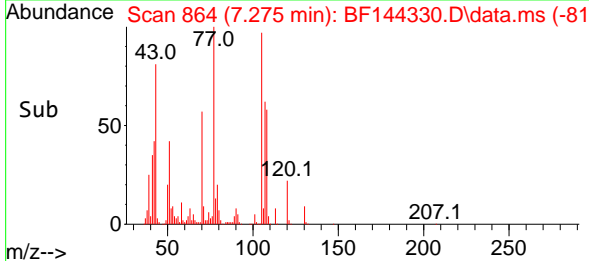
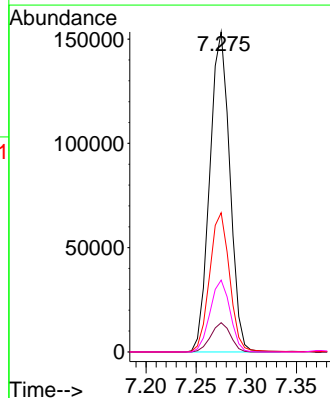
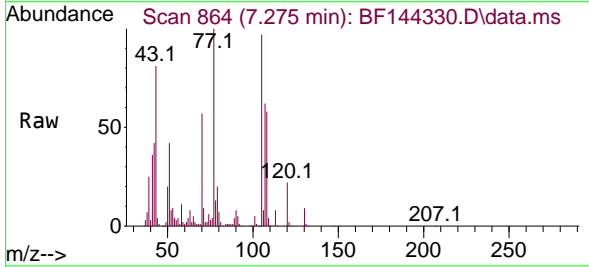
Ion	Ratio	Lower	Upper
136	100		
137	10.8	8.6	13.0
54	8.3	7.0	10.6
68	5.7	4.3	6.5

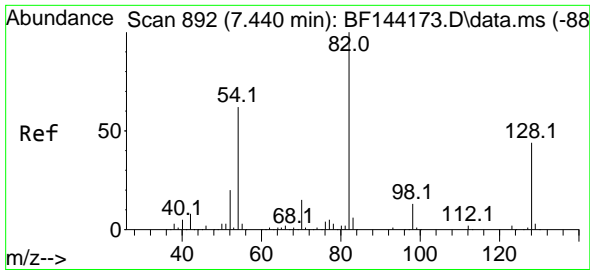


#22
 Acetophenone
 Concen: 49.076 ng
 RT: 7.275 min Scan# 864
 Delta R.T. -0.006 min
 Lab File: BF144330.D
 Acq: 24 Nov 2025 18:18

Tgt Ion:105 Resp: 213073

Ion	Ratio	Lower	Upper
105	100		
71	9.1	7.2	10.8
51	43.5	34.0	51.0
120	22.4	17.8	26.6



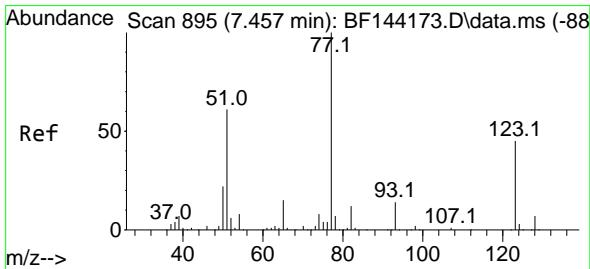
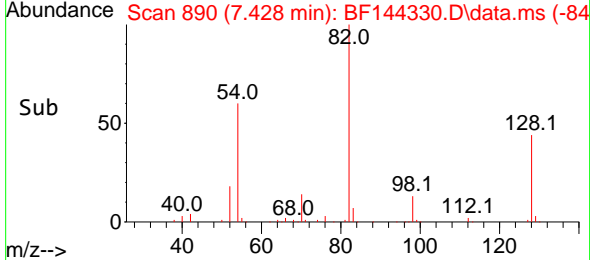
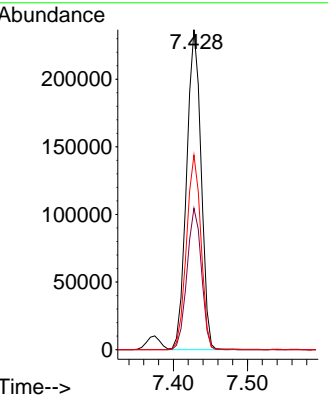
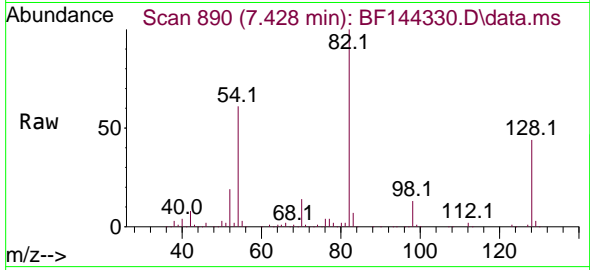


#23
 Nitrobenzene-d5
 Concen: 91.893 ng
 RT: 7.428 min Scan# 893
 Delta R.T. -0.006 min
 Lab File: BF144330.D
 Acq: 24 Nov 2025 18:18

Instrument :
 BNA_F
 ClientSampleId :
 V933MSD

Tgt Ion: 82 Resp: 322021

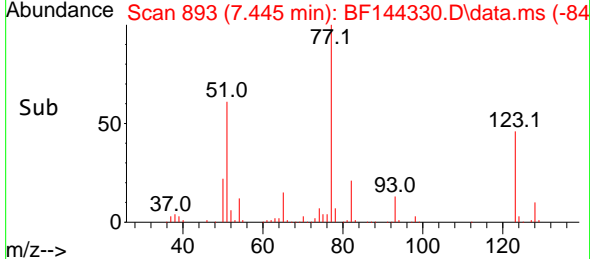
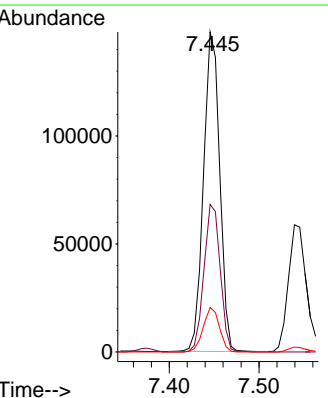
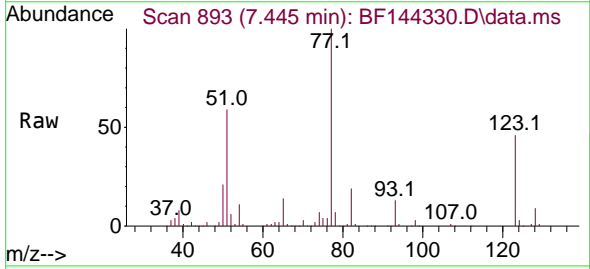
Ion	Ratio	Lower	Upper
82	100		
128	44.2	34.7	52.1
54	60.8	49.5	74.3

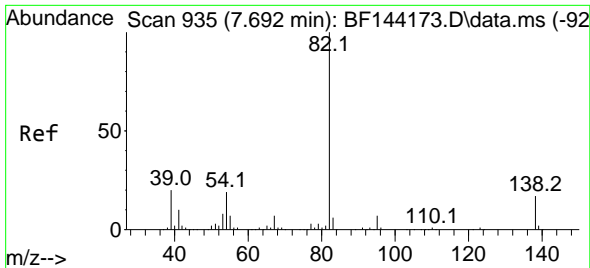


#24
 Nitrobenzene
 Concen: 48.745 ng
 RT: 7.445 min Scan# 893
 Delta R.T. -0.006 min
 Lab File: BF144330.D
 Acq: 24 Nov 2025 18:18

Tgt Ion: 77 Resp: 185466

Ion	Ratio	Lower	Upper
77	100		
123	46.1	35.8	53.8
65	13.9	12.2	18.2



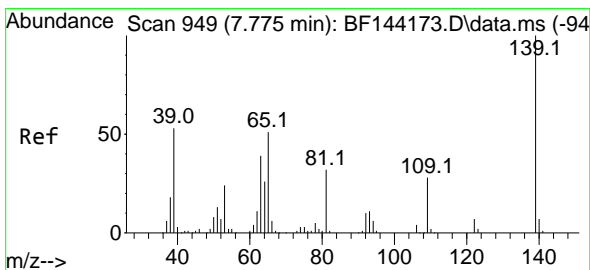
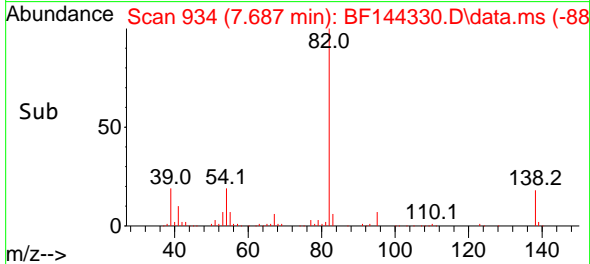
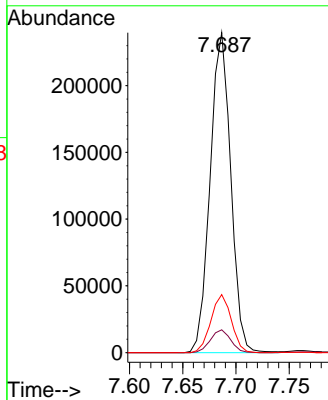
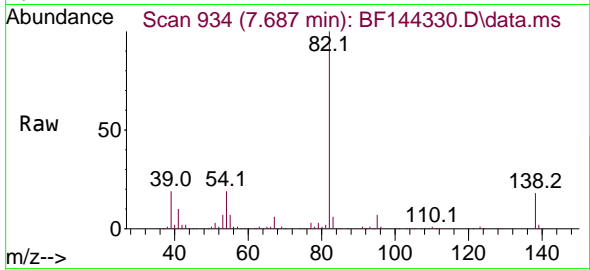


#25
 Isophorone
 Concen: 48.766 ng
 RT: 7.687 min Scan# 91
 Delta R.T. -0.000 min
 Lab File: BF144330.D
 Acq: 24 Nov 2025 18:18

Instrument :
 BNA_F
 ClientSampleId :
 V933MSD

Tgt Ion: 82 Resp: 323244

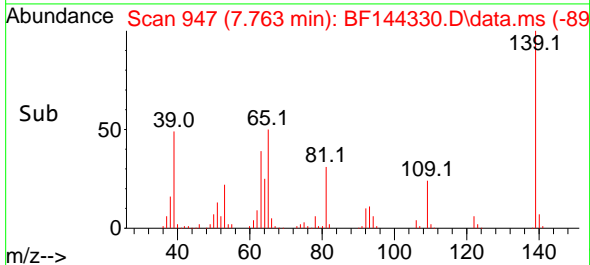
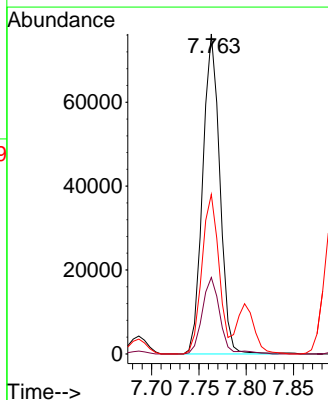
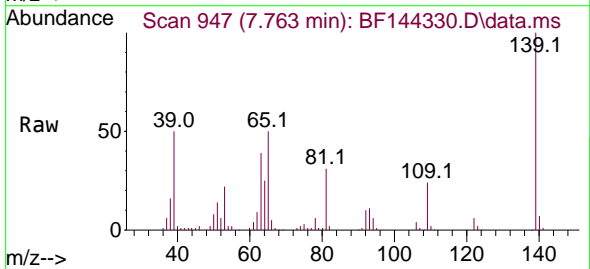
Ion	Ratio	Lower	Upper
82	100		
95	7.1	5.5	8.3
138	18.1	13.7	20.5

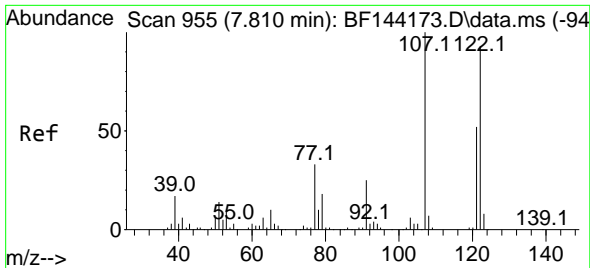


#26
 2-Nitrophenol
 Concen: 50.941 ng
 RT: 7.763 min Scan# 947
 Delta R.T. -0.012 min
 Lab File: BF144330.D
 Acq: 24 Nov 2025 18:18

Tgt Ion: 139 Resp: 95946

Ion	Ratio	Lower	Upper
139	100		
109	23.9	22.2	33.2
65	49.8	40.7	61.1



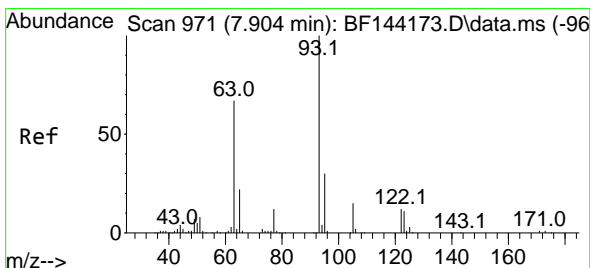
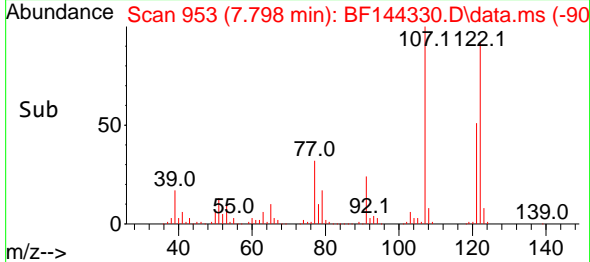
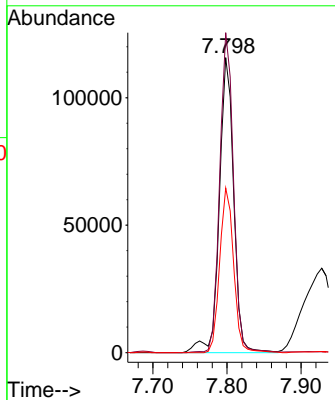
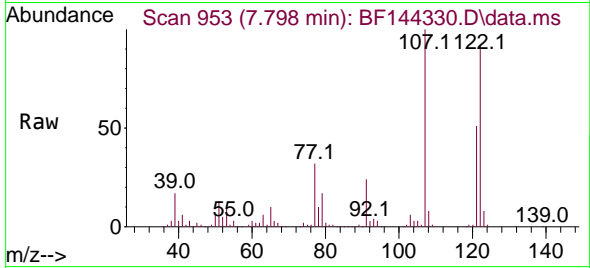


#27
 2,4-Dimethylphenol
 Concen: 55.178 ng
 RT: 7.798 min Scan# 911
 Delta R.T. -0.006 min
 Lab File: BF144330.D
 Acq: 24 Nov 2025 18:18

Instrument :
 BNA_F
 ClientSampleId :
 V933MSD

Tgt Ion:122 Resp: 155767

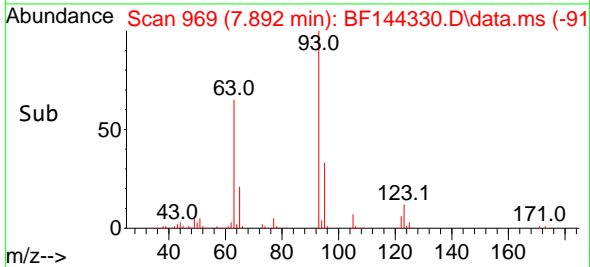
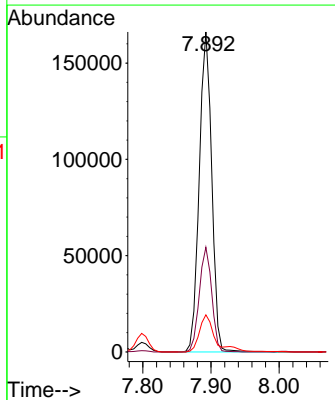
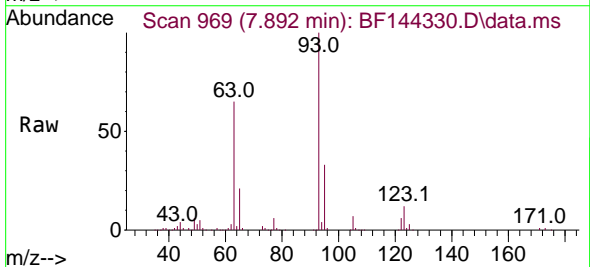
Ion	Ratio	Lower	Upper
122	100		
107	108.5	86.2	129.4
121	55.8	44.6	66.8

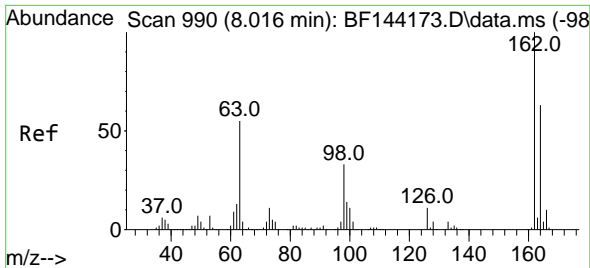


#28
 bis(2-Chloroethoxy)methane
 Concen: 51.050 ng
 RT: 7.892 min Scan# 969
 Delta R.T. -0.006 min
 Lab File: BF144330.D
 Acq: 24 Nov 2025 18:18

Tgt Ion: 93 Resp: 211304

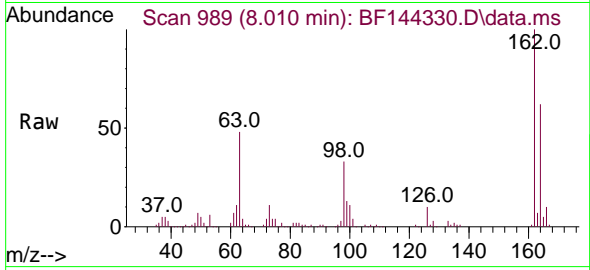
Ion	Ratio	Lower	Upper
93	100		
95	32.7	24.2	36.4
123	11.6	9.0	13.4



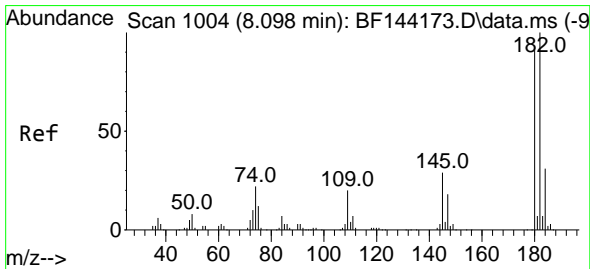
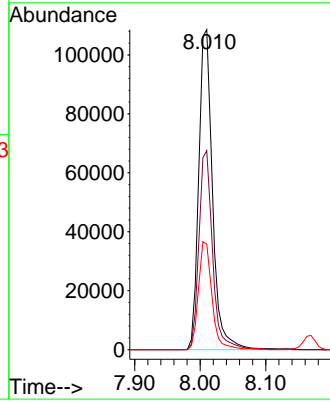
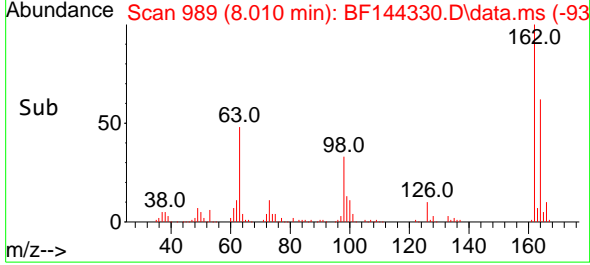


#29
 2,4-Dichlorophenol
 Concen: 48.553 ng
 RT: 8.010 min Scan# 98
 Delta R.T. -0.006 min
 Lab File: BF144330.D
 Acq: 24 Nov 2025 18:18

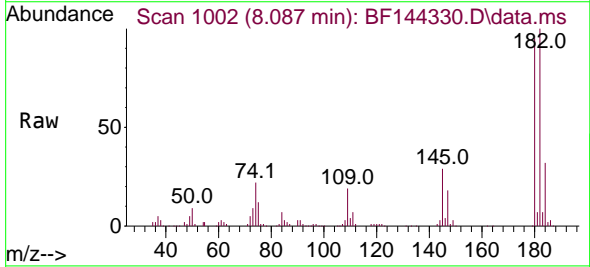
Instrument :
 BNA_F
 ClientSampleId :
 V933MSD



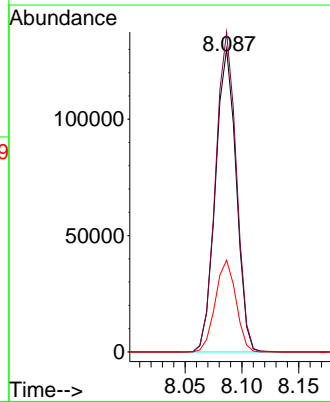
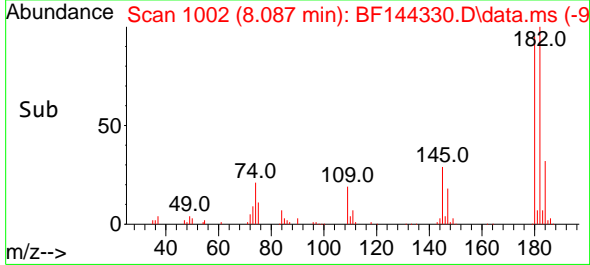
Tgt Ion:162 Resp: 157975
 Ion Ratio Lower Upper
 162 100
 164 62.2 42.9 82.9
 98 33.0 13.3 53.3

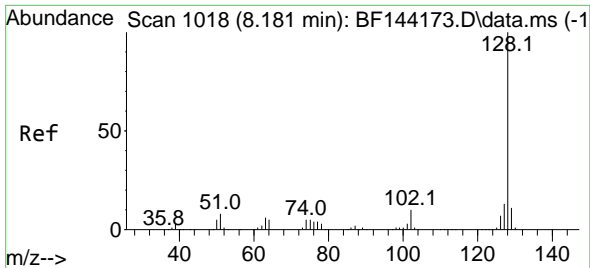


#30
 1,2,4-Trichlorobenzene
 Concen: 49.434 ng
 RT: 8.087 min Scan# 1002
 Delta R.T. -0.012 min
 Lab File: BF144330.D
 Acq: 24 Nov 2025 18:18



Tgt Ion:180 Resp: 165162
 Ion Ratio Lower Upper
 180 100
 182 105.6 87.7 131.5
 145 30.3 25.4 38.0

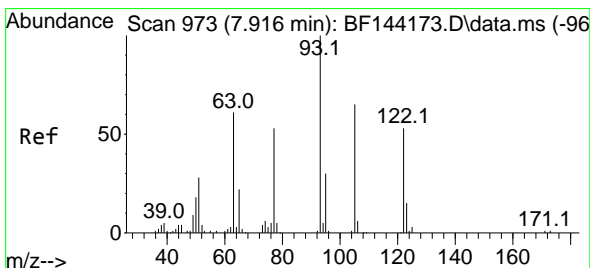
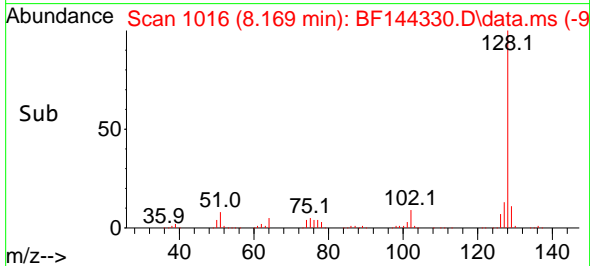
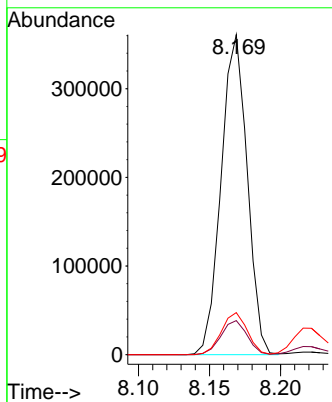
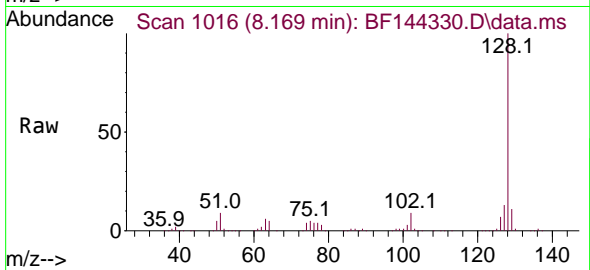




#31
 Naphthalene
 Concen: 47.912 ng
 RT: 8.169 min Scan# 1016
 Delta R.T. -0.006 min
 Lab File: BF144330.D
 Acq: 24 Nov 2025 18:18

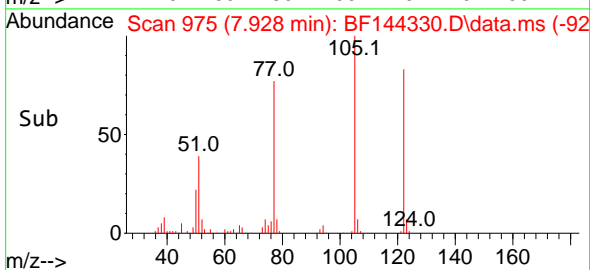
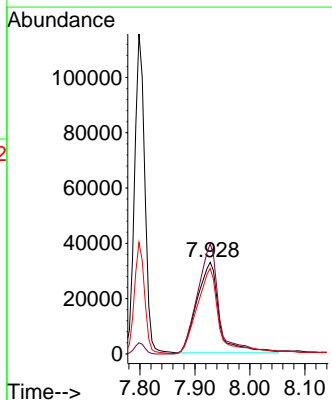
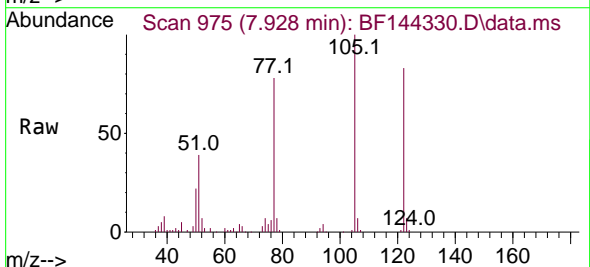
Instrument :
 BNA_F
 ClientSampleId :
 V933MSD

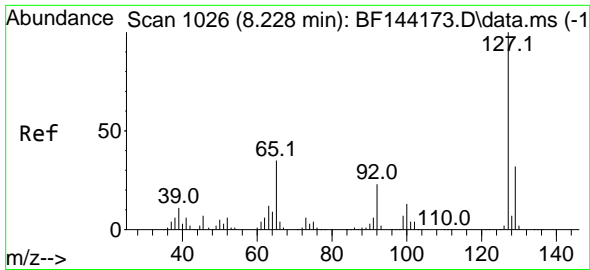
Tgt Ion:128 Resp: 461276
 Ion Ratio Lower Upper
 128 100
 129 10.6 8.9 13.3
 127 13.1 10.3 15.5



#32
 Benzoic acid
 Concen: 44.662 ng
 RT: 7.928 min Scan# 975
 Delta R.T. -0.023 min
 Lab File: BF144330.D
 Acq: 24 Nov 2025 18:18

Tgt Ion:122 Resp: 92418
 Ion Ratio Lower Upper
 122 100
 105 120.1 99.9 139.9
 77 93.3 77.5 117.5



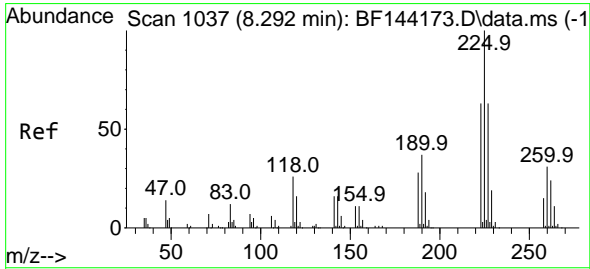
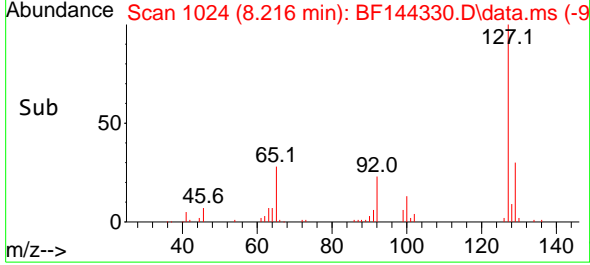
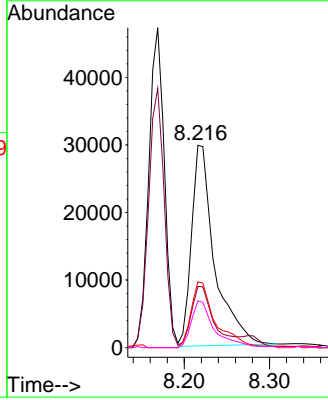
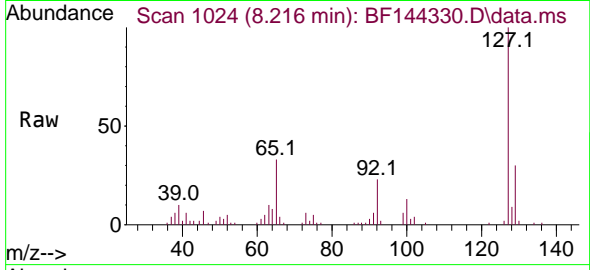


#33
 4-Chloroaniline
 Concen: 15.933 ng
 RT: 8.216 min Scan# 1024
 Delta R.T. -0.012 min
 Lab File: BF144330.D
 Acq: 24 Nov 2025 18:18

Instrument : BNA_F
 ClientSampleId : V933MSD

Tgt Ion:127 Resp: 55944

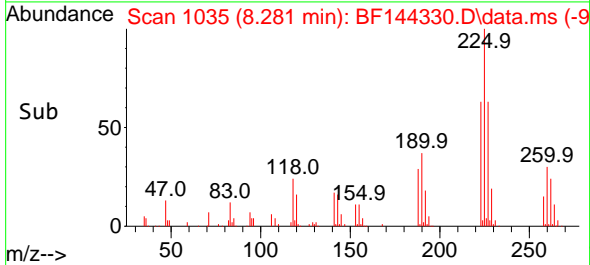
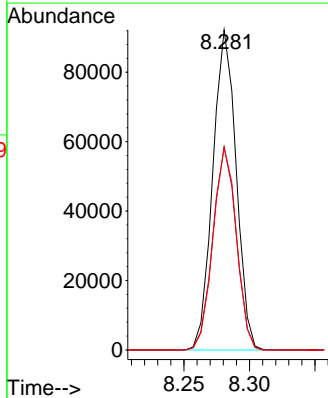
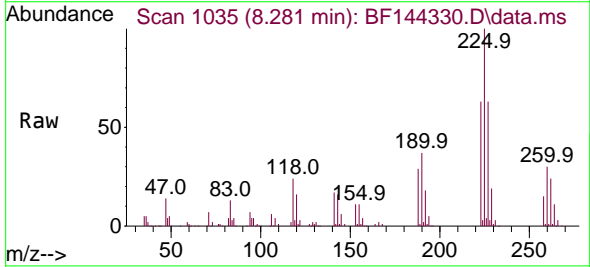
Ion	Ratio	Lower	Upper
127	100		
129	30.3	25.3	37.9
65	32.6	27.6	41.4
92	23.1	18.4	27.6

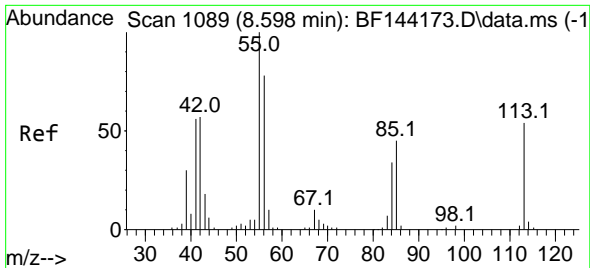


#34
 Hexachlorobutadiene
 Concen: 45.343 ng
 RT: 8.281 min Scan# 1035
 Delta R.T. -0.012 min
 Lab File: BF144330.D
 Acq: 24 Nov 2025 18:18

Tgt Ion:225 Resp: 114173

Ion	Ratio	Lower	Upper
225	100		
223	63.2	50.2	75.4
227	63.4	50.1	75.1

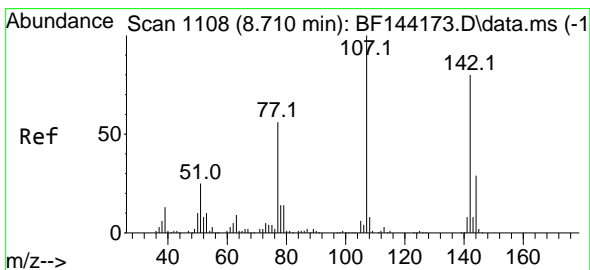
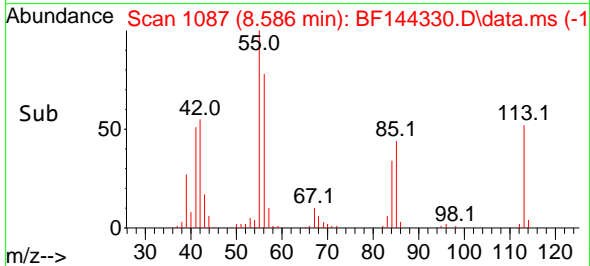
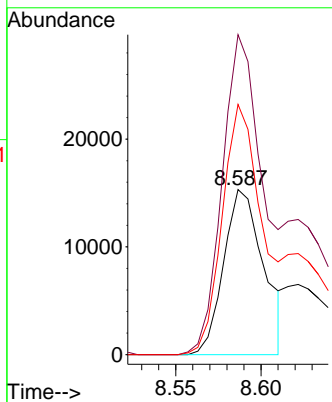
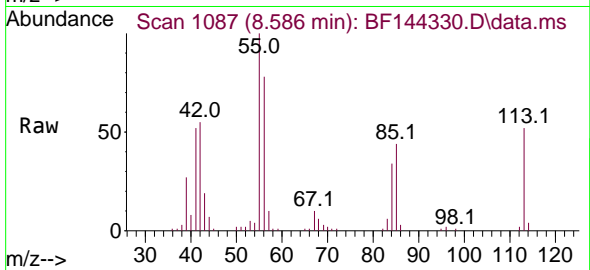




#35
 Caprolactam
 Concen: 28.011 ng
 RT: 8.586 min Scan# 1087
 Delta R.T. -0.035 min
 Lab File: BF144330.D
 Acq: 24 Nov 2025 18:18

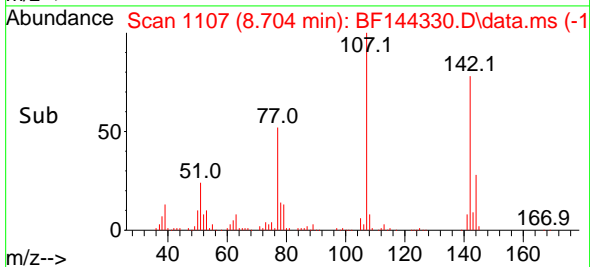
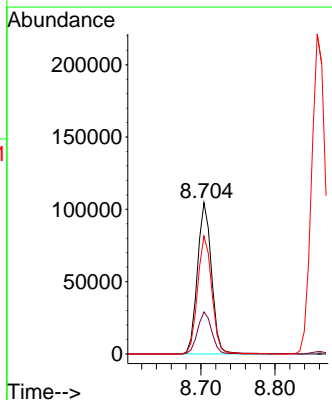
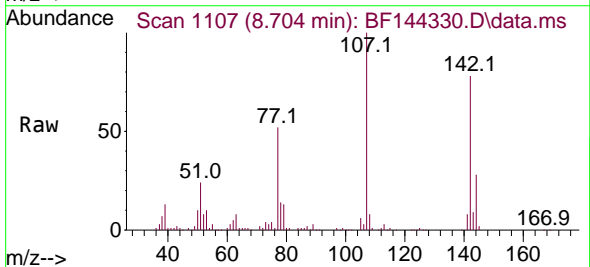
Instrument :
 BNA_F
 ClientSampleId :
 V933MSD

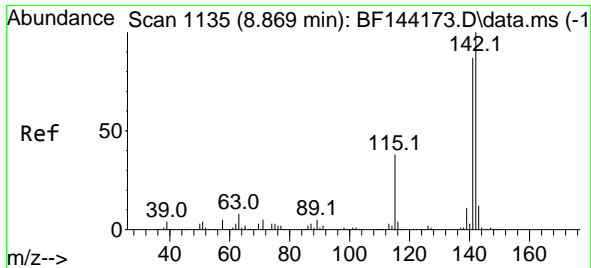
Tgt Ion:113 Resp: 24969
 Ion Ratio Lower Upper
 113 100
 55 193.8 166.8 206.8
 56 151.5 125.9 165.9



#36
 4-Chloro-3-methylphenol
 Concen: 47.544 ng
 RT: 8.704 min Scan# 1107
 Delta R.T. -0.000 min
 Lab File: BF144330.D
 Acq: 24 Nov 2025 18:18

Tgt Ion:107 Resp: 138637
 Ion Ratio Lower Upper
 107 100
 144 27.7 23.3 34.9
 142 77.8 63.8 95.6

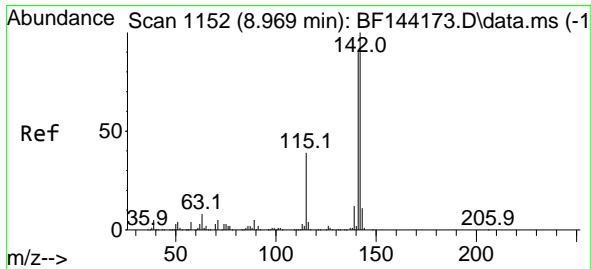
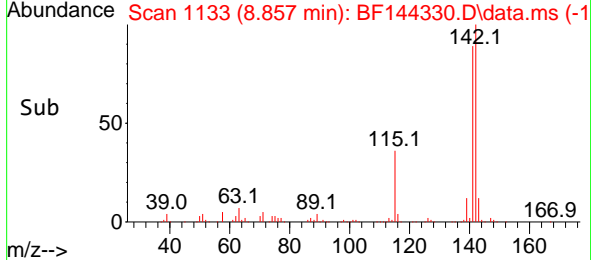
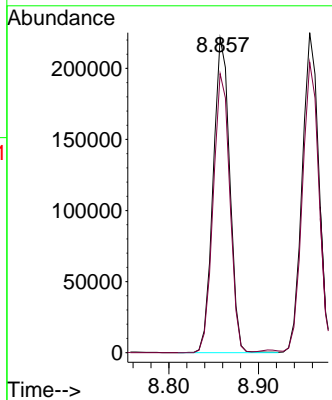
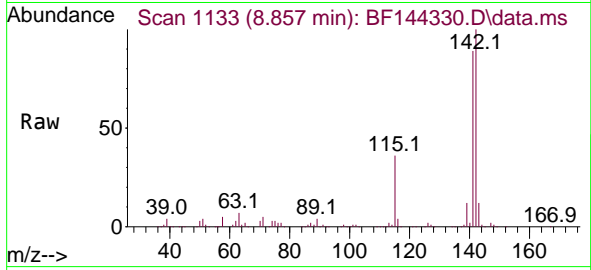




#37
 2-Methylnaphthalene
 Concen: 44.147 ng
 RT: 8.857 min Scan# 1113
 Delta R.T. -0.012 min
 Lab File: BF144330.D
 Acq: 24 Nov 2025 18:18

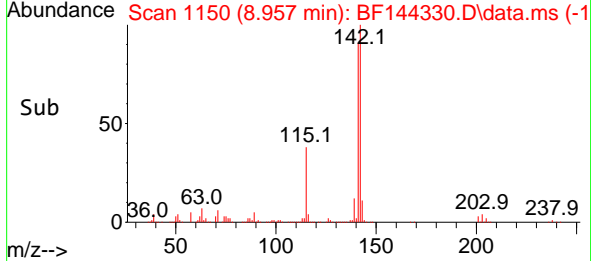
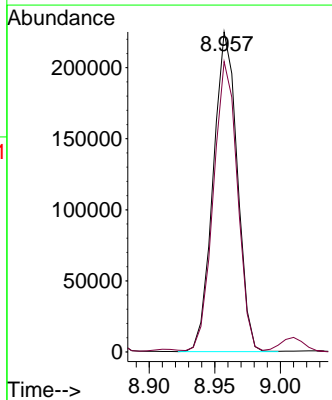
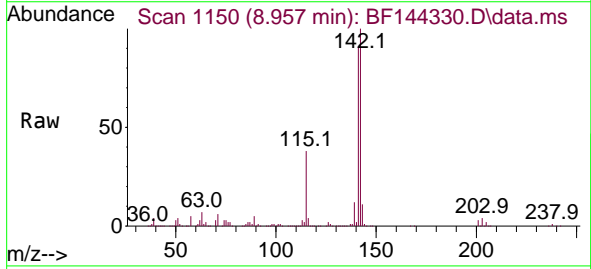
Instrument : BNA_F
 ClientSampleId : V933MSD

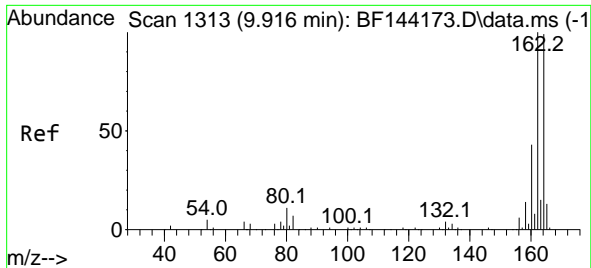
Tgt Ion:142 Resp: 284169
 Ion Ratio Lower Upper
 142 100
 141 88.7 69.9 104.9



#38
 1-Methylnaphthalene
 Concen: 46.408 ng
 RT: 8.957 min Scan# 1150
 Delta R.T. -0.012 min
 Lab File: BF144330.D
 Acq: 24 Nov 2025 18:18

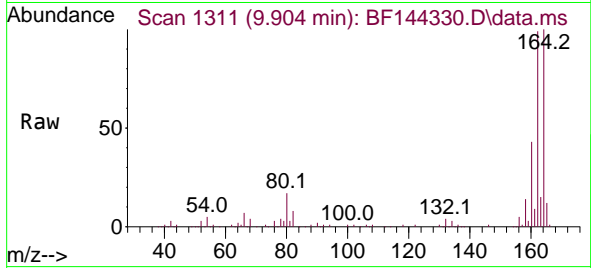
Tgt Ion:142 Resp: 288234
 Ion Ratio Lower Upper
 142 100
 141 90.7 72.1 108.1



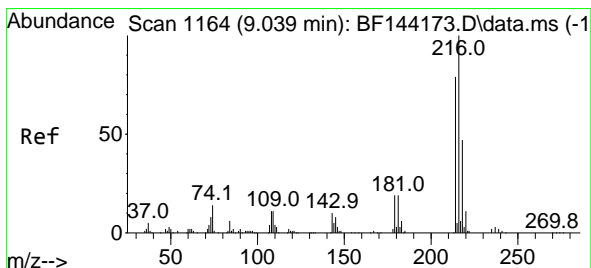
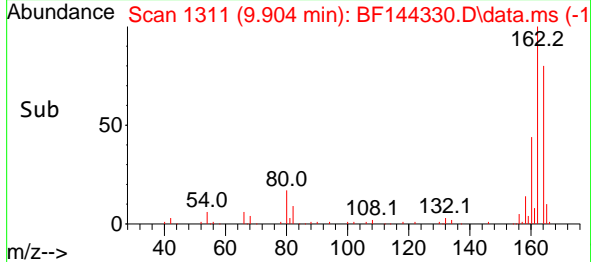
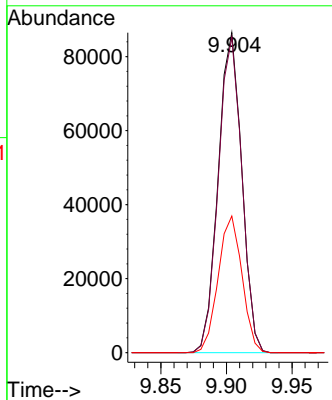


#39
 Acenaphthene-d10
 Concen: 20.000 ng
 RT: 9.904 min Scan# 1311
 Delta R.T. -0.012 min
 Lab File: BF144330.D
 Acq: 24 Nov 2025 18:18

Instrument :
 BNA_F
 Client Sample Id :
 V933MSD

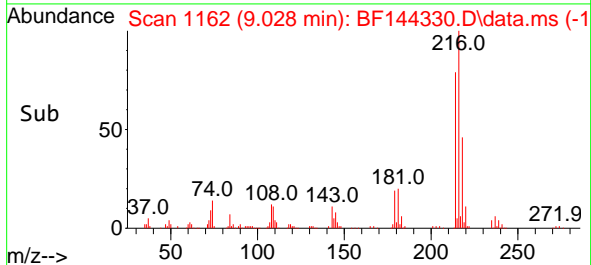
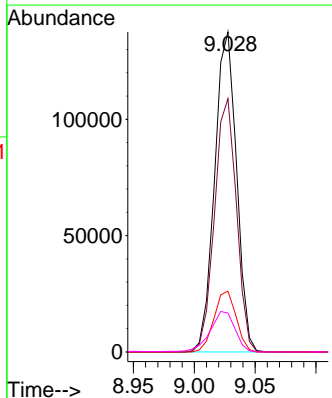
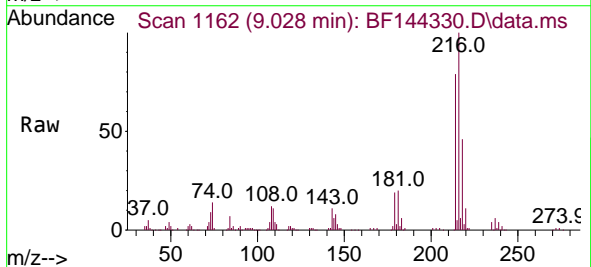


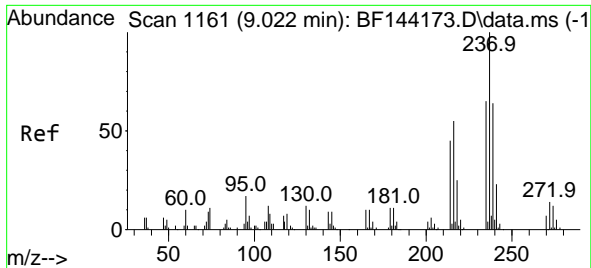
Tgt Ion:164 Resp: 108226
 Ion Ratio Lower Upper
 164 100
 162 98.5 81.1 121.7
 160 42.7 34.5 51.7



#40
 1,2,4,5-Tetrachlorobenzene
 Concen: 48.656 ng
 RT: 9.028 min Scan# 1162
 Delta R.T. -0.006 min
 Lab File: BF144330.D
 Acq: 24 Nov 2025 18:18

Tgt Ion:216 Resp: 172580
 Ion Ratio Lower Upper
 216 100
 214 79.0 63.4 95.2
 179 19.2 15.0 22.4
 108 14.5 10.5 15.7

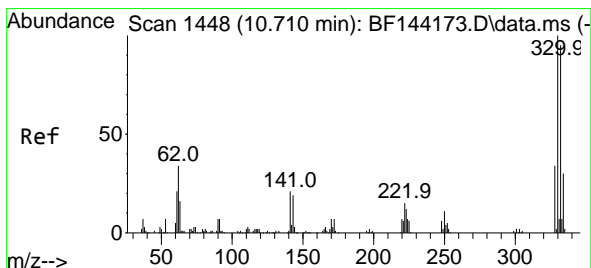
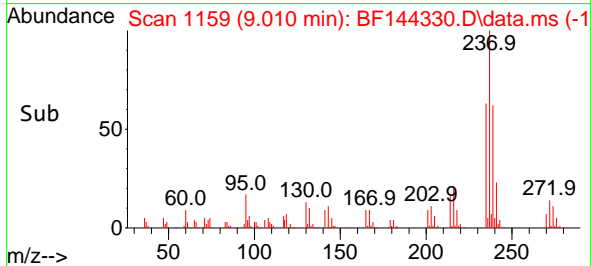
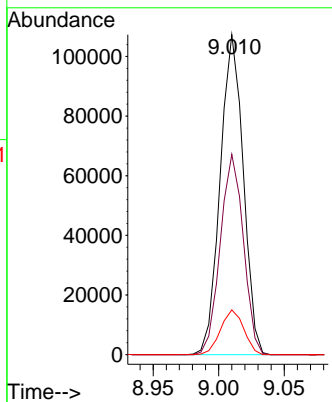
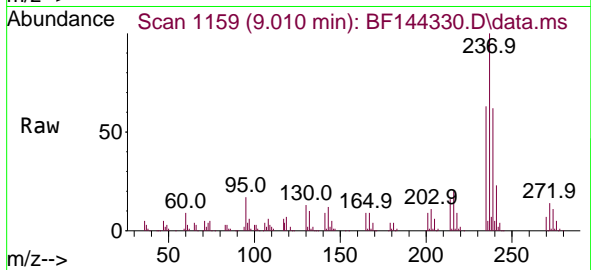




#41
 Hexachlorocyclopentadiene
 Concen: 90.249 ng
 RT: 9.010 min Scan# 1161
 Delta R.T. -0.018 min
 Lab File: BF144330.D
 Acq: 24 Nov 2025 18:18

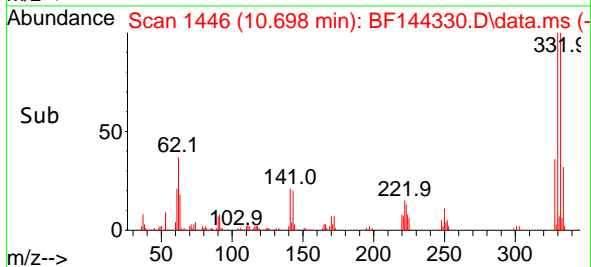
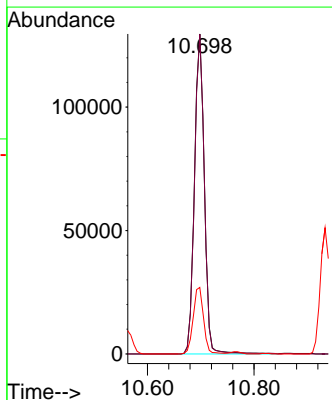
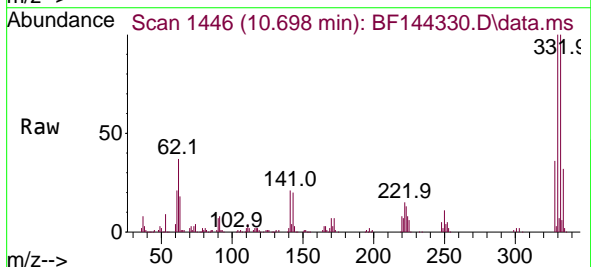
Instrument :
 BNA_F
 ClientSampleId :
 V933MSD

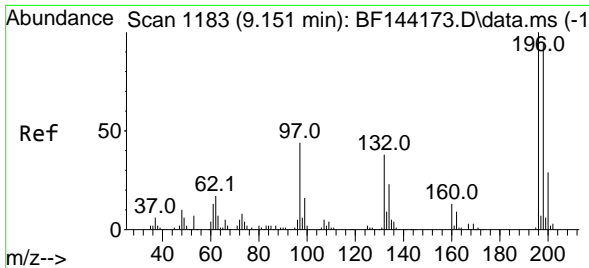
Tgt Ion:237 Resp: 131391
 Ion Ratio Lower Upper
 237 100
 235 62.6 45.5 85.5
 272 14.0 0.0 33.5



#42
 2,4,6-Tribromophenol
 Concen: 123.092 ng
 RT: 10.698 min Scan# 1446
 Delta R.T. -0.006 min
 Lab File: BF144330.D
 Acq: 24 Nov 2025 18:18

Tgt Ion:330 Resp: 167173
 Ion Ratio Lower Upper
 330 100
 332 99.0 76.7 115.1
 141 21.8 17.8 26.8

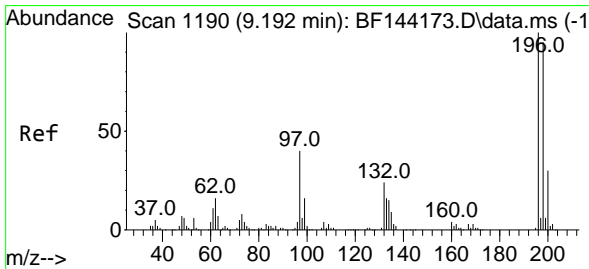
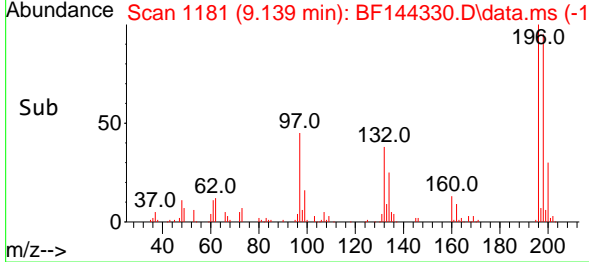
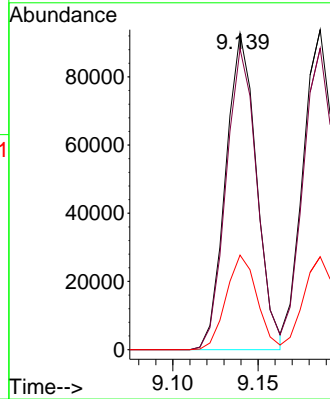
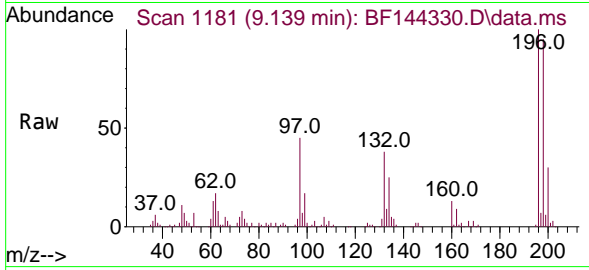




#43
 2,4,6-Trichlorophenol
 Concen: 48.302 ng
 RT: 9.139 min Scan# 1181
 Delta R.T. -0.012 min
 Lab File: BF144330.D
 Acq: 24 Nov 2025 18:18

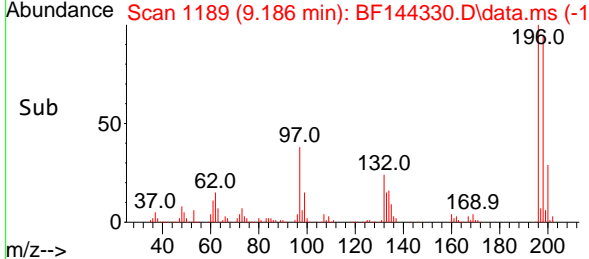
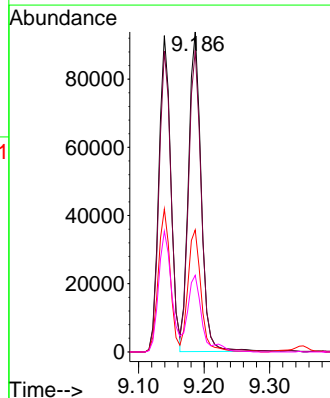
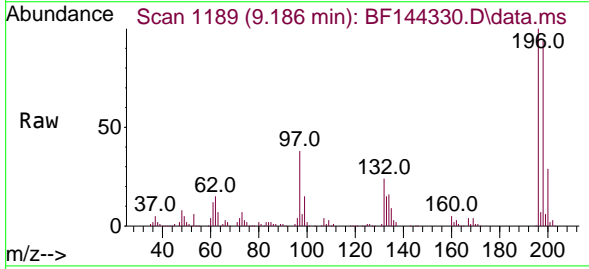
Instrument :
 BNA_F
 ClientSampleId :
 V933MSD

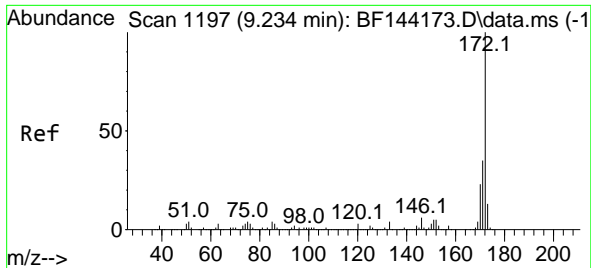
Tgt Ion:196 Resp: 116605
 Ion Ratio Lower Upper
 196 100
 198 95.1 75.3 112.9
 200 29.8 23.4 35.2



#44
 2,4,5-Trichlorophenol
 Concen: 48.404 ng
 RT: 9.186 min Scan# 1189
 Delta R.T. -0.006 min
 Lab File: BF144330.D
 Acq: 24 Nov 2025 18:18

Tgt Ion:196 Resp: 125939
 Ion Ratio Lower Upper
 196 100
 198 94.2 76.1 114.1
 97 38.1 31.9 47.9
 132 23.9 19.4 29.2



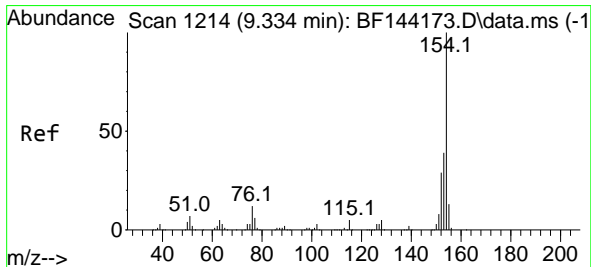
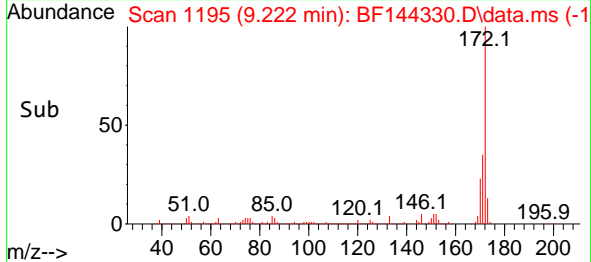
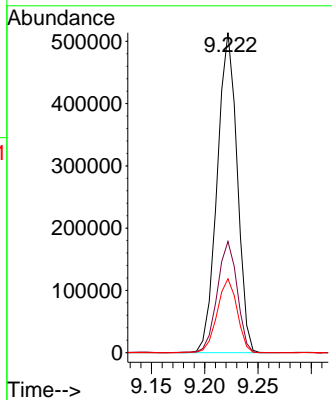
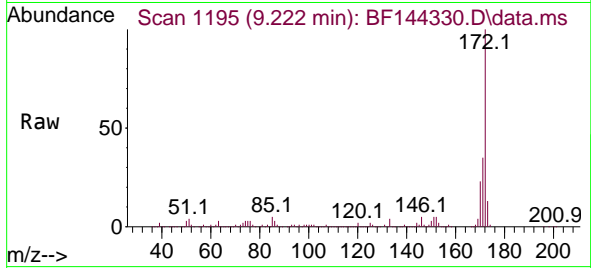


#45
 2-Fluorobiphenyl
 Concen: 91.672 ng
 RT: 9.222 min Scan# 1195
 Delta R.T. -0.006 min
 Lab File: BF144330.D
 Acq: 24 Nov 2025 18:18

Instrument : BNA_F
 ClientSampleId : V933MSD

Tgt Ion:172 Resp: 671747

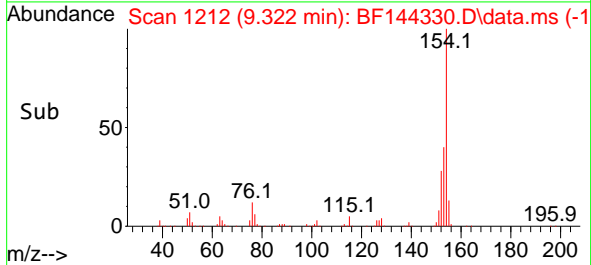
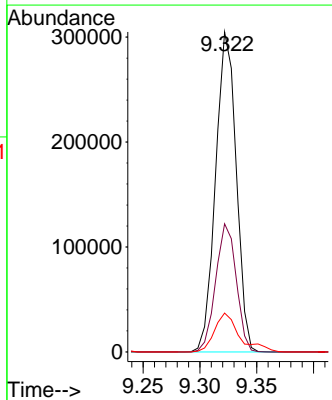
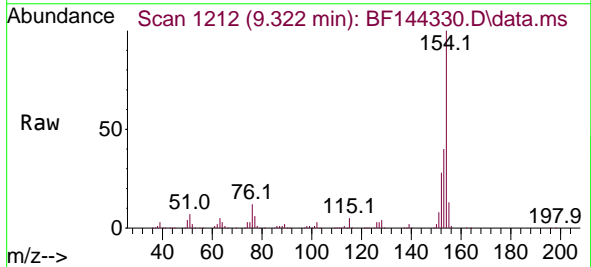
Ion	Ratio	Lower	Upper
172	100		
171	34.7	28.1	42.1
170	23.1	18.6	28.0

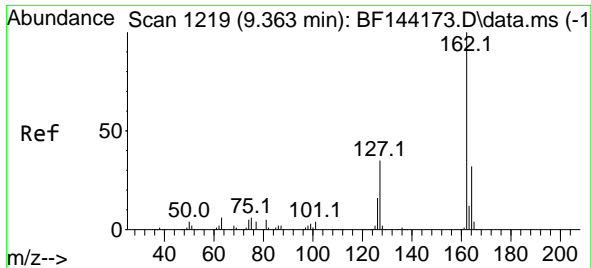


#46
 1,1'-Biphenyl
 Concen: 50.998 ng
 RT: 9.322 min Scan# 1212
 Delta R.T. -0.012 min
 Lab File: BF144330.D
 Acq: 24 Nov 2025 18:18

Tgt Ion:154 Resp: 385263

Ion	Ratio	Lower	Upper
154	100		
153	40.0	19.2	59.2
76	12.1	0.0	31.8



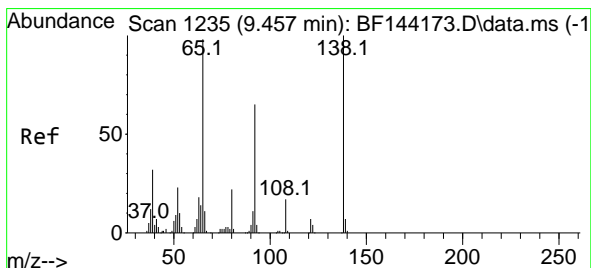
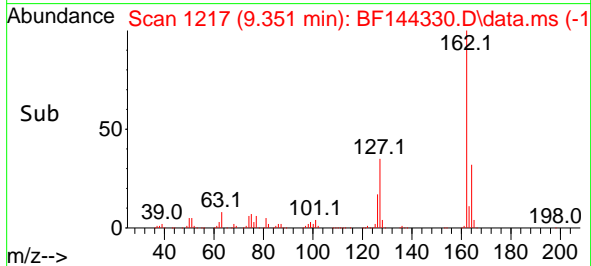
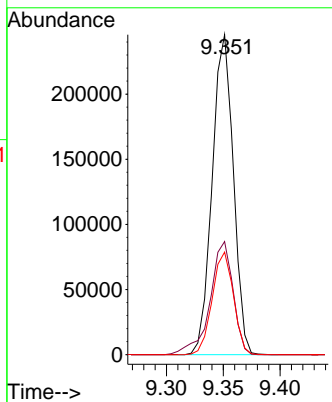
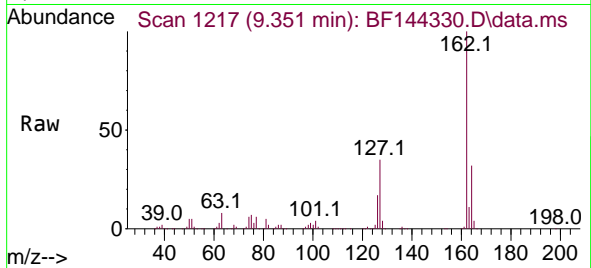


#47
 2-Chloronaphthalene
 Concen: 49.255 ng
 RT: 9.351 min Scan# 11
 Delta R.T. -0.006 min
 Lab File: BF144330.D
 Acq: 24 Nov 2025 18:18

Instrument :
 BNA_F
 ClientSampleId :
 V933MSD

Tgt Ion:162 Resp: 317400

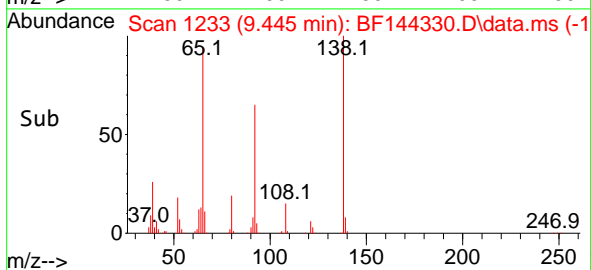
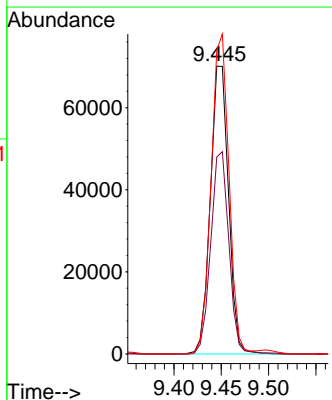
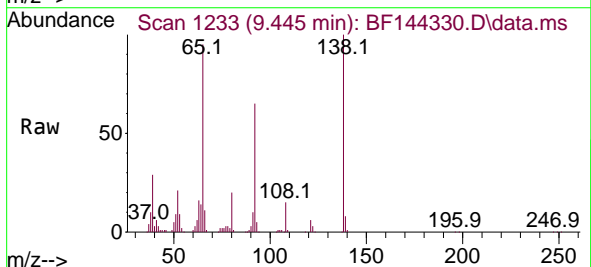
Ion	Ratio	Lower	Upper
162	100		
127	35.3	28.8	43.2
164	32.0	25.8	38.8

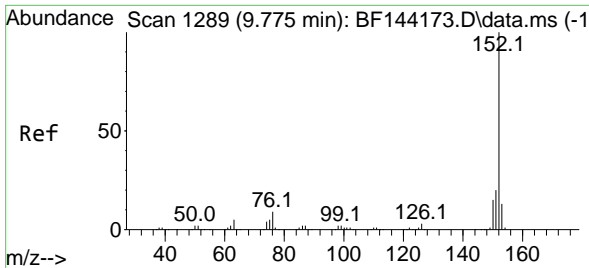


#48
 2-Nitroaniline
 Concen: 50.350 ng
 RT: 9.445 min Scan# 1233
 Delta R.T. -0.012 min
 Lab File: BF144330.D
 Acq: 24 Nov 2025 18:18

Tgt Ion: 65 Resp: 93618

Ion	Ratio	Lower	Upper
65	100		
92	68.4	53.0	79.6
138	105.5	81.6	122.4



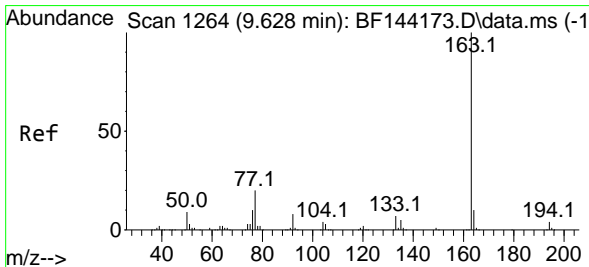
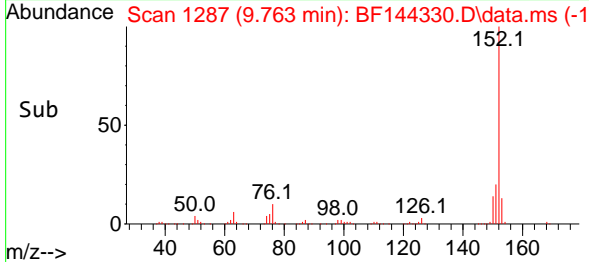
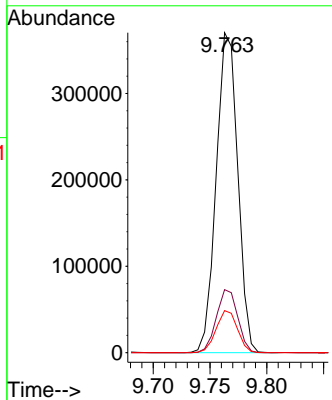
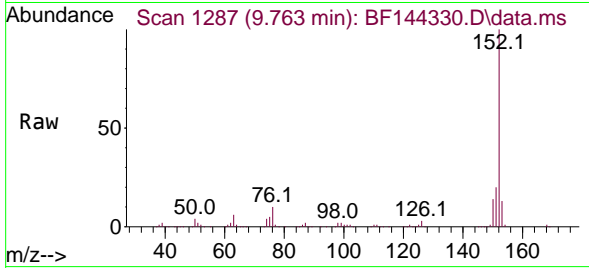


#49
 Acenaphthylene
 Concen: 55.528 ng
 RT: 9.763 min Scan# 11
 Delta R.T. -0.012 min
 Lab File: BF144330.D
 Acq: 24 Nov 2025 18:18

Instrument :
 BNA_F
 ClientSampleId :
 V933MSD

Tgt Ion:152 Resp: 487623

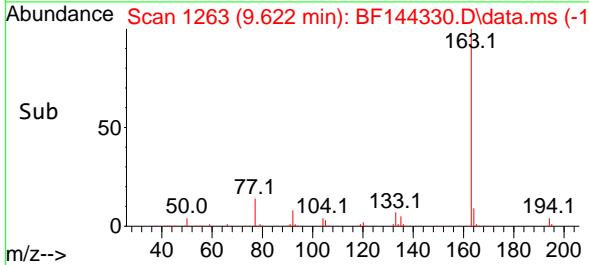
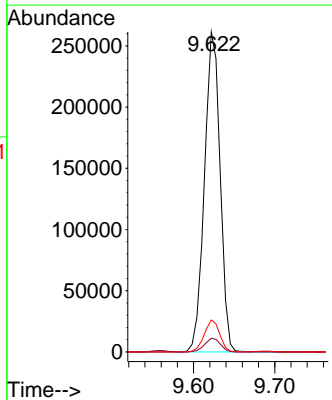
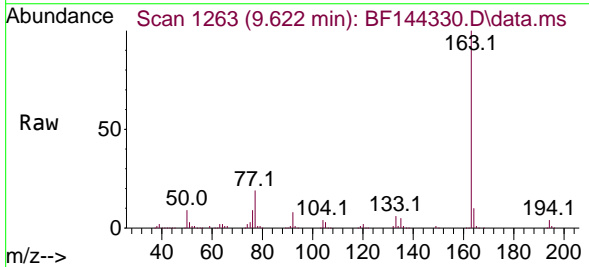
Ion	Ratio	Lower	Upper
152	100		
151	19.7	15.9	23.9
153	13.1	10.5	15.7

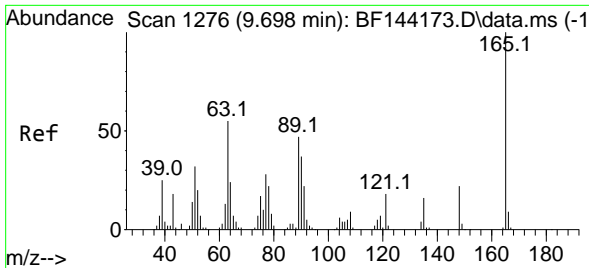


#50
 Dimethylphthalate
 Concen: 48.997 ng
 RT: 9.622 min Scan# 1263
 Delta R.T. -0.006 min
 Lab File: BF144330.D
 Acq: 24 Nov 2025 18:18

Tgt Ion:163 Resp: 351298

Ion	Ratio	Lower	Upper
163	100		
194	4.2	3.3	4.9
164	10.0	8.1	12.1



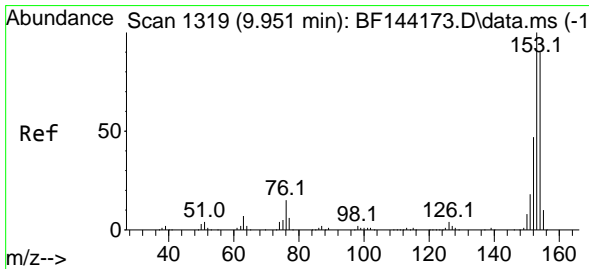
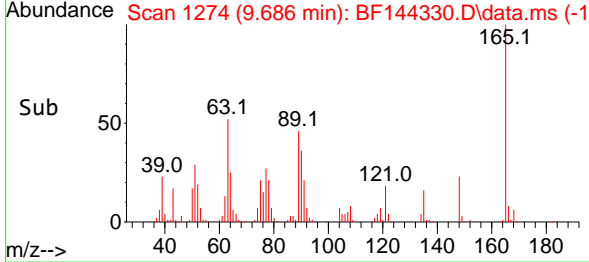
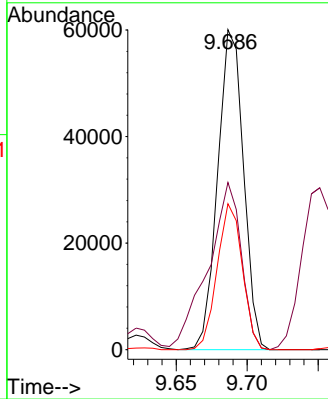
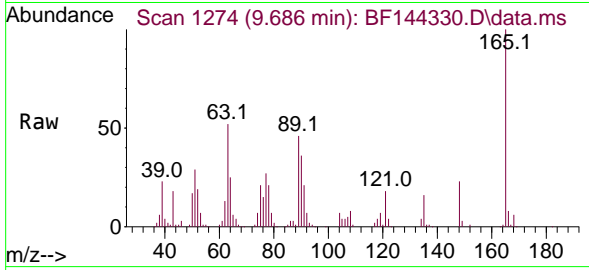


#51
 2,6-Dinitrotoluene
 Concen: 52.377 ng
 RT: 9.686 min Scan# 11
 Delta R.T. -0.006 min
 Lab File: BF144330.D
 Acq: 24 Nov 2025 18:18

Instrument :
 BNA_F
 ClientSampleId :
 V933MSD

Tgt Ion:165 Resp: 76020

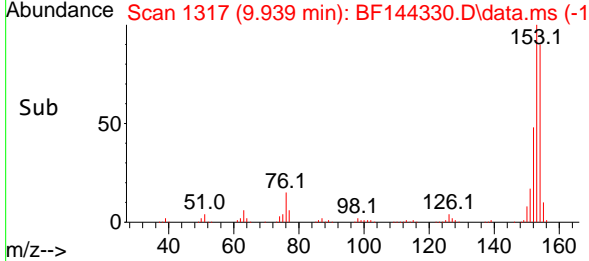
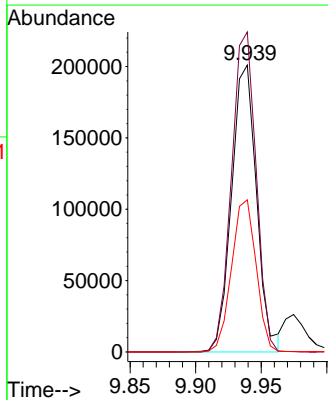
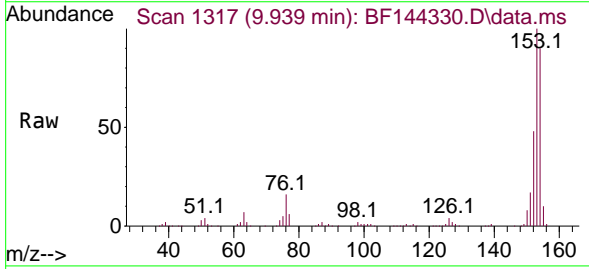
Ion	Ratio	Lower	Upper
165	100		
63	52.2	43.8	65.8
89	45.6	37.5	56.3

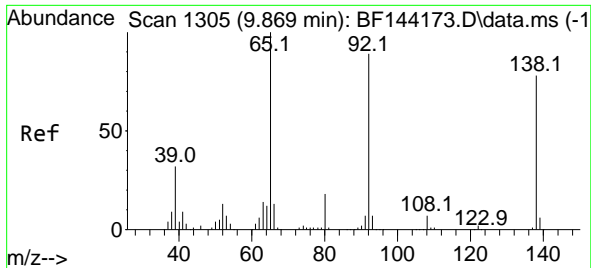


#52
 Acenaphthene
 Concen: 45.395 ng
 RT: 9.939 min Scan# 1317
 Delta R.T. -0.006 min
 Lab File: BF144330.D
 Acq: 24 Nov 2025 18:18

Tgt Ion:154 Resp: 266576

Ion	Ratio	Lower	Upper
154	100		
153	111.6	89.0	133.4
152	53.0	42.2	63.4



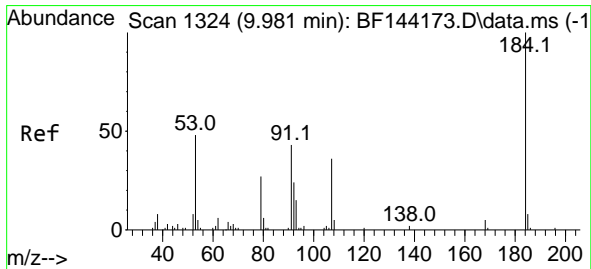
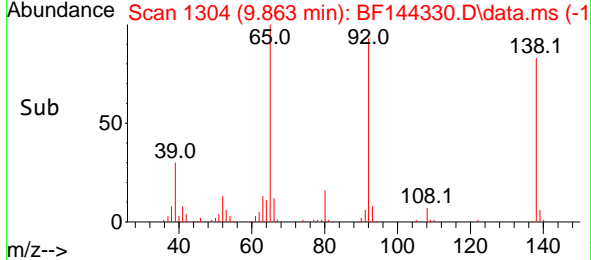
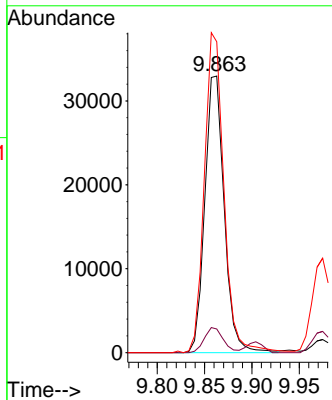
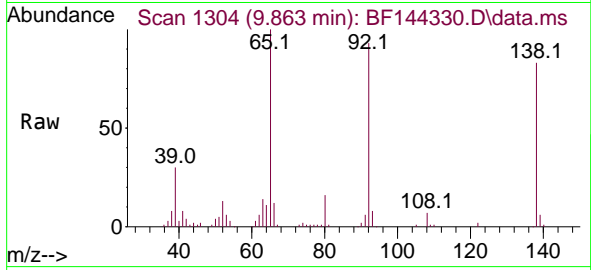


#53
 3-Nitroaniline
 Concen: 29.658 ng
 RT: 9.863 min Scan# 1304
 Delta R.T. -0.006 min
 Lab File: BF144330.D
 Acq: 24 Nov 2025 18:18

Instrument : BNA_F
 ClientSampleId : V933MSD

Tgt Ion:138 Resp: 47055

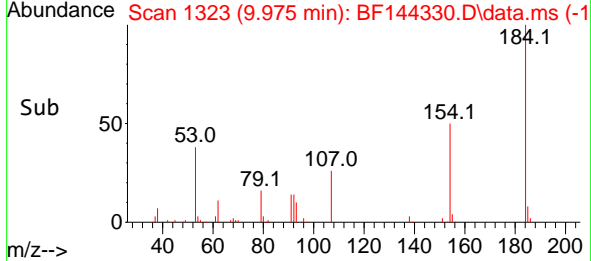
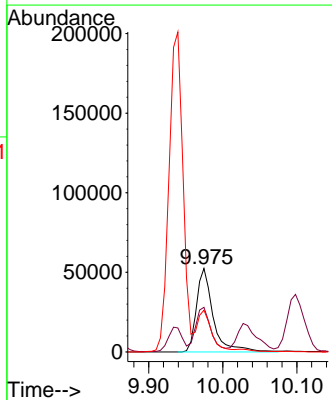
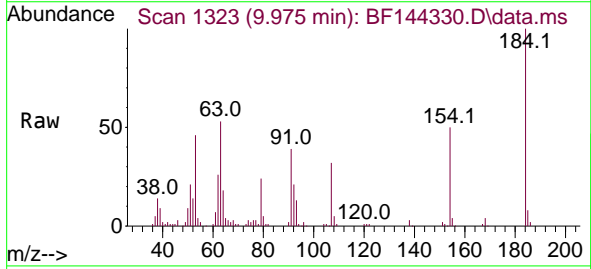
Ion	Ratio	Lower	Upper
138	100		
108	8.6	7.5	11.3
92	112.4	91.8	137.6

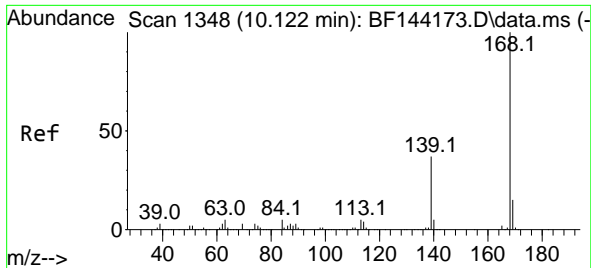


#54
 2,4-Dinitrophenol
 Concen: 93.776 ng
 RT: 9.975 min Scan# 1323
 Delta R.T. -0.012 min
 Lab File: BF144330.D
 Acq: 24 Nov 2025 18:18

Tgt Ion:184 Resp: 82188

Ion	Ratio	Lower	Upper
184	100		
63	53.4	44.0	66.0
154	50.0	42.4	63.6



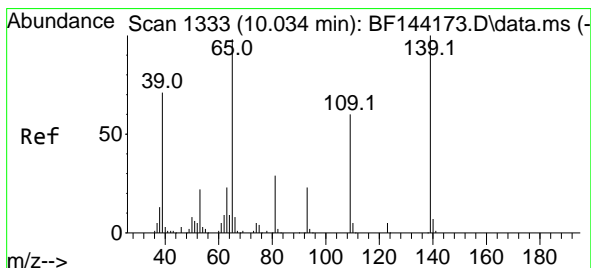
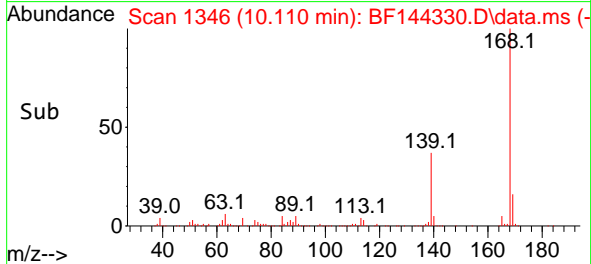
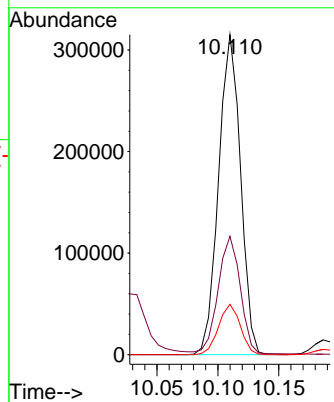
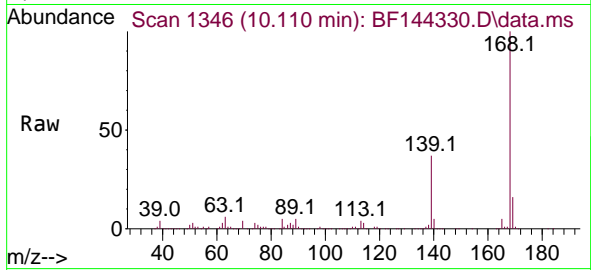


#55
 Dibenzofuran
 Concen: 48.136 ng
 RT: 10.110 min Scan# 1346
 Delta R.T. -0.006 min
 Lab File: BF144330.D
 Acq: 24 Nov 2025 18:18

Instrument : BNA_F
 ClientSampleId : V933MSD

Tgt Ion:168 Resp: 395890

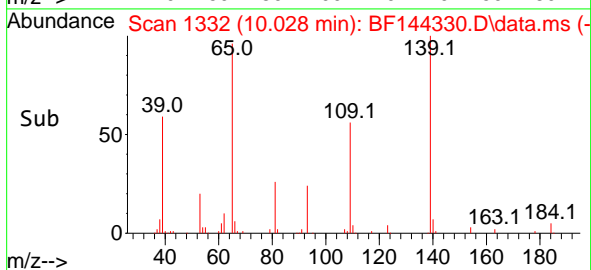
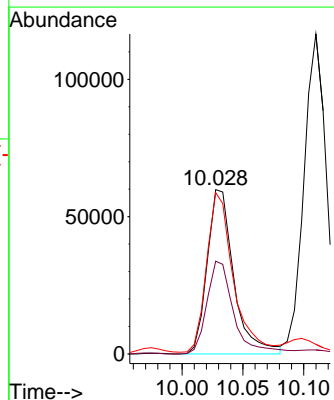
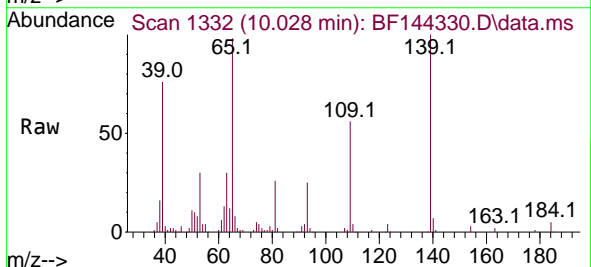
Ion	Ratio	Lower	Upper
168	100		
139	37.0	30.2	45.2
169	15.7	12.2	18.4

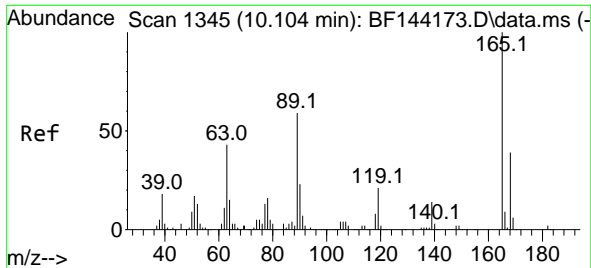


#56
 4-Nitrophenol
 Concen: 79.484 ng
 RT: 10.028 min Scan# 1332
 Delta R.T. -0.012 min
 Lab File: BF144330.D
 Acq: 24 Nov 2025 18:18

Tgt Ion:139 Resp: 91223

Ion	Ratio	Lower	Upper
139	100		
109	56.5	39.9	79.9
65	98.2	79.5	119.5



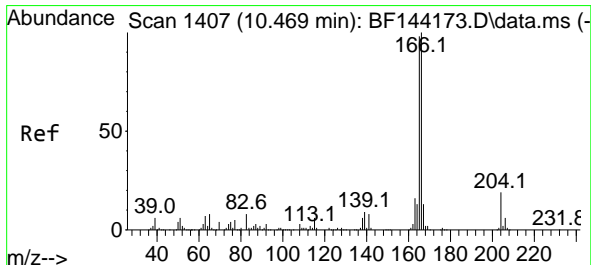
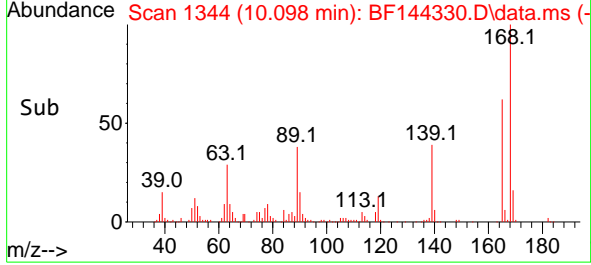
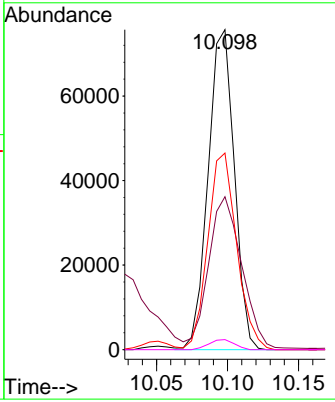
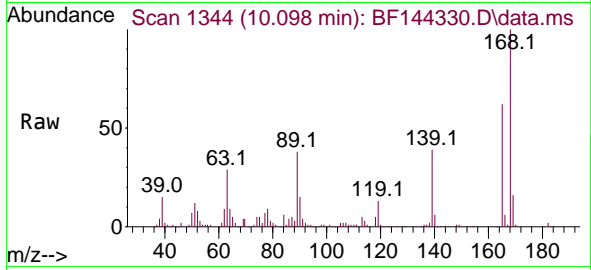


#57
 2,4-Dinitrotoluene
 Concen: 50.058 ng
 RT: 10.098 min Scan# 1344
 Delta R.T. -0.000 min
 Lab File: BF144330.D
 Acq: 24 Nov 2025 18:18

Instrument : BNA_F
 ClientSampleId : V933MSD

Tgt Ion:165 Resp: 97261

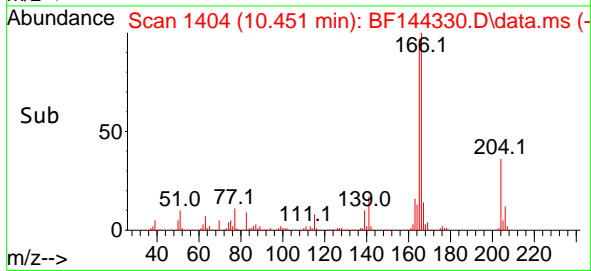
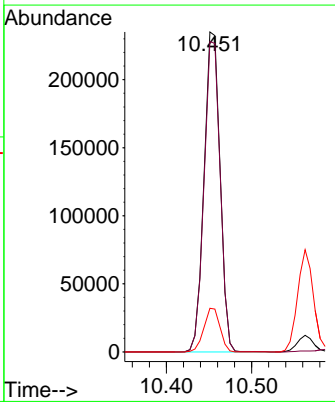
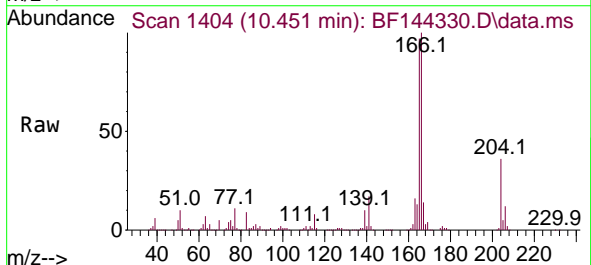
Ion	Ratio	Lower	Upper
165	100		
63	47.8	35.5	53.3
89	61.4	47.4	71.2
182	3.1	1.9	2.9

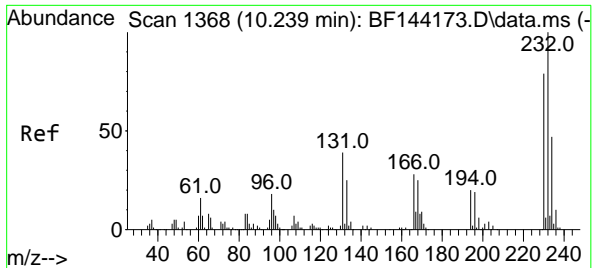


#58
 Fluorene
 Concen: 49.100 ng
 RT: 10.451 min Scan# 1404
 Delta R.T. -0.012 min
 Lab File: BF144330.D
 Acq: 24 Nov 2025 18:18

Tgt Ion:166 Resp: 307030

Ion	Ratio	Lower	Upper
166	100		
165	97.0	78.6	118.0
167	13.6	10.4	15.6



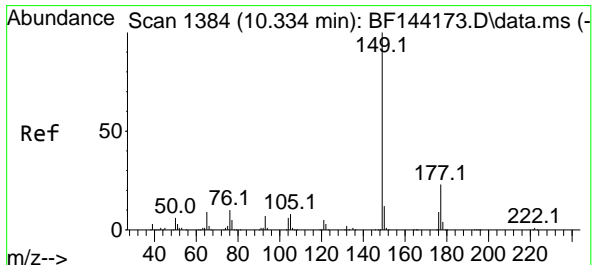
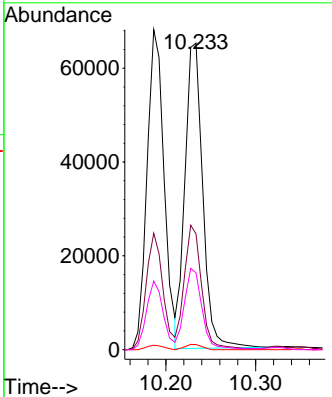
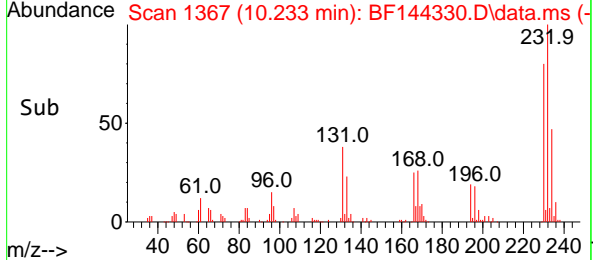
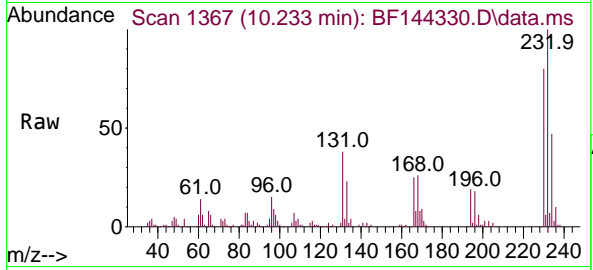


#59
 2,3,4,6-Tetrachlorophenol
 Concen: 48.796 ng
 RT: 10.233 min Scan# 1367
 Delta R.T. -0.006 min
 Lab File: BF144330.D
 Acq: 24 Nov 2025 18:18

Instrument : BNA_F
 ClientSampleId : V933MSD

Tgt Ion: 232 Resp: 89825

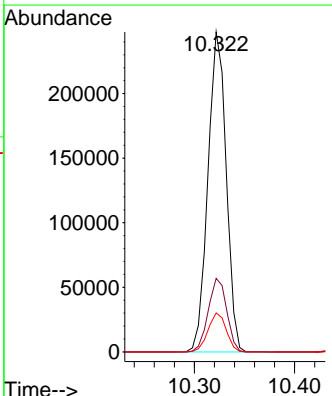
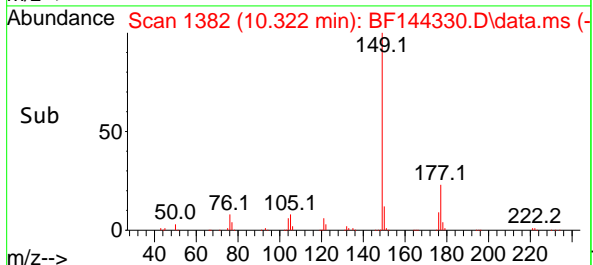
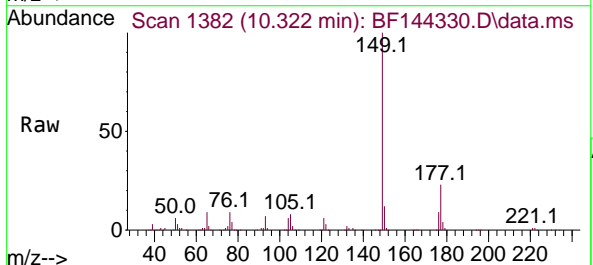
Ion	Ratio	Lower	Upper
232	100		
131	39.0	30.3	45.5
130	1.6	1.2	1.8
166	25.5	21.5	32.3

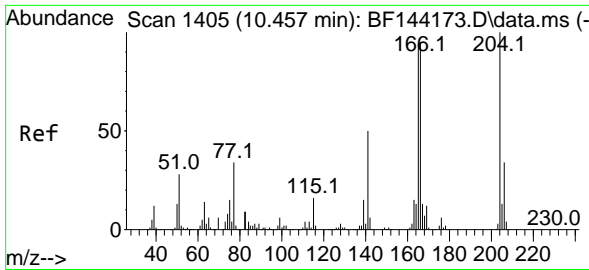


#60
 Diethylphthalate
 Concen: 47.444 ng
 RT: 10.322 min Scan# 1382
 Delta R.T. -0.006 min
 Lab File: BF144330.D
 Acq: 24 Nov 2025 18:18

Tgt Ion: 149 Resp: 313576

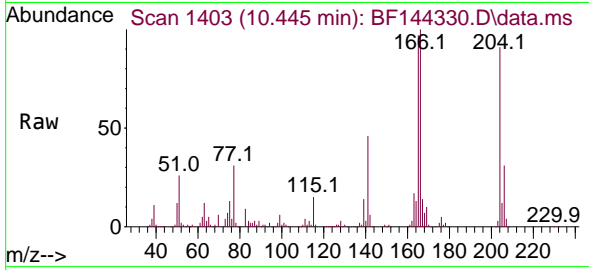
Ion	Ratio	Lower	Upper
149	100		
177	23.0	18.3	27.5
150	12.2	9.8	14.6



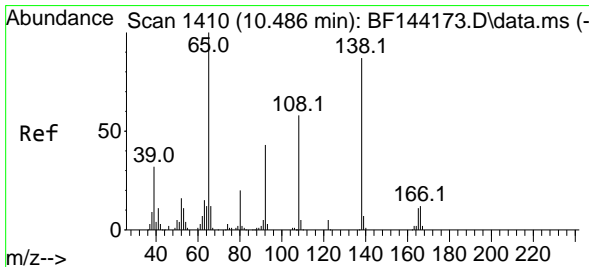
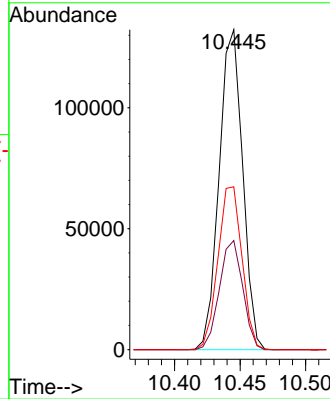
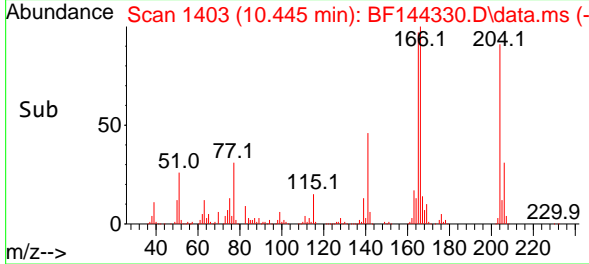


#61
 4-Chlorophenyl-phenylether
 Concen: 46.282 ng
 RT: 10.445 min Scan# 1403
 Delta R.T. -0.012 min
 Lab File: BF144330.D
 Acq: 24 Nov 2025 18:18

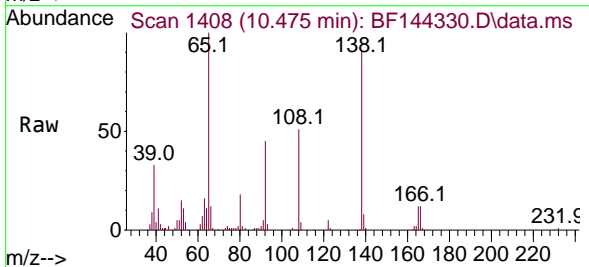
Instrument :
 BNA_F
 ClientSampleId :
 V933MSD



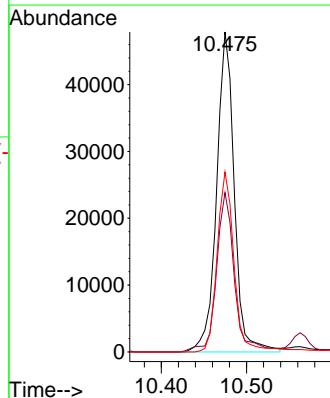
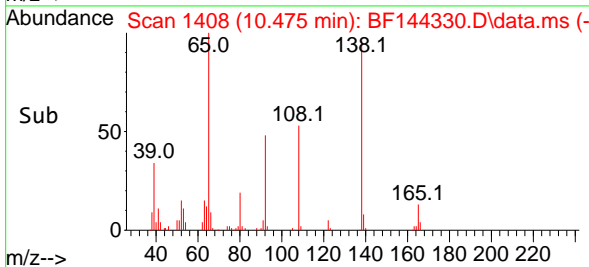
Tgt Ion:204 Resp: 164852
 Ion Ratio Lower Upper
 204 100
 206 34.1 27.4 41.2
 141 50.9 40.0 60.0

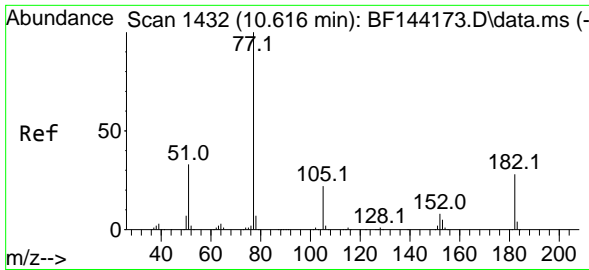


#62
 4-Nitroaniline
 Concen: 45.638 ng
 RT: 10.475 min Scan# 1408
 Delta R.T. -0.000 min
 Lab File: BF144330.D
 Acq: 24 Nov 2025 18:18



Tgt Ion:138 Resp: 68956
 Ion Ratio Lower Upper
 138 100
 92 49.8 29.4 69.4
 108 56.2 46.4 86.4

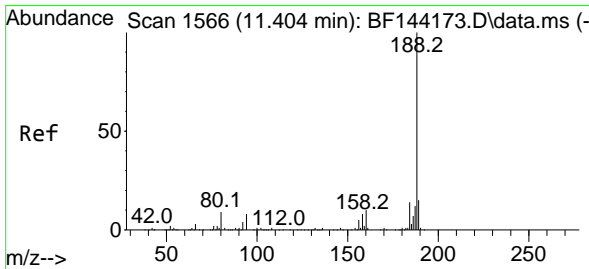
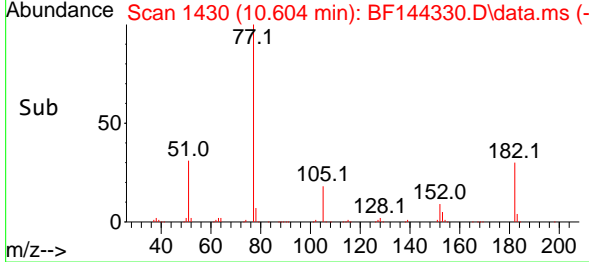
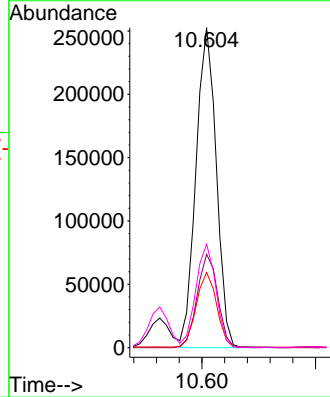
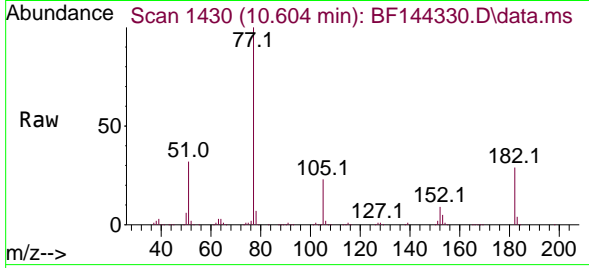




#63
 Azobenzene
 Concen: 50.888 ng
 RT: 10.604 min Scan# 14
 Delta R.T. -0.012 min
 Lab File: BF144330.D
 Acq: 24 Nov 2025 18:18

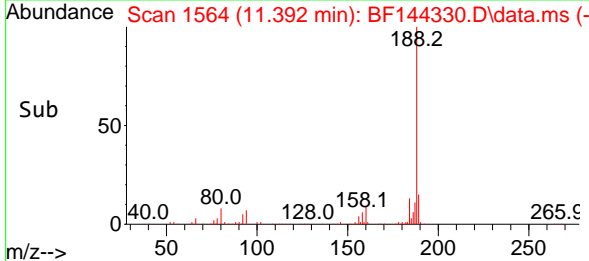
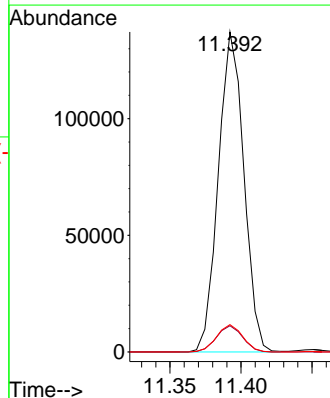
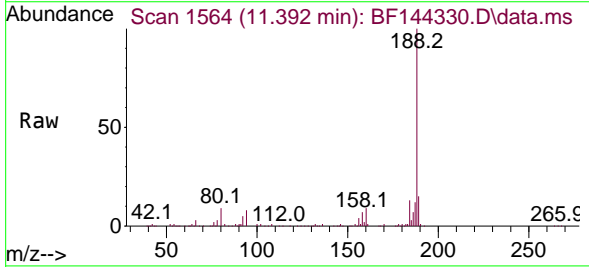
Instrument :
 BNA_F
 ClientSampleId :
 V933MSD

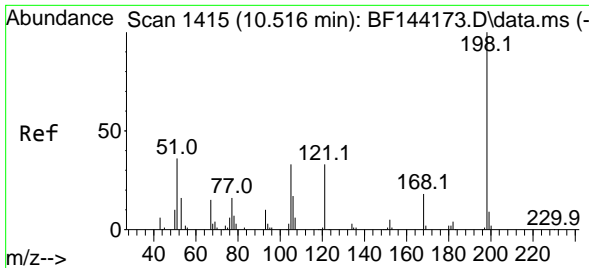
Tgt Ion	Resp	Lower	Upper
77	100		
182	29.2	8.1	48.1
105	23.5	2.0	42.0
51	32.3	13.9	53.9



#64
 Phenanthrene-d10
 Concen: 20.000 ng
 RT: 11.392 min Scan# 1564
 Delta R.T. -0.012 min
 Lab File: BF144330.D
 Acq: 24 Nov 2025 18:18

Tgt Ion	Resp	Lower	Upper
188	100		
94	8.2	6.2	9.2
80	8.5	6.9	10.3

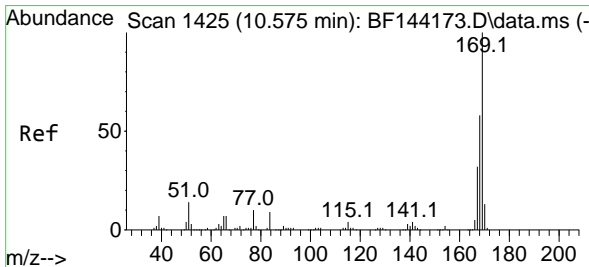
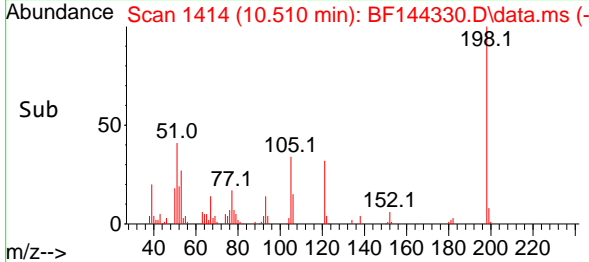
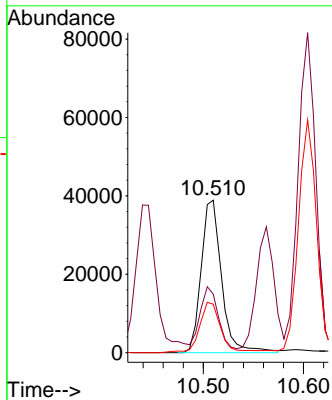
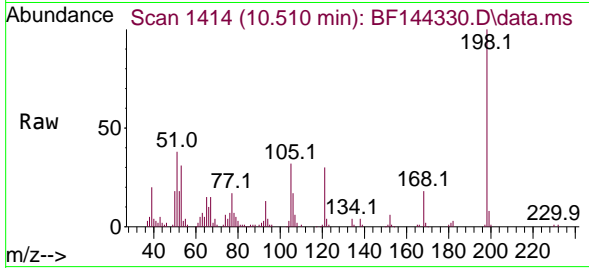




#65
 4,6-Dinitro-2-methylphenol
 Concen: 47.056 ng
 RT: 10.510 min Scan# 1415
 Delta R.T. -0.012 min
 Lab File: BF144330.D
 Acq: 24 Nov 2025 18:18

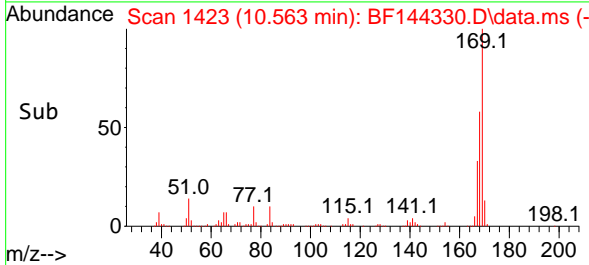
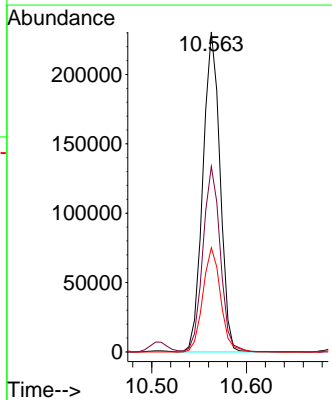
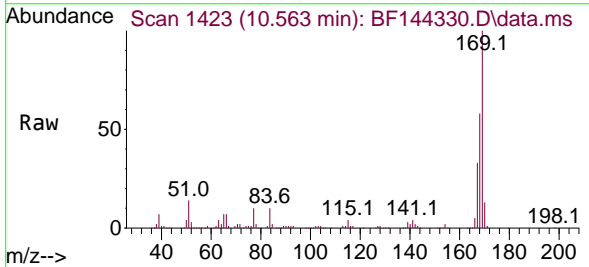
Instrument :
 BNA_F
 ClientSampleId :
 V933MSD

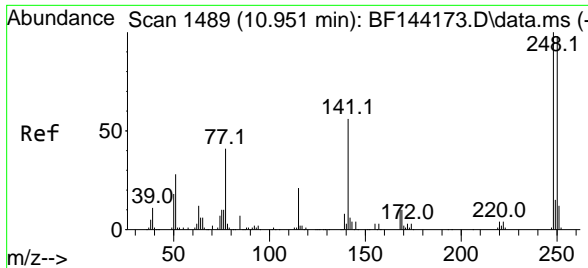
Tgt Ion	Resp	Lower	Upper
198	100		
51	38.4	25.6	65.6
105	31.8	14.6	54.6



#66
 n-Nitrosodiphenylamine
 Concen: 52.536 ng
 RT: 10.563 min Scan# 1423
 Delta R.T. -0.006 min
 Lab File: BF144330.D
 Acq: 24 Nov 2025 18:18

Tgt Ion	Resp	Lower	Upper
169	100		
168	57.9	46.2	69.2
167	32.5	25.7	38.5



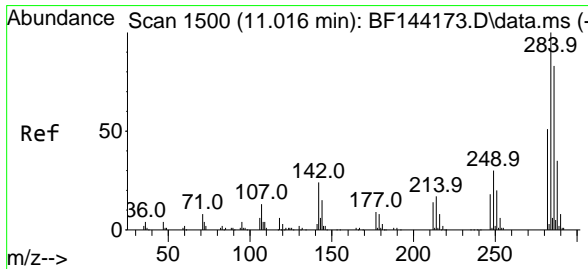
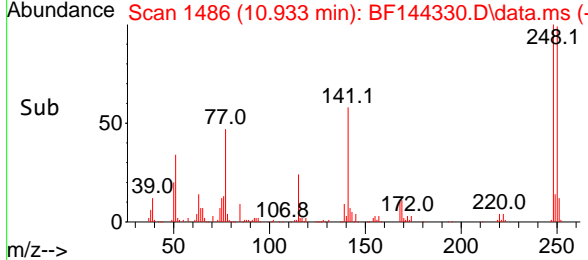
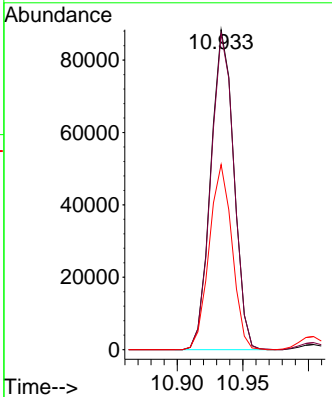
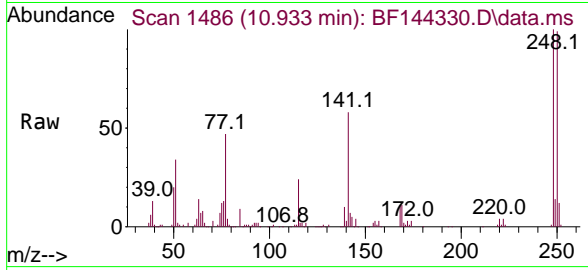


#67
 4-Bromophenyl-phenylether
 Concen: 49.400 ng
 RT: 10.933 min Scan# 1486
 Delta R.T. -0.012 min
 Lab File: BF144330.D
 Acq: 24 Nov 2025 18:18

Instrument :
 BNA_F
 ClientSampleId :
 V933MSD

Tgt Ion:248 Resp: 108214

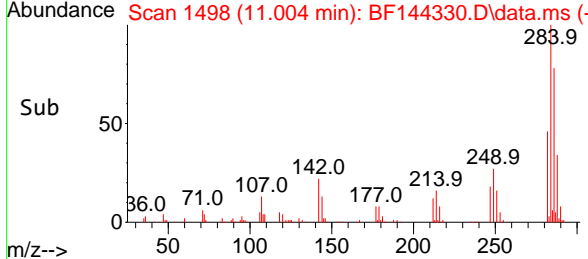
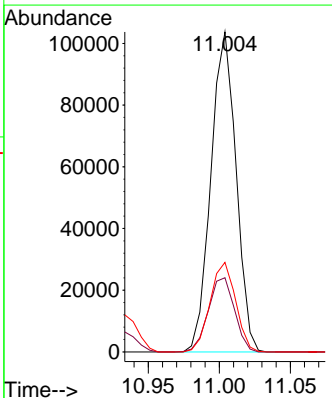
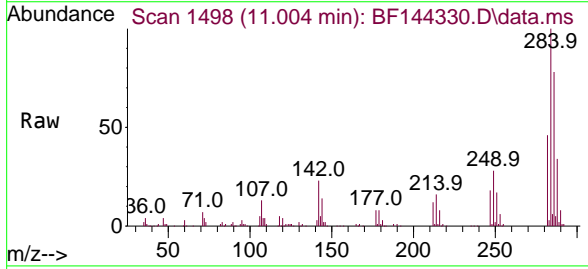
Ion	Ratio	Lower	Upper
248	100		
250	98.8	78.4	117.6
141	57.8	45.1	67.7

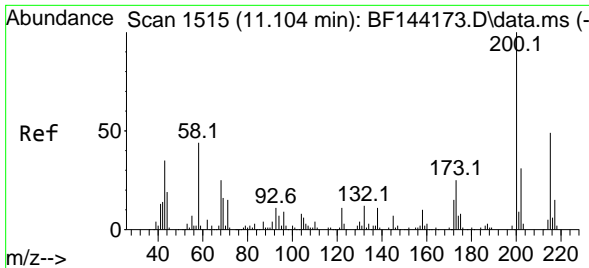


#68
 Hexachlorobenzene
 Concen: 49.533 ng
 RT: 11.004 min Scan# 1498
 Delta R.T. -0.006 min
 Lab File: BF144330.D
 Acq: 24 Nov 2025 18:18

Tgt Ion:284 Resp: 127803

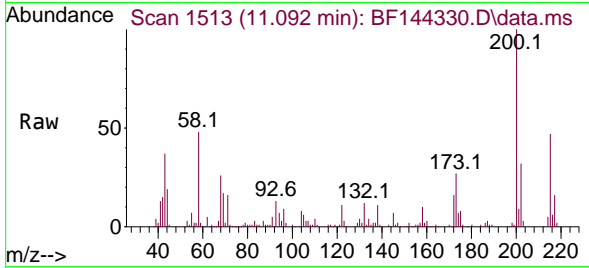
Ion	Ratio	Lower	Upper
284	100		
142	23.2	19.2	28.8
249	28.0	23.8	35.8



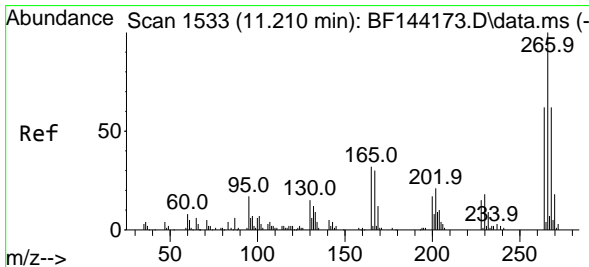
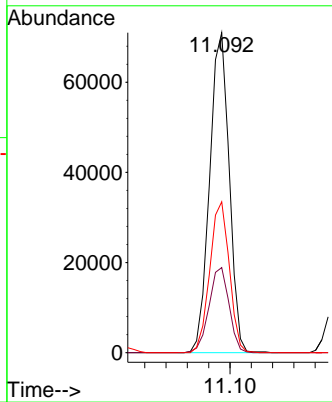
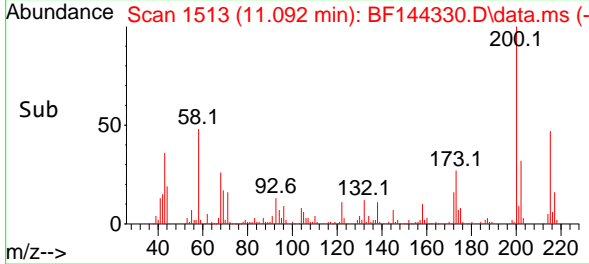


#69
 Atrazine
 Concen: 51.638 ng
 RT: 11.092 min Scan# 11
 Delta R.T. -0.006 min
 Lab File: BF144330.D
 Acq: 24 Nov 2025 18:18

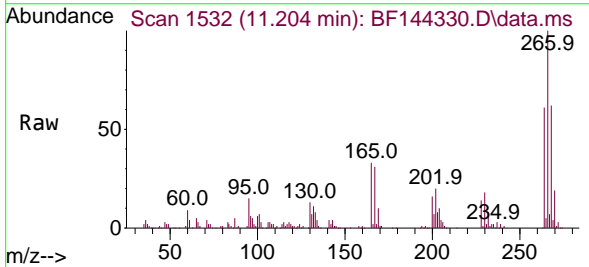
Instrument :
 BNA_F
 ClientSampleId :
 V933MSD



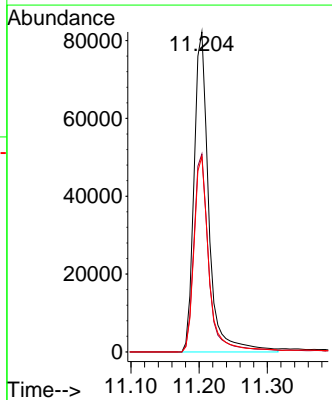
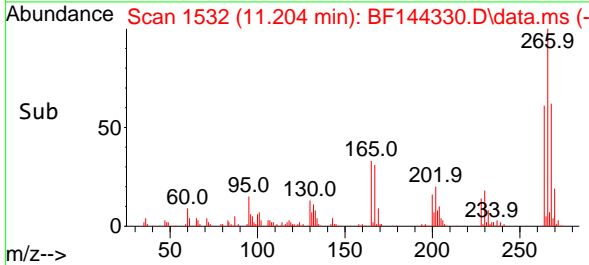
Tgt Ion:200 Resp: 90646
 Ion Ratio Lower Upper
 200 100
 173 26.6 5.0 45.0
 215 47.1 28.7 68.7

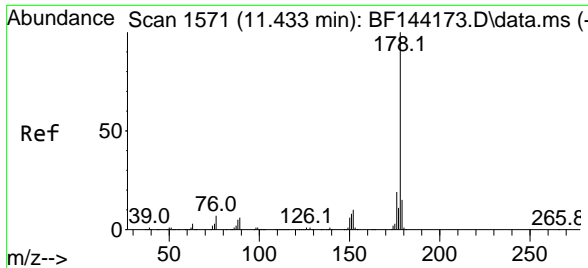


#70
 Pentachlorophenol
 Concen: 96.539 ng
 RT: 11.204 min Scan# 1532
 Delta R.T. -0.012 min
 Lab File: BF144330.D
 Acq: 24 Nov 2025 18:18



Tgt Ion:266 Resp: 124036
 Ion Ratio Lower Upper
 266 100
 268 61.8 49.5 74.3
 264 61.0 49.4 74.2



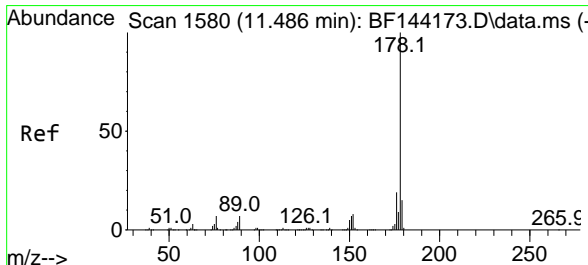
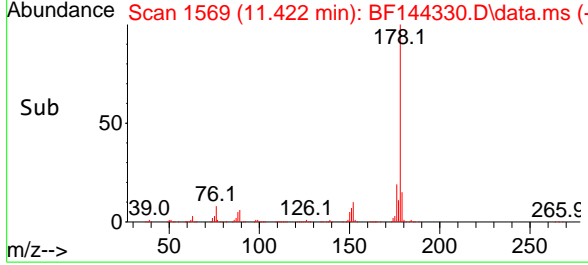
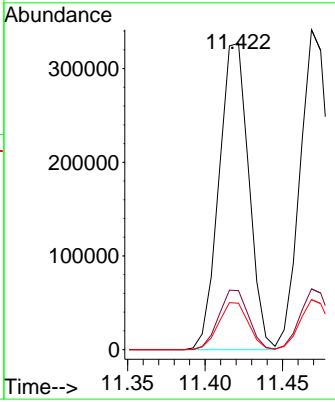
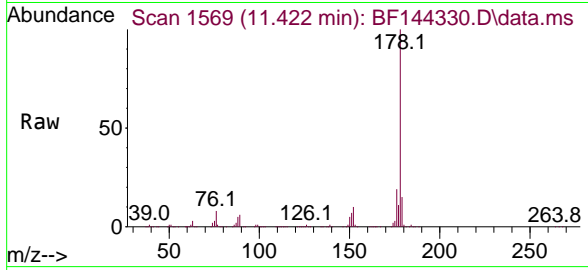


#71
 Phenanthrene
 Concen: 51.273 ng
 RT: 11.422 min Scan# 1569
 Delta R.T. -0.006 min
 Lab File: BF144330.D
 Acq: 24 Nov 2025 18:18

Instrument : BNA_F
 ClientSampleId : V933MSD

Tgt Ion:178 Resp: 438107

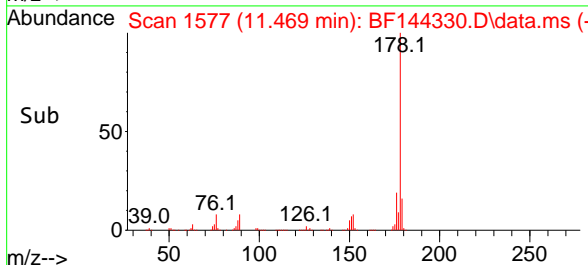
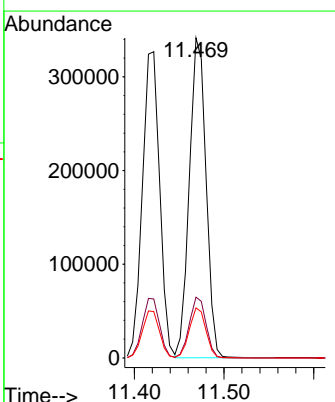
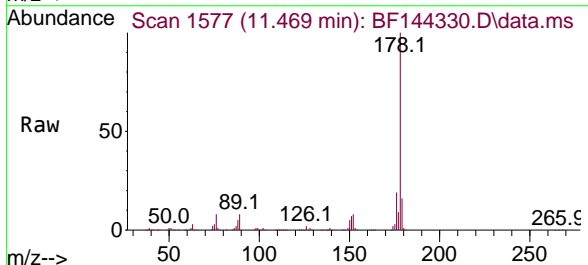
Ion	Ratio	Lower	Upper
178	100		
176	19.3	15.5	23.3
179	15.1	12.2	18.4

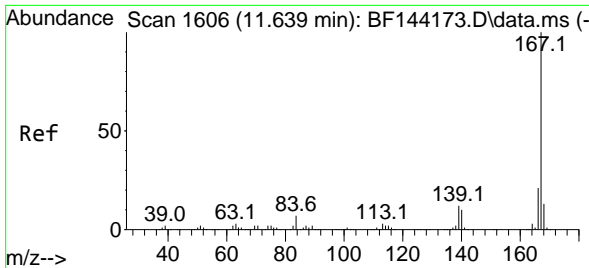


#72
 Anthracene
 Concen: 50.736 ng
 RT: 11.469 min Scan# 1577
 Delta R.T. -0.012 min
 Lab File: BF144330.D
 Acq: 24 Nov 2025 18:18

Tgt Ion:178 Resp: 440820

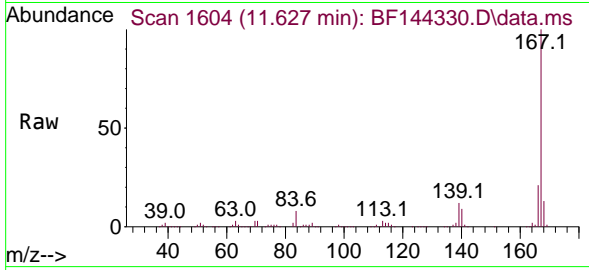
Ion	Ratio	Lower	Upper
178	100		
176	19.0	15.3	22.9
179	15.6	12.0	18.0



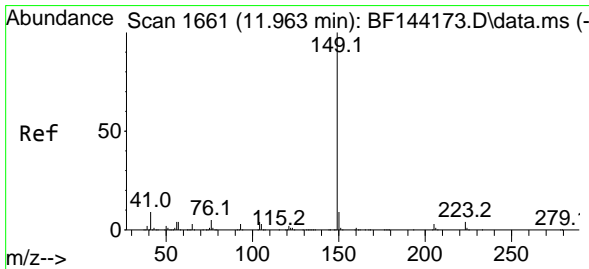
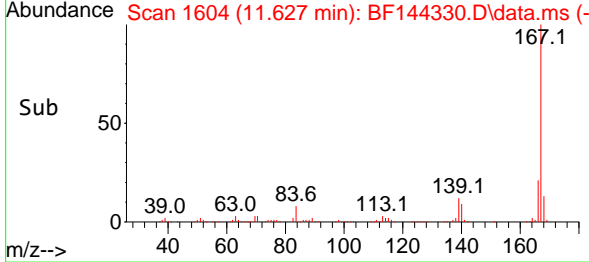
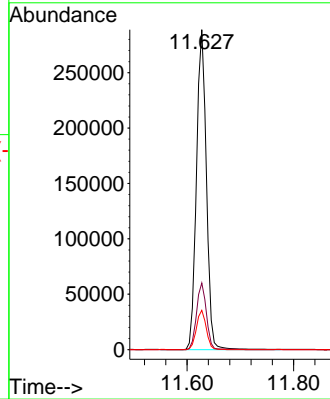


#73
 Carbazole
 Concen: 50.658 ng
 RT: 11.627 min Scan# 1604
 Delta R.T. -0.012 min
 Lab File: BF144330.D
 Acq: 24 Nov 2025 18:18

Instrument : BNA_F
 Client Sample Id : V933MSD

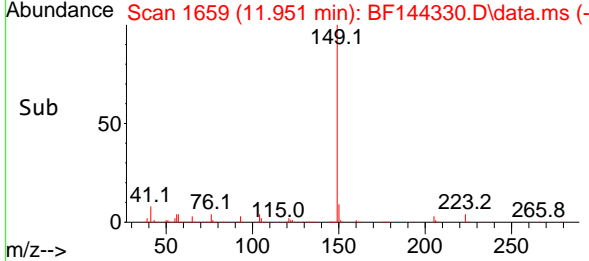
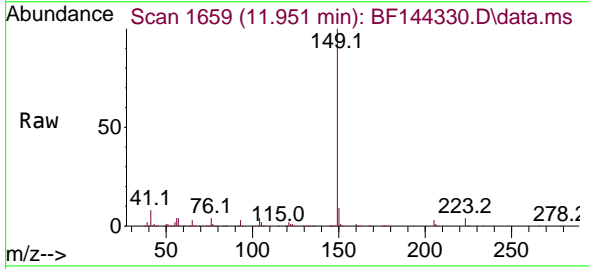
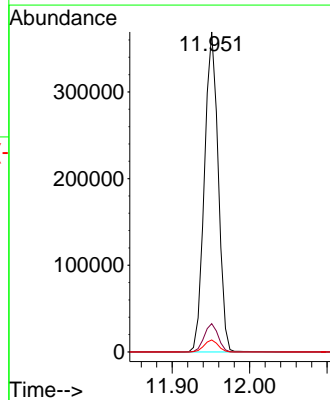


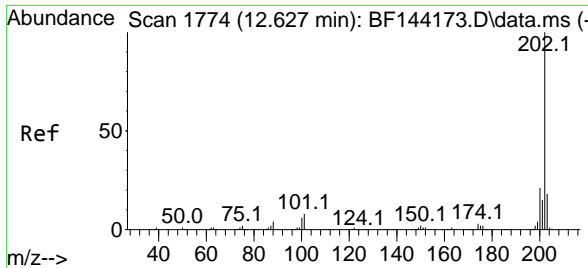
Tgt Ion:167 Resp: 374267
 Ion Ratio Lower Upper
 167 100
 166 20.9 17.2 25.8
 139 12.3 9.9 14.9



#74
 Di-n-butylphthalate
 Concen: 50.910 ng
 RT: 11.951 min Scan# 1659
 Delta R.T. -0.012 min
 Lab File: BF144330.D
 Acq: 24 Nov 2025 18:18

Tgt Ion:149 Resp: 454700
 Ion Ratio Lower Upper
 149 100
 150 8.8 7.4 11.0
 104 3.7 3.4 5.2



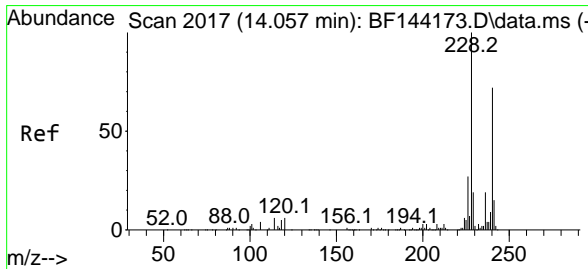
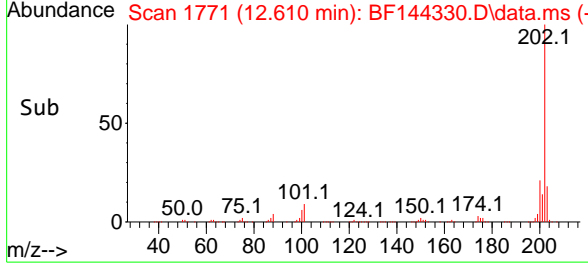
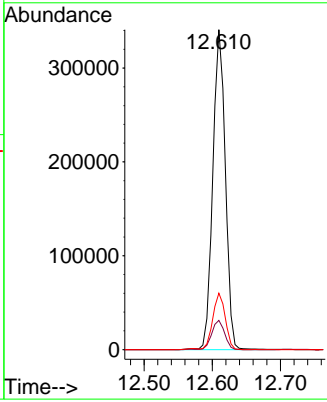
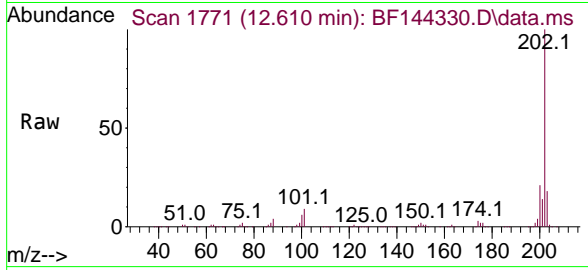


#75
 Fluoranthene
 Concen: 49.038 ng
 RT: 12.610 min Scan# 11
 Delta R.T. -0.012 min
 Lab File: BF144330.D
 Acq: 24 Nov 2025 18:18

Instrument : BNA_F
 ClientSampleId : V933MSD

Tgt Ion: 202 Resp: 432844

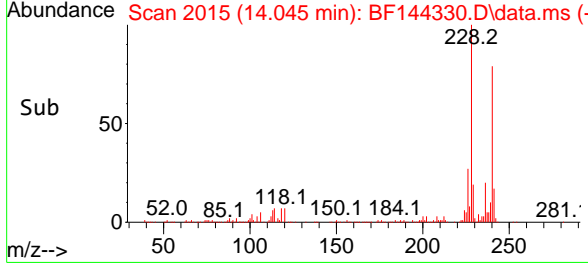
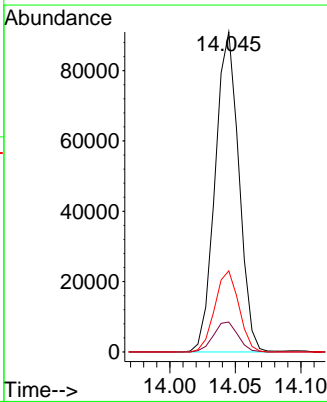
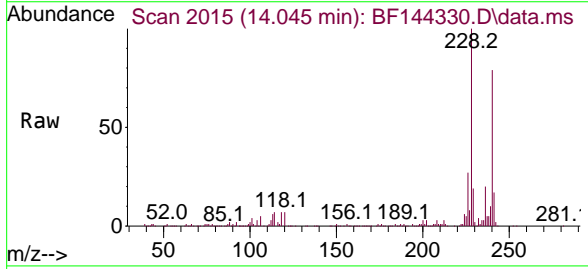
Ion	Ratio	Lower	Upper
202	100		
101	9.2	0.0	27.9
203	17.6	0.0	37.5

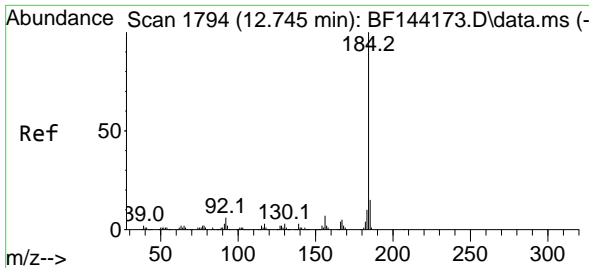


#76
 Chrysene-d12
 Concen: 20.000 ng
 RT: 14.045 min Scan# 2015
 Delta R.T. -0.006 min
 Lab File: BF144330.D
 Acq: 24 Nov 2025 18:18

Tgt Ion: 240 Resp: 114576

Ion	Ratio	Lower	Upper
240	100		
120	9.3	6.6	10.0
236	25.4	21.4	32.2



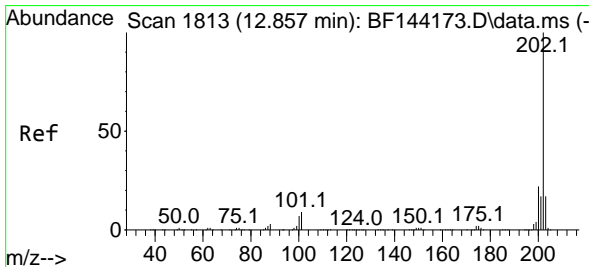
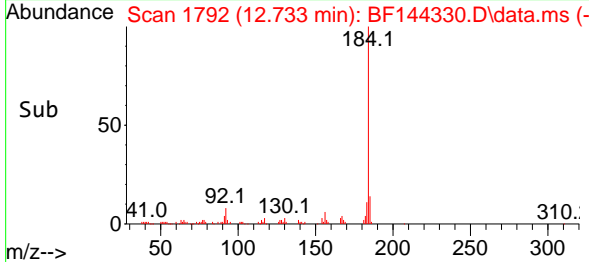
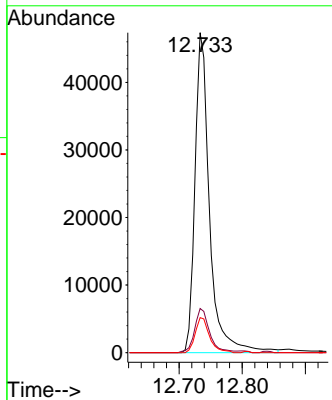
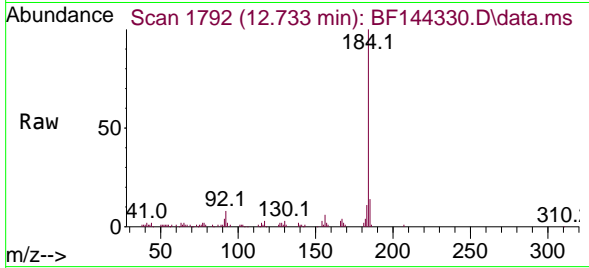


#77
 Benzidine
 Concen: 22.431 ng
 RT: 12.733 min Scan# 11
 Delta R.T. -0.018 min
 Lab File: BF144330.D
 Acq: 24 Nov 2025 18:18

Instrument : BNA_F
 ClientSampleId : V933MSD

Tgt Ion:184 Resp: 76022

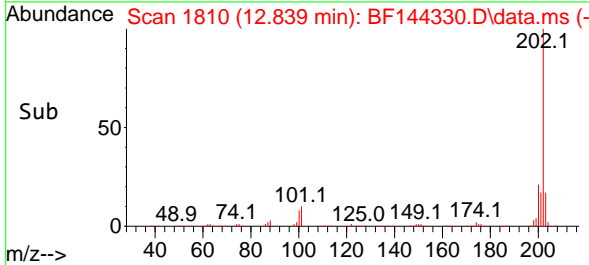
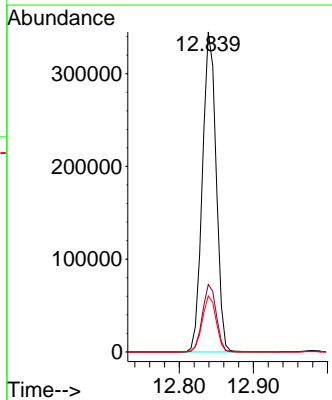
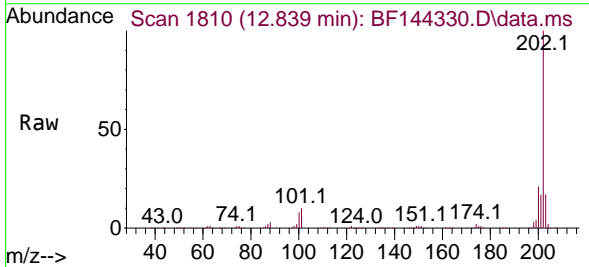
Ion	Ratio	Lower	Upper
184	100		
185	13.8	11.7	17.5
183	10.9	8.3	12.5

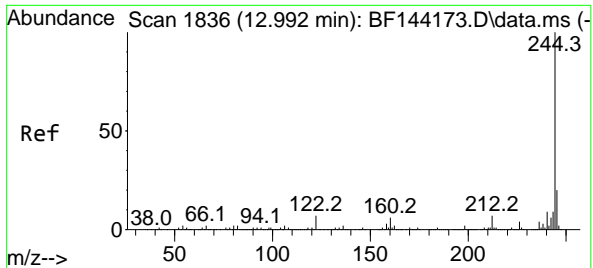


#78
 Pyrene
 Concen: 48.078 ng
 RT: 12.839 min Scan# 1810
 Delta R.T. -0.012 min
 Lab File: BF144330.D
 Acq: 24 Nov 2025 18:18

Tgt Ion:202 Resp: 444156

Ion	Ratio	Lower	Upper
202	100		
200	21.1	17.2	25.8
203	17.5	13.7	20.5



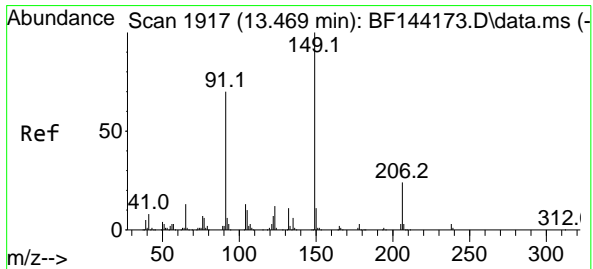
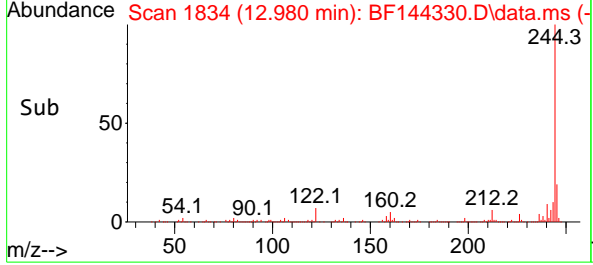
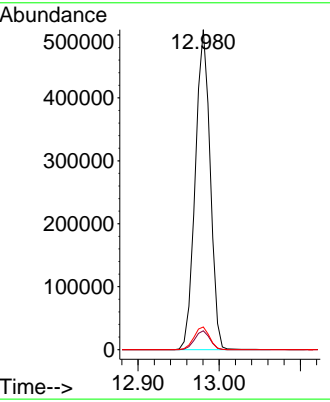
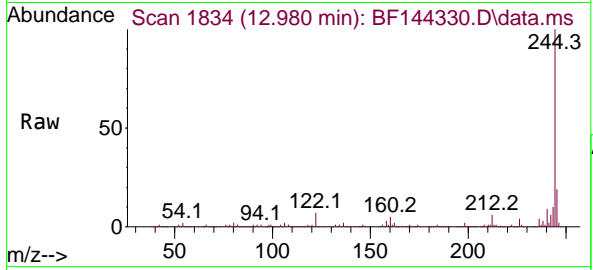


#79
 Terphenyl-d14
 Concen: 89.992 ng
 RT: 12.980 min Scan# 1834
 Delta R.T. -0.012 min
 Lab File: BF144330.D
 Acq: 24 Nov 2025 18:18

Instrument : BNA_F
 ClientSampleId : V933MSD

Tgt Ion:244 Resp: 649135

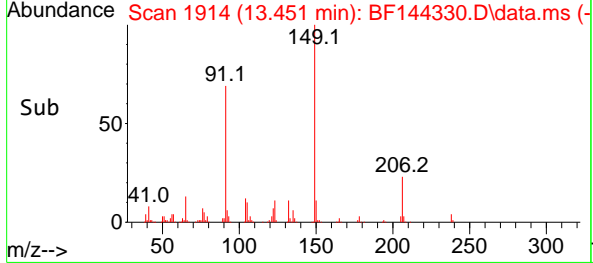
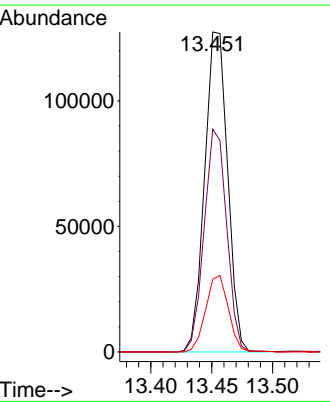
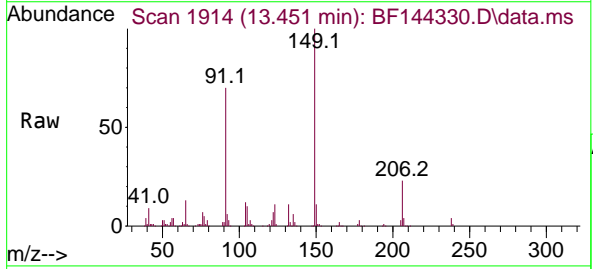
Ion	Ratio	Lower	Upper
244	100		
212	5.9	5.3	7.9
122	7.1	5.6	8.4

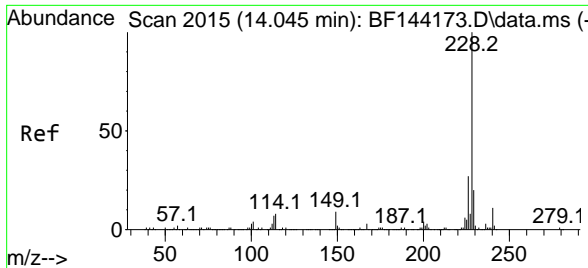


#80
 Butylbenzylphthalate
 Concen: 52.441 ng
 RT: 13.451 min Scan# 1914
 Delta R.T. -0.018 min
 Lab File: BF144330.D
 Acq: 24 Nov 2025 18:18

Tgt Ion:149 Resp: 167908

Ion	Ratio	Lower	Upper
149	100		
91	69.6	56.1	84.1
206	22.7	18.8	28.2



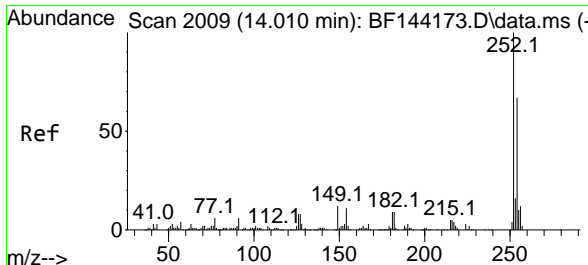
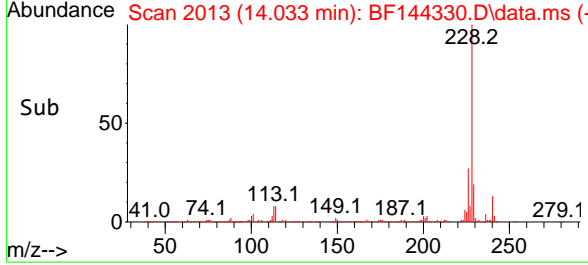
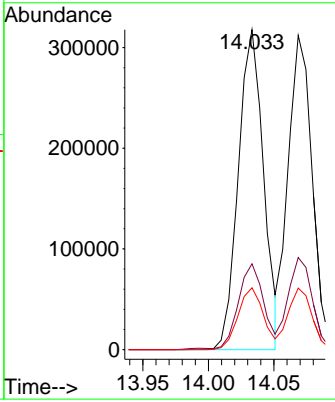
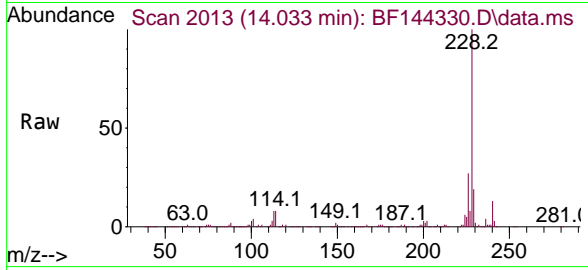


#81
 Benzo(a)anthracene
 Concen: 53.548 ng
 RT: 14.033 min Scan# 2006
 Delta R.T. -0.012 min
 Lab File: BF144330.D
 Acq: 24 Nov 2025 18:18

Instrument : BNA_F
 ClientSampleId : V933MSD

Tgt Ion:228 Resp: 425225

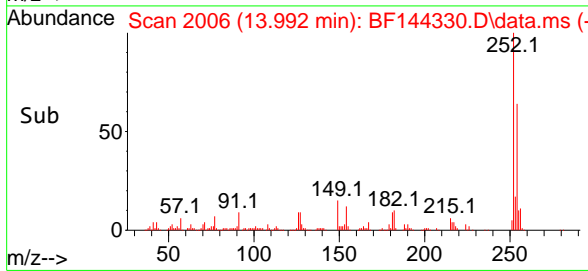
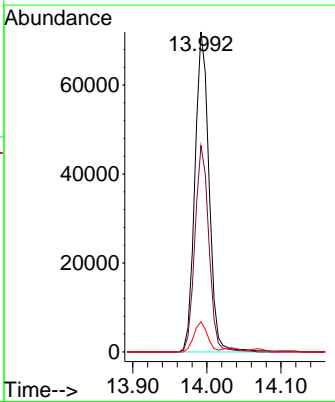
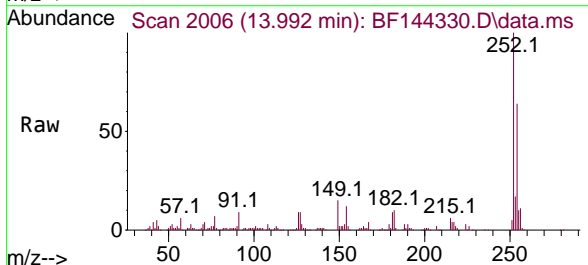
Ion	Ratio	Lower	Upper
228	100		
226	26.8	21.8	32.8
229	19.4	15.8	23.6

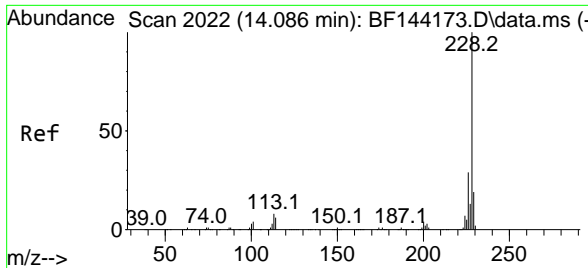


#82
 3,3'-Dichlorobenzidine
 Concen: 35.100 ng
 RT: 13.992 min Scan# 2006
 Delta R.T. -0.018 min
 Lab File: BF144330.D
 Acq: 24 Nov 2025 18:18

Tgt Ion:252 Resp: 95541

Ion	Ratio	Lower	Upper
252	100		
254	64.4	53.5	80.3
126	9.4	6.4	9.6

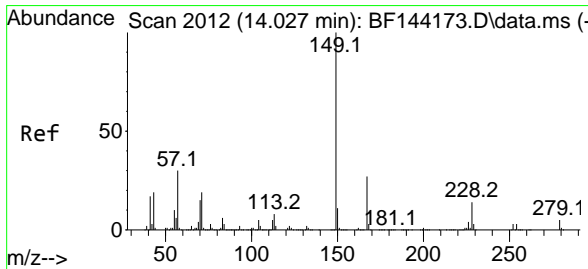
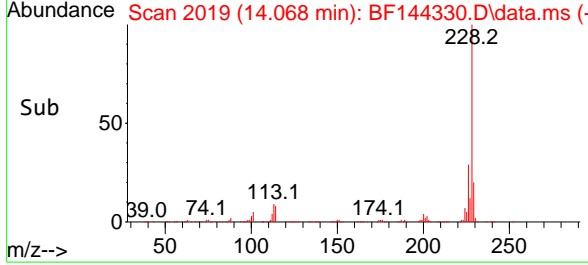
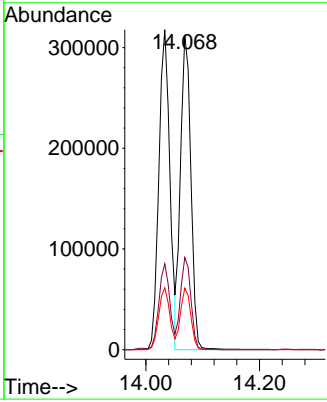
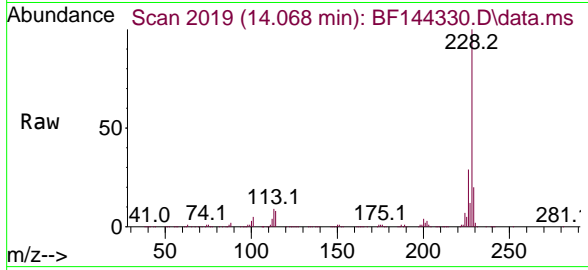




#83
 Chrysene
 Concen: 54.346 ng
 RT: 14.068 min Scan# 2009
 Delta R.T. -0.012 min
 Lab File: BF144330.D
 Acq: 24 Nov 2025 18:18

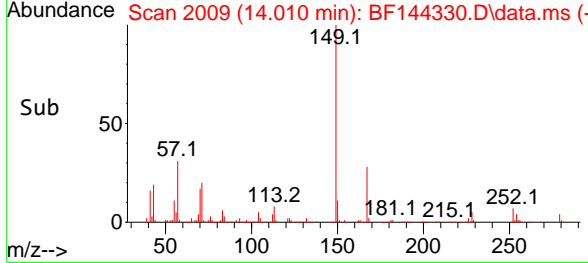
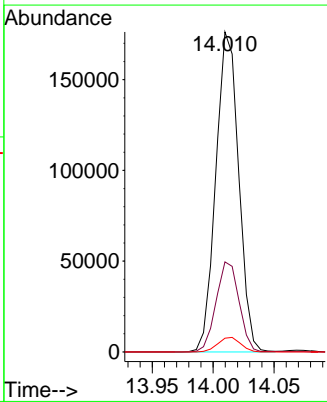
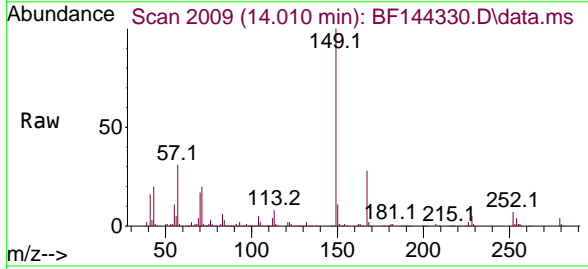
Instrument : BNA_F
 ClientSampleId : V933MSD

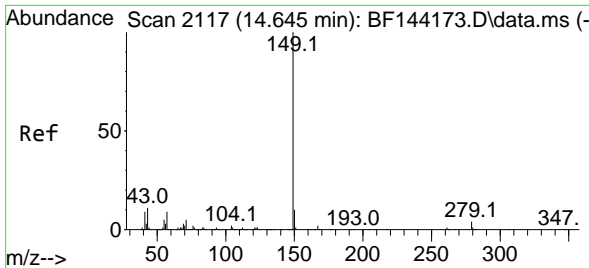
Tgt Ion	Resp	Lower	Upper
228	398390	100	100
226	29.3	22.9	34.3
229	19.6	15.0	22.6



#84
 Bis(2-ethylhexyl)phthalate
 Concen: 52.503 ng
 RT: 14.010 min Scan# 2009
 Delta R.T. -0.018 min
 Lab File: BF144330.D
 Acq: 24 Nov 2025 18:18

Tgt Ion	Resp	Lower	Upper
149	230126	100	100
167	28.1	21.8	32.8
279	4.3	3.7	5.5

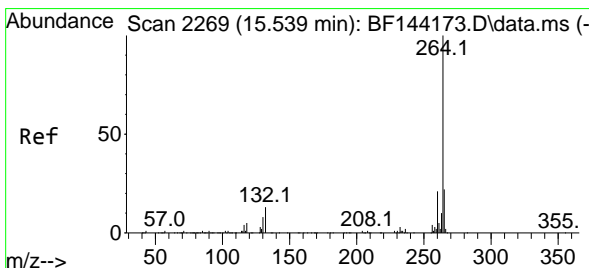
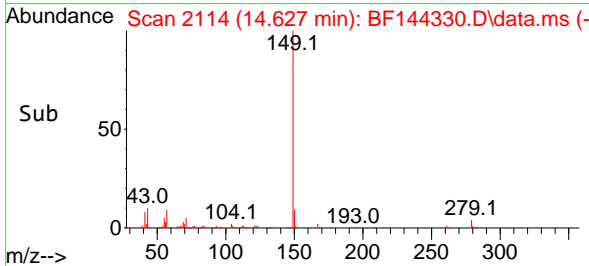
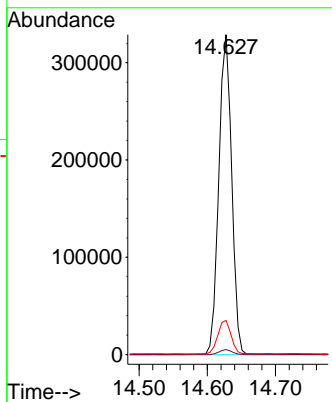
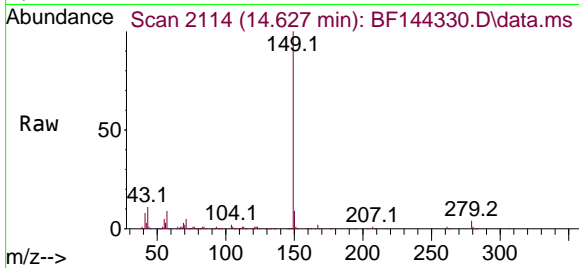




#85
 Di-n-octyl phthalate
 Concen: 56.671 ng
 RT: 14.627 min Scan# 2114
 Delta R.T. -0.018 min
 Lab File: BF144330.D
 Acq: 24 Nov 2025 18:18

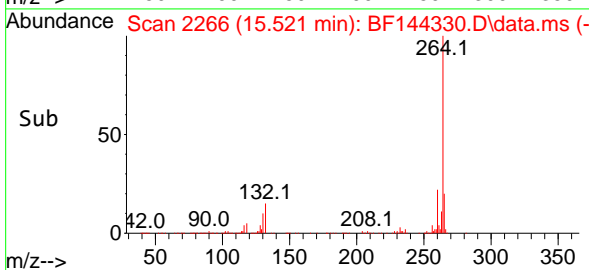
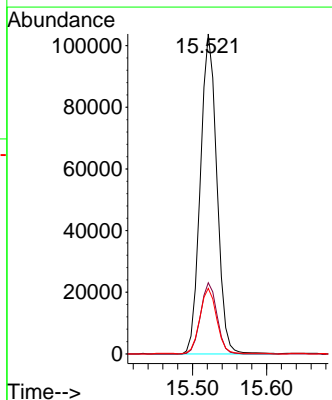
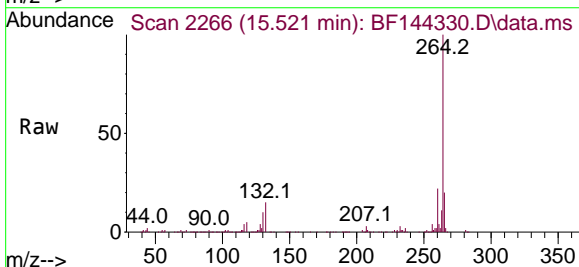
Instrument :
 BNA_F
 ClientSampleId :
 V933MSD

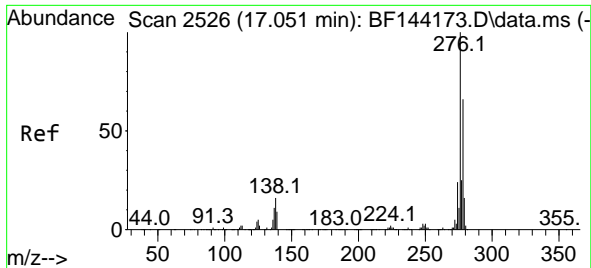
Tgt Ion	Resp	Lower	Upper
149	428567		
167	1.5	1.2	1.8
43	10.7	9.0	13.4



#86
 Perylene-d12
 Concen: 20.000 ng
 RT: 15.521 min Scan# 2266
 Delta R.T. -0.018 min
 Lab File: BF144330.D
 Acq: 24 Nov 2025 18:18

Tgt Ion	Resp	Lower	Upper
264	160719		
260	22.2	17.1	25.7
265	20.5	17.4	26.0



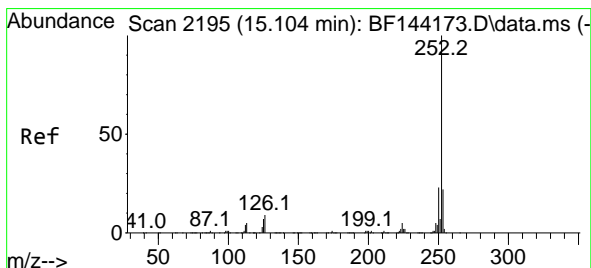
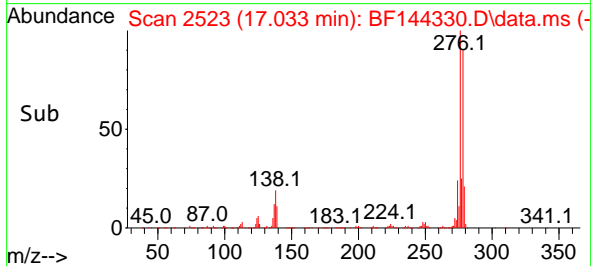
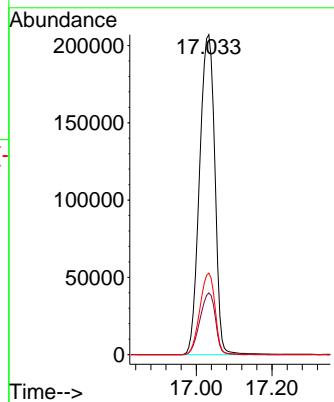
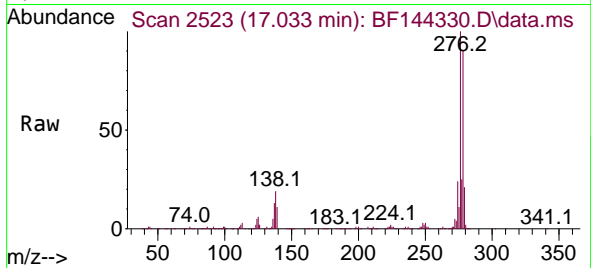


#87
 Indeno(1,2,3-cd)pyrene
 Concen: 50.182 ng
 RT: 17.033 min Scan# 21
 Delta R.T. -0.000 min
 Lab File: BF144330.D
 Acq: 24 Nov 2025 18:18

Instrument :
 BNA_F
 ClientSampleId :
 V933MSD

Tgt Ion:276 Resp: 578952

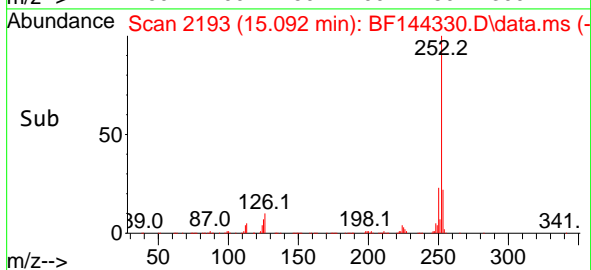
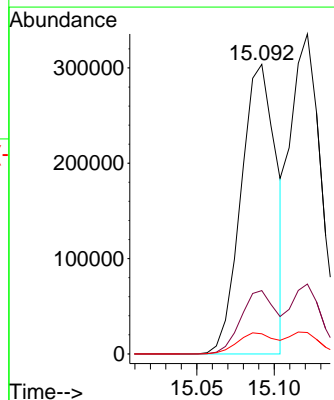
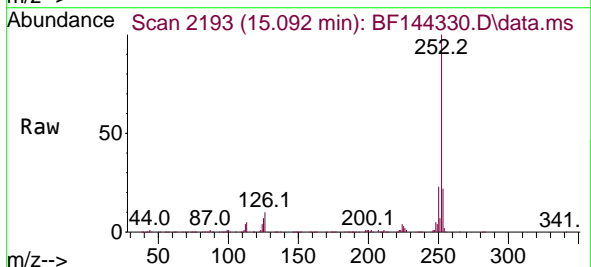
Ion	Ratio	Lower	Upper
276	100		
138	19.5	13.9	20.9
277	25.2	19.8	29.6

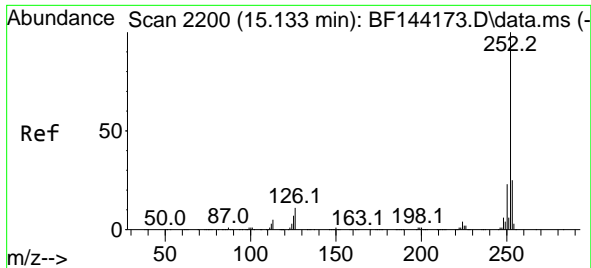


#88
 Benzo(b)fluoranthene
 Concen: 52.541 ng
 RT: 15.092 min Scan# 2193
 Delta R.T. -0.006 min
 Lab File: BF144330.D
 Acq: 24 Nov 2025 18:18

Tgt Ion:252 Resp: 480078

Ion	Ratio	Lower	Upper
252	100		
253	21.9	17.4	26.2
125	6.9	5.3	7.9

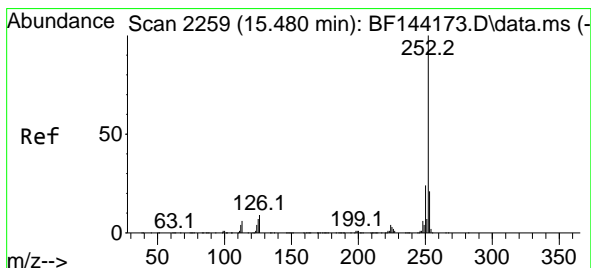
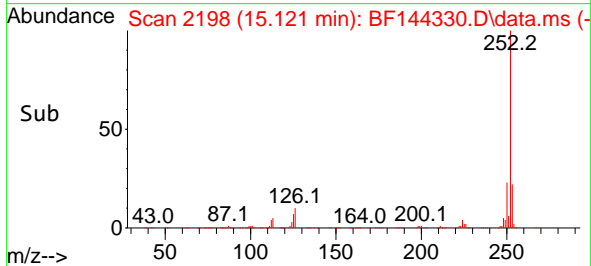
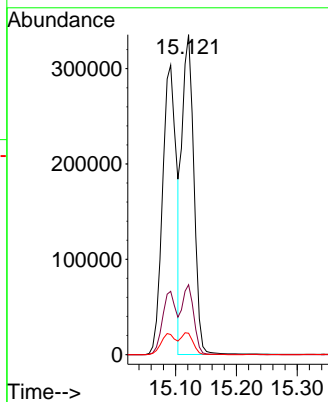
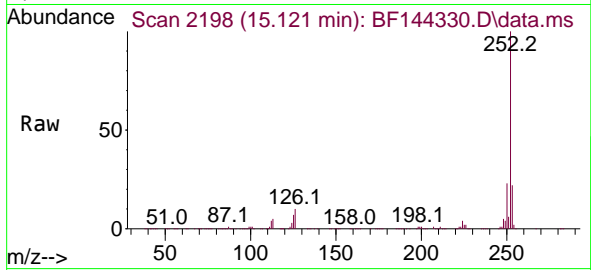




#89
 Benzo(k)fluoranthene
 Concen: 53.436 ng
 RT: 15.121 min Scan# 21
 Delta R.T. -0.006 min
 Lab File: BF144330.D
 Acq: 24 Nov 2025 18:18

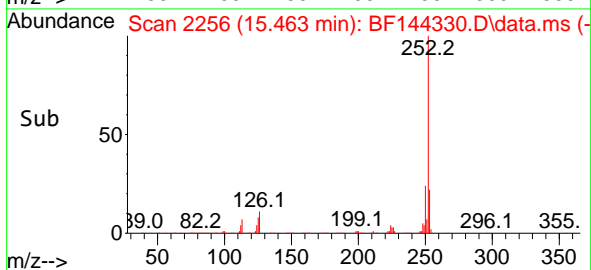
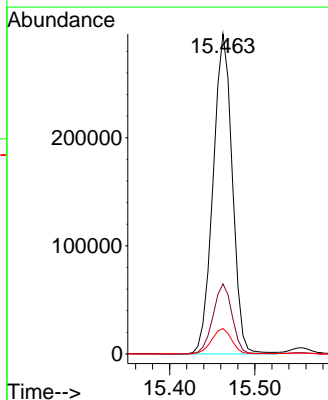
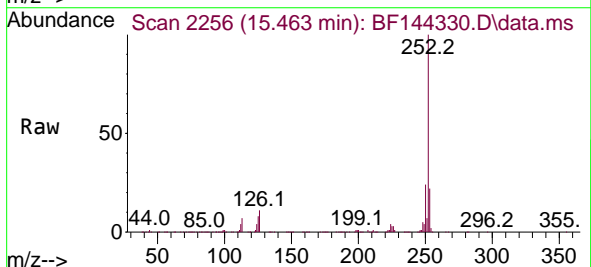
Instrument :
 BNA_F
 ClientSampleId :
 V933MSD

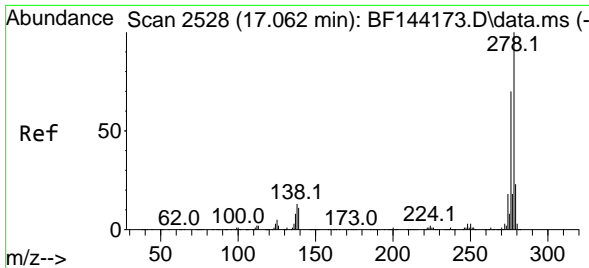
Tgt Ion:252 Resp: 457004
 Ion Ratio Lower Upper
 252 100
 253 21.8 18.0 27.0
 125 6.7 5.4 8.2



#90
 Benzo(a)pyrene
 Concen: 55.168 ng
 RT: 15.463 min Scan# 2256
 Delta R.T. -0.012 min
 Lab File: BF144330.D
 Acq: 24 Nov 2025 18:18

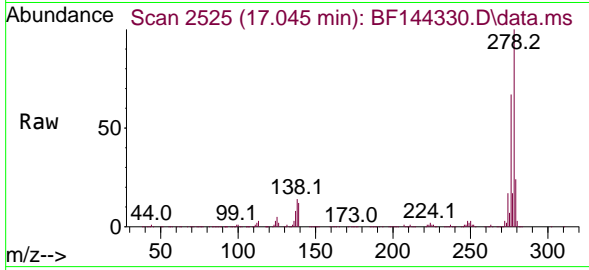
Tgt Ion:252 Resp: 465036
 Ion Ratio Lower Upper
 252 100
 253 21.9 16.7 25.1
 125 7.9 5.7 8.5



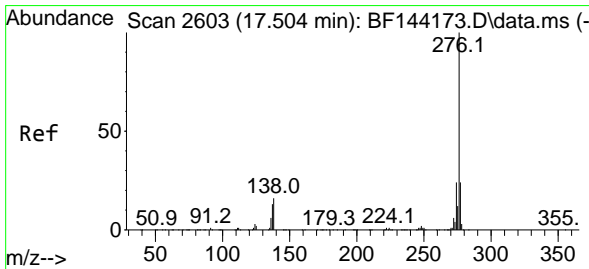
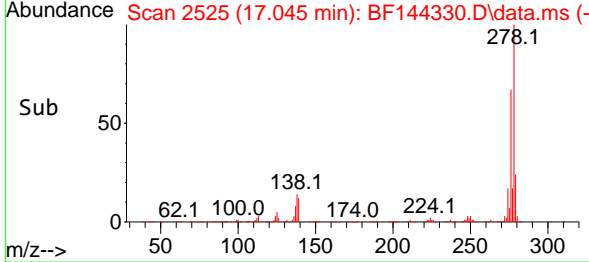
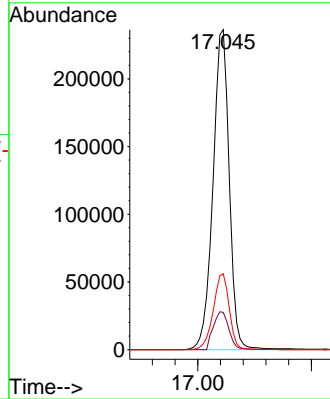


#91
 Dibenzo(a,h)anthracene
 Concen: 50.650 ng
 RT: 17.045 min Scan# 21
 Delta R.T. -0.006 min
 Lab File: BF144330.D
 Acq: 24 Nov 2025 18:18

Instrument :
 BNA_F
 ClientSampleId :
 V933MSD



Tgt Ion:278 Resp: 469297
 Ion Ratio Lower Upper
 278 100
 139 11.6 9.1 13.7
 279 23.7 18.2 27.4



#92
 Benzo(g,h,i)perylene
 Concen: 52.874 ng
 RT: 17.486 min Scan# 2600
 Delta R.T. -0.006 min
 Lab File: BF144330.D
 Acq: 24 Nov 2025 18:18

Tgt Ion:276 Resp: 483782
 Ion Ratio Lower Upper
 276 100
 277 23.1 19.0 28.4
 138 17.7 12.9 19.3

