

Data Path : Z:\svoasrv\HPCHEM1\BNA_F\Data\BF112425\
 Data File : BF144334.D
 Acq On : 24 Nov 2025 20:16
 Operator : RC/JU
 Sample : Q3711-02
 Misc :
 ALS Vial : 15 Sample Multiplier: 1

Instrument :
 BNA_F
 ClientSampleId :
 VNJ-222

Quant Time: Nov 25 00:29:02 2025
 Quant Method : Z:\svoasrv\HPCHEM1\BNA_F\Methods\8270-BF110525.M
 Quant Title : ASP BNA STANDARDS FOR 5 POINT CALIBRATION
 QLast Update : Wed Nov 05 18:37:33 2025
 Response via : Initial Calibration

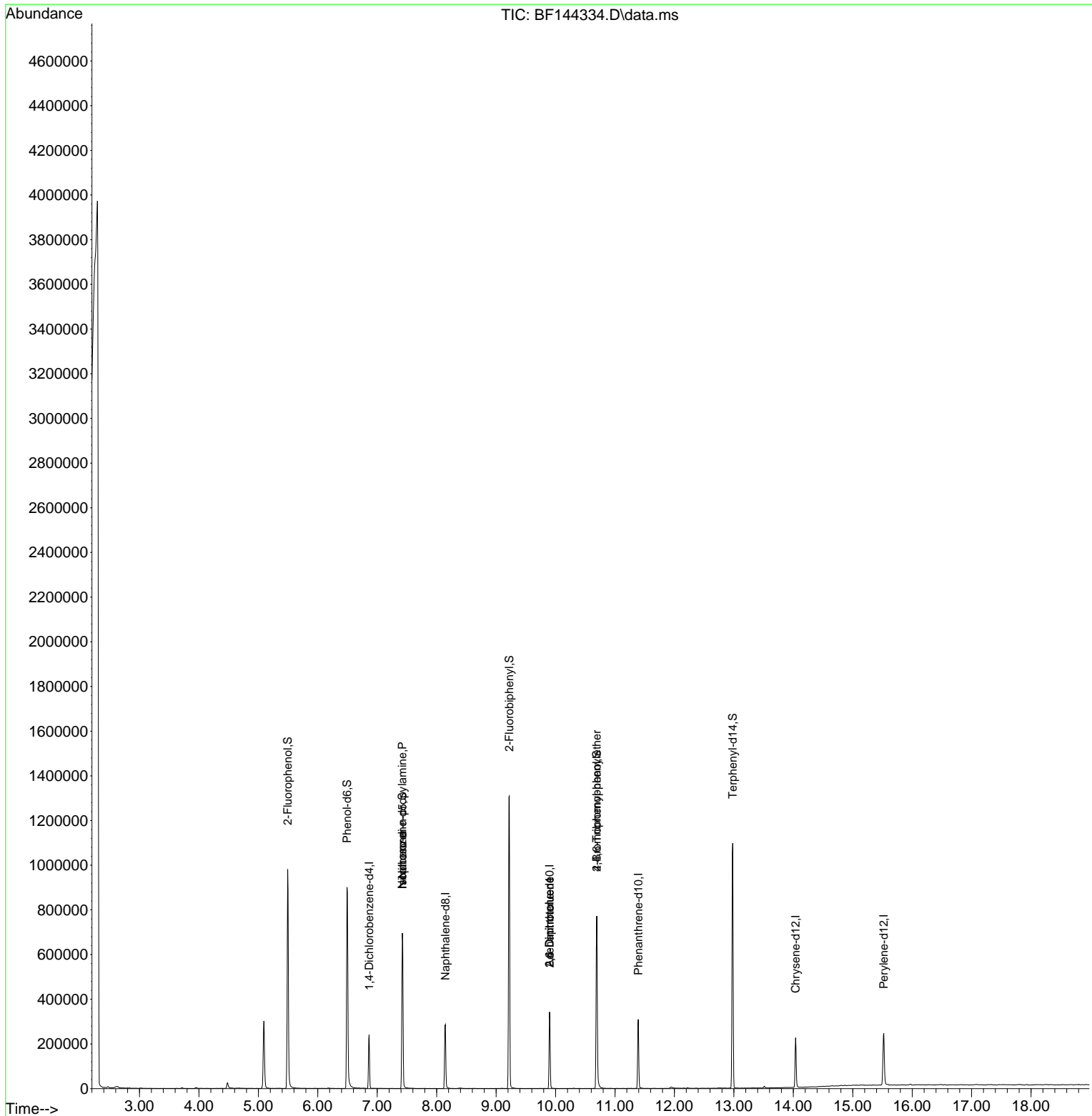
Compound	R.T.	QIon	Response	Conc Units	Dev(Min)
Internal Standards					
1) 1,4-Dichlorobenzene-d4	6.863	152	51284	20.000 ng	-0.01
21) Naphthalene-d8	8.145	136	202006	20.000 ng	-0.01
39) Acenaphthene-d10	9.898	164	111446	20.000 ng	-0.02
64) Phenanthrene-d10	11.392	188	178164	20.000 ng	-0.01
76) Chrysene-d12	14.039	240	119869	20.000 ng	-0.01
86) Perylene-d12	15.521	264	161611	20.000 ng	-0.02
System Monitoring Compounds					
5) 2-Fluorophenol	5.493	112	402849	122.925 ng	0.00
7) Phenol-d6	6.493	99	442420	119.144 ng	0.00
23) Nitrobenzene-d5	7.422	82	305908	87.461 ng	-0.01
42) 2,4,6-Tribromophenol	10.692	330	162592	116.260 ng	-0.01
45) 2-Fluorobiphenyl	9.222	172	656970	87.065 ng	0.00
79) Terphenyl-d14	12.980	244	606956	80.429 ng	-0.01
Target Compounds					
19) n-Nitroso-di-n-propyla...	7.422	70	44039	18.016 ng	# 79
25) Isophorone	7.422	82	305905	46.238 ng	# 66
51) 2,6-Dinitrotoluene	9.898	165	13379	8.952 ng	# 27
57) 2,4-Dinitrotoluene	9.898	165	13379	6.687 ng	# 27
67) 4-Bromophenyl-phenylether	10.692	248	9751	4.288 ng	# 1

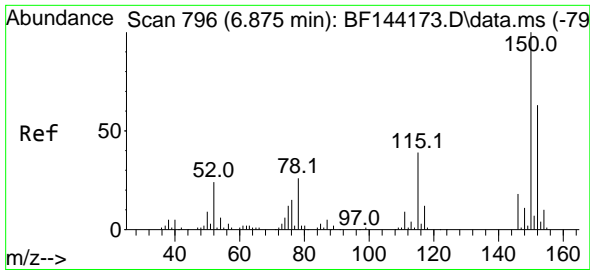
(#) = qualifier out of range (m) = manual integration (+) = signals summed

Data Path : Z:\svoasrv\HPCHEM1\BNA_F\Data\BF112425\
 Data File : BF144334.D
 Acq On : 24 Nov 2025 20:16
 Operator : RC/JU
 Sample : Q3711-02
 Misc :
 ALS Vial : 15 Sample Multiplier: 1

Instrument :
 BNA_F
 ClientSampleId :
 VNJ-222

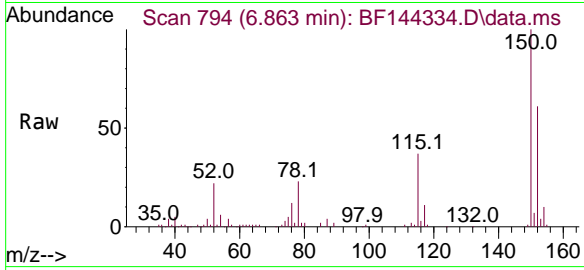
Quant Time: Nov 25 00:29:02 2025
 Quant Method : Z:\svoasrv\HPCHEM1\BNA_F\Methods\8270-BF110525.M
 Quant Title : ASP BNA STANDARDS FOR 5 POINT CALIBRATION
 QLast Update : Wed Nov 05 18:37:33 2025
 Response via : Initial Calibration



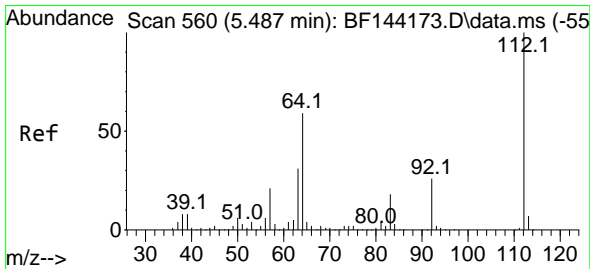
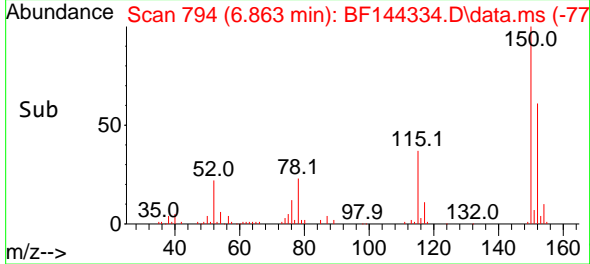
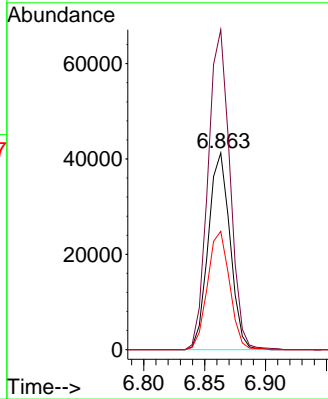


#1
 1,4-Dichlorobenzene-d4
 Concen: 20.000 ng
 RT: 6.863 min Scan# 79
 Delta R.T. -0.012 min
 Lab File: BF144334.D
 Acq: 24 Nov 2025 20:16

Instrument :
 BNA_F
 ClientSampleId :
 VNJ-222

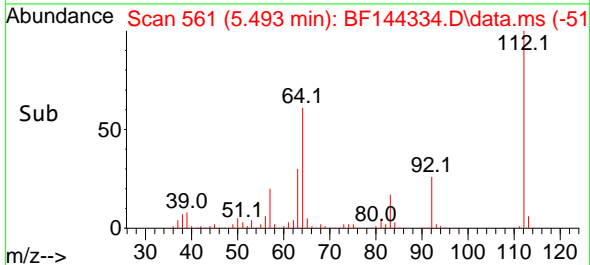
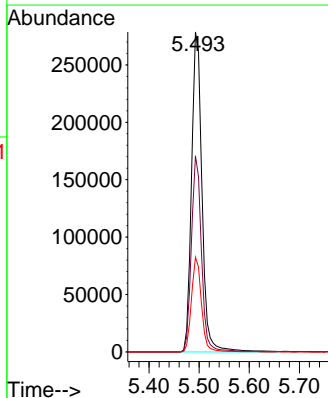
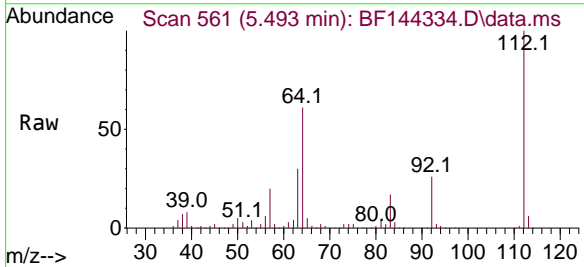


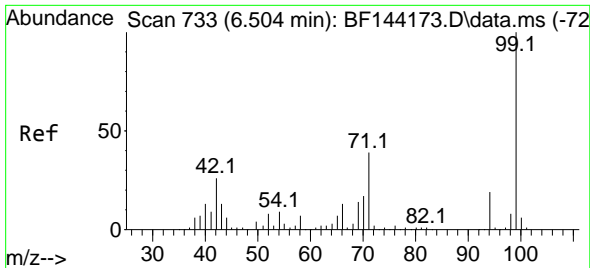
Tgt Ion:152 Resp: 51284
 Ion Ratio Lower Upper
 152 100
 150 162.7 127.4 191.0
 115 60.2 49.5 74.3



#5
 2-Fluorophenol
 Concen: 122.925 ng
 RT: 5.493 min Scan# 561
 Delta R.T. 0.000 min
 Lab File: BF144334.D
 Acq: 24 Nov 2025 20:16

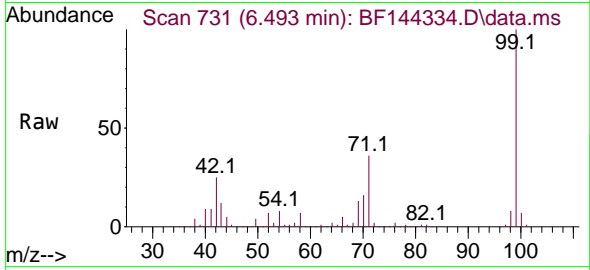
Tgt Ion:112 Resp: 402849
 Ion Ratio Lower Upper
 112 100
 64 61.3 47.2 70.8
 63 29.6 24.4 36.6



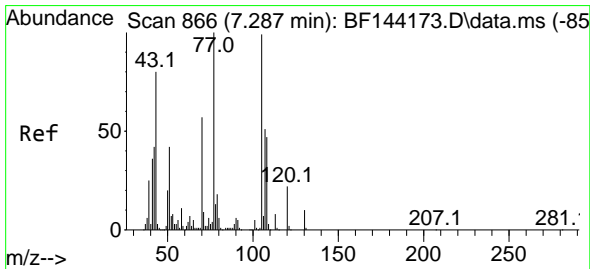
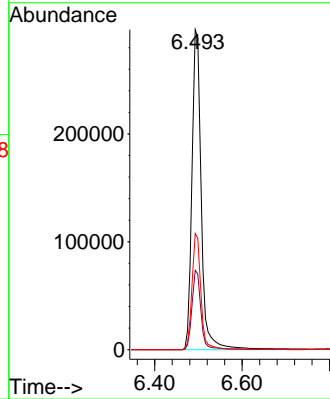
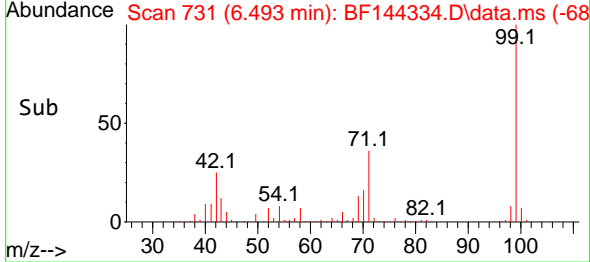


#7
 Phenol-d6
 Concen: 119.144 ng
 RT: 6.493 min Scan# 731
 Delta R.T. -0.006 min
 Lab File: BF144334.D
 Acq: 24 Nov 2025 20:16

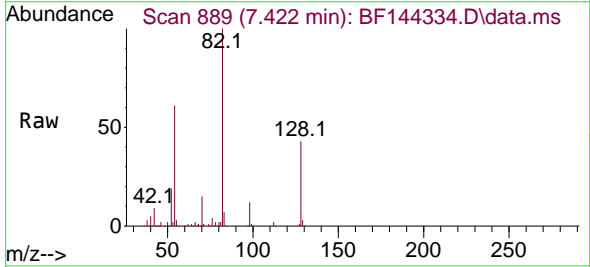
Instrument :
 BNA_F
 ClientSampleId :
 VNJ-222



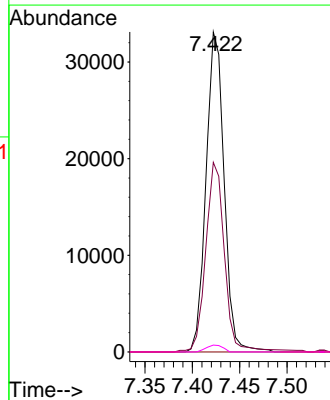
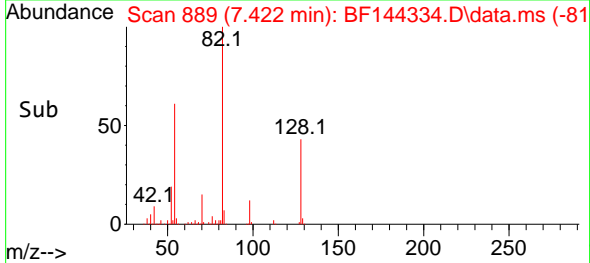
Tgt Ion: 99 Resp: 442420
 Ion Ratio Lower Upper
 99 100
 42 24.8 20.9 31.3
 71 36.3 31.4 47.2

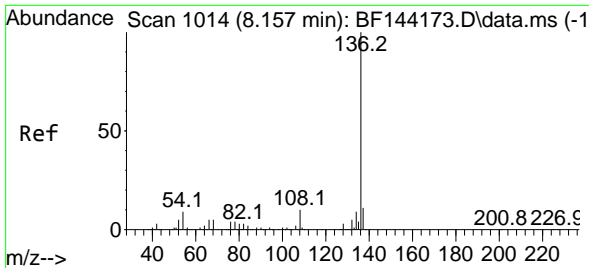


#19
 n-Nitroso-di-n-propylamine
 Concen: 18.016 ng
 RT: 7.422 min Scan# 889
 Delta R.T. 0.147 min
 Lab File: BF144334.D
 Acq: 24 Nov 2025 20:16



Tgt Ion: 70 Resp: 44039
 Ion Ratio Lower Upper
 70 100
 42 59.2 58.3 87.5
 101 0.0 7.0 10.6#
 130 2.1 14.4 21.6#



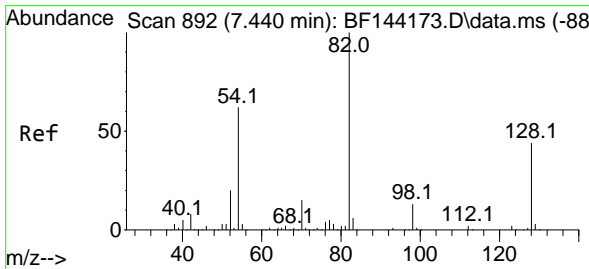
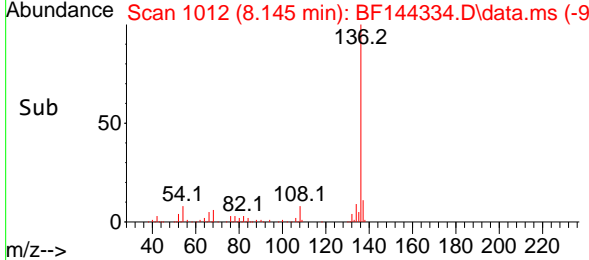
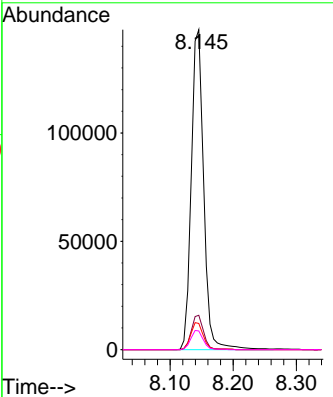
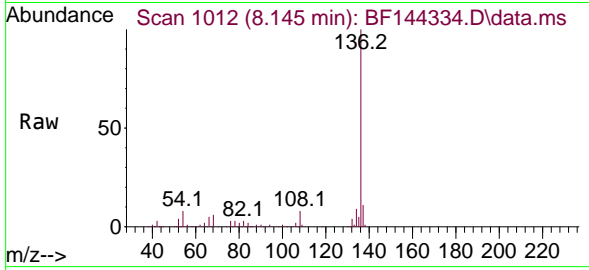


#21
 Naphthalene-d8
 Concen: 20.000 ng
 RT: 8.145 min Scan# 1012
 Delta R.T. -0.012 min
 Lab File: BF144334.D
 Acq: 24 Nov 2025 20:16

Instrument : BNA_F
 Client Sample Id : VNJ-222

Tgt Ion: 136 Resp: 202006

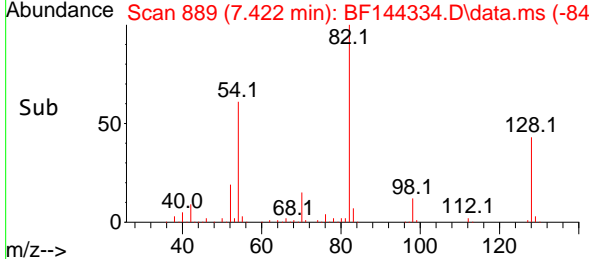
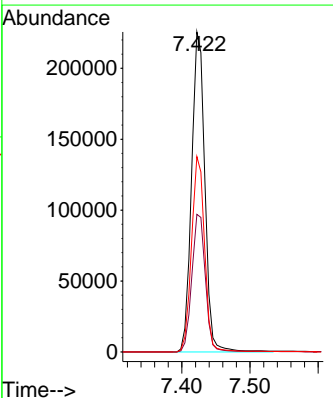
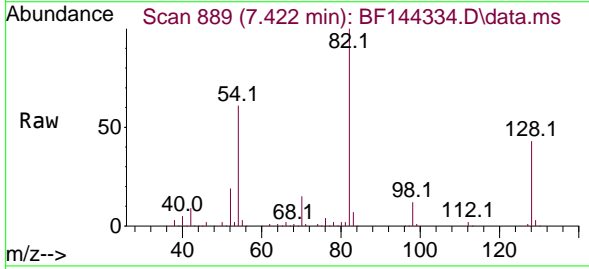
Ion	Ratio	Lower	Upper
136	100		
137	10.7	8.6	13.0
54	8.2	7.0	10.6
68	5.8	4.3	6.5

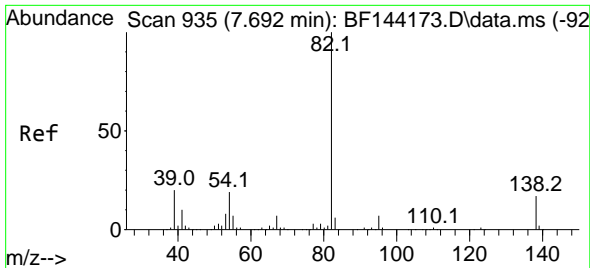


#23
 Nitrobenzene-d5
 Concen: 87.461 ng
 RT: 7.422 min Scan# 889
 Delta R.T. -0.012 min
 Lab File: BF144334.D
 Acq: 24 Nov 2025 20:16

Tgt Ion: 82 Resp: 305908

Ion	Ratio	Lower	Upper
82	100		
128	43.0	34.7	52.1
54	61.0	49.5	74.3

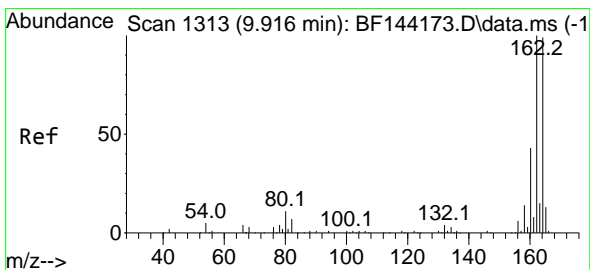
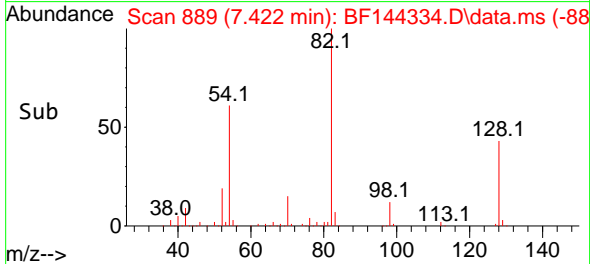
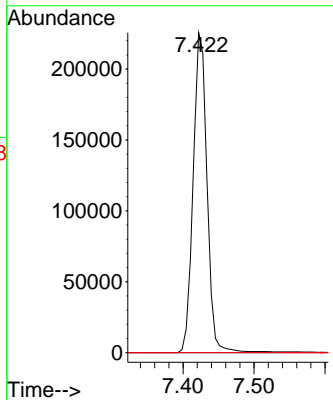
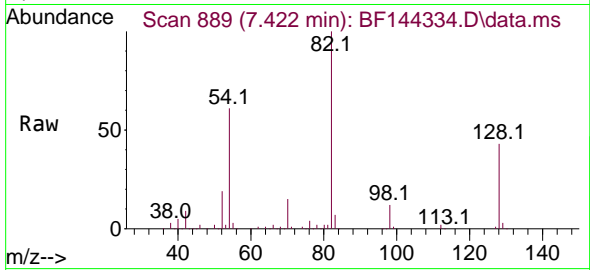




#25
 Isophorone
 Concen: 46.238 ng
 RT: 7.422 min Scan# 88
 Delta R.T. -0.265 min
 Lab File: BF144334.D
 Acq: 24 Nov 2025 20:16

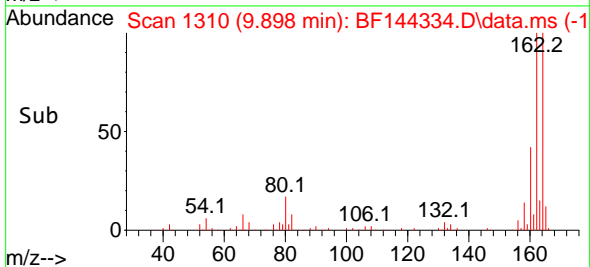
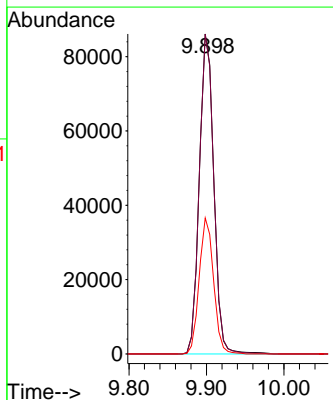
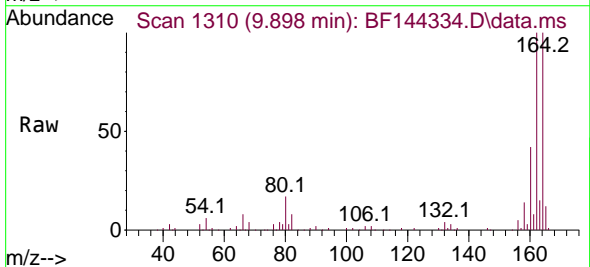
Instrument :
 BNA_F
 ClientSampleId :
 VNJ-222

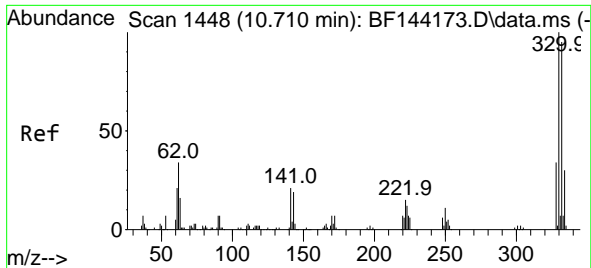
Tgt Ion: 82 Resp: 305905
 Ion Ratio Lower Upper
 82 100
 95 0.0 5.5 8.3#
 138 0.0 13.7 20.5#



#39
 Acenaphthene-d10
 Concen: 20.000 ng
 RT: 9.898 min Scan# 1310
 Delta R.T. -0.018 min
 Lab File: BF144334.D
 Acq: 24 Nov 2025 20:16

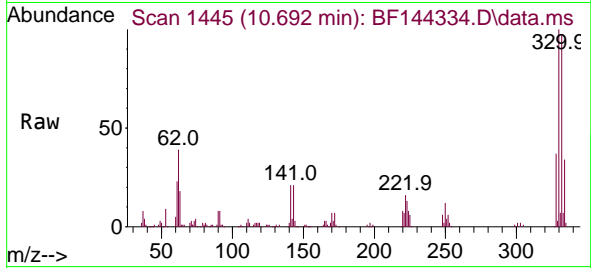
Tgt Ion: 164 Resp: 111446
 Ion Ratio Lower Upper
 164 100
 162 99.9 81.1 121.7
 160 42.5 34.5 51.7



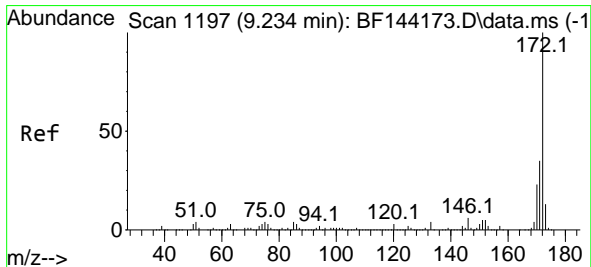
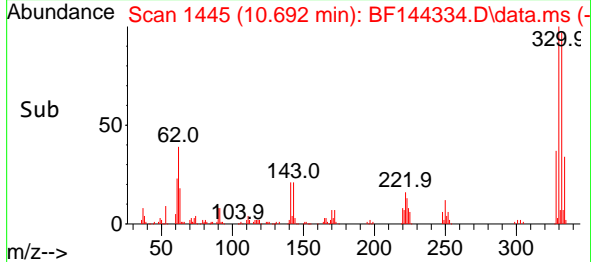
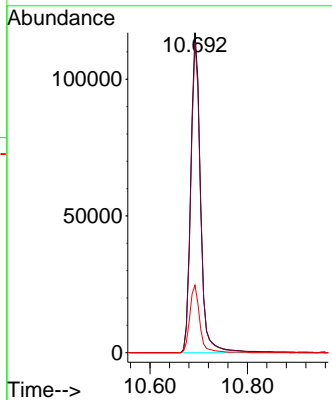


#42
 2,4,6-Tribromophenol
 Concen: 116.260 ng
 RT: 10.692 min Scan# 1445
 Delta R.T. -0.012 min
 Lab File: BF144334.D
 Acq: 24 Nov 2025 20:16

Instrument :
 BNA_F
 ClientSampleId :
 VNJ-222

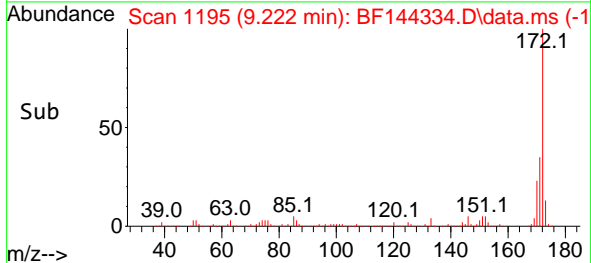
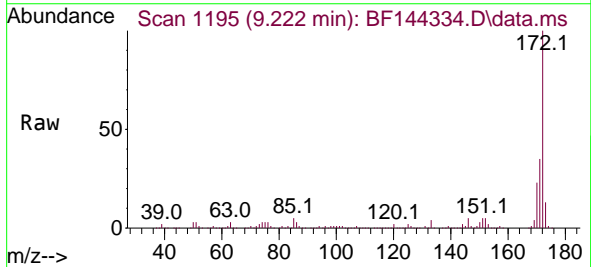
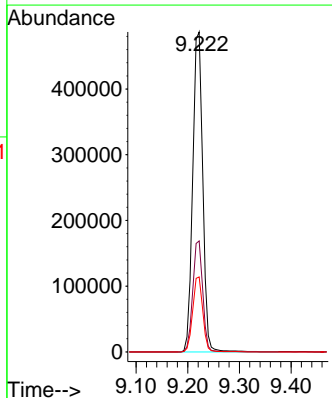


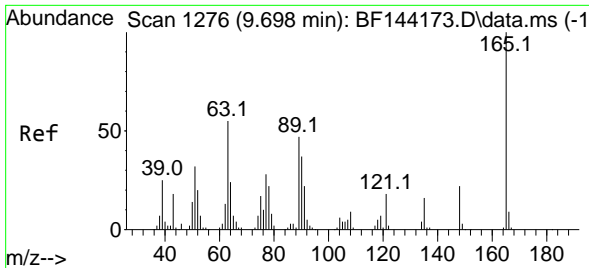
Tgt Ion:330 Resp: 162592
 Ion Ratio Lower Upper
 330 100
 332 96.3 76.7 115.1
 141 21.3 17.8 26.8



#45
 2-Fluorobiphenyl
 Concen: 87.065 ng
 RT: 9.222 min Scan# 1195
 Delta R.T. -0.006 min
 Lab File: BF144334.D
 Acq: 24 Nov 2025 20:16

Tgt Ion:172 Resp: 656970
 Ion Ratio Lower Upper
 172 100
 171 34.7 28.1 42.1
 170 23.4 18.6 28.0

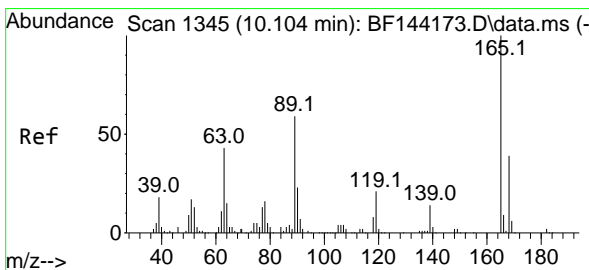
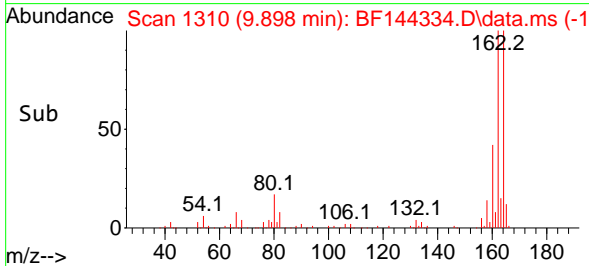
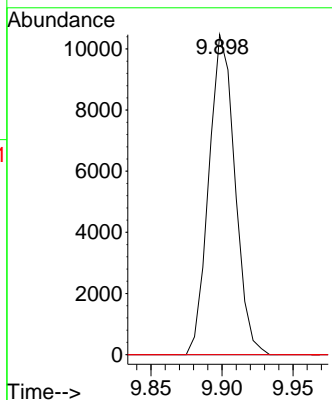
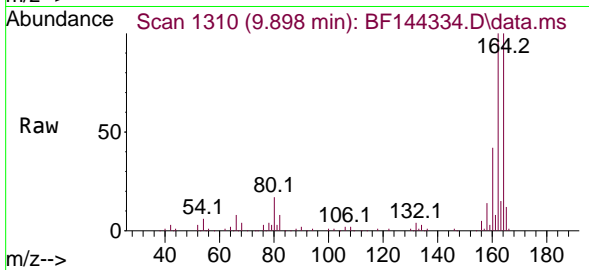




#51
 2,6-Dinitrotoluene
 Concen: 8.952 ng
 RT: 9.898 min Scan# 1310
 Delta R.T. 0.206 min
 Lab File: BF144334.D
 Acq: 24 Nov 2025 20:16

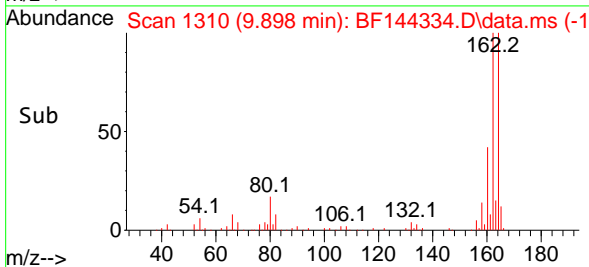
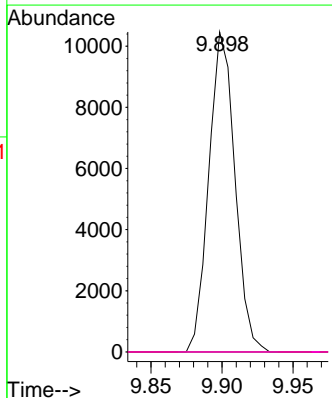
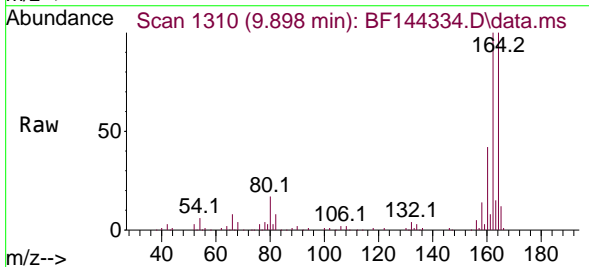
Instrument :
 BNA_F
 ClientSampleId :
 VNJ-222

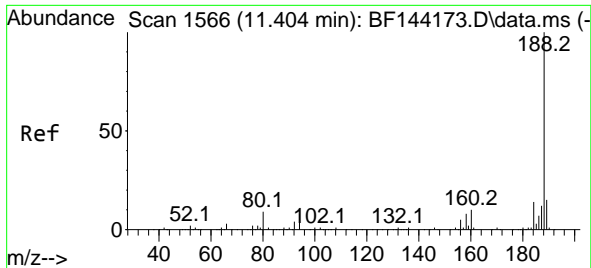
Tgt Ion	Resp	Lower	Upper
165	100		
63	0.0	43.8	65.8#
89	0.0	37.5	56.3#



#57
 2,4-Dinitrotoluene
 Concen: 6.687 ng
 RT: 9.898 min Scan# 1310
 Delta R.T. -0.200 min
 Lab File: BF144334.D
 Acq: 24 Nov 2025 20:16

Tgt Ion	Resp	Lower	Upper
165	100		
63	0.0	35.5	53.3#
89	0.0	47.4	71.2#
182	0.0	1.9	2.9#



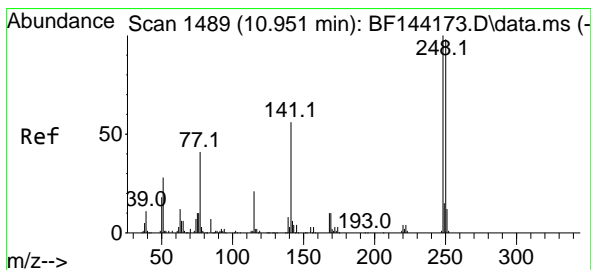
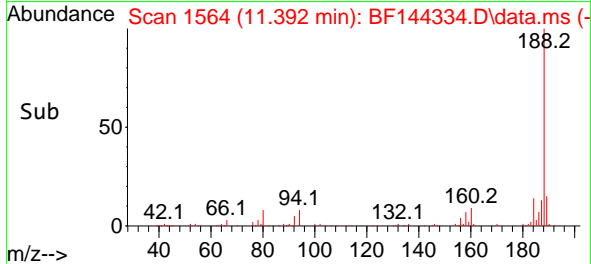
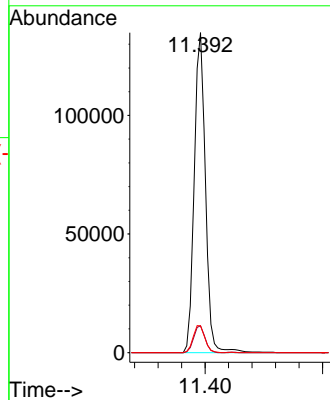
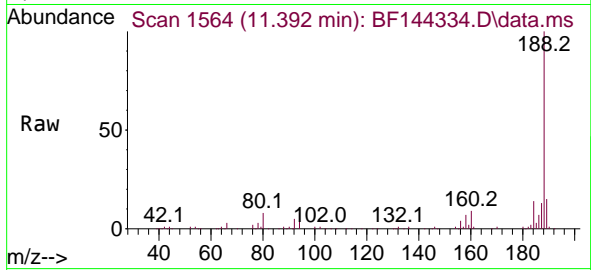


#64
 Phenanthrene-d10
 Concen: 20.000 ng
 RT: 11.392 min Scan# 11
 Delta R.T. -0.012 min
 Lab File: BF144334.D
 Acq: 24 Nov 2025 20:16

Instrument :
 BNA_F
 ClientSampleId :
 VNJ-222

Tgt Ion:188 Resp: 178164

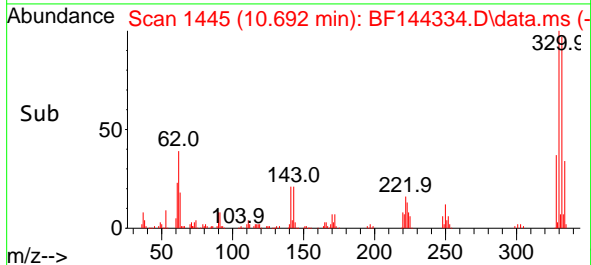
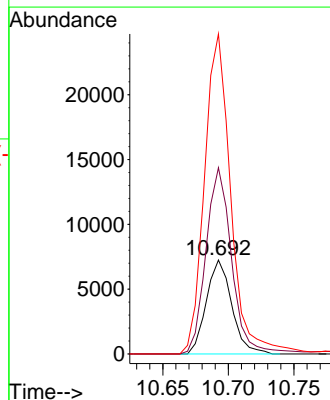
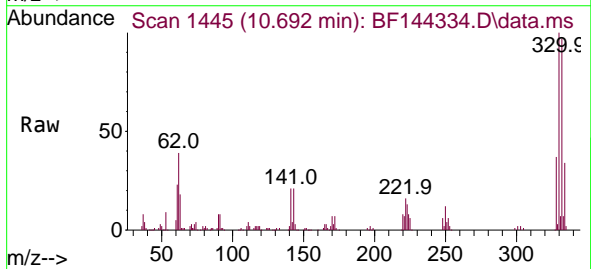
Ion	Ratio	Lower	Upper
188	100		
94	8.4	6.2	9.2
80	8.4	6.9	10.3

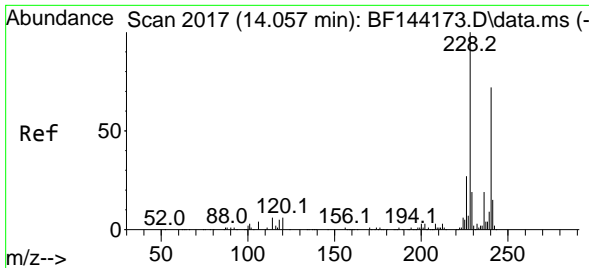


#67
 4-Bromophenyl-phenylether
 Concen: 4.288 ng
 RT: 10.692 min Scan# 1445
 Delta R.T. -0.253 min
 Lab File: BF144334.D
 Acq: 24 Nov 2025 20:16

Tgt Ion:248 Resp: 9751

Ion	Ratio	Lower	Upper
248	100		
250	198.4	78.4	117.6#
141	340.9	45.1	67.7#



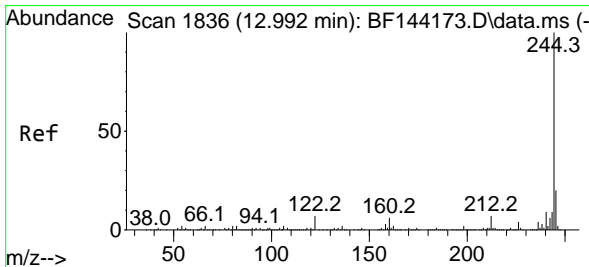
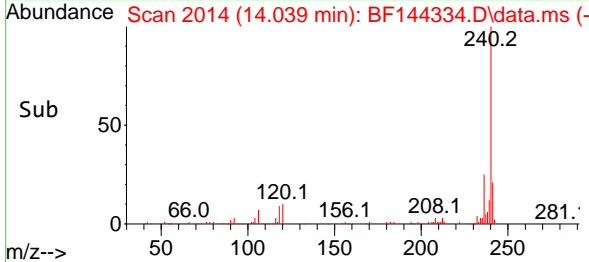
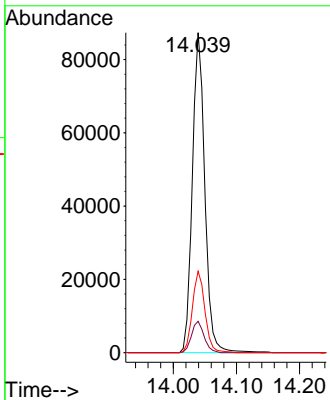
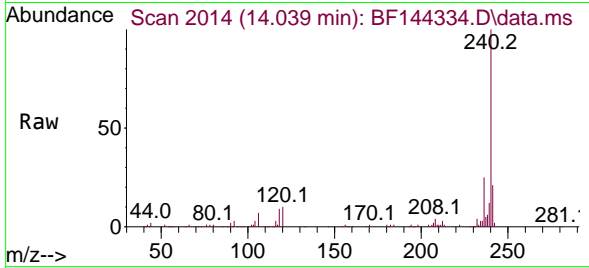


#76
 Chrysene-d12
 Concen: 20.000 ng
 RT: 14.039 min Scan# 20
 Delta R.T. -0.012 min
 Lab File: BF144334.D
 Acq: 24 Nov 2025 20:16

Instrument : BNA_F
 ClientSampleId : VNJ-222

Tgt Ion:240 Resp: 119869

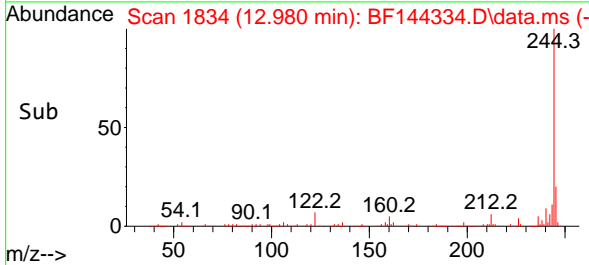
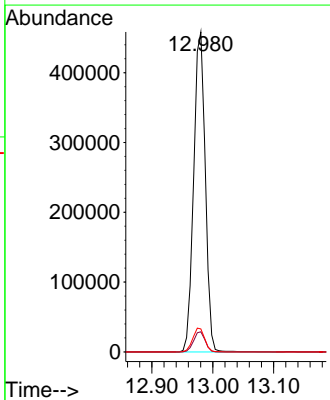
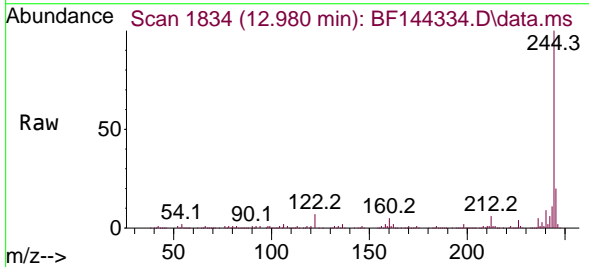
Ion	Ratio	Lower	Upper
240	100		
120	9.8	6.6	10.0
236	25.4	21.4	32.2

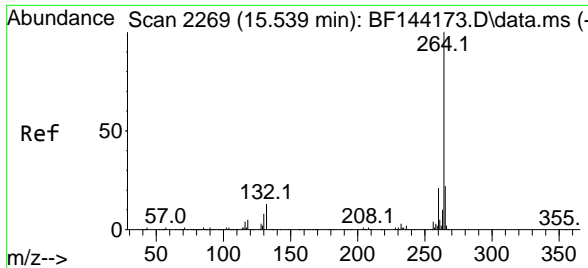


#79
 Terphenyl-d14
 Concen: 80.429 ng
 RT: 12.980 min Scan# 1834
 Delta R.T. -0.012 min
 Lab File: BF144334.D
 Acq: 24 Nov 2025 20:16

Tgt Ion:244 Resp: 606956

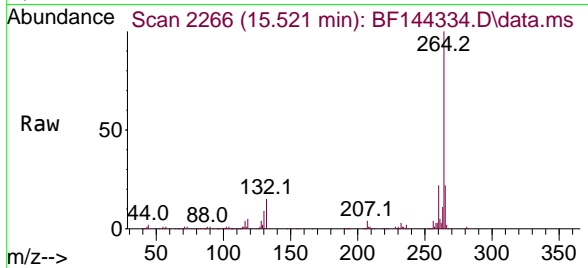
Ion	Ratio	Lower	Upper
244	100		
212	6.3	5.3	7.9
122	7.2	5.6	8.4





#86
 Perylene-d12
 Concen: 20.000 ng
 RT: 15.521 min Scan# 21
 Delta R.T. -0.018 min
 Lab File: BF144334.D
 Acq: 24 Nov 2025 20:16

Instrument :
 BNA_F
 ClientSampleId :
 VNJ-222



Tgt Ion:264 Resp: 161611

Ion	Ratio	Lower	Upper
264	100		
260	21.6	17.1	25.7
265	21.9	17.4	26.0

