

Data Path : Z:\svoasrv\HPCHEM1\BNA_F\Data\BF112425\
 Data File : BF144337.D
 Acq On : 24 Nov 2025 21:44
 Operator : RC/JU
 Sample : Q3709-01
 Misc :
 ALS Vial : 18 Sample Multiplier: 1

Instrument :
 BNA_F
 ClientSampleId :
 LI-1-112125

Quant Time: Nov 25 00:30:02 2025
 Quant Method : Z:\svoasrv\HPCHEM1\BNA_F\Methods\8270-BF110525.M
 Quant Title : ASP BNA STANDARDS FOR 5 POINT CALIBRATION
 QLast Update : Wed Nov 05 18:37:33 2025
 Response via : Initial Calibration

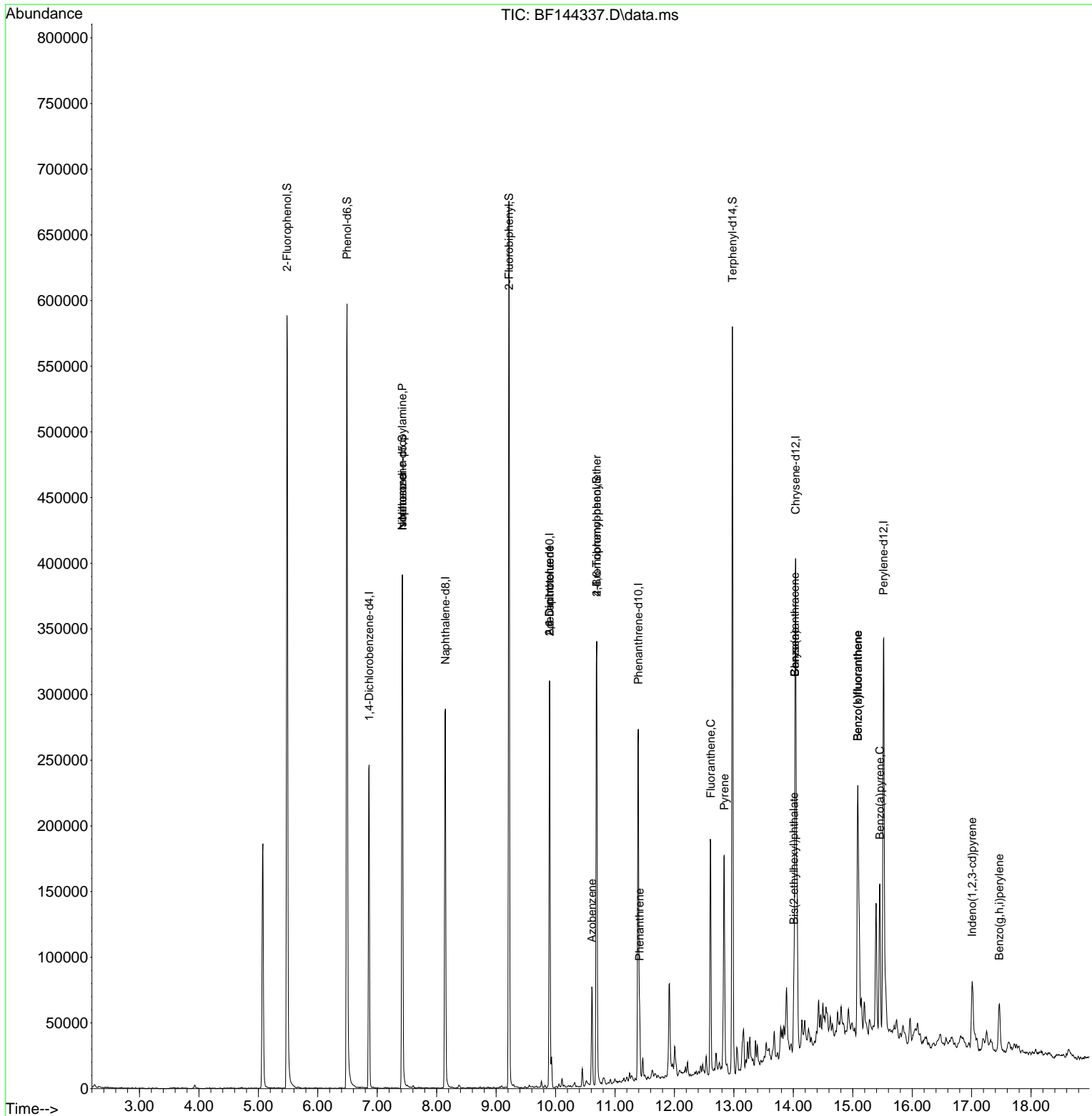
Compound	R.T.	QIon	Response	Conc	Units	Dev(Min)
Internal Standards						
1) 1,4-Dichlorobenzene-d4	6.863	152	55239	20.000	ng	-0.01
21) Naphthalene-d8	8.145	136	200004	20.000	ng	-0.01
39) Acenaphthene-d10	9.898	164	96995	20.000	ng	-0.02
64) Phenanthrene-d10	11.392	188	152346	20.000	ng	-0.01
76) Chrysene-d12	14.039	240	154441	20.000	ng	-0.01
86) Perylene-d12	15.515	264	190380	20.000	ng	-0.02
System Monitoring Compounds						
5) 2-Fluorophenol	5.481	112	254963	72.229	ng	-0.01
7) Phenol-d6	6.493	99	284564	71.146	ng	0.00
23) Nitrobenzene-d5	7.422	82	168818	48.749	ng	-0.01
42) 2,4,6-Tribromophenol	10.692	330	71095	58.410	ng	-0.01
45) 2-Fluorobiphenyl	9.216	172	317953	48.414	ng	-0.01
79) Terphenyl-d14	12.974	244	292862	30.120	ng	-0.02
Target Compounds						
19) n-Nitroso-di-n-propyla...	7.422	70	23030	8.747	ng	# 78
25) Isophorone	7.422	82	168816	25.772	ng	# 66
51) 2,6-Dinitrotoluene	9.898	165	11816	9.084	ng	# 27
57) 2,4-Dinitrotoluene	9.898	165	11816	6.786	ng	# 27
63) Azobenzene	10.610	77	18779	3.406	ng	# 1
67) 4-Bromophenyl-phenylether	10.692	248	4144	2.131	ng	# 1
71) Phenanthrene	11.416	178	30417	4.010	ng	99
75) Fluoranthene	12.610	202	108683	13.871	ng	97
78) Pyrene	12.839	202	101209	8.128	ng	99
81) Benzo(a)anthracene	14.027	228	66003	6.166	ng	99
83) Chrysene	14.027	228	66003	6.680	ng	97
84) Bis(2-ethylhexyl)phtha...	14.010	149	15558	2.633	ng	98
87) Indeno(1,2,3-cd)pyrene	17.009	276	36134	2.644	ng	# 92
88) Benzo(b)fluoranthene	15.086	252	166842	15.415	ng	# 97
89) Benzo(k)fluoranthene	15.086	252	166842	16.469	ng	# 97
90) Benzo(a)pyrene	15.457	252	72932	7.304	ng	# 94
92) Benzo(g,h,i)perylene	17.462	276	34903	3.220	ng	# 94

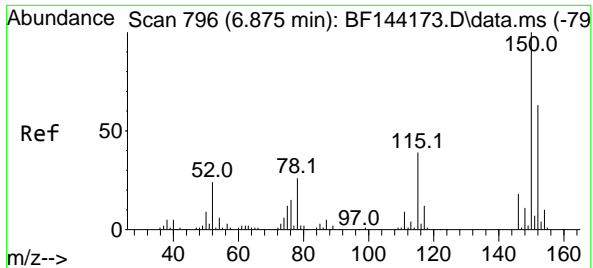
(#) = qualifier out of range (m) = manual integration (+) = signals summed

Data Path : Z:\svoasrv\HPCHEM1\BNA_F\Data\BF112425\
 Data File : BF144337.D
 Acq On : 24 Nov 2025 21:44
 Operator : RC/JU
 Sample : Q3709-01
 Misc :
 ALS Vial : 18 Sample Multiplier: 1

Instrument :
 BNA_F
 ClientSampleId :
 LI-1-112125

Quant Time: Nov 25 00:30:02 2025
 Quant Method : Z:\svoasrv\HPCHEM1\BNA_F\Methods\8270-BF110525.M
 Quant Title : ASP BNA STANDARDS FOR 5 POINT CALIBRATION
 QLast Update : Wed Nov 05 18:37:33 2025
 Response via : Initial Calibration

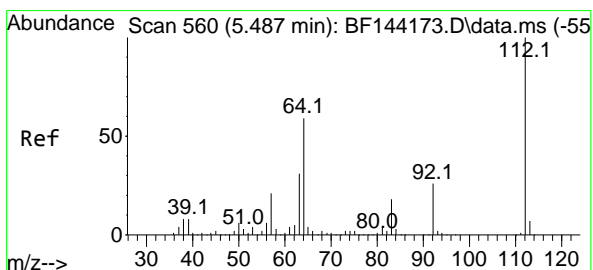
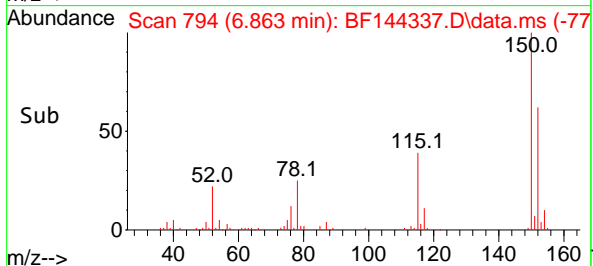
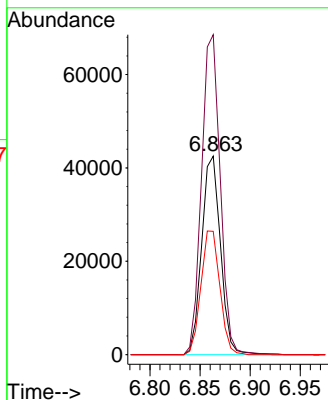
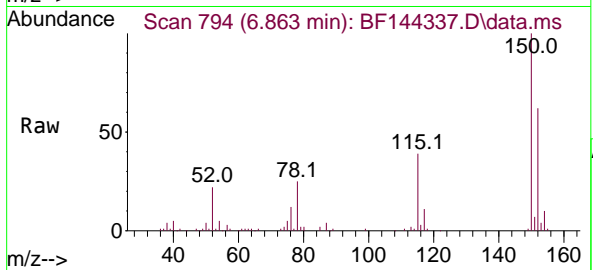




#1
 1,4-Dichlorobenzene-d4
 Concen: 20.000 ng
 RT: 6.863 min Scan# 79
 Delta R.T. -0.012 min
 Lab File: BF144337.D
 Acq: 24 Nov 2025 21:44

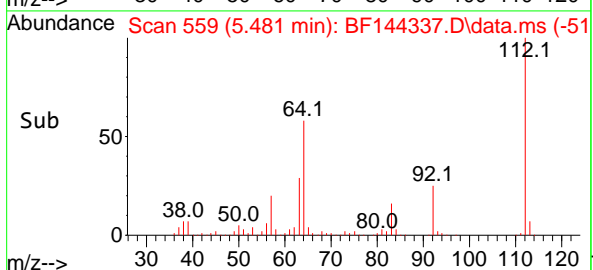
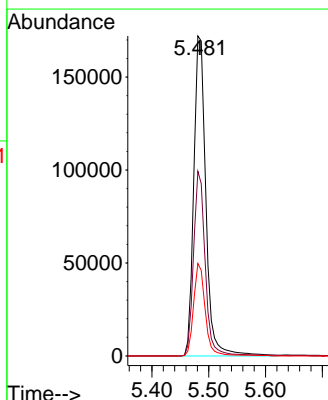
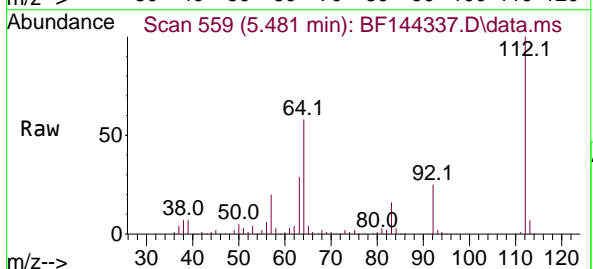
Instrument :
 BNA_F
 ClientSampleId :
 LI-1-112125

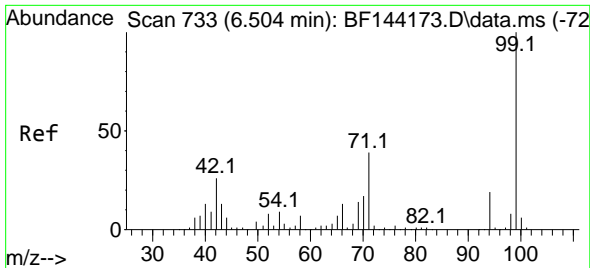
Tgt Ion:152 Resp: 55239
 Ion Ratio Lower Upper
 152 100
 150 161.3 127.4 191.0
 115 62.1 49.5 74.3



#5
 2-Fluorophenol
 Concen: 72.229 ng
 RT: 5.481 min Scan# 559
 Delta R.T. -0.012 min
 Lab File: BF144337.D
 Acq: 24 Nov 2025 21:44

Tgt Ion:112 Resp: 254963
 Ion Ratio Lower Upper
 112 100
 64 57.7 47.2 70.8
 63 28.9 24.4 36.6



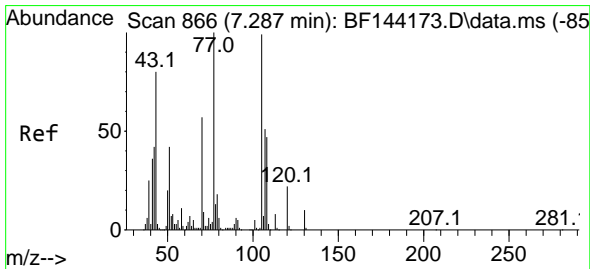
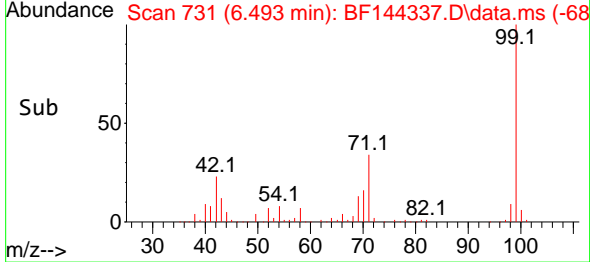
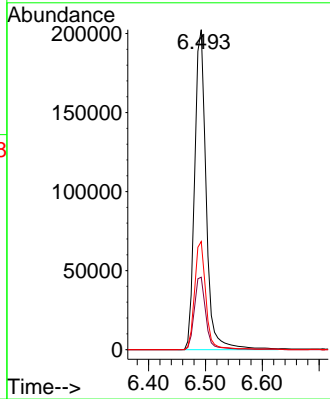
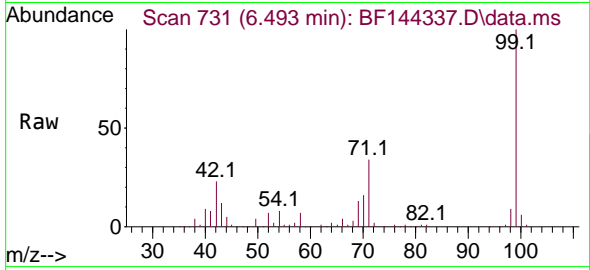


#7
 Phenol-d6
 Concen: 71.146 ng
 RT: 6.493 min Scan# 71
 Delta R.T. -0.006 min
 Lab File: BF144337.D
 Acq: 24 Nov 2025 21:44

Instrument : BNA_F
 ClientSampleId : LI-1-112125

Tgt Ion: 99 Resp: 284564

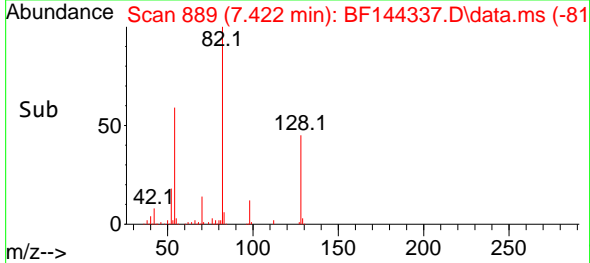
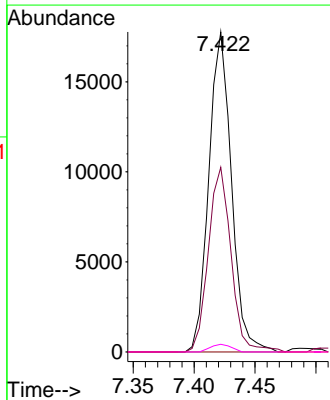
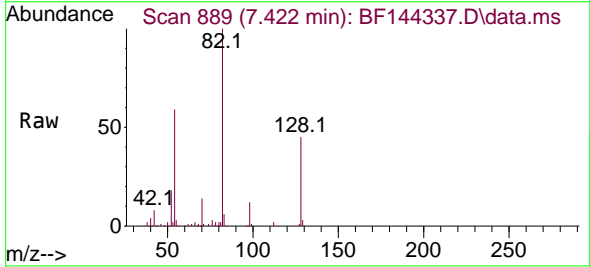
Ion	Ratio	Lower	Upper
99	100		
42	22.6	20.9	31.3
71	33.8	31.4	47.2

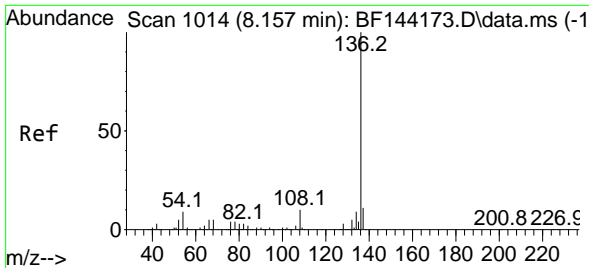


#19
 n-Nitroso-di-n-propylamine
 Concen: 8.747 ng
 RT: 7.422 min Scan# 889
 Delta R.T. 0.147 min
 Lab File: BF144337.D
 Acq: 24 Nov 2025 21:44

Tgt Ion: 70 Resp: 23030

Ion	Ratio	Lower	Upper
70	100		
42	57.7	58.3	87.5#
101	0.0	7.0	10.6#
130	2.4	14.4	21.6#



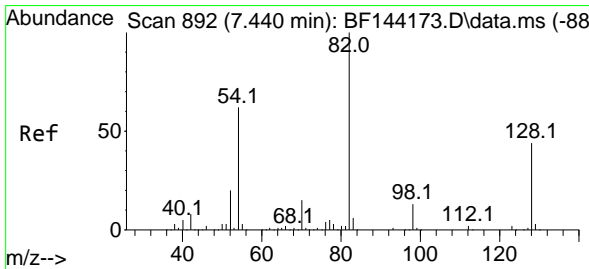
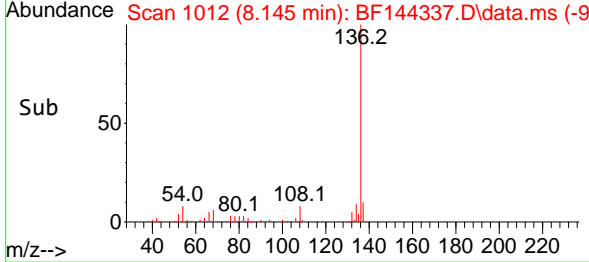
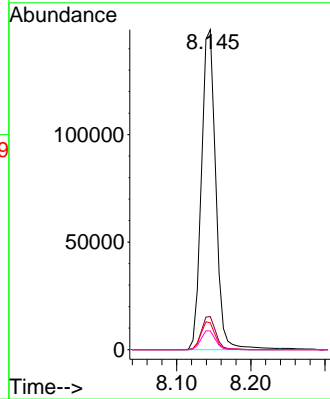
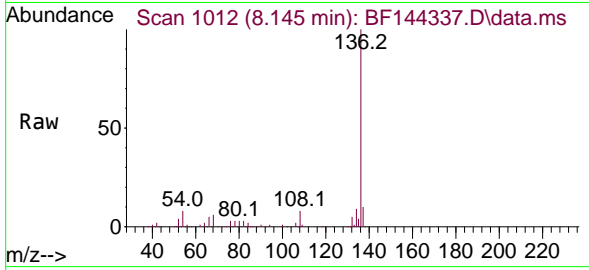


#21
 Naphthalene-d8
 Concen: 20.000 ng
 RT: 8.145 min Scan# 1012
 Delta R.T. -0.012 min
 Lab File: BF144337.D
 Acq: 24 Nov 2025 21:44

Instrument :
 BNA_F
 ClientSampleId :
 LI-1-112125

Tgt Ion: 136 Resp: 200004

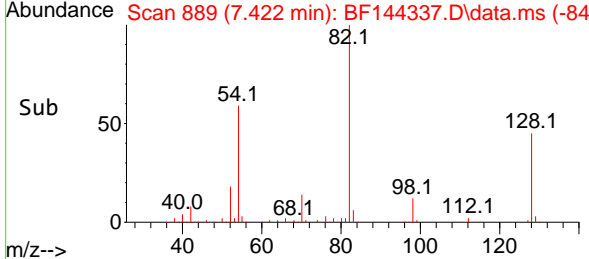
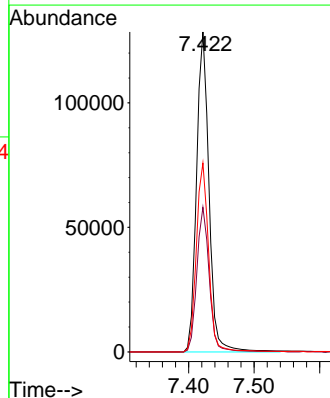
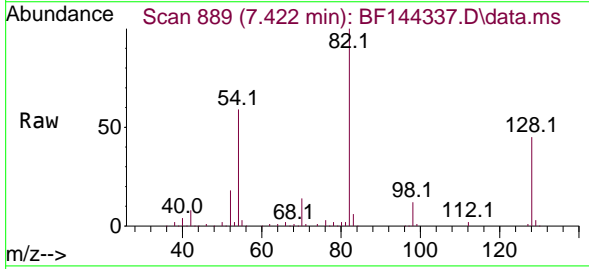
Ion	Ratio	Lower	Upper
136	100		
137	10.3	8.6	13.0
54	8.4	7.0	10.6
68	5.8	4.3	6.5

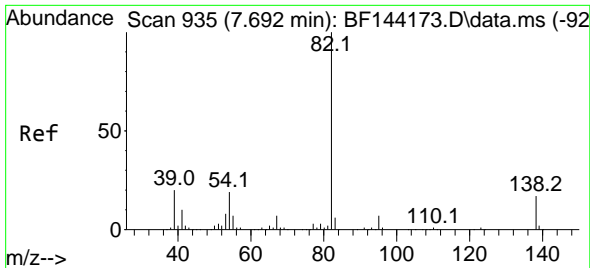


#23
 Nitrobenzene-d5
 Concen: 48.749 ng
 RT: 7.422 min Scan# 889
 Delta R.T. -0.012 min
 Lab File: BF144337.D
 Acq: 24 Nov 2025 21:44

Tgt Ion: 82 Resp: 168818

Ion	Ratio	Lower	Upper
82	100		
128	45.2	34.7	52.1
54	59.0	49.5	74.3



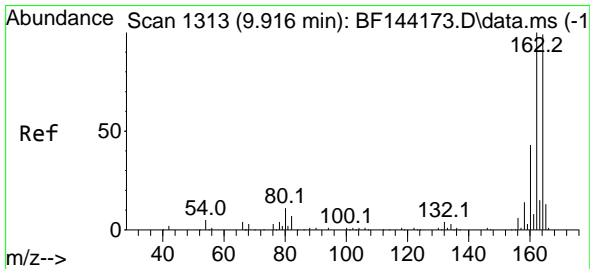
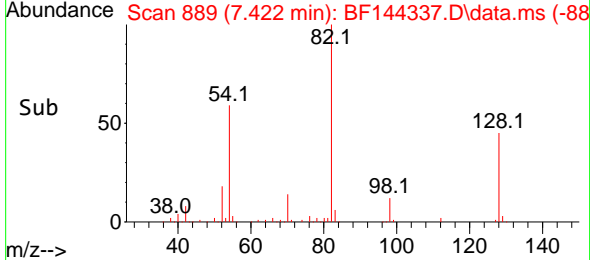
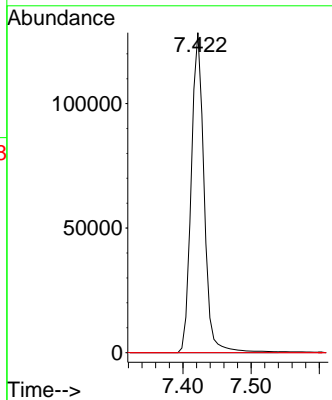
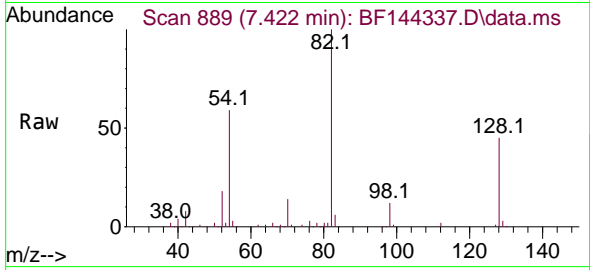


#25
 Isophorone
 Concen: 25.772 ng
 RT: 7.422 min Scan# 88
 Delta R.T. -0.265 min
 Lab File: BF144337.D
 Acq: 24 Nov 2025 21:44

Instrument : BNA_F
 ClientSampleId : LI-1-112125

Tgt Ion: 82 Resp: 168816

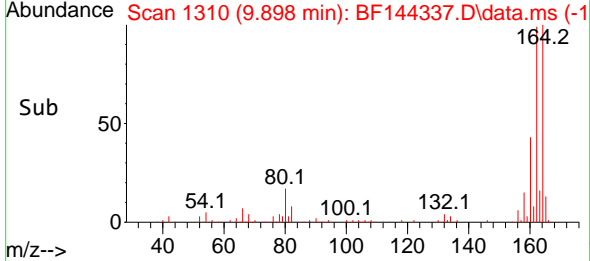
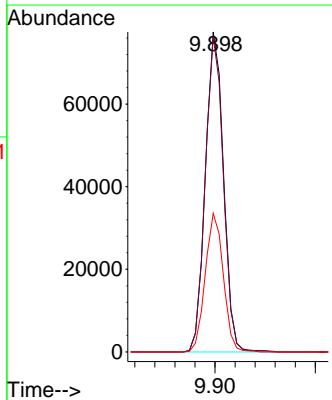
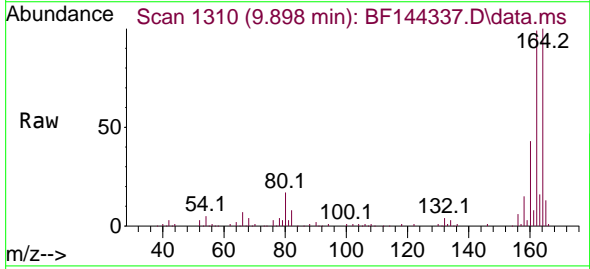
Ion	Ratio	Lower	Upper
82	100		
95	0.0	5.5	8.3#
138	0.0	13.7	20.5#

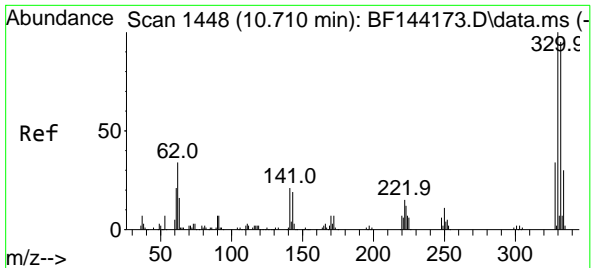


#39
 Acenaphthene-d10
 Concen: 20.000 ng
 RT: 9.898 min Scan# 1310
 Delta R.T. -0.018 min
 Lab File: BF144337.D
 Acq: 24 Nov 2025 21:44

Tgt Ion: 164 Resp: 96995

Ion	Ratio	Lower	Upper
164	100		
162	98.5	81.1	121.7
160	43.3	34.5	51.7

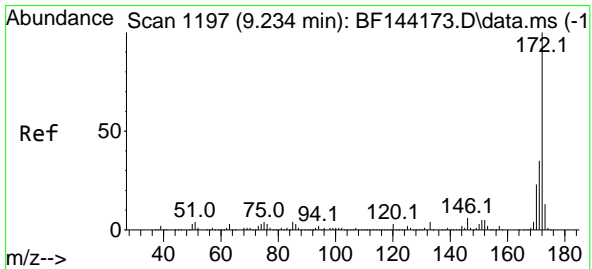
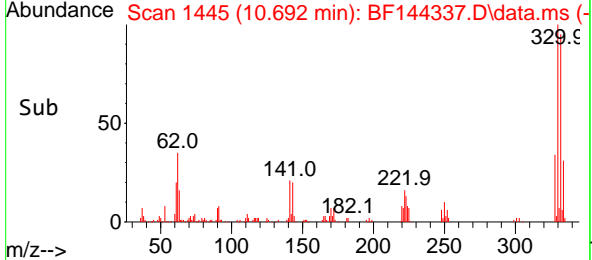
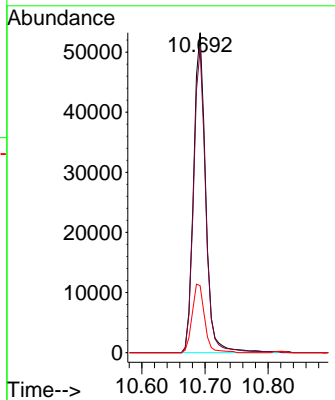
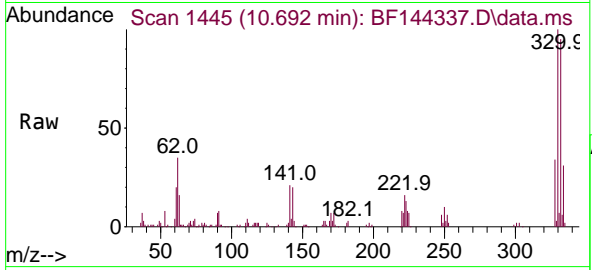




#42
 2,4,6-Tribromophenol
 Concen: 58.410 ng
 RT: 10.692 min Scan# 14
 Delta R.T. -0.012 min
 Lab File: BF144337.D
 Acq: 24 Nov 2025 21:44

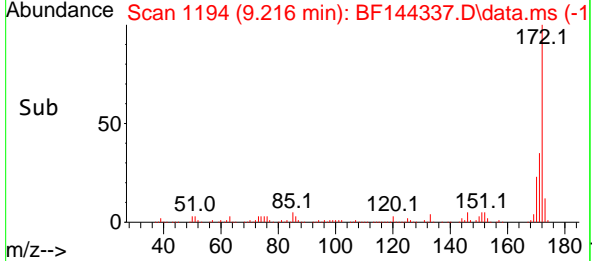
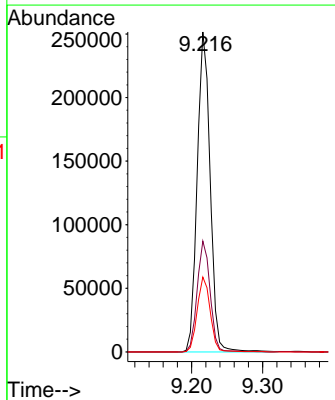
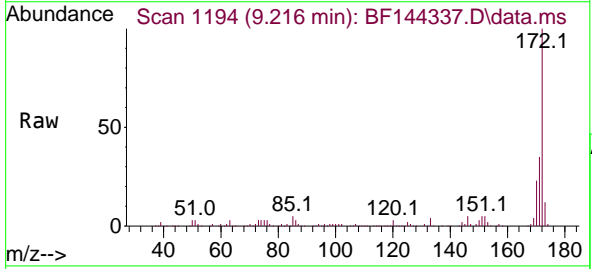
Instrument : BNA_F
 ClientSampleId : LI-1-112125

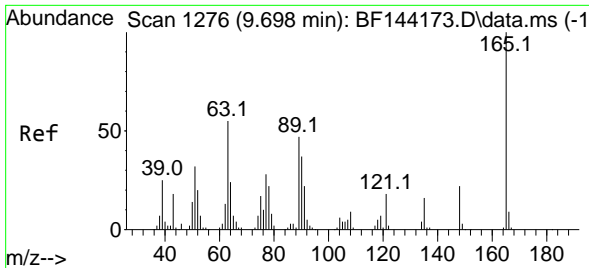
Tgt Ion	Resp	Lower	Upper
330	100		
332	94.2	76.7	115.1
141	22.0	17.8	26.8



#45
 2-Fluorobiphenyl
 Concen: 48.414 ng
 RT: 9.216 min Scan# 1194
 Delta R.T. -0.012 min
 Lab File: BF144337.D
 Acq: 24 Nov 2025 21:44

Tgt Ion	Resp	Lower	Upper
172	100		
171	34.6	28.1	42.1
170	23.4	18.6	28.0

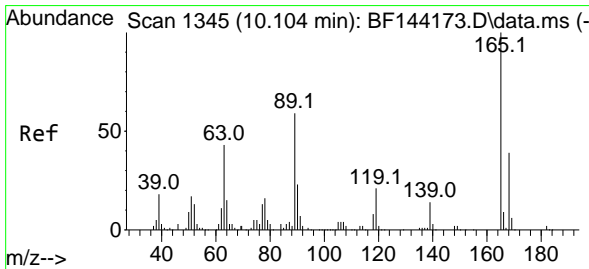
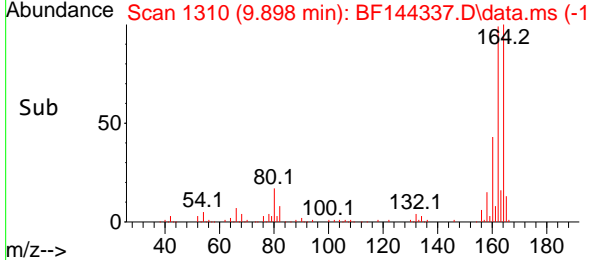
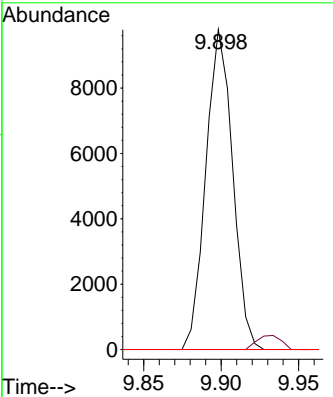
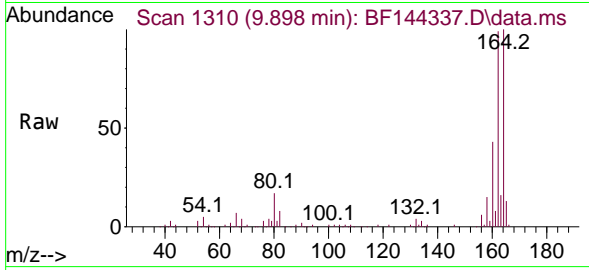




#51
 2,6-Dinitrotoluene
 Concen: 9.084 ng
 RT: 9.898 min Scan# 1310
 Delta R.T. 0.206 min
 Lab File: BF144337.D
 Acq: 24 Nov 2025 21:44

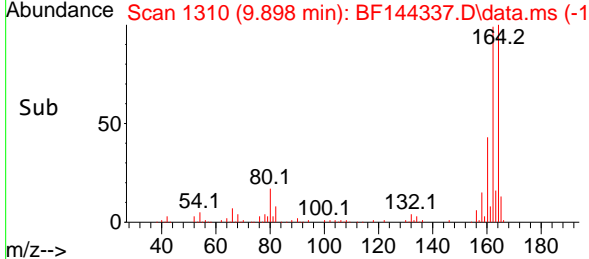
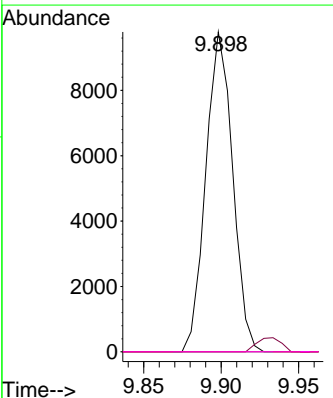
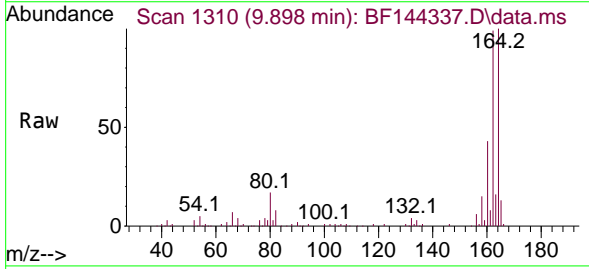
Instrument : BNA_F
 Client Sample Id : LI-1-112125

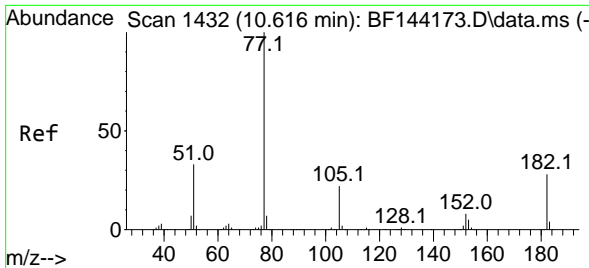
Tgt Ion	Resp	Lower	Upper
165	100		
63	0.0	43.8	65.8#
89	0.0	37.5	56.3#



#57
 2,4-Dinitrotoluene
 Concen: 6.786 ng
 RT: 9.898 min Scan# 1310
 Delta R.T. -0.200 min
 Lab File: BF144337.D
 Acq: 24 Nov 2025 21:44

Tgt Ion	Resp	Lower	Upper
165	100		
63	0.0	35.5	53.3#
89	0.0	47.4	71.2#
182	0.0	1.9	2.9#



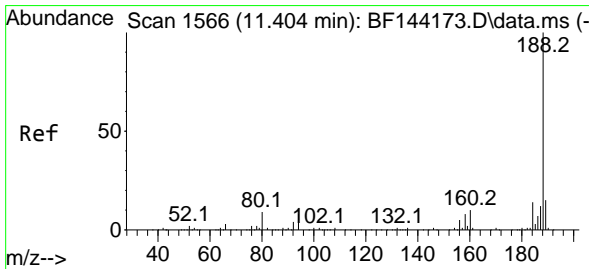
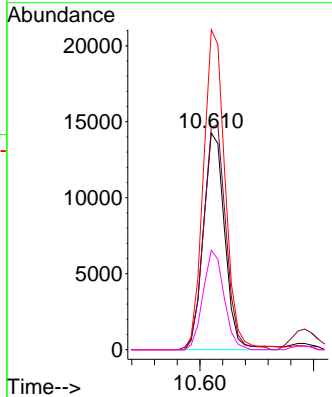
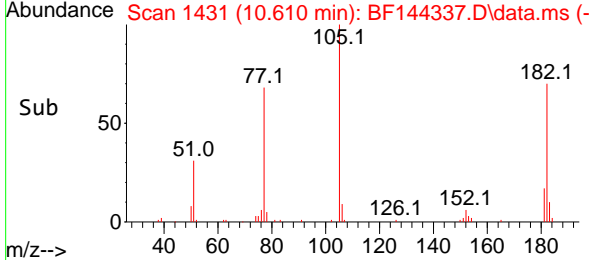
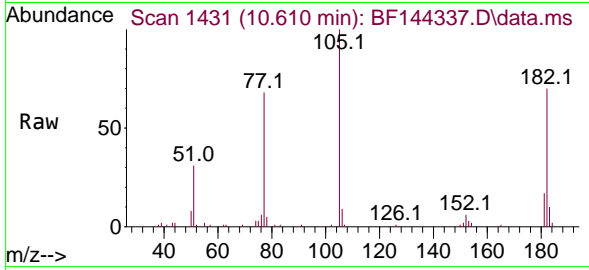


#63
 Azobenzene
 Concen: 3.406 ng
 RT: 10.610 min Scan# 14
 Delta R.T. -0.006 min
 Lab File: BF144337.D
 Acq: 24 Nov 2025 21:44

Instrument : BNA_F
 Client SampleId : LI-1-112125

Tgt Ion: 77 Resp: 18779

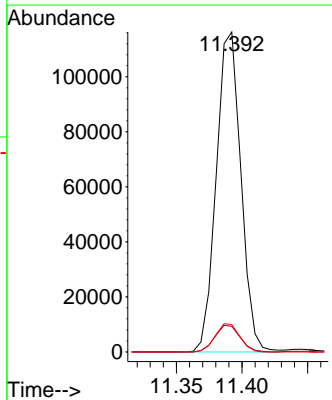
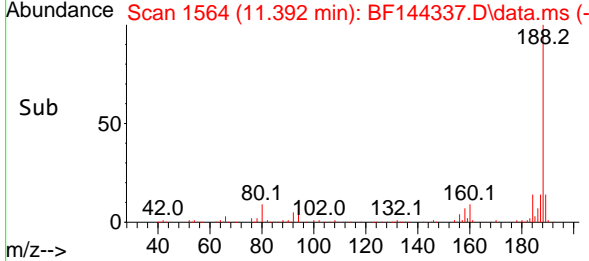
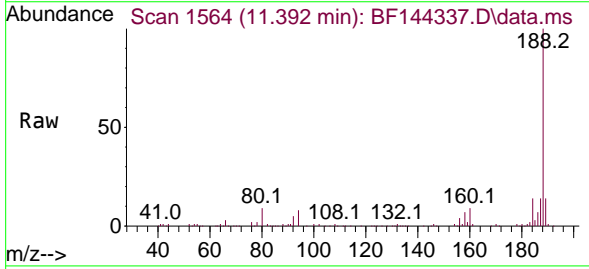
Ion	Ratio	Lower	Upper
77	100		
182	102.9	8.1	48.1#
105	147.8	2.0	42.0#
51	45.9	13.9	53.9

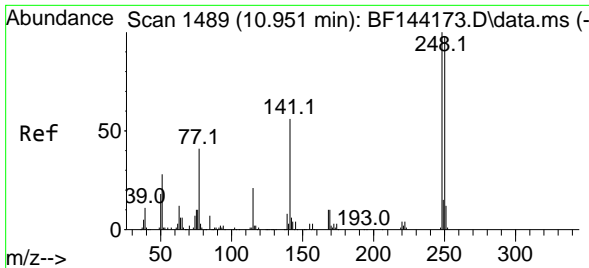


#64
 Phenanthrene-d10
 Concen: 20.000 ng
 RT: 11.392 min Scan# 1564
 Delta R.T. -0.012 min
 Lab File: BF144337.D
 Acq: 24 Nov 2025 21:44

Tgt Ion: 188 Resp: 152346

Ion	Ratio	Lower	Upper
188	100		
94	8.0	6.2	9.2
80	8.5	6.9	10.3

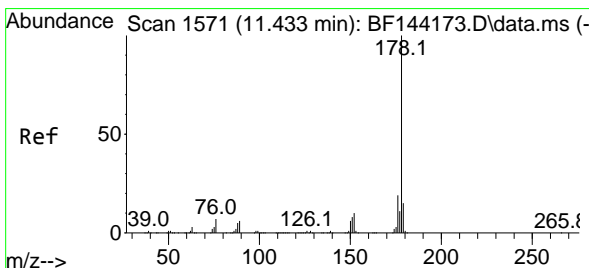
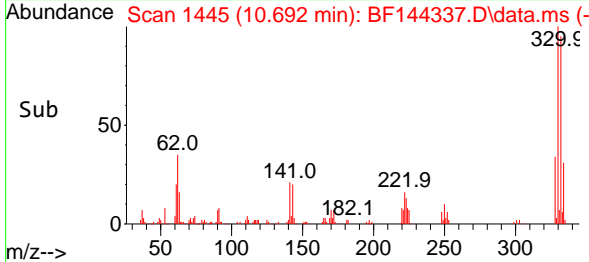
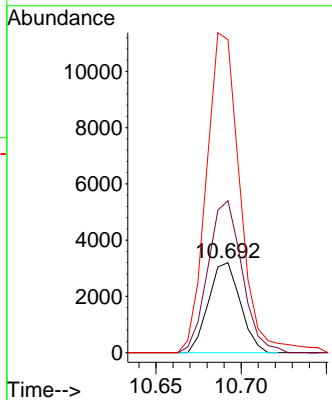
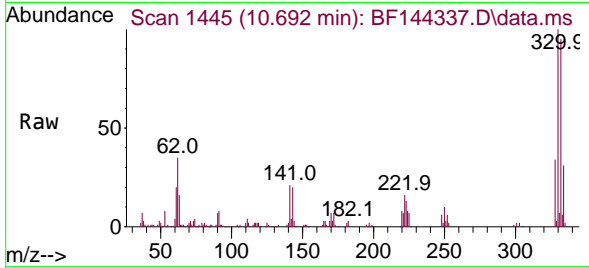




#67
 4-Bromophenyl-phenylether
 Concen: 2.131 ng
 RT: 10.692 min Scan# 14
 Delta R.T. -0.253 min
 Lab File: BF144337.D
 Acq: 24 Nov 2025 21:44

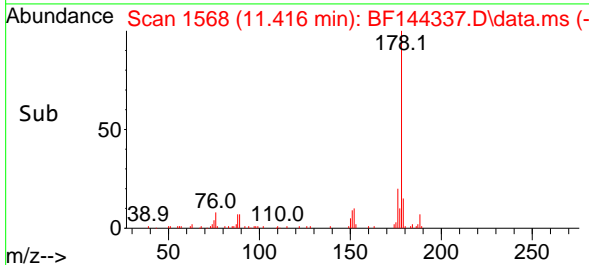
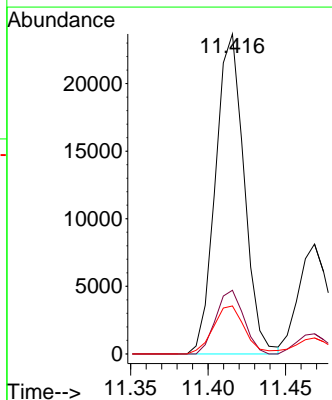
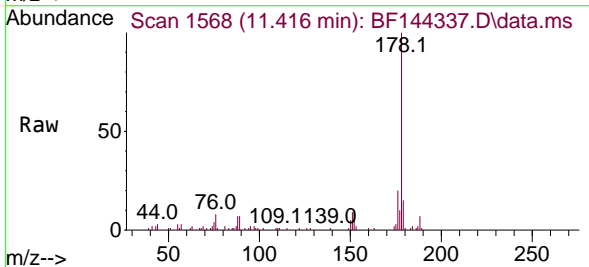
Instrument :
 BNA_F
 ClientSampleId :
 LI-1-112125

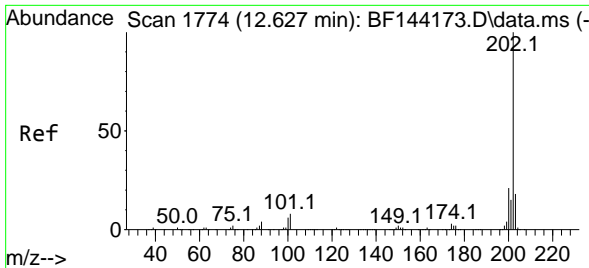
Tgt Ion	Resp	Lower	Upper
248	100		
250	168.9	78.4	117.6#
141	348.0	45.1	67.7#



#71
 Phenanthrene
 Concen: 4.010 ng
 RT: 11.416 min Scan# 1568
 Delta R.T. -0.012 min
 Lab File: BF144337.D
 Acq: 24 Nov 2025 21:44

Tgt Ion	Resp	Lower	Upper
178	100		
176	19.9	15.5	23.3
179	15.0	12.2	18.4

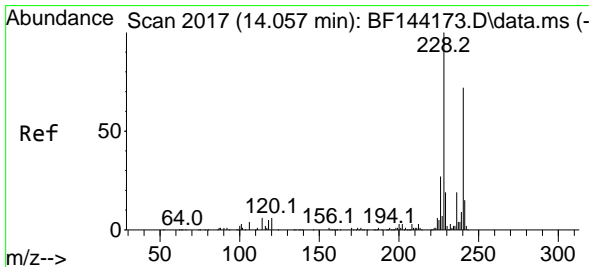
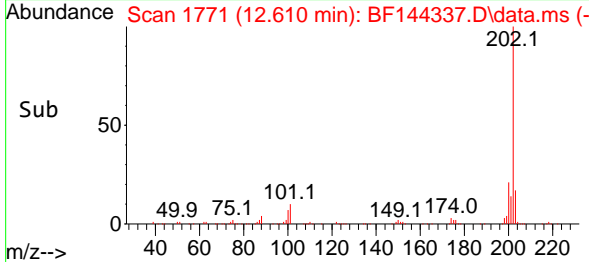
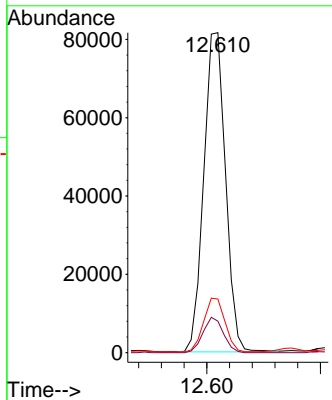
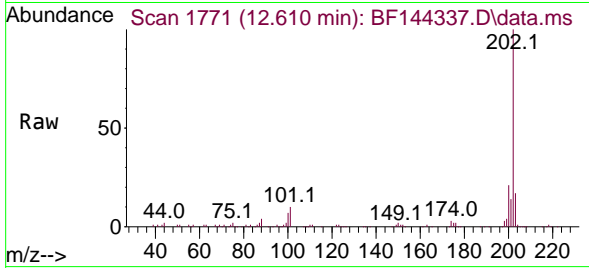




#75
 Fluoranthene
 Concen: 13.871 ng
 RT: 12.610 min Scan# 1771
 Delta R.T. -0.012 min
 Lab File: BF144337.D
 Acq: 24 Nov 2025 21:44

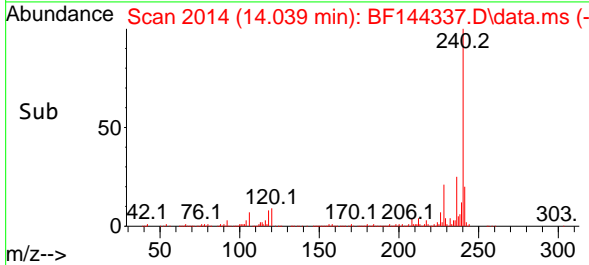
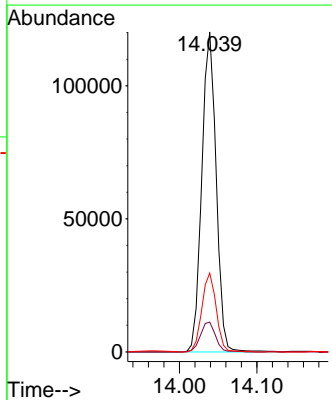
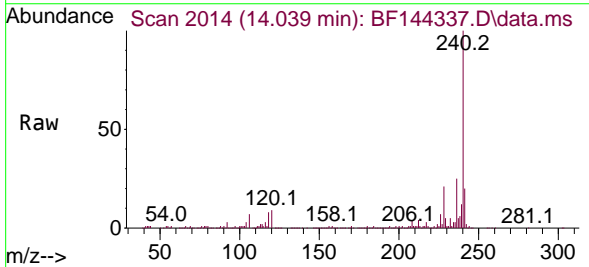
Instrument : BNA_F
 Client Sample Id : LI-1-112125

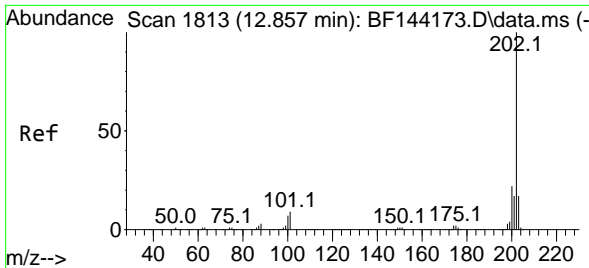
Tgt Ion	Resp	Lower	Upper
202	108683		
101	9.9	0.0	27.9
203	16.7	0.0	37.5



#76
 Chrysene-d12
 Concen: 20.000 ng
 RT: 14.039 min Scan# 2014
 Delta R.T. -0.012 min
 Lab File: BF144337.D
 Acq: 24 Nov 2025 21:44

Tgt Ion	Resp	Lower	Upper
240	154441		
120	9.3	6.6	10.0
236	24.6	21.4	32.2



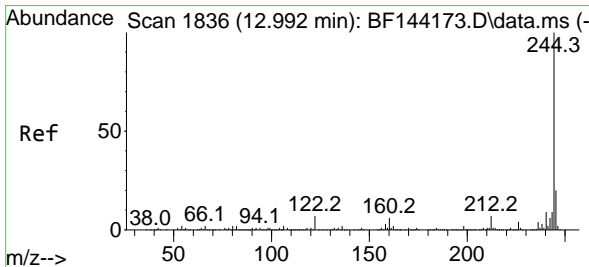
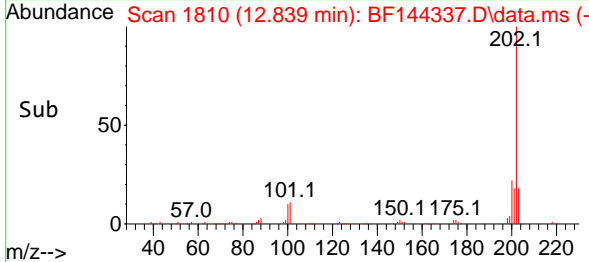
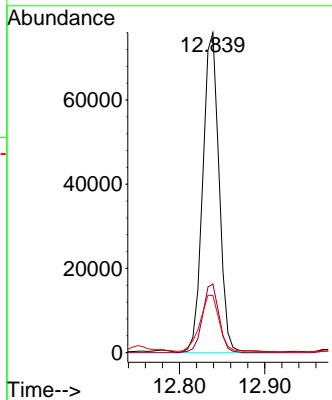
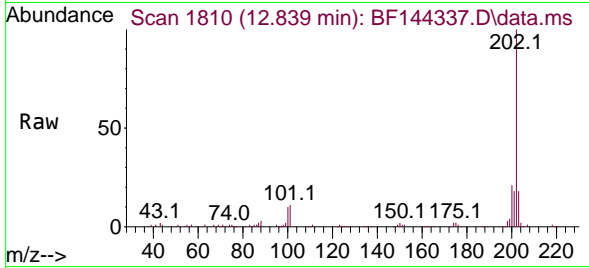


#78
 Pyrene
 Concen: 8.128 ng
 RT: 12.839 min Scan# 1810
 Delta R.T. -0.012 min
 Lab File: BF144337.D
 Acq: 24 Nov 2025 21:44

Instrument : BNA_F
 Client Sample Id : LI-1-112125

Tgt Ion: 202 Resp: 101209

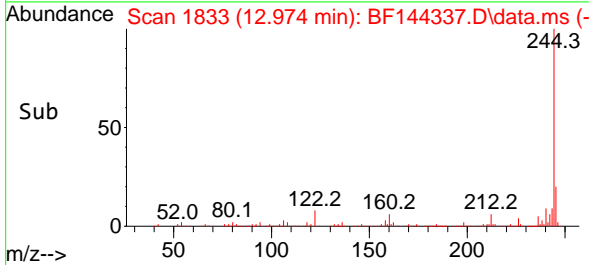
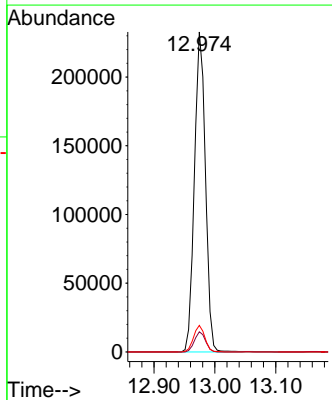
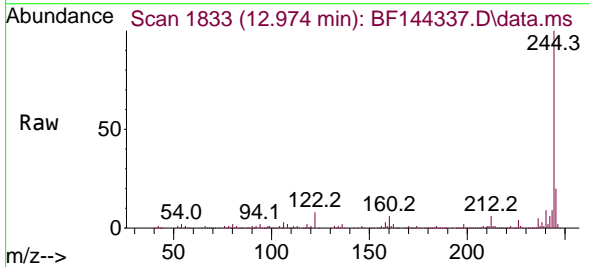
Ion	Ratio	Lower	Upper
202	100		
200	21.4	17.2	25.8
203	17.9	13.7	20.5

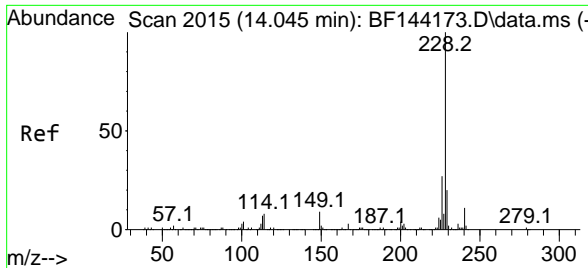


#79
 Terphenyl-d14
 Concen: 30.120 ng
 RT: 12.974 min Scan# 1833
 Delta R.T. -0.018 min
 Lab File: BF144337.D
 Acq: 24 Nov 2025 21:44

Tgt Ion: 244 Resp: 292862

Ion	Ratio	Lower	Upper
244	100		
212	6.3	5.3	7.9
122	8.3	5.6	8.4

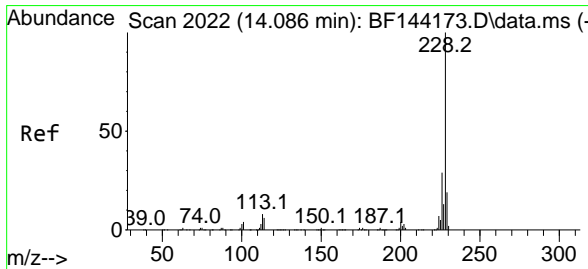
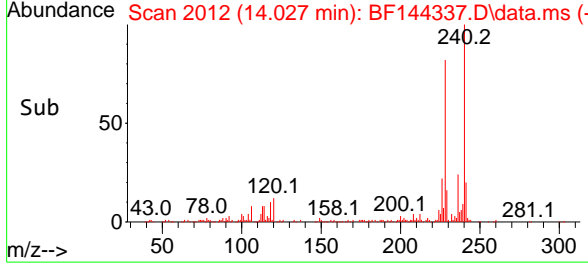
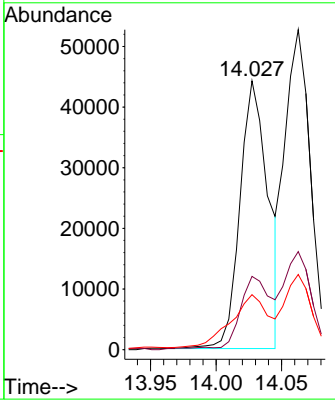
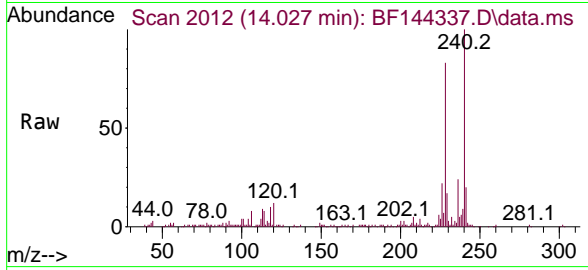




#81
 Benzo(a)anthracene
 Concen: 6.166 ng
 RT: 14.027 min Scan# 2012
 Delta R.T. -0.018 min
 Lab File: BF144337.D
 Acq: 24 Nov 2025 21:44

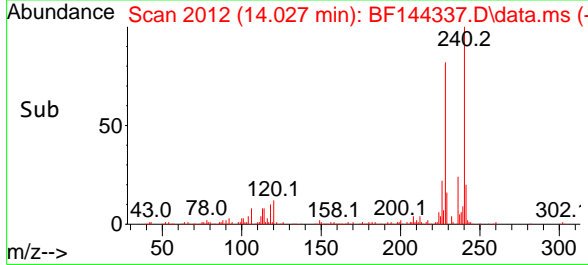
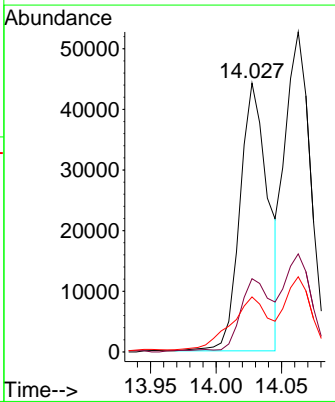
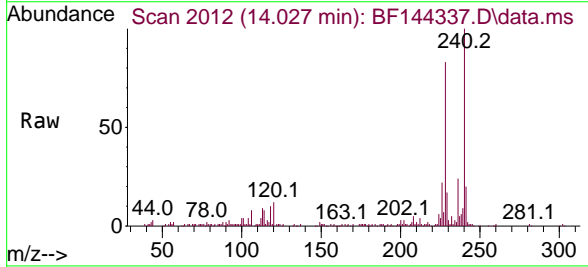
Instrument : BNA_F
 ClientSampleId : LI-1-112125

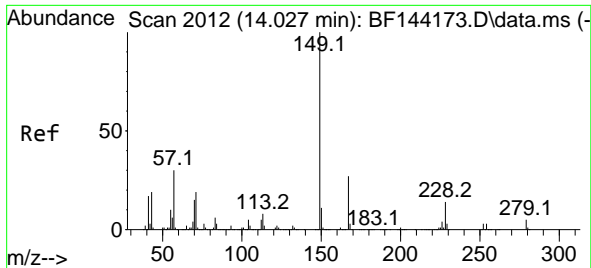
Tgt Ion	Resp	Lower	Upper
228	100		
226	27.2	21.8	32.8
229	20.5	15.8	23.6



#83
 Chrysene
 Concen: 6.680 ng
 RT: 14.027 min Scan# 2012
 Delta R.T. -0.053 min
 Lab File: BF144337.D
 Acq: 24 Nov 2025 21:44

Tgt Ion	Resp	Lower	Upper
228	100		
226	27.2	22.9	34.3
229	20.5	15.0	22.6

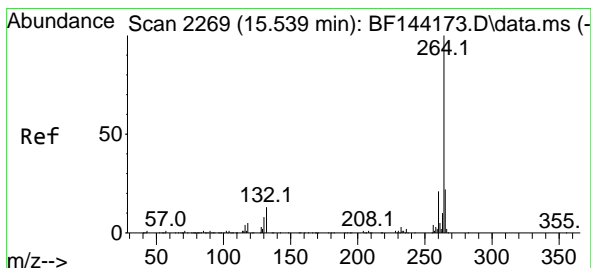
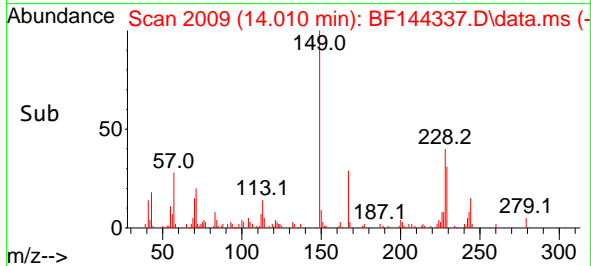
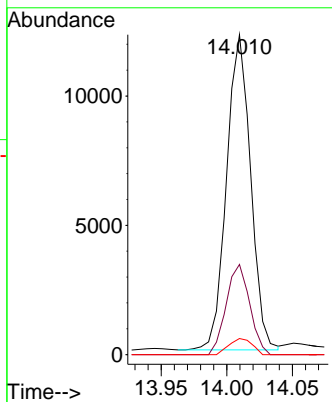
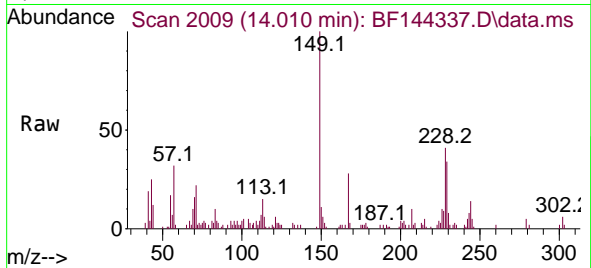




#84
 Bis(2-ethylhexyl)phthalate
 Concen: 2.633 ng
 RT: 14.010 min Scan# 2099
 Delta R.T. -0.018 min
 Lab File: BF144337.D
 Acq: 24 Nov 2025 21:44

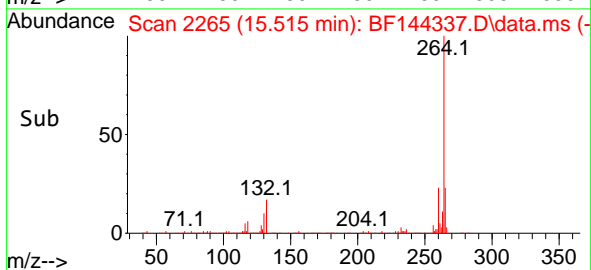
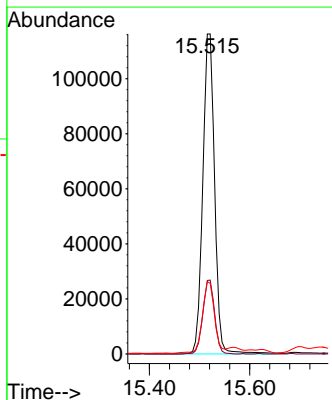
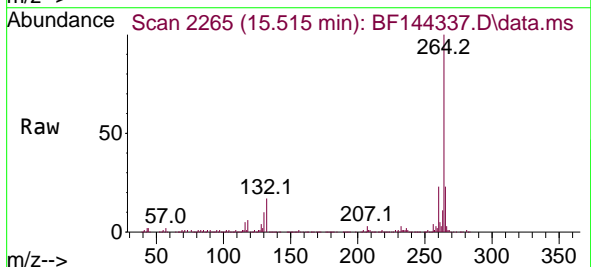
Instrument : BNA_F
 ClientSampleId : LI-1-112125

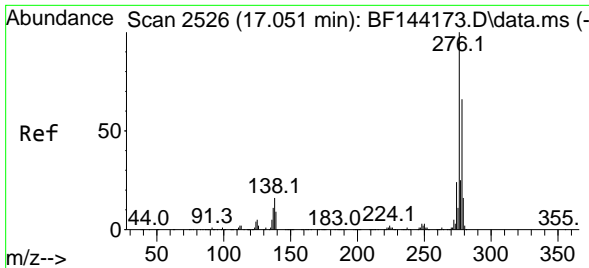
Tgt Ion	Resp	Lower	Upper
149	15558		
167	28.2	21.8	32.8
279	5.0	3.7	5.5



#86
 Perylene-d12
 Concen: 20.000 ng
 RT: 15.515 min Scan# 2265
 Delta R.T. -0.024 min
 Lab File: BF144337.D
 Acq: 24 Nov 2025 21:44

Tgt Ion	Resp	Lower	Upper
264	190380		
260	22.9	17.1	25.7
265	22.6	17.4	26.0

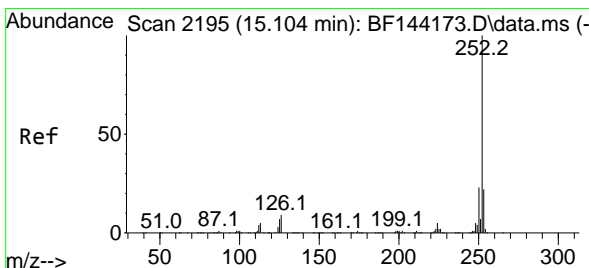
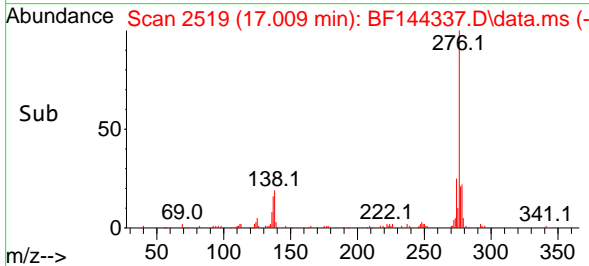
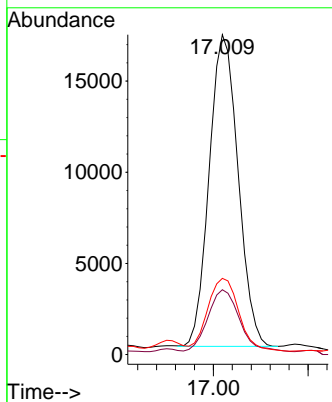
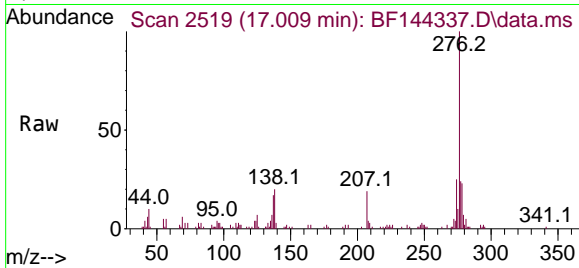




#87
 Indeno(1,2,3-cd)pyrene
 Concen: 2.644 ng
 RT: 17.009 min Scan# 2119
 Delta R.T. -0.024 min
 Lab File: BF144337.D
 Acq: 24 Nov 2025 21:44

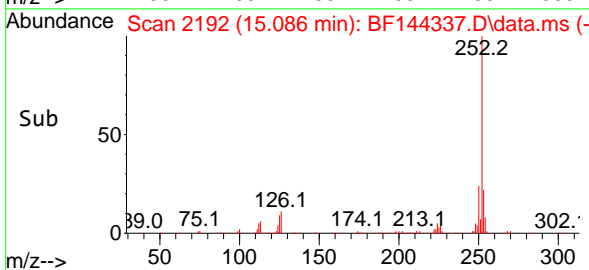
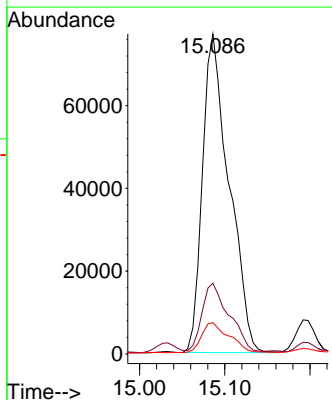
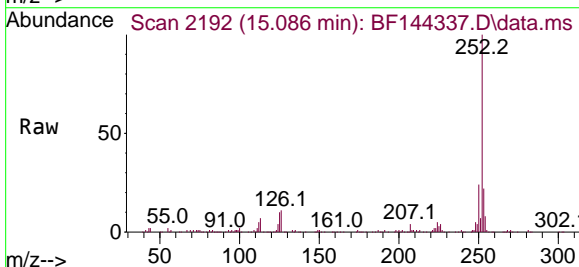
Instrument : BNA_F
 ClientSampleId : LI-1-112125

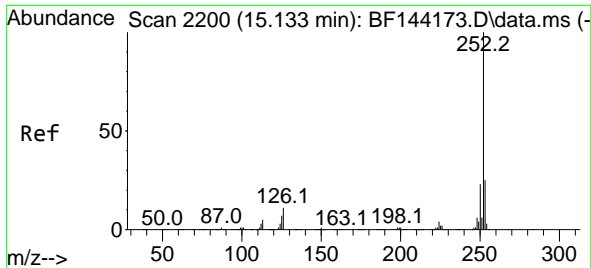
Tgt Ion	Resp	Lower	Upper
276	36134	100	100
138	24.8	13.9	20.9
277	25.6	19.8	29.6



#88
 Benzo(b)fluoranthene
 Concen: 15.415 ng
 RT: 15.086 min Scan# 2192
 Delta R.T. -0.012 min
 Lab File: BF144337.D
 Acq: 24 Nov 2025 21:44

Tgt Ion	Resp	Lower	Upper
252	166842	100	100
253	22.1	17.4	26.2
125	9.8	5.3	7.9

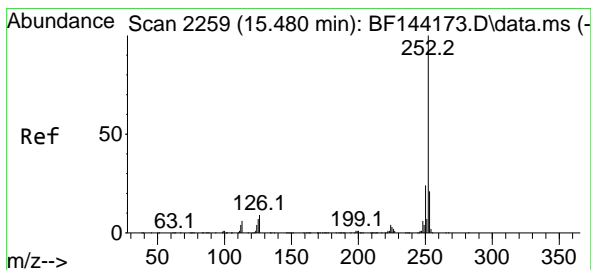
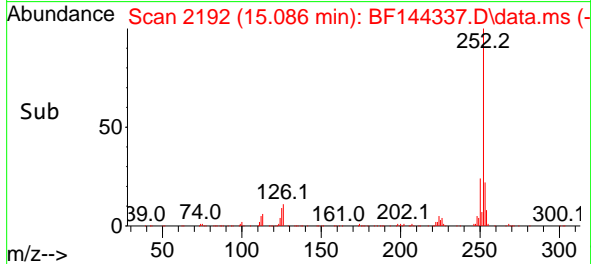
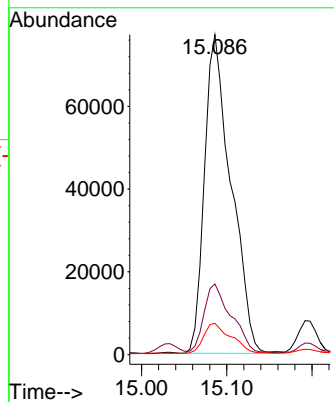
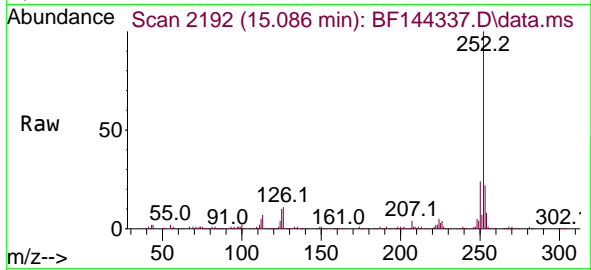




#89
 Benzo(k)fluoranthene
 Concen: 16.469 ng
 RT: 15.086 min Scan# 2192
 Delta R.T. -0.041 min
 Lab File: BF144337.D
 Acq: 24 Nov 2025 21:44

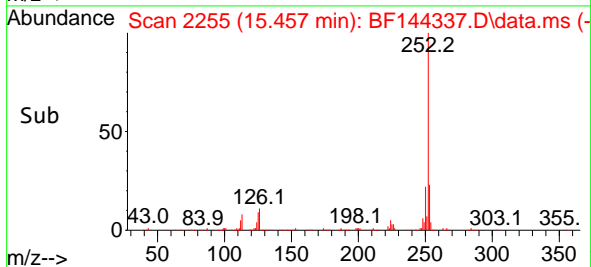
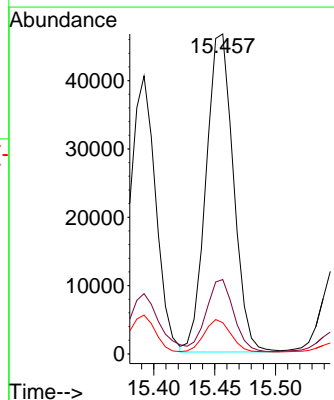
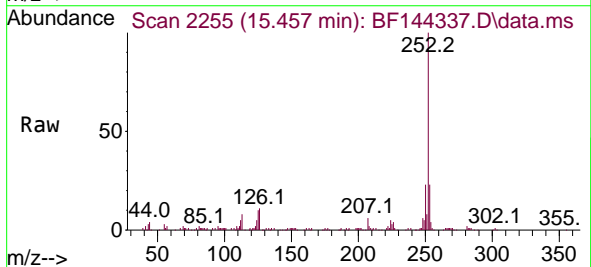
Instrument : BNA_F
 ClientSampleId : LI-1-112125

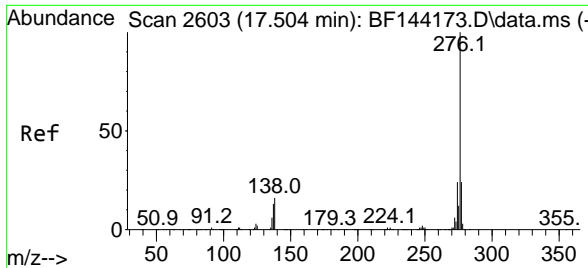
Tgt Ion:252 Resp: 166842
 Ion Ratio Lower Upper
 252 100
 253 22.1 18.0 27.0
 125 9.8 5.4 8.2#



#90
 Benzo(a)pyrene
 Concen: 7.304 ng
 RT: 15.457 min Scan# 2255
 Delta R.T. -0.018 min
 Lab File: BF144337.D
 Acq: 24 Nov 2025 21:44

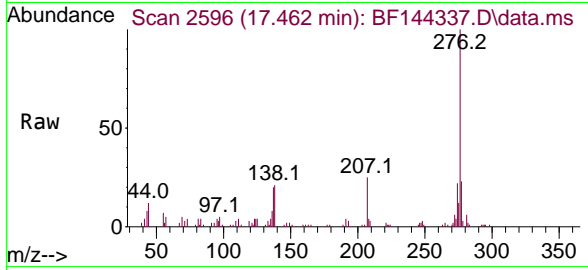
Tgt Ion:252 Resp: 72932
 Ion Ratio Lower Upper
 252 100
 253 23.2 16.7 25.1
 125 9.8 5.7 8.5#





#92
 Benzo(g,h,i)perylene
 Concen: 3.220 ng
 RT: 17.462 min Scan# 21
 Delta R.T. -0.029 min
 Lab File: BF144337.D
 Acq: 24 Nov 2025 21:44

Instrument :
 BNA_F
 ClientSampleId :
 LI-1-112125



Tgt Ion: 276 Resp: 34903

Ion	Ratio	Lower	Upper
276	100		
277	22.9	19.0	28.4
138	21.4	12.9	19.3

