

Data Path : Z:\svoasrv\HPCHEM1\BNA_F\Data\BF112425\
 Data File : BF144340.D
 Acq On : 24 Nov 2025 23:13
 Operator : RC/JU
 Sample : Q3710-01 2X
 Misc :
 ALS Vial : 21 Sample Multiplier: 1

Instrument :
 BNA_F
 ClientSampleId :
 RBR200028-RT5376-COMP

Quant Time: Nov 25 00:31:09 2025
 Quant Method : Z:\svoasrv\HPCHEM1\BNA_F\Methods\8270-BF110525.M
 Quant Title : ASP BNA STANDARDS FOR 5 POINT CALIBRATION
 QLast Update : Wed Nov 05 18:37:33 2025
 Response via : Initial Calibration

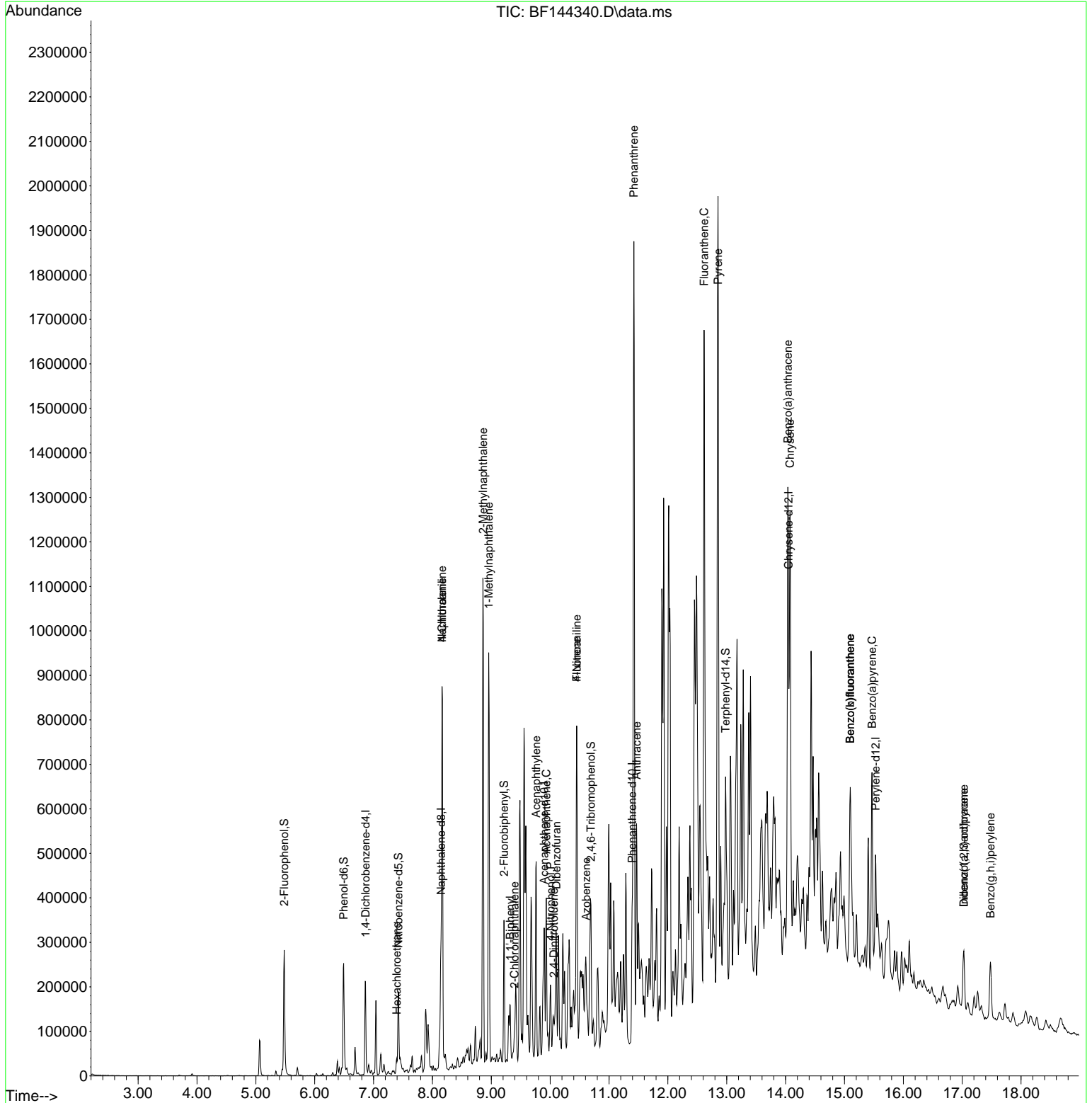
Compound	R.T.	QIon	Response	Conc	Units	Dev(Min)
Internal Standards						
1) 1,4-Dichlorobenzene-d4	6.863	152	47533	20.000	ng	-0.01
21) Naphthalene-d8	8.145	136	161896	20.000	ng	-0.01
39) Acenaphthene-d10	9.898	164	87957	20.000	ng	-0.02
64) Phenanthrene-d10	11.392	188	165837	20.000	ng	-0.01
76) Chrysene-d12	14.051	240	159456	20.000	ng	0.00
86) Perylene-d12	15.527	264	150329	20.000	ng	#-0.01
System Monitoring Compounds						
5) 2-Fluorophenol	5.481	112	127489	41.972	ng	-0.01
7) Phenol-d6	6.493	99	137561	39.969	ng	0.00
23) Nitrobenzene-d5	7.422	82	74009	26.402	ng	-0.01
42) 2,4,6-Tribromophenol	10.692	330	39213	35.527	ng	-0.01
45) 2-Fluorobiphenyl	9.216	172	148628	24.957	ng	-0.01
79) Terphenyl-d14	12.980	244	191743	19.100	ng	-0.01
Target Compounds						
18) Hexachloroethane	7.393	117	5051	4.128	ng	# 1
31) Naphthalene	8.163	128	537530	69.798	ng	99
33) 4-Chloroaniline	8.163	127	67677	24.095	ng	# 29
37) 2-Methylnaphthalene	8.857	142	425581	82.653	ng	99
38) 1-Methylnaphthalene	8.957	142	344196	69.280	ng	99
46) 1,1'-Biphenyl	9.322	154	58541	9.535	ng	100
47) 2-Chloronaphthalene	9.392	162	12707	2.426	ng	# 51
49) Acenaphthylene	9.763	152	160353	22.468	ng	# 94
52) Acenaphthene	9.934	154	88267	18.495	ng	94
55) Dibenzofuran	10.104	168	36257	5.424	ng	# 69
56) 4-Nitrophenol	10.004	139	3877	4.157	ng	# 39
57) 2,4-Dinitrotoluene	10.063	165	5898	3.735	ng	# 55
58) Fluorene	10.451	166	290834	57.228	ng	# 97
62) 4-Nitroaniline	10.451	138	3081	2.509	ng	# 36
63) Azobenzene	10.610	77	10900	2.180	ng	# 1
71) Phenanthrene	11.422	178	1068776	129.442	ng	99
72) Anthracene	11.469	178	276479	32.931	ng	99
75) Fluoranthene	12.616	202	638175	74.822	ng	97
78) Pyrene	12.851	202	1138861	88.581	ng	97
81) Benzo(a)anthracene	14.039	228	559906	50.663	ng	# 87
83) Chrysene	14.074	228	523755	51.339	ng	# 90
87) Indeno(1,2,3-cd)pyrene	17.027	276	103137	9.557	ng	98
88) Benzo(b)fluoranthene	15.098	252	396457	46.388	ng	# 96
89) Benzo(k)fluoranthene	15.098	252	396457	49.560	ng	# 97
90) Benzo(a)pyrene	15.468	252	299570	37.995	ng	94
91) Dibenzo(a,h)anthracene	17.027	278	35628	4.111	ng	# 72
92) Benzo(g,h,i)perylene	17.480	276	120550	14.086	ng	# 94

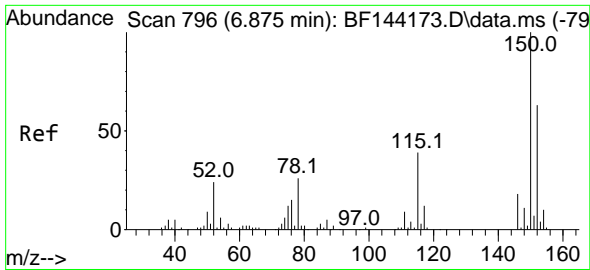
(#) = qualifier out of range (m) = manual integration (+) = signals summed

Data Path : Z:\svoasrv\HPCHEM1\BNA_F\Data\BF112425\
 Data File : BF144340.D
 Acq On : 24 Nov 2025 23:13
 Operator : RC/JU
 Sample : Q3710-01 2X
 Misc :
 ALS Vial : 21 Sample Multiplier: 1

Instrument :
 BNA_F
 ClientSampleId :
 RBR200028-RT5376-COMP

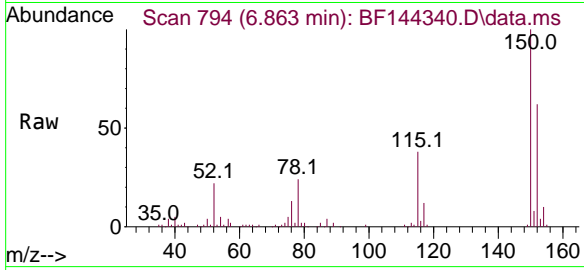
Quant Time: Nov 25 00:31:09 2025
 Quant Method : Z:\svoasrv\HPCHEM1\BNA_F\Methods\8270-BF110525.M
 Quant Title : ASP BNA STANDARDS FOR 5 POINT CALIBRATION
 QLast Update : Wed Nov 05 18:37:33 2025
 Response via : Initial Calibration



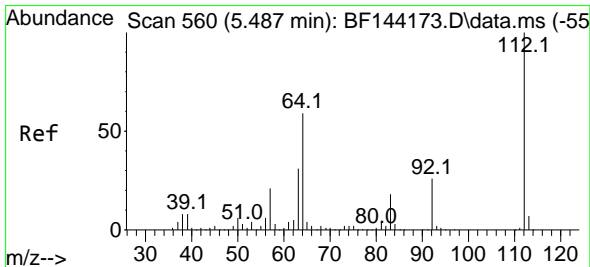
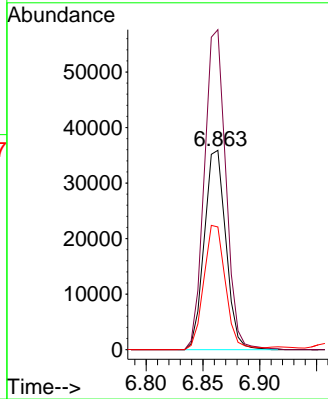
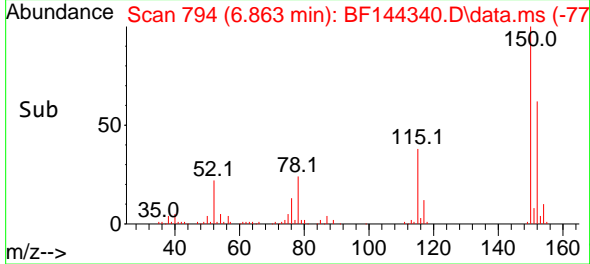


#1
 1,4-Dichlorobenzene-d4
 Concen: 20.000 ng
 RT: 6.863 min Scan# 79
 Delta R.T. -0.012 min
 Lab File: BF144340.D
 Acq: 24 Nov 2025 23:13

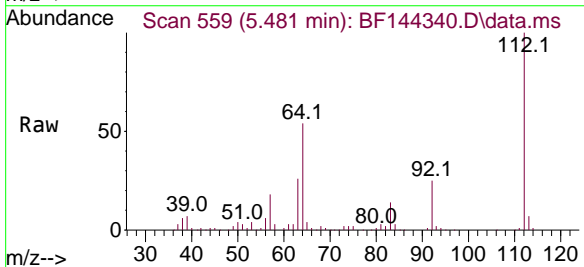
Instrument :
 BNA_F
 ClientSampleId :
 RBR200028-RT5376-COMP



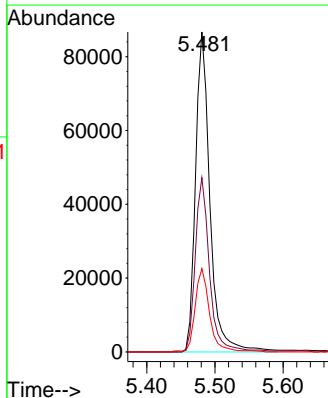
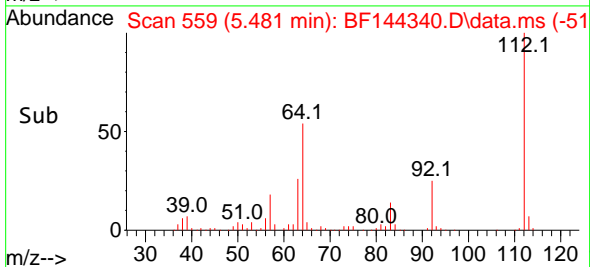
Tgt Ion:152 Resp: 47533
 Ion Ratio Lower Upper
 152 100
 150 160.6 127.4 191.0
 115 61.5 49.5 74.3

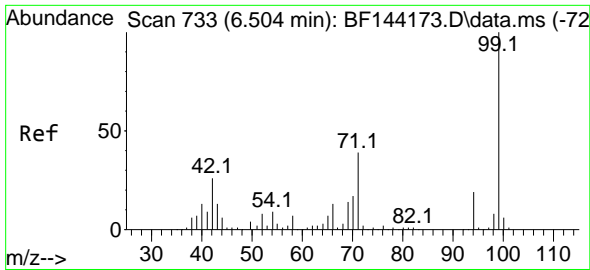


#5
 2-Fluorophenol
 Concen: 41.972 ng
 RT: 5.481 min Scan# 559
 Delta R.T. -0.012 min
 Lab File: BF144340.D
 Acq: 24 Nov 2025 23:13



Tgt Ion:112 Resp: 127489
 Ion Ratio Lower Upper
 112 100
 64 54.4 47.2 70.8
 63 26.0 24.4 36.6

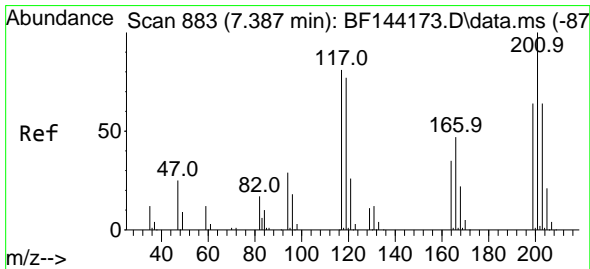
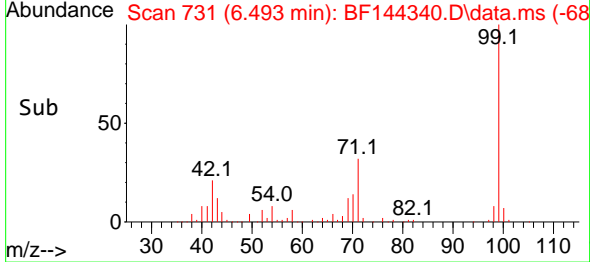
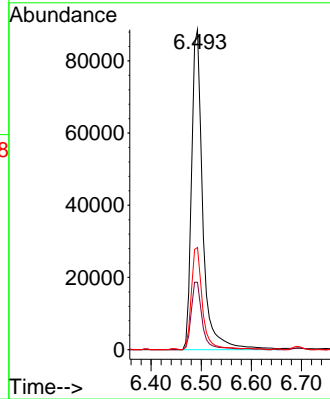
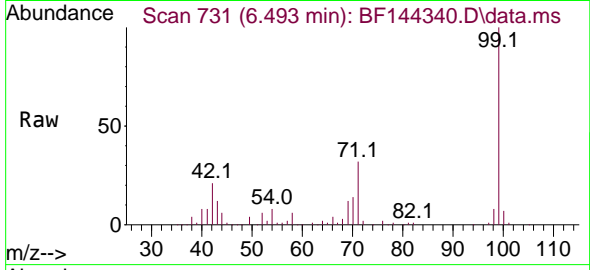




#7
 Phenol-d6
 Concen: 39.969 ng
 RT: 6.493 min Scan# 731
 Delta R.T. -0.006 min
 Lab File: BF144340.D
 Acq: 24 Nov 2025 23:13

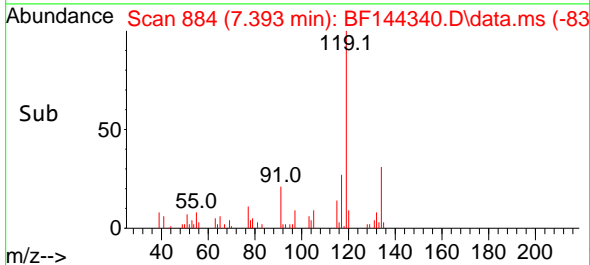
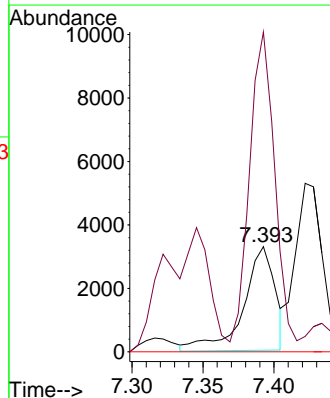
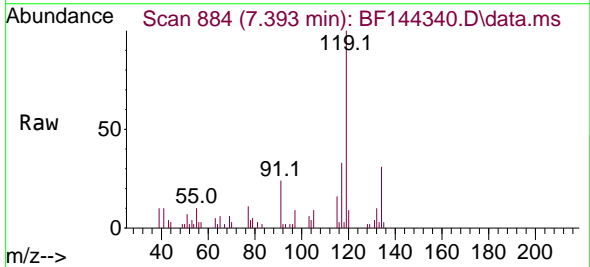
Instrument :
 BNA_F
 ClientSampleId :
 RBR200028-RT5376-COMP

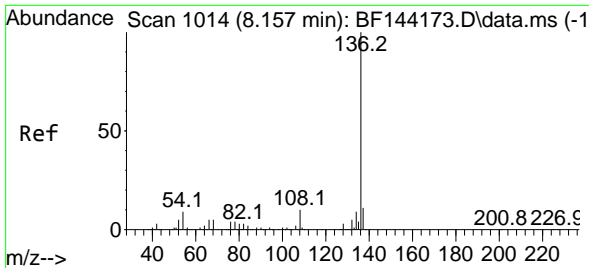
Tgt Ion: 99 Resp: 137561
 Ion Ratio Lower Upper
 99 100
 42 21.0 20.9 31.3
 71 31.9 31.4 47.2



#18
 Hexachloroethane
 Concen: 4.128 ng
 RT: 7.393 min Scan# 884
 Delta R.T. 0.006 min
 Lab File: BF144340.D
 Acq: 24 Nov 2025 23:13

Tgt Ion: 117 Resp: 5051
 Ion Ratio Lower Upper
 117 100
 119 304.2 75.8 113.8#
 201 0.0 98.9 148.3#

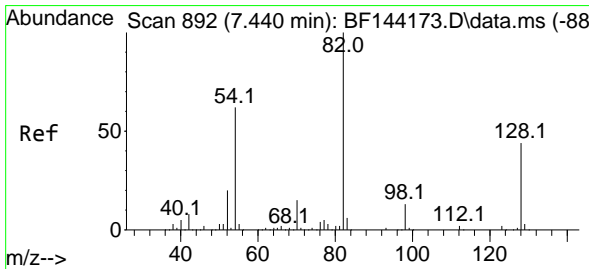
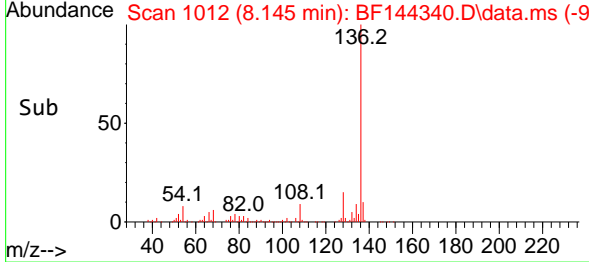
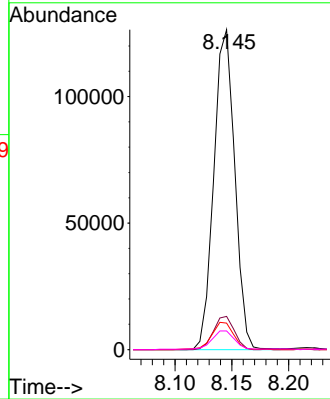
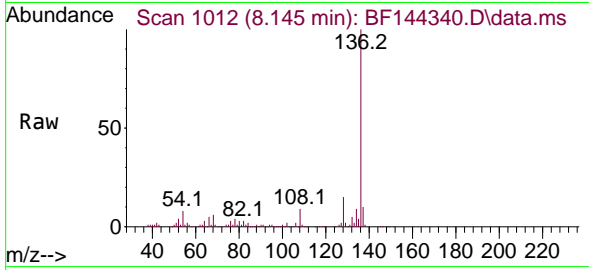




#21
 Naphthalene-d8
 Concen: 20.000 ng
 RT: 8.145 min Scan# 1014
 Delta R.T. -0.012 min
 Lab File: BF144340.D
 Acq: 24 Nov 2025 23:13

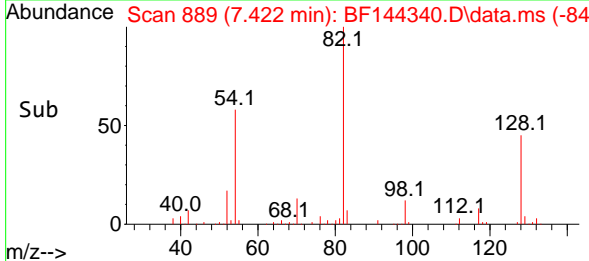
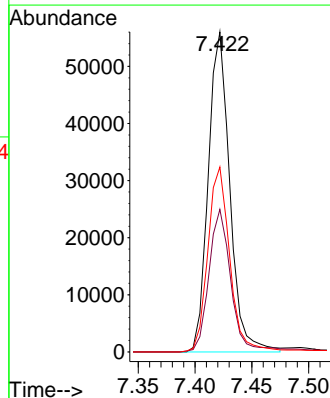
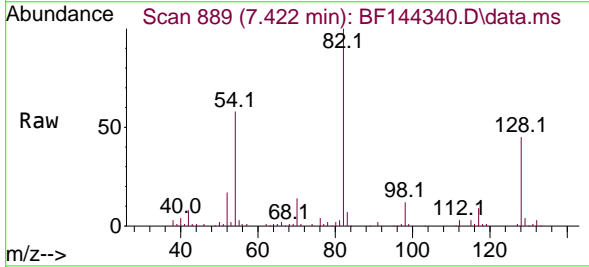
Instrument : BNA_F
 ClientSampleId : RBR200028-RT5376-COMP

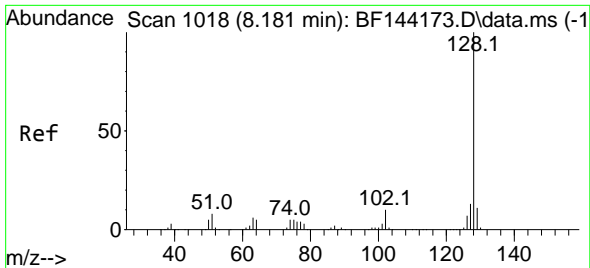
Tgt Ion	Resp	Lower	Upper
136	161896		
137	10.4	8.6	13.0
54	8.3	7.0	10.6
68	5.8	4.3	6.5



#23
 Nitrobenzene-d5
 Concen: 26.402 ng
 RT: 7.422 min Scan# 889
 Delta R.T. -0.012 min
 Lab File: BF144340.D
 Acq: 24 Nov 2025 23:13

Tgt Ion	Resp	Lower	Upper
82	74009		
128	44.5	34.7	52.1
54	57.8	49.5	74.3



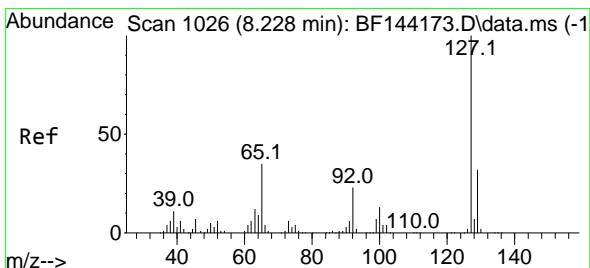
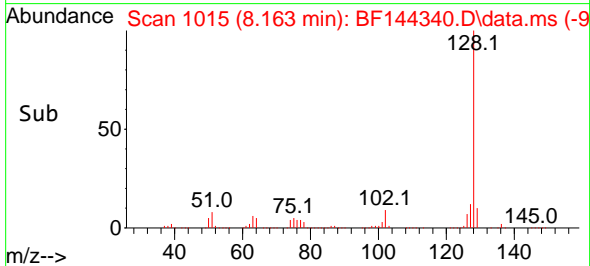
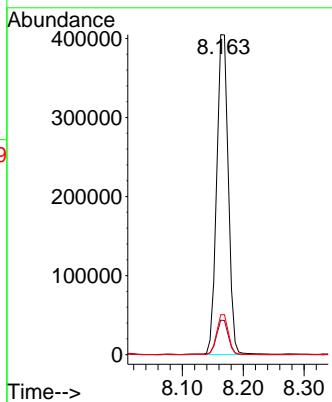
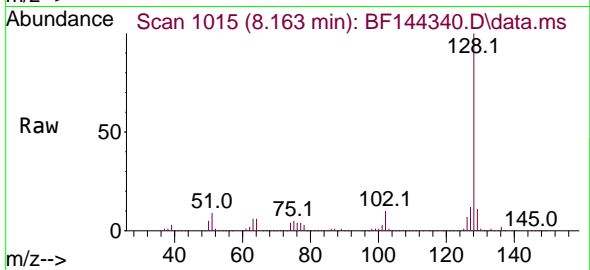


#31
 Naphthalene
 Concen: 69.798 ng
 RT: 8.163 min Scan# 1015
 Delta R.T. -0.012 min
 Lab File: BF144340.D
 Acq: 24 Nov 2025 23:13

Instrument : BNA_F
 ClientSampleId : RBR200028-RT5376-COMP

Tgt Ion:128 Resp: 537530

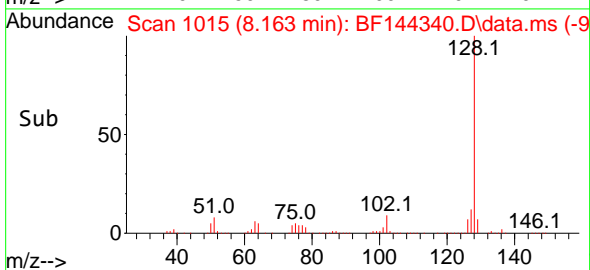
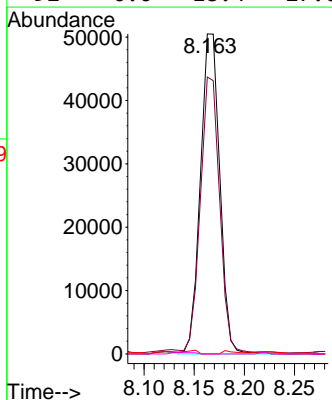
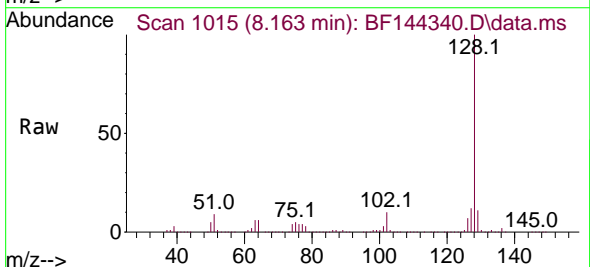
Ion	Ratio	Lower	Upper
128	100		
129	10.8	8.9	13.3
127	12.5	10.3	15.5

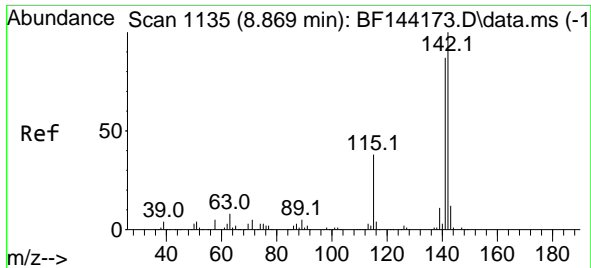


#33
 4-Chloroaniline
 Concen: 24.095 ng
 RT: 8.163 min Scan# 1015
 Delta R.T. -0.065 min
 Lab File: BF144340.D
 Acq: 24 Nov 2025 23:13

Tgt Ion:127 Resp: 67677

Ion	Ratio	Lower	Upper
127	100		
129	86.5	25.3	37.9#
65	0.0	27.6	41.4#
92	0.0	18.4	27.6#

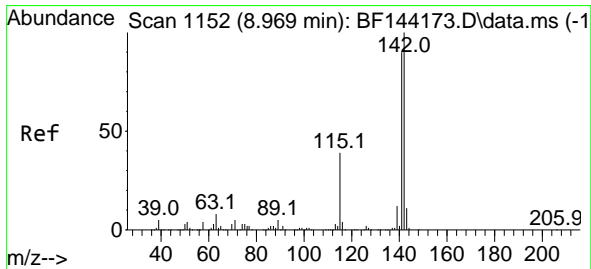
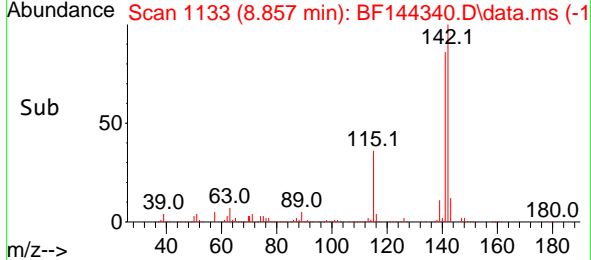
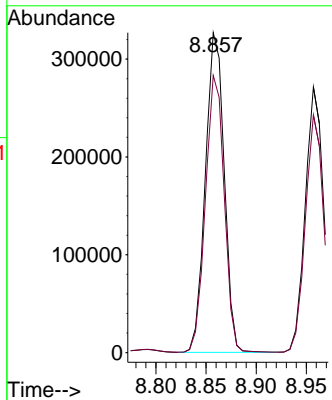
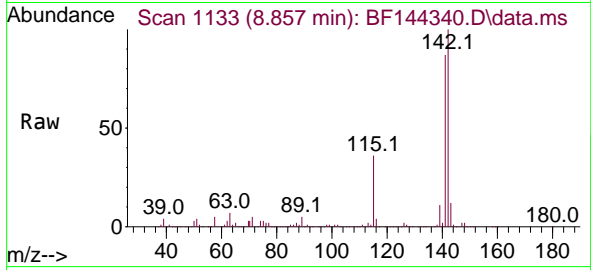




#37
 2-Methylnaphthalene
 Concen: 82.653 ng
 RT: 8.857 min Scan# 1110
 Delta R.T. -0.012 min
 Lab File: BF144340.D
 Acq: 24 Nov 2025 23:13

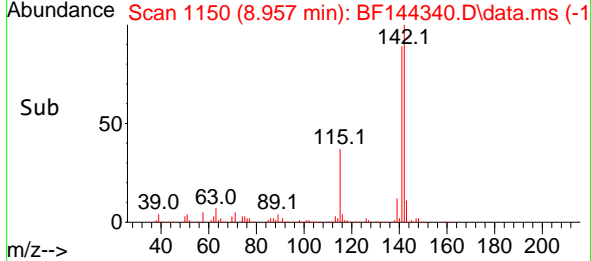
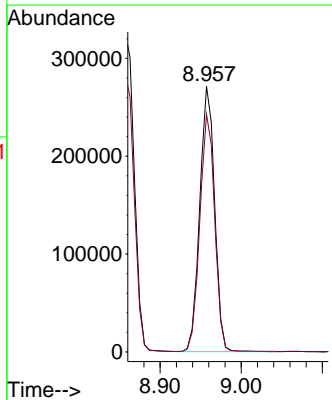
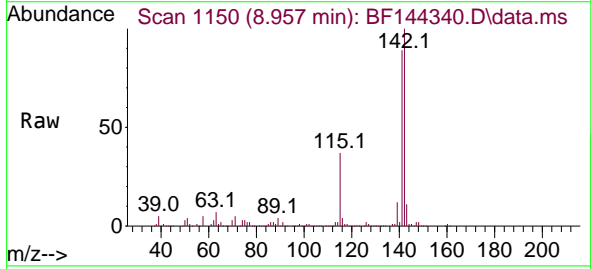
Instrument : BNA_F
 ClientSampleId : RBR200028-RT5376-COMP

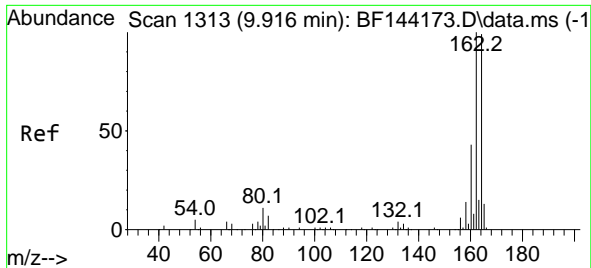
Tgt Ion:142 Resp: 425581
 Ion Ratio Lower Upper
 142 100
 141 86.6 69.9 104.9



#38
 1-Methylnaphthalene
 Concen: 69.280 ng
 RT: 8.957 min Scan# 1150
 Delta R.T. -0.012 min
 Lab File: BF144340.D
 Acq: 24 Nov 2025 23:13

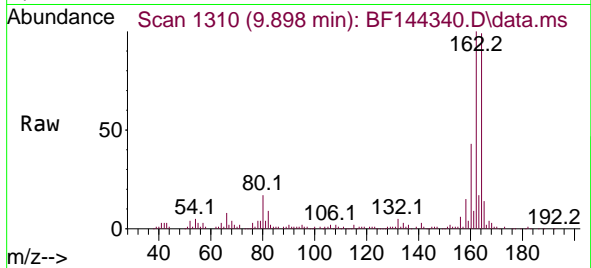
Tgt Ion:142 Resp: 344196
 Ion Ratio Lower Upper
 142 100
 141 89.5 72.1 108.1



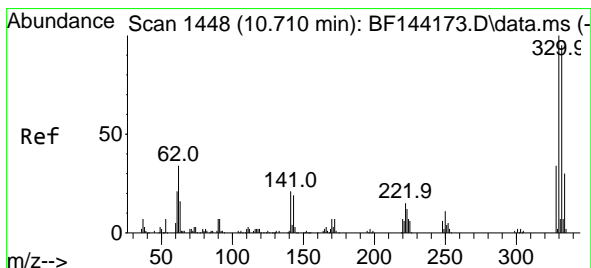
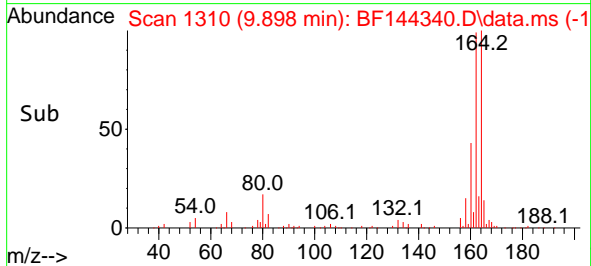
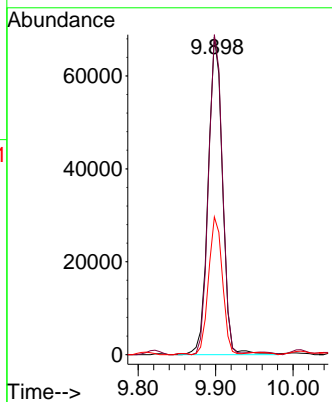


#39
 Acenaphthene-d10
 Concen: 20.000 ng
 RT: 9.898 min Scan# 1310
 Delta R.T. -0.018 min
 Lab File: BF144340.D
 Acq: 24 Nov 2025 23:13

Instrument : BNA_F
 ClientSampleId : RBR200028-RT5376-COMP

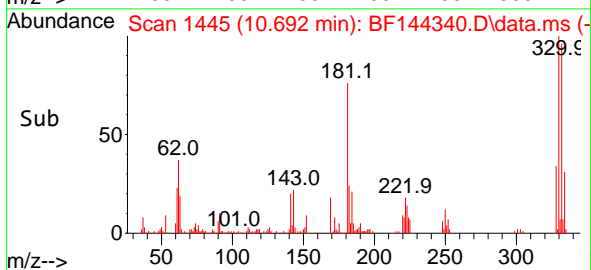
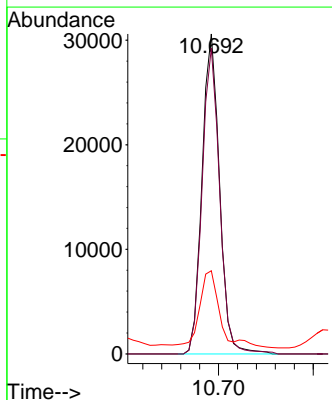
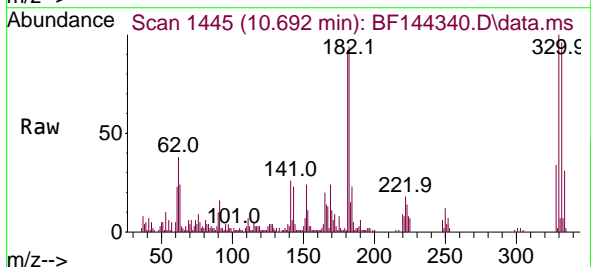


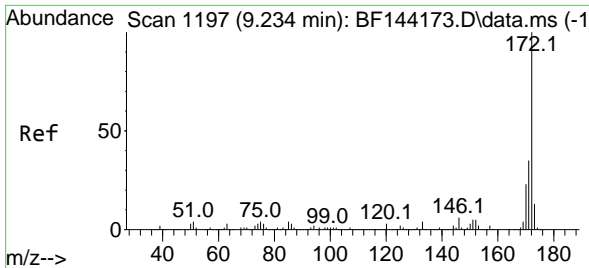
Tgt Ion:164 Resp: 87957
 Ion Ratio Lower Upper
 164 100
 162 100.8 81.1 121.7
 160 43.3 34.5 51.7



#42
 2,4,6-Tribromophenol
 Concen: 35.527 ng
 RT: 10.692 min Scan# 1445
 Delta R.T. -0.012 min
 Lab File: BF144340.D
 Acq: 24 Nov 2025 23:13

Tgt Ion:330 Resp: 39213
 Ion Ratio Lower Upper
 330 100
 332 95.9 76.7 115.1
 141 23.7 17.8 26.8



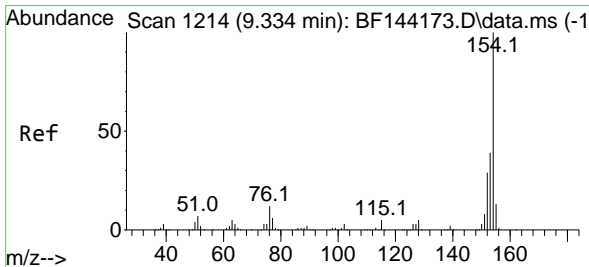
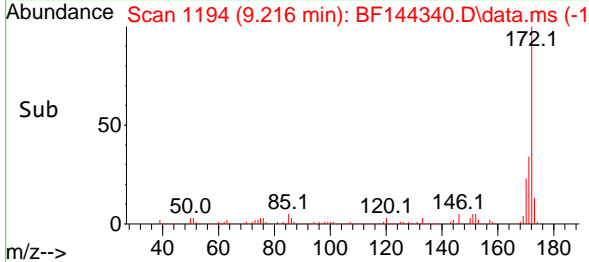
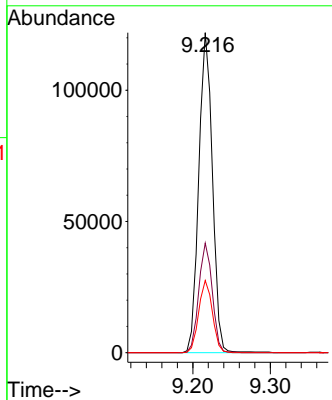
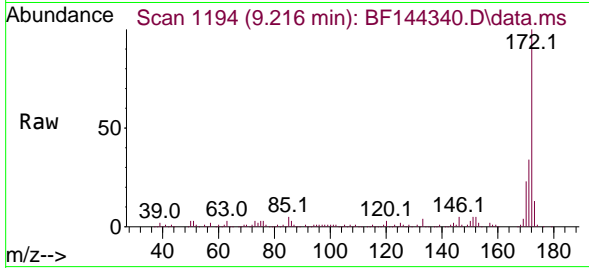


#45
 2-Fluorobiphenyl
 Concen: 24.957 ng
 RT: 9.216 min Scan# 1194
 Delta R.T. -0.012 min
 Lab File: BF144340.D
 Acq: 24 Nov 2025 23:13

Instrument : BNA_F
 ClientSampleId : RBR200028-RT5376-COMP

Tgt Ion:172 Resp: 148628

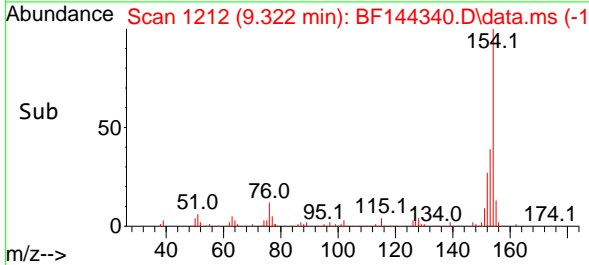
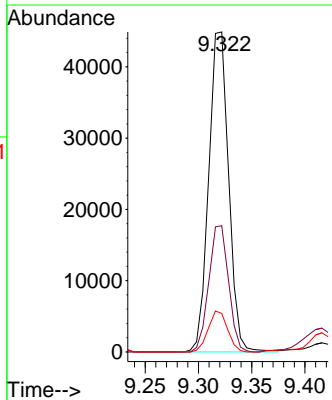
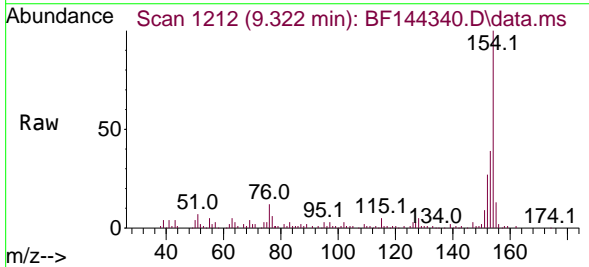
Ion	Ratio	Lower	Upper
172	100		
171	34.2	28.1	42.1
170	22.5	18.6	28.0

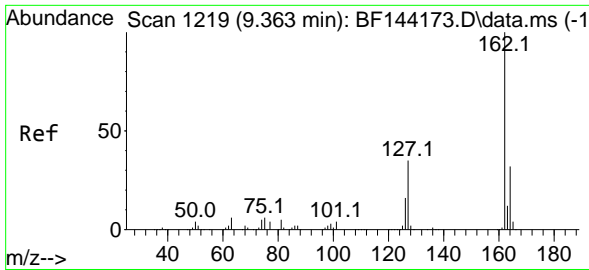


#46
 1,1'-Biphenyl
 Concen: 9.535 ng
 RT: 9.322 min Scan# 1212
 Delta R.T. -0.012 min
 Lab File: BF144340.D
 Acq: 24 Nov 2025 23:13

Tgt Ion:154 Resp: 58541

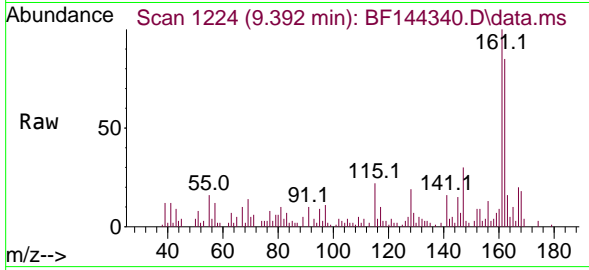
Ion	Ratio	Lower	Upper
154	100		
153	39.4	19.2	59.2
76	12.0	0.0	31.8



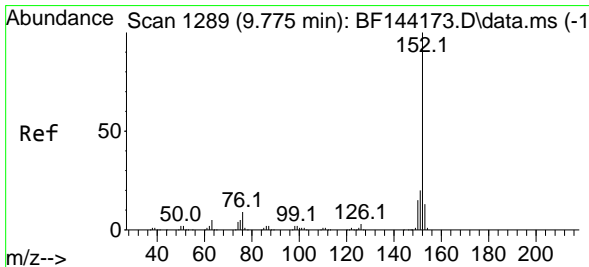
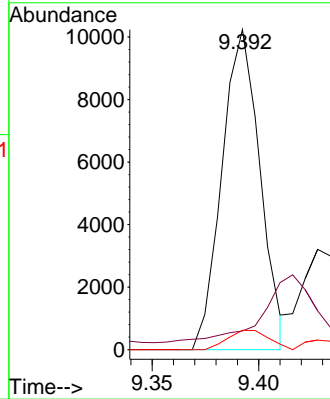
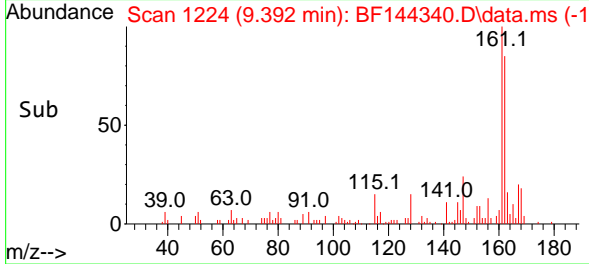


#47
 2-Chloronaphthalene
 Concen: 2.426 ng
 RT: 9.392 min Scan# 11
 Delta R.T. 0.035 min
 Lab File: BF144340.D
 Acq: 24 Nov 2025 23:13

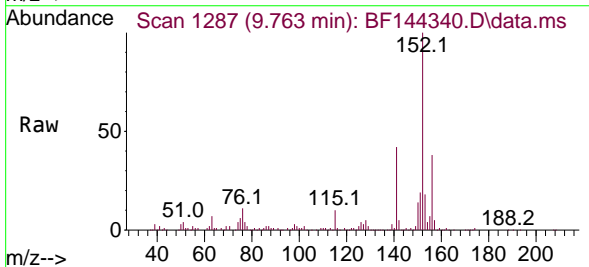
Instrument :
 BNA_F
 ClientSampleId :
 RBR200028-RT5376-COMP



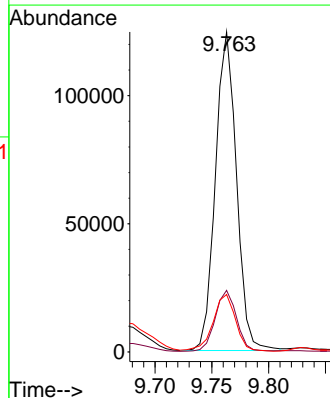
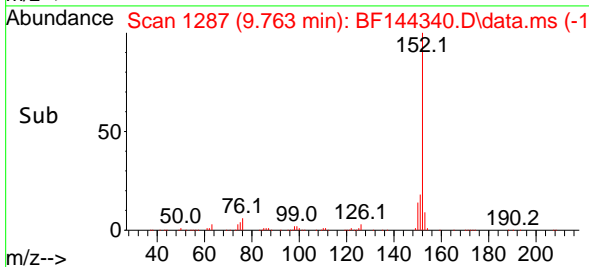
Tgt Ion:162 Resp: 12707
 Ion Ratio Lower Upper
 162 100
 127 5.8 28.8 43.2#
 164 6.0 25.8 38.8#

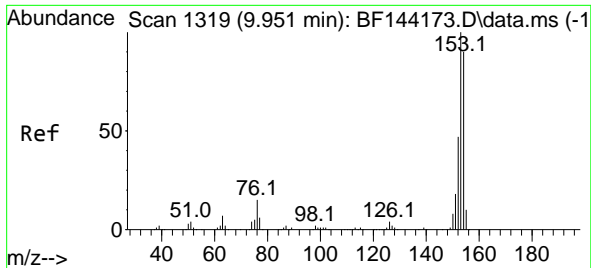


#49
 Acenaphthylene
 Concen: 22.468 ng
 RT: 9.763 min Scan# 1287
 Delta R.T. -0.012 min
 Lab File: BF144340.D
 Acq: 24 Nov 2025 23:13



Tgt Ion:152 Resp: 160353
 Ion Ratio Lower Upper
 152 100
 151 19.3 15.9 23.9
 153 17.9 10.5 15.7#



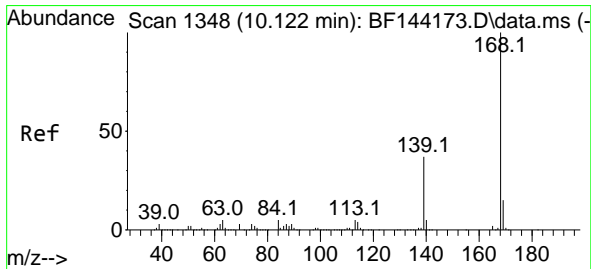
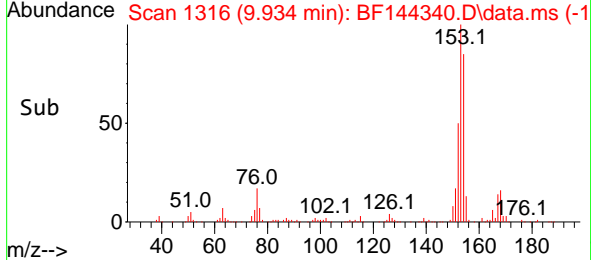
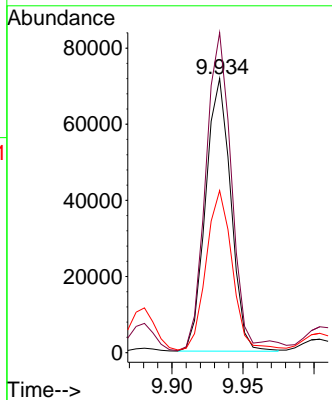
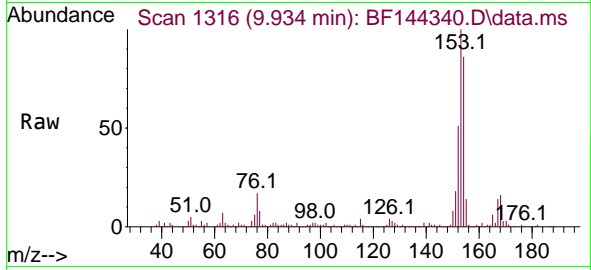


#52
 Acenaphthene
 Concen: 18.495 ng
 RT: 9.934 min Scan# 1316
 Delta R.T. -0.012 min
 Lab File: BF144340.D
 Acq: 24 Nov 2025 23:13

Instrument : BNA_F
 ClientSampleId : RBR200028-RT5376-COMP

Tgt Ion:154 Resp: 88267

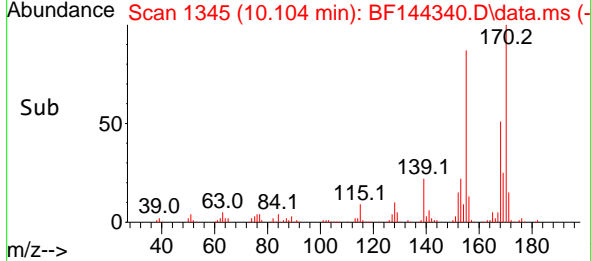
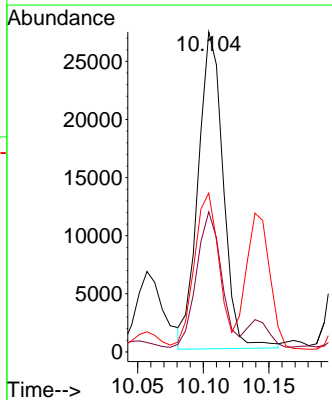
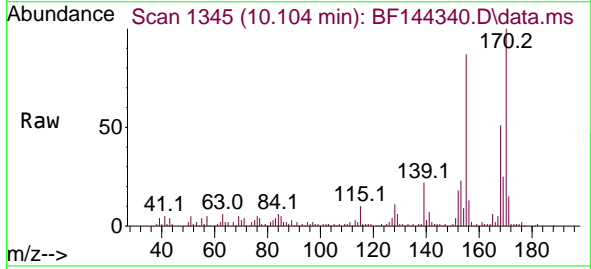
Ion	Ratio	Lower	Upper
154	100		
153	116.7	89.0	133.4
152	59.1	42.2	63.4

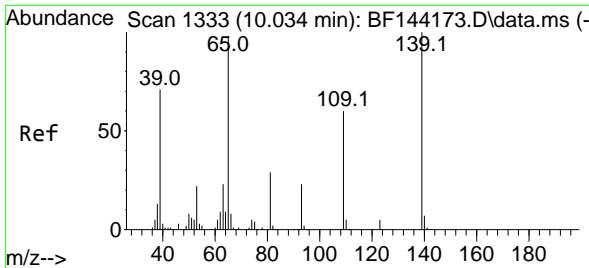


#55
 Dibenzofuran
 Concen: 5.424 ng
 RT: 10.104 min Scan# 1345
 Delta R.T. -0.012 min
 Lab File: BF144340.D
 Acq: 24 Nov 2025 23:13

Tgt Ion:168 Resp: 36257

Ion	Ratio	Lower	Upper
168	100		
139	43.8	30.2	45.2
169	49.6	12.2	18.4

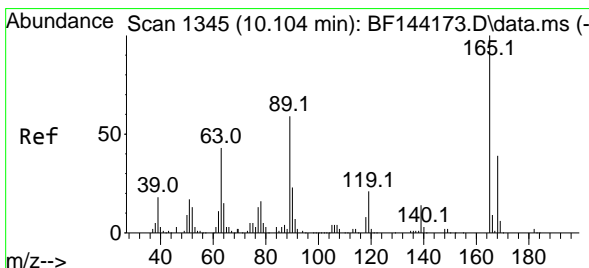
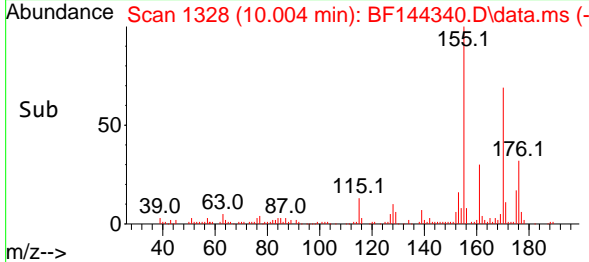
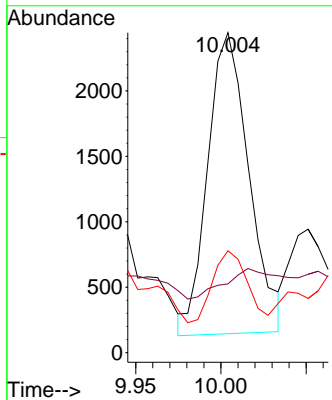
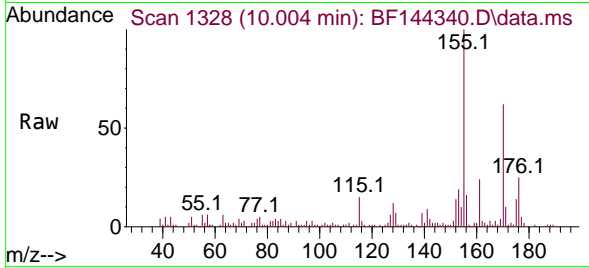




#56
 4-Nitrophenol
 Concen: 4.157 ng
 RT: 10.004 min Scan# 1333
 Delta R.T. -0.035 min
 Lab File: BF144340.D
 Acq: 24 Nov 2025 23:13

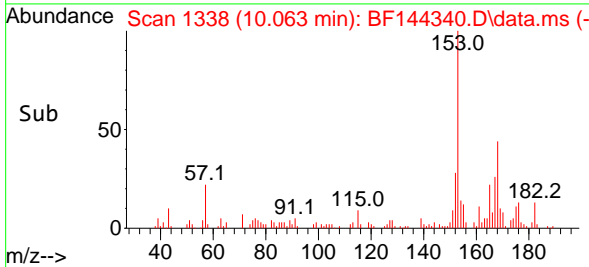
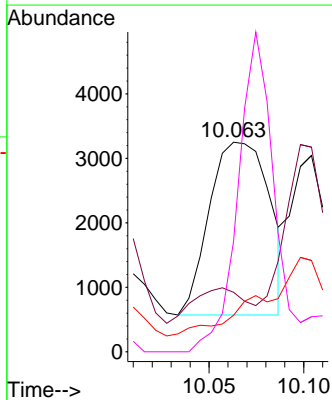
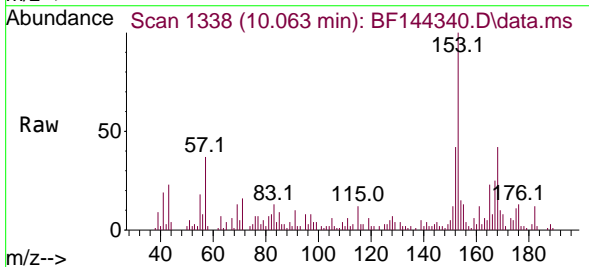
Instrument : BNA_F
 ClientSampleId : RBR200028-RT5376-COMP

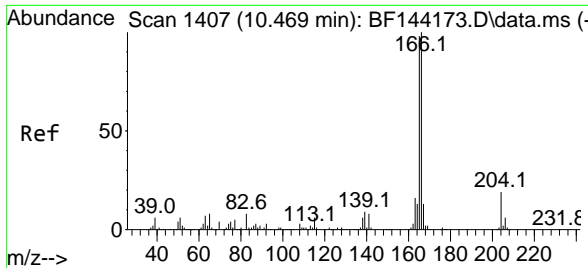
Tgt Ion	Resp	Ion Ratio	Lower	Upper
139	3877	100		
109	21.5	39.9	79.9#	
65	31.8	79.5	119.5#	



#57
 2,4-Dinitrotoluene
 Concen: 3.735 ng
 RT: 10.063 min Scan# 1338
 Delta R.T. -0.035 min
 Lab File: BF144340.D
 Acq: 24 Nov 2025 23:13

Tgt Ion	Resp	Ion Ratio	Lower	Upper
165	5898	100		
63	28.4	35.5	53.3#	
89	17.5	47.4	71.2#	
182	52.7	1.9	2.9#	



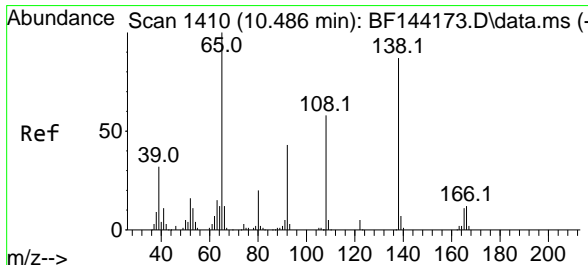
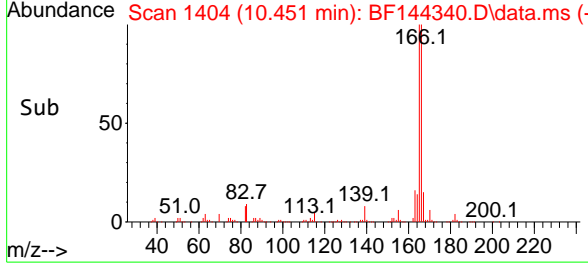
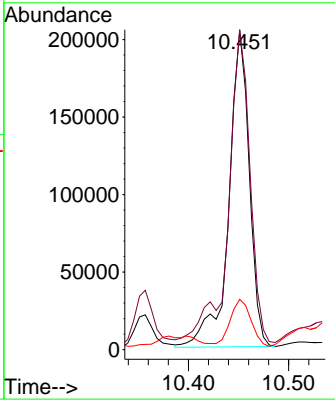
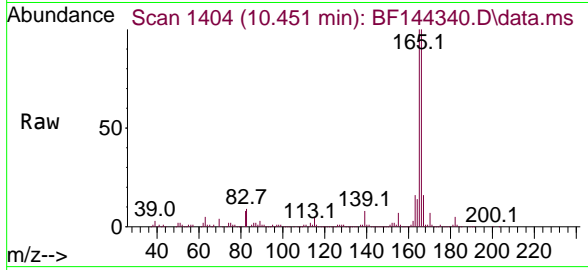


#58
 Fluorene
 Concen: 57.228 ng
 RT: 10.451 min Scan# 1404
 Delta R.T. -0.012 min
 Lab File: BF144340.D
 Acq: 24 Nov 2025 23:13

Instrument : BNA_F
 ClientSampleId : RBR200028-RT5376-COMP

Tgt Ion:166 Resp: 290834

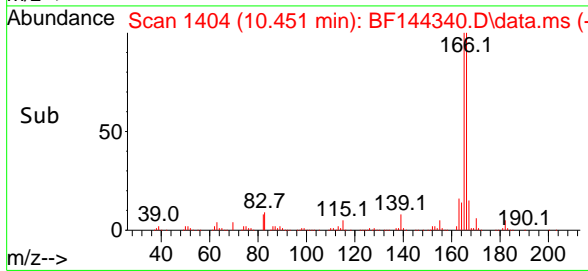
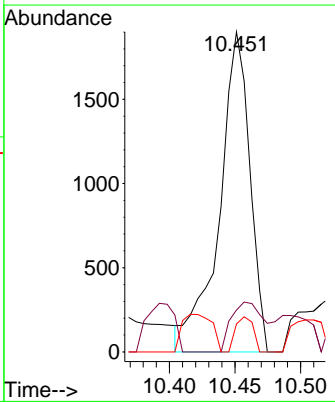
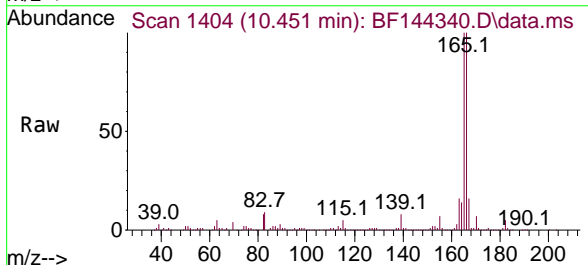
Ion	Ratio	Lower	Upper
166	100		
165	100.3	78.6	118.0
167	15.8	10.4	15.6

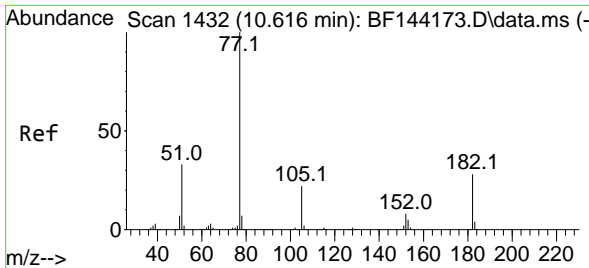


#62
 4-Nitroaniline
 Concen: 2.509 ng
 RT: 10.451 min Scan# 1404
 Delta R.T. -0.024 min
 Lab File: BF144340.D
 Acq: 24 Nov 2025 23:13

Tgt Ion:138 Resp: 3081

Ion	Ratio	Lower	Upper
138	100		
92	13.1	29.4	69.4
108	8.7	46.4	86.4

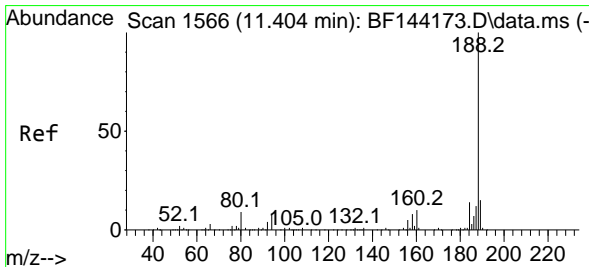
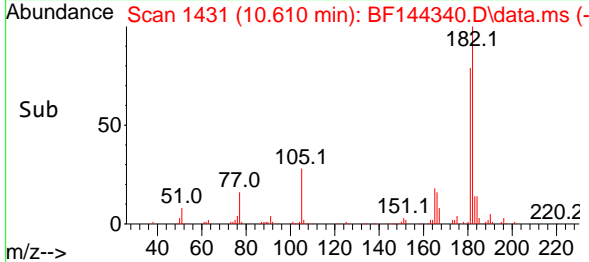
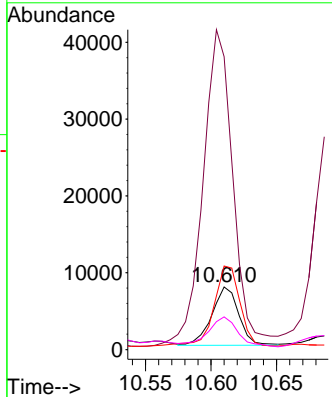
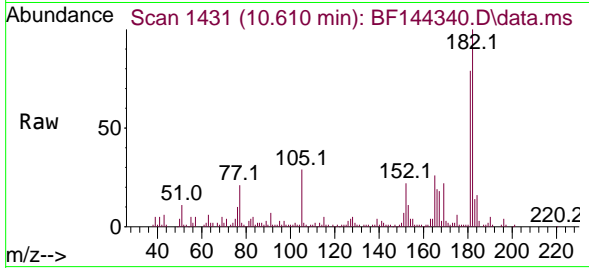




#63
 Azobenzene
 Concen: 2.180 ng
 RT: 10.610 min Scan# 14
 Delta R.T. -0.006 min
 Lab File: BF144340.D
 Acq: 24 Nov 2025 23:13

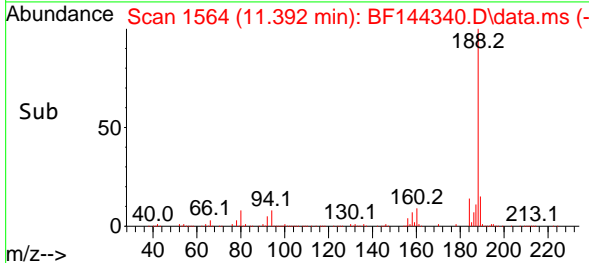
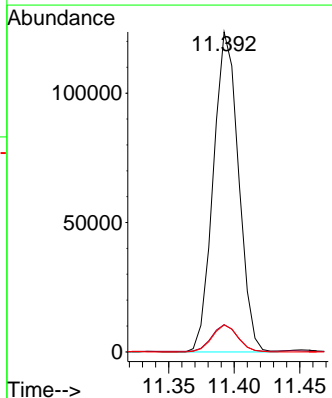
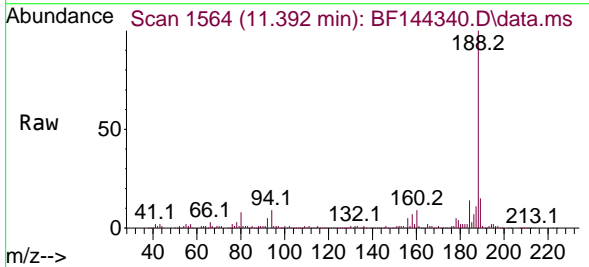
Instrument : BNA_F
 ClientSampleId : RBR200028-RT5376-COMP

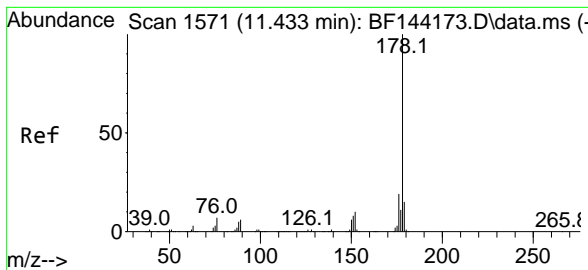
Tgt Ion	Resp	Lower	Upper
77	10900		
182	467.7	8.1	48.1#
105	133.4	2.0	42.0#
51	52.4	13.9	53.9



#64
 Phenanthrene-d10
 Concen: 20.000 ng
 RT: 11.392 min Scan# 1564
 Delta R.T. -0.012 min
 Lab File: BF144340.D
 Acq: 24 Nov 2025 23:13

Tgt Ion	Resp	Lower	Upper
188	165837		
94	8.6	6.2	9.2
80	8.4	6.9	10.3

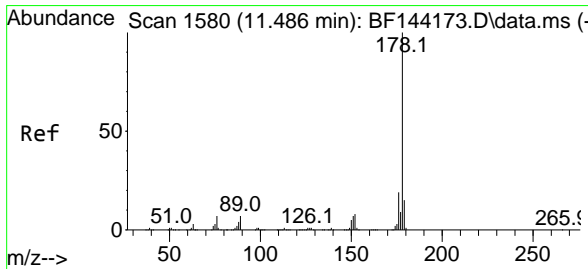
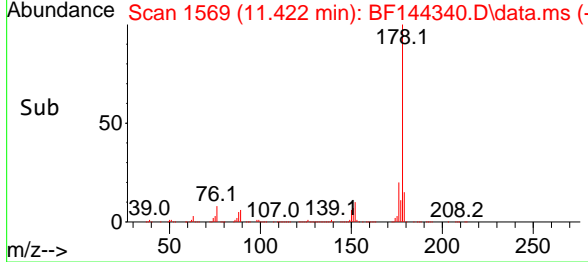
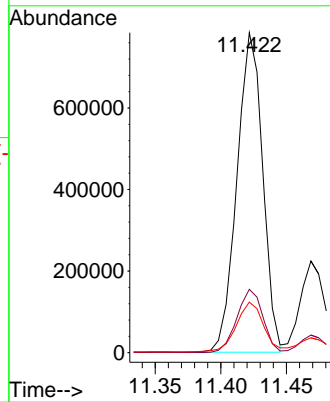
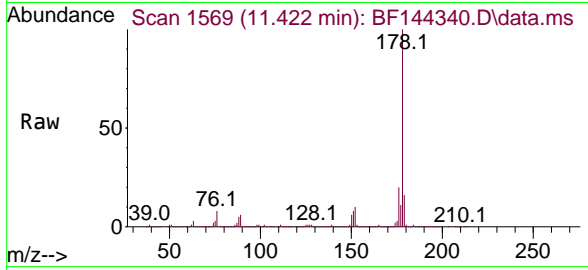




#71
 Phenanthrene
 Concen: 129.442 ng
 RT: 11.422 min Scan# 1569
 Delta R.T. -0.006 min
 Lab File: BF144340.D
 Acq: 24 Nov 2025 23:13

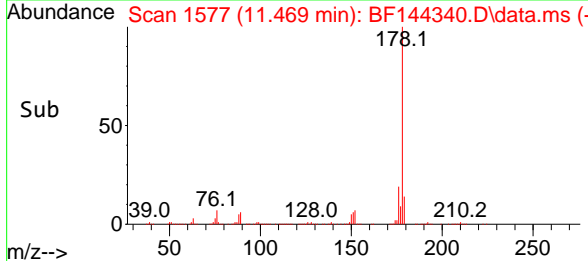
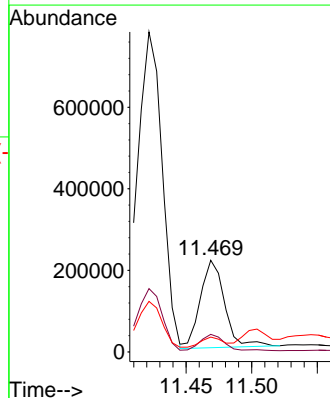
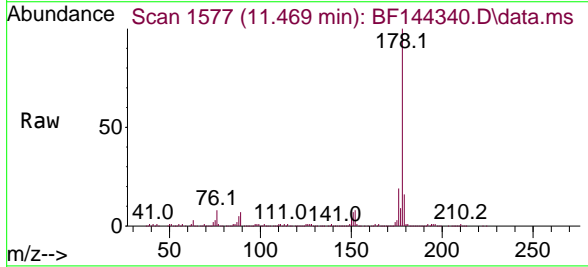
Instrument :
 BNA_F
 ClientSampleId :
 RBR200028-RT5376-COMP

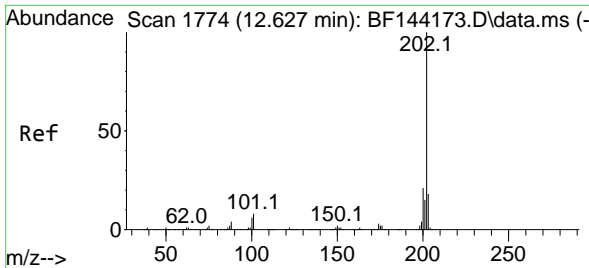
Tgt Ion:178 Resp: 1068776
 Ion Ratio Lower Upper
 178 100
 176 19.8 15.5 23.3
 179 15.8 12.2 18.4



#72
 Anthracene
 Concen: 32.931 ng
 RT: 11.469 min Scan# 1577
 Delta R.T. -0.012 min
 Lab File: BF144340.D
 Acq: 24 Nov 2025 23:13

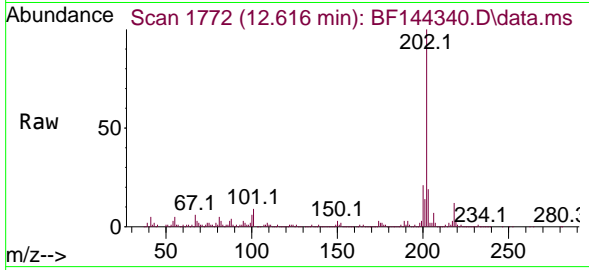
Tgt Ion:178 Resp: 276479
 Ion Ratio Lower Upper
 178 100
 176 19.1 15.3 22.9
 179 16.1 12.0 18.0





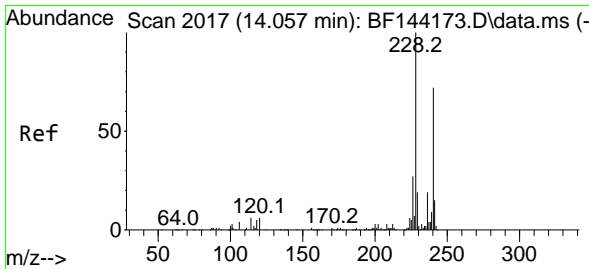
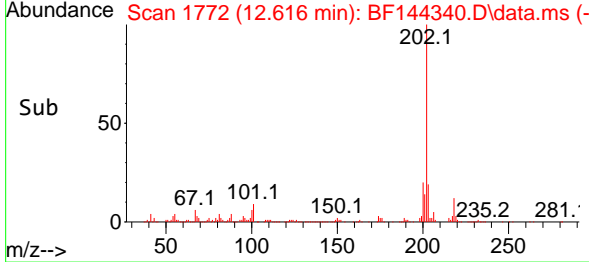
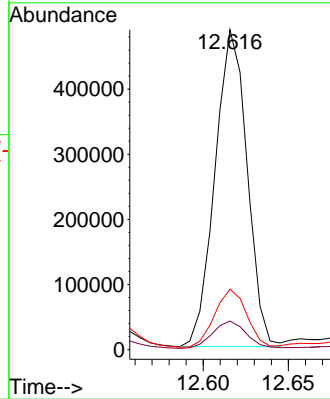
#75
 Fluoranthene
 Concen: 74.822 ng
 RT: 12.616 min Scan# 11
 Delta R.T. -0.006 min
 Lab File: BF144340.D
 Acq: 24 Nov 2025 23:13

Instrument : BNA_F
 ClientSampleId : RBR200028-RT5376-COMP



Tgt Ion: 202 Resp: 638175

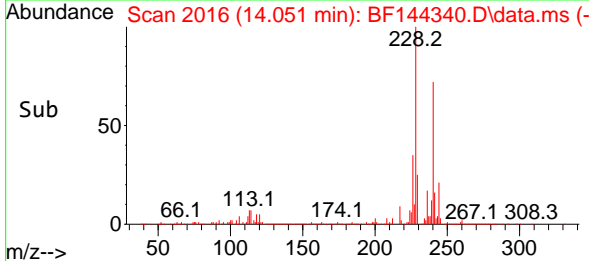
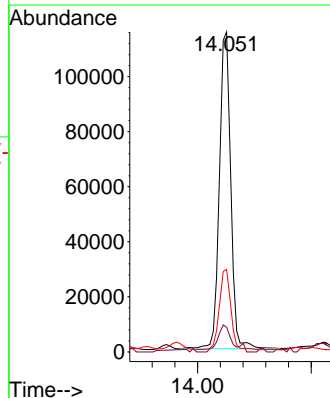
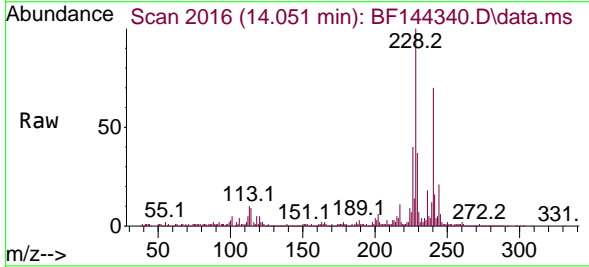
Ion	Ratio	Lower	Upper
202	100		
101	8.9	0.0	27.9
203	18.9	0.0	37.5

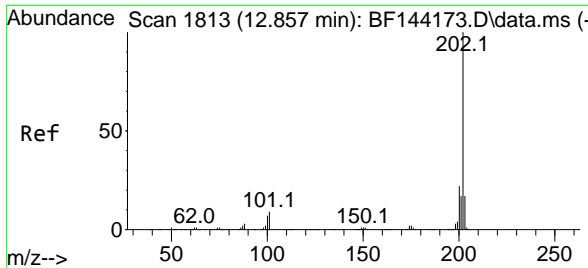


#76
 Chrysene-d12
 Concen: 20.000 ng
 RT: 14.051 min Scan# 2016
 Delta R.T. -0.000 min
 Lab File: BF144340.D
 Acq: 24 Nov 2025 23:13

Tgt Ion: 240 Resp: 159456

Ion	Ratio	Lower	Upper
240	100		
120	7.7	6.6	10.0
236	25.8	21.4	32.2



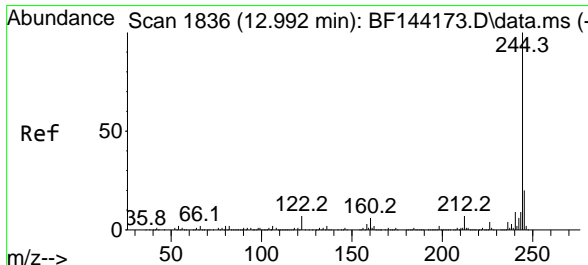
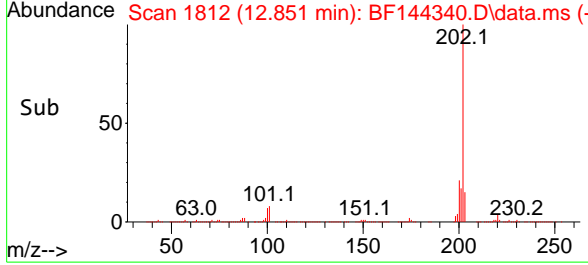
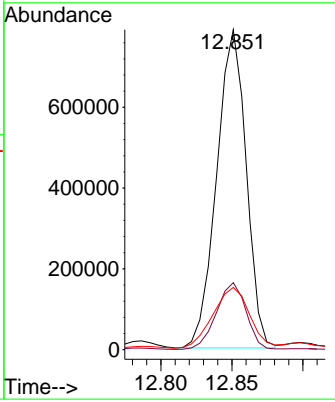
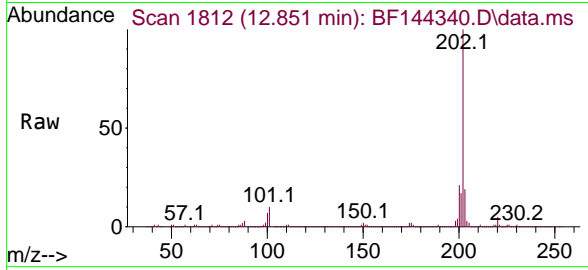


#78
 Pyrene
 Concen: 88.581 ng
 RT: 12.851 min Scan# 1813
 Delta R.T. -0.000 min
 Lab File: BF144340.D
 Acq: 24 Nov 2025 23:13

Instrument : BNA_F
 ClientSampleId : RBR200028-RT5376-COMP

Tgt Ion:202 Resp: 1138861

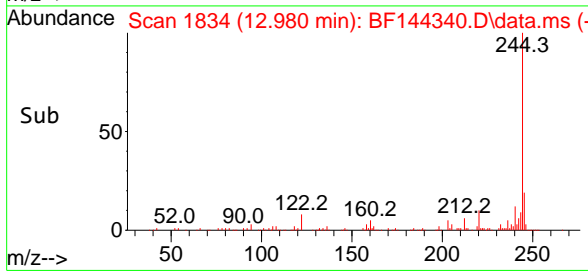
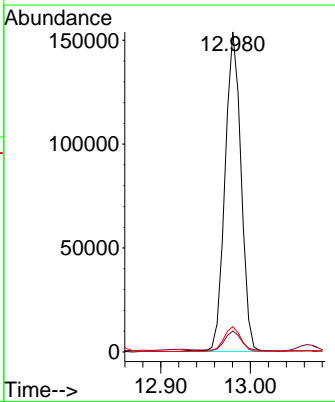
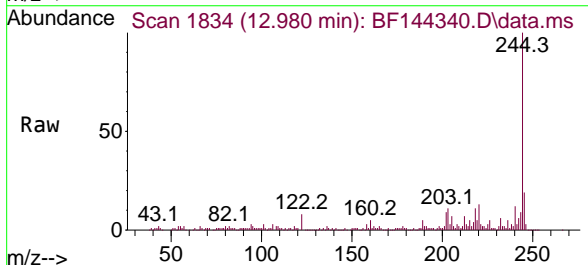
Ion	Ratio	Lower	Upper
202	100		
200	20.9	17.2	25.8
203	19.4	13.7	20.5

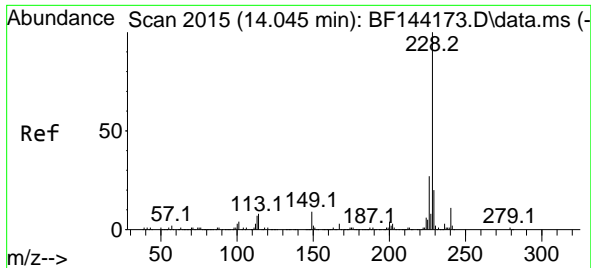


#79
 Terphenyl-d14
 Concen: 19.100 ng
 RT: 12.980 min Scan# 1834
 Delta R.T. -0.012 min
 Lab File: BF144340.D
 Acq: 24 Nov 2025 23:13

Tgt Ion:244 Resp: 191743

Ion	Ratio	Lower	Upper
244	100		
212	6.5	5.3	7.9
122	7.9	5.6	8.4



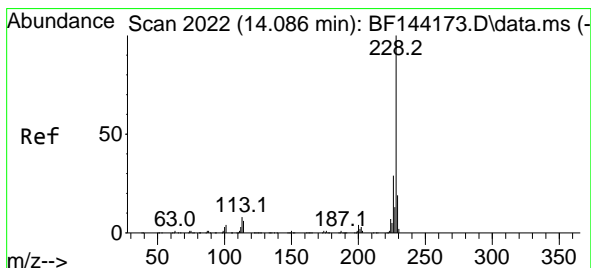
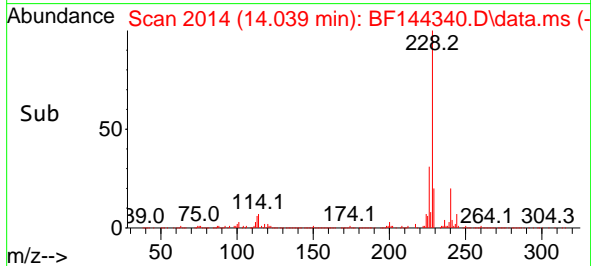
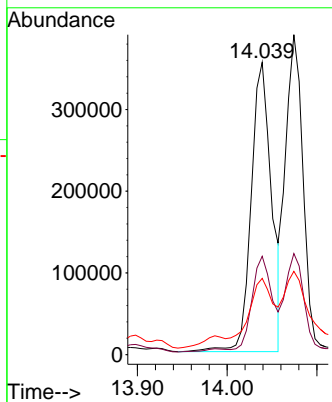
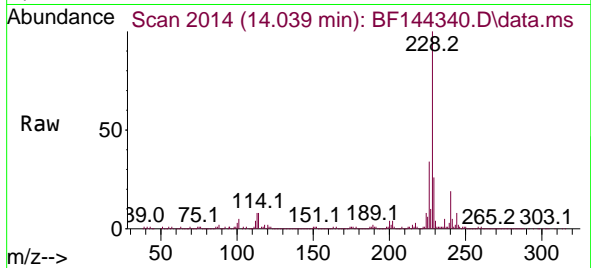


#81
 Benzo(a)anthracene
 Concen: 50.663 ng
 RT: 14.039 min Scan# 2020
 Delta R.T. -0.006 min
 Lab File: BF144340.D
 Acq: 24 Nov 2025 23:13

Instrument : BNA_F
 ClientSampleId : RBR200028-RT5376-COMP

Tgt Ion:228 Resp: 559906

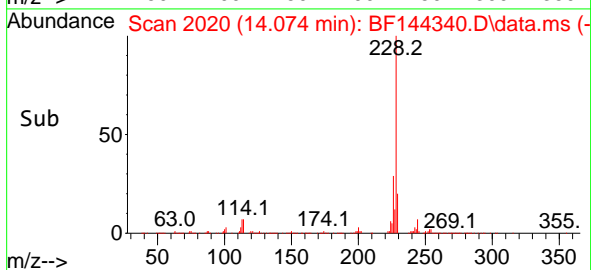
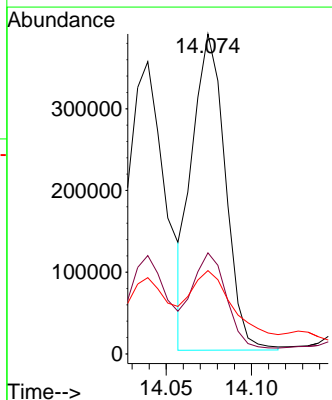
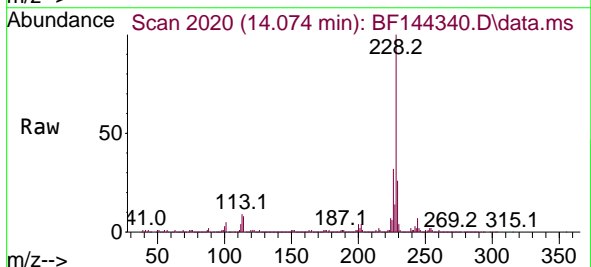
Ion	Ratio	Lower	Upper
228	100		
226	33.6	21.8	32.8#
229	26.1	15.8	23.6#

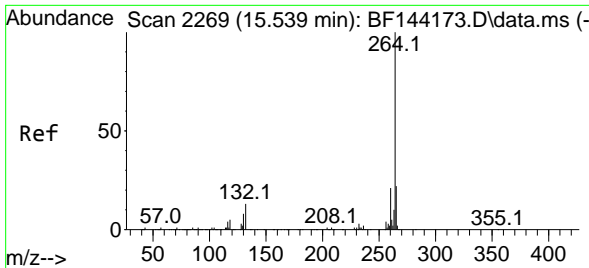


#83
 Chrysene
 Concen: 51.339 ng
 RT: 14.074 min Scan# 2020
 Delta R.T. -0.006 min
 Lab File: BF144340.D
 Acq: 24 Nov 2025 23:13

Tgt Ion:228 Resp: 523755

Ion	Ratio	Lower	Upper
228	100		
226	31.6	22.9	34.3
229	26.0	15.0	22.6#



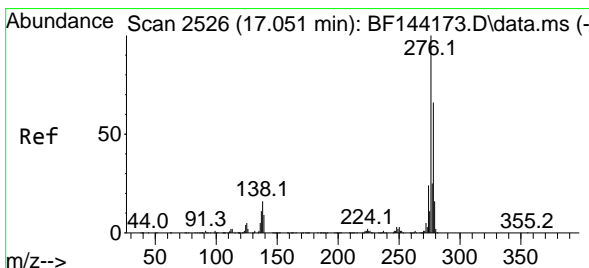
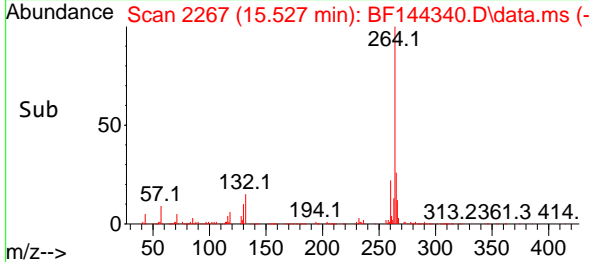
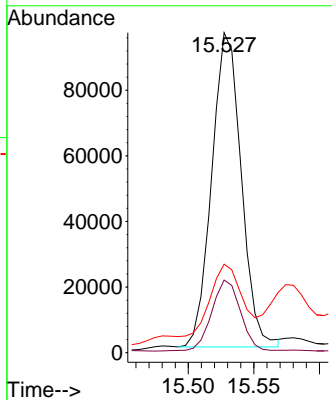
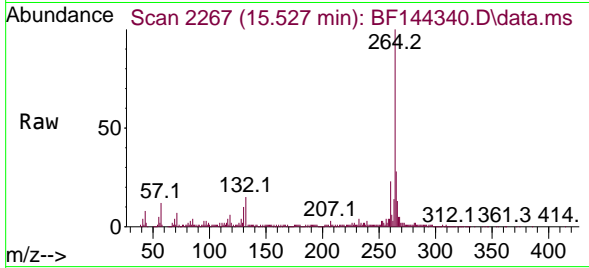


#86
 Perylene-d12
 Concen: 20.000 ng
 RT: 15.527 min Scan# 21
 Delta R.T. -0.012 min
 Lab File: BF144340.D
 Acq: 24 Nov 2025 23:13

Instrument :
 BNA_F
 ClientSampleId :
 RBR200028-RT5376-COMP

Tgt Ion:264 Resp: 150329

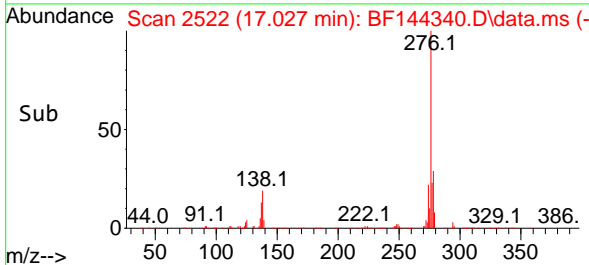
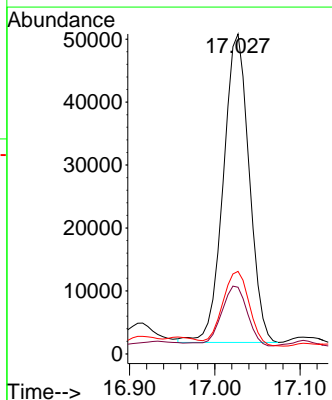
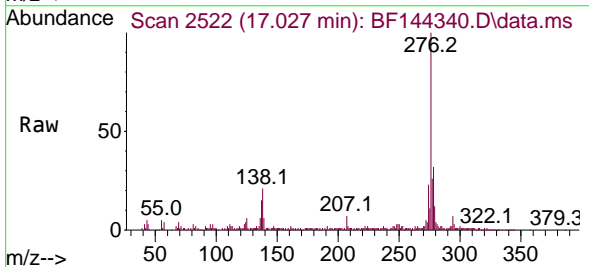
Ion	Ratio	Lower	Upper
264	100		
260	22.7	17.1	25.7
265	27.6	17.4	26.0

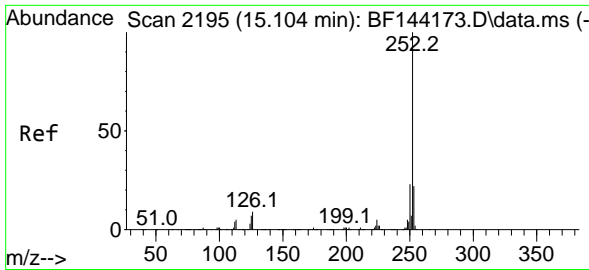


#87
 Indeno(1,2,3-cd)pyrene
 Concen: 9.557 ng
 RT: 17.027 min Scan# 2522
 Delta R.T. -0.006 min
 Lab File: BF144340.D
 Acq: 24 Nov 2025 23:13

Tgt Ion:276 Resp: 103137

Ion	Ratio	Lower	Upper
276	100		
138	19.3	13.9	20.9
277	25.1	19.8	29.6



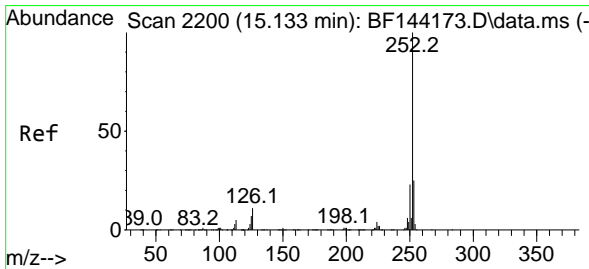
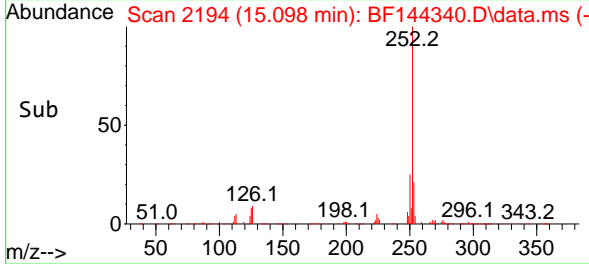
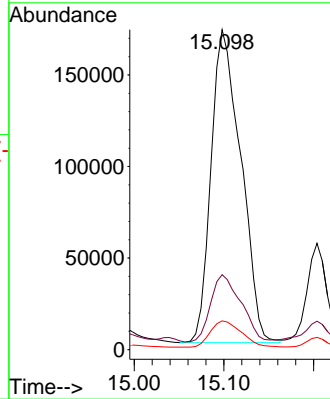
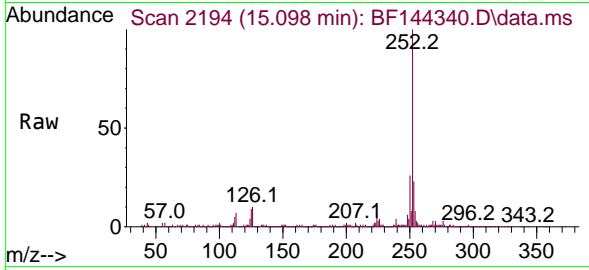


#88
 Benzo(b)fluoranthene
 Concen: 46.388 ng
 RT: 15.098 min Scan# 2194
 Delta R.T. -0.000 min
 Lab File: BF144340.D
 Acq: 24 Nov 2025 23:13

Instrument :
 BNA_F
 ClientSampleId :
 RBR200028-RT5376-COMP

Tgt Ion:252 Resp: 396457

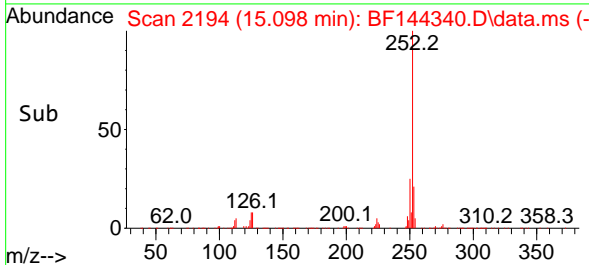
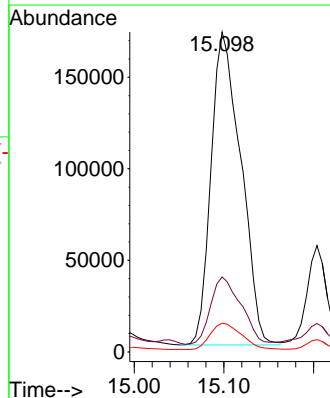
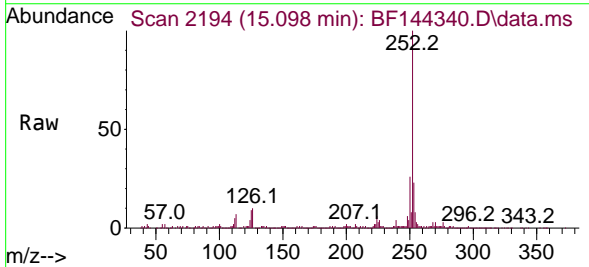
Ion	Ratio	Lower	Upper
252	100		
253	23.4	17.4	26.2
125	9.0	5.3	7.9#

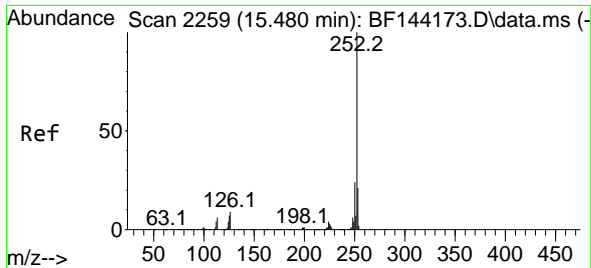


#89
 Benzo(k)fluoranthene
 Concen: 49.560 ng
 RT: 15.098 min Scan# 2194
 Delta R.T. -0.029 min
 Lab File: BF144340.D
 Acq: 24 Nov 2025 23:13

Tgt Ion:252 Resp: 396457

Ion	Ratio	Lower	Upper
252	100		
253	23.4	18.0	27.0
125	9.0	5.4	8.2#



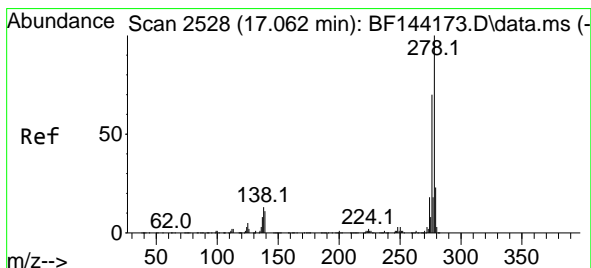
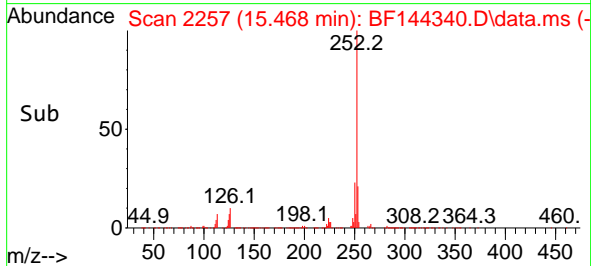
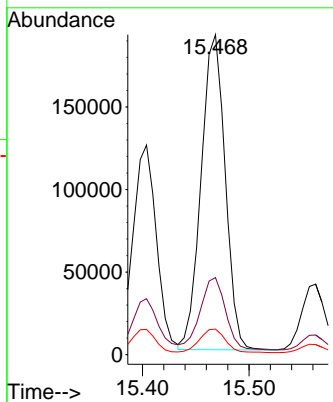
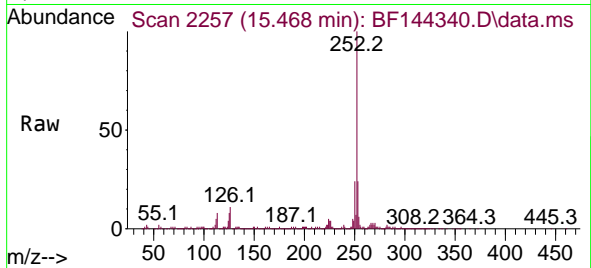


#90
 Benzo(a)pyrene
 Concen: 37.995 ng
 RT: 15.468 min Scan# 21
 Delta R.T. -0.006 min
 Lab File: BF144340.D
 Acq: 24 Nov 2025 23:13

Instrument : BNA_F
 ClientSampleId : RBR200028-RT5376-COMP

Tgt Ion:252 Resp: 299570

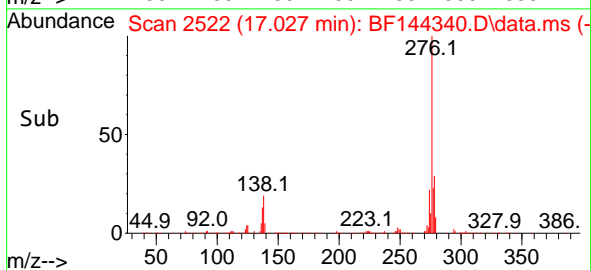
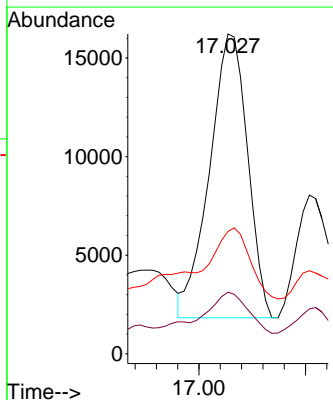
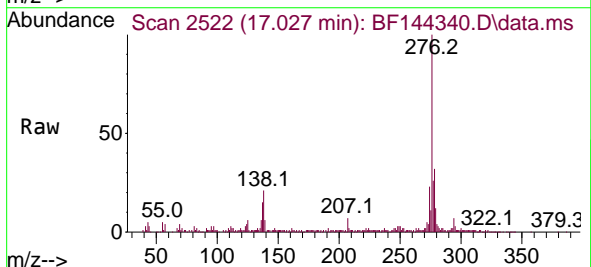
Ion	Ratio	Lower	Upper
252	100		
253	24.1	16.7	25.1
125	8.0	5.7	8.5

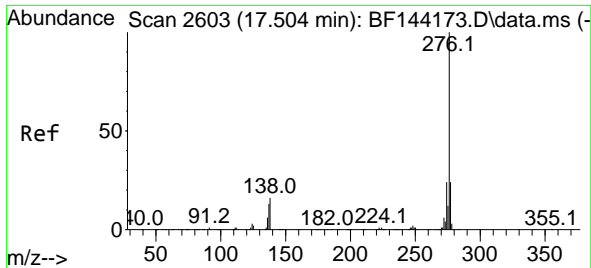


#91
 Dibenzo(a,h)anthracene
 Concen: 4.111 ng
 RT: 17.027 min Scan# 2522
 Delta R.T. -0.024 min
 Lab File: BF144340.D
 Acq: 24 Nov 2025 23:13

Tgt Ion:278 Resp: 35628

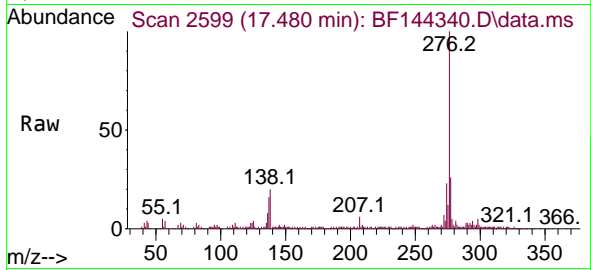
Ion	Ratio	Lower	Upper
278	100		
139	19.3	9.1	13.7#
279	38.3	18.2	27.4#





#92
 Benzo(g,h,i)perylene
 Concen: 14.086 ng
 RT: 17.480 min Scan# 21
 Delta R.T. -0.012 min
 Lab File: BF144340.D
 Acq: 24 Nov 2025 23:13

Instrument :
 BNA_F
 ClientSampleId :
 RBR200028-RT5376-COMP



Tgt Ion: 276 Resp: 120550
 Ion Ratio Lower Upper
 276 100
 277 25.7 19.0 28.4
 138 20.1 12.9 19.3#

