

Data Path : Z:\svoasrv\HPCHEM1\BNA\_F\Data\BF112525\  
 Data File : BF144356.D  
 Acq On : 25 Nov 2025 18:14  
 Operator : RC/JU  
 Sample : Q3710-05DL 4X  
 Misc :  
 ALS Vial : 10 Sample Multiplier: 1

Instrument :  
 BNA\_F  
 ClientSampleId :  
 WELD-SHOP-EXCAVATIONDL

Quant Time: Nov 26 00:34:25 2025  
 Quant Method : Z:\svoasrv\HPCHEM1\BNA\_F\Methods\8270-BF110525.M  
 Quant Title : ASP BNA STANDARDS FOR 5 POINT CALIBRATION  
 QLast Update : Wed Nov 05 18:37:33 2025  
 Response via : Initial Calibration

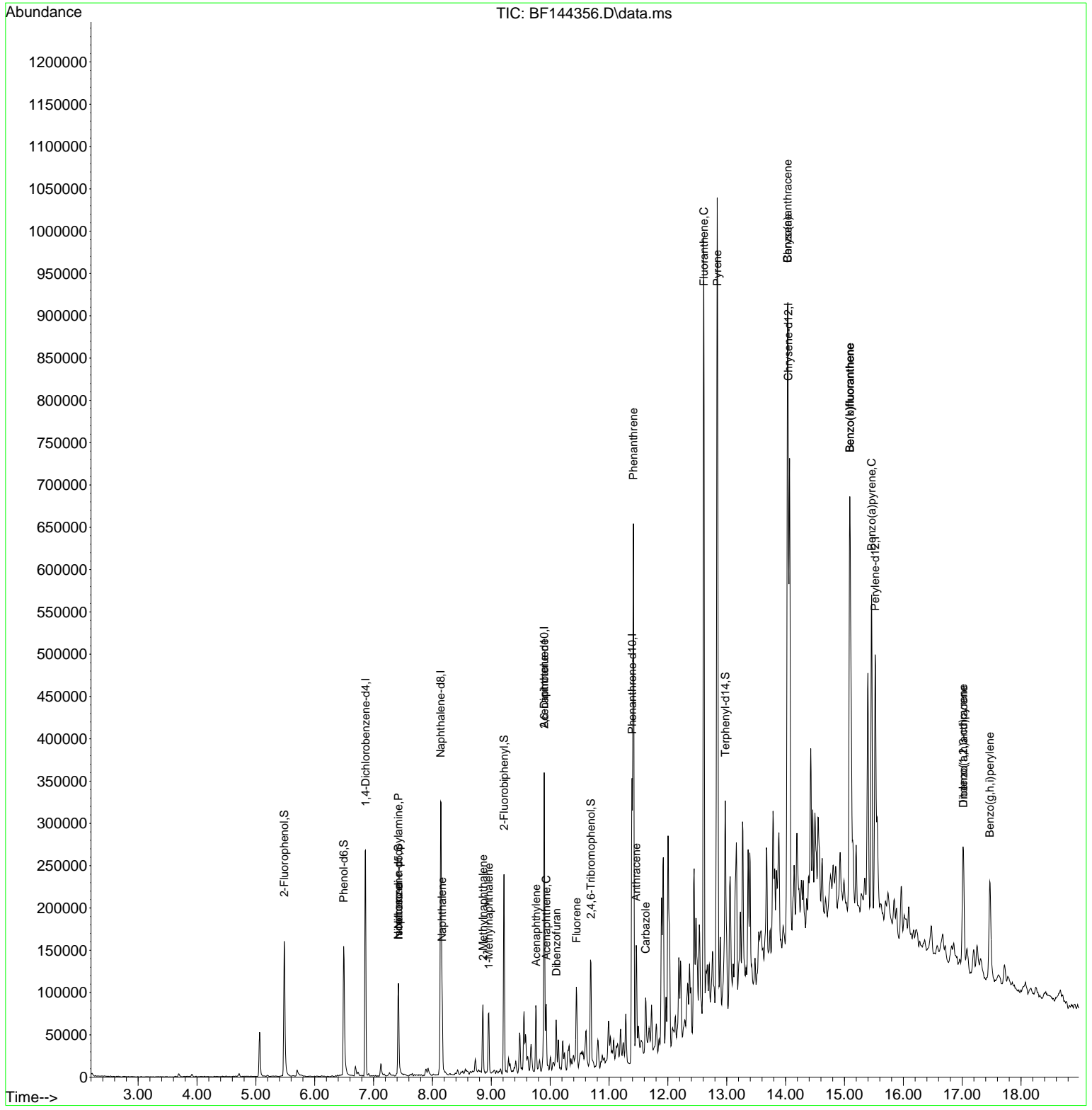
Compound	R.T.	QIon	Response	Conc	Units	Dev(Min)
Internal Standards						
1) 1,4-Dichlorobenzene-d4	6.863	152	60512	20.000	ng	-0.01
21) Naphthalene-d8	8.140	136	219095	20.000	ng	-0.02
39) Acenaphthene-d10	9.898	164	106803	20.000	ng	-0.02
64) Phenanthrene-d10	11.392	188	178806	20.000	ng	-0.01
76) Chrysene-d12	14.045	240	170203	20.000	ng	0.00
86) Perylene-d12	15.521	264	181252	20.000	ng	-0.02
System Monitoring Compounds						
5) 2-Fluorophenol	5.481	112	78505	20.302	ng	-0.01
7) Phenol-d6	6.493	99	86569	19.758	ng	0.00
23) Nitrobenzene-d5	7.422	82	48026	12.660	ng	-0.01
42) 2,4,6-Tribromophenol	10.692	330	21148	15.779	ng	-0.01
45) 2-Fluorobiphenyl	9.216	172	108860	15.054	ng	-0.01
79) Terphenyl-d14	12.975	244	112768	10.524	ng	-0.02
Target Compounds						
19) n-Nitroso-di-n-propyla...	7.422	70	7124	2.470	ng	# 77
25) Isophorone	7.422	82	48026	6.693	ng	# 66
31) Naphthalene	8.163	128	55101	5.287	ng	99
37) 2-Methylnaphthalene	8.857	142	31650	4.542	ng	99
38) 1-Methylnaphthalene	8.957	142	29855	4.440	ng	95
49) Acenaphthylene	9.763	152	40055	4.622	ng	98
51) 2,6-Dinitrotoluene	9.898	165	16171	11.290	ng	# 29
52) Acenaphthene	9.934	154	23070	3.981	ng	98
55) Dibenzofuran	10.104	168	16804	2.070	ng	# 90
58) Fluorene	10.445	166	38353	6.215	ng	# 96
71) Phenanthrene	11.416	178	349388	39.246	ng	99
72) Anthracene	11.463	178	81267	8.977	ng	98
73) Carbazole	11.622	167	33523	4.355	ng	99
75) Fluoranthene	12.610	202	531157	57.758	ng	99
78) Pyrene	12.839	202	602770	43.923	ng	99
81) Benzo(a)anthracene	14.033	228	365292	30.967	ng	95
83) Chrysene	14.033	228	365292	33.545	ng	96
87) Indeno(1,2,3-cd)pyrene	17.015	276	111967	8.606	ng	97
88) Benzo(b)fluoranthene	15.092	252	468878	45.502	ng	98
89) Benzo(k)fluoranthene	15.092	252	468878	48.613	ng	99
90) Benzo(a)pyrene	15.463	252	247743	26.061	ng	96
91) Dibenzo(a,h)anthracene	17.021	278	30621	2.930	ng	# 78
92) Benzo(g,h,i)perylene	17.468	276	112503	10.903	ng	97

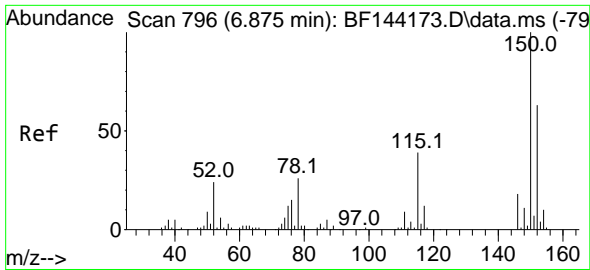
(#) = qualifier out of range (m) = manual integration (+) = signals summed

Data Path : Z:\svoasrv\HPCHEM1\BNA\_F\Data\BF112525\  
 Data File : BF144356.D  
 Acq On : 25 Nov 2025 18:14  
 Operator : RC/JU  
 Sample : Q3710-05DL 4X  
 Misc :  
 ALS Vial : 10 Sample Multiplier: 1

**Instrument :**  
 BNA\_F  
**ClientSampleId :**  
 WELD-SHOP-EXCAVATIONDL

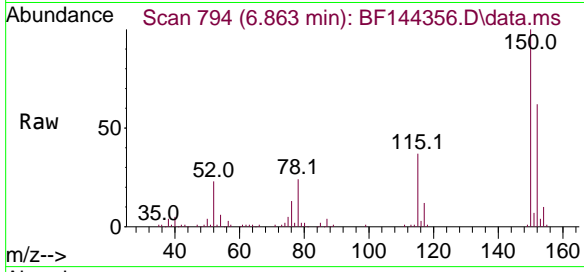
Quant Time: Nov 26 00:34:25 2025  
 Quant Method : Z:\svoasrv\HPCHEM1\BNA\_F\Methods\8270-BF110525.M  
 Quant Title : ASP BNA STANDARDS FOR 5 POINT CALIBRATION  
 QLast Update : Wed Nov 05 18:37:33 2025  
 Response via : Initial Calibration



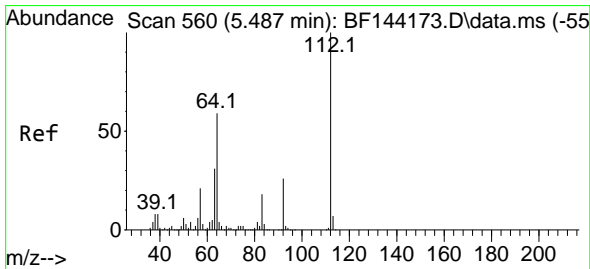
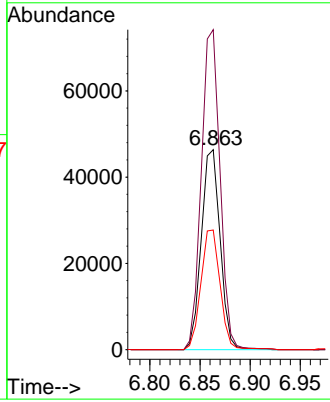
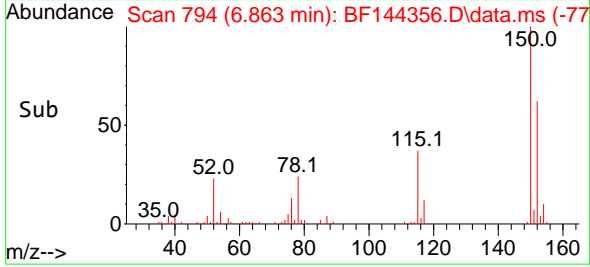


#1  
 1,4-Dichlorobenzene-d4  
 Concen: 20.000 ng  
 RT: 6.863 min Scan# 794  
 Delta R.T. -0.012 min  
 Lab File: BF144356.D  
 Acq: 25 Nov 2025 18:14

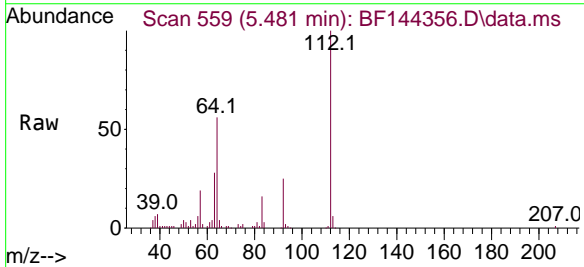
Instrument : BNA\_F  
 ClientSampleId : WELD-SHOP-EXCAVATIONDL



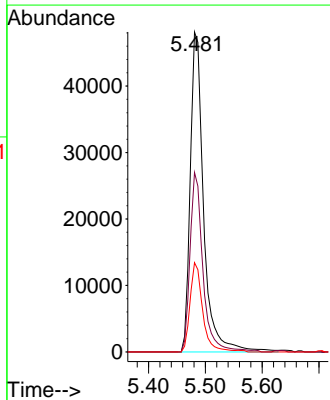
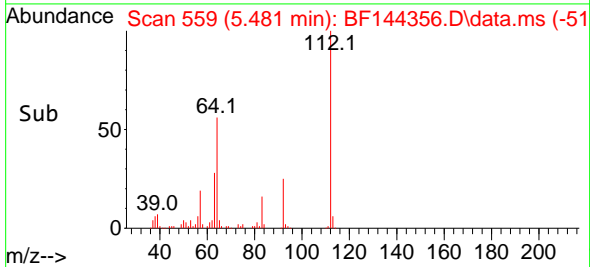
Tgt Ion:152 Resp: 60512  
 Ion Ratio Lower Upper  
 152 100  
 150 160.0 127.4 191.0  
 115 59.8 49.5 74.3

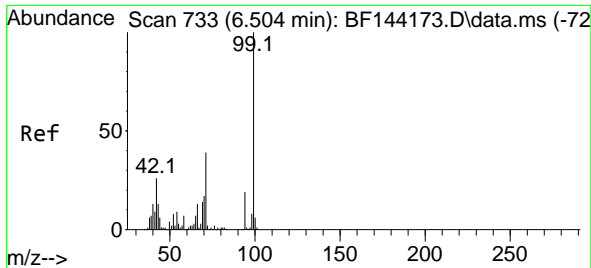


#5  
 2-Fluorophenol  
 Concen: 20.302 ng  
 RT: 5.481 min Scan# 559  
 Delta R.T. -0.012 min  
 Lab File: BF144356.D  
 Acq: 25 Nov 2025 18:14



Tgt Ion:112 Resp: 78505  
 Ion Ratio Lower Upper  
 112 100  
 64 56.1 47.2 70.8  
 63 27.9 24.4 36.6

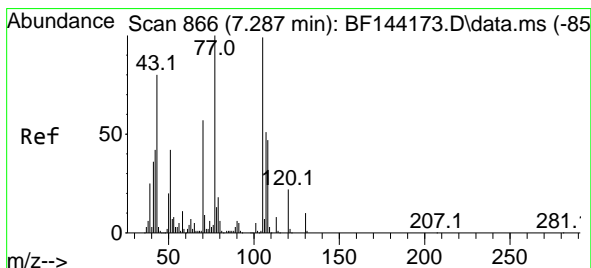
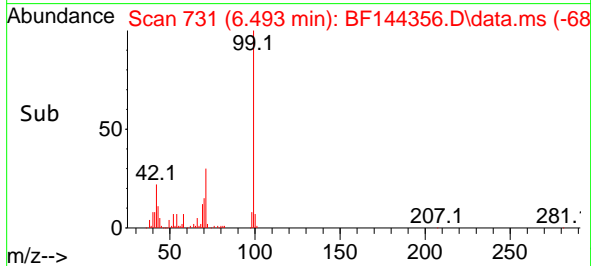
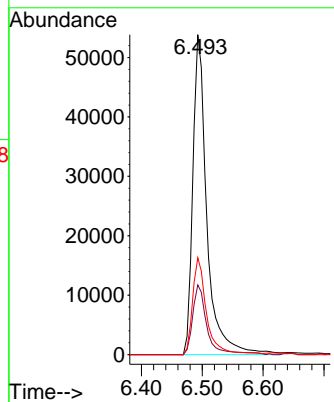
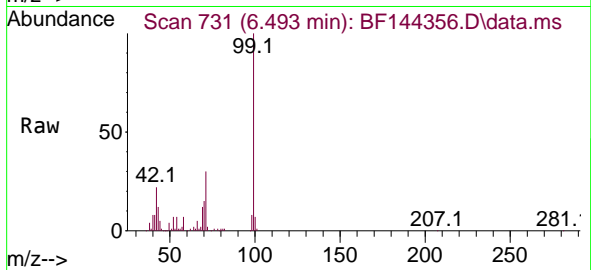




#7  
 Phenol-d6  
 Concen: 19.758 ng  
 RT: 6.493 min Scan# 731  
 Delta R.T. -0.006 min  
 Lab File: BF144356.D  
 Acq: 25 Nov 2025 18:14

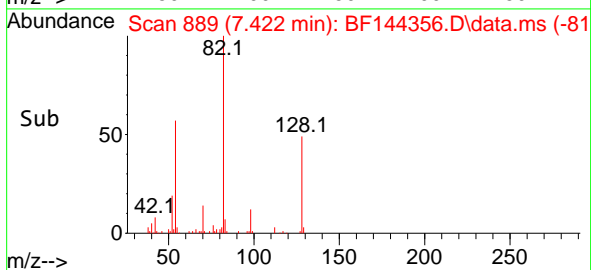
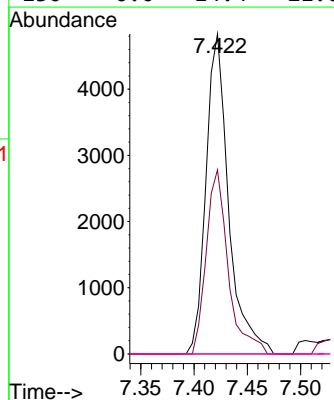
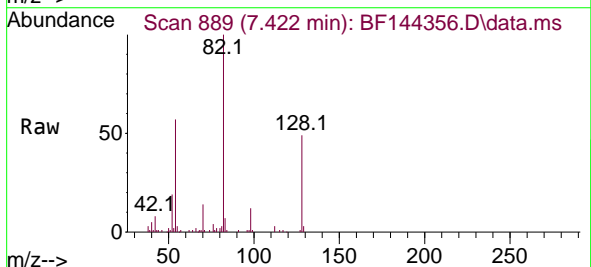
Instrument : BNA\_F  
 ClientSampleId : WELD-SHOP-EXCAVATIONDL

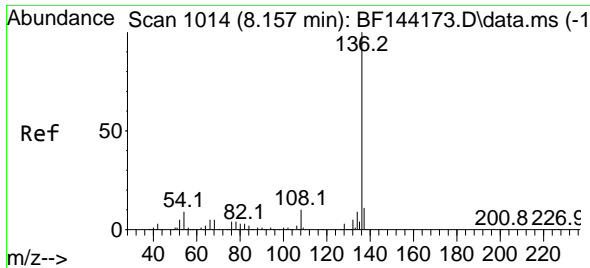
Tgt Ion	Resp	Lower	Upper
99	86569		
42	21.8	20.9	31.3
71	30.3	31.4	47.2#



#19  
 n-Nitroso-di-n-propylamine  
 Concen: 2.470 ng  
 RT: 7.422 min Scan# 889  
 Delta R.T. 0.147 min  
 Lab File: BF144356.D  
 Acq: 25 Nov 2025 18:14

Tgt Ion	Resp	Lower	Upper
70	7124		
42	57.5	58.3	87.5#
101	0.0	7.0	10.6#
130	0.0	14.4	21.6#

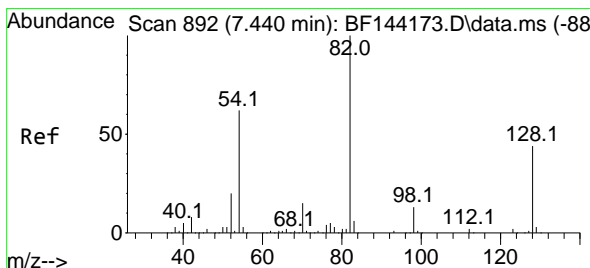
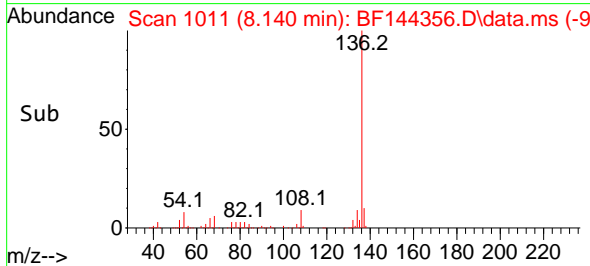
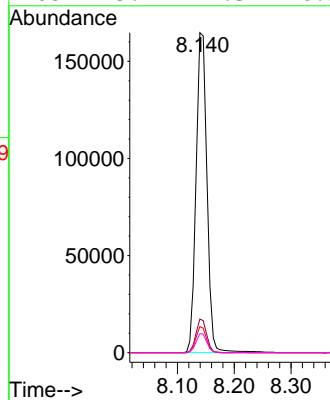
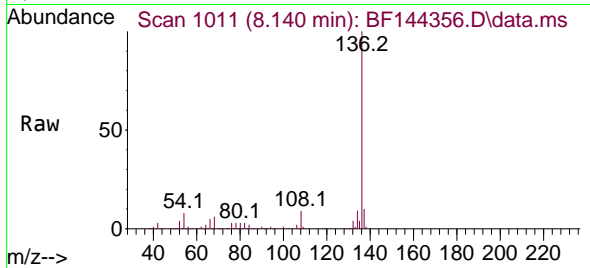




#21  
 Naphthalene-d8  
 Concen: 20.000 ng  
 RT: 8.140 min Scan# 1014  
 Delta R.T. -0.018 min  
 Lab File: BF144356.D  
 Acq: 25 Nov 2025 18:14

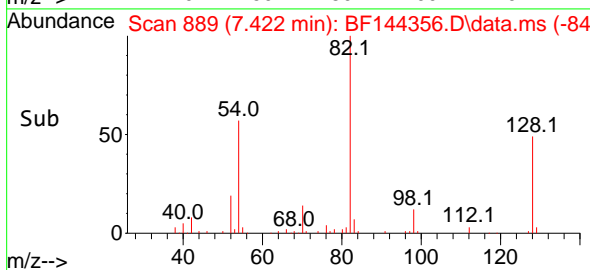
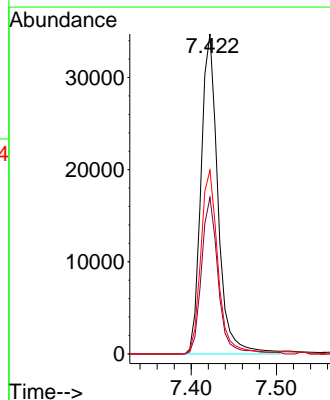
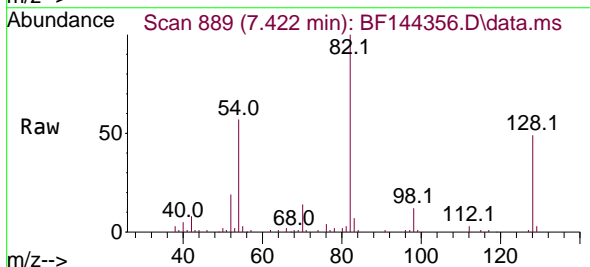
Instrument : BNA\_F  
 ClientSampleId : WELD-SHOP-EXCAVATIONDL

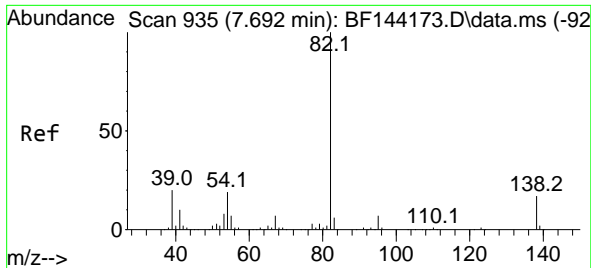
Tgt Ion	Resp	Lower	Upper
136	100		
137	10.5	8.6	13.0
54	8.1	7.0	10.6
68	5.9	4.3	6.5



#23  
 Nitrobenzene-d5  
 Concen: 12.660 ng  
 RT: 7.422 min Scan# 889  
 Delta R.T. -0.012 min  
 Lab File: BF144356.D  
 Acq: 25 Nov 2025 18:14

Tgt Ion	Resp	Lower	Upper
82	100		
128	48.9	34.7	52.1
54	57.4	49.5	74.3



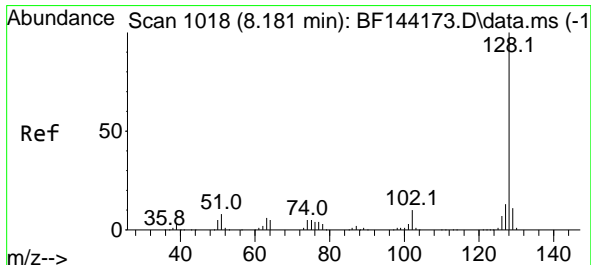
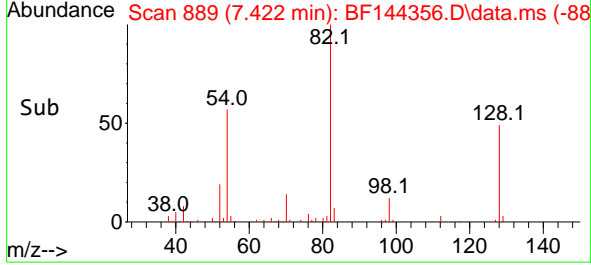
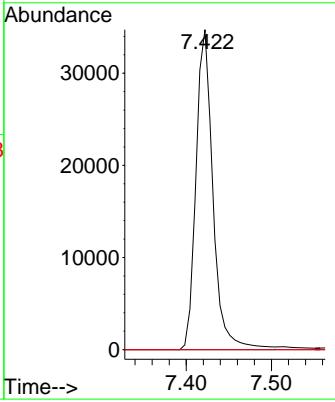
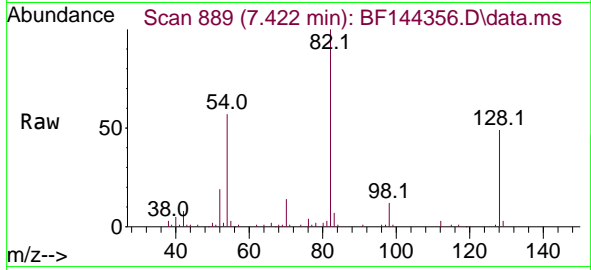


#25  
 Isophorone  
 Concen: 6.693 ng  
 RT: 7.422 min Scan# 88  
 Delta R.T. -0.265 min  
 Lab File: BF144356.D  
 Acq: 25 Nov 2025 18:14

Instrument : BNA\_F  
 ClientSampleId : WELD-SHOP-EXCAVATIONDL

Tgt Ion: 82 Resp: 48026

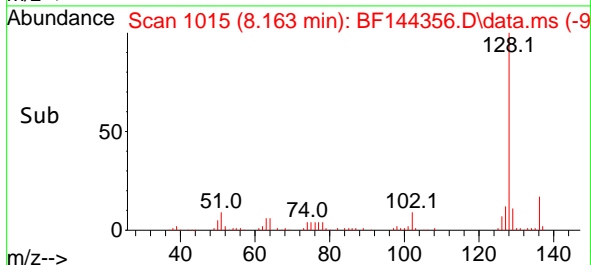
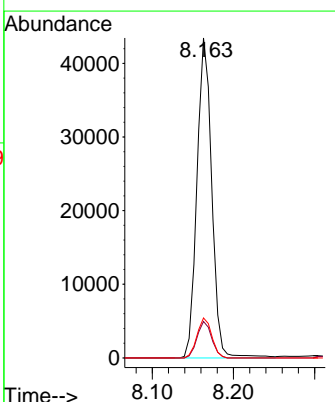
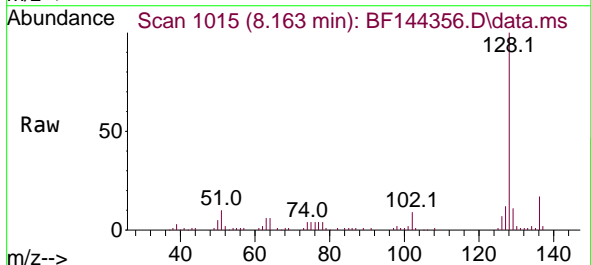
Ion	Ratio	Lower	Upper
82	100		
95	0.0	5.5	8.3#
138	0.0	13.7	20.5#

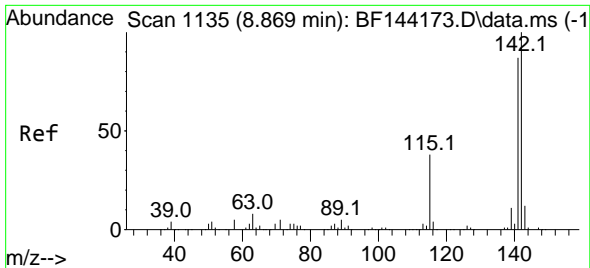


#31  
 Naphthalene  
 Concen: 5.287 ng  
 RT: 8.163 min Scan# 1015  
 Delta R.T. -0.012 min  
 Lab File: BF144356.D  
 Acq: 25 Nov 2025 18:14

Tgt Ion: 128 Resp: 55101

Ion	Ratio	Lower	Upper
128	100		
129	11.4	8.9	13.3
127	12.5	10.3	15.5

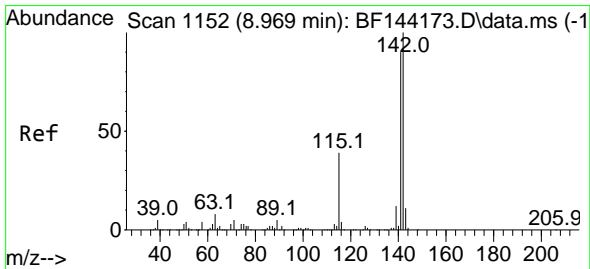
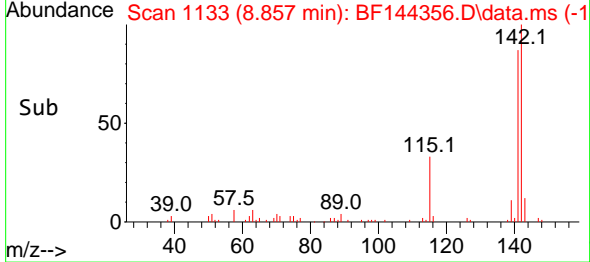
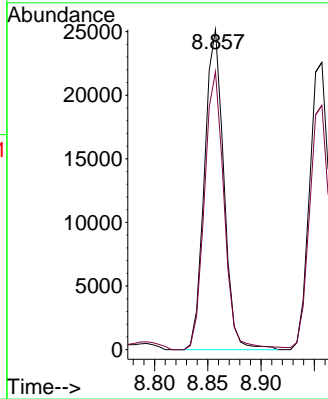
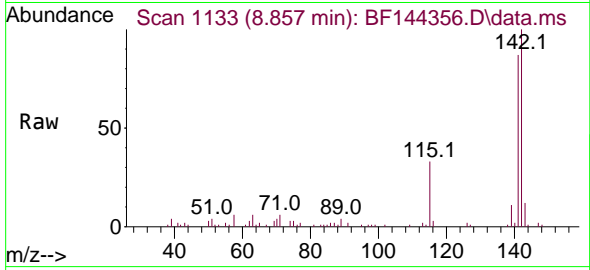




#37  
 2-Methylnaphthalene  
 Concen: 4.542 ng  
 RT: 8.857 min Scan# 1110  
 Delta R.T. -0.012 min  
 Lab File: BF144356.D  
 Acq: 25 Nov 2025 18:14

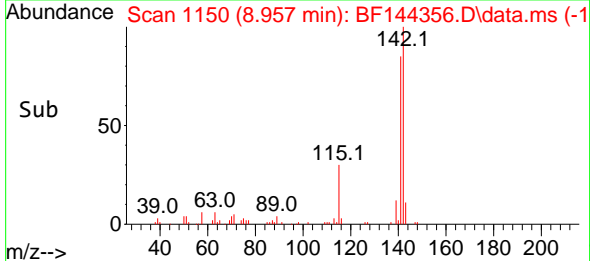
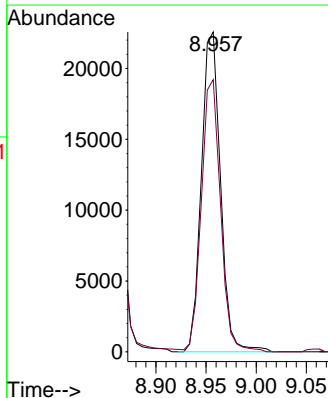
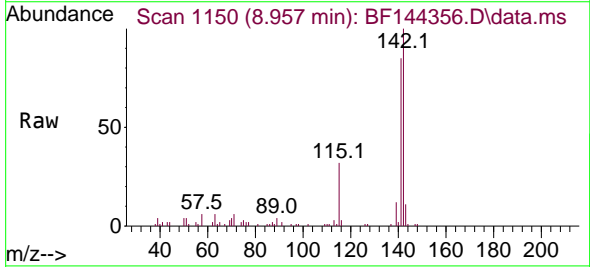
Instrument : BNA\_F  
 ClientSampleId : WELD-SHOP-EXCAVATIONDL

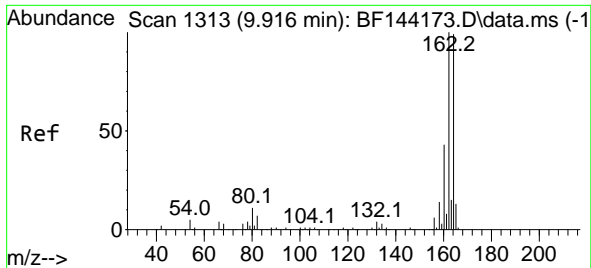
Tgt Ion:142 Resp: 31650  
 Ion Ratio Lower Upper  
 142 100  
 141 86.9 69.9 104.9



#38  
 1-Methylnaphthalene  
 Concen: 4.440 ng  
 RT: 8.957 min Scan# 1150  
 Delta R.T. -0.012 min  
 Lab File: BF144356.D  
 Acq: 25 Nov 2025 18:14

Tgt Ion:142 Resp: 29855  
 Ion Ratio Lower Upper  
 142 100  
 141 85.1 72.1 108.1

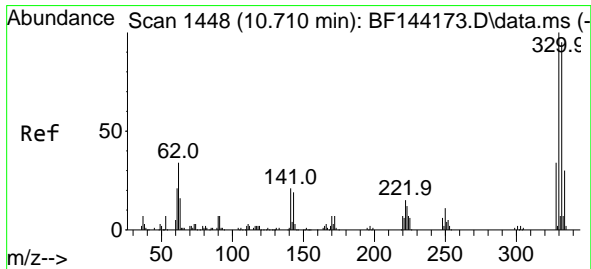
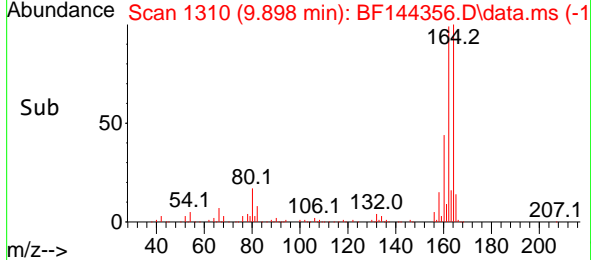
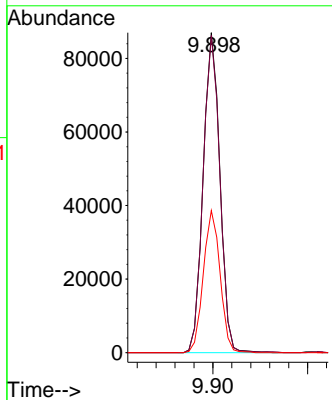
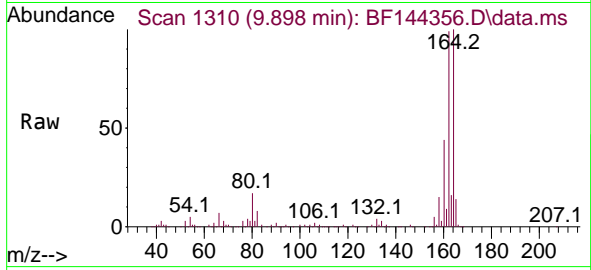




#39  
 Acenaphthene-d10  
 Concen: 20.000 ng  
 RT: 9.898 min Scan# 1310  
 Delta R.T. -0.018 min  
 Lab File: BF144356.D  
 Acq: 25 Nov 2025 18:14

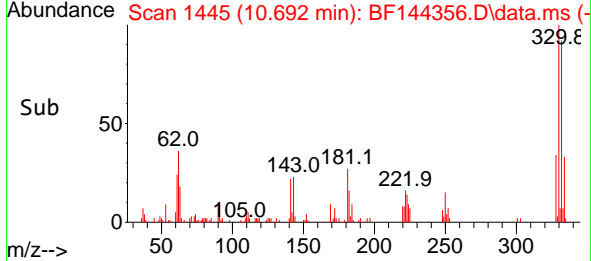
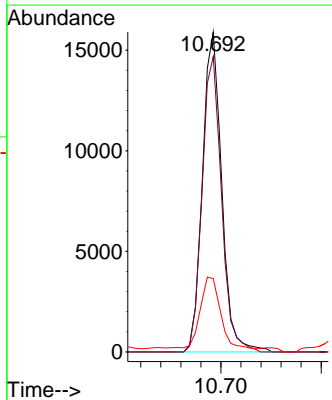
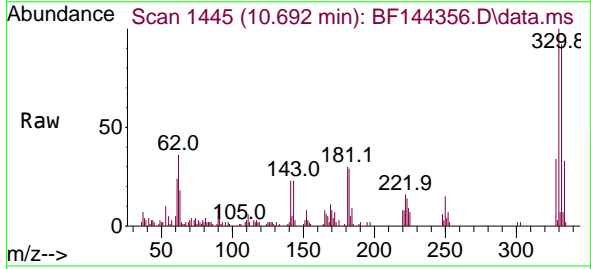
Instrument : BNA\_F  
 ClientSampleId : WELD-SHOP-EXCAVATIONDL

Tgt Ion	Resp	Lower	Upper
164	100		
162	99.1	81.1	121.7
160	44.4	34.5	51.7

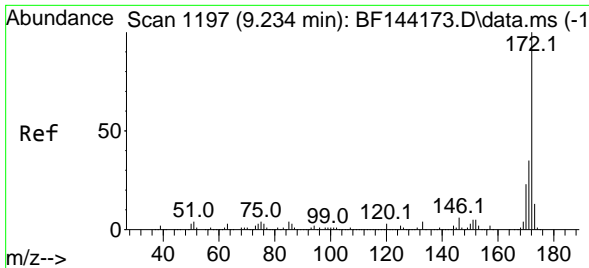


#42  
 2,4,6-Tribromophenol  
 Concen: 15.779 ng  
 RT: 10.692 min Scan# 1445  
 Delta R.T. -0.012 min  
 Lab File: BF144356.D  
 Acq: 25 Nov 2025 18:14

Tgt Ion	Resp	Lower	Upper
330	100		
332	92.6	76.7	115.1
141	23.0	17.8	26.8





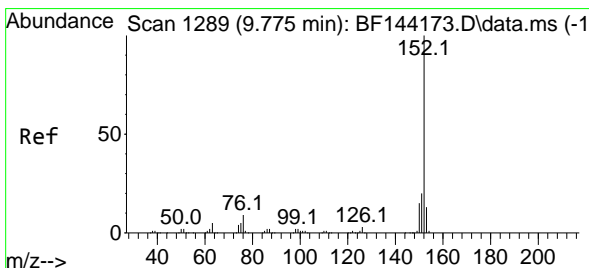
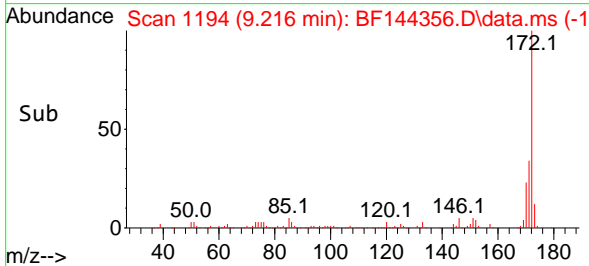
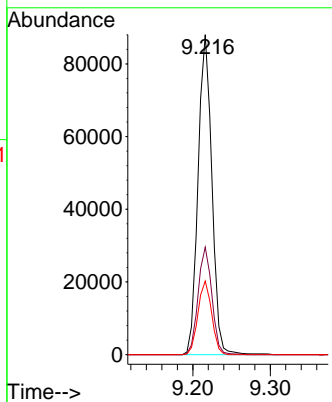
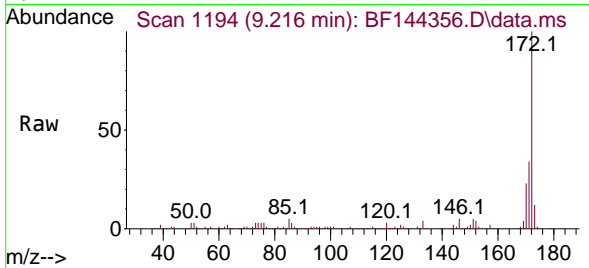


#45  
 2-Fluorobiphenyl  
 Concen: 15.054 ng  
 RT: 9.216 min Scan# 1194  
 Delta R.T. -0.012 min  
 Lab File: BF144356.D  
 Acq: 25 Nov 2025 18:14

Instrument : BNA\_F  
 ClientSampleId : WELD-SHOP-EXCAVATIONDL

Tgt Ion:172 Resp: 108860

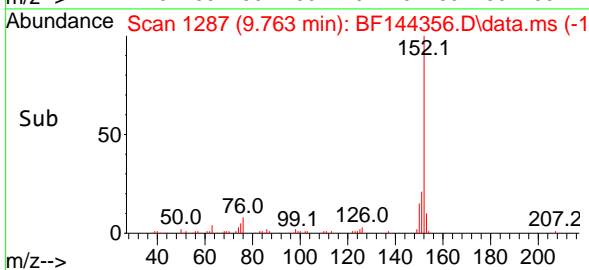
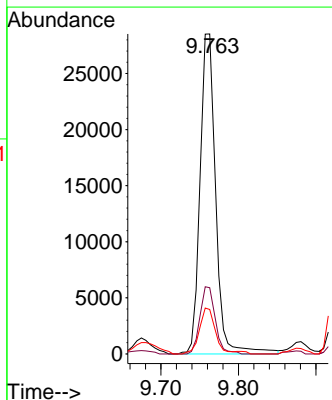
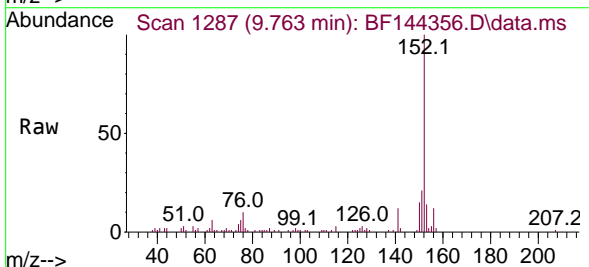
Ion	Ratio	Lower	Upper
172	100		
171	33.6	28.1	42.1
170	23.0	18.6	28.0

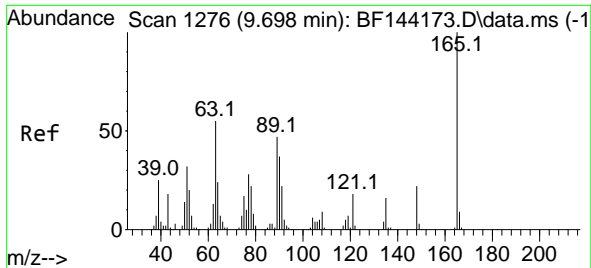


#49  
 Acenaphthylene  
 Concen: 4.622 ng  
 RT: 9.763 min Scan# 1287  
 Delta R.T. -0.012 min  
 Lab File: BF144356.D  
 Acq: 25 Nov 2025 18:14

Tgt Ion:152 Resp: 40055

Ion	Ratio	Lower	Upper
152	100		
151	20.7	15.9	23.9
153	13.9	10.5	15.7

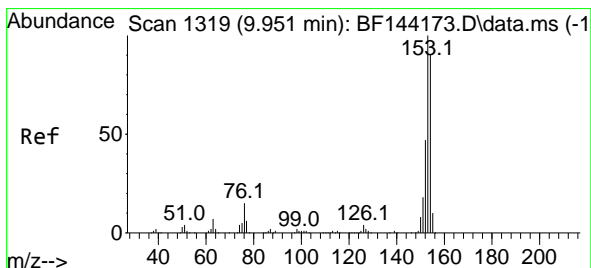
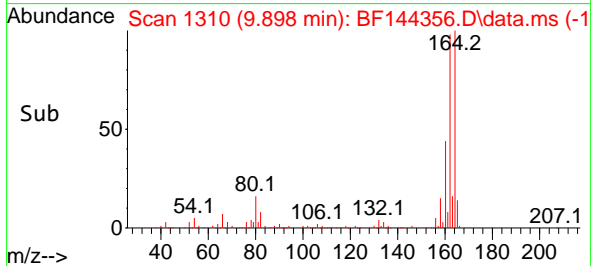
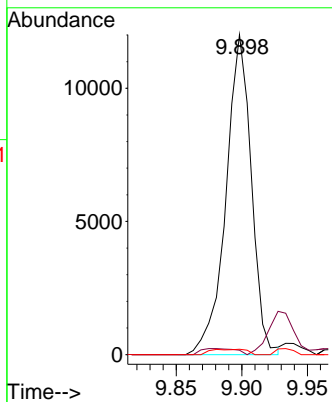
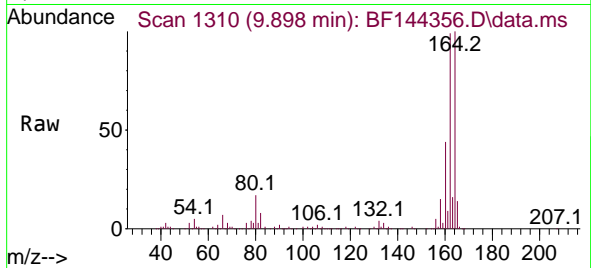




#51  
 2,6-Dinitrotoluene  
 Concen: 11.290 ng  
 RT: 9.898 min Scan# 1310  
 Delta R.T. 0.206 min  
 Lab File: BF144356.D  
 Acq: 25 Nov 2025 18:14

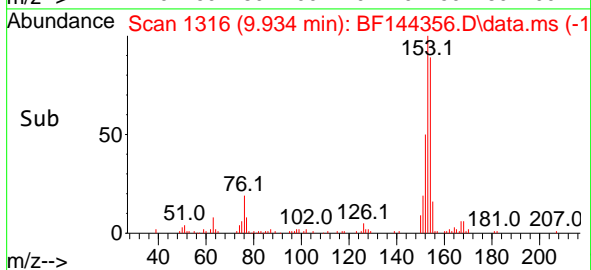
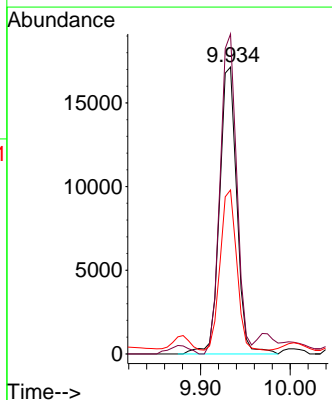
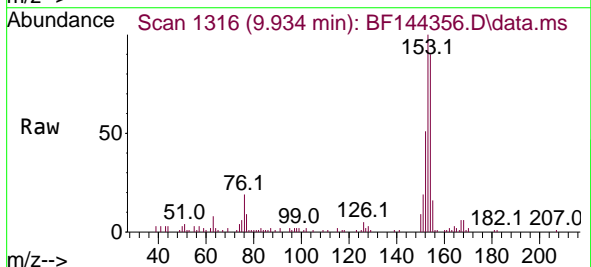
Instrument : BNA\_F  
 ClientSampleId : WELD-SHOP-EXCAVATIONDL

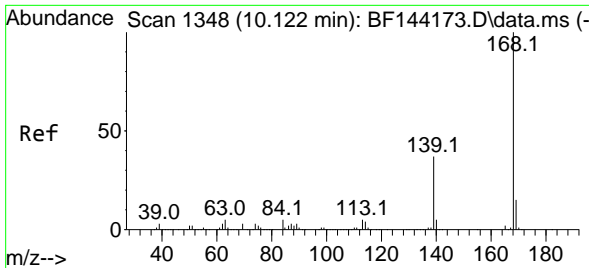
Tgt Ion	Resp	Lower	Upper
165	16171		
63	1.4	43.8	65.8#
89	1.7	37.5	56.3#



#52  
 Acenaphthene  
 Concen: 3.981 ng  
 RT: 9.934 min Scan# 1316  
 Delta R.T. -0.012 min  
 Lab File: BF144356.D  
 Acq: 25 Nov 2025 18:14

Tgt Ion	Resp	Lower	Upper
154	23070		
153	111.6	89.0	133.4
152	57.2	42.2	63.4

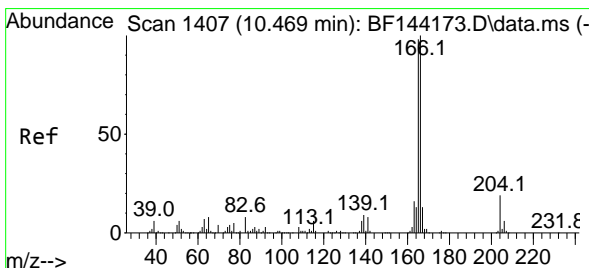
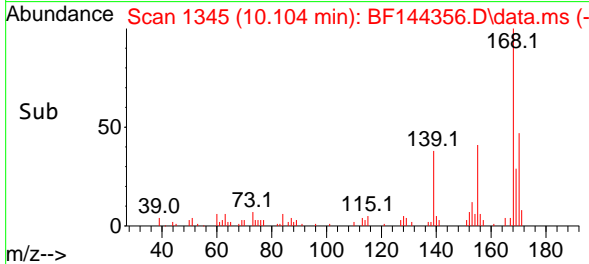
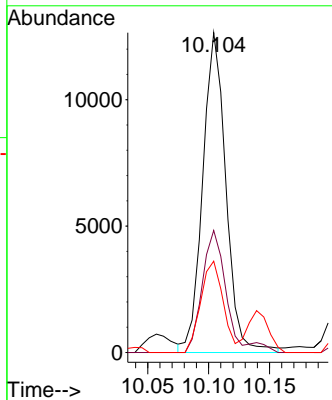
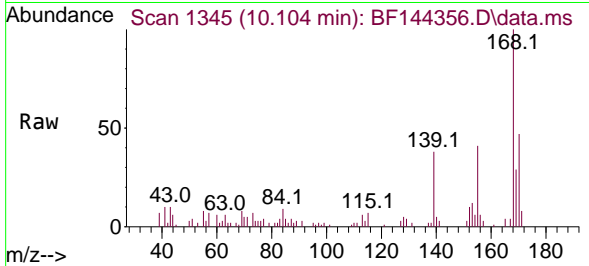




#55  
 Dibenzofuran  
 Concen: 2.070 ng  
 RT: 10.104 min Scan# 1345  
 Delta R.T. -0.012 min  
 Lab File: BF144356.D  
 Acq: 25 Nov 2025 18:14

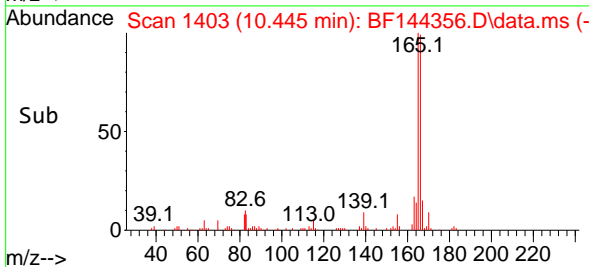
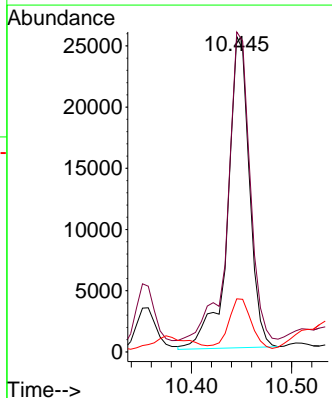
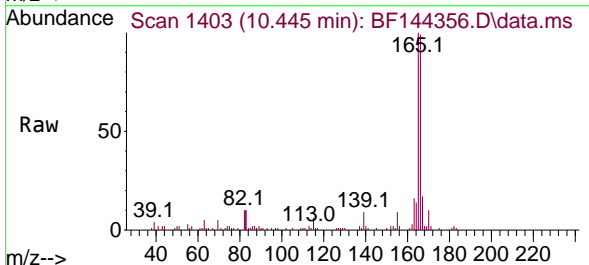
Instrument : BNA\_F  
 ClientSampleId : WELD-SHOP-EXCAVATIONDL

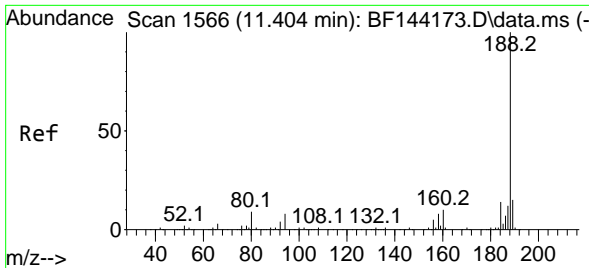
Tgt Ion	Resp	Lower	Upper
168	16804		
139	38.2	30.2	45.2
169	28.6	12.2	18.4



#58  
 Fluorene  
 Concen: 6.215 ng  
 RT: 10.445 min Scan# 1403  
 Delta R.T. -0.018 min  
 Lab File: BF144356.D  
 Acq: 25 Nov 2025 18:14

Tgt Ion	Resp	Lower	Upper
166	38353		
165	101.5	78.6	118.0
167	16.8	10.4	15.6



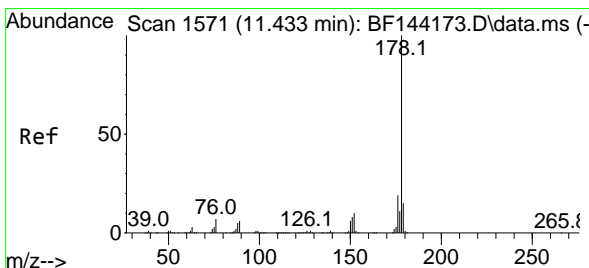
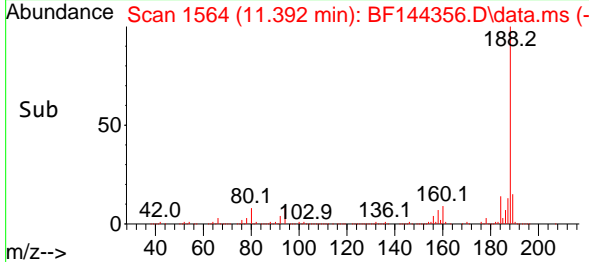
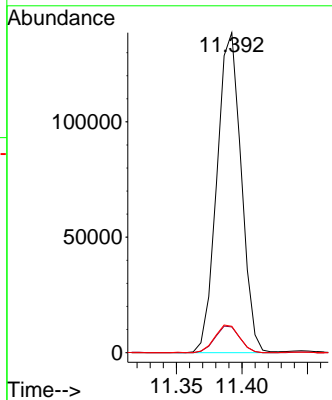
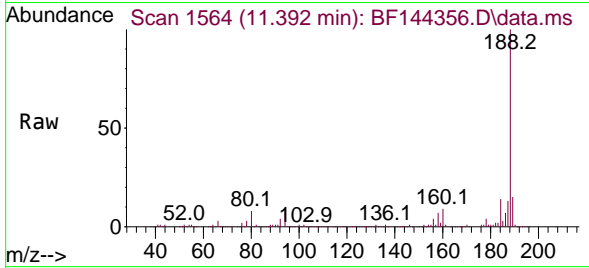


#64  
 Phenanthrene-d10  
 Concen: 20.000 ng  
 RT: 11.392 min Scan# 11  
 Delta R.T. -0.012 min  
 Lab File: BF144356.D  
 Acq: 25 Nov 2025 18:14

Instrument : BNA\_F  
 ClientSampleId : WELD-SHOP-EXCAVATIONDL

Tgt Ion:188 Resp: 178806

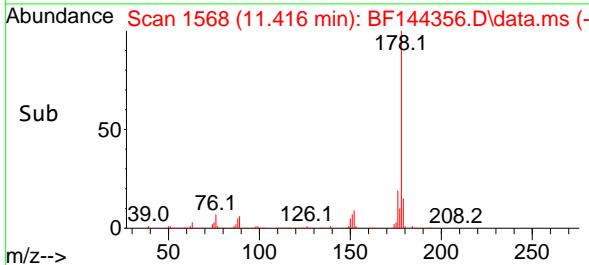
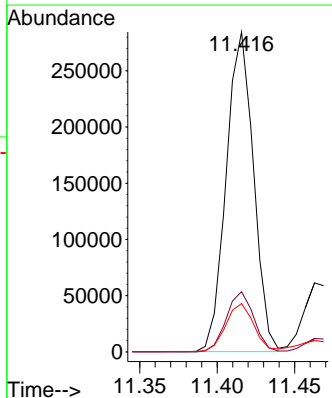
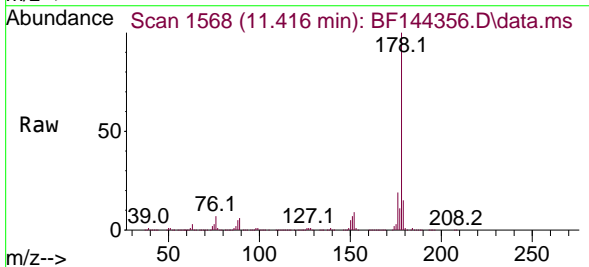
Ion	Ratio	Lower	Upper
188	100		
94	8.0	6.2	9.2
80	8.2	6.9	10.3

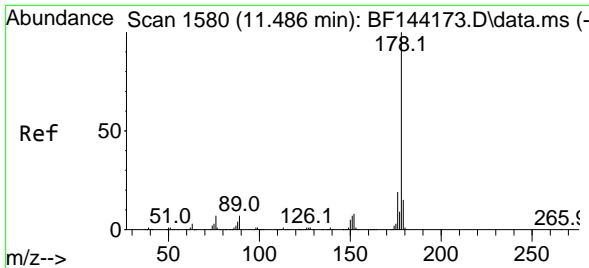


#71  
 Phenanthrene  
 Concen: 39.246 ng  
 RT: 11.416 min Scan# 1568  
 Delta R.T. -0.012 min  
 Lab File: BF144356.D  
 Acq: 25 Nov 2025 18:14

Tgt Ion:178 Resp: 349388

Ion	Ratio	Lower	Upper
178	100		
176	18.8	15.5	23.3
179	15.1	12.2	18.4



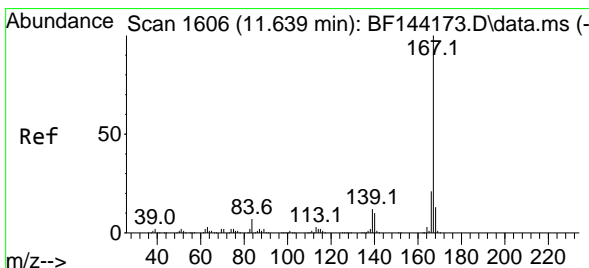
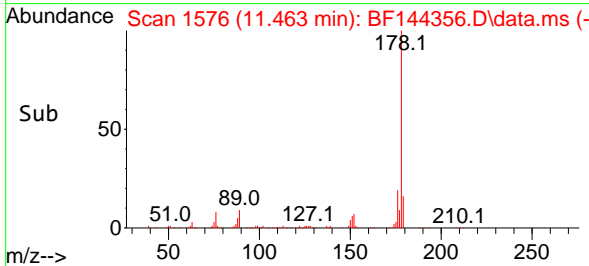
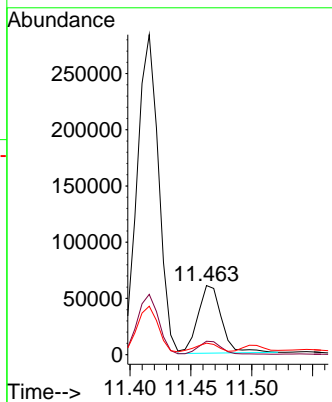
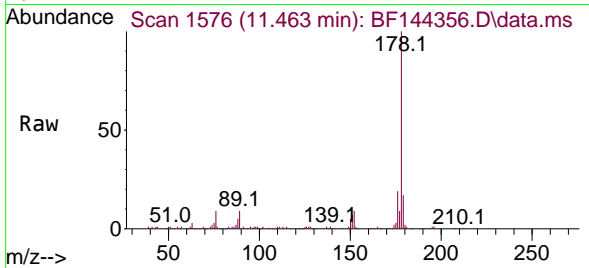


#72  
 Anthracene  
 Concen: 8.977 ng  
 RT: 11.463 min Scan# 11  
 Delta R.T. -0.018 min  
 Lab File: BF144356.D  
 Acq: 25 Nov 2025 18:14

Instrument : BNA\_F  
 ClientSampleId : WELD-SHOP-EXCAVATIONDL

Tgt Ion:178 Resp: 81267

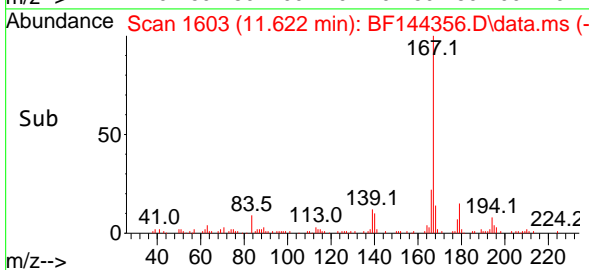
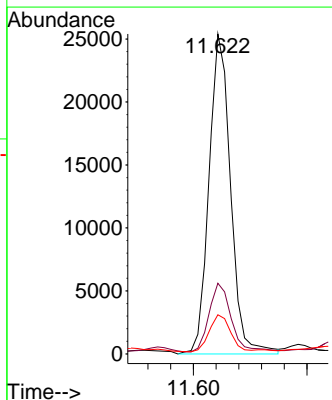
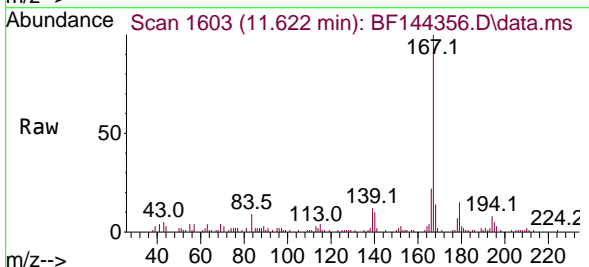
Ion	Ratio	Lower	Upper
178	100		
176	19.4	15.3	22.9
179	16.6	12.0	18.0

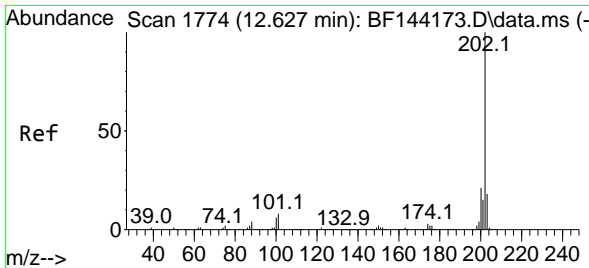


#73  
 Carbazole  
 Concen: 4.355 ng  
 RT: 11.622 min Scan# 1603  
 Delta R.T. -0.018 min  
 Lab File: BF144356.D  
 Acq: 25 Nov 2025 18:14

Tgt Ion:167 Resp: 33523

Ion	Ratio	Lower	Upper
167	100		
166	22.1	17.2	25.8
139	12.2	9.9	14.9

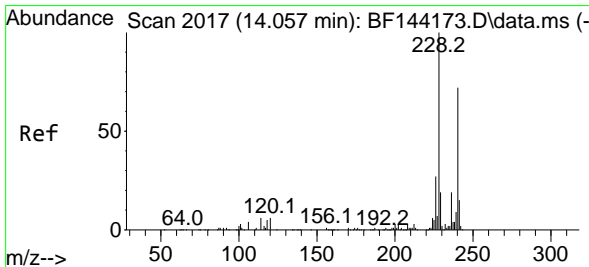
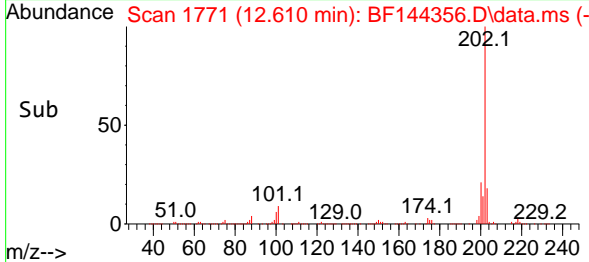
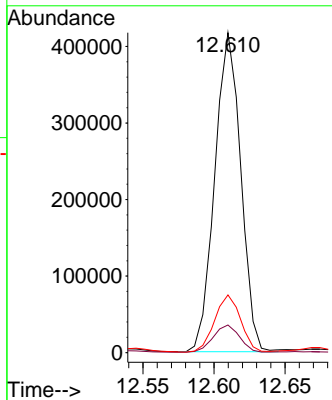
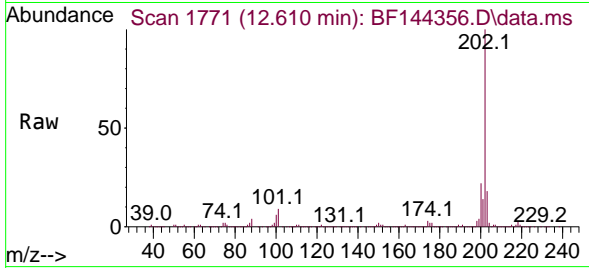




#75  
 Fluoranthene  
 Concen: 57.758 ng  
 RT: 12.610 min Scan# 1771  
 Delta R.T. -0.012 min  
 Lab File: BF144356.D  
 Acq: 25 Nov 2025 18:14

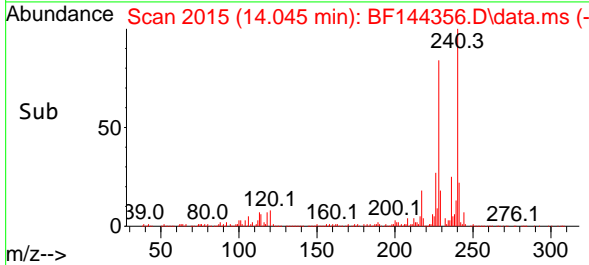
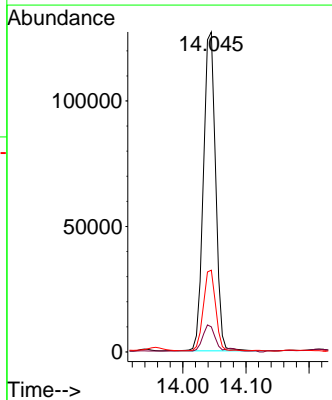
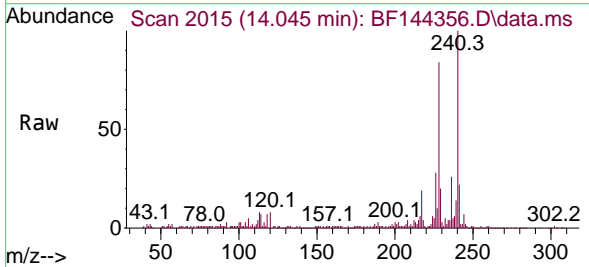
Instrument : BNA\_F  
 ClientSampleId : WELD-SHOP-EXCAVATIONDL

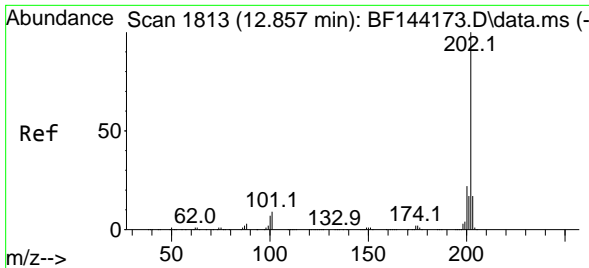
Tgt Ion	Resp	Lower	Upper
202	100		
101	8.6	0.0	27.9
203	18.0	0.0	37.5



#76  
 Chrysene-d12  
 Concen: 20.000 ng  
 RT: 14.045 min Scan# 2015  
 Delta R.T. -0.006 min  
 Lab File: BF144356.D  
 Acq: 25 Nov 2025 18:14

Tgt Ion	Resp	Lower	Upper
240	100		
120	7.8	6.6	10.0
236	25.5	21.4	32.2

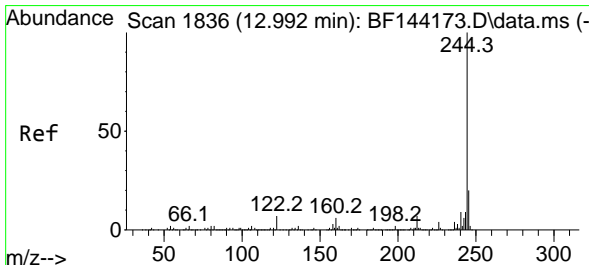
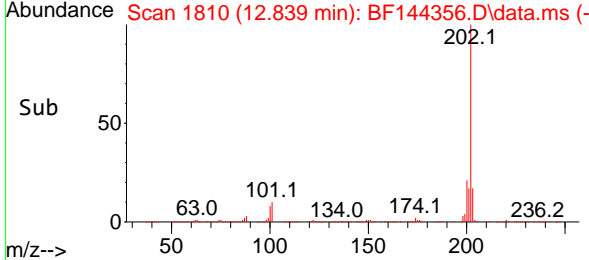
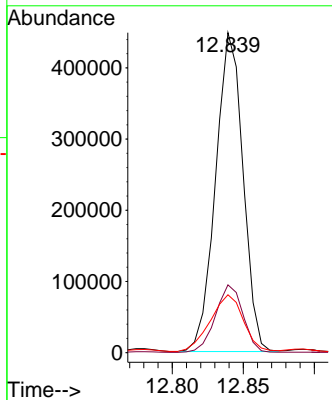
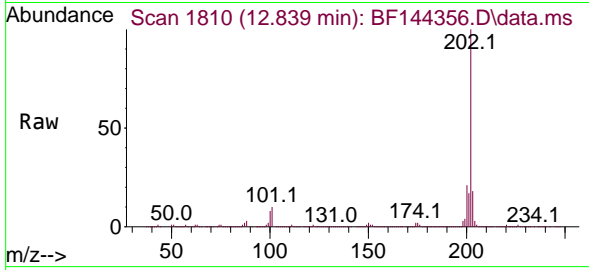




#78  
 Pyrene  
 Concen: 43.923 ng  
 RT: 12.839 min Scan# 1810  
 Delta R.T. -0.012 min  
 Lab File: BF144356.D  
 Acq: 25 Nov 2025 18:14

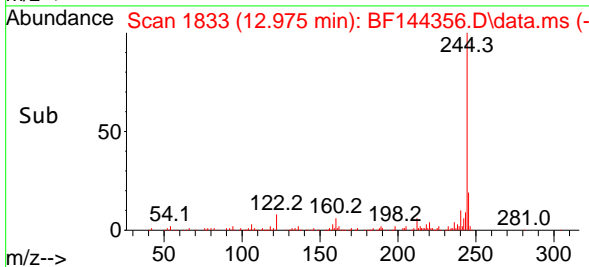
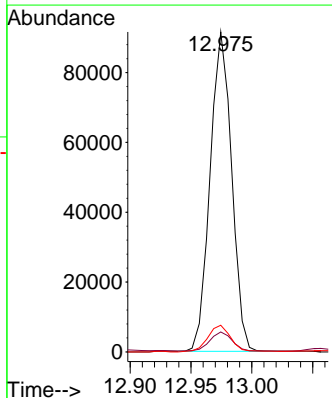
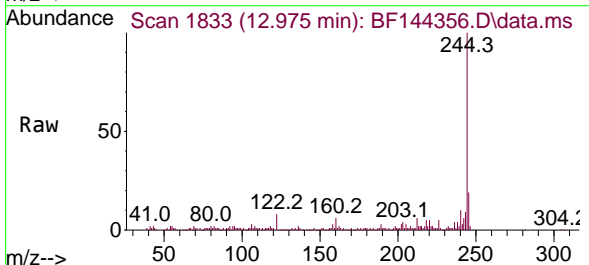
Instrument : BNA\_F  
 ClientSampleId : WELD-SHOP-EXCAVATIONDL

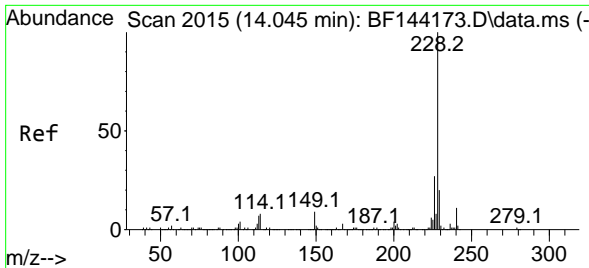
Tgt Ion	Resp	Lower	Upper
202	100		
200	21.2	17.2	25.8
203	18.1	13.7	20.5



#79  
 Terphenyl-d14  
 Concen: 10.524 ng  
 RT: 12.975 min Scan# 1833  
 Delta R.T. -0.018 min  
 Lab File: BF144356.D  
 Acq: 25 Nov 2025 18:14

Tgt Ion	Resp	Lower	Upper
244	100		
212	6.2	5.3	7.9
122	8.3	5.6	8.4

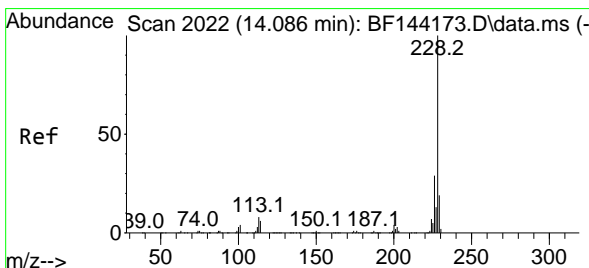
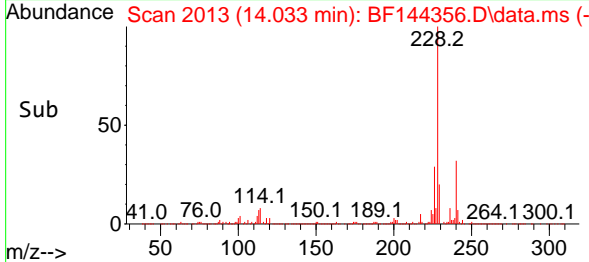
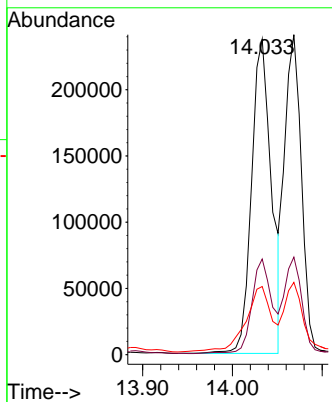
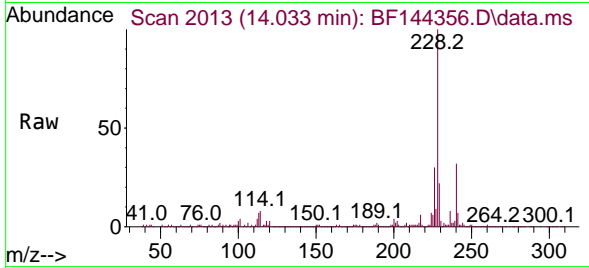




#81  
 Benzo(a)anthracene  
 Concen: 30.967 ng  
 RT: 14.033 min Scan# 2013  
 Delta R.T. -0.012 min  
 Lab File: BF144356.D  
 Acq: 25 Nov 2025 18:14

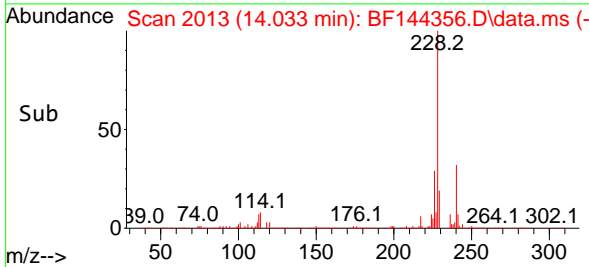
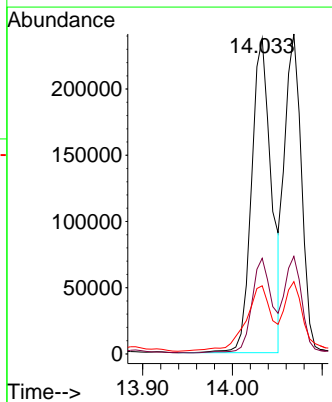
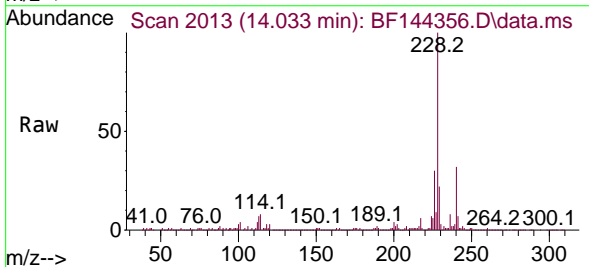
Instrument : BNA\_F  
 ClientSampleId : WELD-SHOP-EXCAVATIONDL

Tgt Ion	Resp	Lower	Upper
228	100		
226	30.3	21.8	32.8
229	21.6	15.8	23.6

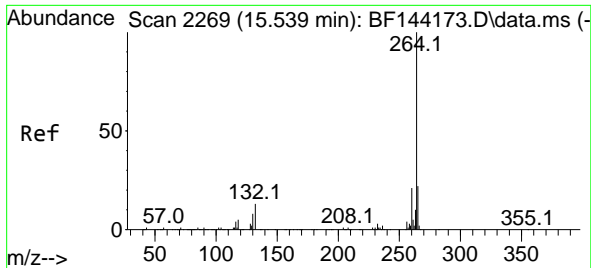


#83  
 Chrysene  
 Concen: 33.545 ng  
 RT: 14.033 min Scan# 2013  
 Delta R.T. -0.047 min  
 Lab File: BF144356.D  
 Acq: 25 Nov 2025 18:14

Tgt Ion	Resp	Lower	Upper
228	100		
226	30.3	22.9	34.3
229	21.6	15.0	22.6





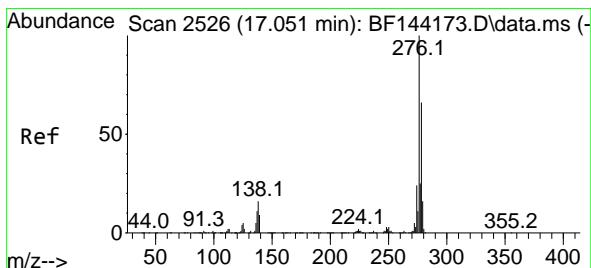
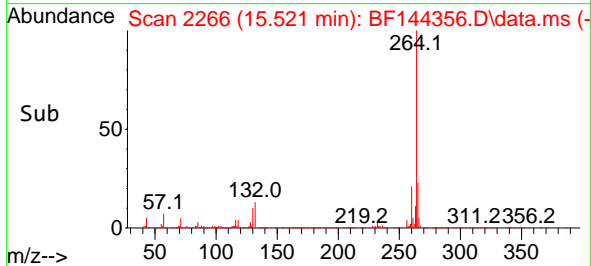
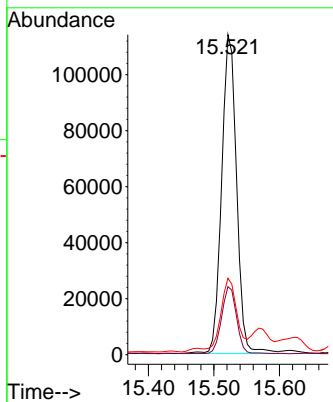
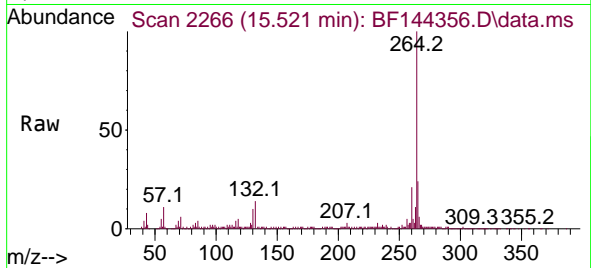


#86  
 Perylene-d12  
 Concen: 20.000 ng  
 RT: 15.521 min Scan# 21  
 Delta R.T. -0.018 min  
 Lab File: BF144356.D  
 Acq: 25 Nov 2025 18:14

Instrument :  
 BNA\_F  
 ClientSampleId :  
 WELD-SHOP-EXCAVATIONDL

Tgt Ion:264 Resp: 181252

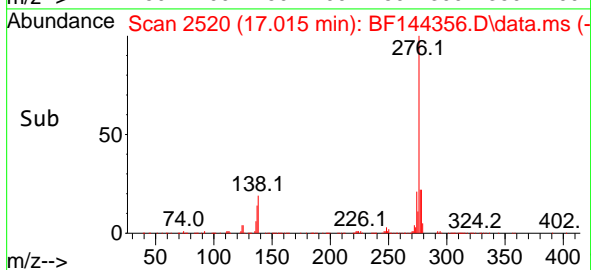
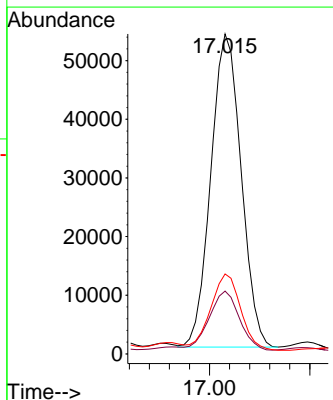
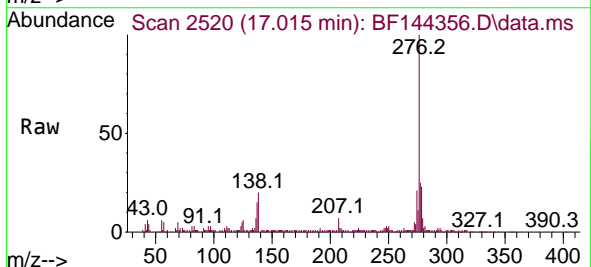
Ion	Ratio	Lower	Upper
264	100		
260	21.2	17.1	25.7
265	23.9	17.4	26.0

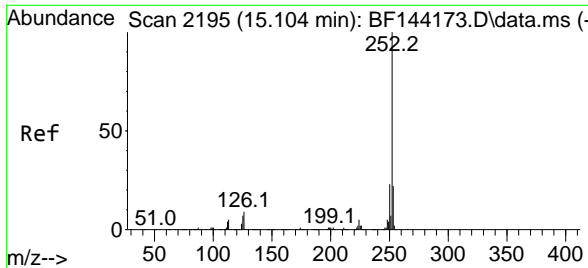


#87  
 Indeno(1,2,3-cd)pyrene  
 Concen: 8.606 ng  
 RT: 17.015 min Scan# 2520  
 Delta R.T. -0.018 min  
 Lab File: BF144356.D  
 Acq: 25 Nov 2025 18:14

Tgt Ion:276 Resp: 111967

Ion	Ratio	Lower	Upper
276	100		
138	19.7	13.9	20.9
277	24.4	19.8	29.6

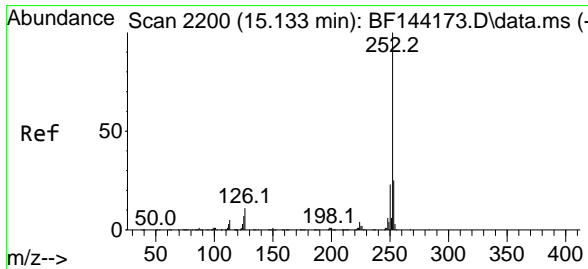
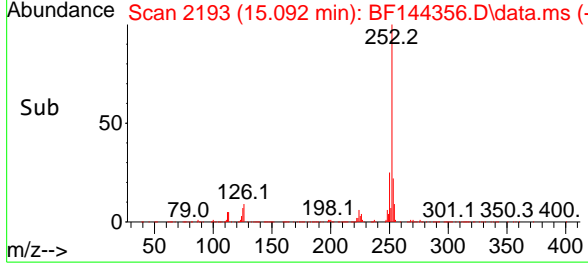
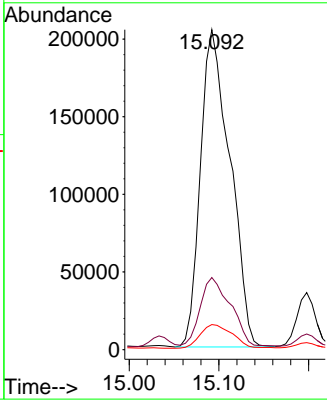
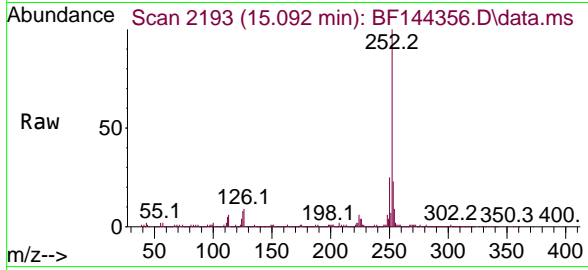




#88  
 Benzo(b)fluoranthene  
 Concen: 45.502 ng  
 RT: 15.092 min Scan# 2193  
 Delta R.T. -0.006 min  
 Lab File: BF144356.D  
 Acq: 25 Nov 2025 18:14

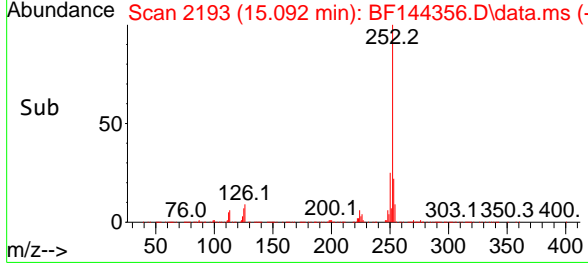
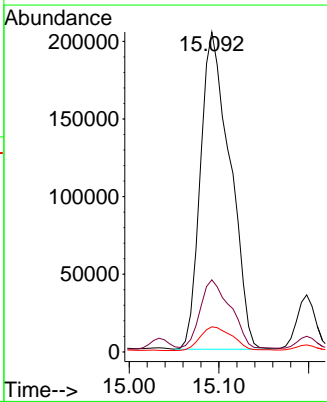
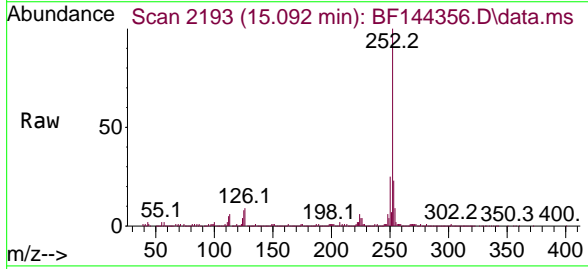
Instrument : BNA\_F  
 ClientSampleId : WELD-SHOP-EXCAVATIONDL

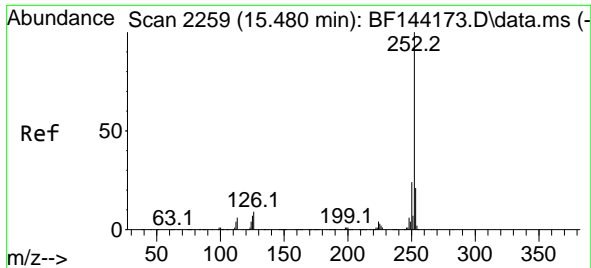
Tgt Ion	Resp	Lower	Upper
252	468878		
253	22.5	17.4	26.2
125	7.8	5.3	7.9



#89  
 Benzo(k)fluoranthene  
 Concen: 48.613 ng  
 RT: 15.092 min Scan# 2193  
 Delta R.T. -0.035 min  
 Lab File: BF144356.D  
 Acq: 25 Nov 2025 18:14

Tgt Ion	Resp	Lower	Upper
252	468878		
253	22.5	18.0	27.0
125	7.8	5.4	8.2

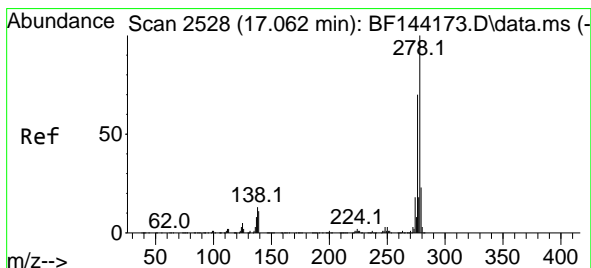
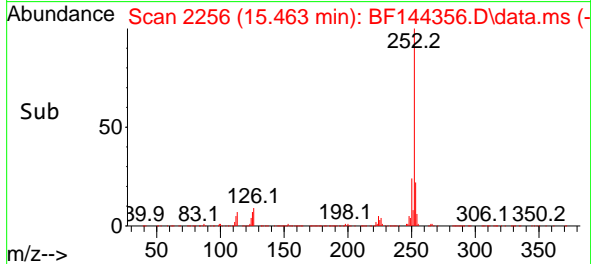
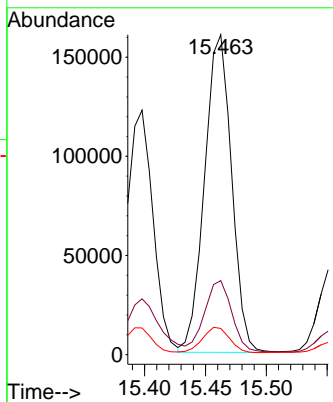
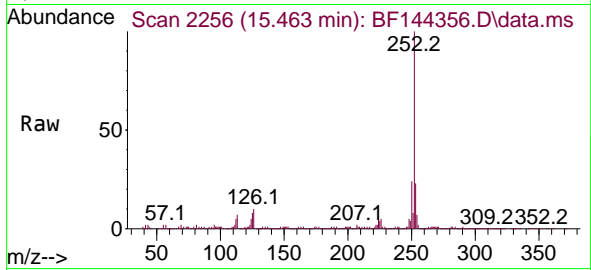




#90  
 Benzo(a)pyrene  
 Concen: 26.061 ng  
 RT: 15.463 min Scan# 21  
 Delta R.T. -0.012 min  
 Lab File: BF144356.D  
 Acq: 25 Nov 2025 18:14

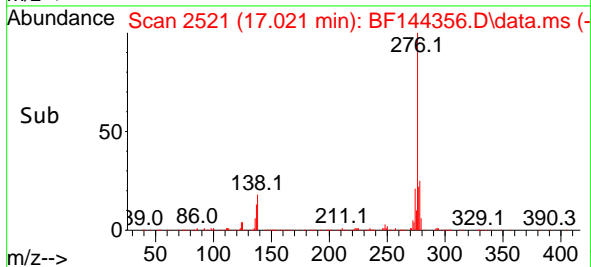
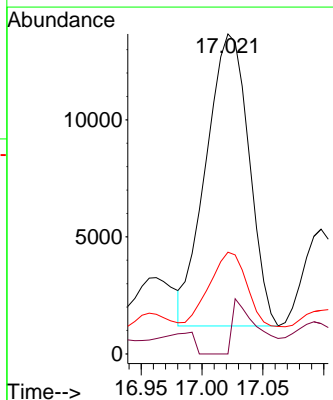
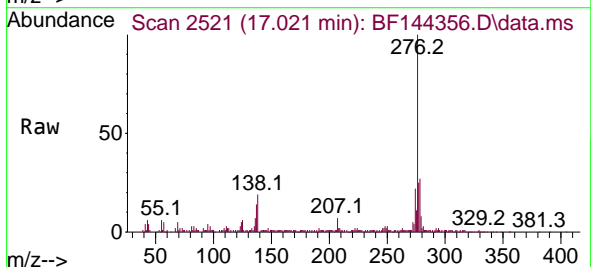
Instrument :  
 BNA\_F  
 ClientSampleId :  
 WELD-SHOP-EXCAVATIONDL

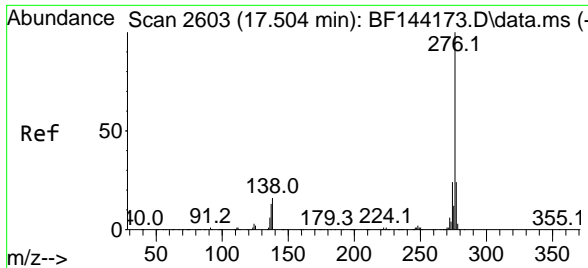
Tgt Ion:252 Resp: 247743  
 Ion Ratio Lower Upper  
 252 100  
 253 23.2 16.7 25.1  
 125 8.2 5.7 8.5



#91  
 Dibenzo(a,h)anthracene  
 Concen: 2.930 ng  
 RT: 17.021 min Scan# 2521  
 Delta R.T. -0.029 min  
 Lab File: BF144356.D  
 Acq: 25 Nov 2025 18:14

Tgt Ion:278 Resp: 30621  
 Ion Ratio Lower Upper  
 278 100  
 139 0.0 9.1 13.7#  
 279 31.8 18.2 27.4#





#92  
 Benzo(g,h,i)perylene  
 Concen: 10.903 ng  
 RT: 17.468 min Scan# 21  
 Delta R.T. -0.024 min  
 Lab File: BF144356.D  
 Acq: 25 Nov 2025 18:14

Instrument : BNA\_F  
 ClientSampleId : WELD-SHOP-EXCAVATIONDL

Tgt Ion:276 Resp: 112503

Ion	Ratio	Lower	Upper
276	100		
277	23.3	19.0	28.4
138	19.0	12.9	19.3

