

Data Path : Z:\svoasrv\HPCHEM1\BNA\_F\Data\BF120125\  
 Data File : BF144391.D  
 Acq On : 01 Dec 2025 17:13  
 Operator : RC/JU  
 Sample : Q3735-01  
 Misc :  
 ALS Vial : 11 Sample Multiplier: 1

Instrument :  
 BNA\_F  
 ClientSampleId :

Quant Time: Dec 02 00:08:15 2025  
 Quant Method : Z:\svoasrv\HPCHEM1\BNA\_F\Methods\8270-BF110525.M  
 Quant Title : ASP BNA STANDARDS FOR 5 POINT CALIBRATION  
 QLast Update : Wed Nov 05 18:37:33 2025  
 Response via : Initial Calibration

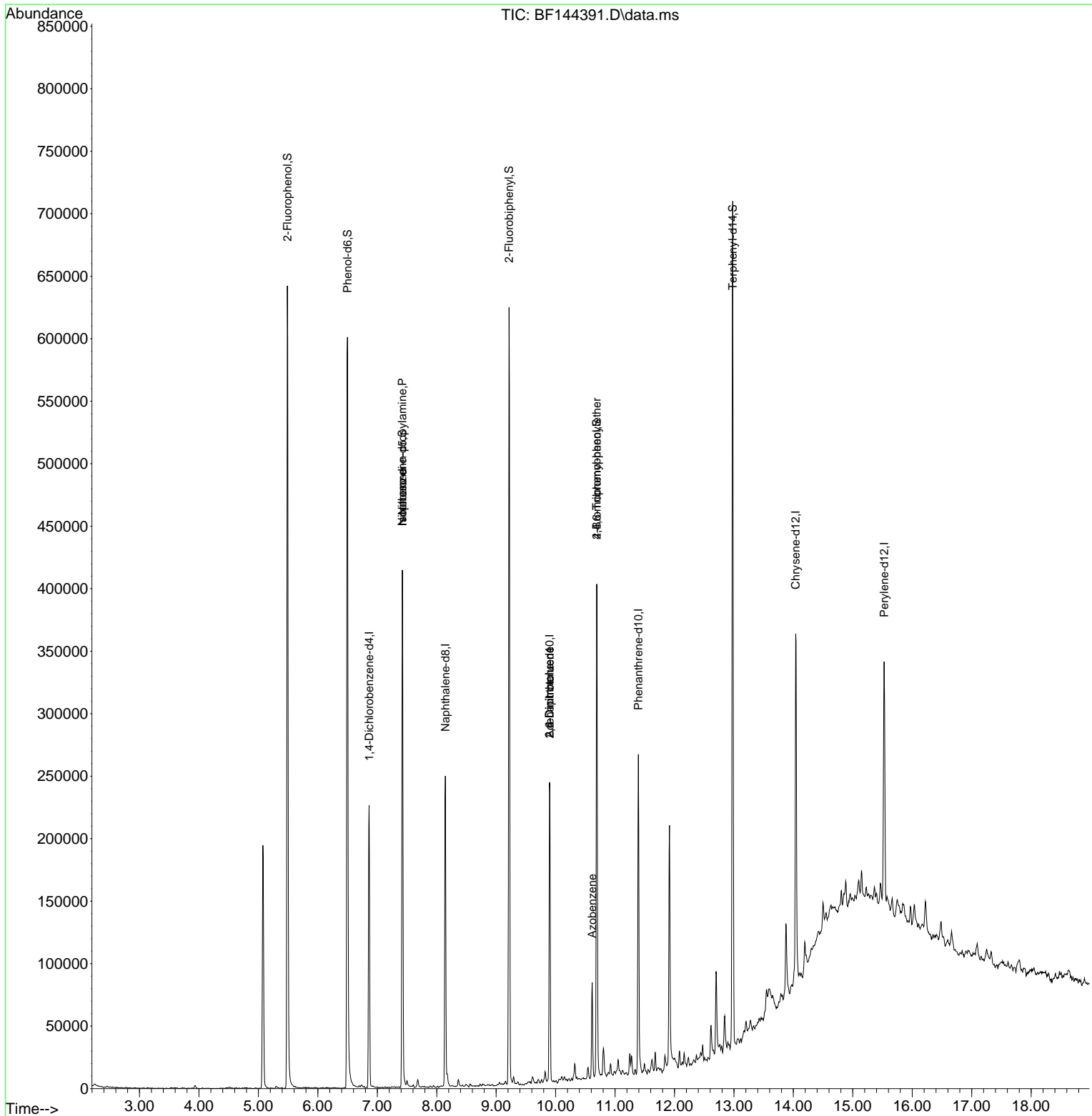
Compound	R.T.	QIon	Response	Conc	Units	Dev(Min)
Internal Standards						
1) 1,4-Dichlorobenzene-d4	6.863	152	49705	20.000	ng	-0.01
21) Naphthalene-d8	8.145	136	164994	20.000	ng	-0.01
39) Acenaphthene-d10	9.898	164	76755	20.000	ng	-0.02
64) Phenanthrene-d10	11.392	188	138286	20.000	ng	-0.01
76) Chrysene-d12	14.039	240	147700	20.000	ng	-0.01
86) Perylene-d12	15.527	264	114213	20.000	ng	-0.01
System Monitoring Compounds						
5) 2-Fluorophenol	5.487	112	268463	84.521	ng	0.00
7) Phenol-d6	6.498	99	293047	81.425	ng	0.00
23) Nitrobenzene-d5	7.422	82	174959	61.243	ng	-0.01
42) 2,4,6-Tribromophenol	10.692	330	80104	83.166	ng	-0.01
45) 2-Fluorobiphenyl	9.216	172	299286	57.589	ng	-0.01
79) Terphenyl-d14	12.980	244	357695	38.467	ng	-0.01
Target Compounds						
19) n-Nitroso-di-n-propyla...	7.422	70	24395	10.297	ng	# 77
25) Isophorone	7.422	82	174956	32.377	ng	# 66
51) 2,6-Dinitrotoluene	9.898	165	10410	10.113	ng	# 27
57) 2,4-Dinitrotoluene	9.898	165	10410	7.555	ng	# 27
63) Azobenzene	10.616	77	18355	4.207	ng	# 1
67) 4-Bromophenyl-phenylether	10.692	248	4195	2.377	ng	# 1

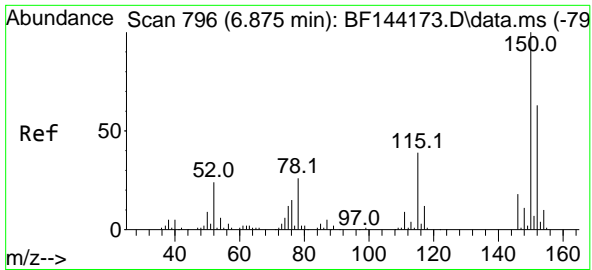
(#) = qualifier out of range (m) = manual integration (+) = signals summed

Data Path : Z:\svoasrv\HPCHEM1\BNA\_F\Data\BF120125\  
 Data File : BF144391.D  
 Acq On : 01 Dec 2025 17:13  
 Operator : RC/JU  
 Sample : Q3735-01  
 Misc :  
 ALS Vial : 11 Sample Multiplier: 1

Instrument :  
 BNA\_F  
 ClientSampleId :

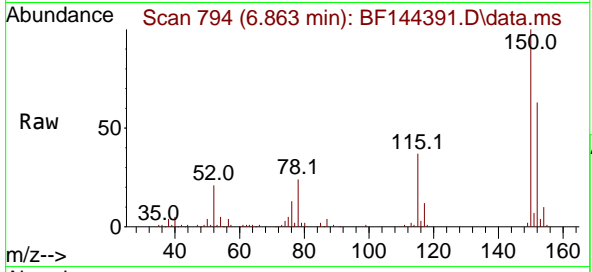
Quant Time: Dec 02 00:08:15 2025  
 Quant Method : Z:\svoasrv\HPCHEM1\BNA\_F\Methods\8270-BF110525.M  
 Quant Title : ASP BNA STANDARDS FOR 5 POINT CALIBRATION  
 QLast Update : Wed Nov 05 18:37:33 2025  
 Response via : Initial Calibration



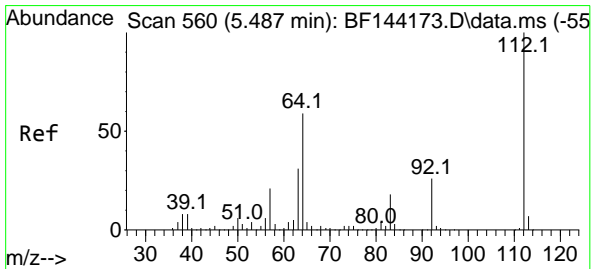
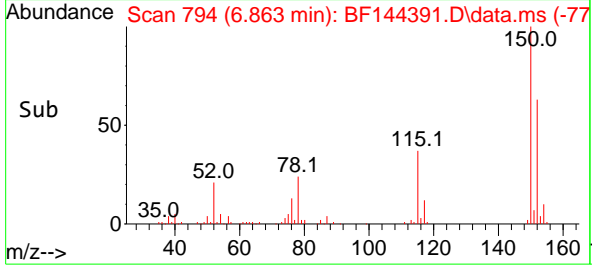
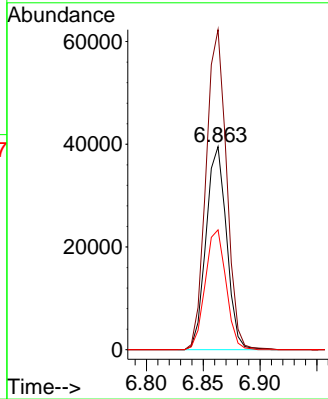


#1  
 1,4-Dichlorobenzene-d4  
 Concen: 20.000 ng  
 RT: 6.863 min Scan# 796  
 Delta R.T. -0.012 min  
 Lab File: BF144391.D  
 Acq: 01 Dec 2025 17:13

Instrument :  
 BNA\_F  
 ClientSampleId :

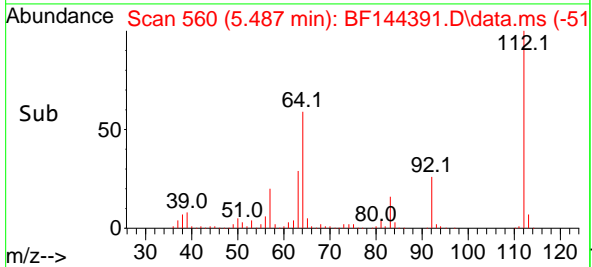
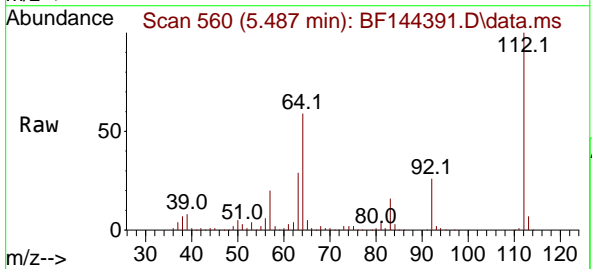
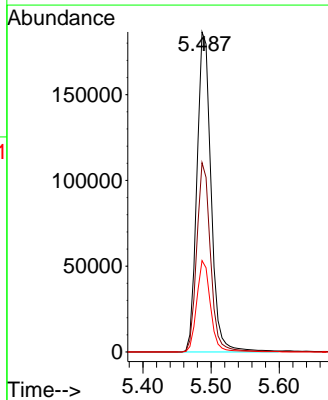


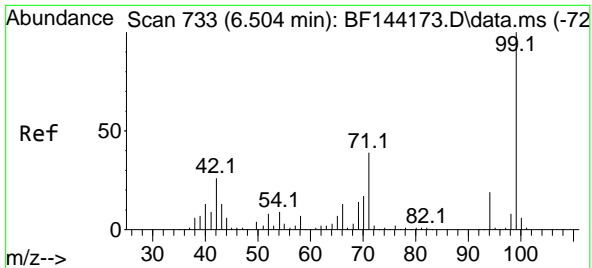
Tgt Ion:152 Resp: 49705  
 Ion Ratio Lower Upper  
 152 100  
 150 157.6 127.4 191.0  
 115 59.0 49.5 74.3



#5  
 2-Fluorophenol  
 Concen: 84.521 ng  
 RT: 5.487 min Scan# 560  
 Delta R.T. -0.006 min  
 Lab File: BF144391.D  
 Acq: 01 Dec 2025 17:13

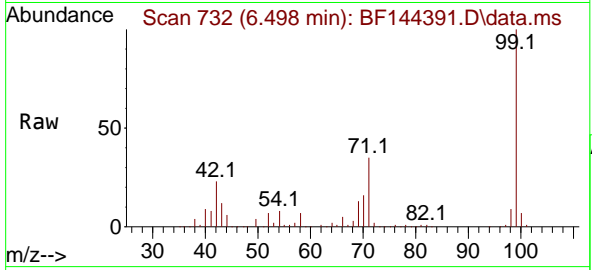
Tgt Ion:112 Resp: 268463  
 Ion Ratio Lower Upper  
 112 100  
 64 59.1 47.2 70.8  
 63 28.5 24.4 36.6



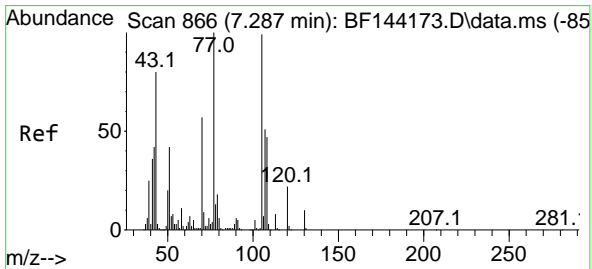
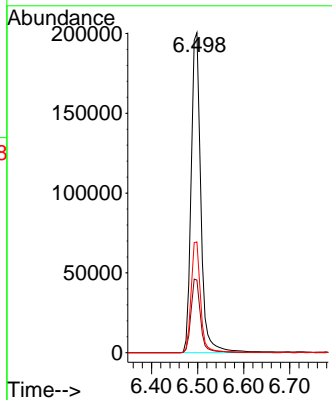
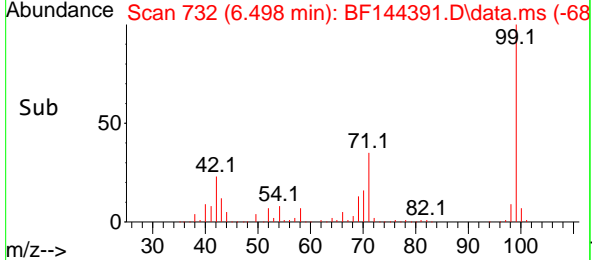


#7  
 Phenol-d6  
 Concen: 81.425 ng  
 RT: 6.498 min Scan# 71  
 Delta R.T. -0.000 min  
 Lab File: BF144391.D  
 Acq: 01 Dec 2025 17:13

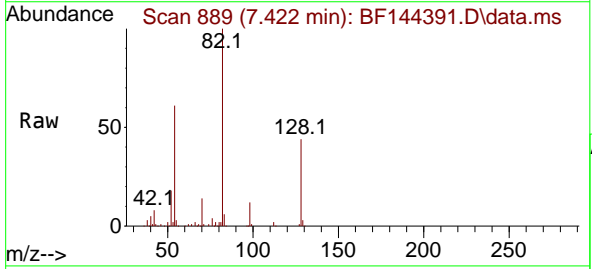
Instrument :  
 BNA\_F  
 ClientSampleId :



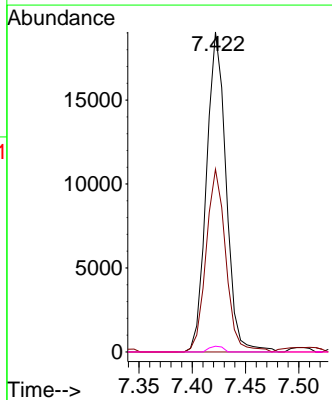
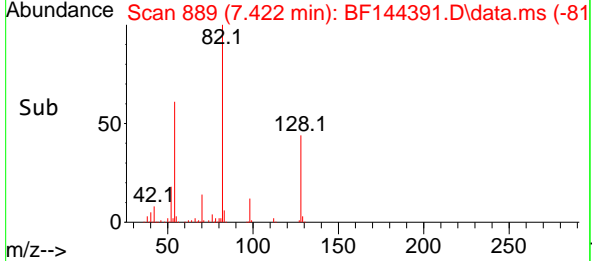
Tgt Ion: 99 Resp: 293047  
 Ion Ratio Lower Upper  
 99 100  
 42 22.7 20.9 31.3  
 71 34.6 31.4 47.2

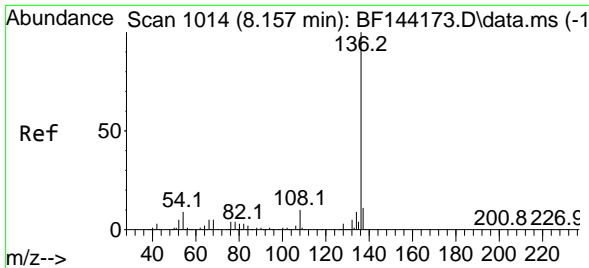


#19  
 n-Nitroso-di-n-propylamine  
 Concen: 10.297 ng  
 RT: 7.422 min Scan# 889  
 Delta R.T. 0.147 min  
 Lab File: BF144391.D  
 Acq: 01 Dec 2025 17:13



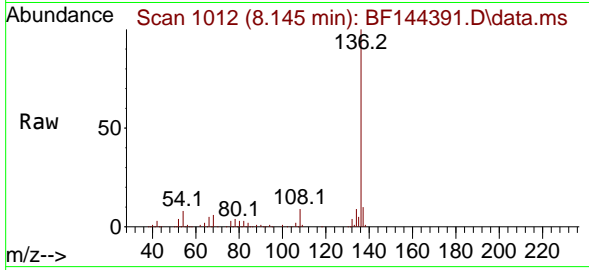
Tgt Ion: 70 Resp: 24395  
 Ion Ratio Lower Upper  
 70 100  
 42 57.1 58.3 87.5#  
 101 0.0 7.0 10.6#  
 130 1.8 14.4 21.6#





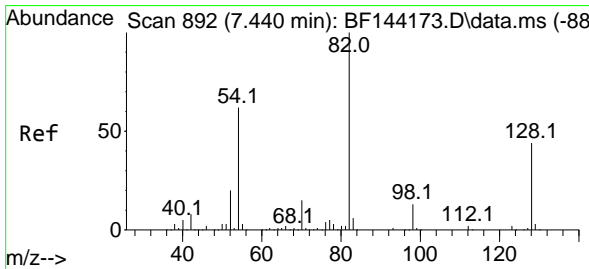
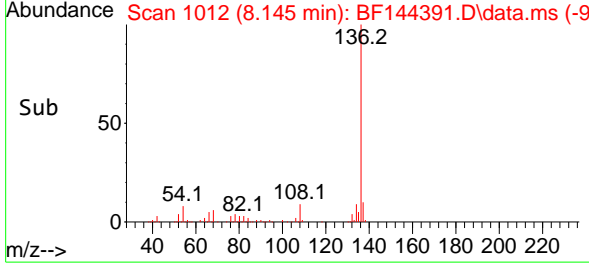
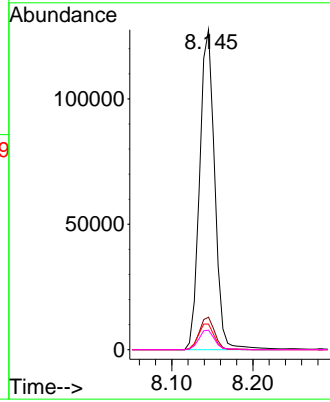
#21  
 Naphthalene-d8  
 Concen: 20.000 ng  
 RT: 8.145 min Scan# 1014  
 Delta R.T. -0.012 min  
 Lab File: BF144391.D  
 Acq: 01 Dec 2025 17:13

Instrument : BNA\_F  
 ClientSampleId :



Tgt Ion:136 Resp: 164994

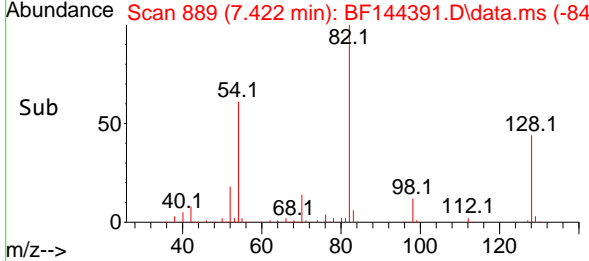
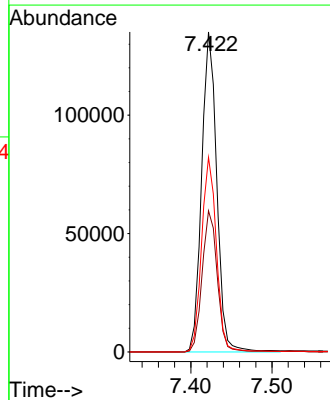
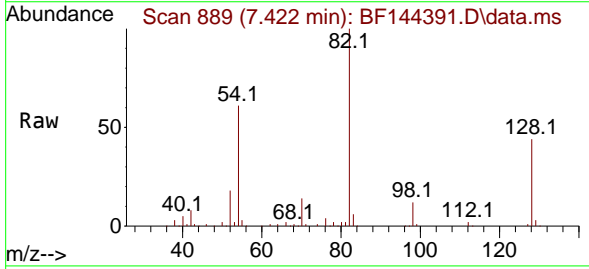
Ion	Ratio	Lower	Upper
136	100		
137	10.1	8.6	13.0
54	8.0	7.0	10.6
68	6.1	4.3	6.5

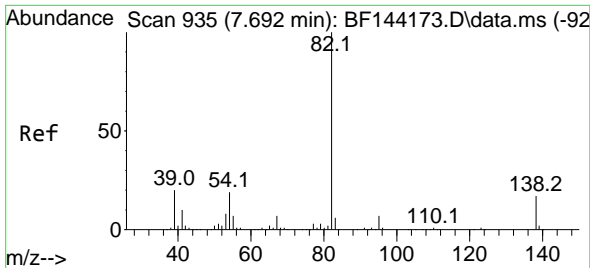


#23  
 Nitrobenzene-d5  
 Concen: 61.243 ng  
 RT: 7.422 min Scan# 889  
 Delta R.T. -0.012 min  
 Lab File: BF144391.D  
 Acq: 01 Dec 2025 17:13

Tgt Ion: 82 Resp: 174959

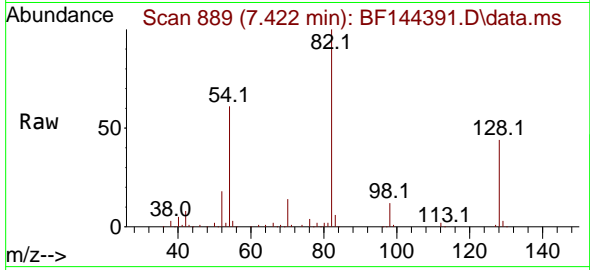
Ion	Ratio	Lower	Upper
82	100		
128	44.1	34.7	52.1
54	60.8	49.5	74.3



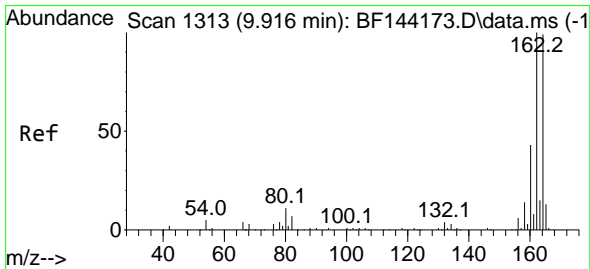
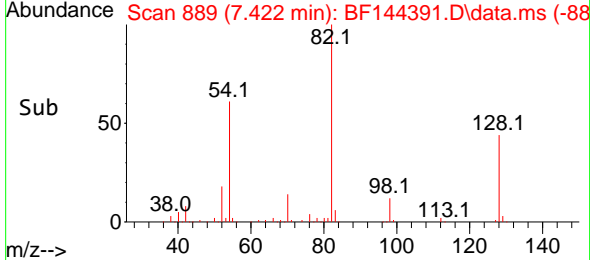
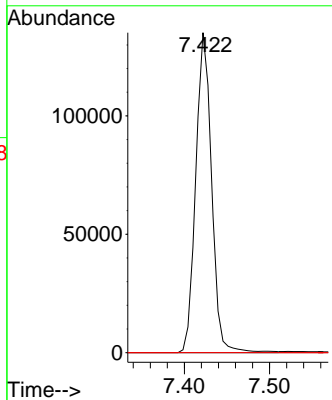


#25  
 Isophorone  
 Concen: 32.377 ng  
 RT: 7.422 min Scan# 81  
 Delta R.T. -0.265 min  
 Lab File: BF144391.D  
 Acq: 01 Dec 2025 17:13

Instrument :  
 BNA\_F  
 ClientSampleId :

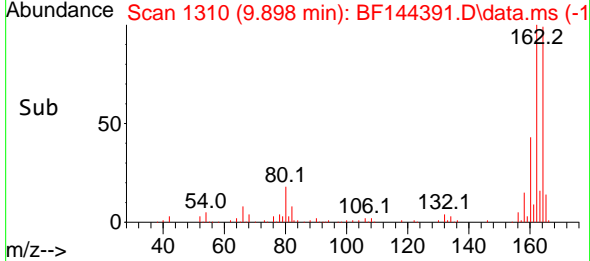
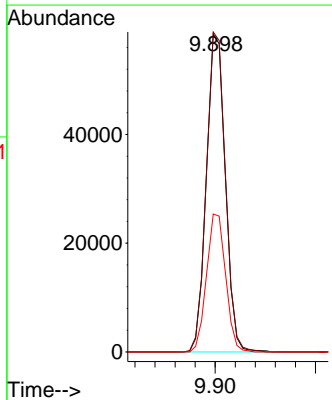
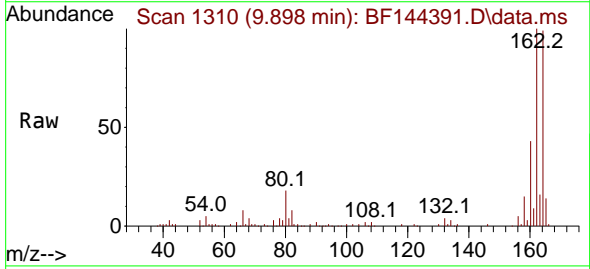


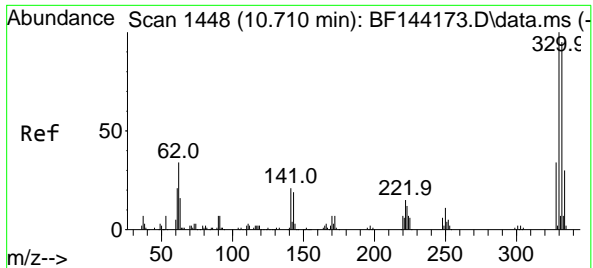
Tgt Ion: 82 Resp: 174956  
 Ion Ratio Lower Upper  
 82 100  
 95 0.0 5.5 8.3#  
 138 0.0 13.7 20.5#



#39  
 Acenaphthene-d10  
 Concen: 20.000 ng  
 RT: 9.898 min Scan# 1310  
 Delta R.T. -0.018 min  
 Lab File: BF144391.D  
 Acq: 01 Dec 2025 17:13

Tgt Ion: 164 Resp: 76755  
 Ion Ratio Lower Upper  
 164 100  
 162 100.6 81.1 121.7  
 160 43.4 34.5 51.7

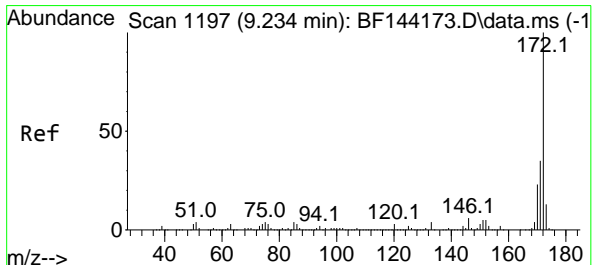
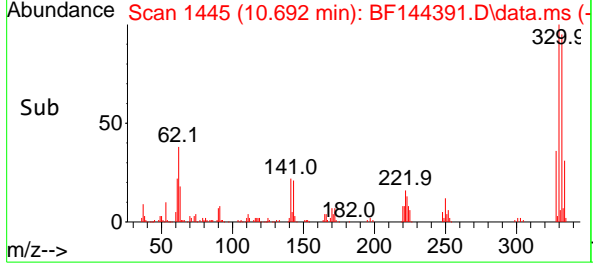
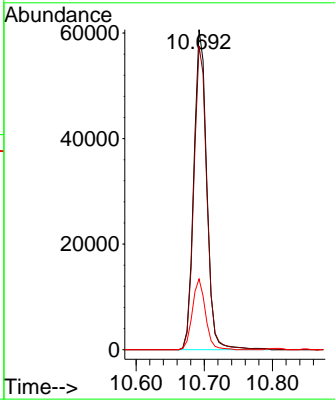
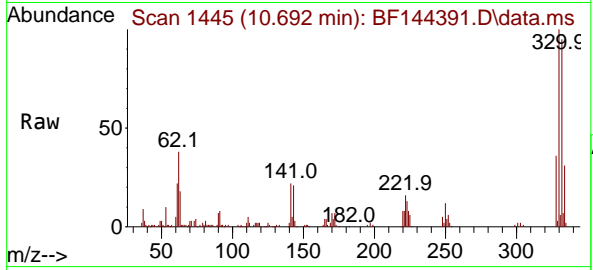




#42  
 2,4,6-Tribromophenol  
 Concen: 83.166 ng  
 RT: 10.692 min Scan# 1445  
 Delta R.T. -0.012 min  
 Lab File: BF144391.D  
 Acq: 01 Dec 2025 17:13

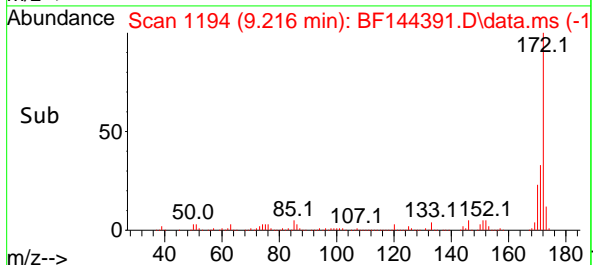
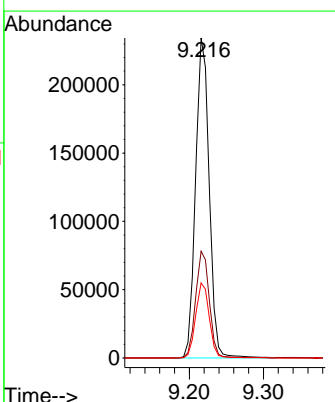
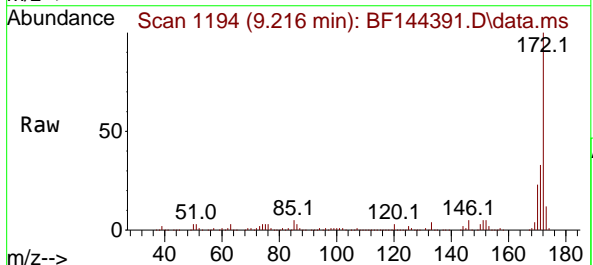
Instrument : BNA\_F  
 ClientSampleId :

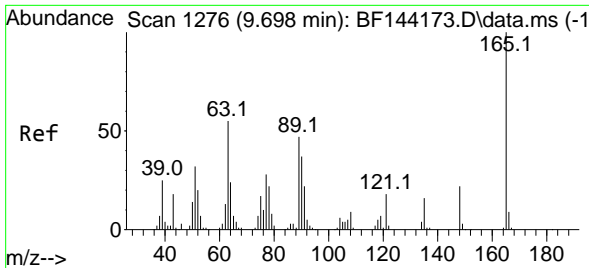
Tgt Ion:330 Resp: 80104  
 Ion Ratio Lower Upper  
 330 100  
 332 95.0 76.7 115.1  
 141 22.2 17.8 26.8



#45  
 2-Fluorobiphenyl  
 Concen: 57.589 ng  
 RT: 9.216 min Scan# 1194  
 Delta R.T. -0.012 min  
 Lab File: BF144391.D  
 Acq: 01 Dec 2025 17:13

Tgt Ion:172 Resp: 299286  
 Ion Ratio Lower Upper  
 172 100  
 171 33.4 28.1 42.1  
 170 23.4 18.6 28.0



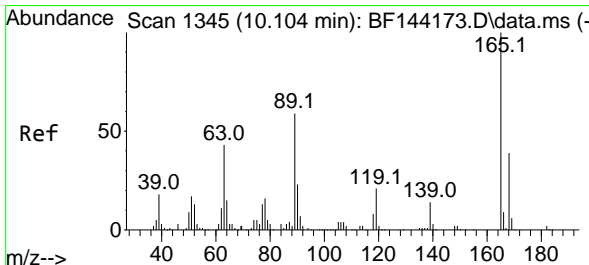
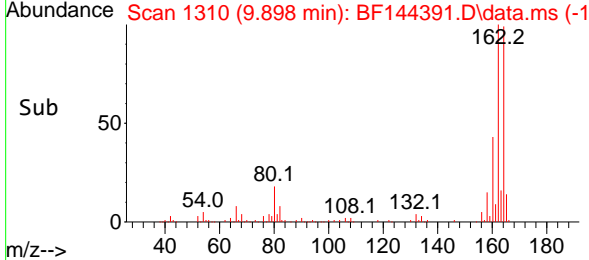
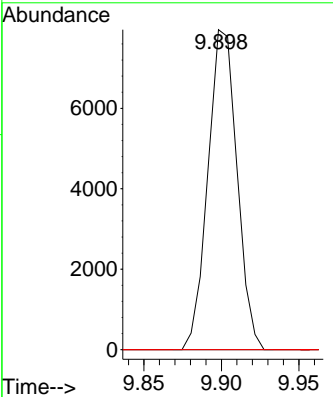
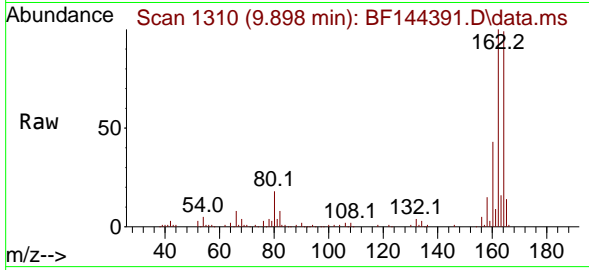


#51  
 2,6-Dinitrotoluene  
 Concen: 10.113 ng  
 RT: 9.898 min Scan# 11  
 Delta R.T. 0.206 min  
 Lab File: BF144391.D  
 Acq: 01 Dec 2025 17:13

Instrument :  
 BNA\_F  
 ClientSampleId :

Tgt Ion:165 Resp: 10410

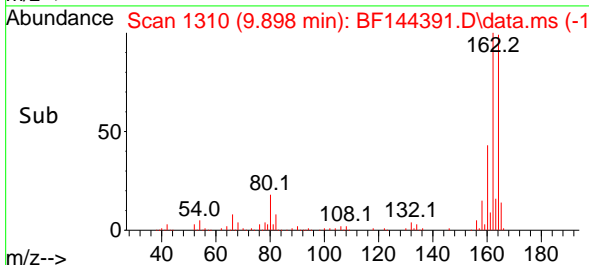
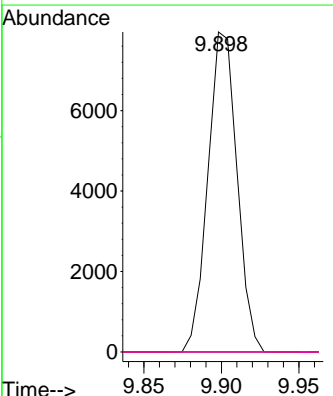
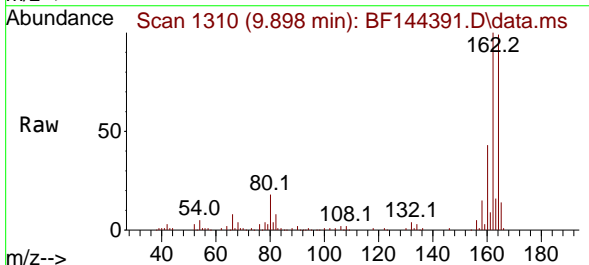
Ion	Ratio	Lower	Upper
165	100		
63	0.0	43.8	65.8#
89	0.0	37.5	56.3#



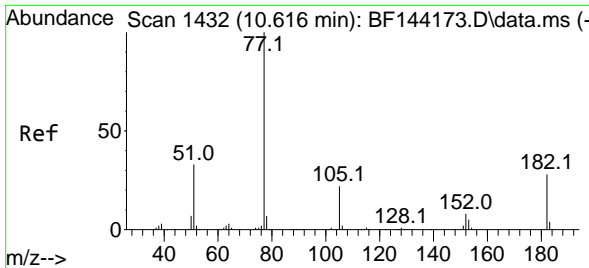
#57  
 2,4-Dinitrotoluene  
 Concen: 7.555 ng  
 RT: 9.898 min Scan# 1310  
 Delta R.T. -0.200 min  
 Lab File: BF144391.D  
 Acq: 01 Dec 2025 17:13

Tgt Ion:165 Resp: 10410

Ion	Ratio	Lower	Upper
165	100		
63	0.0	35.5	53.3#
89	0.0	47.4	71.2#
182	0.0	1.9	2.9#





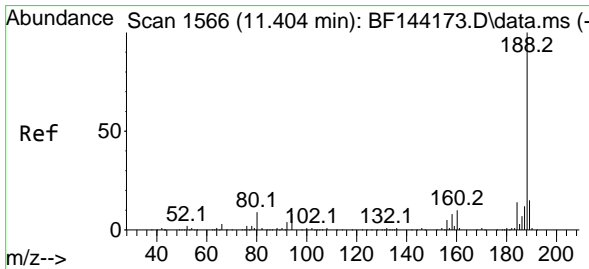
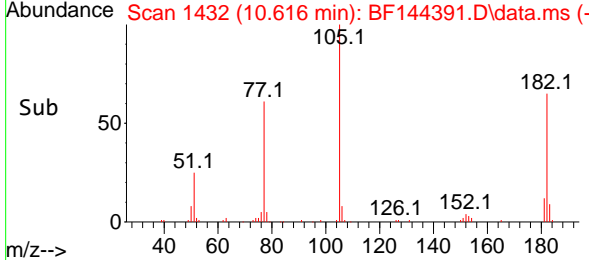
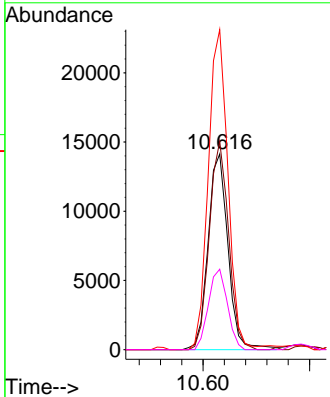
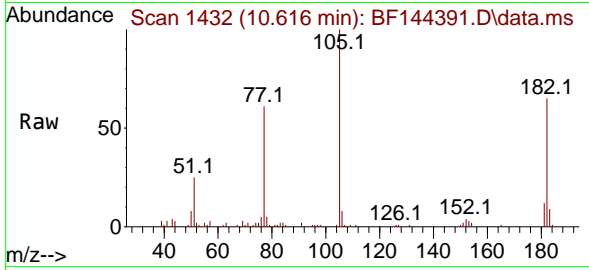


#63  
 Azobenzene  
 Concen: 4.207 ng  
 RT: 10.616 min Scan# 14  
 Delta R.T. -0.000 min  
 Lab File: BF144391.D  
 Acq: 01 Dec 2025 17:13

Instrument : BNA\_F  
 ClientSampleId :

Tgt Ion: 77 Resp: 18355

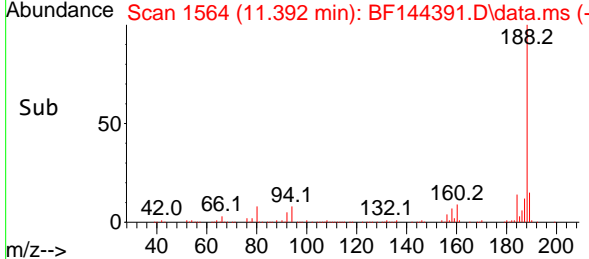
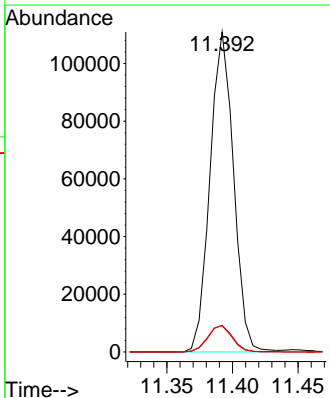
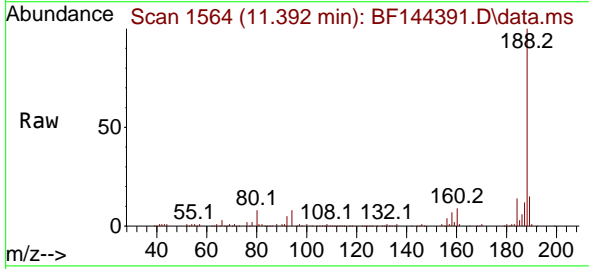
Ion	Ratio	Lower	Upper
77	100		
182	106.5	8.1	48.1#
105	163.5	2.0	42.0#
51	41.2	13.9	53.9

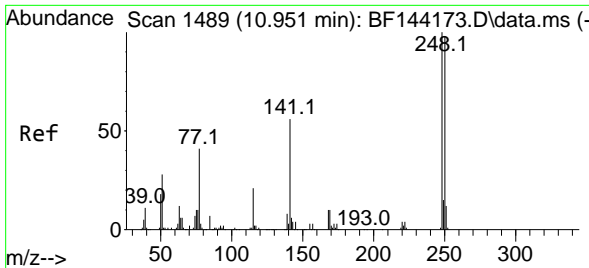


#64  
 Phenanthrene-d10  
 Concen: 20.000 ng  
 RT: 11.392 min Scan# 1564  
 Delta R.T. -0.012 min  
 Lab File: BF144391.D  
 Acq: 01 Dec 2025 17:13

Tgt Ion: 188 Resp: 138286

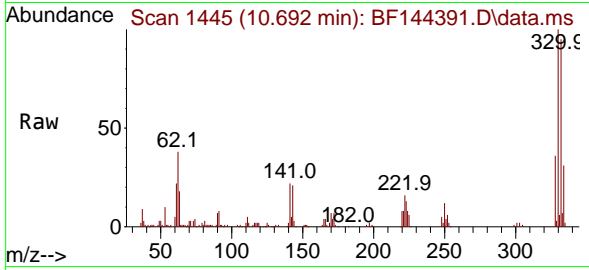
Ion	Ratio	Lower	Upper
188	100		
94	8.2	6.2	9.2
80	8.4	6.9	10.3





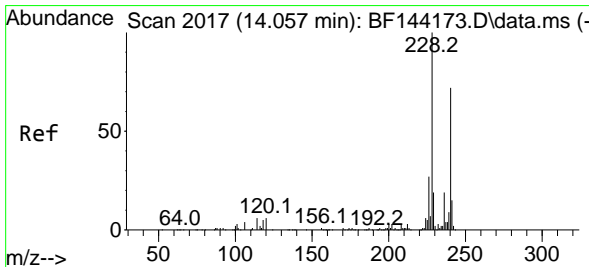
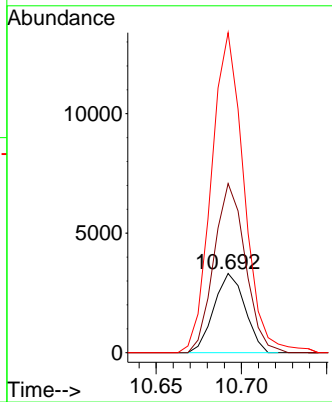
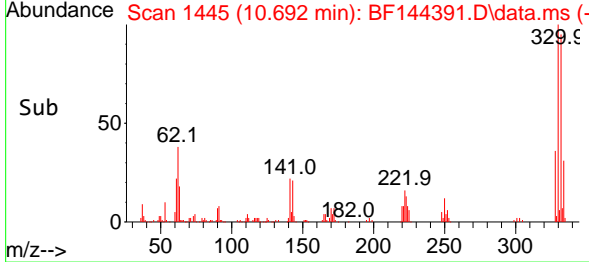
#67  
 4-Bromophenyl-phenylether  
 Concen: 2.377 ng  
 RT: 10.692 min Scan# 14  
 Delta R.T. -0.253 min  
 Lab File: BF144391.D  
 Acq: 01 Dec 2025 17:13

Instrument :  
 BNA\_F  
 ClientSampleId :

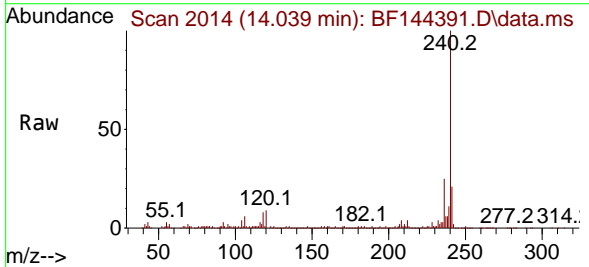


Tgt Ion:248 Resp: 4195

Ion	Ratio	Lower	Upper
248	100		
250	213.6	78.4	117.6#
141	404.3	45.1	67.7#

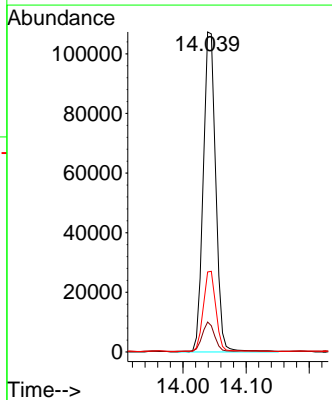
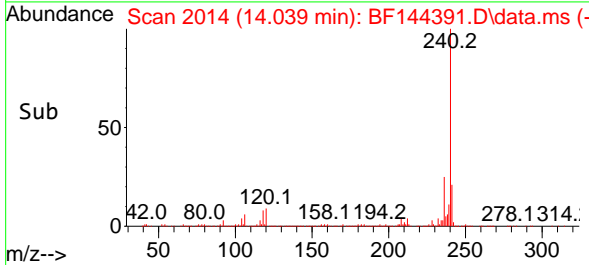


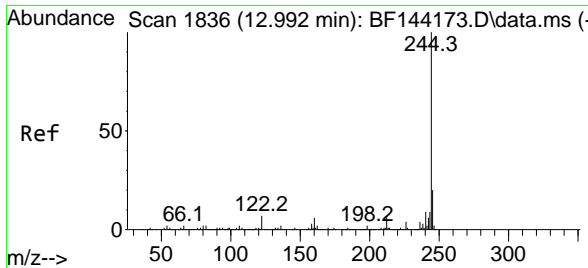
#76  
 Chrysene-d12  
 Concen: 20.000 ng  
 RT: 14.039 min Scan# 2014  
 Delta R.T. -0.012 min  
 Lab File: BF144391.D  
 Acq: 01 Dec 2025 17:13



Tgt Ion:240 Resp: 147700

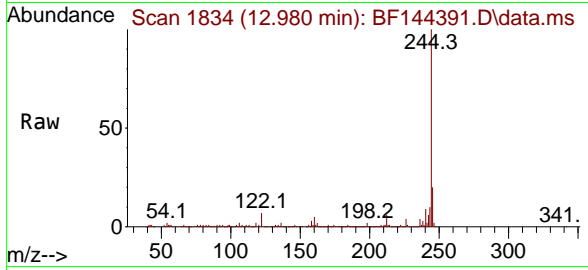
Ion	Ratio	Lower	Upper
240	100		
120	9.4	6.6	10.0
236	25.0	21.4	32.2



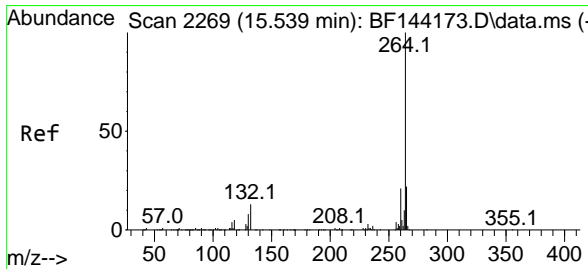
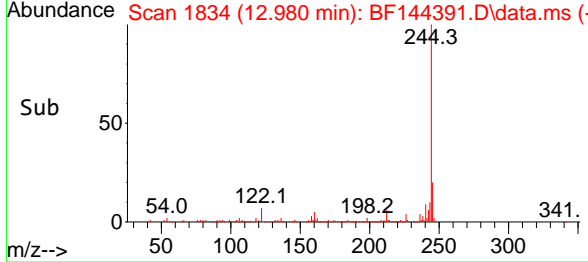
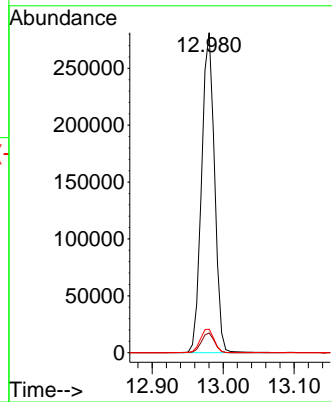


#79  
 Terphenyl-d14  
 Concen: 38.467 ng  
 RT: 12.980 min Scan# 11  
 Delta R.T. -0.012 min  
 Lab File: BF144391.D  
 Acq: 01 Dec 2025 17:13

Instrument : BNA\_F  
 ClientSampleId :



Tgt Ion:244 Resp: 357695  
 Ion Ratio Lower Upper  
 244 100  
 212 6.1 5.3 7.9  
 122 7.4 5.6 8.4



#86  
 Perylene-d12  
 Concen: 20.000 ng  
 RT: 15.527 min Scan# 2267  
 Delta R.T. -0.012 min  
 Lab File: BF144391.D  
 Acq: 01 Dec 2025 17:13

Tgt Ion:264 Resp: 114213  
 Ion Ratio Lower Upper  
 264 100  
 260 22.1 17.1 25.7  
 265 22.1 17.4 26.0

