

Data Path : Z:\svoasrv\HPCHEM1\BNA_F\Data\BF120225\
 Data File : BF144402.D
 Acq On : 02 Dec 2025 14:51
 Operator : RC/JU
 Sample : Q3742-03
 Misc :
 ALS Vial : 6 Sample Multiplier: 1

Instrument :
 BNA_F
 ClientSampleId :
 SB-1125-8

Quant Time: Dec 02 15:15:34 2025
 Quant Method : Z:\svoasrv\HPCHEM1\BNA_F\Methods\8270-BF110525.M
 Quant Title : ASP BNA STANDARDS FOR 5 POINT CALIBRATION
 QLast Update : Wed Nov 05 18:37:33 2025
 Response via : Initial Calibration

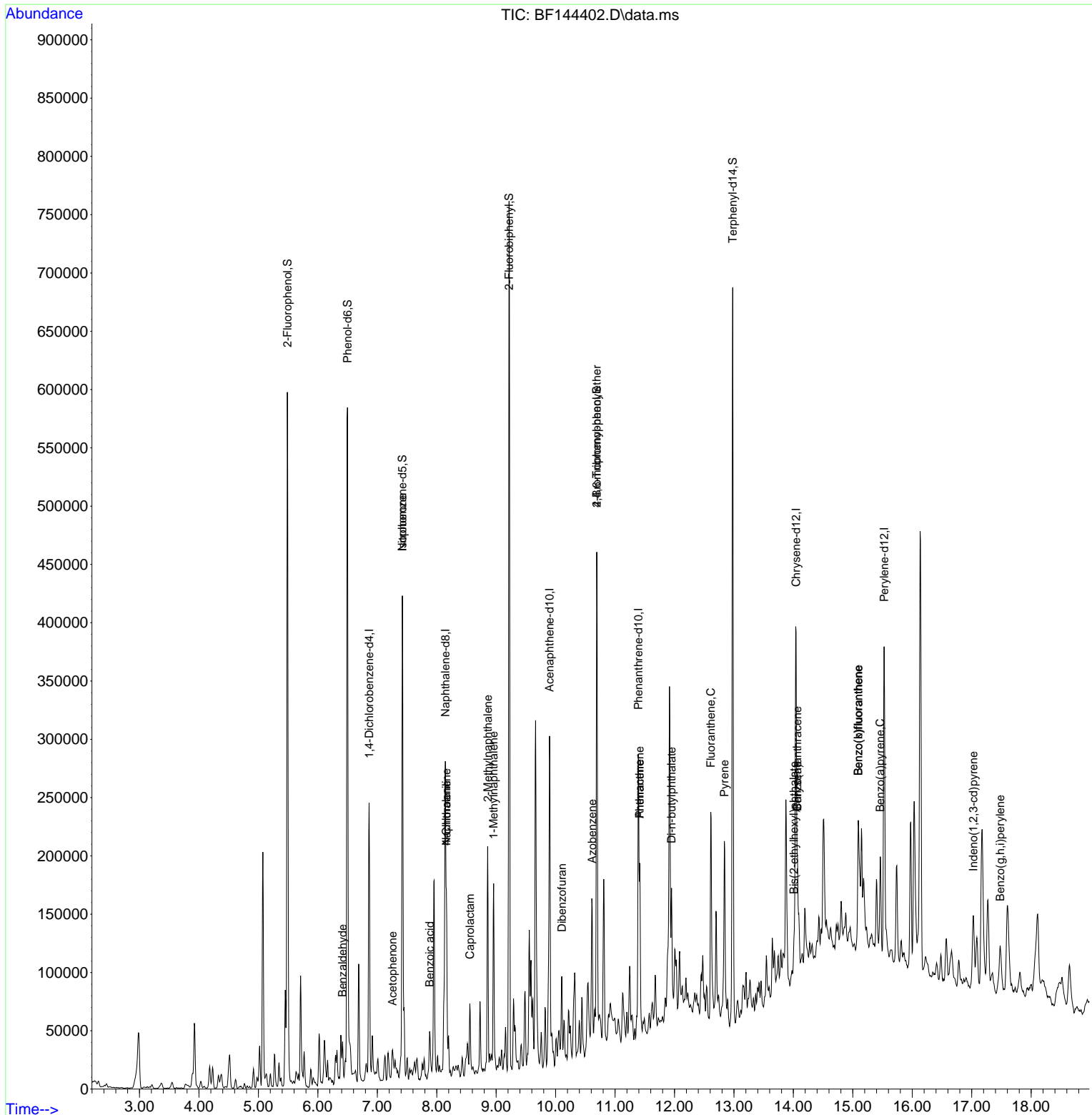
Compound	R.T.	QIon	Response	Conc	Units	Dev(Min)
Internal Standards						
1) 1,4-Dichlorobenzene-d4	6.863	152	46949	20.000	ng	-0.01
21) Naphthalene-d8	8.145	136	165065	20.000	ng	-0.01
39) Acenaphthene-d10	9.898	164	83893	20.000	ng	-0.02
64) Phenanthrene-d10	11.392	188	127031	20.000	ng	-0.01
76) Chrysene-d12	14.045	240	124335	20.000	ng	0.00
86) Perylene-d12	15.527	264	159293	20.000	ng	-0.01
System Monitoring Compounds						
5) 2-Fluorophenol	5.487	112	246485	82.157	ng	0.00
7) Phenol-d6	6.498	99	273439	80.436	ng	0.00
23) Nitrobenzene-d5	7.422	82	171238	59.915	ng	-0.01
42) 2,4,6-Tribromophenol	10.692	330	76721	72.876	ng	-0.01
45) 2-Fluorobiphenyl	9.216	172	352565	62.069	ng	-0.01
79) Terphenyl-d14	12.980	244	333153	42.561	ng	-0.01
Target Compounds						
9) Benzaldehyde	6.416	77	9243	4.815	ng	# 86
22) Acetophenone	7.257	105	10197	2.880	ng	# 64
25) Isophorone	7.422	82	168993	31.260	ng	# 67
31) Naphthalene	8.163	128	85021	10.828	ng	100
32) Benzoic acid	7.881	122	4024	2.384	ng	93
33) 4-Chloroaniline	8.163	127	10751	3.754	ng	# 33
35) Caprolactam	8.557	113	1617	2.224	ng	# 47
37) 2-Methylnaphthalene	8.857	142	71672	13.652	ng	99
38) 1-Methylnaphthalene	8.957	142	59446	11.736	ng	99
55) Dibenzofuran	10.104	168	21840	3.426	ng	# 94
63) Azobenzene	10.616	77	21449	4.498	ng	# 1
67) 4-Bromophenyl-phenylether	10.692	248	4445	2.741	ng	# 1
71) Phenanthrene	11.416	178	82353	13.021	ng	98
72) Anthracene	11.416	178	82353	12.805	ng	98
74) Di-n-butylphthalate	11.951	149	69939	10.579	ng	99
75) Fluoranthene	12.610	202	90795	13.897	ng	98
78) Pyrene	12.839	202	83474	8.327	ng	98
81) Benzo(a)anthracene	14.068	228	53416	6.199	ng	93
83) Chrysene	14.068	228	53306	6.701	ng	# 94
84) Bis(2-ethylhexyl)phtha...	14.010	149	10557	2.220	ng	# 98
87) Indeno(1,2,3-cd)pyrene	17.027	276	27017	2.363	ng	97
88) Benzo(b)fluoranthene	15.092	252	101287	11.184	ng	# 97
89) Benzo(k)fluoranthene	15.092	252	101287	11.949	ng	# 98
90) Benzo(a)pyrene	15.462	252	51792	6.199	ng	# 92
92) Benzo(g,h,i)perylene	17.480	276	25093	2.767	ng	# 95

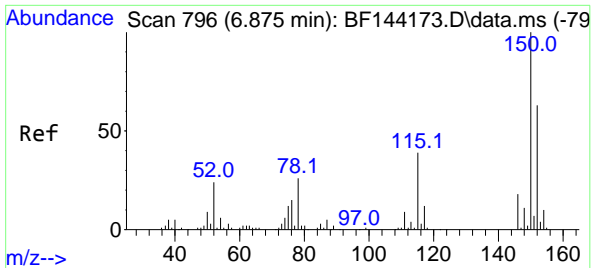
(#) = qualifier out of range (m) = manual integration (+) = signals summed

Data Path : Z:\svoasrv\HPCHEM1\BNA_F\Data\BF120225\
 Data File : BF144402.D
 Acq On : 02 Dec 2025 14:51
 Operator : RC/JU
 Sample : Q3742-03
 Misc :
 ALS Vial : 6 Sample Multiplier: 1

Instrument :
 BNA_F
 ClientSampleId :
 SB-1125-8

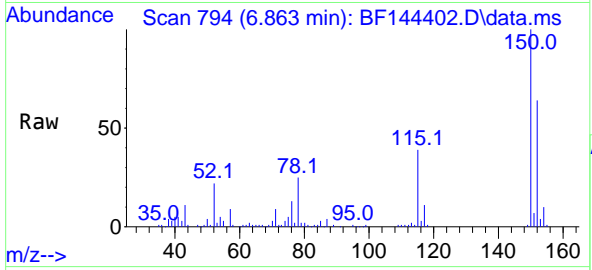
Quant Time: Dec 02 15:15:34 2025
 Quant Method : Z:\svoasrv\HPCHEM1\BNA_F\Methods\8270-BF110525.M
 Quant Title : ASP BNA STANDARDS FOR 5 POINT CALIBRATION
 QLast Update : Wed Nov 05 18:37:33 2025
 Response via : Initial Calibration



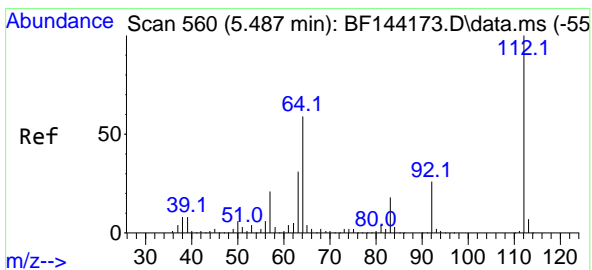
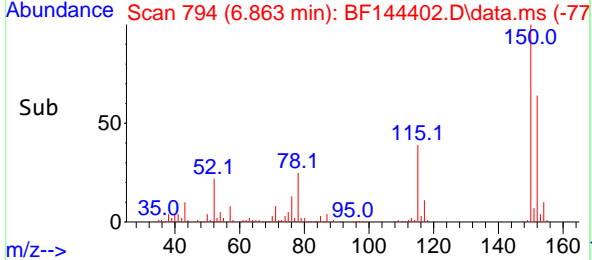
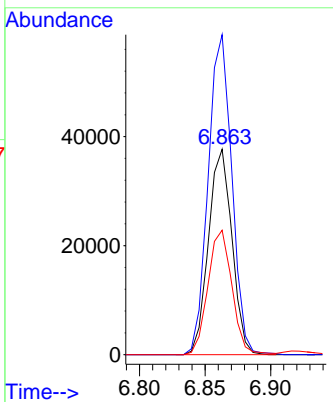


#1
 1,4-Dichlorobenzene-d4
 Concen: 20.000 ng
 RT: 6.863 min Scan# 794
 Delta R.T. -0.012 min
 Lab File: BF144402.D
 Acq: 02 Dec 2025 14:51

Instrument :
 BNA_F
 ClientSampleId :
 SB-1125-8

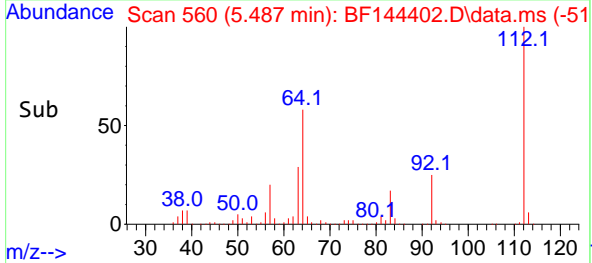
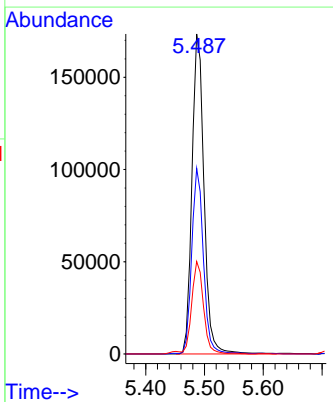
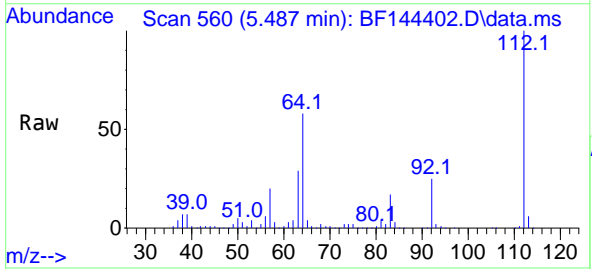


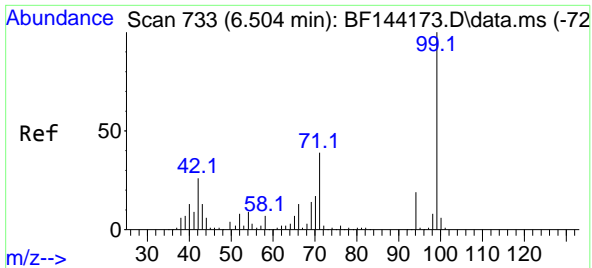
Tgt Ion:152 Resp: 46949
 Ion Ratio Lower Upper
 152 100
 150 155.8 127.4 191.0
 115 60.6 49.5 74.3



#5
 2-Fluorophenol
 Concen: 82.157 ng
 RT: 5.487 min Scan# 560
 Delta R.T. -0.006 min
 Lab File: BF144402.D
 Acq: 02 Dec 2025 14:51

Tgt Ion:112 Resp: 246485
 Ion Ratio Lower Upper
 112 100
 64 58.0 47.2 70.8
 63 28.9 24.4 36.6

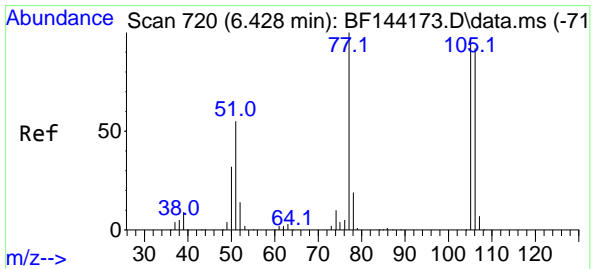
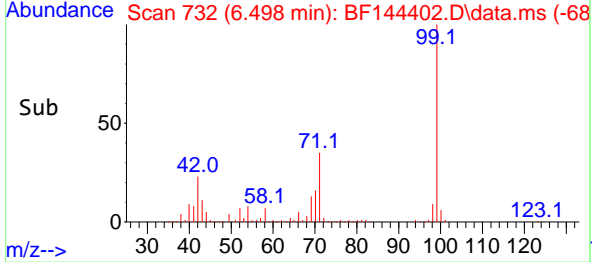
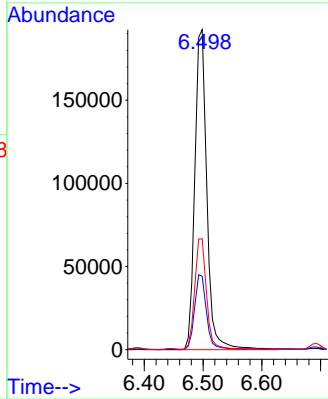
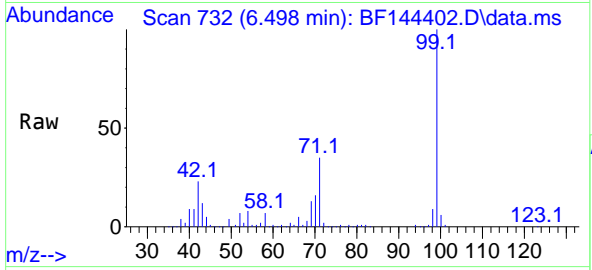




#7
Phenol-d6
Concen: 80.436 ng
RT: 6.498 min Scan# 718
Delta R.T. -0.000 min
Lab File: BF144402.D
Acq: 02 Dec 2025 14:51

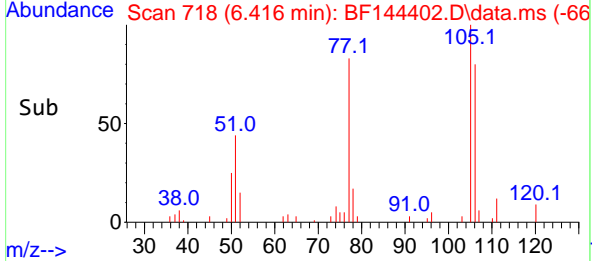
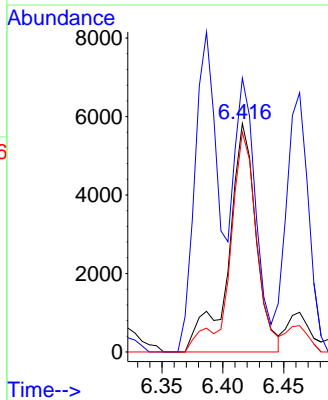
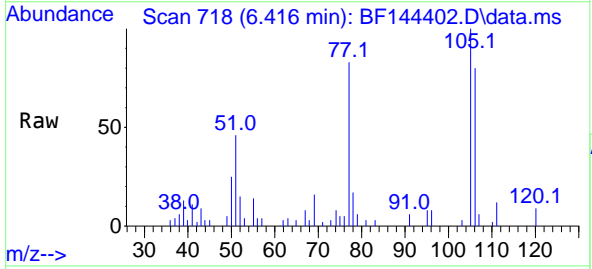
Instrument :
BNA_F
ClientSampleId :
SB-1125-8

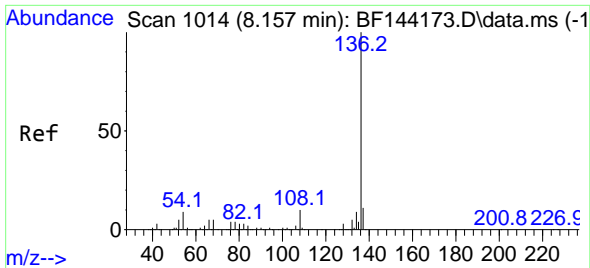
Tgt Ion: 99 Resp: 273439
Ion Ratio Lower Upper
99 100
42 23.0 20.9 31.3
71 34.6 31.4 47.2



#9
Benzaldehyde
Concen: 4.815 ng
RT: 6.416 min Scan# 718
Delta R.T. -0.012 min
Lab File: BF144402.D
Acq: 02 Dec 2025 14:51

Tgt Ion: 77 Resp: 9243
Ion Ratio Lower Upper
77 100
105 119.9 77.2 117.2#
106 96.1 72.2 112.2



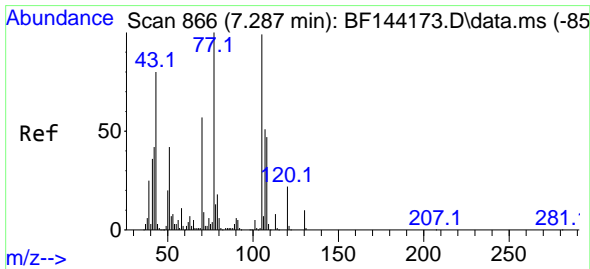
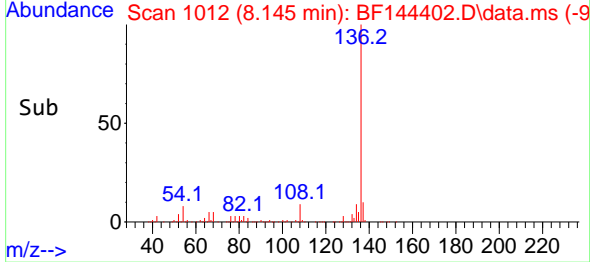
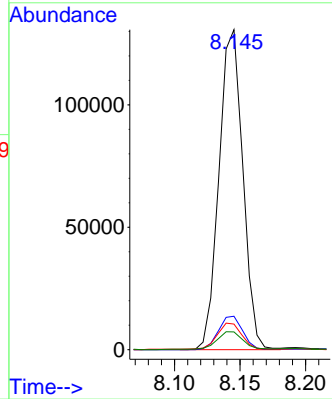
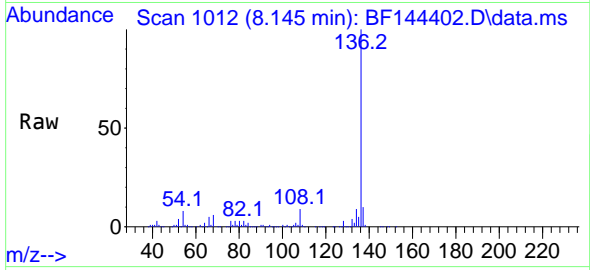


#21
 Naphthalene-d8
 Concen: 20.000 ng
 RT: 8.145 min Scan# 1012
 Delta R.T. -0.012 min
 Lab File: BF144402.D
 Acq: 02 Dec 2025 14:51

Instrument : BNA_F
 ClientSampleId : SB-1125-8

Tgt Ion:136 Resp: 165065

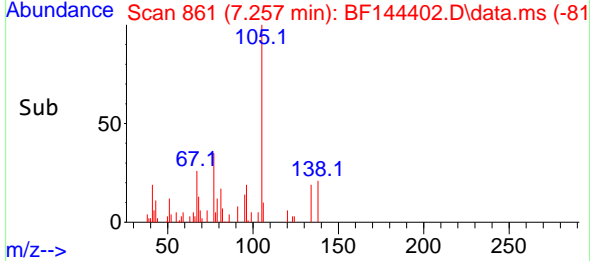
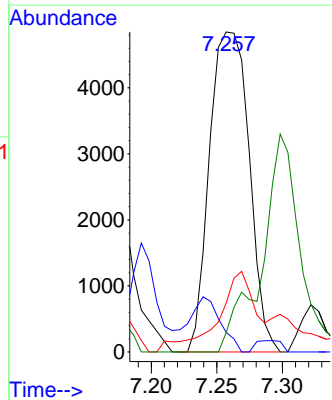
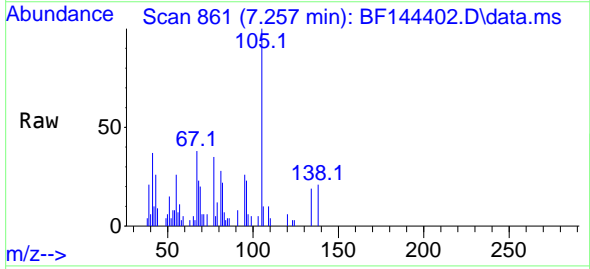
Ion	Ratio	Lower	Upper
136	100		
137	10.4	8.6	13.0
54	8.0	7.0	10.6
68	5.6	4.3	6.5

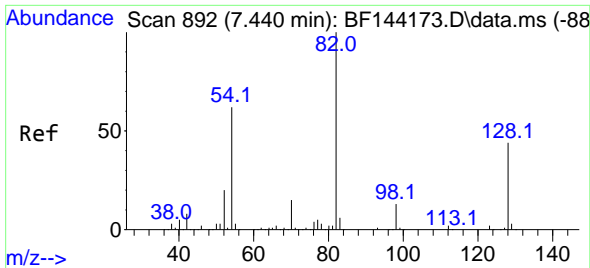


#22
 Acetophenone
 Concen: 2.880 ng
 RT: 7.257 min Scan# 861
 Delta R.T. -0.024 min
 Lab File: BF144402.D
 Acq: 02 Dec 2025 14:51

Tgt Ion:105 Resp: 10197

Ion	Ratio	Lower	Upper
105	100		
71	6.1	7.2	10.8#
51	15.3	34.0	51.0#
120	6.0	17.8	26.6#



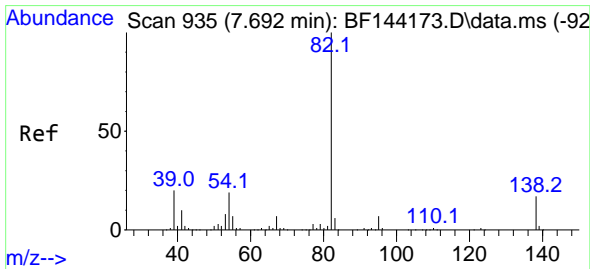
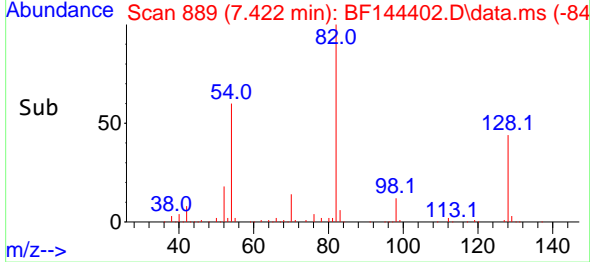
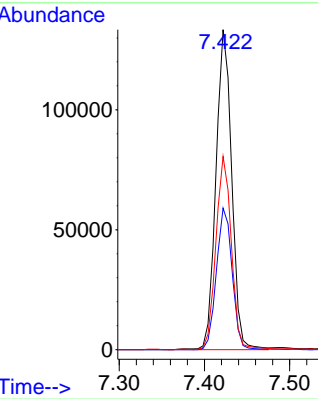
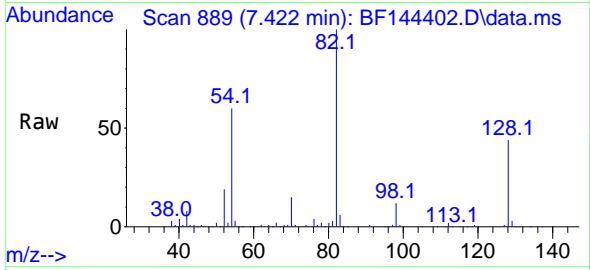


#23
 Nitrobenzene-d5
 Concen: 59.915 ng
 RT: 7.422 min Scan# 889
 Delta R.T. -0.012 min
 Lab File: BF144402.D
 Acq: 02 Dec 2025 14:51

Instrument :
 BNA_F
 ClientSampleId :
 SB-1125-8

Tgt Ion: 82 Resp: 171238

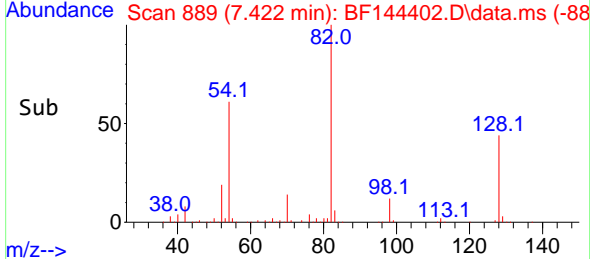
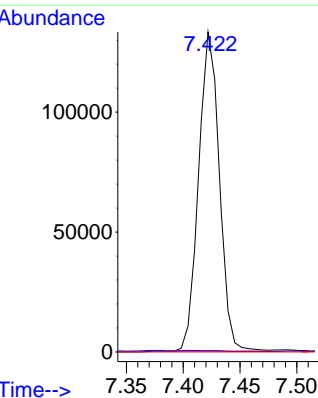
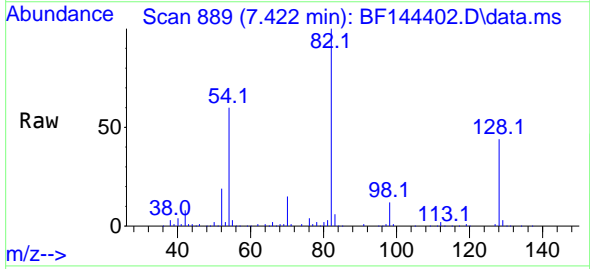
Ion	Ratio	Lower	Upper
82	100		
128	44.3	34.7	52.1
54	60.4	49.5	74.3

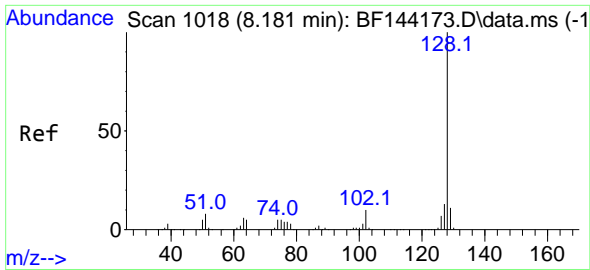


#25
 Isophorone
 Concen: 31.260 ng
 RT: 7.422 min Scan# 889
 Delta R.T. -0.265 min
 Lab File: BF144402.D
 Acq: 02 Dec 2025 14:51

Tgt Ion: 82 Resp: 168993

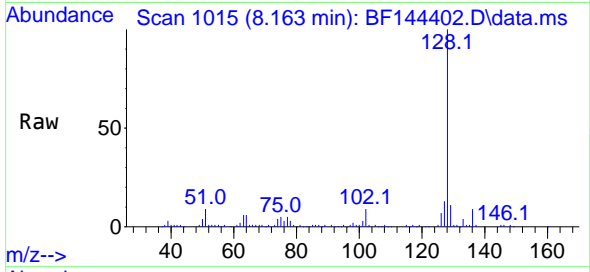
Ion	Ratio	Lower	Upper
82	100		
95	0.4	5.5	8.3#
138	0.0	13.7	20.5#



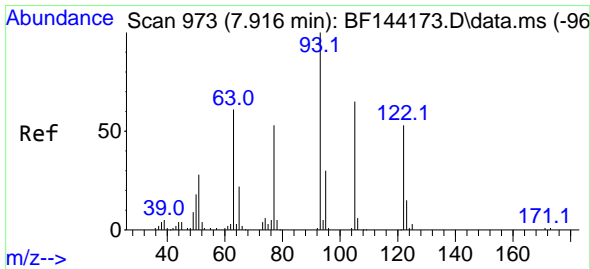
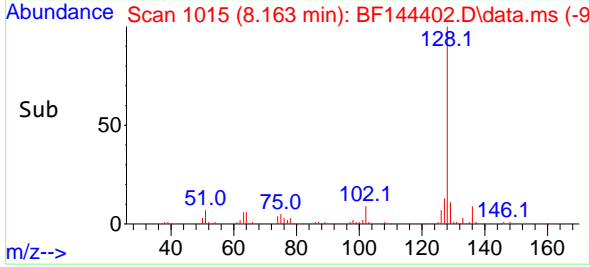
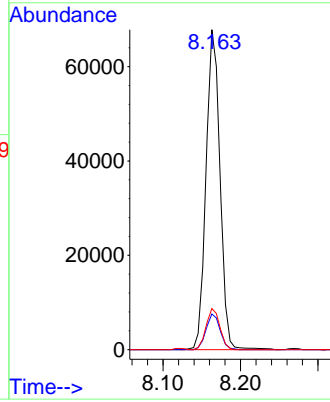


#31
 Naphthalene
 Concen: 10.828 ng
 RT: 8.163 min Scan# 1015
 Delta R.T. -0.012 min
 Lab File: BF144402.D
 Acq: 02 Dec 2025 14:51

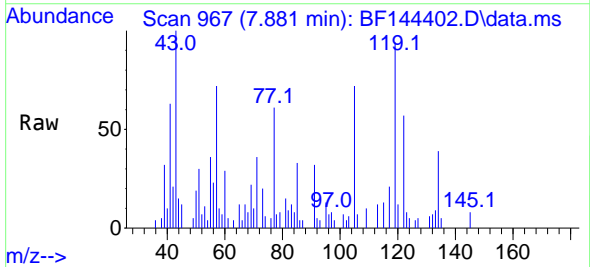
Instrument : BNA_F
 ClientSampleId : SB-1125-8



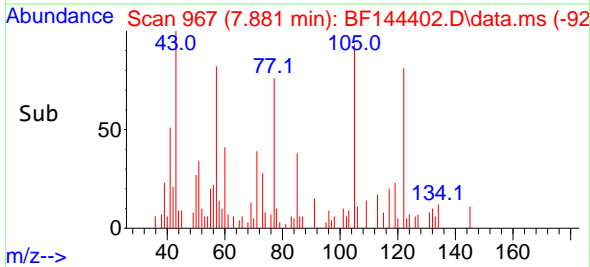
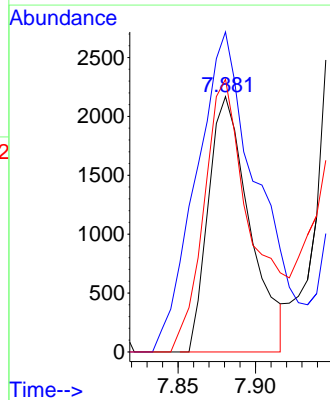
Tgt Ion:128 Resp: 85021
 Ion Ratio Lower Upper
 128 100
 129 11.1 8.9 13.3
 127 12.8 10.3 15.5

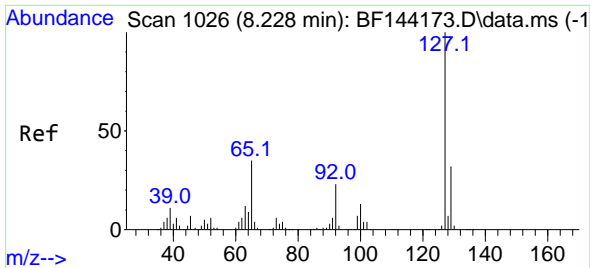


#32
 Benzoic acid
 Concen: 2.384 ng
 RT: 7.881 min Scan# 967
 Delta R.T. -0.071 min
 Lab File: BF144402.D
 Acq: 02 Dec 2025 14:51



Tgt Ion:122 Resp: 4024
 Ion Ratio Lower Upper
 122 100
 105 125.3 99.9 139.9
 77 106.8 77.5 117.5



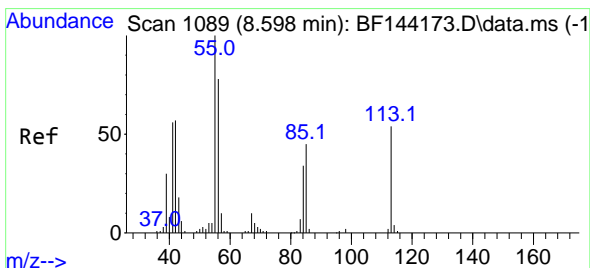
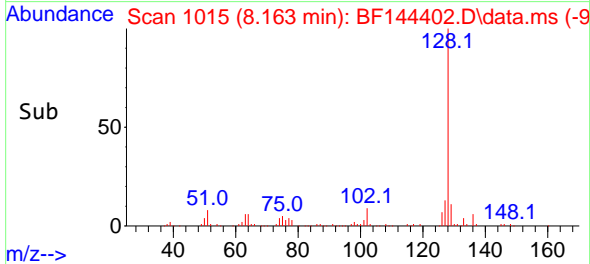
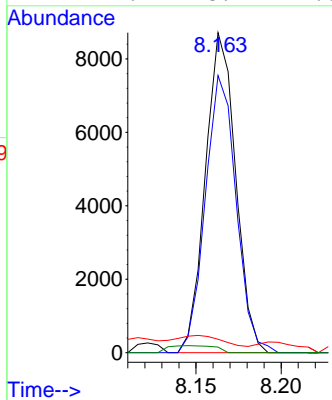
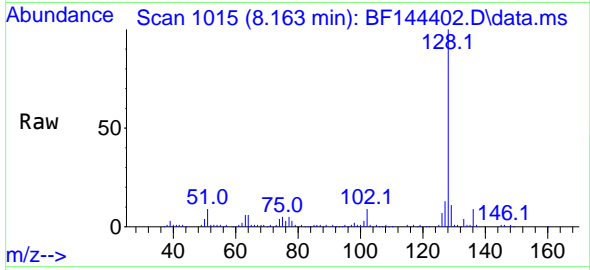


#33
 4-Chloroaniline
 Concen: 3.754 ng
 RT: 8.163 min Scan# 1015
 Delta R.T. -0.065 min
 Lab File: BF144402.D
 Acq: 02 Dec 2025 14:51

Instrument : BNA_F
 ClientSampleId : SB-1125-8

Tgt Ion:127 Resp: 10751

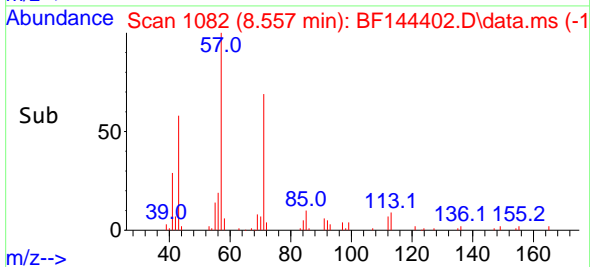
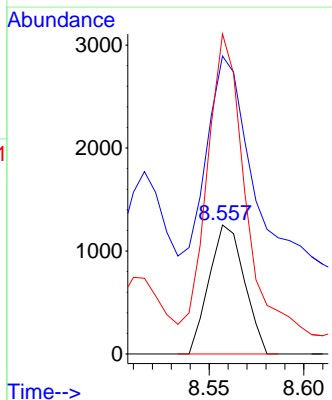
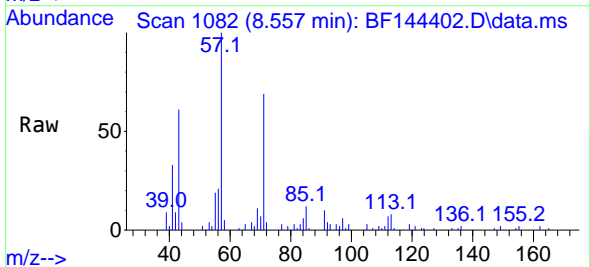
Ion	Ratio	Lower	Upper
127	100		
129	86.6	25.3	37.9#
65	4.2	27.6	41.4#
92	1.7	18.4	27.6#

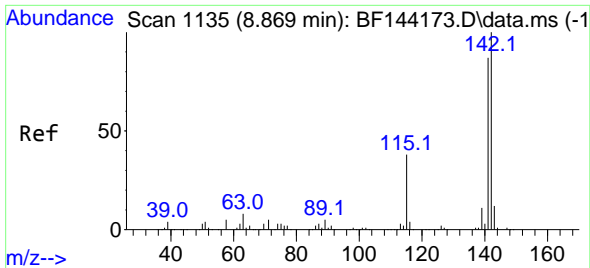


#35
 Caprolactam
 Concen: 2.224 ng
 RT: 8.557 min Scan# 1082
 Delta R.T. -0.065 min
 Lab File: BF144402.D
 Acq: 02 Dec 2025 14:51

Tgt Ion:113 Resp: 1617

Ion	Ratio	Lower	Upper
113	100		
55	231.2	166.8	206.8#
56	248.2	125.9	165.9#

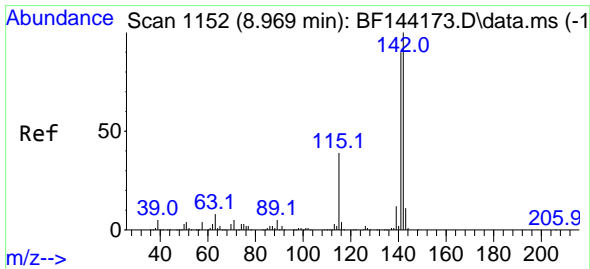
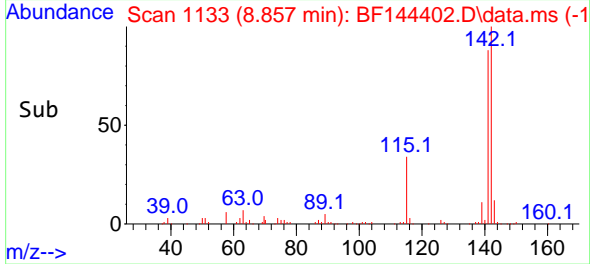
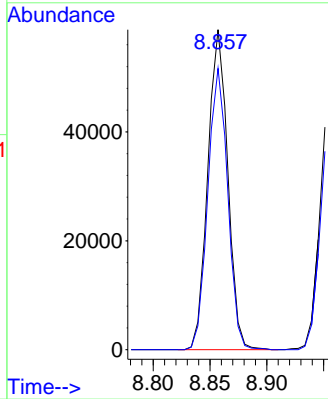
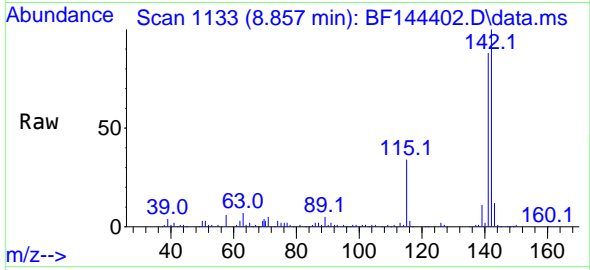




#37
 2-Methylnaphthalene
 Concen: 13.652 ng
 RT: 8.857 min Scan# 1110
 Delta R.T. -0.012 min
 Lab File: BF144402.D
 Acq: 02 Dec 2025 14:51

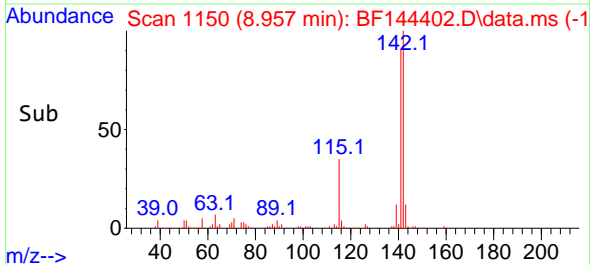
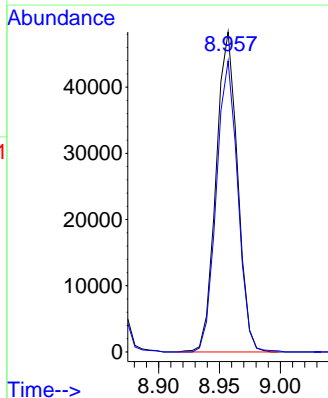
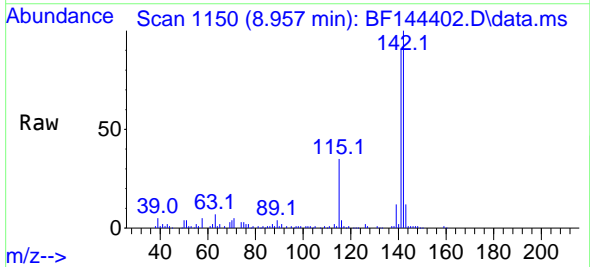
Instrument :
 BNA_F
 ClientSampleId :
 SB-1125-8

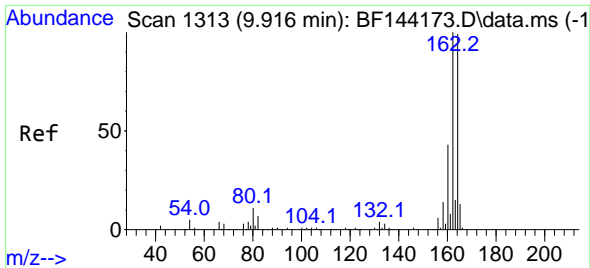
Tgt Ion:142 Resp: 71672
 Ion Ratio Lower Upper
 142 100
 141 87.9 69.9 104.9



#38
 1-Methylnaphthalene
 Concen: 11.736 ng
 RT: 8.957 min Scan# 1150
 Delta R.T. -0.012 min
 Lab File: BF144402.D
 Acq: 02 Dec 2025 14:51

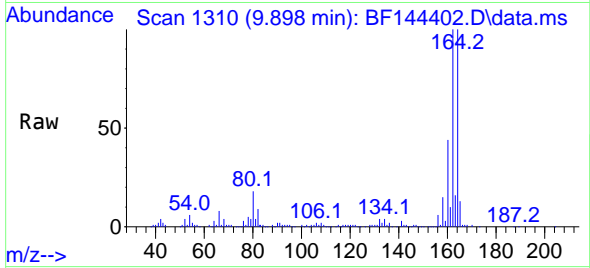
Tgt Ion:142 Resp: 59446
 Ion Ratio Lower Upper
 142 100
 141 90.9 72.1 108.1



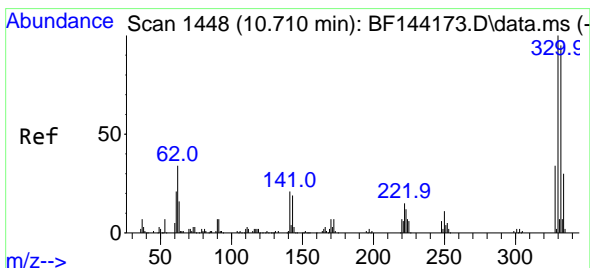
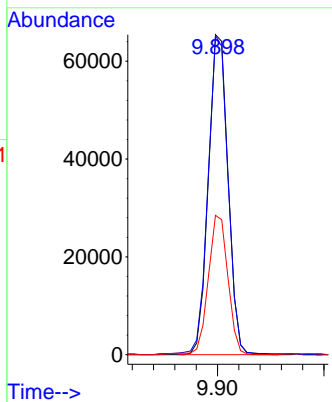
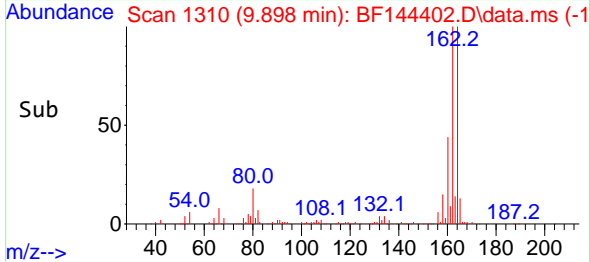


#39
 Acenaphthene-d10
 Concen: 20.000 ng
 RT: 9.898 min Scan# 11
 Delta R.T. -0.018 min
 Lab File: BF144402.D
 Acq: 02 Dec 2025 14:51

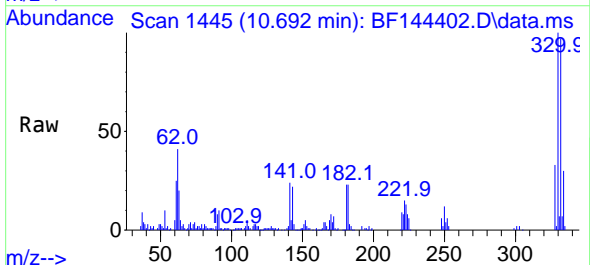
Instrument :
 BNA_F
 ClientSampleId :
 SB-1125-8



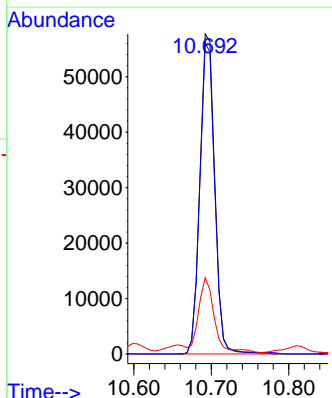
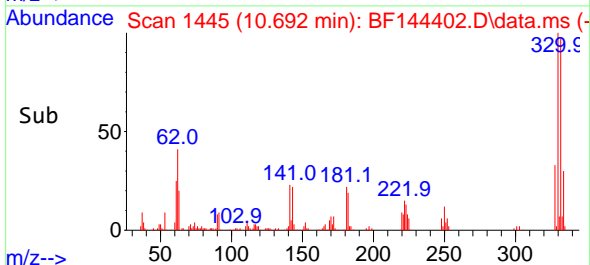
Tgt Ion:164 Resp: 83893
 Ion Ratio Lower Upper
 164 100
 162 99.7 81.1 121.7
 160 43.6 34.5 51.7

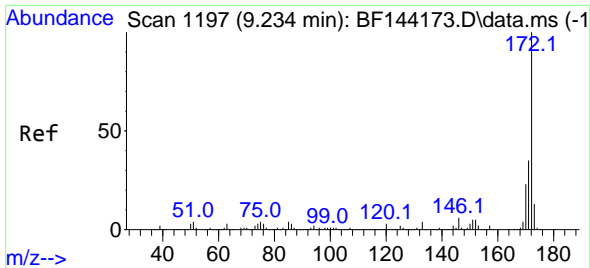


#42
 2,4,6-Tribromophenol
 Concen: 72.876 ng
 RT: 10.692 min Scan# 1445
 Delta R.T. -0.012 min
 Lab File: BF144402.D
 Acq: 02 Dec 2025 14:51



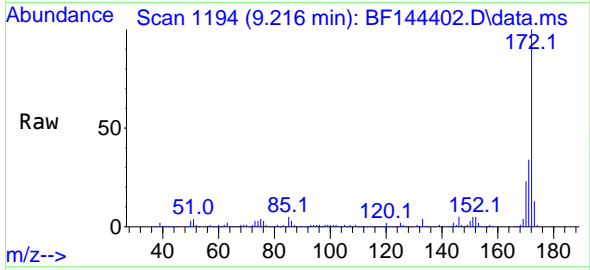
Tgt Ion:330 Resp: 76721
 Ion Ratio Lower Upper
 330 100
 332 96.7 76.7 115.1
 141 24.5 17.8 26.8



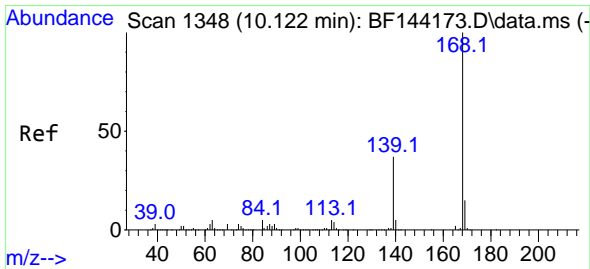
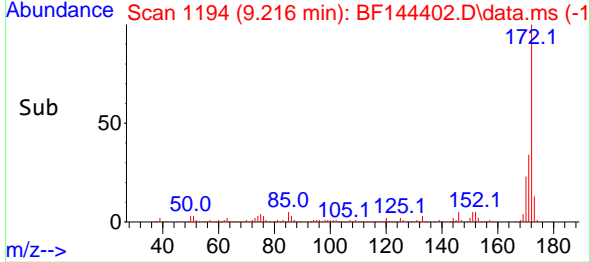
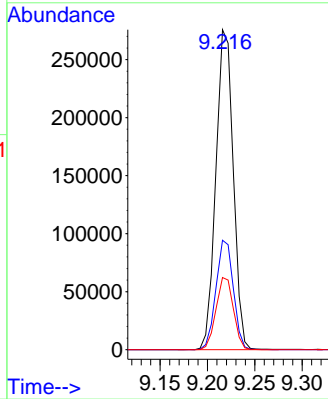


#45
 2-Fluorobiphenyl
 Concen: 62.069 ng
 RT: 9.216 min Scan# 1194
 Delta R.T. -0.012 min
 Lab File: BF144402.D
 Acq: 02 Dec 2025 14:51

Instrument : BNA_F
 ClientSampleId : SB-1125-8

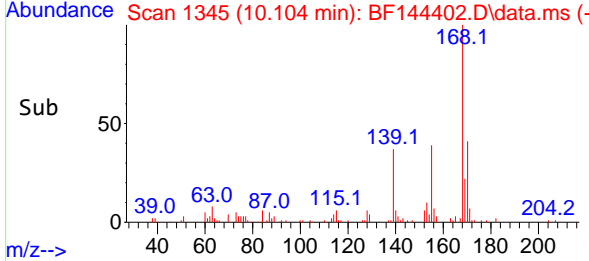
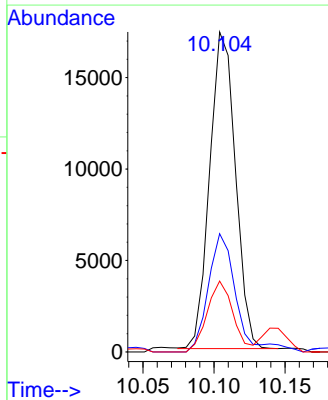
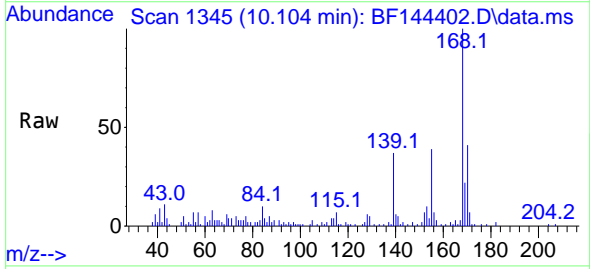


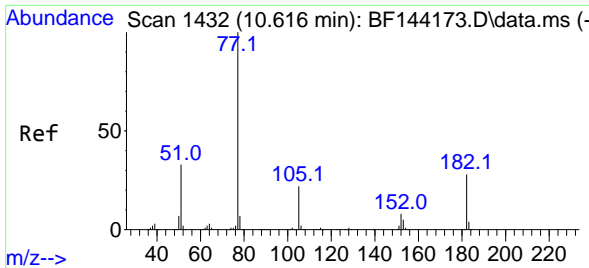
Tgt Ion:172 Resp: 352565
 Ion Ratio Lower Upper
 172 100
 171 34.2 28.1 42.1
 170 22.6 18.6 28.0



#55
 Dibenzofuran
 Concen: 3.426 ng
 RT: 10.104 min Scan# 1345
 Delta R.T. -0.012 min
 Lab File: BF144402.D
 Acq: 02 Dec 2025 14:51

Tgt Ion:168 Resp: 21840
 Ion Ratio Lower Upper
 168 100
 139 37.0 30.2 45.2
 169 22.2 12.2 18.4#



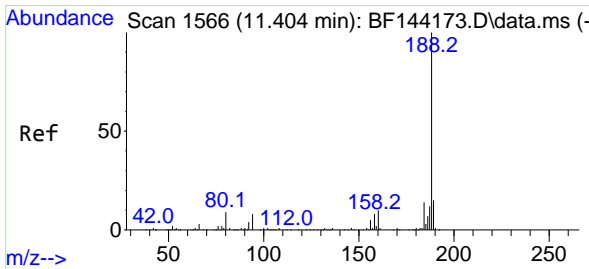
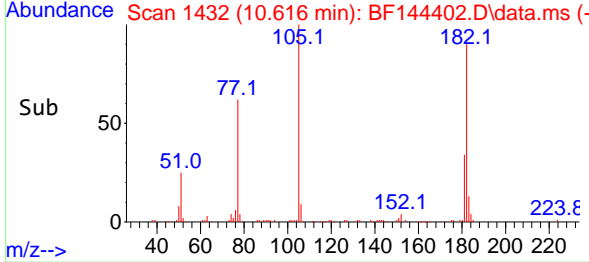
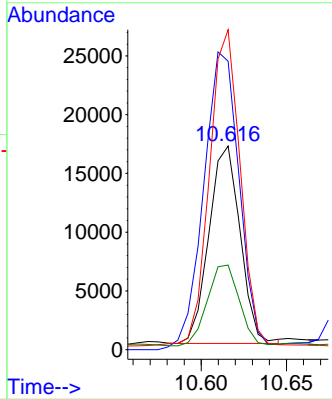
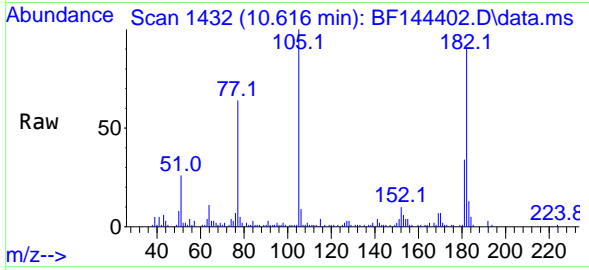


#63
 Azobenzene
 Concen: 4.498 ng
 RT: 10.616 min Scan# 14
 Delta R.T. -0.000 min
 Lab File: BF144402.D
 Acq: 02 Dec 2025 14:51

Instrument :
 BNA_F
 ClientSampleId :
 SB-1125-8

Tgt Ion: 77 Resp: 21449

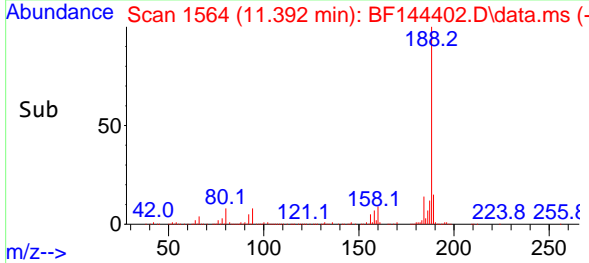
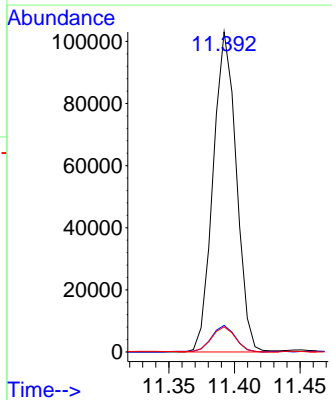
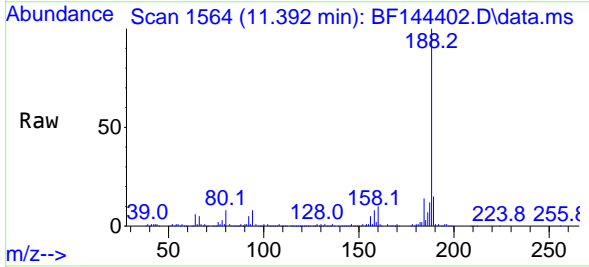
Ion	Ratio	Lower	Upper
77	100		
182	141.7	8.1	48.1#
105	157.2	2.0	42.0#
51	41.6	13.9	53.9

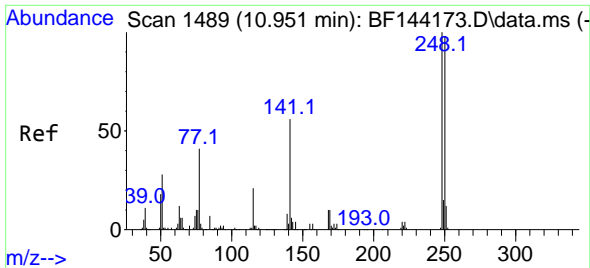


#64
 Phenanthrene-d10
 Concen: 20.000 ng
 RT: 11.392 min Scan# 1564
 Delta R.T. -0.012 min
 Lab File: BF144402.D
 Acq: 02 Dec 2025 14:51

Tgt Ion: 188 Resp: 127031

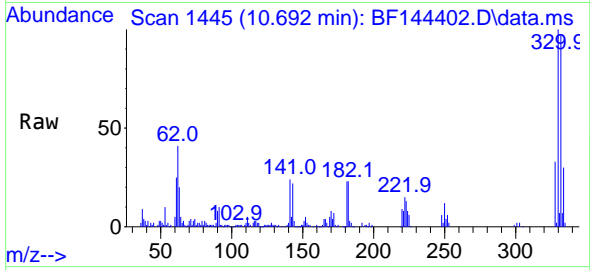
Ion	Ratio	Lower	Upper
188	100		
94	8.3	6.2	9.2
80	7.9	6.9	10.3



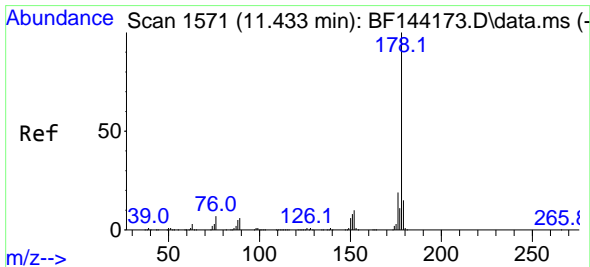
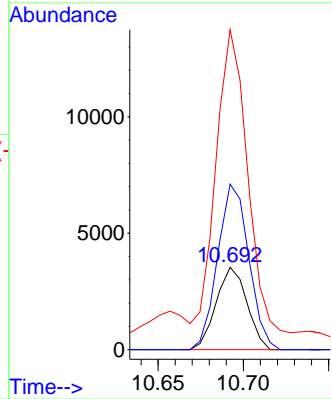
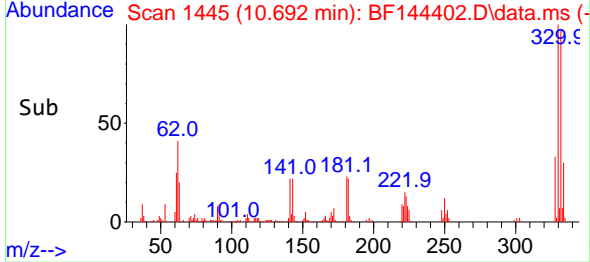


#67
 4-Bromophenyl-phenylether
 Concen: 2.741 ng
 RT: 10.692 min Scan# 14
 Delta R.T. -0.253 min
 Lab File: BF144402.D
 Acq: 02 Dec 2025 14:51

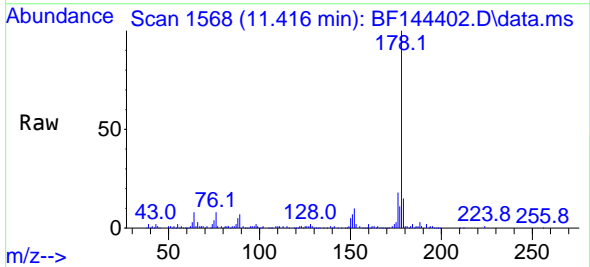
Instrument :
 BNA_F
 ClientSampleId :
 SB-1125-8



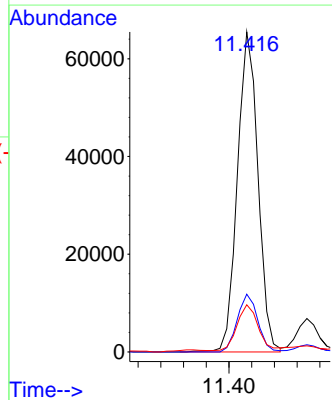
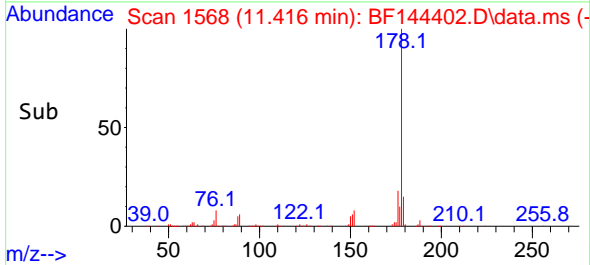
Tgt Ion:248 Resp: 4445
 Ion Ratio Lower Upper
 248 100
 250 200.9 78.4 117.6#
 141 388.4 45.1 67.7#

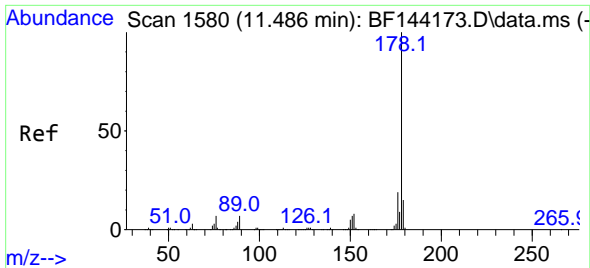


#71
 Phenanthrene
 Concen: 13.021 ng
 RT: 11.416 min Scan# 1568
 Delta R.T. -0.012 min
 Lab File: BF144402.D
 Acq: 02 Dec 2025 14:51



Tgt Ion:178 Resp: 82353
 Ion Ratio Lower Upper
 178 100
 176 18.1 15.5 23.3
 179 14.8 12.2 18.4



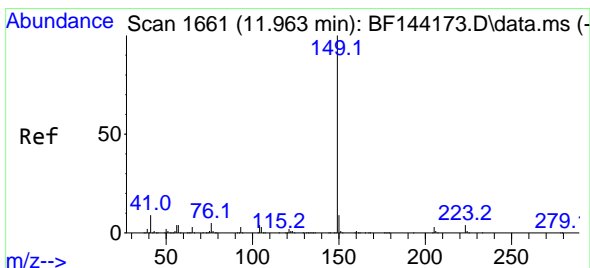
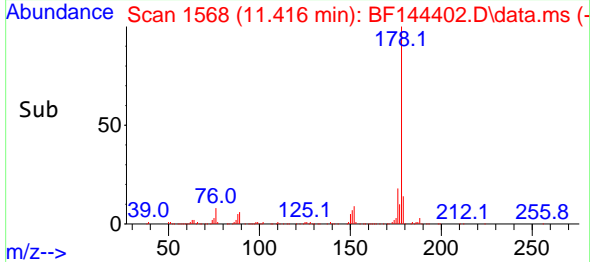
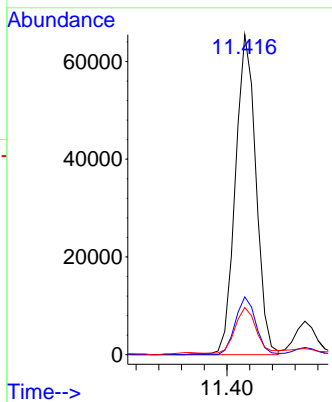
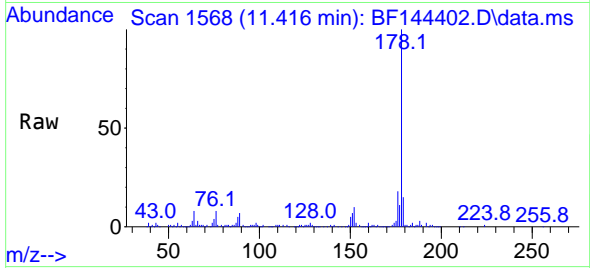


#72
 Anthracene
 Concen: 12.805 ng
 RT: 11.416 min Scan# 11
 Delta R.T. -0.065 min
 Lab File: BF144402.D
 Acq: 02 Dec 2025 14:51

Instrument :
 BNA_F
 ClientSampleId :
 SB-1125-8

Tgt Ion:178 Resp: 82353

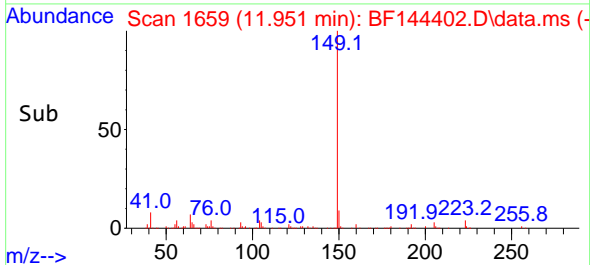
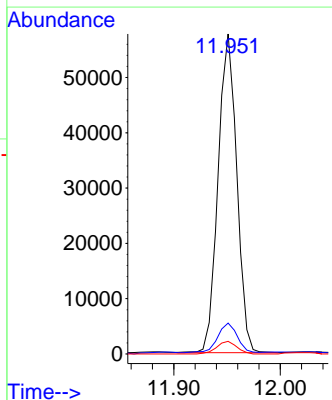
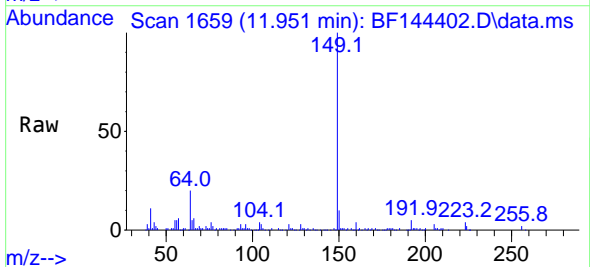
Ion	Ratio	Lower	Upper
178	100		
176	18.1	15.3	22.9
179	14.8	12.0	18.0

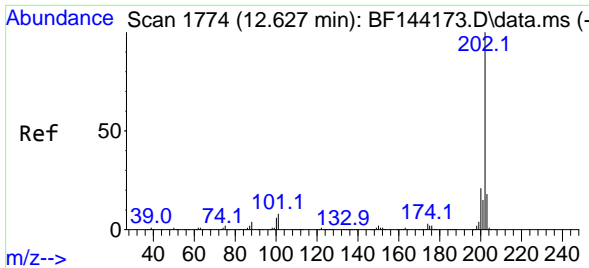


#74
 Di-n-butylphthalate
 Concen: 10.579 ng
 RT: 11.951 min Scan# 1659
 Delta R.T. -0.012 min
 Lab File: BF144402.D
 Acq: 02 Dec 2025 14:51

Tgt Ion:149 Resp: 69939

Ion	Ratio	Lower	Upper
149	100		
150	9.7	7.4	11.0
104	4.0	3.4	5.2



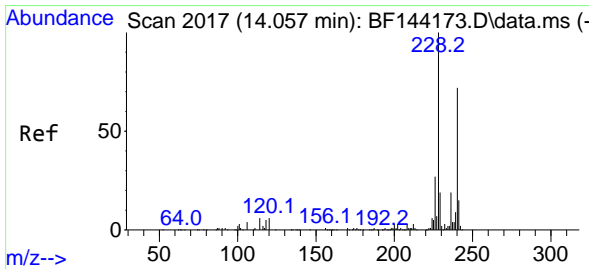
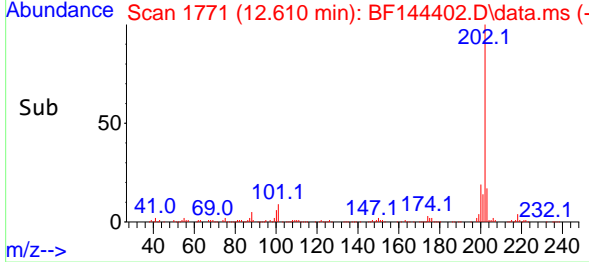
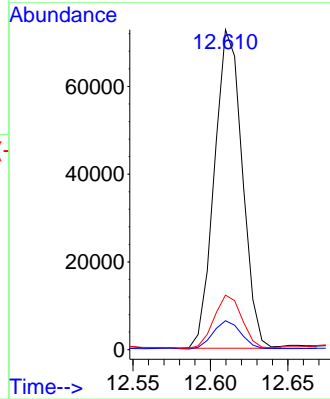
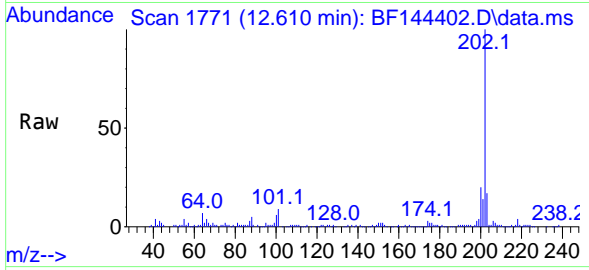


#75
 Fluoranthene
 Concen: 13.897 ng
 RT: 12.610 min Scan# 11
 Delta R.T. -0.012 min
 Lab File: BF144402.D
 Acq: 02 Dec 2025 14:51

Instrument :
 BNA_F
 ClientSampleId :
 SB-1125-8

Tgt Ion: 202 Resp: 90795

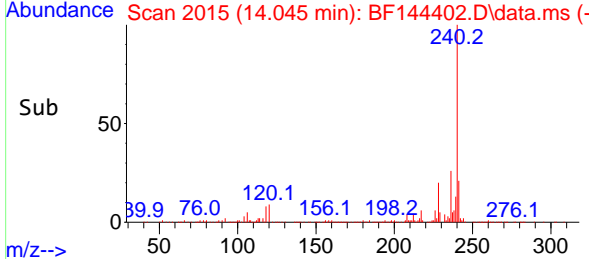
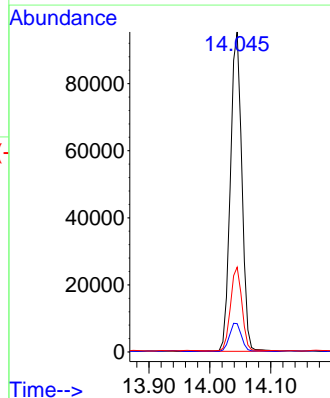
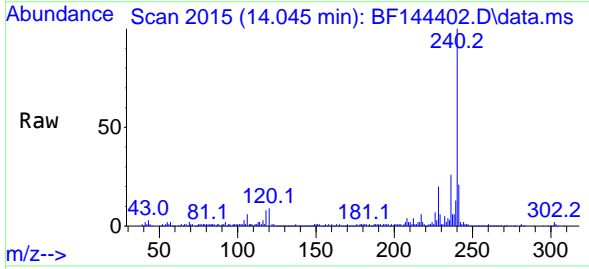
Ion	Ratio	Lower	Upper
202	100		
101	9.1	0.0	27.9
203	17.1	0.0	37.5

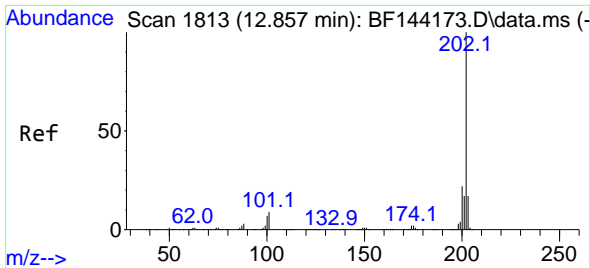


#76
 Chrysene-d12
 Concen: 20.000 ng
 RT: 14.045 min Scan# 2015
 Delta R.T. -0.006 min
 Lab File: BF144402.D
 Acq: 02 Dec 2025 14:51

Tgt Ion: 240 Resp: 124335

Ion	Ratio	Lower	Upper
240	100		
120	8.9	6.6	10.0
236	26.5	21.4	32.2



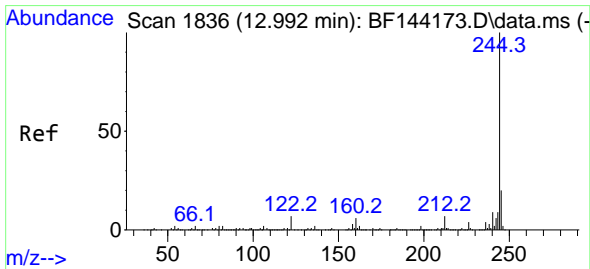
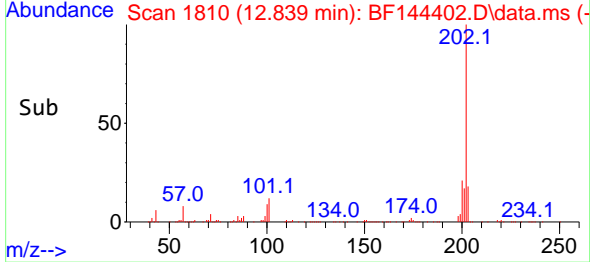
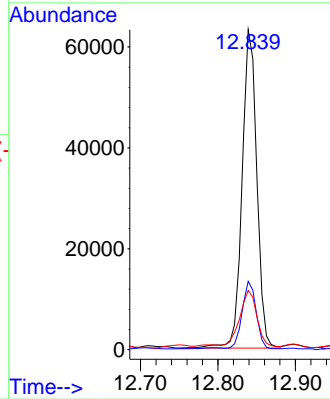
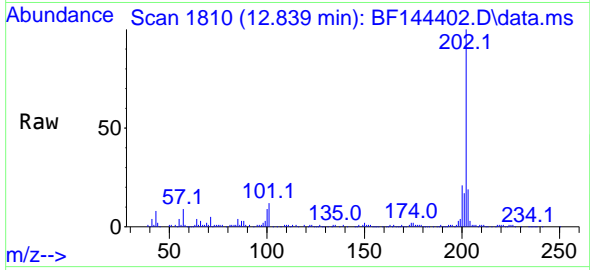


#78
 Pyrene
 Concen: 8.327 ng
 RT: 12.839 min Scan# 1810
 Delta R.T. -0.012 min
 Lab File: BF144402.D
 Acq: 02 Dec 2025 14:51

Instrument :
 BNA_F
 ClientSampleId :
 SB-1125-8

Tgt Ion:202 Resp: 83474

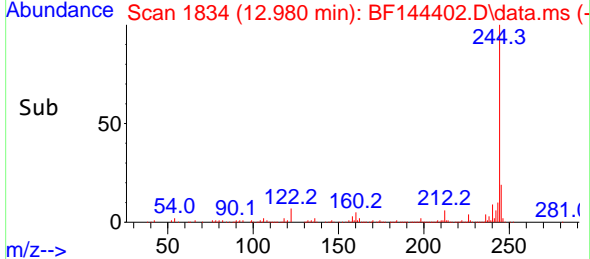
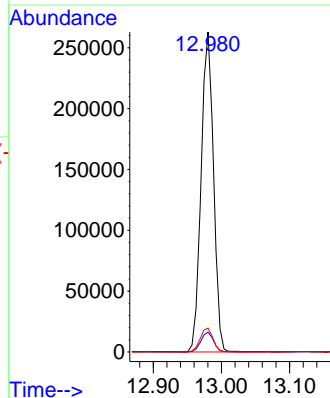
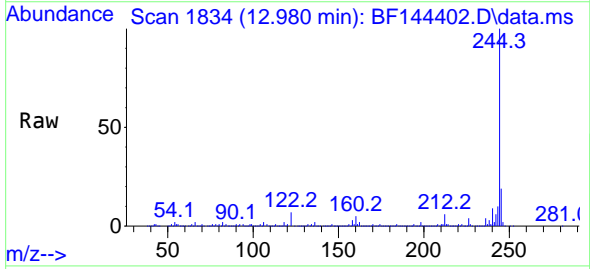
Ion	Ratio	Lower	Upper
202	100		
200	21.3	17.2	25.8
203	18.5	13.7	20.5

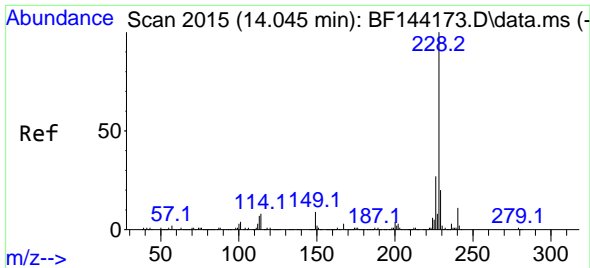


#79
 Terphenyl-d14
 Concen: 42.561 ng
 RT: 12.980 min Scan# 1834
 Delta R.T. -0.012 min
 Lab File: BF144402.D
 Acq: 02 Dec 2025 14:51

Tgt Ion:244 Resp: 333153

Ion	Ratio	Lower	Upper
244	100		
212	6.2	5.3	7.9
122	7.4	5.6	8.4



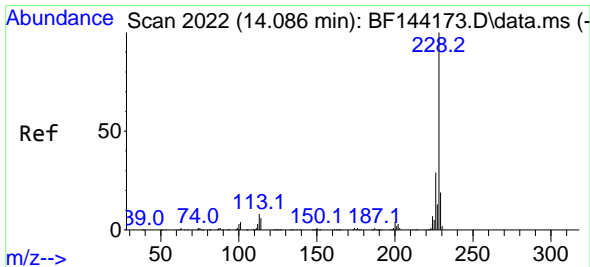
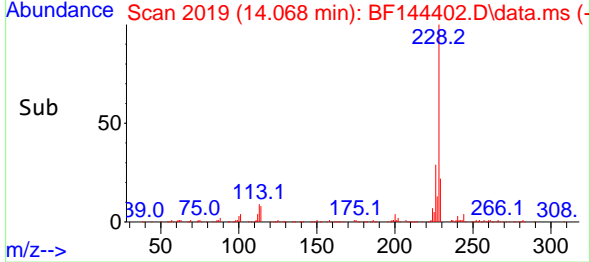
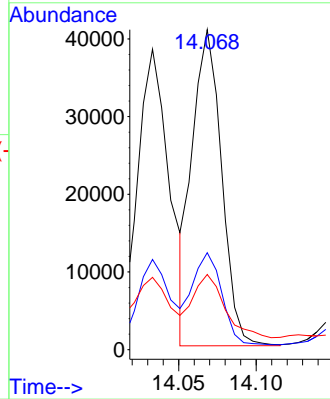
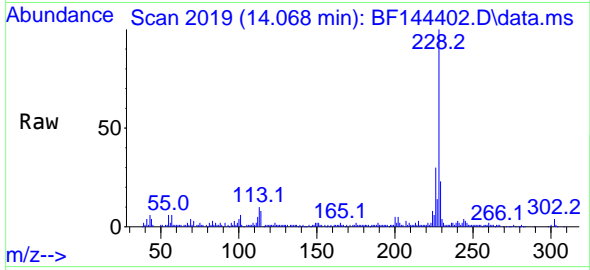


#81
 Benzo(a)anthracene
 Concen: 6.199 ng
 RT: 14.068 min Scan# 2019
 Delta R.T. 0.023 min
 Lab File: BF144402.D
 Acq: 02 Dec 2025 14:51

Instrument :
 BNA_F
 ClientSampleId :
 SB-1125-8

Tgt Ion:228 Resp: 53416

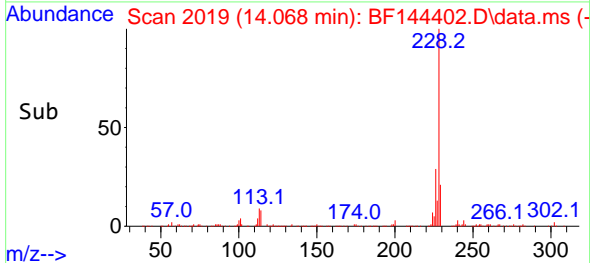
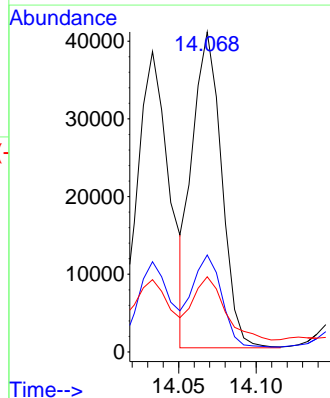
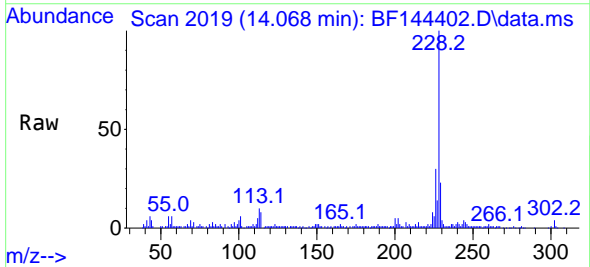
Ion	Ratio	Lower	Upper
228	100		
226	30.3	21.8	32.8
229	23.5	15.8	23.6

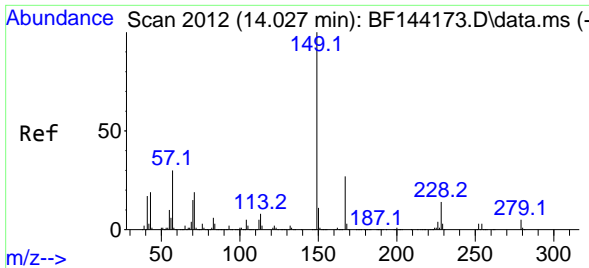


#83
 Chrysene
 Concen: 6.701 ng
 RT: 14.068 min Scan# 2019
 Delta R.T. -0.012 min
 Lab File: BF144402.D
 Acq: 02 Dec 2025 14:51

Tgt Ion:228 Resp: 53306

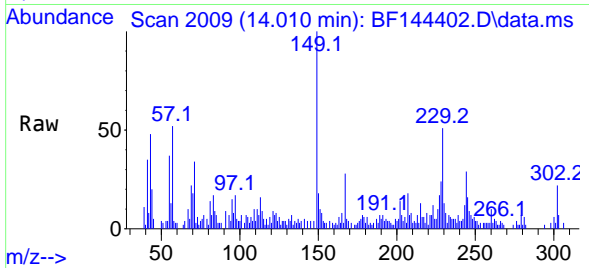
Ion	Ratio	Lower	Upper
228	100		
226	30.3	22.9	34.3
229	23.5	15.0	22.6



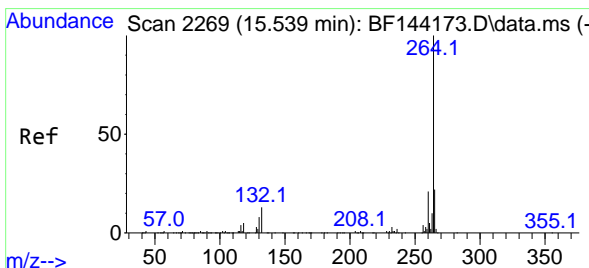
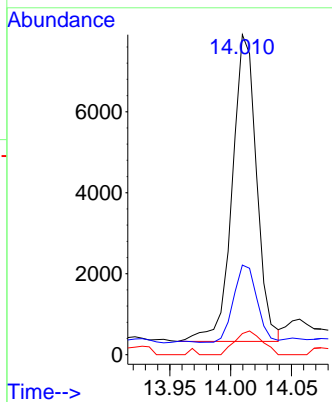
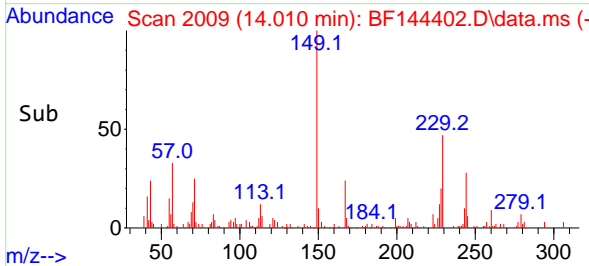


#84
 Bis(2-ethylhexyl)phthalate
 Concen: 2.220 ng
 RT: 14.010 min Scan# 2012
 Delta R.T. -0.018 min
 Lab File: BF144402.D
 Acq: 02 Dec 2025 14:51

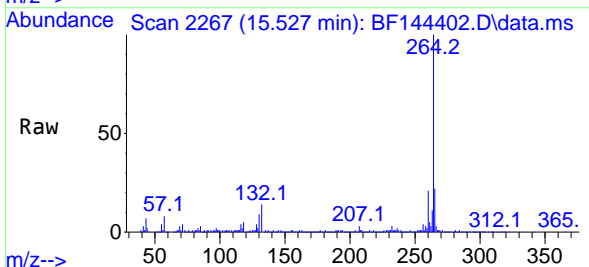
Instrument : BNA_F
 ClientSampleId : SB-1125-8



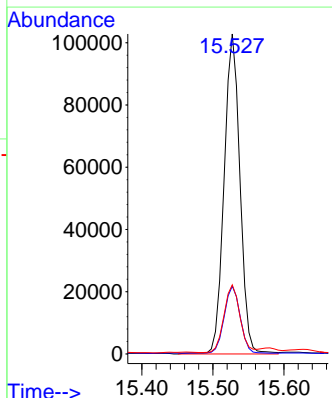
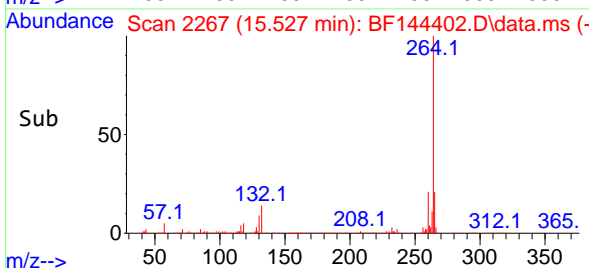
Tgt Ion:149 Resp: 10557
 Ion Ratio Lower Upper
 149 100
 167 28.0 21.8 32.8
 279 6.6 3.7 5.5#

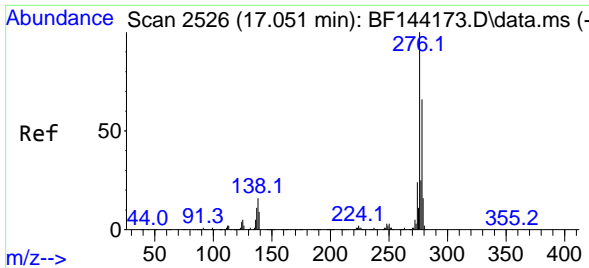


#86
 Perylene-d12
 Concen: 20.000 ng
 RT: 15.527 min Scan# 2267
 Delta R.T. -0.012 min
 Lab File: BF144402.D
 Acq: 02 Dec 2025 14:51



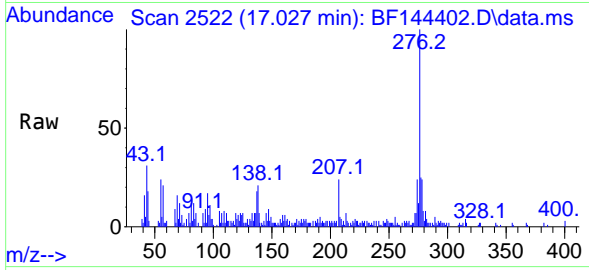
Tgt Ion:264 Resp: 159293
 Ion Ratio Lower Upper
 264 100
 260 21.2 17.1 25.7
 265 21.6 17.4 26.0



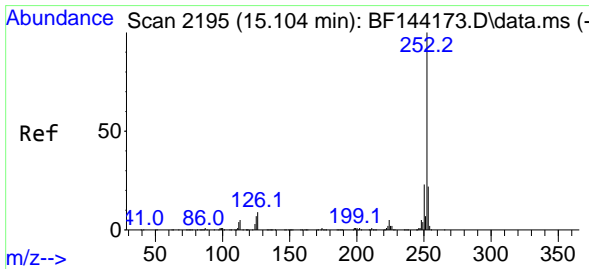
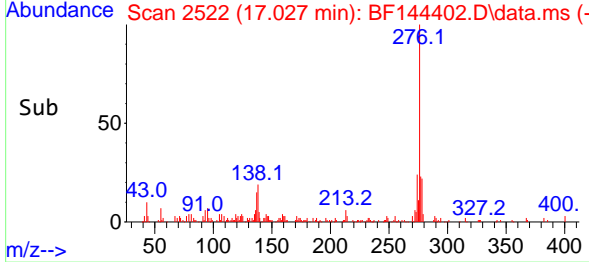
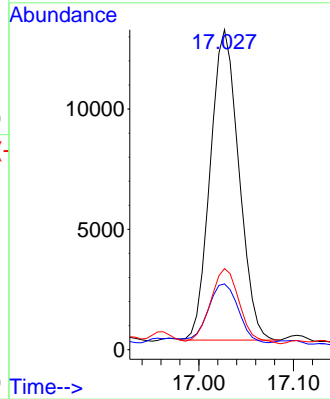


#87
 Indeno(1,2,3-cd)pyrene
 Concen: 2.363 ng
 RT: 17.027 min Scan# 21
 Delta R.T. -0.006 min
 Lab File: BF144402.D
 Acq: 02 Dec 2025 14:51

Instrument :
 BNA_F
 ClientSampleId :
 SB-1125-8

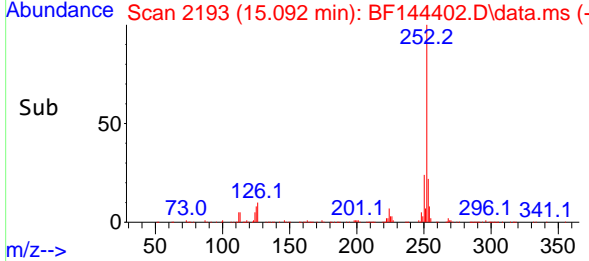
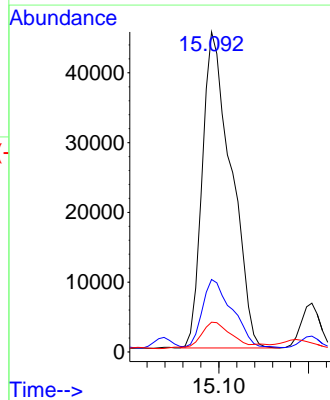
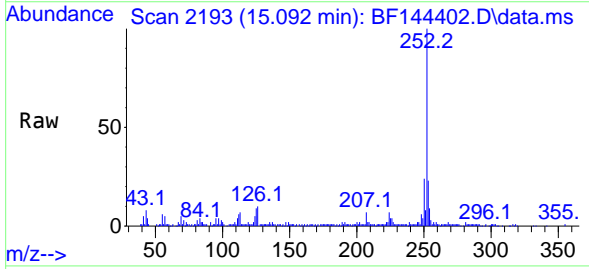


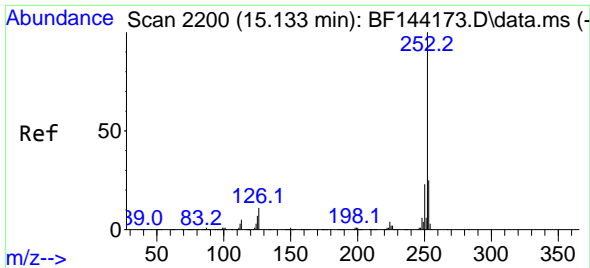
Tgt Ion:276 Resp: 27017
 Ion Ratio Lower Upper
 276 100
 138 20.2 13.9 20.9
 277 24.9 19.8 29.6



#88
 Benzo(b)fluoranthene
 Concen: 11.184 ng
 RT: 15.092 min Scan# 2193
 Delta R.T. -0.006 min
 Lab File: BF144402.D
 Acq: 02 Dec 2025 14:51

Tgt Ion:252 Resp: 101287
 Ion Ratio Lower Upper
 252 100
 253 22.6 17.4 26.2
 125 9.3 5.3 7.9#

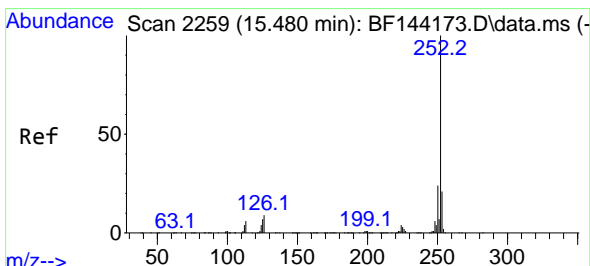
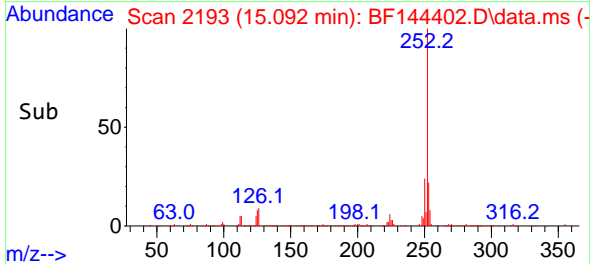
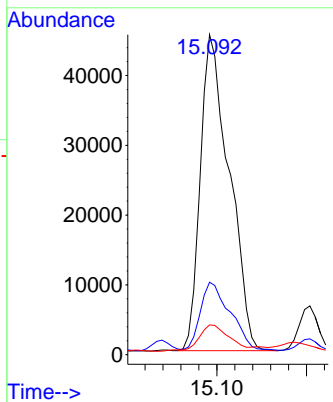
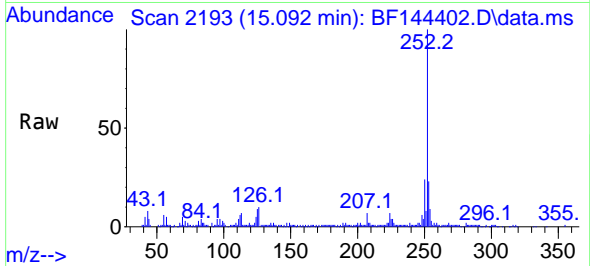




#89
 Benzo(k)fluoranthene
 Concen: 11.949 ng
 RT: 15.092 min Scan# 2119
 Delta R.T. -0.035 min
 Lab File: BF144402.D
 Acq: 02 Dec 2025 14:51

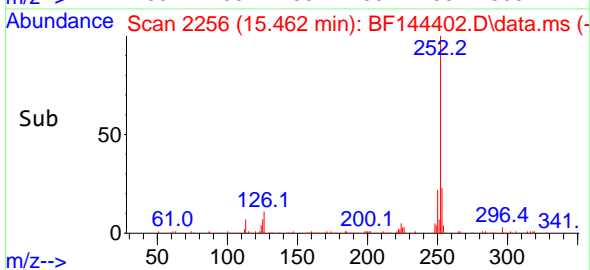
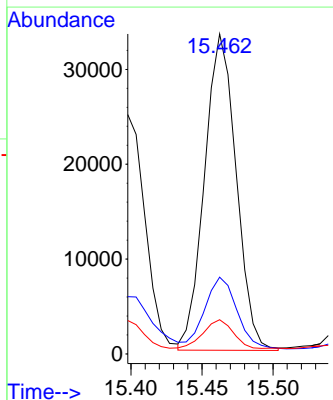
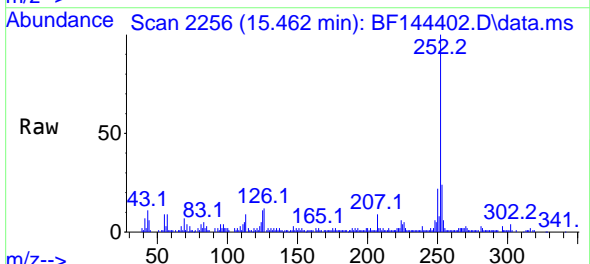
Instrument :
 BNA_F
 ClientSampleId :
 SB-1125-8

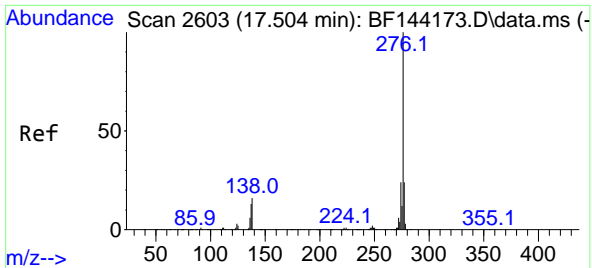
Tgt Ion:252 Resp: 101287
 Ion Ratio Lower Upper
 252 100
 253 22.6 18.0 27.0
 125 9.3 5.4 8.2#



#90
 Benzo(a)pyrene
 Concen: 6.199 ng
 RT: 15.462 min Scan# 2256
 Delta R.T. -0.012 min
 Lab File: BF144402.D
 Acq: 02 Dec 2025 14:51

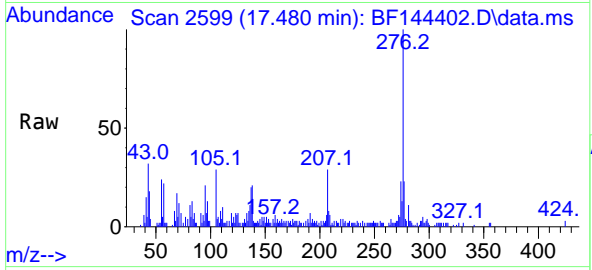
Tgt Ion:252 Resp: 51792
 Ion Ratio Lower Upper
 252 100
 253 24.0 16.7 25.1
 125 10.7 5.7 8.5#





#92
 Benzo(g,h,i)perylene
 Concen: 2.767 ng
 RT: 17.480 min Scan# 21
 Delta R.T. -0.012 min
 Lab File: BF144402.D
 Acq: 02 Dec 2025 14:51

Instrument :
 BNA_F
 ClientSampleId :
 SB-1125-8



Tgt Ion: 276 Resp: 25093

Ion	Ratio	Lower	Upper
276	100		
277	23.2	19.0	28.4
138	20.8	12.9	19.3#

