

Data Path : Z:\svoasrv\HPCHEM1\BNA_F\Data\BF120225\
 Data File : BF144405.D
 Acq On : 02 Dec 2025 16:19
 Operator : RC/JU
 Sample : Q3742-09
 Misc :
 ALS Vial : 9 Sample Multiplier: 1

Instrument :
 BNA_F
 ClientSampleId :
 SB-1125-22

Quant Time: Dec 02 16:41:26 2025
 Quant Method : Z:\svoasrv\HPCHEM1\BNA_F\Methods\8270-BF110525.M
 Quant Title : ASP BNA STANDARDS FOR 5 POINT CALIBRATION
 QLast Update : Wed Nov 05 18:37:33 2025
 Response via : Initial Calibration

Compound	R.T.	QIon	Response	Conc	Units	Dev(Min)

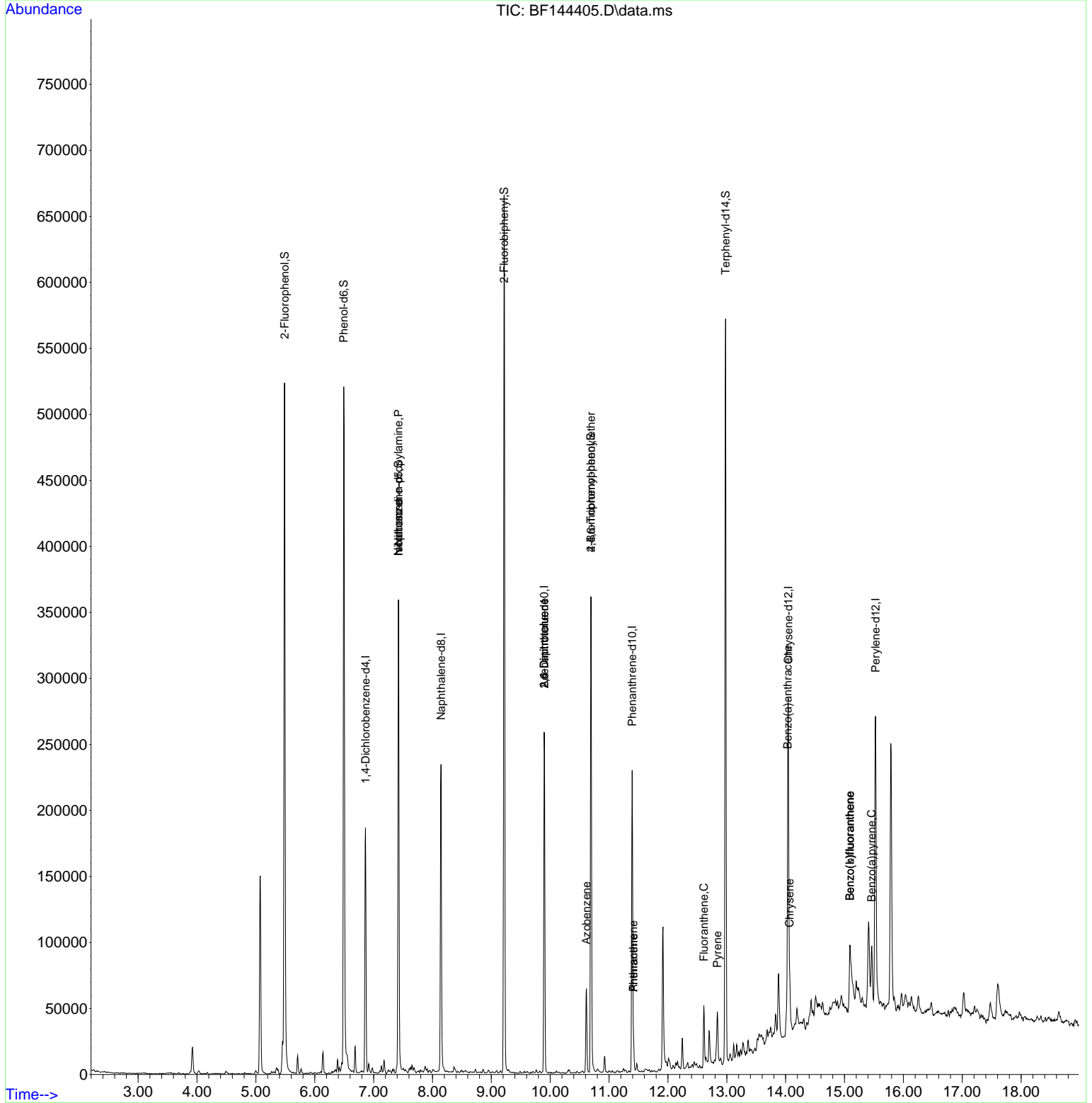
Internal Standards						
1) 1,4-Dichlorobenzene-d4	6.863	152	40154	20.000	ng	-0.01
21) Naphthalene-d8	8.145	136	152656	20.000	ng	-0.01
39) Acenaphthene-d10	9.898	164	84285	20.000	ng	-0.02
64) Phenanthrene-d10	11.392	188	125156	20.000	ng	-0.01
76) Chrysene-d12	14.045	240	113462	20.000	ng	0.00
86) Perylene-d12	15.527	264	140860	20.000	ng	-0.01
System Monitoring Compounds						
5) 2-Fluorophenol	5.487	112	218561	85.177	ng	0.00
7) Phenol-d6	6.492	99	250244	86.070	ng	0.00
23) Nitrobenzene-d5	7.422	82	152774	57.800	ng	-0.01
42) 2,4,6-Tribromophenol	10.692	330	74249	70.200	ng	-0.01
45) 2-Fluorobiphenyl	9.216	172	316592	55.477	ng	-0.01
79) Terphenyl-d14	12.980	244	300123	42.016	ng	-0.01
Target Compounds						
						Qvalue
19) n-Nitroso-di-n-propyla...	7.422	70	22163	11.580	ng	# 75
25) Isophorone	7.422	82	152773	30.557	ng	# 66
51) 2,6-Dinitrotoluene	9.898	165	10219	9.041	ng	# 27
57) 2,4-Dinitrotoluene	9.898	165	10219	6.753	ng	# 27
63) Azobenzene	10.616	77	15894	3.318	ng	# 1
67) 4-Bromophenyl-phenylether	10.692	248	4397	2.752	ng	# 1
71) Phenanthrene	11.416	178	13526	2.171	ng	99
72) Anthracene	11.416	178	13526	2.135	ng	99
75) Fluoranthene	12.610	202	25897	4.023	ng	97
78) Pyrene	12.839	202	23741	2.595	ng	97
81) Benzo(a)anthracene	14.033	228	25019	3.182	ng	92
83) Chrysene	14.068	228	21006	2.894	ng	94
88) Benzo(b)fluoranthene	15.092	252	42317	5.284	ng	# 93
89) Benzo(k)fluoranthene	15.092	252	42317	5.646	ng	# 94
90) Benzo(a)pyrene	15.462	252	24181	3.273	ng	# 92

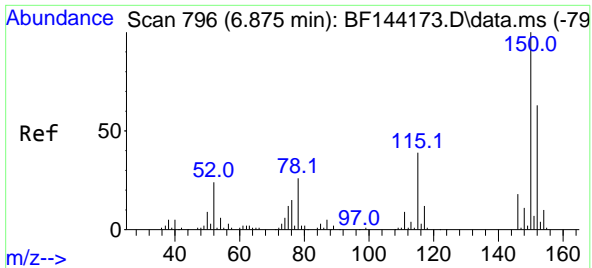
(#) = qualifier out of range (m) = manual integration (+) = signals summed

Data Path : Z:\svoasrv\HPCHEM1\BNA_F\Data\BF120225\
 Data File : BF144405.D
 Acq On : 02 Dec 2025 16:19
 Operator : RC/JU
 Sample : Q3742-09
 Misc :
 ALS Vial : 9 Sample Multiplier: 1

Instrument :
 BNA_F
 ClientSampleId :
 SB-1125-22

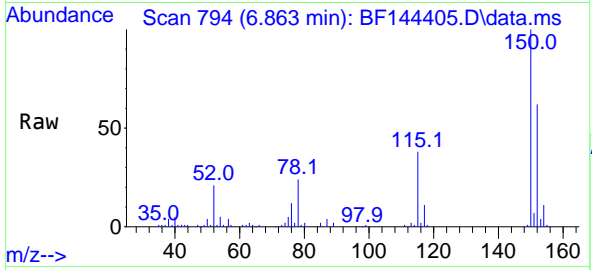
Quant Time: Dec 02 16:41:26 2025
 Quant Method : Z:\svoasrv\HPCHEM1\BNA_F\Methods\8270-BF110525.M
 Quant Title : ASP BNA STANDARDS FOR 5 POINT CALIBRATION
 QLast Update : Wed Nov 05 18:37:33 2025
 Response via : Initial Calibration



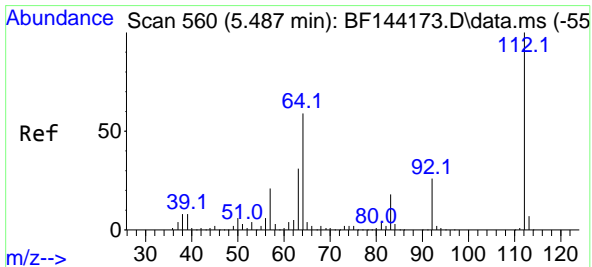
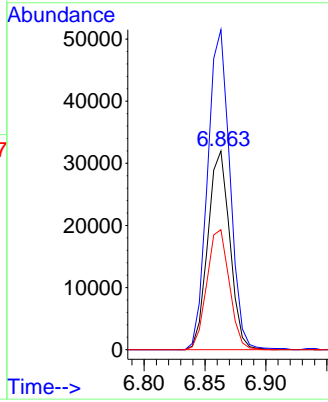
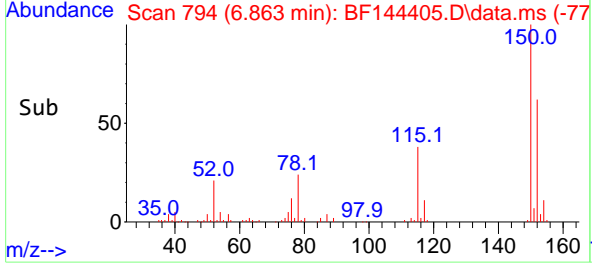


#1
 1,4-Dichlorobenzene-d4
 Concen: 20.000 ng
 RT: 6.863 min Scan# 794
 Delta R.T. -0.012 min
 Lab File: BF144405.D
 Acq: 02 Dec 2025 16:19

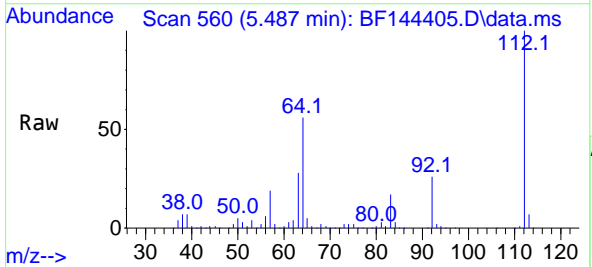
Instrument :
 BNA_F
 ClientSampleId :
 SB-1125-22



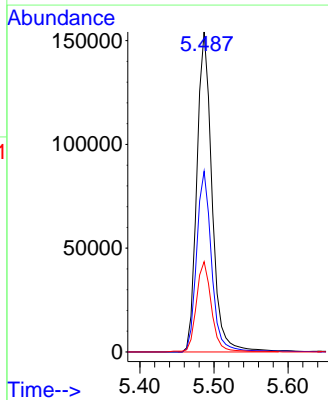
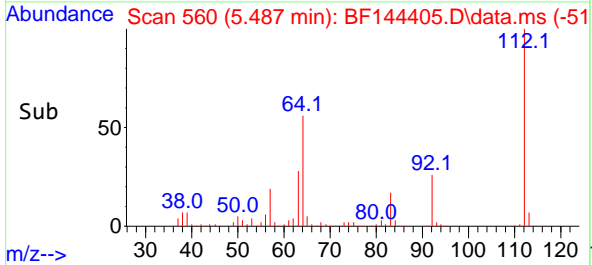
Tgt Ion:152 Resp: 40154
 Ion Ratio Lower Upper
 152 100
 150 161.0 127.4 191.0
 115 60.4 49.5 74.3

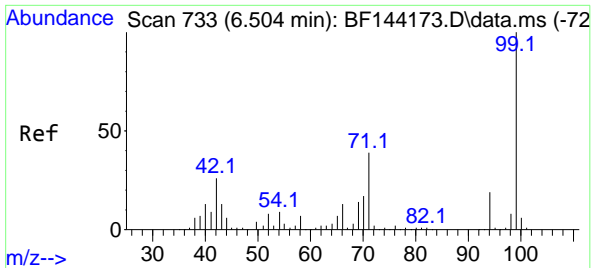


#5
 2-Fluorophenol
 Concen: 85.177 ng
 RT: 5.487 min Scan# 560
 Delta R.T. -0.006 min
 Lab File: BF144405.D
 Acq: 02 Dec 2025 16:19



Tgt Ion:112 Resp: 218561
 Ion Ratio Lower Upper
 112 100
 64 56.4 47.2 70.8
 63 28.2 24.4 36.6

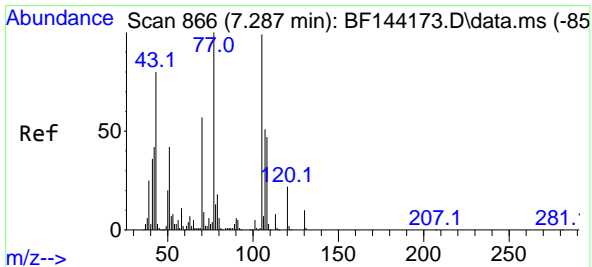
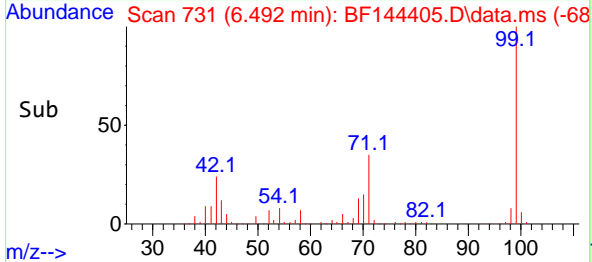
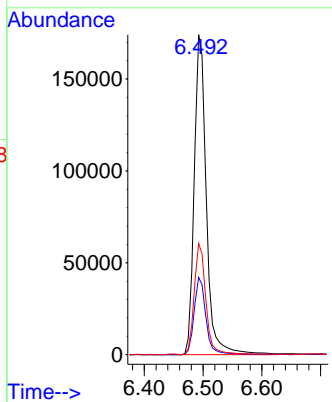
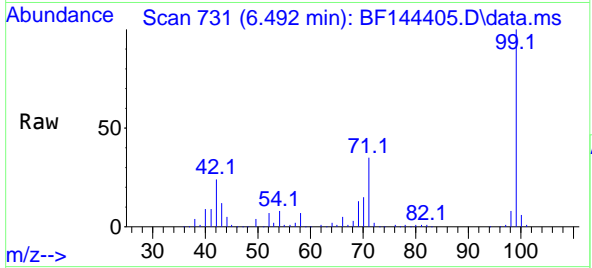




#7
Phenol-d6
Concen: 86.070 ng
RT: 6.492 min Scan# 71
Delta R.T. -0.006 min
Lab File: BF144405.D
Acq: 02 Dec 2025 16:19

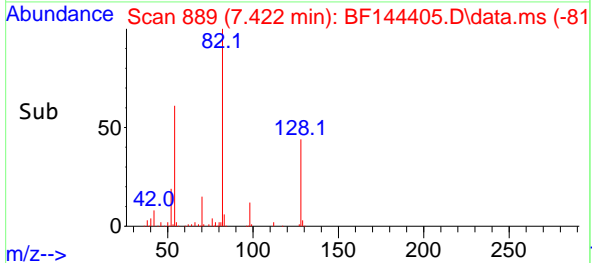
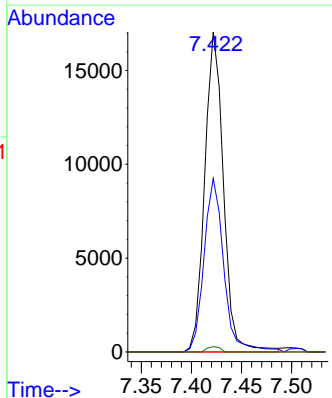
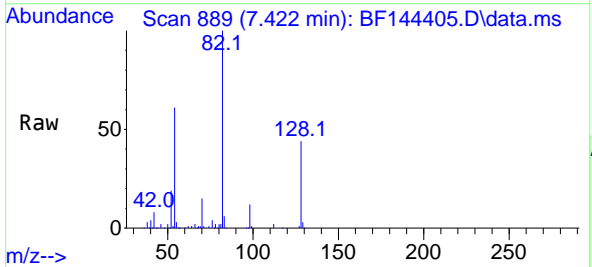
Instrument :
BNA_F
ClientSampleId :
SB-1125-22

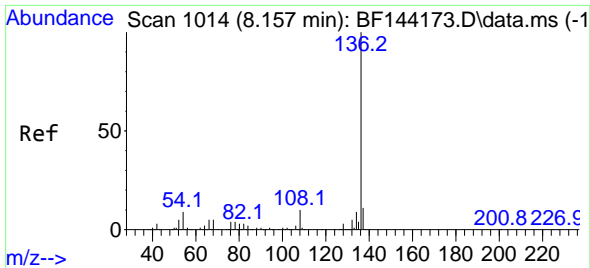
Tgt Ion: 99 Resp: 250244
Ion Ratio Lower Upper
99 100
42 24.2 20.9 31.3
71 34.7 31.4 47.2



#19
n-Nitroso-di-n-propylamine
Concen: 11.580 ng
RT: 7.422 min Scan# 889
Delta R.T. 0.147 min
Lab File: BF144405.D
Acq: 02 Dec 2025 16:19

Tgt Ion: 70 Resp: 22163
Ion Ratio Lower Upper
70 100
42 54.2 58.3 87.5#
101 0.0 7.0 10.6#
130 1.6 14.4 21.6#



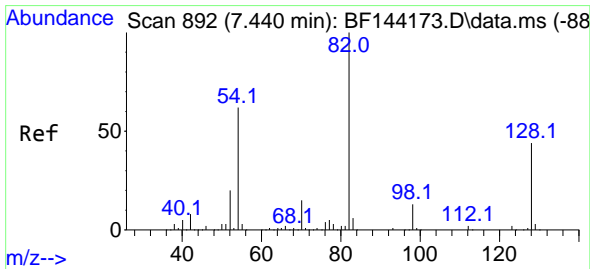
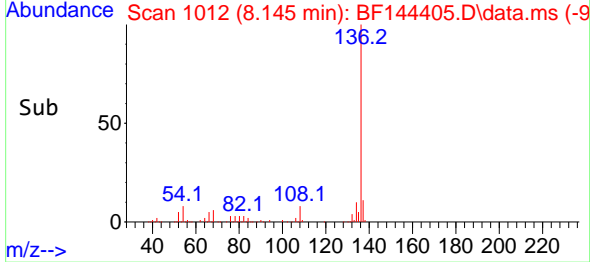
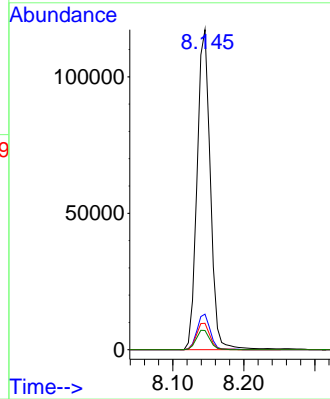
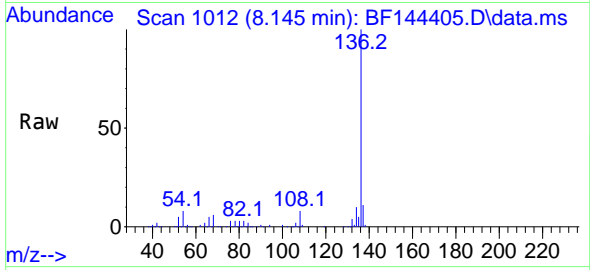


#21
 Naphthalene-d8
 Concen: 20.000 ng
 RT: 8.145 min Scan# 1014
 Delta R.T. -0.012 min
 Lab File: BF144405.D
 Acq: 02 Dec 2025 16:19

Instrument :
 BNA_F
 ClientSampleId :
 SB-1125-22

Tgt Ion:136 Resp: 152656

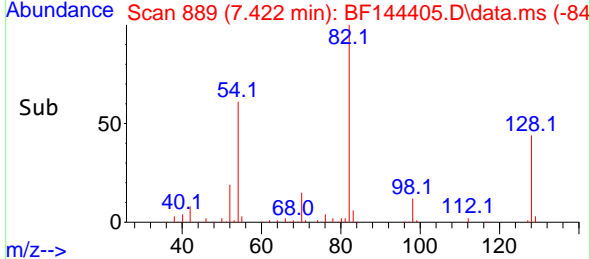
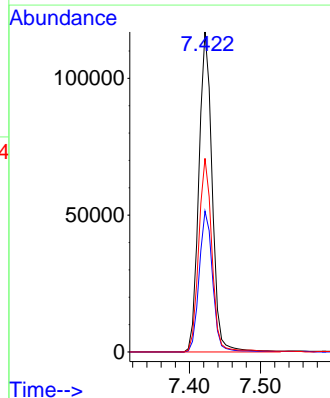
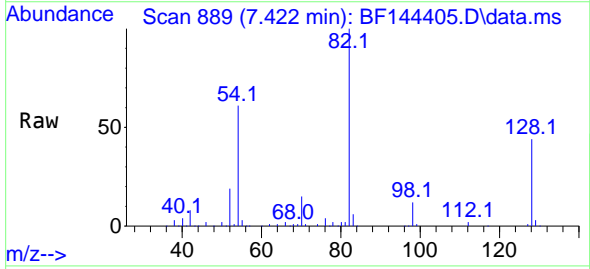
Ion	Ratio	Lower	Upper
136	100		
137	11.1	8.6	13.0
54	8.3	7.0	10.6
68	6.0	4.3	6.5

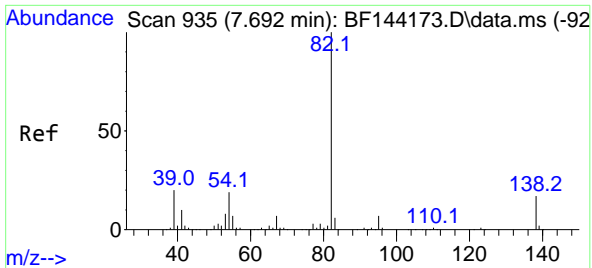


#23
 Nitrobenzene-d5
 Concen: 57.800 ng
 RT: 7.422 min Scan# 889
 Delta R.T. -0.012 min
 Lab File: BF144405.D
 Acq: 02 Dec 2025 16:19

Tgt Ion: 82 Resp: 152774

Ion	Ratio	Lower	Upper
82	100		
128	44.0	34.7	52.1
54	60.5	49.5	74.3

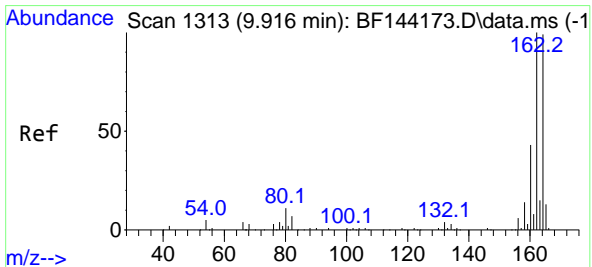
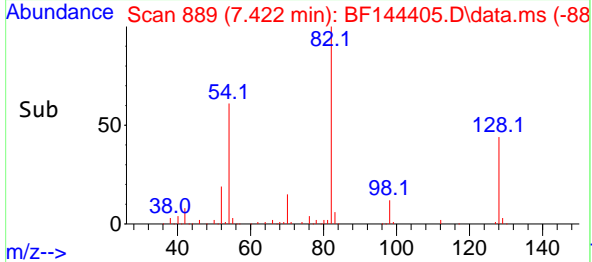
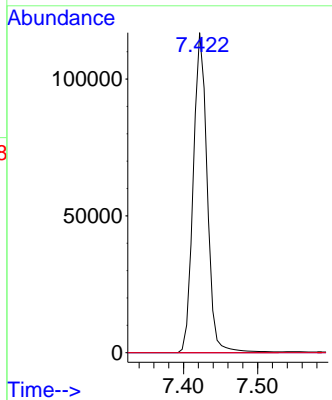
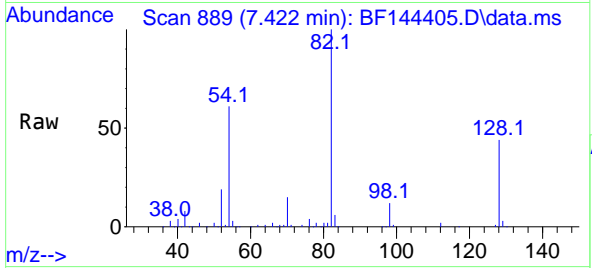




#25
 Isophorone
 Concen: 30.557 ng
 RT: 7.422 min Scan# 81
 Delta R.T. -0.265 min
 Lab File: BF144405.D
 Acq: 02 Dec 2025 16:19

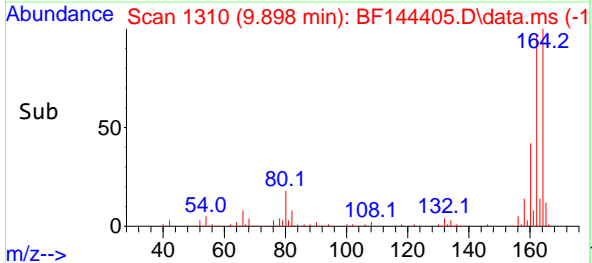
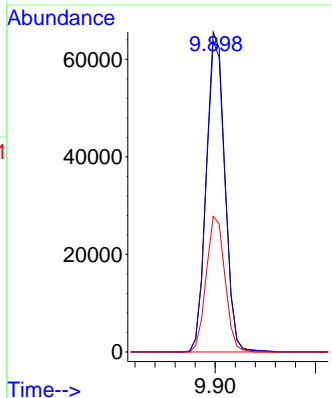
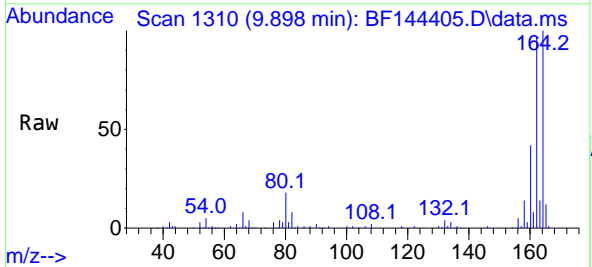
Instrument :
 BNA_F
 ClientSampleId :
 SB-1125-22

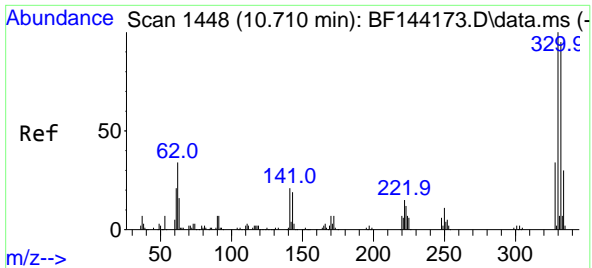
Tgt Ion: 82 Resp: 152773
 Ion Ratio Lower Upper
 82 100
 95 0.0 5.5 8.3#
 138 0.0 13.7 20.5#



#39
 Acenaphthene-d10
 Concen: 20.000 ng
 RT: 9.898 min Scan# 1310
 Delta R.T. -0.018 min
 Lab File: BF144405.D
 Acq: 02 Dec 2025 16:19

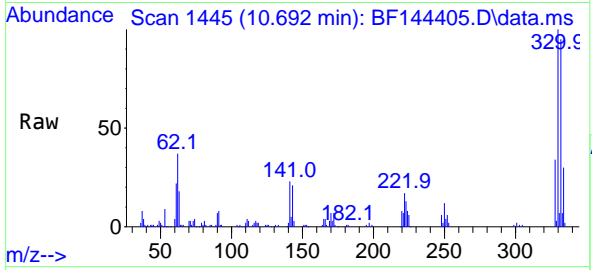
Tgt Ion: 164 Resp: 84285
 Ion Ratio Lower Upper
 164 100
 162 97.1 81.1 121.7
 160 42.4 34.5 51.7



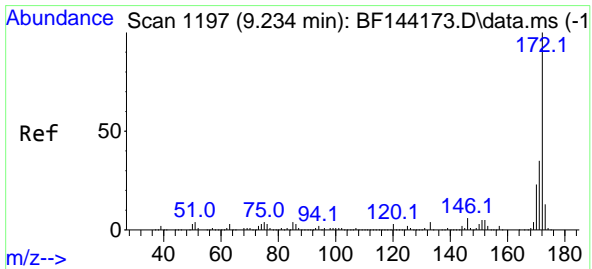
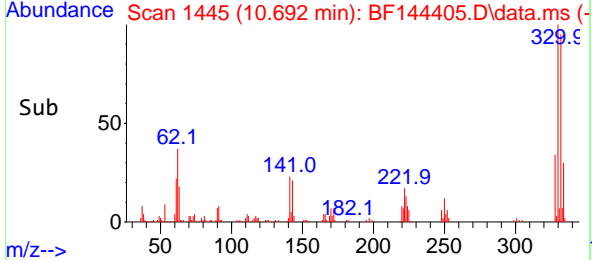
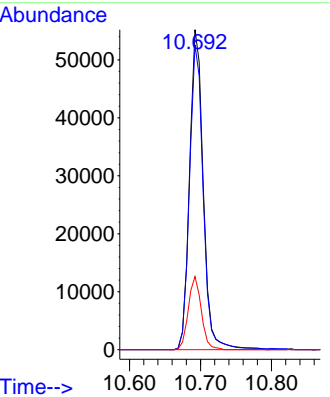


#42
 2,4,6-Tribromophenol
 Concen: 70.200 ng
 RT: 10.692 min Scan# 14
 Delta R.T. -0.012 min
 Lab File: BF144405.D
 Acq: 02 Dec 2025 16:19

Instrument : BNA_F
 ClientSampleId : SB-1125-22

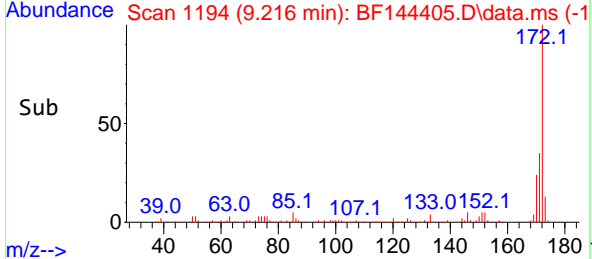
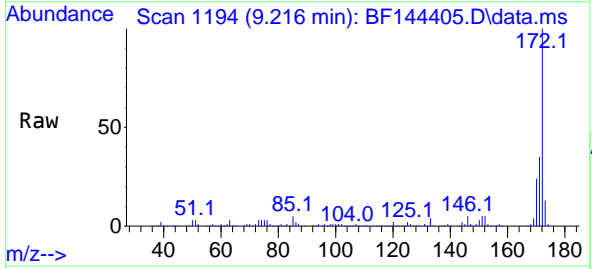
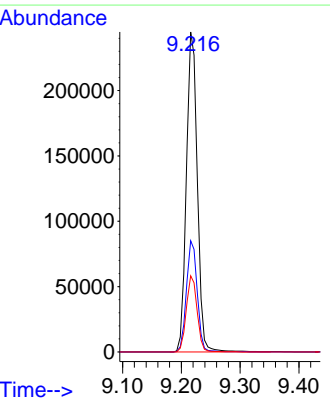


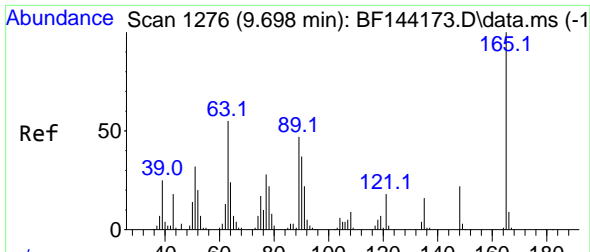
Tgt Ion:330 Resp: 74249
 Ion Ratio Lower Upper
 330 100
 332 95.3 76.7 115.1
 141 21.7 17.8 26.8



#45
 2-Fluorobiphenyl
 Concen: 55.477 ng
 RT: 9.216 min Scan# 1194
 Delta R.T. -0.012 min
 Lab File: BF144405.D
 Acq: 02 Dec 2025 16:19

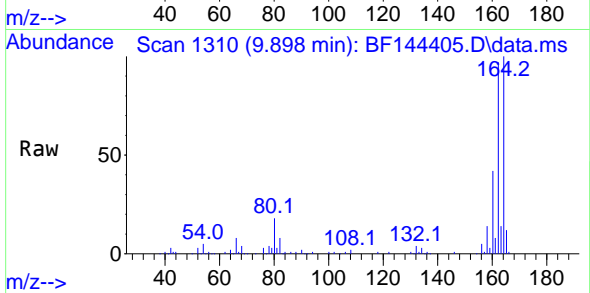
Tgt Ion:172 Resp: 316592
 Ion Ratio Lower Upper
 172 100
 171 34.8 28.1 42.1
 170 23.8 18.6 28.0



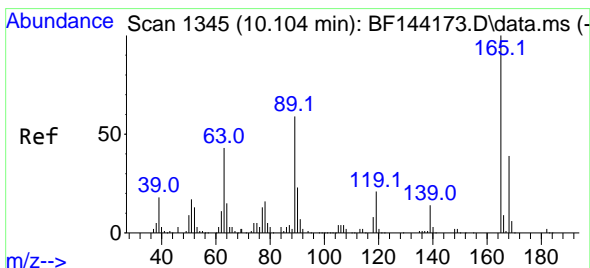
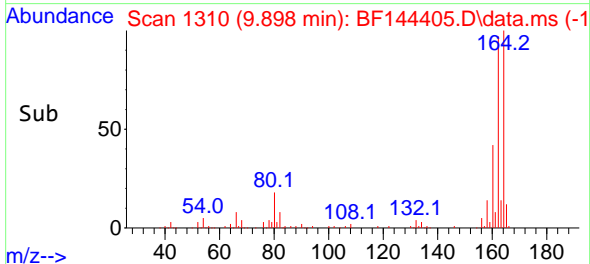
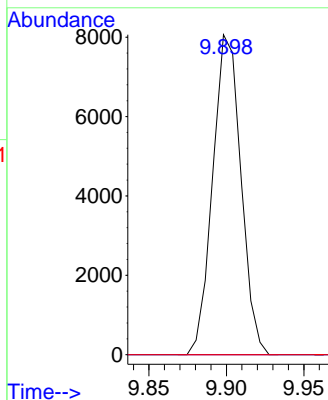


#51
 2,6-Dinitrotoluene
 Concen: 9.041 ng
 RT: 9.898 min Scan# 1110
 Delta R.T. 0.206 min
 Lab File: BF144405.D
 Acq: 02 Dec 2025 16:19

Instrument :
 BNA_F
 ClientSampleId :
 SB-1125-22

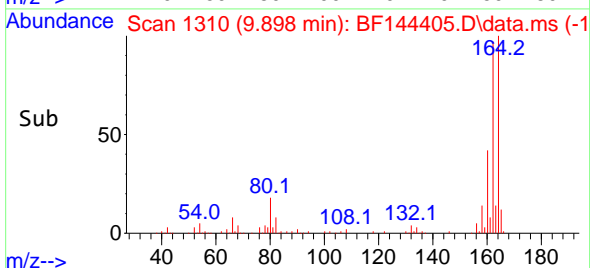
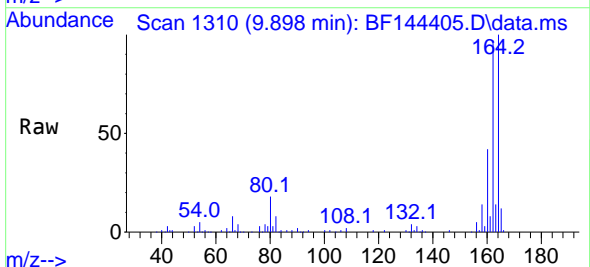
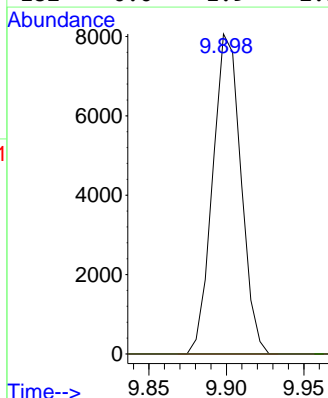


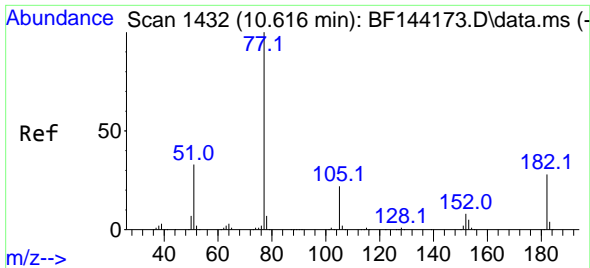
Tgt Ion:165 Resp: 10219
 Ion Ratio Lower Upper
 165 100
 63 0.0 43.8 65.8#
 89 0.0 37.5 56.3#



#57
 2,4-Dinitrotoluene
 Concen: 6.753 ng
 RT: 9.898 min Scan# 1310
 Delta R.T. -0.200 min
 Lab File: BF144405.D
 Acq: 02 Dec 2025 16:19

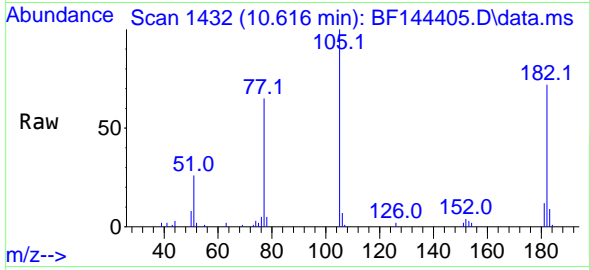
Tgt Ion:165 Resp: 10219
 Ion Ratio Lower Upper
 165 100
 63 0.0 35.5 53.3#
 89 0.0 47.4 71.2#
 182 0.0 1.9 2.9#





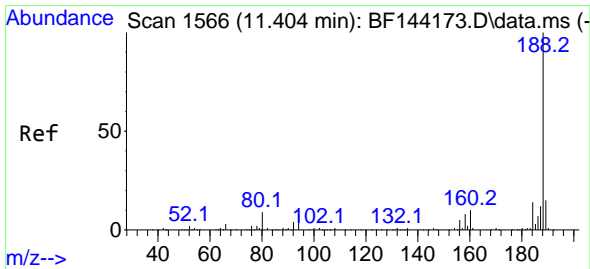
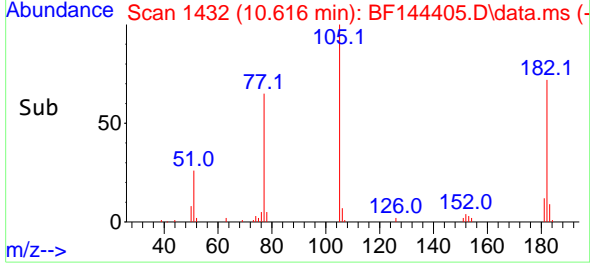
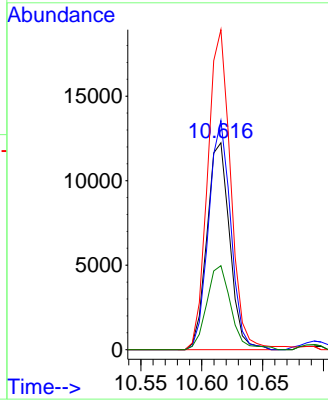
#63
 Azobenzene
 Concen: 3.318 ng
 RT: 10.616 min Scan# 14
 Delta R.T. -0.000 min
 Lab File: BF144405.D
 Acq: 02 Dec 2025 16:19

Instrument : BNA_F
 Client Sampled : SB-1125-22



Tgt Ion: 77 Resp: 15894

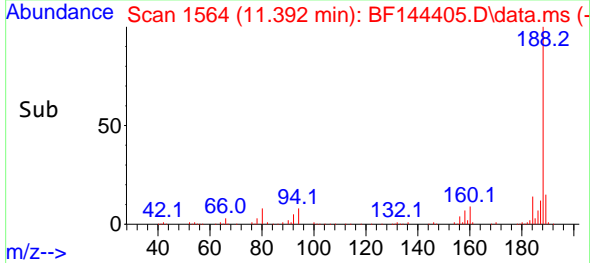
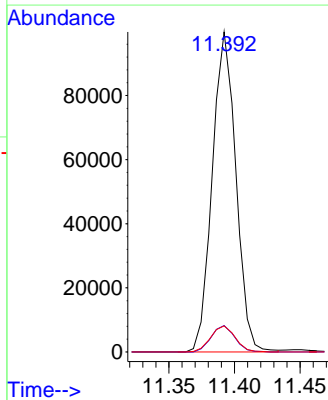
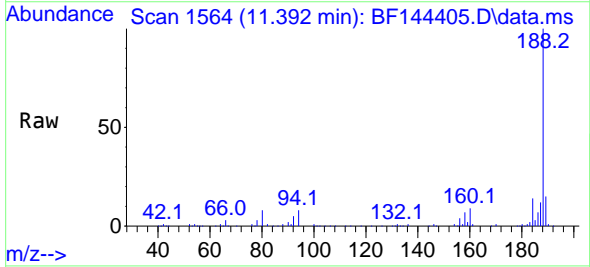
Ion	Ratio	Lower	Upper
77	100		
182	110.7	8.1	48.1#
105	154.6	2.0	42.0#
51	40.6	13.9	53.9

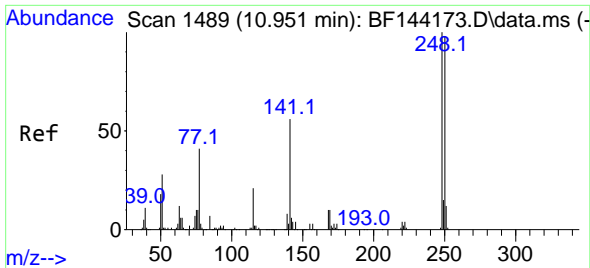


#64
 Phenanthrene-d10
 Concen: 20.000 ng
 RT: 11.392 min Scan# 1564
 Delta R.T. -0.012 min
 Lab File: BF144405.D
 Acq: 02 Dec 2025 16:19

Tgt Ion: 188 Resp: 125156

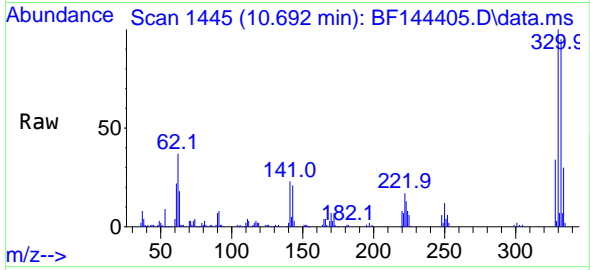
Ion	Ratio	Lower	Upper
188	100		
94	8.2	6.2	9.2
80	8.2	6.9	10.3





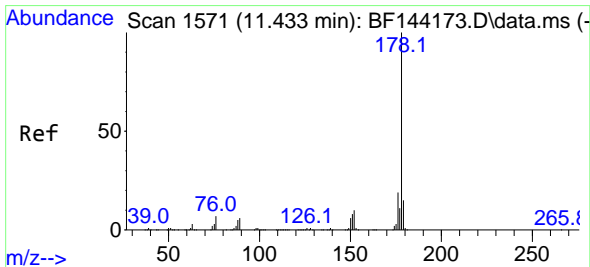
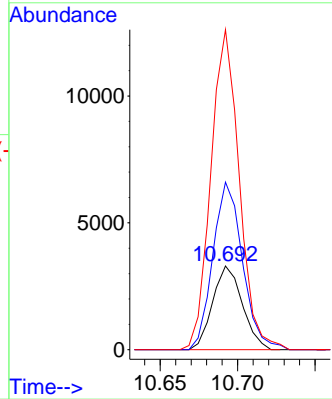
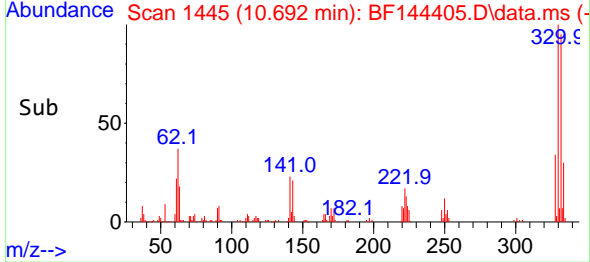
#67
 4-Bromophenyl-phenylether
 Concen: 2.752 ng
 RT: 10.692 min Scan# 1489
 Delta R.T. -0.253 min
 Lab File: BF144405.D
 Acq: 02 Dec 2025 16:19

Instrument : BNA_F
 ClientSampleId : SB-1125-22

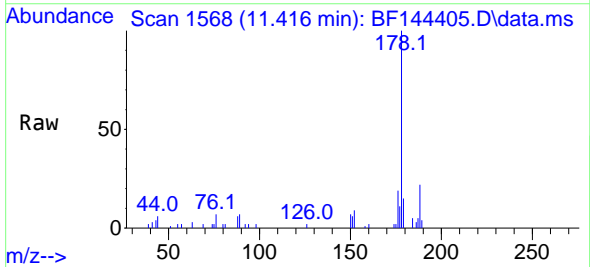


Tgt Ion:248 Resp: 4397

Ion	Ratio	Lower	Upper
248	100		
250	200.4	78.4	117.6#
141	382.7	45.1	67.7#

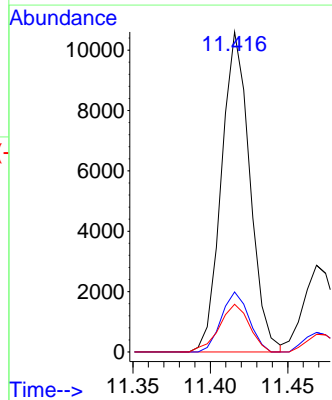
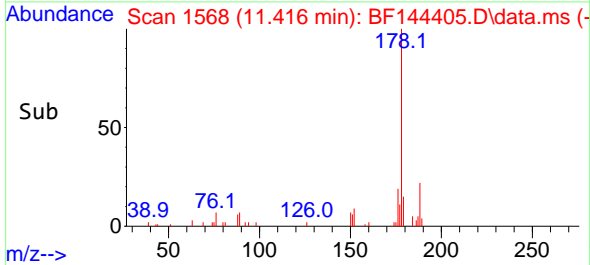


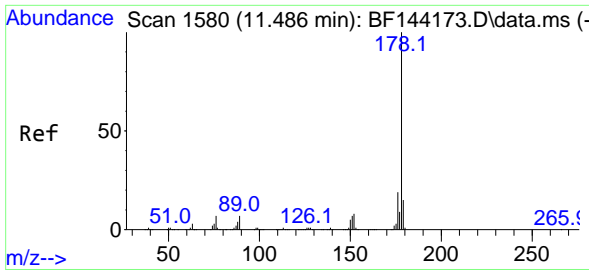
#71
 Phenanthrene
 Concen: 2.171 ng
 RT: 11.416 min Scan# 1568
 Delta R.T. -0.012 min
 Lab File: BF144405.D
 Acq: 02 Dec 2025 16:19



Tgt Ion:178 Resp: 13526

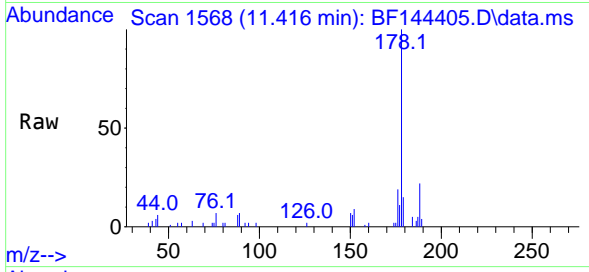
Ion	Ratio	Lower	Upper
178	100		
176	18.7	15.5	23.3
179	14.9	12.2	18.4



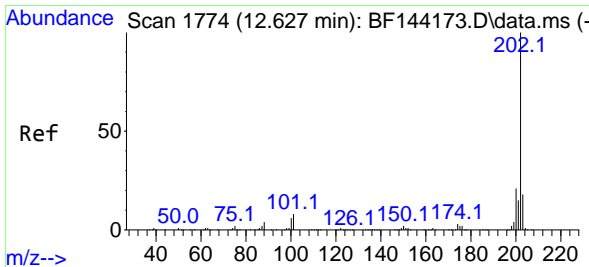
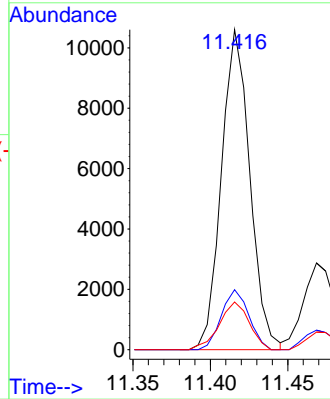
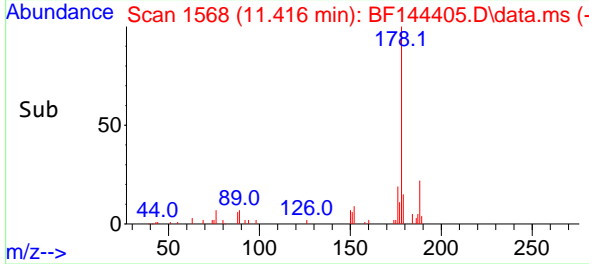


#72
 Anthracene
 Concen: 2.135 ng
 RT: 11.416 min Scan# 11
 Delta R.T. -0.065 min
 Lab File: BF144405.D
 Acq: 02 Dec 2025 16:19

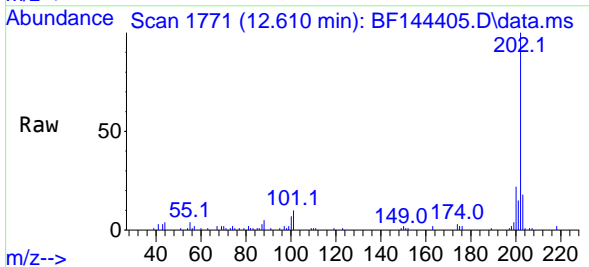
Instrument :
 BNA_F
 ClientSampleId :
 SB-1125-22



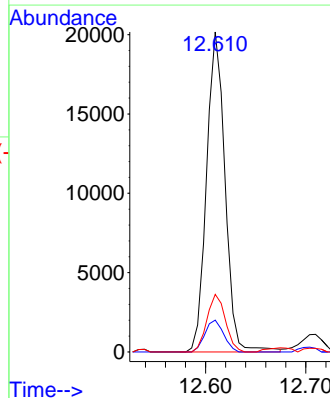
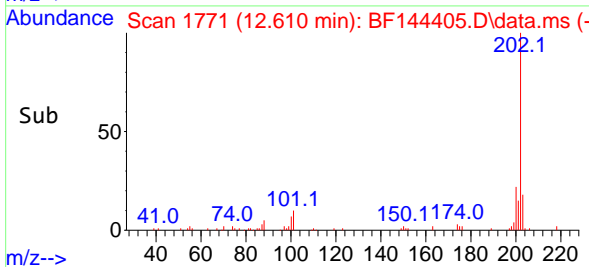
Tgt Ion:178 Resp: 13526
 Ion Ratio Lower Upper
 178 100
 176 18.7 15.3 22.9
 179 14.9 12.0 18.0

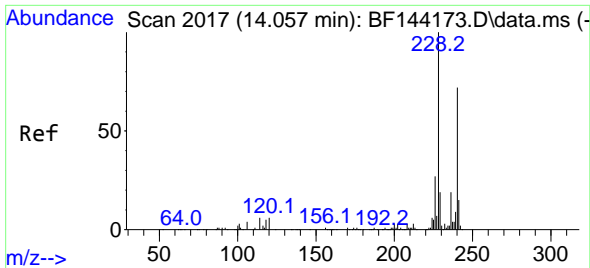


#75
 Fluoranthene
 Concen: 4.023 ng
 RT: 12.610 min Scan# 1771
 Delta R.T. -0.012 min
 Lab File: BF144405.D
 Acq: 02 Dec 2025 16:19



Tgt Ion:202 Resp: 25897
 Ion Ratio Lower Upper
 202 100
 101 10.0 0.0 27.9
 203 18.0 0.0 37.5

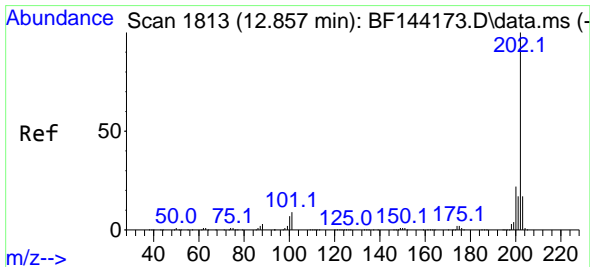
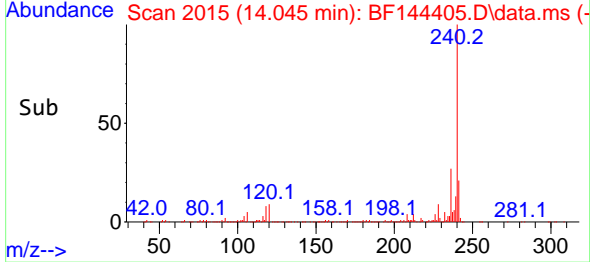
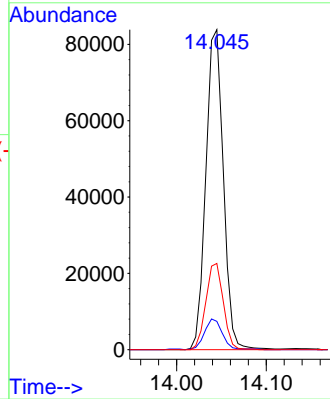
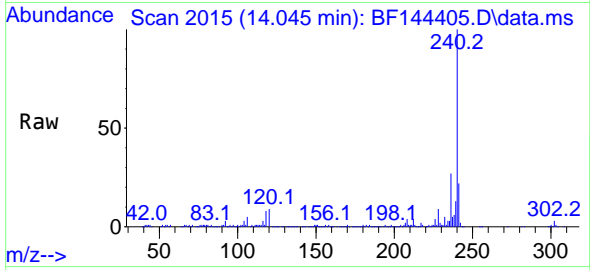




#76
 Chrysene-d12
 Concen: 20.000 ng
 RT: 14.045 min Scan# 20
 Delta R.T. -0.006 min
 Lab File: BF144405.D
 Acq: 02 Dec 2025 16:19

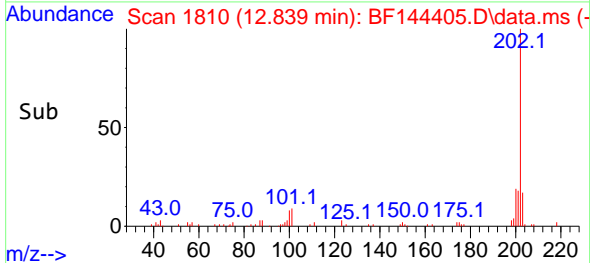
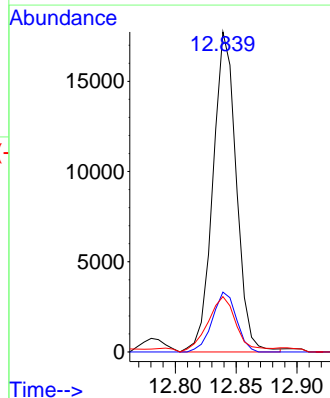
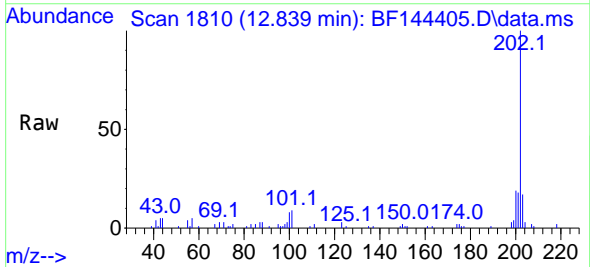
Instrument :
 BNA_F
 ClientSampleId :
 SB-1125-22

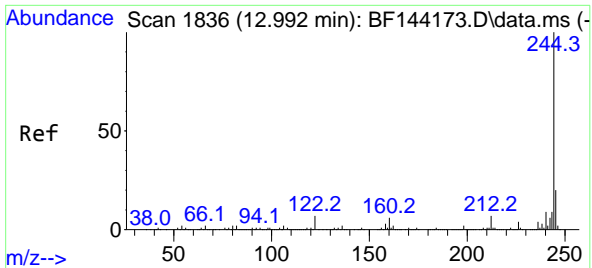
Tgt Ion:240 Resp: 113462
 Ion Ratio Lower Upper
 240 100
 120 8.8 6.6 10.0
 236 26.9 21.4 32.2



#78
 Pyrene
 Concen: 2.595 ng
 RT: 12.839 min Scan# 1810
 Delta R.T. -0.012 min
 Lab File: BF144405.D
 Acq: 02 Dec 2025 16:19

Tgt Ion:202 Resp: 23741
 Ion Ratio Lower Upper
 202 100
 200 18.7 17.2 25.8
 203 17.3 13.7 20.5



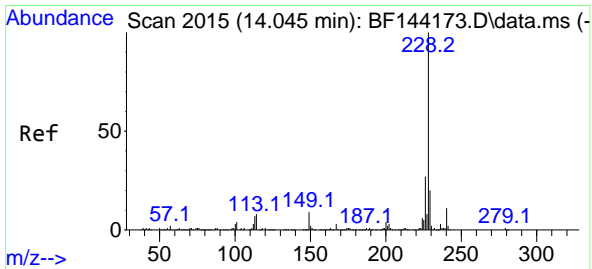
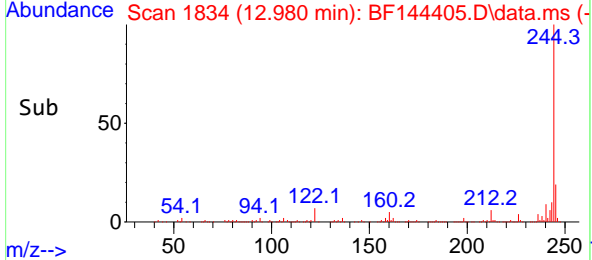
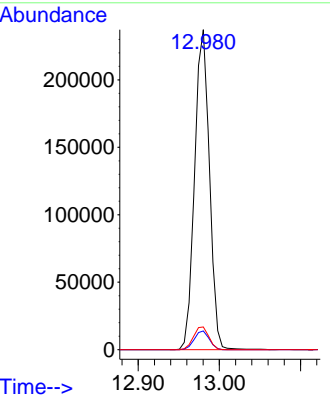
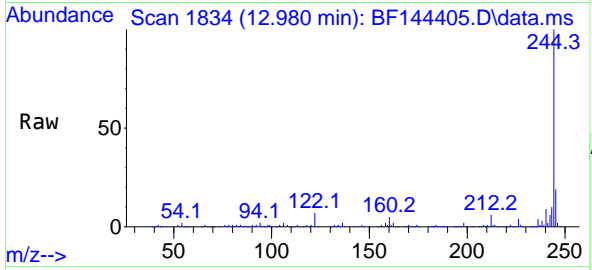


#79
 Terphenyl-d14
 Concen: 42.016 ng
 RT: 12.980 min Scan# 1834
 Delta R.T. -0.012 min
 Lab File: BF144405.D
 Acq: 02 Dec 2025 16:19

Instrument : BNA_F
 Client Sample Id : SB-1125-22

Tgt Ion: 244 Resp: 300123

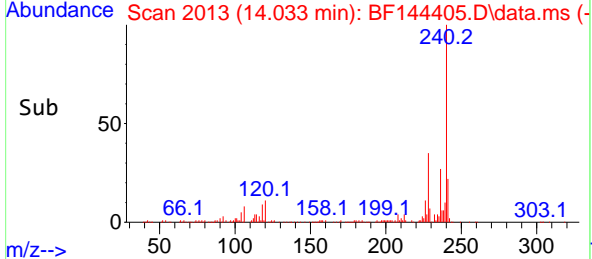
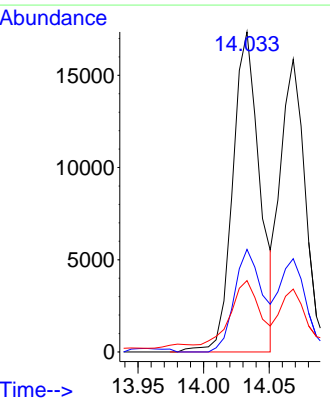
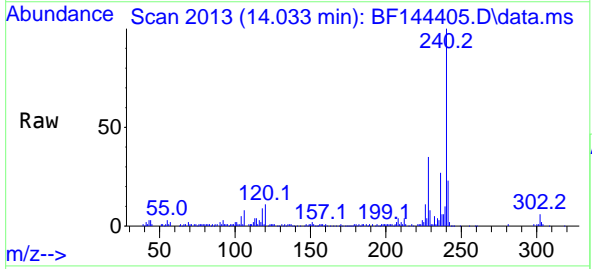
Ion	Ratio	Lower	Upper
244	100		
212	5.8	5.3	7.9
122	7.1	5.6	8.4

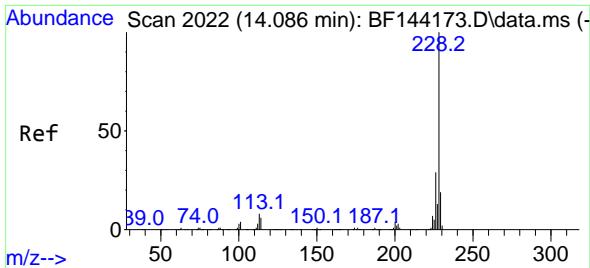


#81
 Benzo(a)anthracene
 Concen: 3.182 ng
 RT: 14.033 min Scan# 2013
 Delta R.T. -0.012 min
 Lab File: BF144405.D
 Acq: 02 Dec 2025 16:19

Tgt Ion: 228 Resp: 25019

Ion	Ratio	Lower	Upper
228	100		
226	32.0	21.8	32.8
229	22.3	15.8	23.6



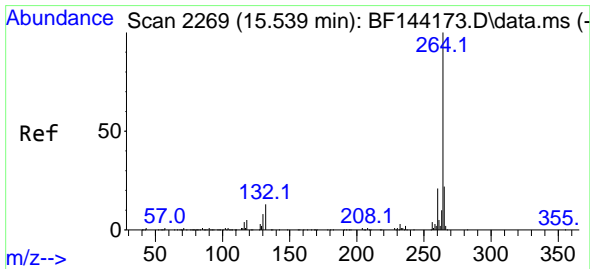
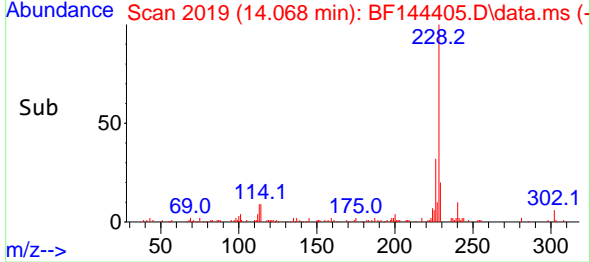
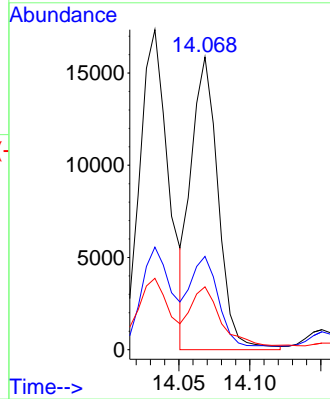
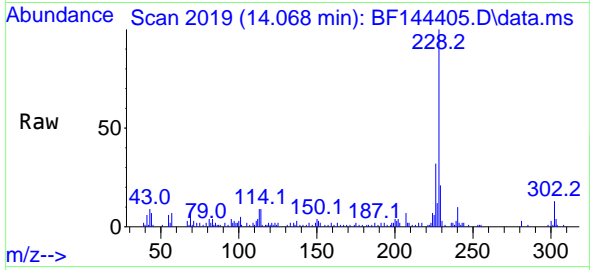


#83
 Chrysene
 Concen: 2.894 ng
 RT: 14.068 min Scan# 20
 Delta R.T. -0.012 min
 Lab File: BF144405.D
 Acq: 02 Dec 2025 16:19

Instrument :
 BNA_F
 ClientSampleId :
 SB-1125-22

Tgt Ion:228 Resp: 21006

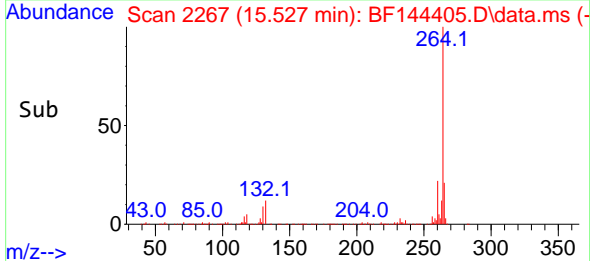
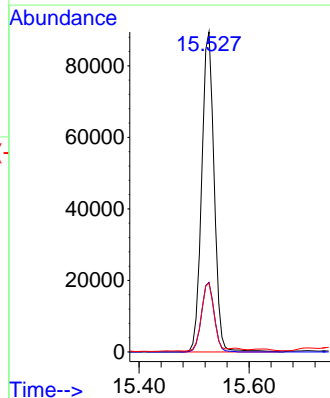
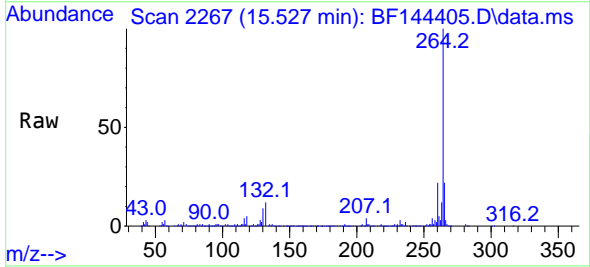
Ion	Ratio	Lower	Upper
228	100		
226	31.9	22.9	34.3
229	21.5	15.0	22.6

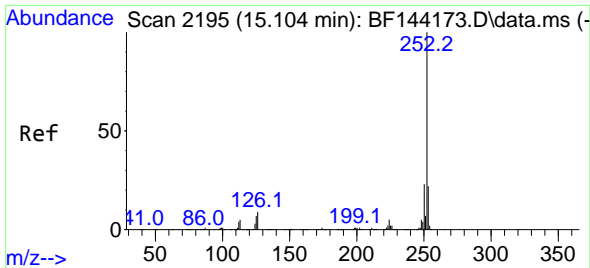


#86
 Perylene-d12
 Concen: 20.000 ng
 RT: 15.527 min Scan# 2267
 Delta R.T. -0.012 min
 Lab File: BF144405.D
 Acq: 02 Dec 2025 16:19

Tgt Ion:264 Resp: 140860

Ion	Ratio	Lower	Upper
264	100		
260	21.8	17.1	25.7
265	21.6	17.4	26.0



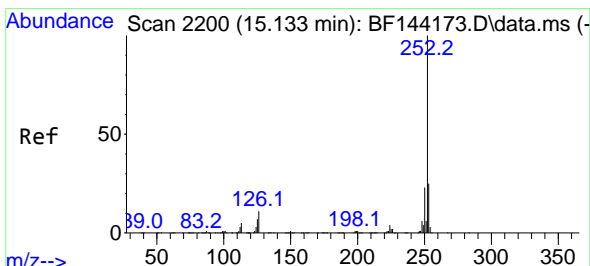
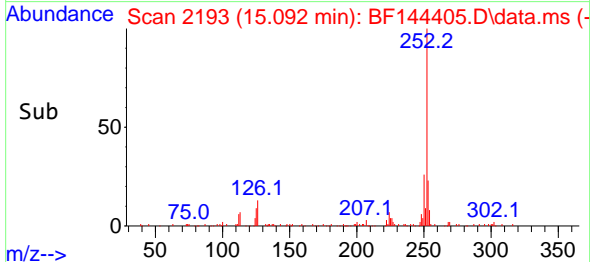
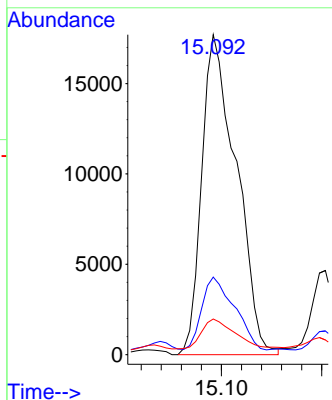
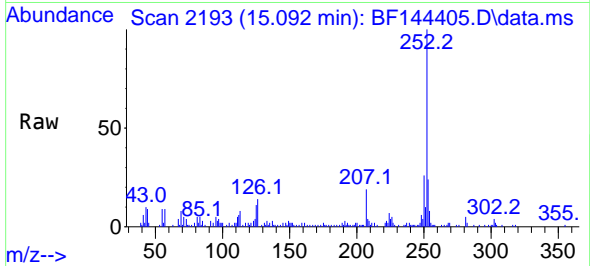


#88
 Benzo(b)fluoranthene
 Concen: 5.284 ng
 RT: 15.092 min Scan# 2193
 Delta R.T. -0.006 min
 Lab File: BF144405.D
 Acq: 02 Dec 2025 16:19

Instrument : BNA_F
 ClientSampleId : SB-1125-22

Tgt Ion:252 Resp: 42317

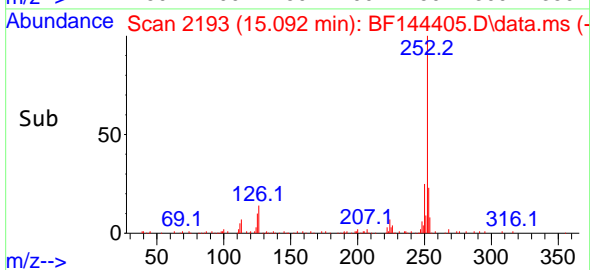
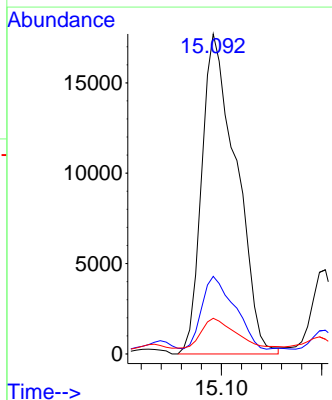
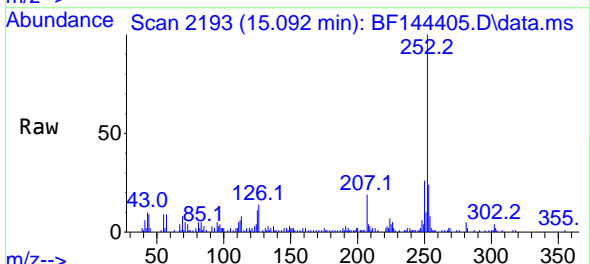
Ion	Ratio	Lower	Upper
252	100		
253	24.3	17.4	26.2
125	11.1	5.3	7.9#

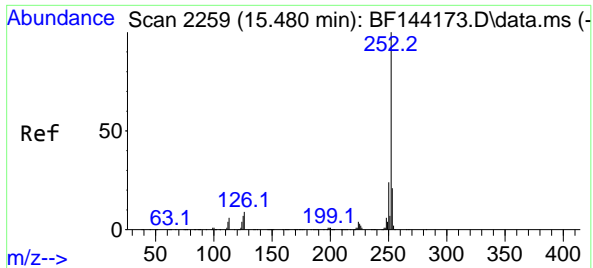


#89
 Benzo(k)fluoranthene
 Concen: 5.646 ng
 RT: 15.092 min Scan# 2193
 Delta R.T. -0.035 min
 Lab File: BF144405.D
 Acq: 02 Dec 2025 16:19

Tgt Ion:252 Resp: 42317

Ion	Ratio	Lower	Upper
252	100		
253	24.3	18.0	27.0
125	11.1	5.4	8.2#





#90
 Benzo(a)pyrene
 Concen: 3.273 ng
 RT: 15.462 min Scan# 21
 Delta R.T. -0.012 min
 Lab File: BF144405.D
 Acq: 02 Dec 2025 16:19

Instrument :
 BNA_F
 ClientSampleId :
 SB-1125-22

Tgt Ion	Resp	Lower	Upper
252	24181		
253	24.9	16.7	25.1
125	9.8	5.7	8.5#

