

Data Path : Z:\svoasrv\HPCHEM1\BNA_F\Data\BF120225\
 Data File : BF144406.D
 Acq On : 02 Dec 2025 16:49
 Operator : RC/JU
 Sample : Q3742-17
 Misc :
 ALS Vial : 10 Sample Multiplier: 1

Instrument :
 BNA_F
 ClientSampleId :
 SB-1125-25

Quant Time: Dec 02 17:10:45 2025
 Quant Method : Z:\svoasrv\HPCHEM1\BNA_F\Methods\8270-BF110525.M
 Quant Title : ASP BNA STANDARDS FOR 5 POINT CALIBRATION
 QLast Update : Wed Nov 05 18:37:33 2025
 Response via : Initial Calibration

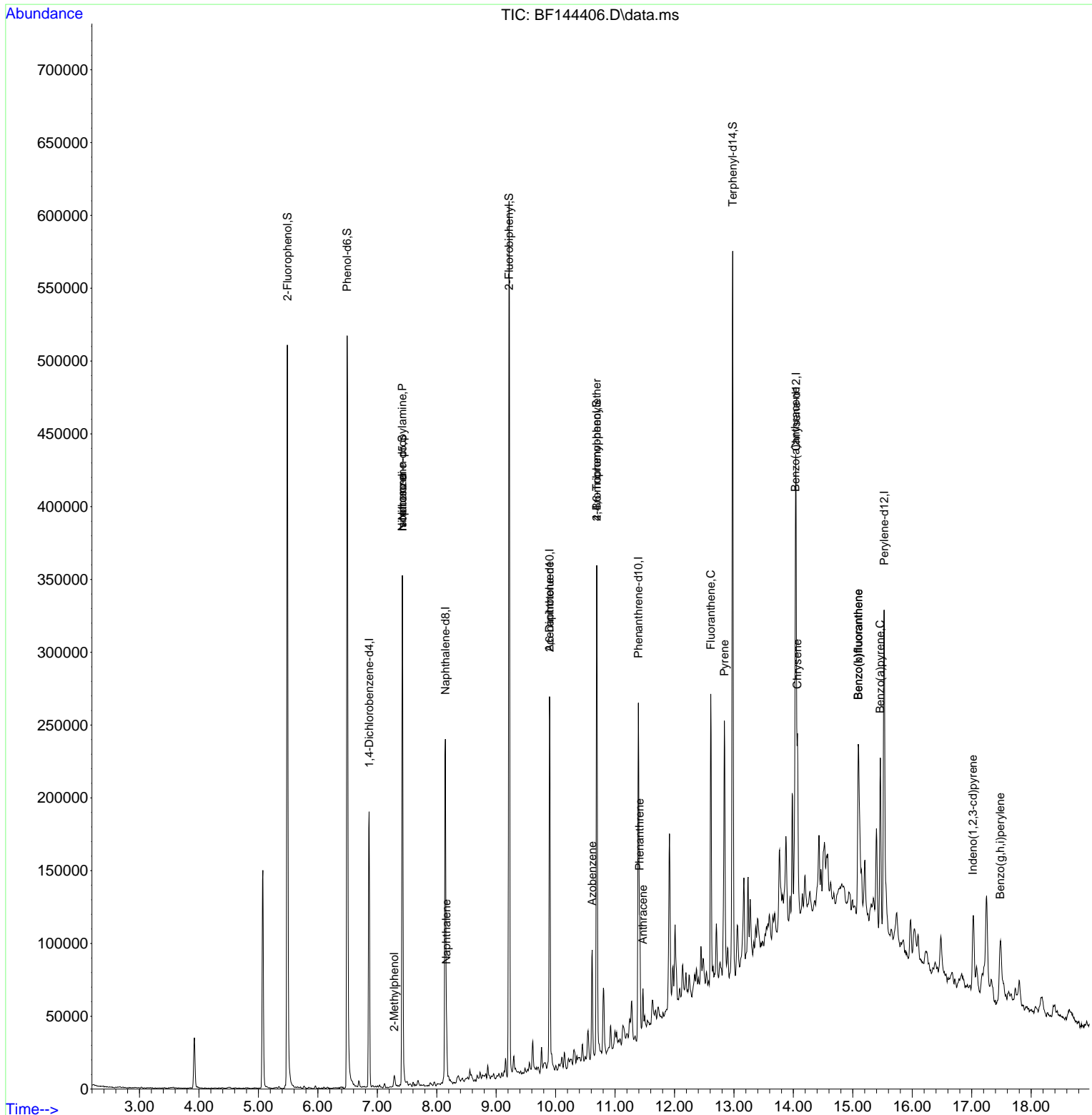
Compound	R.T.	QIon	Response	Conc	Units	Dev(Min)
Internal Standards						
1) 1,4-Dichlorobenzene-d4	6.863	152	42309	20.000	ng	-0.01
21) Naphthalene-d8	8.145	136	155548	20.000	ng	-0.01
39) Acenaphthene-d10	9.898	164	79867	20.000	ng	-0.02
64) Phenanthrene-d10	11.392	188	121200	20.000	ng	-0.01
76) Chrysene-d12	14.045	240	111428	20.000	ng	0.00
86) Perylene-d12	15.527	264	142215	20.000	ng	-0.01
System Monitoring Compounds						
5) 2-Fluorophenol	5.487	112	215382	79.663	ng	0.00
7) Phenol-d6	6.492	99	246176	80.359	ng	0.00
23) Nitrobenzene-d5	7.422	82	147048	54.599	ng	-0.01
42) 2,4,6-Tribromophenol	10.692	330	67969	67.817	ng	-0.01
45) 2-Fluorobiphenyl	9.216	172	287081	53.088	ng	-0.01
79) Terphenyl-d14	12.980	244	264227	37.666	ng	-0.01
Target Compounds						
17) 2-Methylphenol	7.286	107	4570	2.167	ng	# 68
19) n-Nitroso-di-n-propyla...	7.422	70	21401	10.612	ng	# 76
25) Isophorone	7.422	82	147046	28.865	ng	# 66
31) Naphthalene	8.163	128	23049	3.115	ng	98
51) 2,6-Dinitrotoluene	9.898	165	10882	10.160	ng	# 27
63) Azobenzene	10.616	77	18060	3.979	ng	# 1
67) 4-Bromophenyl-phenylether	10.692	248	4035	2.608	ng	# 1
71) Phenanthrene	11.416	178	44559	7.384	ng	98
72) Anthracene	11.469	178	20701	3.374	ng	97
75) Fluoranthene	12.610	202	114271	18.332	ng	96
78) Pyrene	12.839	202	107101	11.921	ng	97
81) Benzo(a)anthracene	14.033	228	88559	11.467	ng	# 91
83) Chrysene	14.068	228	67526	9.472	ng	# 90
87) Indeno(1,2,3-cd)pyrene	17.021	276	29818	2.921	ng	# 94
88) Benzo(b)fluoranthene	15.092	252	118775	14.690	ng	# 96
89) Benzo(k)fluoranthene	15.092	252	118775	15.695	ng	# 98
90) Benzo(a)pyrene	15.462	252	73140	9.806	ng	# 96
92) Benzo(g,h,i)perylene	17.480	276	26095	3.223	ng	# 91

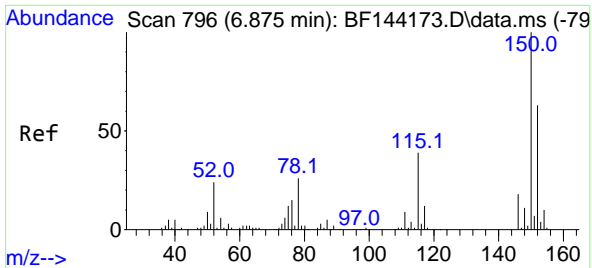
(#) = qualifier out of range (m) = manual integration (+) = signals summed

Data Path : Z:\svoasrv\HPCHEM1\BNA_F\Data\BF120225\
 Data File : BF144406.D
 Acq On : 02 Dec 2025 16:49
 Operator : RC/JU
 Sample : Q3742-17
 Misc :
 ALS Vial : 10 Sample Multiplier: 1

Instrument :
 BNA_F
 ClientSampleId :
 SB-1125-25

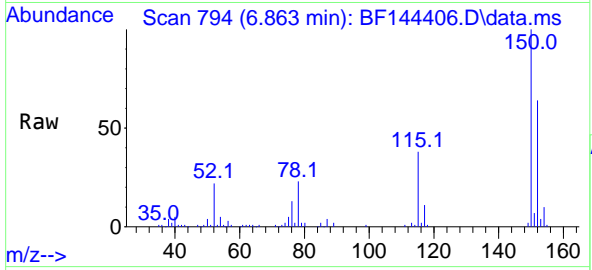
Quant Time: Dec 02 17:10:45 2025
 Quant Method : Z:\svoasrv\HPCHEM1\BNA_F\Methods\8270-BF110525.M
 Quant Title : ASP BNA STANDARDS FOR 5 POINT CALIBRATION
 QLast Update : Wed Nov 05 18:37:33 2025
 Response via : Initial Calibration



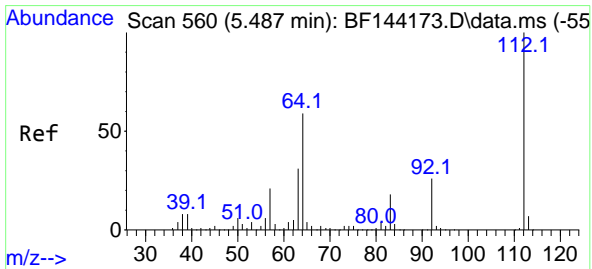
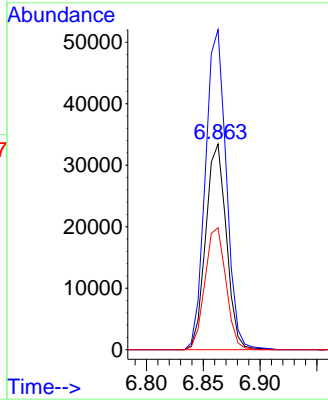
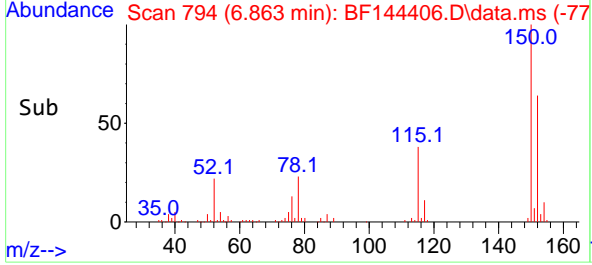


#1
 1,4-Dichlorobenzene-d4
 Concen: 20.000 ng
 RT: 6.863 min Scan# 796
 Delta R.T. -0.012 min
 Lab File: BF144406.D
 Acq: 02 Dec 2025 16:49

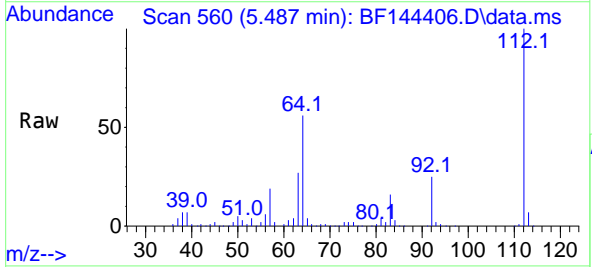
Instrument :
 BNA_F
 ClientSampleId :
 SB-1125-25



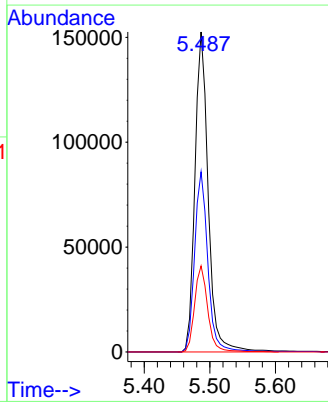
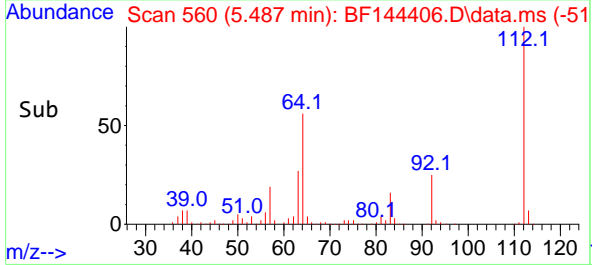
Tgt Ion:152 Resp: 42309
 Ion Ratio Lower Upper
 152 100
 150 155.7 127.4 191.0
 115 59.3 49.5 74.3

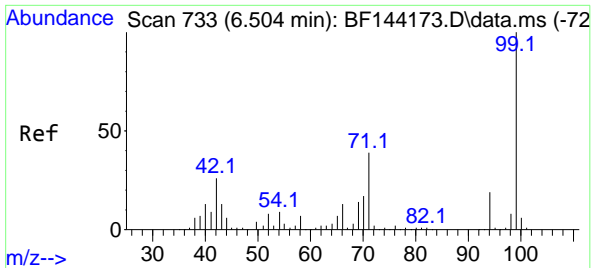


#5
 2-Fluorophenol
 Concen: 79.663 ng
 RT: 5.487 min Scan# 560
 Delta R.T. -0.006 min
 Lab File: BF144406.D
 Acq: 02 Dec 2025 16:49



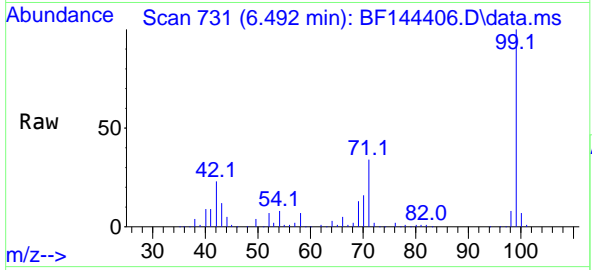
Tgt Ion:112 Resp: 215382
 Ion Ratio Lower Upper
 112 100
 64 56.3 47.2 70.8
 63 26.9 24.4 36.6



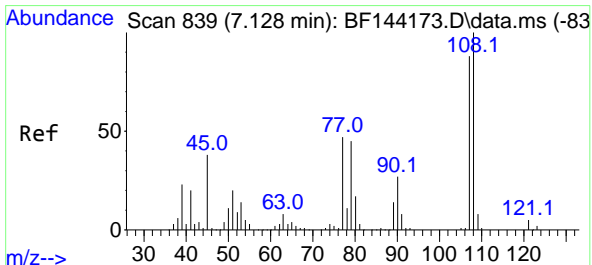
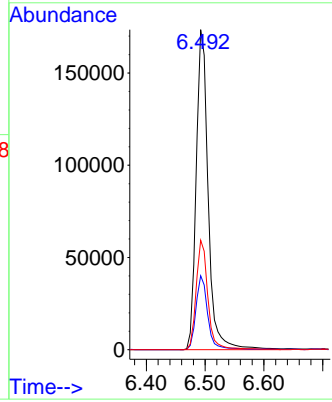
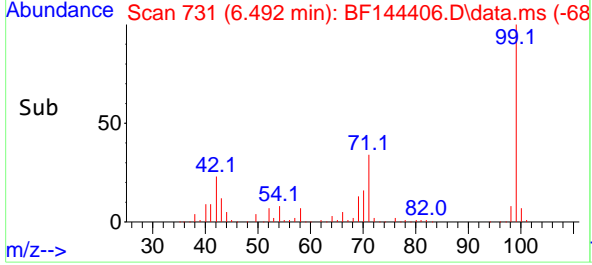


#7
Phenol-d6
Concen: 80.359 ng
RT: 6.492 min Scan# 71
Delta R.T. -0.006 min
Lab File: BF144406.D
Acq: 02 Dec 2025 16:49

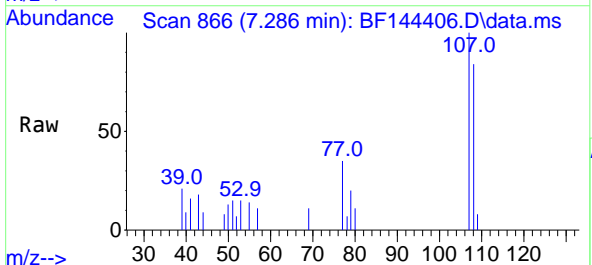
Instrument :
BNA_F
ClientSampleId :
SB-1125-25



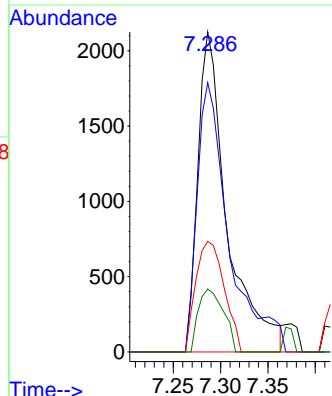
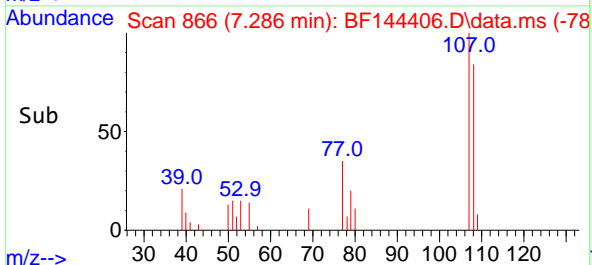
Tgt Ion: 99 Resp: 246176
Ion Ratio Lower Upper
99 100
42 23.1 20.9 31.3
71 34.2 31.4 47.2

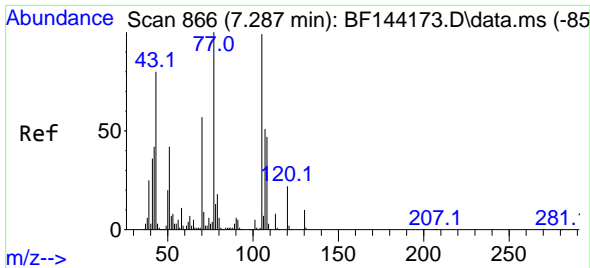


#17
2-Methylphenol
Concen: 2.167 ng
RT: 7.286 min Scan# 866
Delta R.T. 0.164 min
Lab File: BF144406.D
Acq: 02 Dec 2025 16:49



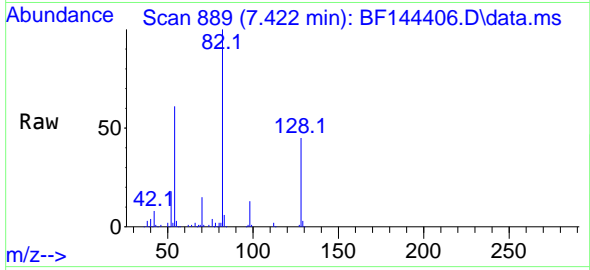
Tgt Ion: 107 Resp: 4570
Ion Ratio Lower Upper
107 100
108 84.1 91.0 136.4#
77 34.5 42.7 64.1#
79 19.7 41.4 62.2#





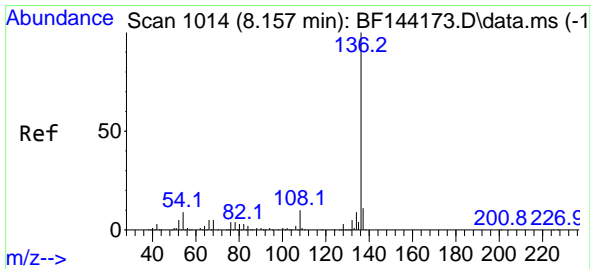
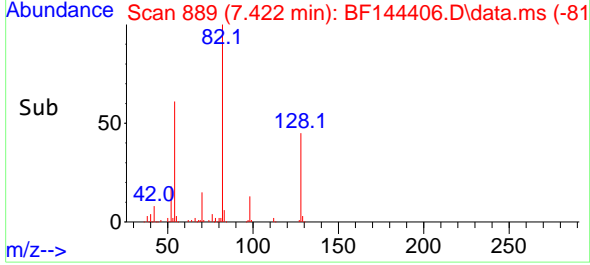
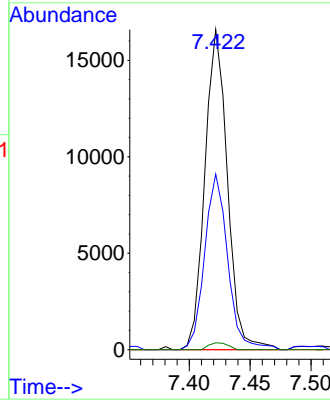
#19
 n-Nitroso-di-n-propylamine
 Concen: 10.612 ng
 RT: 7.422 min Scan# 81
 Delta R.T. 0.147 min
 Lab File: BF144406.D
 Acq: 02 Dec 2025 16:49

Instrument :
 BNA_F
 ClientSampleId :
 SB-1125-25

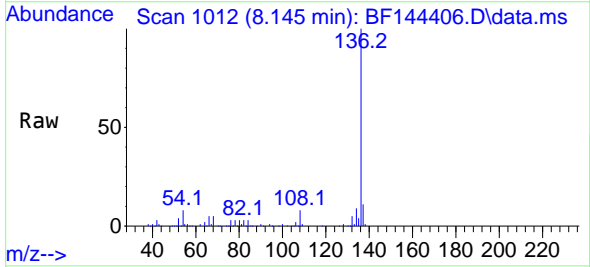


Tgt Ion: 70 Resp: 21401

Ion	Ratio	Lower	Upper
70	100		
42	54.9	58.3	87.5#
101	0.0	7.0	10.6#
130	2.1	14.4	21.6#

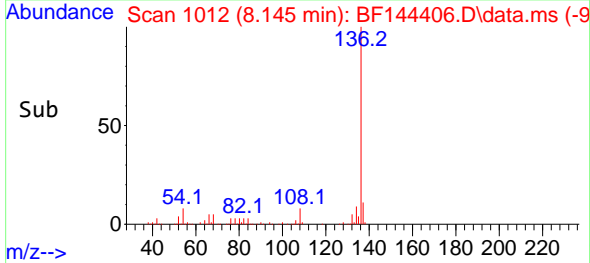
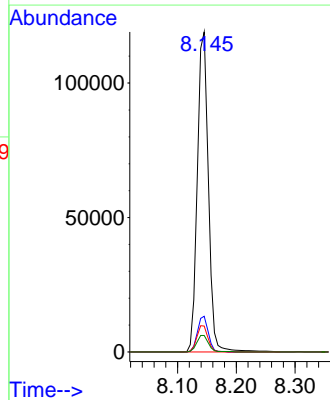


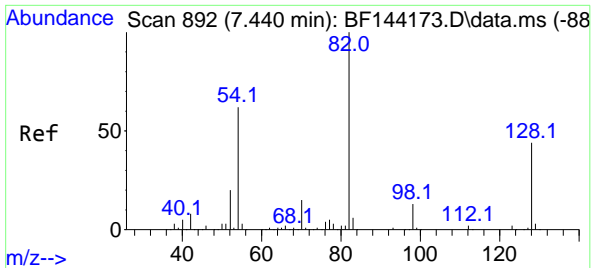
#21
 Naphthalene-d8
 Concen: 20.000 ng
 RT: 8.145 min Scan# 1012
 Delta R.T. -0.012 min
 Lab File: BF144406.D
 Acq: 02 Dec 2025 16:49



Tgt Ion: 136 Resp: 155548

Ion	Ratio	Lower	Upper
136	100		
137	11.1	8.6	13.0
54	8.1	7.0	10.6
68	5.2	4.3	6.5



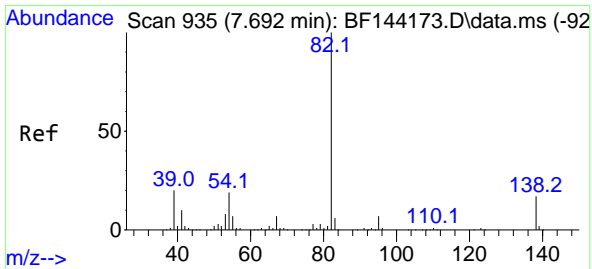
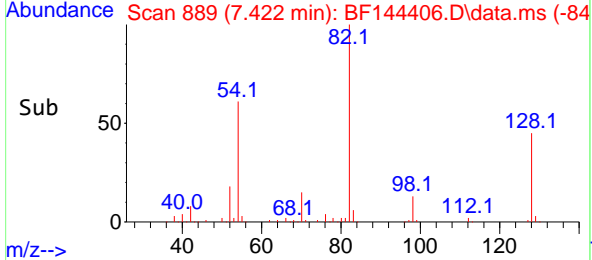
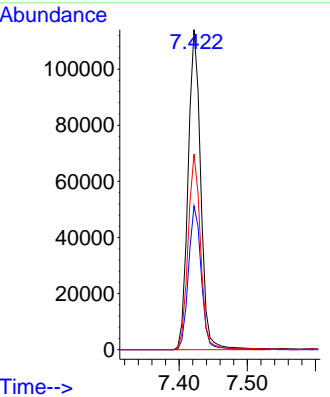
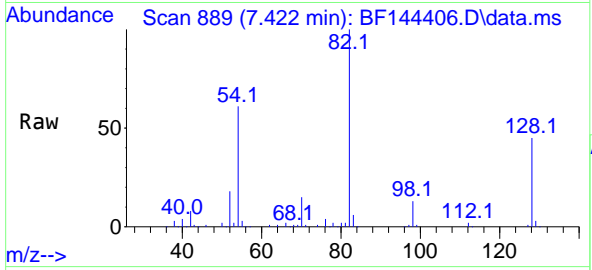


#23
 Nitrobenzene-d5
 Concen: 54.599 ng
 RT: 7.422 min Scan# 889
 Delta R.T. -0.012 min
 Lab File: BF144406.D
 Acq: 02 Dec 2025 16:49

Instrument : BNA_F
 ClientSampleId : SB-1125-25

Tgt Ion: 82 Resp: 147048

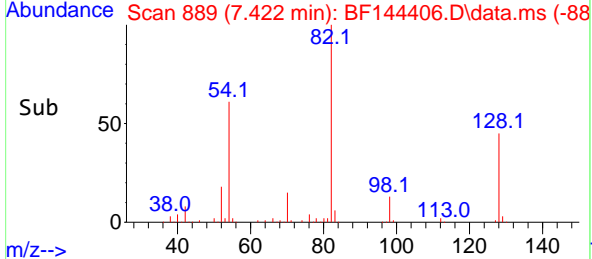
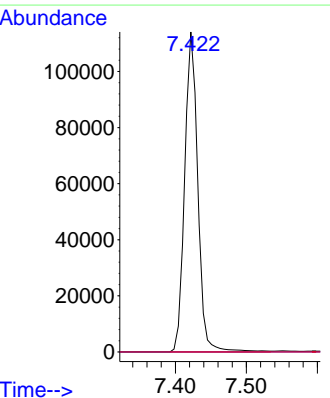
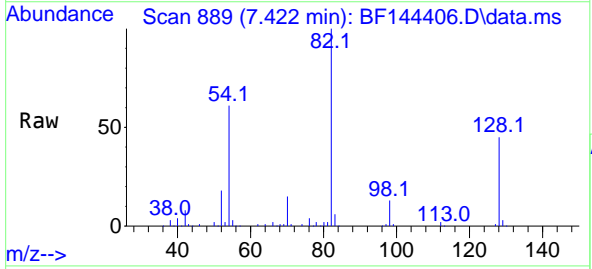
Ion	Ratio	Lower	Upper
82	100		
128	44.9	34.7	52.1
54	61.1	49.5	74.3

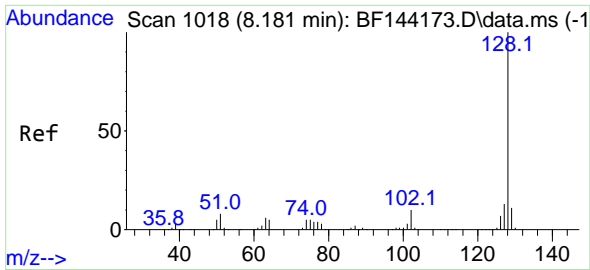


#25
 Isophorone
 Concen: 28.865 ng
 RT: 7.422 min Scan# 889
 Delta R.T. -0.265 min
 Lab File: BF144406.D
 Acq: 02 Dec 2025 16:49

Tgt Ion: 82 Resp: 147046

Ion	Ratio	Lower	Upper
82	100		
95	0.0	5.5	8.3#
138	0.0	13.7	20.5#



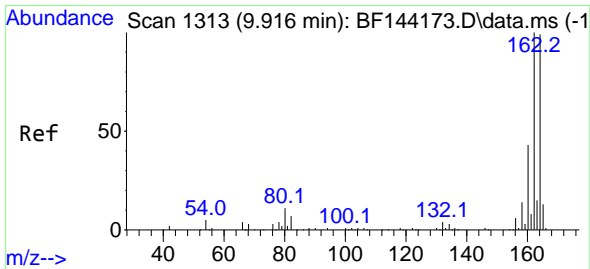
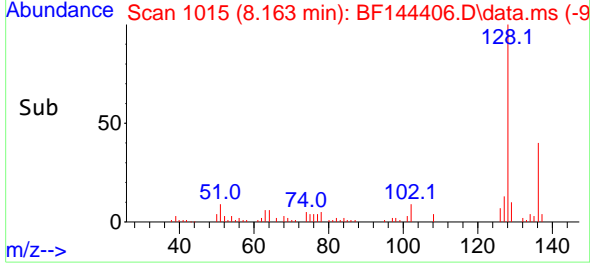
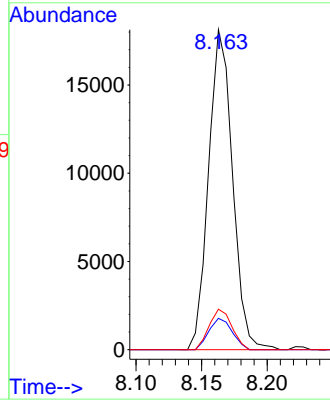
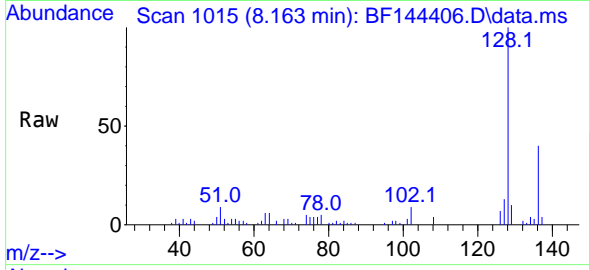


#31
 Naphthalene
 Concen: 3.115 ng
 RT: 8.163 min Scan# 1015
 Delta R.T. -0.012 min
 Lab File: BF144406.D
 Acq: 02 Dec 2025 16:49

Instrument : BNA_F
 ClientSampleId : SB-1125-25

Tgt Ion:128 Resp: 23049

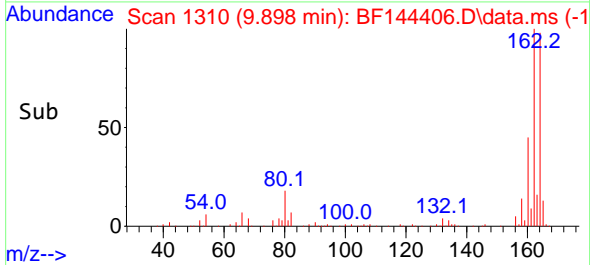
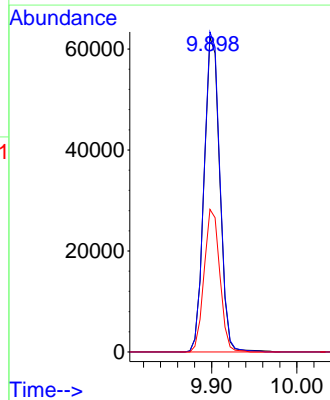
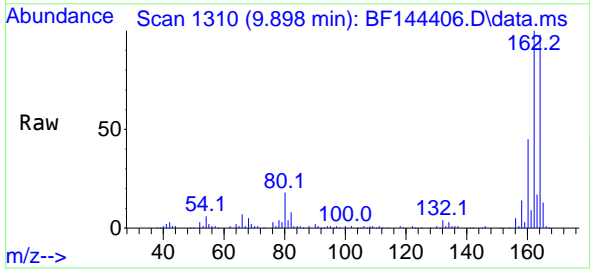
Ion	Ratio	Lower	Upper
128	100		
129	9.8	8.9	13.3
127	12.7	10.3	15.5

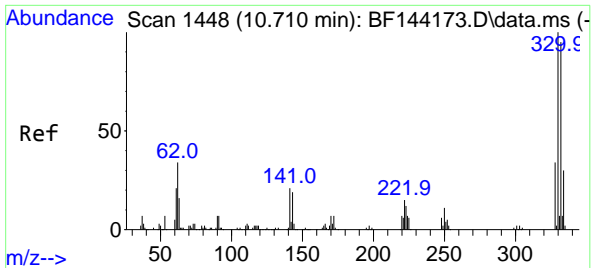


#39
 Acenaphthene-d10
 Concen: 20.000 ng
 RT: 9.898 min Scan# 1310
 Delta R.T. -0.018 min
 Lab File: BF144406.D
 Acq: 02 Dec 2025 16:49

Tgt Ion:164 Resp: 79867

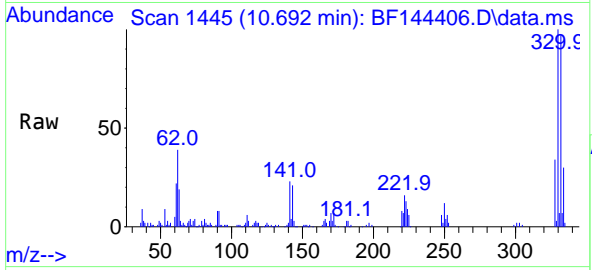
Ion	Ratio	Lower	Upper
164	100		
162	101.6	81.1	121.7
160	45.3	34.5	51.7



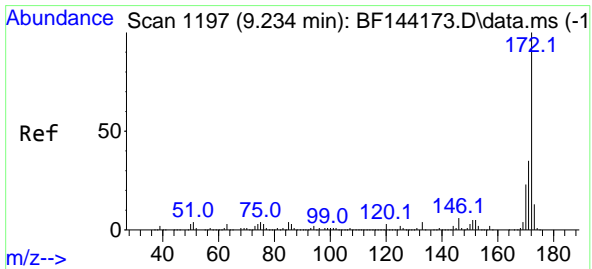
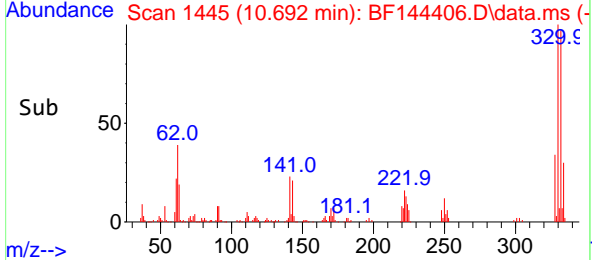
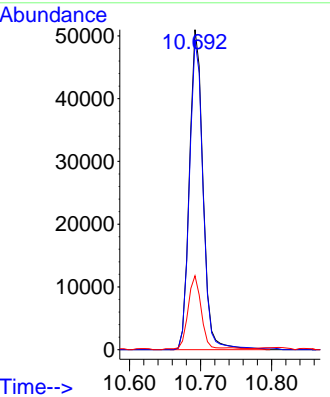


#42
 2,4,6-Tribromophenol
 Concen: 67.817 ng
 RT: 10.692 min Scan# 1445
 Delta R.T. -0.012 min
 Lab File: BF144406.D
 Acq: 02 Dec 2025 16:49

Instrument : BNA_F
 ClientSampleId : SB-1125-25

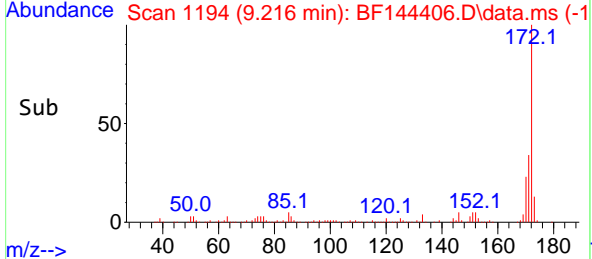
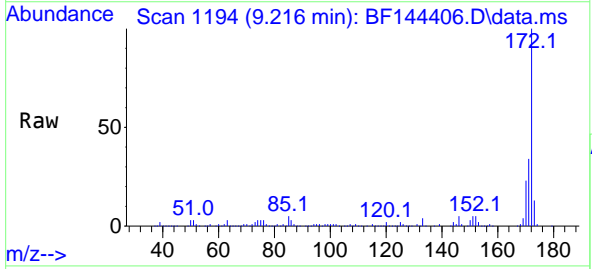
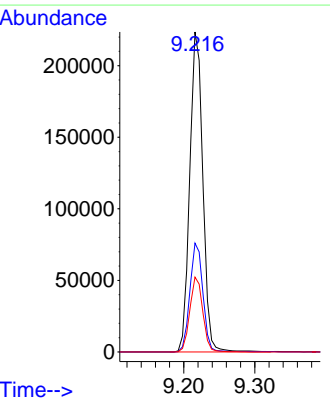


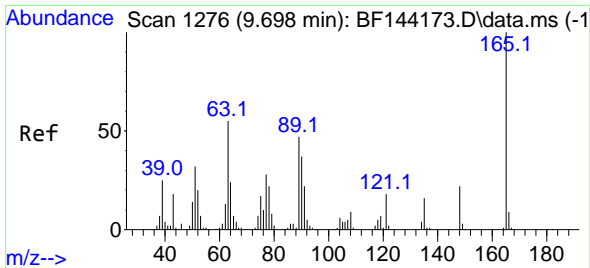
Tgt Ion:330 Resp: 67969
 Ion Ratio Lower Upper
 330 100
 332 97.1 76.7 115.1
 141 22.7 17.8 26.8



#45
 2-Fluorobiphenyl
 Concen: 53.088 ng
 RT: 9.216 min Scan# 1194
 Delta R.T. -0.012 min
 Lab File: BF144406.D
 Acq: 02 Dec 2025 16:49

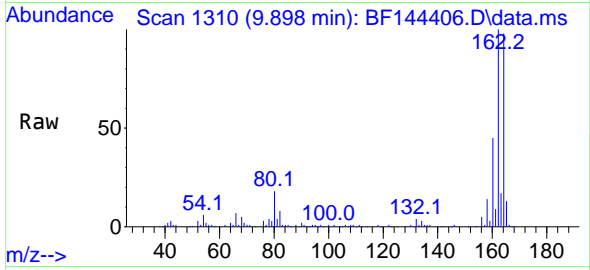
Tgt Ion:172 Resp: 287081
 Ion Ratio Lower Upper
 172 100
 171 34.0 28.1 42.1
 170 23.4 18.6 28.0





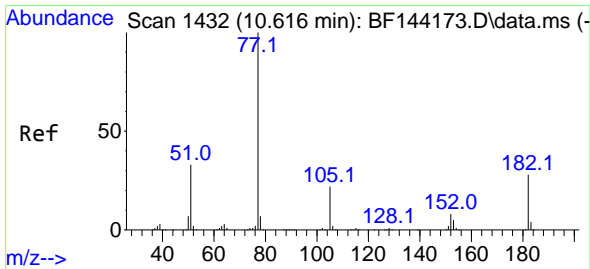
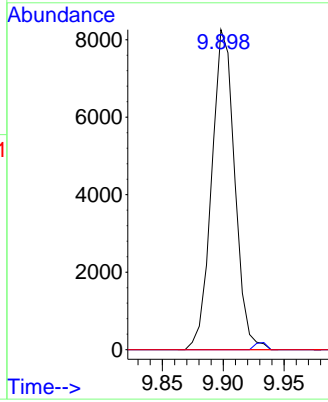
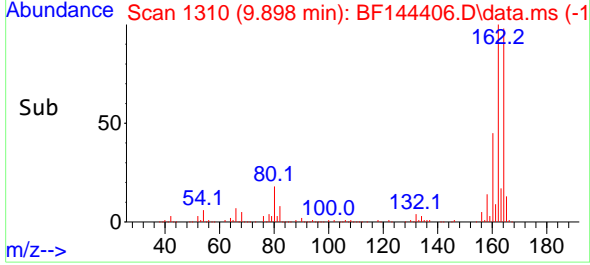
#51
 2,6-Dinitrotoluene
 Concen: 10.160 ng
 RT: 9.898 min Scan# 11
 Delta R.T. 0.206 min
 Lab File: BF144406.D
 Acq: 02 Dec 2025 16:49

Instrument :
 BNA_F
 ClientSampleId :
 SB-1125-25

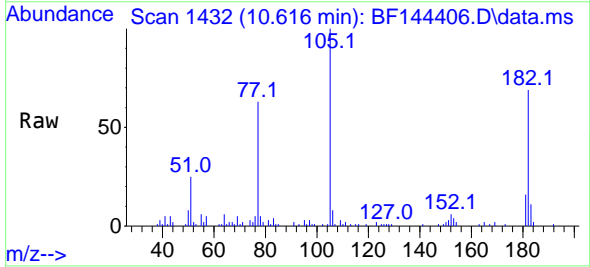


Tgt Ion:165 Resp: 10882

Ion	Ratio	Lower	Upper
165	100		
63	0.0	43.8	65.8#
89	0.0	37.5	56.3#

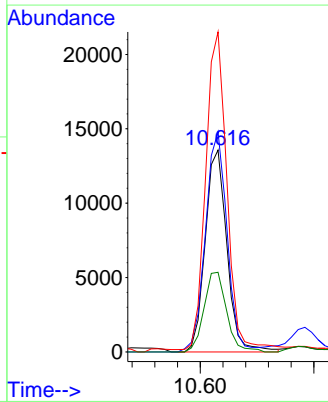
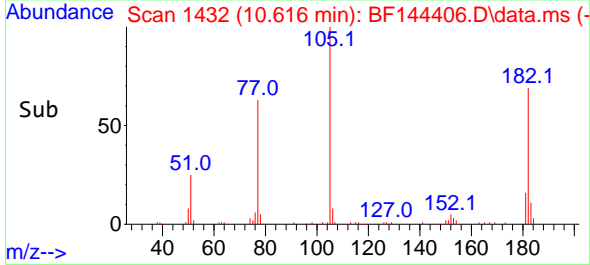


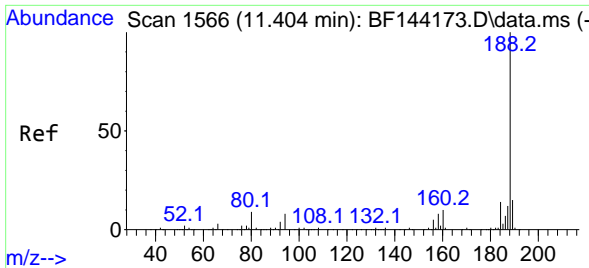
#63
 Azobenzene
 Concen: 3.979 ng
 RT: 10.616 min Scan# 1432
 Delta R.T. -0.000 min
 Lab File: BF144406.D
 Acq: 02 Dec 2025 16:49



Tgt Ion: 77 Resp: 18060

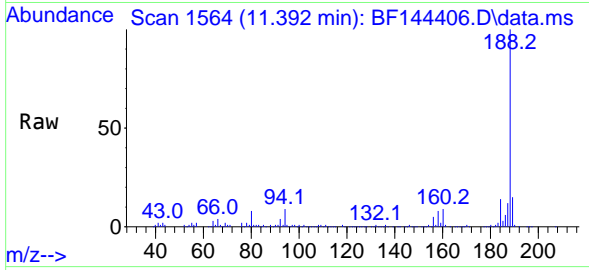
Ion	Ratio	Lower	Upper
77	100		
182	109.1	8.1	48.1#
105	158.5	2.0	42.0#
51	39.5	13.9	53.9



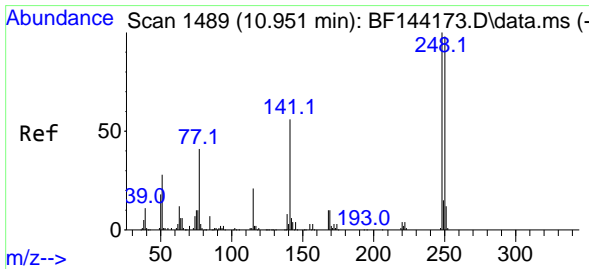
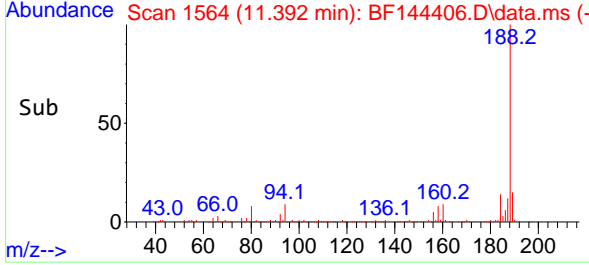
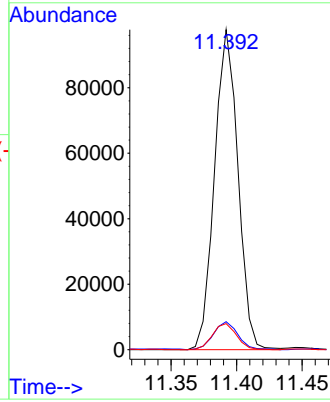


#64
 Phenanthrene-d10
 Concen: 20.000 ng
 RT: 11.392 min Scan# 11
 Delta R.T. -0.012 min
 Lab File: BF144406.D
 Acq: 02 Dec 2025 16:49

Instrument :
 BNA_F
 ClientSampleId :
 SB-1125-25

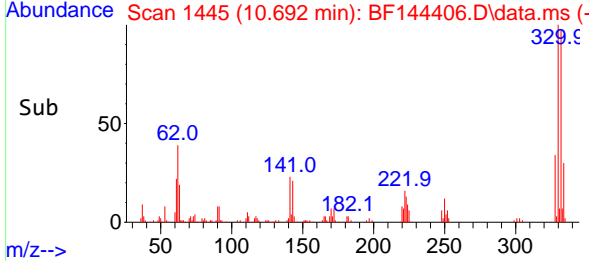
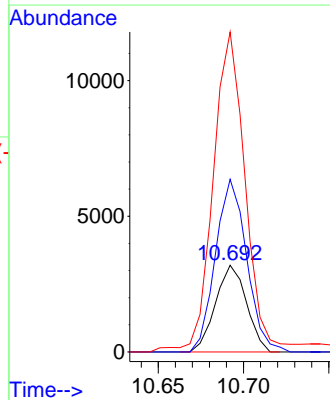
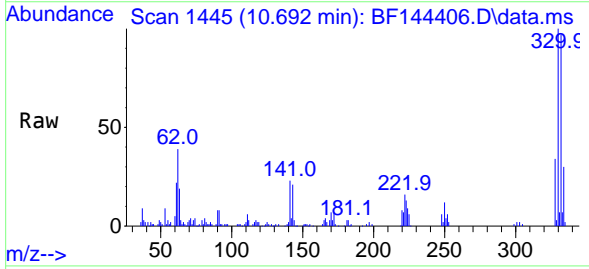


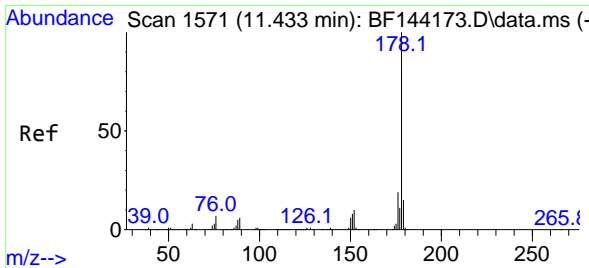
Tgt Ion:188 Resp: 121200
 Ion Ratio Lower Upper
 188 100
 94 8.8 6.2 9.2
 80 8.2 6.9 10.3



#67
 4-Bromophenyl-phenylether
 Concen: 2.608 ng
 RT: 10.692 min Scan# 1445
 Delta R.T. -0.253 min
 Lab File: BF144406.D
 Acq: 02 Dec 2025 16:49

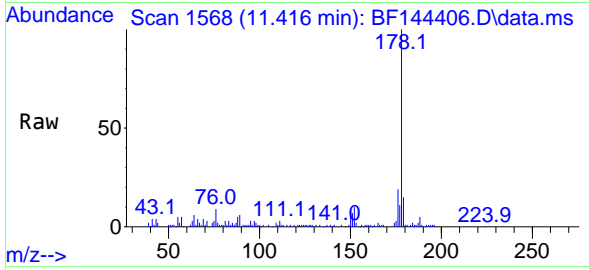
Tgt Ion:248 Resp: 4035
 Ion Ratio Lower Upper
 248 100
 250 199.1 78.4 117.6#
 141 369.1 45.1 67.7#



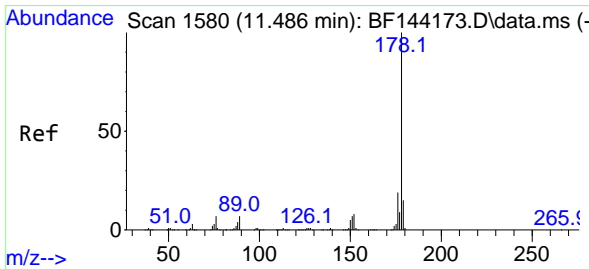
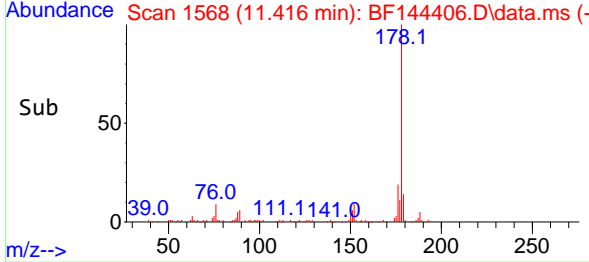
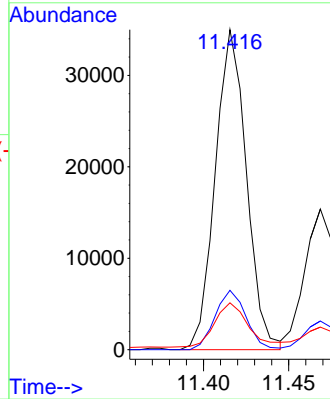


#71
 Phenanthrene
 Concen: 7.384 ng
 RT: 11.416 min Scan# 1568
 Delta R.T. -0.012 min
 Lab File: BF144406.D
 Acq: 02 Dec 2025 16:49

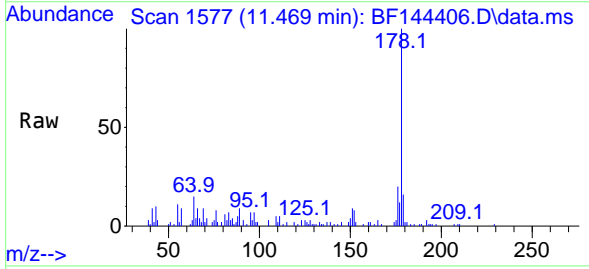
Instrument : BNA_F
 ClientSampleId : SB-1125-25



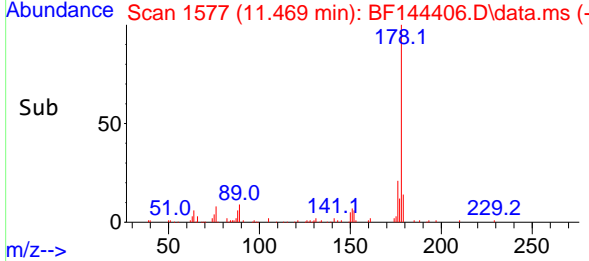
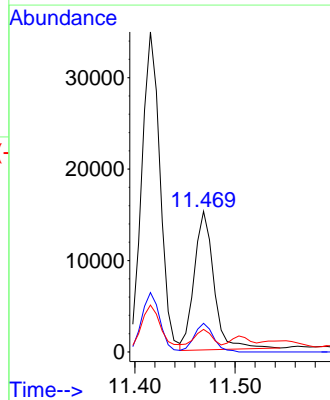
Tgt Ion:178 Resp: 44559
 Ion Ratio Lower Upper
 178 100
 176 18.5 15.5 23.3
 179 14.7 12.2 18.4

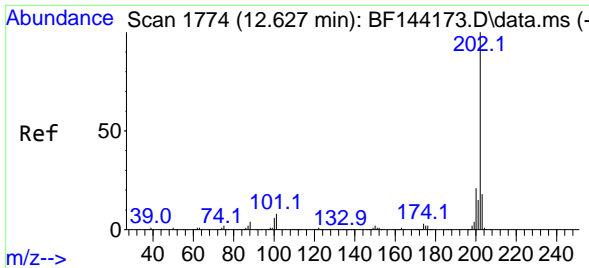


#72
 Anthracene
 Concen: 3.374 ng
 RT: 11.469 min Scan# 1577
 Delta R.T. -0.012 min
 Lab File: BF144406.D
 Acq: 02 Dec 2025 16:49



Tgt Ion:178 Resp: 20701
 Ion Ratio Lower Upper
 178 100
 176 20.4 15.3 22.9
 179 16.0 12.0 18.0



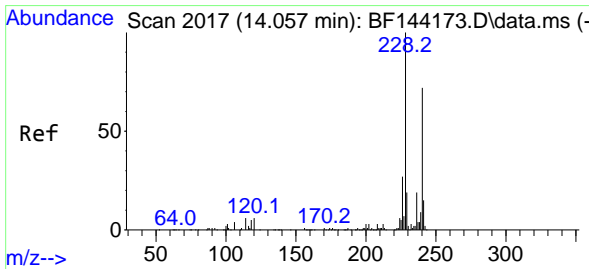
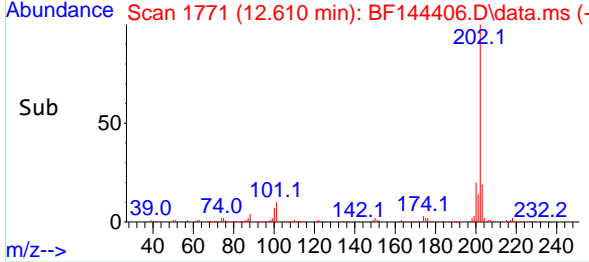
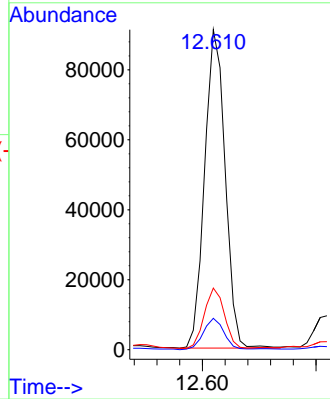
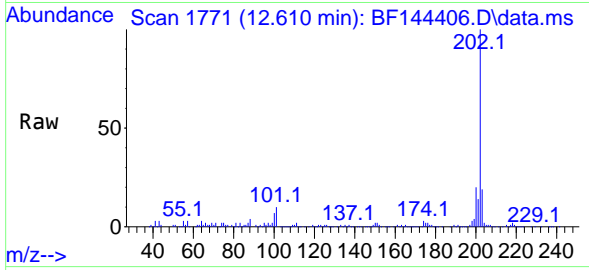


#75
 Fluoranthene
 Concen: 18.332 ng
 RT: 12.610 min Scan# 11
 Delta R.T. -0.012 min
 Lab File: BF144406.D
 Acq: 02 Dec 2025 16:49

Instrument :
 BNA_F
 ClientSampleId :
 SB-1125-25

Tgt Ion:202 Resp: 114271

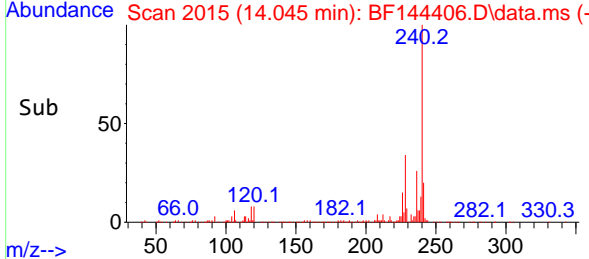
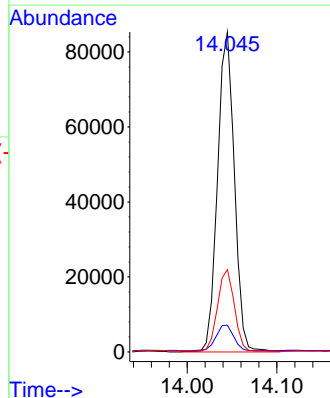
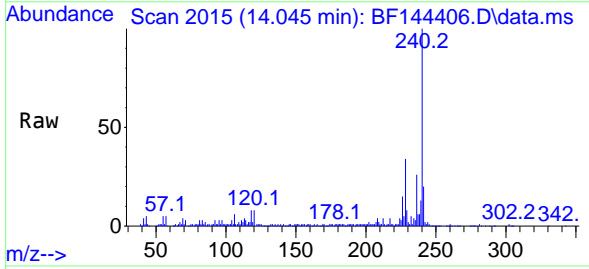
Ion	Ratio	Lower	Upper
202	100		
101	9.8	0.0	27.9
203	19.2	0.0	37.5

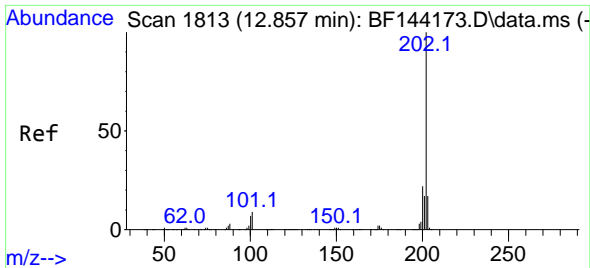


#76
 Chrysene-d12
 Concen: 20.000 ng
 RT: 14.045 min Scan# 2015
 Delta R.T. -0.006 min
 Lab File: BF144406.D
 Acq: 02 Dec 2025 16:49

Tgt Ion:240 Resp: 111428

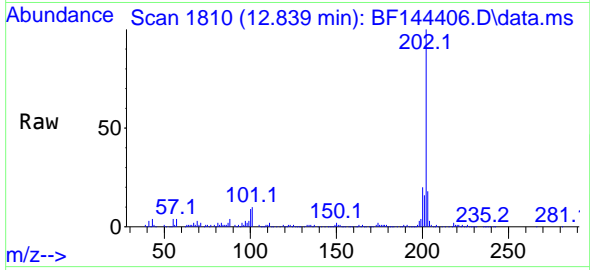
Ion	Ratio	Lower	Upper
240	100		
120	8.4	6.6	10.0
236	25.7	21.4	32.2





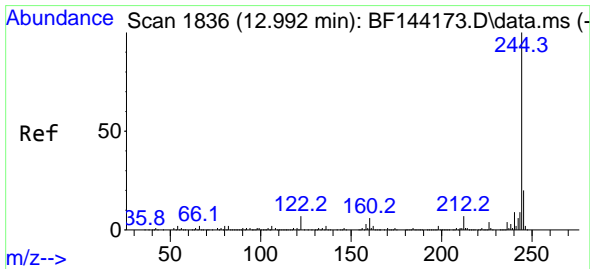
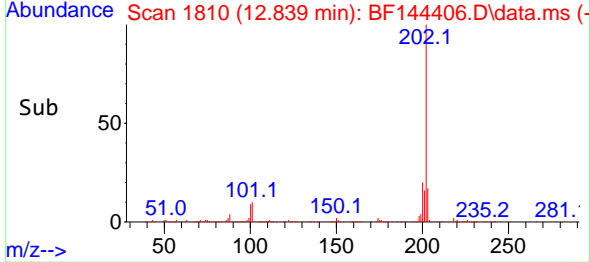
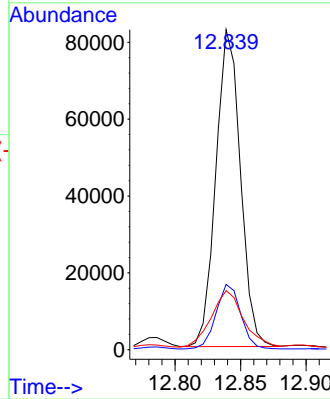
#78
 Pyrene
 Concen: 11.921 ng
 RT: 12.839 min Scan# 1813
 Delta R.T. -0.012 min
 Lab File: BF144406.D
 Acq: 02 Dec 2025 16:49

Instrument :
 BNA_F
 ClientSampleId :
 SB-1125-25

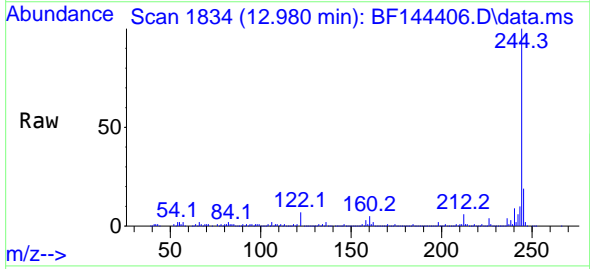


Tgt Ion:202 Resp: 107101

Ion	Ratio	Lower	Upper
202	100		
200	20.4	17.2	25.8
203	18.5	13.7	20.5

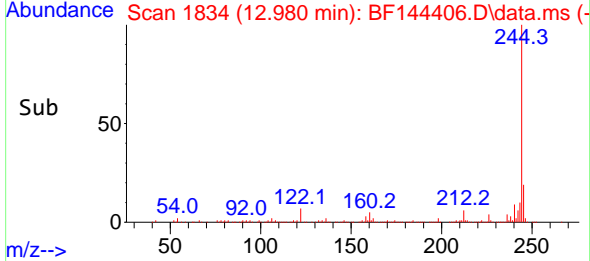
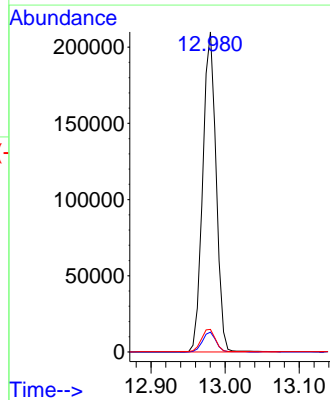


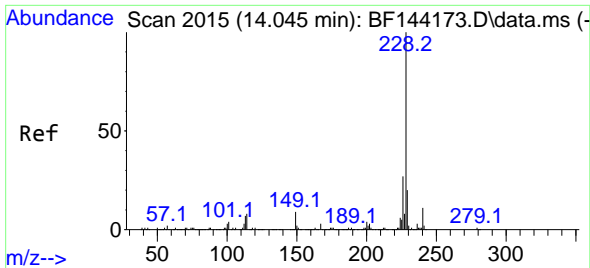
#79
 Terphenyl-d14
 Concen: 37.666 ng
 RT: 12.980 min Scan# 1834
 Delta R.T. -0.012 min
 Lab File: BF144406.D
 Acq: 02 Dec 2025 16:49



Tgt Ion:244 Resp: 264227

Ion	Ratio	Lower	Upper
244	100		
212	6.2	5.3	7.9
122	7.0	5.6	8.4

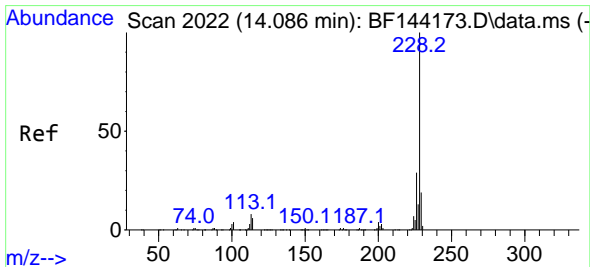
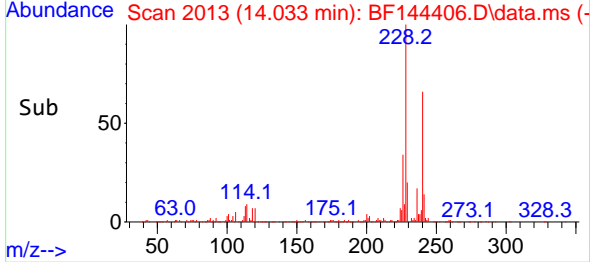
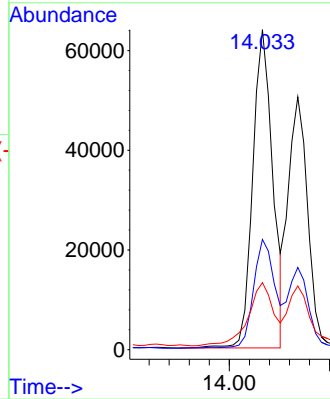
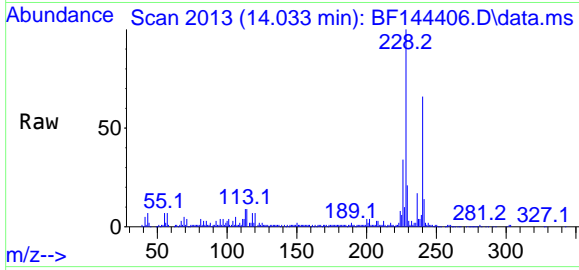




#81
 Benzo(a)anthracene
 Concen: 11.467 ng
 RT: 14.033 min Scan# 2019
 Delta R.T. -0.012 min
 Lab File: BF144406.D
 Acq: 02 Dec 2025 16:49

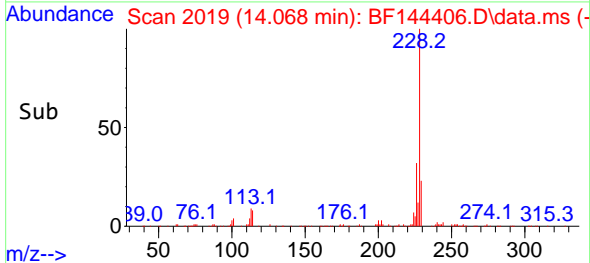
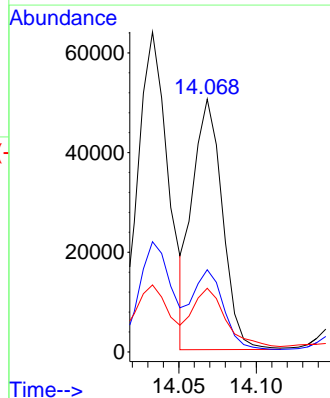
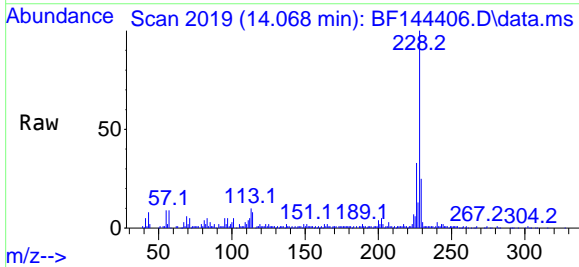
Instrument :
 BNA_F
 ClientSampleId :
 SB-1125-25

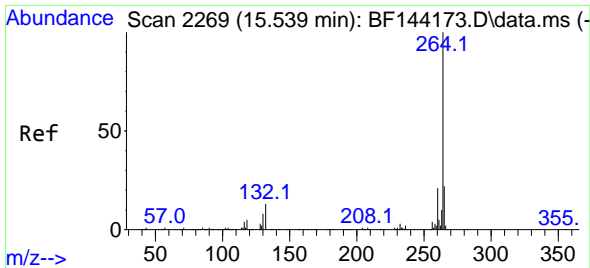
Tgt Ion:228 Resp: 88559
 Ion Ratio Lower Upper
 228 100
 226 34.4 21.8 32.8#
 229 21.0 15.8 23.6



#83
 Chrysene
 Concen: 9.472 ng
 RT: 14.068 min Scan# 2019
 Delta R.T. -0.012 min
 Lab File: BF144406.D
 Acq: 02 Dec 2025 16:49

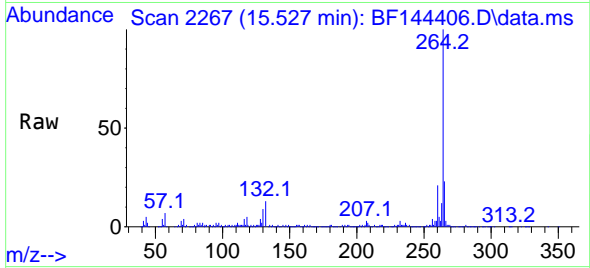
Tgt Ion:228 Resp: 67526
 Ion Ratio Lower Upper
 228 100
 226 32.6 22.9 34.3
 229 25.2 15.0 22.6#



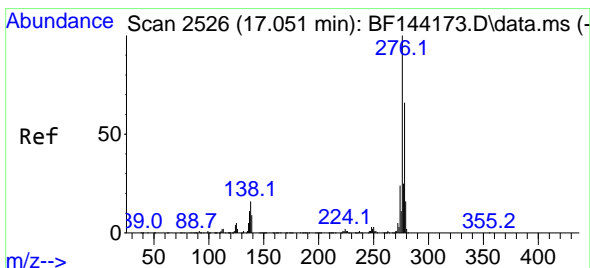
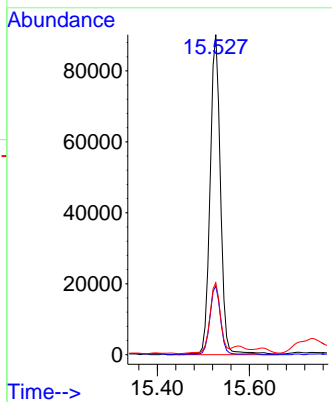
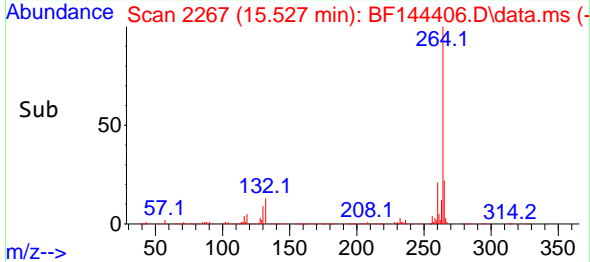


#86
 Perylene-d12
 Concen: 20.000 ng
 RT: 15.527 min Scan# 21
 Delta R.T. -0.012 min
 Lab File: BF144406.D
 Acq: 02 Dec 2025 16:49

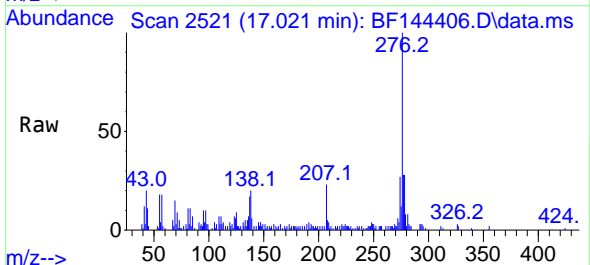
Instrument :
 BNA_F
 ClientSampleId :
 SB-1125-25



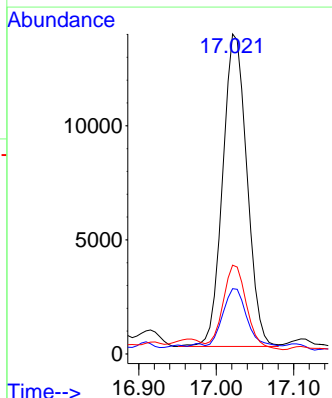
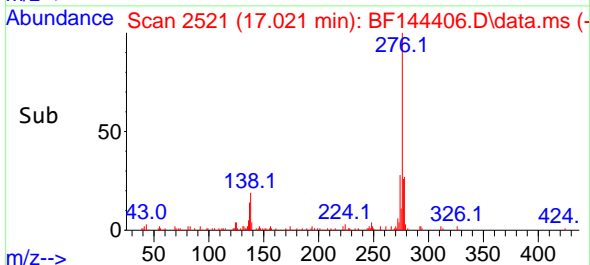
Tgt Ion:264 Resp: 142215
 Ion Ratio Lower Upper
 264 100
 260 21.5 17.1 25.7
 265 22.5 17.4 26.0

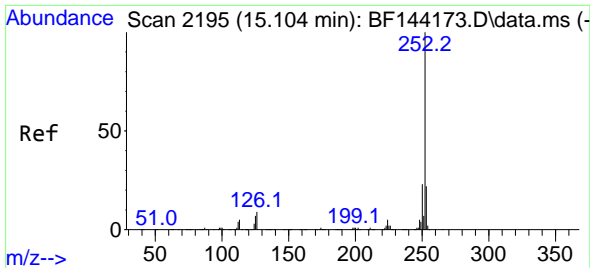


#87
 Indeno(1,2,3-cd)pyrene
 Concen: 2.921 ng
 RT: 17.021 min Scan# 2521
 Delta R.T. -0.012 min
 Lab File: BF144406.D
 Acq: 02 Dec 2025 16:49



Tgt Ion:276 Resp: 29818
 Ion Ratio Lower Upper
 276 100
 138 21.1 13.9 20.9#
 277 26.5 19.8 29.6



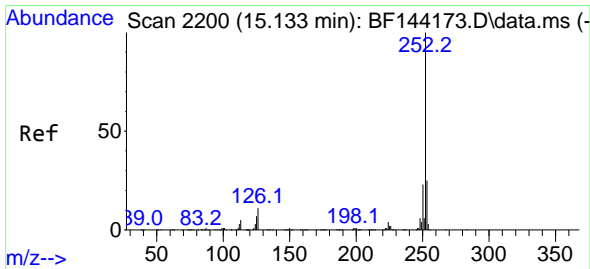
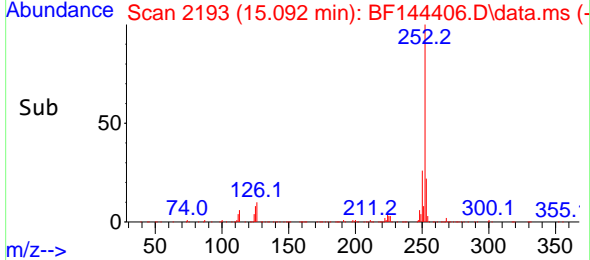
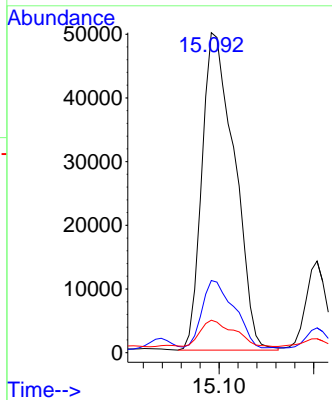
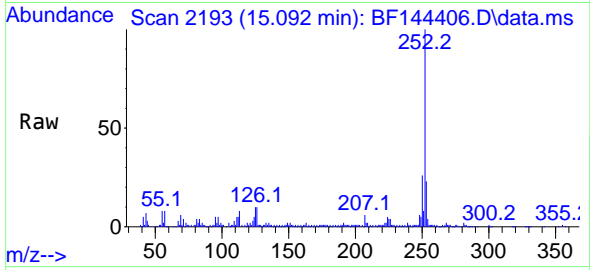


#88
 Benzo(b)fluoranthene
 Concen: 14.690 ng
 RT: 15.092 min Scan# 2193
 Delta R.T. -0.006 min
 Lab File: BF144406.D
 Acq: 02 Dec 2025 16:49

Instrument : BNA_F
 ClientSampleId : SB-1125-25

Tgt Ion: 252 Resp: 118775

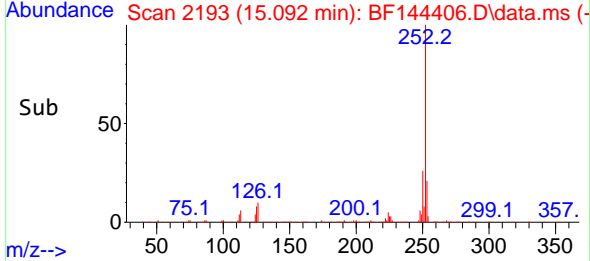
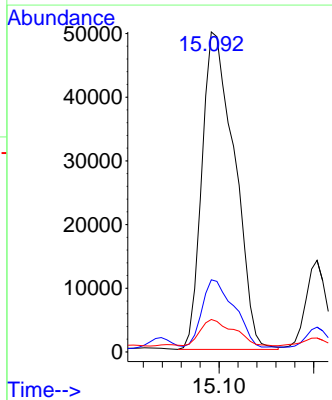
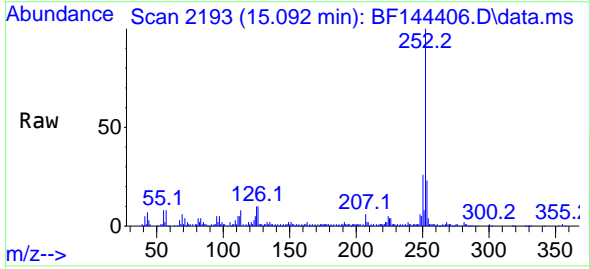
Ion	Ratio	Lower	Upper
252	100		
253	22.6	17.4	26.2
125	10.1	5.3	7.9#

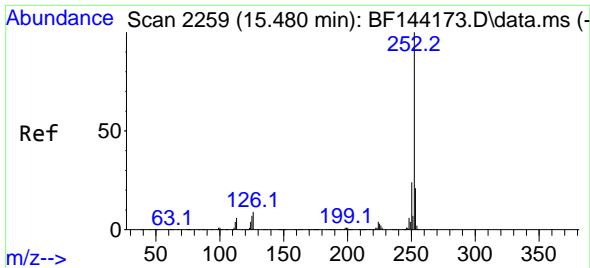


#89
 Benzo(k)fluoranthene
 Concen: 15.695 ng
 RT: 15.092 min Scan# 2193
 Delta R.T. -0.036 min
 Lab File: BF144406.D
 Acq: 02 Dec 2025 16:49

Tgt Ion: 252 Resp: 118775

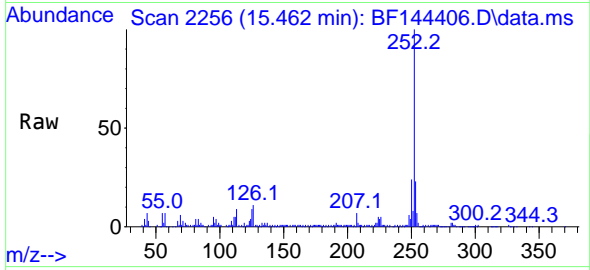
Ion	Ratio	Lower	Upper
252	100		
253	22.6	18.0	27.0
125	10.1	5.4	8.2#



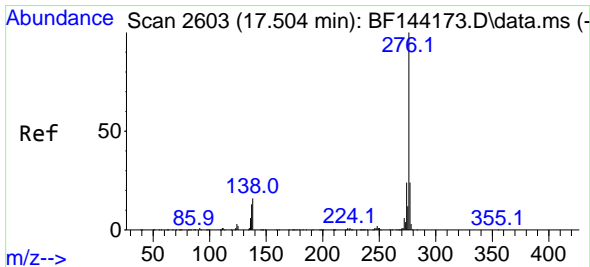
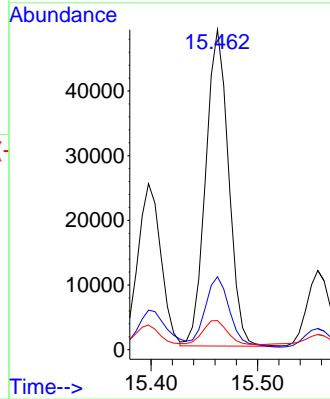
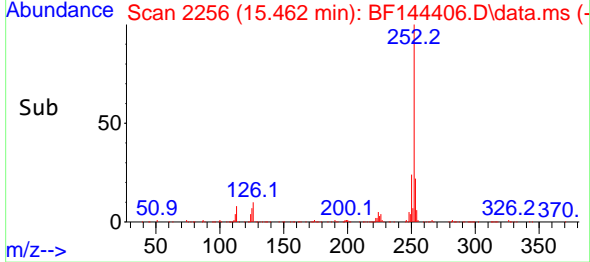


#90
 Benzo(a)pyrene
 Concen: 9.806 ng
 RT: 15.462 min Scan# 21
 Delta R.T. -0.012 min
 Lab File: BF144406.D
 Acq: 02 Dec 2025 16:49

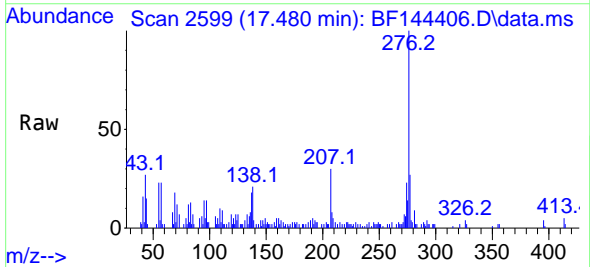
Instrument :
 BNA_F
 ClientSampleId :
 SB-1125-25



Tgt Ion:252 Resp: 73140
 Ion Ratio Lower Upper
 252 100
 253 22.8 16.7 25.1
 125 9.1 5.7 8.5#



#92
 Benzo(g,h,i)perylene
 Concen: 3.223 ng
 RT: 17.480 min Scan# 2599
 Delta R.T. -0.012 min
 Lab File: BF144406.D
 Acq: 02 Dec 2025 16:49



Tgt Ion:276 Resp: 26095
 Ion Ratio Lower Upper
 276 100
 277 27.4 19.0 28.4
 138 20.8 12.9 19.3#

