

Data Path : Z:\svoasrv\HPCHEM1\BNA_F\Data\BF120225\
 Data File : BF144407.D
 Acq On : 02 Dec 2025 17:19
 Operator : RC/JU
 Sample : Q3742-18
 Misc :
 ALS Vial : 11 Sample Multiplier: 1

Instrument :
 BNA_F
 ClientSampleId :
 SB-1125-24

Quant Time: Dec 02 17:39:39 2025
 Quant Method : Z:\svoasrv\HPCHEM1\BNA_F\Methods\8270-BF110525.M
 Quant Title : ASP BNA STANDARDS FOR 5 POINT CALIBRATION
 QLast Update : Wed Nov 05 18:37:33 2025
 Response via : Initial Calibration

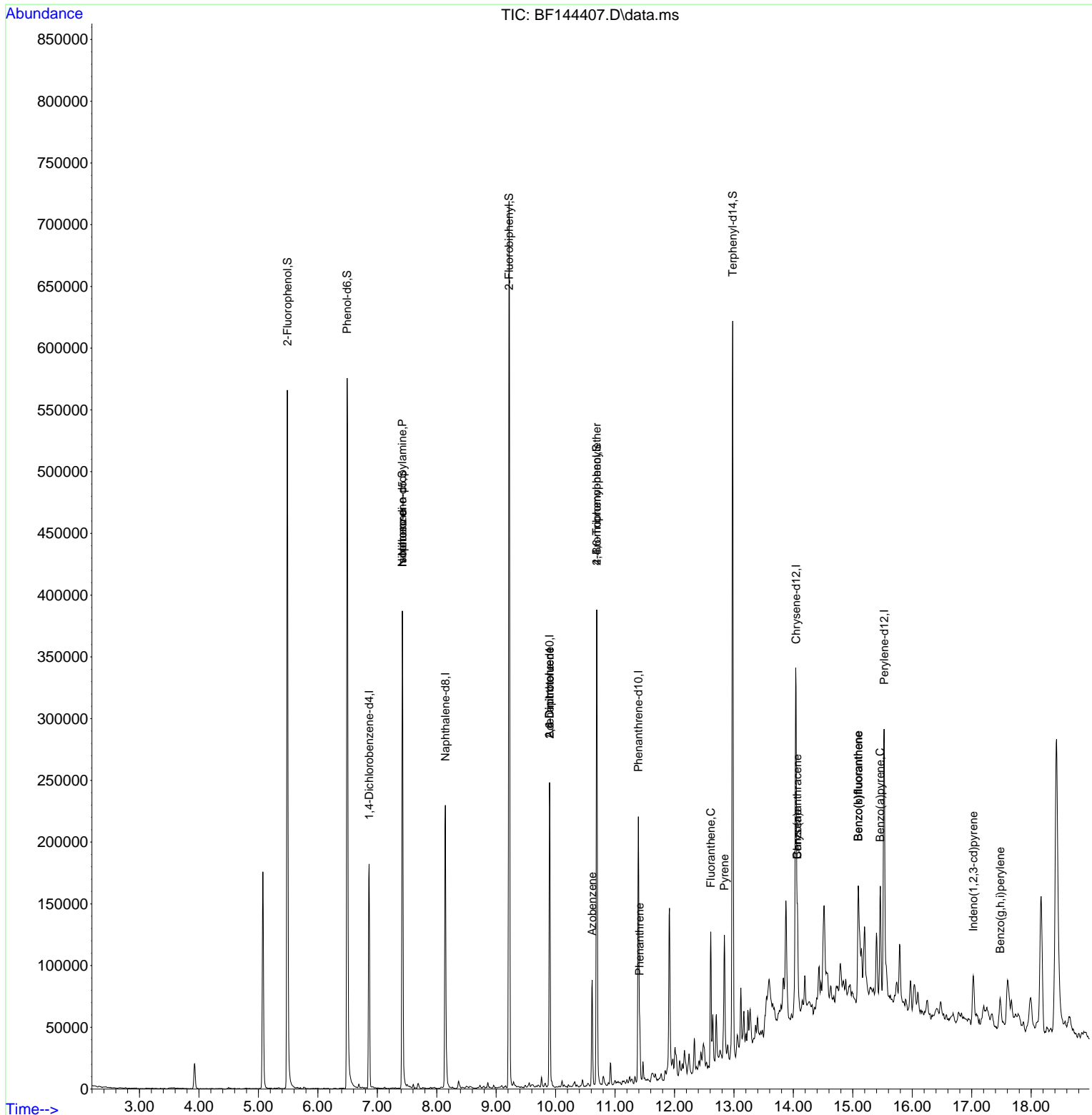
Compound	R.T.	QIon	Response	Conc	Units	Dev(Min)
Internal Standards						
1) 1,4-Dichlorobenzene-d4	6.863	152	40197	20.000	ng	-0.01
21) Naphthalene-d8	8.145	136	151185	20.000	ng	-0.01
39) Acenaphthene-d10	9.898	164	77803	20.000	ng	-0.02
64) Phenanthrene-d10	11.392	188	116737	20.000	ng	-0.01
76) Chrysene-d12	14.045	240	105661	20.000	ng	0.00
86) Perylene-d12	15.527	264	136950	20.000	ng	-0.01
System Monitoring Compounds						
5) 2-Fluorophenol	5.487	112	235901	91.837	ng	0.00
7) Phenol-d6	6.492	99	277496	95.341	ng	0.00
23) Nitrobenzene-d5	7.422	82	165014	63.038	ng	-0.01
42) 2,4,6-Tribromophenol	10.692	330	78690	80.597	ng	-0.01
45) 2-Fluorobiphenyl	9.216	172	346356	65.749	ng	-0.01
79) Terphenyl-d14	12.980	244	313147	47.075	ng	-0.01
Target Compounds						
19) n-Nitroso-di-n-propyla...	7.422	70	24118	12.587	ng	# 76
25) Isophorone	7.422	82	165028	33.329	ng	# 66
51) 2,6-Dinitrotoluene	9.898	165	9917	9.505	ng	# 27
57) 2,4-Dinitrotoluene	9.898	165	9917	7.100	ng	# 27
63) Azobenzene	10.616	77	21384	4.836	ng	# 1
67) 4-Bromophenyl-phenylether	10.692	248	4313	2.895	ng	# 1
71) Phenanthrene	11.416	178	26376	4.538	ng	100
75) Fluoranthene	12.610	202	61608	10.261	ng	98
78) Pyrene	12.839	202	58547	6.872	ng	98
81) Benzo(a)anthracene	14.068	228	45811	6.256	ng	93
83) Chrysene	14.068	228	45811	6.777	ng	94
87) Indeno(1,2,3-cd)pyrene	17.027	276	22777	2.317	ng	95
88) Benzo(b)fluoranthene	15.092	252	87728	11.268	ng	# 97
89) Benzo(k)fluoranthene	15.092	252	87728	12.038	ng	# 98
90) Benzo(a)pyrene	15.462	252	55659	7.749	ng	# 97
92) Benzo(g,h,i)perylene	17.480	276	20302	2.604	ng	# 93

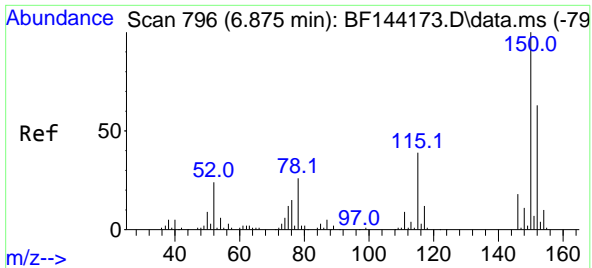
(#) = qualifier out of range (m) = manual integration (+) = signals summed

Data Path : Z:\svoasrv\HPCHEM1\BNA_F\Data\BF120225\
 Data File : BF144407.D
 Acq On : 02 Dec 2025 17:19
 Operator : RC/JU
 Sample : Q3742-18
 Misc :
 ALS Vial : 11 Sample Multiplier: 1

Instrument :
 BNA_F
 ClientSampleId :
 SB-1125-24

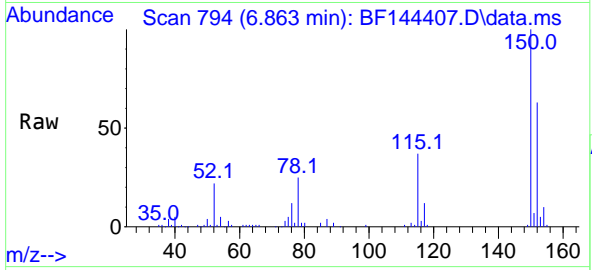
Quant Time: Dec 02 17:39:39 2025
 Quant Method : Z:\svoasrv\HPCHEM1\BNA_F\Methods\8270-BF110525.M
 Quant Title : ASP BNA STANDARDS FOR 5 POINT CALIBRATION
 QLast Update : Wed Nov 05 18:37:33 2025
 Response via : Initial Calibration



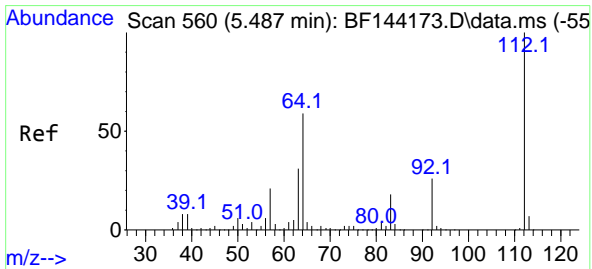
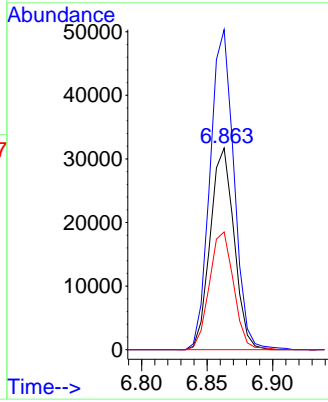
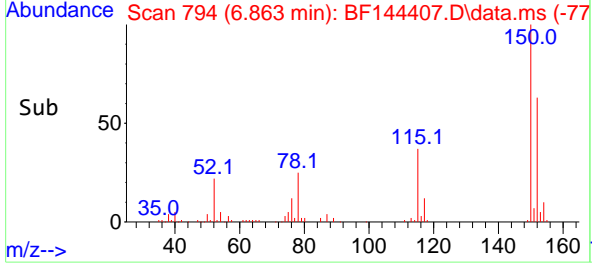


#1
 1,4-Dichlorobenzene-d4
 Concen: 20.000 ng
 RT: 6.863 min Scan# 794
 Delta R.T. -0.012 min
 Lab File: BF144407.D
 Acq: 02 Dec 2025 17:19

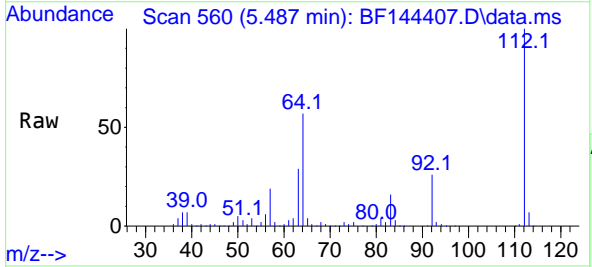
Instrument :
 BNA_F
 ClientSampleId :
 SB-1125-24



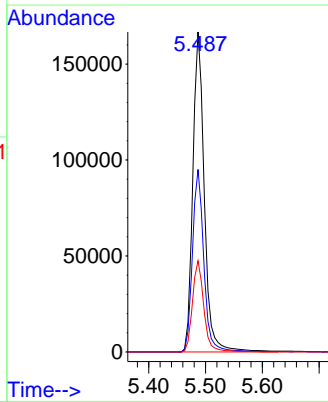
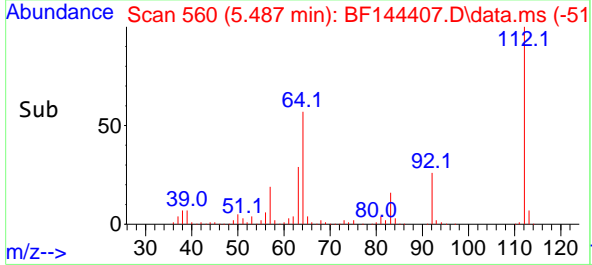
Tgt Ion:152 Resp: 40197
 Ion Ratio Lower Upper
 152 100
 150 158.7 127.4 191.0
 115 58.4 49.5 74.3

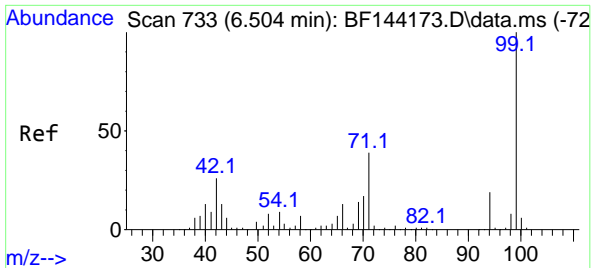


#5
 2-Fluorophenol
 Concen: 91.837 ng
 RT: 5.487 min Scan# 560
 Delta R.T. -0.006 min
 Lab File: BF144407.D
 Acq: 02 Dec 2025 17:19



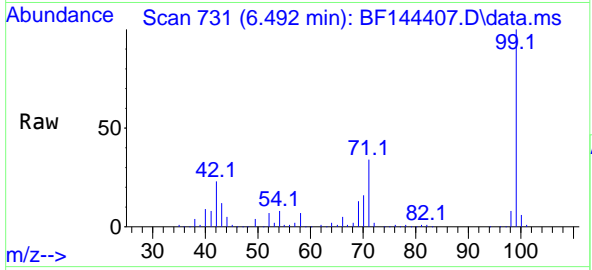
Tgt Ion:112 Resp: 235901
 Ion Ratio Lower Upper
 112 100
 64 57.0 47.2 70.8
 63 28.5 24.4 36.6



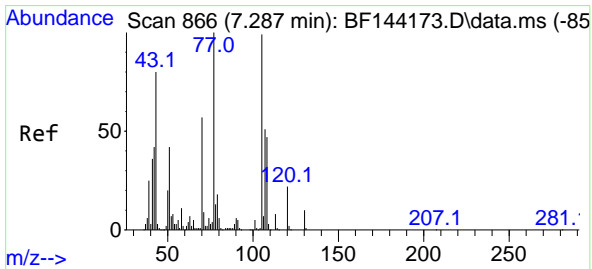
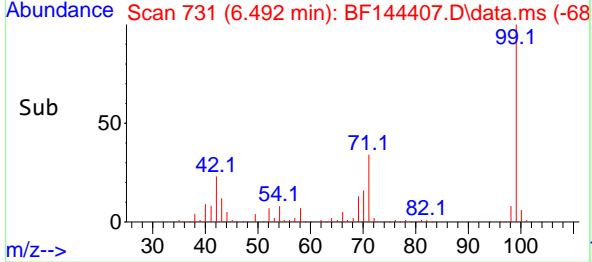
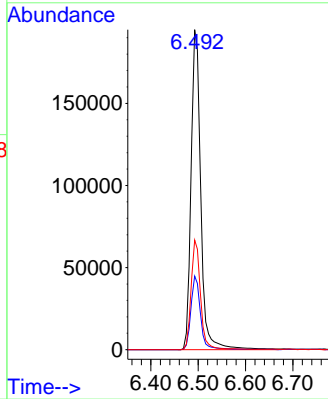


#7
Phenol-d6
Concen: 95.341 ng
RT: 6.492 min Scan# 71
Delta R.T. -0.006 min
Lab File: BF144407.D
Acq: 02 Dec 2025 17:19

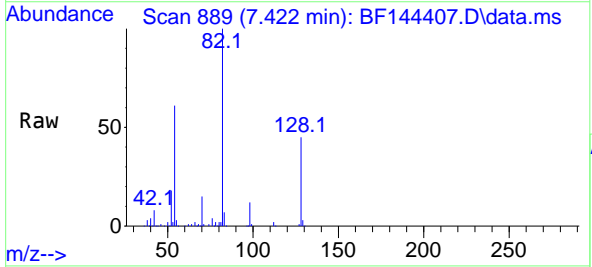
Instrument :
BNA_F
ClientSampleId :
SB-1125-24



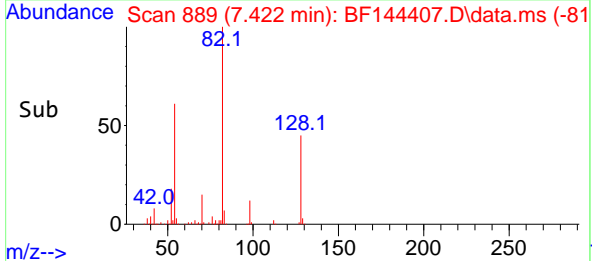
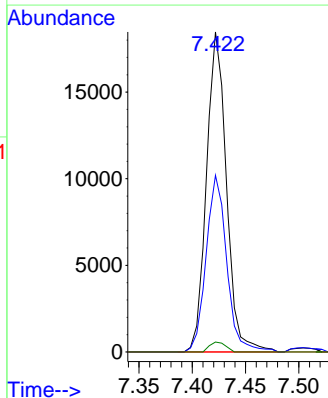
Tgt Ion: 99 Resp: 277496
Ion Ratio Lower Upper
99 100
42 23.0 20.9 31.3
71 34.3 31.4 47.2

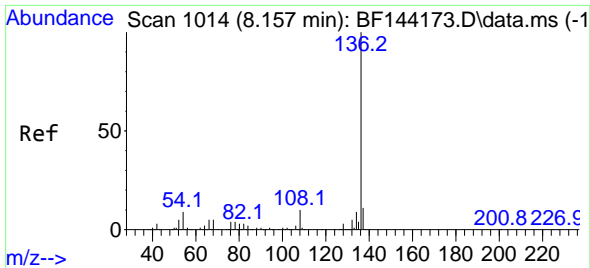


#19
n-Nitroso-di-n-propylamine
Concen: 12.587 ng
RT: 7.422 min Scan# 889
Delta R.T. 0.147 min
Lab File: BF144407.D
Acq: 02 Dec 2025 17:19



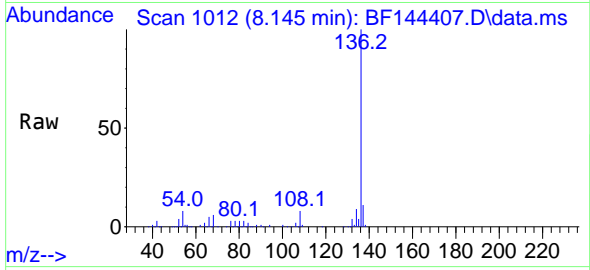
Tgt Ion: 70 Resp: 24118
Ion Ratio Lower Upper
70 100
42 55.2 58.3 87.5#
101 0.0 7.0 10.6#
130 3.1 14.4 21.6#



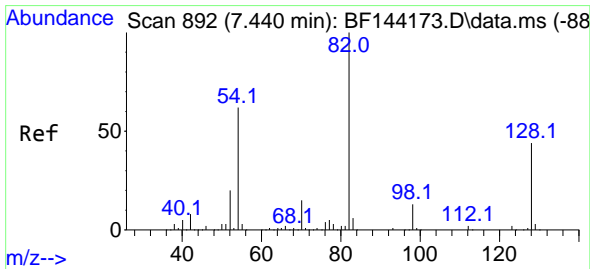
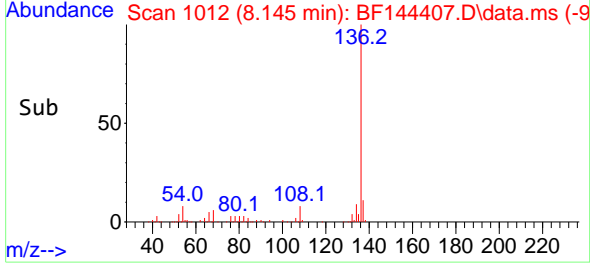
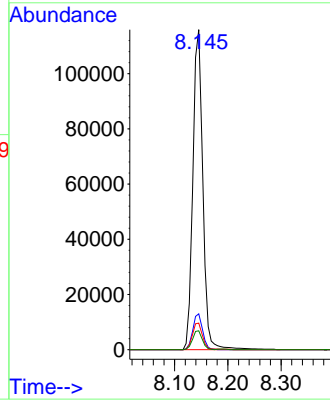


#21
 Naphthalene-d8
 Concen: 20.000 ng
 RT: 8.145 min Scan# 1014
 Delta R.T. -0.012 min
 Lab File: BF144407.D
 Acq: 02 Dec 2025 17:19

Instrument : BNA_F
 Client Sample Id : SB-1125-24

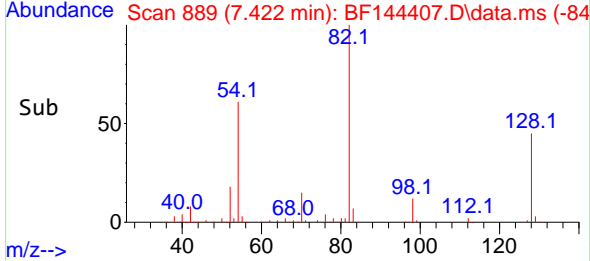
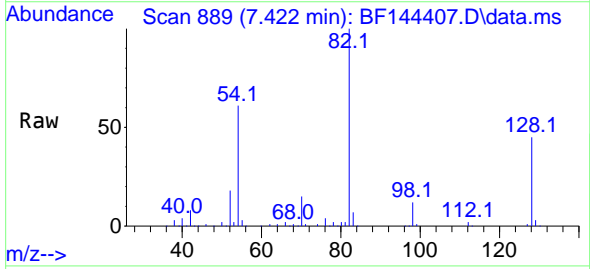
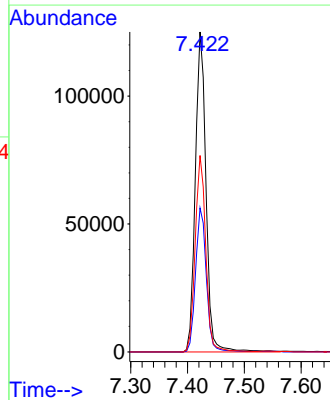


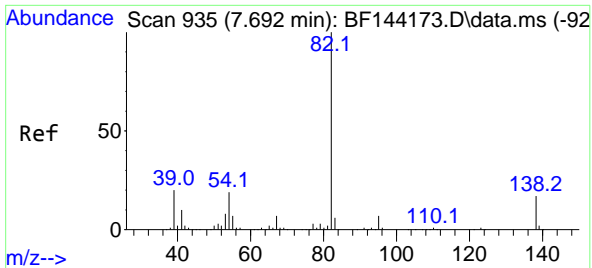
Tgt Ion: 136 Resp: 151185
 Ion Ratio Lower Upper
 136 100
 137 11.2 8.6 13.0
 54 8.3 7.0 10.6
 68 5.9 4.3 6.5



#23
 Nitrobenzene-d5
 Concen: 63.038 ng
 RT: 7.422 min Scan# 889
 Delta R.T. -0.012 min
 Lab File: BF144407.D
 Acq: 02 Dec 2025 17:19

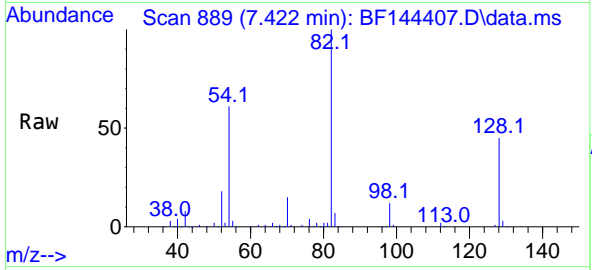
Tgt Ion: 82 Resp: 165014
 Ion Ratio Lower Upper
 82 100
 128 45.0 34.7 52.1
 54 61.4 49.5 74.3



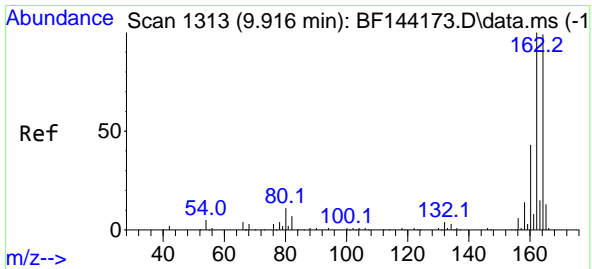
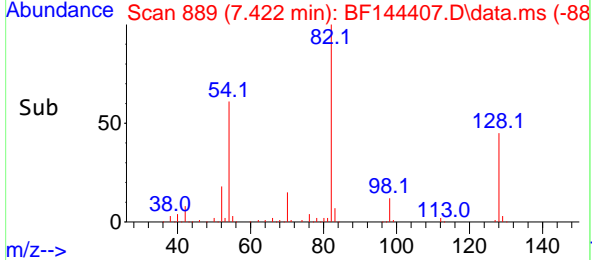
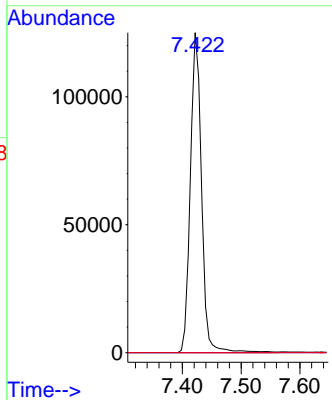


#25
 Isophorone
 Concen: 33.329 ng
 RT: 7.422 min Scan# 81
 Delta R.T. -0.265 min
 Lab File: BF144407.D
 Acq: 02 Dec 2025 17:19

Instrument : BNA_F
 ClientSampleId : SB-1125-24

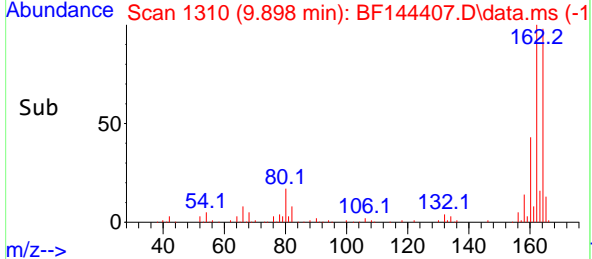
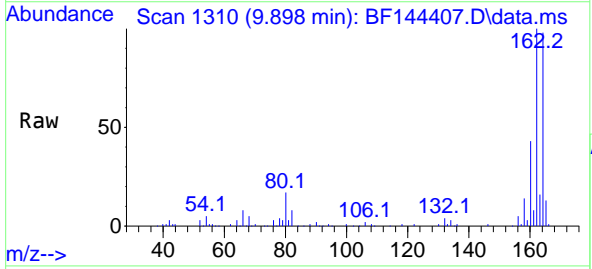
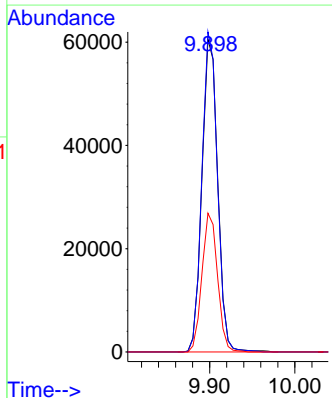


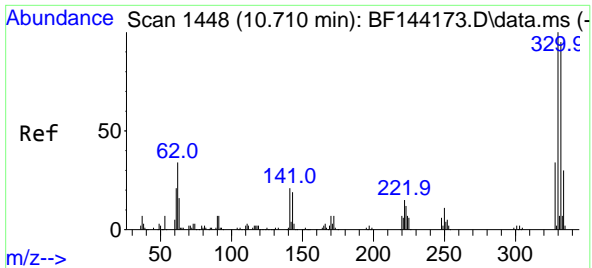
Tgt Ion: 82 Resp: 165028
 Ion Ratio Lower Upper
 82 100
 95 0.0 5.5 8.3#
 138 0.0 13.7 20.5#



#39
 Acenaphthene-d10
 Concen: 20.000 ng
 RT: 9.898 min Scan# 1310
 Delta R.T. -0.018 min
 Lab File: BF144407.D
 Acq: 02 Dec 2025 17:19

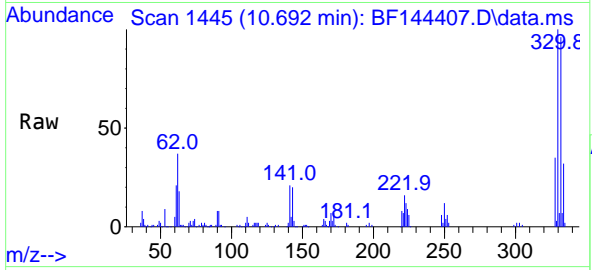
Tgt Ion: 164 Resp: 77803
 Ion Ratio Lower Upper
 164 100
 162 102.4 81.1 121.7
 160 44.4 34.5 51.7



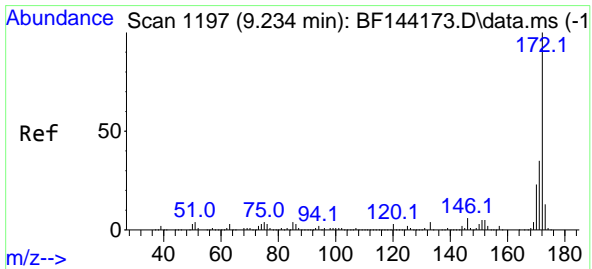
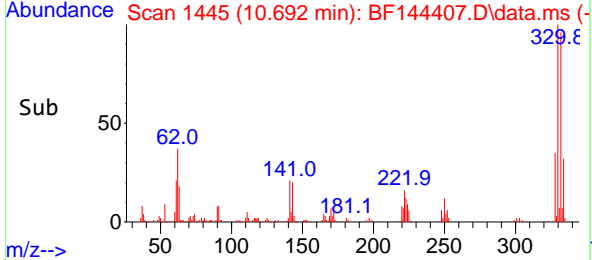
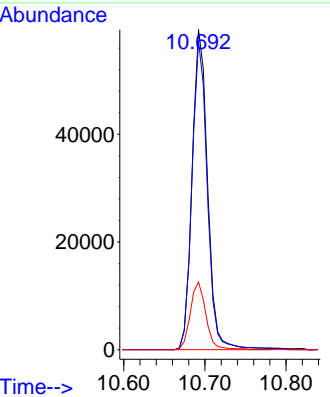


#42
 2,4,6-Tribromophenol
 Concen: 80.597 ng
 RT: 10.692 min Scan# 14
 Delta R.T. -0.012 min
 Lab File: BF144407.D
 Acq: 02 Dec 2025 17:19

Instrument : BNA_F
 ClientSampleId : SB-1125-24

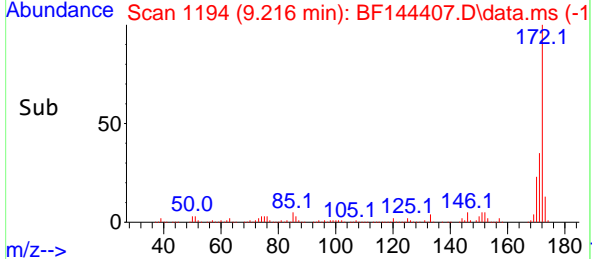
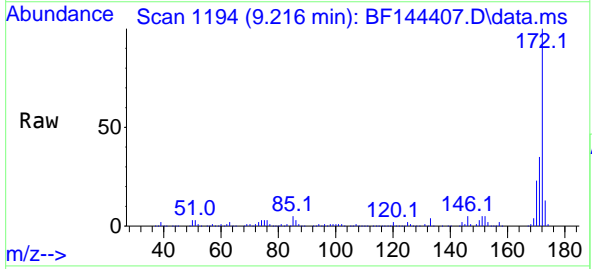
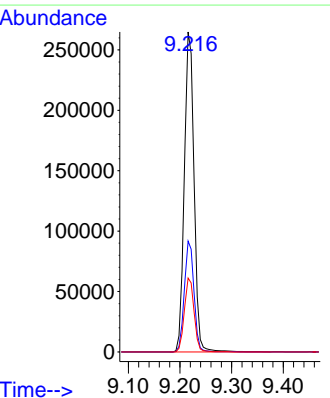


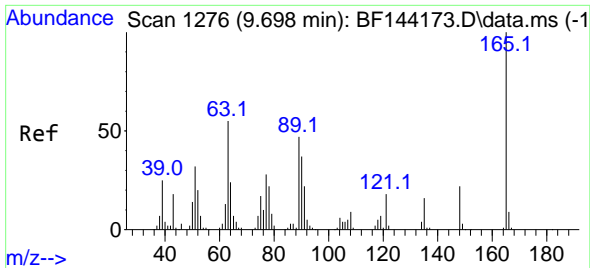
Tgt Ion:330 Resp: 78690
 Ion Ratio Lower Upper
 330 100
 332 95.7 76.7 115.1
 141 21.4 17.8 26.8



#45
 2-Fluorobiphenyl
 Concen: 65.749 ng
 RT: 9.216 min Scan# 1194
 Delta R.T. -0.012 min
 Lab File: BF144407.D
 Acq: 02 Dec 2025 17:19

Tgt Ion:172 Resp: 346356
 Ion Ratio Lower Upper
 172 100
 171 34.6 28.1 42.1
 170 23.1 18.6 28.0



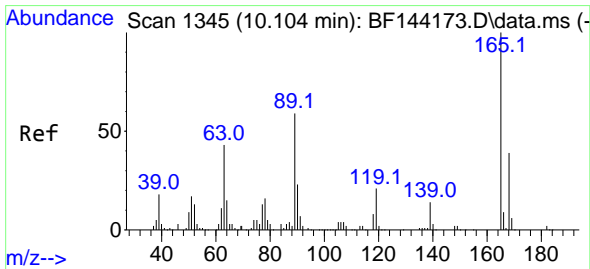
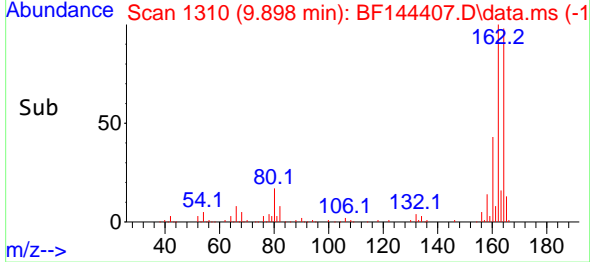
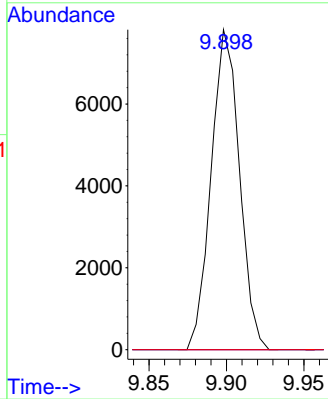
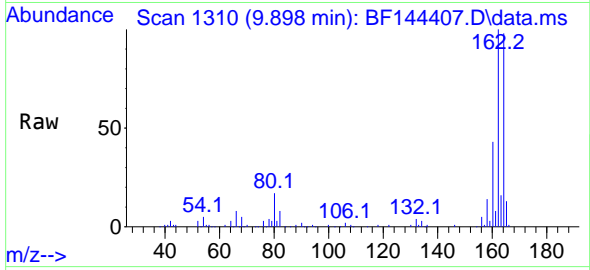


#51
 2,6-Dinitrotoluene
 Concen: 9.505 ng
 RT: 9.898 min Scan# 11
 Delta R.T. 0.206 min
 Lab File: BF144407.D
 Acq: 02 Dec 2025 17:19

Instrument :
 BNA_F
 ClientSampleId :
 SB-1125-24

Tgt Ion:165 Resp: 9917

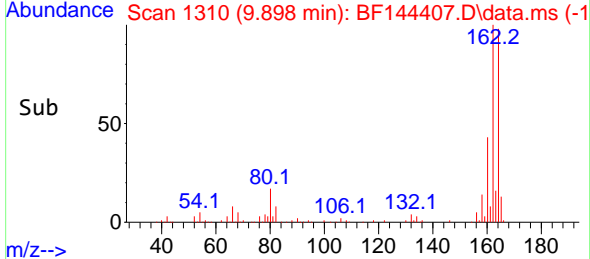
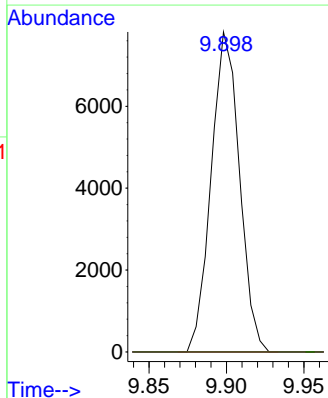
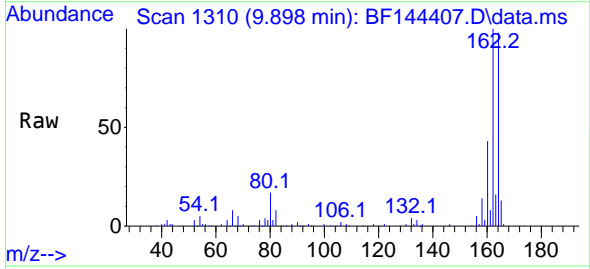
Ion	Ratio	Lower	Upper
165	100		
63	0.0	43.8	65.8#
89	0.0	37.5	56.3#

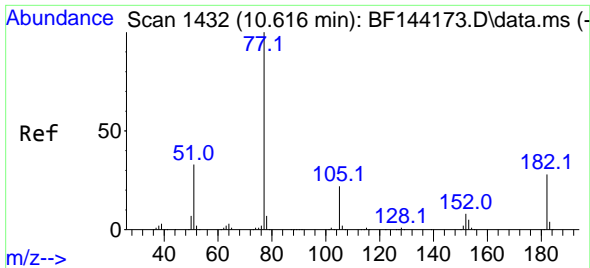


#57
 2,4-Dinitrotoluene
 Concen: 7.100 ng
 RT: 9.898 min Scan# 1310
 Delta R.T. -0.200 min
 Lab File: BF144407.D
 Acq: 02 Dec 2025 17:19

Tgt Ion:165 Resp: 9917

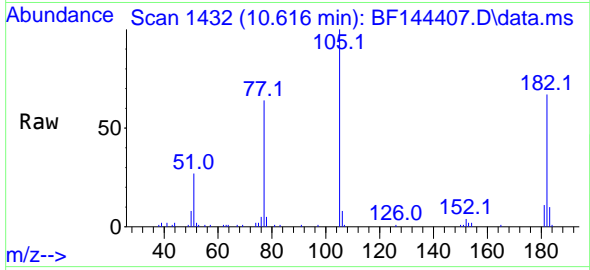
Ion	Ratio	Lower	Upper
165	100		
63	0.0	35.5	53.3#
89	0.0	47.4	71.2#
182	0.0	1.9	2.9#



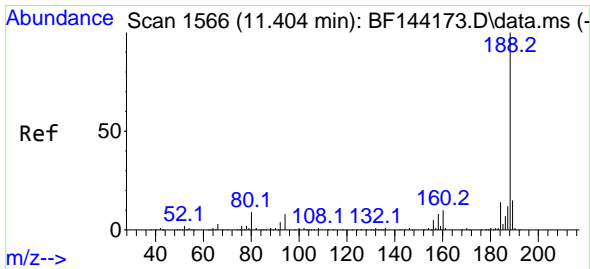
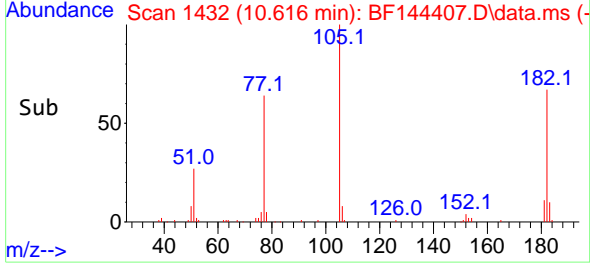
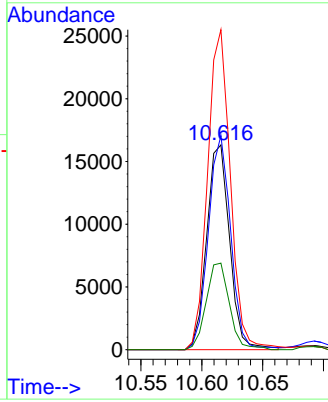


#63
 Azobenzene
 Concen: 4.836 ng
 RT: 10.616 min Scan# 14
 Delta R.T. -0.000 min
 Lab File: BF144407.D
 Acq: 02 Dec 2025 17:19

Instrument :
 BNA_F
 ClientSampleId :
 SB-1125-24

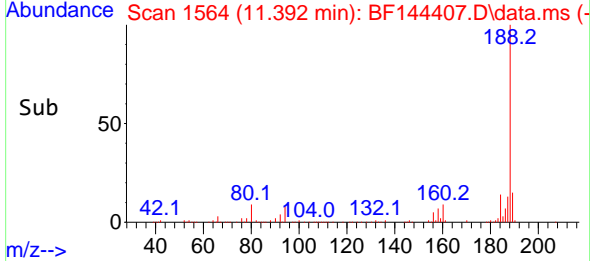
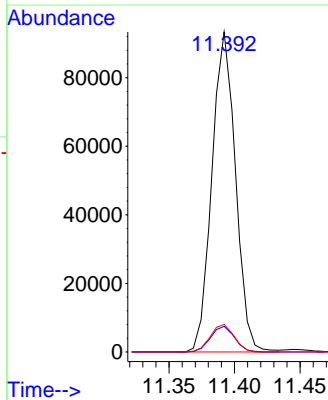
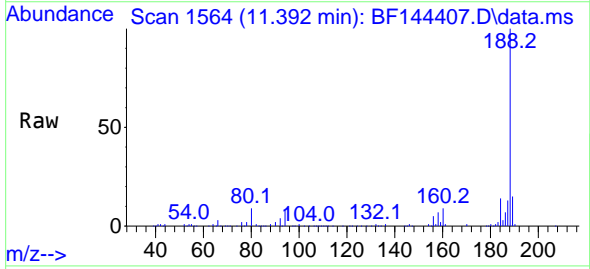


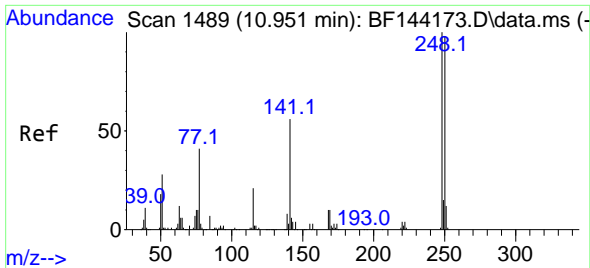
Tgt Ion: 77 Resp: 21384
 Ion Ratio Lower Upper
 77 100
 182 104.6 8.1 48.1#
 105 156.3 2.0 42.0#
 51 42.3 13.9 53.9



#64
 Phenanthrene-d10
 Concen: 20.000 ng
 RT: 11.392 min Scan# 1564
 Delta R.T. -0.012 min
 Lab File: BF144407.D
 Acq: 02 Dec 2025 17:19

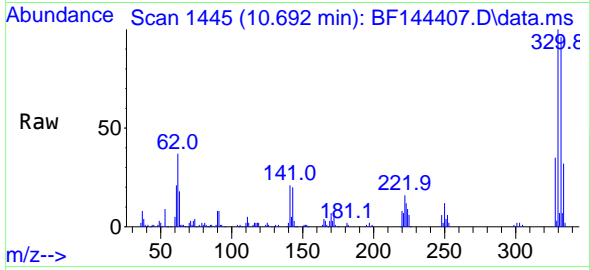
Tgt Ion: 188 Resp: 116737
 Ion Ratio Lower Upper
 188 100
 94 8.0 6.2 9.2
 80 8.6 6.9 10.3



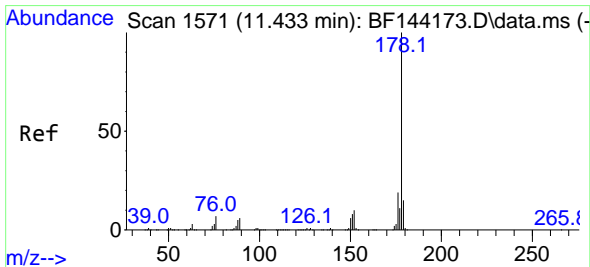
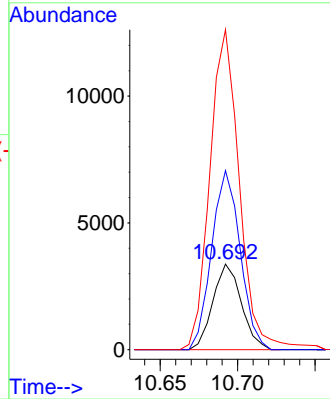
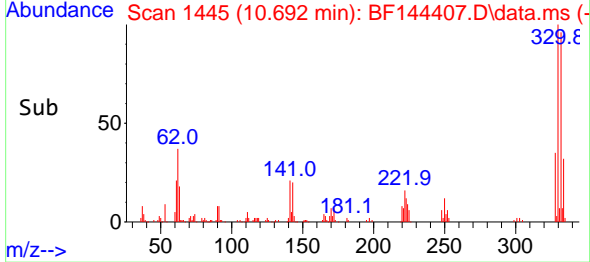


#67
 4-Bromophenyl-phenylether
 Concen: 2.895 ng
 RT: 10.692 min Scan# 14
 Delta R.T. -0.253 min
 Lab File: BF144407.D
 Acq: 02 Dec 2025 17:19

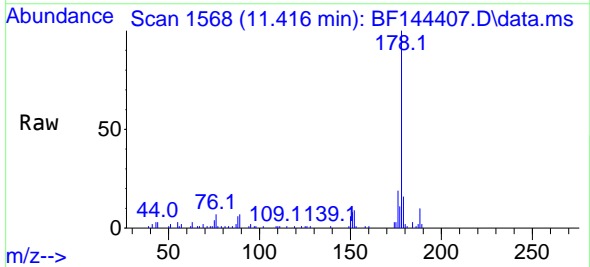
Instrument :
 BNA_F
 ClientSampleId :
 SB-1125-24



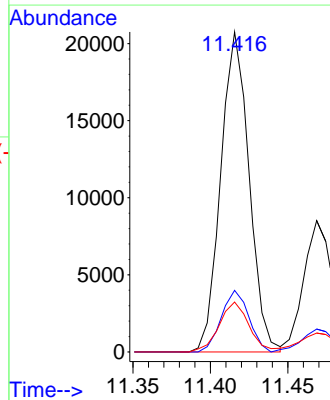
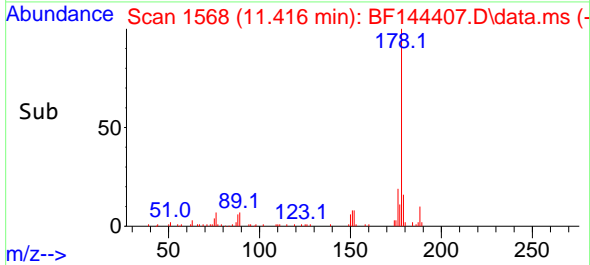
Tgt Ion:248 Resp: 4313
 Ion Ratio Lower Upper
 248 100
 250 209.3 78.4 117.6#
 141 374.1 45.1 67.7#

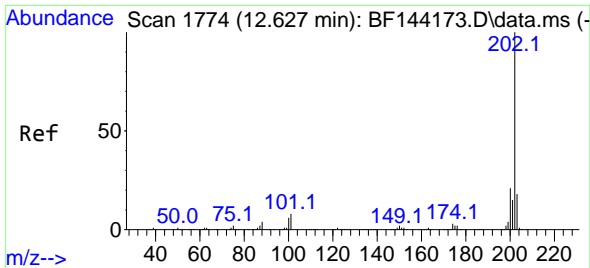


#71
 Phenanthrene
 Concen: 4.538 ng
 RT: 11.416 min Scan# 1568
 Delta R.T. -0.012 min
 Lab File: BF144407.D
 Acq: 02 Dec 2025 17:19



Tgt Ion:178 Resp: 26376
 Ion Ratio Lower Upper
 178 100
 176 19.3 15.5 23.3
 179 15.6 12.2 18.4

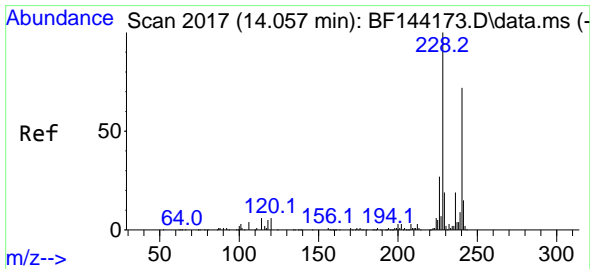
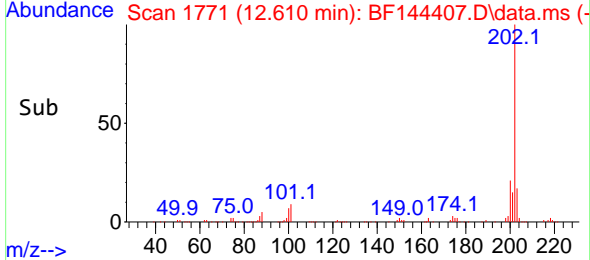
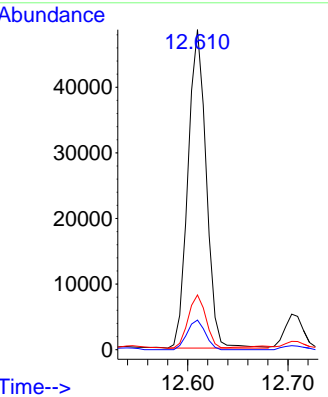
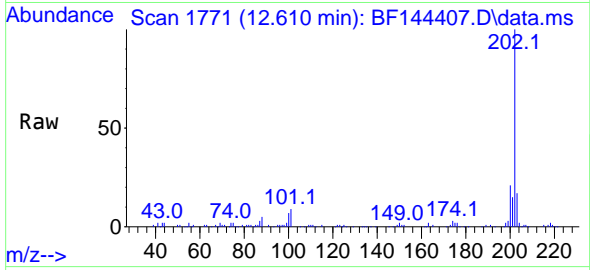




#75
 Fluoranthene
 Concen: 10.261 ng
 RT: 12.610 min Scan# 11
 Delta R.T. -0.012 min
 Lab File: BF144407.D
 Acq: 02 Dec 2025 17:19

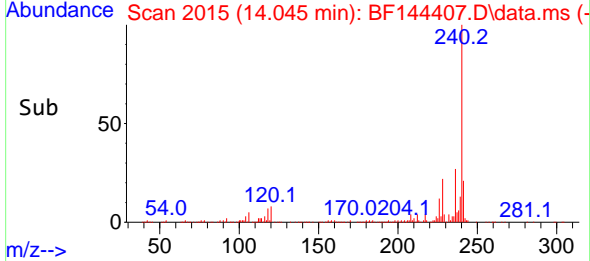
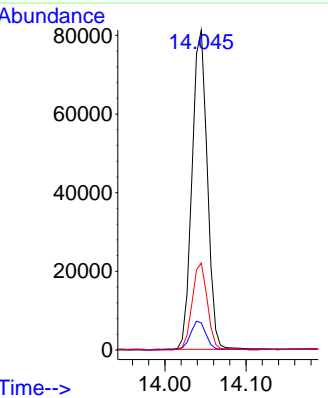
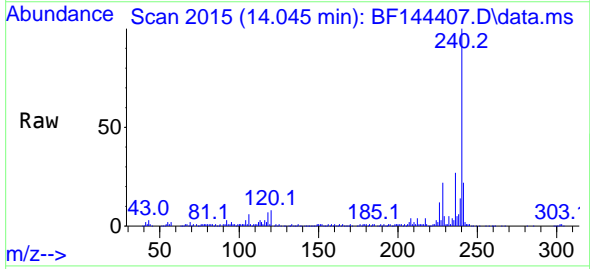
Instrument : BNA_F
 Client Sample Id : SB-1125-24

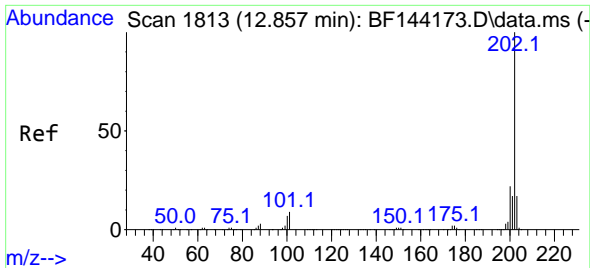
Tgt Ion	Resp	Lower	Upper
202	61608		
101	9.2	0.0	27.9
203	17.1	0.0	37.5



#76
 Chrysene-d12
 Concen: 20.000 ng
 RT: 14.045 min Scan# 2015
 Delta R.T. -0.006 min
 Lab File: BF144407.D
 Acq: 02 Dec 2025 17:19

Tgt Ion	Resp	Lower	Upper
240	105661		
120	8.4	6.6	10.0
236	27.2	21.4	32.2



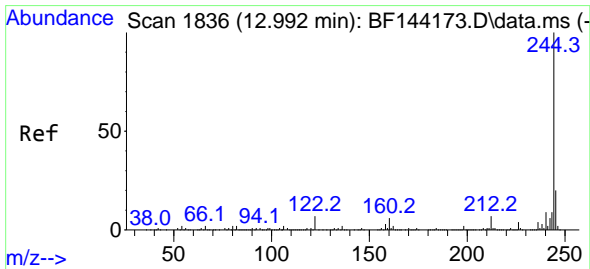
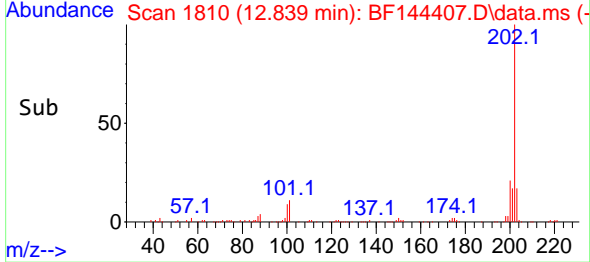
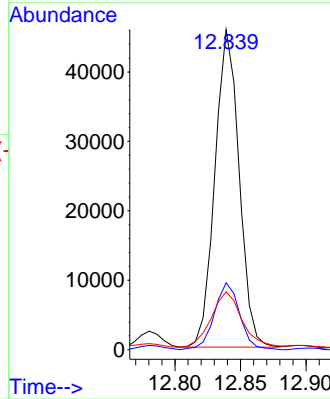
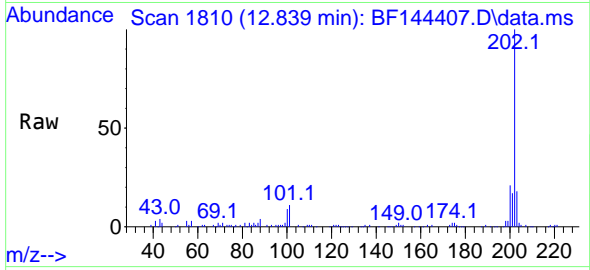


#78
 Pyrene
 Concen: 6.872 ng
 RT: 12.839 min Scan# 1810
 Delta R.T. -0.012 min
 Lab File: BF144407.D
 Acq: 02 Dec 2025 17:19

Instrument :
 BNA_F
 ClientSampleId :
 SB-1125-24

Tgt Ion:202 Resp: 58547

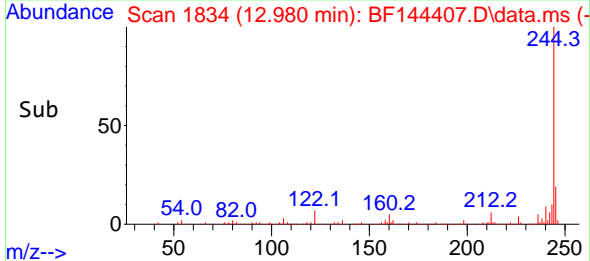
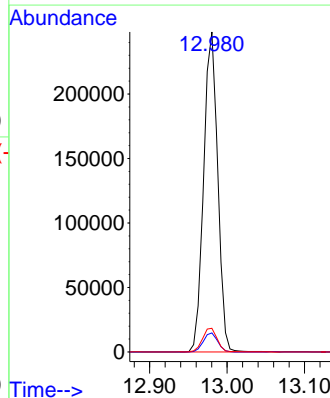
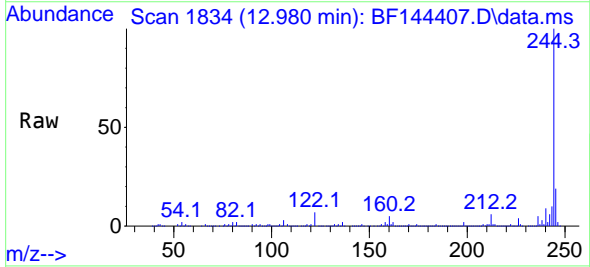
Ion	Ratio	Lower	Upper
202	100		
200	20.9	17.2	25.8
203	18.1	13.7	20.5

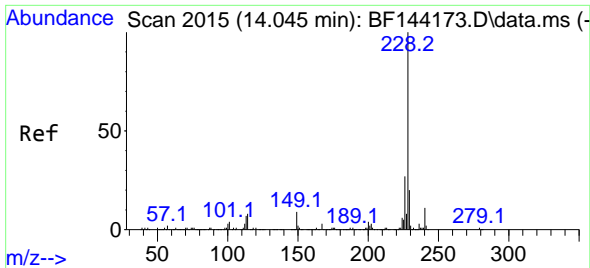


#79
 Terphenyl-d14
 Concen: 47.075 ng
 RT: 12.980 min Scan# 1834
 Delta R.T. -0.012 min
 Lab File: BF144407.D
 Acq: 02 Dec 2025 17:19

Tgt Ion:244 Resp: 313147

Ion	Ratio	Lower	Upper
244	100		
212	6.0	5.3	7.9
122	7.4	5.6	8.4



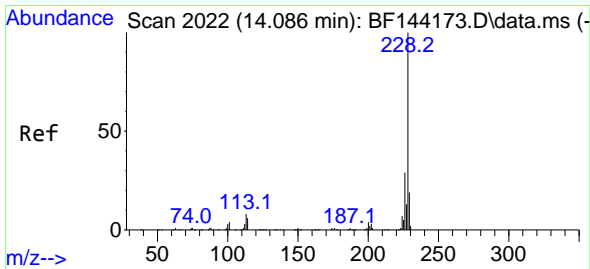
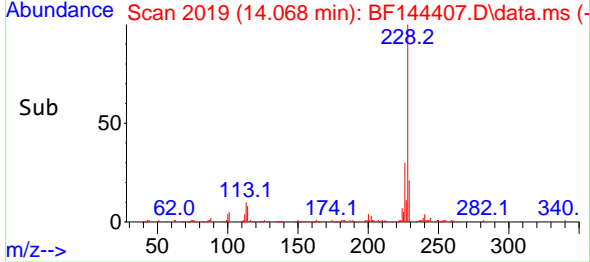
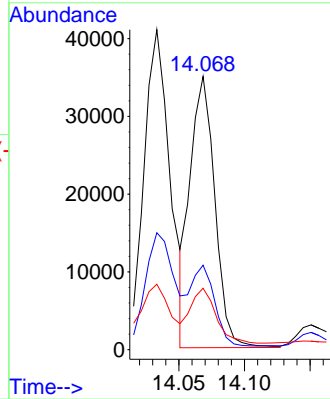
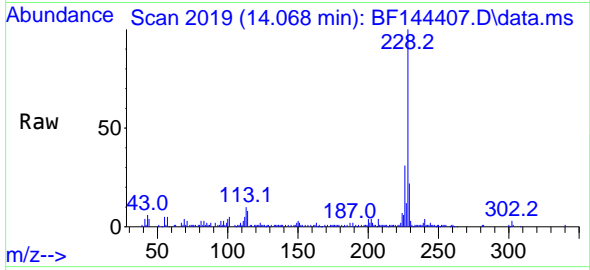


#81
 Benzo(a)anthracene
 Concen: 6.256 ng
 RT: 14.068 min Scan# 2019
 Delta R.T. 0.023 min
 Lab File: BF144407.D
 Acq: 02 Dec 2025 17:19

Instrument : BNA_F
 ClientSampleId : SB-1125-24

Tgt Ion:228 Resp: 45811

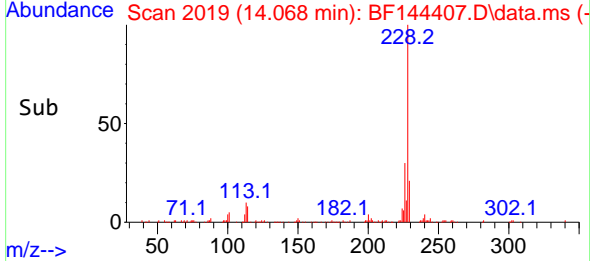
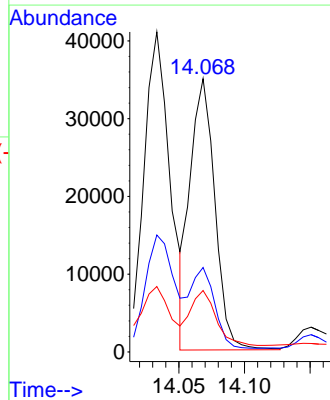
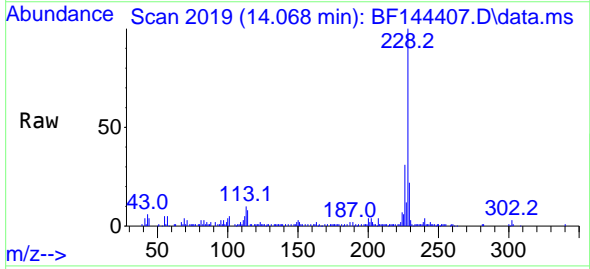
Ion	Ratio	Lower	Upper
228	100		
226	30.9	21.8	32.8
229	22.5	15.8	23.6

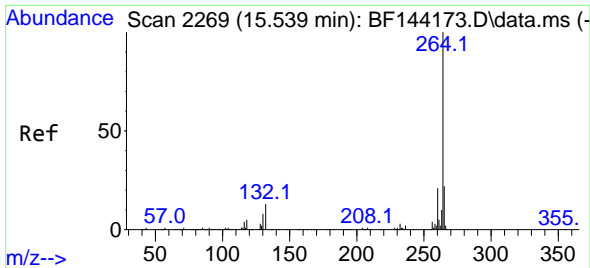


#83
 Chrysene
 Concen: 6.777 ng
 RT: 14.068 min Scan# 2019
 Delta R.T. -0.012 min
 Lab File: BF144407.D
 Acq: 02 Dec 2025 17:19

Tgt Ion:228 Resp: 45811

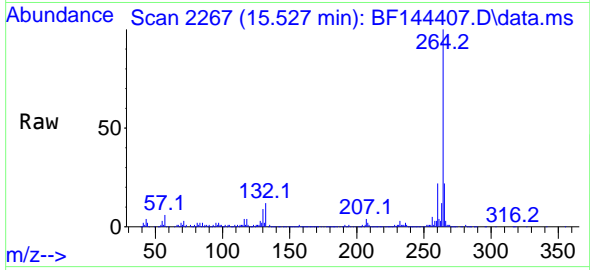
Ion	Ratio	Lower	Upper
228	100		
226	30.9	22.9	34.3
229	22.5	15.0	22.6



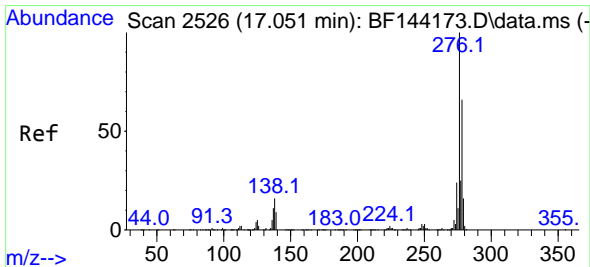
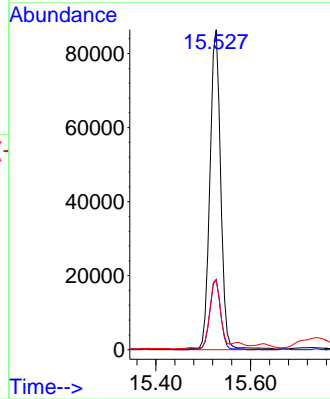
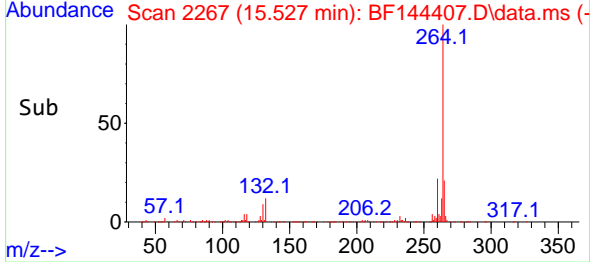


#86
 Perylene-d12
 Concen: 20.000 ng
 RT: 15.527 min Scan# 21
 Delta R.T. -0.012 min
 Lab File: BF144407.D
 Acq: 02 Dec 2025 17:19

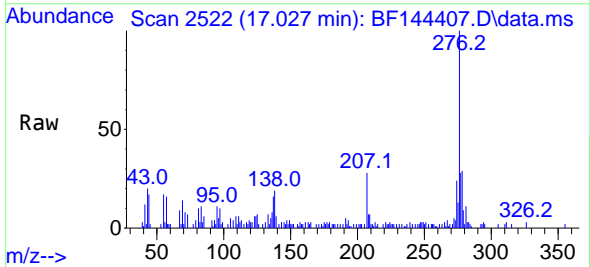
Instrument :
 BNA_F
 ClientSampleId :
 SB-1125-24



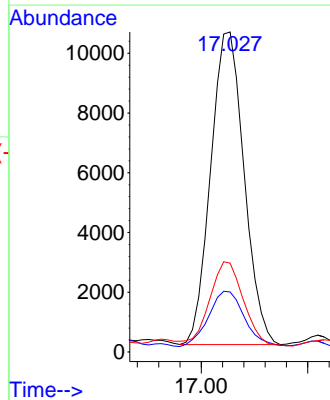
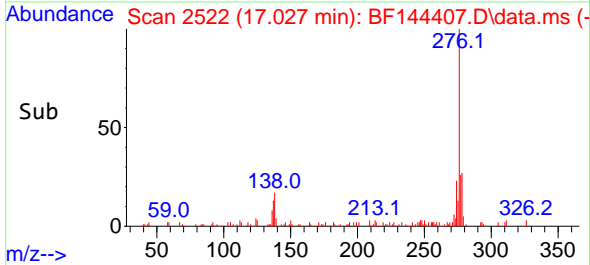
Tgt Ion:264 Resp: 136950
 Ion Ratio Lower Upper
 264 100
 260 21.9 17.1 25.7
 265 21.8 17.4 26.0

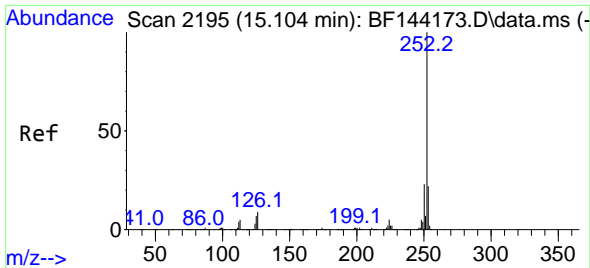


#87
 Indeno(1,2,3-cd)pyrene
 Concen: 2.317 ng
 RT: 17.027 min Scan# 2522
 Delta R.T. -0.006 min
 Lab File: BF144407.D
 Acq: 02 Dec 2025 17:19



Tgt Ion:276 Resp: 22777
 Ion Ratio Lower Upper
 276 100
 138 19.2 13.9 20.9
 277 27.3 19.8 29.6



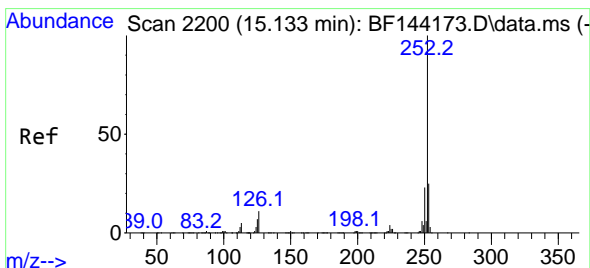
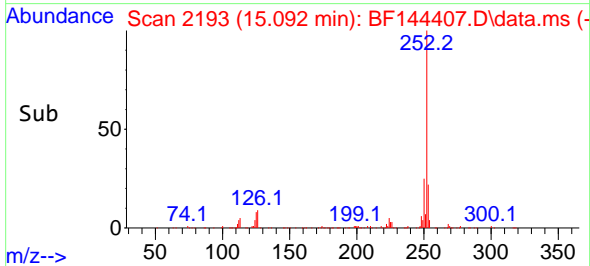
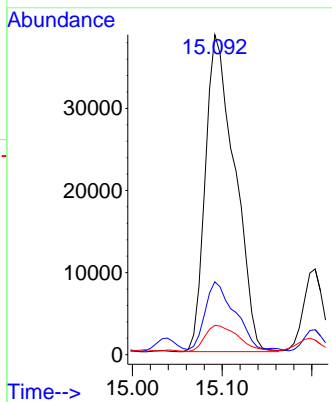
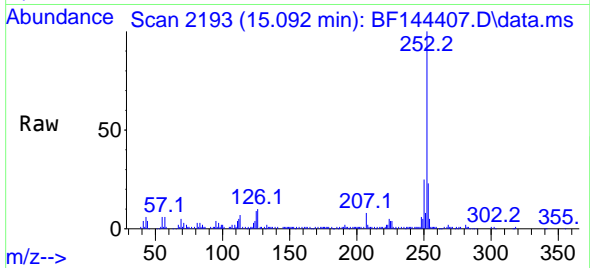


#88
 Benzo(b)fluoranthene
 Concen: 11.268 ng
 RT: 15.092 min Scan# 2193
 Delta R.T. -0.006 min
 Lab File: BF144407.D
 Acq: 02 Dec 2025 17:19

Instrument :
 BNA_F
 ClientSampleId :
 SB-1125-24

Tgt Ion:252 Resp: 87728

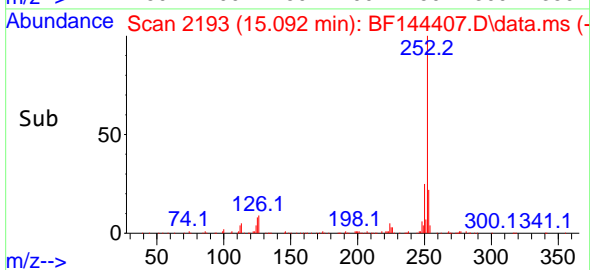
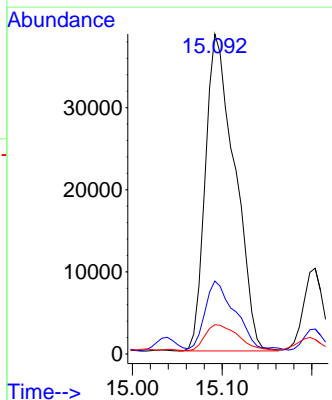
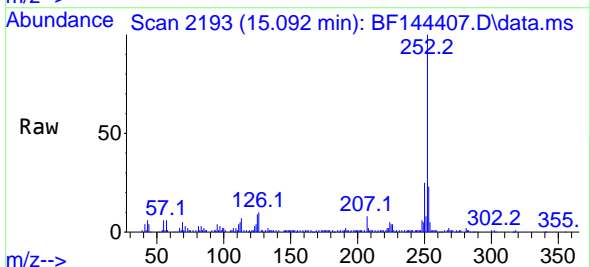
Ion	Ratio	Lower	Upper
252	100		
253	22.8	17.4	26.2
125	9.2	5.3	7.9#

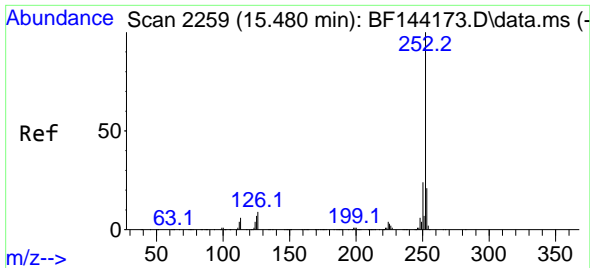


#89
 Benzo(k)fluoranthene
 Concen: 12.038 ng
 RT: 15.092 min Scan# 2193
 Delta R.T. -0.035 min
 Lab File: BF144407.D
 Acq: 02 Dec 2025 17:19

Tgt Ion:252 Resp: 87728

Ion	Ratio	Lower	Upper
252	100		
253	22.8	18.0	27.0
125	9.2	5.4	8.2#



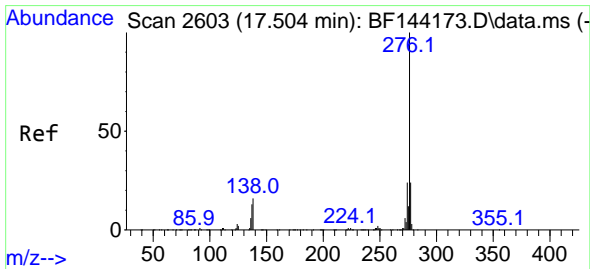
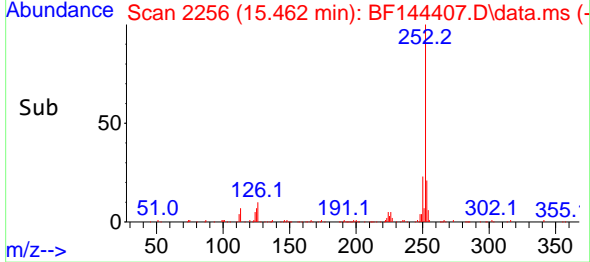
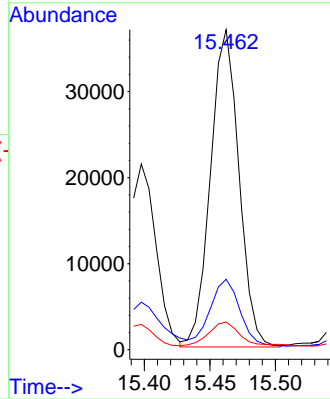
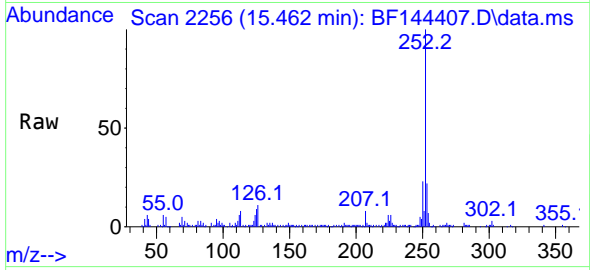


#90
 Benzo(a)pyrene
 Concen: 7.749 ng
 RT: 15.462 min Scan# 21
 Delta R.T. -0.012 min
 Lab File: BF144407.D
 Acq: 02 Dec 2025 17:19

Instrument :
 BNA_F
 ClientSampleId :
 SB-1125-24

Tgt Ion:252 Resp: 55659

Ion	Ratio	Lower	Upper
252	100		
253	22.0	16.7	25.1
125	8.7	5.7	8.5#



#92
 Benzo(g,h,i)perylene
 Concen: 2.604 ng
 RT: 17.480 min Scan# 2599
 Delta R.T. -0.012 min
 Lab File: BF144407.D
 Acq: 02 Dec 2025 17:19

Tgt Ion:276 Resp: 20302

Ion	Ratio	Lower	Upper
276	100		
277	26.9	19.0	28.4
138	19.8	12.9	19.3#

