

Data Path : Z:\SVOASRV\HPCHEM1\BNA F\DATA\BF120618\  
 Data File : BF111131.D  
 Acq On : 6 Dec 2018 11:57  
 Operator : JU/SJ  
 Sample : J6206-15  
 Misc :  
 ALS Vial : 3 Sample Multiplier: 1

Instrument :  
 BNA\_F  
 ClientSampleId :  
 HLSP-SB-4B-(2-6)

Quant Time: Dec 06 13:55:05 2018  
 Quant Method : Z:\SVOASRV\HPCHEM1\BNA F\METHODS\8270-BF120518.M  
 Quant Title : ASP BNA STANDARDS FOR 5 POINT CALIBRATION  
 QLast Update : Thu Dec 06 13:41:03 2018  
 Response via : Initial Calibration

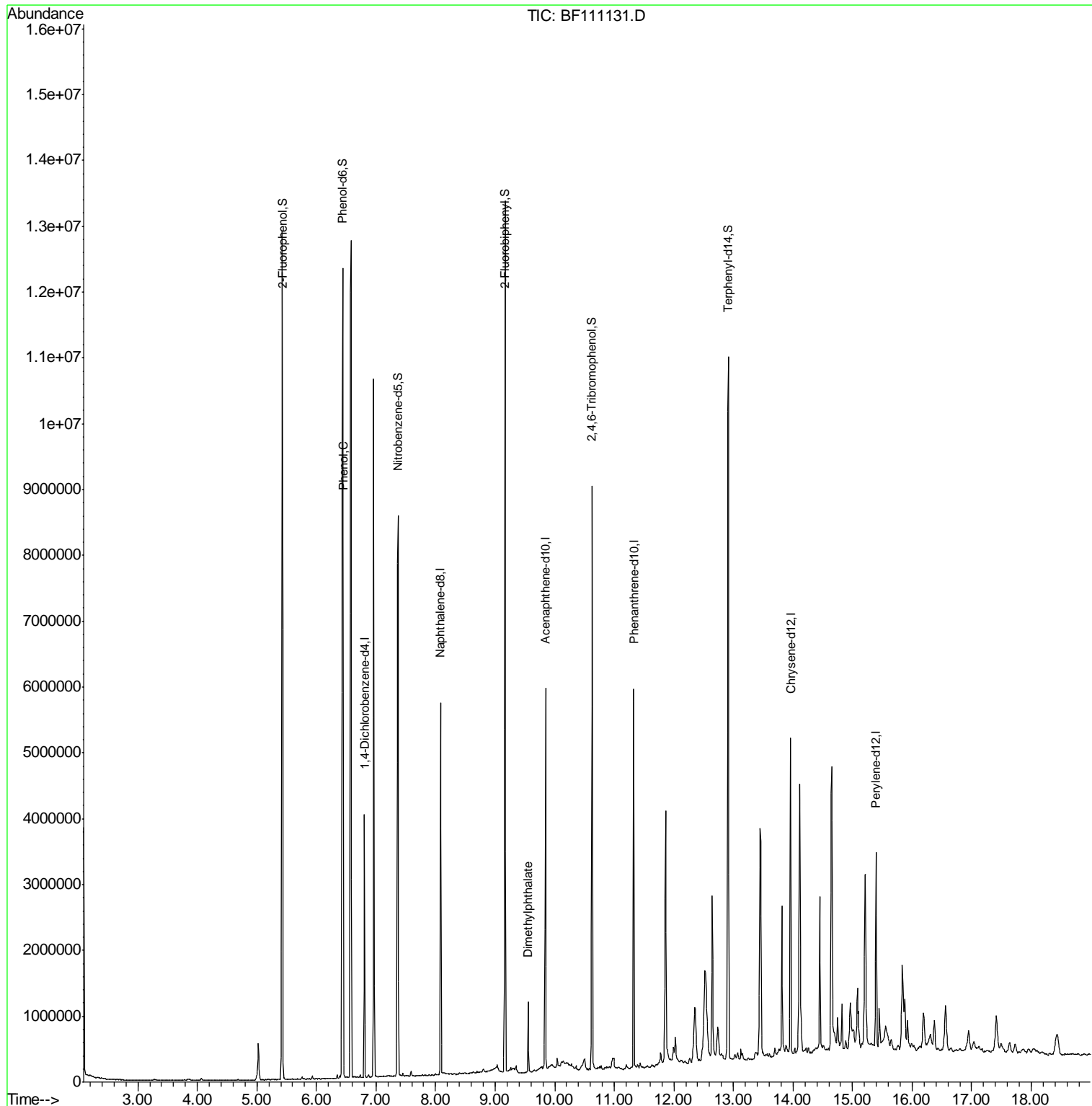
| Internal Standards          | R.T.  | QIon | Response | Conc  | Units | Dev(Min) |
|-----------------------------|-------|------|----------|-------|-------|----------|
| 1) 1,4-Dichlorobenzene-d4   | 6.80  | 152  | 566988   | 20.00 | ng    | 0.00     |
| 21) Naphthalene-d8          | 8.09  | 136  | 2305266  | 20.00 | ng    | 0.00     |
| 39) Acenaphthene-d10        | 9.85  | 164  | 1168593  | 20.00 | ng    | 0.00     |
| 64) Phenanthrene-d10        | 11.33 | 188  | 2051475  | 20.00 | ng    | 0.00     |
| 76) Chrysene-d12            | 13.96 | 240  | 1615061  | 20.00 | ng    | 0.00     |
| 87) Perylene-d12            | 15.40 | 264  | 1288357  | 20.00 | ng    | 0.00     |
| System Monitoring Compounds |       |      |          |       |       |          |
| 5) 2-Fluorophenol           | 5.43  | 112  | 3505376  | 96.47 | ng    | 0.01     |
| 7) Phenol-d6                | 6.44  | 99   | 4395607  | 93.91 | ng    | 0.00     |
| 23) Nitrobenzene-d5         | 7.37  | 82   | 2847363  | 73.13 | ng    | 0.00     |
| 42) 2,4,6-Tribromophenol    | 10.63 | 330  | 901892   | 97.09 | ng    | 0.00     |
| 45) 2-Fluorobiphenyl        | 9.17  | 172  | 3889511  | 56.85 | ng    | 0.00     |
| 79) Terphenyl-d14           | 12.92 | 244  | 3513564  | 44.55 | ng    | 0.00     |
| Target Compounds            |       |      |          |       |       |          |
| 10) Phenol                  | 6.45  | 94   | 307154   | 6.018 | ng    | 94       |
| 50) Dimethylphthalate       | 9.56  | 163  | 373762   | 4.596 | ng    | 97       |

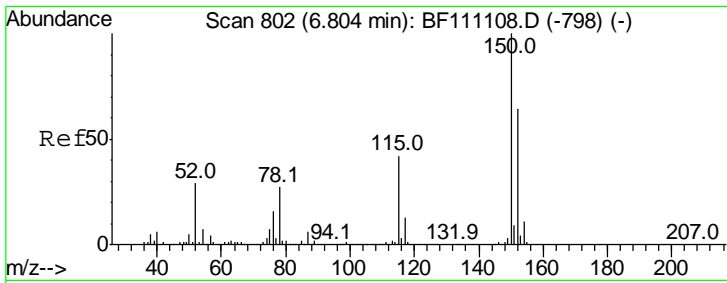
(#) = qualifier out of range (m) = manual integration (+) = signals summed

Data Path : Z:\SVOASRV\HPCHEM1\BNA F\DATA\BF120618\  
 Data File : BF111131.D  
 Acq On : 6 Dec 2018 11:57  
 Operator : JU/SJ  
 Sample : J6206-15  
 Misc :  
 ALS Vial : 3 Sample Multiplier: 1

Instrument :  
 BNA\_F  
 ClientSampled :  
 HLSP-SB-4B-(2-6)

Quant Time: Dec 06 13:55:05 2018  
 Quant Method : Z:\SVOASRV\HPCHEM1\BNA F\METHODS\8270-BF120518.M  
 Quant Title : ASP BNA STANDARDS FOR 5 POINT CALIBRATION  
 QLast Update : Thu Dec 06 13:41:03 2018  
 Response via : Initial Calibration

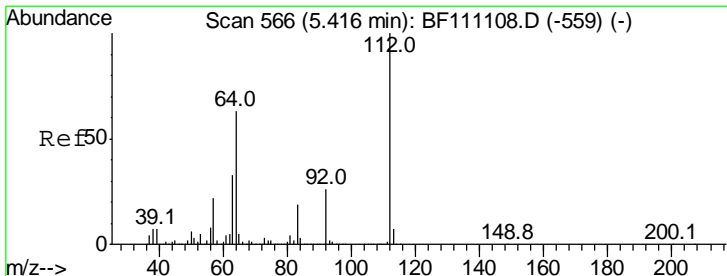
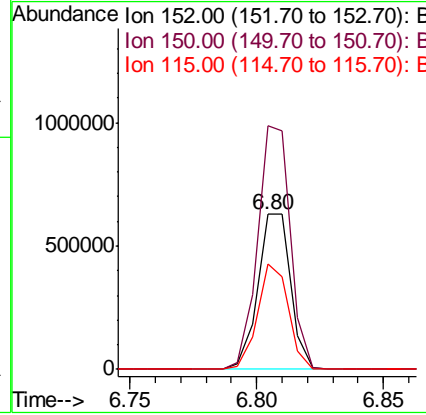
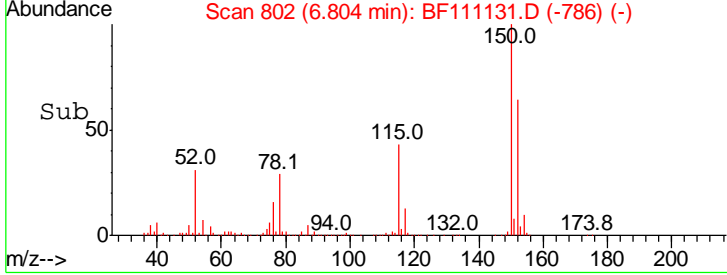
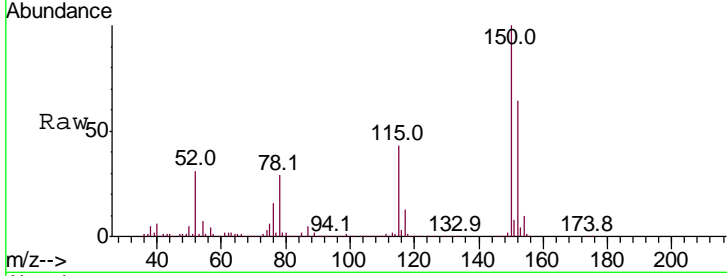




#1  
 1,4-Dichlorobenzene-d4  
 Concen: 20.000 ng  
 RT: 6.80 min Scan# 802  
 Delta R.T. -0.01 min  
 Lab File: BF111131.D  
 Acq: 6 Dec 2018 11:57

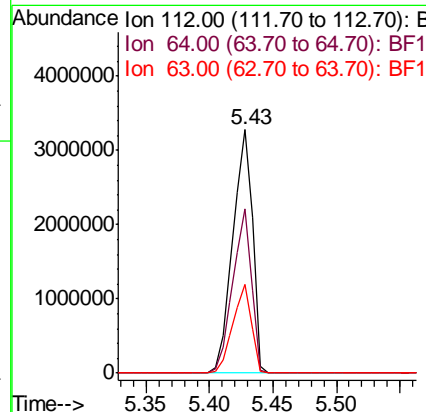
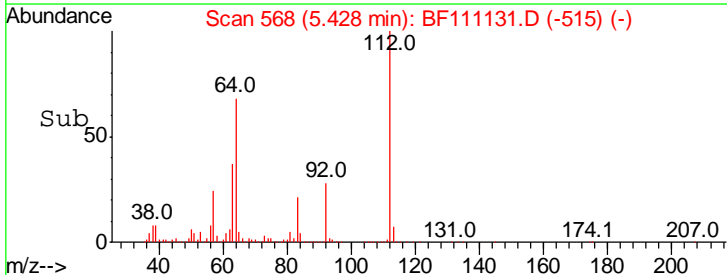
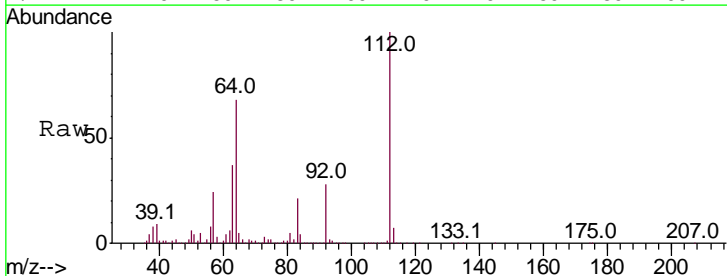
**Instrument :**  
 BNA\_F  
**ClientSampled :**  
 HLSP-SB-4B-(2-6)

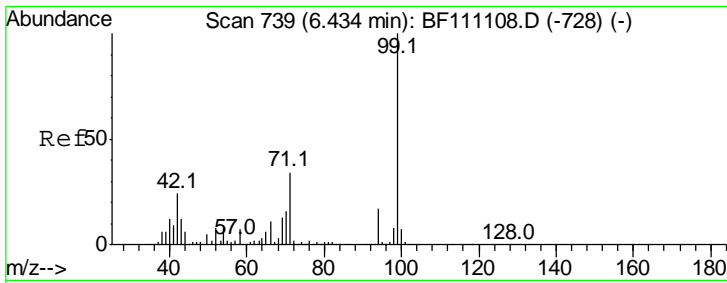
| Tgt Ion | Resp  | Lower | Upper |
|---------|-------|-------|-------|
| 152     | 100   |       |       |
| 150     | 156.9 | 124.6 | 187.0 |
| 115     | 67.5  | 52.2  | 78.2  |



#5  
 2-Fluorophenol  
 Concen: 96.475 ng  
 RT: 5.43 min Scan# 568  
 Delta R.T. 0.01 min  
 Lab File: BF111131.D  
 Acq: 6 Dec 2018 11:57

| Tgt Ion | Resp | Lower | Upper |
|---------|------|-------|-------|
| 112     | 100  |       |       |
| 64      | 67.6 | 50.2  | 75.4  |
| 63      | 36.5 | 26.6  | 39.8  |



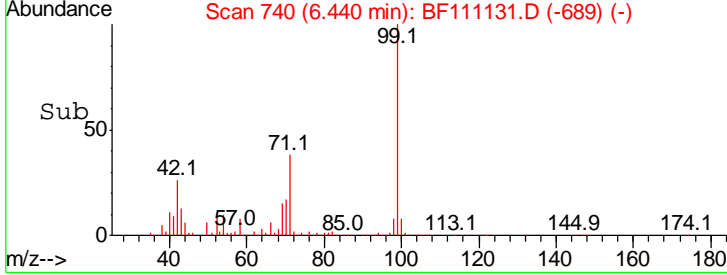
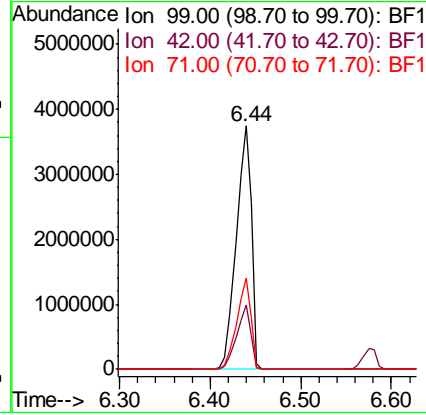
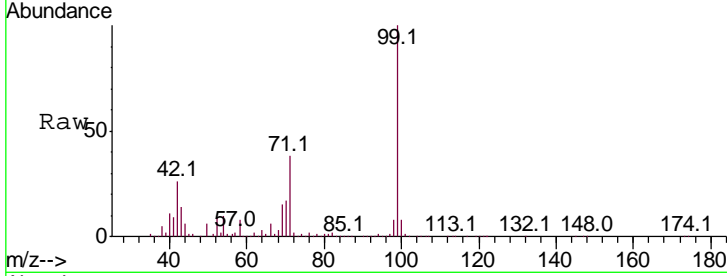


#7  
 Phenol-d6  
 Concen: 93.912 ng  
 RT: 6.44 min Scan# 740  
 Delta R.T. 0.00 min  
 Lab File: BF111131.D  
 Acq: 6 Dec 2018 11:57

**Instrument :**  
 BNA\_F  
**ClientSampled :**  
 HLSP-SB-4B-(2-6)

Tgt Ion: 99 Resp: 4395607

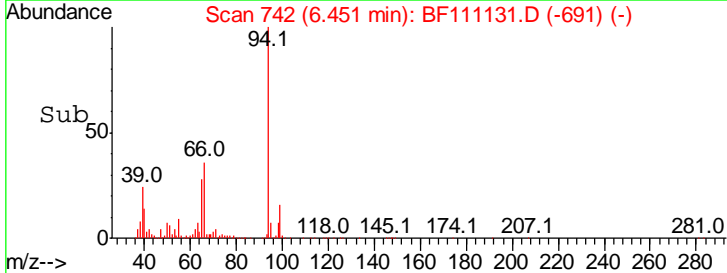
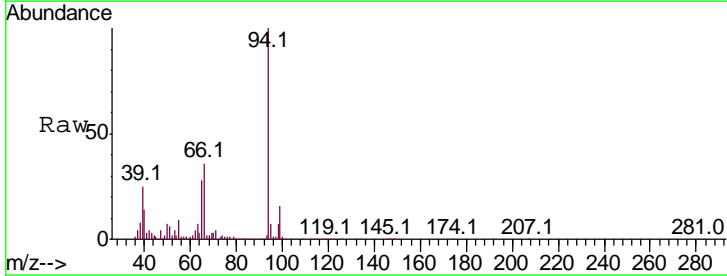
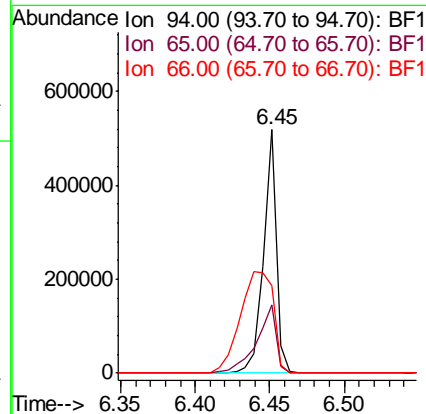
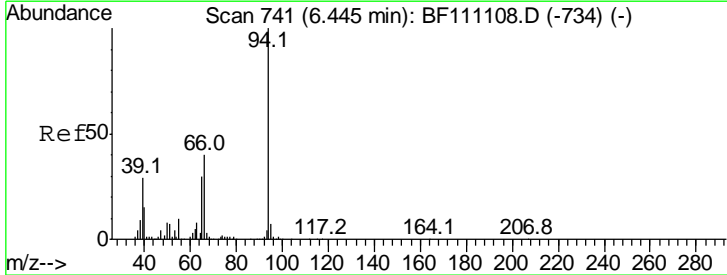
| Ion | Ratio | Lower | Upper |
|-----|-------|-------|-------|
| 99  | 100   |       |       |
| 42  | 26.4  | 19.3  | 28.9  |
| 71  | 37.6  | 27.4  | 41.2  |

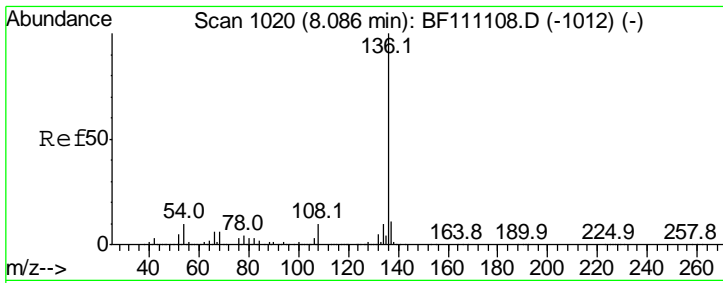


#10  
 Phenol  
 Concen: 6.018 ng  
 RT: 6.45 min Scan# 742  
 Delta R.T. 0.00 min  
 Lab File: BF111131.D  
 Acq: 6 Dec 2018 11:57

Tgt Ion: 94 Resp: 307154

| Ion | Ratio | Lower | Upper |
|-----|-------|-------|-------|
| 94  | 100   |       |       |
| 65  | 28.0  | 10.5  | 50.5  |
| 66  | 35.8  | 19.8  | 59.8  |



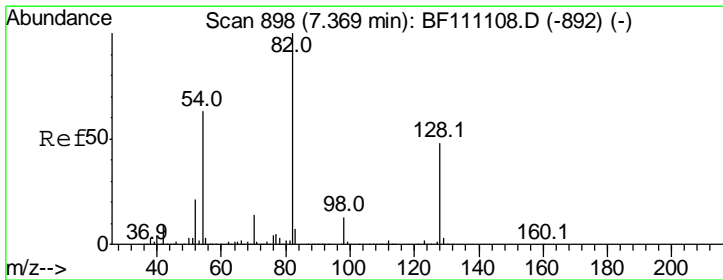
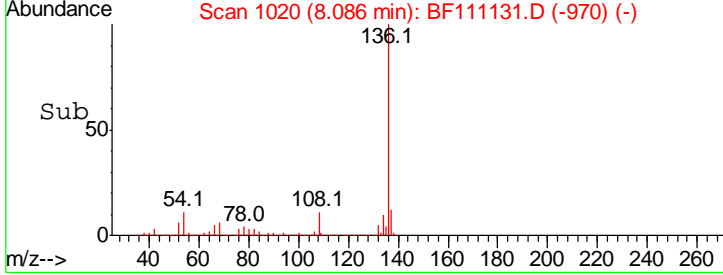
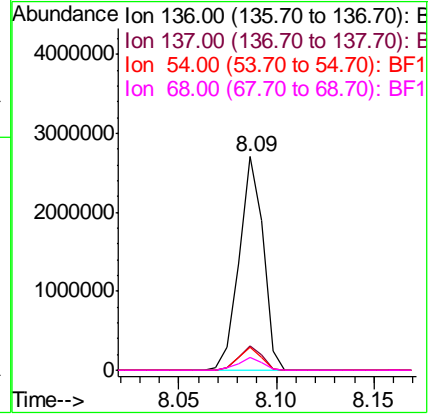
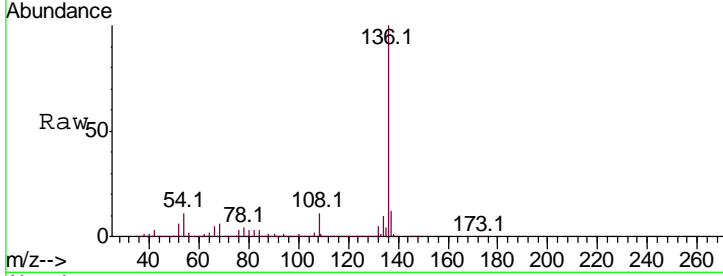


#21  
 Naphthalene-d8  
 Concen: 20.000 ng  
 RT: 8.09 min Scan# 1020  
 Delta R.T. -0.01 min  
 Lab File: BF111131.D  
 Acq: 6 Dec 2018 11:57

**Instrument :**  
 BNA\_F  
**ClientSampleId :**  
 HLSP-SB-4B-(2-6)

Tgt Ion: 136 Resp: 2305266

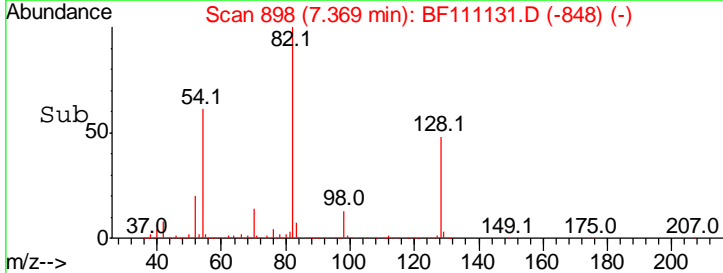
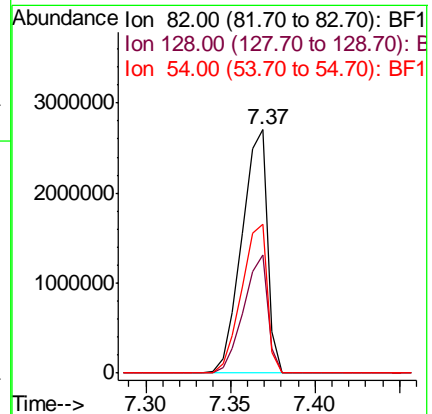
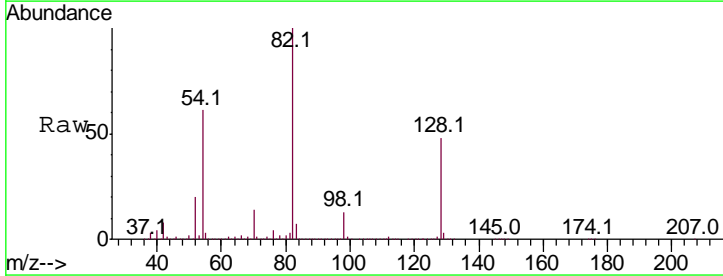
| Ion | Ratio | Lower | Upper |
|-----|-------|-------|-------|
| 136 | 100   |       |       |
| 137 | 11.7  | 9.0   | 13.6  |
| 54  | 10.6  | 8.4   | 12.6  |
| 68  | 6.0   | 5.0   | 7.4   |

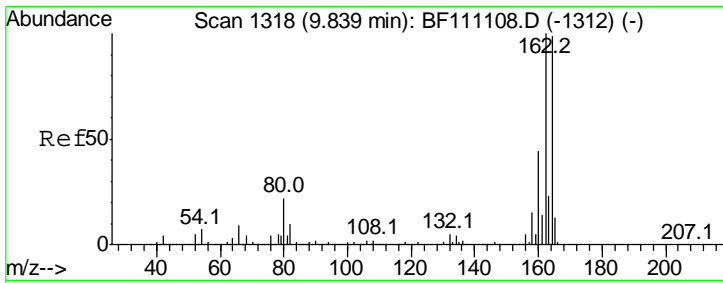


#23  
 Nitrobenzene-d5  
 Concen: 73.125 ng  
 RT: 7.37 min Scan# 898  
 Delta R.T. -0.01 min  
 Lab File: BF111131.D  
 Acq: 6 Dec 2018 11:57

Tgt Ion: 82 Resp: 2847363

| Ion | Ratio | Lower | Upper |
|-----|-------|-------|-------|
| 82  | 100   |       |       |
| 128 | 48.4  | 38.1  | 57.1  |
| 54  | 61.2  | 50.3  | 75.5  |

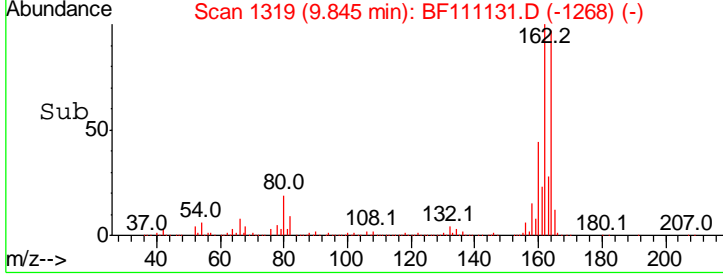
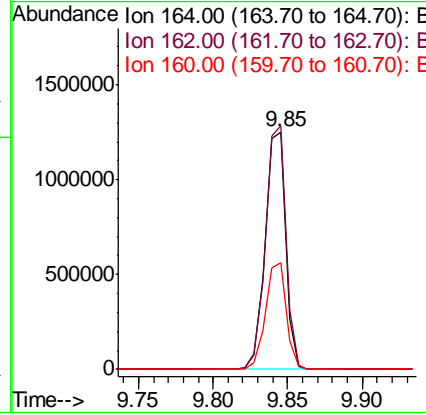
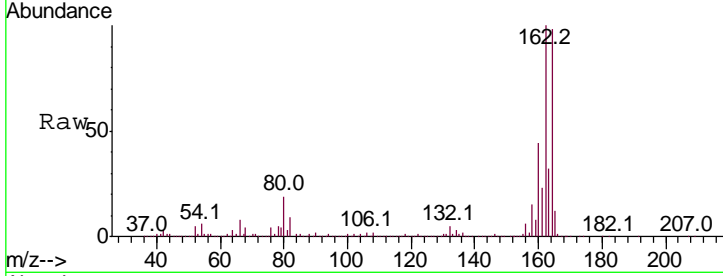




#39  
 Acenaphthene-d10  
 Concen: 20.000 ng  
 RT: 9.85 min Scan# 1319  
 Delta R.T. 0.00 min  
 Lab File: BF111131.D  
 Acq: 6 Dec 2018 11:57

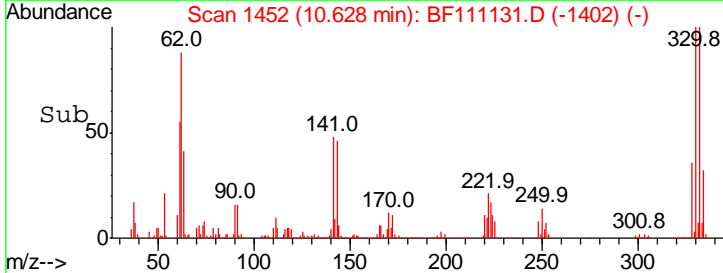
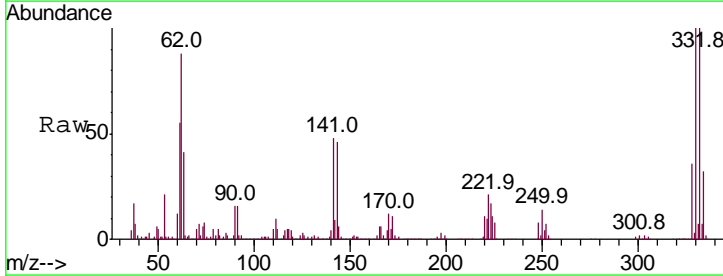
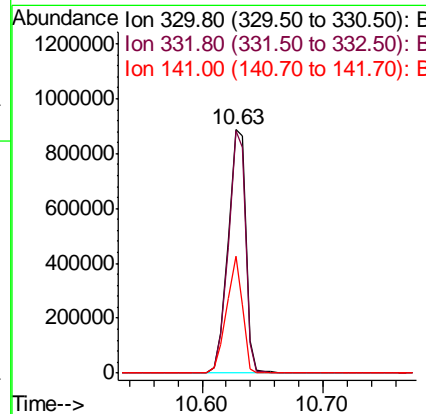
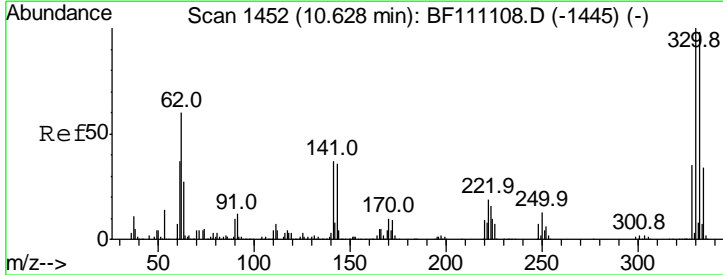
**Instrument :**  
 BNA\_F  
**ClientSampled :**  
 HLSP-SB-4B-(2-6)

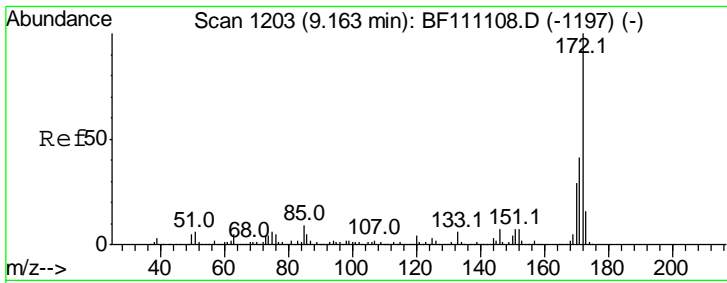
| Tgt Ion | Resp  | Lower | Upper |
|---------|-------|-------|-------|
| 164     | 100   |       |       |
| 162     | 102.4 | 80.6  | 120.8 |
| 160     | 44.8  | 35.5  | 53.3  |



#42  
 2,4,6-Tribromophenol  
 Concen: 97.093 ng  
 RT: 10.63 min Scan# 1452  
 Delta R.T. -0.01 min  
 Lab File: BF111131.D  
 Acq: 6 Dec 2018 11:57

| Tgt Ion | Resp | Lower | Upper |
|---------|------|-------|-------|
| 330     | 100  |       |       |
| 332     | 96.5 | 77.2  | 115.8 |
| 141     | 43.3 | 36.1  | 54.1  |



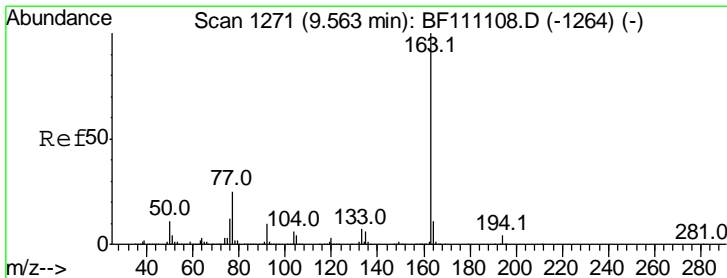
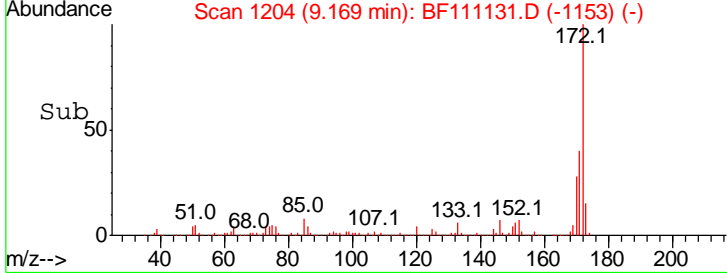
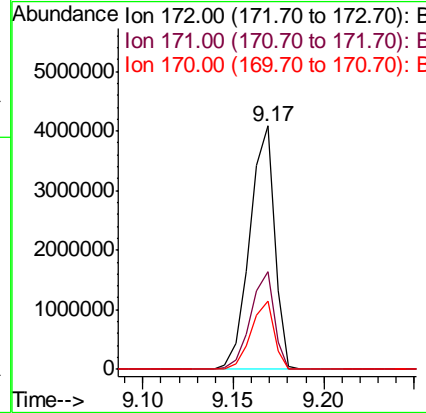
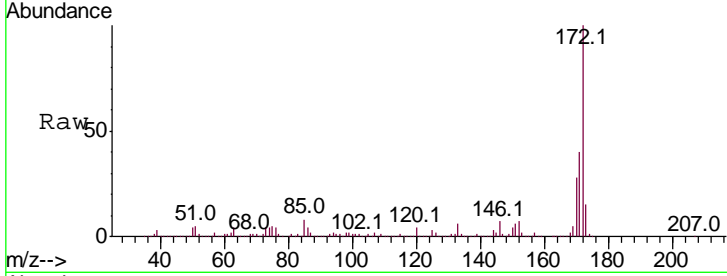


#45  
 2-Fluorobiphenyl  
 Concen: 56.850 ng  
 RT: 9.17 min Scan# 1204  
 Delta R.T. 0.00 min  
 Lab File: BF111131.D  
 Acq: 6 Dec 2018 11:57

Instrument :  
 BNA\_F  
 ClientSampleId :  
 HLSP-SB-4B-(2-6)

Tgt Ion:172 Resp: 3889511

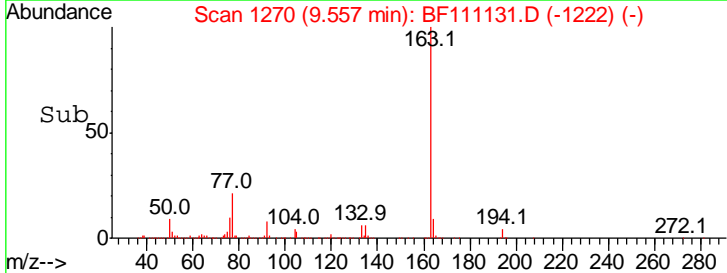
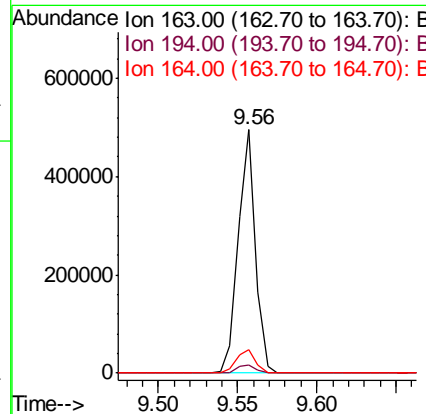
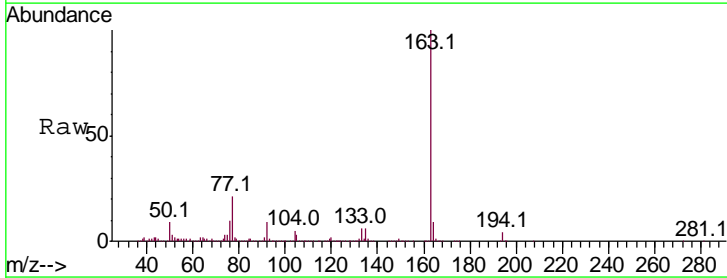
| Ion | Ratio | Lower | Upper |
|-----|-------|-------|-------|
| 172 | 100   |       |       |
| 171 | 40.3  | 33.2  | 49.8  |
| 170 | 28.2  | 22.9  | 34.3  |

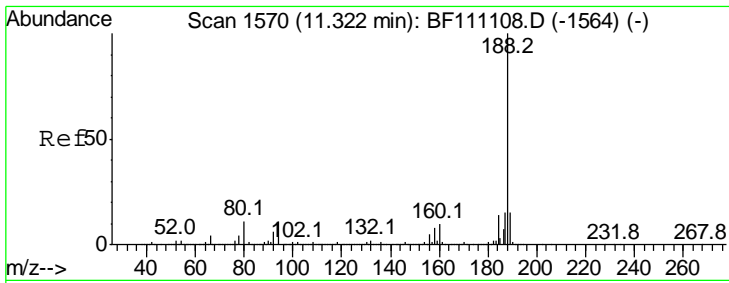


#50  
 Dimethylphthalate  
 Concen: 4.596 ng  
 RT: 9.56 min Scan# 1270  
 Delta R.T. -0.02 min  
 Lab File: BF111131.D  
 Acq: 6 Dec 2018 11:57

Tgt Ion:163 Resp: 373762

| Ion | Ratio | Lower | Upper |
|-----|-------|-------|-------|
| 163 | 100   |       |       |
| 194 | 3.5   | 3.0   | 4.4   |
| 164 | 9.4   | 8.9   | 13.3  |



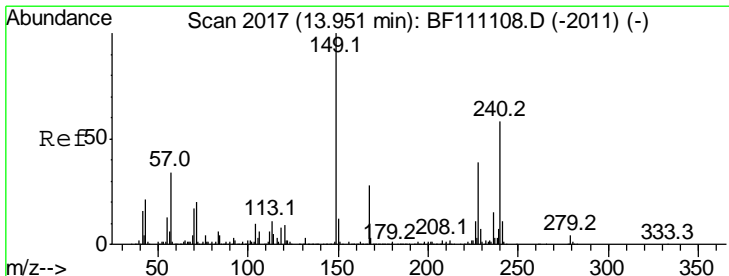
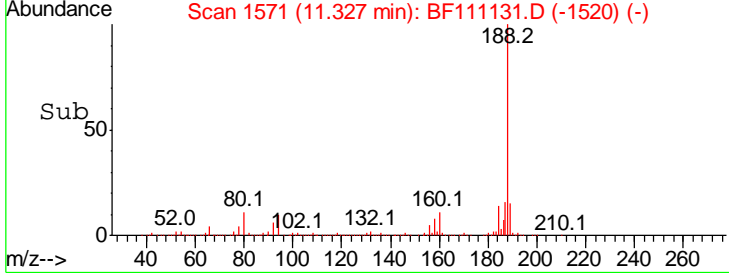
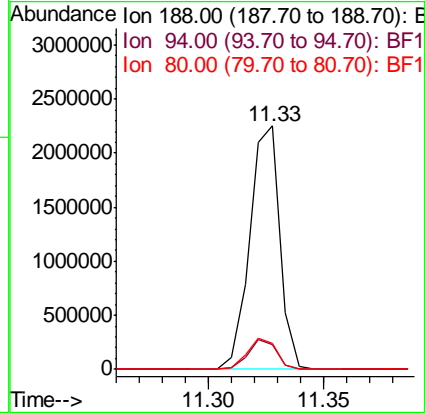
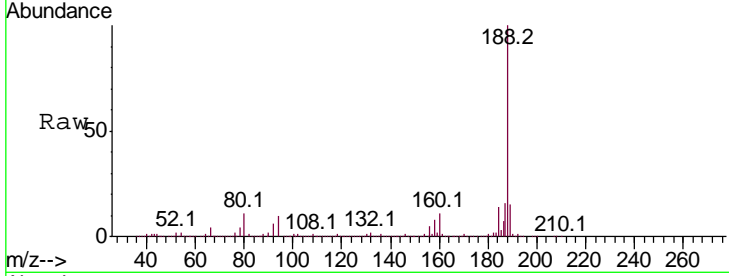


#64  
 Phenanthrene-d10  
 Concen: 20.000 ng  
 RT: 11.33 min Scan# 1571  
 Delta R.T. 0.00 min  
 Lab File: BF111131.D  
 Acq: 6 Dec 2018 11:57

Instrument :  
 BNA\_F  
 ClientSampleId :  
 HLSP-SB-4B-(2-6)

Tgt Ion:188 Resp: 2051475

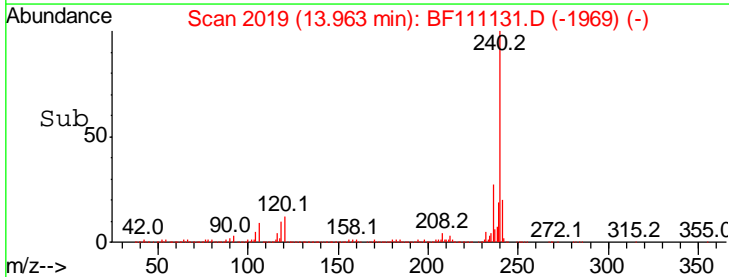
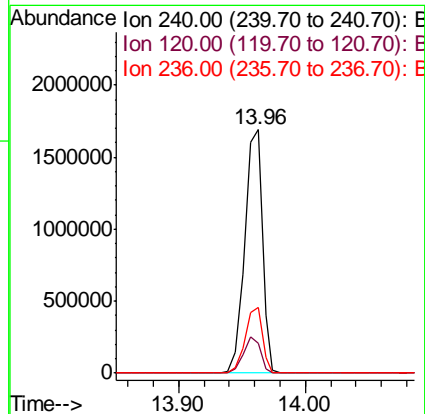
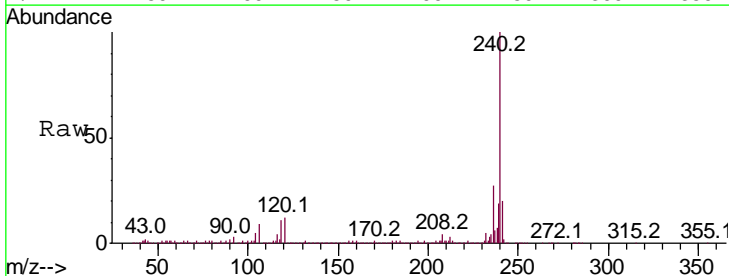
| Ion | Ratio | Lower | Upper |
|-----|-------|-------|-------|
| 188 | 100   |       |       |
| 94  | 10.1  | 8.5   | 12.7  |
| 80  | 10.8  | 9.0   | 13.6  |



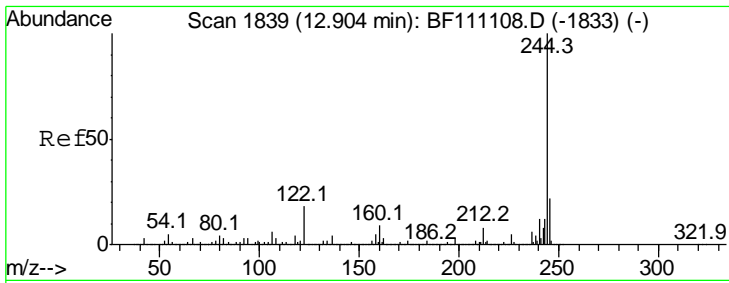
#76  
 Chrysene-d12  
 Concen: 20.000 ng  
 RT: 13.96 min Scan# 2019  
 Delta R.T. -0.01 min  
 Lab File: BF111131.D  
 Acq: 6 Dec 2018 11:57

Tgt Ion:240 Resp: 1615061

| Ion | Ratio | Lower | Upper |
|-----|-------|-------|-------|
| 240 | 100   |       |       |
| 120 | 12.4  | 12.8  | 19.2# |
| 236 | 26.9  | 21.1  | 31.7  |





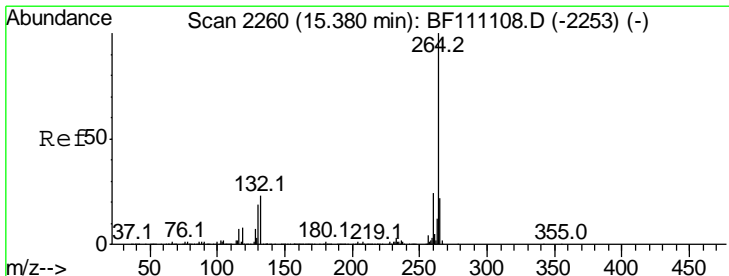
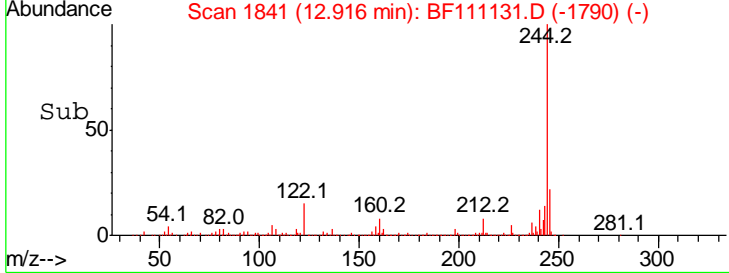
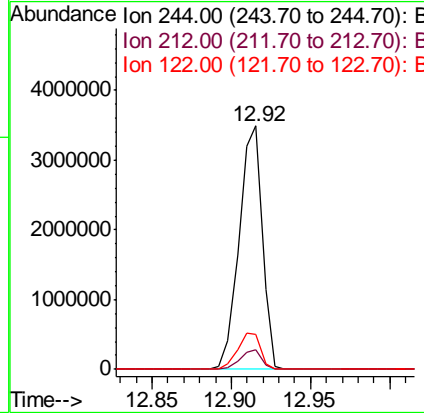
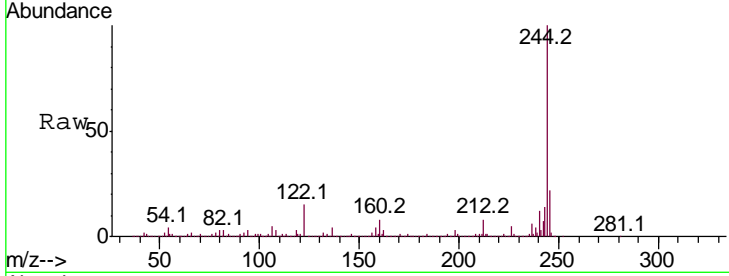


#79  
 Terphenyl-d14  
 Concen: 44.554 ng  
 RT: 12.92 min Scan# 1841  
 Delta R.T. 0.00 min  
 Lab File: BF111131.D  
 Acq: 6 Dec 2018 11:57

Instrument :  
 BNA\_F  
 ClientSampled :  
 HLSP-SB-4B-(2-6)

Tgt Ion: 244 Resp: 3513564

| Ion | Ratio | Lower | Upper |
|-----|-------|-------|-------|
| 244 | 100   |       |       |
| 212 | 7.8   | 6.6   | 9.8   |
| 122 | 14.6  | 14.2  | 21.2  |



#87  
 Perylene-d12  
 Concen: 20.000 ng  
 RT: 15.40 min Scan# 2263  
 Delta R.T. 0.00 min  
 Lab File: BF111131.D  
 Acq: 6 Dec 2018 11:57

Tgt Ion: 264 Resp: 1288357

| Ion | Ratio | Lower | Upper |
|-----|-------|-------|-------|
| 264 | 100   |       |       |
| 260 | 23.7  | 19.4  | 29.0  |
| 265 | 21.5  | 17.4  | 26.0  |

