

Data Path : Z:\svoasrv\HPCHEM1\BNA_F\Data\BF120623\
 Data File : BF136420.D
 Acq On : 06 Dec 2023 10:37
 Operator : CG\JU
 Sample : PB157498BL
 Misc :
 ALS Vial : 3 Sample Multiplier: 1

Instrument :
 BNA_F
 ClientSampleId :
 PB157498BL

Quant Time: Dec 06 11:01:52 2023
 Quant Method : Z:\svoasrv\HPCHEM1\BNA_F\Methods\8270-BF120523.M
 Quant Title : ASP BNA STANDARDS FOR 5 POINT CALIBRATION
 QLast Update : Wed Dec 06 09:40:27 2023
 Response via : Initial Calibration

Compound	R.T.	QIon	Response	Conc	Units	Dev(Min)
Internal Standards						
1) 1,4-Dichlorobenzene-d4	6.798	152	125012	20.000	ng	0.00
21) Naphthalene-d8	8.075	136	514017	20.000	ng	0.00
39) Acenaphthene-d10	9.833	164	273726	20.000	ng	0.00
64) Phenanthrene-d10	11.321	188	540884	20.000	ng	0.00
76) Chrysene-d12	13.974	240	392861	20.000	ng	0.00
86) Perylene-d12	15.451	264	302860	20.000	ng	0.00
System Monitoring Compounds						
5) 2-Fluorophenol	5.451	112	1022800	120.828	ng	0.02
7) Phenol-d6	6.439	99	1257764	119.092	ng	0.00
23) Nitrobenzene-d5	7.363	82	778362	81.862	ng	0.00
42) 2,4,6-Tribromophenol	10.627	330	407041	120.602	ng	0.00
45) 2-Fluorobiphenyl	9.157	172	1633447	81.426	ng	0.00
79) Terphenyl-d14	12.921	244	2127730	71.385	ng	0.00

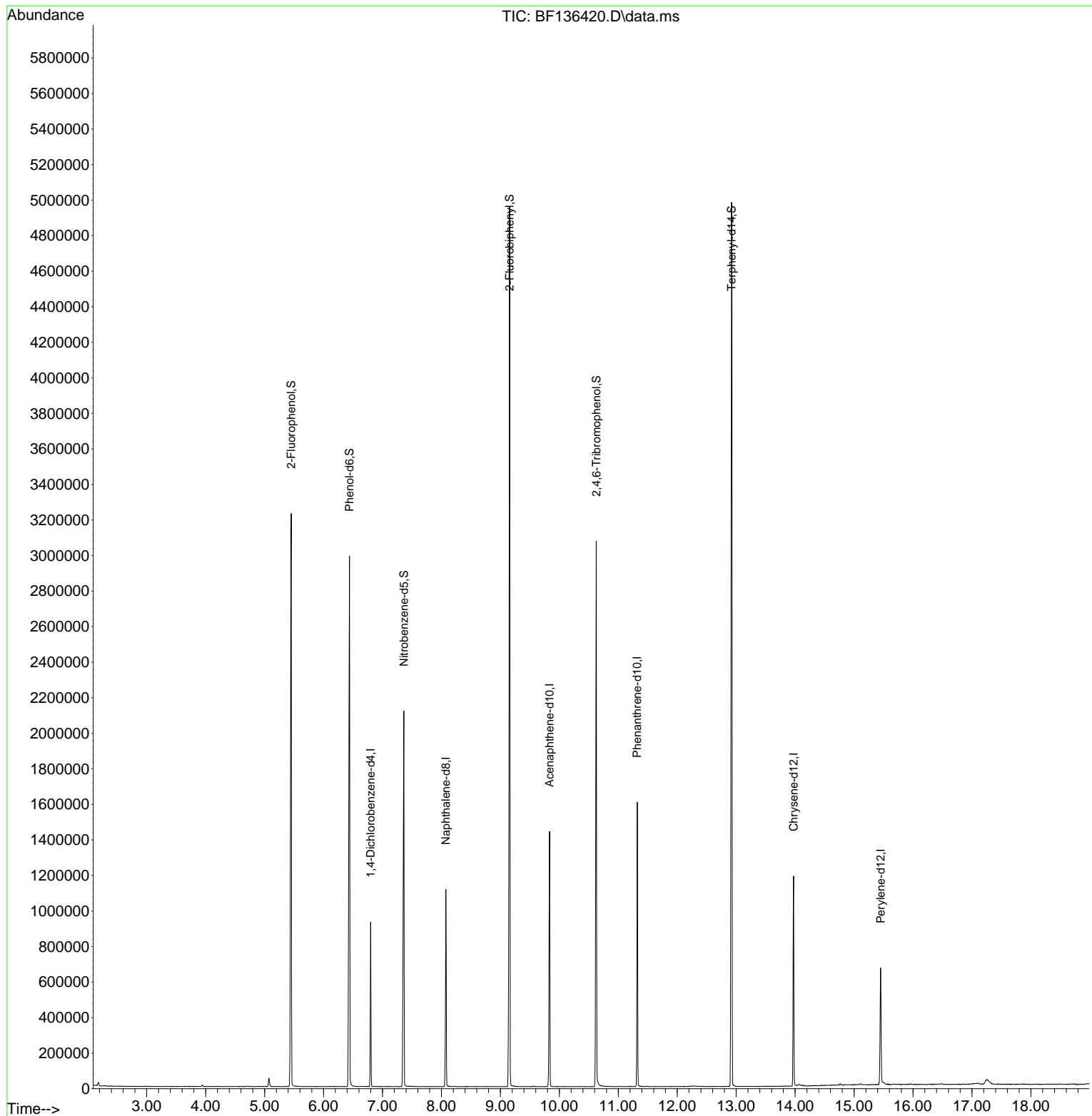
Target Compounds Qvalue

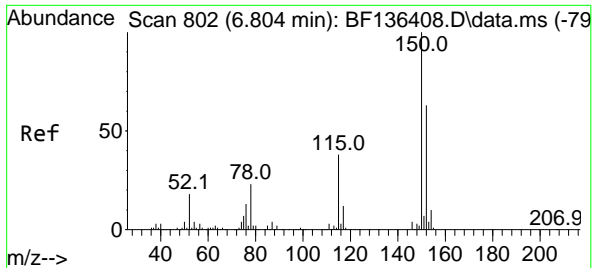
(#) = qualifier out of range (m) = manual integration (+) = signals summed

Data Path : Z:\svoasrv\HPCHEM1\BNA_F\Data\BF120623\
 Data File : BF136420.D
 Acq On : 06 Dec 2023 10:37
 Operator : CG\JU
 Sample : PB157498BL
 Misc :
 ALS Vial : 3 Sample Multiplier: 1

Instrument :
 BNA_F
 ClientSampleId :
 PB157498BL

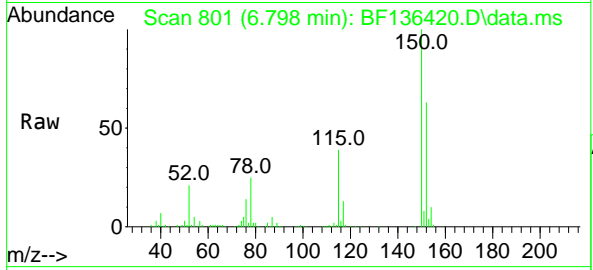
Quant Time: Dec 06 11:01:52 2023
 Quant Method : Z:\svoasrv\HPCHEM1\BNA_F\Methods\8270-BF120523.M
 Quant Title : ASP BNA STANDARDS FOR 5 POINT CALIBRATION
 QLast Update : Wed Dec 06 09:40:27 2023
 Response via : Initial Calibration



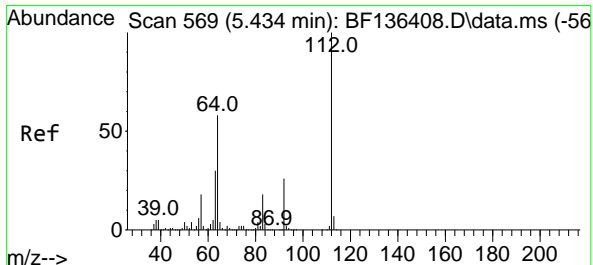
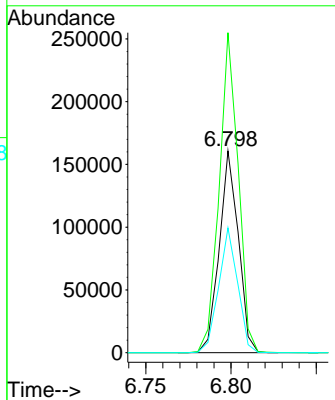
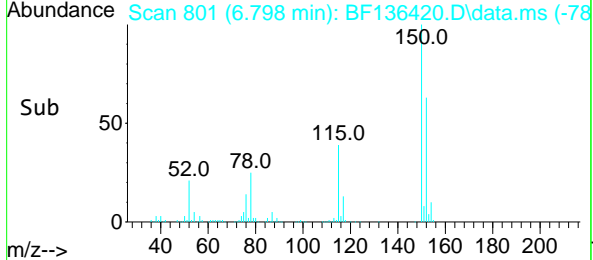


#1
 1,4-Dichlorobenzene-d4
 Concen: 20.000 ng
 RT: 6.798 min Scan# 801
 Delta R.T. -0.006 min
 Lab File: BF136420.D
 Acq: 06 Dec 2023 10:37

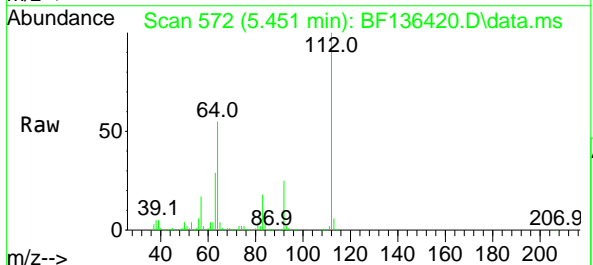
Instrument :
 BNA_F
 Client Sample Id :
 PB157498BL



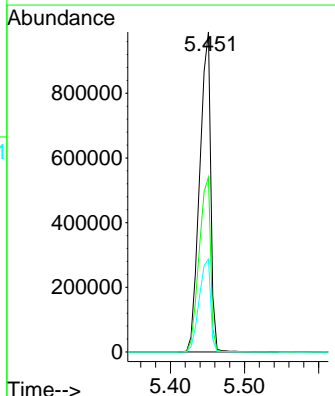
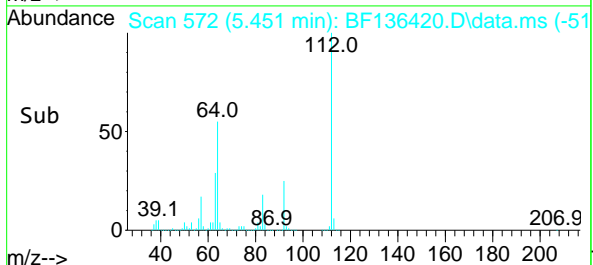
Tgt Ion:152 Resp: 125012
 Ion Ratio Lower Upper
 152 100
 150 158.7 126.4 189.6
 115 61.8 48.2 72.4

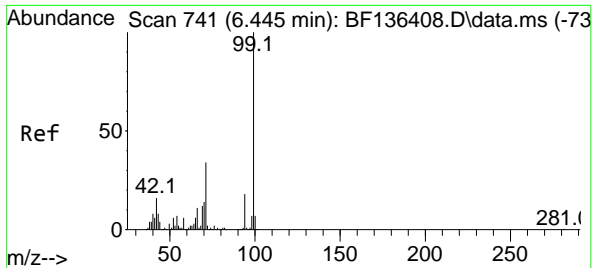


#5
 2-Fluorophenol
 Concen: 120.828 ng
 RT: 5.451 min Scan# 572
 Delta R.T. 0.018 min
 Lab File: BF136420.D
 Acq: 06 Dec 2023 10:37



Tgt Ion:112 Resp: 1022800
 Ion Ratio Lower Upper
 112 100
 64 54.6 46.5 69.7
 63 29.0 23.9 35.9



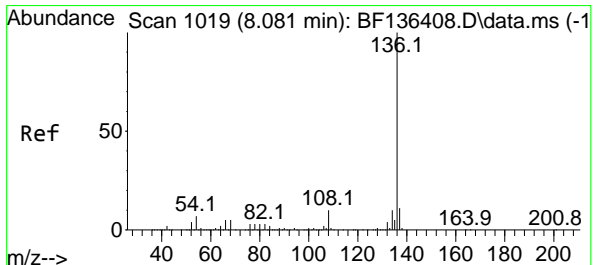
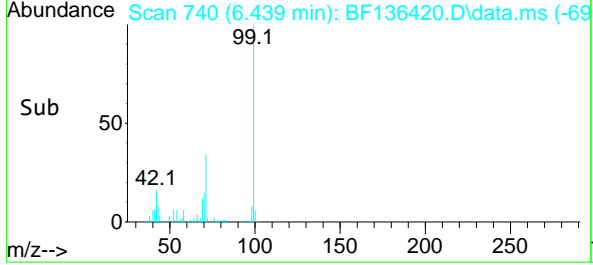
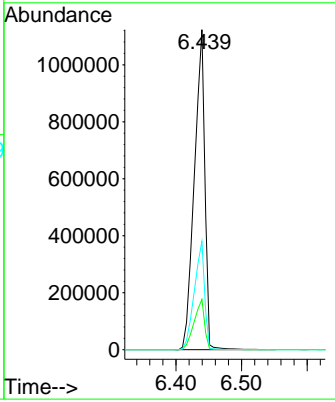
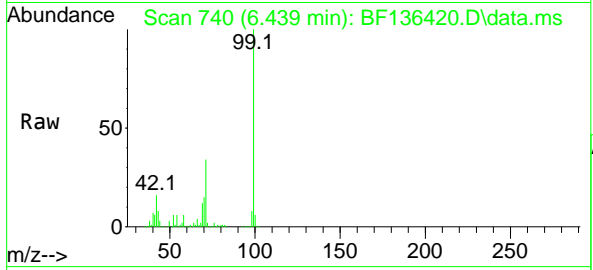


#7
 Phenol-d6
 Concen: 119.092 ng
 RT: 6.439 min Scan# 741
 Delta R.T. -0.006 min
 Lab File: BF136420.D
 Acq: 06 Dec 2023 10:37

Instrument : BNA_F
 ClientSampleId : PB157498BL

Tgt Ion: 99 Resp: 1257764

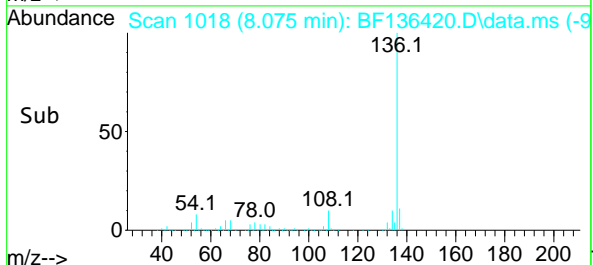
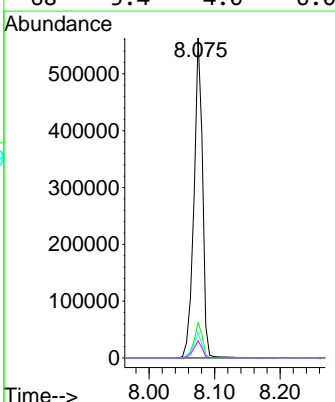
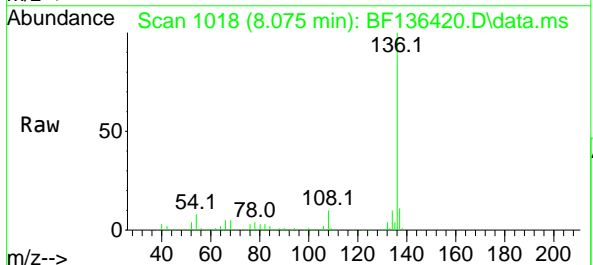
Ion	Ratio	Lower	Upper
99	100		
42	15.7	12.8	19.2
71	33.9	27.0	40.4

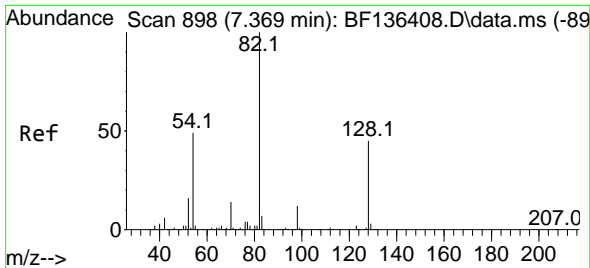


#21
 Naphthalene-d8
 Concen: 20.000 ng
 RT: 8.075 min Scan# 1018
 Delta R.T. -0.006 min
 Lab File: BF136420.D
 Acq: 06 Dec 2023 10:37

Tgt Ion:136 Resp: 514017

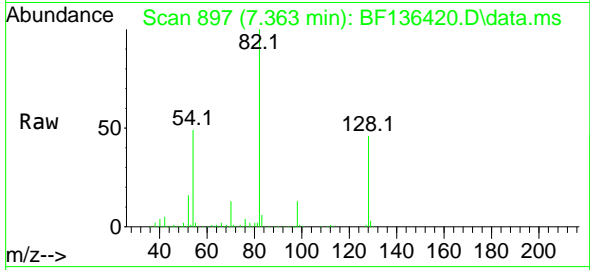
Ion	Ratio	Lower	Upper
136	100		
137	11.0	8.6	12.8
54	7.9	5.7	8.5
68	5.4	4.0	6.0





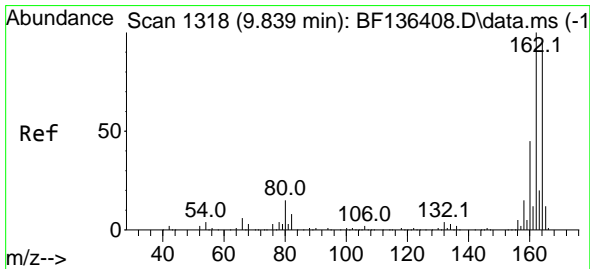
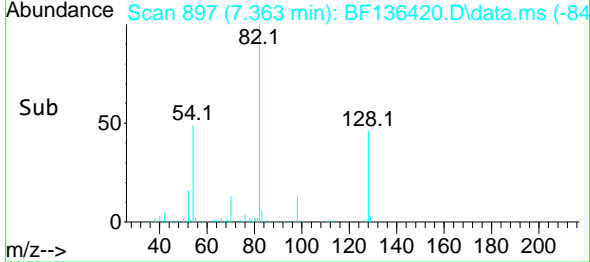
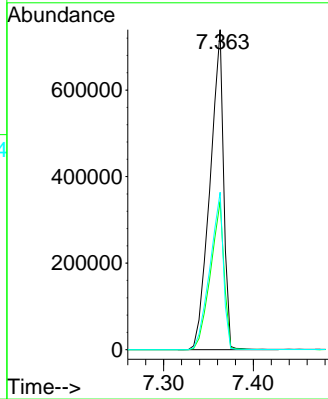
#23
 Nitrobenzene-d5
 Concen: 81.862 ng
 RT: 7.363 min Scan# 89
 Delta R.T. -0.006 min
 Lab File: BF136420.D
 Acq: 06 Dec 2023 10:37

Instrument :
 BNA_F
 ClientSampleId :
 PB157498BL



Tgt Ion: 82 Resp: 778362

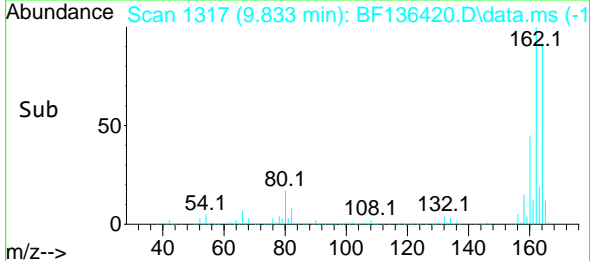
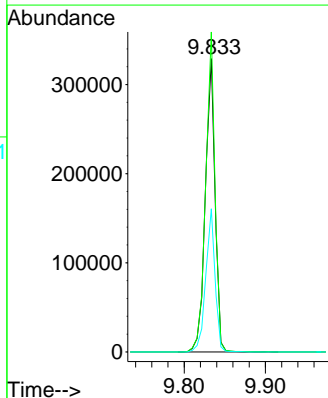
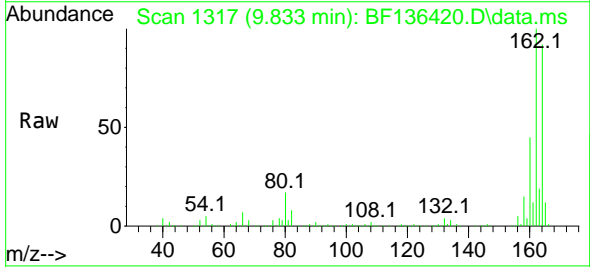
Ion	Ratio	Lower	Upper
82	100		
128	46.3	36.3	54.5
54	49.2	39.0	58.6

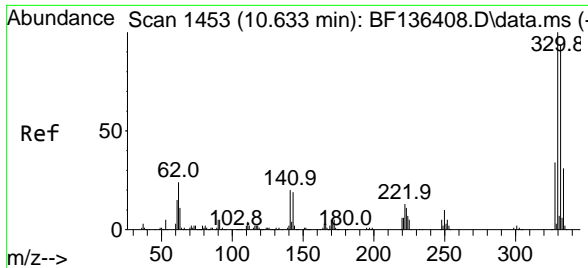


#39
 Acenaphthene-d10
 Concen: 20.000 ng
 RT: 9.833 min Scan# 1317
 Delta R.T. -0.006 min
 Lab File: BF136420.D
 Acq: 06 Dec 2023 10:37

Tgt Ion: 164 Resp: 273726

Ion	Ratio	Lower	Upper
164	100		
162	109.1	84.4	126.6
160	48.9	37.6	56.4



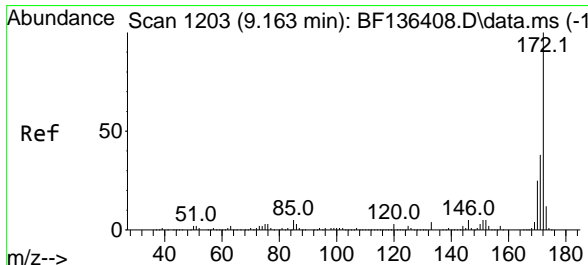
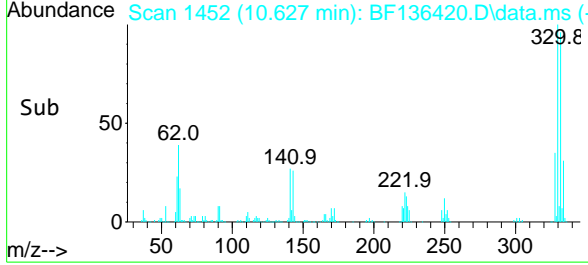
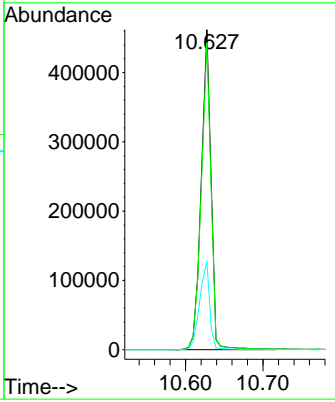
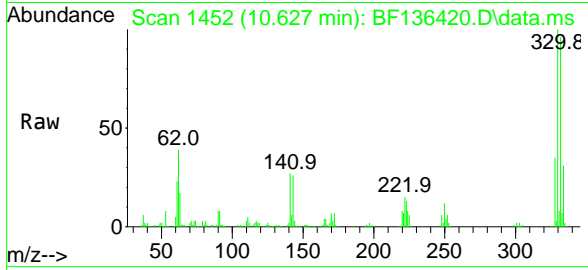


#42
 2,4,6-Tribromophenol
 Concen: 120.602 ng
 RT: 10.627 min Scan# 1452
 Delta R.T. -0.006 min
 Lab File: BF136420.D
 Acq: 06 Dec 2023 10:37

Instrument : BNA_F
 ClientSampleId : PB157498BL

Tgt Ion:330 Resp: 407041

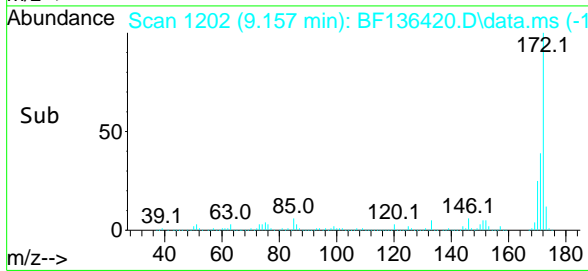
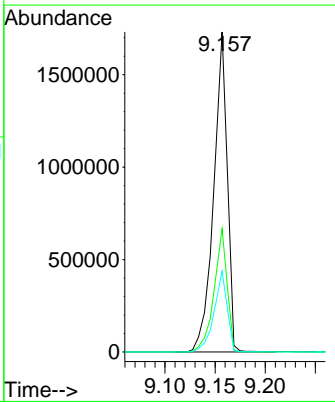
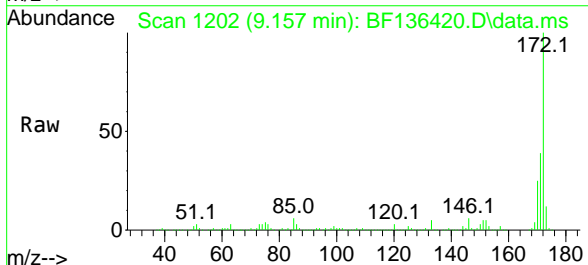
Ion	Ratio	Lower	Upper
330	100		
332	95.6	76.4	114.6
141	28.1	23.4	35.2

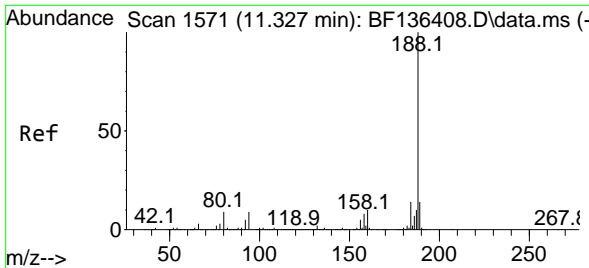


#45
 2-Fluorobiphenyl
 Concen: 81.426 ng
 RT: 9.157 min Scan# 1202
 Delta R.T. -0.006 min
 Lab File: BF136420.D
 Acq: 06 Dec 2023 10:37

Tgt Ion:172 Resp: 1633447

Ion	Ratio	Lower	Upper
172	100		
171	38.6	30.5	45.7
170	25.2	19.9	29.9





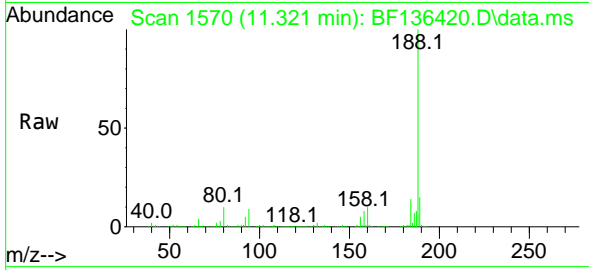
#64
 Phenanthrene-d10
 Concen: 20.000 ng
 RT: 11.321 min Scan# 11
 Delta R.T. -0.006 min
 Lab File: BF136420.D
 Acq: 06 Dec 2023 10:37

Instrument :

BNA_F

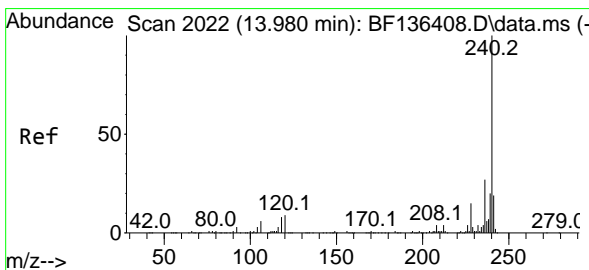
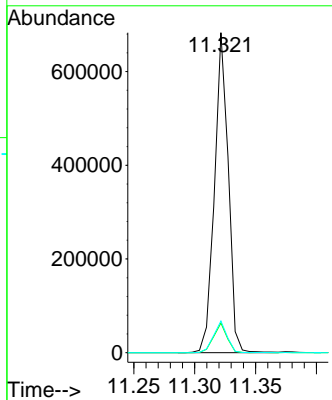
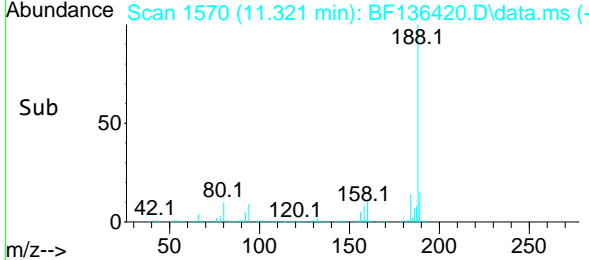
ClientSampleId :

PB157498BL

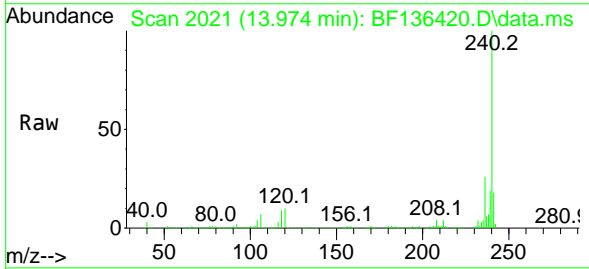


Tgt Ion:188 Resp: 540884

Ion	Ratio	Lower	Upper
188	100		
94	9.3	7.2	10.8
80	9.9	7.2	10.8

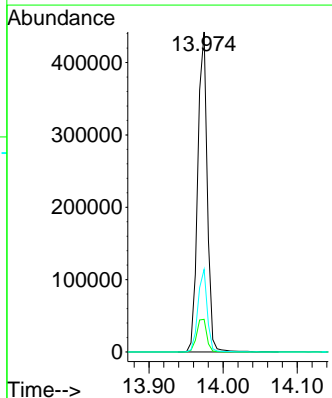
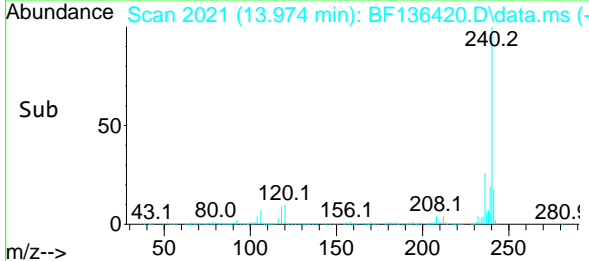


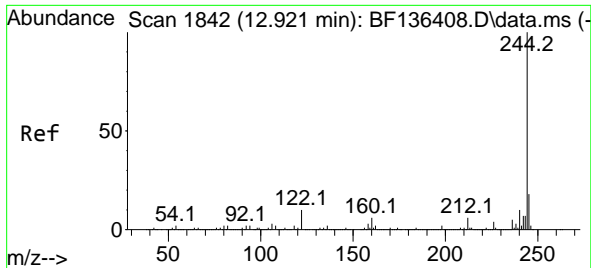
#76
 Chrysene-d12
 Concen: 20.000 ng
 RT: 13.974 min Scan# 2021
 Delta R.T. -0.006 min
 Lab File: BF136420.D
 Acq: 06 Dec 2023 10:37



Tgt Ion:240 Resp: 392861

Ion	Ratio	Lower	Upper
240	100		
120	10.2	7.3	10.9
236	25.8	21.3	31.9





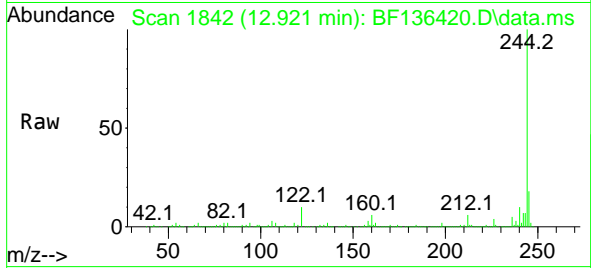
#79
 Terphenyl-d14
 Concen: 71.385 ng
 RT: 12.921 min Scan# 11
 Delta R.T. -0.000 min
 Lab File: BF136420.D
 Acq: 06 Dec 2023 10:37

Instrument :

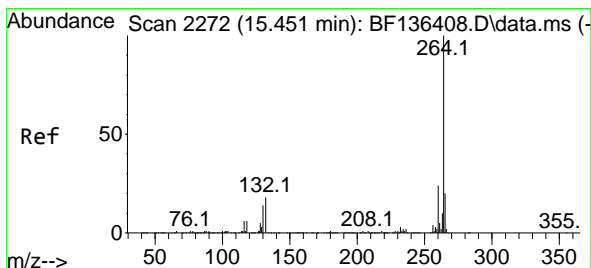
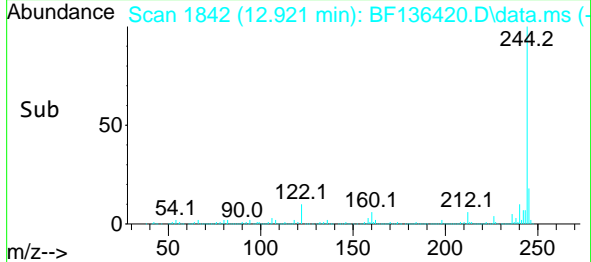
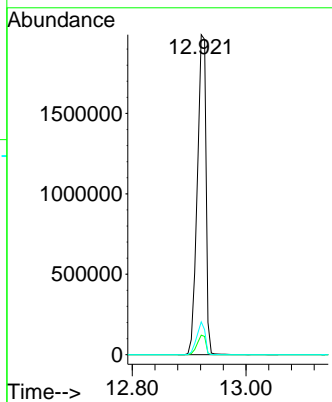
BNA_F

ClientSampleId :

PB157498BL



Tgt Ion:244 Resp: 2127730
 Ion Ratio Lower Upper
 244 100
 212 6.1 5.0 7.4
 122 10.3 8.3 12.5



#86
 Perylene-d12
 Concen: 20.000 ng
 RT: 15.451 min Scan# 2272
 Delta R.T. -0.000 min
 Lab File: BF136420.D
 Acq: 06 Dec 2023 10:37

Tgt Ion:264 Resp: 302860
 Ion Ratio Lower Upper
 264 100
 260 24.0 19.2 28.8
 265 21.3 15.9 23.9

