

Data Path : Z:\SVOASRV\HPCHEM1\BNA F\DATA\BF121118\
 Data File : BF111305.D
 Acq On : 12 Dec 2018 4:43
 Operator : JU/SJ
 Sample : J6148-01 2X
 Misc :
 ALS Vial : 24 Sample Multiplier: 1

Instrument :
 BNA_F
 ClientSampled :
 TP-MH-F

Integration Parameters: rteint.p
 Integrator: RTE
 Smoothing : ON Filtering: 5
 Sampling : 1 Min Area: 3 % of largest Peak
 Start Thrs: 0.2 Max Peaks: 100
 Stop Thrs : 0 Peak Location: TOP

If leading or trailing edge < 100 prefer < Baseline drop else tangent >
 Peak separation: 5

Method : Z:\SVOASRV\HPCHEM1\BNA F\METHODS\8270-BF120818.M
 Title : ASP BNA STANDARDS FOR 5 POINT CALIBRATION

Signal : TIC

peak #	R.T. min	first scan	max scan	last scan	PK TY	peak height	corr. area	corr. % max.	% of total
1	2.375	45	49	58	rVB2	79169	125590	2.77%	0.179%
2	4.987	486	493	501	rBV	169357	185957	4.10%	0.264%
3	5.410	561	565	573	rBV	3139151	2777718	61.30%	3.948%
4	6.428	734	738	746	rBV	3015803	3041127	67.11%	4.323%
5	6.563	757	761	765	rBV	3466754	2868953	63.31%	4.078%
6	6.628	769	772	777	rVV3	62348	75506	1.67%	0.107%
7	6.798	797	801	804	rBV	1862214	1626742	35.90%	2.312%
8	6.951	823	827	831	rBV	2728160	2167569	47.83%	3.081%
9	7.057	842	845	853	rBV	68002	87423	1.93%	0.124%
10	7.351	889	895	898	rBV	2181028	1773019	39.13%	2.520%
11	8.081	1015	1019	1021	rBV	2384477	2126248	46.92%	3.022%
12	8.098	1021	1022	1027	rVB	201770	122607	2.71%	0.174%
13	8.792	1135	1140	1143	rVB2	143168	137420	3.03%	0.195%
14	8.887	1153	1156	1160	rVB	103107	100239	2.21%	0.142%
15	9.151	1198	1201	1205	rBV	3125424	2716909	59.96%	3.862%
16	9.245	1212	1217	1221	rBV5	66040	94932	2.10%	0.135%
17	9.422	1241	1247	1250	rBV	64854	97102	2.14%	0.138%
18	9.492	1255	1259	1262	rVV	147859	148941	3.29%	0.212%
19	9.545	1266	1268	1274	rVB2	245596	304738	6.73%	0.433%
20	9.692	1289	1293	1298	rBV	449313	395109	8.72%	0.562%
21	9.834	1311	1317	1321	rBV2	2441547	2266281	50.01%	3.221%
22	9.863	1321	1322	1326	rVB	124076	83326	1.84%	0.118%
23	10.034	1348	1351	1355	rVV	173486	170067	3.75%	0.242%
24	10.075	1355	1358	1361	rVB	122021	94924	2.09%	0.135%
25	10.151	1367	1371	1374	rBV3	124449	163571	3.61%	0.233%
26	10.245	1382	1387	1391	rBV5	82178	164731	3.64%	0.234%
27	10.375	1407	1409	1416	rVB3	156041	181287	4.00%	0.258%
28	10.445	1416	1421	1423	rBV2	83102	115092	2.54%	0.164%
29	10.492	1426	1429	1433	rVV3	115584	131874	2.91%	0.187%
30	10.533	1433	1436	1442	rVB4	71460	111736	2.47%	0.159%
31	10.616	1446	1450	1455	rBV	1676764	1403558	30.97%	1.995%
32	10.745	1469	1472	1479	rVB3	164310	214568	4.74%	0.305%
33	10.822	1482	1485	1487	rBV2	110580	111850	2.47%	0.159%
34	10.928	1499	1503	1506	rBV	1529607	1270155	28.03%	1.805%

Data Path : Z:\SVOASRV\HPCHEM1\BNA F\DATA\BF121118\
 Data File : BF111305.D
 Acq On : 12 Dec 2018 4:43
 Operator : JU/SJ
 Sample : J6148-01 2X
 Misc :
 ALS Vial : 24 Sample Multiplier: 1

Instrument :
 BNA_F
 ClientSampleId :
 TP-MH-F

Integration Parameters: rteint.p
 Integrator: RTE
 Smoothing : ON
 Sampling : 1
 Start Thrs: 0.2
 Stop Thrs : 0

Filtering: 5
 Min Area: 3 % of largest Peak
 Max Peaks: 100
 Peak Location: TOP

If leading or trailing edge < 100 prefer < Baseline drop else tangent >
 Peak separation: 5

Method : Z:\SVOASRV\HPCHEM1\BNA F\METHODS\8270-BF120818.M
 Title : ASP BNA STANDARDS FOR 5 POINT CALIBRATION

35	10.951	1506	1507	1510	rVB2	149051	107969	2.38%	0.153%
36	11.010	1515	1517	1520	rVB2	101061	85046	1.88%	0.121%
37	11.075	1526	1528	1533	rVB4	109848	122253	2.70%	0.174%
38	11.128	1533	1537	1540	rVB2	259692	242619	5.35%	0.345%
39	11.275	1559	1562	1565	rBV	321173	261801	5.78%	0.372%
40	11.316	1565	1569	1571	rBV	1953577	1631663	36.01%	2.319%
41	11.339	1571	1573	1576	rVV	1227547	913189	20.15%	1.298%
42	11.386	1578	1581	1585	rVB	368369	351677	7.76%	0.500%
43	11.428	1585	1588	1591	rBV	653718	584374	12.90%	0.831%
44	11.545	1605	1608	1611	rBV2	77284	99032	2.19%	0.141%
45	11.645	1623	1625	1628	rVB	153780	116213	2.56%	0.165%
46	11.727	1637	1639	1643	rVB	93621	92091	2.03%	0.131%
47	11.769	1643	1646	1650	rBV3	119483	161379	3.56%	0.229%
48	11.816	1651	1654	1657	rVV	554745	563849	12.44%	0.801%
49	11.851	1657	1660	1663	rVV2	1425900	1413916	31.20%	2.010%
50	11.892	1664	1667	1670	rVV2	317849	364338	8.04%	0.518%
51	11.928	1670	1673	1675	rVV	851590	888908	19.62%	1.264%
52	11.951	1675	1677	1682	rVB	546161	461491	10.18%	0.656%
53	12.022	1686	1689	1692	rVV3	147958	198154	4.37%	0.282%
54	12.051	1692	1694	1698	rVV2	121422	139229	3.07%	0.198%
55	12.110	1699	1704	1706	rVV3	311544	465093	10.26%	0.661%
56	12.133	1706	1708	1715	rVB2	143923	197091	4.35%	0.280%
57	12.245	1724	1727	1728	rBV2	110445	99070	2.19%	0.141%
58	12.263	1728	1730	1733	rVV2	241447	236694	5.22%	0.336%
59	12.292	1733	1735	1737	rVV	173352	146381	3.23%	0.208%
60	12.316	1737	1739	1742	rVB	154301	123137	2.72%	0.175%
61	12.369	1742	1748	1751	rBV	592777	729292	16.09%	1.037%
62	12.404	1751	1754	1756	rVV	337840	393609	8.69%	0.559%
63	12.451	1760	1762	1767	rVB3	282804	340680	7.52%	0.484%
64	12.492	1767	1769	1772	rBV3	76791	77109	1.70%	0.110%
65	12.527	1772	1775	1778	rBV	2074357	1768525	39.03%	2.514%
66	12.575	1781	1783	1785	rVV	271490	236433	5.22%	0.336%
67	12.633	1789	1793	1799	rBV3	793401	1004246	22.16%	1.427%
68	12.757	1809	1814	1817	rBV	2766069	2602122	57.42%	3.699%
69	12.780	1817	1818	1821	rVB2	109208	96475	2.13%	0.137%
70	12.874	1831	1834	1836	rBV	299907	263918	5.82%	0.375%
71	12.904	1836	1839	1846	rVB	2022486	2057032	45.40%	2.924%

Data Path : Z:\SVOASRV\HPCHEM1\BNA F\DATA\BF121118\
 Data File : BF111305.D
 Acq On : 12 Dec 2018 4:43
 Operator : JU/SJ
 Sample : J6148-01 2X
 Misc :
 ALS Vial : 24 Sample Multiplier: 1

Instrument :
 BNA_F
 ClientSampleId :
 TP-MH-F

Integration Parameters: rteint.p
 Integrator: RTE
 Smoothing : ON Filtering: 5
 Sampling : 1 Min Area: 3 % of largest Peak
 Start Thrs: 0.2 Max Peaks: 100
 Stop Thrs : 0 Peak Location: TOP

If leading or trailing edge < 100 prefer < Baseline drop else tangent >
 Peak separation: 5

Method : Z:\SVOASRV\HPCHEM1\BNA F\METHODS\8270-BF120818.M
 Title : ASP BNA STANDARDS FOR 5 POINT CALIBRATION

72	12.974	1848	1851	1855	rVV2	337667	446459	9.85%	0.635%
73	13.039	1858	1862	1864	rBV2	247835	304754	6.73%	0.433%
74	13.063	1864	1866	1867	rVV2	314185	302365	6.67%	0.430%
75	13.086	1867	1870	1873	rVB2	571847	573975	12.67%	0.816%
76	13.151	1878	1881	1884	rVB	336895	292422	6.45%	0.416%
77	13.186	1884	1887	1891	rBV	566094	573768	12.66%	0.816%
78	13.280	1900	1903	1906	rVB	479539	400175	8.83%	0.569%
79	13.310	1906	1908	1913	rVB	455202	393679	8.69%	0.560%
80	13.386	1917	1921	1924	rBV	5043748	4531346	100.00%	6.441%
81	13.592	1953	1956	1961	rVB3	224987	331953	7.33%	0.472%
82	13.698	1971	1974	1978	rBV3	290377	479654	10.59%	0.682%
83	13.733	1978	1980	1982	rVB	208117	131398	2.90%	0.187%
84	13.757	1982	1984	1985	rBV	170853	166102	3.67%	0.236%
85	13.886	2004	2006	2010	rVB	330242	334621	7.38%	0.476%
86	13.951	2013	2017	2020	rBV2	2334193	3195339	70.52%	4.542%
87	13.980	2020	2022	2025	rVB	1336288	966000	21.32%	1.373%
88	14.169	2051	2054	2057	rBV	2561648	2242264	49.48%	3.187%
89	14.192	2057	2058	2060	rVB	298312	160670	3.55%	0.228%
90	14.327	2075	2081	2083	rBV	1162212	1504985	33.21%	2.139%
91	14.374	2087	2089	2092	rVB	336096	274900	6.07%	0.391%
92	14.469	2102	2105	2106	rBV	249238	226681	5.00%	0.322%
93	14.739	2149	2151	2158	rVB2	321111	445815	9.84%	0.634%
94	14.980	2188	2192	2195	rBV	838398	1247354	27.53%	1.773%
95	15.274	2239	2242	2247	rVB	611760	703636	15.53%	1.000%
96	15.333	2248	2252	2257	rBV	715597	844697	18.64%	1.201%
97	15.398	2259	2263	2266	rBV	802964	964529	21.29%	1.371%
98	15.827	2334	2336	2340	rVB	292172	319372	7.05%	0.454%
99	16.804	2499	2502	2508	rVB2	244933	396692	8.75%	0.564%
100	17.233	2570	2575	2582	rVB2	264270	503116	11.10%	0.715%

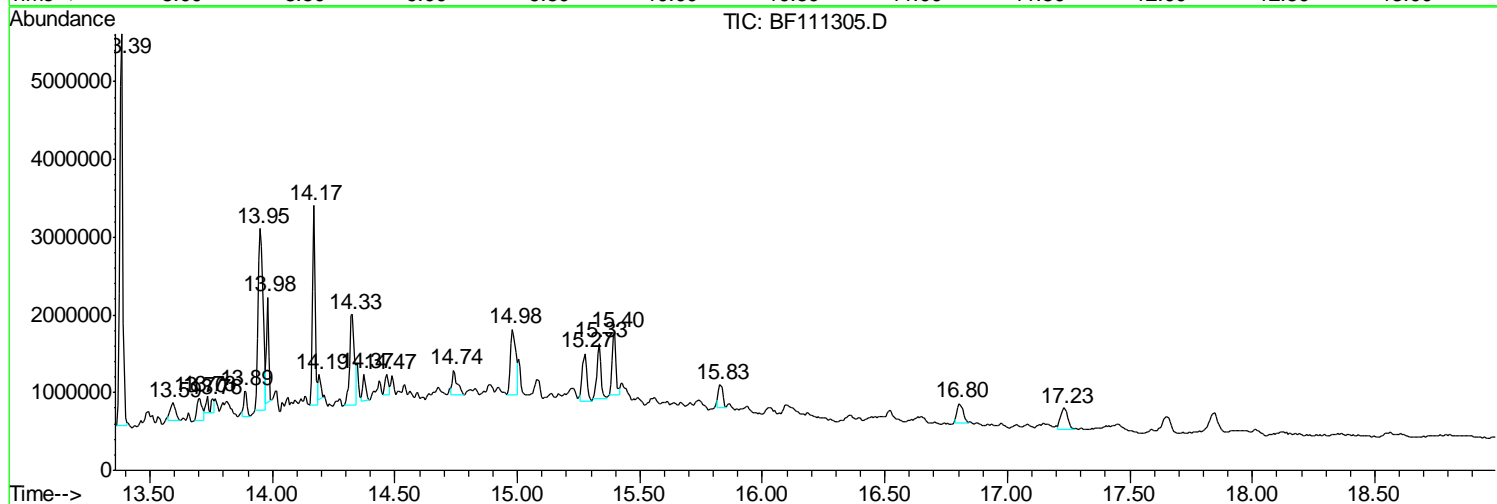
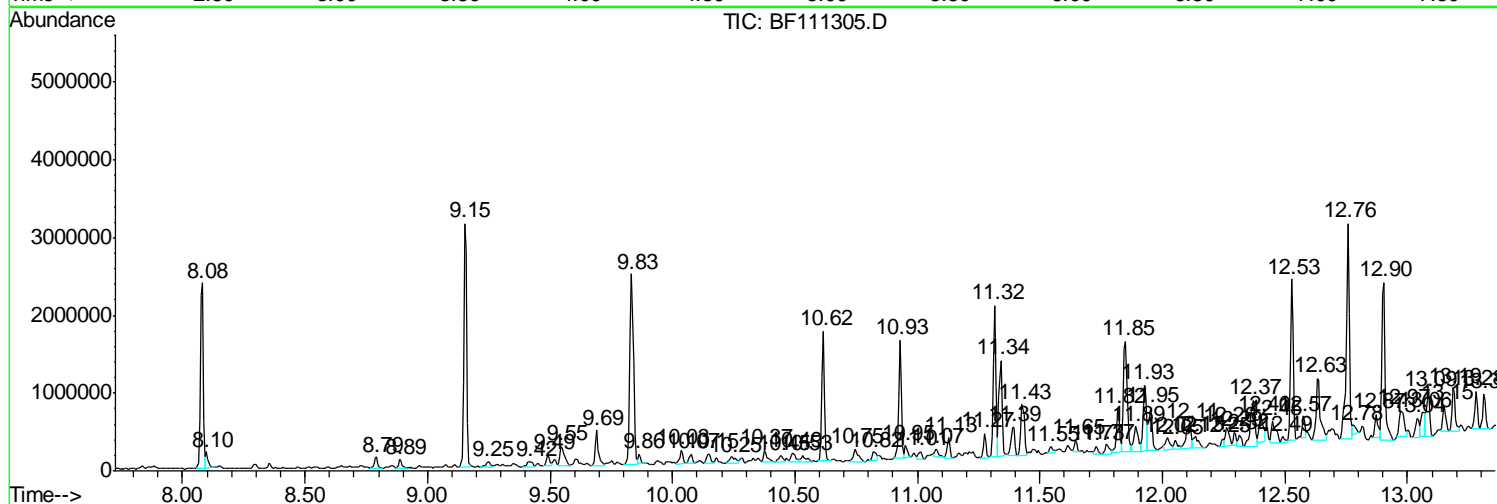
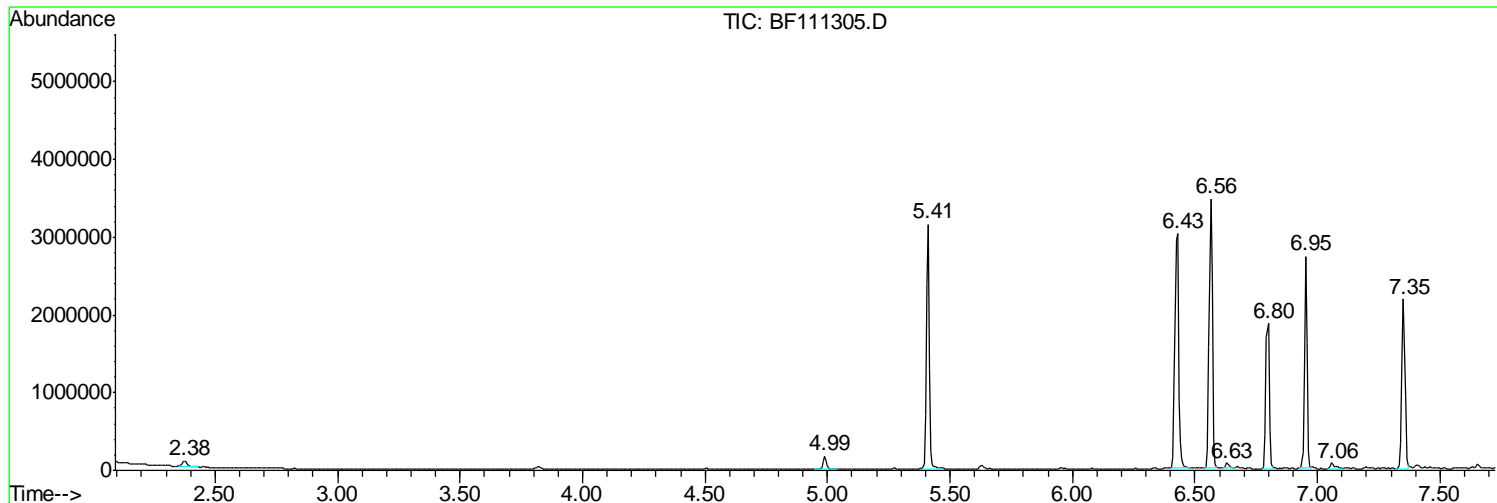
Sum of corrected areas: 70351688

Data Path : Z:\SVOASRV\HPCHEM1\BNA F\DATA\BF121118\
 Data File : BF111305.D
 Acq On : 12 Dec 2018 4:43
 Operator : JU/SJ
 Sample : J6148-01 2X
 Misc :
 ALS Vial : 24 Sample Multiplier: 1

Instrument :
 BNA_F
 Client Sampled :
 TP-MH-F

Quant Method : Z:\SVOASRV\HPCHEM1\BNA F\METHODS\8270-BF120818.M
 Quant Title : ASP BNA STANDARDS FOR 5 POINT CALIBRATION

TIC Library : C:\DATABASE\NIST11.L
 TIC Integration Parameters: LSCINT.P



Data Path : Z:\SVOASRV\HPCHEM1\BNA F\DATA\BF121118\
 Data File : BF111305.D
 Acq On : 12 Dec 2018 4:43
 Operator : JU/SJ
 Sample : J6148-01 2X
 Misc :
 ALS Vial : 24 Sample Multiplier: 1

Instrument :
 BNA_F
 ClientSampleID :
 TP-MH-F

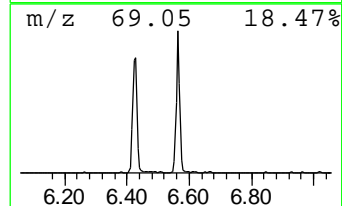
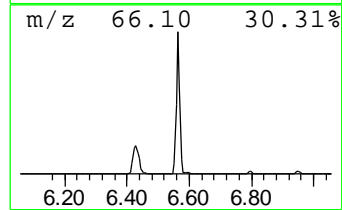
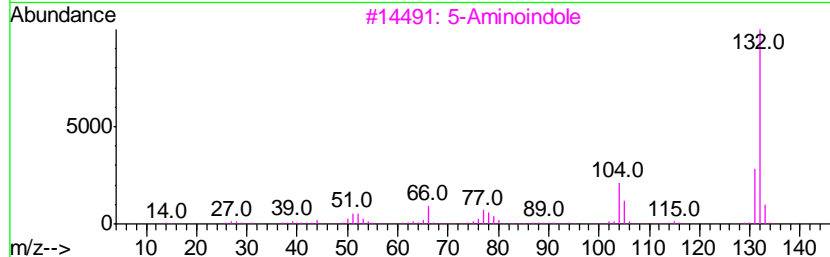
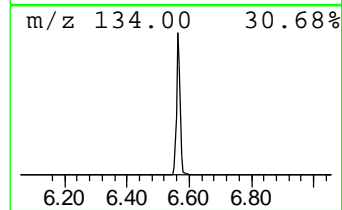
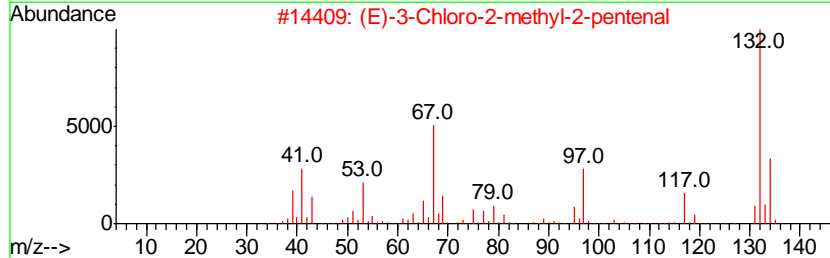
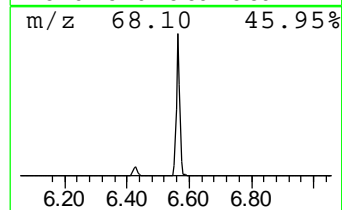
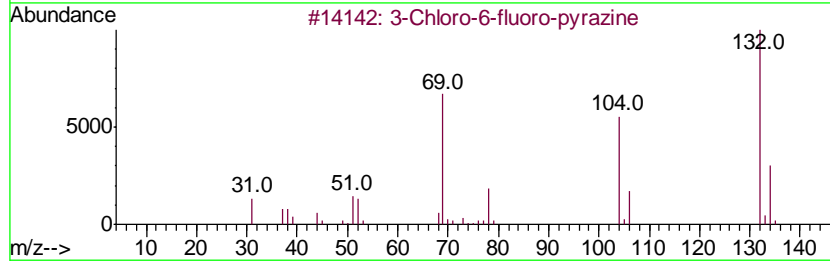
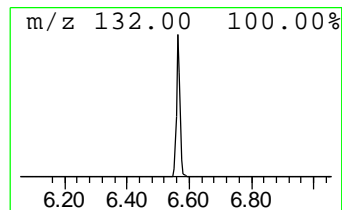
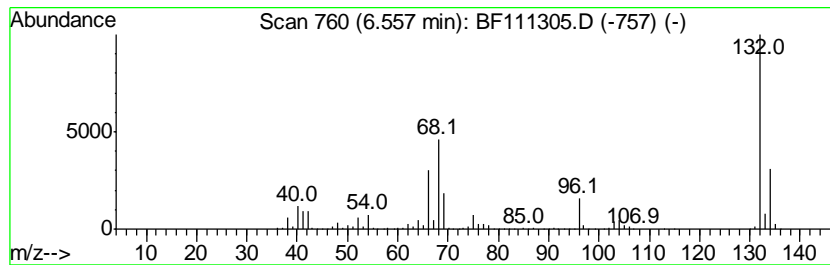
Quant Method : Z:\SVOASRV\HPCHEM1\BNA F\METHODS\8270-BF120818.M
 Quant Title : ASP BNA STANDARDS FOR 5 POINT CALIBRATION

TIC Library : C:\DATABASE\NIST11.L
 TIC Integration Parameters: LSCINT.P

 Peak Number 1 unknown6.56 Concentration Rank 1

R.T.	EstConc	Area	Relative to ISTD	R.T.
6.56	35.27 ng	2868950	1,4-Dichlorobenzene-d4	6.80

Hit#	of	Tentative ID	MW	MolForm	CAS#	Qual
1	5	3-Chloro-6-fluoro-pyrazine	132	C4H2ClFN2	1000146-10-7	27
2		(E)-3-Chloro-2-methyl-2-pentenal	132	C6H9ClO	031357-76-3	12
3		5-Aminoindole	132	C8H8N2	005192-03-0	12
4		Imidazole, 4,5-dicyano-1-methyl-	132	C6H4N4	019485-35-9	9
5		1,3,5-Trifluorobenzene	132	C6H3F3	000372-38-3	9



Data Path : Z:\SVOASRV\HPCHEM1\BNA F\DATA\BF121118\
 Data File : BF111305.D
 Acq On : 12 Dec 2018 4:43
 Operator : JU/SJ
 Sample : J6148-01 2X
 Misc :
 ALS Vial : 24 Sample Multiplier: 1

Instrument :
 BNA_F
 ClientSampleId :
 TP-MH-F

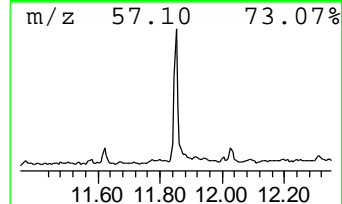
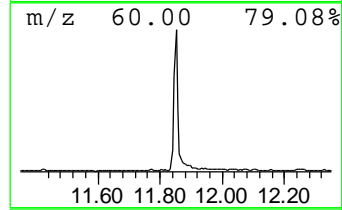
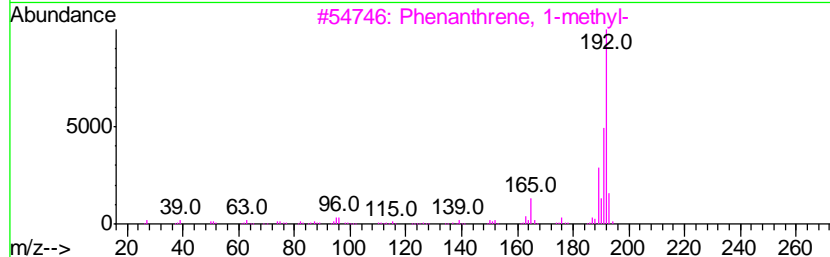
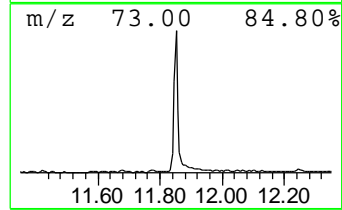
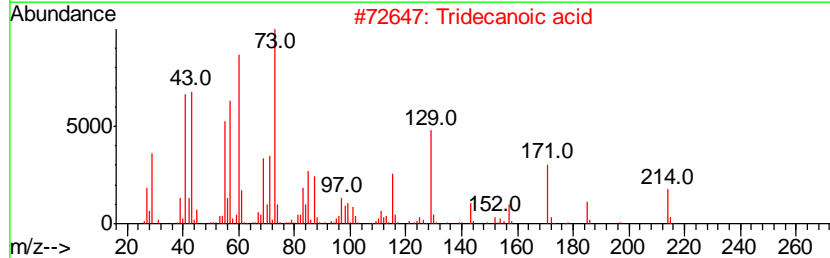
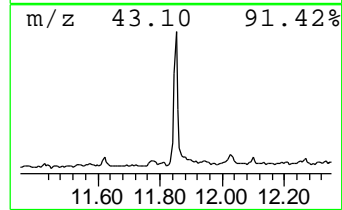
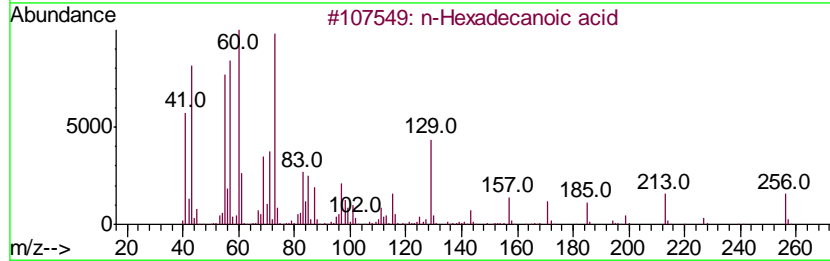
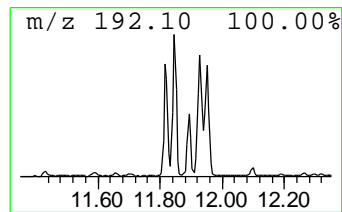
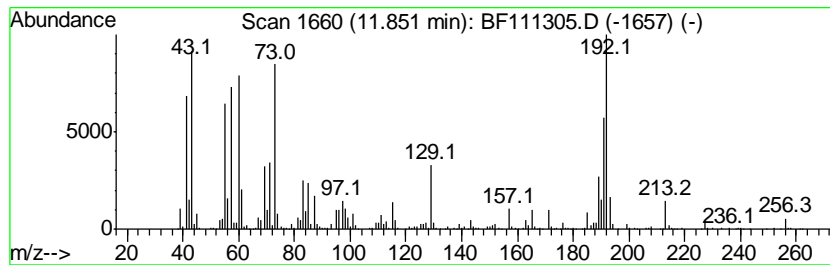
Quant Method : Z:\SVOASRV\HPCHEM1\BNA F\METHODS\8270-BF120818.M
 Quant Title : ASP BNA STANDARDS FOR 5 POINT CALIBRATION

TIC Library : C:\DATABASE\NIST11.L
 TIC Integration Parameters: LSCINT.P

 Peak Number 5 n-Hexadecanoic acid Concentration Rank 3

R.T.	EstConc	Area	Relative to ISTD	R.T.
11.85	17.33 ng	1413920	Phenanthrene-d10	11.32

Hit#	of	Tentative ID	MW	MolForm	CAS#	Qual
1	5	n-Hexadecanoic acid	256	C16H32O2	000057-10-3	97
2		Tridecanoic acid	214	C13H26O2	000638-53-9	94
3		Phenanthrene, 1-methyl-	192	C15H12	000832-69-9	86
4		Anthracene, 9-methyl-	192	C15H12	000779-02-2	86
5		Anthracene, 1-methyl-	192	C15H12	000610-48-0	84



Data Path : Z:\SVOASRV\HPCHEM1\BNA F\DATA\BF121118\
 Data File : BF111305.D
 Acq On : 12 Dec 2018 4:43
 Operator : JU/SJ
 Sample : J6148-01 2X
 Misc :
 ALS Vial : 24 Sample Multiplier: 1

Instrument :
 BNA_F
 ClientSampleId :
 TP-MH-F

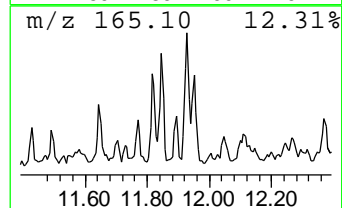
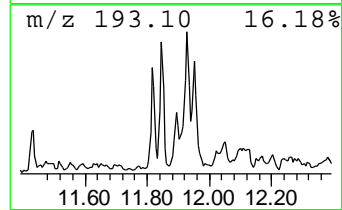
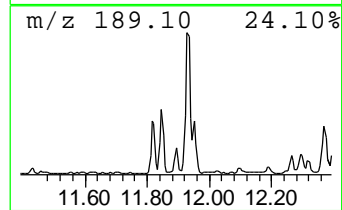
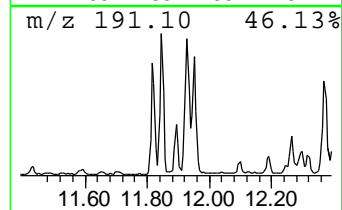
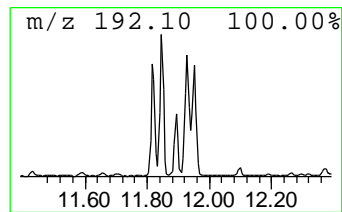
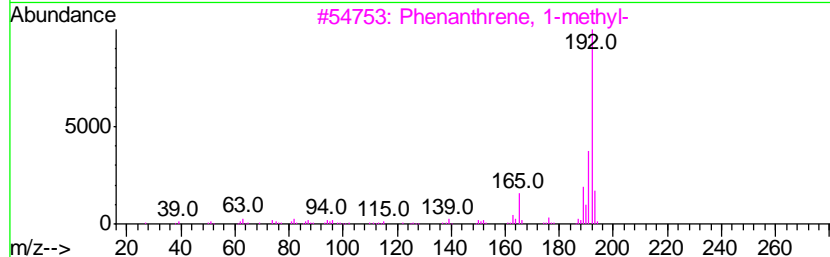
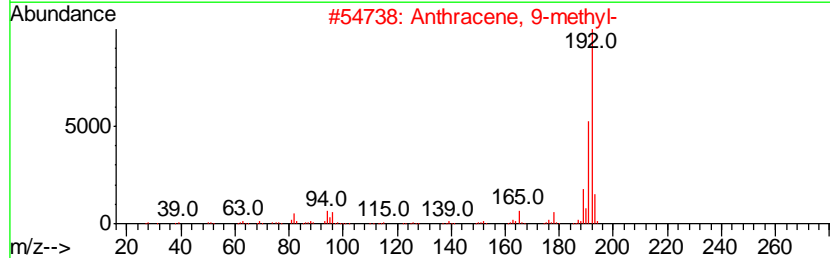
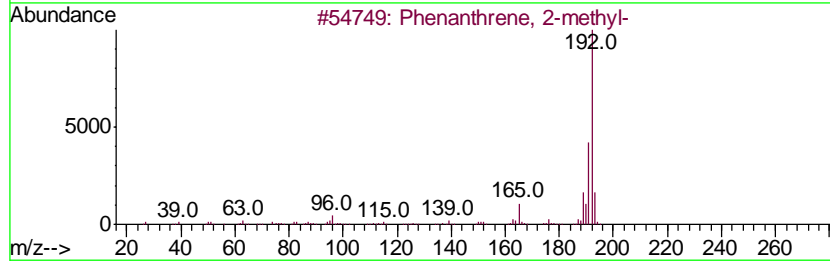
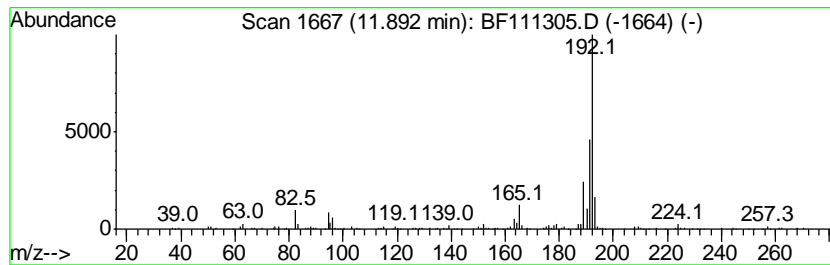
Quant Method : Z:\SVOASRV\HPCHEM1\BNA F\METHODS\8270-BF120818.M
 Quant Title : ASP BNA STANDARDS FOR 5 POINT CALIBRATION

TIC Library : C:\DATABASE\NIST11.L
 TIC Integration Parameters: LSCINT.P

 Peak Number 6 Phenanthrene, 2-methyl- Concentration Rank 17

R.T.	EstConc	Area	Relative to ISTD	R.T.
11.89	4.47 ng	364338	Phenanthrene-d10	11.32

Hit#	of	Tentative ID	MW	MolForm	CAS#	Qual
1	5	Phenanthrene, 2-methyl-	192	C15H12	002531-84-2	96
2		Anthracene, 9-methyl-	192	C15H12	000779-02-2	96
3		Phenanthrene, 1-methyl-	192	C15H12	000832-69-9	94
4		Anthracene, 2-methyl-	192	C15H12	000613-12-7	94
5		1H-Indene, 1-phenyl-	192	C15H12	001961-96-2	93



Data Path : Z:\SVOASRV\HPCHEM1\BNA F\DATA\BF121118\
 Data File : BF111305.D
 Acq On : 12 Dec 2018 4:43
 Operator : JU/SJ
 Sample : J6148-01 2X
 Misc :
 ALS Vial : 24 Sample Multiplier: 1

Instrument :
 BNA_F
 ClientSampleId :
 TP-MH-F

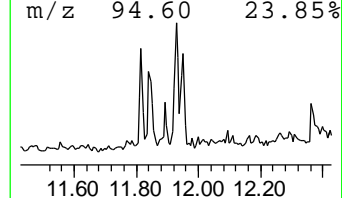
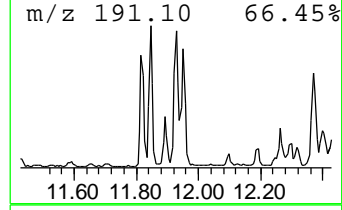
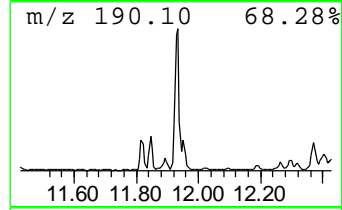
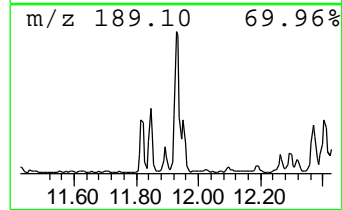
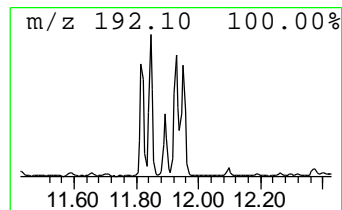
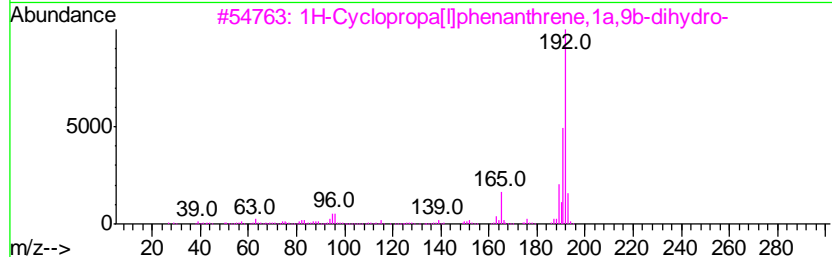
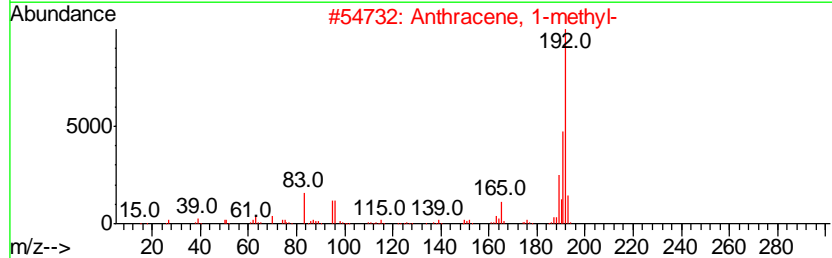
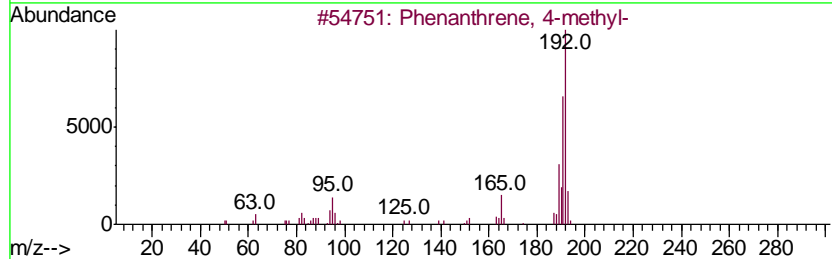
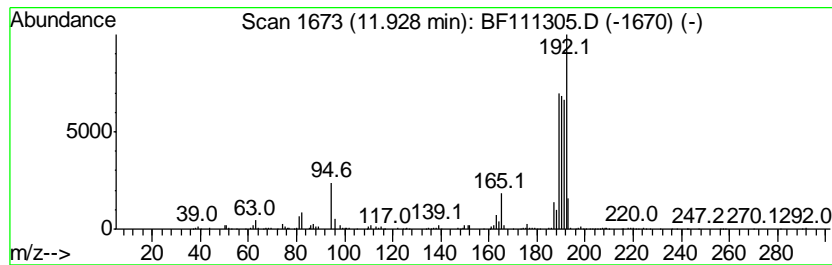
Quant Method : Z:\SVOASRV\HPCHEM1\BNA F\METHODS\8270-BF120818.M
 Quant Title : ASP BNA STANDARDS FOR 5 POINT CALIBRATION

TIC Library : C:\DATABASE\NIST11.L
 TIC Integration Parameters: LSCINT.P

 Peak Number 7 Phenanthrene, 4-methyl- Concentration Rank 8

R.T.	EstConc	Area	Relative to ISTD	R.T.
11.93	10.90 ng	888908	Phenanthrene-d10	11.32

Hit#	of	Tentative ID	MW	MolForm	CAS#	Qual
1	5	Phenanthrene, 4-methyl-	192	C15H12	000832-64-4	60
2		Anthracene, 1-methyl-	192	C15H12	000610-48-0	60
3		1H-Cyclopropa[1]phenanthrene,1a,...	192	C15H12	000949-41-7	60
4		Anthracene, 2-methyl-	192	C15H12	000613-12-7	55
5		Naphtho[2,3-b]norbornadiene	192	C15H12	107426-38-0	53



Data Path : Z:\SVOASRV\HPCHEM1\BNA F\DATA\BF121118\
 Data File : BF111305.D
 Acq On : 12 Dec 2018 4:43
 Operator : JU/SJ
 Sample : J6148-01 2X
 Misc :
 ALS Vial : 24 Sample Multiplier: 1

Instrument :
 BNA_F
 ClientSampled :
 TP-MH-F

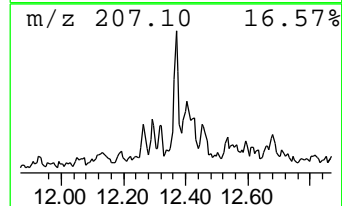
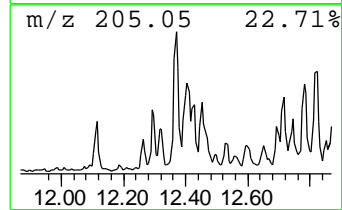
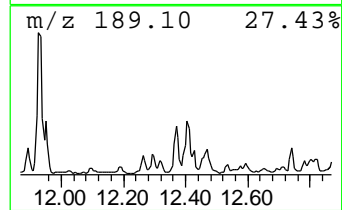
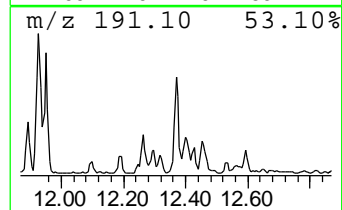
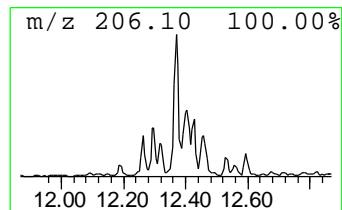
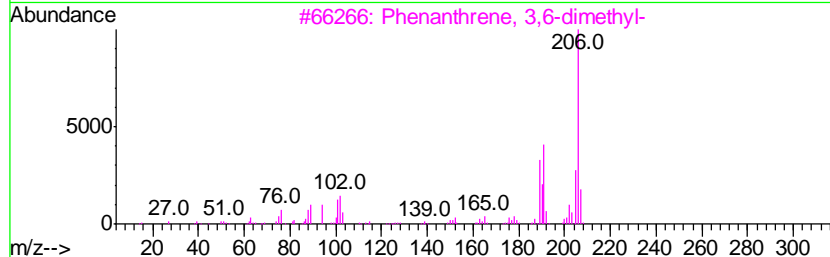
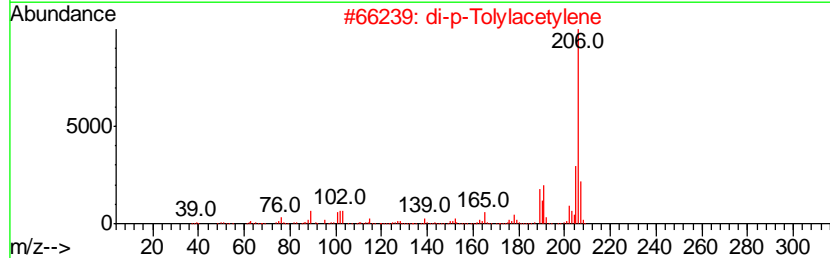
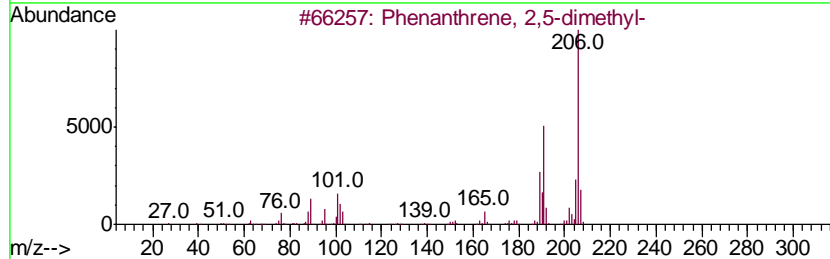
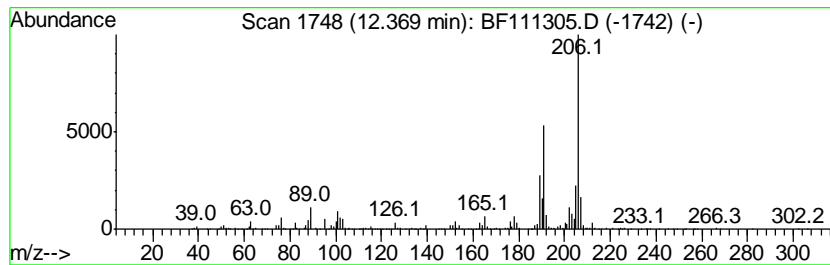
Quant Method : Z:\SVOASRV\HPCHEM1\BNA F\METHODS\8270-BF120818.M
 Quant Title : ASP BNA STANDARDS FOR 5 POINT CALIBRATION

TIC Library : C:\DATABASE\NIST11.L
 TIC Integration Parameters: LSCINT.P

 Peak Number 10 Phenanthrene, 2,5-dimethyl- Concentration Rank 11

R.T.	EstConc	Area	Relative to ISTD	R.T.
12.37	8.94 ng	729292	Phenanthrene-d10	11.32

Hit#	of	Tentative ID	MW	MolForm	CAS#	Qual
1	5	Phenanthrene, 2,5-dimethyl-	206	C16H14	003674-66-6	97
2		di-p-Tolylacetylene	206	C16H14	002789-88-0	93
3		Phenanthrene, 3,6-dimethyl-	206	C16H14	001576-67-6	93
4		Anthracene, 1,4-dimethyl-	206	C16H14	000781-92-0	93
5		Phenanthrene, 2,3-dimethyl-	206	C16H14	003674-65-5	93



Data Path : Z:\SVOASRV\HPCHEM1\BNA F\DATA\BF121118\
 Data File : BF111305.D
 Acq On : 12 Dec 2018 4:43
 Operator : JU/SJ
 Sample : J6148-01 2X
 Misc :
 ALS Vial : 24 Sample Multiplier: 1

Instrument :
 BNA_F
 ClientSampleID :
 TP-MH-F

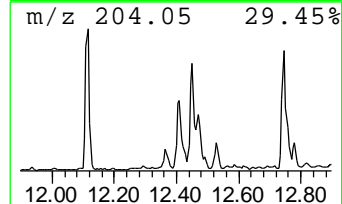
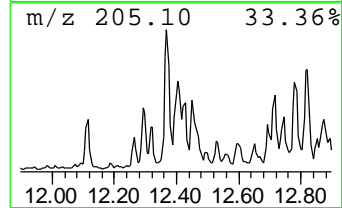
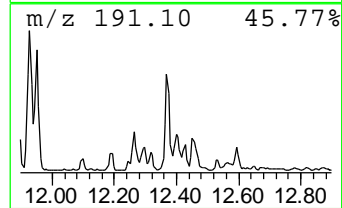
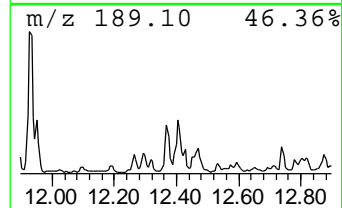
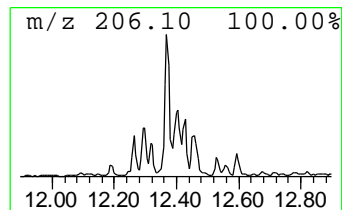
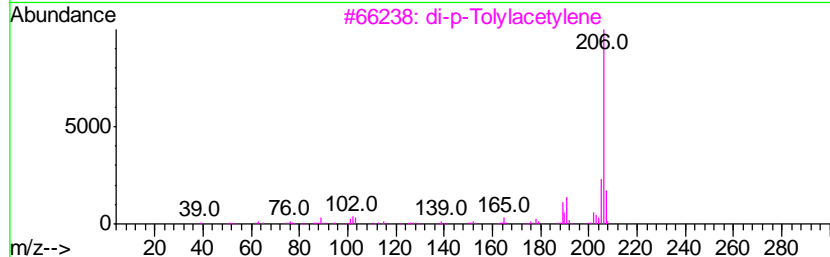
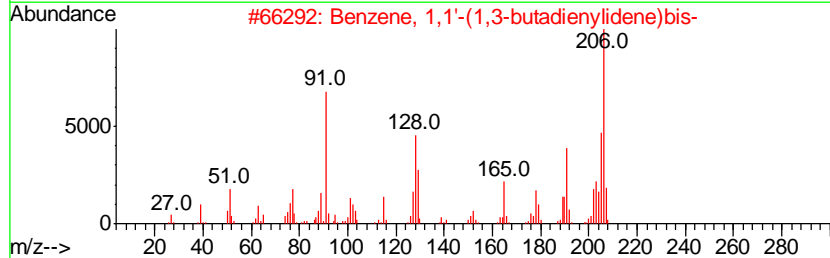
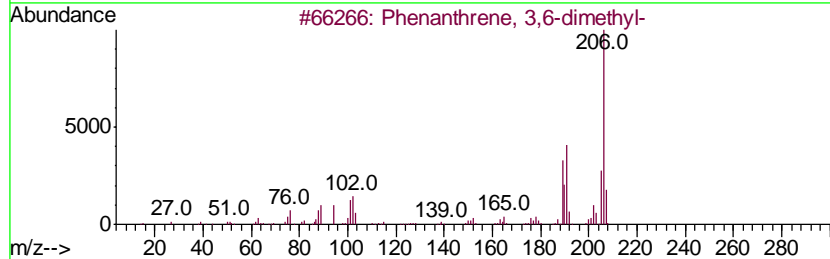
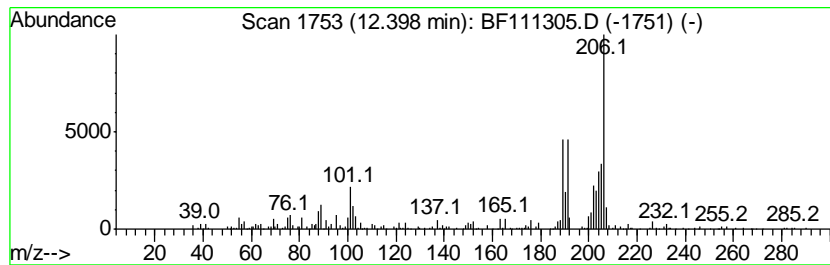
Quant Method : Z:\SVOASRV\HPCHEM1\BNA F\METHODS\8270-BF120818.M
 Quant Title : ASP BNA STANDARDS FOR 5 POINT CALIBRATION

TIC Library : C:\DATABASE\NIST11.L
 TIC Integration Parameters: LSCINT.P

 Peak Number 11 unknown12.40 Concentration Rank 16

R.T.	EstConc	Area	Relative to ISTD	R.T.
12.40	4.82 ng	393609	Phenanthrene-d10	11.32

Hit#	of	Tentative ID	MW	MolForm	CAS#	Qual
1	5	Phenanthrene, 3,6-dimethyl-	206	C16H14	001576-67-6	46
2		Benzene, 1,1'-(1,3-butadienylidene...	206	C16H14	004165-81-5	41
3		di-p-Tolylacetylene	206	C16H14	002789-88-0	41
4		1,3-Butadiene, 1,4-diphenyl-, (E...	206	C16H14	000538-81-8	38
5		[14]Annulene, 1,6:8,13-bis(metha...	206	C16H14	085385-68-8	38



Data Path : Z:\SVOASRV\HPCHEM1\BNA F\DATA\BF121118\
 Data File : BF111305.D
 Acq On : 12 Dec 2018 4:43
 Operator : JU/SJ
 Sample : J6148-01 2X
 Misc :
 ALS Vial : 24 Sample Multiplier: 1

Instrument :
 BNA_F
 ClientSampled :
 TP-MH-F

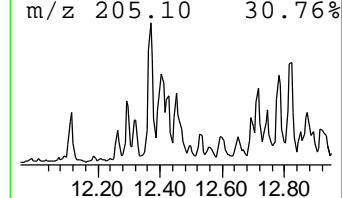
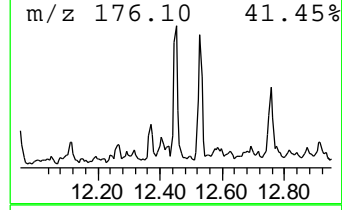
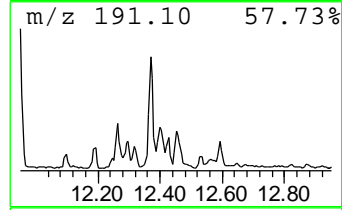
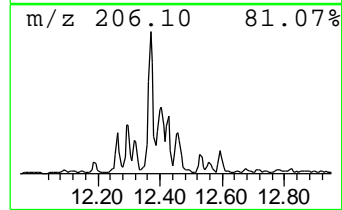
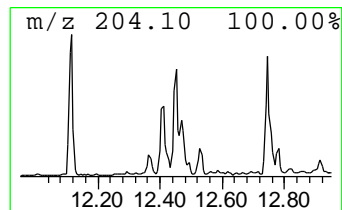
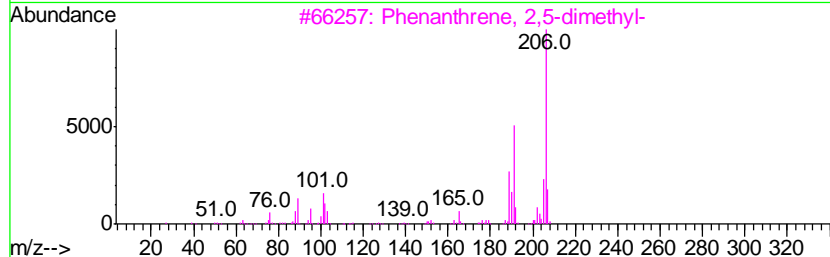
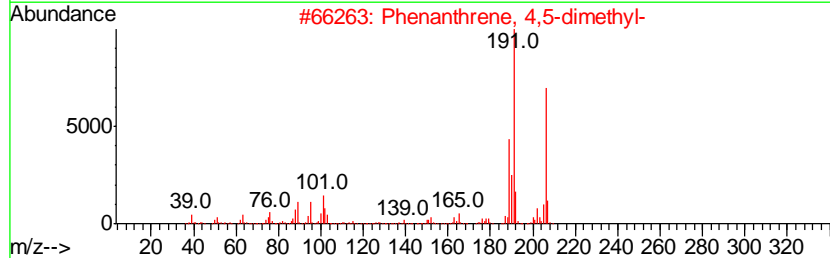
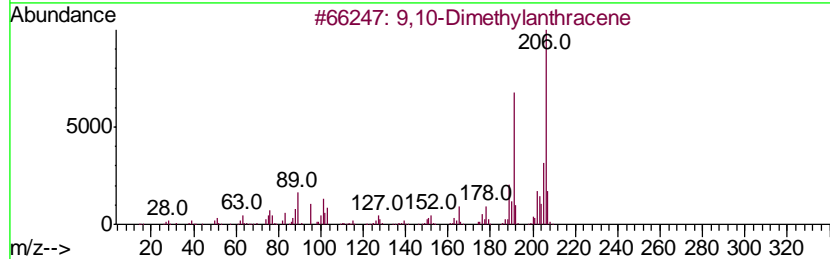
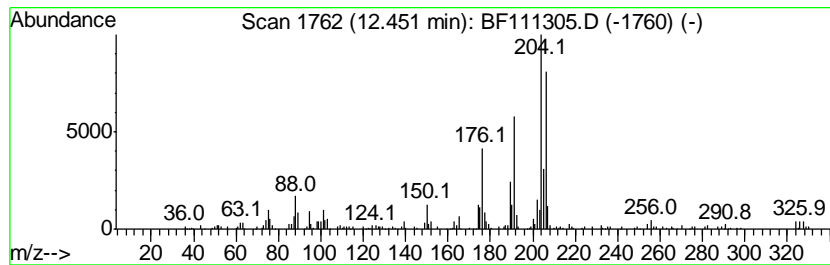
Quant Method : Z:\SVOASRV\HPCHEM1\BNA F\METHODS\8270-BF120818.M
 Quant Title : ASP BNA STANDARDS FOR 5 POINT CALIBRATION

TIC Library : C:\DATABASE\NIST11.L
 TIC Integration Parameters: LSCINT.P

 Peak Number 12 9,10-Dimethylantracene Concentration Rank 18

R.T.	EstConc	Area	Relative to ISTD	R.T.
12.45	4.18 ng	340680	Phenanthrene-d10	11.32

Hit#	of	Tentative ID	MW	MolForm	CAS#	Qual
1	5	9,10-Dimethylantracene	206	C16H14	000781-43-1	70
2		Phenanthrene, 4,5-dimethyl-	206	C16H14	003674-69-9	64
3		Phenanthrene, 2,5-dimethyl-	206	C16H14	003674-66-6	60
4		Phenanthrene, 3,6-dimethyl-	206	C16H14	001576-67-6	60
5		Anthracene, 1,4-dimethyl-	206	C16H14	000781-92-0	55



Data Path : Z:\SVOASRV\HPCHEM1\BNA F\DATA\BF121118\
 Data File : BF111305.D
 Acq On : 12 Dec 2018 4:43
 Operator : JU/SJ
 Sample : J6148-01 2X
 Misc :
 ALS Vial : 24 Sample Multiplier: 1

Instrument :
 BNA_F
 ClientSampled :
 TP-MH-F

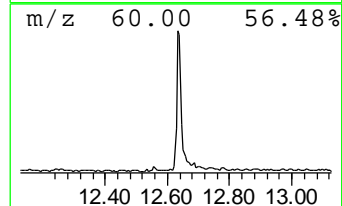
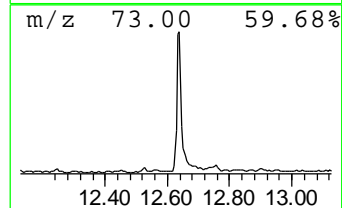
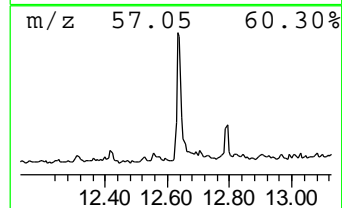
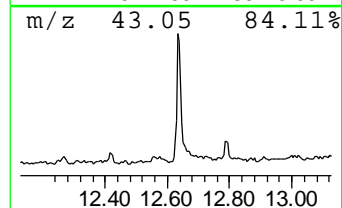
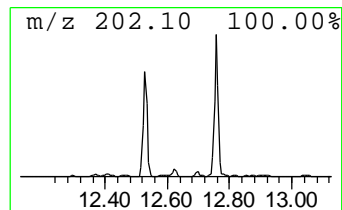
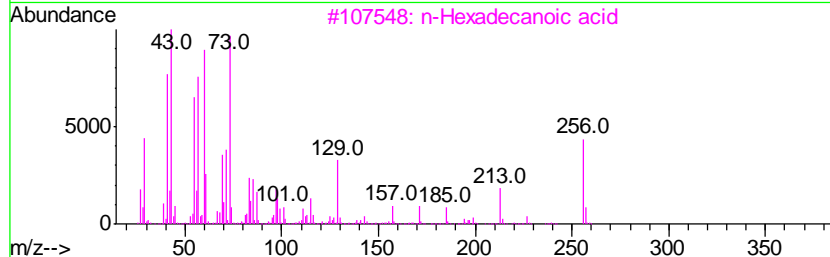
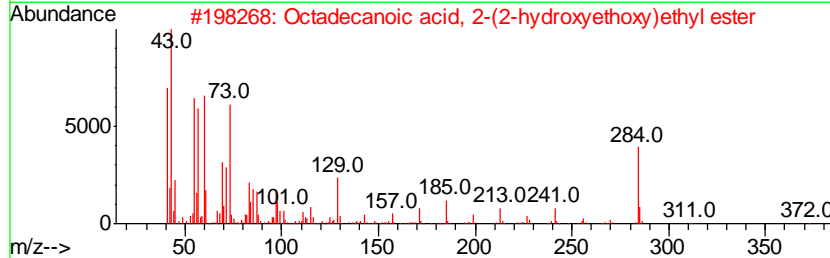
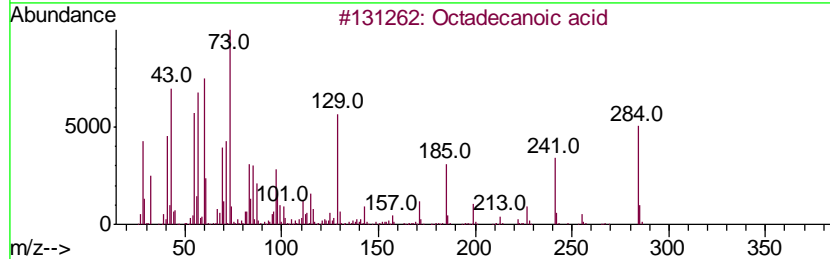
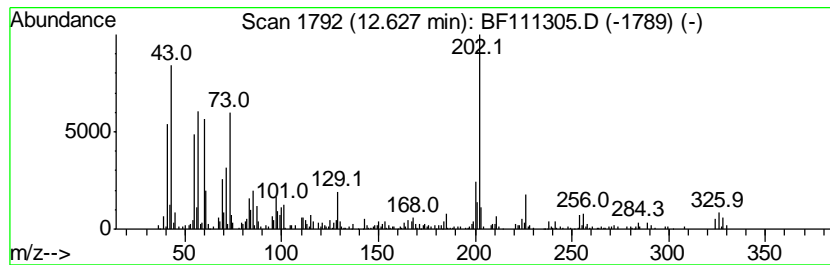
Quant Method : Z:\SVOASRV\HPCHEM1\BNA F\METHODS\8270-BF120818.M
 Quant Title : ASP BNA STANDARDS FOR 5 POINT CALIBRATION

TIC Library : C:\DATABASE\NIST11.L
 TIC Integration Parameters: LSCINT.P

 Peak Number 13 Octadecanoic acid Concentration Rank 7

R.T.	EstConc	Area	Relative to ISTD	R.T.
12.63	12.31 ng	1004250	Phenanthrene-d10	11.32

Hit#	of	Tentative ID	MW	MolForm	CAS#	Qual
1	5	Octadecanoic acid	284	C18H36O2	000057-11-4	99
2		Octadecanoic acid, 2-(2-hydroxye...	372	C22H44O4	000106-11-6	90
3		n-Hexadecanoic acid	256	C16H32O2	000057-10-3	90
4		Pentadecanoic acid	242	C15H30O2	001002-84-2	74
5		Tetradecanoic acid	228	C14H28O2	000544-63-8	70



Data Path : Z:\SVOASRV\HPCHEM1\BNA F\DATA\BF121118\
 Data File : BF111305.D
 Acq On : 12 Dec 2018 4:43
 Operator : JU/SJ
 Sample : J6148-01 2X
 Misc :
 ALS Vial : 24 Sample Multiplier: 1

Instrument :
 BNA_F
 ClientSampled :
 TP-MH-F

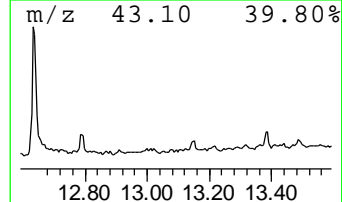
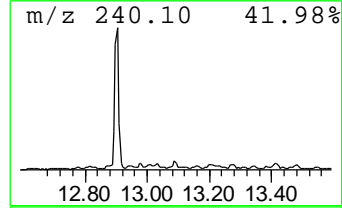
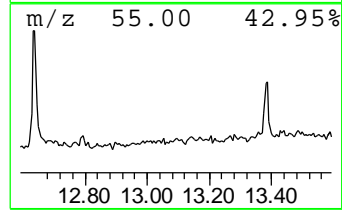
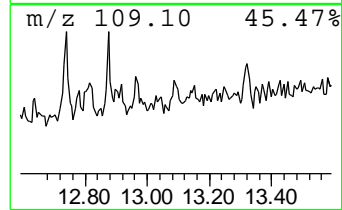
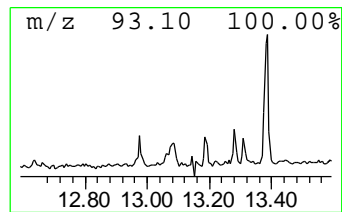
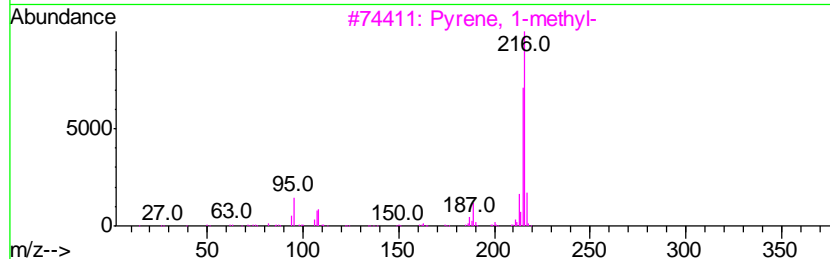
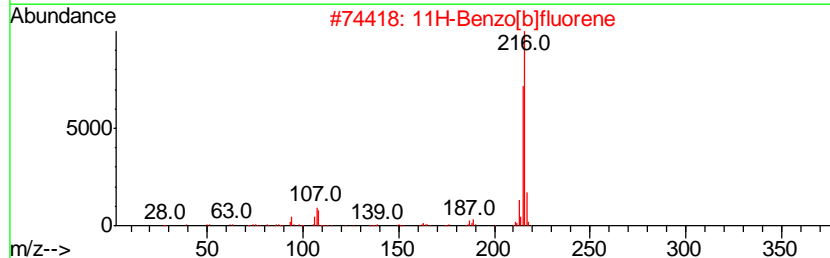
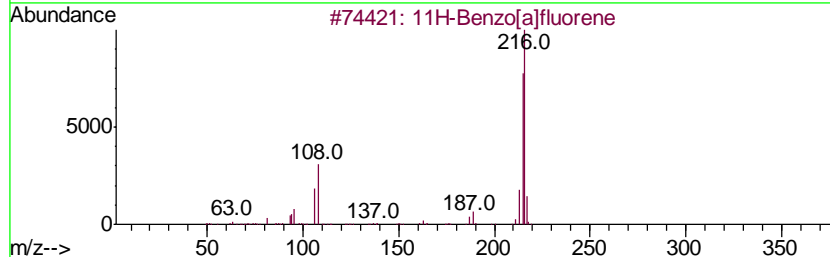
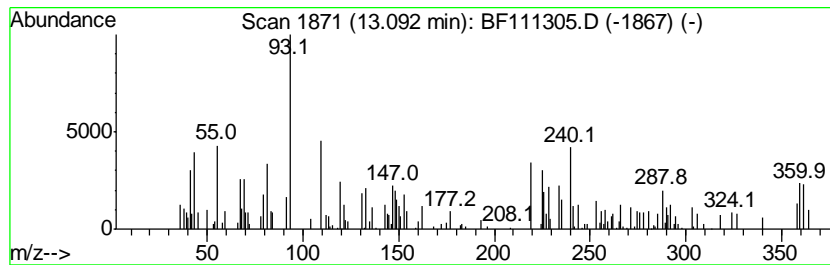
Quant Method : Z:\SVOASRV\HPCHEM1\BNA F\METHODS\8270-BF120818.M
 Quant Title : ASP BNA STANDARDS FOR 5 POINT CALIBRATION

TIC Library : C:\DATABASE\NIST11.L
 TIC Integration Parameters: LSCINT.P

 Peak Number 14 11H-Benzo[a]fluorene Concentration Rank 19

R.T.	EstConc	Area	Relative to ISTD	R.T.
13.09	3.59 ng	573975	Chrysene-d12	13.96

Hit#	of	Tentative ID	MW	MolForm	CAS#	Qual
1	5	11H-Benzo[a]fluorene	216	C17H12	000238-84-6	83
2		11H-Benzo[b]fluorene	216	C17H12	000243-17-4	81
3		Pyrene, 1-methyl-	216	C17H12	002381-21-7	72
4		Fluoranthene, 2-methyl-	216	C17H12	033543-31-6	53
5		6H-Thiazolo[5,4-e]indole, 2,7,8-...	216	C12H12N2S	1000338-32-0	53



Data Path : Z:\SVOASRV\HPCHEM1\BNA F\DATA\BF121118\
 Data File : BF111305.D
 Acq On : 12 Dec 2018 4:43
 Operator : JU/SJ
 Sample : J6148-01 2X
 Misc :
 ALS Vial : 24 Sample Multiplier: 1

Instrument :
 BNA_F
 ClientSampled :
 TP-MH-F

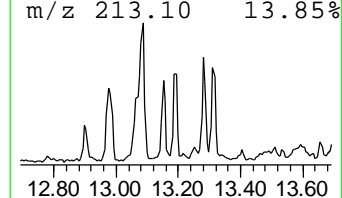
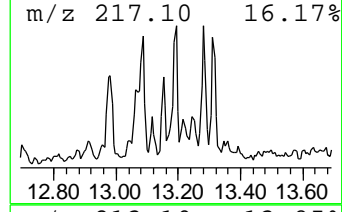
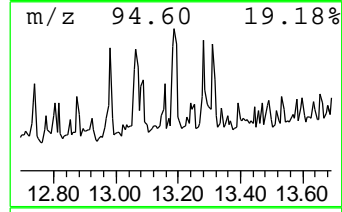
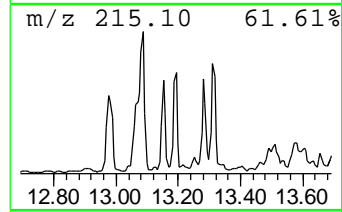
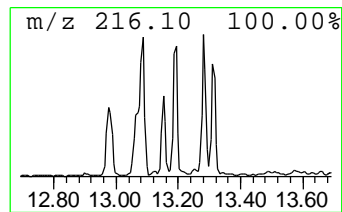
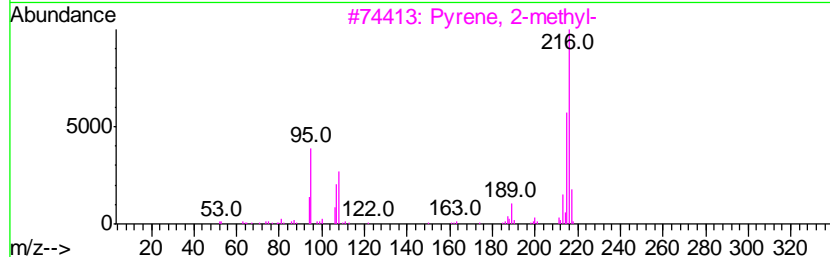
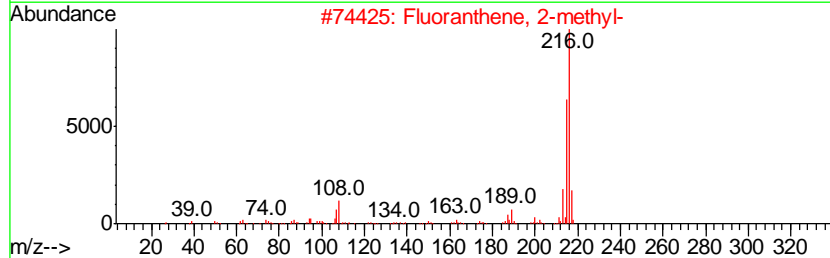
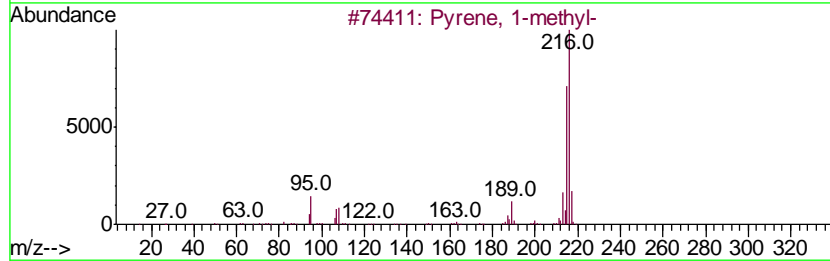
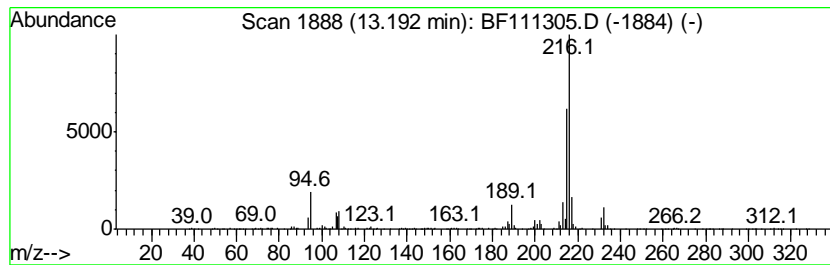
Quant Method : Z:\SVOASRV\HPCHEM1\BNA F\METHODS\8270-BF120818.M
 Quant Title : ASP BNA STANDARDS FOR 5 POINT CALIBRATION

TIC Library : C:\DATABASE\NIST11.L
 TIC Integration Parameters: LSCINT.P

 Peak Number 15 Pyrene, 1-methyl- Concentration Rank 20

R.T.	EstConc	Area	Relative to ISTD	R.T.
13.19	3.59 ng	573768	Chrysene-d12	13.96

Hit#	of	Tentative ID	MW	MolForm	CAS#	Qual
1	5	Pyrene, 1-methyl-	216	C17H12	002381-21-7	96
2		Fluoranthene, 2-methyl-	216	C17H12	033543-31-6	94
3		Pyrene, 2-methyl-	216	C17H12	003442-78-2	94
4		11H-Benzo[b]fluorene	216	C17H12	000243-17-4	89
5		11H-Benzo[a]fluorene	216	C17H12	000238-84-6	74



Data Path : Z:\SVOASRV\HPCHEM1\BNA F\DATA\BF121118\
 Data File : BF111305.D
 Acq On : 12 Dec 2018 4:43
 Operator : JU/SJ
 Sample : J6148-01 2X
 Misc :
 ALS Vial : 24 Sample Multiplier: 1

Instrument :
 BNA_F
 ClientSampleID :
 TP-MH-F

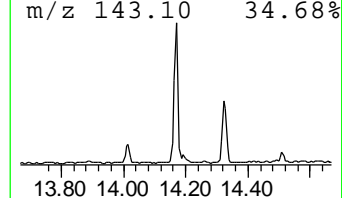
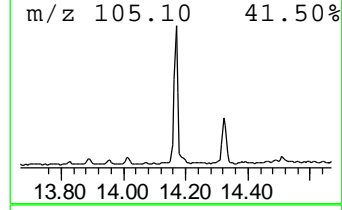
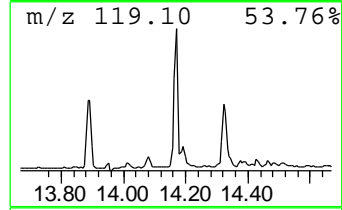
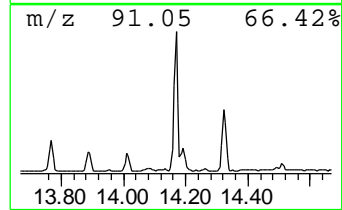
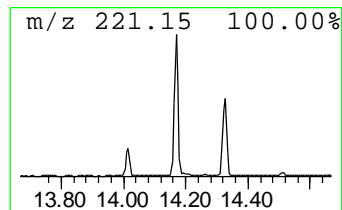
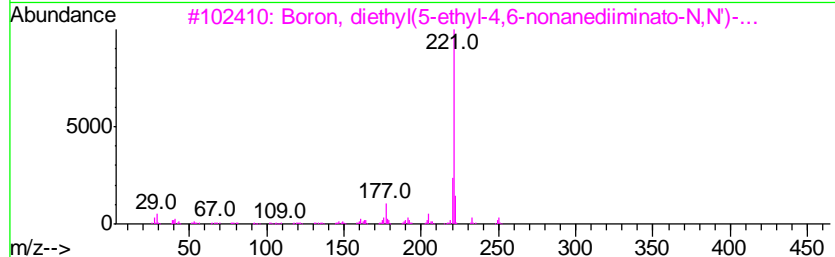
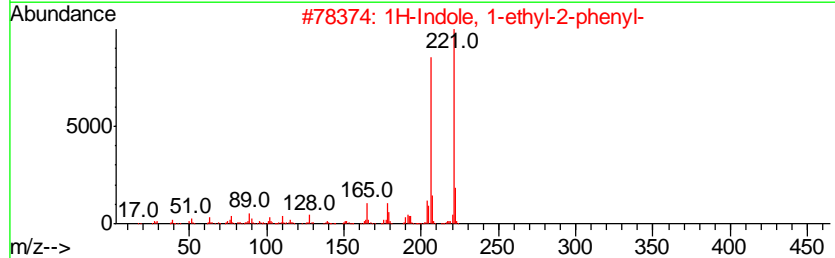
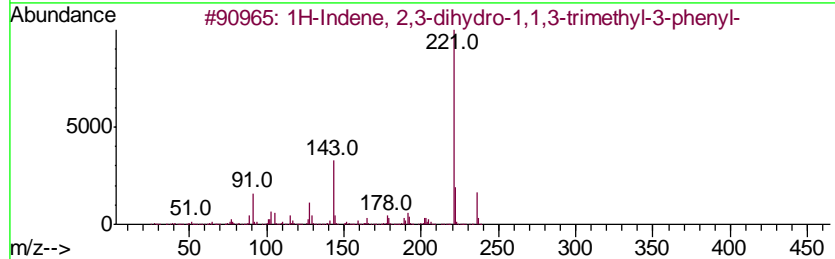
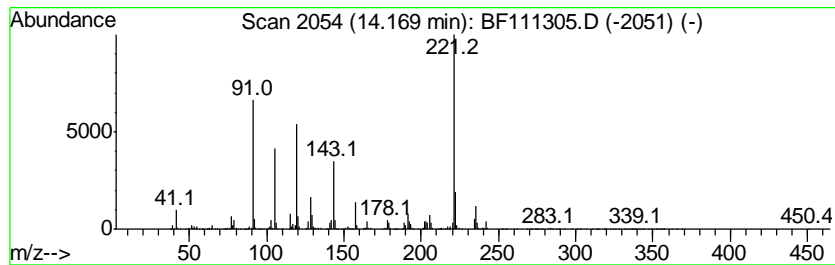
Quant Method : Z:\SVOASRV\HPCHEM1\BNA F\METHODS\8270-BF120818.M
 Quant Title : ASP BNA STANDARDS FOR 5 POINT CALIBRATION

TIC Library : C:\DATABASE\NIST11.L
 TIC Integration Parameters: LSCINT.P

 Peak Number 16 1H-Indene, 2,3-dihydro-1,1,... Concentration Rank 6

R.T.	EstConc	Area	Relative to ISTD	R.T.
14.17	14.03 ng	2242260	Chrysene-d12	13.96

Hit#	of	Tentative ID	MW	MolForm	CAS#	Qual
1	5	1H-Indene, 2,3-dihydro-1,1,3-tri...	236	C18H20	003910-35-8	50
2		1H-Indole, 1-ethyl-2-phenyl-	221	C16H15N	013228-39-2	38
3		Boron, diethyl(5-ethyl-4,6-nonan...	250	C15H31BN2	136705-03-8	38
4		4,6-Dimethyl-2-thioxo-1,2-dihydr...	236	C11H16N2SSi	1000332-43-1	35
5		1H-1,2,3-Triazole, 4,5-diphenyl-	221	C14H11N3	005533-73-3	35



Data Path : Z:\SVOASRV\HPCHEM1\BNA F\DATA\BF121118\
 Data File : BF111305.D
 Acq On : 12 Dec 2018 4:43
 Operator : JU/SJ
 Sample : J6148-01 2X
 Misc :
 ALS Vial : 24 Sample Multiplier: 1

Instrument :
 BNA_F
 ClientSampleID :
 TP-MH-F

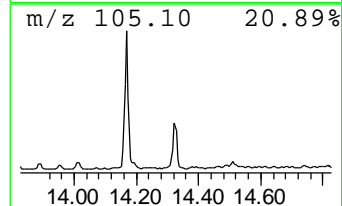
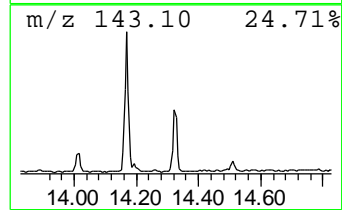
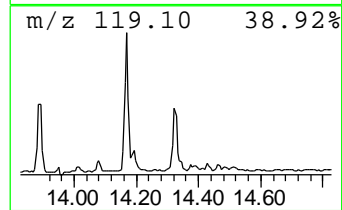
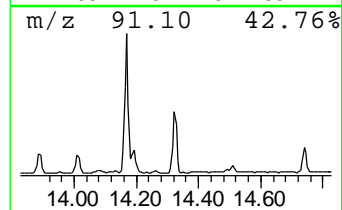
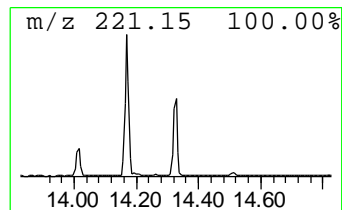
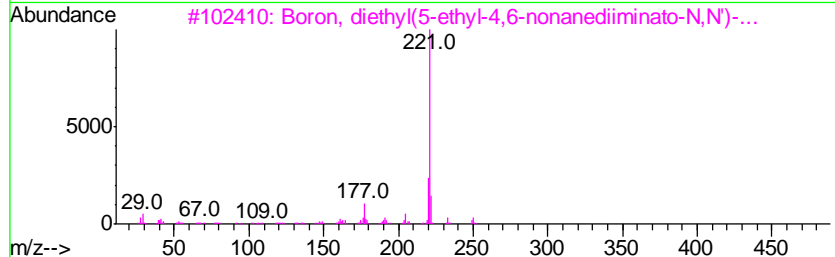
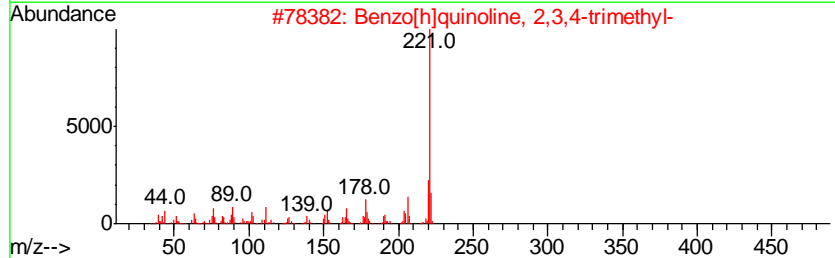
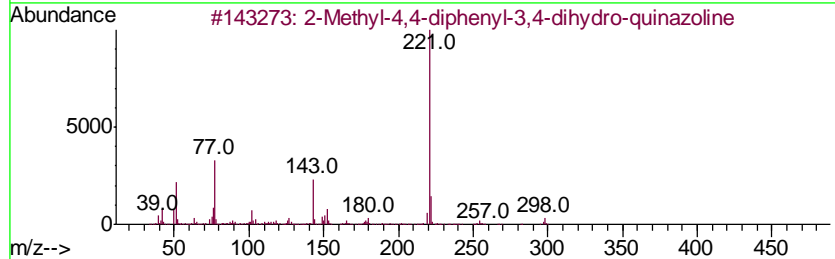
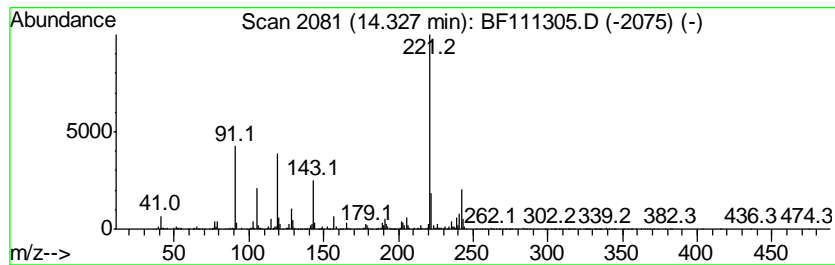
Quant Method : Z:\SVOASRV\HPCHEM1\BNA F\METHODS\8270-BF120818.M
 Quant Title : ASP BNA STANDARDS FOR 5 POINT CALIBRATION

TIC Library : C:\DATABASE\NIST11.L
 TIC Integration Parameters: LSCINT.P

 Peak Number 17 unknown14.33 Concentration Rank 9

R.T.	EstConc	Area	Relative to ISTD	R.T.
14.33	9.42 ng	1504990	Chrysene-d12	13.96

Hit#	of	Tentative ID	MW	MolForm	CAS#	Qual
1	5	2-Methyl-4,4-diphenyl-3,4-dihydr...	298	C21H18N2	1000300-40-0	32
2		Benzo[h]quinoline, 2,3,4-trimethyl-	221	C16H15N	063042-66-0	30
3		Boron, diethyl(5-ethyl-4,6-nonan...	250	C15H31BN2	136705-03-8	27
4		p-Cyanophenyl p-(2-butoxyethoxy)...	339	C20H21NO4	067131-98-0	27
5		Indolizine, 6-ethyl-2-phenyl-	221	C16H15N	079373-01-6	25



Data Path : Z:\SVOASRV\HPCHEM1\BNA F\DATA\BF121118\
 Data File : BF111305.D
 Acq On : 12 Dec 2018 4:43
 Operator : JU/SJ
 Sample : J6148-01 2X
 Misc :
 ALS Vial : 24 Sample Multiplier: 1

Instrument :
 BNA_F
 ClientSampled :
 TP-MH-F

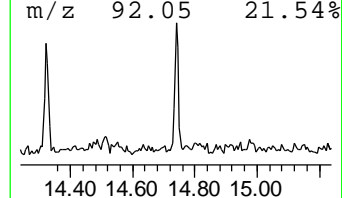
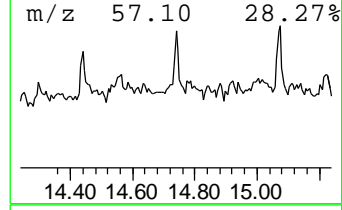
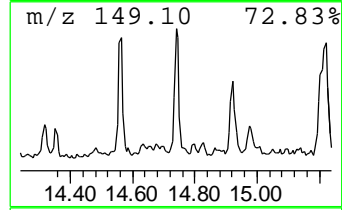
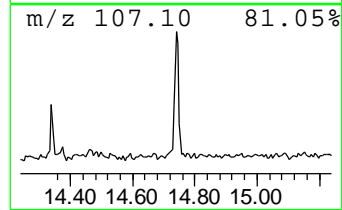
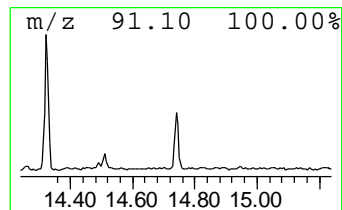
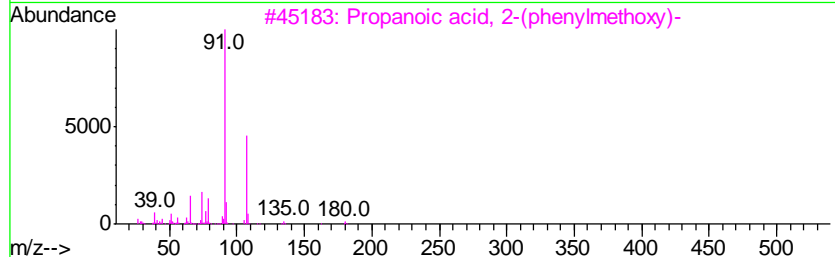
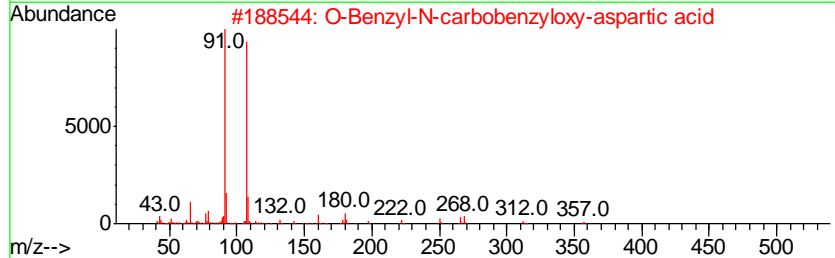
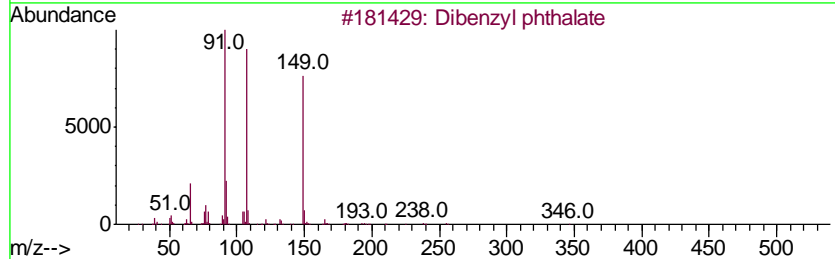
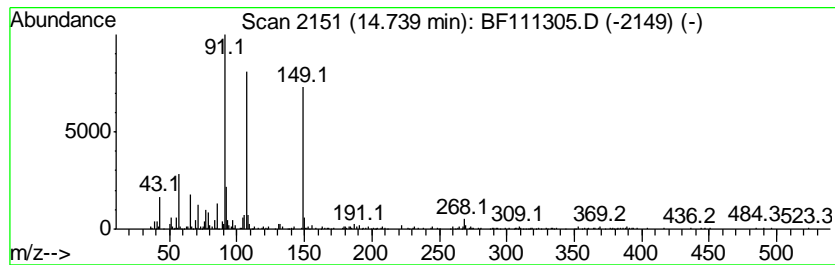
Quant Method : Z:\SVOASRV\HPCHEM1\BNA F\METHODS\8270-BF120818.M
 Quant Title : ASP BNA STANDARDS FOR 5 POINT CALIBRATION

TIC Library : C:\DATABASE\NIST11.L
 TIC Integration Parameters: LSCINT.P

 Peak Number 18 Dibenzyl phthalate Concentration Rank 10

R.T.	EstConc	Area	Relative to ISTD	R.T.
14.74	9.24 ng	445815	Perylene-d12	15.40

Hit#	of	Tentative ID	MW	MolForm	CAS#	Qual
1	5	Dibenzyl phthalate	346	C22H18O4	000523-31-9	83
2		O-Benzyl-N-carbobenzyloxy-aspart...	357	C19H19NO6	1000130-74-8	49
3		Propanoic acid, 2-(phenylmethoxy)-	180	C10H12O3	006625-78-1	47
4		Pyridine, 3-ethyl-	107	C7H9N	000536-78-7	43
5		1,4-Dimethyl-pyridinium chloride	143	C7H10ClN	1000145-43-8	43



Data Path : Z:\SVOASRV\HPCHEM1\BNA F\DATA\BF121118\
 Data File : BF111305.D
 Acq On : 12 Dec 2018 4:43
 Operator : JU/SJ
 Sample : J6148-01 2X
 Misc :
 ALS Vial : 24 Sample Multiplier: 1

Instrument :
 BNA_F
 ClientSampleId :
 TP-MH-F

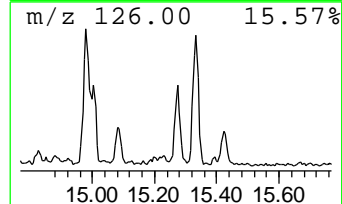
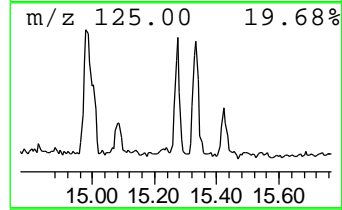
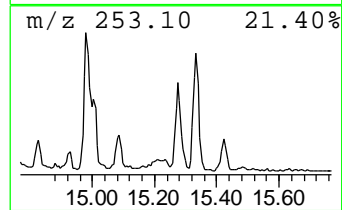
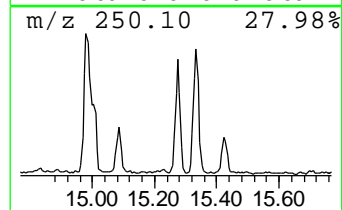
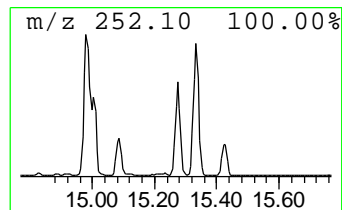
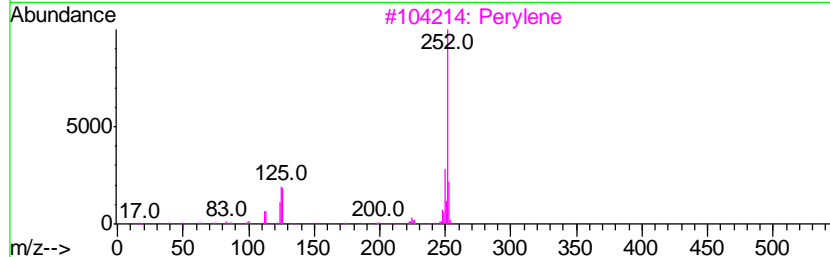
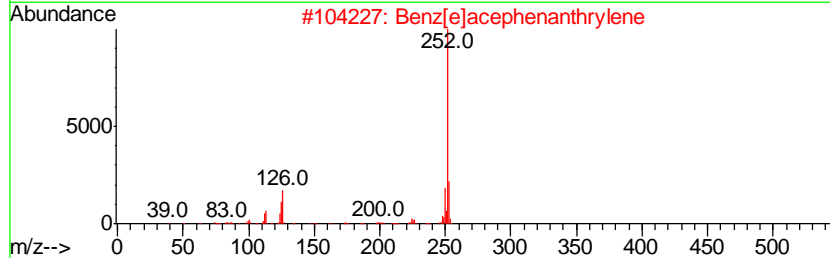
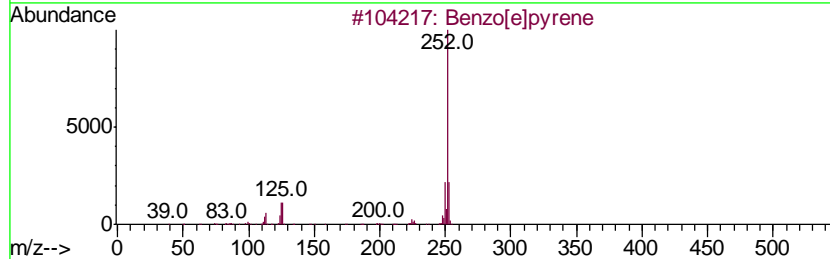
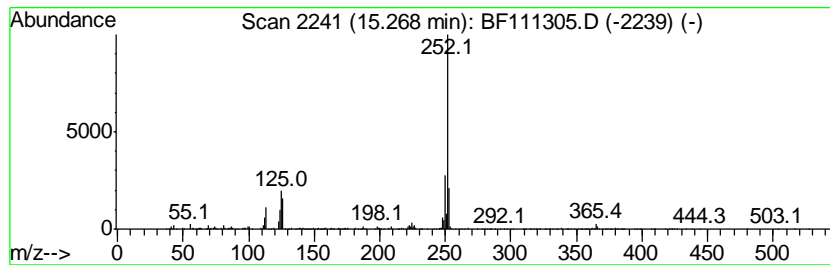
Quant Method : Z:\SVOASRV\HPCHEM1\BNA F\METHODS\8270-BF120818.M
 Quant Title : ASP BNA STANDARDS FOR 5 POINT CALIBRATION

TIC Library : C:\DATABASE\NIST11.L
 TIC Integration Parameters: LSCINT.P

 Peak Number 19 Benzo[e]pyrene Concentration Rank 5

R.T.	EstConc	Area	Relative to ISTD	R.T.
15.27	14.59 ng	703636	Perylene-d12	15.40

Hit#	of	Tentative ID	MW	MolForm	CAS#	Qual
1	5	Benzo[e]pyrene	252	C20H12	000192-97-2	98
2		Benz[e]acephenanthrylene	252	C20H12	000205-99-2	97
3		Perylene	252	C20H12	000198-55-0	94
4		Benzo[a]pyrene	252	C20H12	000050-32-8	93
5		Benzo[k]fluoranthene	252	C20H12	000207-08-9	76



Data Path : Z:\SVOASRV\HPCHEM1\BNA F\DATA\BF121118\
 Data File : BF111305.D
 Acq On : 12 Dec 2018 4:43
 Operator : JU/SJ
 Sample : J6148-01 2X
 Misc :
 ALS Vial : 24 Sample Multiplier: 1

Instrument :
 BNA_F
 ClientSampleID :
 TP-MH-F

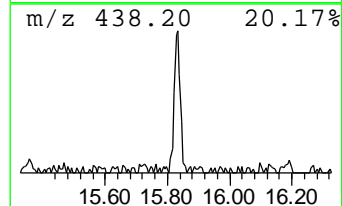
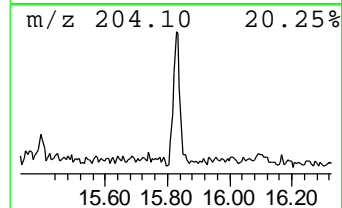
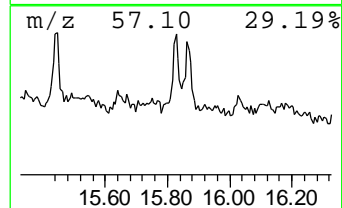
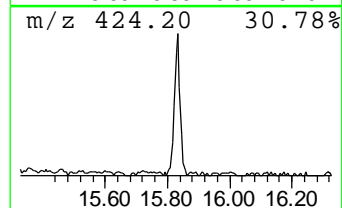
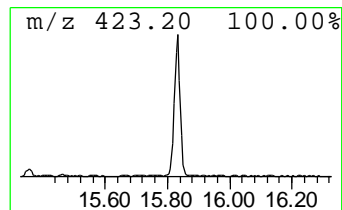
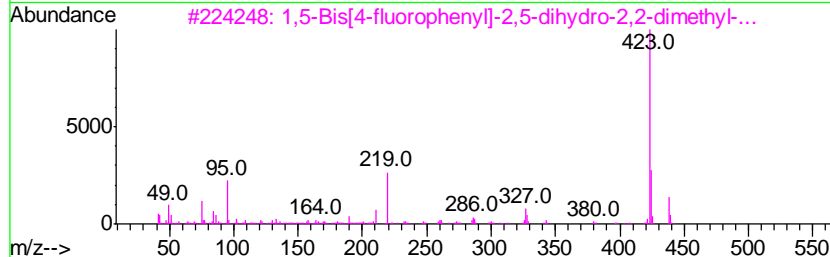
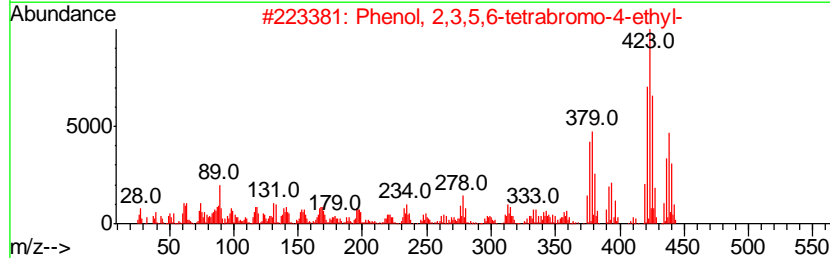
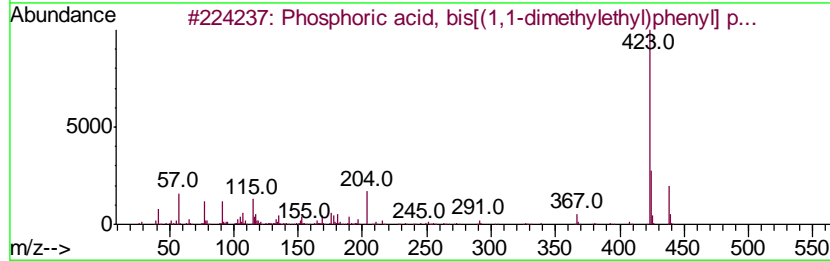
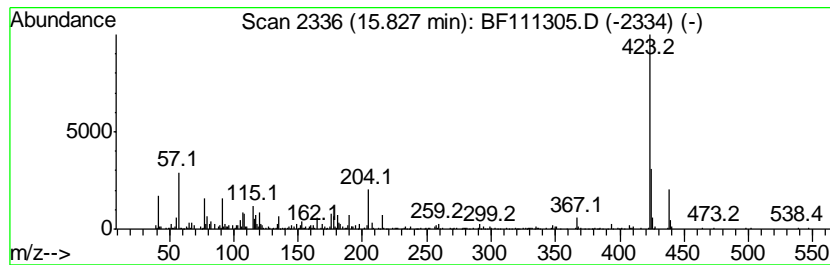
Quant Method : Z:\SVOASRV\HPCHEM1\BNA F\METHODS\8270-BF120818.M
 Quant Title : ASP BNA STANDARDS FOR 5 POINT CALIBRATION

TIC Library : C:\DATABASE\NIST11.L
 TIC Integration Parameters: LSCINT.P

 Peak Number 20 Phosphoric acid, bis[(1,1-d... Concentration Rank 13

R.T.	EstConc	Area	Relative to ISTD	R.T.
15.83	6.62 ng	319372	Perylene-d12	15.40

Hit#	of	Tentative ID	MW	MolForm	CAS#	Qual
1	5	Phosphoric acid, bis[(1,1-dimeth...	438	C26H31O4P	065652-41-7	99
2		Phenol, 2,3,5,6-tetrabromo-4-ethyl-	434	C8H6Br4O	105590-24-7	43
3		1,5-Bis[4-fluorophenyl]-2,5-dihy...	438	C27H20F2N4	004447-85-2	42
4		Silane, diphenyl(cis-hex-3-en-1-...	522	C34H54O2Si	1000368-00-1	9
5		Silane, diethyl(2,6-dimethoxyphe...	452	C26H48O4Si	1000363-25-0	9



Data Path : Z:\SVOASRV\HPCHEM1\BNA_F\DATA\BF121118\
 Data File : BF111305.D
 Acq On : 12 Dec 2018 4:43
 Operator : JU/SJ
 Sample : J6148-01 2X
 Misc :
 ALS Vial : 24 Sample Multiplier: 1

Instrument :
 BNA_F
 ClientSampleId :
 TP-MH-F

Quant Method : Z:\SVOASRV\HPCHEM1\BNA_F\METHODS\8270-BF120818.M
 Quant Title : ASP BNA STANDARDS FOR 5 POINT CALIBRATION

TIC Library : C:\DATABASE\NIST11.L
 TIC Integration Parameters: LSCINT.P

TIC Top Hit name	RT	EstConc	Units	Response	--Internal Standard--			
					#	RT	Resp	Conc
unknown6.56	6.56	35.3	ng	2868950	1	6.80	1626740	20.0
n-Hexadecanoic acid	11.85	17.3	ng	1413920	4	11.32	1631660	20.0
Phenanthrene, 2-m...	11.89	4.5	ng	364338	4	11.32	1631660	20.0
Phenanthrene, 4-m...	11.93	10.9	ng	888908	4	11.32	1631660	20.0
Phenanthrene, 2,5...	12.37	8.9	ng	729292	4	11.32	1631660	20.0
unknown12.40	12.40	4.8	ng	393609	4	11.32	1631660	20.0
9,10-Dimethylanth...	12.45	4.2	ng	340680	4	11.32	1631660	20.0
Octadecanoic acid	12.63	12.3	ng	1004250	4	11.32	1631660	20.0
11H-Benzo[a]fluorene	13.09	3.6	ng	573975	5	13.96	3195340	20.0
Pyrene, 1-methyl-	13.19	3.6	ng	573768	5	13.96	3195340	20.0
1H-Indene, 2,3-di...	14.17	14.0	ng	2242260	5	13.96	3195340	20.0
unknown14.33	14.33	9.4	ng	1504990	5	13.96	3195340	20.0
Dibenzyl phthalate	14.74	9.2	ng	445815	6	15.40	964529	20.0
Benzo[e]pyrene	15.27	14.6	ng	703636	6	15.40	964529	20.0
Phosphoric acid, ...	15.83	6.6	ng	319372	6	15.40	964529	20.0