

Data Path : Z:\HPCHEM1\BNA F\DATA\BF121217\
 Data File : BF101349.D
 Acq On : 13 Dec 2017 00:02
 Operator : SJ/JU
 Sample : I6822-05
 Misc :
 ALS Vial : 24 Sample Multiplier: 1

Instrument :
 BNA_F
ClientSampleId :
 SB-3(8-10)

Manual Integrations
APPROVED
 Sohil
 12/13/2017 12:08:28 PM

Quant Time: Dec 13 04:48:33 2017
 Quant Method : Z:\HPCHEM1\BNA F\METHODS\8270-BF113017.M
 Quant Title : ASP BNA STANDARDS FOR 5 POINT CALIBRATION
 QLast Update : Fri Dec 08 18:17:31 2017
 Response via : Initial Calibration

Internal Standards	R.T.	QIon	Response	Conc	Units	Dev(Min)
1) 1,4-Dichlorobenzene-d4	6.82	152	46966	20.00	ng	0.00
21) Naphthalene-d8	8.10	136	180093	20.00	ng	0.00
38) Acenaphthene-d10	9.86	164	76030	20.00	ng	0.00
63) Phenanthrene-d10	11.36	188	139240	20.00	ng	0.00
75) Chrysene-d12	14.01	240	115388	20.00	ng	0.00
86) Perylene-d12	15.49	264	94329	20.00	ng	0.02

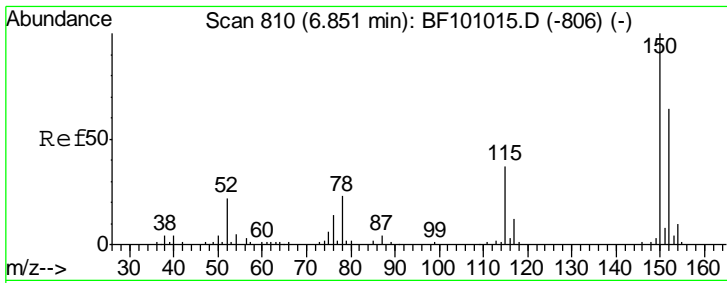
System Monitoring Compounds

5) 2-Fluorophenol	5.45	112	408861	143.85	ng	0.01
7) Phenol-d6	6.47	99	482746	139.90	ng	0.00
23) Nitrobenzene-d5	7.39	82	284205	94.14	ng	0.00
41) 2,4,6-Tribromophenol	10.66	330	112156	122.80	ng	0.00
44) 2-Fluorobiphenyl	9.18	172	456542	82.16	ng	0.00
78) Terphenyl-d14	12.94	244	372479	70.61	ng	0.00

Target Compounds

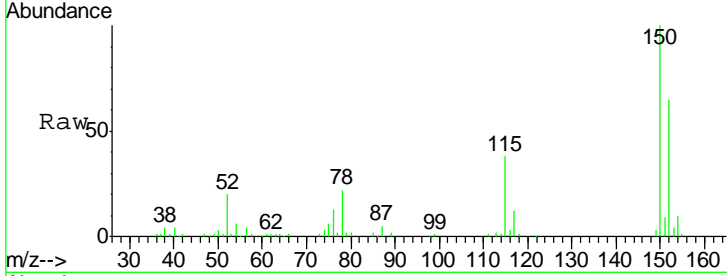
	R.T.	QIon	Response	Conc	Units	Qvalue
10) Phenol	6.47	94	13967	3.640	ng	# 65
49) Dimethylphthalate	9.57	163	62006	10.112	ng	# 99
70) Phenanthrene	11.38	178	29824	3.889	ng	99
74) Fluoranthene	12.57	202	38285	4.504	ng	93
77) Pyrene	12.80	202	42262	5.308	ng	99
80) Benzo(a)anthracene	14.00	228	23659m	3.247	ng	
82) Chrysene	14.03	228	23179m	3.426	ng	
87) Benzo(b)fluoranthene	15.06	252	23574m	4.172	ng	
89) Benzo(a)pyrene	15.42	252	20016	3.897	ng	# 91
91) Benzo(a,h,i)perylene	17.42	276	9169	2.149	ng	# 90

(#) = qualifier out of range (m) = manual integration (+) = signals summed



#1
 1,4-Dichlorobenzene-d4
 Concen: 20.000 ng
 RT: 6.82 min Scan# 805
 Delta R.T. -0.00 min
 Lab File: BF101349.D
 Acq: 13 Dec 2017 00:02

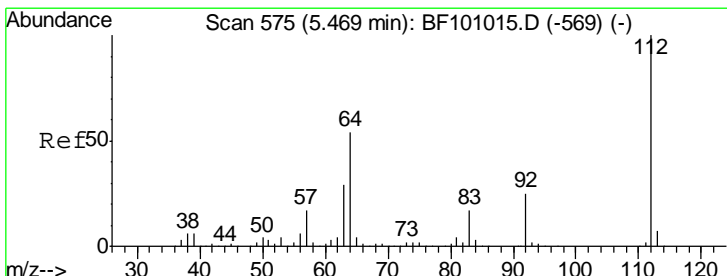
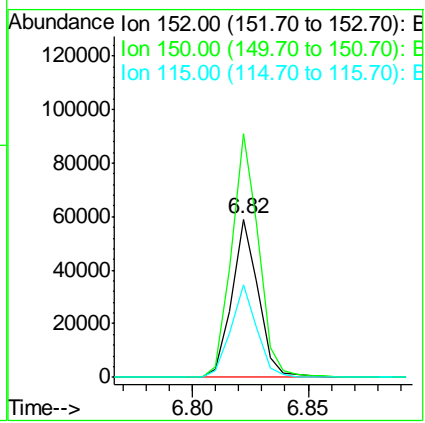
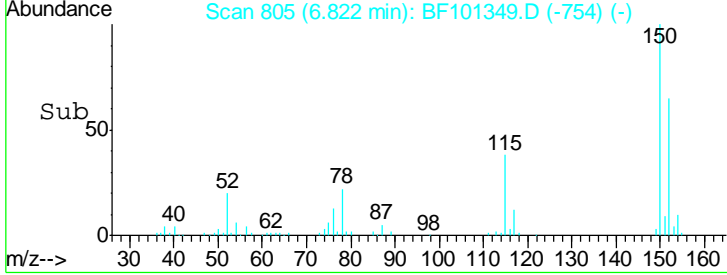
Instrument :
 BNA_F
ClientSampled :
 SB-3(8-10)



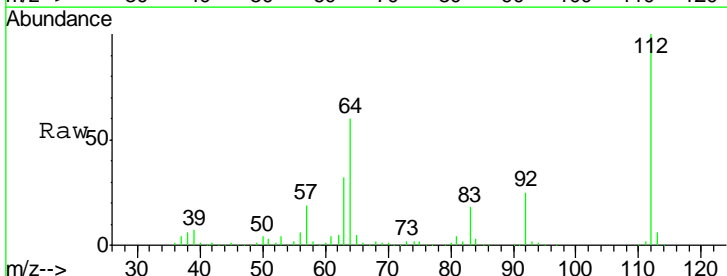
Tot Ion:152 Resp: 46966

Ion	Ratio	Lower	Upper
152	100		
150	154.1	124.6	186.8
115	58.2	50.1	75.1

Manual Integrations
APPROVED
 Sohil
 12/13/2017 12:08:28 PM

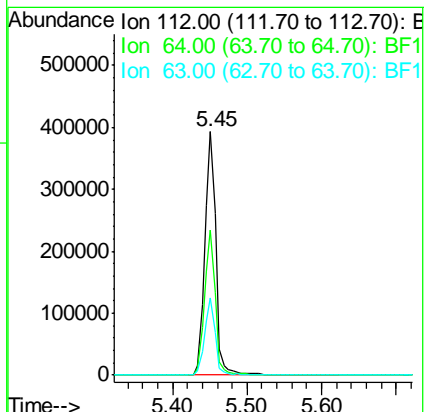
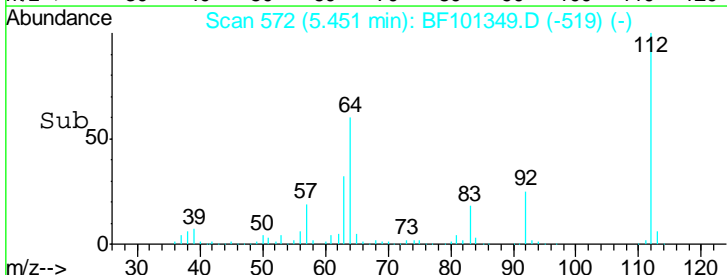


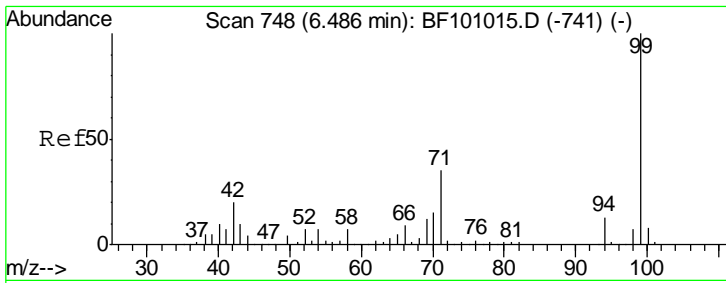
#5
 2-Fluorophenol
 Concen: 143.853 ng
 RT: 5.45 min Scan# 572
 Delta R.T. 0.01 min
 Lab File: BF101349.D
 Acq: 13 Dec 2017 00:02



Tgt Ion:112 Resp: 408861

Ion	Ratio	Lower	Upper
112	100		
64	59.7	47.9	71.9
63	31.8	23.7	35.5





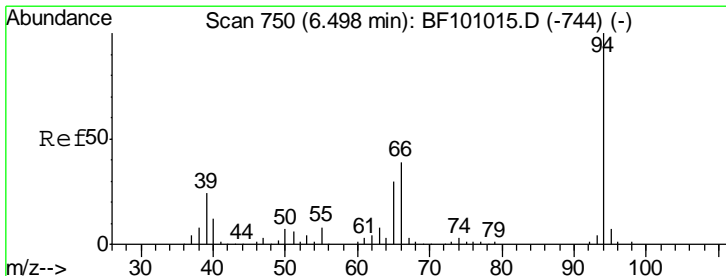
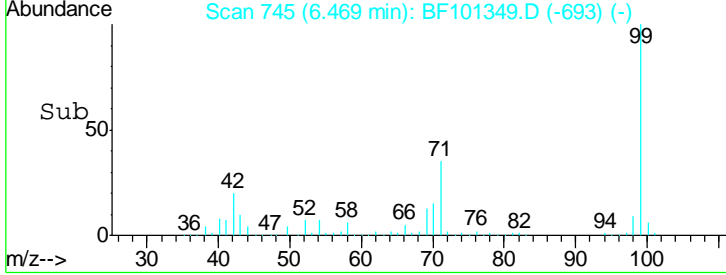
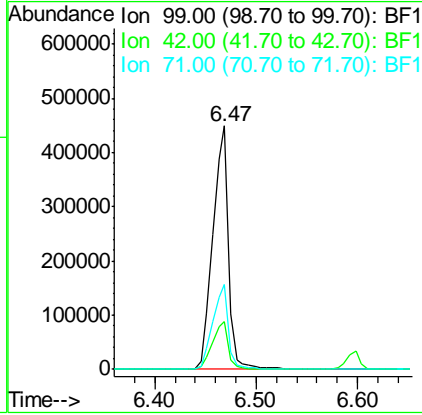
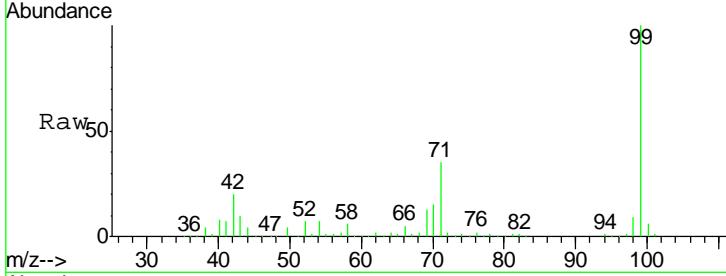
#7
 Phenol-d6
 Concen: 139.897 ng
 RT: 6.47 min Scan# 745
 Delta R.T. 0.01 min
 Lab File: BF101349.D
 Acq: 13 Dec 2017 00:02

Instrument :
 BNA_F
ClientSampled :
 SB-3(8-10)

Tgt Ion	Resp	Lower	Upper
99	482746		
99	100		
42	19.6	14.5	21.7
71	34.8	25.4	38.0

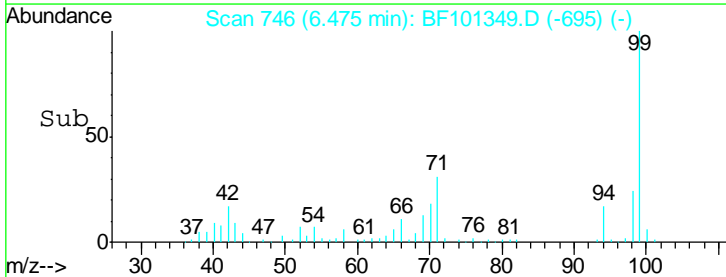
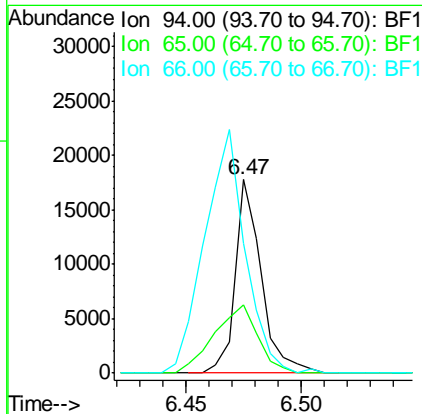
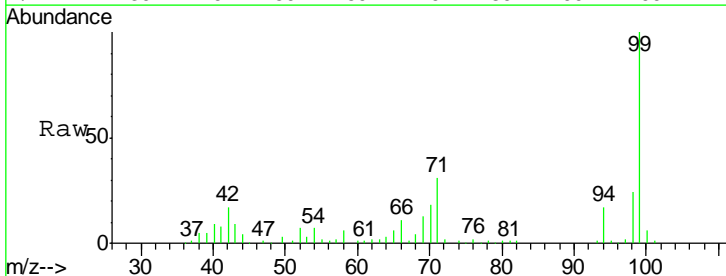
Manual Integrations
APPROVED

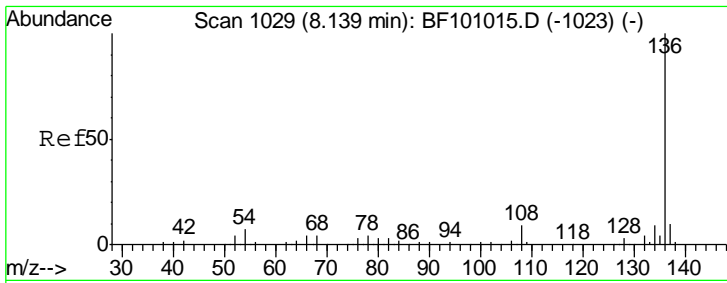
Sohil
 12/13/2017 12:08:28 PM



#10
 Phenol
 Concen: 3.640 ng
 RT: 6.47 min Scan# 746
 Delta R.T. -0.00 min
 Lab File: BF101349.D
 Acq: 13 Dec 2017 00:02

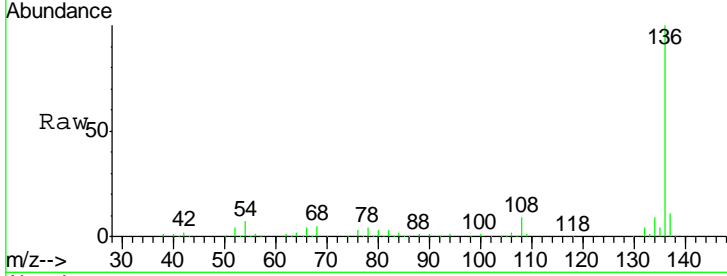
Tgt Ion	Resp	Lower	Upper
94	13967		
94	100		
65	35.0	7.9	47.9
66	66.7	16.2	56.2#





#21
 Naphthalene-d8
 Concen: 20.000 ng
 RT: 8.10 min Scan# 1023
 Delta R.T. -0.01 min
 Lab File: BF101349.D
 Acq: 13 Dec 2017 00:02

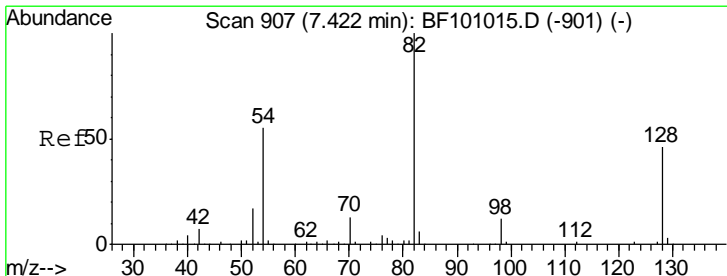
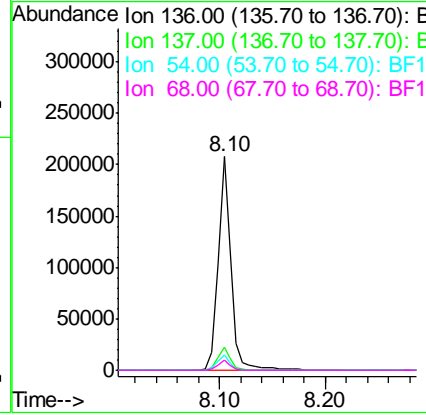
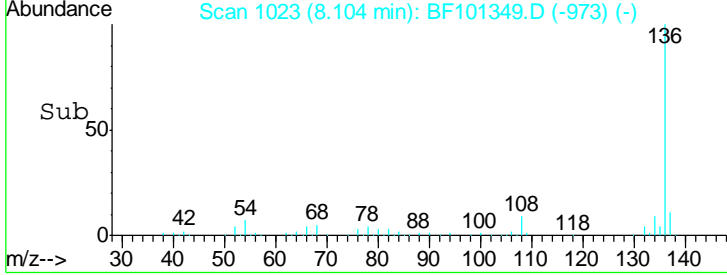
Instrument :
 BNA_F
ClientSampled :
 SB-3(8-10)



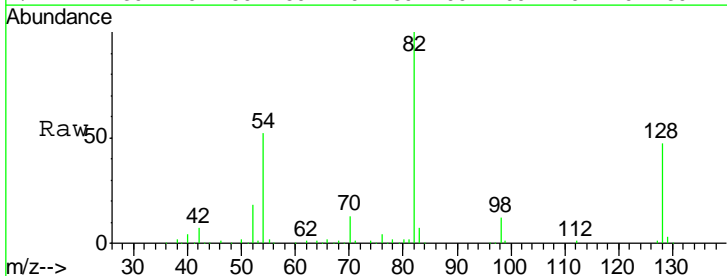
Tgt Ion: 136 Resp: 180093

Ion	Ratio	Lower	Upper
136	100		
137	10.7	8.9	13.3
54	7.5	6.6	9.8
68	4.7	5.0	7.4#

Manual Integrations
APPROVED
 Sohil
 12/13/2017 12:08:28 PM

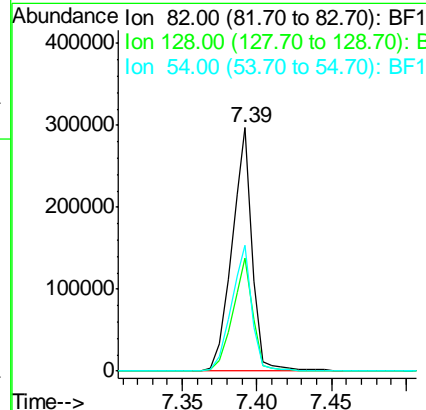
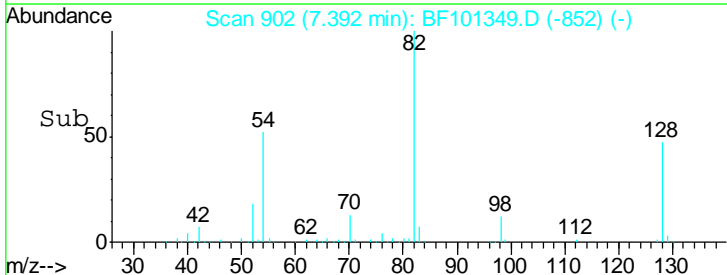


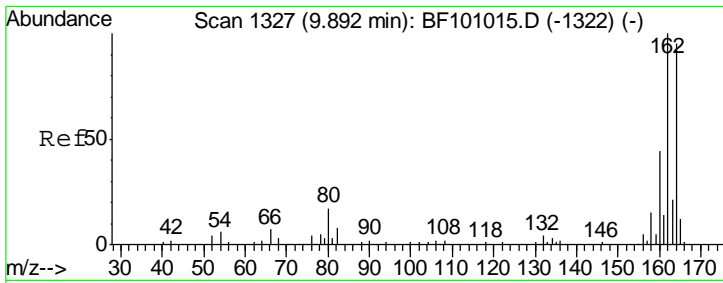
#23
 Nitrobenzene-d5
 Concen: 94.139 ng
 RT: 7.39 min Scan# 902
 Delta R.T. -0.01 min
 Lab File: BF101349.D
 Acq: 13 Dec 2017 00:02



Tgt Ion: 82 Resp: 284205

Ion	Ratio	Lower	Upper
82	100		
128	46.6	36.1	54.1
54	51.9	41.4	62.2





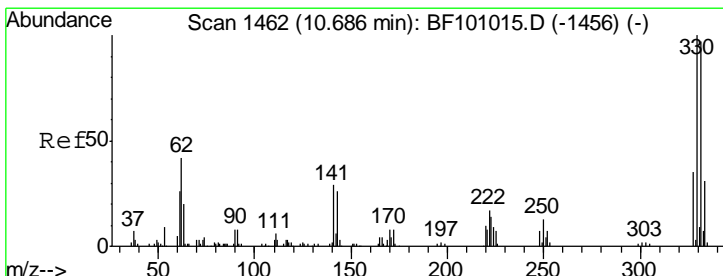
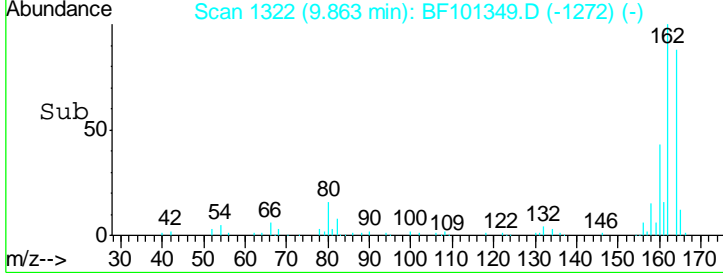
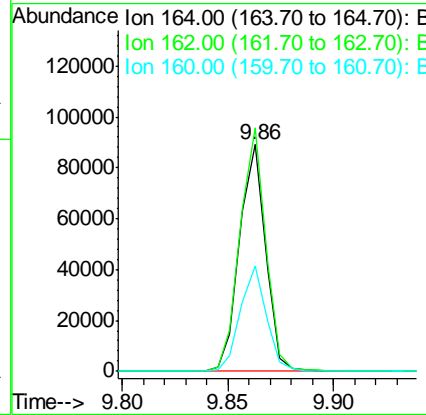
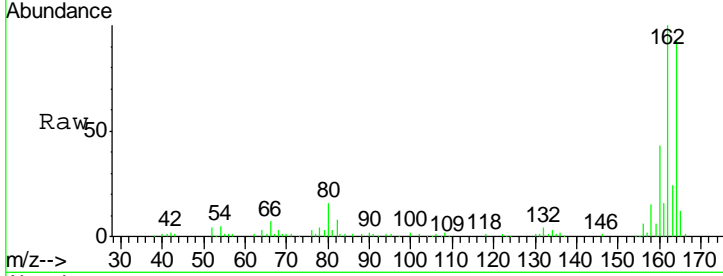
#38
 Acenaphthene-d10
 Concen: 20.000 ng
 RT: 9.86 min Scan# 1322
 Delta R.T. -0.01 min
 Lab File: BF101349.D
 Acq: 13 Dec 2017 00:02

Instrument :
 BNA_F
ClientSampled :
 SB-3(8-10)

Tgt Ion	Resp	Lower	Upper
164	100		
162	107.4	86.1	129.1
160	46.7	38.3	57.5

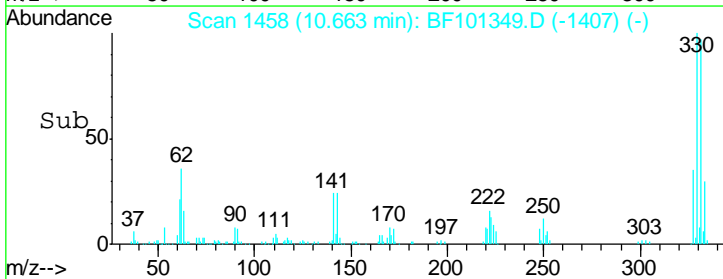
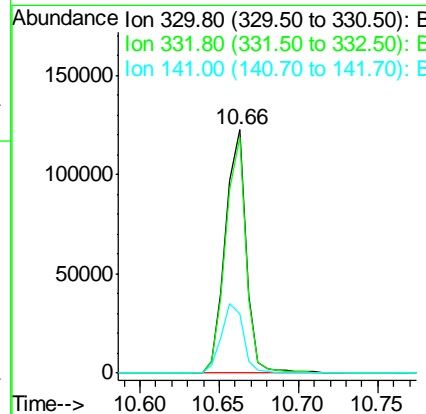
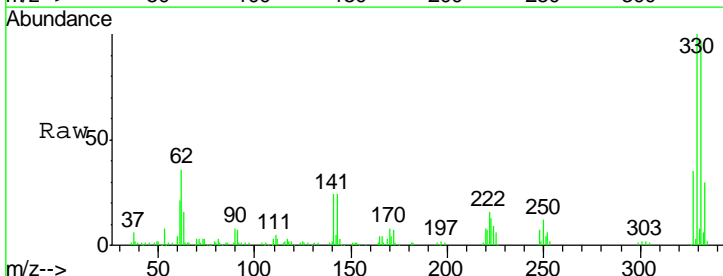
Manual Integrations
APPROVED

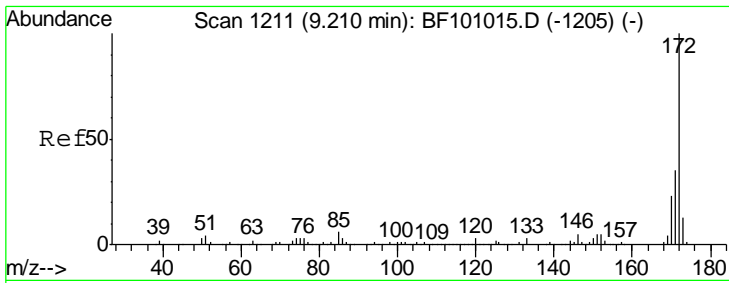
Sohil
 12/13/2017 12:08:28 PM



#41
 2,4,6-Tribromophenol
 Concen: 122.798 ng
 RT: 10.66 min Scan# 1458
 Delta R.T. -0.00 min
 Lab File: BF101349.D
 Acq: 13 Dec 2017 00:02

Tgt Ion	Resp	Lower	Upper
330	100		
332	95.6	77.0	115.6
141	30.1	29.9	44.9





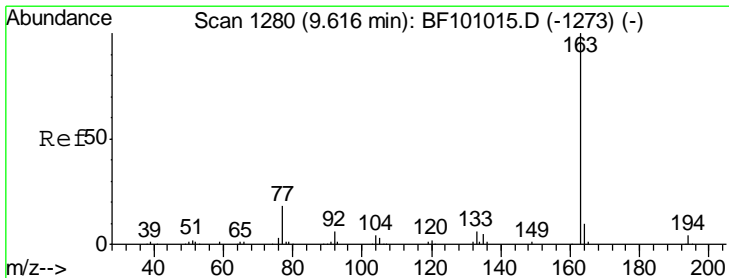
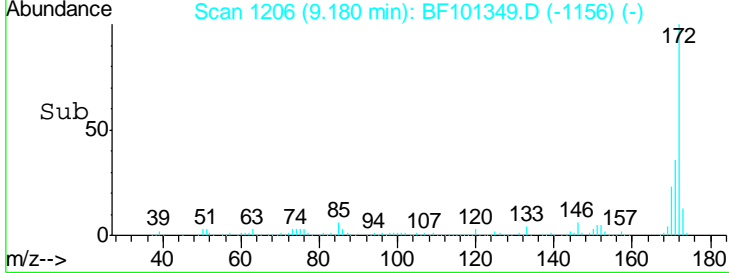
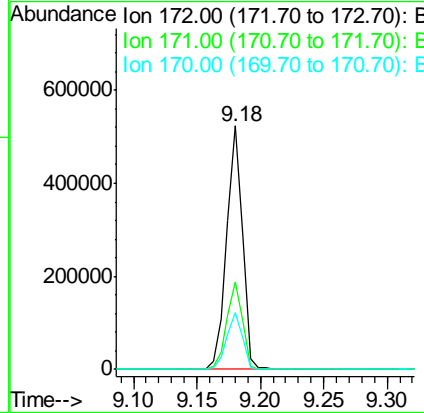
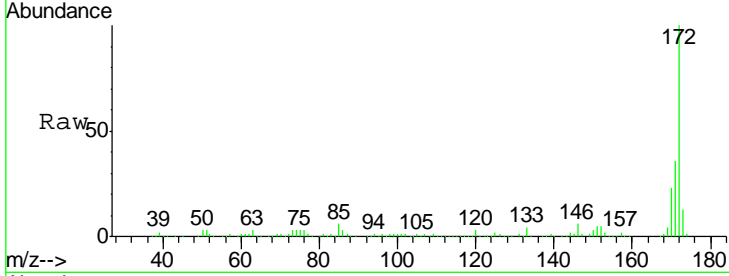
#44
 2-Fluorobiphenyl
 Concen: 82.157 ng
 RT: 9.18 min Scan# 1206
 Delta R.T. -0.01 min
 Lab File: BF101349.D
 Acq: 13 Dec 2017 00:02

Instrument :
 BNA_F
ClientSampled :
 SB-3(8-10)

Tgt Ion	Resp	Lower	Upper
172	100		
171	35.9	29.7	44.5
170	23.3	19.6	29.4

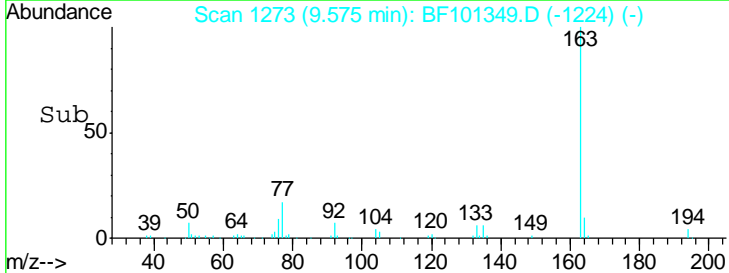
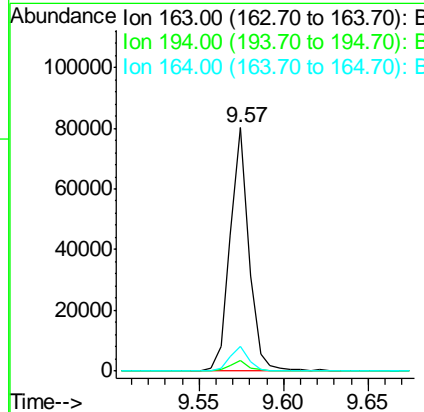
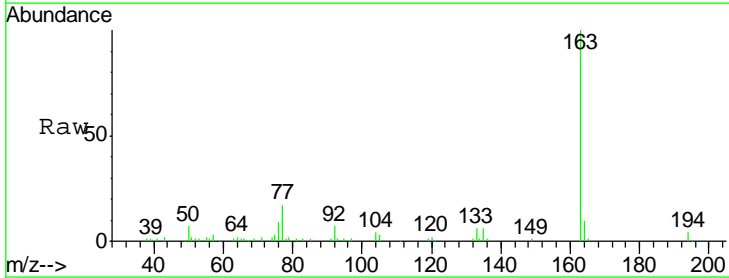
Manual Integrations
APPROVED

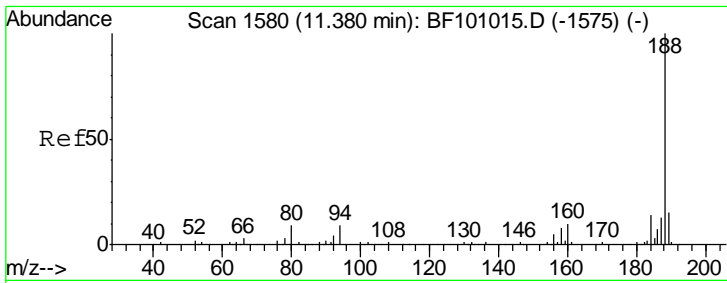
Sohil
 12/13/2017 12:08:28 PM



#49
 Dimethylphthalate
 Concen: 10.112 ng
 RT: 9.57 min Scan# 1273
 Delta R.T. -0.01 min
 Lab File: BF101349.D
 Acq: 13 Dec 2017 00:02

Tgt Ion	Resp	Lower	Upper
163	100		
194	4.1	2.7	4.1#
164	10.0	8.2	12.2



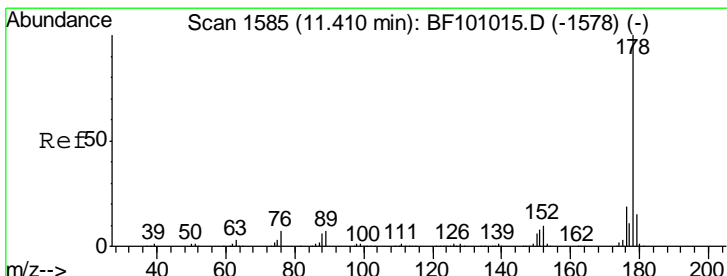
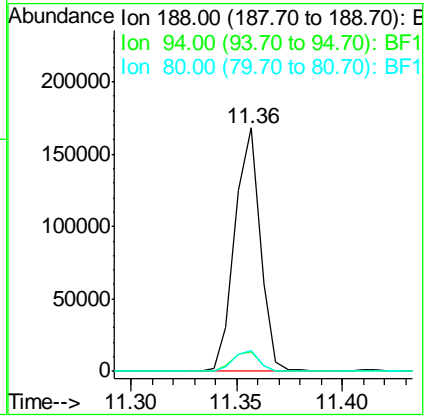
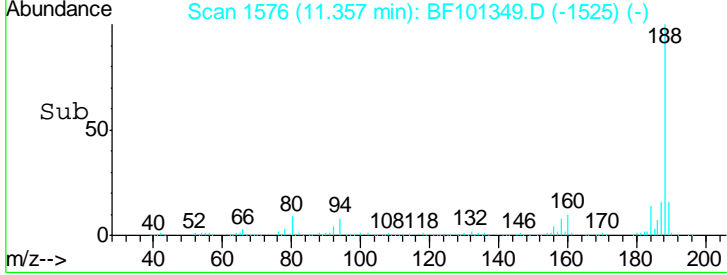
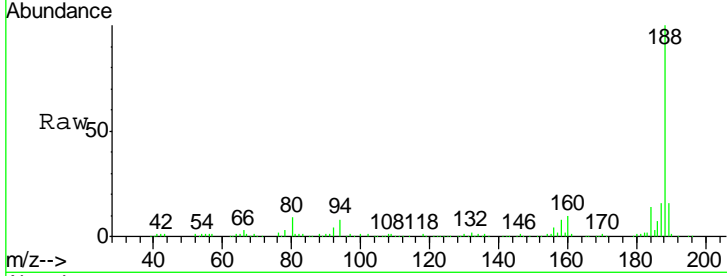


#63
 Phenanthrene-d10
 Concen: 20.000 ng
 RT: 11.36 min Scan# 1576
 Delta R.T. -0.00 min
 Lab File: BF101349.D
 Acq: 13 Dec 2017 00:02

Instrument :
 BNA_F
ClientSampled :
 SB-3(8-10)

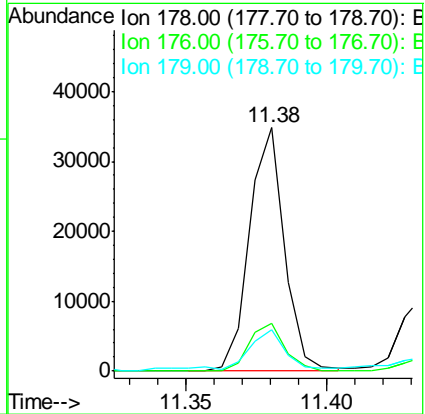
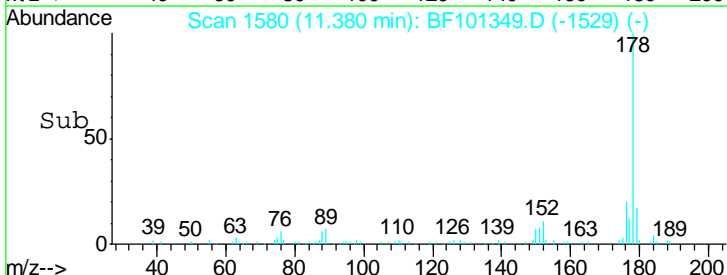
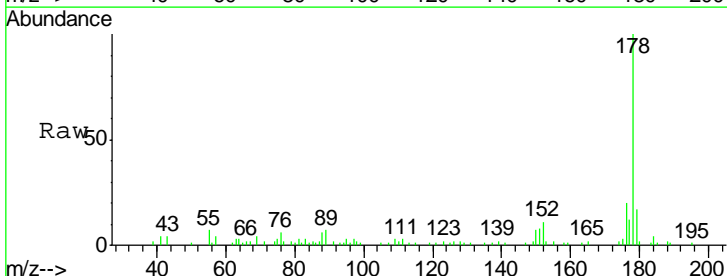
Tgt Ion	Ratio	Lower	Upper
188	100		
94	7.9	8.5	12.7#
80	8.6	9.2	13.8#

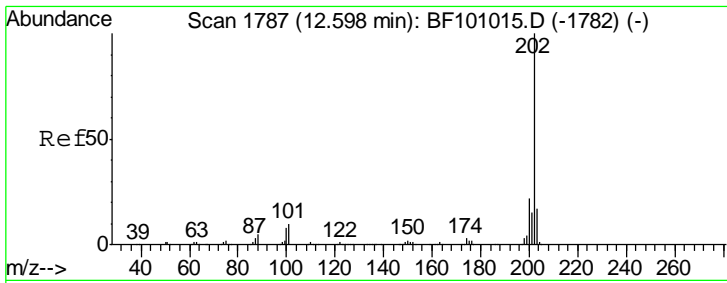
Manual Integrations
APPROVED
 Sohil
 12/13/2017 12:08:28 PM



#70
 Phenanthrene
 Concen: 3.889 ng
 RT: 11.38 min Scan# 1580
 Delta R.T. -0.00 min
 Lab File: BF101349.D
 Acq: 13 Dec 2017 00:02

Tgt Ion	Ratio	Lower	Upper
178	100		
176	19.6	15.8	23.8
179	16.9	13.0	19.6



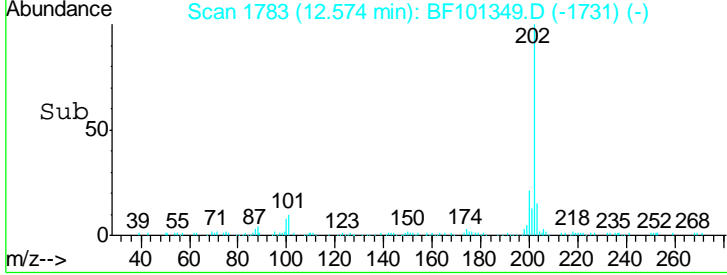
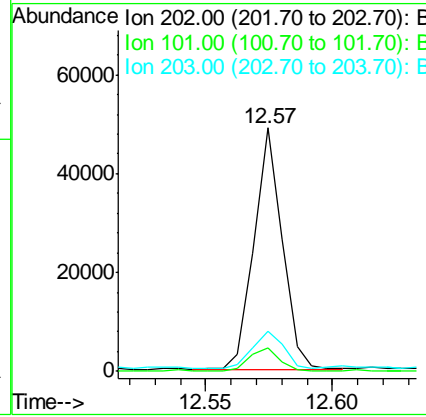
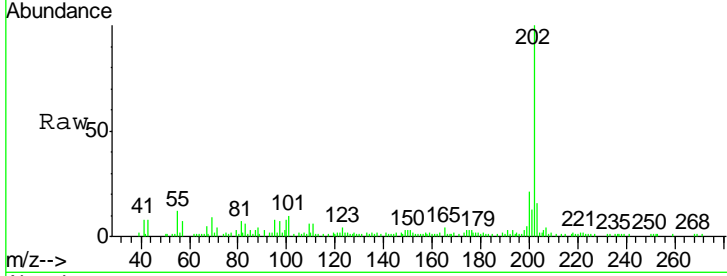


#74
 Fluoranthene
 Concen: 4.504 ng
 RT: 12.57 min Scan# 1783
 Delta R.T. 0.01 min
 Lab File: BF101349.D
 Acq: 13 Dec 2017 00:02

Instrument :
 BNA_F
Client Sampled :
 SB-3(8-10)

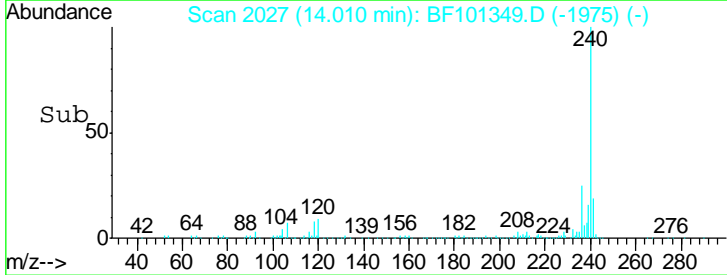
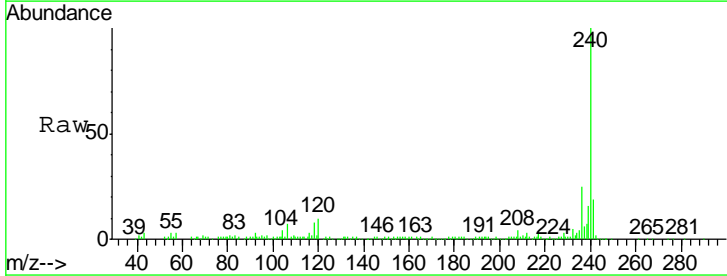
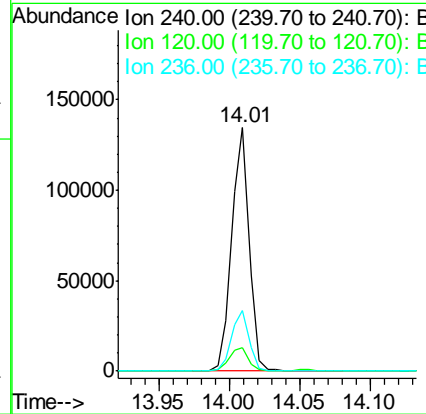
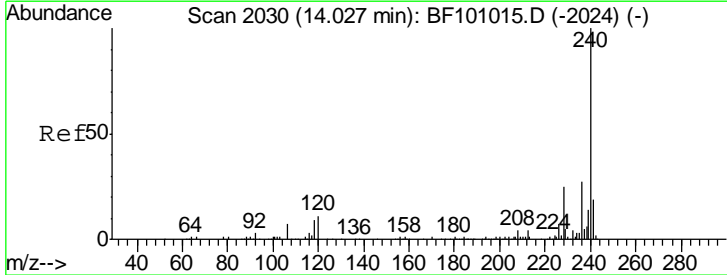
Tgt Ion	Ratio	Lower	Upper
202	100		
101	9.5	0.0	34.1
203	16.2	0.0	38.1

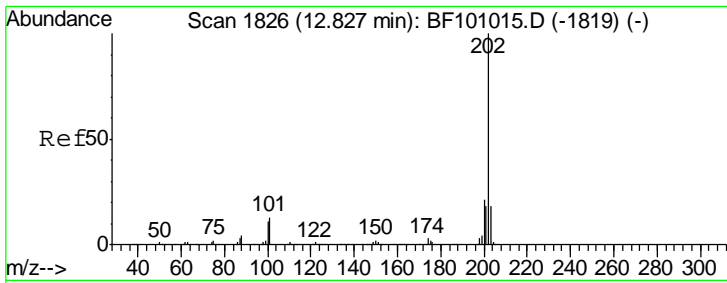
Manual Integrations
APPROVED
 Sohil
 12/13/2017 12:08:28 PM



#75
 Chrysene-d12
 Concen: 20.000 ng
 RT: 14.01 min Scan# 2027
 Delta R.T. 0.01 min
 Lab File: BF101349.D
 Acq: 13 Dec 2017 00:02

Tgt Ion	Ratio	Lower	Upper
240	100		
120	9.6	9.5	14.3
236	25.0	20.7	31.1





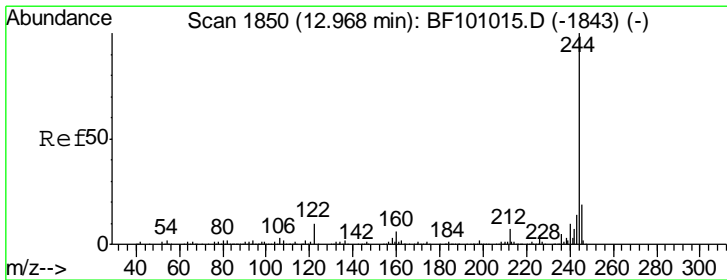
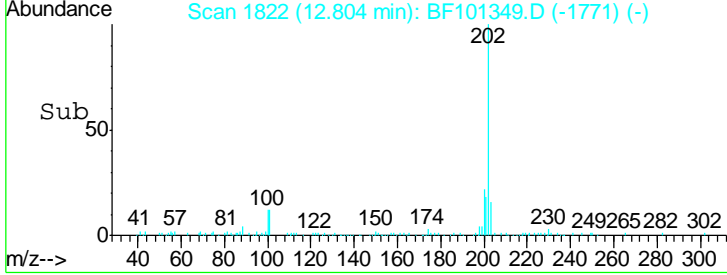
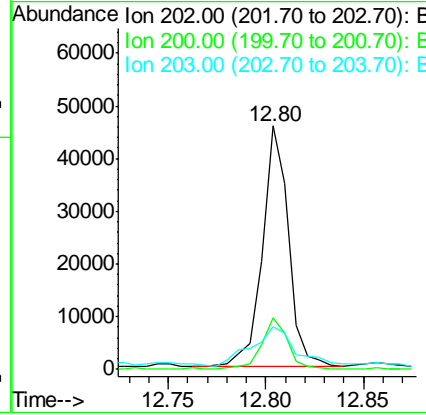
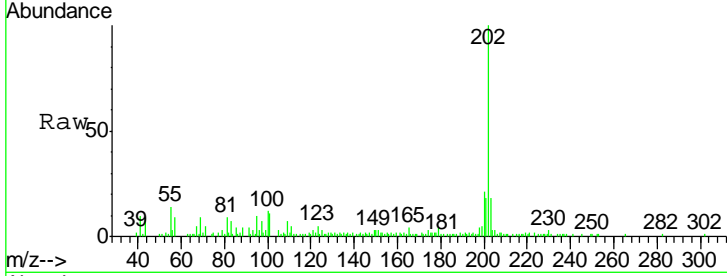
#77
 Pyrene
 Concen: 5.308 ng
 RT: 12.80 min Scan# 1822
 Delta R.T. -0.00 min
 Lab File: BF101349.D
 Acq: 13 Dec 2017 00:02

Instrument :
 BNA_F
 ClientSampled :
 SB-3(8-10)

Tgt Ion	Resp	Lower	Upper
202	42262		
202	100		
200	21.4	17.4	26.2
203	17.7	14.3	21.5

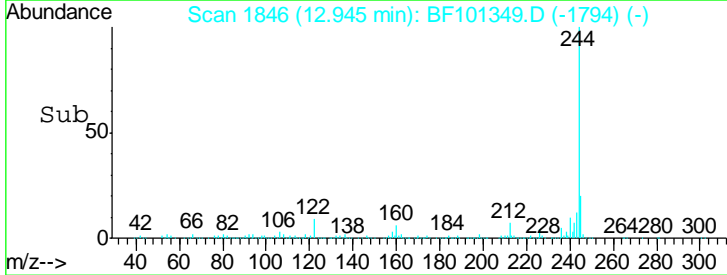
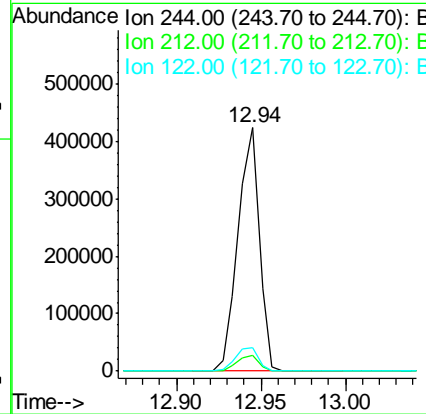
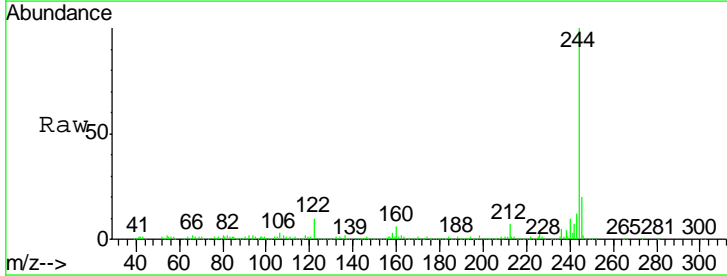
Manual Integrations
 APPROVED

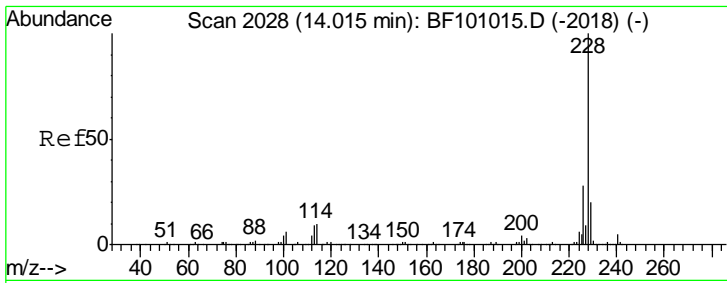
Sohil
 12/13/2017 12:08:28 PM



#78
 Terphenyl-d14
 Concen: 70.606 ng
 RT: 12.94 min Scan# 1846
 Delta R.T. 0.01 min
 Lab File: BF101349.D
 Acq: 13 Dec 2017 00:02

Tgt Ion	Resp	Lower	Upper
244	372479		
244	100		
212	6.7	5.4	8.0
122	9.6	11.0	16.4#





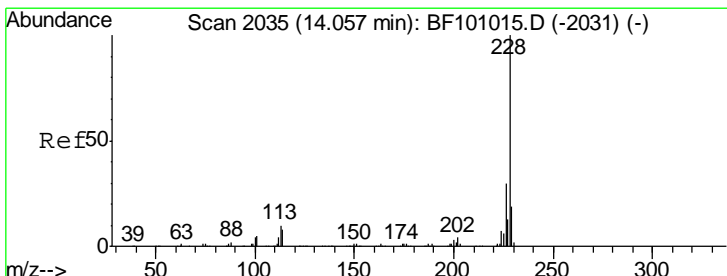
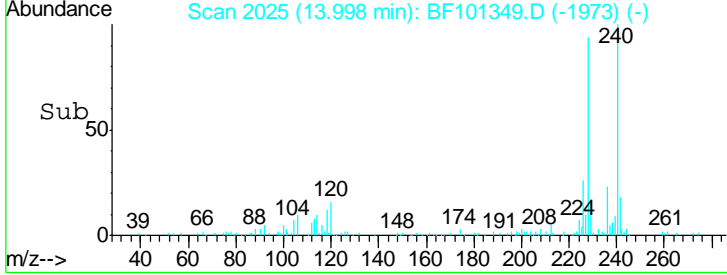
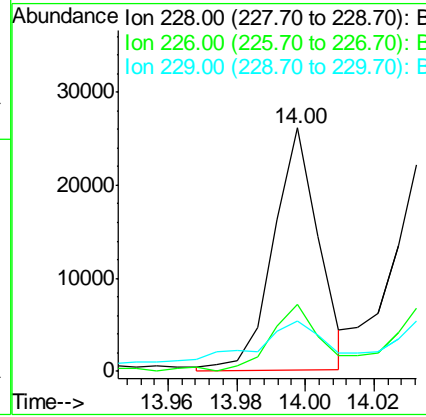
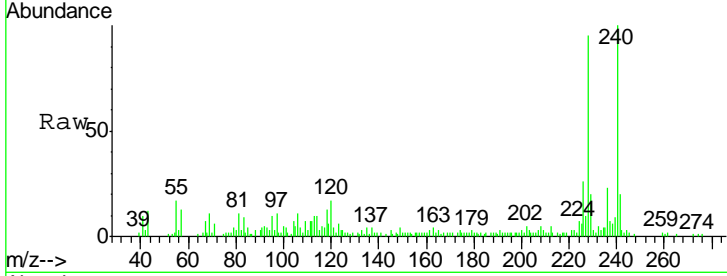
#80
 Benzo(a)anthracene
 Concen: 3.247 ng m
 RT: 14.00 min Scan# 2025
 Delta R.T. 0.01 min
 Lab File: BF101349.D
 Acq: 13 Dec 2017 00:02

Instrument :
 BNA_F
 ClientSampled :
 SB-3(8-10)

Tgt Ion	Resp	Lower	Upper
228	100		
226	27.6	22.6	33.8
229	20.7	15.8	23.6

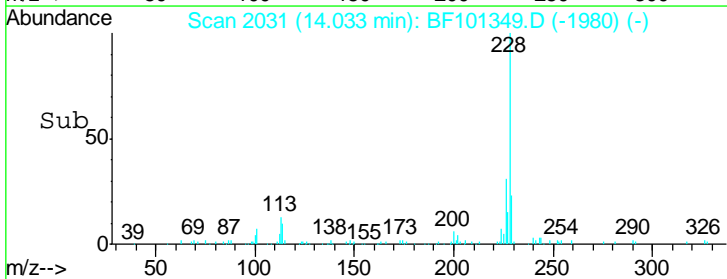
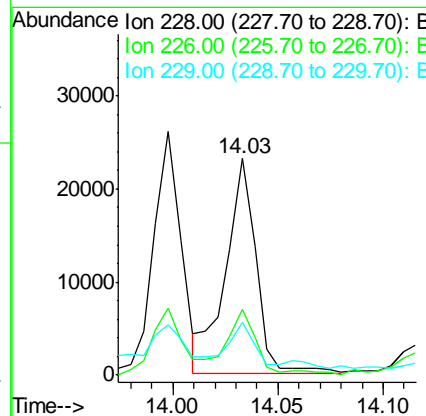
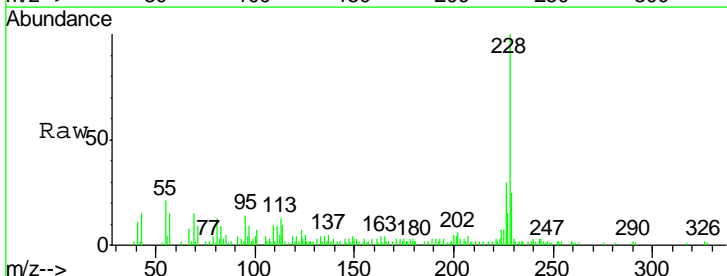
Manual Integrations
 APPROVED

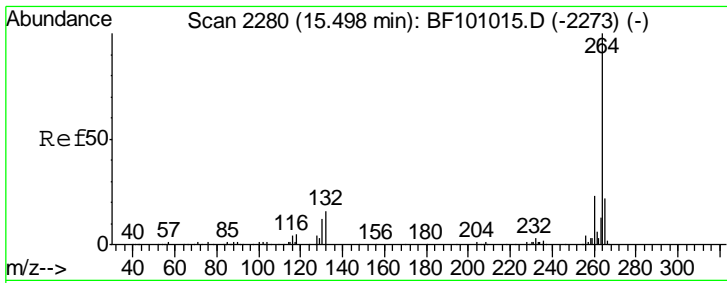
Sohil
 12/13/2017 12:08:28 PM



#82
 Chrysene
 Concen: 3.426 ng m
 RT: 14.03 min Scan# 2031
 Delta R.T. -0.00 min
 Lab File: BF101349.D
 Acq: 13 Dec 2017 00:02

Tgt Ion	Resp	Lower	Upper
228	100		
226	30.2	25.0	37.6
229	24.6	16.2	24.4



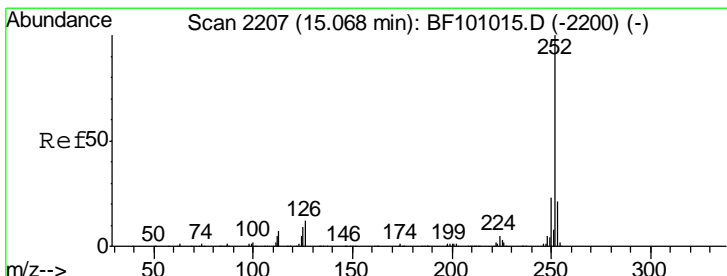
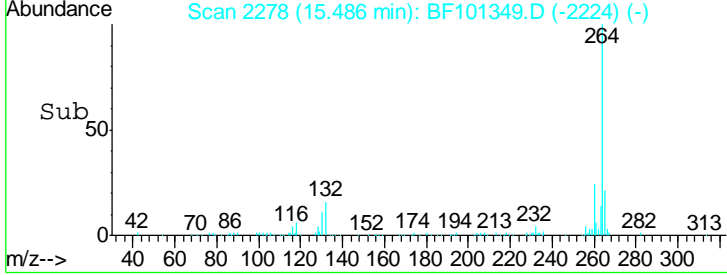
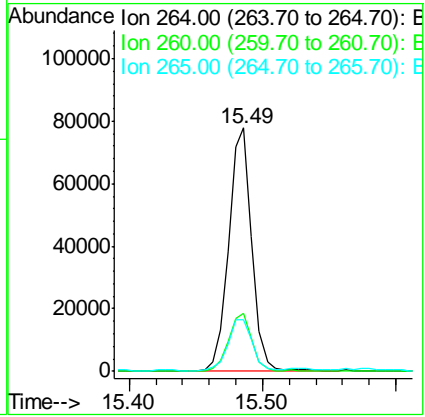
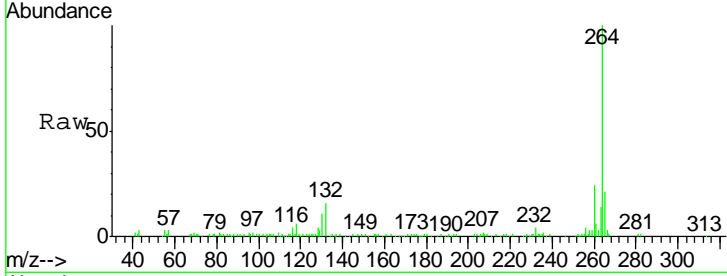


#86
 Perylene-d12
 Concen: 20.000 ng
 RT: 15.49 min Scan# 2278
 Delta R.T. 0.02 min
 Lab File: BF101349.D
 Acq: 13 Dec 2017 00:02

Instrument :
 BNA_F
ClientSampled :
 SB-3(8-10)

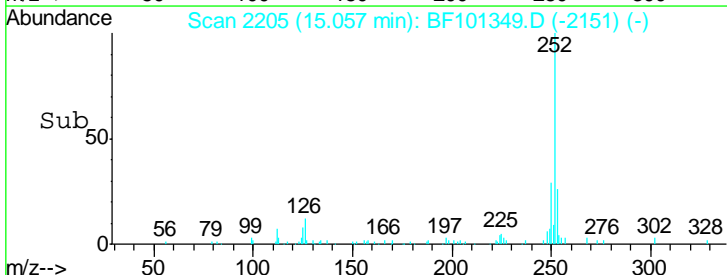
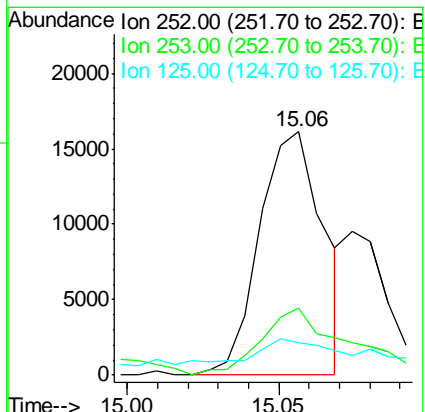
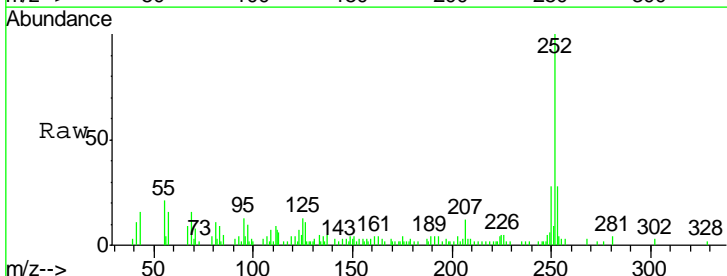
Tgt Ion	Resp	Lower	Upper
264	100		
260	23.7	19.2	28.8
265	21.4	17.5	26.3

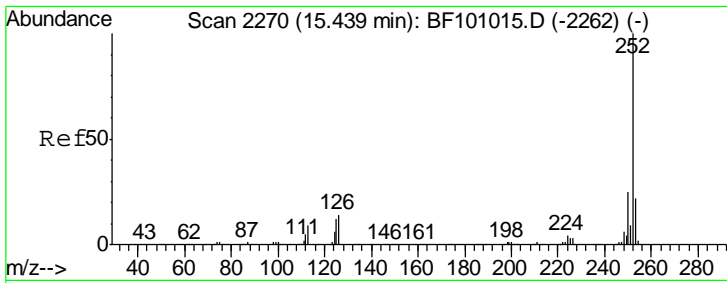
Manual Integrations
APPROVED
 Sohil
 12/13/2017 12:08:28 PM



#87
 Benzo(b)fluoranthene
 Concen: 4.172 ng m
 RT: 15.06 min Scan# 2205
 Delta R.T. 0.02 min
 Lab File: BF101349.D
 Acq: 13 Dec 2017 00:02

Tgt Ion	Resp	Lower	Upper
252	100		
253	27.5	17.0	25.6#
125	13.2	9.0	13.6



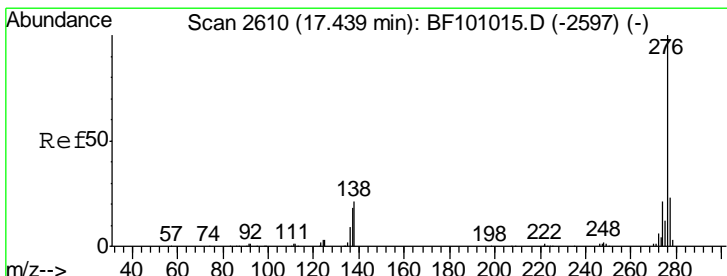
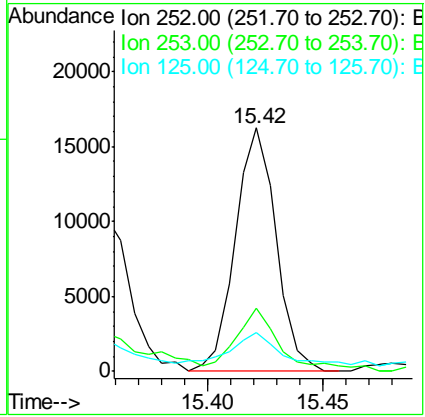
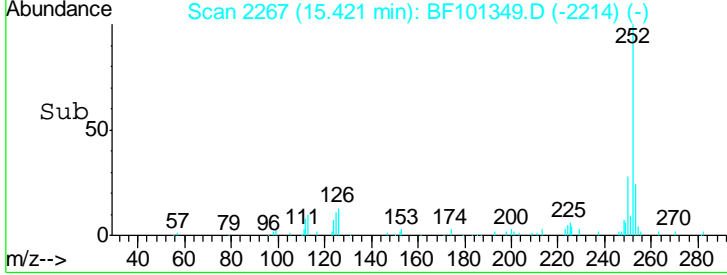
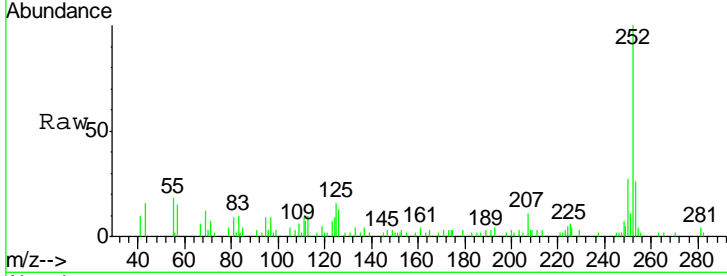


#89
 Benzo(a)pyrene
 Concen: 3.897 ng
 RT: 15.42 min Scan# 2267
 Delta R.T. 0.01 min
 Lab File: BF101349.D
 Acq: 13 Dec 2017 00:02

Instrument :
 BNA_F
ClientSampled :
 SB-3(8-10)

Tgt Ion	Resp	Lower	Upper
252	20016		
253	25.9	17.1	25.7#
125	15.8	9.8	14.6#

Manual Integrations
APPROVED
 Sohil
 12/13/2017 12:08:28 PM



#91
 Benzo(g,h,i)perylene
 Concen: 2.149 ng
 RT: 17.42 min Scan# 2607
 Delta R.T. 0.03 min
 Lab File: BF101349.D
 Acq: 13 Dec 2017 00:02

Tgt Ion	Resp	Lower	Upper
276	9169		
277	31.0	17.9	26.9#
138	25.5	21.8	32.8

