

Data Path : Z:\SVOASRV\HPCHEM1\BNA F\DATA\BF121618\
 Data File : BF111519.D
 Acq On : 16 Dec 2018 20:18
 Operator : JU/SJ
 Sample : J6424-03
 Misc :
 ALS Vial : 16 Sample Multiplier: 1

Instrument :
 BNA_F
 ClientSampleId :
 EB09_1.5-2.5

Quant Time: Dec 17 07:43:39 2018
 Quant Method : Z:\SVOASRV\HPCHEM1\BNA F\METHODS\8270-BF121418.M
 Quant Title : ASP BNA STANDARDS FOR 5 POINT CALIBRATION
 QLast Update : Fri Dec 14 13:26:17 2018
 Response via : Initial Calibration

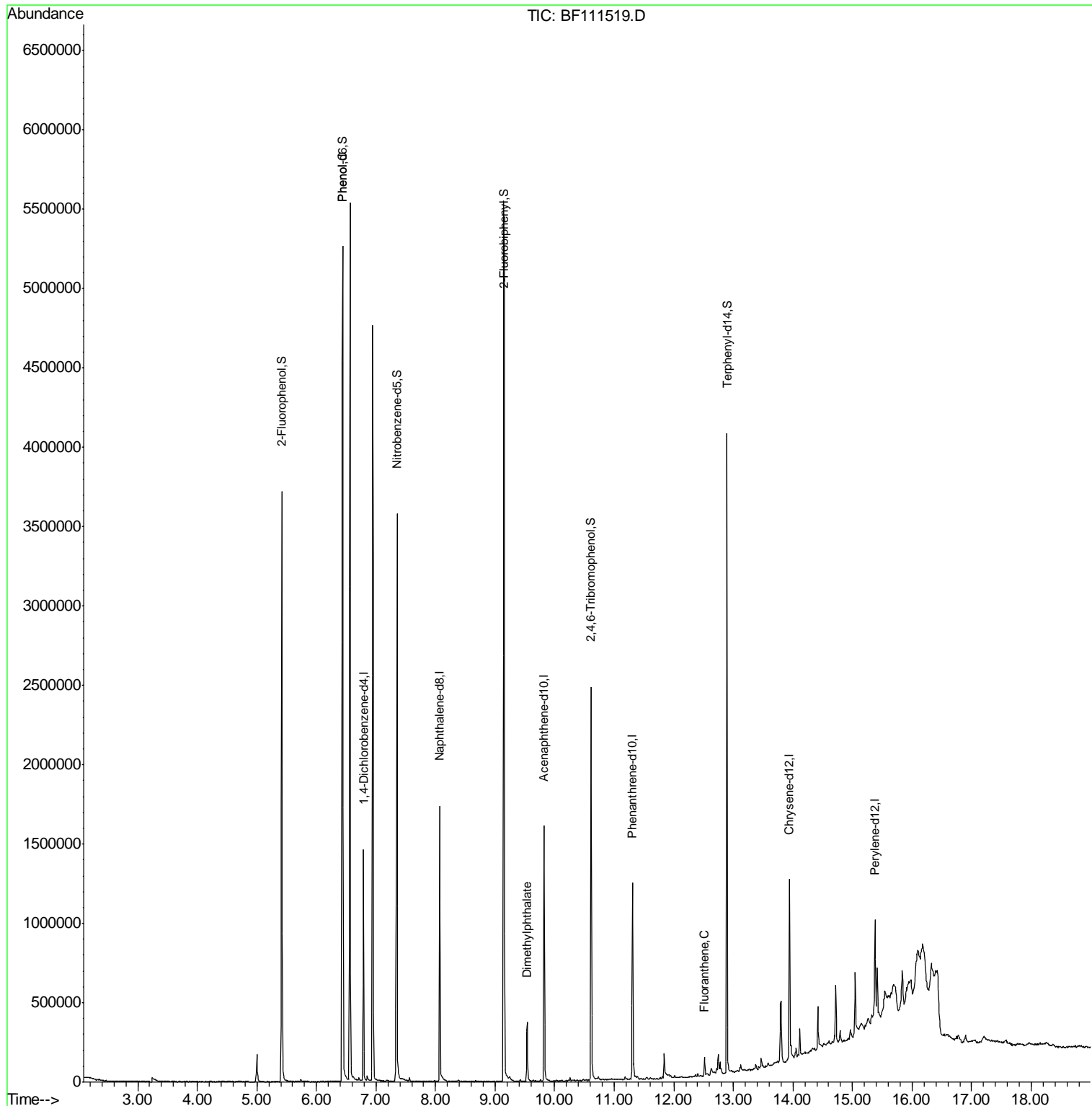
Internal Standards	R.T.	QIon	Response	Conc	Units	Dev(Min)
1) 1,4-Dichlorobenzene-d4	6.79	152	202035	20.00	ng	0.00
21) Naphthalene-d8	8.07	136	788592	20.00	ng	-0.01
39) Acenaphthene-d10	9.82	164	327488	20.00	ng	-0.01
64) Phenanthrene-d10	11.30	188	476035	20.00	ng	-0.01
76) Chrysene-d12	13.94	240	405725	20.00	ng	0.00
87) Perylene-d12	15.38	264	281034	20.00	ng	0.00
System Monitoring Compounds						
5) 2-Fluorophenol	5.42	112	1075494	88.58	ng	0.00
7) Phenol-d6	6.44	99	1950739	120.79	ng	0.00
23) Nitrobenzene-d5	7.35	82	1192471	90.05	ng	0.00
42) 2,4,6-Tribromophenol	10.62	330	282155	96.18	ng	0.00
45) 2-Fluorobiphenyl	9.15	172	1927134	90.90	ng	-0.01
79) Terphenyl-d14	12.89	244	1321856	76.51	ng	0.00
Target Compounds						
10) Phenol	6.45	94	118260	6.574	ng	93
50) Dimethylphthalate	9.54	163	162359	6.884	ng	97
75) Fluoranthene	12.52	202	49539	2.064	ng	96

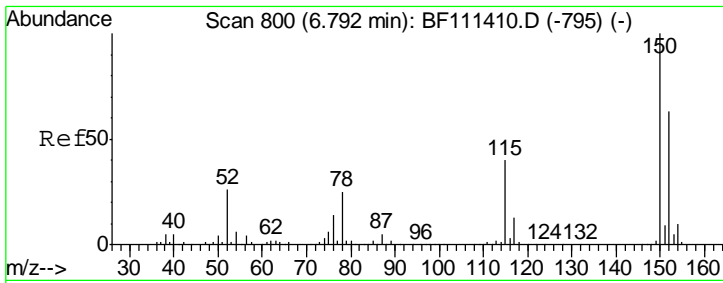
(#) = qualifier out of range (m) = manual integration (+) = signals summed

Data Path : Z:\SVOASRV\HPCHEM1\BNA F\DATA\BF121618\
 Data File : BF111519.D
 Acq On : 16 Dec 2018 20:18
 Operator : JU/SJ
 Sample : J6424-03
 Misc :
 ALS Vial : 16 Sample Multiplier: 1

Instrument :
 BNA_F
 Client Sampled :
 EB09_1.5-2.5

Quant Time: Dec 17 07:43:39 2018
 Quant Method : Z:\SVOASRV\HPCHEM1\BNA F\METHODS\8270-BF121418.M
 Quant Title : ASP BNA STANDARDS FOR 5 POINT CALIBRATION
 QLast Update : Fri Dec 14 13:26:17 2018
 Response via : Initial Calibration

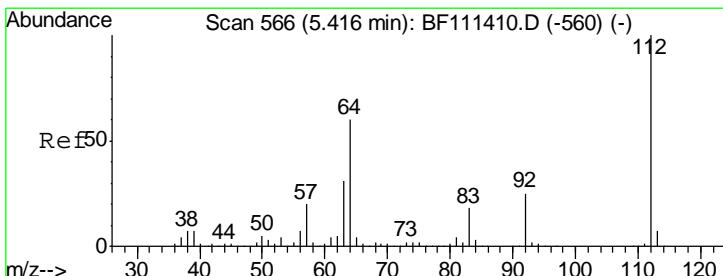
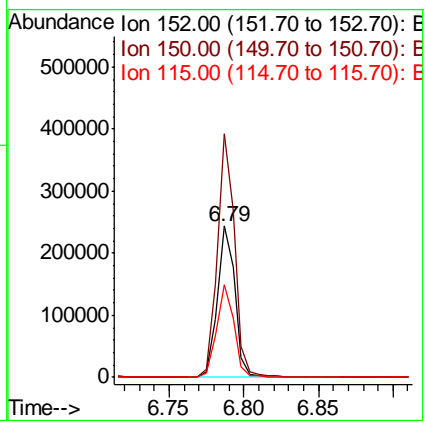
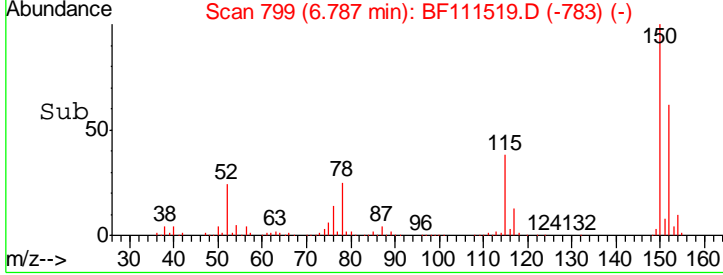
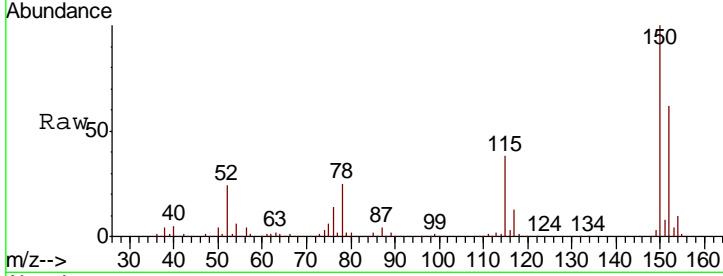




#1
 1,4-Dichlorobenzene-d4
 Concen: 20.000 ng
 RT: 6.79 min Scan# 799
 Delta R.T. -0.01 min
 Lab File: BF111519.D
 Acq: 16 Dec 2018 20:18

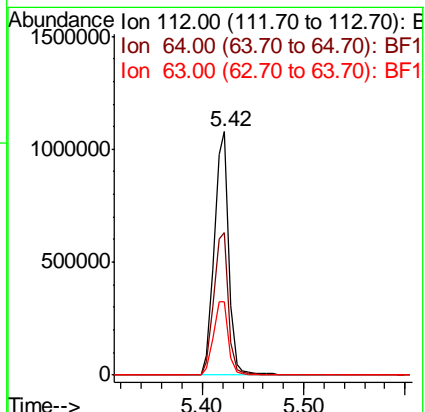
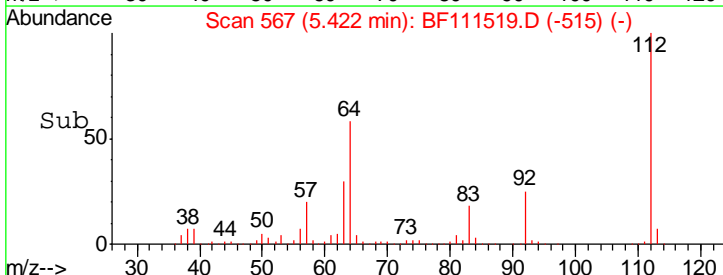
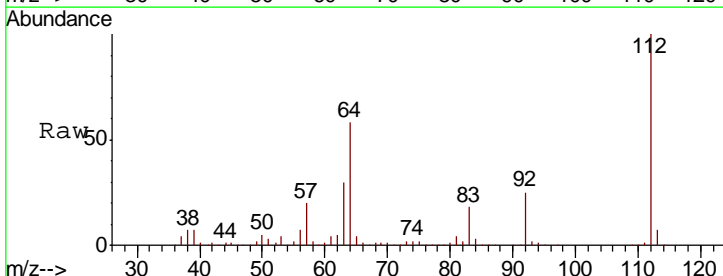
Instrument :
 BNA_F
ClientSampled :
 EB09_1.5-2.5

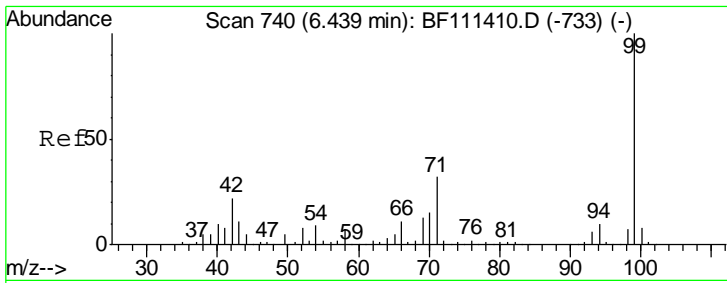
Tgt Ion	Resp	Lower	Upper
152	100		
150	161.2	126.6	189.8
115	61.6	50.7	76.1



#5
 2-Fluorophenol
 Concen: 88.583 ng
 RT: 5.42 min Scan# 567
 Delta R.T. 0.01 min
 Lab File: BF111519.D
 Acq: 16 Dec 2018 20:18

Tgt Ion	Resp	Lower	Upper
112	100		
64	58.4	51.8	77.6
63	30.1	26.8	40.2



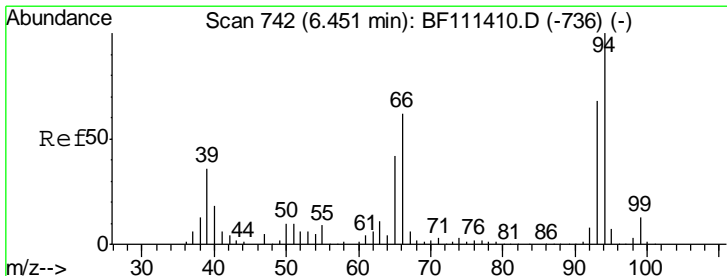
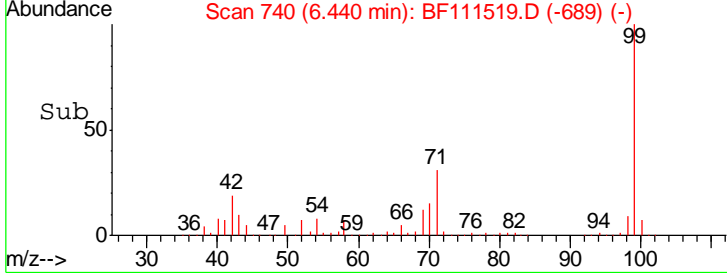
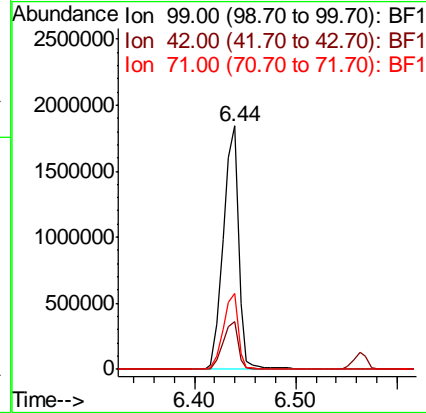
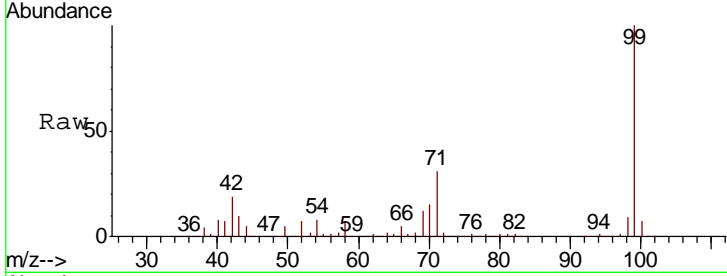


#7
 Phenol-d6
 Concen: 120.790 ng
 RT: 6.44 min Scan# 740
 Delta R.T. 0.00 min
 Lab File: BF111519.D
 Acq: 16 Dec 2018 20:18

Instrument :
 BNA_F
ClientSampled :
 EB09_1.5-2.5

Tgt Ion: 99 Resp: 1950739

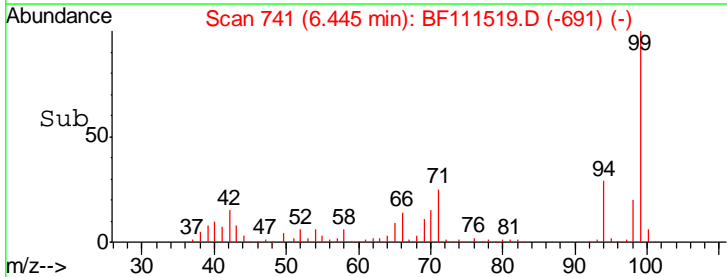
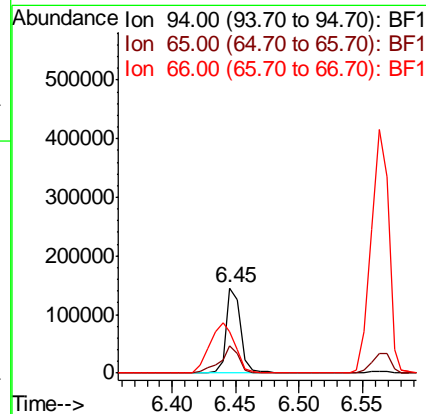
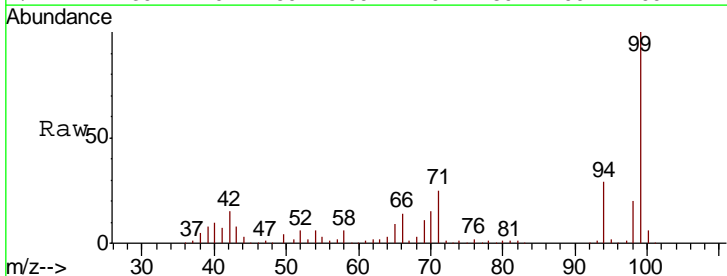
Ion	Ratio	Lower	Upper
99	100		
42	19.5	17.4	26.0
71	31.1	26.1	39.1

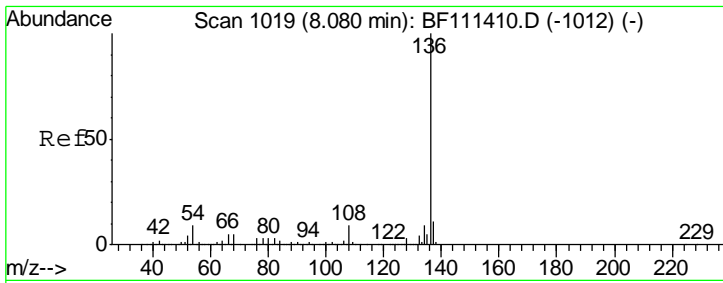


#10
 Phenol
 Concen: 6.574 ng
 RT: 6.45 min Scan# 741
 Delta R.T. -0.01 min
 Lab File: BF111519.D
 Acq: 16 Dec 2018 20:18

Tgt Ion: 94 Resp: 118260

Ion	Ratio	Lower	Upper
94	100		
65	32.0	11.7	51.7
66	48.2	21.0	61.0



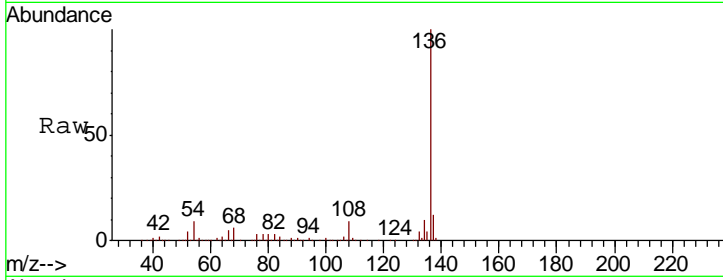


#21
 Naphthalene-d8
 Concen: 20.000 ng
 RT: 8.07 min Scan# 1017
 Delta R.T. -0.01 min
 Lab File: BF111519.D
 Acq: 16 Dec 2018 20:18

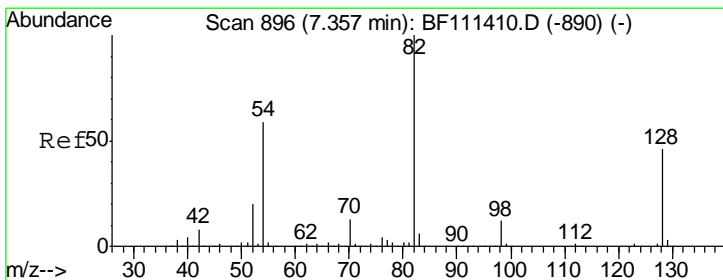
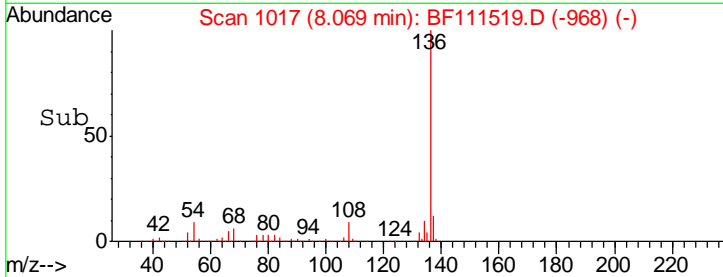
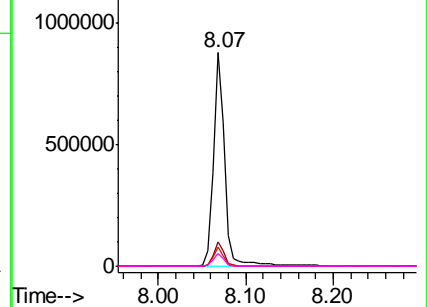
Instrument :
 BNA_F
ClientSampled :
 EB09_1.5-2.5

Tgt Ion: 136 Resp: 788592

Ion	Ratio	Lower	Upper
136	100		
137	11.6	9.1	13.7
54	9.0	7.7	11.5
68	6.0	4.9	7.3



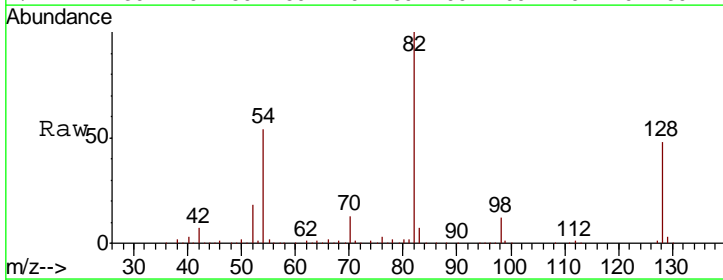
Abundance Ion 136.00 (135.70 to 136.70): E
 Ion 137.00 (136.70 to 137.70): E
 Ion 54.00 (53.70 to 54.70): BF1
 Ion 68.00 (67.70 to 68.70): BF1



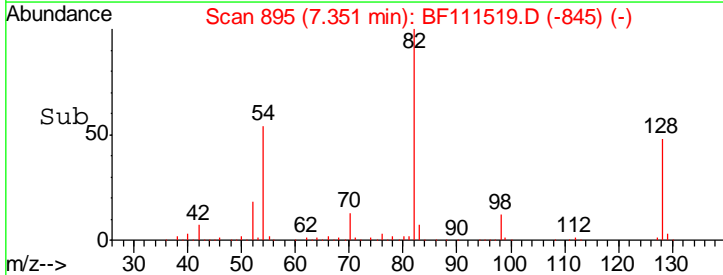
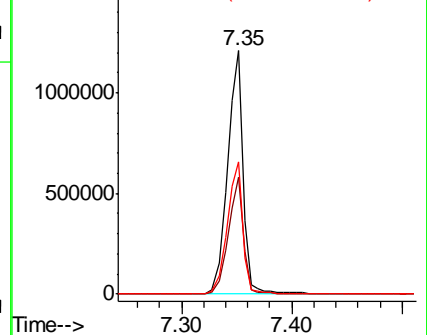
#23
 Nitrobenzene-d5
 Concen: 90.047 ng
 RT: 7.35 min Scan# 895
 Delta R.T. -0.01 min
 Lab File: BF111519.D
 Acq: 16 Dec 2018 20:18

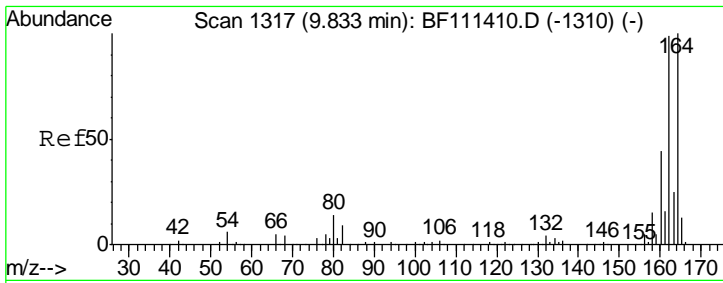
Tgt Ion: 82 Resp: 1192471

Ion	Ratio	Lower	Upper
82	100		
128	48.2	37.4	56.2
54	54.1	47.6	71.4



Abundance Ion 82.00 (81.70 to 82.70): BF1
 Ion 128.00 (127.70 to 128.70): E
 Ion 54.00 (53.70 to 54.70): BF1

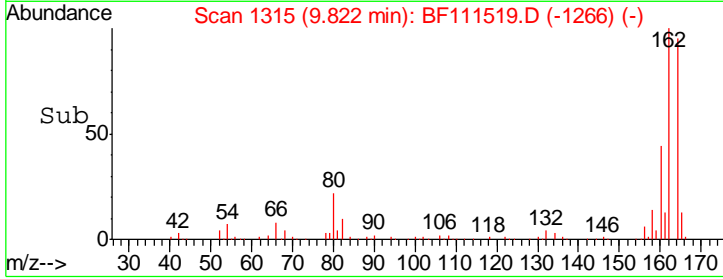
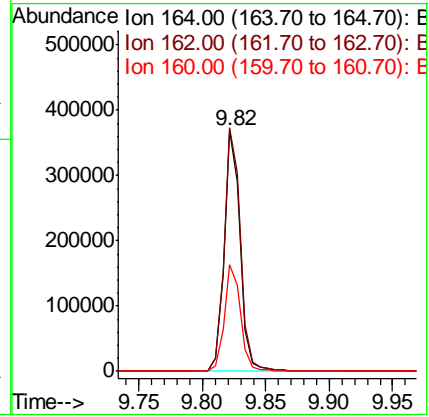
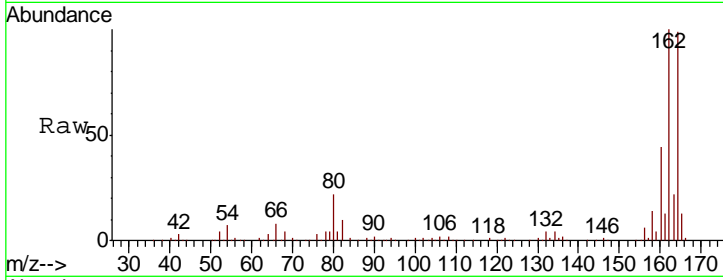




#39
 Acenaphthene-d10
 Concen: 20.000 ng
 RT: 9.82 min Scan# 1315
 Delta R.T. -0.01 min
 Lab File: BF111519.D
 Acq: 16 Dec 2018 20:18

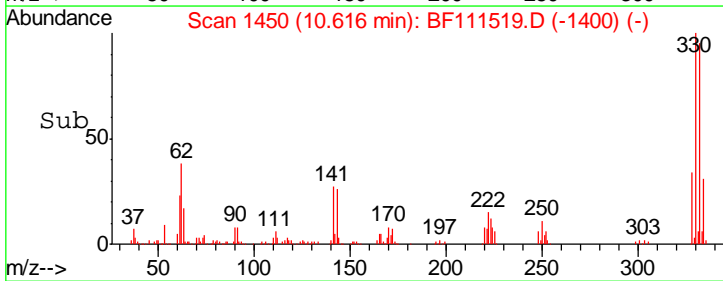
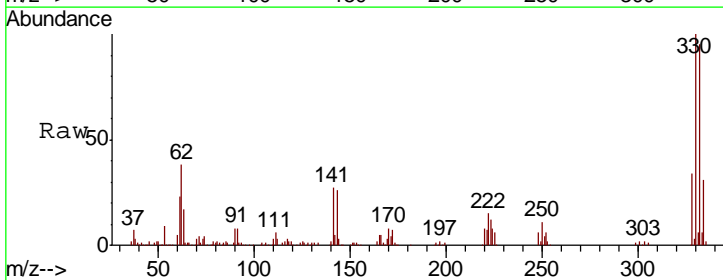
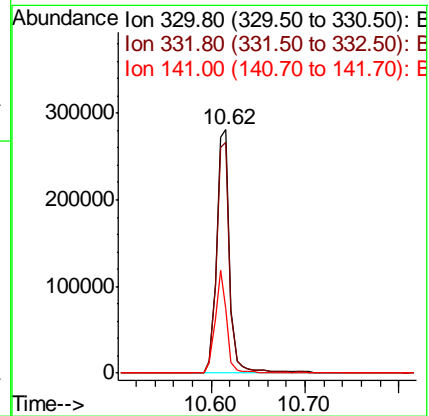
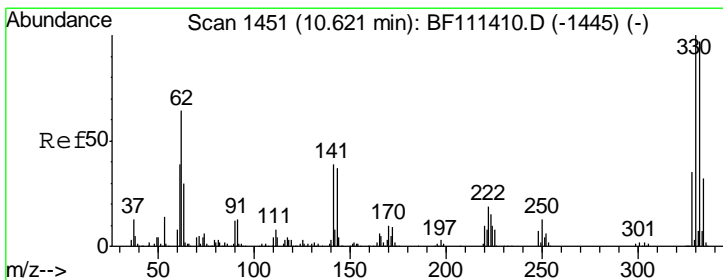
Instrument :
 BNA_F
 ClientSampled :
 EB09_1.5-2.5

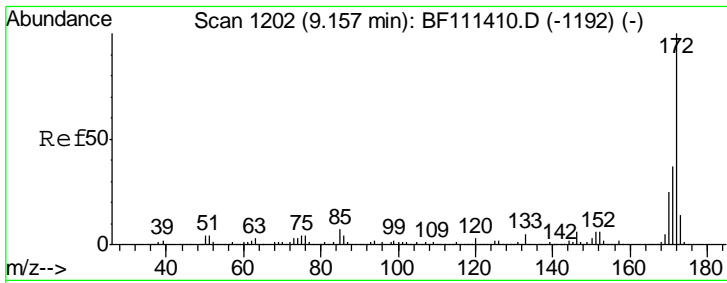
Tgt Ion	Resp	Lower	Upper
164	100		
162	101.1	81.4	122.0
160	44.4	35.7	53.5



#42
 2,4,6-Tribromophenol
 Concen: 96.181 ng
 RT: 10.62 min Scan# 1450
 Delta R.T. -0.01 min
 Lab File: BF111519.D
 Acq: 16 Dec 2018 20:18

Tgt Ion	Resp	Lower	Upper
330	100		
332	95.7	76.0	114.0
141	37.5	31.0	46.6



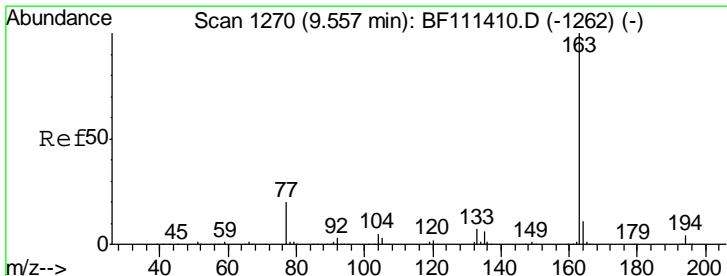
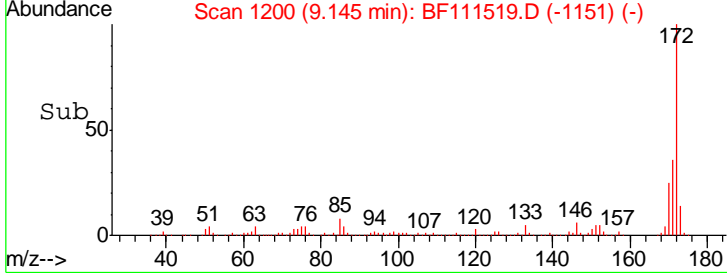
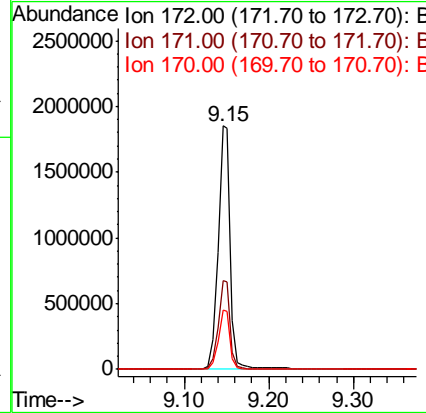
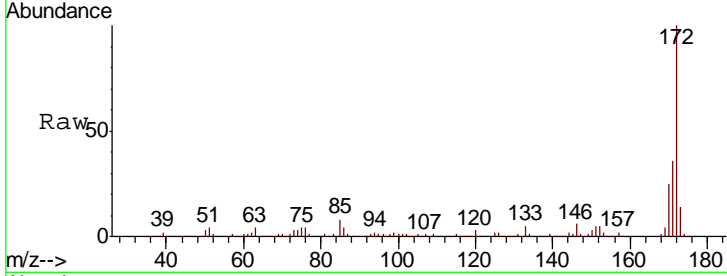


#45
 2-Fluorobiphenyl
 Concen: 90.896 ng
 RT: 9.15 min Scan# 1200
 Delta R.T. -0.01 min
 Lab File: BF111519.D
 Acq: 16 Dec 2018 20:18

Instrument :
 BNA_F
 ClientSampled :
 EB09_1.5-2.5

Tgt Ion:172 Resp: 1927134

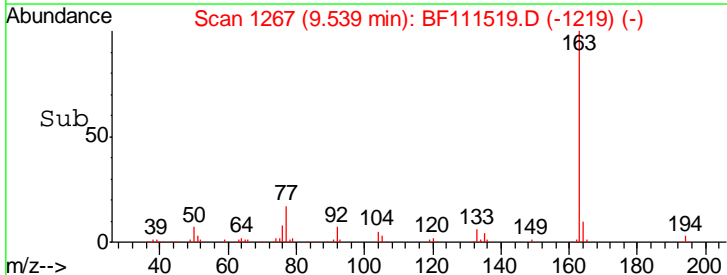
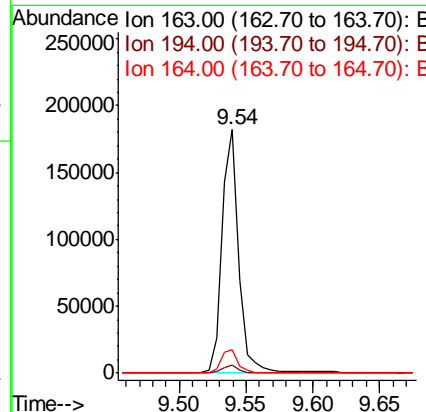
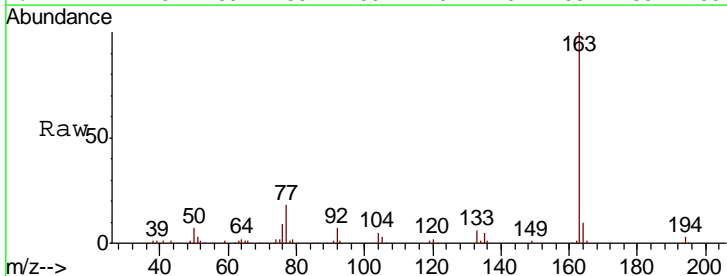
Ion	Ratio	Lower	Upper
172	100		
171	36.2	33.0	49.4
170	24.6	22.3	33.5

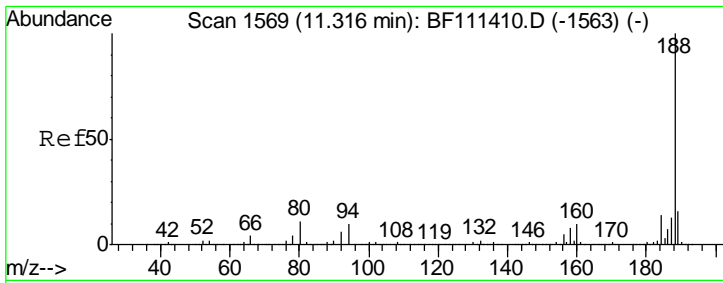


#50
 Dimethylphthalate
 Concen: 6.884 ng
 RT: 9.54 min Scan# 1267
 Delta R.T. -0.02 min
 Lab File: BF111519.D
 Acq: 16 Dec 2018 20:18

Tgt Ion:163 Resp: 162359

Ion	Ratio	Lower	Upper
163	100		
194	3.2	3.0	4.6
164	9.9	8.9	13.3

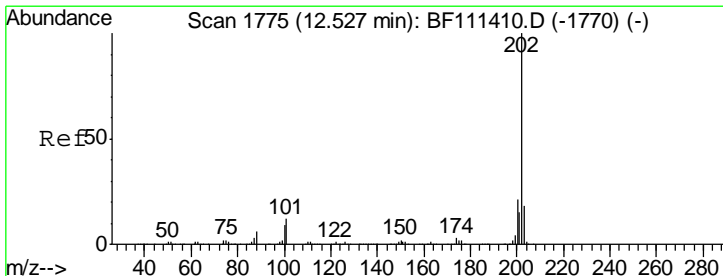
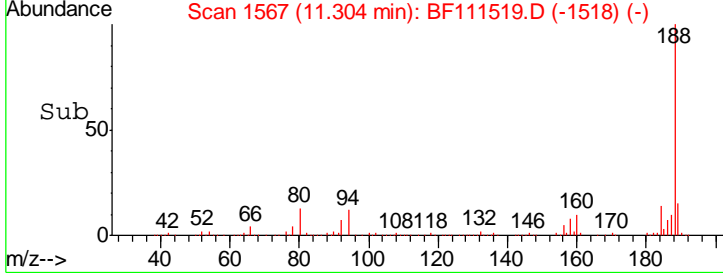
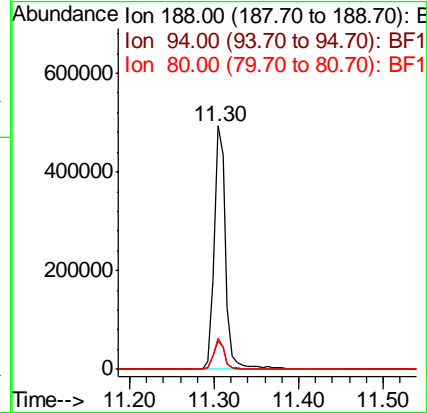
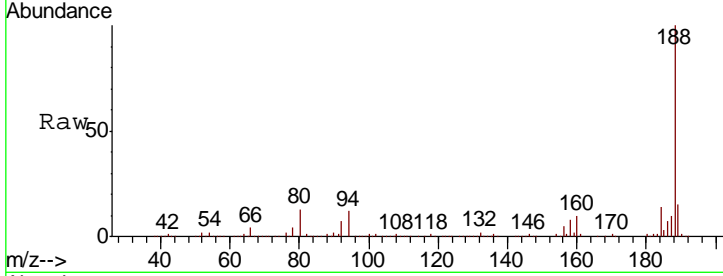




#64
 Phenanthrene-d10
 Concen: 20.000 ng
 RT: 11.30 min Scan# 1567
 Delta R.T. -0.01 min
 Lab File: BF111519.D
 Acq: 16 Dec 2018 20:18

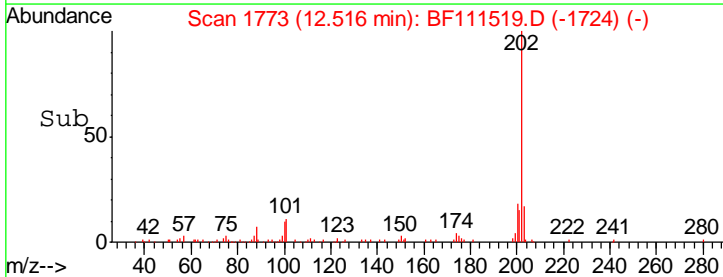
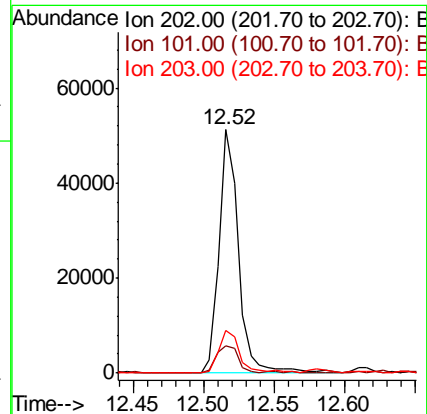
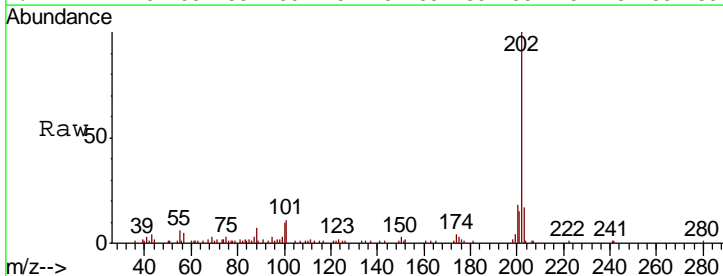
Instrument :
 BNA_F
 ClientSampled :
 EB09_1.5-2.5

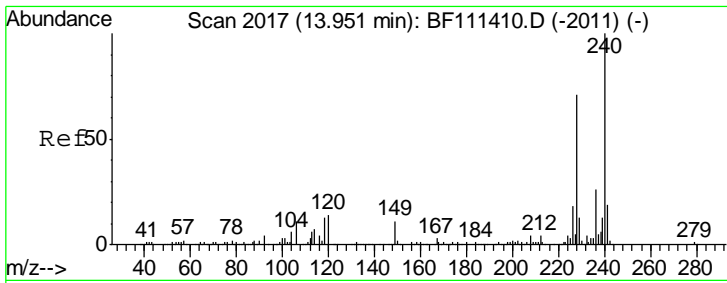
Tgt Ion	Resp	Lower	Upper
188	100		
94	11.7	9.6	14.4
80	12.8	9.8	14.6



#75
 Fluoranthene
 Concen: 2.064 ng
 RT: 12.52 min Scan# 1773
 Delta R.T. -0.01 min
 Lab File: BF111519.D
 Acq: 16 Dec 2018 20:18

Tgt Ion	Resp	Lower	Upper
202	100		
101	11.3	0.0	33.8
203	17.3	0.0	38.6

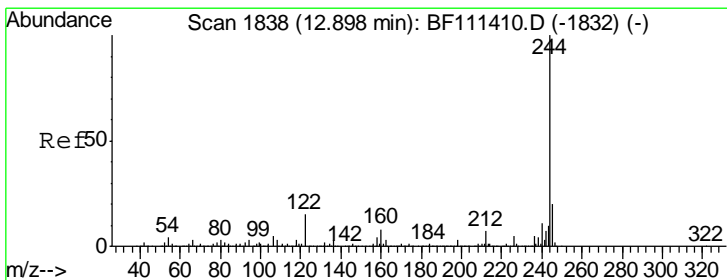
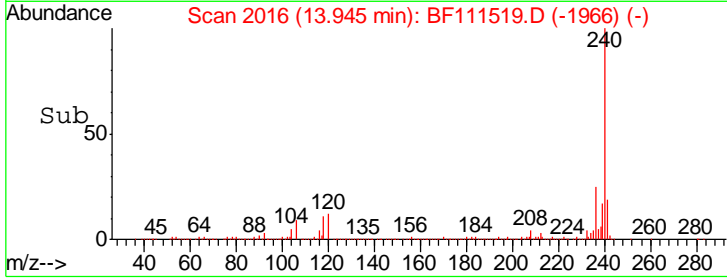
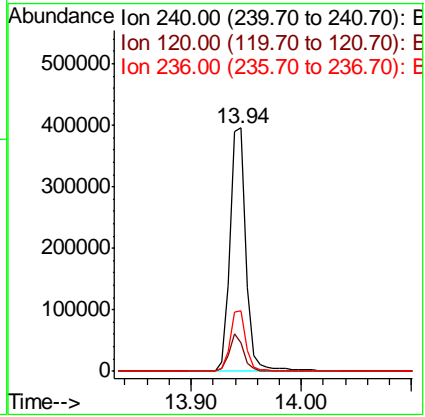
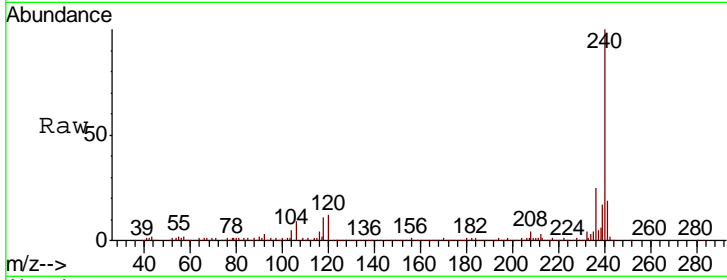




#76
 Chrysene-d12
 Concen: 20.000 ng
 RT: 13.94 min Scan# 2016
 Delta R.T. -0.01 min
 Lab File: BF111519.D
 Acq: 16 Dec 2018 20:18

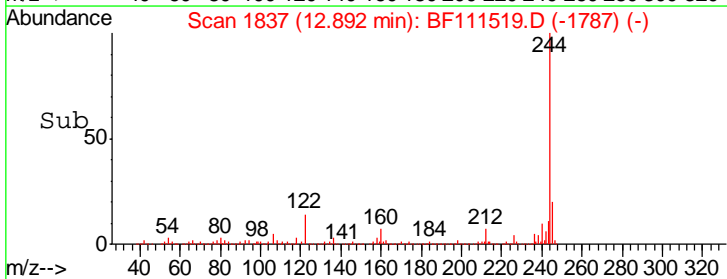
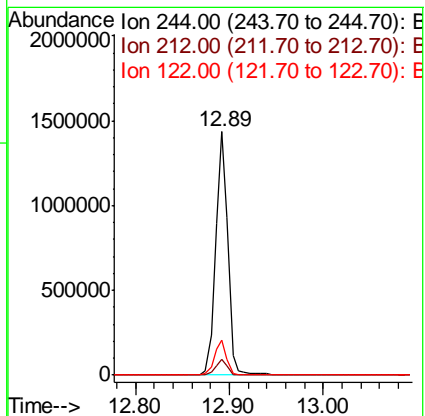
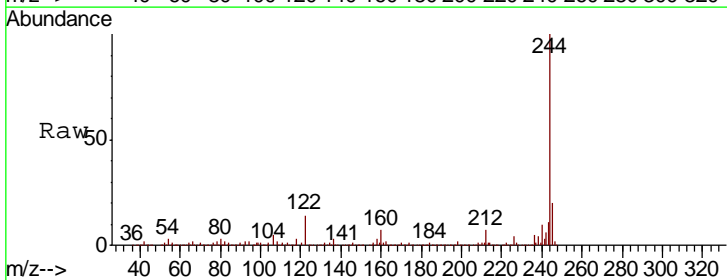
Instrument :
 BNA_F
 ClientSampled :
 EB09_1.5-2.5

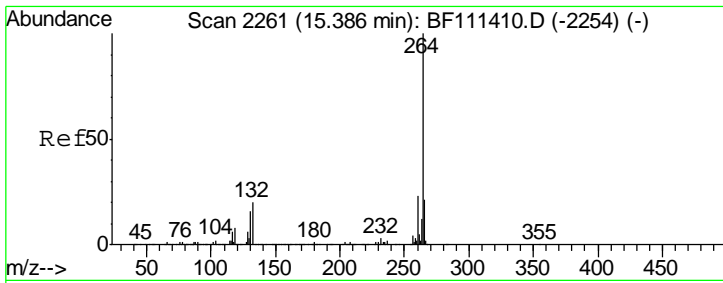
Tgt Ion	Resp	Lower	Upper
240	405725		
120	12.0	12.2	18.2#
236	24.9	20.2	30.2



#79
 Terphenyl-d14
 Concen: 76.506 ng
 RT: 12.89 min Scan# 1837
 Delta R.T. -0.01 min
 Lab File: BF111519.D
 Acq: 16 Dec 2018 20:18

Tgt Ion	Resp	Lower	Upper
244	1321856		
212	6.6	5.7	8.5
122	14.4	13.1	19.7





#87
 Perylene-d12
 Concen: 20.000 ng
 RT: 15.38 min Scan# 2260
 Delta R.T. -0.01 min
 Lab File: BF111519.D
 Acq: 16 Dec 2018 20:18

Instrument :
 BNA_F
 ClientSampled :
 EB09_1.5-2.5

Tot Ion: 264 Resp: 281034

Ion	Ratio	Lower	Upper
264	100		
260	23.2	18.3	27.5
265	21.6	17.7	26.5

