

Data Path : Z:\svoasrv\HPCHEM1\BNA_F\Data\BF121821\
 Data File : BF126253.D
 Acq On : 18 Dec 2021 14:36
 Operator : JU/CG
 Sample : M5168-02
 Misc :
 ALS Vial : 7 Sample Multiplier: 1

Instrument :
 BNA_F
 ClientSampleId :

Quant Time: Dec 20 08:02:14 2021
 Quant Method : Z:\svoasrv\HPCHEM1\BNA_F\Methods\8270-BF121521.M
 Quant Title : ASP BNA STANDARDS FOR 5 POINT CALIBRATION
 QLast Update : Thu Dec 16 12:22:48 2021
 Response via : Initial Calibration

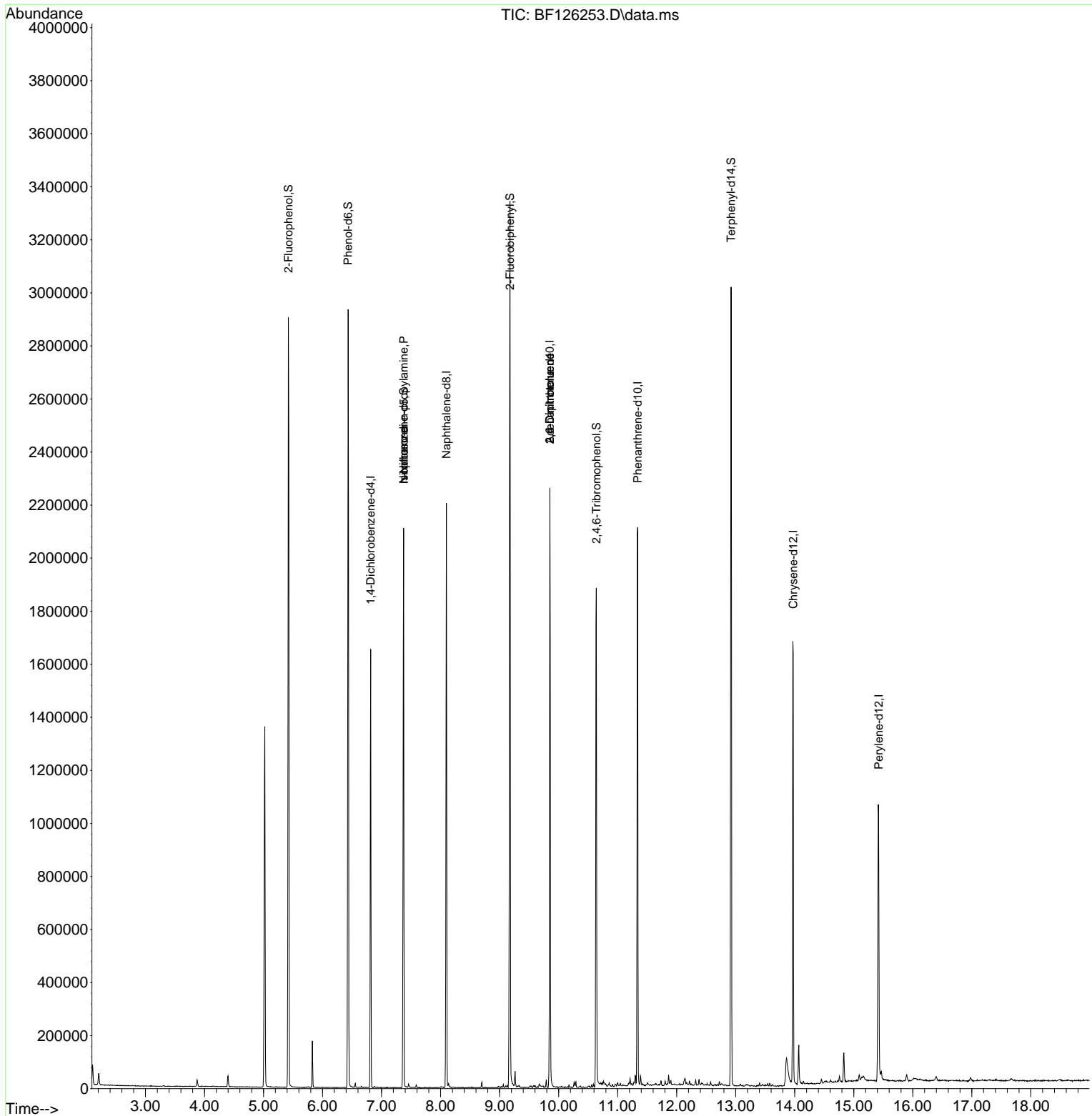
Compound	R.T.	QIon	Response	Conc	Units	Dev(Min)
Internal Standards						
1) 1,4-Dichlorobenzene-d4	6.816	152	226397	20.000	ng	0.00
21) Naphthalene-d8	8.098	136	967750	20.000	ng	# 0.00
39) Acenaphthene-d10	9.851	164	475554	20.000	ng	0.00
64) Phenanthrene-d10	11.339	188	784079	20.000	ng	# 0.00
76) Chrysene-d12	13.974	240	579429	20.000	ng	0.00
86) Perylene-d12	15.421	264	475356	20.000	ng	0.01
System Monitoring Compounds						
5) 2-Fluorophenol	5.422	112	841691	54.750	ng	0.00
7) Phenol-d6	6.434	99	1093838	56.036	ng	-0.01
23) Nitrobenzene-d5	7.375	82	698033	39.065	ng	0.00
42) 2,4,6-Tribromophenol	10.639	330	227654	59.568	ng	0.00
45) 2-Fluorobiphenyl	9.175	172	1016939	37.506	ng	0.00
79) Terphenyl-d14	12.921	244	995452	29.861	ng	0.00
Target Compounds						
19) n-Nitroso-di-n-propyla...	7.375	70	87009	7.261	ng	# 52
25) Isophorone	7.375	82	659785	19.553	ng	# 59
51) 2,6-Dinitrotoluene	9.851	165	60455	9.272	ng	# 28
57) 2,4-Dinitrotoluene	9.851	165	60456	7.269	ng	# 19

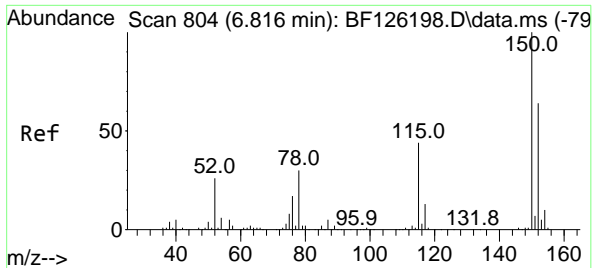
(#) = qualifier out of range (m) = manual integration (+) = signals summed

Data Path : Z:\svoasrv\HPCHEM1\BNA_F\Data\BF121821\
 Data File : BF126253.D
 Acq On : 18 Dec 2021 14:36
 Operator : JU/CG
 Sample : M5168-02
 Misc :
 ALS Vial : 7 Sample Multiplier: 1

Instrument :
 BNA_F
 ClientSampleId :

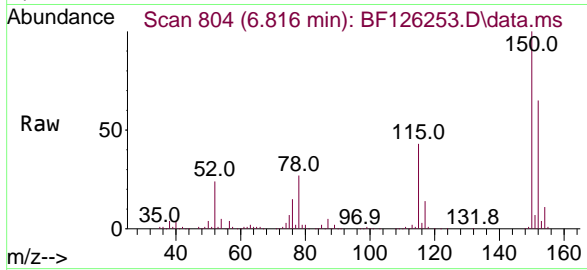
Quant Time: Dec 20 08:02:14 2021
 Quant Method : Z:\svoasrv\HPCHEM1\BNA_F\Methods\8270-BF121521.M
 Quant Title : ASP BNA STANDARDS FOR 5 POINT CALIBRATION
 QLast Update : Thu Dec 16 12:22:48 2021
 Response via : Initial Calibration



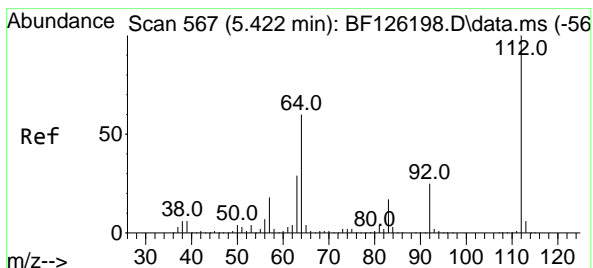
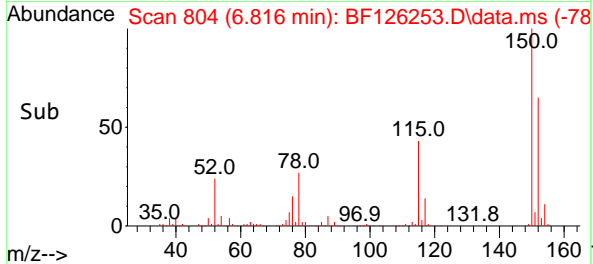
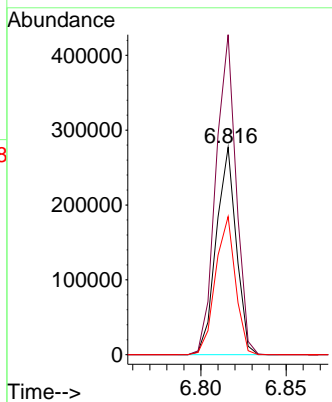


#1
 1,4-Dichlorobenzene-d4
 Concen: 20.000 ng
 RT: 6.816 min Scan# 80
 Delta R.T. -0.000 min
 Lab File: BF126253.D
 Acq: 18 Dec 2021 14:36

Instrument :
 BNA_F
 ClientSampleId :

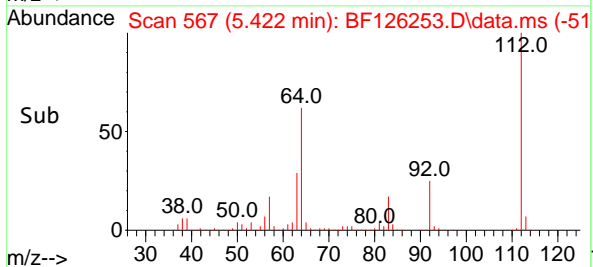
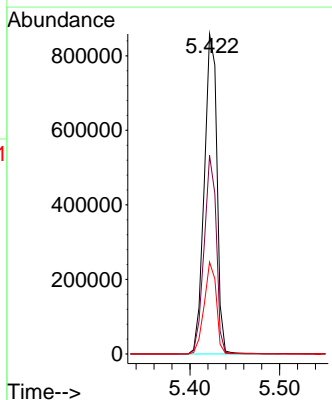
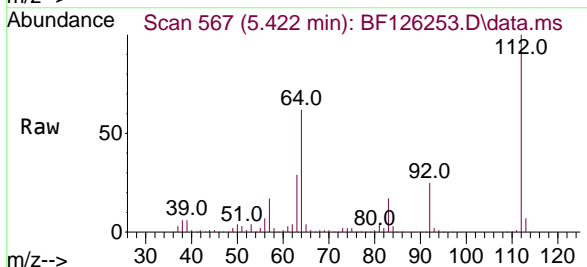


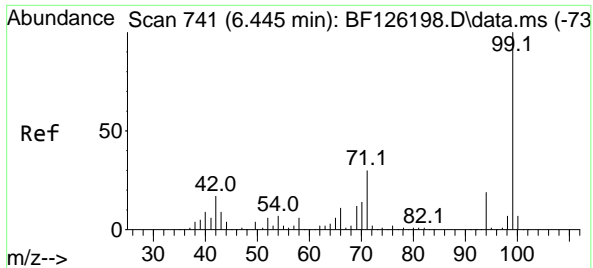
Tgt Ion:152 Resp: 226397
 Ion Ratio Lower Upper
 152 100
 150 154.4 117.6 176.4
 115 66.6 47.1 70.7



#5
 2-Fluorophenol
 Concen: 54.750 ng
 RT: 5.422 min Scan# 567
 Delta R.T. 0.000 min
 Lab File: BF126253.D
 Acq: 18 Dec 2021 14:36

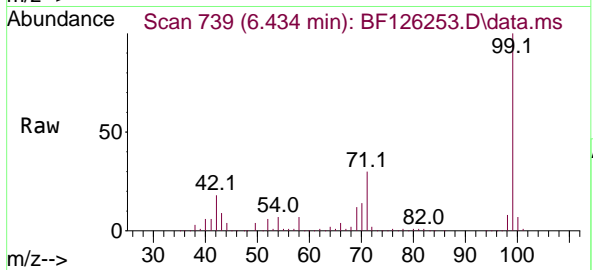
Tgt Ion:112 Resp: 841691
 Ion Ratio Lower Upper
 112 100
 64 62.0 44.2 66.2
 63 28.7 26.2 39.2



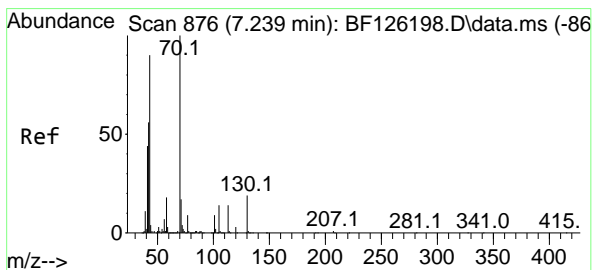
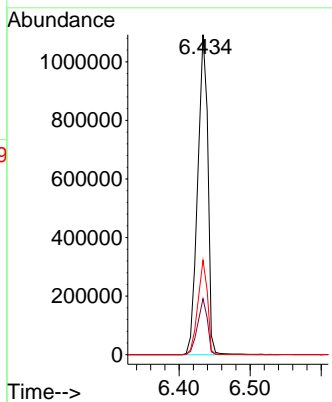
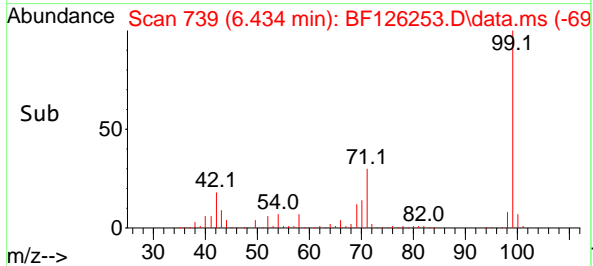


#7
 Phenol-d6
 Concen: 56.036 ng
 RT: 6.434 min Scan# 71
 Delta R.T. -0.012 min
 Lab File: BF126253.D
 Acq: 18 Dec 2021 14:36

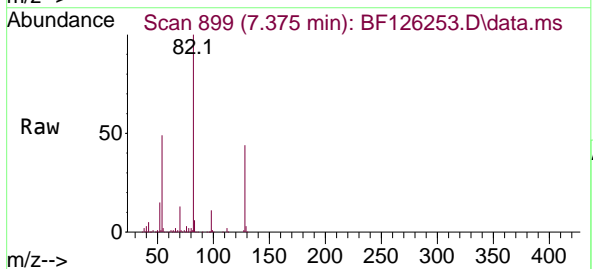
Instrument :
 BNA_F
 ClientSampleId :



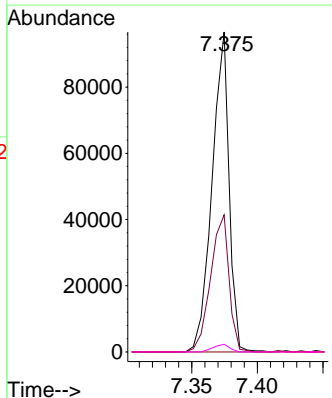
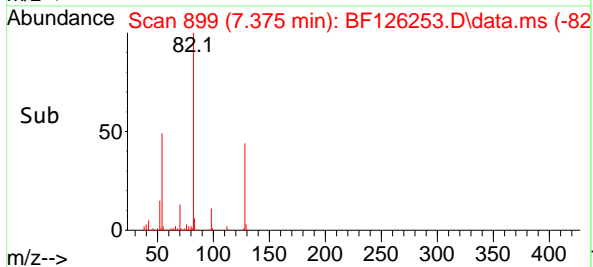
Tgt Ion: 99 Resp: 1093838
 Ion Ratio Lower Upper
 99 100
 42 17.5 23.5 35.3#
 71 29.5 25.6 38.4

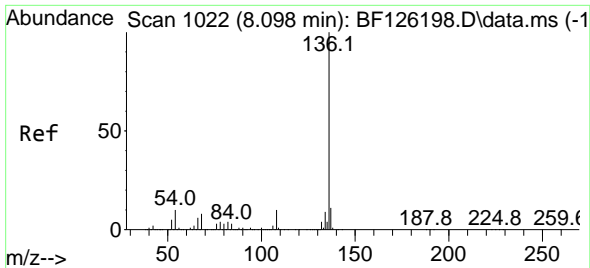


#19
 n-Nitroso-di-n-propylamine
 Concen: 7.261 ng
 RT: 7.375 min Scan# 899
 Delta R.T. 0.135 min
 Lab File: BF126253.D
 Acq: 18 Dec 2021 14:36



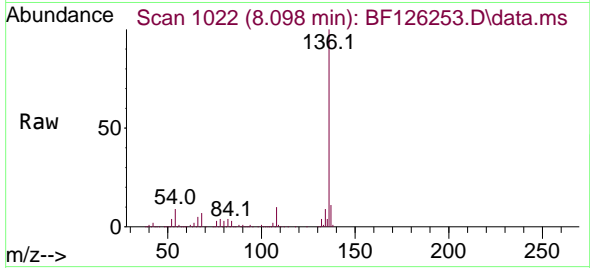
Tgt Ion: 70 Resp: 87009
 Ion Ratio Lower Upper
 70 100
 42 42.8 72.2 108.2#
 101 0.0 7.8 11.8#
 130 2.4 21.8 32.6#



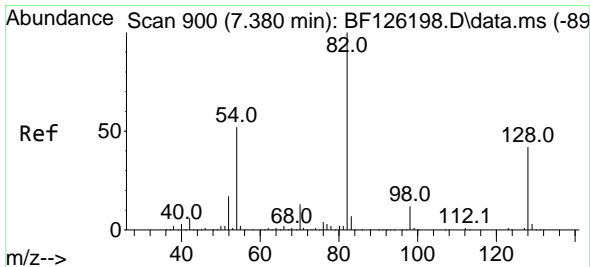
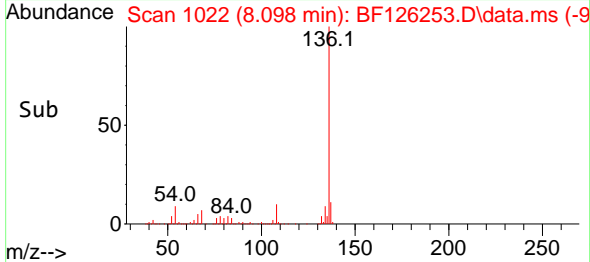
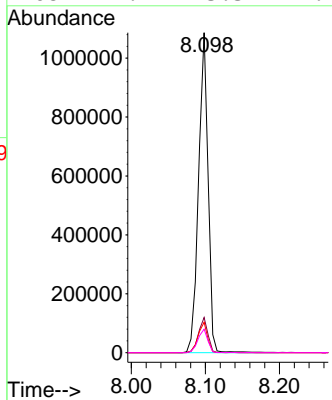


#21
 Naphthalene-d8
 Concen: 20.000 ng
 RT: 8.098 min Scan# 10
 Delta R.T. 0.000 min
 Lab File: BF126253.D
 Acq: 18 Dec 2021 14:36

Instrument :
 BNA_F
 ClientSampleId :

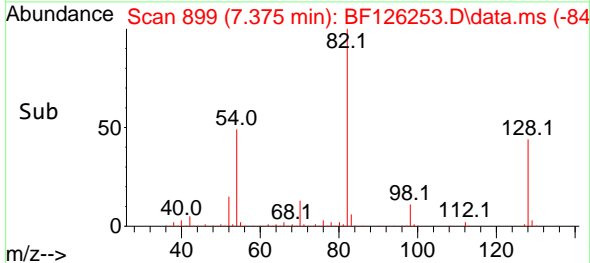
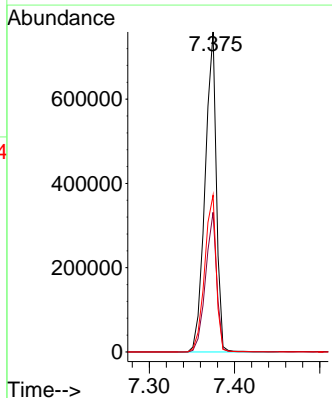
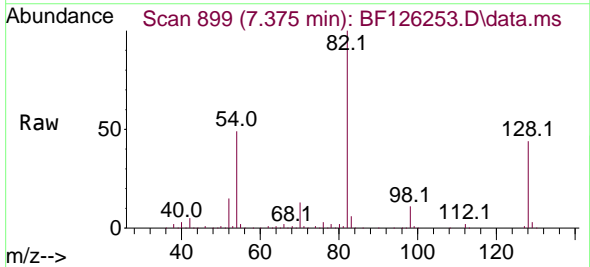


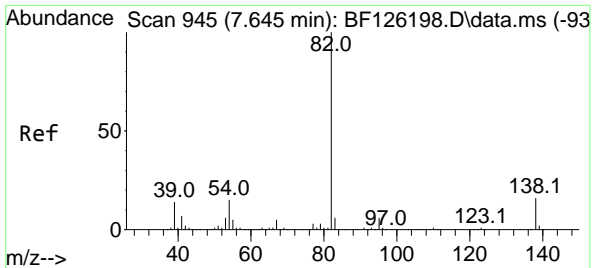
Tgt Ion:136 Resp: 967750
 Ion Ratio Lower Upper
 136 100
 137 11.0 9.8 14.6
 54 9.5 6.4 9.6
 68 7.4 3.3 4.9#



#23
 Nitrobenzene-d5
 Concen: 39.065 ng
 RT: 7.375 min Scan# 899
 Delta R.T. -0.006 min
 Lab File: BF126253.D
 Acq: 18 Dec 2021 14:36

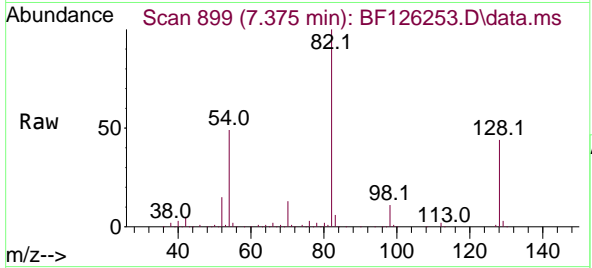
Tgt Ion: 82 Resp: 698033
 Ion Ratio Lower Upper
 82 100
 128 43.7 40.6 60.8
 54 49.0 49.6 74.4#



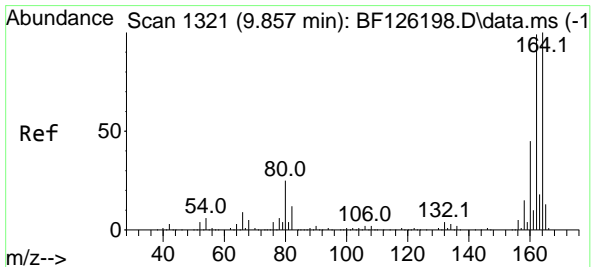
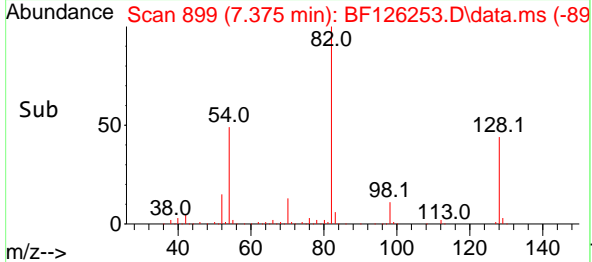
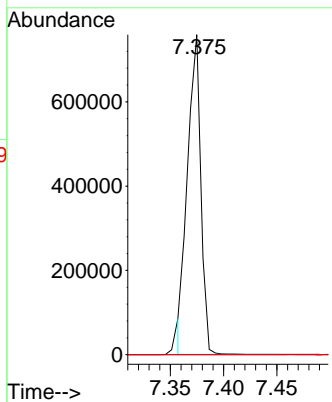


#25
 Isophorone
 Concen: 19.553 ng
 RT: 7.375 min Scan# 89
 Delta R.T. -0.270 min
 Lab File: BF126253.D
 Acq: 18 Dec 2021 14:36

Instrument :
 BNA_F
 ClientSampleId :

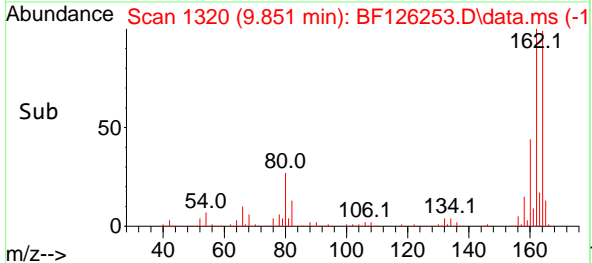
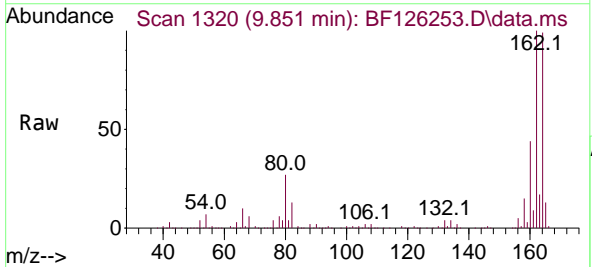
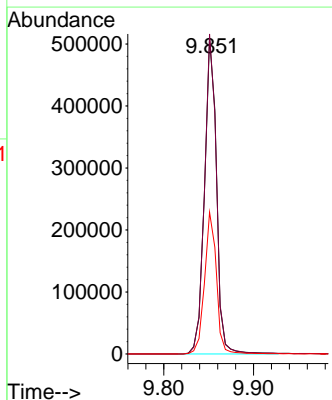


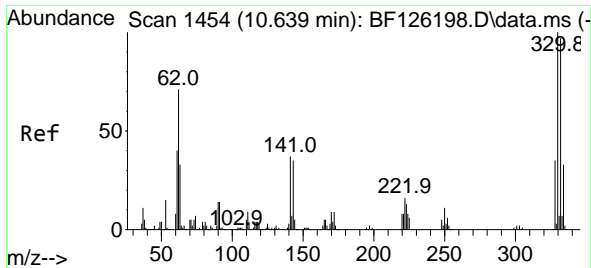
Tgt Ion: 82 Resp: 659785
 Ion Ratio Lower Upper
 82 100
 95 0.0 6.5 9.7#
 138 0.0 18.4 27.6#



#39
 Acenaphthene-d10
 Concen: 20.000 ng
 RT: 9.851 min Scan# 1320
 Delta R.T. -0.006 min
 Lab File: BF126253.D
 Acq: 18 Dec 2021 14:36

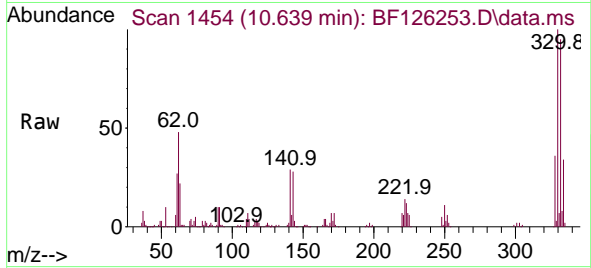
Tgt Ion: 164 Resp: 475554
 Ion Ratio Lower Upper
 164 100
 162 101.3 81.3 121.9
 160 44.9 38.0 57.0



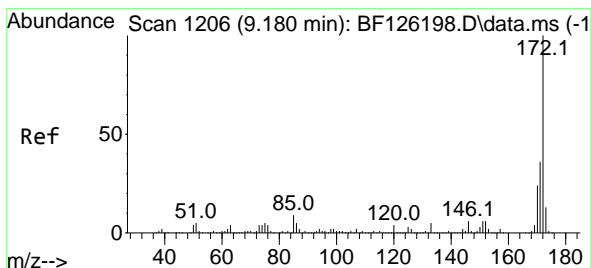
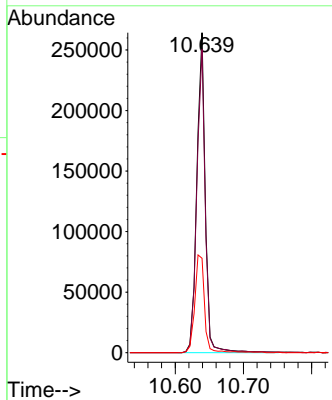
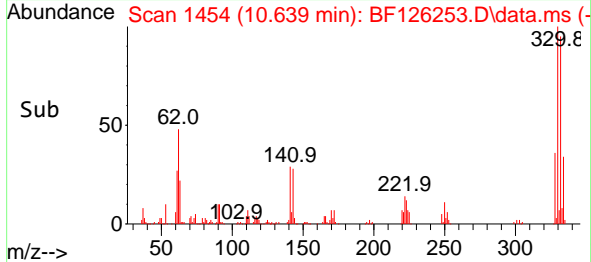


#42
 2,4,6-Tribromophenol
 Concen: 59.568 ng
 RT: 10.639 min Scan# 14
 Delta R.T. 0.000 min
 Lab File: BF126253.D
 Acq: 18 Dec 2021 14:36

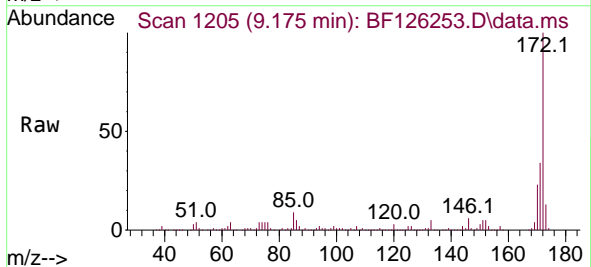
Instrument :
 BNA_F
 ClientSampleId :



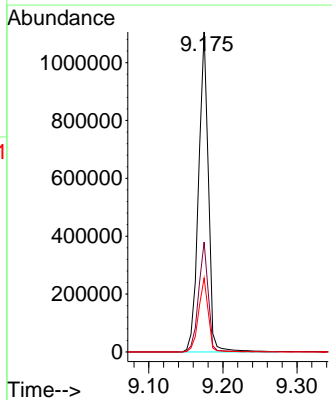
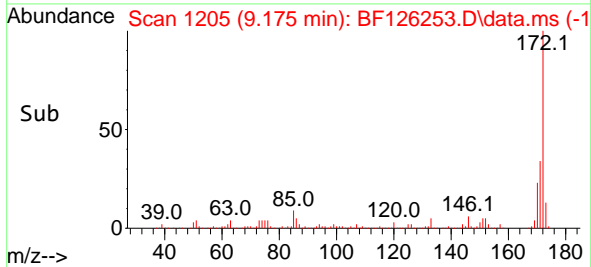
Tgt Ion:330 Resp: 227654
 Ion Ratio Lower Upper
 330 100
 332 95.5 76.2 114.4
 141 35.2 44.6 66.8#

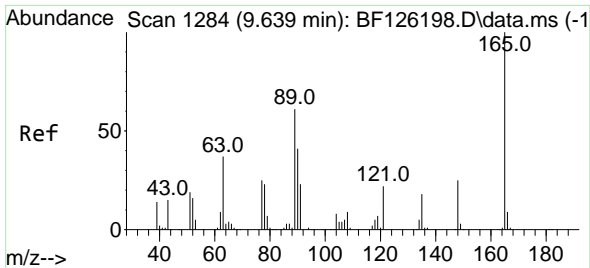


#45
 2-Fluorobiphenyl
 Concen: 37.506 ng
 RT: 9.175 min Scan# 1205
 Delta R.T. -0.006 min
 Lab File: BF126253.D
 Acq: 18 Dec 2021 14:36



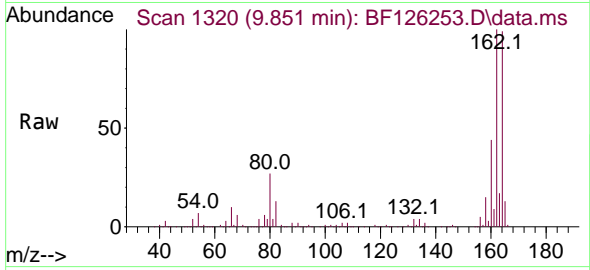
Tgt Ion:172 Resp: 1016939
 Ion Ratio Lower Upper
 172 100
 171 34.3 26.5 39.7
 170 23.1 18.8 28.2



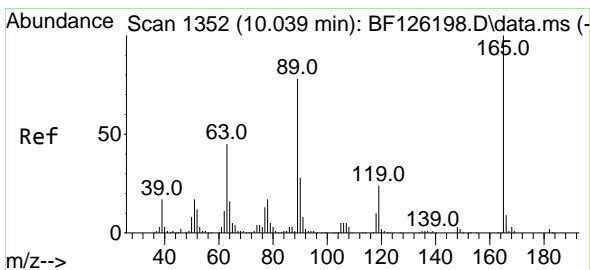
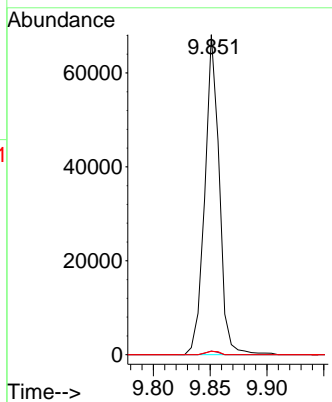
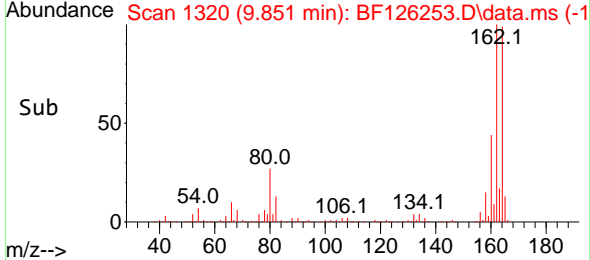


#51
 2,6-Dinitrotoluene
 Concen: 9.272 ng
 RT: 9.851 min Scan# 11
 Delta R.T. 0.212 min
 Lab File: BF126253.D
 Acq: 18 Dec 2021 14:36

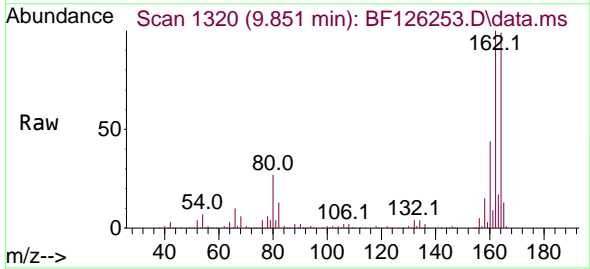
Instrument :
 BNA_F
 ClientSampleId :



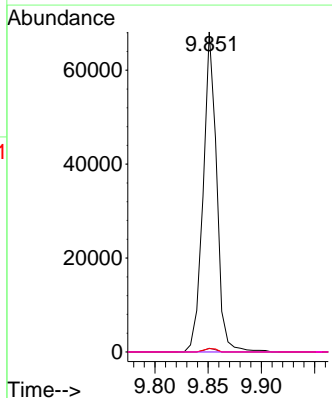
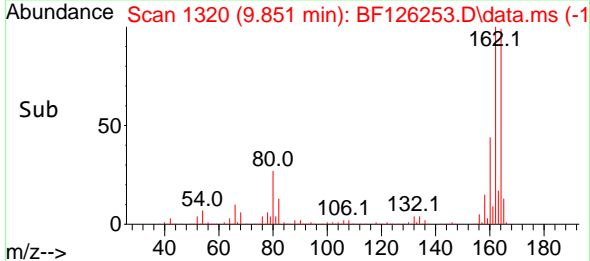
Tgt Ion:165 Resp: 60455
 Ion Ratio Lower Upper
 165 100
 63 1.1 42.6 63.8#
 89 1.0 40.6 60.8#

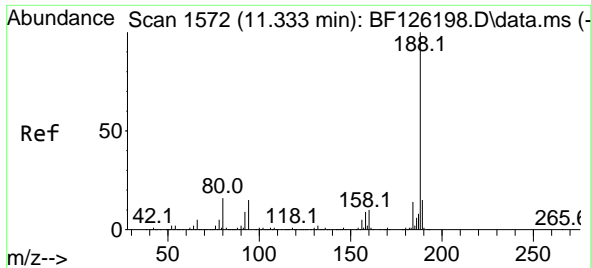


#57
 2,4-Dinitrotoluene
 Concen: 7.269 ng
 RT: 9.851 min Scan# 1320
 Delta R.T. -0.188 min
 Lab File: BF126253.D
 Acq: 18 Dec 2021 14:36



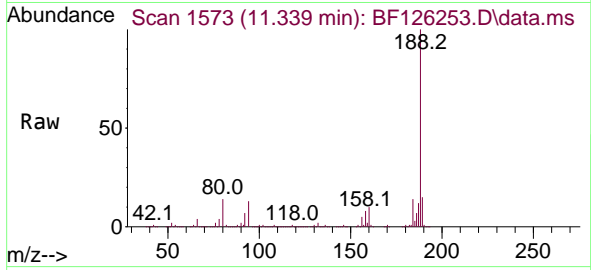
Tgt Ion:165 Resp: 60456
 Ion Ratio Lower Upper
 165 100
 63 1.1 40.9 61.3#
 89 1.0 59.7 89.5#
 182 0.0 0.0 0.0



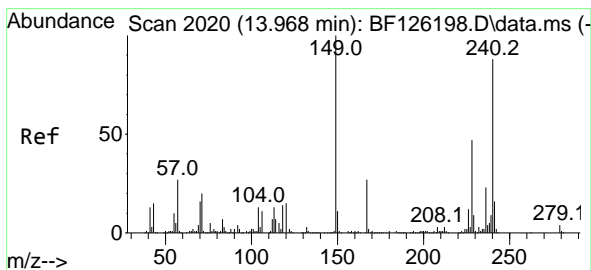
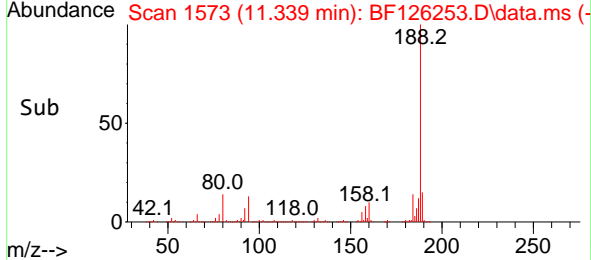
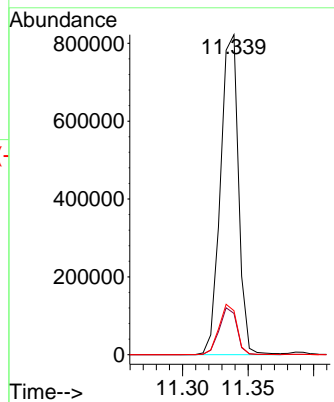


#64
 Phenanthrene-d10
 Concen: 20.000 ng
 RT: 11.339 min Scan# 11
 Delta R.T. 0.006 min
 Lab File: BF126253.D
 Acq: 18 Dec 2021 14:36

Instrument :
 BNA_F
 ClientSampleId :

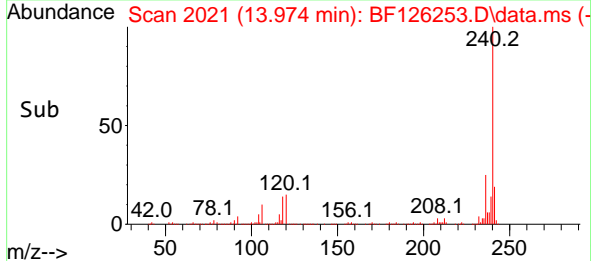
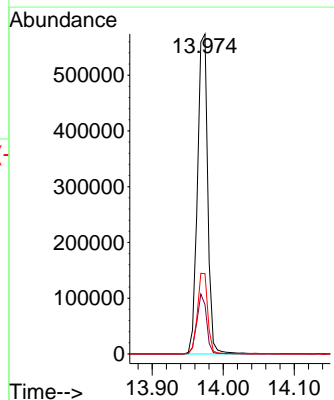
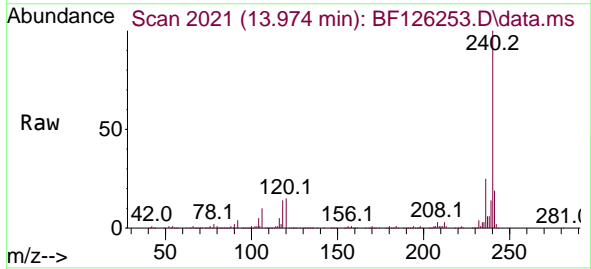


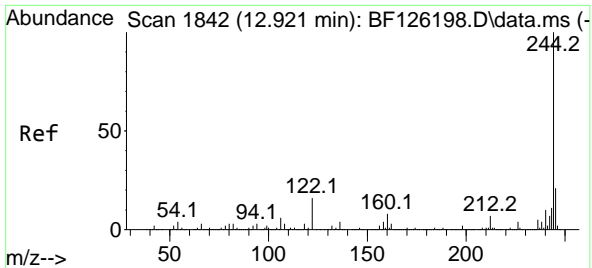
Tgt Ion:188 Resp: 784079
 Ion Ratio Lower Upper
 188 100
 94 12.9 6.7 10.1#
 80 13.7 7.5 11.3#



#76
 Chrysene-d12
 Concen: 20.000 ng
 RT: 13.974 min Scan# 2021
 Delta R.T. 0.006 min
 Lab File: BF126253.D
 Acq: 18 Dec 2021 14:36

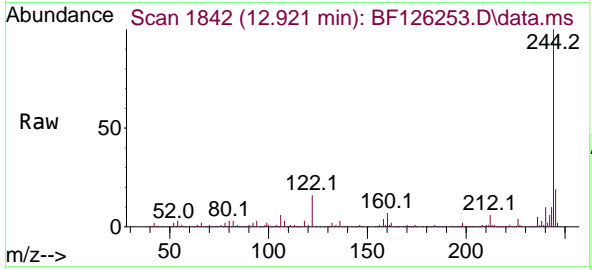
Tgt Ion:240 Resp: 579429
 Ion Ratio Lower Upper
 240 100
 120 15.4 10.8 16.2
 236 25.1 21.6 32.4



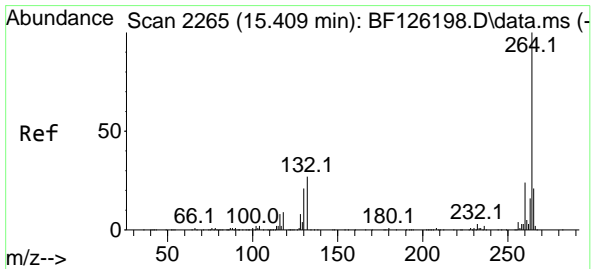
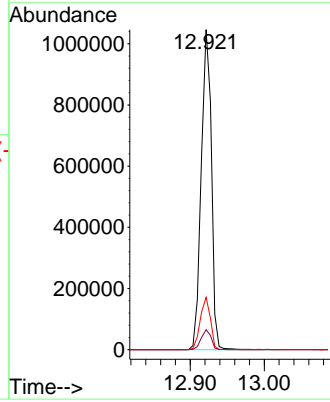
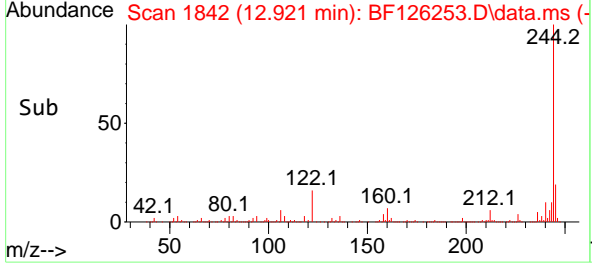


#79
 Terphenyl-d14
 Concen: 29.861 ng
 RT: 12.921 min Scan# 11
 Delta R.T. 0.000 min
 Lab File: BF126253.D
 Acq: 18 Dec 2021 14:36

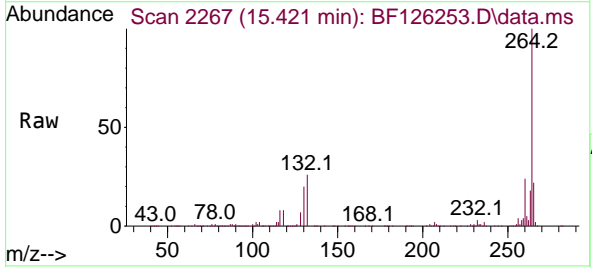
Instrument :
 BNA_F
 ClientSampleId :



Tgt Ion:244 Resp: 995452
 Ion Ratio Lower Upper
 244 100
 212 6.2 5.9 8.9
 122 16.4 9.0 13.4#



#86
 Perylene-d12
 Concen: 20.000 ng
 RT: 15.421 min Scan# 2267
 Delta R.T. 0.012 min
 Lab File: BF126253.D
 Acq: 18 Dec 2021 14:36



Tgt Ion:264 Resp: 475356
 Ion Ratio Lower Upper
 264 100
 260 24.3 19.6 29.4
 265 21.5 17.2 25.8

