

Data Path : Z:\SVOASRV\HPCHEM1\BNA_F\DATA\BF122118\
 Data File : BF111682.D
 Acq On : 21 Dec 2018 12:48
 Operator : JU/SJ
 Sample : J6353-06RE
 Misc :
 ALS Vial : 3 Sample Multiplier: 1

Instrument :
 BNA_F
 ClientSampleId :
 P001-SS003-0002-01

Quant Time: Dec 21 22:32:40 2018
 Quant Method : Z:\SVOASRV\HPCHEM1\BNA_F\METHODS\8270-BF121918.M
 Quant Title : ASP BNA STANDARDS FOR 5 POINT CALIBRATION
 QLast Update : Wed Dec 19 17:39:39 2018
 Response via : Initial Calibration

| Internal Standards | R.T. | QIon | Response | Conc | Units | Dev(Min) |
|---------------------------|-------|------|----------|-------|-------|----------|
| 1) 1,4-Dichlorobenzene-d4 | 6.89 | 152 | 201002 | 20.00 | ng | 0.00 |
| 21) Naphthalene-d8 | 8.17 | 136 | 774431 | 20.00 | ng | 0.00 |
| 39) Acenaphthene-d10 | 9.93 | 164 | 393991 | 20.00 | ng | 0.00 |
| 64) Phenanthrene-d10 | 11.42 | 188 | 732186 | 20.00 | ng | 0.00 |
| 76) Chrysene-d12 | 14.05 | 240 | 506962 | 20.00 | ng | 0.00 |
| 87) Perylene-d12 | 15.53 | 264 | 476334 | 20.00 | ng | 0.01 |

System Monitoring Compounds

| | | | | | | |
|--------------------------|-------|-----|---------|-------|----|------|
| 5) 2-Fluorophenol | 5.52 | 112 | 855031 | 72.51 | ng | 0.00 |
| 7) Phenol-d6 | 6.52 | 99 | 1118187 | 74.51 | ng | 0.00 |
| 23) Nitrobenzene-d5 | 7.45 | 82 | 793534 | 59.64 | ng | 0.00 |
| 42) 2,4,6-Tribromophenol | 10.72 | 330 | 303154 | 65.12 | ng | 0.00 |
| 45) 2-Fluorobiphenyl | 9.25 | 172 | 1076523 | 39.83 | ng | 0.00 |
| 79) Terphenyl-d14 | 13.00 | 244 | 1100280 | 41.16 | ng | 0.00 |

Target Compounds

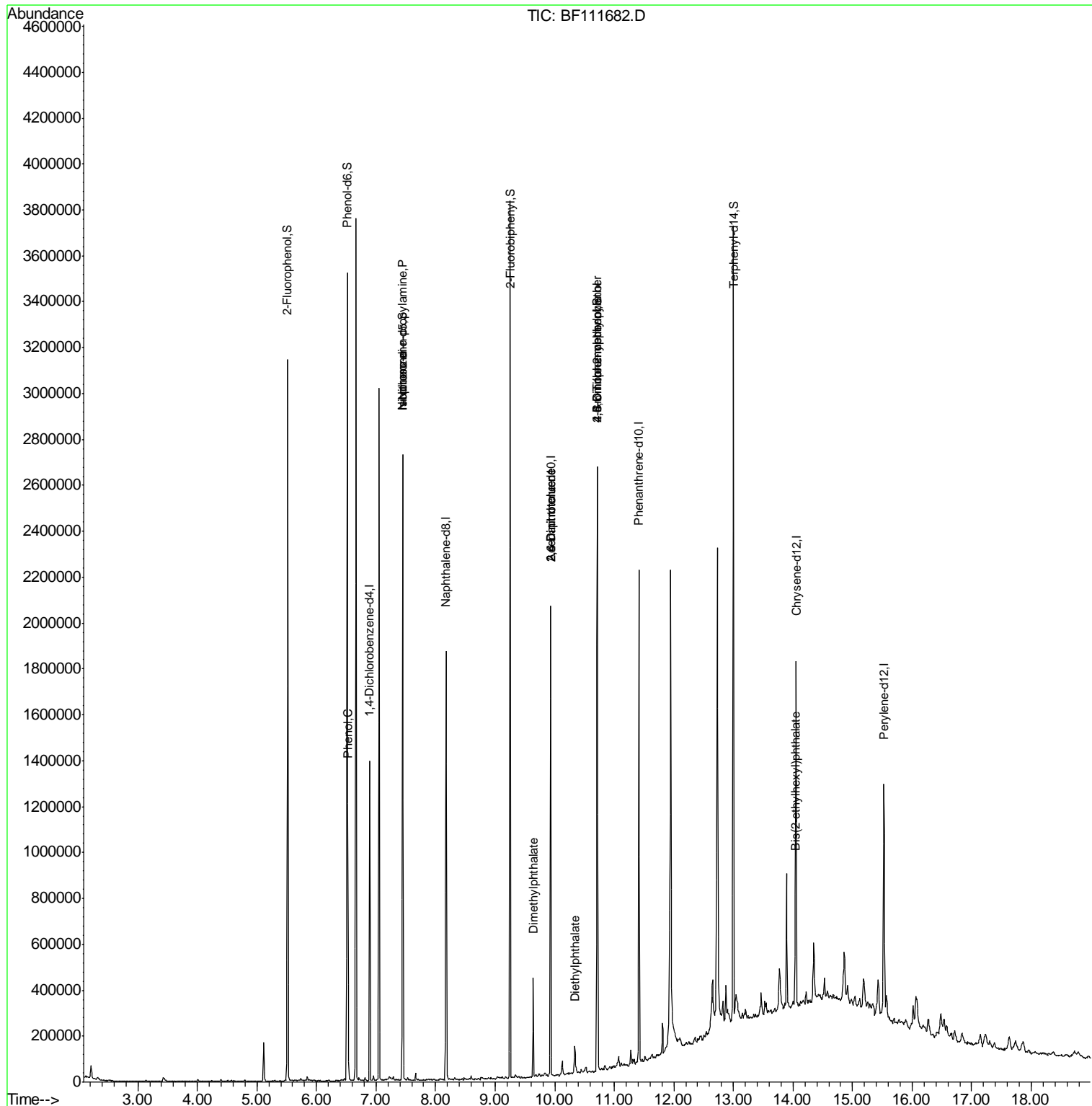
| | | | | | | Qvalue |
|--------------------------------|-------|-----|--------|--------|----|--------|
| 10) Phenol | 6.53 | 94 | 90695 | 5.356 | ng | 96 |
| 19) n-Nitroso-di-n-propylamine | 7.45 | 70 | 108782 | 10.915 | ng | # 77 |
| 25) Isophorone | 7.45 | 82 | 793412 | 33.591 | ng | # 64 |
| 50) Dimethylphthalate | 9.64 | 163 | 146181 | 5.074 | ng | 97 |
| 51) 2,6-Dinitrotoluene | 9.93 | 165 | 50107 | 8.722 | ng | # 29 |
| 57) 2,4-Dinitrotoluene | 9.93 | 165 | 50107 | 7.257 | ng | # 25 |
| 60) Diethylphthalate | 10.33 | 149 | 59975 | 2.122 | ng | 99 |
| 65) 4,6-Dinitro-2-methylphenol | 10.72 | 198 | 689 | 6.889 | ng | # 1 |
| 67) 4-Bromophenyl-phenylether | 10.72 | 248 | 18475 | 2.034 | ng | # 1 |
| 84) Bis(2-ethylhexyl)phthalate | 14.03 | 149 | 41669 | 2.267 | ng | # 97 |

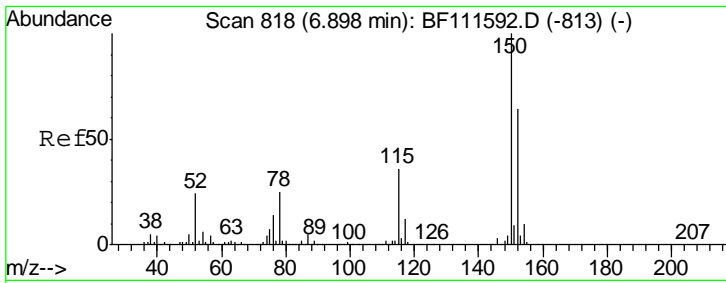
(#) = qualifier out of range (m) = manual integration (+) = signals summed

Data Path : Z:\SVOASRV\HPCHEM1\BNA_F\DATA\BF122118\
 Data File : BF111682.D
 Acq On : 21 Dec 2018 12:48
 Operator : JU/SJ
 Sample : J6353-06RE
 Misc :
 ALS Vial : 3 Sample Multiplier: 1

Instrument :
 BNA_F
 ClientSampleId :
 P001-SS003-0002-01

Quant Time: Dec 21 22:32:40 2018
 Quant Method : Z:\SVOASRV\HPCHEM1\BNA_F\METHODS\8270-BF121918.M
 Quant Title : ASP BNA STANDARDS FOR 5 POINT CALIBRATION
 QLast Update : Wed Dec 19 17:39:39 2018
 Response via : Initial Calibration

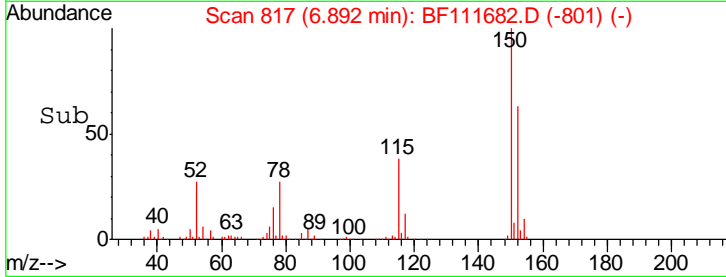
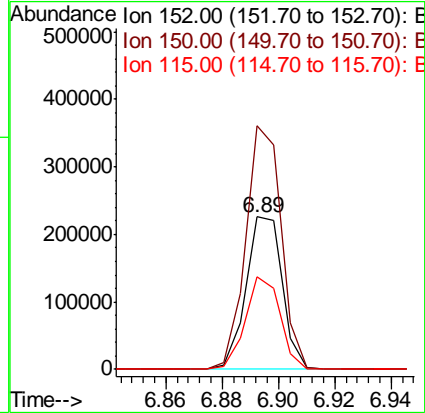
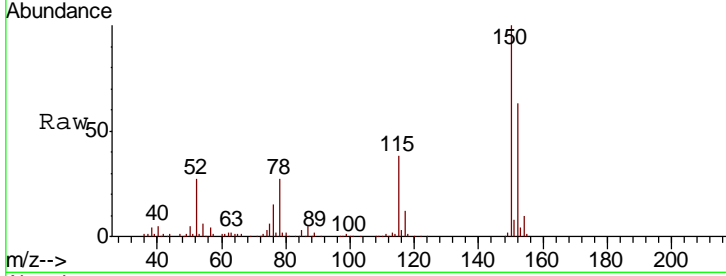




#1
 1,4-Dichlorobenzene-d4
 Concen: 20.000 ng
 RT: 6.89 min Scan# 817
 Delta R.T. -0.01 min
 Lab File: BF111682.D
 Acq: 21 Dec 2018 12:48

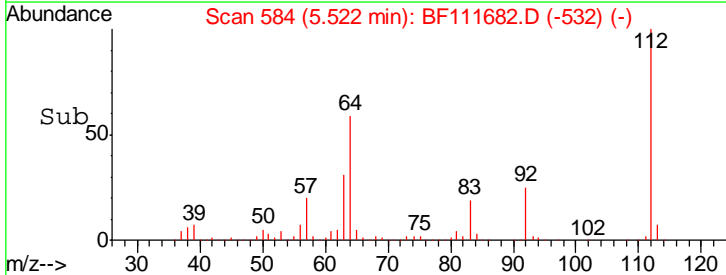
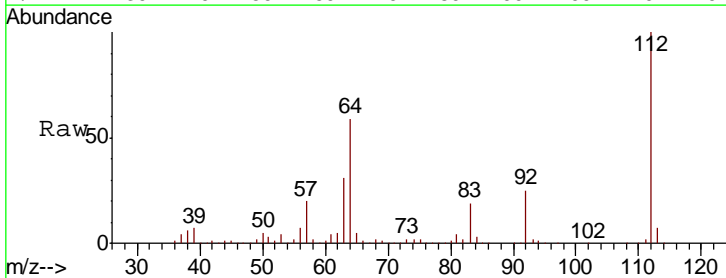
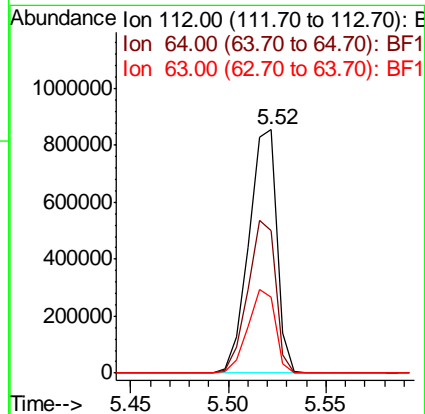
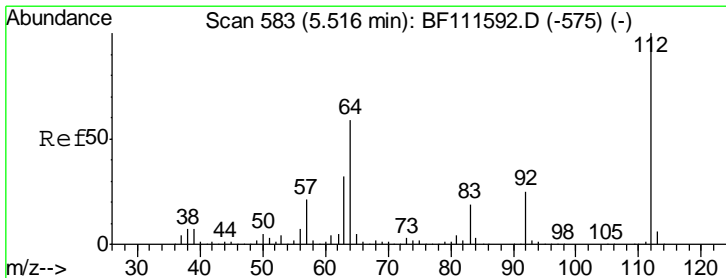
Instrument :
 BNA_F
 ClientSampleId :
 P001-SS003-0002-01

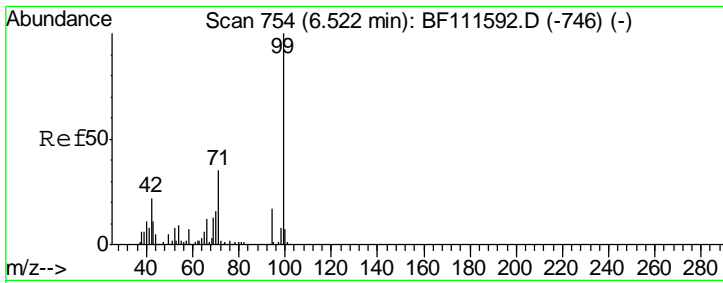
| Tgt Ion | Resp | Lower | Upper |
|---------|--------|-------|-------|
| 152 | 201002 | | |
| 152 | 100 | | |
| 150 | 159.9 | 126.6 | 189.8 |
| 115 | 60.8 | 50.7 | 76.1 |



#5
 2-Fluorophenol
 Concen: 72.508 ng
 RT: 5.52 min Scan# 584
 Delta R.T. 0.01 min
 Lab File: BF111682.D
 Acq: 21 Dec 2018 12:48

| Tgt Ion | Resp | Lower | Upper |
|---------|--------|-------|-------|
| 112 | 855031 | | |
| 112 | 100 | | |
| 64 | 58.5 | 51.8 | 77.6 |
| 63 | 31.1 | 26.8 | 40.2 |

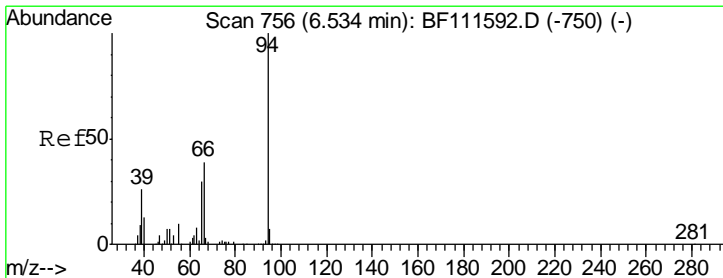
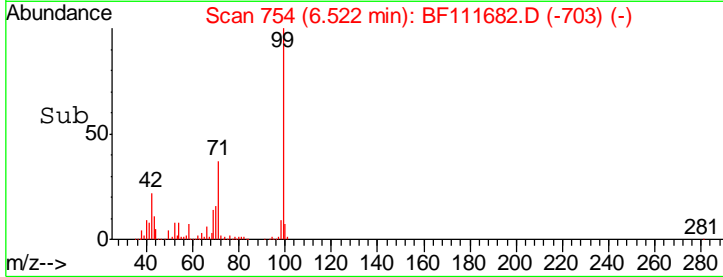
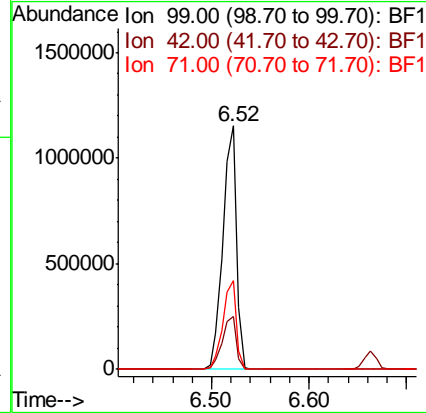
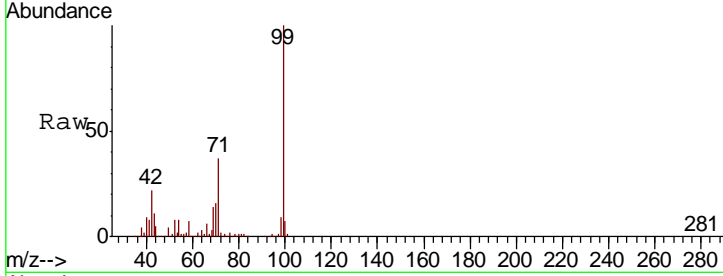




#7
 Phenol-d6
 Concen: 74.509 ng
 RT: 6.52 min Scan# 754
 Delta R.T. -0.00 min
 Lab File: BF111682.D
 Acq: 21 Dec 2018 12:48

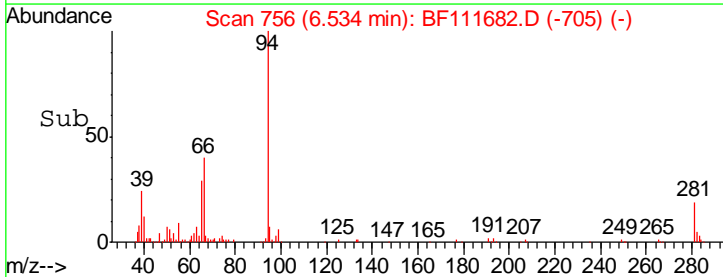
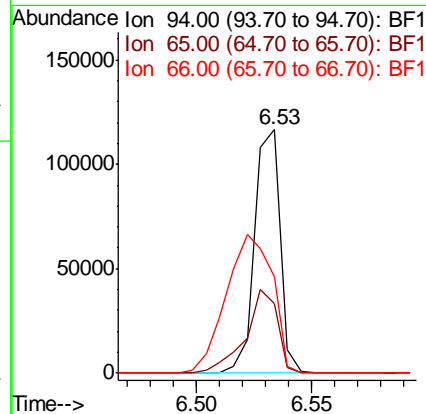
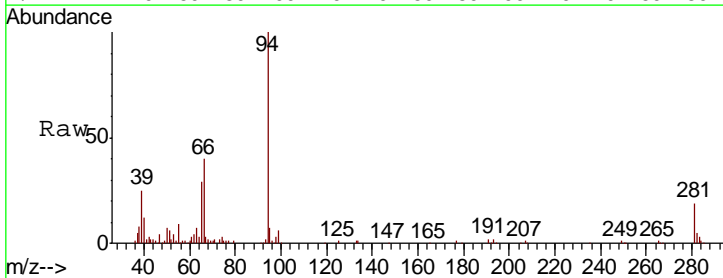
Instrument :
 BNA_F
 ClientSampleId :
 P001-SS003-0002-01

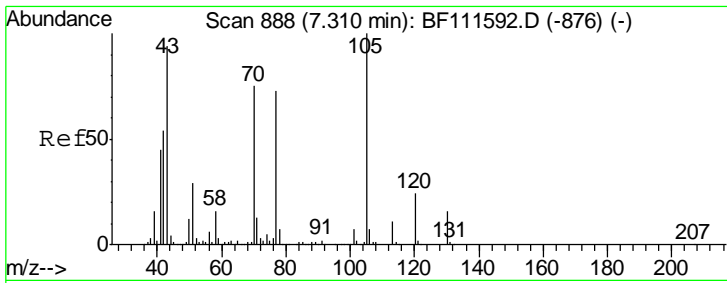
| Tgt Ion | Resp | Lower | Upper |
|---------|---------|-------|-------|
| 99 | 1118187 | | |
| 42 | 21.9 | 17.4 | 26.0 |
| 71 | 36.6 | 26.1 | 39.1 |



#10
 Phenol
 Concen: 5.356 ng
 RT: 6.53 min Scan# 756
 Delta R.T. -0.00 min
 Lab File: BF111682.D
 Acq: 21 Dec 2018 12:48

| Tgt Ion | Resp | Lower | Upper |
|---------|-------|-------|-------|
| 94 | 90695 | | |
| 65 | 28.6 | 11.7 | 51.7 |
| 66 | 39.6 | 21.0 | 61.0 |

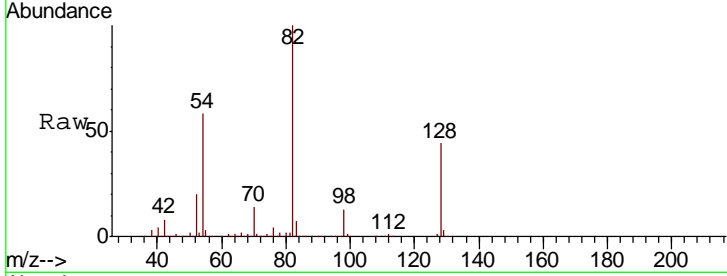




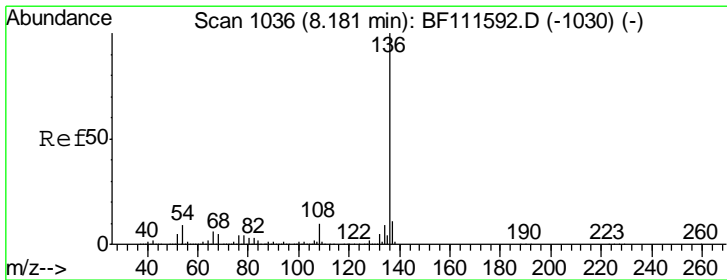
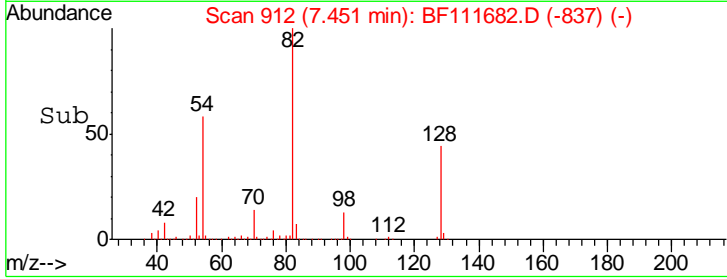
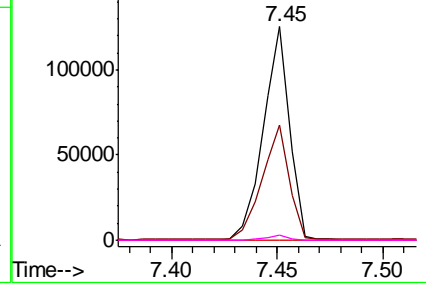
#19
 n-Nitroso-di-n-propylamine
 Concen: 10.915 ng
 RT: 7.45 min Scan# 912
 Delta R.T. 0.14 min
 Lab File: BF111682.D
 Acq: 21 Dec 2018 12:48

Instrument :
 BNA_F
ClientSampled :
 P001-SS003-0002-01

| Tgt Ion | Resp | Lower | Upper |
|---------|------|-------|-------|
| 70 | 100 | | |
| 42 | 54.2 | 53.2 | 79.8 |
| 101 | 0.0 | 8.2 | 12.4# |
| 130 | 2.4 | 18.1 | 27.1# |



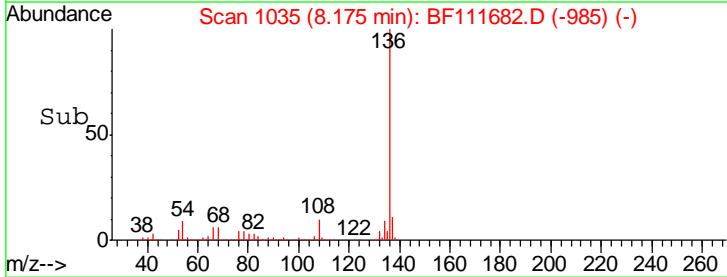
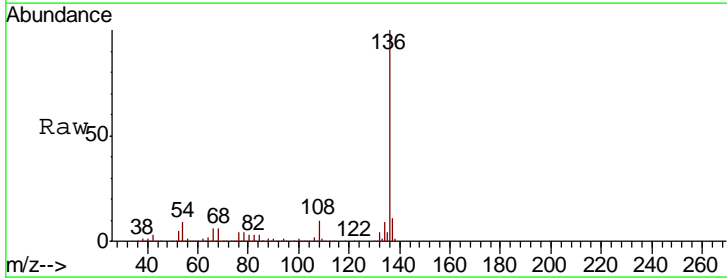
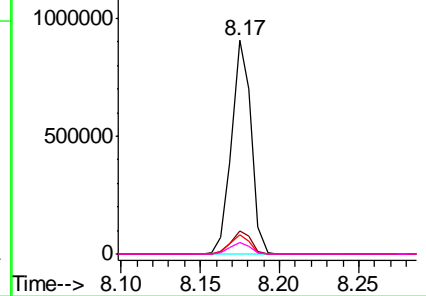
Abundance Ion 70.00 (69.70 to 70.70): BF1
 Ion 42.00 (41.70 to 42.70): BF1
 Ion 101.00 (100.70 to 101.70): E
 Ion 130.00 (129.70 to 130.70): E

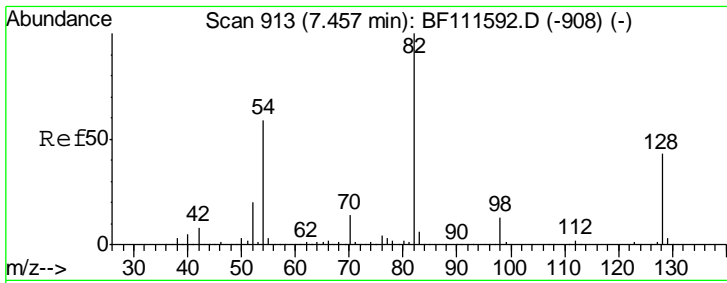


#21
 Naphthalene-d8
 Concen: 20.000 ng
 RT: 8.17 min Scan# 1035
 Delta R.T. -0.01 min
 Lab File: BF111682.D
 Acq: 21 Dec 2018 12:48

| Tgt Ion | Resp | Lower | Upper |
|---------|------|-------|-------|
| 136 | 100 | | |
| 137 | 11.1 | 9.1 | 13.7 |
| 54 | 9.3 | 7.7 | 11.5 |
| 68 | 5.5 | 4.9 | 7.3 |

Abundance Ion 136.00 (135.70 to 136.70): E
 Ion 137.00 (136.70 to 137.70): E
 Ion 54.00 (53.70 to 54.70): BF1
 Ion 68.00 (67.70 to 68.70): BF1

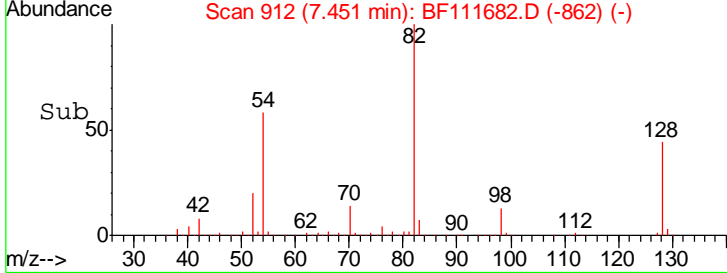
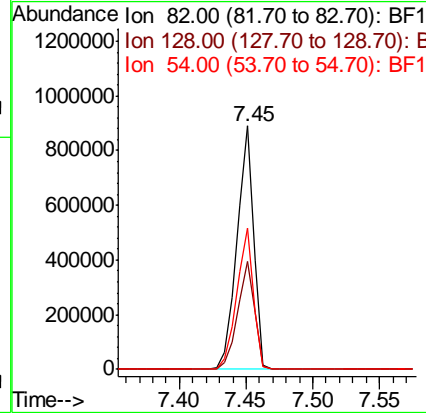
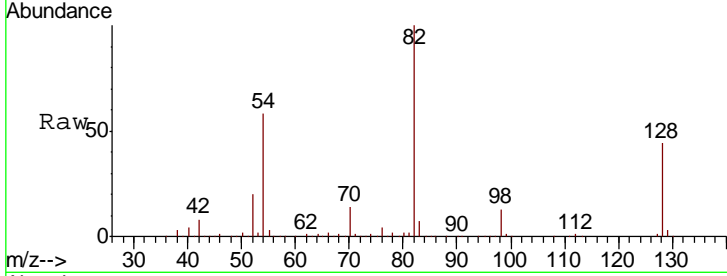




#23
 Nitrobenzene-d5
 Concen: 59.644 ng
 RT: 7.45 min Scan# 912
 Delta R.T. -0.01 min
 Lab File: BF111682.D
 Acq: 21 Dec 2018 12:48

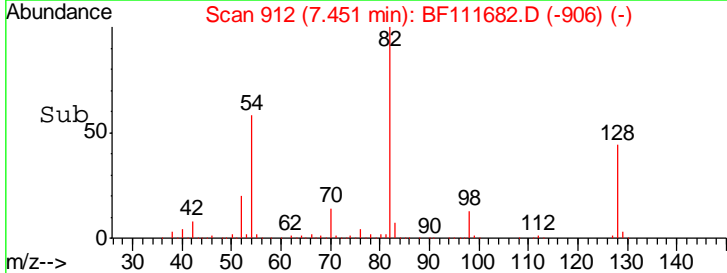
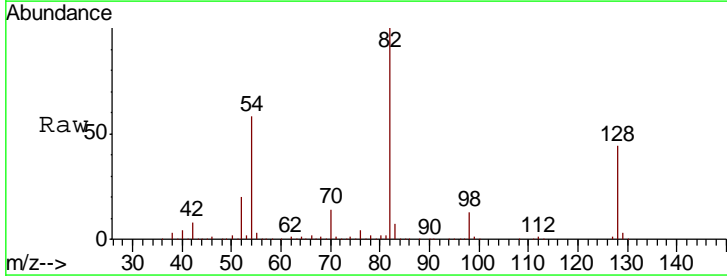
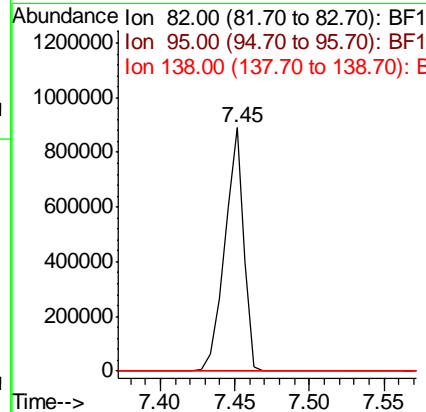
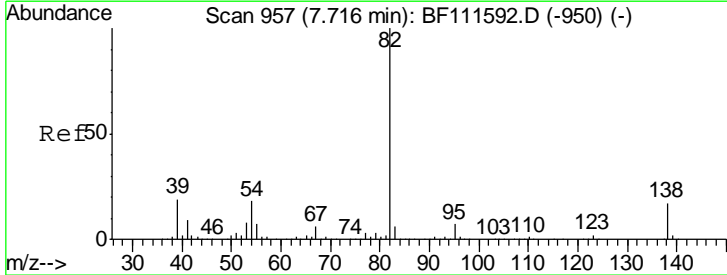
Instrument :
 BNA_F
ClientSampleId :
 P001-SS003-0002-01

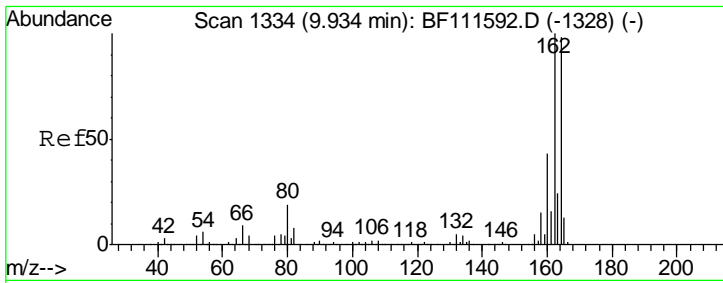
| Tgt Ion | Resp | Lower | Upper |
|---------|------|-------|-------|
| 82 | 100 | | |
| 128 | 44.4 | 37.4 | 56.2 |
| 54 | 58.0 | 47.6 | 71.4 |



#25
 Isophorone
 Concen: 33.591 ng
 RT: 7.45 min Scan# 912
 Delta R.T. -0.26 min
 Lab File: BF111682.D
 Acq: 21 Dec 2018 12:48

| Tgt Ion | Resp | Lower | Upper |
|---------|------|-------|-------|
| 82 | 100 | | |
| 95 | 0.0 | 5.4 | 8.2# |
| 138 | 0.0 | 15.1 | 22.7# |

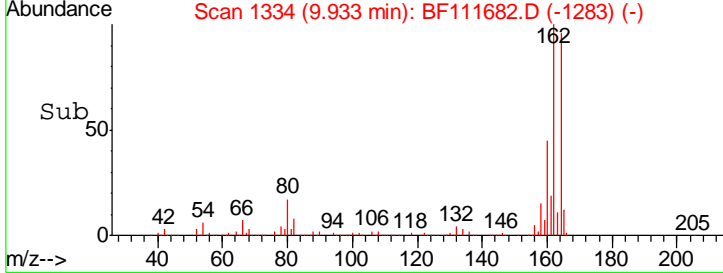
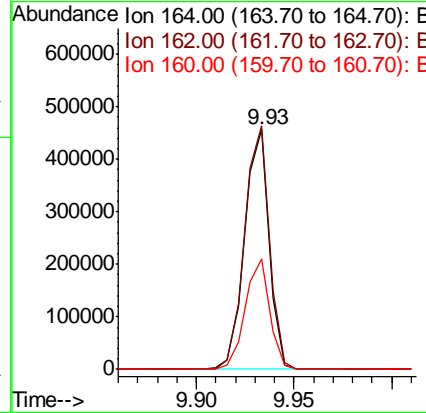
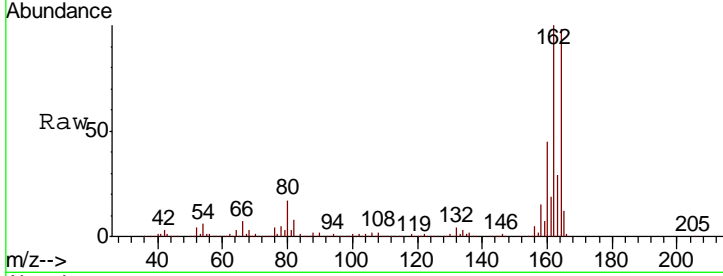




#39
 Acenaphthene-d10
 Concen: 20.000 ng
 RT: 9.93 min Scan# 1334
 Delta R.T. -0.00 min
 Lab File: BF111682.D
 Acq: 21 Dec 2018 12:48

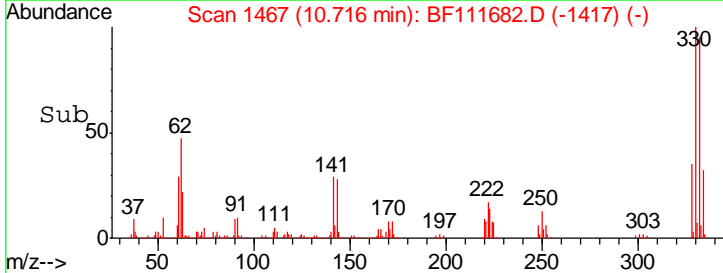
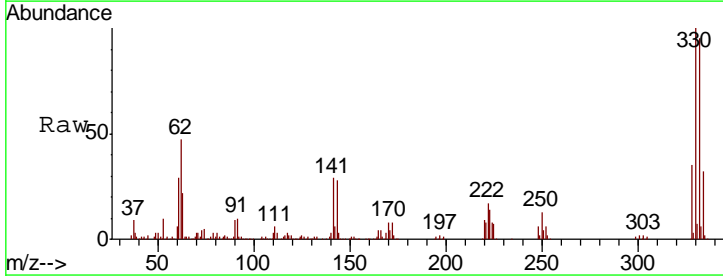
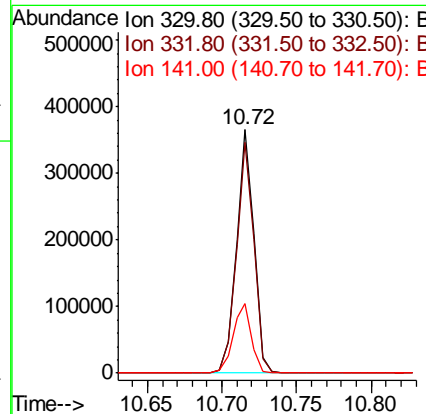
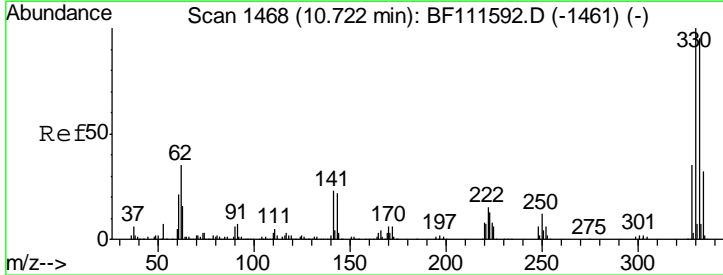
Instrument :
 BNA_F
 ClientSampleId :
 P001-SS003-0002-01

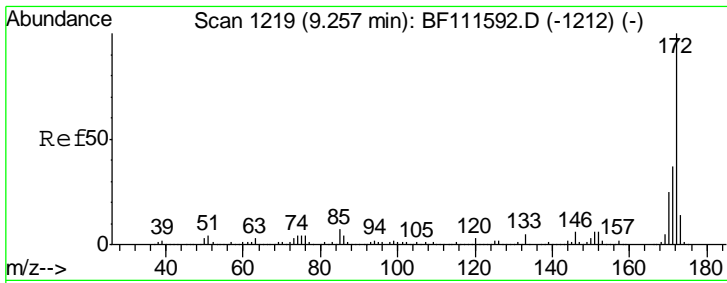
| Tgt Ion | Resp | Lower | Upper |
|---------|-------|-------|-------|
| 164 | 100 | | |
| 162 | 101.6 | 81.4 | 122.0 |
| 160 | 46.1 | 35.7 | 53.5 |



#42
 2,4,6-Tribromophenol
 Concen: 65.120 ng
 RT: 10.72 min Scan# 1467
 Delta R.T. -0.01 min
 Lab File: BF111682.D
 Acq: 21 Dec 2018 12:48

| Tgt Ion | Resp | Lower | Upper |
|---------|------|-------|-------|
| 330 | 100 | | |
| 332 | 95.8 | 76.0 | 114.0 |
| 141 | 30.1 | 31.0 | 46.6# |



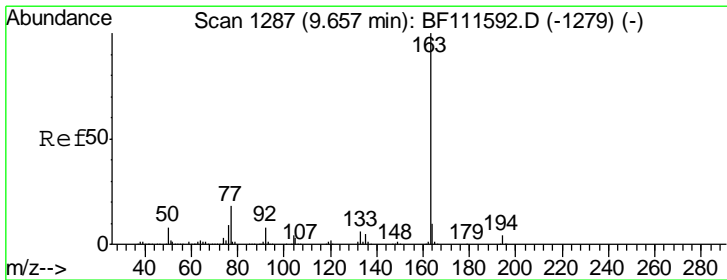
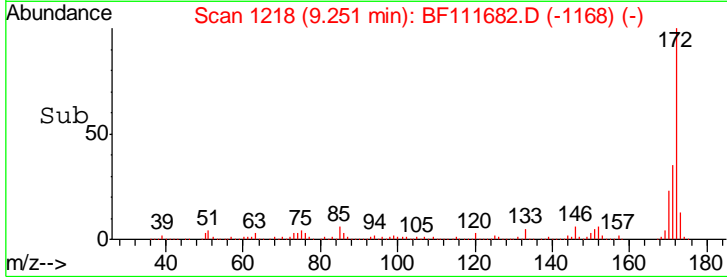
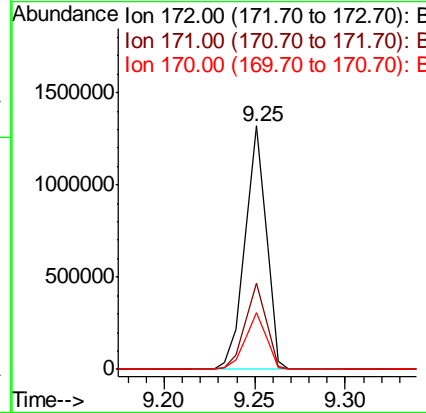
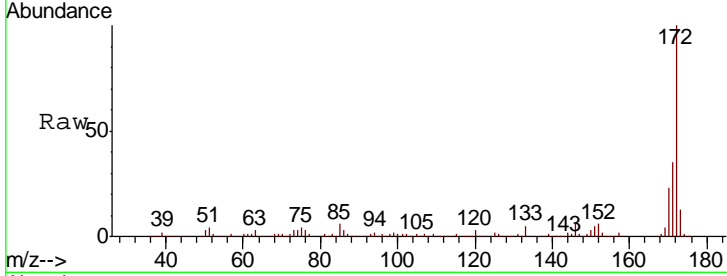


#45
 2-Fluorobiphenyl
 Concen: 39.826 ng
 RT: 9.25 min Scan# 1218
 Delta R.T. -0.01 min
 Lab File: BF111682.D
 Acq: 21 Dec 2018 12:48

Instrument :
 BNA_F
 ClientSampled :
 P001-SS003-0002-01

Tgt Ion:172 Resp: 1076523

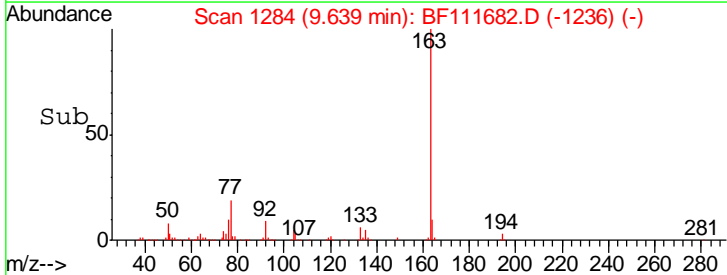
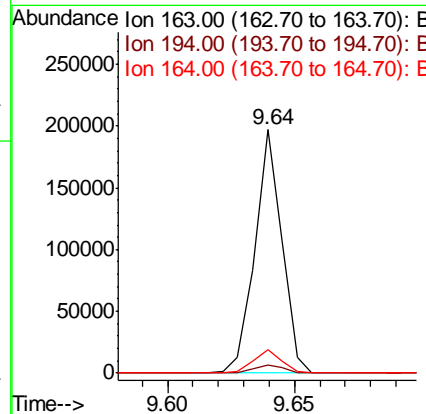
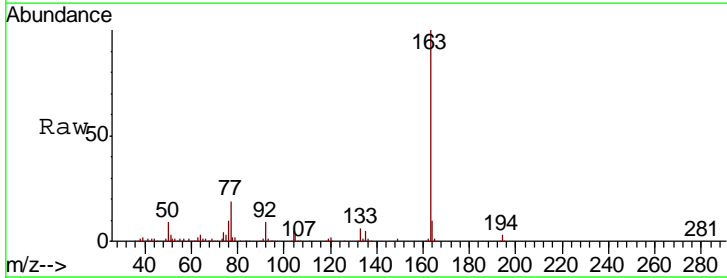
| Ion | Ratio | Lower | Upper |
|-----|-------|-------|-------|
| 172 | 100 | | |
| 171 | 35.5 | 33.0 | 49.4 |
| 170 | 23.4 | 22.3 | 33.5 |

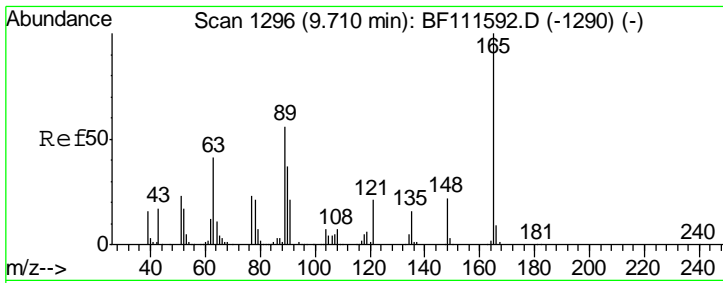


#50
 Dimethylphthalate
 Concen: 5.074 ng
 RT: 9.64 min Scan# 1284
 Delta R.T. -0.02 min
 Lab File: BF111682.D
 Acq: 21 Dec 2018 12:48

Tgt Ion:163 Resp: 146181

| Ion | Ratio | Lower | Upper |
|-----|-------|-------|-------|
| 163 | 100 | | |
| 194 | 3.5 | 3.0 | 4.6 |
| 164 | 9.7 | 8.9 | 13.3 |

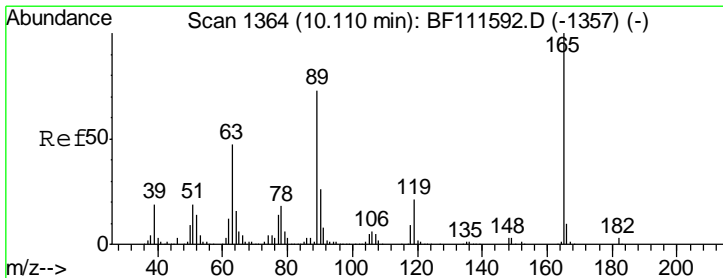
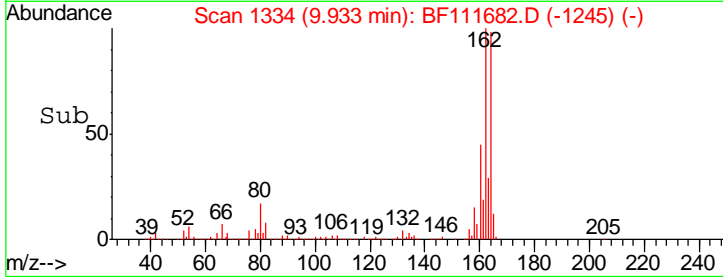
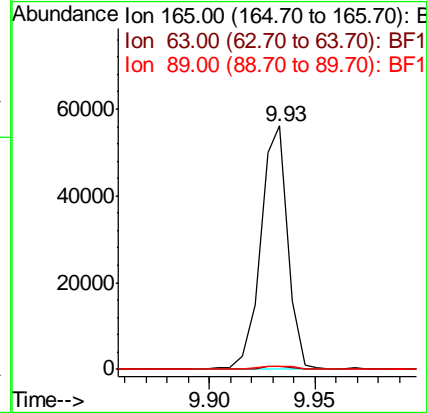
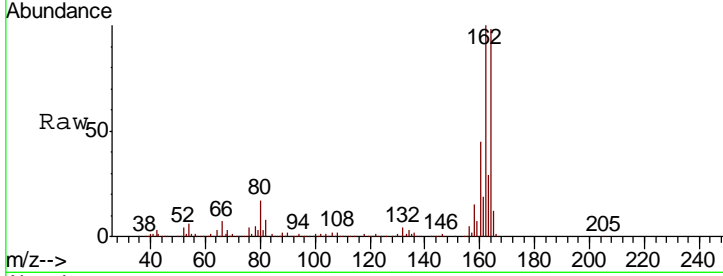




#51
 2,6-Dinitrotoluene
 Concen: 8.722 ng
 RT: 9.93 min Scan# 1334
 Delta R.T. 0.22 min
 Lab File: BF111682.D
 Acq: 21 Dec 2018 12:48

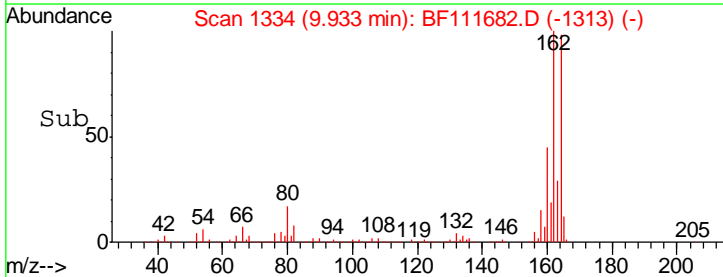
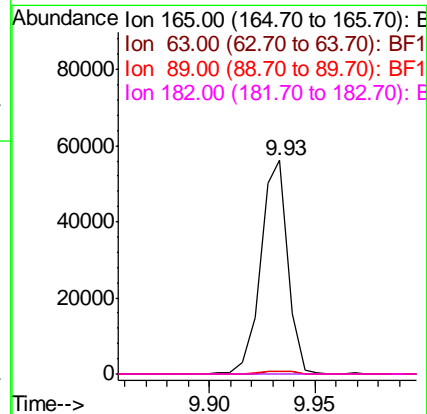
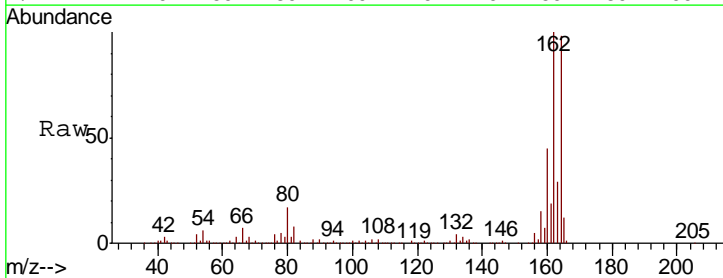
Instrument :
 BNA_F
 ClientSampleId :
 P001-SS003-0002-01

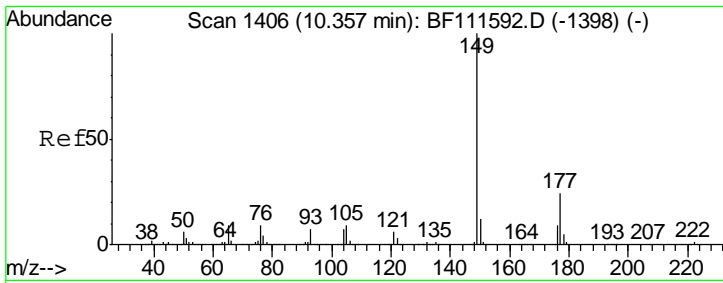
| Tgt Ion | Resp | Lower | Upper |
|---------|------|-------|-------|
| 165 | 100 | | |
| 63 | 1.4 | 40.5 | 60.7# |
| 89 | 1.3 | 40.0 | 60.0# |



#57
 2,4-Dinitrotoluene
 Concen: 7.257 ng
 RT: 9.93 min Scan# 1334
 Delta R.T. -0.18 min
 Lab File: BF111682.D
 Acq: 21 Dec 2018 12:48

| Tgt Ion | Resp | Lower | Upper |
|---------|------|-------|-------|
| 165 | 100 | | |
| 63 | 1.4 | 34.6 | 52.0# |
| 89 | 1.3 | 56.2 | 84.4# |
| 182 | 0.0 | 1.8 | 2.6# |

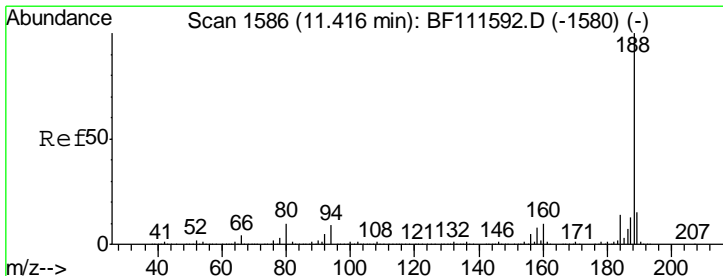
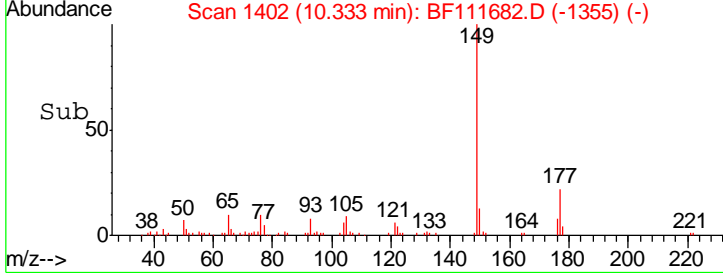
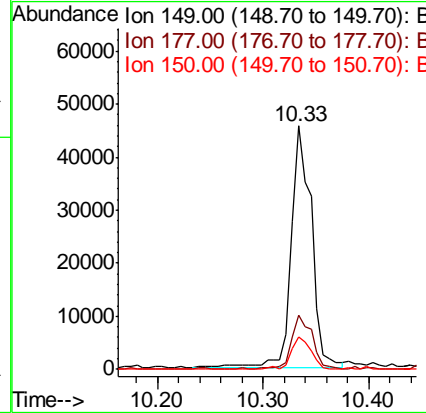
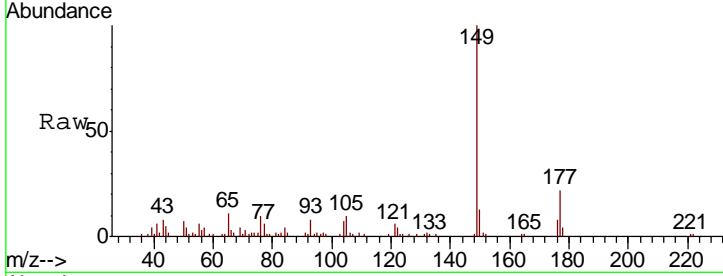




#60
 Diethylphthalate
 Concen: 2.122 ng
 RT: 10.33 min Scan# 1402
 Delta R.T. -0.02 min
 Lab File: BF111682.D
 Acq: 21 Dec 2018 12:48

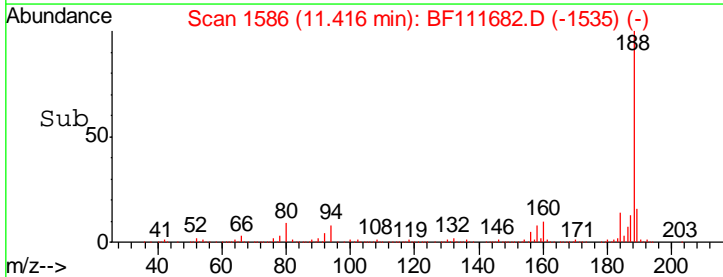
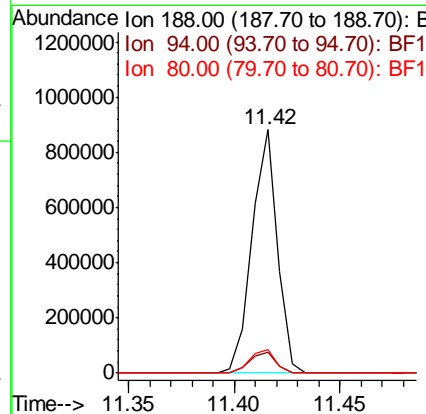
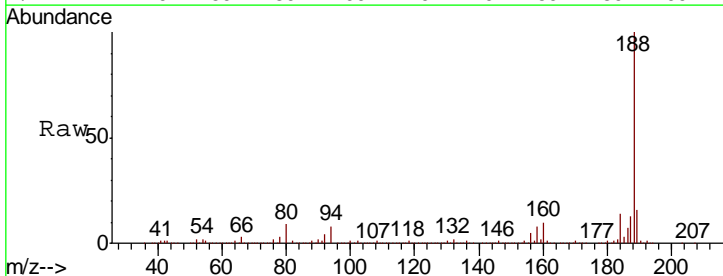
Instrument :
 BNA_F
 ClientSampleId :
 P001-SS003-0002-01

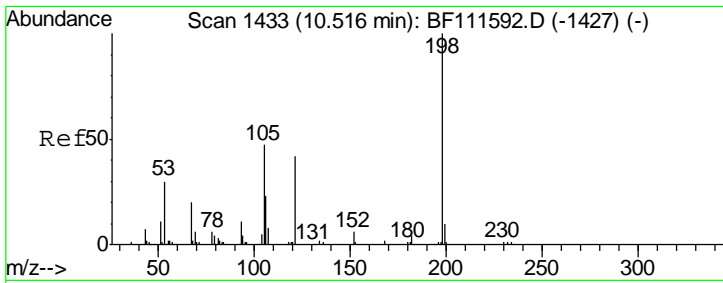
| Tgt Ion | Resp | Lower | Upper |
|---------|-------|-------|-------|
| 149 | 59975 | | |
| 177 | 22.3 | 18.3 | 27.5 |
| 150 | 13.2 | 10.6 | 15.8 |



#64
 Phenanthrene-d10
 Concen: 20.000 ng
 RT: 11.42 min Scan# 1586
 Delta R.T. -0.00 min
 Lab File: BF111682.D
 Acq: 21 Dec 2018 12:48

| Tgt Ion | Resp | Lower | Upper |
|---------|--------|-------|-------|
| 188 | 732186 | | |
| 94 | 8.4 | 9.6 | 14.4# |
| 80 | 9.4 | 9.8 | 14.6# |

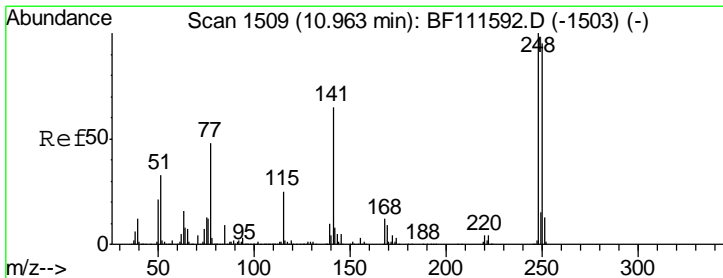
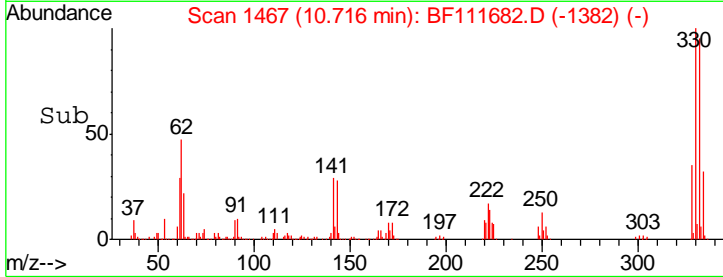
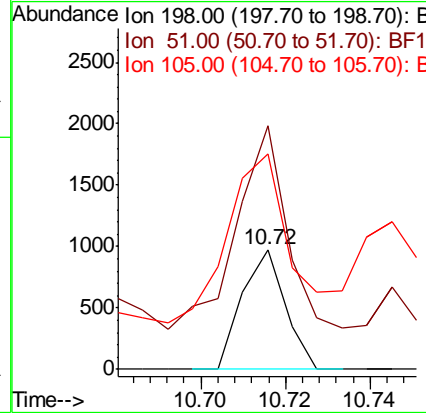
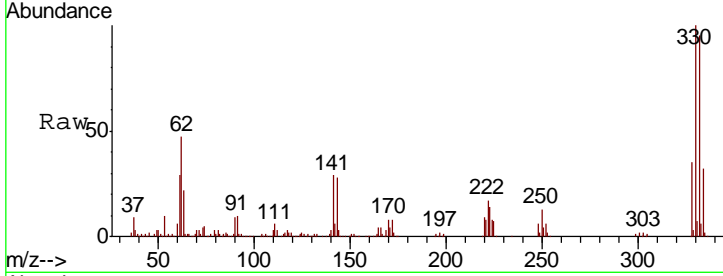




#65
 4,6-Dinitro-2-methylphenol
 Concen: 6.889 ng
 RT: 10.72 min Scan# 1467
 Delta R.T. 0.20 min
 Lab File: BF111682.D
 Acq: 21 Dec 2018 12:48

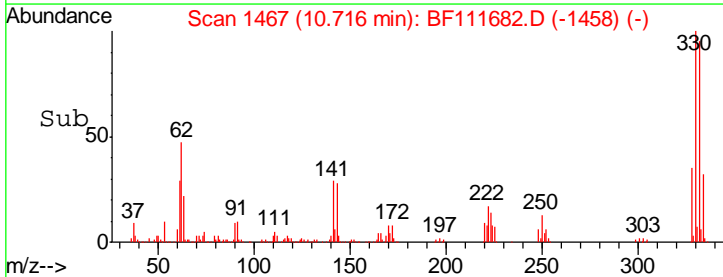
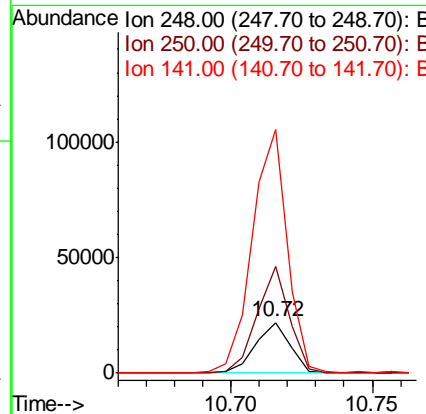
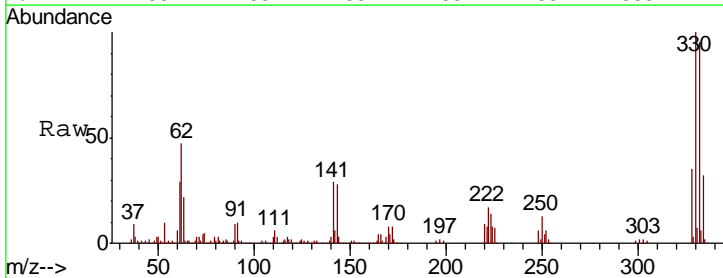
Instrument :
 BNA_F
 ClientSampled :
 P001-SS003-0002-01

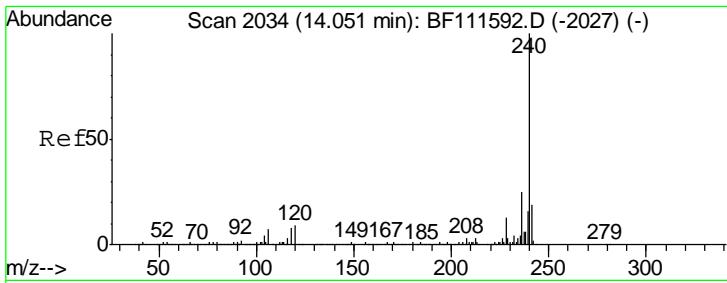
| Tgt Ion | Resp | Lower | Upper |
|---------|-------|-------|-------|
| 198 | 100 | | |
| 51 | 203.0 | 48.0 | 88.0# |
| 105 | 179.9 | 34.0 | 74.0# |



#67
 4-Bromophenyl-phenylether
 Concen: 2.034 ng
 RT: 10.72 min Scan# 1467
 Delta R.T. -0.25 min
 Lab File: BF111682.D
 Acq: 21 Dec 2018 12:48

| Tgt Ion | Resp | Lower | Upper |
|---------|-------|-------|--------|
| 248 | 100 | | |
| 250 | 210.2 | 77.0 | 115.4# |
| 141 | 477.7 | 63.0 | 94.6# |

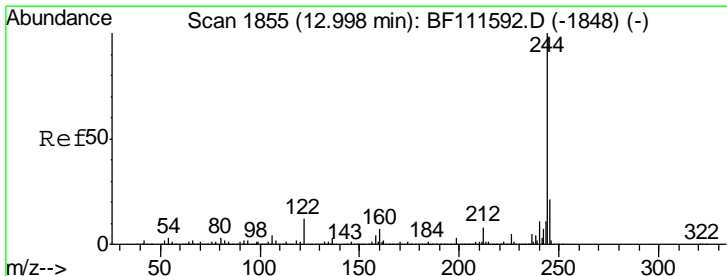
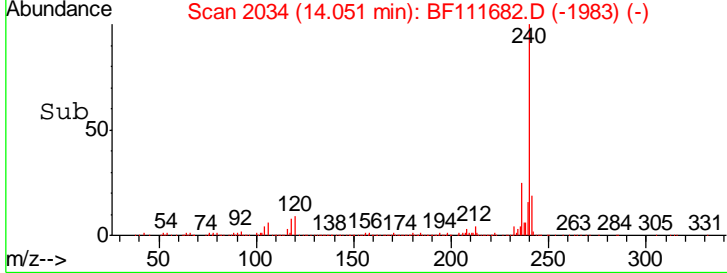
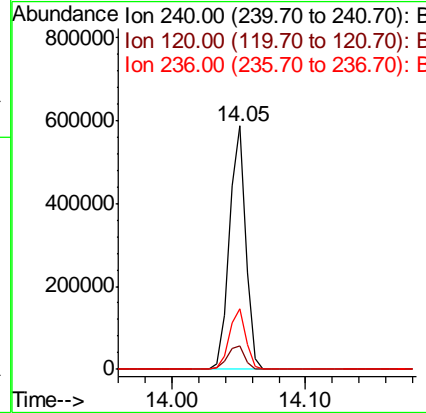
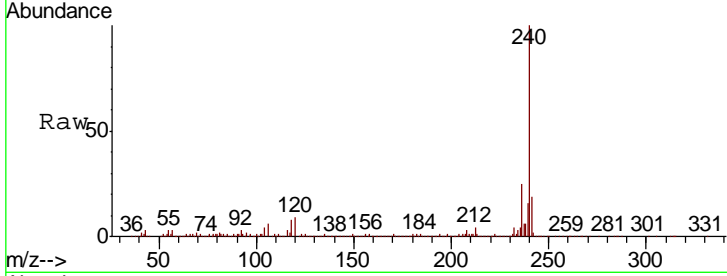




#76
 Chrysene-d12
 Concen: 20.000 ng
 RT: 14.05 min Scan# 2034
 Delta R.T. -0.00 min
 Lab File: BF111682.D
 Acq: 21 Dec 2018 12:48

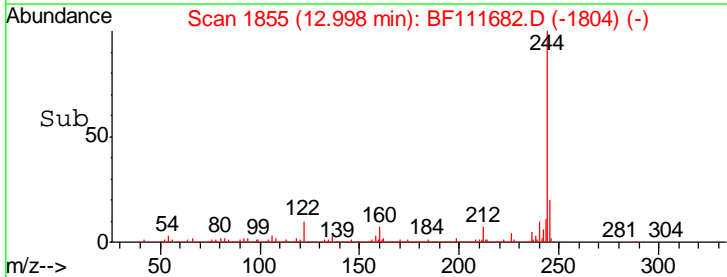
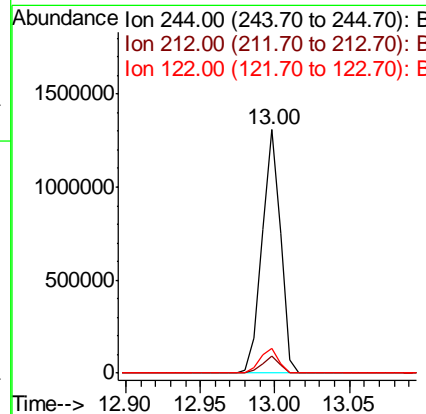
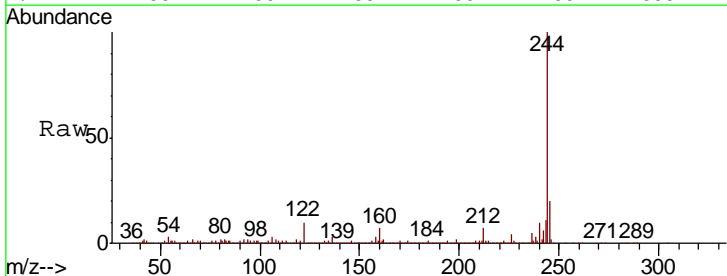
Instrument :
 BNA_F
 ClientSampled :
 P001-SS003-0002-01

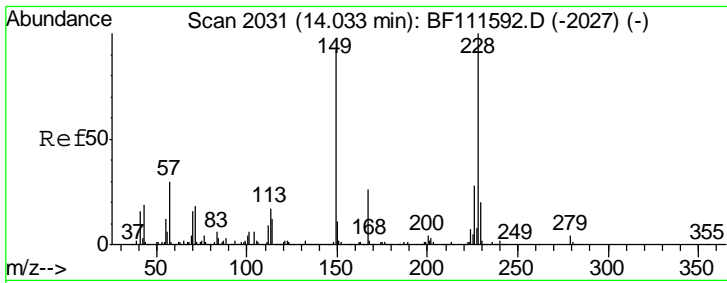
| Tgt Ion | Resp | Lower | Upper |
|---------|--------|-------|-------|
| 240 | 506962 | | |
| 120 | 9.4 | 12.2 | 18.2# |
| 236 | 25.0 | 20.2 | 30.2 |



#79
 Terphenyl-d14
 Concen: 41.159 ng
 RT: 13.00 min Scan# 1855
 Delta R.T. -0.00 min
 Lab File: BF111682.D
 Acq: 21 Dec 2018 12:48

| Tgt Ion | Resp | Lower | Upper |
|---------|---------|-------|-------|
| 244 | 1100280 | | |
| 212 | 6.8 | 5.7 | 8.5 |
| 122 | 10.2 | 13.1 | 19.7# |

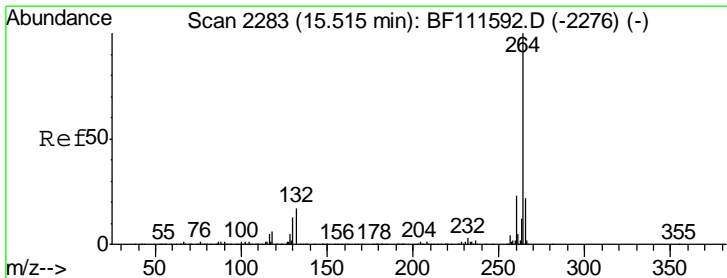
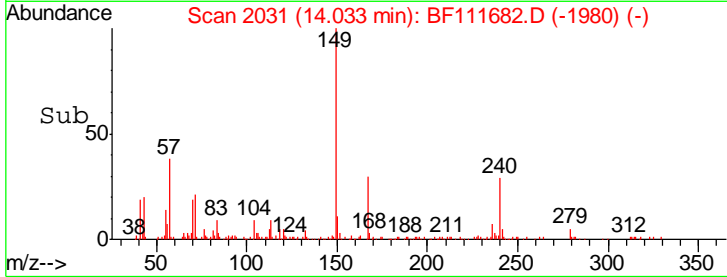
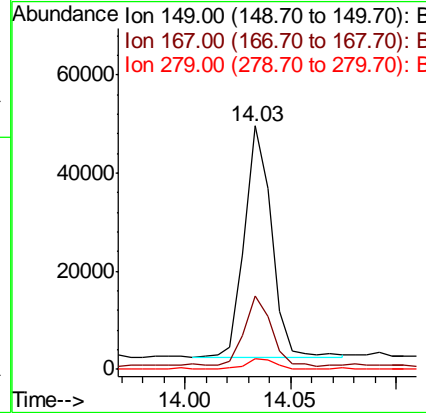
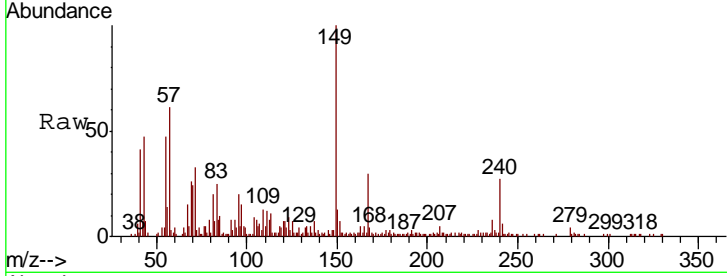




#84
 Bis(2-ethylhexyl)phthalate
 Concen: 2.267 ng
 RT: 14.03 min Scan# 2031
 Delta R.T. -0.00 min
 Lab File: BF111682.D
 Acq: 21 Dec 2018 12:48

Instrument :
 BNA_F
 ClientSampleId :
 P001-SS003-0002-01

| Tgt Ion | Resp | Lower | Upper |
|---------|-------|-------|-------|
| 149 | 41669 | | |
| 167 | 29.9 | 22.5 | 33.7 |
| 279 | 4.5 | 2.6 | 4.0# |



#87
 Perylene-d12
 Concen: 20.000 ng
 RT: 15.53 min Scan# 2285
 Delta R.T. 0.01 min
 Lab File: BF111682.D
 Acq: 21 Dec 2018 12:48

| Tgt Ion | Resp | Lower | Upper |
|---------|--------|-------|-------|
| 264 | 476334 | | |
| 260 | 23.9 | 18.3 | 27.5 |
| 265 | 20.9 | 17.7 | 26.5 |

