

Data Path : Z:\svoasrv\HPCHEM1\BNA_F\Data\BF122220\
 Data File : BF122828.D
 Acq On : 22 Dec 2020 23:36
 Operator : JU/CG
 Sample : L5193-05
 Misc :
 ALS Vial : 12 Sample Multiplier: 1

Instrument :
 BNA_F
 ClientSampleId :
 LLEXSITUTV-022-001-SO

Quant Time: Dec 23 00:50:18 2020
 Quant Method : Z:\SVOASRV\HPCHEM1\BNA_F\METHODS\8270-BF120520.M
 Quant Title : ASP BNA STANDARDS FOR 5 POINT CALIBRATION
 QLast Update : Tue Dec 15 18:14:23 2020
 Response via : Initial Calibration

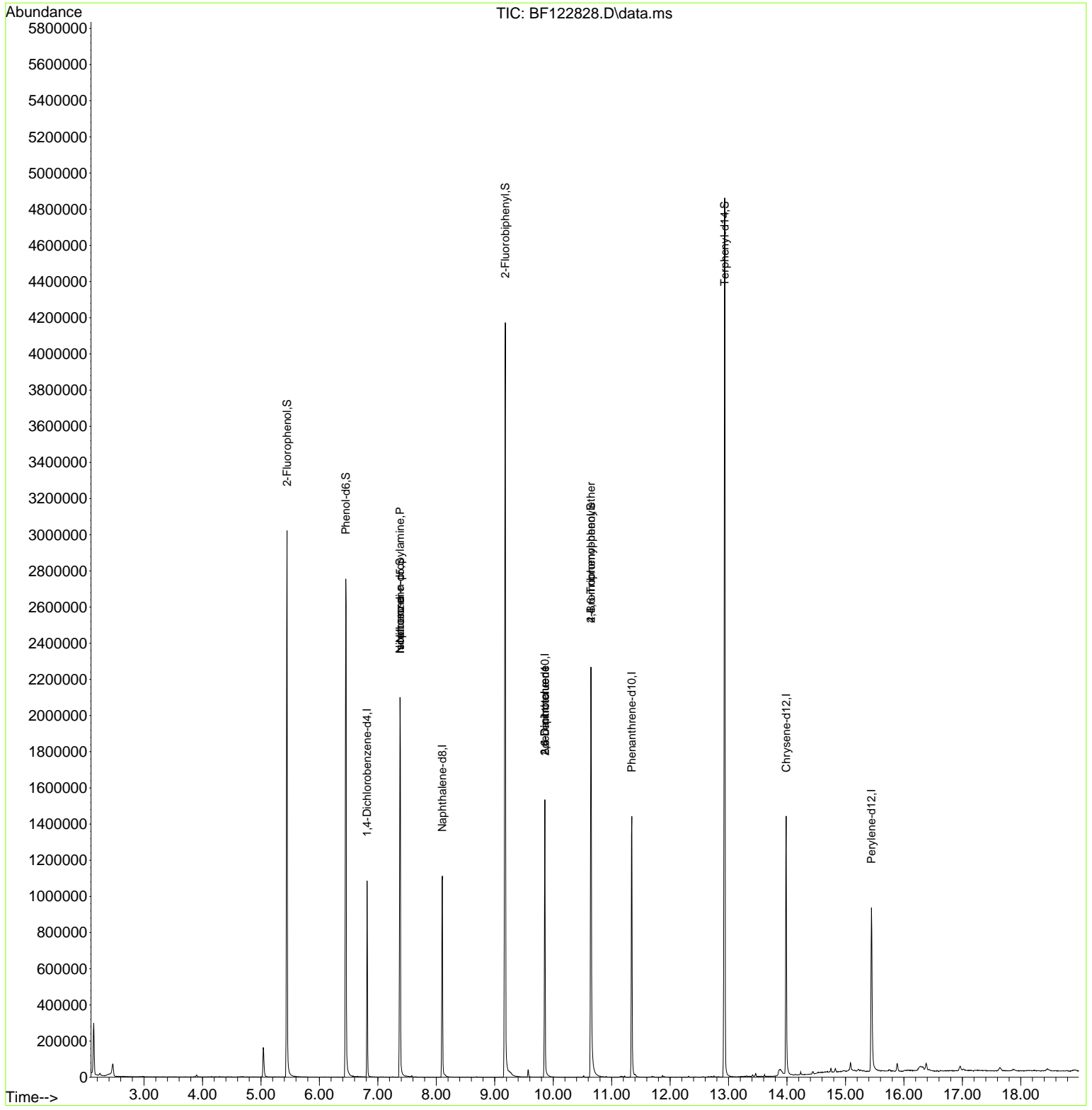
Compound	R.T.	QIon	Response	Conc	Units	Dev(Min)
Internal Standards						
1) 1,4-Dichlorobenzene-d4	6.816	152	156896	20.00	ng	0.00
21) Naphthalene-d8	8.104	136	621186	20.00	ng	0.00
39) Acenaphthene-d10	9.857	164	333382	20.00	ng	0.00
64) Phenanthrene-d10	11.345	188	646951	20.00	ng	0.00
76) Chrysene-d12	13.986	240	571779	20.00	ng	0.00
86) Perylene-d12	15.445	264	486972	20.00	ng	0.00
System Monitoring Compounds						
5) 2-Fluorophenol	5.446	112	916497	92.48	ng	0.01
7) Phenol-d6	6.451	99	1210367	92.09	ng	0.00
23) Nitrobenzene-d5	7.381	82	819811	66.12	ng	-0.01
42) 2,4,6-Tribromophenol	10.645	330	379804	87.03	ng	0.00
45) 2-Fluorobiphenyl	9.181	172	1628944	66.09	ng	0.00
79) Terphenyl-d14	12.933	244	1895652	58.03	ng	0.00
Target Compounds						
19) n-Nitroso-di-n-propyla...	7.381	70	107528	14.28	ng	# 77
25) Isophorone	7.381	82	819802	38.39	ng	# 65
51) 2,6-Dinitrotoluene	9.857	165	41491	7.38	ng	# 31
57) 2,4-Dinitrotoluene	9.857	165	41865	5.59	ng	# 25
67) 4-Bromophenyl-phenylether	10.645	248	22714	2.59	ng	# 1

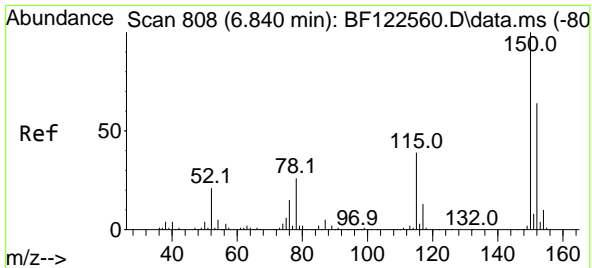
(#) = qualifier out of range (m) = manual integration (+) = signals summed

Data Path : Z:\svoasrv\HPCHEM1\BNA_F\Data\BF122220\
 Data File : BF122828.D
 Acq On : 22 Dec 2020 23:36
 Operator : JU/CG
 Sample : L5193-05
 Misc :
 ALS Vial : 12 Sample Multiplier: 1

Instrument :
 BNA_F
ClientSampleId :
 LLEXSITUTV-022-001-SO

Quant Time: Dec 23 00:50:18 2020
 Quant Method : Z:\SVOASRV\HPCHEM1\BNA_F\METHODS\8270-BF120520.M
 Quant Title : ASP BNA STANDARDS FOR 5 POINT CALIBRATION
 QLast Update : Tue Dec 15 18:14:23 2020
 Response via : Initial Calibration

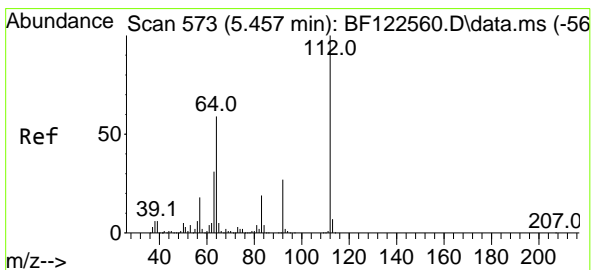
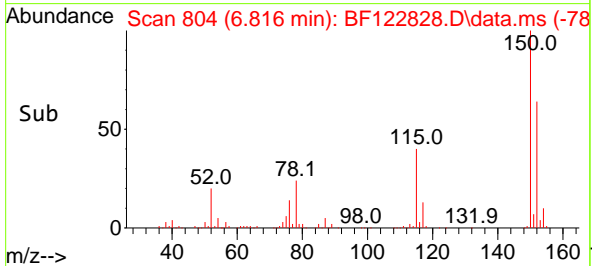
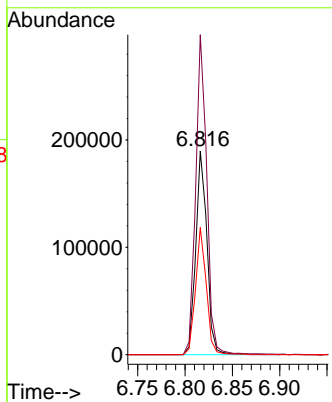
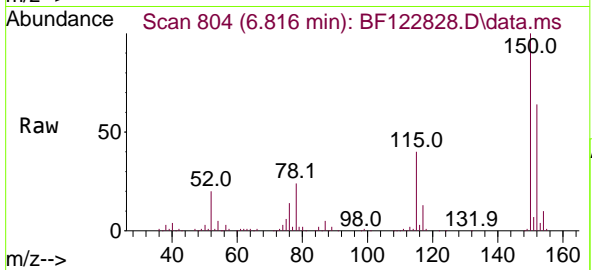




#1
 1,4-Dichlorobenzene-d4
 Concen: 20.00 ng
 RT: 6.816 min Scan# 804
 Delta R.T. -0.006 min
 Lab File: BF122828.D
 Acq: 22 Dec 2020 23:36

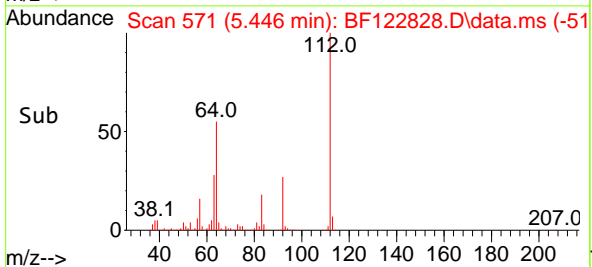
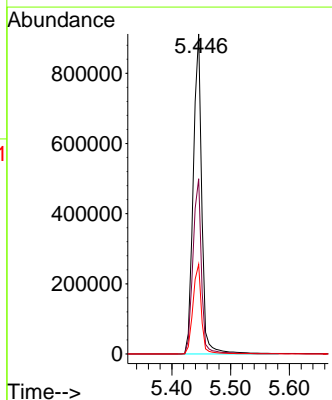
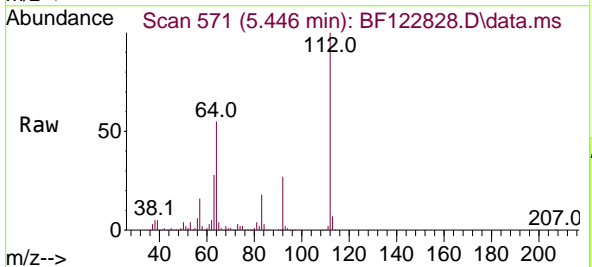
Instrument :
 BNA_F
ClientSampleId :
 LLEXSITUTV-022-001-SO

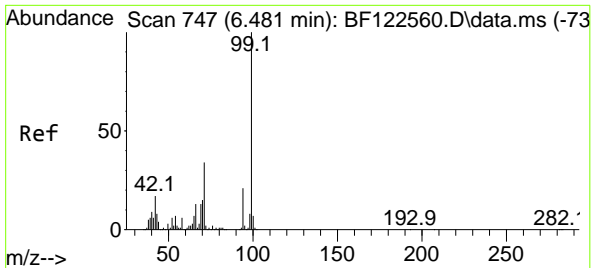
Tgt Ion:152 Resp: 156896
 Ion Ratio Lower Upper
 152 100
 150 157.0 125.8 188.6
 115 62.4 49.3 73.9



#5
 2-Fluorophenol
 Concen: 92.48 ng
 RT: 5.446 min Scan# 571
 Delta R.T. 0.012 min
 Lab File: BF122828.D
 Acq: 22 Dec 2020 23:36

Tgt Ion:112 Resp: 916497
 Ion Ratio Lower Upper
 112 100
 64 54.8 46.9 70.3
 63 28.0 24.5 36.7



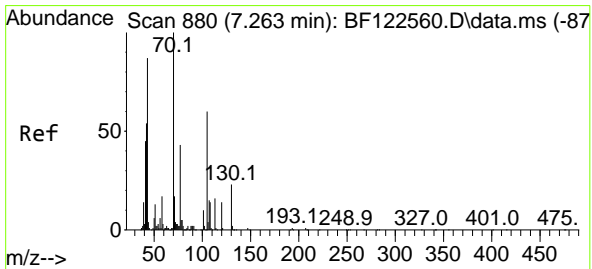
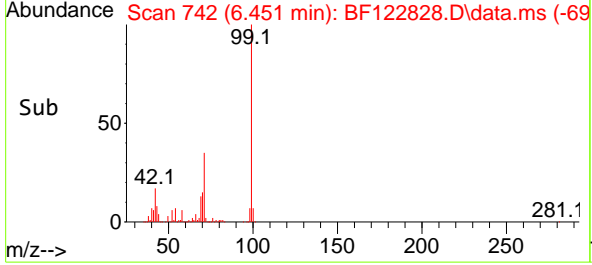
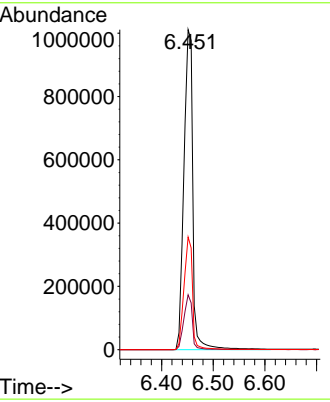
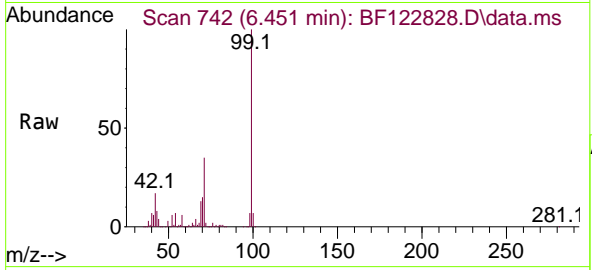


#7
 Phenol-d6
 Concen: 92.09 ng
 RT: 6.451 min Scan# 742
 Delta R.T. -0.006 min
 Lab File: BF122828.D
 Acq: 22 Dec 2020 23:36

Instrument :
 BNA_F
 ClientSampleId :
 LLEXSITUTV-022-001-SO

Tgt Ion: 99 Resp: 1210367

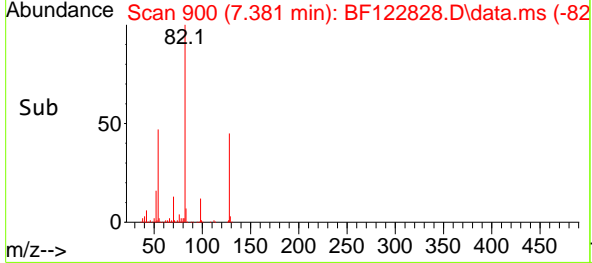
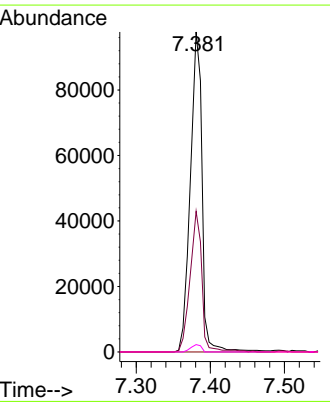
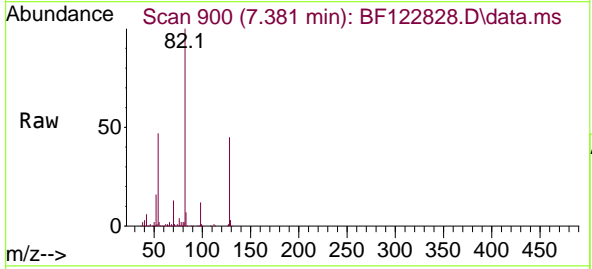
Ion	Ratio	Lower	Upper
99	100		
42	17.1	13.8	20.6
71	35.2	26.9	40.3

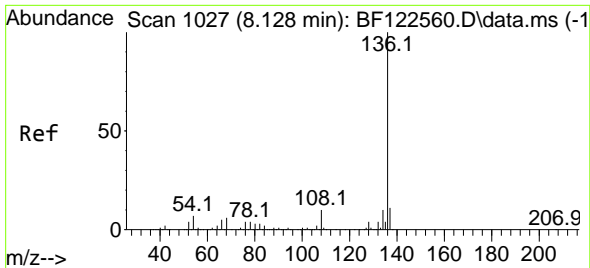


#19
 n-Nitroso-di-n-propylamine
 Concen: 14.28 ng
 RT: 7.381 min Scan# 900
 Delta R.T. 0.141 min
 Lab File: BF122828.D
 Acq: 22 Dec 2020 23:36

Tgt Ion: 70 Resp: 107528

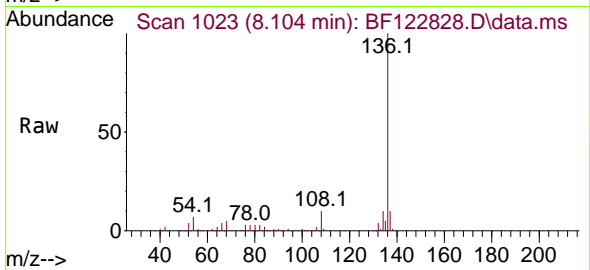
Ion	Ratio	Lower	Upper
70	100		
42	44.0	43.0	64.4
101	0.0	7.9	11.9#
130	2.3	18.5	27.7#





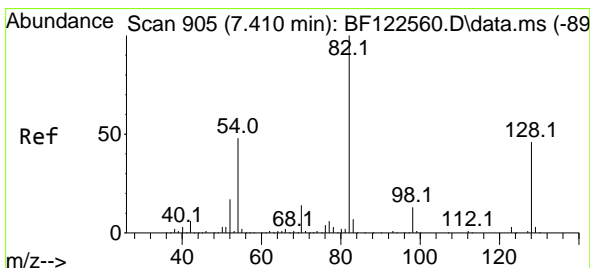
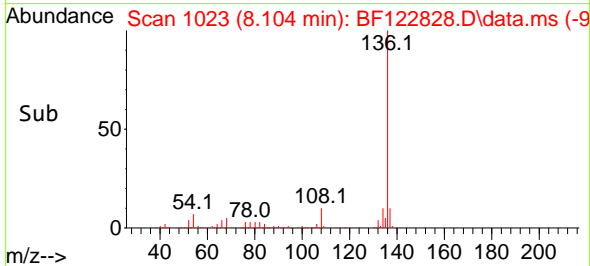
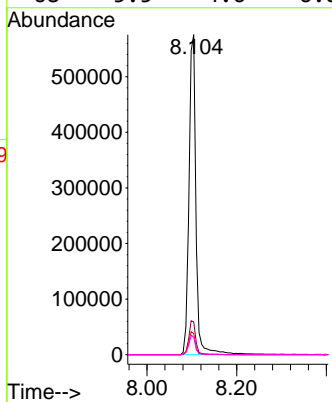
#21
 Naphthalene-d8
 Concen: 20.00 ng
 RT: 8.104 min Scan# 1023
 Delta R.T. -0.006 min
 Lab File: BF122828.D
 Acq: 22 Dec 2020 23:36

Instrument :
 BNA_F
 ClientSampleId :
 LLEXSITUTV-022-001-SO

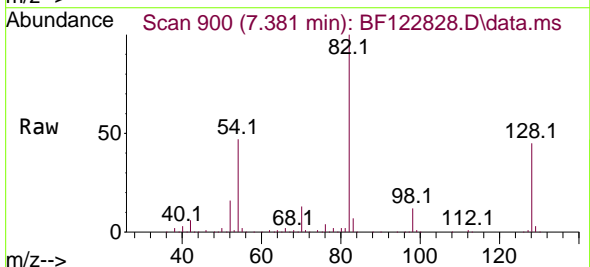


Tgt Ion:136 Resp: 621186

Ion	Ratio	Lower	Upper
136	100		
137	10.2	8.8	13.2
54	6.6	5.5	8.3
68	5.5	4.6	6.8

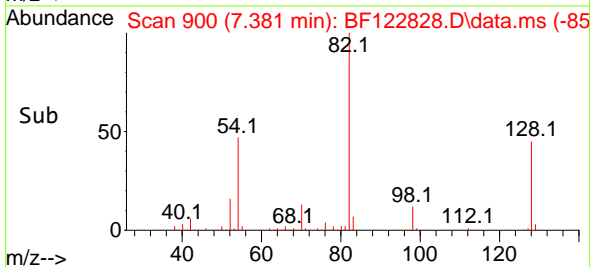
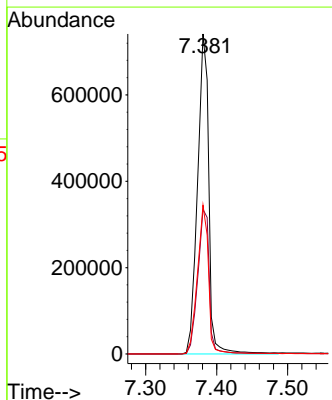


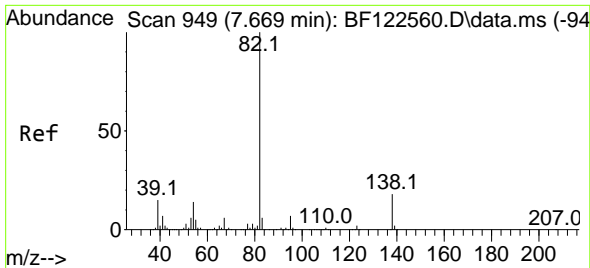
#23
 Nitrobenzene-d5
 Concen: 66.12 ng
 RT: 7.381 min Scan# 900
 Delta R.T. -0.012 min
 Lab File: BF122828.D
 Acq: 22 Dec 2020 23:36



Tgt Ion: 82 Resp: 819811

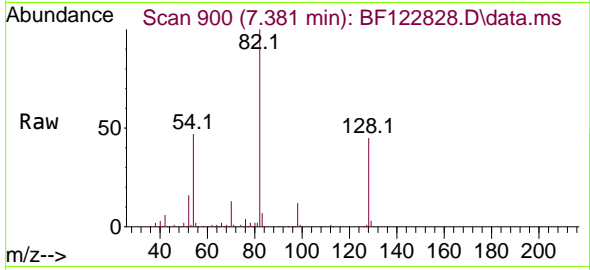
Ion	Ratio	Lower	Upper
82	100		
128	45.2	37.0	55.4
54	46.5	38.4	57.6



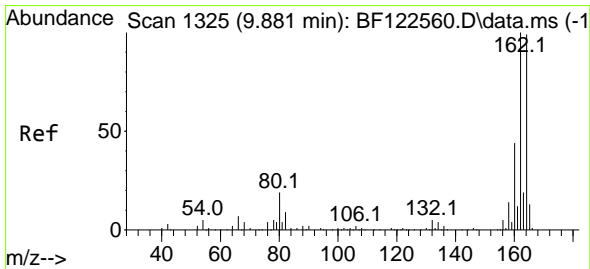
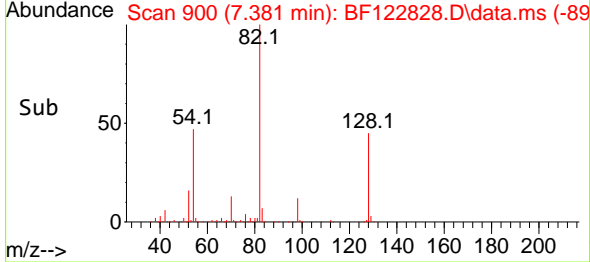
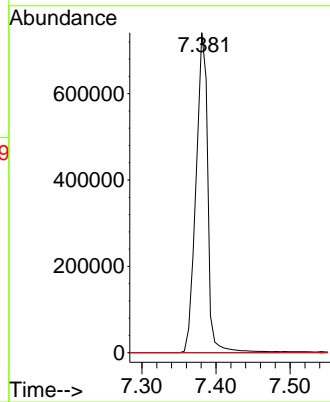


#25
 Isophorone
 Concen: 38.39 ng
 RT: 7.381 min Scan# 900
 Delta R.T. -0.265 min
 Lab File: BF122828.D
 Acq: 22 Dec 2020 23:36

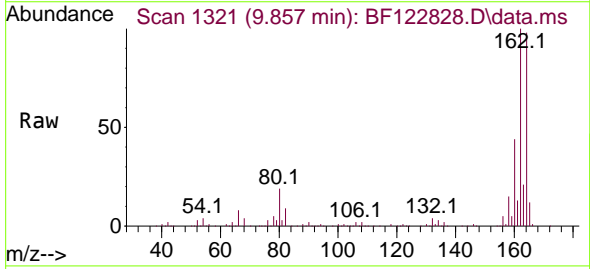
Instrument :
 BNA_F
 ClientSampleId :
 LLEXSITUTV-022-001-SO



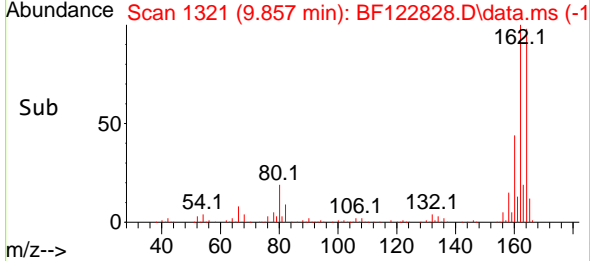
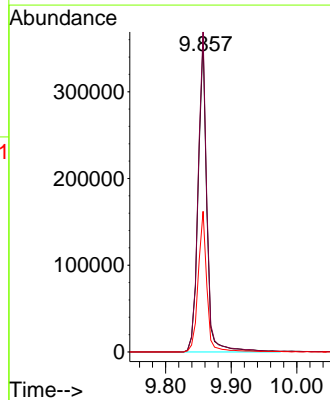
Tgt Ion: 82 Resp: 819802
 Ion Ratio Lower Upper
 82 100
 95 0.0 5.8 8.6#
 138 0.0 14.6 21.8#

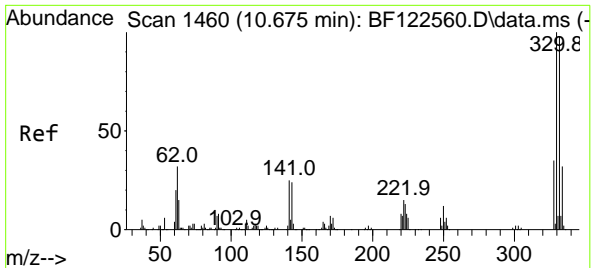


#39
 Acenaphthene-d10
 Concen: 20.00 ng
 RT: 9.857 min Scan# 1321
 Delta R.T. -0.006 min
 Lab File: BF122828.D
 Acq: 22 Dec 2020 23:36



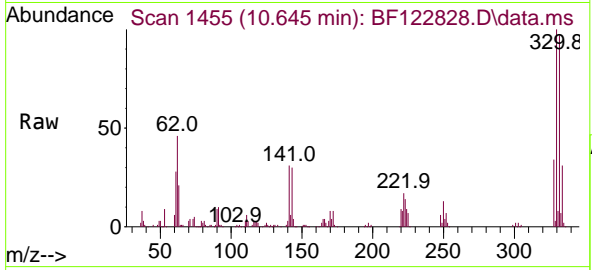
Tgt Ion: 164 Resp: 333382
 Ion Ratio Lower Upper
 164 100
 162 102.4 80.8 121.2
 160 45.0 35.4 53.0



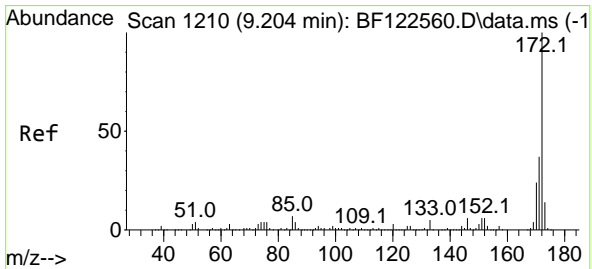
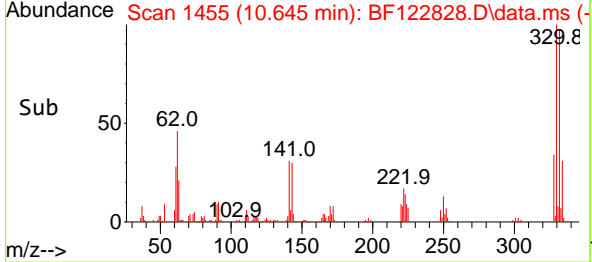
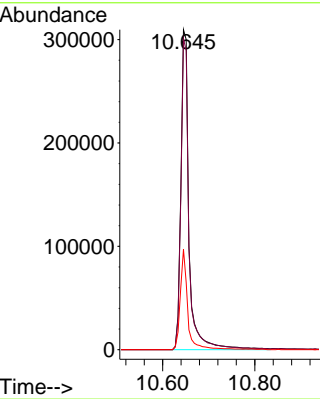


#42
 2,4,6-Tribromophenol
 Concen: 87.03 ng
 RT: 10.645 min Scan# 1455
 Delta R.T. -0.006 min
 Lab File: BF122828.D
 Acq: 22 Dec 2020 23:36

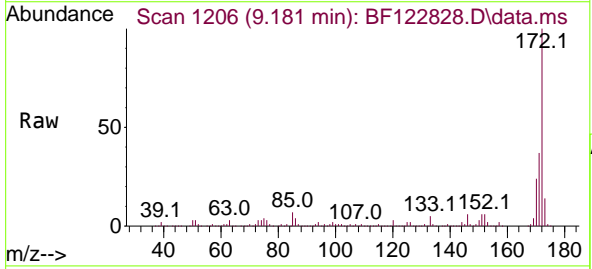
Instrument :
 BNA_F
ClientSampleId :
 LLEXSITUTV-022-001-SO



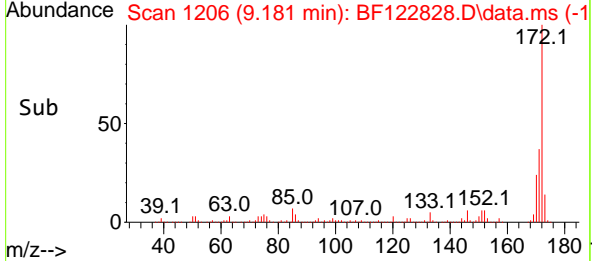
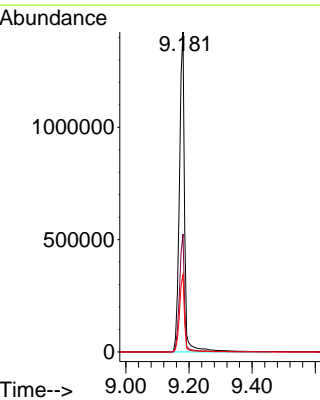
Tgt Ion:330 Resp: 379804
 Ion Ratio Lower Upper
 330 100
 332 96.8 77.5 116.3
 141 28.7 23.8 35.8

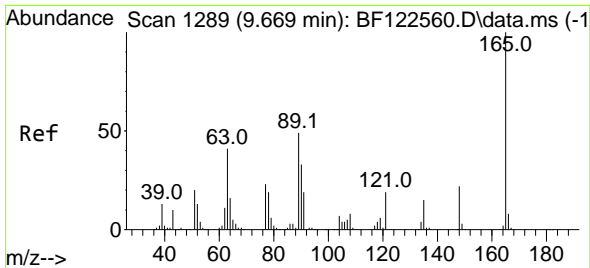


#45
 2-Fluorobiphenyl
 Concen: 66.09 ng
 RT: 9.181 min Scan# 1206
 Delta R.T. -0.006 min
 Lab File: BF122828.D
 Acq: 22 Dec 2020 23:36



Tgt Ion:172 Resp: 1628944
 Ion Ratio Lower Upper
 172 100
 171 36.9 29.6 44.4
 170 24.1 19.5 29.3

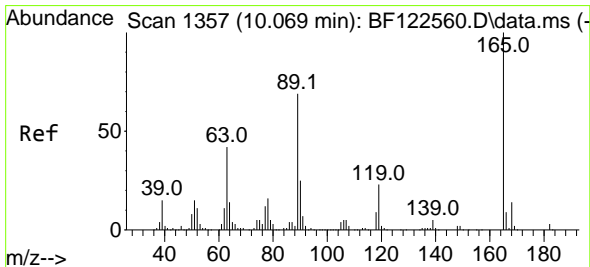
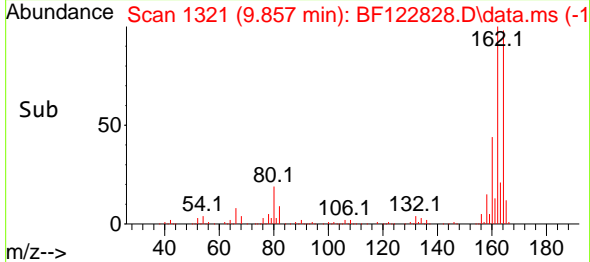
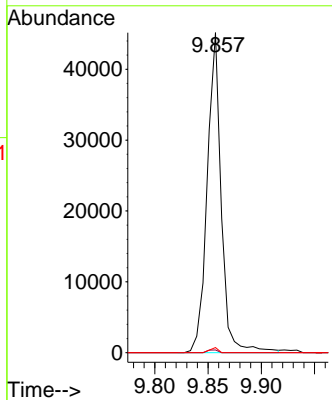
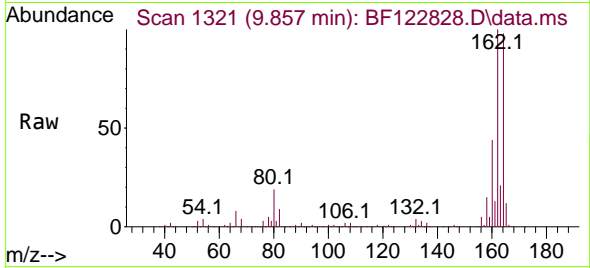




#51
 2,6-Dinitrotoluene
 Concen: 7.38 ng
 RT: 9.857 min Scan# 1321
 Delta R.T. 0.212 min
 Lab File: BF122828.D
 Acq: 22 Dec 2020 23:36

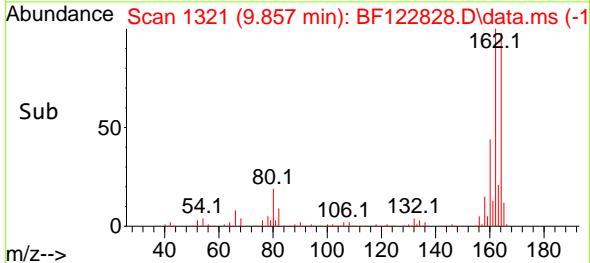
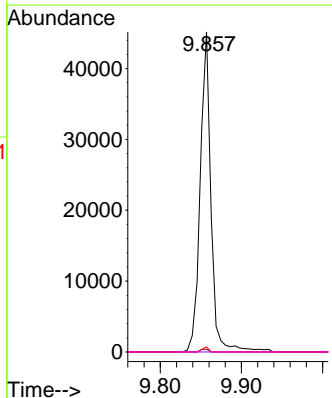
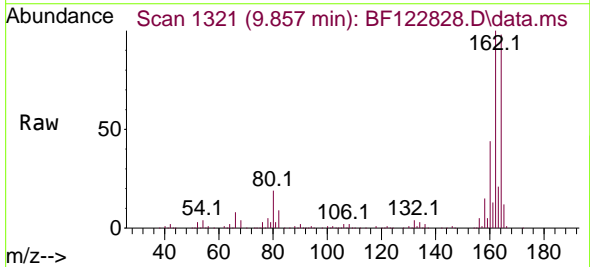
Instrument :
 BNA_F
 ClientSampleId :
 LLEXSITUTV-022-001-SO

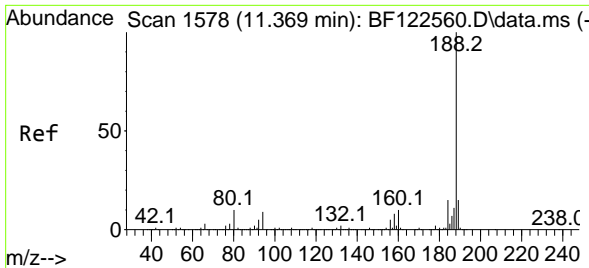
Tgt Ion	Resp	Lower	Upper
165	100		
63	0.9	36.6	55.0#
89	1.6	39.4	59.0#



#57
 2,4-Dinitrotoluene
 Concen: 5.59 ng
 RT: 9.857 min Scan# 1321
 Delta R.T. -0.194 min
 Lab File: BF122828.D
 Acq: 22 Dec 2020 23:36

Tgt Ion	Resp	Lower	Upper
165	100		
63	0.9	34.3	51.5#
89	1.6	55.2	82.8#
182	0.0	2.2	3.2#

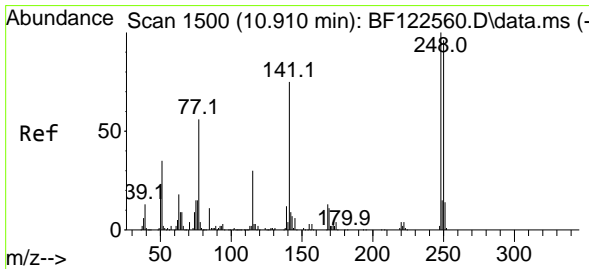
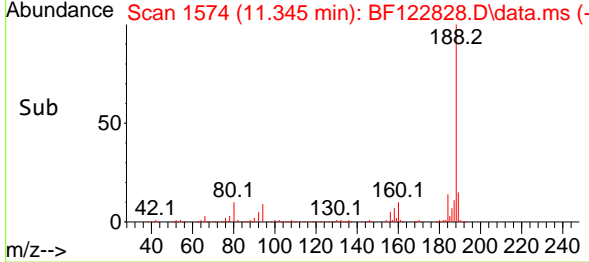
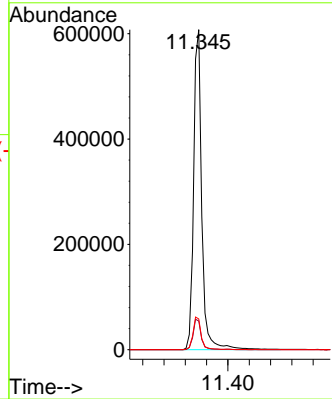
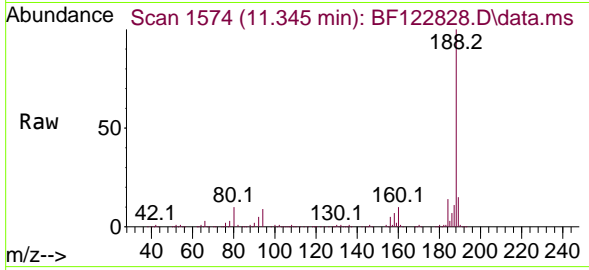




#64
 Phenanthrene-d10
 Concen: 20.00 ng
 RT: 11.345 min Scan# 1574
 Delta R.T. -0.000 min
 Lab File: BF122828.D
 Acq: 22 Dec 2020 23:36

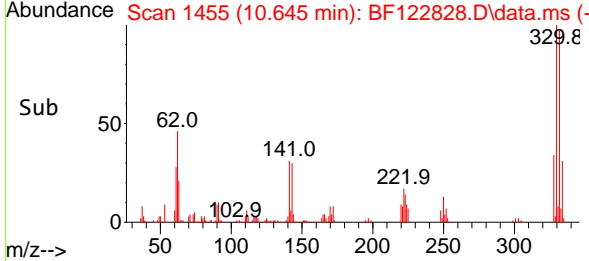
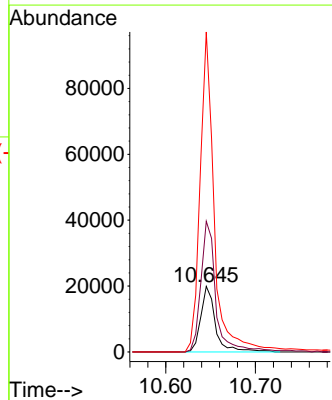
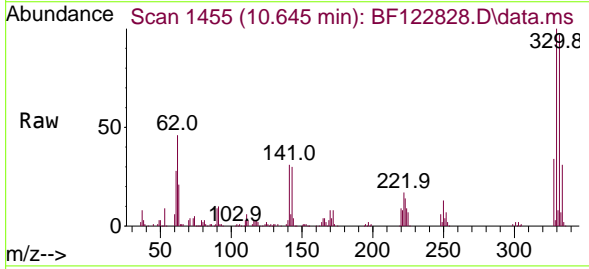
Instrument :
 BNA_F
ClientSampleId :
 LLEXSITUTV-022-001-SO

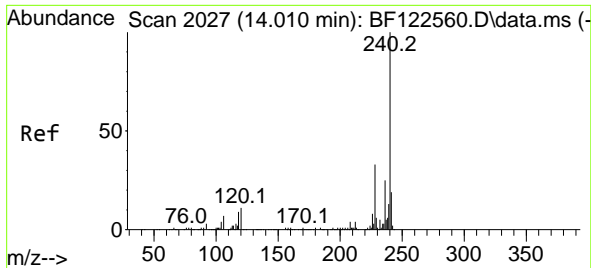
Tgt Ion	Resp	Lower	Upper
188	100		
94	9.0	7.4	11.2
80	9.6	8.2	12.4



#67
 4-Bromophenyl-phenylether
 Concen: 2.59 ng
 RT: 10.645 min Scan# 1455
 Delta R.T. -0.247 min
 Lab File: BF122828.D
 Acq: 22 Dec 2020 23:36

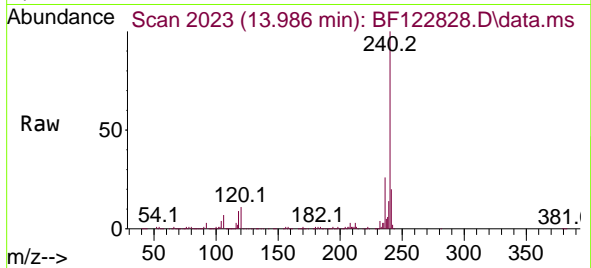
Tgt Ion	Resp	Lower	Upper
248	100		
250	199.4	76.8	115.2#
141	488.2	59.8	89.8#



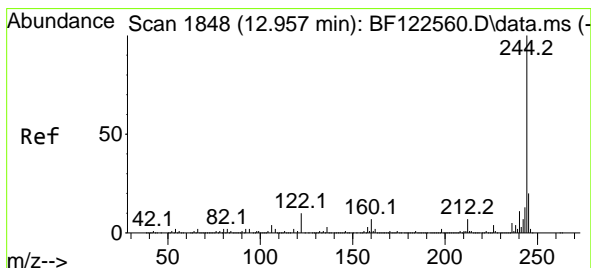
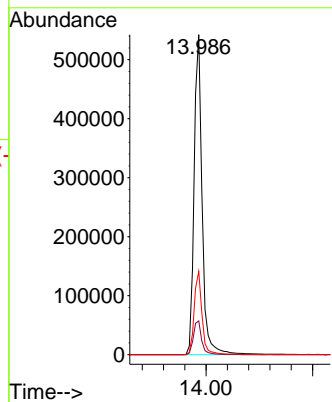
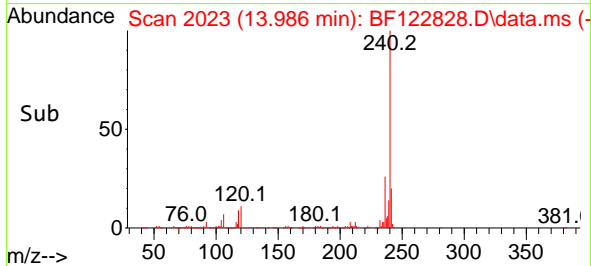


#76
 Chrysene-d12
 Concen: 20.00 ng
 RT: 13.986 min Scan# 2023
 Delta R.T. -0.000 min
 Lab File: BF122828.D
 Acq: 22 Dec 2020 23:36

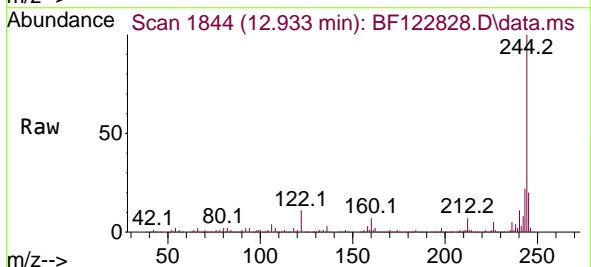
Instrument :
 BNA_F
ClientSampleId :
 LLEXSITUTV-022-001-SO



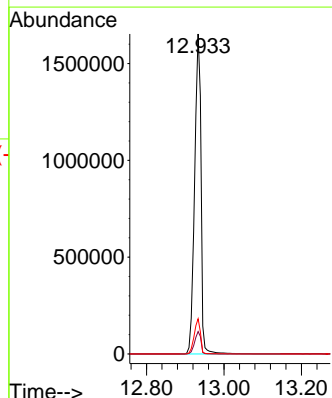
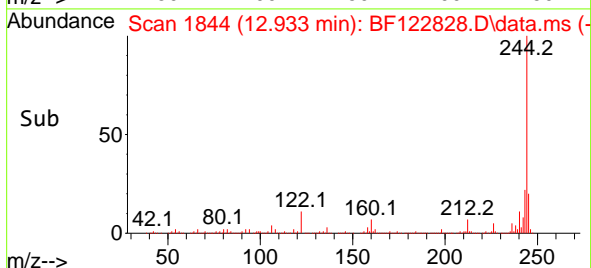
Tgt Ion:240 Resp: 571779
 Ion Ratio Lower Upper
 240 100
 120 10.6 8.6 12.8
 236 26.0 20.3 30.5

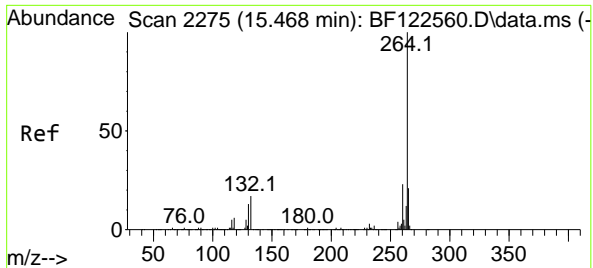


#79
 Terphenyl-d14
 Concen: 58.03 ng
 RT: 12.933 min Scan# 1844
 Delta R.T. -0.000 min
 Lab File: BF122828.D
 Acq: 22 Dec 2020 23:36



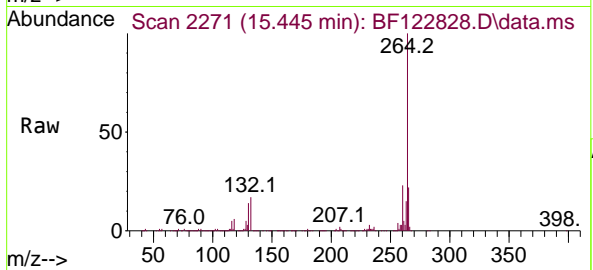
Tgt Ion:244 Resp: 1895652
 Ion Ratio Lower Upper
 244 100
 212 7.0 5.7 8.5
 122 11.0 8.3 12.5





#86
 Perylene-d12
 Concen: 20.00 ng
 RT: 15.445 min Scan# 2271
 Delta R.T. 0.006 min
 Lab File: BF122828.D
 Acq: 22 Dec 2020 23:36

Instrument :
 BNA_F
ClientSampled :
 LLEXSITUTV-022-001-SO



Tgt Ion:264 Resp: 486972

Ion	Ratio	Lower	Upper
264	100		
260	23.4	18.6	28.0
265	21.8	17.0	25.6

